

The TIMES-JOURNAL

MARCH 6, 1952 (VOL. 7, NO. 25) PUBLISHED AT PARKLAND, WASH., BY CLARENCE LACROSSE AND JACK BROWN BOX 885, PARKLAND, WASH.

U. S. POSTAGE PAID
Sec. 3466 P. L. & R.
Tacoma, Wash.
Permit No. 51
BOXHOLDER OR OCCUPANT
RURAL ROUTE
POSTMASTER—If unable to deliver,
return postage is guaranteed.

FREE AMBULANCE EXHIBITED IN AREA ALL WEEK

All this week the handsome Packard ambulance which is to serve the south end beginning Saturday, March 8, has been on display in the district. It was parked on Garfield street, Parkland, on Tuesday, at other locations on other days. In this way, people have an opportunity to see it and realize how very important its operation will be in terms of security for everyone in the district.

Mounted by the Spanaway Community club and turned over for the Spanaway Volunteer Fire department to operate, the ambulance will be on call at all times, day or night, with a trained rescue squad ready to cope with any emergency. The same phone numbers used to report fires in the Spanaway district should be used to call the ambulance. The numbers, GR. 7512 and GR. 7026, should be posted near every telephone in the section served.

It will take money to keep the ambulance in operation. The men running it won't be paid—they give their time and work without pay—but there will be expenses. Those who have made the ambulance possible are confident that the people of the area will finance operating expenses. Donations may be sent to Bill Righetti, president of the Spanaway Community club and a member of the fire department, at his place of business, South End Plumbing.

MOSTLY ABOUT HORSES

By Clarence LaCrosse

I certainly have had a host of friends call the last week about my new Palomino Quarterhorse stallion who was injured in a fight with Gold Dust, another Palomino stallion which I have. He is coming along quite well, having been in his stall all week, and is getting quite frisky. Dr. Van Hoesen has been giving me explicit instructions as to what to do and I have followed to the letter. If he isn't right, I'll tell you that, too, pretty soon. He says it will heal up fine.

Weekend Chatter
A lot of new horses and riders out over the weekend. I managed to get a couple of hours myself and saw quite a few others out riding their horses into shape.

We had a nice visit with Frank Truman Saturday night. He had a house full of company—Marie and B. F. Fluty, Mr. and Mrs. Frank Zurluh, Rosemary and Frank Zurluh, and ourselves. His food bill for the evening sure must have run high. Frank just loves to entertain his friends. It was three before we finally departed. Yeh, sure, the conversation got around to horses. Since Rosemary has a mighty fine Arabian stallion the subject was Arabians for part of the night.

DEL CHENEY is having fun these days by riding back and forth to work on horseback . . . seven miles each way. He and his horse will be in shape by summer or sooner.

GENE BEKSINSKI tells me that the Gossman Drug over in Puyallup is putting in a supply of medical supplies for horses . . . It might be advisable to drop over and see what they have.

SUMNER FARM SUPPLY is very pleased to have the readers of this column stop in at their well supplied store of horse equipment, bridles, martingales, bits, spurs, blankets, quilts, etc. They are about the only store around that stocks what one needs in this line. Try them—you will be pleased to discover such a friendly place to get your needs.

(Continued on Page 3)

P-TA FAIR HAS MENTALIST AS FRIDAY FEATURE

Highlight of the Friday evening program for the Parkland P-TA annual Spring fair will be Madam Leone and her mystifying act. Known as an automatist or mentalist, Madam Leone "sees all, knows all, tells all" reads minds, reads your thoughts, finds lost articles, etc. Her's is only one of many excellent features prepared for the entertainment of the entire family for the two evenings of the fair, Thursday and Friday, at the Parkland school.

The school band, under Mr. White's direction, will play Friday evening. The play, "Mississippi Melodies," which has been in rehearsal for weeks, will be presented both Thursday and Friday evenings. It's too good to miss.

A ham dinner is scheduled for Friday evening. Many colorful carnival attractions are planned for both evenings—booths, fish pond, cotton candy and many other amusing features to coax money from the pockets of our friends of the school, proceeds to be used for school needs. Mrs. Robert Gotschalk, general chairman, says that donations for the various booths are still welcome and needed. She wishes to thank the many who have given so much in time and materials to make this year's fair the finest yet.

I Like Ike Banquet At New York, Mar. 15

I Like Ike is the theme of a banquet to be given at the New Yorker restaurant at Sixth avenue and Cushman on Saturday, March 15, at 1 p.m., according to State Senator Don Eastwood.

Tickets are now available at a cost of \$1.10 each.

Featured speaker of the banquet will be Congressman Walter Judd of Minnesota. Plans are being made for a very enjoyable time for those attending. A large crowd is expected.

SAGA CARNIVAL DUE AT P. L. C. MARCH 14 & 15

Stan Boreson, Scandinavian-dialect star of a KING-TV program who appeared last week on Kate Smith's nationwide telecast, will be the feature attraction of the first night show at P.L.C.'s annual Saga Carnival next Friday, March 14.

On Saturday night, the program will spotlight the Lettermen's club, which will stage a minstrel show. Both programs will take place in the new auditorium, with the carnival taking place in the gym. All profits will go to the Saga, P.L.C. yearbook.

Boreson, besides presenting several numbers on his accordion, will crown a Saga king and queen. Prizes for the carnival have been donated by local merchants.

\$60,000 Bond Issue On March 11th Ballot

The board of directors for the Franklin Pierce school district are asking the voters to pass a \$60,000.00 bond issue on March 11, 1952, for the purpose of completing construction of the new high school. This action is necessary because of increased construction costs.

Three years ago \$310,000.00 was raised by the passage of a 50-mill special levy and a 5% bond issue. This money was to be matched with \$930,000 of state money, which would have given the district \$1,240,000 with which to purchase a site and construct the school. The site was purchased at a cost of \$24,000, but before it was possible to receive the state money, the earthquake made it necessary to use all available state funds in repair and replacement of damaged schools.

"Now that state money is available, we find that building costs have risen well over 20%," states Morris Ford, Franklin Pierce superintendent. "This general raise in costs has made it necessary for us to secure an additional \$240,000, if we are to have our high school complete with a physical education building. The state has offered to allocate \$180,000 of this money, if the district will raise \$60,000. In short, if we vote this \$60,000, we will be able to build the \$300,000 physical education building. If we do not vote this money, our high school will be without any gymnasium facilities.

"In 1949, when the original bond issue was voted, it raised \$160,000, but when the bonds were sold in 1951 our assessed valuation for the district had risen (due to new home construction) so that instead of having the 5% (legal limit) bond issue, we had a bond issue of only 3.68%. The passage of this \$60,000 bond issue will bring the total amount of bonds back up to the 5% as originally voted.

"An additional problem of increased population makes this bond issue of greatest importance. We now have between 800 and 900 high school students attending Clover Park, Puyallup and Tacoma. Enrollments now in our first, second and third and fourth grades shows that we must be prepared to house around 1500 to 1600 in the high school when these classes reach high school age. If we are to take care of these children in 1960, we must complete our high school plant now. We cannot afford to pass up the chance we now have of getting this large gymnasium when it will cost us approximately \$60,000, plus state matching money. If we do not use this \$180,000 state matching money now, it may be lost to us entirely.

"Voting will be at the usual polling places on March 11, 1952. Voter wishing transportation to and from the polls call any of the following numbers: Central Avenue school, GR. 8793; Collins school, GR. 7292; Midland school, GR. 8691; and Parkland school, GR. 7235.

Baby sitters may be secured while you are voting by calling the above numbers.

The administration building, class rooms, heating plant, cafeteria, shops, and sewage disposal plant are now under construction. If you haven't seen the site already, drop by and see your high school under construction at Airport Road and Portland Avenue.

"Please vote March 11, 1952."

Basketball Game
The Franklin Pierce Hi Boosters Cut Throats will collide with the Shelton Butchers at 8 p.m., March 12 in the Parkland school gym. Both teams are composed of college trained basketballers and the game promises to be a thriller.

Spanaway Fire Permits
Fire Permits are required from Feb. 15 to Oct. 15 for all outside fires. No permits will be issued at the court house this year. In the Spanaway area, fire permits may be obtained at the Gibbons Spanaway Food Center, Herman's Food Store, South End Plumbing Shop or Kuper's Store.

Open Saturdays
For a trial period, the office of the Parkland Light & Water Co. will be open from 9 a.m. till noon on Saturdays.

ST. BENEDICT'S ALTAR society of Spanaway will hold the regular monthly meeting at 7:45 p.m. Monday, March 10, at the home of Mrs. Arthur W. Kintz, 165th St. and Lakeshore drive, Spanaway, with Mrs. Ed. A. Kintz as co-hostess. Election of officers will be the main order of business; all members are urged to attend.

THE PARKLAND FIRE DEPT. responded to four fire alarms during the month of February, with 31 firemen turning out.

DRESSMAKING
Buttons and Button Holes
Aprons
Doll & Marie's Shoppe
11222 Pacific Avenue

It's only a hop, skip and a jump to happy feet

IF YOU VISIT

Soine's Parkland Shoe Store

411 Garfield St. (In the Parkland Centre Bldg.)
GRanite 3526 Al and Malcolm Soine Open 10-6

— for Pre-Tested **Poll Parrot** Shoes for Boys and Girls

5.40 to 6.70 according to size and style

Your daughter will love a pair of Poll Parrots in a delightful 2-tone brown or antique red, and they're pre-tested, too, for proper fit and quality.

Red Cross Drive Swings Into Action

The annual drive of the American Red Cross gets underway in Pierce county this week.

Announcement by Frank Quinn, county chairman of the drive, reveals that Virginia Seaman of Parkland will head the drive in this area. Mrs. Seaman has been a very active person in various functions in the past. Mr. Quinn, who introduces Edmond Jacobs, best possible person in charge of the important task of making a complete coverage of the area.

A national figure of 85 million dollars is needed to cover the expected expenditures of the Red Cross for 1952, according to Mr. Quinn. In the county a total of 150,000 is needed. Mrs. Seaman expects to get the necessary pledges for that amount during March. None of the funds given to the Community Chest are given to the Red Cross, it is pointed out.

Parkland Preschool

Parkland Preschool will meet at 8 p.m. March 10 in the school auditorium, Mrs. A. J. Stern presiding. Mrs. David Freeman, program chairman, will introduce Edmond Jacobs, mayor of Puyallup, to speak on "The Legal Responsibility of Raising Children." The film, "Human Growth," will be shown. Fish pond articles may be turned in to Mrs. Charles Denton.

Hostesses for the evening are Mesdames Ruth Reynolds, Cressie Hartman, Marion Gaiser, Gladys Richards, Viola Clark and Jessie Dickinson.

26K Club to Meet

The 26K Republican club will meet at 8 p.m. March 13 in the Spanaway fire hall. Ted Sullivan, executive director of the Citizens Information committee, will address the club on the subject, "The Importance of Your Vote." George M. Brewer, area counselor for this district, requests that all members and their friends be present.

Auxiliary Banquet Due

All firemen of the Parkland area and their wives are invited to attend the annual installation banquet of the Ladies auxiliary, to be held at 7:30 p.m. March 12 at Betty Vogel's Country House. Reservations may be made by calling Mrs. Joe Anderson, chairman, at GR. 7401.

INCOME TAX REPORT

For Quick Service, See

ROY V. ROSTEDT
8201 Park Ave. HA. 2342

First Grade — State Inspected
4, 5, 6' Large Caliper

**Fruit Trees—1.39 ea.
2 or more, 1.29 ea.**

Special Price on Large Lots
Evergreens - Ornamental Shrubs
Flowering and Shade Trees
Azalea Hexe, potted—98c

MAX MILLER'S
8844 Pacific Ave.

STATE PATROL LAUDS SPANAWAY FOR AMBULANCE

The following statement, dated March 3, brings official recognition for the splendid accomplishment of the Spanaway Community club and the Spanaway Volunteer Fire department in inaugurating a free ambulance service this week:

"The State Patrol Headquarters in Olympia has read with interest a recent report furnished by Captain N. L. Taylor indicating that an ambulance provided by the Spanaway Community club is to be placed in operation by a trained rescue squad of the Volunteer Fire department in Spanaway. The Spanaway Community club deserves the heartfelt thanks of all concerned for this outstanding humanitarian effort.

"The State Patrol officers assigned in the area to be served by this ambulance will face their duties with renewed confidence as a result of this additional ambulance service. In times of emergency, the certainty of ambulance service with trained personnel is of paramount importance.

"This tangible example of community spirit is most encouraging to those of us responsible for the prevention of traffic accidents on the state highways in Pierce county.

Signed,
JAMES A. PRYDE, Chief,
Washington State Patrol."

Bill Righetti Candidate

Bill Righetti, president of the Spanaway Community club and a member of the Spanaway Volunteer Fire department, has announced himself a candidate for the post of fire commissioner in Pierce County Fire district No. 7, Spanaway.

HOT CROSS BUNS

Brazilian Mocha Cake—\$1.10
Peanut Clusters, (\$1 val.) 79c lb.
PATTY ANN BAKERY
GR. 3330
Pacific Avenue at Airport Road
Hours: 9 a.m. to 9 p.m.—

NO CHILLS—NO BILLS

Use the new burner oil that gives you more heat and prevents costly bills for breakdowns. Costs you no more!

RICH-HEAT BURNER OIL
containing RICHFIELD SOLARITE

Boston's Fuel Oil
6328 Pacific Avenue
GA. 2125

RICH-HEAT BURNER OIL
CONTAINING SOLARITE

MEDITATION

IT'S ALL IN YOUR MIND

Some time ago a fine looking young soldier walked into my office and greeted me very respectfully. He was vaguely familiar to me, but I could not place him until he gave me his name and reminded me I had been in my Boy Scout troop many years before—from his viewpoint, a great many years before.

Trav Dryer His visit was interesting, but his 20-year-old deference to my "august age" left me feeling bent and in need of a cane. I felt so old as he respectfully bade me goodbye.

He had no more than left when I had occasion to pick up and take home a sprightly little lady of 80 summers. I helped her to her door and as I said goodbye she patted me on the arm and with a twinkle in her eye, said, "Now, be a good boy."

With a spring in my step, I finished the day with zest and vigor.

DRYER MORTUARY

DRYER MORTUARY
220 SOUTH 134th PARKLAND, GR. 3300

Here, in your own community, we offer you complete funeral facilities, with easy parking and close personal attention to every detail.

—Trav Dryer

DRYER MORTUARY

DRYER MORTUARY
220 SOUTH 134th PARKLAND, GR. 3300

Red Hot Specials for This Week

Everything is LUMBER

No. 2 Grooved Cedar Shakes (not reject) sq. 4.95
6" and 8" Cedar Bevel Siding, per 100 ft. . . 2.50
2x4 8-ft. No. 4 STUDS, per M feet, Only . . 10.00
4x8 3-8 inch CELOTEX WALLBOARD, each . . 1.98
36" CEDAR POINTED PICKETS, each . . 11c
CEDAR POSTS, per lin. ft. . . 13c

28" 3-Panel House Doors, each . . 5.95

CONGOWALL BATH TILE, sq. ft. . . 13c

SERVICE RESTORES HOME FURNISHINGS

Moon Mullins, Parkland area salesman for the Puyallup Laundry and Dry Cleaners, is offering housewives a service at this time of year that cuts house-cleaning work to the minimum.

Claims Moon, "At the Puyallup Laundry and Dry Cleaning plant, we can renew the beauty of all hard to do pieces. Using special equipment we can safely wash and beautifully refinish your most fragile curtains. Pillows, in our Muroza Pillow cleaning unit, are cleaned and returned softer than when you bought them at the store. These pillows are not only clean, but also sanitary, for live steam is used in this Muroza process.

"Rugs sent to the Puyallup Laundry and Dry Cleaning plant are not only cleaned, but resized, when this service is required. Colors are revived, spots are removed, and the nap is raised to give you years of satisfying additional service from a dirt-filled and sadly soiled rug."

Moon Mullins also asks local housewives to send drapes and valuable linens to the Puyallup Laundry for finest results, and blankets washed in Puyallup come back looking like new. Call Moon Mullins at Puyallup 5,6651 for emergency service. He offers his personal guarantee of complete customer satisfaction.

PROFESSIONAL DIRECTORY

INSURANCE
CLAY ROLEY AGENCY
98th and Portland Avenue
GR 8501

OPTOMETRISTS
DR. L. RICHARD MCGIRK
Modern Eye Care
4802 1/2 So. Yakima HA 2113

DR. C. A. GEER
Complete Optical Service
117 1/2 Broadway MA. 1888
Opposite J. C. Penney

REAL ESTATE — INSURANCE
NOTARY

ROY V. ROSTEDT
8201 Park Avenue
Phone HA 2342

DIAPER FUNERAL HOME

HILLSIDE 8479 • 5436 SO. PUGET SOUND AVE.

136th Pacific Ave. BROOKDALE LUMBER CO. Phone GR. 8669

No. 2 OAK FLOORING, per 100 ft. . . 13.50
Window Frames, Cut and Bundled, Odd Sizes, each . . 98c
OUTSIDE WHITE PAINT, gallon . . 2.49
HI-GLOSS ENAMEL, quart . . 1.68
PAINT THINNER, gallon (your container) . . 15c
1x3 Kiln Dry Utility Flooring, per 100 ft. . . 6.90

March 13. The business session is called for 11 o'clock, with potluck lunch at noon. Plans will be finished for the "Luncheon Is Served" to be held in the hall at noon March 27. All ladies of the community are invited to attend this event.
Special Services
Rep. Truman Cotton of Seattle will

be the speaker in the Summit church Sunday at the 11 o'clock service and will be the speaker for the special evangelical services to be held Monday through Friday, starting at 7:30 p.m. Everyone in the community is invited to these services, March 9-14.
P-TA Fetes Past Presidents
Wednesday evening, Feb. 27, the

Central Avenue P-TA put on a very interesting Founders' Day program, honoring the past presidents of the group. Past presidents present were Mrs. M. S. Rau, who was also a charter member of the group, Mrs. Fay Clover, Mrs. Norman Johnson, Mrs. William Dower, Mrs. George Wange- lin and Mrs. Emil Ripoli. They and

W-G-S Saves Barn
The Woodland-Collins-Summit fire department was called to put out a fire in the Carlson barn on Canyon road south of Knapp, Friday at 6 p.m. Through the efforts of the de-

partment, the fire was mostly confined to the inside of the building. If there had not been a fire department to call, the whole corner would have been wiped out as the buildings are so close. Fire Chief Harold Leamon wishes to emphasize this: DO NOT call GR. 5511 except for an emergency or a fire. For fire permits, call Harry Lee, Puyallup 5-7100, as he is the local fire warden. No fire should be started outdoors from Feb. 15 to Oct. 15 without a permit.
Prosh Club
The Prosh Study club will meet at the home of Mrs. George Kiehn, 7043 So. A St., Tacoma, for the regular luncheon meeting.
Knapp Road 4-H
The Knapp Road 4-H club met at the home of Albert Shaffer on Grant Wednesday afternoon, Feb. 27. Barbara Shaffer was hostess. New members are Barbara Albaugh, first year sewing, and Bobbie Albaugh and Johnnie Greco, whose project is rabbits. After the meeting Mrs. Shaffer served refreshments. The next meeting was March 5 at the home of Rosalie Barquest on Knapp road.
Visits Parents
Tommy Irish, who is stationed at Camp Humphard, North Richland, spent the weekend with his parents, Mr. and Mrs. Casper Irish, on Knapp and Burnett.
School Election
Don't forget the school election in the Summit church hall March 11 from 8 a.m. to 8 p.m.
The Pacific Railroad inaugurated the first regular passenger train service west of the Mississippi Dec. 9,

2 THE TIMES-JOURNAL Thursday, March 6, 1952
DEMOCRATIC CAUCUS OF precincts 1, 2, 3 and 4 (Spanaway) will be held at the Spanaway school at 8 p.m. March 12. Delegates to the Pierce county convention will be elected; prominent speakers will be present. Public is invited.
GHILARDUCCI'S Chinchillas are on display at Parkland Upholstery, 141st and Pacific.
CORTEGES TO CEMETERIES 3 TO 10 MINUTES
Paul & Charles Mellinger
Services are Distinctive
... Definitely Different
Lakewood Mortuary
LAKWOOD 2167
Lakewood Center Tacoma 9, Wash.
502 Puget Sound
Bank Building
MA. 1381
New Bank Bldg.
Parkland
GR. 3226
John S. Castleman
Castleman Insurance Agency
A Button for a Buck
CUSTOM MEAT
Fresh Eggs — Locker Rentals
Mountain View
Food Lockers
Airport & Spruce GR. 5332
2 1/2 Miles East of Pacific Avenue



"BEST BIT OF SOWING EVER..."
"Yes, son, I've just sowed a crop that will really bear fruit—retirement assurance in the Sun Life Assurance Company of Canada. And the same policy provides that if anything happens to me while we still have a mortgage, the farm will be clear of debt for your mother." No farmer should be without this protection—call me today.
SUN LIFE ASSURANCE COMPANY OF CANADA



ANCHORS AWEIGH Tall 1-lb. Can
SALMON 49c
Del Monte 2 No. 303 Cans
Corn 29c
Del Monte 2 No. 303 Cans
Peas 33c

Nest Fresh Large Grade AA DOZ.
Eggs 49c
Hills Bros. 2 LBS.
Coffee 1.65
COFFEE—Fresh Ground the way you like it. LB.
Swedish Roast 79c
Measuring Spoon FREE
HORMEL'S 12-oz. Can
SPAM 39c
LIBBY'S 12-oz. Can
CORN BEEF 48c
SILVERDALE—Lge. 2 1/2 Can 2 FOR
TOMATOES 39c

Sharp Cheddar CHEESE . lb. 59c
Mission 2-lb., 4-oz. **MACARONI 35c**
Agate Isle 6 1/2-oz. **CRAB MEAT 65c**
Heinz 14-oz. Btl. **CATSUP . . . 24c**
Pioneer Minced Razor **CLAMS . . . 39c**
Woodbury 50c Size **SHAMPOO . . 29c**
Libby's 12 Cans **BABY FOOD . 1.00**
Cereal Pkg. **PABLUM . . 43c**
Quick or Reg., 28-oz. pkg. **Cream of Wheat 31c**
Tastewell Lb. **MARGARINE . . 23c**
Sanitary—4 qts. 80c
MILK . . . qt. 21c
Mild Luxury **CHEESE . . lb. 55c**

SHURFINE—The Finest
Shortening 3 lb. can 81c
Centennial Hard Wheat
FLOUR 25 lbs 1.98

C. & H. CANE
SUGAR 10 lbs. 97c
Pet Milk TALL TINS
3 for 43c

Del Monte No. 2 Can **Stewed Tomatoes 23c**
RITZ 1-lb. pkg. **CRACKERS . . . 31c**

Hunt's
TOMATO SAUCE 6 cans 39c

SUMMIT FARMS
BACON SQUARES (fresh smoked) . lb. 25c
SUMMIT FARMS
SLICED BACON (fresh smoked) . . lb. 49c
FRESH GROUND BEEF . . . lb. 59c
PORK SAUSAGE . . . lb. 49c
FRESH SMELTS
GRAIN FED
PORK ROAST (shoulder cuts) . . . lb. 49c
SKINLESS WIENERS (Carstens) . . . lb. 49c
RED SNAPPER . . . lb. 35c
FRESH OYSTERS (medium size) . . pt. 65c

For a Clean Sink
DRANO . . . can 23c
Energine Can
Cleaning Fluid . 29c
Guest 4 for
TOILET TISSUE . 31c
5c Varieties
Candy Bars . 4 for 15c
All Leading Brands
CIGARETTES, ctn. 2.04

RECIPE OF THE WEEK
By Mary Lee Taylor
Easy Meat Pie
1 1/2 cups biscuit mix 8 slices lunch meat
6 tablespoons fat 1 cup grated American
Milk cheese
6 tablespoons water 1/2 cup chili sauce
Put biscuit mix into bowl. Stir in with fork a mixture of milk and water. Spread in greased skillet holding 6 cups. Cut lunch meat into 2 x 1/2-in. slices. Cut each slice into 2 triangles. Arrange on dough with points in center. Put equal parts of cheese on every other slice of meat. Cover. Bake in moderately hot oven (400) 25 min., or until pie pulls from sides of skillet. Cut in wedges. Serve with sauce. Makes 4 servings.
You Will Need:
Pet Milk, Lunch Meat, Biscuit Mix, Chili Sauce, American Cheese.

One Good Term Deserves Another
RE-ELECT RAY GOGAN
(Charter Member)
Fire Commissioner
Fire District No. 9 (Summit)
6-year Term
Vote Tuesday, Mar. 11
RAY GOGAN

REBORING Butler's Garage
One block North Airport Road on Canyon Road
Phone GR. 8209
If no answer, Call GR. 5095

Quality Repairs
Guaranteed Better Wear
Attention to Details
ART'S SHOE SHOP
Garfield Street Parkland

Malcom's Meats
1 Block North of Airport Road On Canyon Road
GR 8258
PORK ROAST—Center
Cut Shoulder . . . lb. 44c
PORK CHOPS—Loins . . . lb. 58c
LEAN PORK STEAKS, lb. 45c
PORK NECK BONES . . . lb. 17c
Pure Pork Sausage . . . lb. 45c
RIB STEAKS . . . lb. 68c
ALL MEAT WIENERS . . . lb. 49c
TOP ROUND STEAKS, lb. 88c
LEAN SIDE BACON . . . lb. 48c
CUBE STEAKS . . . lb. 88c
Locker Beef, Pork and Veal Custom Slaughtering, Cutting and Wrapping
RETAIL SALES THURSDAY, FRIDAY and SATURDAY

Mrs. Thos. N. Hibben
FARMERS INSURANCE GROUP
Automobile, Truck and Fire Insurance
7820 PACIFIC AVE.
Open Eves. HA. 9132

STOP PAINTING
Pabco Hydro Mastic
guaranteed 10 years
-against cracking, peeling or blistering.
Free Estimates — Terms

MOLITOR CONSTRUCTION
GENERAL CONTRACTORS
3007 Portland Ave.
BR. 8211, Eves., GR. 6982
Tacoma 4, Washington

Horse Ranch, Cattle Ranch, Dairy Farm, Turkey Farm, or Chicken Farm — it makes no difference — we have the feed you need. (Even for a stump farm, Ha, Ha.)
SUMMIT FEED CO.
Home of *Fisher's* Quality Feeds
Canyon Road, next to Summit Trading Co.
GR. 7136 We Deliver

ATTENTION
WAGE EARNERS — BUSINESS MEN — FARMERS
Constantly changing tax laws offer problems that can best be solved by persons who devote their time to studying and working in the highly specialized tax profession. Bring your tax problems to MICHELETTA'S and rest assured that your tax form will be computed correctly. In many cases the amount saved will more than pay for our services.
11 Years in South Tacoma — Plenty of Parking Space
MICHELETTA'S
Accountants — Tax Consultants
Now located in our new, enlarged office at 6435 South Tacoma Way
Evenings by Appointment—HI 4832

ADVERTISED IN LIFE
4 Million Women Say...
"PFAFF is Finest"
PFAFF SEWING MACHINE
People who know and appreciate the value of fine sewing favor the PFAFF because PFAFF alone makes all sewing . . . all finishing so amazingly easy . . . for beginner and expert alike! Take the PFAFF way to better sewing—and save more as well.
With the built-in Dial-A-Stitch*
Just Dial It to Style III!
Sewing with the exclusive PFAFF Dial-A-Stitch is as easy as dialing a radio.
"THE HOLLYWOOD" complete with chair and built-in sewing drawers.
When you own a PFAFF you own a Complete Sewing Center. PFAFF does it all . . . at home . . . Without Attachments
• Buttonholes • Bar Tacks • Appliques • Straight or Reverse • Zig-Zags • Darns • Overcasts • Embroiders • Sew on Buttons • Monograms • Blind Stitches
For 90 Years—The World's Finest Sewing Machine Parts and Service Available Nationally
Easy Terms! Low Down Payment! Generous Trade-In!
Pfaff Sewing Machine Center TACOMA
©1952, Pfaff Sewing Machine Corp.
Come in for a FREE demonstration today. Sewing is Believing!
FU 1122
For Home Demonstration
PFAFF Sewing Machine Center
781 Broadway Winthrop Hotel Building
OPEN MONDAY EVENING TILL 9:00 O'CLOCK

WE RESERVE THE RIGHT TO LIMIT QUANTITIES — NO SALES TO DEALERS

SUMMIT TRADING Company
PHONE GRanite 5848
Rt. 13, Box 690, Tacoma—One-half Mile North of Summit View, on Canyon Road

YOUR Favorite National BRANDS
at
lowest prices

Centennial Silk Sifted 10 LBS. WESCO 303 Tin
Flour 89c **PEAS & Carrots 15c**

1 Plofilm Bag Free
Kitchen Charm 125-ft. Rolls
Wax Paper 19c **Pork Steak lb. 49c**

Washing Powder Giant Size
Nu Bora 57c **Link Sausage 49c**

Tastewell LB.
Margarine 23c **EGGS doz. 49c**

Pork Roast lb. 49c **Coffee lb. 79c**

Large AA Ranch
Blue Bag delicious blend LB.

Waller Road STOP-N-SHOP
64TH & WALLER RD. PHONE GR. 5362
PRICES EFFECTIVE FRIDAY & SATURDAY, FEB. 15-16

WALLER ROAD
By MRS. VERNE FOGLE
GR. 5210

Mrs. Gilbert Carlson, 4-H leader, states that some of the younger 4-H members will be heard on the Farm and Home News program over KMO at 12:45 p.m. Friday. Be sure to listen.

Saturday Movie
The movie for Saturday evening will be "This Is the Life," with Donald O'Connor and Peggy Ryan; also comedy and serial.

Grange Meeting
The next meeting of the Waller Road Grange will be March 14. All members are urged to attend; the Grange needs your support.

Keep the Date
March 21—date to keep in mind. The Grange will sponsor a dance for that night.


PARKLAND Plumbing & Heating
GR. 3710

New Installations
Repairing Pumps, Hot Water Heaters, Washers
Sluggish Drains Opened

Shop located at
770 South 120th

Farmers Mutual Insurance Co.
R. E. ENGBRETSON INS. AGENCY

FIRE LIABILITY AUTO
122nd & Pacific Ave. GR. 4141
(Parkland Theater Bldg.)



1,000 FEET OF SANDY BEACH THIS IS NO OTHER PLACE
Point Ohop Resort POINT OHOP RESORT

ELECTRIC BROODERS
FIVE SIZES — 50 to 800 CHICK CAPACITY
ELECTRIC INCUBATORS
100 AND 300 EGG CAPACITY
RABBIT FEEDERS and WATER FOUNTS
GENERAL SHEET METAL WORK

RAU MANUFACTURING CO.
141st & Pacific Avenue GR. 7372

LOOK

Split Cedar Fence Posts
35c ea. at the yard

Poultry Fencing
Barbed Wire
Ornamental Fencing
Kitchen Ware
Household Appliances

PAINTS HARDWARE and PLUMBING

We Cut Glass
BASKETT LUMBER COMPANY
96th & Portland Avenue
GRanite 5844

Orthopedic
The Marie Hazen Orthopedic guild reports a very successful card party March 1 at the hall.

At Bremerton
Mr. and Mrs. George May of Ghering road were weekend guests of Mr. and Mrs. H. C. Richards of Bremerton. Both families attended the 28th wedding anniversary of Mr. and Mrs. Charles Martin.

4-H Teams
The Waller Road 4-H Lassies have four breakfast teams, two luncheon teams and one dinner team that are entering the County Food Preparation contest, to be held at Fife high school starting at 8:30 a.m. March 8.

In Air Force
Ralph J. Johnson, son of Mr. and Mrs. Ralph Johnson of Lidford road, has enlisted in the U. S. Air Force and is now in training at the Lackland Air Base at San Antonio, Texas. His wife Susan is temporarily at the home of her brother, Clarence Cottrell of Shelton.

Returns to Duty
Leo Bassett, U.S.N., has returned to duty at Vallejo, Calif., after a 15-day leave with his parents, Mr. and Mrs. Harvey Bassett.

Weekend Visit
Mr. and Mrs. Elmer Bradley and family made a weekend trip to Kennebec to visit with their son Lewis and his wife Lorraine and the pride and joy of the family, granddaughter Vickie.

Many "Greats"
Last week we announced the birth of a daughter, Donna Lorraine, to Mr. and Mrs. Don Howard, formerly of Waller Road. This week we wish to include the names of all grandparents, great-grandparents and one great-great-grandmother. Grandparents are Mr. and Mrs. Russell Robbins of Waller road and Mr. and Mrs. Lawrence Howard of Lidford road; great-grandparents, Mr. and Mrs. Franz Nelson of East 62nd St., Mr. and Mrs. William Brauning of 84th and Tacoma Ave., Mr. and Mrs. Herman Heller of Puyallup, Mrs. Mary Howard of McKinley Ave., and Martin F. Miller of Puyallup; great-great-grandmother, Mrs. Sarah Robbins of Everett.

MIDLAND NEWS
National 4-H Club Week is March 1-9. All over the United States 4-H boys and girls made ready for this week to show their "stuff" before the public. The theme for the week is: Serving as Loyal Citizens Through 4-H. Give you 4-Hers your support.

Pre-Easter Sale
Coats and Dresses for toddlers thru six years

STORKVILLE
8324 S. Tac. Way

All Saints Church
(Episcopal)
96th Street at East "B"
EVERY SUNDAY SERVICES
9:30—Episcopal Church School
11:00—Worship, Sermon & Music

Prescriptions Prepared & Carefully

Fresh Insulin at Down Town Prices. Pay Phone Bills Here

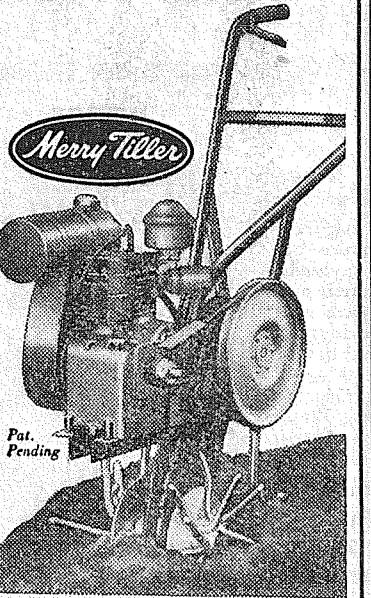
Tincher's Pharmacy
8239 Park Ave. HI. 3344
Across street from Fern Hill P. O.

GROUP ONE
BATTERIES
\$7.45

EXCHANGE
Gas at Competitive Prices

BOB'S PLACE
Airport Road & J St. GR. 3395
18 Years in Parkland

Merry Tiller



Pat. Pending

Prepare Your Garden NOW!
Convenient Terms

Service Hardware
1545 E. Bay St. FU. 2409

Thursday, March 6, 1952 THE TIMES-JOURNAL 3

CANYON ROAD
Mrs. K. W. Struensee, Reporter

The regular monthly meeting of the Canyon Road Community club will be held at the hall Thursday, March 13, at 8 p.m. The committee will have more information regarding the civil defense meeting that is to be held on March 17, and since civil defense is everyone's job, all members are urged to attend.

Home Nursing Class
Anyone interested in taking the course in Home Nursing, classes to be held at the Community hall, 80th and Canyon road, should call Mrs. Mary Hanson, GR. 6782. Don't delay—this is an opportunity you won't want to miss. Call today.

Local Singer
Miss Audrey Carmack, talented daughter of Mr. and Mrs. Glen Carmack of East 72nd street, was one of the vocal participants in the Western Washington Music Educators' festival, a junior and senior high school students' competition in instrumental and vocal fields, at Renton, last Saturday. Audrey also sang with the Francilians, St. Leo's high school choral group. Best of luck to Audrey and to the Francilians.

THANKS
We, the Richard Ward family, wish to thank the Grange and each and every one of the kind neighbors who have been so kind and came to our aid. We are very grateful and appreciate everything that has been done. We especially thank the firemen for the work they did; they did their very best. God bless you all.

Mrs. Richard Ward and family, Rt. 2, Box 208, Puyallup.

"I wouldn't mind being a pancake," said the mess sergeant, "if Lana was my Turner."

A Buck for a Button

Mostly About Horses
(Continued from Page 1)

FRANCIS NORDYKE was seen out riding his new horse over the weekend. Glad to see new blood in the horse world hereabouts.

Parkland Roundup Master of Ceremonies
News of considerable interest to his many friends in the area is that Larry Kirkwood, Parkland Roundup emcee, has opened his own place of business. The name of the new concern is McKinley Park Cleaners at 3608 McKinley Avenue. Phone number . . . sure, it is GARland 2652. Write it down . . . you will want to call him both to wish him well and to have those riding pants and shirts, etc., cleaned. Larry has a pick-up service, so it is easy to patronize your friend and neighbor.

We are looking forward to having Larry as our master of ceremonies at the new and bigger Parkland Roundup this June 2 to 7. It will be the show of shows on this side of the mountains. Entries and inquiries are already coming in. I will have a set of blanks, etc., ready soon for various clubs and organizations who want to enter the parade.

A complete list of committee heads will be named soon. It is my plan to place only such individuals who sincerely want to do a good job of making a bigger and better Parkland Roundup this year, therefore it takes a bit of time to select these individuals.

The Parkland Riding club is going to owe Harry Sprinker, our county commissioner, a vote of thanks soon for his efforts in getting us some suitable property to have a couple of horse shows this summer. I'll tell you more about this later, but we will have a place to stage a show—that is sure, thanks to Mr. Sprinker.

Don't forget the big Spring show at the Washington Horsemen this April 20th. It will be the first show of the season . . . Start now to get your horse in shape for some fancy riding.

Protect Your Car and Your Investment with a MODEL GARAGE



This 14x20 garage pictured above can be built on your lot for only \$495. Payments as low as \$14.38 per month.

GIVE YOUR CAR A GARAGE THEN IT WILL ALWAYS GO FOR YOU

Model Lumber Co.
2424 Bay St. MA. 4147

HORSE & SADDLERY EQUIPMENT

SUMNER FARMERS' SUPPLY
823 Main St., Sumner Phone 3-4784

NEW! EXCLUSIVE!

The Most PRACTICAL Engineering Development Since BENDIX Pioneered The First Automatic Washer!

Introducing the NEW **BENDIX Snow White Automatic WASHER**

makes WASH WATER HOTTER . . . keeps it HOT!
GETS CLOTHES CLEANER . . . with the EXCLUSIVE MAGIC HEATER!

Every woman knows, "The Hotter the Water, the Cleaner the Clothes!" Now—Bendix brings you HOTTER wash water—that STAYS HOT—plus patented Tumble-Action washing . . . for the brightest, cleanest clothes you've ever known!

Free! SEE THE SNOW WHITE DEMONSTRATION SEE SPOTS VANISH BEFORE YOUR EYES — and get these Free Gifts

Zippered SUDSY SAC, for washing lingerie, hosiery, etc. in your washing machine. \$1.00 value.

for Mother

Big 32-page "Snow White" Comic Book in 4 colors. A brand new adventure!

for the Children

Product of BENDIX HOME APPLIANCE Division Avco Manufacturing Corp.

Model G-314

Finest automatic washer made—but not the most expensive. Washes in just 7 gallons of water or less. Saves soap, too! **\$299.95**

See "Snow White and the Seven Dwarfs" at your favorite Theater. © Walt Disney Productions

LIBERAL TRADE-IN ALLOWANCE
18 MONTHS TO PAY, 15% DOWN

Use Your Trade-in As Part or Full Down Payment

OPEN TILL 9:00 P.M. FRIDAYS

FRYE'S FURNITURE, TV, APPLIANCES
405 Garfield Street GRanite 3691

Fletcher's BUDGET PLEASERS

STANDBY 46-OZ. CAN Tomato Juice 4 for 99c
GRANULATED LGE. SIZE PKG.

Peet Soap 29c

The Perfect SALAD DRESSING PINT **TANG 27c**

NALLEY'S LUMBERJACK 24-OZ. **SYRUP 29c**

Centennial FLOUR 10 lbs. 89c

Standby—make a pie No. 2 Can SLICED APPLES 21c

Lean and Meaty LB. Spare Ribs 49c

Tender and Juicy LB. Wieners 49c

Sirloin Steak lb. 89c

LEAN Pork Steak lb. 49c

FRYERS, pan-ready, lb. 65c

We are prepared for your Lenten Food Needs

Garden whole kernel 303 Can CORN 2 for 31c

Wisconsin SHARP CHEESE lb. 55c

Solid Heads Lettuce lb. 9c

2 Bunches Green Onions 9c

Arigona, Large Size Grapefruit 3 for 19c

Local Cauliflower lb. 15c

Daffodils 2 doz. 39c

Fletcher's MARKET
122nd and Pacific Avenue
Phone GRanite 8550
Prices Effective March 7 and 8

FRIDAY AND SATURDAY ONLY

RED COCKERELS \$4.95 per 100

98th and Pacific AVENUE FEED STORE Granite 8641

**SALE LASTS
1 WEEK ONLY**
COME EARLY, WHILE
MERCHANDISE LASTS

BUY NOW
Prices Are Rising

Why Pay More?

Roofing Special



90-LB. MINERAL SURFACED
(Red or Green)
Reg. 4.19 Roll -- SALES PRICE 3.39
45-LB. BLACK -- SALES PRICE 2.18
Regular 2.89
3-IN-1 THICK BUTT

SHINGLES \$8.10
SQUARE
LARGE COLOR ASSORTMENT — STRAIGHT AND BLENDS

FIBERED ROOF COATING
5 gallons \$3.00

ROOF COATING
Non-Fibered
5 gals. 2.75



Utility Paint \$2.49 gal.
(Gray, Red, White, Green)

**PAINT
THINNER**
24c gal.
YOUR CONTAINER

**TURPENTINE
PURE GUM**
1.69 gal.
YOUR CONTAINER

**PURE
BOILED LINSEED OIL**
Gallon
1.99
YOUR CONTAINER

PAINT BRUSHES
All Sizes — Pure Bristle and Nylon
LADDERS AND BRUSHES FOR RENT

STEP LADDERS
4-Foot (reg. 4.49) . 3.60
5-Foot (reg. 5.79) . 4.50
6-Foot (reg. 6.30) . 5.40

**WE ARE
NOW SELLING
SUPER
KEMTONE**

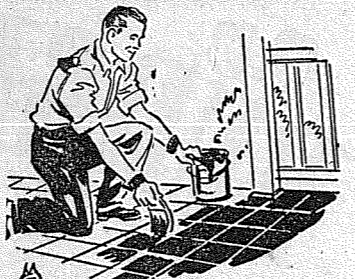
**LAUTEX
TEXTURES**
Plain and Sand Finish
BY THE POUND OR THE SACK

L & H MODERN PAINT Specials



Pure Prepared
Outside Whites and Tints 5.38
Top Quality
(L&H) Regular 5.77

BUNGALOW AND UTILITY (L&H)
Green and White
General Purpose, reg. 3.49
Gallon **2.93**



**PORCH AND FLOOR
ENAMEL (L&H)**
BEAUTIFUL COLORS
DURABLE, LASTING
Reg. 1.57
1.33 quart

MODERN TONE (L&H)
ONE-COAT FLAT WALL PAINT
(Oil Base)
Light Tints (reg. 3.45) . gal. 2.99
Deep Tones (reg. 4.40) . gal. 3.53

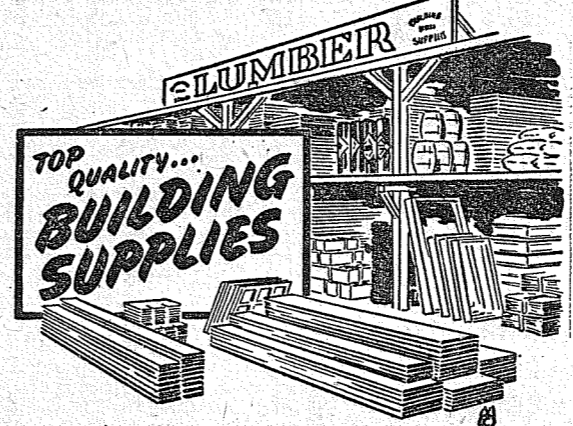
MODERN ENAMEL (L&H)
1 Coat, High Gloss
Really Covers
Reg. 6.03 gallon—Sales Price
Gallon **4.83**

MODERN LUX
All Purpose, High Gloss, 23 Assorted Colors
Suitable for either Interior or
Exterior Surfaces.
Reg. 2.15 quart
Quart **1.72**

TOP FLITE
Rubbed based, washable, for walls or wood-
work. Flat, velvety finish. Reg. 4.79 and 5.25
gallon. All will go at
3.99 gal.

**SHURETEX
TEXTURE PAINT**
A Few Sacks Only
25-lb.
\$2.99

**FLITE WATER MIX
WALL PAINT**
House and Garden Colors
REG. \$1.05 QUART
Going 45c Qt.



LUMBER AND PLYWOOD SPECIALS

2x4's
2-foot . each 4c
3-foot . each 6c
4-foot . each 8c
5-foot . each 10c
6-foot . each 12c
7-foot . each 14c

2x4's
8-ft. to 20-ft.
Specified Lengths
Any Quantity
37.50 M

1x6 and 1x8
S-4-S
No. 4, Good
42.50 M

WOOD GUTTER . per lin. foot 12c
Short Lengths, 6-ft. — 4x5, 4x6, 3x4

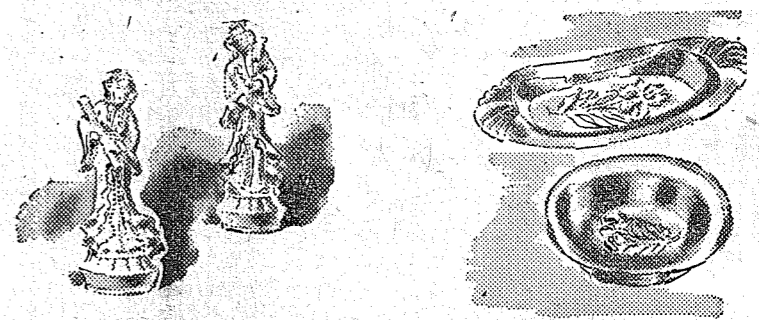
2x6 and 2x8
SPECIFIED LENGTHS
\$40 M

Short Length
2x6's and 2x8's
\$30.00 M

2x2
COMMON
2c lineal foot

**PLYWOOD PRICES ARE
GOING UP AND UP**
Gets yours on these special
prices.

1/2" REJECT (4x8 sheet) . ea. 4.99
3/4" SHOP GRADE (4x5 sheet) ea. 4.40
3/4" SHOP GRADE (4x6 sheet) ea. 5.28
(4x8 SHEETS)
5-8" C. D. SHEATHING . ea. 5.12
1-4" REJECT (4x8 sheet) . ea. 3.39
We cut plywood to suit you. Also have special
lengths available.



Miscellaneous Items

**ZEE
FACIAL TISSUE**
Reg. 29c
2 boxes 49c

TOILET TISSUE
Reg. 4 rolls 48c
now 32c

INSULATION BOARD
4x12 Sheets — Painted Warm Ivory
Reg. 5.40 sheet, Now 3.13 sheet

No. 2 CEDAR SHINGLES
ONLY A FEW SQUARES LEFT
Regular 8.25 square
NOW 7.49 square

**Nick-Nacks, Figurines, Novelties,
Toys, Pans, Dish Cloths, Misc. Hdwe.**
ALL PRICED AT THE LOWEST PRICES

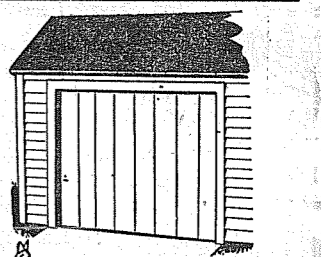
BARBED WIRE -- 25 Spools Only
Reg. 12.00 -- 9.70 spool

Reject Shakes 3.75sq
With Undercourse—5.75 square

Aluminum Gutter
24c ft.

Gravel and Sand
by the sack 50c

CEMENT
sack 1.45



Garage Doors
8-0 -- 7-0
12.50 each

**MOLDINGS, TRIM, DOORS, WINDOWS,
SASH, FINISH LUMBER, CABINETS,
SPECIAL MILLWORK**
ALL PRICED RIGHT

Garden Stakes 1c
ROUND, SMOOTH
Get Them Early EA.

12702
Pacific Avenue

GENERAL SUPPLY CO.

12702
Pacific Avenue

GR 3512

GR 3512

HOGAN'S HAVE LOWER PRICES

2 Stores: 84th - So. Tacoma Way & 98th - Pacific

OVEN FRESH **CRACKERS** 39c
2 LBS.

ARGO SLICED **Pineapple** 25c
NO. 2

Miracle Whip qt. 49c

GREEN GARDEN **SANDWICH SPREAD** 49c
QUART

GOLD MEDAL or DRIFTED SNOW **FLOUR** 1.99
25 LBS.

Fancy Florida Juice
ORANGES 1b. 8c
Fancy & Extra Fancy WINE SAPS 25-lb. box 1.39
LITTLE PIGS, FRESH SAUSAGE 1b. 46c
FOR FRYING OR SEASONING **BACON SQUARES**, 1b. 19c
BY THE PIECE **BACON** 1b. 43c
NEW YORK DRESSED **STEWING HENS** 1b. 39c

HOGAN'S FINE FOODS

SUNDRIES - HOUSEHOLD SUPPLIES - HARDWARE - BEER AND WINES
NO SALES TO DEALERS (WE RESERVE THE RIGHT TO LIMIT QUANTITIES)
PRICES EFFECTIVE THURSDAY, FRIDAY AND SATURDAY, MARCH 6, 7 AND 8

HOGAN'S HAVE LOWER PRICES

ARBOR ACRES WHITE ROCKS
Egg and Meat Type New Hampshires - Rhode Island Reds
Sex Linked Cross (Black Pullets)

FOR'S HATCHERY & BREEDING FARM
East 84th & Woodland Puyallup 5-5543

BULLDOZING
Ken BROWN and Bruce GAMBILL
1750 9th St. S. W. Puyallup
Basements - Backfills - Driveways
Clearing - Levelling - Etc.
Fill Dirt - Gravel - Top Soil
PH. PUYALLUP 5-2452 or 5-5487 ESTIMATES Cheerfully Given

only Gibson REFRIGERATORS GIVE YOU

FingerTip Convenience
FREEZ'R LOCKER 1
SWING'R MEAT LOCKER 2
BUTTRY & DOOR RACKS 3
FULL WIDTH SHELVES 4
SWING'R CRISP'RS 5
Model 982

Try its FINGER TIP Convenience TODAY
FREE Keepsake Bronze Heraldic Brooch Come In TODAY
Your Fuel Oil and Appliance Dealer

POCHEL DISTRIBUTING COMPANY

140th & Pacific Ave. GRanite 8624

CLASSIFIED ADS

PARKWAY FURNITURE

The BEST in NEW and USED FURNITURE

141st and Pacific GR. 3941
Open Until 9 P.M.

2-Auctions
AUCTION SALE
IF YOU want more cash quick, sell by auction. Every Fri., 7:30 p.m. Glen Betts, 8113 So. Tacoma Way. Free pickup service. LA. 8505. 2cft

3-Business Service
AUTO GLASS INSTALLED - Auto Upholstery, Convertible tops. MA 2200, Auto Glass Co. 816 So. Tacoma Ave. 3c50

YOU SAVE AT DANIELS HARDWARE
Pacific Ave. & Garfield GR 3171

SEPTIC TANKS CLEANED - Contents hauled away. Don Redford, 8232 So. Fawcett, GA. 7334. If no answer call GA. 9222. 3cft

UPHOLSTERING
Recovering and Rebuilding Cushions Rebuilt Free Estimates
Parkland Upholstery
140th & Pacific GR 3201
Res. GR 3181

VENETIAN BLINDS
Flexalium-Plastic Tape
LINOLEUM
Pabco - Armstrong Free Estimates
ALDERMAN'S
5425 Pacific Avenue HI 2200
3cft

UPHOLSTERING
Custom Built - New and Recovering Cushions Rebuilt - Free Estimates
MARSHALL UPHOLSTERY
Airport & Knapp-Moore Road GRANITE 6066

LABOUR NURSING HOME
All on ground floor - no wards - no steps. Cheerful surroundings, expert care, excellent food. Doctor referred. Aged and convalescents. Rt. 7, Box 17, Tacoma GR. 7857

ROOFS AND SIDING APPLIED
Free Estimates - Terms
O. L. ROOT
Puyallup, Rt. 2, Box 163
Phone 5-6552

PLUMBING & HEATING - Installation and repair services; pipes electrically thawed. George Purdue, GR. 7036. 3cft

RURAL GARBAGE SERVICE
GR. 3713
Serving Parkland, Lakewood, Midland, Summit, Spanaway and Lakeview - Pierce county permit.

Records, 45-78-33 1/3
Large Assortment
Appliances - TV Radio
Sales and Service
FREE TUBE TESTING

FRYE'S Furniture & Appliances
Parkland Centre Bldg. GR. 3691
BOOKEEPING and Tax Returns prepared. Phone MARKET 5978 or GA 3415. 3cft

Clothes Line Poles
Large Selection 2" and 3" Clothes Line Poles - Ready to Go - Also Fence Posts.
Northwest Pipe & Salvage Co.
1311 So. Tacoma Way HI. 7793

A Button for a Buck
PLUMBING REPAIRS - Sewer Cleaning - Electric Pipe Thawing
Call
E. M. HAMILTON PLUMBING
GRanite 8905

Pierce County Refuse Co.
Weekly GARBAGE Collections
Phone GR. 8688

FARMS WANTED
SUBURBAN REALTY
Member Tacoma Real Estate Board
9920 Pacific Ave. GR. 3624
PARKLAND

HOME AND FARM BUREAU - REAL ESTATE

FARMS WANTED RANCHES WANTED SMALL FARMS HOMES ACREAGE

If you live within reading distance of the Times-Journal and want to sell your place, we will furnish the buyers.

60-ACRE CHICKEN AND DAIRY RANCH

Over 22 acres rich peat soil, planted to hay, balance good pasture land. 3-bedroom older type modern home, 75-ton hay barn, implement shed, two 80x40 chicken houses, 20x30 brooder house, root cellar, garage. All buildings have lights and water, concrete floors. Milking parlor and all equipment included. Three miles from Roy. Buy this G.I. equity for \$2,000. It is available for immediate possession.
YELM, 3 ACRES SUMMIT DISTRICT
\$700 down gives you possession. 5 acres with a 1-bedroom home, Large 2-room house, garage, chicken house, close to Malcomb Maclaren city road. Good value for only \$2,950. Real good terms arranged.
ACREAGE ACREAGE ACREAGE
5 acres, all clear, 1 mile from new Bethel school \$700.00
10 acres near Graham, 20x20 shack \$850.00
480 acres of brush timber, located just off Muk Kapowsin road, 3 miles from new Bethel school \$50 per acre
NEW HOMES - G.I. OR F.H.A.
See us if you contemplate buying a new home in the Parkland area. We have them from \$7,850 up. If we do not have what you like, let us build you one.

HOME AND FARM BUREAU - REAL ESTATE

12810 Pacific Avenue, Parkland GRanite 3931
Mail Address: Rt. 3, Box 819, Tacoma, Wash.
Evenings and Sundays, Mr. Loring, GR. 3570; Mr. Cheetham, GR. 5463

Gibbons Spanaway Food Center

SPANAWAY GR. 7512

ZEE Family Pack 4 Rolls
TOILET TISSUE . 29c
SEEDLESS
RAISINS 1b. 15c
BAR NONE
DOG FOOD . 3/29c
SUNSWET QT.
PRUNE JUICE . 29c
SWIFTING 3-LB.
SHORTENING . 79c
MEDIUM "AA"
EGGS doz. 40c
SPARE RIBS 1b. 49c
PORK LIVER 1b. 39c
LOIN CUTS
PORK CHOPS 1b. 59c
LARGE CRISP HEADS
LETTUCE . ea. 10c
GREEN ONIONS & RADISHES, 2 bu. 9c
FLORIDA - At its best
GRAPEFRUIT . 2/15c
NEW
CABBAGE . 1b. 8c
Quality Consistently HIGH
Prices Consistently LOW
Prices Effective March 8 & 9

16-Livestock & Equip.

FOR SALE OR TRADE - Pleasure horses, well broke. Pintos, buckskins. Many to choose from. 1 1/2 miles from Yelm on Olympia highway. O'Bryan's Place. Used Saddles. 16c25

WANTED TO BUY - Lady's saddle mare, pinto or sorrel preferred. State age and price. Write Box 10300, c/o Times-Journal, Parkland, Wash. 16p25

NEW HAMPSHIRE CHICKS, 17c, quality 30c. Broiler producers, inquire about rates. Excellent laying and meat birds; 8, 10, 12 week old pullets. Midgard Poultry Farm & Hatchery, Roy, Wash. Phone Yelm 3675. 16p26

BOOK BARGAINS

Listen, folks! If you like a book and like a bargain, we have several thousand we just have to get rid of because we have no space. Come in and you will find one huge table massed with books you can buy for 19c-6 for \$1.00. You will find loads of books on it, new and used; fiction and non-fiction. Come in and take 'em away. Fox Book Co., 1123 Commerce 15c25

CHILDREN'S NURSERY

day or night; any age; trained personnel, physician available; fire detector service. Reasonable. GR. 6682. 15cft

DRESSMAKING, ALTERATIONS, BUTTONHOLES

Tele. GR. 9385
Corner of Knapp & Spruce, near Midland school. 15cft

TAP, ACROBATIC, BALLET

Class. All ages. Mildred Keller, GR. 7881. 15cft

BEAUTIFUL new silver oak bedroom set

Large double dresser, plate glass mirror, 4-drawer chest, full panel bed, \$179.50. Parkway Furniture, 141st & Pacific. GR. 3941. 15c25-41

SEWING of all kinds

Will do fittings by appointment at your home or mine. Style Rite Dressmaking, Rt. 7, Box 266. GR. 3328. 17cft

FOR SALE - 1 wood range, \$10; 1 Kwikmaster refrigerator, excellent condition, \$100; 8 sheets 3/4" sheetrock, \$1.60 per sheet. Phone 5-6445, Puyallup. 15c25FOR SALE Nice family cow, second calf in April. 1-year-old steer for lockers, both to private parties. Wanted, pasture for cow, calf and heifer where there will be no horses, by April. 1 mile east of Pacific on 176th after 4 p.m. Saturday or Sunday. E. Bowman, Rt. 1, Box 228-A, Spanaway. 15c25

LAZY 'C' RANCH

Hoss-hoed - Plowin' - Discin' - Wud Cuttin'
GRanite 5947
CEC. CARY

FOR SALE OR Trade, pleasure horses, well broke. Pintos, buckskins. Many to choose from. 1 1/2 miles from Yelm on Olympia highway. O'Bryan's Place. Used Saddles. 16c25

IN THE SUPERIOR COURT OF THE STATE OF WASHINGTON FOR THE COUNTY OF PIERCE
No. 53393
NOTICE TO CREDITORS
Notice is hereby given that the undersigned has been appointed and has qualified as Executor of the above entitled estate; that all persons having claims against said deceased are hereby notified to serve the same, duly verified, on said Executor or attorney of record at the address below stated, and file the same with the Clerk of said Court, together with proof of such service, within six months after the date of first publication of this notice or the same will be barred. Date of first publication March 6, 1952.
ERNEST B. STEEN,
Executor of Estate,
P.O. Box 663, Parkland, Wn.,
GOODWIN, EASTVOLD & HICKS,
Attorneys for Estate,
First Bank of Wash. Branch, Parkland P.O. Box 728,
Parkland, Washington,
Pub. March 6, 13, 20, 1952

SEPTIC TANKS, CESS POOLS CLEANED

Contents Hauled Away
HUTSON TANK CLEANING
GR 5467 HI 3980

REPAIR SERVICE

BUY, Sell and Exchange
Quality Recapping & Vulcanizing
Ault Tire Service
220 Puyallup Ave., Tac. BR. 1888

RUPE MACHINE WORKS

MOTOR REBUILDING
Shop GR. 7452 - Res. HI. 6190
Pacific Avenue at Brookdale
MACHINE SHOP & GARAGE
Take Advantage of Our Easy Payment Plan
Spring is almost here - have your car put in top condition. Twelve months to pay, nothing down.

RUPE MACHINE WORKS

BABY FURNITURE, new and used.
SMALL FRY EXCH., 1109 Market. 15cft

FOR SALE - Girl's Schwinn bicycle, good condition. Call GR. 5798. 15c25

FOR SALE - '37 Chev. coupe, good running condition, needs a little work. GR. 8578. 15p25

COAL WITHOUT DUST

Double Screened
Aberdeen, King Utah, Lump, nut, stoker coal. (Money cannot buy better, cleaner coal.)
Pres-To-Logs are all cut to size to fit any fireplace or furnace - all heat, no ash.
Heavy Planer Ends, Core Block
Montana, Wyoming Soudless Coals
Cordwood, old growth, 12-16 to 24
Briquets - Coal - Planers, sanded
Stove and Diesel Oil

NOTICE OF HEARING FINAL REPORT AND PETITION FOR DISTRIBUTION

In the Matter of the Estate of EDWARD J. WHITLEY, formerly known as EDWARD J. WICK, deceased.
Notice is hereby given that MARION E. WHITLEY, executrix of the estate of Edward J. Whitley, formerly known as Edward J. Wick, deceased, has filed in the office of the Clerk of said Court her Final Report and Petition for Distribution, asking the Court to settle said report, distribute the property to the persons thereto entitled and to discharge said administratrix; and that said report and petition will be heard on the 24th day of March, 1952, at 10 a.m., at the court room of the Probate Department of said Court, at which time and place any persons interested in said estate may appear and file objections and contest the same.
Dated this 28th day of February, 1952.
ROBT. L. DYKEMAN,
Clerk of said Court,
By M. Skidmore, deputy.
Pub. March 6, 13, 20, 1952.

RUPE MACHINE WORKS

FOR SALE - 2-wheeler trailer, \$25.00. McKinley Ave. and King St. G.A. 3124. 15c25

NEED A FENCE? Wood, wire, concrete block. Call us for estimate. Easy monthly payments. Built-Rite Fence Co., HI. 2405 or HI. 9515. 15cft

13-Farm Ads

DEAD STOCK REMOVED WITHOUT CHARGE. Highest prices paid for tallow, hides, grease and bones. PUGET SOUND RENDERING WORKS. Phone LAKewood 2494. 15cft

14-Situations Wanted

WISH TO TAKE CARE of children in my home. GR. 3063. 14c26

CHILD CARE wanted daytimes in my home. GR. 3494. 14c25

CHILD CARE - Wish to do child care in my own home. GR. 3503. 14cft

Pierce County Refuse Co.

Weekly GARBAGE Collections
Phone GR. 8688

COAL WITHOUT DUST

Double Screened
Aberdeen, King Utah, Lump, nut, stoker coal. (Money cannot buy better, cleaner coal.)
Pres-To-Logs are all cut to size to fit any fireplace or furnace - all heat, no ash.
Heavy Planer Ends, Core Block
Montana, Wyoming Soudless Coals
Cordwood, old growth, 12-16 to 24
Briquets - Coal - Planers, sanded
Stove and Diesel Oil

PACIFIC MUTUAL FUELS, INC.

(Est. 100 Years in 1900)
Fuelphone MA. 1137 401 E. 11th

Sgt. and Mrs. Clarence McClure and son Allen spent the weekend visiting old Spanaway friends. The McClures now reside in Spokane and Allen is attending Washington State college.

Visit At Yakima

Mr. and Mrs. Oscar Storlie and daughter Margie spent the past weekend at Yakima, visiting Mrs. Storlie's sister.

Home From Hospital
Bill Wallin has been ill with pneumonia and confined in Tacoma General hospital, but is now at home.

Card Party
Spanaway Firemen's auxiliary held

a very successful card party Friday, Feb. 29, at the fire hall. Proud possessor of 1,000 aces dealt him was Lester Buck. The door prize was won by Harry "Slim" Pentland, a retired fireman of 40 years service to Tacoma. The pillow cases went to Mrs. Katherine Hutchings. Pinochle winners were Mrs. Oscar Storlie, Mrs. Louis Madoche, Harry Pentland and Elmer

WOODLAND NEWS

By Barbara Cordes - Fri. 5-2511

Remember this Tuesday election. Woodland is electing two board members from the following delegates: John Pelesky, Art Lindbeck, Larry Bartaloz, and Clancy Moore. At this time the district is also voting for 10 mills to maintain the new addition and for upkeep. Fire district No. 9 also is voting a new fire commissioner. This is a six year term. Candidates for commissioner are Andrew Ramsay, seeking re-election, and Ray Gogan.

Evening Party
Mrs. J. E. Rockwood entertained a group of friends at her home last Tuesday evening. Dainty refreshments were served at the close of the evening. Attending were Mesdames Oscar Swalander, Gene Currey, Paul Gooding, Richard Nicolet, Walter Waller, Frank Wiggins, Johnson and the hostess, Mrs. Rockwood.

Stork Shower
A group of friends gathered Thursday evening at the home of Mrs. Oscar Swalander for a surprise stork shower on her daughter, Mrs. Bill Rushton. Hostesses for the occasion were Mrs. James Hess, Mrs. Bill Westman and Mrs. Karl Cordes. Regular shower games and bingo furnished the evening entertainment. The guest opened her

Elliott. In 500, prizes went to Mrs. Mae Webber, Mrs. Verna Fitzgerald, Dean Amberg and H. E. Olson. The next card party will be held Friday, March 28.

Auxiliary Board
The Firemen's auxiliary board met at Spanaway fire hall Tuesday, Feb. 26. Present were Mesdames Oliver Omat, Emerson Tarpenning, Edward Flannery, Harry White, Louis Symmons, Jack Hendricksen, George Stephenson, Don McLellan and Bob Steidel.

To Ellensburg
Margie Omat spent the weekend at Ellensburg as guest of Alice Scaree who attends the teachers' college there.

Bake Sale
Plans for a bake sale were discussed by the Pollyanna club at the last meeting, held at the home of Miss Alice Randall.

Home From Hospital
Mrs. Henry Amundsen, who fell at a dance and broke her arm, has returned to her home after confinement in St. Joseph's hospital.

Vote March 11
Let's not forget—we need all and everyone to come out and vote next Tuesday, March 11. If transportation is needed, call the school.

DANCING CLASSES
Ballroom Instruction
AT SUNSHINE HALL
Tues. & Thurs. Eves.—7 to 11
Mrs. Disbo, instructor
Phone GR. 3285

C. O. Lynn Co.
MORTUARY
717 TACOMA AVE. Phone MAIN 7745

A-1 Auto Wrecking
Used Auto Parts
GR. 3445
Good Transmissions
13818 Pacific Ave.

BUILDING SUPPLIES
SPANAWAY LUMBER CO.
Mt. Highway at Spanaway
GR. 3323 WE DELIVER

Have your Cabinets
CUSTOM BUILT
At No Extra Cost
RHONE'S CABINET SHOP
2nd & Pacific Spanaway
GRanite 3342

LAWN MOWERS
MACHINE GROUND
Trade In Your Old Mower
On a New Model
JOHNSON'S SHOP
HI. 7112
15 years at 5514 Pacific Avenue

COMPLETE GARAGE SERVICE
AUTO ACCESSORIES
ATLAS TIRES & BATTERIES
ANDERSON
Chevron Service
176th St. & Mt. Highway
GRanite 6465

FLETT DAIRY
FARM FRESH
HOMOGENIZED AND
PASTEURIZED MILK AND
CREAM
ICE CREAM
Phone GA 3301

Something for Free? YES!
1. Dress Shoes Shined
2. Work Shoes Oiled
3. Minor Rips Sewn
4. Heel Pads, if needed
You get these services FREE with soles and/or heels at
Paul's Shoe Repair
SPANAWAY
Closed Wednesday

many lovely packages and awarded Mrs. Frank Wiggins the prize of the evening for the best baby name suggested. Refreshments were served. Attending were Mesdames Ben Ruhl, J. C. Mullins, Frank Wiggins, J. E. Rockwood, Paul Gooding, C. L. Kelshner, Oscar Swalander, Rushton, and the hostesses, Mrs. Westman and Mrs. Hess.

Entertain at Madigan
The Fruitland Grange auxiliary went to Madigan last Wednesday evening to entertain the boys. Hostess for the evening was Mrs. John Lavik; assisting her were Mrs. Russell Tucker and Mrs. Oscar Swalander. Mrs. James Litton played several musical selections and the talented Moore and Allstott families entertained with many musical numbers, both vocal and instrumental. Bingo was played with cigarettes for prizes. Those attending for the evening were Mr. and Mrs. John Lavik, Mrs. Russell Tucker, Mrs. Oscar Swalander, Mrs. James Litton, the Clancy Moores and their daughters, Sheila and Colene, and Mr. and Mrs. Allstott and their daughter Patty.

Visits Son
George Henn of St. George, Kansas, is here for a visit with his son and his family, the Bill Henns. Mr. Henn came west by bus and stopped first in Oregon, where he visited another son.

At Orting Post Affair
Clarence Clayton went to the Legion post No. 36 at Orting to their Lincoln-Washington birthday celebration last week. He was the guest of Mr. Kittelson and Mr. Leonard Blake-way and entertained with a number of harmonica solos.

State Farm Mutual Insurance
FORREST LEONARD Agency GR. 7222
Anything In Insurance
12815 Pacific Avenue — (House just South of Blue Spruce Motel)

FOR
HARDWARE FISHING TACKLE
ELECTRICAL SUPPLIES
SCHORN PAINTS AND PLUMBING SUPPLIES
See
South End Plumbing
Home of Schorn Paints
Near Roy Y Spanaway
Graham 194
GR. 8337

FREE
1 PINT ARDEN'S BULK
PACK ICE CREAM
with the purchase of 1 quart
at regular price
JACOBS PACIFIC DRUG
8248 Pacific Avenue

With 10c Coupon in News Tribune March 7

| | |
|---|---------------|
| ALLSWEET | lb. 19c |
| SPAGHETTI, Franco-American, 3- | 39c |
| PRUNE JUICE Sunsweet | qt. 32c |
| CRACKERS, Krispy | 1-lb. 28c |
| ORANGE SLICES, Sunshine | 28c |
| SPAM | 43c |
| BISOUICK | 39c |
| COFFEE, Shurfine, fresh roasted | lb. 79c |
| FLOUR, Shurfine | 10 lbs. 89c |
| PLEASE DOG FOOD | 3 for 28c |
| TOMATOES, Tastewell, 2 1/2 | 19c |
| HEINZ CATSUP | 2 for 49c |
| KLEENEX | 2 for 33c |
| TIDE, large | 29c |
| NESTLE'S SWEET MILK COCOA | lb. 49c |
| (NEW LOW PRICES ON ALL FROZEN FOOD ITEMS) | |
| BUNCH SPINACH | 9c |
| CARROTS, Carnation | 2 bunches 19c |
| PEAT MOSS (large or small bales) — FERTILIZERS CHICK STARTER FEEDS, ETC. | |
| No Sales to Dealers — We Reserve the Right to Limit Quantities | |

HERMAN'S 162nd & Park Ave. Spanaway GR. 8213 MARCH 7 AND 8

DON'T MISS THESE VALUES

Round Bone, Center Cut LB. **Pk. Roast 39c**

SLICED—Eastern Sugar Cured LB. **BACON 27c**

Colored New York Dressed LB. **Roasting HENS 38c**

FRESH RED SNAPPER LB. | FRESH COOKED LB. **Fillet 39c | Crabs 32c**

CENTENNIAL 25-lb. Cotton Print Bag **FLOUR 1.99**

WOODS COFFEE, pound 79c

SHRIMP MY-T-GOOD — Wet Pack 29c

GOLDEN GRAIN California Small **WHITE BEANS 2 lbs. 25c**

Del Monte TOMATO 46-oz. **JUICE 4 for 89c**

Donald Duck Grapefruit 46-oz. **JUICE 4 for 89c**

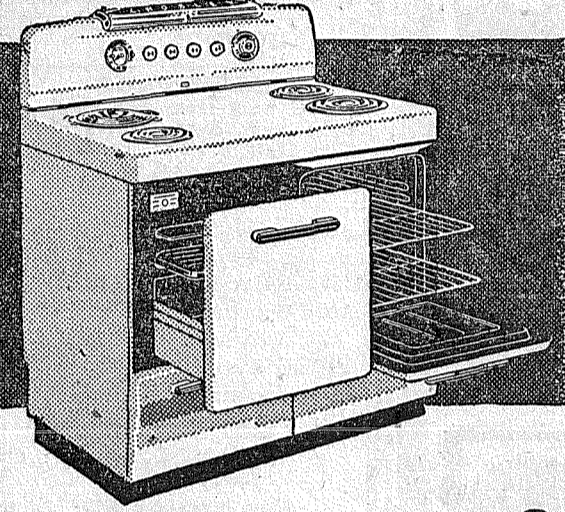
| | |
|-------------------------------|-----------|
| Kingan's, 1/4's POTTED MEAT | 7 1/2c |
| Kingan's K.P. LUNCH MEAT | 39c |
| Sunsweet, medium PRUNES | 2-lb. 39c |
| Sun Valley, Plain MARGARINE | lb. 25c |
| Sunshine Crispy Crackers, lb. | 28c |
| Sunshine Filled Mints, 7-oz. | 19c |

Prices Effective March 6, 7, 8

Vegetables
CRISPY FRESH
APPLES . full box 1.39
Romes, Winesaps, Delicious Fresh Shipment
10-lb. Mesh Bag **BOILER ONIONS . 39c**
Fancy California **ORANGES . lb. 8c**

BARGAIN BASKET
167th St. & Pacific Avenue—Spanaway GRanite 3371
Handy to the East Gate of McChord Field
Open Seven Days a Week—9:00 a.m. Till 10:00 p.m.
We Reserve the Right to Limit Quantities

NOW... Enjoy this automatic CROSLLEY ELECTRIC RANGE IN YOUR OWN KITCHEN



DE LUXE MODEL 100-1
A great Crosley Range that brings you automatic cooking at an amazingly low price. "Divided" top—giant, king-sized oven with infra-red broiler.

Dozens of great Crosley features include Seven Heat Speeds (instead of the usual five) on all surface units... "Mastermind" Clock Timer for controlled oven cooking... Exclusive Self-sealing, Self-adjusting Oven Door... Oven Thermostat with Automatic Oven Pre-heat.

THE PACE-SETTING DESIGNS ARE COMING FROM CROSLLEY

Only 38.62 DOWN

CROSLLEY The Electric RANGE with Beauty and Brains

18 Months to Pay
PARKLAND-BROOKDALE ELECTRIC
13022 Pacific Ave. GRanite 5689
Open Friday Evenings Until 9:00 p.m.

| | | |
|----------------------------------|-------------------------------|-------------------------------------|
| Sugar Cured Pickled Pork lb. 45c | Sugar Cured CORN BEEF lb. 45c | Polish Rings & Link Sausage lb. 49c |
|----------------------------------|-------------------------------|-------------------------------------|

SPANAWAY MEAT MARKET
NEXT DOOR TO HERMAN'S GR 8215

TROVANI'S JUNIOR BOOTERY
Specializing in Children's Shoes
706 ST. HELENS AVE. - MA 6318

American Art Co.
Custom Picture Framing BR 4327
2046 6th Ave.

FENCING -- ARBORS -- ARCHES
Attractively Built to Suit You—Patios, New Lawns, Trees Removed
Let us protect and beautify your home and grounds with a guaranteed Built-Rite Fence

FREE ESTIMATES
SPECIAL—36-inch Chain Link Fence 1 08
INSTALLED, PER RUNNING FOOT
36-INCH PICKET FENCE 98c
INSTALLED, PER RUNNING FOOT
10% Down—Balance Easy Monthly Payments

Vaughan's
PACIFIC AVENUE LUMBER COMPANY
84TH & PACIFIC AVE. PHONE HI. 9515

HELP YOUR VOLUNTEER FIREMEN

CARRY THE LOAD **FIREMEN'S BENEFIT DANCE** DONATE to the SPANAWAY VOLUNTEER FIREMEN'S BENEFIT DANCE MARCH 29TH BRESEMANN'S PARK HALL

"OUR FIREMEN BENEFIT US ALL"
Twenty-four hours a day they are standing by to safeguard your home and property on a strictly voluntary basis, with no pay. Your donations will help buy turnout clothing, light lunches, and recreation equipment for our...
VOLUNTEER FIREMEN

Mail your donation today to "Firemen's Benefit," Fire Dist. No. 7, P.O. Box 263, Spanaway

THE FOLLOWING PUBLIC SPIRITED BUSINESS FIRMS HAVE DONATED:

| | | | |
|--------------------------|----------------------------|------------------------------|-------------------------|
| Gibbon's Grocery | Spanaway Texaco Service | Mixing Bowl Tavern | Spanaway 5c and 10c |
| South End Plumbing | Joe's Tavern & Cafe | Logan's Service | McCullough Brothers |
| Don's Barber Shop | Nick's Barber Shop | Prairie Tavern | Rhone's Cabinet Shop |
| Herman's Shurfine Market | Spanaway Hardware | Ruth's "Y" Cafe | Stewart Hay & Grain |
| King's Meat Market | Anderson's Service Station | Alex's Shell Service (Roy Y) | Pochel Distributing Co. |
| Smith's Cabinet Shop | Bargain Basket | Clark's In-and-Out | Lucky Sales & Service |
| Emerson Tarpenning | Modahl's Auto Parts | Craney Crow | Paul's Shoe Shop |
| Spanaway Exchange | Handy's Garage | Tom Bailey (Roy Y) | Spanaway Lumber Co. |
| Dick's Tavern | Spanaway Cycle Shop | Ray's Place | Union Service (Roy Y) |
| | | | Golden Slipper Tavern |

WILL YOU JOIN THEM BY SENDING IN YOUR DONATION?