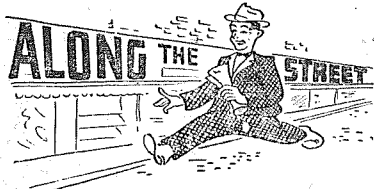


Sec. 34.66 P. L. & R.
Parkland, Wash.
U. S. Postage Paid
Permit No. 9

BOXHOLDER OR OCCUPANT
RURAL ROUTE



By Clarence LaCrosse

One of the nicer events of the year will take place next Wednesday evening in the church parlors of Trinity Lutheran Church. We are referring to the Annual Father and Sons Banquet, sponsored by the Lutheran Brotherhood. Take your son and let's go. He will certainly enjoy that feeling on mingling with his father and friends of his father. Take time, it's worth it.

Dr. Tweit Offices

We note a slight vacant office in the Parkland Centre Building these days, the reason being the fact that Dr. Tweit has moved his offices to the parent firm in South Tacoma. We certainly regret the decision of the firm to leave Parkland, since we feel strongly regarding local business, however a decision of this type is contingent with the demands for the type of services being rendered. It is nice to know, however, that Dr. Tweit has not moved from Parkland. It is also to be known that he will continue to serve his patrons at his South Tacoma office in the same friendly way.

Pierce County Growing

Although not official as yet, it is highly presumable that Pierce County will become a class 1 county with the completion of the census compilation. We are checking into the added benefits and responsibilities relative to such a possibility and will give a full report in a later edition of the Parkland Times. Such a promotion will no doubt affect some of our legal aspects and taxation benefits. To become a class 1 county it is necessary to have a population of 210,000 or more.

Barber Pole Doings

We notice that Jens of the Jensen Barber Shop is making his smoke through the bole of a new fancy dudad pipe these days. It was our only concern that Jens did not burn his chin with the low drooping type of pipe he chose.

New Lawns

A most welcome sight along most of the newer streets in Parkland these days is the appearance of new lawns, with grass, believe it or not. Warm spring showers and summer sunshine, coupled together with all the peat deposited on the otherwise rocky terrain have conquered. Grass is again the master. Now the problem will be to keep it green and mowed. Building fences, too, seem to be a favorite past-time of the busy man of the house. We noticed a few of the feminine class also adding their bit in the way of building fences and painting, much to the interest of the motorists passing by. Very becoming, too, these ladies in bathing suits, painting fences by the highway.

More on Incorporation

The slight bit we mentioned regarding the incorporation of Parkland in the last issue of the Times, was highly received by the majority of people who bothered to mention it or call us (Continued on Page Four)

Piper FUNERAL HOME
HILLSIDE 8479 • 5436 SO. PUGET SOUND AV.

PROFESSIONAL DIRECTORY

ATTORNEYS
EASTVOLD & HICKS
National Bank of Washington
Parkland Branch
GR 7313

INSURANCE
CLAY ROLEY AGENCY
98th and Portland Avenue
GR 8501

OPTOMETRISTS
DR. L. RICHARD MCGIRK
Modern Eye Care
4802 1/2 So. Yakima HA 2113

DRS. D. M. CLISE, M. A. TWEIT
Visual Training
5434 1/2 South Tacoma Way
Garland 5424

REAL ESTATE
PACIFIC BROKERS CO.
Everything in Real Estate
508 Garfield GR 6323

Press-time Bulletins

Completely missing from his home for the past nine days has been Eugene Bresemann, 40, life-long resident of Spanaway. No one has the slightest idea where he could have disappeared. The county sheriff's department is conducting a thorough investigation.

Bresemann lived on Military Road with his wife and one child. He had worked for Tacoma Transit Co. as a driver on the Spanaway line for the past eight years.

Bresemann was last seen at 11 a. m. last Tuesday morning, Memorial Day. The disappearance was made public yesterday.

Daryll Robert Schinnell and Mary Francis Clinton were recipients of the Kiwanis awards at Midland School's graduation Tuesday night.

More than 150 ministers and laymen from all sections of Washington, Oregon and Idaho are attending a convention of the Northwest district of the American Lutheran Church this week at PLC.

An attempted break-in at the Bargain Basket store in Spanaway was frustrated around 11 p. m. Monday night when two of the owners pounced down on the intruding soldier.

Ethan Nelson, who lives next-door to the rambling market, noticed a person fooling around in front of the store. He immediately summoned Leon Harrison and together they nabbed the culprit inside the building.

Spanaway May Become State Park; Bresemanns To Open Kiddies' Midway

Biggest project on Spanaway Lake in more than 20 years is the new \$20,000 kiddies' midway now being erected in Bresemann's Spanaway Park.

When complete, the new amusement zone will consist of a shetland pony ride, an auto ride and a "merry mix-up" for the little tykes and a merry-go-round for everyone.

The pony ride and the merry mix-up have already been installed and made their debut Sunday. The auto ride and the carousel are being shipped directly by auto freight from the factory in the East.

Del Bresemann claims that the merry-go-round will be the first new one seen in the Northwest in several years. It will be complete with neon lights.

The innovation, long discussed by the Bresemanns, got underway about two months ago with the removal of 25 trees and bulldozing above the pavilion. The midway area has been covered with crushed rock. It will be illuminated at night.

Operating the midway will be Ed Harvey, top-notch concessioner from Sumner. Up until this time, the park facilities have been designed mainly for the adults. The spot has long

been popular for bathing, boating, dancing and picnicking.

To improve the approaches to the lake front, the roads and parking areas from the Mountain Highway and the lake received a coat of oil Monday which will control the dust.

Warm weather attracted thousands to the park last weekend, especially on Saturday. The new amusement zone will undoubtedly be an extra impetus to big crowds. Three large Tacoma organizations — Rhodes American Legion Post, Post 138 and Eagles—have already contracted for picnics in July and August.

This Sunday will mark the summer opening of the Spanaway Park Pavilion, with dancing from 9 to 12 p. m. to the music of "Lee's and his Millionaires."

SPEECH ON ADVERTISING

At its next meeting, members of Parkland Business Club will hear a talk on advertising problems in suburban areas. The session will take place in the parlors of Trinity Lutheran Church, although the date hasn't yet been determined.

Keep in tune with the TIMES

LET CONTRACT FOR BROOKDALE ROAD PROJECT

At a cost of \$19,000, the Brookdale (Clover Creek) Road will be re-constructed and re-surfaced from the Mountain Highway to Malcolm McLarty Road this summer. According to Commissioner Harry Sprinker, work is starting this week.

Doing the work will be the Don Shotwell Construction Co., lowest of six bidders. This will be one of the chief road projects in the South End during 1950.

The present road suffers terrifically each winter and spring, leaving the oil mat in rough shape. The project calls for improved drainage, heavy ballast, taking out unstable material in places that broke up, and paving with a light bituminous surface.

The road, which passes by Brookdale Golf Course, is being built to stand up as an all-weather arterial.

Whether or not the ownership of Spanaway Metropolitan Park will be transferred from the Tacoma Metropolitan Park district to the Washington State Parks and Recreation commission will be decided at an important meeting Monday in the city hall annex.

The state Parks and Recreation commission has expressed its desire to establish a state park for Pierce county and has been highly impressed by the strategic location of the Spanaway area and its potential development with expanded recreation facilities.

Attending the meeting Monday will be members of the Tacoma park board, the county commissioners, representatives of the state Parks and Recreation commission, and other interested persons.

It was Mrs. Ruth Peeler, vice chairman of the state commission, who made the proposal to the Tacoma Metropolitan Park district for operation of Spanaway as a state park.

The commission officers recently visited the park with officials from the Metropolitan Park district, the Public Recreation commission and representatives from the Tacoma Chamber of Commerce.

The State Parks and Recreation commission now receives one dollar from every automobile driver's license sold and has over \$2,000,000 at this time for such parks.

Pierce County, with a population of over 270,000, contributes quite a chunk of money to the state parks system, yet now receives no direct benefit due to the lack of state parks in the county.

Spanaway Metropolitan Park consists of 408 acres between the Mountain Highway and Spanaway Lake, just north of Bresemann's park. Included are 1,200 feet of water front, bathing houses, floats, boats, a ball diamond, and other facilities.

However, no one will deny that the park has been sadly neglected in recent years. Very little money has been invested in improvements.

The main reason for the Tacoma Metropolitan Park district's neglecting of Spanaway is that it is outside the city limits. The district receives no taxes from residents in the suburban area.

The only income the city gets from its operating of Spanaway Park is the small amount from boat rents and concessions. Therefore, the park district has been hesitant in spending any extra money in improvements.

Old-timers in Pierce County recall the days when Spanaway Park was the most popular recreation spot in the county. The trolley line had to run dozens of extra cars on weekends and holidays to transport people between Tacoma and the park.

If the park were now developed and improved, it is probable it would soon regain its position as one of the favorite destinations of local picnickers and outdoor sports enthusiasts.

Groups favoring the transfer of the property to the state are asked to make known their opinions to the Metropolitan Park district at 212 City Hall annex.

List Evening Sprinkle Rules For Parkland

Summer sprinkling rules for 1950 were announced this week by M. A. Wutz, manager of Parkland Light & Water Co. He comments that if everyone co-operates, there will never be any threat of a water shortage.

The restrictions apply only to the hours of 4 to 9 p. m. Monday through Saturday. There are no restrictions in the morning or early afternoon or on Sunday.

People living on the south and west side of streets may sprinkle Monday, Wednesday and Friday evenings. People living on north and east side of streets may sprinkle Tuesday, Thursday and Saturday evenings.

Midland Orthopedic Guild to Play Bingo

Final "clambake" of the season being sponsored by Midland Orthopedic Guild is the bingo party this Friday night at Midland Hall. Co-chairmen are Mrs. Andrew Christensen Jr. and Mrs. Aaron Balmer. Admission will be 50 cents, with the party getting underway at 8 p. m.

The June session of the guild will be held on the 12th, not the 19th as reported in last week's Times.

NOW BUILDING

Dryer Mortuary
220 So. 13th

The bulldozer has been at it again, leveling the whole lot for plenty of parking space. That brute makes a man feel so puny.
—TRAV DRYER.

INSURANCE
You'd Better Have It and Not Need It Than to Need It and Not Have It.
•
Castleman Insurance Agency
New Bank Bldg., Parkland
ALL KINDS OF INSURANCE

House for Blind Vet Is Ready for Roofing; Materials, Labor Donated

One of the happiest persons in the whole South End these days is a young veteran who lost his eyesight two years ago—Alan E. Thomas.

In fact he tells everyone he meets that he is so happy he feels he is floating. He says that it is almost impossible for him to believe that people can be so grand.

If you would like to see why Thomas is so happy, drive east of the Parkland School on 121st Street, half a mile to East F. There you will see a four-room house being built for the blind veteran by a host of friends and neighbors. The house has now been completed, and the roof should be completed by the end of this week. The stained shakes for the exterior arrived Tuesday.

The whole project began in mid-March when Mr. and Mrs. Bernard Rouse, who had taken Thomas under their wing, appealed to local citizens to join in helping to provide the vet with a home of his own. The Rouses started the ball rolling by donating a quarter-acre tract.

Since that time, a steady stream of generous donations has been converging on the site. Local business firms have contributed truckloads of materials, and neighbors and members of the Sam Brough V.F.W. Post have worked hundreds of hours in erecting the house.

The Parkland Light & Water put in a meter and donated a \$125 share. Brookdale Lumber, Vaughan's Pacific Ave. Lumber, and Baskett Lumber each donated truckloads of lumber.

Hardware was contributed by 98th Street Hardware and other concerns. Tile for the bathroom and kitchen was chipped in by a South Tacoma outfit. A grandmothers' club in South

Tacoma is throwing a shower to furnish the kitchen later this month.

Foreman of construction is Val Bertsen, who lives across the street. Edward Catt and John Peterson, two other neighbors, will do some of the finish work and door-hanging. Jack Smith has promised to bring his entire crew to do the plastering. The oldest member of the Tacoma bricklayer's union will erect the chimney.

But in the labor department, the greatest boost has come from the V. F. W. post, comprising workers at the Mt. Rainier Ordnance Base. Even Colonels Welsh and Pratt, commanders of the depot, have helped in the undertaking. Members of the post have been working not only on Saturdays but on weekday evenings.

And not satisfied with just donating time, they are now in the process of raising funds for the finishing and perhaps the furnishing of the house through the auctioning off of a \$400 Packard-Bell television set with a 16-inch screen, five horsepower outboard motor, fishing equipment and other prizes. Tickets are selling at 50 cents each.

The drawing will be made at the site on August 19, at which time the house will be dedicated and everyone will be invited to an open house celebration.

Materials still needed include fixtures for the bathroom and brick for the chimney. Anyone wishing to contribute should contact Mrs. Rouse at GR 8179.

The blind veteran, Alan Thomas, injured in an accident in Seattle in 1948, is now in Seattle taking a course in weaving baskets in a state industrial school for the blind. He plans to make this his vocation when he settles down in his new home in Parkland.

FATHER-SON EAT TUESDAY WILL AID SCOUT FUND

The Lutheran Brotherhood of Trinity Lutheran Church will sponsor its annual father-son banquet Tuesday, June 14, at 7 p. m. in the church parlors.

A good program is being organized. The committee in charge includes Dr. M. A. Tweit, chairman, Paul Larson and Kenneth Jacobs. Tickets can be obtained from the committee or any member of the Brotherhood.

This year, the proceeds will go



DR. M. A. TWEIT

toward sending Boy Scouts to the jamboree at Valley Forge.

Art Swindland of the scout committee reports that \$840 has been raised toward sending the lads to the encampment. This leaves a total of \$360 yet to be gathered to reach the ambitious \$1,200 goal.

The campaign was aided considerably by the fact that each boy is raising \$100 on his own, and that the Kiwanis Club of the Parkland area chipped in \$100 to the cause. Each boy has bought his own uniform and will furnish his own spending money.

The 45 boys in Trinity's Troop 33 selected as their representatives at Valley Forge: David Bertsen, David Steen, Tom Swindland and Dale Storaasli. They will leave June 22 via the Milwaukee Railroad, stopping at Yellowstone Park, at one of Minnesota's 10,000 lakes, arriving at Chicago on Sunday, June 25.

Also on the eastbound itinerary is Washington, D. C., where the Scouts will have a day and night to see the capital, Smithsonian Institute and other points of interest.

Following the gigantic jamboree, the boys will spend two days in New York, staying at the famed Waldorf-Astoria. They hope to see a big-league baseball game.

Mrs. Maude Taylor Of Midland Passes

Mrs. Maude Taylor, 69, who had lived at 99th and Jackson in Midland for 48 years, passed away Monday evening at St. Joseph's hospital. Funeral services will be at 3 p. m. Friday from Buckley-King mortuary.

Mrs. Taylor was the widow of Charles F. Taylor, with whom she had come to Midland in 1902. She was born in Jerome, Iowa.

"Are You OK?" Cops Query Lady

What would you think if the county sheriff banged on your door in the middle of the morning and asked you if you were all right? That was the experience last week of Mrs. Max Hyndman of Summit. "You could have knocked me over with a feather," she exclaimed.

Causing all the anxiety was Mrs. Hyndman's mother in Los Angeles. Mrs. Hyndman had recently changed her telephone number, but her mother didn't know about it.

So when Mama phoned from L. A. and was answered by a gruff voice that said, "No, she ain't here, so don't bother me!" she got pretty perturbed.

Mama phoned the cops in L. A. who immediately passed the word along to the Pierce County sheriff's department. She told them she believed there must have been some foul play.

Within a few minutes, a sheriff's paddy wagon pulled up in front of the Hyndman home. When Mrs. Hyndman didn't answer the door immediately, the deputies starting banging away at the door.

When the sheriff was satisfied that the very astounded Mrs. Hyndman was okay, he explained why he had come. A phone call was immediately made to Mama, telling her to simmer down because there was nothing to get excited about.

And before hanging up, Mrs. Hyndman made sure that her mother and all her other relatives in California had her new phone number.

Clyde Gardner New Master of Troop 34

New scoutmaster of Spanaway's Troop 34 is Clyde Gardner. Two weekends ago, nine members of the troop went on an expedition to the ocean beaches south of Gray's Harbor.

They stopped at Graylands State Park, watched the fishing boats at Westport, and explored the two-mile long jetty near there. Accompanying the Scouts were Mr. and Mrs. Oscar Haugen and Mr. and Mrs. John Newell.

Boys in the party were Dick Engstrom, Jack Hix, Billy Thayer, Darrell and Larry Haugen, John and David Newell, Kenneth Behling, John Marthis and Roger DuCharme.

TRINITY WOMEN STAGE NORSE PARTY TONIGHT

All women in the Parkland area are invited to the "Koffee Klasse" (coffee party) to be given by the Martha society of Trinity Lutheran Church tonight at 8 o'clock.

Each member is preparing an ample supply of her own Scandinavian specialty, including such delicacies as lefse, Fattigmand, rosettes and yule kage.

The cozy Friendship room of the brand new parish house will be decorated with spinning wheels, flags, copper coffee pots and a profusion of flowers. Norwegian candles will adorn the coffee table, which will be covered with a hand-made hard uger cloth.

During the program, violin selections will be given by Gary Malmin, and piano music will be furnished by Mrs. Emil Johnson. Folk songs of Norway will be sung by Mrs. Cliff Olson and a reading, in dialect, will be given by Sandra Jacobs.

Mrs. Byron Bryson is general chairman, with the program in charge of Mrs. W. A. Johnson, Mrs. Morry Tweit and Mrs. Milton Nesvig; decorations, Mrs. Kenneth Jacobs, Mrs. Del Shafer and Mrs. Johnson; invitations, Mrs. Robert Davidson, Mrs. Marv Tommervik, Mrs. Kelmer Roe and Mrs. E. B. Steen; and publicity, Mrs. Donald Strandemo.

Directing the preparation and serving of food are Mesdames E. J. Kicsow, Robert Johnson, L. A. Ulberg, Harold Peterson, Nyer Urness and Corine Erickson. On the kitchen committee are Miss Edna Olson and Mesdames Henry Bertsen, Margaret Johnson, Robert Giles, Gean Westerman, Peggy Okness and Gloria Pederson.

Tiny corsages will be presented each guests by little girls in Norwegian costume. They are Ann Marie Bryson, Lois Kay Totten, Christine Johnson, Melissa Dahl and Linda Hagensen.

Greeting the guests will be Mesdames Albert Johnson, Don Eastvold, Jess Thompson, S. O. Storaasli, Olai Hagensen, Orval Dahl, Marvin Oldenkamp, Lyle Greer, Stanley Dahl and Miss Gertrude Tingelstad.

All women having Scandinavian costumes are urged to wear them.

Clean Clothes Wear Longer . . . Clean Clothes Wear Longer



GUESS HOW OLD HER DRESS IS

Well, she won't commit herself. But she attributes the perpetually fresh and undated look of her dresses to our constantly efficient and considerate attention.

PROMPT PICK-UPS AND DELIVERIES

Parkland Cleaners

GRanite 6301

Airport & Pacific

Clean Clothes Wear Longer . . . Clean Clothes Wear Longer

The PARKLAND TIMES

(Formerly the PRAIRIE POINTER)

Distributed by direct mail every Thursday to 6,000 homes in PARKLAND, SPANAWAY, MIDLAND, Clover Creek, Elk Plain, Harvard, Brookdale, Summit, Roy, McKenna, Graham, and Eatonville.

Office: Park Avenue and Wheeler Street
Post Office Box 885, Parkland — Telephone GRANITE 7100

PAUL ARLTON.....Editor
JOSEPH HAMANAKA.....Advertising Manager
CLARENCE LA CROSSE.....Publisher

ADVERTISING RATES
Local and National.....Column Inch \$.85
Contract (local).....Column Inch \$.75

Upland Slabs 9.50
Big Load
Miller's Fuel
GR 7082

FENCING CEDAR PICKETS
clear or common
4x4 Cedar Post
Parkland Lumber & Hardware
127th & Pacific Ave. GR 5544

Martens Garage
Self-Service REPAIR
Work on your own car!
Come use our tools and our "know-how"
Sales Road (108th)

Machine Shop
Parts Department
General Repair
REMEMBER...
If you aren't inclined to working on your own car our trained mechanics will—the choice is yours.
Martens Auto Service
GR 6047

"That's wonderful! We'll meet you at the station"

When you've good news to tell...when—for any reason—you want to get in touch with anyone, anywhere... think first of fast, personal Long Distance. And, if you'll remember these tips, you'll get even more out of your Long Distance service:

Keep a list of the out-of-town numbers you call most... and you'll find service even faster. If you plan your call in advance and take notes while you're talking, you can say as much in three minutes as in an average letter... and you'll be able to express exactly what you mean through the personality of your own voice.

Use Long Distance—so personal, so fast, so inexpensive

You can call anywhere in the country for \$2.50 or less
(Daytime station rate for first three minutes) plus tax

The Pacific Telephone and Telegraph Company

MARSH SEES FIRE HALF MILE AWAY

You've just got to hand it to these local fire commissioners! Not only do they see to it that their districts have adequate fire protection, but sometimes they personally undertake the responsibility of spotting and reporting fires.

Last Thursday noon, Commissioner Clarence Marsh of the Parkland Fire District, just happened to be looking down the highway as he stepped out of the Blue Rustic cafe when his eyes suddenly were attracted by a column of smoke about half a mile south.

Rushing to the scene at 134th and Pacific, near the new Dryer Mortuary, he found an unoccupied laundry shed ablaze, with flames spreading across the surrounding grass. He immediately turned in an alarm to the hall.

The Parkland fire ladders could do little to save the building, which by now was completely gutted, but they prevented some oil tanks from exploding and extinguished the grass fire.

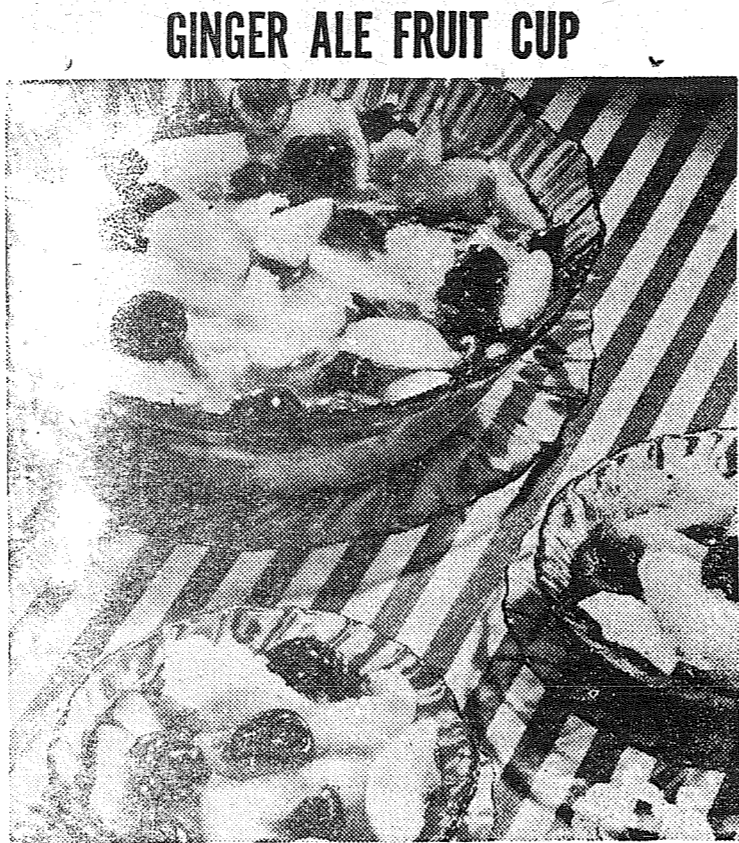
Total damage was estimated at \$250. John Wade was in the process of moving away from the place on the day of the fire.

Mr. and Mrs. Kenneth L. Coates of 1216 So. 116th., and Mr. and Mrs. William T. Kennedy of 1109 South 115th, were recipients of bundles from the stork on May 31. Both newcomers were boys.

Keep In Tune With The TIMES

There's Still Time to **Remember Dad** With Your Fine Portrait
WESLEY STUDIO
413 Garfield

INSURANCE
Fire - Auto - Burglary - Glass
Bonds - Liability and Misc.
Clay Roley Agency
98th & Portland Ave.
GRanite 8501 GRanite 6923



GINGER ALE FRUIT CUP

FRESH fruits offer so much health and variety in the menu that the wise housewife uses them daily. In tempting salads and as desserts they cannot be beat as summertime fare. Use them all, peaches, cherries, bananas, plums, berries and the citrus fruits and use them in different ways. Fruit salads, moulded in gelatin, are appetizing to look at and can be given delicious flavor and tang by adding two cups of pale dry ginger ale to the dissolved gelatin.

Combinations of fresh fruit may be served as a before-meal cocktail or as dessert. Canned and fresh fruits may be combined in these dishes. To add sparkle and extra flavor, cover the fruit with pale dry ginger ale. Orange and grapefruit segments, sliced bananas and diced apples are a happy combination. Pineapple chunks, orange segments and cherries go well together. Melon balls, one kind or mixed varieties, are particularly delicious when covered with pale dry ginger ale.

GINGER ALE CUP
1 cup pitted cherries
1 cup orange segments
1 cup grapefruit segments
1 cup sliced peaches
Pale dry ginger ale
Combine fruits and place in dessert dishes. Pour pale dry ginger ale in dishes just to cover fruit. Serves 6.

SUMMER FRUIT CUP
1 cup raspberries
1 cup fresh diced pineapple
1 tablespoon orange juice
2 tablespoons lime juice
Pale dry ginger ale
Combine raspberries, pineapple and fruit juices. Place in sherbet glasses or dessert dishes. Cover fruit with pale dry ginger ale. Serves 4.

REC. PROGRAM SET AT COLLINS

A first-class recreation program will again be offered this summer at Collins school under the direction of Mrs. H. E. Nusbaum. It will open June 19.

Sessions will be 12:30 to 3 p. m. for small children, 3 to 5 for larger children, and 6 to 9:30 for larger children and adults. The schedule will be posted each Monday.

The program is sponsored by the Collins recreation council with some support from the state. There will be both indoor and outdoor activities. About once a week, the school bus will carry youngsters to Spanaway Lake, with transportation priced at 10 cents.

Collins Tots Club will meet tonight at the home of Mrs. S. J. McElroy at Rt. 3, Box 647, the second house south of Maple Street on Malcolm McLarty Road.

It was necessary to change the regular meeting date due to the graduation Tuesday evening. Co-hostesses are Mrs. Walter Godfrey and Mrs. Hilma Olson.

Also meeting this Thursday evening is the Collins Grange.

Cub Scout Pack 92 will hold an outdoor meeting Friday evening at Camp Curran. All parents are also urged to attend.

Stella's
Everything in *Flowers*
• WE DELIVER
Parkland Center
GR 7863

Outside WHITE PAINT
(gallon)
\$2.79
•
SOUTH END PLUMBING
Mt. Highway GR 8357
(near Roy "Y") Graham 194

LEGAL PUBLICATION

NOTICE OF HEARING OF PETITION TO WITHDRAW FROM SPANAWAY WATER DISTRICT
HEARING: FRIDAY, JUNE 23, 1950.

NOTICE is hereby given that two petitions have been filed by certain electors seeking the withdrawal from Spanaway Water District of the following described properties:

That portion of the Spanaway Water District lying North of a line 300 feet North of the South line of Sec. 21, T19N, R3E, W. M. all in Sec. 16 and Sec. 21, T19N, R3E, W. M.

Beginning at the intersection of the center line of Primary State Highway No. 5 and the North line of the NE¼ of the NW¼ of Section 4, Township 18 North, Range 3 East, W.M., thence South 42 degrees 59' along the center line of said highway 810' thence South 47 degrees 10' West 692.36' more or less to a point 313.50' West of the West line of the NE¼ of said Section 4, thence North 0 degrees 20' West 1020' more or less to the center line of Primary State Highway No. 5, thence Northwesterly along said Primary State Highway No. 5, 50' more or less to the Point of Beginning. All in Section 4, Township 18 North, Range 3 East, W. M.

NOTICE is further given that a public hearing will be had upon such petitions on June 23, 1950, at the hour of 8:30 P. M. at the Spanaway School, at which hearing any person may appear and may object to the withdrawal of such territory.

DATED This 2nd day of June, 1950. Published June 8th and 9th, 1950.

Robert Rhone
Secretary of Spanaway Water District

CLOTHES STOLEN IN CRIME WAVE

We don't want you to suspect your neighbor, but if you see a fellow running around in a bunch of flashy new duds, you may be on the trail of a thief.

In a minor crime wave that swept the Mountain Highway area last week, no less than half a dozen business establishments were broken into. And at each place, the yeggs were quite discriminate in helping themselves to the brightest tigger.

For instance, the burglar who broke into the Brookdale golf course clubhouse last Tuesday night left with seven pairs of size 11 white golf socks, two yellow sports shirts, size small, and one size 42 yellow shirt, along with \$8 in change.

It was probably the same gent who entered one of the local cleaning and pressing establishments and helped himself to the sportiest clothes.

But while the clothes robber is still on the loose, two other thieves weren't quite so fortunate. Police picked up two teen-age boys walking up Orchard Hill at 1:30 a. m., one with a gun slung over his shoulder.

Upon questioning, the lad maintained that the gun belonged to his father. The police called the father, who denied that he was the owner of the firearm. After further grilling, the boys admitted that they had just broken into the Brookdale Mobilgas Service.

SPAN. AUXILIARY PLANS PARTY FOR JUNE 16

Holding their last meeting till fall, members of Spanaway Volunteer Firemen's Auxiliary discussed plans for the public card party to be staged June 16 at the fire hall. Mrs. Robert Rhone, ways-and-means chairman, will be in charge.

Also discussed was a picnic to be held this summer. Mrs. Harry White presided over the business session.

Hankiechief showers were given to Mrs. Ida Dellwo, who is retiring as superintendent of the school lunchroom, Mrs. Clarence McClure, who is moving to Puerto Rico, and Mrs. Louis Symmons, who is moving to Tacoma.

Hostesses were Mesdames Emerson and Ernest Tarpinning, E. W. Senff, George Schnelle, Don McLellan and Louis Symmons.

The Friendly Dozen Birthday Club will meet Wednesday, June 14, at the home of Mrs. Emerson Tarpinning.

The Arthur Pietz family motored to Hoodsport with the Calvin Wards last Thursday. Taking advantage of the tide, lowest in years, the party came home with oodles of oysters and clams.

The Spanaway square dance club will meet Saturday at Metropolitan Hall.

Mrs. M. L. Kirby was surprised on her birthday last Friday. Also honored at the party was her brother, Milton, who was celebrating his birthday a few days later.

Attending the fete were Mr. and Mrs. Ed Spahr, Mr. and Mrs. Robert Rhone and Mr. and Mrs. George Woolhouse, Mrs. H. F. Pillsbury and Mrs. Oliver Omat.

Mr. and Mrs. Steve Ryan from Vallejo, Calif., were weekend guests of Mr. and Mrs. Bill Righetti.

Whislers Start New Square Dance Series

This Friday night will mark the opening of the summer square dance club at the Collins Grange. Mr. and Mrs. Don Whisler will be doing the calling and instructing, while Bernice Libak and her orchestra furnish the music.

The dance will start promptly at 8:30. Coffee, cream and sugar will be provided, so bring your own sandwiches.

The series is set to run for 16 Fridays. Mr. and Mrs. Whisler invite all their friends to attend the opening dance.

Keep In Tune with the TIMES

PREFERRED IN TACOMA
SO RICH, SO DELICIOUS
SO VELVET SMOOTH
Medosweet DE LUXE ICE CREAM
AT BETTER DEALERS

Spanaway Tabernacle Slates Children's Day

Pupils of the Sunday School of Spanaway Full Gospel Tabernacle will present a "Children's Day" program for their parents and members of the congregation this Sunday morning at 10.

The children will give recitations and special musical numbers. Evelyn Keith of Parkland will preach a sermonette.

Throughout the year the youngsters have their own service in the basement while the adults are worshipping upstairs at the 11 o'clock service. This Sunday's program will give the adults an opportunity to sit in on the junior service.

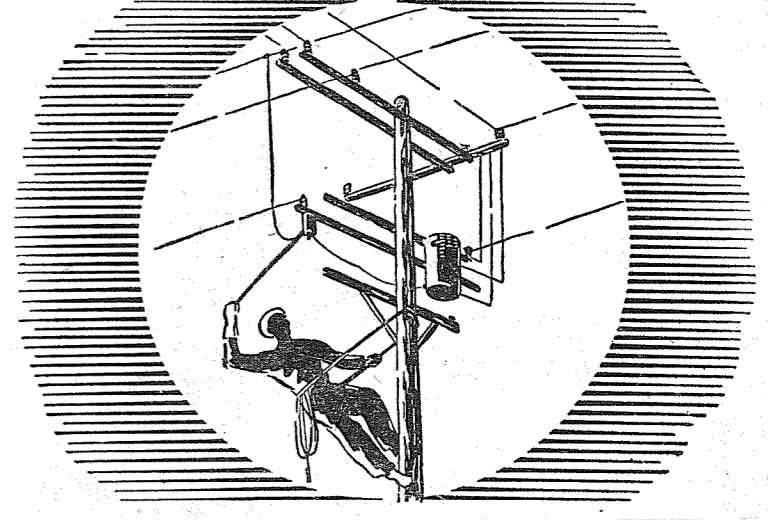
Pastor Stanley Weddle will be back from Spokane, where he is attending a four-day Assembly of God conference.

C. O. Lynn Co. MORTUARY
717 TACOMA AVE. Phone MAIN 7745
Keep In Tune With The TIMES

72nd St. Cleaners
Drive In Under Awning...
Where Everybody Stops
Open 7:00 a.m. to 6:00 p.m.
Daily except Sunday
Telephone GA. 5495 for Pick-up

FLETT DAIRY
G. FUCHS, Proprietor
HOMOGENIZED AND PASTEURIZED MILK AND CREAM
ICE CREAM
P. O. Box 207, So. Tacoma
Tacoma 9 Phone GA. 3301

Plain Careful SEWING & ALTERATIONS
Reasonable Prices
1022 South 115th St.
Mrs. Doll Moonitz GR 7231



MORE POWER TO YOU...

Your Tacoma City Light delivers more energy per home customer than any other utility in the United States. We're proud of that record.

But, there's more to the story. To continue to bring you adequate power at the nation's lowest rates, Tacoma City Light must continue to build.

More power means more business, more industry, more jobs, more homes. So, here's more power to you from Tacoma City Light... for a better life for you.

YOUR TACOMA CITY LIGHT
Public Power at its Best

Distinguished Invitations!

Indication of your own good taste—the correctness and smartness of our invitations printed to your order. Also stationery and calling cards. Come in for prompt service.

We Evidently Don't Do All The Printing In Parkland... But We Do The Best

La Crosse PRINTING CO.
Publisher of Your Parkland Times
LOCATED AT PARK & WHEELER, PARKLAND GR 7100

1949 Chevrolet Lost In Backyard Blaze

Despite efforts of Mrs. Dietrich to combat the blaze with a garden hose, fire completely destroyed the 1949 Chevrolet of Dr. Carlisle Dietrich, dermatologist who lives in Brookdale.

The fire, of undetermined origin, occurred while the Chevy was parked under an oak tree in the Dietrichs' yard about 2:30 last Wednesday afternoon.

Mrs. Dietrich was upstairs in the house when she suddenly heard a bang. Rushing to a window, she saw the car enveloped in flames. She immediately phoned the Parkland Fire Dept. and went to work with the garden hose until the firemen arrived.

The loss was covered by insurance. However, the doctor is searching the used car lots for a car to serve him until he can get a new one.

As far as the Times could determine, the oak tree was undamaged.

Want Ads Do Not COST—They PAY

Expert SHOE REPAIRING
SHOE DYEING—ANY COLOR—RESUEDING
ART'S SHOE SHOP
GARFIELD STREET

Parkland Plowing and Garden Service
Bulldozing — road grading — landscaping — disk — loam soil — fill dirt — gravel — fertilizer



See Us First For a Good Job!
D. R. DOTSON
Call LA 2434 or Contact 751 So. 110th St., Parkland

MIDLAND SCHOOL HAS 38 GRADS

Thirty-eight students received their diplomas from Midland Junior High at ceremonies Tuesday night. The class was presented by Perry G. Keithley, and the sheepskins were presented by Andrew Christensen.

Janice Fisk gave the welcome address; Susan Ellertson spoke on "Prospecting"; Keith Vaughan spoke on "Sticking Together"; and Mary Clinton gave the farewell address. Rev. Robert Bodin gave the invocation and benediction. The Kiwanis awards were presented by Clay Roley.

Music was furnished by the school orchestra, a piano duet by Nina Morris and Daryl Schinnell, a flute solo by Donella Younger, accordion solo by Janice Fisk, piano trio by Arlene Reichmuth, Karen Jones and Donella Younger, clarinet duet by Arlene Reichmuth and Karen Jones, and the onnette.

Graduates include Marie Afdem, Janet Anderson, Susan Bailey, Charlotte Boisture, William Brechbiel, Sallie Christel, Mary Clinton, Lorraine DeMars, Susan Ellertson, Shirley Evans, Janice Fisk, Jack Gardner, Robert Gorenson, James Hals, Elizabeth Hammar, Grace Hansler, Paul Hawkins, Norene Hotchkiss, Tadhunter Johnson, Patricia Kady, Tom Klapstein, Theresa Lanz, Barbara Madsen, Donna McAllister, Karen Jones, Maralyn Mercer.

Dorothy Mitchell, Gloria Morris, Nina Morris, Clarice Olson, Fred Reed, Arlene Reichmuth, Daryl Schinnell, Marilyn Siehl, Betty Turner, Keith Vaughan, Dwight Whitney and Donella Younger.

Mr. and Mrs. Herman E. McDowell of Rt. 13, Box 190-B, became parents of a baby girl on Tuesday, May 30, at Tacoma General.

Keep In Tune With The TIMES

PARKLAND LOCKERS
Wholesale Meat for Storage
1000 LOCKERS

- CUSTOM CUTTING
- ALUMINUM FOIL WRAP
- QUICK FREEZE
- CURING AND SMOKING

Slaughtering by Appointment
A. J. (Slim) Stern, operator
11012 Pacific GR 7111

Harvard Covenant Will Confirm Five

Sunday will be Confirmation Day at Harvard Covenant Church, with a class of five being confirmed. The confirmands are Bonnie Deck, Carol Johnson, Janice Fisk, Beverly Larsen and Eugene Kennedy.

At the morning service there will be individual and class recitations. The whole class will sing, "I'll Go Where You Want Me to Go, Dear Lord." Janice Fisk will give a valedictory address, and Bonnie Deck will sing a solo.

The members of the class will be honored guests of the congregation at the evening service, starting at 7:30.

Harvard Covenant's Bigle School starts Monday and will continue through June 23, from 9 to 12 each morning. There will be classes for all children from the age of four up.

EXPECT LARGE ROLL AT TRINITY BIBLE SCHOOL

The Vacation Bible School at Trinity Lutheran Church is set to open on Monday, June 12. It is anticipated that a record enrollment will be on hand for the opening day of the school which will continue for two weeks.

The daily sessions from Monday through Friday will be from 9 until 12 noon. Nearly 200 were in attendance at this school of Christian instruction last year.

Mrs. Kelmner N. Roe, the Parish Worker of the church, will be in charge of the school as superintendent. She will be assisted by the following teachers: Mrs. Harold Leraas, Mrs. Nyer Urness, Mrs. Luella Johnson, Miss Ida Morken, Mrs. Eldon Killo, Mrs. Neil Reed, Mrs. Charlene Harris, Mrs. Emil B. Johnson, Miss Virginia Seaburg, Mrs. Esther Rousseau, Mrs. I. M. Ulberg, Dr. and Mrs. Ernest B. Steen. Others are yet to be added to the staff.

All classes of the Vacation Bible School will be held in the new parish house which offers ideal facilities for class work and assemblies.

Bus service will furnish transportation for those who live in outlying districts. The bus will travel east on Allison to Waller Road, south to Collins, north on Mile B to Pennsylvania Avenue, west on 98th, south on Waller, west on Knapp and continuing west on 96th to Pacific and then to the church. A second route will run out Sales Road to 102nd street and return on Park.

A cordial invitation is extended to all to make use of this opportunity for Christian training and instruction. There will be classes for all from age 4 through grade 9.

LOCAL V.F.W. LADIES EYE CONVENTION AT BUCKLEY

Members of Rodger Lunde auxiliary, V.F.W., will attend the third district convention at Buckley next Wednesday evening. Buses will leave the Winthrop Hotel at 7 o'clock.

Presiding will be Mrs. Emanuel Karch, third district president. A large delegation of members is expected to attend.

Keep in Tune with the TIMES

84,000 B. T. U. AIR-CONDITIONING OIL FURNACE
"Fully Automatic"



Regular \$450
NOW ONLY \$295⁰⁰

Your Authorized
H.C. Little Burner Company
DEALER
WEIR'S Electric & Hdwo.
2815 6th Ave. BR 0111

SPANAWAY COMMISSIONERS DENY STATEMENTS OF LAKE PARK CLUB

The Parkland Times: The Lake Park Club and Mr. E. J. Reed have again made some characteristic misstatements concerning the proposed Spanaway Water System in the May 25th Parkland Times.

The Federal Government has enough faith in the need for a water system and in the proposed plan to make a non-interest bearing Planning Loan of \$15,600 to the District. This loan is repayable when and if the system is built so they showed real faith in the plan. In addition, the loan was made in the face of determined opposition by Mr. Reed and the Lake Park Club. In fact, they spent considerable money on telegrams to Washington, D. C. This loan is repayable from the bonds issued when the system is built, and is NOT in addition to the bond issue as represented by the "Lake Park Club."

The proposed plan and financing of the system was worked out by a responsible and qualified engineering firm which does a large amount of waterwork. They have to be accurate in their figures in order to stay in business. The figures presented by the Lake Park Club are obviously conjured out of thin air. The basic facts on costs are:

No. of Customers	Revenue per year	Operating cost per year
200	\$ 7,950	\$3,000
300	11,920	3,800
400	15,890	4,600
*514	20,448	5,500
600	23,820	6,020
800	31,800	7,220
1,000	39,700	8,420

*This is the total number of prospective services at the time the engineer's report was prepared. Financing is based on 514 services in four years.

At the present time the areas where the majority of the people are against water are being withdrawn from the District, and the system is being redesigned. These changes will change the overall cost, but will not materially affect the cost to the individual owner or resident.

The facts stand for themselves: for \$1.50 per front foot assessment and a water bill averaging a little over \$3 a month we can have a first class water system with fire hydrants and all.

R. F. Steidel
Robert Rhone
E. H. Tarpenning
Board of Water Commissioners
Spanaway Water District.

GARDEN CLUB TO GATHER AT RICHARDS HOME FRIDAY

The Violet Prairie Garden Club will gather with Mrs. John G. Richards Jr. in Parkland on Friday at 1 p.m. Mrs. Richards Sr. will assist the hostess.

Roll call will be answered by naming favorite roses. Mrs. G. A. Marshall, in charge of the program, will demonstrate arrangements of iris with driftwood.

CROSSWORD ~ ~ ~ By A. C. Gordon

1	2	3	4	5	6	7	8	9	10
11				12	13		14		
15			16			17		18	
19		20			21		22		
	23			24		25			
26	27	28		29	30		31	32	
	33		34				35		
36		37					38	39	40
	41					42		43	
44	45			46		47		48	
49			50		51			52	
53		54		55				56	
57						58			

General Interest

ACROSS

- Publishes
- Fine-grained jambakin prepared for writing upon
- Well-known opera
- Before
- Having the form or use of a rowing implement
- American Indian (abbrev.)
- To oppose one in authority
- Written compositions (abbrev.)
- More tidy
- To reiterate
- Old American (abbrev.)
- One of the continents (abbrev.)
- A person filled with morbid anxiety for his health
- Like
- Absorbent cloth
- Newspaper announcement
- Part of verb "to be"
- Brandished
- Either
- Exclamation of derision
- Atmosphere
- Dining implements
- Appearance
- To go astray
- To stint
- So, in Scotland
- Without
- Exist
- Possessive pronoun
- Aromas
- Affirm
- Kind of help given by the U.S. to other countries during the late war (two words)
- Also
- Established value of a monetary unit
- Laments
- Kind of potato
- An afterthought in letter-writing
- Garden implement
- Man's nickname
- Well-known U.S. "Corp State" (abbrev.)
- Bustle; fuss
- To tax
- To court
- To immerse
- To try again
- Had carried
- To bring legal action again
- Formally precise
- Mineral springs
- Flat surface of ground
- Vehicles
- Measure of area
- Popular name of aerial train
- Division of the Bible (abbrev.)

DOWN

- A potbelly
- Ceremony
- Mental image
- Chemical symbol for sodium
- A prophet
- To savor
- Behold
- Hobbling
- Either one of the "Bear" constellations
- Mysterious
- Chemical symbol for rubidium
- Counter tendencies

SOLUTION ON PAGE FOUR

Elk Plain Sunday School Teachers Meet

Sunday school teachers of Elk Plain Community Church convened at the home of Mrs. Dorothy Anderson last Friday evening. Mrs. Lew Brown, new Sunday school superintendent, presided. Purchase of new materials was discussed.

The congregation has mailed a Bible to the former pastor, Rev. Harold Wagner, in appreciation of his services.

The Elk Plain Gleaners had their husbands as guests at their meeting Tuesday evening in the Grange Hall. Mr. and Mrs. Rodney Howe (Marrianna Holly), now residing at 6312 So. Sheridan in Tacoma, are the parents of a baby boy, Dwight Edward, born Memorial Day at St. Joseph's Hospital. Grandparents are Mr. and Mrs. A. B. Howe of Elk Plain.

Elk Plain Grange holds its regular meeting tonight at 8:30. Because there was no meeting last time, there is much business to be discussed. Webb Gilstrap announced that Grange dances have been discontinued for the summer months.

"FRIV-O-LACE"
NYLON STOCK'EM



SPECIAL PURCHASE
SALE STARTS SAT. (JUNE 10)

10 DAYS ONLY!
3 PAIRS FOR \$3.45

ON A PEDESTAL
GOTHAM GOLD STRIPE
BEAUTIFUL STOCKINGS

— ALSO —

- 60 GAUGE, 15 DENIER
Reg. Price, 3 pr. \$5.85
10 Day Special..... \$4.45
- 54 GAUGE, 15 DENIER
Reg. Price, 3 pr. \$5.25
10 Day Special..... \$3.95

Myrtle Mockel
Apparel of Distinction
GR 7617 Parkland Centre

PARKLAND PHARMACY
The **Rexall**
DRUG STORE
Pacific Ave. at New Bank Corner
GR. 8519

Open Week Days—9 to 9
Sundays and Holidays—
10 a.m. to 2 p.m.—4 p.m. to 9 p.m.

ALWAYS A REGISTERED PHARMACIST ON DUTY

IT IS HERE AGAIN WIRED PICKET FENCING

36" HIGH, GREEN.....50 Ft. Roll \$12.00
48" HIGH, GREEN.....50 Ft. Roll \$13.50
48" HIGH UNPAINTED.....50 Ft. Roll \$11.50

NO TOP OR BOTTOM RAIL NEEDED

Vaughan's
PACIFIC AVENUE LUMBER CO.
84th and Pacific Avenue GA. 3133

The Latest
FASHION TREND IN WEDDING GIFTS

Puget Sound Nursery & Garden Shop
9201 PACIFIC AVENUE GA 2151
Summer Hours: Week Days Only—9 TO 5

STOVE OIL DELIVERY
From 100 to 200 gals.13½c per gal.

- FOREST WOOD
- SACKED COAL
- FENCE POSTS
- SACKED BRIQUETS

ROY MILL WOOD
OLD GROWTH UPLAND SLAB — EXTRA HEAVY OR MILL RUN — READY TO BURN AT ONCE

LAPENSKI FUEL
100TH & PACIFIC AVE. GR. 8173

Come Join the Fun at the **MIDLAND BALLROOM**
Sponsored by Paul Bunyan R. S. Club
EVERY SATURDAY NIGHT
One Mile East of Pacific Avenue on 98th

ONLY Gibson gives you PRES-TOE and these other features



PRESTO DOOR OPENS
PRESTO DOOR CLOSING AUTOMATICALLY
BUTTRY Keeps a pound of butter easy to spread — at your finger tips
FRESH'NER LOCKER Big, wall-to-wall compartment Always very moist and cold to keep meats juicy, salads and desserts fresh and crisp
FREEZ'R LOCKER Full width FREEZING cold storage for 40 lbs. of frozen foods Use to quick freeze extra ice cubes
SUPER MARKET SWING'R CRISP'RS Swing out at a finger touch. In one motion you move Crisp'r to your work space. Swings easily back into place
SUPER LOCKER Insert plastic tray under Fresh'ner Locker — combine with Freez'r Locker, to give extra 50 lbs. of frozen storage


BIG 11 cu. ft. MODEL 1150 \$359⁹⁵
Plus...
COLD TOP TO TOE every bit of space inside the cabinet is refrigerated
SNAP SEAL DOOR LATCH firm positive seal keeps all the cold inside
SCOTCH YOKE world famous mechanism, quiet, economical
FULL LENGTH DOOR easy swinging with ample toe clearance

Penny for Penny, more storage space, more new features, more EXTRA VALUE than ever before!
Come in, let us prove how easily you may have a new 50 Gibson for only PENNIES A DAY.

POCHEL Distributing Co.
YOUR FUEL OIL AND APPLIANCE DEALER
140th and Pacific Avenue GR 8624

Only PENNIES a day!
BIG 7 CU. FT. MODEL 700 \$189⁹⁵
EASIEST TERMS

SAVE for education



A good education does not guarantee success and happiness, but it is a long step in that direction. Open an NBW Savings Account now, while the children are little; small, regular deposits will soon build an educational fund.

NATIONAL BANK OF WASHINGTON
MEMBER FEDERAL DEPOSIT INSURANCE CORPORATION
25V-4 10 BRANCHES

Honor 3 Parkland Girls at Clover Park

Three girls who have grown up together in Parkland were among those honored at graduation exercises at Clover Park High Wednesday night.

The trio includes Janet Klippen, daughter of Mr. and Mrs. Leif Klippen; Mary Olson, daughter of Mr. and Mrs. Cliff Olson; and Shirley Skinner, daughter of Mr. and Mrs. H. F. Skinner.

Mary and Shirley have been going to school together for 12 years, nine of them at Parkland. Janet has been in the "gang" about nine years, the other three having been spent at Collins and Gig Harbor. The three were among the 16 honor students at Clover Park.

Parkland ministers also played a large part in the graduation activities. At baccalaureate services, Rev. Kellmer Roe gave the invocation and Dr. E. C. Knorr gave the benediction. At commencement, Dr. E. B. Steen gave the invocation.

Midland Civic Club to View Two Movies

Two movies will highlight the session of Midland Improvement Club at 8:30 Thursday evening. One will deal with radio, the other with television.

"The Telephone Hour" tells the story of a network broadcast featuring the Bell Telephone orchestra, while "Stepping Out With T-V" takes you behind the scenes in the video business.

RECITALS BY 80 PIANO STUDENTS

Emmy Coltom will present her piano pupils in two recitals, one next Tuesday and one next Thursday. Both recitals will take place in the parlors of Trinity Lutheran Church, and will be complimentary to the public.

Appearing Tuesday evening at 8 will be Paul Streng, Lorinda Green, Lynn Clark, Christy Wood, Griffith Thomas, Sandra Wood, Mary Ann Aldrich, Sylvia Dybvik, Melvin Parker, Judy Reed, Jovellen Bradley, Roxanne Johnson, Delores Gordon, John Kunkel, Marvin Olson, Gloria Kreger.

David McNickle, Wayne Thomas, Barbara Schenk, Eugene Gordon, Janice Coltom, Jerry Kreger, Wendal Bradley, Dianne Reed, Victor Pitzler, JoAnn Palmer, Rodney Berntsen, Karen Swindland, Evelyn Haakenson, Carolyn Coltom, Donna Lea Bledsoe.

Marie St. Clair, Sharron Seger, Sharron Gottschalk, Ruth Olson, Danny McNickle, Gail Westby, Phyllis Martens, Johnny Richards, Linda Olson, Joanne Morud, David Berntsen, Rosalie Rosso, Nancy Crusan, Barbara Pepper and Gene Russell.

Performing Thursday evening, also in the church basement, will be Carolyn Paul, Dennis McGinnis, John LeMaster, Kathleen Longergan, Muriel Fields, Fred Miller, Joan Paul, Carole Christlaw, Betty Castle, Judith Klapstein, Bonnie Trolson, Vivian Frame, Betty Ann Nelson, Joanne Trolson.

Esther Fields, Marianne Moore, Linda Sholberg, June Holmes, Marilyn Ganes, Judith McGinnis, Bonnie Kelling, Carol Johnson, Eleanor Tjorstad, Wandajoy McLellan, Kenneth Riis, Marilyn Larson, Louise Thomas, Wayne Rolfe, Arlie Rose, Claudia Larson, Gloria Helmeich, George Lee Miller, Fred Tjorstad and Ann Murray.

Keep in tune with the TIMES



Expressing pleasure at the new WASHINGTON VOTERS' HANDBOOK are Governor Arthur B. Langlie, Mrs. Earl Weber of the League of Women Voters, and Ernest H. Campbell of the University of Washington's Bureau of Governmental Research and Services. Mrs. Weber is state chairman of the League's May drive to place the voting guide in every home. The HANDBOOK was prepared by the University Bureau at the request of the League and was published by the University of Washington Press.

I See By the Times

School children excited about vacation but worried about report cards as they anticipate the last day of school . . . Mrs. Jennings being anxious that everyone know that her daughter, Mary Lou, was Clover Creek's valedictorian . . . Art Thiel winning another game for the Spanaway fastballers . . . Mary-Martha members dusting off their Norwegian dresses for coffee party . . . Howard Willard telling people about the Explorer bon voyage dance . . . Kiwanians meeting at 6:15 Thursday evenings instead of noon . . . Commissioner Harry Sprinker wondering why his copy of the Times didn't arrive until Friday . . . PLC maintenance men dashing about in the rain to turn off the campus sprinklers . . . people talking about the seven-mile approach being cut through the forests south of McChord Field for jet planes . . . E. W. Castle insisting that his farm, which is being offered as a site for the Bethel High School, is not on a gravel road . . . Malcolm Soine returning from his honeymoon.

Two Spanaway Youths Picked For "State"

Spanaway will be represented at both Girls State and Boys State at Ellensburg this summer. Attending Evergreen Girls State will be Alice Searce, junior at Clover Park and daughter of Mr. and Mrs. Edward Searce. She will be sponsored by Clover Creek American Legion Auxiliary 118.

The session will take place on the campus of Central Washington College from June 24 to July 3. Its purpose, like Boys State, is to "educate our youth in the duties, privileges, rights and responsibilities of American citizenship. Attending will be 200 carefully-chosen girls from cities throughout Washington.

At Boys State, also set for C. W. C. campus immediately preceding Girls State, will be Jimmy Ockfen Jr., who was recommended by Principal Richard Fraser. His sponsor is a downtown American Legion post.

The South End would undoubtedly be represented by several other youths except that the reservations for the two conclaves closed unusually early this spring.

Summit and Parkland Firemen Fight Blaze

Shortage of water handicapped the Summit-Woodland-Collins fire department and the Parkland department in controlling a blaze in Firgrove, south of Puyallup. As a result, a combination service station, apartment house and grocery store burned to the ground, with a complete loss

amounting to \$20,000, partly covered by insurance. Hand carved furniture valued at nearly \$5,000 belonging to Mrs. Glendale Chase, a German war bride, was consumed in the blaze.

The fire started by a water heater at 7 a. m. Monday, but was thought to have been extinguished at that time. After springing up the second time it gained such headway that nearby houses were endangered.

CLASSIFIED ADS

3 CENTS PER WORD (50 CENT MINIMUM) BUY! SELL! TRADE! REACH 15,000 READERS Simply Call GRanite 7100

FOR SALE—MISCELLANEOUS

FOR SALE—99-coil, full size bed-spring and innerspring mattress. 517 So. Violet Meadow. GR 7100. 12 FT. BOAT, newly repaired; Mountain tent, like new; boy's 24 inch bicycle; metal bed, complete. GR 6377, evenings.

ONE USED American Standard kitchen sink, like new, \$10; one used kitchen sink, \$5; one used service sink with trap, \$5. GR 8357 or Graham 194. k39

KEEP FOOD COOL—Here is an excellent refrigerator-type cooler. White enamel inside and out. Well worth \$30. GR 6608, 816 Airport. r

GRAVEL, bank run, good for driveway, 4 yards, \$6. Crushed rock and drainfield gravel. GR. 8259, GR. 8573. r

PARMENTER RED CHICKS, 17c; some started. Price reduction after May 1st. RED COCKERELS, 6c, when available. Day-old pullets on order, delivery Wednesdays. La-Crosse Hatchery and Poultry Ranch, Rt. 1, Box 228, Orting, Wn. Phone Summer 489. r

MISCELLANEOUS

FIVE DOLLARS reward for return of boy's green and white medium size Schwinn bicycle. GR 7135. k39 WANTED—Growing landscaping firm wishes to lease 3 bedroom home with small acreage—must be in Parkland or Spanaway. Contact 751 So. 110th St. or call LAKEWOOD 2434. r

WANTED—PARKLAND HOMES—have several cash buyers for 2 and 3 bedroom homes in Parkland who will pay up to \$15,000. Call Mr. Harper, GR 8760, representing

Washington Realty Co., 772 So. 38th St. Member Tacoma Real Estate Board. r

STEEL clothesline poles installed in concrete. Heavy 3-inch posts. Call us; we do all the work. \$17. Market 0823. r

SERVICES

WILL CARE for one child days while mother works. In Summit district. GR 3149. k39

KITCHEN CABINETS

MILLWORK—SASHWORK. GR 6907. r

NURSERY SERVICE—Capable mother offers her home days and evenings for the care of children—no age limit. Home at 910 S. 110th. large fenced-in yard. Daytime, 35c per hour (15c for each additional child in a family). Accommodations for 8 children. GR 5364. r

RECOVERING & REBUILDING—Davenport and chair in tapestries, low as \$125; freeze mohair, low as \$140. Rebuild cushions, \$4.00. Samples shown day or evs. in your home. GR 4071 for appointment. r

SEPTIC TANKS CLEANED, contents hauled away. Don Redford, GA. 7334. r

ACE SEPTIC TANK SERVICE—Lynn Redford, owner. Septic tanks cleaned, contents hauled away. GA. 3446 or GA. 9794. r

RAY GOGAN, LANDSCAPE CONSTRUCTION—Nothing done, 3 years to pay. New lawns, topsoil, shrubbery, rockeries. GR 8842. r

Brown and Robinson Opens Realty Office

Brown and Robinson, Realtors, have opened an office in Parkland, across from the National Bank of Washington, at 11220 Pacific Ave.

Mr. Brown, formerly owned the Bert Brown Real Estate, located in the Fidelity Building. He is a member of the Tacoma Real Estate Board and is well qualified to handle any kind of real estate sales and trades.

Mr. Robinson has been in the real estate business for many years and knows values of both homes and farms.

Mr. L. D. Clabough, has also joined the firm and has had vast experience in the real estate business.

This firm looks forward to the growth of Parkland, which prompted them to move to their new location.

SPAN. CLUB TO NOMINATE TUES.

Officers for next season will be nominated Tuesday, June 13, by members of Spanaway Progressive Community Club, convening in the school gym. All members and friends are urged to attend.

Presiding will be Bill Righetti, who has been elected to replace Herman Fuchs, who had taken over temporarily after the resignation of Harry Smith. The new officers will take office next fall.

The club will discuss the progress of the zoning campaign now being conducted in Spanaway. Petitions have been circulating to establish a zoning district in the area between Lake Shore Drive and East F, between 1st and 15th and also extending along the highway to the Roy Y and to Orchard Hill.

Signatures of 35 per cent of the property owners in the proposed district are required to validate the petition, which will be submitted to the county commissioners for a hearing.

Anyone who has not yet signed a petition for the zoning district may do so at Tuesday's session. All persons with petitions should bring them so the signatures can be counted.

Entertainment at the meeting will feature "The Secret of the Masters," a movie on ancient murals.

Dr. Richard McGirk, whose offices are at 48th and Yakima, was recently elected president of the Pierce County division of the Washington Optometric association.

Solution to Crossword Puzzle

P	R	I	N	T	S	V	E	L	L	U	M
A	I	D	A	R	E	R	E	O	A	R	G
U	T	E	P	E	B	E	L	M	S	S	
N	E	A	T	E	R	R	E	P	E	A	T
C	O	A	H	N	A	R	I				
H	Y	P	O	C	H	O	N	D	R	I	A
A	S	T	O	W	E	L	A	D			
A	M	W	I	E	L	D	E	D	O	R	
S	B	O	O	S	A	I	R	E			
S	P	O	N	S	A	S	P	E	C	T	
E	R	R	S	P	A	R	E	S	A	E	
S	I	N	E	A	R	E	O	U	R	S	
S	M	E	L	L	S	A	T	T	E	R	

Brown Charges Other Sheriff Candidates

Doc C. G. Brown in his campaign for Sheriff, points out that there is a faction supporting two of the contenders for the nomination of sheriff that are using money donated by a group that hope to use the sheriff's office for a front for other activities. "How," Doc Brown asks "can a sheriff so elected honestly support the wishes of the people he should represent?"

"If I am elected sheriff, I do not want that kind of money to support. The honest, sincere vote of my many friends will be the only obligation I owe anyone. I will not be obligated to persons who will expect certain privileges because they supported me."

Quoting from a letter written by Homer D. Angell, C. M., House of Representatives, Washington, D. C.:

"This will introduce the bearer, Charles G. Brown, who is at the present time a member of the United States Capitol police force, who is voluntarily leaving the force to return to Oregon, where he was born and raised, near Salem.

"Mr. Brown has been following police work for a number of years and is, in my judgment, well qualified, dependable and will give good service to anyone desiring such service. I have known him here in the District for some time." Signed, Homer D. Angell, M. C.

ALONG STREET

(Continued from Page One)

regarding same. In fact we have had only one opposition to the plan. Not to mention a name as it would not be in keeping with the policy of the individual to thus be quoted but it was merely pointed out by this individual that in incorporating we would be losing some of the benefits as now derived from the county in the way of road upkeep. We are always glad to publish both sides of this issue or any other. Our stand is in the middle, until such time as we are thoroughly convinced that one side or the other is definitely advantageous.

In regards to comments regarding the Bethel High site to be chosen by the voting public of that school district, be it known that the opinion of this paper are not reflected through any article appearing therein. As far as The Parkland Times is concerned, it is neutral. Readers in that area are invited to send in their views on the subject, however, it is to be pointed out that we are not in any way to be the tools of any one group or faction so involved. We want both sides to have the facts and the facts alone.

The H. D. Pillsburys and Oliver Omats have been entertaining Mrs. Harmon Gladwin and son Tim from Mountain Home, Idaho. They hadn't seen each other in 13 years.

WANTED . . .
HOMES AND FARMS IN ANY LOCATION
Brown & Robinson
REALTORS
11220 Pacific Ave. GR 3341
Member Tacoma Real Estate Board

Keep COOL Drop in for **ICE CREAM**
Your Favorite Fruit and Candy Flavors
McCay's Ice Creamery
330 GARFIELD

ALVSTAD'S MARKET
231 Garfield St. GR 8560
PARKLAND SHOPPING CENTER
FRIDAY AND SATURDAY, JUNE 9 AND 10

WESCO WHOLE KERNEL CORN	No. 1 can	2 for 21c
WESCO PURPLE PLUMS	No. 2 1/2 can	2 for 35c
WESCO TOMATO JUICE	46 oz.	25c
WESCO HOMINY	No. 2 1/2 can	15c
HEINZ BAKED PORK & BEANS		15c
ARMOUR CORNED BEEF	12 oz.	37c
CAMPBELL'S TOMATO SOUP		10c

NALLEY'S PICKLES
BANQUET, KOSHER, and GENUINE DILLS, Crisp, Delicious. 24 oz. 39c

TANG—NALLEY'S (For Your Favorite Salad) 16 Oz. 27c, 32 Oz. 51c

NALLEY'S POTATO CHIPS. 4 1/2 Oz. 23c, 8 Oz. 37c

WE SPECIALIZE IN GOOD MEAT AT REASONABLE PRICES

WATERMELON	per lb.	5c
CANTALOUPE	per lb.	8c
SHAFTER'S SIZE A NEW POTATOES	10 lbs.	29c
JUICE ORANGES	per doz.	27c
PAPER NAPKINS, ass't. colors,	2 for	27c
JOHNSON'S GLO COAT, qt. 1-3 more		98c
WALDORF TISSUE	4 for	27c
SURF		25c
WOODBURY SOAP	3 for	22c

LIVE IN PARKLAND—SHOP IN PARKLAND

Chevron Motoring Musts
BEFORE STARTING THAT WEEKEND TRIP, A FULL TANK OF GAS AND A QUICK LOOK AT VITAL CAR CHECK POINTS ARE A MUST!
Drive up now, and let us check your oil, radiator, battery and tires. When you leave our station you can be Chevron Sure of pleasant weekend motoring.
Parkland Fuel Oil & Service Station
GR 8112
120TH AND PACIFIC PARKLAND

Keep in Tune with the TIMES
It's Easy to Place a **CLASSIFIED WANT AD** in the PARKLAND TIMES
Just Call GR 7100

In Spanaway . . . it's **GR 8213**
Herman's Food Store
AT END OF BUS LINE AND SAME BLOCK AS POST OFFICE
New Store Hours—8 A. M. to 7 P. M.
For Nationally Advertised Brand Foods and the Best in Produce

SPECIALS—FRIDAY AND SATURDAY, JUNE 9 AND 10

2 LB. LOAF		
Velveeta	75c	Crisco 3-lb. 79c
IMPERIAL VALLEY KLONDYKE	Lb.	PARKAY Lb.
Watermelon	4c	Oleomarg 22c
HI HO Crackers	29c	DUCHESS, CREAM-STYLE Corn case of 24 \$2.35
FROSTEE Ice Cream Mix	2 for 27c	HUNTS Tomato Juice 3 cans 28c
MAKE 16 GLASSES Hawaiian Punch	49c	TEA GARDEN Rasp. or Straw'ry Jelly 2 for 49c
SWEET CREAM Butter	1/2 lb. 35c	CUBE OR MEAL Friskies 5 lbs. 69c

Leave Your Films with us for Developing
PICNIC SUPPLIES OF ALL KINDS

Fresh Fruits and Vegetables
FLORIDA GRAPEFRUIT, lb. 9c
BANANAS, lb. 19c
HOT HOUSE CUKES, lb. 15c
LEMONS, lb. 15c

WE RESERVE THE RIGHT TO LIMIT QUANTITIES
NO SALE TO DEALERS