

The TIMES-JOURNAL

JULY 31, 1952 (VOL. 7, NO. 46)

PUBLISHED AT PARKLAND, WASH., BY CLARENCE LACROSSE AND JACK BROWN

BOX 885, PARKLAND, WASH.

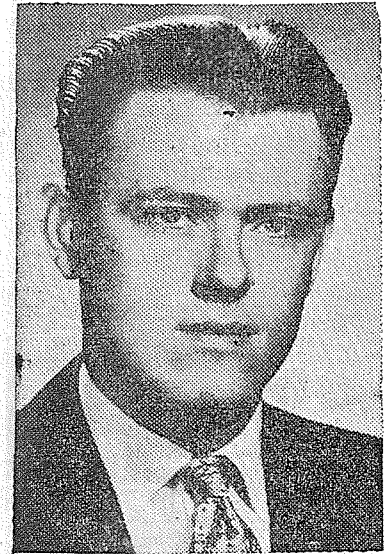
LaCROSSE PRINTERS--TIMES-JOURNAL
PRINTING ADVERTISING
118th and Pacific Avenue Phone GRanite 7100
DEADLINE: News, Monday Noon; Advertising, Tuesday Noon

U. S. POSTAGE PAID
Sec. 34.66 P. L. & R.
Tacoma, Wash.
Permit No. 51

BOXHOLDER OR OCCUPANT
RURAL ROUTE
POSTMASTER—If unable to deliver,
return postage is guaranteed.

DON EASTVOLD ON TV PROGRAMS EAST, WEST COAST

This is a hectic week for Don Eastvold, brilliant young Parkland attorney who gained national recognition at Chicago when he led the fight for



Don Eastvold

Eisenhower on the floor of the convention. The week's activities includes more than 3,000 miles of air travel, spanning the continent twice within 48 hours. On Tuesday he flew to Los Angeles for a political debate with Jimmy Roosevelt. On the panel to question the pair were California Gov. Earl Warren and Sen. William Knowland, along with two Democratic leaders of Roosevelt's choosing. A half hour after leaving the TV studio, Don was planning toward the east coast for his Wednesday evening participation in a roundtable discussion of the presidential campaign in New York City, with Sen. Blaire Moody of Michigan talking for the Democrats. Elmo Roper acted as moderator.

Taking a plane for the west following this TV appearance, Eastvold will be back in Tacoma for the "Big Three" mass meeting in Tiger park this (Thursday) evening, at which event he will represent Gov. Arthur B. Langlie, unable to be present, as well as himself, candidate for the post of attorney general for the state in the coming election.

On Friday, Eastvold will be the principal speaker at the Old Settlers' picnic at Ferndale, near Beltingham.

Pennsylvania Picnic
The fourth all-state Pennsylvania picnic, sponsored by the Pierce County Pennsylvania club, will be held at Wapato park Sunday, Aug. 3, at 1:30 p. m. Please bring lunches, service and all your family and friends. Myself will meet someone from the old home town! Plenty of fun and good fellowship is in store. Coffee, cream and sugar are provided.

Piper FUNERAL HOME
HILLSIDE 6479 - 5436 SO. PUGET SOUND AVE.

PROFESSIONAL DIRECTORY

INSURANCE
CLAY ROLLEY AGENCY
98th and Portland Avenue
GR 8501

OPTOMETRISTS
DR. L. RICHARD MCGIRK
Modern Eye Care
4802 1/2 So. Yakima HA 2113

REAL ESTATE — INSURANCE
NOTARY

ROY V. ROSTEDT
8201 Park Avenue
Phone HA 2342

DR. JOSEPH G. HANSON
Osteopathic Physician
5437 1/2 So. Tacoma Way
Odd Fellows Building
HA 5315 Tacoma 9, Wash.

Danielson - Rolfe Insurance Agency
PARKLAND—GR. 3113
Automobile - Casualty - Fire
Inland Marine

Dryer MORTUARY
FRIENDLY, PERFECTLY PLANNED, CARE, EQUIPMENT, CONCISELY PLANNED DETAILS—ALL THINGS NECESSARY FOR A FUNERAL SERVICE OF CHRISTIAN COMFORT AND SPIRITUAL BEAUTY—WE ARE PREPARED TO OFFER AT ANY HOUR, HERE, IN YOUR OWN COMMUNITY.

—Trav Dryer.

Traffic Warden School Planned by Area C. D.

The members of the Civil Defense auxiliary police of Midland, Parkland, Spanaway and Clover Creek met Wednesday, July 23, at the Dryer Mortuary with coordinator of the area Trav Dryer, Director Virginia Seaman of Parkland and Director William Righetti of Spanaway, to formulate plans for a traffic warden school.

There are 25 members on the force, all of whom have graduated from the police school sponsored by Pierce County Civil Defense and the sheriff's office. It was decided that, in order to rapidly expand the force necessary to control traffic in any large scale emergency, a school should be set up by this group to give the limited training necessary for traffic wardens. They would be privileged to take the much longer course provided by the sheriff if they wished.

The traffic warden school will probably require only two or three evenings to complete. Dryer appointed a committee composed of the four chiefs of the auxiliary police of the four communities to work out the subject matter to be covered by the course. The four are Clyde Spangler, Midland; Walter Fritz, Parkland; Emerson Tarpenny, Spanaway; Charles Weymouth, Clover Creek.

Anyone wishing to take part in this interesting and vital phase of Civil Defense should get in touch with Coordinator Trav Dryer immediately.

DR. EASTVOLD WRITES FROM MOSLEM SECTION

(Excerpts from a letter received by Dean Philip E. Hauge from President S. C. Eastvold.)

"Just a word of greeting as I make ready to leave Erbil, Iraq. I arrived in Baghdad on last Saturday, July 5, at 3 p. m. I visited the Presbyterian Mission and found that the missionary's wife came from Le Roy, Minn., the home town of Mrs. Eastvold. That opened a friendship which was helpful. He will meet me in Baghdad when I arrive there tomorrow morning, July 10.

"I took the night train on July 4 to Mosul, where I was met by our native missionary. I am, as you may know, a member of the board of directors of the Lutheran Orient Mission. No board member has ever been here. They work somewhat in the dark.

"While in Mosul, I visited the missions run by the Presbyterians, Seventh Day Adventists, and the Dominion Catholics. We have had the smallest work in Iraq and no mission anywhere else by Lutherans among the Moslems. I am convinced we should do more.

"I have preached twice here and have visited many homes. The contrasts between good and evil here are indescribable. Rapid strides are being made in many lines. I visited the schools and directors of education. In ten years things will be very different as they are far advanced over ten years ago. At that time they selected the students for the public schools. Soon it will be compulsory. When that happens, Mohammedanism will have to go out. Then it will be important what we as a Christian Church have done to be ready for the new day in the Moslem world. They need Jesus Christ here. If our Lord could take over, this would be a transformed world. It is so very difficult to get our people in America . . . to realize how preferred they are above others in a divided world. PLC has a very important role in this period. Christian men and women are needed more than anything else. We are on the right track, let us push steadily forward."

S. C. EASTVOLD.

A CONCERT presenting Madame Maret Pank, operatic soprano, will be given Tuesday evening at 8:30 at Mason Methodist church, Tacoma, under auspices of the Wesleyan Service Guild of the church.

Mrs. Mason Files For Representative

Addeline M. Hason, Tacoma writer of magazine stories and articles, is a Republican candidate for representative to the State Legislature from the 29th District.

Mrs. Mason, a Tacoma resident for



Mrs. Addeline M. Mason

over 20 years, is a past president of the Business and Professional Women's club, and during the last three years has represented that group on Civic Affairs and Legislative committees of the Tacoma Chamber of Commerce.

She is married, husband is a line foreman; they live at 805 So. Geiger St., and have raised and educated three children, all grown now. In addition to home interests and writing activities, she has had newspaper and business experience.

"Members of the State Legislature should be men and women who take an active part in community life," Mrs. Mason states. "It is through such contacts that the needs and desires of those who must live with the laws are known to those who make them. Legislators should also take the lead in a program of better information to the public on legislative matters, particularly in regard to the mechanics of electing the members of Legislature."

"My interests and activities have brought me in touch with the problems of schools, parks, law enforcement, social welfare and other public issues. With family obligations no longer occupying my full time, I can give year-around attention to better government."

"Women share the responsibility in the home, in business, in education. Why not equal responsibility in government?"

Home on Furlough

Sgt. Ronald R. Turner, U. S. Marine Corps, arrived Tuesday to spend his 30-day furlough with his parents, Mr. and Mrs. C. H. Turner of Collins road. He has been in the service for two years, the past year having been spent in Korea, and came north from San Diego for his furlough. He will be assigned to further duty. Another son of the family, Larry Turner, also is in the Marine Corps, and will be in Korea until September, when he, too, will be here on furlough.

SPECIAL

1/2 Gal. Flett's Ice Cream and one of our own Angel Food Cakes
\$1.89
Patty Ann BAKERY
Pacific Avenue at Airport Road
Hours: 9 a.m. to 9 p.m.
Phone GR 3330

YAKIMA BOYS FRUIT STAND

TREE-RIPENED FRUIT
READY FOR CANNING
APRICOTS PEACHES
Tilton Hales
Morparks Elbertas
YAKIMA SWEET CORN — PLUMS
MELONS — TOMATOES
FULL LINE OF PRODUCE
One Mile Before Entering Puyallup on the River Road
Open Till 10:00 P. M. Phone Puyallup 5-8561

BUS COMPANY ASKS ADVICE OF LOCAL PEOPLE

The owners of the B-Line Transit Co. have an important question to ask all residents of the Parkland-Spanaway area: DO YOU WANT BUS SERVICE? If so, on what streets, at what time?

They urgently request that anyone interested in service drop a card or letter immediately to B-Line Transit Co., P. O. Box 707, Parkland.

The newly organized company began service July 21 and later suspended service temporarily when it became apparent that the original time schedule and routes would have to be revised. The company plans to resume service soon if routes and schedules can be worked out to the acceptance of the general public.

Upon resuming service, the company plans to offer connections to McChord Field, Mt. Rainier Ordnance Depot and South Tacoma, plus previous connections offered to Tacoma.

"Few people realize the great cost per mile to operate a bus and the use and acceptance of the new service by the public must be accomplished if the line is to prosper," states Bill Black, co-owner. "We believe the entire area will benefit and grow with the service through the accessibility to local shopping areas and the growth of real estate values where bus service is offered."

First Farmer: "What was that explosion over at Zeke's place yesterday?"

Second Farmer: "Oh, Zeke started feeding his hens some of that 'Lay or Bust' . . . and one of 'em was a rooster."

Serve These DELICIOUS TWSOMES FROM OUR BAKERY

Pie with Ice Cream
Angel Food with Whipped Cream
Cookies and Milk
Rye Bread and Ice Cold Auburn Buttermilk
Coffee Cake with Fragrant Hot Coffee

AUNT SUE'S Bakery
209 So. 84th HI. 4072

Local Kids to See TV Comic in Person

It has a woman's name, but even the kids don't think it's a woman. It has a face, but nobody ever sees it under the clown's paint. And it may have a voice, but fans only hear the solemn "honk" of a horn!

This confusing personality is "Clarabell," one of the stars of the popular HOWDY DOODY television program, who will make a personal appearance at Soine's Parkland Shoe store on August 12. Local kids will have a chance to see the silent clown between 10 a. m. and 12 a. m., when Clarabell will greet all comers and distribute free gifts.

"Clarabell" is a popular TV star," according to Al and Malcolm Soine, proprietors of Soine's Shoe store, "who puts on a wonderful performance. All personal appearances have been smash successes."

The frames of tennis rackets are usually made of ash or hickory; the handles of cedar.

"Tic-Toc" Is New Store Name

Mrs. Maude S. Twining, 214 South 96th St., is the proud owner of a lovely new 17-jewel watch, her prize for winning the "What's Our Name?" contest held by Glen A. Carmack to provide a title for his recently purchased jewelry store, formerly known as Mabley's Jewelry store. Her entry was Tic-Toc Jewelry store.

The name was chosen Wednesday evening, July 23, by members of the Parkland Business club in a brief business session during the annual cruise on the Virginia V.

Mr. Carmack was especially pleased with the new name since he will feature watch and clock repairing, also offering an attractive line of jewelry. More than 50 entries were received, many of them very interesting and expressive. One person sent in an entry somewhat similar to the winning title but Business club members preferred "Tic-Toc." The other entry was post-marked at a later date than the winner.

Special Notice TO THE CLEANING OF YOUR SUMMER GARMENTS

You will be surprised how fresh, how clean, how bright they will look when they are returned to you.

CALL PARKLAND CLEANERS GR 3221

For Free Pickup and Delivery Service

ARE YOU IN A HURRY? Stop in at our plant 11004 Pacific Ave., 1 block north of bank. Folks, we have lots of parking space for you.

Parkland Cleaners
Phone GRanite 3221 11004 Pacific Ave.
24-HOUR SERVICE AT THE PLANT North of the Bank Corner

HERE'S BIG NEWS FOR HOME OWNERS . . .

IT'S THE NEW H. C. Little OIL WALL FURNACE

KEY TO ILLUSTRATION

- 1—FURNACE measures 79" high, 20" deep and 30" wide.
- 2—PARTITION wall cut away to show how furnace is set in wall to extend out equally on each side (7" in the case of a 6" wall) or can build in flush with walls.
- 3—FURRED OUT section of wall directly above furnace on both sides provides ample room (20x30) for the patent flue.
- 4—PATENT FLUE, which comes down from above, without danger of contact with wood or other combustible material. (Or brick chimney constructed at side may be used.)
- 5—WARM AIR discharge grilles.
- 6—RADIANT PANEL, 12"x49".
- 7—COLD AIR intake grilles.

Perfect for small homes without basements, saves valuable floor space, automatically lights itself, burns low cost furnace oil, Underwriters approved. 65,000 B. T. U. output per hour.

"Estimates Gladly Given"
Specialized H. C. Little Furnace and Heater Service

— WE ALSO CARRY —

- ★ Floor Furnaces
- ★ Basement Furnaces
- ★ Dual Register Furnaces
- ★ Wall Furnaces
- ★ Oil Circulators
- ★ Utility Furnaces

NOTHING DOWN — 36 MONTHS TO PAY

WEIR'S ELECTRIC & HARDWARE

Sixth Ave. at Pine BR 0111 . . . Eves. YU 9836, GR 5940



By Clarence LaCrosse

Thanks, friends, for making our Big Open House of last Friday a huge success . . . We were more than flattered at the amount of attention received and the many friends who dropped in to wish us success. I think I saw nearly everyone we have ever done business with, besides a host of friends who just dropped by to say "Hi!" I don't have a count on the number who passed through but there were a plenty . . . both Jack and I were busy all day shaking hands and treating our friends . . . from the both of us we wish to say "Thanks a million, glad you remembered us." For the many flowers received we certainly want to say "Thanks" . . . sometimes "thanks" is about the only appropriate remark one can make . . . Thanks again.

Coming Attractions
Community Theatre
56th & M St. GA. 7373
Doors open 1:00 p.m. Sat. & Sun.
6:30 p. m. Mon. thru Fri.
Enjoy Movies in Comfort
New Seats Now Installed

Wed., Thurs., Fri., July 31, Aug. 1-2
CARBINE WILLIAMS
James Stewart - Jean Hagen
FLESH & FURY
Tony Curtis - Mona Freeman
Saturday Matinee
MARSHALL OF LAREDO
Red Ryder
Sun., Mon., Tues., Aug. 3-5
JUST THIS ONCE
Peter Lawford - Janet Leigh
CAPTAIN BLOOD
Errol Flynn - Olivia DeHaviland
Wed., Thurs., Fri., Aug. 6-9
THE WILD NORTH
In Color
Stewart Granger - Cyd Charisse
BUGLES IN THE AFTERNOON
In Color
Ray Milland - Forrest Tucker

Meet Clarabell

HOWDY DOODY'S PAL
in Person
Soine's Parkland Shoe Store
411 Garfield
TUES., AUG 12 — 10 A.M.

Clarabell will be HERE, kids . . . your favorite T.V. star. Tuesday, Aug. 12, is the day to meet Clarabell in person . . . and there'll be laughter galore as the comical clown honks hello! It'll be a party you won't want miss.

Free gifts FOR KIDS!

wear Clarabell's favorite shoes -

Poll Parrot
SHOES FOR BOYS AND GIRLS

Soine's Parkland Shoe Store
411 Garfield St. (In the Parkland Centre Bldg.)
Cross from the Parkland Post Office
OPEN 10-6 (Daylight Time) GR 3526

Use Our BUDGET PLAN AS LONG AS 6 MONTHS TO PAY

IT'S EASY TO OWN
NEW TIRES WITH A FUTURE!
ATLAS
BACKED BY 12 MONTH WRITTEN WARRANTY

PACKED WITH POWER FOR YOUR CAR

ENJOY THAT "PLUS" SERVICE
STANDARD HEATING OILS — AUTO PARTS
Parkland Fuel Oil Service
120th & Pacific Ave. Phone GR 8684

136th Pacific Ave. BROOKDALE LUMBER CO. Phone GR.8669

CEMENT, \$1.45 per sack --- SAND OR GRAVEL, 35c per sack

Everything in LUMBER

Friendly planning, cars, equipment, perfectly planned details—all things necessary for a funeral service of Christian comfort and spiritual beauty—we are prepared to offer at any hour, here, in your own community.

—Trav Dryer.

Summit church will start Monday, Aug. 4, in the church hall, continuing until Aug. 13. Children from four years to the sixth grade in school will be enrolled. Classes will be held from 9 o'clock till noon week days. All children in the district are welcome to attend. Mrs. Foster Allen will be the supervisor.

Register NOW
Don't forget that Friday, Aug. 8, is the last day to register for the September primary election.

Clayton-Winsley Wedding July 25

The Summit Methodist church was beautifully decorated with summer flowers Friday evening, July 25, for the wedding of Miss Ruth Olive Clayton, only daughter of Clarence Clayton and the late Mrs. Clayton, to Lyle Winsley. The Rev. John Avery of Tacoma read the double ring service.

Mrs. Robert Bixby played the wedding music and also accompanied Marvin Bush who sang "Because and 'Oh Perfect Love.'" Mrs. Robert Shofner and her sister, Miss Hillary

Ann Metzen, dressed in white embroidered organza, lighted the candles. The bride, given in marriage by her father, was very pretty in a wedding gown of white satin and lace. Her veil was held in place by a crown of small white flowers and she carried a bouquet of baby orchids.

Her matron of honor was a cousin, Mrs. Marvin Tippe, in a gown of blue satin, with a bouquet of roses. Little Miss Carol Tippie was flower girl with a basket of summer blossoms and wearing a floor length dress of white organza.

The groom was attended by his brother, Kenneth Winsley. Clifford Winsley and Gifford DeBois were the ushers.

The reception was held in the church hall following the ceremony. Mrs. James Bibby and Mrs. Jennie Haase poured and Mrs. Arlo Jorton cut the wedding cake. Mr. Gifford DeBois and Mrs. Aubrey Clayton were in charge of the gift table.

An added touch of sentiment regarding the wedding went back 40 years to the marriage of the bride's parents. The Rev. Avery, then pastor of the Summit Methodist church, married Miss Avis Holden to Clarence Clayton in the home of the bride's parents, Mr. and Mrs. Emmet Holden, on Collins road, May 15, 1912. The Holdens are pioneers in this district.

Guests coming from a distance for the wedding were Mr. and Mrs. Gifford DeBois from Seattle and Mrs. Marvin Tippie and daughter Carol from California.

Mr. and Mrs. Winsley are now welcoming friends at their home on East 96th St. near Canyon road. They expect to take a trip when Mr. Winsley has his vacation.

Unit and donated for public use, is not being used and the Unit reports four pairs of crutches are also available for use in this community. Anyone desiring the best of the crutches to be used during convalescence of patients may contact Mrs. Phyllis Blackstone at LA 8586.

Legion News
Parkland Post and Unit No. 228, American Legion

By Mrs. Phyllis Blackstone - Parkland Junior Baseball
For the fourth consecutive year, the Parkland Junior Legion baseball team has turned in a good report of themselves. Out of six teams, Parkland was tied for second place. Rhodes Post was first with an undefeated record of ten wins, Parkland with Olympia won six and lost four. Shelton won five and lost five. Sumner and Puyallup brought up the cellar standings.

Don May and Bob Wallace completed their fourth year of playing ball for the Parkland team. The team roster reads: Gordon Barna, pitcher and third base; Jim Cammel, pitcher; Don Hare, pitcher; Francis Cammel, catcher and third base; Jack Walters, catcher; Bill Martin, shortstop; Don May, second base; Bob Wallace, first base; Pat Jarvis, third base; Fred Gasperetti, left field; Duane Van Beek, center field; Clifford Alton, right field; Ron Colton, pitcher.

In 1949, under the fine tutoring of Hartley May, the American Legion Junior team finished third in the State of Washington and the 4th District champions. In 1950 they duplicated this record and also became the Southwest Washington champions. In 1951 and 1952 they finished in second place in the district. The efforts of Mr. May and the team stand as an unparalleled record of four successful years of junior baseball on behalf of this community and American Legion Post of Parkland.

Ronald May, outstanding pitcher for this team and the Clover Park high school team, is now the property of the Pittsburgh Pirates, pitching for them at their Pirates farm club in Mayfield, Kentucky. We'll venture a prediction of big things for Ron in the Majors before long.

Ronald "Boggy" Chilton, an outstanding player for the Parkland Legion Junior baseball team in 1949, '50 and '51, played as catcher on the State team in the All State game held in Seattle this season. Because of his dynamic playing, he was chosen to represent the state of Washington and has departed for New York where he will play in the National All-American game.

Dick Lack, a player for Parkland in '49, is now playing for the St. Louis Browns at their farm club in Independence, Kansas.

Dick Montgomery, a player of '49 and '50, is now a standout in the City league as a pitcher. Another outstanding player for the City league teams is Dick Wallace who played for the Parkland team and the Washington State College Freshman club.

In conclusion, we of the Parkland American Legion Post and interested citizens of this community take our hats off to Hartley May and to a Tacoma business man, Vernon Blair, who in the past three years of Junior baseball, donated more than \$1,000 to the Legion program.

The boys of this team and their accomplishments prove that a little guidance and help from the community can make your youth of today, citizens to be proud of tomorrow.

Frank Berry, Jr. Past Commander and Junior Baseball Chairman.

Convention Delegates
Delegates to the state convention for the auxiliary have been chosen with Mrs. James Linder and Mrs. W. P. Blackstone representing the Parkland Unit. Mrs. Frances Berry and Mrs. Nelda Fritz are the alternates.

Community Service
The hospital bed, property of the

California Trip
M/Sgt. and Mrs. Joel L. Chapman of Croft St. recently returned from a three-week trip to California where they visited two high school chums of Mrs. Chapman, Mrs. Margaret Hunt and Mrs. Lynn Stier, at Vista. The Chappmans enjoyed the sunshine immensely and plan to return to California when Mr. Chapman retires from the Air Force soon and they dispose of their home here.

Wedding Announcements
LaCROSSE PRINTERS
GRanite 7100

CUSTOM MEAT
Fresh Eggs - Locker Rentals
Mountain View
Food Lockers
Airport & Spruce GR 5332
2 1/2 Miles East of Pacific Avenue

YOU SAVE AT DANIELS HARDWARE
Pacific Ave. & Garfield GR 3171

Enjoy the Healthful Benefits of Swedish Massage in the Privacy of Your Home or Mine.
H. C. Ballard, Masseur
For Appointment Phone EVENINGS
Tacoma, GRanite 4342

PARKLAND Plumbing & Heating
GR. 3710
New Installations
Repairing Pumps, Hot Water Heaters, Washers
Sluggish Drains Opened
Shop located at
770 South 120th

Butler's Garage
One block North Airport Road on Canyon Road
Phone GR. 8209

C. O. Lynn Co. MORTUARY
717 PACOMA AVE. Phone MAIN 7745

Free Pickup and Delivery
GR 5361
College Cleaners
11416 So. Park Ave.

Specializing in Children's Shoes
706 ST. HELENS AVE. - MA 6318
Roofing - Siding - Gutters
"When You Buy, Buy from Beyer"
Beyer & Company
Specializing in Remodeling
Fibre-Glass Insulation
For Remodeling Phone
PR 6079
7515 West 24th Street

FLETT DAIRY
FARM FRESH
HOMOGENIZED AND PASTEURIZED MILK AND CREAM
ICE CREAM
Phone GA 3301

Attention to Details
Guaranteed Better Wear
ART'S SHOE SHOP
Garfield Street
Parkland

Malcom's Meats
1 Block North of Airport Road on Canyon Road
GR 8258
All Meat WEINERS lb. 49c
LEAN HAMBURGER lb. 60c
HAMS, 10 lb. Average lb. 62c
TOP ROUND STEAK lb. 85c
LEAN SIDE BACON lb. 49c
GOOD SIRLOIN STEAK, lb. 75c
PURE PORK SAUS. lb. 45c
RIB STEAKS lb. 60c
All Other Cuts at Reduced Prices
Locker Beef, Pork and Veal Custom Slaughtered, Cutting and Wrapping
RETAIL SALES THURSDAY, FRIDAY and SATURDAY.

SUMMIT NEWS
By MRS. M. S. RAU
GRanite 6391

Mr. and Mrs. William Simmons (Marjorie Bibby) are receiving con-

gratulations on the birth of a six-pound daughter in the Puyallup hospital Thursday, July 24. Welcoming her is a brother, Bobbie; grandmother, Mrs. Maybell Bibby, and great-grandmother, Mrs. Ada Holden.

Summer Bible School
The Summer Bible school of the



Sw'sh Roast 79c
Chase & Sanborn Lb.
Coffee 79c

Hunt's Solid Pack Lge. 2 1/2 Size San
Tomatoes 25c
Solid Pack Light Meat Can
Tuna Fish 22c

Nest Fresh Large Grade AA
EGGS doz 69c

Sw'sh Roast 79c
Chase & Sanborn Lb.
Coffee 79c

Heinz Bottle
CATSUP 23c
Occident 10 Lbs.
FLOUR 81c

ARMOUR'S
Treet 39c
12-oz. Can

For Good Iced Tea
Lipton 1/2-lb. Pkg.
TEA 68c
A.B.C. 2 Lbs.
FIG BARS . 43c
Tastewell Lb.
Oleomarg'ine 23c



Grade Good and Choice—Shoulder Cuts
VEAL STEAK lb. 79c
Grade Good and Choice
LEG-O'-VEAL CUTLETS lb. 98c
Fine for Braising or Stews
BREAST-O'-VEAL lb. 39c
Grade Good and Choice
VEAL CHOPS lb. 89c

Lumber Jack 24 Oz.
Syrup 29c
Fisher No. 27 Pancake 2-lb. Pkg.
Flour 34c

Sharp Aged Lb.
Cheese 67c

Sanitary 4 Qts.
Milk 78c

EVERY DAY LOW PRICES ON THE ITEMS BELOW
FRESH GROUND BEEF lb. 59c
Carsten's Skinless
WEINERS lb. 49c
Fresh Rendered (no limit) Summit Farms
PURE LARD lb. 9c

KoolAid 10
3 Pkgs.

Franco-American 2 Cans.
Spaghetti 25
Libby's Grapefruit 46 Oz.
Juice 27c

RECIPE OF THE WEEK
By Mary Lee Taylor
Butterscotch Marshmallow Cookies
18 marshmallows 1/4 cup Pet Milk
3 dozen vanilla 1 Tablespoon butter
wafers, 1/4 teaspoon salt
2 inches across 1 teaspoon vanilla
1 cup brown sugar, 2 1/2 cups powdered sugar
lightly packed
Cut marshmallows in half crosswise. Put a half, cut side down, on top of each wafer. Mix in saucepan brown sugar, milk, butter and salt. Bring to a boil over medium heat, stirring all the time. Remove from heat and add vanilla. Add powdered sugar, 1/4 cup at a time. Beat until creamy after each addition of sugar. Spread frosting on top and sides of marshmallows and wafers. Let stand at room temperature until frosting is firm. Makes 3 dozen.

Curing & Smoking, lb. 7c Cutting, Wrapping, lb. 3c
We Buy Hides
Golden Ripe
Bananas 2 lbs 33
Pet Milk 3 Tall Cans
4 3c

Spanaway Scouts On Camping Trip
Spanaway Boy Scout troop No. 34 camped on the American river recently. On invitation of the troops, parents enjoyed the weekend with them, camping in a neighboring spot. In addition to practical camping experience, the boys spent some time in Scout craft practice.

Scouts in the party were Larry and Darold Haugen, David Newell, Dick Miller, Larry Fritz, Mike McGinnis, Paul Newbury, Robert Drake, Ronald Bradshaw and Phillip Freiberg. Families included Mr. and Mrs. Newell and Ethelyn, Mr. and Mrs. Fritz, Mr. and Mrs. Newbury and Cub Scout Chuck, Mr. and Mrs. Haugen and Mr. and Mrs. Bradshaw.

They Reads the Ads!
The Garfield Variety store, advertising in the classified section of last week's Times-Journal for a clerk, received 90 replies within the first 24 hours and more than 150 replies in all. This amazing response was helpful to the store in selecting a clerk and gratifying to the Times-Journal management as a measure of its service to the community.

There is often as much independence in not being led, as in not being driven.—Tryon Edwards.

A-1 Auto Wrecking Used Auto Parts GR. 3445
Good Transmissions 13818 Pacific Ave.

WALT'S BACK
The vacation was fine . . . but glad to be back to serve you at
SUMMIT FEED CO.
Home of Fisher's Quality Feeds
Canyon Road, next to Summit Trading Co. We Deliver
GR. 7136

SHAKE HANDS with CLARABELL in Person
TUESDAY, AUG. 12 - 10 A.M.
Soiner's Parkland Shoe Store
411 Garfield St. GR. 3526
Open 10 TH 6

McCULLOCH LIGHTEST 3-h.p. Chain Saw
Webster-Robinson Machinery & Supply Co., Inc.
Puyallup Ave. & 'A' St. BR 0341
Sales Tacoma, Wash. Service

Bulldozing
Excavating, Grading and Ditch Digging
G. S. SHABEN HA 6682

THESE SMALL MONTHLY PAYMENTS
PAYMENT PER MONTH

Loan Am't	12 Months	18 Months	24 Months	30 Months
\$100.00	\$ 8.78	\$ 6.78	\$ 5.78	\$ 4.78
200.00	17.55	11.97	9.18	7.18
300.00	26.32	17.95	13.77	11.26
400.00	35.09	23.94	18.36	15.01
500.00	43.86	29.92	22.95	18.76

WILL BUY MATERIALS FOR
* Siding * Adding Rooms * Milk House
* Roofing * Finishing Attic * Garages
* Flooring * Chicken Houses * Fences
* Wiring * Rental Cabin * Barn
* Plumbing * or Any other improvement
Arrangements Made in Ten Minutes
Free Estimates - Call GR. 8605 Now

SUMMIT LUMBER CO
GENERAL BUILDING SUPPLIES
Rt. 13, Box 659 Airport & Canyon Road GRanite 8605
We Deliver - Rain or Shine
Open All Day Saturday Free Delivery
"EVERYTHING TO BUILD WITH"

WE RESERVE THE RIGHT TO LIMIT QUANTITIES - NO SALES TO DEALERS

SUMMIT TRADING Company
PHONE GRanite 5848
Rt. 13, Box 690, Tacoma—One-half Mile North of Summit View, on Canyon Road

Published every Thursday by LaCrosse Printers in Parkland, Wash. Distributed by direct mail to every home and business in Parkland, Eatonville, Graham, Roy, Firgrove, Midland, Waller Road, McKenna, Elk Plain, Kirby, Kapowsin, Spanaway, Collins, Summit, Thrift, Berkley, Harvard, Fern Hill, Ponders, Frederickson, Harding, Woodland, Lake view, Firwood, and southern portion of Tacoma.

ADDRESS.....P. O. BOX 885, PARKLAND, WASHINGTON
118th and Pacific Avenue Phone GRanite 7100

CLARENCE W. LACROSSE, JACK BROWN.....PUBLISHERS
NEVA T. HONEYWELL.....EDITOR
GIBB THEIS.....ADVERTISING
SUBSCRIPTION RATE.....\$2.00 per year
(Beyond Free Distribution Area)

ADVERTISING RATES—LOCAL
1 to 3 Column inches, per month.....\$1.40
3 to 100 Column inches, per month.....\$1.25
100 to 200 Column inches, per month.....\$1.15
Phone for Additional Volume Rates

NATIONAL RATE.....\$1.47 Per Col. Inch
Classified Ads.....4c per word—Minimum charge 50c

Printed in Parkland

CANYON ROAD

Mrs. K. W. Struensee - GR 5742

ATTENTION ALL WOODROW DISTRICT VOTERS! If you have not registered yet, do it TODAY at the Stop 'n' Shop, 64th and Waller Road. You have until midnight, Aug. 8 to register. With all the very important matters that will be coming up this fall, you will want to be able to vote, so register now.

Home Again
Mrs. E. P. Munsey returned to her home on Canyon Road Sunday after spending a week visiting relatives and friends in Kelso.

Visit in Enumclaw
Mr. and Mrs. Royal Latterell and family and Ronny Mathis spent last Sunday with Mr. and Mrs. Chester Baker at their home in Enumclaw. The Bakers formerly resided at East 72nd street and Canyon road.

The word independence is united to the ideas of dignity and virtue; the word dependence, to the ideas of inferiority and corruption. — Jeremy Bentham.

DR. STEEN WRITES FROM JERUSALEM

Dr. Ernest B. Steen, pastor of Trinity Lutheran church of Parkland, wrote the following very interesting letter to the Times-Journal as a message to his many friends in the community.

JERUSALEM, July 17, 1952—
"There are not many tourists in Palestine these days. The reason is the Arab-Jewish war which broke out in 1947 and the tension that has continued since that time. It is well impossible to travel from Arab territory to the Jewish held portion. It is impossible to come back if once you have succeeded in getting into Israel. We are visiting the Arab assigned territory, which includes most of the historic places. Old Jerusalem is in the Arab zone, while most of the newer portions belong to Israel. It has been a thrilling experience to visit the many places mentioned in the Bible which were the setting for the great events which created our faith. We have spent most of our time in Jerusalem, which is now a city of 120,000 on the Arab side alone. It is situated on very rough and mountainous terrain which is 2,600 feet above sea level and 4,000 feet above the level of the Dead Sea.

"One day was spent making a trip through Samaria and into Galilee as far as no-man's land between the Arab and Jewish territories. Another day was devoted to visiting Bethlehem and Hebron. The finest part of this country in agricultural development is that which surrounds Bethlehem and Hebron. It was amazing to see what the thrifty Arabs had done to make this rocky and mountainous land produce well. I've not seen anything to compare with it since leaving Switzerland.

"The shock of this visit has been to discover the inhuman treatment accorded the Arabs who were driven out of West Palestine to become refugees in the Arab held section of Palestine. They lost their homes and all other property. Their money in the banks was frozen and is unobtainable. Nearly all of these refugees now live in tents and caves and have done so since 1947. You can imagine the result because the temperature is below zero in winter and winter rains come in December to March. Their rations supply no more than 1,200 calories, which is but half of what is normally needed. It is a pitiful story which I would welcome the opportunity to tell when I return. Remember that what has happened was by decision of the United Nations."

Air Force Aid Society Begins Membership Campaign Sat.

The Air Force Aid Society membership campaign goes into full swing Saturday, it was announced this week, with hopes that all McChord personnel will cooperate to the fullest extent to make this a record drive.

It is hoped through united and enthusiastic cooperation of everyone on the base that the showing of last year will be surpassed. Last year McChord personnel contributed less than four thousand dollars to the Society. In turn, McChord personnel were granted outright \$3,399 and were loaned \$29,217.47.

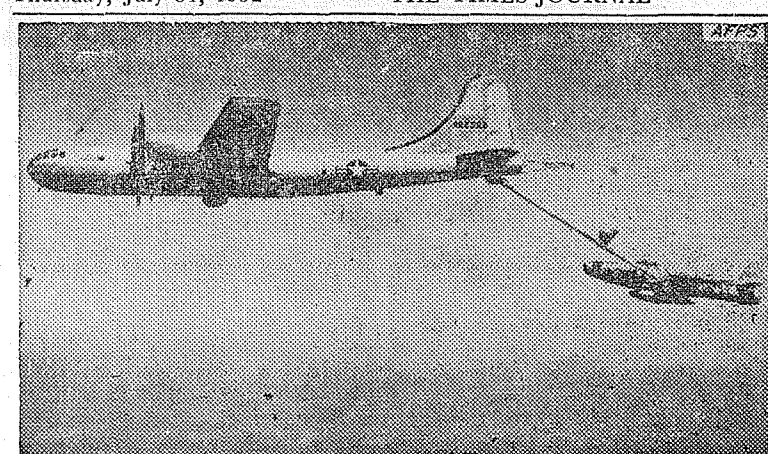
Officially the Red Cross is the relief agency of the service, but it is the Air Force Aid Society which works for the Air Force alone and which sets in to aid destitute airmen when the Red Cross cannot assist.

The majority of the officers and

airmen in the Air Force do not contact the society at any time in their careers except during the annual fund raising campaign, but that does not mean that the society is unimportant to them.

Every squadron on the base is organized for the drive with one officer and one NCO in each squadron appointed to handle its contributions to this worthwhile activity.

Each squadron, seeking to gain 100 percent membership, will be responsible for McChord's standing on an Air Force-wide basis.



Air-to-air refueling of F-84 Thunderjets shown here recently passed its first operational test successfully. B-29 tanker aircraft from Travis AFB, Calif., fueled a squadron of 20 jet planes in mid-air en route between Travis and Honolulu's Hickam Field. The Thunderjets, aided by the new maneuver, raced 2,400 miles non-stop in five hours and 27 minutes—the longest non-stop air refueling jet flight. The tanker pumped fuel into each of four "tear drop" tanks on the F-84—two on the wings and two under the fuselage.



2x4's, 8-ft., No. 3 Com. 30c ea. at the yard

V Rustic Siding 8 Foot 4x4 Cedar \$45 For Fences, 12c Lin. Ft.

Split Cedar Fence Posts 35c ea. At the Yard

1x4 Fir Flooring Door Jamb Window and Door Sills Garden Tools Paints

We Cut Glass

GRanite 5844 BASKETT LUMBER COMPANY 96th & Portland Avenue

July 24, 1947. This period has been extended to January 1, 1954, Raaberg stated, to include coverage of service men who died in Korea. Even though the deceased service man may never have had a social security number, this change in the law may mean monthly payments for his widow and children or for his dependent parents.

More information regarding the new law may be received by calling Broadway 3295 or through contact with the social security office at 1113 A street, Tacoma.



This Could Be You . . .

With all these beautiful summer days ahead when you'll want to be out on the road, why take chances on brake failure. See Earl today for guaranteed brake and motor service.

Gladiator Service 122ND & PACIFIC GR. 9946

'March On' TV Returns to Air

The Armed Forces of the Puget Sound area television show, "March On," will return to the air Saturday, Aug. 2, at 7:32 p. m.

This unique half-hour presentation, which gives the military personnel a chance to display their talents before the TV camera, also presents to the million and a half person television audience of the Pacific Northwest the inside story of the vital job the Armed Forces are doing.

A new policy for Air Force personnel has been designed by Airman First Class Barry Myers, Air Force representative, whereby personnel will be given monthly reports so that commanding officers can determine the effectiveness of having his personnel on the TV show.

A/1c Myers feels that "there is an abundance of new talent at McChord. Our job is to find it and give it an opportunity to appear before the "March On" cameras representing the Air Force.

Social Security Amendment OK'd

President Truman has just signed the new law amending the Social Security Act, which was passed by Congress July 5, stated Mr. Leo C. Raaberg, manager of the Tacoma Social Security office.

Three major changes include an increase of benefits beginning in September; a person who is receiving benefits can accept them even if he is working and earning as much as \$75 a month. The third important change is the inclusion of military service credits for survivors of men who died as the result of Korean service.

World War II service men were given social security wage credits of \$160 a month for service performed between dates of September, 1940 and

Pierce County Refuse Co. Weekly GARBAGE Collections Phone GR. 8688

PEAT SOIL SANDY LOAM Reasonable Rates Ray Gogan - GR 3127

American Art Co. Custom Picture Framing BR 4327 2046 6th Ave.

BROOKDALE LUMBER COMPANY
136th & Pacific Avenue
TACOMA'S LARGEST BUILDERS OF SMALL \$4,750 HOMES
and **FIRST in GARAGES GR. 8669**
... for a complete line of building supplies ...

Free Estimates
ON YOUR PAINTING AND DECORATING PROBLEMS
NO DOWN PAYMENT
ON MATERIALS AND LABOR
PAYMENTS AS LOW AS \$5.00 PER MONTH

Protect INVESTMENT

Increase VALUE

PAINT YOUR HOME WITH BOYSEN PAINTS

It costs just as much to apply cheap paint as it does to apply BOYSEN Paint. Get the most out of the dollars you spend for a paint job. Insist on BOYSEN Paints. They last longer, cost less in the long run.
For lasting beauty and protection use BOYSEN PAINTS
\$5.90 Per Gallon

PORCH AND DECK ENAMEL 1.75 qt. — 6.22 gal.
SPRED SATIN 1.59 qt. — 5.19 gal.
"The original rubber base paint"
ONE COAT FLAT WALL 4.40 gal.
PLASOLUX 1.33 pt. — 2.45 qt.
A Plastic Base Enamel with a Mirror-Like Finish
SHINGLE STAIN 2.86 per gal. in 5's
Paint Thinner 24c gal.
YOUR CONTAINER
BROOKDALE LUMBER CO. 136TH & PACIFIC AVE.
HALF A MILLION FEET OF LUMBER TO CHOOSE FROM



"It's wonderful here in Miami," says Rhoda Wetz, as she beckons from a shady spot at Crandon Park Beach. Pretty Rhoda appears cool, calm and very well collected despite the torrid heat of Miami's summer weather.

CEMENT BIRD BATHS Large and Small, 3 Styles
URNS, FLOWER POTS, 7 Styles
NOVELTIES, Priced Reasonable
E. C. CATT, Rt. 13, Box 283
GR 5378

PURDUE Plumbing & Heating
Installation & Repair Service
GRanite 4477

Have your Cabinets CUSTOM BUILT
At No Extra Cost
RHONE'S CABINET SHOP
2nd & Pacific Spanaway
GRanite 3342

Home and Auto Insurance
FARMERS' MUTUAL OF ENUMCLAW
It Will Pay to Check Our Rates
GR 3733 M. SLATER GR 9939

A TACOMA FAVORITE

Medosweet DE LUXE ICE CREAM

OUR QUALITY FOOD VALUES
GARDEN 2 1/2 TIN
Pork & Beans 19c
3 LBS.
CRISCO 79c
STANDBY 3-SIEVE 303 TIN
PEAS 2 for 35c
WHITE STAR (Solid Pack) LGE. TIN
TUNA 37c
EMPRESS (Reg. or Drip) 1-LB. TIN
COFFEE 83c

Puss'n Boots CAT FOOD Tall tin . 2/27c	Sea Cove Minced RAZOR CLAMS 39c	Standby SLICED APPLES No. 2 tin . 21c	Nabisco SHRED. WHEAT 19c
--	---	---	------------------------------------

EAT MEAT FOR VITAMINS

Nice and Lean PORK STEAK	lb. 55c
Graded Good POT ROAST	lb. 69c
Graded Good RIB STEAKS	lb. 83c
Carsten's Old Fashioned SMOKED BACON	lb. 55c
Pure GROUND BEEF	lb. 65c

FARM PRODUCE

Yakima TOMATOES	lb. 8c
LETTUCE	lb. 7c
Snow White Heads CAULIFLOWER	lb. 10c
Nice for Stuffing GREEN PEPPERS	lb. 15c
Yakima CUCUMBERS	lb. 10c

Fletcher's MARKET
122nd and Pacific Avenue
Phone GRanite 8550
FREE DELIVERY
Prices Effective August 1 and 2

Jemping COMBINATIONS

Blue Bag Lb. **COFFEE** . . . 79c

Oregon Trail 15 1/2, 3 for **Pork - Beans** 37c

Gerber's Baby Food 10 Cans 89c

Newport Cut 303 Tin **Green Beans** 10c

Sunshine **Krispy Crackers** Pound 25c

Skiless Lb. **WEINERS** . . . 49c

PORK STEAKS . . . 49c

Large Size **RINSO** 25c

Waller Road STOP-N-SHOP
64TH & WALLER RD. PHONE GR. 5362
PRICES EFFECTIVE AUG. 1 AND 2

WALLER ROAD
By MRS. VERNE FOGLE GR. 5210

Leon Churning of 40th and Waller road, a Scout of Explorer post No. 23, was confined to a local hospital with injuries suffered when he fell during a recreation period at a recent Scout meeting. Leon had both arms broken.

Home Again
August Swanke is home again after spending several months visiting relatives in Minnesota.

BULLDOZING

Ken BROWN and Bruce GAMBILL
1750 9th St. S. W. Puyallup

Basements - Backfills - Driveways
Clearing - Leveling - Etc.
Fill Dirt - Gravel - Top Soil
Dozers - Large and Small
PH. PUYALLUP 5-2452 or 5-5487 ESTIMATES Cheerfully Given

See and Hear
JIM CALVERT
And His Orchestra
Every Saturday
at the
FRUITLAND GRANGE DANCE JAMBOREE
7 Miles East of Pacific Ave. on Airport Road
Dancing 9:30-2 Admission: \$1.00

Baby Chicks
NEW HAMPS OR PARMENTER REDS
LaCrosse Hatchery
WHERE QUALITY IS PARAMOUNT!
Rt. 1, Box 228, Orting Sumner 3-3122

ROOFING SPECIALS
(COMPARE THESE PRICES BEFORE YOU BUY)

THICK BUTT SHINGLES . . . per sq. 7.50
(210 lb. No. 1 — all colors)

REJECT THICK BUTTS, 210-lb., per sq. 6.00
(Slight imperfections, many colors)

90-LB. MINERAL SURFACE . . . per roll 3.00
(Red and Green)

REJECTS per roll 2.50

65-LB. MICA SURFACE 2.65

55-LB. MICA SURFACE 2.35

45-LB. MICA SURFACE 2.00

ASBESTOS SIDING (many colors) sq. 13.50

COMPOSITION SIDING sq. 13.50

No. 1 Stained Side Wall Shakes, 16" 14.90
(FINEST CEDAR UNDERCOURSE INCLUDED)

Valley Lumber Co.
1/4 Mile West of Puyallup on River Road
YES, WE DELIVER FREE PHONE 5-7141

MIDLAND NEWS
Beverly Corrigan — GR 8545

Miss Shirley Evans was the surprised guest at a wedding shower given for her on July 3 by Miss Mary Clinton. All the girls had a wonderful time and many beautiful gifts were received. Pictures were taken, many comical poses by the girls of the bride and groom-to-be. Those present were Misses Susan Bailey, Charlotte Boisture, Maralyn Mercer, Noreen Hotchkiss, Janice Fisk, Susan Ellertson, Karen Jones, Arlene Reichmuth, Donalla Younger, Marie Anderson, and the hostess, Mary Clinton. Miss Evans left early Monday morning, July 7, to meet her fiancé, Bob Gunderson, of the United States Air Force. They were married July 9 in Cheyenne, Wyoming.

Pigeon Show
The Puget Sound Pigeon Fanatics held their Midsummer Lawn show Sunday, July 27, at the home of Mr. and Mrs. Edward Bodhaine of Rt. 4, Box 624, on Waller and Knapp roads. They served a picnic lunch. About 100 birds were entered in the show and around 50 people were present. Helping set up the show were Robert Collier, Karl Godes, Gordon Lovelace, Vickie Eshpeter and Mr. Bodhaine, who served as chairman of this annual event. Mrs. Rollins was tabulator of the judges' decisions. Three trophies were awarded and the happy winners were Vickie Eshpeter, grand champion, with a Yellow Hellmut as the best fancy bird, and also the trophy for the best bird entered in the junior members division, and Harold Beckman for the reserve champion trophy on a White King and best in adult division. Others winning firsts, many of them more than one, were Walter Sharpe, C. A. Nordlund, Len Alder, George Curtis, Jack Rollins, Harold Beckman, Vickie Eshpeter, Edward Bodhaine, Mike Proctor, Les Zehnder, Ted Klein, George Morris, and P. Walters. Mr. Beck from Seattle was the judge. Congratulations to all the winners and a vote of thanks to all those who worked so hard to make this show such a grand success!

Local Couple Wed in Trinity Lutheran

On July 21 at Trinity Lutheran church of Parkland a double ring ceremony united Miss Nadine D. Kratochvil and Floyd D. Proctor (Don Anderson). Baskets of pink gladioli decorated the candle-lit altar before which Rev. Kelmner N. Roe performed the ceremony.

The former Miss Kratochvil is the daughter of Mr. and Mrs. Frank Kratochvil of Puyallup and the bridegroom the son of Mrs. Clifford Anderson of Spanaway. After a brief visit with friends and relatives Mr. Proctor will return to San Francisco where he is stationed with the Navy.

The attractive bride wore a gown of white satin. A matching sash cap held her quarter-length veil and she carried a white Bible covered with a large orchid.

Mrs. Caroline Frank, sister of the groom, gowned in pastel pink, was matron of honor. Bridesmaids gowned in light green and light blue were Darlene Jones and Doris Johann, cousins of the bride. Wilbur Corp was best man and ushers were Gene Anderson and Stanley Johann. Assistant usher was Claude Johann.

Mrs. Marguerite Tunnard sang "O Perfect Love" and the "Lord's Prayer."

Assisting at the reception which followed in the church parlor were: Guest book, Mrs. Peggy Goff, cousin of the bride; gifts, Mrs. Lenhard Winter and Mrs. Clarence Johann, aunts of the bride; pouring, Mrs. William Bortle and Mrs. Gene Anderson; cake, Mrs. Suncie Johans; punch bowl, Mrs. Morris Burr.

Mrs. Proctor is a graduate of Puyallup high school and Mr. Proctor attended Clover Park high school.

Visitors From Ohio
Dr. Paul Newcomb and his wife from De Fiance, Ohio, were recent visitors of Mr. and Mrs. Larry Cleary. While here they enjoyed a trip to our lovely Mt. Rainier. At the time they went there was still four to five feet of snow at Paradise and the visitors thoroughly enjoyed the scenery at the mountain and on the beautiful drive up there and back. They had an outdoor picnic lunch at one of the summer camps. Snapshots taken of the different scenes turned out wonderful. Here's hoping the Newcombs will come back again soon to enjoy our great Northwest.

First Son Welcomed
Mr. and Mrs. Gilbert Simmons are receiving congratulations on the birth of their first child, a son, July 13, at the St. Joseph's hospital. The son, named Jackie Elmer, weighed eight pounds and 11 ounces at birth. Both the mother and baby are getting along just fine. Proud grandparents are Mr. and Mrs. Elmer Brott of Airport road and Mr. and Mrs. Willis Simmons of Long Island, New York.

Hauge-Jensen Rites
Of interest to a host of Parkland friends was the June 22 wedding of Lawrence Jensen Hauge, son of Dean Philip Hauge of Pacific Lutheran college and Mrs. Hauge, to Miss Helen Joan Jensen, daughter of Mr. and Mrs. Fritz Jensen of Bremerton. The impressive double ring service was held in Our Saviour's Lutheran church in Bremerton with Dr. Magnus Nodtved of Pacific Lutheran college officiating in the presence of a large company of friends and relatives.

The marriage resulted from a romance which had its beginning when both were students at PLC. The bride graduated cum laude in June, Mr. Hauge completing a fifth-year graduate at the same time.

The young husband is in the U. S. Army and at present is stationed at Fort Devens, Mass. In August he will be transferred to Fort Riley, Kansas, where he will enter officers candidate school.

DOZER WORK-SEPTIC TANKS BACK HOE
Large or Small — Small or Large
WATER AND SEWER LINES

Riley Brothers
Bonded and Insured
No Job Too Small or Large
Loading and Hauling

Al Riley GR. 6687
Ralph Riley GR. 3204
Rt. 1, Box 220-B, Spanaway

THANKS . . . For your interest in naming our store.

OUR NEW NAME IS

TIC-TOC Jewelry
10331 Pacific Avenue
REPAIRING OF FINE WATCHES OUR SPECIALTY

AQUA FOLLIES
of 1952

Featuring

- ★ JOHNNY (It's Possible) O'BRIEN and a cast of 100 stars of water-radio-stage.
- ★ KATHERINE RALLS Holder of more swimming titles than any other woman.
- ★ EDDIE CHAMBERLAIN Water comedian supreme.
- ★ AQUADEARS AND AQUADARLINGS

JULY 31-AUG. 13, 8:45 p.m.
Plus 2 Midnight Matinees—August 2 and 9—11:15 p.m.
Price \$2.00 to \$3.50 (tax incl.)

AQUA THEATRE
Shorman, Clay & Co.
1624 Fourth Ave.
MAIL ORDER TODAY

Yelm Lions Holding Carnival Aug. 7-9

The Yelm Lions club is holding its annual carnival and fun fest on Aug. 7-9.

The carnival will open on Thursday evening with a kids' parade that has proved to be one of the most popular events of the three nights of entertainment. There will be the usual carnival events and rides, with free entertainment each evening, ending with a big free dance on Saturday, Aug. 9.

All proceeds from the carnival go to community projects and maintenance and improvement of the club house which is open to the use of the community.

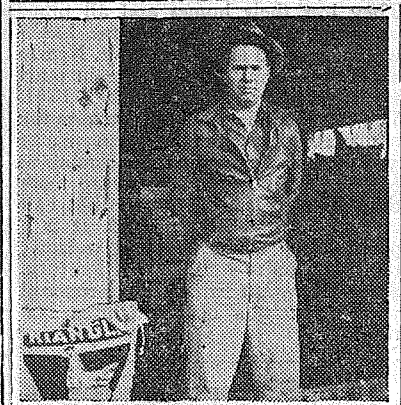
Army Couple in Texas

Sgt. and Mrs. L. E. Melton and children, Susan and Loren Jr., are now at home in Fort Bliss, Texas, where Sgt. Melton is attending the Texas State college. His studies include a course in electrical engineering pertaining to guided missiles in army ordinance. Mrs. Melton is the former Alice Dorfner, daughter of Mr. and Mrs. George Dorfner, now of Parkland, and Sgt. Melton is the son of Mr. and Mrs. Orville Melton of Elk-Plain.

Some drivers who guess they can make it usually never have another guess coming.

COMPLETE GARAGE SERVICE
AUTO ACCESSORIES
ATLAS TIRES & BATTERIES

ANDERSON Chevron Service
176th St. & Mt. Highway
GRanite 6465



"The Best Results I have ever had"

"Of all the egg mashers I have ever used, Triangle Xtra Egg Producer has given me the best results I have ever had. For instance, this year, on a flock of pullets that have never been culled, I have been getting an average production of 81% over a three months period."

A.W. McCoy
Rt. 1, Box 40
Woodburn, Oregon

Extra Egg Profits with TRIANGLE X-TRA EGG PRODUCER

Countless field tests have proven that this full-nutrient balanced feed produces more eggs per feed dollar. It maintains the layer's bodily health and furnishes an abundance of egg-making ingredients. It's a good time NOW to cull out "boarders" and put your best layers on Triangle Xtra Egg Producer.

TRIANGLE MILLING CO.
at your local TRIANGLE DEALERS

Stewart Hay & Grain
SPANAWAY
Mt. Highway GR. 8615

Roblee Cushion-Flex SHOES FOR MEN

SOFT as a cushion FLEXIBLE as a flyrod

For the most valuable feet in the world —YOURS—Roblee has designed the most comfortable shoes ever. Cushion-Flex we call them. Only select, extra flexible sole and upper leathers are used and they're specially treated to furnish added softness. Foamed rubber cushions your every step. Treat yourself to this new thrill afoot today.

VISIT OUR NEW **SHOE DEPARTMENT**
GAY S. NESS, Manager
LUNDQUIST-LILY
"USE YOUR CREDIT—IT'S GOOD"
11th & Commerce Downtown Tacoma

Priced From **9.95**
To 15.95

It's New! It's Amazing!

Pochel's FOOD PLAN

HOW DOES THE PLAN OPERATE?
It enables the qualified families to become Club members and buy better foods at lower costs.

HOW CAN WE BUY FOOD CHEAPER?
Buy buying in wholesale quantities, usually a six months supply.

HOW CAN I PAY FOR SO MUCH FOOD AND HOW CAN I STORE IT?
Club members pay for the food monthly, just as you do now. They also receive a huge home freezer, generally without extra cost.

HOW MUCH DOES IT COST?
In most cases Club Members get both food and freezer for less than they formerly paid for food alone.

You can prepare meals ahead and eliminate kitchen drudgery.

Feel Free to Phone For More Information or Appointment

YOUR CHOICE of Leading Brands of Upright or Chest Freezers

Be Sure to Visit the Showmobile When It's In Your Area

YOUR FUEL OIL AND APPLIANCE DEALER

POCHEL DISTRIBUTING COMPANY
140th and Pacific Ave. GR 8624

SAVINGS EARN **2%** BANK INTEREST AT NBW

National Bank of Washington has rendered uninterrupted service to savers since 1885 . . . paying withdrawals and interest immediately on demand

NATIONAL BANK OF WASHINGTON

MEMBER FEDERAL DEPOSIT INSURANCE CORPORATION • MEMBER FEDERAL RESERVE SYSTEM

Rocket-Equipped Aircraft Produced

Rocket-equipped aircraft, out best defense against night-raiding atomic bombers, have begun to roll off assembly lines in three different designs, the Air Force announces.

The F-86D Sabrejet and the F-94C Starfire are armed only with racks of 24 "mighty mouse" 2.75-inch rockets, the Air Force revealed. The F-89 Scorpion, an all-weather fighter, will switch its armament from six 20-mm cannons to rocket-type weapons. — (AFPS)

All Saints Church
205 East 96th St.
— EVERY SUNDAY —
9:30—Church School Classes
10:15—Worship, Sermon & Music

FENCING
Designers and Builders
Expert Workmanship
Reasonable Prices
Easy Monthly Payments

VAUGHAN'S
HI. 9515 84th & Pacific Ave.

WELL DRILLING
Berkeley Water Systems
Capable, Experienced Drillers
Nothing Down—3 Years to Pay

Cascade Pump & Drilling Co.
Phone GR. 3141 or GR. 5874

FOR MORE PROFIT, FEED FUL-O-PEP FEEDS

RAINIER FEED COMPANY
Airport & Canyon Roads GR. 7656

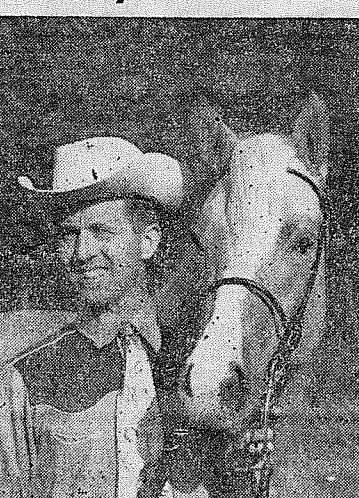
Clearance SALE

LOW DOWN PAYMENT — 24 MONTHS TO PAY

Was	FURNITURE	Now
\$ 69.95	3-Pc. Chrome (Yellow) Dinette Set	\$ 39.50
18.95	Chrome Dinette Chairs	11.95
189.95	5-Pc. Modern Bedroom Suite with Innerspring Mattress and Coil Spring	99.50
169.95	3-Pc. Daveno, Chair, Rocker	129.50
29.95	Modern Contour Chairs	16.50
79.50	9x12 Wool-Rayon Rugs (Firth)	59.50
169.95	5-Pc. Early American Dining Room Suite	89.50
149.95	Eastern Mahogany Drop-Leaf (Duncan Phyfe) Table	99.50
359.95	5-Pc. Blond (Eastern) Bedroom Suite	249.50
129.95	Mahogany Extension Table	79.50
149.95	5-Pc. Dinette Set (Drop-Leaf Table and 4 Chairs)	89.50
79.95	Bunk Beds with Springs	49.50
16.95	2 Mahogany Dining Room Chairs (Side)	9.95
19.95	1 Mahogany Dining Room Chair (Side)	14.95
24.95	1 Mahogany Dining Room Chair (Host)	16.95
19.95	Blond Night Stand	12.95
69.95	Modern Chair (Frieze Cover)	39.50
9.95	Clothes Hampers (All Colors)	6.95
11.95	Clothes Hampers (All Colors)	8.95
19.95	Telephone Stand with Chair	11.95
39.95	Octagon Cocktail Table	22.50
14.95	Lamp and End Tables—Smokers	7.95
39.50	Craftmaster Innerspring Mattress \$10 Trade-in for Old Mattress	29.50
9.95	3-Way Floor Lamps	7.95
6.95	Brass Table Lamps	4.50
8.95	Metal Lawn Chairs—Red—Green	5.95
APPLIANCES		
\$ 20.95	Motorola Table Radio	\$ 16.95
32.95	Motorola Table Radio	24.95
38.95	Motorola Table Radio	28.95
59.95	Motorola (AM-FM) Table Radio	44.95
12.50	Kelvinator Butter Keeper	8.95
239.95	40" Electric Range (2)	189.50
124.95	54" Cabinet Steel Sink	99.50
439.95	Youngstown Electric Sink (\$125 Allowance for Old Sink)	314.95
189.95	Bendix Dialmatic Washer	159.95
229.95	Bendix Economat Washer	189.95
239.95	Bendix Electric Dryers	199.95
TRADE IN THAT OLD REFRIGERATOR AND RECEIVE \$75 ON PURCHASE OF A NEW INTERNATIONAL HARVESTER.		
1—Used	Hotpoint Electric Iron	2.00
1—Used	Single Laundry Tub	5.00
1—Used	Double Laundry Tub	10.00
1—Used	Daveno	10.00
1—Used	M-W Washer	10.00
1—Used	Silvertone Radio-Phonograph Combination	69.50
1—Used	Apex Washer with Pump	69.50
1—Used	Montag Wood and Coal Range	79.50
TELEVISION		
FREE INSTALLATION AND T.V. LAMP WITH PURCHASE OF THESE:		
1—17"	Blond Table Model (Hoffman)	\$279.95
1—21"	Mahogany Table Model (Emerson)	329.95
1—17"	Console (Mahogany) (RCA-Victor)	359.50
These Prices Include Federal Excise Tax and Parts Warranty.		

FRYE'S FURNITURE, TV, APPLIANCES
405 Garfield GR 3691 Parkland
OPEN MONDAY AND SATURDAY, 9:30-5:30

Mostly About Horses



By Clarence La Crosse

Parkland Juniors Elect
It's a new set of officers for the Parkland Juniors as they head into their second year of activity. President for the coming year is Bob Simi, well known Parkland youth who has been very active during the past year in the junior division.

Vice President is Jimmy Robinson, whose lively participation in affairs of the horse world hereabouts has made him very popular with the younger set. Sharon Ellingson has been selected secretary for the alert group. Sharon and her palomino filly, Golden Girl, are becoming well known at the various shows in the area. Jack Jenness is the sergeant at arms and Jean Michel is handling the publicity for the group. . . . Good luck, Juniors, have a good year!

Incidentally, the Parkland juniors took first place in the bareback relay last Sunday at a local show. . . . riders were Larry Robinson, Barbara Bryant, Jimmy Robinson and Jack Jenness.

Westernaires Get Terrific Turnout
The turnout at the Westernaires Show at Silver Lake last Sunday exceeded all expectations of that optimistic group. . . . many from this area attended and returned with a good share of the ribbons. Amiable Ted McMaken took top honors in the Arab Class much to his delight. Congrats, Ted!

Although I spent quite a few dollars on entry fees, I wasn't present, as the Sheriff's posse rode in their drill at another place which confused a lot of entrants. The posse put on a good show and perhaps added just a bit of variation to their usually routine drill. Undeniably, a few cleaners will benefit more than anyone else from the show judging from the looks of my white uniform and those of the rest of the posse.

I observe that the Palins are at it again. . . . two more ribbons, this time as a result of the Westernaires Show Sunday.

Also note that Francis Nordyke has organized an all-Palomino drill team under the guidance of Gene Besinsky with numerous local members. This newly organized group made their first appearance at Bremerton over the weekend. I understand the act was a huge success. It is quite obvious that there are enough Palomino horses in the area to keep such an organization alive, provided members are given something to maintain their interest. . . . and for a horseman what could be better than some riding?

Lee Edwards, from the Lake Law-

AQUA FOLLIES '52 JULY 31-AUG. 13

The Aqua Follies of 1952, feature of the Seattle Seafair, will have its first performance Tuesday night for the current season, and will continue nightly through Aug. 13, according to Al Sheehan, producer of the brilliant swim-musical for the Seattle civic organization, Greater Seattle, Inc. There will also be two moonlight matinees on August 3 and 10.

Unforgettable entertainment for all the family is promised by Producer Sheehan, who will put 100 stars of water, stage and screen through a swim-musical which delights both the eye and ear.

Incomparable Johnny O'Brien, the "It's Impossible" man, is the star of the stage show, which also includes four "production numbers," lavishly mounted: "Aqua Show Case," "Trade Winds," "Aqua LaScala," "Country Club Capers."

Katherine Rawls, holder of more titles and awards than any other girl in the history of swimming and diving, heads an all-star cast on the "water side."

Mail orders for tickets are at Aqua Follies, 1624 4th Avenue, Seattle, and the theatre box office is also open daily from 12 noon until 8 o'clock.

Quotable Quip

Two Communist officials discussed the possibility of substituting Stalin's birthday, Dec. 21, for Christmas. "Well, one of them remarked somewhat dubiously, 'it could be done, but how are you going to get people used to a Santa Claus who doesn't give presents but comes around to collect them?'"

rence pavilion, was in the office the other day telling me about Cecil Jolly who is owner and trainer of Lighted Way, a first winner at Longacres recently. Mr. Jolly is a former resident of the Yelm area.

Big Show of the Week In Olympia
The Olympia Riding Club is staging the biggest show of the season in this area on Aug. 2 and 3 (this Saturday and Sunday). Entries are officially closed, however, I understand that it is still possible to get entered if you want to real badly. The evening show starts at 6 Saturday, and the Sunday show gets under way at 1:30.

Some of the more unusual entries in this show include Morgan Class, Trailer Race, Quarter Horse Class, Greased Pig Contest and Stock Horse Class, besides the usual show events such as pleasure classes, pole bending, pairs and jumping.

Like I said, this is possibly the most outstanding show to be presented anywhere in the state this year. . . . if you want to see a horse show at its best with precision ring work and well handled events, attend the Olympia show this weekend.

Kent Erickson and I have been trying to talk a couple of horses who have never been in a stock horse class before into doing some of the intricate turns and rope work necessary to show. . . . how we will fare will be known better Sunday. Anyway we are having fun getting ready if we never even attempt it.

August 10 at Manchester school grounds is the next show that I have any record of at the moment when the Kitsap Saddle club will present their zone show. . . . they, too, have a few unusual events listed. More about this next week.

Northwest Hitching Post
The name of the new Northwest Horse magazine I have been telling you about is the Northwest Hitching Post. We hope to be out about the middle of August with the first issue of this strictly localized horse magazine. . . . many have already asked about subscriptions which will be \$2.50 per year for a monthly magazine in case any of our good friends would care to give us a boost to get started. I honestly believe that you will like this magazine published at the local level. We are not going to make any attempt to cover the entire United States. . . . because first of all we believe that right here in the Northwest we have some of the most outstanding horses, horsemen and horse events that you can find anywhere in the entire world. By keeping to the Northwest area we will be better able to handle the news and the happenings as they should be. It should prove of immense value to every horse owner and club in the two states of Washington and Oregon. After all, only as long as the interest in horses is maintained throughout the area will our own personal interest be maintained. We of the Northwest Hitching Post hope to be able to keep that interest stirred and maintained through effective presentation of the news of the people who make the horse owners and thousands of other horse owners and enthusiasts. . . . hope to hear from you.

DRESSMAKING
Buttons and Button Holes
Imported Baby Line
Gifts

Doll & Marie's Shoppe
1022 So. 115th GR 7231

Complete Overhaul
6 Cylinder
Motors
Only \$64.95

Gas at Competitive Prices

BOB'S PLACE
Airport Road & J. St. GR 3395
18 Years in Parkland

LAWN MOWERS
MACHINE GROUND
Parts and Repairs for All Makes

JOHNSON'S SHOP
HI. 7112
15 years at 5514 Pacific Avenue

UNITED DECORATORS
Terms — Nothing Down
All Types of Decorating
GR 6982

LETTERS to the EDITOR

Gentlemen:
We want to take this opportunity to thank all of the kind friends and neighbors who assisted in controlling the fire which destroyed our home recently, and also to express our appreciation to all of the men of the Parkland, Spanaway, Midland and other fire departments who answered our call so promptly.

We also wish to thank all of our friends who so generously gave lovely gifts at the linen shower for Mrs. Kearns last week.

Yours very truly,
MR. & MRS. F. G. KEARNS
Rt. 1, Box 319,
Spanaway, Wash.

Go to New England, and visit the domestic firesides, if you would see the secret of American independence.—Religion has made them what they are.—Thomas Mosquern.

Restyling
Repairing

Larchmont Fur Storage
Don't Delay and Be Sorry
De-Mothing, Cleaning, Glazing
in Our O. E. Cold Storage Vaults
For Only \$2.50
For the Season
GR 8762

Pick Up and Delivery

OPEN 24 HOURS A DAY -- 7 DAYS A WEEK

620
Anso Film
3 Rolls
1.23

DIAL
BATH SOAP
2 Cakes
33c

DRUG SALE
PRESCRIPTION DEPARTMENT OPEN ALL HOURS OF DAY OR NIGHT — GR. 8693

APC
ASPIRIN
100 TABLETS
19c

39c
GLYCERIN
SUPPOSITORIES
19c

SUPER Special 100 TABLETS **49c**

drene Now in an **98c**
UNBREAKABLE • RE-USABLE
PLASTIC BOTTLE

FRESH LOCAL
Carrots 5c BUN.

HUNT'S HEAVENLY
PEACHES 4 FOR \$1
Large 2 1/2 Tins

NO. One POTATOES 10 LBS. **47c**

FOR PICNIC LUNCHESES
SPAM 39c

WHITE STAR
TUNA 31c
Solid Pack, White Meat

OLYMPIA -- RAINIER BEER CASE 24 STUBBIES **2.79**

KRAFT FULL
Salad Oil 57c QT.

Sunshine Krispy
CRACKERS 2 LB. PKG. **47c**

COCA COLA 6 FOR **21c**

SAVE TIME AND MONEY
Shop Where Quantity and Quality Go
Hand in Hand. Park 'n' Shop's Super Market brings you the best in Price and Quality the year around.
Come in and Try Our Top Quality Meats
— OPEN 24 HOURS A DAY —

LOCKER BEEF ALSO AVAILABLE IN ANY AMOUNT
Ask the Meat Cutters on Duty. They Are Glad to Help You GET THE BEST.

WYANDOTTE PITTED 5/2
OLIVES 27c oz. Tins

WRIGLEY'S
Gum 10 PKGS. **29c**

CIGARETTES
ALL POPULAR BRANDS **1.97** Carton

PARK 'N SHOP SUPER MARKET
98TH PACIFIC

PRICES EFFECTIVE THURS., FRI. AND SAT., JULY 31, AUG. 1 & 2—24 HOURS A DAY

MAKE PARK 'N SHOP YOUR ONE-STOP SHOPPING CENTER
EVERYTHING UNDER ONE ROOF FOR YOUR CONVENIENCE
Large variety of good beers and wine — largest display of magazines in Tacoma — household hardware — gifts — seasonal and variety Hallmark greeting cards — a complete drug department — goot restaurant featuring home cooking — Sherwin Williams paints and Kem-Glo — good line of sugar-free and diabetic foods — many imported fish and cheese foods.

OPEN 24 HOURS A DAY -- 7 DAYS A WEEK

BARGAIN BARN
 Highway 99 near Fife Phone WA. 7474
EXPANDING
 New Furniture Added at Low Cost Prices.
 WAIT FOR OPENING
 This Week's Special—18x27 WOOL WOVEN RUGS98c

WALK-IN REFRIGERATOR DOORS—
 Value \$150, Now \$40.00.
 1x12 Reject Clear Shelving Lumber12c lin. foot
FIFE BUILDERS SUPPLY
 Old Fife Square WA. 7711

Avenue TIRE Shop
 2311 Pacific Avenue
NEW TIRES — FULLY GUARANTEED
 670/15 . . . 13.51 plus 1.17 fed. tax
 710/15 . . . 14.98 plus 1.20 fed. tax
 760/15 . . . 16.40 plus 1.37 fed. tax
AND YOUR OLD TIRE
 While They Last
RECAPPING AND REPAIRING

Store Hours:
 9:00 a.m. to 5:30 p.m.
 Fridays until 9:00 p.m.

Lakewood COUNTRY STORE

Storewide Clearance

FASHIONS

24 Ladies' Orlon and Wool Skirts, sizes 10 to 18
 Reg. 12.95, Now \$8.95
 6 Cotton Print Skirts, sizes 10 and 12, Reg. 4.95, Now 2.50
 32 Ladies' Denim Jackets, asstd. colors, sizes 12 to 18
 Reg. 4.95, Now 2.50
 18 Pair Denim Pedal Pushers, sizes 10 and 12
 Reg. 2.95, Now 1.95
 20 Pair Denim Shorts, sizes 10 to 20 Reg. 3.75, Now 2.50
 15 Elastic Cumberbund Belts, asstd. colors, Reg. 1.00, Now 50c

GIRLS' DEPT.

30 Summer Dresses, sizes 3 to 4, Reg 3.95 to 10.95 1/3 Less
 17 Girls' Spring Suits, sizes 3 to 14, Reg. 10.95, 14.95 1/3 Less
 10 Girls' Spring Coats, broken sizes 1/3 Less

BOYS' DEPT.

3 Stripe Corduroy Jackets, sizes 6-8-10, Reg. 12.95 \$6.95
 32 Rayon Print Shirts, Short or Long Sleeve, sizes 6 to 18, Reg. 4.95 \$2.95
 20 Pr. Boys' Rayon Gabardine Slacks, size 18 and 20 1/3 Less

HOUSEWARES

9 Only Linen Glass Towels, Reg. 1.00 59c
 6 Only Jumbo White Wash Cloths, Reg. 39c 29c
 45 Only Hand Towels, White Pastel Border Reg. 85c 45c
 26 Only Bath Towels, White Pastel Border Reg. 1.20 65c
 36 Only Pottery Dinner Plates, Reg. 70c 20c
 24 Only Bread and Butter Plates, Reg. 20c 9c
 17 Only Salad Plates, Reg. 50c 15c
 76 Only Orleans Bread and Butter Plates, Reg. 65c 10c
 16 Only Orleans Fruit Dishes, Reg. 55c 10c
 18 Only Orleans Salad Plates, Reg. 75c 20c
 2 Only Orleans Chop Plates, Reg. 4.50 89c
 7 Brittany Chop Plates, Reg. 4.50 89c
 39 Brittany Bread and Butters, Reg. 65c 10c
 5 Pottery Covered Butter Dishes, Reg. 1.00 25c
 16 Dinner Plates, Reg. 1.00 25c
 19 Bread and Butter Plates, Reg. 50c 10c
 13 Round Metal Hand Painted Trays, Were 1.95 and 2.20 98c

HARDWARE DEPT.

20 Only Gallons Flat Wall Paint, Was 4.61 Now \$2.95
 28 Only Quarts Flat Wall Paint (asstd. colors) Was 1.37 Now 87c

PLASTIC GARDEN HOSE

5 only, 25 ft., Reg. 5.98 4.49
 3 only, 25 ft., Reg. 4.45 3.19
 1 only, 25 ft., Reg. 5.25 3.98
 2 only, 25 ft., Reg. 6.74 4.98
 9 only, 50 ft., Reg. 9.69 7.49
 9 only, 50 ft., Reg. 9.80 7.59
 2 only, 50 ft., Reg. 12.60 9.49

RUBBER GARDEN HOSE

7 only, 50 ft., Reg. 8.66 6.29
 6 only, 50 ft., Reg. 15.74 11.29
 10 only, 50 ft., Reg. 11.65 9.19
 4 only, 25 ft., Reg. 4.73 3.49
 3 only, 25 ft., Reg. 6.25 4.59

1 Only Cooper Clipper Power Mower, Reg. 148.50 125.00
 4 Only 16" Buckeye Mowers, Reg. 14.95 11.95
 2 Only 8" Edging Mowers, Reg. 23.95 17.95
 1 Only Electric Edger, Reg. 48.50 36.25
 1 Only Metal Lawn Chair, Reg. 6.95 4.95
 1 Only Canvas Formfit Chair, Reg. 18.95 14.95
 7 Only Lawn Sprinklers, Reg. 5.25 3.98
 9 Only Lawn Sprinklers, Reg. 4.25 2.98
 6 Only Lawn Sprinklers, Reg. 1.75 1.43
 11 Only Lawn Sprinklers, Reg. 1.45 1.13
 1 Only Walking Lawn Sprinkler, Reg. 27.50 15.00
 1 Only 23" Huntington Barbeque, Reg. 117.50 99.50
 1 Only 16" Huntington Barbeque, Reg. 77.50 65.00
 1 Only 8" Plastic Pool, Reg. 38.00 29.95
 1 Only 6" Plastic Pool, Reg. 19.95 14.95
 1 Only 5 1/2" Plastic Pool, Reg. 14.40 10.95
 2 Only 3 1/2" Plastic Pool, Reg. 8.55 6.49
 1 Only 8 1/4" Skill Saw, Reg. 77.50 60.12
 1 Only Belt Sander, Reg. 69.50 52.50
 1 Only 6" Skill Disc, Reg. 37.50 29.12
 1 Only Golf Bag, Reg. 22.50 16.87
 5 Assorted Pieces of Silver, up to 15.00 1.00
 2 Only Clam Guns, Reg. 3.45 2.59
 1 Only Yukon Pack Board, Reg. 7.75 5.75
 20 Only Sun Glasses, Reg. 1.19 69c
 200 Only Yard Sticks FREE
 2 Only Cranco Coolers, Reg. 17.95 15.30
 1 Only Cranco Cooler, Reg. 27.95 23.80
 2 Only Cranco Coolers, Reg. 32.95 28.04
 11 Only Straw Garden Hats, Reg. 1.25 79c
 1 Only 38 Super Colt Automatic, Reg. 65.00 55.00
 2 Only 2' 8" x 6' 9" Screen Doors, Reg. 8.25 6.60
 1 Only 2' 8" x 6' 9" Screen Door, Reg. 8.95 7.17
 8 Only Nu Art S. D. Grilles, Reg. 2.80 2.24

a WORLD of FOOD

GOOD GUM

IT IS BELIEVED THAT CHEWING GUM ORIGINATED WITH THE AMERICAN INDIANS WHO CHEWED SAP FROM THE SPRUCE TREE

MOLDED SUMMER SALADS ARE PARTY-PRETTY WHEN DECORATED WITH REAL MAYONNAISE FORCED THROUGH A PASTRY TUBE. REAL MAYONNAISE HAS THE RICH BODY TO "STAND UP" FOR DECORATING PURPOSES — AND IT TASTES SO GOOD, TOO

WHO NAMED THE STRAWBERRY? NO ONE KNOWS, BUT IT WAS AN OBSERVING PERSON WHO NOTICED THAT IN ONE STATE OF DEVELOPMENT THE PLANT CLOSELY RESEMBLES SCATTERED STRAWS

AT THE FAMOUS FEAST OF KINGS JOHN IN THE 13TH CENTURY PICKLES WERE SERVED AS A MAIN DISH

WE WILL PAY \$5.00 FOR EACH STRANGE FOOD FACT SUBMITTED AND USED. ADDRESS, A WORLD OF FOOD, 104 East 40th Street, NEW YORK, N.Y.

Births

July 15
 T/Sgt. & Mrs. Donnell W. Wilson, boy

July 17
 1st Lt. & Mrs. Stanley L. Winter, girl
 M/Sgt. & Mrs. H. Chamberlain, girl

July 18
 A/3c & Mrs. Jack J. Fleetwood, boy
 A/2c & Mrs. Maurice R. Davis, boy
 A/1c & Mrs. Ken. L. McIntosh, boy

July 19
 T/Sgt. & Mrs. Carl C. Millren, girl
 T/Sgt. & Mrs. LaVar S. Pulley, boy

BIRTHS

July 15
 T/Sgt. & Mrs. Donnell W. Wilson, boy

July 17
 1st Lt. & Mrs. Stanley L. Winter, girl
 M/Sgt. & Mrs. H. Chamberlain, girl

July 18
 A/3c & Mrs. Jack J. Fleetwood, boy
 A/2c & Mrs. Maurice R. Davis, boy
 A/1c & Mrs. Ken. L. McIntosh, boy

July 19
 T/Sgt. & Mrs. Carl C. Millren, girl
 T/Sgt. & Mrs. LaVar S. Pulley, boy

MACHINE PERMANENT
 WAVE \$5.00
Jane's Beauty Salon
 163rd and Pacific Ave.
 GR 7068

"LOOK"
DINE and DANCE
 at the
Ranch Club
 Delicious Pan Fried Chicken and Steaks
 Orchestra Every Saturday Night
 Special Rates for Parties
 For Res. or Direction
 Call LA 9145
 102 Sales Road

you have to plug it in or it won't light
 your vote is the Power that makes Democracy Burn Steady and Bright
BETTER REGISTER!
 This Public Service Ad Contributed by Candidate for REPRESENTATIVE
Homer Humiston, M. D.
 26th District

Shaking Hands
 with Don Eastvold

Well, we are off again starting another campaign. This time for Attorney General of the state of Washington. And once again Clarence La Crosse and Jack Brown have been kind enough to invite me to write a column advising our many friends in this area of the human interest side-lights of a political campaign.

This campaign really began in Chicago two weeks ago. It wasn't until my wife, Elva, arrived that things really began to happen. I'm going to sincerely miss her in this campaign for as many of you know we are expecting our sixth child in November.

Both Elva and I want to take this opportunity to thank our many friends in Pierce County for the letters and telegrams extending good wishes and encouragement to us while we were in Chicago, as well as the 350 people who honored us by their presence at our lawn party upon our return.

In addition to the good wishes from my friends in Tacoma I received many communications from Democrats and Republicans alike, in other parts of the country, many of them coming from Georgia, Texas and Louisiana. One kind gentleman in Georgia asked me to come down there to help in his campaign for Congress. Another telegram was from five coeds from a college town in Texas. They wired: "We like Ike, but we love you." A letter came from Rev. Morris Wee, who was a pastor while I was in the service stationed at Madison, Wis. He wrote that I owed him ten dollars. He said he became so excited while listening to the speech over the radio during the convention that he forgot to watch the speed of his car, and he was picked up by the local police.

A critical note came from a woman in New Jersey (an English teacher, no doubt) who wrote in to remind me that I had missed the word "infer" three times in the talk at the convention. She said that what I really meant was "imply" and that I should learn that there was a very fine distinction.

But the convention is now over. We have nominated a great candidate in General Eisenhower, and all of us who are candidates have the serious responsibility of clearly presenting the issues to the people. It's going to be a very busy time. This week's calendar includes: Longview on Monday; Los Angeles for a TV debate with Jimmy Roosevelt on Tuesday; New York for a TV round table discussion with Blair Moody, Elmer Roper as the moderator; back in Tacoma for the big Republican rally at Tiger Park Thursday night, and Friday the Old Settlers picnic at Ferndale, up near Bellingham.

And so it goes. But I have promised my wife and my children however busy the weeks may be that on those days when I am in Tacoma we will spend at least an hour together and that little Carl will get his daily pop-sicle.

—Thanks, DON.

Parkland Recreation Group Program Grows

Sponsored by a group of interested parents and friends, the Parkland recreation program for youngsters is steadily growing in scope and importance.

The children are being taken to Spanaway lake for swimming on Monday, Wednesday and Friday, the bus taking the Parkland school at 12:30 and returning at 3:30. The age limit for unattended children has been lowered from 10 years to eight, but all must have the written consent of parents to join the group. Children of any age may go if accompanied by an adult. The bus fare has been reduced to five cents for the round trip.

The baseball program is also improving. Adequate equipment has been provided through the generosity of the Parkland Kiwanis, Daniels Hardware, Magdanz Hardware and Garfield Variety store. Two baseball groups have been formed so that the games will be more interesting for different age groups.

A meeting of parents is called for 8:30 Wednesday evening, Aug. 6, at the school. Details of the planned weiner roast on Aug. 9 and other matters will be discussed.

MIDLAND KIDS SWIM

Midland boys and girls are being taken swimming on Mondays and Wednesdays, school buses leaving the Midland school at 12:20 and returning at 3:30. Children must have the written permission of parents to go.

Let all your views in life be directed to a solid, however moderate, independence; without it no man can be happy nor even honest.—Junius.

REFRESH yourself at our fountain
 FROSTED ROOT BEERS
JACOBS PACIFIC DRUG
 8248 Pacific Avenue

An ounce of prevention is worth a pound of cure
 Hot, dusty roads can play havoc with your car. Make it a point to have your car lubricated regularly.
 We use 100% pure Paraffine Base TRITON MOTOR OIL & lubricants, all highest quality. Your Friendly Independent UNION OIL DEALER
Blue Spruce Service
 127th & Pacific GR 9996

SPORTS
 By Rog McDonald

The Northwest's brightest prospect for a world championship boxing crown met a sudden and disastrous left hook Monday night in Madison Square Garden and went down and out. Harry "Kid" Matthews lasted just 5 minutes and 4 seconds against the explosive punching Rocky Marciano. Matthews, after winning the first round with a fine display of fancy boxing, was caught with a vicious left hook in the second round and was counted out after 2 minutes and 4 seconds. Jack Hurley, Matthews' manager, claims that Harry had a lapse of memory. I agree with that statement and besides that I think he forgot to "duck."

The Fort Lewis Rockets defeated the Busch's Drive In nine, 7 to 3, to capture the Pierce County semi-pro baseball championship Friday evening at Tiger park. Both teams qualified in the recent tournament for the State tournament to be held later in the season. The Fort Lewis team headed by Kenny Lehman, the Pacific Coast league star of last year, should have an excellent chance of taking the state crown with their strong lineup. Here's wishing both teams the best of luck.

Bobby Shantz, the pint-sized Philadelphia hurler, could be the first 30-game winner in the major leagues since Dizzy Dean if he keeps up his current pace. He has a record of 18 wins against 3 losses to date. Considering the fact that this young man is only 5 feet 6 inches in height and weighs

Military Social Cards
 LaCROSSE PRINTERS

FIFE DRIVE-IN THEATRE
 WA 7071
 On U. S. 99 East Side of Bridge
 Thursday, Friday & Saturday
 II Hits in Color II
 "Wild North"
 Stewart Granger - Wendell Corey
 and
 "Bugles In The Afternoon"
 Ray Milland - Forrest Tucker
 Sunday, Monday & Tuesday
 "That Cheaper by the Dozen Family"
 in
 "Belles On Their Toes"
 Technicolor
 and
 "Macao"
 Jane Russell - Robert Mitchum
 Starting Wednesday
 "Red Mountain"
 and
 "Sea Hornet"

a mere 148 pounds, this is a phenomenal record. I guess it isn't how big you are, but how good you are that counts.

Bicycling took the sports limelight in the Northwest over the weekend. The Washington State Bicycle championships were held Sunday afternoon at the Seattle-Tacoma speedway. Bicycling has become one of the more popular sports in the country in recent years. This is one sport that requires the participant to be in excellent physical condition to withstand the long and grueling race. In the events held Sunday, Jerry Olsen, a resident of Oregon, but on active reserve duty with the army at Fort Lewis, was judged the winner of the Senior division on a point basis. This decision, however, must be ruled on by the American Bicycle league of America since there is a question as to the eligibility of Olsen. The participants had to be residents of the State of Washington and whether a soldier stationed here is considered a resident is the question to be determined later. The decision is awaited with considerable interest by Dick Perkins of Tacoma, who captured the second spot behind Olsen. If Olsen is declared ineligible, Dick will represent Washington in the U. S. Championships later in the year. In the Junior division, Al Miller of Tacoma took the 1-mile and 5-mile races and Gary Lund of Seattle captured the 2-mile event. Coeta Hartman of Bothell won both the 1/2-mile and 2-mile races in the girls division. Jean Polard of Bellingham came in first in the 1-mile grind.

Cliff Olson of Tacoma scored a hole-in-one at the Brookdale golf course last weekend. The lucky shot, or should I say the well placed shot, came on the short 15th hole.

Rogers Hornsby, the ex-Seattle Rainier manager, has signed a contract to manage the Cincinnati Reds for the remainder of the 1952 season and for the 1953 merry-go-round. He started the season as the pilot of the St. Louis Browns, but was released earlier this year.

SPOKE BROKE? SEAT BROKE? I'M BROKE!!
 "THE TRICYCLE DOCTOR"
 "SCHWINN" BIKES
 LAWNMOWERS — KEYS — WELDING
PARKLAND CYCLE
 Parkland Shopping Center 433 Garfield St. GR 5772
 See a Complete Line of the Finest LAWNMOWERS Available
 Come In Today

for our savings we chose...

Pacific First

... because it's friendly and safe

Pacific First Federal Bldg., 11th and Pacific

Pacific Federal SAVINGS

BELLINGHAM • SEATTLE • TACOMA • PORTLAND • EUGENE
 *Home Office—Established 1907
 Member: Federal Savings and Loan Insurance Corporation • Federal Home Loan Bank System

MONTH END SPECIALS AT SEPIC'S

Beautiful Mohair Frieze Cover
 Soft, Luxurious Spring Construction
 Makes Into Comfortable, Full-size Bed
 Large Matching Club Chair

COMPACT SPACE SAVER — LOVE SEAT BY DAYTIME
FULL SIZE BED BY NIGHT
 Mohair Frieze Cover
 Full Spring Construction
ONLY \$139.50

STARTING HOUSEKEEPING?
 SEE OUR
3 Room Furniture . . . \$399.50

3 Stores
Easy Parking
 Open Till
 9 p. m.
 Except Sat.,
 6 p. m.

SEPIC'S
 OPEN 'TIL 9 P. M.
 EVERY NIGHT EXCEPT SATURDAY

Downtown
 13th & K' St.
 BR 0386
 On the Mt.
 Highway
 7208
 Pacific Ave.
 HI 9556
 Lakewood
 Center
 9133
 Gravelly
 Lake Drive
 LA 5251

CLIP THIS COUPON — CLIP THIS COUPON — CLIP THIS COUPON — CLIP THIS COUPON

SCHILLINGS With This Coupon LB. COFFEE 75c

SILK ROLL Tissue 5c

WHITE STAR—Bire Size TUNA 27c

QUART Miracle Whip 49c

LIBBY'S 12 CANS Baby Foods 98c

BANANAS . . . 2 lb. 29c Small Fresh Hams PORK ROAST . . . lb. 59c

WATERMELONS . . . lb. 4c Eastern Good, 3 lbs. for \$1.00 SLICED BACON . . . lb. 35c

Swift's Fancy Shankless PICNICS . . . lb. 41c Tender Skinless WEINERS . . . lb. 49c

HOGAN'S FINE FOODS

SUNDRIES — HOUSEHOLD SUPPLIES — HARDWARE — BEER AND WINES NO SALES TO DEALERS (WE RESERVE THE RIGHT TO LIMIT QUANTITIES) PRICES EFFECTIVE JULY 31, AUGUST 1 AND 2

HOGAN'S HAVE LOWER PRICES



LINDY LOU "Come across with that other dollar. You know I'm going shopping at the PARKWAY FURNITURE tomorrow."

FREE Twin Size, Plastic Covered Head Board

With purchase of regular \$59.50 or \$79.50 box spring and mattress set.

PARKWAY FURNITURE GR 3941 141st & Pac. Open Until 9 p. m.

SPRING VALLEY 70-ACRE HORSE RANCH, fenced and cross-fenced; dandy vineyard and orchard, chicken house, large barn, 2-bedroom house, approximately 1,500 feet of year around creek; some merchantable timber; all this for \$11,500, exceptionally fine terms. Mr. Carlson, HA 4768.

10 MILES FROM CITY CENTER, large chicken house, good barn, large family orchard, house is modern, \$6,950 on excellent terms. E. A. Peterson, SK 1413 or Mr. Imeson, PR 0081.

2 HOUSES, 42 ACRES, \$10,500 SECOND HOUSE NOW RENTED; 1st house has 4 bedrooms, living room, dining room, attractive kitchen and nook, 3-pc. bath, utility room, attractive lawn, flowers, and evergreen shade trees; good barn for 15 head, chicken house for 200 birds, 22 acres under plow, balance open pasture. Mr. Lemm, BR 5291.

2-BEDROOM, living room with fireplace, cabinet kitchen, wired 220, 4-piece bath; basement, wired 120, 1 bedroom, plumbing, located 13th and K; full price, \$4,950, terms. Mr. Peterson, SK 1413 or Mr. Imeson, PR 0081.

TRADES, CHICKEN RANCH 5-BEDROOM modern home, housing space for 1,800 layers, barn for 6 head, numerous outbuildings, has attractive kitchen, full cabinet; separate dining and living room with fireplace, fine soil, with a Jim-dandy water system. This is the time to get into the chicken business. For information call Mr. Lemm, BR 5291.

HOLY ROSARY FIVE-BEDROOM HOME, walking distance, very fine shape, price now reduced to \$5,950; excellent terms, quick possession. Mr. Carlson, HA 4768.

16 ACRES, \$6,000 TWO-BEDROOM HOME. This is a shake rambler, modern, wired 220, view property; excellent water, 110 ft. drilled well, garage, space for cow and chickens. Trade for Tacoma home or beach home. Mr. Lemm, PR 5291.

CUTE AND MODERN HOME, 2 1/2 acres fine soil, Woodland school, bus by door, price reduced to \$4,500 with very fine terms, quick possession. Mr. Carlson, HA 4768.

LAKE LOUISE BEAUTIFUL YEAR AROUND 4-bedroom home, hardwood floors, built-in kitchen, fireplace, basement, automatic furnace, garage, and patio. To see, call Mr. Peterson, SK 1413 or Mr. Imeson, PR 0081.

LINCOLN-WHITMAN MODERN THREE - BEDROOM BUNGALOW, garage, workshop, 1 block from transportation, stores; excellent terms with immediate possession. Mr. Carlson, HA 4768.

NEW RAMBLER 3-BEDROOM LOVELY BIRCH cabinets, large living room, hardwood floors throughout; 2-car garage, 1/2 acre grounds. To see, call Mr. Peterson, SK 1413 or Mr. Imeson, PR 0081.

SOUTH ALASKA NICE 2-BEDROOM BUNGALOW overlooking South Tacoma Way, Atlas Foundry, 4 lots, fruit trees, quick possession, excellent terms. Mr. Carlson, HA 4768.

NEAR SUMNER lovely 2-bedroom home, tile bath, radiant panel heat, large cabinet kitchen, utility room, 2-car attached garage. For information, call Mr. Peterson, SK 1413 or Mr. Imeson, PR 0081.

2 ACRES UNFINISHED — \$1,800 2 BEDROOMS, on 4 corner lots. Livable. \$800 down, \$40 monthly. Call Mr. Inloes, GR 3624 or HA 2547.

SPANAWAY NEARLY new family home with possibilities for 4 bedrooms. 3 corner lots. Garage. Priced at \$8,750 with very fine terms. Call Mr. Inloes, GR 3624 or HA 2547.

MEMBER Tacoma Real Estate Board 9920 Pacific Avenue GR. 3624

Homes in Parkland Community; Acreage close in, either with or without buildings.

BERT BROWN REALTY 11220 Pacific Ave. Office—Days, GR 3341 Evenings, YU. 9221, LA. 3066 Agent for American Express Money Orders

CHECK OUR LOW DOWN PAYMENT INSURANCE PLAN. WE NEED listings of all kinds. Farms, acreage, lots, building sites, homes (new or old, 1, 2, 3 and 4 bedrooms). We have cash buyers waiting.

TOTTEN REALTY, Inc. Property Management — Insurance. Notary. Member of Tacoma Real Estate Board Office: 328 Garfield St. GR. 3369

PARK AND HOME PARKLAND area: 2-bedroom home; full basement; oil furnace. Excellent lawn and beautiful evergreen grove. FHA terms. Call C. N. Curtis, PR 8325; Forrester & Lee, Realtors, 9c46

PARKLAND 1 bedroom down, 2 children's size up; on 4 nice corner lots with trees and space for garden; 1 block to bus, 3 to grade school and college; new carpeting to go with home; FHA terms; \$6,600. Call owner, GR 5792. 9c46

WILL TRADE equity, Parkland home for trailer house, or sell equity, GR 3089. 9c46

HOME AND FARM BUREAU—REAL ESTATE

PACIFIC AVE.—140 ft. FRONTAGE by 290 ft. DEEP This is value plus. Has a large 2-bedrm. modern home, extra large living room. Big cab. kitchen, breakfast nk., part basement with oil-fired hot air furnace. Garage and small chicken hse. Full price only \$7,500. Good terms. Land alone is worth the asking price.

LIDFORD ROAD 2 bedrms., big living room, dandy cab. kitchen, garage. On 3/4 acre, all cleared. Short drive to Tacoma or Puyallup. Only \$4,950.

BROOKDALE ROAD 5 acres. 2-bedrm. home. Needs minor repairs. Garage, chicken hse., 12' drilled well. Best value ever at only \$3,200. Some terms.

BUILDING SITES — CHOICE LOCATIONS 177 x200 CLOSE TO JAY and Sales Road. 62 1/2 x100 CLOSE TO PARK on 14th St. 70 x150 CORNER 104TH near Pacific. 217 x305 NEAR AIRPORT and Cedar St. 75 x164 On Lake Phillips (Olympic Peninsula) Call Mr. Black, GR 9937.

TRAILER HOMES — RARIN' TO GO PLACES 27-FT. ALMA tandem home trailer. Best of condition. Family-size refrigerator. Propane gas. Electric brakes and turn signals. \$1,595. Terms to responsible parties. Will consider trade for equity. 14-FT. ALL ALUMINUM trailer, late model, fully equipped, ready for the road. Small down payment and E.Z. terms.

SPANAWAY 3 bedrms. down, breakfast nook, liv. rm. Garage and chicken hse. All fenced and garden in. Close to school. Full price only \$3,950.

HOME AND FARM BUREAU—REAL ESTATE 12810 Pacific Avenue, Parkland GRanite 3931 Mail Address: Rt. 3, Box 819, Tacoma, Wash. Evenings: Mr. Loring, GR 3570; Mr. Wallace, GR 5441

BY OWNER—Small 4-room house at Fircrest; 220 wiring and automatic hot water. Days HI. 9556, evenings HA. 5743. 9c46

PARKLAND IN THE heart of Parkland, 4-bedrm. home with partial basement, double plumbing, fine automatic furnace. Corner lots with fruit trees. Ideal home for rental income. \$9,500, terms.

2 - BEDROOM home. Hardwood floors, furnace, Thor Automatic washer. Nice lawn, property 100x100. \$6,950, small payment down. 12874 BURNETT, bungalow, 2 bedrms., basement, 75x100 lots. \$5,950, this is a very good buy.

NEW RANCH type home, attached garage, 3 bedrms. and fireplace. Partial acreage, very good soil, \$11,000, terms.

2-BEDRM. ranch type home with fireplace, \$10,000 down. DUPLEX with 5 rooms and bath in each apartment. Wired for 220, automatic tank, part basement, attic, separate entrances, double garage, QUICK POSSESSION. This is an excellent place for a family and there is garden space, chicken coop and pasture and the property is only 3 blocks to bus and store. \$500 down and monthly payments. This is a good property and can be subdivided later.

1-BEDRM. home with landscaped yard and fenced, \$4,000. Don't overlook inspecting this home. RENTAL acreage located on Pacific Ave., with property approx. 320x75. Now under lease. A very good investment. Call for information. BURNETT ROAD

2 1/2 ACRES, small home and barn, \$5,950—to settle estate. PARTIAL KNAPP ROAD

PARTIAL acreage home and out-buildings. Small greenhouse; rabbit hutches. Close to Central school. \$5,500, will consider trade for close in property.

Parkland Realty Co. (Mrs.) Jennie L. Grodvis GR 7232 days, GR 8210 evs. and Sun.

GRAHAM DISTRICT 15 FERTILE acres; 7 acres of cleared peat soil. Modern 3-bedroom home; barn for 5 head; chicken house; 2-car garage; fenced; nice grove of fir trees. Folks, if you want good value, this is it for \$7,250, on terms. Bill Dacy, LA 7605.

CLOSE-IN TRADE 1 FERTILE acre; modern 2-bedroom cabinet kitchen, room for third bedroom with large living room, sunny room; garage. Good district, close to bus. Owner will trade for city property or sell for \$6,950. If you want good value, this is it. Bill Dacy, LA 7605.

VALUE GALORE SOUTH Tacoma; modern 3-bedroom home; part basement and oil furnace; large living room; large cabinet kitchen with lots of built-ins; breakfast nook; 2 spacious bedrooms with built-in desks; 1 bedroom up. Fully plastered, hardwood floors. Good district, bus at door; price \$8,500, FHA terms. Bill Dacy, LA 7605.

BROWNS POINT VERY modern 4-room home; living room with fireplace; cabinet kitchen; 2 bedrooms; den. This is a home you'd be proud to own, priced to sell fast for \$7,950, FHA terms. Bill Dacy, LA 7605.

PARKLAND HERE'S a honey! Spic and span. Living room with wall-to-wall rug, fireplace; cabinet kitchen; 2 bedrooms; storage space; garage and workshop; nice lawn and shrubs. Owner has bought ranch, will sacrifice for \$7,950; immediate possession. Bill Dacy, LA 7605.

RICHAVEN BR. 1219 FOR SALE — 3-bedroom house, 3 years old; Parkland area; \$8,950; low down payment; by owner. GR 3365. 9c46

10—Rentals FOR RENT—2-bedroom furnished apartment, 100 block on Park Ave. GR 7305. 10c36

NEW 2-bedroom home, 5 acres. Clover Creek, floor furnace, automatic hot water; 220; private water system; available Aug. 21; \$65 a month. GR 7578. 10c46

\$40. UPSTAIRS duplex, 3 bedrooms, living, kitchen and bath, water furnished, new lawn, \$50 otherwise. 505 So. 132nd, Parkland. 10p46

FLOOR SANDER FOR RENT PARKLAND WESTERN AUTO Airport & Pacific GR 3112

FOR RENT—2 and 3-room modern cottages and apartments; all utilities paid; laundry facilities; \$60 to \$75 per month. Oakland Court, inside city limits. HA 9688. 10c46

FOR RENT—Completely furnished 1 and 2-bedroom apartments, all utilities paid. GR 6770. 10c46

2-ROOM furnished cottage near McChord. \$30. LA 2988. 10c46

CHEVROLET TRUCK HDQ. Try South Tacoma Motor Co. For Trucks

GREATEST values in the N. W. in completely and thoroughly reconditioned used truck transportation.

1946 CHEV. 1/2-ton P.U., runs very good. You point and save the difference. As is, only \$695

1948 DODGE 1/2-ton panel, completely reconditioned, new paint, Chev. O.K.'d truck \$1,195

1950 CHEV. 1/2-ton panel, A-1 condition throughout. Chev. O.K.'d truck \$1,695

1945 CHEV. 1/2-ton P.U. A. splendid running truck and priced to sell now \$895

1950 CHEV. 1/2-ton P.U. A-1 mechanical condition, new paint, H. D. traction type rear tires. A real value at \$1,495

1942 FORD C. O. E. flat deck body, runs very good. Complete price \$495

1946 CHEV. 1 1/2-ton L. W. B. chassis and cab, extra H. D. springs front, rear and O. L. 2-speed rear axle, H. D. engine. In splendid condition throughout. Priced to sell now \$1,195

1949 INT. 1-ton. Dual tires, flat bed body, in A-1 mechanical condition throughout. \$1,595

1949 DODGE 1 1/2-ton L. W. B. chassis and cab, dual tires, new paint, mechanically perfect. Splendid buy at \$1,595

1946 INT. 1 1/2-ton complete with dump body and hoist, good rubber, in splendid running condition. Only \$895

GMC 1 1/2-ton L. W. B. flat deck body, 2-speed rear axle. Complete as is \$295

Many More to Choose From

We have the pick of the market. Come in and select your used truck. All sizes, all makes, all models.

SOUTH TACOMA MOTOR CO. 5602 S. Tac. Way Phone HA 3311 (Tacoma's oldest Chev. truck dealer)

WORDS cannot tell you how nice they really are. See them before you buy.

'50 CADILLAC '62" 4-dr. R. H., Hydra-Matic, visor, back-up lights, U. S. Royal Master Mid Century tires, exceptionally low mileage, very, very clean \$3,495

'50 OLDS. '98" 4-dr. R. H. and Hydra-Matic, W.S.W. Only 17,000 actual miles \$2,295

'50 CHRYSLER New Yorker R.H. automatic shift, WSW tires, fender skirts, spotlite, chrome window shades A beautiful car, \$2,295

'50 BUICK Super Riv. 4-door, R.H. Dynaflow, U. S. Royal master mid-century tires, two tone, EZ glass. Real sharp. \$2,295

'50 BUICK Super Riv. Coupe, R.H. Dynaflow, low mileage and clean. \$2,295

'51 FORD Victoria. R. and H., O. D. \$2,175

'50 BUICK Special deluxe 4-door, R. and H., Dynaflow, E-Z glare glass. \$1,895

'51 PLY. Cranbrook. R. and H., clean \$1,785

'49 OLDS. sedan, R. H., Hydra-Matic, fog lights, U. S. Royal Master Mid Century tires, low mileage. A real value \$1,495

'50 PACKARD de luxe 4-dr. R. H., Ultramatic. A real deal \$1,695

'51 FORD V-8 2-dr., R.H. \$1,695

'50 CHEV. Styline Deluxe Club Coupe \$1,595

'50 FORD Custom V-8 2-door, R.H. & H., overdrive. Choice of two \$1,595

'50 FORD Custom V-8, R.H. & H. \$1,545

Gibbons Spanaway Food Center

SPANAWAY GR. 5712 Sunshine SODAS . . . 1-lb. 23c

Hi C 46-oz. Tin ORANGE ADE . 29c Swift Premium 12-oz. Tin

CORN BEEF . . . 47c Hunt's Fruit No. 1 Tin

COCKTAIL . 2/39c S. & W. 13-oz. Tin

TOMATO ASPIC 21c BLUE BANNER PIE FILLER 18-oz. Jar

Wild Huckleberry 35c 18-oz. Jar

Cherry . . . 35c 18-oz. Jar

Loganberry . . 35c Beef Steak 18-lb. Box

TOMATOES . . 1.65 CELERY . . lb. 11c

CARROTS . 2 bun. 15c Fancy Lb. SLICED BACON . 53c

Swifts Premium Whole or Shank 1/2 HAMS . . lb. 65c

Prices Consistently LOW Quality Consistently HIGH

Prices Effective August 1 & 2

HAY CUTTING, tractor work, leveling, GR 4282. 13c47

IS DRY GRASS A FIRE HAZARD AROUND YOUR PLACE? Cut it off with a sickle bar attachment to a Merry Tiller. We demonstrate on your ground. Call PR 1800. Don Arthurs Distributors, Arthur W. Dahlberg. 13c47

FOR SALE—Weaner pigs, \$10. Call GR. 3581. 13c46

4-YEAR-OLD Shetland, saddle and bridle; sell or trade for poultry or furs. GR. 3328. 13p46

FOR SALE—3 1/2-months-old pullets, New Hampshire, GR. 5524. 13p46

TABLE model separator with extras. For sale, or trade for beef. GR 5707. 13p46

FOR RENT—70 acres pasture, Inglewood, Rt. 7, Box 568, Tacoma, after 6 p. m. or weekend. 13c46

FOR SALE—'47 Ford-Peyson tractor and plow, reasonable. GR. 3551. 13p47

14-Situations Wanted CHILD CARE—Wish to do child care in my own home. GR. 3503. 14c47

WILL CARE for children ages 4 to 12 in my country home by day or week. Good food, television, playground near. GR 4412. 14c46

WILL baby sit by the hour. Call GR. 3565. 14c46

15—Miscellaneous WOOD—Upland slab, 2 cords, \$14; planer ends, \$4 and \$8 loads. HI. 4056. 15c47

CHECKER the WRECKER — Used and rebuilt transmissions, also gears; all makes and models; phone Puyallup 5-2141, days; Tacoma, HI 3242, evenings. 15c47

UPLAND WOOD, 2 cords \$14. GR. 3306. 15c47

PEAT TOPSOIL 5 YARDS \$10; 4 Yards \$8. Finest black peat topsoil, state tested, 1- to 5-yard loads. Lawn construction and rock-out. Evergreen Landscaping Co. HI 2722

SUMMER SPECIAL—Top soil from Puyallup. You may see this fine dirt at 9920 Pacific Ave. For sale by the sack or trailer or pick up at our fuel yard. We deliver 4- or 5-yard loads. Call us for prices in your locality. GR 8173, Lapenski Fuel Co. 15c47

VALLEY TOP SOIL, rich and black, any quantity. GR 7259. 15c47

ROTTED COW FERTILIZER \$1 SACK or by the yard; peat and topsoil. HI. 4056. 15c47

ASH MOTOR CO. 9415 Pacific Ave. HI 5100 Open till 9 P. M.

'51 BUICK Super Riviera, 4-door, 9,000 miles, R&H

'51 MERCURY 4-door, overdrive

'51 FORD Victoria Fordomatic

'51 CHEV. 1/2-ton Pickup, new

'50 DODGE Club Coupe, R&H

'50 DESOTO Club Coupe, R&H

'50 FORD 2-dr. V-8, R&H

'50 CHEV. 4-dr. Sedan, R.H.

'50 STUDE. Champ. 4-dr., O.D., heater.

'48 MERCURY Sedan, overdrive

'48 CHEV. Club Coupe, R&H

'47 DODGE 1/2-ton Sedan

'46 DESOTO 4-door Sedan

'46 OLDS '78" 4-door

75 More to Choose From

Two Lots to Serve You

ASH MOTORS 9415 Pacific Ave. HI 5100 4532 So. Tac. Way HA 5333

FOR SALE—1951 Dodge pickup; sell or trade for passenger car of equal value. GR 8076. 12p46

FOR SALE—'39 Chev. panel, new tires, motor in good shape. A buy at \$225.00. 12c46

13—Farm Ads WHITE FACE registered bulls and heifers, polled and horned; also commercial cattle, steers and heifers. Take other cattle in trade. Rt. 3, Box 610, Tacoma, Summit View. Cattle wanted, call collect, GR 6112. 13c47

JOE'S Tractor Service. Rotovating. Complete tractor work. GR 5932. 13c47

CASH FOR milk cows, beef, heifers, veal and hogs. Call Thackeray collect, Puyallup 5-5414. 13c47

DEAD STOCK REMOVED WITHOUT CHARGE. Highest prices paid for tallow, hides, grease and bones. PUGET SOUND RENDERING WORKS. Phone LAKewood 2434. 13c47

MILK GOATS—French Alpine and Saanen. Rt. 1, Box 309, Spanaway on Muck-Kapovision road, between Meridian highway and Mountain highway. 13c47

FOR SALE—All white enamel wood range, cast iron, clean and in very good condition. GR 3494. 15c47

2—Auctions AUCTION SALE IF YOU want more cash quick, sell by auction. Every Fri., 7:30 p.m. Glen Betts, 8113 So. Tacoma Way. Free pickup service. LA. 8505. 2c47

3—Business Service Alan's Refrigeration SALES AND SERVICE House and Commercial Makes Motor Service Washer Service GR. 6662 161st & Pacific Ave. Next Door to Target Sport Store Spanaway

SEPTIC TANKS CLEANED—Contents hauled away. HUTSON TANK CLEANING HI 3980 HA 7038

ART PEDERSON Sheet Rock Taping, Texturing and Painting FREE ESTIMATES GR 7770 HA 3854

UPHOLSTERING Recovering and Rebuilding Cushions Rebuilt Free Estimates Parkland Upholstery 140th & Pacific GR 3201 Res: GR 3181

Most Modern Methods of Location and Development of Underground Water Call Turner FU. 2400 GR. 8108

COMPLETE tractor work. Loosening ground and leveling. Average lawn, \$12.00. Don Abbot, GR. 3846. 3c47

AUTO GLASS INSTALLED—Auto Upholstery, convertible tops. MA. 2200, Art's Glass Co., 816 So. Tacoma Ave. 3c50

BETTER VENETIAN BLINDS FOR LESS STEEL slats with plastic tapes at only 49c per sq. ft. ALDERMAN'S 5425 Pacific Ave. HI. 2200 3c47

PLUMBING REPAIRS — Sewer Cleaning - Electric Pipe Thawing Call E. M. HAMILTON PLUMBING Granite 8905

GARDEN SERVICE ROTO TILLING Lawn rebuilding, fertilizing, top soil, dressing maintenance. GA. 5885. HI. 2722. 3c47

LAND CLEARING and leveling; reasonable rates by hour or contract. Rt. 7, Box 195-X, GR 4294. 3c47

WE BUILD HOMES, remodel, level buildings; concrete work. Reasonable. GR 3550.—3c47

DRAINAGE — Septic tank installation; side sewers; earth work of any type; by hour or contract. Hauser & Seifert. BR. 9141; Res. GR. 8121. 3c47

SPANAWAY NEWS

Mrs. Oliver Omat. GR 6466
 St. Benedict's Altar society met recently at the home of Mrs. Criviansky with Mrs. Vincent Karman as co-hostess. Plans were made for the annual picnic to be held Aug. 10 at the Metropolitan park. Mrs. Harry Harrison gave out the year-books. Mrs. Robert Snyder has moved to University Place and will no longer be with the group. The society will meet next time at the home of Mrs. Ferdie Kanton with Mrs. Eutrophia as co-hostess.

Back From Trip
 The Harland McGee family are back from a vacation of three weeks which included a trip to Denver.
Home From Hospital
 Mrs. Pearl Seneff is home from the hospital recovering from a recent operation.
Reported Ill
 George Woolhouse has been ill in

the hospital.
Visitors
 Mrs. Herman Gladwin and son Tim from Port Townsend were recent visitors at the home of Mr. and Mrs. Pillsbury.
Mother Ill
 Mr. and Mrs. Harry White were called to Spokane by the illness of Mr. White's mother.
Visit Here
 Gordon Galloway, home on furlough, and his mother, Mrs. John Galloway of Tacoma, were visiting Spanaway friends the past weekend.
Home Again
 Mr. and Mrs. Harold Baker are now home from their vacation trip to Billings, Mont.
Houseguest
 Mrs. Mary Healy has been the houseguest of Mr. and Mrs. M. Kirby.
Here on Visit
 Miss Dixie Davis has been visiting with her uncle and aunt, Mr. and Mrs. Don McLellan, and her cousin, Miss

Wanda Joy McLellan.
Kansas Picnic
 The annual Kansas picnic will be held in Lincoln park Aug. 10. Bring lunch and table service; there will be free coffee and a program.
Sailing on U. S. United States
 Mrs. Hayden Stewart, who has been in England since May, is sailing Aug. 14 on the huge new liner United States and expects to arrive in Spanaway Aug. 27. She has been visiting her father, reported critically ill, at Bournemouth, England. Mrs. Stewart is a past president of Spanaway Preschool and active in many community affairs.
Firemen Meet Here
 Pierce County Fire Commissioners association met Thursday evening, July 24, in the Spanaway fire hall. The auxiliary of the Spanaway Volunteer firemen served lunch.

State Farm Mutual Insurance
FORREST LEONARD
Agency GR. 7222
 Anything In Insurance
 12815 Pacific Avenue — (House just South of Blue Spruce Motel)

Classifieds

MISCELLANEOUS household furniture, including Spark oil heater, wood range. May be seen at Manning Seed Co. office at Roy between 10 and 3 Saturdays. 15p47
FOR SALE—Baby scales, Thayer buggy, Welch stroller, and de luxe Trimble bathnet, all in excellent condition. Also lawn mower, \$5. Call GR 8171 or see at 619 111th St. 15p46
FOR SALE—Red cocker pups, 2 months old. GR 8456. 15p46
FOR SALE—Tap dancing shoes, 8 1/2. See Mildred Keller, call GR 8364. 15p46
STOLEN—Titan 40 chain saw, motor No. 303-R. \$50 reward for recovery. G. L. Cloys, Rt. 1, Box 93, Roy. 15p46
YOUR HOME fitted with cabinets, remodeled or repaired, or will take your home on a new one. GR 7102. 15p46
NO. 1 CEDAR shingles, \$10 per square; weaver pipe, \$15; Underwood typewriter, \$45; red pullets, \$1.65 each. GR 7252. 15p46
FOR SALE—16x32 tent. GR 6783. 15p46

LISTINGS WANTED
 We are selling Parkland homes—we need more reasonably priced homes to sell. We have waiting list for rentals. Call Mr. Harmon, Mr. Dammel, Mr. Smith or Mr. Inloes.
SUBURBAN REALTY
 9920 Pacific Ave. GR 3624
OUTBOARD motor, Evinrude 22 1/2 H.P. \$195. Excellent condition, used very little. Call GR 9937 or see at Garfield St. T.V. Repair Shop, 528 Garfield St., Parkland. 15p46
FOR SALE—Leg type bathtub with fittings; inside electric fence control; DeLaval hand operated cream separator; all in good condition. GR 7554. 15p46
FOR SALE—Lang oil burning range, tank and stand; 2-burner electric plate; Everhot electric roaster oven; priced reasonable. Rt. 3, Box 545, Puyallup, 96th and Canyon Road. 15p46
FOR SALE—Coal and wood heater, \$20; wood heater and Majestic range with coils, both for \$20; fence charger \$5; two 1-gal. churns, each \$1. H. M. Wood, Rt. 13, Box 703, Tacoma (Summit). 15p46
FOR SALE—To be moved; clean chicken coop, 10x15 1/2 feet. 864 So. 113th St. 15p47

FISHING TACKLE
South End Plumbing
 Home of Schorn Paints
 Near Roy Y Spanaway
 GR 4100

BUILDING SUPPLIES
SPANAWAY LUMBER CO.
 Mt. Highway at Spanaway
 GR. 3323 WE DELIVER

We Watch While You Sleep
 REASONABLE RATES
 Parkland and Spanaway Area
Radio Equipped Patrol Service
 LA 7395 or GA 8915

Clover Creek Baptists Holding Services
 Evangelist Dr. Carl Swazey of Los Angeles will hold special evangelistic services at the Clover Creek Baptist church Friday and Saturday evenings of this week, Aug. 1 and 2, and also Sunday morning, Aug. 3.
 Dr. Swazey is said to be man of wide experience and outstanding ability in both the evangelistic and pastoral ministry and has for years been one of the leaders in the General Association of Regular Baptist Churches fellowship.
 Pastor L. R. Hagan, minister of the church, will speak at the Sunday evening services.
 All evening services begin at 7:45 o'clock. Sunday school is at 9:45 a. m. and the morning service at 11; Young People's meeting is at 6:30 p. m.
 The church is located on the Metropolitan Park road across from the Clover Creek school.

Weekend Trip
 Mr. and Mrs. E. W. Rau, Rt. 7, Box 293, made a combined business and pleasure trip to Mount Vernon and Bellingham over the weekend. While on the trip, Mr. Rau located an aunt, Mrs. Myra Truchon, whom he had not seen for 56 years.

FURNITURE
 (NEW AND USED)
COSTS LESS
 — at —
BLOCK'S FURNITURE MART
 Open Evenings 'til 9:00 FREE DELIVERY—EASY TERMS
 8205 South Tacoma Way LAkewood 2882

HORSE & SADDLERY EQUIPMENT
SUMNER FARMERS' SUPPLY
 823 Main St., Sumner Phone 3-4784

You're Invited
DANCE
 EDWARDS PAVILION
 LAKE LAWRENCE
EVERY SATURDAY NIGHT
 MIXER AND ICE
 Road Signs from McKenna and Yelm

MUTUAL INSURANCE
200 YEARS OLD...
 founded by the pioneers of our country. Today, hundreds of thousands of careful property owners enjoy all the advantages of Mutual insurance through the NORTHWESTERN and have received millions of dollars in dividends—a saving on their insurance costs.
REDUCE YOUR INSURANCE COSTS TOO
Jennie L. Grodvig
 208 Garfield Street
 Parkland, Washington
 Days: GR 7232; eves., GR 8210
 Representing **NORTHWESTERN**
 MUTUAL FIRE ASSOCIATION

Rubber Stamps
 Made to Order
LaCROSSE PRINTERS
 Granite 7100

Records, 45 - 78 - 33 1/2
 Large Assortment
Appliances - TV Radio
 Sales and Service
FREE TUBE TESTING
FRYE'S Furniture & Appliances
 Parkland Centre Bldg. GR. 3691

RURAL GARBAGE SERVICE
GR. 3713
 Serving Parkland, Lakewood, Midland, Summit, Spanaway and Lakeview—Pierce county permit.

Sheet Metal Work
Poultry Equipment
Rabbit Feeders
Water Founts
RAU MFG. CO.
 Granite 7372

Prescriptions Prepared Carefully
 Fresh Insulin at Down Town Prices. Pay Phone Bills Here
Tincher's Pharmacy
 8239 Park Ave. HI 3344
 Across street from Fern Hill P. O.

\$ SAVE ON COAL \$
 Avoid worry about coal strikes and possible future price increases. Have a good supply of coals on hand NOW! Quality is at its very best.
 The best Wyoming and Utah Steer Coals.
 Aberdeen and King Utah.
 Lump—Utah or Wyoming, your particular size.
 Nut—Double-screened clean.
 Gasco Briquets, leave no ash.
 Presto-logs—Long burning, clean.
PACIFIC MUTUAL FUELS, INC.
 (Est. 100 years in 1950)
 STOVE & DIESEL OIL
 Fuelphone MA. 1137-401 E. 11th

Coffee, Shurfine Fresh Roast, lb. 79c
Choc. Chips, Nestles . . . pkg. 19c
RICE . . . 2-lb. cello 31c
Cottage Cheese . . . Pint 23c
 Fletts Farm Fresh
 1-LB. CAN
Salmon, Anchors Aweigh, Pink 47c
Fig Bars, Fresh Superior, 2-lb. pk. 49c
Orange Juice, Minute Maid . 2 for 33c
 6 Oz. Frozen
Titan Green Beans 10c; Case of 24 \$2.39
Crisco 3-lb. tin 79c
Flour, Shurfine, 25-lb. Print Bag \$1.97
 10-LB BAG 89c
 (Why Have Our Flour Sales Increased So Tremendously? No, It's Not Price But Quality)
Breeze, Lge. Pkg. with Dish Cloth 29c
Jonney Mop \$1.29
 (Special Price Available At All Times on Complete Line of Frozen Foods by the Case—Consult Us.)

Rabbit Pellets 25 lbs. \$1.35
Scratch 100 lbs. \$4.65
Gaines Dog Meal 25 lbs. \$2.98
FREEZER CONTAINERS

Fresh Corn 6 for 19c
Seedless Grapes Lb. 19c
Potatoes, Yakima Reds 10 lbs. 49c
 No Sales to Dealers—We Reserve the Right to Limit Quantities
HERMAN'S 162nd & Park Ave.
 Spanaway GR. 8213
 August 1 and 2

BACON ENDS AND PIECES lb. 22c
SMOKED HAM HOCKS lb. 19c
 Good with String Beans
SKINLESS WIENERS lb. 49c
POT ROAST lb. 69c
 Lean Center Cuts
SPANAWAY MEAT MARKET
 NEXT DOOR TO HERMAN'S GR 8215

FOR SALE by owner—Small home with 6 lots, Parkland, 3 blocks from P.L.C. GR. 7350.
FOR SALE—Registered Chow puppies, red or black. GR. 5165. 15c46
FOR SALE—24-ft. cabin cruiser 93-horse motor, head, afterdeck; sleeps 4. Consider 14-ft. or 16-ft. outboard in trade. A steal. Call LA. 9050 or LA. 7161. 15c46
NEW double mattress. GR. 3503. 15c46
FOR SALE—16-ft. house trailer, partly furnished, sleeps four. \$275. Rt. 2, Box 327, Puyallup, between Pear and Airport Road on 5th St. 15c46
FOR SALE—2—8N Ford tractors, each \$1,195; 1—2N Ford tractor, \$965, overhauled and guaranteed; 1 Towner offset disc harrow pickup, \$175. Barclay Tractor & Imp., Inc., Your Ford Tractor Dealer, 1407 Puyallup Ave., Phone FU 2254, Tacoma, Wash. 15c46
FOR SALE—Drum set, cheap. Phone Puyallup 5-2029. 15c46
USED metal bed frame, link spring and innerspring mattress, complete, \$19.75. Parkway Furniture, GR. 3941. 141st and Pacific. 15c46
FOR SALE—White unbleached flour sacks, 100-lb. size, 15 cents each. Patty Ann Bakery, Pacific Ave. at Airport Rd. 15c46

Rupe Machine Works
 MOTOR REBUILDING
 Shop GR 7450 - Res. HI 6190
 Pacific Ave. at Brookdale
Lathe and Press Work
 piston finishing, valve and seat grinding, cylinder and line boring, head grinding, brake drum turning, pin fitting and rod aligning.

UNFINISHED furniture. Hagg's, 1107 Market Street.
WANTED—Chickens and rabbits. Call before you sell. Cope's Poultry Market, 7036 Pacific Avenue, Tacoma, Wn. GA. 4406. 15c46
16—Livestock & Equip.
HORSE SHOEING now available every day. Drop a card to Rt. 1, Box 475, Graham. J. R. Young. 16c46
MILK COWS, sold on terms. Gammont, Rt. 3, Box 703, Tacoma, 4 miles south of Summit. 16c46
FOR SALE—Buckskin mare, 6 years old, well broke but spirited, \$90. Phone Puy. 9-8118.
8-YEAR palomino gelding, drill trained, with 1 horse trailer, or will sell horse separately. 124-J Eatonville. 16p46

VAUGHAN'S VALUES
 2x4, 8-foot No. 4 Common each 20c
 1x8 No. 4 SHIPLAP per M feet \$37.50
 2x8 and 2x10 No. 3 Common per M feet \$65.00
 45-LB. ROOFING—NAILS AND CEMENT \$2.15
 Ask About Our Monthly Payment Plan
Vaughan's
 PACIFIC AVENUE LUMBER COMPANY
 84TH & PACIFIC AVE. PHONE HI 9515

Prompt Radio
 and
Television Service!
 INSTALLATIONS AND REPAIRS
GARFIELD STREET T.V. & RADIO SERVICE
 Call GR. 9937
528 Garfield St. Parkland Shopping Center

STEP THIS WAY FOR THRIFTY BUYS

All Flavors
JELLO 2 for 15c
CERTO 2 for 45c
Mission 14-oz. SALAD MACARONI . 18c
DENNISON'S 14-OZ. CATSUP 15c
WOOD'S LB. COFFEE 79c
OLD YANKEE 20-OZ. PEANUT BUTTER 49c
BETTER BUYS
 Red Ripe **Wat'melon 4c**
 Solid Heads **LETTUCE 5c**
 California **CANTS 8c**
Adams HONEY 1-lb. 28c
Sunshine CRACKERS . . . 2-lb. 43c
HI-HO CRACKERS 1-lb. 31c
NALLEY'S PT. MAYONNAISE 34c
 With Coupon Attached to Jar
KELLOGG 12-OZ. Corn Flakes 20c
LARGE TREND 23c
 U. & I. **Sugar 2.53**
NEWPORT GREEN 2 FOR BEANS 21c

Meats FOR THE WEEK-END
Gr Beef 59
T-BONE, good utility LB. Steaks 79
SLICED—Eastern sugar cured LB. BACON 29c
PORK—Grain fed LB. CHOPS 73c
PURE LB. LARD 13c

BARGAIN BASKET
 167th St. & Pacific Avenue—Spanaway GRanite 3371
 Handy to the East Gate of McChord Field
 Open Seven Days a Week—9:00 a.m. Till 10:00 p.m. Standard Time
 We Reserve the Right to Limit Quantities

GET ACQUAINTED SPECIAL
FRIDAY & SATURDAY ONLY!
 AUGUST 1 & 2
Laying Mash \$5.10
Scratch Feed \$4.60
 100-LB. BURLAP BAGS
WE MANUFACTURE OUR OWN FEEDS
CUSTOM MIXING AND GRINDING
HIGHLAND FEED MILLS GR. 8585
 96TH & PORTLAND AVENUE MIDLAND
 (Formerly W. H. Berger Feed Co.)