

Sec. 34.66 P.L. & R.
 U.S. POSTAGE PAID
 Parkland, Wash.
 Permit No. 9P

RESIDENTIAL PATRON
 BOXHOLDER OR OCCUPANT
 RURAL ROUTE

POSTMASTER: If unable to
 deliver, return postage is
 guaranteed.

The TIMES JOURNAL

LARGEST CIRCULATION OF ANY WEEKLY NEWSPAPER IN THE N. W., DELIVERED BY U. S. MAIL.

THURSDAY, SEPTEMBER 9, 1954 • VOL. 9, NO. 52 • 18 GR 3466 • PUBLISHED AT PARKLAND, WASHINGTON • 5c PER COPY \$2.50 PER YEAR BY MAIL OUTSIDE FREE DISTRIBUTION AREA

Slave Auction At Parkland September 17

Sponsored by the Parkland Business club, a "slave auction" will be held Friday evening, Sept. 17, beginning at 7 o'clock at the Pochel Distributing Co., 140th and Pacific Ave. In case

of rain, the auction will be held in the company warehouse, which will be cleared for the event, otherwise outside under the flagpole.

One by one, Parkland's most prominent business people will mount the block to be auctioned off by Auctioneer Larry Kirkwood. At their own price, people of the community may buy the services of the "slaves" for practically any type of work. Want a day's work on your farm, a riding trip to the hills, a guided fishing trip to the sound or a lake or stream, a day's sightseeing trip in an elegant new car with an equally elegant driver; want your huge lawn mowed with a power mower? Want the services of a big truck & driver for a day to move your furniture? These services, and many more, have already been volunteered by businessmen and their wives.

Larry Kirkwood considers Flaggpole Kittie's stint, a date to go dancing the first Saturday night after she descends from her lofty perch, one of the most exciting ones he will offer. Just to even up the score, the microphone will be sent up to Kittie and she will auction Larry off to the highest bidder.

One of the highlights of the evening will be the "sale" of a masked mystery man, whose identity will not be revealed until after he has been bought at auction. The only clue is that the mystery man is a person of considerable importance and fame.

During the evening free coffee and doughnuts will be served to all by slave girls in authentic costumes (hope it stays warm!).

All proceeds go to your Community playground.

Lacamas Fair Set For Saturday, Sept. 11th Community Fair At Waller Road This Weekend

The Lacamas Community club will hold its 19th annual Community Fair Sept. 11th. Exhibits may be entered Friday, Sept. 10th at 3 p.m. Saturday's program will have bicycle races, tractor driving, rolling pin throwing, and nail driving contests. An old timers baseball game gets underway in the afternoon.

There will be an evening program at 8 o'clock, John T. McCutcheon will be the speaker of the evening.

An auction sale of prize winning produce will be held after the evening program.

Spanaway Club Dance Saturday

The Spanaway Progressive Community club will hold a dance in the Spanaway Metropolitan park hall Saturday, Sept. 11, from 9 till 2. There will be square dancing, old time dancing and modern steps, so everyone is assured of an evening of fun. Proceeds will be used for improvements on the Community club hall.

Parkland Preschool

Parkland Preschool will hold its first meeting of the year Monday, Sept. 13, at 8 p.m. in the Parkland grade school gymnasium. Mrs. Leo Maves will preside.

Dryer MORTUARY

Consider Convenience for your friends when choosing a funeral director. Go where they can park—out of the traffic. Trav Dryer

Kindergarten Millage On Ballot at Bethel

Residents of the Bethel school district will be given the opportunity to vote on a millage providing for kindergartens. The amount asked is 3 1/2 mills.

Those favoring the proposition point out neighboring districts have kindergartens, even the small Clover Creek district providing for kindergartens this year for the first time.



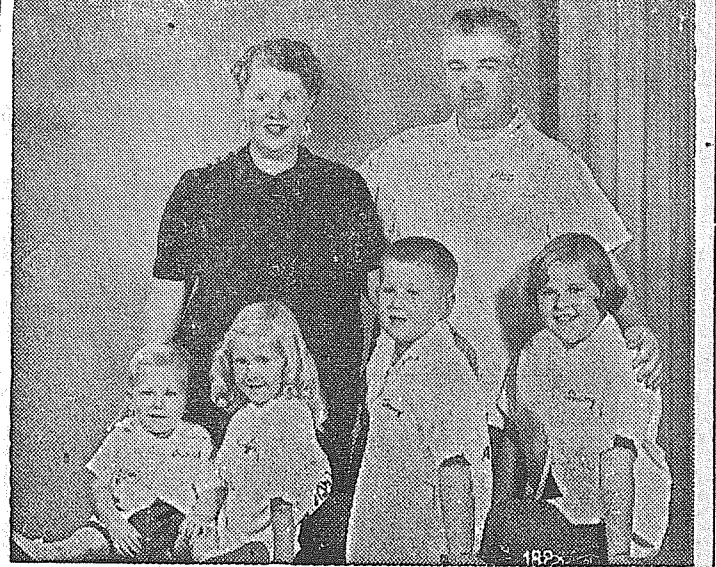
The friends of Ruth Bethel ask your support in returning her to the office of County Superintendent of Schools.

This space sponsored by Andrew Christensen, Homer Anderson, Francis Olson, Morris E. Ford, Edwin L. Nelson, Stanley Willis, David Turnbull, Wilbur Peterkin, Perry Keithley, Orville Weeks, Louise Lynd, Albert Reihls, Lyle Catt, Paul V. Larson and others.

(Pd. Pol. Adv.)



FOR GOOD REASONS
 He is Honest . . . Impartial
 Fearless and Capable



PATRICIA — PAT
 PATRICK — BRIDGET — TOMMY — TIMMY

We're looking forward to your vote!

Sincerely yours,
 the O'BRIENS

SEPT. 14 . . . VOTE FOR T. J. PAT
 O'BRIEN for ASSESSOR

See Statement on Page 9 (Pd. Pol. Adv.)

Professional Directory

INSURANCE
 CLAY ROLEY AGENCY
 98th and Portland Avenue
 GR. 8501

ROY V. ROSTEDT AGENCY
 8201 Park Avenue
 Phone HA 2342

ED MAREK
 Farmers Mutual of Enumclaw
 FIRE - AUTO
 12909 Pacific Ave. GR 4000

PIPER FUNERAL HOME
 Phone HA 3353
 5436 So. Puget Sound Ave.

Shop & Save at BROOKDALE LUMBER CO.

Mr. Brookdale Says:
 "It's Paint-up Time"
 Better get your painting jobs finished before the bad weather.

100% Pure Outside White \$6.32 Gal.
 Special Bungalow House Paint \$3.49 Gal.
 Paint Thinner 49c Gal.

Porch & Floor Enamel \$1.85 Per Qt.
 Brushes
 Turpentine
 Linseed Oil

The Plastic Enamel with the mirror like finish, only 2.57 qt.

Everything For The Painter

BROOKDALE LUMBER CO.
 136th & Pacific Ave. GR 8669

FORESIGHT PAYS OFF

Have your winter blankets and garments cleaned now. They'll be clean and fresh, ready for use when you need them. Don't put it off another minute . . .

Phone
PARKLAND CLEANERS
 GR 3221 11004 Pacific Ave.
 North of the Bank Corner
 24-HOUR SERVICE AT THE PLANT

QUITTING BUSINESS SALE

Childrens Clothing
 Toys, Everything
 For Less Than Cost

Take Advantage of this Tremendous Savings While You Can

Open 9:00 a.m. to 9:00 p.m.

BLESSED EVENT SHOP
 12611 Pacific Ave. Parkland

ONLY 3 LEFT

21" Motorola Table Model TV

\$189.95 Complete With Normal Installation

Siler's 11230 Pacific Ave.
 GRanite 8634

NOTICE
 I take pleasure in notifying my many friends in the Summit-Parkland-Spanaway district that I am now associated with Help You Realty, located at Airport Road and Leonard's Crossing. Oliver Inloes.

FRYING RABBITS 59c Lb.
ROOSTERS 25c Lb.
 Fryer Breasts - Legs 75c Lb.

Armstrong's Poultry Market
 11009 Pacific GR 5524

We Are Against The Machine . . .

SELMER T. "BUD" THORP IS QUALIFIED
 SELMER T. "BUD" THORP IS FOR 100% AMERICANISM
 SELMER T. "BUD" THORP IS AGAINST POLITICS IN THE SCHOOL
 A VOTE FOR THORP . . . IS A VOTE AGAINST THE MACHINE IN POWER!!

If the present County Superintendent of Schools is sincere in her Schuddakopf action, why didn't she act immediately after the Velde hearing? She could have spared the Tacoma Schools the tragic upheavals of the past weeks. Does her action now stem from conviction or is she playing politics with our children?



Vote For
 ALL AMERICAN Leadership
SELMER T. (BUD) THORP
 For Superintendent of Pierce County Schools
 Non-Partisan

Paid for by members of The American Legion

HER CAMPUS CHOICE

a. Track meet pattern with choice of Neolite or Cush-N-Crepe Sole. Black Suede, White Blue Smooth. Cushioned Insoles. **5.95** Sizes 4 1/2-9

b. Puzzle Buckle pattern in White, Red smooth and Blue Suede . . . 5.95

c. White Bucks . . . 7.95 also Soap-N-Water 7.95

FREE . . . cartoon book covers

NO PURCHASE NECESSARY—We want to furnish every youngster in school a free book cover to protect their valuable books. These covers thru the courtesy of Soime's Shoe Store in cooperation with Radio Station KTNT.

Soime's
PARKLAND SHOE STORE
 GR 3526
 411 Garfield Street
 Across from Parkland Post Office
 Open 10 - 6

BIG VALUES FOR FINE GROCERIES MEATS

STORE HOURS: Fri. 8 to 9, Sat. 8 to 7. Other Days: 8 to 6:30.
Large Paved Parking Lot Off Traffic

NEST FRESH
AA MEDIUM
EGGS
DOZEN
36c

SWEDISH ROAST, Fresh Ground
COFFEE Pound **1.05**

FOLGERS
COFFEE Pound **1.07**

INSTANT MAXWELL HOUSE
COFFEE Large 6 Oz. Jar **1.79**

DURKEE'S
MAYONNAISE Quart **49c**

Darigold Processed. good for school lunches
CHEESE 2 lb. pkg. **73c**

Hunt's 3 Cans
Tom. Sauce **19c**

Betty Crocker Angel Food Lb. Pkg.
CAKE MIX **49c**

M. D. 4 Rolls
Tissue **49c**

FRESH BAKED
FIG BARS 2 Pound Pkg. **39c**

Happy Vale Cans
PEAS 10 **\$1.00**

Fresh Smoked, Tenderized
SHOULDER HAMS . . . lb. **37c**

Tender Steer, All Cuts
POT ROASTS lb. **39c**

Tender Steer SIRLOIN or
RIB STEAK lb. **59c**

Meaty Country Style
SPARE RIBS lb. **55c**

Lean Grain Fed
PORK CHOPS lb. **59c**

Lean Meaty
SHORT RIBS lb. **19c**

GUARANTEED LOCKER MEATS AVAILABLE AT ALL TIMES

ONE YEAR'S SUPPLY OF GROCERIES FREE!

GIVEN BY THIS STORE

- FAMILY OF TWO \$1,000
- FAMILY OF THREE 1,500
- FAMILY OF FOUR 2,000 (Maximum of \$2,000)

IF YOU WIN ONE OF THE FIRST THREE SENIOR GRAND PRIZES IN PILLSBURY'S 6TH GRAND NATIONAL RECIPE AND BAKING CONTEST, AND THE NAME AND ADDRESS OF THIS STORE APPEARS ON YOUR ENTRY

GET YOUR OFFICIAL Pillsbury's 6th GRAND NATIONAL RECIPE AND BAKING CONTEST ENTRY BLANK HERE TODAY



Pillsbury's BEST 25 LB. SACK **\$1.98**
THE GRAND NATIONAL FLOUR

RECIPE OF THE WEEK
By Mary Lee Taylor
Hot Bacon and Tomato Sandwiches

1 cup diced American cheese (1/2 lb.)	1/2 teaspoon dry mustard
1/2 cup Pet	1/4 teaspoon salt
Evaporated Milk	4 slices hot toast
2 teaspoons Worcestershire sauce (can omit)	4 large tomato slices, 1/2-in. thick
	8 slices crisp bacon

Mix in top part of a double boiler or in a saucepan the cheese, milk, Worcestershire sauce, mustard and 1/4 teaspoon salt. Cook and stir over boiling water until smooth. Keep hot. Put toast on 4 serving plates. Arrange tomato slices on toast, then sprinkle with 1/2 teaspoon salt. Pour hot cheese sauce over tomatoes. Top with the crisp bacon. Serve hot. Makes 4 servings.

Red Shield Fresh Creamery Lb.
BUTTER . . **59c**

Luxury Mild Lb.
CHEESE . . **49c**

Pet, Nonfat Instant lge. jar
DRY MILK . . . **31c**

Sanitary 1/2 Gal.
MILK . . . **2/77c**

Jersigold 1/2 Gal.
ICE CREAM . . **79c**

M.J.B. 48 Bags
TREE TEA . **43c**

Hunt's Gal.
VINEGAR . . **69c**

Ghirardelli For a hot drink 1 Lb. Can
CHOCOLATE . **53c**

Fishers Instant Cooking Pkg.
ZOOM . . **23c**

Campbell's Meat Variety
SOUPS 6/\$1.00

Shurfine 3 Lb. Can
Shortening . **79c**

PET MILK
Tall Cans 4 for **49c**

CASSEROLES
For Good Baking 2 for **39c**

WE RESERVE THE RIGHT TO LIMIT QUANTITIES

Prices Effective Thurs., Fri., Sat., Sept. 9th - 10th 11th

SUMMIT TRADING CO.

10409 Canyon Road, Tacoma - 1/2 Mile North of Summit View on Canyon Road

Phone Granite 5848

Steele Seeks Re-Election

Patrick M. Steele, candidate for re-election to the State Legislature from the 26th district, has issued the following statement on behalf of his candidacy:

"Legislative experience of the 1953 session, and, prior to that, attendance at sessions in behalf of county legislation during my term as prosecuting attorney, will enable me to better serve the public interest.

"The primary purpose of the legislature is the appropriation of funds to run the state business for the next two years. I will work to keep the budget within the revenue provided by the present tax structure. I am sure this can be done.

"As a member of the Social Security Committee at the last session I worked in committee and on the floor for the adoption of the Public Assistance Law, the Unemployment Compensation Law bringing Washington into conformity with Federal legislation, and the De-

partment of Health measure. "Service on the Roads and Bridges Committee enabled me to press for and help enact legislation relative to the Cross-Sound Bridge Project and the Tacoma-Seattle-Everett toll road. The record will show that I directed my endeavors on behalf of more and better roads for both the Eatonville and Peninsula areas.

"The last session was particularly arduous for the Judiciary Committee, but productive of much important legislation. We enacted the alien land law benefitting airlines in Tacoma, and did the spade work on the important government reorganization bills. I am confident that we can enact much of this proposed legislation into law at the next session.

"School support is always a major concern of the legislature. We increased the school appropriation by 38 million dollars over the previous session. I co-sponsored HB 175, a bill relating to the conditions of employment of teachers, and will continue to work for legislation on behalf of the teaching profession, including passage of a minimum wage law. A well-paid teacher is certainly going to be a better teacher, and the importance of better teachers for our children cannot be over-emphasized.

"I sincerely believe that I can best represent the interests of you, the voters of the 26th district, in the next legislature. I will appreciate your support, and particularly your vote for me at the primaries on September 14."

Develop Tacoma Bertocchini Aim

A. C. "Tony" Bertocchini, native Tacoma and Democratic candidate for State Representative from the 29th District, will wage a vigorous campaign based on development of Tacoma's natural advantages as a seaport and industrial area.

Mr. Bertocchini, who resides with his wife, Betty and daughter, Kathleen at 1114 South 56th St., is a graduate of Lincoln high school. He has worked as a truck driver and mill worker, is a member of the Teamsters' Union, Local 313, the Ancient Order of United Workmen and the Progressive Italian American lodge. He holds honorable withdrawal cards from the Lumber and Sawmill Workers Union and Sheet Metal Workers Union, Local 150. At present Mr. Bertocchini, a licensed real estate broker and insurance agent, is a staff member in the Pierce County Treasurer's office. He has served for several years as secretary of the Pierce County Democratic Central Committee.

"One of the finest deep-water harbors in the world, an expansive industrial site area, water-grade access to a hinterland of unlimited productivity, and plenty of local surplus labor make Tacoma potentially the greatest port on the West Coast," declared Mr. Bertocchini. "I will sponsor legislation that will make Tacoma the world port that it should be.

"Legislative measures I intend to support include a long-range school building program, more state support for schools as opposed to the present local millage situation, increased appropriations for schools for handicapped children, development of our recreation areas and a small boat haven for Pierce County.

"I'm Tacoma born," said Mr. Bertocchini. "I recall when ships thronged our harbors, when our industries hummed and our people were busy, when 40,000 packed our stadium and our town made money, but we have been asleep since the coal-ering era. I want to help wake our community to its potential future and be a real City of Destiny."

Military Funeral For Spanaway Man

A Fort Lewis bugler played taps over a flag draped casket Tuesday at Mountain View Memorial park—Cpl. Marvin L. Gunns had come home to rest in the soil of his native land.

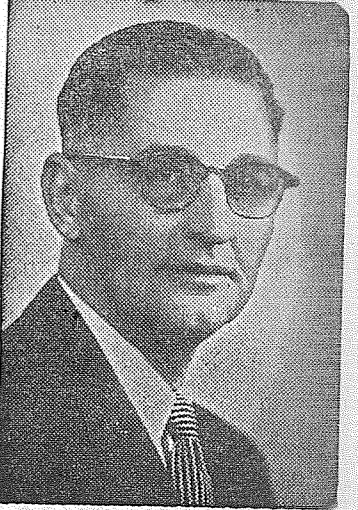
The son of Mr. and Mrs. Joseph J. Gunns of Spanaway had been reported missing in action and, after months of hope that he might be safe somewhere, his parents were at last notified that his body had been found; his remains arrived in Seattle Friday. He had served in Korea with the 24th Division.

In addition to the parents, he is survived by a brother, Herbert, of Tacoma, and six sisters, Mrs. Mabel Kinney, Mrs. Mar-

ion Taini and Mrs. Vernon Petoski, all of Spanaway; Mrs. Dorothy Berryman of Garfield, Mrs. Omie Hall of Tacoma, and Mrs. Lottie Trip of Puyallup.

Participating in the services at the military funeral arranged for Cpl. Gunns were members of Clover Creek post No. 118, Spanaway; Tacoma post No. 138, and Parkland post No. 228, all American Legion; also a chaplain, firing squad and buglers from Fort Lewis. Funeral services were held in the Mountain View chapel.

Elect L. W. (Roy) CRAIG Assessor



HONEST, EFFICIENT, EXPERIENCED

Craig has made and held public confidence thru years of experience in private business and public office, both city and county.

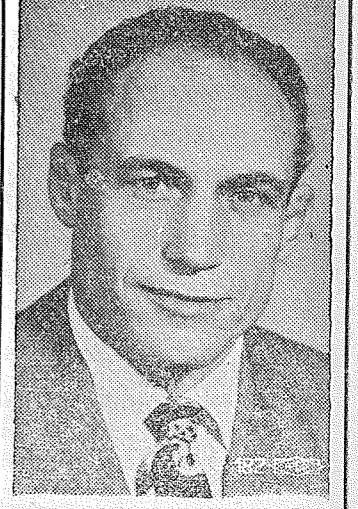
Craig for Assessor Democrat Pd. Pol. Adv.

H. P. Auge States Qualifications

My name is Henry P. Auge. I am a widower with four children, all of whom live with me in our home which we have owned for twelve years. My two boys and two girls attend public schools.

I am a member of the P-T-A, a former cubmaster in the Boy Scout movement, a church member and a long time member of a Local A.F. of L. union. Also, I belong to several civic and fraternal organizations. I have an honorable discharge from the United States Marine Corps.

I believe, with my business education and experience, that I am adequately qualified for the position of County Clerk. It is my firm belief that the taxpayers who have dealings with the County Clerk's office are entitled to courteous and dignified service. I base my platform on honesty and courtesy and a wholehearted desire for a spirit of cooperation among all county offices. I am a Democrat.



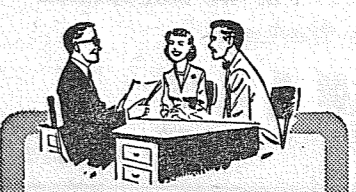
Vote for FRANK STOJACK for Pierce County Sheriff Democrat

★

Champion of Fair Play

Pd. Pol. Adv.

PIERCE COUNTY REFUSE CO. WEEKLY GARBAGE COLLECTIONS Phone GR. 8688



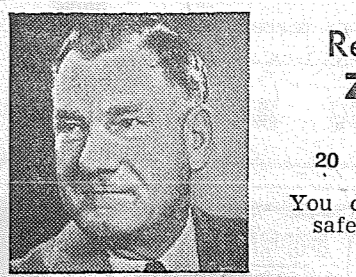
HOME LOANS

—with speed, simplicity and low cost. No hidden charges. Just friendly, honest home loan counsel. The place where over 47,000 Northwest home owners have already financed their home.

A MUTUAL SAVINGS INSTITUTION

1st Federal Savings and Loan Association

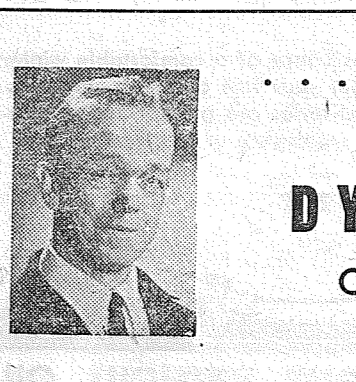
Bellingham • Seattle • Tacoma Portland • Eugene



Return SENATOR Z. A. VANE 29th District

20 years of service to the District and State. You can depend upon him for safe and sane representation.

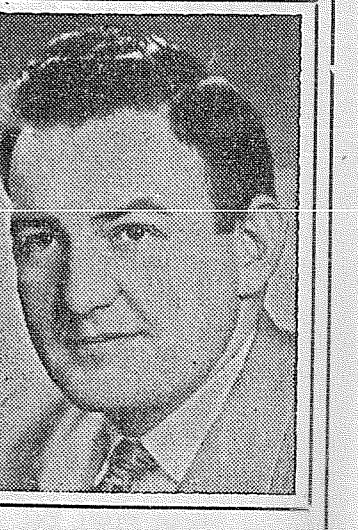
Pd. Pol. Adv.



RE-ELECT Robt. L. DYKEMAN County Clerk Democrat Pd. Pol. Adv.

Let's Keep John G. McCutcheon On The Job . . .

He says "I gave support to the FULL SCHOOL program, PUBLIC POWER, and the 40 hour week for institutional employees. I worked for a balanced state budget. I invite your support Sept. 14th."



DEMOCRAT 29th District STATE REPRESENTATIVE Pd. Pol. Adv.

.. SILVER SPURS BALLROOM ..

Western Type Dancing

EVERY SATURDAY NIGHT

9:00 P.M. Till 1:00 A.M.

Bring the entire family . . . Free baby sitter service

ROY, WASHINGTON

Re-elect Patrick M. STEELE

State Legislator
26th DISTRICT

He deserves your vote on A RECORD of ACCOMPLISHMENT

your support in the PRIMARY SEPT. 14 is important!

(Pd. Pol. Adv.)

Trovani's Junior Bootery

Specializing in Children's Shoes

706 ST. HELEN'S AVE.-MA 6318 LAKEWOOD CENTER LA 4181

C. O. Lynn Co. MORTUARY

AVE. 717 TACOMA Phone MA. 7745

Installation & Repairs JACK'S TV & RADIO SERVICE GR 4863

Prices Effective Thurs. Noon - Fri. - Sat. Sept. 9th - 10th - 11th

BARGAIN BASKET

FREE PARKING Space for Everyone

TEL.-GRanite 3371

167th ST. and PACIFIC AVE. - SPANAWAY

It Says BIGGER Back-To-School BUYS

Nalley's SYRUP, Simply Delicious LUMBERJACK . . . 24 Oz. 59c

ARE YOURS WHEN YOU SHOP BARGIAN BASKET

Hoody PEANUT BUTTER . . .	20 Oz. 55c
Pillsbury PANCAKECAKE FLOUR	4 Lbs. 47c
Biltmore TUNA MORSELS . . .	37c
Nestles CHOC. CHIPS	Pkg. 25c

CHOICE MEATS

ARMOUR'S

BACON ENDS & PIECES	lb. 27c
GROUND BEEF	lb. 29c
PORK STEAK	lb. 49c
PORK ROAST	lb. 45c
RIB STEAKS	lb. 42c
POT ROAST	lb. 35c

Tall Tins DARIGOLD MILK . . .	2/28c
Ranchers Pride CHICKEN NOODLES . .	29c
SHREDDED WHEAT	18c
Snowflake CRACKERS	1 Lb. 25c

Kingan's LUNCHEON MEAT	39¢
Dennison's CHILI CON CARNE	15 1/2 Oz. 24¢
Chef Boy Ardee SPAGHETTI & MEAT BALLS . . .	2 Lb. 8 Oz. Can 59¢
Giant Size TIDE SOAP	71¢

FRESH PRODUCE

Green PEPPERS	lb. 10c
Large Yellow Yummies CARROTS	pack 10c
Fresh Delicious CORN	doz. 39c
LEMONS	lb. 10c

FILL YOUR BASKET at BARGAIN BASKET...FOOD VALUES GALORE

Mrs. Albert N. Nelson Graham 7-7640

Friends of Leo Cardinal hope he will soon be better. He underwent major surgery recently.

Move to Orting
Mr. and Mrs. Carter Larsen have moved to Orting.

Showers
A pink and blue shower was held at the home of Mrs. E. Robinson recently, with Mrs. A. Neimi, Mrs. Langtweed and Mrs. Thomas as hostesses, the affair honoring Mrs. H. Drab. Many charming gifts were received and a delightful lunch was served.

Breaks Ribs
Jerry Plumb, son of Mr. and

James Sales Pre-school Due

James Sales Preschool will meet Monday, Sept. 13, at 8 p.m. in the school auditorium with Mrs. Donald Archer pre-

Mrs. Ross Plumb recently broke two ribs in a fall. We all hope he will soon be feeling better.

Annual Picnic
The annual picnic was held at the Fern Gap State Forestry project at Morton recently, with many of the parents of boys working there attending. Those from Graham were Mr. and Mrs. W. Wallace, Mr. and Mrs. T. Aviral, Mr. and Mrs. Harry White and Mr. and Mrs. Ross Plumb.

Clover Creek Post In Fine Program

The entertainment held Aug. 27 in the Spanaway school gymnasium was well attended and a fine program was presented.

The Mildred Keller Dance Studies presented Julie Natucci and Tommy Collier in tap dance and songs; Patty Joe Cooper, acrobatic; Ann Bluhm, tap; Ron Wilder, tap. Other entertainers were a girls' trio, Joy Barsotti, Mickey Cheeseman and Jean Kerstetter; Patty Thompson, solo; Louise Thomas and Wesley Lovaas, accordion, all from Bethel high school.

Laura Lovass of Spanaway school played an accordion number and Mrs. Jean Thomas, Spanaway rural mail carrier, offered a piano solo.

Several members of the Ladies Auxiliary unit No. 138, Tacoma, and members of Tacoma post No. 138, American Legion, were present.

After the program, coffee and doughnuts were served by the Ladies Auxiliary of unit No. 118, American Legion.

Several valuable awards were made during the evening. Mrs. Earl Hardie, P. O. Box 246, Spanaway, received a hand tool-ed purse; Mrs. Irma Long, P. O. Box 163, Spanaway, leather billfold; Miss Nancy Harvey, 10710 South J St., a ham.

siding. Miss Francis Scaree, for 18 years a kindergarten teacher, will speak on "What Kindergarten Means to a Child". A one-year subscription to P-TA magazine will be given to the person bringing in the most MJB coffee bands. The coffee bands are needed immediately to complete the earn-a-coffee-urn project. Homemade apple pie will be served during the social hour by Mrs. Herb Tollefson, Mrs. Webster Walton, Mrs. Edwin Rupp, Mrs. Chester Kirk, Mrs. Donald Reed, and Mrs. Norman Hondle.

On September 20, 1814, after the national capitol had been destroyed by the British, Congress moved into Blodgett's Hotel, and was guarded by Marines.

On September 20, 1814, after the national capitol had been destroyed by the British, Congress moved into Blodgett's Hotel, and was guarded by Marines.

Collins News

Mrs. E. F. Curtis Granite 7706

Tots Club to Meet

The first meeting of the Collins Tots club will be held Monday, Sept. 13, in the Collins school gymnasium. A movie, "Human Beginnings," will be shown and a talk given by Mrs. Jessup, public health nurse. All mothers of pre-schoolers, kindergarten pupils and first and second graders are cordially invited to attend.



Former State Representative

Paul Sandegren for State Representative

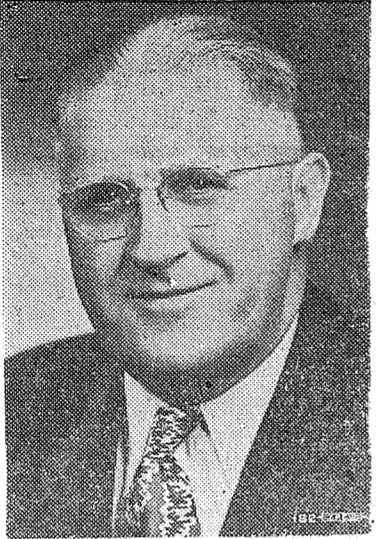
29th District — Democrat
"The true reward of a public servant is the satisfaction of having served the people honestly and conscientiously, of having contributed to the welfare of the community, the state and the nation."
(Pd. Adv.)

Elect Senator H. N. (Barney) JACKSON SENATOR 29th District

14 years as your Legislator. Always ready to work for the public.


Democrat

Endorsed by Railway Brotherhood (Pd. Pol. Adv.)



This is Mellinger's answer to high funeral prices

J. J. MELLINGER



new co-operative plan complete funeral service plus arrangements for cemetery property and cremation

at C. C. Mellinger Funeral Home

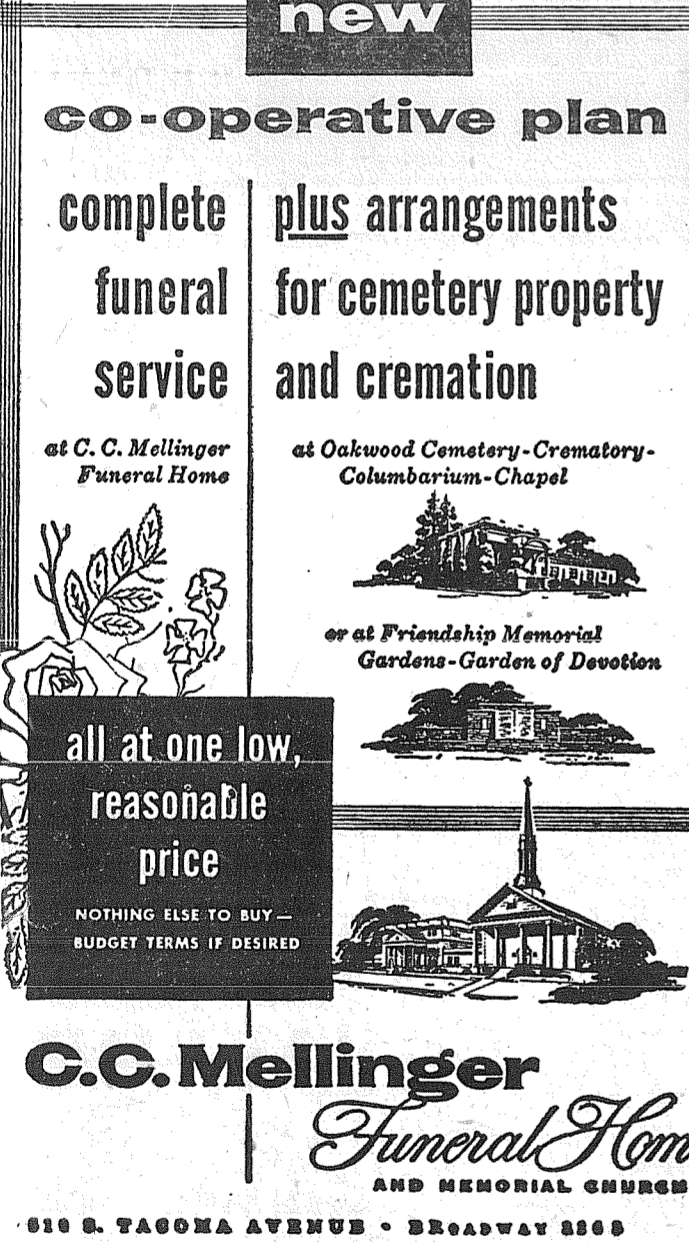
at Oakwood Cemetery-Crematory-Columbarium-Chapel

or at Friendship Memorial Gardens-Garden of Devotion

all at one low, reasonable price

C.C. Mellinger Funeral Home AND MEMORIAL CHURCH

610 S. TACOMA AVENUE • BROADWAY 2800



LAWYERS KNOW JUDGES BEST...

Attorneys throughout the state know the integrity and ability of the judges before whom their cases are tried... and overwhelmingly support the candidacy of Judge Richard B. Ott for Supreme Court.

ASK YOUR LAWYER!

... JUDGE OTT IS LAWYERS' CHOICE!


In Seattle, lawyers endorse Judge Ott—735 to 302... Spokane—231 to 6... bar associations or lawyer groups in 18 counties indicate Judge Ott as their overwhelming choice!

ASK YOUR LAWYER!

ELECT JUDGE RICHARD B. OTT STATE SUPREME COURT

Position No. 1

THE PRIMARY ELECTION IS FINAL... SEPT. 14
(Paid for by Judge Ott Election Committee, W. J. Steinert, Hon. Chairman)



OUR LOW PRICES SET THE PACE

THIRTIETH!

REALLY FRESH EGGS

Small AA

97c

3 Dozen

These Eggs Are Not Over 3 Days from the Nest!



Olympia - Rainier - Heidelberg BEER Case of 24 Stubbies . 2.95

Plus Bottle Deposit

Pillsbury 25 Lb. Bag FLOUR \$1.99

New! STARLAC NONFAT DRY MILK

In Money Saving Family Size Makes **3 FULL GALLONS 79c**



CHOICE MEATS

Pure Lean **GROUND BEEF 3 lbs. 89c**

Lean Tender Boneless **ROLLED ROASTS Pound 59c**

Good Grade Tender Meaty Blade Cuts **POT ROASTS Pound 33c**

BEEF SHORT RIBS Pound 19c

1 Pound 10 Oz. Average **CUT-UP FRYERS Each 79c**

FRESH PRODUCE

FRESH DANISH SQUASH Pound 5c

U. S. NO. 2 **POTATOES 50 Lb. Sack . 79c**

McDaniels Finest COFFEE lb. 97c

Heinz Shop McDaniels and Save! **KETCHUP btle. 19c**

Hunt's, 50 Grain **VINEGAR 1 gal. jug 69c**

Church's **GRAPE JUICE 24 oz. btle. 33c**

Tree Top **APPLE CIDER 1/2 gal. 49c**

A and H 1 Lb. Pkg. **BAKING SODA 10c**

Gaines 25 Lb. Bag **DOG MEAL 2.69**

40 Oz. Pkg. **BISQUICK 39c**

Medosweet 1/2 Gals **MILK 2/77c**

NBC Ritz 1 Lb. Box **CRACKERS 33c**

SHOP McDANIELS FOR PROMPT FRIENDLY COURTEOUS SERVICE

Prices Effective Thurs., Fri., Sat., Sept. 9th - 10th - 11th

OPEN 9 TO 9 7 DAYS A WEEK

LOTS OF PARKING SPACE

McDANIELS Airport and Canyon Road

OUR LOW PRICES SET THE PACE

OUR LOW PRICES SET THE PACE

OUR LOW PRICES SET THE PACE

