

1007 20 '66

PLU Homecoming To Open Thursday In Memorial Gym

Pierce County HERALD

U.S. POSTAGE PAID Puyallup, Wn. 39 C.F.R. 34.66 PERMIT No. 84

Vol. 22, No. 7 and Times Journal October 19, 1966

Marine Wins Bronze Star

David Boshell Cited As Hero In Vietnam

PUYALLUP - Marine Corporal David A. Boshell has been cited for heroism in action in Vietnam.

The 20-year-old son of Mr. and Mrs. Jerry J. Boshell of 5606 Vickery Ave. E., received the citation from Rear Admiral Floyd Schultz, commander of the Puget Sound Naval Shipyard at Bremerton last week.

Corporal Boshell, who attended Puyallup High School before entering the service in 1964, has been stationed at Bremerton since his return from Vietnam.



PINNING A BRONZE STAR MEDAL on Corporal David A. Boshell of Puyallup (right) is Rear Admiral B. Schultz (left). Young Boshell was among three Bremerton-stationed servicemen who were honored at a full scale military decorations ceremony last week as they were presented medals earned for action in Vietnam.

He received the honor for heroic achievement in connection with a battalion operation for Company K, 3rd Battalion, 9th Marine Division.

The citation given to young Boshell reads, "On July 4, 1966, his company was under extremely heavy fire with superior Viet Cong Forces positioned on three sides of the Marine Unit."

"Reacting swiftly and professionally Boshell commenced returning hostile fire on the hostile position. When his ammunition was nearly depleted, Boshell made several hazardous re-supply trips covering 75 meters of terrain and returned with two cases of ammunition. Under fire he carried a seriously wounded comrade to safety."

After the battle the Corporal utilized his rifle and helped carry casualties to safe areas where medical treatment was available.

Vandals May Work Off Damage

A special penal work-pay program for juveniles guilty of vandalizing school or other public property is being put into effect by the Franklin Pierce School District in cooperation with the Pierce County Juvenile Court, Supt. E.E. Hill disclosed early last week.

Details of the program were worked out in a recent meeting with Judge Bertil E. Johnson and officials of the Juvenile Court, Dr. Hill said. Under the work-pay plan, an offender can expect to work off between 25% and 100% of the total damages, depending upon his parents' ability to pay the difference in restitution.

Vandals referred to the district by the court will be required to perform constructive work to cover at least 25% of the damage they have created. The most a parent will be required to pay will be 75% of the total, Dr. Hill stated.

Juvenile authorities will refer violators to the district superintendent's office for work assignments. Under the watchful eye of a school custodian the youths will work out their punishment until released by the superintendent, Dr. Hill said.

The plan was enthusiastically approved by the court, and will probably be recommended to other school districts in the county, Dr. Hill stated.

Franklin Pierce School administrators met with county juvenile court officials to find a way of effecting restitution for recent acts of school vandalism in the district. The meeting was recommended by the Franklin Pierce School Board after acting on a letter submitted by one of the directors.

County Police Beat High Chair Near-Tragic Path For Parkland Tot

By Em Matson

Using her high chair as a ladder, a 2 1/2 year old Parkland girl climbed to near tragedy on top of her family's electric kitchen range, deputies reported last week.

The daughter of Mr. and Mrs. E.L. Faker, 1104 South 123rd, was given emergency treatment for second degree burns on her face, and second and third degree burns on her chest and stomach at Lakewood General Hospital, Deputy Sheriff Fred Dillon stated. She was later transferred to Mary Bridge Children's Hospital.

The child used her high chair as a ladder to get onto the kitchen range, the father told deputies. She turned surface unit switches to "on" and when the elements heated, her nightgown ignited.

Quick action by her father, who discovered the accident, removed her burning gown. He was treated for first and second degree burns of the hands and wrists.

PARKLAND - A Pierce County Sheriff's Deputy was called upon to act as emergency "midwife" during the birth of the son of Mr. and Mrs. Earl Sexton, 13022 Pacific Avenue early October 11.

Although the mother and her 7 pound, 2 ounce son are reported to be doing fine, the deputy, Thomas Lawrence, was described by fellow officers as a "nervous wreck". It seems Deputy Lawrence expects to become a father any minute, and he doesn't want another midwife assignment, especially at his own home.

Lawrence was assisted by Don Giles, Parkland Pacific Ambulance, who finished the job by tying off the umbilical cord and transporting the mother and child to Madigan Hospital. The birth took place at the Sexton residence.

SUMNER - Vandals did at least \$500 damage to a road grader and D-4 Cat at a construction site 3 miles north of Sumner, Deputy Sheriff H.N. Holstad reported last week.

Gauges were smashed and the air cleaner and driver's seat were stripped from the cat, Richard Merrill, Lige Dickson site foreman told Holstad. Windows and gauges

County Farming Shows Decline, Facing Crisis

21,000 Acres Out Of Production In Past 5 Years

Pierce County has lost over 21,000 acres of farm land in the five years ending 1964, according to the Preliminary Report to the 1964 U.S. Census of Agriculture, soon to be released.

Frank Jackson, County Extension Agent, revealed today that this latest census of agriculture will show that the 153,363 farm acres reported in 1959 has shrunk to 132,249 acres in 1964. Farm numbers also declined about 20% from 2535 to 2054. Greatest loss came in poultry farms tabulating from 252 to 138, while nearly 100 dairies moved or went out of business. Dairy farms dropped from 262 to 164.

"There is an uncertainty of the future status of agriculture in Northeast Pierce County which tends to limit building investment and expansion programs in agriculture," planning consultant Walter M. Isaac told the Rural Suburban Council.

Addressing the annual meeting of the Council, Isaac warned, "Speculative land buying makes more land available than is needed for non-farm use. This creates two problems: (1) the loss of land for agricultural production, and (2) it causes excess taxes Isaac went on to list five positive reasons for maintaining agriculture in Pierce County:

- (1) Raising of foodstuffs for the increasing adjacent urban population.
 - (2) Providing open space near the population centers of Pierce County and the Puget Sound Region and greenbelts around its cities.
 - (3) The maintaining of horticulture provides an economic activity in employment parts of the county.
 - (4) Ideal soil conditions exist in Pierce County for farming, which produces high yield per acre.
 - (5) Agriculture provides summer employment for students. "The coming five years," Isaac concluded, "will determine the future of agriculture in the rich Puyallup and Stuck River valleys."
- The Rural Suburban Council is composed of concerned Pierce County private citizens who study problems in community development, family living, youth and agriculture, and recommend to the Extension Service.
- Officers and directors for the 1966-67 year are president Richard Starkel, Puyallup dairyman; vice president Warren Bjerge, Boeing draftsman; secretary Mrs. Lyle Parker, housewife and community leader; directors - R.C. "Chuck" Miller, Firgrove poultryman, and Harlan Ford, Orting dairyman.
- Most crops and livestock produced showed marked declines, Jackson said. Exceptions are larger numbers of beef cattle, primarily the "backyard" variety grown for locker beef. Fewer dairy cattle actually produced nearly 7 - 1/2% more milk while total dairy products sold increased from \$3-3/4 million to \$4-1/2 million.
- "While some increases are apparent in bulbs, specialty crops and strawberries, dairy and poultry," Jackson concluded, "the picture is one of massive encroachment and net loss of production at a time when populations swell. But the camouflage of inflation tends to create a false sense of euphoria at a time when the bulldozer blade slowly bleeds our national productivity to death."
- "This is not a local situation," Jackson warned, "King County has lost some 53,000 acres of farm land and across the nation we are feeding 3,000 farm acres per day to the hungry bulldozer blades."

Daffodil Budget \$26,000

Adoption of a \$26,000 budget for the 1966-67 festival year was a major item of business Thursday night at the regular Board of Directors' meeting of the Puyallup Valley Daffodil Festival.

Meeting in Tacoma, the directors heard a report from revenue chairman Francis J. Browne that early response to Sustaining Membership Committee headed by Robert L. DeLong was encouraging. First requests for financial support for the festival in the forms of gold and silver awards are ahead of schedule, Browne said.

Festival dates confirmed Thursday night included three for selection of festival princesses. Sumner has set January 23, Tacoma has chosen January 26 and Franklin Pierce has named February 7 for naming their queen candidates.

A. Richard Wingard, chairman of the Tacoma Chamber of Commerce Daffodil Committee, said that he is now completing the membership

Homecoming festivities at Pacific Lutheran University will get underway Thursday evening with a concert by Louis Armstrong and His All Stars at 8:15 p.m. in Memorial Gymnasium.

The homecoming queen and her court will make their debut at the songfest to be held Friday night at 7:30 o'clock in Eastvold Chapel. Following the coronation there will be a bonfire and pep rally on the lower campus.

The annual Powder Puff game between freshmen and upper class coeds will be held at 10:00 a.m. Saturday, followed by the all-star intramural football game at 11.

Varsity football between PLU and Whitman is slated for 1:30 p.m. Saturday in the Franklin Pierce Stadium. Halftime festivities will include a marching pageant by the PLU Concert Band under the direction of Prof. Gordon O. Gilbertson.

In the evening at 5:30 there will be a banquet for the alumni at which time Dr. Martin Johnson, renowned oceanographer from La Jolla, Calif., will receive the Distinguished Alumnus Award. The day will conclude with the annual homecoming dance in the gymnasium from 8:30 to 12:30.

Suen Hall, new residence unit for 110 women, will be dedicated at the 10:30 a.m. worship service Sunday morning in Eastvold Chapel. There will be open house in residence halls on campus from 1:30 to 3:00 p.m.



PLU'S HOMECOMING ROYALTY-Julie Danskin, center, will reign as queen over homecoming festivities at Pacific Lutheran University this weekend. A senior education major from Bremerton, she will receive her crown at coronation rites Friday night at 7:30 in Eastvold Chapel. Princesses in the royal court are Geraldine Cohens, left, and Sylvia Olson.

Freeway Speedup Requested

OLYMPIA - The State Highway Department this week recommended to the Highway Commission the budgeting of the freeway link from Auburn through Sumner and Puyallup to Parkland for immediate construction, Rep. Leonard Sawyer announced Monday.

Under the Department's new priority program, the budget request would complete the freeway in 1971, nearly five years ahead of previous time estimates. Sawyer had estimated earlier this year that nothing could be done to start freeway construction before 1972. The new move could get work underway in 1967.

The budget request is part of the total priority programming being explained by the Department's planners early this week to the Highway Commission. It still must pass the Commission's scrutiny and get approval of the Legislature.

Some work is underway at the Parkland end of the freeway link and in the Stuck River area near Sumner.

Lights On Pacific



INSTALLATION of mercury vapor street lighting along Pacific Avenue between 131st and 152nd started Monday, October 17. Completion of the project is expected within the next two weeks. Elmhurst Mutual Power and Light Company officials said Monday. Pending availability of twenty foot extension arms lighting will eventually be installed to 168th and Pacific.

Parkland Studying For Libe

A joint committee composed of Parkland Kiwanis and Parkland Development Association members has been investigating potential sites and financing for a new Parkland Branch Library.

The committee has been working in cooperation with the Pierce County Library Board.

Steps have been taken by the Library Board to make the Parkland Library eligible for federal funds, a recent bulletin released by the Parkland Development Association reported. The funds would come through the Library Services and Construction Act of 1964.

The committee has been working toward procurement of local funds that could be supplemented by the Pierce County Library Board and a federal grant, the bulletin stated.

Serving on the committee are Paul Larson, chairman, Dr. Jack Erickson, George Potter, Carl Lindgren, John Austin and Dr. Dale Tibbitts.

The present library branch in Parkland is housed in a Quonset hut at 119th Street South just west of Pacific Avenue.

Pumpkin Producer



PUMPKIN KING Ed Pechon, Spanaway, is pictured as he prepares to transfer a ton of pumpkins for shipment to nearby markets. He is assisted by 15 year old Eric Travelstead. Pechon picked the pumpkins near Yelm last week.

Club Calendar

CUB SCOUT PACK #134 will meet 7 p.m. Thursday, October 27 at the Spanaway Lutheran Church.

PARKLAND BUSINESS Club will meet 7:30 p.m. Wednesday, October 19, at Johnny's Ranch. County Commissioner Harry Sprinkler will be guest speaker.

PARKLAND UNIT 228 of the American Legion Auxiliary will meet 8 p.m. October 24 at Sunshine Hall. This will be a visitation meeting with the Fourth District officers. Nina Ross, Parkland Girl's State Representative, will report on her participation at Girl's State in Ellensburg.

LUTHERAN WELFARE Auxiliary will meet Friday at Bethlehem Lutheran church. Alice Meyers of the Family and Child service in Seattle will be the guest speaker, coffee hour, served by the ladies of the church will follow the business meeting.

SOUTHERN PUGET SOUND Dietetic Association will hold its fall dinner meeting Thursday, October 20, at the Sherwood Inn. The 7 o'clock dinner will be preceded by a social hour at 6:30.

ROUND ROBINS round dance club will meet at Fruitland Grange on Thursday, October 20 at 8 p.m. All round dancers are invited. Coffee and tea will be served by Mr. and Mrs. Roy Armstrong at the close of the evening.

KALICO KICKERS square dance will hold its annual "Hobo Hop" when they meet at the Canyon Road Community Hall, 80th and Canyon Road at 8:30 p.m. Saturday. A prize will be awarded to the "worst burn" but costumes are optional.

Apple cider will be served during the intermission. A potluck supper will be served at 11:30 p.m.

PARENTS WITHOUT PARTNERS, Pierce County Chapter, will hold a swim party for the children from 7 to 9 p.m. Friday at the Puyallup swim pool.

The regular dance of PWP is 9 p.m. Saturday on the top floor of the Tacoma Athletic Club, 733 Commerce. For further information call TH, 5-4138 or write PO Box 778, Tacoma.

BETHEL HIGH BOOSTER Club will meet 8 p.m. Monday, October 24 in the school multi-purpose room. Howard O'Conner will speak on the "Proposed Constitutional Amendment and How it Affects the School". Refreshments will be served by the Club.

FRANKLIN PIERCE HIGH BOOSTER Club will meet 7:30 p.m. October 25 at the High School.

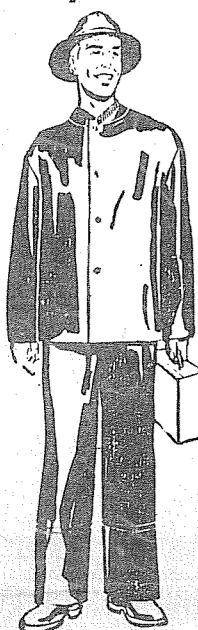
COLLINS TOT CLUB will hold an executive board meeting at 8 p.m. Tuesday in the home of Sandy Rogers, 13012-42nd Avenue East. All interested members are welcome.

GOLDEN DAFFODIL Grandmother's Club #62 of Graham will have a "fun night" at 8 p.m. Saturday at the Graham Grange Hall. Refreshments will be served.

Western Monumental AND Marble INC.
Reliable, Prompt Service in All Cemeteries
1106 Center St. FU 3-5538
Marble for the Home

Firstbank Card welcome here

Shop Seymour's Each Day 9 to 9 P.M. Sundays 10 to 6



Large Selection of **RAINWEAR** 3⁹⁹ to 12⁹⁹ each
Husky work jackets, pants, etc., in olive drab or yellow! They're waterproof—by U.S. Rubber. All sizes!

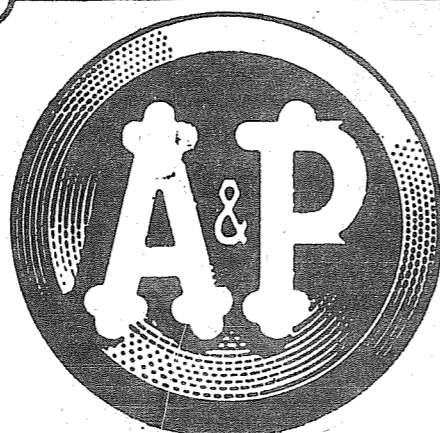
SEYMOUR'S
9714 PACIFIC AVE.
Free Front-Door Parking!

OK WINTER TRACTION SPECIAL!
Get Dependable GO at 1/2 the Dough with safe, reliable O.K. Trailmaster Winter tread retreads

OK Trailmaster RETREADS ANY SIZE
BLACKWALLS OR WHITE WALLS
2 FOR 24.95
PLUS F.E.T. Of 52¢ to 80¢ depending on size
2 Recappable Trade Ins

AND FOR THE ULTIMATE IN SAFE, WINTER DRIVING, HAVE O.K. SAFETY STUDS INSTALLED AT A SLIGHT ADDITIONAL COST.

OK TIRE STORES NATIONWIDE SALES AND SERVICE
PARKLAND LE 7-7355
9639 Pacific Ave.



HUNT'S PIZZA CATSUP
14 OZ. **11¢**
BTL.

-LOCKER BEEF SALE -

Cut & Wrapped at your specifications at NO EXTRA CHARGE - U.S.D.A.

"CHOICE" GRADE BEEF - See your Meat Department Manager for particulars

BEEF HINDQUARTER
140 To 170 Lbs. Average **63¢ LB.**

Fresh Produce!



BANANAS
Chiquita Finest Quality
11¢ lb.

California Crown—Large, Sweet Clusters
Emperor Grapes lb. **15¢**
California Crown—Packed with Vitamin C—Red
Ripe Tomatoes lb. **17¢**
Washington Crown SQUASH—Excellent Quality
Sugar Hubbard lb. **4¢**

Frozen Foods!

Frozen—Adds Flavor to Coffee
COFFEE RICH 2 16-oz. Size **49¢**
Booth's—Cooked
SCALLOPS 1-oz. pkg. **59¢**
A&P's Own—Grade A—CUT CORN or
FROZEN PEAS 2-lb. cello **39¢**
A&P's Frozen—Grade A—1-lb. pkg.
STRAWBERRIES 3/1.00
A&P's Frozen—Grade A—Baby
LIMA BEANS 2-lb. cello **49¢**

ORANGE JUICE
A&P's Frozen Florida Grade A Like Fresh 6 fl. oz. tin
1.29
Handy 6 Pack

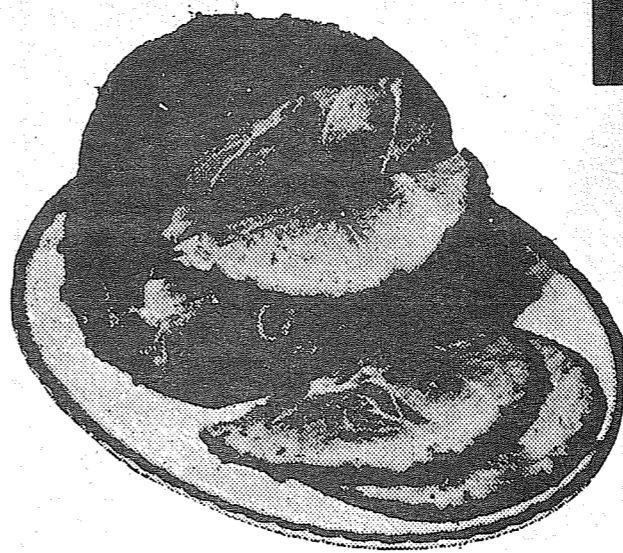
Candy Corn HANDOUTS

Ann Page 13-oz. **29¢** | Ann Page 1-lb. 1 1/2-oz. 20 Assorted **75¢**

Dairy Values!

A&P's Own Wisconsin Cheddar—Aged—Over 1 Year
SHARP CHEESE lb. **89¢**
Mel-O-Bit—A&P's Pasteurized—Swiss or American
SLICED CHEESE 12-oz. cello **53¢**
A&P's Own—Fresh Tasting—Fine Flavored—Nutritious
MUENSTER CHEESE lb. **69¢**

SMOKED HAMS



Lennon's FULLY COOKED 12 to 16 lbs.

SHANK END
lb. **49¢**

Lennon's Fully Cooked 12 to 16 lbs. Average Hams Thick Cut for Baking or Frying
WHOLE or Shank Half ... lb. **59¢**
HAM SLICES lb. **98¢**

Fresh—Cut From Eastern Grain Fed Pork—12 to 16 lb. Loins
PORK CHOPS ... lb. **79¢**
RIB CUT

Fresh Pork—Country Style—Cut From The Rib End of Loin
SPARERIBS lb. **69¢**
U.S. "Choice" Beef—Whole or Half—Serve Boiled
BONELESS BRISKET lb. **83¢**
Super-Right Quality Beef—Freshly Ground
GROUND CHUCK .. lb. **69¢**
Fresh—Unseasoned—Approx. 50% Beef, 25% Pork, 25% Veal
MEAT LOAF lb. **69¢**
U.S. "Choice" Beef—Cut Any Size Piece
BONELESS CHUCK lb. **79¢**
POT ROAST lb. **79¢**

Super-Right—All Meat—Sandwich Size
Sliced BOLONGA 1/2 lb. **39¢**
Danola—Imported—Danish—Vac. Pak
COOKED HAM ... 4 1/2-oz. **65¢**
Leo's—Smoked Beef—Spicy Beef, Corned Beef or Ham
SLICED MEATS 3-oz. pouch **35¢**
Hygrade's—Large—8 Per Package
Ball Park FRANKS lb. **69¢**
Allgood—A&P's Own—Hickory Smoked—Fresh Flavor
SLICED BACON lb. **79¢**

GRADE A—YOUNG—NEW CROP TURKEYS
Top Quality 10 to 14 lb. Average
Flash Frozen Broadbreasted
39¢ lb.

— FRESH SEAFOODS —
FRESH OYSTERS
Medium Size 10 oz. **69¢**
FRESH CRABS
Dungeness Medium Size lb. **39¢**
SILVER SALMON
Fresh—Steaks or Roasts lb. **79¢**

Dependable Grocery Values!

Hi-C FRUIT DRINKS
Cherry, Grape, Orange, Fruit Punch or Orange/Pineapple
(Each 25¢) **4** 1 Qt. 14 Fl. oz. Tins **99¢**

Geisha—Mandarin—11-oz. Tins—(Each—25¢)
ORANGES **4/99¢**
Nabisco—Apple Strudel or Pecan Shortbread
COOKIES 14-oz. pkg. **45¢**
FAB—Powdered—Includes 25¢ off Deal
DETERGENT 5-lb. 3 3/4-oz. pkg. **99¢**
Nalley's—With Beans—Regular or Hot
CHILI CON CARNE 30-oz. tin **69¢**
Nalley's—Tender Beef w/Garden Vegetables
BEEF STEW 30-oz. tin **75¢**
Post's Cereals—14-oz. pkg. Sugar Krisp or
ALPHA BETS 12 1/2-oz. pkg. **39¢**
Scansco—Assorted Flavors—Layer
CAKE MIX 4 pkg. **1.00**
Hills Bros.—All Grinds—(2-lb. tin ... 1.37)
GROUND COFFEE 1-lb. tin **72¢**
Sutana - A&P's Own - Creamy Smooth
SALAD DRESSING One Quart Jar **39¢**

Double Luck—Irregular Cut—GREEN—1-lb. tins
BEANS **10/99¢**
Chiffon—Spreads Smoothly
MARGARINE 1-lb. pkg. **39¢**
A&P's Own—Fresh Coffee Flavor
INSTANT COFFEE 6-oz. jar **79¢**
A&P's Own—Finest Quality—Grade A Fruit
COCKTAIL 3 1-lb. 12-oz. tins **1.00**
A&P's Own—Grade A—Heavy Textured
APPLESAUCE 6 1-lb. tins **95¢**
Cold Stream—A&P's Own—Alaska 1966 New Pack
PINK SALMON 1-lb. tin **67¢**
Carnation—Orange, Choc. Mint or Strawberry
INSTANT BREAKFAST Pkg. of 6's **69¢**
Ann Page—A&P's Own—Fine, Medium or Broad
NOODLES 3 one pound cello **1.00**
A&P's Own—Grade A—Whole Kernel or
CREAM CORN 5 1-lb. 1-oz. tins **1.00**

A&P VITAMINS NEW Daily Multiple **100** tablets in Jar **89¢**

TACOMA A&P 9201 PACIFIC AVE.
OPEN
MONDAY THRU SATURDAY - 9 AM to 9 PM.
SUNDAY - 10 AM to 6 PM.

All Prices Effective Thursday thru Saturday, Oct. 22nd
Equal Opportunity Employer

County 4-H 5th In Judging At PI

Taking fifth place honors in the dairy judging contest at the Pacific International Livestock Exposition in Portland

this last weekend was the Pierce County 4-H team. Team members included

Sherry Dusek of Graham, Eunice Overland of Puyallup and alternate Robin Dusek of Puyallup.



we don't have a representative in Congress... we have a rubber stamp for LBJ!

The "Great Society" is great all right. So great that it threatens to crush every person in this country who depends for his livelihood on wages, a salary or a pension.

Yet, despite the objections you may have to this "something-for-nothing" approach to running our nation . . . the present congressman from the 6th district finds very little wrong with it.

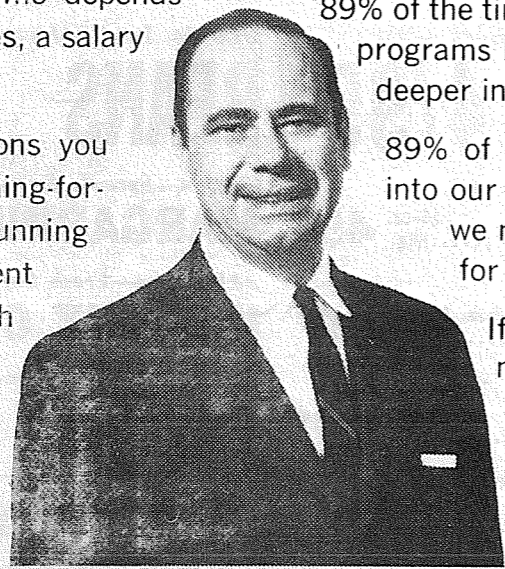
89% of the time, he has voted FOR the very things that have sent

prices and interest rates completely into the stratosphere.

89% of the time, he has voted FOR the programs LBJ wants — sending us deeper into debt.

89% of the time, he has dipped into our tax dollars to buy things we neither asked for, wished for or voted for.

If you believe — as so many of your neighbors do — that it's time we began to live within our national income once again, you will vote for an help elect



GEORGE MAHLER

REPUBLICAN FOR CONGRESS - SIXTH DISTRICT

"HOLLER FOR MAHLER"

PAID FOR BY MAHLER FOR CONGRESS COMMITTEE, ROBERT W. COPELAND AND WILLIAM DANE, CO-CHAIRMAN

Reception, Breakfast To Fete Hicks, Magnuson

A reception Friday evening at the Tacoma Motor Ho-

tel and a breakfast Saturday morning at Ivan's on the River Road will fete Congressman Floyd Hicks and U.S. Senator Warren Magnuson, b

The reception will be held from 5 to 8 p.m., according to County Democratic Chairman Dewey Plankers. The \$25 a ticket event will provide funds for the general election campaign. An all-county political rally will follow at the Tacoma Public Library.

Hicks and Magnuson both also will speak at the breakfast at 9:30 a.m. Saturday. Both will discuss legislative matters of interest to this area and will also answer questions from those attending.

Senator Magnuson also will tell of his recent trip behind the Iron Curtain, particularly of his stay in Moscow.

Any interested citizen in Pierce County is invited to attend. The reservations are not necessary, it would assist the committee if those planning to be present would call Puyallup TH, 5-1720. Tickets sell for \$1.50.

Co-Chairmen of the event are Senator Reuben A. Knoblauch and Representative Frank "Buster" Brouillette of the 25th District.

150 Attend 4-H Leaders Banquet

SUMNER - The annual banquet given by Pomona Grange in honor of County 4-H leaders drew 150 persons Saturday night, nearly 100 of them being honored guests, b

Al and Helen Adams of Kapowsin were honored as "king and queen" of the evening and were seated at the head table in the Sumner Grange Hall. After the dinner, served by the Sumner Grange ladies, a program was held. Mrs. Eileen Miller led the community singing and the 17 Norselanders from Puyallup High School sang. Fife Grangers presented a skit.

"Pomona Grange can take great pride in this tribute to the 4-H leaders of the County," George Purcell said in his talk about the rewarding work of 4-H.

Frank Stowe, county agent, presented service pins from the Washington State Grange and feather corsages by Mrs. Leola Richardson, chairman of the Pomona Grange youth committee.

20-year pins were awarded to Mrs. Eunice Booth of Eatonville and Mrs. Orpha Geise of Waller Road.

15-year pins went to Otto Moebius of Graham and Mr. and Mrs. E.G. Foote of Fife.

10-year pins went to Mrs. Elsie Bergren of Roy and Joyce Ward of Puyallup.

5-year pins were presented to Mrs. Shirley Knapp of Gig Harbor; Stanley Gleier of Sumner, Beryl Olson of LaGrande, Jean Cimono of Midland, Betty Jorgensen of GIG Harbor, Lena Swetz of Graham, Evelyn Ida Miller of Firwood, Marjorie Kiesel of Gig Harbor and Allie Wood of Brookdale.

FP Dist. Sets DPT, Smallpox Vaccinations

Smallpox vaccinations and diphtheria-tetanus shots will be offered all Franklin Pierce students during the first week in November.

The immunization program, however, is only available to students who have their parents' permission. Consent forms must be completed by Oct. 24 for elementary students so the school can order the right amount of vaccine, according to Mrs. Dolores Schmechel, school nurse.

The immunization will be given at the High School, Keithley, Midland, Collins and Elmhurst schools Nov. 1; James Sales, Central Avenue and Christensen Nov. 2; and Ford, Parkland, Harvard and Brookdale, Nov. 3.

FP School Bond Issue Needs 3,430 Voters For Nov. 8 Passage

More than 3,430 voters must cast ballots on Proposition I in the Franklin Pierce School District election Nov. 8 if the issue is to be validated, Robert C. Richardson, assistant superintendent, said this week. b

the high school is not possible before the fall of 1969 even if the bond issue passes in November, he said.

Because Proposition I is a bond issue for \$995,000, he said, 40 per cent of the number of people who voted in the last general election must vote on the issue.

Proposition II, a \$598,000 excess levy request, needs only 40 per cent of the number of voters who turned out in the special election last spring, which means that 1,431 votes are needed to validate that proposition, Richardson said. Because both the propositions are money issues, each must receive a 60 per cent majority of the votes to pass.

The \$995,000 bond issue, which would provide about 26 per cent of the total funds needed, is to help finance the planning and initial construction of a new high school in the district, a tenth elementary school and the planning for a third junior high school.

Richardson said that enrollment in the present high school is some 200 students over the enrollment standard set by the state for the building and in another three years the enrollment is expected to exceed that standard by about 500.

Present elementary schools are nearly full also, he said, and both junior high schools are now at capacity. An addition to Ford Junior High School has been completed, he said, but further additions cannot be made and still get any state financing assistance.

The school district already has purchased the land for the new high school. The land is located just west of Keithley Junior High School. An elementary school site has also been purchased at 128th and Portland Avenue. However, completion of construction of



MIDLAND
Oct. 13 SHED FIRE 3:27 p.m., 9333 Golden Given. Caused by children playing with matches.

PARKLAND
Oct. 14 FALSE ALARM 8:19 p.m., 1102 South 117th.

MILTON
Oct. 15 ELECTRICAL FIRE 9 p.m., 10th and Kent Street.

PUYALLUP
Oct. 15 STREET WASH 11:40 a.m., Junior High Parking Lot. Washed down spilled load of weed killer.

Oct. 16 SMOKE SMOELL 6:03 a.m., 907-18th N.W. Caused by overheated fan motor.

Oct. 16 HOUSE FIRE 1:28 p.m., 711 4th Street S.W. Started in closet from undetermined cause.

SUMNER
Oct. 11 FURNACE FIRE 9:46 a.m., 1803 Academy Street.
Oct. 12 DRYER FIRE 10:50 a.m., Laundromat on Wood Avenue.
Oct. 16 CAR FIRE 6:40 p.m., On Buckley Highway. \$125 damage.

LAKE TAPPS
Oct. 15 RESUSCITATOR CALL 3:23 p.m., A Driftwood Point residence.
Oct. 15 BUILDING FIRE 11:30 p.m., Orvitz's Charcol Pits.

Pierce County Bldg. Permits

Ray N. Dally \$27,500 residence 4423 Merry Lane, W., Ernest Horman \$16,000 residence 618 So. 116th Street, Alfred H. Gunns \$4,000 residence 11106-119th St. E., Clyde Hume, Jr. \$18,500 residence 7612-50th Ave. E., Irene D. Scharch two \$15,000 residences at 418 49th Ave. N.W., Puyallup, Robert S. Rollins \$20,000 commercial building 177th & Park Ave., Arvid E. Keith \$20,000 residence 15909 7th Ave. E., Earl Robinson \$12,000 residence 919 - 51st Ave. Ct. N.E., Puyallup, Pete V. Naccarate \$25,000 residence 810-55th Ave. N.W., Puyallup, Gilbert R. Howard \$10,000 residence 10304-90th Ave. E., Martin Boyle \$24,000 residence 6204-143rd St. So., Earl S. Robinson \$12,000 residence 14904-78th Ave. E., Puyallup.



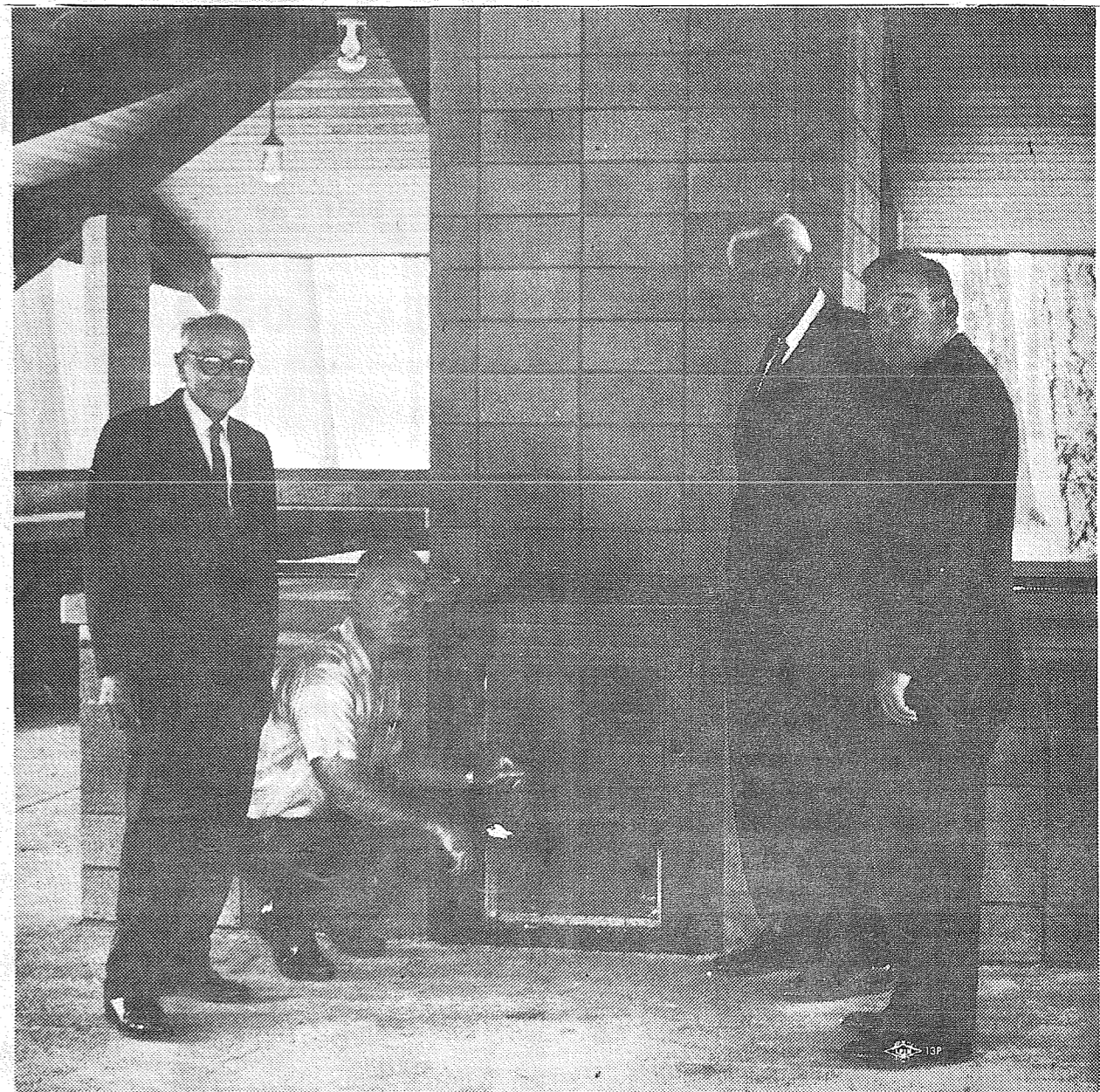
THE PUYALLUP ELKS PRESENTS



THE FRANKIE FANELLI SHOW
Now, Weds. Oct. 19 thru Sat. Oct. 22
RCA PHONE RECORDING START!! TH 5-9515 FOR RESERVATIONS

COME OUT & ENJOY YOURSELF AT THE PUYALLUP ELKS B.P.O.E. 1450

RETAIN FRITZ GEIGER COUNTY COMMISSIONER-DEMOCRAT



A SOLID TEAM-The County Commissioners work together in the support of community progress-- in this case, the construction of a new picnic shelter. They also work together for good government for Pierce County.

We solidly support the re-election of Fritz Geiger as County Commissioner. We urge all voters of Pierce County to retain his knowledge and experience in continued strong government for our County.

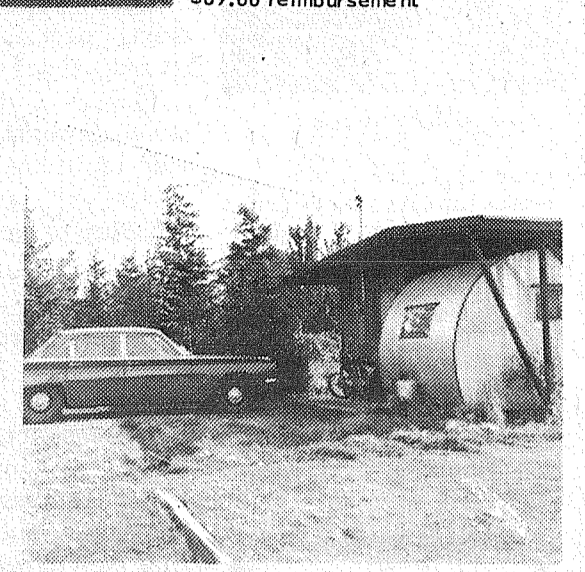
RE-ELECT FRITZ GEIGER YOUR COUNTY COMMISSIONER - DEMOCRAT

(Pd. for by Committee for Fritz Geiger)

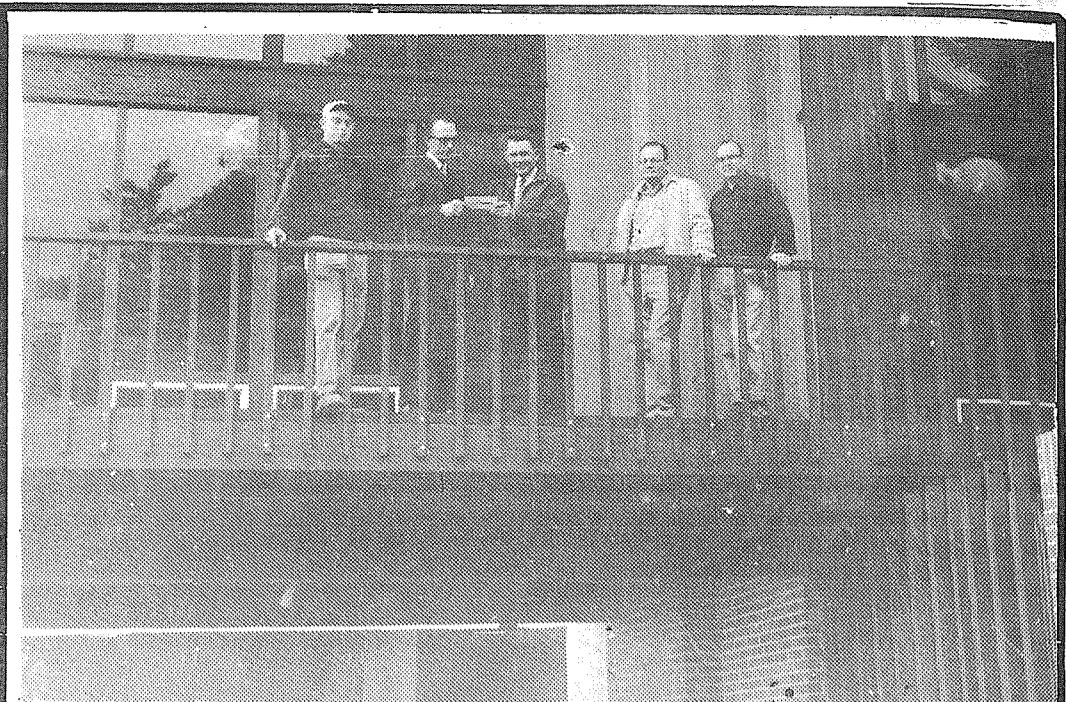


89⁰⁰ & 117⁰⁰
2 OF 9....
HEATING SYSTEMS
INSTALLED BY
PARKLAND ELECTRIC
WITH UNITS BY
INTERCITY
MANUFACTURING CO.
 (L) Robert L. Deal Home 1712 So. 120th \$117.00 Reimbursement for rec & sewing room add.
 2 Room addition to the home below of Mrs. Ellen Green. 110 E. 206th \$89.00 reimbursement

Heating System Installed By.....
PARKLAND ELECTRIC
 ELECTRICAL CONTRACTOR
 13415 PAC. AVE. LE 7-1
LE 7-0397
 Heating Units Manufactured By.....
INTERCITY Manufacturing Co.
 13421 PAC. AVE.
 "YOUR LOCAL ELECTRIC BASE BOARD HEAT MANUFACTURERS"
LE 1-0311



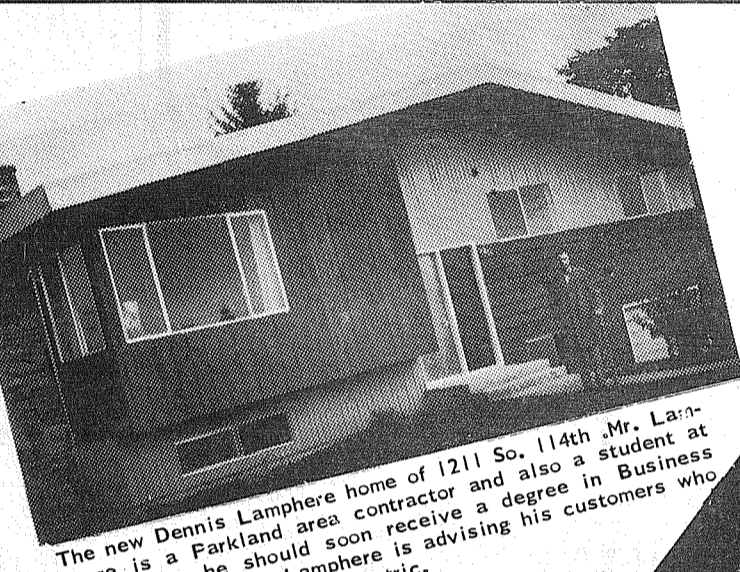
WE RECEIVE MONEY FOR INSTALLING ELECTRIC HEATING? \$150⁰⁰
 That's right....Mr. & Mrs. Blan are shown here receiving a check for \$150.00 from Parkland Light & Water Manager Al Raber as reimbursement for installing Electric Heat. Looking on are Larry and Ma: Hyndman, of Hyndman & Son Electric, who installed the units. This home should heat for less than \$100 per year, less any free bills granted by PL & W.
HYNDMAN & SON ELECTRIC
 LICENSED & BONDED COMMERCIAL & RESIDENTIAL
5226 SO. M STREET GR 4-3245



NEW HOME - NEW IDEA FOR LOW COST HEATING INSTALLATION \$540⁰⁰
 This new concept in modern living is equipped with ELECTRIC HEATING by ABC ELECTRONICS, owned by Gene and George Knudtson. The home was constructed by LaMonte Hedlund and has wall-to-wall windows overlooking PLU. All are pictured on the balcony looking on as Al Raber, Parkland Light & Water Manager presents owner, Dr. Richard Moe with a check for \$540.00, reimbursement for installing electric heating.
 INSTALLATION OF HEATING SYSTEM BY.....
ABC ELECTRONICS
325 Garfield So. Parkland LE 7-4900 NIGHTS SUNDAYS & HOLIDAYS LE 7-4725

SAVE \$200 TO \$500
 THROUGH PARKLAND LIGHT & WATER CO.'s
"PROVIDE THE HEAT PROGRAM"
 When We Install A Fabulous New WESCO FORCED AIR ELECTRIC FURNACE In Your Home
Groff's ELECTRIC HEAT
 3308 SO. UNION TACOMA **FU 3-5329**

Electrical CONTRACTORS
INDUSTRIAL- COMMERCIAL
 ELECTRIC HEATING
 ESTIMATES-TERMS
GR 4-9506
 3709 SOUTH G.
H&W WIRING INC.



The new Dennis Lamphere home of 1211 So. 114th. Mr. Lamphere is a Parkland area contractor and also a student at PLY where he should soon receive a degree in Business Administration. Mr. Lamphere is advising his customers who live in Parkland to go all electric.

AN ALL ELECTRIC HOME IS FOR LIVING

FOR YOUR HEARTS DESIRE... CHECK PARKLAND LIGHT & WATERS

"PROVIDE THE HEAT" PROGRAM
 "ANOTHER ADVANTAGE TO LIVING IN PARKLAND"
LE 1-5666
 (AVAILABLE TO MEMBERS ONLY)



The Spencer home at 622 South 114th, changed to an all electric last month. The annual heating cost will be under \$100, less any free bill granted by Parkland Light & Water.

Flameless Water Heaters Best!

Whether they are fresh from the Little League baseball diamond or just in from the family sandpile, kids usually manage to drag in a lot of dirt on themselves and their clothes.
 And when Mom sends the "home team" off to the showers or drops their dirty clothes into her automatic electric washer, hot water worries are the last thing she needs. For mothers know that both kids and clothes come out a lot cleaner when there is plenty of hot water on tap.
 With flameless electric water heating on the team, hot water worries go down the drain. The super speed of a quick recovery electric water heater can produce in a 24 hour period one-third of an entire month's hot water needs for the average home. And Mom can have all the 130 degree water she needs for people-washing, clothes-washing and dishwashing, too.
 Because electric water heaters are flameless and need no flues or vents, families can install them right where they use the most hot water. This eliminates the heat-wasting, long pipe runs that force you to drain off cool water—that you have already paid to heat—before you get the hot water that you really want.
 And electric water heaters are space-saving, too. Because



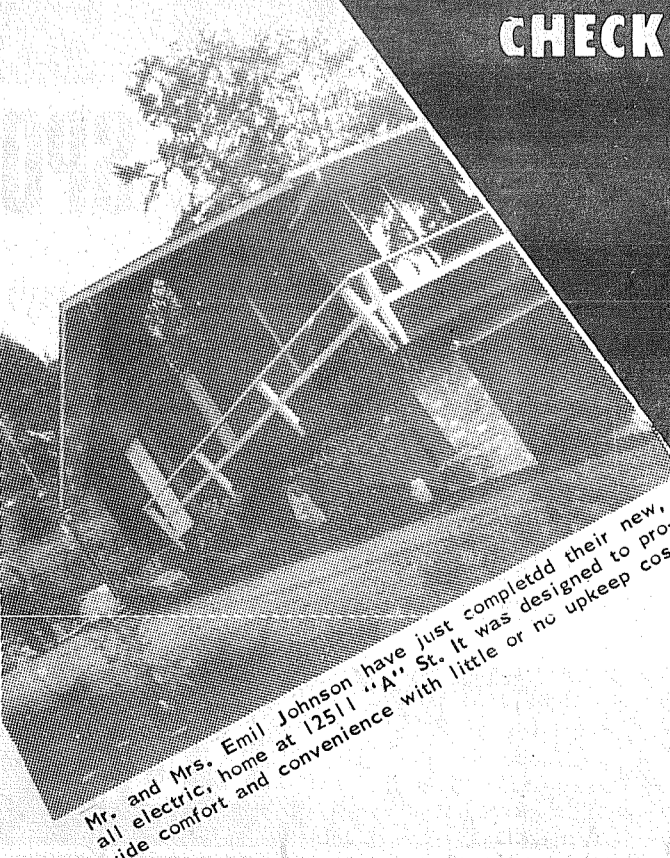
Because flameless electric water heaters need no flues or vents, you can install them right where you use the most hot water, in full view, like this counter-top model, or tucked away in a closet.

they are flameless and fully insulated on all six sides to keep the heat in the water and not in the room, you can install them in handy but out-of-the-way places—even airtight closets.

Light Is for Seeing, Too

There has been such a rush of glamour in home lighting in recent years we sometimes seem to forget that light is also for seeing.
 Actually, the first job of good lighting is to help our eyes see rapidly and accurately so we can do "eye work" with a minimum of effort or error.
 The penalty of a seeing error can range from a fatal fall

to a cake ruined by a mis-read recipe.
 The American Home Lighting Institute has these suggestions to assure good seeing:
 1) All incandescent bulbs—except decorative, low-wattage types, should be shielded from direct view by a diffuser.
 2) When you select fixtures primarily for their decorative value you may have to provide supplementary lighting in the location for good vision.
 3) Glare generally is not caused by too much light but by "light out of place." Each of an inadequate number of lights in a room seems to glare because of high contrast. The best cure is larger fixtures and more of them to provide balanced, evenly distributed light instead of spots of light and harsh shadows.



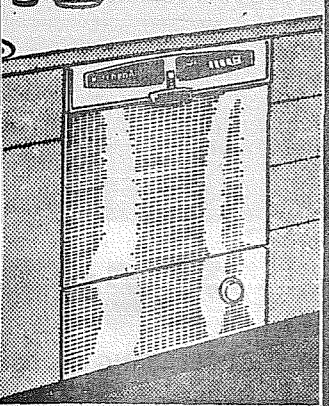
Mr. and Mrs. Emil Johnson have just completed their new, all electric home at 12511 "A" St. It was designed to provide comfort and convenience with little or no upkeep cost.



This home at 12719 "A" St., until recently was a run down undesirable rental. It's now a comfortable home and the dining room is much larger since the old furnace was replaced with space saving electric equipment.

Want a dependable dishwasher?

Pick a KitchenAid.



No matter which model or type you buy, you'll get the same effective washing and drying performance and built-in dependability—when you get a KitchenAid. There's no skimping to meet a price.

There's a KitchenAid dishwasher for every kitchen, every budget: Undercounter built-ins. Top-loading portables that need no installation. Front-loading convertible-portables that are portable now and can be built in anytime. Dishwasher-sink combinations in a compact 48" cabinet.

Come in and pick yours.

Don't be switched from the best...
KitchenAid.

ARNOLD'S APPLIANCE CENTER
TWO LOCATIONS
Puyallup 210 N. Meridian TH 5-0596
Tacoma 5303 E. 112th LE 1-2825

Finder's Act Restores Loser's Faith

A Spanaway man received renewed faith in human honesty last week. John Klabo, 126 South 161st, Spanaway, lost his wallet while riding his motorcycle home from work from Boeing's Auburn plant. The wallet was found on the

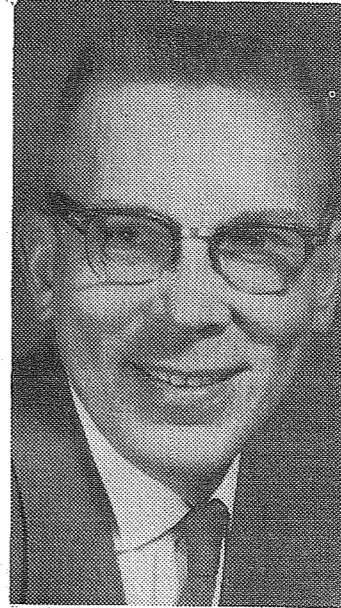
West Valley Highway by Jack R. Joyner, 1807 - 12th Ave. S.E., Puyallup, who gathered the scattered papers from the roadway and mailed them with the wallet to Klabo. Klabo, surprised to receive his wallet complete with papers and cash, sent Joyner a

five dollar bill with a letter of appreciation. But Joyner returned the money with a note stating, "no reward was expected." People aren't so bad after all, Klabo's wife Sherry stated in expressing her appreciation.

Co. Dairymen To Learn Of Nutrition

PUYALLUP - A series of four dairy nutrition meetings for all Pierce County dairymen will begin next Wednesday at 1:30 p.m. in the Winter School Building, Western Washington Research and Extension Center. Dr. F.R. Murdock, Dairy Scientist at the Center will be

the featured speaker during the first session. He will discuss recent research results on "Milk Production and Feed Intake Relationships of Dairy Cows Fed Two Types of Roughage and Two Levels of Concentrate." In addition, Dr. Murdock will discuss malt feeding, various levels of



Dr. F.R. Murdock

grain feeding, urea with corn silage, and pasture rotation. Murdock, a native of Idaho, received his Ph. D. from Pennsylvania State University. He has been a Dairy Scientist at the Center since 1948. As feed costs account for approximately one-half of milk production costs, County Agent Eddie Thomason urged all dairymen and interested persons to attend.

1967 TOYOTA CORONA
THE NEW HOT ONE!
90-HP.
4-DR. SEDAN
\$1934 DEL. IN TAC. Fully Equipt
AUTO. TRANS. AVAILABLE
Temple Motors INC.
117 PUYALLUP AVE. TACOMA, WASH. BR 2-9333

The Teen Scene

By Jeannie Crumb

With weeks of football practicing in mud, rain and shine, the Puyallup Powder Puff teams will be ready to go Friday night. Months of planning have been well spent and, as spectators of past Powder Puff games will admit -- you'll be in for an action-packed evening.

The three 12-minute games, with the three high school classes competing, will start at 7:30 on Viking Field. In case of a tie, there will be a six minute play-off.

Boys' Pep Club will provide half time entertainment, promising to give everyone something to chuckle about over their drill team routines.

Tickets, which are 50¢, can be purchased from students participating in the Foreign Student Project or at the gate Friday night. All proceeds go to the AFS project, which makes it possible for Puyallup to have two foreign students.

"The Egg and I", a comedy written by Betty MacDonald, will be presented at Bethel High December 6 and 7. Tryouts for the play were held and the cast of 22 started rehearsals this week.

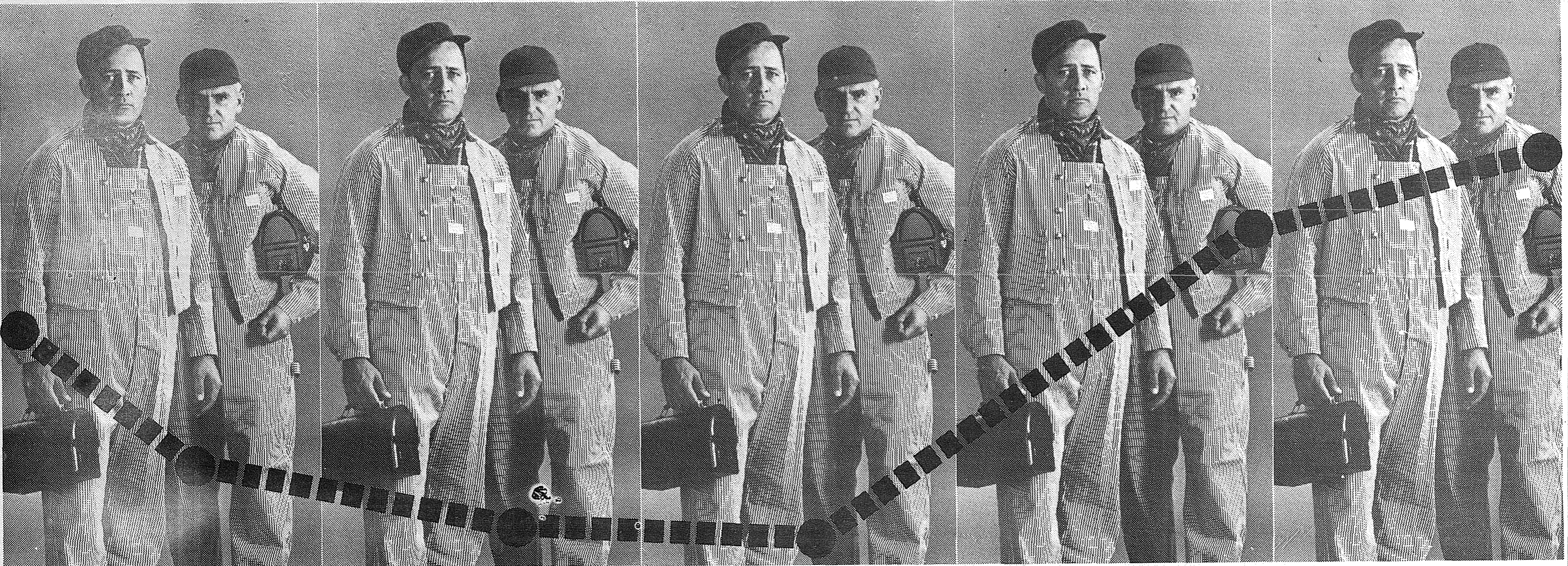
The two-act play reflects the lives of two teenagers, who move to the Olympic Peninsula and help their parents start a chicken ranch. Their supposedly dull farm life turns out to be not quite what they expected.

"Trojans Tour America" will be the theme of Fife High's Homecoming. After the game Friday night, the alumni are invited to the dance, where the elected royalty will be crowned.

Summer High is also having its Homecoming soon. October 27 will start the ball rolling with a pep rally through town, led by the band and cheerleaders. SHS also hopes to hold a bonfire the same night, where the juniors will bring all the wood and try to top the amount last year's class brought. Their Homecoming game will be against Puyallup October 28. A semi-formal dance honoring the alumni will then be held October 29.

An "Around the World with Strings" assembly was held Friday at Eatonville High School. A variety of musical selections from different countries and imitations of other instruments on the guitar, combined with the superb technique of Clark Metcalf added up to an unusual musical experience.

5 Crew Changes—10 Unneeded Men To Cross the State of Washington



SEATTLE 1st crew 2 hrs. work ½ day pay
AUBURN 2nd crew 7 hrs. work 1½ days pay
YAKIMA 3rd crew 4 hrs. work 1 day pay
PASCO 4th crew 5½ hrs. work 1½ days pay
SPOKANE 5th crew 2 hrs. work ½ day pay
HAUSER, IDA.

Archaic 1911 Train Crew Law requires railroads to fill 10 unnecessary jobs between Seattle and Idaho

The picture above illustrates a cross-state freight run which makes five crew changes and requires ten extra men to comply with our state law.

The positions in question, fireman and extra brakeman, are filled because a 1911 law requires their presence. They do not perform duties necessary for safe or efficient freight train operations.

Passage of Initiative 233 will repeal the 1911 freight train crew law and allow our railroads to utilize present and new manpower in the positions necessary for modern railroading. No firemen or brakemen regularly employed on election day will be laid off because of this initiative.

Repeal The Train Crew Law — Vote FOR Initiative 233

Committee for Transportation Economy, 417 Washington Bldg., Seattle 98101. Fred H. Tolan, State Chrm.

County Given \$169,845 Aid For "Head Start"

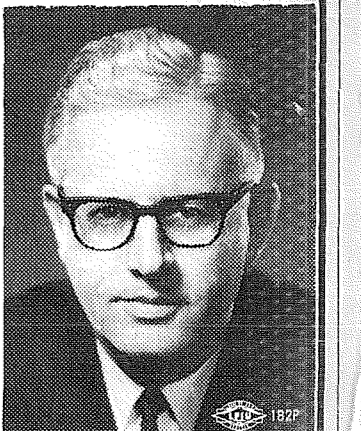
A Federal grant of \$169,845 to the Tacoma-Pierce Counties Opportunity and Development, Inc., for 26 Project Head Start classes was announced by Daniel M. Luevano, regional director of the Office of Economic Opportunity.

Administered by Tacoma School District No. 10, the nine-month pre-school program will serve 390 children ages four and five from low-income families in Tacoma and the surrounding areas. In addition to a professional staff of 27 members, there will be 16 teacher's aides from the low-income population.

The children will receive medical, dental, psychological and nutritional attention, as well as increasing their social skills and learning experiences.

William G. Seline is executive director of the Tacoma-Pierce Opportunity and Development, Inc.

You Are Invited to MEET CONGRESSMAN HICKS



OPEN HOUSE COFFEE HOURS THURS., OCT. 27:
2:00 PM: Mrs. Alf Hammer, 2924 Home Road, Fife.
2:45 PM: R. L. "Dick" West, Milton City Hall
3:30 PM: Mr. Reuben Knobloch, Summer Heights home
You are invited to attend the most conveniently located coffee hour

Undefeated Cards Host Lakes Friday

F-Pierce Power Swamps Royals With Whitewash

Unbeaten Franklin Pierce who disposed of defending PSL Kent-Meridian last Friday 24-0, will take on the Lakes Lancers Friday night at Cardinal Field.

The Cards' John Yurovchak chalked up a 6 pointer by returning a K-M punt 73 yards in the second quarter. That TD, following Tom Marr's 23 yard field goal gave the Cards a 10-0 half-time lead.

In the third stanza, Yurovchak pounced on a Royal fumble in the Kent end zone. Steve Harshman repeated Yurovchak's feat as he also recovered a Kent fumble for a TD. Tom Marr's unerring toe hit the mark on all three PAT's in addition to his three pointer.

FP is 5-0 thus far this season, and along with Puyallup are the only undefeated squads in the PSL. Lakes suffered a 14-0 loss to the Auburn Trojans last week to drop their season record to 2-3 and even their league slate to 1-1.

White Pass pushed across the initial tally, but the Cruisers roared back and reeled off the next five TD's. Quarterback Rick Hermsen and halfback Don Rose paced the Eatonville attack. Hermsen completed seven of seventeen passes for 117 yards and two touchdowns, and also tallied once himself. Rose rambled for 143 yards in 17 carries and hitting paydirt twice on runs of 43 and 2 yards. The Cruisers rolled up 386 yards in total offense to completely dominate the Panthers.

St. Martin's, the defending champion squeaked past Elma 12-6 for its second win of the season. The Rangers may find it difficult to stop the Cruiser offense which has amassed 163 points in five games this season.

Bethel Braves

After a week's layoff, the Bethel Braves will host a frustrated Summer Spartan eleven on their homefield this Thursday night.

Bethel will try to get back to its winning ways after suffering two devastating defeats at the hands of North Thurston and Enumclaw. A young team, the Braves have been prone to making costly mistakes that have hurt them. They will catch Summer in a nasty frame of mind after the Spartans were upset by Peninsula last week. The loss was the 2nd in a row for the Summer team.

Cruisers 33-Panthers 12

Eatonville's Cruisers play host to the St. Martin's Rangers Friday night, and will try to capture the Eastern Division pennant in the Central League title chase after clinching at least a tie by smothering the White Pass Panthers 33-12 last week.

Knights Meet Whitman Here

Seeking their first victory in Northwest Conference play, the Pacific Lutheran University Knights will entertain the Whitman College Missionaries here Saturday. Kickoff time for the homecoming game will be 1:30 p.m. at Franklin Pierce Stadium.

The Knights, who are 0-1-1 in league play, had a 27-13 lead over College of Idaho at Caldwell last Saturday, but the Coyotes stormed back to tally 14 points in the last five minutes of play to gain a tie.

Coach Keith Loper's Whitman eleven is winless in four outings this fall, and has a 0-2 mark in conference competition.

With Ken Harding, leading ground gainer, sidelined with a cracked rib, Knight coach, Roy Carlson, is trying out several combinations in his backfield this week. Doug Jansen, freshman defensive safety, and Vic Eaton, freshman end, are leading candidates for Harding's spot. In an effort to get more punch up the middle, linebacker Gary Nelson is being used at the half-back spot.

Senior quarterback Tony Lister returned to the starting lineup last week after being on the shelf for two weeks with a throat infection. He is expected to be at full strength for this week's tilt.

Freshman Grant Spencer is ready to spell him if necessary.

Nelson continues to be the Lutheran standout on defense. Against College of Idaho he had 12 tackles and 4 assists. Right up there with him was senior linebacker Art Hooper with 11 tackles and 3 assists.

Cards, Vikings Ranked High

With their showdown clash only three weeks away, both Puyallup and Franklin Pierce have impressed the pollsters enough to be ranked in the top five AA teams in the state.

Barring upsets, the two grid powers could come into their grid showdown with the southern division title on the line.

Last year's titanic battle was in doubt until the final minute of the contest, with the Cards' Tom Yotry wrapping up a Franklin Pierce victory by stealing the pigskin and racing over 80 yards to score. The 1964 meeting was one of the finest prep gridbattles in PSL League history, with the Vikings taking a 21-20 win and then going on to beat Kent for the crown.

Puyallup was named third in both the AP and UP polls behind first place Seattle Prep and Gonzaga. Franklin Pierce was in the fourth spot in both polls.

Both Seattle Prep and Gonzaga won its games last week as did Puyallup 33-13 over Federal Way and Franklin Pierce's 24-0 shutout over Kent-Meridian. Kent was ranked eight in the AP poll last week.

The polls for the week were not released at the Herald's press time.

Loggers Take Aim At NCAA Programs

TACOMA - The University of Puget Sound announced today that its athletic teams will participate in future events and tournaments of the National Collegiate Athletic Association. Logger teams, in the past, have participated under the banner of the National Association of Intercollegiate Athletics.

UPS Athletic Director John Heinrick made the disclosure, noting that the university has been a member of both the NCAA and NAIA for many years. The decision means that Puget Sound no longer will compete in NAIA District One tournaments, playoffs or championship meets.

Notification of the change to

NCAA competition has been given by UPS Vice-President Richard Dale Smith in letters to NAIA District Chairman Mark Salzman and NCAA Executive Director Walter Byers. Earlier this year UPS notified Evergreen Conference officials of its withdrawal from the league effective January 1, 1967.

"In drawing up our future schedules as an athletic independent," Smith commented on the move, "we will be associating with increasing numbers of colleges and universities who are active members of the NCAA. In addition, we necessarily must establish the set of regulations which we will abide by and the

tournaments and other such events in which we desire to be considered possible participants."

Heinrick praised the Evergreen Conference and the NAIA for a "most pleasant association" during the past 18 years but pointed out that "the enrollment trend at UPS toward ever increasing numbers of out-of-state students indicates that the athletic future of this university lies in a different direction."

The Logger campaign toward NCAA events and tournaments is in effect immediately and UPS basketball and swimming turnouts will begin Monday, October 17, in accordance with NCAA rules.

UPS has notified NCAA officials of its willingness to participate in future Camellia Bowl football games which annually decide Pacific Coast supremacy among NCAA College Division schools at Sacramento, California. This year's contest is scheduled for December 10.

In basketball the Loggers will join Seattle Pacific College and Portland State in the race for Pacific Northwest large berths in the NCAA College Division Regional Tournament for Pacific Coast and Southwest teams. This year's regional event is slated for March 10-11 at a site to be determined. The national finals will be played at Evans-

Puyallup Elks Collecting Hides
The Puyallup Elks want your hide! Deer or Elk hide that is.
The club will donate all hides to the hospitalized war veterans. Pickup barrels are posted in Eatonville, Orting, Graham, Summit View, Edgewood, Sumner and the Puyallup Elks. Chairman Forum Beck urged all hunters to deposit their hides at any of the pickup spots.

- *UPLAND SLAB WOOD
- *SAWDUST
- *SHAVINGS

NOW AT **BASKETT LUMBER CO.**
9701 PORTLAND AVE.
LE7-8663

FUEL OIL
LE 7-6968
Beacon Oil Co.

Citizens STATE BANK
112th and Canyon Road

SUMMIT VIEW OFFICE
LEnox 1-3322

Member Federal Deposit Insurance Corporation

HI HO PUYALLUP HI HO

U.S.D.A. PRIME BEEF SALE

ONLY THE WORLD'S FINEST BEEF CAN BE GRADED "PRIME"

PRIME ROUND STEAK
68c/lb

- BONE-LESS SWISS STEAK **67c/lb**
- BONE-LESS SIRLOIN TIP ROAST **79c/lb**
- BONELESS TENDER SIRLOIN TIP STEAKS **1.19/lb**
- HI HO'S FAMOUS GROUND BEEF **49c/lb**
- TOP ROUND STEAK **97c/lb**
- BOTTOM ROUND STEAK **88c/lb**
- BREAKFAST STEAKS **1.29/lb**

PRIME RUMP ROAST
79c/lb

DRUGS

DOWN TO EARTH PRICES THAT YOU CAN AFFORD TO PAY

- REG. 1.49 HAIR SPRAY WHITE RAIN **89c**
- REG. 63¢ RESPOND HAND LOTION **39c**
- REG. 1.00 SHAMPOO WHITE RAIN **59c**



PUYALLUP

PRICES EFFECTIVE OCT. 17 Through OCT. 22
OPEN 8 A.M. Till 11 P.M.

GROCERY

- 1-GAL. GOLDEN VALLEY APPLE CIDER **69c** (SAVE 30c Gal.)
- 4-LB. BAG, 3-MINUTE POPCORN **49c** (SAVE 20c)
- HI HO MARGARINE **5 lbs. \$1.00** (SAVE 25c)
- 40-OZ. ADAMS PEANUT BUTTER **89c** (SAVE 40c)
- CARNATION INSTANT BREAKFASTS **59c** (SAVE 20c)
- HI HO LIQUID DETERGENT **39c** (SAVE 10c QT.)
- SUNSHINE HYDROX COOKIES **59c** (SAVE 10c)
- GOLD LABEL FROZEN 16-oz. FRENCH FRIES **59c** (CRINKLE CUTS OR 2-LB. HASH BROWNS)

PRODUCE

- NEW CROP FLORIDA PINK GRAPEFRUIT **5/49c**
- PUYALLUP VALLEY GROWN
TURNIPS, RUTABAGAS, PARSNIPS, CARROTS **10c**
- OREGON BROCCOLI .. **15c**

THE SPORTS SHOP

- 7.50 SAM JONES PROFESSIONAL BASKETBALL **4.97**
- COMPLETE LINE OF SKI EQUIPMENT AND SKI RENTALS
- AFTER-SKI BOOTS **12.95** (BY RED BALL)
- IT'S FUN TO SHOP HI HO 25 EXCITING DEPARTMENTS TO SERVE YOU.

HARDWARE

KEEP YOUR WINDSHIELD CLEAR

- REG. 79¢ 20/10 LIMIT 2 MIRACLE INSTANT WINDSHIELD CLEANER **49c**
- BOEING WORKERS' SPECIAL BIG 19-INCH "ALL AMERICAN" TOOL BOX **4.99** (WITH TOTE TRAY)
- REPEAT OF A TERRIFIC SPECIAL LIGHT BULBS ... **11c** (25, 40, 60, 75, 100 WATTS)

VISIT THE ART GALLERY IN OUR TV DEPT. ON THE BALCONY

FOR TV SERVICE
CALL TH 5-6652

S and W QUALITY WEEK

- CREAM OR W.K. CORN 303 TINS APPLESAUCE 303 TINS SLICED BEETS 303 TINS FRUIT COCKTAIL 303 TINS CUT GREEN BEANS 300 TINS KIDNEY BEANS 303 TINS OF SAUERKRAUT
- 5 FOR 1.00**
- 4/1.00
- 6/1.00
- 6/1.00

JUMBO SIZE THERMOS AND Plastic Lunch Kit
RUST PROOF, EASY TO CLEAN EXTRA LARGE
3.77

LET US CARRY THE BALL ON YOUR HEATING OIL

ALWAYS BETTER SERVICE FROM YOUR LOCAL INDEPENDENT DEALER!
-SERVING YOU LOCALLY FOR 20 YEARS-

Come to our display room and consult our experts. Don't overheat or underheat.

Prompt reply to your service needs... No waiting

Automatic delivery service No need to spend a cold night

LE 7-0256

MARV TOMMERVIK'S Parkland Fuel Oil Service
120th & PACIFIC AVE. ESTABLISHED 1945

Authorized OIL HEAT Installer
STANDARD HEATING OILS

3-IN-1 TO SERVE YOU BETTER

HI HO PUYALLUP HI HO

HARD-TO-FIND SHOES!

HAVE YOU EVER LOOKED ALL OVER TOWN FOR A CERTAIN TYPE OR SIZE SHOE OR BOOT? WE CARRY THEM-ALL THE TIMES!

- MENS**
- *3E (EEE)-DRESS SHOES 6 TO 13's
 - *WESCO HAND MADE LOGGERS & LINE MANS BOOTS & WORK BOOTS 6 TO 13 , 8 TO 16 TOPS
 - *ALL TYPES RUBBER BOOTS & WET WEATHER SHOES
 - *INSULATED LEATHER & RUBBER BOOTS
- WOMENS**
- *WESTERN BOOTS, WELLINGTONS, FISHERMANS ROMEOS.
 - *HUNTING & HIKING BOOTS
 - *3E (EEE) WIDE! HEELS & FLATS
 - *WELCO HOUSE SLIPPERS
 - RUBBER BOOTS & SNOW BOOTS
 - SQUAW BOOTS, MOCCASINS
 - *WESTERN, ETC.



PAULS SHOES

161st & PAC. LE 7-0552 OPEN DAILY 9-9 SAT. & SUN. TILL 6

BILL HUNTINGTON'S

HOT LINE



It's antique time at my house... besides my trusty steed, "The Great Green Ground Grabber," I have just added a buggy. Last week I bought the authentic, antique buggy from Lee Smith. As you all know Lee is the proprietor of Smith's Meats located just off Pacific Ave., on Violet Meadow. I wish I could have loaded my truck up with his supply of thick, juicy, steaks and roasts but he wouldn't go for that. Later that same week I called on Mr. and Mrs. John Ginter of the Antique Glass House, 16804 Pacific Avenue, Spanaway... and believe me, if you have time just stop in and have a look. They have some of the ding-dangdest antiques... like their tobacco cutter. They explained it to me that in the old days chaw'n tobacco came in long plugs and they would lop off the size you wanted in the tobacco cutter. The cutter even has markings for the size plug you want. The Ginters also have a good collection of old irons. These irons are the kind that have to be preheated on a stove. They do have a good selection of shiny, brand new Yakima apples for only \$2.50 a box. So if you're looking for a new apple or an old time waffle iron stop at The Antique Glass House in Spanaway.

PLU Theatre Offers "Indian Captive"

Students in grades three through six in Franklin Pierce schools will see a performance of "The Indian Captive" at Pacific Lutheran University Children's Theatre during its run October 20-29. Open performances for the public will be Saturday at 10 a.m., Sunday at 3 p.m. and Saturday, October 29, at 2:30 p.m.

Brookdale; and Oct. 28 for James Sales, Christensen and Central Avenue.

Tickets may be obtained from the PLU information desk, LEnox 7-8611, extension 230.

The performance, a part of PLU's Children's Theatre, will be presented Oct. 21 for students at Parkland, Elmhurst and Harvard; Oct. 27 for Collins, Midland and

FALL HARVEST DINNER noon to 6 p.m. Sunday, October 23, at St. Ann's School lunchroom, 72nd and South G Street. Menu will include a roast beef dinner with a deep dish apple pie dessert. Children under 5 years will be admitted free.

Wins Scholarship

Linda Jeanne Lawson, daughter of Mr. and Mrs. Ralph C. Lawson, Rt. 2, Spanaway, received a \$250 John I. and Orpha Preissner scholarship award, Washington State University announced last week.

BAKE SALE on election day, November 8, by ladies of the Benston Grange. A variety of baked goods will be offered including old time family specialties. Mrs. Irving Furre will accept special orders up to November 4.

Parkland Methodist Church
12183 "A" ST.
9:30 am Church School
Classes for All Ages
11:00 am Morning Worship
6:00 pm Youth Fellowship
ARTHUR D. CAMPBELL,
MINISTER
LE 1-2400 LE 1-2555

FAMOUS
BALDWIN
PIANOS & ORGANS
Now in Spanaway
Area For Demonstration Call
LaJUANA MURPHY
LE 7-4221

VAUGHAN'S VALUES

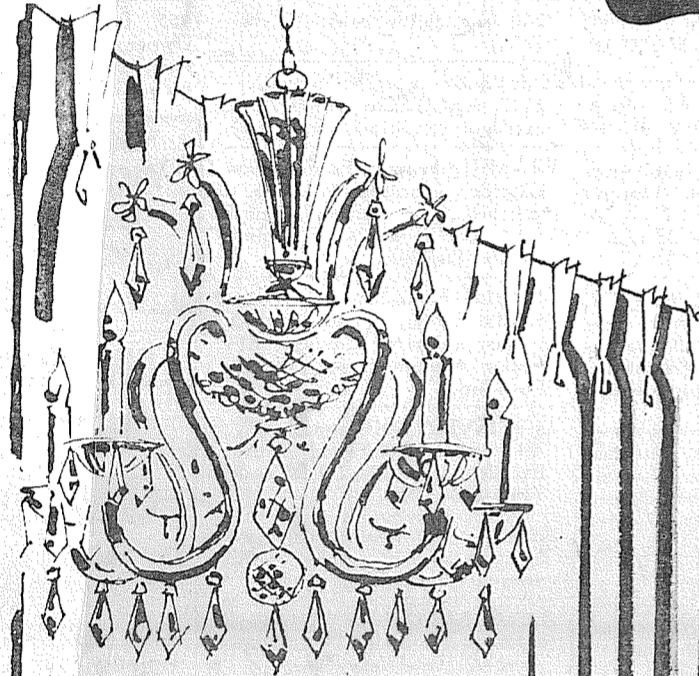
W.P. FULLER "RUFFWOOD" SHAKE AND SHINGLE PAINT
INDIAN BROWN & BEIGEWOOD
REG. PRICE 3.79 NOW \$2.39 PER GALLON
-THIS IS A CLOSEOUT-
VISIT OUR HOME REMODELING LIBRARY
VAUGHAN'S LUMBER INC.
PACIFIC AVENUE GREENFIELD 4-9515
84TH & PACIFIC AVENUE

9 am - 10 pm
7 DAYS A WEEK
BARGAIN BASKET
16618 Pacific Ave. S. - Spanaway
LE 7-3371
We Carry A Complete Line Of Sacked Feeds • Presto Logs
We Are Locally Owned & Operated
HELP YOUR BUDGET WITH THESE SAVINGS
No Sales To Dealers
WE RESERVE THE RIGHT TO LIMIT QUANTITIES
PRICES EFFECTIVE Oct. 20, 21, 22

SUNNY FARM ASPARAGUS No. 300 Tin 7 \$1	BEST BET MACARONI 4 Lb. 79¢	MJB COFFEE 3 Lb. Tin \$1.99
MARKET DAY RAISINS SEEDLESS 4 Lb. Bag 89¢	NALLEYS LUMBERJACK SYRUP 21 Oz. 29¢	1 Lb. Tin 79¢ 2 Lb. Tin \$1.43 10 Oz. Instant \$1.49
WEST BEST APPLE CIDER 1/2 GAL. 43¢	RED DART CUT Green Beans 303 TIN 10/99¢	GIANT SIZE DUZ 73¢
EXTRA FANCY JOHNATHAN APPLES 4 Lb. Bag 39¢	PENCILS No. 2 Lead 10/25¢	SUNNY FARM CLING PEACHES 2 1/2 TIN 5 \$1
OUR OWN CURED Corned Beef 69¢ LB.	Beef Steak TOMATOES 19¢ Lb.	PINK Grapefruit 3 For 29¢
BAR-S NO. 1 BACON Thick or Thin Sliced 79¢ LB.	OUR OWN CURED RIB STEAK 79¢ LB.	BAR-S SMOKED PICNICS 39¢ LB.
Everyday Low Meat Prices		25 LB Locker Boxes \$14.95
BLADE CUT POT ROAST 43¢ LB.	SIRLOIN STEAK 85¢ LB.	ROUND STEAK 85¢ LB.
POT ROAST 63¢ LB.	7-BONE POT ROAST 53¢ LB.	ROUND BONE POT ROAST 55¢ LB.
RUMP ROAST 69¢ LB.	LEAN GROUND BEEF 43¢ LB.	COUNTRY STYLE PORK SAUSAGE 98¢ LB.

ELVINS

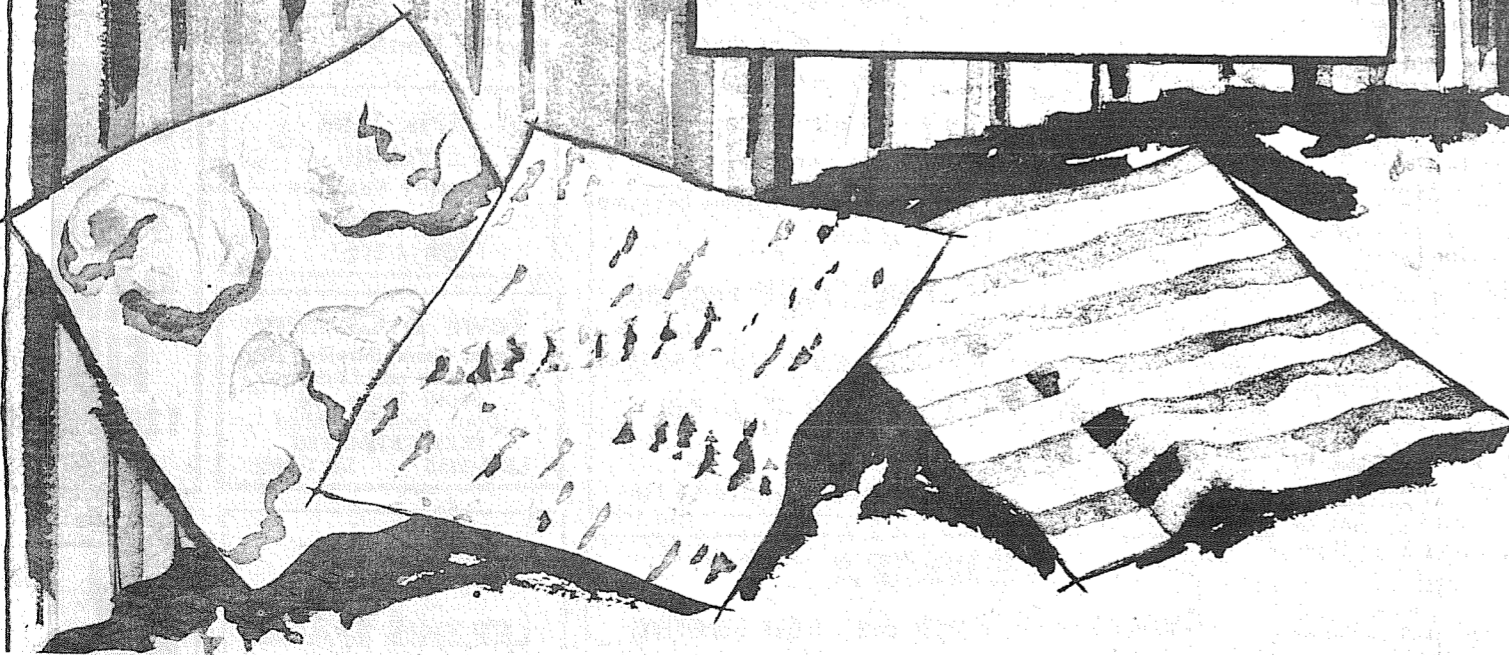
AT THE HI-HO SHOPPING CENTER - PUYALLUP



Vogue Custom Made Draperies

For The Cost Of The Fabric Only

- GROUP ONE **1.99** yd.
- GROUP TWO **2.49** yd.
- GROUP THREE **2.99** yd.
- GROUP FOUR **3.99** yd.



You select the fabric and Elvins will custom tailor your draperies to the exact width and length you need... You pay only for the fabric. Labor at no extra cost to you... Dozens of fabrics to choose from including fiberglass in solids, sheers, modern or floral prints, antique satins in solids and prints. Washable Antique satins, heavy texture fabrics and sheers... Elvins guarantees quality workmanship. Pleated to exact width, 4 inch crinoline in headings, all draperies weighted, 4 inch bottom hems.... All fan folded (except fiberglass) Custom lengths 54" or longer.