

# Mid-County Shopper

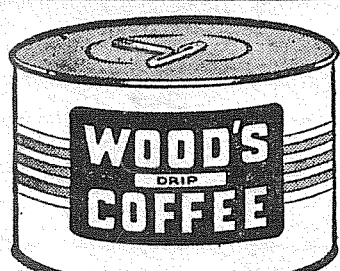
THURSDAY, JULY 14, 1949

For Classified or Display Advertising, Call Granite 8667—P. O. Box 702, Parkland

VOLUME THREE—NUMBER 28

Shopper ads bring results. Over 10,000 circulation. Call GR.

TENTS, CAMP STOVES, CAMPING EQUIPMENT and LIGHT HARDWARE  
at  
**STONER'S**  
Puyallup 5-7202 110 East Stewart Ave.



**WOODS COFFEE**  
reg. or drip Lb. **49¢**  
BUTTER lb. 59c

Sea Cap  
**TUNA FLAKES** ..... tin 29c  
Kellogg's, 8-oz. pkg.  
**CORN FLAKES** ..... 2 for 29c  
All Popular Brand  
**CIGARETTES** ..... carton 1.69  
Hunt's  
**STRAWBERRY JAM** ..... 1-lb. jar 29c  
Van Camp's  
**PORK & BEANS** ..... No. 2 1/2 size 23c  
Protex  
**TOILET TISSUE** ..... 4 rolls 25c  
Beg More  
**DOG FOOD** ..... 2 tins 27c  
**GROUND BEEF** ..... lb. 45c  
Giant Size  
**NU BORA SOAP POWDER** ..... 61c  
Durkee's  
**MAYONNAISE** ..... pt. jar 33c

• PICTSWEET FROZEN FOODS  
FRESH MEATS • FRUIT • VEGETABLES  
**Waller Road Mercantile**  
64TH & WALLER ROAD  
Store Hours: 8 a. m. to 7 p. m. Closed Sundays GR 5362

**Spanaway Refrigeration**  
Domestic & Commercial  
GRanite 7689

There is time to play 18 holes in the evening at  
**BROOKDALE GOLF CLUB**  
1 1/2 Miles East of Mt. Hiway on Brookdale Road

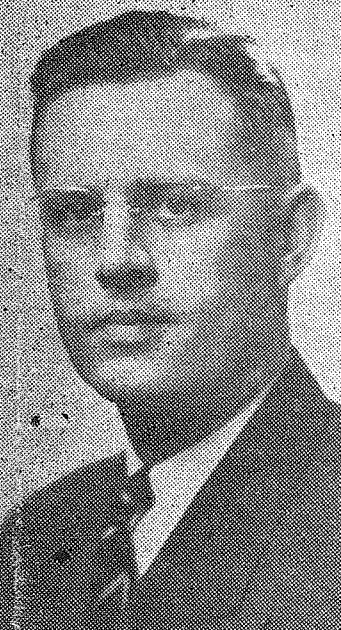
SUMMER LOTIONS  
*Beauty Aids-Creams-OINTMENTS*  
**Johnson's Drug Store**  
Across from the Post Office  
In The Parkland Shopping Center GR 7333

LEAVE YOUR FILMS AT  
**QUALITY Photo Service**  
9610 Pacific Ave.  
For DEVELOPING, PRINTING and ENLARGING  
IN AT 10 A. M. — OUT AT 5 P. M. SAME DAY  
SUPPLIES FOR THE AMATEUR

**Spred Satin**  
A WONDERFUL  
**NEW**  
GUARANTEED WASHABLE PAINT  
COME IN AND SEE IT DEMONSTRATED AT  
**PARMELEE - CROWE, INC.**  
4822 Pacific Ave. Phone HI 6020

**NEW & USED CARS FOR LESS**  
GR. 6385  
**NEW CHEV. ENGINES \$195.00 - Installed**  
OTHER NEW & REBUILT MOTORS — — TERMS

TO OPEN OFFICE



Floyd V. Hicks will open law offices in the new National Bank of Washington, Parkland Branch, on Monday, July 18. Hicks is a graduate of Central Washington College of Education and the U. of W. Law School. In addition to teaching school and coaching basketball in St. Johns, he served 4 years in the Army Air Corps and was discharged as a major. He has been engaged in the practice of law in Auburn. Hicks will be joined in the early fall by Don Eastvold who is presently a deputy in the criminal division of the Pierce County Prosecutor's office.

**HUSTLE to Russell**  
Guaranteed Watch Repairing Reasonable Price  
**RUSSELL'S JEWELRY**  
Eatonville, Wn. at Radio Shop

**22 FLAVORS**  
Parkland Ice Creamery  
**SHERWIN WILLIAMS PAINTS**  
**KEM-GLO**  
**JOHNSON'S SHOP**  
5514 Pacific Ave. Tacoma, Wn. SINCE 1932



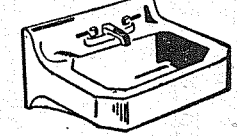
FOR A HOT WEATHER TREAT STOP AT  
**DON'S**  
Airport and Yakima Ave.  
SAY: "I SAW IT IN THE MID-COUNTY SHOPPER"

**REPAIR YOUR OWN CAR**  
at  
**Pacific Avenue Garage**  
Pacific Ave. at Sales Road  
We Carry a Full Line of Parts and Tools  
Call GR 7274

**Hours During Vacation**  
7:15 A. M. to 8 P. M. MONDAY THROUGH FRIDAY  
9 A. M. to 7 P. M. SATURDAYS  
CLOSED SUNDAYS  
**PARKLAND GRILL**

Beautiful Your Home with  
**CERAMIC TILE**  
For Estimate Call  
**BERT MCKENY**  
Plastering & Tile Contractor  
9645 Pac. Ave. GR 5372

**WASH BASINS**

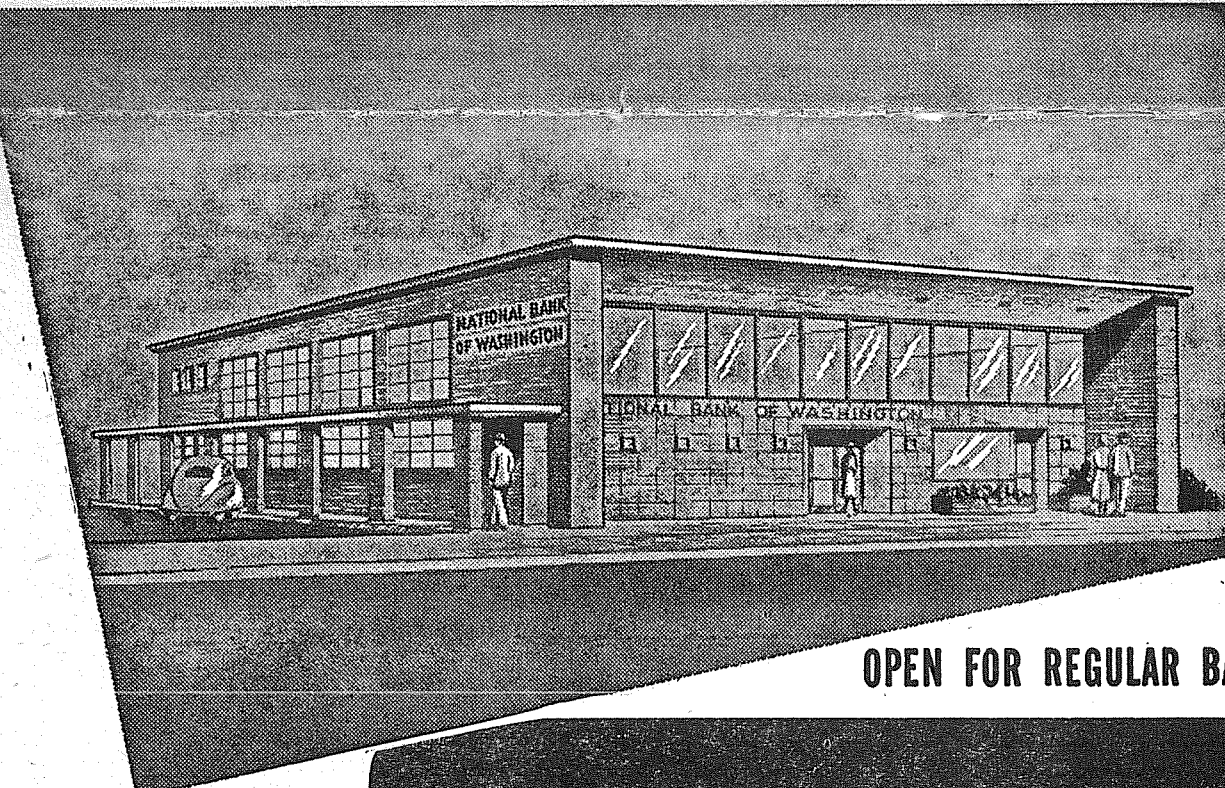


STEEL BASIN, complete with trap .....\$19.95  
CAST IRON BASIN, complete with trap .....\$28.50  
CLOSE COUPLED TOILETS, complete .....\$29.50  
Home of Schorn Paints  
**SOUTH END PLUMBING**  
Near Roy Y. Spanaway GR 8357 Graham 194

**Open House at Parkland Bank**  
The new Parkland Branch of National Bank of Washington, located at Pacific Avenue and Airport Road, will be open for business on Monday, July 18, at 10 a. m. it was announced today by A. H. Brouse, President. The bank is holding Open House on Saturday, July 16, from 5:00 p. m. to 9:00 p. m., to which the public is cordially invited.



Arthur G. Swindland has been appointed Manager of the branch.

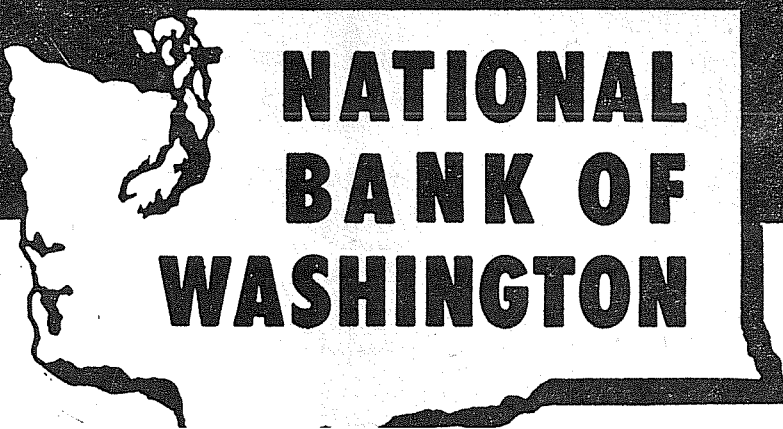



You are cordially invited to inspect our new  
**Parkland Branch**  
Pacific Avenue and Airport Road  
Saturday, July 16, 5 p. m. to 9 p. m.

OPEN FOR REGULAR BANKING BUSINESS MONDAY, JULY 18... 10 A. M.

## Complete banking facilities for Parkland and the surrounding area

The erection of one of the most modern banking offices in the Northwest is our contribution to the thriving Parkland district and surrounding area. \* Within the beautiful spacious quarters of Parkland Branch will be found every facility of a hundred million dollar bank, with the friendly atmosphere of a neighborhood institution. \* You are cordially invited to attend our Open House on Saturday evening, July 16, from 5 p. m. to 9 p. m. . . and to make this your banking headquarters when the branch opens for regular business Monday morning. Ample parking space is provided for the convenience of our customers.



- SAVINGS ACCOUNTS
- FHA HOME LOANS
- SAFE DEPOSIT BOXES
- CHECKING ACCOUNTS
- FARMPLAN LOANS
- SMALL BUSINESS LOANS
- TRAVELERS CHECKS
- AUTOMOBILE FINANCING
- MODERNIZATION LOANS
- BANK MONEY ORDERS
- INSTALLMENT LOANS

stant Manager.  
These men will be assisted by a staff of well-trained men and women.  
The new building, which is 60' x 100', is of beautiful modern design. It is of steel frame construction with concrete block walls, and the exterior is Roman tile with ceramic tile front. A unique feature of the building is a covered walkway extending along the two sides adjacent to the ample parking area, so that customers may enjoy covered protection upon entering and leaving the bank. A night depository is also provided.  
The banking room covers an area of 4,500 square feet, and an additional 1,500 square feet will be available for rental space until such time as expansion is desirable. The woodwork in the lobby is of rift grained oak with matching counter tops, and the walls are painted a soft gray-green to blend with the woodwork.  
Ample officers' quarters, five tellers' windows, comfortable conference rooms, safe deposit vaults, and private booths for safe deposit customers are on the first floor. The doors of the safe deposit booths have specially designed locks to insure complete protection for customers. When a customer enters a booth and closes the door, it locks automatically and can only be opened by him from the inside. When he leaves, the door closes automatically and then can be unlocked only by the vault attendant who checks the booth before the next customer is admitted. Thus, in the event a customer should accidentally drop something from his safe deposit box while in the booth, the attendant is able to identify the owner immediately. The fire and earthquake-proof vault is of the highest classification, the vault door being of the latest design in the modern cast plug type.  
An unusual feature of the bank is the modern radiant heating in the floor. Thousands of feet of copper tubing are scientifically laid, and the temperature of the bank will be kept at a constant and comfortable degree of heat by circulation of warm water through the pipes in the floor. The building contains approximately 300 lineal feet of fluorescent lighting channels which are designed to give a maximum of proper light at working levels.

# BROOKDALE LUMBER COMPANY

EVERYTHING FOR THE BUILDER AT OUR ONE STOP LUMBER YARD

136th & Pacific Avenue LUMBER — HARDWARE Between Parkland & Spanaway PLUMBING AND ELECTRICAL SUPPLIES FOLLOW THE MAP GR 8362

1x4 D.V.G. FLOORING, END MATCHED, per 100 ft. \$8.80  
 1x4 UTILITY FLOORING, End Matched, per 100 ft. 6.50  
 1x12 CEDAR SHELVING, per foot. 1.5c  
 OUTSIDE WHITE PAINT, per gal. 2.95  
 BAMBOO LAWN RAKES, each. 45c  
 ASK ABOUT OUR MONTHLY PAYMENT PLAN

# VAUGHAN'S

PACIFIC AVENUE LUMBER CO.  
 84th & Pacific GA. 3133

Fuel Pumps — Gaskets — Piston Rings — Ignition  
 Parts — Generators — Batteries and Cables —  
 Hydraulic Brake Parts — Brake Linings and  
 Shoes — Carburetors — Headlight Lenses — Muf-  
 flers — King Bolt Sets — Water Pumps — Me-  
 chanics' Tools.

Open Week Days and Saturdays Until 6 p. m.

## Modahl Auto Parts

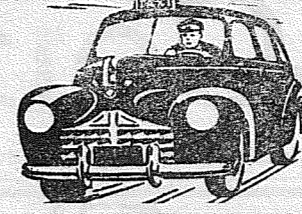
GR 7583 Wholesale & Retail GR 6547  
 We Gladly Deliver Spanaway

## De Laval Milkers

Freezers — Separators  
 AUTHORIZED DEALER  
 Parts and Service  
 Call or Write

## DAIRY SUPPLY SERVICE

1103 River Road Puyallup  
 Puy. 5-6242—Tac. GR 7558



**SUBURBAN TAXI**  
 GR 6337  
 Prompt Courteous Service

## SPANAWAY REFUSE CO.

Weekly Garbage Collections  
 Phone GR 6191

## SPRAYING

Call McGEE  
 For Trees, Shrubby, Weed  
 Control and White Washing.  
 GR 7859

## GOVERNMENT HOUSING UNITS FOR SALE

2x4 construction; double con-  
 structed fir; 3-piece bath  
 set; 1/2-in. Sheet Rock; rock  
 wool insulation.  
 WE PANEL AND DELIVER

1-unit \$750  
 Duplex \$1,200  
 4-Unit \$1,800  
 6-Unit \$2,400  
 Also we sell where is and as  
 is. Full stock of new and used  
 building material  
**McDowell's Building Supply**  
 6 block up from Milton Center  
 Milton, Wash. WA. 8582

## AUTO PARTS

GAS — OIL  
**Summit View Service**  
 GR 7414  
 Airport & Canyon Roads

## JERRY'S BARBER SHOP

150 Ft. East of  
 Summit Trading Co.  
 On Knapp Road



**Summit Feed Co.**  
 On Canyon Rd. Next To  
 Summit Trading Co. We  
 Deliver.  
 GR 7136

## LOW LUMBER PRICES

Good Grade of No. 4  
 1x8 Shiplap, 8 to  
 20 ft. Lengths. Per  
 1000 Board Ft. \$28  
  
 Extra Good 2x6, 8 to  
 24 ft. Lengths, per  
 1000 bd. ft. \$49.00

No. 3 Cedar Shingles  
 Per Square \$3.50  
 No. 2 Cedar Shingles  
 Per Square \$6.50  
 No. 1 Cedar Shingles  
 Per Square \$9.95

1x6 Shiplap No. 2 and  
 Better, Per 1000  
 bd. ft. \$63.00

1x6 Cedar Shiplap,  
 No. 2 & Better, per  
 1000 Bd. Ft. \$69.00

FREE DELIVERY  
 (Including Saturdays)

NEW PHONE NO.  
 GR 8605

**Summit Lumber Co.**  
 General Building Supplies  
 Rt. 13, Box 398-A GR 8605  
 Airport and Canyon Road  
 We Deliver - Rain or Shine

## 22 FLAVORS Parkland Ice Creamery

**Wrigley & Clements**  
 MORTICIANS  
 Lady Assistant  
 Puyallup Phone 5-6171

**Upland Old Growth**  
 Douglas Fir Wood  
 2 cords for \$15  
 Edgings and Slabs  
**Hand Picked Inside Block Wood**  
 O. G. Extra Heavy  
 2 cords for \$18  
 Extra Heavy Old Growth Fir  
 Hand-Picked Furnace and  
 Fireplace Wood  
 Ready for Use at Once  
 \$10 per cord in 2 cord loads  
 Upland Wood

**SAM'S FUEL**  
 Immediate Delivery  
 GR. 7334

## SPECIAL

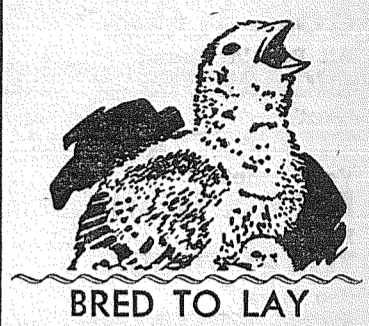
Guaranteed Complete  
 ENAMEL PAINT JOB  
**\$50.00 & UP**  
 Free Estimates  
 Broilite Paint Mixing  
 All Types Fenders Available  
**FOR RENT**  
 Lincoln Portable Gas Powered  
 ELECTRIC WELDER  
 Open Saturdays  
**Laurence Body & Paint Shop**  
 Airport Rd. At Summit View  
 GR 6557

## AUTO PARTS TOOLS and ACCESSORIES

**Graham Garage**  
 WRECKER SERVICE  
 Phone 321 On Meridian Hiway

**98c SALE**  
 BOYS' Blouses, Shirts, Suits & T-Shirts  
 GIRLS' Dresses, Pinafors & Blouses  
 CHILDREN'S SWIM SUITS  
 HAGER'S INFANTS &  
 CHILDRENS WEAR  
 8237 So. Park Ave.

## Linn's



BRED TO LAY  
**PROFIT MAKER REDS**  
 New Hampshire, Parmenters  
 & Golden-Broad Chicks  
 All Chicks Guaranteed for  
 Livability and Production  
**LINN'S HATCHERY**  
 Rt. 2, Box 100 Phone 5-6272  
 Puyallup, Wash.

## WATKINS PRODUCTS

8408 Pacific Ave. GARland 3231  
 Tacoma 4, Washington  
 DEALERS WANTED

## FEELING THE PINCH?

Probably you would like a new  
 roof if liberal credit were avail-  
 able.  
 WELL — IT IS!  
 at  
**FIFE BUILDER'S SUPPLY**  
 No Money Down. Three Years to Pay  
 SPECIAL—1x3 "D" Grade V.C. Fir Flooring, \$95 per 1000 ft.  
 BOYSEN'S OUTSIDE WHITE PAINT—Reg. \$6.12 per gal.  
 NOW \$5.12  
 Old Fife Square WA 8725

Plumbing, Plumbing Supplies  
 FREE ESTIMATES  
 Licensed Master Plumber  
**Althuser Plumbing Co**  
 8203 Pacific Ave. HI 4671

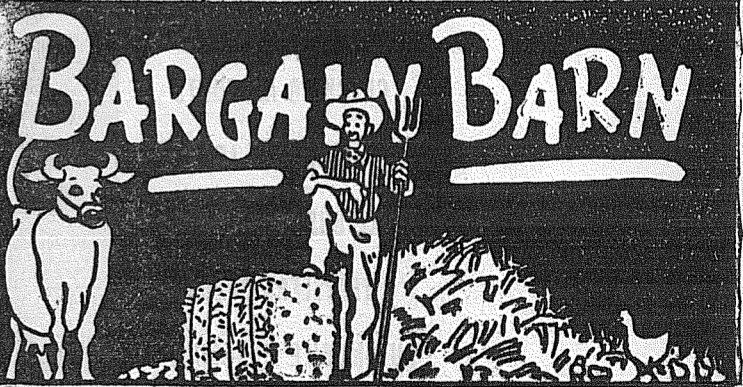
**BUTLER'S GARAGE**  
 GR 8209  
 1 Block North of Airport Rd.  
 on Canyon Rd.

## BULLDOZING

BROWN and GAMBILL  
 1750 9th St. S. W., Puyallup  
 • BASEMENTS • CLEARING  
 • BACKFILLS • LEVELING  
 • DRIVEWAYS ETC.  
 NO CHARGE FOR MOVING  
 Estimates Cheerfully Given  
 Phone Puyallup 5-2452 or 5-5487

**SEPTIC TANKS**  
 CLEANED  
 Contents Hauled Away  
**DON REDFORD**  
 GA. 7334 417 So. 84th, Tacoma

JUNK CARS WANTED  
**Hecker the Wrecker**  
 Airport Road and  
 Golden Given Road  
 Tacoma, Wa. Phone GR 6264



## SALE

... on Vacation Needs!  
 Sleeping Bags 2.95 up  
 TENTS, pup 2.95  
 TENTS, 5x7 12.95  
 TENTS, 9x9 16.95  
 Coleman Stoves 9.95  
 Coleman Lamps 9.95

**SPECIAL ON LADIES SLACKS**  
 Sizes 12 to 44  
 from \$2.95 to \$5.95

OPEN SUNDAY  
 Highway 99—Willow Road—Fife WA 7474

# More GROCERIES FOR YOUR MONEY!

**BIG VALUES COFFEE**  
 SWEDISH ROAST—Ground 48c  
 Fresh the Way You Like It  
 HILLS 2 lbs. 98c  
 WOODS 2 lbs. 89c

Chef Boy-ar-dee—No. 1 Tall Can  
**MEAT BALL & SPAGHETTI** 21c  
 Armour's  
**CORN BEEF HASH** 1-lb. net 37c  
 Guaranteed by Good Housekeeping  
**SWANCO MARGARINE** 2 lbs. 49c  
 Fancy Long Grain  
**RICE, M.J.B.** 2 lbs. 41c

Chef Boy-ar-dee, Sauce with Meat  
**SPAGHETTI DINNER** pkg. 39c  
 Salted  
**CIRCUS PEANUTS** can 31c  
 6-oz. pkg.  
**TERRY MINTS** pkg. 23c  
**BARS—5c size** 4 for 15c



**MEAT DEPT.**  
**Ground Beef**  
 Always Good  
**lb. 39c**

**Sliced BACON**  
**lb. 49c**

**Summit Farms**  
 Tender and  
 Economical  
**VEAL STEW**  
 Breast o'Veal  
**lb. 35c**

**SMOCKED HOCKS**  
 A Thrifty Buy  
**lb. 25c**  
**Pure Lard**  
 In App. 3-4 lb. ctns.  
**lb. 12c**

**Beef Heart**  
**lb. 35c**

**FRYER RABBITS**  
**lb. 63c**

(Boneless)  
**CORNER BEEF**  
**lb. 49c**  
 A Winner at Dinner

# EGGS



Nest Fresh—Large Grade AA doz. 68c

LIBBY'S BABY FOOD 3 for 25c  
 PABLUM, large pkg. 45c  
 GERBER'S BABY FOOD 3 for 25c  
 Borden's Milk 11c

**KRAFT CARAMELS**, 1 lb. pkg. 37c  
 Superior, Fresh Made  
**FIG BARS** 2 lbs. 49c  
**GUM—All Flavors** 3 pkgs. 10c  
 Leading Brands  
**CIGARETTES** carton 1.69  
 Tobacco  
**PRINCE ALBERT** 1-lb. can 80c  
 Maple Grove  
**BUTTER** lb. 59c  
 Sanitary  
**MILK** qt. 17c  
 Aged, Very Old  
**CHEESE** lb. 69c  
**VELVEETA** 2 lbs. 73c

**BIG VALUES**  
**MIRACLE WHIP**  
 DRESSING pt. 29c  
**HORMEL'S**  
**Deviled Meat**  
**2 cans 13c**

# SHREDDED WHEAT N. B. C. 11c

**PICNIC ITEMS**  
 Hi Ho  
**CRACKERS** 1-lb. pkg. 29c  
 Old Fashioned  
**GINGER SNAPS** 1-lb. pkg. 32c  
 Panquet Dills  
**KALLEY'S PICKLES** large jar 43c  
 Giant Size—LIBBY'S  
**OLIVES** tall can 30c

LUNCHEON MEAT  
**PREM 35c**

HUNT'S—Solid Pack, No. 2 1/2 Can  
**Tomatoes 17c**

**BIG VALUES SALT** MORTON—Plain or Iodized 8c  
**PUREX** 1/2 Gallon 23c

**LOCKER BEEF and PORK AVAILABLE**  
 Your Locker Meat Cut & Wrapped 3c  
 We Buy Hides  
 Curing & Smoking Summit Farm Style  
 Pound 7c

# SUMMIT TRADING Company

WE RESERVE THE RIGHT TO LIMIT QUANTITIES — NO SALE TO DEALERS  
 Rt. 13, Box 420, Tacoma — One Half Mile North Of Summit View, On Canyon Road  
 PHONE GRanite 5848



# July FOOD VALUES

**Sugar** Pure Cane 10-lb. bag **89c**

**Certo** Regular Bottle **18c**

**CRISCO** 3 lb. tin **81c**

**Corned Beef** LIBBY'S Can **45c**

**Dill Pickles** OLYMPIC 24-oz. jar **29c**

**Biskit Mix** FISHER'S 2 1/2-lb. pkg. **38c**

Del Monte No. 2 tin

**Pineapple Chunks** **27c**

Campfire 1-lb. pkg.

**Marshmallows** **29c**

Calumet 1-lb. tin

**Baking Powder** **18c**

**Sugar** Pure Cane 25-lb. bag **\$2.29**

## CHOICE MEATS

**SKINNED HAMS**  
Whole or Shank Half lb. **59c**

**SLICED BACON**  
Eastern, Hormel's, Broken Slices lb. **25c**

## VEAL

Good, Milk Fed

**STEAKS** lb. **59c**  
Shoulder Cuts

**SIRLOIN** lb. **69c**

**CHOPS** lb. **69c**

**STEW** lb. **35c**

## VEGETABLES FOR VITAMINS

NOW IS THE TIME TO CAN

**Apricots**  
Moor Park—Pear Boxes **89c**

**New Spuds**  
WHITE SHAFTERS No. 1 **10 lbs. 29c**

## 22 FLAVORS Parkland Ice Creamery

**MIDLAND BEAUTY SHOP**  
GR. 8889 For Appointment  
BLANCHE SIZER, Owner

**S & C MOTION PICTURES Novelty Theatre**  
On Sunday, July 17  
"EYES OF THE UNDERWORLD"  
With Richard Dix and Lon Chaney, and  
"ROLLING PLAINS"  
Starring Tex Ritter

**COLLINS GYM**  
On Friday, July 15  
"KID DYNAMITE"  
With the East Side Kids

**Superfex "HOMOGEN-AIR"**  
heating is UNIFORM  
BALANCED  
CONSTANT  
ECONOMICAL  
AUTOMATIC  
Gas or Oil Fired  
See your Superfex Comfort Specialist

48th and Pacific  
HI 5272

Free Delivery of Funeral Sprays & Flowers on all orders from  
Kapowsin, Graham, McKenna, Eatonville, Roy, and Other Outlying Districts GR 7270  
Parkland Florists

**Rebuilt Motors Rupe Machine Works**  
Shop: GR 6830 Res: HI 6190  
13411 Pac. Ave. at Brookdale

**SPANAWAY LUMBER CO. GR 8235**  
The Poor Man's Yard  
Get Our Prices First  
Everything for Building  
Mt. Hiway at Spanaway  
— We Deliver —

**FRENCH'S GARAGE & TOWING**  
24 Hour Towing Service  
10006 Pacific Avenue  
Expert Repairing  
GR. 8177

## A NEW PAINT

Performance Insured by a WRITTEN, Money-back Guarantee and Service Policy

You receive a refund of up to \$50.00 of the purchase price of "Spred Satin" if it becomes streaked or spotted or loses color as a result of washing when applied and washed in accordance with the directions . . .



JUST STIR AND APPLY. FAST DRYING. (About 20 Min.) COVERS MOST SURFACES Plaster, Woodwork, Wallpaper, Concrete Blocks, Plasterboard, etc. Easily Applied!

**\$1.49 Qt. \$4.59 Gal.**

**Demonstration Saturday, July 15**

By Factory Representative. Bring your decoration problems — we probably have an agreeable solution.

## LOOK at THESE VALUES

	Regular Price	OUR PRICE
SOAP HOLDERS (Chrome)	\$3.45	\$1.50
TUMBLER HOLDERS (Chrome)	3.25	1.50
STOVE PADS, 14x17	.54	.39
STOVE PADS, 18x20	.79	.59
BATH TUB BRUSHES	.69	.49
SCOURING PADS	.12	.05
TIN CAKE PANS	.25	.15
TIN LOAF PANS	.35	.22
TIN GELATIN MOLDS	.25	.15
TIN SCALLOPED PIE PANS	.15	.10
Stainless Steel Drip Coffee Makers	6.50	4.50
Stainless Steel Whistling Tea Kettles	4.50	3.00
CLINCHER HOSE MENDERS	.15	.07
LAWN EDGERS	1.50	.97
1-MAN CROSS CUT SAW	7.50	4.95

HAND SPRAYERS— 39c - 49c - 68c - 1.46 - 1.65	8-oz. Glass Tumblers
STEAM IRONS — Silex or Steam-O-Matic. - Regular 19.95 NOW 14.95	COLLANDERS—Blue Enamel 49c
CORY Glass Coffee Maker with Stove. Reg. \$10.00 — NOW \$5.95	7-qt. CANNERS 1.94
2-Cup COFFEEMAKER — Reg. 1.69 & 1.95, now \$1.31	9-qt. CANNERS 3.25 (Cold Pack)
ELECTRIC WALL HEATERS 120 V. or 220 V. (2 models) NOW \$9.00	TOY GARDEN TOOL SETS Shovel, Rake, Hoe 39c
Coleman Camp Stove	Water Pitchers 97c
COLEMAN CAMP STOVE NOW \$11.16	Steel Fry Pans, 8" 29c
PICNIC KIT \$12.52	Steel Fry Pans 10" 59c
2 Thermos and Sandwich Box in Leatherette Case	Plastic Drinking Cups 9c
GLASS SERVICE PLATES— 3 divisions—now 19c ea.	Salad Bowl Sets 1.29
	TENNIS BALLS, 3 in a can, Draper & Maynard 1.46
	BADMINTON SHUTTLE COCKS 49c
	SOFT BALLS, D & M (official) 2.40
	RED HATS 97c

## DECALS 25 percent OFF

MIX MASTER 39.50	3-qt. Vogue Enamel Kettle 1.94
HAMILTON BEACH 39.50	4-qt. Vogue Enamel Kettle 2.43
We have power units and food mills for these units.	Tripple Coated Bakelite Pull Chain Sockets 19c
CLEAR PLASTIC Refrigerator Dishes. The no-break kind! 27c and 44c	TOWEL BARS— Porcelain ends, 18" 87c wood bars 24" 97c Plastic ends, 18" 49c wood bars 24" 58c Chrome bar 18" 1.94 and ends 30" 2.40
Golf Balls (75c) 58c	
King-Built for 100 holes of play.	
Tin 1-qt. Measures 19c	
Rubber Dog Dishes 58c	
1 1/2-qt. Alum Sauce Pans 58c	

**GARDEN HOSE**  
2-ply, guaranteed 8 yrs. 50-ft. 8.01  
2-ply, guaranteed 8 yrs. 25-ft. 4.27  
1-ply, guaranteed 4 yrs. 50-ft. 7.28

**.22 Cal. Remington, Mod. 510A, Bolt Action Single Shot, was 18.95. NOW 15.20**

**12 Ga. Winchester Mod. 37 Single Barrel Shotgun, was 97.50. NOW 75.00**

**WRECKING BARS—24" Red End 97c Skeltonia, 36" 1.36**

**JAR LIFTERS 19c**  
Wire lifts for canners.  
**2 Cream Cans, 3-gal. 5.55**  
Heavy duty tinned

**TREDS SHOE SOLES, rubber, will not mar floors—"Stick on Soles" 10c pr.**  
These are old and you'll have to buy the rubber cement extra.

GR. 7302

**98th ST HARDWARE STORE**

9648 Pacific Ave.

# MIDLAND FOOD CENTER

98th And Portland Avenue We Reserve The Right To Limit Quantity

**ICE**  
BLOCK or CRUSHED  
Call Ed Shaffer - MA 8161

If your present garbage service is not satisfactory . . . give us a try

**Rural Garbage Service**  
GR 5893

**FUR STORAGE**  
Complete Service & Storage  
BETTY ANDERSON FURS  
102nd & So. Park Ave  
GR 7610

**Stop & Shop On Your Way To The Mountain**  
Groceries, Meat, Drug Sundries, Gas, Oil, Fishing Tackle, Fresh Vegetables, Ice Cream & Pop at —  
**HANSCH'S CORNER**  
Graham at Meridian & Carlson Roads Open Every Day

**COLLEGE CLEANERS**  
GR. 7914  
Free Pickup & Delivery  
Plant-Park & Violet Meadow

**PARKLAND TAXI**  
GR 8192  
If No Answer Call GR 6704

**DUGUAY'S POULTRY**  
NORTH PUYALLUP  
For your everyday dinner enjoy fresh dressed poultry  
Open six days per week, 9 to 6  
Phone Puyallup 5-2892

KEEP YOUR FOOD FRESH at  
**MOUNTAIN VIEW FOOD LOCKERS**  
Airport & Spruce GR 7031  
2 1/2 Miles East of Pacific Ave.

SO. END RADIO Specialists!  
**ROGERS**  
RADIO & APPLIANCE  
82nd & Pacific HI 5942  
PHILCO SALES & SERVICE

**SAVE \$600 on this regular \$1595**  
7-quart Dinner Belle  
**PRESSURE COOKER**

HERE IS THE PLAN . . .  
Get a Purchase Card now at our store. Have the amount of your purchase punched out on this card. When completely punched out to total of \$5.00 on purchases present the card and \$9.95 for your 7 quart DINNER BELLE PRESSURE COOKER.

**Dinner Belle PRESSURE COOKER HAS THESE OUTSTANDING FEATURES:**

- Extra large capacity — 7 quart size — holds 7 pint mason jars for canning
- Holds large chicken, roast or ham
- True pressure regulation for 5, 10 and 15 pounds
- Pure drawn aluminum — chrome fittings
- "Stay-cool" plastic handles — Plastic side grip for easy handling
- Self-sealing cover — safety pressure plug with "steamblast" guard
- COMPLETE WITH MEAT RACK AND COOK BOOK

Underwriters' Laboratory Approved  
Retains More Vitamins • Full Year Guarantee  
Ideal for Canning and Cooking

**ONLY 995 ON OUR PLAN**

YOUR **Rexall** STORE

**Parkland Pharmacy**  
Mt. Hiway at Airport Road GR 8519

## Don't Live In A Dream



LIVE IN A DREAM HOME THAT IS A REALITY . . .  
Stop in today and let us show you how we can make your dreams come true by Remodeling, Reroofing or Redecorating your home. All labor and material furnished. No down payment—easy terms.

CALL US FOR FREE ESTIMATE

**Brookdale Lumber Co.**  
136th & Pacific Avenue GR 8362

**WANT ADS**

FORD plowing, manure spreading, blade work. Post holes, mowing, hauling. Ackley, GR 5283. Sc2f

HAVE YOUR RADIATOR CLEANED — The Brady way. Cleans radiator and block in the car! Satisfaction guaranteed. Stafford's Garage, 9654 Pacific Ave. GR 6770. Sc28

FOR RENT — Furnished house with bath. Phone GR 5421.

FOR SALE—40 acres 2 1/2 miles south off Puyallup on Meridian highway. White house, red roof, 3 rooms and snack bar, roomy closet, 3-piece bath, fruit room, built-in fuel bins, lovely ceilings in all rooms, lots of light, electric pump, cabin for guest room or storage. Long picnic table in shady grove. Abundance of shrubs and flowers. A real rest home. Small lakes where the deer come down to drink. Wild ducks in abundance. Plant fish and water lilies for profit and relax near this busy highway. Sell for cash or trade for small house close in Parkland and some cash. Phone owner Puyallup 52544. Sc28

UPHOLSTERING — And Recovering. Will call with samples and estimates. Work Guaranteed. 27 years experience. Elrey Upholstering, 8237 So. Park Ave., Phone HI. 6862. 43-tf

EXPERT CAR PAINTING — Working man's price; stop, inquire, Pacific Auto Service, 9847 1/2 Pacific Ave.; GR 8107. Sc33

FOR SALE OR TRADE — 1946 Chevrolet sedan. New '48 motor. Condition same as new. Will trade for '40 or '41 Chevrolet or Ford pick-up as part payment. See at Schaefer's Garage on Mt. Hiway, 6 miles north of Eatonville. Luther Smith, owner, box 176, Eatonville, Wash. Sc28

GLASS-LINED hot water tank with automatic 110-V. side-arm heater. Complete. GR 8349. Sc28

FOR SALE—Brood sow with 10 little pigs 3 weeks old. Exceptionally good mother. HI 7796.

AUCTION — Every Monday. Sales start 12 noon. Misc. household furniture, tools, farm machinery, poultry, livestock, etc. Phil Zurfluh, auctioneer. Spanaway Auction Sales. Mt. Hiway at Military Road. For consignment call GR 6895. Pick up and deliver. Sc2f

WOOD FOR SALE — Mill run green slab and edgings; also heater and fireplace wood. GR 4604. Sc2f

SPANAWAY FUEL — Heavy upland tie slab. Immediate delivery. Call GR 6309. Sc33

WANTED TO BUY — Poultry of all kinds. Call or write Douglas's, North Puyallup, Phone Puy. 5-2892. Sc1f

HUTSON TANK CLEANING — Septic Tanks Cess-Pools cleaned. Contents hauled away. GR 7038. GR 5467. Sc17

EXPERT AUTO PAINTING — \$37.50 and up. The factory way. Prewar paints, 11 years experience. All work guaranteed. Also spray rigs for rent. Smalley Bros., 98th & Pacific, GR 8131. Sc2f

TRACTOR WORK — Anything. Anywhere. T. E. Fugate, Rt. 3, Box 588, Puyallup, Wash. Phone 5-6064. Sc2f

FOR SALE—Pine walnut dining table and chairs. Also fireplace screen. Reasonable. Moving. GR 3035. Sc28

The Spanaway Elk Plain Volunteer Firemen's Auxiliary will hold their picnic at noon July 19th, in Metropolitan Park at Spanaway Lake. Potluck. Members and friends urged to attend.

CLEAN-UP SALE—Rebuilt washers, electric refrigerators. Good condition—guaranteed. \$24.50 up. POCHTEL DIST. CO. 140th Pacific. GR 8624. Sc28

Cabinets Made To Order

**RHONES CABINET SHOP**  
2nd & Pacific St. Spanaway GR 7005

**USED AUTO PARTS A-1 Auto Wrecking**  
GR 7777  
Axles - Gears - Rear Ends  
Motors - Transmissions  
Heads - Wheels - Trailer Axles  
Mt. Highway in Parkland

Insurance and Notary  
**Parkland Realty Co.**  
208 Garfield St. Parkland  
Gr 7232 or Gr 6774 Office Phones  
Eves. & Sunday GR 8210

**22 FLAVORS**  
**Parkland Ice Creamery**

Experienced Technician  
Repairs on Home and Auto Radios

**MILLER RADIO & TELEVISION**  
North Puyallup Phone 5-6084  
Pickup & Delivery Service

**FREE**  
WITH SOLES AND/OR HEELS  
1. Dress Shoes Shined  
2. Minor Rips Sewn  
3. Work Shoes Oiled  
4. Heel Pads if Needed  
We Also Carry New Shoes

**Paul's Shoe Repair**  
Mt. Hiway at Spanaway

**OLD TIME GOSPEL SERVICES**

Being held in school recreation hall. So. Meridian & Parr St., Puyallup.

Sunday School Services  
10:00 a. m.  
Regular Services  
11:00 a. m. & 8:00 p. m.

**Pastors: Brother Cox and Brother Harris**

White-Tail Deer  
White-tail deer are polygamous and the normal doe continues to have twin fawns every year after her first one. With offspring producing progeny, each doe is said to be responsible for 100 offspring in 10 years time.

**Gibbons**

**Spanaway Food Center**  
Spanaway — GR. 7512

- EXTRA SPECIAL**  
Whiz Paste Wax  
Lb. 69c  
The 2nd lb. 7c
- BOOK MATCHES**  
2 cartons 25c
- JELLS RITE**  
8-oz. 2 btls. 23c
- DR. PHILLIP'S BLENDED JUICE**  
46-oz. can 43c
- LIBBY'S SOCKEYE SALMON**  
1-lb. tin 63c
- PURE GROUND BEEF** lb. 35c
- EVISERATED FRYERS** lb. 65c
- DENNISON'S PORK AND BEANS**  
1-lb. tin 10c
- HUNT'S 2 1/2 SIZE APRICOTS** 27c
- Our Street Is Open—  
Plenty of Parking  
Space for All

IF LONELY, write Ruth L. Wade, an old reliable club. Box 607, Vancouver, Wash. Sc2f

WASHING MACHINE PARTS — Largest stock in town. Repairing that pleases. B. B.'s Washer Service. 3722 So. G. G. 5115

**SPECIAL**



**BATH SETS**  
3 pc. \$11985 and up

**Valley Plumbing & Heating**  
"AT THE SIGN OF THE DRIPPING FAUCET"  
Save on Plumbing, Heating and Appliances  
1700 River Road, Puyallup Phone 5-6400

**The Parkland Theatre**

Fri. & Sat. July 15 & 16  
Lusty Brawling Love-Packed  
Action  
MARLENE DIETRICH in  
**SEVEN SINNERS**  
with JOHN WAYNE  
—and—  
THE MARK BROTHERS  
A NIGHT AT THE OPERA

Sun. & Mon. July 17 & 18  
**CRISS CROSS**  
with Burt Lancaster, Yvonne DeCarlo, Dan Duryea  
—and—  
LASSIE in  
**HILLS OF HOME**

Tues.-Wed.-Thu. July 19-20-21  
Joan Fontaine, James Stewart  
—in—  
**YOU GOTTA STAY HAPPY**  
—and—  
**I SURRENDER DEAR**  
Gloria Jean, David Street

**HERMAN'S**

**FOOD STORE SPANAWAY**  
3rd & Pacific, Spanaway GR 8213 July 15-16  
No Parking Problem or Hiway Construction to Contend with—Just Turn on 3rd Street

★ **SUGAR** 25-lbs. \$2.23  
Cane

★ **FANCY APRICOTS** \$1.19  
For Canning—28-lb. net wt.

★ **PET MILK** can 11c  
Any Amount

★ **COFFEE** 1 lb. 49c; 2 lbs. 97c  
HILL'S BROS.

**OLD STYLE BEER** case 2.40  
Plus Deposit

Varieties or Fruitees  
**TOOTSIE Summer Candies** cello pkg. 35c  
Del Monte — No. 2 tins  
**TOMATO JUICE** 2 for 25c

Blue Tag  
**SLICED BEETS** 2 jars 29c  
Joan of Arc  
**KIDNEY BEANS** 2 cans 25c  
**KRISPY CRACKERS** 1-lb. box 25c  
**HI HO CRACKERS** 29c

Hunt's  
**HOT SAUCE** 3 for 17c  
**MIRACLE WHIP** qts. 49c  
**FRUITS — VEGETABLES — ALL VARIETIES**  
Top Quality  
**WATERMELONS** lb. 4c  
Selected Large Solid Heads  
**LETTUCE** each 7c  
**ONIONS or RADISHES** bunch 3c  
Zucchini  
**SQUASH** 2 lbs. 15c

**SPANAWAY MEAT MARKET**  
NEXT DOOR TO HERMANS — GR. 8215

**VEAL ROAST—Choice** lb. 49c  
**VEAL STEAK—Choice** lb. 53c  
**BEEF POT ROAST—Blade Cut** lb. 44c  
**PURE GROUND BEEF** lb. 39c  
**PURE LARD** 2 lbs. for 25c  
**CORNED PORK—Sugar Cured** lb. 43c

**MID SALE SUMMER**  
SEAMLESS CAMEO  
**NYLONS** - - 2 pr. \$1.50  
Visit our special rack and select one of our dresses at greatly reduced prices.  
**SWIM SUITS** - - \$6.95  
Denims, Skirts, Jackets, Shorts, Etc., \$2.95 and up

**MYRTLE MOCKEL APPAREL**  
In the Parkland Shopping Center GR 7617



**Johnson & Anderson**  
ON MT. HIWAY **MARKET** GR 8356  
FINEST PARKING ON MT. HIWAY

Meadow Grove  
**BUTTER** lb. 57c  
12-oz. Can  
**TREET LUNCHEON MEAT** 35c  
Red and White  
**MAYONNAISE** pints 33c  
Golden West  
**COFFEE** lb. 49c  
**HI HO CRACKERS** lb. pkg. 27c  
Bath Size  
**SWEETHEART SOAP** 4 for 37c  
**KITCHEN KLENSER** 3 for 29c  
**PUREX** 1 gal. jug 43c

— FRESH FRUIT —  
**APRICOTS and RASPBERRIES for Canning**  
**RASPBERRIES** \$2.25 flat  
Freshly Picked Daily

**MEATS**

**BEEF LIVER** lb. 69c  
**SWIFT'S PREMIUM FRANKS** lb. 53c  
By the Piece  
**SWIFT'S PREMIUM BACON** lb. 59c  
**T-BONE STEAKS, Steer Beef** lb. 75c

**FEEDS**

**SCRATCH FEED** 100 lbs. \$4.05  
**GROUND BARLEY** 100 lbs. \$3.25

Pyrex Ware Colored Refrigerator Set \$2.95  
Oil Cloth per yard 59c

**THE STORE THAT HAS IT**

**OUR FOOD VALUES**

Maple Grove  
**BUTTER** 57c

Per Can  
**MILK** 11c

10-lb. Bag  
**SUGAR** 89c

You Can't Make a Bad Cup of **M-J-B**

**DRIP OR REGULAR** lb. 49c

Van Camp—2 1/2 Tin  
**Pork & Beans**  
2 for 45c

FINE FOODS from **NALLEY VALLEY**  
DEMONSTRATION IN OUR STORE SATURDAY

**NALLEY'S MAYONNAISE**  
Quarts 63c Pints 33c  
FRESHER - RICHER - BETTER

Nalley's Mustard, 9-oz. 15c

**NALLEY'S LUMBERJACK SYRUP** 29c  
Better the Year 'Round—24-oz.

Nalley's Beef Stew, 30-oz. 65, 15-oz. 35  
Delicious—Plenty of Meat

Nalley's Delicious Dill Pickles 37c  
Kosher or Plain Style—24-oz. jar

Nalley's PURE HONEY 5 lbs. 79c  
U. S. Grade No. 1

**NALLEY'S POTATO CHIPS**  
Made in Tacoma—They're Fresh!  
Jumbo Bag 39c, 4 1/2-oz. 23c  
A Real Picnic Treat

**FRESH VEGETABLES**

MOORE PARK  
**APRICOTS** 28-lb. box 1.15

No. 1  
**NEW SPUDS** 10 lbs. 35c

Fresh, Crisp  
**CELERY** lb. 6c

**TOMATOES** 2 lbs. 29c

Walla Walla  
**CORN** each 5c

**RADISHES & ONIONS** 2 bn. 5c

**MEATS FOR YOUR SUMMER MENU**

Center Cut, Shoulder  
**PORK ROAST** lb. 39c

**PURE GROUND BEEF** lb. 39c

Country Style  
**BULK SAUSAGE** lb. 39c

Good Young  
**BEEF RIB STEAKS** lb. 49c

5 lb. to 7 lb. Average  
**Smoked BOSTON BUTTS** lb. 53c

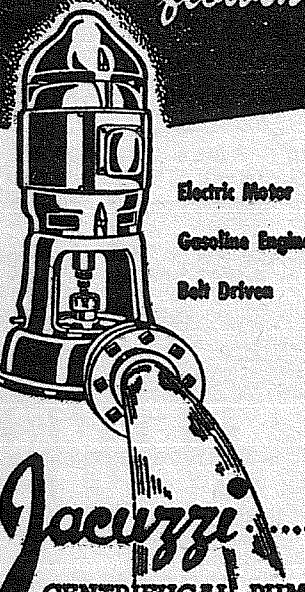
Good, Light — Any Size Piece  
**LEAN SLAB BACON** lb. 49c

**FILL YOUR LOCKERS NOW!**  
Half or Front Quarter  
**GOOD YOUNG BEEF** lb. 39c

**HUGHES GARAGE**  
GENERAL AUTO REPAIRS  
30 Years Experience  
Cars & Trucks  
We Estimate Your Job  
9612 Pacific Avenue

**KEEP YOUR FARM PROFITS**

flowing



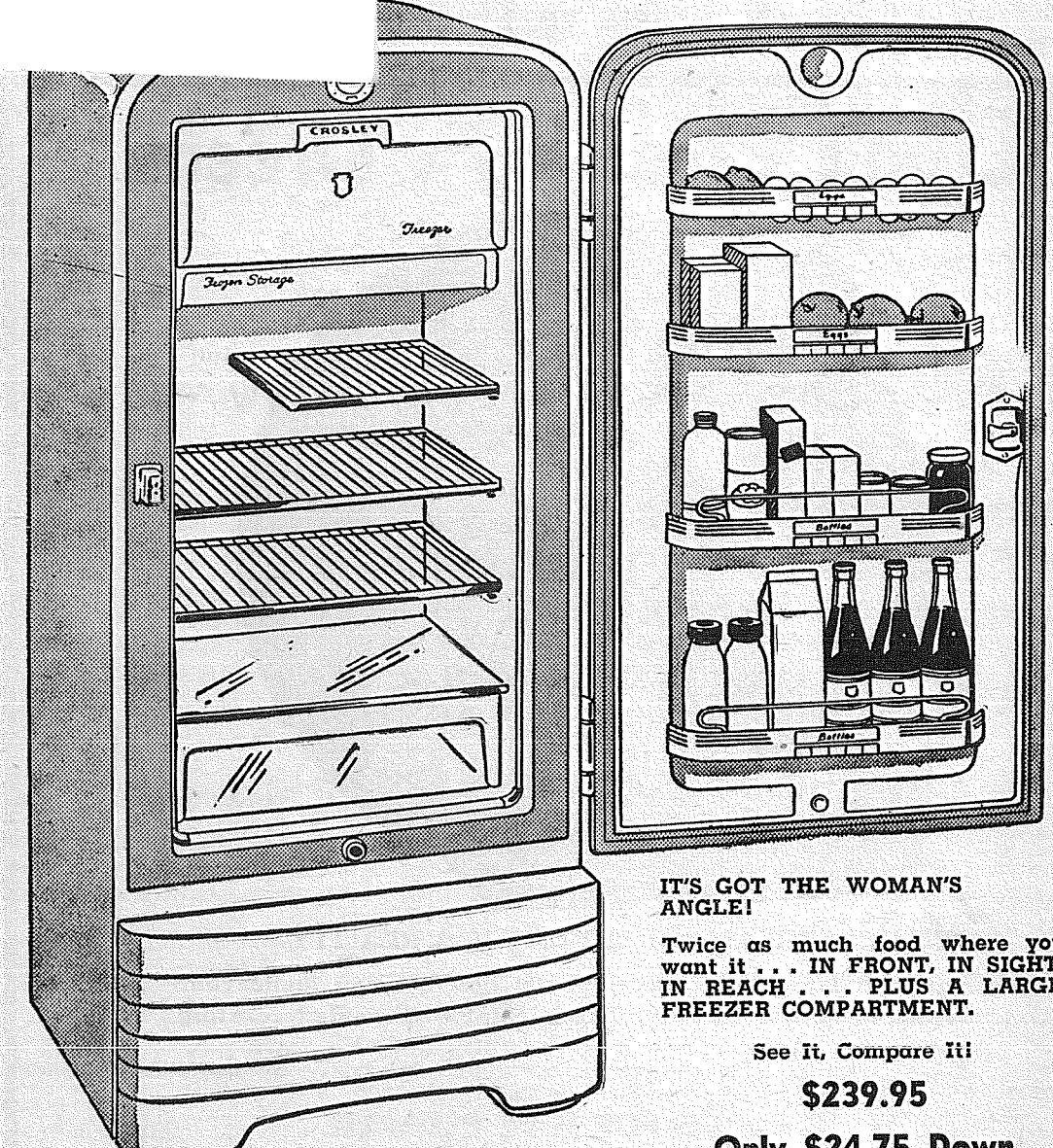
Electric Motor  
Gasoline Engine  
Belt Driven

**Jacuzzi CENTRIFUGAL PUMPS FOR IRRIGATION**

A complete line of pumps for surface and overhead irrigation purposes as well as other installations requiring large volumes of water. Jacuzzi Centrifugal Pumps deliver a maximum of water with a minimum of horsepower.

**Philip Hardware**  
2215 Pacific Ave. BR 3109

**ROSLEY EMA 7 SHELVDOR**



IT'S GOT THE WOMAN'S ANGLE!  
Twice as much food where you want it... IN FRONT, IN SIGHT, IN REACH... PLUS A LARGE FREEZER COMPARTMENT.

See It, Compare It!  
**\$239.95**  
Only \$24.75 Down

**Parkland Brookdale Electric**  
MT. HIWAY AT BROOKDALE GOLF COURSE ROAD—GR 6789 Open Evenings till 9:00

**NOVOTNEY BERGER'S**  
BROTHERS QUALITY MEATS

72nd And Portland Avenue HI 7200  
(WE RESERVE THE RIGHT TO LIMIT QUANTITIES)