



**SUMMIT NEWS**  
By MRS. M. S. RAU  
GRanite 8391

business meeting and election of officers. Potluck luncheon will be at 12 o'clock. The Ada Holden circle will meet at the home of Mrs. B. D. Cook at 1 p.m. Thursday, April 24, for business hour and dessert luncheon. Plans are being made for a mother-daughter banquet Thursday evening, May 8; more details later.

**WSCS Election**  
The Woman's Society of Christian Service held the annual election at the regular meeting April 10. Mrs. E. B. Heister was chosen president; Mrs. H. Van Beek, vice-president; Mrs. Aho Morton, secretary; Mrs. Lew Dillman, treasurer. Divisional secretaries are Mesdames James Bibby, M. Gjuka, William Daniels, Archie La-Forge Jr., Jack Houtz and M. S. Rau

and Miss Ruth Clayton.  
**New Owner**  
Merle P. Dehn, popular proprietor of the Shell gas station at Summit, has sold his interest in the station to Sam Slater, who will give the same courteous service given by Merle. The Slater family also live at Summit.  
Here for Easter  
Miss Althea Hammergren, who is connected with the county extension

work at Bonner's Ferry, Idaho, spent the Easter vacation with her parents, Mr. and Mrs. Ed Hammergren of Garden Valley road.  
**Visitors**  
Visitors at the Alex Kelly home are Mrs. Kelly's brother and family, Mr. and Mrs. R. N. Jeffers, and her niece and family, Mr. and Mrs. F. Mitchell and son from Rossland, B. C.

**WISCONSIN CLUB** potluck supper will be held at 6 p. m. Sunday, April 20, in the basement of the Odd Fellows Temple, Sixth and Fawcett

**NEW CROP OF VALUES**

Nest Fresh Grade AA  
**EGGS doz. 53c**

Swedish Roast, fresh ground the way you like it  
**Coffee lb. 79c**

Libby's Unsweetened 46-oz. Can  
**O'rage Juice 25c**

Libby's 12-oz. Can  
**Corn Beef 43c**

Libby's Corned 1-lb. Can  
**Beef Hash 35c**

Mission Pkg.  
**Noodles 29c**

Kraft Pkg.  
**Caramels . . . . . 39c**

Kraft Dinners 2/25c

Kraft Pt.  
**Miracle Whip . . 35c**

COFFEE 2-LB.  
**HILLS 1.65**

KRAFT QT.  
**Salad Oil 49c**

Swansdown, White or Devil's Food Pkg.  
**Cake Flour 31c**

Aunt Jemima, Mixing Spoon Free 10-Lb.  
**P'cake Flour 99c**

FISHER'S PKG.  
**Biskitmix 39c**

Honey Graham  
**Crackers**

Large Pkg.  
**47c**

VELVEETA  
**Cheese 2 lbs 79c**

Licenses Issued  
**FISHING TACKLE**

SHURFINE  
**Shortening 3 lbs 79c**

**Pet Milk**

3 Tall  
**41c**

GRADE GOOD & CHOICE ROUND  
**STEAKS lb. 93c**

GRADE GOOD & CHOICE POT—Blade Cuts  
**ROAST lb. 69c**

FRESH RENDERED PURE  
**LARD lb. 13c**

GARSTEN'S SKINLESS  
**WIENERS lb 49c**

SLICED—Summit Farms Fresh Smoked  
**BACON lb. 49c**

FRESH GROUND PURE PORK  
**SAUSAGE lb 49c**

Cutting, Wrapping, lb. 3c  
Curing & Smoking, lb. 7c  
We Buy Hides

**RECIPE OF THE WEEK**  
By Mary Lee Taylor

**Fruit Kisses**  
Broadcast: April 19, 1952

3 cups corn flakes 1/4 cup Pet Milk  
2 Tablespoons butter 1 cup drained, canned  
1/2 cup brown sugar fruit cocktail

Put corn flakes into greased bowl. Melt butter in skillet over low heat. Stir in brown sugar a little at a time. Cook over low heat until sugar is melted, stirring all the time. Then stir in milk by tablespoons. When smooth, boil and stir 1 minute. Remove from heat. Pour all of mixture over corn flakes at once. Turn corn flakes gently over and over until all are coated with mixture. Drop from mixing spoon onto waxed paper making 4 patties. With spoon and fingers shape into rounds about 4 inches across. Then press a hollow in center of each. At serving time fill with equal parts of fruit cocktail.

4 QTS.  
**Sanitary Milk . 84c**

LB.  
**Mild Cheese . . 57c**

LB.  
**CHEDDAR Sharp Cheese . 69c**

LB.  
**TASTEWELL Oleomargarine 23c**

PKG.  
**TREND Washing Powd. 19c**

3 FOR  
**LIBBY'S Baby Food . . . 25c**

Nalley's Cucumber  
**CHIPS . . . . . 25c**

4 FOR  
**GUEST Toilet Tissue . . 29c**

4 FOR  
**ALL FLAVORS GUM . . . . . 15c**

CARTON  
**Cigarettes . . . 2.04**

We believe the best customer and our best advertisement is a satisfied customer.  
**BIXBY Guaranteed RADIO Repair**  
Call GR. 8309  
**BRING YOUR RADIO FOR FREE Inspection and Tube Check**  
On Waller Road, 3/4 Mile South of Airport Road

**FLETT DAIRY**  
FARM FRESH  
HOMOGENIZED AND PASTEURIZED MILK AND CREAM  
ICE CREAM  
Phone GA 3301

**Wheel Aligning Butler's Garage**  
One block North Airport Road on Canyon Road  
Phone GR. 8209  
If no answer, Call GR. 5095

An Independently Owned and Operated Dairy Serving The SOUTH END  
Grade A Milk  
Chocolate Milk  
Cottage Cheese  
**Puy. Valley Dairy**  
Phone WA. 8351

**LAWN MOWER Sharpening**  
Free Pick-up and Delivery  
NEW STOCK  
"Schwinn" BIKES  
Free Trading Stamps  
**Parkland Cycle**  
Parkland Shopping Center  
GR. 5772

Prescriptions Prepared & Carefully  
Fresh Insulin at Down Town Prices. Pay Phone Bills Here  
**Tincher's Pharmacy**  
8239 Park Ave. HI. 3344  
Across street from Fern Hill P. O.

**PARKLAND Plumbing & Heating**  
GR. 3710  
New Installations  
Repairing Pumps, Hot Water Heaters, Washers  
Sluggish Drains Opened.  
Shop located at  
**770 South 120th**

GROUP ONE  
**BATTERIES \$7.45**  
EXCHANGE  
Gas at Competitive Prices  
**BOB'S PLACE**  
Airport Road & J St. GR. 3395  
18 Years in Parkland

**WELL DRILLING**  
\$6.25 per foot  
6-INCH CASING  
Capable, Experienced Drillers  
Nothing Down—3 Years to Pay  
**Cascade Pump & Drilling Co.**  
Phone GR. 3141 or GR. 5874

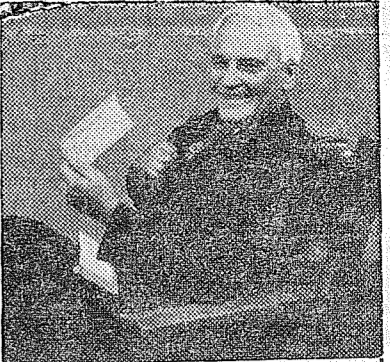
**COAL WITHOUT DUST**  
Double Screened  
Aberdeen, King Utah lump, nut, stoker coal. (Money cannot buy better, cleaner coal.)  
Fres-To-Logs are all cut to size to fit any fireplace or furnace—all heat, no ash.  
Heavy Planer Ends, Core Block Montana, Wyoming Sootless Coals  
Cordwood, old growth, 12-16 to 24  
Briquets - Coal - Planers, sacked  
Stove and Diesel Oils  
**PACIFIC MUTUAL FUELS, INC.**  
(Est. 100 Years in 1950)  
Fuelphone MA. 1137 401 E. 11th

**FIFE DRIVE-IN THEATRE**  
WA. 7071  
On U. S. 99, East Side of Bridge  
Thursday, Friday & Saturday  
Two Technicolor Hits  
"I'll See You in My Dreams"  
Doris Day - Danny Thomas  
with Robert Cummings  
Sunday, Monday, Tuesday  
Two gala color programs  
"Hong Kong"  
Ronald Reagan - Rhonda Fleming  
Coming Wednesday  
"Model and the Marriage Broker"  
plus  
"Flaming Feathers"

**Mrs. Thos. N. Hibben FARMERS INSURANCE GROUP**  
Automobile, Truck and Fire Insurance  
7820 PACIFIC AVE.  
Open Eves. HA. 9132

**COMPLETE GARAGE SERVICE**  
AUTO ACCESSORIES  
ATLAS TIRES & BATTERIES  
**ANDERSON Chevron Service**  
176th St. & Mt. Highway  
GRanite 6465

**Sheet Metal Work Poultry Equipment Rabbit Feeders Water Founts**  
**RAU MFG. CO.**  
GRanite 7372



**THREE SCORE AND TEN . . .**  
People nowadays often live beyond the biblical span of 70 years. The wise man makes sure that he will not outlive his income. A Sun Life retirement policy will give you a guaranteed income for as long as you live. Start saving today.

**SUN LIFE ASSURANCE COMPANY OF CANADA**  
New Bank Bldg.  
Parkland  
GR. 3226  
502 Puget Sound Bank Building  
MA. 1381  
**John S. Castleman**  
Castleman Insurance Agency

**C. O. Lynn Co. MORTUARY**  
717 TACOMA AVE. Phone MA. 7745

**Malcom's Meats**  
1 Block North of Airport Road On Canyon Road  
GR 8258  
COTTAGE HAMS—  
Boneless . . . . . lb. 63c  
LEAN SIDE BACON . . . . . lb. 45c  
PORK ROAST—  
Shoulder . . . . . lb. 43c  
GOOD SIRLOIN STEAK, lb. 79c  
PURE PORK SAUS. . . . . lb. 45c  
All Other Cuts at Reduced Prices  
Locker Beef, Pork and Veal Custom Slaughtered, Cutting and Wrapping  
RETAIL SALES THURSDAY, FRIDAY and SATURDAY  
The Bass will soon be biting  
**Point Chop Resort**

It's Fisher's Feeds for Profit at Summit Feed Co.

**LUMBER LUMBER LUMBER**  
1x6 Boards 4 ft. long, per 1,000 lin. ft. \$11.00  
1x8 Boards 4 ft. long, per 667 lin. ft. . . \$11.00  
2x4's No. 4, 8 to 18 ft., per 1,000 lin. ft. \$26.33  
1x4's No. 4, 6 to 20 ft., per 1,000 lin. ft. \$13.67  
Wood Plaster Lath, 4 ft. (per 100) . . . \$1.50  
Fence Pickets, No. 2, each . . . . . 7c  
"Always Inexpensive Lumber At"  
**SUMMIT LUMBER CO**  
GENERAL BUILDING SUPPLIES  
Rt. 13, Box 659 Airport & Canyon Road GRanite 8605  
We Deliver - - Rain or Shine  
Open All Day Saturday Free Delivery  
"EVERYTHING TO BUILD WITH"

**UNDER NEW MANAGEMENT**  
**Summit Shell Service**  
Corner Knapp & Canyon Roads  
Sam Slater, Proprietor  
**IT PAYS TO BUY SHELL PRODUCTS**  
We Feature FAMOUS SHELL LUBRICATION  
**Firestone Tires**  
BATTERIES AND ACCESSORIES  
12 Years Automotive Experience

WE RESERVE THE RIGHT TO LIMIT QUANTITIES — NO SALES TO DEALERS

**SUMMIT TRADING Company**  
PHONE GRanite 5848  
Rt. 13, Box 690, Tacoma—One-half Mile North of Summit View, on Canyon Road



**VERN JOHNSON SAYS:**

We appreciate very much the welcome reception we have received since moving our Hardware Store into the community of Fern Hill, 8302 Park Avenue.

We know you like good service, and we try to tender such at all times. A man in business is a public servant. When the tires of being a public servant, he has no business in business.

Come and See Us Often

**Pacific Hardware & Paint Co.**

"Flag Headquarters"

8302 Park Avenue

HI. 3072



Lakewood 2167

**H. T. Anderson Given New School Contract**

Homer T. Anderson was re-elected as superintendent of the Bethel school district No. 403, for a two-year term, at the Tuesday, April 1, meeting of the Bethel school board. Anderson came to Kapowsin school district in September, 1944, to serve as superintendent. He formerly came from the Peninsula where he was both grade and high school principal at Vaughn. After the formation of the Bethel district on July 1, 1949, he was elected superintendent of this district. The Bethel district is a result of consolidation of Elk Plain, Kapowsin, Roy, Rocky Ridge, and Spanaway. The district covers 112 square miles of Pierce county.

**CUSTOM MEAT**

Fresh Eggs - Locker Rentals  
**Mountain View Food Lockers**  
Airport & Spruce GR 5332  
2 1/2 Miles East of Pacific Avenue

COME IN  
And See Our Newly Remodeled  
**Prescription Dept.**

**JACOBS PACIFIC DRUG**  
8248 Pacific Avenue

**FISHERMEN ATTENTION!**

Fish Worms packed in Special Mix  
Upside Downer Plastic Container  
Guaranteed to Satisfy.  
4 blocks from Park Ave. towards Hiway 99 on Sales Road. Turn right 100 feet in on So. J.  
**JOHN E. MILLER**  
GR 5059

**ROTO-HOE**

2 H.P. ROTO-HOE only \$136  
Acclaimed everywhere shown as America's finest Garden Cultivator for small and medium Gardens



Roto-Cutter Attachment (for cutting lawns, tall grass, high weeds, etc.) \$40.00  
Come in and ask us for a demonstration of the efficiency and usefulness of the ROTO-HOE

**BUCK & SONS Tractor & Implement Company**  
114 Puyallup Avenue, Tacoma MAin 4117-3

**ASK ABOUT IT Bicycles**

No Down Payment only \$5 per mo.

**PARKLAND CYCLE SHOP**

433 Garfield St. GR. 5772

Guaranteed Better Wear  
Attention to Details  
**ART'S SHOE SHOP**  
Garfield Street Parkland

Have your Cabinets CUSTOM BUILT  
At No Extra Cost  
**RHONE'S CABINET SHOP**  
2nd & Pacific Spanaway GRanite 3342

**PURDUE Plumbing & Heating**  
Installation & Repair Service  
GRanite 7038

**TRUCKS FOR RENT**  
MA 9039  
Save One Half We Furnish Everything  
**HARMON'S Driv-Ur-Self Co**  
HARMON'S SERVICE  
Jim Harmon, Mgr.  
2112 Jefferson

Home and Auto Insurance  
**FARMERS' MUTUAL OF ENUMCLAW**  
It Will Pay to Check Our Rates  
GR 3733 - M. SLATER GR 9939

**All Saints Church** (Episcopal)  
96th Street at East "B"  
EVERY SUNDAY SERVICES  
9:30—Episcopal Church School  
11:00—Worship, Sermon & Music

**TROVANI'S JUNIOR BOOTERY**  
Specializing in Children's Shoes  
706 ST. HELENS AVE. - MA 6318

**NO Boat Reservations Left**  
for Sunday morning, April 20, at HART'S LAKE

**SHOP & SAVE**

AT

**BROOKDALE Lumber**

Odd Sizes Casings and Base and Miscellaneous Mouldings  
**.01c per foot**

Why pay \$37.50 per M or more for No. 4 2x4's when we have it for **\$29.95 per M.**

**INSIDE DOORS** (new)  
**\$2.00 and up**

Dry reject from clear 1x12 Shelving only **15c ft.**

1x6 DRY UTILITY SIDING  
Just the thing for garages and chicken houses.  
**No. 2 OAK FLOORING**  
Per 100 Sq. Ft. Only **\$13.50**  
Cheaper than fir

**STEP LADDERS**  
4-ft. \$3.50  
5-ft. \$4.50  
6-ft. \$5.50



4x4  
**No. 1 CEDAR POSTS**  
13c ft.

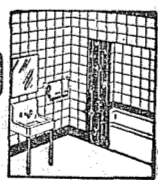
**KEYSTONE CARPENTER'S SAW**  
8 point \$4.50

A Few Left  
**WINDOW FRAMES**  
Cut and Bundled  
98c ea.

**ALUMINUM LEVELS \$4.15**  
**Paint Thinner 24c gal.**  
Your Container

Per Foot, including Posts, 2x4's and Rails  
**Picket Fence 35c ft.**

3-PIECE **BATH ROOM SETS** Complete **\$145.00**  
First grade white sprayed Toilet Seats, \$3.95  
Pipe Fittings and Chrome Supplies



We Contract **ELECTRIC WIRING**  
LARGEST STOCK IN SOUTH END

**No Down Payment**

All Materials and Labor on Our Payment Plan

**Brookdale Lbr. Co.**

136th & Pacific Avenue



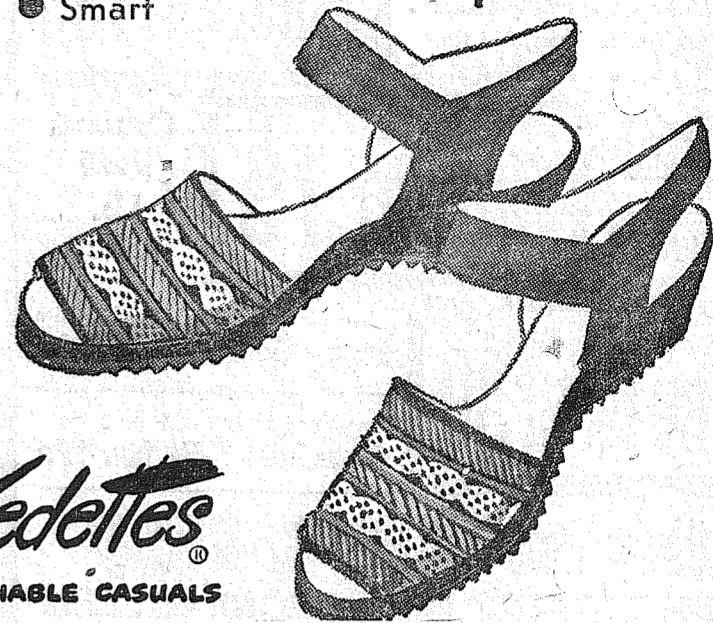
GRanite 8669

*Boosterettes*



- Cool
- Comfortable
- Smart

*Sunny Steps*



**U.S. Kedettes**  
THE WASHABLE CASUALS

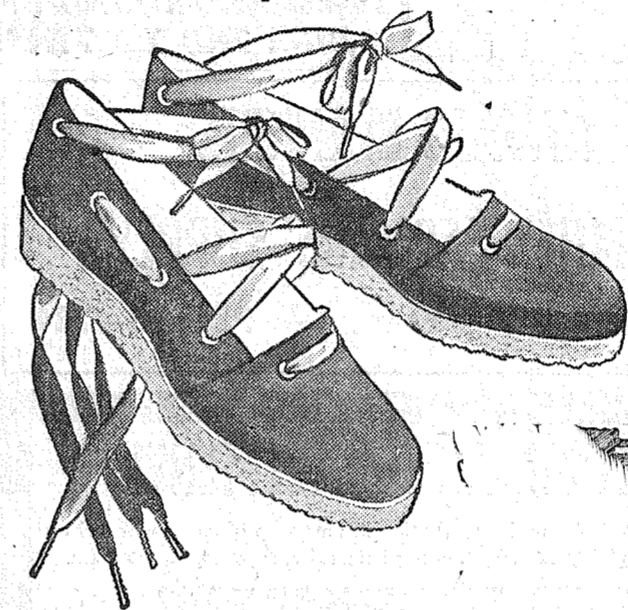
MORE THAN A DOZEN

DAZZLING COLORS AND STYLES

For the First Time . . . **NARROW WIDTHS**

Misses' Sizes 8 1/2-3—Women's Sizes 3 1/2-10

*Bravo Espadrille*



**Soine's Parkland Shoe Store**

411 Garfield St. (In the Parkland Centre Bldg.)  
Across from the Parkland Post Office  
GRanite 3526 Al and Malcolm Soine Open 10-6

**The Complete FOOD STORE**

STANDBY **P'apple Juice 4 for 99c**  
DRIP OR REGULAR **WOODS COFFEE 79c**  
46-OZ. **POUND 79c**

ENTER WHITE KING'S \$72,000 BENDIX CONTEST  
**240**  
\$300 BENDIX Soap Washers with Magic Heater  
WILL BE GIVEN AWAY! 40 EVERY WEEK FOR SIX WEEKS  
GET ENTRY BLANKS HERE with complete details

TWIN PEAKS **Grape Juice 27c**  
24-OZ. BOTTLE

MD TISSUE . . . . . 10c Roll  
Standby Strawberry . . . . . 12-oz. 29c  
PET MILK . . . . . 3/43c Large Tin  
STANDBY SPINACH . . . . . 19c 2 1/2 Tin



**WANT TO SAVE ON MEAT?**

**CHECK THESE VALUES**  
Pan-ready Red Fryers . . . 63c lb.  
Graded Good T-BONES . . . 95c lb.  
Skinless WIENERS . . . 49c lb.  
Pork Loin ROAST . . . 49c lb.  
Lean Streaked Slab Bacon . . . 45c lb.

**FOR BETTER NUTRITION EAT MORE VEGETABLES**  
Long Yellow Crispies  
**CARROTS . 2 bunches 15c**  
Local GREEN ONIONS or  
**RADISHES . 2 bunches 9c**  
Golden Ripe **BANANAS . . 2 lbs. 29c**  
Outdoor **RHUBARB . . 2 lbs. 15c**  
Local **ASPARAGUS . 2 lbs. 35c**

HERSHEY **BARS . . . 4 for 15c**  
WRIGLEY **GUM . . . 3 for 10c**  
HI HO Large Size Pkg. **CRACKERS . . . 29c**  
Asstd. Colors Facial 250 Count **TISSUE . . . . . 19c**  
SIERRA PAPER Roll **TOWELS . . . . . 15c**  
Standby 3-sieve 303 Tin **PEAS . . . . . 2/35c**  
1/2 Gal. **PUREX . . . . . 29c**  
STANDBY 303 Tin **APPLE SAUCE 17c**

**Fletcher's MARKET**  
122nd and Pacific Avenue  
Phone GRanite 8550  
FREE DELIVERY  
Prices Effective April 18 & 19

**Helps to Good HEALTH and ECONOMY**

SUNNY JIM Apricot, Peach Preserves, 12-oz. 25c  
 DUCHESS Cream Style, 303 tin CORN . . . . 2 for 29c  
 DUCHESS Tender Sweet, 303 tin PEAS . . . . 2 for 25c

OLD YANKEE 14-OZ. P'nut But'r 35

BLU BAG LB. Ground Beef  
**Coffee 79** Lb. 65c

SWANSDOWN PKG. Centennial, California Small White Navy Beans, 2 lb. 29c  
 Sunshine Krispy Crackers 2-lb. bx. 47c

**Waller Road STOP-N-SHOP**  
 64TH & WALLER RD. PHONE GR. 5362  
 Prices Effective April 18 and 19

**DANCING every Sat. Night at the V.F.W. Hall in Sumner**  
 Mixed Dancing at your request by the Sportsmen Quartet. Admission \$1.00 per person, 9:00 to 1:30. Refreshments in the kitchen.  
 For An Evening of Pleasure . . . follow the arrows to the V.F.W. Hall in Sumner

**BULLDOZING**  
 Ken BROWN and Bruce GAMBILL  
 1750 9th St. S. W. Puyallup  
 Basements - Backfills - Driveways Clearing - Leveling - Etc.  
 Fill Dirt - Gravel - Top Soil Dozers—Large and Small  
 PH. PUYALLUP 5-2452 or 5-5487 ESTIMATES Cheerfully Given

**ARTHRITIS AND KINDRED AILMENTS**  
 SUCH AS RHEUMATISM, NEURITIS, ETC. TRY SULGLY - MINOL  
 A NEW METHOD OF TREATMENT  
**SIMPLE SELF-APPLIED SENSATIONAL**

Dear Friend: Are you suffering from these painful distressing ailments? Do you have a relative and friends searching in vain for relief? Here's your answer: "I had my teeth pulled, tonsils out, serum shots, electric treatments, hot baths, pills, etc. ARTHRITIS WITHSTOOD THEM ALL. Finally I discovered Sulgly-Minol. Today, after seven months, I am more free of pain and soreness than in any time in twenty years. All I did was apply Sulgly-Minol to the soles of both feet every nite. By all means, try this remedy. It may prove a blessing to you."

**\$250** LOCAL DISTRIBUTORS WANTED  
 INEXPENSIVE\* EFFECTIVE\* FULL INSTRUCTIONS INCLUDED (EXTERNAL USE ONLY)  
 Per Bottle  
 Mail all orders with cash or money order or C.O.D. TO  
**Sulgly-Minol Co.**  
 BOX 232 NAMP, IDAHO  
 P. S. FULL INFORMATION WILL BE GIVEN ON REQUEST

**THIS YEAR, start them on Albers**  
 AND DEVELOP A MORE PRODUCTIVE LAYING FLOCK NEXT FALL

This year, be sure that your chicks get the kind of start that assures a profitable laying flock next fall and winter. Start your chicks on Albers feeds and keep them on Albers from brooding through rearing and right on into the laying house.

Follow the Albers Plan also. It is a tested program of successful poultry management developed from years of scientific feeding and management trials at the Albers Research Station near Carnation, Wash.

Make it a point to call at our store and ask for full details on the Albers Plan the next time you're in town. We'll be glad to furnish Albers helpful chick brooding booklets without cost or obligation.

**Albers CHICK STARBUCK MASH**

**STEWART HAY & GRAIN**  
 Mt. Highway, Spanaway GRanite 8615  
 SEEDS — FERTILIZER — GARDEN TOOLS

**WALLER ROAD**  
 By MRS. VERNE FOGLE GR. 5210

A card party will be held Friday, April 18, at 8 p.m. in the Waller Road Community hall, 64th and Waller road, by the 4-H Boys club. Everyone invited.

**Saturday Movie**  
 "The Baron of Arizona," starring Vincent Price and Ellen Drew, is the main feature for the Saturday evening movie. Everybody turn out and help the Boy Scouts in their efforts to give the community a weekly show.

**Sunday School Party**  
 The Waller Road Sunday school party will be held at the Waller road hall this (Thursday) evening, starting at 7. There will be fun for all, with the playing of games and the

**NOW OPEN NEW BARBER SHOP**  
 64th and Waller Road  
 10 A. M. to 7 P. M. Tuesday through Saturday

We extend you a cordial invitation to stop in and get acquainted with HOWARD PRICE — BARBER

**Spanaway P-TA Will Offer Scholarships**  
 Spanaway P-TA at recent meeting voted to establish two \$50 scholarships for outstanding young people of the community who will enter college in the fall of 1952. One boy and one girl will receive the awards.  
 To be eligible, the students must be graduates of the eighth grade of the Spanaway school and planning to enter college as freshmen this fall. In addition to high grades, citizenship, participation in school and community affairs will be important factors considered by the judges in selecting the scholarship winners.  
 Students interested should write to Sam Green at the Spanaway school, giving full background and enclosing letters of recommendation if possible. All applications should be in before the end of April, Green said.  
**PARKLAND ROUND-UP JUNE 2ND TO 7TH**

**NAVAJO BLANKETS**  
**SUMNER FARMERS' SUPPLY**  
 823 Main St., Sumner Phone 3-4784

**SPECIAL ANNOUNCEMENT!**  
 Every church, lodge and organization has a group of ladies who help lift the financial burden by holding bake sales, suppers, bazaars, etc.  
**WHY NOT LET US HELP YOU?**  
 We give you an enjoyable evening . . . moving pictures, refreshments, entertainment and awards, as well as helping you financially.  
**FOR FURTHER DETAILS, CALL**  
**POCHEL DISTRIBUTING COMPANY**  
 GR 8624

**SAVE YOUR PENNIES!**  
 Then come to the  
**Rexall ORIGINAL 1/2 SALE**  
**WEDNESDAY thru SATURDAY APRIL 16-17-18-19**

This famous sale, the greatest money-saving event in the nation, comes just twice a year—in the spring and fall. Don't miss it!

**BUY TWICE AS MUCH FOR A PENNY MORE!**  
 Advertisd in LIFE • LOOK POST • COLLIER'S • FARM JOURNAL  
 and by **AMOS 'n' ANDY** on the REXALL RADIO SHOW SUNDAYS—CBS

**PARKLAND Pharmacy**  
 THE **Rexall** DRUG STORE  
 PACIFIC AVE. AND AIRPORT ROAD GR. 8519

GENERAL SUPPLY CO. — GENERAL SUPPLY CO. — GENERAL SUPPLY CO. —

GR 3512 **General Supply Co.** 12702 PACIFIC AVE.

**Lumber Specials**

1x6 No. 3 --- S-1s \$50.00	SHIPLAP FIR GOOD NO. 4	2x4's --- 8' to 20' \$37.50 M.
1x6 No. 2 & Btr. --- 24's \$65.00	<b>\$45 M</b>	2x6 --- 2x8 \$40.00 M.
2x4's 2' . . . . . 4c ea.	1x6 --- 1x8 . . . \$37.50 M.	<b>GUTTER</b>
2x4's 3' . . . . . 6c ea.	1x4 . . . . . 1 1/2 c ft.	3x4 — Long Random Lengths . . . 25c lin. ft.
2x4's 4' . . . . . 8c ea.	1x4 No. 2 & Btr. 2 1/2 c ft.	4x5 — Long Lengths 30c lin. ft.
2x4's 5' . . . . . 10c ea.		4x6 — Long Lengths 35c lin. ft.
2x4's 6' . . . . . 12c ea.		
2x4's 7' . . . . . 14c ea.		

**SHORT LENGTH GUTTER**  
 6' — Makes Ideal Chicken Feeders 3x4 — 4x5 — 5x6 72c ea.

**USED DOORS**  
 3-0x7-0 — 4-0x7-0 — 2-6x7-0 and Other Sized Outside Doors \$1.50 ea.

**Plywood Specials**

1/2" 4x8 PLYWOOD Shop Grade \$5.12 Sheet	3/4" PLYWOOD 4x8 Shop Grade \$7.04 Sheet	1/4" PLYWOOD 4x7 . . . . . \$2.79 4x8 . . . . . \$3.00
--	--	--

**WE CUT PLYWOOD TO YOUR DESIRED SIZES**

<b>STILL SOME LEFT</b> Scrap Hardwood Plywood and Fir 5c sq. ft.	<b>1 3/4" SOLID PANEL VERTICAL GRAIN</b> Ideal for making coffee tables, furniture, etc. You have to see them to appreciate. 12"x26" . . . . . 49c ea. 26"x37" . . . . . \$1.49	<b>CEDAR</b> 2x4's, 2 and btr. \$78.00 M. 4x4's, No. 3 . . . 10c ft. No. 2 . . . 12c ft. Clear . . . 13c ft.
---	--	--

<b>BARBED WIRE</b> A hard-to-get item \$10.00 Roll	<b>STEP LADDERS</b> 4-foot, ea. . . . . \$3.60 5-foot, ea. . . . . \$4.50 6-foot, ea. . . . . \$5.40	<b>INSECT SPRAYERS</b> 35c and 98c
---	---	---------------------------------------

<b>LINSEED OIL</b> Pure Boiled \$1.99 gal.	<b>Turpentine</b> Pure Gum 1.69 gal.	<b>PAINT THINNER</b> 24c gal.	<b>GARDEN STAKES</b> Round — Smooth — 42" and 48" Long 1c each
---	---	----------------------------------	---

45-lb. Roll ROOFING \$2.18 Roll	90-lb. Roll ROOFING \$3.39 Roll	3-in-one Thick Butt SHINGLES \$8.10 Square	<b>WE RENT LADDERS BRUSHES</b>
---------------------------------	---------------------------------	--	--------------------------------

<b>SCREENING</b> LUMITE — RUST PROOF — NO STAIN lin. ft. lin. ft. 24" wide . . . 28c 30" wide . . . 35c 26" wide . . . 31c 32" wide . . . 38c 28" wide . . . 33c 36" wide . . . 42c	<b>SCREEN DOOR</b> Hinges, Catches, Latches, Springs PRICED RIGHT	<b>CELLO GLASS</b> 15c sq. ft.
--	--	-----------------------------------

Utility and Bungalow OUTSIDE PAINT \$2.79 gal.	<b>HOES — RAKES SHOVELS GARDEN TOOLS AXES — LAWN RAKES, Metal and Bamboo</b>	Pure Prepared OUTSIDE PAINT The Finest \$5.70 gal.
--	--	--

HAND SICKLES 69c ea.	1/2" Mesh Hardware Cloth 10c sq. foot	We Handle SUPER KEMTONE and LAUTEX TEXTURE Olympic Shingle Stain
HAND PRUNERS High Quality . . \$1.88 pr.	2" CHICKEN MESH 2c sq. foot	

<b>CABINETS</b> Built to Your Specifications Reasonably Priced	<b>ALUMINUM GUTTER</b> 22c ft. All Accessories Extra	50-ft. Clothesline . . 49c
		<b>ARTIST LACQUER</b> Assorted Colors 25c Bottle

GR 3512 **General Supply Co.** 12702 PACIFIC AVE.  
 GENERAL SUPPLY CO. — GENERAL SUPPLY CO. — GENERAL SUPPLY CO. —



Mrs. Chet McAtee - GR. 8066  
Harley McCabe, son of Frank McCabe, has been promoted to the rank of staff sergeant.

Pollyanna Club  
The Pollyanna club will meet on Thursday, April 24, at the home of Mrs. Pete King in Parkland.

Friendly Dozen  
The Friendly Dozen Birthday club met at the home of Mrs. Jack Kanon with Mrs. Jack Splane's birthday honored.

Spanaway P-TA Elects  
Spanaway P-TA held the election of officers Wednesday evening, April 9, as the main part of the program. Mrs. Mabel Patton was elected presi-

dent. Mrs. Doris Onat, first vice-president; Mrs. Carl Holder, second vice-president; Mrs. Vera Hensley, secretary; Mrs. Emma George, treasurer.

Sponsored by the Spanaway P-TA, a teen-age dance will be held at the school this (Thursday) evening. The dance was originally planned for Friday evening.

# FOOD VALUES

THAT ARE THE CATCH OF THE SEASON!

<p><b>HUNT'S</b> <b>Pork &amp; Beans</b> No. 2 1/2 Can <b>19c</b></p> <p><b>Sunshine SODA</b> <b>Crackers</b> 2-lb. Box <b>43c</b></p> <p><b>Potato Chips</b> Nalley's 4-oz. Pkg. <b>23c</b></p>	<p><b>VAN CAMP'S</b> <b>Tuna</b> Light Meat, Grated No. 1/2 Tin <b>19c</b></p>  <p><b>DURKEE'S</b> <b>Mayonnaise</b> Quart Jar <b>53c</b></p>	<p><b>Morrell's Snack</b> <b>Lunch Meat</b> 12-oz. Can <b>39c</b></p> <p><b>HILL'S</b> <b>COFFEE</b> 1 lb. 83c 2 lbs. 1.65</p> <p><b>KRAFT'S</b> <b>Mustard</b> 6-oz. Jar <b>8c</b></p>
--	--	---

**FISHING**

**FOR MEAT BARGAINS?**

T-BONE, good utility	lb. 69c
RIB STEAKS, good utility	lb. 63c
GROUND BEEF, guaranteed	lb. 55c
POT ROAST, good utility	lb. 58c
EASTERN CUGAR CURED SLICED BACON	lb. 27c

CENTENNIAL—Cotton Print Bag

# Flour 25 lbs. 2.05

DAD'S—Buy Carton of 6 for 39c Receive 1 Quart for

# ROOT BEER 5c

Carsten's Snocap 4-lb. Pail	SHORTENING . 83c
Darigold Canned Milk	Tall 3/39c
Wax Sandwich BAGS	. . . . . 9c
Silk Toilet TISSUE	. . . . . 3/19c
Sunshine LEMON DROPS	Pkg. 19c

**HOOK ONTO THESE PRODUCE VALUES**

CALAVOS	. 2 for 19c
TOMATOES	. . . . . carton 23c
CALIFORNIA ORANGES	
5-lb. Mesh Bag	. . . . . 39c

Prices Effective Thursday, Friday & Saturday, April 17, 18, 19

# BARGAIN BASKET

167th St. & Pacific Avenue—Spanaway GRanite 3371  
Handy to the East Gate of McChord Field  
Open Seven Days a Week--9:00 a.m. Till 10:00 p.m.  
We Reserve the Right to Limit Quantities

## VAUGHAN'S VALUES

REPAIR — REMODEL — ADD A ROOM — BUILD A FENCE  
NO DOWN PAYMENT

36" CLEAR PICKETS	each 10c
48" NO. 2 PICKETS	each 12c
4x4 NO. 2 AND BETTER CEDAR	per foot 15c
4x4 NO. 3 CEDAR	per foot 12c
CEDAR BEAN POLES	each 05c

**Vaughan's**  
PACIFIC AVENUE LUMBER COMPANY  
84TH & PACIFIC AVE. PHO: 22 HL 9515

## NO DOWN PAYMENT ON

When you think of kitchens consider this!

# MURRAY

ALL-NEW LIFETIME MATCHED-STEEL KITCHENS

Have all these marvelous features:

- Welded Construction for lifetime service!
- Silent Brass Runners for all drawers!
- Sound-deadened construction in doors for silent operation!
- Rounded Edges; everything smooth to the touch!
- Durable Hinges and dependable spring-action catches!
- Recesses for comfortable toe and knee space!
- Adjustable Shelves!
- Concealed Hand Grip on all wall cabinets!
- Wearproof, stainproof Vinyl tops on all floor cabinets!
- Hi-baked enamel on all cabinets!
- Acid and Stain Resistant Porcelain on all steel sinks!
- Fluorescent Lighting provision under all wall cabinets!

**COME IN AND SEE FOR YOURSELF!**



149.00  
Ultra-modern cabinets of most any size and shape to suit your needs.

91.00  
Model CA-55, 66" cabinet sink, everything from breadboard to cutlery tray!

119.00  
Model CA-54, plenty of storage space. Available with fewer drawers (CA-53).

Model CA-51, 42" long, great for smaller kitchens.

Open Monday and Friday till 9:00 P. M.

# PEOPLE'S SUPPLY

1004 Tacoma Ave. BR 2030

## Concordia 4-H Club In P-TA Program

Parkland Concordia 4-H club met March 8 at the home of Mrs. Iver Johnson, with Maurice Delano, county extension agent, speaking on gardening. Ross LeMaster, Sr. was introduced as the new livestock leader. Arthur Johnson has also signed up for this project.

Final arrangements have been made for the program this group will present at the meeting of Concordia P-TA Tuesday evening, April 22. Mrs. Florence Allen, county extension agent, will give a talk on 4-H club work. The following will give demonstrations: Sigrid LeMaster, methods of dampening off; Marc Hansen, how to keep worms out of vegetables; Lynne Hansen and Ingeborg Johnson, how to sew in a zipper the 4-H way; Beverly Stimpson, how to make a garment cover; Priscilla Pedersen, how to hem a tea towel; Lou Ella West, how to sew on a button.

Mary Alice LeMaster will show several methods of growing seedlings. Keith Parker will conclude the demonstrations by showing how to store root vegetables.

4-H mothers who will assist in serving are Mesdames Mel Pedersen, Marvin Hansen, Ross LeMaster, Arthur Johnson, Arthur Bernsten, Robert Hasting, Iver Johnson and Max Parker.

The next regular meeting of Concordia 4-H will be April 12.

**PARKLAND ROUND-UP**  
JUNE 2ND TO 7TH

EVERYTHING FOR THE

## FISHERMEN

WORMS  
TACKLE  
FISH EGGS  
LICENSES

**Target**  
SPORT STORE  
161st & Pac. Ave. GR 7082

**LAWN MOWERS**  
MACHINE GROUND  
Trade In Your Old Mower  
On a New Model

**JOHNSON'S SHOP**  
HI. 7112  
15 years at 5514 Pacific Avenue

**Webster-Robinson**  
Machinery & Supply  
Co., Inc.  
Puyallup Ave. & 'A' St. BR. 0341  
Sales Tacoma, Wash. Service

THE TIMES-JOURNAL Thursday, April 17, 1952

## LOW PRICES Every Day

SPAM	39c
HILLS BROS. COFFEE	2-lb. 1.65
TOMATO SOUP, Campbell's	11c
JELLO Desserts	3 for 23c
GUEST Toilet Tissue	4 for 29c
	LGE. 24-OZ.
MAYONNAISE, Shufine	49c
PEACHES, Calirose Freestone	29c
CORN BEEF HASH, Armour's	39c
SHORTENING, Crisco	3-lb. 79c
GRAPE JUICE, Twin Peaks, 2 btles.	49c
KRISPIE CRACKERS, Sunshine, 2-lb.	43c
CATSUP, Heinz	23c
GRAPEFRUIT, Ruby pink	lb. 9c
ONIONS & RADISHES	bunch 5c
DRY ONIONS, new crop white wax, 2 lbs.	25c
FOR THE FISHERMAN—ALL POPULAR WESTERN BRANDS BEER	1/2 case cans \$1.98
PEANUTS, Circus vacuum pack	8-oz. 33c

**HERMAN'S** 162nd & Park Ave. Spanaway GR. 8213  
APRIL 18 & 19

**RIB STEAK**, graded good steer beef, lb. 83c  
**POT ROAST** lb. 69c  
**GRAIN-FED, LARGE END PORK LOIN ROAST** lb. 55c

**SPANAWAY MEAT MARKET**  
NEXT DOOR TO HERMAN'S GR 8215


**American Art Co.**  
Custom Picture Framing BR 4327  
2046 6th Ave.

**BUILDING SUPPLIES**  
**SPANAWAY LUMBER CO.**  
Mt. Highway at Spanaway GR. 3323 WE DELIVER

Gas - Oil - Accessories - Repairs  
**RILEY'S SERVICE**  
We Stand Behind Our Work  
Tune-up - Brake Jobs  
Motor Overhaul  
165th & Pacific Ave. Spanaway

State Farm Mutual Insurance  
**FORREST LEONARD Agency** GR. 7222  
Anything In Insurance  
12815 Pacific Avenue — (House just South of Blue Spruce Motel)

**HOW THEY BITIN'?**



**TACKLE**  
from **SOUTH END PLUMBING**  
On your way to the lakes stop in. Near Roy - Spanaway GR 8357 - Graham 194

72nd and Pacific AT ALL 3 SEPIC STORES 9133 Gravelly Lake Drive LAKEWOOD

# STARTS YOU IN HOUSEKEEPING

FOR ONLY **399.50**



Similar to Out

<b>LIVING ROOM</b>	<b>DINETTE</b>	<b>BED ROOM</b>
--------------------	----------------	-----------------

YOUR CREDIT IS GOOD AT SEPIC'S

NO PARKING PROBLEM

- ★ APPLIANCES
- ★ FURNITURE
- ★ TELEVISION
- ★ SEPIC'S SERVICE

**Sepic's**  
OPEN 'TIL 9 P.M.  
EVERY NIGHT EXCEPT SATURDAY

Downtown 13th and 'K' Street BR. 0386
On the Mt. Highway 7208 Pacific Ave. HI. 9556
Lakewood Center 9133 Gravelly Lake Drive LA. 5251