

U.S. Postage Paid
Sec. 34.66 P.L.&R
Parkland Branch
Tacoma, Wash.
Permit No. 9P

Occupant or Boxholder
Rural Route
Postmaster: If unable
to deliver, return post-
age is guaranteed on
addressed papers.

The TIMES JOURNAL

THURSDAY, NOVEMBER 14, 1957 • Volume 13, No. 10 PUBLISHED AT PARKLAND, WASH. LEnox 7-0223

Boosters Plan Football Banquet

The Franklin Pierce Hi-Boosters will be host for a banquet for the 1957 Franklin Pierce high school football team Nov. 18, at 6:30 p.m. All parents and other adults interested are invited to come. Tickets are \$1.50, and will be available by calling the high school office, LE 7-0211. Letters, Captain and inspirational awards will be presented. John Heinrich, CPS coach, will be the main speaker. Musical numbers will also be a part of the program.

Summit Playschool

There will be a meeting of the Summit Co-operative Playschool mothers this (Thursday) evening at 8:00 o'clock at the home of Mrs. L. L. Larsen Any mother interested in enrolling her child at the school, which is held every Tuesday and Wednesday morning at the Canyon Road Community hall, is invited to attend. Mrs. W. C. Wheatley will assist in serving refreshments. For further information, please phone LE 7-6457.

Orthopedic Fruit Cakes Now Ready

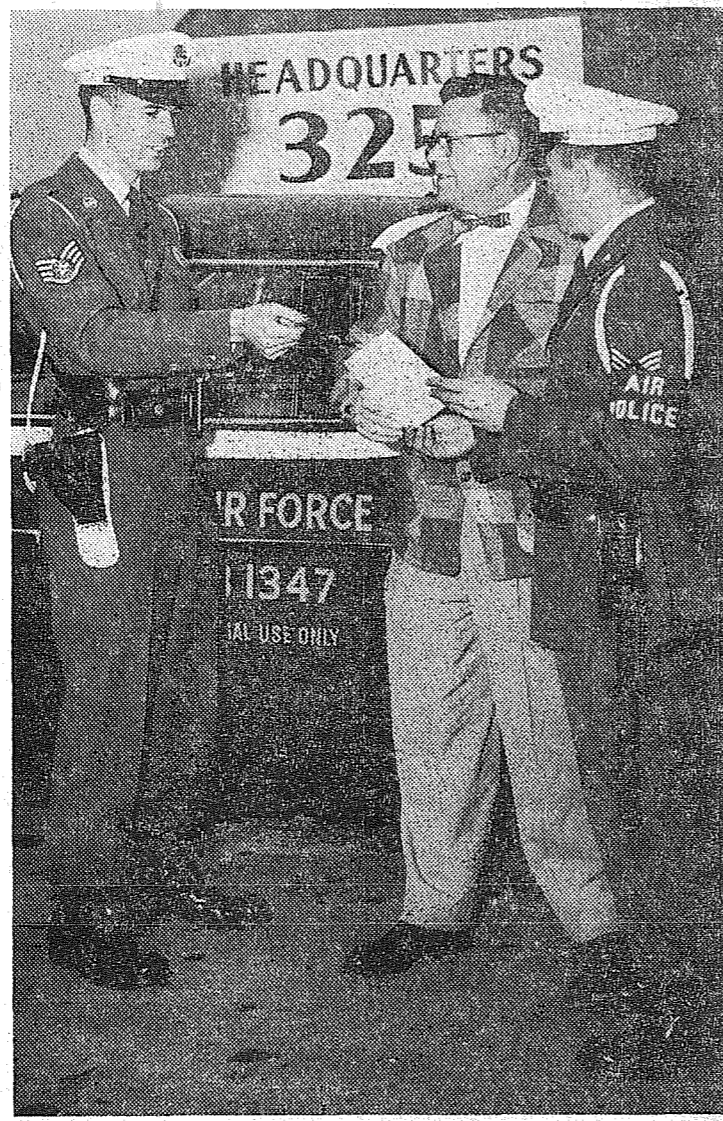
To benefit the Mary Bridge Children's Hospital, Madrona Guild of the Tacoma Orthopedic Association members, are now ready to serve their friends and all others interested, with their famous fruit cakes.

Each year at this time these fine cakes so full of plump fruits and nuts are made from an old English recipe given to a charter member of the Guild by an elderly lady who came from England.

Madrona Guild has been making these cakes the past 10 years with the proceeds going to the Children's Hospital.

The members of the guild meet in various groups for the making, the gift wrapping and the selling of the cakes, which are placed in several convenient stores, and at the Orthopedic Mart in the lobby of the Winthrop Hotel. The cakes may also be had by calling Mrs. Frank Madden, SK 9-7689, or Mrs. Howard Brines, BR 2-6960. The cakes vary in size: One pound; one and a half; and two pounds.

Flying Saucer Scare Not Created Locally



NO PUBLICITY STUNT — Ethan Nelson (center), owner of the Bargain Basket super market at Spanaway, assures Air Police S/Sgt. Robert Finch (left) and Airman Jack Dingus (right) that although the Bargain Basket sponsors Flying Saucer Reports each week in the Times Journal and is this week celebrating with a remodeling sale, he and his employees are in no way responsible for the latest flying saucer scare now sweeping the country. What does Mr. Nelson really think of flying saucers? Why not stop in and ask him? — Photo by McKewen

NBW Christmas Club Members' Checks In Mail

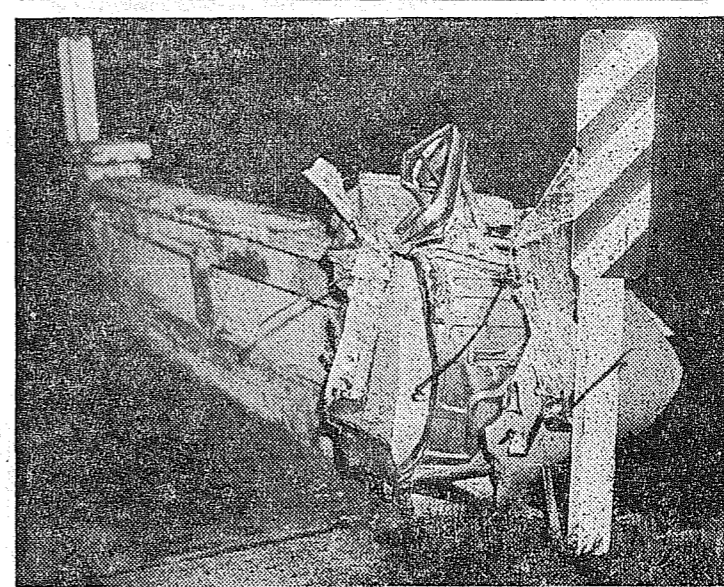
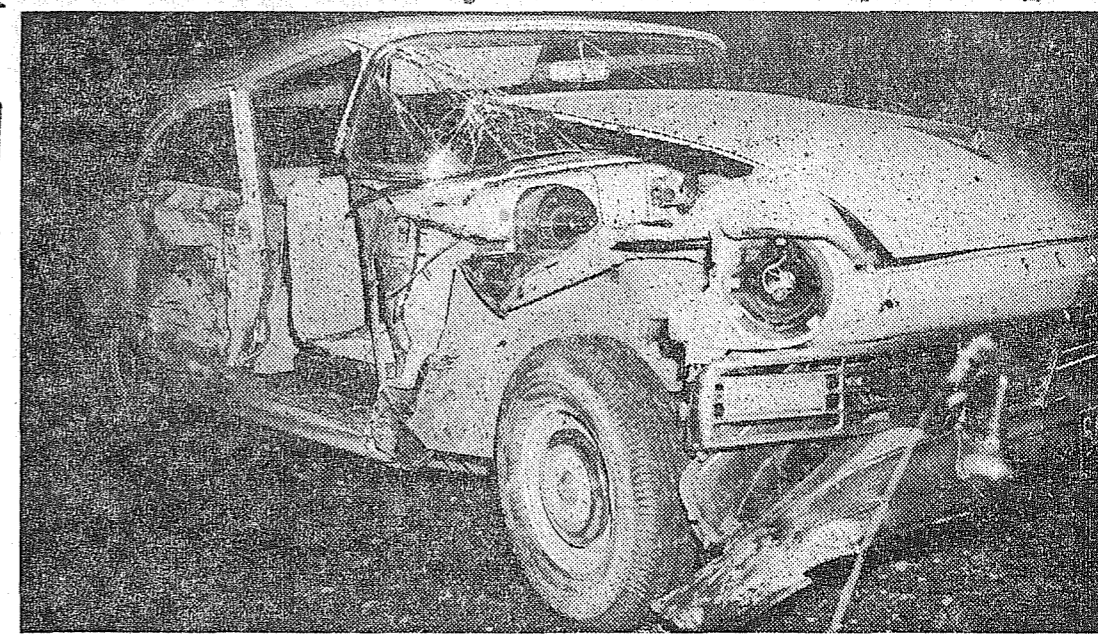
Christmas is coming early for the 14,000 Christmas Club members of National Bank of Washington, as the bank begins distribution of nearly \$1,500,000 in Christmas Club checks this week, representing the amount saved by members during the year, plus regular bank interest. This is the largest amount ever distributed by the bank which pioneered Christmas Club in the state of Washington 18 years ago.

A. G. Swindland, Manager of the Parkland Branch of National Bank of Washington, states that checks from the Parkland Branch will be placed in the mail November 15th, and that the dollar total will exceed \$135,000. A preponderance of this sum will no doubt be spent in the Parkland area, benefiting all of our local merchants.

Mr. Swindland also commented that it was interesting to note that the average size of Christmas Clubs has shown a steady increase each year. While the unique savings plan was started many years ago to encourage people to save from 50c to \$1.00 a week toward Christmas, it has also been happily adopted by hundreds of people who save as much as \$500 or more.

The bank estimates that from 65% to 75% of the total Christmas Club checks now being distributed will be spent for Christmas gifts, with the remaining amount being used for tax payments, insurance premiums, down payments on new homes or cars, and some of the funds finding their way back into regular savings accounts.

Man Dies Instantly When Car Sideswipes Bridge



DEATH TRAP — Without an instant's warning Friday night, James B. Atkins, Jr., 31-year old Renton man, was killed on a country road near Roy in a ghastly car accident. He was a passenger in an automobile driven by Ivan R. Robertson, 44, of Kent, which sideswiped the railing of a bridge, the terrific impact slicing away the entire right side of the car, leaving the shorn-off parts impaled on the concrete bridge railing (lower left). Atkins was catapulted out and mangled between the car and bridge. State Patrol Officer William Krotzer, who investigated the accident, reports that Robertson was uninjured.

Photo by McKewen.

Scout Smorgasbord

Boy Scouts of Larchmont Troop 42 will hold a smorgasbord dinner Friday, Nov. 15, from 5:00 to 7:00 p.m. at All Saints Episcopal church, 96th and East B streets. Roast turkey and baked salmon will highlight the menu.

Proceeds from the nominal donations will be used to replace the floor in the Scout building at Larchmont school. The public is invited.

BE SURE

To Check Oil Prices Before Ordering Your Winter Oil Supply

LAPENSKI FUEL CO.

9920 Pac. Ave. LE 7-8173

TODAY'S LAFF . . .

BACHELOR: A man that's found the ideal woman and has found she was looking for the ideal man!

Remodeling & Expansion Sale

With any purchase over \$3.00. WOMEN'S \$3.00 TRUE BALLERINAS . . . 99c

Black Suede, Red, White or Black Calf LADIES SKIMMERS, Pair . . . \$2.99

White, Brown, Black, Regular \$3.99. LADIES MOCCASINS . . . \$2.99

Regular \$6.95 Sale HUNTERS CARTRIDGE BELTS . . . \$5.00

Mens Regular \$10.95. MARK III ITALIANO'S . . . \$6.95

Regular \$10.95. Size 7 - 7 1/2 - 8. MENS LOAFERS . . . \$5.99

Mens Heavy Duty. ARMY TYPE WORK SHOES . . . \$4.99

MENS ENGINEER BOOTS . . . \$12.95

Mens Black OIL TAN MOCCASINS . . . \$2.99

Used 1/2 LEATHER - 1/2 RUBBER PACS . . . \$2.99

Childrens, Red or Black, Reg. \$5.95. Size 8 1/2 to 3 SWING STRAP PUMPS . . . \$4.99

Childrens Brown 2 STRAP SANDALS . . . \$2.29

Washable - With Arch Supports. Size 6 to 3. CANVAS OXFORDS . . . \$1.99

Boys Size 2 to 6. Regular \$7.95. MARK III WEDGIES . . . \$5.95

Boys 8". Sizes 2 1/2 to 6. OIL TAN LACE BOOTS . . . \$7.95

HUGE STOCK OF USED SHOES FAST - EXPERT SHOE REPAIR

PAUL'S SHOES

167th & Pacific Ave., Spanaway LE 7-6297 Open 9 a.m. till 6 p.m.

Franklin Pierce Lunch Menu

Monday — Creamed chip beef on toast squares, spinach, cheese sticks, cookie, milk.

Tuesday — Corn and red bean scramble, johnny cake, lettuce wedges and French dressing, one-half apple, milk.

Wednesday — Hot meat sandwich, carrot and celery sticks, upside-down cake, milk.

Thursday — Potato chips, hot dog, green beans with bacon, pudding, milk.

Friday — Noodle-tuna-mushroom casserole, rainbow salad, bread and butter sandwich, spiced peaches, milk.

Bake Sale

On Friday, Nov. 15, the Harvard-Midland Pre-school will hold a bake sale beginning at 10:00 a. m. at the Puget Sound National Bank located at 84th and Pacific avenue. Mrs. Richard Larson is the chairman. The group extends an invitation to all friends and neighbors to come in and buy home-made treats.

Annual Games Event

St. John of the Woods Parish is sponsoring the Annual Turkey "Evening of Games" Friday evening, Nov. 15, at 8:00 o'clock in the Midland Improvement club hall. Men of the parish are in charge of the games. The public is cordially invited.

Hi-Boosters In Members Drive

November is the month the Franklin Pierce Hi-Boosters have set for their annual membership drive, under the able chairmanship of Dr. and Mrs. Burton Ostenson. The purpose of this organization is to make Franklin Pierce high school a bigger and better educational center for the students, the faculty and the community. Membership consists of any person 21 years or over who resides within or is employed by the Franklin Pierce school district or whose children attend school in the Franklin Pierce district.

The membership is 50 cents; all of the money derived from membership and fund raising projects is used for the Franklin Pierce high school.

State school construction policy does not provide for cafeteria equipment, scholarships, uniforms, organized sports equipment, and many other things. For example, the matching funds provided for the children and cafeteria as a structural part of the school unit, but the equipment for it was not; this was the first of many projects the Hi-Boosters undertook and finished. Besides providing the high school kitchen with the best possible equipment, the Hi-Boosters worked on many other projects, namely a portable P.A. system, the furnishing of two teachers' lounges, basketball and football banquets, financial aid in school elections, contributions to the school paper and annuals, donated \$1,000 toward the band uniforms, furnished the football parkas and in addition each year have given two scholarships of \$125.00 each.

Games Night

Saturday evening, Nov. 16, is the date of the Midland Volunteer Fire Department's annual fund raising "Evening of Games" to be held in the Midland Improvement club hall, starting at 8:00 p.m. Glen Krough is general chairman of this big event. Proceeds will go towards fire fighting equipment as well as life saving rescuers and inhalators. Refreshments will be served. Everyone is welcome to attend.

IT'S THE RESULTS THAT COUNT!

Appearance is important, and it begins with really clean clothes. Call us.

PARKLAND CLEANERS

11004 Pacific Ave. LEnox 7-3221
North of the Bank Corner

SOINE'S WEEKEND "SURPRISE SPECIAL"

YOU'LL KICK UP YOUR HEELS OVER these SHOE BARGAINS!

WOMEN'S DRESS SHOES

and Cushioned Wedgies by "Trim Tred" Regular 7.95 to 11.95

6.79

2 Pairs for 12.00 This Weekend Only

Complete Your Winter Wardrobe

10 Styles To Choose From

SOINE'S
Parkland Shoe Store
411 Garfield St.
Open 10 to 6
LE 7-3526

Pumps and Sandals

Laurinat's Weekend "Surprise Special"

COTTON KNIT Smartee

T-Shirts

Long or Short Sleeves For Play or Casual Wear

Reg. \$3.95 & \$5.95

Special Price Thursday Friday & Saturday Only!

\$2.95 & \$4.95

LAURINAT'S APPAREL

406 GARFIELD ST., PARKLAND LEnox 7-5317
Watch This Ad Each Weekend for "SURPRISE SPECIAL"

Fall Festival

The Sons & Daughters of Norway will hold the Fall Festival in Normanna hall Friday and Saturday evenings. On Friday evening dinner will be at 5:30; on Saturday evening there will be a smorgasbord starting at 5:00. There will be an evening of games for each day.

TV Panel Theme Of P-TA Program

The Clover Creek P-TA will meet Nov. 20 at 7:30 p.m. in the school gym. Mrs. Edwin Betts will preside. A report will be made on the Halloween Carnival and the Christmas program and children's treat will be discussed during the business meeting.

The program for the evening will consist of a panel discussion on TV programs for children, also there will be a "Get Acquainted Quiz game" and community singing.

Hostesses for the evening will be the 7th Grade room mothers: Mrs. Wallace Bagley, Mrs. Merlin Southwell and Mrs. Virgil Rodius. Refreshments will be served during the social hour in the lunchrooms. Everyone is cordially welcomed.

Items for the rummage sale may be brought to this meeting.

Boys Club Invites All To Open House

Everyone in the Tacoma area is invited to share the open house at the East Side Boys' club, 614 East 64th street, Sunday afternoon between 1:00 and 5:00 o'clock.

Interested friends will meet the new director, Jack Richardson, the club president, Chet Delin, and also Tacoma's own Pat McMurtry if he can arrange to be present as he hopes.

Collins Grange Election Tonight

Collins Grange will elect new officers at the regular meeting being held tonight, Nov. 14, at 8:00 o'clock.

Officers who have held office three or more years feel it is time others took their places. All members are urged to attend. Absent members may be elected to office.

There will be no meeting the 28th of November; a happy Thanksgiving is wished for all members.

Candy Sale

Faith Assembly, Order of Rainbow for Girls, is launching its annual candy sale for the yearly budget. With Joyce Walin and Patty King as co-chairmen, the girls are making a house-to-house canvass with boxes of delicious assorted chocolates at a nominal price.

Parkland Auxiliary

The Parkland Volunteer Firemen's Auxiliary will meet in the fire hall Wednesday, Nov. 20, at 8:00 p.m. Hostesses for the social hour will be Betty Maze and Bonnie Calhoun.

Easy Parking
LE 7-0253

DRYER'S MORTUARY
PARKLAND

CORRECTION — In the item concerning the Nov. 8 meeting of Clover Creek Post 118 American Legion and Auxiliary in last week's Times Journal, the guests making an official visit were reported as 5th District officials; they were the 4th District leaders.

PHONE NOW!

LE 7-0256

MAY TOMMERVIK'S

PARKLAND FUEL OIL SERVICE

FOR AUTOMATIC FILL - UP SERVICE WITH THE FAMOUS

STANDARD HEATING OILS

SHOP & SAVE AT

BROOKDALE LUMBER COMPANY

Make Your Own Storm Windows

For Frames Lin. Ft. 1x2 Cedar . . . 3c

Felt - Type Weather Strip 25c per pkg.

Rubber (Wire Reinforced) 10c lin. ft.

Storm Window Kits only 39c

Finish A Room Upstairs 16"x32" Sq. Ft. Ceiling Tile . . 16c Each
Celotex Panels 2.25 1x4 Utility Per 100 Sq. Ft. Flooring . . . 8.50

MANY GRADES OF PINE PANEL

ZONOLITE
Pour Type Insulation \$1.69 bag

Sand & Gravel

Pay As Little As \$10 Per Month on Material

BROOKDALE LUMBER COMPANY

LE 7-8669
136th & Pacific

The TIMES JOURNAL
ADDRESS P. O. BOX 2008, PARKLAND, WASHINGTON
119th and Pacific Avenue Phone LENox 7-0223

JACK BROWN.....PUBLISHER
NEVA T. HONEYWELL.....EDITOR
VALERIE IMM.....ADV. MNGR.
ESTHER GODDARD.....ADVERTISING
RON FRANK.....SPORTS EDITOR
KENNETH POTTLE.....SHOP SUPERINTENDENT
WES McKEWEN.....PHOTOGRAPHER

Qualified as a Legal Publication under Chapter 213 of the Legislative Acts of the 1941 Regular Session of the State of Wash.
Delivered free by U. S. Mail to all homes in the trade territory. Paid subscriptions elsewhere!
In Wash. State \$2.50 per year; outside the state, \$3.00 per year.

ADVERTISING RATES ON REQUEST

Volkswagen Club To Meet Tonight

Officers and charter members of the Volkswagen club of Tacoma held a special meeting Thursday, Nov. 7 at 5636 South Tacoma Way, at which time the group revised the clubs by-laws and made plans for the club's

regular monthly business meeting activities.
Attending the club's special meeting were Miss Barbara Mann, president; Jerry Siler, 10394 A street, vice president; Miss Kreetha B. Alkire, secretary-treasurer; Otto Bendel, James Holeman and Robert B. Chamberling. Except Siler, all were from

Tacoma.
The next monthly meeting of the Volkswagen club will be on Thursday, Nov. 14 at 5636 South Tacoma Way at 8:00 p.m.
Business will include the election of officers for 1958 and the completion of plans for the club's first anniversary party to be held later this month. The group, planning on inviting all Volkswagen owners of the Tacoma area to this event, will nominate a committee to plan refreshments, decorations and entertainment for this gala affair.

Groundwork plans for the club's holiday season social events will be started.

A coffee hour will follow the business meeting. Mrs. Anne Knightley, who is in charge of refreshments, will serve cake. Otto Bendel will assist by making coffee.

Building Permits

The following building permits have been issued by Keith F. Jones, County Road Engineer Building Department:
A. A. Clemens, \$6850 frame home, 13103 Park Ave.; Ethan H. Nelson, \$1500 move home to property, 12902 A; Am. M. Manges, \$2500 move home to prop., Rt. 1,

Box 331A, Spanaway; McMenamins Realty, \$695 Comm. Display, 16426 Pacific Ave.; Dan Stafke, \$12,500 frame home, 1101 South 124th; Pac. Tel. & Tel., \$7000 repeater Bldg., Graham; Pac. Tel. & Tel., \$7000 repeater Bldg., Roy; Robert J. Saltar, \$8000 frame home, Rt. 2, Spanaway.

John Scott, \$500 garage, 7, Box 193A, Spanaway; H. E. Raden, -10,000 frame home, 7, So. 134th; Robert Schramech, \$400 remodel garage, 10711 So. Sheridan; Wayne Robinson, 1016 So. 110th; Alfred J. Milsten, \$1500 addn. to home, 8835 McKinley; Frank Rearden, \$600 move home to prop., 810 South 132nd; Walter Duncan, \$5500 frame home, W. of Canyon on Pipe Line; Steven Pease, \$2500 remodel to home, 11819 Clover Creek; Henry Bernsten, \$7000 addn. to store, 315 Garfield.

ELK PLAIN . . .

Firemen to Hold Open House 18th

The Elk Plain Firemen's Auxiliary will hold an open house at the fire hall Nov. 18 at 8:00 p. m. Also at this time the "Hamper Full" will be given away.

The public is cordially invited to see the work the Auxiliary has done. Members of the Auxiliary are asked to be at the fire hall at 7:00 p. m.

P-TA
The Elk Plain P-TA will hold its regular meeting Nov. 20 at 8:00 p. m. in the Elk Plain grade school.

Baby Shower
A baby shower honoring Mrs. Bill Hallmon was held Nov. 7 at the home of Mrs. Jack Smith. Mrs. Ray Langrebe, sister of Mrs. Hallmas, was the hostess. Those attending were Mesdames Chester Wright, Ken Kuper, Jim Sartain, Bill Wright, Fred Seaman, Hulda Kavanaugh, Charles Langrebe, Carl Fritz, George Waun, Henry Schmidt, Lloyd Langrebe and Louie Yeager.

Reporter—Mrs. Eileen Schmidt,

The Wampus Cat &

The Wampus Cat, of sad mien and stealthy movement, roams the high peaks and Alpine meadows of the Olympics, leaving a most curious sign of his presence. In the early morning hours his dark whiskers are shed, and as the shades of night fall, he discards the light whiskers that have grown thru-out the daylight hours.

aided by its extremely large and permanently open eyes plus its very sensitive sense of smell, allows it to evade all means of capture so far devised.

A young Whiffle-Snipe reported to be momentarily stunned when flying into the fog horn on Destruction Island was seen as a At a safe but respectful distance, the Whiffle-Snipe hovers, gathering the cast-off whiskers—excellent material to line their nests, located in the high fog banks that reach in from the Pacific and at times cover the Olympic peaks.

While a determined effort has been made by the Forest Officials to capture a Wampus Cat, their plans have been unsuccessful. The keen sight of the animal

PRESCRIPTIONS
CAREFULLY PREPARED
Fresh Insulin
Downtown Prices
Pay Phone Bills Here
Tincher's Pharmacy
8227 Park Ave. GR 4-3344
Across from Fern Hill P.O.

probable means of capturing a Wampus Cat by training it to hover over the claw-footed night prowler and at midnight when its whiskers were the tightest to grab the Wampus Cat with its four feet and tail, fly aloft to a heavy cloud bank and then with the aid of a dirigible, imprison this great feline of the high country.
Up to the present, however, all plans to capture a Wampus Cat have been unsuccessful.

EXCEPTIONAL HIGH EARNINGS PART-TIME WORK FOR ADDED INCOME
Reliable party or persons wanted for this area to handle the world famous RCA, WESTINGHOUSE, AND SYLVANIA television and radio tubes sold through our new modern type-self-service tube testing and merchandising units. This national firm offering this high type business opportunity for the first time. Will not interfere with your present employment. To qualify you must have \$2923.25 Cash Available immediately For Inventory. Car. 5 Spare Hours Weekly. Must Be Able to Start At Once. Exceptional high earnings are being experienced by people in this business today!
The company will supervise your operations and extend financial assistance to full time if desired. This excellent opportunity offered to a dependable person who is interested in his future. It's an all cash basis, depression proof, no credit risk. Do not answer unless fully qualified.
● Income Starts Immediately
● Business is Set Up For You
● No Selling or Soliciting
● Company Secures All Locations
● Please Include Phone Number
● For Personal Interview in Your City—Write
Nation Wide Sales Co., Inc.
2322 Big Bend Boulevard, St. Louis 17, Mo.



You Can't Beat These Shiners!



The Cleanest Clean Possible!
Tide Clean

Giant Size . . . **73¢**

You can't beat the savings you make when you shop at your **SUMMIT TRADING CO.** You can't beat the large variety of guaranteed quality nationally advertised brands you have to select from. You can't beat the storewide lower prices SUMMIT offers you every day. You can't beat SUMMIT'S courteous, friendly service. Shop SUMMIT today---compare the variety of brands - compare the prices - compare the friendly atmosphere - compare the service. See why more people shop at **SUMMIT TRADING CO.**

JELLO
Ten Delicious Flavors
4 Pkgs. **29¢**

12¢ OFF
KING SIZE
Joy 83¢
Special Price
plus SPECIAL DISPENSER OFFER

HOMOGENIZED **SANITARY MILK** . . . 1/2 GALLON **2/89¢**

SUMMIT SPECIAL **COFFEE** POUND **79¢**

BLUE BONNET **OLEO** 2-lbs. **59¢**

Comet
Cleanser
Giant
Economy Size
2/35¢

BLEACH **CLOROX** 1/2-gal. **35¢**

TREE TOP **APPLE JUICE** qt. **27¢**

WHITE - NEST FRESH **AA LARGE EGGS** . . doz. **56¢**

MISSION **MACARONI DINNERS** . 2/**33¢**

HI HO CRACKERS Lb. Pkg. **33¢**

KLEENEX 400 Ct. Pkg. 2 For **49¢**

Heavy Waxed - 20 Inch **LOCKER WRAP** 150 Ft. Roll **\$1.35**

Friskies **DOG MEAL** 20-Lb. Bag **\$2.09**

ABC Cookies **PECAN SCOTTIES** 14-Oz. Pkg. **43¢**

Plain or Iodized **MORTON'S SALT** Carton 2 For **27¢**

Franco American **SPAGHETTI** 2 For **25¢**

Three New **CAMPBELL SOUPS**
Minestrone - Turkey
Chicken - Vegetable - Noodle
6/95¢

SWANSON'S
Fresh Frozen **MEAT PIES**
Beef - Turkey - Chicken
4/95¢

Holiday OLEO 5 Lbs. **99¢**

SUNNY JIM
P'nut Butter 20-Oz. Jar **49¢**

SNOW MIST
TUNA CHUNK STYLE No. 1/2 Size Tin **5/1.00**

DEL MONTE
Tom. Sauce 14/**1.00**

WINTER BANANA 24-Lb. **Apples** Box **75¢**

Loose **BANANAS** 9¢ Lb.
Cello Pack **CAULIFLOWER** 23¢ Each

Fresh From Our **Smoke House**
HAMS PICNIC STYLE Pound **39¢**
FRESH **Red Snapper** Lb. **23¢**
Fresh Turkeys
AVAILABLE HERE - ORDER NOW
No Deposit Necessary When Ordering Your Thanksgiving Bird.

MURRY AIR FLITE
BICYCLES
BOYS or GIRLS
26" Bicycles \$49.95
24" Bicycles \$46.95
USE OUR LAY-A-WAY PLAN

STORE HOURS
9 A. M. Till 9 P. M. Daily Except Sunday
(Large Paved Parking Lot)
SUMMIT TRADING COMPANY
10409 Canyon Road - Tacoma LE 7-5848
No Sale To Dealers
We Reserve The Right To Limit Quantities

BEEF SLAUGHTERING \$5.00 A Head
 Custom Cutting & Wrapping, Beef, Pork, Veal Lb. 4c
LEWIS MEAT MARKET
 10903 CANYON ROAD AT SUMMIT VIEW
 Open Tuesday thru Saturday 9 a.m. Till 6 p.m. LEnox 7-8258

Whole or Shank Half	Pound	Lean	Pound
SMOKED HAMS	44c	SLICED BACON	39c
GROUND ROUND	49c	PORK SAUSAGE	98c
Beef	Pound	Shoulder	Pound
HEARTS & TONGUES	29c	RIB STEAK	45c
By The Piece	Pound	SIRLOIN STEAK	59c
BOLOGNA	37c	By The Half For Your Freezer.	Pound
SAVE! For your freezer	25-Lbs.	BEEF	36c
BEEF	\$9.95	All Cuts Included	

Thursday, November 14, 1957 Page 3 SUMMIT . . .
The TIMES JOURNAL

**WALLER ROAD . . .
New Rabbit Club
At Waller Road**

One more 4-H club has been added in the Waller Road area with the organization of a new rabbit club by Mr. and Mrs. Roy William. It is open to all boys of 10 years and older who live in the North End district of Waller road, East 48th to Pioneer.

To create interest in the raising of rabbits as a project, Mr. and Mrs. William took the boys to the recent Puyallup Valley Rabbit Breeders Association show to pick up helpful information. Roy William won 2nd place on his California buck in open competition.

A name has not been officially chosen for the new club but officers were elected at the last meeting, as follows: President, David Spiering; vice president, Frank Willmott; secretary, Lloyd McSwain; reporter, Raymond William. Other members are Charles McSwain, David William, Gerald Perrin and Floyd Hughes. Meetings are held the second and fourth Friday evenings at 7:00 o'clock at the William home, 3730 East Knob Hill road.

New Grangers
James Larson, Ronald Fogle and James Evans were among the candidates initiated into the Waller Road Grange at the Nov. 1 meeting when the degree work was put on by Ohop Grange.

New Home
Mr. and Mrs. John Graham and family have moved from their former home at 5317 Vickery road to a new residence near 84th and Vickery. We are happy to still have them in the community.

Newcomers
Mr. and Mrs. James Taylor of Vickery road welcomed a new daughter Oct. 24. A lovely shower was given for Mrs. Taylor at the home of Mrs. Kenneth Aarhus by a group of friends before the blessed event.

A baby girl arrived Oct. 25 for Mr. and Mrs. Jack Roques, former Vickery Road residents now living on Cedar street. The little

Rodger Lunde Post

On Monday, Nov. 18, the Post and Auxiliary of Rodger Lunde VFW will honor all Gold Star Fathers in the Parkland area with a pot luck dinner. The Post extends an invitation to all Gold Star Fathers to come to this dinner. The American Legion Post and Auxiliary have also been invited.

For information please call Post Commander Robert Surplus, LE 7-4701. The dinner is to be held at Sunshine hall in Parkland.

The next meeting of the Auxiliary will be a special meeting at the home of Mrs. A. T. Unkur, 122 East Violet Meadow, on Thursday, Nov. 14.

The next regular meeting will be held at Sunshine hall Nov. 25. At that time Mrs. Ione Johnson will make her official visit to the Auxiliary; Mrs. Amila Karsh will also be a guest at this meeting.

miss was named Susan Marie. Mrs. Roques was the recipient of many lovely gifts at a shower held for her before the baby's arrival by Mrs. George May and Mrs. Charles Morgan at the home of Mrs. Andrew Carlson.

Mr. and Mrs. Larry Pederson joined the ranks of the proud new parents Nov. 1 when their first child, Steven Richard was born.

Hospital Notes
Little Mark Howard, son of Mr. and Mrs. Don Howard of Vickery road spent five days in Mary Bridge Children's hospital with pneumonia; he is now home and improving fast.

Mrs. Harold Mieninger of East 62nd street underwent surgery in a Tacoma hospital recently and is now convalescing nicely at home.

Larry Geise, 11 years old, is confined to St. Joseph's hospital where it was determined that he had been a victim of polio a year ago, the affects only now becoming apparent. In the past few months Larry has developed a limp when walking, the muscle in the leg becoming more affected as he grew in height. Now with therapy treatments at the hospital it is hoped he will be back on his feet again in a short time.

Spinsters
The Waller Road Spinsters 4-H club enjoyed a skating party Nov. 9. The next meeting will be at the home of the leader, Mrs. Myers Wheeler. Refreshments for each meeting are planned by Jean Hand.

Reporter — Mrs. Verne Fogle, LE 7-5210.

Save A Life
Observation On Illness
Car Sickness, it was reported this week, is that nauseated feeling you get each month when you got to make the payment. This information courtesy of SUMMIT VIEW SERVICE, where most of your car's ills can be cured with very little trouble. Tom Bailey, Jr., is the man to see. The address, Airport and Canyon Roads.

Visiting
Mr. and Mrs. Milton Glover of Ellensburg spent the weekend with Mr. Glover's mother, Mrs. Mae Bandy.

Mr. and Mrs. William Dowie of Pennsylvania avenue spent the weekend with relatives and friends at Vancouver, B. C. Reporter—Mrs. M. S. Rau, LE 7-8391.

Smorgasbord Set By WSCS

The Woman's Society of Christian Service of the Summit Methodist church will hold a smorgasbord dinner in the church hall Saturday, Nov. 16, from 5:00 to 8:00 p. m. The menu features turkey, ham and "all the fixin's."

The proceeds will go to a much needed building fund for the Sunday school room.

Busy Stitches
The Busy Stitches 4-H club met at the home of Mrs. Harry Holm and the following officers were elected: President, Linda Robbins; vice president, Barbara Tennent; secretary, Janice Aldrich; treasurer, Nancy Scalp; reporter, Margaret Korsmo. The new leaders are Mrs. Harry Holm and Mrs. Martin Korsmo. Their project will be making petticoats.

Lucky Clover 4-H
A new 4-H club, Lucky Clover, recently organized in the Summit district with Mrs. Rave as leader. The project will be sewing. At the first meeting, held Oct. 24 at Mrs. Rave's home, the following officers were elected: President, Susan Ward; vice president, Linn Rave; secretary, Sandra Hagstrom; reporter Catherine Pruitt. Refreshments were served by Susan Ward. The Lucky Clover club will meet every Thursday after school.

Bus Chix
The Summit Busy Chix held their first meeting of the year on Saturday, Nov. 9, at the home of their leader, Mrs. Morton.

The members elected new officers and worked on their projects. Elected officers are: President, Judy Wenner, vice president, Joyce Buss; secretary, Barbara Carlson; treasurer, Carol Adams. New members are Barbara Kanzler, Carol Alexander, Sandra Moore, Noreen Houtz, Lindo Harrington and Janice Paterson.

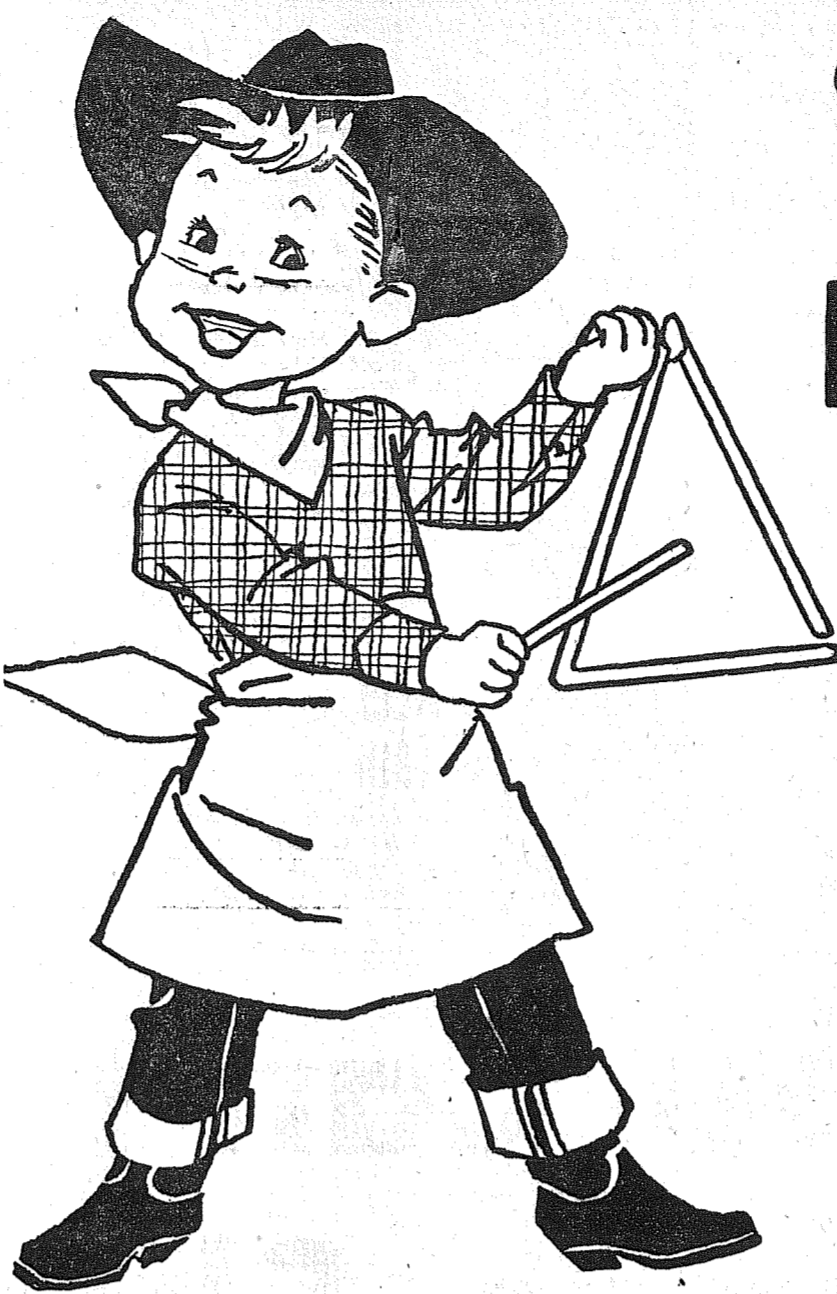
Joyce Morton gave an illustrated talk on cotton material.

June Bug Garden Club
Mrs. Arthur Bjork will be hostess to the June Bug Garden club Tuesday at 10:30 a. m. with Mrs. John K. Fuller as co-hostess.

Roll call will be to bring or give an unusual idea for a Christmas gift.

Following the business meeting there will be a demonstration on Christmas swags by Mrs. Lester Goelzer.

Sympathy
Deepest sympathy of neighbors and friends goes to the family of Ike Evans of 9706 East Taylor Way who passed away Friday in a local hospital at the age of 83. His parents homesteaded near Roy at what is now part of the Fort Lewis reservation and he lived there until 1904. Surviving are three daughters, including Mrs. Edward Jackson with whom he made his home.



CALL TO FLAVOR!
Del Monte®
ROUND-UP
89¢ SALE

46-Oz. Tins **4/89¢**
PINEAPPLE JUICE

46-Oz. Tins **3/89¢**
PINEAPPLE-GRAPE'FT JUICE

46-Oz. Tins **4/89¢**
TOMATO JUICE

No. 2 1/2 Tins **3/89¢**
FRUIT COCKTAIL

303 Tins **5/89¢**
GRAPEFRUIT SECTIONS

211 Tins **5/89¢**
CHUNKS - CRUSHED OR TIDBITS PINEAPPLE

303 Tins **6/89¢**
CORN, Cream or Whole Kernel

303 Tins **5/89¢**
EARLY GARDEN PEAS

No. 2 1/2 Tins **5/89¢**
PUMPKIN

14-Oz. Bottles **5/89¢**
CATSUP

303 Tins **5/89¢**
CUT GREEN BEANS

M.J.B. **COFFEE** . Lb. **85c**

BEE LIGHT WHITE CLOVER **HONEY** 5-Lb. Pail **99c**

GLENWOOD **CHOC. COVERED CHERRIES** box **59c**

SUNSHINE HI - HO'S 1-lb. box **33c**

DAWN HOUR WHOLE FANCY. No. 2 1/2 Tins **3/89¢**
PEARS

Swift's Fully Cleaned - Fresh **WHOLE FRYERS** lb. **33c**
Tender and Delicious

Fresh Smoked **BACON SQUARES** . . . lb. **29c**

Old Fashioned **BOLOGNA** lb. **39c**

YOUNG TENDER GRAIN FED STEER BEEF

Round Steaks **67c** Lb.

YOUNG TENDER GRAIN FED STEER BEEF

T-Bone Steak **67c** Lb.

Golden No. 1 **BANANAS** lb. **12c**

Solid Red Ripe. 1-Lb. Cello Tube **TOMATOES** **13c**

Indian River Pink. Large Size **GRAPEFRUIT** 2 for **19c**

North Dakota Red **POTATOES** 10 lbs. **49c**

"AA" Medium **EGGS**
Dozen

48c

Delivered Daily From One Local Farm!

McDANIELS
AIRPORT & CANYON ROAD

The Home of The Low Price

Store Hours: 9:00 Till 9:00 — Sundays 9:00 Till 7:00



Prices Effective
Thurs., Fri. & Sat.
This Week

PRE-HOLIDAY * * * * *
DOLLAR STRETCHERS

- CHECK THIS:
- ELECTRICAL SUPPLIES
 - GLASS
 - CHARCOAL BRIQUETS
 - HARDWARE
 - PLUMBING
 - PAINT
- 1/3 OFF

EXTRA SPECIALS

1x6 No. 3 V	Per 1000	No. 4	Each
Rustic Siding	\$65.00	8 Ft. 2x4's	15c

Baskett Lumber Co.

MILL and RETAIL YARD
97th & Portland Ave. LEnox 7-5844

"FLYING SAUCER REPORTS"



Presented weekly as a public service by the Bargain Basket

Seattle, Wash., 8/1/57 — An unidentified flying object, or objects, described as a meteor by some astronomers, was seen by thousands of witnesses from Seattle, Wash. to Southern California and as far east as Salt Lake City, Utah. Over one hundred reports of this object, or objects, were received at A.P.R.C. Headquarters—about half of them personal letters from witnesses. Here is the information as we compiled it. We are convinced it was not a meteor. What do you think?—Blazing a bright blue-green, the object shot across the sky to the south of Salem, Oregon at 8:34 p.m. The brilliant object was said to be oblong in shape. Mike Forbes, Salem Capital Journal valley editor, observed the strange fiery object from Southeast Salem. "The object appeared suddenly in the set," he said. "It did not come over the horizon, nor was it falling, but it appeared suddenly as though someone had turned on a switch."

New Leaders For Local Grange

At the regular meeting of the Fruitland Grange Nov. 1 the following officers were elected: Master Clifford Hurst; overseer, Frank Ballou; lecturer, Thelma Janowski; steward, Ed Swalander; assistant steward, Bill Geddes; chaplain, Faye Gelzer; treasurer, Lillian Seifert; gate keeper, Jim Litton; secretary, Neva Milne; Pomona, Maude Swalander; Ceres, Helen Ballou; Flora, Clara Layick; lady assistant steward, Myra Geddes; executive committee, Mitch Milne; home economics, Myrtle Halbert; juvenile matron, Rose Leah Swalander.

At the next meeting, Nov. 15, the Grange will honor the following 25-year members and each will be presented with a 25-year pin: Mrs. Alma Lind, Clifford Miller, Mr. and Mrs. R. C. Breckon and Mr. and Mrs. Albert Ochfen.

Woodland P-TA held the monthly meeting Nov. 8. Mrs. Youngblood of Edgewood spoke on the proposed new Puyallup hospital. The P-TA voted to endorse the Package Lunch Program which is new in the county. The Woodland kitchen will be used for entertainment only. The lunches will be foil wrapped and come from Puyallup; the children will eat in their rooms. It will eliminate dish washing since paper plates and plastic tableware will be used.

Mr. Laycock's 6th grade room won the P-TA membership drive award and will receive \$2 from the membership chairman to buy something for the room. Mr. Hoggatt's 5th grade room won room count and will also receive \$2 to buy something for the room.

There will be no December P-TA meeting and the January meeting will be Dad's Nite.

Homemakers Pierce County Grange Homemakers made a tour of a local mortuary Nov. 7. Those present from the Fruitland Grange were Ann Templin, Clare Lovis, Helen Heil, Maude Swalander, Nellie Williams and Margaret Mullins. The next Homemakers meeting will be Tuesday, Nov. 18, at the Grange Supply in Tacoma.

Spaghetti Dinner Don't forget the Woodland spaghetti dinner and carnival Saturday evening, Nov. 16, from 5:00 to 7:00 o'clock. The carnival is from 6:00 to 10:00. Come and bring the family.

Thanks! As writer of this column I wish to extend my thanks to neighbors and friends for the help given thereby making possible the trip to my brother's funeral in Denver; also for the care and consideration given my two children, Cathy and Teddy, who stayed here.

Reporter—Mrs. J. C. Mullins, Puyallup TH 5-8621.

P-TA Dads Sponsor A Pancake Supper

Elk Plain P-TA announces a pancake supper Nov. 16, 5:30 to 8:00 p.m. at the Elk Plain school, the affair to be sponsored by the P-TA dads. The nominal donations will go for the year's P-TA projects.

Chet Bardwell, Elk Plain principal, is chairman with Duane Lobeda as co-chairman. Since help is needed to make the affair a success, anyone willing to assist is asked to phone Mr. Bardwell at the school, VI 7-7667, Saturday afternoon.

Building Permits

Edwin Ranger, \$2000 move home to prop., 10412 Golden Given Road; W. R. Dalin, \$1100 frame home, Rt. 1, Box 146, Eatonville; Wm. B. Smith, \$944 addn. to home, Rt. 3, Box 567; Hilmer A. Delin, \$6950 frame home, 3331 So. 92nd.



A precious fleeting moment of childhood is captured for all time in this "Hummel" figurine called, appropriately, "Telling Her Secret." It catches the instant when a young miss shares with her confidante the latest bit of news so very important in a child's world. This tiny vignette eternally characteristic of small-fry is one of the many ceramic figures reproduced from the inspired drawings of Sister M. I. Hummel. A gentle and talented Franciscan nun, her abounding love of children was projected through her art. With great sensitivity and perception she recorded them in hundreds of typical beguiling situations.

The figures exactly produced by master craftsmen with meticulous attention to detail are world renowned collectors' treasures. Manufactured by W. Goebel of Bavaria, West Germany, authentic "Hummels" can be readily identified by the "M. I. Hummel" indented on the base of each piece.

American Legion News

Sam Carta, Publicity

By S. Carta The American Legion is urging all local citizens to take an active part in observing American Education Week, November 10-16, Ed N. Davis, Commander of Parkland Post No. 228, said today.

Primary purpose of the "Week," Commander Davis said, is to call public attention to the problems, needs and accomplishments of our schools. The American Legion, he said, is urging the public to participate by visiting their schools to learn more about local conditions. Most schools are holding open house during or near Education Week.

Other local events for the 37th annual observance include a talk by Mr. Morris Ford, Supt. of Franklin Pierce high school on school problems and schools in general, Commander Davis declared.

General theme for this year's observance is "An Educated People Moves Freedom Forward." Included as part of American Education Week will be observance of National Teachers Day on Thursday, November 14.

In urging public support for the week-long observance, Commander Davis said: "Comparatively few of our citizens are aware that American Education Week was originated by The American Legion."

Early Legionnaires, aware of the high degree of illiteracy evidenced during World War I, felt the need for a dramatic focusing of public attention upon the schools. They knew that the preservation of our cherished American Freedoms and Rights depended upon an alert citizenry and that this alertness was in direct ratio to the education of the citizens. So, in 1921, they initiated the idea of a week set aside once a year to point up education and schools as a whole," he said. "During the first year, The American Legion found a ready

So this is HOMEMAKING

If people had numbers instead of names, my husband would remember them all. Bill is great for statistics! This morning, for example, he lowered his newspaper and announced, "Of all the fabrics sold today, 15% are synthetics. And in 1961, the experts predict it will be 35%."

Unimpressed, I asked, "Does the article mention that about 1/4 of the average wash load is synthetic clothing?"

Bill was dumbfounded. "I have no head for figures, but I had figured a way to get his attention long enough to convince him I needed a new RCA Whirlpool automatic washer."

"Those wash 'n wear suits of yours are a headache!" I wailed. "Even after drip drying I have to press them."

Bill fingered his lapel thoughtfully. "You mean the Whirlpool people have even come up with an automatic way to press this suit?"

"Practically," I said. "It's just a matter of washing it the way fabric manufacturers advise. First a warm water wash takes out soil and wrinkles, then the water is cooled to set the fibers and keep them smooth."

Bill had to rush off to work before I could tell him about the automatic fabric control that's just like having a built-in instruction book. It shows at a glance proper time and speed and temperature settings for all basic fabrics!

I guess my well-informed talk on the wash 'n wear cycle did the trick, though. On his lunch hour, Bill called to tell me the washer comes in pink, yellow or white. We agreed that a pink one would be nice in our new laundry room!

Weyerhaeuser News

Many students of the Weyerhaeuser school are absent because of flu. The community was saddened only under advancing mist or enshrouding fog.

The Skree-Stacker has three joints in each leg. The two forward limbs being a couple of feet apart while the rear set of limbs are about five feet astern. Stub tail, somewhat like a black bear, mouse-colored hair, a combination cloven hoof with two fetlocks that are heavily spiked, small head, eyes prominent and ears quite minute present its general appearance. Its bellows that work between its two rear sets of legs forms the motive power for its proboscis that is the strangest part of this creature's anatomy.

In clear weather this organ shrinks to a mere thread. In light rain or heavy fog it assumes larger proportions and during light fog it becomes an immense balloon-like appendage. At the terminal of this strange organ, which resembles an elephant's trunk, is a peculiar nozzle affair that the skree-stacker inserts in small crevices that exist in the rocky wall. It braces its feet firmly and pumps fog or mist into the cracks in the rocks exerting tremendous pressure and forcing the condensed moisture deep into the fissures along the Nelson Wall.

When the cool of the evening settles down, the concentrated moisture rammed into the rock crevices by the skree-stacker freezes and another section of the rocky parapets crashes down adding to the menace that faces the mountaineer.

by the death of Laverne Peck, son of Mr. and Mrs. Earl Peck, who was killed instantly in an automobile accident near Eatonville. He graduated from the Weyerhaeuser school and attended Eatonville high school.

Many friends and neighbors attended the wedding of Miss Grace Gallagher and Thomas Cox Saturday, Oct. 26, at Our Lady Queen of Heaven church near Parkland. The reception was held in the main officers club at Fort Lewis.

A home wedding in the presence of old-time friends and neighbors was that of David Lindholm and Agnes Haradyk, both of Weyerhaeuser.

The Weyerhaeuser Lutheran Ladies Aid had a dinner in the new dining room Nov. 8.

A large crowd attended the school carnival Saturday evening and a good time was had by all.

The regular meeting of the Weyerhaeuser school club scheduled for Thursday has been postponed indefinitely due to illness.

Drive Safely PRESCRIPTIONS VETERINARY SUPPLIES Open 9:30 to 9 Weekdays (Closed Sunday) SPANAWAY DRUG 165th & Pacific LE 7-5998

The Skree Stacker

The most hazardous terrain encountered in the summit climb of Mt. Olympus is across the skree below the Nelson Wall, piled helter-skelter like jackstraws on the age-old ice of the Hume Glacier. The dislodgement of a sliver of rock would bring the jumbled mass of thousands of tons of stones down upon the climber. Massive jagged boulders teetering precariously above are apt to plunge downward from the wash of rain or the result of melting ice. The weight of a bird, under proper conditions, could start the destructive mass into a crashing, smashing force.

Careful observation determined that some peculiar power besides that of Nature was causing the strange shape of this skree deposit. Following many trips and careful observation during all sorts of weather, patience was rewarded and the skree-stacker, one of Nature's most peculiar creatures, was observed in his weird occupation.

Practically invisible in clear weather, but assuming larger and larger proportions as mist or heavy fog rolls in from the ocean, this six-legged creature strides above the pinnacles of the Nelson Wall. Over great precipices and towering pinnacles it threads its way in all kinds of weather. The skree-stacker has never been photographed, although several attempts have been made with telephoto lenses. It is very wary and only once or twice have human eyes observed his peculiar occupation, and then

Appreciation

Mrs. Alfred Jackson, chairman for the Gloria Motycka Orthopedic Guild dinner, wishes to thank all who donated and helped to make it such a success. Those in charge regret that they did not anticipate such a large crowd and consequently had to turn away many who came after supplies were exhausted.

Mrs. Lawrence Anderson, Publicity.

Wisconsin Club potluck supper will be held at 6:00 p.m. Sunday, Nov. 17, in the basement of the Odd Fellows Temple, Sixth and Fawcett avenues.

PLANNING A SPACE TRIP? BEFORE YOU LEAVE, STOCK UP AT THE Bargain Basket 167th & Pacific Ave. Spanaway See Our Full Page Ad On Page 12 (Pd. Adv.)

CLOVER CREEK . . . Women's Club Meeting 21st The Clover Creek Women's club will meet Nov. 21 at the home of Mrs. Helen Criviansky on the John Mahon road; all visitors are welcome. Refreshments will follow the short business session. The last meeting was at the home of Mrs. Stella Carlson. Church News Special services will be held morning and evening Nov. 17 at Clover Creek Baptist church by the Rev. R. V. "Bob" Dryer, a missionary from Glendawn Bible Camp. Interesting Trip Mr. and Mrs. W. H. Danforth report a pleasant and interesting trip east to visit her son, Lt. Com. William McLean, Navy flier stationed in Rhode Island. The couple flew east, leaving here at 9:00 a.m. and arriving in New York at 7:00 p.m. The trip from New York was by helicopter.

Building Permits Edwin Ranger, \$2000 move home to prop., 10412 Golden Given Road; W. R. Dalin, \$1100 frame home, Rt. 1, Box 146, Eatonville; Wm. B. Smith, \$944 addn. to home, Rt. 3, Box 567; Hilmer A. Delin, \$6950 frame home, 3331 So. 92nd.

To Beautify Your Home Inexpensive Sectional Cupboards BAR STOOLS . . . \$2.40 For Holiday Informal Entertaining HEADQUARTERS FOR UNFINISHED FURNITURE Open Monday and Friday Till 9:00 RINNANS FURNITURE 8104 South Tacoma Way, Tacoma JUNiper 8-2234



no Gift like this in all the world... Your Portrait For a very special someone . . . and for new ideas on ways to give a portrait gift—come in, see how portraits can be a special greeting to your family, a friend, or to a favorite household! For instance, framed portraits, wallet-size portraits, large color portraits for modern walls—and many other suggestions here will please you. Visit our Studio now, or telephone for an appointment. McKewen Studio 405 GARFIELD STREET LEnox 7-3833

"Young Life" and "Fruit of the Loom" GIRL'S Dresses Sizes 8 to 12 Cotton Prints Cohama Brioni Cotton Jumpers with Nylon Blouses Unconditionally Guaranteed for Fabric, Fit and Wear \$1.98 to \$4.29

"BECO" PLASTIC WARE WICK FED POTS 79c & 98c WALL PLAQUES . . . 79c POT DECORATORS . . . ea. 25c URN STYLE FLOOR PLANTERS \$3.98 & \$6.98 USE OUR LAY-AWAY PLAN A Small Deposit Will Hold Any Item Until Christmas

TABLE PLANTERS \$1.79 to \$2.98 GOLD AWARD WALL PLANTERS 98c BIRD CAGES . . \$3.29 to \$5.49 3-Piece Coffee Service Wall Planters To add beauty to your home \$1.19 SHADOW BOX PLANTERS . . . \$1.98 DECORATED GIFT FRUIT CAKE & COOKIE TINS Ideal For Mailing . . . only 59c and 79c

MEN'S TERRY Robes Small, Medium, Lge. & Ex. Lge. Made of "Cannon" Terry Cloth White or Yellow \$9.49

BIG BEAR HAS THE BARGAINS!



This week Big Bear is presenting its own spectacular! In true Hollywood and P.T. Barnum style, we are having a circus with prices and bringing you bargains such as you've rarely seen! Hurry, hurry, hurry, to your local Big Bear Store where your dollar always buys more, and the brand names we feature are all nationally known headliners! Stock up now on these items for the rainy days ahead, and take advantage of prices!

Pictsweet Fresh - Frozen FRUIT PIES

Take your choice of Apple or Cherry — Both extra delicious.

24-Oz. Pies **39**

C&H Sugar 1-Lb. Can **11**

Brown or Powdered — Hot price!

CRISCO 3-Lb. Can **79**

Special pack and a real value!

BUTTER

Sweet and creamy and very smooth spreading. A Big Bear bargain buy!

1-POUND PRINTS

59

PINEAPPLE JUICE

SMLAX --- Pressed from the very finest top quality Hawaiian fruit, and immediately packed to assure its flavor and freshness! Look at this Big Bear price!

LARGE 46-OUNCE CANS

5 For Only **1.00**

FRESH-FROZEN GARDEN PEAS 3 10-Oz. Pkgs. **25**

NORTH STATE---Tender, garden-fresh, vine-ripened and sweet. A perfect dinner course any time!

BEEF PIES 8-Oz. Pies **19**

PICTSWEET---We also have the delicious Chicken pies, and this terrific Big Bear price is good while they last!

FRESH GRADE AA LARGE EGGS Per Doz. **55**

Guaranteed to be the freshest eggs you can buy anywhere! Buy now at this bargain price!

CRANBERRY SAUCE OCEAN SPRAY 2 No. 300 Cans **33**

Strained or whole and really delicious---This is another Big Bear bargain feature!

PITTED MEDIUM RIPE OLIVES No. 1 Can **27**

CALIFORNIA GIFT --- Dark and delicious, firm and tender! California's finest!

PACIFIC PEARL SHRIMP 3 No. 1/2 Cans **1.00**

Tiny, delicately flavored pink meat, and guaranteed to be absolutely ocean-fresh!

LIBBY CLING PEACHES 4 No. 2 1/2 Cans **99**

A fancy pack of delicious, golden-yellow fruit. Another Big Bear bargain feature!

S&W Fancy Mixed Nuts . . . 1-Lb. Pkg. **49**

Crackerjack Popcorn WHITE or YELLOW . . . 2-Lb. Bag **29**

Walnut Meat Halves 7-Oz. Pkg. **49**

Market Day Seedless Raisins 2-Lb. Bag **39**

Miracle Whip Salad Dressing Per Qt. **49**

NATIONAL BRAND! TOYS

A Big Bear pre-Christmas special! Buy these wonderful toys on our Christmas lay-away plan!

1/3 OFF

CARSTEN'S HYGRADE FIESTA FULLY COOKED BONELESS HAM 79

Take your choice of whole or either half. 6 - 10 Lb. Average.

SLICED BACON 53¢

MORRELL'S COMET --- Really nice and well streaked with lean.

RED SNAPPER 19¢

Ocean fresh filets for wonderful eating. This is a Big Bear bargain!

PORK ROAST 27¢

Guaranteed fresh and extra juicy and delicious. These are picnic style.

WASHINGTON GROWN FRESH CHICKENS 33

WHOLE OR CUT - UP These plump deliciously tender beautys are delicious for stewing or fricasse. A buy!

GOLDEN BANANAS

Plump golden fruit. Perfectly ripened to bring you absolutely the finest in tropical flavor.

2 Lbs. For **25**

ARIZONA YAMS 9

Meaty bright golden texture. Small even sizes. Extra mellow and sweet.

Jonathan APPLES 7

Extra fancy and fancy Washington grown. Snappy & crunchy. Buy a 24-Lb. Box at this low price \$1.19.

FLORIDA AVACADOS 2 For Only **25**

Table ready, large thick-meated and tasty.

FRESH-FROZEN FRYERS 1-Lb. 12-Oz. **89**

OCOMA---Frozen while absolutely fresh to guarantee the finest in flavor and tenderness!

BRUCE WAX Quart For **79**

Self polishing --- Takes the soil and toil out of floors!

Chunk Tuna 5 No. 1/2 Cans **1.00**

SNOWMIST --- Light, tender meat packed in oil!

JELLO, ALL FLAVORS 3 Pkgs. **19**

Pacific Avenue at 133rd. Prices thru Saturday. Right to limit.

MORTON BLUEBERRY PIES

Serves two portions. A buy!

Large 10 1/2 Oz. Pie Only **19**



BIG BEAR

WHERE BETTER FOODS COST LESS!

BIG BEAR STORES

For Best Results

READ AND USE THE

CLASSIFIED ADS

Page 6 Thursday, November 14, 1957 The TIMES-JOURNAL

1--Personal

TO WHOM IT MAY CONCERN - I will not be responsible for debts contracted by anyone anywhere; my signature required in person; Edward Bowman, Rt. 1, Box 228-A, Spanaway. 1p10

Business Service 3

BLENDED TOP SOIL; peat; barnyard compost; sand; free estimates, JU 8-2111. 3cft

Parkland Heating Co.

All makes of furnaces for sale; specializing in Williams OIL 'O' MATICS; Oil, Gas, Hot Water Installations. Service; reasonable; 755 South 108th, LE 7-4045. 3cft

GEORGE PURDUE - Plumbing, Heating, New work, remodeling, Repairs. Phone LE 7-4477.

OLSON

Oil Burner Service SERVICE ON ALL MAKES 303 Ea. 123rd LE 7-7398

SEPTIC TANKS & WATER LINES INSTALLED Riley Brothers. Phone LE 1-0987 or LE 7-3204. 3cft

LAWN MOWERS

Serviced and Stored Power Mowers A Specialty Free Pick-up & Delivery PARKLAND CYCLE & KEY

11021 Pacific Ave. LE 7-5772

FOUNDATIONS - New additions; free estimates, financing; work guaranteed; GR 4-2002. 3cft

Home Wiring

Free Estimates Guaranteed Satisfaction Emergency Service PEARL ELECTRIC LE 7-8568

STORM SASH made to order; Mt. Hiway Cabinet Shop; VI 7-7638. 3cft

AUTO GLASS, Seat covers; upholstery & convertible tops installed. Open 9:00 a.m. to 1:00 p.m. Saturdays. ART'S GLASS & UPHOLSTERY SHOP, 816 So. Tacoma Ave. MA 7-2200. 3cft

ACE SEPTIC TANK SERVICE

Septic Tanks Cleaned O. B. ACKLEY LE 7-4343 LE 7-7882

PHYSIOTHERAPY treatments in your own home; day or night; LE 7-7254. 3cft

WE BUILD HOMES - Remodel, level buildings; cabinet work, concrete work. Reasonable; LE 7-3550. 3cft

SEPTIC TANK CLEANING

Prompt Service C. V. Hutson GR 4-8980 GR 2-7038

FAST PHOTO SERVICE - In at 10:00 out at 5:00. QUALITY PHOTO SERVICE, 9818 Pacific Ave., LE 7-7271. 3cft

SNAP ON TOOLS - Johnny Hall, 1012 South 110th, Lenox 1-0856. 3cft

NEAT BEAUTY SHOP

GR 2-7628 6814 McKinley Avenue

POWER MOWERS sharpened and serviced; pick-up and delivery; Baldwin & Son, 947 Tacoma Ave., MA 7-3431. 3cft

KITCHEN CABINETS, corner shelves, book cases; birch, fir or knotty pine; built to your specifications; get the best for less - my prices are the lowest. HOOVER'S CABINET SHOP, LE 7-5514. 3cft

FERN HILL BEAUTY SHOP

COMPLETE BEAUTY SERVICE 8287 1/2 Park Ave. GR 4-3177

SEPTIC TANK PUMPING - Replace and repair work. 3 years to pay; JU 8-8734 - GR 4-5945. 3cft

Fuel

FUEL - Mill wood, 2-cord load \$16; fireplace wood, alder, maple, 2-cord load \$35; single cord \$20; Orting TW 3-5850, LE 1-0778. 4cft

Help Wanted

WANTED - A boy for spading garden on Saturday; LE 7-3168. 5c10

Lost & Found

LOST - 4 months-old black and white collie pup, vicinity 130th and A streets; if seen, call LE 7-5418. 6c10

Wanted To Buy

USED CAMERAS and photo equipment for resale. QUALITY PHOTO SERVICE, LE 7-7271, 9818 Pacific Ave. 8cft

Real Estate

40 ACRE farm near Eatonville with good home which has 3 bedrooms and large attic space, large living room, separate dining room and eating space in kitchen. Basement, furnace and laundry. \$16,000.00 on terms. Jennie Grodvig, LE 7-8609 or LE 1-1210.

BRAND NEW Duplex at 706 & 708 South 128th, near Pacific Lutheran College. Jennie Grodvig, LE 7-8609 or LE 1-1210.

Jennie L. Grodvig Parkland Realty Co. Insurance of All Kinds Notary Public Est. in Parkland Since 1941 LE 7-8609 Office 302 Garfield St., Parkland "Deal with the people who give you their personal attention."

\$250.00 DOWN FHA WHY RENT, when you can own your home. This home is very clean inside and out, hardwood floors, 2 good bedrooms, good built-ins and closets, oil furnace, large utility room, fenced back yard, garage. Close to bus, school and stores. Call Ralph Decker, GR 4-9579.

McKinley Hill Realty 6311 McKinley Ave. GR 4-9579 Member of Tacoma Real Estate Board Member Multiple Listing Service

2 LOTS, 114th & Alaska \$495 5 LOTS, Midland 1250 3 LOTS, So. 107th 1250 5 ACRES, Collins Road - 3400

Home & Farm Bureau

12695 Pacific Ave. LE 7-5501

Drive Safely

2 BEDROOM - POINT DEFIANCE \$8950 or will sacrifice equity for \$1500 cash, or will lease for year or more. If you want a nice modern home, and willing to do a little yard work, don't miss this one.

3 BEDROOM - PARKLAND A DANDY new one floor home. Hardwood floors, lots of cabinets, tiled bath with tub and shower, baseboard heat, fireplace, large carpet, wired for dryer. Quick possession. Only \$10,750 FHA.

Call "Trader Bill" Black LEnox 7-5400 or LEnox 7-3272 RURAL REAL ESTATE 14620 PACIFIC AVENUE

TRADE OWNER may accept suitable lots, trailer or boat as down payment on this 2 bedroom home in Lakeview. Refrigerator and range included. Priced at \$6700.00. Call Mr. Harmon, LE 7-8638 or LE 7-6896. V.B.

3 BEDROOMS - \$9850.00 TAKE A look at this modernistic home. Large spacious rooms on a large lot across from Brookdale School. Low down payment. F.H.A. Call Mr. Harmon, LE 7-8638 or LE 7-6896.

LISTINGS WANTED WE NEED LISTINGS in the South End. An active staff to serve you plus the benefits of multiple listing service. For action call Suburban Realty, Inc. 11320 Pacific Avenue LEnox 7-8638

Rentals

FOR RENT - Two room furnished apartment; clean, comfortable and compact; nice for one person or couple; rental \$60 including utilities; LE 7-5181, 751 South 110th. 10c10

CLEAN, private room. 414 East 133rd St., Parkland. LE 7-6009. 10cft

FOR RENT - Two apartments in the Parkland Centre building, 1 furnished, 1 unfurnished; phone LE 1-0446. 10c10

WILLOWS Trailer Park; large modern spaces, with carports & storage rooms; reasonable rates; convenient shopping; Propane gas available; school bus at door; 1 mile south of Puyallup on Airport road; Phone Puyallup TH 5-4200. 10cft

FOR RENT - Furnished upper apartment, one or two bedrooms 401 South 116th. 10c10

FOR RENT - Power mowers, hand tools, garden tools, spray guns, Sanders, plumbing tools, power tools, etc. A tool for every job. South End Plumbing and Hardware. Phone LE 7-4100 10cft

Repair Service

WASHING MACHINE PARTS - Largest stock in town. Repairing that pleases. BB's Washer Service, 3727 So. G. GR 4-9409. 11cft

Automotive

58 FORDS & CHEVROLETS - Wholesale prices, 5% interest. SMALLLEY'S MOTORS, 10410 Pacific Ave., LE 7-4060 anytime, evenings, Sunday. 12cft

This is Your Chevrolet Salesman



Don Flowers 1952 CHEVROLET hard top sports coupe; radio, heater, white walls; just had valve job; real clean. New Chevrolet Cars & Trucks Used Cars & Trucks Come to Puyallup Valley Chevrolet

For The Best Deal Opposite Postoffice PUYALLUP, WASH. BR 2-0734 TH 5-1766 - TH 5-1332

FOR GOOD USED CARS, call Anderson Chevrolet, Spanaway, L. 7-6465. 12cft

13--Farm Column

EASTERN WASHINGTON HAY, by the bale, ton or truck load; J. A. Dove, phone LE 7-6709. 13cft

FOR SALE - Out and clover hay, \$25 per ton. Call evenings, LE 7-5972. 13cft

BREED YOUR COW ARTIFICIALLY to sires proved great. Washington Proved Sire Service. George Lytle, technician, phone Yelm 3931, or Graham VI 7-7417 before 9:00 a.m. 13cft

Work Wanted

GOOD CHILD CARE in my home, Parkland area. Licensed. LE 7-3688 14cft

WANTED - Reliable baby sitter for 3 children; own transportation, or live in. Call evenings, LE 7-5152. 14cft

DIVORCED WIFE LEFT husband wants someone to take over contract on SINGER walnut console sewing machine with only \$29 left to pay; take over \$5 monthly payments and get free home demonstration. Open till 9:00. UPTON ELECTRIC CO., 1148 Market St., FU 3-2551. 15c10

LEAVE FILM at Quality Photo Service for developing. In at 10, out at 5 9818 Pacific Ave

LAF Sporting Goods and Office Supplies DRAG SAW \$75.00 PINE Southern Oregon LARGE CONES 2/25c 162nd & PACIFIC AVENUE LE 7-8015

FOR SALE - Two contour lawn chairs; miscellaneous tools; professional hair dryer; 14002 So. J St., LE 7-7793. 15c10

TACOMA UPHOLSTERY - Special on reupholstering day-ent, chair, as low as \$129. Davenos \$49.00. Rocker, \$29; Free estimates; GR 2-6955, LE 7-0327. 15cft

FOR SALE - Organ in excellent condition; 1 large wood circulator; 1 all-steel bed for trailer. TH 5-6931. 15c11

Expert T.V. Repair Satisfaction Guaranteed Free Tube Testing POCHEL Distributing Co. Your Fuel Oil & Appliance Dealer 140th & Pacific LE 7-8624

FOR SALE - Kirby vacuum cleaner, bright and shiny, only \$39. 618 So. I. 15c10

ATTENTION LADIES - For free House of Stuart Cosmetics, phone LE 7-4636, LE 7-0559, LE 7-7439. 15c11

TO THOSE LIVING NEAR BY - I have some Golden Delicious apples at \$2 per 35-lb. box, plus 50c deposit on box; Bowman, 1 mile east on 176th, Spanaway. 15p10

LOGS PURCHASED at Rainier or Tacoma. For information call MA 7-2313, Tacoma. 15c11

Earle's Evergreens Walter Earle SHRUBS - PLANTING Rt. 3, Box 146, Tacoma LEnox 7-6784 Sign at East 112th & Vickery

LIKE NEW - Lightweight portable sewing machine with 14 attachments; used three or four times; you take over \$27 balance; 5440 So. Tac. Way 15c10

FOR SALE - Siegler heaters at Parkland Fuel Oil Service, LE 7-0256; 129th & Pacific Ave. 15cft

FOR SALE - 15-ft. Glider Vacation Trailer. Sleeps four, good condition, \$280. Call Eatonville TE 2-4656. 15p10

CUSTOM KILLING POULTRY of all kinds Joe Crest WA 2-5301 3031 Pioneer Way, Tacoma

FOR SALE - Black and white Siegler heater, like new, \$50; phone Puyallup TH 5-2588. 15c10

PARKLAND FURNITURE - New and used miscellaneous; Airport & Pacific Ave. Residence phone LE 7-3748. 15cft

FOR SALE - 21" General Electric table model television, \$55. See at 618 So. I. 15c10

KMAS SPECIAL - Photos \$x10 \$15.00 doz.; 5x7 \$10.00 doz.; photo Xmas cards \$1.75, \$4.50 doz. Evening and Saturday appointments. 8411 So. Park Ave. Family Portrait Studio. 15cft

ONE ONLY KIRBY - Save over \$100; hard to tell from new; have cut the price to only \$50; free home demonstration, \$5 monthly terms; open till 9:00 p.m. UPTON ELECTRIC CO., 1148 Market St., FU 3-2551. 15c10

FOR SALE - Baby Safety Server in A-1 condition, \$20.00 or best offer. LE 1-1008. 15c10

PERFECT KIDDIE GIFT - Red and white baked enamel tables and chairs; very sturdy; sacrifice at \$6; LE 7-4259. 15c10

TAP, ACROBATIC, BALLET and BATON classes; all ages; Mildred Keller; LE 7-7881. 15cft

Englander

30 Day Free Trial 20 Year Guarantee Goodyear Air Foam Famous Red-Line Foundation Parkway Furniture 141st & Pac. Ave. LE 7-3941 Open Till 9:00 p.m.

FOR SALE - Two fish tanks with extras \$15; NESCO roaster with broiler \$15; lady's western boots, C-6, worn twice, \$8; floor furnace \$25; large Pacific bird cage with stand \$12; Rt. 2, Box 229, Puyallup, TH 5-5474. 15p11

IRENE WOLZ PIANO & HAMMOND ORGAN STUDIO, 9995 Park Avenue, LE 7-0420; residence, LE 7-4051. 15cft

Midland Nursing Home 10816 Portland Ave. LE 7-5395 LICENSED NURSES ON DUTY 24-HOURS A DAY

FOR SALE - 2 burner hotplate, needs repair. Wood range with coils, oven \$10; National hot water tank, used, 30 gals., \$5; 1415 So. 104th; LE 7-3475. 15c10

TAP DANCING LESSONS. Beginning and advanced. Call Jim Nylander, LE 7-0574. 15cft

WOMEN - Earn Christmas toy gifts; have TOY PARTY in your home; call LE 7-6717. 15c10

WE HAVE BAGS for All Airway-Sanitizers; special price on this \$130 vacuum cleaner of only \$29 for fast sale; \$5 monthly payments, free home demonstration; open till 9:00. UPTON ELECTRIC CO., 1148 Market St., FU 3-2551 15c10

Ace Dirt Moving Co. BULLDOZING - DITCHING GRAVEL - TOP SOIL - SEPTIC TANKS - DRAIN FIELDS 1750 9th St. S.W., Puyallup Phone Puyallup TH 5-2452

Horses - Equip. 16

HORSES BOARDED - Excellent care. Box stalls, \$40 per month including hay and grain. Kenny Dunlap, 1 mile west of Rocky Ridge Corner on Benston Road. 16c10

HORSE SHOING - Dick Morris, Rt. 3, Box 600, Tacoma. LE 7-6229. 16p10

DID YOU KNOW . . .

Storm Window - Screen-Combinations Are Now Available at . . . Parkland Hdwe. Across from Piggly Wiggly

We'll Make Them For You or You Can Do It Yourself

Residential & Commercial Wiring

Electric Heating Light Fixtures Complete Line of Small Westinghouse Appliances LEnox 7-3563

PEARL ELECTRIC 12603 PACIFIC AVENUE

SALE Factory Close Outs

Table listing furniture items and prices: Englander (30"x75") Foam Cushion, Latex Hair Bolsters Modern "Calypso" Sofa 129.50 89.50 Flexsteel 72" Seat, Full Foam Cushions "Star of India" Sofa 289.50 199.50 Mohair Frieze Cover, Foam Cushions, Tufted Foam Back 3-Pc. Curved Stantons Sectional 399.00 319.00 DuPont Armless Divan, Fabko Lite 89.50 65.00 Kenmar, Modern (Green). Full Foam Reclining Chair 139.50 109.50 94" Bumper End Sofa 139.50 109.50 Englander Golden Nite Twin Bed 99.00 69.00 Delcorat, Fibre, Wool, Rayon 9x12 Rugs 45.00 29.95 9x12 Fiber Rug 24.50 18.75

Parkway Furniture

141st & Pacific Ave. Open til 9 LE 7-3941

HOT SCOOP!

Top Comfort at New Low Prices!

AMERICAN-Standard SPACE-SAVING, FUEL-SAVING WARM AIR UNITS

- Fully Automatic! Single, Compact Unit Rock Bottom Prices Thrifty! Choice of Oil or Gas!



Parkland Heating FOR FREE HEATING SURVEY: 755 South 108th Phone LEnox 7-4045

SEPTIC TANKS CLEANED - Contents hauled away. Don Redford, 8232 So. Fawcett, GR 2-7334. If no answer call GR 2-9222. 3cft

HOUSE MOVING - Leveling, foundations; cement work; free estimates; SK 9-2653. 3cft

SPANAWAY ELECTRIC CONTRACTORS Residential & Commercial Heating Specialists LE 7-7064 LE 7-4792

GRAVEL - All sizes; top soil; leveling; weekend deliveries; LE 7-7291. 3cft

DON'T encourage dishonesty: locks keyed, combinations changed; Parkland Cycle & Key; 11021 Pacific Ave. LE 7-5772. 3cft

Rough or Finished LUMBER Direct from Sawmill Tooles Saw Mill Davis Road, Graham, Wash. VI 7-2229

BRICK WORK - House leveling and foundations, retaining walls, sidewalk and patios, fireplace and stone work. LE 7-4291. 3cft

AERIFYING & FERTILIZING; give your lawn a treat; JU 8-2111. 3cft

PAINTING, sheetrock taping and texturing; LE 7-8564. 3cft

HAROLD'S SHOE SERVICE Repairs - Men's and Children's Shoe Dept. SUMMIT 9 a.m. - 6 p.m. Closed Sun.

TOP SOIL - Rich, black and reasonable. Screened and ground. Rt. 2, Box 958-B, Puyallup, TH 5-8372. 3cft

TOP SOIL and fill dirt; crushed rock, Utah coal; LE 7-3536 or Puyallup TH 5-2038. 3cft

SMITH CABINET SHOP - REMODELING, carpenter work, kitchen cabinets; we stock and cut glass; 16309 South Park, Spanaway; LE 7-7949. 3cft

South End Auto Wreckers USED PARTS Motors - Transmissions Tires - Batteries We Buy Junk Cars Also Custom Welding by Joe's Welding 1 Mile East Roy Y on Mt. Hy. Spanaway LE 7-6534

CANYON ROAD GRAVEL & SUPPLY; pick-ups and trailers loaded or we haul; LE 7-7586. 3cft

FOUNDATIONS, additions, remodeling. Free estimates. Financing, no down payment. Phone GR 4-7000 anytime. 3cft

WELL DRILLING Berkeley Pumps JETS SUBMERSIBLES CENTRIFUGALS TURBINES Call LE 7-7281

Tacoma Pump & Well Drilling Co. 14619 PACIFIC AVENUE Terms Trades

STAN'S SUPER SOIL SERV. ICE: Top soil, sandy loam, peat fertilizer; GR 4-2305 or LE 7-8259. 3cft

BRONZED BABY SHOES - Tiny Tots Metalizing Co., P. O. Box 323, Spanaway; LE 7-7922. 3cft

OIL BILL TOO HIGH? Save money! Call MAJOR OIL CO. LE 7-3644. 3cft

STANLEY PRODUCTS - Mrs. Johnson, LE 7-4233. 3p10

Hot Water Heating Residential and Remodel Work CORNELL PLUMBING & HEATING LEnox 7-7293

PEAT SOIL for sale - \$1 yard, you haul; RFD Box 144, Roy; phone Roy 291, Roy. 3cft

PLOWING, discing, rototating and lawn work. D. R. Beeler, LE 7-4940. 3cft

ACE DIRT MOVING Co. Bulldozing - Ditching TOP SOIL - GRAVEL SEPTIC TANKS and DRAIN FIELDS Phone TH 5-2452

CUSTOM FIRE SCREENS; any style; estimates without obligation. Thermolite Glass. Franklin fireplaces, portable, attached to any flue. FIREPLACE SHOP, 6607 Sixth Ave.; SK 2-0133; 12:00 to 7:00. 3cft

SCREENED TOP SOIL - No rocks or roots. Crushed Rock. Drain Gravel, Fill Dirt and Screened Road Gravel that packs. Hilltop Gravel Co., 23rd Ave. S.E., Puyallup, TH 5-2198. 3cft

Women's Page



Thursday, November 14, 1957

Page 7

In Midland . . . Baskett Lumber Mill Long-Time Landmark

Ever longed to be a logger? Or see one in operation?

Residents of this area don't have to travel far in order to achieve a good look at one of the most complete lumber operations in this territory.

Unique, because of its city location, the Baskett Lumber Company spanning two city blocks at 99th and Portland Ave., is also unique in another respect. And that is that most of the people working there can answer to the name of Baskett or at least claim a relationship, from the general manager of the company through the

ator of the edger); Leona Tur-osik (sister - and in charge of the hardware department); Marge Bortle (also a sister who shares the hardware division duties.)

Paul Turosik, husband of Leona, is a planer-operator. One person you will find in the office who is not a claimant to the name is George Pyette, bookkeeper for this operation.

Steve Baskett, Sr., the original founder of the business, began his logging career in 1916 in the Klaber Valley, 16 miles south of Chehalis.

In 1930 the family moved on to Tacoma and settled on the present Portland Avenue site. The original 1930 building was replaced by the present structure in 1945.

Until three years ago the mill equipment was entirely steam-

Fashion Forecasts: Fashion Forecasts; Shorter Hemlines This Season

New York, N.Y.—The look of the twenties is staging a strong revival in this season's fashion decrees. While terminology such as this, is highly reminiscent of the "era of flaming youth," designs from leading fashion houses are yet more so.

Very big for the season is the Chanel Look—known popularly as the "eased" or "unfitted" look. The name is taken from this designer of Parisian styles, and manifests itself in straight skirts falling just short of milady's knee-cap, and softly draped over-blouses. Huge collars created in fur or self-fabric, low-waisted belt levels and double-breasted buttons continue the theme. Fabric wise, tweeds and sheer lined wools lead the hit parade.

In contrast, and a rather blaring one, are the evening clothes which seem to attempt to envelop all the femininity that is

understated in daytime creations. With the advent of night, shimmering satins, chiffons and silks, dominate the scene. Bell-shaped hemlines constitute some of the more startling skirt interests with the uneven hemline cuts running a close second. Covering everything is fur, fur and more fur. Color-wise there seemingly is no highly favored tone unless it is the vivid school where a high blue is making a terrific splash—this blue-note is also increasingly evident in hats.

For all of the fashionable decrees one hears, possibly the most astute came from a visiting fashion fireman who made the statement that ". . . American women have the habit of dressing for their own personal comfort and styles appropriate to their individual types." We say so be it.

A GAY GIFT ARRAY of Glamour Treats . . .

Stamped
Pillow Cases 1.39

Mens & Boys
Flannel Shirts

Children's Toys

10 Inch
Pyrex Pie Plates . . . 49c

Enamel Roasters . 1.39 up

Ladies 51 Gauge - 15 Denier
Nylon Hose 89c

Ladies
Fancy Aprons 1.00

Ladies
Blouses

Gowns

Slips

Christmas Cards

A SMALL DEPOSIT WILL HOLD YOUR CHRISTMAS LAY-AWAY

WALLER ROAD VARIETY
6418 Waller Road
LEnox 7-5362

you'll be a
christmas
angel
when you give
gifts to be found
at
Diane's
Apparel

UNDER \$5.00

- jewelry
- slippers
- blouses
- sweaters
- gloves
- scarves
- hosiery
- filmy and feminine pajamas or nighties

accessories - the ideal gift

Diane's Apparel
Big Bear Shopping Center Parkland

THIS PAGE

. . . is especially designed for our women readers and will be a regular feature of the Times-Journal. Should you have any comments, we will be glad to receive them. Address all letters to "WOMAN'S PAGE EDITOR" Times-Journal.

Platter Chatter

By Mickey Hamlin

Tab Hunter's back. After an unusual absence from the recording scene, the young flick star has resumed his disk career with two sides that have the big loot tag.

The most dangerous of the two is "I'm Alone Because I Love You." The flip is "Don't Let It

run. Today, electricity supplies all the necessary power — and plenty of it is required in this type of business.

The mill is a study in complete processing of lumber, from the entry of the raw, freshly-hewn logs purchased on open market, to the final smoothed, dried and seasoned lengths of wood. A dry-kiln (not generally considered standard equipment) is always in constant use, thereby insuring the ultimate in lumber drying process.

During World War II and the subsequent Korean conflict, Baskett's cut lumber on a high-priority basis, involving such specifications as special sizes in wood for crates and over-seas shipments. Meanwhile they also managed to meet their local trade orders.

Today, approximately one-half million feet of lumber is the usual stock inventory at the mill.

The originator of all this, Steve Sr., is still very much in evidence as the man who over-see's all machinery technicalities.

Family-wise, the Basketts say with a grin, that there are really enough of them to constitute a baseball team — that is, if they had time.

And to anyone making a tour of this progressive business, time would appear to be about the only thing in short supply at Baskett Lumber Co.

Get Around," also an appealing number.

With two previous smashes to his history, this new waxing could easily follow suit.

By far the strongest disk in recent months for George Hamilton, IV, is his "Why Don't They Understand." Hamilton, who has had three past successes, delivers this tune against excellent guitar and string backing.

The flip side, "Even Tho," is a fair coin catcher, too.

"Oh, Boy," 'pears to be a strong follow up for the Crickets' "That'll Be The Day," which is still riding high on the pop parade. The wild sounds and hollering add a great seal of excitement to this frantic rocabilly.

Backing this side of the group's interpretation of an off-beat tune, "Not Fade Away." Either side could go but "Oh, Boy" has a slight edge.

"Fever" is back — again. This is not the kind that comes with the flu. It's the type you catch on wax. Earl Grant, new Decca artist, is currently reviving "Fever", Little Willie John's claim to fame of several seasons back.

The reception to Grant's rendition was at first skeptical. The earlier recording cleaned up at the shops and it was doubtful if the teenagers would go for the same tune with a slight variation.

Evidently they have for it is breaking on the local charts with much more action expected. It just goes to show you can't keep a good tune down.

Half-Notes: Anita Carver's "Blue Doll" came from way down the line to one of the top pop positions practically overnight. . . Same goes for Jimmy Rodger's "Kisses Sweeter Than Wine." Tune is available in his new long play as well as on single. . .

"Down In The Alley" is beginning to move up from the darkness. Should hit the bright lights fairly soon. . . Buddy Holly has a hot two sided wax for Coral containing "Everyday" and "Peggy Sue". . . Roulette has purchased the master of "Hey Little Girl" by The Techniques, the Georgia Tech campus group. They're expecting big things to come in the way of sales.

Each week the Parkland Record Shoppe, 414 Garfield, increases its stock of classical long playing selections, in answer to the many requests.

Of course, they're always ahead with the latest pop tunes and potential chart makers. A complete selection of L.P.'s are also featured in Parkland's exclusive record shop.

Drop in this afternoon or phone them at LE 7-0440. They'll be glad to help you.

Norman H. Frink, son of Mr. and Mrs. LaVern M. Frink, has left Melbourne, Australia, with the Destroyer Squadron II to join the U. S. Seventh Fleet off Formosa.

GOOD NEWS - NIK!!
Lawing Cleaners
& Laundry Service
HAVE OPENED IN PARKLAND
NEWS FLASHES!!

- Lawing uses the exclusive Sta-Nu Process. A beauty treatment for clothes.
- One - Two - or Three Day Service.
- Pick-up and Delivery.

Remember:
You don't have to go to the moon for dry cleaning that is out of this world!

Temporary Telephone
LEnox 7-9979

CORNER OF YAKIMA AND AIRPORT
"NEXT TO FORGET - ME - NOT CAFE"

For A ROUND-UP Of
GOOD FOOD
Eat At The
Brandin' Iron
84TH & PACIFIC AVENUE

. . . Come In Every Friday For Seafood Specials . . .

<p>Brandin' Iron RIB STEAK Steer Beef Served good old "Western Style" with deep fried spuds, salad and toast.</p> <p>97c</p> <p>CHICKEN FRIED STEAK Fresh Salad - Spuds - Toast</p> <p>97c</p>	<p>Char-Broiled T-BONE STEAK</p> <ul style="list-style-type: none"> • Salad • Spuds • Toast <p>\$1.50</p> <p>Char-Broiled Chopped Steak Sandwich</p> <p>48c</p>	<p>Char-Broiled Ground ROUND STEAK</p> <ul style="list-style-type: none"> • Salad • Spuds • Toast <p>87c</p> <p>"TEXAN" Fillet Mignon A Real Treat • Spuds • Salad • Toast</p> <p>\$1.89</p>
--	--	---

Home Made
CHILI 35c
FISH and CHIPS . . . 78c
- SANDWICHES -
BEEFBURGERS 35c
(Deluxe) Charbroiled
CHEESEBURGER 45c
Charbroiled
NO CHARGE FOR COFFEE REFILL WITH FOOD ORDERS!

Real Home - Made
ITALIAN SPAGHETTI
SALAD AND TOAST Seasoned To Perfection!
A Treat For The Whole Family! **87c**

WE SAY "THANKS A MILLION" TO ALL THOSE WHO HELPED MAKE OUR OPENING SUCH A SUCCESS. . .
WE ARE LOOKING FORWARD TO SERVING YOU!

College Drive-In

— 19c THANK YOU SALE —
Burgers — 19c Sundaes — 19c Mince Meat Pie
Hot Dogs — 19c Milk Shakes — 19c at a Mode — 19c

123rd & Pacific

DO YOU?

belong to —
the cool school?
Jazz-lovers?
Classics?
Rock 'n Roll?
Smaltzy?
Semi-Classical?

then check in at

PARKLAND RECORD SHOPPE
Garfield Street

This
Can lead
to
This

no appointment necessary

The New Short Up-do
Festive Fashion for
Holidating . . .
special
Reg. \$20.00 Now
COLD WAVE . . . \$12.50

Flair Beauty Salon
In Parkland . . . At Big Bear Shopping Center

County Agents News

By Joseph Buhaly

Forest products manufacturing payrolls provide over one third of the manufacturing jobs in the State of Washington; 34 per cent is the exact figure for forest products, 10 per cent for food products, 47 per cent for metals and chemicals, and 9 per cent from other sources. The Seattle-First National Bank released the figures recently in its "Annual Review Summary of Pacific Northwest Industries."

Paychecks will continue coming to a major segment of our population because of our renewable resource, the forest. Renewable, however, does not imply that our forests will continue to produce bountiful harvests without man's care and help. Substantial improvements are needed in forest management on small ownerships; if we are to maintain maximum production. This is particularly so since small woodland ownerships comprise half of the private commercial forest land in Oregon and Washington.

"There is no place for complacency in the Pacific Northwest when only .58 per cent of the class 3 (small) ownerships qualified for 70 per cent — and better — stocking following cutting," states the Washington State Forest Service. "Collectively, these owners (small) have not taken advantage of the growth potential. In fact many owners had no conception of whether good or poor practices were being followed," adds the United States Forest Service, in its bulletin titled "Small Forest Land-ownerships — Oregon and Washington."

Forest industries contemplating moving to the Northwest evaluate the potential fibre supply. An abundant supply and good management of our forest lands would be an encouraging factor for a forest industry looking for a factory site. Thus good forest management on all acres will increase Washington's payrolls and provide more dollars to woodland farmers.

Hilltop 4-H

New officers chosen for the coming year by Hilltop 4-H club are: President, Jimmy Freid; vice president, Steve Schrader; secretary, Teddy Meldon; treasurer,

LEGALS

ADVERTISEMENT FOR BIDS
Sealed bids will be received by the undersigned until 8:00 p.m. on the Third day of December, 1957, for the Required Trades contract for construction of a Junior High School Building for Bethel School District No. 403, Foute No. 1, Box 289-AB, Spanaway, Washington.

Bids will be received at the Office of the Superintendent of Schools, High School Building Route No. 1, Spanaway, Washington. In the event of mailing, address bids to: Mr. Dewane E. Lamka, Superintendent of Schools Bethel School District No. 403, Route No. 1, Box 289-AB, Spanaway, Washington.

Contractors must submit a separate bid on Architectural, Mechanical, or Electrical Trades contract and/or general contract including all trades—Architectural, Mechanical and Electrical.

Plans, specifications and contract documents may be obtained by bidders at the office of Harry E. Botesch, Architect, and F. Edward Brown, Associate, 504 Commerce Bldg., Everett, Washington.

Each prime contractor will be allowed one set of drawings and specifications upon deposits as follows: Architectural \$50.00, Mechanical \$35.00, Electrical \$35.00.

Plan Holders who do not enter a bona fide bid, and who do not return unmarked and unutilized plans and specifications at least ten (10) days prior to bid opening, will forfeit their deposits. Additional sets of drawings and specifications may be secured at the cost of reproduction. Sub-contractors may also purchase sets of plans and specifications at cost of reproduction. Such sets remain the property of the Architect and shall be returned.

Each bid shall be accompanied by a certified check, cashier's check, or bid bond, made payable to Bethel School District No. 403, in an amount not less than 5% of the bid, plus all alterations. School Board Directors reserve the right to waive any informalities or irregularities in any bid or in the bidding, and may reject any or all bids.

No bidder may withdraw his bid after the hour set for the opening thereof or before award of the contract unless said award is delayed for a period exceeding thirty (30) days.

BETHEL SCHOOL DISTRICT NO. 403
ROY C. NIXON
Chairman of the Board
Published in the Times-Journal Nov. 7, 14, 21, 1957.

American Legion News

Susan Swanson

The American Legion Posts and Auxiliaries of the 4th district held the fall conference Oct. 19 with Rhodes Post as host. A delicious smorgasbord was enjoyed by the many who attended. The District and Department dignitaries were introduced and later the auxiliaries held their meeting in a separate room with District President Mabel Hart presiding.

Mrs. Grace Evans, Department president, complimented the units on their programs. She urged that workers do not attempt too many projects but concentrate most on child welfare, community service and care of hospitalized veterans.

The Parkland Auxiliary was especially happy to win the Helene Linder Poppy trophy which was presented to President Hazel Mackey by Trophies and Awards Chairman, Mrs. Ethel Blake. We are very grateful to the public whose generosity made this trophy possible. Vice President Eunice Hughes, who is District membership chairman, reported that almost three times as many dues are paid in at present than at this time last year. District Council was held Monday, Nov. 4, in Olympia and very well attended.

Mrs. Amy Wormald, who has been at Madigan hospital for several weeks for eye surgery, will be home soon and the report is very encouraging. Mrs. Henry Swanson is also home from St. Joseph's hospital.

Don't forget next meeting Nov. 14, Sunshine hall, 8:00 p.m. There will be only one meeting in November due to Thanksgiving.

Steve Schrader; sergeant-at-arms, Billy Victor; news reporter, Richard Henning.

Meetings are held twice each month at the home of the leader, Mr. Mildon. Ted Mildon will attend the Sears banquet as a blue ribbon garden winner. Projects for the year are: Billy Victor, rabbits; Jimmy Victor, chickens; Dale Millica, poultry; Tommy Anderson, bees; Steve Schrader, poultry; Mike Nagel, ducks; Teddy Mildon, Junior Leader, poultry, gardening; Danny Mildon, Garden; Jerry Free, poultry, garden; Richard Henning, cattle.

SPANAWAY... Baseball Dance At Grange 16th

The Spanaway Baseball team will hold a benefit dance this Saturday, Nov. 16 at the Elk Plain Grange hall. Jack Rankin, business manager, and Bill Fueston, sponsor, urge everyone to come out and have a good time.

Preschool
Spanaway Preschool will meet Wednesday, Nov. 20, at 8:00 p.m. in the school lunchroom. An interesting program is planned; also the results of the booth at the carnival will be discussed.

Reception
On Nov. 3 a wedding reception was held at the home of Mrs. Myrtle Brandias for her son, Charles R. Brandias and his wife who returned from Germany recently. Many beautiful and useful gifts were received by the happy couple who are at present staying with his mother. There were 50 in attendance to enjoy a happy afternoon.

Grandmothers
The Spanaway Kan Do Grandmothers club No. 254 will meet at the Spanaway fire hall Thursday, Nov. 21, for noon luncheon. Hostesses will be Mrs. Emerson Tarpenning and Mrs. William Wallin.

Skating
An enjoyable afternoon was spent ice skating Sunday by 16 Girl Scouts of Troop 60.

Shower
Mrs. Robert McKinnell was the honored guest at a pink and blue shower at the home of Mrs. John Iverson with Mrs. Sam Green as co-hostess. Friends present were

Mesdames Carlyle Jurgens, Raymond Frericks, Curt Parsons, Ralph Alexander, Ralph Mason, Orville Critchley, W. H. Greisbach, Walter Cotten, Roy Norgan, O. Omat, James Craig, John Newell, Phil Taylor and the honor guest's aunt, Mrs. Arnold Sanders.

Tranks!
The Spanaway P-TA wishes to thank everyone who helped make the Fall Festival such a success, special thanks to John Critchley, Jr., who made all signs for the various booths, etc.

WCS
The regular meeting of the Woman's Society of Christian Service of Spanaway Methodist church will be held Tuesday, Nov. 19, the business session opening at 7:30 p.m. During the program hour the book, "Christ, the Church and the Race," will be reviewed by Mrs. Dewane Lamka; devotions will be led by Mrs. George Nafus. Hostesses for the coffee and fellowship hour will be Mrs. Orville Critchley and Mrs. Edward A. Searce. Reporter—Mrs. Oliver Omat, LE 7-6466.

Benefit Shower For Family Losing Home

The Canyon Road folks look after each other! Proving this, plans have been made for a miscellaneous shower for the Bud Emmett family, whose home was burned to the ground last Thursday night, as the highlight of the regular meeting of the Canyon Road Community club this (Thursday) evening at the hall. Any articles for the home or for any member of the family will be appreciated.

News Note to Gals:

For Him . . . Tools for Christmas

Complete line of highest quality tools for his workshop. See them now.

MIDLAND HARDWARE

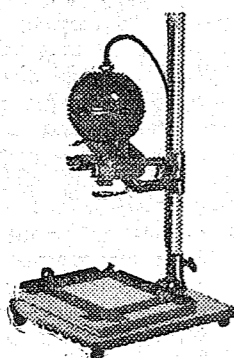
84th & Portland Avenue

JOHNSON DRUGS

(WALGREEN AGENCY)

TWO FOR ONE!
CLOSE OUT SALE OF REMAINING STOCK OF MELMAC DINNER WARE

BUY ONE PIECE - GET ONE FREE WHILE PRESENT STOCK LASTS!



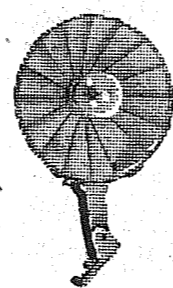
Let us help you do your own finishing with a fine Leica Enlarger. It also copies photographs, makes duplicate slides, titles and has many other uses.

UNUSUAL BOXED CHRISTMAS CARDS STOCK IS IN SEE AND SELECT NOW



ALWAYS CARRY EXTRA KEYS
DON'T BE LOCKED OUT
KEYS MADE IN 1 MINUTE
No. 7
TWO EYES ARE BETTER THAN ONE TO SEE YOUR COLOR SLIDES TRY THE B1-LENS 35 SLIDE VIEWER

FLASH



Better cameras are less expensive now — Let us show you some of them!

NEW

Dorothy Grey Colognes
Essence
"Voltage Concentrate"
"Night Drums Concentrate"
Mmmm - Mmmm THEY'RE NICE!

STORE OPEN Daily 9 a.m. to 10 p.m. Sundays 12:00 to 8:00 p.m.

PRESCRIPTIONS FILLED CAREFULLY - PROMPTLY

M.J.B. Coffee 85¢

A HUGE SAVING!

JELS-BEST Gelatins 6¢

ASSORTED FLAVORS

GRADE A LARGE EGGS 53¢ DOZEN

for... SERVICE SATISFACTION ECONOMY

BREAST O' CHICKEN CHUNK STYLE Tuna 27¢ NO. 1/2 CAN

PUMPKIN SILVER FALLS Large No. 2 1/2 Can 10¢

Pork 'N' Beans VAN CAMPS 5 No. 2 1/2 CANS \$1.00

CATSUP VAN CAMPS 2 14-Oz. Bottles 29¢

Economy Beef Sale!

Rib Steak . . . Lb. 49¢

SIRLOIN STEAK	TRIMMED WASTE FREE	Lb. 59¢
ROUND STEAK	FULL CUT	Lb. 69¢
T-BONE STEAK	FOR FINE EATING	Lb. 69¢
GROUND BEEF	LEAN BEEF FRESHLY GROUND	Lb. 97¢

CARSTEN'S HYGRADE - 5 To 7 Lb. Average	35¢
SMOKED PICNICS Pound	35¢
ROUND BONE SHOULDER - Skin And Fat Removed	39¢
PORK ROAST Pound	39¢
LEAN BLADE CUT	45¢
PORK STEAK Pound	45¢

Flour KITCHEN QUEEN - LOOK WHAT YOU SAVE! 10-LB. BAG 79¢

Zee Tissue . . . 4 ROLL PACK 33¢

• STOKELY - VAN CAMP DOLLAR DAYS! •

Apple Sauce	Stokely	4	No. 2 1/2 Cans	\$1	Tomato Juice	Stokely	4	46-Oz. Cans	\$1
Red Cherries	Stokely	4	No. 2 1/2 Cans		Corn	Stokely Cream Style or Whole Kernel.	7	No. 303 Cans	
Grapefruit	Stokely	5	No. 303 Cans		Sweet Peas	Stokely	6	No. 303 Cans	
Cut Gr. Beans	Stokely	6	No. 303 Cans		Spanish Rice	VAN CAMP	5	No. 300 Cans	
Diced Beets	Stokely	8	No. 303 Cans		Tamales	VAN CAMP	4	No. 300 Cans	

Manning's BAKERY
2 LAYER ROUND CAKES Spec. 93c
Devils Food with Rocky Road Icing. White with Buttered Crunch Icing. Mocha.
DATE CINNAMON ROLLS 4/35c
APPLE SAUCE CINNAMON PAN Spec. 49c

NO. 1 POTATOES
• U. S. 10-LB. No. 1 CELLO 29¢
EMPEROR Lb. 10¢
GRAPES.. 10¢
ARIZONA Lb. 10¢
YAMS . . . 10¢



PACIFIC AT GARFIELD IN PARKLAND
Prices Effective November 14, 15, 16
We Reserve the Right to Limit

Lutes To Close Season Against CPS Saturday Nite

The TIMES JOURNAL

NOVEMBER 14, 1957 • PAGE 9 • SECOND SECTION PUBLISHED AT PARKLAND, WASH. LEnox 7-0223

Standings

WEST CENTRAL LEAGUE		
Bethel	7	0
Batonville	5	2
Peninsula	4	2
Orting	3	2
Vashon	2	4
Pife	2	5
White River	1	4
Yelm	1	6

PUGET SOUND LEAGUE		
Clover Park	7	0
Highline	6	1
Renton	6	1
Enumclaw	5	3
Kent-Meridian	3	4
Auburn	2	5
Puyallup	1	5
Franklin Pierce	1	5
Sumner	0	7

Powder Puff Activities



Pictured above is pre-game scene before the annual powder puff game at PLC. The three girls seated at the left are Princess Twilla Gillis, Queen Esther Ellikson, Princess Marilyn Force.

In the center, facing the camera, is PLC President, Dr. Seth Eastwood and to the right are Co-chairmen Teddy Gulhaugan and Ted Forsell. Photo by McKewen

Results Friday
 Auburn 20, Franklin Pierce 14
 Clover Park 27, Sumner 12
 Highline 42, Puyallup 19
 Renton 38, Enumclaw 6
 West Bremerton 20, Kent-Meridian 13 (non-league).

Tic-Toc JEWELRY
 10331 PACIFIC AVE.
 Repairing of Fine Watches
 Our Specialty
 GLEN A. CARMACK

FENCING
 Designers and Builders
 EXPERT WORKMANSHIP
 REASONABLE PRICES
 Easy Monthly Payments
VAUGHAN'S
 84th & Pac. Ave. GR 4-9515

Rupe Machine Works & Garage
 AUTOMOTIVE & INDUSTRIAL WORK
 13411 Pac. Ave., P.O. Box 2445 Parkland 44, Wn. LE 7-7450
COMPLETE MOTOR REBUILDING
 Lathe Work, Press Work, Con-Rod-Grinding, Head Surfacing, Piston Grinding, Brake Drum Turning, Reboring, Main Line Boring, Pin Fitting, Rod Aligning, Armature Turning, Crank Service and Valve Seating.

Weatherstripping
 COMPLETE STOCK
CONCRETE SEWER & DRAIN **TILE**
 SEE US FOR PLUMBING SUPPLIES
 WE CUT GLASS TO SIZE
 POWER TOOLS FOR RENT
 SANDERS - EDGERS - POLISHERS - HAND SANDERS - SKIL SAWS - ELECTRIC DRILLS - CEMENT MIXERS - ETC. ALSO HAND TOOLS FOR RENT
Anderson Lumber
 9813 Pacific Avenue LEnox 7-7311

For Extra Egg Profits This Winter Feed
TRIANGLE
 16% EGG LAYER
 This year, with egg prices on the upgrade, you can't afford to gamble on feed. Put your profits on a solid foundation with Triangle 16% Egg Layer. This "famous-formula" feed is a perfectly balanced, nutrition-packed ration that gets all the egg-laying power bred into your layers. Right now, with cold weather coming on, is the time to see us about this efficient egg producer.
 IN MASH OR PELLET FORM
TRIANGLE MILLING COMPANY
 603-665 NORTH TILLAMOOK
 PORTLAND 12, OREGON
RUDY'S
 Feed & Seed Co.
 14660 Pacific Ave.
 LE 7-4888
 PARKLAND, WASH.

Franklin Pierce Meet Warrior Gridders Fiday At Clover Park

Franklin Pierce's Cardinals will face their arch-rivals, Clover Park, Friday night at Thompson Field in Lakewood. It will be the final Puget Sound League game of the season for the two teams but the Warriors have a Thanksgiving date in Seattle as a reward for winning at least a tie for the title.

Clover Park needs a victory over the Cards to win undisputed possession of the championship as Highline and Renton are right behind the Warriors. The Lakewooders will be heavy favorites over the Parkland eleven, however, the grid history of the series between the two schools has been extremely close. The game has the natural setting for an upset.

The Warriors were not too impressive in their title clinching 27-12 victory over a fired-up bunch of Sumner Spartans last Friday. The game has been a point in the high attitude which has prevailed in the Cardinal camp since turnouts began Monday. Franklin Pierce, however, dropped a 20-14 game to the

Auburn Trojans which hasn't helped the cause except for the possibility of over-confidence on the part of the Warriors.

Left halfback Dave Reynolds was the bright spot for the Cards against the Auburn team as he racked up 139 yards on 27 carries and completed two passes for 22 yards and a total of 161 yards for the night. Reynolds will be relied on heavily against the Warriors.

Coach Eldon Killo will probably start Gary Moore and Reynoir Peterson at the ends, Al Svint and Gary Gehrman at the tackles, Myron Krumm and John Crone at the guards, Jim Marshall at center, Graham Rolstad at quarterback, Reynolds and Jim Mancuso at the halfbacks, and Bob Spradley at fullback.

Gerry Austin, the head mentor for the Warriors will start Wheeler and Welker at the ends, Schwartz and Docken at the tackles, Evans and Johnson at the guards, Taylor at center, Hoxsey at quarterback, Alsbury and T. Smith at halfbacks, and Kneip at fullback.

Bethel Hosts Rams Friday; Win West Central Crown

With the West Central league crown already wrapped up, the Bethel Braves finish their season this Friday night on the home grounds with the North Thurston Rams providing the opposition. The Rams are members of Central League and sport an outstanding record. Kickoff time is set for 7:30 p.m.

Bethel won the West Central crown last Thursday when they ran over the Yelm Tornados 44-0 and scored their final conference victory over Pife on Armistice Day in an afternoon grid struggle. The Ram-Braves game is a non-conference meeting between the two schools.

Coach Ed Niehl has been giving his team a much deserved

30c a week will buy meals for two weeks for a youngster at a children's home. Give to the UGN.

DRAMEX
 Makes wallboard walls look like lovely plaster in one easy coat.
 Get your free DRAMEX color card from
South End Plumbing & Hardware
 Near Roy "Y" Spanaway
 LE 7-4100
 We Stock & Cut Glass
 We Carry Down Spout and Gutter

Frankly Speaking

with Ron Frank

It should be a thriller again Saturday night when the Pacific Lutheran Gladiators tangle with the College of Puget Sound Loggers. Scene for the arch-rival game will be Lincoln Bowl and kickoff time is 8 p.m. for the Evergreen Conference finale for the Lutes.

Both elevens have had lots of trouble this fall against Evergreen foes and non-conference rivals. The Loggers were drubbed by the strong Willamette forces 35-6 two weeks ago in their last outing. It spoiled the Loggers homecoming proceedings; the Lutes were bopped last Saturday in their welcome grad game with Whitworth.

Off the season record, the Loggers should be a slight favorite. Despite a 7-6 loss to the Lutes, the Heinrick men still have an overall advantage. They've defeated Western 13-7, Whitworth 20-12, and tied Eastern 7-7 while the Lutes were losing to these teams by fairly sizeable scores. But still the 7-6 win over the Loggers in the first game makes any prediction real close.

The PLC forces have fullback Tommy Gilmer back in harness to help against the CPS eleven. Gilmer has always been a thorn in the side of the Loggers and will be ready to go full steam Saturday. Another bright spot has been the seasoning now of several freshmen performers who should be extremely more able this time out against the North Enders. In particular, Bruce Alexander, former Franklin Pierce star, should be a constant threat against CPS.

The mental side of the proceedings seems to be in favor of the Lutes Saturday night as Coach John Heinrick's forces have suffered a terrible letdown since Central ended their hopes

for a second straight title. The Willamette game was a striking example of how dissipated the Loggers were after losing the crown to the Central Wildcats. One drawback for the Lutes could be the possibility of a revengeful Logger squad because of the opening loss of the season.

It should be quite a donnybrook for the local collegiate fans Saturday. The Lutes-Loggers always put up an entertaining menu of football.

Hats off to: Coach Ed Niehl and his West Central League champions, the Bethel Braves, who ripped through their conference opponents with the greatest of ease. . . The Huskies for their brilliant and convincing victory over the Oregon Ducks Saturday in Portland. The Cougar-Husky battle Nov. 22 could be quite a tussle. . . Gary Greeg, Bethel's sensational halfback, is aiming for 1000 yards Friday night against North Thurston in the season finale. . . Gary Moore and Gary Gehrman are making determined bids for all Puget Sound League honors. The two Garys play for the Franklin Pierce Cardinals who play Clover Park Friday which will either make or break their chances of gaining all-conference.

Drive Safely - Save A Life
PIERCE COUNTY REFUSE CO.
 Weekly Garbage Collections
 Phone LE 7-8688

GLASS HOME SERVICE
 OUR SPECIALTY
 Also Commercial Installations
 Full Line Schorn Paints
 Storm Windows and Doors Installed
 FREE ESTIMATES
DEAN'S PAINT & GLASS
 13021 Pacific LE 7-5661

Symptoms of Distress Arising from
STOMACH ULCERS
 DUE TO EXCESS ACID
 QUICK RELIEF OR NO COST
 Ask About 15-Day Trial Offer!
 Over five million packages of the WILLARD TREATMENT have been sold for relief of symptoms of distress arising from Stomach and Duodenal Ulcers due to Excess Acid - Poor Digestion, Sour or Upset Stomach, Gasiness, Heartburn, Sleeplessness, etc., due to Excess Acid. Ask for "Willard's Message" which fully explains this home treatment - free at
JOHNSON'S DRUG STORE

Slate Finale For Bowl; Lose Homecoming Tillt

Still trying to break a long losing streak, the Pacific Lutheran Gladiators wind up their 1957 season play with a Saturday night game against the College of Puget Sound. The 8 p.m. battle will count both in the City and Evergreen Conference standings.

The Lutes edged the Loggers 7-6 in the season opener in September but have not had too much success since that time. After winning over the UBC Thunderbirds in their second outing of the fall, the Gladiators have lost five straight and have scored only three touchdowns in the process. Influenza and knee-injury to star fullback Tommy Gilmer were key factors in the dismal record.

The Loggers have not been very much of a success either. A 25-6 loss to Central gave the Wildcats an inside edge for the title and the Loggers have suffered a mental letdown ever since. Willamette crushed the CPS forces 35-6 two weeks ago in the Logger homecoming. They were idle last week.

Homecoming was not very bright at PLC either as the Whitworth College Pirates dropped the Lutes 19-7 Saturday after noon at Lincoln Bowl. The Lutes scored right at the end of the contest to avoid a shutout from the Spokane collegians. Gilmer was the outstanding performer for the Lutes as he carried for 56 yards and booted the ball twice for 47.5 yard averages. He also completed three passes out

of eight attempts. The Lutes will probably start Denis Rodin and Larry Robinson at the ends, Mike Teel and Lynn Calkins at tackles, Al Capelli and Dick Goodwin at the guards, Ron McAllister at center, John Jacobson at quarterback, George Fisher and John Fromm at halfbacks, and Tommy Gilmer at fullback.

Coach John Heinrick will probably counter with Herm Magnuson and Herb Richey at the ends, Jack Bolton and Ron Taylor at the tackles, Bill Barnhart and Phil Yant at guards, Rich Hammermaster at center, Gary Brines at quarterback, Bob Austin and Mike Granston at halfbacks, and Dick Pruet at fullback.

Mountain View Food Lockers
 CUSTOM MEAT CUTTING
 Locker Beef Available
 2519 East 112th LE 7-5332

Guaranteed Work

BIXBY TV - RADIO
 12503 Waller Rd. LE 7-8309

TILE
 CERAMIC REAL CLAY QUARRY
 FREE ESTIMATES
 Kitchens - Bathrooms - Etc.
AMERICAN ART TILE COMPANY, Inc.
 13201 Pacific Ave. LE 7-4795

Low Monthly Payments
 Don't Wait - Get Your Car In Condition for Winter Motoring Now . . .
COMPLETE AUTOMOTIVE REPAIRS
PARKLAND AUTO REPAIR
 10214 PACIFIC AVENUE LEnox 7-4433



join our popular Christmas Club

Relax! Enjoy Christmas time as it should be. You eliminate Christmas money worries when you join our popular Christmas Club. Deposit from 50c to \$10 a week for 50 weeks. Then next year in November you receive a check to take care of your gift purchases or for anything else. It's the smart, modern way to thoroughly enjoy Christmas. Don't delay . . . join now.

SELECT YOUR PLAN

50c each week for 50 weeks... \$ 25.00	\$ 3.00 each week for 50 weeks...\$150.00
\$1.00 each week for 50 weeks... 50.00	5.00 each week for 50 weeks... 250.00
2.00 each week for 50 weeks... 100.00	10.00 each week for 50 weeks... 500.00

Ask for free booklet of Christmas Carols when you join the Club

84th & Pacific Branch
PUGET SOUND NATIONAL BANK
 6 OFFICES TO SERVE YOU • FREE CUSTOMER PARKING
 MEMBER: F.D.I.C.

G-E ELECTRIC BLANKETS YOUR GENERAL ELECTRIC CORNER
 IN BEAUTIFUL DECORATOR COLORS
 OPEN EVERY NIGHT 'TIL 9:00 P.M. SATURDAY 'TIL 6:00 P.M.
WEIR'S
 8419 PORTLAND - LE 7-5650



COME and SEE
COME and SAVE

PROMPT
COURTEOUS
CORRECT
SERVICE

Park With Ease! Shop With Pleasure!

THE HOME OF BRAND NAMES

LIBBY'S
DEL MONTE
BETTY CROCKER

S & W
KELLOG'S

POST
BAKERS

NESTLES
SHILLINGS

PICTSWEEET
DARIGOLD

KRAFT
NALLEY'S

IGA
PILLSBURY

QUAKER
HEINZ

GERBERS
DUNCAN HINES

HERSHEY'S

CAMPBELL'S

SOCIETY

FISHERS

G E
NESTLES

WALLA
WALLA

N.B.C.

SUNSHINE

PEACHES

ANYTIME BRAND
FREESTONE
BROKEN PIECES

25

LARGE
2 1/2 CANS . .

FOLGER'S

COFFEE

Lb. **85**

BISKIT

HEINZ KETCHUP

5 14-OZ. BOTTLES

\$1

★ **INST. COFFEE 1.15**
MAXWELL HOUSE 6-OZ. 10c OFF JAR

Darigold **BUTTER 69**
SWEET CREAM BUTTER - 1-LB. CUBES

★ **Hi-Ho CRACKERS 33**
FULL ONE POUND BOX FOR

MIX

FISHERS
40-OZ. PKG.
EXTRA LOW PRICE

35

DATES 23

★ **DESSERT SWEET 1-LB. BOX**

THE PERFECT GELATIN DESSERT
JELLO DESSERT 4 pkgs. 29
8-OZ. JAR

THE PERFECT CHEESE SPREAD
KRAFT CHEESE WHIZ 29
QUART JAR

BUY TACOMA PRODUCTS
NALLEY'S MAYONNAISE 57

LARGE 24-OZ. JARS FOR ONLY
NALLEY'S KOSHER OR BANQUET DILLS 2/69

DUNCAN HINES
CAKE MIXES 4/\$1

STAR KIST 1/2 SIZE CANS
CHUNK TUNA 27

IVAR'S 15-OZ. CANS
CLAM CHOWDER . . . 2/49

LYNDEN 5-OZ. CANS
BONED CHICKEN 47

HERSHEY'S 1-LB. CAN
INSTANT COCOA 41

APPLE JUICE 23

★ **TREE TOP**

FULL QUART BOT TLES

NEW STORE HOURS
WEEKDAYS
9 a.m. to 10 p.m.
SUNDAYS & HOLIDAYS
10 a.m. to 7 p.m.

U. S. CHOICE
Top Round Steak . . Lb. 79

U. S. CHOICE
Bottom Round Steak Lb. 69

CALVES LIVER 59
SWIFT'S PREMIUM SLICED BACON Lb.

RATH'S BLACKHAWK
Dainties Lb. 69

Bar S Sliced 4-Oz. Pkg.
Dried Beef 39

Rath's Blackhawk 8-Oz. Pkg.
SMOKY Sausage 43

NO. 1 GOLDEN RIPE
Bananas Lb. 12 1/2

LOUISIANA
SATSUMAS 2 Lbs. . 27

OREGON DANISH
Squash . . Lb. 3

112th & PARK AVENUE

Court of Honor Held at Summit

Troop 76 Court of Honor, originally scheduled for October 28th was postponed because of the flu epidemic, is now set for Nov. 18, at 8:00 in the evening. The Court will be held in conjunction with parents' night in Central Avenue dining hall.

The Troop Committee in its regular monthly session at George Lind's took a dim view of the request to substitute "Tacoma" for "Summit" on scout name patches.

"Whose bright idea was that?" asked Carl Escene, committee chairman. "Summit has been the home port of Troop 76 ever since

it was launched in 1923. I can't see any sense in changing names just to save a few pennies on patches."

Delay in getting Scouts thru advancement tests was put up to Dick Rave for solution. Dick, a former Scout leader, had a staunch supporter in George Lind, incumbent scoutmaster. He vouched for Dick's willingness to accept the assignment to head the advancement committee.

"He's the old reliable," George assured the committee. Plans for rifle practice hit a road block in the form of a heavy schedule at the Point Defiance shooting range, which left a dozen-odd organizations on the waiting list. Paul Bunyan range at Midland may be the next choice — "only," said Carl Escene, "we've got to get in six weeks of training at Point Defiance first."

Junk collections ran into a bear market and the committee decided to hold off for higher prices. All Scouts are urged to hoard old iron and other metals in their back yards.

"We won't have the luck we had last year," reminded Truman Dawn, "when we sold a 10-ton fly wheel for \$167.00, cash on the barrel head."

The school board okayed the

CANYON ROAD... Fire Guts Home; Neighbors Help

The home of the Bud Emmetts on White Road was completely wiped out by fire last Thursday, originating in an over heated oil stove, despite the efforts of the fire department who arrived minutes after the alarm was turned in. The family escaped with just the clothes they had on.

Mr. Emmett, who at the time the fire broke out was in the barn, cut an artery in his arm trying to get his family out and had to be taken to the hospital. Mr. and Mrs. Tom Folk, neighbors, took the family in until it was decided what could be done and the neighborhood went to work gathering clothes, dishes, kettles, furniture and food. The Red Cross came within two hours with help.

Mrs. Emmett, with tears in her plan to allow Scouts to convert into a community park a beautiful patch of conifers, alders and dogwoods in the northeast corner of the school grounds.

Harold Miller reported the treasure slightly bent but still in a solvent condition.

Cecilia Lind served coffee and an excellent brand of pie to the following members of the Troop Committee present: George Lind, Fred Arbuckle, Harold Miller, Otto Kostilecky, Jack Houtz, Elmer Neustel, Carl Escene, Bill Rave and Truman Dawn, district representative.

Thank Neighbors

With beautiful flowers and thoughtfulness, friends and neighbors have lightened the loss in the Truman James Loan family. Killed in an accident in Alaska, his funeral took place Oct. 28, and he was buried at the Longmire Cemetery.

Mr. Loan was owner of the Kodiak Transit Co. His wife, now in Alaska, will return to the family home at Bainbridge Island. He is survived by his mother, Mrs. Claire E. Keene, of Parkland, a son Truman James Loan, and a brother Kenneth Loan. All wish to express their thanks for kindness extended them.

eyes, said that she just didn't realize how kind people could really be. We close this news item with special thanks to our fire department.

Garden Club

Mrs. Jack Johnson will be the guest speaker for the Canyon Road Garden club meeting Wednesday, Nov. 20, "Holiday Decorating" to be the main topic.

Community Club

Don't forget tonight is the regular meeting of the Canyon Road Community club at 8:00 o'clock with our guest speaker Attorney Leonard Sawyer discussing "Wills and Preparation for the Future". Be sure to come and bring your neighbors, both the old ones and the new ones.

Reporter—Mrs. John Folk, LE 7-5801.

HELP BUILD SUMMIT YOUTH CENTER! Buy a button now at local stores!

FLETT DAIRY

FARM FRESH
HOMOGENIZED AND
PASTEURIZED MILK
AND CREAM
ICE CREAM
Phone GR 2-3301

Prescription Service

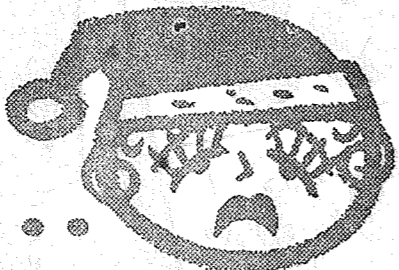
Open 7 Days a Week
9:30 a.m. - 9:30 p.m.

JACOBS PACIFIC DRUGS

Walgreen Agency
Pay Light & Water Bills Here
84TH & PACIFIC AVE.

Greenfield 2-6445

Sad Sally...
with Christmas
bills ahead



Happy
Harriet...
no bills to face -
Her Christmas Club
check just came!



Within the next few days 14,000 people will receive \$1,450,000 in Christmas Club checks from National Bank of Washington. Be a part of this happy group next year. Simply join our Christmas Club now and enjoy a debt-free Christmas next year.

It's easy—it's convenient—it works—Yearly, millions of Americans save ahead for Christmas. Join the crowd by coming to National Bank of Washington and select your plan. Then presto, you're off to a happier and merrier Christmas next year.

Two Plans to Choose From — You can use the regular *weekly deposit plan* in which you save each week the amount most convenient for you. Receive next year the amount shown on the chart in plenty of time to do your Christmas shopping.

Monthly Automatic Transfer Plan — Checking account customers can enjoy the convenience of regular monthly transfers from their checking accounts to their Christmas Club accounts. Transfers begin in January... last only ten months.

SAVE EACH WEEK	HAVE NEXT NOVEMBER
\$.50	\$ 25.00
\$ 1.00	\$ 50.00
\$ 2.00	\$ 100.00
\$ 5.00	\$ 250.00
\$10.00	\$ 500.00
\$20.00	\$1,000.00

Plus regular savings interest

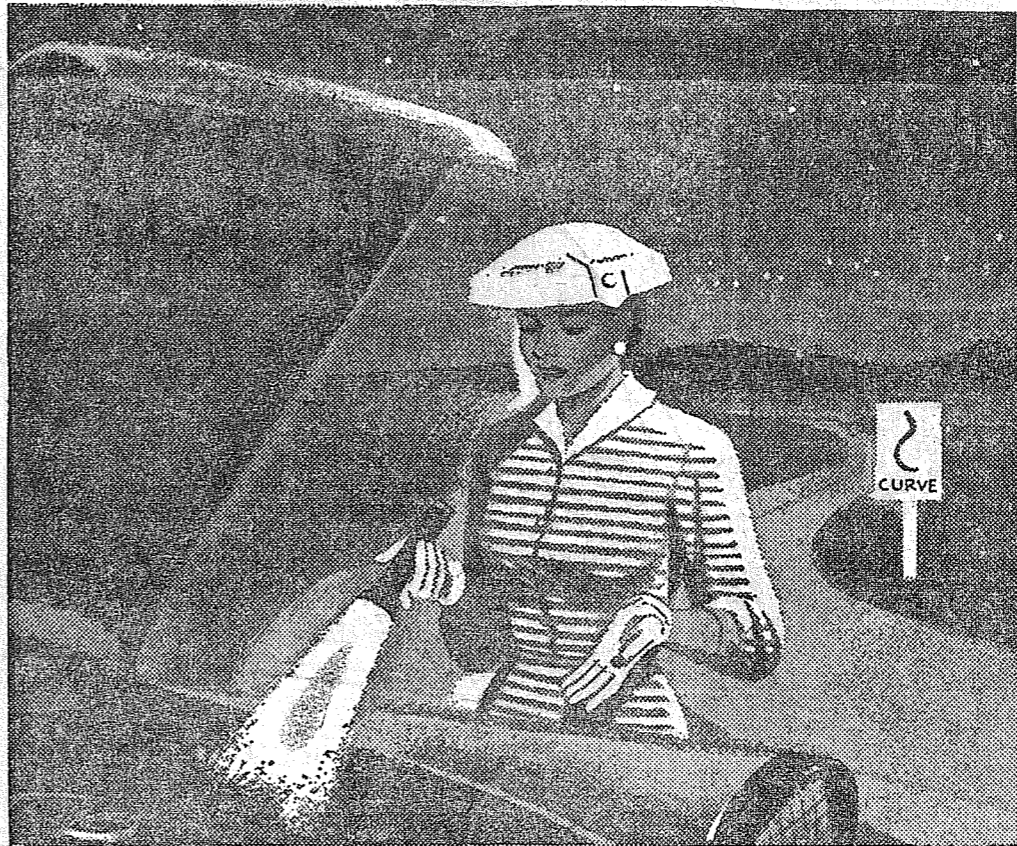


PARKLAND
BRANCH

The Bank of Personal Service

MEMBER FEDERAL DEPOSIT INSURANCE CORPORATION • MEMBER FEDERAL RESERVE SYSTEM

THIS COULD BE YOU!



BE SURE!
HAVE YOUR
CAR CHECKED
FOR SAFE
WINTER
DRIVING!
**BRAKE
JOBS**

Complete Relining
Adjusting and
Road Testing
\$16.95

AND UP

COMPLETE MOTOR OVERHAUL

We Replace Rings, Piston Pins, Con Rod Inserts, Gaskets and Oil.

We reface valves, reseat block, adjust carburetor, set timing and tune motor

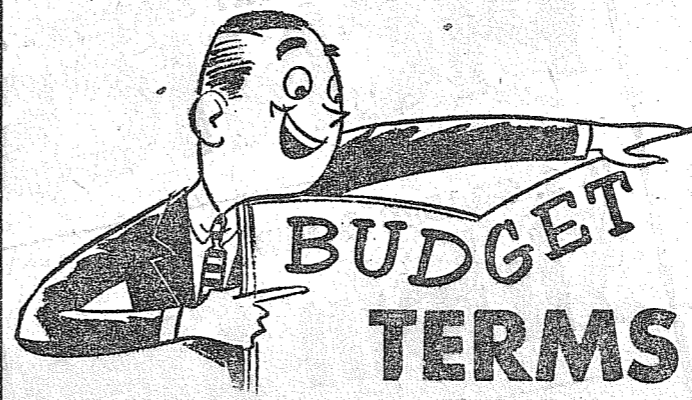
ALL SIX
CYLINDER
MODELS

\$74⁹⁵

CHEVROLET,
FORDS & PLYM.
V8's

\$94⁹⁵

OTHER V8's SLIGHTLY HIGHER



No Down Payment

Easy monthly payments on all automotive repairs and accessories over fifty dollars. Entire transaction handled right at Bob's Place!

GASOLINE & OIL At Competitive Prices



BUILD YOUR CAR CONFIDENCE



By becoming one of our regular customers. When we know your car, we can help you avoid road trouble

Marfak Lube Jobs

ONLY
\$1.50

REMEMBER! AT BOB'S PLACE YOUR LUBE JOB IS SUPERVISED BY A MECHANIC!

FREE PICK-UP & DELIVERY

Free 1958 State License Prefix Cards - Get Yours Now!

B.F. Goodrich

Now is the time to buy. Savings in every size and type.

\$1570 6.70-15 SAFETY-S plus tax and your retreadable tire

\$2165 6.70-15 *plus tax and your retreadable tire

SAFETY-S TUBELESS
The economy tubeless tire

7.10-15 \$22.20 **\$1985**

7.60-15 \$24.50 6.70-15 *plus tax and your retreadable tire

B.F. Goodrich
FIRST IN RUBBER—FIRST IN TUBELESS

GUARANTEED TEXACO PT

ALL WINTER
PROTECTION

Texaco PT Anti-Freeze is guaranteed to maintain your cooling system protection to the degree ordered when installed in a cooling system that is: 1. Free from mechanical defects. 2. Watertight and maintained in that condition. It is recommended that your cooling system be checked every 30 to 60 days. Should it become necessary to add replacement anti-freeze, Bob's Place will replace, without cost to you, such additional PT Anti-Freeze as is required to restore solution to the original protection point.



PER GAL. **\$325**

GUARANTEE GOOD UNTIL MAY 1, 1958

BOB'S PLACE

Airport Road & Jay Street

22 Years In Parkland

LEnox 7-3395

Everybody Is Going To



FUN - GAMES

PRIZES

CLOWNS

FREE COTTON CANDY

FREE COFFEE & DO-NUTS

THURS. - FRI. - SAT.

BARGAIN BASKET'S

GALA REMODELING EVENT

THURS. - FRI. - SAT., NOV. 14 - 15 - 16

FRISKIES
CAT FOOD 9/\$1

U & I
SUGAR 10 LBS. 99¢

REAL NORTHWOODS FLAVOR
SUNNY JIM
SYRUP 24-Oz. Jar 29¢

From Nalley Valley
NEW DIPPERS
POTATO CHIPS 7 1/2-Oz. Bag Reg. 49c 39¢

SPAGHETTI and MEAT 23¢
WITH SAUCE 15-Oz. Tin

FARM FRESH 16-Oz. Jar
CUCUMBER CHIPS 2/45¢

NALLEY'S BANQUET
DILLS .56-oz. 49¢
24-OZ. 3/\$1.00

PEDERSON'S PAN READY - WASHINGTON GROWN
FRYERS Pound 39¢

FEDERAL - HICKORY SMOKED - 4 to 8 LB. AVERAGE
PICNICS Pound 33¢

U. S. GRADED GOOD
Sirloin Steak Pound 59¢

FRESH PACIFIC
Oysters Pint 45¢

LEAN GRAIN FED - BLADE CUTS
PORK STEAKS Pound 39¢

M.J.B. COFFEE
"Shake-the-can" lb. . . . 85¢

CARNATION MILK Tall Tins 8 \$1

CARNATION INSTANT MILK
8 Qt. Size . . . 65¢

CARNATION CORN FLAKES
12-oz. pkg. . . 19¢

SUNNY JIM PEANUT BUTTER
20-Oz. Jar . . . 2/\$1
CREAMY OR CRUNCHY

Jonathan - Good Bakers
APPLES . . 4-lbs. 29¢

Golden Ripe
BANANAS . . . 2-lbs. 25¢

U.S. No. 1
POTATOES . 10-lbs. 25¢

Large Solid Crisp Heads
LETTUCE . . . head 10¢

Cello Tube
TOMATOES . . 2 for 25¢

Serve Candied
Sweet Spuds . 2-lbs. 25¢

KRAFT 46-Oz
ORANGE ADE 4/ \$1.00

HEINZ - FAMILY SIZE
KETCHUP 3/ \$1.00

PARKAY
MARGARINE 4/ \$1.00

KRAFT
MIRACLE WHIP Qt. 49¢

KAISER HEAVY DUTY
BROILER FOIL 14-inch 41¢

HEINZ ASSORTED BAGGED
SOUPS 8/ \$1.00

WHITE KING
CLEANSER . . 2/31¢

KIDDIES . . . LOOK!
NALLEY'S MERRY - GO - ROUND
WILL BE AT OUR STORE FRIDAY & SATURDAY
FREE RIDES FOR ALL THE CHILDREN

ABC OVEN FRESH
Crackers 2 LB. BOX 39¢

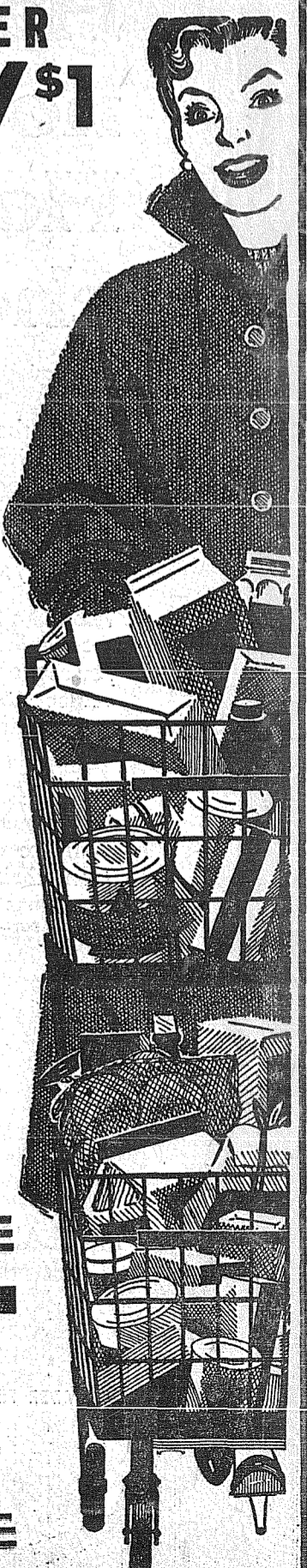
21"x34" - REGULAR \$1.95.
Scatter Rugs 1.39

NEW PARKING LOT IN REAR - DRIVE IN - DRIVE OUT

SPECIAL **10¢ OFF**
GIANT SIZE
2/\$1
(SPECIAL PRICE INCLUDES 10% OFF REGULAR PRICE)

BARGAIN BASKET

16618 PACIFIC AVENUE SOUTH SPANAWAY



District 402 School Calendar

Nov. 15 — Harvard-Midland Preschool bake sale.
Nov. 18 — Franklin Pierce football banquet, 6:30 p.m. Franklin Pierce Hi-Booster board meeting.
Nov. 19 — Brookdale P-TA, regular meeting. Central Avenue Preschool meeting, regular meeting. Harvard-Midland Preschool board meeting. James Sales Preschool, regular meeting.
Nov. 20 — Central Avenue P-TA board meeting. Harvard-Midland P-TA regular meeting.
Nov. 21 — Collins P-TA, regular meeting. Parkland P-TA, regular meeting, 8:00 p.m. Parkland P-TA board meeting, 7:00 p.m.
Nov. 26 — Hi-Booster regular meeting. Collins TOTS board meeting. James Sales P-TA and Preschool board meetings combined.
Nov. 27 — Harvard-Midland Preschool regular meeting.

The regular meeting of the James Sales Preschool will be held Tuesday, Nov. 29, at 8:00 p.m. in the school auditorium, Mrs. Alan Satterlee presiding. The speaker for the evening will be Dr. Beverly Mathus from American Lake hospital, speaking on "Problems of the Preschool Child." Hostesses are: Mrs. Harold Fallstrom, chairman; Mrs. Burt Robison, Mrs. Al Jeannel, Mrs. Gerald Myers and Mrs. Howard Schrock.

The new Brookdale school will have a "Back to School Night," for the regular P-TA meeting on Tuesday, Nov. 19, at 8:00 p.m. There will be a short business meeting presided over by Mrs. Arthur Storlie. The parents will have the opportunity to meet with the teachers in their rooms where they will discuss teaching methods. Hostesses will be the 1st grade room mothers.

Central Avenue Preschool will meet Tuesday, Nov. 19. Miss Bixby, County Librarian, will speak on "Selecting Books for Children."

Harvard-Midland P-TA will have open house on Wednesday, Nov. 20, at the Midland school. After a short business meeting the teachers will meet with the parents in their classrooms to demonstrate and discuss teaching techniques.

On Thursday, Nov. 21, at 8:00 p.m., the regular meeting of Collins P-TA will be held. Mr. Robert Iuter presiding. It will feature Back to School Night, followed by the Social Hour.

The Parkland P-TA will have Open House of grades 1 through 6 as the regular meeting on Nov. 21, at 8:00 p.m., Mrs. August Stern, presiding. The Flag Salute will be led by Mrs. A. T. Unkrur's group of Blue Birds, the Meadow Larks. Mrs. H. Bernsten will give the invocation. The school health nurse, Mrs. Edwin Freiter, will speak on "Your Child's Health, a Public Concern." Mrs. Frances Johnson will direct a chorus of 8th grade girls in musical selections and a community sing. A

Many Ill With Flu At Elbe

The news from Elbe this week seems to be that the flu epidemic has reached this community with a bang. Among those suffering with it are Mrs. Mary Thompson, who has been seriously ill; Mr. and Mrs. Ronald Fisk's baby daughter is very ill and the little boy Ronnie is down but not quite so bad off as his little sister; Mrs. Muriel Schmidt and Mrs. Lydia Parker are getting some better. Many others have had light cases but have been able to take care of some of the others who had to be in bed.

New Son
Mr. and Mrs. Donald Kirkpatrick have a new son, Gregory Mark, born Nov. 5 at the Morton hospital. Last Friday, Nov. 8, Donald had to be taken to the Morton hospital for flu which went into pneumonia.

Visits
Mrs. Pearl Engel spent a pleasant day last Wednesday with her old time friend Mrs. Charles Lutkens, who will be 83 in December, is still a real worker. She entertains much company and really enjoys it as much as she did when she was young. Her daughter, Mrs. Bill Weston of Seattle, was a weekend visitor and helped her little grandson, Bobby Nyman, celebrate his birthday on Nov. 2.

Mr. and Mrs. George Nyman have been enjoying some of the evangelistic meetings in Tacoma the past few weeks, held by Rev. Waldez.

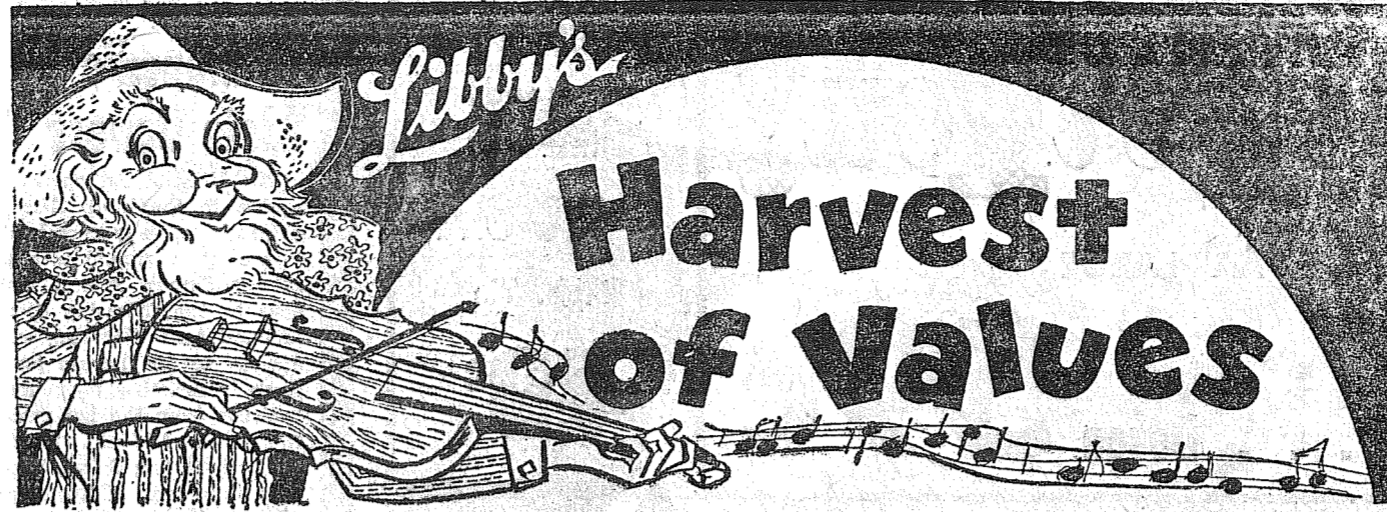
Reporter—Mrs. Pearl E. Engel, Elbe.

Stationed in Alaska

WHITTIER, ALASKA (AHTNC) PPC Carl A. Clark, son of Mr. and Mrs. James M. Clark, Route 1, Spanaway, Wash., recently arrived at the Port of Whittier, Alaska, where he is now assigned as a supply clerk.

Clark entered the Army in November 1956 and was last stationed at Fort Belvoir, Va. He is a 1953 graduate of Bethel high school.

social hour will complete the evening.



- Libby's Beef Stew 24-Oz. Can 39c
- Libby's Chili with Beans 24-Oz. Can 43c
- Libby's Garden Green Peas 2 17-Oz. Cans 35c
- Libby's Cut Green Beans 2 16-Oz. Cans 35c
- Libby's Asparagus Spears 6 8 1/4-Oz. Cans \$1.00
- Libby's Cream Style Corn 7 17-Oz. Cans \$1.00

Other Libby's Products

- BARTLETT PEARS . . . No. 2 1/2 Cans 3 For \$1
- CLING PEACHES . . . No. 2 1/2 Cans 4 For
- CRUSHED PINEAPPLE . . . 20-Oz. Cans 4 For
- FRUIT COCKTAIL . . . 16-Oz. Cans 5 For

- SHADY LANE FRESH BUTTER . . . 1-Lb. Print 65c
- STARKIST CHUNK TUNA 6 1/2-Oz. Can 27c
- AIRWAY COFFEE . . . 2-Lb. Bag \$1.57 1-Lb. Bag 79c
- TITAN CUT GREEN BEANS 16-Oz. Can 10c

DUTCH MILL

SLICED CHEESE

AMERICAN CHEESE

4 Oz. Pkg. 19¢

PORK SALE

- ROUND BONE CUT - Economical!
- Shoulder Roast Lb. 35c
- FRESH PORK - SERVE WITH APPLE SAUCE
- Shoulder Roast Lb. 43c
- FRESH PORK - SERVE STEAK TO-NITE
- Shoulder Steak Lb. 45c
- SERVE PATTIES FOR BREAKFAST
- Pork Sausage Lb. 39c

FRESH

SAFEWAY Oysters

Med. Size Pint 57¢



Prices effective Thursday, November 14, thru Saturday, November 16, at 82nd & Pacific Safeway.
No sales to dealers, right to limit is reserved.

Tomato Juice

Libby's - Always dependable quality 4 Giant 46-Oz. Cans \$1.00

Pineapple Juice

Libby's - Flavor from Hawaii. 4 Giant 46-Oz. Cans \$1.00

ORANGES

Florida - Peak of the season. Serve Fresh

Lb. 9¢

Extra Fancy

DELICIOUS APPLES Lb. 10¢

Use for salads, desserts or for lunches.

D'ANJOU PEARS . . . 2-Lbs. 25¢

Use for salads.

LARGE AVOCADOS . 2 For 29¢

<p style="text-align: center;">HEAD</p> <h2 style="text-align: center;">LETTUCE</h2> <p style="text-align: center;">Large crisp fresh heads.</p> <h3 style="text-align: center;">2 / 25c</h3>	<p style="text-align: center;">ROME</p> <h2 style="text-align: center;">APPLES</h2> <p style="text-align: center;">Fancy grade, Wash. grown.</p> <h3 style="text-align: center;">23-Lb. Box . . . 98c</h3>
---	--

FRESH FOWL

For Fricasee Or Serve With Dumplings

Lb. 29¢

Skinned Hams

Diamond 'F', 12-16 Lb. Whole or Shank End

LB. 49¢

U.S. CHOICE BEEF, BOTTOM

Round Steak Lb. 65c

SAFEWAY QUALITY - GROUND FRESH

Ground Beef Lb. 3/\$1

Hi-Lites Pharmacy

Bob Vaughan
The professors teaching chemistry in Germany frequently instructed their students in their pharmacies because they possessed the laboratories and these laboratories were the precursors of the later university chemical laboratories.

In Germany appeared the first journal devoted exclusively to pharmacy founded in 1780.

We at the PARKLAND PHARMACY guarantee complete purity and accuracy in the compounding of your doctor's prescription . . .

Parkland Rexall Pharmacy
Pacific Ave. & Airport Road
LEnox 7-8686
United Features Syndicate

savings insured by an agency of the United States Government to \$10,000 at the Family Savings Center

A MUTUAL SAVINGS INSTITUTION

Pacific Federal Savings
and Loan Association
Bellingham • Seattle • Tacoma
Longview • Portland • Eugene

Vaughan's Values

SAVE FUEL BY WEATHERSTRIPPING

- For One Door NuWay Bronze \$1.65
- For One Door NuWay Felt & Metal . . . \$1.10
- Alum. & Foam Rubber . . . \$2.60
- Wood & Foam Rubber . . . \$2.00
- Metal & Felt Door Bottoms 40c

Vaughan's

PACIFIC AVENUE LUMBER COMPANY
84th & Pacific Avenue GR 4-9515

Big Savings For You!

EVERY EGG GUARANTEED FARM FRESH - "AA" LARGE

EGGS Dozen **59c**

NESTLES
Everready
Instant
COCOA
1-Lb. Tin
49c

M.J.B. **Coffee** . Lb. **89c** | DENNISON'S **Chili** **2/43c** 15 1/2-OZ.

U & I
SUGAR 10 Lbs. **99c**

CENTENNIAL KITCHEN QUEEN
FLOUR 10 Lbs. **79c**

SNOW MIST CHUNK
Tuna **2/39c**

NESTLES
Choc. Chips . . Pkg. **19c**

BITS O' HONEY - Cream or Whole Kernel
Corn . . 303 Tin **2/25c**

SUNNY JIM
Apple Butter 18-Oz. Jar **25c**

TASTY Fresh Vegetables
PRIZE QUALITY

LARGE CALIFORNIA TOMATOES 10c Pound

DELICIOUS APPLES 29c 4-Lb. Bag

EMPEROR GRAPES 9c Pound

HUBBARD SQUASH 1c Pound

SNOW FLAKE CRACKERS
1-Lb. Box
25c

HI-C Orangeade
46-Oz.
25c

LYONS FRUIT MIX
1-Lb. Pkg.
43c

ALCOA ALUMINUM FOIL
25-Ft.
29c

ROMAN MEAL CEREAL
28-Oz. Pkg.
33c

GERBERS BABY FOODS
Strained
10 CAN **89c**

**BARGAINS GALORE AT FLETCHER'S STORES.
BETTER MEATS AT LOWER PRICES**

LEAN PICNIC STYLE Lb. **Pork Roast 29c**

Lean, Tender RUMP ROAST 45c Pound	PORK STEAKS 49c Pound	Lean GROUND BEEF 3-Pounds 99c	ROLLED ROAST Sirloin Tip 59c Pound
--	---------------------------------	--	---

CARSTEN'S 1-LB. LAYER
Bacon . . Lb. **39c**

OUR OWN GRAIN FED BEEF RIB OR SIRLOIN
STEAKS . . Lb. **55c**
The Best To Broil
Porterhouse . . Lb. **69c**

VILLA PLAZA STORE ONLY!
Graded Good or U.S. Choice Beef
Select Cut
OVEN ROAST . Lb. **45c**
Aged Beef - Good or Choice
RIB STEAKS . Lb. **69c**

SELECT TENDER CUTS
7-BONE OVEN ROAST . . . **39c** Lb.
SHORT RIBS . . Lb. **10c**

TWO LOCATIONS TO SERVE YOU

Fletcher's
SERVICE IS OUR MOTTO

VILLA PLAZA
LAKEWOOD
12208 PACIFIC AVE.
PARKLAND
Right to Limit
Prices Effective Thru Saturday

MIDLAND Orthopedic Lists Donors

The Midland Orthopedic Guild wishes to thank all those who helped in any way to make a success of their annual turkey and salmon dinner. Special mention goes to the following sponsors: Midland Auto Wrecking with an apology to Mr. Larkin for accidentally omitting his name and business from the list posted in the hall; Midland Thriftway, Midland Styling Salon, Highland Feed Company, Midland Tavern, Allison Variety Store, Mara's Cafe, Baskett Lumber Co., Weir's Hardware Co., Ted Baskett Masony, Frank Gural's Shoe Repair, Jo Powloski's Meat Market, Brouwer's Tavern, Gene's Midland Drug Store, Clay Roley Insurance Company and the Midland Gas and Fuel.

Thanks also go to the 4-H girls who helped serve: Linda Lewis, Nancy Hansler, Linda Stokes, Sandra McElroy, Donna Hintz and Darlene Matilainen from the Delba 4-H Club; Janet Bombardier, Jane Lawler, Nadine Olson, Kathie Jones, Sally Hanson and Donna Ayers of the Midland 4-H Cloverbuds; and Marcella Lawler, Joanne Ayers, Julie Johnson, Nancy Bombardier, Pat Linter-ton Linda Martin, Corrie Miller and Anita McElroy, from the Midland 4-H Cloverettes.

All of the Guild members worked very hard on this worthwhile project under the capable leadership of Mrs. Francis Hush-ek.

Fette-Gannon

A former Midlandite, Miss Anne Marie Fette, daughter of Mr. and Mrs. Joseph Fette, became the bride of John Francis Gannon, Jr., son of Mr. and Mrs. John Francis Gannon, in solemn double ring rites at the Sacred Heart church in Tacoma Saturday, Nov. 9. The Rev. Edward Norris officiated at the ceremony. The bride was given in marriage by her father. John Hagala sang "Ave Maria", "Ave Verum" and "On This Day, Oh Beautiful Mother", accompanied on the organ by Miss Marlene Wanchena.

The bride wore a lace-over taffeta wedding gown which was enhanced with a Sabrina neckline and bouffant skirt, her double circular veil caught to a Juliet cap of pearls and lace. Her only jewelry was a gold cross belonging to the bridegroom's grandmother which had been blessed by His Holiness, Pope Pius. Her spray bouquet of stephanotis was centered with a white orchid and a pearl rosary a gift from the bridegroom, was entwined in the bouquet. Miss Patricia Fette was maid of honor for her sister. Attendants were Misses Janet Weir and Elizabeth Weir, cousins of the bride and Miss Linda Fette, sister of the bride and junior bridesmaid. All the girls wore blue schrome taffeta gowns in princess style. In powder blue taffeta dresses were the flower girls, Mary Jo Fette, sister of the bride, and Barbara Weir, cousin of the bride. Fred Gagliardi was best man and ushers were William Traynor, Lawrence Petrowski and Calvin Whitting.

The mother of the bride chose a rose beige crepe dress and the bridegroom's mother was gowned in royal blue crepe. Both wore

orchid corsages.

Assisting at the reception at Ivans were Mesdames Phillip Fette, aunt of the bride; Martha Costello, aunt of the bridegroom; Frank Hall, Al Matheson, Elmer Suver, Norman Neill, Frank Grab, Stephen Morton, Frank Hidaka, Joseph Boyle, Louis Weir and the Misses Louella Frost, Eileen Buetnes, Janet Boyne, Sue Murphy and Julie Weir.

For their wedding trip along the Oregon coast, the bride wore a coral knit suit with patent accessories, a black coat and a white fur hat and white gloves. A white orchid set off her ensemble. The bride attended Midland school, St. Leo's high school, Providence Academy in Seattle, and the College of Education in Great Falls, Montana. The bridegroom attended Bellarmine high school and Seattle university. The new home will be in Tacoma.

Delba 4-H Elects

Members of the Delba 4-H club held their first meeting of the new year at the home of Mr. and Mrs. Robert Lewis, their leaders. A new member, Donna Hintz of 9112 McKinley Avenue was introduced. The evening's business included the election of the following officers: President, Linda Lewis; vice president, Sandy McElroy; secretary, Connie McCue; reporter, Linda Stokes; historian, Donna Hintz; telephone chairman, Matilainen; recreation chairman, Nancy Hansler; flag chairman and song leader, Bonnie Christensen. The girls decided to sell apple cider, which they make themselves.

Altar Society

The Altar Society of St. John of the Woods Parish met for their November meeting, Thursday the 7th, and the business session was presided over by the president, Mrs. Walter Vaillencour.

Officers for the coming year were chosen as follows: President, Mrs. Joe Walters; secretary, Mrs. George Rauh; treasurer, Mrs. Frances Simon; The vice president will be elected from the Circle chairmen. The luncheon preceding the meeting was served by members of the St. Ann and St. Theresa Circles. Circle meetings listed for this month are Tuesday, November 12, St. Joan, 8:00 p.m. at home of Mrs. Russell Beals and St. Cecilia, 8:00 p. m. at home of Mrs. Nicholas Keller; Thursday, November 14, St. Rita, 8:00 p.m. at home of Mrs. John Piper and St. Elizabeth at home of Mrs. Richard Jensen; Monday, November 18, St. Theresa 8:00 p.m. at home of Mrs. N. D. Johnson; Wednesday, November 20, St. Ann, 8:00 p.m. at home of Mrs. Harry Budke and Our Lady of Perpetual Help Circle will be announced later.

Open Under
New Management
Redwood Cafe

LOIS LOID, Manager

BREAKFASTS, LUNCHEONS
DINNERS, SHORT ORDERS

Open at 6:00 a.m. Daily
Except Sunday

171st & Pacific Ave.
Spanaway

LAY AWAY NOW FOR CHRISTMAS
"SCHWINN" MIDDLE WEIGHT
FULL SIZE BICYCLES . . . \$57.95

BENDIX 2-SPEED GEAR SHIFT ONLY \$7.50 Additional
(100% American Made)

PARKLAND CYCLE & KEY

111021 Pacific Ave. LEnox 7-5772

under new management . . .

FREE LUBE JOB
with each
TUNE-UP

Tune - Ups

6 - Cylinder Car \$6.95
8 - Cylinder Car \$8.95

HOURS:
Weekdays 7 a.m. - 9 p.m.
Sundays 9 a.m. - 8 p.m.

AIRPORT ROAD SERVICE

2115 East 112th

Mobilheat

FUEL OIL
Complete Service

EVERY



DROP



PURE



COMFORT



Mobilheat Is Clean
Burning, Safe and
Economic

CALL US TODAY
FOR

**AUTOMATIC
FILL - UP
SERVICE**

Budget Your
Fuel Bill With
Your Fuel Oil
and Appliance Dealer

POCHEL

Distributing
Company

140TH & PACIFIC AVENUE
LE 7-8624