

PRAIRIE POINTER
 PUBLISHER
 ELMER BEARD
 GARFIELD KIEL
 Editor

A community newspaper for Midland, Parkland, Brookdale, and Spanaway. Published every Thursday by Beard Printing Co., P. O. Box 797, Parkland, Wash.

Application for Second Class Mail Matter Permit Pending at the Postoffice, Parkland, Washington

FOR NEWS AND ADVERTISING CALL GR 8436

In Union There Is Strength

The Parkland Community Club is the media through which the people of the Parkland community work to obtain projects for the best interest of the vicinity.

The club is the town's chamber of commerce. Meetings are held monthly and problems of the community are discussed and where possible action is taken to make improvements.

Much good has come from these club meetings. Problems of the Parkland area will become greater now that many new businesses are being established and many permanent residents being added monthly. Only through these meetings will the people be able to keep pace with the community's rapid growth.

No community can prosper or grow unless the men and women of that community band together for the common good. It is remarkable what can be done when individuals form an association that stimulates strength and power.

Attendance at the December meeting last week was very discouraging. It is imperative that every man and woman interested in Parkland's welfare turn out for the January meeting, for at that time the 1946 officers will be selected.

It is a community obligation. It is a community necessity.

My Christmas Rosary

As I dress up my Christmas tree
I find myself unconsciously
Transforming it into a rosary,
Each ornament that I hang there
Is placed with reverent, silent prayer
For friends and kin, so very dear to me.

The Christmas tree may shed its green,
The ornaments may lose their sheen,
And lights burned out be stripped from off the tree;
But faith and love shall never fade,
And fervent prayer shall e'er be made
For friends and kin so very dear to me.

The above poem was written by Rev. George Cooper, Parkland Methodist minister. It is very timely for this Yuletide season and we know you'll enjoy reading it.

Spanaway Church Goes Ahead

Two weeks ago members of the Spanaway Community Methodist Church voted to enlarge their building facilities. The enthusiasm shown at the meeting leaves little doubt that the congregation will reach a building goal of \$1,500.

The members of the church, realizing the need of spiritual education for Spanaway boys and girls, are to be congratulated for making this move.

On one Sunday morning,
Some good people of Spanaway,
Met in our little Church
To meditate and pray.

After our worship service
A meeting we had planned,
The enlargement of our Church
Was the business we had at hand.

The job ahead would not be easy,
And our thoughts were, could we afford?
But as we tackled the problem
We were sure it was for the Lord.

For the friendly, wholesome spirit
Was inspired by loyalty intense,
And the wonderful co-operation
Was surrounded by common sense.

Our good people were so generous
As is their accustomed rule;
They realized our little folks
Needed more room for Sunday School.

So we tackled the job ahead
With confidence and pride;
And we know that all of Spanaway
Will rally to our side.

Did your Minister appreciate it?
He surely did and how!
And with that kind of spirit
Nothing can stop us now.



Home Town Notes

From all Points in the U. S.

Courtland, N. Y.—"Go ahead, you saw him first." Thus went the conversation between ninrods John K. Alama and Samuel Musici as they sighted their shooting irons on a deer silhouetted against the sky. Their polite conversation was interrupted by a shot. Another hunter bagged the deer.

Springfield, Ill.—Dr. Franz J. Polgar, memory expert from New York City, arrived in Springfield for a speaking engagement and discovered he had been overcharged on his train ticket. He obtained a refund by describing perfectly from memory the agent who sold him the ticket. A wire to the agent brought prompt action. Dr. Polgar had to send another wire. The memory expert had forgotten his hat when he left the train.

Cleveland — They put Sammy, the incorrigible thieving crow, in solitary confinement at Brookside zoo after he stole a set of automobile keys.

But they haven't stopped Sammy from stealing. Recently he grabbed a quarter from a seven-year-old girl and hid it in his cage. Her cries caused quite a commotion until the quarter was returned.

Cheyenne, Wyo.—Nov. 19 was just another day for 4 year old Forrest "Nubbins" Hoffman. He played with his toys as usual, unmindful that a year ago he was celebrating what was expected to be his last Christmas.

The calendar was turned ahead Nov. 19, 1944, to give "Nubbins" a real Christmas because he was expected to die of a bladder ailment before the regular time for St. Nick's annual visit. But Nubbins fooled them all. A bladder obstruction was removed by an operation performed at Denver soon after his premature Christmas. The tousel haired boy's weight was increased from 18 to 33 pounds and he is happy and bright eyed.

"We're busy getting ready for Santa Claus this year," Mrs. Hoffman said. "He wants a lot of presents. Our present will be just having Nubbins."

Philip E. Hauge to Return To College

Major Philip E. Hauge, former dean of Pacific Lutheran College, who served his country ably and faithfully for the past three and a half years, will take over his old position with the college beginning on January 1, 1946, according to an announcement by Dr. S. C. Eastvold, president. Dean and Mrs. Hauge and their son Larry and daughter Janet, are well known in the South End, having made their home in Parkland for many years.

The present student body as well as all former students of PLC, are glad to see the college professor back on the campus.

SUBSCRIBE to The Pointer

Try the Fern Hill Shop for your Christmas Gifts
Glass, china, fancy work, secondhand furniture

FERN HILL SHOP
OPEN 11 A. M. TO 6 P. M.
Open Evenings 'til Christmas
8239 So. Park GA 7374

Piper Funeral Home
5436 SO. PUGET SOUND
GA 5436

Christmas Tree And Decorations Are Fire Hazard

Fire hazards lurk in your Christmas tree and in the decorations that make it gay. Carefulness is therefore the watchword in order to prevent tragic accidents.

A few sensible precautions, plus the use of fireproofing chemicals, can provide you with insurance against damage.

First of all, remember that a fresh cut tree will not take fire any more easily during the first day or two than would the ever-green shrubs growing outside our window. But the fire hazard grows after that.

So the best procedure is to bring in a fresh tree as short a time before Christmas as possible, and remove it as soon afterwards as you can. Be careful in placing your tree in the home. Set it well away from stoves, radiators and other sources of heat. Above all, when you smoke, keep away from the tree.

Use Special Safeguards

If you want to keep your tree from a week or more before Christmas until after New Year's day, special safeguards are necessary. One of these is to see that the base of the tree stands in a container of water. Cut off the base of the tree at an angle at least 1 inch above the original cut and see that the water level is always kept above the cut. This helps keep the tree fresh and reduces the chances of fire.

Another and important safeguard is to use a chemical flame-proofing solution.

Dissolve one pound of sodium-chloride in one and one-half pints of water. That will take care of a tree that weighs approximately four pounds. If the tree weighs eight pounds, use two pounds of chemical and three pints of water.

Put the solution in the container in which the tree stands. Let the tree soak up as much of the chemical solution as possible. In case calcium chloride is not available, ammonium sulfate will be highly satisfactory.

FIREMEN'S AUXILIARY XMAS PROGRAM SUNDAY

Santa Claus will be present for the annual Christmas party which will be held by the Ladies' Auxiliary of the Harvard-Midland Larchmont fire department at the Midland community hall on Sunday, December 23, at 8 p. m.

Members of the organization have arranged a colorful program for their final meeting of the year. Special Christmas treats will be given to all the youngsters present, according to club officials.

Seasons Greetings
and
Best Wishes

BEARD PRINTING COMPANY
Publishers of PRAIRIE POINTER

Basement PLC Chapel GRanite 8436

Bill The Builder
Remodeling Specialist

NO JOB TOO SMALL
PROMPT SERVICE
FREE ESTIMATE

GR 7502

KUNTZ POULTRY FARM AND MARKET
(1 Block North of Rau's Chicken Dinner)

We Pick Poultry—10c bird
Dress and Draw—15c a bird
ROASTERS & FRYERS
GR 8061
OPEN SUNDAY

PAINTING
Interior and Exterior Decorating
Paperhanging
Sheet Rock Taping
Spray Painting
All Work Guaranteed

CALL GR 8817
or Write P. O. Box 131

PUGET SOUND PAINTING CO.
SPANAWAY

ANDERSON LUMBER CO.
GR 7311
9802 PACIFIC AVENUE

LUMBER OF ALL KINDS

PABCO PAINTS

Anything In the Cabinet Line at the

SPANAWAY CABINET SHOP
GR 8235 (days) SPANAWAY

METAL MOLDING FOR CABINET TOPS
A. M. SMITH LEO CRANEY
GR 7410 (Evenings) PR 9226 (Evenings)

THE FIRS

Delicious Chicken Dinners family style
Private Parties and Banquets a Specialty

GRANITE 8062
CHARLES AND EMMA KING

WOOD AND COAL USERS !!
PLENTY OF 16-IN. UPL'D SLAB
Utah, Wyoming and Colorado Coal
In Lump, Nut or Stoker

CALL YOUR NEIGHBORHOOD FUEL DEALER

CADDIGAN FUEL AND FEED CO.
8630 South Tacoma Way GARland 1292

EARL'S PLACE
LOVELAND

GROCERIES -- MEATS
FARM MAID ICE CREAM
TEXACO GAS AND OILS

ONE OF PARKLAND'S BEST EQUIPPED GARAGES

Let us do your automobile repairing with new machinery!
EXPERT WORKMANSHIP — REASONABLE RATES

R. A. CLARK
One Block North Of Parkland School On Pacific Ave.
PHONE GR 8443 — PARKLAND

Auto Glass Installed
Body and Fender Repairing
Painting -- Welding
Valve Grinding -- Brake Service
New Engines

LOVELAND GARAGE
Hugo Loveland

SPANAWAY FUEL CO.
AT SPANAWAY LUMBER YARD

IMMEDIATE DELIVERY ON UPLAND SLAB WOOD AT \$10 per cord

CALL GR 8235 PROMPT DELIVERY SAM H. WARREN, PROP.

Old Growth Forest Wood
UTAH SACK COAL

LAPENSKI FUEL GR 8173
98TH & PACIFIC AVENUE

WALLY'S PHOTO SHOP
HOME PORTRAITS
Commercials—Weddings

A. R. WALLETT
GR 7082 SPANAWAY

Park 'n Shop
98th AND PACIFIC GR 7321
L. H. Darrow—C. Thurman Givens—H. M. Andersen

OPEN 24 HOURS PER DAY
7 DAYS PER WEEK

Groceries — Meats — Hot Dinners
Fountain — Magazines

Christmas Cheer

May happiness and good fortune be yours, both now and throughout the coming year.

Pacific Avenue Garage

JERRY SILER

Merry Christmas

May you all have a very Merry Christmas and a Happy New Year!

Sterio & Hanson

General Contractors

We Invite You to

Portland Avenue Baptist Chapel

40th & Portland Ave. VIRGIL R. SAVAGE, Pastor

9:45—SUNDAY SCHOOL
11:00—MORNING WORSHIP
7:00—Christmas Program

Wishing All a Blessed Christmas

"Cheerio"

Just had to Drop In to say "Hello"

We couldn't let the holiday season go by without wishing you all a very Merry Christmas and a New Year of happiness!

The BUG

JACK and JEAN

Turkey Dinner

WITH ALL THE TRIMMINGS

AT THE

Jolly Inn


Pacific Avenue at Sales Road

Sunday, December 23

\$1.00 per plate Children 50c

SANTA CLAUS WILL BE HERE FROM 2 TO 4

Don't Miss Him!



To wish you loads of Christmas Cheer and a hearty wish for A Happy New Year

Brookdale Lumber Company

William "Bill" Hermes, Mgr.

NEWS OF PRAIRIE CHURCHES

PARKLAND EVANGELICAL LUTHERAN CHURCH
The Church of the International Lutheran Hour Collins Road and Mountain Hwy. Parkland, Washington
Walther C. Gullixson, Pastor

Morning worship, 10:30.
Sunday School, 9:30.
Christmas service 7:30 p. m.
Confirmation of young people will be included in the service next Sunday morning. The Children's Christmas service will be held Sunday evening at 7:30 p. m. "On Earth Peace," a prepared Children's service, includes participation by all pupils and departments of the Sunday School and pupils of the Concordia Lutheran School from the Parkland area.

This Thursday the Women's Club meets at the home of Mrs. Walter Daniels. Members are to bring cookies, magazines and games for the soldiers at Madigan Hospital—to make Christmas brighter for them.

The young people will decorate the Christmas tree Friday evening. The elders of the congregation will meet with candidates for church membership at the parsonage at 7 p. m. Friday, and the Building Committee will meet at 8 p. m.

Saturday, the final rehearsal of Children's Christmas service will be held at 10 a. m. Christmas Day Festival Worship will be held at 10:30 a. m. Special music by the choir under the direction of Mr. M. J. Ingebritson will be presented. The altar offering is designated for the Building Fund of the congregation.

TRINITY LUTHERAN CHURCH
Parkland, Wash.
Mrs. G. J. Malmin, organist
Dorothy Satterlie, Parish Worker, Choir Director

Divine Services Sunday at 11 o'clock. Chaplain Fritjof Eide, guest pastor. Sunday school at 9:45.

Sunday School Christmas program on Sunday, Dec. 23 at 5 o'clock in the evening.

The Luther League meets on Thursday evening, Dec. 27, at the home of Larry Hauge for a Christmas party. Election of officers will also be held.

You are invited to attend our Christmas Day services at 11 a. m. Dr. S. C. Eastvold, guest pastor. His theme will be: "Christmas Through the Ages."

SPANAWAY COMMUNITY METHODIST CHURCH
Rev. Louis Martin, Pastor
Church school, 10:00 a. m.
Services at 11:00 a. m.
Sermon topic: "Christ and the Home."

You are urged to attend church this Sunday. We invite you to attend with us. On that first Christmas, Jesus was shut out of the Inn. Is He shut out of the inn of your life today?

SALVATION ARMY SUNDAY SCHOOL AT SPANAWAY
Meets every Sunday at 11 a. m.
Sewing club meets every Saturday at 1:30 p. m. in the old German church. Both are under the leadership of Major Selma Goode.

CLOVER CREEK BAPTIST CHURCH
Military Road opposite Clover Creek School
Rev. R. V. Ellstrom, Pastor

Sunday School, 9:55 a. m. Geo. Chessum, Supt.
Morning worship, 11 a. m.
Training Union, 6:30 p. m.

PEACE LUTHERAN CHURCH
Corner 3d St. on East Pioneer Puyallup
Erwin H. Jahr, Minister

Sunday school at 9:45 a. m.
Men's Bible class at 10 a. m.
Worship service at 11 o'clock.

SPANAWAY FULL GOSPEL TABERNACLE
Stanley R. Weddle, Pastor

Sunday School—11:00 a. m.
Morning worship—11:00 a. m.
Evangelistic service—8 p. m.
Christ's Ambassadors, Wednesday 8 p. m.

TEACHERS UNDERPAID

Teaching has always been important and it is doubly so today when teachers have to make up for the havoc that war has brought to children. Teaching has always been underpaid. Teachers should be paid as well as lawyers, writers, or actresses. Education, books, music and the beauty shop are all tools that a teacher must use to capture a child's attention, fire his mind, and make him want to be in school. She should be able to afford those tools without stinting.—Irene Dunne.

Reclamation farmers in 1944 produced more than 10 million tons of food, worth more than \$400,000,000.

Merits of Fire District Told

Interested in winning unanimous approval throughout the entire proposed district, members of the Spanaway-Elk Plain-Clover Creek Fire Department met at the Clover Creek school on Monday night.

The meeting was held in Clover Creek district so that residents of that area could get first hand information on the proposed rural fire district now under consideration for the Spanaway area.

Jim Gray, president of the group, explained to the Clover Creek people what steps had been taken to get the organization underway; he also mentioned territory being considered in the proposed district.

Next meeting of the fire group will be held at Spanaway on Monday, January 7, at which time Harold Baker, an experienced fireman, will give some training instructions. The next mass meeting has been scheduled for Monday, January 14, at Elk Plain. Residents of Clover Creek, Spanaway and Elk Plain are urged to attend this meeting as a full discussion and explanation of the rural fire district set-up will be carried on.

Plan to Commence With Tower Work

The Parkland Light and Water Company will soon let bids for the construction of footings for the tower tank. Mr. Rosso, president of the company, also announced that delivery of the two electric water pumps is expected around February 1.

As soon as the footing is installed, then the company will be ready to commence with construction of the steel tanks. At the present time prospects of getting the steel looks good but hopes may become very dim should the proposed steel strike take place.

POCHEL TO FETE HIS EMPLOYEES DEC. 31ST

Dealers, employees and their families will be guests of the R. E. Pochel company on December 31 when an informal Christmas treat is given by their "boss."

The party will be held in the new warehouse on the Pochel property at Brookdale. Approximately 60 guests are expected. The warehouse was just recently completed and "after the ball is over" will be used as a storage depot.

Pochel has sixteen dealers and thirteen employees.

S/sgt. Dale M. Bosworth and First Sergeant V. C. Walters have returned to their station at Fort Ord, Calif. Sgt. Bosworth expects to return in a few days on his furlough. Sgt. Walters is waiting for a reassignment.

GATES MARKET

PARKLAND, WASH. GRanite 8560

Formerly Anderson's Grocery

Groceries - Meats - Fruits - Vegetables - Feed - Flour
General Paint Distributors School Supplies

We carry the current issues of all popular magazines

STOKELY'S

Green Lima Beans, No. 2 can.....26c
Asst'd Jello Pudding, pkg.6c
Asst'd Jello, pkg.6c
Bisquick, 20-oz. pkg.18c

ALL POPULAR BRANDS

Cigarettes, per carton\$1.65

MIXED NUTS... CANDY
WALNUTS

Chickens and Turkeys on Order

LUTEFISK FOR CHRISTMAS

Our Usual Low Prices on Meats and Groceries!

Free Delivery on Wednesday and Saturday... Just Call
GRanite 8560

PTA Meeting Held At Clover Creek

Meeting in regular monthly session Wednesday night, the Clover Creek P. T. A. heard a discussion of the proposed fire district.

Jim Gray, president of the group formed to promote the fire protection measure, spoke to the assemblage and explained the set-up in detail.

Other routine business was carried on with Mrs. Edward O'Neil, president, presiding.

Fern Hill Rebekahs

Fern Hill Rebekah Auxiliary met Wednesday with Mrs. G. B. Graham at her home at 8221 So. Park Avenue. Luncheon was served to all members present with Mrs. Edith Brolin and Mrs. Kenneth Parker assisting the hostess with the serving.

Presiding at the meeting was the club president, Mrs. Nan Berger. Election of the 1946 officers and the exchanging of Christmas gifts were important items on the afternoon's program.

Crystal Ice Service

Merry Christmas and a Happy New Year
GA 1711



Lingham's Nursery

Orders placed now for hardy shrubs as Christmas presents, reserved for February delivery.

Our P. O. address
Rural Route 3, Box 805-C
Phone: GRanite 8441
Tacoma, Wash.

LOOK!

PIGS Need More Than Just GROUND BARLEY

Barley is a good feed, it contains many factors which contribute to the growth of a pig. However, Pigs need more Proteins, Minerals, and Vitamins than are found in just Ground Barley.

DENNETT'S HOG FEED is a scientific Ration containing Ground Barley, Oats, Wheat, and Corn, Alfalfa Meal, Linseed Meal, Meat Meal and added Minerals and Vitamins. The cost is only a little more than Ground Barley.

Obtain MORE Weight, in a SHORTER time at LESS cost with

DENNETT'S HOG FEED

from

Avenue Feed Store

98th & Pacific GRanite 8641

Overseas Veterans

Join the Roger Lunde Post of VFW

Merry Christmas to All

Best wishes to you and yours for a very Merry Christmas and a Happy New Year!

Roger Lunde VFW

Post No. 5052

Compliments

T & G GROCERY
Sales Road and Tacoma Avenue

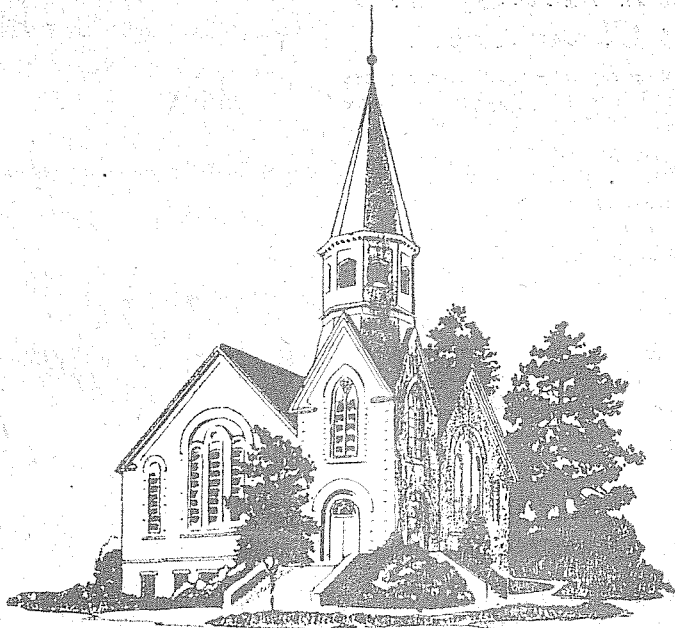
"OLD MAN" WHEELER SERVICE STATION
Last station to your right on Sales Road

May your every wish be granted, every hour filled with happiness and good cheer at Christmas and throughout the coming New Year.

Christmas Wishes

Park 'n Shop

OPEN 24 HOURS PER DAY
7 days per week



Trinity Lutheran Church
PARKLAND, WASHINGTON

Wishes you
a blessed Christmas

You are invited to attend our
CHRISTMAS DAY
Services at 11 o'clock

Dr. S. C. Eastvold
GUEST PASTOR

Theme "CHRISTMAS THROUGH THE AGES"

**Ladies Auxiliary
Patriarch Militant**

The Ladies Auxiliary of the Patriarch Militant and Canton will celebrate with a turkey dinner on Saturday, December 22, at 6:30 in the I.O.O.F. Temple, Tacoma.

Mrs. Cecil Hill will be in charge of the dinner, being assisted by Mrs. Ora Hamilton, Mrs. Andrew Gustavson and Mrs. Fred C. Ranf. Mrs. Donald McLean will be in charge of the gift exchange.

Following the dinner a regular lodge meeting will start at 8 p. m. Mrs. Andrew Gustavson, President of the Patriarch, and Mrs. Cecil, vice president, presiding.

Final election of 1946 officers, and mustering in a class of candidates will be the main features. Visitors are expected from Seattle, Olympia and Aberdeen. All Ladies and Canton members are invited.

**Christmas Seal Sales
Have Been Excellent**

This week marks the last few days of the annual sale of Christmas Seals by the Tuberculosis League of Pierce County, and to date the total amount received is encouraging to the directors who are encouraging to the directors who can now confidently count on the purchase of the much desired mobile X-ray unit.

"It has indeed been gratifying," said Mrs. J. W. Kalkus, county sale chairman. "The people of the county have been interested in our coming purchase of the mobile X-ray unit and have responded accordingly, buying Christmas Seals."

"Many of them have increased their purchases of other years and we have quite a number of new buyers of these bright little messengers of good health."

"There are a few," Mrs. Kalkus continued, "who have not as yet sent in money for the Christmas Seals they received through the mail, but we expect this money in within a few days to complete our quota both for the X-ray chest photographing machine and for the regular work of the League."

Mrs. Kalkus emphasized the fact that the sale will end on Christmas Day. She further asked those who have not yet sent in for the seals to send the money to the chairman in their community. She said that Mrs. Stanley Rosso is representing the League in this year's sale in Parkland and vicinity.

**50 Million Budget
Predicted for 1947**

Despite a large cut in war expenses, the government will require a budget of around fifty billion dollars for the fiscal year of 1947, high government quarters in Washington have predicted.

Under a budget that large, it was said, it would be necessary to continue deficit financing, and additional tax cuts would be unlikely at least for the immediate future. The new budget will be made public shortly after Jan. 1. It will cover the year beginning July 1, 1945.

Senator Robert A. Taft (Rep.) of Ohio, said he thought it would be necessary to continue deficit financing until 1948 or 1949. He doubted, however, that the fiscal 1947 budget would be more than forty billion dollars.

Government finance specialists believe that it will be considerably higher. They base their prediction on the cost of the veterans aid program, providing the peacetime needs of the armed forces, and other wake-of-war expenses.

Chairman Walter F. George (Dem.) of Georgia, of the Senate finance committee would not comment on the \$50,000,000,000 prediction. He said previously, however, that it would be optimistic to forecast a balanced budget by 1948.

When the senate recently passed the new tax-reduction bill, Taft said he thought another tax cut, primarily in individual and excise levies, was in sight for next year. But he doubted there would be another reduction in business taxes in ten years. At the same time he envisioned a postwar budget of some \$20,000,000,000. Now



MEETING DATES

VFW — Roger Lunde Post No. 5052, meets every Tues. night, Sunshine Hall, 8 p. m. Gus Clemans, Service Officer.

CLOVER Creek American Legion Post meets second and fourth Friday night at Spanaway school.

SELF SUSTAINING FARM HOME

Shipmate Lester S. Skinner, residing at Lopez Island, Wash., has a former "Dude Ranch," consisting of 40 acres, an eight-room log cabin home, two barns, three chicken houses, large cleared area for gardening, etc., which he desires to sell to a responsible veteran.

He advises that the ranch is ideal for a disabled or retired veteran who is desirous of rehabilitating himself or for a veteran interested in becoming independent. Terms are reasonable.

The ranch is located approximately 43 miles west of Portland and is situated on a good highway near Carlton, Oregon. Anyone interested is requested to contact the aforementioned veteran to contact service in the South Pacific as a Chief Pharmacist's Mate.

Christmas Party

The Fern Hill Odd Fellows and Rebekahs will hold their annual pot luck luncheon and Christmas party on Thursday, December 20, at 6:30 in the Fern Hill I.O.O.F. hall.

Parents will bring gifts for their own children and Santa Claus will be present for the occasion to see to it that the presents are properly distributed. Members of the kitchen committee are Mrs. Robert Munz, Mrs. Bert Christiansen and Mrs. C. E. Hein. The arrangements are in charge of Mrs. Carl Onan and Miss Doris Brolin.

**SPANAWAY SCHOOL OUT
EARLY DUE TO MEASLES**

The Spanaway school will close Thursday (today) for the Christmas holidays instead of Friday as originally set. Change of the date was made due to an epidemic of measles that has swept the Spanaway area.

The P. T. A. will hold its meeting at the Spanaway school immediately after the Christmas program. The program will start at 12:30 and last for about an hour. The P. T. A. session will follow immediately. All members are urged to attend the meeting.

RESTORE SURFACE

Shallow dents and bruises in wood may be removed by moistening a blotter with hot water, placing it on the spot, and gently applying heat with a hot iron, but you may need to remove white water spots from varnished surfaces after this treatment.

he said he doubted that a figure that low could be reached before 1948 or 1949.

The present revised budget calls for the spending of \$66,400,000,000 through next June 30. Of this, \$50,500,000,000 is for war and war associated spending.

If the new budget is fixed at \$50,000,000,000, continued deficit spending appears inevitable. Even under heavy wartime tax collections, the Treasury's highest net receipts were only \$46,000,000, collected in fiscal 1945. During the same twelve months, spending amounted to \$100,400,000,000.

CLASSIFIED ADS

LOST—One man's black shoe ice skate, size 8. Between Victor's Market and Fog St., Brookdale. Reward. Call GR 8538. 15c

LOST, strayed or stolen—Small bay mare with 3 white stocking feet, and large sorrel mare with blaze face. Boy owner is anxious to recover. Call GR 8548. Reward. 15c

FOR SALE — Man's pre-war leather house slippers, size 9½; practically new men's black oxfords, size 7½. Call evenings only. GR 8210. 15c

WATER WELL DRILLING—We drill new wells and deepen old ones. F.H.A. terms up to 36 months. No down payment required. Einar M. Thorsen, Rt. 7, Box 437, Tacoma. Phone GRAnite 8707 15p

ROOFING
ROOFS REPAIRED — New roofs applied. Johns Manville and Certain-tyed guaranteed roofing. Terms.
Mr. Fredrickson
Phone GR 7857 tfc

FOR SALE—Girl's Johnson figure shoe skates, size 3. Phone GR 8897. 15c

WANTED TO BUY — Good portable electric or treadle sewing machine. GR 8897. 15c

FOR SALE — Maple chest of drawers; two maple occasional tables; two phonographs; smoking stand; pottery figurines; doll cradles; Raggedy Ann dolls, shadow boxes, walnut coffee table, gifts for Christmas. Fern Hill Shop, 8239 South Park. Phone GA 7374. Open from 11 a. m. to 9 p. m. until Christmas. 15c

FOR SALE
Extracts, spices, soaps, washing powder, brushes, brooms and mops, toilet articles, stock and poultry tonic and several hundred other items.
L. R. OVERLAND
GR 8720 R. 13, Box 252-C

WANTED TO RENT—2 or 3 bedroom furnished house as soon as possible. Write Box 394, Parkland 12tf

FOR SALE — Roller canaries, beautiful singers, \$10 to \$15. Will hold until Christmas. Also cages. GR 8172. 15c

FOR SALE—16-in. old growth forest wood. Call GR 8838 or inquire at the first house west of Cotton Shingle mill, Spanaway. 15p

FOR SALE — Girl's ice skates, size 3, \$6.00; also one New Zealand white buck rabbit, \$2.00. GR 8537. 15c

ALTERATIONS and children's clothes made to order. GR 8120. 12tf

½ h. p. freezing unit, completely rebuilt. See at Spanaway Refrigeration Service, 7th and Mt. Highway. 15c

FOR SALE—9x12 pre-war wool rug and pad; 3-piece bedroom set including spring and mattress; child nursery chair; shoe fly; baby push cart and baby car seat. All in good condition. For information call GR 7285. 15c

VETERAN planning to attend PLC needs small house or apt. for wife and baby or would consider buying 2-bedroom home in or near Parkland. Call GR 8848. 15c

WILL take care of your children while you are shopping, etc. Daytime only. GR 8734. 15c

FOR SALE — Electric washer with wringer; good condition. GR 8077. 15c

SEPTIC tanks pumped, contents hauled away. Established business. Phone GR 8680. 13fc

FOR SALE—Coal-wood circulator, \$25; good condition. Cor. Park Ave. and Hendricks. xx

FOR SALE—Westwood Lang wood range with copper coils, \$50. Next door to Rohr Hardware Store, Spanaway. 14-15c

GRANT'S FUEL
Forest Wood, Dry Upland slab and cedar fence posts. Route 1, Box 99, Roy, Wash.

SUBSCRIBE to The Pointer

BETTER DIETS
The enrichment of bread and the increased use of milk are improving the diet in important vitamins and minerals.

Los Angeles. — The pilurined pink panties file at the police station is getting fatter. Betty Chamberlain has reported the theft of 10 pairs from her clothesline. That brought the week's total to 25.

BE A McNESS DEALER
Make more money—be your own boss—sell sealed medicines, extracts, soaps, food products, stock remedies, direct to farmers. Fine locality open near here—a great opportunity for a dependable person with a car. See me evenings or Saturday afternoon.
L. R. OVERLAND
R. 13, Box 252-C
GR 8720 Tacoma

**PARKLANDERS ON RT. 7
ASKED TO PICK UP CARDS**

Parkland residents who receive their mail from Tacoma rural routes are requested to call at the Parkland post office for second class mail. A large number of Christmas cards with 1½ cent stamps are accumulating. These cannot be forwarded.

This mail was addressed to the Parkland post office instead of rural routes. First class mail is being forwarded by the Parkland post office staff, but they cannot do so with the second class matter.

If present plans of the bureau of Reclamation are approved, more than 200,000 newly irrigated farms would be created in the 17 western states.

SERVING PRAIRIE FOLKS FOR OVER 25 YEARS

Johnson & Anderson

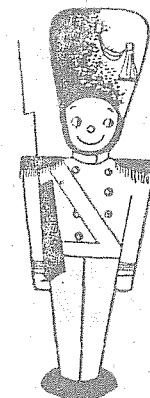
"On the Mountain Highway" Parkland, Washington

**LAST MINUTE
Christmas Shopping
SUGGESTIONS**

- Chickens
- Southworth Turkeys
- Pork, Beef and Lamb
- Lutefisk
- Fruit Cakes
- Nuts
- Candies
- Apples and Oranges
- Olives
- Cookies
- Jule Kake
- Colored Candles
- Pyrex Ware
- Mirrors
- Cookie Jars
- Shortening
- Pie and Cake Mixes

READ TACOMA PAPERS FOR YOUR
RED & WHITE WEEK-END SPECIALS

RED & WHITE



Best Wishes

For a Christmas Day filled with
happiness and a New Year
filled with blessings

Johnson's Service Sta.

Mr. and Mrs. B. M. Johnson

PARKLAND GR 8197

UNION GAS AND OILS

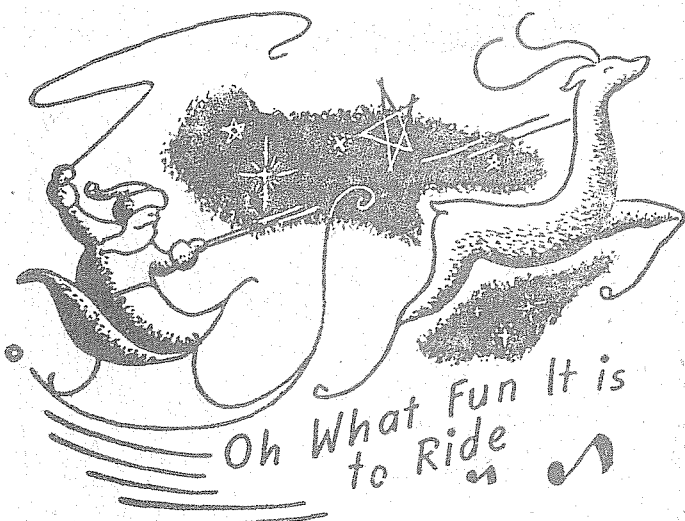
Season's Greetings

God's Message of Peace

Fear not . . .
I bring you good tidings . . .
For unto you is born
this day in the city of David
a Savior, which is Christ the Lord.
Glory to God in the highest;
and on earth peace,
good will toward men.

Luke 2:1-14

Pacific Lutheran College
Parkland, Washington



Oh What Fun It is
to Ride

MERRY CHRISTMAS
and
A HAPPY NEW YEAR

The Midland Hall

"WHERE THE CROWDS GO SATURDAY NITE"

John Smithlan, Publicity Chairman

Photographs

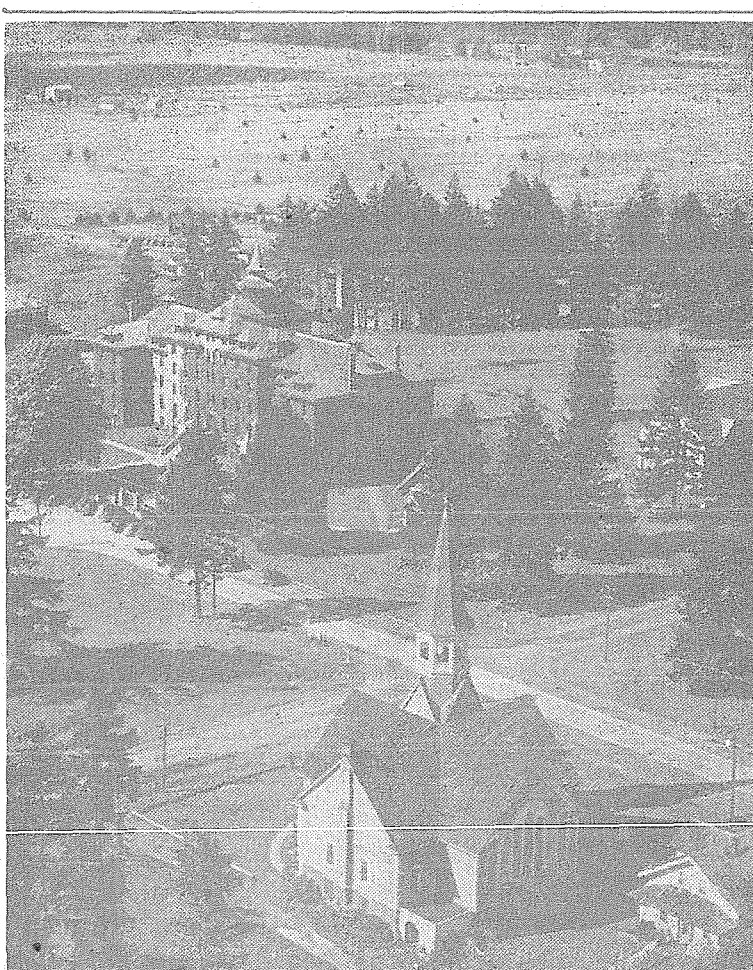
Dramatizing the
Individual Personality
Special Time and Patience
Given to Children

Doris Morrison

Your Residential Studio
GR 7516
SOUTH BROADWAY
AND SALES ROAD

**FLOYD AYERS
Oil Stoves**

GR 7300
Cleaned
Repaired
Installed



SPANAWAY LUMBER CO.

HARDWARE PAINTS BUILDING MATERIAL ROOFING

2x6 AND 2x8 WELL CRIBBING

We Sell Fuel

AL CULBERTSON
DON WILLIAMS

GR 8235

BOB'S PLACE

Airport Road—Yakima Ave.

"A first class job on all Automobile repairing."

General Auto Repairs

CAR ACCESSORIES

LET BOB DO YOUR JOB

24-HOUR FUEL OIL DELIVERY SERVICE



GR 7341

R. E. POCHEL

Your Local Distributor of General Petroleum Products At Brookdale on Mt. Hiway

GOLDEN WEST DAIRY

PASTEURIZED AND HOMOGENIZED MILK and CREAM

BUTTER MILK AND ORANGEADE

DELIVERY SERVICE Parkland, Midland, Summit, Collins and Harvard

M. STAUFFACHER

GRANITE 8793

BLUE RUSTIC

Excellent Meals For The Entire Family

MILK SHAKES ICE CREAM MALTS

OPEN UNTIL 10 P. M. Corner Mt. Road & Garfield

HILLSIDE DAIRY

PASTEURIZED AND RAW MILK

From Farm to You Today

SPANAWAY Rt. 1, Box 249

CAGE JACKETS ARE DONATED

Parkland and Midland Folks Donate Funds for Warm-up Suits for Parkland Girls' Team

Sports fans from Midland and Parkland have made it possible for the Parkland Bombers, South End representatives in the Tacoma woman's basketball league, to don attractive warm-up suits.

The Merchants of Midland donated enough cash for four suits and sports fans in Parkland raised enough money in less than a half a day to buy an additional ten.

The Bombers, coached by Supt. Morris Ford of Parkland schools, are all Prairie girls, coming from Parkland, Midland and Spanaway. The femmes, who purchased their own playing suits, needed warm-up suits and when the local business men learned this they came to the rescue and the price of the gear was raised in record time.

Although names of the Midland merchants contributing are unknown, a list of the Parkland donors is herewith published:

Mr. and Mrs. Roy Peterson, Beulah Breckenridge, Mrs. Gilbert Peterson, Esther Davis, Morris Ford, Frank G. Forest, Norma G. Peterson, M. A. Wutz, Ben Swanson, Parkland Beauty Shop, C. R. Marsh, Smith's Market, Johnson & Anderson, Parkland Bicycle Shop, Garfield Variety Store, Stanley Willis, Blue Kustic Cafe, B. M. Johnson Service Station, R. A. Clark Garage, V. R. Selle, Beitz Service Station, Harry Beitz Garage, J. E. Simerson, Jim Brown, M. Franck, Sterling Fleming, Gate's Grocery, Gladiator Service Station, Madsoe's Market, Lundberg Drug Company, and Paul Panter.

The Bureau of Reclamation has under investigation irrigation and power construction that would provide jobs at peak production for more than 250,000 men.

Gullberg's Greenhouses

One Block East of Parkland Public School

Spanaway Welding-Brazing PORTABLE EQUIPMENT WILL GO ANYWHERE

JOE NETZEL

PHONE GR 7317

Rt. 7, Box 531, Tacoma

1/2 Mile East Buck Garage

Your PARKLAND BARBER

C. R. MARSH

"Across From The Parkland Postoffice."

GARFIELD Variety Store

NU ENAMEL PAINTS

SPANAWAY'S NEW BARBER SHOP IN NEW GIBSON BLDG. HAIRCUTTING FOR THE WHOLE FAMILY

W. D. McLELLAN

Shaves, Shampoos, Massages

C. O. Lynn Co. MORTUARY

717 TACOMA AVE. Phone MAIN 7745

For Your Enjoyment Christmas Night

TACOMA CITY LIGHT

Presents

Pacific Lutheran College CHOIR OF THE WEST


in a special program of Christmas music

KVI - 7:30 p.m.
KTBI - 7:30 p.m.
KMO - 8:00 p.m.

December 25th

Shootin' A LINE WITH GARFIELD KIEL

PRAIRIE SPORTS



A Big Order for Santa

Santa Claus, trying to prove that he'll be plenty busy during Christmas Eve, sent us copies of letters that he received from South Enders. We're submitting just a few to show you that St. Nick has a big job ahead:

Dear Santa: Bring us a high school so we can see some athletic contests in the South End. We've been playing Santa Claus for Tacoma schools long enough by sending them our good athletes. Give us a chance to have and develop our own teams with our own material.—3,200 South End Sport Fans.

Dear St. Nick: I have just one request. Bring us an early spring with lots of sunshine so we can offer our members some ideal golfing weather.—Wally Carr, Brookdale Golf Club.

Dear Mr. Santa: You were so kind to me three years ago. I am sure that you'll remember sending me a couple of lads by the names of Tommervik and Harshman. How's about sending me a couple more touchdown twins for a Christmas present? You probably read in the Prairie Pointer that PLC is going back to bigtime football in 1946.—Cliff Olson, PLC Athletic Director.

Santa Claus: I have a son who plays basketball for Washington State College. Do you think you can arrange a game between W. S. C. and some Fort Lewis team so I can get a chance to see him play during the Christmas holidays?—B. M. Johnson, Parkland.

Dear Santa: I'll see to it that you see all of PLC's home games if you'll send us a couple of cagers stretching longer than six feet. Surely, in making your rounds you will find some tall youngsters who are eager to play ball for good old PLC. P. S.—I have only one man who measures over six feet.—Marv Harshman, PLC coach.

St. Nick: If you should run out of Christmas gifts, come by and see me. You probably heard that I have the best supply of dolls, toys and gifts in Pierce county.—Martin Gibbons, Spanaway.

Dear Santa Claus—Leave a few 200 pounders at Pullman for my friend, Phil Sorboe. Phil, one of the greatest grid coaches in the land, can teach the boys plenty of football, but he would like to have a few beetles when he starts his next class in September.—Harold Andersen.

Hi, Santa: How's about sending us a nice crowd to watch our first home game on January 9. We not only have a bunch of good-looking gals on our Parkland basketball club, but we have a gang that can really play ball.—Morris Ford, Bomber coach.

Assembly Program Given by Students

Parkland students were treated to an assembly program Friday afternoon, Dec. 14. The program which was put on by 8th graders, was announced by Bonnie Nicol and included the following numbers:

Flag Salute—Led by Dave Lincoln, student body president.

Vocal duet, Joann Huchttoen and Martha Presba, accompanied by Connie Hanson; play, "Flood and Fortune," Winton Victor, Hans Dahl, Bob Clemons, Carl Anderson, Marian Myers, Don Farrell, Ethel Girt, Myrna Farnham, Betty Turner, Dexter Washburn and Dave Lincoln.

Song, Bonnie Nicol and Marian Myers, accompanied by Connie Hanson, "Atcheson, Topeka and Santa Fe," Connie Hanson, Joann Huchttoen, June Wellan, Martha Presba, Marlene Ziegler and Bonnie Nicol, accompanied by Miss Dawley, Skit, Jerry Cater, Douglas Muir, George Greene, Dexter Washburn, Ronnie Colwell, Dick Rouner, Dale Frank and Alan Ahrens. Vocal numbers by the Girls' Ninette, directed by Miss Dawley.

COUNTRY CLUB MEETS SUNDAY

Annual Christmas Party Will be Held at Ostlund

Mr. and Mrs. Carl Ostlund are opening their home on Sunday afternoon for the annual Christmas party at which members of the Country Women's Club entertain their husbands. Guests will be welcomed by Mrs. William H. Chambers, president.

The traditional turkey dinner is planned by the committee, Mrs. Earl Rau, chairman, with Mrs. Morris Ford and Mrs. Ostlund assisting with the serving will be Misses Dorothy Spence, Earlene Summers and Marilyn Rosso. After the program, Santa will arrive to distribute gifts from the Christmas tree.

Reservations have been made by the following members: Mr. and Mrs. Josiah Duryea, Mr. and Mrs. Earl Rau, Mr. and Mrs. Jack Spence, Mr. and Mrs. Morris Ford, Mr. and Mrs. Harry Harrigan, Mr. and Mrs. Ralph Sherrill, Mr. and Mrs. Otto Siburg, Mr. and Mrs. Lee Howes, Mr. and Mrs. Edwin Wegner, Mr. and Mrs. and Mrs. William Fowler, Mr. and Mrs. Robert E. Lee, Mr. and Mrs. William Gray, Mr. and Mrs. William H. Chambers, Mr. and Mrs. Stanley Rosso, and Mrs. Amy Jensen, Mrs. Jeannette Rau and Mrs. Flora Holmes.

Soap Flakes Make Snow For Trimming

The final step in trimming the Christmas tree is frosting it with fluffy snow. There are a number of ways of doing this, but a simple and popular one uses ordinary soap flakes.

Any homemaker can produce all the snow she wants in a short time and it won't melt, either, if it is properly concocted.

Here's the way to make it: Use three or four cups of soap flakes to one cup of warm water. Beat in an electric beater or very vigorously with a hand beater, until it is very smooth and fluffy. Then spread it immediately over the branches of the tree, scattering it with the hands.

If you want the snow to sparkle, quickly spread on some artificial glistening snow. Use as much soap snow as you like.

When raindrops hit the ground running they pick up a load of top-soil. Slow them down to a walk by farming on the contour.

PLC CAGERS WALLOP EJC

LUTES RUN UP 45-22 OVER EVERETT JUNIOR COLLEGE IN GAME HERE

Coach Marv Harshman's Pacific Lutheran College cagers doubled the score on Everett Junior College's basketekers at the Parkland gym last Friday night by ringing up a 45-22 victory in their first collegiate tussle.

The Lutherans, playing a very smooth floor game, had considerable trouble hitting the basket. Time after time the Lutes would work the ball through Everett's defense and then fail to connect with set shots.

Ernie Perrault, sparkplug of the local ball club, paced the scorers for the night with five field goals and two gratis shots for a total of 12 points. Close behind were the two PLC forwards, Earl Nordeng and Leity Harkness, who both hit the meshes for 10 markers. Both Nordeng and Harkness played topnotch ball and their alert ball handling pulled the Lutherans out of a tight spot in the first few minutes of the second half.

The hustling Gladiators completely outplayed the Everett squad in all departments. An airtight PLC defense held the losers to ten points during the first half.

With the bleachers practically filled and a trio of cheer leaders for each team bringing out the yells, Parkland gym had all the color of pre-war athletic events. Approximately thirty students from Everett J. C. accompanied the team here to witness the contest.

The box score of the contest is as follows:

P. L. C. (45)	FG	FT	PF	TP
Nordeng, f	5	0	1	10
Harkness, f	5	0	0	10
Douglas, f	0	0	0	0
Kunschak, f	0	0	1	0
Mills, c	2	2	4	6
Peterson, c	0	0	0	0
Neal, g	2	1	2	5
Hauge, g	1	0	2	2
Jaech, g	0	0	0	0
Pihl, g	0	0	1	0
Perrault, g	5	2	4	12

Everett J. C. (22)	FG	FT	PF	TP
Gilpin, f	2	2	2	6
Gay, f	0	0	0	0
Gameliem, f	1	1	0	3
Mathis, c	1	0	1	2
Cooper, c	2	0	1	4
Bartlett, g	0	0	0	0
Buser, g	0	0	0	0
Kopplitz, g	1	0	3	2
Breralex, g	0	0	0	0
Bryiges, g	1	3	1	5

Officials: Larson and Barofsky.

Midland W. C. T. U. Will Meet Dec. 27

Members of the Midland W. C. T. U. will hold their annual Xmas party at the home of Mrs. Ella Burleson in Midland on Thursday, December 27, at 12:30. A potluck luncheon will be served.

After a short business meeting, a program of Yuletide music and Christmas readings will be featured. Exchanging of Christmas gifts by members of the Club will climax the afternoon's entertainment.

Mrs. Luella Engler, president of the Midland W.C.T.U. urges all members to be present to enjoy the final meeting of 1945.

SUBSCRIBE to The Pointer

Labour Nursing Home

Tule Lake Road

Parkland GR 8077

PLUMBING and SERVICE CALLS

Oil Burner Service All work guaranteed

E. V. SMITH

Rt. 10, Bx 319-A, Tacoma

GRanite 7301

Parkland FLORIST

Open from now until Christmas

Holly and Holly Wreaths Shipping Boxes

Poinsettias Corsages Potted Plants

Closed Saturdays

GRanite 8137 days

GRanite 8451 days and nights

Lundberg Drug Company

PACIFIC AVE. AND AIRPORT ROAD "The Rexall Store"

The Suburban Drug Company With Uptown Prices

COMPLETE PRESCRIPTION STOCK

Dispensing Prescriptions Is The MOST IMPORTANT PART of Our Business

Bring in Your Old Age Pension Prescriptions and Pierce County Medical Prescriptions

Burn Texaco Fuel Oil For More Heat

Daily Delivery in Prairie District

—CALL—

YOUR NEIGHBORHOOD FUEL AND FEED DEALER

CADDIGAN FUEL AND FEED CO.

Call GARland 1292

8630 South Tacoma Way

Regular Garbage Collection

Servicing Parkland Area And 96th Street District

PICKUPS EVERY FRIDAY

BUNCE FUEL CO. LA 3220

State Has Chance To Top "E" Quota

Faced with the problem of selling \$10,790,000 worth of "E" bonds in the 16 days remaining before the Victory Bond drive deadline December 31, Washington state Victory loan leaders today centered their emphasis on the slogan, "Remember—the best Christmas present is a Victory Bond."

According to Federal Reserve figures as of December 14 received by William C. H. Lewis, state executive manager war finance committee, Washington state has hit 73.2% of its \$40,000,000 "E" bond quota. King county "E" bond sales as of December 14 were \$8,312,808 or 58.8 per cent of its \$14,120,000 "E" quota. Spokane county "E" bond sales were \$2,419,988 or 62.05% of its \$3,900,000 "E" quota. Pierce county "E" sales, as of that date, were \$2,337,580 or 59.93% of its \$3,900,000 quota.

"Washington state citizens bought \$4,590,000 in 'E' bonds this past week," said Reno Odlin, state chairman war finance committee. "We are still very confident that we will make our 'E' quota. As Christmas approaches, the sale of 'E' bonds is gaining momentum. The extra Victory Bond promotion campaign that is being carried on throughout the state, and is scheduled until December 31, is bound to bring us the needed 'E' sales and quota results.

"Our aim is still to place Wash-

Fuel Oil Delivery

STANDARD BURNER OILS

REG. U.S. PAT. OFF.

Patronize Your Local Fuel Oil Dealer

V. R. SELLE

GRanite 8112

PARKLAND, WASH.

PARKLAND REALTY CO.

Notary Public

Fire Insurance Car Insurance

Real Estate

GRanite 7232

Office: Arneson Bldg., Garfield St., 150 ft. West of Mt. Hy.

General Contracting Detail Millwork Kitchen Cabinets a Specialty

WALTER H. GISIN

General Contracting and Millwork

M. E. PEDERSEN

Architectural Designer

Route 7, Box 1001 Tacoma, Washington GRanite 8162

Lundberg Drug Company

PACIFIC AVE. AND AIRPORT ROAD "The Rexall Store"

The Suburban Drug Company With Uptown Prices

COMPLETE PRESCRIPTION STOCK

Dispensing Prescriptions Is The MOST IMPORTANT PART of Our Business

Bring in Your Old Age Pension Prescriptions and Pierce County Medical Prescriptions

Burn Texaco Fuel Oil For More Heat

Daily Delivery in Prairie District

—CALL—

YOUR NEIGHBORHOOD FUEL AND FEED DEALER

CADDIGAN FUEL AND FEED CO.

Call GARland 1292

8630 South Tacoma Way

Gibbons Grocery
Spanaway GR 7512

Standby Asst. Baby Food, 24 in case \$1.68
 Satin Finish Christmas Candy, Limited Supply
Old Fashioned Chocolate Drops lb. bags
 Assorted Christmas Candies in Celophane bags!
1 lb. MJB Coffee33c
BEST LINE OF DOLLS AND TOYS
IN PIERCE COUNTY \$1.29 to \$7.50
Large Scooters \$9.00
FINEST SELECTION OF STUFFED ANIMALS
 Complete line of fruits, nuts and candy for the holidays!
A DEPOSIT WILL HOLD ANY ITEM FOR YOU!
If you can't find it anyplace else, try us!

Al Hull's Market

TURKEYS
45 Cents Per Pound

Season's Greetings to All!

For quality and quantity in all lines of meats visit our modern market!

Complete Beauty Service
PARKLAND Beauty Shop
 Across From the Postoffice
 GR 7460

George H. Woolhouse
PLUMBING & HEATING
 "OVER 40 YEARS EXPERIENCE"
 SPANAWAY GR 8894

WIRING LICENSED
 FIXTURES BONDED
Olson Electric
 O. M. OLSON
 Gr. 8983
 Rt. 1, Box 301, Spanaway

GARFIELD Variety Store
 CHRISTMAS TOYS NOTIONS
 PARKLAND GR 7758

WM. D. ALLISON
FURRIER
 Repairing . . . Restyling
 Cleaning . . . Storage
 GR 8879 Route 7, Box 486

Geter M. Stokes
 Plumbing Contracting
 General Repairing
 PHONE 162
 1705 Wood Ave., Sumner

To wish you every happiness for Christmas and the New Year

Clover Creek Market

NIEL THOMAS, owner

May the holiday season be rich in blessing

Anderson Lumber Company

Cemeteries Minutes Apart from

Lakewood Mortuary

Lakewood 2167

Local Items

Sgt. Alvin Johnson, son of Mr. and Mrs. Carl Johnson, Parkland, arrived home last Saturday to spend a short leave with his folks. He is at present stationed at Muskogee, Oklahoma, and leaves on Christmas day to return to his camp.

Charles Overaa, U. S. Navy, is expected to arrive home for the New Year holidays with relatives in Spanaway. Charles is chauffeur for the fleet commander at the San Diego, Calif., naval air station.

Friends of Mrs. Chris Turner of Spanaway will regret to hear that she has been seriously ill for the past several days.

Mr. and Mrs. S. Hinderlie and Mr. and Mrs. Ed Hinderlie, Parkland drove to Port Orchard last week-end to visit Mr. and Mrs. Ray Hinderlie and daughter, Arlene and son, Richard Ray, who was born on December 1.

The Carl Johnsons, members of the PLC staff, enjoyed a visit last week with Mr. and Mrs. Henry Helgeson of Fordville, North Dakota. Mrs. Johnson and Mrs. Helgeson are twin sisters.

Felix Wonzor, son of Charles A. Wonzor of Parkland, has been discharged after 26 months service with the army in France. He and Mrs. Wonzor are at present residing at 5431 So. Oakes, Tacoma.

Miss Van Peterson of Spokane spent the week-end visiting her parents, Postmaster and Mrs. Roy W. Peterson of Parkland. Other visitors in the Peterson home were Mrs. Peterson's sister, Mrs. Jessie M. Hallett of Glasgow, Montana, and Herman E. Hubbard of Silverton, Oregon. They were called here because of the serious illness of Mrs. Peterson's mother, Mrs. Chas. T. Hubbard of Tacoma.

Mrs. Mary Sailey of Spanaway returned from a two weeks trip to California where she visited a few of her former Spanaway friends.

A Christmas party was given by Alice Kjesbu at Brame Villa, Brookdale, Friday, Dec. 14, at 8:00 p. m. Guests were entertained with games and refreshments, followed by carol singing around the fireplace. Guests included: Jean Keller, Nellie Risa, Geraldine Olson, Faye Harrison, Margaret Anderson and Ruth Johnson.

Mr. and Mrs. Christian S. Goodman are visiting with his parents in St. Paul, Minn. They expect to return in about a month.

Midland

(Continued from page 1)

acts. Time, England in the Middle Ages. Place, In front of the Inn and the Cathedral.

Act. I, Christmas Eve.
 Act II, Christmas Day.

Characters:
 Watchman, Donald Peterson; Mary, Janice Fiske; Harold, Alfred Balmer; Ann, Marilyn Taylor; Margaret, EthelAnne Scafturion; The Good Dame, Marjorie Bastin; Elsbeth, Arlene Reichmuth; Thomas Moreley, Terry Piper; Tom, Darrell Schinnell; Sir Arthur Hertford, Donald Bowdish; Jester, Darrell Brittain; Father Christmas, Donald Piper; Good St. George, Jerry Hansler; The Crusader, Babe O'Neill; The Turk, Lloyd Hanson; The Fool, Ted Vaughan; The Fool's Keeper, Herbert Kennedy.

Morris Dancers: Nina Morris, Mary Slingsby, Leona Jones, Susan Ellertson, Audrey Marshall, Alice Dickson, Marilyn Siehl.
 Soloist: Ella Mae Hanson.
 Duet — Delores Mayfield and Ella Mae Hanson.

Boys' double quartet: Jerry Hansler, Darrell Brittain, Dale Roley, Don Larison, Clifford Mayfield, Dean Loucks, Babe O'Neill, Lloyd Hanson.

Mixed double quartet: Delores Mayfield, Beverly LaMar, Ella Mae Hanson, Virginia Christel, Clifford Mayfield, Dean Loucks, Babe O'Neill, Lloyd Hanson.

Songs by pupils of first and second grades: "Away in a Manger," "Who Followed the Light," "Love Came Down to Stay."

Orchestra
 Members of the Midland Junior High orchestra are: Ted Vaughan, D. Loucks, D. Clark, Victor Eshpeter, Charles Berry, Jack Soltis, Eugene Kennedy, Wayne Kennerly, Marjorie Bastin, Virginia Christel, Lloyd Hanson, Herbert Kennedy, Darrel Brittain, Bill Hagemeyer.

Flute Band
 Harold Snyder, Rosie Cater, Helen Earle, Mary Clara Dickson, Billy Squires, Joyce Veenhuizen, Joann Veenhuizen, Barbara Hanson, Beverly Morud, Joyce White, Richard Johnson, Leslie Horton, Norre LaMar, Billy Martin, Marilyn Crossman, Nita Steinbock, Lloyd Haavik, Beverly Corrigan, Eleanor Peterson, Joan Loucks, Doris Hubert, Clarence Millett, Edwin Tomlinson, Jay Olds, Philip Baum, Dick Hansen, Eddie Whitley, Dickie Ames, Donald Reed, Larry Bowlin, Mary Jo Jones.

Production Managers
 Stage crew and faculty members directing this production were:
 Glen Klapstein, Albert Townsend, Lelah Ames, Vivian Sterling, Mildred Baker, Virginia Ward, Ella Williams, Ruby Swanson, Ruby Moos, Ruth Rogers, Elizabeth Sullivan, Ervin Dammeld, David Turnbull, and Albert Reihis.

T/5 Vernon Vert and Miss Pauline Mindenhall were callers at the Ira Tisch home on Monday of this week. Vert is home from 28 months spent overseas where he took part in three campaigns. He is now discharged and has become a mail carrier in the McKinley Hill district of Tacoma.

J. F. Vert, father of Mrs. Ira Tisch, who has been confined to St. Joseph hospital for the past three months is so greatly improved that he is expected to be home by Christmas time.

Nancy Anderson, who is staying with Mr. and Mrs. Sam Brame of Brookdale, visited her mother in Everett, December 15 and 16.

Spanaway

(Continued from Page 1)

"Christmas Eve."
 Mrs. Brame—Tenette, "Jingle Bells and Good Night Ladies," Glee Club, "The First Noel," "O Come All Ye Faithful."
 Song by children of the Brick Building, "Up On the House Top."
 Mrs. Burton—Play "A Peaceful Christmas"; song, "Jolly Old Santa Claus."
 Mrs. Crippen—Choir: "The Friendly Beast," "Away in the Manger."
 Miss McKenzie—Dramatized choral reading, "Gift of Love."
 Kindergarten children—Shoemaker song and dance.
 Mrs. Rose and Miss Smith—Two songs "Christmas" and "Christmas Bells."
 Mrs. Cook and Mrs. Haagen—Play, "A Discouraged Worker."
 Song—Children of the new building, "White Christmas."
 Whole school sings "Silent Night."

Church Programs

(Continued from page 1)

Meukal, Earl Reinke, Helen Schultz and Jerry Leap.
 Confirmation—Albert Benjamin, Alfred Erickson, Joyce Roberts, Donald Schonemann, Ruth Schonemann, Donald Myron, Ralph Reinke, and Ardene Wood.

Spanaway Methodist
 The seventy-odd Sunday School pupils of the Spanaway Community Methodist Church will have their program, Sunday at 5:30 p. m. Every one is welcome to attend.

There are only two farms in Arlington County, Va. The farms have been converted into residential districts to take care of the population overflow from nearby Washington, D. C.

Church Programs

(Continued from page 1)

Meukal, Earl Reinke, Helen Schultz and Jerry Leap.
 Confirmation—Albert Benjamin, Alfred Erickson, Joyce Roberts, Donald Schonemann, Ruth Schonemann, Donald Myron, Ralph Reinke, and Ardene Wood.

Spanaway Methodist
 The seventy-odd Sunday School pupils of the Spanaway Community Methodist Church will have their program, Sunday at 5:30 p. m. Every one is welcome to attend.

There are only two farms in Arlington County, Va. The farms have been converted into residential districts to take care of the population overflow from nearby Washington, D. C.

SUBSCRIBE to The Pointer

Parkland Ev. Lutheran Church
 W. C. GULLIXSON, Pastor
 Children's Christmas Service Sunday at 7:30 p. m.
 Christmas Day Festival Service at 10:30 a. m.

SPANAWAY COMMUNITY METHODIST CHURCH
 Louis Martin, Pastor

God's Message of Peace

Fear not . . . I bring you good tidings . . . For unto you is born this day in the city of David a Savior, which is Christ the Lord. Glory to God in the highest; and on earth peace, good will toward men.

Luke 2:1-14

Spanaway

(Continued from Page 1)

"Christmas Eve."
 Mrs. Brame—Tenette, "Jingle Bells and Good Night Ladies," Glee Club, "The First Noel," "O Come All Ye Faithful."
 Song by children of the Brick Building, "Up On the House Top."
 Mrs. Burton—Play "A Peaceful Christmas"; song, "Jolly Old Santa Claus."
 Mrs. Crippen—Choir: "The Friendly Beast," "Away in the Manger."
 Miss McKenzie—Dramatized choral reading, "Gift of Love."
 Kindergarten children—Shoemaker song and dance.
 Mrs. Rose and Miss Smith—Two songs "Christmas" and "Christmas Bells."
 Mrs. Cook and Mrs. Haagen—Play, "A Discouraged Worker."
 Song—Children of the new building, "White Christmas."
 Whole school sings "Silent Night."

Church Programs

(Continued from page 1)

Meukal, Earl Reinke, Helen Schultz and Jerry Leap.
 Confirmation—Albert Benjamin, Alfred Erickson, Joyce Roberts, Donald Schonemann, Ruth Schonemann, Donald Myron, Ralph Reinke, and Ardene Wood.

Spanaway Methodist
 The seventy-odd Sunday School pupils of the Spanaway Community Methodist Church will have their program, Sunday at 5:30 p. m. Every one is welcome to attend.

There are only two farms in Arlington County, Va. The farms have been converted into residential districts to take care of the population overflow from nearby Washington, D. C.

SUBSCRIBE to The Pointer

Parkland Ev. Lutheran Church
 W. C. GULLIXSON, Pastor
 Children's Christmas Service Sunday at 7:30 p. m.
 Christmas Day Festival Service at 10:30 a. m.

SPANAWAY COMMUNITY METHODIST CHURCH
 Louis Martin, Pastor

God's Message of Peace

Fear not . . . I bring you good tidings . . . For unto you is born this day in the city of David a Savior, which is Christ the Lord. Glory to God in the highest; and on earth peace, good will toward men.

Luke 2:1-14

Spanaway

(Continued from Page 1)

"Christmas Eve."
 Mrs. Brame—Tenette, "Jingle Bells and Good Night Ladies," Glee Club, "The First Noel," "O Come All Ye Faithful."
 Song by children of the Brick Building, "Up On the House Top."
 Mrs. Burton—Play "A Peaceful Christmas"; song, "Jolly Old Santa Claus."
 Mrs. Crippen—Choir: "The Friendly Beast," "Away in the Manger."
 Miss McKenzie—Dramatized choral reading, "Gift of Love."
 Kindergarten children—Shoemaker song and dance.
 Mrs. Rose and Miss Smith—Two songs "Christmas" and "Christmas Bells."
 Mrs. Cook and Mrs. Haagen—Play, "A Discouraged Worker."
 Song—Children of the new building, "White Christmas."
 Whole school sings "Silent Night."

Merry Christmas to All

There's a host of good wishes behind this all-time greeting!

HERMAN'S Shurfine and Spanaway Meat Market
 GEORGE KING, Prop.

HERMAN'S Shurfine GROCERY

SPANAWAY GR 8213

Raisins, Thompson Seedless...3 lbs. 43c
 DEL MONTE
 Coffee, regular or drip.....1 lb. 31c
 DEL MONTE
 Coffe, regular or drip.....2 lbs. 59c
 Shurfine Coffee 1 lb. 29c
 Peaches, choice, No. 2 1/2 can25c
 Mixed Nuts1 lb. 49c

Spanaway's one-stop shopping center. Herman's Shurfine and Geo. King's market, at end of bus line, and next to Postoffice where local folks meet

SPANAWAY MEAT MARKET
 G. A. KING PHONE GRanite 8215

Pot Roast lb. 25c
 Beef Stew lb. 19c
 Large Loin Pork Chops lb. 33c
 Pork Sausage lb. 35c
 Sugar Cured Pickled Pork lb. 32c
 Sugar Cured Corned Beef.....lb. 23c
 Pure Lard 2 lbs. 39c

ORDER YOUR CHRISTMAS TURKEYS NOW!
 WE HAVE LUTEFISK

Pointer Classifieds Are Paying Dividends

A Blessed Christmas

May the coming year be filled with the very best for you, and may the Holiday Season be a bright one!

For Prosperity, Good Health and Happiness

SERVING PRAIRIE FOLKS FOR OVER 25 YEARS

Johnson & Anderson
 "On the Mountain Highway" Parkland, Wash.

RED & WHITE

Pre-Holiday SALE

Christmas Suggestions

Merry Christmas to All

for Holiday Selections

200 Dresses to choose from at these attractive low prices

\$12.95 DRESSES for \$8.95
 \$10.95 DRESSES for \$7.95

\$7.95 Cotton Print House Coats \$4.95
 \$14.95 Jersey House Coats . . . \$10.95
 \$6.29 Children's Chenille Robes \$4.19
 Sizes 2 to 6

\$4.95 GIRDLES small, medium, large . . . \$3.19

Parkland Dress Shop
 Mr. and Mrs. Sydney Madsoe