

Sec. 31.66 P.L.&R
U.S. Postage Paid
Parkland Branch
Tacoma, Wash.
Permit No. 9P

The TIMES JOURNAL

THURSDAY, AUGUST 15, 1957 • Volume 12, No. 49 PUBLISHED AT PARKLAND, WASH. LEnox 7-0223

Midland W.C.T.U.

A potluck picnic dinner will be served Tuesday, Aug. 20, weather permitting, in the yard of Mrs. August Elmquist, otherwise it will be in the house, at 12:30.

There will be special music by Mrs. Paul Anderson and the roll call will be answered by favorite scriptural verses.

Mrs. Jessie Siddall will have the prayers and devotionals.

The Midland group can claim the membership of two L.T.L. boys attending the camp for three days and winning some awards.

The election of officers will be the main item of the meeting and the president, Mrs. Gjuka will have several other features to bring before the group. Members and friends invited to attend.

Jack Kinkade, co-owner of the Lakewood Necchi-Elna Company, has bought an attractive new home for his family in the Lake-wood Fairway addition. He has long been associated with sales promotion of Necchi-Elna sewing machines.

Today's Laff

SUCCESSFUL WIFE . . . One that always lets her husband do as she pleases.

School Shoes by the thousands! Get 'em now while sizes are full.

We have boys shoes - Oxfords - Wedgies - Boots - Tennis Shoes, etc. . . . \$3.98 & up
Girls Flats - Saddles - Junior League Wedgies - Tennis - Ornaments, etc. \$2.98 & up
Mens Oxfords - Wedgies - Bush Boots - Desert Boots - Logger Boots - Linemens Boots - Calked Boots - Rubber Boots, Etc.

Also a full selection of fine quality rebuilt shoes and boots.

PAUL'S SHOES
Spanaway
Closed Sun. & Holidays only

SHOP & SAVE AT BROOKDALE LUMBER COMPANY

"The Handy-Mans Headquarters"

Remodeling Specials

Doors . . .
Slight Defect One Side
Mahogany Flush
All Sizes
\$4.25 to \$5.95

Used Doors
With Hinges
\$2.00 Ea.

Paneling . . .
1x8 Cedar
Select Grade
\$13.50
Per 100 Sq. Ft.
4x8 1/4 inch
Mahogany Panel
\$4.80 Ea.

BOYSEN
1c PAINT SALE
IS STILL ON
only a few days left!

Everything in
Plumbing &
Electrical Supplies
Pipe Cut - Threaded
BROOKDALE
LUMBER
COMPANY
LE 7-8669
136th & Pacific

Livestock Cause Of Auto Mishaps

A cow and a horse figured in two serious automobile accidents during the weekend.

On Thursday evening about 8:20 o'clock, Mr. and Mrs. Kenneth McAuley of Rt. 1, Box 214, Yelm, were driving on the Roy highway in their 1949 Nash coach when a cow appeared directly ahead of them and McAuley could not avoid hitting her. The car swerved and hit a bridge, throwing Mrs. McAuley out. In his effort to help his wife, MacAuley sprang from the car, leaving it jammed in gear, and it took off, ran 1000 feet further and ended in the brush, a total wreck.

The MacAuleys were taken by friends to St. Peters hospital in Olympia, suffering from bruises and lacerations; later returning to their home. The cow which caused the accident has not since been located.

Art McKellips, State Highway Patrol, investigated the accident.

On Sunday night a pick-up truck driven by Alfred Frappier of 617 South 19th, Tacoma, hit a horse on the Mountain Highway at South 175th St. near Spanaway. The truck was damaged about \$200 and Frappier was taken to a Tacoma hospital with minor injuries and later released. The horse, which belonged to Art Drexler and had strayed, was so badly hurt that it had to be destroyed. The accident was investigated by Pierce County Sheriff's deputies.

A third mishap, which occurred Sunday afternoon near the Parkland Junior Riding Club grounds on South 146th St., had a slight connection with horses since Marlene Anderson, 17, of 415 East 121st, might have been thinking of the Junior horse show earlier in the day when her car crashed head-on with that of Elmer C. Delaney Jr., 1402 North Anderson, Tacoma.

Though neither car was going much over 20 miles an hour, the impact did considerable damage to the vehicles and sent three people to Tacoma hospitals. Marlene suffered facial lacerations, bruises and injuries to an elbow; Delaney was not hurt but his two passengers sustained painful injuries. Nedra Smith, 1206 North Lawrence, lost several front teeth and suffered lacerations and possible skull fracture. Her mother, Mrs. Marilyn Smith, was hospitalized for possible fracture of the knees, foot, arm and shoulder. State Highway Patrol Officer Art McKellips investigated the accident.

Birthday Party

Colorful beachcomer party hats added gaiety to the 11th birthday party for Winnie Hawkins, daughter of Mr. and Mrs. L. Hawkins at 11612 South Yakima recently.

The beautiful pink frosted cake, baked and decorated by her mother, was served with ice cream, with party favors in frilly pink cups.

Attending the party were Rhonda Arena, Valerie Clarkston, Pattie Helder, Tony Bott, Dennis and David Opdahl, the honor guest and her two brothers Joaquin and Tony Hawkins.

Each child received a prize, also a grand prize (a cake) for one boy and one girl, Tony Bott and Rhonda Arena being the lucky ones. Winnie received beautiful gifts.

Drive Safely SAVE A LIFE

Professional Directory

Farmers Mutual Ins. Co.
Auto - Fire - Liability
J. J. GUNNS Agency
and **BARBER SHOP**
303 Ea. 176th St. LE 7-7757
2 Blocks East of Transformers, Spanaway

CLIFFORD M. KORSMO
Lutheran Brotherhood
Life Insurance
LEnox 7-5644

Easy Parking
LE 7-0253
Dryer
MORTUARY
TACOMA AND PACIFIC
PARKLAND

PLC Ambassadors to Sing Monday



SACRED CONCERT—Pictured above are the four young singers who will be heard Monday evening at Trinity Lutheran parish hall, left to right: James Brandt, Aberdeen, Wash., bass; John Cooley, Seattle, Wash., first tenor; Edgar Larson, Tacoma, Wash., second tenor; and David Knutson, Clarkston, Wash., baritone.

Now on its sixth annual summer-long tour, the Ambassador Quartet of Pacific Lutheran College will appear in concert Monday, Aug. 19, at 8:00 p.m. in the Trinity Lutheran parish house, 121st and Park avenue, Parkland.

Included in the program of sacred music will be 15 selections, including arrangements of familiar hymns, Church music classics and well known Spirituals. The public is invited; there will be no admission charge but a free will offering will be taken.

John Cooley, tenor, and David Knutson, clarinetist, dill alternate in solo roles.

In addition to their singing, the collegians will conduct opening devotions, and one of them will give a brief talk on Christian education.

On their current three-month tour the Quartet will give over 100 concerts in Washington, Idaho, Montana, Utah, California and Oregon.

Brandt and Cooley are music education majors. Larson will enter Luther Seminary, St. Paul, in September. Knutson, student body president-elect, is a pre-theology student.

Rummage Sale Volkswagen Club Plan Trip 25th

The Riverside Valley Grange No. 1047 will hold a rummage sale Friday and Saturday in the old book store across the street from the Liberty Theatre on Main street in Puyallup.

A large and varied selection of worthwhile merchandise will be available.

Truman Dawn on Jamboree Trip

Truman Dawn returned to Tacoma recently by train, accompanied by local Boy Scouts who had enjoyed the three-week excursion to the Fourth National of Scouts of America Jamboree held at Valley Forge, Pa. Forty-two countries were represented this year by Scouts and selected Scout leaders.

Truman as father of three boys—ages 10, 14, and 16—was right at home. As excited as any of the boys, Truman took plenty of singing material with him to keep the boys busy during the long train ride.

From the 150 Scouts under the Rainier council, the 40 selected were all 2nd class Scouts of 12 years of age. It is certainly quite an honor for Truman Dawn, advancement counselor for Troop 76 at Summit.

Health Department Issues Warning

Dr. C. R. Fahgher, Director of the Tacoma-Pierce County Health Department is warning Pierce County residents to be on guard for unlicensed persons contracting for septic tank cleaning or repairs.

Licensed septic tank cleaners may be identified by the large letters P.C.H.D. followed by their license number painted on both sides of the cab of their pump trucks. Septic tank cleaners must be bonded for the protection of the public before they are eligible for licensing by the Health Department.

Numerous complaints have been recently received by the Health Department and the Better Business Bureau in regard to huge overcharges and improper service by septic tank cleaners. Investigation revealed that this work was done by unlicensed itinerant cleaners. Charges, considerably above the going rate, have been made.

Any further information desired may be had by calling the Sanitation Division of the Tacoma-Pierce County Health Department, E.Roadway 2-9341.

Mt. Adams blueberries are now ripe for picking.

Cedar Mill Run
Wood up to 25"
PICKUP or TRAILER LOAD
U - Haul
50c
Split Cedar Fence Posts
37c ea. in lots of 300
43c ea. in lots of 100
LE 7-4080

Morton To Hold Loggers Jubilee August 17, 18

It's Jubilee time again at Morton, 60 miles south of Tacoma in Eastern Lewis county. The 15th annual Loggers Jubilee will be held Saturday and Sunday, with a colorful and thrill-packed program insuring action every minute.

The two big shows offer exciting contests which have attracted many of the All-American champions who will vie for prize money in hand-bucking, choker setting, log rolling, power saw bucking, hand falling, power saw falling and axe throwing. Robert N. Wright is this year's Jubilee manager.

A hearty loggers breakfast will be served from 8:00 a. m. till noon each day, after which the parade will tour the streets of Morton for nearly an hour.

The afternoon show is from 2:00 p. m. until 4:20 p. m. There will be dances both Friday and Saturday nights.

A rock and gem display is being held in connection with the Jubilee, the exhibits being staged by several enthusiastic rock clubs, including the Newaukum Rockhounds, the Packwood Prospectors, the Morton Rockologists and the Nisqually Rock Club. Many beautiful and interesting displays will be seen.

As in former years, neighboring communities will be represented by attractive floats and contest talent. It is a wonderful time for people to visit Morton and meet its progressive and hospitable people.

Local People Picked For Jury

Men and women residing in Times Journal territory who have been named by Pierce County Clerk Robert L. Dykeman for jury duty in September and October, to report in Superior Court Department 6 at 9:00 a.m. Sept. 9:

William L. Adams, 11219 East Leonard's Crossing; Cecilia J. Andrews, Rt. 3, Box 625, Puyallup; Floyd L. Austin, Tillicum; Mary V. Blomquist, Rt. 13, Box 38; Muriel H. Cambren, 131st and Pacific Ave.; Walter E. Challender, Rt. 3, Box 383, Puyallup; Marie Christopherson, 415 South 122nd.
Glenna Evenger, Rt. 3, Box 654, Tacoma; Ann K. Daniels, 702 East 91st; Rita June Davidson, 406 South 117th St.; Earl B. Gilman, 10614 East Grant; Eva Inderbitten, Rt. 1, Box 237, Spanaway; Frank Kusek, Eatonville.
Gene Lebert, Ashford; Gerald F. LeMarr, Rt. 3, Box 728-A, Tacoma; Gertrude Maes, Eatonville; Mary Jean Payne, 1002 Wheeler St., Parkland; Eleanor H. Quinn, 11504 A St.; Frances T. Raden, Rt. 3, Box 356, Puyallup; Ella M. Rostedt, 8201 South Park; James T. Scafturon, 802 South 116th.
Walter Schenck, Graham; Elmer M. Thorsen, 520 South 139th St.; Leif Thorvaldsen, Eatonville; Frank L. Trutman, East 138th and McKinley; Cecil C. Williams, Eatonville; Gerald Youngedyk, 401 South 129th St.; Frank Zerkle Jr., Rt. 7, Box 516, Tacoma.

Summit Firemen Making Canvass

Summit Volunteer Firemen report that they are still canvassing their fire district with fire phone stickers, home fire inspection sheets and tickets for the Firemen's Dance Aug. 31.

They wish to report a wonderful reception at the homes where they have called. They hope to cover the rest of the district within the next three weeks. Anyone wishing to contact them should call Ash Butler, LE 7-8209.

MAKE IT A RULE
to send your children
back to school
in clothes that sparkle
just like now!

PARKLAND CLEANERS
11004 Pacific Ave. LEnox 7-3221
North of the Bank Corner
24 HOUR SERVICE AT THE PLANT

BARGAIN BASKET TO SPONSOR NEW SERIES "FLYING SAUCER REPORTS"

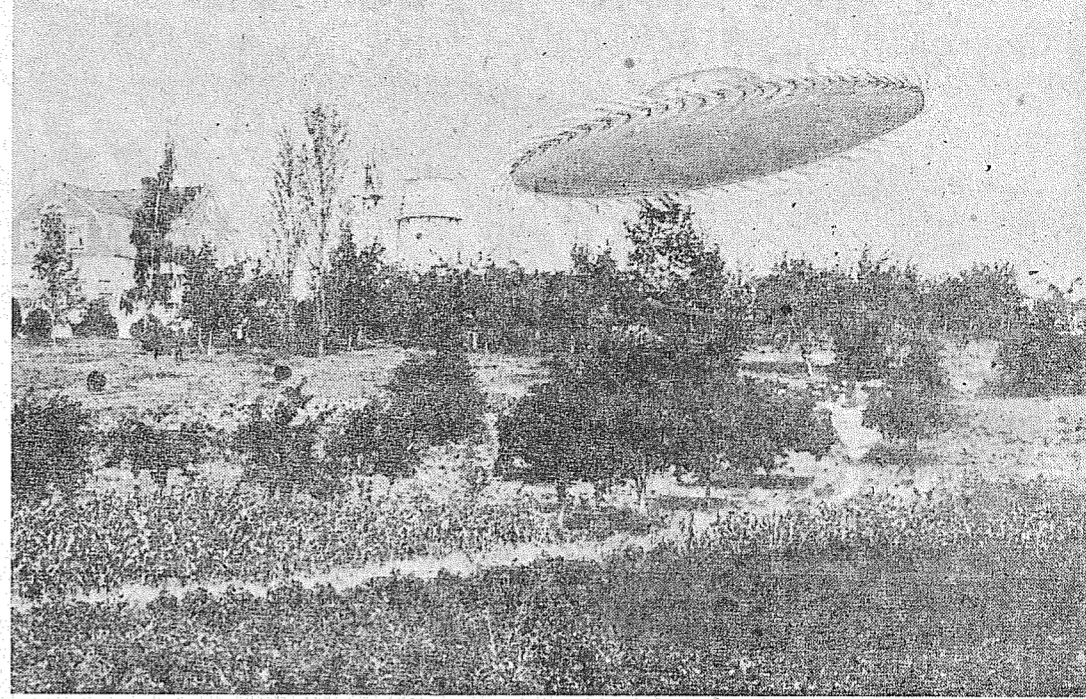


Photo by McKewen
FLYING SAUCERS ARE REAL? FLYING SAUCERS ARE A FIGMENT OF THE IMAGINATION? Regardless of which way your own thoughts lay, you will find the new weekly series, "FLYING SAUCER REPORTS", sponsored by the Bargain Basket, of great interest.

Mr. Nelson, owner of the Bargain Basket, realizing the great interest of the American public in the matter of U.F.O.s. (unidentified flying objects), feels that a series of this nature will greatly enlighten the residents of Pierce County. The articles you will read in this new series will be eye witness accounts from near and far, compiled through the efforts of the Aerial Phenomena Research Group whose home offices are in Seattle.

A recent A.P.R.G. release of 7/10/57 states . . . There is now sufficient information based on data compiled from eyewitness accounts that a high percentage of aerial phenomena such as those popularly described as unidentified flying objects are "intelligently controlled craft whose ports of origin are outside earth's atmosphere." This is the conclusion reached as the result of a study begun by Aerial Phenomena Research Group in Seattle, Washington on January 1, 1954 into the field of unidentified flying objects and related phenomena. Commenting on this study, National Director of Aerial Phenomena Research Group Robert J. Gribble said: "Although the accounts considered in this study did not contain scientific measurements of every sighting, it was possible to establish certain valid conclusions by the application of statistical methods in the treatment of the data. Analyzed and arranged, the data did show a marked pattern. On the basis of this marked pattern of the data, it is considered to be highly probable that many of the more than 3,000 accounts of unidentified flying objects examined in this study represent observations of technological developments outside the range of present day scientific knowledge. Therefore, it is highly probable that many of the unidentified flying objects considered in this study are "spacecraft from other planets."

Starting next week, share the experiences of the thousands of normal human beings who have actually had the opportunity to witness flying saucers in action.

Vandals Break In Forget-Me-Not

Unidentified vandals didn't forget a thing when they broke in the Forget Me Not Cafe, corner of Park Ave. and Airport Roads last Friday. The break-in and damage was reported to the Sheriff's office who has the case under investigation.

The entry occurred sometime between the hours of nine and eleven p. m., according to the proprietors, Mr. and Mrs. A. Bechard who have recently sold the cafe. At the time of the vandalism, the new owners had not yet taken possession.

The intruders racked up a messy but not very profitable record. Net score: Missing; four boxes of chocolates; 6 cartons of pop; several boxes of cigars; punch board prizes; candy bars; one RCA portable radio; and several lighters. To complete the job they bent the hands on the clock, pumped syrup from the fountain at random over the floor and serving area; tossed ketchup into the ice cream and lifted a dollars worth of pennies from the cash register.

Robert Moskal, Navy Electrician's mate third class, is now on the attack aircraft carrier USS Bon Homme Richard in the Western Pacific. He is the son of Mr. and Mrs. K. A. McKenzie, 167th St., Spanaway.

Turkey Dinner

The Ladies Aid and Guild of the Roy Community Congregational church are joining forces for a benefit turkey buffet dinner Friday, August 23, at 5:00 o'clock at the Odd Fellows hall at Roy.

Mrs. Charles Throssell and Mrs. George Lambertson are co-chairmen. The public is invited.

Miss Marilyn E. Olsen, daughter of Mr. and Mrs. Oscar M. Olsen of 615 South 119th St., is taking a four-weeks' officer training course at the WAC center at Ft. McClellan, Ala. On completion of the course, Miss Olsen may apply for a commission in the WAC during her senior year at the University of Texas.

Earl Mundell is among the naval reservists leaving this summer for two weeks' training at Floyd Bennett Field, N. Y. His reassignment committee, of which John home is at 1312 South 108th St. Newell is chairman.

Hunter Safety Class Crowded

The saturation point was reached last week in the Hunter Safety class being conducted at Spanaway school Thursday evening and no more entries will be accepted for the remaining sessions of the course, according to Art Hallgren, in charge of the project.

However a new course of four lesson periods will be announced shortly after school starts in September and anyone wishing to join may do so. The course is open to boys and girls from 11 to 17 years of age and offers training in the care and use of firearms and safety practices in hunting.

The Hunter Safety course is sponsored by the Spanaway Recreation Committee, of which John Newell is chairman.

FRIENDLY SERVICE SINCE 1908
Now With a 100
Car Free Parking
Lot right next
door.
PIPER FUNERAL HOME
PHONE Greenfield 2-3353 5436 SO. PUGET SOUND

\$50 Trade-In
ON ANY
Oil Stove

FOR A
NEW IMPROVED
Quaker
"Assured Comfort"
Oil Heater

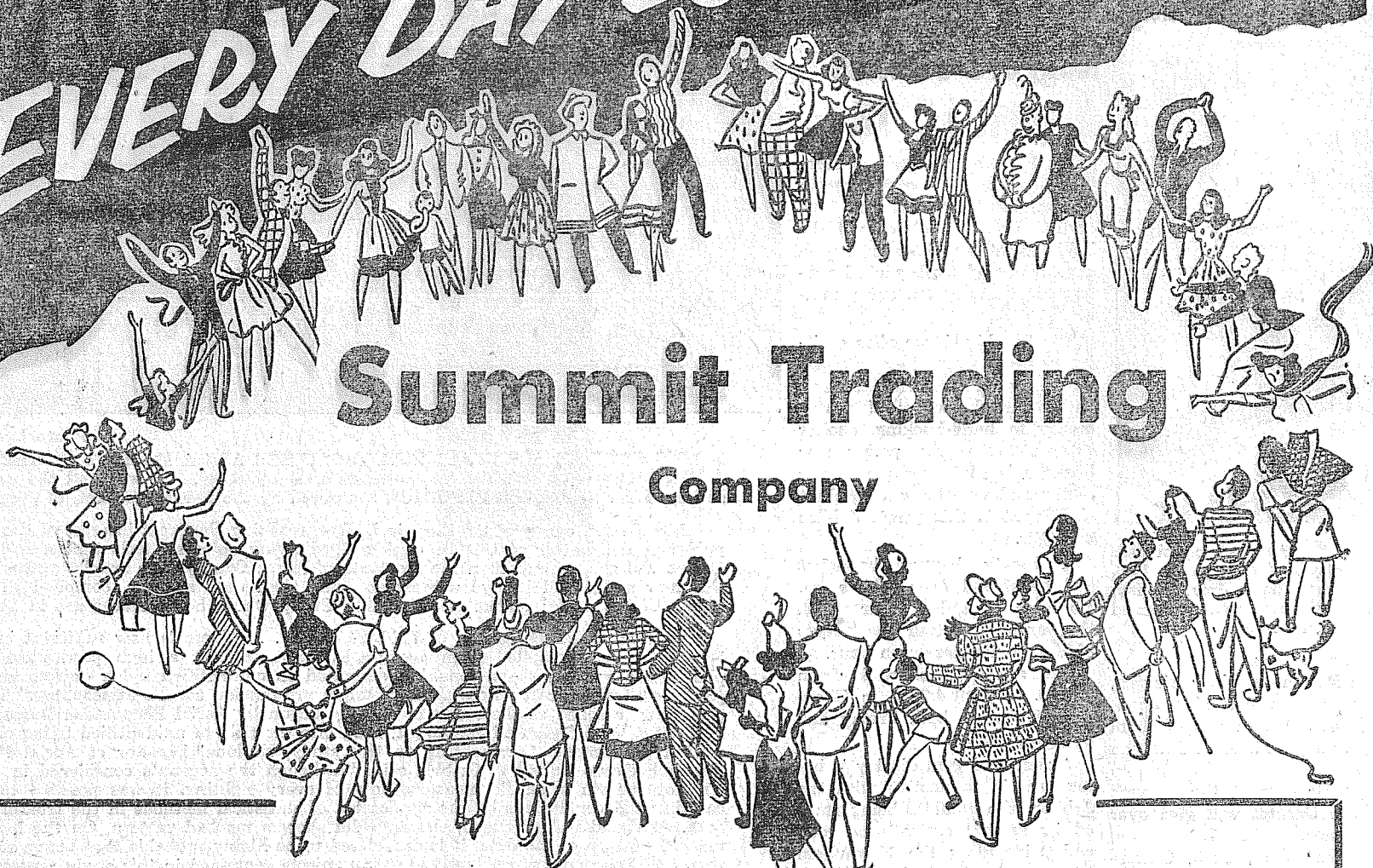
• Automatic Fan and Forced Air Draft
• Save Up To 1/3 On Fuel Costs.
MARV TOMMERVIK'S
Parkland Fuel Oil Serv.
120th & Pacific Avenue Phone LEnox 7-0256



PEOPLE'S CHOICE

for

EVERY DAY LOW PRICES



Summit Trading

Company

GOOD TENDER STEER RIB STEAKS Lb. **59^c**

GOOD STEER CUT FROM BOTTOM ROUND SWISS STEAKS Lb. **63^c**

OUR OWN DRY CURED **BACON** • LESS SHRINKAGE • FRESH SMOKED • EXCLUSIVE HERE

FRESH FROM GRAIN FED HOGS PORK CHOPS Lb. **63^c**

PURE GROUND BEEF 3 Lbs. **98^c**

CUSTOM CURING & SMOKING LOCKER BEEF CUT & WRAPPED

FRESH RENDERED PURE LARD Lb. **15^c**

OPEN EVERY NIGHT TILL P:00 P.M. EXCEPT SUNDAY

BACK-TO-SCHOOL WRANGLER JEANS

ALL SIZES PLUS LARGE ASSORTMENT OF OTHER SCHOOL WEAR

LARGE AA NEST FRESH EGGS Doz. **57^c**

STOKELY'S Tomato Juice 46 Oz. **25^c**

GOLDEN SHORTENING Fluffo 3-Lb. Tin **80^c**

SANITARY BULK PACK Ice Cream 1/2 Gal. **85^c**

LUXURY IN A CUP 2-LB. CAN \$1.85 Yuban Coffee . Lb. **93^c**

SUNSHINE KRISPY Crackers 2-Lb. Box **47^c**

GOLD MEDAL FLOUR 25-Lb. Bag \$ **2.10**

KRAFT Parkay Oleo . 2-Lbs. **49^c**

ABC RED ARROW Fig Bars 2-Lb. Pkg. **49^c**

SUMMIT SPECIAL COFFEE Lb. **79^c**

40 9-INCH PLATES Paper Plates . . Pkg. **49^c**

WHITE STAR - Chunk Style TUNA 1/2 Tins **27^c**

PACIFIC CIDER Vinegar Gal. **69^c**

CALIFORNIA Watermelons . . Lb. **2 1/2^c**

NETTED GEM - YAKIMA NO. 2 Potatoes 50-Lb. Bag **85^c**

Radishes & Gr. Onions. Three Bunches **10^c**

WIN
A FREE Hawaiian Vacation
IN THE C&H PURE CANE SUGAR CONTEST! PRIZES EVERY WEEK! GET ENTRY BLANKS HERE

VAN CAMP

CATSUP

14-Oz. Bottle **7/1^{\$}**

KRAFT

ORANGE JUICE

46-Oz. Tin **4/89^c**

SWANSON'S

TV Dinners

BEEF - TURKEY - CHICKEN

59^c

CHET'S

Meat Pies

BEEF - TURKEY - CHICKEN

4/85^c

Libby's Vienna 4-Oz. tin SAUSAGE 2/ **35^c**

Liptons 48-Bag TEA Pkg. **67^c**

Liquid Detergent 22-Oz. TREND Tin **53^c**

Large Bar IVORY 2/ **29^c**

STORE HOURS

9 A.M. TILL 9 P.M. DAILY EXCEPT SUNDAYS

(Large Paved Parking Lot)

SUMMIT

TRADING COMPANY

10409 Canyon Road - Tacoma LE 7-5848

No Sale To Dealers

We Reserve The Right To Limit Quantities

Lewis Meat Market

SMOKED PICNICS . . .	Pound	38c	SIRLOIN STEAK . . .	Pound	59c
GROUND ROUND . . .	Pound	49c	PORK SAUSAGE . . .	3-Pounds	98c
BEEF LIVER	Pound	25c	Shoulder RIB STEAK	Pound	45c
Lean GROUND BEEF	Pound	33c	SLICED BACON	Pound	53c
SAVE! For your freezer		25-Lbs.	By The Half For Your Freezer.	Pound	35c
BEEF		\$9.95	All Cuts Included		
* BEEF SLAUGHTERING - \$5.00 A HEAD *					
10903 CANYON ROAD AT SUMMIT VIEW					
Open: Tuesday thru Saturday, 9 a.m. Till 6 p.m.			Phone LEnox 7-8258		

Thursday, August 15, 1957
The TIMES - JOURNAL

Page 3 and Mrs. A. Kelly from Vancouver, B.C.

Local Teacher Gets Fellowship

Clifford McMillan of 10305 Canyon road returned home Friday from summer school in Syracuse, New York. Mr. McMillan was one of 50 teachers of physics and chemistry chosen from western states who were awarded

fellowships at Syracuse university by the General Electric company. In addition to a full course of graduate studies, the summer's activities included tours of many of the Company's plants to see applications of scientific principles in modern industry.

Tours were also made of several research plants for previews of things to come. He is a teacher in Franklin Pierce high school.

Nelson - Berne
Mr. and Mrs. Norman M. Nelson of 9903 East Pennsylvania avenue are announcing the marriage of their son Edward to Miss Barbara Berne of Savanna, Georgia, July 6. Edward is Airman 1st Class in the Air Force and is stationed at Hunter AFB, Savannah. He graduated from Central Avenue school and Puyallup high school and has been in the Air Force two years.

Bible School
Don't forget the Bible school being held in the Summit Methodist church will continue thru to Friday, Aug. 16. All children in the district are invited to attend from 9:00 to 11:30 a.m.

Visits, Outings
Mrs. Dowie and daughter Mary took a trip around the Loop to spend Mary's vacation, but were rained out and had to come home.

Mr. and Mrs. Alex Kelly spent their vacation in Rosland, B.C., attending the 50th wedding anniversary of her brother and wife, Mr. and Mrs. R. N. Jeffers. Recent guests at the Kelly home were his brother and wife, Mr.

A non-too-pleasant visitor of the Kellys was the recent electric storm, when lightning struck a big tree on their place and knocked out all the electricity in their home.

Rumor
News is going the rounds that there is a new pastor at Summit. This is not the Summit Methodist church, 104th and Canyon road, where the Rev. John Besant is now serving his third year as minister.

Reporter - Mrs. M. S. Rau, LE 7-8391.

Collins News

Mr. and Mrs. Ken Shafer and family have returned from a three-weeks trip to points in Montana, including Kalispell, Stevensville and Havre. Also Mrs. Shafer visited with a brother in Spokane whom she hadn't seen for 15 years. Verlyn Shafer stayed in Havre, Mont., to work during the harvest.

Visits, Trips
Mr. and Mrs. George Shandrow have as guests her niece and family, Mr. and Mrs. Orville Rock from Sacramento, Calif.

Linda Burgeson is in Portland, Ore., visiting her grandparents, Mr. and Mrs. Ray Butler.

Mr. and Mrs. Charles Moore and son have returned from a trip to Polson, Mont., where they visited with Mr. Moore's father. Mr. and Mrs. James Montgomery have returned from Reno, Nev., and Pocatello, Idaho. Reporter—Mrs. Harold Burgeson, LE 7-7640.

It is reported that the Senate rackets committee, headed by Senator McClellan, has received more than 50,000 letters charging misdeeds by labor union officials.

Woof! Meow! Chirp! Chain Store Age reports that production of pet foods is now a major industry. Our dogs and cats consumed \$275 million worth of these foods last year.

LIKE TO MEET THIS FELLOW OFTENER?



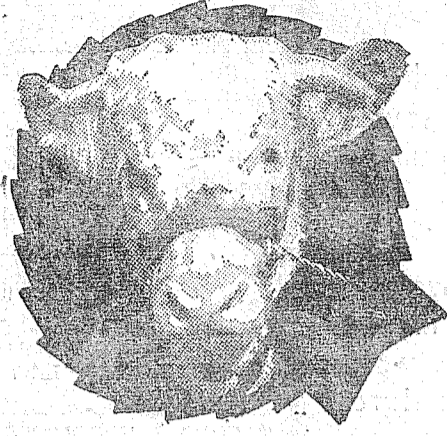
Let us show you how to pile up the profits with Fisher's Quality Feeds

Summit Feed

Home of Fishers Quality Feeds
Knapp & Canyon Roads
Next to Summit Trading Co.
LE 7-7136 We Deliver

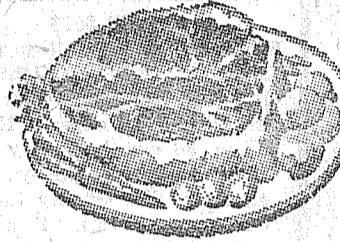
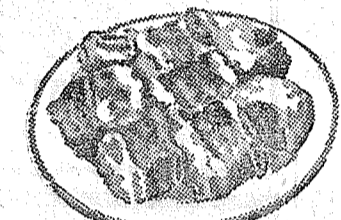
HAVE YOU BEEN BEEFING ABOUT HIGH PRICES LATELY?
THEN VISIT McDANIELS GIGANTIC PRICE SLASHING

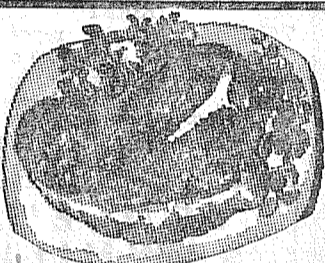
BEEF OR TUNITY



SALE

NOT "CHEAP" LOW GRADE BEEF, BUT BEEF FROM HIGH QUALITY YOUNG GRAIN FED STEERS. WE'RE NOT MAKING ANY MONEY, BUT WE'RE HAVING A LOT OF FUN!

	POT ROAST	Lb.	29c
FRESH BEEF LIVER	Lb.	33c	
			Short Ribs Lb. 19c

	T-BONE STEAK	Lb.	69c
--	---------------------	-----	------------

	RIB STEAK	Lb.	49c
--	------------------	-----	------------

	ROUND STEAK	Lb.	59c
--	--------------------	-----	------------

	Porterhouse STEAK	Lb.	55c
--	--------------------------	-----	------------

	GROUND BEEF	PURE LEAN	3 Lbs.	\$1.00
--	--------------------	-----------	--------	---------------

FRESH PORK HEARTS	Lb.	29c
--------------------------	-----	------------

JAMES HENRY NO. 1 GRADE WEINERS	Lb.	47c
--	-----	------------

Large AA Fresh EGGS	Doz.	57c
----------------------------	------	------------

Our Eggs Are Received Fresh Daily From One Local Farm

Kraft American - Swiss or SWISS CHEESE	Lb.	43c
---	-----	------------

Send in label, get a jar free.	6-Oz. Jar	
NESCAFE		\$1.19

S and W BAKED BEANS	28-Oz. Tin	4/\$1.00
----------------------------	------------	-----------------

M.J.B. COFFEE	Lb.	95c
----------------------	-----	------------

Sperry PANCAKE FLOUR	10-Lb. Bag	98c
-----------------------------	------------	------------

3-Lb. Can CRISCO		89c
-------------------------	--	------------

Sunshine CRACKERS	1-Lb.	25c
--------------------------	-------	------------

No. 2 Yakima POTATOES	50-Lb. Bag	95c
------------------------------	------------	------------

FANCY DRY ONIONS	10-Lbs.	39c
-------------------------	---------	------------

Fancy GREEN PEPPERS	Lb.	10c
----------------------------	-----	------------

Thick Meated Marblehead SQUASH	Lb.	3c
---------------------------------------	-----	-----------

Plywood Finished Lumber Hardware - Paints Plumbing Supplies Save At

Summit Lumber & Hardware Co.
5303 East 112th LE 7-4555
Open 8 a.m. Till 6 p.m.

SCHOOL SUPPLIES

Complete Stock
Prescriptions Carefully Prepared

McAuley Summit Drugs
Airport & Canyon Roads
LEnox 7-0668

- Will Swap -

HARDWARE - PAINT - PLUMBING and ELECTRICAL SUPPLIES for HAND TOOLS - POWER TOOLS - POWER MOWERS - GUNS - ETC.

MIDLAND HARDWARE

8502 PORTLAND AVENUE (OPEN SUNDAYS)

Work Shoes

Durable - Expert Workmanship
BACK TO SCHOOL SHOES
For Boys and Girls
Complete Line of Styles and Sizes

Tennis Shoes Complete Shoe Repair Service
For Sports and Athletic Wear

At **HAROLD'S SHOE SERVICE**
Airport & Canyon Roads Summit

PEACHES HALES AND ELBERTAS RIPE AND READY FOR CANNING

Tomatoes LUSCIOUS YAKIMA PRODUCTS. IDEAL FOR YOUR CANNING & EATING

Green Beans LOCAL FRESH Delicious!

Pickling Cucumbers PICKED FRESH DAILY!

MELONS - Yakima - CANTALOUPES FULL LINE OF FRUITS AND PRODUCE

Yakima Boys Fruit Stand

23rd & River Road - Near Clarks Creek Bridge
BRoadway 2-6071 Open 'Til 9:30 P.M.

KRAFT
All Purpose Oil
Or
KRAFT
MIRACLE WHIP
Your Choice
Quarts
49c

Mc DANIELS

AIRPORT & CANYON R OA

The Home of The Low Price

Store Hours: 9:00 Till 9:00 - Sundays 9:00 Till 7:00

Lots Of Free Parking Space





"CROMPTON"
SUPERIOR

BACK to SCHOOL

Corduroy - Plaid
Permanent Pleats

CORDS

Sizes 4 To 12 **\$1.98 to \$3.98**

DOUBLE KNEE
WHIPCORD PANTS
Sanforized, Washable

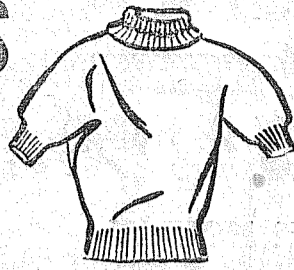
Sizes 3 To 12 **\$3.19**

Sweaters

Girls Slipover
and Cardigans

100% Dupont Orlon

Sizes 4 to 14 **\$2.98 & \$4.29**



"FRUIT OF THE LOOM" S-T-R-E-T-C-H SOX

Lanolized - Sizes 4 to 11

SPECIAL **39c & 49c**

BOYS "SUN PLAY"

T SHIRTS

Knit Combed Yarn



Sizes 4 To 16

89c

Short and Long Sleeves

To **\$1.98**

SKIRTS

Sizes 7 to 14

SPECIAL **\$3.49**



NEW STOCK OF SCHOOL SUPPLIES
ARRIVING DAILY

SHOP-ETTE VARIETY & DEPT. STORE

134TH AND PACIFIC AVENUE (Next To Big Bear Store)



BIG BEAR HAS THE BEST VALUES



Yakima Grown TOMATOES

Firm vine ripened & full flavored tomatoes. The season's finest at a very low price. Shop Big Bear now and save!

16-LB. CRATE

ROMAINE LETTUCE

Crisp large heads — adds flavor to salads!

GREEN PEPPERS

California wonder variety, large and thick.

WATERMELON

Washington grown, crisp sugar sweet melons. A top buy!

PER POUND

85

Per Head **5**

Per Lb. **9**

2

The values are better and the savings are bigger when you shop at Big Bear. And they're in all departments---not just a few hot specials, but every item in your shopping cart is a real buy!

OCOMA'S FROZEN DINNERS

Your choice of Beef or Turkey at this money-saving price!

PER PACKAGE

49

C & H BRAND PURE CANE SUGAR

Highest quality, pure Hawaiian cane sugar; finely granulated and quick-dissolving!

25-POUND BAG

2.39

HORMEL'S HAMS

READY TO EAT
Deliciously tender and juicy, lean hams; 10 to 12 lb. avg., whole or shank half.

POUND

57

FRESH SALMON

The very finest, fresh-caught salmon; tender and rich in flavor!

Center Cut Sliced lb. 45c

35¢

GROUND BEEF

Pure Lean, Made

FRESH

HOURLY

\$1.00

4 LBS.

BEST FOODS MAYONNAISE

Each For Only

49

America's largest selling mayonnaise; made from freshly broken, whole eggs and finest in texture and flavor. A money-saving-special!



CAMPBELL'S TOMATO SOUP

Per Can

10

The very finest---smooth and rich in flavor; delicious as a soup, for sauce or cooking. Stock up now and save at Big Bear!

GOLD MEDAL BISQUICK

Quick 'n easy; serve a fresh Peach or frozen Strawberry shortcake tonight!

Large 40-Oz. Pkg. For

35

Snowflake CRACKERS

NABISCO—Extra fresh and flavorful, crispy soda crackers; salted just right. They're economical and a real appetizer for snacks or with meals.

2-POUND BOX FOR

49¢

LIBBY'S FRUIT COCKTAIL

No. 2 1/2 Can For

29¢

A luscious mixture of five three-ripened fruits. Each 34c

Pacific Avenue at 133rd. Prices thru Saturday. Right to Limit.



BIG BEAR

WHERE BETTER FOODS COST LESS!

PICTSWEET FRESH-FROZEN STRAWBERRIES

Tempting, large red-ripe berries; frozen fresh at their peak of flavor. A real taste treat! Each package, 15c.

2 29

10-Oz. Pkgs. For Only

WALLER ROAD Guests Feted in Family Reunion

Spending a week's vacation in Tacoma visiting relatives and old time friends was Norman Gustafson, accompanied by his daughter Nancy, of Salinas, Calif. Mr.

Gustafson is Mrs. Verne Fogle's brother.

Last Thursday evening a family get-together was held at the Fogle home, catching Brother Norm up on the comings and goings of the family.

Joining the group was a brother-in-law and sister, Mr. and Mrs. Leo Heather, Fred, Judy and Hal, and Mr. and Mrs. Leonard Heather; brothers, Kenneth Baker and Mr. and Mrs. Frank Baker; their father, A. E. Gustafson, all of Tacoma; Mr. and Mrs. Douglas Fogle, Mr. and Mrs. Ronald Fogle and Connie, Mr. and Mrs. L. J. McMahill and Rocky and Christy, Mr. and Mrs. Leo Bassett (Bill Rhodes and Jim Evans.

During the pleasant evening, movies and colored slides were enjoyed. Refreshments were served at a late hour.

Garden Club

The Waller Road Garden club meeting has been changed to Aug. 29 due to the Waller Road Fair dates. At this meeting officers for the coming year will be

Senator Goldwater believes that high tax rates are actually a major source of inflation, because they are "a limiting factor on personal and business savings, and thus result in excessive pressure on the banking system for capital which should have come from current income."

Medical inquiries into the possible deleterious effect of cigarettes on health don't seem to have hurt sales. This year, it is forecast, cigarette consumption will top the former all-time record of 394,100,000,000 established in 1952.

Thomas Edison's first lamp bulb burned 40 hours. A replica of that bulb was recently switched on in a laboratory—and it is expected to burn for 100 years.

installed and final plans made for the Community Fair.

On Furlough

Ron Ferch, on two-weeks furlough from the U. S. Army, stationed at Fairbanks, Alaska, has been spending it with his parents, Mr. and Mrs. Alven Ferch of 5319 Vickery road.

4-H Picnic

The Waller Road 4-H Boys held their annual picnic at Wapato park Aug. 6. Accompanying the boys were their leaders, Mrs. Rudolph Geise and Mrs. James Larson; also two mothers, Mrs. Peter Hulscher and Mrs. Ray Williams. The afternoon was spent in fishing, playing baseball and various other games.

Grange

Grangers! Attend the Aug. 16 meeting at 8:00 p.m. Due to the Waller Road Fair, Sept. 6 and 7, there will be no Sept. 6 meeting. Reporter — Mrs. Verne Fogle,

ANOTHER MAMMOTH MEAT SALE AT PARKLAND PIGGLY WIGGLY!

Swift's Fryers FRESH WHOLE FULLY DRAWN Lb. **39¢**

GROUND FRESH HOURLY GROUND BEEF 3 Lbs. **95c**

IDEAL FOR BROILING - SIRLOIN Or RIB STEAKS Lb. **59c**

WASH. CO-OP. CUT-UP STEWING CHICKENS Lb. **33c**

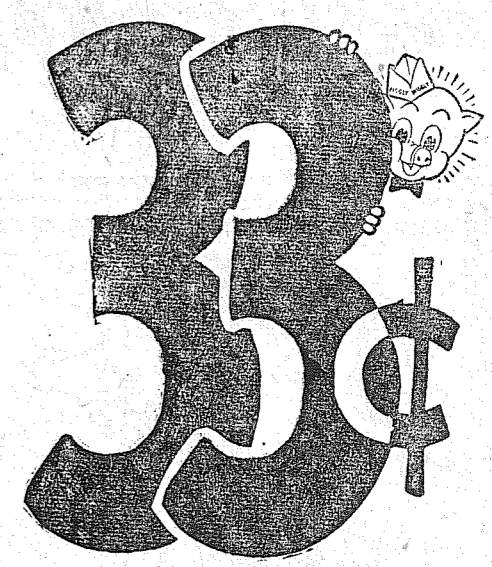
AN ECONOMICAL ROAST RUMP ROAST Lb. **59c**

TENDER AND JUICY SIRLOIN TIP ROAST Lb. **69c**

ROUND STEAK OR T-BONE STEAKS . . Lb. **69c**

Pot Roast

Blade or 7-Bone



OPEN 9 A.M. TO 11 P.M. EVERY DAY OF THE WEEK

We Treat all TV Troubles!

BIXBY TV-RADIO

12503 WALLER ROAD
CALL LENOX 7-8309

My Mother . . .

Knows how to save money on we kids shoes. She takes 'em to Art's for fixin'. They last!

ART'S SHOES AND REPAIRING

Garfield Street Opposite P.O.

Look At These Specials!
Now Is The Time To Do Exterior Painting

OUTSIDE WHITE PAINT
Reg. \$6.25 Gallon
\$4.49
SPECIAL

1¢ SALE!
Glidden Rockspar Varnish 1st Qt. \$2.35 - 2nd Qt. 1c
Superior Ultra-White Gloss Enamel Reg. \$2.80 - 2nd Qt. 1c

Frye's Lakewood Hardware
9627 Gravelly Lake Drive S.W.
JUniper 7-8722

Special Close-Out On Odds and Ends In **TREASURE TONE PAINTS**
Save now while They are Available

JOHNSON DRUGS

(WALGREEN AGENCY)

a NEW KIND of deodorant

ban lotion deodorant rolls on

More Effective Than Creams!
Easier To Apply Than Sprays!

ban rolls on with revolving marble applicator

- checks perspiration - stops odor 24 hours
- no drip - no waste
- won't stain clothes
- safe for normal skin

98¢ plus tax

Deodorant - Antiperspirant - Pleasing lotion

all rolled into one - that's ban

*In a recent survey against both the leading cream and spray deodorants, 7 out of 10 prefer BAN.

V-7 VITALIS
Greaseless Hair Grooming Discovery

Special

1 - 53c
And
1 - 29c
BOTH FOR **58c**
You Save 24c

New medical **ANTI-DANDRUFF** formula . . .

Theradan T.M.

- CLEARS UP SEVEREST DANDRUFF WITH JUST 3 APPLICATIONS!
- KEEPS SCALP FREE FROM DANDRUFF 1 TO 4 MONTHS!

Not a tonic - not a shampoo

\$2.00

SUMMER GOOD BUYS
BARBECUE TOOLS 1/3 OFF!

Reg. \$3.69 Hamburger Broiler \$2.46
Reg. \$1.89 Steak Broilers \$1.26
Reg. \$1.89 Hamburger Broilers \$1.26
Reg. \$1.19 Long Forks 79c
Reg. \$1.19 Long Fry Turners 79c
Reg. 36c Extension Forks 26c
Reg. 49c Weiner Roasters 33c

2 FOR 1 GLASSWARE SALE!

10c Glasses Two for 10c
2 For 25c Sherbets Four for 25c

\$1.00 Summer Jewelry for 59c
\$3.19 Picnic Jugs for \$2.13

SUNNYDALE MARGARINE
5 1-lb. cartons

99¢

WALLA WALLA
Cream Style or Whole Kernel

CORN
8 No. 303 Cans

\$1.00

GRADE "A" LARGE EGGS
DOZEN

49¢

OLYMPIC Dill Pickles
1/2 Gallon

49c

SWANSDOWN CAKE MIXES
White - Chocolate
Yellow - Butterscotch

4/89c

GOODEE POTATO CHIPS
6-Oz. Package

29c

Tomatoes

3-Lb. Basket **29c**
16-Lb. Crate **89c**

Red **GRAPES** Lb. **10c**

U. S. No. 2 **POTATOES** 50-Lb. Bag **89c**

TURKEY or BEEF DINNERS OCOMA EACH . . . **63c**

MEAT PIES OCOMA - Chicken Turkey - Beef . . 8-Oz. **2/49c**

Drumsticks OCOMA 12-OZ. PKG. . . . **63c**

THIGHS . . . OCOMA 12-OZ. PKG. . **63c**

GIZZARDS OCOMA 16-OZ. PKG. . . . **49c**

Manning's BAKERY

Orange Crunch Rolls **3/33c**

Regular 85c Now Special
Variety of Square 1-Layer Cake . 79c

Devils' Food with nut ludge icing - White with English Toffee and Lemon with Orange Butter Icing. Special Regular 59c **53c**

Danish Almond Coffee Cake . . 53c

WIN
A FREE Hawaiian Vacation

IN THE C-11H PURE CANE SUGAR CONTEST! PRIZES EVERY WEEK GET ENTRY BLANKS HERE

CH cane sugar

10-Lb. Bag **89c**

PIGGLY WIGGLY
The Original SELF-SERVICE

PACIFIC at GARFIELD IN PARKLAND

Prices Effective August 15 - 16 - 17
We Reserve The Right To Limit

PRESCRIPTIONS FILLED CAREFULLY - PROMPTLY

Store Open Daily 8 A.M. To 10 P.M. Sundays 12 to 8 P.M.

Spanaway And South Prairie Play For Eastern Championship Saturday

The TIMES JOURNAL

SECOND SECTION

THURSDAY, AUGUST 15, 1957

Page 7

PUBLISHED AT PARKLAND, WASH.

LEnox 7-0223

ALONG THE TRAIL

With
Larry
Kirkwood



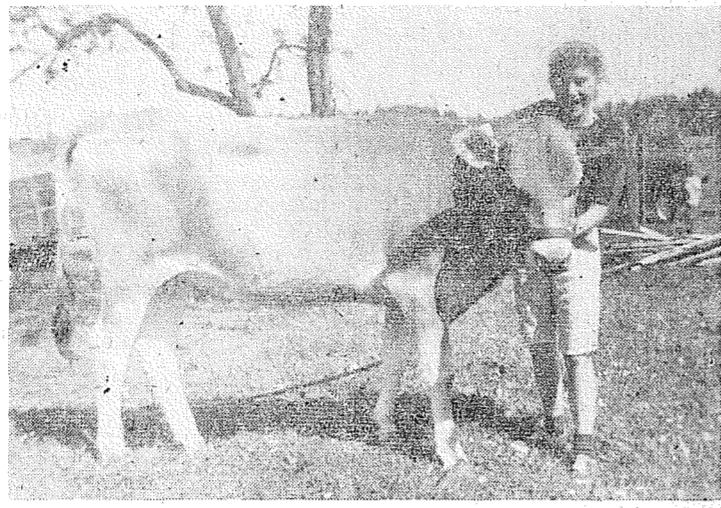
The Parkland Juniors managed to squeeze their show in between the rain drops Sunday. Although it did shower a little, a good time was had by all. High

point trophy for the day went to Arlene Lofgren with Jackie Mains getting reserve trophy.

Tex Dowling has been gathering ribbons all summer on his Morgan, Sunshine's Mischief. At the Morgan show in Wenatchee recently he really hit the jackpot. In the open show he won 2nd in western pleasure class and 4th in stock horse reining. In the all Morgan show he won 1st in stock horse reining, 3rd in model gelding, 2nd in western pleasure and 4th in trail horse class. Pretty good, huh? In fact, we think that it's terrific.

We hear that a horse belonging to Art Drexler was killed Sunday night when several of the horses got out of the pasture and wandered onto the highway. Any horses that you might hap-

Showing at Sumner Fair



PROUD 4-H'er—Glenna Haaland, 5514 East 112th St., poses with her sleek Jersey yearling heifer Tinker Bell which she is showing this week at the Pierce County Junior Fair at Sumner. Glenna is a member of the Summit Stock Raisers 4-H club.

pen to see running loose should be reported to the sheriff's office immediately. It might save someone from losing a valuable horse.

The mountain ride for the Parkland horsemen last weekend was called off because of rain. Perhaps they can find a nice weekend at some later date. The Tacoma Lariettes are planning a mountain ride this coming weekend. We hope they have better luck with the weather.

This coming weekend, August 17 and 18, is the rodeo at Rainier. This is always a wild and woolly affair, and should prove entertaining.

Along the trail we saw Pat Delaney out chasing his horse that he brought over from Yakima. . . . Marlene Anderson in a car accident that almost broke up the Parkland show. . . . Bob Kirkwood from California visiting his folks. . . . Worthy Hecht judging the Parkland show, pinch hitting for Bob Steele who was injured when a horse fell with him.

Send your news items to Larry's Mt. View Cleaners, 11903 Pacific Avenue, LE 7-3261.

Standings

Final standings in the Boys' Baseball Leagues follow —

SENIOR			
	W	L	Pct.
Lakewood A's	10	0	1.000
Bays' Club	8	2	.800
Bethel	5	4	.555
Optimist	4	5	.444
OK All Stars	4	5	.444
UP Boosters	4	5	.444
Bethlehem B'rhood	1	8	.111
Spans	0	7	.000

JUNIOR			
	W	L	Pct.
6th Ave. Colts	10	0	1.000
Franklin Pierce	7	3	.700
So. Tacoma	7	3	.700
Fern Hill	6	3	.667
Lakers	5	3	.625
Beleens	6	4	.600
UP Boosters	5	5	.500
Vaughans	6	3	.633
Stanley's	3	7	.300
Early Yukons	1	9	.111
Manitou	0	10	.000

Bantam South			
	W	L	Pct.
Rich's Wolves	10	0	1.000
Boys' Club	9	1	.900
Burns Boys	8	2	.800
Tac. Ave. Merchants	7	3	.700
UP Boosters	5	5	.500
Midland	5	5	.500
SEB CConnors	4	6	.400
Cleaners	3	7	.300
Moose No. 1	3	7	.300
Moose No. 2	1	9	.100
McLaughlin's	0	10	.000

FRANKLIN PIERCE			
	W	L	Pct.
Midland Mites	9	0	1.000
Tommerviks	8	1	.889
Keller's	7	2	.775
Midland Midgits	5	4	.556
Taylor	4	4	.500
Pochels	4	5	.444
Greco	3	6	.333
Collins	2	6	.250
Wings	2	7	.222

GLASS HOME SERVICE
OUR SPECIALTY
Also Commercial Installations
DEAN'S GLASS
13021 Pacific LE 7-5661

VAUGHAN'S VALUES

Outside WHITE PAINT	Per Gal. \$1.98
45-Pound ROOFING	Per Roll \$2.99
Chrome CABINET PULLS	Each .20
3 1/2 x 3 1/2 Dull Brass DOOR HINGES	Pair .57
Black SCREEN DOOR GRILLS	Each 1.25

Vaughan's
PACIFIC AVENUE LUMBER COMPANY
84th & Pacific Avenue GR 4-9515

MORTON'S 15TH ANNUAL Loggers Jubilee

SATURDAY & SUNDAY **AUG. 17-18** SHOW STARTS 2 P.M. DAILY

13 THRILL PACKED CONTESTS
For The All American Championships

Contest Events
Splicing - Chopping - High Climbing - Tree Topping
Bulldozing - Trailer Backing
Hand Bucking - Choker Setting
Log Rolling - Power Saw
Bucking - Hand Falling
Power Saw Falling and Axe Throwing

BACK TO SCHOOL

Helen Harper - Joan Marie

Sweaters 3.98 to 12.95

NEW HELANCA BLEND — ORLON — WOOL & BULKIES

Stitch Down **PLEAT SKIRTS \$11.95 to \$16.95**

SLIM SKIRTS \$5.95 to \$14.95

REVERSIBLE SKIRTS \$11.95 to \$21.95

Ship 'N Shore & Graff **BLOUSES \$2.98 to \$4.98**

Diane's APPAREL
(In The Big Bear Shopping Center)
134th & Pacific Ave. LEnox 7-4309

RECCHI-ELNA Sewing Machines

FREE Home Trials & Sewing Lessons

Rentals and service on all makes of machines. Many used reconditioned machines at low prices. Easy terms, liberal trade-in allowances.

Lakewood **RECCHI-ELNA CO.**
Lakewood Center JU 8-2331

FLETT DAIRY

FARM FRESH HOMOGENIZED AND PASTEURIZED MILK AND CREAM ICE CREAM

Phone GR 2-3301

General Sheet Metal Work

Special Attention to Special Equipment

RAU MFG. CO.
LEnox 7-7372

Spanaway downed Edgewood 6-5 in 10 innings in a Valley League quarter-final playoff game Sunday at the South End Boys Club field.

In the other quarter-final game, St. Paul and Tacoma squeaked by Nalley's 4-3 in 12 innings.

Spanaway plays South Prairie Saturday at one o'clock at Cheney Field in a semi-final game which will determine the Eastern Division champion.

St. Paul and Tacoma will play Stanley's in Saturday's second game starting at 3:30 p. m.

Bob Brewer went all the way for Spanaway and scored the winning run on Don Anderle's error in the last half of the 10th inning.

Brewer fanned only one batter and gave up 12 hits, but he did not allow a base on balls which undoubtedly saved the day for Spanaway.

Edgewood jumped off to an early lead on Fred Minnitti's two-run double in the third inning.

Don Tavern's double, an error and Dick Hausch's sacrifice opened the Spanaway scoring in the fifth.

Edgewood scored an unearned run in the top of the sixth to make it 3-1, but Spanaway tied the score in the last half of that frame.

Ray Brammer was safe on Miller's error and singles by Jim Olson, Tavern and Brewer produced two runs and knocked starter Wayne Slatzer from the mound in favor of Dick Foran.

Two more Edgewood runs in the eighth made it 5-3 and Foran had not yet allowed a hit.

Brewer started the ninth by walking. Hansch singled to left and Darrell Billings, batting for Wally Jones sacrificed.

Don Jacobson hit a roller to Miller and both runners scored when he failed to come up with the ball.

Ray Brammer singled, Buzz Eley fanned and Jim Olson was intentionally walked to fill the bases.

Bob Howard forced Brammer

Pirates 0 9 .000

BETHEL
Midgits

Kapowsin 5 0 1.000

Span. Merchants 4 1 .800

Span. Firemen 3 2 .600

Elk Plain 2 3 .400

Benston Grangers 1 4 .200

Roy 0 5 .000

Pee Wee
Span. Auctioneers 4 1 .800

Wilkins Packers 3 2 .600

Span. Hawks 3 2 .600

Elk Plain 3 2 .600

Kapowsin 2 3 .400

Roy 0 5 .000

to end the threat.

Brewer retired the side in order in the 10th and Tavern flied out to start the home half.

Brewer singled up the middle and Foran ran into control trouble and walked Hansch and Billings to fill the bases.

Bob Milton came out of left field to pitch to Jacobson. Jake hit another roller to the right side, this time to Anderle, who booted it, letting the winning run score.

Vertin Koenen was the winner in St. Paul's victory over Nalley's. It was the third St. Paul's had beaten the Tangmen this year.

Losers Bob Sonneman hit Gary Barrett in the 12th inning and then wild pitched him home with the winning run in St. Paul's 4-3 win.

Spanaway now faces South Prairie Saturday at Cheney field. The two teams have each won a game from the other this year and a real good contest is expected.

The short score:
St. Paul & Tac. 000 000 111, 001
Nalley's 100 000 101 000

Coleman, Koenen (10) and Robbins; Michaelson, Sonneman (12) and Chilton.

Box score of the Spanaway-Edgewood game:

EDGEWOOD	AB	R	H	PO	A
Anderle, 2b	5	1	2	3	3
Minnitti, ss	4	0	2	3	0
Platt, cf-1b	5	0	1	0	0
Miller, 1b	5	0	2	10	0
Johnson, c	5	0	1	7	2
Laviola, 3b	5	2	0	1	1
Sutton, lf-cf	5	0	1	0	1
Mitton, rf-cf-lf-p	5	1	2	2	0
Shatzer, p	2	1	1	0	0
Foran, p-lf	3	0	1	1	3
TOTALS	44	5	12	28	9

SPANAWAY	AB	R	H	PO	A
Hansch, cf	3	1	2	2	0
Olson, 2b	3	0	0	4	3
Jacobson, lf	6	0	1	1	0
Brammer, 1b	5	1	1	1	2
Eley, rf	5	0	1	2	0
Olson, ss	3	1	1	5	2
Howard, 3b	5	0	0	2	4
Tavern, c	5	1	2	1	0
Brewer, p	4	2	2	0	5
A-Billings, 2b	0	0	0	0	0
TOTALS	39	6	10	30	15

*One out when winning run scored

A-Sacrificed for Jones in 9th

EDGEWOOD 002 001 020 0-5

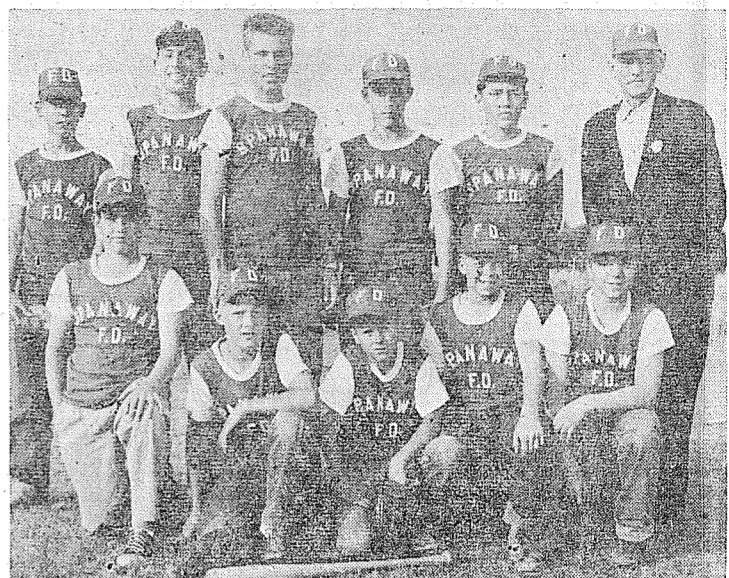
SPANAWAY 000 012 002 1-6

E-Anderle, Miller 2, Mitton, Jones 3, rammer, Olson 2 RBI-Minnitti 2, Mitton, Hansch, Jacobson, Tavern, Brewer 2B-Minnitti, Hansch, Tavern 3B-Eley SH-Anderle, Minnitti, Billings SF-

Hansch DP-Jones to Olson Left-Edgewood 11, Spanaway 14 BB-

Shatzer 2, Foran 5 SO-Shatzer 5, Foran 3, Brewer 1 HO-Shatzer in 5 2/3, Foran 3 in 3 2/3, Brewer, 12 in 10 R-ER-Shatzer 3-1, Foran 3-2, Brewer 5-2 PB-Tavern L-Foran W-Brewer U-Morrone and Minnitti T-2-52.

Spanaway Firemen



SPANAWAY FIREMEN—Front row: Bobby Durbin, Don Wood, Doug Wood, Marlin Demme, Frank Lucas. Back row: Bobby Greenhouse, Harry Colbeck, Bill Bailey, Earnest Treadway, Gary Hart, Arthur Hart, Coach. Charles Liley and Tim McGinnis were absent. Photo by McKeven

MAKE THIS YOUR HEADQUARTERS FOR GUNS

RIFLES SHOTGUNS BUY NOW

ONLY **10% DOWN** UP TO 15 MONTHS TO PAY

ON ALL WINCHESTER MODELS

Use Our Lay-Away Club Plan On Other Makes

So. End Plumbing & Hardware
Near Roy "Y" Spanaway LEnox 7-4100

Adolph's Richfield Service

FAVORITE SPORT MEMOS

Just happened to look it up and find that in 1937 the U of W went into a series with Idaho with the fantastic height average of six-feet--what a change in size of basketball players twenty years has made . . .

Going on a trip? Don't take a chance with your life with bad tires. We have a complete line of GOODYEAR TIRES, TUBES, AND ACCESSORIES be safe buy now

Adolph's Richfield Service
603 South 112th Tacoma, Wash.

Paradise Bowl

OPEN DAILY 10:00 A. M.

OPENINGS FOR WINTER LEAGUES AVAILABLE

FREE BOWLING CLASSES FOR WOMEN

10707 Pacific Avenue LEnox 7-6012

RAINIER RODEO

And **DANCE**

SATURDAY & SUNDAY, AUG. 17 - 18

SATURDAY DANCING 9:30 - 2 a.m.

SUNDAY RODEO STARTS 1:30 p.m.

Rainier, Washington

The GENERAL ELECTRIC Corner

"Buy The Best For Less"

Open Every Night 'Til 9 p.m. - - - Saturday 'Til 6 p.m.

WEIR'S
8419 PORTLAND AVE. LE 7-5650

Tacomans to WARC Meeting

At least eight members of the Tacoma Chapter of the Washington Association for Retarded Children will attend the 1957 annual convention of the state association, to be held in Wenatchee August 22-24, according to an announcement by Richard Winter, Chapter president.

Themes of the convention will be "Children Limited: Make Them a Part of the World, Not Apart from It". More than 200 parents and friends of the mentally retarded are expected to take part, including those from this area. The Washington Association is the oldest state group of its kind in the United States, having been founded in 1936, and

the Tacoma Chapter is one of 18 affiliated chapters.

Governor Albert D. Rosellini will address the convention, at the luncheon Friday noon, August 23. His topic will be "The Future for Washington State Institutions."

The W.A.R.C. members attending from this area will include: State President and Mrs. Ed Riviere, 4117 North 29th; Tacoma Chapter President and Mrs. Richard Winter, 13224 South C; Master Sergeant and Mrs. Clarence Lee, McChord Field, and Mr. and Mrs. Don L. Burbank, 412 North 4th Street. All of these people are taking active part in different phases of the convention.

In addition to Governor Rosellini, the principal speakers and other convention participants will include Dr. Arthur Westwell, superintendent of the Montana State Training School and past president of the American Association on Mental Deficiency; Mrs. Stuart W. Chapman of Ed-

CLOVER CREEK NEWS Shower Honors Mrs. Alvin Late

Mrs. J. Nutt entertained with a blessed event shower honoring Mrs. Alvin Late (Nellie Rowe) last Friday evening at her home. A beautifully decorated shower cake was featured at the coffee hour and many lovely gifts were presented to the young mother-to-be.

Present were Mesdames Late Sr., Margaret Rowe, Ruth Rowe, Larson, Blanche Greenlaw, Ed Betts, Omer Roland, Mark Stone, Galma Osborn, Reynem, the hostess and the honor guest.

Women's Club
The Clover Creek Women's club will meet today (Thursday) at the home of Mrs. Carl Lightbody. Mrs. Frank Plaurde was hostess for the Aug. 1 meeting.

Visitors
Lt. Col. and Mrs. William J. Gannon from Travis Air Force Base, Calif., are visiting their family on Military road. They

came to take home their two daughters, Linda and Lee, who have been spending the summer with their grandparents, Mr. and Mrs. Gannon.

Outings
Mr. and Mrs. Jim Eustace and two boys spent a whole week at the beaches where they had a lot of fun fishing, clamming and swimming.

Mrs. Ethel Hansen, Mrs. F. B. Busby and Mrs. Ethel Wetherell spent a week at the beach and report they had quite a time for themselves.

Grange
The Clover Creek Grange met with the Pierce County Pomona Grange Aug. 10 at the Clover Creek Grange hall.

Church Notes
The Missionary group of Clover Creek Baptist church met Tuesday; this month's project is for the missionary schools of Brazil. Saturday the young people are having a work day; they are making a missionary map.

Reporter—Mrs. William Dalby, LE 7-0163.

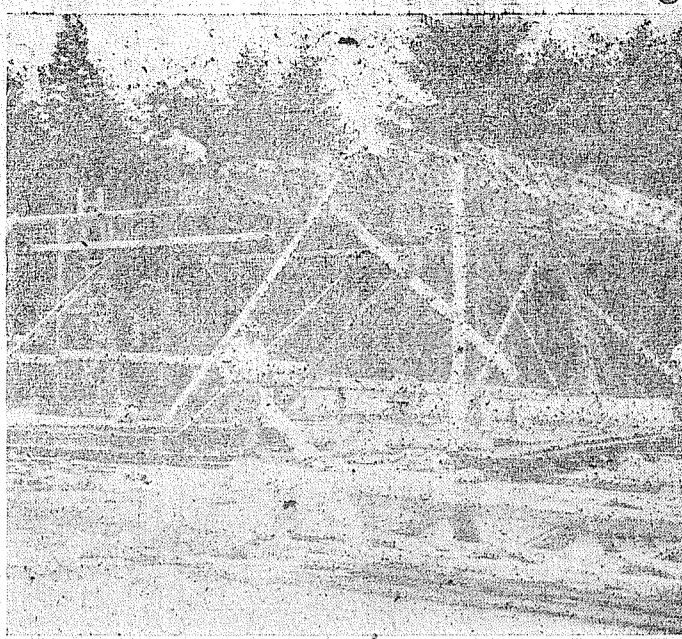
County Agent News

By George Purcell
A boy on crutches training his Hereford heifer is Bob Merkle, 4-H boy of Midland, in preparation for the County Junior Fair at Sumner. Bob was hit by an automobile last winter and suffered a fractured hip which still makes the use of crutches necessary. He is leading his animal twice daily and grooming her twice daily.

By Ernest Hopp
This is the week of the Pierce County Junior Fair, held at the Sumner High School Spartan field. Dates are August 15 to 17 inclusive. Those who have watched the Fair develop can scarcely believe their eyes when they see its present size.

Back in 1949—the first year in Sumner—a few temporary sheds along the fences housed all the livestock. We are still using temporary sheds, but the number and size has greatly increased. Exhibits include all types of livestock, dairy, poultry, rabbits, garden, flowers, forestry and home economics. Last year there

Summit Youth Center Rising



COMMUNITY PROJECT—The Youth Center planned for the Summit area is now beginning to take form on the Central Avenue elementary school grounds. On a recent Saturday morning a group of men gathered and were soon busy nailing trusses raised in place by a wrecker operated by John Hall. Members of the work party were E. R. Bauer, Dick Rave, Arlo Buchanan, Harris Adkins, Joe Hofto, Mr. Whitehead, Allen Smith, Bob Rave, Henry Olmstead, John Hall, Charles Ashlock, Bill Rave, Dick Slencamp and Truman Dawn. Potluck dinner was brought in by the Summit ladies and served by Margaret Hofto; real tasty eating, the men reported. The work parties will be continued until the building is finished.

There were over 2000 exhibits. The Pierce County Junior Fair is a class B fair, under the Washington State Fair Association. Any organized youth group in Pierce County is eligible to participate. At present 4-H & FFA members have requested membership.

The Fair is managed by a group of volunteers which compose the Board of Directors. These directors represent the 4-H and FFA groups and also service and civic organizations in Pierce County. Any Pierce County organization interested in promoting youth activities in the county may apply for membership to the board of directors. Board of directors meetings are held monthly throughout the year.

A demonstration contest is a very important part of the fair activities. While presenting demonstrations, club members teach recommended practices in agriculture and home economics. They also gain valuable experience speaking before groups. The public is invited to watch the demonstrations which are held the first two days of the fair, Thursday and Friday, from 9:00 a. m. till 3:00 p. m.

Another special attraction is evening programs. These begin at 7:30 p. m. each of the three nights. Admission is free although booster buttons may be purchased to help support the fair.

A new attraction this year is

INTERURBAN AUTO FREIGHT INC.

3 Trips Daily
To Parkland, Spanaway
Summit, Midland
GENERAL FREIGHT
MA 7-4121

SCHOOL TIME IS BICYCLE TIME

EXPERT REPAIRS - PARTS & ACCESSORIES
Home of New "Schwinn" Bicycles
PARKLAND CYCLE & KEY
11021 PACIFIC AVENUE LEnox 7-5772

That's Right



It has come to our ears that **LAURINAT'S APPAREL** is all set with Back-To-School Fashions. Wonderful Lay-A-Way Plan they have, too!

409 Garfield Parkland

ELK PLAIN Myron Kreidlers Entertain Guests

Mr. and Mrs. Myron Kreidler were very pleasantly surprised recently by the arrival of Mrs. Kreidler's uncle and aunt, Mr. and Mrs. Emil Kletecka of Kenosha, Wis., who stopped here en route to Canada. They are making a complete loop trip of the United States.

Mrs. Kletecka is an accomplished pianist and voice teacher and she entertained relatives and guests Saturday evening with many piano selections, both classic and popular. Everyone gathered about the piano for an old fashioned song fest as a finale to a wonderful evening.

Guests were Mr. and Mrs. Richard Maca of Bellevue, Mr. and Mrs. Claude Blythe of Clover Creek, Mrs. Ruth Sheen of Seattle, Mr. and Mrs. S. Lang-twait of Graham, Cliff Martin of Clear Lake and Clyde Spangler of Midland.

Since Mrs. Kreidler had lived with her aunt as a child and hadn't seen her in 12 years, she was extremely happy to spend the week showing the Kleteckas Tacoma, the Mountain and all local spots of interest.

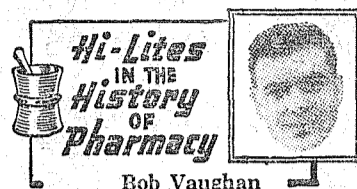
Mr. and Mrs. Alfred Kennedy of Los Angeles, Calif., visited their uncle and aunt, Mr. and Mrs. Pete Williamson, last week and spent the weekend on a trip around the Olympic Loop scenic

Car Wash Saturday

The Methodist Youth Fellowship of Spanaway will wash cars at the Associated gas station at 133rd and Pacific avenue Saturday, Aug. 17, from 9:00 a.m. till 6:00 p.m. The charge will be 99 cents, proceeds to be used for the activities of the group. Gary King is chairman for the project.

drive. While here they also went to Mt. Rainier. Miss Janyce Wright is visiting her uncle, Charles McKenzie, at River's View rest home at Oswego, Oregon.

Reporter—Mrs. Ted Otterstad LE 7-7653.



Hi-Lites IN THE HISTORY OF Pharmacy
Bob Vaughan

In 1240, the German Emperor Frederick II issued an edict which was to create pharmacy as an independent branch of public welfare service.

The three essentials were:

1. Separation of the pharmaceutical from the medical profession.
2. Official supervision of pharmaceutical prescription.
3. Compulsory use of a prescribed formula.

The first Pharmacopoeia published were not all uniform in strength causing much danger to the public when powerful preparations were ordered in one country and dispensed in another.

Did you know that **Parkland Rexall Pharmacy** handle a complete line of **Invalid Supplies?** Also call us for delivery of exact **Prescriptions** filled to your doctor's orders. **Parkland Pharmacy** Pacific Ave. & Airport Road LEnox 7-8636 Copr. 1957 United Features Syndicate

Winnie Ellen's Beauty Shop
Winnie Martin - Nola Clowers
9:00 a.m. to 6:00 p.m.
Closed Mondays
Evenings by Appointment
8711 Waller Road LE 7-5513

KEEP THIS AD!
Over 20,000 Arthritic and Rheumatic Sufferers have taken this medicine since it has been on the market. It is inexpensive, can be taken in the home. For free information give name and address to P.O. Box 2535, Tulsa, Oklahoma.

JACOBS PACIFIC DRUGS
Prescription Service
Open 7 Days a Week
9:30 a.m. - 9:30 p.m.
Walgreen Agency
Pay Light & Water Bills Here
84TH & PACIFIC AVE. Greenfield 2-6445

Rupe Machine Works & Garage
AUTOMOTIVE & INDUSTRIAL WORK
13411 Pac. Ave., P.O. Box 2445 Parkland 44, Wn. LE 7-7450
COMPLETE MOTOR REBUILDING
Lathe Work, Press Work, Con-Rod-Grinding, Head Surfacing, Piston Grinding, Brake Drum Turning, Reboring, Main Line Boring, Pin Fitting, Rod Aligning, Armature Turning, Crank Service.

Trovani's Junior Bootery
LAKEWOOD CENTER JU 8-4181
Specializing in Children's Shoes
706 St. HELEN'S AVE. MA 7-6318

Horse Shoeing BY AN EXPERT
J. R. YOUNG
Phone Orting TW3-5362

RURAL GARBAGE SERVICE
Serving Parkland, Lakewood, Midland, Summit, Spanaway & Lakeview
Pierce County Permit
LE 7-8688

All This - - - And Right Prices Too!
SHOP HERE
1x8 No. 4 100 Ft. 1x6 No. 3 V Rustic Per M
Shiplap . 3.90 Siding . 65.00
BASKETT LUMBER CO.
MILL & RETAIL YARD
97th & Portland Ave. Midland LEnox 7-5844

Grand Opening

The New

Parkland HARDWARE

FRIDAY AND SATURDAY
AUGUST 16th & 17th

FULLER PAINTS • GLASS

See The Famous Fuller "Jewel Cases" Complete Color Service

COFFEE AND DO-NUTS TO CELEBRATE!

Announcing our appointment as a BRAND NEW FULLER PAINT DEALER to serve the Parkland Area.

Complete line of Fullers Highest - Quality Paints, Varnishes, Enamels and Wallpaper

Dick Howard, Fuller sales representative, will be at our store during these two days to assist you with your painting problems.

OPENING SPECIAL!!
Quality Venetian Mirrors
Quality Venetian Mirrors 3/8" beveled edge, complete with hangers. Perfect for your mantel or living room walls.
YOUR CHOICE
36x28" Special \$9.95
40x30" Special \$11.95
Buy Several Now! They Make Wonderful Christmas Gifts!

OPENING SPECIAL!!
Ladder Special!
5-Ft. Household Step Ladder
Regular \$5.60 Value
Special for Friday and Saturday Only
\$4.98

Come In And Register For Valuable Door Prizes To Be Awarded. Winner Need Not Be Present To Win!

PARKLAND HARDWARE
121st and Pacific Avenue
"Across from Piggly Wiggly"

SUMMER SPECIAL

AUSTIN Studios
OVER A QUARTER OF A CENTURY OF FINE PHOTOGRAPHY
SENSATIONAL OFFER

★ THIS AD AND 89¢ entitles you to receive one sparkling 9x12 sepia tone PHOTOGRAPH

REGULARLY \$10.89
YOU SAVE \$10

★ ★ ★ LIMITED TIME ONLY Available to any member of the family

ONLY ONE OFFER TO A FAMILY

Expires In 15 Days No Appointment Necessary

AUSTIN Studios
OVER A QUARTER OF A CENTURY OF FINE PHOTOGRAPHY
751 Commerce - Tacoma, Washington

Minors must be accompanied by a parent. Only one special offer of any kind will be honored within 6 months. Nominal service charge; covers mailing, handling and insurance on all prints.

Prices For
Thurs., Fri.,
& Saturday,
Aug. 15, 16, 17

THRIFTWAY

WHERE *Every* CUSTOMER IS IMPORTANT!

APRICOTS Del Monte Halves 303 Can **27c**

PEARS Del Monte Quality 303 Can **27c**

TOMATOES Del Monte Stewed 303 Can **21c**

Darigold 1/4 lb. cubes Lb. **69c**
BUTTER.....

Shur Fresh Medium Doz. **49c**
AA EGGS.....

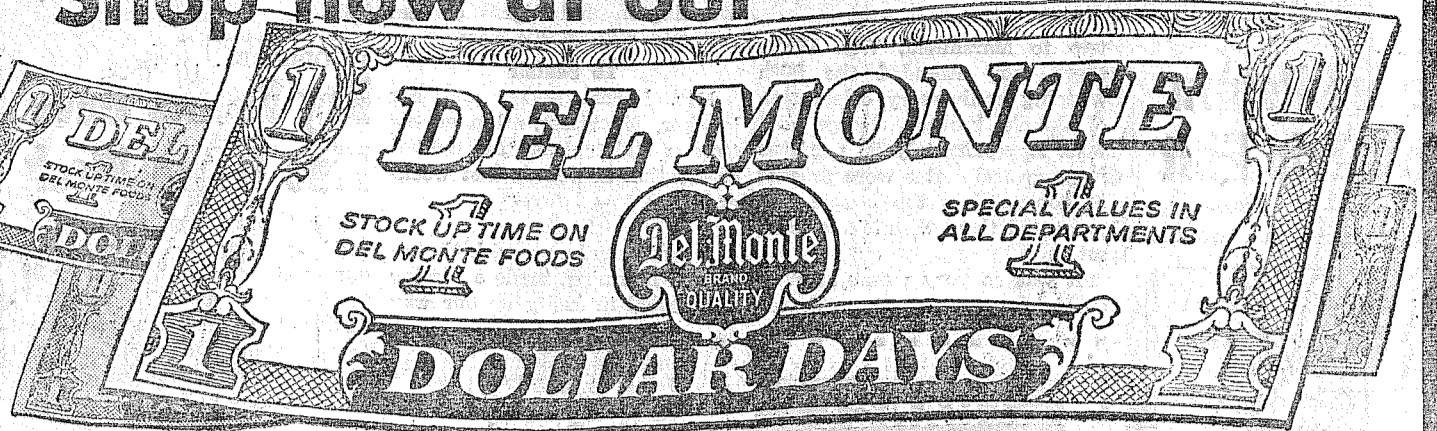
Hills Bros. Lb. **95c**
COFFEE.....



A Whirlybird Special
CALO DOG FOOD
6 No. 1 Tins **75c**

C&H SUGAR
10 Lb. Bag **93c**

Shop now at our



Del Monte Cream Corn 303 Tin **7 For \$**

Del Monte Peas Early Garden 303 Tin **5 For**

FRUIT COCKTAIL Del Monte 303 Tin **5 For**

TOMATO JUICE Del Monte 46-Oz. **4 For**

Del Monte Catsup 14-Oz. Bottle **6 For**

Tomato Sauce Buffet Tin **13 For**

Asparagus Dew Drop Cut Tender Tips Picnic Size. **6/\$1.00**

Cut Beans Red Dart Standard 303 Can. **10/\$1.00**

MARGARINE Kraft Parkay Lb. Ctn. **2/63c**



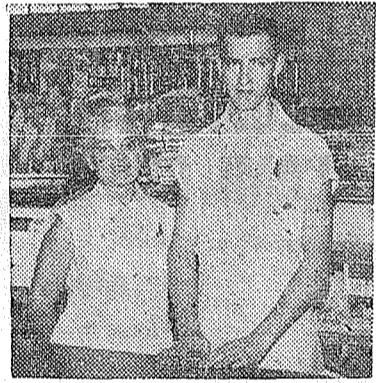
Meet the Employees that Serve You At THRIFTWAY FOOD STORES

EACH MONTH FROM THE 65 THRIFTWAY STORES A CHECKING TEAM IS SELECTED AS THE "CHECKER TEAM OF THE MONTH". WE ARE PROUD TO PRESENT TO YOU, OUR CUSTOMERS, THE JULY WINNERS!

Mary Salter, Checker
Jim Spriddell, Ass't. Checker
Mansfield Thriftway
Seattle, Wash.

Danna Mae Weisharr, Checker
David Bradley, Ass't.
Wray's Thriftway
Yakima, Wash.

Nellie Tough, Checker
Gary Florek, Ass't. Checker
20th Century Thriftway
Shelton, Wash.



ASSORTED
CAKE MIXES
Just Right 19-Oz. Pkgs. **4/\$1**

PALMOLIVE
Reg. Size Soap **3/29c**

PALMOLIVE
Bath Size Soap **2/27c**

CASHMERE BOUQUET
Reg. Size **3/29c**

CASHMERE BOUQUET
Bath Size **2/27c**

VEL - LARGE DETERGENT
Large, 2 Pkg. 9c Off Deal **55c**

VEL LIQUID
Special, 5c Off Deal, 12-Oz. **34c**

FAB DETERGENT
Special 5c Deal Large **28c**

AD DETERGENT
3 1/2-Lb. Box **89c**

GIANT AJAX
3c Off Deal **2/29c**

REGULAR LUX
Assorted Colors **3/32c**

CALO CAT FOOD
No. 1 Cans **2/29c**

White Star Tuna
S. P. 1/2 Can **35c**

INSTANT COFFEE
Hills Bros. 2-Oz. **55c**

Shurfine, 3-Sv. 303 Can
PEAS **2/39c**
Shurfine 4-Sv. 303 Can
CUT GR. BEANS . **2/39c**
Shurfine No. 2 Can
TOMATO JUICE . **2/27c**
Shurfine 1/2 Can
CHUNK TUNA . . . **29c**
Shur-Fresh Pints
COTTAGE CHEESE . **27c**

Fir Tree Mixed Pieces 2 1/2 Can
PEARS **4/\$1.00**
Looking Glass Shredded 8-Oz.
COCOANUT **29c**
Looking Glass, 1/2's & Pcs. 4-Oz.
NUT MEATS **35c**
Twinle 4 1/2-Oz.
COPPER CLEANER . **49c**
Ass't'd. Crescent 7 1/2-Oz.
ICE CREAM **2/37c**

Betty Crocker, Angel & Conf. 17-Oz.
CAKE MIX **49c**
Pillsbury Shaker Pack 14-Oz.
FLOUR **19c**
Del Monte 303 Can
WHOLE BEANS . . . **26c**
Del Monte Pine, Grpft. 46-Oz.
FRUIT GRAPE . . . **33c**
Del Monte, Reg. & Kosher 24-Oz.
PICKLES **35c**

NABISCO CRACKERS 2-Lb. Box **55c**
GAMEO CREME SANDWICH 8 1/2-Oz. **27c**
NABISCO VANILLA WAFERS 7 1/2-Oz. **25c**

U. S. Choice & Good, Young Steer, Blade Cuts
Pot Roast . . Lb. **33c**

Armour's Star Ready To Serve - Canned
Picnics . . . Tins **1.89**

CARSTEN'S BASEBALL SPECIALS
Morning Glory, Extra Lean
Slr. Bacon 1-Lb. Cello **59c**

Carsten's Hygrade 1-Lb. Cello **49c**
SKINLESS WEINERS **49c**
CARSTEN'S HYGRADE CRYOVAC BONELESS BRISKETS, 2 TO 3 LB. AVERAGE.
CORNER BEEF Lb. **57c**

RED HAVEN PEACHES
2 Lbs. **29c**

KRUNCHY CRISP CELERY
Lb. **5c**

LONG GREEN CUCUMBERS
Each **5c**

BLUE LAKE BEANS
Lb. **10c**

DANISH SQUASH
Lb. **4c**

NO. 2 POTATOES
50 Lbs. **79c**

1/2-Gal.
PUREX LIQUID BLEACH . . **35c**
18-Oz. Pkg.
BEADS O' BLEACH PUREX . **39c**
22-Oz.
TREND LIQUID DETG'T . . . **53c**
Twin Pack, Large
TREND DETERGENT **45c**

FROZEN FOODS
SWIFT'S 12-Oz.
HAMBURGER PATTIES . **55c**
WELCH'S 12-Oz.
GRAPE JUICE **33c**
SWIFT'S 8-Oz.
LUNCHEON STEAKS . . . **55c**
Simple Simon, Strawberry, Choc. or Cocoanut. 8-Oz. Ea.
CREAM PIES **65c**

SUNSHINE 1-Lb. Box
HI-NO CRACKERS **37c**

SUNSHINE 1-Lb. Pkg.
ASST'D CUP CUSTARDS . . **49c**

MILK AMPLIFIER 12-Oz.
BOSCO CHOCOLATE **36c**

Park 'N Shop Thriftway 9662 Pacific Avenue
Villa Thriftway Store . . . 10111 Gravelly Lake Dr. S.W.
Summit View Thriftway 5309 East 112th
Midland Thriftway 1701 East 99th
Stan's Thriftway 6421 Steilacoom Blvd.
Thriftway Food Fair 214 West Main, Puyallup

THRIFTWAY

WHERE *Every* CUSTOMER IS IMPORTANT!

Fraser's Return From Trip East

Mr. and Mrs. John Fraser have returned home from a two-weeks

trip to Marshfield, Wis. While there they attended the 50th wedding anniversary celebration of John's brother George and wife. Approximately 50 relatives from several states were present to congratulate the couple and presented them with a television set.

It was so very warm in Wisconsin that Mr. and Mrs. Fraser

shortened their visit to return to the cool breezes of our Western Washington and nights of real rest and comfortable sleep.

To Seafair

Mrs. Norma Setzer and her brother, Bill Fitzer, attended the Golden Jubilee at the Seafair celebration in Seattle last weekend.

Storm

A real cloudburst, with thunder and lightning, made a display of unusual intensity up our way

Boy Scouts Have Fine Camp Week

Boy Scout troop No. 174 had good meather for their week's outing at Camp Hahobas July 28 to August 3 and the boys are anxious to go back next year. The troop received a Certificate of Merit for fire prevention on the fireplace they built at their camp site.

The week was filled with a hike to Hoods Canal, council fires with other troops every other night, marksmanship training,

archery and swimming instruction in the morning and free swimming in the afternoon.

By the way: The Scouts swim by what they call the "buddy plan," which simply means always going swimming with a buddy, never alone. There were Scout life guards there at all times, which were the adult leaders in Scouting besides the regular lifeguard who called a "buddy call" every 10 minutes, at which time all buddies were to find each other within 10 seconds. The Scouts are attempting to put the "buddy plan" across to non-Scouts as well.

The boys had boating on three days and their forest conservation. In the forest conservation, each troop is given a plot of level land, 200 feet square, to

improve. Each year they go to Camp Hahobas they clear as much as they can by clearing out the underbrush, leaving the rhododendrons, all lower limbs of the trees up to the boys' heights so the trees will grow taller, and all trees up to four inches across are cleared out. This year they ran into a little trouble with bees and didn't get as much done as they had hoped.

Boys going with troop No. 174, with Scoutmaster George Newcomer, were Leslie Ulrich, Raymond Kerbs, Jimmy Strong, Erwin Spencer, Claude Hubbard, Bob West, Dale Stol, Tommy Grass and Terry Storm. Mr. West, Mr. Grass and Bill Newcomer went up Saturday to help set up camp and came back to help with transportation on Saturday, Aug-

SPANAWAY . . . Friends Fete Mrs. Steidel

Friends gathered last Friday evening at the home of Mrs. Harry White for a surprise shower for Mrs. Bob Steidel whose 25th wedding anniversary was about that time. Mrs. Jack Henriksen and Mrs. George Stephenson were co-hostesses. Attractive gifts for Mrs. Steidel and her home were presented.

Best Wishes "Get Well" wishes to John Schwab, who is recovering from an operation. Glad to see Mrs. Helen Newberry back at Bargain Basket after a recent operation. Her many friends missed her

and hope she is going to be fine now.

Trip South

Mr. and Mrs. Emerson Tarp- enning have just returned from a trip to San Francisco.

Secret Pal

Mrs. Matilda Symmons was hostess last Tuesday for the Secret Pal club party at the home of Mrs. Warren Symmons. Mrs. Bob Steidel Sr. will entertain next.

Happy Birthday

Last Thursday was a happy occasion for Mary Hawkins when she celebrated her 11th birthday with a party.

Home Again

Mrs. Bill Righetti and her daughter, Mrs. Harry Thomas, have returned from a motor trip to Denver where they visited relatives.

Reporter Mrs. Oliver Omat, LE 7-6466.

Mountain View Food Lockers

CUSTOM MEAT CUTTING

Locker Beef Available
2519 East 112th LE 7-5332

CHANGE OIL

BOB AVITT'S Shell Service
133rd AND PACIFIC AVENUE

You get more for your money at **SAFEGWAY**

RED TAG SALE

Let's Have A Chicken 'N Que

Sand. Spec.
Nu Made. Smooth and creamy. Qt. Jar
Mayonnaise 59c
Campbell's Chicken. A Favorite 10 1/2-Oz. Cans
Noodle Soup . . . 6/\$1.00

For frying or cooking. Quart Bottle
MAZOLA OIL 53c
Reynolds 12"x25-Ft. Roll
ALUMINUM FOIL 29c
Molihenny 2-Oz. Bottle
TABASCO SAUCE 39c

GEM POTAOES
U. S. No. 1 Washington Grown—Netted Gems. Clean Washed—Uniform Sizes.
10 lbs. 39c

Ripe Beef Steak Variety Lb. **10c**
SLICING TOMATOES . . . 10c

New Local, Snow White Heads
CAULIFLOWER Lb. 10c

Marblehead, First of the season. Any size piece
CUT SQUASH Lb. 3c

GOLDEN BANANAS
Perfectly ripened for the finest flavor.
Lb. **17c**

BARTLETT PEARS
U. S. No. 1 Washington grown. Juicy, sweet and flavorful.
Lb. **10c**

Ground Fresh
AIRWAY COFFEE 1-Lb. Bags 79c
Castle Crest or Town House No. 2 1/2 Can
Y. C. PEACHES 27c
Curtsy Brand Pkg. of 3
RAISIN DATE SNAILS 23c
Del Monte 17-Oz. Cans
CREAM CORN 2/29c

Libby's Ripe Olives
Giant Size - for parties & picnics. 8 1/2-Oz. Can **25c**

CAKE MIXES
Pillsbury Assorted. 2 17-Oz. Pkgs. **59c**

Instant
DRY MILK
Lac Mix, Mixes Instantly
12-Oz. Can **69c**

Del Monte
Pineapple and Grapefruit Drink
48-Oz. Can **27c**
S & W Oven Baked
Baked Beans
28-Oz. Cans 55-Oz. Can
2/49c 49c

CALF SALE

CALF SIRLOIN or ROUND STEAKS U.S. Choice Or Good **lb. 69c**

U. S. Choice or Good
CALF RIB STEAK **lb. 59c**

U. S. Choice or Good
CALF T-BONE STEAK **lb. 89c**

CALF ROAST **lb. 37c**

Blade Cut U.S. Choice Or Good

CALF RUMP ROAST U. S. Choice or Good **lb. 49c**

PLATE BOILING MEAT
CALF STEW MEAT lb. 25c

STEWING **CHICKENS** Serve Fricassee or Dumplings
Fresh Whole Body **lb. 29c**

BOLOGNA or SALAMI CHUB "Somerset" or "Swift's"
2-Lb. Chub Each **93c**

Frozen Foods Orange Juice

Bel-Air, Premium Quality

2 6-Oz. Cans **29c** 12-Oz. Can **29c**

Bel-air 10-Oz. Pkgs.
STRAWBERRIES 3/ 49c

FROZEN TUNA PIES

Starkist, so easy and quick. 8-Oz. Pies **25c**

Campbell's 28-Oz. Cans
PORK & BEANS . . . 5/ 1.00
Band Box, or Triple Treat, Vanilla

ICED MILK 1/2 Gal. 59c

Real Gold 6-Oz. Can
ORANGE BASE 2/ 29c

White Only Pkg. of 80
ZEE NAPKINS 10c

Ocean Spray 16-Oz. Cans
CRANBERRY SAUCE 2 cans 39c

Each boy earned a camp emblem for the required work during the week and Mr. Newcomer gave each boy a Camp Hahobas tee shirt as a gift of appreciation.

DRIVE SAFELY Save A Life

HOBBY FUN for all the Family!
THIS WEEK'S NEW PLASTIC MODEL "Revell"
Stanley Steamer Now In **PARKLAND HOBBIES**
328 Garfield St. LE 7-3137

BLUE MOUSE 18th WEEK!

Seattle, Washington • Phone MUTUAL 1492

NIGHTLY AT 8:30
Except SUN. AT 7 P.M.

MATINEES AT 2 P.M. WED., SAT. & SUN.

MICHAEL TODD'S

WORTH COMING MILES TO SEE!

Around the World in 80 days Today!

ACADEMY AWARD WINNER BEST PICTURE OF THE YEAR!

MAIL ORDERS PROMPTLY FILLED

Herewith \$ for seats for the
Performance at
Name
Address
City Zone State
Make check or money order payable to:
BLUE MOUSE THEATRE, 1421 5th AVENUE, SEATTLE, WASH.
Please Enclose Stamped, Self-Addressed Envelope

All Seats Reserved
Tickets Now On Sale
Box Office Open Daily
12 Noon 'til 9 P.M.

Evenings at 8:30, Mon. thru Thurs., \$2 & \$2.50; Fri. & Sat., \$2.50 & \$3; Sun. Evn. at 7:30, \$2 & \$2.50; Mat. at 2 Wed., \$1.50 & \$2; Matinees at 2 Sat. & Sun, \$2 & \$2.50.
(All Prices include Tax)

STILL CELEBRATING

Our Grand Re-Opening With These Price Bargains For You!!

PLASTIC WALL TILES
PLASTIC COUNTER TOPS
PLASTIC WALL COVERINGS
FORMICA SHEETS
Reg. \$1.00 NOW
Metal Mouldings • Pastes • Rubber Base

ENDS - OF - ROLLS Per Sq. Ft.
Reg. \$3.00 & \$3.40 NOW **\$1.75 & \$2.00**

INLAID TILES Reg. 18c NOW **11c**

8x9 Tiles - Standard Weight Reg. 18c NOW **10c**

8x9 Tiles - Light Weight Reg. 18c NOW **10c**

COOLEY'S

Custom Flooring
9400 Pacific Ave. GR 2-2748

Prices effective Thursday, August 15th, thru Saturday, August 17th at 82nd & Pacific Safeway. No sales to dealers, right to limit is reserved.

SAFEGWAY'S your **BEST** place to save!

IT'S OUR

AUG. 14, 15,

2nd

16, and 17

BIRTHDAY

WED. THUR.

SALE AND YOU ARE INVITED TO

FRI. SAT.

the PARTY AT

FREE CAKE And BOYD'S COFFEE

10c ICE CREAM SLICES Only 5c

FREE! DONUTS FREE!

FREE 7-UP Carton of 6 6-Oz. Btls. 39c

TURKEY 12 TO 16 LBS. HENS OVEN READY POUND 29

SEEDLESS GRAPES 10 HALE PEACHES 1 Lb. 10

SUGAR C & H PURE CANE 25-lb. bag 2.39

TUNA SNO-MIST or VAN CAMPS 5 NO. 1/2 CANS 99 CHUNK STYLE

COFFEE BOYD'S Pound Can 79

PEAS OR BEANS OR CORN NORWEST 9 303 CANS \$1

PORK ROAST PICNIC STYLE POUND 29 PORK STEAK BLADE CUTS POUND 43

BETTY CROCKER CAKE MIXES PKGS. \$1

BROWNIE JUMBO BAGS ASSORTED COOKIES Bag 39

SUNNY JIM SYRUP 24-OZ. JAR 27

SUNSHINE KRISPY CRACKERS See The Ton Of Crackers On Display LB. BOX 25

CARSTEN'S WEST VIRGINIA BRAND HAM LB. 89

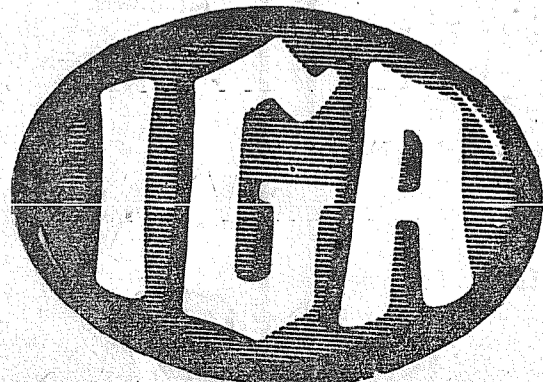
VAN CAMPS 3 NO. 2 1/2 CANS PORK n' BEANS 59

MEDOSWEET WELCOME ICE CREAM. . . QUART 37

MORTON'S SALT PLAIN OR IODIZED 26-Oz. Pkg. 10

112TH & PARK AVE.

FOOD



TOWN

WORD GETS AROUND! WE HAVE THE BEST FOOD BUYS!

PILLSBURY
FLOUR
10 Lb. Bag **99¢**

SUNNY JIM STRAWBERRY
PRESERVES
20 Oz. **29¢**

CHIFFON
FACIAL TISSUE
400 Count **19¢**

CHASE & SANBORN
INST. COFFEE
6 Oz. **99¢**

B & M
Baked Beans
28 oz. **25¢**

SELECT SUMMER PRODUCE

Yakima Large
CANTALOUPE 5/ 49¢

Danish Each
SQUASH 5¢

Slicing 2-Lbs.
PEACHES 25¢

Long Yellow Cello Bag
CARROTS 17¢

Fircrest Lb.
MARGARINE . . . 5/ 89¢

Gerbers Strained
BABY FOOD 12/ 99¢

Sunshine Black Walnut Lb. Bag
COOKIES 45¢

for a scrUMPIous dinner
RUMP ROAST
Pound **39¢**

Thick Cut Swiss or
RIB STEAK
Pound **49¢**

Whole or Half
PORK LOINS
Pound **49¢**

Let's Have a Stew
SHORT RIBS
Pound **10¢**

Boneless Tip
ROLLED ROAST
Pound **59¢**

Guaranteed Tender
BEEF ROAST
Pound **33¢**

YOUR ONLY HOME OWNED
SUPER MARKET
12208 Pacific Avenue

Fletcher's

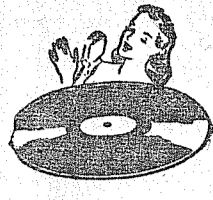
OPEN:
7 Days A Week
9 a.m. to 10 p.m.

Prices Effective
WED., THURS., FRI. & SAT.
THIS WEEK

No Sales To Dealers
Right To Limit Reserved

"COURTESY" OUR MOTTO ALWAYS

Platter Chatter



By Mickey Hamlin

With each successive recording, Pat Boone, the favorite of millions, seems to deliver a song better and better. It was about this same time two summers ago that Pat's first waxing of "Two Hearts, Two Kisses" was at its peak and his second recording, "Ain't That A Shame," was just beginning to move. Well, move it did—right into the number one spot bringing Pat his first gold record and the start of a long and happy career in popular music.

Things began to happen fast after that. He quickly followed "Shame" with several successful rock 'n' roll numbers. Then came million seller number two: "I'll Be Home." Up to this point, Pat had stayed mainly with rick 'n' roll numbers occasionally using a ballad to back the beat side. With the knowledge that the public accepted him as a ballad singer, he stayed with the ballads, returning now and then to rock 'n' roll.

His last several releases have gone way over the million mark. "Love Letters In The Sand" is currently nearing the two million mark in sales.

Pat's latest release justifies the public's support in him. It's one of his best yet. On one side he brings back the old favorite "Gold Mine In The Sky." The big one will be the flip side, "Remember You're Mine," a new summer ballad loaded with teenage appeal; it's already one of the largest sellers in our area. At the least the coupling will sell a million copies. At the most—well,

CANYON ROAD Backwoods 4-H Members Score

At the regular meeting of the Backwoods 4-H club at the home of Bobby Hobbs, with Dennis Austin presiding, reports were given on the fair held recently at Thrift, Washington. Michael Kershner received two red ribbons on his Jersey cow; Lawrence Kershner, one red and one white ribbon his Shorthorn heifer calf; Bobby Bacon, one blue ribbon and a sack of feed for his lamb, which was the only one entered. — Michael Kershner, reporter. Congratulations, boys!

Rummage Sale
Folks, don't forget our rummage sale this Thursday, Friday and Saturday at 1516 Jefferson Ave., Tacoma. We will be glad to receive articles during these days.

Flower Show
Be sure to attend our flower show, "Summertime Splendors," only time will tell.

Another smash hit for the late great Jimmy Dorsey. His orchestra and chorus, who backed Jimmy on the golden disk recording of "So Rare," his first hit in over fourteen years, is currently keeping Jimmy's memory alive with their "Jay Dee's Boogie Woogie" and "June Night," both reporting strong sales action. Rumor has it that a Jimmy Dorsey album containing "So Rare," "Sophisticated Swing," this latest pair and many other numbers will soon hit the market. I, for one, am looking forward to such a release. How about you?

Half-Notes: The Five Keys could do it again with "Face Of An Angel" . . . Ron Goodwin and his orchestra are currently big sellers with their "Swingin' Sweethearts" . . . For some strange reason "Short Fat Fannie" by Larry Williams is actually selling . . . Did you know that actress-songstress Polly Bergen is the only girl with a top selling album nationally? It's her fabulous "Bergan Sings Morgan" . . . Fats Domino headed back up the ladder with another smash, "What Will I Tell My Heart" backed with "When I See You" . . . Bill Haley is trying to create a hit single of "The Dipsy Doodle," one of the tunes from his "Rock In The Oldies" album . . . This seems to be the day that the Crickets' "That'll Be The Day" is headed for the much desired top tunes in our area spotlight . . . Nat "King" Cole fans should be pleased with his new album, "This Is Nat 'King' Cole."

Rock, Gem Show Set at Morton

If activity means anything the rock and gem show at Morton during Jubilee days will be outstanding.

The Newaukem Rockhounds, Packwood Prospectors, Morton Rockologists and Nisqually Rock club members have been busy these last few days polishing up their pet rocks and agates for the event. Those acquainted with this sponsored by the Canyon Road Garden club next Thursday from 2:00 to 9:00 p.m. at East 80th and Canyon road.

Visitors
Mr. and Mrs. Lyle Briggs Sr. of Lidford road have spaced their visitors just right this season. Their son and daughter-in-law, Mr. and Mrs. Lyle Briggs Jr. and daughters Alison and Farrel from Detroit, Mich., were here for a week. After their departure Mrs. Briggs' brother and wife, Mr. and Mrs. Calvin Hood from Northampton, Mass., arrived for a fortnight's stay.

Sympathy
Our deepest sympathy goes to Mrs. Russell Jones of East 72nd on the death of her father.

Fishing Trip
John Folk of Canyon road and his brother, Tom Folk from Hillsboro, Oregon, are back from their fishing trip at Las La Hoche in British Columbia. They report the fishing fine; in fact, they took 56 worms with them one day and caught 53 fish. I dunno—that's what they said.
Reporter — Mrs. John Folk, LE 7-5801.

type of hobby will find pleasure and new ideas; the uninitiated will enjoy a big surprise that such beautiful things could be obtained from rocks and gems.
This show is being held in conjunction with the Loggers Jubilee at Morton August 17 and 18.
L. W. Gilbert

Mrs. Clinton Gillam wishes a correction on a recent "thank you" note in the Times Journal: It was the Spanaway ambulance which rushed her husband to the hospital. She was deeply grateful for the splendid service.



Big Safe and Friendly . . . the Family Savings Center

A MUTUAL SAVINGS INSTITUTION
Pacific Federal Savings
and Loan Association
Bellingham • Seattle • Tacoma
Portland • Eugene

OPEN FOR BUSINESS
Drake's Shoe Repair
8425 PACIFIC

LUMBER

EVERYTHING FOR THE BUILDER

Complete Stock Of Rental Tools
SANDERS - EDGERS - POLISHERS - HAND SANDERS - SKIL SAWS - ELECTRIC DRILLS - CEMENT MIXERS - ETC. ALSO HAND TOOLS FOR RENT

Anderson Lumber

9813 Pacific Avenue LEnox 7-7311

TRUCKS FOR RENT
MA 7-9039
Save One Half
We Furnish Everything
HARMON'S
Driv-Ur-Self Co.
HARMON'S SERVICE
2112 Jefferson
Jim Harmon, Mgr.

Dr. L. H. Thurmond
OPTOMETRIST
Complete Visual Service
Tues. thru Sat. 9:30 to 6:00
Closed Monday
Evenings by Appointment
Phone LE 7-4460
11316 PACIFIC AVENUE
Blk. So. of Parkland Br. Bank

PIERCE COUNTY REFUSE CO.
Weekly Garbage Collections
Phone LE 7-8688

You'll do better on
Medosweet MILK

Work and play better
Relax and sleep better
Look and feel better

Yes, you will do better on Medosweet. There's more zealous energy in each glass. Farm-fresh and flavor-rich, it's nature's most nearly perfect food. Authorities agree you need three glasses of milk a day...but you'll want more...much more...when it's Medosweet.

BEST BUYS FOR BACK TO SCHOOL

84th St. Variety Store

"The Store With Oceans of Notions"
Open 9 to 9 8242 Pacific Ave.

Two Fine TRIANGLE Laying Feeds

TRIANGLE X-TRA EGG PRODUCER
Here's a "Famous Formula" feed that cuts your cost per dozen eggs. A perfect balance of egg producing elements which enables your birds to lay to the limit yet keep in perfect bodily condition.

TRIANGLE 16% EGG LAYER
A complete laying feed with all the necessary egg-producing elements plus scratch, grit, and shell, all in one formula. Simplify your feeding job with this self-contained, easy-to-use feed.

RUDY'S Feed & Seed Co.
14660 Pacific Ave.
LE 7-4838
PARKLAND, WASH.

TRIANGLE MILLING COMPANY

603-665 N. TILLAMOOK
PORTLAND 12, OREGON