

Sec. 34.66 P. L. & R.
Parkland, Wash.
U. S. POSTAGE PAID
Permit No. 9

BOXHOLDER OR OCCUPANT
RURAL ROUTE
POSTMASTER: If unable to deliver,
return postage is guaranteed.

The TIMES-JOURNAL

JUNE 21, 1951 (VOL. 6, NO. 40)

4

BOX 885, PARKLAND

Two Offices to Serve You
FOR ADVERTISEMENTS: OFFICE, Garfield St.
between C St. & Pac. Ave. (Closed Wednesdays) GR. 8667
FOR NEWS AND COMMERCIAL PRINTING: GR. 7100
SHOP, corner Park Ave. & Wheeler (Closed Sat.)
DEADLINE FOR NEWS AND ADVERTISEMENTS TUES. NOON



By Clarence LaCrosse

Sure had a lot of fun this past week up in Roy taking some photos of the town and meeting some of the people who make up the city. There are a lot of fine people in our little neighbor city Roy, besides some mighty fine stores which seem to have ample supplies of merchandise. The good old-fashioned general merchandise store seems to be the thing to handle the needs of the populace.

Our aerial photos turned out to be a lot of fun, too. The nice pilot who took me up from the Spanaway Aircraft Co. sure knew where every place was. In about an hour in the air we took about fifteen different aerial shots of different places whose owners wanted photos. It was fun while it lasted. Now to get in the dark room and make prints of all these things.

No, Walt Young hasn't taken the "Try South Tacoma" sign off his car yet. Says it is his wife's car—not his!

There's going to be fireworks in Parkland this 4th... sponsored by your hometown merchants. The show will equal any shown in the stadium or elsewhere... and it is all absolutely FREE to you for just watching... a present from your progressive merchants of the area. Where? Right out on Tule Lake Road by the county gravel pits. You will be able to see it from all over. Drive out and park and see the show free.

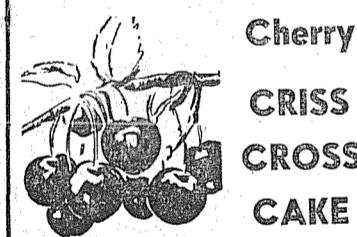
Junior Gymkhana This Sunday, June 24th

Junior horsemen from all over the district will meet this Sunday at one o'clock at the Tacoma Unit Club Grounds at 113th and Bridgeport Way for the Junior Gymkhana to be held at that time.

This is the big chance of the year for junior riders 18 and under. Special invitation is made to the newly formed Parkland Junior Horsemen, it is announced by Mrs. Larry Kirkwood, leader for the group.

The Colts and Fillies of the unit will present their drill. Other classes open to all are: Beginning jumping, English and Western pleasure class, musical acts, small fry class (10 and under), trail horse class (with obstacle), pairs class in both English and Western, pole bending (individually timed).

There is fun in store for all at the big Junior Gymkhana this Sunday at 1 p.m.—don't forget.



Cherry
CRISS
CROSS
CAKE

99¢

Phone GR. 3330

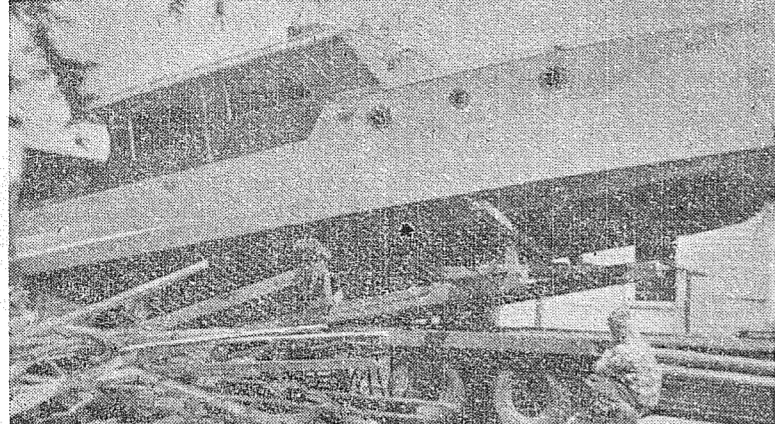
PATTY ANN BAKERY
Pacific Avenue at Airport Road

MEDITATION

"I AM RIGHT"
The ancients were sure the sun revolved around the earth. They argued long and loud, "I am right." A very short time ago women were burned or tortured as witches. The advocates were adamant in their contention, "we are right." Two old men, brothers, argued over a button, and died. Each was positive, "I am right."

If a friend contends that 2 plus 2 equals 5, what possible difference can it make to you? He will discover his mistake and be ashamed. Unless we learn to give the other person the benefit of the doubt, let him think his way while we think our way, we will have a war on our front porch every second of every day.

The people we like best are not the best debaters, but the most generous; they are not the most belligerent but the most peaceful. "I am right" should be, "I can be wrong."



THE DELRENE HEADS BACK TO SALT WATER; showing the rebuilt craft being loaded on the truck which took her to Day Island for launching.

ROY PLANNING BIG JULY 4TH CELEBRATION

Officers of the Roy Pioneer Picnic association are planning another of their famous old-time celebrations for the Fourth of July. The program will start at 11 o'clock and the picnic lunch will be at noon. Everyone is asked to bring a basket lunch, but the Roy ladies will have a refreshment stand on the grounds for those who do not bring lunch.

In the afternoon there will be contests and games for young and old. In the park there will be a softball game between the single and married men and one between the single and married women; also other games for the tots.

The day will close with an old-fashioned community dance in the school gymnasium in the evening.

A friendly good time is assured by all attending and a general invitation is extended to everyone to share the pleasant day.

Parkland Library is Taking Shape

Parkland's library is just about ready to move into, or at least it will be when members of the Explorer troop Boy Scouts get through laying the asphalt tile donated by three of the major floor covering companies of Tacoma.

The asphalt tiling, 1200 feet of it, in fact, was donated by G. W. Paulson Co., Selden's, Stebner Co. Roy Kreger, store manager for Paulson Co., informs this office that the tiling has been delivered to the library. The Boy Scouts are to finish the laying for the price of fifty dollars donated by the Puget Sound National Bank. Ordinarily this would have cost around \$120 to do.

Roy Kreger and Harry Chambers have been very much occupied with the construction and handling of all the details of getting this library ready for use for Parkland residents. At present, after the floor is laid, 95% of the job is complete. In fact, as soon as the floor is laid it is ready for use.

ROBERT SHOFNER, seaman apprentice, has been assigned to Sasaby, Japan, for duty. He is a former Kapowsin high school student and is the son of Mr. and Mrs. H. T. Shofner of Graham. His wife, Mrs. Catherine Shofner, also lives at Graham.

Pre-Vacation LUBRICATION

CHEVRON GAS STATION

Have you been asking "What goes on here?"

PICK-UP and DELIVERY Service
HEATING OILS — AUTO PARTS

Marv Tommervik

Parkland Fuel Oil Service

120th & Pacific Ave. Phone GR. 8684

Bus. Club Sponsors July 4th Fireworks

Sponsored by the Parkland Business club, a patriotic program and elaborate fireworks display will be presented on the evening of the Fourth of July at the county gravel pit on Tule Lake road. From this vantage point, the show can be seen from a very large area, permitting thousands of people to view the affair from their cars.

Parkland merchants have assumed the financial responsibility of the fireworks and a number of handsome set pieces have been ordered, each scene to be announced in order of showing. The Kiwanis club, American Legion and other organizations are assisting with the fireworks display.

Bob Lynd will be master of ceremonies and a public address system will carry the program to distant points. An army band will provide the music. Stressing the significance of the date, a brief Independence Day address will open the program at 9 o'clock.

One of the most exciting features of the show will be a demonstration by the Parkland fire department. A small wooden structure, moved to the scene, will be set on fire. The alarm will be turned in, the siren at the fire hall will sound, and the fire truck will make a fast run, its siren screaming. The firemen will "rescue the beautiful maiden" in traditional manner, extinguish the flames and give folks a practical exhibition of modern fire fighting.

In connection with the firemen's demonstration, the Parkland Civilian Defense organization, under direction of Mrs. Virginia Seaman, will take advantage of the situation for a practical session on handling traffic and other problems in an emergency.

Parkland unit No. 228, American Legion, will present a feature by some unit of the armed services.

Strawberry Festival is Great Success

The fifth annual Strawberry Festival, sponsored by the Marie Hazen Orthopedic Guild and held in the Waller Road Community hall, will go down on the records as the most successful event to date. Mrs. Jack Johnson reports that close to 500 people attended. The ladies in charge received great praise for the beautiful garden setting and the floral centerpieces on the tables.

The style show, through the courtesy of Richardson's, was enjoyed by all. Models for the swim and sport togs were Miss Sandra Forsythe of Lakewood and the Misses Frances Heath, Janet Carlson and Joanne Williams.

The program included a piano solo by Penny Silvernail, a tap dance by Pamela Weeks and solos, "Mocking Bird Hill" and "Penny a Kiss," by Carol Ferch, with accordion accompaniment by Michael Christensen.

The numbers presented by the Rhythm Sparks were very well received by the audience. They included "On Top of Old Smokey," "Mr. and Mississippi," with solo parts by Lucille Bradley and Jim Evans; "I'm So Lonesome I Could Cry," and their most requested number, "Cool Water." Miss Anna Corkish sang "Too Young" as a solo number. When they were called back by applause, little Carol Feich joined them in singing "Sparrow in the Tree Top."

The young people in the group are Mary and Lucille Bradley, Anna Lee Corkish, Bunny Fogle, Bob Lasham, Gene Weeks, Jim Evans and Jim Robbins. As Gene and Bob were unable to be present for the afternoon performance, Lee Duncan of Summit sang with the group.

A special "Thank You" should go to the Marie Hazen Guild for bringing to the community such an enjoyable day as the annual Strawberry Festival. Those who missed it this year should be sure to attend the sixth annual event in 1952.

The door prize in the afternoon was won by Kay Lasham; in the evening by Mrs. Fred Gordon of Tacoma. Both were flats of strawberries.

Well Baby Clinic

The well baby clinic sponsored by the Parkland Preschool will be held June 25 in the Methodist church basement. The clinic is open at 9 o'clock. Infants through kindergarten age are welcome for a check-up and inoculation. For further information call Preschool President Mrs. A. J. Stern, GR. 7111.



Pupils of Trinity Lutheran Vacation Bible School take time out to have their pictures snapped. Attendance of the course, which ended June 15, surpassed that of previous years by a wide margin.

CO-OP TO SHOW NEW STORE AT JULY 7 MEETING

A special invitation to all farm families to attend Open House Saturday, July 7, at Washington Co-Operative Farmers Association's new farm service store and poultry processing plant in Tacoma was extended today by Dale Smith, branch station manager.

"Our new quarters at 1801 Taylor Way, adjacent to the Association's feed mill, will be completed and occupied, and we would like all our friends to see it," says Smith. "Drop in anytime on July 7. We will be on hand to welcome you with a tour of the facilities, exhibits of farm production and marketing, refreshments and prizes."

The new 180 by 136-foot concrete and metal building will house several Association operations and office. There will also be a farm supply display room and warehouse storage on both the main floor and balcony, egg handling and candling facilities, a modern poultry processing plant featuring the latest type equipment, and refrigeration units for pre-cooling and for local sales purposes.

A main platform will serve members for egg deliveries and picking up supplies and feed invoices and for customer service. Another platform on the opposite end will be used by members for poultry deliveries, and for Association poultry pick-up trucks.

The poultry plant features streamlined handling and dressing equipment, and facilities for packaging the popular cut-up fryers and fowl. It was designed and built to meet requirements for the most sanitary methods of handling poultry.

This building, which will accommodate over 100 employees as operations require, will be known as the Tacoma station plant. It is the second large unit of Washington Co-Op's several new buildings planned for Tacoma.

When completed and fully equipped, Association members will have invested about \$300,000 in these facilities, in addition to approximately \$1,750,000 for the modern feed mill and its warehouses, and the Taylor Way land site.

This plant will serve farm families immediately surrounding Tacoma, and rural areas at Puyallup, Sumner, Orting, Kapowsin, Roy and Nisqually. It will also be a terminal for Auburn, Enumclaw, Yelm, Olympia, Gig Harbor, Lake Bay, Shelton, Elma and Aberdeen branch stations.

Some folks make their joys mere incidents and their sorrows great events.

SPECIAL DAN RIVER -- GOLD LABEL DRESS MATERIAL . YD. 89¢

WHILE IT LASTS
90 PATTERNS TO CHOOSE FROM

GARFIELD VARIETY STORE

326 Garfield St. Parkland GR. 9948

FOR FINE CLEANING

REMEMBER
It's the

Parkland Cleaners

Phone GR. 3221
11004 PACIFIC AVE. ONE BLOCK NORTH OF BANK

KEN BEEGLE HERE FOR SHOOTING DEMONSTRATION

Ken Beegle, reputed one of the world's greatest marksmen, will be seen in a free shooting demonstration at 7 o'clock Friday evening at the Chateau, Tacoma Sportsmen's club recreation area four miles east of Parkland on the Brookdale Golf Course road. Rudy Etchen, champion doubles shooter, will also be on hand.

All those interested in shooting are invited to come early; any shooting questions will be answered by both Ken and Rudy. Bring your shotgun; the traps will be open to the public. Food and refreshments will be available.

The shooting demonstration is free and open to the public.
Ken Beegle

Have You Moved?

Want your address correct in the new telephone directory due in August? If there has been a change in your address since the present book was printed, it will not be corrected unless you notify the telephone company of the fact. Don't delay, as the new directory will soon go to press.

June, the Bridal Month

WEDDING CAKES

Designed and Priced Especially For You

AUNT SUE'S Bakery

209 So. 84th HI. 4072

Piper FUNERAL HOME

HILLSIDE 84-79 - 5436 SO. PUGET SOUND AVE.

PROFESSIONAL DIRECTORY

- MIDLAND NURSING HOME
Special Attention to Aged Men
End Portland Ave. & Airport Rd.
GR. 5395
- INSURANCE
CLAY ROLEY AGENCY
98th and Portland Avenue
GR. 8501
- OPTOMETRISTS
DR. L. RICHARD MCGIRK
Modern Eye Care
4802 1/2 So. Yakima HA 2113
- DR. M. A. TWEIT
Visual Training
5434 1/2 South Tacoma Way
GARLAND 5424
- REAL ESTATE — INSURANCE
NOTARY
List Your Home with
ROY V. ROSTEDT
8201 Park Avenue
Phone HA 2342

WHY BUY An Ordinary Car?

Are you one of the people who year after year buy the same ordinary car, little changed in design, luxury features or safety construction? Do you know that you can buy today a make of car with features that add to your comfort, safety and economy of operation, so far advanced it's unbelievable unless you investigate?

Only the amazing new NASH AIRFLYTE

can give you up to 30 miles per gallon, Hydromatic or Overdrive transmission, unitized all welded Airflyte body, bed reclining seats, weather eye air conditioning heat, one-piece windshield in all models, and many other qualities unobtainable in other makes.

ALLOWANCE?

We top them all! Our low overhead small profit per car operation saves you up to \$300! Why take a low price for your trade? Drive to Puyallup today. Let's deal now!

Auto Sales & Service

Home of the Low Profit Deal
303 W. Main Puyallup
Phone 5-6693

PARKLAND TAXI AND Ambulance Service

PHONE GR 8192

For Quick Service in the SOUTH END

Prompt -- Courteous -- Bonded
24-HOUR SERVICE
(AMBULANCE OWNED & OPERATED BY YELLOW CAB CO.)

Dryer MORTUARY

270 SOUTH 134th PARKLAND GR. 3300

136th Pacific Ave. BROOKDALE LUMBER CO. Phone GR. 8669

If You Are Handy With Tools - Save Money

BUILD YOUR OWN GARAGE WITH OUR READY CUT GARAGE MATERIAL — 30 MONTHS TO PAY

SUMMIT NEWS

By MRS. M. S. RAU
We are very sorry to report that

Ed Hamergren, the manager of the Summit Water Co., is very ill in a Tacoma hospital.
New Neighbors
Mr. and Mrs. Dewey Doolittle from

Tacoma have purchased the Art Wolf home on Pennsylvania avenue. Mr. and Mrs. Wolf have moved to a farm near Centralia.
Returns Home
Mrs. Lawrence Garwin of Streeter,

N. D., has returned to her home after spending two weeks with the Casper Irish family; also with her aunt, Mrs. H. Iverson, and with Mrs. Irish Sr.
Summer in Morton
Mr. and Mrs. Gene Armstrong

(Virginia Irish) and small son have moved to Morton for the summer.
Mrs. Fannie Borden and her brother, Clifford Johnson of Seattle, were recent visitors of the Fay Clovers and Mrs. Mable Clover on Canyon road.

Midland News

Beverly Corrigan, Reporter
GRanite 8545

Mrs. Grant Hopkins (Virginia Piper) had as her guest for the past week Miss Lois Haush of Gordon, Neb. Mr. and Mrs. Art Orr of Valentine, Neb., visited Mr. and Mrs. Herbert Piper and family last Friday and Mr. Orr's sister, Mrs. Bess Bauder of Tenino, Wash., also visited the Pipers.

Midland 4-H Boys
The Midland Boys 4-H club held their first meeting of the year at the home of Mrs. Ruth Eshpeter on East 99th St. Monday, June 11, at 8 p.m. Mrs. Eshpeter is the leader, while Ed Whitley was chosen as the junior leader. The new officers for the year are as follows: President, Ed Whitley; vice-president, Ronnie Turner; secretary, Vic Eshpeter; reporter, Fred Reed, and treasurer, Fred McPherson. Those attending the meeting were Ed Whitley, Don Reed, Ronnie Turner, Vic Eshpeter, Fred Reed, and Freddie McPherson.

Clover Club
The Midland 4-H Clover club's meeting was postponed from June 14 to Thursday, June 21, at 1:30 p.m. at the home of Beverly Paulik.

W.C.T.U. Picnic
The Midland Women's Christian Temperance union will hold their June meeting Tuesday, June 26, at the home of Mrs. Blanche McCort on East 98th and Polk Sts. A picnic dinner will be served at 12:30 p.m. All members and friends are cordially invited.

Boy Scout Outing
Boy Scout troop No. 42 of Larchmont, sponsored by the American Legion, Post No. 2, spent the weekend at Camp Johnson on Long lake. The boys enjoyed themselves very much.

NO WAITING
TWO BARBERS
Jerry's Barber Shop
150 Ft. South of Summit Trading Co. on Canyon Road

STEAM
CLEANING
Butler's Garage
GR 8209
1 Block North Airport Road on Canyon Road

WE CAN SUPPLY YOU WITH
the Gates V-Belts
you need for your
Washer, Refrigerator, Power Tools
Summit View Service
GRanite 7414
Airport & Canyon Roads

QUALITY MEATS
Our Store Is Open
Thursday, Friday and Saturday
FOR RETAIL SALES
Retail at
Wholesale Prices
Buy Your Week's Supply
Locker Beef, Pork and Veal Custom Slaughtered, Cutting and Wrapping

MALCOM'S MEATS
1 Block North of Airport Road
On Canyon Road
GR 8258

and did project work on camping and trailing. Those attending to transportation were Ray Killian, William Khul, Stanley Robertson, Ed Frelin, Frank Sampson, and George Hutchinson. Those attending the camp were the executive force, Jim Phillips, S. M.; Ray Killian, A. S. M.; Jim Phillips Jr., Jr. A. S. M.; Bill Hiller, acting Jr. A. S. M.; and Jack Kensley, Sr. patrol leader. Scouts attending were Joe Sigby, Gary Robertson, Dale Breeding, Wayne Killian, Dale Frelin, Harry Harris, Earl Ogden, Jerry Hall, Richard Phillips, Jim Kensley, Douglas Hutchinson, Victor Gerth, Oscar Gerth, Vertin Koenen, and David Reed. The board of review, consisting of William Hiller Sr., Frank Sampson, and Allen Dodge, I. R., conducted the ceremony of presenting Jerry Robertson with the second class Scout rating.

In Hospital
Mrs. Katherine Logan was in the hospital a few days this week for a check-up. We hope she will be feeling better soon.



"BEST BIT OF SOWING EVER..."
"Yes, son, I've just sowed a crop that will really bear fruit—retirement assurance in the Sun Life Assurance Company of Canada. And the same policy provides that if anything happens to me while we still have a mortgage, the farm will be clear of debt for your mother." No farmer should be without this protection—call me today. SUN LIFE ASSURANCE COMPANY OF CANADA

502 Puget Sound
Bank Building
MA. 1381
New Bank Bldg.
Parkland
GR. 3226
John S. Castleman

Guaranteed Better Wear
Attention to Details
ART'S SHOE SHOP
Garfield Street
Parkland

FLETT DAIRY
FARM FRESH
HOMOGENIZED AND PASTEURIZED MILK AND CREAM
ICE CREAM
Phone GA 3301

FISHER'S QUALITY FEEDS
For HEALTHY ANIMALS
Fisher's have a feed for every animal... Be it a Jackass or Brahma Bull
SUMMIT FEED COMPANY
Canyon Road, next to Summit Trading Co.
GRanite 7136 WE DELIVER

SPECIAL PURCHASE
You Can Save On ENAMEL WARE
Ideal for Picnics, Camping Trips, Summer Cabins



(Bluestone)
1-QT. SAUCE PANS.....34c
(Vogue White)
3-QT. SAUCE POTS.....\$2.98
2-QT. SAUCE POTS.....\$2.49
(White)
1-QT. SAUCE PANS.....42c
1 1/2-QT. SAUCE PANS.....79c
2-QT. SAUCE PANS.....\$1.14
WHITE CHAMBERS.....56c
We Also Have Many Other Picnic and Camping Needs

CASEY'S 98th ST. HARDWARE STORE
9818 Pacific GR 7302

FISHER'S QUALITY FEEDS
For HEALTHY ANIMALS
Fisher's have a feed for every animal... Be it a Jackass or Brahma Bull
SUMMIT FEED COMPANY
Canyon Road, next to Summit Trading Co.
GRanite 7136 WE DELIVER

THE BEST WOOD IN TOWN!
\$ \$ Save Order Early Save \$ \$
Old Growth No. 1 Heavy Fir Cordwood
12" 14" 16" up to 2 ft. and Nubbins. Specify Your Length
\$10.00 per cord
Order now and dry it for early use. This same wood dry is \$15 a cord and will be higher-priced this winter.
Large or Small Core Blocks, \$9 cd. in 2 cd. Loads, \$10 cd. in Single Lds.
HEAVY PLANNER ENDS
\$ \$ SAVE BUY NOW! SAVE \$ \$
PACIFIC MUTUAL FUELS, INC.
FUELPHONE MAin 1137 401 EAST 11TH ST.

OUR FINE FOODS ARE YOUR BEST BET

BEANS

RECIPES OF THE WEEK

Hash Rarebit
Broadcast: June 30, 1951
1 lb. can corned beef hash
1 1/2 tablespoons shortening
4 thick slices tomato
1/4 teaspoon salt
few grains pepper
2 cups grated American cheese
1/2 cup Fat Milk
1/2 teaspoon dry mustard
Cut hash into 4 slices. Brown slowly on one side in hot shortening. Turn, and arrange tomato slices on hash slices. Sprinkle tomatoes with 1/4 teasp. salt and pepper. Cover and cook slowly until hash is brown underneath, and tomatoes are thoroughly heated, about 10 min. Meanwhile, mix cheese, milk, mustard and 1/2 teasp. salt. Cook over boiling water until cheese melts and mixture is smooth, stirring often. Serve cheese sauce over the tomato and hash slices. Makes 4 servings.

SANITARY QT.
Milk 19c
4 qts. 72c

Sharp Aged Wisconsin
Cheese lb. 69c

Mild Darigold Luxury
Cheese lb. 49c

Eggs 67c
NEST FRESH GRADE AA DOZ.

HASH 39c
LIBBY'S CORN BEEF LB. CAN

Cheese 79c
ARMOUR'S RI CHEDDA 2 LBS.

Coffee 79c
SWEDISH ROAST LB.
Nothing Finer

Tomatoes 35c
HUNT'S—303 Size 2 FOR

PET MILK 3 tall cans 41c

MEATS
FOR VITAMINS-PROTEINS-MINERALS
EAT MORE
GRADE GOOD & CHOICE
POT ROAST . . LB. 69c
BLADE CUTS—Ceiling price 73c

Summit Farms Fresh Smoked
SLICED BACON . LB. 49c
By the Piece . . lb. 45c

FRESH
GROUND BEEF . LB. 66c
PORK SAUSAGE, LB. 49c

Summit Farms LB.
LEAN SALT PORK . 35c

GRADE GOOD
RIB STEAKS . . LB. 74c

Ready for the Pan LB.
COLORED FRYERS . 63c

CUSTOM CUTTING AND WRAPPING
3c lb.
Curing & Smoking . . 7c lb.

MAXWELL HOUSE, Drip or Regular LB.
Coffee 83c

GOLDEN RIPE
Bananas 2 lbs. 29c

BITE SIZE 1/2 SIZE CAN
STAR KIST TUNA 25c

EXTRA LARGE 54 SIZE
Grapefruit each 5c

Nucoa 3 lbs 99c

HOT HOUSE LB.
TOMATOES 29c

ALL LEADING BRANDS—2 for 39c CARTON
CIGARETTES \$1.86

LARGE SOLID
LETTUCE each 7c

AERO EASTERN, 100 Pct. Paraffine Base 2-Gal. Can
OIL \$1.29

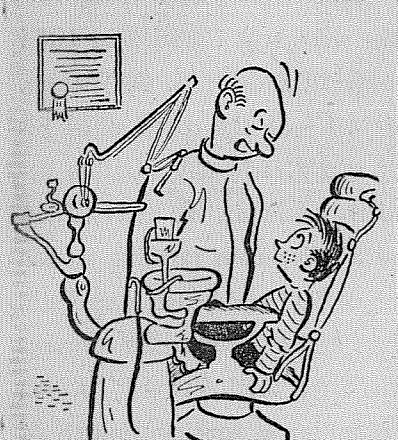
RITZ—Good with Salad 1-Lb. Pkg.
Crackers 29c

WE RESERVE THE RIGHT TO LIMIT QUANTITIES — NO SALES TO DEALERS

SUMMIT TRADING Company
PHONE GRanite 5848
Rt. 13, Box 690, Tacoma—One-half Mile North of Summit View, on Canyon Road

Was \$289.95
Now Only
\$229.95
90 SQUARE INCHES OF
MOVIE CLEAR PICTURE
32 TUBES, BUILT-IN ANTENNA, ONE-HAND TUNING, FINEST F.M. HIGH-FIDELITY SOUND CIRCUITS, BEAUTIFULLY STYLED MAHOGANY CABINET WITH DOORS.
This offer will not last long—Take advantage of this offer NOW. Why pay more when you can have this set for LESS?
Use our Easy Payment Plan.
SYLVANIA MOVIE CLEAR TELEVISION
MODEL 197
Parkland Brookdale Electric
13022 Pacific — We Contract Wiring Jobs — GRanite 5689

By Barbara Cordes
Mr. and Mrs. R. L. Gilmore, of



ETHER GAS OR OIL
NO, I DON'T USE THAT KIND OF GAS, BUT IF I DID I'D GET IT AT—
GLADIATOR SERVICE
122ND & PACIFIC GR. 9946

Palisade, Colo., arrived last week to see their granddaughter, Joy Gilmore, graduate from Puyallup high school. Mr. and Mrs. Gilmore came by bus and plan to stay the week. They are going home by way of San Diego, where they have another son and daughter. Joy is planning to work for the summer and has plans for college this fall. Whatever her plans, we wish her good luck.

To Longview
Mrs. Harry Lampshire went by bus Friday to visit her mother and father, Mr. and Mrs. E. W. Ratty, at Long-

Under New Management
THE STORE WITH THE NEW LOOK
JACOBS PACIFIC DRUG
8248 Pacific Avenue

view, Wash. They returned with her by car and spent the remainder of the week-end here.

Attending 4-H Camp
Miss Helen Heil will be the 4-H delegate to the State 4-H Camp at Pullman, Wash. All the Pierce county delegates plan to leave from the Union depot in Tacoma, Sunday. Accompanied by the county agents, Mrs. Florence Allen and Mrs. George Purcell, they will travel by train at night and arrive at Pullman in time for their lunch. The 4-H members get the taste of college life by living on campus in the dormitories. While the camp is in session they enjoy classes, programs, assemblies and various recreations.

NOW OPEN
FRANK'S BARBER SHOP
112th & Yakima Tisch's Corner
Hours: 10 a.m. to 7 p.m.
Children's Haircutting a Specialty

Thursday, June 21, 1951
Miss Heil was one of the delegates chosen to attend the National 4-H convention last November at Chicago, Illinois.

State Grange Meeting
Fruitland Grange will be well represented at the State Grange meeting this coming week at Longview. Those representing Fruitland are John Hoffman, master of the grange; Nellie Williams, lecturer, and Myrtle Jones, juvenile matron.

Study Club Picnic
The Study club picnic at Wildwood park was a huge success. Those who missed have wished they had had their share of the corn-on-the-cob, and chicken and all the trimmings. The two hostesses, Mrs. Jewel Fox and Mrs. Harry Lampshire, went to a lot of work and expense to close the year of study club with a bang.

Thirteen members of the club were there: Mesdames Isabel Badham, Vivian Menninga, Mac Elsdon, Margaret Stager, Irene Bergren, Kathryn Hanson, Beulah Hoffman, Ernie Templin, E. O. Allen, Don Porter, L. B. Brown

and the hostess.
Next year's plans for Study club were discussed. President of the P-T-A, Mrs. Bert Badham, presided. Irene Bergren has been elected as next year's Study club chairman.

On Trip to Montana
Mrs. Bert Badham and children, Dickie, Bob and Caroline, left Saturday to drive to Bozeman, Mont., to spend two weeks visiting her mother and father, Mr. and Mrs. R. W. Allinson. P.S.—Mr. Badham will remain behind to milk the cows.

Mrs. Neate of Puyallup is riding with them and will visit with her mother and father, who also live in Bozeman.

Fifth Grade Picnic
The members of the fifth grade at Woodland celebrated the last day of school with their own class picnic. The group went out to Spanaway park and enjoyed their sack lunches and swimming. There were 26 class members who were accompanied by four of the 5th grade mothers, Mrs. Less Root, Mrs. St. Pierre, Mrs. Rule and Mrs. Art Lincoln. Their teacher, Mr. Mobley, treated the class to ice cream.

4-H Club Treated
Strawberry shortcake was served to the members of the 4-H that met at the home of Mrs. Bert Badham last Thursday. The meeting was presided over by Byron Fox and eight members were present.

Picnic at Hi Dive
Hi Dive at Lake Surprise was the spot chosen for the 8th grade picnic. The class took sack lunches and enjoyed the recreation area and swimming. Following the picnic the group ended up at the home of Mrs. L. B. Brown, who had prepared hot dishes and a wiener roast for the gang of 28 class members. Mrs. Erna St. Pierre assisted her.

Neighborhood Club
The Neighborhood club met on Wednesday for its regular June meeting, at the home of Edna Pederson. The evening was spent in games and visiting, with lovely refreshments served by the hostess. Those attending were Mrs. Frank Wiggins, Mrs. Maude Swallander, Mrs. Waller, Mrs. Rockwood and the hostess.

Improving
Mrs. Bell Jordan, who was reported as being in the Roney Nursing home, is now in the Mrs. Stell Waters Nursing home at Second St. N. W. in

JUNE Foods
CHASE & SANBORN L.B.
Coffee 79c
C & H 10 LBS. **SUGAR . . . 95c**
VAL VITA CUT Lge. No. 2 Can **BEANS 9 for \$1.00**
VELVEETA . . . 2-lb. loaf 83c
LIBBY'S **CORN BEEF, 12-oz. . . . 39c**
RED ARROW **FIG BARS 2 lbs. 49c**
RINSO Giant Size Pkg. **59c**

ADAMS BLACK 4-OZ
PEPPER 69c
Cello Carton Fresh GREEN 2 Lbs. **Tomatoes 19c BEANS . . 25c**
Snow White Lb. **Cauliflower 8c**
CANTS, lb. 8c

Novotney Bros.
72ND & PORTLAND AVENUE HI. 7200 PRICES EFFECTIVE JUNE 22-23

POLISH SAUSAGE . . lb 55c
SKINLESS **WIENERS**

Center Cut Shoulder PORK ROAST Per Pound 49c

LOCKER MEATS AVAILABLE
CUSTOM CUTTING and WRAPPING

BERGERS
Quality MEATS

Puyallup. She is well enough now for brief visits.

Happy Birthday
The neighborhood all joins in wishing Howard Allen a happy birthday. His community spirit, good will, and friendliness is felt by all those who enter his store.

THE LADIES AUXILIARY of the Puyallup volunteer fire department will meet at 8 o'clock Thursday evening at home of Mrs. Gay Kagler for its annual strawberry festival. Final plans for the July picnic will be discussed; all members are urged to attend.

You'll like to bank in nearby Lincoln District

The Puget Sound NATIONAL BANK
Lincoln Branch
3308 So. Yakima Ave.
Member Federal Deposit Insurance Corporation

C. O. Lynn Co. MORTUARY
717 TACOMA AVE. Phone MAIN 7745

NOTICE
IT'S VACATION TIME HOURS
Monday, June 18, to June 30
2 p.m. to 10 p.m.
Sunday, June 17 and 24
11 a.m. to 10 p.m.
McCAY'S ICE CREAMERY
Garfield St., Parkland GR. 8205

BUY NOW! SAVE 15%
In Our "Summer Installation" Special

On **Coleman Floor Furnaces**

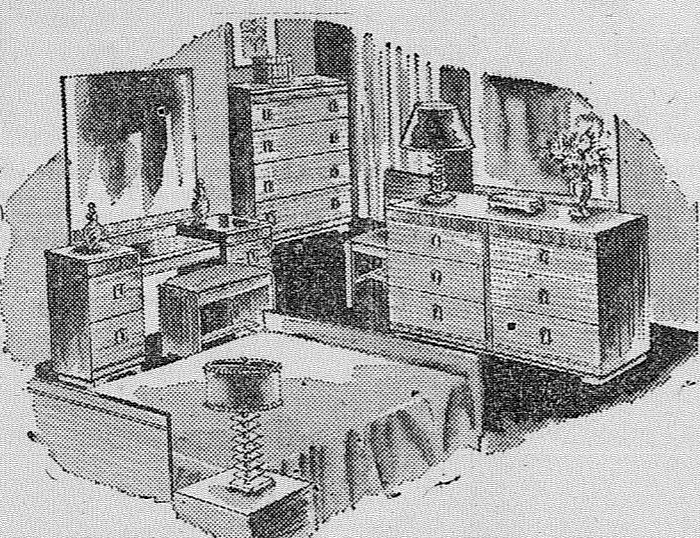
It's Automatic: Burns oil. No fire-tending, no shoveling of ashes.
It's Clean: No fuel-grime or dirt.
It's Real Automatic Furnace Heat: Powerful—heats up to 4 or 5 rooms with "warm-floor" comfort.
Needs No Basement—No Ducts—we can install without "tearing up" your house.
Wide Range of Sizes and Models to suit your particular needs: See us for the right installation for your home.

We're making this offer to induce you to buy in our slow season instead of in our Fall rush. See us now—save money—get this better heat!

Low Down Payment—Easy Terms!
Offer Good Until July 31st Only
YOUR FUEL OIL AND APPLIANCE DEALER
POCHEL DISTRIBUTING COMPANY
140TH AND PACIFIC AVE. PHONE GR. 8642

Starts You In Housekeeping

For Only **399.50**



Living Room

- 10 PIECES
★ DAVENO in Mohair Frieze
★ 1 MATCHING ROCKER
★ 2 END TABLES
★ COFFEE TABLE
★ 2 TABLE LAMPS
★ 1 FLOOR LAMP
★ 1 SCATTER RUG
★ 1 SMOKER



(Similar to Cut)

Bedroom

- 10 PIECES
★ VANITY ★ NIGHT STAND
★ BENCH ★ BED LAMP
★ BED
★ CHEST
★ INNERSPRING MATTRESS
★ BOX SPRINGS TO MATCH
★ 2 BOUDOIR LAMPS

Dinette

5-PIECE DINETTE
SET INCLUDES BEAUTIFUL DROP-LEAF TABLE AND 4 CHAIRS

Open Tonight Until 9!

SEE US FOR FINEST IN APPLIANCES
KELVINATOR - MAYTAG - EASY - NORGE - HOTPOINT

7208 PACIFIC AVE.

SEPIC'S

1301 SO. 'K' STREET

HI. 9556

FURNITURE & APPLIANCES

BR. 0386

KEEP YOUR FARM PROFITS
flowing.
Electric Motor
Gasoline Engine
Belt Driven
Jacuzzi
CENTRIFUGAL PUMPS
FOR IRRIGATION
Philip Hardware
2215 PACIFIC AVENUE
BR. 3109

GENERAL SUPPLY CO. "you've tried the Rest now try the BEST"

12702 PACIFIC AVE.

(In The Growing Parkland District)

GR 3512

OPEN 'TIL 9:00 P. M. DAILY EXCEPT SUNDAYS

TOP QUALITY **Paint Thinner**
GAL. **22c** Your Container
PRIZES! PRIZES! PRIZES!

LOTS OF PARKING SPACE
EASY TERMS AVAILABLE
PRICES EFFECTIVE THURSDAY, FRIDAY, SATURDAY
KIDS! COME IN AND INQUIRE ABOUT OUR MODEL AIRPLANE BUILDING CONTEST!

IT'S PURE BOILED **LINSEED OIL**
GAL. **\$1.99** Your Container
(5-GALLON LIMIT)

CABINETS BUILT TO SPECIFICATION
DOORS, SASH, MILLWORK
THE BEST IN THE NORTHWEST!

TURPENTINE
GAL. **\$1.39** Your Jug
PRIZES! PRIZES! PRIZES!

Flite Water Mix **PAINT**
QT. **59c**
Regular \$5.45 Gallon \$2.04 Per Gallon (5 colors)

OUTSIDE WHITE
2.49, 3.19, 3.95, 4.11 and 5.80 per gallon

SHINGLE STAIN
\$1.39 GAL.
Red, Green, Light Brown, Dark Gray, Light Gray
Wow! What a Buy!

L & H PORCH AND FLOOR PAINTS
9 Colors, including Blue
\$5.33 GAL.

L & H GREEN UTILITY FENCE PAINT
THE BEST Gallon **\$3.33**

Let's Paint The **BARN!**
Barn and Utility Paint
\$2.49 GAL.
Red, Gray, White

90-LB. MINERAL SURFACED **ROOFING**
100 Sq. Ft. to Roll
\$3.49 Roll
Other Roofing Prices Are Right

YOU CAN'T FIND A BETTER **TEXTURE**
White . . . 3.75
Colors . . . 3.95
25-LB. SACK

Window & Door **SCREENING**
Screen Doors
Garden Tools
Garden Stakes

ROY, WASHINGTON

The TIMES-JOURNAL

OVER 10,000 CIRCULATION

Published every Thursday by LaCrosse Printers in Parkland, Wash. Distributed by direct mail to every home and business in Parkland, Eatonville, Graham, Roy, Firgrove, Midland, Waller Road, McKenna, Elk Plain, Kirby, Kapowsin, Spanaway, Collins, Summit, Trift, Berkley, Harvard, Fern Hill, Ponders, Frederickson, Harding, Woodland, Lake view, Tillicum, Firwood, and southern portion of Tacoma.

TWO LOCATIONS:

SHOP Old Chapel Bldg., PLC Campus—GR 7100
OFFICE..... On Garfield St. between Pacific & C Sts.—GR 8667

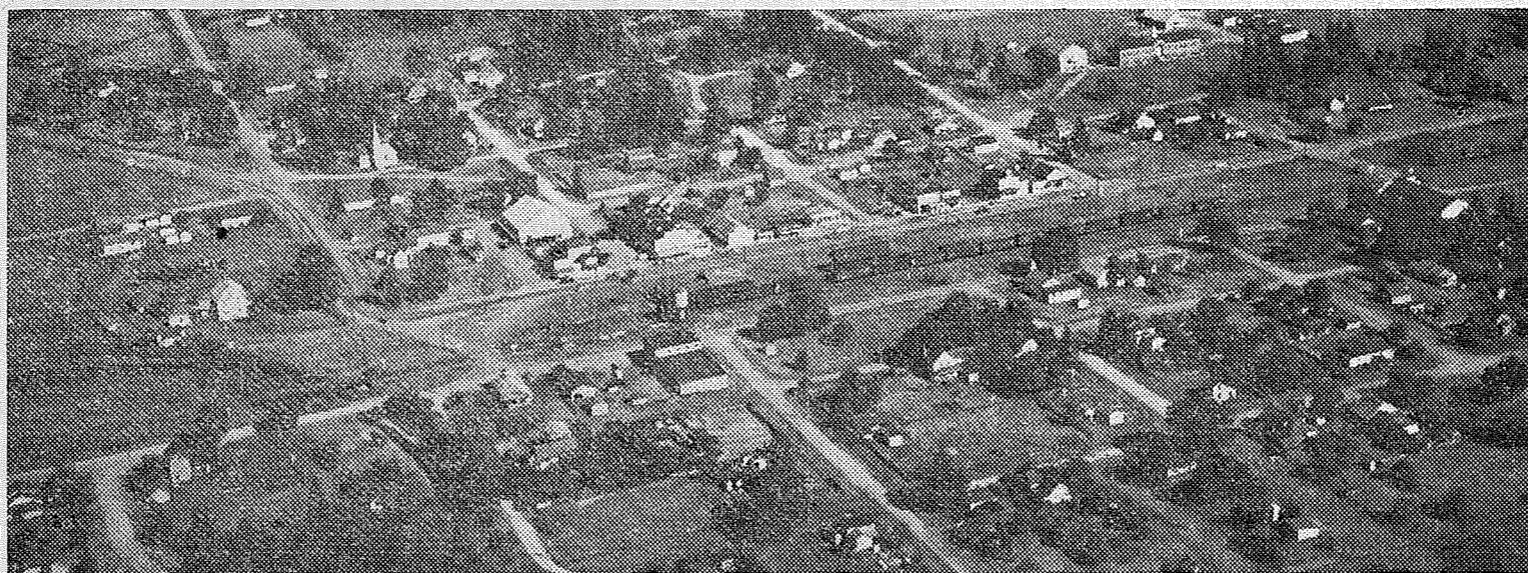
CLARENCE W. LACROSSE, JACK BROWN.....PUBLISHERS
NEVA T. HONEYWELL.....EDITOR
SUBSCRIPTION RATE\$2.00 per year
(Beyond Free Distribution Area)

ADVERTISING RATES—LOCAL AND NATIONAL

1 to 3 Column inches, per month.....\$1.40
3 to 100 Column inches, per month.....\$1.25
100 to 200 Column inches, per month.....\$1.15

Classified Ads.....4 cents per word
Phone for Additional Volume Rates

Printed in Parkland Mailed in Parkland



AERIAL VIEW

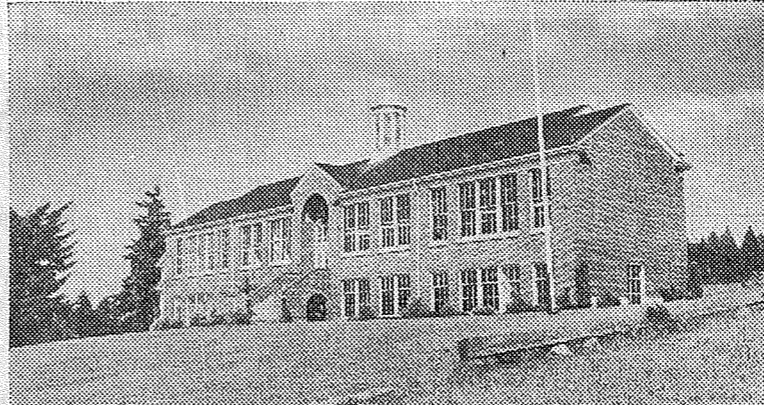
ROY, a pioneer community of the state, was founded in 1884 by James McNaught, a railroad official, and Dr. S. O. Warren, the latter continuing as "first citizen" of the town until his death. The town is the home of many early-day families descendants of pioneers who crossed the plains in the early fifties. With Fort Lewis on one side and a prosperous farming section on the other, Roy has a population of 300 and boasts a splendid grade school and a number of stores and other business concerns to serve the community. It is on the direct road between Tacoma and Portland. Roy citizens are planning a rousing Fourth of July celebration.

H. L. Wolf General Merchandise



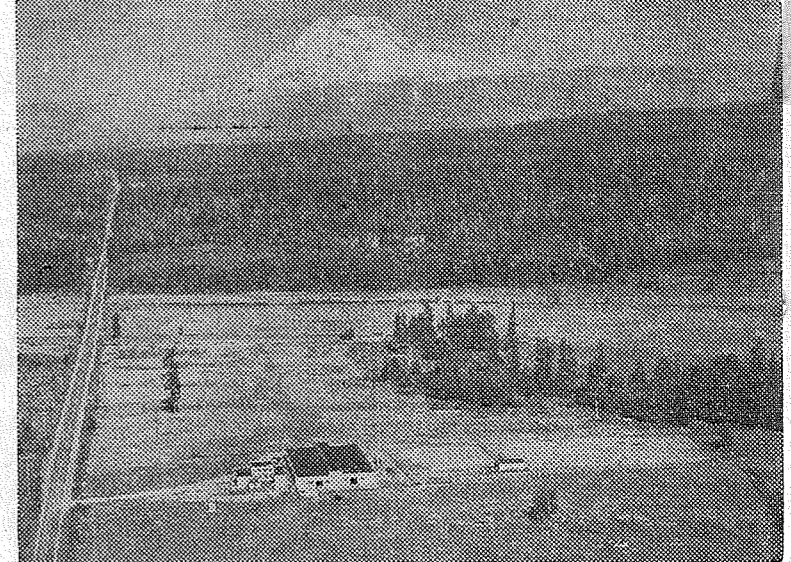
This photo shows the spacious grounds and large building housing the H. L. Wolf store and the Roy Post Office. This building and business is for sale. Health and age force Mr. Wolf to retire after more than forty years of continuous operation. Must sell general merchandise business, stock, fixtures, buildings and properties. Equitable terms can be arranged. Investigate this opportunity today. H. L. Wolf, owner, Roy (Pierce County), Washington.

Roy Grade School

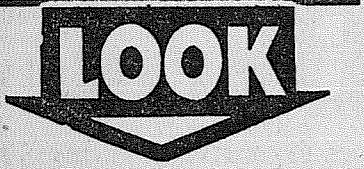


Roy Grade School, built in 1937, is a modern brick four-room structure with up-to-date library, full basement, gym facilities and cafeteria. The attendance is about 110. Dan Grethen, principal, is also the 7th and 8th grade teacher; Donald Huseby teaches the 5th and 6th grades; Miss Florence Woodbridge, 3rd and 4th grades; Mrs. Louise Phelps, 1st and 2nd grades.

Schorno Dairy



As seen against a background of timberlands with majestic Mt. Rainier in the distance, the broad acres of the Schorno Dairy, surrounding the modern buildings of the establishment, present a picture of the thrifty rural enterprise which is typically American. Owner Walter Schorno is justly proud of his fine herd of registered Jersey cattle and the high quality of the products of his dairy.



2x4, 8 foot 10c each and up

SPLIT CEDAR FENCE POSTS

35c ea. (at the yard)

WE RENT House Jacks, Floor Sander, Edger and Miter Saw.

WE CUT GLASS

BASKETT

Lumber Company
96th and Portland Ave. Our Phone GR. 5844

Patronize Your Advertisers

FIREWORKS

Roman Candles, Skyrockets, Buzz Bombs and all Night and Day Fireworks are available.

PARKLAND FIREWORKS STAND
125th and Pacific Avenue

Patronize Your Advertisers

NOW OPEN

Hamburgers & 12" Hot Dogs

CLARK'S

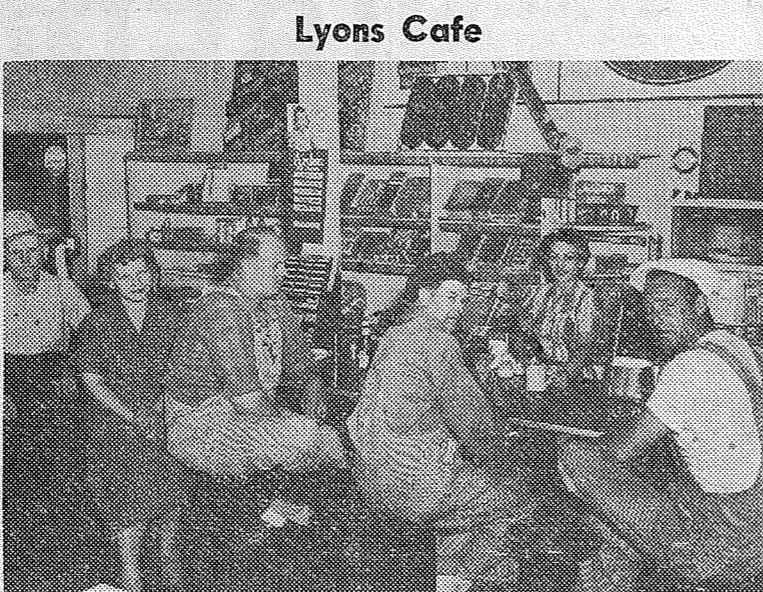
IN - AND - OUT

Mt. Highway Spanaway

Patronize Your Advertisers

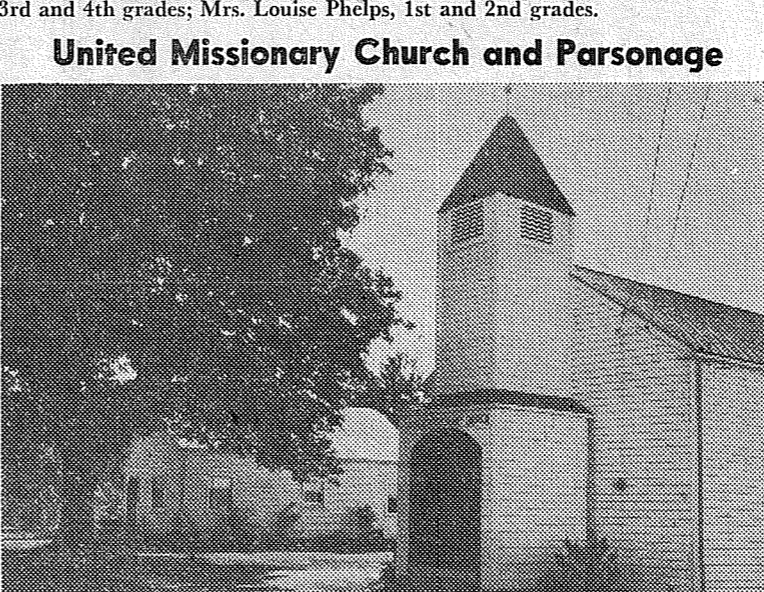
Have your Cabinets CUSTOM BUILT

At No Extra Cost
RHONE'S CABINET SHOP
2nd & Pacific Spanaway
GRanite 3342



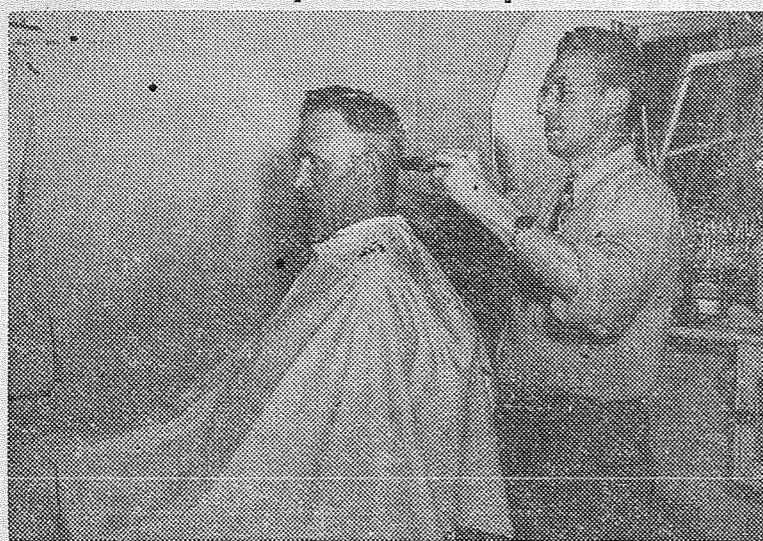
Lyons Cafe

Eva Dittbenner, owner and operator of this modern restaurant, serves a steady customer along the line of well-filled stools at her counter. This cafe caters to tourists and local trade alike and is a favorite stop for truckers. Yes, it's a nice, clean, friendly spot to stop for good food and fountain specialties.



United Missionary Church and Parsonage

The Roy United Missionary Church was organized in 1944. An old store building and property was purchased under able leadership of Reverend A. B. Newfield and Albert Brizicha. The building was remodeled and dedicated free of debt in June 1945. The next year the adjoining property was purchased and an attractive parsonage built. Later six Sunday school rooms with basement were added to the rear of the church. There is a thriving Sunday school and a splendid vacation Bible school has just closed. Reverend and Mrs. Harlander, present pastors, came to Roy in 1949. Hard workers and faithful in proclaiming the gospel. Regular services are Sunday morning, Sunday school at 10 o'clock, worship at 11. Evening service at 7:45 and midweek services at 8 p.m. Wednesdays. A warm welcome awaits you here at this Gospel Center.



Roy Barber Shop

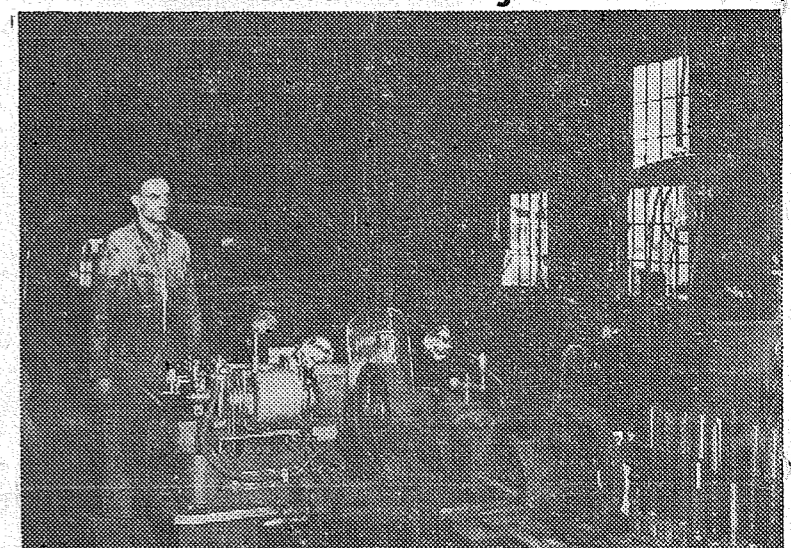
Pictured above is Fred W. Porsch, owner and operator of Roy's Exclusive Barber Shop. Seated in the chair getting "the works" is Earl Caldwell, manager, Sawmill Div. of Ziedell Machinery and Supply of Portland, who is a regular customer of Fred's when in Roy. Fred has been barbering for over 40 years in Roy. His customers find his work highly satisfactory as do many travelers who stop in for a haircut or shave.

(Times-Journal Photos by LaCrosse)



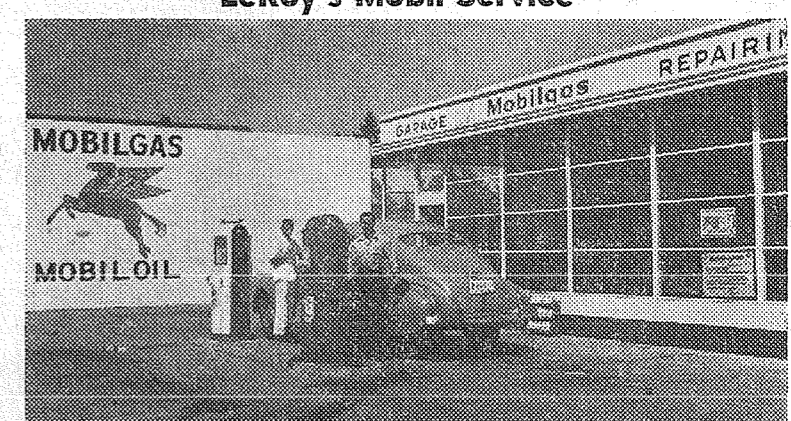
Murray's Store

Maurice Murray, owner and operator of Murray's Store, waits on Judy Lyons and Kathleen Welch, with Mrs. Murray waiting on Louise and Mrs. Reeder at the second counter. This store is able to supply your every need with quality meats, groceries, hardware, feed, and lockers. This store has a reputation for friendly, courteous service, built up since the day it was established in 1889.



Reeder's Garage

Roy Reeder, Roy's leading mechanic, stands beside a customer's car in his well-equipped garage. Roy has been in the automotive repair business for 25 years and has been working on the autos of Roy residents for the past ten years. Complete automotive repair work, plus gas, oil and accessories, are features of the service offered by Reeder's Garage.



LeRoy's Mobil Service

LeRoy Irett, owner of this modern Mobil Service, fills the tank for one of his many satisfied customers as Gene Ketter, assistant, adds the free service. This station is open from 6:45 a.m. to 10 p.m. every day. LeRoy invites you to stop in for friendly service.

Better Hurry!
Last 2 Days

Hundreds of People Are Taking Advantage of the Great, Sensational

L. L. HESS & SON
NEW FURNITURE

AUCTION

Every Afternoon at 1:30
Every Evening at 7:30

BARGAINS GALORE!

L. L. HESS & SON
39TH & SO. "M" ST. (ON SOUTH TACOMA BUS LINE)

How to make good telephone service even better...



give the operator
1 town you're calling
2 number you want
3 name (if your call is for a specific person)

Faster Long Distance service Maybe you never if you place your call like this thought of it this way, but you can help your Long Distance operator save your time if you give her your call like this: First, the name of the town you're calling. Then the telephone number. And finally the name of the person you're calling—if it's a person call. You'll find this tip particularly helpful these days when Long Distance lines are busy carrying the calls that are aiding our military forces and our industries to build the nation's strength.

Have you started keeping a handy out-of-town number list? You'll find you can save considerable time in completing Long Distance calls if you give the operator the number you want rather than just the name and address. That way, you see, you won't have to wait while she calls "Information" in the distant town to get the number you're calling.



CANYON ROAD
By MRS. K. W. STRUENSEE
GR. 5742

The next meeting of the Neighborhood Workers 4-H club will be held Friday evening, June 29, at 7 o'clock, at the home of Kenneth Hill, on Montana Ave.

Visit Friends in Spokane
Mr. and Mrs. W. H. Niquette Sr.

PERCIVAL JONES



Ah, relax. They got the silverware, but didn't touch the watch you got at the...

PARKLAND JEWELERS

today.
CLOSED SATURDAY AFTER-NOON, STARTING JUNE 23
239 GARFIELD GR. 7828

and Mr. and Mrs. W. H. Niquette Jr. and daughter Kathy spent the week end visiting friends and relatives in Spokane. While there they attended a party in honor of the 80th birthday of the grandmother of Mrs. Niquette Jr. They also enjoyed a very successful fishing trip while East of the mountains.

Moving Into New Home
Mr. and Mrs. Curry recently sold their home at 96th and Canyon road and are moving into a new home at North Hill. Their sons, David and Ronny, were members of the 1951 graduating class of Puyallup high school. David immediately enlisted in the United States Navy and left Tuesday for boot training.

Ladies Auxiliary Meeting
Mrs. Harvey Dodd and Mrs. Margaret Hague will be hostesses for the pot luck luncheon of the Ladies auxiliary meeting that will be held June 28 at 12 noon. This will be the last meeting before the summer recess, so everyone is urged to attend.

Hostess to Friends
Mrs. John Folk of Canyon road was hostess to a group of neighborhood friends at her Clear Lake cabin Monday, June 11. Swimming and fishing were enjoyed during the day by Mrs. John R. Andrews and Rusty and Linda; Mrs. Ed Hoffman and Larry, Kathy and Jimmy; Charlene Latterell, Mr. and Mrs. Royal Latterell, and Mrs. Folk and Sherry. Their husbands, John R. Andrews, Ed Hoffman and John Folk, and Mr. and Mrs. Mike Latterell and Mike Jr. arrived in time for dinner, and in the evening the men had a "fishing party," but can only talk about the "big" ones that got away.

On Extended Fishing Trip
Mr. and Mrs. Ray Lester of Canyon road and their grandson, Larry Hoffman, left Friday, June 15, for Quinalt on an extended fishing trip. The best of luck to them.

Returns Home
Bryan Samuelson, small son of Mr. and Mrs. B. Samuelson of Mount Vernon, formerly of East 72nd street, who has been in the Tacoma General Hospital, has improved enough so that he was able to return to his home last

Listen to
America's Finest Western Recording Band!
JOHNNIE LEE WILLS
and HIS BOYS

Now on Station KIRO at 12:30

BROUGHT TO YOU BY

MOUNTAIN VIEW FEED
Rt. 4, Box 417 Tacoma
YOUR **Larso** DEALER

Picnic at Lake Ohop
Mr. and Mrs. Royal Latterell and Shirley, Lawrence and Ole; Mr. and Mrs. Paul Bacon and Bobby, Dorothy, Sandy and Pat, and Mr. and Mrs. Shorty Peacock enjoyed last Sunday picnicking, swimming and fishing at Lake Ohop.

New Arrivals
Welcome to our community, Mr. and Mrs. Sigurd Christensen and son Tim. The Christensens are living in the Samuelson home on East 72nd street.

DON HANSLER, son of Mr. and Mrs. Frank Hansler of Parkland, left Sunday for Bonneville, Ore., where he has accepted a position as aquatic biologist for the Oregon State Fisheries. Don graduated June 9 from the University of Washington, where he was elected to two science honoraries, Phi Sigma and Sigma Pi. He was an honor graduate from both Parkland grade school and Lincoln high school.

"Our Girl Stater"
Charlene Hirshey of Parkland has been selected to represent unit No. 228 of the American Legion auxiliary at Evergreen Girls State, to be held at the Central Washington College of Education, Ellensburg, from June 23 to July 1.
She was chosen from the Lincoln high school for her outstanding accomplishments in music, citizenship, Americanism and cooperation.

VAUGHAN'S VALUES

30" ORNAMENTAL WIREper foot 20c
42" ORNAMENTAL WIREper foot 24c
39" FIELD FENCE WIREper foot 10c
4x4 CEDAR FENCE POSTSper foot 15c

Vaughan's
PACIFIC AVENUE LUMBER COMPANY
84TH & PACIFIC AVE. PHONE HI. 9515

WE REPAIR

AUTO RADIOS
PORTABLES
TABLE MODELS
& CONSOLES

Is your auto radio giving you a bad time? It may need a new tube or vibrator, a properly installed aerial or an ignition noise suppressor.
WHATEVER THE TROUBLE IS, WE CAN FIND IT and give you an accurate estimate of complete repairs for a very small, or perhaps, no charge, sometimes very quickly.

BIXBY Guaranteed RADIO Repair
Call GR. 8309
FREE TUBE TESTING
Waller Road, 1/4 Mile South of Airport Road

HOGAN'S FINE FOODS

98th AND PACIFIC STORE ONLY
Hogan's Dollar Saving Values

TUNA TIME

TUNA FLAKES
23c

1/2 TIN

While They Last

JAM JELL

3 Bottles for
25c

HOGAN'S BLEND

Coffee
75c

POUND

COCO COLA

(Plus Deposit)

6 for 19c

OVEN FRESH

Crackers

2 LBS.

35c

OLYMPIC DILL

PICKLES

24-OZ.

33c

SUNNY JIM

SYRUP

24-OZ.

29c

PRODUCE

2 BUNCHES

RADISHES, ONIONS 5c

ORANGES . . . LB. 7c

Low Priced Meats

GOOD—Blade or Arm Cuts

POT ROAST . . . LB. 72c

COUNTRY STYLE

SAUSAGE . . . LB. 49c

SMALL, LEAN

PICNICS . . . LB. 48c

Groceries - Meats - Magazines - Sundries - Household Hardware
Large selection of Beer and Washington Wines - Locker Supplies

STORE WIDE - OPEN AS USUAL ALL DAY SUNDAY

SALE THURSDAY, FRIDAY AND SATURDAY, JUNE 21, 22, & 23
Store Hours: 9 a.m. to 12 p.m. — Sundays: 10 a.m. to 12 p.m.
No Sales to Dealers — (We reserve the right to limit quantities)

HOGAN'S HAVE LOWER PRICES



COMPLETE SUPPLY OF HIGH QUALITY

BUILDING NEEDS
LUMBER MILLWORK CEMENT

1x12 Shelving . . . per ft. 15c
Fly Screen, galv. . . sq. ft. 10c
Fly Screen, bronze . . sq. ft. 12c

4'x8'x1/4" Reject Unsealed Veneer . . . each \$2.98

4'x8'x1/4" Good Interior SOIS Veneer . . . each \$4.76

4'x8'x3/8" Celotex Wallboard Each \$1.98

SASH, 8x10 4 Light . . \$2.25

BUILD
4 x 4
FIR TREATED POSTS
15c per foot

A GOOD BUY

1X3 42-INCH CEDAR POINTED PICKETS . EA. 11c

PAINT THIN'ER
24c PER GAL.
YOUR CONTAINER

OUTSIDE WHITE
Utility House and Barn
PAINT
\$2.49 PER GAL.

OUTSIDE WHITE
100% Pure Boysen
HOUSE PAINT
\$5.75 PER GAL.

ENAMELED

STEEL RECESS TUBS

REPAIR
1x4 & 1x6 Utility Siding
\$5.90 per 100 sq. ft.

Double Compartment
Kirchen Sinks

1x4 Dry Utility Flooring
Per 100 sq. ft. . . \$13.50

TOILETS
(Complete with Seats)
Good Supply Available

1x4 B & Better Fir Flooring
4' to 8' lgths., 100 sq. ft. 18.50

No. 14 House Wire, per ft. 2c

No. 1 Common Oak Flooring
Per 100 sq. ft. . . \$25.00

KNOTTY CEDAR and KNOTTY PINE
PANELING

REMODEL

METAL LIGHT RECEPITALS
Regular \$1.65 . . . each 29c
(For Basements, Attics and Garages)

Metal Clothes Line Poles \$12.95
Bamboo Leaf Rakes . . . 29c
(Save Money—Assemble Yourself)

Combination Garden Rakes and
Rollers, Reg. \$2.45 . . ea. 97c

GARDEN TOOLS
Hand Cultivators, Weeders,
Etc. 29c

Brookdale Lumber Co.

136th & Pacific Ave.

Phone Granite 8669

Fowler-Norris
Wedding May 28

Robert Douglas Fowler and Marcia K. Norris were married in Puyallup May 28, with close friends and relatives in attendance at the reception held at the home of Mr. and Mrs. Mark Norris, parents of the bride.

After a short honeymoon at Capeland, Bob returned to the Marine base at Oceanside, Calif., where his bride joined him June 15.

Bob is the youngest son of Mr. and

Mrs. William C. Fowler, an old pioneer family in Spanaway.

Marilyn Pflueger Is
Making European Tour

Marilyn Pflueger, graduate of Pacific Lutheran College, daughter of Dr. and Mrs. J. P. Pflueger of Parkland, was selected as one of 20 students by the National Lutheran Council to tour Europe as a study group.

They will travel through France, Austria, Germany and Holland to study the youth conditions and churches of those countries.

She is the only one chosen from the West. She arrived in Paris on Monday morning by air. Marilyn is a graduate student of Syracuse University, N. Y., the past year and will go back again next year. Before going back she will attend the Ashram for Lutheran Students at Interlaaken,

Switzerland.

FOR SALE—Easy washing machine, Universal electric stove, large upholstered chair, girl's Shelby bicycle; all in nice shape and cheap. Call PR. 1478. 15p10

FOR SALE—Buffet and outside gym set. 961 So. 121st. 15p10

FOR SALE—Taylor Tot with shopping bag, high chair and pad. GR. 6642. 15c40

DRESSMAKING, ALTERATIONS, BUTTONHOLES. Tele. GR 3385. Corner of Knapp & Spruce, near Midland school. 15c1f

CHILDREN'S NURSERY, open any age; trained personnel, physician available; reasonable rates; GR 6682. 15c1f

LAWN MOWERS sharpened and repaired. 1-day service. Free pick up and delivery. Phones GR. 3310 and LA. 2718. 15p41

RUPE MACHINE WORKS
MOTOR REBUILDING
Shop: GR 7450 - Res: HI 6190
Pacific Avenue at Brookdale
MACHINE SHOP & GARAGE

All Automotive
Machine Work

WANTED—Typing to do in my home; experienced legal typist. Call GR. 7289. 15c1f

GRAVEL, bank run, good for driveway; 4 yards, \$6. Crushed rock and drainfield gravel. GR. 8095, GR. 8259. 15c1f

EXPERT WATCH REPAIRING
Pearls Restrung
Jewelry Repaired
Mobley's Jewelry
C. E. HAWMAN, Prop.
Pacific Avenue at 104th
Parkland, Wn. Res: HI 1274

WANTED—Alterations, restyling and dressmaking. Come in for free estimate. Located across from Parkland Bank. Doll Moonitz Dressmaking. 15c1f

TAP, ACROBATIC, BALLET Classes. All ages. Mildred Keller, GR. 7881. 15c1f

WANTED—Chickens and Rabbits. Call us before you sell. Cope's Poultry Market, 7036 Pacific Avenue, Tacoma, Wn. GA 4406. 15c40f

BABY FURNITURE, new and used. SMALL FRY EXCH., 1109 Market. 15c1f

10—Rentals

FLOOR SANDER FOR RENT
PARKLAND WESTERN AUTO
Airport & Pacific GR 3112

11—Repair Service

WASHING MACHINE PARTS — Largest stock in town. Repairing that pleases. B. B.'s Washer Service, 3722 So. G. GA. 5115. 11c1f

WE FIX oil heaters fast. Telephone GR. 3635. 11c1f

STOVE REPAIRS—Largest stock in Northwest. Hyder Furnace, 1513 Pacific Ave. MA 4767. Established in 1872. 11c1f

13—Farm Ads

DEAD STOCK REMOVED WITHOUT CHARGE. Highest prices paid for tallow, hides, grease and bones. PUGET SOUND RENDERING WORKS. Phone Lakewood 2434. 13c1f

\$10 DISCOUNT ON ALL MERRY TILLERS FOR ALL OF JUNE
Demonstrations in the field. We stand back of our sales. 3 years' experience with Merry Tillers. 1 used Merry Tiller for sale, \$125. DON ARTHUR Distributors. PR. 1800. 4018 Sixth Avenue Tacoma

14—Situations Wanted

CHILD CARE—Wish to do child care in my own home. GR 3503. 14c1f

15—Miscellaneous

WATER WELLS DRILLED
Pumps
Call TURNER
GR. 8168 MA. 4323 15p34

Building Supplies

SASH - WINDOWS
DOORS AND FRAMES
WE CUT GLASS
4'x8'x1/2" Tempered MASONITE SHEETROCK—ALL SIZES

SPANAWAY LUMBER CO.
Mt. Highway at Spanaway
GR. 3323 WE DELIVER

SEPTIC TANKS CLEANED—Contents hauled away. Don Redford, 8232 So. Fawcett. GA. 7334. If no answer call GA. 9222. 15c1f

FOR SALE—Vac. Case tractor with power mower, and plow, spring tooth, buzzsaw, disc, and low trailer. Phone 127, Graham. 15c40

FOR SALE—Fresh whipping cream from tested cow, 85c a quart. GR. 8088. 15c40

Pierce County Refuse Co.
Weekly GARBAGE Collections
Phone GR. 8688

FOR SALE—Twin beds, complete. Excellent condition. Wall tent. GR. 3988. 15c40

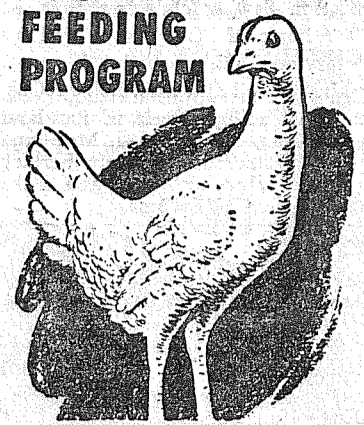
LEAVE FILM at Quality Photo Service for developing. In at 10, out at 5. 9610 Pacific Ave. 15c1f

MAN, no drinker, wishes to pay for room in private home, near bus; can help around place if you have farm or business. BR. 8870. 15c40

BICYCLE REPAIRS—Guaranteed parts and workmanship. New and used bicycles for sale. Spanaway Cycle, 3rd and Mt. Highway, in Spanaway. 15c1f

FOR SALE—Bald hay, \$25 per ton. Harvey Crute, Rt. 1, Box 94, Eatonville. Ph. 7-R14 evenings. 15p10

Ready for the Second Stage in her FEEDING PROGRAM



TRIANGLE DEVELOPING FEED
MASH OR PELLETS

Builds Better Layers

After years of careful field research Triangle has developed highly specialized feeds for the three periods in a layer's life span—Chick Starter for the chick stage, Developing Feed for the pullet stage and X-tra Egg Producer for the laying stage. Right now most poultrymen are in the second stage of the program—the time when young pullets need a specially balanced formula to supply growth and body reserve so essential to future maximum egg production.

Insure your Future X-tra Egg-Profits

Feed Triangle Developing Feed now! Its full nutrient balance will insure you of maximum egg production this fall when your pullets are ready for the laying house. Keep those pullets in top shape with Triangle Developing Feed.

TRIANGLE MILLING CO.
Sole locally by

Stewart Hay & Grain
SPANAWAY
Mt. Highway GR. 8615

Mich., and visit her brother Gerhard in Columbus, Ohio.

Merle Pflueger, who is attending Columbia University, N. Y., is home for the summer.

PFC. James R. Stullick, son of Mrs. Zarah M. Stullick of 8642 So. D St., is listed among Marines wounded in action, according to the Department of Defense's Korean casualty list No. 329.

JEROME FRANCIS KUKOWSKI, Rt. 11, Box 372, was one of 439 seniors who received their degrees from Seattle university at commencement exercises June 1. He was given a Bachelor of Science degree.

12—Used Autos

You Get MORE For Your Money at MALLON'S

'47 FORD V-8 Super Deluxe Tudor, A-1 . . . \$895

'47 FORD V-8 Super Deluxe Fordor, radio, heater, A-1, \$1045

'47 FORD V-8 Super Deluxe 5-pass. coupe, heater, A-1, \$995

'49 FORD V-8 Custom Fordor Sedan, radio, heater, A-1, \$1295

'49 FORD V-8 Custom Tudor, heater, over-drive, A-1, \$1445

'49 FORD 6 Custom club coupe, radio, heater, A-1 . . . \$1345

'50 FORD 6 Deluxe Tudor; heater, A-1 . . . \$1545

'50 FORD 6 Deluxe Tudor, heater, A-1 . . . \$1445

'46 MERCURY Sedan, rebuilt motor, heater, A-1 . . . \$995

'46 OLDS 66 5-pass. coupe, new finish, heater, A-1 . . . \$995

'49 STUDE Commander, 3-pass. coupe, radio, heater, overdrive, A-1 . . . \$1595

'50 STUDE Champion sedan, radio, heater, overdrive . . . \$1795

'49 PACKARD 8 sedan, radio and heater . . . \$1695

'48 CHEV. station wagon, heater, A-1 . . . \$1295

'49 CHEV. Deluxe Club Coupe, radio, heater, A-1 . . . \$1495

'50 CHEV. Deluxe Fordor Sedan, radio, heater, Powerglide, A-1 . . . \$1895

Several More to Choose From

MALLON'S

Tacoma's Pioneer Ford Dealer
Serving the Public
For 33 Years
5625 South Tacoma Way
GARland 7273

3-PIECE BATHROOM SET—
COMPLETE . . . \$151.50
Including All Fittings

PARKLAND LUMBER & HDWE.

127TH & PACIFIC AVENUE GR. 5544

Gibbons

Spanaway Food Center

SPANAWAY GR. 7512
CAMPBELL'S
TOM. SOUP 3 for 29c
CHEDDAR
CHEESE . . . lb. 56c

2 Pkgs.
WHEATIES . . . 25c
BAR NONE
DOG FOOD 3 for 29c
LARGE
CAULIFLOWER 15c

2 Bunches
RADISHES . . . 5c
BEETS, bunch . . . 5c
SLICED, Pieces & Ends 2 Lbs.
BACON . 2 lbs. 45c

CHICKEN
LIVERS . . . lb. 89c
CHICKEN
GIZZARDS . . lb 57c
CUT UP
FRYERS . . . lb. 67c

Prices Effective
June 22nd and 23rd

BEST QUALITY FRUITS AND
VEGETABLES AT LOWEST
MARKET PRICES

Septic Tanks, Cess
Pools Cleaned
Contents Hauled Away
HUTSON TANK CLEANING
GR 5467 GA 7038

ELK PLAIN NEWS

Any Brown, Reporter

Mrs. John Airheart of Elk Plain flew to San Francisco for several days, leaving June 16.

Rev. Pruitt Here

The Rev. J. J. Pruitt is serving as interim pastor for Elk Plain Community church until late July. He is executive secretary of the Breakfast club, former pastor of Plymouth Congregational church in Tacoma, and has had short stories and poetry published under a pseudonym. He has also been in the real estate business.

Last Sunday, Father's Day, there was a special Sunday school program. During church service, gifts were presented to Robert Schriver as the youngest father; Edward Castle Sr., as the oldest father, and Milo Becker as the father with the most children present.

Next Sunday there will be a potluck picnic following church services. The picnic will be held on the church site and clean-up chores will be part of the program. Everyone is invited to come.

4-H Girls Meet

June 18 was the date of the regular meeting of the Elk Plain Girls 4-H club, held at the home of Cornelia and Virginia Reardon. Plans for a picnic at Ohop lake June 29 were made. 4-H Camp was announced. The next meeting will be July 9.

Keep in step with yourself—don't worry about the rest of the parade.

LEGAL PUBLICATION

IN THE SUPERIOR COURT OF THE STATE OF WASHINGTON IN AND FOR THE COUNTY OF PIERCE.

No. 111601
SUMMONS BY PUBLICATION

BETTY JEAN CATLETT, Plaintiff, vs. JOHN JACOB CATLETT, Defendant.

THE STATE OF WASHINGTON, To the said JOHN JACOB CATLETT, Defendant:

You are hereby summoned to appear within sixty (60) days after the date of the first publication of this Summons, to wit: Within sixty (60) days after the 17th day of May, 1951, and defend the above entitled action in the above entitled court and answer the Complaint of the Plaintiff and serve a copy of your answer upon the undersigned attorneys for the Plaintiff at their office below stated, and in case of your failure so to do, judgment will be rendered against you according to the demands of the complaint which has been filed with the Clerk of the said Court.

The purpose of the above entitled action is to obtain a divorce on the ground of burdensome home life and to recover temporary support money together with attorney's fees and costs.

PETER L. STERBICK, Of Sterbick & Sterbick, Attorneys for Plaintiff.

Office and Post Office Address: 3805 1/2 South Yakima Ave., Tacoma, Washington.

Pub. May 17, 24, 31; June 7, 14, 21, 1951.

USE OUR WANT ADS TO...

BUY SELL RENT TRADE

2—Auctions

SPANAWAY AUCTION — Every Friday. Cattle, block hogs and veal sold by the pound. Also poultry and rabbits. Misc. goods sold from 12 noon to 2. For hauling call GR. 6895 or Rev. 7-1-2. 2c1f

AUCTION SALE
IF YOU want more cash quick, sell by auction. Every Fri., 7:30 p.m. Glen Betts, 8113 So. Tacoma Way. Free pickup service. LA. 8505. 2c1f

3—Business Service

ACE SEPTIC TANK SERVICE—Lymon Redford, owner. Septic tanks cleaned, contents hauled away. GA 3446 or GA 9794. 3c1f

RAY GOGAN
LANDSCAPE CONSTRUCTION
Nothing down, 3 years to pay. New lawns, topsoil, shrubbery, rockeries. GR. 3127. 3c1f

● VENETIAN BLINDS
Flexalum-Plastic Tape
● LINOLEUM
Pabco - Armstrong
Free Estimates
ALDERMAN'S
5425 Pacific Avenue HI 2200 3c1f

UPHOLSTERING
Recovering and Rebuilding
Cushions Rebuilt
Free Estimates

Parkland Upholstery
140th & Pacific GR 3201
Res: GR 3181

BOOKKEEPING and Tax Returns prepared. Phone MARKET 5978 or GA 3415. 3c

SPANAWAY NEWS

Mrs. Chet McAtee - GR. 8066
 Rev. Grier of Marymount Academy has left for a 10-day vacation trip to Canada.

Sixteen Sewing Club

Sixteen Sewing club met June 12 at the home of Mrs. Ted O'Neil on Military road with noon lunch served by Mrs. O'Neil and Mrs. Bob McCullough. Attending were Mesdames Beulah Ballard, Oliver Omat, Louis Symons, Chet McAtee, Ted O'Neil Jr., Jack Hendricksen, George Stephenson, Don McLellan, Ed Flannery, Emerson Tarpenning, and Arlene McCullough. Sewing kits were made for the fall bazaar.

Community Club

Spanaway Community club met on Tuesday evening, June 12, at 8 o'clock in the fire hall with President Bill Rightetti presiding. The club has decided to meet throughout the summer months.

Attend Graduation
 Mr. and Mrs. William C. Fowler, with their son-in-law and daughter, Mr. and Mrs. Steve Pease, attended the graduation exercises at Washington State college where their granddaughter, Mary Lou Pease, was a member of the '51 class. They visited afterward in Spokane and in Crescent Lake, Idaho, with their son, William Fowler Jr., before returning home.

Mass Meeting June 21
 At 8 o'clock Thursday evening, June 21, another mass meeting on the water problem will be held at the Spanaway school. Everyone is urged to attend and bring your questions.

Granddaughters Honored
 On June 14 Mr. and Mrs. William C. Fowler entertained at Steve's Smorgasbord in South Tacoma, the affair honoring the birthday of their granddaughter, Dorothy Jean Pease, and also announcing the engagement of her sister, Mary Lou Pease, to LaVern Torgensen of LaCrosse, Washington.

Business Club
 The Spanaway Business Men's club will meet at 8 p.m. Monday, June 25, at the fire hall.

Clover Creek Legion
 Clover Creek Unit No. 118, American Legion, will meet Friday evening, June 22, at 8 o'clock in the new Legion hall. The auxiliary will also meet at this time, but at the home of Mrs. Erma Long.

ASTHMA
 FREE SAMPLE FURNISHED
 When each minute seems like an eternity while you struggle and choke for breath from an attack of Bronchial-Asthma, try NEPHRON Inhalation therapy and be convinced. Spasms most chronic cases relieved quickly - usually in 1 minute. Regardless of what you have tried do not give up. Ask your druggist for full particulars and a 10 day sample of Nephron Inhalant to use in Knox-Azma vaporizer.

LAWN MOWERS
 Precision Ground
 Free Pick Up and Delivery
Parkland Cycle Shop
 GR 5772 HI 1261

YOU SAVE AT DANIELS HARDWARE
 Pacific Ave. & Garfield GR 3171

FISHING TACKLE
 PLUMBING SUPPLIES
 PUMP REPAIR
South End Plumbing
 Home of Schorn Paints
 Near Roy Y Spanaway
 GR. 8357 Graham 194

A-1 Auto Wrecking
 Used Auto Parts
 GR. 3366
Good Transmissions
 13818 Pacific Ave.

SHEET METAL WORK
 POULTRY AND RABBIT EQUIPMENT
RAU MFG. CO.
 141st & Pacific Ave. GR. 7372

ANOTHER IMPROVEMENT!
 New, Fast Service on Shoe Repairing
 LEAVE 'EM GOING - GET 'EM COMING BACK!
 Thousands of Used and Rebuilt Men's, Women's and Children's Shoes - sterilized by Violet Ray 50c and up
 New Shoes for the Family
PAUL'S SHOE REPAIR
 SPANAWAY
 Closed Wednesday

MOTOR WORK
 IS OUR SPECIALTY
 General Repairing
 Gas, Oil, Accessories
BOB'S PLACE
 Airport Rd. & J St. GR 3395
 17 YEARS IN PARKLAND

College Cleaners
 GR 5361
 Free Pick Up and Delivery
 11416 So. Park Ave.

CUSTOM MEAT
 Fresh Eggs - Locker Rentals
Mountain View Food Lockers
 Airport & Spruce GR 5332
 2 1/2 Miles East of Pacific Avenue

WALLER ROAD
 By MRS. VERNE FOGLE GR. 5210

Mrs. C. D. Curry of Dash Point, aunt of Mrs. V. Fogle, was honored on her 70th birthday by a party given at the Fogle home June 15. The guests attended the Strawberry festival, then came back for the cutting of the birthday cake. Present for the occasion were Mrs. Fogle's brother and sister-in-law, Mr. and Mrs. Norman Gustafson, and daughter Nancy of Salinas, Calif.; her parents, Mr. and Mrs. A. E. Gustafson of Tacoma; Mary and Lucile Bradley, Anna Lee Corkish, Jim Evans, Ron Fogle, USN, and Mr. and Mrs. Fogle and Jerry and Bunny and the honored guest, Mrs. Curry.

4-H Boys
 Three 4-H boys, Donald Geise, Melvin Bradley and Tom Farley, have returned home from Pullman where they attended the 4-H State Camp. They reported a wonderful trip.

Waller Road Grange
 The Waller Road Grange families will meet Friday evening, June 22, for a picnic at the lower picnic grounds at Point Defiance park. There will be no Grange meeting at the hall, since it was voted to make the second meeting in each of the summer months a social gathering. Hot dogs and potato salad are on the menu for the picnic - dessert of your own choice.

State Farm Mutual Insurance
Forrest Leonard Agency GR 7222
 Anything In Insurance
 Office: Blue Spruce Motel
 Parkland

Visitors
 Recent visitors at the J. M. Heath home were Mr. and Mrs. Jack Crawford of Aberdeen and Mr. and Mrs. Clarence Spinning of Horseshoe Bay.

Taking Beauty Course
 Miss Frances Heath has enrolled at the Modern Beauty school for a course of study.

Summer School
 Miss Janet Carlson is attending summer school at Stadium high school.

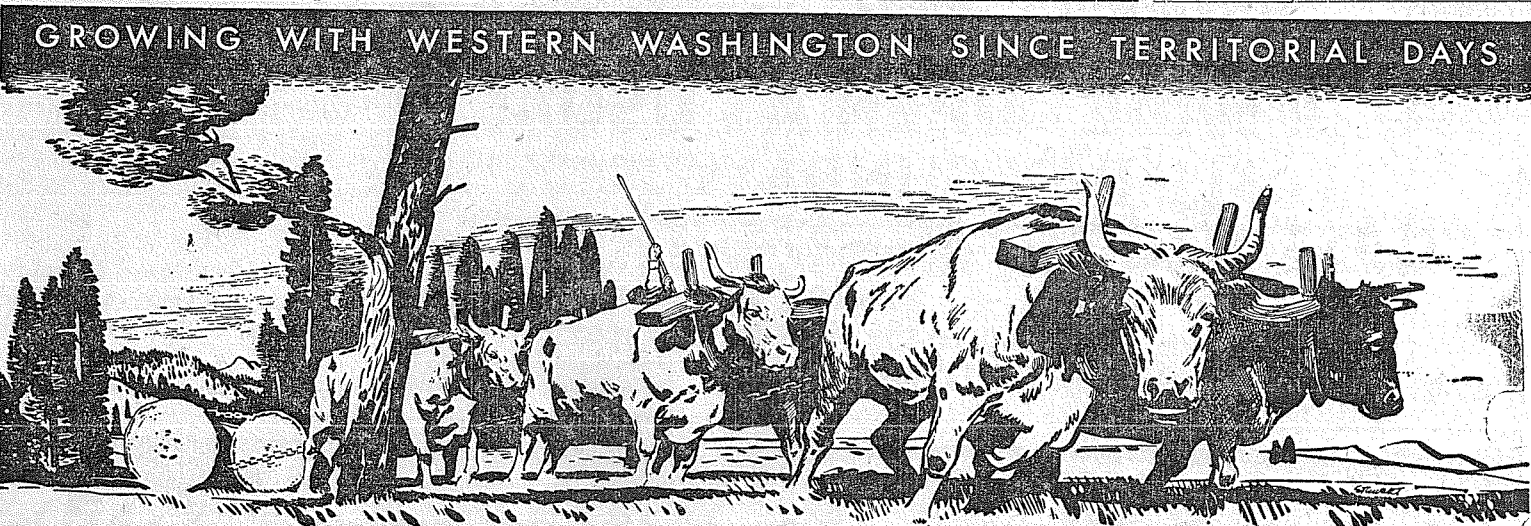
Returns to Tacoma
 Miss Mary Lou Geise has completed her three-months specialized training at Northern State hospital and has returned to complete her training at Tacoma General hospital.

SHOVEL - TRUCKS DOZER EXCAVATING
 Of All Kinds
 LAND CLEARING
Dave Elmore
 Phone 6611 Eatonville or HA 5231, Tacoma

RURAL GARBAGE SERVICE
 Granite 5893
 SERVING PARKLAND, LAKEWOOD, MIDLAND, SUMMIT, SPANAWAY AND LAKEVIEW. PIERCE COUNTY PERMIT.

BULLDOZING
 Ken BROWN and Bruce GAMBILL
 1750 9th St. S. W. Puyallup
 Basements - Backfills - Driveways
 Clearing - Leveling - Etc.
 Fill Dirt - Gravel - Top Soil
 PH. PUYALLUP 5-2452 or 5-5487 ESTIMATES Cheerfully Given

MACHINE WORK, PINFITTING
 VALVE REFACING (hard seat grinding) -- BRAKE WORK
 WHEEL ALIGNING -- WELDING -- IGNITION PARTS AND ACCESSORIES
Anderson Chevron Service Station and Garage
 ATLAS TIRES AND BATTERIES
 Mt. Hiway at Henry Berger Road, Spanaway GR. 6465
 FARMERS' UNION AUTOMOBILE & CASUALTY INSURANCE



Savings interest paid regularly for sixty-six years

At all times since it was founded in 1885, NBW has paid savings interest promptly, and at an attractive rate. Never has one of our savers had to forego his interest, wait for his principal, or accept any adjustment on his deposit balance.

This is of importance to those who plan to build an investment reserve through systematic saving. A sixty-six year record of safety and service is the best assurance that your

funds will be readily available, and that they will continue to earn an attractive rate of interest.

With resources over one hundred and fifteen million dollars, NBW has an invested capital of more than eight million; more than 56%... over sixty million dollars... of its assets are "liquid," that is, in cash and securities. This is a solid foundation for security, now and in the future.

SAVE WHERE YOU CAN BORROW
 Your record as a systematic saver at NBW will establish bank credit... making available to you loans of every type at low, bank rates. Open a savings account at this complete financial institution tomorrow.

RESOURCES OVER ONE HUNDRED FIFTEEN MILLION DOLLARS



SECURITY AND SERVICE SINCE 1885

NOTE FOR THE BRIDES BOOK
OUR FINE FOODS ARE Easy on the Budget

SUN VALLEY, PLAIN LB.
Margarine 29¢
 Down to Earth Price

DEL MONTE 14-OZ. GLASS
CATSUP 19¢
 PURE TOMATO FLAVOR

C & H 25 LBS.
Sugar 235¢
 Canning season ahead, Save Now

Darigold CANNED TALL
MILK 2-25¢
 SAVE WAY 2 GALS.
MOT'R OIL \$1.29
 Campbell's TOMATO
SOUP 10¢
 Del Monte BLENDED, 46-oz.
JUICE 29¢

Quality MEATS AT LOWER PRICES
 MORRELL'S PRIDE—Small and Lean
PICNIC STYLE HAMS 46¢
 GUARANTEED
PURE GROUND BEEF 65¢
 PAN-READY AND CELLO WRAPPED
FRYERS 63¢
 ARMOUR'S BANNER
SLICED BACON 49¢
 GRAIN-FED—END CUTS
LEAN PORK CHOPS 49¢

FRUITS & VEGETABLES
 LB.
BANANAS 15¢
 CALIFORNIA
GRAPEFRUIT 5¢
 Fancy Green Slicers
CUKES 5¢
 SUNKIST
LEMONS 12¢
 SUNSHINE KRISPY
CRACKERS 27¢
 SUNSHINE 9-oz. Cello
LEMON DROPS 19¢

Green Arch, solid pack, light meat
TUNA 29c
 WOODS LB.
Coffee 79c
 CENTENNIAL 25 Lbs.
Flour \$1.83
 In Cotton Print Bag
LIBBY'S Roast Beef 49c
LIBBY'S, NO. 2 TIN St. Pineapple 29c
 Prices Effective June 22 and 23

BARGAIN BASKET

7th & Mountain Highway Spanaway, Wash., GR 3371 Ponders Corner Highway "99" LA 3975
 Open Seven Days a Week--9:00 a.m. Till 10:00 p.m.
 We Reserve the Right to Limit Quantities