

Sec. 34.66 P.L.&R.
U.S. POSTAGE PAID
Parkland, Wash.
Permit No. 9

RESIDENTIAL PATRON
BOXHOLDER OR OCCUPANT
RURAL ROUTE

POSTMASTER: If unable to
deliver, return postage is
guaranteed.

The TIMES JOURNAL

LARGEST CIRCULATION OF ANY WEEKLY NEWSPAPER IN THE N. W., DELIVERED BY U. S. MAIL

THURSDAY, JUNE 24, 1954

VOL. 9, NO. 41

18

PUBLISHED AT PARKLAND, WASHINGTON

5c PER COPY

\$2.50 PER YEAR BY MAIL OUTSIDE FREE DISTRIBUTION AREA

NBW Promotes; Snowden Now Local Manager

A. G. Swindland, who has been manager of the Parkland branch of National Bank of Washington since it opened in November of '49, is being transferred to the Tacoma head-



office as assistant vice president in the installment credit loan department, it was announced by Carl L. Phillips, president, following the board meeting last week.

Benefit Parties

The Thrift community is having two benefit affairs June 25 at 8:30 p.m. for Doris Walsworth, who was badly burned while working on the community dinner. A dance will be held at the Thrift hall and a card party at the George Bennett home. Everyone is invited.

R. H. Snowden has been named manager of Parkland branch, and John R. Whisler, assistant cashier.

In commenting upon these changes, Phillips stated, "It has long been the policy of National Bank of Washington to move our men along within the organization as opportunities arise. A. G. Swindland has made a fine record at Parkland, and his transfer to the Tacoma office, where he first began his banking career in 1921, is in further recognition of his capabilities. R. H. Snowden, his successor, is well known to our customers and friends in Parkland. He has had many years of banking experience, and has been assistant manager of the branch since 1949, except for a two-year period from '51 to '53 when he was recalled by the navy and spent two years as Lt. Com-



mander stationed in Washington, D.C. We know he will continue to make a real contribution to Parkland and its environs. John Whisler is a young man who has been in the installment credit loan department at Parkland and we are happy to have him join the office staff."

(Continued on Page 7)

STATEMENT

To the Residents of the Spanaway-Parkland District:
Tacoma Transit Company is in receipt of a notice of public hearing from the Washington Public Service Commission, which has to do with the bus service furnished by the Tacoma Transit Company to you residents of the Spanaway-Parkland area. A hearing has been set for 10:00 a.m., July 1, 1954, in the Wedgewood Room of the Winthrop Hotel, Tacoma.

This complaint was filed by Robert F. Wright, owner of the Nisqually Valley Lines, who operates bus service between Vail and Tacoma via the Mountain Highway. Mr. Wright has requested the Department to require that we:

- (1) Discontinue such trips as conflict with those operated by him to Spanaway, or
- (2) Operate with closed doors on the Mountain Highway between 138th Street and 160th Street.

Our position in the matter is this:
It must be obvious to any of you residents in the Spanaway-Parkland area that the volume of riding is so low that the costs of operation are just barely covered. Any limitations or restrictions to our service will further aggravate our situation and do not offer a solution to our problem. Furthermore it is immaterial to us whether we operate at all beyond the City Limits since we operate essentially a city bus system.

We are mindful of the fact, however, that we have served this area for 65 years and during this time have worked out many problems with you. We are willing to continue to do so at least until the end of our franchise in the City of Tacoma, providing you want us to do so and will continue to support our service. Our franchise expires December 13, 1957, and obviously we are not able to commit ourselves beyond this point.

So, if those who are desirous of having us continue our service for a while at least will appear in person at the above hearing and express their views, we are sure it will be in order. Those not able to be there personally may address a letter to the Washington Public Service Commission at Olympia in time for the hearing on July 1, 1954, in the Wedgewood Room of the Winthrop Hotel in Tacoma.

CURTISS L. HILL,
President Tacoma Transit Company

Bus Service Curtailment Looms; Hearing Set July 1

The State Public Service Commission is holding a hearing in the Wedgewood room of Hotel Winthrop Thursday, July 1, at 10 a.m., on the application of Robert Wright of Yelm, owner of Nisqually Valley Lines bus service, to require Tacoma Transit Co. to curtail its service to Parkland and Spanaway. Wright claims the Tacoma company infringes on his franchise rights. The hearing is open to the public.

Organizations in Parkland and Spanaway are alerting their members to the threat to local transportation service and urge a large attendance at the hearing.

R. H. "Howie" Snowden, president of the Parkland Business club, joins officers of other groups in spearheading a concerted drive to assure adequate representation of the area at the July 1 session. "The reported demand to curtail our only city-connected bus service poses a serious problem to all who use its facilities," declares Mr. Snowden. "Let's have large delegations from the affected communities present July 1 to inform the Public Service Commission concerning local sentiment on the question."

Delbert Bresemann, of Bresemann's park at Spanaway, says "I am definitely opposed to any change because the Nisqually Lines could not possibly give adequate service to the park during peak hours. Any curtailment of public bus service would be a gross injustice to the public using the parks, since the recreation facilities here are needed and used by many families without automobiles who must travel by public bus or stay at home."

As president of the Parkland Community club, Mrs. Jennie L. Grodvtig says: "To partially reduce the Tacoma Transit service during the peak hours of the day would surely reduce the service entirely through the Parkland-Spanaway area. The Community club represents all the residents of the area and many of them are employed in Tacoma and their only method

Professional Directory

INSURANCE
CLAY ROLEY AGENCY
98th and Portland Avenue
GR. 8501

ROY V. ROSTEDT AGENCY
8201 Park Avenue
Phone HA 2342

Farmers Mutual of Enumclaw
ED MAREK
12909 Pacific Ave. GR 4000

PHYSICIANS
SPANAWAY CLINIC
161st & Pacific GR 6200
Mon., Wed., Fri., 11:00 to 6:00
G. L. DEAN, M.D.

TACOMA CLINIC
3102 Sixth Ave. SK 1244
G. L. DEAN, M.D.

Important Purchase . . .



Signing of real estate deed for the first well site of the Spanaway Water Co. was an important item of business at the June 16th meeting of the trustees in the Spanaway fire hall. Shown, left to right: Seated, Paul Boyle, Attorney for water company, John Newell, President, Robert S. Dodds, Seller of well site, Phil Zurluh, Jr., Sec'y.-Treas. Standing: Hugh Gonyeau, Harry Randall, Lawrence Sharley, Trustees. Photo by Robert Minnitti

Bethel Ready For Big Boxing Wrestling Show

All plans are now complete for the big boxing-wrestling show in the Bethel high school gymnasium Saturday evening, June 26, and a capacity crowd is expected.

Both main events will bring big name professionals to the area. Charlie McPhail, chairman of the fight committee, has booked Pat McMurtry and Big Bill Little, with Sheriff Harold Bird as referee.

Paavo Ketonen, well known wrestling promoter, will bring out two of his most colorful grapplers, Bronco Lutich and Scotty Williams, for the main event in this department. Ketonen will referee.

There will also be four bouts by young boxers from Tacoma Boys club to start the show. In addition to the other features, Arnold Snell will give an exhibition of weight lifting.

All proceeds of the show will be used to improve the Bethel athletic field. With so many people in the community working on the project, it is impossible to mention them all. However, Mr. and Mrs. Ray Corbett and Mr. and Mrs. Fred Erickson deserve special credit for the fine work they are doing. The women head the food committee preparing the refreshments to be sold at the show.

To reach the gymnasium, drive one mile south of the underpass on the Mountain highway, then turn left one mile to Bethel high school, which is on Muck-Kapowsin road.

Kid Parade Big Event At Spanaway

One of the big events of the Spanaway Days celebration will be the children's pet parade, planned for 1 p.m. Saturday, July 3 at 163rd St. and Park Ave.

Every boy and girl is invited to take part. All kinds of unusual pets are expected, as well as bicycles. (Maybe bicycles ARE pets, too).

The list of entries includes: Youngest boy and girl, most comical boy and girl, cleverest boy and girl, most original bicycle, most comical bicycle and rider, most unusual pet, best behaved dog, best dressed cat.

Missionary Meeting

The Ladies' Missionary society of the Fern Hill Baptist church will hold its monthly meeting on Thursday, June 24, at the home of Mrs. Donna Archer, 10232 Barnes Lane. The business meeting will commence at 11 a.m. followed by luncheon at 12.

At 1 p.m. a program will be presented with special music and a message by the Pastor, R. W. Ledyard.

PIPER FUNERAL HOME

Phone WA 3353
5436 So. Puget Sound Ave.

Water Company Buys Well Site At Spanaway

Spanaway's community effort to provide a public water supply reached another milestone with the purchase of the central site for the well.

The well site consists of 12 lots west of the Spanaway Community hall. This central site was selected after much deliberation as the most economical location for the first well site. The site was provided for a nominal sum by Mr. and Mrs. Robert S. Dodds of Tacoma.

"Well-drilling will begin as soon as we have a few more members to meet the minimum number of 75," stated John Newell, president. "A low monthly payment plan is available, enabling everyone to have the advantages of the water system. With the support of a few more members, we will have the system under construction early this summer."

Potential members are urged to immediately call Mr. Newell at GRanite 7425 or Hugh Gonyeau at GRanite 8285 and they will be contacted.

SPANAWAY 4th OF JULY
CELEBRATION
JULY 3rd - 4th - 5th

FRYERS

Deliciously Fresh

Large Red ROOSTERS

Armstrong's Poultry Market

11009 Pacific GR 5524

Patty Ann BAKERY

Your Parkland Baker
Airport & Pacific GR 3330

Have you tried our SPECIALTY BREADS
Ideal for all occasions
Cinnamon Bread, Nut Bread, Egg Sesame Bread, Cracked, Etc.
Black Raspberry JELLY ROLLS 2/49c
CHERRY FLIPS 6/35c

We Make T.V. Service Easy

Easy on your patience
With speedy service.
Easy on your pocket
With fair prices. . .
Easy on your mind . . .
All work guaranteed
And it's easy to get the service anytime day, or night.

CALL GR 3549
JIM'S RADIO
9920 PACIFIC AVE.

Dryer MORTUARY

720 SOUTH 134th PARKLAND GR. 3300

Consider Convenience for your friends when choosing a funeral director. Go where they can park—out of the traffic.
Trav Dryer

ARE YOU PLANNING YOUR VACATION

Plan on looking your best wherever you go. Let us send you on your way with summer clothes cleaned sparkling fresh and neat
Phone Us For Prompt Service

PARKLAND CLEANERS

GR 3221 11004 Pacific Ave.
North of the Bank Corner
24-HOUR SERVICE AT THE PLANT

WE'RE NOT ON STRIKE

Siler's

11230 Pacific Ave.
GRanite 8634

Action Soles! Archking

Features designed for championship play:
• new deep-cut design outsole
• scientific foot-conforming last
• Duo-Life counter and bind
• full-breathing duck uppers
• pull-proof eyelets
• slant-cut top

3.25 - 3.50 - 3.75
According to Size

U.S. Keds

The Shoes of Champions—They Wash

Soine's

411 Garfield
across from Parkland Post Office
Canvas Casuals for the Entire Family

PARKLAND SHOE STORE

GR 3526 Open 10-6

BROOKDALE LUMBER COMPANY

136th & Pacific Avenue

Builders of Homes, Garages and Farm Buildings
GRanite 8669

for a complete line of building supplies . . .

Shop & Save at BROOKDALE LUMBER CO.

Groved (Reject) Cedar Shakes	Only \$4.90	Per Sq.
24"x84" 5 Panel No. 1 Doors	Only \$3.98	Each
1 1/2" & 1 3/4" Thick (Interior & Exterior) Reject Slab Doors	Only \$5.95	Now
Overhead, Regular \$84.50 Aluminum Garage Doors	\$65.00	
1/2"x6 and 8" Cedar Siding	Per 100 Ft. \$2.95	
Shorts No. 2 Oak Flooring	Per 100 Sq. Ft. \$16.00	

Mr. Brookdale Says:

"We have odds & ends of plywood & lumber at mighty good prices - - just right for some of those odd jobs around the house"

USE YOUR CREDIT - - BUY NOW & PAY AS LOW AS \$5.00 PER MO.

No. 4 2 x 4s. Any Length \$30.00 Per M	1x4 Utility Kiln Dry Flooring only \$8.00 Per 100 Ft.
--	---

LOOK OVER OUR COMPLETE ELECTRICAL & PLUMBING DEPT.

FREE DELIVERY

BROOKDALE LUMBER CO.

136th & Pacific Ave. GR 8669

M. D.
TISSUE

4 for
39¢

SWEDISH ROAST COFFEE

Pound
1.09

HILL'S COFFEE

With Coupon
Pound
1.04

DON'T MISS OUR SPRING VARIETIES



STORE HOURS:
Fri. 8:00 to 9:00
Sat. 8:00 to 7:00
Other Days
8:00 to 6:30

LARGE PAVED PARKING LOT OFF TRAFFIC

Large Grade AA
E G G S Doz. 51c

Nalley's
TANG DRESSING . . qts. 45c

Pillsbury
FLOUR 10 lb. bag 79c

White Star
CHUNK STYLE TUNA . 3/ \$1.

STEAK LOVERS . . .

A HIND QUARTER OF TENDER STEER

BEEF . . . pound 47c

This Price Includes Cutting & Wrapping
Average Weight 90 - 120 Lbs.

Good For Stewing or Braising Lb. Grain Fed, Lean Lb.
BONELESS BEEF CUBES . 49c PORK CHOPS 63c

Lean Meaty Lb. Boneless Lb.
SHORT RIBS 19c CORNED BEEF . . . 45c

Borden's Cheese 2 lb. box 83c

Sanitary 1/2 Gals.
MILK 2/77c

SCOOP FREEZE . . 35c

Sharp Aged 1 Lb.
CHEESE 69c

Auburn Qt.
BUTTERMILK . . . 16c

Darigold 1 Lb. Print
BUTTER 64c

Hi Ho Lb. Pkg.
CRACKERS . . . 33c

Old Country Pkg.
HARD TACK . . 31c

Imported, Crisp
RY KING BREAD . . 26c

N.B.C. Qt.
GINGER SNAPS . . 37c

Sunny Jim 20 Oz. Jar
PEANUT BUTTER . 59c

RECIPE OF THE WEEK

By Mary Lee Taylor

Butterscotch Crisps

3/4 cups crisp rice cereal 1 cup brown sugar, lightly packed
2 Tablespoons butter or margarine 1/4 cup Pet Evaporated Milk
Put cereal into a greased bowl. Let stand. Melt butter in a skillet over low heat. Stir in brown sugar, about 1/4 at a time. Cook over low heat until sugar is dissolved, stirring all the time. Then stir in milk, about a tablespoon at a time. When milk mixture is smooth, boil and stir 3 min. Remove from heat. Pour over cereal all at once. Turn cereal gently over and over until all of it is coated with the mixture. Put into greased 8-inch square pan. Pat gently to edge with buttered paper or fingers. Let stand until firm. Cut into 2-in. squares to serve. Makes 16.
No. R542-23

All Leading Brands Ctn.
CIGARETTES . . 2.14

All Flavors
GUM 4/15c

5c Varieties
CHOC. BARS 4/15c

Pillsbury
Angel Food

CAKE MIX

Package

47c

Sweet & Juicy Lb.
WATERMELONS . 4c

CANTALOUPE 2/25c

Lb.
JUICE ORANGES . . . 9c

Heinz Bottle
CATSUP . . . 23c

3 Lb. Tin
CRISCO . . . 89c

Friskies Cans
DOG FOOD . . 2/27c



PET MILK Tall Cans 4/49c

DURKEE'S MARGARINE 2 Lbs. 59c

BISQUICK 40 Oz. Pkg. 39c

Dutch Boy PAINTS

Super KEMTONE

GARDEN HOSE 50 Ft. \$3.99

FISHING TACKLE

FISHING LICENSES

GARDEN TOOLS

PIPE FITTINGS

NAILS FENCING

LUX FLAKES Large Pkg. 30c

AIRWICK Bottle 59c

LUX TOILET SOAP Reg. Size 3/23c

LIFE BUOY SOAP Reg. Size 4/25c

ALL For Auto. Washers 10 lbs. \$2.49

BORAXO 8 Oz. Tin 16c

PALMOLIVE SOAP Reg. Bars 3/25c

CASHMERE SOAP Bars 3/25c

Prices Effective Thurs., Fri., Sat., June 24th - 25th - 26th

SUMMIT TRADING CO.

10409 Canyon Road, Tacoma - 1/2 Mile North of Summit View on Canyon Road

Phone GRanite 5848

Summit News
Mrs. M. S. Rau
GRanite 8391

Mr. and Mrs. Emil Erickson and their daughter, Mrs. Foster and daughter are visiting relatives and friends in North Dakota. Driving through Montana, they ran into a snow storm.

Going To Camp
Nancy McMillan will leave this weekend for Girl Scout Camp Beavals in the Longview district where she will be a counselor.

Choir Picnic
The choir of the Summit church will enjoy a picnic supper Thursday, June 24, and they are keeping their fingers crossed that it won't rain.

Engaged
Mr. and Mrs. Ernest Daggett of Airport and Leonard's Crossing are announcing the engagement of their daughter Sharon to Cpl. Robert L. Scott of Fort Lewis, whose home is in Illinois. The wedding will be in the parish house chapel of Trinity Lutheran church, Parkland, next Saturday evening.

Recovering
Albert Reihls, principal of Central Avenue school, is reported convalescing nicely following major surgery and is now at his home, 6114 Pacific avenue.

Saturday Wedding
At 3 o'clock Saturday afternoon in the Summit Methodist church Susan Alethe Wearstler and Charles Winter were united in marriage by the Rev. Geo. Cooper, acting pastor. The attendants were Henrietta Redding and A. Peters. Following the ceremony, refreshments were served at the A. H. Redding home on Garden Valley road. The groom, who is stationed at McChord, has a two-weeks furlough and the couple will visit his people in Eastern Washington.

Hi-Ho It's Off To Camp We Go With
Hi-Ho Lovely Fresh Cleaned Clothes By...
Larry's MTN. VIEW
CLEANERS
PICK UP & DELIVERY RAIN OR SHINE
GR 3261 134th & Pacific

Locker Beef Young Steers 35c lb.
White Face Grain Fed Steers Cut & Wrapped 1/2 or whole CUSTOM CUTTING AND WRAPPING
WE RETAIL AT WHOLESALE PRICES
RETAIL SALES THURS., FRI., & SAT.
Good Quality Graded Beef U.S. Govt. Insp.
White Face Steer Beef

RIB STEAK lb. 45c
GROUND BEEF . 3 lbs. 97c
POLISH RINGS 3/97c
POT ROAST lb. 35c
GROUND ROUND . . . lb. 49c
BONELESS BEEF, Lean . lb. 45c
FRANKFURTERS lb. 39c
LEAN PICNIC HAMS . . lb. 44c
PORK SAUSAGE lb. 45c

MALCOM'S MEATS GR 8258
1 Block North of Airport on Canyon Road
We Retail at Wholesale Prices

ALONG THE TRAIL
with **LARRY KIRKWOOD**

The powers that be at the Veteran's Hospital looked at the downpour of rain last Saturday, lakes on the ball diamond, and called off the horsemen's playday for entertainment of the boys at the hospital. Then the weather man turned the tables and brought forth a real nice day Sunday. Oh, well! Maybe we can go there sometime later in the season.

The juniors are getting their two bits' worth in this week with a junior play day at Tacoma Unit No. 1 grounds this coming Sunday, June 27th. This is for all junior horsemen 18 years of age and under and begins at 1:00. The Parkland Junior Drill Team will present their drill to start the show. Then there will be bareback class, 12 and under; musical chairs; side saddle class; west-

THE FAMILY SAVINGS CENTER
The Northwest's largest—a symbol of strength. The friendly place where over 80,000 thrifty Northwesters save in safety.

A MUTUAL SAVINGS INSTITUTION
Pacific Federal Savings
and Loan Association
Bellingham • Seattle • Tacoma
Portland • Eugene

\$100,000.00 STRONG

THE FAMILY SAVINGS CENTER

The Northwest's largest—a symbol of strength. The friendly place where over 80,000 thrifty Northwesters save in safety.

A MUTUAL SAVINGS INSTITUTION
Pacific Federal Savings
and Loan Association
Bellingham • Seattle • Tacoma
Portland • Eugene

PARK'N SHOP
98TH & PACIFIC AVENUE

M.J.B. COFFEE Pound \$1.09
HUNT'S New Whole Potatoes 14/\$1.00

OPEN 24 HOURS A DAY - 7 DAYS A WEEK

SHOP WHERE DOLLARS GO FARTHER!

Locker Beef Young Steers 35c lb.
White Face Grain Fed Steers Cut & Wrapped 1/2 or whole CUSTOM CUTTING AND WRAPPING
WE RETAIL AT WHOLESALE PRICES
RETAIL SALES THURS., FRI., & SAT.
Good Quality Graded Beef U.S. Govt. Insp.
White Face Steer Beef

RIB STEAK lb. 45c
GROUND BEEF . 3 lbs. 97c
POLISH RINGS 3/97c
POT ROAST lb. 35c
GROUND ROUND . . . lb. 49c
BONELESS BEEF, Lean . lb. 45c
FRANKFURTERS lb. 39c
LEAN PICNIC HAMS . . lb. 44c
PORK SAUSAGE lb. 45c

MALCOM'S MEATS GR 8258
1 Block North of Airport on Canyon Road
We Retail at Wholesale Prices

Weibel Electric
Wiring of All Kinds
Licensed & Bonded
GR 4857

SAVE!

BE THRIFTY and WISE! USE FISHER'S Quality Feeds and SAVE!

SUMMIT FEED
Home of "Fisher's Quality Feeds"
Canyon Rd., next to Summit Trading Co.
GR 7136 We Deliver

Installation & Repairs
JACK'S TV & RADIO SERVICE
405 Garfield St.
for service phone GR 3691

TIC-TOC JEWELRY
10331 PACIFIC AVE.
Repairing of Fine Watches
Our Specialty
GLEN A. CARMACK

Horse Shoeing
by An Expert
J. R. Young
Graham 7-7616

TRUCKS FOR RENT
MA 9039
Save One Half
We Furnish Everything
HARMON'S
Driv-Ur-Self Co.
HARMON'S SERVICE
2112 Jefferson
Jim Harmon, Mgr.

Parkland in Top Spot in League

A win in Sunday night's game left the Parkland softball team tied for first place in the Evergreen league.

The next game will be this (Thursday) evening at 6:30 at Peck Field, formerly Athletic park, at 12th and Sprague in Tacoma.

Manager William Schaefer wants to thank the sponsors of the team, Parkland merchants for their fine co-operation in backing up the team. He is proud of his team and says they are doing very well. He would like to have some of the sponsors view tonight's game.

Butler's Garage
One block North Airport
Road on Canyon Road
Phone GR 8209

Sheet Metal Work
Poultry & Pet Stock Equipment
Special Attention to Special Equipment

RAU MFG. CO.
GRanite 7372

FLETT DAIRY
FARM FRESH
HOMOGENIZED AND PASTEURIZED MILK AND CREAM
ICE CREAM
Phone HA. 3301

WE STOCK GENUINE RCA TUBES AND REPLACE-
MENT PARTS AND DELCO
REPLACEMENT PARTS
FOR GENERAL MOTORS
CARS AND TRUCK RADIOS.
THEY ARE DEPENDABLE,
AND ALWAYS OF THE HIGHEST QUALITY.

BIXBY Guaranteed RADIO Repair
Call GRanite 8309
FREE T.V. & Radio Tube Testing
12503 Waller Rd.



SCHOLARSHIPS FOR SALE
Promising students unable to qualify for scholarships are sometimes forced to forego their higher education through lack of funds. A Sun Life College Policy will provide a guaranteed "scholarship" to take your son through college. Ensure your son's future—call me today.

SUN LIFE ASSURANCE COMPANY OF CANADA

John S. Castleman
Castleman Insurance Agency
New Bank Bldg. Parkland
GR 8647
602 Puget Sound Bank Building
MA. 1381

ALL BRANDS WESTERN BEER 2.99
CASE 24 STUBBIES
24 HOUR PRESCRIPTION SERVICE

VALVITA SWEET PICKLES 8 Oz. Jars 3/49c
HI-C ORANGE 46 Oz. Tins 2/45c

'Cherokee Jack' Ch. 13 Thurs. 8:30 p.m.

Fresh SPINACH Bunch 3c
ARDENS COTTAGE CHEESE Pound 2/45c

LARGEST ASSORTMENT OF FOOD
Betty Crocker. White - Yellow - Devils
Food - Honey Pkgs.
CAKE MIXES 4 For \$1

Carsten's READY TO EAT HAMS SHANK END Pound 49c
CARSTEN'S Bologna Polish Rings 3/98c

SUGAR FREE DIETETIC FOODS
Morning Glory SLICED BACON Pound 59c
Pure Lean GROUND BEEF Pound 3/89c

REFRIGERATED BABY VITAMINS
SOLID Head LETTUCE 3c HEAD
Biltmore TUNA MORSELS 6 1/2 Oz. Tins 27c

Prices Effective June 24th - 25th - 26th

For Tomorrow's Layers TRIANGLE Developing Feed

The condition of your pullets today determines your profits when they go into the laying house this Fall. Triangle Developing Feed is a famous-formula feed which insures your pullets of...

(a) **Faster growth and better development.**
(b) **A bodily reserve for highest egg production.**

Insure your egg profits now with Triangle Developing Feed. Your pullets will get into regular laying weeks earlier and will produce more and bigger eggs.

TRIANGLE MILLING COMPANY
603-665 N. Tillamook
PORTLAND 12, OREGON

STEWART HAY & GRAIN CO.



I'll have a real ski vacation next winter

I love winter sports, and have always wanted to try the runs at Sun Valley. So, since trips cost money, I opened a savings account at NBW and add to my "ski fund" every payday. When next winter rolls around, I'll be on my way to Sun Valley. I'm glad I'm saving at National Bank of Washington, because the people down there are so friendly, and because they gave me all the material necessary to make my deposits by mail... saving me an hour's time each payday.

NATIONAL BANK OF WASHINGTON

There's nothing like money in the bank

MEMBER FEDERAL DEPOSIT INSURANCE CORPORATION MEMBER FEDERAL RESERVE SYSTEM

KEEP UP WITH THE WORLD

Watch **TELENEWS DIGEST** Sunday Evening at 10:05 on KING-TV Channel 5

Sponsored by **Northwestern Mutual Fire Association** Northwestern Casualty Company

Represented by **Jennie L. Grodvig**
208 Garfield Street
Parkland, Washington
GR 7232 - GR 8210

COMPLETE MOTOR REPAIRS TIRES - BATTERIES and ACCESSORIES

BUDGET PLAN

BOB'S PLACE
Airport Rd. & J St. GR 3395

WHO SAID BARGAINS WERE BYGONES?

Blue Bag COFFEE 1 lb. 98c

BETTER FOOD COSTS LESS HERE

HI-C 46 Oz. **ORANGE AID 27c**

Hoody's **PEANUT BUTTER** 20 Oz. **55c**

Firecrest, 303 Tin 2 For **GRAPEFRUIT 35c**

Duchess, All Green 303 Tin 2 For **LIMA BEANS 35c**

CENTENNIAL 4 Pounds **PANCAKE FLOUR 49c**

FISHERS Large Pkg. **BISCUIT MIX 39c**

Wesco Cream Style 303 tin **CORN . . . 2/29c**

Sliced **BOLOGNA . 49c**

GR. BEEF 39c

Skinless **WIENERS 45c**

WALLER ROAD STOP'N SHOP
64th & Waller Road GR 5362
Prices Effective Thursday thru Saturday, June 24 - 25 - 26

Waller Road News
Mrs. Verne Fogle
6405 E. Vickery Rd.
GRanite 5210

The annual stockholders meeting of the Waller Road Consumers Water Co. will be held in the Waller Road Community hall June 28 at 8 p.m. There will be reports on the year's activities. Next year's projects and their financing will also be considered. Two board members will be elected.

Correction
The food for the dinner given for the 22 graduates of the district was furnished by all of the parents, not just by those mentioned in last week's paper. Acting as sponsors were Mrs. Geise, Mrs. Roy Nelson, Mrs. L. Howard and Mrs. G. Oeh, assisted by Mrs. Mike Vasicko and Mrs. Elmer Bradley.

Garden Club
On July 1 at 8 p.m. the Waller Road Garden club will meet at the Community building. Each member is asked to bring a bloom of some plant growing in her yard to provide a horticulture display for discussion of varieties and their care.

Classified Ads

3—Business Service
ROTOVATING, \$3.50 an hour, \$5.00 minimum; H. L. Worley, GR 6297, 3c4f

IF YOU HAVE HAY to mow, we can do it. Call Cliff Keller, Puyallup 5-8529; Rt. 3, Box 124, Puyallup, 3c4f

HAY BALING
Cutting, Side Delivery Raking
JOHN H. ARNESTAD
12009 Mile E Road,
Tacoma 44, Wash.
GRanite 4282

LAWN MOWERS — Grinding, Lapping, Repairing, Pick-up & Delivery Power, Hand, Rotary, New and Used. PARK LAND CYCLE & KEY, GR 5772, 3c4f

FOR SALE — Clematis, many colors, now in bloom, many other varieties of flowers and shrubs. South Meridian Nursery, Puyallup, 3c4f

HAY CUTTING
Side Delivery Raking
GR. 8408
Baler Arrangements

LANDSCAPING; bulldozing, rotovating; top soil and fertilizer by sack, yard or truck load; free estimates, monthly rates; A. C. Edwards; 7202 Park Ave, HA 9997, 3c4f

GEORGE PURDUE Plumbing & Heating—New work, Remodeling, Repairs. Phone GR 4477, 3c4f

ED DILLON & CO. for the best rotovating; light blade work. Free estimates, satisfaction guaranteed; PR 3902, HI 9681, 3c4f

Top Soil
6 Yards for \$10 Delivered
Hay Baling
JACK RANGLES
GR 8373

WE BUILD HOMES, remodel, level buildings; cabinet work, concrete work. Reasonable. GR 3550, MA 0706, 3c4f

TRACTOR WORK, plowing, discing, blade work; Fred Ludwig, GR 8028, 3c4f

FOUNDATIONS — All kinds block and concrete work; free estimates; Walsh Construction Co., HI 1529, 3c4f

8—Wanted To Buy
WANTED—Buildings to wreck. We buy and sell used building materials. White Ball Lumber Co., Bingham Road, just west of Summit View; GR 8591, 3c4f

SPOT CASH FOR YOUR USED FURNITURE
1 Pieces of Home Full
Blick's Furniture Mart
8219 So. Tacoma Way
LA 2882

9—Real Estate
FOR SALE — G.I. equity in 2-bedroom house. Parkland area. \$1800. Present mortgage G.I. 4% at \$34 per month. Call GR 8647, 9c4f

FOR SALE — 3-bedroom house in Roy; furnished or unfurnished; shown by appointment. Write or phone owner, Miss J. Mae Chambers, 801 So. G St., Tacoma; phone BR 1967, 9c4f

RAY GOGAN
LANDSCAPE CONSTRUCTION. General landscaping service. New lawns, top soil, topsoil, shrubbery, rockeries. Nothing down, 36 months to pay. GR 3127, 3c4f

Spanaway \$5950.00 G.I.
ALREADY appraised; large 2-bedroom bungalow; wired 220. Excellent well, fruit and berries; approximately 1/2 acre. Call Orrin Moore, GR 8638, GR 5469.

Parkland New Rambler
BUILT under F.H.A. inspection. Living room with fireplace; furnace heat to all rooms. Attached garage; large storage. Closing cost to veteran. Call Helen O'Brien, GR 8638, GR 3558.

2 1/2 Acres
DO YOU want a home and business? Then don't pass this up. 3-bedroom, full basement, double garage; a going business that will make your payments. This won't last; only \$12,500. Call Mr. Hickman, GR 7379, GR 8638.

5 Acres - Fife
VERY NICE 3-bedroom home. Beautiful yard, all fenced and cross fenced. Will go G.I. or owner will carry contract. Call Mr. O'Leary, GR 6473, GR 8638.

SUBURBAN REALTY — Insurance
11902 Pacific Avenue GRanite 8638

A LORING LISTING SELLS

CONTRACTORS! - HANDYMAN!
FINISH this new 4-B.R. home yourself while you live in it. Liv. rm. with fireplace, din. rm., attached garage. On 2 1/2 acres with additional building site. 1/2 mile from Collins school. \$6750.

G.I. - 4 B.R. - F.H.A.
2 B.R. and bath down, 2 B.R. and 1/2 bath up. Large liv. rm., din. rm., kitchen and utility. Lots of closet and storage space. Wall to wall carpeting and drapes included. Excellent Parkland location. A home you would really be proud to own. \$11,750.

GENTLEMAN FARMER
COUNTRY ESTATE, California rambler on 5 acres of good soil, landscaped, fenced, close in. 2 large living rooms with fireplaces, Perimeter hot water heat, basement, double garage. 2 bedrooms but could be more. \$27,000. Shown by appointment only.

PARKLAND
2 BEDROOM home, living rm., kitchen, util. rm., garage. Just off Pacific Ave. on 123rd. Close to stores, schools; bus. Will sell G.I.

G.I. EQUITY
GOOD Parkland location. 2 B.R. shake, garage, 3 1/2 years old. \$9250.

WE HAVE a number of buyers for ranches from 10 acres on up. Please call us if you are going to place your property on the market.

OPEN SUNDAYS and EVENINGS
JAMES R. LORING
REAL ESTATE — INSURANCE
Bill Black GR 3272 - Mr. Inloes HA 2547 Eves
12609 Pacific Ave. Office Phone: GRanite 4148
Mail Address P.O. Box 707, Parkland, Wash.

Jennie L. Grodvlg
Parkland Realty Co.
Insurance of All Kinds
Notary Public
Est. in Parkland Since 1941
GR 7232 days
208 Garfield Street
"Deal with the people who give you their own personal attention."

13—Farm Ads
FOR SALE — 47 International panel, good condition. \$150 down, easy monthly payments. GR 8688. 12c4f

FOR SALE — '41 Nash; mechanically good, needs some work; new seat covers; \$55; LA 7524. 12c4f

FOR SALE — Standing hay on 3 1/2 acres; John Peterson, 311 East 123rd St. 13c4f

FOR SALE — Guernsey cow, fresh with second calf in October. \$140; Jersey bull calf, 8 mo., \$50; 20 R.R. laying pullets, \$2 each; Rt. 11, Box 760, 90th & Waller road. 13p4f

HAY BALING—It's that time again: 2000 Vio. Sale, Graham 72127, 13c4f

GOOD RYE HAY—50c per bale. La-Crosse, Rt. 7, Box 581, Fredrickson Road. 13c4f

FOR SALE — 2 acres standing hay; GR 5717. 13c4f

14—Situation Wanted
RELIABLE girl would like baby sitting in the vicinity of Spanaway. GR 7087. 14c4f

ACCORDION LESSONS in your home; instrument furnished; call HA 3788 collect. 14c4f

BRICK WORK: House leveling and foundations, retaining walls, sidewalk, etc.; call R. Thackeray collect. GR 4291 Evenings. 14c4f

WANTED — Ironing in my home; HI 8593, 3012 South Cushman. 14c4f

CHILD CARE in my home; fenced yard, pleasant surroundings; 903 So. 111th. 14p4f

PIANO LESSONS — Graduate Holy Names, also Cornish. On 138th St. Mrs. Guffin, GR 6488. 14c4f

15—Miscellaneous
14 FT. BOAT — 1953 7 1/2 H.P. Scott Awater, \$225; GR 5097; 11941 L. 15c4f

2 CORDS green upland slab, \$14; GR 3306. 15c4f

GRANDPARENTS wish a furnished apartment for summer months. Parkland area; under \$50; phone GR 4206 collect. 15c4f

PARKLAND FURNITURE — New and used miscellaneous; Airport & Pacific Ave.; Residence Phone GR 3748. 15c4f

10x14 cold storage Bldg. 1500 lb. freezing capacity. Complete with unit, A-1, \$200 and take it away. Ideal for Fur Farmer; days, GR 5689. 15c4f

FOR SALE — Old newspapers; big bundle for 10c; Times-Journal office, 119th & Pacific Ave. 15p4f

FOR SALE — One Paul Names raspberry picker, used one season; in A-1 condition; \$150.00, delivered. Joe Strong, Box 211, Sultan, Wash. 15p4f

WANTED — Chickens and rabbits. Call us before you sell. Cope's Poultry Market, 7036 Pacific Ave., Tacoma, Wash. HA 4406. 15c4f

G. I. Financing F.H.A.
WE NEED listings of all kinds. Farms, acreage, lots, building sites, homes, (new or old, 1, 2, 3, 4 bedrooms).

JAMES R. LORING
REAL ESTATE
12609 Pacific Ave., Parkland
GRanite 4148 Anytime

10—Rentals
FOR RENT — Cottage, fully furnished, \$50, including utilities; GR 5248, GR 8585. 9c4f

FURNISHED 3-room apartment, light housekeeping room, and sleeping rooms; 415 So. 122nd. GR 3714. 10c4f

FOR RENT — 3 room house, furnished; electric refrigerator; wired 220; lavatory outside temporarily; \$25 a month; also 4 room duplex apartment, private bath; \$28; 1117 East 104th, on Knapp and Golden-Given Rds. 10c4f

11—Repair Service
WASHING MACHINE PARTS. Largest stock in town. Repairing that please. B.B. Washer Service, 3727 So. G. HI 9409. 11c4f

12—Used Autos
FOR SALE — 1953 Mercury Monterey hard top coupe. Like new. Low mileage. A clean, 2-tone beauty. \$750 down, easy monthly payments. Phone GR 6688. 12c4f

FOR SALE — 2 young horses, 3 and 4 years old; broke to ride. Ernest H. Wallace, Roy, Wash. Phone Roy 267, evenings. 16p4f

CALL TOM RAFFERTY, Granite 4443; your agent for Powder River Cattle Squeeze Chute. 16p4f

WILL TRADE hay for horses. GRanite 6446. 16c4f

FOR SALE — Palomino mare; saddle and bridle; trailer, \$150; GR 7000. 16c4f

FOR SALE — 4-year-old Morgan stallion. Gentle, green broke. Children can handle. A beautiful animal. 17 papers available; well known sire, dam can be seen. \$225. Also 2-year-old Palomino mare. Papers on hand. Gentle, well broke. Fine parade horse. 17 hands. Well known sire. \$150. Phone GR 6374 evenings. 16p4f

ARTIFICIAL BREEDERS — Evergreen Breeders Ass'n. \$7 breeding fee; no charge on returns. Holstein, Guernsey, Jersey, Milking Shorthorn, Brown Swiss Hereford. Call Puyallup 5-8393. 16c4f

SPANAWAY 4th OF JULY CELEBRATION
JULY 3rd - 4th - 5th

CUSTOM MEAT
Fresh Eggs - Locker Rentals
MOUNTAIN VIEW FOOD LOCKERS
Airport & Spruce GR 5332
2 1/2 Miles East of Pacific

A-1 Auto Wrecking
Transmissions Rear-Ends
Good Tires
GR 3445
13818 Pacific Ave.

RENTAL TOOLS AND EQUIPMENT
A Tool for Every Job
across from Starlite Theatre
8322 S. Tac. Way LA 4712

HAVE YOUR CABINETS CUSTOM BUILT
At No Extra Cost
RHONE'S CABINET SHOP
161st & Park Ave.
GRanite 3342

BURGERS & FRIES
You don't have to wait
Call HA 9780
We will have them ready
"You Just Pick Them Up"
AL'S DRIVE IN
8818 Pacific Ave.

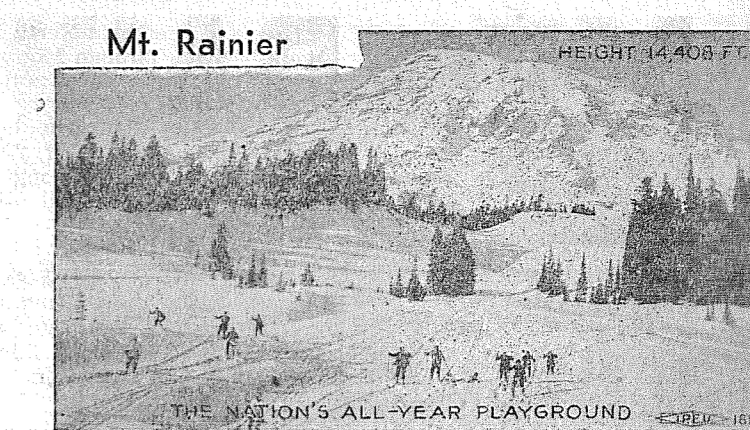
INSURANCE
Ed Marek
Farmers Mutual of Enumclaw
12909 Pacific Ave. GR 4000

AMERICAN ART CO.
CUSTOM PICTURE FRAMING
OLD MASTERS AND MODERN PRINTS
B Broadway 4327
2046 6th Avenue

WELL DRILLING Berkeley Pumps
• JETS
• SUBMERSIBLES
• CENTRIFUGALS
• TURBINES
Call GR 7281
Tacoma Pump & Well Drilling Co.
Rt. 7, Box 316 Tacoma
Terms — — — — — Trades

INSURANCE
Life, Disability, Mortgage Retirement
ACACIA MUTUAL LIFE INSURANCE CO.
L. W. "Bill" Hertler
Representative
1222 South 120th St.
Phone GRanite 3752

CLOSE OUT SALE IS ON
The groceries will be included in the sale for 1 LB. COFFEE FREE with \$10 purchase on any kind merchandise we have on hand.
6 different brands coffee to choose from. Have 515 lbs. coffee on hand and when that is gone the coffee deal will be off. First come - First served.
H. L. WOLF
Roy, Wash.



"WHERE FLOWERS AND GLACIERS MEET" The many improvements that have been made, will add much enjoyment for the whole family.

Make your trip a social one. These business folks invite you to stop in and get acquainted.

1 COPPER CREEK
Gad About - Dining Out? No Doubt!
Our Specialty Serving Piping Hot Home Made Breads - Fresh Baked Daily, Coppers Toppers - Wild Berry Pie, Dinners - Snacks and Sweets To - Go's

2 COPPER CREEK
Modern Cottages with Playground
Trout Pond - You don't need a license
It's a Wonderful Rest for the Whole Family
Price Range from \$7.50 to \$12.00
Phone Ashford 5206

3 BILL STARKEL'S CHEVRON STATION
R.P.M. Oil - Atlas Tires - Tire Repair
Picnic Supplies
Phone Ashford 5011 Ashford, Wash.

4 ASHFORD TAVERN & CAFE
Lunches - Sandwiches - Short Orders
Fountain - Candies - Amusements
Fred Swanson, owner
Phone Ashford 9841

5 ASHFORD DRIVE IN
Hamburgers To Go
Milk Shakes & Home Made Pie
Picnic Tables For Your Convenience

6 RUTH'S HIGHWAY SERVICE
Short Orders - Steaks - Etc.
Confections & Soft Drinks
Union Station - Tire Changes & General Repair
National, Wash.

7 ALDER STORE
Groceries - Sundries
Gas - Oil - Tires
Mt. Hiway at Alder Phone Elbe 2801

8 TWIN FIRS - LaGrande Auto Court
Modern Cabins - Picnic Grounds
Cafe Across the Street
Leonard and Lola Davis, Props.

9 GILBERT'S COUNTRY STORE
Hand Woven Skirts and Jackets
Picnic Supplies
THE MOUNTAIN CONE
LaGrande, Wash.

10 HENLEY'S PLACE
Picnic and Camping Grounds
Fishing - Refreshments - Boats
Excellent Crappie Fishing

11 FOSS SERVICE
Where Your Dollar STRETCHES
Auto Parts - Tires - Batteries
GAS (28cx) OIL
Complete Lube and Tire Service
Call Graham 7-7344 Open 7 Days a Week

12 SCOTT'S GROC. & SHELL SERV.
PICNIC SUPPLIES
At Rocky Ridge on Mt. Highway Open 7 Days a Week

13 Spring Water Farm Rainbow Trout
The trout are here: All Sizes. Can you catch them? Your catch will be cleaned and wrapped for you. We Furnish Everything for Fishing - No License Required
Phone Graham 7-2110

14 KUPER'S KORNER
MOBIL GAS - GROCERIES - BEER
Everything to Complete Your Picnic Lunch
OPEN ALL DAY SUNDAY FOR YOUR CONVENIENCE
At Loveland

15 ELK PLAIN CAFE
Dinners • Steaks • Chicken
Cabins • Gas • Oil
Open 5:30 a.m. Till 2:00 a.m.
Mt. Hiway at Loveland

MT. RAINIER NATIONAL PARK OPENS JUNE 26TH

PLAN YOUR TRIP ON THE ROADS TO PARADISE

MT. RAINIER NATIONAL PARK, contains 378 square miles of America's superlative mountain grandeur, is easily accessible from the gateway cities of Tacoma and Seattle. Towering above all this is Mt. Rainier, an extinct volcano, 14,408 feet above sea level. It is the highest perpetually ice-clad peak, and has the largest single system of glaciers in the U.S. These glaciers, 26 in all, contain more than 45 square miles or 29,000 acres, of ice. Beneath these masses of moving ice are born many turbulent rivers which flow through the Evergreen Playground to the waters of the Pacific. Almost 700 species of flowering plants in addition to hundreds of ferns, mosses and fungi; 34 waterfalls, 62 lakes, and trees centuries old, add to this Mountain of grandeur. Here is fun for all—hiking, mountain climbing, saddle horse riding, fishing, dancing and easy walks through flower meadows. Hotels, lodges and camp grounds are provided for your comfort. Guides, Ranger Naturalists, spacious lobbies and experienced, intelligent personnel provide for your entertainment.

PARADISE VALLEY, situated on the south side of Mt. Rainier, is reached by way of excellent highways leading directly to Paradise Inn. You will thrill at the huge evergreen trees lining the highway on either side, the great Nisqually Glacier that flows precipitously down the mountain toward the roadside, beautiful Narada Falls dropping 168 feet to the Paradise River Canyon, unexcelled panoramas from the highway at Rickscocker and Inspiration points, and spectacular Mount Rainier itself, rising 14,408 feet above sea level.

We urge you to visit Paradise for it is without doubt THE GREATEST SINGLE SCENIC ATTRACTION IN THE ENTIRE NORTHWEST.

Paradise Inn, with its unique timbered lobby and dining room, is renowned for its excellent food and comfort, and will be open June 26. NARADA FALLS, on the highway to Paradise Valley is one of 34 waterfalls in Mount Rainier National Park.

NATURALIST CONDUCTED TOURS see the beauties of Paradise Valley and the Tatoosh Range with Mt. St. Helens sixty miles away.

Be sure to plan a trip to the park this summer. On this page you will find listed many businesses and their location shown, who will endeavor to make your trip more pleasant. Keep this page, referring to it on your trip.

WOODY'S MARKET
Almost Everything
But Not Quite
Loveland, Wash.

Smitty's Shell Service & Groc.
Cold Beverage at our Pop Bar
Picnic Supplies & Ice Cream
Mt. Hiway at Loveland

Craney Crow Trailer Homes
LUXURY AT NO EXTRA COST
NOW OPEN
MT. HIWAY AT ROY "Y"
Phone GRanite 8064

OUR ACCOMMODATIONS
Car Ports For Each Trailer. (2) Individual Storage
rms. (3) Modern Utilities. (4) Lounge with Fireplace
T.V.

LOUIE'S SHELL SERVICE
Tire & Brake Repair - Tune Up
Acetylene Welding
Roy "Y" & Mt. Hiway

SOUTH END PLUMBING & HARDWARE
Everything for the Home
Man and Fisherman
and Hunter
GRanite 4100
Highway near Roy "Y"
Spanaway
Shorn Paints
Fishing & Hunting Licenses

PAUL'S SHOE REPAIR
We don't tell you how to live,
But we can save your sole.
We know they're bought to scuff about,
But walking takes it's toll.
58th & Pacific Ave. Spanaway

THE BARGAIN BASKET
OPEN SUNDAYS
For Your
PICNIC SUPPLIES
7th & Pacific Avenue
Spanaway

SPANAWAY 5 & 10
PICNIC SUPPLIES - FISHING TACKLE
For All Your Needs, First Shop
Across from the School on Mt. Hiway at Spanaway

SPANAWAY CLINIC OF MYOPRACTIC
G. L. Dean
Doctor of MyopRACTIC
haven't tried every-
thing until you try
MYOPRACTIC?
1, Wed., Fri. 11 to 6 p.m.
corner 161st & Pacific
GRanite 6200

OUHL'S ONE STOP SERVICE
RICHFIELD GAS & OIL
Complete Auto Repair Service
30th & Pacific Ave. GRanite 6547

30 SPANAWAY TEXACO SERVICE
Tires - Tubes - Batteries
See Buck for
Guns & Ammunition Bargains
159th & Pacific Ave. GRanite 9924

31 GREENACKERS EXCHANGE
Used Furniture and Appliances - Dishes - Etc.
GRanite 6184

PRETTYMAN HEATING CO.
McPherson Furnaces
GRanite 7861
147th & Pacific Ave.

32 STEWART HAY & GRAIN
FEEDS - Dogs - Horses - Cattle - Chickens
Fertilizer & Evergreen Plant Food
Leather Goods - Bridles & Show Halters
Alber's & Triangle Feeds
147th & Pacific Ave. GRanite 4888

33 SPANAWAY AUCTION
Sales Every Thurs. & Sat. Starting at 12:00 Noon
Livestock & Miscellaneous
146th & Pacific Ave. GRanite 6895

34 Tacoma Pump & Well Drilling Co.
WE HELP KEEP WASHINGTON GREEN
Phone GRanite 7281 146th & Pacific Ave.

35 RAU MFG. CO.
Specialty Sheet Metal Work
You Name It - - We Can Make It
141st & Pacific Ave. GRanite 7372

36 LITTLE DINER CAFE
Hungry Man's Meal! Or a Snack
Pie An Dunkers An
141st & Pacific Avenue

37 PARKWAY FURNITURE
OPEN TILL 9:00 P.M.
Phone GRanite 3941
141st and Pacific Avenue Moupntain Highway

38 POCHEL DISTRIBUTING CO.
YOUR FUEL OIL and APPLIANCE DEALER
GRanite 8624
140th & Pacific Mt. Hiway

39 BROOKDALE LUMBER CO.
When You Think of Building
LUMBER - PAINTS - HARDWARE
136th and Pacific Avenue Phone GRanite 8669

40 CLOVER CREEK TEXACO SERVICE
The Best Costs No More
GAS - OIL - TIRES - BATTERIES
OTTO Takes Care of your AUTO
132nd and Mt. Hiway at Brookdale

41 BROOKDALE MOBIL SERVICE
Gas - Oil - Tires - Lubrication
FISHING TACKLE
131st & Pacific Avenue GRanite 5722

42 PARKLAND UPHOLSTERY
Furniture and Rug Cleaning
Free Estimates
FURNITURE MADE TO ORDER
GRanite 3201 12841 Pacific Ave.

43 GENERAL SUPPLY COMPANY
PAINT - MILLWORK - HARDWARE - BUILDING
MATERIALS - SHAKES - LUMBER - ROOFING
12702 Pacific Avenue The Best for Less

44 SILER'S
T.V. and Appliances
11230 Pacific Avenue Phone GRanite 8634

45 BUNGALOW CAFE & TAVERN
DINE and DANCE
Friday & Saturday Nite
24-Hour Restaurant Service
Sales Rd. & Pacific Ave.
Mt. Hiway GR 7181
LIVE MUSIC

46 ANDERSON LUMBER
FOR POP, MOM,
AN-DE-RSON,
Vee Hav Zupplied
PAINTS
Lumber & Bldg. Supplies
9813 Pacific Ave. GR 7311

47 CASEY HARDWARE
PICNIC SUPPLIES
Coleman Camp Stoves
Folding Picnic Tables
and Stools
Ice Chests and General
Camping Supplies
9818 Pacific Ave. GR 7302

48 JACK TROUNCE SPORTING GOODS
INFORMATION - WHERE TO FISH
Everything for Lakes, Streams Salt Water Fishin'
NEW STOCK OF GUNS
96th & Pacific Ave. HA 8524

49 BABE'S CAFE
Good Food for Hearty Vacation Appetites
Eatonville
Open 5 a.m. Till 10 p.m. 7 Days a Week

50 POINT OHOP
Good Boats and Clean Cabins
on beautiful Lake Ohop
Swimming - Fishing - Softball
Sheltered Outdoor Stoves with Hot & Cold Water
Location on Map

51 BARNEY'S CAFE & TAVERN
A Friendly Spot
To Stop & Relax
Fine Foods & Beverages
Open 8 a.m. Till 7
7 Days a Week
At the Intersection of
Meridian & Eatonville
Cutoff
Former Owners of
Otremba's Cafe
Fred & Viola

52 KLASEY'S
CHEVRON SERVICE
LIGHT GROCERIES
Fill Up Your Car
or Your Picnic Basket
Meridian Highway and
Clear Lake North Road

53 FELTS FARM SHOP RESTAURANT
An Unusual Place
Home-Made Pie and the
famous Gyppo Logger
Hamburger
operated by
Margaret & Horace Felt
Meridian Hiway
5 Mi. So. of Graham

54 JIM & LEE'S GROCERY & SERVICE
Ride with the Flying Horse
MOBILGAS
Oil & Accessories
Groceries - Meats and
Beverages
Meridian Highway and
Carlson Road

55 GRAHAM STORE AND FRIENDLY TAVERN
Feel at Home
Among Friends
Beer & Wine to Take Out
GAS and OIL
GROCERIES
General Merchandise
AT GRAHAM
Roy & Helen Thorsen

56 DUN ROVIN CAFE
For Good Food, Cold
Beverages &
Friendly Service
Stop At
Meridian Hiway at Graham

57 SPANAWAY
Spanaway Clinic of MyopRACTIC 27.
Ouhl's One Stop Service 29.
Greenacres Ex. & Prettyman 31.
Stewart Hay & Grain 32.
Rau Mfg. Co. 35.
Little Diner Cafe 36.
Brookdale Lumber Co. 39.
Brookdale Mobil Service 41.
Parkland Upholstery 42.
General Supply Company 43.
Siler's 44.

58 BUNGALOW CAFE & TAVERN 45.
Casey Hardware 47.

59 SPANAWAY HARDWARE 22.
Paul's Shoe Repair 23.
The Bargain Basket 24.

60 SCOTT'S GROC. & SHELL SERVICE 12.
Kupper's Korner 14.
Woody's Market 18.
Craney Crow Trailer Homes 19.

61 FELTS FARM SHOP 53.
Felts Farm Shop 53.
Foss Service 11.
Barney's Cafe & Tavern 51.
Klasey's 52.

62 TO YELM
To Yelm
Foss Service 11.
Barney's Cafe & Tavern 51.
Klasey's 52.

63 ROCKY RIDGE
Rocky Ridge
Foss Service 11.
Barney's Cafe & Tavern 51.
Klasey's 52.

64 LOVELAND
Loveland
Foss Service 11.
Barney's Cafe & Tavern 51.
Klasey's 52.

65 GYPSY TRAVELERS
Gypsy Travelers
Foss Service 11.
Barney's Cafe & Tavern 51.
Klasey's 52.

We Move The Earth
CRANE SERVICE
Power Ditching - Sewers
Septic Tanks - Top Soil -
Excavating - Rock Work -
Landscape Engineering.
**SEAMAN, MAVES
& SEAMAN, Inc.**
GR 4700 - HI 2177 - HI 7858
10329 Pacific Avenue

Midland News
Marlene Corrigan
GRanite 8545
Dickson - Purcell
Miss Alice Marie Dickson,
daughter of Mr. and Mrs. David
C. Dickson of Midland, and
Granville A. Purcell, son of Mr.
and Mrs. Jack W. Purcell of
Miami, Oklahoma, became "Mr.
and Mrs." at a double-ring cer-
emony held at St. John of the

Woods church Saturday, June
19. The bride's gown of Chantilly
lace and pleated net over
slipper satin was graced by a
basque bodice and pointed lace
sleeves, trimmed with tiny satin
buttons and iridescent se-
quins. Her bouquet of red
roses was centered by her go-
ing-away corsage. Her finger-
tip veil was caught to a Juliet
cap studded with rhinestones.
The maid of honor, Miss Mary
Ann Reding, wore a blue gown
and carried blue painted daisies
on pink ribbon streamers.
The bridesmaids, Miss Audrey
Lee Cormack in blue and Miss

Sharon Lee Dickson in pink,
also carried daisies of pink and
blue. Miss Mary Katherine
Dickson and Miss Mary Ann
Dickson, dressed in pink and
blue, were the junior brides-
maids.
The best man was Milton
Schmida. Thomas Huff and
David Podsednick attended as
ushers.
White calla lillies decorated
the altar, which was tended by
the bride's nephews, Peter John
and Robert Dickson. The Rev.
Andrew Prouty performed the
ceremony.
A wedding breakfast was
served to the family and relatives,
followed by an evening
reception, also at the home of
the bride.
Mrs. James B. Dickson cut
the bride's cake and Mrs. Bern-
ard J. Dickson poured, with the
Misses Ann, Kathleen, and
Theresa Lanz assisting in serv-
ing.

Music was provided by Peter
John and Robert Dickson, the
bride's nephews, with Benny
Lee and Robert Freeman.
A pale green suit with white
accessories was worn by the
bride on the wedding trip to
Astoria.
The bridegroom, who at-
tended high school in Miami, is
stationed in Seattle with the
United States Navy communi-
cations. The bride attended Se-
attle university.

President honored
Mrs. Dorothea Sullivan, nation-
al Grandmothers president, was
honored with a dinner at LaPer-
gola Friday evening. Local wo-
men attending included Mrs. V.
Selle, Mrs. John LaPore, and
Mrs. Albert Nelson.
Improving
We are glad to hear that Dol-
ores Dworsky, daughter of Mr.
and Mrs. Frank Dworsky Jr., is
home from the hospital.
Visitors
Mrs. G. VanDenelzen and
children visited with her par-
ents, Mr. and Mrs. V. Ander-
son, on Friday. We are glad to
hear that Jackie is able to be
up after such a long time in
bed.
Church Supper
Don't forget the church sup-
per June 26, to be held at the
Graham Grange hall.

**Cement - Sand - Gravel
and Drain Tile**
**SOUTH END
PLUMBING**
HOME of SCHORN PAINT
Near Roy Y. Spanaway
GRanite 4100

HARDWARE
Fuller Paint - Republic
Paint - Dramex
Super Kemtone
Complete Stock
Save Time & Money
MAGDANZ
Lumber & Hardware
11401 Pacific Ave.
GR. 5538
Open Eve. 'Til 8 p.m.

**RUPE
MACHINE WORKS**
Industrial - Automotive
ENGINE REBUILDING
- General Garage Repairs.
Brake Drum & Fly Wheel
Turning - Head Grinding.
Shop GR 7450 - Res. HI 6190
Pacific Ave. at Brookdale
P. O. Box 645, Parkland

Self-Service and
Complete
Laundry Service
HA 9736
Ask Our
Satisfied Customers
Hrs. 9 a.m. to 9 p.m.
Mon., Wed., Fri.
9 to 6 Tues., Thurs., Sat.
**FERN HILL
LAUNDROMAT
& DRY CLEANERS**
8420 PACIFIC AVE.

Presenting
The Fine New
ILLINOIS
Cased and Timed by
The HAMILTON WATCH CO.
SEE IT!
NOW 17-JEWEL
Self-Winding
ILLINOIS
\$71.50
Convenient Terms
Take Advantage
of our
Free Inspection
and Watch-Master
Check Service
Mfg. Settings for Diamonds
Diamond Rings - Silverware
Jewelry Repair - Engraving
Costume Jewelry
Open Mon. & Fri. Eve. till 9

**LAKWOOD
JEWELERS**
LAkewood 4311
9601 Gravelly Lake Dr.
Opposite New Center Bldg.

VAUGHAN'S VALUES
FENCING - FENCING - FENCING
Let Us Analyze Your Fence Problems
And Give You An Estimate
Our expert fence crew costs you less than the
Inexperienced Workman
Easy Monthly Payments
VAUGHAN'S
PACIFIC AVENUE LUMBER CO.
84th and Pacific Avenue Phone HI 9515

TOPS IN SERVICE & QUALITY
Mirrors - Convertible Tops - Auto Window Glass
Custom Tailored Seat Covers
Art's Glass & Upholstery Shop
816 So. Tacoma Ave. MA 2200

ATTENTION ORDNANCE ATTENTION
and
**FORT LEWIS
EMPLOYEES**
Bone Dry Steel Toe Oxfords
Regular Price \$11.45
Special Purchase Only \$9.45
Leather Lined
Vul-Cork Oil Resisting
Neoprene Sole.
MIDLAND SHOE REPAIR
98th & PORTLAND AVENUE

NOW IN STOCK
HIGHLAND'S
HI - NUTRA
MILK REPLACER
For Starting & Growing
Calves. 1/2 the cost of milk.
Money Back Guarantee.
CALVITA
POULTRY
BANQUET
A Semi-Solid Super Forti-
fied Feeding Cake. Finest
Product of Its Kind.
HIGHLAND FEED
HOME OF FISHER'S QUALITY FEEDS
GRanite 8585 Midland 96th & Portland

**ANNOUNCING
A NEW BAND**
-- At --
Fruitland Grange Hall
Introducing
JIMMY OCKFEN
And HIS VAGABONDS
Starting
Saturday, June 26

GR. 5566 NOW IS THE TIME TO GR. 5566
Install A Well or Check That Water Pressure
we Guarantee Full Pressure with an Advance Water System
Get Our Bid on your Water Problems - You Save Money
GLACIER PUMP AND DRILLING CO.
10435 South Sheridan

**MIDLAND
DRUGS**
PRESCRIPTIONS
98th & Portland Ave. GR 5387

Prices Effective
June 24th - 25th - 26th

BARGAIN BASKET

FREE PARKING
Space for Everyone

TEL. - GRanite 3371

167th ST. and PACIFIC AVE. - SPANAWAY

**BRING YOUR FRIENDS
AND
PLAN TO SPEND**

JULY 3-4-5 AT SPANAWAY'S

**GALA 3-DAY
CELEBRATION**

- WATER SPORTS
- DANCING
- FIRE WORKS
- PATRIOTIC PROGRAMS, ETC.

Standing
Prime Rib Roasts Pound **53c**

Our Own Make
PORK SAUSAGE . . . lb. 29c

T-BONE STEAKS . . . lb. 69c

Pure Lean
GROUND BEEF Pound **29c**

WATERMELON
HALF
or
WHOLE **4¢ lb.**

Giant Size
WHEATIES 2/45c

Old Yankee
PORK & BEANS 2/45c

Hoody
PEANUT BUTTER 53c

Schillings
BLACK PEPPER 2 oz. 17c

HI-C ORANGEADE 46 oz. 2/49c

Medosweet
COTTAGE CHEESE pt. 25c

Biltmore
TUNA MORSELS 36c

For CONVENIENCE and ECONOMY
STARLAC NONFAT DRY MILK

3 QUART PKG. {PRE-MEASURED ENVELOPES} **24c**

1 POUND PKG. {MAKES 5 QTS.} **34c**

Large 24 Oz. Jar
DILL PICKLES . 49c

Sunshine 1 Lb.
CRACKERS . 25c

Sunshine 1 Lb.
MARSHMALLOWS 29c

HILLS BROS. COFFEE lb. 1.19
With Coupon in Thursday Nite Tribune Lb. \$1.09

**PILLSBURY ANGEL FOOD
CAKE MIX** pkg. **49c**

**CENTENNIAL
FLOUR**

25 Lb. Bag **2.05**

Giant Size Pkg. **49c**

Family Size Pkg. **23c**

FRUITS and VEGETABLES

Delicious
APPLES . . . 2 lbs. 33c

Fresh Local Heads
LETTUCE . . . head 5c

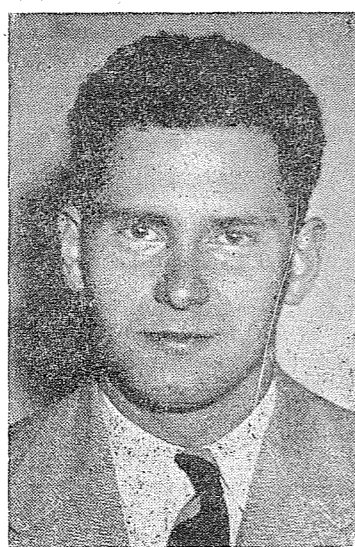
Full Tender Cobs
CORN 3/14c

Full O' Vitamins
JUICE ORANGES lb. 9c

FILL YOUR BASKET at BARGAIN BASKET...FOOD VALUES GALORE

NBW Promotes . . .
(Continued from Page 1)
Snowden received his schooling in Tacoma, graduating from Stadium high school. His banking career with National Bank of Washington goes back to 1939. In 1940 he joined the navy, where he rose to the rank of Lt. Commander. Upon his return from the service in '46, he was assigned to the installment credit loan department of the

bank, and in '41 was transferred to the Bremerton branch as assistant cashier, where he remained until his transfer to Parkland in 1949 as assistant manager. He is president of the Parkland Business club and a member of the Elks club. He and his wife and three children reside at 7924 Golden Given road.
John R. Whisler was first employed at the Winlock branch in 1941. He joined the army in



John R. Whisler
Coffman-Dobson branch, in Chehalis, for a short time, and in '46 was transferred to the Winlock branch. In 1950 he joined the staff at Parkland branch. He is a member of the Parkland Business club, and he and his wife and four children reside at 710 South 132nd street.

Officers of the Parkland Branch will now be, R. H. Snowden, manager; W. M. Adams, J. M. Sandal and John R. Whisler, assistant cashiers.

Preschool Picnic

Parkland Preschool will hold a picnic Tuesday, June 29, at Wapato park. Potluck lunch will be at noon, each family bringing needed table service. Ice cream and Kool-Aid for the children and coffee, cream and sugar for adults will be furnished by the Preschool. For further information, call Mrs. Leo Maves, GR 3966, or Mrs. Virgil Flynn, GR 6964.

FENCING
Designers and Builders
EXPERT WORKMANSHIP
REASONABLE PRICES
Easy Monthly Payments
VAUGHAN'S
HI 9515 84th & Pacific Ave.

Free Pickup & Delivery
GR 5361
College Cleaners
11416 So. Park Ave.

NOTICE

TO ALL members of Parkland Light and Water Company who have dryers or know of others that have dryers, please contact our office or the State Electrical Inspector to be sure the house service and meter are adequate for the additional load of a dryer.

This is a State Insurance and safety law and is for your own protection and may prevent a serious fire.

PARKLAND LIGHT AND WATER COMPANY.
M. A. Wutz, Manager.

UPHOLSTERING
Recovering and Rebuilding
Cushions Rebuilt
Free Estimates
FURNITURE AND RUG CLEANING
PARKLAND UPHOLSTERY
12814 Pacific Avenue
GR 3201 Res. 3181

Prescriptions

Carefully Prepared
Fresh Insulin at Downtown Prices. Pay phone bills here
Tincher's Pharmacy
7239 Park Ave. HI 3944
Across from Fern Hill S.O.

Trovani's Junior Bootery

Specializing in Children's Shoes
706 ST. HELEN'S AVE.-MA 6318
LAKEWOOD CENTER LA 4181

VISIT OUR RECORD SHOPPE

APPLIANCES - TV Radio
SALES and SERVICE
FRYE'S Furniture & Appliances
Parkland Centre Bldg.
GR. 3691

BULLDOZING

Leveling - Road Grading
Landscaping & Back Filling
Top Soil
Large and Small Dozers
Frank Rearden
GR. 5758

Parkland Plumbing & Heating

GR 3710
New Installations
Repairing Pumps, Hot Water Heaters, Washers
Sluggish Drains Opened
Shop Located at
770 South 120th

Parkland TV

SERVICE & REPAIRS
On All Makes of
Radios & TV Sets
Ed Weiss
233 Garfield St. GR 4458

Listen to The
YOUR COMMUNITY CONTEST PROGRAM
ON
KPUY 1450 K.C.
Valuable Prizes Galore!!!
Nothing To Buy!!
Get Your FREE Entry Blank Where You See This Sign . . .
CO-SPONSOR YOUR Community Contest
COME IN FOR YOUR FREE ENTRY



Your Invitation to
Fishing Pleasure

WALLACE SPORTFISHERS

Salmon Fishing Charter Service
AT WESTPORT
P.O. Box 141A Westport 3232



BULLDOZING

Ken Bruce
Brown & Gambill
1750 9th St. S.W.
Puyallup
Basements, Backfills, Driveways, Clearing, Leveling, Etc.
Fill Dirt - Gravel - Top Soil
Dozers—Large and Small
Ph. Puyallup 5-2492 - 5-5487 - Estimates Cheerfully Given

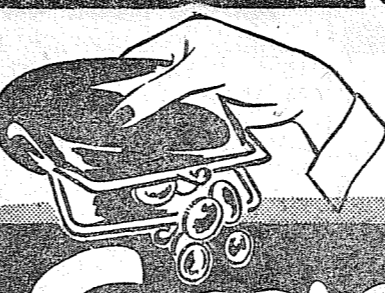
FRIDAY NIGHTS

SHOP HERE
TILL **9 P.M.**

LAKWOOD CENTER
Acres of Free Parking

OUR LOW PRICES SET THE PACE

SHOP McDANIELS and



Save ON Food Bills Everyday



OUR EVERY DAY PRICES
SET THE PACE!
7 DAYS A WEEK!

SHOP HERE MON.-TUES.
WED. - THURS. - FRI. -
SAT. - SUN. & SAVE!

All Western 12 Oz. Tins
BEER . 6/\$1.00

All 5c
GUM . . . 3/10c

All 5c
CANDY BAR 4/15c

Holiday
MARGARINE . . . 5 lbs. 1 00

Old Yankee Lge. 2 1/2 Tins
PORK & BEANS . . . 5/ 1 00

Silk
TOILET TISSUE . . . Roll 5c

6 Delicious Flavors
JELLO Pkg. 5c

Libby's Reg. Size Tin
DEVILED MEAT 5c

Jack and Jill
CAT FOOD 8 oz. can 5c

Sunkist
ORANGE JUICE . . 6 oz. tin 5c

Sunshine Soda 2 Lbs.
CRACKERS 49c

Beach Cliff Reg. Size Tin
SARDINES 10c

All Popular
CIGARETTES . . 2/43c

Seasonal Close Out. All Popular Brands
FERTILIZER . 20% Discount

RATH'S PURE Shortening 3 Lb. Tin 79c

GAINES DOG MEAL 25 Lb. Sack 2.69

Prices Effective Thurs.. Fri., Sat., June 24th - 25th - 26th

LOTS OF
PARKING
SPACE

OPEN 9 To 9
7 DAYS A WEEK

McDANIELS
Airport and Canyon Road

OUR LOW PRICES SET THE PACE

OUR LOW PRICES SET THE PACE

OUR LOW PRICES SET THE PACE

OUR LOW PRICES SET THE PACE

PRESCRIPTION SERVICE
9 a.m. Till 10 p.m.
Open Sunday 10 a.m. till 10 p.m.

JACOBS PACIFIC DRUG
8248 Pacific Avenue

Pay Light & Water Bills Here

RURAL GARBAGE SERVICE

Serving Parkland, Lakewood, Midland, Summit, Spanaway & Lakeview Pierce County Permit

GR. 8688

PILLOWS

We clean pillows by the MUROZA process. Each feather is sterilized in live steam. Worn ticking is replaced on request for \$1 extra. Pillows are returned, soft and lovely as new.

Phone HA 4433

TACOMA OLYMPIC LAUNDRY PANTORIUM CLEANERS

WHAT'S DOING

M. J. Sullivan, your Telephone Manager for Parkland

New cable sheath saves money

If you look closely at the telephone cables in the picture—both similar to the ones that carry your calls—you'll see a difference in their coverings. The outside of the cable on the left is made of lead. And, formerly, only lead did a good job of protecting the vital wires inside. But now we have a new cable covering called "stalpeth" (the one on the right). Perfected after long research, it's made of aluminum, steel, and plastic. Stalpeth weighs less than lead and costs less—up to 43 cents a foot less. We're using it wherever we can . . . to



furnish more service, good service, at low cost to you. Pacific Telephone works to make your telephone a bigger value every day.

Easy way to speed long distance calls

You'll get faster long distance service if you give the operator the telephone number you're calling, rather than just the name and address. And to help you keep out-of-town numbers handy, we'll be glad to send you a free booklet to list them in. For your copy, just call, write, or drop in at our business office.

You can save time and steps

For just pennies a day, you can enjoy the privacy and convenience of an extension telephone in any room of your home. Extensions save steps, save time . . . make it easier for the family to place calls, receive calls. No additional outside wires or equipment are needed—just the telephone itself. To get your extension, call our business office. Pacific Telephone.



Orthopedic home of Mrs. Herbert Anderson, 241 South 54th St., Tacoma. Sylvia Storaasli Orthopedic Guild will meet for 12:30 lunch. Mrs. Walter Paul will be the co-hostess. Thursday, July 1, at the

Spanaway News

Mrs. Oliver Omat
GRanite 6466

The Secret Pal Sewing club met last Tuesday at the home of Mrs. Robert Rhone. Present were Mesdames Jack Henrickson, George Stephenson, Ted O'Neill Sr., Emerson Tarpening, Robert Steidel Sr. Beulah Ballard, Harry White, Oliver Omat, Edward Flannery.

Friendly Dozen
The Friendly Dozen Birthday club will meet with Mrs. S. F. Kintz Thursday, July 1.

Wins Award
Chet McAtee won the award, a chair, at the Spanaway Volunteer Firemen's dance Saturday evening in Bresemann's hall.

Grandmother's Dinner
Mrs. Edward Flannery, Mrs. Emerson Tarpening and Mrs. Raymond Corbett, officers of the Spanaway Kan Do Grandmothers club, attended the dinner held at LaPergola in honor of the national president of the

Allison Road 4-H

Allison Road 4-H met June 14 at the home of Mrs. Ann L. Browning.

Four of the club members took their heifers to the Parkland Round-up livestock show June 12. The four, Dennis Anderson, Trudy Norfleet, Karen Selk and Janice Petrich, brought home six red ribbons and one white ribbon. Trudy Norfleet and Janice Petrich together won a beautiful gold trophy for herdsman.

The club is planning a swimming party for Saturday, July 3, from 11 to 3 at Spanaway park.

Visitors

Last week Mr. and Mrs. Harry Behmer (Parkland Florists) enjoyed a visit from old friends, Capt. and Mrs. Otto Stanhiser of Berien Springs, Mich., who were vacationing on the west coast.

Grandmothers clubs.

Mr. and Mrs. William Moe and family spent the weekend with Mrs. Moe's parents, Mr. and Mrs. Walter Ellis.

On Visit
Mrs. Don McLellan and daughter Wanda Joy visited friends and relatives east of the mountains over the weekend.

Home From Trip
Bob Steidel Jr. is back from a week's trip with friends east of the mountains.

SPANAWAY 4th OF JULY CELEBRATION
JULY 3rd - 4th - 5th

Canyon Road News

Mrs. K. W. Struensee
GRanite 5742

Today, Thursday, is the meeting of the Ladies Auxiliary at the community hall. There is still time to bring your donations for the coming rummage sale.

Garden Club Chairman

At the June 17 meeting of the Canyon Road Garden club the following committee chairmen were selected for the ensuing year: Program, Mrs. Robert Terp; hall project, Mrs. William Hartwich and Mrs. Wesley Niquette; hospitality, Mrs. Blanche Miller; membership, Mrs. Norman Hague, Sr.; telephone, Mrs. William Hartwich; hostorian, Mrs. Norman Hague, Sr.; plant exchange, Mrs. Gilmore Platter; year book, Mrs. C. Zierner and the officers of the Garden club.

Evening Meeting

The next meeting of the Canyon Road Garden club will be held July 21 at 7:30 p.m. in the community hall, at which time the new charter, amended at the June 17 meeting, will be voted upon for adoption. Anyone that cannot attend afternoon meetings will be welcomed at this evening meeting. Hostesses for the evening will be Mrs. Gilmore Platter and Mrs. Norman Hague, Sr. Several members will have floral arrangements on display for throws to third."

Jimmy's Vagabonds At Fruitland Grange

Saturday night will mark the first appearance of Jimmy's Vagabonds at the dance band at the regular weekly dances sponsored by Fruitland Grange at its hall.

Jimmy Ockfen is the leader and needs no introduction to local dance fans as he has been around 30 years, according to him, and has a host of friends here. The band offers music for all kinds of modern and old-time dances as well as square dances.

Jimmy Ockfen plays violin and string bass in the band; Gus DeBock, saxophone and clarinet; Herbert Rickert, trombone, saxophone and violin; Floyd DeFreece, drums, and Tom Croston, piano.

study and comment.

Visitors
Mrs. Jack Saylor, of Tacoma, spent Sunday, June 24, at the home of her grandmother, Mrs. L. R. Field, and Mr. Field, on East 72nd street. In the afternoon they visited the rose show at the South Tacoma Community hall.

Weekend Trip
Mr. and Mrs. Fred Ladwig and family and Pat Bacon enjoyed a tour of Hood Canal and Bremerton last Sunday.

Trevor Adams broadcasting a Yankee baseball game a few years ago: "Dimaggio is backing, backing—to the wall—his head hits it—it drops to the ground—he picks it up and throws for thirds."

USED T.V.

Sylvania 1/2 DOOR CONSOLE \$109.95
R.C.A. 17" CONSOLE \$129.95
AMBASSADOR 12 1/2" CONSOLE \$35.00
R.C.A. 10 1/2" TABLE MODEL \$35.00
1954 21" CONSOLE. Slight Freight Damage.
BIG DISCOUNT - FULL WARRANTY

RAINIER TELEVISION & APPLIANCE CO.

Free Tube Checking

OPEN EVERY DAY FROM 9 TO 9

Sales & Service

8203 Pacific Avenue Hawthorne 1553

KEEP THEM HEALTHY

with **QUALITY FOOD**

U & I SUGAR 10 lbs. 99¢

Pan Ready Colored FRYERS Pound 55c	Carsten's Ready To Eat PICNIC HAMS Pound 47c
Medium FRESH RANCH EGGS Doz. 43¢	Fresh Ground Country SAUSAGE Pound 49c
Carsten's Skinless WEINERS Pound 39c	Hi - C GRAPEAID 46 Oz. 2/ 49¢

TAKE 'N' TREATS FOR YOUR PICNIC

Garden, Sliced PINEAPPLE . . . 2 1/2 Tin 29c	FRESH CRISPY VEGETABLES
Liquid Soap JOY 31c	Fresh, on the Cob CORN . 6/29c
Skippy DOG FOOD . . 3/27c	Fancy GREEN PEPPERS . 12c
TREE TEA 49c	Hot House SLICING Cucumbers 10c
Rosedale CREAM CORN . . 2/25c	RADISHES & Gr. Onions 10c
Stocton, Solid Pack TOMATOES . . . 19c	Nice Ripe Canteloupes 8c
Kraft CHEEZ WHIZ 53c	

Prices Effective Friday and Saturday, June 25th and 26th

FLETCHER'S Market

122nd and Pacific Ave. Phone GRanite 8550

FREE DELIVERY

CASH TALKS

BIG SAVINGS ON TELEVISION - APPLIANCES FURNITURE FOR CASH

TELEVISION - NEW

1-17" Mhg. Table Model	Reg. Price 149.95	Sale Price 124.95
1-17" Mhg. Table Model	189.95	149.95
1-17" Mhg. Table Model, with Legs	209.95	169.95
1-17" Mhg. Table Model, UHF-VHF All Channel	249.95	199.95
1-21" Mhg. Table Model	269.95	199.95
1-Mhg. Table Model, with Legs	259.95	209.95
2-21" Mhg. Console Models	259.95	234.95
1-21" Mhg. Console Model	269.95	239.95
1-21" Lined Oak Console Model	289.95	249.95
1-21" Mhg. Console Model, Deluxe	339.95	279.95
1-21" Mhg. Console Model, UHF-VHF All Channel	369.95	289.95
1-21" Maple Console Model, Deluxe	419.95	349.95

APPLIANCES - NEW

2-Crosley 110 or 220V Electric Dryers, each	239.95	139.95
1-Bendix Automatic Ironer	279.95	189.95
1-Magic Chef Apt. 4 Element Electric Range	184.95	149.95
1-Magic Chef Full Size Electric Range	199.95	159.95
1-Magic Chef Automatic Electric Range	299.95	239.95
1-Magic Chef Auto. Elec. Range w/Food Conditioner	429.95	324.95
1-Perfection Oil Circulator	94.50	49.95

TELEVISION & RADIO - USED

General-Electric Pushbutton Console Radio	10.00
10" Motorola Console Model	25.00
Hoffman Comb. Radio-Phono-Recorder Console	50.00
12" Sparton Comb. TV-AM-FM Radio-2 Speed Player	75.00
17" Raytheon Table Model	85.00
20" Firestone Console Model	95.00
21" Arvin Console Model	150.00
17" CBS-Columbia Blond Table Model (5 mo. Wty. on parts)	185.00

APPLIANCES - USED

Florence Electric Range with Auto. Clock	25.00
Monarch Electric Range with Auto. Clock	60.00
Bendix Automatic Washer	60.00
Bendix Electric Dryer	95.00
Duotherm Oil Circulator	2.00
Ivanhoe Oil Circulator	4.00

FURNITURE - NEW

1-Grey Dinette Table	69.95	34.95
1-6-Year Crib & Mattress	69.95	39.95
1-6 Year Crib & Mattress	59.95	34.95
2-Foam Rubber Pillows	7.95	4.50
1-Full Size Bookcase Headboard w/Frame (Maple)	39.95	24.95
1-Full Size Lined Oak Bed	69.95	34.95
1-Full Size 405 Coil Mattress	69.95	39.95
1-Full Size Longfellow Mattress	69.95	39.95
1-COSCO Feed-N-Play Table	21.95	14.95
2-Floor Lamps, 3-Way	12.95	6.50

Store Hours—9:30 a.m. - 5:30 p.m.—Mon. & Fri. 9:30 a.m. - 9:00 p.m.

FRYE'S

Furniture - TV - Appliances

405 Garfield St., Parkland GRanite 3691

SUGAR 10 lbs. 97c

MILK, Fletts Farm Fresh, 1/2 gal. 2/77c
KRISPY CRACKERS, 1 lb. pkg. 23c
GUM DROPS, Sunshine Jumbo, lb. 27c

Lady Elberta PEACHES 33c

KOOL ADE, 6 pkgs. 27c
FIG BARS, 2 lb. pkg. 49c
TOMATO JUICE, Hunt's 3/29c

Fine for Lunches 12 Oz.

CANADIAN PORK 39c

JELLO, 5 Ass't. Flavors 5/39c
SALAD MACARONI, 14 oz. 19c
GREEN BEANS, Del Monte 2/49c
SKIPPY DOG FOOD 3/27c
KEN I. BISKIT, 25 lbs. \$3.19

NALLEY'S FRESH POTATO CHIPS . 33c

7 Oz. Bag each

APPLES, New Transparent, 2 lbs. 29c
PEACHES, Fine Fruit, lb. 19c
PEPPERS, For Salad & Stuffing, lb. 15c

BERRIES - WATERMELONS - ETC.
at Low Prices

LARRO FEEDS, 70 lbs. ROLL OATS . . . \$3.05
MILL RUN, 100 lbs. \$2.65
SUREGROW, 100 lbs. \$5.23
SUREALL, 100 lbs. \$5.05
RABBIT PELLETS, Gold Medal, 25 lbs. \$1.10

Buy From Us and Save

Prices Effective Thurs. Noon thru Saturday, June 24, 25, 26

HERMAN'S 162nd & Park Ave. Phone GR 8213 Spanaway

POT ROAST, good steer beef lb. 43c
CORNED BEEF, sugar cured . lb. 37c
BACON, Carstens Morn. Glory lb. 69c
FRANKS lb. 45c

SPANAWAY MEAT MARKET
NEXT DOOR TO HERMAN'S GRanite 8215
Prices Effective Friday & Saturday, June 25th & 26th

Woodland News

Mrs. Carl Cordes
Puyallup 5-2511

Woodland Graduates
Thirty-three members of the Woodland graduating class received their diplomas at the Fruitland Grange hall on June 3rd. Following the entrance of the graduates, the invocation was given by Rev. Kirk of the Presbyterian church of Puyallup. Shirley Snyder gave the welcome address, followed by Gary Lincoln giving a talk on "Home Ownership Makes Better Citizenship." Two musical selections were presented by the Martinson sisters trio and a poem was given by Judy Zepp. Vaudeictorian, Jay Lambert spoke on "We Must Live in Our Own Age." Lynn Shaefer presented an accordion number. Guest speaker for the evening, Professor Harry Bauer of the University of Washington, was introduced by Superintendent Fred Sutter. Girls of the 7th and 8th grade, under the supervision of Mrs. George Cole, presented several musical numbers. Presentation of the class was made by their teacher, Verne Hoggatt, and presentation of the certificates were made by Clancy Moore, school director. School Patrol awards were presented by Virgil Mattson of the Washington State Patrol.

Members of the graduating class were: Janice Barnett, Harry Bartlett, Kay Burgess, Cleo Cadida, Donald Dawson, Wilma Doyle, Robert Elsdon, William Fox, Loretta Gleason, Leroy Gustafson, Rose Harber, Karin Haworth, Cliff Keller, Jay Lambert, Gary Lincoln, Robert McMahon, Dennis Moore.

Dale Parks, Duane Rodde- wig, Earl Root, Sheila Root, Terry Ruyle, Lynn Schaefer, Shirley Snyder, Ronald Sheldon, Dale St. Pierre, Gale St. Pierre, Kenneth Strocher, James Tompkins, Kenneth Villines, Carol Whitney and Judy Zepp.

Elk Plain 4-H

The last meeting of the Elk Plain 4-H club was held June 14 at the home of Nyda Sartain.

A Hobo dance is planned for July 16 in the Elk Plain Grange hall. Tickets are: Adults, 50c; under 12, 25c. There will be a prize for the best dressed "Hobo."

The girls have new song books, used at the meeting for the first time. They also picked a game leader, Beverly Darling.

The next meeting of the Elk Plain Girls 4-H club will be at the club house. There will be a birthday party. Ellen Clark and Beverly Darling will serve.

C.O. Lynn Co. MORTUARY

AVE. 717 TACOMA MA. 7745

ASTHMA

Quick relief! NEPHRON INHALATION THERAPY has helped countless thousands. Ask about our Trial offer. See your Druggist or write NEPHRON CO., P.O. Box 1, Tacoma 1, Wash.

Parkland Theater

Now Playing

The French Line
In Technicolor
Jane Russell-Gilbert Roland
Plus

The Saint's Girl Friday
Louis Hayward

Starts Sunday
Carnival Story
In Technicolor
Ann Baxter
Plus

The Battle of
Rogue River
In Technicolor

Farcy's Service

Buick - Pontiac - Chev. Specialist

Rt. 3, Box 149 - Puy 5-7207
Around corner off Airport on Cedar Road, Woodland District.

SCREEN DOORS \$6.50 & up

GARBAGE CANS \$3.79

BEAN POLES 75c
Mahogany 20-Bundle

ANDERSON Lumber Co.
9813 Pac Ave. GR. 7311

Army Surplus
Oxfords \$1.95 up
Boots \$1.95 up
Canvas Tarp 2.00 & 2.50
Linens
Safety Belts \$5.00
Harness Straps 50c
Army Peak Style Hat, Buttons 10c
Army Belts no buckles 50c

PAUL'S SHOE REPAIR
SPANAWAY
Closed Wednesday