

# \$3,000,000 Observatory Planned At LACAMAS

PLU LIBRARY  
PACIFIC LUTHERAN UNIVERSITY  
3600 14TH AVE. N.E.  
SEASIDE, WASH. 98138

## 9-Year Plan Part Of International Reporting System

LACAMAS - The Evans-Atkinson Observatory, near Lacomas, will expand into a \$3 million complex over the next nine years as a part of an international system studying astro bodies and related phenomena, director George Harper has announced.

In making the announcement, Harper disclosed that effective April 1, 1967, the Lacomas operation will join the Baker-Nunn Astronomical Reporting System, a branch of the Smithsonian Astrophysical Reporting Network. It is truly international in scope, with member observatories all over the world including Red China, he said.

Although present buildings occupy only 3 1/2 acres, the site will eventually utilize 180 acres of surrounding state school land reserved for the observatory. When questioned about overcast skies frequently blanketing the area, Harper agreed there might be fewer days of usable visibility. "But when we can see, we see with greater clarity due to less pollen and smoke in the atmosphere," he stated.

The Observatory already in buildings and equipment. "Eventually, we will have four to six full time employees and 30 to 40 part-time volunteers manning the station," Harper said and likened the operation to a volunteer fire department.

At present there are no full-time employees and Harper supervises the project on a spare-time basis. When not at the Observatory, he teaches astronomy and astro physics at St. Martin's College near Olympia.

A 25 inch fused-quartz mirror weighing 490 pounds that was figured from the largest fused-quartz blank ever cast, is now in use, Harper disclosed. The instrument is so sensitive it can be used to detect details of a single human hair at better than one third of a mile, or spot a candle 1,000 miles out in space, he said and boasted, "It is probably the best figured instrument for its size ever constructed."

The Observatory recently christened a solar telescope "The 6 inch Lacamas Instrument" and will use this title in all bulletins or reports referring to observations made with the instrument, Harper announced. The name was selected in appreciation of the hospitality and kindness extended by the Lacamas community and to commemorate a donation offered by the Lacamas Ladies Auxiliary.

From past experience it has been found that an aperture size from 6 to 12 inches is just suitable for direct solar viewing, he stated. Above this aperture size the performance falls off rapidly because of high atmospheric convection currents, and below the minimum there is insufficient resolution. "The Lacamas Instrument is within the lower range of maximum effectiveness, and it is anticipated that it will perform with good effectiveness as a solar instrument," Harper said.

## Bee-Bothering Bear Bagged Near Graham

GRAHAM - A 351 pound black bear that had been raiding a Graham area farm was shot early last week by David Dresen, 1613 Spanaway Loop Road, after hounds helped bruin at bay on the Wetherbee Bee Farm near 78th Avenue East.

The large marauder was reported to have killed a 500-pound calf, and had been damaging bee hives on the Wetherbee farm. Two shots from a 12 gauge shotgun using rifled slugs dropped the animal.

Arnold Wetherbee, victim of the bear's raids, called Dresen and another hunter, Gary Tuller of Parkland, when he found two of his hives had been destroyed during the night. Both hunters arrived on the scene with dogs and tracked the animal into a swampy area on the Wetherbee farm. While the hounds held the bear at bay in a small clearing, Dresen said he worked his way to about 10 feet from the animal before firing. "That's as close as I'd ever want to be to a wild animal that size," he said afterward.

## Eatonville, Bethel Superintendents Resign Positions

### Milroy Quits For Tacoma Schools' Post

Bethel Superintendent John Milroy will leave the district January 1, 1967 to assume an administrative position with the Tacoma Public School System. The announcement was made public following his appointment to the job by Tacoma School Directors at their regular meeting held last Thursday.

Last July, Milroy informed Bethel board members of his intention to resign in order to accept a position with Tacoma Schools, and his resignation was approved contingent upon the hiring of a suitable replacement. Bethel Directors climaxed a four month search for a new superintendent at their November meeting by naming Fred M. Gramann, Enumclaw High School principal, as Milroy's successor. Gramann will join the district December 15, and take over the office January 1. Milroy took office as Bethel superintendent 6 1/2 years ago, and has seen the district grow from 2500 students to the present enrollment of 3800. During his term of office, the district has been involved in a number of building projects including 2 elementary additions and 2 additions to Bethel High School. Plans for a second junior high was approved by the voters November 8.

As an Administrative Assistant with Tacoma Schools, Milroy will be concerned with district building programs. He will work with architects and school administrators in coordinating the renovation, remodeling, and construction of school buildings.

Prior to his service in the Bethel District he was superintendent of schools at South Whidbey for nine years.

### Gramann Chosen

Fred M. Gramann, Enumclaw High School principal, has been named Superintendent of Bethel District Schools. The appointment was made during the November meeting of Bethel School Directors.

After spending several months screening and interviewing applicants, the Bethel Directors selected Gramann for the position, Board Chairman E.W. Webster stated. The new superintendent will join the district December 15 and work with his predecessor until January 1, at which time he will assume the office. Although Milroy's resignation was to be effective December 15, he has indicated he will stay on until January 1 to acquaint Gramann with the Bethel District, Webster disclosed.

For the past 10 years Gramann has been a principal in the Enumclaw School District. Until the district formed a separate senior high, he had been principal of the combined junior-senior high. He helped plan Enumclaw High School, and upon its completion became the first principal. The district has 2900 students with a high school enrollment of 612. Prior to joining the Enumclaw School System he spent 6 years as principal of Concrete High School.

The 42 year old superintendent earned his B.A. and Masters degrees from the University of Washington, where he is presently a doctoral candidate. He graduated from Cleveland High School in Seattle in 1942, and served with the U.S. Army during World War II.

Gramann, his wife Jean, and three children, Bob age 19; Fred age 16, and Judy age 12, expect to move into the district in the near future.

### Olson To Close 40 Year Career Next July

Eatonville Superintendent of Schools Hans C. Olson has announced his decision to retire July 1, 1967 to close out 40 years of service as a teacher and school administrator.

The announcement was made in a letter of resignation submitted to the Eatonville Board of School Directors. Olson began his teaching career in a small Montana community, and since has taught and directed educational activities in five different school districts, during World War II he instructed Air Force personnel at Boeings.

In the letter Olson described his 18 years of work in the Eatonville District as a "happy, rewarding experience," and of his career he wrote, "I hope that the boys and girls and the men I tried to serve have received some small measure of training in citizenship; proper attitudes; vocational competence; and preparation for future learning and life in this great country."

The district annexed the Weyerhaeuser School District during his administration and developed a building program to meet the needs of the community. Construction projects included the new Columbia Crest school at Ashford, the Memorial Physical Education Building and swimming pool, and the additions to Eatonville Grade School and High School.

Olson attributed the successes of his administration to the Board of Directors' "forward looking programs," the winning spirit and teamwork of everyone connected with the Eatonville School System, and to an understanding, devoted wife and family. He concluded his letter by instructing the board, "I hope you will use your best judgment in selecting a successor who will build on the traditions of the past with a vision for the future as the school goes forward to an expanding tomorrow."

Appreciation of Olson's contribution to his community was summed up in a letter sent to the Herald by Mrs. Ruth Williams, school board clerk, who stated, "The Board of Directors of Eatonville School District #404 and all his friends in this community wish to express their appreciation for his conscientious service, leadership, and inspiration to the schools and community." She added a personal note saying, "I haven't the words to express how very much we'll miss him but we wish him the very best in his new life of retirement."

He plans to travel and write after his retirement.

## Early Herald Next Week-- Thanksgiving

Next week's edition of the Pierce County Herald will be published on Monday instead of Wednesday because of the Thanksgiving week end.

News and advertising deadline will be Friday of this week rather than Monday.

Classified advertising deadline for next week's paper will be 1:30 p.m. Friday. Publicity and club news deadline will be noon Friday. Display advertising deadline will be 3 p.m.

The Herald Office will be closed Thanksgiving Day.



# Pierce County HERALD

and Times Journal

Vol. 22, No. 11

and Times Journal

November 16, 1966

U.S. POSTAGE PAID Puyallup, Wn. 39 C.F.R. 34.66 PERMIT No. 84

Householder R.F.D. or Star Boxholder

## Sewer District Assured Initial Area Annexation

The first annexation of the South Suburban Sewer District is now assured according to Clayton E. Peterson, President.

Under state law, 60 per cent of the land ownership signed this first petition.

The annexed area include the land from 123rd and 120th between Park and Pacific, Park Avenue from 120th to 112th Streets and 112th to Pacific and Pacific to the freeway.

In announcing the annexation Peterson said, "We are greatly encouraged by this positive evidence of the pride and progressive spirit of the people of Parkland. The vast majority of the people who were contacted expressed a lively interest in solving a great community problem at the earliest possible moment. We are proceeding now with four other petitions representing most of the Parkland area. So many people in other areas have asked to be included that other petitions will have to be prepared."

"Our greatest problem now is manpower. We need people to help carry petitions. It will take the help of a great many people to make this program a success. I should like to invite all people who would like to help make Parkland an even finer place to live to sign petitions and to receive signatures from their friends and neighbors."

Emphatic support of the Sewer District was given by Dr. Edward E. Hill, Superintendent of the Franklin Pierce School District, at a public information meeting held at Keithly Junior High last week.

Senator George Kupka, Dr. Ernest Kredel, Director of the Pierce County Health Department, and Dr. Robert Mortvedt, President of Pacific Lutheran University, also pointed out the need for immediate action and the economic, health and social values of a sewer system to a community.

Dr. Hill called attention to the fact that the Franklin Pierce District had just voted a bond issue for a new high school by the largest majority of any district in King or Pierce Counties. However, in order to build this high school a sewer system must be built in the next two years. Otherwise the School District will have to build a sewage disposal plant similar to the one at Franklin Pierce High School which cost about \$150,000. This would mean an added tax burden and would not be a permanent solution to the problem.

Four good reasons were given by Dr. Hill for developing a sewer system at this time: beauty, economy, safety and good sense. Communities with sewer systems develop better and improve themselves more than those without a system. This is obvious in the way cities in the Bay Area have developed.

Secondly, property values rise and the quality of building in the area improves. But areas without sewers tend to become slums.

As population increases Dr. Hill said the dangers from pollution become progressively greater. It is necessary that we safeguard the health and welfare of our children and families from diseases that pollution can bring.

Sewers make good sense, he continued, because they will help improve the tax base for this area. At the present time the Franklin Pierce School District has the lowest assessed wealth per student of any first class school district in the state. This is due to the fact that most of our area is residential.

A sewer system will help attract business, professional buildings and light industry which will increase the tax base and positively benefit our area.

President Mortvedt indicated that PLU will probably be the single largest customer of the new sewer district and will probably be paying about \$1000 per month for service in addition to its assessment.

## New Radio Station Fills Wish Of PLU Benefactor

The wishes of a Pacific Lutheran University benefactor will bear fruit Wednesday when radio station KPLU-FM goes on the air.

In 1951 the late Chris Knutzen, a PLU regent from Burlington, gave the University a radio studio as a part of Eastvold Chapel which was then under construction. Knutzen expressed the hope that some day the studio which bears his name would be the home of a radio station.

For 15 years the studio has been used for instruction in radio and speech and hundreds of programs have been produced there for broadcast over stations away from the campus.

KPLU-FM, owned and operated by PLU, will be an educational station whose object will be to serve the community with top quality information and musical programs. A 10 watt station, it will broadcast four hours daily, Monday thru Friday, from 4:30 to 8:30 p.m.

The station is a member of the National Education Radio network, the only station in the area with this service. Through its ties with NER, the PLU station will offer programs featuring interviews with the top scientific, political, religious and educational leaders of the world. The network also furnishes outstanding musical programs by symphonies and ensembles from the United States and European countries.

Programming will include local news, a bulletin board community service show and interviews with local personalities.

A regular feature from 7:00 to 8:30 daily will be "The Evening Concert Hour," featuring classical music.

The station will go on the air at 3:30 p.m. Wednesday with a dedicatory opening program. President Robert Mortvedt of PLU will throw the switch putting the station on the air and will speak briefly. Local community leaders will appear in interviews on the inaugural show.

Prof. Theodore O.H. Karl,



Harry B. Corliss New Director Of WW Fair

Harry B. Corliss, 41, Sumner and Federal Way businessman, has been appointed to the board of the Western Washington Fair Assn.

He is the grandson of the late Dr. John H. Corliss who was one of the founders in 1900 and the 1938-1960 president of the annual Puyallup exposition.

## New Radio Station Fills Wish Of PLU Benefactor

The wishes of a Pacific Lutheran University benefactor will bear fruit Wednesday when radio station KPLU-FM goes on the air.

In 1951 the late Chris Knutzen, a PLU regent from Burlington, gave the University a radio studio as a part of Eastvold Chapel which was then under construction. Knutzen expressed the hope that some day the studio which bears his name would be the home of a radio station.

For 15 years the studio has been used for instruction in radio and speech and hundreds of programs have been produced there for broadcast over stations away from the campus.

KPLU-FM, owned and operated by PLU, will be an educational station whose object will be to serve the community with top quality information and musical programs. A 10 watt station, it will broadcast four hours daily, Monday thru Friday, from 4:30 to 8:30 p.m.

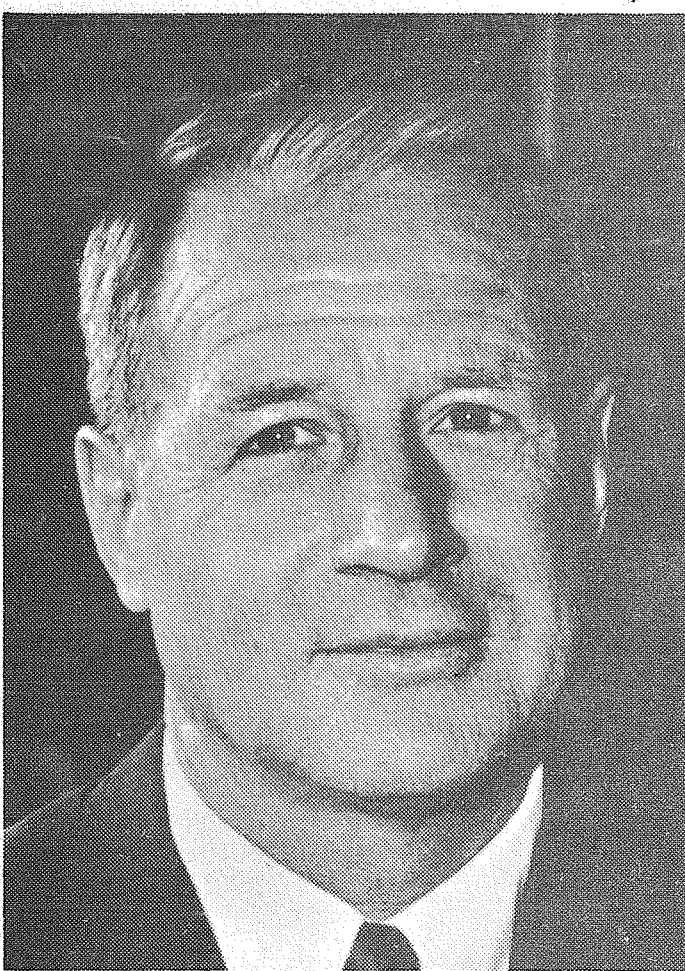
The station is a member of the National Education Radio network, the only station in the area with this service. Through its ties with NER, the PLU station will offer programs featuring interviews with the top scientific, political, religious and educational leaders of the world. The network also furnishes outstanding musical programs by symphonies and ensembles from the United States and European countries.

Programming will include local news, a bulletin board community service show and interviews with local personalities.

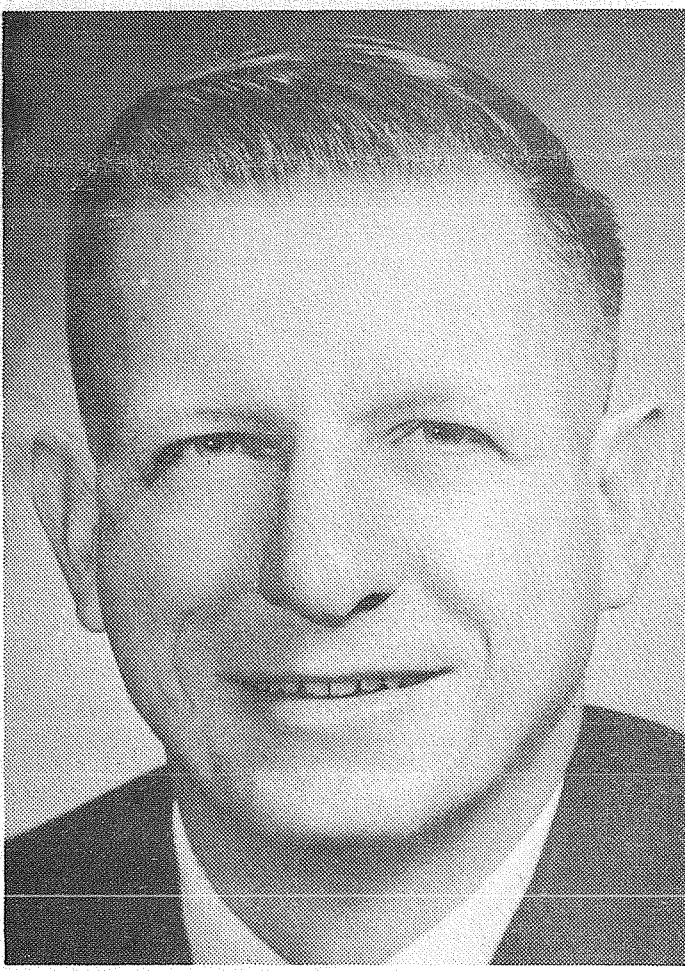
A regular feature from 7:00 to 8:30 daily will be "The Evening Concert Hour," featuring classical music.

The station will go on the air at 3:30 p.m. Wednesday with a dedicatory opening program. President Robert Mortvedt of PLU will throw the switch putting the station on the air and will speak briefly. Local community leaders will appear in interviews on the inaugural show.

Prof. Theodore O.H. Karl,



John Milroy



Fred M. Gramann



H. C. Olson



DISCUSSING program format for the new educational radio station at PLU are (from left) Paul Steen program director, Theodore O.H. Karl manager and Judd Doughty, assistant program director.



**Publishers:**  
 Frank Franich, John VanDevanter, Walt Tupper  
 Puyallup Office . . . . . 117 W. Meeker  
 THosnwall 5-7511 . . . . . P.O. Box 517  
 Parkland Office . . . . . 14620 Pacific Avenue  
 LEnox 7-0223 . . . . . P.O. Box 2116

**Editorial Manager:** John VanDevanter  
**Advertising Managers:** Puyallup — Frank Franich  
 Parkland — Bill Huntington  
**News Editors:** Puyallup — Phyllis Wilson  
 Parkland — Em Matson  
**Sports Editor:** Walt Tupper  
**Circulation Manager:** Chuck Gambriel

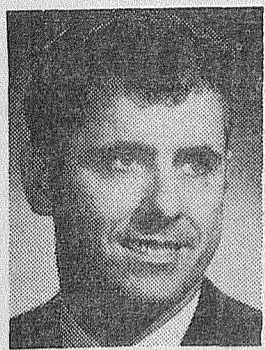
**Subscription (Outside Distribution Area)** \$5.00 per year  
**Foreign Subscriptions** Rates on Request

Qualified as a Legal Publication under Chapter 213 of the Legislative Acts of the 1941 Regular Session of the State of Washington.

Delivered free by U.S. Mail, or carriers, to all homes in the trade territory.

**NATIONAL NEWSPAPER ASSOCIATION**  
 AFFILIATE MEMBER

Vol 22, No. 11 20 November 16, 1966



*getting the*  
**Wedding**  
 BY  
**JOHN VANDEVANTER**

You want these wedding pictures to tell a story, Parallax? Or do you want pictures of the whole family posing around like statues on the lawn? If you wanted a wedding photographer you should have hired one . . . sandwich scraps and a couple hookers of champagne aren't going to turn ME into one. Now, Reverend, will you ask the father of the bride just one more time that part about, "Who gives this woman . . ." And look like you're really puzzled.

Well, can't you go back over it? And Parallax . . . look a little more grim when you answer . . . you know, like you did when you first heard about the groom. Now . . . hooold-IT . . . aaaaaah.

Kids . . . ah, Kids . . . I can't see both your faces. Will the groom stand a little forward of the bride and look a little this way and . . . Miss . . . lean back a trifle and tilt up your head . . . mmmmm-HMMMM.

Nah! That's still not it. We're not coming across. Reverend, why don't you be pointing at something over toward the side and all three of you look at it . . . no, no, not at his finger. Look over where he's . . . Forget it, Kids, he looks like the Archangel driving Adam and Eve out of the Garden.

Sure you can proceed with the ceremony. Are you down to the part about "If anyone knows why these two should not . . . ?" You're going to start over? Okay, but this time, when you get to her lines, hold up one finger and when you get to his hold up two. That way I can whip around the altar and get his good side.

Sure, I'm ready. Oh, could I have one of the candlelighters bring a taper up and stand behind the couple? It's hard to focus the camera in the dim light. Thanks. Now, go ahead . . .

Psst! Psst! Hey, Kid. Psst! When he gets to the part about anyone knowing why they shouldn't get married, how about crouching forward on the edge of the chair with a look of anguish . . .

Because YOU'RE the disappointed suitor. Don't you get it? You want to stop this terrible mismatch because the girl belongs to YOU.

Would you get the Kid to co-operate with me, Parallax? We got to get some punch in this wedding.

So WHAT if he doesn't want her? He's about the right age and who's going to know in 20 years when you're all sitting around the fire looking at the family album? He may have had a real thing for the bride, for all you . . . sister? Well, he wasn't much of a looking kid anyway.

Enough? Heavens no, that's not enough. Oh, YOU'VE had enough. Well, suppose I wait until they're kissing? On the steps, then? The reception? The car leaving for their trip? The honeymoon . . . Okay, Parallax. But it could have made a heck of a nice picture feature. As it is you'll probably wind up with a prosaic 2 by 6 like any other wedding. Now, can I have the camera back?

**VAUGHAN'S VALUES**  
 PREPARE FOR WINTER  
 \*\*WEATHERSTRIPPING\*\*STORM DOORS  
 INSULATION ZONOLITE Per Bag \$1.29  
 WEATHERSTRIPPING \$1.95  
 ALUMINUM THRESHOLDS "WEATHER CHIEF" \$2.29  
 QUALITY STORM DOORS \$31.95  
 VAUGHAN'S PACIFIC AVENUE LUMBER INC.  
 84th & PACIFIC AVENUE GREENFIELD 4-9515

**William Hart, Sr.**  
 Services for William Hart, Sr., 84, of 12415-28th Avenue E., Tacoma, were held Saturday afternoon at Dryer's FIR Lane Chapel.  
 Rev. David Cassatt officiated. Burial was in Fir Lane Memorial Park.  
 Hart died last week in a hospital. He was born in Florence, Minn., and lived in this area since 1918, coming from Billings, Mont. He was a retired carman for the Northern Pacific Railway Co.  
 Besides his wife, Inez, survivors include two sons, William Jr., of Tacoma, and Robert D., of Browns Point; and six grandsons.

**Ervin Robinson**  
 Services for Ervin Robinson, 65, of 1401 East F Street, Tacoma, were held Friday afternoon at the Dryer Mortuary.  
 Rev. John Bratt officiated. Burial was in Sumner Cemetery.  
 Robinson died last week at a hospital. He was born in Lennon, S.D., and came to Tacoma 54 years ago. He was a retired auto mechanic.  
 Surviving are a son, Larry E., of Tacoma; a daughter, Mrs. Gary (Loris) Webb, of Portland; his mother, Mrs. Jessie Mason, of Puyallup; a sister, Mrs. Maude Thompson, of Puyallup; four brothers, Clarence, of Parkland, Thomas, of Hollywood, Calif., Harvey, of Bothell, and Wayne of Spanaway; and five grandsons.

**Arthur E. Rinck**  
 Services for Arthur E. Rinck, 65, of 4601 East F Street, Tacoma, were held last Thursday afternoon in the Buckley King Chapel.  
 Dr. Albert J. Lindsey officiated. Fern Hill Lodge No. 80 F&AM officiated at the graveside. Burial was in Mountain View Cemetery.  
 Rinck died last week in a hospital. He was born in Pendleton, Ore., and had lived in Tacoma since 1925.  
 Rinck was employed as an electrician for the Hygrade Food Corp. He was a member of Fern Hill Lodge 80, F&AM, and International Brotherhood of Electrical Workers; and was past chief of Tacoma Council 26, Universal Craftsmen Council of Engineers.  
 Surviving are his wife, Florence E.; a son, Capt. Theodore Rinck, with the Navy at Honolulu; a daughter, Mrs. Robert Lovelace, of Tacoma; his mother, Mrs. William Abrams, of Coeur d'Alene, Idaho; a brother, Earl Rinck, of Aberdeen; five grandchildren and one great-grandchild.

**Glenn D. Rutledge**  
 Requiem mass was offered last Thursday morning at Our Lady Queen of Heaven Church for Glenn D. Rutledge, 59, of Rt. 1, Box 1384, Spanaway.  
 Burial was in Fir Lane Memorial Park under the direction of Dryer Mortuary.  
 Rutledge died unexpectedly in his trailer home recently. He was born in Minneapolis and moved to this area in 1935. Rutledge was an iron worker in building construction. He was a member of the Catholic Church.  
 Surviving are two brothers, Ralph T. and Vernon H., both of Minneapolis.

**Steven M. Morris**  
 Requiem mass will be offered at 10 o'clock this morning for Steven Michel Morris, 13, of Rt. 1, Box 1229, Spanaway, at Our Lady Queen of Heaven Catholic Church. Rosary was recited last night at Dryer Mortuary.  
 Steven died of an accidental gunshot wound last week near his home. He was born in Puyallup. He moved to this area five years ago from Auburn. He was a member of Our Lady of Heaven Catholic Church and was a seventh grader at Bethel Junior High Schools.  
 Survivors include his parents, Mr. and Mrs. Bennet L. Morris; two sisters, Mrs. Connie Hopkins, of Tacoma, and Susan, of the home; five brothers, Timothy, Patrick, Mark, Jack and Donald, all of the home; his grandparents, Mrs. Lillian Beckman, of Spanaway, and Mr. and Mrs. Bert Shoemaker, of Puyallup.

**William R. Flaherty**  
 Requiem mass will be offered at 10 o'clock this morning for William R. Flaherty, 62, of 1103-54th Street E., Tacoma, at St. Martin of Tours Catholic Church. Rosary was recited last night at the church.  
 Interment will be in Calvary Cemetery under the direction of Gaffney Funeral Home.  
 Flaherty died last week at his home after a long illness. He was born in O'Brien, Wash., and had lived all of his life in the Green River and Puyallup valleys.  
 Flaherty was a bakery route salesman for Jordan Bakeries for more than 20 years. He was a graduate of Kent High School, where he was a noted athlete.  
 He was a member of St. Martin of Tours Catholic Church, the Holy Names Society, Bellarmine Boosters and the Bakery and Food Salesmen's Union, Local 567.  
 Survivors include his wife, Mary K.; two sons, William, of Fullerton, Calif.; and John, of the home; four brothers, Ed, of Renton, Justin, of Pasadena, Calif., Ford, of Enumclaw, and John Gill, of Kent; and two grandchildren.

**Marv E. Brown**  
 Private services for Mrs. Lou Brown, 97, of 10324 E. Polk Street, Tacoma, were held last Thursday morning at Mountain View Garden Chapel.  
 Rev. Ole P. Hansen officiated. Burial was in Mountain View Memorial Park.  
 Mrs. Brown died last week in a hospital. She was born in Louisville, Ky., and came to Tacoma in 1916.  
 Surviving are a daughter, Mrs. Clara Alder, of Tacoma, two grandsons, Robert Alder, of Parkland, and Leonard Alder, of Tacoma; and a great-grandson, Ronald Alder, with the Army in Germany.

**Delores Tallman**  
 Tuesday morning services for Mrs. Dale Tallman, 35, of 1729 E. 65th Street, Tacoma, were held at Cassidy & Allen Chapel. Rosary was recited Monday evening in the Cassidy & Allen Chapel.  
 Burial was in Calvary Cemetery.  
 Mrs. Tallman died last week in a hospital after she was found unconscious in an automobile in a closed garage, apparently the victim of carbon monoxide poisoning.  
 She was born in Wisconsin and had lived here for the past 25 years. She was a member of the Catholic Church.  
 Survivors include her husband; four sons, Kevin, Jeffrey, David and Mitchell, all of the home; her mother, Mrs. Ann L. Johnson, of Tacoma; a brother, James Johnson, of Tacoma; and two sisters, Mrs. Louise O'Connell, and Mrs. Patricia Loper, both of Tacoma.

**Arnus O. Miles**  
 Services for Arnus O. Miles, 62, of Rt. 1, Box 439, Graham, were held yesterday afternoon at Powers Wrigley Clements Funeral Home.  
 Rev. William L. Dugger officiated. Burial was in Oregon Cemetery.  
 Miles died last week in a hospital. He was born in Henning, Minn., and had lived in the Graham area 19 years.  
 He was an employee of the Dickman Lumber Co. and a member of the Lumber and Sawmill Workers Union, Local 2633.  
 Surviving are his wife, Doris A., of the home; a son, Lewis F., of Graham; a brother, Herman, of Tacoma; and three sisters, Mrs. Walter (Vera) Meador, of Tacoma, Mrs. Roy (Elnora) Merrill, in California, and Mrs. Alta Wade, of Forks.

County Police Beat

Capture Solves 12 Puyallup Burglaries

Twelve unsolved Puyallup burglaries were cleared last week when Sheriff's Deputies arrested a 20 year old suspect who was caught leaving town after burglarizing Ivan's Cafe, 204-12th Street N.W.

The suspect, a former Job Corp member, admitted to a dozen burglaries dating back to September 9, officers stated. In addition to breaking into Wildwood School and Cleman's Furniture twice, the man told police he was involved in burglaries at Hinshaw Honda, Lepley Lumber, Bock Implement Company, D.W. Briggs Company, Inc., Fairway Cleaners, Vancouver Door, Copeland Lumber and Ivan's Cafe. The man was also charged with the burglary of the Firwood Tavern in the county.

Puyallup police officers spotted the suspect leaving town and radioed Sheriff's Deputies who made the arrest. When apprehended, the suspect's pockets were loaded with coins taken from a cigarette machine at Ivan's Cafe, police disclosed.

Entry was gained at Ivan's Cafe through a broken window, officers said. He looked thru cash registers and cabinet drawers, then pried open what appeared to be a closet door, police learned. The suspect told investigators he was surprised to find the closet was a room full of liquor. Although he drank a bottle of beer, he stated he left the premises with only the change from a cigarette vending machine.

He was taken to the Pierce County Jail.

GRAHAM - Burglars entered the mobile home of George C. Bourne, Rt. 1, Box 538D, Graham, and took \$430 worth of television sets and tools, Deputy Matt Medicus reported last week.

Breaking in through a door window, the thieves entered to take a 23 inch TV, an 8 inch TV, and a box of tools, Medicus stated. Several pictures were knocked off the wall during the burglary and were found on the floor with the glass broken out.

The victims were in Puyallup at the time of the theft, deputies said.

GRAHAM - A radio and .22 caliber rifle were stolen last week from the residence of Darrell Rinkel, Rt. 1, Box 543, Graham, Deputy Medicus reported.

Entry was gained by forcing open a rear door, breaking the door from the lock, Medicus said. Total loss was estimated at \$45.

PARKLAND - Bill Dasher, 12001 Park Ave., was the victim of burglars who broke into his car to steal \$190 worth of his property, according to Deputy Tom Sotak. Taken were a stereo, 3 suitcases, and a dragfast link.

PUYALLUP - A bottle of wine and a billfold containing \$18 were taken from Ray Castle, 218 4th Ave. N.W., in a strongarm robbery that took place in the alley behind his home early last week, police reported.

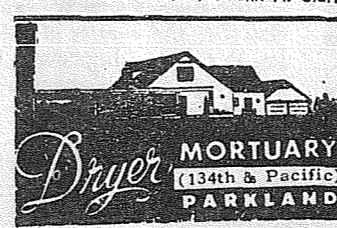
The victim said he was



The Country Parson



"It's a common mistake to assume that any man who agrees with you is therefore wise."  
 Copyright 1966, by Frank A. Clark



Sawyer On Program At Arizona Meet

Representative Leonard A. Sawyer is a program participant at the annual meeting of the Western Conference of the Council of State Governments in Nogales, Arizona.

Sawyer is chairman of the Joint Committee on Highways. He is also, along with Washington and Henry, a member of the conference's executive committee to plan interim activities and future meetings of the Conference.

**BILL HUNTINGTON'S**  
**HOT LINE**

Today I must admit . . . THE HOTLINE IS FREEZING . . . I do believe winter is coming on, and me with no mittens or anti-freeze.

You know, it's hard to believe but Thanksgiving is just around the corner and already there is a touch of Christmas in the air. The stores are beginning to place their holiday wares on the shelves and soon everything will be decorated to add to the Christmas spirit. This is one time of the year I really look forward to, and the second is New Years Day . . . football, football, football . . . from 9:00 a.m. to 9:00 p.m. all the top schools in the country will be battling for a bowl title.

Just in time for the Christmas Season . . . OPALS' GIFT SHOP . . . owned and operated by two well known residents, Opal McNiven and Maxine Dolfin. Opal's Gift Shop is located at 16607 Pacific Avenue and will feature exclusive give items of crystal, copper brass, and wood.

Until next week . . . Adios . . .

**ATTENTION HUNTERS AND MEAT BUYERS**  
 STORE UP TO 280 LBS. OF MEAT FOR ONLY \$10.00 A YEAR  
**BROOKDALE FOOD LOCKERS**  
 13022 Pacific Ave. Phone Anytime LE 7-5689

AN ENDOVED CARE CEMETERY  
  
**Fir Lane Memorial Park**  
 924 EAST 176TH STREET  
 LE 1-5500

**National Bank of Washington**  
**5% Certificate Savings**  
**...of greater interest**

*And no wonder!* Thousands of savers have now put their planned savings in Three-month Certificate Savings Accounts at National Bank of Washington because now NBW pays them the new 5% interest on their money.

*One hundred dollars* is enough to open your high-yield savings account. NBW will start paying you 5% per annum the day you do, will pay it after only three months, will keep paying the current rate every three months thereafter when automatically renewed by NBW.

*More than ever,* it pays to save where you bank . . . at your National Bank of Washington Banking Center!

**NATIONAL BANK OF WASHINGTON**  
 MEMBER FEDERAL DEPOSIT INSURANCE CORPORATION

**PARKLAND BANKING CENTER**

# Wedding Plans



ANNOUNCING THE ENGAGEMENT of their daughter Susan Kristina to Jerry Duane Price, son of Mr. and Mrs. Lee Price of Mt. Vernon, are Mr. and Mrs. A. James Jellen of Puyallup. Miss Jellen is attending Tacoma Community College and working at the Tacoma Post Office following her graduation in 1965 from Puyallup High School. The future benedict is majoring in chemistry at the University of Puget Sound where he is affiliated with the American Chemical Society. Their December 8th wedding will be an event of the Fircrest Methodist Church. -- Harta Studio

# Coming Events

**BOOSTER NIGHT** at the Waller Road Grange beginning at 8 p.m. Friday will be a chance for those interested to learn about the work of the Grange. A program is being arranged by Mrs. Kitty Looker.

**HARVEST LUNCHEON** served smorgasbord style will begin at 11:30 this morning and continue through 2 p.m. at the Waller Road Grange Hall, E. 64th Street near Waller Road. Hostesses will be the Waller Road Grange Auxiliary. Christmas gift ideas and a white elephant sale will be featured also. Donations are \$1.

**FIFTH ANNIVERSARY** Silver Tea will be held in honor of the fifth anniversary of Our Savior Lutheran Church, 112th and Bingham Ave. East, 2-5 p.m. Sunday November 20. At 5 p.m. there will be a vesper service of thanksgiving.

**BOOK FAIR** sponsored by the Midland Preschool will be held at the school 3:30-4:30 p.m. November 17 and at 7:30 p.m. the same evening. A variety of 300 books will be on display suitable for any child from the toddler to young adult age. With Christmas fast approaching, books make enjoyable as well as educational gifts.

**CHRISTMAS BAZAAR** sponsored by ten member groups of the Pierce County Home-maker's Club Friday at the Waller Road Grange, 2708 East 64th.

Doors will open to the public from 10 a.m. until 3 p.m. The Bazaar will feature Christmas items including decorated candles, Christmas wall hangings, artificial flowers, and gift items. Proceeds will go to continue the Washington State University Extension Service and toward furthering 4-H activities.

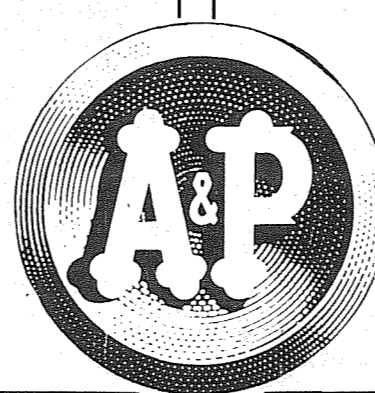
**CHRISTMAS BAZAAR** from 10 a.m. to 3 p.m. Friday will be under the auspices of the Pierce County Homemakers at the Waller Road Grange Hall, Crafts and handmade gifts will highlight the annual event. A door prize will be awarded each half hour. A buffet luncheon will be served at a nominal fee. County Agent Mrs. Allen is supervising the bazaar.

**FALL RUMMAGE SALE** from 9 a.m. to 5 p.m. through Friday at the Our Lady Queen of Heaven society hall, 14601 A Street, Spanaway, is being prepared by the Altar Society. Many clothing items and household goods will be available.

# CHUCK STEAK

U.S. "Choice" Beef  
Blade and 7-Bone Cut  
Marinate & Broil

lb. **49<sup>c</sup>**



# ROLLED ROAST

U.S. "Choice" Beef  
Boneless Cross Rib  
One Piece Roll  
NO FAT ADDED

lb. **98<sup>c</sup>**

## MEAT LOAF

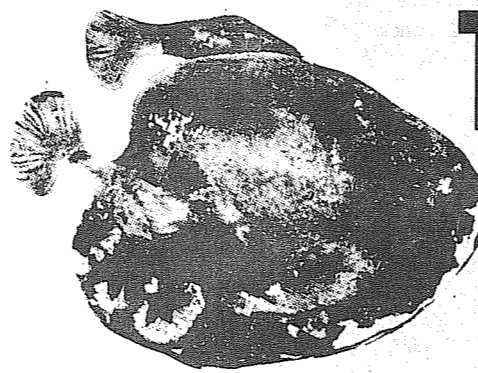
Fresh—Unseasoned  
Approx.  
50% Beef  
25% Pork  
25% Veal

lb. **69<sup>c</sup>**

## SHORT RIBS

U.S. "Choice" Beef  
English Cut  
Meatiest

lb. **59<sup>c</sup>**



# TURKEYS

NEW CROP—GRADE A  
U.S.D.A. Inspected—  
Frozen At Peak of Quality  
17-23 Lbs. Avg.

lb. **38<sup>c</sup>**

## SLICED BACON

Allgood  
A & P's Own  
Hickory Smoked

lb. **69<sup>c</sup>**

## BEEF SHANK

U.S. "Choice" Beef  
Meaty With  
Marrow Bone

lb. **49<sup>c</sup>**

## U.S. "CHOICE" BEEF RIB ROAST

First 4 Ribs from Small End  
7-inch Cut  
Feather Bone  
& Chine Bone  
Removed  
No Fat Added

lb. **98<sup>c</sup>**

## GROUND CHUCK

Fresh Super-Right Quality

lb. **69<sup>c</sup>**

## BONELESS SHANK

U.S. "Choice" Beef

lb. **59<sup>c</sup>**

## SLICED SALAMI

Super-Right or Bologna

1/2-lb. **39<sup>c</sup>**

## FRESH SALMON

Head & Tail Removed By the Piece

lb. **69<sup>c</sup>**

## HALIBUT FILETS

Pan Ready—Skinless No Waste

lb. **69<sup>c</sup>**

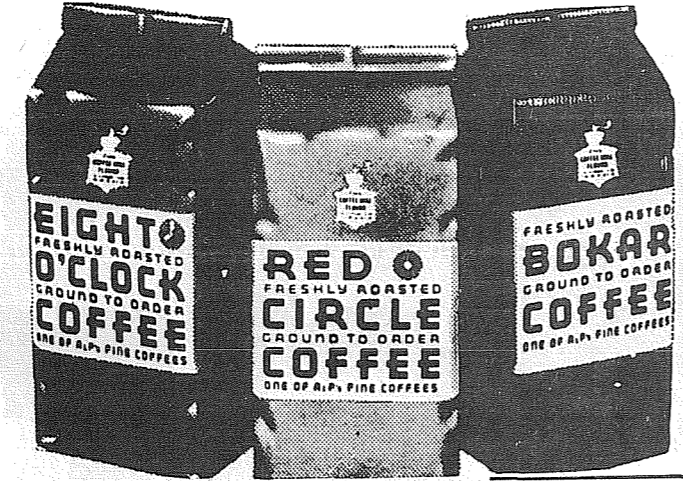
## BONELESS CHUCK POT ROAST

U.S. "Choice" Beef  
Any Size Piece  
Well Trimmed  
All Meat

lb. **79<sup>c</sup>**

YOU DO SAVE AT A & P

## SENSATIONAL COFFEE PRICES---3-LB. BAGS



A & P's Own—Mild & Mellow Coffee  
**EIGHT O'CLOCK** SAVE 24c 3-lb. Bag **1.75**

A & P's Own—Rich & Full Bodied Coffee  
**RED CIRCLE** SAVE 24c 3-lb. Bag **1.95**

A & P's Own—Vigorous & Winey  
**BOKAR COFFEE** SAVE 24c 3-lb. Bag **2.01**

# DETERGENT MARGARINE

**BOLD**—Powdered Includes 25c Off Deal KING SIZE 5 lb. 4 oz. Pkg. **99<sup>c</sup>**

# POTATO CHIPS CAKE MIXES

**ANN PAGE CORN OIL** (Each 30c) 3 1-lb. Pkgs. **89<sup>c</sup>**

**PIXIE** 3-Bag Pack Quality Guar. by A&P 10 1/2-oz. Box **49<sup>c</sup>**

**ANN PAGE LAYER** (Each 25c) 4/99<sup>c</sup>

# PUMPKIN "AA" EGGS

**Libby's** (Each 20c) 2 1-lb. 13-oz. Tins **39<sup>c</sup>**

**SUNNYBROOK—FRESH LARGE—WASHINGTON FARMS** DOZEN **49<sup>c</sup>**

# "AA" BUTTER

**DARIGOLD—FRESH SWEET CREAM** LB. **79<sup>c</sup>**

A&P's Own—100% Colombian  
**COLOMBIAN COFFEE** 1-lb. Tin **85<sup>c</sup>**

**MISSION—Elbow or Seashell ELBOW MACARONI** 12-oz. Pkg. **23<sup>c</sup>**

For Automatic Washers—Includes 60c Off Deal  
**ADVANCED ALL** 20-lb. Pkg. **3.99**

**KING SIZE—Detergent GOLD POWER** 5-lb. 4-oz. Pkg. **1.45**

**FAB—Powdered—Includes 10c Off Deal DETERGENT** 3 lbs. 1 1/4 oz. Pkg. **69<sup>c</sup>**

**LUX—Includes 8c Off Deal LIQUID DETERGENT** 22-oz. Size **61<sup>c</sup>**

**HILLS BROS.—All Grinds CANNED COFFEE** 1-lb. Tin **72<sup>c</sup>**

**HILLS BROS.—All Grinds CANNED COFFEE** 2-lb. Tin **1.37**

**HILLS BROS.—Percolator Grind CANNED COFFEE** 3-lb. Tin **2.13**

THERE IS AN A&P STORE NEAR YOU

**TACOMA A&P** 9201 PACIFIC AVE. OPEN MONDAY THRU SATURDAY - 9 AM TO 9 PM. SUNDAY - 10 AM TO 6 PM.

A & P's Own—Grade A—5 Assorted Fruits—(Each 20c)  
**FRUIT COCKTAIL** 5 1-lb. 1-oz. Tins **99<sup>c</sup>**

**ANN PAGE—Equal to the Best—Yet Costs You Less MUSHROOM SOUP** 2 15 1/2-oz. Tins **29<sup>c</sup>**

**REYNOLDS—Heavy Duty—SAVE! —Includes 6c Off Deal FOIL WRAP** 25-ft. Roll **59<sup>c</sup>**

**Scott's—Roll of 200's—Regular or Decorator PAPER TOWELS** 3/\$1

**KLEENEX—PAPER—Pkg. of 50's—(Each 25c) DINNER NAPKINS** 4/99<sup>c</sup>

**Langendorf—All White or 1/2 & 1/2—(Pkg. 34c) BROWN 'N SERVES** 3/\$1

**Nucoa—Includes 2c Off Deal—(Pkg. 30c) MARGARINE** 3 1-lb. Pkgs. **89<sup>c</sup>**

## S & W BULK NUTS

MIXED—FILBERTS BRAZILS - WALNUTS or ALMONDS  
lb. **49<sup>c</sup>**  
Check & Compare!

A & P's Own—Grade A—Halves or Sliced—1 lb. 13 oz.—(Each 30c)  
**FREESTONE PEACHES** 3/89<sup>c</sup>

**Betty Crocker—7-oz. Bugle—4.5 oz. Daisy or 5-oz. WHISTLES SNACKS** 3/\$1

Includes 2c Off Deal—(Each 16c)  
**AJAX CLEANSER** 2 14-oz. Pkgs. **31<sup>c</sup>**

## FRESH PRODUCE GRAPEFRUIT

Florida Ruby Reds  
**5/39<sup>c</sup>**

**SATSUMAS** California Grown Oranges lb. **25<sup>c</sup>**

**LETTUCE** California Grown Large Firm Heads **2/39<sup>c</sup>**

Washington Grown—U.S. No. 2—Gem  
**POTATOES** 20 LB. BAG **65<sup>c</sup>**

All Prices Effective Thursday Thru Saturday, November 19, 1966. Equal Opportunity Employer.

# EARLY DEADLINE FOR NEXT WEEKS HERALD

DUE TO THANKSGIVING NEXT WEEK'S HERALD WILL BE PUBLISHED MONDAY, NOV. 21.

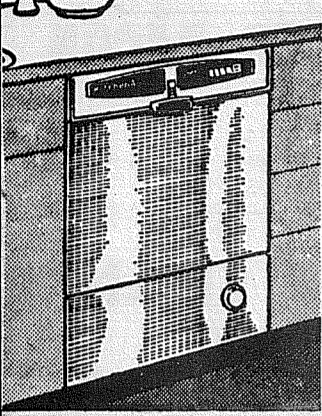
ALL CLASSIFIED ADS MUST BE IN BY

**FRIDAY 1:30 P.M.**

Class Ads Get Extra Fast Results

Want a dependable dishwasher?

Pick a KitchenAid.



No matter which model or type you buy, you'll get the same effective washing and drying performance and built-in dependability...

There's a KitchenAid dishwasher for every kitchen, every budget: Undercounter built-ins, top-loading portables that need no installation...

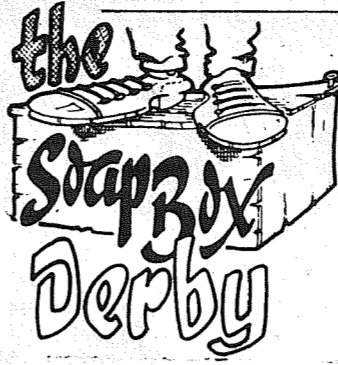
Don't be switched from the best... KitchenAid.

ARNOLD'S APPLIANCE CENTER

TWO LOCATIONS Puyallup Tacoma

Pierce County Election Results

Table of election results including Ballot Propositions, U.S. Congress, Supreme Court, Puyallup Dist. 3, City of Puyallup, Sumner Dist. 320, Fire Dist. 22, Bonney Lake, Pierce County Bldg. Permits, Eatonville Dist. 404, Eatonville Library, Fife District 417, and various County Offices.



By John VanDevanter

While it is natural to credit the Republican steamroller in Washington State to the resurgence of the party, it is even more a personal victory for Governor Dan Evans...

have done it without a sellout by some Democratic senators, but the victory belonged to the Governor and his team...

But the story is not ended yet. Just as the redistricting of the state made a new ball game out of the 1966 election...

Evans enters the second

half of his first term with a great deal more power than he entered the first half. He not only has his own veto power...

Where Democrats will hurt the most from this table turning, however, will be in their re-election campaigns...

Highway Committee, but a strong candidate for speaker of the house. However, there will be no chairmanships in the Republican House for Sawyer...

L(.)K STOCK REDUCTION SALE!! CHRISTMAS IN NOVEMBER LOOK \$100 WILL BUY YOU YES, BIG SAVINGS FOR 1 WEEK ONLY! CALL OR COME IN TODAY BUY A BRAND NEW 1967 RAMBLER FROM OUR STOCK AND SAVE HUNDREDS \$ -EXAMPLE- 67 AMBASSADOR 990 - 4 DOOR 11 FACTORY ACCESSORIES SALE PRICE \$2891.10 SAVE \$512.35

Jack and Darlene Besaw 17,200 Residence 9105 East 118th St., Holmes Anrud 21,500 Residence 9611 Wildwood, Fritz Paulsen 21,000 Residence 12101-136th Ave. East...

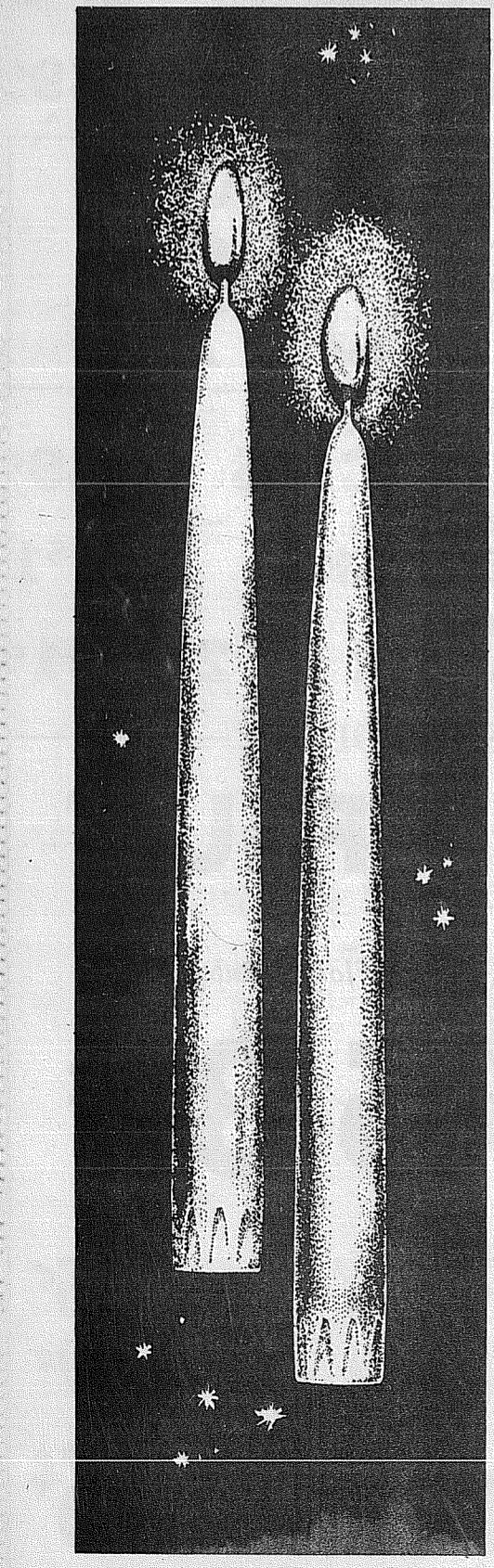
It is true that he couldn't

drive legally advertisement with large stylized text and background image of a car at night.

Now be honest... isn't that a small price to pay for a dozen lives each week?

Do you dread listening to the news on Sunday night or picking up the paper on Monday morning? "Man and wife killed by swerving car..."

Claude M. Blair, President Pacific Northwest Bell



FREE! Two Gold Candles When you open a new Christmas Club Account

Begin planning, now, for the money you will need next Christmas. And when you do, we have a free gift of these two beautiful Christmas candles for you...

Citizens STATE BANK advertisement with logo and address information.

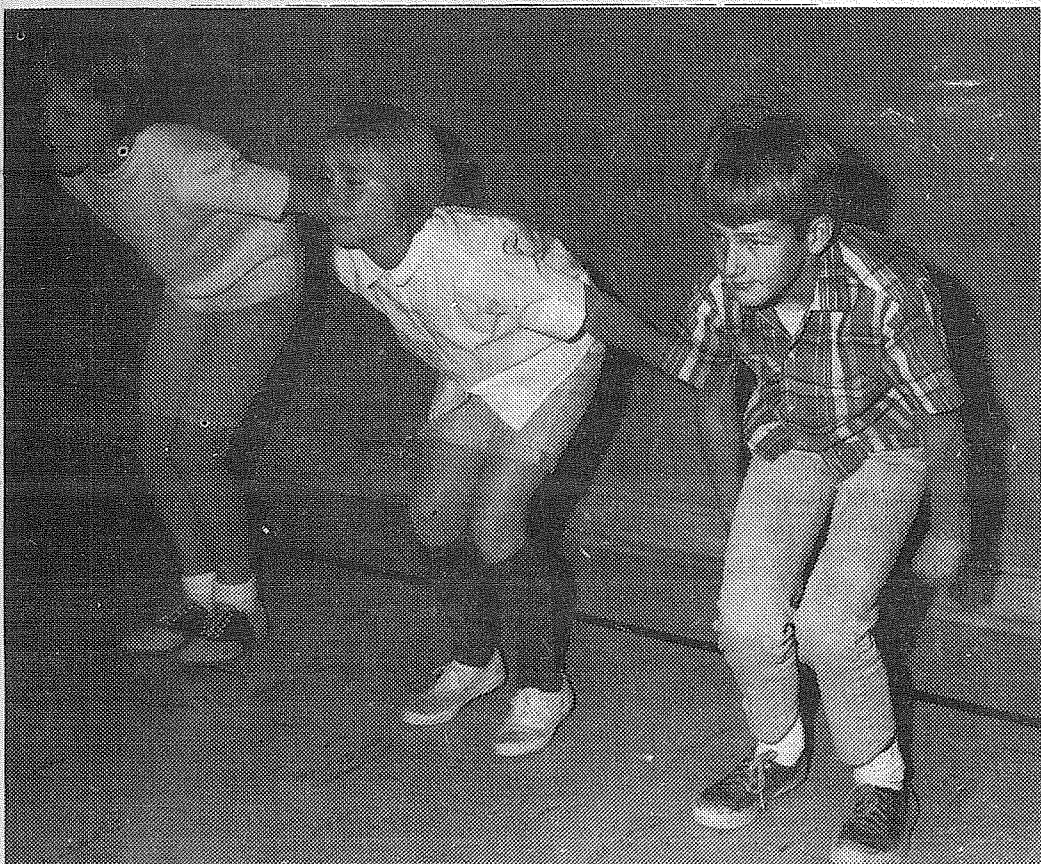
Fire Calls

PARKLAND Nov. 9 GREASE FIRE 9:31 p.m. 119th and Pacific, \$50 damage. SPANAWAY-ELK PLAIN Nov. 11 CAR FIRE 3:15 p.m. On Mountain Highway. No loss.

Silks 'N Saddles Elects Officers GRAHAM - Silks 'N Saddles 4-H Club elected new officers during its meeting last Saturday at Frontier Park...

SEE THE ALL NEW 1967 CHRYSLER PLYMOUTH VALIANT advertisement with Steven Motor Co. logo.

# Fitness Winners



ON YOUR MARK! GET SET GO! Three students of Waller Road Grade School were honored at a Veterans Day assembly last week for earning the "Presidential Physical Fitness Award". Debbie Iverson (left), Lisa Rosenboom (center) and Gregg Olsson (right) received certificates signed by President Lyndon B. Johnson and an emblem "in recognition of their outstanding physical achievement and exceptional dedication to the ideal of a sound mind and strong body." The entire school participated in the fitness tests, but only these three placed in 85% of each of seven events which included shuttle runs, 50 yard dash, 600 yard run, softball throw, standing broad jump and situps.

## Jaycees Strive For Gift Bikes This Christmas

Parkland Jaycees will try and include a bike or trike in their Christmas Baskets for the Needy Project, according to club officials.

Donations of old trikes, bikes, wagons or scooters will help make this project a success. The Jaycees will fix up the items before delivering them for Christmas. The donations may be left at O.K. Fire Store, 9638 Pacific Avenue, or they will be picked up by a Jaycee by calling LE, 7-0657.

Other Christmas projects will include the annual Santa Claus fly-in behind Parkland Elementary School. Jaycees are making arrangements to fly Santa to the school grounds in a helicopter.

## Legal Notices

**GEORGE F. POTTER**  
ATTORNEY AT LAW  
159 SOUTH 112TH  
PARKLAND, WASHINGTON

IN THE SUPERIOR COURT OF THE STATE OF WASHINGTON IN AND FOR PIERCE COUNTY

BERTHA M. ANDERSON, Plaintiff vs. ALISTAIR M. ANDERSON, Defendant

No. 171583  
SUMMONS BY PUBLICATION

THE STATE OF WASHINGTON, to the said ALISTAIR M. ANDERSON,

YOU ARE HEREBY SUMMONED to appear within sixty (60) days after the date of first publication of this summons, to-wit: Within sixty (60) days after the 2nd day of November, 1966, and defend the above-entitled action in the above-entitled court, and answer the Complaint of the plaintiff above-named, and serve a copy of your Answer upon the undersigned Attorney for plaintiff at his office below stated; and in case of your failure to do so, judgment will be rendered against you according to the demand of the complaint which has been filed with the Clerk of said Court.

This is an action for divorce.  
George F. Potter  
Attorney for Plaintiff  
Office and Post Office Address  
159 South 112th Street  
Parkland, Washington 98444  
Published November 2, 9, 16, 23, 30 and December 7, 1966.

**GEORGE F. POTTER**  
ATTORNEYS AT LAW  
159 SOUTH 112TH STREET  
PARKLAND, WASH. 98444

IN THE SUPERIOR COURT OF THE STATE OF WASHINGTON IN AND FOR PIERCE COUNTY

RICHARD N. BEFORE, Plaintiff vs. JOAN BEFORE, Defendant

No. 172902  
SUMMONS BY PUBLICATION

THE STATE OF WASHINGTON, to the said JOAN BEFORE,

YOU ARE HEREBY SUMMONED to appear within sixty (60) days after the date of first publication of this summons, to-wit: Within sixty (60) days after the 9th day of November, 1966, and defend the above-entitled action in the above-entitled court, and answer the Complaint of the plaintiff above-named, and serve a copy of your Answer upon the undersigned Attorney for plaintiff at his office below stated; and in case of your failure to do so, judgment will be rendered against you according to the demand of the Complaint which has been filed with the Clerk of said Court.

This is an action for divorce.  
George F. Potter  
Attorney for Plaintiff  
Office and Post Office Address  
159 South 112th Street  
Parkland, Washington 98444  
Published November 9, 16, 23, 30 and December 7 and 14, 1966.

# Club Calendar

PARENT EDUCATORS of St. John of the Woods Catholic Church will meet at 8 p.m. tomorrow in the parish hall. (The date has been changed from the fourth Thursday this month because of Thanksgiving.) Final plans will be made for the December 3 dance. All parents of pre-school children are invited to attend the meeting to hear a taped selection from the Family Enrichment Program entitled "Communications Within the Home". Refreshments will be served. b

SOUTHERN AREA LEADERS' 4-H COUNCIL will meet at 8 p.m. tomorrow at Frontier Park Community Hall, Dr. A.J. Ryncarz will discuss the new veterinary science project. b

PARKLAND BUSINESS Club will elect officers Wednesday, Nov. 16. The meeting will be called to order following dinner at 7:30 p.m. and will be held at Johnny's Ranch, 10203 Sales Road. \*\*\*

FRUITLAND GRANGE will meet at 8 p.m. Friday at the Fruitland Grange Hall. Refreshments will be served by Albert Youngblood, John and Beulah Hoffman, Cora Hill, Shirley Skoglund and Donald and Florence Glaser. b

SOUTH HILL ATHLETIC CLUB will hold their annual Fall Dance at Sunshine Hall, 108th & Yakima, Friday, November 25, for members and their guests. For further information call Garth Koecke, TH, 5-5367.

## Boosters Plan Sport Banquet

Members of this year's football, golf and cross country teams along with coaches and yell staff will be honored by the Bethel Booster Club at a banquet to be held 7:30 p.m. November 22 at Brad's Restaurant. b

A limited number of tickets will go on sale November 16 on a first come, first serve basis. These tickets may be purchased from the athletic department at Bethel High School.

MIGRANT MINISTRIES Association annual meeting Monday, November 28, at 6:30 at Ivan's on the River Road. b

On the program will be Dr. Ernst Kredel, of the County Health Department, Frank Wright, Director of "MORE" Reservations for the dinner must be made by November 23 to Mrs. Fred Stickey, TH, 5-5266 or TH, 5-6989.

## Lacamas Libe Faces Closure

Lacamas, Longbranch and Home-Lakebay community libraries probably will be closed by action of the County Library Board of Trustees after its meeting at 2:30 p.m. Monday at Gig Harbor Library. b

Figures resulting from a recent study conducted by the library director Mrs. Carolyn J. Else indicate the population of these communities is inadequate to support branch libraries.

"These communities could be well served by the Pierce County bookmobiles," Mrs. Else said.

Prior to the meeting, the board will complete its year-long tour of branch library facilities.

## Fruitland Grange Elects R. Geddes Master For 1967

Robert W. Geddes was elected Master in the Fruitland Grange at their last meeting. b

Other officers elected included Overseer Platt Lebert, Lecturer Katherine Hansen, home economics chairman Clara Lavik, chaplain Helen Ballou, secretary Elaine Runkel, Stewart Harold Hansen and gatekeeper James Craigen.

Also elected were assistant Steward Delbert Runkel, Ceres Faye Goelzer, Pomona Myra Geddes, flora Beverly Bigelow, treasurer Violet Swayne, executive committee W.O. Smith, lady assistant Steward Elaine Hurst and musician Doris Smith.

## Achievement Day To Cite Co. 4-H'ers

County 4-H members and leaders will be recognized for their work during the past year at the annual Pierce County 4-H Achievement Day at 1:30 p.m. Saturday at the Tacoma Public Utilities Building. b

President of the 4-H Leaders Council Ray William will present Meritorious Service awards to three adults for their 4-H contributions. The 4-H'ers will be honored for their participation at the Western Washington and State 4-H Fairs.

Representatives of the Puyallup Kiwanis Club will be on hand to present plaques to 4-H members who made outstanding accomplishments in different project areas. Guest speaker will be 4-H specialist Tom Quann.

HI HO

PUYALLUP

HI HO

WHOLE-BODIED  
STEWING  
**Chickens 19¢**  
Pan Ready CHICKEN  
FRICASSEE or STEW  
27¢ lb.

**BOILING BEEF..... 19¢**  
**LEAN BEEF SHORT RIBS 29¢**  
**BEEF CUBE STEAKS .... 98¢**  
**LEG O'LAMB YOUNG TENDER ..... 79¢**

HI HO'S OWN  
**GROUND BEEF 39¢**  
lb.

HI HO

PUYALLUP

HI HO

HI HO

HI HO

PUYALLUP

HI HO

HI HO

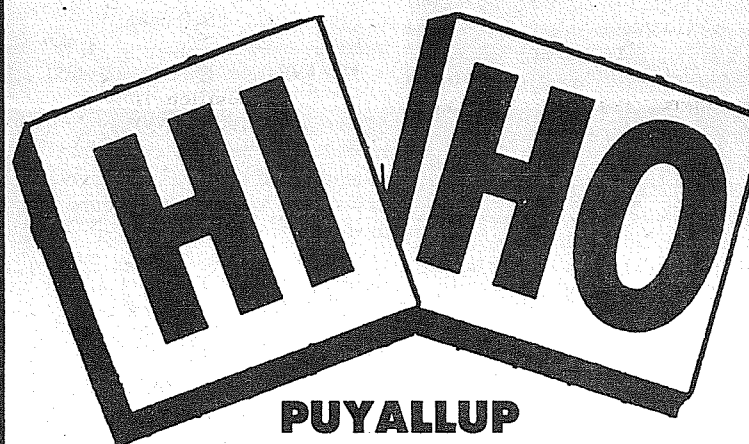
OPEN **DRUGS** CLOSE  
8 A.M. 11 P.M.

LOWEST PRICES FOUND ANYWHERE

REG. 1<sup>33</sup> ANACIN ..... 79¢  
REG. 98' COTTON SWABS ..... 49¢  
REG. 1<sup>09</sup> HAIR CREAM SCORE ..... 59¢  
REG. 1<sup>00</sup> PHISO-HEX GERMICIDAL SOAP 97¢

## BAKERY

MINT DEVIL'S FOOD CAKES .. 99¢  
SAILOR JACKS ..... 6/33¢  
A LOAF OF HI HO BREAD GIVEN FREE IF OUR BAKERY SALESGIRLS FAIL TO MENTION OUR BAKERY SPECIAL.



PUYALLUP  
PRICES EFFECTIVE NOV. 14th through 19th

## PRODUCE

NEW CROP NAVEL  
**Oranges.. 12¢**  
AVOCADOS .. 10¢  
NEW CROP!  
OREGON UNBLEACHED  
**WALNUTS 3 LBS. 1<sup>00</sup>**  
FANCY OREGON FILBERTS..... 3 lbs. 1<sup>00</sup>

HI HO IS THE MOST WORTHWHILE SHOPPING TRIP YOU CAN MAKE!

## HARDWARE

WIN A FREE VACATION TO LAS VEGAS -- NO OBLIGATION 1 - WEEK ALL - EXPENSE PAID. DETAILS AT PAINT DEPT.

FROM OUR TV DEPT.  
ADMIRAL CLOCK RADIO EXTRA SPECIAL ..... 11<sup>97</sup>  
REG. 9<sup>95</sup> HEAVY-DUTY PLASTIC CAR COVERS ... 7<sup>95</sup>  
DUPONT ANTI-RUST ... 57<sup>¢</sup>  
12-oz. FOR YOUR COOLING SYSTEM

6-Quart Capacity  
**PLASTIC PAIL 33¢**

## GROCERY

BANQUET FROZEN DINNERS  
CHICKEN, TURKEY, BEEF, CHOPPED BEEF, HAM, HADDOCK SAVE 14¢ **35¢**  
GIANT 20-oz. HUNT'S CATSUP SAVE 34¢ **4/1<sup>00</sup>**  
46-oz. DEL MONTE SAVE 67¢ **5/1<sup>00</sup>**  
FRUIT DRINKS ORANGE, APPLE, PINE-GRAPEFRUIT, GRAPE  
GOOD SEASON FOR CHICKEN OR FISH SHAKE AND BAKE ..... 4/1<sup>00</sup>  
2-LB. MJB COFFEE ..... 1<sup>29</sup>  
1-lb. MJB COFFEE ... 73¢ 10-oz. INSTANT ... 1<sup>39</sup>  
200-2-PLY SAVE 49¢ CHIFFON FACIAL TISSUE ..... 5/1<sup>00</sup>  
2-LB. NABISCO HONEY MAID GRAHAMS 69¢  
NO. 2 1/2 TINS SAVE 25¢ SUNBLEND PEACHES 5/1<sup>00</sup>  
10-LB. GOLD MEDAL FLOUR ..... 99¢

## THE SPORT SHOP

COLEMAN TWO-BURNER CAMP STOVE ..... 9<sup>99</sup>  
COLEMAN NO. 200A SINGLE MANTLE LANTERN ..... 9<sup>99</sup>  
COLEMAN FUEL ... GAL. 1<sup>00</sup>  
**VARIETY**  
DORMEYER ELECTRIC HURRI-HOT REG. 16.95 ..... 10<sup>97</sup>  
WARMS, COOKS, BOILS, STEWS

REG. 17.95  
DORMEYER ELECTRIC  
**HAND MIXER 10<sup>97</sup>**

## Looking for New

## CHRISTMAS DECORATING IDEAS?

Attend the FREE

## CHRISTMAS DECORATING CLINICS

Wed. & Thur. - Nov. 16 and 17  
7:30 p.m.

Tacoma City Light Auditorium  
So. 35th & Union

## Featuring

- \*Wednesday...Mr. Ed Hume, noted Northwest landscaping and gardening expert, discussing new ideas on outdoor decorating
- \*Thursday...Mrs. Eleanor Zappallo, gardening editor of the Seattle Post Intelligencer.
- \*Do-it-yourself yard and home lighting projects.
- \*New products for Christmas decorating including plywood cutouts.
- \*Information on the Greater Tacoma Christmas Lighting Contest and colored slides of last year's award winner.
- \*Attendance prizes. No admission charge

BROADCAST OVER TACOMA RADIO STATIONS

Sponsored by :

GREATER TACOMA OUTDOOR CHRISTMAS LIGHTING CONTEST COMMITTEE

HI HO

PUYALLUP

HI HO





PTA News

### Bethel PreSchool PTA Invites More Parents

**Legal Notices**  
**McGAVICK, BETZENDORFER, HEMMEN & BOTTIGER**  
 Attorneys at Law  
 8849 Pacific Ave., Tacoma, Washington  
 IN THE SUPERIOR COURT OF THE STATE OF WASHINGTON IN AND FOR THE COUNTY OF PIERCE  
 WILLIAM F. WILSON, Plaintiff, vs. RAYFORD AUSTIN and MARGARET A. AUSTIN, husband and wife, Defendants.

NO. 172481  
 SUMMONS BY PUBLICATION  
 The State of Washington to the said Rayford Austin and Margaret A. Austin, husband and wife, and all other persons or parties unknown claiming any right, title, estate, lien or interest in the real estate described in the Complaint herein, Defendants:

You, and each of you, are hereby summoned to appear within sixty (60) days after the date of the first publication of this Summons, to-wit, within sixty (60) days after the 12th day of October, 1966, and defend the above-entitled action in the Superior Court aforesaid and answer the Complaint of the plaintiff and serve a copy of your answer upon the undersigned attorneys for the plaintiff, at their office below stated; and, in case of your failure so to do, judgment will be rendered against you according to the demands of the Complaint in this action which has been filed with the Clerk of said court.

The object of this action is to quiet title in plaintiff to real estate in Pierce County, Washington, described as: Lot 4, Block 1, S.L. Rowland's Replat of Part of Tracts 1 & 4 of T.J. Spooner's 5 Acre Tracts according to Plat recorded in Book 5, of Plats at page 45, against the claim of the defendants and any one of them. McGAVICK, BETZENDORFER, HEMMEN & BOTTIGER Attorneys for the Plaintiff  
 By R. Ted Bottiger  
 Office and Post Office Address: 8849 Pacific Avenue Tacoma, Washington 98444 Telephone: GR. 5-4800  
 Published October 12, 19, 26, November 2, 9 and 16, 1966.

BETHEL - Parents with children near kindergarten age are invited to join with the Bethel Preschool PTA during their 8 p.m. meeting Thursday in the home economic room of Bethel Junior High School.  
 Guest speaker will be Mrs. Phillips of the public health department. She will discuss the well baby clinic and her duties as a public health nurse.  
 Those attending are asked to contribute their favorite baked item for the baked goods auction which will follow the business session.

The group is still seeking old papers and magazines. Those with unwanted items should wrap them in bundles and notify any of the following people:  
 Spanaway, Shirley Hartsell, LE. 7-6740; Roy, Mrs. Corbin, 843-2470; Graham, Claudia Sturzen, VI. 7-2460; Karpowin, Marie Taylor, 893-5248 or Clover Park, Laura Reno, LE. 7-4885.

Andrew Christensen PTA will meet at 8 p.m. November 22 in the Multipurpose room.  
 Dr. Hill, Superintendent of the Franklin Pierce School District, will introduce the members of the school board. A report will be presented on the remedial reading program in the district. The discussion will include a description and slides of our teachers and students in action.  
 Refreshments will be served.

ELMHURST P.T.A. will change the regular meeting to 8 p.m. November 22 in order to make possible a presentation by Dr. John Phillips, U.P.S. professor of religion and sociology, on the social behavior of children.  
 Franklin Pierce School Board will meet in the school library at 7 p.m. and PTA members are urged to come early and attend the meeting.  
 Following the PTA meeting, a Holiday Bake Sale will be held by members.

BROOKDALE PTA will meet 8 p.m. Wednesday, November 16 at the school, Harold J. Mulholland, Chief Probation Officer at Remann Hall, will discuss juvenile problems with PTA members. Mulholland is also vice-president of Region 2 for the Washington Congress of Parents and Teachers.

### H. Freeman Again To Head Pomona Grange

Pomona Grange has elected Howard Freeman to head the affairs of the County Grangers for 1967.  
 This will be a 3rd term for Freeman, who is a member of Waller Road Grange. Lee Biggs was re-elected to the office of Overseer. He is a member of Riverside Valley. Marie Custer of McMillin retained her secretarial office for another year.  
 Rev. W.A. Moore was re-elected as Chaplain for Pomona, making this the 27th year he has served. Rev. Moore is a member of Riverside Valley Grange.  
 William Markham of Clover Creek Grange was elected to the Lecturer's office. Others elected as follows: Steward - Nolan Nelson of Graham, Ass't Steward - David VanHulle of Waller Road, Treasurer - David Harper of Waller Road, Gate Keeper - Herbert Piper of James Sales, Ceres - Helen Nelson of Graham, Pomona - Agnes Kropf of Ohop, Flora - Helen Ballou of Fruitland, Lady Ass't Steward - Myrtle Leach of Riverside Valley, Executive Committeeman - C.M. McKenney of James Sales, Home Ec Chairman - Ruth Gorow of Collins.

Early appointments made by the Master were: Junior Grange Chairman - Anna VanHulle of Waller Road, agricultural chairman - Nolan Nelson of Graham, Good of the Order committee chairman - Harold Johnson of Benston.

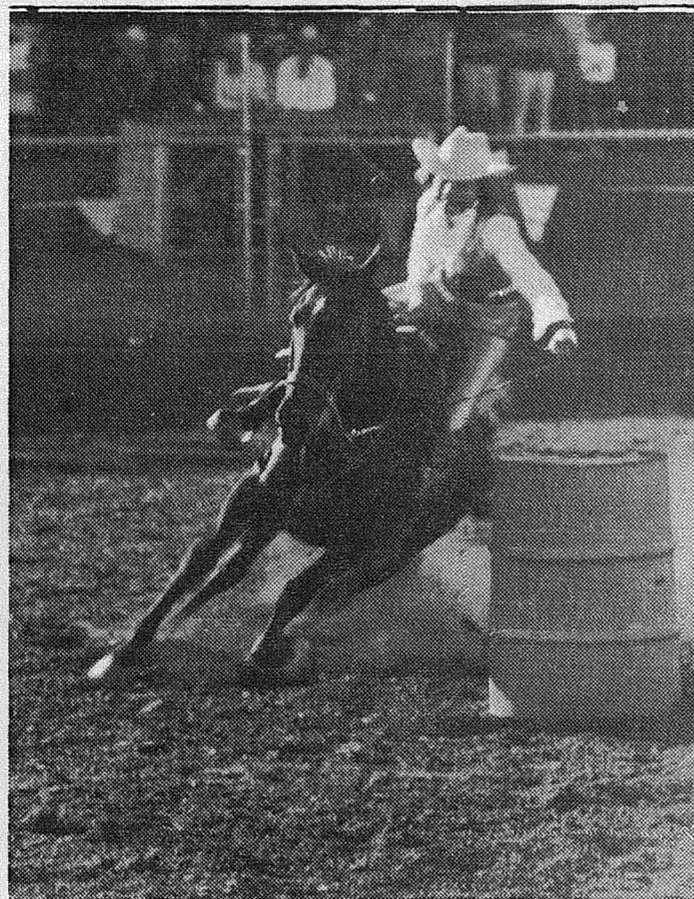


THRIFTI-MAIDS Homemaker's Club members put the finishing touches on a Christmas Village frosting sculpture to be displayed at the county-wide Christmas Bazaar Friday, November 18 at the Waller Road Grange, 2708 East 64th. Pictured are Dolores Baskett (left) and Clara Johns on. Thrifti-maid members are from the Parkland-Midland-Collins area and are one of ten groups making up the Pierce County Homemaker's Club. Christmas wall hangings on coffee table will be offered for sale.

**Serving the Country**  
 VIETNAM - Clifford M. Nelson, whose wife, Violet, lives at 1716 S. 119th St., Parkland, re-enlisted in the Army for three years and was promoted to staff sergeant in Vietnam, October 20.

**Serving the Country**  
 VIETNAM - Army Private First Class Vincent Horan, 20, son of Mr. and Mrs. John F. Horan, 11005 Caraway Dr., Tacoma, participated throughout October in the defense of Camp Radcliff at An Khe, home of the 1st Air Cavalry Division's base camp in Vietnam.

### Statewide Honors



TAKING TENTH PLACE HONORS in the state for the Washington Barrel Racing Association for 1966 is Jan Thackeray, a junior at Puyallup High School, who has won \$363 in eight barrel races. The daughter of Mr. and Mrs. W.H. Thackeray was honored at the annual state WBRA convention recently in Ellensburg. Miss Thackeray injured her neck in gym class earlier this year but was back riding in August winning \$101 at the Bremerton rodeo. Her horse Harney Lea is the only thoroughbred in the WBRA top ten.

## 3 PRICE CLEARANCE ON USED SEWING MACHINES at SINGER

PORTABLES! \$19.95  
 CONSOLES! \$29.95  
 ZIG-ZAGS! \$39.95

Here's your chance to own a sewing machine today! Choose from a wide variety of makes and models that have been traded-in. Don't miss this great clearance. Hurry to your SINGER CENTER today!

What's new for tomorrow is at SINGER today!

# SINGER

SINGER SEWING CENTER  
 116-2nd Ave. S.E. TH 5-5333

**Serving the Country**  
 VIETNAM - Army Staff Sergeant Raymond Clark, Jr., 26, is taking a rest from combat in Vietnam but his new job is just as important.  
 He currently is guarding National Route 19 between An Khe and Pleiku.

**Citizens STATE BANK**  
 112th and Canyon Road  
**SUMMIT VIEW OFFICE**  
 LEnox 1-3322  
 Member Federal Deposit Insurance Corporation

## WOMENS TENNIS SHOE SALE

ODDS & ENDS - CLOSEOUTS - DISCONTINUED  
 WOMENS CANVAS TIES OR SLIP-ONS ALL COLORS-US KEDS, COOL CHOICE  
 NOTES, DOBIES, P.F. FLYERS, ETC.  
 REGULAR TO \$5.00 A PAIR

**PAULS SHOES**  
 161st & PAC. LE 7-0552 OPEN DAILY 9-9 SAT. & SUN. TILL 6

First Bank Card welcome here

9 am - 10 pm  
 7 DAYS A WEEK

## BARGAIN BASKET

16618 Pacific Ave. S. - Spanaway  
 LE 7-3371

We Carry A Complete Line Of Sacked Feeds • Presto Logs  
 We Are Locally Owned & Operated  
 HELP YOUR BUDGET WITH THESE SAVINGS

No Sales To Dealers  
 WE RESERVE THE RIGHT TO LIMIT QUANTITIES  
 PRICES EFFECTIVE NOV. 17, 18, 19

<b>SNOWDRIFT SHORTENING</b> 3 1/2 Lb. Tin <b>69¢</b>	<b>NALLEY COCKTAIL SAUCE</b> 12 Oz. <b>25¢</b>	<b>HUNTS FRUIT COCKTAIL</b> 300 TIN <b>\$1</b>
<b>OCEAN SPRAY CRANBERRY SAUCE</b> Whole or Strained NO. 1 TIN <b>5 / \$1.00</b>	<b>PACIFIC TINY SHRIMP</b> 4 1/2 Oz. <b>39¢</b>	<b>BANQUET PUMPKIN PIES</b> <b>29¢</b>
<b>UNBLEACHED WALNUTS</b> 3 Lbs. <b>\$1</b>	<b>NALLEY CUCUMBER CHIP PICKLES</b> 15 OZ. <b>43¢</b>	<b>BANQUET MINCE PIES</b> <b>39¢</b>
<b>CRISP STALKS CELERY</b> <b>9¢ LB.</b>	<b>BANQUET MARSHMALLOWS</b> 1 Lb. <b>19¢</b>	<b>CAMPFIRE MARSHMALLOWS</b> 1 Lb. <b>19¢</b>
<b>FANCY NO. 1 SWEET POTATOES</b> 2 LBS. <b>29¢</b>	<b>MED. SIZE DRY ONIONS</b> <b>5¢ LB.</b>	<b>JONATHAN APPLES</b> <b>9¢ LB.</b>
<b>STARKLE FARM FRESH DRESSED ROASTING ROOSTERS</b> <b>25¢ Lb.</b>	<b>GRADE A TOM TURKEYS (16-24 LBS.)</b> <b>39¢ Lb.</b>	<b>BAR-S NO. 1 SLICED BACON</b> <b>79¢ Lb.</b>
Everyday Low Meat Prices		
<b>RIB STEAK</b> <b>73¢ LB.</b>	<b>SIRLOIN STEAK</b> <b>79¢ LB.</b>	<b>ROUND STEAK</b> <b>79¢ LB.</b>
<b>BLADE CUT POT ROAST</b> <b>43¢ LB.</b>	<b>7-BONE POT ROAST</b> <b>53¢ LB.</b>	<b>ROUND BONE POT ROAST</b> <b>55¢ LB.</b>
<b>RUMP ROAST</b> <b>69¢ LB.</b>	<b>LEAN GROUND BEEF</b> <b>43¢ LB.</b>	<b>COUNTRY STYLE PORK SAUSAGE</b> <b>98¢ 2 LBS.</b>

### SPECIAL OFFERING-FRANKLIN PIERCE ADULT EVENING CLASSES

\*NEW SPECIAL INTEREST CLASSES MEET ONE NIGHT FOR 3 WEEKS  
 \*SIMPLIFIED ENROLLMENT PROCEDURE...COME TO CLASS AND ENROLL THERE \*NO PRE-REGISTRATION NECESSARY

**HOLIDAY SPECIALS Nov. 28 & 30 to Dec. 12 & 14**

**CANDLE MAKING**  
 Demonstrations on pouring, coloring and scenting; use of candles in arrangements. Learn to make your Holiday candles; Hurricane, Cinderella or Ice Chunks, Midas (metallic candles) and candle with a candle.  
 Instructor: Mrs. Marguerite Angermeir. Inquiries welcome - Phone LE 1-0896.  
 Classes held MONDAY Nov. 28, Dec. 5 and 12, 7-9:30 p.m., Room 406 FEE: \$3.00 for all three or \$1.25 each class.

**HOLIDAY INTERIOR DECORATIONS**  
 Mrs. Clara Wall, professional Interior Decorator, will include demonstrations on gift wrapping and origami (Japanese paper folding) Nov. 30. Students may start a Della Robbia wreath on Dec. 7 and on Dec. 14 make a centerpiece or entry decoration using the origami ideas from the first night. Bring your ideas to share. Small charge for materials.  
 Classes held WEDNESDAY 7-10 p.m., Room 406 FEE: \$3.00 for all three or \$1.25 each class.

**CREATE YOUR OWN HOLIDAYS GIFTS AND DECORATIONS**  
 Nov. 28 the instructor will demonstrate various inexpensive decorations and gifts you can make; Christmas trees of teasels or greens, angle mobiles, plaques, small gifts and you may construct or individualize Christmas cards. Dec. 5 the class will make Christmas Angels. Dec. 12 an Angel mobile or one of the various other decorations demonstrated the first night.  
 Instructor: Mrs. Peg Vetterhus. Classes Monday 7-9:30 p.m., Room 605 FEE: \$3.00 or \$1.25 each.

**PHOTO CHRISTMAS CARDS**  
 Make your own personalized picture Christmas cards. Bring your negative with you the first night MONDAY, Nov. 28 to the Photography lab class at Ford Jr. High School - Class meets 7-10 p.m., Nov. 28, Dec. 5 and 12. Room 702 FEE: \$3.00 or \$1.25 each.  
 Instructor: Skip Larsen

**WINTER PRUNING (AND TRAINING)**  
 of Deciduous shrubs and trees Nov. 28, Monday, (Rosebushes, dwarf fruit trees, maples, thundercloud plums, etc.) Dec. 5 Evergreen Broadleaf and needle (Ornamental shrubs, junipers, hollies, rhodias and evergreen trees, firs, cedar, pines, etc. Dec. 12 Native shrubs, selection, moving, pruning and card (Dogwoods, maples, huckleberries)  
 Instructor: Eugene Teesdale Mondays 7-10 p.m., Room 032 FEE: \$3.00 for all three or \$1.25 each.

**WINTER QUARTER COURSES** **10 WEEKS HIGH SCHOOL CREDIT NOV. 28 THROUGH FEB. 3**

ENGLISH COMPOSITION Mon. 7:10 p.m. \$10.00 Rm. 004 Inst. Mrs. Ruth Ricker  
 1st SEMESTER U.S. HISTORY AND AMERICAN GOVERNMENT Wed. 7-10 p.m. \$10.00 Rm. 002 Inst. Larry Carlson  
 MODERN MATH FOR CREDIT Mon. 7-9:30 p.m. \$10.00 Rm. 002 Inst. Marvin Jacobsen  
 PHYSICAL FITNESS CLASS Men and Women 7-9:30 p.m. \$5.00 Gym Inst. Jon Herrington

**FOR FURTHER INFORMATION PLEASE PHONE ADULT EDUCATION OFFICE LE 7-0211 EXT. 47**  
 CALL FOR REGULAR ADULT BROCHURE FOR COMPLETE HIGH SCHOOL CREDIT PROGRAM CLASSES TO BEGIN AGAIN FEBRUARY 6, 1967