

# The TIMES-JOURNAL

OCT. 30, 1952 (VOL. 8, NO. 7)

PUBLISHED AT PARKLAND, WASHINGTON

5c PER COPY • \$2.00 PER YEAR

U. S. POSTAGE PAID  
Sec. 34.66 P. L. & R.  
Parkland, Wash.  
Permit No. 9

BOXHOLDER OR OCCUPANT  
RURAL ROUTE  
POSTMASTER—If unable to deliver,  
return postage is guaranteed.



By Clarence LaCrosse

In discussing the county-city building further with various people after last week's article I was very pleased to find so many people of the same opinion that I have expressed.

One thing might be said in defense of the controversy regarding the final selection of a site for the county-city building in case it does pass the approval of the voters is that the county commissioners are the ones who have the say-so in regards to the selection of the site.

Perhaps all the smoke screen being raised in regards to the location has been all in vain as it will be the sole responsibility of the county commissioners to make the selection of the site... not the city council, not the voters... just the three commissioners. Whether or not they will be susceptible to the wishes of the majority of the county residents will be seen after the bond issue is passed.

Franklin Pierce Asks Millage Vote Yes

If you haven't been out to see the new Franklin Pierce high school out at Portland avenue and Airport road do so before the election November 4th. Here is one of the finest high schools in the state of Washington. Of course it isn't quite finished yet, but it is coming along just fine, thanks to the fine leadership of a mighty fine superintendent and an equally fine board of directors who have nursed this project along since its inception in 1949 when Franklin Pierce school district was formed. It has been the dream and the ever-persistent perseverance of Morris Ford and his board of directors—Chester Larson, chairman of the board (Central Avenue); Andrew Christensen, clerk of the board (Midland); G. O. Stover of Parkland; Olaf Jordahl, Parkland; and Matt Manley of the Collins district—who have been instrumental in the rapid growth of the district which only a few years ago employed 67 teachers (Continued on Page 5)

## Attention Hunters

Hunters' All-Activity "Outdoorsmen" Accident Insurance—All Risks Covered for as little as \$1.10.

**SUBURBAN REALTY & INSURANCE**  
Ernest Harmon - Avyee Coombs  
9920 Pacific Ave.  
GR 3624

**PIPER FUNERAL HOME**  
Phone HA 3353  
5436 So. Puget Sound Ave.

## PROFESSIONAL DIRECTORY

DR. JOSEPH G. HANSON  
Osteopathic Physician  
11112 Pacific Ave.  
Office: HA 5315; Res: GR 3123  
By Appointment

Enjoy the Healthful Benefits of Swedish Massage in the Privacy of Your Home or Mine  
**H. C. BALLARD, MASSEUR**  
For Appointment Phone  
EVENINGS  
Tacoma, Granite 4342

**INSURANCE**  
CLAY ROLY AGENCY  
98th and Portland Avenue  
GR 8501

**OPTOMETRISTS**  
DR. L. RICHARD MCGIRK  
Modern Eye Care  
4802 1/2 So. Yakima HA 2113  
REAL ESTATE - INSURANCE  
NOTARY

ROY V. ROSTEDT  
8201 Park Avenue  
Phone HA 2342

**Danielson - Rolfe Insurance Agency**  
PARKLAND—GR. 3113  
Automobile - Casualty - Fire  
Inland Marine

FRIENDLY SYMPATHY  
with  
**FLOWERS**  
Reasonably Priced  
**Parkland Florists**  
125th & Pacific GR 7270

## Franklin Pierce Millage Measures Declared Vital

By Morris Ford, Superintendent  
After the article in last week's Times-Journal there have been some questions asked as to why two millage propositions, instead of one, would be on the Nov. 4th ballot.

The school budget is divided into two principal parts, general fund and building fund. The new furniture and equipment going into the new high school and grade school is classed as a part of these new buildings and must be paid for with building fund money. Money for this fund must be voted by the people and includes no money from other than district sources. As you know, the State has already given us \$1,151,808.67 for the construction of the high school and the Federal government has given \$360,600.00 for the new grade school.

The general fund, used for maintenance and operation of the schools, is made up of money from local, State and Federal sources. The amounts from these sources vary from year to year as well as from district to district. Districts with high per pupil valuation receive a lesser percent of State money. Our general fund budget this year for the Franklin Pierce schools is \$602,842.07. Of this amount the local district furnishes \$26,004.17 (4.3% of the total) the State furnishes \$524,119.81 (86.9%) and the remaining \$52,717.99 comes from reimbursements, rentals and Federal allocations.

Money from this general fund is used for salaries, text books, supplies, fuel, utilities, etc. A large part of the State's contribution to the general fund is based on the average daily attendance of the preceding year, and in districts like ours, where we have had a large, continual growth each year, it has been necessary to skip on purchases of texts, library books and supplies, as well as to curtail maintenance and improvements of grounds and buildings.

We must have new texts, additional teachers, library books, building repairs, from the general fund. We must have such equipment as seats, shop tools, home economics equipment, typewriters, business machines, laboratory equipment, gym equipment for our new schools from the building fund.

Your schools ask that you vote "Yes" on both millage issues at the November 4th election. Our increasing population demands that we make provision now to take care of the school children of tomorrow. They are your children. VOTE!

## Community Club

The main item of discussion for the Nov. 13 meeting of the Parkland Community club at the Parkland school will be the proposed Parkland area sewer and sewage disposal plan. President Elvin Krumm urges all residents of the community to attend.

## Benston Card Party

There will be a card party Saturday, Nov. 1, at 8:30 p.m. in the Benston Grange hall. Pinocle and 500 will be played. Admissiop is 50 cents.

## SPANAWAY AMBULANCE

### Benefit Dance

METROPOLITAN PARK HALL

Saturday, November 1st

Good Music and Entertainment

## Trick or Treat

Halloween's here again and we're expecting to see a lot of ghosts, big and little, show up at the Mortuary. Just to be sure we keep them in good spirits, we have the usual Giant Cotton Candy Cones ready for them, so come, one and all, young and old for our treat.

**Dryer MORTUARY**  
700 SOUTH 134 - PARKLAND GR. 3400

## "Sign of the Times" Now at Park 'n' Shop

One of the most beautiful neon signs of the Tacoma area has just been completed for the Park 'n' Shop Super Market at 98th and Pacific. Standing full 60 feet high, the sign carries the name "Park 'n' Shop" in vertical arrangement with the letters outlined in red and green neon, the colors constantly alternating and changing in vivid effects.

The words "Super Market," occupying a horizontal space just below the towering vertical section, are in red neon, the along surrounded by a border of small flashing white lights. On each side of the base is a large illuminated clock, easily visible by traffic from both directions.

The sign was erected by Arrow Signs, Inc., and the iron work by Ballaw's Trailer & Welding Shop, both Tacoma firms. Local labor was used exclusively.

The sign is already attracting much attention and is destined to become a landmark in the community. Park 'n' Shop, open continuously, maintains the only 24-hour prescription department in this section and the sign, visible for a long distance, will be invaluable in quickly locating the store at night in emergency cases.

## Dr. Hanson Opening Office at Parkland

Dr. Joseph G. Hanson, osteopathic physician, is opening his office in the Parkland area on Monday, Nov. 3. The new address will be 11112 Pacific Ave., next to the Rexall Drug store.

Office hours are 9-12 and 1:30-5:30 Monday through Friday; Saturday afternoon appointments by special arrangements.

## WCSF Says Vote No On Initiative 184

Voters today were urged to "remember, and vote against, Initiative No. 184, because it is the most risky and expensive piece of business on the November ballot."

The Washington Conference on State Finance said the initiative would add more than \$81,000,000 to the state's public welfare cost and boost the present outlay to the staggering figure of more than \$255,000,000.

"Don M. Follett, chairman of the conference, said the estimate on cost was based on official state security department studies. The increase, he said, would be "disastrous to the state's financial structure, already overloaded." He said the only safe action would be to defeat the initiative and turn the responsibility for the welfare legislation over to the state legislature.

In Pierce county, the added cost of Initiative No. 184 would be an estimated \$9,379,800, he stated.

"The voter who does not want to jeopardize the state's financial structure should make it a point to remember Initiative No. 184, and take action to defeat it," Follett said. The conference chairman pointed to the fact that present state financial difficulties can be traced directly to Initiative 172, enacted in 1948. That initiative plunged the state into deficit financing, and the trend was not reversed until Initiative 178 was passed two years ago.

## Pierce County Hospital Scene Of Many Crises

Editor's Note—The following article, submitted by the Pierce County Hospital in response to an inquiry by the Times-Journal, gives a vivid word picture of the average day's exciting routine at the hospital's emergency department.

A wailing of sirens is heard as the County Sheriff's ambulance pulls to a screeching halt at the emergency room entrance with a distressed young woman in labor—a true emergency. A quick look at the patient determines that there is a complication involved, a complication whose handling determines whether or not this patient and her baby will survive. The house physician rapidly examines the patient, a laboratory technician is summoned, blood samples are drawn, and a laboratory analysis follows. The patient's critical condition does not mean that birth of the baby will be immediate and careful handling of the patient with intravenous fluids and other medications widely necessary, are started. This story begins and ends in the emergency room within a short space of 35 minutes.

Ten minutes before this patient leaves the emergency room, a 78-year-old gentleman arrives by private vehicle. The nurse on duty quickly looks at the patient as he is placed on a stretcher. He is breathing with relative comfort and states that he wants to be transferred immediately to the Marine hospital in Seattle. An emergency call establishes his eligibility, the lung disease is described over the telephone by the house doctor, and arrangements are made for an ambulance. Within about 45 minutes from the time the patient is admitted, he is on his way.

By this time a Police ambulance has been waiting five minutes outside of the emergency room entrance and by the time the elderly gentleman has been discharged, we find this new patient being restrained on a chair by two police officers. A very strong odor of alcohol is evident and the patient's behavior indicates him to be on the verge of becoming mentally disturbed—he "has the snakes." He is taken into a dressing room back of the emergency room and requires the temporary attention of one of the police officers besides the nurse to prepare him for a complete examination. With some cajoling, this patient, who has been uncooperative from the beginning, finally is examined for blood pressure, pulse, a check on the heart, lungs, etc. This man doesn't seem to be too sick physically but he had too much alcohol for too long a period of time. A special intravenous mixture has been prepared by another nurse on duty and with considerable more cajoling and assistance the medicine is finally given. The patient relaxes and is covered up and left to rest for a short while. Another 45 minutes have elapsed.

While the first house doctor was examining this patient, an emergency call is accepted by the Department and the other doctor goes upstairs to deliver a baby.

While this has been going on, an old auto is driven up to the front entrance of the hospital and the switchboard operator has notified the emergency room that another patient is coming in. An attendant brings out a wheelchair and a young man with a rather blank expression is brought down to the hallway of the emergency (Continued on Page 6)

## Mostly About Horses

By Clarence LaCrosse  
Something new has been added over at the Washington Horsemen club. Always an aggressive club, this organization now comes up with something entirely different... a jumpers' group who meet every other Sunday at one p.m. Horses are handicapped according to their ability, therefore a beginner has a chance to win.

About 15 turned out the first Sunday for this event with Jean Caddigan's Dusty Rocker and Sgt. Seney's Denali tying for first place, the jump-off placing Denali in first place. Dimity Dee with Claire Reisinger aboard and Shamrock with Barbara Hoyt at the controls both turned in clean performances; Miss Reisinger, with a time of 34.1, and Miss Hoyt with 35.1.

Miss Barbara Hoyt also placed first in the four foot jumps riding that beauty Shamrock. Sgt. Seney and Jack Caddigan are to be congratulated upon the formation of this new activity for the club... it will afford many a pleasant hour for those who love to test the ability of their mounts in that spectacular event... jumping.

This activity is open to any and all who have a genuine interest. Please call L.A. 4513 for information. Parkland Riding Club Western Dance Nov. 15th.

It's a night of dancing for members of the Parkland Riding club and their friends next November 15th when that group will present an evening of entertainment at the Sunshine hall in Parkland. Tickets may be obtained (Continued on Page 6)

## Turkey Dinner, Bazaar

Sponsored by the O. E. S. Auxiliary, a turkey dinner and bazaar will be held at the Fern Hill Masonic Temple, 84th and Park Ave., Saturday, Nov. 1. The doors open at 4 p.m. with dinner served, family style, from 5 to 7 o'clock. Adults are charged \$1.50, 8 to 12 years, 50c; 8 and under, 35c. Booths for fancy work, baked foods, white elephants and other articles will lend interest to the occasion.

## Lacamas 4-H Club Elects Officers

The highlight of the Oct. 18 meeting of the Lacamas 4-H Sewing club was the election of officers. Lenore Erickson was chosen president; Janice Smith, vice president; Sally Kevey, secretary, and Sharon Plumlee, reporter. After the meeting, a surprise party was held in honor of Sally Kevey. Refreshments were served. Members of the sewing club are: Sandy Wood, Sally Kevey, Mary Mock, Lenore Erickson, Christy Wood, Janice Smith, Elsie Trusler, Georgan Erickson, Kathy Smith, Jane Allen, Marion Marvin and Sharon Plumlee. Mrs. Allen is expected to be at the next meeting, Nov. 8.



After you've voted, for snacks while listening to the returns — Cookies - Cakes or Breads for Sandwiches.

**AUNT SUE'S Bakery**  
209 So. 84th HI. 4072

## Vane Offers No Swift Cure For Problems

Z. A. Vane is one candidate who does not claim to know all the answers. He does, however, feel that he can have a lot to say about the state's affairs at the next session of the legislature. He says there are a lot of very fine candidates who desire to represent the people in its law-making body. However, he believes his background, training and experience can make him quite effective in helping to formulate the program that will mean so much to the citizens of this state. He does not claim to have a panacea for this very involved and difficult matter.

The people of the State of Washington by their very votes indicate a desire for certain reforms and services which often times increases costs without the public being too fully aware of it. When the voting public demands more expenditures in the way of service it is only natural to assume there will be an accompanying bill to pay. To hold within the revenues of the state when our population is on such a rapid increase is truly a difficult problem and wise is the legislator who can offer a quick solution.

The initiative and referendum propositions are a test on the average voter and he should well understand the difficulty of the legislature when it must resolve itself on so many more and new questions affecting the state's business and welfare. It is an interesting job and yet a difficult one.

## Lots of Changes

Three important changes are reported this week by a Parkland firm. Formerly known as the Garfield St. TV and Radio Service, located at 509 Garfield street and owned and operated by Bill Black, the business is now Jack's TV and Repair, with space in the same building with Parkland-Brookdale Electric at 13022 Pacific Ave., and owned and operated by Jack Neely. The finest in TV service is offered by the shop.

While there is no connection between the two businesses, customers of both will benefit by having firms offering sales and servicing of TV sets under the same roof.

Preserve Your Right to Initiative. Farmers Union Local 425 Says  
**Vote "NO" on SJR No. 7**

## FRYING TURKEYS

7 to 8-lb. average

49c lb.

ROOSTERS

29c lb.

ALSO DUCKS, GESE, HENS AND FRYERS

## Armstrong's Poultry Market

11009 Pacific Ave. GR 5524

## Orthopedic

Sylvia Storaasli Orthopedic Guild will meet for 12:30 luncheon Thursday, Nov. 6, at the home of Mrs. S. O. Storaasli, 1217 So. 121st St., with Mrs. W. W. Anderson as co-hostess. Mrs. T. S. Fleming, president, will preside.

## Central Ave. Bake Sale

Central Avenue Preschool will hold a bake sale at the Summit Trading Co. store Friday, Oct. 31, beginning at 10 a.m.

## Bake Sale

The Parkland Methodist church ladies are holding a bake sale at the Parkland Light & Water Co. office on Tuesday, Nov. 4, beginning at 10 a.m. Mrs. Rufus Harvey is in charge.

## BAKE SALE

A bake sale for Saturday, Nov. 8, at the Novotney Bros. Shop-Rite store is announced by the Harvard-Midland Preschool. Chairmen are Mrs. Hubabek, Mrs. Creamer and Mrs. Bagley.

## Spanaway P-TA to Hold Carnival Nov. 7

The night of Friday, Nov. 7, promises to be a riotous one for the Spanaway area. The Spanaway P-TA annual carnival will open in the Spanaway school at 5:30 with the usual delicious dinner for the whole family.

## Young Democrats Form Club at PLC

Organization of a Young Democrats club at PLC was completed last week, with officers elected Monday. John McBride is president; Nick Glaser, vice president; Jane Pederson, secretary; Sharon Morgan, treasurer; Conrad Simonson, sergeant-at-arms; Jack Hoover, social secretary.

Committee heads are Shirley Rogers, publicity; Larry Anderson, transportation; Myrna Berg, reception; Dick Nelson, music; Sharon Morgan, finance.

## Business Cards

LaCROSSE PRINTERS  
GRanite 7100

## COMING IN PERSON

### To The BUNGALOW

"The Mayor of Ballard"

## Stan Boreson

KING TV & RADIO STAR

Thursday, November 13, 1952

No Reservations — Come Early  
WATCH FOR ADDED ATTRACTIONS THIS WINTER

## Oil Resisting Soles

NEW STAR BRAND  
Cush-N-Bilt  
WORK SHOES

For

Garagemen  
Filling Station  
Attendants  
Machinists



CUSHION  
INNERSOLES

Extra soft, resilient,  
sponge rubber insoles  
are covered with leather  
to give lasting comfort.

\$9.95

Sturdy Brown  
Elk Leather  
Neo-Cork  
Oil-Resisting  
Soles and Heels

B. C. D. E Widths

## Soiné's Parkland Shoe Store

411 Garfield St. (In the Parkland Centre Bldg.)  
Across from the Parkland Post Office  
OPEN 10-6 GR 3526

## Vote NO

ON INITIATIVE

# 181

Juvenile delinquency is fostered in darkness. What interests are served by early darkness?

Drinking is done largely in darkness when people can no longer enjoy healthy outdoor recreation.

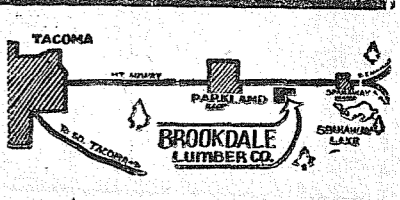
The natural attractions of our beautiful state cannot be appreciated in the dark.

Is this the kind of progress we want?

(paid adv.)

## 136th Pacific Ave. BROOKDALE LUMBER CO. Phone GR 8669

Everything in  
**LUMBER**  
TACOMA'S LARGEST BUILDER OF \$4750 HOMES





**SUMMIT NEWS**

By MRS. M. S. RAU  
GRanite 8391

Carnival Day, Nov. 7, is just around the corner and the ladies of the Cen-

tral Avenue P-TA are just as busy as cow pokes at branding time.

As "Round Up on the Range" is the theme for this year's event, many surprises and a lot of fun are in store for you.

The "chuck wagon" will be open at 7 p.m. and Ann Nordhouse will serve

cafeteria style until all grub is gone. Mrs. Austin will have charge of "the old fishin' hole" and Mrs. Morton will be in charge of "Honest Ed's." Down the lane you will find Mrs. Lovitt at the "Sugar Lump." Mrs. Irish is in charge of the "Tumbleweed" corner and Mrs. Mansen will run the "Pony Express."

The "Ghost Riders" is Mrs. Mus-

ser's department and Howard Lee will spin the "Wheel of Fortune." You will find Truman Dawn and his Boy Scouts taking charge of the "Side Shows." An interesting program will be presented under the direction of Mrs. Ranghill Peterson, so be sure and save Friday, Nov. 7, for Central Avenue school carnival.

**In Service**

Among Pierce county men who have recently enlisted in the Navy are Donald L. Vincent, son of William H. Vincent of Rt. 1, Box 194, Spanaway; Ronald M. Woolery, son of Mrs. Ruth L. Bartlett of Rt. 3, Box 530, Puyallup, and Charles D. Cortner, son of Oscar L. Cortner of Rt. 3, Box 504, Puyallup.

**HYPPA WILL SERVE YOU BEST**



Elmer A. Hyppa, community leader and successful farmer of Buckley, has issued the following statement in support of his candidacy for State Representative from the 25th District.

A native of Pierce County, educated in local schools, Hyppa has won the respect of thousands with his sincerity and support for local community programs.

"I wish to express my deep appreciation to all those in the 25th District who worked to secure my nomination. Your vote indicates that you too are interested in a sound legislative program at Olympia."

"As your new representative I'll support the development of our Western Washington Experimental Station program and all other good farm legislation."

"I believe that good schools and well paid teachers are a sound investment. Educational programs will receive my support."

"We need improved reforestation legislation to insure that lands good only for growing timber on a sustained yield basis, are so used. I will favor legislation also that insures effective fishways and hatcheries built to compensate commercial fishermen and sportsmen for losses resulting from dam impediment to natural fish spawning."

"As a member of Local 612, Operating Engineers, A. F. of L., I want sound legislation to insure adequate industrial insurance, unemployment compensation and vocational training."

"I believe that Initiative 178 should be amended by the State Legislature to eliminate abuses which dissipate tax monies earmarked for widows, orphans and senior citizens. I am opposed to notable reductions and property lien laws."

"Good roads are vital to us all and road improvements will have my complete support."

"Elmer Hyppa is married and the father of two boys. As chairman of the Board of Trustees of the Memorial Community Hospital at Enumclaw, and as Deputy Grand President of District No. 9, Fraternal Order of Eagles, he is very active in community work. Hyppa is also a member of the Puyallup Elks, Western Star Lodge of the Masonic Order, a Veteran of World War II, a member of Garbon Glacier Post V.F.W., the Farmers Union and Marion Grange."

**YOU CAN TRUST ELMER HYPPA**

(Paid Adv.)

**JOIN THE BOOSTERS**

**Rx Prescriptions Prepared Carefully**

Fresh Insulin at Down Town Prices. Pay Phone Bills Here

**Tincher's Pharmacy**  
8239 Park Ave. HI. 3344  
Across street from Fern Hill P. O.

**CUSTOM MEAT**  
Fresh Eggs - Locker Rentals  
**Mountain View Food Lockers**  
Airport & Spruce GR 5332  
2 1/2 Miles East of Pacific Avenue

**PARKLAND Plumbing & Heating**  
GR. 3710  
New Installations  
Repairing Pumps, Hot Water Heaters, Washers  
Sluggish Drains Opened  
Shop located at  
**770 South 120th**

**Butler's Garage**  
One block North Airport Road on Canyon Road  
Phone GR. 8209

**TROVANI'S JUNIOR BOOTERY**  
Specializing in Children's Shoes  
706 ST. HELENS AVE. - MA 6318

**FLETT DAIRY**  
FARM FRESH  
HOMOGENIZED AND PASTEURIZED MILK AND CREAM  
ICE CREAM  
Phone GA 3301

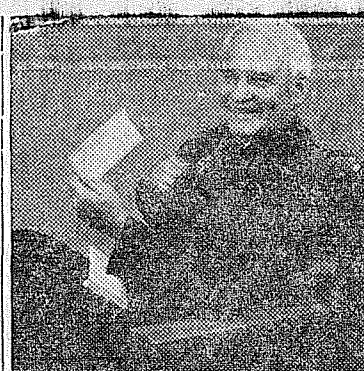
**Firgrove News**

Deepest sympathy goes to Mrs. Julius Gratzler in the recent death of her brother in California. Mrs. Gratzler went to California to attend the funeral services. Also sympathy to G. C. Siegel of the Firgrove Grocery, whose brother died recently in Spokane. Mr. and Mrs. Siegel attended the funeral.

**Home on Leave**  
Robert Ballou, son of Mr. and Mrs. Frank Ballou, has been home on a 30-day furlough after service in Korea. He has now gone to Texas where he will be stationed with the U. S. Army.

**John Laviola, son of Mr. and Mrs. Carl Laviola, has enlisted in the Air Force and is now stationed in San Diego.**

**Congratulations**  
Congratulations are in order for Mr. and Mrs. Leslie Baker who are proud parents of a baby boy.



**THREE SCORE AND TEN...**

People nowadays often live beyond the biblical span of 70 years. The wise man makes sure that he will not outlive his income. A Sun Life retirement policy will give you a guaranteed income for as long as you live. Start saving today.

**SUN LIFE ASSURANCE COMPANY OF CANADA**

New Bank Bldg. Parkland GR. 3226

502 Puget Sound Bank Building MA. 1381

**John S. Castleman**  
Castleman Insurance Agency

**Daaa . . .**  
Can't think of anything to say this week.  
Walt.  
**SUMMIT FEED CO.**  
Home of Fisher's Quality Feeds  
Canyon Road, next to Summit Trading Co.  
GR. 7136 We Deliver

**YOUNG STEER BEEF - GOV'T. INSPECTED**

- Pot Roast . . . lb. 49c
- Sirloin Steak . . . lb. 69c
- Rib Steak . . . lb. 59c
- Pork Steak . . . lb. 50c
- Pork Roast . . . lb. 43c
- Ground Beef . . . lb. 53c
- Lean, Slab Bacon . . . 49c
- Loim Pork Chop . . . 65c
- Skinless Weiner . . . lb. 49c
- Neck Bones . . . lb. 15c

**LOCKER BEEF** Young Steers lb. . 43c and Heifers Cut, Wrapped

**MALCOM'S MEATS GR. 8258**  
1 Block North of Airport on Canyon Road  
RETAIL SALES THURSDAY, FRIDAY & SATURDAY

**GIVE YOUR PARTY REAL Halloween ATMOSPHERE**

SERVE DELICIOUS  
**Orange 'N White Frosted Apple 'n Spice DONUTS**

Place Your Orders Early  
**PARKLAND DONUT BAR**  
PARKLAND CENTRE BLDG. GRanite 3431

There once was a Lass who had laundry amass  
And Oh how she dreaded washday.  
Then one morn as she sighed, but not with remorse  
Her laundry went away, to 99 Laundromat, 'of course!

**99 Laundromat and Cleaners**  
Check These Special Features  
**No Charge For Loading**  
**No Charge For Pre-Wash**  
ALL BUNDLES FOLDED & WRAPPED  
WE DRY CLOTHES  
Open: Mon., Wed. & Fri. till 9:00 P.M.  
Open: Tues. & Thurs. till 7:00 P.M.  
Open: Sat. till 6:00 P.M.  
**9904 So. Tac. Way on Highway 99 LA 7732**

**FIRE TRAPS HAVE NO FUTURE**

The safety of YOUR County and City records is entrusted to anticipate quarters which are best described by the term "Fire-trap!"

Prompt and efficient handling of YOUR County and City Business is greatly hampered by dangerously overcrowded working areas.

Let's remedy this threatening and unhealthy condition . . .  
Vote YES for a NEW COUNTY-CITY BUILDING on NOV. 4th!

(Vote YES for Proposition No. 1, County-City Building Bonds)

**COUNTY-CITY BUILDING COMMITTEE**  
(Paid Advertisement)



**FOR THESE FOOD VALUES**

STORE HOURS: 8 to 6:30 — SATURDAY 8 to 7 O'CLOCK

Fresh Ground the way you like it. Swedish Roast  
**Coffee Lb. 79c**

Folgers - S & W - Hill's 2-Lb. Can  
**Coffee 1.63**

Sunny Jim 24-Oz. Bottle  
**SYRUP 27c**

Fishers No. 27, Pancake For good hot cakes, Pkg.  
**FLOUR 31c**

Hi Ho 1-Lb. Box  
**Crackers 29c**

Yakima No. 1 15-Lb. Sack  
**Potatoes 67c**

A B C, Fresh Made 2-Lbs.  
**Fig Bars 43c**

For Good Baking <b>CRISCO</b> 3-Lb. Can <b>79c</b>	Nest Fresh <b>EGGS</b> Medium, Grade AA Dozen <b>57c</b>
Sunsweet, Medium <b>PRUNES</b> 2-Lb. Carton <b>41c</b>	Silk Sifted <b>FLOUR</b> Centennial Hard Wheat 25-Lbs. <b>1.98</b>

Fresh Dressed Pound  
**Rabbit Fryers 59c**

Summit Farms Pound  
**HAM LOAF 58c**

Summit Farms, Fresh Made Pound  
**POTATOE SAUSAGE 49c**

Fresh, Med. Size Pint  
**PACIFIC OYSTERS 69c**

**EVERY DAY LOW PRICES**

GROUND BEEF . . . lb. 53c  
PURE LARD . . . lb. 15c  
SKINLESS WEINERS . . . lb. 49c

**RECIPE OF THE WEEK**  
By Mary Lee Taylor

**Prune Whip**  
1/2 cup Pet Milk 1 1/2 Tbsp. spoons  
1/2 cup prune pulp\* lemon juice  
1/4 cup sugar

Chill milk until ice cold. Mix prune pulp and sugar. Chill. Whip cold milk with chilled rotary beater, or electric beater at high speed, until fluffy. Add lemon juice. Continue whipping until stiff. Fold into chilled prune mixture. Keep chilled until ready to serve. Makes 4 servings.

\*Rub drained, cooked and pitted prunes through a sieve or use the canned, strained prunes.

Carton  
**CIGARETTES . . \$2.03**

NESTLES Large Size  
**CHOCOLATE BAR 49c**

1/2 Gal.  
**MILK . . . . 40c**

15 Deiner, Sheer Seam Pair  
**NYLON HOSE . . . 88c**

Can  
Campbell's  
**TOMATO SOUP . . 10c**

Pkg.  
S & W  
**FRUIT CAKE MIX . 41c**

**PET MILK**  
3 Tall Cans  
**43c**

WE RESERVE THE RIGHT TO LIMIT QUANTITIES — NO SALES TO DEALERS

**SUMMIT TRADING Company**  
PHONE GRanite 5848  
Rt. 13, Box 690, Tacoma—One-half Mile North of Summit View, on Canyon Road



**All Saints Church**  
205 East 96th St.  
— EVERY SUNDAY —  
8:00—Holy Eucharist  
9:30—Church School Classes  
10:15—Worship, Sermon & Music

**A-1 Auto Wrecking**  
Used Auto Parts  
GR. 3445  
Good Transmissions  
13818 Pacific Ave.

3 generations

tell you why

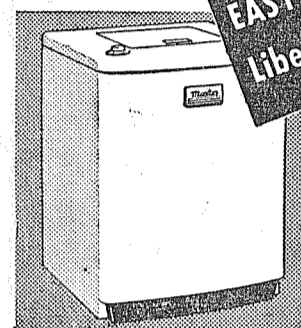
Maytag is for you!

All over America, three generations in the same families have chosen Maytags. Grandmothers, Mothers, new homemakers — all believe Maytag is best!

**America's Favorite Conventional Washer**

- Huge, square aluminum tub keeps water hot longer
- Gyrafoam washing action gently washes dirt away
- Exclusive Maytag Roller Water Remover can't burn buttons or trim
- Sediment Trap catches dirt, keeps water clean

\$199<sup>95</sup>



**EASY PAYMENTS**  
Liberal trade-ins

The Maytag Automatic has so many work-saving features:

- Famous Gyrafoam Washing Action
- Completely Automatic Operation
- Safety Lid • Maytag Quality
- No boiling down
- Adjustable Legs
- Beauty that lasts
- Sediment Trap

\$309<sup>95</sup>

All 3 Stores Open Till 9:00 P. M.

7208 Pacific

Downtown  
13th & K St.  
BR. 0386

Hillside 9556

Lakewood  
Center  
9133  
Gravelly  
Lake Drive  
LA 5251



Store Hours . . .  
9 a. m. to 5:30 p. m.  
Monday Evening until 9

**1st Anniversary Celebration**

Oct. 30-31-Nov. 1  
Open Evenings Oct. 30th  
and 31st until 9 p. m.

**Special Values**  
Free Apple Cider  
Crackers and  
Cheese

COME ON OVER AND  
JOIN THE FUN

**DUNCAN CRYSTAL**

Compots, Relish Dishes and Bowls

Special Values 1.75 to 3.95

**CRYSTAL SALT AND PEPPERS**

Gift Sets of 4

Special 1.25

Don't forget to see our Vernon  
Ware . . . Special Offer Dinner  
Ware Sets . . . 16 pc.

Desert Bloom, reg. 16.95 . . . 13.95

Mayflower, reg. 13.95 . . . 11.95

**Aids to Kitchen Mechanics . . .**

Flint Stainless Steel Slotted Spoons  
. . . Hamburger Turners or Racks

Reg. 1.95 ea. . . special 1.29 ea.

**Pure Silk Hand Rolled Hem Scarves**

Assorted patterns and colors. 30 inch squares.

Special, 3 days only, 69¢ ea.

**NYLON TRICOT SLIPS**

Reg. 2.25 . . . special 1.97

**SPORTS**

By Rog McDonald

**U.S.C. Stops Bears**

Jess Hill and his rugged USC Trojans stopped the University of California Bears cold Saturday and in doing so almost cinched the Coast Conference title. The 10 to 0 Trojan victory was a mild upset, especially in the respect that this was the first game since 1947 in which the California Bears have been unable to score points in a game. The USC defensive unit is by far the best team in the country. It is very seldom a school finds such a group of rough and tough big boys such as Hill has assembled in this unit. There are no great stand-outs among this defensive team, but every one of them are tough to go around, over or through. If the USC squad should represent the coast in the Rose Bowl, the Big Ten team will be in for a rugged afternoon of football.

**Huskies Click for Win**

Husky quarterback Don Heinrich led his team to a brilliant upset victory over Stanford by a 27 to 14 score. Using good field strategy, Heinrich mixed his passing and running plays and kept the Indians completely baffled for the first three quarters of the game. In the fourth quarter the Stanford team took to the air and managed to score two touchdowns, but the Huskies had piled up an advantage and their victory was never in danger. Nugent, Kyllingstad and Lariza, the Huskies' running attack, ripped off 189 yards for one of the best showings on the ground by the U. of W. this year. George Black, the big end, was Heinrich's main target during the game and hit him repeatedly with passes for good gains.

**Rockets Start to Move**

As predicted earlier by Coach Muzz Patrick, the Tacoma Rockets have started to move up the ladder in the Western Hockey league standings. Proving Patrick's theory that he has a high scoring team, the Rockets peppered the Victoria net for 7 goals in their victory over the strong Canadian sextet. The steady, capable Wingy Johnston is playing brilliant hockey and is the key to the success of the Tacoma team. Several of the younger players are rounding into shape and will be a big help very soon.

**Few Deer Taken**

The 1952 deer season has been one of the most disappointing for the local hunters in many years. Due to the dry weather, most of the areas where the hunters usually have good hunting were closed until the last few days of the season. Even after these areas were reopened, the deer were very scarce. Due to the few deer taken so far, Governor Langlie is considering an extension of the hunting season. An announcement from his office is expected early this week.

**Troy Fumbles**

I am not sure whether the following paragraph should come under the heading of sports, but our present Attorney General, in my opinion, is a poor sport, so I will include my remarks under this heading. It is certainly a shame when a state officer holder stoops as low as did Smith Troy to try to salvage a hopeless victory

in the coming election. Until the present underhanded sneer against his opponent, Don Eastvold, I had felt that Mr. Troy was a man of fine reputation and a man the people could trust in this high office. Evidently, like a lot of other people, I have been ignorant of the true caliber of his character. Any person who would dig as deep into his bag of lowly tricks as did Mr. Troy, and I might also add the Yelle clan, is not deserving of the support of the people. If Mr. Eastvold was not entitled to receive a veterans' bonus, which is a matter to be decided, then it shows us the

need for better management in Olympia, since this case, along with several thousand others, should have been acted upon some time ago. I, for one, would like to see some new faces in Olympia, especially in the Attorney General's office and in the office of the state auditor. The odor is terrific.

Free Pickup and Delivery  
**GR 5361**  
**College Cleaners**  
11416 So. Park Ave.

RE-ELECT



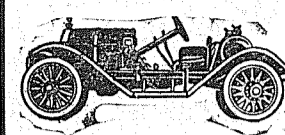
Z. A.  
**VANE**  
DEMOCRAT  
Your State  
Representative

29th DISTRICT

★ ★  
TRAINED for the Job . . .  
EXPERIENCED

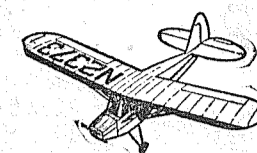
JOIN THE BOOSTERS

! START YOUR HOBBY TODAY !



RACERS EARLY  
AND LATE MODELS  
Wide selection to  
choose from.

PLANES . . . all makes  
and models.  
ACCESSORIES  
PARTS



TRAINS . . . BOATS . . . CRAFTS  
For Christmas . . . Make Someone Happy with a Hobby

Quality Hobby Supplies

**THE MODEL SHOP**

915 TACOMA AVE. SO.

BR. 2562

Patronize Your Advertisers

SEPIE'S  
**\$300,000**  
ANNUAL INVENTORY REDUCTION  
**SALE**

SAVE  
UP TO  
**50%**

New, clean merchandise . . . at lower prices than so-called distress sales . . . Sepie's are always lower in price . . . Now is your chance to make further savings . . . Below are a few sample items . . . Many more thru-out all 3 stores . . . Come in and shop all departments . . . Open till 9 p. m. every night except Saturday open till 6 . . . Terms? Tell us how you want to pay and we will try to meet it within reason.

ODDS AND ENDS  
**CHROME CHAIRS**  
4.95

Administer 9x12  
**WOOL RUGS**  
59.50  
Reg. 74.95

**BOX SPRING**  
or Spring Filled  
**MATTRESS**  
Reg. 34.50  
22.50 each

**COLEMAN OIL HEATERS**  
30% OFF

**DAVENPORT & CLUB CHAIR**  
199.95  
Regular 224.95

2-PIECE  
**SECTIONAL**  
99.95

**DAVENO AND ROCKER**  
119.95

**KELVINATOR MDL KT REFRIGERATOR**  
2-door with Deep Freeze compartment  
\$100.00 TRADE  
You pay only \$349.00

**BABY CRIBS**  
All Hardwood  
24.95

**LAMP SHADES**  
97¢

**ROLLAWAY BED**  
COMPLETE  
49.95

**EASY SPINNER**  
Deluxe  
\$30.00 for Your  
Old Washer  
You Pay Only \$189.95

**FREE 32 pc. SET. DISHES**  
With Any Chrome Set

**DAVENO AND ROCKER**  
144.95  
Regular 169.95

**TELEPHONE GOSSIP BENCH**  
14.95  
Regular \$24.95

**MONITOR DELUXE WASHER**  
50% OFF

**LAMP SHADES**  
3.99  
Regular \$6.95

**FREE TURKEY**  
with  
**KELVINATOR**  
30-in. ELECTRIC RANGE

**FLOOR LAMPS**  
8.95

LIMITED QUANTITY  
\$30.00 for Your  
Old Washer  
ON NEW  
AUTOMATIC WASHER

**SHOP ALL 3 STORES**

7208 PACIFIC AVE.  
ON MOUNTAIN HIWAY  
HI. 9556

13th & K Sts.  
DOWNTOWN  
BR. 0386

LAKWOOD  
9133 GRAVELLY LAKE DR.  
LA. 5251

OPEN EVERY EVENING TILL 9 . . . SAT. TILL 6

EASY TERMS  
EASY PARKING  
AT  
ALL STORES



All Sales Final  
WONDERFUL  
VALUES  
IN ALL  
DEPARTMENTS

**Tic-Toc JEWELRY**  
10331 Pacific Ave.  
Repairing of Fine Watches  
Our Specialty

**The Newest of JACKETS**  
100% Dupont Nylon  
Water Proof  
Warm  
Lightweight  
For Men & Boys  
**HIWAY VARIETY**  
7025 Pacific Avenue

**Complete Overhaul**  
6 Cylinder  
Motors  
Only \$64.95  
Gas at Competitive Prices  
**BOB'S PLACE**  
Airport Road & J. St. GR 3395  
18 Years in Parkland

**VACUUM CLEANERS**  
10-Day Money Back Trial  
Free Home Demonstration  
Good Cleaners  
Popular Makes  
\$6.95 & Up  
Terms  
Hurry! Supply Limited  
**KIRBY CO.**  
3804 Portland Ave. HA 9587



**SERVE**  
**Delicious Meals**

S & W 46-Oz. Blue Bag. Its Delicious Lb.  
**Grapefruit Juice . 25c**

Wesco 2 1/2-Tins  
**Pumpkin . . . . 16c**

**COFFEE... 79c**

**We have Cider**  
1/2 Gals & Gals.

**Spaghetti Dinner . . . 39c**

Large Selection of **Halloween Candies**  
For Trick or Treat

Shoulder Lb. Olympic 22-Oz. Jar  
**PORK ROAST 49c** **Mayonnaise . . . 55c**

Sliced Lb.  
**Bacon . . . . . 39c**

**Waller Road STOP-N-SHOP**  
64TH & WALLER RD. PHONE GR. 5362  
PRICES EFFECTIVE OCT. 31st & NOV. 1st

**Last Sermon**  
Robert Bodin, pastor of the Harvard Covenant church, 84th St. and Portland Ave., for the past four years, preached his last sermon there Sunday. He is leaving this week to accept a pastorate at Billings, Mont. Donald Bruckner of Seattle will serve as interim pastor for the church until a permanent pastor is appointed.

**This Is Not Political Campaign Talk**  
**THIS IS THE FACT. We will give you \$100.00 for your Old Refrigerator**  
If Running, On A New TCAD-12 Crosley Shelvador, or \$90.00 On Models DAD-105 or CAD-105

ACT NOW  
Low Easy Terms  
TELEVISION SALES and SERVICE

**PARKLAND - BROOKDALE ELECTRIC**  
13022 Pacific Ave. Granite 5689

**THERE'S BEEN SOME CHANGES MADE WE HAVE**  
**MOVED**  
TO  
13022 PACIFIC AVENUE  
(Parkland Brookdale Electric Bldg.)

**WE HAVE**  
**CHANGED Our NAME**  
TO  
**JACK'S T.V. & RADIO REPAIR.**  
Formerly  
Garfield St. TV & Radio 528 Garfield St.

**Vote Against the Puppet Candidate**



Congressmen who renounce their own convictions to respond to every pull of the administration's strings don't make "great" senators. Congressman Jackson's record shows that he has consistently gone along with Truman and Secretary of State Acheson. All they have to do is pull the strings and the puppet Congressman does their bidding.

Let's vote to re-elect a fighting senator. Senator Harry Cain has always stood by his convictions and fought for what is right. Senator Cain is well qualified to represent the people of Washington.

**Let's End the Mess in Washington By Voting for Ike, Nixon and Cain.**

This advertisement paid for by Friends of Harry P. Cain, James P. Hunter, chairman

**WALLER ROAD NEWS**  
There will be an all-community Halloween party at the Waller road hall Friday evening, Oct. 31, beginning at 7:30 o'clock under sponsorship of the Waller Road Grange. In charge is Mrs. R. L. Fogle and Mrs. R. Geise, assisted by a capable committee. Any mothers who will assist during the evening in game planning, etc., will be greatly appreciated. Don't send the children—come along with them! Come masked if you choose.

**Shaking Hands**  
with  
**Don Eastvold**

This being my last column in this very heated campaign, I want to express my appreciation to Jack Brown and Clarence LaCrosse for their generosity in allowing me to use the columns of the Times-Journal to keep my friends informed of our activities. I want to also express my deep appreciation to all of the loyal friends in the south end area who have contributed of their time, money and effort to help us make this campaign a success.

I plan to make another state-wide broadcast Friday evening, Oct. 31. I intend to discuss the issues as I see them in my own campaign.

I sincerely believe that some great decisions will be made next Tuesday that will have a lasting effect upon the picture of our country. We can all do our part in these next few days by advising our friends and neighbors of the true facts as we know them to be.

**Retain**  
**LEE L. DOUD**  
**PORT Commissioner**

- Lee Doud is personally capable, competent, clear-thinking and far-sighted. His reputation and integrity are beyond question.
- Lee Doud knows waterfront conditions and shipping problems through a lifetime career in the local lumber business.
- Lee Doud has already had on-the-job experience. Since he has been on the Port board, the Industrial Waterway has been extended, and \$250,000 budgeted and bids called for the new fish boat haven.
- Lee Doud is in agreement with his fellow commissioners for greater port and industrial development, and for an expanded public relations program.
- Lee Doud is willing and able to continue giving his full services, in the public interest, without cost to the taxpayers. He endorses a "No" vote on the new \$3,000 salary proposal.


**The Port of Tacoma is Pierce County's Multi-Million Dollar Business**

**Retain**  
**Lee L. Doud**

NON-PARTISAN ON THE NOV. 4 BALLOT

(This adv. contributed by friends of Lee Doud in the interest of retaining a good public official.)

**RE-ELECT THOR TOLLEFSON TO CONGRESS**

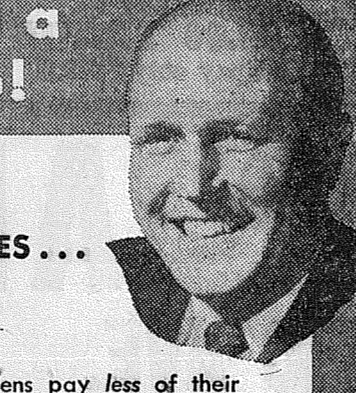


*doing a good job!*

Commended by both management and labor for his work in behalf of Puget Sound Industries.

**Re-Elect THOR TOLLEFSON**  
Paid for by Tollefson Re-election Committee

**He is doing a great job!**




**BETTER SERVICES... LESS COST**

Washington State citizens pay less of their income dollar in state and property taxes than citizens in neighboring western states. Here's what a check of U. S. Census Bureau records shows:

WASHINGTON . . . . .	8.1c
CALIFORNIA . . . . .	9.5c
OREGON . . . . .	9.1c
MONTANA . . . . .	9.3c
IDAHO . . . . .	8.2c
COLORADO . . . . .	9.7c

BETTER SERVICES... LESS COST... means efficient, economical management of your state government.

**RE-ELECT LANGLEIE GOVERNOR**  
**REPUBLICAN**



**Rep. Kenneth H. Simmons**

**VETERANS**  
Simmons has a perfect record for Veteran's Legislation. He has worked hard to better ORTING Soldier's Home. HE was the sponsor of our Vet's Physical Therapy Program. He was one of the Leaders that got Orting's 1951 budget back to normal after drastic cuts had been made.

**PUBLIC SERVICE**  
Served 2 terms Councilman at Milton  
Served 3 terms as Mayor of Milton  
Served 2 terms as Police Justice  
Served 3 terms as State Representative  
Now serving as Mayor of Bonney Lake

**CIVIC SERVICE**  
President Improvement Club  
President Sportsmen's Club  
President Puyallup Eagles  
Volunteer Fireman  
Master Summer Grange

**THOSE WHO KNOW HIM BEST**  
Rep. Kenneth H. Simmons has lived in Milton for over 40 years and Bonney Lake for the past six years. Here is the tribute paid him by those who know him best.

**MILTON**  
Simmons ..... 156 votes  
Closest opponent ..... 80 votes

**BONNEY LAKE**  
Simmons ..... 82 votes  
Closest opponent ..... 23 votes

**An Open Letter**  
Dear Friends and Voters:  
I thank you, my many friends, for the privilege of serving you as one of your TWO State Representatives at Olympia. I pledged to you in the primaries that I would carry on a clean campaign for re-election and I have kept this faith with you. I have nothing but a good word to say for each and every one of the candidates for the legislature. If I am successful in my bid for re-election I will work for you with whomever you send to represent you. I know that most people would not tolerate a campaign based on personal prejudices, petty politics and character assassinations. I am trying to outline my idea of a constructive program to you, the same as each of the other candidates have. Will you read it, study it and if it meets with your approval, will you help me to further serve you by voting for me on November 4th.

Thanking you again,  
Your State Rep. Kenneth H. Simmons.

**Do YOU WANT NEW TAXES? IF NOT...VOTE "AGAINST" INITIATIVE No. 184**

**Requires New Taxes**  
There are many reasons why Initiative No. 184 should be voted down. The most urgent of these is that its enactment will require new taxes which most of us do not have the money to pay.

**Increases Costs \$80 Million.**  
Initiative No. 184 proposes the spending of an additional \$80 million for welfare; money the state does not have. The state cannot use any of its trust funds without impairing the reserves for schools or undermining the insurance funds set aside for injured workmen and the surviving widows and children of injured workmen. The state can get this money only by imposing on us new and higher taxes. These new taxes will amount to at least \$50 per year for every wage earner. Under recent Supreme Court rulings about the only major revenue source left open to the state is an increase in the sales tax. It would require another cent of sales tax to raise the additional \$80 million necessary to finance Initiative No. 184. After paying what is already the highest tax bill in the country how many—or how few—of us have anything left over to pay new taxes?

**Initiative No. 184 Is Dangerous**  
Initiative No. 184 is a real danger. It is not just a political threat that can be dismissed lightly. We know this from experience because we faced the same issue only four years ago when Initiative No. 172 was pending.

**Damages State Finances**  
In 1948 the state was in sound financial condition. It had a cash surplus of more than \$32 million. But Initiative No. 172 was on the 1948 general election ballot, a measure which required the state to increase its welfare spending \$75 million. Public warnings as to the dangers of this proposal went unheeded and it was enacted. By the end of 1950, despite desperate legislative efforts to close the flood gates, the \$32 million balance had disappeared and the state general fund had a deficit of almost \$50 million.

**Must Pay For Past Mistakes**  
By 1950 we had recognized the threat of Initiative No. 172 to our economy and had taken two steps to meet the danger. We had rejected Initiative No. 176, a measure designed to perpetuate the excesses of its predecessor, and approved Initiative No. 178, a measure restoring reasonable controls to the welfare program. This action, however, has not saved us from paying for our past mistakes. The 1951 legislature found it necessary to impose \$20 million in new taxes to keep the state solvent and even these new taxes have not made possible any major reduction in our general fund debt. We have some \$40 million of Initiative No. 172 costs yet to pay.

**Vote Against Initiative 184**  
Initiative No. 184 is more costly in many ways than Initiative No. 172. It proposes a \$75 monthly floor under welfare payments as compared with \$60 in the earlier measure. Department of Social Security estimates that Initiative 184 will increase welfare costs \$80 million during the next biennium appear conservative. Only new taxes can supply such a sum. Unless you have plenty of money left over after meeting your present tax bill.

**The Dollars Saved May Be Your Own**

**Vote "AGAINST" Initiative No. 184**  
**WASHINGTON CONFERENCE ON STATE FINANCE**

**SEWING MACHINES**  
Reconditioned Singer Portables . \$24.50 up  
Recd. New Heads in New Desks . \$49.50  
**McCLANAHAN'S**  
PHONE L.Akewood 4100

**LABOR SPEAKS**  
● AMERICAN FEDERATION OF LABOR ENDORSES SIMMONS FOR RE-ELECTION.  
● TEAMSTERS' UNION SUPPORTS SIMMONS FOR RE-ELECTION.  
● C. I. O. ENDORSES SIMMONS.  
● WASHINGTON MACHINISTS' COUNCIL URGES SIMMONS' RE-ELECTION.  
● RAILWAY BROTHERHOOD ENDORSES KENNETH H. SIMMONS UPON HIS EXCELLENT RECORD IN BEHALF OF LABOR.

**SIMMONS LEADS GAME PROGRAM**  
As Chairman of the Game Committee, he personally donated "free of any charge" a Public Free Fishing Area on Bonney Lake. He introduced and secured passage of our Game Land procurement program, our Public Shooting Areas, and personally introduced bills that brought hundreds of thousands of Federal dollars to Washington for Game and Fish.

**100% FOR TEACHERS AND EDUCATION**  
Rep. Kenneth H. Simmons will always be remembered by the teachers and educators in our state for he was one of the CO-SPONSORS of the original Teachers' Minimum Salary Law. This was back in 1937 session. Throughout the years he has been an ardent supporter of school legislation. At the last session he introduced the Bill to aid our schools for capital outlay. Our schools need men like him in Olympia.

**AGRICULTURE AND SIMMONS**  
Rep. Simmons is a Grange-master and works closely with the Farm program. He was the Sponsor and Leader for our Experiment Station Act. Thru his efforts at the last session of the legislature our Puyallup Experiment Station received \$87,000.00 appropriation for land procurement. Let's keep him in Olympia to keep up the good work for our agriculture program.

**SIMMONS WORKS FOR FIREMEN AND POLICE**  
Rep. Simmons is an ardent supporter of better conditions for our firemen and police depts. He sponsored the Firemen's Civil Service Act. Also the Police Pension bill.

He is PLEDGED to work for a County Employee's Civil Service, including ALL employees. He is 100% for a Statewide Civil Service and Merit System.

**REPRESENTATIVE SIMMONS A LEADER FOR OUR STATE INSTITUTIONS**  
REP. SIMMONS was the man who introduced our State Employee's Retirement Act at the last session of the Legislature. He will extend every possible effort to bring about better working conditions and more equitable salaries for employees. He favors and will work for Statewide Civil Service Act and Retirement programs.

Help us to get better conditions by RE-ELECTING OUR PRESENT STATE REPRESENTATIVE KENNETH H. SIMMONS.

**SIMMONS HELPS ROAD PROGRAM**  
Rep. Kenneth H. Simmons of the 25th District of Pierce County can be credited with a great effort to secure an adequate Highway Program. He was the Sponsor of the S U M N E R - B U C K L E Y Highway. Rep. Simmons, as co-sponsor of the Primary and Secondary Highways that were included in our important 15-year Highway Program. This included Tacoma to Milton, Tacoma-Puyallup River Road widening, Milton to Edgewood, Airport Road, Meridian Street in Puyallup and others. Rep. Simmons is pledged to work for the continuation of State Highway direct thru Graham from Puyallup to the Mountain. He has and is working for the Cascade Tunnel. He worked and assisted in the Buckley to Rainier School Street. He will extend every effort to finish the Milton Highway.

(Paid Advertisement)



VOTE FOR  
FRANK L.

**Quinn**  
REPUBLICAN



HE'LL SERVE YOU BEST AS  
**COUNTY COMMISSIONER**  
1ST DISTRICT

**MIDLAND NEWS**  
Beverly Corrigan — GR 8545  
Halloween Party  
The Halloween party for the grade

**AL Canwell**  
REMEMBER!  
This time you vote for 2  
Your Congressional  
District Candidate  
✓ **AL CANWELL** for  
**CONGRESSMAN AT-LARGE**  
REPUBLICAN

**BULLDOZING**  
Ken BROWN and Bruce GAMBILL  
1750 9th St. S. W. Puyallup  
Basements - Backfills - Driveways  
Clearing - Leveling - Etc.  
Fill Dirt - Gravel - Top Soil  
Dozers—Large and Small  
ESTIMATES Cheerfully Given  
PH. PUYALLUP 5-2452 or 5-5487

school children from the 1st through the 5th grades will be held at the Midland Community club hall Friday evening, starting at 7:30. This annual party for the Midland children is sponsored by the Midland Community club, the Harvard-Midland P-TA and the merchants of the community which include Portland Avenue Gas, Jones Grocery, Lindstrom's Furniture, White Grocery, Heath and Bagley, Baskett Lumber Co., Walker's Tavern, La Vaquer's Variety, Cole's Lockers, Eleanor's Cafe, Frank Gural's Shoe Store, Roley's Insurance, Roy Christensen's Shell Gas and Oil, Airport Station and Midland Thriftway. A technical movie, "Who Killed Doc Robin," and two comedies will be shown after which those attending will be served treats and cats.

The school bus will bring the children to the party and take them home again. General chairman of this party is Mrs. Harold Stavig and she will be assisted by Mesdames Eva Mann, Roy Christensen, F. C. Wagaman and Edward Jackson. A big vote of thanks goes to all those contributing towards this entertainment for the community children and also for all those who worked so hard to make this a success!

**ALONG THE ST.**  
(Continued from Page 1)  
to now when the district employs 116 teachers.

One of the most amazing things of this phenomenal growth and the end results of having such a fine high school is the small amount of money which the residents have actually put into this huge project. Consider this . . . only about 4.3% of all the one and one-half million dollars of the project have been paid for by the taxpayers of the Franklin Pierce district. This has been possible because of state and federal funds obtained by your board and superintendent at great personal work on their part.

I don't want to scare you with a lot of figures . . . I have a reason in giving you those that I have, however, because I want you to think a bit before now and November 4th when you go to the polls to vote for many issues, many office seekers and many requests for bond issues.

On that ballot for voters of the Franklin Pierce school district will be a request for 30 mills for a period of one year . . . These thirty mills are for the equipping of the new schools in the amount of 20 mills which will raise approximately \$100,000 and ten mills for maintenance and operation of those wonderful new buildings which will

Used Sewing Machines  
**\$9.95 & Up**  
**PFAFF SEWING MACHINE CENTER**  
781 Broadway FU 1122

**COMPLETE GARAGE SERVICE**  
AUTO ACCESSORIES  
ATLAS TIRES & BATTERIES  
**ANDERSON Chevron Service**  
176th St. & Mt. Highway  
GRanite 6465

**\$ SAVE ON COAL \$**  
Avoid worry about coal strikes and possible future price increases. Have a good supply of coals on hand NOW! Quality is at its very best.  
The best Wyoming and Utah Stoker Coals.  
Aberdeen and King Utah.  
Lump—Utah or Wyoming, your particular size.  
Nut—Double-screened clean.  
Gasco Briquettes, leave no ash.  
Presto-logs—Long burning, clean.  
**PACIFIC MUTUAL FUELS, INC.**  
(Est. 100 years in 1990)  
STOVE & DIESEL OIL  
Fuelphone MA. 1137—401 E. 11th

The teachers of Franklin Pierce school districts are supporting Pearl Wanamaker because of her contributions to education: an economical, yet superior building program; a continually increasing support of teacher's training and financing.

Good schools reflect on the community. As community members we urge you to support Pearl Wanamaker, State Superintendent, Public Instruction.  
R. J. Haglund, D. Schafer, R. Jacobs, R. Winters, L. Spitzer, R. C. Moon, L. P. Gregory, B. F. Young, M. P. Phillips, E. L. Adams, Gladys Carlson, Ella L. Olson, Thomas B. Wilson, Louise Lorenz, Jacqueline Munson, Ordelle Lee, Betty Olell, Delores Randolph, Pearl Clothier, Irene Corbin, C. R. McMillan, Ida Bernsten, Elsie O. Blandau, June J. Walter, Helen Turner, Burnice Reynolds, Robert C. Richardson, Anne Bray, Arnold Tommervik, E. Emerson, Francis Searce, Frances Johnson, Frieda Blandau, Mae Kittleson, Gladys Mailand, Almira Norton, Ruth Rogers, Wesley Anderson, Ella Williams, Georgia Stay, Carl Colton, Mabel Galbraith, Virginia Seaburg.  
Robert J. Brass, John M. Leque, Nina Larson, Ester Lamb, Myrtle Larson, Russell D. Fulkerson, Ruthmarie Tennent, Gertrude I. Anderson, Nancy Lee Darr, Mary Weeks, Lila E. Boynton, Elizabeth Stolen, Carolyn Winters, Victoria Sanerud, Wesley G. Benson, Charl Mansen, Lyle Catt, Hazel I. Schmalte.  
Ervin E. Dammell, Edward L. Brown, Vincent D. Keyes, June Fulkerson, Barbara Carr, Helen H. Tate, Lois Teterud, W. R. Currier, Leo V. Gaume, Geo. Baras, N. Haagen, I. Nelson, R. Bischoff, Mrs. Gunnette, Lester Storaasli, Blaine McKanna, G. B. Walter, Floy Mitchell, Hal Evans, R. G. Hellbaum, Ruth E. Shaff, Charlotte Schnueger, Pauling Gaupp, Esther Jacobs, Beatrice Childers, Elizabeth Burlingame, Leona Hinkley.  
(Paid Adv.)

Thursday, October 30, 1952 THE TIMES-JOURNAL 5  
raise approximately another \$50,000. These amounts are urgently needed if we are to continue to take advantage of the existing facilities. We have the buildings practically without cost . . . now we need to equip them and then maintain them.

**RURAL GARBAGE SERVICE**  
GR. 3713  
Serving Parkland, Lakewood, Midland, Summit, Spanaway and Lakeview—Pierce county permit.

**WELL DRILLING**  
Berkeley Water Systems  
Capable, Experienced Drillers  
Nothing Down—3 Years to Pay  
**Cascade Pump & Drilling Co.**  
Phone GR. 3141 or GR. 5874

**Change To Progress**  
Elect  
**HUGH B. MITCHELL**  
Democrat  
Governor

**BULLDOZING**  
Large or Small  
Gravel - Fill Dirt - Top Soil  
Ed Van Antwerd GRanite 3161

Pierce County  
**Refuse Co.**  
Weekly GARBAGE Collections  
Phone GR. 8683

**THEY DO IT IN NEW YORK!  
WHY NOT HERE IN WASHINGTON?**  
Today in New York State, at the insistence of that State's Insurance Commissioner, individual passenger auto owners are now buying insurance on a preferred risk rate plan, designed to reward the accident-free drivers with lower rates.  
The same plan was offered to Washington State but the 20-year Democrat incumbent has neither accepted it nor offered a substitute program of his own.  
Change to an energetic insurance commissioner—Fred Becker, a career insurance man—who will provide real leadership in solving insurance problems . . . who will work for adoption of a sound plan for rewarding accident-free drivers with lower auto insurance rates!

**Vote for Fred G. BECKER**  
REPUBLICAN  
INSURANCE COMMISSIONER  
27 YEARS SUCCESSFUL EXPERIENCE

A SHIPPING MAN FOR A SHIPPING JOB

**MORT WOODWARD**  
**PORT Commissioner**

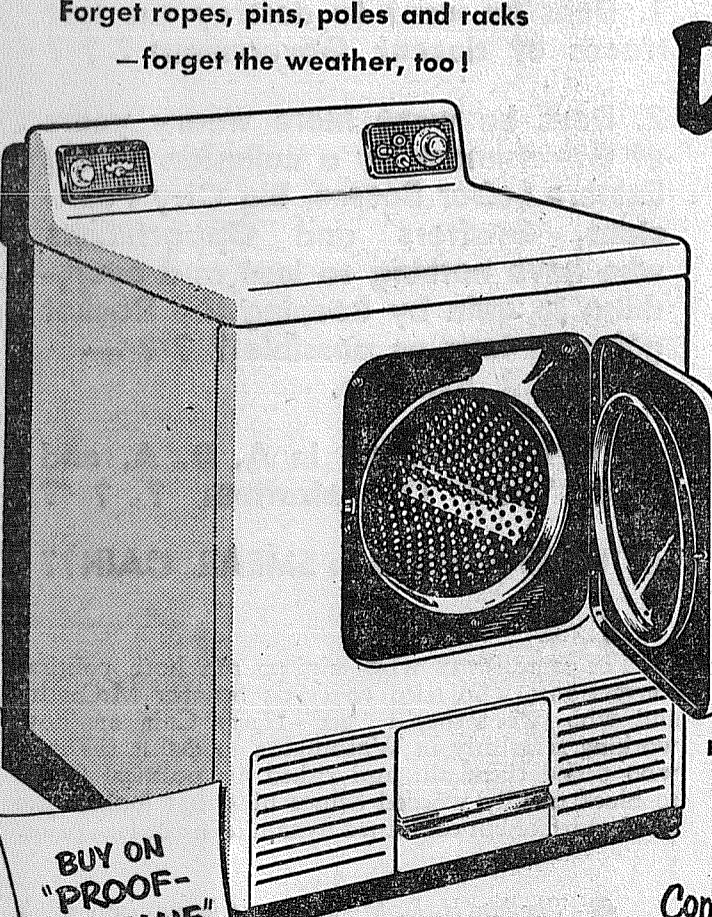
The only all-around experienced shipping man running for this important office.  
World War II Veteran  
25 years experience in dock Operation and management.



Non-Partisan Pierce County Election November 4th

Now! Clothes-drying's the easiest job of all!

See the **NEW** and Different **FRIGIDAIRE** Filtra-Matic **DRYER!**



Won't throw off sticky heat and lint!  
This sensational Frigidaire electric clothes dryer fits anywhere in your home! It won't throw off humid heat. And it won't eject sticky lint. The Filtra-Matic Dryer does its job without plumbing or venting—dries clothes without work or worry!  
**The ONLY DRYER with Cabinet and Drum finished in LIFETIME PORCELAIN!**  
Protects against moisture, rust, stains and scratches. Easy on clothes. Stays new-looking for years!

Perfect mate to the FRIGIDAIRE Washer—plan to own the "Porcelain Pair"!

Come in—demand proof—be convinced! Ask for a **FREE Demonstration Today!**

**\$24975**

NEW LOW TERMS

**Sigler's**  
HARDWARE

8044 Pacific Ave.

HA. 4123

OPEN 24 HOURS A DAY -- 7 DAYS A WEEK

FILL YOUR FREEZER WITH FROZEN FOODS!  
**Libby's** ORANGE JUICE 2 For 29c  
LEMONADE TENDER PEAS CUT CORN

Libby's, 46-oz. tin TOMATO JUICE 4 For \$1.00  
Libby's, 46-oz. tin GRAPEFRUIT JUICE 4 For 1.00

Durkee's MAYONNAISE Full Quart 55c  
BISQUICK Large 4 Oz. Pkg. 39c

FOR MEATS YOU CAN ALWAYS DEPEND UPON—YES, PARK 'N SHOP MEATS  
Tender Swiss Steak Pound 59c  
Armour Star, 4/6 lb. aver. Boston Butts Lb. 49c  
Black Hawk, 12/14, half or whole Lb. Hams 59c  
Boneless Beef Stew Lb. 59c

Centennial PANCAKE FLOUR 4 Lb. Pkg. 45c  
Lumberjack, 24-oz. SYRUP Bottle 29c

Play Fair DOG FOOD 6 Cans 50c  
Lipton's TEA BAGS 100 Env. 97c

Libby's, Section GRAPEFRUIT 6 For \$1.00  
Red Shield BUTTER Lb. 77c

Cough Drops 4 Pkgs 15c  
HALO SHAMPOO 2 For 69c

VICKS RUB 33c  
25c Anacin 19c  
WITH COUGH SYRUP FREE

TRICK or TREET  
HERSHEY BARS 2 Bars or Pkgs. 7c  
WRIGLEYS GUM

Hawaiian PUNCH 49c Pt. 79c Pt.  
Blue Bell POTATO CHIPS Reg. 39c 35c

Snowflake CRACKERS 2 Lb. Pkg. 39c  
Hubbard SQUASH Whole or Piece 2c lb.

ALT HEIDELBERG RAINIER OLYMPIA BEER Case 24 Strubbies \$2.89

Stamped PILLOW CASES \$1.39  
Reg \$1.15 to \$1.29 NYLONS 3 Pair \$2.89

**PARK 'N SHOP** SUPER MARKET  
98TH PACIFIC  
PRICES EFFECTIVE THURS., FRI. AND SAT., OCT. 30, 31; NOV. 1—24 HOURS A DAY  
MAKE PARK 'N SHOP YOUR ONE-STOP SHOPPING CENTER  
EVERYTHING UNDER ONE ROOF FOR YOUR CONVENIENCE

Large variety of good beers and wine — largest display of magazines in Tacoma — household hardware — gifts — seasonal and variety Hallmark greeting cards — a complete drug department — good restaurant featuring home cooking — Sherwin Williams paints and Kem-Glo — good line of sugar-free and diabetic foods — many imported fish and cheese foods. Good line of children's toys and books.

OPEN 24 HOURS A DAY -- 7 DAYS A WEEK



# GET READY FOR WINTER

FOR STOVE AND DIESEL OIL DELIVERIES \* COMPLETE AUTOMATIC FILL UP SERVICE

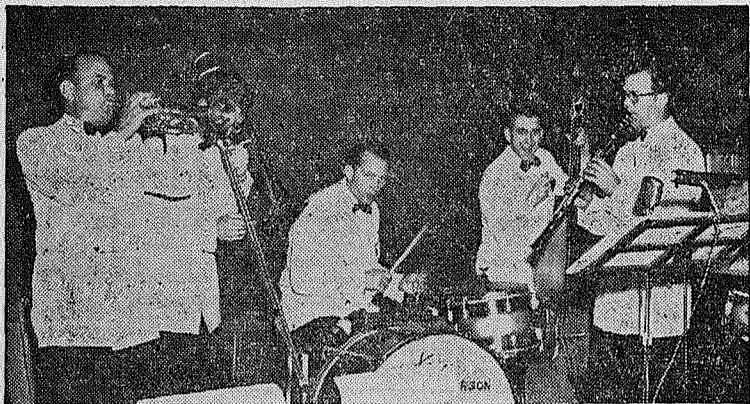
Call **GR 8624**

**POCHEL** DISTRIBUTING COMPANY

140th & Pacific Ave. GRanite 8624



THE TIMES-JOURNAL Thursday, October 30, 1952



**Featured Attraction** at Lee and Ruby Edwards' Pavilion-Niterite, Lake Lawrence, every Saturday night from 9 to 2 is the versatile Fritz Peterson 1952 Version Dixieland Band, which stars, left to right, B. McNeil, G. Alshire, Fritz (on drums), O. Phipps, A. Doll and R. Griggs. For further information and reservations, phone Hillside 3271 or Yelm 2222. (Sorry, no minors.) —Adv.

## Pierce County Hospital

**TELEVISION**  
SERVICE & REPAIR  
**McCLANAHAN'S**  
LAKewood 4100

normal. The patient is breathing well but the excited members of the family are walking up and down the hall during the next five minutes, somewhat upset because the patient has not been immediately seen by the doctor on call. However, the situation is well controlled and the nurse is present while the doctor is finishing the injection of the patient with chronic alcoholism. Diagnosis for the young man is not quite as easy but after a careful, complete physical examination it is determined that he has an unusual type of epilepsy. He also has a beginning early pneu-

monia which requires treatment.

While this patient is being examined, a volunteer ambulance arrives at the emergency room door and a patient brought in on a stretcher. The nursing supervisor asks the routine questions regarding identification of the patient who has been brought in following an accident. His pulse and respiration are good and he is somewhat apprehensive and a little excited. Realizing the possibility of more extensive injuries, the nurse asks the house doctor, who is caring for the previous patient, about ordering X-rays. Since the house staff and the nurses, with long working experience as a team, have a very complete understanding, the doctor speaks over his shoulder, giving reassurance that X-rays are advisable. The X-ray technician on night call is summoned by phone.

With two patients already under treatment, the ambulance drivers are asked to stand by for a few minutes. The X-ray technician arrives within 20 minutes after being called. The patient is then transferred to a cart and removed to the X-ray department to make the necessary check for fractures. After the X-rays are taken, to be of any value, they must be developed, thoroughly washed and read. With this preparation and positive knowledge that the patient has not sustained any fractures, the laceration of the forehead is then sutured. During this three-and-a-half hour period, there have been at least four

telephone calls, one from a mother with a sick baby, another from a diabetic patient who is worried about a change of urinalysis noticed on examining the evening specimen, another call from a nursing home for directions as to what to do with a disturbed patient, and at least one or two calls from newspaper reporters inquiring about the condition of the accident victim we were caring for. In talking with Dr. Brady about the patient care in the emergency room at the County Hospital, I have begun to realize that perhaps the preparation of a patient for care and the coordinated team work might perhaps explain why at times it is hard for the layman to appreciate the fact that care is actually underway for the patients from the time of their arrival without any actual knowledge by those who brought the patient to the hospital, as to its relative importance.

witches starts at 7:30 to 11:30. Wear jeans is the warning... also if you are bringing a guest please call Joan Klippen at GR. 6057.

Next meeting of the Parkland Riding club will be on Tuesday evening, Nov. 4, at our new clubhouse at the Horse and a Half Ranch.

**YOUR NEXT FOR THE BEST WILLIAMS BARBER SHOP IT PAYS TO LOOK WELL**

**FENCING**  
Designers and Builders  
Expert Workmanship  
Reasonable Prices  
Easy Monthly Payments  
**VAUGHAN'S**  
HI. 9515 84th & Pacific Ave.

**OPEN SUNDAYS**  
12 to 8 P. M.  
**PARKLAND GRILL**  
Garfield St. Parkland

**VAUGHAN'S VALUES**  
KITCHEN CABINETS — WARDROBE CABINETS  
CUSTOM BUILT IN OUR OWN SHOP  
Quality At No Extra Cost  
STORM DOORS — STORM SASH  
FREE ESTIMATES  
**Vaughan's**  
PACIFIC AVENUE LUMBER COMPANY  
84TH & PACIFIC AVE. PHONE HI 9515

**CHALK-TALK PROGRAM**  
Friday Evening, October 31  
Forrest Potter, leaving Nov. 4 for the mission field in Mexico, will present an interesting illustrated lecture  
**BRING YOUR NEIGHBORS - WIN A PRIZE**  
**CALVARY PENTECOSTAL CHURCH**  
Summit — Corner Airport & Bingham Roads

**BOY'S & YOUTH'S DRESS SLACKS**  
Rayon-Nylon Gabardine  
Size 8 to 12 - \$3.95  
Size 14 to 20 - \$4.95  
**Madden's Men's & Little Men's Shop**  
Parkland Centre Bldg. GRanite 4242

**Mostly About Horses**  
(Continued from Page One)  
from most of the members. Mr. Larry Kirkwood will lend some of his outstanding ability at the mike to the occasion when he emceeds the event for the group. More about this later.  
**Parkland Riding Club Briefs**  
The Parkland Riding club, junior division, will have a post-Halloween party at the Fisch barn out at Brookdale and Waller road on Saturday night. The shindig of goblins and

**Mrs. Thomas A. Swayze**  
REPUBLICAN CANDIDATE FOR LEGISLATURE 26th DISTRICT  
**What You Should Know About Her**  
Lived in Pierce County 45 years  
Housewife and mother of five children  
Graduate of College of Puget Sound  
Active in Civic, Church and Political organizations  
Member of Washington State Council for Children and Youth  
Past State Legislative chairman of Pro-American (Republican)  
Washington State Council of Church Women  
American Association of University Women

## Month End Clearance Sale Savings UP To 50%

	was	NOW
3 Piece Chrome Dinette Set (Yellow)	49.95	29.50
5 Piece Chrome Dinette Set (Grey) Drop Leaf	69.95	49.50
7 Piece Chrome Dinette Set (Grey)	179.95	129.50
1—Love Seat - Opens To Bed	149.95	99.50
3 Piece Daveno, Chair and Rocker	169.95	119.50
2 Piece Daveno and Rocker	249.95	169.50
7 Piece Bedroom Suite (Eastern)	349.95	289.50
5 Piece Bedroom Suite (Olympic)	149.95	89.50
1—Double Dresser and Mirror (Eastern)	169.95	99.50
2—9 x 12 Rugs — (Wool and Rayon)	79.95	54.50
1—9 x 12 Fibre Rug	23.95	18.50
1—Blond Cedar Chest	79.95	59.50
Floor Lamps	9.95	7.50
Table Lamps (Brass)	6.95	3.89
1—Mahogany Kneehole Desk	69.50	49.50
1—Combination Electric Sink and Dishwasher	439.95	250.00
1—54" Cabinet Sink	129.95	99.50
1—Electric Dishwasher (Known brand)	339.95	275.00
2—Murray Electric Ranges	249.95	169.50
1—16" R. C. A. Console TV Set		175.00
1—Used Montgomery - Ward Refrigerator		69.50
1—Used Crosley Shelvador Refrigerator		59.50
1—Used Bendix Automatic Washer (as is)		19.50
1—Used Montgomery - Ward Washer (as is)		10.00
1—Montag Coal and Wood Range		69.50
1—Used Daveno		10.00
Used Davenport and Chair		29.50
1—Used Coronado Oil Circulator		20.00
1—Used Four-Drawer Dresser		5.00
1—4/6 Metal Bed		5.00
2—Used Coil Springs		ea. 7.00
1—Used 9 x 12 Rug Pad		2.00
1—Used 3/3 Mattress		2.00
1—Used 4/6 Mattress		3.00
Twin Laundry Tubs		7.00
1—Used Bathroom Sink		5.00

Save \$50.00 on Installation when you purchase the following TV Sets:

21"—C B S - Columbia Table Model (Mhg.)	359.95
21"—C B S - Columbia Console Model (Mhg.)	339.95
21"—C B S - Columbia Lined Oak Console	449.95
21"—R C A (Lansford) Blond Console	425.00
21"—Sylvania Table Model (Halo-Light)	399.95
21"—Emerson Table Model (Mhg.)	329.95

**FRYE'S FURNITURE, TV, APPLIANCES**  
Parkland Centre Bldg. 450 Garfield St. GRanite 3691  
Open Monday & Friday Evenings Till 9:00 P. M.

**LET'S STANDARDIZE TIME!**

They can't change me. I'm on STANDARD TIME!

**VOTE FOR 181**

End Confusion — Washington NEEDS Standard Time. Join Parents, Labor Groups, Farmers, Theaters, and Transportation Services — VOTE FOR 181! (Paid Adv.)

**Patrick M. STEELE**  
(Republican)  
Sincerely appreciates the vote of confidence given him in the primaries and respectfully asks the voters of the 26th District for endorsement in the finals.  
AS  
STATE REPRESENTATIVE  
Steele pledges to his district honest and conscientious representation on all issues and measures, and a faithful discharge of his duties without fear, favor or prejudice.  
**Vote For Patrick M. Steele**  
Finals Nov. 4  
(Paid Advertisement)

**LOOK SHARP!**

at the man . . . or the cute lady who smears Senator Cain . . . then ask him:

- Does he want to destroy the last traces of decent Government???
- Does he want more weary years of Government by a collusion of big Eastern Labor Bosses, Big City Politicians, Grafters and Opportunists who have nothing to lose and everything to gain by keeping the Racket going as long as possible???
- Does he believe in A. D. A. and other "Front" Organizations???
- WHO told him to SMEAR CAIN??

The same forces who tried to run both political conventions: who tried to defeat Senator McCarthy and who swore they'd "get" Harry Cain are now working feverishly in Washington to defeat the man who defied them all, and risked his political future to block trickily worded Senate bills that looked nice on the surface but contained dynamite in the fine print.

The late H. L. Mencken said it was impossible for a man with high-type character to be re-elected under our present system of mud-slinging. Let's prove it's possible for a man to stand on his convictions — win, lose or draw — AND SEND CAIN BACK TO THE SENATE!

DON'T LOSE SIX YEARS OF PRICELESS SENIORITY THAT WILL GIVE OUR JUNIOR SENATOR TWO VALUABLE SENATE CHAIRMANSHIPS IF WE SEND HIM BACK.  
Cain Associates, Ed Griffin, Chairman

**THE NEED IS GREAT**

THE COST IS SMALL . . .

THE COUNTY NEEDS A NEW BUILDING . . . the Court House was built about 1890, is unsafe, overcrowded and an obvious firetrap.

By combining the County need with the City need

2/3 OF THE COUNTY BUILDING COST WILL BE BORN BY THE CITY OF TACOMA . . . and the cost to the average County home owner will be just 5c to 9c a week on his tax bill. THIS IS THE COUNTY'S GREATEST OPPORTUNITY TO GET A NEW BUILDING AT SMALL INDIVIDUAL COST!

**Vote YES for a New County-City Building on November 4th!**

(Vote YES for County-City Building Bonds, County Proposition No. 1)

**COUNTY-CITY BUILDING COMMITTEE**



**USE WANT ADS**

**2—Auctions**  
**AUCTION SALE**  
 IF YOU want more cash quick, sell by auction. Every Fri., 7:30 p.m. Glen Betts, 8113 So. Tacoma Way. Free pickup service. LA. 8505. 2cft

**3—Business Service**  
**COMPLETE** tractor work. Loosening ground and leveling. Average lawn, \$12.00. Don Abbot, GR. 3846. 3cft  
**UTO GLASS INSTALLED**—Auto Upholstery, convertible tops. MA. 2200, Art's Glass Co., 816 So. Tacoma Ave. 3c50

**Septic Tanks, Cess Pools Cleaned**  
**Contents Hauled Away**  
**HUTSON TANK CLEANING**  
 HI 3980 HA 7038

**SEWERS - SEPTIC TANKS - DRAIN FIELDS - WATER LINES.** City and County Licensed. Free Estimates. - Jim Malony, 3739 1/2 McKinley Ave., Call HA 6351; Eve. & Sat. HA 6068. 3cft

**Wells & Pumps**  
**COMPLETE JOB**  
**36 MONTHS TO PAY**  
 Submersible Pumps  
**CALL TURNER**  
 FU 2400 GR 8108

**SEPTIC TANKS CLEANED**—Contents hauled away. Don Redford, 8232 So. Fawcett, GA. 7354. If no answer call GA. 9222. 9cft  
**HALLOWEEN CAKES** with a spook hat \$1.25; phone orders to GR 3330, Patty Ann Bakery. 15c7

**PLUMBING REPAIRS** — Sewer Cleaning - Electric Pipe Thawing  
**E. M. HAMILTON PLUMBING**  
 Granite 8905

**GARDEN SERVICE**  
**ROD KILLING**  
 Lawn rebuilding, fertilizing, top soil, dressing maintenance. GA. 5885, HI. 2722. 3cft

**NEW LOCATION**  
**PARKLAND UPHOLSTERY**  
 now at  
**12814 Pacific Ave.**  
 Next to Home & Farm Bureau  
 Recovering and Rebuilding Cushions Rebuilt Free Estimates  
**Parkland Upholstery**  
 GR 3201 Res: 3181

**LAND CLEARING** and leveling; reasonable rates by hour or contract. Rt. 7, Box 195-X, GR 4294. 3cft  
**WE BUILD HOMES, remodel;** level buildings; concrete work. Reasonable. GR 3550—3cft.

**DRAINAGE** — Septic tank installation; side sewers; earth work of any type; by hour or contract. Hauser & Seifert. BR. 9141; Res. GR. 8121. 3cft

**Alan's Refrigeration SALES AND SERVICE**  
 House and Commercial Makes Motor Service Washer Service  
 GR. 6662 161st & Pacific Ave.  
 Next Door to Target Sport Store Spanaway

**ROTOVATING, blade work;** no job too small. W. L. Lewis, GR 7492. 3cft

**HOUSE MOVING;** leveling; foundations; cement work; free estimates. FR. 2653. 3cft

**JOE'S Tractor Service.** Rotovating. Ditch digging. Truck loading. Complete tractor work. GR 5932. 1c

**ACE SEPTIC TANK SERVICE**  
 Septic Tanks Cleaned  
**GR. 4343**  
 O. B. ACKLEY HA 5704

**RAY GOGAN LANDSCAPE CONSTRUCTION**  
 General landscaping service — new lawns, peat soil, topsoil, shrubbery, rockeries. Nothing down, 36 months to pay. GR 3127. 3cft

**5—Help Wanted**  
**WOMAN WANTED** for housework and ironing one day a week; Mrs. R. J. Calhan, GR 8152. 5c7  
**BABY SITTER WANTED** — Mrs. R. J. Calhan, GR 8152. 5c7  
**REAL ESTATE**—We have enough work to keep another man busy full time. Come in and talk it over with Mr. Harmon or Mr. Inloes; Suburban Realty, 9920 Pacific Ave., GR 3624. 5c7

**HALLOWEEN CAKES** with a spook hat \$1.25; phone orders to GR 3330, Patty Ann Bakery. 15c7

**6—Lost & Found**  
**LOST** — Buff colored Cocker, 10 months old, children's pet, answers to name Taffy; reward; GR 7272. 6c7  
**FOUND** — Child's wallet; owner call at Times-Journal office, 118th St. and Pacific, and identify, no charge. 6p7  
**HALLOWEEN CAKES** with a spook hat \$1.25; phone orders to GR 3330, Patty Ann Bakery. 15c7

**JOIN THE BOOSTERS**

**2 Bedrooms - \$2850**  
 Owners will trade their equity for an acreage with 3 bedrooms. Not completely modern but a real buy. Call Mr. Inloes, GR 3624 or HA 2547.

**Summit District**  
 1/2 ACRE, corner location; 3 room house, partly furnished. Good chicken house, brooder house and garage. Owner would trade for a 3 bedroom home with less ground. Call Mr. Inloes, GR 3624 or GR 2547.

**1 Bedroom - \$3600**  
**PARTLY FURNISHED;** good well, garage and storage building; picket fence; 4 lots. Call Harmon, GR 3624 or GR 6896.

**Listings Wanted**  
 WE ARE IN NEED of farm listings, both large and small.

**SUBURBAN REALTY**  
 Member Tacoma Real Estate Board  
 9920 Pacific Ave. GR. 3624

**7—Hatcheries**  
**SPECIAL** — About 3000 red cockerels the last of October and first part November, Bc. LaCrosse Hatchery, Sumner. 3-3122 7c7

**8—Wanted to Buy**  
**CASH** for equities. Five Motors, 5026 So. Tacoma Way, HI. 9241. 8cft  
**SPOT CASH** For Your Used Furniture 1 Piece or House Full Block's Furniture Mart 8205 So. Tacoma Way LA. 2882  
**RADIATORS,** scrap iron, junk cars and batteries. Puy. 5-2-41. Hecker, the Wrecker. 8cft

**9—Real Estate**  
**WHEN** you have real estate contract, and prefer cash, see Bratrud. When you have cash and want 5 or 6% interest, buy a contract. Better see Bratrud, 911 1/2 Pacific Ave. 9c7

**FOR SALE** — 2 1/2 acres and warehouse at Midland; call GR 7970 after 6 p.m. 9c7

**Parkland Realty Co.**  
 Insurance of All Kinds  
 Notary Public  
 Est. in Parkland since 1941  
 GR 7232 days; GR 8210 Eve. & Sun. 208 Garfield Street

**CHECK OUR LOW DOWN PAYMENT INSURANCE PLAN.**  
 WE NEED listings of all kinds. Farms, acreage, lots, building sites, homes (new or old, 1, 2, 3 and 4 bedrooms). We have cash buyers waiting.

**TOTTEN REALTY, Inc.**  
 Property Management — Insurance. Notary  
 Member of Tacoma Real Estate Board  
 Office: 328 Garfield St. GR. 3369  
**Homes in Parkland Community;** Acreage close in, either with or without buildings.

**BERT BROWN REALTY**  
 11220 Pacific Ave.  
 Office: Days, GR 3341  
 Evenings, YU. 9221, LA. 3066  
 Agent for American Express Money Orders

**WHY PAY RENT?**  
 I HAVE several one and two bedroom homes priced from \$3000 up that I can sell with low down payment. For more information call Ralph Decker, HA 0365 or BR 0702.

**\$600 DOWN GI EQUITY**  
 THIS is a lovely home priced right at \$8,950; in good district; handy to Mary Lyon or Sacred Heart school. Two large bedrooms with large cedar closets, nice large living room, beautiful kitchen and dining; 4-piece tile bath; utility room; 12x20 garage and a lovely yard; \$1150.00 will take out full equity. Call Rex Rector HA 0365 or HI 8344.

**McKINLEY HILL REALTY**  
 6311 McKinley Ave. GA. 0365  
 Member Tacoma Real Estate Board

**HELP U REALTY**  
 SO. TACOMA SPECIAL  
 CLOSE to bus and school, this dandy 2 bedroom home has tile kitchen, automatic furnace, nice yard, \$7450.00; terms.  
 \$750 DOWN  
 2 BEDROOM HOME; living room; built-in kitchen; on two lots; close to school, buses and shopping. \$7250.00; why pay rent?

**HELP U REALTY**  
 Airport and Leonards Crossing  
 GR 3871 Day or Eve.

**10—Rentals**  
**SLEEPING ROOM** for rent; GR 3503. 10cft  
**HALL FOR RENT** — At 11102 So. Yakima. For information call HI 2439. 10cft

**FLOOR SANDER FOR RENT**  
**PARKLAND WESTERN AUTO**  
 Airport & Pacific GR 3112

**11—Repair Service**  
**WASHING MACHINE PARTS** — Largest stock in town. Repairing that pleases B. B.'s Washer Service, 3722 So. G. A. 5115. 11cft  
**STOVE REPAIRS**—Largest stock in Northwest. Hyder Furnace, 1513 Pacific Ave. MA 4767. Established in 1872. 11cft

**13—Farm Ads**  
**TRACTOR WORK,** leveling. GR. 4282. 13cft  
**CASH** for livestock—beef, milk cows, veal and heifers. W. H. Thackeray, Puyallup, 5-8228 collect. 13cft

**DEAD STOCK REMOVED WITHOUT CHARGE.** Highest prices paid for tallow, hides, grease and bones. PUGET SOUND REMEDIAL WORKS. Phone Lakewood 2434. 13cft  
**WANTED** — Fryers and hens. Top prices paid. GR 3328. 13p7

**12—Used Autos**  
**SELECT Used Cars**  
**WRITTEN GUARANTEE**  
 Don't forget to come in and see the excitingly new Golden Airflyte Nash for '52.  
**TERMS TO SUIT YOU**

- 51 RAMBLER Hard Top \$1895
- 51 NASH States. 4-dr. Custom. Loaded. \$1925
- 52 STUDE 1/2-ton pickup. O. D. Low mileage. \$1695
- 50 NASH Statesman 4-dr. O. D. Weather Eye & beds \$1595
- 49 NASH Amb. custom. Radio, heater, OD. \$1595
- 49 NASH "600" 4-dr. \$1295
- 49 MERCURY Sed. Radio, heater OD, foam cushions, sun visor, turn indicators, and priced at only \$1595
- 48 LINCOLN clb. cpe., OD, R. & H. Loaded. \$461 dn. pay. \$1095
- 48 NASH Amb. 4-dr. \$995
- 48 FRAZER 4-dr. \$995
- 47 FORD fordor. Radio, heater, Columbia overdrive. \$939
- 46 PLYMOUTH 4-dr. \$875
- 46 NASH 600 4-dr. \$795
- 42 NASH 4-dr. \$445
- 42 PONTIAC, only \$195
- 39 FORD 4-dr. \$399
- 37 PLYMOUTH cpe. \$99

**SANFORD - NASH Inc.**  
 Nash in Tacoma Since 1918  
 5815 So. Tac. Way HA 1760  
 722 Broadway BR 0303

**FOR SALE**—'41 Ford coupe, 6 cylinder; best offer takes. Call Graham 7-2100. 12c6

**DODGE 1 1/2 ton truck** sell or trade for pick-up car; GR 3456. 12p7

**USED CARS USED TRUCKS**  
 One Price To Fit Every Pocket Book  
**LUCKY SALES AND SERVICE**  
 135th & Pacific Avenue  
**GR 8688**

**14—Situations Wanted**  
**CHILD CARE** in my home by the day; Woodland & Airport road. GR 3862. 14c8  
**DRESSMAKING & ALTERATIONS** in my home. 702 So. 118th St. Parkland; GR 3216. 14c7  
**CHILD CARE** — Under five; on bus line; GR 3426. 14c6  
**CHILD CARE** — In my home, days. GR 4104. 14cft

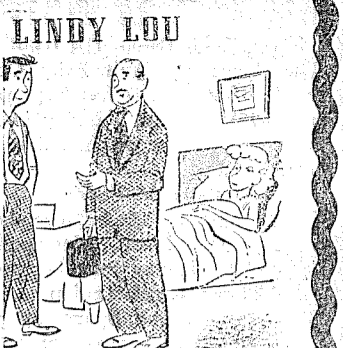
**15—Miscellaneous**  
**FOR SALE** — 1 washer in good condition; 1 small upright piano, first class condition; GR 6338. 15c7  
**FOR SALE** — Fresh Alpine goat, \$30; breeder geese \$5 each; Hotpoint electric range with high oven \$20; O'Keefe & Merritt deluxe gas range, used 6 weeks, cost \$385, sell for \$200; Revnor 5-room circulating gas heater, like new, complete with thermostat, cost \$175, sell for \$100. WA 6448. 15c7  
**TITAN CHAINSAW WANTED**  
 Call HI 2771. 15p7  
**SPARK HEATER,** five room size; converted oil range. Mrs. Phipps, GR 4337. 15p7  
**FOR SALE** — Northwestern strawberry plants, also girls bicycle; GR 7571. 15c7  
**FOR SALE** — Hobart & Cable cabinet grand piano; GR 3864; Rt. 7, Box 94, Tacoma. 15c7  
**HECKER the WRECKER** — Used and rebuilt transmissions, also gears; all makes and models; phone Puyallup 5-2141, days; Tacoma, HI 3242, evenings. 15cft  
**UPLAND WOOD,** 2 cords \$14. GR 3306. 15cft  
**VALLEY TOP SOIL,** rich and black, any quantity. GR 7259. 15cft  
**LEAVE FILM AT Quality Photo Service** for developing. In at 10, out at 5. 9610 Pacific Ave. 15cft  
**SEWING MACHINES** — Lowest prices in Tacoma. Necchi-Singer-White. From \$29.00. Central Sewing Center. 607 So. Pine. MA. 6393. 15cft

**FINE TOP SOIL**  
 Rich and black; delivered. Call Puyallup 5-8228. 15cft  
**WANTED** — Chickens and rabbits. Call us before you sell. Cope's Poultry Market, 7036 Pacific Avenue, Tacoma, Wa. GA. 4406. 15cft  
**FOR SALE** — State inspected Rock Hill Strawberry Plants; GR 6552. W. E. Wilson, Rt. 3, Box 520-G, Tacoma. 15c8  
**FOR SALE** — Henney & Long upright piano, \$100; HI 3767. 15c8  
**FERTILIZER** by yard or sack. GR. 4108. 15cft

**ALFALFA HAY** — By the bale or ton. Grass hay \$1.00 per bale. Will take livestock in trade. Delivery can be arranged. 2nd house past Roy on Mt. Road. 15cft

**PEAT TOPSOIL**  
 5 YARDS \$10; 4 Yards \$8. Finest black peat topsoil, state tested, 1 to 5-yard loads. Lawn construction and rockeries. Evergreen Landscaping Co.  
**HI 7222**

**FOR SALE** — Boy's 27-inch bicycle; excellent condition, \$25; call GR 5344 after 6 p.m. 15cft

**LINDY LOU**  
  
 "Go down to the PARKWAY FURNITURE and get her a new mattress and she'll be well by tomorrow."

**PARKWAY FURNITURE**  
 Open Till 9:00 P. M.  
 Delivery Service  
 141st and Pacific Ave.  
 GR 3941

**HALLOWEEN CAKES** with a spook hat \$1.25; phone orders to GR 3330, Patty Ann Bakery. 15c7  
**WOOD**—Upland slab 2 cords, \$14; planer ends, \$4 and \$8 loads. HI. 4056. 15cft

**FOR SALE** — Boys and girls bicycles, \$25 each; GR 5577. 15cft  
**BABY FURNITURE,** new and used. SMALL FRY EXCH., 1109 Market. 15cft  
**ROTTED COW FERTILIZER**  
 \$1 SACK or by the yard; peat and topsoil. HI. 4056. 15cft

**AFRICAN VIOLET NURSERY**  
 New Crop On Now  
**4 Miles So. of Puyallup TOWARDS GRAHAM**  
 Letourneau's Puy. 5-6844

**TAP, AEROBATIC, BALLET** Classes. All ages. Mildred Keller, GR 7881. 15cft  
**FERTILE,** screened top soil; pulverized peat; 5 foot yards \$8. All Kress, GR 5192. 15cft  
**UNFINISHED furniture.** Hagg's, 1107 Market Street. 15cft

**Tires - Tires - Tires**  
 Buy, Sell and Exchange  
 Quality Recapping & Vulcanizing  
**Auto Tire Service**  
 220 Puyallup Ave., Tac. BR. 1888

**I PAY CASH** for what have you; Dave's Fix-It Shop; 8410 Pacific Ave. 15c9  
**FOR SALE** — Service station cash register, late type, rings up to \$100; also fill dirt, top soil, or peat, \$3.50 up; upland slabs and sawdust; also '41 Plymouth 4-dr. sed., in good repair, and '46 Plymouth coupe, mechanically perfect; best offer; call GR 6520. 15cft  
**SLABS,** 8ft to 16 ft. long, \$1.50 a load, you haul. Tooloes Sawmill, Davis Road, Graham. 15p9

**Rupe Machine Works**  
 Shop GR 7450 - Res. HI 6190  
 Pacific Ave. at Brookdale  
**MOTOR REBUILDING**  
**LATHE & PRESS WORK**  
**PIN FITTING, ROD ALIGNING, PISTON FINISHING, VALVE & SEAT GRINDING, BRAKE DRUM TURNING, HEAD & BLOCK GRINDING, CON ROD GRINDING.**

**SPECIAL** — If you use oil to heat with and live within a 2-mile radius of 100th and Pacific Ave., we can offer you a real saving on your heating oils. Lapenski Fuel Co. 9920 Pacific Ave.; Call GR 8173

**16—Livestock & Equip.**  
**FOR SALE** — Pet nanny goat, solid black color, 18 months old, Saanen and Alpine, ready to breed; price \$10; phone WA 7605; Rt. 11, Box 238, Tacoma, Waller Road. 16c7  
**FOR SALE** — 5 Guernsey heifers, 3 year olds due to freshen in Nov. \$225 each; Harry Moore, Rt. 1, Box 144, Roy; phone Roy 41-R-3. 16p7  
**HORSE SHOING** now available every day. Drop a card to Rt. 1, Box 475, Graham. J. R. Young. 16cft  
**MILK COWS,** sold on terms. Gammon, Rt. 3, Box 703, Tacoma, 4 miles south of Summit. 16cft

**HORSE SHOING**  
 Art Nunn  
 Granite 5346

**REGISTERED** Herefords; cows, heifers and bulls; also commercial Herefords, Angus and Shorthorn cattle. Phone GR 6112. 16cft  
**REGISTERED** polled Hereford bull service. Breed the horns off. Phone GR 6112. 16cft  
**CASH** for milk cows, beef, heifers, veal and hogs. Call R. Thackeray collect, Puyallup 5-5414. 16cft

**FOR SALE** — Henney & Long upright piano, \$100; HI 3767. 15c8  
**FERTILIZER** by yard or sack. GR. 4108. 15cft

**ALFALFA HAY** — By the bale or ton. Grass hay \$1.00 per bale. Will take livestock in trade. Delivery can be arranged. 2nd house past Roy on Mt. Road. 15cft

**PEAT TOPSOIL**  
 5 YARDS \$10; 4 Yards \$8. Finest black peat topsoil, state tested, 1 to 5-yard loads. Lawn construction and rockeries. Evergreen Landscaping Co.  
**HI 7222**

**FOR SALE** — Boy's 27-inch bicycle; excellent condition, \$25; call GR 5344 after 6 p.m. 15cft

**REGISTERED** Herefords; cows, heifers and bulls; also commercial Herefords, Angus and Shorthorn cattle. Phone GR 6112. 16cft  
**REGISTERED** polled Hereford bull service. Breed the horns off. Phone GR 6112. 16cft  
**CASH** for milk cows, beef, heifers, veal and hogs. Call R. Thackeray collect, Puyallup 5-5414. 16cft

**FOR SALE** — Henney & Long upright piano, \$100; HI 3767. 15c8  
**FERTILIZER** by yard or sack. GR. 4108. 15cft

**ALFALFA HAY** — By the bale or ton. Grass hay \$1.00 per bale. Will take livestock in trade. Delivery can be arranged. 2nd house past Roy on Mt. Road. 15cft

**PEAT TOPSOIL**  
 5 YARDS \$10; 4 Yards \$8. Finest black peat topsoil, state tested, 1 to 5-yard loads. Lawn construction and rockeries. Evergreen Landscaping Co.  
**HI 7222**

**Farms Wanted** Acreages Small Farms  
**Homes Wanted** Ranches Wanted Equities  
 If you want to sell your place, list it with us. We need more listings.  
**72 ACRES - STOCK - GRAHAM DISTRICT**  
 ABOUT 40 ACRES of bottom land, balance in good grazing. Has large well for irrigation. 3 bedroom home on concrete foundation. Fair stock and hay barn. This is a good stock set up. If you are looking for value in a farm, this is the one to see. Owner will consider small home in trade. Asking \$10,000. Worth more.

**FURNISHED COLLINS ROAD**  
 1 BEDROOM home with fenced yard, garage, and small chicken house. Close to Pacific Ave., Spanaway. Full price only \$4000. Will take \$500 down.

**MOUNTAIN HIWAY FRONTAGE**  
 75' FRONTAGE by 600' deep. Has a 4-bedroom older type modern home on concrete foundation. Sets on Orchard Hill with a sweeping view of all Parkland. Would make an ideal trailer park, etc. Owner says to sell for only \$5750 and will consider terms to responsible purchaser.

**STUCCO HOME BROOKDALE ROAD**  
 2 BEDROOM, near-new, close to bus and stores in Parkland. Has a 1-car garage and workshop. Lawn all in. A beautiful home for \$8750. Will sell F.H.A. or on terms. \$2000 down will handle.

**HOME AND FARM BUREAU - REAL ESTATE**  
 12810 Pacific Avenue Granite 3931 or Granite 3272 anytime

**Legal Publications**  
**IN THE SUPERIOR COURT OF THE STATE OF WASHINGTON FOR THE COUNTY OF PIERCE**  
 No. 54194  
**NOTICE TO CREDITORS**  
 In the Matter of the Estate of LEWIS ANTHONY FOLDEN & EDNA EDITH FOLDEN, Deceased.  
 Notice is hereby given that the undersigned has been appointed and has qualified as Administrator of the above entitled estates; that all persons having claims against said decedent are hereby required to serve the same duly verified, on said Administrator or his attorneys of record at the address below stated; and file the same with the Clerk of said Court, together with proof of such service, within six months after the date of first publication of this notice or the same will be barred.  
 Date of first publication, Oct. 23, 1952.

**CREIGHTON C. FLYNN**  
 Administrator of Estate,  
 828 Rust Building,  
 Tacoma, Washington.  
**GOODWIN, EASTVOLD & HICKS,**  
 Attorneys for Estate,  
 Nat'l Bank of Wash. Branch, Parkland P. O. Box 728, Parkland, Washington.  
 Published in the Times-Journal Oct. 23, 30; Nov. 6, 1952.

**COLLINS NEWS**  
 Mrs. John G. Gorow  
 Granite 7070

**Tentative plans** are being made for a Halloween party for the children of the community Halloween night. Collins P-TA  
 Collins P-TA will meet Thursday, Nov. 6, at 8 p.m. in Collins school. This is to be a very important meeting with a panel discussion on a state law controlling the entrance age of school children. This will not only set the age for entering the first grade but will set the age for entering college or military training. Seventh grade mothers will be hostesses.  
**Home from Korea**  
 The best news this week covers the returning home of two Collins boys from Korea. They are Cpl. Duane Hansen of the Marine Corps and M/Sgt. Orville L. Mickelson, son of Mr. and Mrs. Fred Mickelson of Collins and Malcolm-McClary of Duane. Duane's parents are Mr. and Mrs. H. Hansen of Cedar road. Both boys have been in Korea for a year and a half right in the worst battles. We are so glad to welcome them home and hope they get a long deserved rest.

**TRUCKS FOR RENT**  
 MA 9039  
 Save One Half We Furnish Everything  
**HARMON'S**  
 Driv-Ur-Self Co  
 HARMON'S SERVICE  
 Jim Harmon, Mgr.  
 2112 Jefferson

**JOIN THE BOOSTERS**  
**Kids! Look!**  
 HOW MANY JELLY BEANS ARE IN THE JAR IN OUR WINDOW?  
 If you are Not over 15 years old you can come in and place your guess.  
**2 PRIZES**  
 To the girl and the boy guessing the closest we will give a wonderful prize.  
**Also: See the Fine Selection of Halloween Items on Display In Our Window.**  
**GARFIELD VARIETY STORE**  
 326 Garfield St., Parkland GR 9948  
 Buy Now For Xmas. Use Our Lay-A-Way Plan Hours: 8:00 a.m. Till 8:00 p.m.

**REGISTERED** Herefords; cows, heifers and bulls; also commercial Herefords, Angus and Shorthorn cattle. Phone GR 6112. 16cft  
**REGISTERED** polled Hereford bull service. Breed the horns off. Phone GR 6112. 16cft  
**CASH** for milk cows, beef, heifers, veal and hogs. Call R. Thackeray collect, Puyallup 5-5414. 16cft

**FOR SALE** — Henney & Long upright piano, \$100; HI 3767. 15c8  
**FERTILIZER** by yard or sack. GR. 4108. 15cft

**ALFALFA HAY** — By the bale or ton. Grass hay \$1.00 per bale. Will take livestock in trade. Delivery can be arranged. 2nd house past Roy on Mt. Road. 15cft

**PEAT TOPSOIL**  
 5 YARDS \$10; 4 Yards \$8. Finest black peat topsoil, state tested, 1 to 5-yard loads. Lawn construction and rockeries. Evergreen Landscaping Co.  
**HI 7222**

**FOR SALE** — Boy's 27-inch bicycle; excellent condition, \$25; call GR 5344 after 6 p.m. 15cft

**REGISTERED** Herefords; cows, heifers and bulls; also commercial Herefords, Angus and Shorthorn cattle. Phone GR 6112. 16cft  
**REGISTERED** polled Hereford bull service. Breed the horns off. Phone GR 6112. 16cft  
**CASH** for milk cows, beef, heifers, veal and hogs. Call R. Thackeray collect, Puyallup 5-5414. 16cft

**FOR SALE** — Henney & Long upright piano, \$100; HI 3767. 15c8  
**FERTILIZER** by yard or sack. GR. 4108. 15cft

**ALFALFA HAY** — By the bale or ton. Grass hay \$1.00 per bale. Will take livestock in trade. Delivery can be arranged. 2nd house past Roy on Mt. Road. 15cft

**PEAT TOPSOIL**  
 5 YARDS \$10; 4 Yards \$8. Finest black peat topsoil, state tested, 1 to 5-yard loads. Lawn construction and rockeries. Evergreen Landscaping Co.  
**HI 7222**

**FOR SALE** — Boy's 27-inch bicycle; excellent condition, \$25; call GR 5344 after 6 p.m. 15cft

**REGISTERED** Herefords; cows, heifers and bulls; also commercial Herefords, Angus and Shorthorn cattle. Phone GR 6112. 16cft



**MUTUAL INSURANCE**  
200 YEARS OLD...  
founded by the pioneers of our country. Today, hundreds of thousands of careful property owners enjoy all the advantages of Mutual insurance through the NORTHWESTERN and have received millions of dollars in dividends—a saving on their insurance costs.

**Jennie L. Grodvig**  
208 Garfield Street  
Parkland, Washington  
Days: GR 7232; eves., GR 8210

**REDUCE YOUR INSURANCE COSTS TOO**

Representing  
**NORTHWESTERN**  
MUTUAL FIRE ASSOCIATION

State Farm Mutual Insurance  
**FORREST LEONARD**  
Agency GR. 7222  
Anything In Insurance  
12815 Pacific Avenue — (House just South of Blue Spruce Motel)

**Did You Know**  
You can get rebuilt and used shoes, sterilized with ultra-violet ray from 50c at

**Paul's Shoe Repair**  
SPANAWAY  
Closed Wednesday

**JOIN THE BOOSTERS**

**ALL SIZES**  
STEEL ANGLES, PIPE  
CHANNELS & PLATE  
We Buy Scrap Iron & Metals  
**Northwest Pipe & Salvage Co.**  
1311 So. Tacoma Way  
Hillside 9491

**McCulloch**  
LIGHTEST  
3-h.p. Chain Saw

**Webster-Robinson**  
Machinery & Supply  
Co., Inc.  
Puyallup Ave. & 'A' St. BR 0341  
Sales Tacoma, Wash. Service

**SPANAWAY NEWS**  
Mrs. Oliver Omat, GR 6466  
The Spanaway Well Baby Clinic scheduled for Nov. 4 has been postponed until the first Tuesday in December because the original date fell on election day.

**Ambulance Dance**  
Don't forget the Ambulance dance this Saturday at the Metropolitan hall; good music and refreshments.  
Clover Creek Legion

Clover Creek and Spanaway post No. 118, American Legion, invites you to a dance Saturday, Nov. 8, in the Metropolitan Park hall, beginning at 9 p.m. Prizes and a cash door prize are promised, according to Mrs. Warren Stinson, dance chairman. Don's orchestra is playing.

**Spanaway 4-H Club**  
The Spanaway 4-H club met Oct. 24 at the home of Kathleen Brown, welcoming three new members, Judy Graves, Leslie Sales and Nancy Brown. Election of new officers was held. Dick Graves is now president; Leslie Sales, vice-president; Diane Smith, secretary; Edgar Graves, treasurer, and David Smith, reporter. The club attended a boat launching at Tacoma Boat Building Co., Inc., yards recently and other trips are planned.



**Pearl A. Wanamaker**

At a recent unit meeting of the Washington Education Association, held at the Parkland School, the teachers of the Franklin Pierce School District voted unanimously to support Pearl A. Wanamaker for State Superintendent of Public Instruction.

Pearl A. Wanamaker, state superintendent of public instruction since 1941, is seeking reelection to this non-partisan office in the coming election on Nov. 4th.

During three terms in that position Mrs. Wanamaker has gained national and international recognition both for herself and the State of Washington by her aggressive leadership in the field of education. As president of the state board of education, executive officer of the state board for vocational education, and chairman of the state library commission, she has vigorously fought for better schools and has focused national attention on Washington's educational system.

In recognition for her work she was elected president of the National Education Association in 1946-47, president of the National Council of Chief State School Officers in 1950-51, and is currently vice-president of the American Association of School Administrators. She served on General MacArthur's commission for the democratization of Japan's educational system following the war, is now on the joint Canada-United States committee on education and the United States national commission for UNESCO. In 1946 she was adviser to the United States delegation at the first UNESCO conference in Paris.

A graduate of the University of Washington, Mrs. Wanamaker taught both elementary and high school classes. In 1923 she was elected county superintendent of schools in Island county being, at the time of her election, the youngest county superintendent in the country. Later she served several terms as state representative and state senator where she spearheaded school legislation. The Showalter Bill, providing basic state support to school district on a per-pupil attendance basis, and the Yantis-Wanamaker Equalization Law, the greatest single step toward providing equal educational opportunity for every child no matter where he might live, were two of her major legislative accomplishments which since have become standard procedure for school support in many other states.

Because of her outstanding work for the youth of the state she was urged to file for the office of State Superintendent in 1940, was elected then and reelected in 1944 and 1948 by overwhelming majorities.

Mrs. Wanamaker sums up her reasons for her avid interest in education very directly by saying, "I believe that I can best serve my State by serving its children."

**HI HO CRACKERS, large pkg.** . . . . . 39c  
**GRAPE JUICE, Church's, 24-oz.** . . . . . 29c

**Folgers Schillings** \$1.63  
2 Lbs. . . . .

**Darigold Cheese** 79c  
2 Lb. Loaf . . . . .

**NESTLES CHOC. CHIPS** . . . . . 19c  
**SHURFINE SHORTENING, 3-lbs.** . . . . . 79c

**SHURFINE FLOUR** \$1.93  
25 Lbs. Print Bag . . . . .

**Bisquick** 39c  
40 Oz. Pkg. . . . .

**PUMPKIN, Libby's, 2 1/2-tin** . . . . . 2/35c  
**CATSUP, Dennison's** . . . . . 2/35c  
**FRISKIES, 3-cans** . . . . . 43c

**CREAM STYLE, Hood's, 20-Oz. Jar** . . . . . 47c  
**PEANUT BUTTER** . . . . .

**SOUTHERN YAMS, Small whole, no. 2 tin** 35c  
**DARIGOLD MILK SOLIDS, makes 5-qts.** 37c

**JOHNSON'S BUTTER CREAM CHOCOLATES** . . . . . 49c  
**PINK GRAPEFRUIT, 5 for** . . . . . 45c  
**DELICIOUS APPLES, box** . . . . . \$2.79  
**SPUDS, No. 2, 50-lbs.** . . . . . \$1.59  
**DRY ONIONS, Fancy No. 1, 3-lbs.** . . . . . 23c

(No Sales to Dealers. We Reserve the Right to Limit Quantities.)

**HERMAN'S** 162nd & Park Ave.  
Spanaway  
GR. 8213  
Prices Effective Oct. 31, Nov. 1

**PORK CHOPS, lean center cut** . . . . . lb. 69c  
**PORK ROAST, Picnic Style** . . . . . lb. 45c  
**PORK NECK BONES** . . . . . lb. 17c  
**PURE GROUND BEEF** . . . . . lb. 49c

**SPANAWAY MEAT MARKET**  
NEXT DOOR TO HERMAN'S GR 8215

**TO THE VOTERS IN THE 25th DISTRICT:**

On next Tuesday the voters in the 25th District will choose a new State Senator to represent us all at Olympia. We have a most important decision to make and our duty is to choose a man who can do us honor as a public servant.

For the past six years our hard working State Representative, Reuben A. Knoblauch, has served us faithfully and well. Those of us who know him know that Reuben has been on the job every day of the year. He wants to devote his life to public service and by his past record we know that he keeps his word.

Yes, Reuben Knoblauch is known for his outstanding services to our state and our district. We have given him six years experience in the House of Representatives and now he is asking us for a well-earned promotion to the Senate. He is our investment and votes are needed to keep him on the job.

In the past six years that Reuben has held public office, no one has ever questioned his honesty or sincerity. As our legislator his work in behalf of his fellow veterans has won him the highest award of the Veterans of Foreign Wars—the VFW Citizenship Medal; as Chairman of the House Education Committee he has a statewide reputation for his efforts in behalf of our schools; for his favorable record in behalf of the members of organized labor he has the endorsement of all major labor groups in our state; as a farmer he is familiar with the problems of agriculture in this district. Whether Reuben is in his overalls at home on the farm, or in his suit and on the job in Olympia, he's never too busy to listen to our problems. Let's keep him on the job and promote him to our State Senate!

**HERE'S WHAT THEY THINK OF KNOBLAUCH**

**HIS HOME PRECINCT**  
Knoblauch 160 His Opponent 13

**HIS HOMETOWN AREA**  
Knoblauch 1014 His Opponent 173

**THE ENTIRE DISTRICT**  
KNOBLAUCH 7984 HIS OPPONENT 2360  
(Paid for by his neighbors and friends)

**C.O. Lynn Co.**  
MORTUARY  
717 TACOMA AVE. Phone MAIN 7745

**Bendix - Whirlpool R.C.A.**  
Appliances - TV Radio  
Sales and Service

**FRYE'S Furniture & Appliances**  
Parkland Centre Bldg. GR. 3691

**Sheet Metal Work**  
Poultry & Pet Stock Equipment  
SPECIAL ATTENTION To SPECIAL EQUIPMENT

**RAU MFG. CO.**  
GRanite 7372



**ADDELINE M. MASON**

FOR BALANCE in State Government—one Legislator from each District should be a WOMAN.

**Representative 29th District**  
Republican  
(Paid Advertisement)

**American Art Co.**  
Custom Picture Framing  
BR 4327  
2046 6th Ave.

**YOU SAVE AT DANIELS HARDWARE**  
Pacific Ave. & Garfield GR 3171

**BUILDING SUPPLIES SPANAWAY LUMBER CO.**  
Mt. Highway at Spanaway GR. 3323 WE DELIVER

**Guns & Ammunition**  
**South End Plumbing**  
Home of Schorn Paints  
Near Roy Y Spanaway GR 4100

**Home and Auto Insurance FARMERS' MUTUAL OF ENUMCLAW**  
It Will Pay to Check Our Rates  
GR 3733 M. SLATER GR 9939

**LOOK**  
Brush On a New Wall With **DRAMEX PAINT**  
V Rustic Siding 8 Foot  
PAINTS & HARDWARE  
Door Jambs  
1x4 Fir Flooring  
Window and Door Sills  
We Cut Glass  
GRanite 5844  
**BASKETT LUMBER COMPANY**  
96th & Portland Avenue

**RADIO - TV Repairing and Installation**  
Call LA. 8813  
STEWART - WARNER & SENTINEL T.V.  
Portables and Auto Radios Our Specialty

**Perry Radio Co.**  
12904 Pacific Highway  
Midway between Fort & Tacoma

**Economy ON THE MEAL TICKET**

**3 Pounds**  
**SPRY or CRISCO** 81c  
Instant Swansdown, White or Devils Food

**Cake Mix** 29c  
Red Chinook Tye

**SALMON** 59c  
No. 1 Tall

California  
**GRAPEFRUIT** . . . . . 6/25c  
**TOMATOES** . . . . . ctn. 15c  
Sno White Heads  
**CAULIFLOWER** . . . . . lb. 9c  
**SALAD MIX** . . . . . pkg. 10c  
**HUBBARD SQUASH** . . . . . lb. 2 1/2c

**Velveeta Cheese** 2 lbs. 85c

**ROASTING HENS** . . . . . lb. 49c  
Full Drawn

**BABY BEEF**  
SIRLOINS  
T-BONES  
RIB STEAKS  
**lb. 75c**

**PORK STEAK, blade cut** . . . . . lb. 59c  
**POT ROAST** . . . . . lb. 55c

M D Roll  
**TOILET TISSUE** . . . . . 10c

BAKER'S 4-Oz.  
**COCONUT** . . . . . 2/35c

1/2-Gal.  
**PUREX** . . . . . 29c

2-Lbs.  
**NAVY BEANS** . . . . . 29c

REGULAR Tall Tin  
**CHEERIOS** . . . . . 2/33c

HORMEL  
**CHILI With BEANS** . . . . . 37c

KOUNTY KIST 303 Tin  
**CREAM STYLE CORN** . . . . . 2/29c

**Jackson**  
has done a *Great Job* for Our State

HERE'S a real fighter—a man who believes in getting things done!  
Elected to Congress in 1940 at the age of 28, Henry Jackson has won the admiration of the entire state for 12 long years of hard work. He led the battle for the building of new dams, transmission lines, and reclamation projects. He brought new industries and payrolls to our cities. He supported the REA's, the farm cooperatives, and stable prices for farm products.

Jackson is honest, levelheaded, aggressive. He stands for government economy as proved by his "yes" vote on every recommendation of the Hoover Commission to eliminate waste. He consistently fights for the farmer and small businessman.

Let's vote for a man we can all respect—Henry M. Jackson! He's earned the job.

**HENRY JACKSON**  
will make a **GREAT U. S. SENATOR**  
Democrat

**Prepare for Winter**  
Order A **Brookdale Garage**

Shelters Your Car  
Protects Your Tools  
Provides Kids' Play Space  
Gives Hubby A Work Shop



**BUILT ON YOUR PROPERTY READY FOR USE**

20'x20' size . . . \$675	\$21.65 per mo.
14'x20' size . . . \$495	\$15.81 per mo.
12'x20' size . . . \$475	\$15.17 per mo.

- \* Concrete Floor
- \* Thick Butt Shingle Roof
- \* Clear Grade Dry Siding—Full 3/4" Thick
- \* Overhead Doors with Stanley Hardware
- \* 3 Sash — 1 Entrance Door
- \* Galvanized Nails


Buy by Comparison — See a Brookdale garage before you buy.

No Down Payment — Your First Payment Next Year

**Brookdale Lumber Co.**  
136th & Pacific Ave. GR 8669

**Fletcher's MARKET**  
122nd and Pacific Avenue  
Phone GRanite 8550

FREE DELIVERY  
Prices Effective Oct. 31st and Nov. 1st



**HENRY JACKSON**  
will make a **GREAT U. S. SENATOR**  
Democrat