

# The TIMES JOURNAL

CONTAINS THREE SECTIONS . . . MAIN SECTION . . . MAGAZINE SECTION . . . COMIC SECTION

THURSDAY, FEBRUARY 18, 1954 • VOL. 9, NO. 23

• PUBLISHED AT PARKLAND, PIERCE COUNTY, WASHINGTON • 10c PER COPY • \$3.00 PER YEAR BY MAIL IN PIERCE COUNTY

## Committees Working on PL Omnibus

Combining the talents of three campus groups into one show, Pacific Lutheran's annual "Omnibus of the Arts" will be presented February 25, 26 and 27 on the Chapel-Music-Speech building stage.

Thursday will see a formal concert by the Choir of the West, directed by Gunnar J. Walmin; Shakespeare's "Comedy of Errors" will be the Friday evening feature, and a special musical performance by the College Band and Chorus will wind up the affair Saturday evening.

During the entire three days a special exhibit of student art will be displayed in the C-M-S lounge.

The Omnibus was begun last year as an annual student production, entirely planned and directed by the students. This year's coordinator for the affair is Edith Engel.

Directors are Kathleen Hinricks, Alpha Psi Omega; Glen Hull, Band; Stanley Halsman, Choir; and Jerry Stillum, Art Department.

Committee chairmen are Stanley Halsman, publicity; La Wanna Huber, radio; Jo Hansen and John Shannon, newspapers; Kathleen Hinricks and Jerry Scheffels, posters; and Marlys Salterbeck and Thelma Nygard, Churches.

Others are Karen Kvem, house; Richard Stuhlmiller and Jeanne Friskie, tickets; Robert Randay and Mina Roen, programs; and Edward Kennedy and Myrna Shelper, reception.

Directing "Comedy of Errors" is Marian Christiansen, assisted by Walter Nealon. Tickets for the Omnibus, went on sale Feb. 1, are \$1.75 for adults and \$1.00 for students for the entire three performances. Tickets for individual events are 75 cents for adults and 50 cents for students.

## Roy Resident Victim of Car, Bus Accident

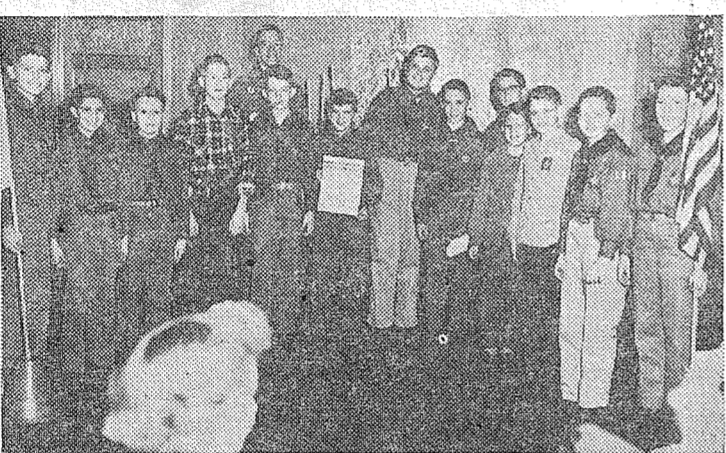
John Bastian, 67-year-old pensioner of Rt. 1, Box 172-A, Roy, was killed instantly in an auto accident Tuesday morning, and the driver of the car, Melvin A. Byrd, also of Roy, is under hospital care in Tacoma. The death car rammed the back of a city transit bus, parked at So. 96th and Pacific Ave., with such impact that it required tow car winches to pull apart.

Byrd is to be held for investigation, after his release from the hospital. He is suffering several rib fractures, head lacerations and bruises and knee lacerations.

Byrd was alleged to have been drinking, although he refused the blood alcohol test. Broken beer bottles were found in the wrecked car.

## Honor Society Shows Film Feb. 26 at F-P

Honor Society of Franklin Pierce High School will sponsor a movie, "You Can't Take It With You", starring James Stewart and Jean Arthur, which will be shown Friday, Feb. 26, in the school cafeteria. Showing will start at 7:30 p. m., and will include a cartoon.



**COURT OF HONOR**—Receiving badges at the Court of Honor held by Boy Scout Troop No. 104. McChord were the boys pictured above. (from left to right) Dennis Johnston, John Harvel, David Gedert, Daniel Glesmann, Jimmy Mitchell, Ross Nolen, Tommy Bennett, Gene Little, Worth Stephenson, Baird Stephenson, Richard Dangle, Richard Stolarski, Johnathon Sewerr. (background) John Schifferle, scout master.

## White Stripe Proves Satisfactory On State's Highways Says Director

In 1953 the Washington State Highway Commission changed the center stripe on highways from yellow to white and after several months' experience with the new stripe, engineers are enthusiastic about its ability to reflect light and its all-around visibility under the various conditions the motorists meets on the highways of the state, according to W. A. Bugge, director of highways.

The fact that the white center line was accepted as standard by the majority of the highway officials of the country and the fact also that 33 states used the white center stripe was an important reason for the change, Bugge said.

Formerly guard rails, bridge abutments and the center stripe were yellow and the no-passing lines were white, but the action of the Commission resulted in changing guard rails, bridge abutments and the center stripe to white and the no-passing lines to yellow.

Months of tests by the materials engineers of the Department of Highways preceded the change.

Instruments that measured light reflecting ability showed the white to be equal to the yellow and tests of the lasting quality of the two colors showed the white to be as durable as the yellow.

The sanding of highways during winter weather and the use of tire chains wears the stripe out quickly. In those areas where sand and tire chains were through the white, the yellow line has appeared but after a good solid layer of white paint has been built up,

the yellow color will not show through.

One of the problems with the center stripe, whatever the color, is that water lying over it at night reflects the light from the car headlights and obscures the stripe on the roadway.

Engineers of the Department of Highways are attempting to lick this problem by raising the center stripe slightly above the pavement and then painting with white on top.

This is accomplished by laying a paving material about 5 inches wide and about 3/8 of an inch thick on the surface of the road. Then the stripe is painted white.

Experimental sections in various parts of the state indicate that the visibility and lasting quality of the stripe are vastly improved.

"We are constantly at work trying to improve safety of highways in Washington," said Bugge. "These experiments with traffic striping are an important part of that program."

## Roads to Paradise Group to Meet March 10th

Efforts to keep the road to Paradise Valley open were commended in letters received from interested people all over the state, at the last meeting of the Roads to Paradise Resort Association in the Don Christianson home at Ashford last week.

Plans were outlined for a car tour of resort owners and members of the Washington State Resort Ass'n., planned for spring. An advertising program, planned for the summer season, was announced.

An extensive fishing program, to be carried out with the assistance of the state department of fisheries, is expected to benefit the tourist trade as well as the local residents.

Walter Hewitt and Harry Canty were appointed as a committee to investigate the situation, for the next meeting at Camp Elliott, March 10.

Members of the Washington State Resort Ass'n., are invited to attend the state convention in Seattle, Feb. 26.

Members of the local Roads to Paradise Association will meet at the home of Mrs. J. J. ... (Continued on Page 8)

## Boy Scout Troop No. 104 Has Court Of Honor

The members of Boy Scout Troop No. 104, McChord, held their Court of Honor, Tuesday, Feb. 9, at 7:30 p. m. in the Chapel Annex.

The program began with the Pledge of Allegiance to the American Flag, led by Patrol Leader Gene Little.

A very impressive candle-light ceremony in which the following boys received badges was held. Parents of the scouts pinned the badges on their sons.

Richard Dangle, Tenderfoot; David Gedert, Tenderfoot; Daniel Glesmann, Tenderfoot; John Harvel, Tenderfoot; Dennis Johnston, Tenderfoot; Gene Little, Tenderfoot; Jimmy Mitchell, Tenderfoot; Ross Nolen, Tenderfoot; Baird Stephenson, Tenderfoot; Worth Stephenson, Tenderfoot; Richard Stolarski, Tenderfoot; Tommy Bennett, Second Class; Johnathon Sewerr, Tenderfoot.

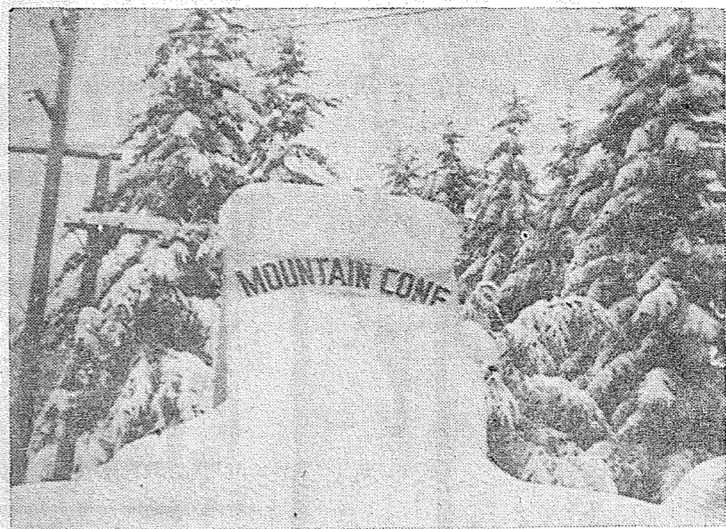
The following boys were given their rank of officers in the Troop.

Tommy Bennett, Patrol Leader; Richard Stolarski, Assistant Patrol Leader; Gene Little, Patrol Leader; Worth Stephenson, Assistant Patrol Leader; Ross Nolen, Troop Scribe; Jimmy Mitchell, Quartermaster; Dennis Johnston, Librarian.

Following the Court of Honor ceremony, slides of "Camp Hababab" were shown.

Brig. Gen. T. Alan Bennett, 25 AD Commander, gave a short talk on the Troop Charter and presented the charter to scout master John E. Schifferle who in turn gave it to Troop Scribe Ross Nolen. (Picture at left).

The members of Troop No. 104 formed a circle for the closing ceremony. The Scout Oath was given by Patrol Leader Gene Little, and the Benediction by the Scoutmaster.



## Nature's Mountain Cone

snapped by G. W. Gilbert of LaGrande, Wash., after the recent January snowfall. The sign is advertising the mountain ice cream cone, and the snow was untouched to form the picture.

## Story of C-54 'Miracle' Crash Told in Eye-witness Account

By Special Officer C. K. "Red" Haney

Remarkable flying was done Sunday morning, by one of our local Air Force men—Sgt. Dale White, well known in the area, as is his wife, Edy, who works at the Bungalow Cafe.

About 9:45 a. m., a flying box car - C-54 - radioed McChord AFB that it was in trouble, and would try to make a landing on the field.

The Air Police immediately notified the Sheriff and State Patrol, and cars were alerted to stand by for a possible crash.

Ten minutes later, the pilot, Capt. Ray Costello, landed the plane in a cow pasture, barely one-half mile long. It is located

about one mile north of Yelm, close to highway 5.

I went up and took some pictures of the crash, and I am still marveling. The plane stopped barely 200 feet from two fir trees, large enough to have cut it in two.

Four of the crew bailed out on orders from Capt. Costello but Sgt. White rode the plane down with him. This is the second crash landing for White in the past two weeks, according to his wife.

Two local residents, Charles Dunham of Rte. 1, Box 187 Yelm, and Lee Lefebure, of Rte.

## State Grangers Will Meet at PLC June 7-14, -- Lloyd

Plans for the State Grange convention in Parkland at the Pacific Lutheran College got under way Tuesday, Feb. 9th at the Fruitland Grange Hall with an organizational meeting of 65 Grangers called by Pomona Master Frank Swalander.

State Master Lars Nelson stated in his speech to the state session group, that everything pointed to a very successful

convention this year, as the facilities at the PLC site are the finest available and the spirit of enthusiasm in Pierce County runs high.

Ted Lloyd, State Deputy Master in charge of convention planning, said that the early start by this group, well in advance of the June 7 convention date, indicated that the week long session would be efficiently organized and streamlined to handle the volume of business that must be completed for the entire state of Washington in the short time allotted.

Present at the meeting also and offering talks to the group were, State Lecturer Freda Berger and State Juvenile Matron Dorothy Dodge.

Fourteen committees were named by Pomona Master Frank Swalander at this time. These primary committees and their chairmen are:

Session housing, Chester Thompson; housing for officers, Etta Rau; degree team exemplification, O. C. Wisner; decorations, Daisy Pratt; finance, C. M. McKenney.

Publicity, Jerry Shea; entertainment, Marie Custer; fifth and sixth degree ticket sales, George Custer; registration of visitors, Minnie Chesley; state, Frederick Pratt.

Hospitality, Charles Hartman; home economics, Esther Swalander; juvenile committee, Maude Swalander; canteen committee, Mrs. Lange of Spokane.

Information relative to the registration of convention delegates starting June 6 at 2 p. m. may be obtained at any time from Minnie Chesley, Rt. 5, Puyallup. Phone 5-2580 Puyallup.

## OFF THE POLICE BLOTTER

Robert Norman of 1602 So. 112th St. told Deputy Trepanier that someone got into his rabbit hutches and took an undetermined amount of meat on the hoof besides four New Zealand does valued at about \$20.

Minor Crime Wave  
Someone had a field day at Midland early Sunday morning

## Parkland Com. Club Installs New Officers

Formal installation of new officers and announcement of committee personnel was the highlight of the regular meeting of the Parkland Community club Thursday evening, Feb. 11, at the Parkland school.

Three officers are already well acquainted with their club duties, having been re-elected at a recent meeting. They are Mrs. Jennie Grodovig, president; Sev Kittleson, vice president, and Mrs. Gladys Wutz, treasurer. Mrs. Floyd Hicks was installed as the new secretary.

The following committee appointments were announced, the chairman's name appearing first: Program, Bob Lynd, Marjorie Rolfe, Doris Gable, Doris Bryan, Kay Skurut; publicity, Judy Densmore; schools, O. M. Jordahl; library, Louise Lynd, Harry Chambers, Ruth Magdanz; hospitality, phoning and greeters, Mrs. C. S. Fynboe, Marjorie Worley, Beverly Hedlund, Mary Kittleson, Marion St. John, Mrs. Martin Mathison.

Legislative and by-laws, E. M. Krumm, P. P. Pflueger, Jack Patch, Mike Wutz, Dick Soukup; sewer, Lawrence Armstrong, Bart Payne, Herman ... (Continued On Page 8)

## 54 Cases of Measles Reported, 517 Total

Tacoma Pierce County Health Department reported 54 new cases of measles this week, bringing the 1954 total to 517, as compared to 19 for the same period last year.

Another rise was noted in the report of 26 additional cases of streptococcal infections, giving a total of 96 to date, against 26 last year.

Three deaths were reported, one from pneumonia and two of Tuberculosis.

of last week. Several places of business were entered, usually by breaking the glass of the door, and losses included items of merchandise and some cash. Among buildings visited were those of Novotney store, Heath & Bagley Hardware, Midland Drug store, Clay Roley Insurance agency, Midland Shoe Repair shop and Ken & Winnie's cafe. Deputies Jack Berry and Vic Lattiere investigated but found no trace of the culprit.

School Ransacked  
Clover Creek school was broken into and ransacked recently but there was no known loss. Phillip Norby, 4321 American Lake Blvd. reported the case to Detective Russ Wall.

Hubsacks Taken  
P. W. Baum of 1318 East 99th St. told Chief Criminal Deputy Dick McCreedie Sr. that someone took all of his hubsacks last Friday from his '52 Nash, parked in his driveway.

Window Broken  
Smalley Bros. Body shop, 10325 Pacific Ave. reported to Detective Jim Phill that a window had been broken in the rear of the garage sometime during the night of Feb. 3, with apparently no effort being made to enter.

Car Stripped  
Harry F. Rich, 11405 So. I reported to Deputy Helen Wick that the skirts from his '51 Mercury were taken between 8 and 9 p.m. Tuesday, while parked in front of the James Sales school.

## Former Bethel Girl Dies In Highway Mishap

Services were read Wednesday for Marlene Gorman, 15-year old former Bethel high student, who only recently moved to Seattle.

She was killed in an auto accident on the Seattle-Tacoma highway last Friday night, about half-way between Tacoma and Seattle.

One other teenager was killed in the tragedy, and three were injured, in addition to the driver of the second car.

Students from Bethel High were released Wednesday to attend the services, which were held in Roy.

## State Forester Urges Carefulness When Burning Brush in Rural Areas

Forest fires have occurred in every month of the year in Washington according to State supervisor of forestry, L. T. Webster.

Pointing up the need for extreme care in burning leaves, brush, weeds, or fern, Webster urged that all rural dwellers carefully guard every fire during dry or windy weather.

In certain cases just a few days of warm sunshine can transform grasses or dead forest fuels into highly inflammable materials.

Despite the fact that Washington had the best forest fire year in its history during 1953, Webster stated that about one quarter of our man-caused forest fires were brush or trash fires that were allowed to escape.

The Keep Washington Green program has helped to reduce many types of forest fires, particularly those caused by careless smokers but the debris fire that accidentally or carelessly gets away remains to plague fire fighters.

"Each year thousands of tiny seedling trees are burned

by these needless fires and until March 15th, when burning permits are required, the State Division of Forestry can only ask that everyone help to keep Washington Green by using care with any fire", Webster said.

"Remember that an acre of young growth burned in February or March kills just as much of our future forest resources as an acre burned in August".

## Hi Boosters Meet Postponed

The regular meeting of the Franklin Pierce Hi Booster club has been postponed from the scheduled date, Feb. 23, to Thursday evening, Feb. 25. The change was made necessary because of the Franklin Pierce—Peninsula basketball game at the high school Feb. 23.

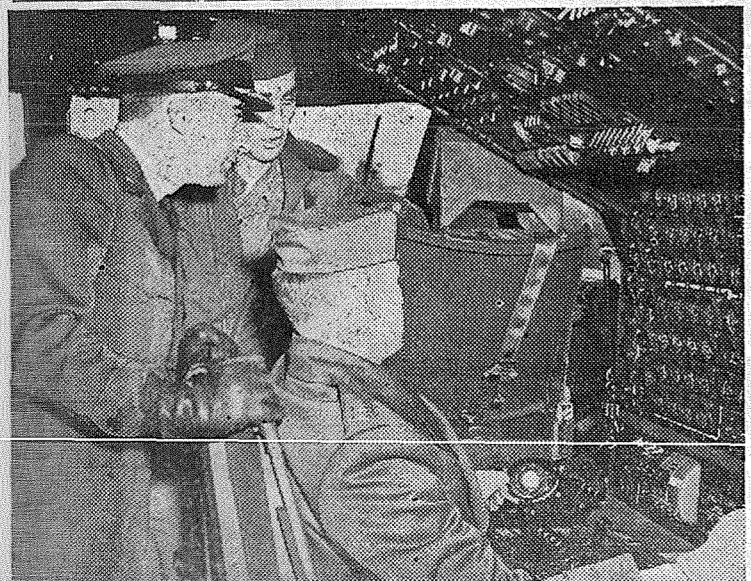
A fine program has been arranged for the February meeting, which will be held in the auditorium-cafeteria of the high school.



## Bethel High School Juniors,

shown above rehearsing, will present their class play Feb. 25 and 26 in the Bethel High Auditorium. "It's Great To Be Crazy" is the title of the play, which will be directed by William J. O'Connell.

The curtain will rise at 8 p.m. Left to right in the above photo are Rene McAllister, Oma Lee Clark, Cathy Holt, Vic Becker, Mickey Cheeseman, Barbara Burrington, Dick Kraiger, Jerry Johnson and Pete Mattsen.



Col. Emil G. Beaudry, left, 1705th ATG commander looks at the new C-124C flight engineer's instrument panel. In the C model the panel is re-located on the side and to the rear of the co-pilot.

TOO GOOD TO KEEP UNDER OUR HATS...

# WASHINGTON'S BIRTHDAY BUYS

Libby's Family Size  
**Olives 25¢**

Nalley's  
**Tang Dressing qt. 45¢**

Idaho  
**Potatoes 10 lb. sk. 43¢**

Golden Ripe  
**Bananas 2 lbs. 29¢**

**CLOSED MONDAY**  
FEBRUARY 22nd  
WASHINGTON'S  
BIRTHDAY



**PET MILK**  
3 Tall  
**39¢**

**RECIPE OF THE WEEK**  
*By Mary Lee Taylor*

**Frankfurter Corn Bake**

- 4 teaspoons flour
- 1/2 cup Pet Evaporated Milk
- 1/2 teaspoon salt
- 4 frankfurters
- 1/2 teaspoon pepper
- 4 strips American mustard
- 4 strips American cheese, 4x1 1/2 in. thick
- No. 303 can whole kernel corn, drained

Mix flour, salt, pepper, mustard and corn. Stir in milk. Put into a greased baking dish. Split frankfurters lengthwise, being careful not to cut through. Put cheese strips into frankfurters, then arrange on top of corn mixture, having cheese side up. Bake in 350 oven (moderate) about 30 min., or until bubbly hot. Serve hot from the dish. Makes 4 servings.

**STORE HOURS:**  
Fri. 8:00 to 9:00  
Sat. 8:00 to 7:00  
Other Days  
8:00 to 6:30

Royal Arms  
**TOILET TISSUE**  
4 rolls  
**29¢**

Hershey Bars  
**4/15¢**  
Box of 24 . . . . 89¢  
All Flavors  
**GUM 4/15¢**

M.J.B.  
**TREE TEA . . . . 48 bags 49¢**  
Hershey's  
**COCOA . . . . 1 lb. can 49¢**  
Ghirardelli  
**CHOCOLATE . 1 lb. can 57¢**  
Maxwell House, Flavor Buds  
Makes 100 Cups large 8 oz. jar  
**INSTANT COFFEE 165**  
Don't Like Coffee - - Drink  
**INSTANT POSTUM . . . . 61¢**

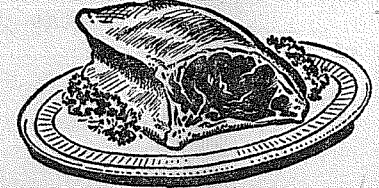
Large Nest Fresh Grade AA  
**EGGS doz. 55¢**  
Folgers, Hill's, M.J.B.  
**Coffee 2 lb. tin 1.85**

Snow Flake  
**Crackers 2 lb. box 39¢**

Pillsbury's for good hot cakes  
**Pancake Flour 4 lb. sack 39¢**

Top 'Em With This. Sunny Jim  
**Pancake Syrup 2-24 oz. bottles . . 53¢**

Fry Some  
**Spam Good Eating Anytime 43¢**



FOR VITAMINS-PROTEINS-MINERALS  
**EAT MORE MEATS**

**The Meat Is Tender - The Fat Is White**

Good Tender. All Cuts  
**POT ROASTS lb. 37¢**

Meaty Steer  
**SHORT RIBS lb. 23¢**

Sirloin and Rib  
**STEAKS lb. 59¢**

FRESH RENDERED PURE LARD . . . . . pound 23c

FRESH GROUND BEEF, Our Every Day Price . . . pound 33c

CARSTEN'S SKINLESS WIENERS . . . . . pound 39c

Custom Curing & Smoking pound . . . . . 7c

Custom Cutting & Wrapping pound . . . . . 4c

SHELLED  
**WALNUTS 1/2 & Pieces 1/2 Lb. 49¢**

Stokely's  
**CHERRIES For Good Pies 2/49¢**

Pall Mall Ctn.  
**CIGARETTES...\$214**

C & H Cane  
**SUGAR 10 lbs. 98¢**

Fresh Lucky Strike Ctn.  
**CIGARETTES...\$214**

**\$100,000.00 LUCKY LEVER SWEEPSTAKES**  
*Art Linkletter says - Redeem your coupons here!*

**SURF LG. 31¢ ECON. 59¢**

**LUX LIQUID 12 OZ. 39¢ 22 OZ. 69¢**

**LUX REG. 3 for 25¢ BATH 2 for 25¢**

**LUX TOILET SOAP 31¢ LUX FLAKES 31¢**

Large Paved Parking Lot Off Traffic

We Reserve the Right To Limit Quantities . . . No Sale to Dealers

# SUMMIT TRADING COMPANY

Rt. 13, Box 690, Tacoma — One-half Mile North of Summit View, on Canyon Road

Phone GRanite 5848

Published Every Thursday

ADDRESS.....P. O. BOX 654, PARKLAND, WASHINGTON  
119th and Pacific Avenue Phone GRanite 3466

Application for entry as second-class matter is pending.  
Entered at Parkland, Washington Post Office

JACK BROWN ..... PUBLISHER  
GIBB THEIS ..... GENERAL MANAGER  
NEVA T. HONEYWELL ..... EDITOR  
JUDY DENSMORE ..... ASSISTANT EDITOR  
BILL BLACK ..... ADVERTISING  
DOLORES BROWN ..... CIRCULATION  
KENNETH POTTLE ..... SHOP SUPERINTENDANT  
WES MCKEWEN ..... PHOTOGRAPHER  
ROG McDONALD ..... SPORTS EDITOR  
C. K. (Red) HANEY ..... POLICE REPORTER

Subscription Rate  
In Pierce County \$3.00  
Outside Pierce County \$3.50  
Out of State \$4.00  
Outside U.S.A. \$4.25  
SIX MONTHS \$2.00 \$2.50 \$3.00

Advertising Rates On Request  
Qualified as a Legal Publication under Chapter 213 of the Legislative Acts of the 1941 Regular Session of the State of Washington.

## Editorial Page

### Another Tea Party Brewing?

There was a time when a certain brand of coffee was advertised as "fit for a king". The way coffee prices are today, it would take a king to afford it.

Last week in the Journal, leading a list of petty thievements reported in the Police Blotter column, was the report of the theft of three pounds of the precious blend from the James Sales Grange.

This may or may not have been influenced by the rise in price. However, newspapers throughout the nation are reflecting the opinions of the people.

From Abingdon, Ill., comes this sentiment: "... The coffee drinkers of the nation now want the rest of the story. They are sending telegrams by the hundreds to their congressmen, and they want results at once.

"There is a natural suspicion that the frost in Brazil may be part fact and part fiction, and that manipulation by speculators in New York City is the real reason.

"The United States doesn't want to get too tough with Brazil, because it has been a good friend in critical times—and good friends, even among nations, are getting scarce."

The Hagerston, Md., Herald advises: "... Stop drinking coffee, or cut down a little. The law of supply and demand will take care of the situation faster than you can crumple a tea leaf."

On the other hand, the Cortland, New York, Standard offers this bit: "... The 15-cent cup is not too far away. And we'll do nothing about it. Sure, we will gripe and moan for a few days, but that is all it will amount to.

All of these opinions are no doubt shared by each and everyone of us, in one way or another, and in the meantime, we suppose, we'll just have to go on having all the joy taken out of our morning coffee, when we look at the price on the coffee can.

It has been said that accepting government aid is like taking drugs—pleasant at first, habit-forming later, and damning at last.

### Help When It's Needed

One of the most dependable aspects of everyday living, particularly in Pierce County, is the assurance that in the event of an emergency, help will be forthcoming—with the greatest possible speed.

The work of the volunteer fire departments which function in almost every community of any size around the area, is not only consistent, but outstanding.

Three cheers to the volunteer fire laddies, and long may they continue to serve so efficiently.

Until next week—While criticizing the government is The Great American Pastime, it's an even greater privilege to live in a country where you can do it and live through the next morning without being shot at sunrise.



### Letter to the Editor

Editor: Times-Journal:

Our sincere thanks to those responsible for getting this move (lowering speed limit on Airport Rd.) started. We live on the corner of Airport and Cedar St. and near Waller Rd., and have seen many accidents at the corner of Airport and Waller roads.

There is also a great need for caution or overhead spotlight at that intersection. Perhaps this could be accomplished at the same time when the speed is reduced to 35 m.p.h.

There have been many people killed on this murderous highway, and at this intersection, and something should be done about it.

Sincerely,  
Mrs. Carl Molzan  
Rt. 4, Box 425.

EDITOR'S NOTE—All properly signed letters to the Editor will be printed as submitted, excepting deletions of portions which might be considered libelous. It is not the purpose of the Times-Journal to take sides in controversial questions; the Letter Box is designed merely to permit the expression of opinions of readers concerning matters of local interest.

### Rodger Lunde Post

Eva M. Steele Publicity Chm.  
6005 So. Lawrence - HA 2363

Regular meeting of Rodger Lunde Auxiliary, Veterans of Foreign Wars will be held Tuesday, Feb. 23, at 8 p.m., in the Veteran's Hall, 11102 So. Yakima Ave.

Mrs. J. W. Johnson will preside. Reports of committees, standing and special, will be heard.

Mrs. Harry Akers was elected at the last meeting to serve as trustee for the remainder of the term.

Auxiliary members will sponsor a talent show at McNeil Island, Sunday. Mrs. Johnson is chairman.

Mrs. Guy Steele will serve a luncheon and party in her home at 6005 So. Lawrence St., Thursday, Feb. 25, beginning at 12 p.m.

The post and auxiliary were guests of the William C. Thompson post and auxiliary in Stellacoom last Monday night.

### Summit News

Mrs. M. S. Rau  
GR 8391

Do you like a basket social? Then pack a lunch for two and come to the Central Avenue school Friday evening, Feb. 19. There will be games and surprise awards. Everyone is welcome. The affair is sponsored by the Preschool.

Ada Holden Circle  
The Ada Holden circle of the WSCS of Summit church will meet at the home of Mrs. McMillan Thursday, Feb. 25, for 1 o'clock luncheon. Mrs. Rau will be the assisting hostess. Mrs. Emil Beyer will have the lesson. All ladies in the community are invited.

P-TA, Preschool  
Central Avenue P-TA and Preschool met at the school Tuesday, Feb. 16, for the regular meeting and Founders Day program. Mrs. I. W. Rinehart, president, opened the meeting with the Boy Scouts presenting the colors, followed by the national anthem, with Mrs. Frank

**Butler's Garage**  
One block North Airport  
Road on Canyon Road  
Phone GR 8209

TIME TO THINK ABOUT  
**GARDEN NEEDS**

AND  
**Seeds**  
We Have Our  
New Stock In  
**Summit Feed Co.**  
Home of "Fisher's Quality Feeds"  
Canyon Rd., next to  
Summit Trading Co.  
GR 7136 We Deliver

**LOCKER BEEF** Young Steers and Heifers **35c lb.**  
White Face Grain Fed Steers Cut & Wrapped 1/2 or whole  
CUSTOM CUTTING AND WRAPPING  
RETAIL SALES THURS., FRI. & SAT.  
WE RETAIL AT WHOLESALE PRICES  
Good Quality Graded Beef U.S. Govt. Insp.  
**White Face Beef**  
HORMELS  
BOLOGNA RINGS . . . . . 4/\$1.00  
PURE GROUND BEEF . . 3 lbs. 89c  
BONELESS CORN BEEF . . lb. 49c  
POT ROAST . . . . . lb. 33c  
BOILING BEEF . . . . . lb. 19c  
SIRLOIN STEAKS . . . . . lb. 53c  
RIB STEAKS . . . . . lb. 45c  
GROUND ROUND . . . . . lb. 49c  
BONELESS BEEF CUBES . . lb. 49c  
PURE PORK SAUSAGE . . lb. 45c  
SKINLESS WEINERS . . . lb. 39c  
**MALCOM'S MEATS** GR 8258  
1 Block North of Airport on Canyon Road  
We Retail at Wholesale Prices

HELP US  
**CELEBRATE**  
**OUR 3rd ANNIVERSARY**  
SATURDAY, FEBRUARY 20  
8:00 a.m. Till 6:00 p.m.  
GIFTS FOR ALL  
See Our Anniversary Specials  
While They Last  
Vases - 1/2 Price  
22.50 Lawnmowers - \$17.72  
3-Pc. Bathroom Sets, complete - \$115.00  
Many Others . . . . .  
IT'S OUR TREAT  
**Casey Hardware**  
9818 Pacific GR 7302

piano.  
Mrs. E. W. Austin presented the past presidents and pinned a corsage of carnations on each one. They were Mesdames M. S. Rau, Fay Clover, L. A. Hoffman, Norman Johnson, Frank Gates, William Dowie, George Wangelin, Lawrence Howard and Ranghill Peterson.  
Mrs. Rau was presented with a life membership in the P-TA honoring her work in organizing the Central Avenue P-TA with the help of Mrs. Elwell Hoyt, and is the only charter member now living in the community.  
Mrs. Chester Larson was also presented with a similar pin for her willing service through the years.  
The Preschool also gave a life membership pin to Mrs. Lenhard Winters, the president, for her outstanding work with pre-school mothers. Mrs. George Wangelin presented the life membership pins.  
Mrs. Kenneth Romjue, program chairman, presented a very interesting program and Morris Ford, superintendent of the Franklin Pierce district, gave an interesting talk on the history of Central Avenue school.  
For the social hour that followed, the luncheon tables were decorated with Valentine hearts. Mrs. Olson, a 3rd grade teacher, cut the beautiful birthday cake, which was served by the 3rd grade mothers.

OPEN 24 HOURS A DAY - 7 DAYS A WEEK

**PATRONIZE TAGOMA OWNED STORES**  
*Keep Our Payroll Home*

STOCK UP!  
Libby's Frozen  
**ORANGE JUICE**  
Can  
**12¢**

SAVE!  
**FRISKIES**  
Cubes or Meal  
25 lb. bag  
**\$259**

Remember Folks . . . You Can Get Your Prescriptions Filled 24 Hours A Day . . .

ARIZONA  
**Grapefruit**  
8 Lb. Bag  
**47c**

No. 1  
**Bananas**  
2 Lbs.  
**29c**

Large Pkg.  
**Bisquick**  
**39c**

All Flavors  
**JELLO**  
7c pkg.

THE LARGEST ASSORTMENT OF FOOD UNDER ONE ROOF

STOCK UP!  
Schillings  
**Pure Black PEPPER**  
2 Oz. Tins  
**25¢**

LOOK!  
Hunt's Solid Pack  
**TOMATOES**  
Lge. No. 2 1/2 Tins  
**5 for \$1.00**

NO PARKING WORRIES WHILE YOU SHOP AT YOUR "PARK 'N SHOP"

VAL VITA  
**Dill Pickles**  
Large 2 1/2 Glass  
**4 cans \$1**

ARMOUR'S  
**Peanut BUTTER**  
12 Oz. Glass  
**35c**

LIPTON'S  
**TEA**  
48 Bags  
1/2 Lb. Pkg. 59c  
**49c**

BEST TASTE  
**CHILI**  
(No Beans)  
**4 cans \$1**

NO MEAL IS BETTER THAN THE MEAT  
FRESH PICNIC  
**Pork Roast . . . . . lb. 39c**  
TENDER LEAN  
**Pork Steak . . . . . lb. 59c**  
ARMOUR'S STAR  
**Pork Sausage . . . . . lb. 39c**  
WE FEATURE ONLY THE BEST GRADES OF BEEF ALSO

**PARK N' SHOP** 98th & Pacific Avenue  
Prices Effective Thursday, Friday, Saturday, Feb. 18, 19, 20 - Yes! 24 Hours A Day  
OPEN 24 HOURS A DAY - 7 DAYS A WEEK

## WASHINGTON'S Birthday Specials

Stokely's Red Sour (Washington's Birthday Feb. 22) Cans  
**PITTED CHERRIES . . . 2/49c**  
Pillsbury (Just add water) Pkgs.  
**PIE CRUST MIX . . . . . 2/37c**  
(A Complete Food) 5-Lb. Bag  
**FRISKIES DOG MEAL . . . 74c**

**GR. ONIONS**  
Add zest to that salad  
Bunch  
**5c**  
**CELERY**  
Fresh & Crisp  
Pound  
**9c**

**GR. BEEF . . . . . 39c**  
Lb.  
Lean & Tender  
**BEEF ROAST . . . 39c**  
Lb.  
Cut-Up Frying  
**CHICKENS . . . 59c**  
Lb.  
(Just Cook & Eat)

(Golden Soap Granules) Pkg.  
**INSTANT FELS NAPTHA . 31c**  
Argo (Approved by Good Housekeeping)  
**CORN STARCH . . . . . 2/27c**  
**WALLER ROAD STOP'N SHOP**  
64th & Waller Road GR 5362  
Prices Effective Thursday, 18th, through Saturday, 20th

## Waller Road News

Mrs. Verne Fogle GR 5210  
The seventh anniversary of the organization of the Marie Hazen Orthopedic Guild was celebrated Feb. 1 with a luncheon at the Top of the Ocean. Mrs. Edwin Valentine and Mrs. Frank Grabs were hostesses for the day.

Marie Hazen Guild was organized seven years ago with the aid of Mrs. William Lyness, an ardent worker in the Orthopedic association. At the recent luncheon, corsages were presented to Mrs. Lyness and to Mrs. Marie Hazen, in whose honor the Guild was named.

In the business session which followed the luncheon, plans were made for a card party sponsored by the Guild, to be held Feb. 26 at 8 p.m. in the Waller Road hall. All who are interested in playing 500, pinochle or canasta are invited to attend. Further details will be published next week.

**Teen-Age Dance**  
The Waller Road Lassies, 4-H group, will sponsor a teen-age dance in the Waller Road hall, 64th and Waller road, Saturday evening, Feb. 20, from 8:30 to 11:30.

## Kapowsin News

Mavis Zacek Rt. 1, Box 246-B  
The Kapowsin Grange auxiliary met Feb. 10 at the home of Mavis Zacek. The women are starting a quilt, the exact use to be decided later.

Plans for a smorgasbord were started with Esther Hansen as general chairman. Other committees are: Kitchen aides, Gertrude Thiel, Carmen Fairbanks, Rena James, Ellen Zafino; decorations, chairman for dining room, Harriet Dilly, Nelda Barlow, Betty McDonald, Ruth McDonald, Doris Broaten, Mary Remark; to take money, Hazel Hollinger, Hazel Kennedy; novelty table, Lillian Bump, Mavis Zacek; advertising, Mavis Zacek, Doris Broaten, Hazel Kennedy, Ruth McDonald; dishwashers, anyone we can snag.

**In Hospital**  
Julius Remark is in the hospital with rheumatic fever. We all hope for a speedy recovery.

## Traffic Violations

The following is a list of traffic violations fined in Judge Deibert M. Bresemann's court, Spanaway, Wash., and disposition of therein:

Louis Betschart, Rt. 1, Box 252-S, Spanaway; Weight violation, B.F. \$27.75, WSP.  
Wayne E. Morgan, Box 54, Spanaway; Speeding, B.F. \$15, WSP.  
Thomas Averill Jr., Rt. 1, Box 264-A, Spanaway; No arterial stop, B.F. \$10, WSP.  
Maurice L. Young, Rt. 1, Box 193-H, Spanaway; Illegal parking, B.F. \$25, WSP.  
Harry E. Scott, Rt. 1, Box 386, Spanaway; Speeding, B.F. \$15, WSP.  
George B. Peterson, Rt. 7, Box 3A, Tacoma; Speeding, B.F. \$15, WSP.  
Floyd F. Cowan, 5009 So. Sheridan, Tacoma; Speeding, B.F. \$10, WSP.  
Gordon W. McNiven, Rt. 7, Box 432, Tacoma; speeding, B.F. \$10, WSP.  
I certify that the above list is true and accurate; recorded in official dockets of the State of Washington.  
Luther C. Shelton  
Clerk of the Court.

## Well Baby Clinic

The Parkland - James Sales Well Baby clinic will be held Thursday, Feb. 25, in the basement of the Parkland Methodist church. Registration is from 9 a.m. to 11 a.m. Dr. Buel Sever is the physician and there are three registered nurses in attendance. All children of the community, from infants through the age of 5 years, are welcome to come for check-ups and immunizations. For further information call Mrs. James Hitch at GR 6129 or Mrs. Charles Kent at GR 7277.

## Guest Speaker

Rev. Darwin Blomgren of Dayton, Washington, will be guest speaker at Immanuel Baptist church on Sunday, Feb. 21, conducting both the 11:00 a.m. and the 7:30 p.m. services. All are invited to attend, members being especially urged to come out.

## BOB LORAAS NAMED AGENT FOR State Farm Insurance



GR 4040 Home: HA 8113 323 Garfield St., Parkland Across from the Post Office

This carefully selected and trained insurance agent will be happy to advise and assist you in selecting the insurance protection you need. Why not have him visit you so you can secure his valuable assistance on your needs of Life, Auto and Fire insurance. No obligation. Call or write him now.

## Mu Phi Epsilon Sets Recital Tues.; Local Musicians to be Heard

Tacoma Alumnae Chapter of Mu Phi Epsilon, national sorority, will present the seventh annual Recognition Recital next Tuesday, Feb. 23, at 8 p.m., in the auditorium of the Jason Lee Junior High School.

Eleven senior high school girls, from the Tacoma area and the Puyallup valley, were selected by auditions conducted last October by the Tacoma Alumnae Chapter.

The senior musicians were selected on the basis of outstanding musicianship, scholarship, and character.

The Recognition Recital was inaugurated six years ago as a means of encouraging young women musicians to continue their musical studies and to give them an opportunity to be heard in a formal public recital.

The alumnae chapter also aids in promoting college scholarships for the soloists by inviting music faculty representatives from Pacific Northwest colleges to attend the recital.

The recital is complimentary to the public.

## Gladiator Service Station To Re-Open

Twenty-five years of experience in the service station business were put to work this week, with the re-opening of the Gladiator Service Station, by C. D. Lawson and his son-in-law Paul Bence.

Lawson is in the process of moving to Tacoma from Oklahoma, where he has owned a service station.

Affiliated with the Rocket Gasoline Co., the station will be open from 7 a.m. to 6 p.m., and possibly on Sundays.

**Complete Prescription Service**  
9 a.m. till 10 p.m. - 7 Days

**JACOBS PACIFIC DRUG**  
8248 Pacific Avenue  
Pay Light & Water Bills Here

HELLO & WELCOME  
**GLADIATOR SERVICE RE OPENS for BUSINESS**  
Hoping to give you the good service for which **GLADIATOR SERVICE** has been noted for.  
C. D. Lawson, new owner, is proud of the reputation and will lend every effort to serve you in the same manner.

**ORDERS TAKEN FRI. & SAT. ONLY**  
On This Special  
**16% Dairy Feed \$2.93 per Sk.**  
all other feeds at low prices Be Fair & Compare  
**AIRPORT ROAD FEED**  
1 1/2 miles East of Pacific Ave on Airport Road We Deliver GRanite 5534

**CONGRATULATIONS . . .**  
to the  
**C & M Market and Farm Store**  
Feek Cigar Co.  
1549 Broadway MA 5747

## HEALTHFUL FOODS

makes healthfull meals  
WITH OUR LOW PRICES  
Southern Maid  
**OLEO MARGARINE . . . . . lb. 25c**  
Breakfast Delight  
**COFFEE . . . . . lb. 93c**  
**PAN READY FRYERS . . . . lb. 55c**

**VEGETABLES**  
Dry **ONIONS . . . 10c** 3-Lbs.  
Golden Ripe **BANANAS . . 15c** Lb.  
New Arizona **CABBAGE . . . 4c** Lb.  
Arizona **Grapefruit . . 49c** Bag

**MEATS**  
Big Juicy **Frankfurters . . 39c** Lb.  
**Pot ROASTS . . . . . 39c** Lb.  
Chili **ROLLS . . . . . 49c** Lb.  
Sliced **BACON . . . . . 65c** Lb.

Lima **BEANS . . . . . 2/29c** No. 303  
Nestles **CANDY BARS 6/25c**  
Toilet **TISSUE . . . . . 4/25c**  
Stokely, Red Pitted **CHERRIES . . . . . 29c**  
Stokely **APPLE SAUCE . 21c**  
Libby's Pink **SALMON . . . . . 49c** No. 1 Tall

## Rusler's Market

We Reserve The Right To Limit Quantities  
231 Garfield St. GR 8560

Buy and Save  
**HONDLES AUTO PARTS & SERVICE**  
FUEL PUMPS, most cars . . . . . \$1.95  
SHOCK ABSORBERS, new . . . . . \$3.95  
ALL BRAKE LININGS THIS MONTH . . . . . 20% Off  
EXHAUST MUFFLERS, from . . . . . \$3.95  
FORD DUAL EXHAUST SETS, with Mufflers . . . \$16.95  
PISTON RINGS, CHEV. . . . . \$8.95  
Steel X Engineered Sets. Sets for all cars  
HA 4857 8412 Pacific Avenue

**RICHARDS CAFE**  
Business Men's Luncheon . . 65c & 70c  
Jumbo Burgers . . . . . 35c  
Steaks - Fried Chicken - Sea Foods  
REASONABLE PRICES  
8201 Pacific Ave. Phone Orders HI 2063

Cute Styles for LITTLE TYKES  
sizes 0 to 8

**Hi-top hard soles in white or brown 3.95**  
**Smart black patent 3.95-4.95**  
**Brown & white saddles 3.95**  
**Red or brown 2-strap 3.95**

**Scine's PARKLAND SHOE STORE**  
411 Garfield Open 10-6 GRanite 3526  
Across from Parkland Post Office

## TELEVISION HOFFMAN . . . ZENITH

We have some of the finest values in the Northwest

See Us Before You Buy

Shop your neighborhood stores

New & Used Sets

We Would Appreciate Your Patronage To Our Customers "YOU", I LIKE

We offer the most liberal trade-in possible

Shop where there is plenty of parking

T.V. at it's best Easy Credit Plan

Values that Can't Be Beat

**POCHEL DISTRIBUTING COMPANY**  
140th & Pacific Avenue GRanite 8624

## EAT HEARTY SAVE PLENTY

ATTEND OUR **GRAND OPENING**

SATURDAY, FEBRUARY 20th

**ALL PRICES MARKED DOWN**  
VISIT OUR NEWLY RE-OPENED MEAT MARKET

**FREE** FLETT DAIRY DIXIE CUPS TO ALL CHILDREN ACCOMPANIED BY THEIR PARENTS

**PONY RIDES**  
BRING THE CHILDREN THEY'LL LOVE THE PONIES

BEAUTY AIDS & SUNDRIES SUPPLIED BY SOUND DRUG

## C & M MARKET & FARM STORE

— Formerly Barrett's Market —  
MARGARET GERLINGS NEW OWNER AND MANAGER  
128th & Pacific Ave. Phone GR. 5146



**Shining Hour Lives Forever**

A portrait captures all the glowing radiance of the bride . . . perpetuates precious memories of her happiest day! Phone today for appointment.

**GR 3833**

**McKEWEN STUDIO**  
407 Garfield St. Parkland

**Local Residents Called On Jury**

Among the 180 persons who have been drawn as superior court jurors for the months of March and April are the following residents of Times-Journal territory:

- Mrs. Robert W. Carlson, Rt. 4, Box 950, Tacoma; Emert R. Davis, Rt. 4, Box 32, Puyallup; Laura B. Catchpole, Rt. 7, Box 193, Tacoma; Walter R. Dawes, Rt. 3, Box 826, Puyallup; Geo. Dundon, McKenna.
- L. W. Elliott, Rt. 7, Box 446, Tacoma; Ethel M. Gale, Rt. 4, Box 318, Puyallup; George S. Grubb, Rt. 3, Box 269, Puyallup; Arthur Merle Harpel, Graham; Curtis A. Hedborg, Alder; John Kellson, Rt. 13, Box 249-C, Tacoma.
- Clem N. Larson, 8410 So. Thompson Ave.; Florence S. Macomber, 8248 East D St.; Evelyn B. McAtee, Rt. 1, Box 174, Spanaway; Betty McDonnell, Kapowsin; Blanche M. Malcom, Rt. 13, Box 482, Tacoma; Howard E. Miller, RFD, Spanaway; Doris N. Nixon, McKenna.
- Anna Paulsen, Rt. 4, Box 970, Tacoma; Florence Payne, Rt. 4, Box 376, Tacoma; Josephine Reynolds, Rt. 3, Box 775, Tacoma; Godfrey E. Thureson, Alder.

**Formal Opening For Insurance Office Set**

Saturday will be a big day for Bob Loraas for it will mark the formal opening of his new office as local agent for the State Farm Insurance Co. All policy holders of the company living in the vicinity, all old friends and the public in general will be welcomed at the new office at 323 Garfield St., Parkland. Coffee will be served from 9 a.m. till 1 p.m. and there will be suckers for the children who accompany their parents.

Bob Loraas needs no introduction to Parkland folks as he's been around for the past 15 years. After graduating from Lincoln high school, he attended PLC for a year. He worked as salesman for the Brookdale Lumber Co. for four years. He and his wife live at 1115 South 114th St.

**Riverside Valley Grange To Meet**

Riverside Valley Grange gathered at the home of Mrs. and Mrs. Stanley Fisher Tuesday evening, Feb. 9. After brief business, there were games and Valentine refreshments.

At the close of the evening, there was a surprise for Mr. and Mrs. Charles Berg (formerly Dorothy Olsen), who were recently married. They were presented a beautiful table lamp, with cream color base decorated with rose ceramic work and wearing a pink shade. Mrs. Berg, now Flora of the Grange, was formerly its secretary.

**Concordia 4-H**

Priscilla Pederson, Reporter Wood fibre flowers were made by the Concordia club Saturday, Feb. 13 at the home of Mrs. Owen Barrett. The members enjoyed it very much and the mothers also thought the flowers beautiful as a Valentine corsage.

After making the flowers, which were carnations, the club members went to the home of the leader, Mrs. Ross LeMaster, for the meeting here they made plans for the next meeting, which will be March 13, when each will bring a brush and paint to paint her chair for the new club room in the LeMaster basement.

Beverly Stinson demonstrated "How to Make a Pattern for Scuffs." Sigrid and Ross Jr. LeMaster will demonstrate at the next meeting. The record books were passed out.

Mrs. Lemaster served chocolate and cup cakes after the meeting.

On Feb. 9 the baking members made a cake together at the home of Mrs. Stanley Willis. The next baking meeting will be March 9.

On Feb. 23 the sewing members will meet at the home of Mrs. Mel Pederson.

**Canyon Road News**

Mrs. K. W. Struensee GR 5742

The regular monthly meeting of the Ladies Auxiliary will be held Thursday, February 25. Hostesses for the 12:30 pot luck luncheon will be Mrs. John Folk, Mrs. John R. Andrews, Mrs. Mike Latterell, and Mrs. Ed Hoffman. The officers for 1954 will be installed.

**Home From Trip**  
Mrs. L. R. Field, of East 72nd street, returned home Sunday from a two months trip. Mrs. Field spent several weeks in Jackson Heights, N. Y., visiting her daughter and son-in-law. Mr. and Mrs. Richard Armstrong, and touring the east coast. And on her return trip she made numerous stops across the country to visit relatives and friends. Welcome home, Mrs. Field.

**In California**  
Mrs. Norman Hague, Sr. is spending several weeks in Long Beach, California, visiting relatives.

**New Daughter**  
Mr. and Mrs. Thomas Folk, of Tacoma, announce the birth of a daughter, Sandra Susan, February 2 at St. Joseph's hospital. Sandra has a sister Pamela and a brother Tommy. The proud grandparents are Mr. and Mrs. John Folk, of Canyon road.

**Appreciation**  
Mrs. Glen Carnack, general chairman, and her committee, Mrs. Don Hansen and Mrs. John R. Andrews, wish to thank the friends and neighbors who were present at the Community Club Valentine dance.

Ed Hoffman, chairman of the Men's Night program, wishes to thank the club members who participated and who so generously contributed their talents to the entertainment, which was enjoyed by everyone present. The evening was voted a complete success.

Hobby Show March 5  
People of the Collins district

**Graham News**

Mrs. Albert N. Nelson Graham 7-7640  
Mrs. Mattina Sorenson celebrated her birthday with an informal party at her home Feb. 9. Friends sharing the happy occasion with her were Mesdames O. Westlund, Henry Bergt, Erwin Cope, Ernest Cope, James King, Paul Lindberg, E. O. Tinius and Eva Nelson. Mrs. Sorenson received a gift of money.

**New Grandson**  
Congratulations are being received by Mr. and Mrs. Fred Erickson on the arrival of a grandson, born to Mr. and Mrs. Alfred Erickson Feb. 10 at Swedish hospital in Seattle.

**Ill at Home**  
Sorry to hear that Ethel Mothershed has been ill at her home all week.

**Triple Birthday Party**  
A triple birthday party was held Wednesday, Feb. 10, at the home of Mrs. E. Robinson. Sharing the birthday with Esther Robinson were Ellen Lorenz and Allen Robinson. Those present were Mesdames E. G. Tinius, John LaPore, L. Anderson, Paul Lindberg, D. T. Lindberg, Don Lindberg, E. Mothershed, A. Niemi, G. Gray, Albert Nelson and Franz Hanson and Thelma Funk.

A table decorated with a pink birthday cake and Valentine favors, his guests being Billy Mothershed, Susan and David Lorenz and Gene Gooch. All three honor guests received many cards with money enclosed, to be spent for something they wanted to buy.

**Elk Plain News**

Mrs. A. L. Goddard GRanite 4317

Founders' Day, observed by the Elk Plain P-TA at the meeting last Wednesday, with a birthday cake later auctioned off to help swell the fund for new library drapes and a birthday-package bank, also had a guest who remembered the early days and interestingly related them. Mrs. Fred Anderson, after a few words of background history of the P-TA, introduced Mrs. Elwell Hoyt of Tacoma, who though known more as the founder of Preschool circles, was happy to tell some of the early episodes and pit-falls known to her as first city president of the Parent-Teacher Associations organized in the state of Washington. She gave special credit to Mrs. Frank Hill, founder of the older organization, for her help and encouragement.

Clifford Boyce, principal of Elk Plain school, introduced Emmet Rich of the Bethel school board, and Homer T. Anderson, superintendent, each stressing particular needs in the schools of the district that will be met with a successful passage of the school bond and millage issues. They urged a full turnout March 9 to insure success in the school elections. Mr. Anderson proposed the re-

are reminded to keep the evening of March 5 open for the Collins P-TA Hobby show. It will include exhibits, booths of "white elephants", aprons, and baked goods, wonderful entertainment and dinner. Proceeds will go for the school yard fence, so start thinking about your contribution and dig up those "white elephants".

Anyone who is interested in displaying a collection, an antique, or handwork of any kind may contact Mrs. Max Effenberger at GR. 6719 for information.

ular P-TA meeting for March be set up a week to March 3, to insure publicity of benefit to the schools concerned. This date, having been held for the meeting of the executive board, changes the time for that session to March 1, at the home of Walt Sahli.

**Woodland News**

Mrs. Karl Cordes Puyallup 5-2511

**Save the Date**  
Remember to save the date of Feb. 26 for the Smoker, sponsored by the Woodland P-TA. It promises another evening of entertainment and fun for all. Those who attended last year will remember the good time and the good show put on by the students under the instruction of their teachers. Mr. Furseth and Mr. Dinsmore. The smoker will start at eight and will have an evening full of boxing and wrestling with the girls' marching unit again putting on one of their attractive drills under the direction of Mrs. George Cole. Donation for the event will be: Adults, 35c; children 12 and under, 25c. There will be pop corn, coffee, hot dogs, and pop sold during the evening.

**Story Teller's League**  
Anyone interested in organizing a Story Teller's League is invited to meet Mrs. George Lagerquist of Tacoma, Wednesday at 8:00 p.m. at the home of Mrs. Joe Temus, Phone 5-7901. At that time she will explain the Story Teller's League's activities and help those interested in organizing one.

**Story Hour**  
The Woodland Preschool story hour was held last week at the school in Mrs. Arnold's room. A group of youngsters enjoyed their afternoon of stories. Mrs. Robert Shuster was in charge of the story, games and refreshments.

**Teacher Leaves**  
Mrs. Alvarado, first grade teacher, left last week for New York where she will leave for Germany to join her husband who is stationed there with the U. S. Air Force. Mrs. Beatrice Woodbury, of Tacoma, is teaching her grade now.

**Firemen's Ball Great Success**

The annual dance with which the Parkland Volunteer Fire department finances the operation of the fire hall for the year proved a huge success. Sunshine hall was filled to capacity and the generous support through donations from the public proved that people of the community appreciate the fine service being rendered by the firemen.

The Parkland firemen wish to thank all who supported the dance, with a special "thank you" to the Parkland business firms who contributed so generously in money and merchandise for the awards.

Receiving awards were Mrs. Tziot, banjo clock; Mrs. Pheno, planter lamp; Minnie Ranks, plant; Mrs. Skwirut, ceramic Brahma bulls; Mrs. Martinson, Ladies Auxiliary basket.

**Don't Chase Fires**  
Firemen ask people NOT to follow the fire trucks to fires, nor to park their cars near the trucks at fires. These practices make it very difficult for the firemen to do their job, as well as increasing the hazards.

**Fire Permits**  
Chief Harry Beitz reminds the public that after Feb. 15 it is necessary to have a fire permit for any open fire. Fire permits may be obtained at the Parkland fire hall after 8 p. m.

**January Calls**  
The Parkland Volunteer Fire department answered six fire calls during the month of January with 70 men reporting. There was also a resusitator case with satisfactory results.

**Valentine Parties**  
Gaily decorated Valentine boxes loaded with heart and sentiments were in each room at the Woodland school Friday when room mothers aided the teachers with their annual Valentine room parties. Each room enjoyed the exchange of Valentines and refreshments.

**Gibbons**

- SPANAWAY FOOD CENTER**  
Spanaway GR 7512
- Nalley's "Mild Western" Chili Con Carne, 15 oz. . . . 2/47c
- Nalley's Mayonnaise Full Qt. . . . 55c
- Sharp CHEESE . . . . 63c  
Van Camps Yellow Tail 1/2s TUNA . . . . 5/99c  
M. D. TISSUE . . . . 2/21c  
Sunny Jim 18 Oz. Glass APPLE BUTTER 21c  
Top Round U.S. Good Lb. STEAKS . . . . 59c  
Smoked PIG HOCKS . . 35c  
Chicken GIZZARDS . . 59c  
Green ONIONS . . . . 5c  
RADISHES . . . . 5c  
CELERY . . . . 9c  
New RHUBARB . . . . 25c
- Complete Selection of Flower & Garden Seeds  
Closed All Day  
Monday, Feb. 22nd
- Jiffy Pie Crust Mix 2/19c  
Jiffy Corn muffin mix . . 2/19c  
This is a One Time ONLY Special Offer  
Prices Effective Feb. 19 & 20

**Legal Notices**

**STERBICK & STERBICK Attorneys**  
3805 1/2 So. Yakima Ave. Tacoma, Wash.

In the Superior Court of the State of Washington, for the County of Pierce.

In The Matter Of The Estate of WILLIAM HENRY SIELK, Deceased

NO. 57433

**NOTICE TO CREDITORS**  
Notice is hereby given that the undersigned has been appointed and has qualified as Executrix of the above entitled estate; that all persons having claims against said deceased are hereby required to serve the same, duly verified, on said Executrix or her attorneys of record at the address below stated, and file the same with the Clerk of said Court, together with proof of such service, within six months after the date of first publication of this notice or the same will be barred.

Date of first publication 11th day of February, 1954.  
Executrix of said Estate  
ZELDA L. SIELK  
3805 1/2 So. Yakima Ave.  
Tacoma, Washington

**STERBICK & STERBICK Attorneys for Estate**  
3805 1/2 So. Yakima Ave. Tacoma, Washington

Published in the Times-Journal Feb. 18, 25; March 4, 1954.

**PATRONIZE OUR ADVERTISERS**

**FEBRUARY CLEARANCE SALE**

**FURNITURE**

Ranch Style Throw Rugs (Asst. Colors)	4.95	1.49
Foam Rubber Pillows	8.95	3.75
5-Pc. Chrome Dinette Sets (Grey, Yellow, Chart.)	89.95	69.95
3-Pc. Breakfast Nook Set (Table & 2 Benches)	69.95	49.95
3-Pc. Semi-Oval Dinette Set	79.95	54.95
3-Drawer Walnut Chest (Alder)	24.95	13.95
5-Drawer Walnut Chest (Alder)	34.95	18.95
Bookcase Headboard (Full Size, Maple)	29.95	16.95
Maple Twin Size Beds (Alder)	24.95	14.95
3 Way Floor Lamps	14.95	6.95
6 Way Floor Lamps	18.95	9.95
Eastern Mhg. Drum Tables (2 Drawers)	59.95	29.95
Eastern Mhg. 2 Tier Table	49.95	24.95
9x12 Deltax Rug (Reversible)	21.95	15.95
Mhg. Dining Room Table (With 2 Leaves)	99.95	49.95
Coil Springs (Full Size or Twin)	18.95	10.95
Pearl Wht Hampers (Yellow & Green)	12.95	8.95
6 Yr. Durotone Crib with Innerspring Mattress	64.95	34.95
Wall Shelves (Maple & Salem)	12.95	5.95

**TELEVISION AND RADIOS**

17" Crosley Table Model (Mhg.)	189.95	169.95
21" Crosley Table Model (Mhg.)	279.95	229.95
21" Crosley Table Model (Mhg.) (Custom)	309.95	259.95
21" Sparton Table Model (Mhg.) (All Channel)	289.95	239.95
21" Crosley Console Model (Mhg.)	309.95	259.95
21" Sparton Console Model (Mhg.)	349.95	249.95
21" Sparton Console Model (Mhg.) (All Channel)	399.95	279.95
24" Crosley Console Model (Mhg.)	409.95	309.95

**APPLIANCES**

8.2 cu. ft. Bendix Refrigerator (full 5 yr. Wty.)	259.95	165.00
Bendix Automatic Ironer (Cabinet Style)	279.95	185.00
RCA-Estate 33" Fully Automatic Electric Range	299.95	190.00
18.5 cu. ft. Manitowoc Upright Freezer	579.95	425.00
Crosley Tumble Automatic Washer	299.95	229.95
Crosley Electric Dryer (110 or 220 volt)	239.95	169.95
Bendix Electric Dryer (110 or 220 volt) (Demo.)	199.95	159.95
Lewyt Vacuum Cleaner with Attachments	94.50	65.00
Perfection Oil Heater (3-5 Room Size)	89.95	60.00

(These are Floor Samples and carry full warranty)

**USED TELEVISION & RADIOS**

21" Emerson Table Model (Mhg.)	115.00
17" Admiral Console Model (Full Doors) (Mhg.)	115.00
16" Admiral Console Model (Half Doors) Lined Oak	120.00
16" Packard-Bell Comb. TV-Radio-Phono.	140.00
12" Sparton Comb. TV-Radio-Phono.	150.00
20" Firestone Console Model (Mhg.)	150.00
16" Coronado Console Model (Mhg.) (1 Yr. Wty. Pix. Tube)	150.00
17" Capehart Console Model (Mhg.)	150.00
17" Raytheon Table Model (Leatherette)	125.00
21" Arvin Console Model (Mhg.) with Antenna Kit	225.00
Hoffman Radio-Phono. (1 speed with Recording Disc)	75.00
Sparton Radio-Phono. (2 speed) Bleached Mhg.	85.00

**USED APPLIANCES**

Duotherm Oil Heater	5.00
Ivanhoe Oil Heater	10.00

**FRYE'S**  
Furniture - Appliances - TV

Open 9:30 to 5:30 Daily — Monday and Friday Till 9:00 p.m.  
405 Garfield Street, Parkland GRanite 3691

**HILLS BROS. "limit" 1 lb.**

**"AA" Large EGGS 57c Doz.**

**Coffee 89c 1 Lb.**

**1 lb. Powdered SUGAR 2 for 19c**

**Carsten's WEINERS . . . 33c**

**Blade Cut POT ROAST . . 39c**

**Zee - 80 Count NAPKINS . 2/19c**

**TOMATOES . . 19c**

**U.S. No. 1 POTATOES . . 29c**

**Picnic HAMS 6-8 Aver. lb. 45c**

**OLSON'S CLOVER CREEK MKT. 130th & Pacific Ave. GRanite 8727**

### Midland News

Marlene Corrigan GR 8545

The Midland hall was filled with friends from the parishes of St. John of the Woods, Our Lady of Good Counsel, Eatonville, and Sacred Heart Church, Morton, Tuesday evening, Feb. 9, when they all gathered to bid farewell to their beloved pastor for the last 10 years, the Rev. Father Robert E. Logan, and his mother, Mrs. Katherine Logan. Father Logan has been transferred to a brand new parish in Seattle, St. Luke's, an appointment announced recently by the Very Rev. Archbishop Thomas Connelly of the Seattle Diocese.

Present at the reception, beside the honored guests, Father Logan and his mother, were his sister, Mrs. Marie McIcer of Seattle; his brother, John A. Logan, assistant Corporation Counsel for Seattle; Dr. and Mrs. J. J. Logan and son, Jimmy, of Paulsbo, and the Rev. Francis Logan, S. J. professor at Seattle University, and who has been assistant at St. John's on Sundays for several years. Other members of Father Logan's family who were not able to be present were the Rev. Joseph P. Logan, S. J., rector of the Jesuit Novitiate at Sheridan, Oregon; Edward J. Logan, Superintendent of Elections for Seattle and King County, and Sister Mary Aquinas, O. P., teacher at Sacred Heart high school in Miles City, Montana.

Al Merkle was master of ceremonies at the reception and he presented Father Logan with a purse as a small token of affection from all the parishioners. Mrs. Melvin Morrill, president of the Altar society, presented Mrs. Logan with a small gift of remembrance. She then mentioned those who had been president of the Altar society since Father Logan had been in the parish: The deceased Mrs. Mabel Nearns, who was such a hard worker in getting the new church established; also Mesdames Edward Sonneman, Thomas Dolle, Walter Corrigan, Frank Couture and Peter Krapf. A short program, including solos by Miss Ann Lanz,

accompanied by Mrs. Elvin Bombardier, piano solo by Kent Morrill, accordion selections by Miss Mary Ann Reding and songs by members of the St. John's choir.

Peter Coleman Jr., present president of the Holy Name society, baked a beautiful decorated cake in the colors carried out in decorating the tables, heather and silver. Mrs. Frank Reding, who is one of the members who has been with the parish for a long time, cut the cake and served it. Everyone present enjoyed the evening and had a chance to bid farewell to their pastor and wish him luck and success in the building of his new church and parish.

A reception will be held Tuesday evening, Feb. 23, at the Midland hall to welcome the newly appointed pastor for St. John of the Woods, the Rev. Andrew M. Prouty.

#### Teen-Age Dance

The Midland 4-H Clover club wishes to thank all the teenagers who turned out and made a success of their dance last Friday evening at the Midland hall. A special "thank you" also goes to the staff of the Times-Journal for the use of their record players and good sound and microphone equipment.

#### Sewing Circle

The postponed meeting of the Neighborhood Sewing circle will be held Thursday evening, Feb. 25 at the home of Fred Dimond on Portland Ave., with Mrs. Carol McQuarrie assisting the hostess. The members will honor Mrs. Edith Miraldi, who is moving to a new home in Tacoma, after being a resident of the Midland area for many years.

#### Friday Dance

Announcement — All teenagers in Pierce County are invited to come out and enjoy a grand evening of dancing Friday, Feb. 19, at the Midland Community club hall, from 9 until 12 o'clock. The Midland Girls 4-H club, sponsors of this social evening, report that they have obtained the music of "The Five Sharps" band for dancing. Members working on this dance are Mary Benson, Sharron Eshpeter, Marline Spearman, Carolynne Burk, Gloria Siehl, Ann Clinton and Joanne Morud. A good time is promised all those attending.

#### Leaders Council, Seniors

The Pierce County 4-H Leader's Council met at the Fruitland Grange hall Monday evening, Feb. 8, with Mrs. Ellis Anderson presiding. A professor from C.P.S. explained about the coming Science Fair to be held in Tacoma at the C.P.S. Fieldhouse in April and urged all junior and high school students to enter exhibits. Morrill Delano told of an invitation from the Rose society to make a special department for 4-H'ers in their annual rose show exhibits and also that they would assist any clubs interested in better rose growing. George

Purcell and Mrs. Florence Allen gave several reports.

Don Buchanan of Gig Harbor reported on the coming Rally Day program. After the meeting, Miss Helen Noyes, home management specialist with the Extension service, showed some colored slides about the electric project and explained how it could be worked in with most of the regular projects carried by girls and boys. An engineer from the City Light and two of their home economists were also present and reported that they would gladly help out with any such 4-H projects and offered the use of their demonstration rooms. Refreshments were served afterwards.

The Pierce County Senior 4-H'ers met the same evening, with Don Rasmussen presiding, and reported working out programs interesting to the members such as a panel discussion at the next meeting on "Dating." Several "thank you" letters from their CARE packages were read and enjoyed.

#### Bagger-Wiren

February the 6th was the wedding day of Miss Ruth Marie Bagger, daughter of Mr. and Mrs. Harvey Bagger, and Loyal Carl Wiren Jr., son of Mr. and Mrs. L. C. Wiren Sr., of Seattle. The Rev. Robert E. Logan, pastor of St. John of the Woods parish, officiated at the double-ring ceremony.

Miss Bagger's father gave the bride in marriage at the 10 o'clock ceremony, which was witnessed by three-score close friends and family members. The church was decorated with candle trees and pink calla lilies and white flower sprays.

Miss Ann Lanz was the soloist, accompanied by Mrs. Elvin Bombardier. White satin and lace with a bouffant tulle pleated skirt fashioned the bridal gown. The fingertip-length veil of illusion was held in place by a pearl-trimmed tiara and the bridal bouquet was made up of dainty pink rosebuds and white hyacinths. Miss Beverly Corrigan, maid

of honor, wore a ballerina length gown of aqua taffeta with matching head-crown, and carried a colonial bouquet of pink carnations centered with violets and double pink sweet-peas.

Miss Patricia Ann Whalen of Seattle was bridesmaid and wore a similar gown in rose-pink taffeta and carried a colonial bouquet, also.

Mr. Tillish of Seattle was best man and Lloyd Chesterman, also of Seattle, ushered.

The mother of the bride wore a dark blue gown with pale blue accessories. A varied print ensemble in aqua and blue was the choice of the bridegroom's mother. Both wore corsages of white carnations.

A reception feted the newly-weds in the home of the bride's parents at 2205 East 91st, after the wedding ceremony.

For the wedding trip to Sun Valley, the bride changed to a beige suit with white and brown accessories. She is an alumna of Midland Junior high school

### Midland Nursery Sets Grand Opening Saturday, Feb. 20

Midland Nursery, 10603 Portland Ave., will hold its grand opening this Saturday, to celebrate the completion of a new garden shop.

Mr. and Mrs. Iver Jacobsen are the owners, and have been in the nursery business for three years in the Midland area. They will carry a complete line of garden supplies, includ-

ing bulbs, rockery plants, shrubs, bedding plants and garden implements. They have a small greenhouse, in addition to the garden shop.

They will be open seven days a week, from 9 a.m. to 6 p.m., specializing in landscaping.

Civil Defense in Washington is organized in a state department, 39 counties, three metropolitan cities and two special areas, Grand Coulee Dam and Hanford.

and Lincoln high school of Tacoma. Mr. Wiren, an industrial engineer, is a graduate of Seattle university. The new home will be made in Seattle.

**MIDLAND DRUGS**  
PRESCRIPTIONS  
98th & Portland Ave. GR 3305

ing bulbs, rockery plants, shrubs, bedding plants and garden implements. They have a small greenhouse, in addition to the garden shop.

They will be open seven days a week, from 9 a.m. to 6 p.m., specializing in landscaping.

Civil Defense in Washington is organized in a state department, 39 counties, three metropolitan cities and two special areas, Grand Coulee Dam and Hanford.

and Lincoln high school of Tacoma. Mr. Wiren, an industrial engineer, is a graduate of Seattle university. The new home will be made in Seattle.

ing bulbs, rockery plants, shrubs, bedding plants and garden implements. They have a small greenhouse, in addition to the garden shop.

They will be open seven days a week, from 9 a.m. to 6 p.m., specializing in landscaping.

Civil Defense in Washington is organized in a state department, 39 counties, three metropolitan cities and two special areas, Grand Coulee Dam and Hanford.

and Lincoln high school of Tacoma. Mr. Wiren, an industrial engineer, is a graduate of Seattle university. The new home will be made in Seattle.

A sarcastic tongue is always dangerous — especially to the person who possesses it.

**THIS WEEKS SPECIAL**

Bicycle Basket  
Reg. 1.90 .....99c

**LAWN MOWERS**

PICK UP SHARPEN REPAIR STORED DELIVER

Precision Grinding \$2.50  
Lapping \$1.50

**Parkland Cycle & Key**  
GR 5772

### Parkland Theater

Fri. & Sat.

Escape From Fort Bravo

Plus Half A Hero

Starring Red Skelton

Starts Sunday

Veils of Bagdad

Plus Son of Belle Starr

# FREE BREAKFAST LET'S EAT!

**MENU**

Delicious Golden Brown Hot Cakes made from Sperry's Pancake Flour topped with Red Shield's Pure Creamery Butter

Nalley's Famous Lumberjack Syrup

When We Say Coffee - - We Mean Folgers

Carsten's Sliced Bacon and Little Pigs

**YES! LET'S EAT. NOT JUST A SNACK NOT JUST A SAMPLE but a FULL BREAKFAST**

**Mom: Don't plan on making breakfast. Bring the family to the BARGAIN BASKET. It's all FREE. No strings. Come and join us, won't you? We'll be looking for you. Oh Yes! For those of you who are too late for breakfast, we will serve Betty Crocker Cake from 1 p.m. till 5 p.m.**

**Cut-Up Hens 80c pkg.**

**Fryer Legs & Breasts - Special - 75c lb.**

**TURKEYS All Sizes**

**Armstrong's Poultry Market**  
11009 Pacific GR 5524

cut-up hens, fryer legs, turkeys, etc.

## SPECIAL INCENTIVES FOR YOUR VISIT TO THE BARGAIN BASKET

<b>SPEERY Pancake Flour</b>	4 lbs. <b>47¢</b>	<b>Stokley's, Red Sour PITTED CHERRIES</b>	300 tin 2 for <b>45c</b>
<b>BETTY CROCKER Cake Mixes</b>	3 for <b>85¢</b>	<b>BISQUICK</b>	40 oz. pkg. <b>41c</b>
<b>Sunshine DAINTY MINTS</b>	pack 19c	<b>C &amp; H POWDERED SUGAR</b>	2 for <b>25c</b>
<b>Sunshine GRAHAMS</b>	1 lb. 31c	<b>KRAFT DINNERS</b>	2 for <b>27c</b>
<b>Yakima No. 2 SPUDS</b>	50 lbs. 69c	<b>Carsten's Skinless LINK SAUSAGE</b>	12 oz. pkg. 45c
<b>Pink GRAPEFRUIT</b>	lb. 8c	<b>Carsten's PICNIC HAMS</b>	45c
<b>CELERY</b>	lb. 10c	<b>Sirloin Tip STEAKS</b>	59c
<b>ONIONS</b>	10 lb. mesh bag 29c	<b>GROUND BEEF</b>	32c
		<b>POT ROAST</b>	35c

**TREE TEA**

48 bag pkg. .... **49¢**

**PLAY FAIR DOG FOOD** . . . . . 3/27c

**LIBBY'S GARDEN PEAS, No. 303** . 2/39c

**DEL MONTE CREAM CORN, 303** 2/35c

**Nalley's BEEF STEW** . . . . . 2/65c

**KRUN CHEESE** . . . . . 27c

**LUMBERJACK SYRUP, 24 oz.** . . . . 27c

**Dial the correct HEAT for BACON-EGGS-PANCAKES and your other favorite dishes**

**Sunbeam CONTROLLED HEAT Automatic FRYPAN**

Everything Will Be More Delicious Because You Get the CORRECT HEAT Every time

WATER-SEALED element for easy washing. **\$2495**

Easy-to-See FRY-GUIDE and HEAT CONTROL DIAL right in the handle.

You simply set the dial and you get CONTROLLED HEAT for cooking and frying, without guesswork. Shortening is always at just the right temperature, resulting in less grease absorption. Your favorite dishes are more delicious because their natural, flavorful juices are sealed in. New square shape makes the Sunbeam ideal for everything from bacon to one dish meals and hashed brown potatoes. Plug into any outlet—use any place you wish. Has bakelite legs.

**PRICES EFFECTIVE THURS. - FRI. - SAT. FEB. 18th, 19th, 20th**

**BARGAIN BASKET**

TEL. - GRanite 3371

Open Monday & Friday 9:30 a.m. Till 9:00 p.m.  
Regular Store Hours: 9:30 a.m. To 5:30 p.m.

**FRYE'S**  
FURNITURE T. V. and APPLIANCES  
Parkland Ctnere Bldg. Granite 3691

**167th ST. and PACIFIC AVE. - SPANAWAY**

**FILL YOUR BASKET at BARGAIN BASKET...FOOD VALUES GALORE**



## Parkland Com. Club Installs New Officers

(Continued from Page 1)  
Simpson; recreation, Howard Motteler; ways and means, Dick Soukup, Stan Pietersyskowski, Frank Madden, Charles Peterson; civic, planning and rezoning, Mel Pedersen, Al Grodsvig,

Ed Stevens; banquet, Dick Soukup, Mike Wutz, Mrs. Henry Kurl, Mrs. F. D. Van Rheaden, Bart Payne.  
Action was taken to approve the petition to reduce the speed limit on Airport road, request a signal light at Garfield and Pacific, request county commissioners to install a better railroad signal by the Franklin Pierce high school, and request the State Highway department to fill or fence the gravel pit near Tule Lake road.

## Spanaway Water Co. Plans Well

The Spanaway Water Co. announced this week that a well site would be procured and drilling for the well would begin as soon as 50 more shares are subscribed.

The board of trustees and permanent officers were elected at the last meeting of the water company. The officers are: President, John Newell; vice president, Hugh Conycau; and secretary-treasurer, Phil Zurfluh, Jr. The other four trustees elected were: Lee Corp, Harry Randall, George Brewer and Lawrence Sharley.

## Births

To Mr. and Mrs. Wallace Hoover, 303 So. 84th St., a daughter Jan. 28.  
To Mr. and Mrs. Marvin Shier, 10603 A St., a son Jan. 30.  
To Mr. and Mrs. Donald Loete, Spanaway, a son Jan. 30.  
To Mr. and Mrs. Robert Myron, Rt. 11, Box 336, Tacoma, a daughter Jan. 31.  
To Mr. and Mrs. Howard Walsborn, 9601 Pacific Ave., a son Jan. 31.

## Spanaway Water Co. Plans Well

The Spanaway Water Co. announced this week that a well site would be procured and drilling for the well would begin as soon as 50 more shares are subscribed.

The board of trustees and permanent officers were elected at the last meeting of the water company. The officers are: President, John Newell; vice president, Hugh Conycau; and secretary-treasurer, Phil Zurfluh, Jr. The other four trustees elected were: Lee Corp, Harry Randall, George Brewer and Lawrence Sharley.

The shares of stock sell for \$300 and a \$20 monthly payment plan is available. Further information can be had by calling John Newell at GR 7425, Phil Zurfluh at GR 6895, or contacting any of the trustees.  
"The sooner the potential customers sign up, the sooner the actual construction can begin," stated President Newell. "This is a project the entire community can unite upon without the discord that characterized the previous attempts to bring in water."

The next meeting of the Spanaway Water Co. will be held Tuesday evening, Feb. 23, at 8:00 at the Spanaway school. Anyone having questions or prospective stock-holders are urgently invited to attend.

## Homemakers to Learn Of Labor Saving Ways At 'Heart' Courses

The homemaker who would like to learn easier ways to do her housework can enroll for the second series of classes in labor-saving techniques by the Pierce County Unit of the Washington State Heart Association.

The classes which are free begin next Tuesday and will continue for five weeks.

Miss Dorothea Kappahn will instruct the class which will meet from 10:30 a.m. to noon at the Mountain View Sanatorium, So. 36th and Pacific Ave. The classes are designed especially for women whose doctors have told them to "take it easy" because of heart disease or other disabilities, but they are open to all women.

Lectures will be augmented by a film, demonstrations and equipment, which will be available for practice sessions.  
Registration may be made by calling Heart, Broadway 3166.

## C & M Market Open Sat., Under New Management

The C & M Market and Farm Store will open Saturday, formerly Barrett's Market, under the ownership of Mrs. Margaret Gerlings. The store is located at 128th and Pacific. While Mrs. Gerlings is making her first venture into the grocery business, she is from a family that has long dealt in the foods line.

Her father started the Wood's Wholesale Grocery Co., in Tacoma in 1910.

All prices will be marked down for the special grand opening sale, with special attractions for the kiddies.

All children accompanied by parents will get Plett Dairy Dixie cups.

The butcher department will be capably handled by "Butch" Ferderer, who has had 30 years experience in the meat line. His specialty is home made sausages and worst.

**LUMBERJACK SYRUP . . . . 67c**  
New Decanter Bottle

**BISQUICK . . . . . 39c**  
40 Oz.

**PARKAY MARGARINE, 2 lbs. . . . . 55c**  
**TURKEY FRICASSE, Lynden . . . . . 39c**  
**AMAZO PUDDING, 2 pkgs. . . . . 17c**

**CHERRIES . . . . . 23c**  
No. 2 Tin  
**PIE CRUST MIX, Betty Crocker . . . . . 33c**  
**POWDERED SUGAR, 3 pkgs. . . . . 39c**

**CHEESE FOOD . . . . . 83c**  
Darigold Process 2 Lb. Brick

**POP CORN, 2 lb. cello pkg. . . . . 35c**  
**BAKERS COCOA, 4-in-1, 1 lb. . . . . 37c**

**WHITE KING . . . . . giant 53c**

**S & W JUICES, Asst. 12 oz. . . . . 2/25c**  
**HONEY, Whitney's 1 lb. jar . . . . . 32c**  
**HOT SAUCE, Spanish Style, 4 cans . . . . . 25c**  
**AVACADOS, each . . . . . 10c**  
**IDAHO ONIONS, 5 lb. bag . . . . . 19c**  
**BANANAS, lb. . . . . 10c**

**HERMAN'S** 162nd & Park Ave.  
Phone GR 8213  
Spanaway  
Prices Effective Thurs. Noon, Fri., Sat., Feb. 18, 19, 20

**CARSTEN'S FRANKS . . . . lb. 45c**  
**SKINLESS WIENERS . . . . lb. 45c**  
**BOLOGNA . . . . . lb. 45c**  
**BEEF HEARTS . . . . . lb. 29c**

**SPANAWAY MEAT MARKET**  
NEXT DOOR TO HERMAN'S Granite 8215  
Prices Effective Friday & Saturday, Feb. 19th & 20th

**Bethel Hi P-TA**  
The Bethel Hi P-TA will meet this (Thursday) evening at the high school, Mrs. Louis Symmons presiding. In accordance with the Founders Day theme, all past presidents have been invited to attend.  
The music department of the Bethel high school, under direction of Richard Curtiss, will entertain the group.  
A nominating committee will be elected.  
Everyone is cordially invited; refreshments will be served.

**L. A. PERIOD — CALIFORNIA ARTS — F. S. HARMON**  
**WATCH THIS SPACE — EVERY WEEK —**  
For  
**(Out Of This World) SPECIALS**  
This Week  
**BEDROOM SUITE \$11950**  
Double Dresser with 30x36 Plate Mirror  
Roomy Five Drawer Chest and Panel Bed  
Eastern Hardwood  
Salem Maple Finish  
(Slight Shipping Rub on Mirrors)  
**PARKWAY FURNITURE**  
141st & Pacific Ave. Granite 3941  
Terms (Open Till 9:00 P.M.) Trades  
**HIGHTSTOWN CARPETS — COUNTRY MODERN**

**VAUGHAN'S VALUES**  
**Fencing Installed or Do It Yourself & Save**  
FREE PLANS AND ESTIMATES  
**Complete Material For 6 Foot Grape Stake Fence, per ft. . . . . 90c**  
ASK ABOUT OUR MONTHLY PAY PLAN  
**VAUGHAN'S**  
PACIFIC AVENUE LUMBER CO.  
84th and Pacific Avenue Phone HI 9515

**WE FEATURE YOUR FAVORITE BRANDS**  
**At FLETCHER'S MARKET**  
**At all times at LOW PRICES!**

Armour's TREET 12 oz. 43c	Carstens Skinless WIENERS . . . 39c	Dennison's PORK & BEANS 2 1/2 tin 2/45
Ocean Glen PINK SALMON 1/2 tin 2/49c	Sirloin STEAKS . . . 69c	Drifted Snow FLOUR 10 lbs. 89c
Standby PIE CHERRIES No. 2 tin 29c	Country Style Pork SAUSAGE . . . 45c	Standby Whole Kernel CORN 303 tin 2/39c
Jiffy PIE CRUST MIX 10c	Grade Good, Round, lb. STEAK . . . 69c	Parkay OLEOMARGARINE 2 lbs. 59c
Waxtex WAX PAPER roll 25c	<b>GOLD SHIELD COFFEE</b> Drip or Reg. 89c lb.	Sunshine CRACKERS lb. 25c
	<b>Fresh Vegetables</b>	GRAHAMS 1 lb. 31c
	Local Fresh RHUBARB . . . 25c	Campbell's CHICKEN NOODLE SOUP 2/33c
	Radishes or GREEN ONIONS 5c	
	Crisp Green CELERY . . . 9c	
	Dry ONIONS . . . 10c	

**Aunt Sue's Bakery**  
209 So. 84th HI 4072  
**National Cherry Week**  
We'll have . . .  
Cherry Sauce Cake  
Cherry Pies  
Cherry Coffee Cake

**BROOKDALE LUMBER COMPANY**  
136th & Pacific Avenue GRanite 8669  
**Builders of Homes, Garages and Farm Buildings**  
for a complete line of building supplies

**Shop & Save at Brookdale Lumber Co.**  
**THIS WEEKS SPECIALS**

4x6 1/4" Reject Plywood . . . only \$2.74	Each
4x8 3/8" Celotex Wallboard . . . only \$1.98	Each
Mahogany Slab, Reg. 24.50. This Week	Only
<b>Front Doors . . . . . \$14.95</b>	

**Clear Cedar Boards, 1x2 to 1x12**  
**Priced less than fir!**

**Close out on Olympic Overhead Garage Door Hardware at . . . \$17.50 per set**  
**Free Estimates on Remodeling your Home**  
No Down Payment  
Pay As Low As \$5.00 Per Month  
**BROOKDALE LUMBER CO.**  
136th and Pacific GR 8669

**We'll be your memory!**

Let us see to it that you're always well supplied with clean-burning, economical Standard Furnace Oil with Thermisol, for your pressure-type burner.  
Our automatic refill service relieves oil heat users of the bother of reordering.

or worry about running out of fuel. And Standard Furnace Oil with Thermisol keeps furnace filters and screens clean. Thermisol keeps your burner sludge-free . . . gives you oil heat at its best. Every drop of Standard Furnace Oil is pure heat.

**Call us today. Put your heating problem in our hands.**

**MARV TOMMERVIK'S PARKLAND FUEL OIL SERVICE**  
120th & Pacific Ave. GRanite 8684

Prices Effective Friday & Saturday, February 19th & 20th

# FLETCHER'S Market

122nd and Pacific Ave. Phone GRanite 8550  
**FREE DELIVERY**



## PLC Campus Goes Modern

### Northwest Respirator Center In Seattle To Aid Polio Patients

Respirator treatment and rehabilitation training for additional convalescent polio patients from all parts of the state will be available by March 1 at the new Northwest Respirator Center in Seattle.

The Center, established last November, was made possible by a grant from the National Foundation for Infantile Paralysis. It is medically supported by the University of Washington Medical School, and is located in Harborview Hospital.

The comprehensive treatment program at the Center includes the most recent developments in respirator care and special nursing and physical therapy techniques.

Patients have an opportunity both to continue their schooling and to learn new skills in the Center with the aid of an occupational therapist.

Most of these patients recover to a considerable extent after acute poliomyelitis has passed. It has been found that after rehabilitation training nearly all patients are able to return to gainful employment.

Although the Center has been open only a few months, the staff has already succeeded in making it possible for two patients, who otherwise would have required prolonged hospitalization, to return home.

In the near future, several other patients are expected to return home.

In addition to providing the latest in treatment for patients learning to come out of respirators, the Northwest Respirator Center has an active research program aimed at learning more about treating

polio and other paralyzing diseases.

Physicians on the staff are studying the emotional reactions of patients in order to better help the paralyzed patients return to an active life.

The third part of the Respirator Center's activity is teaching. Though it is hoped that the development of a vaccine will, within the next few years, eliminate polio as a serious medical problem, there are many other illnesses causing paralysis of movement and sensation which present similar problems intreatment.

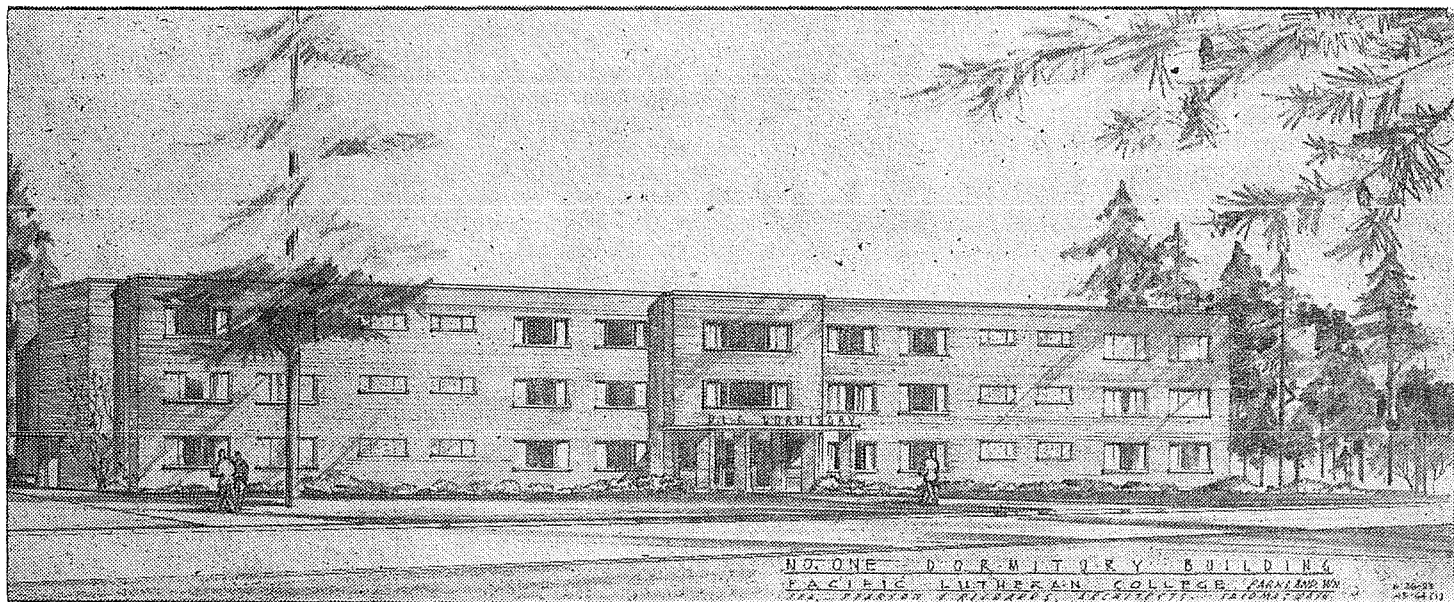
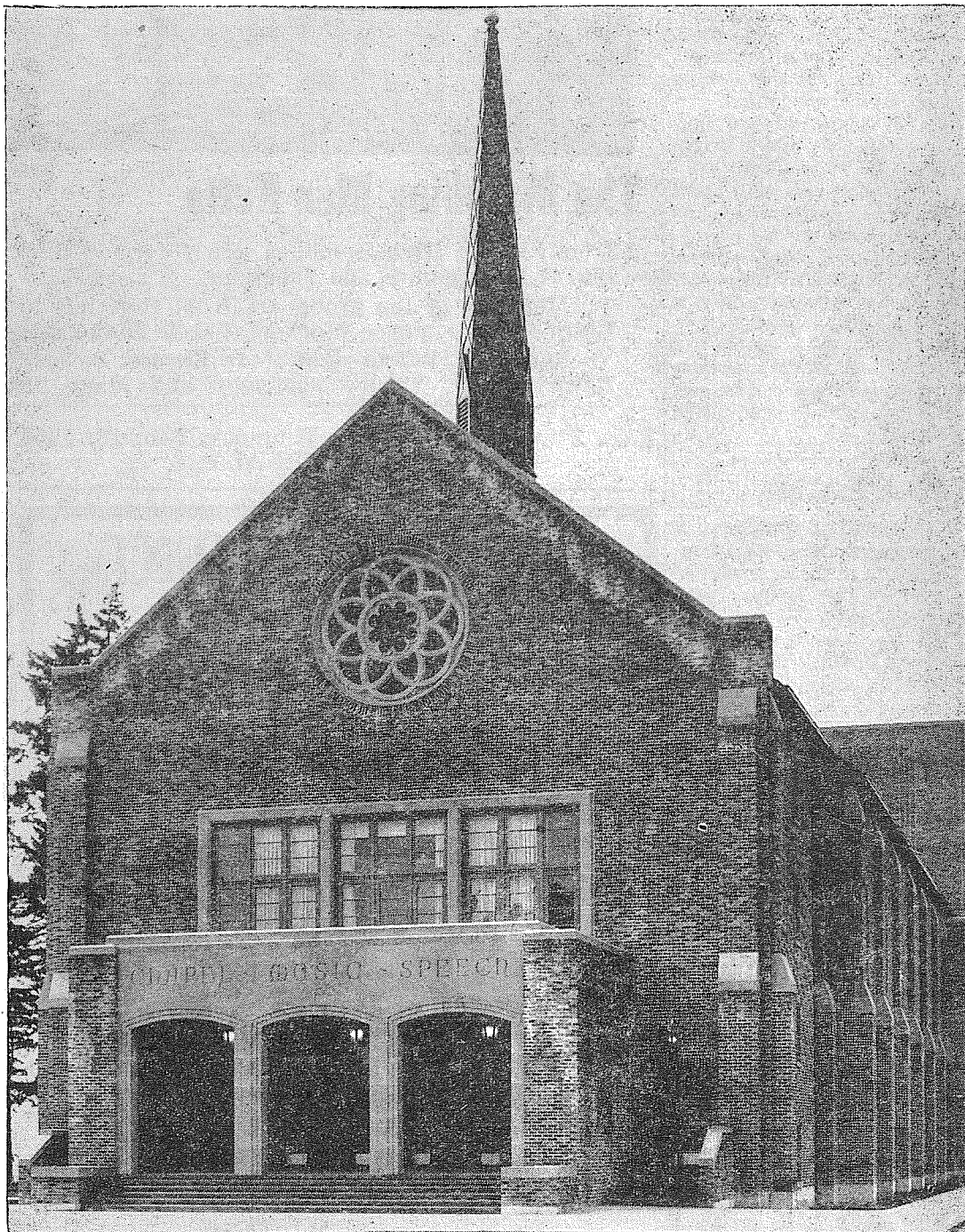
Teaching courses initiated through the Northwest Respirator Center for doctors, nurses and therapists have application not only to polio but to other crippling illnesses which need specialized care.

Plans are now under way for a symposium on poliomyelitis to be held at the University of Washington in the late spring, and other short courses will be announced periodically.

Like eight other similar centers in the United States, the Northwest Respirator Center was created to provide the best in convalescent care for polio patients who need artificial respiration.

Application for admission to the Center should be made through local chapters of the National Foundation for Infantile Paralysis. In cases where the patient is unable to pay for treatment, the cost of care will be supported by the Foundation.

Make your train of thoughts a construction train.



### Pacific Lutheran College's Latest

buildings are shown above. Top photo is the recently completed Chapel-Music-Speech building, said to be one of the most modern and beautiful structures of its kind on the coast.

Bottom photo shows an artist's conception of the dormitory now under construction. When completed, it should look similar to the photo.

With these new buildings, PLC is rapidly becoming one of the most beautiful campuses on the Pacific coast.

### Professional Directory

INSURANCE  
CLAY ROLEY AGENCY  
98th and Portland Avenue  
GR. 8501

ROY V. ROSTEDT AGENCY  
8201 Park Avenue  
Phone HA 2342

### Dryer MORTUARY

720 SOUTH 134 PARKLAND OR 3304

### Consider Convenience

for your friends when choosing a funeral director. Go where they can park—out of the traffic.

TRAV DRYER

## New Drill Unit Formed at Lincoln

Tassels bobbing and skirts flaring, Lincoln High School's newest marching group, the Mar Ketts, a subdivision of the famed Marcella Ki unit, will soon be making appearances in local parades and shows.

While the larger group is noted for its outside drills and fancy formations, the new unit is seeking to shine in indoor drill work, featuring precision drilling, dance steps and variations.

"Because the usual marching uniforms are not appropriate for indoor floorwork, new outfits were designed," club president Beverly Lund explained, "and the girls cut the cost by making their own outfits."

The new uniform has a short white gored skirt, black sweaters with the Marcella Ki emblem, white knit hats with black tassels, white gloves, black socks and white buck shoes.

Mrs. Maxine Cissne is adviser of the group, while Robert McGinn of the Army Reserve is serving as drill master.

The girls are available for programs and other entertainment purposes, and can be contacted through Lincoln High School.



## The Marching Mar Ketts

from Lincoln High School, a newly formed drill and entertainment group, are currently entertaining at local games and functions.

Members of the group are front row, left to right, Donna Moody, Marion Johnson, Anita Sorger, Clarice Keller, Joyce Markert, Carole Blake, Inez Forsland and Maureen Paplow.

Back row, left to right, Joan Kirmse, Beverly Lund, Norma Fulz, Marilyn Gross, Donna Beck, Beverly Hess, Shirley Anderson and Mary Benon.

## Wisconsin Club

Wisconsin Club will serve a potluck supper at 6 p.m. Sunday, Feb. 21 in the basement of the Odd Fellows temple, Sixth and Fawcett Ave.

—A housewife here filed a complaint with police that a man frightens her dog by barking at him.

## Turkey Dinner

Sunday, Feb. 21

Elk Plain School Lunch Room

1:00 to 5:00 p.m.

Sponsored by Elk Plain Firemen's Auxiliary  
Adults \$1.25  
Children under 12, 75 cents

VISIT OUR RECORD SHOPPE  
APPLIANCES - TV  
Radio

SALES and SERVICE

Furniture & Appliances  
**FRYE'S**  
Parkland Centre Bldg.  
GR. 3691

Page 2 Thursday, Feb. 18, 1954  
The TIMES-JOURNAL

## ENTERTAINMENT PAGE

### Stravinsky To Conduct Seattle Symphony Orchestra Here March 8

Igor Stravinsky will conduct the Seattle Symphony orchestra at the Temple Theater Monday, March 8, in a program of his own and other music.

Tickets are available at the Temple Theater box office from Feb. 23 to March 8, Monday through Saturday, from 12 to 6 p.m. Prices range from \$1.25 student tickets to \$3.75.

The two Stravinsky works to be performed in Tacoma are "Scenes de Ballet" and "Suite from Petrouchka." The program will be opened with the Overture to "Russlan and Ludmilla" by Glinka, followed by Tchaikovsky's Symphony No. 2.

Born in St. Petersburg, Russia, Stravinsky has come to be known as the greatest living composer as well as an outstanding conductor.

Among his notable compositions are The Firebird Suite and The Rites of Springtime.

This is the only concert that Tacoma Philharmonic, Inc. will present this year.

### Allison Road 4-H

The Allison Road 4-H club met at the home of Mrs. Ann L. Browning Monday, Feb. 1. A roller skating party was planned for Saturday, Feb. 6. Information was given on coming events. Refreshments and games were enjoyed.

The boys and girls taking Junior Leadership are helping the members with their projects by holding special meetings for each project. Mike Flynn is helping Mrs. Browning with handicraft projects. He scheduled a meeting for Friday, Feb. 5. Bernice McCune and Janet Barna will help with cooking and sewing.

## Bethel Juniors Slate Class Play Feb. 25, 26,

Feb. 25 and 26 are the dates set for the two presentations of the Bethel High School Junior Class play.

"It's Great To Be Crazy" is the play that has been chosen and starting time for both performances is 8 p.m.

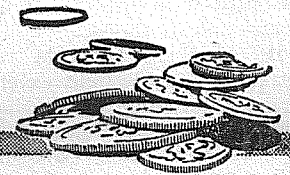
The cast includes Vic Becker, Barbara Burrington, Kitty Calchina, Mickey Cheeseman, Oma Lee Clark, Cathie Holt, Jerry Johnson, Jeanne Kerstetter.

Joanne Kidd, Dick Kraiger, Pete Mattsen, Rene McCallister, Eunice McGee, Lovena McNicholas, and Wayne Otto.

## Preschool Board

The James Sales Preschool executive board will meet at 8:00 p.m. Feb. 23 in the home of Mrs. R. T. Westerman, 872 So. 114th St. Mrs. Mel Ballman will be co-hostess.

The handicraft booth needs materials that can be used for doll clothes, aprons, etc.



**YOUR POCKET CHANGE IS A STEP TOWARD FINANCIAL SECURITY**

... and to help you SAVE your change — Pacific First Federal gives you handy dime and quarter savers. Pocket-sized folders. Easily filled. Easy to save with. Get yours today, at the Family Savings Center.

A MUTUAL SAVINGS INSTITUTION  
**Pacific First Federal Savings and Loan Association**  
Bellingham • Seattle • Tacoma  
Portland • Eugene

## Parkland TV

SERVICE & REPAIRS

On All Makes of Radios & TV Sets

Ed Weiss

233 Garfield St. GR 4458

## SEE AND HEAR JIM CALVERT

And his Orchestra Every Saturday

at the

Fruitland Grange Dance Jamboree

7 Miles East of Pacific Ave. on Airport Road  
Dancing 9:30 - 2:00 Admission \$1.00

## AUTO PARTS

176th & Pacific Avenue GR. 6465  
FRANCHISED WAGNER BRAKE DEALER  
ATLAS TIRES & BATTERIES

ANDERSON  
CHEVRON complete SERVICE

GR. 6465 176th & Mountain Hiway

## TRUCKS FOR RENT

MA 9039

Save One Half

We Furnish Everything

**HARMON'S**

Driv-Ur-Self Co.

HARMON'S SERVICE

2112 Jefferson

Jim Harmon, Mgr.



Mrs. Avyce Combs

## INCOME TAX SERVICE

Headquarters

at

Suburban Realty

11302 Pacific Ave.

GR 3624 - GR 3536



## 4-H's Schedule Turkey Dinner At Riverside

The eighth annual Riverside 4-H turkey dinner will be held at the Riverside school Sunday, Feb. 21, with serving from 12:30 to 4:00 p.m. Proceeds each year help send 4-H boys and girls to Pierce County and State 4-H camps. Stanley Fisher, general chairman, will have the advice and assistance of Mrs. George Richen, who retired this year after many years' chairmanship.

Young people and leaders have been divided into three crews to facilitate handling of the expected crowds. Last year more than 500 were served, the number growing yearly from a mere handful at the first dinner.

The dinner has won fame as the event where empty plates can be brought back for "seconds," all for the same price. There is a half-price plate for children and there is no charge made for babes-in-arms.

The menu, turkey, dressing, mashed potatoes and gravy, green beans, peas and carrots, jello salad, cabbage salad, pickles, hot buttered rolls, jam and jelly, homemade apple pie, coffee or milk. Everybody gets all of these items, not a choice of one or another.

Club leaders are Mr. and Mrs. Frank Deck, Riverside Dairy Club; Stanley Fisher and Robert Braden, Riverside Garden Club; Mrs. Richard Lund and Mrs. Sam Puppo, home economics Club No. 1; Mrs. Carl Carlson, Mrs. Jane Afrank and Mrs. H. V. Patterson, Home Economics Club No. 2, and Mrs. John Nehwinkle and Mrs. Braden, home economics Club No. 3. Mrs. Patterson entertained the committee Monday evening when final details will be planned.

Next Saturday, all 4-H's will assemble at the schoolhouse at 1 p.m. to get going on the pre-dinner schedule. Mrs. Richard Lund, chairman of decorations, will instruct the girls in the art of making simple centerpieces, which they can also use in their coming demonstration contests.

The Military Air Transport Service carried more than 500,000 passengers and patients during 1953 without a fatality. The three MATS divisions—Pacific, Atlantic and Continental—carried 471,000 passengers and 57,000 patients. Also flown were 82,000 tons of priority cargo and mail.

When you stop to think, don't forget to start again.

### Quotable Quip

Moscow Radio recently stated that a Tibetan wild yak has been crossed with a Russian cow. The new breed may be called a "yaw." However, there seems to be a slight drawback. The new animal is still giving "white" milk.

**Castleman Insurance Agency, Inc.**  
Natl. Bank of Wash. Bldg.  
GR 8617

## SCHOOL NEWS

### Puyallup High School Students Now Rehearsing Viking Varieties

Busily working since Christmas are many students at Puyallup high school who have already started planning scripts and music for Viking Varieties, the annual spring presentation, which will be presented March 26 and 27, with a matinee performance for students March 25.

Viking Varieties was begun about ten years ago to replace school operettas as more students could participate in this type of production.

It started out as a series of short variety acts, but gradually has become a three to five act production.

The show generally consists of an opener, a light and fanciful act, a serious and vividly staged act, and a finale.

Section meetings for the purpose of writing scripts are being held at individual homes. Within the next two weeks, the scripts should be completed so

### Co-op Extension Work Information Told

By George Purcell

District Demonstration Contests: These will be in the latter part of March (Gig Harbor district) and May 1st for other districts. Each club should soon elect at least one member (or more) with either a method demonstration or illustrated talk. District chairmen please check duties outlined in letter dated January 1st, 1954. Will let you know later the date of judges' school.

State 4-H Leader Training Conference at Yakima March 16th to 19th. Many women leaders are planning to go. There should be a man or so or more too. Free meals, free bunk (take your sleeping bag or bedroll) and possibly free transportation. Please let us know soon how many plan to attend.

4-H Rally Day: Tentatively set for April 24th at Ft. Lewis.

Colt Club Requirements: The 4-H horse outline says members are required to own, feed and care for and train one or more filly, gelding or stallion colt, under two years of age, preferably foals for at least six months.

the show can go into rehearsal the middle of February.

Students working on these scripts include Lois Heindselman, Sandy Svinth, John MacKay, Bob Daily, Pat Schwartz, Barbara Porter, Bev Sale, Mary Rhea, Judy Friese, Donnie Miller, Bette Riis, Joan Richards, Luther Criss, and Marlene Buess.

Harriet Turney is in charge of costumes while Jon Linder is designing the stage sets.

Marlene Buess is publicity chairman and Joanne Novosat and Joanne Pierson are serving on her committee.

The chorus, glee clubs, girls' nonette, and boys' sextet have begun practicing on music which might be used in Viking Varieties.

Louis Owens, vocal director of Puyallup high school, has general charge of the show. Mrs. Joan Kern, girls' P. E. teacher, is responsible for the dance productions, and Morris Hendrickson, stage crew director, is in charge of the sets.

Quite a few students are preparing for a solo and ensemble contest to be held March 6, at Clover Park high school.

Both vocal and instrumental soloists and ensembles participate in this contest where they are rated by competent judges.

The nonettes will be singing two numbers, but are practicing several as they will also be singing for various organizations around town.

Students preparing for vocal solos are Judy Friese, Beth Belanger, Leilani Beech, Luther Criss, and Ted Barker.

## PLC Alumni Set Reunion Feb. 20; Banquet Planned

The annual alumni reunion at Pacific Lutheran College will be held this week end, starting with a banquet Saturday evening.

Carl Fynboe, Parkland, president of the P.L.C. Alumni Association, will preside at the banquet which will start at 5:45 p.m. in the college dining hall.

Entertainment for the pro-

alumni chapters from Tacoma, Seattle, Portland and gram will be furnished by Spokane.

There will be a special recognition given to the anniversary classes of 1904, 1914, 1924, 1934 and 1944.

Following the dinner, the alumni will attend the P.L.C. University of British Columbia basketball game in the gymnasium. A coffee hour and choir reunion is scheduled to be held after the game in the Student Union lounge.

The Gamma chapter, comprised of women alumni in the Tacoma area, will serve.

The Rev. Arthur J. Knutzen, '27, will preach the sermon at the annual alumni worship service in the Chapel auditorium Sunday morning at 11 o'clock.

Rev. Knutzen is pastor of Anacortes Lutheran Church. Soloist for the service will be the Rev. Rudolph B. Johnson, '48, pastor of First Lutheran Church, Aberdeen. Rev. Johnson was soloist in the P.L.C. choir in '46, '47 and '48.

Some folks make a specialty of getting into trouble. Today is what we were all looking forward to yesterday.

**YOU SAVE AT DANIELS HARDWARE**  
Pacific Ave. & Garfield  
GR. 3171

**BURGERS & FRIES**  
You don't have to wait  
Call HA 9789  
We will have them ready  
"You Just Pick Them Up"  
**AL'S DRIVE IN**  
8818 Pacific Ave.

**Parkland Plumbing & Heating GR 3710**  
New Installations  
Repairing Pumps, Hot Water Heaters, Washers  
Sluggish Drains Opened  
Shop Located at  
770 South 120th

**COMPLETE LUBRICATION — TIRES & BATTERIES THE BEST COSTS NO MORE at LLOYD DILLINGHAM'S**  
**RICHFIELD SERVICE**  
Pacific Ave. at Garfield St. GR. 3040 Parkland

**FENCE PICKETS**  
3/4"x2 1/2" Gothic Point  
24" - 30" - 36" - 42" - 48"  
4c - 5c - 6c - 7c - 8c  
Also Usable for Line-Up Stakes  
**We Always Have Low Priced Shiplap and 2x4's**  
Also Dry Lumber Under Cover at Reasonable Prices  
**LEES LUMBER**  
1517 So. 112th Airport Road GR 3212

**HAVE YOUR CABINETS CUSTOM BUILT**  
At No Extra Cost  
**RHONE'S CABINET SHOP**  
161st & Park Ave.  
GRanite 3342

**For TOP T.V. & RADIO PERFORMANCE**  
Call GR 3549  
Any Time . . .  
Day or Night  
Or Bring Your Set To Our Shop & Save!  
**JIM'S RADIO**  
9920 PACIFIC AVE.

**Trovani's Junior Bootery**  
Specializing in Children's Shoes  
706 ST. HELEN'S AVE.-MA 6318  
LAKEWOOD CENTER LA 4181

**TACOMA OLYMPIC LAUNDRY**  
  
AL HULL SERVES PARKLAND WITH TOP QUALITY LAUNDRY AND DRY CLEANING. REGULAR DELIVERY DAYS ARE TUESDAY AND FRIDAY.  
**HA-4433**  
**PANTORIUM CLEANERS**

## CLUBS & LODGES

### LEGION NEWS

By Phyllis Blackstone  
4th Dist. Publicity Chmn.

During the past week, the American Legion Auxiliary of this district was quite busy entertaining the Department of Washington President, Mrs. Milton H. Schroeder of Seattle.

Mrs. Schroeder's first duty was performed at the Orting Soldiers Home where the dedication of the Wurlitzer Organ was held. The organ was purchased last year by the American Legion Auxiliary Units in this state. This activity was the special project of Mrs. Henry Ahnemiller, who at that time

was Department President. Mrs. Ahnemiller was not able to be at the dedication due to other obligations.

Following the introduction of Mrs. Schroeder to the soldiers, Mr. William Weaver, superintendent of the Home, introduced Mrs. Roy Rodgers, Department chairman for the Orting Home and Hospital; Mrs. James Linder, District President, Mrs. T. J. Muren, Orting Unit President and Mrs. W. P. Blackstone, District Music Chairman. Mrs. Blackstone entertained the men with a few select numbers on the organ and then played special requests.

Mr. and Mrs. Weaver then took the visitors on a short tour of the Orting Hospital where they were shown many new and marvelous aids in keeping the men well and happy. The Hospital is being repainted and in some instances is being remodeled. The soldiers in the Home and the Hospital and even in the yards were able to hear the music during the dedication due to the wonderful loud speaker and inter-communication system.

From the Home, the women went on to the American Legion Hall in Orting for a delicious ham dinner and meeting honoring Mrs. Schroeder. Mrs. T. J. Murnen, president of the Orting Unit, was assisted in preparing for the visit by her own unit serving the dinner and president of neighboring units: Mes-

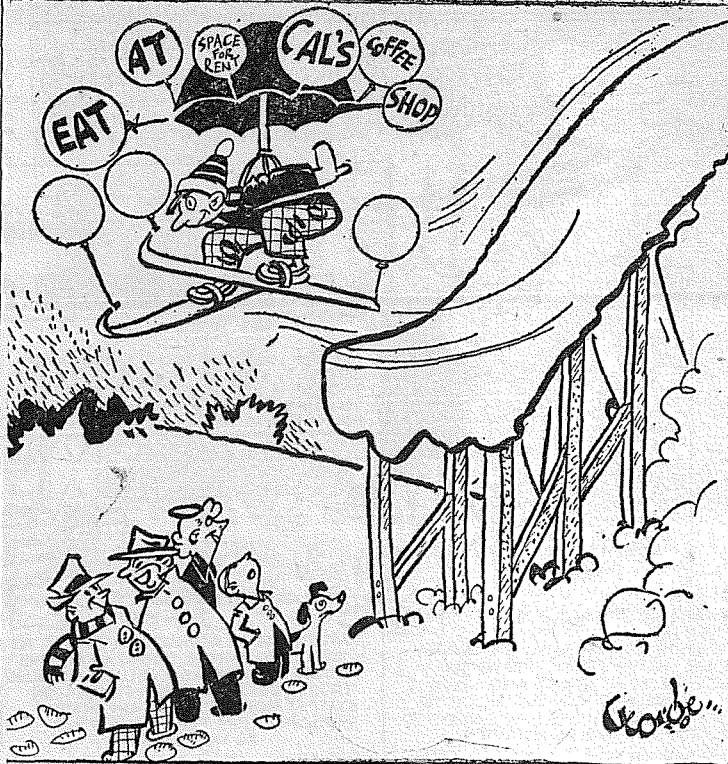
dames Glenn Vormstrand, Eatonville; Lee Thomas, Puyallup and Dorothy Mayfield, Sumner. Honored guests included Mesdames James Linder, District President; Cleo Perry, District vice-president; Will Bierer, District Poppy Chairman; Roy Rodgers, W. P. Blackstone and Mr. and Mrs. William Weaver. Entertainment was furnished by Mrs. Edith Ellezson and Mrs. Blackstone.

Thursday evening, Mrs. Schroeder was entertained at a dinner and a meeting at The Country House with Mrs. James Jensen, president of Parkland Unit No. 228, chairman. Mrs. Jensen was assisted by the following Unit Presidents: Mesdames Andrew Williamson, Rhodes; Peter Pasero, Tacoma No. 138; Irma Long, Clover Creek; Robert Marsden, Tacoma World War II; and Tommye Jefferson, George Wash. Carver. Mrs. W. P. Blackstone acted as Toastmistress.

Guests included Mrs. Ray Erickson, American Lake Hospital chairman for the state; Mrs. Melvin Storlie, Dept. Membership chairman; Mrs. James Linder, District President; R. A. Hedberg, Gift Shop chairman for American Lake

### Ticklers

By George



"He used to be the world's worst skier until he went into advertising."

Presenting  
The Fine New  
**ILLINOIS**  
Cased and Timed by  
The HAMILTON WATCH CO.

SEE IT!  
NEW 17-JEWEL  
Self-Winding  
**ILLINOIS**  
Only \$71.50  
Shock-resistant. Sweep seconds hand. Natural gold-filled case. Raised gold numeral dial.

Convenient Terms  
Take Advantage  
of our  
Free Inspection

and Watch-Master  
Check Service  
Mfg. Settings for Diamonds  
Diamond Rings - Silverware  
Jewelry Repair - Engraving  
Costume Jewelry  
Open Mon. & Fri. Eve. till 9

**LAKWOOD JEWELERS**

Opposite New Center Bldg.  
9601 Gravelly Lake Dr.  
Lakewood 4311

**Locker Meat**  
Government Grade GOOD  
and CHOICE Baby Beef  
We Deliver—Also Custom  
Kill and Pick Up  
**Excel Meat Co.**  
(Formerly Kanton's)  
GRanite 3049

**PIPER FUNERAL HOME**  
Phone HAWthorn 3353  
5436 So. Puget Sound Ave.



Phyllis Blackstone

Hospital; Mr. and Mrs. Glenn L. White and Mrs. Neva Honeywell, Editor of the Parkland Times Journal. A small umbrella which showered new dollar bills on the Department President was presented to her on behalf of the Units participating by Mrs. Lona Jorgensen, past district president.

Entertainment was furnished by the "Harmonettes", singing "A Green Cathedral" and "Down By The River Side". Their encore number was, "Blue Skies". The singing trio included, Darlene Lang, Donna Schmidt and Pat Snyder.

Mr. White, recreational director at the American Lake Hospital, was assisted by Mrs.

Erickson in showing a film depicting the various duties and activities of the volunteer workers at the hospital. The film was beautifully colored and very educational. Many of the women present were thrilled to see themselves on the screen.

Friday night the Yelm Unit with Mrs. Clarence Hughes, chairman, honored our President with a dinner and meeting. Assisting Mrs. Hughes from the Yelm Unit were, Mesdames Neil Sherman, E. K. Fristoe and Ray Norton. Presidents from near-by Units assisting were: Mesdames L. J. Parsons, Olympia; Ed Faubert, Shelton; Richard Schoelkopf, Tenino and Robert Smith, Hood Canal.

The guest list included Mesdames Bertha Andresen, past National Vice-President; James Linder, District President; Cleo Perry, Wendell Brickert, Rae Melcum and W. P. Blackstone, musician for the evening.

Arriving late in Parkland Friday, after the meeting in Yelm, the Department President, accompanied by Mrs. Linder and Mrs. Blackstone, made a surprise visit to the Parkland Unit. Mrs. Gudrun Jensen and Mrs. Donald Walsh, hostesses for the Parkland meeting served coffee and cookies to the guests.

Mrs. Schroeder departed for Seattle, Saturday, to spend the weekend with her family before travelling to other districts in the state where she will continue her visits.

The American Legion Auxil-

ary Junior TV show will hold a practice meeting at the home of Mrs. Riley Drake, 858 So. 85th St., Tacoma on Saturday, February 20th. Practice will begin at 1:30 p.m.

Pheasant: Orders have been placed with the State Game Department. As soon as we are notified of our quota we will in turn inform you. A Game Department representative will inspect all members' rearing facilities before pheasants arrive.

You Are Invited To Attend A  
Southern  
Baptist Church

**First Southern Baptist Church of Tacoma**

So. 11th St., Between Proctor and Adams St. S.

**SERVICES:**  
Sunday School 9:45 A.M.  
Morning Worship 11 A.M.  
Training Union 6:30 P.M.  
Evening Worship 7:30 P.M.  
Prayer Meeting Wednesday 7:30 P.M.

For Free Transportation  
Phone HI 7883

Rev. C. H. Green, Missionary  
Pastor - Montesano, Wash.  
Tel. 3622  
Bro. Fred Bennett, Pastor  
HI 9280

**tot-toons**  
BY SUZY & MURIEL



If in the dirt  
He likes to play  
Be sure he's dressed  
To suit the day.

## FREE LECTURE ON CHRISTIAN SCIENCE

Subject:  
"CHRISTIAN SCIENCE: THE GOAL OF SCIENTIFIC KNOWLEDGE"

Lecturer:  
HENRY ALLEN NICHOLS, C. S. Los Angeles, California. Member of the Board of Lectorship of the Mother Church, The First Church of Christ, Scientist, in Boston, Massachusetts.

Place:  
PUYALLUP HIGH SCHOOL AUDITORIUM  
7th and Pioneer.

Time:  
SUNDAY, FEBRUARY 21, 3 P. M. Auspices of First Church of Christ, Scientist, Puyallup, Washington.

Sound equipment has been installed on the main floor for those unable to reach the Auditorium.

**The Public Is Cordially Invited**

This Space Cleaned By

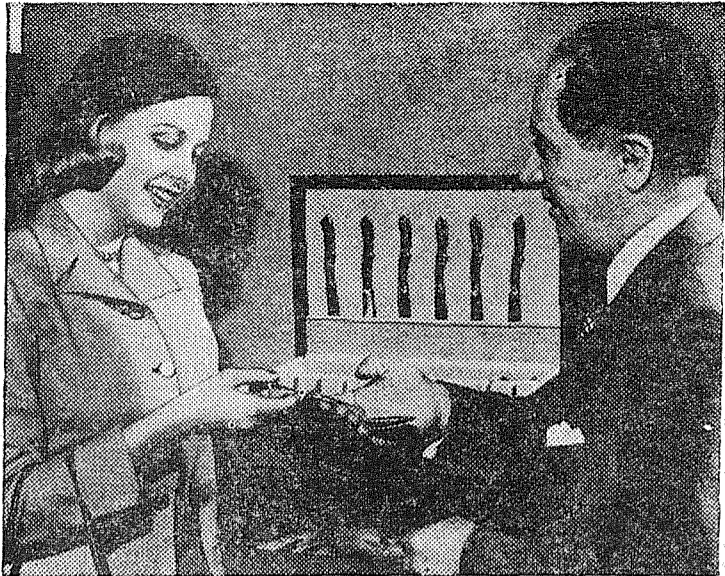
**PARKLAND CLEANERS**

GR 3221

11004 Pacific Ave.  
North of the Bank Corner

24-HOUR SERVICE AT THE PLANT

**Blessed Event SHOP**  
PHONE GRANITE 4166  
328 GARFIELD ST.  
PARKLAND, WN.



This bride-to-be carefully inspects stainless steel spoons for finish and grading, two qualities that spell the difference between good tableware and the less expensive variety. The pattern she is inspecting is called "Ballet."

## Womans Page

### Parkland P-TA, Preschool To Observe Founder's Day Feb. 18

Parkland P-TA will meet this Thursday at 7:45 p.m., in the school auditorium, in a joint meeting with the preschool. Founder's Day will be observed.

Mrs. Trav Dryer and Mrs. Virgil Flynn, presidents of the two groups will preside. The meeting will honor all past

presidents of both organizations.

The Parkland Junior Band will open the program, directed by Mr. Winters. LeRoy Spitzer will sing "The Lord's Prayer", following the invocation.

Program will include a talk and films shown by Miss Elizabeth Krell, Jefferson School teacher, who taught in Eng-

Also on the program will be Orville Weeks, who will speak on "School Millage."

Hostesses for the evening will be Mrs. Mary Larson, Mrs. Helen Craig, Mrs. Shirley Elske, Mrs. Inez Armstrong, Mrs. Gerhard Haakenson, Mrs. Walter Malmgren, Mrs. Robert Gardner and Mrs. Alexander Airic.

Table decorations will be made from rummage already collected, as a reminder of the rummage sale March 15.

Those having rummage they wish to be picked up are asked to call Mrs. William Hart at GR 3758 or Mrs. John Swanson at GR 6463.

There's more hard work than luck in most success stories. and eight miles wide.

## Choose Stainless Steel Tableware With Care - Miles

By Edna Miles

In a very short time, stainless steel has come out of the kitchen and into the dining room, where it graces the table in company with good china and crystal.

Nearly every housewife has some stainless steel in her kitchen which she uses for stirring or other food preparation. Thus, she wonders how the more expensive stainless (selling for perhaps \$9 a place setting) differs from the cheaper varieties that offer a set for four persons at a mere \$10.

The answer, as always, lies in quality. First, there's a matter of finish. Unlike the inexpensive stainless, the quality stainless has no rough edges and is buffed to bring out the lasting, high luster of the stainless itself.

Many brides-to-be are picking stainless steel as their only tableware in starting out. Later on, they can add sterling, but at the outset they have one good quality set that will serve handsomely for both family and guests.

In shopping for stainless, then, watch for hollow handles on knives and graded pieces. Graded pieces are those tapering in thickness toward the edge of the spoon bowls, handles and tips of fork tines, just as in the best sterling.

Such grading improves the appearance, feel and balance of the tableware. The woman buying stainless should always hold a piece in her hand and inspect it carefully for such qualities.

Designers no longer translate silver designs into stainless; they design for the stainless itself.

The Texan, seeing his first motorcycle, seized his rifle and fired. "Git the varmint?" asked his wife. "Nope," admitted the Texan. "I still hear the critter, but I shore made it turn that man loose."

## TIC-TOC JEWELRY

10331 PACIFIC AVE.

Repairing of Fine Watches  
Our Specialty

GLEN A. CARMACK

# \$250<sup>00</sup> CASH

## FREE every Monday!



**GAS-O-LENE ALLEY**  
10002 Pacific Ave.  
Tacoma 44, Wash.  
GR 3000

**B & K SERVICE**  
103 River Road  
Puyallup, Wash.  
Puyallup 5-7111

**NO PURCHASE TO MAKE**

**NO CONTEST TO ENTER**

**TICKETS ABSOLUTELY FREE AT ALL EAGLE STATIONS!**

Here it is! The easiest and fastest contest you ever heard of! Just think! FREE cash given away every Monday by your neighborly Eagle service station dealer. Drive in and see him today—to get your tickets for this contest that can win you cash every week.

And here's another tip. Ask your Eagle dealer about the GUARANTEED petroleum products he sells. Yes, GUARANTEED products for your car—your assurance of the very best!

### A NEW CONTEST EVERY WEEK!!!



# EAGLE

**SERVICE STATIONS**

ALSO 200 GALLONS OF GASOLINE GIVEN AWAY FREE

**GAS-O-LENE ALLEY**

**B & K SERVICE**

10002 Pacific Avenue

GR 3000

103 River Road Puyallup

5-7111

Winning numbers posted at all Eagle stations every week!

# ★ SPORTS ★

## Bethel Braves Scalp Eatonville 61-60, for 15th Straight Win

Bethel Braves marched to their 15th straight league victory Friday night when they sneaked by Eatonville 61 to 60 at Eatonville.

The Braves trailed the Cruisers for a good part of the game until the final quarter when they surged to a seven point bulge.

Eatonville put on a final flurry to come within one point but time ran out on their rally.

Four of the Bethel starters hit the double figures. Walter Leigh led the attack with 18 points followed by Gene Ketter and Felix Brodigan with 14 and Gary Allison with 12.

Bob Jacobson led the Eatonville scorers with 19 points

to be high point man of the evening.

Bethel (61)	
Rich, F	3
Ketter, F	14
Brodigan, C	14
Leigh, G	18
Allison, G	12
Anderson	
Eatonville (60)	
Logston, F	10
Jacobson, F	19
White, C	8
Del Gianni, G	16
O'Neil, G	5
Harper	2

## Kid Gavilan To Take On Minelli In Olson Warmup

"Kid" Gavilan, the king of the welterweight boxers has his sights set on "Bobo" Olson middleweight crown and is preparing early.

The Gavilan-Olson title match is scheduled for April 2nd in Chicago. Prior to this engagement, Gavilan will meet Livi Minelli, hard punching middleweight, in Boston March 8. Gavilan considers this bout a warmup for the big match against Olson.

Minelli is no pushover and could dampen Gavilan's confidence.

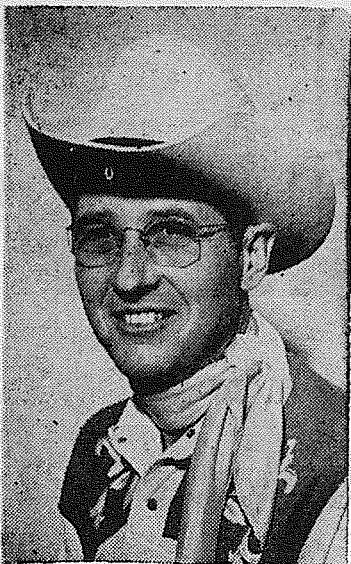
## ALONG THE TRAIL

with  
**LARRY KIRKWOOD**



There was a fine turn-out at the Tacoma Unit party last Saturday night, with everyone having a lot of fun—thanks to George Wise who was chairman of the party.

This coming Saturday night, February 20th, we'll all be heading out Graham way for



"Larry"

the big dance starting at 9:00 and ending???? There will be a good western orchestra to furnish music, with both old (Continued on Page 7)

# PLC Cagers Facing Tough Weekend; May Tie for 2nd

The scramble for second place in the Evergreen Conference is proving to be a wild one. By taking their week end series against Western and U.B.C., the Pacific Lutheran College Gladiators could end up in second place despite their four losses.

Central and Eastern have three defeats, but the Wildcats from Ellensburg have two games with CPS, and one each with Eastern and Whitworth left.

The Savages have two games with undefeated (in league play) Whitworth and one each with Central and CPS. If the games run true to form, Eastern, Central and CPS all figure to have more than four defeats.

Big hurdle for the Lutes will be the rangy UBC five which dumped CPS, 64-62, and a club which the Lutes barely got over, 55-53, two weeks ago.

That game is carded for 8 o'clock Saturday night on the PLC courts.

Friday night the Lutherans meet the hapless Western five, but they can't afford to look past them to Saturday night. The Vikings have given some scares to the big clubs this season, and they could upset the dope bucket.

Garnet Lund continues to lead the Lute scoring parade. In 22 games he has scored 270 points for a 12.3 average. Other leading scorers are Bob Ross, 224; Phil Nordquist, 193; and Donn Koessler, 184.

PLC closes out its regular season next Tuesday night when they meet the much improved Seattle Pacific team here in Parkland. The junior varsity

fives of the two schools will meet in a preliminary tilt at 6:15 p.m.

### ASTHMA

Quick relief! NEPHRON INHALATION THERAPY has helped countless thousands. Ask about our Trial offer. See your Druggist or write NEPHRON COMPANY, Tacoma 1, Wash.

**SPECIAL Purchase**  
Reg. 15.95  
**FIELD BOOTS**  
\$12.95  
Reg. 11.95  
**MENS Loafers**  
\$7.95

**PAUL'S SHOE REPAIR**  
SPANAWAY  
Closed Wednesday

### Horse Shoeing

by  
An Expert  
**J. R. Young**  
Graham  
7-7616

**NOW IS THE TIME TO**

Install a Well or Check that Water Pressure. We Guarantee Full Pressure with an Advance Water System.

**Glacier Pump & Drilling Co.**

Get our bid on your water problems — You may save money.

10435 So. Sheridan  
GR. 5566

**You Be The Judge**

Try  
**Larry's** MTN. VIEW  
**CLEANERS**

PICK UP & DELIVERY  
RAIN OR SHINE  
GR 3261 134th & Pacific

## THE SPORTING TIMES

By ROG McDONALD

### Baseball Fever Hits

Here it is only February but the baseball fever is creeping into the hearts of baseball players in both the major and minor leagues.

During the winter months the officials and owners of the teams participating in our national sport have been trading players and sending and re-sending contracts to their regulars but most of all have been trying to lay the groundwork to put baseball back on a paying basis.

Our own Coast League is a shining example of the troubles facing baseball leagues all over the country. Baseball has been on the down grade financially ever since 1948 here on the coast.

The attendance figure in 1947 was a shade over the four million mark and has slipped to a miserable million and three-quarters last year.

One thing is sure, another year like last year and the

Coast League will surely cease to exist. Many of the clubs have been operating on a shoestring the last couple seasons and are now out of shoestrings.

The reason for the declining attendance figures is anybody's guess. Many things could be responsible such as poor seating in some parks, television, weak teams and many other reasons.

These may be contributing factors, but could it be that people are tiring of baseball and have switched their interest to other sports?

Looking back over the histories of different sports, it is evident that interest in each sport runs in cycles. Professional basketball was dead for many years but today it is enjoying prosperous seasons. Professional football was another sport that suffered for years with low attendance records. Hockey and boxing are no exception to the trend, either.

The best bet for success by a team is to have a winning one. This, of course, is strictly dependent upon the caliber of the players and management.

Every team can't be a champion but it would help a lot if the coast league

FOR A USED  
**Pickup or Truck**  
see  
**LUCKY SALES & SERVICE**  
135th & Pacific GR 8688

## College Golf Course Gets Face Lifting

The popular nine hole College Gold Club will be closed down Feb. 15 for an indefinite period in which time several changes will take place.

A new watering system will be installed during the shutdown along with some improvement to the greens.

Joe Greco, the likeable southend golfer, will take over as the new operator of the club, succeeding the capable Jerry Munson. Greco will take charge of the club repairs and assures the local golfers that the club will be excellent by the time it is reopened.

wasn't a pasture for old horses from the major leagues. Some young hustling stock would probably improve the ticket sales

## Garage DOOR Specials

From Now Till March 31st We Are Offering 5% Discount

STEEL 8'x7'	\$59.50 Less 5%
ALUMINUM 8'x7'	\$59.50 Less 5%
WOOD 8'x7'	\$49.00 Less 5%

Hardware Only As Low As \$15.00  
INSTALL IT YOURSELF AND SAVE \$

**CRAWFORD DOOR SALES**  
Center & Orchard Street PR-5591

**Fishing Tackle**  
**SOUTH END PLUMBING**  
HOME of SCHORN PAINT  
Near Roy Y. Spanaway  
GRanite 4100

**RUPE MACHINE WORKS**  
ENGINE REBUILDING  
Pin Fitting — Rod Grinding & Aligning — Piston Finishing — Rings, Pistons & Con Rods in Stock.  
Brake Drum Turning  
Head Grinding  
Shop GR 7450 Res. HI 6190  
Pacific Ave. at Brookdale  
P. O. Box 645, Parkland

**FLETT DAIRY**  
FARM FRESH  
HOMOGENIZED AND PASTEURIZED MILK  
AND CREAM  
ICE CREAM  
Phone HA. 3301

Free TV and Radio Tube Testing. We reinstall the tubes and check your set for normal operation, when you bring the set. You may save an extra trip by bringing it.

**BIXBY Guaranteed RADIO Repair**

Call GRanite 8309  
On Waller Rd., 3/4 Mile South of Airport Road

**Prescriptions**

**Rx** Carefully Prepared

Fresh Insulin at Downtown Prices. Pay phone bills here  
**Tincher's Pharmacy**  
7239 Park Ave. HI 3344  
Across from Fern Hill P.O.

**Sheet Metal Work**  
**Poultry & Pet Stock Equipment**  
Special Attention to Special Equipment

**RAU MFG. CO.**  
GRanite 7372

# Lute Quint Tops EWCE, Falls Prey to Pirate Five

The stubborn Harshman coached Pacific Lutheran College cagers tangled with a couple toughies the past weekend and came out of the shuffle with a respectable one win—one loss record.

The PLC five thoroughly trounced the highly rated Eastern Savages Friday night in the Parkland team's gym by a 79 to 61 score and settled into second place in the Evergreen Conference standings.

After a fairly even game for the first three quarters, the Gladiators took full command in the final quarter and dumped in 23 points while holding the Savages to only 11.

Garnet Lund paced the Lute's attack with 23 points and some fine rebounding. Bob Ross ac-

counted for 11 big points and Jack Hoover collected 10 points all from the free throw line.

Saturday night the skyscrapers of the Evergreen Conference, the Whitworth Pirates, invaded the Lutes home floor with all the intentions of retaining the undefeated conference record. This they did, but not until the Gladiators had given them a rough evening.

Led by their 6 ft., 10-inch center Phil Jordan, the Pirates eked out a close 57 to 54 victory.

Jordan was the whole show for the victors as he dropped 33 points through the hoop in one of the highest individual scoring sprees on the local floor for a long time.

The PLC team put up a game fight all the way and almost pulled the game out of the fire in the second half, outscoring the Pirates 26 points to 21. A one point near the end of the game the local team moved to a one point lead but couldn't hold it against their taller opponents.

Lund for the second straight night, paced the Lute scorers, this time scoring 19 points. Ross was the only other Gladiator to hit the double figures scoring 12 points.

This loss dropped PLC out of second place in the Evergreen standings to fourth place. They will try to move up the ladder again this weekend when they wind up their schedule against Western Wash. on Friday night and the University of British Columbia on Saturday evening.

Both games will be played on the Gladiator home floor.

## ALONG THE TRAIL

(Continued from Page 6) time and modern dancing.

This is the dance that was scheduled during the "big snow," and had to be postponed.

You can't miss the place—it will be held at the Grange hall, just one block off the highway in Graham.

How would you like to go for a ride on the prairie again? This Sunday, February 21st, those wishing to go for a ride will meet just beyond the Roy Y on the prairie at 12:00—weather permitting, of course. This will be another no-host ride, so come one, come all.

Along the trail we saw the Parkland Junior Riding Club really getting ahead of the rush for show dates by setting a date in August . . .

Howie Snowden busy with the Parkland Business Club . . . Walt Pease and family on a trip to California . . . Jean Caddigan looking for material for Lariette uniforms.

Send your news items to Larry's Mt. View Cleaners, 134 and Pacific; GR 3261.

## WEEKLY CROSSWORD PUZZLE

### Northern Bruin

- HORIZONTAL**
- 1,8 Depicted animal, the — bear
  - 13 Supplant
  - 14 Anatomical networks
  - 15 Electrical unit
  - 16 Transferree
  - 18 Transpose (ab.)
  - 19 Affirmed
  - 21 Counsel
  - 23 French article
  - 24 Measure of type
  - 25 Exclamation
  - 27 Mast
  - 30 Negative reply
  - 31 Pigpen
  - 32 Social insect
  - 34 Daybreak (comb. form)
  - 35 Percolate slowly
  - 37 Church fast season
  - 39 Musical note
  - 40 Measure of area
  - 41 Discolors
  - 45 It also is called a — bear
  - 49 Symbol for iridium
  - 50 Spell anew
  - 52 Compass point
  - 53 Renovate
  - 55 Free
  - 57 Dispatches
  - 58 Laconic
- VERTICAL**
- 1 Greek god of war
  - 2 For fear that

Here's the Answer

28 Solar disk 43 Tidings  
29 Indian peasant 44 Ocean vessel  
33 Anatomical (ab.)  
36 Coupled 45 Retain  
37 Dipper 46 Palm leaf  
38 Silkworm 47 Handle  
41 Courtesy title 48 Sharp  
(pl.) 49 Names (ab.)  
42 Large plant 50 Near

**PIERCE COUNTY REFUSE CO.**  
WEEKLY GARBAGE COLLECTIONS  
Phone GR. 8688

**CUSTOM MEAT**  
Fresh Eggs-Locker Rentals  
**MOUNTAIN VIEW FOOD LOCKERS**  
Airport & Spruce GR 5332  
2 1/2 Miles East of Pacific

**Auto Insurance**  
10/20/5 As Low As \$12.50 Semi-Annually  
Check us for other rates Comprehensive & Collision  
Farmers Mutual of Enumclaw  
**ED MAREK**  
12909 Pac. Ave. GR 3100

**ROLLINS AUTO WRECKING**  
10805 Pacific Ave.  
NEW & USED PARTS  
Open 8 to 8  
7 Days a Week  
**GR 3011**

**FOR RENT**

**SANDERS - EDGERS**  
POLISHERS & SKIL SAWS

- 3-Inch Per Ft. Caseing . . . . . 3c
- 4-Inch Lin. Ft. Base Board . . . . . 4c
- Base Shoe Lin. Ft. Shorts . . . . . 1 1/2c
- 8-Ft. Each 2x4s . . . . . 15c

**ANDERSON Lumber Co.**  
9813 Pacific Ave. GR 7311

**James Sales Grange**  
An attractive feature of the program at the James Sales Grange meeting this (Thursday) evening at 8 o'clock will be a talk, illustrated by slides, on the proposed Grange Home.

The lecture hour, normally opening at 9 o'clock, will be advanced to 8:30 so that the speakers, Mr. and Mrs. Chester Thompson of Hart's Lake Grange, may afterward give their talk at the meeting of Roy Grange.

Plans for the home are under sponsorship of the Kegley memorial Committee of Pierce County Pomona Grange.

**Castellani - Durando Bout To Be Telecast This Friday**

Rocky Castellani, runner-up to champion Bobo Olson in the middleweight division, and Ernie Durando, the kayo artist, meet for the third time in a scheduled 10-round match as

the Friday 7 p.m. television and radio feature from Madison Square Garden on the Cavalcade of Sports.

In their first meeting, Rocky won a close decision while Ernie avenged this by kayoed him in their second get-together.

The impending rubber tilt promises an interesting evening for viewers and listeners since both boys are regarded as crowd pleasers with their aggressive styles.

Castellani, boxing in the pro ranks since 1946, is noted for a fast combination style of attack. Among his victims in a total of 46 wins are, in addition to Durando, Pierre Longlois, Johnny Bratton, Joe Giardello and Gene Hairston.

Although he has gained only 8 victories via the kayo route, Rocky has developed in to a dangerous hitter, especially after being hurt by his opponent.

Durando, known as "The Rock," is well remembered by fans for his five appearances against Paddy Young. A total of 36 wins gained since his pro debut in 1946 includes an impressive total of 27 knockout.

Along with Young and Rocky Castellani, Norman Hayes and Joey DeJohn have met defeat at the hands of Ernie.

**Jack Hurley Out Looking For Another Matthews Pushover**

"Deacon" Jack Hurley, cautious manager of Seattle's Harry "Kid" Matthews, is out looking for another fourth rater to meet his boxer.

Now that Matthews is no longer considered a contender in either the heavyweight or light-heavy divisions, Hurley is trying to establish him on the comeback trail.

This is quite a job considering the fact that beating fourth and fifth raters doesn't add much to Matthews prestige al-

**Installation & Repairs JACK'S TV & RADIO SERVICE**  
405 Garfield St.  
for service phone GR 3691

**Buick, Pont., Chev. SPECIALISTS**  
All Makes Cars Repaired  
**FARCY'S SERVICE**  
Rt. 3, Box 149 Puy. 5-7207  
Airport & Cedar Road Woodland Dist.

**BULLDOZING**  
Leveling — Road Grading  
Landscaping & Back Filling  
Top Soil  
Large and Small Dozers  
**Frank Rearden GR. 5758**

**FENCING**  
Designers and Builders  
EXPERT WORKMANSHIP  
REASONABLE PRICES  
Easy Monthly Payments  
**VAUGHAN'S**  
HI 9515 84th & Pacific Ave.

**AMERICAN ART CO.**  
CUSTOM PICTURE FRAMING  
OLD MASTERS AND MODERN PRINTS  
BRoadway 4327  
2046 6th Avenue

**UPHOLSTERING**  
Recovering and Rebuilding  
Cushions Rebuilt  
Free Estimates  
**FURNITURE AND RUG CLEANING**  
**PARKLAND UPHOLSTERY**  
12814 Pacific Avenue  
GR 3201 Res. 3181

**A-1 Auto Wrecking**  
Transmissions Rear-Ends  
Good Tires  
**GR 3445**  
13818 Pacific Ave.

**Fern Hill Laundromat & Cleaners**  
8420 Pacific Ave. HA 9736  
Complete Laundry Service and Dry Cleaning also Custom Drying

**C.O. Lynn Co. MORTUARY**  
717 TACOMA AVE. Phone MA. 7745

# FARM NEWS

## Farm Placement For 1953 Highest In Service History

A total of 40,986 agricultural placements were made from the Tacoma Sears lot of the Washington Employment Service, in addition to 7,759 made from the Puyallup seasonal agricultural office last summer, the largest number of seasonal placements made in the state, according to the yearly farm labor report just issued by the Employment service.

In forecasting the employment situation for 1954, farm labor officials point out that only minor changes in acreage and production of the crops from Auburn, Bremerton, Renton, Seattle and Tacoma areas are expected.

Moderate increases are expected in string beans, cranberries, strawberries and mixed vegetables.

Employment of seasonal hired workers is forecast at about the same level as last year, with an estimate of nearly 14,600 for July as compared with 13,400 in July of 1953 at the peak of the strawberry harvest.

It is anticipated that local workers, recruited largely through day-haul programs, will make up more than 70 per cent of the seasonal work force with an estimated 10,150 local workers expected in July.

About 1,300 non-locals are expected from intrastate sources;

and about 3,100 Canadian Indians and a few foreign workers are also included in the expected supply.

The Employment Security Department placed more workers with Washington-farmers during 1953 than ever before in its history, a total of 251,211 farm placements, 28,000 more than 1952.

## Berry Growers Name 3 Directors At Annual Meet

Three new members were elected to the board of directors of the Puyallup Valley Berry Growers Association last week during their annual meeting.

They are Lee Matlock, Foster Keeran and Dan Reese, all for three-year terms. Mrs. A. G. Stone will continue to serve as secretary-treasurer, but resigned as a board member.

Speakers at the meeting included Dr. E. P. Breakey, on insect control; John Brekke, of the USDA food laboratory at the Experiment station, talking on experiments with a new frozen blackberry pie mix being developed at the station; Dr. Folke Johnson, on diseases of raspberries; Morrill Delano on extension work.

Foster Keeran spoke on well balanced fertilization programs and Chas. Bond invited all Association members to attend the premier of the colored motion picture about the Valley.

Norbert Alexander, a director, outlined objectives for 1954 and Armand Mocerri, chairman reported growers are hoping to get 12 cents a pound for the 1954 crop.

Despite the heavy fog, about 100 persons gathered in Fruitland Grange Hall for the meeting.

Naturally spanking doesn't help much in this soft-handed age.

# COUNTY AGENTS' CORNER

By C. R. Doran

The pioneer 200 acre Torgor Peterson farm of the O'Hop valley shows signs of returning to full production.

Last week I found Mr. and Mrs. George Stean, Jr., actively engaged in re-working the farm buildings. Immediate objective was a 20 cow grade A milking barn.

George is a '43 graduate of Puyallup high school. He was active in F.F.A. and acquired experience on the family farm near Firwood. After a hitch in the service he was a member of a home building firm in Parkland.

George says he is a farmer at heart and is getting a thrill out of planning and developing a good farm and future for himself and family. The children are a boy seven and a girl age four. Mr. and Mrs. Stean, Sr. also live on the farm.

George made a note of the date of the "Dairy Structures Clinic". A timely meeting to help with his over-all farm building arrangements.

I. L. and Elmer Larson, that well known father and son combination of Roy are looking pleased. The new eight cow milking parlor with bulk milk facilities is about ready for initiation. It is arranged for bulk grain feeding too. There will be no juggling of 10 gallon cans and those 80 pound grain sacks—just a memory.

This new improvement has been on the agenda for years. The loafing and feeding barn came first in 1950 and '51. It was a big help in caring for the growing herd.

Agreement on design of the milking parlor came only after inspection trips to the best of the modernized dairy farms in Seattle-Tacoma milk shed. Elmer and I. L. agree that it's time well spent to look around to profit by the other fellows experience.

By Ernest I. Hopp

Here are a few notes on poultry activities in Pierce County.

There are many farms with baby chicks and developing pullets. Among these is the E. M. Antonsen farm at Gig Harbor. Their late fall hatched pullets are maturing very well on range. They should be, they have plenty of room, and ample feeder and water space.

At the G. D. Morgan farm, also of Gig Harbor, we find an entirely different brooding system. Land is at a premium. There isn't room to allow the birds to run on range. The birds are brooded in a 20 by 40 foot brooder house that is divided into two rooms.

This, plus a sunporch at each end furnishes rearing quarters until the birds come into egg production. Morgan's October 1953 hatched pullets looked fine.

The Gust Johnson's are still waiting for their spring hatched chicks. While waiting they did a good job cleaning the brooder house. When I saw it

last week it was clean and neat as a pin. That's good insurance against poultry health problems. The Johnson's farm is located in the Summit vicinity.

With all this talk of brooding chicks we don't want to forget the older girls. They are dropping in production but still have lots of egg laying potential. Get rid of the ones that aren't laying and the others should earn you good money this spring. Follow Fred Ahrens practice of keeping nesting material in the nests.

I noticed that most of the eggs he gathers are as clean as if they had been run through an egg cleaner. He uses excelsior as a nesting material.

Fred has a 200 bird laying flock in the Clover Creek area.

By George Purcell

Among the 4-H's — Head, Heart, Hands and Health, the older Pierce County 4-H members have been especially practicing the "Heart" recently. Last Christmas time they were sending CARE packages to very poor French people.

Now they are planning to work with the Easter seal campaign to help buy equipment for local crippled children. Twenty-five 4-H'ers have made plans to help.

The latest new 4-H club to start is a boys' group in the Woodland area southwest of Puyallup. These boys and parents asked Arthur Green to be their adult leader and they plan to get going immediately on their individual projects.

If you would like a 4-H club in your community let us know and we will work with your people too. Just write county agent Court House, Tacoma, or phone MA 7121. There are no dues to pay, no uniform to buy. Members must be 10 to 20 years of age—must be 10 by next September 30.

Now that many lambs have been born its time to see that they get fed well if we want them to grow fast and fat. Lambs need a simple creep so they can slip through and have a feed trough of their own.

Don't make them crawl under — it may hurt their backs. Widen the spaces as lambs grow.

Lambs will eat grain when

# Poultry Health Control Problems To Be Discussed

The Pierce County Extension Service has announced four meetings featuring a panel discussion on poultry health problems and their control.

The first meeting was held Feb. 16 at the Lakebay Church Annex. The second in the series is scheduled for 8:00 p.m. Wednesday, Feb. 24 at the Western Washington Experiment station winter school building. This is a joint meeting with the Edgemont poultry local.

Others are scheduled for the early part of March at Buckley and Graham.

Panel members who will appear at the meetings are Sig Sivertson, Edgewood; Robert Berg, Puyallup; Kenneth Bergman, Summit; James Richardson, Puyallup; and Dr. T. Browne, Dr. Hamilton, and Dr. Jerstad, from the Western Washington Experiment Station.

Ernest I. Hopp, Pierce County agent, will be panel moderator.

## Thrift 4-H Dance

Sponsored by the Thrift 4-H club, a modern and old-time dance will be held Saturday evening, Feb. 20, 8:30 to 11:30, in the Thrift Community hall.

10 days old. They will really thrive on cracked corn, crushed barley or oats and a little bran and protein (soybean or linseed) oil meal. A healthy lamb will soon learn to eat one-half to one pound grain a day. The more they get the less their mothers will need.

Judge: "Will you tell the court what passed between you and your wife during the quarrel?"

Defendant: "A flat iron, a rolling pin, six plates and a tea kettle."

## HARDWARE

Fuller Paint - Republic Paint - Dramex Super Kemtone Complete Stock Save Time & Money

### MAGDANZ

Lumber & Hardware 11401 Pacific Ave. GR. 5538 Open Eve. 'Til 8 p.m.

# Well COME To Our -- OPENING --

## SATURDAY, FEBRUARY 20th

### Of Our New Garden Store

FREE - FREE - FREE - FREE - FREE To First 10 Customers \$1.00 in Merchandise of Their Choosing, and 1954 Planting Guide.

For The Rest

We will have bargains galore. A fine assortment of Garden Supplies - Seeds - Fertilizers - Tools - Shrubby.

Remember MIDLAND NURSERY When Shopping for Gardening Needs

## MIDLAND NURSERY

10603 Portland Ave. GRanite 3661 PLANT MORE IN FIFTY-FOUR

## T. V. REPAIR

Lightning Arrestors Installed

### WHY PAY MORE

For Service Calls Phone

## SILER'S

11230 PACIFIC AVE. GR. 8634

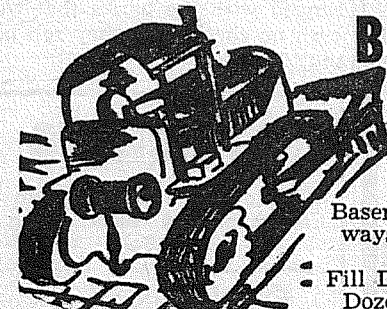
## BULLDOZING

Ken Brown & Bruce Gambill

1750 9th St. S.W., Puyallup

Basements, Backfills, Driveways, Clearing, Leveling, Etc.

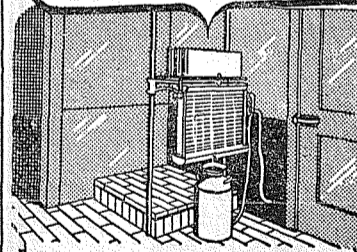
Fill Dirt - Gravel - Top Soil Dozers—Large and Small



Ph. Puyallup 5-2452 - 5-5487 - Estimates Cheerfully Given

## MEET SANITARY REQUIREMENTS with Smooth, Clean

### Plywood MILK HOUSE LINING



Smooth, enameled Exterior type Douglas fir plywood walls and ceilings in dairy barn or milk house meet all sanitary requirements. Big, puncture-proof, damage-proof panels keep joints to a minimum, reduce drafts... make cleaning a swift, simple job. Durable, too! Exterior plywood stands up indefinitely in steam and boiling water. It's light, strong and easy to use. No special tools or skill required—you can do it yourself.

## St. PAUL & TACOMA Lumber Co.

733 East 11th St. Phone Main 6181 MORE TO OFFER THE PROSPECTIVE BUYER