



# The PARKLAND TIMES

(Formerly the PRAIRIE POINTER)

Distributed by direct mail every Thursday to 6,000 homes in PARKLAND, SPANAWAY, MIDLAND, Clover Creek, Elk Plain, Harvard, Brookdale, Summit, Roy, McKenna, Graham, and Eatonville.

Office: Park Avenue and Wheeler Street  
Post Office Box 797, Parkland — Telephone GRanite 7100

PAUL ARLTON.....Editor  
MALCOLM SOINE.....Business Manager  
CLARENCE LA CROSSE.....Publisher

### ADVERTISING RATES

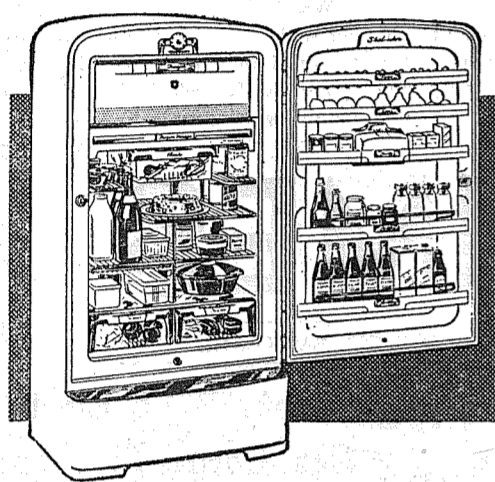
Local and National.....Column Inch \$ .85  
Contract (local).....Column Inch \$ .75

Keep in Tune with the TIMES

**Expert SHOE REPAIRING**  
SHOE DYEING—ANY COLOR RESUEDING  
**ART'S SHOE SHOP**  
GARFIELD STREET

**PURDUE PLUMBING & HEATING**  
SEE US FIRST ABOUT PLUMBING, HEATING AND SEPTIC TANKS  
Route 3, Box 580-A GR. 8008

## GREAT REFRIGERATOR NEWS! The 1950 Shelvador\*



**CROSLLEY exclusive WORKSAVER design gives you NEW SPACE MORE SPACE**  
all at the "CONVENIENCE LEVEL"  
TRADE IN YOUR OLD BOX TODAY

Easy Terms

## PARKLAND - BROOKDALE ELECTRIC

13022 PACIFIC

GR 6789



COME AND JOIN THE FUN!  
**MIXED DANCING . . . EVERY SATURDAY NIGHT**  
Come and Learn to Square Dance  
Sponsored by Paul Bunyan Rifle Club  
**MIDLAND HALL**  
One Mile East of Pacific Avenue on 99th

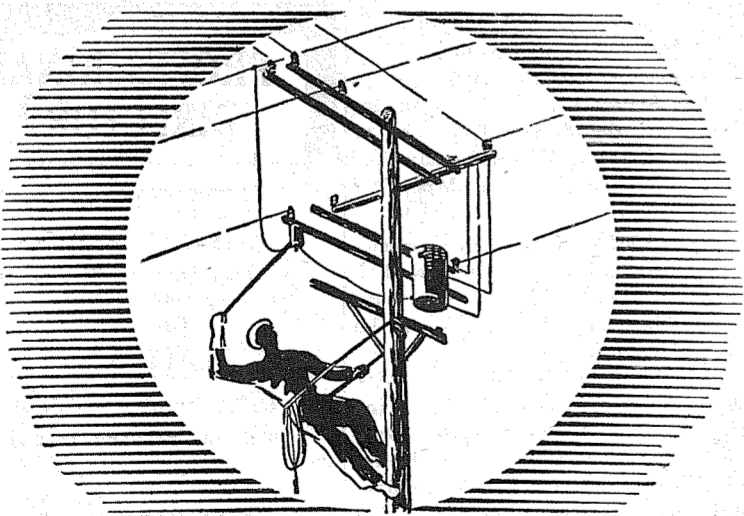
## CUSTOM SLAUGHTERING . . .

CURING AND SMOKING — "WE TENDERIZE YOUR HAM"  
**We Will Pick Up Your Livestock for Your Locker**

COMPLETE CUTTING AND WRAPPING SERVICE

## LOVELAND PACKING CO.

Route 1, Box 353, Spanaway HARRY SPLANE—GR. 4030  
Phone Graham 196 CLAUDE BLYTHE—GR. 6238



## MORE POWER TO YOU...

Your Tacoma City Light delivers more energy per home customer than any other utility in the United States. We're proud of that record.

But, there's more to the story. To continue to bring you adequate power at the nation's lowest rates, Tacoma City Light must continue to build.

More power means more business, more industry, more jobs, more homes. So, here's more power to you from Tacoma City Light . . . for a better life for you.

**YOUR TACOMA CITY LIGHT**  
Public Power at its Best

## Elk Plain P-TA Tabs Gilstrap

A man will preside over the Elk Plain P-TA next year. Members, holding their first meeting since re-organizing from their former status as the Elk Plain School Club, elected Webb Gilstrap president.

Other officers chosen last Wednesday were Mrs. Ferd Kanton, vice-president; Mrs. Edward Castle Sr., secretary; and Robert Wright, treasurer. The new cabinet will be installed at the next regular meeting night, May 3.

Plans for the annual school picnic were discussed. Mrs. Vera Ferguson, third grade teacher, explained the nutrition project in her room which is being carried on through a demonstration with a pair of white rats.

After the business was completed, lunch was served by Mesdames Johnson, Plumb, Jupiter and Hardt.

Easter services of the new Elk Plain Community Church, held in the Grange Hall, attracted a large number of worshippers. Special musical numbers were given by Mrs. Bernice Libak at the piano with solovox attached, and Thorne Tibbetts and his

accordion. The hall was decorated with Easter lilies and daffodils.

The teen-age dance held last Friday in the Grange Hall, under the direction of the Grange youth committee, was acclaimed a big success. Proceeds added to the fund for buying a jukebox. Grand prize was a radio donated by Weisfield & Goldberg.

Music was furnished by the orchestra of Mrs. Bernice Libak. Main door prizes were won by Katie Nelson and Pat Long. Chaperones were Mr. and Mrs. Frank Reardon, Mr. and Mrs. Ross Plumb, Mesdames Hugo Loveland, Gordon Johnson, Joseph Smith and Emmitt Rich, and Henry Libak.

The Elk Plain Grangers will convene tonight. During the lecture hour, there will be a brief Easter program. On Easter Sunday evening, Mr. and Mrs. Edward Castle Sr. had as dinner guests, Mr. and Mrs. David Harkness and family, Mr. Sheperd and Mr. and Mrs. Edward Castle Jr. and family.

## Wait for Site, Writer Urges

Editor, the Times: I am enclosing two letters received recently regarding the 65-acre tract of land we hope to get for the Bethel high school. As I understand it, there isn't any state funds available until after the general fall election when a special state school assistance fund is voted on, and also, it will be next spring before the district gets its money coming from the taxes we voted in, so why cannot we afford to wait and see if we are successful in getting what should belong to us anyway.

We have interested and competent men working to secure this, and we just have to be patient a little longer. By the time the financial background has shaped up, we will probably find our location donated, where it will please the most people, and the \$8,000 saved will help purchase a library or other needed equipment.

Edna Kerr  
Route 7, Box 378

Excerpts from the two letters include this from Congressman Thor C. Tolleson: "My measure which would authorize the eventual acquisition of some 65 acres of land by the district has been acted upon favorably by the House. It is now over on the Senate side where I have every reason to believe it will also receive favorable action."

"With the President's signature it will then become law and in due course of time the property will belong to the Bethel School District. You may be assured that I shall do everything I can to hasten its enactment."

Senator Harry Cain's letter stated in part: "I am very happy to tell you that H. B. 5101 is now on the Senate calendar. It is reasonable to assume that on the next call of the calendar favorable action will be taken."

PLC ALUMNAE GROUP TO GATHER THIS SATURDAY  
The Associated Women Alumnae of Pacific Lutheran college will meet at the Top of the Ocean at 12 noon Saturday, April 15. In addition to other business, the proposed constitution for this newly organized group will be discussed. Mrs. Harold Peterson of Parkland will preside.

Reservations may be made by calling Mrs. Otis Grande, BR 5807, in Tacoma, or Mrs. Sterling Harshman of Puyallup, 5-6006.

**FLETT DAIRY**  
G. FUCHS, Proprietor  
HOMOGENIZED AND PASTEURIZED MILK AND CREAM  
ICE CREAM  
P. O. Box 207, So. Tacoma  
Tacoma 9 Phone GA. 3301

**C. O. Lynn Co. MORTUARY**  
717 TACOMA AVE. Phone MAIN 7745

**PARKLAND LOCKERS**  
Wholesale Meat for Storage  
1000 LOCKERS  
● CUSTOM CUTTING  
● ALUMINUM FOIL WRAP  
● QUICK FREEZE  
● CURING AND SMOKING  
Slaughtering by Appointment  
A. J. (Slim) Stern, operator  
11012 Pacific GR 7111

"TRY BEFORE YOU BUY!"  
**FREE DEMONSTRATION NEW 1950 TORO Sportlawn**  
21 and 18 inch POWER MOWERS

ONE LOOK and you're sold . . . one try and you're convinced that Toro is tops for performance, power and dependability. See the fine new 21-inch and 18-inch Sportlawns . . . from America's leading maker of championship golf course mowing equipment. Husky, power-packed engines. Diston tool steel blades with ball-bearing mounted reels. Dozens of other newest Toro features! Phone us for a free demonstration.

21 Inch \$119.95  
18 Inch \$99.95

**Magdanz Lumber and Hardware Company**  
Millwork, Lumber, Paint, Hardware, Electrical Appliances, Building Supplies  
11401 Pacific Parkland GR 5338

**READY FOR TRIANGLE Chick Starter KRUMBLES**  
Triangle's amazing new chick starter in Krumbled form is making new records for healthier, faster growing chicks. This size, is course enough for easy feeding yet small enough to be safe for the smallest chicks. Give your chicks a good start with Triangle Krumbles.  
Sold locally by  
**Stewart Hay & Grain Co.**

## Parkland Taxi Starts Ambulance Service

Newest addition to the fast-growing South End is the "Parkland ambulance." The vehicle, a 1950 Pontiac, went into service early this week, Stan Peterson of Parkland Taxi told the Times.

Peterson commented that he felt that an ambulance was practically a necessity for a community such as Parkland, and should be a paying proposition. At present, residents have to wait for ambulance service from downtown Tacoma. On different occasions, Stan has hauled people to the hospital in his cabs when they should have been transported by ambulance.

The vehicle will be fully equipped with red lights, siren, ambulance cot and first-aid kit. On every trip, a person with advanced first aid training will be along.

Peterson's taxicabs have now been serving south suburban Pierce County for four years. Stan is in partnership with Ray Maritvold of Graham.

All may help the Red Cross—have you?

**SOUTH END BRAKE SPECIALISTS**  
Modern Equipments and Reasonable Rates  
GRanite 6047  
**Martens' Garage**

Keep in Tune with the TIMES  
**PREFERRED IN TACOMA**  
SO RICH, SO DELICIOUS SO VELVET SMOOTH  
**Medosweet DE LUXE ICE CREAM**  
AT BETTER DEALERS

**72nd St. Cleaners**  
Drive In Under Awning . . . Where Everybody Stops  
Open 7:00 a.m. to 6:00 p.m. Daily except Sunday  
Telephone GA. 5495 for Pick-up

**PARKLAND PHARMACY**  
The **Rexall**  
**DRUG STORE**  
Pacific Ave. at New Bank Corner  
GR. 8519  
Open Week Days—9 to 9  
Sundays and Holidays—10 a.m. to 2 p.m.—4 p.m. to 9 p.m.  
ALWAYS A REGISTERED PHARMACIST ON DUTY

**Sensational "Black" Tube TV**  
ANOTHER **ZENITH** FIRST

Of course with Built-In "Picturemagnet" Aerial

ONLY **379.95**

New Zenith "Lexington" Television Console with Glare-Ban "Black" Tube, 165 Sq. In. Screen. Exquisite cabinet of genuine Mahogany veneers, with all of Zenith's advanced features at their best.

New Zenith Glare-Ban "Black" Tube . . . sets a new standard of TV picture quality! Reduces glare . . . greatly increases picture contrast and clarity.

Sensational Built-In "Picturemagnet" Aerial . . . eliminates the need for an external aerial in many locations.

Giant Circle Screen and Picture Control . . . lets you enjoy either the circular or rectangular type of television picture.

One-Knob Automatic Tuning . . . just one twist brings you station, picture, sound—all pre-tuned, all pre-adjusted!

Low Down Payment . . . Easy Terms

YOUR FUEL OIL AND APPLIANCE DEALER

**POCHEL DISTRIBUTING CO.**  
140TH & PACIFIC GR 8624  
If no answer, call BR 5140

**STOVE OIL DELIVERY**  
From 100 to 200 gals. . . . . 13 1/2¢ per gal.  
● FOREST WOOD ● FENCE POSTS  
● SACKED COAL ● SACKED BRIQUETS  
★ **ROY MILL WOOD**  
OLD GROWTH UPLAND SLAB — EXTRA HEAVY OR MILL RUN — READY TO BURN AT ONCE  
**LAPENSKI FUEL**  
100TH & PACIFIC AVE. GR. 8173

## CROSSWORD ~ ~ ~ By A. C. Gordon

1	2	3	4	5	6	7	8
9				10			11
12			13	14		15	16
		17		18			
19	20	21		22	23		24
25	26			27		28	
	29				30		
31	32		33	34	35	36	37
38		39		40			41
42	43	44	45			46	
47		48		49			50
	51		52		53	54	
							55

- ACROSS**  
1—The "top man" in a republic  
9—Void of embellishment  
10—Designs  
12—Part of the day  
13—Possess  
15—Measured duration  
17—The things a candidate for public office needs  
19—Parent  
21—A cavity  
22—The president of an assembly has to do this for attention  
24—Personal pronoun  
25—Language peculiar to a people (pl.)  
27—Picturesque  
29—Royal Law (abbrev.)  
30—Measure of area  
31—Part of the human limbs (pl.)  
35—Soluble mineral salt  
38—Symbol for tantalum  
39—Compass direction  
40—United States Senate (abbrev.)  
41—American officeholders (abbrev.)  
42—To subsidize
- DOWN**  
1—Scheme  
2—What the candidate did for election  
3—Either (abbrev.)  
4—Grumaces (colloq.)  
5—Eaters  
6—Man's nickname  
7—Snare  
8—Animal appendage  
9—Italian river  
11—Chemical symbol for samarium  
12—Proposed a candidate for office  
14—Weight (abbrev.)  
16—The act of choosing men for public office (pl.)  
17—Force
- 18—Baglike part of a plant  
20—Newspaper announcement  
21—Receive the votes of the people  
23—The highest parts  
24—Note of the musical scale  
26—To irritate  
28—National Recovery Administration (abbrev.)  
32—A native viceroy of India  
33—Suffix used to denote feminine nouns  
34—A legislative body  
35—Dawn of the day  
36—Abbreviation for tank-landing craft  
37—Scottish landed proprietor  
43—A kind of meat  
45—Officer of the guard (abbrev.)  
46—Secured  
48—Scottish "so"  
50—Consumed  
52—Standard Deviation (abbrev.)  
54—Toward
- SOLUTION ON PAGE FOUR

**SAVE for security**

Save systematically for a home, investment or any other goal . . . and, meanwhile, enjoy the peace of mind that comes from having a growing cash reserve. Open an NBW Savings Account tomorrow, and assure your future security.

**NATIONAL BANK OF WASHINGTON**  
MEMBER FEDERAL DEPOSIT INSURANCE CORPORATION  
10 BRANCHES

Mr. and Mrs. Carl Marti of Olympia and Mr. and Mrs. Bernard Salters were dinner guests of Mr. and Mrs. William Righetti Easter Sunday. They went to the auto show in Seattle.

# PAINT UP CLEAN UP FIX UP

**SAVE 41¢**  
**SPECIAL "TRY-A-PINT" OFFER!**



**KEM-GLO**  
 TRADE MARK  
**STAY-WHITE**

Regularly \$1.39  
 Until May 31, 1950 **98¢ Pt.**

Try a pint of KEM-GLO, in white that stays white, at only 98¢, Today! A pint covers up to 50 square feet. 10 lovely colors in quarts and gallons. Pints in Stay-white only.

**\$2.39 Qt. \$7.98 Gal.**  
 Get your PINT of KEM-GLO Stay-white at only 98¢, TODAY! Bring this ad to

**Daniels Hardware**  
 On the Mt. Highway at Garfield St. GR 7947

### Scouts To Slay Big Dragon at CPS Circus

The Cub Scouts of Pack 33, Parkland, are looking forward with eagerness to their part in the Scout Circus to be held April 14 and 15 at the CPS Fieldhouse. Parkland's Cubs will appear inside a huge seventy-foot dragon, designed by Dr. Robert Olsen and built by members of the pack committee. The dragon is part of the "Knights in Armour" act, in which hundreds of Cubs will fight the "Dragon of Unamericanism."

For the occasion the Pack has been

divided into two groups: Dens 3, 6, 7, and part of 2, appearing in Friday night's performance; Dens 1, 4, 5, 8, and the rest of 2, operating the dragon on Saturday night. A bus to carry the boys will leave Parkland school at 6:45 each night, returning about 10:15.

Four thousand Scouts and Cubs will appear in the giant Circus, beginning at 8 on both nights, and the Fieldhouse is expected to be filled with spectators at each performance.

**HEADQUARTERS FOR . . .**  
**OIL HEATING EQUIPMENT**

Featuring Nationally Advertised . . .

- COLEMAN
- SILENT SIOUX
- GILBARCO
- KRESKY
- INTERNATIONAL

**OIL HEATING APPLIANCES**

**Prettyman Heating Company**  
 147th & Pacific GR 8263

**SIGN DONATED TO CHURCH**  
 A large neon sign has been donated to the Parkland Methodist Church by a friend who is to be unknown. Its question, "Why don't you come to church?" is intended to make a fruitful suggestion for many with troubled minds passing up and down the Mountain Highway.

### Central Av. P-TA Meets Wednes.

Election of officers will highlight the session of Central Avenue P-TA next Wednesday night. Mrs. Emil Ripoli will bring down the gavel at 8 p. m., following a half-hour conference between parents and teachers.

Musical entertainment will be furnished by Baritone Carl Fynboe of Parkland. After the meeting, a plant sale will be staged. Everyone is urged to bring a plant.

thanks to all the moms, dads, kids and neighbors who lent a helping hand. Altogether, the affair grossed \$567.

**PAUL BUNYAN RIFLERS TO SHOOT AGAIN SUNDAY**

Paul Bunyan Rifle and Sportsmen's Club will stage its regular .22 caliber 100-yard match this Sunday on the official D.C.M. course. There will be rifles for any who may not have one. Everyone will use post iron sights.

Jim Ellis will be defending the trophy. Range Officer Herb Shovlain will officiate over Sunday's activities.

Unintentionally omitted from the list of sponsors of the Parkland daffodil float printed in last week's Times were Kneehigh Children's Shop, Young's Gift Shop, Garfield Williams Co., Johnson's Service and Parkland Barker Shop. Thanks to you, too.

This Friday afternoon the nominating committee — Lyle Catt, Mrs. Ranghild Peterson and Mrs. Robert Brown will hold a special meeting to prepare a slate of nominees.

"Due to the splendid cooperation of all the merchants in our community and outlying districts, the Central Avenue Mardi Gras was a huge success," Mrs. Ranghild Peterson, chairman, told the Times. "We know that without their support, the carnival would have been impossible. So to each and every one of you a hearty thank you."

Mrs. Peterson also extended her

**"It Can't Happen Here," You Say . . .**

WELL, IT USUALLY DOESN'T. But other painting problems arise, which we can help you solve. For painting methods, and quality paints, see us today. We handle



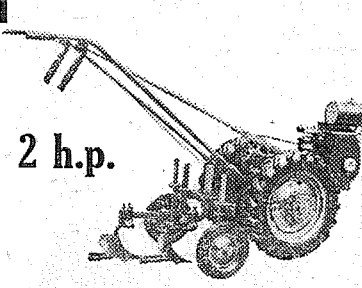
**PABCO PAINTS**  
 "The Finest Paints Money Can Buy!"

MULTI-SERVICE PAINT AND EXTERIOR TRIM • VARNISH AND STAINS • FLOOR ENAMEL • MULTI-SERVICE ENAMEL • INTERIOR FINISH • CINDEK ENAMEL

**ANDERSON LUMBER CO.**  
 9643 PACIFIC GR 7311

Keep in Tune with the TIMES

**On Display NOW**



**Mighty Man Junior GARDEN TRACTOR**

- 2, 3 AND 5 H.P. ENGINES
- 4 SPEEDS
- 1 to 5 MILES PER HOUR
- ALL WELDED STEEL CONSTRUCTION
- ADJUSTABLE WHEEL WIDTH
- TACOMA MADE

2 H.P. Tractor with Cultivator and 7-inch plow  
**\$198.50**

FULL LINE OF IMPLEMENTS  
**Parkland Western Store**  
 Airport and Pacific GR 6119

**SAVE 41¢**  
**SPECIAL "TRY-A-PINT" OFFER!**



**KEM-GLO**  
 TRADE MARK  
**STAY-WHITE**

Regularly \$1.39  
 Until May 31, 1950 **98¢ Pt.**

Try a pint of KEM-GLO, in white that stays white, at only 98¢, Today! A pint covers up to 50 square feet. 10 lovely colors in quarts and gallons. Pints in Stay-white only.

**\$2.39 Qt. \$7.98 Gal.**  
 Get your PINT of KEM-GLO Stay-white at only 98¢, TODAY! Bring this ad to

**SUNSET FURNITURE**  
 Parkland Shopping Center GR 6582

**Magdanz Lumber and Hardware Company**  
 Millwork, Lumber, Paint, Hardware, Electrical Appliances, Building Supplies  
 11401 Pacific GR 5538  
 Parkland

**SAVE 41¢**  
**SPECIAL "TRY-A-PINT" OFFER!**



**KEM-GLO**  
 TRADE MARK  
**STAY-WHITE**

Regularly \$1.39  
 Until May 31, 1950 **98¢ Pt.**

Try a pint of KEM-GLO, in white that stays white, at only 98¢, Today! A pint covers up to 50 square feet. 10 lovely colors in quarts and gallons. Pints in Stay-white only.

**\$2.39 Qt. \$7.98 Gal.**  
 Get your PINT of KEM-GLO Stay-white at only 98¢, TODAY! Bring this ad to

**BAKE SALE TOMORROW**  
 Mary-Martha Society of Trinity Lutheran Church will stage a bake sale this Friday at the Parkland Light & Water office, starting at 10 a.m. On sale will be cakes, pies, cookies, baked beans, and other foods.

In charge are Mrs. R. T. Westerman and Mrs. Robert Davidson.

Members of the society gathered last night at the home of Dr. and Mrs. E. B. Steen for a dessert lunch. Guest speaker was Prof. Magnus Nordvedt. Co-hostesses for the evening were Gertrude Tingelstad and Edna Olson.

**Fuller Paints LINO BONE**  
 The Linoleum finish that positively doesn't peel, chip, or turn yellow.

**Parkland Lumber & Hardware**  
 127th & Pacific Ave. GR 5544

Keep in Tune with the TIMES

**Scott's LAWN COST LESS**



**Scott's SEED** is so clean, pure that one pound does the work of three of ordinary seed. **Scott's LAWN FOOD**, the specific grass food, feeds many times as much as ordinary fertilizer. Result: The best in lawn beauty treatment at less than a half cent per square foot.

**Scott's LAWN SEED**—100% perennial grasses, 99.91% weedfree blend for lawns in full sun or moderate shade.  
 1 lb.—\$1.45 5 lbs.—\$6.95

**SPECIAL PURPOSE BLEND**—For drier soils, deep shade, terraces.  
 1 lb.—\$1.15.

**LAWN FOOD** brings out full lawn beauty, promotes thick growth. Economical. Box, feeds 2500 sq ft.—\$1.95; Bag, feeds 11,000 sq ft.—\$7.50.

**Scott's SPREADERS**—Make possible quick, economical feeding, seeding and weeding. Rubber tired.  
 \$10.85 \$17.50

**Puget Sound Nursery & Garden Shop**  
 9201 PACIFIC AVENUE GA 2151  
 9 to 5 Weekdays; 11 to 5 Sundays

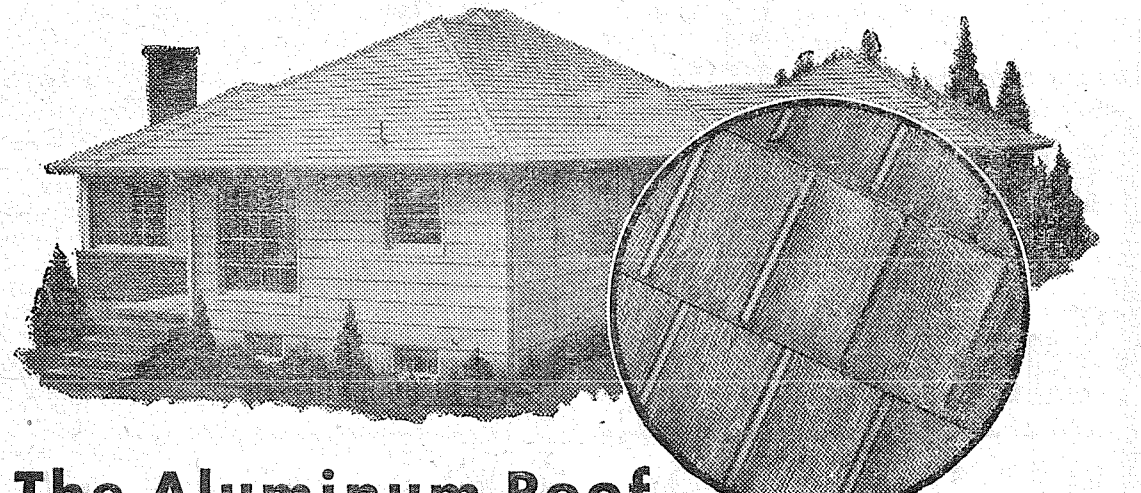
**VAUGHAN'S VALUES . . .**

1x3—END MATCH UTILITY FLOORING . . . PER 100 FT. \$7.50  
 1x4—E FLOORING . . . PER 100 FT. \$6.40  
 1x4—No. 3 CEDAR V CEILING . . . PER 100 FT. \$5.80  
 1x8—No. 4 CEDAR BOARDS . . . PER 100 FT. \$2.50  
 1x4—D END MATCH V. G. FLOORING . . . PER 100 FT. \$11.50

ASK ABOUT OUR MONTHLY PAYMENT PLAN

**Vaughan's**  
**PACIFIC AVENUE LUMBER CO.**  
 84th and Pacific Avenue GA. 3133

**FREE ESTIMATE ON YOUR ROOF . . .**  
 No Obligation



**The Aluminum Roof of Beauty That Lasts a Lifetime!**

**Aluma-Lock Shingles**

See This NEW Low-Cost ALUMINUM SHINGLE

- ✓ Grained to look like cedar.
- ✓ Locks on all four sides.
- ✓ Guaranteed to last a lifetime.
- ✓ Easily applied over old or new roofs.

**ALUMA-LOCK ROOFING CO.**  
 5620 South Tacoma Way, Tacoma

Gentlemen: Please supply me with further information concerning the new low-cost interlocking Aluma-Lock Aluminum Shingles. This request does not obligate me in any way.

Name \_\_\_\_\_  
 Street \_\_\_\_\_  
 City \_\_\_\_\_ Zone \_\_\_\_\_ State \_\_\_\_\_

**ALUMA-LOCK ROOFING COMPANY**  
 5620 SOUTH TACOMA WAY HI 8301

**SHOP at HOME**

**GARDEN SUPPLIES**

SEEDS ROSE BUSHES  
 PERENNIALS  
 PEET MOSS FERTILIZER

**PARKLAND GARDEN SUPPLY**  
 125 AND PACIFIC GR 7270

Give your home a new . . .

**SPRING COAT**

INDOORS . . .

- KEMTONE ● LAUTEX ● SPRED
- VELLO ● ENAMELS ● VARNISH
- REZ

OUTDOORS . . .

- MATSON HOUSE PAINT

**BASKETT LUMBER COMPANY**  
 96TH & PORTLAND GR 8488  
 PICK UP YOUR TICKETS HERE FOR THE FIREMAN'S BALL

**EVERYTHING YOU NEED TO CLEAN-UP PAINT-UP FIX-UP WITH PAINTS BY SHORN**

**HOUSE PAINT**  
 No. 10—Mildew resistant. 10 colors. Made from the finest materials.

**FAST-TO-LITE**  
 Exterior TRIM ENAMEL

**FORSPAR**  
 Quick drying gloss weather-proof varnish.

**FLOOR PAINT**  
 Rock film, quick-drying enamel.

**FORWEAR**  
 Quick-drying interior varnish

**TEXTURE Paint**  
 Lauthex 6 colors. Looks like plaster.

**Interior FLAT**  
 Dresswood full surfacing flowing undercoat.

**SHORN certainly makes FINE PAINT**  
 FULL LINE OF PAINT BRUSHES, THINNERS, SPACKLE, JOINT CEMENT, WALL SIZE

**22-Colors Enamel**  
 Vitagloss quick-drying gloss enamel.

**BLANKIT**  
 One coat flat wall finish—washable. 14 beautiful shades.

**KWIK MIX**  
 COLORS IN OIL  
 Make your own colors. A thousand shades.

**IMPERIAL TEXOLITE**  
 Washable flat wall paint—just add water. 16 colors.

**SATIN MADE ENAMEL**  
 The solid hiding satin enamel

**COL-O-WALL DEEPTONES**  
 The flat wall paint for modern decorating.

**SOUTH END PLUMBING**  
 Mt. Highway, at Spanaway, near Roy "Y" GR 8357 or Graham 194

**Brookdale Lumber Co.**  
 BUILDERS OF SMALL HOMES — READY-BUILT GARAGES

136th and Pacific Ave.—between Spanaway and Parkland GRanite 8669

**SEE OUR NEW 1950 Model GARAGE**  
 ON DISPLAY NOW AT OUR YARD  
 14 x 20 Size—\$475.00 — \$15.75 Per Month

# USE WANT ADS

3 Cents Per Word: 50c Minimum  
Call GRanite 7100

### FOR SALE—MISCELLANEOUS

PARMENTER RED CHICKS, 17c; some started. Price reduction after May 1st. RED COCKERELS, 6c, when available. Day-old pullets on order, delivery Wednesdays. La-Crosse Hatchery and Poultry Ranch, Rt. 1, Box 228, Orting, Wn. Phone Sumner 489.

DRY UP-LAND SLABS. Call R. & R. Fuel. GR 4711.

BANK run gravel, good for driveway, 4 yards \$6.00. Crushed rock and drainfield gravel. GR. 8259, GR. 8573.

1936 DODGE panel truck. Mechanic.

**Red Tag Special**

**GARDEN HOSE**  
50 Ft.  
**\$4.95**

2-Year Unconditional Guarantee

MANY OTHER SPECIALS ON DISPLAY AT OUR STORE

SEE THIS RED TAG SPECIAL IN OUR STORE WINDOW

### Magdanz Lumber and Hardware Company

Millwork, Lumber, Paint, Hardware, Electrical Appliances, Building Supplies

11401 Pacific Parkland GR 5338

# ALVSTAD'S

**MARKET**  
231 Garfield St. GR 8560  
PARKLAND SHOPPING CENTER

FRIDAY AND SATURDAY, APRIL 14 AND 15  
**SHOP HERE AND SAVE**

- 303 TIN SWEET PEAS Duchess... 2 for **25¢**
- TOMATO JUICE Wesco, 46-oz. **24¢**
- NO. 2 TIN PINEAPPLE Wesco sliced... **27¢**
- SHRIMP Duchess wet pack, 5-oz. **43¢**
- NO. 2 TIN SAURKRAUT Wesco... 2 for **23¢**
- 1-LB. PKG. CRACKERS Sunshine Crispy... **25¢**
- SUNSHINE BUTTERSCOTCH SANDWICH... **21¢**
- ASSORTED COLORS SILK NAPKINS 80 count... 2 for **25¢**
- TOMATO SOUP Campbell's, can **10¢**
- HERSHEYS Almond, 3 bars... **10¢**

Choice Fresh and Cured Meats at Popular Prices

Visit our Produce counters—always full of Fresh Fruit and Produce Bargains

12 CANS BABY FOOD Clapps or Gerbers **1.00**

CIGARETTES, popular brands, ctn. **1.89**

TREND SUDS... **19¢**

DUZ, 20½-oz... **25¢**

DREFT, 15-oz... **25¢**

JOHNSON'S GLO-COAT, 1 1-3 qt. **98¢**

### MISCELLANEOUS

call perfect. New paint. 1216 So. 116th. GR 8452. k31

LOST — Monday eve., red Cocker spaniel, female, blond patch on top of head. Answers to name of Taffy, children's pet. GR 5286. k31

WANTED — PARKLAND HOMES; have several cash buyers for 2 and 3 bedroom homes in Parkland who will pay up to \$15,000. Call Mr. Harper, GR 8760, representing Washington Realty Co., 772 So. 38th St. Member Tacoma Real Estate Board.

### SERVICES

TRACTOR WORK, plowing, discing, back-filling, leveling. Phone GR 6877. k37

WATCH REPAIRING, clock repairing—all work guaranteed. New location, Mobley's Jewelry, Pacific Ave. at 104th. k31

CHILDREN'S NURSERY, any age, any hour. Trained mother, licensed, well equipped home, reasonable rates, hour-day board. GR 4282. r

RECOVERING & REBUILDING—Davenport and chair in tapestries, low as \$125.; freeze mohair, low as \$140. Rebuild cushions, \$4.00. Samples shown day or evens in your home. GR 4071 for appointment. r

WAD'S SERVICE—Guaranteed service on all refrigeration and heating equipment. Call GR 5034 day or night.

SEPTIC TANKS CLEANED, contents hauled away. Don Redford, GA. 7334. r

ACE SEPTIC TANK SERVICE—Lyman Redford, owner. Septic tanks cleaned, contents hauled away. GA. 3446 or GA. 9794. r

RAY GOGAN

LANDSCAPE CONSTRUCTION Nothing down, 3 years to pay. New lawns, topsoil, shrubbery, rockeries, old sawdust for mulching. GR 8842. r

This is paint-up, clean-up and fix-up time in the South End.

Solution to Crossword Puzzle

P	R	E	S	I	D	E	N	T			
P	L	A	I	N	I	D	E	A	S		
N	O	N	O	W	N	T	I	M	E		
O	T	V	O	T	E	S	L	L			
M	A	P	I	T	R	A	P	M	E		
I	D	I	O	M	S	S	C	E	N	I	C
N	R	L	S	A	R	A	R	T			
A	N	K	L	E	S	A	L	K	A	L	I
T	A	S	E	U	S	S	A	O			
E	B	B	S	N	O	R	T	I	N		
D	O	E	S	A	G	O	A	I	R	S	
B	E	A	S	T	R	A	T	E	D		
F	E	D	E	R	A	T	E	D			

## Thinking Out Loud

By C. G. "Doc" Brown

Can you afford a Cadillac? Can you afford a vacation in Arizona, when the elements are adverse? Can you drive a state-owned automobile wherever and whenever you please? No! Of course you can't... Neither can nine out of ten other average working people, like yourself and myself.

But, Vic Meyers, Lt. Governor of the State of Washington can and what's more HE DOES, with your money and my money... and he does it with the evident approval of the administration.



I am referring the latest reported whereabouts of Washington's Lt. Gov. who seldom spends any time in the State of Washington, but rather as a pastime and for lack of things to keep him busy at his \$6,000 a year state job in Olympia spends most of his time basking in the climate of more to his liking State of Arizona. I am not saying that he should not have a vacation and that where he so chooses, but the fact which is more important is, WHY SHOULD THE LT. GOV. OF THE STATE OF WASHINGTON BE ALLOWED TO DRIVE A STATE OWNED AUTOMOBILE (A CADILLAC) TO ARIZONA WHILE ON VACATION? or to the other reported places he has been seen the past year. If his job in Olympia is not important enough to keep him busy for more than one month a year, why do we even need the man, much less pay him \$6,000 at a time when the politicians in charge of the state machine are crying and making every possible attempt to RAISE NEW SOURCES OF REVENUE and complain that the State faces bankruptcy, does it allow to let such matters continue under their very noses and evidently with their approval.

We wonder if such a financial condition would prevail and exist if this and other similar conditions were curbed and the state were brought to a strict accounting of all officials and their activities... including the Governor and all other elected and appointed officials.

As candidate for Pierce County Sheriff, I want you, the taxpayer and public to know that I am cognizant of these conditions and ask you when you vote to think of these things. They can be prevented, even now, by proper public pressure to your legislators, letters of disapproval to your newspaper and best of all by voting.

Yours for better government saying that I, as a farmer, would like to make \$6,000 a year—and drive a Ford.

C. G. "Doc" Brown.

Candidate for Sheriff—(Pd. Adv.)

## Joint Legion Session Friday

Legionnaires and auxiliary members from Parkland Post 228 and Clover Creek Post 118 will join for a mass meeting at Spanaway School this Friday to welcome Commander Wendell Brickert of the Legion fourth district, and President Marie Brickert of the auxiliary fourth district, who are paying an official visit.

In addition, members of the Tacoma 40 et 8, the fun-loving organization of the Legion, will be out to help initiate upwards of 50 new members into the two posts.

A report will be given by the girl who represented the Clover Creek auxiliary at Girls State last summer at Pullman.

...The meeting will be in charge of Art Hart, commander of the host post. Afterwards there will be lunch, and entertainment directed by Stan Pietrzykowski of Post 228.

**Ted Boydston Killed In Railroad Accident**

Funeral services were held Friday afternoon for Ted H. Boydston, 31, formerly of this area, who died last Wednesday at Walla Walla after an accident.

Boydston was killed when the railroad speeder he was riding jumped the track while he was checking Western Union telegraph lines along the right-of-way. The speeder turned over several times.

Among the survivors is his wife, Lois, daughter of the Emerson Tarpennings of Spanaway. He was a veteran of World War II. Dr. E. B. Steen officiated at the services, which took place at Piper's chapel.

**Memory Marvels**

The human memory is far superior to and more efficient than any machine ever made by man. It preserves, files, indexes, and cross-indexes an incredible quantity of material. Cosmopolitan magazine cites conductor Arturo Toscanini as having an amazing memory for music, General George Marshall as a wizard at remembering long conference questions, and former postmaster general Jim Farley as being famous for never forgetting a name.

The Couples Club of Parkland Methodist Church will hold a rummage sale May 1, 2 and 3 at 745 Tacoma Ave. Anyone wishing to donate any articles to the event may have them picked up by calling Mrs. C. G. Williams at GR 8201 or Mrs. George Rolstad at GR 7885.

The Parkland library will be a civic asset. Give generously to help build it.

**TISCH'S CORNER NOW OPEN**

8 a. m. to 10 p. m.

to give you the same courteous service and good food you have always enjoyed in the past.

WE SERVE:  
Waffles - Hamburgers - French Fries - Short Orders - Fountain Specialties.

Airport and Yakima

**Your Printing Is Our Business**

We Evidently Don't Do All The Printing In Parkland... But We Do The Best

**LaCrosse PRINTING CO.**

PUBLISHER OF YOUR PARKLAND TIMES

LOCATED AT PARK & WHEELER, PARKLAND GR 7100

### LEGAL PUBLICATION

**SUMMONS BY PUBLICATION No. 107560**

In the Superior Court of the State of Washington in and for the County of Pierce.

CARROLL S. BULLION and PATRICIA ANN BULLION, husband and wife, Plaintiffs, vs. M. S. PHILLIPS and NORA PHILLIPS, husband and wife; LENOX R. HOGAN and MAYME HOGAN, husband and wife; MAYME HOGAN as Administratrix of the Estate of LEN R. HOGAN, deceased; MINNIE O. WILHELM, a widow; ROY H. HARTMAN and CRESSIE E. HARTMAN, husband and wife; HERBERT G. HARTMAN and LOU-THIE S. HARTMAN, husband and wife; K. E. BASSETT and PEARL BASSETT, husband and wife; PAUL R. SCREVEN and MILDRED C. SCREVEN, husband and wife; the unknown heirs of defendant LEN R. HOGAN, deceased; also all other persons and parties unknown claiming any right, title, estate, lien, or interest in the real estate described in the complaint herein, Defendants.

STATE OF WASHINGTON TO THE ABOVE NAMED DEFENDANTS: You and each of you are hereby summoned to appear within sixty (60) days after the date of the first publication of this summons, to wit, within sixty (60) days after the 13th day of April, 1950, and defend the above entitled action in the above entitled Court, and answer the complaint of the plaintiffs, and serve a copy of your answer upon the undersigned attorney at his office below stated; and in case of your failure so to do, judgment will be rendered against you according to the demands of the complaint, which has been filed with the Clerk of said Court.

That the cause of action herein is to quiet title to the following described real estate, to wit:

Commencing at a monument at the intersection of the centerline of John Street and the East line of WRIGHTS CLOVER CREEK ADDITION TO LAKE PARK, PIERCE COUNTY, WASHINGTON; as per map thereof recorded in Book 3 of Plats, at Page 32, records of Pierce County Auditor; thence North on the East line of said Addition to a point 825 feet South of the North line of Henry Williams Johns Donation Land Claim; thence East parallel with the North line of said Claim 303.58 feet to the true point of beginning; thence South 22° 19' East 399.20 feet; thence North 77° 12½' East 403.35 feet to the West line of Johns Street; thence along the West line to Johns Street North 280 feet; thence West to point of beginning; situated in the County of Pierce and State of Washington.

Washington. FLOYD V. HICKS Attorney for Plaintiffs  
Office: Parkland Branch, National Bank of Washington Bldg.  
Postal Address: P. O. Box 728  
Parkland, Washington  
Telephone: GRanite 7313  
Date of First Publication: April 13, 1950  
Date of Last Publication: May 18, 1950

The auxiliary of the Parkland Fire Department will gather next Wednesday at the home of Mrs. Robert Haner on A Street.

Want Ads Do Not COST—They PAY

**Have a Snack with SUNSHINE**

- Sunshine KRISPIE CRACKERS ..... lb. box **24¢**
- Sunshine GRAHAM CRACKERS ..... lb. box **27¢**
- Sunshine FIG BARS ..... 9¼-oz pkg. **19¢**
- Sunshine HYDROX ..... 12¾-oz. **34¢**
- Chocolate Pecan Cakes ..... 6½-oz. **26¢**

---

**TREE TEA**

- Lb. box ..... **98¢**  
(Makes 200 Cups)
- ½ lb. .... **58¢**
- ¼ lb. .... **30¢**

**MEATS**

- PORK SAUSAGE Country Style ..... lb. **39¢**
- PORK STEAK Young tender ..... lb. **39¢**
- PURE GROUND STEAK ..... lb. **49¢**
- FISH AND OYSTERS AT ALL TIMES
- PORT CLYDE 3¼ oz. .... **10¢**
- NORWEGIAN 3¼ oz. .... **28¢**

**Sardines**

LOTS OF FROZEN FOODS

**Barrett's Market**

FORMERLY JOHNSON & ANDERSON  
General Merchandise

GR 8356 128th and PACIFIC GOOD PARKING

**A FEW HOURS OF HEALTHFUL RELAXATION**

**Play Golf.. EACH WEEK**

The Game Enjoyed by Millions the World Over

**Play Right Here in Your Own Back Yard at the COLLEGE GOLF COURSE**

OPEN TO THE PUBLIC 7 DAYS A WEEK

FEATURING LEADING GOLFING AND TENNIS EQUIPMENT

**9 Holes, 35c 18 Holes, 65c**

Clubhouse Opposite PLC Memorial Gym. GR 8559  
Member Tacoma Golf Association

**Quality Service**

**Cheerful, Speedy Attention...**

Our smiling attendants fill your car needs speedily, yet efficiently. Drive up now for service with a PLUS!!

**CHEVRON GAS STATION**

**Smart Motorists Rush To...**

**Parkland Fuel Oil & Service Station**

GR 8112  
120th and Pacific Parkland

**HERMAN'S Highlights FOR THE WEEK-END**

- Tuna LIGHT MEAT, SOLID PACK LGE. TIN... **29¢**
- Butter CLOVER LEAF LB... **61¢**
- Raisins MARKET DAY 2-LB. PKG... **23¢**
- Biskit Mix 40-OZ. PKG... **35¢**

★ **Tide 2 Pkgs. 49¢** ★

**U SAVE BY SHOPPING AT HERMAN'S EVERY DAY LOW PRICES**

- POPULAR BRANDS COFFEE ..... lb. **79¢**
- BOOK MATCHES, 2 ctns **29¢**
- NALLEY'S KOSHER or BANQUET PICKLES ..... **43¢**
- HAPPY VALE SALMON ..... 1-lb. tin **39¢**
- DEL MONTE (Cream Style) CORN ..... 2 for **29¢**
- LIBBY'S PEAS, 303 size ..... **18¢**
- IVORY ..... 2 lge. bars **25¢**

**Produce**

"A" SIZE NEW POTATOES... 4 lbs. **25¢**

DRY ONIONS... 3 lbs. **10¢**

ORANGES, lge. size... lb. **.9¢**

3 BUNCHES RADISHES or ONIONS... **10¢**

BEDDING PLANTS -- SEED POTATOES -- FERTILIZERS -- FEED IN LARGE AND SMALL LOTS

**HERMAN'S FOOD STORE** HOURS: 8 to 6 GR. 8213

3RD & PACIFIC, Spanaway—Same Block as Spanaway P. O.

WE RESERVE THE RIGHT TO LIMIT QUANTITIES—NO SALE TO DEALERS