

Parkland Cleanup Saturday

Spanaway To Charter Lions Club

About 200 Pierce County Lions and their ladies are expected to attend an organizational banquet May 13 to welcome 30 Spanaway charter members into the international at the Lake Spanaway Golf Course Clubhouse.

County Commissioner Harry Sprinker will welcome the Spanaway club to the community. Past district governors, club presidents and Lions representing most Pierce County Lions Clubs will be on hand to give the new organization a good send-off.

PLU Plans Folk Festival This Saturday

The May Fest Dancers of Pacific Lutheran University will hold their "International Folk Festival" at 2:30 Saturday (May 6) in front of Eastvold Chapel.

The event replaces the annual May Festival which has been cancelled this year.

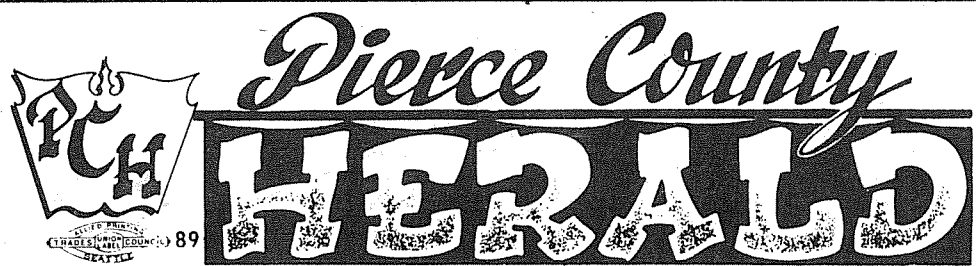
A queen to be selected by the student body will reign over the outdoor festival. Candidates are Joyce Conine, Marcia Wake, Dianne Brunsvold, Angela Nicholson, Karen Brown, Louise Gustafson and Susan Haugen.

The May Fest Dancers will perform "Dreistyer," an Austrian flirting dance involving one man and two women; a hopping Lithuanian dance, "Sukcins"; and "Der Windmuller," a dance about a windmill.

In addition, they will do a fast moving Mexican dance "Elbarracho" and the American dance, "Beautiful Ohio."

A student German band will play during the performance, and Karen and Philip Ranheim will sing several folk songs.

Deborah Olson, a senior physical education major, is the director.



Vol. 23, No. 18

and Times Journal

May 3, 1967



PLU COED Morley Gustafson (right) holds her nose with displeasure as she turned out last week with Kaye Halwas to help clean-up day chairman Ray Manges get an early start in picking up litter. Residents are asked to join the May 6th event by cleaning up their properties and leaving trash to be picked up in a container on the roadside. Tree limbs or wood should be cut in three or four foot lengths.

Parkland Masons Honor Eatonville Sets Top Bethel, FP Students Swim Program

Parkland Lodge #299 F. & A.M. held its third annual scholarship banquet Friday evening at Parkland Masonic Temple with over 140 present including 34 special guests.

The annual banquet is held to honor top honor students and to raise funds for 2 scholarships of \$150 each, one for a graduate of each of two high schools, Franklin Pierce and Bethel.

The special guests included ten top honor students from the two schools, the two superintendents, the two principals, and two guidance directors.

Other special guests were the principal speaker, Robert Gilmore, Senior Grand Warden of Masons of Washington, and three Deputies of the Grand Master of Masons, E. Stanley Maple of District 13, Malcolm Wilkinson of District 14, and Forrest Ferguson, District 15. The Rev. Arthur Campbell of Parkland Methodist Church gave the invocation.

EATONVILLE - The swim program at Eatonville pool for this summer will consist of two three-week sessions announced pool director Richard J. Hermesen.

Each session will have 15 meetings for learn-to-swim instructions. The first session will start June 19 and July 8 with registration June 10 from 10 a.m. until noon. The pool will be closed on July 4.

The second session will start on July 10 and last until July 28, with registration to take place during the afternoons of the previous week.

The learn-to-swim instructions will be for low beginners, high beginners, intermediate swimmers, swimmers, advanced swimmers, junior life-saving and senior life-saving. The cost for the 15 sessions of instructions will be \$3.50 per session. Each child should be of school age or 40 inches of height from the chin, and each must furnish one towel and suit. The instructors will be Mrs. Jean Parton and another one, unannounced at this time.

There will be recreational swim sessions every afternoon from 1 to 4:30 p.m. These will be every day as long as attendance warrants keeping the pool open, otherwise it will be three days only, Monday, Wednesday and Fridays. The cost for recreational swimming will be 15¢ through the sixth grade, 25¢ through the 12th and 50¢ for adults. All swimmers must furnish their own towels.

For further information, contact Hermesen at the high school, 832-3302.

Residents Urged To Help Drive

Parkland residents are urged to meet at the Fire Hall, 114th and A Street, Saturday morning to assist in the area-wide clean up drive sponsored by the Parkland Development Association, chairman Ray Manges requested.

"Organized four years ago, the clean up day is an attempt to rid the community and especially the roadside of trash and abandoned automobiles that seem to accumulate over the year," he said.

Last year 118 volunteers

turned out to remove over 100 tons of garbage. It is hoped an even greater number will respond to help make the 1967 drive a success, he added.

Members of many local organizations have indicated they will be on hand to participate including several PLU student groups. Helping with the drive will be the Parkland Business Club, Parkland Lions Club and the Triton Car Club.

Student organizations volunteering include Alpha Phi Omega, Spurs, Intercollegiate Knights, and the Tassels. All are from Pacific Lutheran University.

Citizens of the Parkland area can haul any amount of trash to the County Dump free on Saturday.

"We hope the Parkland Clean-up day will generate enough community spirit that the area will be a clean and beautiful place to live all year long," Al McManis, one of the officials of the drive stated. "It is my hope that some day we will find that we have the manpower and equipment to do the job, but nothing to clean up."

3 FP Seniors To Serve Mock Gov't.

Three Franklin Pierce High School seniors will serve in the Hi-Y sponsored mock legislature in Olympia scheduled to convene when the adult lawmakers vacate their seats at the conclusion of the present extra session.

The trio will join 200 other youths from all corners of the state to fill the positions of senators, representatives and lobbyists.

Volunteering for the opportunity were Rex Himes, 18, Dave Jacobson 17, and Don Swanson, 18. Himes and Jacobson will take senate seats while Swanson will serve as a lobbyist. Both Jacobson and Himes have been appointed to the senate judiciary committee with the latter named as committee vice chairman.

A bill to permit the press to publish the names of juvenile offenders will be placed in the hopper by Jacobson, who believes such a measure will help curb delinquency. Himes indicated he would support such a proposal.

Waller Garden Club Plans Spring Smorg

Waller Road Garden Club will hold its annual spring smorgasbord luncheon from noon to 2 p.m. today (May 3) at the Waller Road Grange Hall.

Real home cooking will be featured for the \$1 price and free games will be played, according to co-chairmen Mrs. Rudolph Geise and Mrs. Verne Fogle. The club will offer plants for sale.

122 1/2 Years' Service

Three Veteran Teachers Retiring FP District

Three teachers, who have given a total of 122 1/2 years to education, will retire from the Franklin Pierce School District at the end of this year.

Retiring are Regina McFadden, Frances Scearce, and Wilbur J. Peterkin.

"In no other profession could these three teachers have left their mark so well," commented Dr. Edward E. Hill, superintendent. "In their more than 120 years of combined teaching experience, they have been a direct influence on some 10,000 children. Now those children, the community and their fellow teachers thank these three for the positive mark they have made in education over the past 40 years."

A Brookdale elementary teacher, Regina McFadden started teaching in 1920 right after her graduation from high school. Her first years of tea-

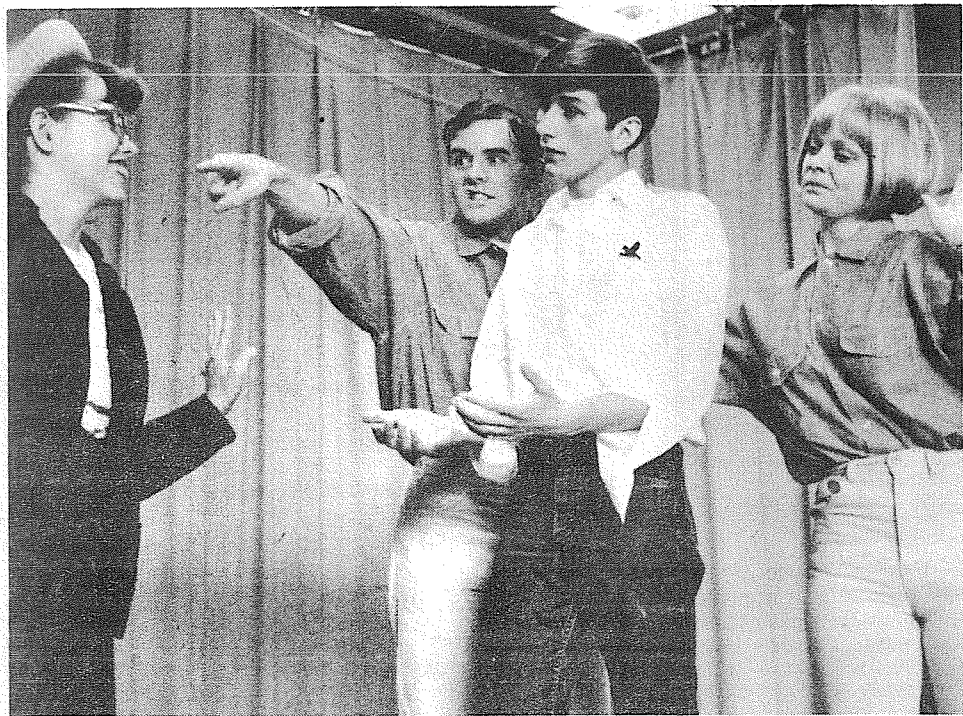
ching were in North Dakota where she taught all elementary grades plus the 7th and 8th grade. In 1928 she received her Life Certificate at the State Teachers College at Minot, N.D.

Moving to Washington in 1949 she substituted in Tacoma school until 1952. Then she taught at Collins Elementary School for five years before moving to Brookdale. She has been in education for 47 years.

Frances Scearce, completing 39 1/2 years in teaching, began her career in 1925. Throughout her years of teaching she has devoted herself to the instructing of kindergarten and nursery school children. From 1941-1946 she was a supervisor of nursery schools for children of mothers working in war plants. Twenty-one of her teaching years have been in the Franklin Pierce School District.

Wilbur J. Peterkin, currently the commercial director at Franklin Pierce High School, has devoted 36 years to teaching students. Coming from Portland, Ore., Peterkin began teaching in Washington at Sumner High School in 1931. Throughout his years of teaching students, he has also devoted many years to the teaching of adult education classes in commercial subjects.

Spring Play



"A DIFFERENT DRUMMER" will be presented by members of Franklin Pierce High School's drama department at 8 p.m. Thursday and Friday in the high school cafeteria. In a scene from the annual spring play Dennis Nugent (second from right) deals with Bonnie Bickford (left) who portrays the town gossip. Tom Marr and Pam Peterson (behind) play the parts of Dennis's conscience. According to director Roger Shaw the play concerns a 30-year-old "mama's boy" who tries to become a man. Others playing lead roles are Julia Cousineau, Julie Smith, Sue Sharp, Steve Sanders, Jim Hartley and Louis Woodford.

WWI Vets To Fete Auxiliary Tuesday

Parkland Barracks, Veterans of WWI will honor its auxiliary with a Mother's Day dinner as one of the highlights of May activities.

The Barracks and Auxiliary will meet at 6 p.m. Tuesday at the James Sales Grange. Other May activities will

include the Barracks' 7th anniversary, a visit to the McGee Nursing Home to serve refreshments, attendance at Memorial Day services and participation in the carnival at the American Lake Hospital May 10, 11.

Publishers:

Frank Franich, John VanDevanter, Walt Tupper

Mail Address P.O. Box 517, Puyallup, Wn. 98371
Telephone TH 5-7511

Editorial Manager John VanDevanter
Advertising Manager Frank Franich
News Editor Em Matson
Sports Editor Walt Tupper
Circulation Manager Wayne Johnson

Published weekly at 14620 Pacific Ave., Parkland, Wn. and delivered by U.S. Mail and carrier to homes within the trade area.



NATIONAL NEWSPAPER ASSOCIATION
AFFILIATE MEMBER

Qualified as a legal publication under Chapter 213 of the Legislative Acts of the 1941 regular session of the State of Washington.

Vol. 23, No. 18

ESTABLISHED 1891

May 3, 1967

Calendar OF MEETINGS AND EVENTS

PIERCE COUNTY HOLSTEIN Club will meet at 8 o'clock tonight in the Winter School Building of the Research and Extension Center to elect new officers. Plans will be made for the District and State Black and White shows which will be held June 16 & 17 in Enumclaw. Speaker will be All West Breeder sire analyst Archie Nelson. b

FRUITLAND GRANGE will meet at 8 p.m. Friday in the Grange Hall. The home economics committee will present the program which will include vocal and dance numbers. There will be a visitation from Waller Road Grange. Refreshments will be served by Eddie and Rose Swander, Clara Lavik, Violet Swayne and Myrtle Anderson. b

SIGMA XI CLUB will meet at 8 p.m. Thursday in the Winter School Building on the station to hear Dr. C.A. Ryan speak on the subject of "The Control of Protein Synthesis in Solanum tuberosum." Dr. Ryan is Assistant Agricultural Chemist in the Dept. of Agricultural Chemistry at Washington State University. Refreshments will be served after the lecture. The public is invited. ***

Plant Living Park Fence In Eatonville

EATONVILLE - A living fence consisting of 120 Austrian pine and Norway spruce has been planted for the Glacier View Community Park according to chairman Mrs. Ray Treadwell. The trees were donated by Mr. and Mrs. Richard Rave. The next step will be installation of a sprinkling system that has been purchased and paid for through donations. The trees were planted in soil donated by Weyerhaeuser Company by Nick Kneip, Mr. and Mrs. Rave, Mr. and Mrs. Treadwell, Carl Hupman, Les Butts, Helmar Norberg, Vincent Agostinelli and Dogwood Garden Club members Martha Parrish, Gladys Henricks, Vesta Anderson, Elinor Cochrum and Margaret Painter. b

PARKLAND ACTIVE Club for senior citizens will meet from 11 a.m. to 3 p.m. Thursday in the James Sales Grange, 612 S. 113th. The speaker will be a representative from the Tacoma Social Security Office who will speak on social security and Medicare. ***

TACOMA WURLITZER Organ Guild will meet at 7:30 p.m. Friday in the Medical Arts Building auditorium. Pre-meeting music will be presented by Eva Carmichael. The three section main event will include Lincoln High School director Leonard Schuchman who will direct an all-girl ensemble; organist Marjorie Mattson and clarinetist Norma Weiss, both of Kent and a combination on the organ, piano and drums played by Stan Croff, Etta Christian and Cecil Fassett. Social hour music will be played by organist Edythe Piersol. b

SMORGASBORD will be served Mother's Day, May 14, by members of DesChutes Grange #222. ***

RAINDROPS TOASTMISTRESS Club will meet Tuesday evening in the Flame Restaurant on Old Highway 99. For further information call president Emilia Karch GR 4-8273. ***

NOON MUSIC each Friday from 12:30 to 1 p.m. in Eastvold Chapel of Pacific Lutheran University. The public is invited. ***

THRIFTI - MAIDS Home-makers Club will meet at 10 a.m. Tuesday at the home of Mrs. Ronald Wire. Officers will be elected and plans made for the achievement day luncheon. Kent Basket will present a 4-H demonstration to the group. ***

PANCAKE SUPPER from 6 to 9 p.m. Tuesday by the James Sales Grange to support its community progress program. b
Earl Stevens will be head chef. There will be entertainment after 9 p.m. to which all are invited. ***

SMORGASBORD DINNER from 1 to 5 p.m. Mothers' Day, May 14, at DesChutes Grange on the Vail Loop Road south of McKenna. This third annual dinner will feature ham and turkey with dressing, gravy, potatoes, salad and baked beans. Price is \$1.50 and 75¢. b

RUMMAGE SALE from 10 a.m. to 5 p.m. Monday and Tuesday at James Sales Grange, 612 S. 113th St., Tacoma, under the direction of American Legion, Parkland Unit #28. ***

PHOTO EXHIBIT from 10 a.m. to noon and 2 to 4 p.m. Friday in the business education room of Eatonville High School. Annual staff members will exhibit Kodak Scholastic Photo Awards of 1966. The black and white as well as color photos will be on display at no charge. ***

PIERCE COUNTY Library Board of Trustees will meet at 1:30 p.m. next Wednesday in library headquarters, 201 St. Helens Ave., Tacoma. Glenn Ash will preside. ***

MIDLAND FIRE Department Ladies Auxiliary will have a short business meeting to close the year at 6:30 tonight in the fire hall. New officers will be installed. Reservations have been made for dinner following the meeting at Johnny's on the Mall. All firemen wives are invited. b

MAYFEST, sponsored by Sons and Sisters of Hermann, will be held at Normanna Hall, So. 15th & Kay St., Tacoma, Saturday. There will be dancing to the Bullinger Orchestra from 9 p.m. to 1 a.m. Refreshments including German Bratwurst potato salad, rye-bread and coffee will be served at a nominal fee. Donations are \$1.25. b

FRIED CHICKEN and Roast Beef dinner will be served from 12:30 to 4 p.m. Sunday in the Lacamas Community Hall on Hart's Lake Loop Road by Lacamas Ladies Auxiliary. A variety of home-made pies, breads and salads will also be featured. ***

OPEN HOUSE at St. Albans' Established Girl Scout Camp will be held Sunday. An invitation to tour the facilities has been extended by Mesdames Annon May and Harry Zweig of Puyallup and Mrs. James Benson of Parkland. St. Albans is located on Lake Devereaux in Mason County between Allyn and Belfair. b

29TH DISTRICT REPUBLICANS will meet 6:30 p.m. Wednesday, May 3 at Brad's Restaurant. Sheriff Jack Berry will speak. ***

READER & ADVISER MADAME HINDU from India. Advice on all affairs of life. She will lift a heavy load off your aching heart. Speaks several languages. Don't fail to see her. She does sand reading and reads your palm like an open book. Phone for an appointment. GR 4-9821.

LOOK THE RANCH
DINE AND DANCE
JERRY SHEA'S ORCHESTRA

Pan-Fried Chicken, Char-Broiled Steaks, Prawns, True Italian Spaghetti served with every order.

For Reservations or Directions Call
JU 8-9933 or JU 8-9145
10203 Sales Road

Western Monumental AND Marble INC.
Reliable, Prompt Service in All Cemeteries
1106 Center St. FU 3-5538
Marble for the Home

FUEL OIL
LE 7-6968
Beacon Oil Co.

May Sale

SWEAT SHIRTS

Short Sleeve
*Lots of Colors 2 For \$3.00
*Heavy Weight 1.66 EACH

TENNIS SHOES

for all the family

Women's
Men's
Children's FROM \$2.97

SHOP MART

133RD AND PACIFIC
NEXT TO LUCKY DISCOUNT SUPERMARKET

Dance
ROY RODEO HALL
Sat., May 6
MUSIC BY THE
Country Boys
Admission \$1.25

Go Quality And Save!

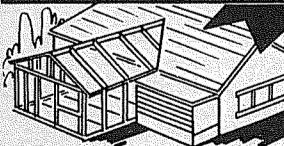
QUALITY BUILDERS

QUALITY Home Remodeling Cost No More!

GARAGES



ADD-A-ROOM



12 X 14 ROOM
You Finish & Save \$1087.00

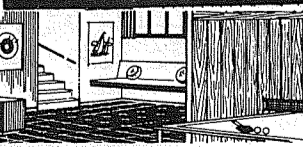
DON'T PAINT INSTALL ALUMINUM SIDING \$895
1000 Sq. Ft.

Applied, Labor-Material LARGER AREAS PRICED ACCORDINGLY Large Selection Colors Manufacturer's Name Withheld Due To Low Prices

ROOFING

1000 Sq. Ft. COMPLETE ROOF Labor & Material \$199.00

ADD A FAMILY ROOM



The Country Parson



"If most successful men had as much help as acquaintances claim they gave them—they never would have made it."
Copyright, by Frank A. Clark



100% FINANCING - 2% OFF FOR CASH
FREE ESTIMATE CALL FU 3-1533
601 Tacoma Ave. "Parking Off Alley" WE FURNISH Permits- Plans

AN ENDOWED CARE CEMETERY

Fir Lane Memorial Park
924 EAST 176TH STREET
LE 1-5500

SPEED QUEEN ALL FABRIC PAIR

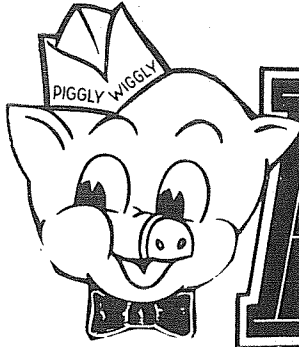
SWITCH TO SPEED QUEEN QUALITY

MODELS A78F WASHER - 166F DRYER

New Durable Press Fabric Cycles
SAVES WORK FOR YOU, THE HOUSEWIFE

ALL FABRIC WASHER	ALL FABRIC DRYER
*Lifetime Warranty on Stainless Steel Tub!	*Lifetime Warranty on Stainless Steel Drum
*Flexible, Three Cycle Washing Selection.	*Three Cycle Tying For All Fabric Dryer
*Flotation Rinse Lint Removal.	*Giant Capacity In-A-Door Lint Screen
*10-year Warranty On Component Parts of The Transmission	*Poly-V Direct Drive Reduces Wear, Requires Less Service.

POCHEL'S TV & APPLIANCE
14001 Pacific Ave. LE 1-1040
Award of Merit Service Dept.



PIGGLY WIGGLY'S

Anniversary Sale

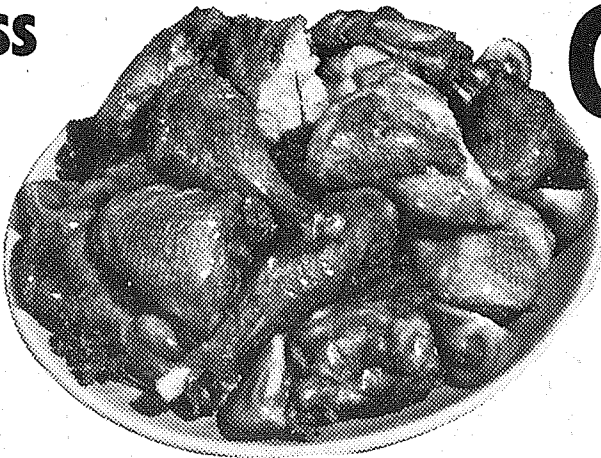
FREE
CAKE
FRIDAY & SATURDAY
ALL STORES

4 BIG DAYS
WEDS., THURS., FRI. & SAT.
MAY 3-4-5-6

5¢ ICE CREAM CONES
ALL STORES...FRIDAY & SATURDAY

HYGRADE'S BONELESS HAMS

SWEET AND JUICY
77¢
LB.



CUT-UP FRYERS

FAMOUS QUALITY
PEDERSON'S FLASH
FROZEN WASHINGTON
GROWN LB.

33¢

14-18 LB. AVG.
U.S.D.A. INSPECTED
TURKEYS **29¢**
*QUALITY GUARANTEED LB.

FRESH...BREASTS & DRUMSTICKS
FRYER PARTS
LB. **49¢**

U.S.D.A. GRADED CHOICE
SIRLOIN STEAK
WELL TRIMMED
TENDER AGED LB. **89¢**

OLYMPIC DILL, GARLIC OR REG.
PICKLES
48 OZ. JAR **49¢**

U&I **SUGAR** SPECIAL **10 89¢**
LB. BAG

SHASTA ORANGE, GRAPE, TIKI 46. OZ. TINS
FRUIT DRINKS **5 99¢**

FREE!
28 OZ. BOTTLE OF
DIET RITE COLA
WITH PURCHASE OF
6 PACK OF 12 OZ. BOTTLES AT **59¢** *PLUS DEPOSIT

PLYMOUTH
FLOUR .. **79¢**
10 LB. BAG

BANANAS
NEW CROP SUNKIST
VALENCIAS,
SWEET AND JUICY
ORANGES
8¢
LB.

GRADE A
RAW MILK
GALLON **79¢**

PLYMOUTH
ICE CREAM
1/2 GAL **59**

CHASE & SANBORN
COFFEE
2 LB. TIN **\$1 15**

U.S. NO. 1
CHIQUITAS
LB. **10¢**
FLORIDA TENDER SWEET
CORN 3 Ears **25¢**
FLORIDA LONG GREEN SUPER SELECT
CUCUMBERS . . . Each **9¢**

4 Big Days!
PRICES EFFECTIVE
MAY 3-4-5-6
RIGHT TO LIMIT

Piggly Wiggly!
PACIFIC AVE. AT GARFIELD
PARKLAND

Former Bethel Boy Nominated To AF Academy

SPANAWAY - A former Bethel High School student has been nominated to the U.S. Air Force Academy by Congressman Floyd V. Hicks.

Michael Lee Cyrus, who lived at 114 So. 161st when in Pierce County, was seventh in his class of 1967 at Bethel. He is active in Explorer Scouts, DeMolay and other extra-curricular school activities. He will enter the academy July 1.

Cyrus's father, Jerrold Cyrus, is an Air Force officer who was stationed at McChord Air Force Base and now is at Minot, N.D., AFB.

Members, Guests To Attend Tacoma Meetings Of LDS

PARKLAND - Members and guests of the local Church of Jesus Christ of Latter-day Saints will attend special conference meetings Saturday and Sunday at the Tacoma Stake headquarters, 12th and Pearl.

We further state that the annexation of said territory will be conducive to the public health, welfare and convenience and will be of special benefit to the land included within the boundaries of said territory.

Boundary of said territory described as follows:

AREA NO 2
DESCRIPTION
That portion of Sections 4, 5, 6, 7, 8 and 9 in Township 19 North, Range 3 East, W.M., and Sections 1 and 12 in Township 19 North, Range 2 East, W.M., all in Pierce County, Washington, described as follows:

Beginning at the southwest corner of Section 4, Township 19 North, Range 3 East, W.M., in Pierce County, Washington;

Thence northerly along the west line of said Section 4 to a line 150 feet northerly and parallel to the north margin of South 112th Street;

Thence easterly along said parallel line to a line 50 feet westerly and parallel to the west margin of 6th Avenue South, also known as Park Avenue;

Thence southerly along said parallel line to the north line of Block 18, of the plat of Armours Addition;

Thence westerly along said south margin to the north-

Witness Assembly

Appointments of members of Jehovah's Witnesses from the Spanaway area as department heads for the circuit assembly May 12 - 14 were made this week.

Caring for the needs of the delegates meeting at the Jason Lee Junior High School, 6th and Division Streets, will be Donald Riesau, stage design and Daryl Schinnell.

LEGAL NOTICES

NOTICE OF HEARING ON PETITIONS FOR THE ANNEXATION OF CERTAIN TERRITORY TO THE SOUTH SUBURBAN SEWER DISTRICT.

NOTICE OF HEARING ON PETITIONS FOR THE ANNEXATION OF CERTAIN TERRITORY TO THE SOUTH SUBURBAN SEWER DISTRICT

NOTICE IS HEREBY GIVEN that the following petitions for the annexation of certain territory to the SOUTH SUBURBAN SEWER DISTRICT have been filed with the Board of County Commissioners of Pierce County, Washington, to-wit:

PETITIONS
TO: Board of Commissioners South Suburban Sewer District
114 Administration Building
Pacific Lutheran University
Tacoma, Washington 98447

We, the undersigned, constituting the owners, according to the records of the County Auditor, of not less than sixty per cent (60%) of the area of land hereinafter described, respectfully petition that said property be annexed to and become a part of South Suburban Sewer District, Pierce County, Washington, as provided in Chapter 250, Laws of 1953, State of Washington.

Thence southerly along said parallel line to the northeast corner of Lot 17, Block 186 of said plat of University Addition;

Thence southerly 200 feet to the southeast corner of Lot 17, Block 187, of said University Addition;

Thence easterly along the south line of Block 187 and its easterly extension to the centerline of Yakima Avenue;

Thence southerly along the centerline of Yakima Avenue to the centerline of 130th Street;

Thence westerly along said centerline of 130th Street to the centerline of the Spanaway Loop Road;

Thence northerly and westerly to the north line of the P. Smith Donation Land Claim;

Thence westerly along the north line of the P. Smith Donation Land Claim to a line 150 feet westerly of and parallel to the west margin of the Spanaway Loop Road;

Thence northerly along said parallel line to a line 150 feet southerly of and parallel to the south margin of 116th Street;

Thence westerly along said parallel line to a line 150 feet westerly of and parallel to the west margin of Steele Street;

Thence northerly along said parallel line to a line 150 feet southerly of and parallel to the southerly margin of South 112th Street;

Thence westerly along said parallel line to the easterly boundary of U.S. Air Force Reservation, known as McChord Field;

Thence northerly along said easterly boundary to the south margin of said 112th Street South;

Thence westerly along said south margin to the north-

west right-of-way line of Interstate Highway No. 5;

Thence southerly along said north-west right-of-way line to a line 150 feet southerly of and parallel to the westerly extension of the south margin of said 12th Street South;

Thence westerly along said parallel line across the Federal Aid Secondary Highway, known as State Highway No. 1 U.S. Highway No. 99, to the west margin of Lakeview Avenue S.W.;

Thence northerly along said west margin to a line 150 feet northerly of and parallel to the westerly extension of the north margin of 112th Street S.W.;

Thence easterly along said parallel line across the two aforementioned highways to the west line of U.S. Air Force Reservation, known as McChord Field;

Thence southerly along said west line to the north margin of 112th Street South;

Thence easterly along said north margin to the east line of U.S. Air Force Reservation, known as McChord Field;

Thence northerly along said east line to a line 150 feet northerly of and parallel to the north margin of said 112th Street South;

Thence easterly along said parallel line to a line 150 feet easterly of and parallel to the east margin of East Airport Way;

Thence southerly along said parallel line to a line 150 feet northerly of and parallel to the north margin of South 116th Street;

Thence easterly along said parallel line to a line 150 feet easterly of and parallel to the east margin of Spanaway Loop Road;

Thence southerly along said parallel line to a line 150 feet northerly of and parallel to the north margin of Garfield Street;

Thence easterly along said parallel line to a line 150 feet westerly of and parallel to the west margin of Sheridan Avenue, also known as 14th Avenue South;

Thence northerly along said parallel line to a line 150 feet northerly of and parallel to the north margin of 112th Street South;

Thence easterly along said parallel line to the west line of the SW 1/4 of Section 4, Township 19 North, Range 3 East, W.M., and the true point of beginning.

Thence southerly along said parallel line to the west line of the NW 1/4 of Section 10, Township 19 North, Range 3 East, W.M.;

Thence easterly along said parallel line to its intersection with a line 125 feet southerly of and parallel to the southerly margin of 123rd Street;

Thence southerly along said parallel line to its intersection with a line 100 feet southerly of and parallel to the southerly margin of 114th Street;

Thence westerly along said parallel line to the centerline of Pacific Avenue;

Thence northerly along said centerline to its intersection with the centerline of 114th Street;

Thence westerly along said centerline to its intersection with a line 182.8 feet westerly of and parallel to the westerly margin of Pacific Avenue;

Thence northerly along said parallel line to its intersection with a line 100 feet southerly of and parallel to the southerly margin of 112th Street;

Thence westerly along said parallel line to the east line of Lot 4, Block 3, of the plat of Hinderlies and Dammels Addition to Parkland, Records of Pierce County, Washington;

Thence southerly along said east line to the south line thereof;

Thence westerly along said south line and the westerly projection thereof to the centerline of Spanaway Street, also known as Car Line Road;

Thence southerly along said centerline to its intersection with the centerline of Lafayette Street;

Thence westerly along said centerline to its intersection with a line 50 feet easterly of and parallel to the easterly margin of Park Avenue;

Thence southerly along said parallel line to its intersection with a line 100 feet northerly of and parallel to the northerly margin of 120th Street;

Thence easterly along said parallel line to the northeast corner of Lot 13, Block 60 of the plat of Armours Addition, records of Pierce County, Washington;

Thence southerly along the east line of said Lot 13 to the southeast corner thereof;

Thence southerly in a straight line to the northeast corner of Lot 12, Block 59, of said plat of Armours Addition;

Thence southerly along the east line of said Lot 12, Block 59, and continuing southerly along the east line of Lot 12, Block 58,

of said plat of Armours Addition to the southeast corner thereof;

Thence southerly in a straight line to a point on the southerly margin of 121st Street being 291.5 feet easterly of the easterly margin of Pacific Avenue;

Thence southerly along the line 291.5 feet easterly of and parallel to the easterly margin of Pacific Avenue to the westerly extension of a line 150 feet southerly of and parallel to the south margin of 123rd Street;

Thence easterly along said westerly extension and along the line 150 feet southerly of and parallel to the south margin of 123rd Street to the west line of the SW 1/4 of Section 10, Township 19 North, Range 3 East, W.M.;

Thence southerly along said west line to the south line of the N 1/2 of the SW 1/4 of Section 10, Township 19 North, Range 3 East, W.M.;

Thence easterly along said south line to the west line of the SE 1/4 of said Section 10;

Thence easterly along the south line of the NW 1/4 of the SE 1/4 of said Section 10 to the southeast corner thereof;

Thence northerly along the east line of said NW 1/4 of the SE 1/4 to the south line of the NE 1/4 of said Section 10;

Thence northerly along the east line of the W 1/2 of the NE 1/4 of said Section 10 to the south line of the SE 1/4 of Section 3, Township 19 North, Range 3 East, W.M.;

Thence northerly along the east line of the W 1/2 of said SE 1/4 of Section 3 to the south right-of-way line of State Highway 5-G;

Thence westerly along said southerly right-of-way line to the point of beginning.

DESCRIPTION
That portion of Section 4, Township 19 North, Range 3 East, W.M., all in Pierce County, Washington, described as follows:

Beginning at the intersection of the centerline of Pacific Avenue and the centerline of 108th Street;

Thence westerly along said centerline of Pacific Avenue;

Thence northerly along said centerline of Pacific Avenue to the true point of beginning.

DESCRIPTION
That portion of Section 4, Township 19 North, Range 3 East, W.M., all in Pierce County, Washington, described as follows:

Beginning at the intersection of the centerline of Pacific Avenue and the centerline of 108th Street;

Thence westerly along said centerline of Pacific Avenue;

Thence northerly along said centerline of Pacific Avenue to the true point of beginning.

DESCRIPTION
That portion of Sections 3, 4, 9 and 10 of Township 19 North, Range 3 East, W.M., in Pierce County, Washington, described as follows:

Beginning at the intersection of the southerly right-of-way of State Highway 5-G with a line 150 feet easterly of the east line of Pacific Avenue in the SW 1/4 of Section 4, Township 19 North, Range 3 East, W.M.

DESCRIPTION
That portion of Sections 3, 4, 9 and 10 of Township 19 North, Range 3 East, W.M., in Pierce County, Washington, described as follows:

Beginning at the intersection of the southerly right-of-way of State Highway 5-G with a line 150 feet easterly of the east line of Pacific Avenue in the SW 1/4 of Section 4, Township 19 North, Range 3 East, W.M.

DESCRIPTION
That portion of Sections 3, 4, 9 and 10 of Township 19 North, Range 3 East, W.M., in Pierce County, Washington, described as follows:

Beginning at the intersection of the southerly right-of-way of State Highway 5-G with a line 150 feet easterly of the east line of Pacific Avenue in the SW 1/4 of Section 4, Township 19 North, Range 3 East, W.M.

DESCRIPTION
That portion of Sections 3, 4, 9 and 10 of Township 19 North, Range 3 East, W.M., in Pierce County, Washington, described as follows:

Beginning at the intersection of the southerly right-of-way of State Highway 5-G with a line 150 feet easterly of the east line of Pacific Avenue in the SW 1/4 of Section 4, Township 19 North, Range 3 East, W.M.

DESCRIPTION
That portion of Sections 3, 4, 9 and 10 of Township 19 North, Range 3 East, W.M., in Pierce County, Washington, described as follows:

Beginning at the intersection of the southerly right-of-way of State Highway 5-G with a line 150 feet easterly of the east line of Pacific Avenue in the SW 1/4 of Section 4, Township 19 North, Range 3 East, W.M.

DESCRIPTION
That portion of Sections 3, 4, 9 and 10 of Township 19 North, Range 3 East, W.M., in Pierce County, Washington, described as follows:

Beginning at the intersection of the southerly right-of-way of State Highway 5-G with a line 150 feet easterly of the east line of Pacific Avenue in the SW 1/4 of Section 4, Township 19 North, Range 3 East, W.M.

DESCRIPTION
That portion of Sections 3, 4, 9 and 10 of Township 19 North, Range 3 East, W.M., in Pierce County, Washington, described as follows:

Beginning at the intersection of the southerly right-of-way of State Highway 5-G with a line 150 feet easterly of the east line of Pacific Avenue in the SW 1/4 of Section 4, Township 19 North, Range 3 East, W.M.

DESCRIPTION
That portion of Sections 3, 4, 9 and 10 of Township 19 North, Range 3 East, W.M., in Pierce County, Washington, described as follows:

Beginning at the intersection of the southerly right-of-way of State Highway 5-G with a line 150 feet easterly of the east line of Pacific Avenue in the SW 1/4 of Section 4, Township 19 North, Range 3 East, W.M.

DESCRIPTION
That portion of Sections 3, 4, 9 and 10 of Township 19 North, Range 3 East, W.M., in Pierce County, Washington, described as follows:

Beginning at the intersection of the southerly right-of-way of State Highway 5-G with a line 150 feet easterly of the east line of Pacific Avenue in the SW 1/4 of Section 4, Township 19 North, Range 3 East, W.M.

DESCRIPTION
That portion of Sections 3, 4, 9 and 10 of Township 19 North, Range 3 East, W.M., in Pierce County, Washington, described as follows:

Beginning at the intersection of the southerly right-of-way of State Highway 5-G with a line 150 feet easterly of the east line of Pacific Avenue in the SW 1/4 of Section 4, Township 19 North, Range 3 East, W.M.

DESCRIPTION
That portion of Sections 3, 4, 9 and 10 of Township 19 North, Range 3 East, W.M., in Pierce County, Washington, described as follows:

Beginning at the intersection of the southerly right-of-way of State Highway 5-G with a line 150 feet easterly of the east line of Pacific Avenue in the SW 1/4 of Section 4, Township 19 North, Range 3 East, W.M.

DESCRIPTION
That portion of Sections 3, 4, 9 and 10 of Township 19 North, Range 3 East, W.M., in Pierce County, Washington, described as follows:

Beginning at the intersection of the southerly right-of-way of State Highway 5-G with a line 150 feet easterly of the east line of Pacific Avenue in the SW 1/4 of Section 4, Township 19 North, Range 3 East, W.M.

DESCRIPTION
That portion of Sections 3, 4, 9 and 10 of Township 19 North, Range 3 East, W.M., in Pierce County, Washington, described as follows:

Beginning at the intersection of the southerly right-of-way of State Highway 5-G with a line 150 feet easterly of the east line of Pacific Avenue in the SW 1/4 of Section 4, Township 19 North, Range 3 East, W.M.

DESCRIPTION
That portion of Sections 3, 4, 9 and 10 of Township 19 North, Range 3 East, W.M., in Pierce County, Washington, described as follows:

Beginning at the intersection of the southerly right-of-way of State Highway 5-G with a line 150 feet easterly of the east line of Pacific Avenue in the SW 1/4 of Section 4, Township 19 North, Range 3 East, W.M.

DESCRIPTION
That portion of Sections 3, 4, 9 and 10 of Township 19 North, Range 3 East, W.M., in Pierce County, Washington, described as follows:

Beginning at the intersection of the southerly right-of-way of State Highway 5-G with a line 150 feet easterly of the east line of Pacific Avenue in the SW 1/4 of Section 4, Township 19 North, Range 3 East, W.M.

DESCRIPTION
That portion of Sections 3, 4, 9 and 10 of Township 19 North, Range 3 East, W.M., in Pierce County, Washington, described as follows:

Beginning at the intersection of the southerly right-of-way of State Highway 5-G with a line 150 feet easterly of the east line of Pacific Avenue in the SW 1/4 of Section 4, Township 19 North, Range 3 East, W.M.

THE PUYALLUP ELKS PRESENT

THE MATY BROS.

AND

VERA LEE

MONDAY, MAY 15 THRU SATURDAY, MAY 20

RETURNED BY POPULAR DEMAND

Direct from Las Vegas comes this merry group. Their slapstick comedy thrilled Puyallup audiences during their last showing here. Hurry and get your reservations now.

For Elks & Guests Only. Phone TH 5-9515 For Reservations

EHS Elects Student Body Officers

EATONVILLE - The newly elected Eatonville High School student body officers are president Jack Hebert, vice president Steve Fitzer, secretary Carolyn Hammer, treasurer Gail Henley and business manager Margie Baker.

According to principal Richard J. Hermesen the officers attended the northern division Southwest Washington Leadership Conference held at Ocean Shores to acquaint themselves with the duties and responsibilities of their respective offices. He accompanied the officers.

Yell leaders include queen Lita Barnett, Sue Peters, Annette Boness, Nancy Gollehon and Paulette Hale. They will attend a yell leaders' conference at Central Washington State College during the summer.

See Your Dealer
TROPHY Aluminum Storm Doors
MANUFACTURED BY
Parkland Door Inc.
318 E. 96TH
GR 4-7011

PLENTY OF MONEY

Remodel Now and Save

Call Us For a FREE ESTIMATE

VISIT OUR HOME REMODELING LIBRARY

VAUGHAN'S BUILDING MATERIALS

64th & So. Tacoma Way GR 2-4494 84th & Pacific GR 4-9515

MAY IS THE MONTH

All this Dead Grass Out of MY Lawn?

You Bet! And your lawn probably has just as much!...

RENT YOUR POWER RAKE AT

PARKLAND
United Rent-Alls 9440 PACIFIC AVE.
GR 5-3755
OPEN SUNDAY TOO

HI-HO

PUYALLUP

HI-HO

SPLIT
BROILERS
FOR BAR-B-QUE
47¢
lb.

SPRING
LEG O'LAMB
69¢
lb.

LEAN
CHUCK STEAKS
55¢
lb.

4 to 6 lb. AVG.
GRADE "A"
TURKEY
HINDQUARTERS
29¢
lb.

GROUND
CHUCK **59¢**
lb.

HYGRADE REG. OR ALL BEEF
WIENERS **59¢**
lb.

SIRLOIN
LAMB CHOPS **89¢**
lb.

10 oz. FROZEN
EVERFRESH
STRAWBERRIES **5¢**
1.00

46 oz. DEL MONTE ALL FRUIT
DRINKS **4¢**
1.00

CAN'T SHOP REGULAR HOURS?
SHOP HI-HO WHERE YOU WILL FIND
EVERYTHING YOU WANT AT MOST ANY HOUR.
TWENTY FIVE VALUE FILLED DEPARTMENTS
TO SERVE YOU. **OPEN 8 AM till 11 PM**

NO. 211 DEL MONTE
PINEAPPLE
CRUSHED
CHUNK
TIDBITS **5¢**
1.00

2 lb. NABISCO HONEY
GRAHAMS **49¢**

PILLSBURY
CAKE MIXES **3¢**
89

14 oz HUNTS
TOMATO CATSUP **4¢**
1.00

26 oz. HUNTS
TOMATO CATSUP **3¢**
1.00

303 TINS DEL MONTE CANNED GOODS SALE!

WHOLE KERNAL CORN
STEWED TOMATOES
CUT GREEN BEANS
FRUIT COCKTAIL
CREAM CORN
PEAS

5¢
TINS
1.00

15 1/2 oz MASCOT
DOG FOOD **14¢**
1.00

2 lb. NESTLE'S
QUICK **59¢**

6 oz. MINUTE MAID
ORANGE JUICE **5¢**
1.00

12 oz. MINUTE MAID
ORANGE JUICE **39¢**

GRADE "A" GALLON
RAW MILK **79¢**



FRESH BAKED
CINNAMON **ROLLS** **8¢**
39

FRESH BAKED BUTTERMILK
CRISPY CRUNCHY **CRULLERS** **6¢**
39

PRICES EFFECTIVE
MAY 1 through 6

LOCAL
OUTDOOR CRIMSON
RHUBARB
9¢
lb.

8 lb. CELLO BAG
ARIZONA WHITE
GRAPEFRUIT
49¢
BAG

LOCAL
SPRING CROP
SPINACH
10¢
BUNCH

1 lb. CELLO BAG
CARROTS
10¢
ea.

HI-HO

PUYALLUP

HI-HO

READ USE CLASSIFIED ADS for fast results

*YOUR AD WILL APPEAR IN 35,000 COPIES

*ONLY \$1.00 FOR 10 WORDS

*DEADLINE IS MONDAY NOON

*PHONE TH 5-7511

Miscellaneous For Sale

1958 WESTINGHOUSE washer and dryer \$125, refrigerator \$60, stove \$20, water heater \$25. Call LE 1-3221

NEW certified everbearing strawberry plants - Nisqually and Quinalt. \$3 per dozen or \$20 per 100 plus sales tax. Postage prepaid. Kenneth J. Scholz Farms, P.O. Box 37, McMullin, Wn. 98332

CLEANINGEST carpet cleaner you ever used, so easy electric shampooer \$1. Brookdale Lumber, Inc., 136-02 Pacific Ave., Tacoma. 1966 SUZUKI 150cc. Trail equipped. \$325. UN 3-7629

UPTON'S has rental purchase plan on TV and appliances for as little as \$5 each month. Upton's, 1148 Market Street, FU 3-2551. Open Monday and Friday nites till 9.

12" GIRLS bike. Good shape. 21" boys bike. As is. TH 5-1570

RUMMAGE Sale \$709 East 88th. 10 a.m. to 8 p.m. May 5 and 6. Bargains Galore.

TODAY delivery on this Friday refrigerator and priced at only \$49. Rent or buy for \$7 each month. Upton's, 1148 Market Street, FU 3-2551. Open Monday and Friday nites till 9.

1956 MODEL SC Case tractor. Good condition. Hydraulics, good tires. \$600 or best offer. Also 1965 7-ton low load 4-wheel farm wagon. Excellent condition. Heavy duty flotation tires. \$200 or best offer. LE 1-2809

12 x 15 ACRYLAN rug. \$35. LE 1-5718

MANURE spreader - \$50, 11/2 hp Gould deep well pump and pipe - \$75. International A wheel tractor with mower -

Miscellaneous For Sale

FRANK'S 2nd Hand, 1512 East Pioneer. Furniture and Appliances. Buy, sell, and swap. FRESH TULIPS. 50¢ a dozen. VanLeerop Bulb Farms, TH 5-8395.

BULLDOZING, ditching, gravel, top soil. ADM Co. TH 5-2452.

RENT ADMIRAL portable TV's. All sizes, color too. United Rent-Alls. CR 5-3755, 9440 Pacific Ave.

SLAB wood - \$1.00 pick up load. U haul. A.J. Gale, Paterson Road, Orting.

TOP SOIL, lawns, leveling, landscaping. ADM Co. TH 5-2452.

APPLIANCES. Private party. LE 1-6597.

LUZIER cosmetics. TH 5-5362.

TRAILER tires - \$125 \$65 a pair - 7-14.5, 8 ply. UN 3-6674.

KRESKY automatic wood heater. Nice looking. Like new. LE 7-4243.

FORNEY ARC Welders. New and used for sale or trade. VI 7-7297.

TOP SOIL, lawns, leveling, landscaping. ADM. Co. TH 5-2452.

2 WHEEL trailer, \$45. TH 5-5752 after 4 p.m.

MOHAWK Carpet. Let us save you money on the complete line. Extra special prices on any in stock. Some 1967 patterns are available. McCaleb Rug Cleaners, Carpet & Drapery Sales. 404-2nd St. SE. TH 5-6732.

FINE local hay. Orting 893-4811.

ORNAMENTAL evergreens, 4 years old. Near Bethel high bulbs and Fuchsia shrubs.

Miscellaneous For Sale

VACUUM cleaner bags for most makes. Cleman's Furniture, 201-3rd St. S.E., Puyallup.

2 BOYS bikes: 3 speed \$30, other one \$10. TH 5-4883

1962 OASIS 15 1/2". Extras. Small balance due. Cash or trade for equity. UN 3-1224.

COIN SHOW - War Memorial Building. May 6th and 7th. Rare coins on display. Dealers buying and selling.

LIKE NEW. 12 string electric guitar. Dual pickups. With case. \$95. TH 5-1161.

KILN dried planer ends. Eichler Fuel, TH 5-2857.

HAND SPLIT shakes and shingles. Ridge. BR 2-6083.

SCREENED driveway gravel. Packs hard. Large load \$12.50. Washed sand - \$12.50. Washed pea gravel. Mixes for concrete work. Gravel - all kinds. Norman LE 7-4088.

TV'S working, \$14.95 and up. 3423 Pacific Highway South, Federal Way.

ROCK GARDEN plants many new varieties. Call LE 1-2635

DAHLIA BULBS - 150 varieties in different types and colors. 10¢ to 50¢ each. Evergreen shrubs - 20 varieties. \$1.00 to \$2.50 each. Turn on 16th Street E. off Orting Hwy to 150th East. Sunrise Gardens, 11521-150th Ave. East. TH 5-9062

LANG HUSKY wood range with coils. Excellent condition. 832-3381.

KEEP your carpets beautiful despite constant footsteps of a busy family. Get Blue Lustre. Rent electric shampoer \$1. Spanaway Hardware. VI 7-7100

Miscellaneous For Sale

NORWEGIAN imported miniature silver Poodle. AKC registration. Stud service. LE 1-0396

3 MONTH old AKC black Lab pups. VI 7-2597.

BLACK Toy Poodle pups - 8 weeks. \$50. UN 3-1795.

Free

FREE to good homes - Large and small dogs, puppies, healthy cats. WA 7-1119 WA 7-0163.

Lost

WALLET. Vicinity of "Bar-gain Basket", April 7th. Reward. FU 3-4605.

For Sale or Trade

'51 GMC pickup with '56 Buick motor, automatic transmission. \$150. or trade for car. TH 5-7028 before noon.

'53 CHEVY for cow or young stock. 843-2458

'56 FORD, good transportation for skin diving tanks. 832-5912 after 6 p.m.

TOP SOIL, lawns, leveling, landscaping. ADM Co. TH 5-2452.

'58 CHEV Belair deluxe 4-dr. V8 Auto. R.H. Very clean. \$325. or pickup. LE 7-4088.

For Trade

WILL swap \$150 Keepsake diamond for building or remodeling supplies, top soil, TH 5-3889

Wanted to Buy

2 BEDROOM home. Will pay cash. TH 5-5669

AUTOMATIC chick incubator. Up to 500 capacity. Le 1-2488

WANTED: Old round table, wooden cupboard or wardrobe, set of chairs, desk, piano stool, carved chest -

Pets For Sale

LANDSCAPING, lawns, leveling, top soil. ADM Company. TH 5-2452.

CUSTOM built garages, carports, patios, etc. Free estimates. UN 3-1017.

REPAIRING & remodeling of houses in and out. Evenings, TH 5-3232.

FOUNDATION, framing, roofing and siding. A complete package for so much per foot. GR 5-2464.

CARPENTER work from small jobs to new homes. Free Estimates. TH 5-9461.

REMODELING, leveling, block foundations, cabinets. Free estimates. Reasonable. LE 7-3550.

I NEED work. All types of remodeling, additions, foundations, siding, roofing, windows, fireplaces. 100% financing. Free counseling. 10% discount on all work. TH 5-4051.

FIREPLACES. Start enjoying the warmth of your own fire right now. You'll be amazed at my low prices and easy terms. Estimates. 100% financing. TH 5-4051.

SPECIALTY in fireplaces, block garages, fences, planter boxes and basements. Financing. GR 5-2464.

NEWHALL Electric. Bert Hall, owner. New and remodeling wiring. TH 5-8028

REMODELING? Addition? New garage? Or? Expert carpenter work. I can save you money. Call TH 5-7842

ADD-A-ROOM specialists; we will not be undersold on quality remodeling. Ask about our 50-50 plan. 100% financing. Free est. Ron Powell WA 2-8360.

Building Services

16 YR OLD boy high school student wants job after school weekends, or summer vacation. Has drivers license. TH 5-3220

MIKE'S Carpentry. Roofing, Painting. Concrete work. Home repairs. Also mobile homes. WA 2-8448 after 5 p.m.

PRACTICAL NURSE wishes to care for semi-invalid patient or part-time babysitting. TH 5-1870

Child Care

LICENSED child care by day or hour. Any age. TH 5-7288. #8813

NEED a substitute mother? Child care while you shop or work. My home. TH 5-7216. #76989

HUMPTY Dumpty playschool. Age 3 and up. 801 South 105th, Tacoma. LE 1-1718. #31093

LICENSED child care - my home. Lots of play area. Loving care. LE 7-8319. #52123

GRANDMOTHER alone Loves children. 20605 East 96th. UN 3-6764 #31090

LICENSED babysitting, my home, weekdays. TH 5-4307 #86001

Help Wanted

WOMEN wanted for strawberry weeding. No experience necessary. \$1.10 per hour. TH 5-5592 between 7 and 8 p.m.

NURSE AID, full time, experience preferred. \$1.83 an hour. 893-5041 between 7 a.m. and 3 p.m.

DEATH makes available good Rawleigh Business in Pierce County. Opportunity to continue business established for 40 years. Write Rawleigh, 306 Adeline, Oakland, Calif.

BILL PROBLEMS? Protect your job and family security. One Payment per month through consolidation. Valley Consultants. WA 2-7555 TH 5-4770

Instruction

PIANO, guitar, band instruments. Students home or studio. LE 1-3246. SK 2-7695

O. MEL LIEN Instructor of guitar, banjo, uke, and mandolin. Analyst of harmony. WA. 2-7189.

PIANO - organ lessons. Fast chord progression course. TH 5-4336.

PIANO and organ lessons. LE 7-4242.

PIANO teacher in Milton has opening for students. Call WA 2-8248.

PIANO studio - 72nd & Canyon Road. LE 7-5064.

Personals

MARY M. ERICKSON In memory of her birthday May 3. She had a smile for everyone, a heart as pure as gold to those who knew and loved her. Her memory will never grow old. Lillian & Friends

We thank everyone in Roy who helped so much during the recent illness in our family. Ralph and Fay Cole and 3 sons.

\$50 CASH to churches, clubs, schools or groups for selling 84 bottles Watkins Vanilla. Call between 8 and 10 a.m. Monday thru Friday. LE 7-6101

ARE YOU living with or near a drinking problem? JU 8-8659 - LE 7-4332.

HAVE AN Alcoholic problem? LE 1-1022, GR 2-5267, UN 3-1618. Write Box 2265, Parkland

Situations Wanted

TRAILER SPACE for rent. Call Craney Crow Trailer Park. VI 7-2560.

For Rent

CLOSE in Puyallup. 1 bedroom unfurnished house. No pets or children. TH 5-1641

CAMP trailers for rent. Call Roy 843 - 2273

2 BDRM. furnished Town House, 1309 M St. S.E. Call JU 4-2000. Tacoma. Immediate occupancy. A-18 1-2-3

BOAT OWNERS attention: For rent, stall for dry storage of your boat-on trailer. 10' wide by 11'6" high by 25' deep. Lights, constant surveillance, easy access behind the Times Journal Bldg. on Pacific Ave. \$15. per month. Phone Jack LE 7-0223 or LE 7-0473 evenings.

4 BDRM. HOUSE. \$125 month. TE 3-5459 after 5 p.m. A-18 1-2-3

1 BEDROOM unfurnished apartment. Summer. TE 3-4816

3 - BEDROOM unfurnished. 1/2 acre. No children. Five. WA 2-5392

UPSTAIRS FURNISHED 4-room apt. New refrigerator - freezer, large pantry or storage room. Plenty of cupboard space, wash facilities. Wash anytime. \$75 per month. You pay lights and gas, we pay water, sewer, garbage. Natural gas heating and cooking. Adults only, no pets. Inquire 609 5th Ave. N.W.

EDGEWOOD DUPEXES. New, 2 bedrooms, carpeting, drapes, appliances, fireplace, carport, patio and storage. Close to school and shopping, 3 miles from Auburn-Boeing. WA 7-1827

Trailer Space For Rent

REFRIGERATOR - LE 1-2460

DAVID BRADLEY garden tractor, harrow and plow. Excellent condition. BR 2-1449

ATTRACTIVE modernized upright piano and stool. A real bargain - \$95. Cash, U-Haul. JU 8-7092

ALL metal and glass 8 x 12 greenhouse. Riding mower with new 4 1/2 HP engine. TH 5-0029

17' BOAT - convertible top, 35 HP Johnson electric, trailer plus accessories. \$600. UN 3-7349 after 5.

1 BEDROOM Mobile home - 10 x 50, all electric. Call TH 5-9364.

3 MODEL T wheels, garden tools, birdhouses, doghouses. 7229 South A.

AZALEAS, RHODIES, few other shrubs. WA 2-8928

FOR better cleaning, to keep colors gleaming, use Blue Lustre carpet cleaner. Rent electric shampooer \$1. Puyallup Furniture, 302 Meridian S., Puyallup

RENT this Philco TV for \$7.50 each month and rental may apply on purchase. Full price only \$59. Upton's, 1148 Market Street, FU 3-2551. Open Monday and Friday nites till 9.

1956 MODEL SC Case tractor. Good condition. Hydraulics, good tires. \$600 or best offer. Also 1965 7-ton low load 4-wheel farm wagon. Excellent condition. Heavy duty flotation tires. \$200 or best offer. LE 1-2809

12 x 15 ACRYLAN rug. \$35. LE 1-5718

MANURE spreader - \$50, 11/2 hp Gould deep well pump and pipe - \$75. International A wheel tractor with mower -

Wall-to-wall carpeting, draw drapes, electric range, new refrigerator - freezer, automatic washer and dryer, laundry room. Wash any time. Off street parking, automatic wall natural gas heater. \$95 per month. Adults only, no pets. Inquire 609 - 5th Ave. N.W.

Wanted in local drive-in restaurant. Call TH 5-6714 Wednesday and Thursday evenings between 7 - 9.

LOCAL dentist desires dental assistant. Apply by hand written letter stating experience and qualifications to Box F., Pierce County Herald.

MAATURE women - circulation attendant. P.L.U. Library. \$125 a month, 26 hours a week, 10 months a year, 2 evenings a week. Apply phone only. Mrs. Bemis, LE 7-8611 ext. 301. 9-12 daily.

BABYSITTER - Immediately! My home, own transportation, days or nights. TH 5-4668

BABYSITTER - My home, 6 a.m. - 4 p.m. Edgewood area. UN 3-1983 after 4:30.

REAL ESTATE salesman wanted. Contact George Aaby, TE 3-1313. A-18 1-2-3

HOUSEWIVES need money? Part or full time work available. GR 5-2734.

SHIFT WORKERS. Put spare time to work. Earn \$2-\$3 per hour with Fuller Brush Co. Call Jim Sellers. TH 5-5393.

Wanted. Lake Tapps area. UN 3-6724

LADY needs room - Preferably Puyallup area. TH 5-3674

Room & Board Wanted - Unfurnished 3 or 4 bedroom home. Puyallup. TH 5-3235

Wanted To Rent - RESPONSIBLE FAMILY would like to rent 3 bedroom house around May 15. Puyallup area. LE 7-4357

3 BEDROOM unfurnished home by June 1. Parkland area. LE 1-0681

Home Vacant - We desperately need good rentals \$80 to \$150 per month

Call Now - Let us handle your worries

Suburban Realty - 11302 Pacific Ave. LE 7-8638 or LE 7-6896

Menthan At Pioneer In Puyallup

RENT A TRUCK from HARMON'S TRUCK RENTALS

MA 7-8186 - TACOMA TH 5-9851 - PUYALLUP UN 3-7935 - SUMNER

Wedding Rentals - TUXEDOS FORMAL COATS SPECIALTIES

GERSTMANN BROTHERS

MENTHAN AT PIONEER IN PUYALLUP

DO YOU NEED HELP? SPIRITUAL READER

Will help you with your life problems, will tell you what you need to know about your friends, associates, and domestic problems -- before you say a word!

LA 4-0487 for appointment 524 University Way NE

BILLS PRESSING? Avoid embarrassing, repositioning, letters.

NOT A LOAN COMPANY - No collateral or co-signers needed. Worlds most experienced credit management company.

Credit Arrangers, Inc. Call Now Br. 2-1291 Tacoma

Business Opportunity - WILL SELL established Dahlia bulb business. Reasonable. TH 5-9062

BARBER SHOP - All electric, overhead \$55.50 a month. Same owner since January 1947. \$1,500 or \$1,000 cash. Haircuts \$1.50. 114 Main Avenue W., Puyallup. TH 5-8198 after 6 p.m.

JUDY LEE JEWELS distributors earn 53% on personal shows, 18% on their group's sales. If you would like to sell on party plan the jewelry worn by Miss America, call collect evenings. Bellevue 746-6947.

Situations Wanted - HIRE A BOY from Dyslin Boy's Ranch. J.F. 7-3891

IRONING, EXPERIENCED, references, LE 1-6597. REMODELING, foundations, roofing and siding. MA 7-2031.

IRONING, experienced, Pickup and delivery. Housework. References. TH 5-9774 evenings.

HOUSECLEANING, resturant fry cook, patient care. UN 3-1130

PIANO TUNING - \$11. Repair. George Messengee JU 8-7092.

GUARANTEED sewing machine repair. TH 5-8162.

FOR FURNACES, repairs, sheet metal work, call Parkland Fuel Oil. LE 7-0256.

HERB'S TV - Color Black & White Open 9 am to 6 pm daily 3846 Pacific Ave. GR. 2-0156

ROTATING, plowing, smooth and pack lawns, in preparation for planting. Call Keller. TH 5-8529

GARDEN rotovating. UN 3-4753. TOP soil, sandy loam, black soil, mixed soil. LE 7-7455.

ROTOVATING and plowing. Call Maesner. TH 5-9756.

MOWING - ROTOTILLING. Puyallup - Summer - Edgewood areas. No calls on Friday after 6 p.m. or Saturday. WA 7-2585

CUSTOM rotovating. Summer area. UN 3-6213

BULLDOZING. Days, weekends. LE 1-1892.

TOP SOIL, lawns, leveling, landscaping. ADM Company. TH 5-2452.

LANDSCAPING-shrubberies. Complete yard care. TH 5-0320.

TOP SOIL & Gravel, Tractor & loader work. R.D. Beeler. I.F. 7-4940

ROTOVATING, plowing, harrow, discing, light blade work. LE 7-6058.

ROTOVATING. TH 5-8517 evenings.

DOZER & LOADER WORK - Hour or Contract Hauling State CC Permit 8-10 yd. new truck NEWBURY'S DOZER SERVICE LE 7-7455

Instruction - DRIVER TRAINING. 3 week course. Free Pick up. LE 1-0505 anytime.

RAY'S WINDOW CLEANING - COMMERCIAL RESIDENTIAL CARPETS - FLOORS - WALLS FREE ESTIMATES SEATTLE VE 9-1771 TACOMA BR. 2-5137

WANTED: Used furniture, tools, glassware, antiques and miscellaneous. High-land's Second-Hand. TH 5-4824.

Miscellaneous Service - QUALITY rug, furniture cleaning in home. Reasonable. Free estimates. LE 1-5718

FURNITURE refinishing and repairing. TH 5-5518.

TV Sales and Service. Call Cleman's Furniture Inc. TH 5-8846.

BARBER SHOP - Now open at 138th and South J.

SHADE TREE pruning, shaping. Dangerous limbs, and tops removed. Reasonable. Call UN 3-1676 for my estimates and recommendations

TREE topping, removal and spraying. Bonded and free estimates. UN 3-1017.

REMODELING, roofing and siding additions. Free estimates, financing. No down payment. GR 4-7000 anytime.

WE BUY junk batteries, sell Chief batteries. Do welding and radiator repairs. 213 W. Stewart, TH 5-6956.

FLOOR waxing? Office cleaning? Consistent quality. United Janitor Service. WA 7-0574.

ALTERATIONS, GR. 5-2734.

DRIVEWAY GRAVEL: Bank run \$2 a yard, screened \$14 for 5 yard load. Don Abbott, tractor work. LE 7-3846.

DOZER, LOADERS, dump trucks, excavating, grading, backfill, roads, gravel & fill. Hour or contract. VI 7-7193.

FOR appliance Service call Cleman's Furniture. TH 5-8846

CARPET cleaning in your home or our plant. 25% discount for cash and carry. McCaleb's Rug Cleaners. Carpet and Drapery Sales. 404-2nd St. SE., Puyallup, TH. 5-6732.

RAY'S WINDOW CLEANING - COMMERCIAL RESIDENTIAL CARPETS - FLOORS - WALLS FREE ESTIMATES SEATTLE VE 9-1771 TACOMA BR. 2-5137

REGISTERED Angus. Proven herd sire. 4 years old. \$650. UN 3-4050.

GENTLE Shetland mare and driving outfit - \$225. Yearlings \$50. Registered stallion. WA 7-1653

THOROUGHbred gelding. Spirited but gentle. Has papers. Reasonable to right party. JU 8-5920

CAKLEBERRY RANCH has fine fat white hens. 50¢ each. 122nd & Canyon Road, LE 1-0352

BABY CHICKS, Hamps, rocks. Rowley's Poultry Farm, Puyallup. TH 5-9166.

Livestock - CATTLE breeding, dairy and beef, all breeds. ABS. TE 3-7722 Auburn; TA 5-3441 Enumclaw. Ray Harris, technician. A-11-2-3

WESTERN Washington Regional Appaloosa Club 2nd Annual All-Appaloosa Play Day, May 7 9 a.m. Steekers Stables, East 176th Street, Tacoma. Bring your Appaloosa - We need your support.

LLOYD'S dead stock hauling. Free. Enumclaw TA 5-3473.

HORSE shoeing. All types of corrective shoeing. My business, not a sideline. John Foster VI 7-7750.

BONNIE ALLEN saddle, padded seat, like new. TH 5-5725

Pet Care - GROOMING to your liking. Dogs given tender loving care. Call Kaye, TH 5-3105.

PROFESSIONAL poodle grooming, private grooming lessons. Pet and professional courses. Lovely orange apricot pups. Stud service. Mr. Lucky's Kennel. LE 1-4131.

RUSSTAN KENNELS 5721-13th St. N.E. - Puyallup WA 7-9012

BASSET HOUNDS - All Breed Boarding Visitors Welcome

east of the mountain highway at the county road shops. VI 7-7807.

GARAGE SALE - Saturday May 6th - 609 South 141st Street (2 blocks West of Pacific Avenue). Household articles, knick-knacks, and many interesting items.

ORGAN consolette. Baby stroller. 1414 Lawrence Ave., Sumner

SOFA, 2 chairs, miscellaneous furniture. Reasonable. TH 5-3251

12 CU FT. Kelvinator refrigerator. Good condition. \$25. TH 5-0269

3/4 HIDE-A-BED, excellent condition. \$85. TH 5-8372.

HOUSEHOLD furniture and other items. Reasonable. LE 1-4166.

MARK DAHLIAS - 10¢ piece, good varieties. Closed weekends. 1130 - 11th St. S.W., Puyallup.

2 RECLINER chairs. One average, new, \$100. One wine, used, best offer. Call TH 5-6521 days, UN 3-1311 evenings.

TROPIC AIRE portable heater. new. \$8.00. TE 3-0736. A-20 1-2-3

ELEC. ORGAN buy! Will sacrifice to responsible party in this area. Cash or terms. Also Spinet Console Piano. Adjustor, Tallman's Pianos-Organs, Inc., 4759 University Way NE, Seattle, Washington.

MOVING - Must sell miscellaneous furniture. UN 3-4795

7 1/2 HP MERCURY outboard. Excellent condition. \$50. UN 3-7349 after 5.

VACUUM CLEANERS. Hose and repairs for all makes of vacuum cleaners. Many bargains in rebuilt and low priced vacuum cleaners. Upton's, 1148 Market Street, FU 3-2551. Open Monday and Friday nites till 9.

PORTABLE sewing machine - used 2 hours. Cheap. UN 3-6111 after 6.

2 ELECTRIC ranges. Best of their kind. TH 5-5727 or TH 5-1218.

CARPETS ready instantly when cleaned with new Host. Modern and convenient way to clean. Rent Machine \$1. Pacific Floor Covering, 130-05 Pacific Ave., Tacoma.

KNAPP SHOES - G.H. Rowe, 711 East 133rd St. LE 7-5128.

FIREPLACE wood, 16" to 24" Alder and fir. Delivered, \$18 cord. LE 1-4024.

RIDING lawn mower also 3/4 ton box for pick-up. Best offer. TH 5-1681

CHAMPION mobile home. 10 x 58, 3 bedroom. Buy our equity and take over payments. TH 5-3201.

EVERGREEN shrubs, many varieties. Thunbergi and Contorta pines. 11009-136th Street East. TH 5-2860.

McNESS Products. GR 5-2734.

'65 FLEET CRAFT 15' w/w brakes, gas lights, window guard. Sleeps 6. \$995. New Fleet Craft trailers, too. Bunce U-Rent, 1812 E. Main, TH 5-7527.

CIRCULATING heater, tools, Murphy bed, camping equipment, numerous other items. TH 5-5963.

\$ SAVE \$ 49¢ - 99¢ UP 'SPECIAL CLEARANCE' HIGLEYS EVERGREEN GARDENS 807 - 57th Ave. NE Edgewood

CORRUGATED PLASTIC FOR PATIOS 19¢ Per Sq. Ft. FIFE LUMBER At Fife Interchange

EVERY FRI. NITE 7:30 P.M. BUY, SELL, OR CONSIGN

A.A. AUCTION FORMERLY Jones Federal Way Auction 34233 Pac. Hy. So. (Old 99) Federal Way, Wn. BR. 2-7829

WA 7-2611 VE 8-9622

LOW PRICED HIGH QUALITY GROUND BARK

WHOLESALE OR RETAIL. WE SELL FOR LESS. YOU HAUL OR WE HAUL....

GITT BROS., INC. MA. 7-2927 (TACOMA)

FAMOUS CHEF BURGERS 6 FOR \$1.00 DARI-FLO 1210 East Main - Puyallup 2 blocks East of Piggly Wiggly

COIN SUPPLIES AT THRIFTY DRUGS 9201 PACIFIC AVE. GR. 4-0571

APPLIANCE PARTS ADAMS APPLIANCE SERVICE 817 EAST MAIN TH 5-1395

Auction 11 Every Saturday 7 P.M. Frank's 2nd Hand 1512 E. Pioneer Puyallup TH 5-0115

COIGNMENTS WELCOME

LOW PRICED HIGH QUALITY GROUND BARK

WHOLESALE OR RETAIL. WE SELL FOR LESS. YOU HAUL OR WE HAUL....

GITT BROS., INC. MA. 7-2927 (TACOMA)

WANTED ADS

Real Estate For Sale

EDGEWOOD. Convenient to Tacoma, Auburn, Kent. 3 bedroom, dining room, kitchenette, w/w carpeting, double fireplace, daylight basement. \$19,750. WA 7-2154. 4912 -10th St. N.E.

TWO story 4-bedroom home. Large living room, dining room & kitchen. Good location, close to schools, 5 blocks to downtown. Fenced back yard. \$8500. 351-5th St. S.E.

3 LOTS. Each 100'x300'. Two wooded - one cleared. Vicinity of new high school. Well drained. \$2500 each. TH 5-1500.

1/2 ACRE. Custom built, 3 large bedrooms, family room, farm kitchen with lots of cabinets. Cyclone fence, double garage, playhouse. GR 4-0147

TRADE your present home equity or contract for new one of your choice. Apex Realty, TH. 5-7505.

4 BEDROOM, w/w carpeting. Close to schools. \$13,900. TH 5-5963.

GOOD level lot for sale by owner. Ohop Lake. Call 893-3061

BY OWNER: Attractive 2 bedroom brick. Large carpeted combination living-dinette, fireplace, kitchen with eating space, vanity bath. Attached garage and partial basement. TH 5-5379

PUYALLUP - See this beautiful new 3 bedroom home featuring: Natural gas heat and hotwater, cathedral ceilings, 2 fireplaces, large recreation room, dishwasher, luxurious carpet. Located on quiet dead-end street of new and distinguished homes. 1822 - 11th Avenue N.W. TH 5-4879. Builder.

BY OWNER: 4 bedroom house, family room, 1 1/2 baths. 7 years old. Large lot. Near Sumner. UN 3-6804

2 CANAL lots at Ocean Shores. Substantial savings. Owner transferred. Also pearl grey table and chairs. \$15. TH 5-5267

ACREAGE at Roy Creek. For information call 843-2250

BY OWNER: 3 bedroom rambler, fireplace, wall-to-wall carpeting, patio, fenced back yard. \$16,750. 1809 - 7th St. S.W., Puyallup. TH 5-4716.

4 - BEDROOM. Large yard. Maplewood area. \$15,500. TH 5-9168

NEW 3-bedroom home, 1 1/2 baths, fireplace, double garage. 2010-8th Ave. S.E. TH 5-1453.

LOT - Ocean Shores. Block from proposed recreation center and school. TH 5-5963.

ATTRACTIVE 5 - year - old home. 2,250 square feet. Lot 138' x 90'. Beautifully landscaped. 3 bedrooms, carpeted. Call for details. \$24,950. TH 5-1909 or TH 5-2922.

BY OWNER. 3 bedroom Medallion home. Fireplace, hotpoint electric kitchen, drapes, sliding glass door to patio. 10 minutes to McChord and Puyallup. \$17,000 - 5 1/4% interest. TH 5-2353

2 BEDROOM all electric house with yard or acre. TH 5-0029

Real Estate Wanted

2 or 3 Bedroom house. Close to city or shopping center. TH 5-1246

LISTINGS NEEDED
HOMES - FARMS - ACREAGE
JOHNSON REALTY
706 NO. MERIDIAN
TH 5-8823

WE'RE READY
WE NEED LISTINGS

Our New Hi-Ho Branch at the Hi Ho Shopping Center is now open. List with us. Our offices have very large traffic count.

STANDARD REALTY
Hi-Ho Branch TH 5-7555
5436 So. Tacoma Way
GR 2-4433
Member Tacoma Board of Realtors & Multiple Listing Service

Mobile Homes

SELL OR TRADE equity. 1966 12'x60' Elcar 3 bdrm., all electric for smaller trailer. Space No. 1, Skylark Trailer Village, 900 29th St. S.E., TE 3-9450, Auburn. A-19 1-2-3

AVION - NOMAD
TRAVEL TRAILERS
ROBOT HITCHES
CHARLES TRAILER SHOP
9621 S. Meridian TH 5-5582

BEST BUYS
1967 Mobile Homes
12' WIDES-20' WIDES
10' EXPANSIBLES
DISCOUNT PRICES/
CAMBRIDGE
Mobile Home Sales
2001 Valley Av. NE
TH 5-1967 Afternoon's
EVENINGS BY APPT.

Autos For Sale

IMMACULATE 1962 Falcon 2 dr. automatic. Excellent. Extras. \$795. WA 2-7649

'52 CHRYLSE sedan V8. Hemi motor, hydro-tourque, power steering, new paint and tires. TH 5-4889

1963 IMPALA. 4 - door sedan, \$900. VI 7-7749

1959 CHEV Impala, 2-door, hardtop, automatic transmission, power brakes, power steering. Excellent condition. TH 5-4679 after 6 p.m.

1961 PLYMOUTH - 4-door v-8, Commando 395. New tires. LE 1-2032

'60 MERCURY stationwagon, power steering, radio - heater, good tires and condition. \$525. TH 5-0472

1964 MONZA CORVAIR. New tires, 4-speed, 37,000 miles, 1 owner. LE 1-2082

'38 CHEV pick-up - 1955 engine, 4 speed. Sell or trade. UN 3-1697

1957 3/4 ton Pickup. 4 speed. \$495. Roy 834-2369

IMMACULATE '63 Pontiac Cat. 2 door, ht., p.s., p.b., small V-8, stereo radio. Low actual mileage, full service record furnished, like new throughout. Must sell - \$1,495 or \$150 and assume contract. Call Orting 893-3801 or 893-5612

'57 FORD. Good condition. Best offer. GR 4-6853

WE BUY JUNK CARS AND TRUCKS
C & S
AUTO WRECKING
SUMNER UN 3-6123

Autos For Sale

1959 CHEVROLET BEL-AIR. 2 door, 283, standard transmission, V - 8, overdrive. \$350. TH 5-6582.

REBUILT
FORD 6 ENGINES
Installed, \$189. Call us on all makes. Terms.

TACOMA ENGINE CO. INC.
2611 PACIFIC TACOMA
BR 2-8301

L(.)K
'60 Karmann Ghia hdt., R., H., like new\$890
'64 Volks Variant "S" stn. wgn., sharp\$1,390
'60 Volks. sedan, a real steal, choice of 2\$890
'60 Volks. "Kombi" stn. wgn, a steal\$490
TH 5-1725

Where Cars Always Cost Less
LARSON RAMBLER
300 River Road Puyallup

TUNE UP
V-8 \$950
COMPLETE REPAIRS

AYLEN'S RICHFIELD
202 WEST PIONEER
PUYALLUP

PHONE TH 5-9834

*TIRE TRUING
*WHEEL BALANCING
*WHEEL ALIGNMENT
*FRONT END REPAIR
*SHOCKS
*BRAKES

CALL TH 5-2451
ROSS THOMPSON'S
OK TIRE STORE
923 E. Main Puyallup

NEW- MORE POWERFUL
the 1967's
ARE HERE
VOLKSWAGEN
27 MAJOR CHANGES
COME IN AND
Tom Carstens
AUTOHAUS
7030 So. Tacoma Way
GR 4-0666
TACOMA DEALER SINCE 1955

Trucks, Equipment

HEAVY duty 4-speed Chev pick - up. Good condition throughout. Excellent farm truck. \$325 TH 5-6351

L(.)K
'65 Chev 1/2-ton, 6-cyl., spotless, one owner ...\$1,599
'64 Willys Jeep pickup, sharp R., H., only ...\$1,499
'59 Ford "Custom" 1/2-ton, Buick V-8, 4-spd.\$699
'50 Chev 1/2-ton, a real buy, a steal, only\$249
TH 5-1725
Where Cars Always Cost Less
LARSON RAMBLER
300 River Road Puyallup

Eatonville Students To Reign

EATONVILLE - A court of Eatonville High School students will reign over the 49th annual community festival Friday announced principal Richard J. Hermesen.

To rule as queen and king will be seniors Karol Robbie and Bob Miller. Other senior court members include Jennie Rose, Patty Smith, Don Fisher and Jim Hebert.

Junior class attendants will be Margie Baker, Sandy Heacock, Charles Chappell and John Christian. Court members from the sophomore class will include Lynda Koemann, Sandi Short, Rod Kelly and Gary Malcom. Representing the freshmen class will be Judy Bushnell, Karen Ford, Danny Dooham and David Mettler.

The flower girl will be Elaine Elliff accompanied by crown bearer Elliott Sherdahl both from the grade school.

The coronation will take place at 1 p.m. in the Memorial Gymnasium which will be followed by dances involving students from Eatonville, Columbia Crest and Weyerhaeuser Grade Schools.

Too Late To Classify

LIVESTOCK FOR SALE: Nanny goat, 2 months old. LE 1 6520.

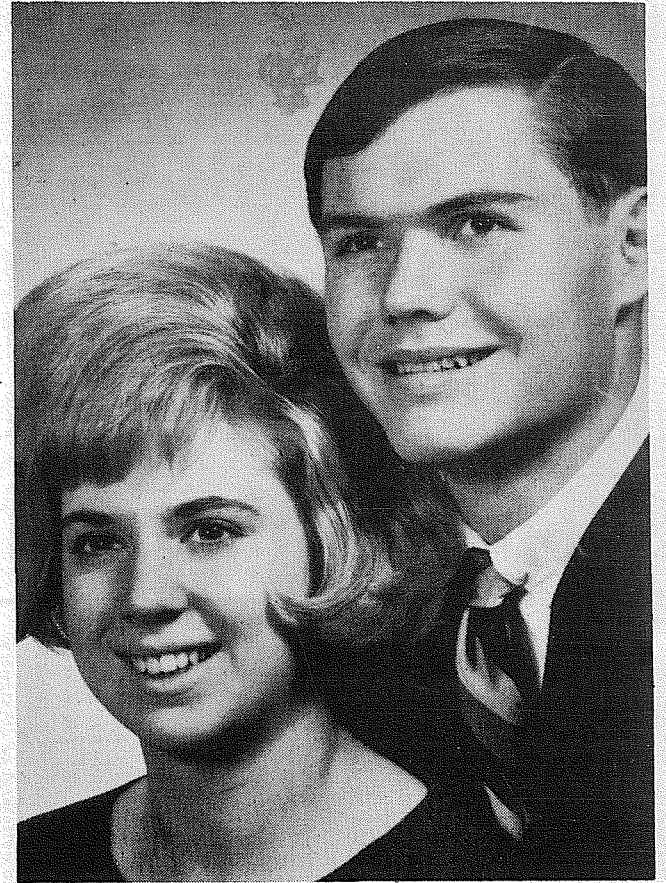
HOMEMADE PLYWOOD canopy. Fits 58-59 Ford, wide box. VI 7-2281.

FOR SALE - New and used campers. 2205 Valley Avenue. TH 5-6781.

FOR RENT: Small house trailer 8x30. Located River View Trailer Court. Retired people preferred. Reasonable. TH 5-5650 after 5 p.m.

WANTED: Occupancy by June 15th - 3 or 4 bedroom home. Rent or lease with option to buy. TH 5-9442 days - WA 7-2394 evenings.

FOR SALE - Upright piano and stauffer table. WA 7-2102.



Roberta L. Edwards - Harold W. Derion

Open House Occasion For Engagement News

TACOMA - An open house in the home of her grandmother Mrs. C. J. Fry was an occasion for Roberta Lorraine Edwards to announce her engagement to Harold William Derion.

The romantic news was revealed to many of the couple's college friends and relatives attending who were served refreshments including a cake decorated with entwined hearts and the betrothed couple's names inscribed on top.

Presiding at the silver tea service was the bride-elect's great-aunt Mrs. Oscar Crain. Also assisting were Mesdames David E. Edwards and Dean J. Rennie, both aunts of the bride-to-be.

Unable to attend the occasion was the bride's maternal grandmother Mrs. Forest Bray of Harbor, Oregon.

The bride, the daughter of Mr. and Mrs. Robert J. Edwards of Tacoma, was gra-

uated from Puyallup High School and is attending Olympic Junior College in Bremerton.

The future benedict, the son of Mr. and Mrs. William R. Derion of Bremerton, is also attending Olympic College.

The nuptial rites will take place June 23 in Tacoma's Westminster Presbyterian Church.

Eatonville Plans Alumni Banquet

EATONVILLE - Reservations for the Eatonville High School Alumni Banquet are pouring in reported Mrs. Hugo LaPlante, executive secretary of the Alumni Association. She claimed an increase in reservations over previous years at this time.

This dinner and dance will be held Saturday following the annual Eatonville Community Day celebration.

Legal Notices

McGAVICK, BETZENDORFER, HEMMEN & BOTTIGER
IN THE SUPERIOR COURT OF THE STATE OF WASHINGTON IN AND FOR THE COUNTY OF PIERCE
SHIRLEY M. BROWN, Plaintiff vs. NORMAN E. BROWN, Defendant.
NO. 174105

SUMMONS BY PUBLICATION
THE STATE OF WASHINGTON, To the said NORMAN E. BROWN, Defendant: YOU ARE HEREBY SUMMONED TO APPEAR WITHIN 60 days after the date of the first publication of this summons upon you, and answer the Complaint and serve a copy of your answer upon the undersigned at the place below specified, and defend the above entitled action in the court aforesaid; and in case of your failure so to do, judgment will be rendered against you, according to the demand of the Complaint which will be filed with the Clerk of said Court, a copy of which is hereby served upon you.
This is an action in which the plaintiff seeks a Decree of Divorce from the defendant on the grounds of cruel treatment and burdensome homelife.
McGAVICK, BETZENDORFER, HEMMEN & BOTTIGER
By M.H. Hemmen
Attorneys for the Plaintiff
Office and Post Office Address:
8849 Pacific Avenue
Tacoma, Washington 98444
Published April 5, 12, 19, 26, May 3 and 10, 1967.

MOTHERS LOVE ORCHIDS UN .LTD.
PLANTS, SUPPLIES, FLOWERS, CORSAGES
627 So. Pearl (Cor Bentz)
Tacoma

BUSINESS DIRECTORY

Fencing
FENCING
Designers and Builders
EXPERT WORKMANSHIP
REASONABLE PRICES
Easy Monthly Payments
VAUGHAN'S
84th & Pac. Ave. GR 4-9515

Boush Moving & Storage
Agents for U.S. Van Lines
Coast to Coast Service
121 WEST STEWART
TH 5-5436

Sheet Metal
• Furnace Repair and Service
• Installations
PARKLAND FUEL OIL
12002 Pacific Ave.
LE 7-0256

Top Soil
BALMER & SON
EXCAVATING
Bulldozing - Loader
Land Clearing - Dump Trucks
Blasting - Road Construction
Top Soil, Backhoe For Hire
FREE ESTIMATES
LE 7-9165 VI 7-7133

INTERURBAN AUTO FREIGHT INC.
3 Trips Daily
To Parkland, Spanaway, Summit, Midland.
GENERAL FREIGHT
MA 7-4121

RENT TV
Color TV
Portables All Sizes
GR 5-3755 9440 Pacific
United Rent-Alls
THE NATION'S NEIGHBOR
JU 4-4100 10012 Bridgeport

M.L.S. MULTIPLE LISTING SERVICE
McKinley Hill Realty
4311 McKinley Ave. GR 4-9579
Member of Multiple Listing Service and Tacoma Real Estate Board

Grant To Finance Teaching Experiment At Keithly Junior High

A \$42,000 Federal Title III grant has been approved to finance a model student response teaching system at the Perry G. Keithly Junior High School, Franklin Pierce Superintendent E.E. Hill announced last week.

Known as "Project Promise", the student response program had received prior approval of Pierce County Superintendents and the funds will be administered through the County Superintendent's Office, Dr. Hill said.

The grant provides for payment of approximately \$8000 during the 1967-68 fiscal year to provide professional planning. The balance is scheduled for distribution the following fiscal year (1968-69) to implement the project.

"Most of the planning will be accomplished this summer

by a group of educators selected as specialists in their respective fields," Assistant Superintendent R.C. Richardson stated. The planning stage calls for a part-time staff of 5 professional consultants and a full time secretary, he said.

The electronic response system will provide push-button stations for groups of up to 80 students, Richardson revealed. A set of push-buttons, each button representing an answer to a multiple-choice question posed by the teacher, will be used to reflect how well students comprehend what they are being taught, he stated.

Buttons will register a light on a master console to give teachers an immediate visual check of student classroom progress. "If too many wrong answers appear on the con-

sole, then the teacher knows the students require more instruction," Richardson explained.

In addition to the electronic student response system, the funds will provide the district with a video tape recorder, television cameras, monitors, and a supply of video tape.

Television video tape equipment will be used for programming instructional presentations prepared by both teachers and students, Richardson said. The tape machine is planned to be compatible with those used in other districts to facilitate eventual exchange of tapes.

Richardson and Ed Peterson, principal of Keithly, recently completed a tour of similar projects undertaken in other states. The trip was planned in conjunction with a teacher recruiting drive.

During the initial year of

operation the project will develop junior high level classroom programs covering mathematics and social studies, Dr. Hill stated in a recent proposal outlining the goals of the new system.

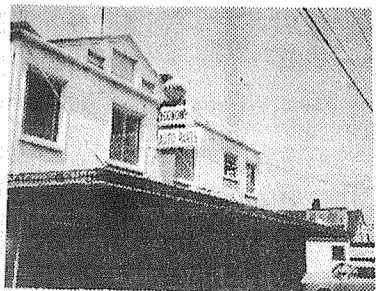
To Be Feted



Congratulations from friends and family will be received by Mr. and Mrs. John V. Napora from 2 to 5 p.m. Sunday when they will be guests of honor at an open house in the Roy Rebekah Hall. Hosting the event will be the couple's four sons and two daughters and their spouses - Messrs and Mesdames John Napora, Poulsbo; Stanley Napora, Silverdale; Matthew Napora, Richland; Michael Napora, Parkland; Roger Callies, Tacoma and Ronald Smith, Tacoma. The couple has 22 grandchildren and one great grandchild. Special guests will be their wedding attendants Charles Potochi and Mrs. W. Daniszewski, both of Tacoma.

DISCOUNT AUTO PARTS HOUSE

MACHINE SHOP SERVICE
New -Used & Rebuilt Parts



RECONDITIONED GENERATORS
6 Volt **\$8.95**
12 Volt **\$9.95**
WITH EXCHANGE
We Repair
Generators & Starters

GENERATORS TESTED FREE

STARTERS TESTED UNDER LOAD

\$1.00

MARTENS ECONOMY AUTO PARTS, INC.

11012 Pacific
Tacoma
Call LE 1-1144

Open 7 Days A Week
Monday thru Friday
8 a.m. To 8 p.m.
Saturday 8 a.m. to 6 p.m.
Sunday 11 a.m. to 5 p.m.

ONLY FIVE YEARS AGO



... many now-familiar viruses had not yet been isolated. Since then, your doctor and druggist have, as a team, explored and defeated them. You can safely trust their joint knowledge.

ASHMORE'S SPANAWAY DRUGS

165th & PACIFIC AVE. LE 7-5993

Moving Sale!

ENTIRE STOCK MUST GO

AT 30% OFF

BY MAY 15th

We'll be moving to 11413 Pacific Ave,
Next to the Milk Break

OPAL'S GIFT SHOP
16607 Pacific Ave.

DON'T TAKE OUR WORD FOR IT

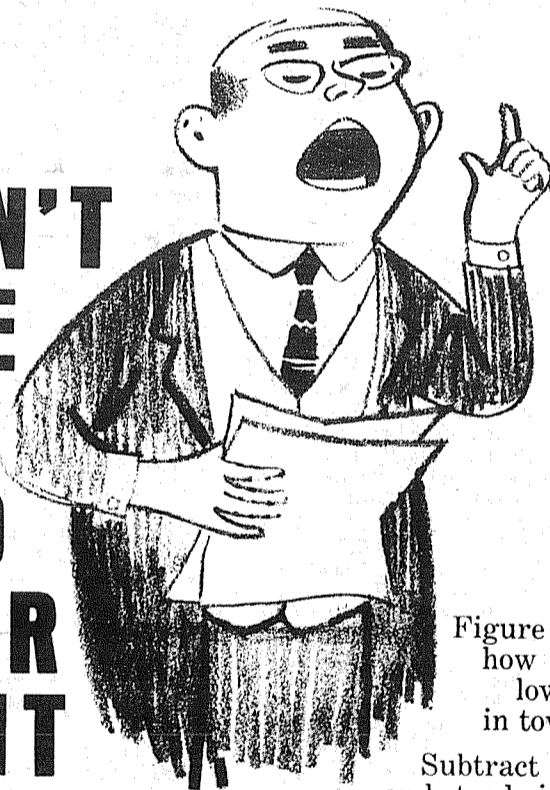


Figure it out for yourself how Citizens offers the lowest new car loans in town. Take a pencil:

Subtract the down payment and trade-in allowance from your new car's purchase price. (This is the amount you have to borrow.)

Now multiply this figure by .045 (Citizens low 4 1/2% new car loan rate). This gives you the financing cost per year.

Multiply this by the years the loan will run ... and you've arrived at the total financing cost of your new car at Citizens.

Or, figure \$4.50 per \$100 per year. Whatever way you figure ... a Citizens new car loan costs less. Be sure and see us before you buy.

P.S. We've got low used car rates, too!

Citizens STATE BANK



MEMBER FEDERAL DEPOSIT INSURANCE CORPORATION

- ☆ MAIN OFFICE - PUYALLUP
- ☆ EAST SUMNER OFFICE
- ☆ SUMMIT VIEW OFFICE
- ☆ EDGEWOOD-MILTON OFFICE

Sumner To Host Track Finals

Seamount Cindermen To Compete

SUMNER - Track and field finalists from throughout the Seamount League will gather at Spartan field Friday for the league championships.

Largest representations will come from Curtis (25) and from North Thurston (22) after the Sea Division and Mount Division finals last week. Fife will send 13 entries, Bethel 9 and the Spartans will have 7 starters in the field.

In the qualifying action at Foster (Sea Division), the host school scored 138 points to beat out the Fife Trojans with 108. In order, they were followed by Tahoma 90 - 1/4, Mount Si 69, Laughon 43 1/4, White River 29 1/4 and Tumwater 18 1/4.

In the Mount Division meet at Peninsula, the scoring went: Curtis 179, North Thurston 133, Bethel 54, Sumner 51, Enumclaw 40, Peninsula 35.

Bethel's Braves have only one division champion going into the League finals Friday, but had several qualifiers in the Mount Division finals last week.

Mike Dukes high jumped 5-6 in the cold and wet to win that event. Other Braves who placed were Hal Madsen 4th in the mile, Hopkins 3rd in the 2-mile, Ed Mayo 6th in the shotput and 3rd in the discus, John Briehl 4th in the broad jump, Tom Rice 2nd and John Zurfluh 5th in the javelin, and a 2nd place in the 880 relay and 4th in the mile relay.

In running events, the top four from the Mount finals and the top three from the Sea finals were qualified and the eighth position went to the next best performer from either division. The top nine field performances from the combined meets were qualified to Friday's competition.

Card Netters Hope To Improve Season Slate

Bad luck continued to plague Coach Norm Scott's Franklin Pierce net squad as the Cards dropped two 3-2 decisions to Clover Park and Puyallup last week.

Three matches are on tap for this week, with FP traveling to Lakes Monday, hosting Auburn Tuesday, then hitting the road for Federal Way tomorrow. With a couple of breaks, Franklin Pierce could bring their season record to 4-5 by sweeping the three matches.

Brave Nine Hosts Hawks

The Bethel Braves, who hammered their way into a first place diamond tie last Wednesday with a 3-2 victory over league leading Curtis,

Brave Netmen To Host Sumner Team

The Bethel Brave tennis team, which started the week with a 1-3 league record, traveled to Peninsula yesterday for more Seamount action and will host the Sumner Spartans Thursday.

Sumner and Bethel are tied in the middle of the second division.

Paradise Bowling

Rod Pardey Rolls 653 Series In Premier Loop

Rod Pardey rolled a 653 series in Premier League bowling last week to top official action, but the high game was turned in by Jerry Olson (233) whose series was a 622.

ROLLING BEES: Gertie Rich 554-205, Split pick ups: Don Rausch 3-7-10, Lela Natucci 6-7-10, Lois Lovelace 4-7-9.

BELLES: Bev Maruma 539, Georgia Welsh 212.

PINETTES: Ginger Pittman 580, Ruth Manarino 569, Marcy Martinson 547, Sheila Horton 540, Barb Vatter 215.

PARKLAND MERCHANTS: Bob Collen 600-218.

SPORTSMAN: Al Bates 574, Ralph Zeigler 219.

INDUSTRIAL: Herm Rampel 579-212.

TUES. NITE MIX: Dick Breon 594, Ken Cissne 223, June Crump 443, Edris Haikkila 189.

PREMIER: Rod Pardey 653, Jerry Olson 622-233, Bill Schaefer 605, Jack Reese 602.

LADIES SCRATCH TRIOS: Sue Sweaney 591-222, Ann Bryant split pick up 3-9-10.

SENIOR CITIZENS: Barney Bigger 535-212, Beth McLellan 446-150.

MIXERS: John Boyce 577, Gene Knudtson 205, Larry Hutson 205, Syd Sheppard 527, Marge Jones 190.

TOP ROLLERS: Jack Mitchell 562, Bob Guthrie 222, Eve DeMangelaere 486-169.

GRAHAM: Dick Hansch 610-223, Leann Burkes 501, Alyce Sims 188, Lola Barnwell

Tough Sledding At Highline, Shelton Meets

The Puget Sound League's Southern Division entries to the Highline Relays and Shelton Invitational track meets last weekend found the going a little too tough. Lincoln proved to all they had all the horses, while talent-laden Renton barely withstood Highline at

A bad pickoff throw in the 12th inning broke up the pitcher's duel, which saw Dean Ketter fan 19 batters in his victory.

Matching single runs in the second frame, the teams were tied again when Curtis scored in the top of the fourth and Bethel in the bottom of the fifth. Six scoreless innings later a pickoff attempt went awry and Mike LaVine who had walked and stolen second scampers across.

Peninsula, this week's opponent, has a 2-2 record after dropping a 4-1 game to Tumwater and downing Laughon 5-2 last week. Bethel's league record is 4-1.

Baseball Meeting Set For F-P

An organizational meeting to discuss the summer baseball and softball program for youngsters in the Franklin Pierce area will be held at 8 p.m. on Thursday, May 4, at Franklin Pierce High School Building No. 11.

Persons who intend to enter teams in the summer program and those who have questions concerning the baseball and softball leagues for boys and girls are urged to attend the meeting.

the Burien cinder meet last Friday. The Abes repeated their strong showing by dominating the Shelton meet Saturday.

Franklin Pierce thinclads garnered a few points at Shelton after finishing far down the ladder at Highline. Coming through for the Cards were Ron Eklund (high jump), Steve Harshman (shotput), Clay Smith (880), and Gay Shumway (440).

Pierce returns to dual competition Friday when they play host to the Eagles of Federal Way.

Puyallup managed to pick up a few points on the strength of Vic Harris' 6th place finish in both hurdle events, Hans Lindstrom's 6th in the 880, Neal Hedges' 4th in the 220 and a 5th spot in the mile relay raced by Vic Harris, Dan Ross, Mike Poe and Cece Snodgrass.

The Viks have two meets on tap this week, traveling to

Federal Way yesterday, then hosting powerful Renton this Friday.

2 Hr Transmission Repair

Don't Sell Bob's Pit Crew Short

SPANAWAY - An unbelievable 2 hour transmission repair by the pit crew of Bob Short's bright red double A car enabled the popular Spanaway driver to capture his first main of the young season. After wiping out 2nd gear even before the time trials, Short's efficient crew of Fred Emmett and Ken Elmore climbed over the car with a box of wrenches and a lot of desire. Two hours later, Short had it running in the heat race, then came on strong to beat the very capable Jack Jeffries in his hot 88 car.

Eve Rohr picked up where she left off last season by capturing the 1st Powderpuff Derby of the year, beating out Rita Hunter and Sally Balzer in the 15 lap thriller. 10 members of the distaff side answered starter Lucky O'Neil's green flag for the exciting female fenderbanger.

Ken Longley had his number 92 car humming and ran away with the 40 lap A main.

Next week's Spanaway card, will feature a full slate of racing including dashes, heats and mains. Time trials are

set for 1:30 and racing at 3:30 p.m.

Complete results of last Sunday's card are as follows: Jalopy Trophy Dash: Bob Bull (86), Bill Hunter (9) and Bob Jackson (3). Time 1:19:31. "A" Trophy Dash: Ken Longley (92), Steve Kiser (63) and Bruce Stanley (18). Time, 1:09:12. "AA" Trophy Dash: Leon DeLapp (34), Mickey Norton (38) and Rick Brock (88). Time 1:08:42. 1st Heat: Milt Balzer (66), Dick Knerr (27) and Richard Allen (15). Time 2:06:92. 2nd Heat: Hunter, Del MacWatters (64) and Larry Davis (82). Time 2:31:53. 3rd Heat: Longley, Kiser and Les MacWatters (28). Time 2:25:58. 4th Heat: Art Hall (11), Jim Bond (31) and Burt Clawson (2). Time 2:31:46. 5th Heat: Don Hall (5), DeLapp and Bernie Aase (78). Time 2:21:19. Powderpuff (15 laps) Eve Rohr (44), Rita Hunter (9) and Sally Balzer (66). (No Time). "A" Main (40 laps): Longley, Kiser and Bob Short (17). (No Time). "AA" Main (40 laps): Bob Short (17), Jack Jeffries (88) and Bernie Aase (78).

PSL Baseball Roundup

Heavy Slate This Week

Off to a slow start because of pesky weather, the Southern Division baseball title chase should start to clear after this week's heavy slate of games is completed.

Leading the pack at the start of Monday's action is the dark-horse entry of Clover Park with a 2-0 record. Auburn holds down the number two spot, with Puyallup just a game from the top. Franklin Pierce, Lakes and Federal Way all have identical 1-2 marks.

The Cardinals split a pair in last week's action, downing Puyallup 2-0, then suffering a heartbreaking 7-6 setback at the hands of Federal Way. Coach Bud Galusha's horse-hiders hope to get back in the thick of the title chase with two games on tap, a road contest at Auburn Tuesday, then hosting the Eagles tomorrow.

The Cardinals' Gary Hammer has been swinging a hot bat thus far, collecting a round tripper and a double in their loss to Federal Way.



SPANAWAY SPEEDWAY

SUNDAY, MAY 7th
"SPEED, THRILLS, ARE BEST AT SPANAWAY"

*HEATS *TROPHY DASHES *MAINS
TIME TRIALS 1:30 RACING 3 PM

DON'T MISS THE SLAM-BANG ACTION OF THE SUPER-STOCKS!

2 MILES EAST OF PACIFIC AVE.
ON 159th TACOMA



Used Car

HEADQUARTERS
"MOST FOR THE MONEY!"
All Makes... All Kinds
ARMSTRONG'S USED CARS LE 7-5524
11109 Pacific Ave.

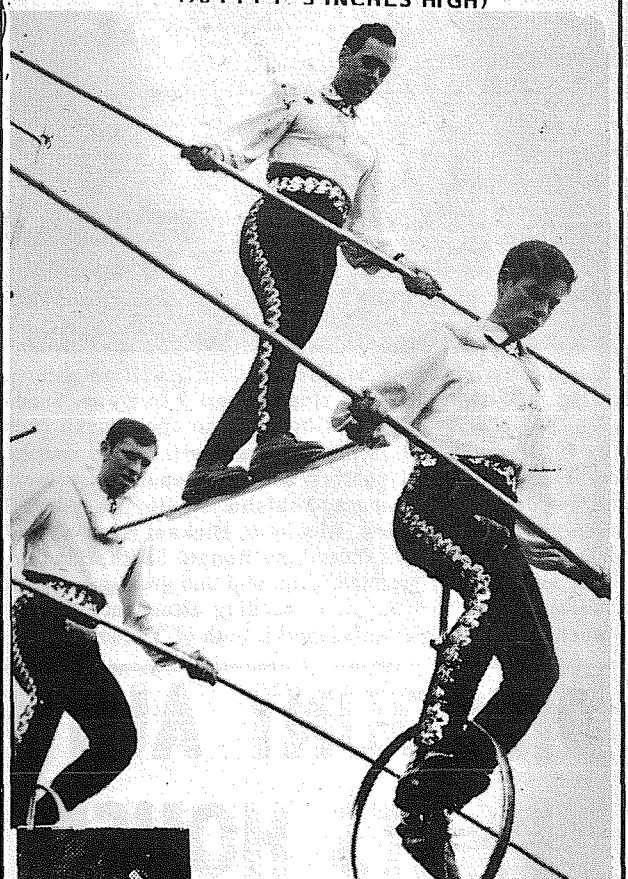
MAGDANZ
Buy Of The Week
UTILITY
WHEELBARROW
REG. \$10.50 YOU ASSEMBLE **8³⁵**

GARBAGE CAN
REG. 5.70 30 GALLON **4⁴⁹**

MAGDANZ
HOMETOWN HARDWARE
11401 PACIFIC AVE.

Saturn Cyclists IN PERSON!

Just Back From The TV Show "I'VE GOT A SECRET" SEE THE TALLEST UNICYCLE IN TOWN! (70 FEET 3 INCHES HIGH)



PLUS: Teeny The Clown

ADMISSION
Adults \$1.50
Students \$1.25
Children (UNDER 12) 50¢

Unicycles, Juggling, Pyramid...
All On The High Wire!
TACOMA SPORTS ARENA
38TH & SO. TACOMA WAY

MAY 6th, 7:30 PM

JOIN A SUMMER BOWLING LEAGUE
FREE OPEN PLAY GAME FOR EACH PAID LEAGUE GAME
DISCOUNT BOWLING RATES FOR ONE FULL YEAR
CHECK OUR LOWER EVERYDAY RATES

COME IN OR CALL NOW
108th PACIFIC PARADISE BOWL LE 7-6012

LEGAL NOTICES

NOTICE OF SALE OF COUNTY PROPERTY

NOTICE IS GIVEN THAT the Pierce County Treasurer will, on TUESDAY, the 23RD of MAY, 1967 at the hour of 9:00 A.M., at the Tacoma Avenue Entrance to the County-City Building, Tacoma, Washington, receive bids at public auction for the sale of the following described parcels of real property:

Parcel 1: (Parkland Area) A parcel of unimproved real property located within Pierce County, Washington, more particularly described as Lots 29 and 30, Block 16, Cultum's Second Addition to Parkland, as recorded in Volume 8, Page 70, Book of Plats in the office of the Pierce County Auditor.

Parcel 2: (Peninsula Area) A parcel of real property, together with buildings and sundry fixtures thereon, comprising about 2.95 acres, located within Section 8, Township 21 North, Range 2 East, W.M., Pierce County, Washington, more particularly described:

Beginning at the Southwest corner of the East half of the Southwest quarter of Southeast quarter of Southwest quarter of Section 8, Township 21 North, Range 2 East, W.M.; thence East on South line of said Subdivision 12.0 feet; thence North parallel to the West line of said Subdivision 283.0 feet; thence East parallel to said South line 319.41 feet more or less to the East line of said Subdivision; thence North 377.03 feet more or less to the Northeast corner of said Subdivision; thence West 331.69 feet more or less to the Northwest corner of said Subdivision; thence South 660.65 feet more or less to the point of beginning.

Parcel 3: (Spanaway Park area) A parcel of unimproved real property, comprising about 4.97 acres, located within Section 21, Township 19 North, Range 3 East, W.M., Pierce County, Washington, more particularly described:

Beginning at the Northeast Corner of Bushaller Donation Land Claim; thence West along the centerline of 149th Street South for a distance of 50 feet; thence South 30 feet to the South right-of-way line of said 149th Street South and the true point of beginning of this description; thence South and parallel with the West line of Block 4 in Wright's Acre Tracts to the Northerly right-of-way line of Military Road; thence Northwesterly along said Northerly right-of-way line of existing Military Road to the East right-of-way line of Pacific Avenue; thence North along the East line of said Pacific Avenue to the South right-of-way line of 149th Street South; thence East along the South line of said 149th Street South to the true point of beginning in the Northwest Quarter of Section 21, Township 19 North, Range 3 East, W.M., EXCEPT the South 10 feet reserved for additional right-of-way on Military Road.

Parcel 4: (Spanaway Park area) A parcel of unimproved real property, comprising about 1.88 acres located within Section 21, Township 19 North, Range 3 East, W.M., Pierce County, Washington, more particularly described:

Beginning at the Southwest Corner of Lot 16, Block 3 of Egermoyer's Addition; thence West along the North right-of-way line of Louvre Street to the East line of Pacific Avenue; thence North along said right-of-way of Pacific Avenue to the South right-of-way line of Old Military Road; thence Southeasterly along Military Road to the West line of Egermoyer's Addition; thence South along said West line of Addition to the point of beginning; EXCEPT the North 10 feet reserved for additional right-of-way for Military Road and EXCEPT the East 50 feet for county road.

Parcel 5: (Spanaway Park Area) A parcel of unimproved real property, comprising about 1.42 acres, located within Section 21, Township 19 North, Range 3 East, W.M., Pierce County, Washington, more particularly described:

Beginning at the Northwest Corner of Lot 15, Block 2 of Egermoyer's Addition; thence West along the South line of Louvre Street to the East right-of-way line of Pacific Avenue; thence South along said Pacific Avenue right-of-way to the North right-of-way line of Spanaway Street; thence East along said North right-of-way of Spanaway Street to the West line of Egermoyer's Addition; thence North along said West line of Addition to the point of beginning, EXCEPT the East 50 feet for county road.

Parcel 6: (Spanaway Park Area) A parcel of unimproved real property, comprising about 1.23 acres, located within Section 21, Township 19 North, Range 3 East, W.M., Pierce County, Washington, more particularly described:

Beginning at the Southwest corner of Lot 16, Block 2 of Egermoyer's Addition; thence South along the West line of said Addition 70 feet to the true point of beginning; thence continuing South to the inside corner of Bushaller Donation Land Claim; thence West parallel with the South right-of-way line of Spanaway Street to the East right-of-way line of Pacific Avenue; thence North along east right-of-way line of Pacific Avenue to the South right-of-way line of Spanaway Street; thence East along said Spanaway Street right-of-way to the point of beginning, EXCEPT the South 60 feet and the East 50 feet for county roads.

Minimum acceptable bids are:
 Parcel 1 - \$ 200.00
 Parcel 2 - \$ 4,900.00
 Parcel 3 - \$108,175.00
 Parcel 4 - \$ 40,963.00
 Parcel 5 - \$ 31,000.00
 Parcel 6 - \$ 28,313.00

Each parcel shall be sold to the highest and best bidder for cash, payable to the Pierce County Treasurer within 24 hours following acceptance of the bid. PROVIDED: That any purchaser of Parcels 2, 3, 4, 5 or 6 who chooses to do so may, at his option, enter into a real estate contract with Pierce County, the essential terms of which shall be that the purchaser shall make a down payment in cash equal to not

less than 20% of the purchase price, and shall pay the balance of the purchase price, together with interest at 6% per annum, in ten equal annual installments commencing one year from the date of the sale. Upon full payment of the purchase price, together with all interest, the property shall be conveyed by Bargain and Sale deed in statutory form. PROVIDED FURTHER: That the Board of Pierce County Commissioners has reserved the right to reject any and all bids.

Prospective bidders are encouraged to examine the property; investigate Pierce County's title to the property; and examine the sample real estate contract available in the office of the Clerk of the Board of Pierce County Commissioners, Room 1046, County-City Building, which sample is in the form that will be executed with any purchaser who exercises an option to pay for the property in installments.

By ORDER OF THE BOARD OF COUNTY COMMISSIONERS of Pierce County, Washington, dated APRIL 17TH, 1967.
 BOARD OF COUNTY COMMISSIONERS
 Jack W. Sonntag, County Auditor and Clerk of the Board
 By L. Hamre Deputy
 Published April 26 and May 3, 1967.

GEORGE F. POTTER ATTORNEY AT LAW

IN THE SUPERIOR COURT OF THE STATE OF WASHINGTON IN AND FOR PIERCE COUNTY

MAX R. JINKENS, Plaintiff vs. RENATE M. JINKENS, Defendant
 No. 175206

SUMMONS BY PUBLICATION
 THE STATE OF WASHINGTON, to the said RENATE M. JINKENS

YOU ARE HEREBY SUMMONED to appear within sixty (60) days after the date of first publication of this summons, to-wit: Within sixty (60) days after the 5th day of April, 1967, and defend the above-entitled action in the above-entitled court, and answer the complaint of the above-named, and serve a copy of your Answer upon the undersigned Attorney for plaintiff at his office below stated; and in case of your failure to do so, judgment will be rendered against you according to the demand of the complaint which has been filed with the Clerk of said Court.

This is an action for divorce.
 GEORGE F. POTTER
 Attorney for Plaintiff
 Office and Post Office Address:
 159 South 112th Street
 Parkland, Washington 98444
 Published April 5, 12, 19, 26, May 3 and 10, 1967.

GEORGE F. POTTER ATTORNEY AT LAW

159 South 112th St.
 Parkland, Washington

IN THE SUPERIOR COURT OF THE STATE OF WASHINGTON IN AND FOR PIERCE COUNTY

ROBERT V. LA DOUCER, Plaintiff vs. BARBARA ANNE LA DOUCER, Defendant
 No. 175226

SUMMONS BY PUBLICATION
 THE STATE OF WASHINGTON, to the said BARBARA ANNE LA DOUCER

YOU ARE HEREBY SUMMONED to appear within sixty (60) days after the date of first publication of this summons, to-wit: Within sixty (60) days after the 5th day of April, 1967, and defend the above-entitled action in the above-entitled court, and answer the Complaint of the Plaintiff above-named, and serve a copy of your Answer upon the undersigned Attorney for Plaintiff at his office below stated; and in case of your failure to do so, judgment will be rendered against you according to the demand of the Complaint which has been filed with the Clerk of said Court.

This is an action for divorce.
 GEORGE F. POTTER
 Attorney for Plaintiff
 Office and Post Office Address:
 159 South 112th Street
 Parkland, Washington 98444
 Published April 5, 12, 19, 26, May 3 and 10th, 1967.

GEORGE F. POTTER ATTORNEY AT LAW

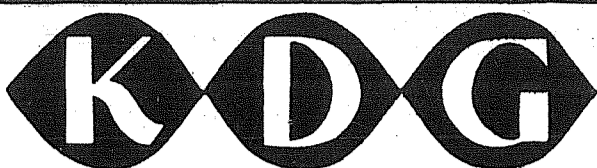
159 SOUTH 112TH ST.
 PARKLAND, WASHINGTON

SUPERIOR COURT OF WASHINGTON FOR THE COUNTY OF PIERCE

Estate of RICHARD D. ROSS Deceased, Probate No. 75861
 NOTICE TO CREDITORS

The undersigned has been appointed and has qualified as EXECUTOR of the estate of RICHARD D. ROSS, deceased. Each person having a claim against the above named person or his estate must serve the claim, duly verified by the claimant, on the undersigned or his attorney(s) of record at the address stated below and must file it with the clerk of the court, together with proof of the service, within six months after the date of first publication of this notice or the claim will be barred.

Date of first publication APRIL 19, 1967.
 GEORGE F. POTTER
 Executor of said Estate,
 Address: 159 South 112th Street,
 Parkland, Wash. 98444
 George F. Potter
 Attorney(s) for the Estate
 Address: 159 South 112th Street
 Parkland, Wash. 98444
 (Telephone): LE 2-2889
 Published April 19, 26 and May 3, 1967.



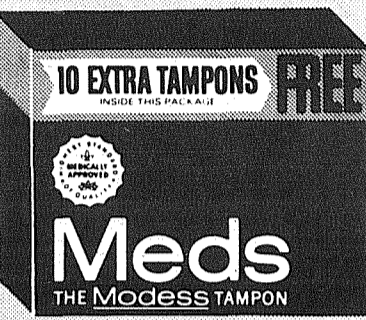
KEY DRUG GROUP



EXTRA BONUS

BOX OF 40 PLUS 10 FREE
ONLY \$1²³

ASHMORE'S SPANAWAY
 So. 165th & Pacific Ave. LE 7-5993



EXTRA BONUS

BOX OF 40 PLUS 10 FREE
ONLY \$1²³

BEREN'S REXALL
 1102 Main Sumner, Wash. UN 3-6223



EXTRA BONUS

BOX OF 40 PLUS 10 FREE
ONLY \$1²³

EDGEWOOD PHARMACY
 6513 No. Meridian, Puyallup WA 7-3333



EXTRA BONUS

BOX OF 40 PLUS 10 FREE
ONLY \$1²³

GENE'S MIDLAND DRUG
 1805 99th E. LE 7-3305



EXTRA BONUS

BOX OF 40 PLUS 10 FREE
ONLY \$1²³

JACOB'S PACIFIC DRUG
 8248 Pacific Ave. GR 2-6445



EXTRA BONUS

BOX OF 40 PLUS 10 FREE
ONLY \$1²³

MILTON DRUG
 Milton, Wash. WA 2-5577

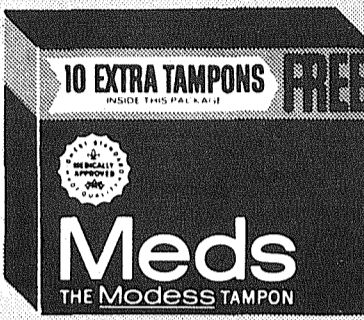
Check this page for the Key Drug Group store in your neighborhood.



EXTRA BONUS

BOX OF 40 PLUS 10 FREE
ONLY \$1²³

BEALL'S PHARMACY
 124 S. Meridian, Puyallup TH 5-8444



EXTRA BONUS

BOX OF 40 PLUS 10 FREE
ONLY \$1²³

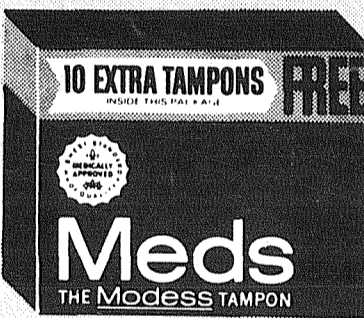
BROWN'S POINT DRUG
 6610 East Side Drive WA 7-1122



EXTRA BONUS

BOX OF 40 PLUS 10 FREE
ONLY \$1²³

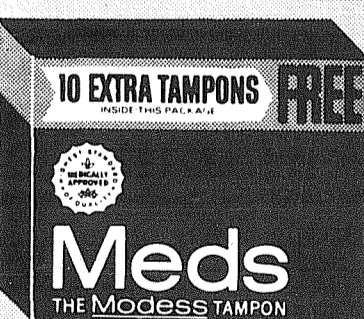
FIFE VALLEY MART PHCY.
 5306 Pacific Hy. E. WA 2-8722



EXTRA BONUS

BOX OF 40 PLUS 10 FREE
ONLY \$1²³

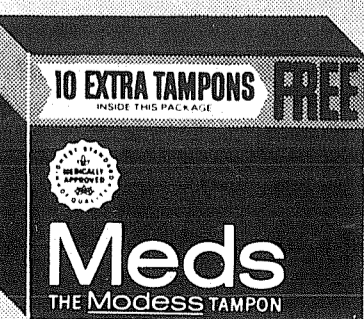
GOSSMAN DRUGS
 602 S. Meridian, Puyallup TH 5-6658



EXTRA BONUS

BOX OF 40 PLUS 10 FREE
ONLY \$1²³

JOHNSON'S PHARMACY
 210 Garfield Parkland LE 7-0221



EXTRA BONUS

BOX OF 40 PLUS 10 FREE
ONLY \$1²³

NICHOLSON'S SUMNER PHCY.
 910 Alder Sumner, Wash. UN 3-6343

LOANS

FOR SPRING NEEDS-CONSOLIDATION-PURCHASE VACATION

TO \$3500.00 OR MORE

ON HOME - FURNITURE - CAR - BOAT

CASCADE INDUSTRIAL LOAN CO.

751 Commerce Tacoma FU 3-2533

Free Parking At Motor Ramp Garage

Matson's Memos

AL RABER, Parkland Light and Water, recently returned from a nuclear power seminar sponsored by General Electric at the firm's nuclear-electric headquarters in San Jose, Calif. Of the seminar Raber said, "A satellite controlled network of interconnected nuclear power plants is now being planned to supply the nation with electricity." Although he didn't foresee a nuclear installation for Parkland in the near future, he stated Parkland was one of many mutuals jointly considering nuclear energy as a future source of power. Twenty-one Pacific Northwest utilities were represented.

BEST WISHES to the Spanaway Lions, who will be presented their charter during an organizational banquet May 13 at the Spanaway Golf Course Clubhouse.

OPAL'S GIFT SHOP, 16607 Pacific Avenue, will move to new quarters adjacent to the Milk Break, 11413 Pacific Avenue about May 15. To make ready for the move Opal McNiven, gift shop owner, says all gift merchandise will be reduced 30%.

BARBARA RIKE, Parkland Roundup Queen Advisor, is still looking for Roundup princesses. Single girls, 16-21 years of age who can furnish a horse and transportation, may apply for the Roundup Queen title by calling Mrs. Rike at WA 2-6738.

MORRIE ANDERSON, Anderson Lumber, with a volunteer crew of Parkland Business Club members trucked bricks from the razed Park 'N Shop building to the Rodeo grounds for new concession stands. Volunteers included Larry Armstrong, Armstrong Used Cars, and Harold Lloyd, Parkland Thriftway.

PIERCE COUNTY HEADQUARTERS FOR
1967

★ CHRYSLER
★ PLYMOUTH
★ VALIANT
★ BARRACUDA
CALL GR 4-0621

★ Steven MOTOR CO.
2705 SOUTH TACOMA WAY

FINAL CLOSEOUT
BOYSEN RUBBERGLO INTERIOR LATEX
4.49 GALLON
1.49 QUART

BOYSEN Dream Semi Gloss
4.69 GALLON
1.59 QUART
Limited Colors HURRY!
BROOKDALE LUMBER INC.
13602 PACIFIC

Spanaway School Plans Carnival

Spanaway School's Family Faculty Club is sponsoring its annual spring carnival to be held in the Spanaway School Gym Friday, from 5 p.m. to 9 p.m.

They will be featuring games, novelties, pony rides, food, prizes and surprises. Everyone is invited.

Proceeds will be used to purchase badly needed playground equipment for the school.

Pierce County Planners To Meet Tues.

The Pierce County Planning Commission will meet at 1 p.m. Tuesday in the County-City Building to consider rezones and other property use petitions.

The agenda includes:
OLD BUSINESS
UP2-67-Woodworth & Company seeks an unclassified use permit for gravel mining, rock crushing and a portable asphalt plant in an SR-9 Suburban Residential District, including existing and proposed pit sites in the southeast quadrant of the interchange of Interstate 5 and SR 512 extending south to 108th Street and property in the NE quadrant of this interchange extending north to 98th Street and east in part to Sales Road.

9 am-10 pm
7 DAYS
A WEEK



16618
PACIFIC AVE. S. SPANAWAY
LE 7-3371

No Sales To Dealers

WE RESERVE THE RIGHT TO LIMIT QUANTITIES

We Carry A Complete Line Of Sacked Feeds-Presto Logs

We Are Locally Owned & Operated
HELP YOUR BUDGET WITH THESE SAVINGS

PRICES EFFECTIVE
May 4-5-6
Thur., Fri., Sat.

KRAFT MIRACLE WHIP
SALAD DRESSING
LGE. 48 OZ.
79¢

SACRAMENTO
TOMATO JUICE
NO. 300 TIN
3/29¢

VAN CAMP
PORK N' BEANS
NO. 2 1/2 TINS
4 \$1

MISSION MACARONI & CHEESE DINNER
7 1/4 OZ. Pack
6/\$1

FAMILY JOY
MUSHROOMS
PIECES & STEMS
4 OZ.
4/\$1

16 PIECE DISH
Starter Set
\$3²⁹

NALLEY'S
HOT OR MILD
CHILI
30 OZ. TIN
59¢

Old Fashioned, Sweet & Sour, French, Chutney, Italian
Nalley's Dressing
8 OZ.
2/49¢

ZEE POLY ASST'D.
NAPKINS
80 COUNT
10¢

Lettuce LARGE HEADS
2 FOR **29¢**

SLICING **CUKES**
10¢ EA.

FRESH **CORN**
6 EARS **49¢**

CANTS
2 FOR **45¢**

EVERYDAY LOW MEAT PRICES

25-LB. LOCKER BOXES \$13.95

HYGRADE SMOKED
PICNICS
SLICED 42¢ lb.
38¢ LB.

FRESH
WHOLE BODIED FRYERS
29¢ LB.

FRESH
CUT-UP FRYERS
34¢ LB.

HYGRADE
WIENERS
12 OZ. PKG.
45¢

FRESH LINK
SAUSAGE
69¢ LB.

BOLOGNA
BY THE PIECE
45¢ LB.

SELECT
Beef Liver
38¢ LB.

FRESH
GROUND BEEF
33¢ LB.

FRESH
HALIBUT
BY THE PIECE
SLICED 45¢ lb.
39¢ LB.

WOMEN'S SANDALS!

HUNDREDS OF SANDALS-ALL COLORS
Over 25 Styles to Choose From!

\$2⁶⁹ TO \$6⁹⁹

Men's & Boy's Too! **3.99 & UP**

PAUL'S SHOES

161st & Pacific
LE 7-0557

Open 9 to 9 Daily
Till 6 Sat. & Sunday