

On the Sunday calendar at Calvary Pentecostal Church, Airport and Bingham Road, are Sunday school at 10, morning worship at 11, young people's meeting at 6:30 and evening service at 7:45.

FENCING CEDAR PICKETS

CLEAR OR COMMON 4x4 Cedar Post Parkland Lumber & Hardware 127th & Pacific Ave. GR 5544



Picnic Must ICE CREAM

Your Favorite Fruit and Candy Flavors McCay's Ice Creamery 330 Garfield, Parkland

\$570.00 in CASH PRIZES

Your child may win!

Any boy or girl 4 months to 10 years is eligible. Winners will be chosen on basis of typical American childhood.

This is a Local Contest

WESLEY'S STUDIO 413 Garfield, Parkland GR 3155



Is Your Car Ready For Your Vacation?

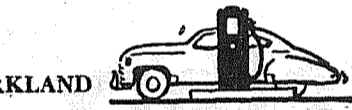


YOU may be ready for a wonderful vacation or week-end travel... but IS YOUR CAR READY?

DRIVE IN TODAY for a complete lubrication, including a change of oil and grease.

Parkland Fuel Oil & Service Station

GR 8112 120TH AND PACIFIC PARKLAND



CROSSWORD By A. C. Gordon

Crossword puzzle grid with numbers 1 through 56 indicating starting points for clues.

Digging into History

- ACROSS: 1—Most famous ancient feminine ruler... 2—One of England's most renowned navigators... DOWN: 1—Ancient Roman statesman and philosopher... 2—Liberal Benevolent Orders (abbrev.)

SOLUTION ON PAGE FOUR

New Grocery Opens In West Parkland

Residents of the thickly-populated new residential district in the west 116th Street area of Parkland are welcoming a grocery store into their neighborhood.

Owners of the Clover Lea Grocery are Mr. and Mrs. Carl Paulson, who formerly operated a grocery at one location in Montana for 27 years.

The store has a full line of fine foods, dairy products, ice cream, soft drinks, baked goods, vegetables and lunch meats.

Keep In Tune With The TIMES

Plain Careful SEWING & ALTERATIONS Reasonable Prices 1022 South 115th St. Mrs. Doll Moonitz GR 7231

Keep In Tune With The TIMES

ANOTHER FEAST AT STORLIE HOME

The WSCS of Spanaway Community Methodist Church will again serve dinner this Saturday evening at the Storlie residence at the corner of Second and Mountain Highway.

Tickets for the dinner are selling at only 75 cents for adults and 35 cents for children.

Spanaway volunteer firemen will hold a benefit dance this Saturday night at Metropolitan Hall.

Eight Spanaway women went on an excursion boat trip from Seattle to Victoria, B. C., last Tuesday. While there, they enjoyed a four-horse trolley ride through the city and went on a shopping spree.

Enjoying the junket were Mesdames Lucille Steidel, Beulah Ballard, Marion White, Mary Henricksen, Doris Omat, Althea Flannery, Olive Tarpinning and Matilda Symmons.

Miss Norman Manning, who is to be married Saturday evening to Russell W. Turner, was honored with a bridal shower given by Miss Georgina King on Wednesday evening.

Refreshments were served to Mesdames Edna Ayres, Louise Lonergan, Jack Splane, Jack Kanton, H. F. Pillsbury, Emerson Tarpinning, Robert Manning, George King, Opal Taylor, George Woolhouse, Vern Schlatter, Robert King, Oliver Omat, Ed Flannery, C. E. Fosterling, Rosalie Manning, and Bert Scott of Seattle.

Miss Shirley Peck is visiting with relatives in Yakima.

Mr. and Mrs. Joe Barsotti and daughter, Joy, are back from a vacation trip in Montana.

The Oliver Omats, Doreen McAtee and Jerry McCullough spent the weekend on the Deschutes river.

\$570 in Cash Prizes For Portrait Contest

Wesley's Studio, 413 Garfield in Parkland, in cooperation with members of the Pierce County Photographers Association, is now conducting a children's portrait contest, offering \$570 in cash prizes.

Any boy or girl between the ages of 4 months and 10 years is eligible to enter the contest, which is local—not nationwide.

Winners are to be chosen on the basis of typical American childhood, not for beauty or photogenic qualities only.

FATHER-SON BANQUET SET MONDAY AT FERN HILL

The WSCS of the Fern Hill Methodist Church is sponsoring the annual Brotherhood Father-and-Son banquet next Monday at 6:30 p.m.

A carnival of cartoons has been arranged by Mrs. Virgil Flynn of 104th and Ainsworth.

MARILYN KRUMM HOST TO BROOKDALE 4-H CLUB

Brookdale 4-H Club members recently gathered at the home of Marilyn Krumm for a party.

Also present were Dorothy Stewart, Robert Southwell, Carmen Robinson, Gary Ellingson, Patsy Little and Ruth Stewart.



Trucks supplied by Ford Motor Company are carrying replicas of the famous Liberty bell into every state of the United States to spearhead the U. S. Treasury department's Savings Bond Independence Drive.

Pick Marilyn Rosso For Girls State

Representing Parkland at the forthcoming Girls State in Ellensburg will be Marilyn Rosso, junior at Lincoln and daughter of Mr. and Mrs. Stanley Rosso.

Girls State is an annual ten-day event, which is expected to attract 240 selected girls from all corners of the state this year.

Parkland has no representative at Boys State, which is now in progress, because the quota was filled up before the Parkland post sent in its reservation.

Upland Slabs 9.50

Big Load Miller's Fuel GR 7082

The RANCH Club DANCE EVERY NITE



FERGUSON'S Orchestra Every SATURDAY Night

For Reservation or Direction CALL LA. 9145

- Butter Fried Chicken, Delicious Steak Dinners

SPECIAL RATES For Banquets and Parties

102ND. & SALES ROAD

Two Years Ago This Week

Despite the rain the new Parkland Shopping Centre's celebration had plenty of free prizes, free ice cream, free coffee, speeches and music furnished by the Wild West Drum and Bugle Corps.

Ray Snyder's (Clover Creek) purebred Guernsey cow is reported to be mothering one-fourth of a litter of pigs.

Bobby Kuper of Elk Plain left this week for a camp in Shelton for schoolboy patrol captains.

The Midland 4-H Girls surprised their leader, Mrs. Elmer Morud, with a birthday party at their meeting this week.

Fifty-one varieties of flowers were shown at the flower show sponsored by the Monte Vista Garden Club.

The Boy Scout camp located at Spanaway Lake celebrated its 25th birthday.

Mr. and Mrs. Harold Taylor and family of Seattle visited Spanaway this week. The former Spanawayite stayed at the home of Mr. and Mrs. Garnet Yanders of Henry-Berger Road.

Mrs. Bernice Larsen of Harvard returned this week from the hospital where she had been confined for two weeks.

Watch yourself at work. Think safely—use your head to save your job—maybe your life!

PARKLAND LOCKERS

Wholesale Meat for Storage 1000 LOCKERS

- CUSTOM CUTTING, ALUMINUM FOIL WRAP, QUICK FREEZE, CURING AND SMOKING

Slaughtering by Appointment A. J. (Slim) Stern, operator 11012 Pacific GR 7111

'Good Samaritan' Helps Himself To Parkland Ambulance

Parkland has had a self-service gas station at 98th and Pacific for more than a year.

One month ago, Carl Martens opened a self-service automotive repair garage at 106th and Yakima.

Last week, the "Parkland self-service ambulance service" was inaugurated.

But don't credit the innovation to Stan Peterson, co-owner of the local taxi and ambulance service; he was just as surprised as everyone else.

Around midnight last Wednesday, a terrific auto accident occurred at Airport and Pacific.

Although finding nobody in the office at Garfield and Pacific, he was delighted to find that the parked ambulance was unlocked and the keys were inside.

He told the crowd that he was a driver for the local cab outfit, and one of the sheriff's deputies helped him load the victims aboard.

The incident was all over and the ambulance was parked in its usual spot when the cabbies arrived at work Thursday morning.

Stella's Everything in Flowers WE DELIVER Parkland Center GR 7863

The mystery was cleared up a few hours later when the gent who had helped himself to the vehicle called to reveal what he had done.

Now Peterson double-checks every night to make sure the ambulance is all locked up.

Midland Improvement Club Plans Picnic

July 16 is the date set for Midland's annual community picnic at Dawson Field, sponsored by Midland Improvement Club.

Midland will be represented at both Boys State and Girls State this year.

Registrar of the new Meeker precinct is Mrs. George Turner of 94th and Portland Avenue.

Boundaries of the precinct are 96th on the south, 72nd on the north, Waller on the east and Portland on the west.

Mrs. Lois Johann is still registrar of the Midland precinct.

FLETT DAIRY G. FUCHS, Proprietor HOMOGENIZED AND PASTEURIZED MILK AND CREAM ICE CREAM P. O. Box 207, So. Tacoma Tacoma 9 Phone GA. 3301

Traditional and Modern... WEDDING GIFTS Puget Sound Nursery & Garden Shop 9201 PACIFIC AVENUE Summer Hours: Week Days Only—9 TO 5

Why Stay Home? You Can Now Learn To Drive IT'S NEW IT'S SAFE IT'S EASY FULLY COVERED BY INSURANCE CERTIFIED INSTRUCTORS DUAL CONTROL CARS

PABCO PORCH & STEP PAINT ANDERSON LUMBER CO. 9643 PACIFIC GR 7311

Martens Garage Self-Service REPAIR Work on your own car! Come use our tools and our 'know-how' Sales Road (108th) Machine Shop & General Repair REBORING, Brake Drum Turning, Pin-fitting, Armature Timing and Testing, Wheel and Master Cylinder Honing. Martens Auto Service GR 6047

Buying a home set this young man up in business Because he met his home loan payments promptly... NATIONAL BANK OF WASHINGTON

PARKLAND ORTHOPEDIC EYES PICNIC AT WAPATO LAKE

A picnic at Wapato Park will take the place of the regular June meeting of the Parkland Orthopedic Guild. Members and their families will meet at the park at 6 p.m., Monday, June 26.

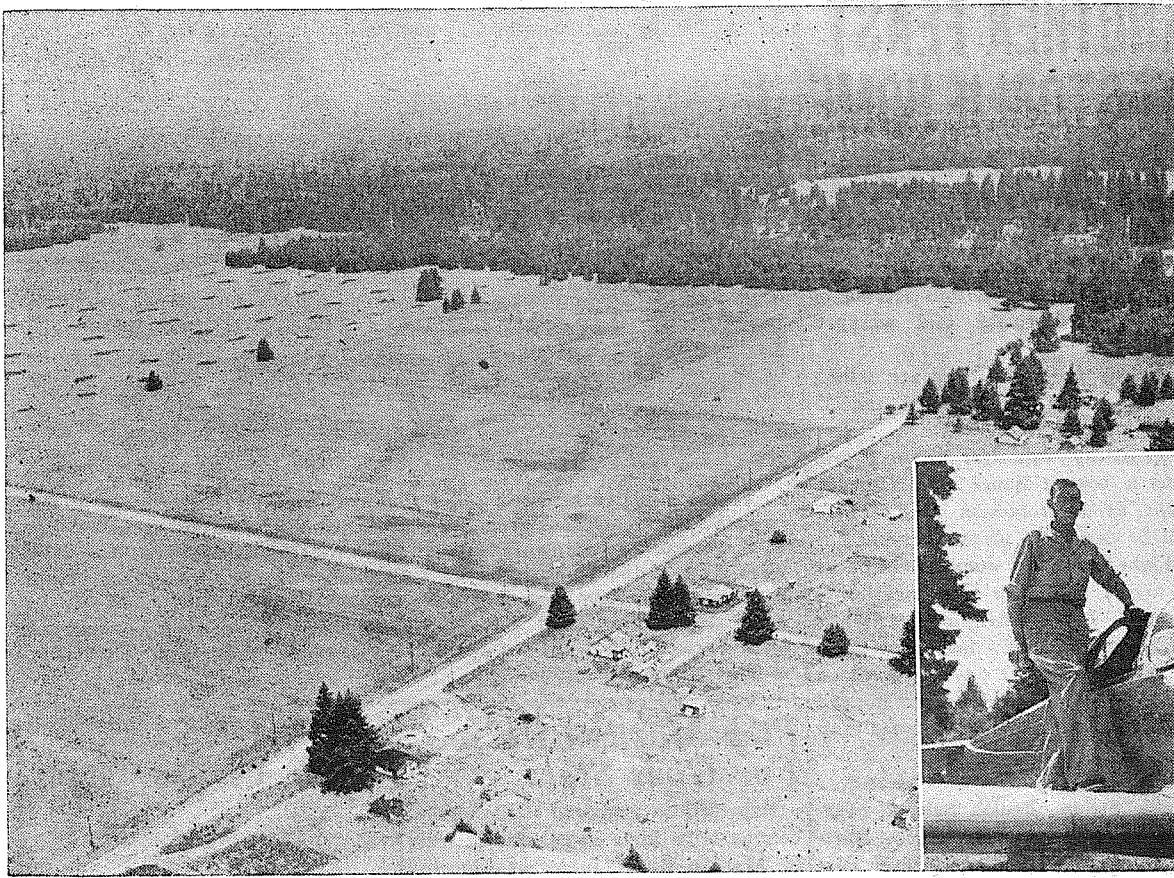
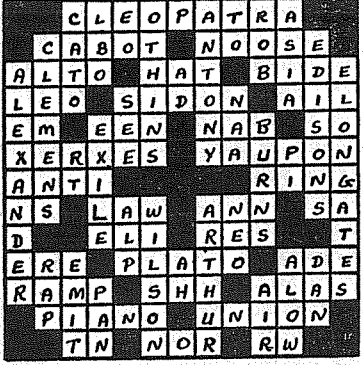
13 Precincts Open For Bethel Vote

A check this day with the county department of elections has revealed that thirteen polling places will be open for the voting to take place July 1st on the selection of a school site in the Bethel District.

- Benbow precinct, Kapowsin Grange hall.
- Brookdale, Spanaway school.
- Elk Plain, Elk Plain Grange hall.
- Graham, Graham Grange hall.
- Holz, Kapowsin Grange hall.
- Kapowsin, Kapowsin high school.
- Lacamas, Roy school.
- McKenna, Roy school.
- Muck, Rocky Ridge school.
- Orting 1 and 3, Thrift Community Hall.
- Roy, Roy school.
- Spanaway, Spanaway school.
- Tanwax, Weyerhaeuser school.

Keep In Tune With The TIMES

Solution to Crossword Puzzle



WELL, HERE IT IS, FOLKS—that Graham Road site you've been hearing so much about during the past month. It and the Pole Line Road Bowman site are the two being offered to voters of the Bethel School District as the location for the new, long-needed \$750,000 high school. It consists of 60 clear, level and well-drained acres nine-tenths of a mile east of the Mountain Highway. The tract is part of a farm owned by E. W. Castle and is presently sowed to oats. In the inset is Ernest Jensen of Spanaway, who took the Times photographer up in his Aircope. Next week's Times will present an air view of the Pole Line Road site.

Notice to Auto Drivers

YOU ARE REQUIRED BY LAW to report to your local police station or State Patrol office within 24 hours after every accident causing \$25 damage to property, or any personal injury. Failure to do so exposes you to severe penalties.

After you complete the accident report at your local police station or State Patrol office, you will be given a copy of the report. If the accident is one coming under the new Safety Responsibility Law* this copy of the report must be mailed by you to the Director of Licenses, Olympia, Washington. Failure to send this report to the Director may result in the suspension of your driver's license.

Your driver's license must be renewed at a State Patrol office every other year on your birthday. Check your license now to be sure it is in force.

WASHINGTON SAFETY RESPONSIBILITY COMMITTEE

*If any one person's property is damaged in excess of \$200, or if any person is injured sufficient to require a doctor.

REG. PROGRAM GETS UNDERWAY

Due to the fact that Spanaway Lake lifeguards are on duty in the afternoon only, the schedule of Parkland school's summer recreation program has been revised. The program got underway just this week.

The swimming excursions will take place from 1 to 3:30 every Monday, Wednesday and Friday afternoon. The school bus provides the transportation. No less than 28 youngsters turned out the very first day.

From 10 a.m. to 1 p.m. and from 3:30 to 6:30 p.m. on Monday, Wednesday and Friday, supervised activities will be in progress in the Parkland school building and on the playground. Building and playground activities are also on schedule for 12 noon to 5:30 and 6:30 to 9:30 p.m. on Tuesdays and Thursdays.

Golf sessions at the College course are set for Tuesday and Thursday mornings from 10 to 12. Leader of the recreation program is Steinar Gorud, who graduated this spring from PLC, where he was active in athletics.

Underwrite Lights

To keep the street lights burning, Spanaway Progressive Community Club will soon sponsor a benefit dance. A few bills are due in connection with the lamps in the vicinity of Third and Pacific.

Keep in tune with the TIMES

Along The Street

Continued from Page One fit to more people than would one otherwise selected. However, that is not our interest in the matter. Our only interest is to see that both sides of the entire situation is given correct airing. After all, once chosen, this is a site which will be forever for both sides to have.

No newspaper, large or small, likes to have a club held over its head and a group telling the paper to do this, or else! We are no exception to this rule. While we feel that, perhaps, the heat of battle is on, thus causing some people to react more vehemently than they would otherwise when faced with opposition. To stand up and fight like a man in such a predicament would be worthy of note and would be so recognized by this paper as being an honorable doing. However, such action has not been the choosing of a very small group of people. Yesterday the Times had in the way of visitors a group headed by Mrs. J. Harvey, representing the Elk Plain Boosters' Club; Mrs. Effie McGee, representing a council of clubs from this area. Incidentally, Mrs. McGee is from Graham. We feel these women sincere in their belief. However, it is not necessary for any club or group to come into this office and make threatening gestures. Regardless of the cause represented such things have no place in this community, nor will the Parkland Times yield to such threats.

We have no axe to grind in this election, nor are we opposing any group. When a group of this nature finds it impossible to present their views in a manner becoming common decency and respect we do not feel obligated to donate space in our paper to promote their cause.

Nor do we feel that any clear thinking business man will be influenced by a decidedly few who threaten boycotting of a paper for not going along with such decidedly underhanded methods.

Let's get it straight . . . whenever it becomes necessary for this paper to take orders from such a group or face extinction we will suspend publication rather than yield under such circumstances. Dictatorial powers such as these are out of place in this area.

Comment of any other interested group will be welcomed by this publication. Anything for publication in our pages are to be sent in with a written signature and please keep them to about 300 words.

WANTED . . .

HOMES AND FARMS IN ANY LOCATION
Brown & Robinson
REALTORS
11220 Pacific Ave. GR 3341
Member Tacoma Real Estate Board

Collins Fire Women Buy Chairs, Dishes

The women's auxiliary of the Summit-Woodland-Collins Fire Dept. will gather next Wednesday evening at the fire station, with Mrs. Kenneth Hoff as hostess.

Current project of the group is purchasing steel folding chairs and dishes for the fire hall. At their last meeting, they allocated \$80 for chairs and \$50 for dishes.

Another of Mr. and Mrs. Don Whisler's series of dances at Collins Grange Hall is set for tomorrow night, with Bernice Libak furnishing the music.

5-FT. RECESS—With Trim
STEEL TUBS \$79.50
3-PIECE BATH SET **\$119.00** As Low As
EASY FHA PAYMENTS
South End Plumbing
HOME OF SCHORN PAINTS | SPANAWAY | GR 8357, Graham 194

SPANAWAY MEAT MARKET
NEXT DOOR TO HERMAN'S GR. 8215
PORK SAUSAGE lb. 35c
BACON SQUARES lb. 18c
SLICED BACON ENDS . . . lb. 18c
Short Ribs OF BEEF 27c lb.
WE FEATURE **Carters** SELECT BEEF FRESH, COLORED Fryers 48c lb.

Herman's Food Store
AT END OF SPANAWAY BUS LINE AND SAME BLOCK AS POST OFFICE
New Store Hours—8 A. M. to 7 P. M.

M.J.B. COFFEE 1-lb. . 69c 2-lb. \$1.37 SHURFINE COFFEE	GRO PUP RIBBON 33c TASTEWELL PEAS 2 cans 23c DEL MONTE Tomato CATSUP . 19c	Cream Style Duchess CORN 2 for 19c SPAM 39c Shurfine Shortn'g No. 3 Can. 75c
---	---	--

ALWAYS THE BEST, FRESHEST,
Fancy PRODUCE

Tastewell Apricots No. 2 1/2 Tin 2 for 49c Case \$5.80	As Advertised By Arthur Godfrey FROSTEE 2 pkgs. 27c	Dennison's Pork'n Beans No. 2 1/2 Tin 18c	Cantaloupe, lb. 7c Radishes, 3 bunches . . . 10c Tomatoes, hot house, lb. . . 37c Lettuce, head 5c
--	---	---	---

Strawberries -- at Lowest Market Price

Whatever your Printing needs may be, we are always glad to serve you in an efficient and courteous manner.
Prices consistent with quality workmanship.

JOB PRINTING

LaCrosse Printers
Publishers of Your ONLY Local NEWS-paper, the Parkland Times
GR 7100
ON THE P.L.C. CAMPUS IN PARKLAND

ALVSTAD'S

MARKET
231 Garfield St. GR 8560
PARKLAND SHOPPING CENTER

FRIDAY AND SATURDAY, JUNE 23-24

DUCHESS-303 2 FOR
CREAM STYLE CORN . . . 21¢

WESCO NO. 2 1/2 CAN
TOMATOES 21¢

WESCO 12-OZ.
ASSORTED JELLY . . . 19¢

WESCO NO. 2 1/2 CAN
SLICED PINEAPPLE . . . 31¢

WESCO 46-OZ. CAN
PINEAPPLE JUICE . . . 33¢

Chicken Noodle Soup, Campbell's . 15c
Lumber Jack Syrup, 24-oz. 33c
Tuna Fish, chunk style, 6 1/2-oz. . . . 33c
Hi-Ho Crackers, Sunshine, 1-lb. . . 27c
Hydrox Cookies, Sunshine 21c

CHOICE FRESH AND CURED MEATS
REASONABLY PRICED

Waldorf Tissue 4 for 27c
Ivory Soap, large 2 for 23c
Surf 25c
Cigarettes, per carton \$1.89
Red Heart Dog Food 2 for 25c

Cauliflower, home grown . . . head 17c
Oranges, large and juicy lb. 8c
Cantaloupe, jumbo size 2 for 29c

HARKNESS

Introductory Offer

\$25 FOR YOUR OLD SIDE ARM HEATER OR HOT WATER TANK

ON A NEW FAMOUS NATIONAL BRAND

AUTOMATIC HOT WATER HEATER

Regular Price 104.95
LESS \$25 ALLOWANCE 25.00
You Pay Only . . . 79.95

- 10-YEAR REPLACEMENT GUARANTEE
- FIBERGLASS INSULATION
- DOUBLE THERMOSTAT

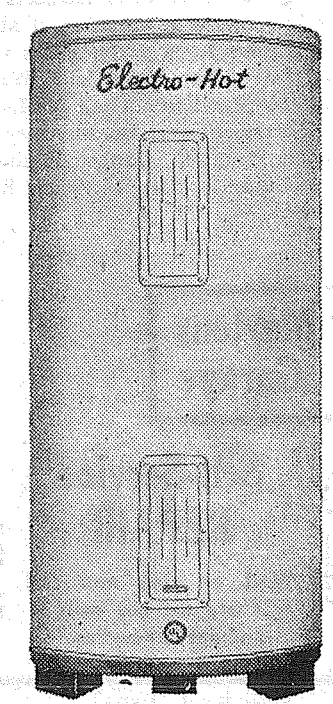
GIVES YOU ALL THE HOT WATER YOU NEED 24 HOURS EVERY DAY

QUANTITY LIMITED—ACT NOW!

BUDGET TERMS

HARKNESS

66th and South Tacoma Way



40-gal. size
52-Gal. Size 94.00 (plus your old tank)

VISIT OUR NEW
BUDGET ANNEX
Where we feature budget priced living room, dining room, bedroom and unpainted furniture!