



# NO FOOLING SALE

Your \$1s Worth More at Herman's

PRICES EFFECTIVE FRIDAY AND SATURDAY

- SHORT'NING, Shurfine, 3-lb. tin. . . . . 69c
- MARGARINE, 2 lbs. . . . . 53c
- AEROWAX, quart . . . . . 55c
- CIGARETTES, carton . . . . . 1.89

OLD RANGER LGE. 2 1/2 CAN  
**PEACHES . . . 19c**

LUXURY by DARIGOLD  
**CHEESE . . lb. 39c**

- Party Cake Mixes, Betty Crocker . . . . 32c
- Chocolates, Hershey's miniature, pkg. . 27c

**PRODUCE**

- SOLID WINESAP Carryall Bag  
**APPLES . . . . . 49c**
- Bulk, 2 lbs. . . . . 27c
- TOMATOES—**
- Bulk, 2 lbs. . . . . 27c
- POTATOES—**
- U. S. No. 1, 15 lbs. . . . . 59c
- SCRATCH, Centennial . . . . . 100 lbs. 3.80

**Boys and Girls FREE**

**MOVIE TICKETS**

For Children's Admission to the Parkland and Downtown Theaters.

Your Choice  
**79c**  
10 lbs. Gold Medal Flour OR 5-lb. pail OF 100% PURE HONEY OR 1-lb. Hills Bros. COFFEE

IN EVERY CAN OF MANLEY'S HI POP POP CORN AT OUR SPECIAL LOW PRICE

## HERMAN'S

3RD & PACIFIC, Spanaway—Same Block as Spanaway P. O. **FOOD STORE** HOURS: 8 to 6 GR. 8213

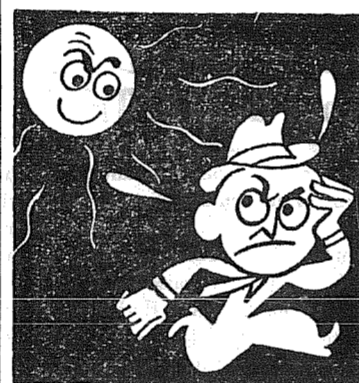
WE RESERVE THE RIGHT TO LIMIT QUANTITIES—NO SALE TO DEALERS

### SPANAWAY MEAT MARKET

- NEXT DOOR TO HERMAN'S GR. 8215
- PICNIC HAMS, rolled and boned. . lb. 49c**
- PORK SAUSAGE, country style. . lb. 35c**
- CARSTENS WASHINGTON BRAND
- SLICED BACON . . . . . lb. 44c**
- CORNED PORK, sugar cured. . . lb. 39c**

Henceforth, all of Tacoma will be served by rural routes emanating from Parkland, and the Tacoma, PO will be a substation of the new Parkland PO, which will cover a solid block.

**One of These Days THE SUN MAY COME OUT**



WHEN IT DOES, RUSH TO THE COLDEST SPOT IN TOWN

**Parkland Lockers**

### Flying Saucers To Solve Local Transit Problem

"Flying saucers" will solve the South End's public transportation problems. That is the announcement of Don Eastvold, Business Club prexy, who has been conducting a quest to improve local transit facilities.

The Business Club plans to catch and harness at least a dozen "flying saucers" to serve suburban commuters. If the project works out, Parkland will have the fastest and least expensive transportation system in the world.

The chief problem right now is to get hold of some flying saucers. Eastvold has arranged with pilots at a local airfield to chase the discs when they are spotted. Bob Haner, enterprising young aviator, will supervise.

The Business Club is enlisting the aid of members of various other South End organizations to help in manning several flying saucer observation posts. These volunteers will be assigned to eight-hour watching shifts atop the Midland and Parkland water towers and the old fire lookout station in Spanaway.

As soon as a sentinel spots a flying saucer, he will immediately phone the airfield, and the chase will immediately get underway. Aboard each airplane will be a local cowboy to lasso the contraptions.

Jack Foster of Parkland Pharmacy promises to have a supply of Sloan's liniment at each station. There will be plenty of stiff necks from gazing skyward.

To attract the nomadic saucers to Parkland, large signs visible from the air will proclaim the city slogan—"Parkland, Gateway to Paradise." South End merchants will post lists of their every-day savings on their roof tops. Even a flying saucer knows a bargain when it sees it.

Saucer tokens and commuter tickets will go on sale as soon as ten or more "vehicles" are available.

### 'We Want Water,' Say Lake Park Clubbers

Spanaway's civic-minded Lake Park Club has thrown its full weight behind all movements that will improve the community, especially the public water system.

E. J. Reed, president of the young organization, is searching his and his neighbors' attics for soap boxes so that he and all the members can make speeches on Spanaway street corners. He says a gigantic rally will be held at the corner of Third and Pacific Sunday afternoon, during which leaders of the club will harrangue about the need of a public water system.

Other soap boxes will be placed at strategic corners along the Mountain Highway so that everybody will have a chance to hear the speeches. Reed and E. W. Rau will conduct a house-to-house canvass to urge all citizens to vote for the revenue bonds.

Postal officials, including Postmaster General Donaldson, are now in Pierce county preparing the way for a few minor changes in postal service.

### Parkland OKs Incorporation

By a vote of 984 to 727, Parklanders voted to incorporate their community Tuesday. Interest is now focused on the question, "Who will be Parkland's first mayor?" The mayoralty election is slated for April 18.

So far, Walt Young, blustering gift shop magnate, is the only citizen to announce his candidacy for mayor. Other hats are expected to be thrown into the ring, including those of Don Eastvold, Woody Cline, Bob Lynd, F. J. Nordyke and Mrs. Jenny Grod-vig.

In his initial campaign statement, released exclusively to the Times, Young said his platform featured: (1) printing all municipal documents in both English and Norwegian, (2) establishing a C.V.A. (Clover Creek Valley Authority), and (3) annexing Tacoma into Parkland.

If Eastvold enters the race, he is expected to include in his platform a plank on transportation by flying saucers as described elsewhere on this page.

Other candidates may bring up such vital issues as hiring a dog-catcher to tend the packs of wandering canines, erection of a half-million dollar city hall, imposition of a tax on lutefisk, better movies for the Parkland Theater, finding a city constable, adoption of scotch broom as the official flower and restricting Communist activities in Parkland.

### What Would You Do If . . . ?

Arne were a Sunrise instead of a Sunet.

Slim were Gentle instead of Stern. Herman were a Wolf instead of a Fuchs.

J. J. were Bullets instead of Gunns. Fritz were Chews instead of Beitz. Morris were Chevrolet instead of Ford.

Frank were a Sack instead of a Basket. George were a Queen instead of a King.

George were a Tulane instead of a Purdue. Harold were a Butcher instead of a Baker.

Neil were a Waterfall instead of a Gaiser. Del were a Windywoman instead of a Breseman.

Jack were a Feather instead of a Quill. Art were a Liver instead of a Hart. Morry were a Chirp instead of a Tweet.

Stan were a Jeep instead of a Willis. Dave were a Switchcow instead of a Turnbull.

Dick were a Kaiser instead of a Fraser. Robert were Dull instead of Sharpe. Fay were a Peasant instead of a Cooley.

Ross were a Peach instead of a Plumb.

Senator McCarthy disclosed in a telegram from Washington, D. C., that he plans to investigate the Communist leanings of Spalt Wartenbe of Midland. He says he bases his contention on the fact that Spalt was wearing a red suit during December.

Officials of the telephone company inform us that the local number prefix will be changed from GRanite to GRasshopper.

Parkland's fire chief, Lewis Duffey, is credited with stopping a million-dollar fire with a pair of scissors. Report has it that he was attending a play at the Temple last Friday when Monty Woolley's beard suddenly caught fire.

Did you hear about the local yokel that phoned up Ray Pochel and ordered 1,000 gallons of fuel oil? April Fuel!

Want Ads are only 3 cents a word in the Times—Call GR 7100.

**FREE 15 GALLONS OF GASOLINE WITH EACH LUBE JOB**

**Parkland Fuel Oil & Service Station**

GR 8112 PARKLAND, WASH.

This offer good only April 1 to first cousins of Li'l Abner Yokum

*This isn't an April Fools joke, but a whale of a lot of fun!*

**AMERICAN LEGION POST 228**

**APRIL FOOLS DAY Hardtime DANCE**

**SATURDAY, APRIL 1 - SUNSHINE HALL**

NEAR SALES ROAD AND PARK AVENUE

**Program — Refreshments**

DONATION 50c PER PERSON

when you think of sunsets, you think of every shade of color and hue. when you think of shades think of Sun-set's. see their new line of non-rip cloth window shades. stock shades cut to size while you wait.

★ ★ ★ ★ ★

Arne would like to scatter these scatter rugs all over the south end.

genuine "firth" scatter rugs, 27x52, \$5.75 36x63—\$9.45

—100% pure wool face

**SUNSET FURNITURE COMPANY**

COMPLETE FLOOR COVERING DEPARTMENT

FLOOR SANDER FOR RENTAL

PARKLAND SHOPPING CENTER GR 6582

96TH & PORTLAND GR 8488

**BASKETT LUMBER COMPANY**

WE STILL HAVE NO. 4 2x4 AT \$19.00 PER M

Fittings — Electric Wiring.

Wall Paper Cleaners — Plumbing and

Kemtone — Lauxtex for that plaster

Enamels — Spred and Spred Luster

ing — Doors and Windows — Matson

Shingles — Composition Shingles — Roof-

Wire Fencing — Shake, for sidewalk

COME AND JOIN THE FUN!

**MIXED DANCING . . . EVERY SATURDAY NIGHT**

Come and Learn to Square Dance

Sponsored by Paul Bunyan Rifle Club

**MIDLAND HALL**

One Mile East of Pacific Avenue on 98th

**WANTED For MURDER**

Verne Kampbell

CO-OWNER OF THE BUNGALOW CAFE

SALES & PACIFIC

**Just Killed**

One of Chef Roy Vaughan's Delicious TENDERET STEAKS

**WALT YOUNG For Mayor**

Of NEWLY-INCORPORATED Parkland

Qualifications:

- He is young
- His wife is Young, too

Campaign Slogan: "Two families in every garage and greeting cards every Sunday."

This ad is paid for from the profits of *Young's Gift Shop* Garfield Gaten

CUSTOM SLAUGHTERING . . . "WE TENDERIZE YOUR HAMS" CURING AND SMOKING — "We Will Pick Up Your Livestock for Your Locker"

COMPLETE CUTTING AND WRAPPING SERVICE

**LOVELAND PACKING CO.**

Phone Graham 196

Route 1, Box 353, Spanaway

HARRY SPLANE—GR. 4050

CLAUDE BLYTHE—GR. 6238

MACHINE WORK, FINITTING — VALVE REFAACING (hard seat grinding) — BRAKE WORK WHEEL ALIGNING — WELDING — IGNITION PARTS AND ACCESSORIES

**Anderson Chevron Service Station and Garage**

ATLAS TIRES AND BATTERIES

Mr. Hiway at Henry Berger Road, Spanaway GR. 6465

FARMERS' UNION AUTOMOBILE & CASUALTY INSURANCE

Your Friendly Neighborhood Store

**PETER'S GROCERY**

AIRPORT & YAKIMA

**FLETT DAIRY**

G. FUCHS, Proprietor

HOMOGENIZED AND PASTEURIZED MILK AND CREAM

ICE CREAM

P. O. Box 207, So. Tacoma Tacoma 9 Phone GA. 3301

**FARMERS MUTUAL INSURANCE AUTOMOBILE**

NO MEMBERSHIP CHARGE

Agent: J. J. GUNNS

**SPANAWAY BARBER SHOP**

Third & Pacific St., Spanaway

Res. Tel. Granite 7157

INSURANCE

You Save Money on AUTOMOBILE LIABILITY FIRE

**PURDUE PLUMBING & HEATING**

SEE US FIRST ABOUT PLUMBING, HEATING AND SEPTIC TANKS

Route 3, Box 580-A GR. 8088

**STOVE OIL DELIVERY**

From 100 to 200 gals. . . . . 13 1/2c per gal.

- FOREST WOOD
- SACKED COAL
- FENCE POSTS
- SACKED BRIQUETS

**LAPENSKI FUEL**

100TH & PACIFIC AVE. GR. 8173

REASONABLE "Any Job—Large or Small"

BACK-FILLING

LOADING — LEVELING

GR 6804

GR 6877

**PLOWING**

FREE! FREE! FREE!

# MUSICAL BINGO

ON  
RADIO STATION KOL—1300 Kc  
1:30 p.m., Monday thru Saturday

Sponsored by your local  
APEX DEALERS

PICK UP YOUR BINGO CARDS AT  
**PARKLAND-BROOKDALE ELECTRIC**  
13022 PACIFIC GR 6789

## DEATHS

Mrs. Augustus Voelker, 68, of 701 113th St. in Parkland, who was prom-



inent in P-TA and Sunday School activities, died last Thursday in a Tacoma hospital.

Mrs. Voelker was a former president of the Pierce County P-TA and first vice-president of the Washington Congress of P-TA. She had been interested in Lutheran Sunday School work for 30 years.

Services were held Saturday afternoon in the garden chapel of Mountain View memorial park, with Dr. E. B. Steen of Trinity Lutheran Church officiating.

Mrs. Mary Elizabeth Holbrook, 69, of Rt. 1, Box 177, Spanaway, died last Wednesday in a Tacoma hospital. She had lived in this district 20 years.

Mrs. Elizabeth Stephenson, 75, of Rt. 1, Box 184-D, Spanaway, passed away Thursday in Olympia. Services were held Saturday afternoon.

Keep in Tune with the TIMES

## Another Dinner At Clover Creek April 1

Clover Creek Grange will sponsor the second in a series of dinners at Clover Creek School this Saturday evening, serving from 5 to 8:30 p.m. The roast beef dinner will be served family style for a price of \$1.25 for adults and 65 cents for children under 14. An enjoyable movie is included with the dinner.

Arrangements for the affair are being made by Master J. Harold McCammon, Overseer Freeman Meyer, Fred Sutter, George Bolieu, Erwin Ward and John Kuper.

Proceeds are to be used to finish the recreation area started by the Grange last summer.

Weekend guests of Mr. and Mrs. Calvin Ward were Calvin's mother, Mrs. Sarah Ward of Kelso, Pfc. Robert Ward of Fort Lewis and Dick Boden of Kelso.

The Ladies Aid of Trinity Lutheran Church will sponsor a food sale at the Parkland Light & Water office Friday morning.

Mrs. Emma Rohr, mother-in-law, and Mrs. Emil Kellenberger, mother of Mrs. William Rohr, have both been very ill.

... APRIL 8 ... Grand showing ... General Electric Appliances ... Beautiful ... 1950 models ... Last word in appliances ... See them ... More info in next week's Times ...

## Pochel Distributing Co.

YOUR FUEL OIL AND APPLIANCE DEALER  
140TH & PACIFIC PHONE GR 8624

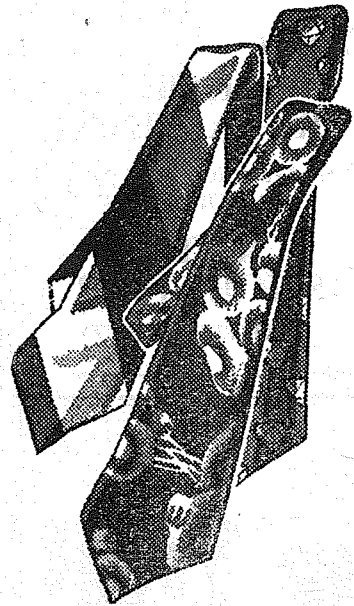
# For Your EASTER PARADE

Easter Ties for '50



In subdued or bold colors and prints ... a variety of ties you'll want for your own wardrobe or for perfect Easter giving.

\$1 to \$2

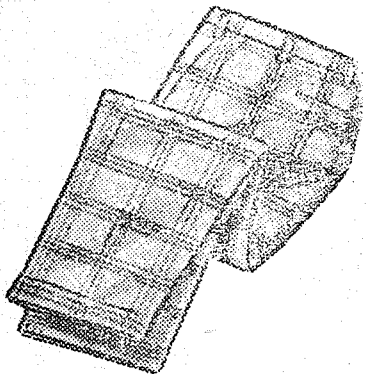


## Casual Successes



Don't overlook our shipment of 1950 designs in TEE Shirts, with or without collars. Every design and color imaginable.

\$1.79 to \$2.95



NEW SPRING-SUMMER SLACKS ...

No slack season on slacks! New styles and colors that combine comfort with long wear and smart appearance.



PLAID SPORT SHIRTS

Just arrived—brilliant, gay colors in rich plaids.

\$3.95 and up

## Parkland Men's Shop

Parkland Centre Bldg.

In the Parkland Shopping Center

## Easter Parading You ...

Your first necessity! A hair styling with verve and fashion-rightness ... as offered by our skilled beauticians.

IN THE PARKLAND CENTRE BUILDING **GRanite 7931**

**MARGIE'S BEAUTY SALON**

Two Operators to Serve You

Open Monday through Saturday—9 Till 6



Let ...

STELLA'S FLOWERS

complete your Easter costume with a corsage designed for YOU.

By Stella

GRanite 7863

Parkland Center

WE DELIVER

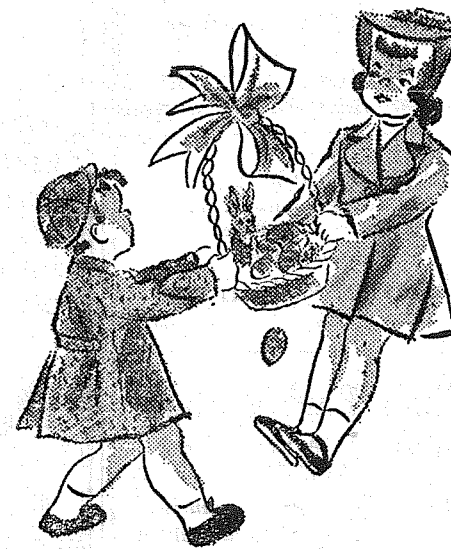
## Dress them up for Easter!

In tune with the season ...

Our mite-sized group of Easter and after-Easter clothes.

Sturdy as they are cute—

Quality-wise as they are low in price.



## KNEE HIGH CHILDREN'S SHOP

PARKLAND CENTRE BUILDING

younger than springtime



7.95

Capturing the gay, light mood of Spring clothing. STYLE STRIDE has expressed it in this very smart shoe.

Designed to flatter ... yet magnificently comfortable ... you can walk hours in this little shoe ... and it is so budget right.

Come In and See Our Many Other Styles

## Parkland Shoe Store

PARKLAND CENTRE BLDG.

GR 6612

Keep in Tune with the TIMES

## Alterations ...

DRESSMAKING  
APRONS — GIFTS  
BUTTONHOLES

**KITTY LEE NEEDLECRAFT**  
328 GARFIELD



## EASTER Candy

EASTER BASKETS for the kiddies' delight

BOXED CHOCOLATES for Mom's Delight

EASTER GREETING CARDS by Hallmark

## PARKLAND PHARMACY

PACIFIC AVE. & AIRPORT—(At the Bank Corner)

PHONE GR 8519

Arriving Daily for Your Easter

- DRESSES
- BLOUSES
- SUMMER SUITS

JUST ARRIVED  
Nationally Advertised Bra  
"THE WARNER"

LAPEL FLOWERS

## Myrtle Mockel

"Women's Apparel of Distinction"  
Parkland Centre Building

GR 7617

## Easter mylons



Sheerest 1.95

Very Sheer 1.75

Every Day Sheer 1.19 1.45 1.65

## MYRTLE MOCKEL

Parkland Centre Building  
GR 7617

## SHOP at HOME



# Thank You!

WE TAKE GREAT PLEASURE AT THIS TIME TO ANNOUNCE THAT WE HAVE SOLD OUR GENERAL MERCHANDISE STORE TO MR. AND MRS. OWEN BARRETT OF BROOKDALE. WE FEEL THAT MR. BARRETT, HAVING HAD TWENTY YEARS OF SELLING EXPERIENCE, WILL BE ABLE TO CONTINUE TO GIVE THE SAME FRIENDLY SERVICE WITH ECONOMY PRICES THAT WE HAVE ENDEAVORED TO DO IN THE PAST.

WE WISH TO THANK OUR MANY GOOD FRIENDS AND CUSTOMERS FOR THEIR SPLENDID PATRONAGE FOR MORE THAN A QUARTER OF A CENTURY.

Mr. and Mrs. Iver Johnson  
Mr. and Mrs. Oscar J. Anderson

## HOUSE CLEANING TIME

**M.J.B.**  
**COFFEE**  
lb. **79¢**

Hunt's  
**PEACHES**  
NO. 2 1/2 TIN  
2 for **45¢**

NABISCO  
**SHREDDED WHEAT**  
2 for **29¢**

**MEATS**  
Country Style Lb.  
**Pork Sausage .39¢**  
Sugar Cured Lb.  
**Sliced Bacon .45¢**  
Pork Shoulder Lb.  
**Roasts, Steaks 39¢**



GOLD DUST CLEANER ..... 5c  
PUREX, 1/2 gal. .... 23c  
WHITE KING, lge. .26c  
KITCHEN CLEANSER ..3 for 25c  
SOILOFF ..... 37c  
AMERICAN LYE ..... 2 for 25c  
AMMONIA, 12-oz. .9c  
DIC-A-DOO ..... 36c  
AEROWAX, pint. .27c  
WAXGLO, quart. .93c  
DRAIN-O ..... 22c  
GLASSWAX, pint .59c  
LIQUID VENEER  
RUG CLEANER ... 30c  
MOP STICKS ..... 30c  
For Shoes  
Polishing Cloth ... 23c  
PRICES EFFECTIVE FRIDAY AND SATURDAY

CAMPBELL'S CHICKEN NOODLE  
**SOUP**  
2 for **29¢**

GERBER'S  
**BABY FOOD**  
1 doz. **89¢**

**KRAFT DINNERS**  
2 for **25¢**

FRESH RANCH EGGS AT ALL TIMES  
CANNED MEATS  
**FEED DEPT.**  
EGG MASH— 4.75  
100 lbs. ....  
MILL RUN— 2.80  
100 lbs. ....  
GARDEN TOOLS & SPRAY

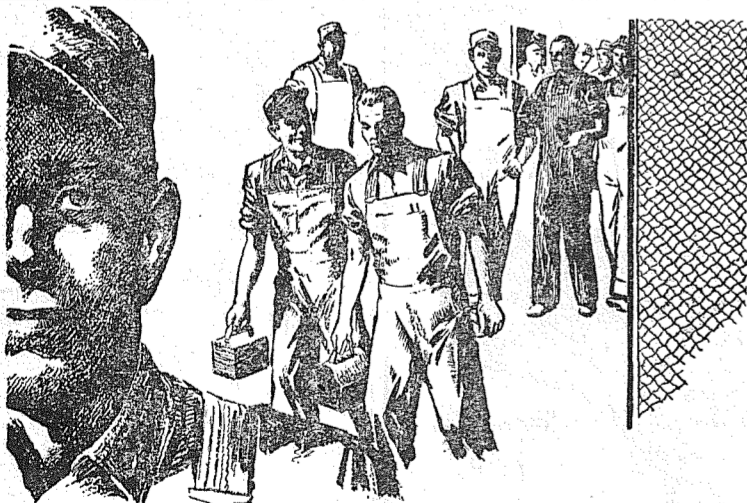
**BARRETT'S Market**  
(FORMERLY JOHNSON & ANDERSON)  
"The Store That Has It"  
GRanite 8356 MT. HIGHWAY  
128TH & PACIFIC AT PARKLAND  
(We Reserve the Right to Limit Quantities) FINEST PARKING ON THE MOUNTAIN HIGHWAY

**C.O. Lynn Co.**  
MORTUARY  
717 TACOMA AVE. Phone MAIN 7745

**72nd St. Cleaners**  
Drive In Under Awning . . .  
Where Everybody Stops  
Open 7:00 a.m. to 6:00 p.m.  
Daily except Sunday  
Telephone GA. 5495 for Pick-up

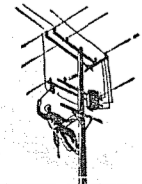
**SOUTH END BRAKE SPECIALISTS**  
Modern Equipments and Reasonable Rates  
GRanite 6047  
**Martens' Garage**

**Jim's Barber Shop**  
AIRPORT ROAD AND YAKIMA AVENUE  
Barber Work for Grandmaw, Grandpaw, Paw, Maw and all the Children



### "POWER AND LIGHT MAKE MORE JOBS"

Without electricity there'd be a lot fewer jobs for everybody. Power and light turn wheels, drive machinery... keep business in business. To keep Tacoma busy and prosperous City Light must not only provide dependable lowest-cost service... it must continually plan ahead. Tacoma City Light is working now for your future... for the future of your job.



You Own Tacoma City Light  
Tacoma City Light Serves You

Your **TACOMA CITY LIGHT**

Want Ads Do Not COST—They PAY  
★ ROOFING ★ PAINTS  
★ PLUMBING  
**SOUTH END PLUMBING**  
Mt. Highway at Spanaway, near Roy "Y"  
GRanite 8357 and Graham 194

**PARKLAND PHARMACY**  
The **Rexall**  
**DRUG STORE**  
Pacific Ave. at New Bank Corner  
GR. 8519  
Open Week Days—9 to 9  
Sundays and Holidays—  
10 a.m. to 2 p.m.—4 p.m. to 9 p.m.  
ALWAYS A REGISTERED PHARMACIST ON DUTY

## WANT ADS

3 Cents Per Word: 50c Minimum  
Call GRanite 7100

### FOR SALE—MISCELLANEOUS

FOR SALE—Boy Scout sleeping bag, \$5.00, almost new condition. GR 6737. k29  
USED GAS water heater, 15-gal., \$18. Graham 194 or GR 8357. k29  
USED OIL HEATER, with 50-gal. drum of oil, \$20. Graham 194 or GR 8357. k29  
HOME FOR SALE—Large house, 1 acre of ground. Drilled well, plenty of water. Good place for chickens. Call weekends or after 5 p.m. GA 0229. k29  
HOUSE TRAILER for sale or trade on small home or lots, GR 8250. k29  
SPECIAL!—Red Cockerels every Wednesday, 6c each. Parmenter Red chicks and day old pullets available on order. LaCrosse Hatchery, Telephone Sumner 489. r  
DRY UP-LAND SLABS. Call R. & R. Fuel. GR 4711. r  
BANK run gravel, good for driveway, 4 yards \$6.00. Crushed rock and drainfield gravel. GR. 8259, GR. 8573. r

### MISCELLANEOUS

WANTED—Truck driver, 3 days a week. Call GA 1711, leave address and location. r  
WANTED—PARKLAND HOMES; have several cash buyers for 2 and 3 bedroom homes in Parkland who will pay up to \$15,000. Call Mr. Harper, GR 8760, representing Washington Realty Co., 772 So. 38th St. Member Tacoma Real Estate Board. r

### SERVICES

PIANO TUNING & REPAIR—Prompt, courteous service. Call GA 8595 or write 8210 E. Sherwood, Tacoma. k29  
CHILDREN'S NURSERY, any age, any hour. Trained mother, licensed, well equipped home, reasonable rates, hour-day board. GR 4282. r  
RECOVERING & REBUILDING—

Davenport and chair in tapestries, low as \$125; freize mohair, low as \$140. Rebuild cushions, \$4.00. Samples shown day or even in your home. GR 4071 for appointment. r

WADE'S SERVICE—Guaranteed service on all refrigeration and heating equipment. Call GR 5034 day or night. r

SEPTIC TANKS CLEANED, contents hauled away. Don Redford, GA. 7334. r

ACE SEPTIC TANK SERVICE—Lyman Redford, owner. Septic tanks cleaned, contents hauled away. GA. 3446 or GA. 9794. r

RAY GOGAN  
LANDSCAPE CONSTRUCTION  
Nothing down, 3 years to pay. New lawns, topsoil, shrubbery, rockeries, old sawdust for mulching. GR 8842. r

4-foot Cedar Pickets ..... 9c  
3-foot, 6-inch ..... 8c  
3-foot ..... 7 1/2 c  
4x4 CEDAR POSTS  
MILLWORK CABINETS MADE TO ORDER  
**Parkland Lumber & Hardware**  
127th & Pacific Ave. GR 5544

*Expert*  
**SHOE REPAIRING**  
SHOE DYEING—ANY COLOR RESUEDING  
**ART'S SHOE SHOP**  
GARFIELD STREET

NOW you can have a . . .

## Free Home Trial

YES, YOU CAN HAVE ANY OR ALL OF THESE FRIGIDAIRE LAUNDRY APPLIANCES DELIVERED TO YOUR HOME ON FREE TRIAL. NO OBLIGATION, OF COURSE.

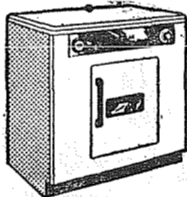
FRIGIDAIRE GIVES YOU 1 1/2 MINUTE WASH INCLUDING THESE FEATURES:

- HOT WATER and
- SUDS SAVER

Yes, with the Frigidaire Automatic Washer, you can re-use the hot sudsey wash water over again. And you use it immediately—while it is still hot . . . no set tubs of any kind.

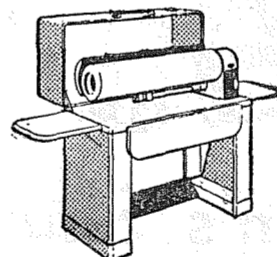


299.75



239.75

NOW! NEW, EXCLUSIVE NEW FRIGIDAIRE DRYER. Just plug in any 110-volt appliance outlet. Yes, the miracle Frigidaire Dryer eliminates expensive installation costs. Plugs in any 110-volt appliance outlet. Dries clothes as fast as they can be ironed.



199.75

NOW! SIT DOWN . . . CUT IRONING TIME IN HALF. DO A WHOLE WEEK'S IRONING EASILY, EXPERTLY, AND IN HALF THE TIME! IT'S SIMPLE. IRON CLOTHE THE MIRACLE WAY, WITH A FRIGIDAIRE ELECTRIC IRONER . . .

**Pochel Distributing Co.**  
YOUR FUEL OIL AND APPLIANCE DEALER  
140TH & PACIFIC GR 8624

## ALVSTAD'S

MARKET  
231 Garfield St. GR 8560  
PARKLAND SHOPPING CENTER  
FRIDAY AND SATURDAY, MARCH 30; APRIL 1

CUT NO. 2 CAN  
**GREEN BEANS** Rosedale . . . 2 for **33¢**

**PEAS** Wesco 3-sieve picnic . . . 3 for **32¢**

WESCO BLENDED NO. 2 CAN  
**JUICE** Orange and Grapefruit. 2 for **33¢**

DUCHESS SLICED  
**PEACHES** No. 2 1/2 Can. . . . 2 for **51¢**

QUAKER  
**PUFFED WHEAT** 4-oz. . . . 2 for **23¢**

**DOG FOOD** Please . . . . . 3 for **25¢**

NALLEY'S  
Pickles **MAYONNAISE**  
12-oz. 2 for **47¢** | Quart 67c Pint 37c  
Treasure Wonder Sweet Mixed HOME KITCHEN GOODNESS

**GLO COAT**, larger can 1-3 more . . . **98c**

**HONEY**, Blue Ribbon . . . . . 5-lb. pail **83c**

**TREND** . . . . . **19c**

**LUMBERJACK SYRUP**, 24-oz. . . . . **33c**

**TIDE**, large . . . . . **25c**

**IVORY SNOW** . . . . . **25c**

### ★ MEATS ★

**WIENERS**, skinless . . . . . lb. **43c**

**BACON**, sliced . . . . . lb. **39c**

**CUBE STEAK** Top Round . . . each **21¢**

### ★ PRODUCE ★

**CARROTS**, 2 bunches . . . . . **15c**

**ONIONS**, 3 lbs. for . . . . . **10c**

**POTATOES**, U. S. No. 2, 50 lbs. . . . **1.19**

### VAUGHAN'S VALUES . . .

FIR BEAN STAKES—per bundle (20 pieces) . . . . . \$ .97  
OUTSIDE WHITE PAINT—per gallon . . . . . 2.95  
1x4 E FLOORING—per 100 feet . . . . . 6.40  
1x8 NO. 4 CEDAR SHEATHING—per 100 feet . . . . . 2.80  
1x2 CLEAR CEDAR SCREEN STOCK—per foot . . . . . .04  
ASK ABOUT OUR MONTHLY PAYMENT PLAN

## Vaughan's

PACIFIC AVENUE LUMBER CO.  
84th and Pacific Avenue GA. 3133

### BEFORE IT'S TOO LATE . . .

Plant NOW!

- ★ Fruit Trees
- ★ Shade Trees
- ★ Flowering Trees
- ★ Roses

**Puget Sound Nursery & Garden Shop**  
9201 PACIFIC AVENUE GA 2151  
9 to 5 Weekdays; 11 to 5 Sundays

## SAVE and relax



SYSTEMATIC  
SAVING IS THE SECRET  
OF SUCCESS

For a happier, more abundant life tomorrow, save today. Small deposits, made regularly, will soon build a fund for travel, education or any other purpose. Plan your future now; open an NBW Savings Account tomorrow.

**NATIONAL BANK OF WASHINGTON**

MEMBER FEDERAL DEPOSIT INSURANCE CORPORATION

10 BRANCHES