

U. S. POSTAGE PAID  
 Sec. 34.66 P. L. & R.  
 Tacoma, Wash.  
 Permit No. 51  
 BOXHOLDER OR OCCUPANT  
 RURAL ROUTE  
 POSTMASTER—If unable to deliver,  
 return postage is guaranteed.

# The TIMES-JOURNAL

FEB. 14, 1952 (VOL. 7, NO. 22)

PUBLISHED AT PARKLAND, WASH., BY CLARENCE LACROSSE AND JACK BROWN

BOX 885, PARKLAND, WASH.

**LaCROSSE PRINTERS--TIMES-JOURNAL**  
 PRINTING ADVERTISING  
 Corner Park Avenue & Wheeler Phone GRanite 7100  
 DEADLINE for News and Advertising is TUESDAY NOON

## COMMUNITY CLUB BANQUET TONITE, COUNTRY HOUSE

Thursday evening, Feb. 14, the Parkland Community club will hold its fifth annual banquet at 6:30 at the Country House. The theme for the affair is planned in co-operation with the Parkland Business club's blood bank drive, Operation Orient 2000 Plus, which is also being supported by practically every club and service group of the area.

In addition to the program already announced, featuring Guest Speaker Jack Elch, Explorer troop No. 228 will present the colors at the opening ceremony. Later in the program, awards will be presented to members of the troop.

Sgt. Selma D. Danielson of WAF-WAG, of the Tacoma recruiting office, will speak on opportunities for women in the service, highlighting social services as chaplains' assistants, etc. She will also present a style show, modeling the new WAF uniform designed by Hattie Carnegie.

Members of the committee in charge of arrangements for the dinner meeting invite all people living in the district to attend the affair.

## Dance a Success

The dance given Saturday evening in Sunshine hall by the Parkland Volunteer Fire department was a great success, according to reports. Members of the department wish to thank all those who assisted in the affair.

Three door prizes were given. Winner of the first prize, a deep fryer, was George A. Strick, 9228 So. Peterson; second prize, a 100-lb. sack of sugar, Donald F. Reid, 11610 So. Yakima; third prize, a dish grinder, Alma Marivold, 11501 So. C St.

This Week-end Featuring a variety of **Angel Food Cakes** and **French Apple Coffee Cake**

**AUNT SUE'S Bakery**  
 209 So. 84th HI. 4072

### PROFESSIONAL DIRECTORY

**INSURANCE**  
 CLAY ROLEY AGENCY  
 98th and Portland Avenue  
 GR 8501

**OPTOMETRISTS**  
 DR. L. RICHARD MCGIRK  
 Modern Eye Care  
 4802 1/2 So. Yakima HA 2113  
 DR. C. A. GEER  
 Complete Optical Service  
 1117 1/2 Broadway MA. 1880  
 Opposite J. C. Penney

**REAL ESTATE — INSURANCE NOTARY**  
 ROY W. ROSTEDT  
 8201 Park Avenue  
 Phone HA 2342

### MEDITATION

**PAD YOUR HAMMER**  
 John Brooks, cashier of XYZ Company, had used one desk for 20 years; was accused and convicted of stealing it \$500. He said, "I never saw that money," yet he was sent to prison. His wife divorced him. His children abandoned him. His friends ignored him. When he was released he couldn't return to accounting; bonding companies wouldn't accept him. Through efforts of his Pastor a trucking concern hired him as a driver. He was morbid, threatened suicide.

His Pastor bought a used desk, cleaned out a drawer, picked up a paper stuck to the bottom under it. He found a \$500 bill. He called the dealer who told him it had come from XYZ company. The money was returned to the company. The manager said, "That was John Brooks' desk."

John was exonerated, paid for the time he was in prison, returned to his position; but no one could pay for anguish, disgrace and love of family. Before you strike, soften your hammer blow; the man might be innocent.

**Dryer Mortuary**  
 Complete Funeral Facilities,  
 Conveniently Located, with  
 Easy Parking.  
 —Trav Dryer

## Mrs. Mockel Injured

Mrs. Myrtle Mockel (Myrtle Mockel Appare) was painfully injured Friday morning when her car collided with a panel truck belonging to the Singer Sewing Machine Co., 750 St. Helens Ave., and driven by Norman A. Honeycutt. The accident occurred at the intersection of 120th St. and Park Ave., where it was reported, Honeycutt came onto the arterial without stopping. The truck skidded 130 feet and overturned.

Mrs. Mockel was rushed to Tacoma General hospital suffering from a deep gash in the back of her head, back injuries, contusions, loss of blood and shock. On Monday, hospital attendants stated that she was doing as well as could be expected.

## BAND CONCERT

The University of Washington concert band, under direction of Prof. Wilke, will play in the new PLC chapel-music-speech building auditorium Monday evening, Feb. 18, beginning at 8 o'clock. The PLC concert band will assist.

## Engagement Told

Announcement of the engagement of Miss Joan Helen Daskam and John M. Darnell Jr., was made the occasion for two charming parties last week. She is the daughter of Mrs. Daskam of Spanaway and the late Harold C. Daskam and he the son of Mr. and Mrs. J. M. Darnell Sr.

Parties honoring Miss Daskam were given by Mrs. Robert Laughlin of Spanaway and Mr. and Mrs. Donald Kipp of Bellevue. Plans are being made for a May 10 wedding.

## Special Meeting

A special meeting of the Parkland Volunteer Fire department has been called for Tuesday evening, Feb. 19, at the fire hall for the purpose of discussing and adopting the by-laws.

## Bridal Shower

Miss Vita Castiglione entertained recently with a shower for Miss Anne Arlene Browning, whose marriage to Robert Earle is planned for Thursday evening, Feb. 14, at Bethlehem Lutheran church, Tacoma. A Valentine motif was carried out at the party and the 25 guests made scrap books depicting and predicting the future lives of the bride and groom, using illustrations clipped from magazines. Late lunch was served and many gifts were presented.

## ROBERT E. HIGDON, son of Mr. and Mrs. W. E. Higdon of 7615 East Wilkeson, recently joined the Navy and is at San Diego for recruit training.

## CLARENCE E. GAUTHIER, 1203 East 80th St. was recently promoted to the rank of sergeant. He is serving in the Army and at present is stationed at Madigan hospital.

## GREAT NEWS FOR OIL BURNERS!

Your oil furnace lasts longer when you use Rich-Heat Burner Oil. You get cleaner, steadier heat. And you save money because Richfield's scientific ingredient, Solarite, prevents costly sludge, rust and corrosion —prolongs the life of your furnace... Yet with all these extra values you pay no more for Rich-Heat. Let us fill your order now.

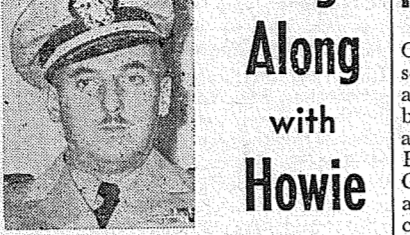
## Boston's Fuel Oil

6328 Pacific Avenue  
 GA. 2125

## RICH-HEAT BURNER OIL

CONTAINING SOLARITE

## Tag Along with Howie



**By Howie Snowdon**  
 Feb. 9, 1952  
 I was called on the other day to be an honorary pallbearer at the funeral of a Navy Commander. I don't believe there is any ceremony quite as impressive as a military funeral. It was held at the Arlington National Cemetery, which is across the street from our office. After the services in the chapel, the casket is placed on a black caisson drawn by six horses. Preceded by a Navy band playing a dirge and a group of marching men, the caisson transports the casket to the graveside. Here the Chaplain reads the final rites, a volley is fired and the bugler plays taps. Unfortunately this ceremony can be observed many times a day now, as a great number of those killed in Korea find their final resting place here in Arlington Cemetery.

The ceremony now covers approximately 406 acres and has three miles of paved paths and twelve miles of wide avenues dividing burial sections.

We have the pleasure this week-end of having as guests John Hancock, his wife Dore and little boy Mike. John was the chief clerk of the Coffman Dobson branch of the National Bank of Washington at Chehalis. Some years ago I worked with him at our Winlock branch. He has been recalled by the Air Force as a first lieutenant. He was sent to a school at Langley Field, Virginia, for instruction before being ordered to Korea.

I have hopes of a trip to the West Coast some time this month or next. I am due to go to San Diego, Calif., but there is some talk of having me go also to the headquarters of the 13th Naval District in Seattle. Hope it works out as I would have a chance at last getting over to Tacoma long enough to have dinner with my mother.

## Great Books Course Planned For So. End

The first meeting of one of the Great Books courses now being sponsored by the Great Books Foundation and the Tacoma Public library will be held at 8 p.m. Thursday, Feb. 14, at the Moore branch of the Tacoma Public library at 56th and Pacific. Co-leaders of the course will be Mr. and Mrs. Howard W. Lynn of Fircrest.

The course is designed for adults who are interested in the reading and group discussion of such great works as the Declaration of Independence, and the works of such authors as Plato, Aristotle, Thomas Aquinas, Shakespeare, Mark Twain, Descartes, Voltaire, and Machiavelli. The only fee connected with the course is for the purchase of the books, and this fee is small—and entirely optional.

The course lasts two hours per meeting, and will convene every two weeks on Thursday evening at the Moore branch. The general public is cordially invited to attend the first meeting and any succeeding meetings. Those interested may call the Moore branch, Mrs. Lynn, at PR. 0478, or just come to the first meeting at 8 p.m. Feb. 14th.

## MOSTLY ABOUT HORSES

**By Clarence LaCrosse**

Bright, sunny weather Sunday certainly turned a lot of the summer riders to their horses and an ultimate ride.

The Valley Riding club at Puyallup turned out for a ride, as did a lot of other couples.

I had the pleasure of having a nice cross country ride with Ted McMaken and his outstanding Arabian stallion, Denars. That horse certainly has style and is well mannered. I rode Camella, my palomino m.a.r.e. She needs a lot of riding to get in shape for the drills ahead of her in the Governor's Guard this summer.

Incidentally, we started our warm up drills in the Governor's Guard last Friday over at Woodbrook. The arena was muddy and after a couple hours of sloshing around in the black stuff, we had a bunch of black Palominos. It all came out, though, after several hours of brushing the next day.

I even got my brother Frank out on horseback, and that is a sign that the weather was mighty fine. He and Walt, up at the Summit Feed Co., are so busy selling us horsemen feed they don't have time to ride themselves. Hey, I'm only kidding; take it easy fellows, they might even sell me moulton hay if I'm not careful.

Gene Belinsky was busy as a bee Saturday shaking Tekka, that little filly of Frank Troutman.

Tried to get Marie and B. F. Fluty out for a ride Sunday, but they got invited out to a Sunday dinner... so they went to dinner.

I see Del Cheney home with a new horse a bad rope cut. Even Francis Nor-dyke has purchased a horse and outfit in preparation for the summer riding. It is going to be a big horse summer in the area this year, according to all the shows and signs of activity.

Sort of crowded this week... more next week.

## CANYON ROAD

Mrs. K. W. Struensee, Reporter  
 GRanite 5742

Tonight is Ladies' Night at the Canyon Road Community club. No work for the ladies—just fun.

**Saturday Dance**  
 Teen-agers, parents, friends—don't forget the dance at the Community hall, 90th and Canyon road, Saturday, Feb. 16. Dancing begins at 9 p.m. Donation, fifty cents per person.

**Birthday Party**  
 Mrs. Paul Bacon was hostess at a party last Saturday night in her home on Canyon road in honor of Mr. Bacon's birthday. After an evening of fun, refreshments were served to neighbors and friends who helped Paul celebrate his birthday. Congratulations, Paul.

**Family Party**  
 Mr. and Mrs. L. R. Field of East 72nd street attended a family party at the home of their daughter and son-in-law, Mr. and Mrs. Ray Squires, 26th and Park avenue. There were 25 members of the families of Mr. and Mrs. Richard Armstrong, of Jackson Heights, N. Y., present to see the films that the Armstrongs took on their trip across the country last spring, and of many points of interest on the east coast. Mrs. Armstrong is a daughter of the Fields. The surprise of the evening was a phone call from the Armstrongs, who had the pleasure of talking to their parents, brothers and sisters. Refreshments were served at the close of a very pleasant evening.

**Visitors**  
 Mr. and Mrs. Melvin Slyter and family are the house guests of Mr. and Mrs. W. Niquette at their home on 84th street. Mrs. Slyter is a daughter of the Niquettes. The Slyters are formerly of Oklahoma City, Okla., but will establish a new home in the Pacific Northwest.

## DIPER FUNERAL HOME

HILLSIDE 8479 - 5436 SO. PUGET SOUND AVE.

## SUPPORT THE BLOOD DRIVE

How Many Pints Have You Given?

**PATTY ANN BAKERY**  
 GR. 3330  
 Pacific Avenue at Airport Road  
 Hours: 9 a.m. to 9 p.m.—

## SHOWERPROOFING

pays dividends

It repels moisture, prevents clothes from soiling so easily. Let us do a factory job of waterproofing.

**Parkland Cleaners**  
 Phone GRanite 3221  
 24-HOUR SERVICE AT THE PLANT  
 11004 Pacific Ave. North of the Bank Corner

## Operation Orient 2000 Plus Enters Final Week

After a fortnight of planning and organization, Operation Orient 2000 Plus swings into its final phase in the Parkland area with the enthusiastic support of practically every club and service group in the community. Designed to be the greatest blood donation drive ever attempted at Parkland, the project is sponsored by the Parkland Business club with the active co-operation of the Parkland Community club, Pacific Lutheran college, American Legion, Veterans of Foreign Wars, Altrusa club, Girl Scouts, Boy Scouts, Kiwanis club, Parkland Riding club, Trinity Lutheran church, Parkland Lutheran church and other groups.

Pledges are now being solicited by committees from the sponsoring clubs and it is hoped that each group will reach its quota—one pint of blood pledged for each membership, bringing the total to approximately 2000 pints. As "Operation Orient 2000 Plus" suggests, the blood is being collected for the armed forces in Korea.

A large room of the Parkland Light & Water Co. offices, 402 Garfield St. in Parkland, will be used on Operation Orient 2000 Plus Tuesday, Wednesday and Thursday, Feb. 19, 20 and 21, and is being equipped with everything needed for the successful culmination of the drive and the comfort and convenience of blood donors.

Roger McDonald, president of the Parkland Business club, has appointed Wes McKeven general chairman for the drive, with Lee Tretter publicity chairman.

Publicity Chairman Tretter is finding his job rather strenuous, but is enjoying every minute of it, due to the fine response he is receiving in the community. "Parklanders have received the blood donation drive with determination and vigor," he declares. "Pride of Parkland's citizens is showing increasing interest daily in a friendly rivalry which I'm sure will result in surpassing the fine record made by Puyallup recently. You that have not pledged your donation of blood, do so now and get another pledge. Remember, we can make this drive a success only with your support. Surely, our armed forces can at least depend on a flood of blood from us to those whose blood is ebbling."

Hours for donating blood are 2 p.m. to 9 p.m. Feb. 19, 20 and 21. Donors are reminded that no food should be taken in the three hours prior to donating blood.

President Roger McDonald has called the monthly meeting of the Parkland Business club Wednesday, Feb. 13, at the Chateau, with dinner at 7:30. The Altrusa club will meet with the Business club at this time. Last-minute details of Operation Orient 2000 Plus will be completed at the meeting.

## Tacoma Goodwill Names Board Heads

In a special meeting of the board of directors of Goodwill Industries of Tacoma, Inc., last week, Howard E. Gregory was re-elected to the board presidency.

He carried into office with him the full panel of officers who served the organization in 1951. They include C. G. Raymond, vice president; Stanley T. Shaw, secretary; E. Paul Todd, treasurer, and J. Halor Titcomb, executive director.

**SO-PAC BUSINESS CLUB** will meet at 8:30 Wednesday evening, Feb. 20, at the Fir. Dinner will be at 9:30. Ned Richards is president; Astor Smith, vice-president; Mrs. June Althuser, secretary-treasurer.

**FIRE SEASON** starts Feb. 15 and extends to Oct. 15. A permit for burning is required between these dates.

## DRESSMAKING

Buttons and Button Holes Aprons

**Doll & Marie's Shoppe**  
 11222 Pacific Avenue

## STATE FARM MUTUAL AUTO INS. CO.

Is Happy to Announce the Appointment of **Q. J. CARRELL** As a Local Agent

"For Lower Insurance Cost in '52"

Call  
 411 So. 117th St., Parkland GRanite 5486

## STATE FARM INSURANCE COMPANIES

Bloomington, Illinois

## SHOWERPROOFING

pays dividends

It repels moisture, prevents clothes from soiling so easily. Let us do a factory job of waterproofing.

**Parkland Cleaners**  
 Phone GRanite 3221  
 24-HOUR SERVICE AT THE PLANT  
 11004 Pacific Ave. North of the Bank Corner

## Lincoln High School Reunion February 15

Friday evening, February 15, at the Fellowship Hall, which is under the Temple theater in Tacoma, will be the time and setting for the annual Lincoln High School Alumni Reunion and Dance.

Chairmen of the group say it will be outstanding and the largest in history. Scheduled on the program for the evening will be the famed 1932 championship football team of Lincoln.

Old time yell leaders will be on hand to stir a few memories in the hearts of the grads. Music for the dance will be furnished by Bill Baty and his orchestra. Miss Margaret Goheen will furnish a musical program.

Officers of the Lincoln Alumni include William Stromberg, pres.; E. Albert Morrison, vice-pres.; Clemencie Boers, sec'y; Tenny Keil, treas. Eloise Washburn is handling publicity.

## Midland Library Open Longer Hours

Mrs. Beryl Tefre, librarian at the Midland branch of the Pierce County library, announces that the library will be open for longer hours in the future. The schedule is as follows: Monday, 1 to 5; Wednesday, 1 to 5 and 7 to 9; Friday, 10 to 5. The library will be closed Feb. 22.

A recent exchange of books brings 200 new volumes to Midland.

Mrs. Tefre wishes to thank the people of the community who have donated equipment for the library.

## School Bids In

Bids on the Woodland elementary school addition were opened recently in Puyallup, the low bids totalling \$88,911.

Barrow and Shaffer Construction company of Everett submitted the low basic bid for the general contract at \$68,187. Valley Plumbing & Heating Co. of Puyallup was the low bidder at \$16,702. The low basic electrical bid was submitted by the Puyallup Radio clinic at \$3,922.

The work involves construction of a four-classroom addition to the existing school building.

## Couples Club

The Parkland Methodist Couples club will meet in the church basement at 8 p.m. Friday. Presiding for the first time will be Mr. and Mrs. Stanley Pietrzykowski, elected president last month. Other officers are Mr. and Mrs. Harris Victor, vice president and program chairman; Mr. and Mrs. Ivan Makinster, secretary-treasurer.

## All Saints Guild Plans Rummage Sale

Sponsored by St. Cecilia's Guild, a rummage sale will be held at All Saints church, 96th and East B streets, Friday and Saturday, Feb. 22 and 23. A snack bar will serve refreshments at a nominal fee.

Contributions for the sale may be left at Bergman's Red & White store at 318 East 96th St., or at Nelson's Shell station, 96th & Pacific. To have donations picked up, call HI. 6200 or GA. 7921.

FOR THE BEST in television, buy Sylvania. Call GRanite 5689 NOW.

## POLL PARROT SHOES FOR BOYS AND GIRLS

PRE-TESTED

GIVE YOUR BABY'S FEET THE RIGHT START...

Feet of the future are being built today. Have your baby perfectly fitted in Poll Parrots—the first step to foot happiness. They're pre-tested by real children... fit right today—protect growing feet for tomorrow. Come in and see our complete line.

## Soine's Parkland Shoe Store

411 Garfield St. GRanite 3526 (In the Parkland Centre Bldg.) Al and Malcolm Soine. Open 10-6

**When It Is FUEL OIL**

REMEMBER We Feature **STANDARD HEATING OILS**

METERED DELIVERY AUTOMATIC REFILLS

ENJOY THAT "PLUS" SERVICE

## STANDARD HEATING OILS — AUTO PARTS

## Parkland Fuel Oil Service

120th & Pacific Ave. Phone GR. 8684

# 136th Pacific Ave. BROOKDALE LUMBER CO. Phone GR. 8669

## PLANNING TO ADD A ROOM OR REMODEL? LET US GIVE YOU FREE ESTIMATE

All Materials and Labor Figured  
 Payments from \$5.00 and up per month  
 First Payment Due 60 Days After Job Is Complete

OUR PAYMENT PLAN COVERS...  
 NEW HOMES, REPAIRING AND REMODELING, FARM BUILDINGS TO PICKET FENCES

## SPECIALS -- Cedar Pickets: 3' length, 11c each; 3 1/2' length, 12c each; 4' length, 13c each. Oak Flooring, shorts, No. 2, 13.50 per 100 sq. ft. -- cheaper than fir flooring!

Everything in LUMBER

By MRS. M. S. RAU  
GRanite 8391

Mrs. Elvira Rupprich of Thief Falls, Minn., is visiting the Albert Schancks on 96th St. She is Mrs. Schanck's sister.

Cottage Prayer Meeting  
The cottage prayer meeting of the Summit Methodist church will be held at the home of Mr. and Mrs. Raymond Bixby this (Thursday) evening at 7:45. A cordial invitation is extended to all who wish to attend.  
Civil Defense

A meeting will be held at 8 p.m. Monday at the Summit fire hall to organize a local Civil Defense unit.  
Registration  
Through the efforts of the P-TA, teachers and pupils of Franklin Pierce district schools, there was a good turnout for registration last week. The books are open for those wishing to

transfer from one rural precinct to another, but not from city to rural, until Feb. 23. Then they will be open again after March 11.  
Central Avenue Preschool  
Central Avenue Preschool will meet Thursday evening, Feb. 21, at the Central Avenue school. The speaker for the evening will be Dr. K. Kasuga

of the staff of the Cushman Indian hospital, who will speak on the atom bomb. A special invitation is extended to the husbands as the subject is of general interest. Hostesses for the evening will be Mrs. Lenhard Winter and Mrs. John Clabough. Refreshments will be served after the meeting. Mrs. Ranghill Peterson will also give a

short talk on Founders' Day.  
Two Birthdays  
Mr. and Mrs. Robert Carlson celebrated two birthdays Thursday, Feb. 7. In the afternoon Mrs. Carlson entertained a group of one-year-olds and their mothers honoring the first birthday of their son Elmer John. The guests were Mrs. C. K. Clover and Connie, Mrs. Jerry Bosquette and Johnny, Mrs. William Irwin and Jimmie, Mrs. Stanley Nyba and Marilyn, Mrs. Elmer Gohr and Jo Ann, Mrs. Allen Jones and Beverly Garner. No entertainment was needed for the grown-ups but to watch five little children getting acquainted.  
In the evening, Elmer John's great-grandmother, Mrs. Ida Rice, came out from Tacoma and they celebrated their birthdays together, the first and 92nd, respectively. Guests for this party were aunts, uncles and cousins. Included were Mr. and Mrs. Ed Garner, Mr. and Mrs. Darrell Turks, Mr. and Mrs. Allen Jones, Beverly Garner, Willard Rice, and Donna, Deanna and Carol Turks. A buffet supper was served, followed by birthday cakes. A tired but happy little boy had to go to bed before the party was over.

THE TIMES-JOURNAL  
Thursday, February 14, 1952  
**COLLINS NEWS**  
By MRS. A. O. ANDERSON  
Collins P-TA will celebrate Founders' Day on Feb. 19 at 8 p.m. in the Collins gym, Mrs. Frank Selk president.  
The program will feature a review of the first school held in the Collins district, held in 1907 in the cook house of the logging camp, arrangements having been made by Mrs. Ray Gogan, program chairman. Taking part will be Al Gerritz, only living member of the first school board; Mrs. Jessie G. Vinson, first teacher; Anton Anderson, first Collins graduate, and pupils attending school in 1907 in the cook house school. They will be honored guests of the P-TA and will be introduced to the audience.  
Entertainment numbers will be presented by a group of pupils from the 4th grade. Supt. Morris E. Ford will be present and will give a brief talk on progress of the Franklin Pierce high school building project to date. Collins P-TA past presidents will be honored in the customary Founders' Day ceremony and will be guests of the P-TA. A social hour with refreshments will follow the meeting. A cordial invitation is extended to pupils of the 1907 cook house school through this notice, since addresses of those living in other places were not available. A large attendance is anticipated.  
P-TA To Sponsor Play  
Sponsored by the Collins P-TA, the Tacoma Theatre Guild will present a play in the Collins gym at 8 p.m., Feb. 22. The play is a popular comedy, "Aaron Slick from Punkin City," and is an hour and 45 minutes in length. Tickets will soon be on sale. A percentage of the proceeds will benefit the local P-TA.

# SCOOP 97c SALE

DEL MONTE Cream Style 6 FOR  
**CORN 97c**

LIBBY'S TOMATO, 46-oz. 4 FOR  
**Juice 97c**

LIBBY'S Unsweetened, 46-oz. 4 FOR  
**JUICE 97c**

DEL MONTE SLICED—2½ Size 3 FOR  
**Pineapple 97c**

DEL MONTE FRUIT, 1ge. 2½ can 3 FOR  
**Cocktail 97c**

DEL MONTE PINEAPPLE, 46-oz. 4 FOR  
**Juice 97c**

CAMPBELL'S TOMATO 9 FOR  
**SOUP 97c**

HUNT'S, 8-oz. 14 FOR  
**Tom. Sauce 97c**

SWEET, JUICY NAVELS 5-LB. SACK  
**ORANGES 47c**

LIBBY'S 12 FOR  
**Baby Food \$1.00**

Summit Farms PURE  
**Lard lb. 10c**

PURE  
**Gr. BEEF lb. 59c**

Fresh Pacific Medium size  
**Oysters pt. 69c**

Fresh Made Pork  
**Sausage lb. 49c**

Grain-fed Pork  
**Chops lb. 59c**

Fresh Dressed Colored  
**FRYERS lb. 59c**

Curing & Smoking, lb. 7c  
Cutting, Wrapping, lb. 3c  
We Buy Hides

SET, Large Size 10 LBS.  
**ONIONS . . . 49c**  
SWEDISH ROAST  
**COFFEE . . . lb. 79c**  
Fresh Ground the Way You Like It

LARGE 'AA' NEST FRESH DOZ.  
**EGGS 50c**

LIPTON 100 BAGS  
**TEA 97c**

WHITE ALBACORE, 7-oz. 4 FOR  
**Tuna Fish 97c**

C. & H. CANE 10 LBS.  
**Sugar 97c**

ARMOUR'S FRESH MADE 5 GLASSES  
**P't Butter 97c**

CHURCH'S GRAPE, 24-oz. 4 FOR  
**JUICE 97c**

KRAFT 2-QT.  
**Salad Oil 97c**

ALL FLAVORS 12 FOR  
**Jello 97c**

KRAFT 8 FOR  
**Dinners 97c**

PLEASE 12 FOR  
**Dog Food 97c**

**A Button for a Buck**

**Give Your Radio a Valentine: HAVE IT REPAIRED**  
A happy radio will give you more radio per dollar than the unhappy one you may now have or a new one to take its place. Keeping 'em happy—that's our job.  
Where? Drop in and see us, phone or write Rt. 3, Box 291-A, Tacoma.  
**BIXBY Guaranteed RADIO Repair**  
Call GR. 8309  
FREE TUBE TESTING  
On Waller Road, ¼ Mile South of Airport Road

**UPHOLSTERY**  
Will Call with Samples  
Free Estimates  
**El Rey Upholstery**  
84th & Park Ave. Shop: HI 6862  
Home Phone: HI 5146

**OLD FOXY SAYS . . .**



And we quote: "Man, those chickens raised on Fisher's Quality Feeds sure can't be beat . . . they're the best I ever ate." Unquote.  
**SUMMIT FEED CO.**  
Home of *Fisher's* Quality Feeds  
Canyon Road, next to Summit Trading Co.  
GR. 7136 We Deliver

DO YOU know the new Norge Automatic Washer is your best buy? Why have an ordinary washer? Your old washer may make your down payment. Call GR. 5689. (Pd. Adv.)

**All Saints Church** (Episcopal)  
96th Street at East "B"  
EVERY SUNDAY SERVICES  
9:30—Episcopal Church School  
11:00—Worship, Sermon & Music

FOR THE BEST in television, buy Sylvania. Call GRanite 5689 NOW.

**WHEEL BALANCING**  
**Butler's Garage**  
One block North Airport Road on Canyon Road  
Phone GR. 8209  
If no answer, Call GR. 5095

Quality Repairs  
• Guaranteed Better Wear  
• Attention to Details  
**ART'S SHOE SHOP**  
Garfield Street  
Parkland

**Malcolm's Meats**  
1 Block North of Airport Road on Canyon Road  
GR 8258  
PORK ROAST—Center  
Cut Shoulder . . . lb. 44c  
PORK CHOPS—Center  
Cut Loin . . . lb. 58c  
LEAN PORK STEAKS . . . lb. 48c  
PORK NECK BONES . . . lb. 17c  
Pure Pork Sausage . . . lb. 45c  
RIB STEAKS . . . lb. 68c  
ALL MEAT WIENERS . . . lb. 49c  
TOP ROUND STEAKS, lb. 89c  
LEAN SIDE BACON . . . lb. 48c  
Locker Beef, Pork and Veal Custom Slaughtered, Cutting and Wrapping  
RETAIL SALES THURSDAY, FRIDAY and SATURDAY

**FRYE'S FURNITURE**  
**FEBRUARY SALE**

TELEVISION		Was	NOW
17" Mhg. Table Model		229.95	199.95
17" Mhg. Console, 12" speaker		269.95	239.95
20" Blonde Table Model		259.95	229.95
17" Mhg. Console (half doors)		324.95	259.95
17" Blond Table Model		299.95	259.95
APPLIANCES		Was	NOW
Bendix 220-V Dryer (demonstrator)		189.95	189.95
Bendix Dialomatic Washer (demonstrator)		129.95	129.95
Bendix Gyromatic Washer (bolt down)		199.95	199.95
Bendix Gyromatic Washer (non-bolt)		229.95	229.95
Bendix Economat Washer		179.95	179.95
6 cu. ft. Kelvinator Refer.		249.95	169.95
6 cu. ft. Kelvinator Freezer		269.95	189.95
9.5 cu. ft. Servel Refer.		449.95	299.95
7 cu. ft. Servel Refer.		259.95	189.95
Whirlpool Washer (used slightly)		49.95	49.95
7.4 cu. ft. I-H Refer.		219.95	179.95
FURNITURE		Was	NOW
3-pc. Chrome Dinette Set		79.95	39.95
5-pc. Chrome Dinette Set		99.95	59.95
4-pc. Mhg. Dining Room Suite		149.95	89.95
8-pc. Mhg. Dining Room Suite		269.95	179.95
5-pc. Modern Bedroom Suite		139.95	89.95
2-pc. Davenport and Chair Suite		279.95	169.95
3-pc. Daveno. Chair and Rocker		159.95	119.95
Innerspring Mattress & Box Spring, reg.		79.00	49.95

**Frye's FURNITURE & APPLIANCES**  
Parkland Centre Bldg.  
GRanite 3691  
OPEN FRIDAY EVENINGS TILL 9:00 P.M.

Good 1x6 and 1x8 Boards, 4 ft. Long  
\$22.00 per M board feet  
**SUMMIT LUMBER CO**  
GENERAL BUILDING SUPPLIES  
Rt. 13, Box 659 Airport & Canyon Road GRanite 8605  
We Deliver - - Rain or Shine

SELDEN'S — LAKEWOOD CENTER  
**PROFESSIONAL DECORATOR SERVICE**  
NO CHARGE OR OBLIGATION  
"Each Home a New Personalized Decorator Scheme"  
Complete With  
Paint — Wallpaper — Draperies  
Carpet and Linoleum  
**Selden's** Phone LA. 4445  
And a Decorator Will Bring Samples to Your Home  
LAKEWOOD SHOPPING CENTER

**Build for Your Future . . .**



PROFIT AT PACIFIC, save where your savings are insured up to \$10,000.  
The Northwest's Largest  
our 45th year  
BELLINGHAM • SEATTLE • TACOMA • PORTLAND • EUGENE  
Member: Federal Savings and Loan Insurance Corporation • Federal Home Loan Bank System

WE RESERVE THE RIGHT TO LIMIT QUANTITIES — NO SALES TO DEALERS

# SUMMIT TRADING Company

PHONE GRanite 5848  
Rt. 13, Box 690, Tacoma—One-half Mile North of Summit View, on Canyon Road

## POCHEL OFFERS SHOWMOBILE

For Pochel, and the large area they serve, it is another first. Something absolutely new and revolutionary in the presentation of merchandise to the public is being offered by this outstanding appliance firm in the way of a traveling showmobile which brings your demonstration of new appliances right to your door.

There is nothing like it from the Mississippi on the east or from San Francisco on the South. It is absolutely the newest wrinkle in the art of merchandising.

The newest line of Frigidaire refrigerators, washers, electric ranges, clothes dryers, ironers and other electrical products will be brought right to your door by this traveling show-

mobile. Heat and all the comforts of home will be on board to make your visit to this unusual showing a thing of pleasure for you and your friends.

This innovation represents many hours of study and research on the part of the powers that be at the Pochel firm. Ray Pochel, Roger McDonald and Tom Moore have done everything in their power to make this newest of ideas absolutely the ultimate for their customers.

On hand in the Pochel Showmobile will be especially trained personnel to give advice and to point out the many outstanding features of their product.

Ladies visiting the Pochel Showmobile will be presented a lovely bottle of White Shoulders perfume by Evyan, and other attractive gifts.

When this showmobile visits your neighborhood be sure to make your visit. You will like the friendly, courteous service always displayed by the staff of Pochels.

## MIDLAND NEWS

The Harvard Midland P-TA will meet Feb. 20 at 8 p.m. at the Midland school. Mrs. Raymond Ellison will preside over the business session. There will be a continuance of the school evaluation program that was started last year by the teachers and will begin with the fourth grade and continue on up through the ninth grade if time permits. This should prove to be very interesting to the parents.

There will also be a short skit on the early days of P-TA to round out the Founders' Day program at which all the past presidents will be honored. Shirley Johnstone and Ida Nelsen are the teacher's rooms to be hostesses at the social hour following the meeting and the room mothers are Mrs. Harold Stavig and Mrs. William Collins.

A Valentine Party and social is being planned by St. John of the

Woods parish Friday evening, Feb. 15, in the Midland Community hall at 8 p.m. sharp. There will be awards for high score, refreshments and a social hour, and everyone is cordially invited. Committees appointed include Mesdames Frank Reding, Robert Reding, Jake Stumpf, Katherine Logan, James McCarthy, Joseph LeMieux, Michael Koval, John Koval, John Mikelich, Ernest Paul, Viola Townsend, Herman Portz, Harold Thaden, Mel Morrill, and the Misses Ann, Lucille and Katherine Lanz.

The Altar Society of St. John of the Woods held their February meeting last Thursday at the home of Mrs. John Mikelich. Mrs. Peter Krapf presided over the business session. Mrs. Louis Hoffman, Mrs. Peter Coleman Jr., and Mrs. Augustine Galivan were all reported on the sick list. Main discussion was the coming Valentine card party and social Friday evening and some of the committee chairmen were appointed for the annual St.

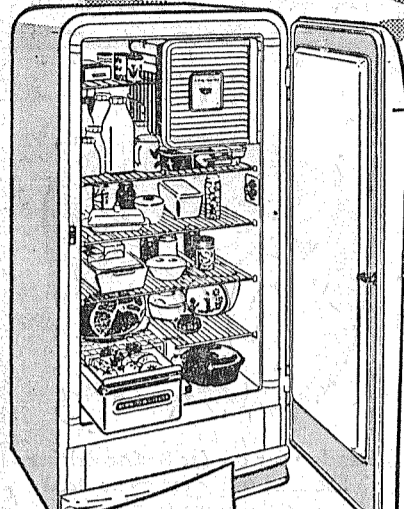
Patrick's Day talent show, style review and social hour to be held in Mesdames O. O'Farrell, Mel Morrill, John Salter, John Gilligan, Peter Krapf and the hostess, Mrs. John con served before the meeting were Mikelich.

Thursday, February 14, 1952

THE TIMES-JOURNAL

## Showmobile SPECIAL

14 million buyers can't be wrong!



—so don't take less than a genuine FRIGIDAIRE America's No. 1 Refrigerator

8-2/10 cu. ft. Standard Model only 199.95

Ask about our S.T.D.P. PURCHASE PLAN

Get rid of that too-small refrigerator now! Model illustrated gives you modern conveniences and plenty of storage space for at least a week's supply of all kinds of foods—plus—SAFE-COLD from top to bottom. See all these features:

- Super-Freezer holds over 29 lbs.
- More than 15 sq. ft. shelf area
- Famous Meter-Miser
- Cold-Storage Tray
- Quickcube Ice Trays
- Lift-out half-shelf
- Bin-size Hydrator

Come in! Ask about all the new Frigidaire Refrigerators!

YOUR FUEL OIL AND APPLIANCE DEALER  
**POCHEL DISTRIBUTING COMPANY**  
140th & Pacific GR. 8624

**SPECIAL**  
**\$10 Helene Curtis**  
**Machine**  
**Permanent**  
**ONLY \$6.50**  
Complete with Razor Hair Cut  
**CUT & CURL**  
**BEAUTY SHOP**  
8236 1/2 Pacific Ave. HI. 4201

**CUSTOM MEAT**  
Fresh Eggs — Locker Rentals  
**Mountain View**  
**Food Lockers**  
Airport & Spruce GR 5332  
2 1/2 Miles East of Pacific Avenue

FOR THE BEST in television, buy Sylvania. Call Granite 5689 NOW.

**LOOK**

**Split Cedar Fence Posts**  
**35c ea. at the yard**  
Full Line Of

**Matson's Enamel and House Paints**  
KEM GLO — SUPER KEM TONE AND REGULAR KEM TONE  
LAUXTEX AND VELLO

**Closing Out on SPRED**  
**10 Pct. Off**  
VISIT OUR HARDWARE DEPT.

**We Cut Glass**  
**BASKET LUMBER COMPANY**  
96th & Portland Avenue  
GRanite 5844

DO YOU know the new Norge Automatic Washer is your best buy? Why have an ordinary washer? Your old washer may make your down payment. Call GR. 5689. (Pd. Adv.)



**Their Future is IN YOUR HANDS!**

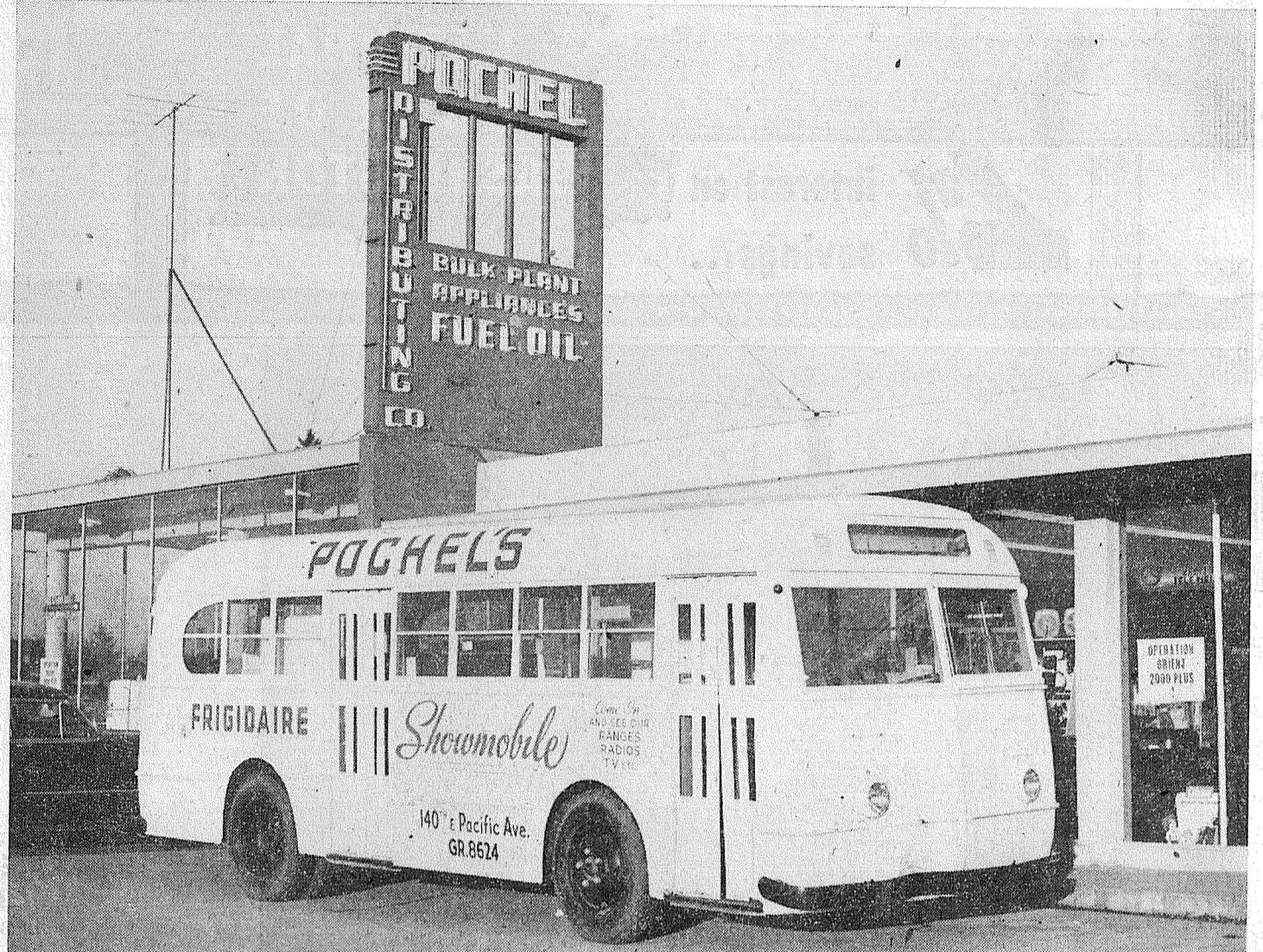
**For Healthy Sturdy Chicks**  
insist on  
**TRIANGLE CHICK STARTER KRUMBLES**

The first six weeks are a critical period for your chicks. They need a specially prepared feed like Triangle Chick Starter Krumbles to carry them through and insure rapid growth. Triangle Krumbles are easy to feed yet safe for even smallest chicks. A balanced formula of essential proteins with amino acids, prime grains, minerals and B-12 Vitamin Supplement insure that your chicks will have the right start to health and sturdy growth.

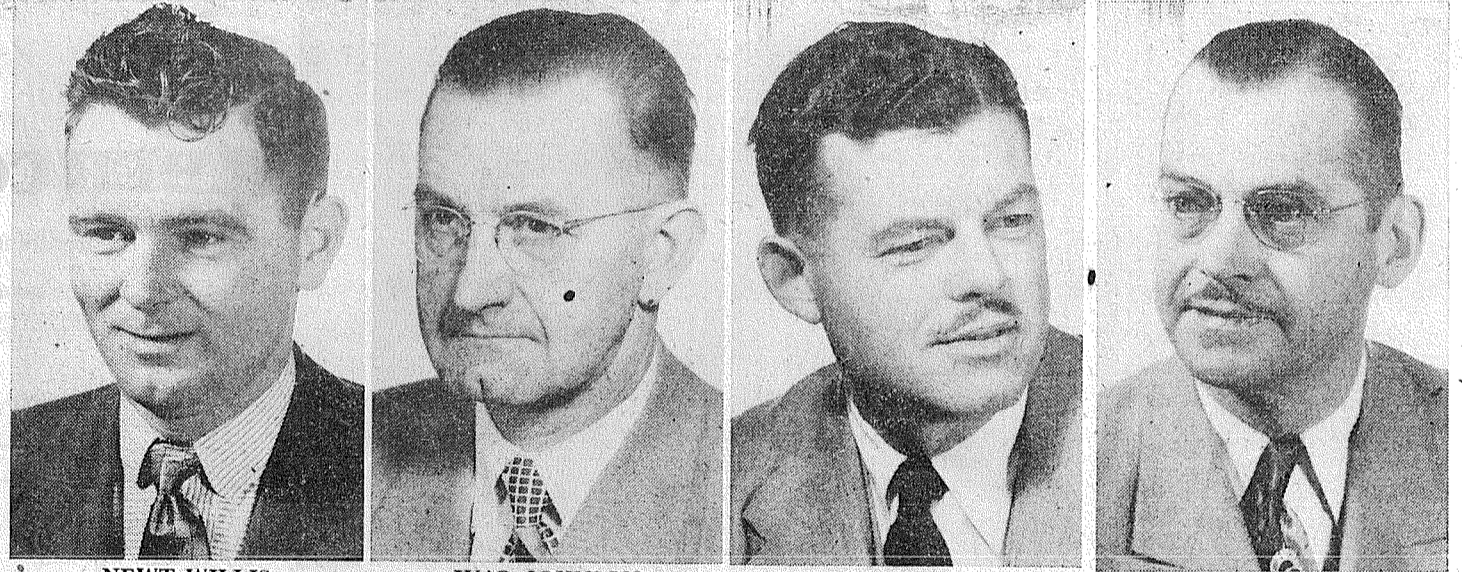


**Stewart Hay & Grain**  
SPANAWAY  
Mt. Highway GR. 8615

## First Appliance Store On Wheels In This Area



Pochel Distributing Company announces the addition of their new FRIGIDAIRE Appliance Showmobile. This new unit will carry a staff of four trained salesmen to bring the finest line of appliances to your front door. MEET THE SHOWMOBILE STAFF:



THE SHOWMOBILE WILL OPERATE FROM POCHEL'S MODERN SOUTH END APPLIANCE STORE



When the showmobile is in your area prepare to come aboard and see the new FRIGIDAIRE APPLIANCE LINE  
YOUR FUEL OIL AND APPLIANCE DEALER

**POCHEL DISTRIBUTING COMPANY**  
140TH & PACIFIC AVE. GR. 8624

## MEET THEIR DOOM HERE

**HIGH PRICES**

**Oxydol Large Size 29c**

**Sugar U. & I. 10 LBS. 93c**  
40-oz. Pkg.

**Bisquick 43c**  
3-LB. CAN

**Swiftening 79c**  
SOLID PACK—Standby 2 1/2 CAN

**Tomatoes 2 for 49c**

**DIAMOND WAX PAPER . . . roll 23c**  
303 CAN

**GARDEN CREAM CORN . 2 for 29c**

**KELLOGG'S—12-oz. CORN FLAKES . 2 for 39c**

**PUREX . . . half gal. 27c**

**CALO DOG FOOD . . . 2 for 27c**

**STANDBY SLICED PINEAPPLE . . . 2 1/2 CAN 29c**

**M.J.B. RICE . . . 2 lbs. 35c**

**DISPENSER TYPE NAPKINS . . . 2 pkgs. 25c**

**FRESH FRUITS and VEGETABLES**

NO. 2 SPUDS 50 lbs. 1.79

CARTON TOMATOES . 19c

CTN. LETTUCE . . lb. 9c

CABBAGE . . lb. 8c

RADISHES or 2 Bchs. GREEN ONIONS 15c

**Quality MEAT CUTS**

**HAMS**  
10 to 12-lb. Average lb. 55c

**Smoked BOSTON BUTTS . . . lb. 49c**

**Nice and Lean—well trimmed PORK STEAK . . . lb. 53c**

**Graded Good ROUND STEAK . . . lb. 98c**

**Pure Beef—lean GROUND BEEF . . . lb. 65c**

**Wrigley's GUM . 3 for 10c**

**Red Shield BUTTER lb. 83c**

**Standby 2 1/2 Can DILL Pickles 31c**

**Libby's 46-oz. TOM. JUICE 27c**

**Fletcher's MARKET**  
127th and Pacific Avenue  
Phone GRanite 8550  
FREE DELIVERY  
Prices Effective February 15th and 16th

### WALLER ROAD

By MRS. VERNE FOGLE  
GR. 5210

The movie for Saturday night at the Community hall is "The More, the Merrier" with Jean Arthur, Joel McCrea and Charles Coburn.  
4-H Carnival  
Don't forget the 4-H Carnival Friday, Feb. 15, in the Waller Road hall. Doors open at 6 p.m. Take the family out for dinner and an evening of fun. The cats are bound to be good; the prices are right.

Orthopedic  
Coming Feb. 29 to Waller Road hall! Orthopedic (the Marie Hazen Guild) card party. Keep it in mind.  
No Meeting  
Mrs. R. Geise wishes to inform the boys of her 4-H group that there will be no meeting this week.

To Tacoma  
Miss Mary Lou Geise, student nurse, will return Saturday to Tacoma General hospital to finish out her studies there after two months training at the Firland Sanatorium near Seattle. Mary Lou has only until September, and she will become a graduate nurse.

Family Party  
A family get-together at the Earle Thompson home Feb. 9 honored Mr. Thompson's mother, Mrs. Imogene Preston, on her 85th birthday. Present for the occasion were Mr. and Mrs. Clair Farley and family and Mr. and Mrs. Earle Thompson and the honored guest, Mrs. Preston. Mrs. Preston is very active for her years and still takes part in community affairs. We know everyone joins in wishing her a very happy birthday.

Auxiliary Elects  
The Waller Road Grange auxiliary

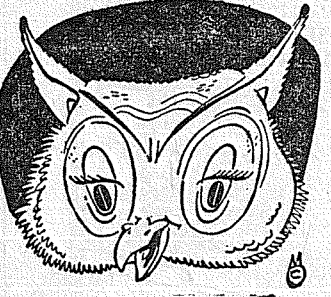
met Feb. 6 with Mrs. Lawrence Howard of Lidford road. An election of officers was held. Mrs. R. Geise, home economics chairman of the Grange, is president; Mrs. Andrew Carlson, vice-president; Mrs. Verne Fogle, secretary-treasurer; Mrs. Walter Spitzer, program chairman. Plans for the annual variety show were discussed and a date will be set soon. Refreshments were served by Mrs. Howard, assisted by her daughter-in-law, Mrs. Don Howard, and her niece, Mrs. Ralph Johnson.

DO YOU know the new Norge Automatic Washer is your best buy? Why have an ordinary washer? Your old washer may make your down payment. Call GR. 5689. (Pd. Adv.)

FOR THE BEST in television, buy Sylvania. Call GRANite 5689 NOW.

**A Button for a Buck**

**BE WISE**



Ready your car for Spring driving. See Earl today for guaranteed automotive repairs.

**Gladiator Service**  
122ND & PACIFIC GR. 9946

**VALUES - VALUES - VALUES - VALUES**

JELLO Puddings and Pie Fillings **3 for 23c**

**Boston Butts 49c**  
Nice, Lean—any size piece

**BACON, lb. 47c**

**SHORTENING (Swiftning) 3 lbs. 79c**

**NALLEY'S PURE MAYONNAISE 67c**  
ALWAYS GOOD—Full Quart

DARIGOLD 2-LB. LOAF Sweet and Juicy  
**CHEESE FOOD . 89c** **ORANGES . lb. 9c**  
BLUE BAG SUNSHINE Krispy  
**COFFEE . lb. 79c** **CRACKERS 1-lb. 28c**

WESCO  
**PINEAPPLE JUICE, 46-oz. . . . . 25c**

**Waller Road STOP-N-SHOP**  
64TH & WALLER RD. PHONE GR. 5362  
PRICES EFFECTIVE FRIDAY & SATURDAY, FEB. 15-16

**HORSE & SADDLERY EQUIPMENT**

**SUMNER FARMERS' SUPPLY**

823 Main St., Sumner Phone 3-4784

**BOATS**

5x14 "V" TYPE BOTTOM  
\$200.00 to \$250.00

**PARKLAND LUMBER & HDWE.**  
127TH & PACIFIC AVENUE GR. 5544

**BULLDOZING**

Ken BROWN and Bruce GAMBILL  
1750 9th St. S. W. Puyallup

Basements - Backfills - Driveways  
Clearing - Leveling - Etc.  
Fill Dirt - Gravel - Top Soil

PH. PUYALLUP 5-2452 or 5-5487 ESTIMATES Cheerfully Given

**VAUGHAN'S VALUES**

REPAIR — REMODEL — RE-ROOF  
BUILD A FENCE — ADD A ROOM

Use Our Easy Monthly Payment Plan  
10% Down—Up to 36 Months to Pay

**Vaughan's**  
PACIFIC AVENUE LUMBER COMPANY  
84TH & PACIFIC AVE. PHONE HI. 9515

**ATTENTION**

WAGE EARNERS — BUSINESS MEN — FARMERS

Constantly changing tax laws offer problems that can best be solved by persons who devote their time to studying and working in the highly specialized tax profession. Bring your tax problems to MICHELETTA'S and rest assured that your tax form will be computed correctly. In many cases the amount saved will more than pay for our services.

11 Years in South Tacoma — Plenty of Parking Space

**MICHELETTA'S**  
Accountants — Tax Consultants  
Now located in our new, enlarged office at 6435 South Tacoma Way  
Evenings by Appointment—HI. 4832

**WANTED**

**Part Time Work**

for

**P.L.C. STUDENTS**

**BOYS** **GIRLS**

Yard Work Window Cleaning Wall Cleaning Baby Sitting Fixit Jobs Car Washing Clerking

General Housework Ironing Child Care Baby Sitting Typing Office Work Clerking

**"HIRE A P.L.C. STUDENT"**

Apply to:  
L. O. EKLUND, Dean of Men GR. 8611 or GR. 7477  
MARGARET WICKSTROM, Dean of Women — GR. 8611

**Pacific Lutheran College**

**Prescriptions Prepared Carefully**

Fresh Insulin at Down Town Prices. Pay Phone Bills Here

**Tincher's Pharmacy**  
8239 Park Ave. HI. 3344  
Across street from Fern Hill P. O.

GROUP ONE

**BATTERIES**

**\$7.45**

EXCHANGE

Gas at Competitive Prices

**BOB'S PLACE**  
Airport Road & J St. GR. 3395  
18 Years in Parkland

Mrs. Thos. N. Hibben

**FARMERS INSURANCE GROUP**

Automobile, Truck and Fire Insurance

7820 PACIFIC AVE.  
Open Eves. HA. 9132

**UNLIMITED PARKING**

**Paul & Charles Mellinger**

Services are Distinctive  
... Definitely Different

**Lakewood Montuary**  
LAKWOOD 2167  
Lakewood Center - Tacoma 9, Wash.

**A TACOMA FAVORITE**

**Medosweet DE LUXE ICE CREAM**

**COAL WITHOUT DUST**

Double Screened Aberdeen, King Utah lump, nut, stoker coal. (Money cannot buy better, cleaner coal. Pres-To-Logs are all cut to size to fit any fireplace or furnace—all heat, no ash. Heavy Planer Ends, Core Block Montana, Wyoming Sootless Coals, Cordwood, old growth, 12-16 to 24 Briquets - Coal - Planers, sacked Stove and Diesel Oils

**PACIFIC MUTUAL FUELS, INC.**  
(Est. 100 Years in 1990)  
Fuelphone MA. 1137 401 E. 11th

**A BRAND-NEW '52** can be yours on favorable terms at low, bank rates. See the dealer who displays the NBW *Timeplan* emblem. If your dealer does not have the *Timeplan* franchise, financing may be arranged directly through NBW.

**2% interest on savings...**

**NATIONAL BANK OF WASHINGTON**

MEMBER FEDERAL DEPOSIT INSURANCE CORPORATION MEMBER FEDERAL RESERVE SYSTEM



Photograph from "This Is War!" by David Douglas Duncan

## You Were Going to Give Blood?

**TELL IT TO THIS MARINE!**

What are the chances of a wounded GI coming through? That depends—on blood. Without blood, fatalities would go up sharply. With blood, we save 97 out of every 100 who reach even the most forward hospitals.

So blood will tell. Your blood.

Of course you intend to give blood. The butcher, the banker, the milkman, the mayor... all Americans are "rolling up their sleeves" these days... giving cheerfully, proudly.

But wounds won't wait... right now, your Armed Forces are short 300,000 pints of blood a month. We're dipping into precious reserves... scraping the bottom of a barrel that should be overflowing if our men are to live to fight for democracy!

Make that date today, won't you? And keep it. Don't wait till it's too late. There's no percentage in one American giving his blood the hard way... when you can save it the easy way.

**PLEDGE A PINT TODAY**  
PHONE YOUR PLEDGE TO:  
**GRanite 3833**

## Parkland's Blood Donation Drive Is On

Sponsored by Parkland Business Club with the Support of The Parkland Kiwanis, Parkland Riding Club, Parkland Community Club, American Legion Post 228, V.F.W. Rodger Lunde Post, Altrusa Club, Pacific Lutheran College, Boy Scouts and Girl Scouts, Franklin Pierce School District.

**DATES** FEBRUARY 19, 20 & 21 **TIME** 2:00 to 8:00 P.M. **PLACE** PARKLAND LIGHT & WATER COMPANY

**Parkland Business Club** Paid Adv.



Visiting with Mr. and Mrs. Ernie Senff is Mr. Dale Welton of Challis, Idaho.

Extends Thanks Mrs. Louis Symmons, "March of Dimes" chairman for the Spanaway

district, wishes to thank all who contributed, especially the P-TA, Catholic Ladies Society and Firemen's auxiliary for their generous donations. Cans, \$50.37; checks, \$40.00; school \$98.10; Total \$188.47.

Firemen and Auxiliary Meet Spanaway-Elk Plain Firemen and the Spanaway Firemen's auxiliary met Monday evening, Feb. 4, at 8 p.m.

at the Spanaway fire hall, making plans for the Feb. 29 card party. Chairman will be Mrs. Bill Righetti, assisted by Mesdames Bob Steidel, Louis Symmons, George Schnelle, Ernest Senff, George Stephenson, Slater and Miss Alice Randall.

First Get-Together Tuesday, Feb. 5, was the first get-together for the Secret Pal Sewing

club at the fire hall for a pot luck lunch. Plans are now started for the annual fall bazaar. Attending were Mesdames Bob McCullough, Chet McAtee, Oliver Omat, Louis Symmons, Edward Flannery, Jack Hendricksen, George Stephenson, Bob Rhone, Bob Steidel, Beulah Ballard, Ted O'Neil, Harry White and Don McLellan.

Spanaway P-TA at Convention Spanaway P-TA was well represented at the bi-monthly P-TA convention held at Edgemont school. Attending were Mesdames J. W. Walin, John Newell, Albert Bartle, Franz Holmes, Florence Klink, Faye Cooley, Grace Kintz, Harold Baker, Vera Hensley, Ed George, Evelyn McAtee, Frances O'Dell.

Spanaway Preschool Founders' Day meeting, combined with a Valentine theme, Feb. 6 at the school lunchroom. The officers were dressed in 1890 costumes and introduced past officers as honor guests. Past officers included Mesdames Chet McAtee, Lawrence Beckman and Charles Newman. Mrs. William Fowler entertained with stories of early days in Spanaway. She was appropriately attired in 1890 costume. Mrs. Art Pietz, membership chairman, presented the Gold Oak Leaf award for membership. The above honored guests were presented with lovely carnation corsages. Valentines were exchanged, followed by refreshments. A lovely cake, made by Mr. Stahl, was the center of attraction.

Republican Club to Meet The 26K Republican club will meet Friday evening, Feb. 15, 8 p.m., at the Spanaway school. Dr. S. C. East, veld of PLC will give the Lincoln Day address, followed by movies on life of Lincoln.

Business Men Meet Spanaway Business Men's club will meet Monday evening, Feb. 18, 8 p.m., at the Spanaway fire hall, with newly-elected President George Brewer presiding. John Newell, a member of the Bethel district school board, will show plans for the new Bethel high school. Mr. Richard Fraser will also speak on the school topic. Newly-elected officers for the club are: president, George Brewer; vice-president, Marion Smith; secretary, Harvey Bradshaw; corresponding secretary, Ted Stansbie; treasurer, Chet Modahl.

CLOVER CREEK GRANGE will meet Friday evening in the Grange hall, Grange Master S. J. Carlson presiding. The auxiliary will meet Thursday evening, Feb. 14, with Mrs. Fred Sutter.

Highly Competitive Prices Courteous Service Always South End Plumbing Home of Schorn Paints Near Roy Y Spanaway GR. 8357 Graham 194

DO YOU know the new Norge Automatic Washer is your best buy? Why have an ordinary washer? Your old washer may make your down payment. Call GR. 5689. (Pd. Adv.)

WANTED! Junked Cars & Trucks Call Granite 6264 Or Puyallup 5-2141

LAWN MOWERS MACHINE GROUND Trade In Your Old Mower On a New Model JOHNSON'S SHOP HI. 7112 15 years at 5514 Pacific Avenue

PARKLAND Plumbing & Heating GR. 3710 New Installations Repairing Pumps, Hot Water Heaters, Washers Sluggish Drains Opened Shop located at 770 South 120th

PERMA TILE PLASTIC TILE STYRON PLASTIC 50s sq. ft. Wide Selection of Colors People's Supply 1004 Tacoma Ave. BR. 2030

ARBOR ACRES WHITE ROCKS Egg and Meat Type New Hampshires - Rhode Island Reds Sex Linked Cross (Black Pullets) FOR'S HATCHERY & BREEDING FARM East 84th & Woodland Puyallup 5-5543

IMPORTANT NOTICE

Congratulations and best wishes to Mr. and Mrs. Jack Blossom of Port Angeles, to whom we have sold our motel; likewise to Billy Niesen, Union Oil representative, to whom we have sold our Blue Spruce Service Station. We wish to sincerely thank our vast number of patrons, from far and near, who have favored us with their business at our Blue Spruce enterprise. We feel sure you will be extended the same efficient and courteous service from the new owners, and we hope you will continue to patronize them.

We also wish to state that Mrs. Leonard and myself will continue our Insurance Service . . .

from our home, temporarily, which is just South of the Blue Spruce Motel, or 12815 Pacific Avenue. We hope, within 2 or 3 months, to build a new modern insurance office by Art's Barber Shop, just South of the motel, where we can take care of your every insurance need. In the meantime, we sincerely do hope you will bear with us and make our home your insurance headquarters, until we can get our new office completed. Again, many thanks to all.

THE LEONARDS Our Insurance Number Is Still Granite 7222 Anything In Insurance FORREST LEONARD

Have your Cabinets CUSTOM BUILT No Extra Cost RHONE'S CABINET SHOP 2nd & Pacific, Spanaway Granite 3342

FLETT DAIRY FARM FRESH HOMOGENIZED AND PASTEURIZED MILK AND CREAM ICE CREAM Phone GA 3301

Something for Free? YES! 1. Dress Shoes Shined 2. Work Shoes Oiled 3. Minor Rips Sewn 4. Heel Pads, if needed You get these services FREE with soles and/or heels at Paul's Shoe Repair SPANAWAY Closed Wednesday

**LOW PRICES Every Day**

MIRACLE WHIP, quarts . . . 49c  
PEACHES, 2½ Calirose Freestone 29c

SMALL WHITE—Do Not Cook Up BEANS . . . 2 lbs. 29c  
ADAMS—Large 20 oz. Jar PEANUT BUTTER . . . 59c  
PEAS, Tastewell, 2 cans 25c  
SYRUP, Log Cabin, 24-oz. 49c  
SUNSHINE KRISPY CRACKERS . lb. 28c  
SUNSHINE GUM DROPS . . . bag 28c  
25-LB. PRINT BAG

FLOUR, Shurfine . . . \$1.93  
CHEESE, Windsor Club . 2-lb. 79c

WHITE KING, giant size . 57c  
OLD DUTCH . . . 2 for 23c

ONION SETS . . . 2 lbs. 39c

NEW HOMOGENIZED GAINES DOG MEAL . . . 5-lb. .79  
50-lb. 5.85

GRAPEFRUIT . . . lb. 7c  
NEW CALIF. CABBAGE . . . lb. 7c  
RUTABAGAS . . . lb. 7c

Centennial Feeds — Start Your Chicks Out Right — Centennial Feeds 162nd & Park Ave. Spanaway GR. 8215 FEBRUARY 15 & 16

Pure Ground Beef lb. 63c | Country Style Pork Sausage lb. 43c | Skinless WIENERS lb. 49c

**SPANAWAY MEAT MARKET**  
NEXT DOOR TO HERMAN'S GR. 8215

**ELECTRIC BROODERS**  
FIVE SIZES — 50 to 800 CHICK CAPACITY  
**ELECTRIC INCUBATORS**  
100 AND 300 EGG CAPACITY  
RABBIT FEEDERS and WATER FOUNTS  
GENERAL SHEET METAL WORK

**RAU MANUFACTURING CO.**  
141st & Pacific Avenue GR. 7372

THIS IS NO OTHER PLACE FOR THE BEST in television, buy Point Ohop Resort Sylvania. Call Granite 5689 NOW.

Don't Forget Your **TWELVE BABYCHICKS FREE** (All Reds)

**Thursday, February 14th**  
BRING YOUR OWN CONTAINER  
It Will Pay You to Raise Your Own Chickens  
Delicious Eating — At a Very Low Cost

This Coupon Entitles Bearer to 12 Free Red Chicks

NAME \_\_\_\_\_  
ADDRESS \_\_\_\_\_  
(Redeemable at Rainier Feed Company)

No Obligation — Just Fill Out Coupon and Bring It To  
**RAINIER FEED COMPANY**  
Airport & Canyon Roads Phone GR. 7656

**GOOD FOODS For Good Health**

WESCO 46-OZ. **Tomato JUICE** 4 for 99c  
WESCO unsweetened 46-OZ. **ORANGE JUICE** 4 for 99c

CHEESE FOOD 2-LB. LOAF **VELVEETA** 83c  
Delicious All Ways

CENTENNIAL 25-LB. **FLOUR** 1.99  
Cotton Print Bag

People are talking about... **THESE VALUES**

Duchess - 303 Tin PEAS 9 for 99c  
Nalley's Mayonnaise 32-oz. 66c from Nalley valley  
Morrell's SNACKS 39c A Real Buy

GROUND BEEF . . . lb. 59c  
Good Utility Beef POT ROAST . . . lb. 59c  
SHORT RIBS . . . lb. 35c  
SLICED BACON . . . lb. 27c  
Good Utility T-BONE STEAKS . . . lb. 73c

PRICES EFFECTIVE FEBRUARY 15 & 16

WOOD'S—In Hermetically Sealed Bag LB. **COFFEE** 79c

Alt Heidelberg, Olympia, and Rainier BEER Competitive Prices

Adams 20-oz. Jar PEANUT BUTTER . 49c Creamy or Krunchy  
Valmont Frozen 12-oz. STRAWBERRIES . . 33c  
Libby's Frozen 6-oz. ORANGE JC. 2 for 29c

Kraft SALAD OIL . full qt. 49c | Dennison's 14-oz. Bottle CATSUP . . . . . 15c

**FRUITS and Vegetables**  
Buy By The Bag and Save  
SPUDS . . 50-lb. bag \$1.69  
ORANGES . 5-lb. bag 39c  
GRAPEFRUIT 8-lb. bag 49c

**BARGAIN BASKET**

167th St. & Pacific Avenue—Spanaway Granite 3371  
Handy to the East Gate of McChord Field  
Open Seven Days a Week--9:00 a.m. Till 10:00 p.m.  
We Reserve the Right to Limit Quantities

**PRECISION-BUILT REPLACEMENT ENGINES**

WITH New Motor Guarantee

PARTS USED in our Precision-Built engines are manufactured by Thompson Products and Perfect Circle Corp.—the same parts they supply most of the new car manufacturers and their replacement divisions.

**NEW Valves, Springs, Guides, Pistons, Rings, Cam Bearings, Rod Bearings, Main Bearings, Timing Gears and Timing Chains**

**LOWEST PRICES**  
Priced Far Below the Cost of New Engines

CHEVROLET, 1929 to 1950—*Exchange	\$ 9300	BUICK "40-50", 1937 to 1948—*Exchange	\$18500
STUDE. CHAMP, 1939 to 1946—*Exchange	12200	OLDSMOBILE "8", 1937 to 1947—*Exchange	18500
CHRYSLER-DE SOTO, 1933 to 1948—*Exchange	14500	PONTIAC "8", 1937 to 1947—*Exchange	19000
PONTIAC "6", 1937 to 1947—*Exchange	14500	KAISER-FRAZER, 1948 to 1951—*Exchange	15500
OLDSMOBILE "6", 1937 to 1947—*Exchange	14000	STUDE. "6" COMM., 1937 to 1946—*Exchange	14500

Other Motors Priced Proportionately Low. Prices Include Federal Excise Tax  
\*Exchange Motors Must Be in Rebuildable Condition

**TERMS IF DESIRED**

**YOUR PARTS HEADQUARTERS**

**National auto parts**

• 4001 PACIFIC AVE.  
• FIFE SQUARE  
• 8215 SO. TACOMA WAY

**3 CONVENIENT LOCATIONS**

Phones: Ample Parking Facilities  
• 4001 Pacific Ave.—HI 8423  
• Fife Square—WA, 8709  
• South Tacoma—LA 4453

**HOURS:** 4001 Pacific—8 a. m. to 9 p. m., including Saturday  
Fife Square—9 a. m. to 8 p. m., including Saturday  
8215 So. Tacoma Way—9 a. m. to 9 p. m., including Saturday

**HOME AQUARIUM**  
COMPLETE WITH  
**2 Select Goldfish**  
**GOLDFISH BOWL**

WATER PLANT PEARL CHIPS Only . . . . . **31c**  
(While They Last)

WITH ANY PURCHASE OF \$1.00 OR MORE

**Parkland Pharmacy**  
Airport & Pacific New Bank Corner GR. 8519