

Vikings Regain Southern Division Crown

See Sports
For Details

School Head To Discuss Sewer Need

Dr. Edward Hill, Superintendent of the Franklin Pierce School District, will discuss the need for sewers in the school system at the public information meeting which will be held at 8:00 p.m., Wednesday at the Keithley Junior High School Cafeteria.

The public meeting has been arranged by the Commissioners of the South Suburban Sewer District to acquaint people of the area with the plans to provide a modern, efficient and healthful method of collecting and disposing of sewage.

Other speakers on the program will be Senator George Kupka, Dr. Ernst Kredel, Director of the Pierce County Department of Health, and Dr. Robert Mortvedt, President of Pacific Lutheran University. The program will also include a question and answer period. Every landowner in the greater Parkland area is encouraged to be present.

Sign Vandals Apprehended At Mt. Rainier

LONGMIRE - Two young men who were caught recently, in the act of removing traffic and informational signs within Mount Rainier National Park as well as being in illegal possession of alcoholic beverages.

United States Park Commissioner Clarence Layton found the boys guilty as charged and fined them a total of \$100 and \$25 suspended.

The defacement or theft of signs is a costly annual problem in national parks. The attractive wood routed signs may cost up to \$75 each while standard metal traffic signs often cost \$35. Mount Rainier strives to maintain an informative and attractive sign program without cluttering the natural scene with too many restrictive reminders, Supt. John A. Rutter reported.

Judo Classes To Be Offered

The Bethel Area Recreation Program and the County Park Department will offer judo classes if enough interest is indicated.

Classes are being planned to cover both defensive and sports judo. Henry Trussler, Sr., who is an expert in the field, will teach.

A meeting of those interested is scheduled for 7:30 p.m., November 15 in the Bethel High School Gym. Further information may be obtained by calling Ed Niehl at VI, 7-2144 or VI, 7-2353. A nominal fee will be charged.

Big Brothers In Demand

TACOMA - Screening interviews with prospective Big Brothers are well underway but more applicants are needed announced Henry Weeks, president of the Big Brothers of Tacoma-Pierce County.

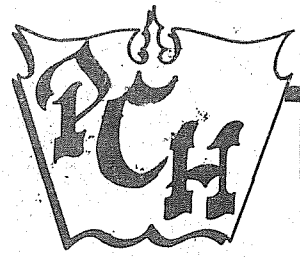
Those wishing to become a Big Brother may obtain informational leaflets from the Tacoma office, 711 Commerce, or by calling BR, 2-6858.

Membership in the program requires payment of \$1 annually. Payment now will cover the remainder of this year plus all of 1967.

Parkland Nurse Gets Scholarship

Alice Armstrong, R.N., 11009 Pacific Avenue, was one of 15 nurses from Pierce County awarded a scholarship to attend the Alderbrook Inn "Rendezvous in Nursing" held November 6-9.

Miss Armstrong is a graduate of Pacific Lutheran University and is an employee of Good Samaritan Hospital. She is the daughter of Mr. and Mrs. Lawrence Armstrong of Parkland.



Pierce County HERALD

Vol. 22, No. 10

and Times Journal

November 9, 1966

County Police Beat

Burglars, Vandals Hit Four Schools In County

BY EM MATSON

Four county schools were burglarized last week with losses ranging from agricultural shop tools to butner.

The thieves also committed extensive acts of vandalism in some of the schools.

During a raid on Clover Creek Elementary School, 16715-36th Ave. E., the burglars stole about \$39 in foodstuffs, broke into vending machines, then turned to vandalism, Sheriff's Deputy Paul Mock reported.

After ransacking offices and strewing educational film down the galls, suspects poured bottles of hydrogen peroxide, boric acid, and rubbing alcohol over the principal's desk, Mock stated. Candy and crackers were spread about the teacher's lounge, he said. Clover Creek School officials listed 60 pounds of butter in federal wrappers and 30 pounds of hamburger as the known loss. Amount removed from four vending machines in the school could not be determined at the time of the investigation.

In Bethel High School offices Deputy Thomas Lawrence found that burglars had emptied drawers and files on the floor to build up a carpet of paper six inches deep. Reported losses were a Rollei-flex 351S camera complete with attachments, and \$71.50 in cash. The camera was the property of Vice - Principal Clarence Knaggs.

After ransacking Bethel Junior High School offices, thieves broke into an apple vending machine in the school multipurpose room. The machine is owned by the Genske Vending Service, 7512 East Wilkstone Road, and the amount of coins stolen has not yet been determined, deputies stated.

Eatonville High School was entered by burglars recently and property valued at \$700 was stolen from the school's agriculture shop, Supt. Hans Olson told deputies. Stolen were numerous tools, paint, stamps, and first aid equipment.

MIDLAND - A pair of Midland men was charged with rustling a calf from a Yelm farm and slaughtering the animal behind Thun Field, Detective Russell J. Harford reported last week.

Thurston County officials, when advised of the incident, recommended the rustlers be tried in Pierce County as Pierce County Sheriff's Deputies made the investigation and apprehension.

The suspects admitted taking the calf from the Ball Hill

Fife Woman To Fill GSA Council Term

Mrs. C.W. Ehret of Fife was elected to complete the unexpired term of president of the Mt. Tacoma Girl Scout Council Rainier View Association at their recent meeting.

The group accepted the resignation of former president Mrs. Clayton Peterson of Parkland. Also elected was secretary Mrs. Robert Shoemaker.

During the session, those attending heard public relations chairman for the Mt. Tacoma Council Mrs. Floyd Raver of Gig Harbor speak on "Friends Around Town".

All adult Girl Scouts and delegates are reminded of Tuesday's meeting at the New Yorker. The business session will start at 10 a.m.

area of Thurston County, and told deputies the meat was stored in a Midland frozen food locker. The meat will be sent to Remann Hall, and restitution asked for the victim, Woody Woodard of Yelm, Harford stated.

ORTING - A total of \$1,090.80 in merchandise was stolen during a pair of recent Orting burglaries, Orting Police Chief G.W. Jones reported last week.

Victims were the Washington State Liquor Store and Ace Radio & TV, 112 East Washington Ave. Stolen property included a 19 inch Motorola TV set and \$812.80 in assorted liquors.

Eight cases containing 4/5 bottles of whiskey and gin, two cases of whiskey pints, ten 4/5 of liqueurs, and a half gallon bottle of bourbon, were among the losses reported by state auditors.

PARKLAND - Sharon Rorem, 12310 Interlaaken Drive, parked her car on the PLU Pool parking lot for thirty minutes and when she returned, her purse had been stolen, Deputy Robert J. Crookshank reported last week.

The victim left her purse under the car seat, Crookshank stated. In addition to valuable personal papers, it contained a \$30 pair of glasses, \$3 in cash, about \$10 in miscellaneous articles, and a billfold valued at \$5.

PUYALLUP - A \$1,300 cash register stolen during the Oct. 21 burglary of Ron's Shell Service was recovered last week as the result of the apprehension of 5 valley area teenagers in Bellingham. The arrests brought to an end a string of crimes committed by the quintet, whose ages range from 15 to 19.

Following up on a statement issued by one of the youths, officers located the safe under a mound of hay on an abandoned farm near Clark's Creek. The door had been pried off, and police estimated it would cost about \$140 to repair. Over \$240 was reported in the safe at the time it was stolen.

Two of the older boys, ages 18 and 19, will be tried on adult status, police disclosed.

PARKLAND - Three night-duty firemen thwarted a nearly morning burglary attempt at the Parkland Fire Station last week by capturing a 40-year old man parked on the station lot with two guns taken from the fire hall, deputies reported last Friday.

Awakened by a door chime warning device, the firemen discovered a pair of guns belonging to Fireman Wes Gilbertson were missing. Running outside, they found a strange car on the parking lot and investigated.

The suspect denied stealing the guns, but could not account as to how they got into his car. He was taken into custody by sheriff's deputies and booked into the county jail.

Gilbertson, who planned to go hunting the following day, was assisted in the capture by Lt. Robert LaForce and John Curtis.

Methodists Plan Stewardship For Remodeling

Members and friends of Parkland Methodist Church are conducting a stewardship crusade to provide financial support for remodeling and adding to the present building, Rev. Arthur D. Campbell disclosed last week.



Dr. Elmer Searls

Dr Searls Headed East To Meetings

PUYALLUP - Dr. Elmer Searls, economist with the Co-operative Extension Service Center in Puyallup, has been invited to take part in several meetings at Syracuse, N.Y., and Washington, D.C.

The first session, to which he flew yesterday, has been called by the Eastern Milk Producers Cooperative Association. He will talk about the Class I Base Plan in the Puget Sound market and why local producers feel there is a need for such a plan.

Dr. Searls has been working with producers for the past year to inform them how they might make use of new legislation.

Through actions taken by Puget Sound producers, a USDA hearing on the matter was held in August and testimony is now being reviewed by USDA marketing specialists prior to some far-reaching decisions affecting milk marketing.

The Puget Sound market is the first among 75 in the U.S. to have held a hearing of this kind, and other markets, such as the one extending an invitation to Dr. Searls, are anxious to know details.

From New York, Dr. Searls will conduct with colleagues at Cornell University and then go to Washington for the 44th annual Outlook Conference. He's to be joined there by Dr. Bruce L. Brooks, Pullman, another WSA agricultural economist, as official representatives to this USDA meeting.

The outlook for all major agricultural commodities during the next year will be surveyed and the group will delve into foreign trade, labor in agriculture and similar projects as well.

Social Security 1,800 More In County Eligible For Benefits

Even though never employed under social security, an estimated 1800 residents of Pierce County now 72 or over, will be eligible starting with October 1966, for \$35 monthly cash benefits, according to Jack Chastain, district manager.

Special questionnaires have been mailed to all the eligible persons who have signed up for hospital insurance under medicare, but anyone now 72 who failed to apply for medicare is advised to get in touch with his social security office. So should those who did sign up for medicare, who have not yet heard from their social security office.

Unlike other benefit claims, these special benefits under a 1966 Amendment to the Social Security Act will have no retroactivity. Payments will begin in the month the application is received in the Social Security office, but not before Oct-

Experts To Propose Drainage Solutions

PUYALLUP - Proposed solutions to the drainage problems throughout Pierce County will be presented by a panel of experts at an 8 p.m. public meeting next Wednesday at the Allied Arts Building in Tacoma.

The meeting has been arranged by the Tacoma-Pierce County League of Women Voters announced Puyallup president Mrs. Gilbert Price, Jr.

The League has invited Pierce County-Valley Cities planning study consultant Walter Issacs, Floyd Hastings of the Flood Control Division of the Washington State Conservation Department and Pierce County engineer Keith Jones to be on the panel.

In addition to their proposed solutions to drainage problems, panel members have been asked to discuss proposed enabling legislation to be introduced to the Legislature in January.

"There are eight drainage and two drainage - improve-

ment districts in Pierce County that were formed 20 to 50 years ago," outlined League resource chairman Mrs. Geo. Gilman. "The ability of these districts to meet current needs has been studied by the League over the past three years."

All drainage and drainage-improvement district commissioners, County Commissioners and members of the County Planning Commission have been invited to the discussion.

4-H Operates Forest Plots For Projects

Cavalier 4-H Club of Midland recently took advantage of the opportunity to manage its own forest plots on the 4-H forest tract near Bonney Lake.

Eleven members of the Cavaliers braved rainy weather October 29 to measure and mark out their 1 1/2-acre plots for their own use as natural resources projects.

These plots are to be on a 150-acre forest tract which was deeded to Washington State University for 4-H use in the early 1940's. The area contains primarily young Douglas fir ranging from Christmas tree size to about 30 year old timber.

4-H clubs with forest plots will use their areas for projects such as tree planting, Christmas tree culture, timber stand improvement, general plant and nature study, and other outdoor activities.

Bell Planning Roy-Graham Improvements

Additional switching equipment to handle calls from Roy to Graham and Tacoma exchanges is part of the \$4 million improvement package approved at the October board meeting of Pacific Northwest Bell.

Some \$11,400 will be spent on the switching equipment. A larger item, \$230,000, will be spent in Tacoma for various jobs, including 144 additional channels between Tacoma and Fort Lewis and more capacity for the Juniper-8 switching center.

The improvement package included major projects in Seattle, Kent and Sea-Tac areas.

Waller 4-H Starts 21st Club Year

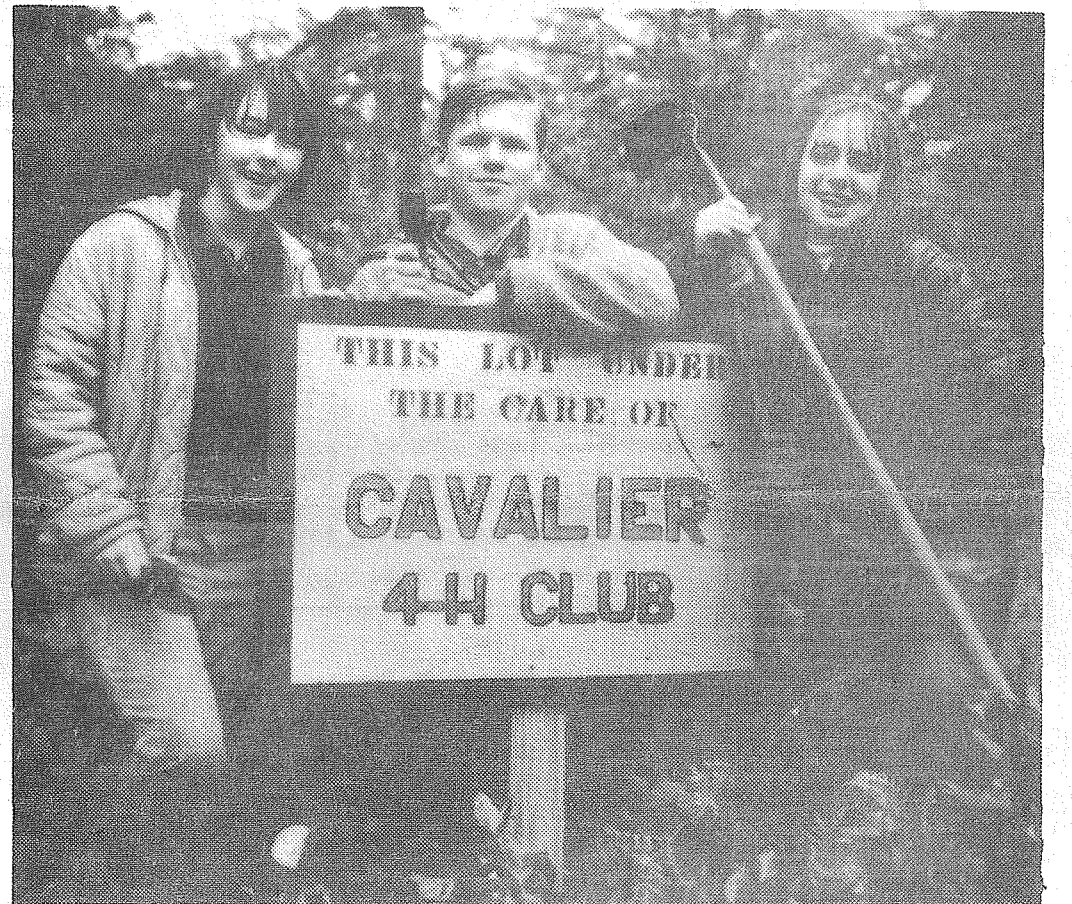
WALLER ROAD - Members of the Waller Road 4-H Boys Club began their 21st year of club activities in the community by electing Dave Quenell as president.

Others elected were vice president Brandt Olson, secretary Don Kirkwood and treasurer Andy McCown.

Leaders for the Waller Road Grange sponsored group are Mrs. Rudolph Geise, Dave Quenell and Nick McCown. Recently joining the club were Scot Nyegaard, Gordon and Gary Fredricks, David Larson, Mike Engels, Kenneth and Steven Myers and Gary Orris.



PACIFIC TO POLK STREET freeway paving operation approaches the Portland Avenue railroad bridge (background) as Lige-Dickson construction workers work in the shadow of the Franklin Pierce School District overpass. The new railroad bridge will be put into operation upon completion of laying track, officials stated. Before paving can progress, a fill blocking the new freeway must be removed.



CAVALIERS Beverly Baskett, Donald Spittler, and Carol Braithwaite, (left to right) of the Cavalier 4-H Club from Midland stand happily in a drenching rain after help stake out their club's forest plot at the Pierce county 4-H area near Bonney Lake.

Coronary Care Class



ATTENDING THE FIRST course for nurses assigned to coronary care units sponsored by the Washington State Heart Association are two Pierce County nurses Helen Miller (left) of Puyallup's Good Samaritan and Ruth Heaton (right) of Lakewood General Hospital. Nancy White of Seattle's Doctors' Hospital (center) instructs the two in closed chest resuscitation. Nurses attending the course are learning the use of electronic monitoring equipment, "defibrillators" and the "crash cart" of emergency equipment for coronary patients. -- Jack H. Johnson Photo

Pierce County HERALD

and Times-Journal

Publishers:

Frank Franich, John VanDevanter, Walt Tupper
Puyallup Office 117 W. Meeker
THosnwall 5-7511 P.O. Box 517
Parkland Office 14620 Pacific Avenue
LEnox 7-0223 P.O. Box 2116

Editorial Manager John VanDevanter
Advertising Managers Puyallup — Frank Franich
Parkland — Bill Huntington
News Editors Puyallup — Phyllis Wilson
Parkland — Em Matson

Sports Editor Walt Tupper
Circulation Manager Chuck Gambriel

Subscription (Outside Distribution Area) \$4.00 per year
Foreign Subscriptions Rates on Request

Qualified as a Legal Publication under Chapter 213
of the Legislative Acts of the 1941 Regular Session of the
State of Washington.

Delivered free by U.S. Mail, or carriers, to all homes
in the trade territory.



Vol. 22, No. 10 November 9, 1966

Spring Date



PLANNING AN EARLY SPRING wedding are Patricia Bosworth and James Rich, both of Tacoma, whose engagement was announced recently by her mother Mrs. Helen Bosworth. The bride elect was graduated from Puyallup High School and is employed at Citizens State Bank. The future bridegroom, the son of Mr. and Mrs. Harry Rich, was graduated from Franklin Pierce High School and is attending Olympic College. -- Foshaug

VAUGHAN'S VALUES
PREPARE FOR WINTER
INSULATION**WEATHERSTRIPPING**STORM DOORS

INSULATION ZONOLITE	Per Bag	\$1.29
WEATHERSTRIPPING ALUMINUM		\$1.95
THRESHOLDS "WEATHER CHIEF"		\$2.29
STORM DOORS		\$31.95

VAUGHAN'S PACIFIC LUMBER INC.
84th & PACIFIC AVENUE GREENFIELD 4-9515

Coming Events

A HARVEST TIME SMORGASBORD will be held noon to 5 p.m., November 13 at the Elk Plain Grange on the Mountain Highway. Donations will be adults \$1.50 and children .75.

FALL RUMMAGE SALE from 9 a.m. to 5 p.m., Tuesday through next Friday, November 18, at the Our Lady Queen of Heaven society hall, 14601 A Street, Spanaway, is being prepared by the Altar Society. Many clothing items and household goods will be available. Anyone having donations for the sale should bring them to the parish hall.

FALL HAM DINNER sponsored by Faith Assembly #145 will be held Sunday, November 13, from 12:30 to 4:30 p.m., in the Parkland Masonic Temple. There will be a gift table and Rainbow candy for sale.

PARKLAND MOOSE CHARTER CLASS will sponsor a dance 9-12 p.m., Saturday November 12 at Sunshine Hall, 10665 South Yakima. Music will be provided by the Clarence Leingang Orchestra thru the courtesy of Music Performance Trust Fund of the Recording Industries and Tacoma Local 117, American Federation of Musicians. Admission is free.

CLOVER CREEK GRANGE will hold a party 8 p.m., November 12 at the Clover Creek Grange Hall. Refreshments will be served.

MITCHELL TRIO, folksingers, will give a concert at Pacific Lutheran University Friday, Nov. 18, at 8:15 p.m., in Memorial Gymnasium, sponsored by the PLU Expression Series.

BILL HUNTINGTON'S

HOT LINE

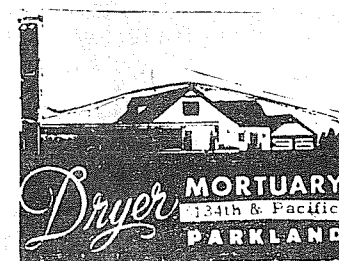


We have some new tenants in the old Wagner Real Estate Building John Tucker and Francis G. Phelps. Both men are Air Force veterans and have an excellent understanding of the service man's insurance problems. And before I go any further I best let you know that they are agents for FARMERS INSURANCE IN our area I must say John is very excited about the new office and he loves it here in Parkland I think you'll really like him if you don't already know him, he likes to meet people so stop in at their office, 12607 Pacific Avenue and give them a big friendly Parkland Howdy.

I was talking to Dorothy Righetti of South End Hardware the other day and she was telling me about the successful outing of her husband Bill on his recent moose hunt to Canada. I asked her to please write down the names of those in the party so I could tell you all about the trip. Several days later I find this worn piece of paper in my pocket that tells of a herd of moose (or is it MEESSE?) each coming home with a kill would you believe The truth is that Bill Righetti, Emerson Tarpenning, and Verl Augg had a most successful moose hunting trip each coming home with a kill

Must apologize to Lizz Rediske for the picture of her in my column last week. It was a little dark the picture was the only one available and it was a color print which just doesn't reproduce in our process of printing "CHIEF" Rediske brought the picture in, I bet he knew this all the time

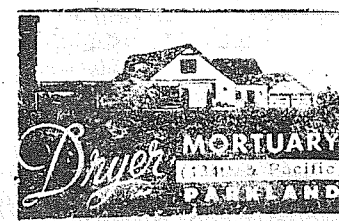
IT WON'T BE LONG NOW Tomhoff's Furniture is just about ready for its GRAND OPENING be sure and keep an eye on the PIERCE COUNTY HERALD I had a tour of their new store recently, in fact it wasn't quite completed yet, but boy is it beautiful. The entire main floor is carpeted in a plush green with a tile aisle (tile-aisle . . . my poem for the week), with two carpeted offices, one in a deep royal purple outline with white carpet and the other with red carpet. Then there is the stereo room which is done in blue all this is so attractive that it's hard to explain, so I would suggest you make a point to visit Tomhoffs during their grand opening.



The Country Parson



"A fellow's religion isn't much good if it has taught him nothing except how to pray in a pious voice."
Copyright, by Frank A. Clark



County

TACOMA GENERAL
Mr. and Mrs. Donald R. Stewart, 418-8th Ave. N.E., Puyallup, girl, Nov. 2.

Mr. and Mrs. R. David Drowley, 1010 East 138th, Tacoma, boy, Nov. 2.

Mr. and Mrs. Dale A. Zufelt, 1305 8th Ave. N.W., Puyallup, boy, Nov. 2.

Mr. and Mrs. Roy E. Martin, 10666 South D Street, Tacoma, boy, Nov. 2.

Mr. and Mrs. Delmer K. Strickland, 916 South 110th, Tacoma, boy, Nov. 2.

Mr. and Mrs. Thomas H. Hammett, 6820 51st Ave. E., Puyallup, girl, Nov. 1.

Mr. and Mrs. Marvin R. Haws, 3264 South 70th, Tacoma, girl, Nov. 1.

Mr. and Mrs. John P. Dolan, 101 South 138th, Parkland, boy, Nov. 1.

Mr. and Mrs. Larry L. Fleming, 855 South 136th, Parkland, girl, Oct. 31.

Mr. and Mrs. Paul T. Fischlin, 816 70th Ave. E., Puyallup, boy, Oct. 31.

LAKEWOOD GENERAL
Mr. and Mrs. James M. Pitzer, Rt. 3, Box 208A, Graham, boy, November 2.

Mr. and Mrs. Warren Jaech, 7368 South Alaska, Tacoma, girl, November 1.

Mr. and Mrs. John N. Borgert, 12419 Lakelome, Tacoma, girl, October 30.

Mr. and Mrs. James E. Couture, 10606 Davison Road, Tacoma, boy, Oct. 28.

GOOD SAMARITAN
Mr. and Mrs. John Calhoun, 1515 South 116, Tacoma, boy, Nov. 2.

Mr. and Mrs. Ronald Phair, 5809 North Levee Road, Fife, boy, Nov. 1.

PARKLAND DEVELOPMENT Association will meet 8 p.m., November 14, at the Parkland Light and Water Building. George Prescott, secretary to the Olympia Chamber of Commerce, will discuss the topic, "It's Going To Be Great".

PARKLAND JAYCEE JAYNES will hold their regular meeting at Richards, Thursday, Nov. 10. Dinner will be served at 7 p.m., and the meeting will be at 8 p.m. Reports will be presented on Remann Hall and Laboure Nursing Home. A demonstration on Christmas decorating will be given by Mrs. Galloway and Mrs. Anderson.

PARKLAND LEGION POST 228 Auxiliary will meet 8 p.m., November 14 at Sunshine Hall.

PARKLAND BUSINESS Club will hold a dinner meeting 7 p.m., Wednesday, Nov. 16 at Johnny's Ranch, 10203 Sales Road. Election of officers for the coming year will be held. Free turkeys will be awarded as door prizes. Members are reminded to display flags Nov. 11.

PARKLAND AREA ALTRUSA CLUB will meet Thursday evening, November 10, for dinner at Ceccanti's Restaurant. Miss Dorothy Hollingsworth, Twelfth District Governor, will be special guest.

HANDI-MAIDS HOME MAKERS Club will meet at 10 a.m., next Wednesday in the home of Mrs. Ashley Butler, 11018

Births

Mr. and Mrs. Donald Drew, 319 2nd Street N.E., #4, Puyallup, girl, Nov. 1.

Mr. and Mrs. Larry Capps, 4633 141st St. E., TCOMA, BOY, Oct. 31.

Mr. and Mrs. Timothy Adams, 1207 Juniper, Milton, girl, Oct. 31.

Mr. and Mrs. Norval Powers, General Delivery, Milton, girl, Oct. 31.

Mr. and Mrs. Herbert LeTavec, 10901 128th St. East, Puyallup, boy, Oct. 30.

Mr. and Mrs. William Geehan, 1130 East 63rd, Tacoma, girl, Oct. 29.

Mr. and Mrs. John Mahon, 2917 Tyee Road N.W., Puyallup, boy, Oct. 27.

Mr. and Mrs. David Quinn, 15222 22nd Ave. E., Tacoma, girl, Oct. 27.

Mr. and Mrs. Bernard Espe, 506 10th Street S.E., Puyallup, girl, Oct. 27.

Mr. and Mrs. Jimmy Crain, 9221 40th Ave. E., Tacoma, boy, Oct. 26.

Mr. and Mrs. Duane Goddard, 603 3rd Ave. N.W., Puyallup, boy, Oct. 25.

TACOMA GENERAL
Mr. and Mrs. Robert H. Woodworth, 761 South 137th St., Tacoma, girl, Oct. 30.

Mr. and Mrs. James L. Collins, P.O. Box 141, Eatonville, boy, Oct. 30.

Mr. and Mrs. Robert Kravsky, 10209 Barnes Lane, Tacoma, boy, Oct. 29.

Mr. and Mrs. Gerald T. Sater, 8425 Pacific Hwy. E., Tacoma, boy, Oct. 29.

Mr. and Mrs. Marvin C. Hoiseth, 4616 Granville N.E., Tacoma, boy, Oct. 28.

Club Calendar

Canyon Road E. Anyone interested is invited to attend. Please bring a sack lunch.

RURAL SUBURBAN COUNCIL will meet 8 p.m., Tuesday at Waller Road Grange Hall to propose educational programs for the coming year.

SUMMIT NURSERY SCHOOL mothers will meet at 8 p.m., Tuesday in the Canyon Road Community Hall to hear executive director of Mt. Tacoma Girl Scout Council Lucy McAssee speak on the Scouting program. With her will be Puyallup Girl Scout Linda Lewis who attended an international conference in Portland last summer. A question and answer period will follow. Slides will also be shown by Mrs. Denzel Cline. Those attending are asked to bring a holiday idea.

Librarians To Attend Co. Workshop

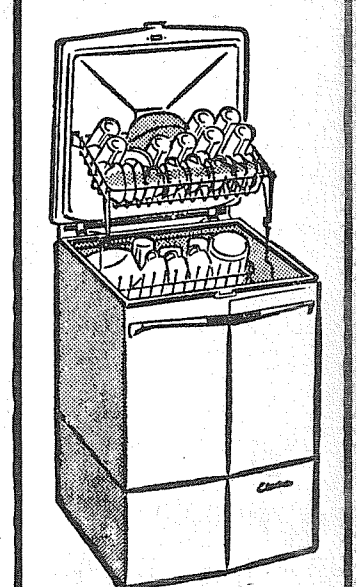
Librarians for county community libraries will attend workshop for in-service training during November, Mrs. Louise E. Morrison announced last week.

The sessions will emphasize methods and materials and will be held at library headquarters, 201 St. Helens Avenue.

Mrs. Morrison is coordinator of adult services.

Special Value

THE WONDERFUL KitchenAid TOP-LOADING PORTABLE DISHWASHER



MODEL KDE-5
Porcelain enamel inside and out
White or shaded copper tone
Automatic-Lift Top Rack
No installation needed
Here's a budget-priced portable dishwasher with the basic features and performance of every KitchenAid dishwasher. Advantages like:
■ 4-Way Hydro Sweep wash
■ Flo-Thru drying
■ Big, versatile capacity.

ONLY \$229⁹⁵ per mo.

KitchenAid DISHWASHERS

ARNOLD'S APPLIANCECENTERS

TWO LOCATIONS
Puyallup Tacoma
210 No. Meridian 5303 E. 112th
TH 5-0596 LE 1-2825

THANK YOU!

I am sincerely grateful for the vote of confidence accorded me at the polls on November 8, and will do my best to merit that confidence during the next four years.

DON PERRY

Pierce County Clerk
(Democrat)

YOUR SAVINGS are now INSURED to \$15,000 at Citizens

It's good news to savers. Congress has authorized an increase to \$15,000 on insured savings accounts.

Good news, too, for corporations, clubs, associations, unions and fraternal organizations.

Now everyone can save more at Citizens State Bank, with the same assurance of safety.



Citizens STATE BANK

★ MAIN OFFICE PUYALLUP
★ EAST SUMMER OFFICE
★ SUMMIT VIEW OFFICE
★ EDGEWOOD-MILTON OFFICE

YOU'RE AMONG FRIENDS AT

GRAND OPENING OPAL'S GIFT SHOP

16607 PACIFIC AVE.

FRIDAY NOV. 11th

EXCLUSIVE Gift Items

★ CRYSTAL
★ COPPER
★ BRASS
★ WOOD

To Benefit Hospital

The Pacific Lutheran University Concert Band will give its third annual "Concert for Youth" Sunday at 3:00 p.m. in Eastvold Chapel auditorium, b. Sponsored annually by the Parkland Orthopedic Guild, the program is designed for children and parents. Proceeds to the Mary Bridge Children's Hospital in Tacoma.

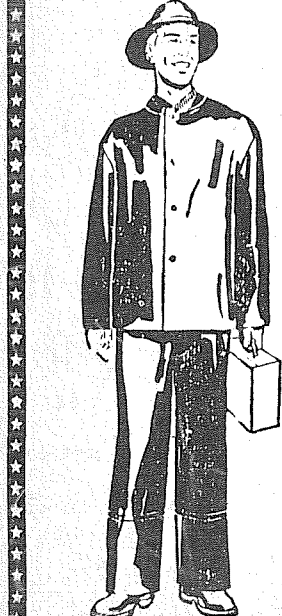
Visits Graham Home

GRAHAM - Dr. Edward Voss, who recently was graduated from the Palmer College of Chiropractic in Davenport, Iowa, and his wife and son are visiting his parents and preparing to open an office in the area.

Dr. Voss, who was graduated from Bethel High School and attended Yakima Junior College, interned at the Palmer Chiropractic Clinic.

Firstbank Card
welcome here

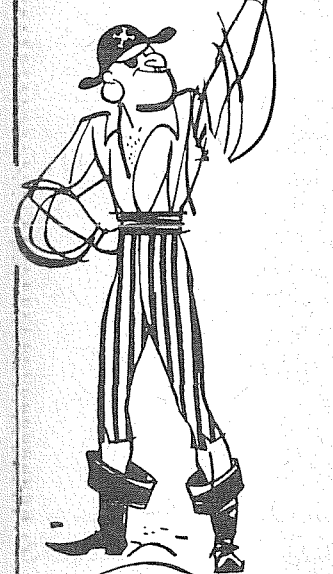
Shop Seymour's
Each Day 9 to 9 P.M.
Sundays 10 to 6



Large Selection of RAINWEAR
3.99 to 12.99 each
Husky work jackets, pants, etc., in olive drab or yellow! They're waterproof—by U.S. Rubber. All sizes!

SEYMOUR'S
9714 PACIFIC AVE.
Free Front-Door Parking!

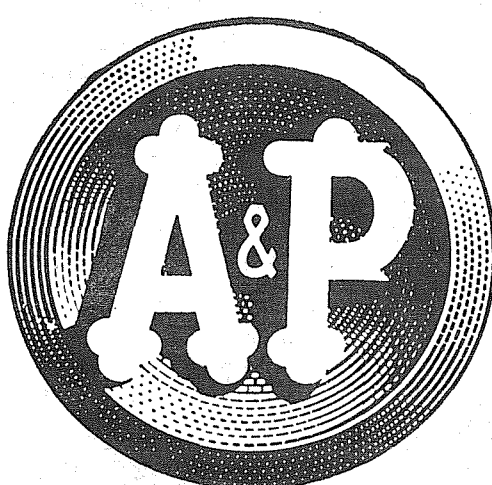
AHOY LASSIE



THIS IS YOUR LAST CHANCE TO SAVE EVERYTHING IN MY SHOP GOES AT COST....

"My loss is your gain!"
My shop is for sale for fixtures and inventory.... contact Peggy at LE 7-5317

PEGGY K APPAREL
406 Garfield
Parkland LE 7-5317



PINK SALMON
Cold Stream - A&P's Own

Alaska
1966 New Pack
1 LB.
TIN

67¢

U & I SUGAR

Pure Granulated
10 Lb. Bag

89¢

Chili Con Carne

Nalley's -Regular
or Hot
15 1/2 oz. Tins

4/99¢

APPLESAUCE

A&P's Own
Grade A
1 Lb. Tins

8/\$1

Fresh Produce!

Florida - White
GRAPEFRUIT 4/45¢

Golden Ripe
BANANAS Lb. 10¢

California Grown
CARROTS 1 Lb. Cello 10¢

California Grown ... Large Clusters ... Sweet
EMPEROR GRAPES lb. 17¢

California Grown ... Large Bunches ... **RADISHES** or
GREEN ONIONS 2/15¢

POTATOES Washington U. S. No. 1 GEM 10-lb. cello 49¢

Frozen Foods!

GREEN BEANS
A&P's - Grade A Regular or French 5 9-oz. Pkgs. 99¢

STRAWBERRIES
A&P's - Grade A - Sliced Sugar Added 3 1-lb. Pkgs. 1.00

FROZEN PEAS
A&P's Own Grade A 4 10-oz. Pkgs. 59¢

A&P's Frozen - Florida - Like Fresh - Grade A - 6 Fl. Oz. Tin
ORANGE JUICE 6 Pack 1.29

Dairy Values!

COTTAGE CHEESE
A&P's Own - Fresh - Creamed Large or Small Curd
1-lb. Cup 25¢ | 2-lb. Cup 49¢

SHARP CHEESE
A&P's Own Cheddar Aged lb. 89¢
MARGARINE
Mazola Corn Oil 1-lb. Pkg. 39¢

U. S. "CHOICE"

BEEF SALE

A&P Gives You More Eat In The Meat—Yes! A&P's Cutting Methods, Preparation and Trim Give You More Edible Meat For The Money Spent At A&P—Inexpensive Fat, Not Natural To a Cut, Is Never Tied To a Roast—All Purchases At A&P Carry a Money-Back Guarantee IF You Are Not Completely Satisfied For Any Reason. Yes, A&P gives you more for your money

CHUCK STEAK

U.S. "Choice" Beef-Blade And 7-Bone Cut lb. **45¢**

ROUND STEAK

U.S. "Choice" Beef-Full Cut Family Size lb. **79¢**

U.S. "Choice" Beef - Full Cut - Family Size Cut From Fine Quality Beef - Specially Selected
SIRLOIN STEAK lb. 95¢

U.S. "Choice" Beef Steak - TAILLESS - Well Trimmed For Quality & Value - Tender
PORTERHOUSE lb. 1.29

U.S. "Choice" Beef - BONELESS BOTTOM - If You Like Swiss Steak, Don't Miss This Steak
ROUND STEAK lb. 89¢

You'll Heartily Enjoy The High Quality & Fresh All Beef - Flavor of "Super-Right" Quality Ground Chuck
GROUND CHUCK lb. 69¢

U.S. "Choice" Beef - Boneless - All Meat For A Quick - Fix Meal - Ready To Please
CUBED STEAK lb. 1.09

Super-Right Quality - Fresh - Unseasoned Approximately 50% Beef, 25% Veal & 25% Pork
MEAT LOAF lb. 69¢

Super-Right Top Quality Beef - Ideal For Low Fat Diets - Freshly Ground Many Times A Day
GROUND ROUND lb. 89¢

BONELESS BROILING STEAKS

TOP SIRLOIN U.S. "Choice" Beef Steak, lb. 1.39

NEW YORK U.S. "Choice" Beef Strip lb. 1.79

RIB EYE U.S. "Choice" Beef Steak lb. 1.69

U.S. "Choice" Beef Steak—TAILLESS—Flavor Perfect Value Priced Fine Quality Beef
T-BONES lb. 1.19

U.S. "Choice" Beef Boneless Steak - Our Round Steaks Are Carefully Selected From Grain-Fed Beef
TOP ROUND lb. 98¢

U.S. "Choice" Beef - Thick-First Cut of Top Round Broil & Slice Thin For A New Taste Treat
LONDON BROIL lb. 1.09

U.S. "Choice" Beef - Boneless Rolled Oven Roast A Juicy & Fine Flavored Roast—NO FAT ADDED
SIRLOIN TIP lb. 98¢

U.S. "Choice" Beef - BONE-IN - Well Trimmed Truly Tender & Brimming With Juices
RUMP ROAST lb. 89¢

RIB STEAK

BACON
SLICED

Super-Right - A&P's Own
First & Finest Quality lb. **69¢**
(2-Lb. Thick Sliced—Pkg. 1.35)

U.S. "Choice" Beef - Short Cut lb. **98¢**

SUPER-RIGHT SLICED MEATS

BOLOGNA Sliced 8-oz. Pkg. 39¢

SALAMI Sliced 8-oz. Pkg. 39¢

COOKED HAM Sliced 6-oz. Pkg. 69¢

SEAFOOD SPECIALS

OYSTERS Fresh Medium, 10-oz. 79¢

SNAPPER Fresh Red Fillets, lb. 39¢

CRAB MEAT Frozen King, 6-oz. 59¢

SALMON Fresh Piece lb. 69¢

Grocery Values To Go Buy!

MILK
White House - EVAPORATED
2 14 1/2-oz. Tins 25¢
A&P's Own - Equal to The Best

PINEAPPLE Dole's—Chunk Crushed or Tidbits Mix 'N Match 4 13 1/2-oz. Tins 1.00

PURPLE PLUMS A&P's Own Grade A 3 1lb. 14oz. Tins 79¢

dexola A&P's Pure Vegetable Oil Equal to the Best 1 1/2-Pint Btl. 49¢

APPLE PIE Baked Fresh Daily By Van de Kamp's 8" Pie 69¢

BROWN SUGAR
C&H or U&I Brown or Powdered 1-lb. Pkg. 15¢

POTATO CHIPS
Pixie - Quality Guaranteed By A&P—3 Pack 10 1/2-oz. Ctn. 49¢

TOMATO KETCHUP Ann Page A&P's Own 14-oz. Btl. 18¢

PORK & BEANS Van Camp's (Ea. .30c) 3 1-lb. 15-oz. Tins 89¢

V-8 JUICE Vegetable 1 Qt. 14 Fl. Oz. 39¢

CAKE MIXES Ann Page A&P's Own 4 Pkgs. 99¢

SUNSHINE RINSO Includes 15c Off Deal 3-lb. 7-oz. Pkg. 59¢

A&P COFFEE Vacuum Pack Percolator or Drip 2-lb. Tin 1.23

CHOP SUEY Chun King Beef Style 41-oz. Size 99¢

RICE A-RONI Golden Grain Beef or Chicken 3 8-oz. Pkgs. 1.00



COOKIES
JANE PARKER - A&P's Own Assorted Sandwich Cremes

3 1 1/2-lb. Pkgs. 1.00

Powdered Detergent - Whiter Clothes
COLD POWER 5-lb. 4-oz. Pkg. 1.45

AJAX - Includes 2c Off Deal
CLEANSER 2 14-oz. Size 31¢

DuPont - 2 MW Size - Wet Pack
SPONGES Each 29¢

Instant Suds - For Automatic Washers
LUX LIQUID 32-oz. Size 79¢

Condensed - Includes 10c Off Deal
BLUE ALL 3-lb. 1-oz. Pkg. 89¢

Nabisco - Ideal Lunch Box Treat - Fresh
FIG NEWTONS 16-oz. Pkg. 39¢

Sunshine Biscuit - Crisp & Fresh - Flavorful
HI HO CRACKERS 13-oz. Pkg. 39¢

Star Kist - Chunk Style - For Sandwiches
TUNA FISH 6 1/2-oz. Tin 37¢

Assorted Colors & White - Soft
ZEE TISSUE Pkg. of 41¢

Regular or Drip Grind - Aged Coffee Beans
YUBAN COFFEE 1-lb. Tin 91¢

All Prices Effective
Thursday thru
Saturday, Nov. 12th
Equal Opportunity Employer

THERE IS AN A&P STORE NEAR YOU
TACOMA A&P 9201 PACIFIC AVE.
OPEN
MONDAY THRU SATURDAY - 9 AM to 9 PM.
SUNDAY - 10 AM to 6 PM.

SKI SPECIAL

SKI SCHOOL SIGNUP UNDERWAY



Add some fun to your skiing this year with the Crystal Mountain Ski School. This winter, Director Jack Nagel will introduce a closed-circuit "instant replay" television system for many classes to watch themselves ski. Registration is underway for 12-session weekend programs beginning Dec. 3 and 4, and 8-session classes beginning Jan. 7 and 8. (Chaperoned bus transportation available.) And there are Mitey Mite, jumping and regular daily classes. For more information and a registration form, mail this coupon or call BA 6-4544 (toll-free from Seattle) or TA 5-3597.



CRYSTAL MOUNTAIN SKI SCHOOL

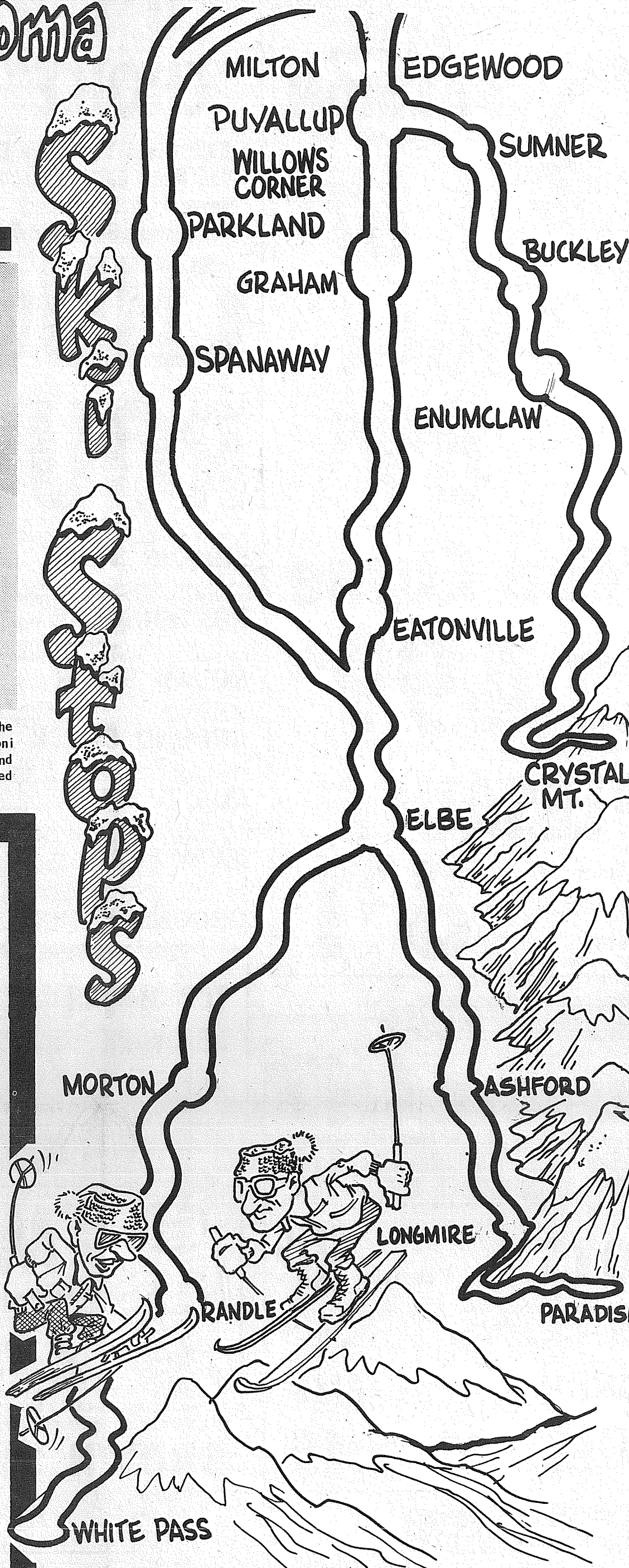
1421 Cole St., Enumclaw, Wash. 98022

Please send me more information:

Name _____
Address _____
City _____ State _____ Zip _____



FEATURED recently at the 1966 Seattle Ski Fair at the Seattle Center was all-time international great Toni Sailer of Austria. Other former Olympic champions and ski resorts took part in the three day event which helped kick-off the State's 1966-67 skiing season.



Snowmaking Machinery Introduced At Crystal

The Northwest's first snow-making equipment will be used early in the season at Crystal Mountain to cover the lower portion of Quicksilver and connecting Silver Bell, Manager Howard Paulsen has announced.

The innovation will permit skiers to use the slopes all the way to the bottom of the mountain during the early snowfalls on the high levels. The equipment also will insure a durable snow cover for late spring skiing, he added.

Snowmaking equipment is only a part of the more than a quarter of a million dollars worth of improvements which will greet skiers.

Major changes are the new Sport Center and Administration Building and the Crystal House motel. Both are nearing completion.

Other improvements include expansion of the Day Lodge "brown bag" lunch room, employee housing, sewer system expansion and general maintenance.

QUICKSILVER READY "Quicksilver" run, newly opened to skiers last year with the addition of the resort's fourth high-speed, double chairlift, has been completely graded, groomed, and planted with grass, Paulsen pointed out.

NEW SPORT CENTER Most apparent of the additions will be the new two-story Sport Center adjacent to the Day Lodge. Housed in the building will be the ski shop, plus ski rentals and re-

pairs, and the Crystal Mountain, Inc., offices.

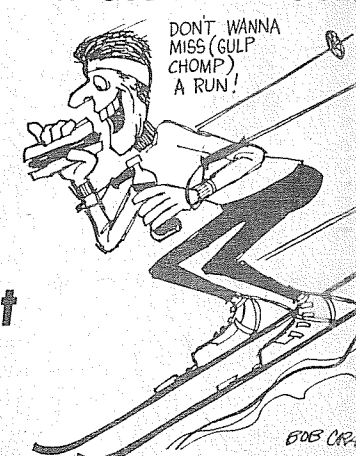
CRYSTAL HOUSE Also new in the village complex will be the 12-unit Crystal House, which Paulsen termed "a handsome and rugged stone-faced lodging." A large lounge will be featured in the new building.

Innovations extend to the ski school too, with Director Jack Nagel reporting the introduction this winter of a closed-circuit television system with instant tape replay equipment to be used on the slopes.

SKI TIPS FROM YOUR HEART ASSOCIATION



STAY IN SHAPE THE YEAR AROUND THRU REGULAR EXERCISE.



TAKE TIME TO EAT LUNCH AND REST.



DON'T OVER-DO! SAVE 'ONE MORE RUN' FOR NEXT WEEK

Ski Season Among Longest Of Any Sport

The skiing season, traditionally considered a winter-time activity, has grown into a year-round sport offering activities even through the summer months in the Northwest.

Resort skiing which opens its winter season during November, carries through the spring season in the month of May. It is followed by summer activities such as the June and July racing camps.

Introduction of popular night skiing by torch and artificial light in the past few years has extended the sport to a greater period of time than at any time in its history.

The advent of a practical snowmaking system promises to extend the resort ski season farther into the spring and to move up the start of the winter season by several weeks.

WINTER TRACTION SPECIAL!

Get Dependable GO at 1/2 the Dough with safe, reliable O.K. Trailmaster Winter tread retreads

Trailmaster RETREADS ANY SIZE BLACKWALLS OR WHITE WALLS

2 24 95
FOR PLUS F.E.T. OF 52¢ to 80¢ Depending on size 2 Recappable Trade Ins

Sold with a written Nationwide Money Back Guarantee

AND FOR THE ULTIMATE IN SAFE, WINTER DRIVING, HAVE O.K. SAFETY STUDS INSTALLED AT A SLIGHT ADDITIONAL COST.

OK TIRE STORES

NATIONWIDE SALES AND SERVICE
LE 7-7355
PARKLAND 9639 Pacific Ave.

Mix 'em or Match 'em Your choice



NO MONEY DOWN

Town & Country
WINTER TREADS OR DELUXE CHAMPION NEW TREADS

RETREADS ON SOUND TIRE BODIES OR ON YOUR OWN TIRES

ANY SIZE 2 \$24.24
Whitewalls or Blackwalls FOR
NO MONEY DOWN
Put them on your car today!

All tires mounted FREE

USE YOUR TEXACO NO-INTEREST CREDIT CARD OR YOUR FIRSTBANK CREDIT CARD

SAM'S

FIRESTONE
LOCALLY OWNED AND OPERATED

120 PUYALLUP AVE. MA 7-9168

FRANK Says: CUSTOMER SATISFACTION AND SERVICE IS OUR MOST IMPORTANT ASSET!

ASK YOUR FRIENDS



FRANK PUPO

Buryl Bryan's Ski Headquarters

BURYL BRYAN'S IS LOCATED IN THE HEART OF PUYALLUP... THE CROSSROADS OF ALL THE SKI SLOPES. IF YOU HAVE ANY SKI PROBLEMS, BRING 'EM TO US. OUR RAY RICHARDS HAS HAD 21 YEARS EXPERIENCE FITTING SKIS & BINDINGS. CHECK THESE...

POLES..\$3.95 & UP {A&T BINDINGS, SUPER ALAIS TOE PIECES, LIFT FRONT THROWS. IDEAL BINDINGS FOR ALL..

BOOTS.. {LE TRAPPEUR BOOTS MADE IN FRANCE.. MEN'S AND WOMEN'S SIZES 5 1/2 & UP. CHILDREN'S 6 1/2 to 15 1/2

SKIS..\$9.95 & UP {BLITZ, CHAMPION, AROSA, ASPEN, SQUAW VALLEY, MEDALIST, ZERMAT, KELLER MK.I

• Gloves • Mittens • Socks • Goggles • Caps • Face Masks

RACKS.. FOR ALL CARS FROM VOLKSWAGENS TO CADILLACS

Ski Rentals {SKIS BOOTS POLES

BURYL BRYAN'S SPORTING GOODS

207 S. MERIDIAN, PUYALLUP TH 5-6161



CHECK OUR PACKAGE DEAL!
20% Savings on SKIS, BINDINGS, BOOTS & POLES...



Instant Replay TV Camera Aids Beginners

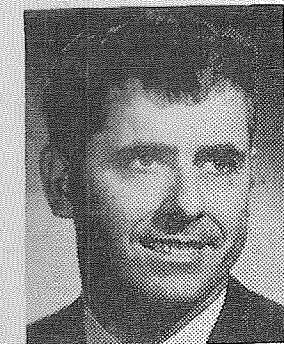
The instant replay camera, so familiar to professional gridiron fans, will be on the slopes at Crystal Mountain this fall and winter, helping beginners learn to ski.

There won't be a view from the end zone, but the students, within moments after completing a run, will see taped TV replays as their instructors offer comments.

Later, back on the hill, the students will have the double advantage of having seen their good and bad points and having the instructor still on hand to reinforce the message.

Beginners will use the system after a few lessons. More advanced skiers will use the videotape equipment from the start.

Ski school activities at Crystal are guided by former Olympic skier Jack Nagel.



getting the Duff BY JOHN VANDEVANTER

Don't tell ME to "schuss" there, Herringbone. I was on this fairway before you had your jammies back under your pillow this morning. And if I've got a bad "lie" for a four wood, you've got just as bad a site for a homestead. What you planning to build with the warped flooring and the tent poles ... a cabana?

Paradise? Well, Herringbone, it may look like Paradise to you, but it's the worst second shot I ever made in my life. Tougher'n taxes trying to find a golf ball in the snow. You haven't seen a smile lying around with rubber bands showing through the gap, have you?

Where'd I START from? Why from the fifth tee, of course. Usually I don't hook this badly, but I always give the pond a wide berth ... never QUITE like this, but wide ... Could you tell me which way is the pin? I may have to take a stroke and play a fir cone to the apron.

The "beginner's slope?" You mean I can start over from here? Say, you're my kind of guy. And this is what you call a "slope"?

You know, Herringbone, the guys I golf with are tighter'n ticks. Oh, they let you have a "mulligan" on the first drive, improvement of lie in the rough, two kicks and a hand-span from behind a tree and two "pretenders" out of a trap. But being able to start over again ... you called it a "slope"? I must remember that. Tell you what, show me the way back to the clubhouse and I'll buy you a drink ...

Okay, OKAY. I'll "schuss" ... you can even order the drinks ... but get me back to the clubhouse. There's a foursome up there that seems to

MT. RAINIER serves as the backdrop for skiers atop Crystal Mountain at nearly 7,000 feet above sea level. A downhill run of 2½ miles to the resort complex below awaits them.

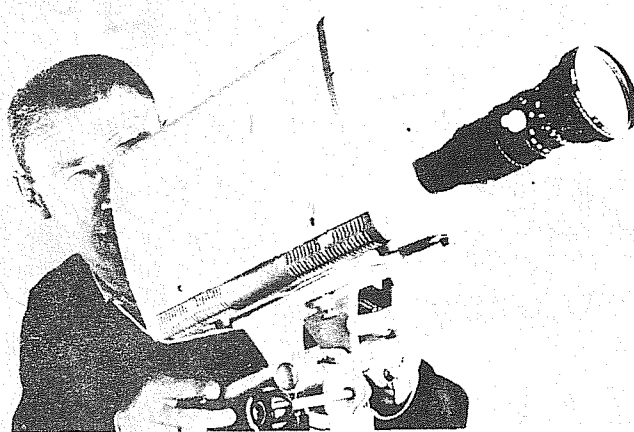
DUFFER McDivot



be playing through and they're coming to beat the band.

A "slalom", you say? Well, they're sure all over the course, aren't they?

No, no ... don't tell me what is a "slalom" yet, Herringbone. Let's wait 'til we're back at the clubhouse over a buttered rum. I've already taken a "slope" on this hole anyway. But I've just got an idea that if I can take a "slalom" on the back nine, I'll be able to break a hundred.



THEY BITE!

B. F. GOODRICH SNOW TIRES with TEETH!

STEEL SAFETY STUDS GRIP ON ICE!

- FASTER STARTS—up to 71% more starting traction
- SAFER STOPS—stop 30% better than regular snow tires
- BEST POSSIBLE CONTROL—drive with a new confidence

available in BFG Trailmaker Silvertown and Trailmaker Silvertown Retreads

only **6.95** extra **NO MONEY** per tire **DOWN**

BFGoodrich
The Straight-Talk
Tire People

ROSS THOMPSON'S
SERVING PUYALLUP 28 YRS.

HOURS: 9 A.M. to 6 P.M., SATURDAYS 9 A.M. to 5:30 P.M.
923 E. MAIN PUYALLUP TH 5-2451

AND OK NEW TIRES

OK TIRE STORE

SNOW TIPS

Snow shovelling is strenuous—can be dangerous to your heart. Shovelling ten loads of fluffy snow a minute equals walking three flights of stairs in the same time. Shovelling wet snow takes as much effort as climbing to the seventh floor in a minute. If you're pushing 40, play it safe. Hand that shovel to the boy down the block.

If you're pushing 40, don't push your car when it gets stuck in the snow. A little sand under the drive wheels may give you the traction you need. Your insurance may cover towing. Remember—don't play Superman!

NO. 1 BEGINNERS Ski Package

\$39.95

Incl. Boots Release Bindings Poles Ski w/ Metal Edges

HEAD SKIS

Fischer Skis - Volkl Skis Kneissl Skis

NO. 2 Ski Package

\$59.95

Saska Double Boots A&T Bindings PK Poles Cobra Skis

BOOT SPECIAL DOUBLE TYROLIA 14.95

TACOMAS LARGEST SELECTION

FASHIONS BY

Ernst Engle Roffe-Rogue Obermeyer Miester Edelwiess

Sportscaster White Stag Chalet Demetre Sasnit of Norway

BOOTS BY

Heireling -Strolz Kastinger -Saska Nordica -Koflach Le Trappeaun

THE PRO SHOP

Open til 9PM Mon-Sat.

11122 PACIFIC AVENUE TACOMA, WASHINGTON PHONE LE 7-5677

HI-HO....THE VALLEY'S LARGEST SKI CENTER

SALES • RENTALS • LESSONS • RESERVATIONS

SKI & PLAY BOOTS \$4.99

Children's Rubberized

INSULATED UNDERWEAR \$11.90

100% SILK SUIT

GLOVE LINERS \$2.29

3.95 VALUE

SKI TOW-ROPE MITTENS 3.89 PR.

SKI POLES \$1.69

BEGINNERS PLAIN BAMBOO

BEGINNERS SPLIT BAMBOO

WHILE THEY LAST!!

SKI & BINDINGS \$24.95

FREE ASSEMBLY

WEDEL DOUBLE

SKI BOOTS \$16.49

24.50 VALUE

CHILDREN'S

SKI SETS \$8.49

*SKIS *BINDINGS *POLES

ASSTD. SIZES

SKI MITTENS 75¢

WHILE THEY LAST!! Ladies' After-Ski

BOOTS 3.99

ICELAND SKI SWEATERS FROM 25.00

ASSTD. COLORS

HEAD BANDS 90¢

BOOT TREES 3.97

WE HAVE A COMPLETE LINE OF

RENTAL EQUIPMENT

FAMILY & WEEKEND RATES

HI HO SPORTS CENTER

TH 5-3810 IN THE HI-HO SHOPPING CENTER PUYALLUP

*OPEN EVERY EVENING

**Western Monumental
AND Marble INC.**
Reliable, Prompt Service
in All Cemeteries
1106 Center St. FU 3-5538
Marble for the Home

Litter Les Says:

Hats off to all
our Safe Drivers
This company
does it's utmost
to promote
Safe Driving!
Defensive Driving is
most important in
our modern times.

"Our Business is Always Picking Up"

Pierce County Refuse Co.

Tacoma 98444 13502 PACIFIC AVENUE LE 7-9888

Joseph Coccioli
Services were held yesterday afternoon at Dryer Mortuary for Joseph Coccioli, 77, of Eatonville.
Terrestrial Lodge No. 228 F & AM officiated with interment in Eatonville Cemetery. Coccioli died last week in a hospital.
He was born in Italy and

came to this area more than 50 years ago from Chicago. He was a retired logger.

Mr. Coccioli was a member and the present Tyler of Terrestrial Lodge 228, F & AM, at Eatonville. He was also a member of the Tacoma Moose Lodge; Mountain Star Chapter 179, OES; the Scottish Rite Bodies, Affili Temple of the Shrine; and the Woodworkers Union, Local 2767.

Besides his wife, Mary M., survivors include a stepson,

Les B. Bickey of Eatonville, and three grandchildren.

Infant Kennedy
Graveside services for Shawn Matthew Kennedy, infant son of Mr. and Mrs. Dane C. Kennedy, of 14607 Waller Road, Tacoma were held Tuesday morning at Calvary Cemetery under the direction of Dryer Mortuary.

Besides his parents, survivors include his grandparents, Mr. and Mrs. Gerald Kennedy, of Portland and Mr. and Mrs. Ferdinand Canton,

Obituaries

of Spanaway; and his great-grandparents, Mrs. Maria Canton, of Parkland, Mr. and Mrs. John Karamon, David J. LaPlante, and Mrs. Norman Reed, all of Tacoma.

Chester H. Propst
Services for Chester H. Propst, 73, of Spanaway, were held Thursday afternoon at Dryer's Fir Lane Chapel. Rev. Gordon Harrison officiated. Burial was in Fir Lane

Memorial Park.

Propst died last week in a nursing home. He was born in Farmington, near Spokane, and came to the Tacoma area in 1924.

He was a veteran of World War I.

Surviving are two sisters, Mrs. Hazel M. Lake and Mrs. Flossie V. Cooper, both of Spokane; and a brother, Harry, of Seattle.

Elmer J. Bagley
Friday afternoon services were held at Brookside Chapel of the New Tacoma Cemetery for Elmer J. Bagley, 76, formerly of Spanaway.

Rev. Eugene Barnes officiated. Burial was in New Tacoma Cemetery.

Bagley died Sunday in Clarkston. He was born there and lived in Spanaway about five years. He returned to Clarkston only 10 days ago. He retired from the former Mount Rainier Ordnance Depot in 1956.

Surviving are two sons, Wallace N., of Spanaway, and Raymond, of Grantsville, Utah; two daughters, Mrs. Paula Gruewell, of Juneau, Alaska, and Mrs. Albert Klusmain, of Galesburg, Ill.; two brothers, Walter H., of Eugene, Ore., and Lawrence, of Idaho; 12 grandchildren; and four great-grandchildren.

Arthur A. Anderson
Services will begin at 1 p.m. tomorrow for Arthur August Anderson, 73, of 3922 128th St. E., Tacoma, at Mt. View Garden Chapel.

Rev. E. Arthur Larson will officiate with interment in Mt. View Memorial Park.

Anderson died last week in a hospital. He was born in Tacoma and moved to McNeil

Legal Notices

**COUNTY OF PIERCE
NOTICE OF PUBLIC
HEARING ON PROPOSED
CHANGE OF ZONE
CLASSIFICATION**
CASE NO Z50-66

NOTICE IS HEREBY GIVEN that a public hearing will be held in the Chambers of the Board of County Commissioners of Pierce County, Washington, in the County - City Building at Tacoma, Washington, on TUESDAY, the 22ND day of NOVEMBER, 1966, at the hour of 10:00 A.M., on petition of JACK KENNEDY, et al, Case No. Z50-66, to zone change from classification "G-GENERAL USE" to "S-12 SUBURBAN AGRICULTURE" on the following described properties beginning at Canyon Road and extending 1350 feet east, and projecting 660 feet north and 985 feet south of the centerline of East 136th Street, to-wit:

The following portions of Sec. 18, Twp. 19N, R4E, WM; N 985' of NW 1/4 of SW 1/4; Also the S 660 ft. of the SW 1/4 of NW 1/4.

Said HEARING will be held on said date and hour, or as soon thereafter as the same can be heard, when any person, firm or corporation may appear before the Board and be heard in the matter.

By ORDER of the Board of Pierce County Commissioners, dated OCTOBER 24TH, 1966.
BOARD OF COUNTY COMMISSIONERS
Jack W. Sonntag, County Auditor and Clerk of the Board
By L. Hamre Deputy
Published November 9, 1966.

**GEORGE F. POTTER
ATTORNEYS AT LAW
159 SOUTH 112TH STREET
PARKLAND, WASH. 98444**

IN THE SUPERIOR COURT OF THE STATE OF WASHINGTON IN AND FOR PIERCE COUNTY RICHARD N. BEFORE, Plaintiff vs. JOAN BEFORE, Defendant

No. 172902
SUMMONS BY PUBLICATION
THE STATE OF WASHINGTON, to the said JOAN BEFORE

YOU ARE HEREBY SUMMONED to appear within sixty (60) days after the date of first publication of this summons, to-wit: Within sixty (60) days after the 9th day of November, 1966, and defend the above-entitled action in the above-entitled court, and answer the Complaint of the plaintiff above-named, and serve a copy of your answer upon the undersigned Attorney for plaintiff at his office below stated; and in case of your failure to do so, judgment will be rendered against you according to the demand of the Complaint which has been filed with the Clerk of said Court.

This is an action for divorce.
GEORGE F. POTTER
Attorney for Plaintiff
Office and Post Office Address
159 South 112th Street
Parkland, Washington 98444
Published November 9, 1966.

**PLU EXPRESSION
SERIES**
-PRESENTS-
the
**MITCHELL
TRIO**

POPULAR FOLKSINGERS
FRIDAY, NOV. 18
8:15 P.M.
Memorial Gymnasium
Reserved Seats...\$2.50, \$2.00
General Admission...\$1.50
Tickets on sale at
*Lakewood Record
& Book Shop
*Sherman & Clay
*UPS Bookstore
PLU information desk
LE 7-8611 EXT. 230

Island at the age of 16.

He was an employee at the island's federal penitentiary and retired in 1955 as a senior officer. He was an Army veteran of World War I and a member of Our Saviour Lutheran Church.

Surviving are his wife, Olive, of the home; two daughters, Mrs. Gerald (Carolyn) Kass, of Tacoma, and Mrs. William D. (Marlyn) Hill, of Empire, Calif.; a sister, Mrs. Frieda Grange, of Tacoma; and seven grandchildren.

Thomas Byrd
Services for Thomas Byrd, 79, of Roy will be held at 11 this morning at the Roy Congregational Church.

Rev. Robert Drewes will officiate with burial in Roy Cemetery.

Byrd died last week in an auto accident just south of Roy. He was born in McKenna and lived in this area all his life.

He was a retired sawyer and worked in several saw mills in Southwest Washington. He was a member of the Roy Congregational Church.

Surviving are two daughters, Mrs. Ruth Crum and Mrs. Verna Thomas, both of Parkland; two sons, Lawrence, of Tacoma, and Franklin, of Rocky Ridge; four sisters, Mrs. Hannah Maupin, of Tacoma, Mrs. Marguerite Barker, of Hoquiam, and Mrs. Ann Brazzell, of Kennewick; 17 grandchildren; and five great-grandchildren.

Legal Notices

**McGAVICK,
BETZENDORFER,
HEMMEN & BOTTIGER**
Attorneys at Law
8849 Pacific Ave.
Tacoma, Washington
IN THE SUPERIOR COURT OF THE STATE OF WASHINGTON IN AND FOR THE COUNTY OF PIERCE
WILLIAM F. WILLSON, Plaintiff, vs. RAYFORD AUSTIN and MARGARET A. AUSTIN, husband and wife, Defendants.

No. 172481
SUMMONS BY PUBLICATION
The State of Washington to the said Rayford Austin and Margaret A. Austin, husband and wife, and all other persons or parties unknown claiming any right, title, estate, lien or interest in the real estate described in the Complaint herein, Defendants:

You, and each of you, are hereby summoned to appear within sixty (60) days after the date of first publication of this summons, to-wit: Within sixty (60) days after the 2nd day of November, 1966, and defend the above-entitled action in the above-entitled court, and answer the Complaint of the plaintiff above-named, and serve a copy of your answer upon the undersigned Attorney for plaintiff at his office below stated; and in case of your failure to do so, judgment will be rendered against you according to the demand of the complaint which has been filed with the Clerk of said Court.

This is an action for divorce.
George F. Potter
Attorney for Plaintiff
Office and Post Office Address
159 South 112th Street
Parkland, Washington 98444
Published November 2, 9, 16, 23, 30 and December 7, 1966.

PTA News

WALLER ROAD PTA has planned their annual "Back to School" night from 7:15 to 8:15 p.m. Tuesday with all parents urged to attend. A "Make It and Take It" auction will follow with auctioneering done by David Van Hulle. Many Christmas items and goodies will be featured. The flag presentation will be given by the Campfire group of Mrs. Joanne Ehnat. Social hour hostesses will be Mesdames Barbara Boskovich, Carol Kalapus, Miriam Kirkwood, Pat Jacobson, Joyce Clancy and Mary Weed.

CLOVER CREEK PTA will meet at 7:30 this evening in the multi-purpose room of the Clover Creek school. A talk and film strip will be presented by Stu Kimball, a remedial reading teacher from the Bethel area. A question and answer period will follow.

Open house this month is for 5th grade and kindergarten parents. Hostesses are the 4th grade mothers.

rence, of Tacoma, and Franklin, of Rocky Ridge; four sisters, Mrs. Hannah Maupin, of Tacoma, Mrs. Marguerite Barker, of Hoquiam, and Mrs. Ann Brazzell, of Kennewick; 17 grandchildren; and five great-grandchildren.

Legal Notices
**GEORGE F. POTTER
ATTORNEY AT LAW
159 SOUTH 112TH
PARKLAND, WASHINGTON**

IN THE SUPERIOR COURT OF THE STATE OF WASHINGTON IN AND FOR PIERCE COUNTY
BERTHA M. ANDERSON, Plaintiff vs. ALISTAIR M. ANDERSON, Defendant
No. 171583
SUMMONS BY PUBLICATION
THE STATE OF WASHINGTON, to the said ALISTAIR M. ANDERSON,

YOU ARE HEREBY SUMMONED to appear within sixty (60) days after the date of first publication of this summons, to-wit: Within sixty (60) days after the 2nd day of November, 1966, and defend the above-entitled action in the above-entitled court, and answer the Complaint of the plaintiff above-named, and serve a copy of your answer upon the undersigned Attorney for plaintiff at his office below stated; and in case of your failure to do so, judgment will be rendered against you according to the demand of the complaint which has been filed with the Clerk of said Court.

This is an action for divorce.
George F. Potter
Attorney for Plaintiff
Office and Post Office Address
159 South 112th Street
Parkland, Washington 98444
Published November 2, 9, 16, 23, 30 and December 7, 1966.

**Dance
ROY RODEO HALL
Sat., Nov. 12th
MUSIC BY THE
Country Boys
Admission \$1.00**

**ATTENTION
HUNTERS AND MEAT BUYERS**
STORE UP TO 280 LBS. OF MEAT
FOR ONLY \$10.00 A YEAR

BROOKDALE FOOD LOCKERS
13022 Pacific Ave. Phone Anytime LE 7-5689

**DURING OUR OPENING
SAVE 50%
TOP KICK JEWELRY & LOANS**
13022 PACIFIC AVENUE
HRS. 10-7 6 DAYS A WK. LE 7-4747

AN ENDOWED CARE CEMETERY
Fir Lane Memorial Park
924 EAST 176TH STREET
LE 1-5500

HI HO

PUYALLUP

HI HO

BEEF LOCKER PACK

22 LBS. OF BEEF
U.S.D.A. CHOICE
RIB STEAKS, ROUND STEAKS,
POT ROAST, CHOPPED
SIRLOIN, GROUND BEEF

17⁹⁵

DRUGS

REG. 1⁴⁰
CONTAC

89^c

REG. 1⁰⁰
CONGESTAID

1¹⁹

REG. 1⁰⁰ HAIR DRESSING
VO5 CLEAR-GEL

57^c

REG. 1³⁹

BUFFERIN
79^c

FRESH WASHINGTON-GROWN FRYER PARTS

**DRUMSTICKS
BREASTS**

48^c
lb

WINGS lb. 29^c

THIGHS lb. 59^c

BACKS AND NECKS 10 lbs. for 1⁰⁰

PRODUCE

NEW CROP OREGON UNBLEACHED

WALNUTS 3 lbs. 1⁰⁰

PITTED, DESERT SWEET

DATES 1 1/2-lb. PLASTIC CUP 69^c cup

1-lb. CELLO PACK, VALLEY'S BEST

CARROTS 10^c pkg.



PRICES EFFECTIVE NOV. 7th Through NOV. 12th

BEEF CHOPPED SIRLOIN

79^c
lb

HI HO'S FAMOUS COUNTRY

SAUSAGE
39^c
lb

VARIETY

HOSTESS

GAME OR BRIDGE TABLE

GREEN OR BROWN COVERING
MOISTURE AND STAIN REPELLENT

STANDARD SIZE 3⁹⁹

THE **BAKE** SHOP

ORANGE
PULL-APART
COFFEE CAKES
AND
VAGAS STRIPS
59^c
ea

HARDWARE

FAMOUS LUBRICANT

SPOT OIL Reg. 1.35 ea. 49^c

REG. 2⁰⁰ WHITE OR COLORED

TOILET SEATS 2³⁷

JUST ARRIVED-8-oz.

VISION WINDSHIELD
CLEANER 79^c

WE'RE CLOSING OUT OUR
HORSE DEPT.-ALL ITEMS
50% OFF PRICES MARKED

VINYL
FLOOR MATS
FULL SIZE
DOOR-TO-DOOR
3³⁷

MATCHING REAR
2⁹⁷

GROCERY

STOKELY CANNED GOODS

303 TINS **SALE** 303 TINS

SHELLIE BEANS
FRUIT COCKTAIL
APPLESAUCE
NO. 300 TOMATO SAUCE
BAVARIAN SAUERKRAUT

6/1⁰⁰

W.K. OR CREAM CORN
GREEN PEAS
CUT WAX BEANS
CUT GREEN BEANS

5/1⁰⁰

REG. JUMBO "ALL" 1⁸⁹

VETS' DOG FOOD 15-oz. Tins. 12/\$1

HI HO MAYONNAISE Qt. 49^c

CUCUMBER CHIPS 22-oz. Nalley's... 3/\$1

BANQUET DILLS 22-oz. 3/\$1

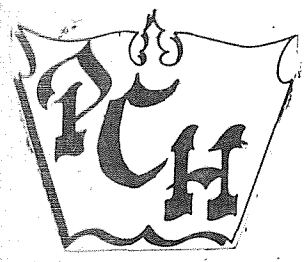
OPEN 8 A.M. TILL 11 P.M., 7 DAYS EACH WEEK

HI HO

PUYALLUP

HI HO

HI HO



CLASSIFIED

ADS

**NOW GO INTO
35,500
HOMES**

CALL
TH 5-7511
OR
LE 7-0223

Real Estate For Sale

VIEW - South Hill: About finished 3 bedroom, daylight basement home. 1 1/2 baths, split entry, kitchen with eating space, large dining room, 2 fireplaces, double garage in basement on approx. 1/2-acre. Call TH 5-4333 after 4 p.m. or any time week-ends.

VIEW lot on North Hill in Puyallup. Panoramic view of the valley. Partly wooded. Approximately 175' by 150'. Drive by on Karshner Road or call TH 5-5272.

PUYALLUP: transferred. 3 bedrooms, 4 years old, fenced yard, 1 1/2 baths, utility, fire place, attached garage. Buy my equity at old interest rates. TH 5-0384.

NEW 3-bedrooms, sunken living room and family room, 2 fireplaces, 3 baths, all brick veneer, lawn is in. Natural gas heating and hot water. 312-15th St. N.W. TH 5-0707.

SPANAWAY district, new 3 bedroom homes. Fireplace, patio, built-in oven & range. Intercoms, 2 car garage. Must see to appreciate. Call SK 9-4518 or SK 9-0160.

WANTED someone to love. I don't show my age. I have 3 bedrooms, gas furnace, lots of storage and I appraised for \$10,500. 224 4th Ave. N.W. TH 5-1331.

TWO 2-bedroom duplex apartment units in NW Puyallup. 1 unfinished. TH 5-4941.

EDGEWOOD — By owner. 3-bedroom rambler, 1 1/2 baths, utility brick fireplace, w/w carpet. Lots of kitchen cabinets, built-in range. Large family room with sliding glass doors to patio. Attached double garage. Large, mostly landscaped lot. Close to bus, schools and shopping. WA 7-1827.

PUYALLUP — By owner. 3-bedroom, 1 1/2 baths, 3 years old. \$21,950. 913-17th St. N.W. TH 5-6780.

TRADE your present home equity or contract for new one of your choice. Apex Realty, TH 5-7505.

OLD COW manure, \$3 a yard. You pick up. LE 7-8497.

TWO FIRST line tires, Town & Country 6 ply nylons. Size 700 x 13. Brand new. LE 7-8395.

VISIT JODY'S for your floral craft supplies, wood fiber, ribbons, resin, candles and trims. (Yes, we have feathers). Arrangements made to order. Floral craft classes and holiday workshop now beginning. 8633 So. Tacoma Way. Call JU 8-9257.

M.L.S. MULTIPLE LISTING SERVICE
McKinley Hill Realty
6311 McKinley Ave. GR 4-9579
Member of Multiple Listing Service and Tacoma Real Estate Board

Real Estate Wanted

WE have 2 buyers with substantial cash for down payment. 3 bedroom older with one or two acres. Please call Alex WA 7-2020 or LO 4-1689. Geo. D. Poe Co. Realtors.

FLASH 25 - HOMES - WANTED
DAHLKE REALTY
TH 5-8851 Puyallup
305 EAST STEWART AVE.

LISTINGS NEEDED
HOMES - FARMS - ACREAGE
JOHNSON REALTY
706 N. MERIDIAN
TH 5-8823

WANTED
HOMES & FARMS
NO USING CHARGE
DAHLKE REALTY
305 EAST STEWART
TH 5-8851

Real Estate For Sale

REAL ESTATE FOR SALE. "WHOLESALE" between Puyallup and Parkland. Direct from owner to buyer. Passing on real estate commission & discount money to buyer. Two bedroom, ranch style. Pink coral stone fireplace. New nylon carpeting. Large suburban lot, with trees. Nice neighborhood, etc. \$9,950, minimum down payment \$1,500. LE 7-5436, after 6 P.M.

1 ACRE, 4 blocks from Puyallup City Center. Ideal for multiple unit. TH 5-1280.

2 1/2 ACRES for sale by owner. 4 bedroom home with separate dining room, spacious kitchen with sliding doors to patio and fenced yard. Large garage, garden space and fruit trees. Good barn with fenced pasture, quiet street and city sewer in. TH 5-1047.

Autos For Sale

DODGE 1946 dump truck for sale cheap. 15707 Waller Rd. East.

1960 BUICK LeSabre. Power steering, power brakes. Nice looking car in good condition. \$725 cash. TH 5-9241.

1954 CHEV Belair 4 door, AT, PB. \$175. TH 5-4666 after 6.

EXCELLENT '64 LeMans GTO hardtop. TH 5-0792.

1955 FORD 1 ton. Engine and tires in good condition. Best offer. LE 1-2891. 4219 East 76th St.

1958 Plymouth Wagon as is \$65 or parts. Radiator, \$5, generator \$7.50, starter, \$7.50, transmission \$20. 10001 East Tyler. LE 1-5867.

1963 VALIANT 4 door, automatic, \$990. TH 5-5091.

'64 G.M.C. 1/2 ton pick-up. Radio, heater and canopy. Evenings TH 5-2453.

8 FOOT Dayliner canopy. In good condition. TH 5-2502.

TUNE UP V-8 \$950
COMPLETE REPAIRS

AYLEN'S RICHFIELD
202 WEST PIONEER
PUYALLUP
PHONE TH 5-9834

WE BUY JUNK CARS
AND TRUCKS
C & S
AUTO WRECKING
SUMNER UN 3-6123

NEW - MORE POWERFUL

the 1967's
ARE HERE
VOLKSWAGEN
27 MAJOR CHANGES
COME IN AND
DRIVE ONE

Tom Carlens
AUTOHAUS
7030 So. Tacoma Way
GR 4-0666
TACOMA DEALER SINCE 1955

Trailer Space For Rent
SPACIOUS spot for mobile home. All electric. Country setting. TH 5-4140.

PRAIRIE Village Trailer Park. Carpools, lockers, propane gas piped in, laundry facilities. \$22.50. Located near Ft. Lewis and McChord at Roy Y. VI 7-7110.

Wanted To Rent
2-BEDROOM unfinished house. Puyallup-Fife-Milton area. \$70-\$80. UN 31476.

HOME VACANT
We desperately need good rentals. \$80 to \$150 per month. CALL NOW

Let us handle your worries

SUBURBAN REALTY
11302 Pacific Ave.
LE 7-8638 or LE 7-6896

For Rent
TRAILER SPACE for rent. Call Crane Crow Trailer Park. VI 7-2560.

ART CLASSES: Water colors, oils, batiks, shoemaking, children's classes. Lakewood Art Center. 8805 Bridgeport Way S.W. JU 4-6020.

PIANO and Organ lessons. Popular and social music. Chord study. Edgewood area. Margaret Sanstad. WA 7-1570.

For Rent

BOAT Owners attention: For rent, stall for dry storage of your boat on trailer. 10' wide by 11'6" high by 25' deep. Lights, constant surveillance, easy access, behind the Times Journal Bldg. on Pacific Ave. \$15 per month. Phone Jack. LE 7-0223 or LE 7-0473 even.

TRAILER Space for rent. Tired of being squeezed into a 4x4 cubby hole? Then this is the place. Only one other trailer in huge yard space. Behind a bldg off the highway. School bus & city bus by the door. Approx. four blocks to shopping center. \$25 per month, includes water, garbage and stall in 10-car carport. See Jack Brown at the Times Journal Bldg., 14620 Pacific Ave., or phone LE 7-0223 days, or LE 7-0473 evenings.

CLEAN, neat 2-room furnished apartment. No children. TH 5-5749.

NEW 4-plex, 2 bedroom unit. Appliances, W/W carpeted, drapes. Adults. Summer. UN 3-7834.

UNFURNISHED 1 bedroom apt. Washer, dryer, carport. Adults. No pets. 708-7th Avenue S.W.

SLEEPING rooms. Working men preferred. TH 5-1001.

TWO-BEDROOM house, partially furnished, close in, no pets. TH 5-9195 after 5.

BACHELOR efficiency apartment. Man only. Furnished. Water, sewer, garbage paid. TH 5-8118.

2-ROOM house with bath. 1008-21st St. SE. No children. No pets.

FURNISHED ground floor apartment. Private entrance. All utilities paid except gas. \$60. TH 5-8202.

PARTIALLY furnished 1-bedroom upper duplex. Water, sewer, garbage paid. \$49. TH 5-8383.

RENT A TRUCK
from
HARMON'S
TRUCK
RENTALS
MA 7-8186 - TACOMA
TH 5-9851 - PUYALLUP
UN 3-7935 - SUMNER

OFFICE SPACE
Two room office space available in the Times Journal Bldg.

*deal for Lawyer, real estate agent, bookkeeper, etc.

\$50.00 per month includes lights & heat.

CONTACT JACK BROWN.

LE 7-0223 DAYS

LE 7-0473 EVENINGS

Miscellaneous Wanted

TRADE 2-4-1+ or consign salable items. Rummage Bazaar. 14622 Pacific Ave.

Wanted to Buy

WANTED: Used furniture, tools glassware, antiques and miscellaneous. Highland's 2nd-Hand. TH 5-4824.

USED Furniture, sports equipment, boats, motors, trailers or organs. Summit Budget Barn, LE 1-5000.

2 WHEEL trailer or frame and chassis. Condition not important. GR 5-1270.

CEDAR boughs. McMahon's. Orting. 893-3734.

HONEY, comb or jar. LE 7-7227.

BUYERS waiting! Property needed! Two 3 bedroom homes below \$15,000 in Sumner, one 3 bedroom home below \$15,000 in Puyallup, one 1 or 2 bedroom home in Puyallup. B&N Land Office. TH 5-8861 (days). TH 5-6449 or TE 3-2618 (evenings).

TOP PRICES PAID

FOR USED furniture, appliances, tools, dishes, antiques and misc. Nothing too small or too large. We will pay absolutely the highest prices. Call us before you sell. Fast service to any area. GR 2-7855 JU 8-2543

Instruction

ART CLASSES: Water colors, oils, batiks, shoemaking, children's classes. Lakewood Art Center. 8805 Bridgeport Way S.W. JU 4-6020.

PIANO and Organ lessons. Popular and social music. Chord study. Edgewood area. Margaret Sanstad. WA 7-1570.

Instruction

PIANO, guitar, band instruments. Student's home or studio. LE 1-3246.

PIANO teacher in Milton has opening for students. Call WA 2-8248.

DRIVER TRAINING. 3 week course. Free pick up. LE 1-0505 anytime.

PIANO lessons in my home. Near Maplewood School. TH 5-7370 or WA 7-4949.

Lost

LOST since Thursday friendly, female, short-haired cat. Brown black markings with white on chest, front legs and stomach. Sprayed, de-clawed, named Genie. Vicinity of East Sumner Shopping Center. Reward. Please call UN 3-4760.

TWO MALE DOGS, mixed, medium size, one white with black spots, one grey with white on legs. Both have long, fluffy tails. Reward. VI 7-2307.

Situations Wanted

OFFICE cleaning? Professional floor waxing? I need work. United Janitor Service. WA 7-0574.

IRONING \$1.00 per hour. LE 1-4158.

BABY SITTER available evenings and weekends. LE 1-1125.

IRONING, MENDING alterations \$1.25 an hour average. LE 1-1922.

IRONING. My home. \$1 an hour. TH 5-1280.

IRONING. \$1 an hour. TH 5-2555.

HOUSEWORK/Ironing. References. 11316 Meridian S., Space 61. TH 5-3293 between 5:30-9 p.m.

LONGSOME invalid wants babysitting job. TH 5-3674.

Child Care

GOOD care for 1 child. My home, daily. Jovita-Edgewood area. Certified. WA 7-2960. 14960

LICENSED child care, by day. TH 5-8559. 83923.

LICENSED child care. LE 7-7791. 4540.

LICENSED child care. Number 14454. My home Cherry Ave. area. UN 3-4036.

GRANDMOTHER ALONE wants to care for 1 or 2 children 3 to 5 years old in my trailer home. Best of references. 2605 E. 96th, Cedarview, Sumner. c/o Robert Picotet.

LICENSED. Hourly or daily. Fife area. WA 2-6092.

Help Wanted

McNESS CALLING—need people for work? Call LE 7-6693 or JU 4-0693 before 10:00 a.m. or 5 to 7 p.m.

MEDICAL receptionist. Must be experienced. Write Box R, The Herald.

\$50.00 CASH. To churches, clubs or groups for selling 84 bottles famous Watkins Vanilla. Call 8 to 10 a.m. Mon. thru Fri. LE 7-6101.

LADIES extra money time is here. Work near home. Average \$2.97 hour. No canvassing. Call TH 5-5256 Mr. Hill.

SALESLADIES WANTED. Call LE 7-0387 between 8 and 6.

BABY SITTER needed my home 5 days a week. LE 1-5856.

BABY SITTER 4 days a month, my home. LE 1-2829.

BABYSITTER needed near Karshner 2 hours after school. TH 5-7442.

NEED dependable man for assistant manager, local rental store. Must be mechanically inclined with ability to assume administrative duties. Opportunity for advancement in growing business. GR 2-3348.

BABYSITTER. Hilltop School area (Edgewood) One boy (5), kindergarten afternoons. UN 3-7142.

BABYSITTER from 6-8 a.m. North Lake Tapps area. UN 3-6224.

Business Opportunity

GULF OIL CORP.
High gallonage locations available for qualified dealers.
Financing can be arranged ALSO
Position as service station manager for man 75-35
JU 4-1211 Tacoma
MU 2-4550 Seattle

Personals

HAVE an Alcoholic Problem? LE 1-1022, GR 2-5267, UN 3-1618. Write Box 2265, Parkland.

DRINKING problems? Alcoholics Anonymous in Puyallup area. TH 5-5882, UN 3-6403, WA 7-1113, TH 5-3313

LOSE weight safely with Dex-ADIET tablets. Only 98c at Bealls Rexall Drugs.

BOOST your morale. Boost your energy. Enjoy a massage. Swedish scientific principle. Graduate masseur. Housecalls by appointment. Puyallup area. TH 5-9697.

Miscellaneous Service

EXPERT ALTERATIONS — Men's and Women's. Fast guaranteed work. Reasonable. LE 1-3506.

REMODELING. Additions, Foundations. Free Estimates. Financing. No down payment. Ph: GR 4-7000 any time.

FURNITURE refinishing and repairing. TH 5-5518.

DOZER, loader, dump trucks, excavating, grading, backfill, roads, gravel & fill. Hour or contract. VI 7-7193.

FOR Appliance Service call Cleman's Furniture. TH 5-8846.

TV Sales and Service. Call Cleman's Furniture Inc. TH 5-8846.

MOWING, raking, baling — Clark's Field Service. LE 7-0133.

ROTOVATING: Plowing, discing, smooth and pack lawns, loose dirt and gravel. Call Kaller, TH 5-8529.

WE BUY junk batteries, sell Chief batteries. Do welding & radiator repair. 213 W. Stewart, TH 5-6956.

TREE topping and removal. Bonded and free estimates. UN 3-1017.

SEWING machine service. Munson, TH 5-8162.

SEWING & Alterations. TH 5-4693.

SEWING & Alterations. TH 5-2121.

DRIVEWAY GRAVEL: Bank run \$2 a yard, screened \$14 for 5 yard load. Don Abbott, tractor work. LE 7-3846.

CAR ILL? Bring it to Hill, at Aylen's Richfield Service, 2nd and West Pioneer, Puyallup.

SEWING & alterations. Edgewood area. WA 7-4949.

Business Service
SAVE Taxes by having proper records. Jensen's Bookkeeping Service, 11457 Pacific Avenue. LE 1-4800.

Repair Services
FOR FURNACES, repairs, sheet metal work, call PARKLAND FUEL OIL, LE 7-0256.

KENMORE and Whirlpool washers repaired. Reasonable. TH 5-5136.

Building Services
REMODELING, leveling, block foundations, cabinets. Free estimate. Reasonable. LE 7-3550.

CONCRETE work, slab, basements, carports, patios, aggregate work, coloring, porches. WA 7-2227.

I NEED work. All types of remodeling, additions, foundations, siding, roofing, windows, fireplaces. 100% financing. Free counseling. 10% discount on all work. TH 5-4051.

FOUNDATION, Framing, roofing and siding. A complete package for so much per foot. GR 5-2464.

COMPLETE Home remodeling. We specialize in cabinets and floors. Free estimates. Roy, 843-2497.

SPECIALTY in fireplaces, block garages, fences, planter boxes and basements. Financing. GR 5-2464.

WORK WANTED. All types of remodeling, additions, foundations, plumbing and wiring, fireplaces, roofing. Free counseling. 100% financing. 10% discount on all work. WA 2-8360 or GR 2-3383.

Land Services

TOP soil and gravel. Tractor and Loader work. Complete lawn work. R. D. Beeler. LE 7-4940.

BULLDOZING
*TOP SOIL
*ROCKERIES
*DUMP TRUCKS
*LOADERS
TH 5-2059 TH 5-4832

Livestock For Sale

SHETLAND ponies for Christmas. Now taking orders, starting at \$50 for cute little colts. WA 7-1653.

TWO horses for \$350 or \$200 each. One Palomino Mare 8 years and a Paint Gelding 12 years. Sacrifice. LE 7-0195 call anytime.

REGISTERED Black Angus Bull, Heifer 1 1/2 years, and Angus cow. WA 2-6611.

PINTO - WELCH Shetland pony. Everything except saddle. WA 7-0750.

DESTROY little slugs this fall with ducks. VI 7-2268.

RIDING horse. Part Quarter part Morgan. TH 5-8550.

GUERNSEY cow. Bred to Hereford Aug. 8, 8th calf. Gentle family cow. \$150. LE 1-0441.

Livestock

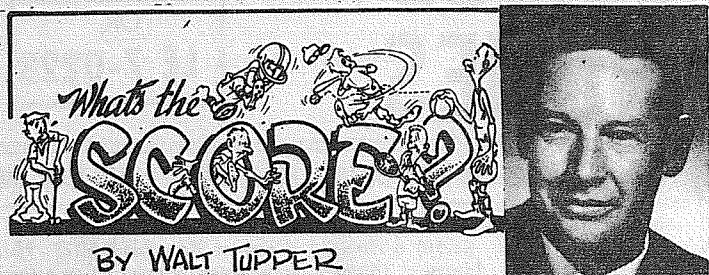
CASH for livestock of all kinds. Bonded buyer. TH 5-5016, TH 5-1589 after 3.

ALL-WEST artificial breeders. 6 dairy and 10 beef breeds available. TH 5-8393.

LIVESTOCK bought, sold, hauled, delivered, licensed dealer. Boyd Burns, TE 3-1496. At 1-2-3

HORSE shoeing and trimming. Work guaranteed. TE 3-9516. At 1-2-3

Cards Stacked On Vik Defensive Wall



BY WALT TUPPER

The Big Game

In all the years I've been following high school football, never have I watched one that matched last Friday's struggle between Puyallup and Franklin Pierce.

For sheer drama and excitement ... for bone-crushing tackles and rib popping blocks ... for offensive fireworks and brilliant defensive stands ... it will have to go in the record books as a masterpiece.



Eldon Kylo brought a team onto the field that was better than last year's southern division champs. Glenn Hadland has developed into a top caliber quarterback who can thread the needle on both long and short passes. With Ellis and Al Bulger doing the snagging, plus the Gary boys, Stevenson and Hammer romping up the middle behind a big, offensive line, the Cards proved they can move the ball against anyone.

But then, on the other hand, there's a game called defense. This is a hard nosed, gritty type of game that is hard to come by in high school play. Coach Gerry Redmond has expertly molded a unit on either side of two huge anchors called Marv Thompson and Frank Veitenheimer ... and therein lies the tale of victory.

It was as if the Vikings told the Cards, "You can play in my sandbox, but don't touch my toys." And indeed, the entire second half was played in Puyallup's sandbox ... most of the time inside the 20 yard line. Pierce tried every method of chalking up six points short of bribing the scorekeeper, but to no avail. The big wall of Purple jerseys somehow managed to come up with the big play in key situations.

Random thoughts while watching the game ... Dave Graham's 15 yard TD scamper in the 1st quarter was a beaut ... He slid around left end flashing the pigskin like a French postcard, faked the defensive end out of his sneakers, then cut inside, threw a hip roll at the cornerback and was gone.

And how about that Gary Picha? Talk about your circus catches, Picha snagged one right off the turf in a diving effort, went high in the air to pull one down on the Card's 29 yard stripe, then topped off his evening's performance with a grab that makes Dave Williams look like Mr. Butterfingers.

Gary Stevenson's punt returns had Puyallup rooters chewing fingernails all during the 4th quarter. Catching the ball in full flight, Stevenson would set sail down the sideline almost to the point of the original line of scrimmage.

No matter what happens from here on must be considered anti-climatic. Nothing will match this game, not even the PSL title game with Highline. Thirty years from now, when I'm rocking a chair in some nursing home and the old timers start talking football, I'll clear my vocal cords and wheeze, "Speakin' of football, did I ever tell you about the Franklin Pierce-Puyallup game back in the Fall of '66? Well here they were ... ranked 3rd and 4th in the state and each undefeated. Well, sir, you never saw nothin' like it"

Four Drives Stopped Inside 20 Yard Line

With a defense that resembled a stone wall, the Vikings eked out a 13-7 triumph over the Franklin Pierce Cardinals, in a game that will be long remembered by a huge crowd of over 6,000 that packed Viking Field's ancient rafters to the hilt.

After Hans Lindstrom ran the opening kickoff back to the FP 47, the Viks drove to the Pierce 13 before being stopped. Puyallup took over after a Cardinal punt, and end Gary Picha hauled in a Dave Graham pass for 17 yards and a first down into the end zone. The Viks later drove to the Cardinal 15 before their drive was halted.

Pierce mounted its only scoring assault midway thru the second stanza, as they drove 75 yards for the score, with the final 26 yards being covered on a beautifully executed pass play from quarterback Glenn Hadland to half-back Doug Ellis. Tom Marr booted the equalizer with 1:35 to go in the half.

Lindstrom returned the kickoff 22 yards to the Puyallup 36 and the Norsemen needed but six tries to punch the score across. The dramatic climax to the half came when Picha took in a Graham pass for 22 yards to the Card 29. With two seconds left, Graham faded to throw and spotted Picha in the end zone. Picha tipped the ball into the air between defenders Gary Stevenson and Hadland, and then clutched it tightly as he fell into the end zone for what proved to be the winning score. Puyallup's defense proved its worth in the second half, when FP was continually knocking at touchdown's door. Threat after threat was repulsed by the valiant Viking defenders. FP constantly kept the Viks in the hole in the second half, as they penetrated to the Puyallup 5, 11, 9, and

4, but could not punch it over. The Cards' final opportunity was thwarted as Dave Graham intercepted Hadland's fourth down pass to Al Bulger in the end zone and ran it out to the 12. With just a little over a minute left and Pierce out of timeouts, the Viks ran out the clock.

Pierce, with their title aspirations ruined by the superb Vik defense will travel to Auburn to battle the defensive-minded Trojans. Puyallup's season state stands now at 8-0, and their league ledger at 4-0. Pierce is 7-1 on the season, and 3-1 in league play.

It was, in every aspect, a battle of champions.

Seahawks 27 Braves 7

Bethel's Braves will try to get back on the winning track after being unceremoniously dumped by the Peninsula Seahawks, 27-7 when Coach Ed Tingstad's warriors travel to Auburn to meet the Tahoma Bears.

Peninsula scored in the first period when Allan Ross fell on a punt blocked by a retreating Bethel lineman, Tom Thrall scored twice on runs of 33 and 2 yards to lead the Seahawks. He picked up 114 yards in 23 carries for the victors, Dan Dolphin scored the lone Brave TD on a 2 yard jaunt in the final frame. The Braves took the game stats as they led in first downs, 13-7, and in total yards 254 to 239.

Bethel is 2-3 in league contests, and has a 3-4 record for the season.

Cruisers 26 Bulldogs 12

The Eatonville Cruisers, co-champions of the Central League's Eastern Division, travel to Laughon Field to meet Wright in their 1966 season finale.

In a cross-over contest last week the Cruisers whipped Montesano 26-12. Montesano

Fircrest Takes Sm. Fry Crown

Fircrest's Mike Levenseller broke loose for three touchdowns to lead his team to a 19-13 victory over the Tacoma Boys Club Red Devils in the playoff game for the Metro-County Small Fry boys football championship last Sunday.

The victory was the sixth in seven starts for Fircrest, which had its schedule marred only by a 12-12 tie with the third-place NWBC Rams.

Levenseller scored first on a 20-yard pass from Stuart Shelton, returned an intercepted pass 40 yards for another touchdown and climaxed the afternoon with a two-yard plunge. Oscar Chambers rambled 60 yards for one of the Red Devils' two tallies.

In other Small Fry games on the season's final weekend, Rick Landshut scored with 35 seconds remaining to give the NWBC Rams a 7-6 victory over the ESBC Hookers. Economy Angels edged the WEAC Cubs 7-0 on Herman McDowell's quarterback sneak from the 1-yard line. The SEBC Cey's rolled past the NEAA Lions 26-0 as Tom Medved scored two touchdowns and Chris Barker raced 45 yards with an intercepted pass for another.

rolled 80 yards in four plays to score after the opening kickoff, but Don Rose rambled 69 yards in the next period to deadlock the game at halftime, 6-6. The second half was a different story as quarterback Rick Hermen led the way. Hermen passed for one TD and ran 26 yards for another as the Cruisers pulled away in the second period. Rose tallied again in the final period to ice the win for Eatonville. Hermen completed 12 of 25 passes for 180 yards, and Rose picked up 112 yards in 14 carries to lead the Cruiser ground assault.

With the win Eatonville's season mark became seven wins and one loss, their league slate remaining a final 5-1.

Salmon Runs Show Strength

Salmon runs continue strong in several areas this week justifying relaxation of fishing regulations for both sport and commercial fisheries Thor C. Tollefson, Director of Fisheries, announced today.

In the coastal areas the Naselle River downstream from the Pacific County Bridge and the Satsop River downstream from the mouth of the West Fork will open for sport salmon fishing on November 5th instead of the scheduled November 20th. On the same date the Chehalis River will be open for salmon fishing downstream from the Porter Bridge instead of from the present deadline at the South Elma Bridge.

Lutes Could Finish Third

The chance to finish it in a tie for third place in Northwest Conference play will be the incentive for the Pacific Lutheran University gridders when they travel to Salem Saturday to tangle with the Willamette University Bearcats. A PLU win would give them a 2-2 league mark as over against a 3-3 record for Willamette.

Saturday's 1:30 homecoming game is Willamette's McCulloch Stadium will be the final one of the season for both teams and will mark the first time the two schools have met in football competition.

Coach Roy E. Carlson of PLU lauded the offensive play of quarterback Tony Lister and the defensive work of line-backer Gary Nelson in last Saturday's game against Lewis & Clark which the Lutes

lost, 33-13. Lister, who will be playing his final game this week, hit on 15 of 28 passes for 148 yards and one touchdown. He also scored a six-pointer. Nelson, also a graduating senior, made 11 tackles and had 3 assists in another sterling defensive performance.

Other seniors are the PLU team are tackle and co-captain Bob Krieger, corner line-backer and offensive end Art Hooper, and defensive end Oliver Johnson.

FUEL OIL

LE 7-6968

Beacon Oil Co.

MOTOR REBUILD KITS		
CHEV.	1940-1965 All Models	PRICES START AT \$39.65
FORD	1954-1965 All Models	PRICES START AT \$37.60
PLYMOUTH	1962-1967 All Models	PRICES START AT \$39.60

KITS AVAILABLE ON ORDER FOR ALL STANDARD MAKES AND MODELS OF DOMESTIC PASSENGER CARS

KIT INCLUDES: PISTONS, RINGS, TIMING CHAIN OR GEAR, CAM BEARINGS, ROD BUSHINGS

CRANKSHAFT KITS

INCLUDES: CRANKSHAFT & BEARINGS AVAILABLE FOR ALL STANDARD MAKES AND MODELS OF DOMESTIC PASSENGER CARS

PRICES START AT \$20

REGROUND STOCK CAMS

AVAILABLE FOR ALL STANDARD MAKES AND MODELS OF DOMESTIC PASSENGER CARS

RACING CAMS START AT \$21.00

SPEEDWAY CAMSHAFT & CRANKSHAFT GRINDING

11112 PACIFIC AVE. LE. 1-3929

9 am - 10 pm
7 DAYS
A WEEK

BARGAIN BASKET

16618
Pacific Ave. S. - Spanaway
LE 7-3371

We Carry A Complete Line Of Sacked Feeds • Presto Logs

We Are Locally Owned & Operated
HELP YOUR BUDGET WITH THESE SAVINGS

No Sales
To Dealers
WE RESERVE THE
RIGHT TO LIMIT
QUANTITIES

PRICES
EFFECTIVE
NOV. 10, 11, 12

PENNANT GLAZE FRUIT MIX 1 LB. 39¢	THREE BEES HONEY 5 LB. 99¢	SUNNY FARMS Asparagus NO. 300 6/\$1.00
BLUE MOUNTAIN KITTY O'S 4 LB. 79¢	KRAFT MARSHMALLOW CREME 7 OZ. 19¢	RAISINS 4 LB. BAG 89¢
JACK'O LANTERN YAMS NO. 301 5/\$1.00	TREE TOP APPLE JUICE 46 OZ. 3/\$1.00	DEL MONTE CREAM CORN NO. 303 6/\$1.00
EMPEROR GRAPES 10¢ LB.	NO. 1 CELLO CARROTS 2/17¢	OREGON 20 LB. NO. 2 POTATOES 59¢
Veal Steaks 69¢ LB.	Veal Roast 59¢ LB.	Veal Patties 59¢ LB.
Old Fashioned Franks 49¢ LB.		

NOV. 25-26 Are Big Days At BROOKDALE LUMBER INC. LE 7-8669	PARKLAND AMBULANCE 24 HOUR SERVICE LE 7-3322
--	---

Citizens STATE BANK SUMMIT VIEW OFFICE LEnox 1-3322 Member Federal Deposit Insurance Corporation	112th and Canyon Road
---	-----------------------------

Everyday Low Meat Prices		25 LB. Locker Boxes	
RIB STEAK 73¢ LB.	SIRLOIN STEAK 79¢ LB.	ROUND STEAK 79¢ LB.	
BLADE CUT POT ROAST 43¢ LB.	7-BONE POT ROAST 53¢ LB.	ROUND BONE POT ROAST 55¢ LB.	
RUMP ROAST 69¢ LB.	LEAN GROUND BEEF 43¢ LB.	COUNTRY STYLE PORK SAUSAGE 2 LBS. 98¢	

County Cagers Set Practice

Recreation basketball will burst onto the Pierce County sports stage next week when teams begin official practice sessions for the 1966-67 season.

Reservations may be made at the Pierce County Park Department office, 735 County-

City Building, or with the Metropolitan Park District, 236 County - City Building, for practice sessions which begin Monday throughout the County.

Adult teams will have until Nov. 29 to submit \$20 entry fees, covering both the pre-season tournament which starts Dec. 5, and the league games opening Jan. 3.

League play will be offered this year in American and National divisions of the Pierce County League, the County Church Adult, Western Washington, County-City 5-10, Industrial, Commercial, and County-City Old Timers leagues.

For teams which choose not to participate in the pre-season tournament, a final deadline of Dec. 21 has been set for submitting entry fees for league play.

SEE THE ALL NEW 1967

★CHRYSLER
★PLYMOUTH
★VALIANT

OPEN MON. & FRI.
NIGHTS UNTIL 9:00

★Steven
★MOTOR CO.
2705 SOUTH TACOMA WAY

BOWLING 32¢ DAILY UNTIL 6 P.M.

BOWLING BALL INVENTORY CLEARANCE
A.M.F. & BRUNSWICK BLACK \$16.95
A.M.F. RED & GREEN RUBBER \$17.95
Prices Good Nov. 5th through Dec. 3rd 1966

PARADISE BOWL
108th & PACIFIC LE 7-6012

HOT SHOES FOR COLD FEET!
LARGEST SELECTION IN TOWN FOR BOTH MEN & WOMEN

SNO BOOTS Women's **3.99 UP**

AFTER-SKI BOOTS MENS FUR LINED RUBBER-INSULATED **5.99 UP**

PAULS SHOES

161st & PAC. LE 7-0552 OPEN DAILY 9-9 SAT. & SUN. TILL 6

Firstbank Card welcome here