

The TIMES JOURNAL

CONTAINS THREE SECTIONS . . . MAIN SECTION . . . MAGAZINE SECTION . . . COMIC SECTION

THURSDAY, MARCH 25, 1954 • VOL. 9, NO. 28

PUBLISHED AT PARKLAND, PIERCE COUNTY, WASHINGTON

10c PER COPY • \$3.00 PER YEAR BY MAIL IN PIERCE COUNTY



Clowning Around

while getting ready for the James Sales P-TA - Preschool carnival Friday at 5:30 p.m. in the school, is George Cashman, above, surrounded by Mrs. Edward Rupp, Preschool president; Mrs. Robert Keller, carnival chairman, and Mrs. William J. Betts, P-TA President.

James Sales P-TA, Preschool Slate Around & About Carnival As Joint Enterprise

The James Sales P-TA and Preschool are jointly sponsoring their first carnival at the school on Friday, March 26, beginning at 5:30 p.m.

Main attraction for the evening will be a zoo, featuring live animals. Other attractions will be a magician, puppet show, movies, fortune teller and skill games. Booths offering novelties and handicrafts will also be featured.

General chairman is Mrs. Robert Keller. Her committee chairmen include Mesdames John Brunton, refreshments; M. W. Jackson, candy; Donald Archer, popcorn; John Hull, novelties; Donald Reed, fish pond; Willard Gamin, garden.

Russell Semple, ice cream; Fred Bartlett, handiwork; Stanley Reynolds, country store; R. T. Westerman, bakery; Geo. Stephenson, peanuts; Russell Fulkerson, make-up; George Skurup, hoop game; Lloyd Smith, tot's pool; Jack H. Blum, dolls.

Lacamas 4-H

The regular meeting of the Lacamas 4-H Baking club was held March 6 at Mrs. Kizen's home. The meeting was called to order by the president, Lenore Erickson, the flag salute following.

The regular public dance will be held at the Lacamas Community hall Saturday evening, March 27. This month the 4-H clubs will serve the lunch and the proceeds from the dance will go to the 4-H camp fund.

Constructive Suggestions Welcome

A Solution To Our Money Woes

(An Editorial)

Recently, the community of Alder made over \$400 for local interests, by holding a slave auction, selling the time and ability of its citizens to the highest bidder.

The event was such an outstanding success, that the Hood Canal Women's Club at Potlatch has adopted the idea, which was an original one conceived by Mrs. Mary Potts of Alder, and will do the same thing to raise funds for that community.

Work auctioned in the "slave market", includes such services as baking, sewing, tractor work, car washing, clothes washing, baby sitting, etc.

At a gathering of Parkland residents last week, the plight of the local library was told, and a need for funds was expressed.

It is the suggestion of this paper, The Times-Journal, that a community function such as that described above, be held, and all proceeds turned over to the library or whatever other enterprise in the area that needs bolstering.

Mr. Gilbert, of Gilbert's Country Store, LaGrande, who served as advertising chairman of the Alder event, will gladly give details, and it would be a worthwhile project indeed, for one of the service clubs in Spanaway or Parkland to undertake, for community betterment.

Education Council To Meet April 1 at Bethel

Pierce County Council of Parents and Teachers will hold the final convention of the school year on Thursday, April 1st at Bethel high school. The Bethel P-TA with Mrs. Louis Symmons, president, will be hosts.

Registration will begin at 9:45 a.m. with Mrs. Frank Ansley, membership and attendance chairman in charge. At 10 o'clock the Council president, Mrs. Clarence P. Lund, will call the meeting to order.

Earl Platt, Principal of Bethel High, and Homer T. Anderson, superintendent of Bethel district, will welcome the delegates to the new school.

The colors will be presented by the Bethel High cheer leaders. Mrs. A. O. Anderson, character and spiritual education chairman will give the invocation, followed by the Bethel High Mixed chorus which will sing two inspirational songs, "Oh Highty Land", by S. F.

Melius Christiansen, and "Today There is Ringing", by Jan Sibelius. The chorus is directed by Richard N. Curtiss.

During the business session, presided over by Mrs. Lund, the election of officers will be held.

The nominating committee chairman, Mrs. Travers F. Dryer has announced the following as selections of the committee: for president—Mrs. Wallace Gregory, Edgemont; first vice president—Mrs. Norman Harris, Tillikum-American Lake South.

Delegates and alternates to the state convention will also be elected at this meeting.

Following business, the sections will meet and directors will be elected for the coming school year. The local unit presidents are asked to have a written report ready to give to the directors, of the year's activities.

The record and history books from the local units will be brought to this meeting and awards will be made by the chairmen, Mrs. John Newell and Mrs. O. E. Fortier.

Luncheon will be served by the Bethel P-TA at noon. Following this the new attendance trophies will be awarded. Community singing will be led by the music chairman,

Mrs. G. A. Lagerquist. Honorary state life memberships will be presented to two members by Mrs. C. A. Spreen, chairman of the Washington Congress of Parents and Teachers Scholarships and Loan Fund (formerly the Helen Clarke Wilson fund.)

Installation of the newly elected officers will be performed by Mrs. George F. Wangelin, state director of county councils. She will use an installation ceremony written especially for the occasion.

Mrs. Norman Harris, program chairman, will present a group from the College of Puget Sound. They will feature two exchange students in native costume, one from India, Miss Helen Chandra Donald, who will talk on "Schools and Education in India", and the other from Hawaii, Miss Maybelle Bulaatao, who will do interpretive songs and dances of her native land.

There will be a supervised nursery for small children. Adjournment is set for 2:30 p.m.

'For Emergency Use Only'

CD Rescue Program Nears Finish

A plan that will keep 90 mobile engineering and rescue teams available for disaster at any point in the state is steadily approaching completion. Admiral Daniel Barbey, state civil defense director, announced this week.

He explained that an additional number of teams is being organized within private construction companies. Working mostly in rural communities, these units are expected to be in a position to readily supplement the state and county teams.

The state and county teams, the director said, are composed of trained highway men. Their first duty, in case of disaster, is to open and keep open highway communications. Before actual rescue operations can be undertaken, highway obstructions must be removed.

However, the teams must be ready for any eventuality, and with their equipment may be counted upon to move into a stricken city, clear out debris, and perform their rescue missions.

"The state teams, thanks to the cooperation of the highway department, are ready to go right now," Barbey said. "Most of the counties are likewise prepared, and we are making progress with others."

"With the addition of private company units, Washington will have an engineering and rescue system second to none in the country within a few months."

The teams include 23 state groups, organized and equipped by the department of highways, and 67 county teams, said Barbey. The principal objective of the teams, which are to be called out only upon order of the governor, is to have at hand trained, well equipped, highly mobile organizations ready to move to any point where they may be needed, with a minimum of delay and confusion.

Thirty-three men, including an engineer and foreman, comprise a team. They are all trained in highway maintenance, and for the most part, could substitute in any rescue capacity.

The teams will be accompanied by a power shovel, a bulldozer, a loader, six dump trucks, a wrecking car, a service truck, two station wagons, a portable light plant and suitable small tools.

In command, in case of a major emergency, is the governor, acting through the state civil defense director. Under the terms of the Civil Defense Act of 1951 the line of authority is from the governor through the state director to the civil defense directors of the various counties, metropolitan areas, and the two special areas, Grand Coulee and Hanford.

Pierce County 4-H club members are reminded of the poultry training meeting at 8 p.m. Wednesday in the Winter School building, Western Washington Experiment Station.

Types of poultry projects, keeping records, and brooding chicks will be discussed and demonstrated. Everett Shinn, Firgrove poultryman, will lead the brooding discussion. Slide pictures of poultry management will be shown.

All 4-H poultry and pheasant club members as well as leaders and parents are invited to attend. The meeting is sponsored by the Pierce County Extension Service.

Pierce County 4-H club members are reminded of the poultry training meeting at 8 p.m. Wednesday in the Winter School building, Western Washington Experiment Station.

Types of poultry projects, keeping records, and brooding chicks will be discussed and demonstrated. Everett Shinn, Firgrove poultryman, will lead the brooding discussion. Slide pictures of poultry management will be shown.

All 4-H poultry and pheasant club members as well as leaders and parents are invited to attend. The meeting is sponsored by the Pierce County Extension Service.

Pierce County 4-H club members are reminded of the poultry training meeting at 8 p.m. Wednesday in the Winter School building, Western Washington Experiment Station.

Types of poultry projects, keeping records, and brooding chicks will be discussed and demonstrated. Everett Shinn, Firgrove poultryman, will lead the brooding discussion. Slide pictures of poultry management will be shown.

All 4-H poultry and pheasant club members as well as leaders and parents are invited to attend. The meeting is sponsored by the Pierce County Extension Service.

Pierce County 4-H club members are reminded of the poultry training meeting at 8 p.m. Wednesday in the Winter School building, Western Washington Experiment Station.

Types of poultry projects, keeping records, and brooding chicks will be discussed and demonstrated. Everett Shinn, Firgrove poultryman, will lead the brooding discussion. Slide pictures of poultry management will be shown.

All 4-H poultry and pheasant club members as well as leaders and parents are invited to attend. The meeting is sponsored by the Pierce County Extension Service.

Pierce County 4-H club members are reminded of the poultry training meeting at 8 p.m. Wednesday in the Winter School building, Western Washington Experiment Station.

Types of poultry projects, keeping records, and brooding chicks will be discussed and demonstrated. Everett Shinn, Firgrove poultryman, will lead the brooding discussion. Slide pictures of poultry management will be shown.

All 4-H poultry and pheasant club members as well as leaders and parents are invited to attend. The meeting is sponsored by the Pierce County Extension Service.

Pierce County 4-H club members are reminded of the poultry training meeting at 8 p.m. Wednesday in the Winter School building, Western Washington Experiment Station.

Types of poultry projects, keeping records, and brooding chicks will be discussed and demonstrated. Everett Shinn, Firgrove poultryman, will lead the brooding discussion. Slide pictures of poultry management will be shown.

All 4-H poultry and pheasant club members as well as leaders and parents are invited to attend. The meeting is sponsored by the Pierce County Extension Service.

Pierce County 4-H club members are reminded of the poultry training meeting at 8 p.m. Wednesday in the Winter School building, Western Washington Experiment Station.

Types of poultry projects, keeping records, and brooding chicks will be discussed and demonstrated. Everett Shinn, Firgrove poultryman, will lead the brooding discussion. Slide pictures of poultry management will be shown.

All 4-H poultry and pheasant club members as well as leaders and parents are invited to attend. The meeting is sponsored by the Pierce County Extension Service.

Pierce County 4-H club members are reminded of the poultry training meeting at 8 p.m. Wednesday in the Winter School building, Western Washington Experiment Station.

Types of poultry projects, keeping records, and brooding chicks will be discussed and demonstrated. Everett Shinn, Firgrove poultryman, will lead the brooding discussion. Slide pictures of poultry management will be shown.

All 4-H poultry and pheasant club members as well as leaders and parents are invited to attend. The meeting is sponsored by the Pierce County Extension Service.

Pierce County 4-H club members are reminded of the poultry training meeting at 8 p.m. Wednesday in the Winter School building, Western Washington Experiment Station.

Types of poultry projects, keeping records, and brooding chicks will be discussed and demonstrated. Everett Shinn, Firgrove poultryman, will lead the brooding discussion. Slide pictures of poultry management will be shown.

All 4-H poultry and pheasant club members as well as leaders and parents are invited to attend. The meeting is sponsored by the Pierce County Extension Service.

Pierce County 4-H club members are reminded of the poultry training meeting at 8 p.m. Wednesday in the Winter School building, Western Washington Experiment Station.

Types of poultry projects, keeping records, and brooding chicks will be discussed and demonstrated. Everett Shinn, Firgrove poultryman, will lead the brooding discussion. Slide pictures of poultry management will be shown.

All 4-H poultry and pheasant club members as well as leaders and parents are invited to attend. The meeting is sponsored by the Pierce County Extension Service.

Pierce County 4-H club members are reminded of the poultry training meeting at 8 p.m. Wednesday in the Winter School building, Western Washington Experiment Station.

Types of poultry projects, keeping records, and brooding chicks will be discussed and demonstrated. Everett Shinn, Firgrove poultryman, will lead the brooding discussion. Slide pictures of poultry management will be shown.

All 4-H poultry and pheasant club members as well as leaders and parents are invited to attend. The meeting is sponsored by the Pierce County Extension Service.

Pierce County 4-H club members are reminded of the poultry training meeting at 8 p.m. Wednesday in the Winter School building, Western Washington Experiment Station.

Types of poultry projects, keeping records, and brooding chicks will be discussed and demonstrated. Everett Shinn, Firgrove poultryman, will lead the brooding discussion. Slide pictures of poultry management will be shown.

All 4-H poultry and pheasant club members as well as leaders and parents are invited to attend. The meeting is sponsored by the Pierce County Extension Service.

Pierce County 4-H club members are reminded of the poultry training meeting at 8 p.m. Wednesday in the Winter School building, Western Washington Experiment Station.

Types of poultry projects, keeping records, and brooding chicks will be discussed and demonstrated. Everett Shinn, Firgrove poultryman, will lead the brooding discussion. Slide pictures of poultry management will be shown.

All 4-H poultry and pheasant club members as well as leaders and parents are invited to attend. The meeting is sponsored by the Pierce County Extension Service.

Pierce County 4-H club members are reminded of the poultry training meeting at 8 p.m. Wednesday in the Winter School building, Western Washington Experiment Station.

Last Call For Daffodil Parade Entries - - Lynn

Only five days remain for entering floats in this year's three-city Daffodil Festival parade, April 10, March 31 is the final day for receiving entries by the Festival committees in Puyallup, Sumner, Orting and Tacoma (Chamber of Commerce office.)

Plans for the parade, starting in Tacoma at 10 a.m. April 10, 1 p.m. in Puyallup and 2:30 p.m. in Sumner, are rapidly shaping up, according to Parade Chairman Nathan Lynn of Tacoma.

Colorful pageantry is promised, with the Royal Rosarian of Portland sending word they would be present in force, forming guards of honor for both the queen's and attendants' floats. Queen Mary Carlile, her princesses and four attendants will ride on the royal float built by Tacoma City Light, while the remaining attendants from the four Festival towns will ride the non-competitive float entered by St. Paul & Tacoma Lumber Company.

Nationwide attention on the 21st Festival, with its "vacation-land" theme will be given by Neiman-Marcus Co. of Dallas, Texas, one of the five outstanding department stores in the nation. The store will stage its own daffodil festival April 5-11, using 175,000 King Alfred daffodils from the Puyallup Valley to decorate store windows, escalator ledges, departments within the store, and tie-in newspaper advertisements.

The spring flower promotion will carry a theme of "Singing Yellow" with cages of yellow canaries being used with the daffodil displays.

The whole family will enjoy it—plenty of good food to eat, countless shows and games of skill. There will even be a television for Dad to watch the world championship fight. Home-made cakes, bread and pies to buy, and plants for the garden of every destination. Every kind of apron, potholder, doily and even embroidered pillowcases for mom, and the loveliest dolls, with all kinds of dresses for the girls to admire. Don't forget the darling pinoes for the kiddies to ride.

Upstairs in the gym will be different types of skill games, to say nothing of a cake-walk, where luscious cakes can be easily won.

Be prepared to eat your dinner there that night, and then try your skill at the Country Store, where boxes of groceries will be awarded.

The money taken in from this carnival will be used towards helping the school, finishing the outside play area, which was started last year, finishing the two teachers' parlors, dark curtains for the gym.

Everybody come and have a good time.

Each is planning to exhibit several kinds of tillage and fertilizer equipment in addition to participating in tractor plowing.

Lunch will be served by a community group.

Orchestra Concert At. F. P. Hi Friday

The orchestra of Franklin Pierce high school will play a complimentary concert in the cafeteria of the school Friday evening, March 26, beginning at 8 p.m. The program will include classic and semi-classic numbers with George Barras directing. Organized this year, the orchestra now has 27 members.

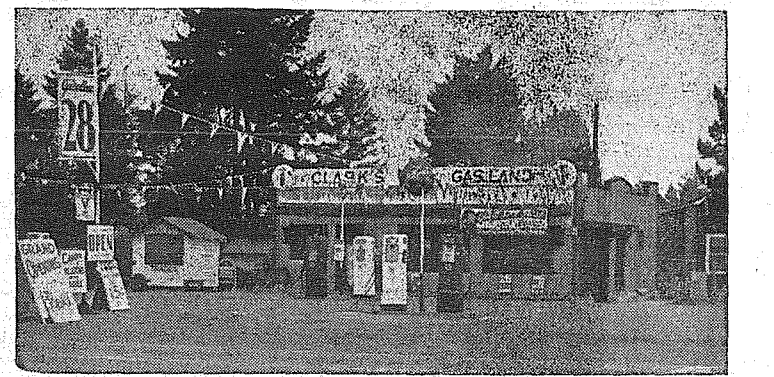
Assisting the orchestra will be Miss Veronica Nausbaum with ballet and tap dance numbers; also Harley Christofferson of the school faculty and Gary Ulmann and Rodney Adler.

Clark's Gasland

located in Spanaway, can count over 200 satisfied customers, following the grand opening last Saturday. Shown above, before the opening, is the station.

More than 250 gallons of gas were given away to the patrons, in addition to candy and balloons for the kids and initialed key chains for the women.

The station is affiliated with Time Oil Co.





Our Better Service

MEANS BETTER BUYS FOR YOU!

Check these Values



Nest Fresh Large Grade AA

EGGS doz. 51c



**LARGE
PAVED
PARKING
LOT OFF
TRAFFIC**

STORE HOURS:
Fri. 8:00 to 9:00
Sat. 8:00 to 7:00
Other Days
8:00 to 6:30

CHOICE MEATS

Buy Now --- Keep For Easter
Picnic Style - 6-8 Lb. Aver. Size

Fresh Smoked Hams lb. 47c

Summit Farms Fresh Smoked (Shoulder)

Boneless Hams lb. 73c

FRESH FRYER RABBITS lb. 59c

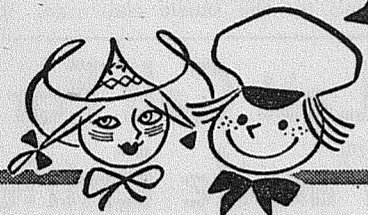
Fresh Smoked
LINK SAUSAGE lb. 65c

Medium Size
FRESH PACIFIC OYSTERS . . . pt. 53c

FRESH SKINLESS WIENERS . . lb. 39c

TRY *Betty Crocker's*
OF GENERAL MILLS
NEWEST ONE-DISH DINNER

Dutch Pantry Pie



YOU'LL NEED

WESSON OIL Quart **65¢**

CARNATION MILK 3 Cans **39¢**

SPAM 12 OZ. Can **43¢**

GOLD MEDAL FLOUR 10 Lbs. **87¢**

Nalley's Lumberjack 24 Oz. Btl.
SYRUP **29c**

Fishers Pkg.
ZOOM **19c**

Pillsbury 10 Lbs.
PANCAKE FLOUR . **98c**

Golden Ripe 2 Lbs.
BANANAS **29c**

Florida Pink Lb.
GRAPEFRUIT . **8c**

Large Juicy Lb.
ORANGES **13c**

NBC HONEY GRAHAM

Crackers 2 Lb. Box 49c

Last Chance At This Price 2 Lb. Can
Folger's Coffee 1.97

Mild
Cheese Pound **45c**

FRESH CREAMERY - RED SHIELD
Butter Pound **67c**

SPRY 3 lb. can 83c

For Hot Biscuits Lge. Pkg.
BISQUICK **37c**

Nestles 2 Pkgs.
NESTLES MORSELS **39c**

Shelled, halves & Pieces 1/2 Lb.
WALNUTS **49c**

Bakers Pkg.
COCOANUT **18c**

Calumet Lb. Can
BAKING PWD. . . **25c**

All Flavors 4 for
GUM **15c**

Fresh Cigarettes Ctn.
CAMELS **\$214**

RECIPE OF THE WEEK

By Mary Lee Taylor

One-Dish Tuna Dinner

Broadcast: March 27, 1954

- 1/4 cup finely cut onion
- 2 Tablespoons hot fat
- 3/4 cup Pet Evaporated Milk
- 1/4 cup water
- 1/2 teaspoon salt
- low grains pepper
- 3 cups cooked macaroni, drained
- 3/4 cup grated American cheese
- 3/4 cup canned tomato soup
- 2 Tablespoons water
- 6-oz. can tuna, broken into pieces
- 3 Tablespoons grated American cheese

Cook onion slowly for 5 minutes in hot fat in saucepan. Add milk, water, salt, pepper and macaroni. Cook and stir over low heat until mixture thickens, about 5 minutes. Then add 3/4 cup cheese and stir over low heat until cheese melts. Heat in small saucepan until steaming hot a mixture of soup, water and tuna. Put macaroni mixture on warm platter. Top with hot tuna mixture. Sprinkle with 3 Tablesp. cheese. Makes 4 servings.

For Your Locker
Tender Young Steers & Heifers . . lb. **39c**

This Price Includes
Cutting and Wrapping

Centennial Dog Meal
FROLICS **57c**

10 Lbs.
FRISKIES **\$149**

Jack & Jill Cans
CAT FOOD **2/19c**

KEN L RATION . **2/31c**



Large Jar
INSTANT COFFEE
\$1.69

RED RIPE TOMATOES
2 Cartons
27c

Quick or Reg.
Cr. of Wheat
Pkg.
31c

Royal Arms
Toilet Tissue
4/29c

Aerowax
Quart
59c

Zee
Lunch Sacks
Pkg.
10c

Morton's
SALT
Ctn.
12c

Arm & Hammer
Baking Soda
2 Pkgs.
23c

Sunshine
Marshmallows
1/2 Lb. Pkg.
15c

Small
Navy Beans
2 Lb. Pkg.
33c

Hershey Bars
Box of 24
89c

Gheradelli
Chocolate Bar
Large 14 Oz.
49c

We Reserve the Right To Limit Quantities . . . No Sale to Dealers . . . Prices Effective Thurs., Fri., Sat., March 25th, 26th, & 27th

SUMMIT TRADING COMPANY

Rt. 13, Box 690, Tacoma — One-half Mile North of Summit View, on Canyon Road

Phone GRanite 5848

Subscription Rate		Out Of State	Outside U.S.A.
In Pierce County	Outside Pierce County	\$4.00	\$4.25
ONE YEAR \$3.00	\$3.50		
SIX MONTHS \$2.00	\$2.50		

Advertising Rates On Request
Qualified as a Legal Publication under Chapter 213 of the Legislative Acts of the 1941 Regular Session of the State of Washington.



Letter to the Editor

EDITOR'S NOTE — All properly signed letters to the Editor will be printed as submitted, excepting deletions of portions which might be considered libelous. It is not the purpose of the Times-Journal to take sides in controversial questions; the Letter Box is designed merely to permit the expression of opinions of readers concerning matters of local interest.

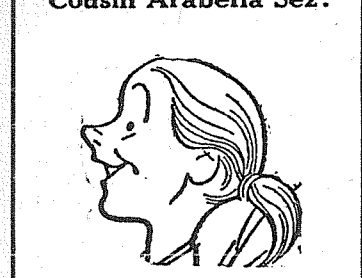
March 22, 1954
Bob's Place
Airport and Jay
Letter to the Editor
Times-Journal
Parkland, Washington

We here at Bob's Place take pleasure in commending the Times-Journal for its advertising coverage for this and the area of its circulation. We are doing this for many good reasons.

Our full page advertisement which appeared in the Thursday, March 11th (issue of the Times-Journal (giving one-half pound tin of Hills Bros. coffee free with every grease job) brought such overwhelming results that our Texaco working staff was increased by two more mechanics plus overtime for the entire personnel. Our March

Butler's Garage
One block North Airport
Road on Canyon Road
Phone GR 8209

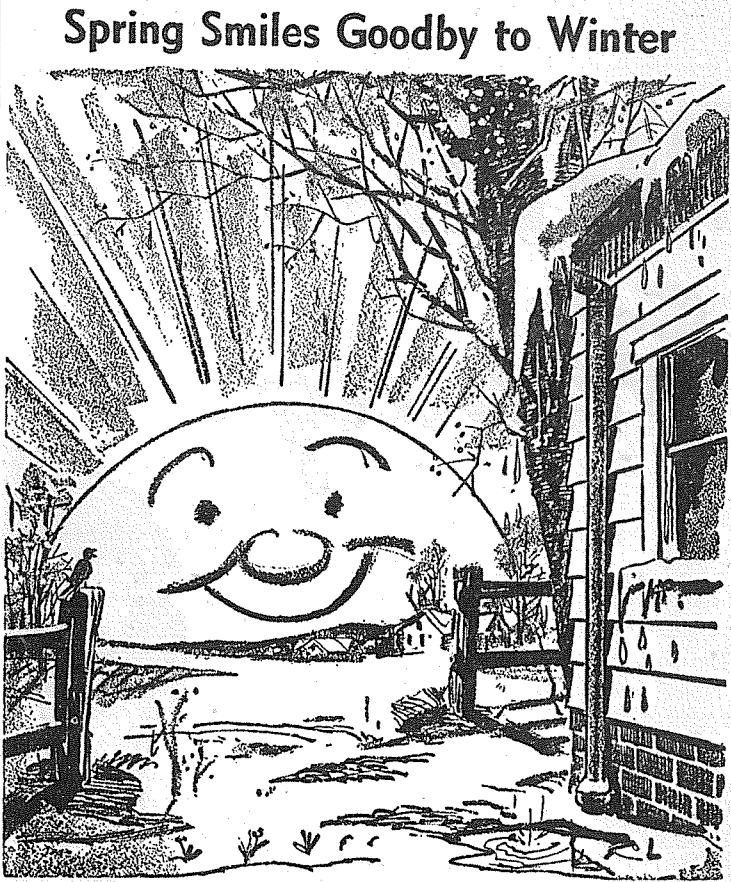
Cousin Arabella Sez:



Fisker's
Quality feeds shore puts the meat on 'em, and that's what fattens your pocketbook.

Summit Feed Co.
Home of "Fisker's Quality Feeds"
Canyon Rd., next to
Summit Trading Co.
GR 7136 We Deliver

LOCKER MEAT
25 Lb. Roasts - 15 Lb. Steaks
5 Lb. Pure Ground Beef - 5 Lb.
Lean Short Ribs all for . . . \$22.50
Good Quality Graded Beef U.S. Govt. Insp.
White Face Beef
TENDER LEAN
BOSTON BUTTS . . . lb. 59c
PURE
PORK SAUSAGE . . lb. 45c
BONELESS, LEAN
BEEF CUBES . . . lb. 49c
PURE
GROUND BEEF . . . 3 lbs. 97c
LEAN, BONELESS
CORNED BEEF . . . lb. 49c
POT ROAST, Waste Free . . lb. 35c
BOILING BEEF . . . lb. 19c
RIB STEAKS . . . lb. 45c
GROUND ROUND . . . lb. 49c
MALCOM'S MEATS GR 8258
1 Block North of Airport on Canyon Road
We Retail at Wholesale Prices



Spring Smiles Goodbye to Winter

Parkland, Washington
March 19, 1954
Editor
Times Journal
Parkland, Washington
Dear Jack Brown;
For the cooperative efforts of individuals and merchants in the Franklin Pierce area on the school election, a sincere thank you.

To the many who voted: Your interest in your community and using your right to vote shows grand spirit and cooperation. To the individuals for hard work well done and to merchants for the ad space, plug lines, and space for posters—to both for being interested enough in their schools and their community to put forth effort to inform and interest others in the election, a well deserved vote of "Thanks".

From the Franklin Pierce Education Council and all persons interested in their community and school comes appreciation for your cooperation. Sincerely,
Mrs. Donald Reed

Letter to the Editor:
The Summit - Woodland-Collins Volunteer Fire department and the Ladies Auxiliary wish to thank the Times-Journal for the publicity given the recent ham-turkey dinner at the fire hall, which was a fine success. We also appreciate the cooperation of the Times-Journal in publicizing the activities of the department and auxiliary in the past. Mrs. George Purdue, Auxiliary president; Ashley Butler, Department president; Sid Waring, president firemen social group.

Woodland News

Mrs. Karl Cordes
Puyallup 5-2511
A public meeting will be held at Woodland school Monday, March 29, at 8 p.m. to discuss the financial needs of the district for the school year 1954-55, chapter 11, laws first extraordinary session 1951.

P-TA Dance
Tickets are on sale now for the friendly, informal "cottons and jeans" dance to be held at the school Friday, March 26, beginning at 8:30 p.m. "Iver" and his trick horse "Ching" will be the intermission attraction. They have appeared at numerous rodeos and events and are very popular. Donations for the affair are: Adults, 50c; students, 25c. Chili, coffee and pop will be on sale in the cafeteria.

Convention
Save Thursday, April 1, for the county P-TA convention at Bethel school. Mrs. Walt Chaulander, Puyallup 5-5083, will provide transportation information.

Story Hour
The always successful story, sponsored by the Woodland Pre-

school, was held again last Tuesday in Mrs. Arnold's room. Games and refreshments followed the story. Mrs. Norman Ward was in charge.

Successful Dinner
Many families and couples from Woodland enjoyed the ham-turkey dinner at the fire station last Sunday.

School Election
The Woodland kindergarten measure, calling for a 10-mill levy, failed with 164 persons voting against it to 98 favoring the measure. However, they approved the \$20,500 bond issue for construction, 186 to 88, and a 10-mill levy to purchase land, 165 to 104. Arthur M. Lincoln was elected school director.

"That private across the street always reminds me of you."
"But he's short and fat—and I'm tall, an' dthin."
"I know—but he owes me ten dollars, too."

DID YOU KNOW?
We Repair All Makes
Watches & Clocks
Electric Razors
Ronson Lighters
Costume Jewelry
Rings
Perfect Gifts for All Occasions
SMITH JEWELRY
8238 Pacific Ave. HA 2351

OPEN 24 HOURS A DAY - 7 DAYS A WEEK

DOLLARS!
SAVED BY SHOPPING PARK'N SHOP

OPEN 24 HOURS A DAY - 7 DAYS A WEEK

ALL FLAVORS WRIGLEY'S **GUM** Pkg. 3c
Surfkist BROKEN **SHRIMP** 5 Oz. Tins 3/\$100
200's **KLEENEX** Box 13c
Libby's FROZEN **PEAS** 2 for 31c

HAVE YOUR DOCTOR PHONE PRESCRIPTIONS ANYTIME TO - - GR 8693

SAVE **HILLS BROS. COFFEE** Pound 98
Light or Dark **KARO** 1 1/2 Lb. Jar 5 for 1.00
SAVE **VELVEETA** 2 Lb. Loaf 79c

NO PARKING WORRIES WHILE SHOPPING AT PARK N' SHOP

Libby's **PINK SALMON** 43c
Sunshine **SHREDDED WHEAT** 2 Pkgs 33c
Cello **CARROTS** 2 Pkgs. 19c
Florida **ORANGES** 4 Lbs. 19c

"FOR MEAT THATS A TREAT" BUY AT PARK N' SHOP!

FRESH **Salmon Steak** lb. 59c
PURE LEAN **Ground Beef** 3 lbs. 89c
GRADED GOOD **T-Bones** A Real "Treat" lb. 73c
EXTRA LEAN **Short Ribs** lb. 19c

P lease **DOG FOOD** 14 Cans \$100
SHILLINGS PURE BLACK **PEPPER** 4 Oz. Tins 45c
Starkist **Chunk TUNA** 3/\$100
ABC **FIG BARS** 1 1/2 Lbs. 29c

THE LARGEST ASSORTMENT OF FOODS UNDER ONE ROOF

SAVE! Libby's Frozen **ORANGE JUICE** 2 Cans 27c
Pillsbury's **FLOUR** 10 Lb. Bag 89c
SAVE! **MIRACLE WHIP** Full Quart 49c

PARK N' SHOP 98th & Pacific Avenue
TACOMA'S INDEPENDENTLY OWNED SUPER MARKET
Prices Effective Thursday, Friday, Saturday, March 25, 26, 27 - Yes 24 hours a day
OPEN 24 HOURS A DAY - 7 DAYS A WEEK

Open 24 hours a Day - 7 Days a Week

Top Buys

Dutchess 303 Tin
PEARS In Heavy Syrup . . . 2/37c

Lenten Menus on Each Pkg. 1/2 Lb.
FRESH DATES . . . 49c

Fresh Dairy Red Shield Lb.
BUTTER 69c

Wesco 46 Oz.
TOMATO JUICE 2/49c

Hoodys, In Refrig. Jar 18 Oz.
PEANUT BUTTER . 59c

Hey Gang Free Kites
with purchase of Centennial Flour or Pancake Mix

ZOOM 2 pkgs. 43c

The Hearty Breakfast Cereal

Good For Juicin' or Eatin'. Large
ORANGES . . . 2 lbs. 25c

BEEF POT ROAST . . lb. 39c

GROUND BEEF lb. 39c

WALLER ROAD STOP'N SHOP

64th & Waller Road GRanite 5362

Prices Effective Thursday, 25th through Saturday, 27th

Summer School at CPS To Feature PTA Leadership Conference In July

Summer school at the College of Puget Sound will feature a campus demonstration-school in elementary education and a Parent-Teacher Association Leadership conference along with the usual courses in liberal arts and teacher training, according to the bulletin of summer school activity at CPS just off the press.

The demonstration school will run from June 15 to July 16 inclusive and will be composed of third graders. It will be under the direction of Miss Dorothea Jackson, director of elementary education in the Seattle Public Schools.

The class work in this school will center around a social studies unit on Mexico, and beginning conversational Spanish will be introduced.

The PTA Leadership conference will be under the sponsorship of the Washington Congress of Parents and Teachers and CPS July 20-23.

The conference will be under the direction of Christian Miller, associate professor of education at CPS and Mrs. Myrtle C. MacLennon, vice-principal, Stewart Junior High School, Tacoma, and vice-president of the Washington Congress of Parents and Teachers.

Other features of the summer session at CPS include a five-week field camp for geology students in the Olympic Mountains, July 19 to Aug. 20, a workshop on marriage and family relations, July 12 to 16. The Washington State Music Teachers' Convention, Aug. 4, 5, 6 and 7.

The Tacoma-Pierce County Workshop for Teachers will be sponsored jointly by CPS and Pacific Lutheran College with credit granted by the institution specified by the student.

The summer school of 1954 will be the last chance for many Korean War veterans to begin education or training under Public Law 550, commonly known as the Korean GI bill, according to information from the U.S. Veterans Administration.

Under this bill all Korean War veterans who were discharged before Aug. 20, 1952, must start their educational training on or before Aug. 20,

1954. Those discharged after that date must enter training within two years of the date of separation from the armed forces.

Teachers who are World War II veterans and who have been enrolled in college under Law 346, the GI bill of that war, are eligible to re-enter training during the 1954 summer session, if they have been employed as teachers during the 1953-54 school term and attended summer school in 1953.

Span-A-Park 4-H

After a rousing game of baseball, the Span-A-Park 4-H club met at the James Sales Grange hall. David Parker reported on the sheep shearing demonstration held at Monroe. Members were given some pointers in first aid to animals by Mrs. Graves.

The dairy group met at Alice Armstrong's. Several members give illustrated talks and demonstrations. It is hoped that the group will have some entrants in the county demonstration contest this year.

A demonstration on chickens was held at the Graves place Saturday. Mrs. Kittenger's group from Fife attended also. They learned various points in judging a chicken for show, also the differences in meat and laying hens.

Span-A-Park participated in the Parkland P-TA Youth Activities program at the school. Everyone marched in the grand parade. Kathleen Brown explained the projects and purposes of the club and introduced Alice Armstrong, Kenny Parker and David Hammar, who gave illustrated talks and demonstrations.

Accident

Donald Lorenz had the misfortune to scald himself Thursday evening by overturning an electric percolator.

Dinner Party

Mr. and Mrs. Ray Funk and Miss Thelma Funk were dinner guests at the home of Mr. and Mrs. Glenn Emery of Eatonville March 19.

Exasperated wife: "I knew I was marrying a blooming idiot, but I didn't think you were a perennial."

THE TRUTH comes home.. to the Family



THE TIMES - JOURNAL BRINGS YOU THE FACTS

THAT SAFEGUARD YOUR FREEDOM OF CHOICE

As an American, you are free to think, choose and act for yourself. But, unless you also had the right to know the truth, these precious freedoms would immediately become meaningless and soon disappear. The right to know is fundamental to democracy. It is guaranteed to you by the First Article of the Bill of Rights, which established a free press. It is predicated upon the faith of the founders in the wisdom of the people . . . Provided they have the facts. To bring the truth right into your family circle is the purpose of your newspaper. It tells you what is going on across the world . . . and across the street! Without fear or favor, it gives you authentic facts which you must have if you are to think, choose and act in the best interests of your family, your community, your country. Freedom of the press is primarily the freedom of all the people to know all the facts. It is the basic freedom upon which all other freedoms depend . . . without which, none could long endure.

In its advertising as well as its news columns, The Times - Journal helps you to exercise your American freedom of choice wisely and well. Every advertisement it prints is a bid for your favor . . . presents the facts you need in order to decide what to buy and from whom . . . all with a view to making every dollar you spend contribute the greatest measure of satisfaction to your family and yourself.

READ THE TIMES - JOURNAL EVERY THURSDAY

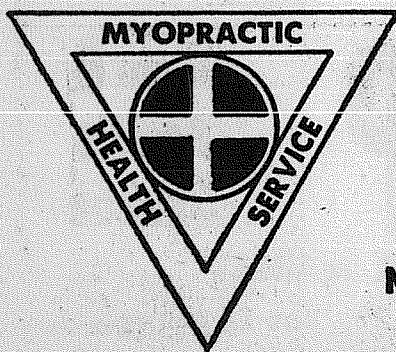
Spanaway Clinic of Myopractic

G. L. Dean, M.D., Director
Corner of 161st and Pacific

Add Years to Life and Life to Years
Circulation is Life, Stagnation is Death.

Keep Alive and going with good circulation of blood and nerves and lymphatics.

"I Can Help Where Others Fail"



Physical
Therapy

GR 6200

Mon., Wed., Fri.

SPRING TRADE-IN CLEARANCE SALE

TELEVISION

2-17" Crosley Table Models, List \$189.95
Trade-in old radio 30.00
Your Price . \$159.95

1-17" Sparton All-Channel Table Model, List . . \$249.95
Trade-in old radio 50.00
Your Price . \$199.95

1-21" Crosley Table Model, List \$279.95
Trade-in old radio 50.00
Your Price . \$229.95

1-21" Sparton All-Channel Table Model, List . . \$289.95
Trade-in old radio 70.00
Your Price . \$219.95

1-21" Crosley Custom Table Model, List . . . \$309.95
Trade-in old radio 75.00
Your Price . \$234.95

1-21" Sparton Console Mhg. Model, List . . . \$349.95
Trade-in old radio comb. or TV set . . . 100.00
Your Price . \$249.95

2-21" Sparton All-Channel Consoles, List . . . \$389.95
Trade-in old radio comb. or TV set . . . 125.00
Your Price . \$264.95

1-24" Crosley Console Mhg. Model, List . . . \$409.95
Trade-in old radio comb. or TV set . . . 100.00
Your Price . \$309.95

APPLIANCES

1-8.2 Cu. Ft. Refrigerator, List \$259.95
Trade-in old refrigerator 75.00
Your Price . \$184.95

1-Fully Automatic Magic Chef Range, List . . \$429.95
Trade-in old range 75.00
Your Price . \$354.95

1-Bendix Automatic Cabinet Ironer, List . . . \$279.95
Trade-in old hand iron 75.00
Your Price . \$204.95

1-Bendix 110 or 220 Volt Electric Dryer, List . \$239.95
Trade-in old dryer 75.00
Your Price . \$164.95

USED TV - APPLIANCES

20" Emerson Table Model \$ 85.00
17" Admiral Full Door Console \$100.00
17" Raytheon Table Model (UHF-VHF) . . . \$100.00
17" Capehart Console \$125.00
20" Firestone Console \$125.00
12" Sparton Comb. TV - Radio -Phono. . . \$130.00
16" Coronado Console (Wty. Pix. Tube) . . \$135.00
21" Arvin Mhg. Console \$175.00
Bendix Automatic Washer \$ 25.00
Bendix Electric Dryer \$ 85.00

FRYE'S

Furniture - TV - Appliances

Open 9:30 to 5:30 Daily — Monday and Friday Till 9:00 p.m.
405 Garfield Street, Parkland GRanite 3691



Wedding Plans

were announced recently by Mr. and Mrs. Luigi Greco, for their daughter Annie, who will wed Marvin Kincheloe, now serving with the U.S. Army, upon his return from the Far East.

Photo by Richards Studio

OFF THE POLICE BLOTTER

By Special Officer C. K. "Red" Haney

Jack Hart of 1214 South 108 St. reported to Deputy Don Warren that someone tore the hamp off of a shed belonging to Bennett Campbell, Inc., and stole a Black & Decker two-wheel electric grinder valued at \$60.00.

Loses Hub Cap

George W. Henish of 5716 So. 110th St. reported the loss of a hubcap from his car parked in the lot at P.L.C. He told detective Archie Truman its value was about \$10.

Somebody Needed Nails

Deputies Jack Berry and Nick Lattiere took a report from Helen and Henry Ferguson of Rt. 3, Box 682, Tacoma, that someone tore the padlock off of their door, also the hinges from a window, taking about \$5 worth of nails.

Taken From Car

T. L. McMaken, Rt. 3, Box 434, Tacoma, reported to Detective Clarence Otto that while his car was parked across from the Parkland theatre someone took his spare wheel and a Firestone tire; also syphoned about five gallons of gasoline from his tank.

Wheels Stolen

Ralph W. Barsone of Ft. Lewis reported to Deputy J. F. Carbone that both rear wheels and tires of his car were stolen while the vehicle was parked in the Parkland theatre lot. The loss was about \$50.

Store Windows Broken

Detective Phill was called to Ryan's Grocery store at Mt.

Highway and Poleline road where Mr. Ryan reported that someone had broken his store windows with a stone and also his residence window. Intruders then entered the living quarters and took about \$20 in cash. The damage amounted to about \$11.

Going Fishing?

A. E. Schimke of 721 South 115th St. reported to Deputy Helen Wick that someone entered his garage and removed a Johnson O/B 5hp Sea Horse motor, valued at \$125.

Taken To Hospital

Russell H. Roth, 45, of Rt. 1, Box 146, Roy, was escorted by Motorcycle Officer Al Johnson to the Tacoma General hospital suffering from internal bleeding.

Don Forsland, fireman apprentice, son of Mr. and Mrs. Charles Forsland of 9823 So. Sheridan Ave., recently spent a leave with his parents after completing his recruit training at San Diego. He has now reported for duty to the San Francisco Group Pacific Reserve Fleet, U. S. Navy. He is a graduate of Lincoln high school.

PIERCE COUNTY REFUSE CO.

WEEKLY GARBAGE COLLECTIONS
Phone GR. 8688

Fern Hill Laundromat & Dry Cleaners

8420 Pacific Ave. HA 9736
Self-Service and Complete Laundry Service
Hrs. 9:00 a.m. to 9:00 p.m.
Mon. - Wed. - Fri. 9 to 6 Tues. - Thurs. - Sat.
"Ask Our Satisfied Customers"

Parkland Theater

Thurs., Fri. & Sat.

In Technicolor

Thunder Over The Plains

Starring: Randolph Scott

— Plus —

Body and Soul

Starring: John Garfield and Lilli Palmer

Starts Sunday

In Technicolor

The Captains Paradise

Starring: Yvonne Carlo and Alex Guinness

— Plus —

Appointment in Honduras

Starring: Glen Ford and Ann Sheridan

47 Studebaker \$495

3/4-Ton Pickup

Bring This Ad & Save \$50

LUCKY SALES & SERVICE

135th & Pacific GR 8688

LUMBER

FREE DELIVERY

OPEN SATURDAYS

Mahogany slab doors.....\$8.49

Colored bath sets (3-pc.)...124.55

White bath sets (3-pc.)...99.95

A-grade por. toilets.....24.95

1x10, 1x12 Sheathing boards.....39.M

1x8 Shiplap; 2x4 studs.....39.M

2x4s, 6s, 8s, 10s, 12s.....39.M

1x6, 1x8, 1x10 blvd. sdg.....39.M

Nails, 8, 20, 30 p. keg.....9.24

Paint, gray, outside, gal.....1.49

Paint, white, outside or in 2.89

Sheetrock-Celotex frp.....59.M

3 Tab roofing, 1st gr. sq.....8.89

90-lb. Min. Roofing sq.....3.89

SPECIAL BUY

1/2" V. T&G Paneling.....49.M

3/4x8 Cedar Siding.....79.M

BONNEY LAKE

LUMBER

4 ml. East of Sumner on Hwy

Phone Sumner 3-3250 any hour.

Nurserymen Given Advice On Care, Fertilizing of Lawns During Spring

Does your lawn look like the lovely green carpets described in the catalogs? A good turf will do the same for your garden as a beautiful rug will do for your home. If you want the best possible results, follow these suggestions from the Washington State Nurserymen's Association.

As soon as weather conditions permit, you should fertilize. Select a nice day when the grass is dry to the touch. Apply a well-balanced lawn fertilizer in an even and smooth cover. Always follow the manufacturer's and the nurseryman's instructions, a little will go a long ways.

One of the best formulas is the 6-10-4; this means that the compound contains six per cent nitrogen, ten per cent phosphate, and four per cent potash. This particular formula should be used at the rate of three pounds for every 100 square feet of lawn. Water the lawn thoroughly as soon as the fertilizer has been applied.

If your lawn bakes hard in the summer and water does not penetrate deeply around the roots, you are in for some trouble. The best way to correct this condition is to punch a lot of holes into the sod, using what is called a "spiker."

Do this before you fertilize. Then topdress with horticultural peatmoss at the rate of one standard bale for every 600 square feet of lawn. Use the back of your rake to work the peatmoss down to the soil.

The Washington State Nurserymen's Association recommends that you cut your grass at the 1 1/2-inch level during the spring, then raise your mower to 2 inches when summer comes. Use a grass catcher since clippings may encourage fungus infestations and weeds.

Sympathy

The sudden death of Charles Fosterling came as a great shock to his friends and relatives. Deepest sympathy is extended to the family.

Pierce County Council

We hope many Spanaway P.T.A. members will plan to attend the Pierce County Council session at Bethel high school Thursday, April 1. It is our chance to win the attendance award as it is so close.

Talented Student

We are proud to have a Bethel student, Joy Barsotti, chosen as a contestant for the VFW talent show. We enjoyed seeing and hearing Joy on TV. She is a talented singer.

Birthday Party

The birthday of Mrs. Louis Symmons was celebrated with an informal party Tuesday evening, March 16. Guests included Mesdames Robert Rhone, Harry White, Don McLellan, Bob Steidel and Beulah Ballard.

Former Parkland Pair Open Cafe

Friends of Mr. and Mrs. Charles Reynolds, former owners of the Parkland-Grill, will be pleased to learn that the couple have opened a new restaurant, the Ranch Cafe, on the highway near Yelm.

For the present Mrs. Reynolds is personally in charge of the Ranch Cafe, her husband to join her there after the fishing season closes.

Spanaway News

Mrs. Oliver Omat
GRanite 6466

The Bethel Hi P.T.A. met last Thursday evening at the high school. Officers were chosen as follows: President, Mrs. Louis Symmons (re-elected); 1st vice president, Harry White; 2nd vice president, Douglas Averill; 3rd vice president, Thorne Tibbits; 4th vice president, Merle Prettyman; secretary, Mrs. Olson; treasurer, Mrs. E. Wallace (re-elected).

Mrs. Ted Otterstad, program chairman, turned the meeting over to C. J. Knaggs, driver training instructor, who acted as moderator for the "Traffic Safety" panel discussion. Those on the panel were: Dick Kraiger and Judy Lyons, students; Mrs. Merle Prettyman, Walter McGee, Deputy Sheriff Earl Olson and Joe Moreland. Refreshments and a social hour were enjoyed.

Recovering

Chet Modahl is home from the hospital and reported recovering from a very serious operation. His many friends wish him a speedy recovery.

SPECIALS

49 BUICK Super Sedan, Sharp \$895
49 CHEV. Deluxe 2-Door Sed. R. & H. \$695
49 FORD Custom Sed. R. & H. \$595
48 FRAZER Manhattan Sed. R., H., O'Drive \$425
47 FORD Conv. R. & H. New rings, new top \$495
47 FORD Station Wagon, Heater, good cond. \$385
41 CHEV. Club Cpe. R. & H. \$195
39 CHEV. Sedan. R. & H. \$99
39 FORD Coupe \$69

TERMS & TRADE

BROOKDALE MOTOR SALES
4303 So. Tac. Way HI 7127

Gibbons

SPANAWAY FOOD CENTER

Spanaway GR 7512
Prices Effective
Fri. & Sat., March 26 & 27
Sharp Pound
CHEESE 59c
N.B.C. Snowflake 1-lb.
SODAS 24c
Old Yankee 20-oz. jar
P'NUT BUTTER 49c
Old Yankee 2 1/2 size
Pork & Beans . 19c

WIENERS Pound 39c
Pickle & Pimento Lb.
LOAF 39c

BOLOGNA Pound 39c
VEAL LOAF Pound 39c
OLIVE LOAF Pound 39c

Cello Pack, Each
SPINACH 16c
Sno White Lb.
Cauliflower 10c
Green Bunch
ONIONS 5c
Bunch
RADISHES 5c

Lawrence T. Newsham, son of Mr. and Mrs. T. L. Newsham of Rt. 4, Box 17, Tacoma, has been promoted to corporal. He is a member of Headquarters Company, 503rd Airborne Inf. Reg., 11th Airborne Div., Fort Campbell, Ky. He is a graduate of Lincoln high school and later volunteer for and graduate from Basic Airborne School at Ft. Benning, Ga., and is now a qualified parachutist with 15 jumps. He is assigned to an intelligence and reconnaissance platoon.

The wife who hangs on every word her husband utters may only be trying to find one that makes sense.



Shining Hour Lives Forever

A portrait captures all the glowing radiance of the bride . . . perpetuates precious memories of her happiest day! Phone today for appointment.

GR 3833

McKEWEN STUDIO

407 Garfield St. Parkland

BEEF Pot Roast
Lb.
lb. 39c

Tomato Sauce and Cheese
Nalley's Spaghetti 25c
2-15-oz. cans

Fresh
TOMATOES . . 17c
U. S. No. 1
POTATOES . . 29c

Ctn.
Lamb Shldr. STEAK or ROAST 39c

OLSON'S CLOVER CREEK MKT.

130th & Pacific Ave. GRanite 8727
We Reserve Right to Limit Quantities

Young Beef
LIVER
Lb.
35c

BISQUICK . . . 39c
40-oz. pkg.
Medosweet Pint
Cottage Cheese . 23c
Zee (80 Count)
Paper Napkins 2/19c

Midland News

Marlene Corrigan
GRanite 8545

Everyone attending the St. Patrick's talent show and social sponsored by the members of St. John of the Woods parish last Friday evening had a grand time and the big annual affair was a huge success. Highlights of the program: Several selections from the Piper's Conservatory of Guitar Music with Peter and Bob Dickson featured; vocal solos by Miss Ann Lanz, Miss Yvonne Bombardier, Mrs. Eunice Anderson, Charles Evarard and a group of teen-

age songsters; piano solos by Mary Kay Dickson and Mary Ann Dickson; accordion numbers by the Misses Mary Ann Reding, Georgia Gemmill and Linda Stokes; harmonizing by the barber-shop quartet consisting of Messrs. Charles Evarard, Harold Thaden, Jack Erck and Larry Cleary; several dance numbers by Midland members of Mrs. Keller's dancing class. Mrs. Larry Cleary was mistress of ceremonies and Mrs. Elvin Bombardier, accompanist. A social hour followed refreshments. Awarded the linen-filled hamper and six other gift packages were Mrs. Pauline Fanning, Ivan Broberg, John Wystrack, Mrs. Leo Bissell, Mrs. Prouty, Mrs. Alf Hals and James Woodard.

MIDLAND DRUGS

PRESCRIPTIONS
8th & Portland Ave. GR 3307

TV REPAIR

Day or Night
Service Charge \$4.95
Rainer TV 8203 Pac
Ph. HA 1553 Nite GR 5507

Auto Repair

Gas & Arc Welding
Jackson's Service
1 Mile So. of Willows
on Graham Hwy
Open
Mon. thru Sat., 9 to 6

BURGERS & FRIES

You don't have to wait
Call HA 9789
We will have them ready
"You Just Pick Them Up"
AL'S DRIVE IN
8818 Pacific Ave.

Trovani's Junior Bootery

Specializing in Children's Shoes
706 ST. HELEN'S AVE. MA 6318
LAKEWOOD CENTER LA 4181

A-1 Auto Wrecking

Transmissions Rear-Ends
Good Tires
GR 3445
13818 Pacific Ave.

Free Pickup & Delivery

GR. 5361
College Cleaners
11416 So. Park Ave.

HAVE YOUR CABINETS CUSTOM BUILT

At No Extra Cost
RHONE'S CABINET SHOP
161st & Park Ave.
GRanite 3342

what are we waiting for?


No Kisses, But
"WOW"
Starting Today
for One Full Week
8 Ft. 9c ea.
2x4's

ANDERSON Lumber Co.

8813 Pacific Ave. GR 7311

ART Wants You To Have 'Em

PRIZE QUALITY CHICKS & POLTS
PLEASE ORDER NOW
So You Won't Be Disappointed
Call GR 5534

The BEST Costs LESS In The Long Run

ART BODHAINE'S
Airport Road Feed
1 1/2 Mile East of Pacific Ave.
on Airport Road
WE DELIVER GR 5534

Elk Plain News

Mrs. A. L. Goddard
GRanite 4317

Of interest to many will be a talk during the Sunday school hour at the Elk Plain Community church on March 28 by Miss Beryl Ring. Rev. Paul Stone felt fortunate in obtaining Miss Ring who, as a missionary to Japan, has much to relate from her years of work in that country. Costumes and souvenirs will give added importance to the message she brings.

4-H Spring Hop Near

The Spring Hop and card party, big event sponsored by the Elk Plain 4-H groups to provide help for youngsters going to camp this summer, is near at hand. The three-piece orchestra of the Western Rhythmers will help to make April 2 a date to remember at the Elk Plain Grange hall.

Daughter for Charboneaus

Happy news comes from Mr.

and Mrs. Ben Kuper, announcing the birth of their granddaughter Joan, born to Mr. and Mrs. John Charboneau of Everett, former residents of Elk Plain. Mrs. Kuper left for Everett Saturday to be with her daughter and greet the new arrival.

Council Meets

March 29 is the date set for the council meeting of the Elk Plain Grange. A pot-luck dinner is arranged.

Grange Fun Night

"Games and fun for everyone" might well be the slogan for the Elk Plain Grange fun night, with everyone welcome March 27 at 8:30. Cards will be played and games to suit many tastes, with surprises pleasing the participants.

Visits Sister

Mr. and Mrs. Everett Thatcher and family drove to Seattle Friday where they visited with Mr. Thatcher's sister, Mrs. Pat

Keeping Touch

Word from Service members of the Elk Plain community is always welcome and good news for the Samuel Jenkins is in hearing of their son, Sam Jr., impending discharge from the Army. Now spending a furlough with his family after service in Korea, he will wind up his tour of duty at Ft. Lewis Lloyd Landgrebe expects to return from Korea for his discharge in about two months, and anticipates seeing his baby boy, born in his absence. John Thatcher expects to have a summer furlough with his family. He is now on duty at the plant generating electricity for Ft. MacArthur, California. His not-much-younger niece, Rosetta Keech, WAF at Scott's Air Force Base in Illinois, studying radio and radar, hopes soon to have a second stripe.

Paper of Interest

The Bethel Committee will meet Tuesday, March 30, at 10 a.m. at the Roy grade school.

Members, composed of the president and a representative of each P-TA of the Bethel district, will report on the requirements of the new scholarship. Authority was given Earl Platt, high school principal, to draw up a paper concerning rules governing the scholarship which will be read by Mrs. Ferd Anderson, president of the committee.

Smoker Big Success

The Elk Plain smoker held last week at the grade school's all-purpose room, was definitely a success and bids to be a yearly affair. At the bake sale table a luscious and beautiful cake made by Mrs. R. W. Spanger brought her a gift of ear-rings. A similar gift was earned by grade student Judy Smith for a layer cake cleverly decorated with boxing gloves, and red-lettered "Smoker" on it, reminder of the occasion.

Bethel To Be Host

The Bethel high school will be host April 1 to the Pierce County Council. Registration

Canyon Road News

Mrs. K. W. Struensee
GR 5742

The Ladies Auxiliary will meet today (Thursday) at the Community hall. There will be a sack lunch at 12:30, the kitchen modernization project making the usual potluck luncheon impossible this time. The annual plant sale will be held at the meeting.

Harvey Dodd Better

Harvey Dodd, who has been ill with a serious heart ailment for some time, is sufficiently improved to be able to be up a short while each day. He is well enough to have visitors. How about a few cards and notes to cheer him while he's getting

will begin at 9:45 and at 10:00 a.m. the president, Mrs. Clarence Lund, will open the session. A lunch will be served at noon by the P-TA.

Home From Hospital
Mrs. Ray Squires, daughter of Mrs. L. R. Fields, has returned to her home on South Park Ave. after a week's stay at Tacoma General hospital because of pneumonia.



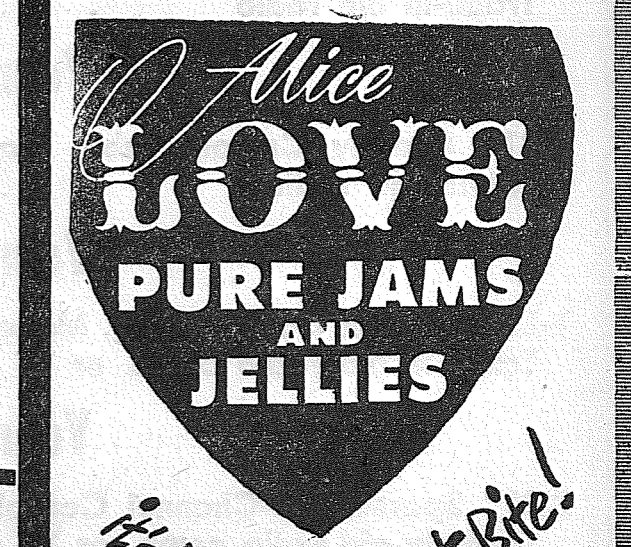
Were all a-buzz about Spring

ETHEN'S Love Is For	♥ Alice LOVE PURE	Strawberry Jam	10 Oz. Glass 27¢
TOM'S Love Is For	♥ Alice LOVE PURE	Grape Jelley	10 Oz. Glass 23¢
LEON'S Love Is For	♥ Alice LOVE PURE	Apple Jelley	10 Oz. Glass 23¢

SPERRY PANCAKE FLOUR . 4 lbs. . . .	49c	SNOW FLAKE SODA CRACKERS . 2 lbs.	43c
---	------------	---	------------

When A MANS Fancy Turns To LOVE

YES and IT'S



It's LOVE at First Bite!

Holiday MARGARINE 5 lbs. for \$1.00

PICTSWEET FROZEN FOODS

P E A S . . . 2/35c MIXED VEG. 2/37c

Whole Kernel CORN . . . 2/37c SPINACH . . . 2/37

TRY Betty Crocker's OF GENERAL MILLS NEWEST ONE-DISH DINNER **Dutch Pantry Pie!**

YOU'LL NEED

CARNATION MILK	3/39c
SPAM 12 OZ.	49c
GOLD MEDAL FLOUR	97c
WESSON OIL	65c

MEATS FRESH MEATS

RIB STEAK	lb. 45c
GROUND BEEF	lb. 32c
Tenderized ROUND STEAK	lb. 55c
Our Own Make PORK SAUSAGE	lb. 32c
RED SNAPPER	lb. 29c

Hills Bros. Coffee . . . (Limit) lb. **98¢**

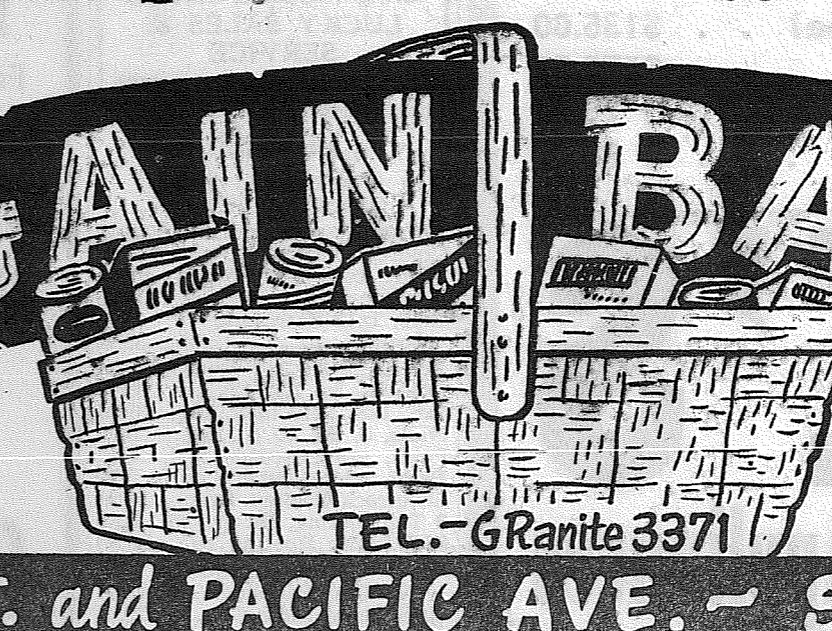
Nalley's Spanish Style RICE DINNER	15 Oz. 2/33c
with Tom. Sauce & Cheese Nalley's Spaghetti	15 Oz. 2/24c
Nalley's Farm Fresh Cucumber Chips	16 Oz. 2/43c
N.B.C. Peanut CREAM PATTIES	26c
Gerbers Strained BABY FOODS	10/85c

VEGETABLES

ONIONS	10 Lbs. 19c
SALAD MIX	9c
TOMATOES	Ctn. 19c
Idaho SPUDS	10 Lb. Mesh Bag 39c

PRICES EFFECTIVE THURS., FRI., SAT., MARCH 25th - 26th - 27th

BARGAIN BASKET



TEL. - GRanite 3371

167th ST. and PACIFIC AVE. - SPANAWAY

FILL YOUR BASKET at BARGAIN BASKET...FOOD VALUES GALORE

FREE PARKING Space for Everyone

BUY AND SELL THROUGH WANT ADS

RENT AND HIRE

3—Business Service

ROTOVATING, \$3.50 an hour, \$5 minimum; H. L. Worley, GR. 6297 3c2f.

SEPTIC TANKS, CESS POOLS CLEANED
Contents Hauled Away
Hutson

TANK CLEANING
HI 3980 HA 7038
Locker Meat Accepted

WHAT DO YOU NEED? Plowing, discing, blade work, etc; GR 6550.

RAY GOGAN
LANDSCAPE CONSTRUCTION GENERAL landscaping service—new lawns, peat soil, topsoil, shrubbery, rockeries. Nothing down, 36 months to pay. GR 3127. 3c2f

DOWN SPOUTS, gutters, chimney; painting; etc; C & M Market Fix-It-Shop, 128th & Pacific, GR 5146 3c28

ELECTRIC CONTRACTING
25 years experienced; licensed & bonded; reasonable; Lee Corp, GR 7064. 3c2f

TRACTOR WORK, plowing, discing, blade work; Fred Ludwig, GR 8028. 3c2f

HOUSE MOVING; leveling; foundations; cement work; free estimates. PR 2653. 3c2f

ACE SEPTIC TANK SERVICE
Septic Tanks Cleaned
GR 4343

D. B. ACKLEY HI 5058

WILL KEEP set of books for small business; GR. 3771 3c28

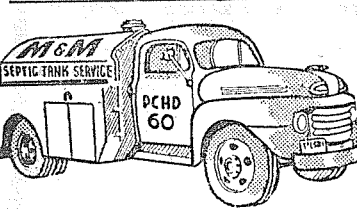
SMITH CABINET SHOP
Remodeling, kitchen cabinets; we sell glass; 16309 So. Park, Spanaway, GR 7949. 3c2f

TRACTOR WORK, plowing, discing, blade work; J. H. Arnestad, GR 4282; Rt. 3, Box 521-A, Tacoma. 3c2f

SEPTIC TANKS CLEANED
Contents hauled away. Don Redford, 8232 So. Fawcett, GA 7334. If no answer call GA 9222. 3c2f

SPRING PLOWING, discing and tilling; GR 8492. 3c2f

WE BUILD HOMES, remodel, level buildings; cabinet work, concrete work. Reasonable. GR 3550, MA 0706. 3c2f



Septic Tank Cleaning
Free Estimates
And Advice
GR 5588

5—Help Wanted

WANTED — Girl model for Camera club Saturday & Sunday afternoons; address Camera Club c/o Times-Journal, P. O. Box 654, Parkland. 5c28

6—Lost & Found

LOST — Small black and tan female dog; reward; 201 East 123rd; GR 5369. 6c28

LOST — Golden cocker male, white chest; pet of widow; information greatly appreciated; please call BR 4974 6p28.

8—Wanted To Buy

WANTED—Buildings to wreck. We buy and sell used building materials. White Ball Lumber Co., Bingham Road, just west of Summit View; GR 8591. 3c2f

SPOT CASH
For Your Used Furniture
1 Piece or House Full
Block's Furniture Mart
8219 So. Tacoma Way
LA 2882

9 Acres - Summit District

TWO BEDROOM HOME, Room for 2 up, H. W. floors, wired 220, 3 stantion barn, chicken house, \$10,500.00 4% interest on balance. Call Helen O'Brien GR. 8638, GR. 3558, GR. 5469.

80 Acres - Bethel District

THREE BEDROOM HOME, wired 220, 100' well, large 18 stantion barn. Several out buildings, some equipment, \$16,000.00 terms. Call Mr. Moore GR. 8638, GR. 5469, GR. 3558.

40 Acres - Thrift

\$4,750.00 AND TERMS, unfinished 3 bedroom home, several out buildings. Good well. Call Mr. Moore GR. 8638, GR. 5469, GR. 3558.

2 1/2 Acres - Waller Road

THREE BEDROOMS, barn and chicken house, good soil, \$800.00 equity, \$45.00 month. Call Mr. Mitchell GR. 8638 GR. 6545.

SUBURBAN REALTY — Insurance

11302 Pacific Avenue GRanite 8638

9—Real Estate

G. I. Financing F.H.A.
WE NEED listings of all kinds. Farms, acreage, lots, building sites, homes, (new or old, 1, 2, 3, 4, bedrooms).

JAMES R. LORING
REAL ESTATE
Natl. Bank of Wash. Bldg.
Eves. Gr 7068 - Days GR 4148

NICE LEVEL Building Site. 90 foot frontage on 126th Street in Parkland. GR. 3204. 9c28

HAVE 80 ACRES — 8 miles from Parkland Shopping, lots of nice trees and lots of pasture, will sell all or part "terms" call GR 3237 evenings. Build to suit yourself. Enjoy life in the country. 9p

TWO-AND-A-HALF bedroom bungalow with 12x24 living room, with wall to wall carpeting, oil furnace, large garage with five beautiful lots. Total price \$6,250.

HERE'S YOUR CHANCE to buy Spanaway Lake frontage with 31 feet of shore land with a nice home that has fullsize basement, living room, two bedrooms, plus attic that can be finished to make two extra bedrooms. The total price is \$6,950.

THREE-BERDOOM concrete-block home with one acre of ground, with full-size basement which would make a nice recreation room, with large oil furnace, 126 ft. drilled well; located on the east side of Mt. Highway near Military road. Total price \$12,500.00 and may go G. I.

119TH AND A STREET. A four year, beautiful home, story-and-a-half, five-rooms and utility, 14x20 garage. \$10,700.

MR. HANDYMAN — Here's your chance to make some money. Over a half acre on east "F" Street close to 121st, with one-bedroom unfinished home to finish. Total price \$3,200 with a small down payment.

Jennie L. Grodvg
Parkland Realty Co.
Insurance of All Kinds
Notary Public
Est. in Parkland Since 1941
GR 7232 days
208 Garfield Street
"Deal with the people who give you their own personal attention."

Homes in Parkland Community; Acreage close in, either with or without buildings.

Bert Brown Realty
11220 Pacific Ave.
Office—Days, GR 3341
Evenings, YU 9221, HI 3315
HI 6174 - LA 7161
Agent for American Express
Money Orders

10—Rentals

FOR RENT — Upstairs furnished 3-bedroom apartment; all utilities furnished except heat; near bus and schools; \$60 per month; GR. 8560 10c28

MACHINE RENTALS — Rota-Tillers, Chain Saws, Mechanic Tools, Floor Sanders, Skill Saws, House Jacks. If its for rent we have it. AA Equipment Rentals. 3804 Pacific Ave., HI 6193. 10c2f

FOR RENT — 3-room house, furnished, with electric refrigerator; wired 220; \$25 a month. Also two 4-room duplex apartments, partly furnished; private bath; \$25; on Knapp and Golden Given roads; Rt. 13, Box 133, Tacoma. 10c28

FOR RENT — Large sleeping room, private bath, private entrance; call GR 3128 after 7. 10p28

11—Repair Service

ANTENNA KITS \$13.95. Complete, all parts. Rainier TV 8203 Pacific Ave. HI 1553 11c28

WASHING MACHINE PARTS.
Largest stock in town. Repairing that pleases. B.B.'s Wash-er Service, 3727 So. G. HI 9409 11c2f

12—Used Autos

FOR SALE — '52 Henry J. 6 Corsair DeLuxe; overdrive, heater, directional signals, white sidewall tires, day-night mirror, radio; low mileage; must sell; take small trade; GR 7498 after 5. 12c28

FOR SALE — '48 Kaiser; sun visor, R. & H., good tires, body and engine; GR 6792. 12p28

FOR SALE — 1940 Dodge Sed. Exceptionally good body, paint and upholstery. Good heater, 4 new Mobil tires. New brakes. 1954 license. Permanent type anti-freeze. Motor average for 1940 car. This is the Times-Journal car No. 8 which we have as an extra. We make very little use of it, so will sell for \$175. See at the Times-Journal office, 119th & Pacific Ave.

FOR SALE — Chester White 'boar, 6 months old; W. H. Bray, Rt. 1, Box 62-A, Eatonville. 13p28

HAY — dry land alfalfa, grass hay \$1 per bale. Delivery can be arranged. Will take livestock in trade. Second house past Roy "Y" on Mountain Highway. 13c2f

HIGHEST PRICES PAID for all kinds of livestock; call or write Butch Grombach, Rt. 3, Box 577, Puyallup; phone Puyallup 5-5621. 13c2f

14—Situation Wanted

WANTED — Baby sitting, day or night; phone for information, GR. 7701. 14c30.

EXPERT PRUNING of trees and shrubs; Fred Stoller; GR 5751. 14c29

ACCORDION, HARMONICA lessons; button and piano accordion; certified teacher; Mrs. Meier, 937 So. Ainsworth, BR 6428. 14c2f

BUTTONHOLING; 904 So. 113th St., Tacoma; GR. 4404. 14c29

ACCORDION lessons in your home; instrument furnished; call HA 5788. collect. 14c2f

PIANO TEACHING — Graduate Holy Names Teachers College; also Cornish School. On 138th St.; GR 6488. 14c28

15—Miscellaneous

LAWN MOWER Sharpening A. A. Equipment Rentals; 3804 Pacific Ave. HI 6193 15c2f.

CASH BUYERS
SAVE UP TO 75%
ON HOUSEHOLD APPLIANCES, WATCHES, TOOLS, ETC.
Write L. H. Peterson

2 CORDS green upland slab, \$14; GR 3306. 15c2f

WE BUY, sell and trade furniture, baby furniture, appliances, garden tools, etc; Trading Post. 8328 So. Park, HI 7374. 15c29

WANTED—Chickens and rabbits. Call us before you sell. Cope's Poultry Market, 7036 Pacific Ave., Tacoma, Wash HA 4406. 15c2f

CEDAR FENCE POSTS Round or split, any length, 35c and up, delivered. Write Cloyes, Rt. 1, Box 93, Roy. 15c2f

FOR SALE—Boys and girls bicycles, \$25 each; GR 5577. 15c2f

REAL SILK products; phone Fern Rutherford, GR 4451. 15c2f

FOR SALE — Ice Cream fountain. Good condition. Motor & unit just overhauled. See at Parkland Grill Garfield St. Parkland. Make an offer. 15p28

TAP, ACROBATIC, BALLET classes. All ages. Mildred Keller, GR 7881. 15c2f

FRUIT TREES — Standard, Dwarf, Combination. Ornamentals and Flowering Trees, Burlap with Valley soil. For best in roots and the best in name it's South Meridian Nursery. One-half block south of Fair Grounds. 15c29

SPECIAL ORDER CAKES—Phone GR 3330, Patty Ann Bakery. 15c2f

LEAVE FILM AT Quality Photo Service for developing. In at 10, out at 5. 9610 Pacific Ave. 15c2f

FISHERMEN! One 12-ft. semi "v" boat, 1 year old, new 8-ft. prams; see at 903 So. 101st St., Tacoma. 15c28

FOR SALE — Mixed grass hay, \$25 per ton; Chester Reichel, end of Smith road; phone Yelm 7820. 15c2f

FOR SALE — Bred New Zealand does; Amden goose eggs; poultry fertilizer; cal Graham 7-7810. 15c28

FOR SALE — All priced to go; automatic washer, electric range, used furniture, all kinds miscellaneous items; C & M Market Fix-It-Shop, 128th & Pacific Ave., GR 5146 15c28

BANK RUN GRAVEL \$6 for 4 yards delivered; loading 50c per cubic yard. Canyon Road pit; WA 7902. 15c2f

SALADMASTER — Free demonstration, free gift; no obligation; for appointment, HI 6287. 15c2f

PARKLAND FURNITURE — New and used miscellaneous; Airport & Pacific Ave.; Residence Phone GR 3748. 15c2f

Used Bargains

Bathinette & Stand A-1 \$7.50
Car Seat - Bed & Pad \$3.75
Clean Baby Swing \$1.50
New Bassinett & Pad (\$14.75) \$10.00
New Childs Rockers \$3.95
Blue Daveno \$25.00
Trailer Bed (like new) \$55.00
Club Chair \$5.00
Rollaway Cot & Mattress \$14.75
5 Piece Kitchen Set \$12.50
5 Piece Solid Oak Dinette \$35.00
Walnut Library Dining Table \$15.00
Chest & Vanity \$27.50
Coit Springs \$4.50 - \$7.50

PARKWAY Furniture

Open Until 9
141st & Pac. GR. 3941
(Bargains Always In Good New Furniture).

16—Livestock, Equip

CASH FOR milk cows, beef, heifers, veal and hogs. Call R. Thackeray collect. Puyallup 5-5414. 16c2f

FOR SALE — Sorrel mare, army saddle, blanket, hackamore bit, halter; not recommended for small children; \$80 takes all; 133rd St., Brookdale; Rt. 7, Box 48, Tacoma, Wn. 16p28

FOR SALE — Beautiful black saddle, bridle and martingale; sacrifice for \$65; GR 6437. 16c28

ARTIFICIAL BREEDERS — Evergreen Breeders Ass'n. \$7 breeding fee; no charge on returns. Holstein, Guernsey, Jersey, Milking Shorthorn, Brown Swiss, Hereford. Call Puyallup 5-8393. 16c2f

CALL TOM RAFFERTY, GR 4443; your agent for Powder River Cattle Squeeze Chute. 16p46ff

WILL TRADE hay for horses. GR 6446 16c2f

Legal Notices

KENDALL O. HALVORSEN
Attorney
Parkland, Washington
In The Superior Court Of The State of Washington, for The County of Pierce,
IN PROBATE
NO. 56700
NOTICE OF HEARING
FINAL ACCOUNT AND REPORT AND PETITION FOR DISTRIBUTION
IN THE MATTER OF THE ESTATE OF JAMES E. BECKWITH, Deceased.
NOTICE is hereby given that FLORENCE N. BECKWITH, the Executrix of the Estate of James E. Beckwith, deceased, under the Non-Intervention Will and Testament of the deceased, has rendered and presented for settlement to, and filed with the Clerk of the Superior Court of said County and State, her Final Account and Report and Petition for Distribution as such Executrix; and that on the 9th day of April, 1954, at 9:30 o'clock a.m., at the Court Room of our said Superior Court at Probate, in said county, has been duly appointed by our Superior Court for the settlement of the Final Account, at which time the Court is asked to settle such report, distribute the property to the heirs or persons entitled to the same and discharge the said Florence N. Beckwith, Executrix.
WITNESS, the Hon. Bertil E. Johnson, Judge of the said Superior Court, and the seal of said court affixed this 11th day of March, 1954.
ROBT. L. DYKEMAN
Clerk of Said Superior Court,
By Roy Goelzer
Deputy.

S E A L
KENDALL O. HALVORSEN
Attorney for the Estate
215 Garfield Street
Parkland, Washington
Published in the Times-Journal March 18, 25; April 1, 1954.

WELL DRILLING
Berkeley Pumps
• JETS
• SUBMERSIBLES
• CENTRIFUGALS
• TURBINES
Call GR 7281
Tacoma Pump & Well Drilling Co.
Rt. 7, Box 316 Tacoma Trades

PERMANIZED BABY SHOES
A new luxurious velvet finish for baby shoes, the most beautiful you have ever seen. More life-like than bronze or any other finish known. Baby pastels. Please Check One:
Pink Yellow
Blue White
Mail Baby Shoes with 1.98 to VEL-KOTE KREATIONS
Parkland Postoffice
(Return this ad with order. This special price for limited time only).
Name
Address

OUR LOW PRICES SET THE PACE

Spring PRICE SLASHING SALE

C and H Cane 10-lb. bag. **SUGAR 97¢**

Pillsbury 2 Pkgs. **Pie Crust Mix 25¢**

HEINZ 14-oz. bottle **Ketchup 19¢**

WESSON 1 gallon **OIL ... \$2.19**

Snowdrift 3-lb. tin **79¢**

FINEST PRODUCE IN PIERCE COUNTY

U. S. No. 1 POTATOES 10 Lbs. **23¢**

HOT HOUSE RHUBARB 3 lbs. **33¢**

FRESH TOMATOES 1 lb. ctn. **23¢**

FRESH CRISP SALAD MIX cello pak. **10¢**

FRESH DATES 1 lb. pkg. **29¢**

MEATS

Tender Delicious Lb. **RIB STEAKS . . . 39¢**

Good Beef Lb. **POT ROAST . . . 37¢**

Tasty Meaty 5 Lbs. **SHORT RIBS . . \$1.00**

Fresh, 12-15 Size Pint **OYSTERS . . . 49¢**

Fillet of Lb. **RED SNAPPER . 23¢**

Fresh Spring Lb. **SALMON . . . 59¢**

Try Our Pure Lean Lb. **GROUND BEEF . 33¢**

EXTRA LARGE A-A FRESH Eggs 57¢

New Brewers Best! 7 Stubbies **BEER \$1.00**
Also Lowest Prices on Rainier, Olympia, Etc.

Red Shield Pound **BUTTER 69¢**

GET DOUBLE COFFEE ENJOYMENT
use **BORDEN'S EVAPORATED MILK**
3 CANS **39¢**

All 5c **Candy Bars** 4 for **15¢**

All 5c **Chewing Gum** 3 for **10¢**

All Popular Brands 2 Pkgs. 43c Ctn. **CIGARETTES . \$2.14**

M.J.B. Black 48's **TEA BAGS 49¢**

M.J.B. Long Grain 2 Lbs. **WHITE RICE 39¢**

Prices Effective Thurs., Fri., Sat. March 25-26-27

LOTS OF PARKING SPACE

OPEN 9 To 9 7 DAYS A WEEK

MCDANIELS
Airport and Canyon Road
OUR LOW PRICES SET THE PACE

OUR LOW PRICES SET THE PACE

OUR LOW PRICES SET THE PACE

Daffodil Queen To Be Crowned April 6 In Tacoma Armory Show

Western Washington's floral grandeur goes on show April 6 to 11 with the annual presentation of the famous Puyallup Valley Daffodil Festival. Visitors from all over the State of Washington, as well as from neighboring states, will be coming to take in the many events.

The lovely Daffodil Queen, will be crowned at 8 p.m. on April 6 at the Tacoma Armory. Here also will be held the flower show with its many elaborate displays of daffodils, tulips, nursery stock, and flower arrangements.

According to Stanley Walters, show manager and president of the Washington chapter of the American Association of Nurserymen, this year's show will be especially beneficial to new gardeners who want sound information on how to develop their yards.

Walters has enlisted the help of hundreds of professional horticulturists, including leading nurserymen and bulb growers, in order that he may present the people of Washington with the very finest show possible.

The floral parade will begin at 10 a. m. Saturday, April 10 in Tacoma and continue to Puyallup and Sumner. Millions of gay blossoms, fresh from Washington's giant bulb fields, are used annually in creating the floats for this parade.

The floral marine parade follows on April 11 in Commencement Bay in Old Tacoma with more flowers, more beautiful girls, and more music to stir the hearts of young and old.

A diplomat is a man who can convince his wife that she'd look fat in a mink coat.

It's The Law

(Presented as a public service by the Washington State Bar Association).

GUARDIANSHIPS FOR INFORM AND AGED

Mr. and Mrs. Smith had reared and educated nine children and had accumulated considerable property before Mr. Smith's death.

Mrs. Smith was 78 years old, could no longer read, was becoming forgetful, and managed her property only with the aid of her children from time to time.

But the children didn't get along well together. Finally, three of them became jittery and petitioned the superior court for the appointment of a guardian of their mother's estate because of her feeble memory and because they feared she would not deal fairly with them in disposing of her property.

Infirmity Not Enough

Mrs. Smith resisted their petition and claimed that despite her age she was quite capable of managing her own affairs.

Tularemia, 'Nuisance Disease' Explained by UW Science Experts

By the Staff of the Health Sciences Division University of Washington
Tularemia is a disease of wild animals that is transmissible to man. While it hasn't been a great problem in this state, it continues to be a nuisance.

Wild rabbits and other rodents are a usual source of the disease. Handling the infected animal may provide the germ an entrance to the body through a break in the skin.

Infected fingers may carry the germ to the eye or to the mouth. Eating poorly cooked, infected rabbit meat may produce the disease.

In this state, there have been reports of this disease occurring as a result of other sources, however. The wood tick and dog tick, both of which feed on rodents, are known to carry this disease to mankind. A person, who was investigating a magpie

And she demonstrated that she was able to deal with strangers even though she wasn't always impartial toward all her children.

The courts have power to appoint guardians for persons and estates of minors, insane and mentally incompetent persons. However, the courts will not appoint a guardian for one's property merely because he is aged or infirm, or because his mind is to some extent impaired by age or disease.

It must appear that the person for whom a guardian is sought is not capable of transacting the ordinary business involved in taking care of his property.

If he understands the nature of his business and the effect of what he does, and can exercise his own will with reference to such business, notwithstanding the influence of others, he is not of unsound mind.

(This column is written to inform, not advise. Facts may change the application of the law.)

nest, apparently was infected by the contamination brought by the bird's eating of infected rodenst.

Even the deer fly has been known to first bite an infected animal and then bite a human, thus transferring the disease.

The onset of this disease is very often like an influenza attack. There is a marked fever which subsides for a day or so, and then rises again. The second rise in temperature lasts about two weeks.

In the area where the germ was introduced, the kernels or glands are swollen and tender. If the germ gets into the human body through the skin of the hand, these kernels will show up at the elbow joint and under the arm.

If the introduction is in the eye, the glands in the neck become affected.

Hunters, farmers, butchers and campers are most likely to get tularemia. The housewife who prepares wild rabbit for eating is, of course, susceptible. Through cooking of the meat of an infected animal will kill the germ and thus remove contamination.

The physician has several tests which can be made to determine if the human has tularemia. Because this disease may resemble other disease conditions, depending upon how the germs enter the body, the doctor may not suspect tularemia unless he knows about the possibility.

It will help him to know if the ill person has been handling wild rabbits or has recently eaten wild rabbit meat. He should be told if the patient has recently been bitten by a tick or a deer fly.

The handling of such material as the magpie's nest is unusual, but an important point in considering the possible source of this disease.

This information is important because it is the unusual. Tularemia exists in the state of

Plan To Reactivate Spanaway Boys Club

Jim Gray, guiding spirit of Boy Scout groups in the Spanaway area, is very anxious to reactivate troop No. 34. He points out that with summer months approaching and plans already under way for some good outdoor activities for boys this summer, something has to be done if the boys of troop No. 34 of Spanaway are going to get in on the fun.

"To get the ball rolling, we need a meeting of the boys and their dads, as a troop doesn't work unless it has the help of both the boys and their parents," declares Mr. Gray.

"Now a boy of Scout age should be able to cook over a camp fire well enough so his dad can eat the food, especially with a little help from dad. So in the near future an outdoor meeting is being planned. Boys will bring their dads, their food and their eating and cooking tools. Dads, bring your appetites.

"Scout leaders will be present to outline the program and show us all a good time.

"Where? at Jim Gray's ranch at 163rd and East B St.

"When? We will let the boys decide that."

All Scouts, including Explorers and interested boys between ages 11 and 14, are asked to meet Mr. Gray at the Scout hall at Spanaway at 4:45 p.m. Friday, March 26, for a short meeting to talk this over.

YWCA Offers Child Birth Education

The Y.W.C.A. is offering to expectant mothers, another series of classes in education for childbirth, which began Wednesday morning, March 24, at 10 a. m.

The class will be under the guidance and supervision of Virginia Lawrence Larsen, M. D. of Seattle, with Mrs. Kathryn D. Jensen, registered nurse, Tacoma, assisting.

This will be the fourth series of classes in education for childbirth offered by the Tacoma Y.W.C.A., a red feather agency. Further information may be obtained from the Y.W.C.A. BR-4181.

Lacamas Dance

An all-community dance is being held Saturday evening, March 27, in the Lacamas Community hall on Hart's Lake loop road. A good orchestra is promised. Proceeds will go to 4-H clubs for summer camp expenses. Everyone invited to come and have a good time; hours 9 to 2.

Grange Fun Night

The Elk Plain Grange is planning a "fun night" party for Saturday evening, March 27, beginning at 8 o'clock. Awards and lunch are promised and everyone is invited to come and join in an evening of fun.

"You'll drive me out of my mind, said the golfer.
"That would be a putt, dear—hardly a drive," replied his wife.

Washington. If the right diagnosis is made, the right remedy is available. Where rabbits, squirrels and other rodents are most plentiful, there tularemia may eventually occur.

County Agents' Corner

By Florence D. Allen
Mrs. Otto Moebius of the Thrift community has made arrangements for an upholstery workshop in the Community Hall there. Sixteen women are going to be in the workshop and others in the community are planning on helping their friends who will be doing the upholstering.

Mrs. Anderson's Waller Road Lassies will have 15 teams that day. Mrs. Walter Corrigan and Mrs. Keil have charge of the contest.

Kapowsin P-TA

Kapowsin P-TA will meet at the school this (Thursday) evening at 8 o'clock. The main topic of discussion will be the annual school picnic. Officers will be elected for the coming year.

Leonard E. Eriksson, son of Christian Eriksson of 8603 So. A St., is reported serving aboard one of the Navy's ships of Task Force 12 which put in for a three-day stay recently at San Francisco.

The Perfect Salad Dressing
TANG qt. **45c**
24 Oz.
BANQUET DILLS **33c**

TOMATO SAUCE, Tastewell 5/29c
SEEDLESS RAISINS, 2 lbs. 35c
ROYAL ARMS TISSUE, 4 rolls 29c

M-J-B RICE SPECIAL Spam **45c**
2 Lbs.
Long White Grain . . . **37c** Prunes . **49c**

SUNSHINE KRISPY'S, 1 lb. pkg. 26c
SUNSHINE FILLED SWEETS, 1 lb. pkg. 39c
ICE CREAM, Farm Fresh, 1/2 gal. 89c
FRANCO SPAGHETTI 2/25c
GRO PUP, 2 pkgs. 73c

ALL 10 Lbs. **2.49**
24 Ozs. **39c**
JOY 73c

TREE TEA BLACK
1/2 lb. . . . **63c**
48 Bags . . **49c**

HI C ORANGE ADE 26c
SARDINES, 3 for 29c
FRUITS - VEGETABLES — ONLY THE BEST
TEXAS PINK GRAPEFRUIT, each 5c
RED DELICIOUS APPLES, 2 lbs. 29c
TOMATOES, carton 17c
NuLIFE, 100 lbs. 5-10-10, reg. 4.50 \$3.70
GARDEN PEAT MOSS, reg. 2.69 \$2.49
CHICK STARTER - FEED - MASHES - GRIT

HERMAN'S 162nd & Park Ave.
Phone GR 8213
Spanaway
Prices Effective Thurs. Noon, Fri., Sat., March 25, 26, 27

LAMB STEAK lb. 49c
LAMB ROAST lb. 45c
CORNED PORK Sugar Cured lb. 49c
SKINLESS WIENERS lb. 45c

SPANAWAY MEAT MARKET
NEXT DOOR TO HERMAN'S GRanite 8215
Prices Effective Friday, Saturday, March 26th & 27th

YOUR SUPER SAVING CENTER

Centennial FLOUR . . . 10 Pounds 89¢

Krafts Miracle Whip . . . Quart 49¢

Armour's Sweet Sixteen Oleomargarine . . . 2 Pounds 45¢

Garden Sliced **PINEAPPLE 2 1/2 Tin 29c**

PRODUCE LEMONS 2 lbs. 25c

Snow White **Cauliflower 10c lb.**

Radishes & Green Onions 5c bun.

Indian River, Pink **Grapefruit 10c ea.**

OUR delicious MEATS CAN'T BE BEAT

BROIL A STEAK

Sirloin or **T-Bones lb. 69c**

Carstens Skinless **WIENERS lb. 39c**

BEEF LIVER . lb. 45c

Young & Tender **LEG O' MUTTON 39¢**

Young & Tender **MUTTON CHOPS**

Sea Cap 5 Oz. **Shrimp . . 47c**

Mission 2 For **Macaroni Dinner 25c**

M.J.B. 8 Oz. **Quick Rice . . 2/25c**

Old Yankee 14-Oz. **Peanut Butter . 35c**

Rancher's Pride, Chicken & 2 1/2-Tin **Noodles 49c**

Snowflake 1-Lb. **Crackers 25c**

Prices Effective Friday & Saturday, March 26th & 27th

BROOKDALE LUMBER COMPANY Builders of Homes, Garages and Farm Buildings
GRanite 8669
136th & Pacific Avenue



for a complete line of building supplies . .

Shop & Save

36x80" **Mahogany Doors . . . \$14.95**

1x3 100 Sq. Ft. **Utility Flooring . . . \$6.90**



Mr. Brookdale Says: "There's lots of sunshine now, so get out the hammer and saw and get started on those home projects."

Ranch Fence Lin. Ft. 35c

Picket Fence Lin. Ft. 45c

Includes all materials - - 4x4 Cedar Posts, 2x4s, 1x6 Boards and Nails.

STOP BY AND LOOK AT OUR BACK-YARD GREEN HOUSE

FREE ESTIMATES ON FENCE INSTALLATIONS, REMODELING AND BUILDING

FREE DELIVERY

BROOKDALE LUMBER CO.
136th & Pacific Ave. GR 8669

FREE ANTENNA WITH ANY T.V. SET THIS WEEK!

CLEARANCE OF NEW AND USED SETS

1952 21" G.E. Console, full warranty \$199.95
17" Cromwell Console, new warranty . . . \$129.95
2 Only 17" Coronado Console \$ 89.95
16" Admiral T.M., new warranty \$ 99.95

USED RADIOS \$2.50 Each

17" T. V. SET - - as is - - **MAKE AN OFFER**

NEW

Model 2194 Reg. Price \$439.95 **NOW 21" PACIFIC MERCURY COMB. . . \$379.95**

Model 2184, Reg. \$539.95 **SPECIAL 21" PACIFIC MERCURY COMB. . . \$459.95**

Reg. \$419.95 **Special 21" FULL DOOR CONSOLE \$339.95**

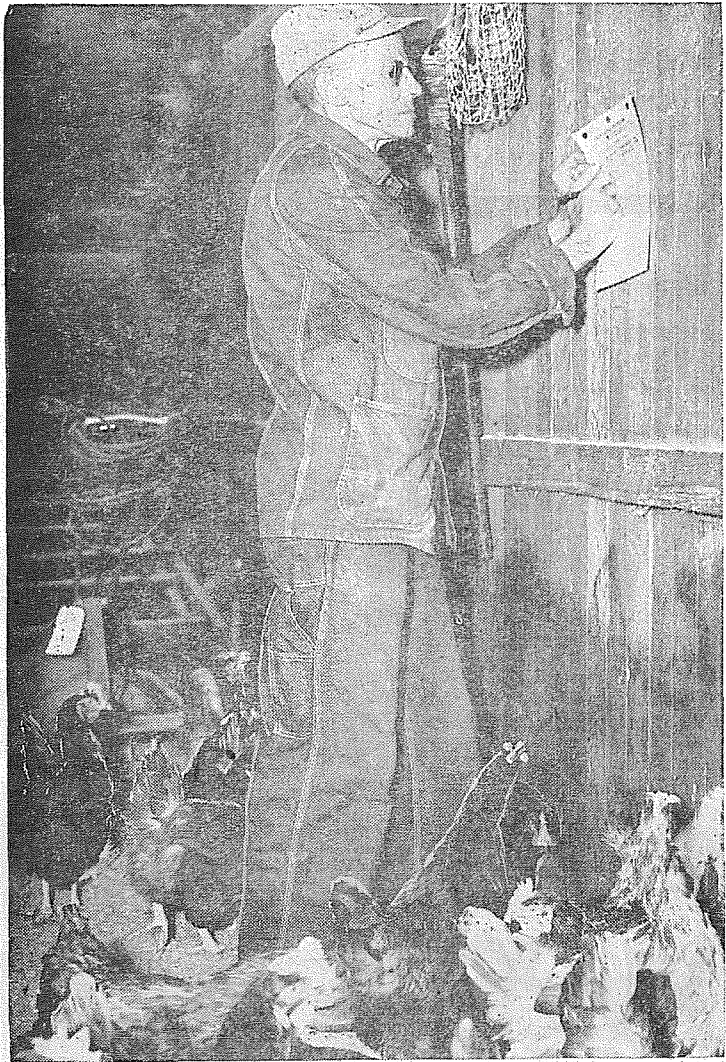
COMPLETE ANTENNA KITS Including Lead Wire, Guy Wire and Ring Mast, Mount, Screw Eyes and Insulators. Only \$13.95 - Installed \$22.95

TERMS? SURE! WE DELIVER FREE

Rainier Television & Appliance
8203 PACIFIC AVE Open 9 to 9 - 6 Days HA 1553
FREE TUBE CHECKING

FLETCHER'S Market 122nd and Pacific Ave.
Phone GRanite 8550
FREE DELIVERY

Poultryman Finds Large Part Of Work Is Keeping Records Of Flock Production



Records and bookkeeping aren't often associated with farm work and poultry raising, at least in the mind of the average reader. However, according to L. C. McFadden, 10228 Pacific Ave., it is one of the most important phases of farming.

Since 1930, McFadden has been chalking up the daily total of eggs laid and birds lost or culled, and making up a monthly report for the county agent's office to process and return showing how good or bad business is.

"You know what you're doing and where you stand," declares McFadden, "with this system there's no guess work."

The daily record is kept hanging in the pen, handy to write totals and other information. The month's figures are copied onto the monthly record under such divisions as number of eggs laid per hen, per day; mortality for month; number consumed in the home.

Also feed costs, total amount of eggs sold, chicks sold and other bits of information pertinent to the business. In other words, a complete bookkeeping system, only on a poultry basis, instead of the ordinary basis.

"It's a great income tax help," McFadden said, "as it affords an entire itemized look at your operation, including depreciation."

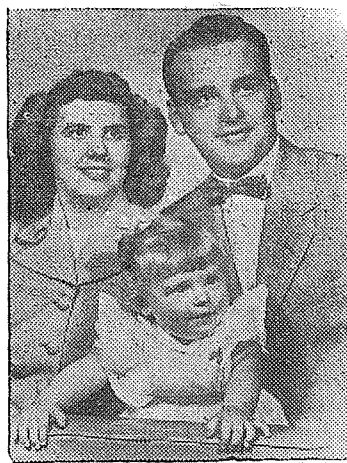


Cooperative Poultry Recordkeeping

under the county agent's extension program is typified by the experience of L. C. McFadden, 10228 Pacific Ave., who has been keeping the books on his poultry enterprise since 1930.

In the photo at the top, McFadden writes down the daily total of eggs and bird data on the henhouse. Above, he enters the figures on the monthly total sheet, to be sent in to County Agent Ernest Hopp.

(Photos by McKewen)



Evangelist

and Mrs. Jerry Fischer, of No. Dakota, known as the "Musical Fischers of Men", will begin a special Youth Festival at the Spanaway Assembly of God, this Tuesday.

Services will be held each night, with the exception of Monday and Saturday, at 7:30 p.m. The Fischers will feature the Hammond organ, vibraharp, piano, Spanish and Hawaiian guitars and novelty instruments, such as the saw and pitchfork.

Social Workers Sought For New Jobs

College graduates are being sought for beginning social work jobs in the Ellensburg, Chehalis, Olympia, Port Angeles and Vancouver offices of the State Department of Public Assistance according to state personnel board supervisor, Harold A. Lang. Appointments will be made wherever possible by April 1.

Salary for these merit system jobs start at \$259 per month with increases to \$307 and mileage allowed for the use of employee's cars. Opportunities for advancement, including graduate training grants are available to qualified applicants.

Written tests are required prior to employment. Full details may be secured from local public assistance or employment service offices or from the State Personnel Board, 1209 Smith Tower, Seattle 4.

Sermon Topic Told

The value of humility, patience, and obedience in learning the nature of spiritual reality and in experiencing the divine healing power will be stressed at Christian Science services Sunday. The lesson-sermon is entitled "Reality."

90,000 School Enrollment Increase In 5 Years State Wide - - Langlie

By Gov. Arthur B. Langlie

Our public schools have for several years faced the problem of coping with the ever-growing number of children. In the past five years public school enrollment in Washington increased by more than 90,000 pupils.

In all the other states—outside the deep south—the bulk of public school revenues is raised locally, with the state contributing about 1/3 of the total on the average, in order to equalize differences in wealth and need between the various areas.

Washington is the only state north of the Mason-Dixon line in which state government contributes 2/3 of the school costs. It was state government which, in the past few years, not only took care of the increased attendance load but enabled our school system to do better than ever before.

* * *

In 1950 Washington state ranked 10th in per capita expenditures for education; by 1952 we had advanced to 3rd place.

Now let us see what has happened last year:

The 1953 Legislature made available to the public schools for the 1953-55 biennium, from state appropriations and statutory levies, \$38 million more than they had received in the preceding biennium.

Teachers are the most important thing in the schools; they also account for the largest part of school costs. Salaries

account for 75 per cent of all current school expenditures. In Washington teachers' salaries were raised more than \$400 in 1953, while in the rest of the United States they went up only \$171 on the average. Only one other state raised teachers' salaries as much as \$400. In the past four years teachers' salaries in Washington rose 27 per cent while the cost of living increased about 13 per cent.

Washington now ranks third highest in teachers' salaries, exceeded only by California and New York. Only three years ago we ranked 10th. The steady increase in teachers' salaries has enabled our schools to attract more qualified people to the profession.

In the past four years the number of elementary and secondary classroom teachers has risen 19 per cent while the total labor force in Washington rose 7 per cent.

More significant than the increase in numbers has been the improvement in quality of our State's elementary and secondary teaching force in the past four years. In the school year 1949-50, 5,260 teachers with so-called emergency or sub-standard certificates were employed in Washington, about 36% of all teachers.

In the current school year, we have only 1,200 teachers, seven per cent with emergency certificates. Nationwide the number of teachers with emergency certificates dropped 25% (Continued on Page 3)

Adelphian Choir To Tour In Concert

The Adelphian Concert Choir of the College of Puget Sound,

one of the outstanding choral groups in the Pacific Northwest, will make its annual spring tour from April 1 to April 15. The choir will sing a total of 20 concerts in four western states, Washington, Idaho, Oregon and Montana.

Under the direction of Prof. Bruce Rodgers, head of the CPS Dept. of Music, the 35-voice mixed choir will perform in Olympia, Everett, Wenatchee, Omak, Ephrata, Spokane.

FOR FUEL OIL

P

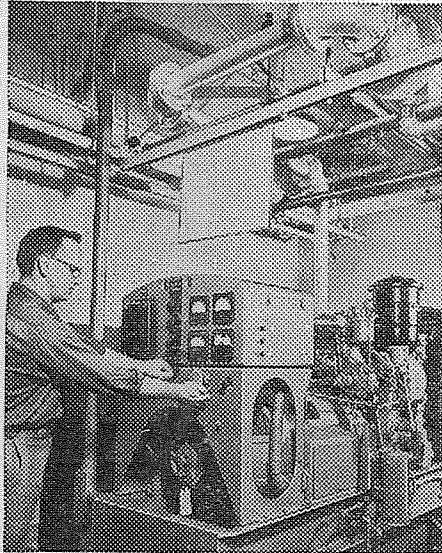


WHAT'S DOING

M. J. Sullivan, your Telephone Manager for Parkland

Emergency power for your telephone

Once in a great while, because of storms or other emergencies, a telephone central office may be cut off from its usual source of electric power. But this doesn't interrupt telephone service. In your central office are special electric generators, run by gasoline or diesel engines. And they take over the job of charging the large storage batteries that supply the current to run the telephone system.



Planning ahead for emergencies is another way we make sure you have dependable, low-cost telephone service when you need it. Bell of Nevada works to make your telephone a bigger value every day.



Coast-to-coast calls cost only \$2.50 plus tax

Just think — you can call clear across the country — for just \$2.50 plus tax. This is the day station rate for the first 3 minutes. Calls over shorter distances — to Chicago, Salt Lake City, etc., cost less. Still lower rates apply for all calls on Sundays and after 6 p.m. on weekdays.

How you can enjoy even better telephone service

If yours is a party-line, you will receive even better service by following these simple points: When you have a series of calls to make, take time out between them. This gives other people a chance to reach you. Before you call, make sure the line is clear. And in cases where someone else has to make an emergency call while you're talking, the thoughtful thing is to hang up and call back later. Bell of Nevada.



Ten Word INTELLIGRAM

Check the correct word.

1. England (does) (does not) celebrate Thanksgiving Day.
2. A bass drum (is) (is not) larger than a kettle drum.
3. A baby elephant is called a (foal) (calf).
4. A baby beaver is called a (kitten) (bea).
5. A baby camel is called a (foal) (calf).
6. Brazil (is) (is not) larger in area than the U. S.
7. Julius Caesar (did) (did not) conquer Britain.
8. A Kanaka is an (Eskimo) (Hawaiian).
9. The Cape of Good Hope is in (Africa) (South America).
10. Croutons are (food) (feminine hair styles).

Check your answers, scoring yourself 10 points for each correct choice. A score of 0-20 is poor, 30-60, average; 70-80, superior; 90-100, very superior.

Decoded Intelligram

1—Does not, 2—Is, 3—Calf, 4—Kitten, 5—Foal, 6—Is, 7—Did not, 8—Hawaiian, 9—Africa, 10—Food.

Luther Choir To Appear At PLC Thursday Evening For Concert

Making their first concert tour of the Pacific Northwest, the Luther Junior College and Academy choir from Wahoo, Nebraska will appear this Thursday evening at 8 o'clock in the Pacific Lutheran College chapel auditorium.

Prof. Carroll O. Nygren is director of the 40 voice group which will give a concert of sacred music. Vocal and instrumental students from the college will appear with the choir as assisting artists.

Two of Prof. Nygren's compositions are included on the program. They are "O Sing Unto The Lord" and "Words of Prayer."

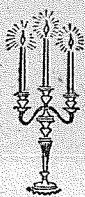
Other program selections include: "Now Let All the Heavens Adore Thee," Mach; "O Dearest Jesus," Palestrina; "Kisericordias Domini," Durante; "Cherubim Song," Glinka; "O Man Thy Grief and Sin Be moan," Ralph Williams.

Also "Angus Dei," Kalinnikof; "O Light Everlasting," Alaf Christianson; "Day by Day Thy Mercies, Lord, Attend Me," Hemlandssanger; "There is a Balm in Gilead," Dawson;

Bike Reflectors

Put a small reflector on the back of each bicycle pedal. The small reflectors, moving up and down, will attract more attention at night than the single one on the back fender.

New Haven, Conn. (AFPS)—It was so hot here last July that baked apples were found on trees in local orchards.



It's Not Our Piano Playing
It's Our Cleaning
We're Proud of

Larry's MTN. VIEW CLEANERS

PICK UP & DELIVERY RAIN OR SHINE
GR 3261 134th & Pacific

Rodger Lunde Post

Eva M. Steele Publicity Chm.
6005 So. Lawrence - HA 2363

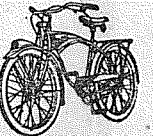
Final plans were completed for the Rodger Lunde Post and Auxiliary sponsored smorgasbord, to be served Sunday at the VFW hall, 11102 So. Yakima Ave., from 1 p.m. to 4 p.m. Mrs. Thurlow Clothier and Robert Oakley are general chairmen.

Co-chairmen include Mr. and Mrs. Harry Akers, Mr. and Mrs. Harthur Neff, and Mrs. Cecil Harbin. Members of the Auxiliary will serve, set tables, etc.

Included on the menu are such goodies as home baked beans, spaghetti, salad, rolls, cookies and coffee. The public is invited to attend.

Gas Improves Pierce Homes

Liquefied petroleum, sometimes called bottled gas, has been a big factor in the modernization of a majority of Pierce County's 79,000 homes in the past five years.



ONE WEEK ONLY
ASK FOR IT
Bicycle Spring Reg. \$2.30

Carriers . . . \$1.65

LAWN MOWERS

PICK UP SHARPEN REPAIRED STORED DELIVER

Lapping \$1.50
Precision Grinding \$2.50

Parkland Cycle & Key
GR 5772

EASTER CARDS

BASKETS and CANDY

JACOBS PACIFIC DRUG

8248 Pacific Avenue

Pay Light & Water Bills Here

SEE AND HEAR
JIM GALVERT
And his Orchestra Every Saturday

at the

Fruitland Grange Dance Jamboree

7 Miles East of Pacific Ave. on Airport Road
Dancing 9:30 - 2:00 Admission \$1.00

BICYCLES

The most Beautiful Rebuilt Bicycles in the Northwest at Prices You Can Afford
6 Months Unconditional Guarantee

If You Are Looking For a Bicycle

Look At

DAVE'S FIX IT SHOP

LAWN MOWERS - NEW & USED
Power or Push Type

8410 Pacific Avenue

Parkland Sewer Meeting Called

Commissioners of the recently formed Parkland Sewer district announce that public meetings will be held the first Tuesday of each month, at 8 p.m., in the Parkland grade school. The first scheduled meeting will be Tuesday, April 6. All residents of the community are welcome to attend these sessions.

Card Party

The annual card party of the Eagles lodge and auxiliary No. 3, Tacoma, will be held Tuesday, March 30, in the Eagles hall, So. 13th and Fawcett Ave. Pinochle and 500 will be played; the 50c donation including favors and refreshments.

Winnie the WAC says she ignores traffic lights because "when you've seen two or three, you've seen them all."

Installation & Repairs
JACK'S TV & RADIO SERVICE
 405 Garfield St.
 for service phone GR 3691

UPHOLSTERING
 Recovering and Rebuilding Cushions Rebuilt Free Estimates
FURNITURE AND RUG CLEANING
PARKLAND UPHOLSTERY
 12814 Pacific Avenue
 GR 3201 Res. 3181

HARDWARE
 Fuller Paint - Republic Paint - Dramex Super Kemtone Complete Stock
Save Time & Money
MAGDANZ
 Lumber & Hardware
 11401 Pacific Ave.
 GR. 5538
 Open Eve. "Til 8 p.m.

BURY YOUR AUTO ACCIDENT WORRIES
 with a STATE FARM "80-20" POLICY

The protection that gets rid of high auto collision expenses. With this policy you never pay more than \$50 on any collision repair bill and you have the extra advantage of paying only 20% on damage costs from 1¢ to \$250. Ask about State Farm "80-20" Collision Coverage today.



It Pays to Know Your STATE FARM AGENT

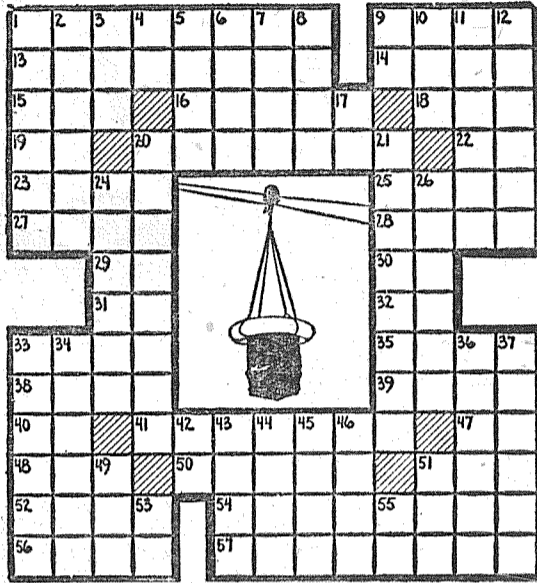
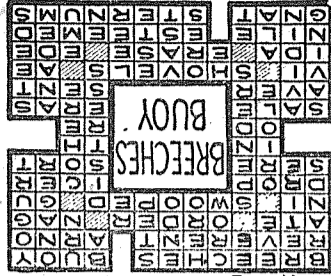
BOB LORAAS
 Across from Parkland Postoffice
GR 4040 - GR 8113

WEEKLY CROSSWORD PUZZLE

Marine Device

- HORIZONTAL**
- 1,9 Depicted marine device
 - 13 Worshipful
 - 14 Italian river
 - 15 Goddess of infatuation
 - 16 Command
 - 18 Scold
 - 19 Nickel (symbol)
 - 20 Descended suddenly
 - 22 Guinea (ab.)
 - 23 Fall
 - 25 Chiller
 - 27 Dry
 - 28 Kind
 - 29 Preposition
 - 30 Weekday (ab.)
 - 31 Hypothetical force
 - 32 Anent
 - 33 Bargain event
 - 35 Ages
 - 38 State
 - 39 Dispatched
 - 40 Six (Roman)
 - 41 Spades
 - 47 An (Scot.)
 - 48 Girl's name
 - 50 Expunge
 - 51 Dutch town
 - 52 Egyptian river
 - 54 Regarded
 - 56 Insect
 - 57 Breastbones
- VERTICAL**
- 1 Trademarks
 - 2 Go to bed
 - 3 Night before an event
 - 4 Eye (Scot.)
 - 5 Bird
 - 6 Demigod
 - 7 Within (comb. form)
 - 8 Pace
 - 9 College degree (ab.)
 - 10 Vase
 - 11 Wild ass
 - 12 Curdled milk product
 - 17 Concerning
 - 20 Wastrels
 - 21 Sorrow
 - 24 Song bird
 - 26 Cling
 - 33 It is used for life
 - 34 Egg substance
 - 36 Garland
 - 37 Horses
 - 42 Pronoun
 - 43 Mineral rocks
 - 44 Immense
 - 45 Italian town
 - 46 Ogle
 - 49 Winglike part
 - 51 Australian ostrich
 - 53 Diminutive suffix
 - 55 Half an em

Here's the Answer



Speech Festival To Draw High School Students April 2, 3

More than 75 high school speech students from all over the state are expected to attend the 16th Annual Speech Festival at the University of Washington, Friday and Saturday, April 2 and 3. Dr. Gale Richards, assistant professor of speech in charge of the conference, has announced.

The meetings have been set up so that participants can compete in three events; group discussion, oral interpretation, and extemporaneous speaking. Not

more than five students from each school will be allowed to register for the conference.

A plaque for the school judged best in over-all performance and certificates for individual performances will be awarded at a 1 p.m. luncheon Saturday, April 3, in the University commons.

Other events planned for the high school visitors include a Friday luncheon and several campus events on Friday and Saturday evenings.

The Speech Festival is sponsored by the Department of Speech and the Office of Short courses and Conferences at the University. Registrations should be made by March 29 with the Office of Short Courses and Conferences, University of Washington, Seattle 5, Washington.

For TOP T.V. & RADIO PERFORMANCE
 Call GR 3549

Any Time . . . Day or Night
 Or Bring Your Set To Our Shop & Save!
JIM'S RADIO
 9920 PACIFIC AVE.

You Are Invited To Attend A Southern Baptist Church

First Southern Baptist Church of Tacoma

So. 11th St., Between Proctor and Adams St. S.

SERVICES:
 Sunday School 9:45 A.M.
 Morning Worship 11 A.M.
 Training Union 6:30 P.M.
 Evening Worship 7:30 P.M.
 Prayer Meeting Wednesday 7:30 P.M.

For Free Transportation Phone HI 7883

Rev. C. H. Green, Missionary Pastor - Montesano, Wash. Tel. 3622
 Bro. Fred Bennett, Pastor HI 9280

FLETT DAIRY
 FARM FRESH
 HOMOGENIZED AND PASTEURIZED MILK AND CREAM
 ICE CREAM
 Phone HA. 3301

TIC-TOC JEWELRY
 10331 PACIFIC AVE.
 Repairing of Fine Watches Our Specialty
 GLEN A. CARMACK

SCHOOL NEWS

90,000 School Enrollment Increase In 5 Years Statewide - Langlie

(Continued from Page 1)
 In the past four years. In Washington it dropped 17% although Washington has higher standards for teacher certification than almost all other states. The number of regularly certificated teachers rose in the past four years from 9,500 to 16,300, or 70%.

Now let's look at our school building program: Washington, in the past four years, made available \$70 million in outright grants to the school districts for construction. No other state in the Union has given its school districts

grants of such magnitude for buildings.

Public school needs are on the increase and will rise for a long time. For many years the state has taken care of the increase in school needs while local contributions have remained virtually stable.

The practical problem of raising the necessary funds in future years must develop around a true partnership arrangement between the state and local districts where local financing takes a more equitable share of the responsibility of raising funds.

Turning to higher education, we find that Washington state government spends for colleges and universities more than twice the national average and ranks third on a per capita basis among the 48 states.

That does not mean that higher education has so much more money to spend in Washington than elsewhere. The National average shows about half of all college students enrolled in private institutions. In Washington, however, our nine private colleges account for less than one-fourth of our enrollment. The five state institutions take care of more than 3/4 of all college students, and consequently the state bears a relatively heavy burden.

U Of W Huskey's Track Coach To Retire

One of the most famous collegiate coaches of all time, Clarence S. (Hec) Edmundson, has turned in his resignation as head track coach at the University of Washington effective September 1.

Edmundson came to the U. of W. in 1919 as a track coach and trainer after competing in the Olympic games as a 400 and 800 meter runner. Although not a winner in the Olympics he did qualify for the finals in the 800 meter event.

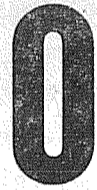
In 1921 he added to his duties the job of basketball coach at Washington. During his tenure as head man of the basketball team he won 10 Northern Division titles.

He directed the basketball activities at the school until the finish of the 1947 season when he decided to concentrate on track alone.

During his 34 year reign as track coach, Hec has turned out seven Northern Division team Champions and seven individual national champions.

Besides carrying out his strenuous duties at the University, he was active in developing high school sports programs in the area. One of these programs is the successful Washington High School Class A basketball tournament of which Edmundson is co-founder.

FOR FUEL OIL



Parkland Plumbing & Heating
GR 3710
 New Installations
 Repairing Pumps, Hot Water Heaters, Washers
 Sluggish Drains Opened
 Shop Located at
 770 South 120th

RURAL GARBAGE SERVICE

Serving Parkland, Lakewood, Midland, Summit, Spanaway & Lakeview Pierce County Permit

GR. 8688

NOW IS THE TIME TO

Install a Well or Check that Water Pressure. We Guarantee Full Pressure with an Advance Water System.

Glacier Pump & Drilling Co.

Get our bid on your water problems — You may save money.

10435 So. Sheridan GR. 5566

AUTO PARTS

176th & Pacific Avenue FRANCHISED WAGNER BRAKE DEALER ATLAS TIRES & BATTERIES GR. 6465

ANDERSON CHEVRON complete SERVICE

GR. 6465 176th & Mountain Hwy

CLUBS & LODGES

LEGION NEWS

By Phyllis Blackstone
4th Dist. Publicity Chmn.

Mrs. James Linder, 4th district president, made her official visit to Tenino last week where she officiated at the draping of the charter for Mrs. Dora Mullaney who passed away February 15. Mrs. Mullaney was a Gold Star Mother and the first president of the Tenino Unit. Assisting Mrs. Linder in her duties were, Mrs. Clee Perry, district vice-president of Olympia; and Mrs. Mil Bierer, of Sumner.

District officials present at the draping were Mesdames Myron Paulson, Rehabilitation chairman, Olympia; Walter Fritz, Sgt. at Arms, Parkland; Richard Schöelkopf, Pan Americanism chairman, Tenino; W. P. Blackstone, Music and Publicity chairman, Parkland and Wendell Brickert, Chaplain, Tenino.

During the meeting, Miss Barbara Austin, Tenino, candidate to the Evergreen Girls State in 1953, gave a talk on the activities at Girls State last year.

Other women from Parkland attending the meeting were: Mesdames James Linder, Donald Walsh, and Henry Swanson.

The Pierce County Salon No. 220, 8 et 40, held their monthly meeting at Inghams Cafe Wednesday. Mrs. James Linder, Le

RUPE
MACHINE WORKS
ENGINE REBUILDING
Pin Fitting — Rod Grinding & Aligning — Piston Finishing — Lathe & Press Work — General Garage Repairs. Brake Drum Turning
Head Grinding
Shop GR 7450 - Res. HI 6190
Pacific Ave. at Brookdale
P. O. Box 645, Parkland

Petit Chapeau, presided during the meeting.

Dinner was served at 7:00 p. m. with the following women acting as hostesses: Evelyn Broderick, Margaret Bowen, LLois Mersereau, Edith Ellexson, Frances McClane, Helen Doyle and Mabel Hart.

Last week during the Seminar held at Post No. 138 in Tacoma, Mr. Fred Fuecker, Department of Washington Adjutant, outlined the Legion's program in combatting Communism. He urged the members of the Legion and Auxiliary to write to your Senators and Representatives and insist that they support the bill to "Outlaw Communism." The bill in the Senate is No. S-200 and in the House it is No. HR-5941.

Jeanetta Nelson, Department of Washington Vice-Commander, spoke on the history and origination of Communism. She stated that, "the greatest weapon to combat Communism is education."

The last speaker for the evening was Lawrence Timbers, Department Anti-Subversive chairman, who spoke on Communism within the state of Washington.

Attending the meeting from Parkland and Spanaway Units were: Mesdames James Linder, W. P. Blackstone, J. E. Wormald, Arthur Hart and Bertha Bailey.

The next regular meeting of

Ticklers



"He's the most conscientious street cleaner we ever had."

the Parkland Unit will be held March 26, at 8 p.m. at the Sunshine Hall. Mrs. James Jensen will preside.

The Parkland Unit was host-American Lake Hospital last week at the Guest Hut at the

Sunday. The women served home made cookies and coffee to 150 patients and their guests. Women participating were, Mesdames James Jensen, C. H. Carpenter, Walter Fritz and W. P. Blackstone.

Rodger Lunde Post, Auxiliary Schedules Joint Installation

Joint installation ceremonies for Rodger Lunde Post and Auxiliary, No. 5052, Veterans of Foreign Wars, will be held April 2 at 8 p.m., in the Veteran's Hall, 11102 So. Yakima Ave.

Mrs. Donald Ward, past president, and Guy Steele, Post commander, will act as installing officers.

Auxiliary officers to be installed are Mrs. Troy Nighswonger, president; Mrs. Harry Akers, senior vice president; Mrs. Arthur Neff, junior vice-president; Mrs. Thurlow Clother, chaplain.

Mrs. Emir Thorsen, treasurer; Mrs. Guy Steele, conductress; Mrs. Charles Ames, guard; Mrs. Robert Anderson, Mrs. LeRoy Cousins, trustees.

Mrs. Ralph Rowley, and Mrs. J. W. Johnson, third district delegates, and Mrs. Robert Anderson and Mrs. Akers, alternates.

Appointive officers include Mrs. Joe McGarr, Mrs. Johnson, Mrs. Donald Kruger, Mrs. Donald Ward, Mrs. LeRoy Cousins, Mrs. Cecil Harbin, Mrs. Robert Anderson.

Post officers include Richard Cogdill, commander; Harry Akers, senior vice commander; Thurlow Clother, junior vice commander; Robert Oakley, quartermaster; Ralph Rawley, post advocate.

Arthur Neff, chaplain; Ernest Harman, John W. Johnson,

trustees; Harry Bunney, surgeon; William Callaghan, guard; Charles Ames, service officer; Robert Anderson, adjutant; Guy Steele, officer of the day.

Third district delegates include John W. Johnson, Ernest Harman and Guy Steele; alternates will be Akers, Clother, and Neff.

Toy French Poodle Puppies
For Sale to Good Home
Call GR 3833
GR 5969 Evenings

DRAMEX SOUTH END PLUMBING
HOME of SCHORN PAINT
Near Roy Y, Spanaway
GRanite 4100

Sheet Metal Work Poultry & Pet Stock Equipment
Special Attention to Special Equipment
RAU MFG. CO.
GRanite 7372

SMORGASBORD DINNER

SUNDAY, MARCH 28
Beginning At 1:00 p. m.

Veterans Hall, 111th & Yakima Ave.

Sponsored by
Rodger Lunde Post No. 5052, V.F.W.
Adults \$1.00 Children 50c
OPEN TO THE PUBLIC

Antenna Work Our Specialty

OPEN EVERY DAY FROM 9 TO 9

Free Tube Checking

SPECIAL
21" Pacific-Mercury Console Comb. TV
I only - \$339.95

RAINIER TELEVISION & APPLIANCE CO.

Sales & Service

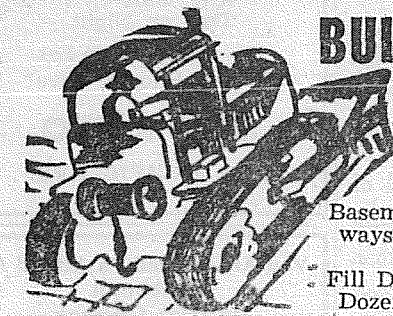
8203 Pacific Avenue

HAwthorne 1553

Dryer MORTUARY

Consider Convenience for your friends when choosing a funeral director. Go where they can park—out of the traffic.
Trav Dryer

FOR FAST SERVICE SEE . . .
5 MINIT CAR WASH
3210 SOUTH TACOMA WAY
Phone HI 4881



BULLDOZING

Ken Brown & Bruce Gambill
1750 9th St. S.W., Puyallup

Basements, Backfills, Driveways, Clearing, Leveling, Etc.
Fill Dirt - Gravel - Top Soil
Dozers—Large and Small
Ph. Puyallup 5-2452 - 5-5487 - Estimates Cheerfully Given

Garage DOOR Specials

From Now Till March 31st We Are Offering 5% Discount
STEEL 8'x7'\$59.50 Less 5%
ALUMINUM 8'x7'\$59.50 Less 5%
WOOD 8'x7'\$49.00 Less 5%

Hardware Only As Low As \$15.00
INSTALL IT YOURSELF AND SAVE \$

CRAWFORD DOOR SALES

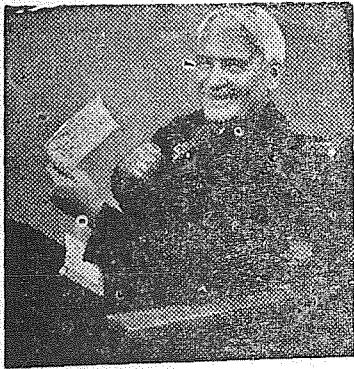
Center & Orchard Street

PR-5591

Salmon Macarino Casserole Is Inexpensive Meal

By Dorothy Maddox

During Lent, or at any time when you want a delicious meatless main dish, turn to canned salmon. It is a first-class protein, sticks to the ribs, and is certainly agreeable in appearance.



THREE SCORE AND TEN...

People nowadays often live beyond the biblical span of 70 years. The wise man makes sure that he will not outlive his income. A Sun Life retirement policy will give you a guaranteed income for as long as you live. Start saving today.

SUN LIFE ASSURANCE COMPANY OF CANADA

John S. Castleman

Castleman Insurance Agency

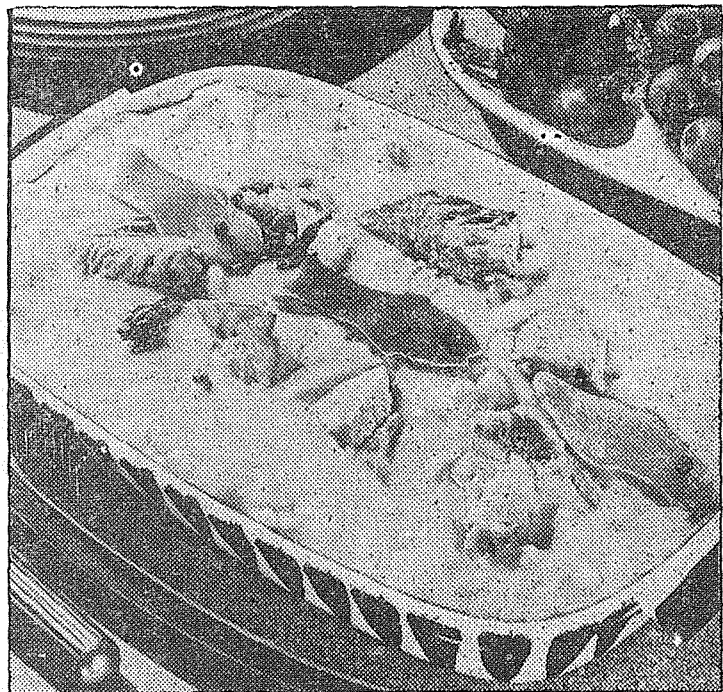


New Bank Bldg.
Parkland
GR. 3226

502 Puget Sound
Bank Building

MA. 1381

Combined with macaroni and cheese in a casserole, it produces a budget "meal in a dish" everyone will enjoy at any season of budget-wise meatless dish, using fish fillets and corn flakes. Curried Fish With Parsleyed Rice and Peas



Canned salmon, combined with macaroni and cheese in a casserole, is a filling meatless dish for Lent or any other time of year

the year. Serve with a green salad and crisp rolls.

Salmon Macaroni Casserole

Four ounces elbow macaroni, 1 can condensed cream of asparagus soup, 2/3 cup evaporated milk, one 1-pound can salmon, drained and broken into pieces; 1/4 cup finely cut pimiento, 1 cup grated American cheese.

Cook macaroni according to package directions. Drain, but do not rinse, reserve. Combine asparagus soup and evaporated milk. Add macaroni, salmon, pimiento and 1/2 cup of the grated cheese.

Turn into a greased 1 1/2-quart casserole; sprinkle remaining cheese around edge. Bake in a moderate oven (350 degrees F.) 25 minutes. If desired, garnish with additional pimiento.

Here's another delicious and

(Yield: 6 servings)

One and one-half pounds fish fillets, 4 cups corn flakes, 3 teaspoons salt, 1 cup milk, 4 teaspoons salad oil, 2 tablespoons butter or margarine, 1/4 cup minced onions, 2 tablespoons flour, 3/4 teaspoons sugar, 1/2 teaspoon powdered ginger, 1 cup milk, 1 teaspoon lemon juice, 2 teaspoons curry powder, 3 cups cooked and drained peas, 4 cups seasoned cooked rice, 1/2 cup chopped parsley.

Cut fish into serving pieces, allowing 1/4 pound for each serving. Crush corn flakes into fine crumbs. Combine salt and milk. Dip fish into salted milk, then into crumbs; arrange on well-oiled baking sheet. Sprinkle with oil.

Bake in extremely hot oven (500 degrees F.) about 12 minutes. Melt butter in small saucepan; add onions and cook until tender but not brown. Stir in flour, curry powder, sugar and ginger.

Add milk slowly, stirring constantly; continue cooking over low heat until mixture thickens. Stir in the lemon juice just before serving.

Place a ring of peas on a large serving plate or platter. Combine rice and parsley and place around peas in a ring. Fill the center with oven-fried fish. Serve curry sauce in separate dish.

Professional Directory

INSURANCE

CLAY ROLEY AGENCY
98th and Portland Avenue
GR. 8501

ROY V. ROSTEDT AGENCY
8201 Park Avenue
Phone HA 2342

JACK J. ERICKSON
announces new office hours:
Monday thru Saturday 10 - 12
a.m. 1 - 5 p.m. except Wednesday.
Office hours by appointment. Located in Times-Journal
Building. Phone GRanite 4488.

Card Party

Canasta, 500 and pinochle will be played at the card party to be held at the James Sales Grange hall April 2 at 8:15 p. m.

Oven Ready
Large Colored
HENS lb. 52c

Fryer Breast & Legs
Lb. 75c

Cut-Up Hens
Pkg. 85c

TURKEYS
All Sizes

Armstrong's
Poultry Market

11009 Pacific GR 5524

Womans Page

Trade Position Exam Announced At McChord AFB

The United States Air Force Central Board of U.S. Civil Service Examiners, Headquarters McChord Air Force Base, Washington, is re-announcing examinations for trades positions to raise the qualifications back to apprenticeship or probationary standards.

No vacancies exist at present, but the resulting registers for junior plumber; plumber; steam-fitter, junior machinist general; machinist general; junior heating equipment repairman; heating equipment repairman; electrician; painter, general; painter, sign; sheetmetal worker; fireman; stationary boiler; welder, gas and electric; junior carpenter; and carpenter, will be used for indefinite appointments to fill vacancies at Fort Lewis, Madigan Army Hospital, Mt. Rainier Ordnance Depot, and McChord Air Force Base.

Persons interested in applying may secure information or an application from the Director, 11th U.S. Civil Service Region, 302 Federal Office Building, Seattle 4, Washington, any first or second class post office or U.S. Air Force Central Board of U.S. Civil Service Examiners, McChord Air Force Base, Washington.

Jr. Luther League Of Trinity Active

The Junior Luther League of Trinity Lutheran church, at the last meeting in the parish hall of the church, decided to organize an intermediate choir. Paul Running, a member of the PLC Choir of the West, has consented to direct.

The Junior Luther League also decided to entertain those living in near-by old people's homes. These and other projects will prove very interesting to all participants.

The group is urging all young people who would like to join in Christian fellowship and fun to come to the next meeting March 28. A Christian movie will be shown.

VISIT OUR RECORD SHOPPE APPLIANCES - TV Radio

SALES and SERVICE Furniture & Appliances
Parkland Centre Bldg.
GR. 3691

FOR FUEL OIL



Presenting
The Fine New
ILLINOIS
Cased and Tined by
The HAMILTON WATCH CO.

SEE IT!
NEW 17-JEWEL
Self-Winding
ILLINOIS
Only \$71.50
Shock-resistant. Sweep seconds hand. Natural gold-filled case. Raised gold numeral dial. Fed. Tax Inc.

Convenient Terms
Take Advantage
of our
Free Inspection
and Watch-Master
Check Service

Mfg. Settings for Diamonds
Diamond Rings - Silverware
Jewelry Repair - Engraving
Costume Jewelry
Open Mon. & Fri. Eve. till 9

LAKWOOD JEWELERS

Lakewood 4311
9601 Gravelly Lake Dr.
Opposite New Center Bldg

Medosweet
COTTAGE CHEESE
CREAM OR COUNTRY STYLE

COUNTRY STYLE
COTTAGE CHEESE
BY Medosweet
ONE OF TACOMA'S FAVORITE FAMILY

Don't WASH YOUR CLOTHES AT HOME

Do BRING YOUR WASHING TO US.

We'll WASH and DRY Your Clothes FREE In a new Hotpoint Washer and Dryer Absolutely No Obligation.

SILERS

11230 Pac. Ave.

GR 8634

GEORGE PURDUE PLUMBING & HEATING

Stoves & Furnaces
Vacuum Cleaned

We Also Service & Adjust Carburetors
New Work - Remodeling - Repairs - Oil Burner Service
Phone GRanite 4477

★ **SPORTS** ★

Boy's Baseball Team To Be Formed

All boys under 16 years of age, or who will not be 16 before Oct. 1, are invited to meet at the Parkland Grade school field Tuesday, to try out for a Parkland baseball team.

The team, formerly the Parkland Midgets, will be entered in the 15 years and under class, for league play this spring.

Sportsmen's Club Eyes Benefit Shoot Sunday

Pierce County Sportsmen's Council will sponsor a benefit shoot this Sunday at 10 a.m., at the Tacoma Sportsmen's Club recreation area, Canyon and Military roads. The Wapato Float Fund will be the beneficiary.

Included in the slate of events is archery poker, hi-power rifle running deer and all kinds of trap shooting.

Prizes will be awarded for good shooting, with special fish ponds and games for the kids.

The meanest man, anywhere: Put a tack on the electric chair.

Bethea Winds Up Brilliant Fight Career For McChord

By Bill Austin

McChord's classy, hard-hitting Champion welterweight, Joe Bethea winds up a brilliant boxing career for McChord when he leaves here March 22 for the National AAU boxing finals in Boston, March 26-28. After the Boston fights Joe will report to Parks AFB, California for overseas processing.

Bethea has won almost every welterweight title in the Northwest for the past two years, including the Vancouver, B. C. championship. He was named "Diamond Boy" in the Canadian bouts and was selected as "Golden Boy" in the Northwest finals held at Seattle recently.

Bethea, a Technical Sergeant, assigned to the 567th Medical Squadron has run up a list of ring achievements that would be hard to match by any other service fighter.



BOSTON NEXT—Base Commander, Col. Houston W. Longino Jr., presents T/Sgt. Joe Bethea, 567th Medical Squadron, with the Golden Boy trophy awarded annually to the outstanding fighter in the Northwest Golden Gloves tournament by the Seattle Post-Intelligencer. Joe, who also won the welterweight title will fight in the National finals in Boston March 26-28 before departing for the Far East.

In March 1952 Joe took the 5th Air Force welterweight title and then went on to win the Far Eastern crown. In April 1952 he went to the finals of the All-AF matches at Lackland AFB, Texas. In the 1953 Golden Gloves eliminations Joe won the Tacoma title, was runner-up at Vancouver and then came back strong to win the Seattle welterweight title. He was crowned the Northwest Air Force champ and was invited to the Air Force finals at Lackland, which he won.

After the Lackland fights Joe traveled to Boston for the Nationals, where he was a runner-up in the welterweight division.

This year the ring wise fighter won all the local Golden Gloves tournaments, many of his victories coming as a result knockouts. He also captured the Interservice welterweight crown in fights held at Fort Lewis.

Bethea is also an outstanding track man. He has won one two mile championship and two 3,000 meter championships in track competition in the Far East.

Sgt. Bethea has two overseas tours to his credit. He was with the 20th Air Force on Okinawa and is a veteran of the Korean conflict, serving there from September 1951 until April 1952.

Yankees Look Bad In Spring Training

The world champion New York Yankees look anything but champions so far in the Grapefruit baseball circuit.

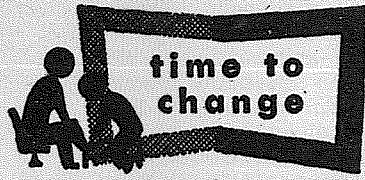
The Yanks lost their seventh straight Saturday as they bowed to their heated National League rivals, the Brooklyn Dodgers and manager Casey Stengel is not the happiest man about town.

It is true that Stengel has been giving many rookies their chances in the Yank lineup, but the youngsters aren't the cause of the many losses suffered by Stengel's crew. The regulars just aren't rounding into shape as in past seasons.

With Mickey Mantle still riding the bench due to his knee injury, Stengel is trying to find the right combination in the outfield but as yet hasn't come up with the starting three.

FOR FUEL OIL

E



IT'S TIME

for new
Spring Shoes...

by **RAND**

a. Rand "Royal" No. 325
Burgundy Scotch Grain
12.95

Same style also in
Rand "Free matic"
17.95

b. Rand "Royal" No. 279
Brown U-Wing Tip
11.95

U-Wing tip available
also in Lace-less style
11.95

c. Rand "Trujuns" No. 319
Smart brown loafer with
your choice of Neolite
or Cush-N-Crepe Soles.
8.95

Other Rand Styles
7.95 - 17.95



As Advertised in **Esquire**
©Esquire, Inc.

Soine's

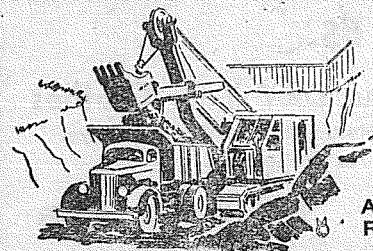
PARKLAND SHOE STORE

411 Garfield Street - Across from Parkland Post Office
OPEN 10-6 Al & Malcolm Soine **GR. 3526**

Parkland TV

SERVICE & REPAIRS
On All Makes of
Radios & TV Sets

Ed Weiss
233 Garfield St. GR 4458



Dozer & Shovel Work

Large or Small
Basements Dug
Septic Tanks
Water Lines
Top Soil

Al - GR 4987
Ralph - GR 3204

GENERAL CONSTRUCTION
RILEY BROS. RT. 1, BOX 220-B
SPANAWAY

GOLFS LONGEST BALL HITTER

During the past many years of golfing history, stories about fantastic long ball drivers have been recorded in the pages but it is doubtful if there has ever been a golfer the equal of a 6-foot 5½-inch, 240 pound giant

from Pasadena, California named George Bayer.

Just recently Bayer turned pro after several years of intermittent playing as an amateur. During the years as an amateur, he never took the game too seriously until his tremendous driving ability was noticed by the club professional.

Under the supervision and guidance of this pro, Bayer began to show real promise until today he is the longest driver in golf.

Along with his driving ability, he also plays his other shots well as is indicated in his record breaking sub-par round of 62 on the Pasadena Brookside course.

Some of the feats performed by this ex-University of Washington football player are listed following.

Brookside's first hole measures 335 yards. Most golfers use a driver for their tee shot but not George, he uses a 3-wood for fear of over-shooting the green and landing in the drainage ditch behind the green.

On one occasion, playing with the assistant pro at Brookside Club, Bayer hit the center of the 330-yard 9th green on the fly to the amazement of the foursome just completing their putting on the green.

On the 368-yard dogleg 16th hole recently, his tee shot from the back tee, into a slight wind, hit in front of the green and rolled 15 feet beyond the cup. He took an eagle 2 on the hole.

In thinking back Bayer thinks that possibly his longest tee shot was during the 1953 Las Vegas Invitational meet. His tee shot on the 476-yard 4th hole hit a player, in a group ahead of Bayer's foursome, on the second bounce.

The distance of the drive was estimated to be in the neighborhood of 420 yards at the time it struck the player.

If this giant ever decides to

ALONG THE TRAIL

with
**LARRY
KIRKWOOD**



With the nice weather, there is really a lot of activity being stirred up among the horsemen.

The Pierce County Sheriff's Posse enjoyed the day Sunday with a ride on the prairie, just one of the many rides that are bound to be on the schedule from now on.

Next Sunday, March 28th, there will be another Zone Judging School at Woodbrook starting at 1:00. Those of you who attended the other school here will know that these are very interesting and well worth while. This particular session will specialize in hunter and jumper classes.

Those in this area who have passed the judging school tests are: Lois Pollard, Jean Caddigan, Marie Palin and Wes Moak.

The Tacoma Lariettes are planning to hold a big shindig at The Firs, Friday night, April 23. If you don't have your tickets, contact any Lariette — they will be glad to have you do so. A good time is in store for those who attend, so plan to come.

One of the first gymkanas of the season will be held at Tacoma Unit No. 1 grounds April 25th. We hope to have a list of events held this year at George Beeson's Ranch on the mountain highway. We hope this is centrally located so that many of the different riding clubs in the area may participate.

The Colts and Fillies have started to drill, too, at the Tacoma Unit Club Grounds, every Saturday at 12:00, under the capable leadership of Mildred Peterson and Lois Pollard. Any junior in the area interested is welcomed.

Last, but not least, the Round-up Committee is very

busy with some real exciting plans for Parkland area. This is not for publication, but you just wait ! ! ! Along the trail we saw Jeanie Wood and Ruby LaCrosse out for a Sunday ride . . . the Roslie Ranch overrun with horsemen . . . Barbara Hoyt breaking her ankle while skiing (better stick to horses, Barb) . . . Jackie Wise taking a spill while jumping her horse . . . Jeanie Stanley seen riding down Pacific Ave. in Parkland . . . Connie and Kent Erickson enlarging the Bunk House . . . Doris Dietrich with a broken leg—and she didn't get it horseback riding, either.

hit the tournament trail he will undoubtedly force the officials to draw up a set of new rules for the protection of the golfers playing ahead of him. Maybe football helmets will be issued for their protection.

**REVERSE CREDIT,
REVERSE CHARGES**

Bob Feller tells this story of the 1938 season. On the eve of the final day of the season, Bobo Newsom, then of the St. Louis Browns, held the lead for number of strikeouts. He was two ahead of Feller. Both men pitched the final game for their teams.

That night Newsom phoned Feller in Cleveland, and said he had called to accept congratulations on being the new strike-out king. "I struck out 12 men today," he said.

"I didn't do badly, either," said Feller, who that day created a world record. "I struck out 18." "In that case, Newsom told him, "I hope it's not too late to make this call collect."

WE ARE USED TO STANDING ON OUR HEAD. Sometimes Car Radios can be repaired without removing them; other times they must be on the bench before they can even be tested or tubes checked. We repair lots of them.

BIXBY Guaranteed RADIO Repair

Call GRanite 8309
On Waller Rd., ¼ Mile South of Airport Road

Johnny O'Brien Leads Service Team To Victory

Little Johnny O'Brien, former Seattle University All-American basketball player, led the Aberdeen Proving Grounds basketball team to victory in the Army elimination tournament Friday night.

Johnny, aided by brother Eddie, put on one of the greatest displays of shooting ever recorded by a service team player.

During the seven games of the tourney, O'Brien averaged over 32 points per game and made 82 free throws in 85 attempts. He made 46 straight without a miss.

It was due to this amazing shooting average that Aberdeen was able to win the tournament.

They were not favored to go very far before the tournament started.

Now that O'Brien and company has defeated the best service teams in the east, they qualify for the Worldwide Army Tournament to be held at Fort Lewis April 5 and 6. This tournament will bring together the best Army teams from all over the world.

It will be interesting to see what the O'Brien mites can do against the class of the service teams. April 5 and 6 affords the local fans the opportunity of seeing the little fellows in action again.

Harshman Looks Good On Mound

Jack Harshman, the first baseman who turned pitcher, looks like he has finally found his position according to manager Paul Richards of the Chicago White Sox.

Harshman, who is well known to the local fans having played both in the Western International and Pacific Coast Leagues, has been up and down in the major leagues for the past few seasons.

The left-hander just couldn't quite hold down a regular assignment on the first sack in the big time.

Along the trail we saw Jeanie Wood and Ruby LaCrosse out for a Sunday ride . . . the Roslie Ranch overrun with horsemen . . . Barbara Hoyt breaking her ankle while skiing (better stick to horses, Barb) . . . Jackie Wise taking a spill while jumping her horse . . . Jeanie Stanley seen riding down Pacific Ave. in Parkland . . . Connie and Kent Erickson enlarging the Bunk House . . . Doris Dietrich with a broken leg—and she didn't get it horseback riding, either.

Along the trail we saw Jeanie Wood and Ruby LaCrosse out for a Sunday ride . . . the Roslie Ranch overrun with horsemen . . . Barbara Hoyt breaking her ankle while skiing (better stick to horses, Barb) . . . Jackie Wise taking a spill while jumping her horse . . . Jeanie Stanley seen riding down Pacific Ave. in Parkland . . . Connie and Kent Erickson enlarging the Bunk House . . . Doris Dietrich with a broken leg—and she didn't get it horseback riding, either.

Along the trail we saw Jeanie Wood and Ruby LaCrosse out for a Sunday ride . . . the Roslie Ranch overrun with horsemen . . . Barbara Hoyt breaking her ankle while skiing (better stick to horses, Barb) . . . Jackie Wise taking a spill while jumping her horse . . . Jeanie Stanley seen riding down Pacific Ave. in Parkland . . . Connie and Kent Erickson enlarging the Bunk House . . . Doris Dietrich with a broken leg—and she didn't get it horseback riding, either.

BULLDOZING

Leveling — Road Grading
Landscaping & Back Filling

Top Soil
Large and Small Dozers

**Frank Rearden
GR. 5758**

FOR FUEL OIL



REX'S SHOP

**Power and Hand
Lawnmowers**

Precision Sharpened
Reasonable Prices
Pickup and Delivery
Satisfaction Guaranteed

9701 Ea. F St. GR 7226

**Horse
Shoeing**

by
An Expert

**J. R.
Young
Graham
7-7616**



Prescriptions

R Carefully
Prepared

Fresh Insulin at Downtown
Prices. Pay phone bills here
Tincher's Pharmacy
7239 Park Ave. HI 3344
Across from Fern Hill P.O.

1954

PARKLAND ROUNDUP

Yes Sir Pardner, it's time



to round up those Western Duds and have them all Cleaned and Rarin' to go. There's only a few weeks left, so why not call

PARKLAND CLEANERS

GR 3221

11004 Pacific Ave.

North of the Bank Corner

24-HOUR SERVICE AT THE PLANT

**PIERCE COUNTY
REFUSE CO.**

WEEKLY GARBAGE
COLLECTIONS
Phone GR. 8688

**Last Year's Model
MERRY TILLER**

\$20 Off

Call

DON ARTHUR

for new & used machines
PR 1800

**AMERICAN
ART CO.**

CUSTOM PICTURE
FRAMING
OLD MASTERS AND
MODERN PRINTS
BRoadway 4327

2046 6th Avenue



**PIPER
FUNERAL HOME**
Phone HAwthorn 3353
5436 So. Puget Sound Ave.

Farcy's Service

General Repairing

WE REBUILD

Starters - Generators -
Carburetors - Electric
Motor Service

**HYDRAMATIC &
DYNAFLO SPECIALIST**

Lowest labor rate
Get Our Bid First

**CLARENCE RAGAN
GLEN FARCY**

Rt. 3, Box 149 - Puy 5-7207
Around corner off Airport
on Cedar Road. Woodland
District.

FENCING

Designers and Builders
EXPERT WORKMANSHIP
REASONABLE PRICES
Easy Monthly Payments

VAUGHAN'S

HI 9515 84th & Pacific Ave.

CUSTOM MEAT

Fresh Eggs - Locker Rentals
**MOUNTAIN VIEW
FOOD LOCKERS**

Airport & Spruce GR 5332
2½ Miles East of Pacific

Auto Insurance

10/20/5 As Low As \$12.50
Semi-Annually

Check us for other rates
Comprehensive & Collision
Farmers Mutual of
Enumclaw

ED MAREK
12909 Pac. Ave. GR 3100

VAUGHAN'S VALUES

Add A Room - Build A Porch
Finish That Unused Attic

Do It Yourself or Let Us Quote You on
A Completed Job

No Down Payment - Budget Terms

VAUGHAN'S

PACIFIC AVENUE LUMBER CO.

84th and Pacific Avenue

Phone HI 9515

FARM NEWS

COUNTY AGENTS' CORNER

By Morrill Delano

I wonder how many of you folks are aware that a new agricultural industry has developed in this county during the last three or four years to a new highly developed enterprise. This new farming activity employs over 200 people who would otherwise be unemployed at this season of the year. I also wonder if our merchants are aware of this fact as 200 people unemployed don't usually have too much purchasing power.

This newly developed farm activity is the production, sorting and packing of strawberry plants for commercial berry production. Actually hundreds of thousands of

strawberry plants are now grown in Pierce County and sold throughout Washington and Oregon.

Strawberry digging and processing is now at its peak. Frank Ballou, our amiable farm labor placement representative tells me that out Alderton way three plant producers alone, Lee Matlock, Ken Spooner and Mervin Ward are now employing some 150 people and in addition there are several other smaller plant growers using help at this time.

There is a continuing demand for strawberry plants as the life of a planting is from three to five years. Our locally produced plants have earned themselves a reputation and this new farm industry should

be maintained here indefinitely.

And by the way if you would like to have the latest insect and disease control recommendations for strawberries just call or write our Extension office at the County Court House for your copy.

* * *

By Ernest I. Hopp

With the completion of the four poultry health meetings most Pierce County poultrymen are more aware of the need for sound vaccination programs on their farms. Poultrymen who participated in the meetings, Sig Sivertson, Ken Bergman, James Richardson, and Robert Berg, indicated that they too benefitted from the discussions.

Drs. Browne, Hamilton, and Jerstad from the Western Washington Experiment Station also helped make the programs successful.

Some of the important points brought out at the meetings were:

All poultrymen should vaccinate their flocks to prevent Newcastle problems. Laying flock owners will also want to vaccinate to prevent fowl

pox.

If you do not have time to vaccinate your birds—take time—or hire help! Use common sense sanitation measures to control worms. Don't forget to use plenty "elbow grease" to clean houses. Drugs alone won't solve all problems. Sulfa drugs do an effective job controlling coccidiosis. Follow manufacturers' recommendations whenever using any medication.

Consumer of poultry and eggs need not worry about poultry health problems. It's the economics of producing these products that causes concern to poultrymen.

All 4-H poultry and pheasant members, leaders, and parents will want to attend a training session 8 p.m. Wednesday, March 31 in the Winter School Building at the Western Washington Experiment Station. Brooding and rearing chicks will be discussed as well as other phases of 4-H poultry work.

* * *

By George Purcell

Many questions still come up about whether or not to raise

beef cattle in this area as a full-time farm enterprise. Here is the way Dick Stidham a cattleman of Eatonville feels about the subject. He says, "Unless you are raising purebred cattle I feel a man needs a minimum of 100 cows for an economical commercial unit. This is more of a grass than a grain area."

Last year one Eatonville cattleman sold his calves right off fall pasture and mother's milk with no grain in them at an average weight of 465 pounds. Such calves at present prices would bring about 20 cents a pound or \$93.00 per head.

Irrigation and use of commercial fertilizer is important if pasture supply is limited.

FOR FUEL OIL

Distributing
Company

140th & Pac, Ave.
GR 8624

SEPIC FURNITURE

STARTS YOU IN HOUSEKEEPING FOR ONLY

399.00



Items
Are
Similar
To
Illustrations

SHOP
AT
YOUR
LEISURE

Your Credit
Is Good

There is A Sepic Store In Your Neighborhood.

7208 Pacific
HI. 9556

LAKWOOD - NEAR
Lakewood Center - LA-5231
13th and Kay St. - BR. 0386

5 Piece Dinette Set

32 Piece Set Dishes

Choice of Living Room
Mirror or Picture

Bed Daveno
Matching Chair
2 Lamp Tables
1 Coffee Table
2 Table Lamps
1 Floor Lamp
1 Throw Rug

Mr. & Mrs. Dresser
Plate Glass Mirror
Bookcase Headboard
Matching Footboard
Springs
Mattress
2 Boudoir Lamps

\$41.97 Down — \$17.63 Month

COMPLETE LINES APPLIANCES

FURNITURE & TELEVISION

