

# THE TIMES JOURNAL

DEC. 18, 1952 (VOL. 8, NO. 14)

PUBLISHED AT PARKLAND, WASHINGTON

5c PER COPY ★ \$2.00 PER YEAR

RESERVATIONS for the Jan. 10  
dinner meeting of the Spanaway Vol-  
unteer firemen and auxiliary, which  
will mark the installation of new offi-  
cers, should be made as soon as pos-  
sible by calling Loren Buck, GR. 6210,  
or Mrs. Emerson Tarpenning, GR.  
4456.

**GIRL SCOUTS of Parkland** will  
be going caroling on December 23.  
They will meet at Trinity Lutheran  
church at 4:30 p.m. and return to the  
church basement later for refresh-  
ments.

### Newcomers

That slight haze hovering over Gar-  
field street, Parkland, last weekend  
wasn't smog. It was the fragrant  
smoke of the cigars being passed out  
on both sides of the street by two  
proud papas.

Del Totten (Totten Realty) was  
handing out the stogies because of  
the birth of a new daughter, born  
Thursday, Dec. 11, at Tacoma Gen-  
eral hospital. The little stranger is  
welcomed by a brother and a sister.

On the north side of the street Har-  
old Frye (Frye's Furniture) was quite  
calm in announcing the birth of a  
son Friday, Dec. 12, also at Tacoma  
General. Nothing at all to be excited  
about—it was the eighth child in his  
family!

### New Year's Eve Dance At Graham Grange

Those in the Graham area planning  
to do a bit of New Year's Eve cele-  
brating have the opportunity to do so  
right in their own Graham Grange  
hall. Admittance is not restricted to  
Graham residents, however, and the  
welcome mat is out for all wishing to  
take advantage of the friendly atmos-  
phere prevailing at this community  
affair.

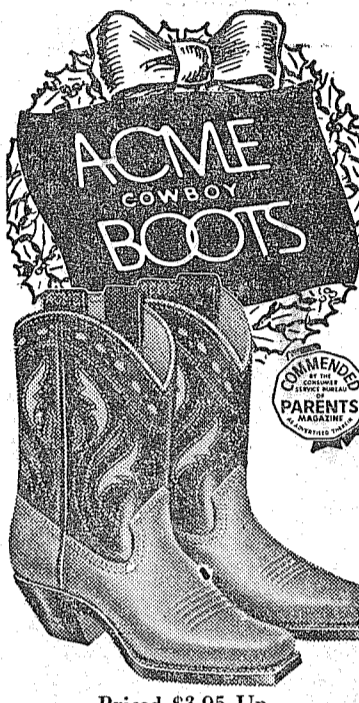
Tom's Rhythmairs will provide the  
rhythm for the gala affair.

An active committee comprised of  
Orley Andrews, Noland Nelson, Or-  
ville Eveleth and Melvin Mothershead  
have outdone themselves in providing  
fun, favors and entertainment for the  
evening.

The dance starts at nine, continuing  
until late. Supper will be served.

**For boys and girls . . .**  
(And Grown-ups, Too!)

*the most  
wanted gift  
of all . . .*



Priced \$3.95 Up  
Open Evenings

**Soiné's Parkland  
Shoe Store**  
411 Garfield St. GR. 3526  
See Our Ad on Page 10

**HEAR  
Dr. S. C.  
Eastvold**  
Every Sunday  
KTNT (1400)  
8:30 to 9:00 A.M.  
KMO (1360)  
3:00 to 3:30 P.M.  
**Putting Christ  
Back Into Christmas**  
Music . . .  
The Choir of the West

Phone  
**5-6651**  
**PUYALLUP  
LAUNDRY  
and DRY  
CLEANERS**

**ROOSTERS**  
25c lb.  
**Packaged Hens**  
\$1.00 each  
Also Fresh Fryers & Roasting Hens  
Order Your Holiday Fowl Now  
For Fine Selection  
**Armstrong's  
Poultry Market**  
11009 Pacific Ave. GR. 5524

**5**  
**Shopping Days Till  
Christmas**  
**Parkland-Brookdale  
Electric**  
13022 Pacific Ave. GR. 5689

**Christmas Items**  
Yule Kaka  
Rum Cake  
Christmas Cookies  
Stollen  
Xmas Box Candy  
**GR 3330**  
**Patty Ann  
BAKERY**  
Pacific Avenue at Airport Road  
Hours: 9 a.m. to 9 p.m.—

**Save Electricity**  
**STANDARD  
HEATING OILS**  
**Parkland Fuel Oil Service**  
120th & Pacific Ave. Granite 8684  
**LET US  
CARRY THE BALL  
ON YOUR HEATING OIL**  
Enjoy That "PLUS" Service  
Lubrication - Tires - Batteries  
Auto Parts  
**MARV TOMMERVIK'S**

**PIPER  
FUNERAL HOME**  
Phone WAshrn3353  
5436 So. Puget Sound Ave.

**T. V.  
Repair  
Siler's**  
11230 PACIFIC AVE.  
GR 5555

**WELL WOOD  
BOATS & KITS**  
on display  
Custom Craft Kits  
in Transit

**T & G**  
752 So. 108th  
GRanite 8128

### PROFESSIONAL DIRECTORY

**DR. JOSEPH G. HANSON**  
Osteopathic Physician  
11110 Pacific Ave.  
Office: GR. 3400, Res. GR. 3123  
By Appointment

Enjoy the Healthful Benefits of  
Swedish Massage in the Privacy  
of Your Home or Mine  
**H. C. BALLARD, MASSEUR**  
For Appointment Phone  
EVENINGS  
Tacoma, GRanite 4342

**INSURANCE**  
**CLAY ROLFE AGENCY**  
98th and Portland Avenue  
GR 8501

**ROY V. ROSTEDT**  
8201 Park Avenue  
Phone HA 2542

**Danielson - Rolfe  
Insurance Agency**  
PARKLAND—GR. 3113  
Automobile - Casualty - Fire  
Inland Marine

**Dryer  
MORTUARY**  
720 SOUTH 136th PARKLAND GR 3900  
CONSIDER CONVENIENCE . . .  
for your friends when choosing  
a funeral director. Go where they  
can park . . . out of the traffic.  
Trav Dryer

**Flowers & Decorations  
for  
Christmas**  
Trees, Wreaths, Center Pieces  
Mistletoe, Etc.  
**Parkland Florists**  
125th & Pacific GR 7270

**TRINITY LUTHERAN CHURCH**  
So. Park and 121st St. Parkland  
Dr. Ernest B. Steen, Pastor  
**CHRISTMAS CALENDAR  
at TRINITY LUTHERAN**  
DECEMBER 24 (Christmas Eve)  
11:00 p.m.—Christmas Eve Candle-light Service  
(Special music by the Senior Choir)  
DECEMBER 25 (Christmas Day)  
11:00 a.m.—Christmas Day Festival Service  
(Special music by the Junior Choir)  
Trinity Lutheran Church extends wishes for a blessed  
Christmas to one and all. An invitation is extended to  
everyone to attend the Christmas services.

**good-bye to rust  
in your  
oil burner**  
*Here's a fuel that  
burns clean as a whistle!*  
Rust and corrosion wreck  
your oil burner's fuel system. Gummy sludge robs you of good  
heat. You stop them when you use Rich-Heat Burner Oil—  
yours at no extra cost. This new-day burner oil burns clean as  
a whistle because it is made by Richfield from top selected  
crudes, specially refined, then double treated for utmost heating  
efficiency.  
As a further protection for your oil burner and pocketbook,  
Rich-Heat contains Richfield's exclusive rust-proof ingredient,  
Solarite . . . All this means no sludge, no smudge, no grudge—a  
more comfortable home, a longer lasting oil burner—money  
saved! Let us fill your order now.

**RICH-HEAT rust-proof BURNER OIL**  
CONTAINING SOLARITE®  
**Boston's Fuel Oil**  
64th & Pacific Ave. HA Hawthorne 2125

## SEPIC'S SAVE YOU MONEY

ON GROUP BUYING FOR YOUR HOME - - Sepic's will set you up in housekeeping complete at a nice saving over  
buying single pieces. We have groups pre-selected up to \$3000 for 6-room houses, including Range, Refrigerator  
and Washer - or pick your own items and Sepic's will make you a definite saving. Terms if you wish, up to 2 years  
to pay. ACTUAL SHOWING BELOW of 3 ROOM GROUP Pre-selected for only \$399.95. \$41.95 down, \$17.68 mo.

**Living Room**  
Davens  
Matching Rocker  
2 End Tables  
Coffee Table  
2 Table Lamps  
1 Floor Lamp  
1 Scatter Rug

**Bedroom**  
Coil Spring  
Mattress  
2 Vanity Lamps  
1 Bed Lamp  
Mr. & Mrs. Chest  
Bed  
Night Stand

**Dinette**  
5 Piece Chrome Set

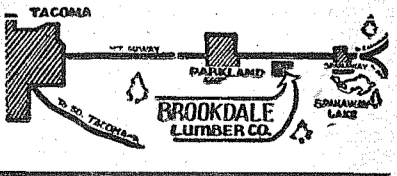
**3 STORES**  
72nd & Pacific  
Lakewood Center  
13th & Kay

Open Till 9:00 p.m.  
Monday & Friday  
Evenings

**Sepic's**  
OPEN 'TIL 9 P.M.  
MONDAY & FRIDAY EVENINGS

**136th Pacific Ave. BROOKDALE LUMBER CO. Phone GR. 8669**

SEE OUR CHRISTMAS AD ON PAGE 7



**USED Warehouse Clearance Make An Offer WEIR'S**  
FLOOR FURNACES - OIL HEATERS - WASHERS - RANGES  
84th & Portland Ave.  
and  
6th Ave. at Pine - BR 0111





### WALLER ROAD By MRS. VERNE FOGLE GR. 5210

It is suggested by the Waller Road Grangers that the children's exchange gifts at the Christmas party be toys. Don't forget, folks—all Grange families will meet at 6:30 p.m. Friday, Dec. 19, for a potluck supper.

**Make It a Real Christmas!**  
Mrs. J. M. Heath of 62nd and Waller Road is one person who would certainly like to retain her faith in humanity, but an incident that happened to her recently has given her some doubts.

While awaiting the regular bus for Tacoma, she was offered a ride by a couple, who, while enroute to town, stated that they had recently moved from the Collins district and appeared very friendly. As Mrs. Heath had with her a package to be mailed to England, the man kindly stopped the car at the 11th street entrance to the post office. She quickly alighted, so as not to detain him in the heavy traffic, and only when she saw them drive on did she realize that she had left her purse on the back seat.

She had no way of knowing who these folks were, only the faith that they would return the purse to her, as it contained many sources of identification, along with her glasses, her driver's license, house keys and a reasonably large sum of money which to be used to pay a doctor's bill and other payments.

We sincerely hope that these folks will read this and return the purse to

Mrs. Heath. Then, knowing that their conscience was cleared, they, too, could enjoy a Merry Christmas.

**C.O. Lynn Co.**  
MORTUARY  
717 TACOMA AVE. Phone MAIN 7745

**ROTO-HOE**  
2 H.P. ROTO-HOE only \$136  
Acclaimed everywhere as the most usable GARDEN TOOL!  
America's finest Garden Cultivator for small and medium Gardens  
Roto-Cutter Attachment (for cutting lawns, tall grass, high weeds, etc.) \$40.00

★ The Ideal Christmas Gift For the Gardener

★  
**BUCK & SONS**  
Tractor & Implement Company  
114 Puyallup Ave. MA 4117

**Quality FOODS**  
*For the Holidays.*

Ready to Eat, Tender  
**HAM . . . lb. 59c**

**XMAS CANDY**  
Assorted Nuts

Swansdown  
**Cake Mix**  
White and Devils Food Pkg. 29c

Vallmont  
**Mince Meat 39c**

29-Oz. Jar  
**Fruit Cocktail**  
2 1/2 Tin 35c

Hunt's

Mixer, Qts. Plus bottle deposit  
**SQUIRT . . 2/21c**

**Blue Boy, So Good**  
**COFFEE . . lb. 79c**

**ORDER YOUR TURKEY NOW**  
**Waller Road STOP-N-SHOP**  
64TH & WALLER RD. PHONE GR. 5362  
Prices Effective December 19, 20, 22, 23, 24

**GIFTS**

Mens \$1.00 & **Boxed Ties . . \$1.50**

Ladies Nylon **Hose . . \$1 & \$1.39**

Christmas **Tree Lights . \$1.98**  
One Goes Off - Rest Stay On

**WE INVITE YOU TO COME IN, LOOK AROUND AND SEE OUR WONDERFUL SELECTION OF GIFTS**  
Open Till 9:00 p.m. Evenings Until Christmas

**WALLER ROAD VARIETY**  
64th & Waller Road Phone GR 5362  
PLENTY OF PARKING SPACE

**TOYS**  
Miniture Timbers \$2.95 & \$4.95  
Christmas Books & Records . . . 25c ea.  
**GAMES - DOLLS TRUCKS & CARS**  
Large Selection of Tree Ornaments - Candles and Christmas Wrappings

**From Santa's Workshop to yours**

We Carry A Full Line Of  
**Stanley Tools**

★ ☆  
2 x 4's - 8 Ft. . . . . 20c each  
For Rent  
Sanders - Edgers - Polishers - Waxers - Etc.

**ANDERSON LUMBER**  
9813 Pacific Ave. GRanite 7311

**Nifty Thrifty AND CHEAP**

**Van Heusen Shirts**  
French Cuff or Barrel Cuff \$3.95

**Rob Roy Shirts**  
For Boys \$1.95 to \$2.95

**Van Heusen Pajamas**  
Broadcloth Flannel or Rayon  
A, B, C, D and Tall Man Sizes  
\$3.95 to \$6.95

**Madden's Mens & Little Men's Shop**  
Parkland Centre Bldg. GR 4242

**CHRISTMAS SALE**  
SAVE MONEY AT MAGDANZ'S  
GIFTS FOR THE WHOLE FAMILY  
A Friendly Home - Owned Store

Reg. \$4.95—Mechanical Train . . . . . sale price \$3.95  
Reg. \$6.95—Sled, 41" Streamlined . . . . . sale price \$4.95  
Reg. \$1.00—Candy Thermometers . . . . . sale price 79c  
Reg. \$2.95—Hand Saws . . . . . sale price \$1.98  
Reg. 69c—Glass Egg Plates . . . . . sale price 49c  
Reg. \$1.49 Value—Pastry Cloth & Roller Pin Cover 89c  
Reg. \$22.50 Value Deluxe Tricycle . . . . . sale price \$16.95  
Electric Mixers . . . . . \$19.98 & Up  
Electric Toasters . . . . . \$3.68 & Up  
Dolls \$3.00 And Over . . . . . 10% Discount

Reg. \$344.90 Admiral Electric Stove—Flex O Heat Controls. New. Best Buy on Pacific Ave. sale price \$245  
Reg. \$116.00 52-Gal. Electric Water Heaters. sale price \$95  
Mirrors . . . . . All Reduced 10%

One of the Largest Stocks of Paint and Hardware on South Pacific Avenue. Over 15,000 Items.

AVOID THE BIG HILLS - - SHOP & SAVE AT  
**Magdanz Lumber & Hardware Co.**  
11401 Pacific Ave. GRanite 5538  
Tacoma, Washington Free Parking - Open Til 9 p.m.

*This Christmas, GIVE FOR YEARS TO COME*

# Arvin TV

## All-Channel Super 28

Will receive ALL present and future stations at the turn of a knob!

There will be 60 TV stations within 60 miles of (name of city) when all now authorized have been built.  
Arvin All-Channel Super 28 will receive all of them, as soon as they come on the air! No extras to buy—no service call needed.  
28 tubes, including 21-inch picture tube and rectifiers, provide freedom from interference. Picture quality and range are far beyond anything you've ever known.  
Unequalled performance and dependability are assured by Arvin's Dual Power, Cascade Booster Tuner, Phantom Filter, Velvet Voice tone system—many other important features.  
Superbly styled cabinets, in a wide range of finishes and styles, are constructed of choicest woods by fine-furniture craftsmen.

**The Arvin Waldorf**  
21-inch console of hand-rubbed Honduras mahogany  
Only \$469.95 Complete. Tax & Warranty Included  
OTHER MODELS FROM \$209.95

Open Evenings 9:00 P. M. Till Christmas Eve.

**FRYE'S FURNITURE, TV, APPLIANCES**  
405 Garfield GR 3691 Parkland

# PRE INVENTORY & XMAS SALE

11.1 Cu. Ft. International - Harvester Freezer - - \$419.95. Our Christmas Present To You - - - \$50.00 Worth Of Frozen Foods - - Including A Turkey For Your Christmas Dinner.

15.8 Cu. Ft. International - Harvester Freezer - - \$519.95. Our Christmas Present To You - - - \$75.00 Worth Of Frozen Foods - - Including A Turkey For Your Christmas Dinner.

<b>3 Piece Chrome Set \Yellow)</b> Reg. 69.95 . . . . . \$29.92	<b>Bendix Automatic Washer (Dialomatic)</b> Reg. 189.95 . . . . . \$149.94	<b>2 Piece Sectional (O My-A-Bed). (Green Nylon Fabric). Reg. 339.95 . . . . . \$239.93</b> Free Floor Lamp for Your Xmas Present
<b>5 Piece Duncan Phyfe Chrome Dinette (Grey). Reg. 159.95 . . . . . \$89.98</b>	<b>Bendix Automatic Washer (Economat) Demo.</b> Reg. 229.95 . . . . . \$129.92	<b>Daveno And Chair \Grey Nylon)</b> Reg. 289.95 . . . . . \$189.98 Free Floor Lamp for Your Xmas Present
<b>5 Piece Rect. Chrome Dinette (Grey)</b> Reg. 149.95 . . . . . \$79.97	<b>Full Size 40" Electric Range \Murray)</b> Reg. 249.95 . . . . . \$149.94	<b>Daveno And Chair (Provincial Finish)</b> Reg. 239.95 . . . . . \$169.96 Free Floor Lamp for Your Xmas Present
<b>5 Piece Wood Grain Chrome Dinette Set \Chart.) Reg. 189.95 . . . . . \$139.93</b>	<b>8.2 Cu. Ft. I-H Refrigerator. Floor Sample</b> Reg. 264.95 . . . . . \$219.91	<b>6 Piece Mhg. Dining Room Suite. Extension Table - 2 Leaves. Reg. 289.95 . . . . . \$189.98</b>
<b>5 Piece Oaktone Chrome Dinette Set</b> Reg. 219.95 . . . . . \$169.96	<b>Youngstown Electric Sink. Floor Model</b> Reg. 439.95 . . . . . \$299.90	<b>6 Piece Mhg. Drop-Leaf Table with 5 Chairs</b> Reg. 329.95 . . . . . \$219.91
<b>5 Piece Provincial Bedroom Suite</b> Reg. 329.95 . . . . . \$229.92	<b>54" Youngstown Cabinet Sink. Floor Model</b> Reg. 129.95 . . . . . \$89.98	<b>Mahogany Kneehole Desk</b> Reg. 79.95 . . . . . \$54.45
<b>4 Piece Solid Rock Maple Bedroom Set</b> Reg. 349.95 . . . . . \$249.94	<b>American Kitchen Roto-Tray Dishwasher</b> Floor Sample. Reg. 339.95 . . . . . \$279.97	<b>Clothes Hampers. All colors</b> Reg. 9.95 . . . . . \$6.89
<b>Table Lamps - Brass</b> Reg. 7.95 . . . . . \$3.49	<b>Floor Lamps</b> Reg. 12.95 . . . . . \$7.89	

Buy A TV Set For The Family - - Our Christmas Present To You - - Free Installation Before Christmas On Any Floor Model. R. C. A. - CBS - Columbia - Arvin - Sylvania - Kaye Halbert.

OPEN EVENINGS UNTIL DECEMBER 24

# FRYE'S FURNITURE, TV, APPLIANCES

Parkland Centre Bldg. 450 Garfield St. GRanite 3691

WE WELCOME THE 44TH DIVISION

We offer you nationally advertised foods at competitive prices, and an atmosphere in which you may shop in confidence.

May We Have The Pleasure Of Serving You

- 5 DAYS of Money Saving Values CRISCO DEL MONTE PINEAPPLE, Sliced 25c BULK PITTED DATES 25c LARGES OLIVES 25c CHRISTMAS CANDY 27c MIXED NUTS 37c MINCE MEAT 45c CRUST QUICK 35c OCEAN SPRAY CRANBERRIES 39c COLORED MARGARINE 47c JELLO 7c MILK 41c BUTTER 79c S & W COFFEE 1.63

EXTRA STOCK OF FINE ASSORTMENT OF TABLE WINES FOR THE HOLIDAYS OLD STYLE BEER... case of 24 \$2.68

- CELERY 9c SWEET POTATOES 14 1/2c TANGERINES 9c CAULIFLOWER 13c

HERMAN'S 162nd & Park Ave. Spanaway GR. 8213

- PORK STEAK 49c PORK ROAST 45c PORK CHOPS 55c CORN BEEF, Brisket, rolled choice 38c

SPANAWAY MEAT MARKET NEXT DOOR TO HERMAN'S GR 8215

WANT ADS - USE WANTED

Remodeling - Also Building, Roofing, Siding, Foundations...

RAY GOGAN LANDSCAPE CONSTRUCTION

PLUMBING REPAIRS - Sewer Cleaning - Electric Pipe Thawing

E. M. HAMILTON PLUMBING

Marshall Upholstery

Alan's Refrigeration SALES AND SERVICE

UPHOLSTERING - Recovering and Rebuilding

Parkland Upholstery

ACE SEPTIC TANK SERVICE

HOUSE MOVING: leveling, foundations; cement work; free estimates, PR 2655.

JOB'S Tractor Service. Rotovating, Ditch digging, Truck loading.

SHRUBBERY—Perennials, rockeries, lawns. Free Estimates; terms, GR 3661; Midland Nursery. 3cft

Glass Tops For Desks & Furniture \$3.50 COPIA GLASS 923 Tacoma Ave. BR 0227

5—Help Wanted OPPORTUNITY—Will train you to earn at least \$100 a week with an unlimited future...

WANTED—Woman for baby sitting, 11229 So. A St. after 6. 5c14

6—Lost & Found LOST FROM LOVELAND—Black and tan spotted blue tick hound...

8—Wanted to Buy WANTED TO BUY—Late model Ford or Ferguson Tractor, phone GR 8688.

SPOT CASH For Your Used Furniture 1 Piece or House Full

9—Real Estate \$5,850.00 - TERMS 6931 SO. TYLER—2 bedrooms, living room, kitchen, built-ins, dinette, 3 piece bath, utility room, large garage...

MCKINLEY HILL REALTY 6311 McKinley Ave. GA. 0365

Parkland Realty Co. Insurance of All Kinds Notary Public

HECK OUR LOW DOWN PAYMENT INSURANCE PLAN.

TOTTEN REALTY, Inc. Property Management - Insurance

Complete Overhaul 6 Cylinder Motors \$64.95

BOB'S PLACE 18 Years in Parkland

PLATING OF ALL KINDS Fire Sets - Silver Gifts

We Cap Sawdust Tires 2500 Used Tires Hard To Get Sizes

Used Sewing Machines \$9.95 & Up PFAFF SEWING MACHINE CENTER

FLOOR SANDER FOR RENT PARKLAND WESTERN AUTO

BULLDOZING Large or Small Gravel - Fill Dirt - Top Soil

COMPLETE GARAGE SERVICE AUTO ACCESSORIES ATLAS TIRES & BATTERIES

ANDERSON Chevron Service 176th St. & Mt. Highway

RURAL GARBAGE SERVICE GR. 3713

14—Situations Wanted CHILD CARE—In my home, or room and board; GR 3503, ask for Alice.

COLLINS NEWS

Mrs. John G. Gorow Granite 7070

Mrs. A. O. Anderson and son David were guests of Gordon Anderson at the Delta Tau Delta House in Seattle, Sunday, Dec. 6.

Club Scouts The Cubs of Troop 92 will have their pack meeting Friday evening in the Collins gym at 8 o'clock.

New Daughter Mr. and Mrs. Lloyd Valentine announce the birth of a new baby girl, born Sunday night, Dec. 14.

YULETIDE PARTY FOR PARKLAND CHILDREN (Continued from Page 1) held Saturday afternoon, Dec. 20, at the Parkland theatre.

LEGION NEWS

(Continued from Page One) and a wrapped gift to be exchanged following the dinner.

Entertainment will be furnished by the junior members of the organization. Christmas carols will be sung and a good time will be had by all.

The following day, December 20, the Post and Auxiliary will cooperate with the Business Men's Club of Parkland in giving a Christmas party for the children of the community.

Commander James Linder and President Phyllis Blackstone will represent the Legion.

JOIN THE BOOSTERS

Town & Country Septic Tank Pumping Get Our Bid - Guaranteed Less

Birthday Party for Girl Scout Troop

Girl Scout troop No. 247 held its birthday cake and candle birthday celebration for parents in the Trinity Lutheran church parlors recently.

Virginia Dryer played flute solos and several songs were sung before the Court of Awards.

The troop birthday spread was served by the girls.

SEE SANTA CLAUS 7:00 p.m. to 10:00 p.m. Monday, Dec. 22nd

Ice Cream Cones Gifts for the Kiddies Richmaid Ice Cream 7212 Pacific Avenue

Calp Roping at The Firs It's always a big day for the fellows who meet each week at Lloyd and Speck Alton's Firs Arena to do a bit of calf roping on Sundays.

Future Events at Woodbrook A full schedule at Woodbrook awaits many a horseman...

REOPENED Svinth Service

\* Welding \* Auto Parts \* Gas and Oil \* 24 Hour Wrecker and Road Service \* Auto Repair \* Mechanic on Duty

SEWING MACHINES

Lowest Prices in Town New Elec. Portables With Attachments \$39.50 NECCHI Sewing Machines \$69.50

Looks Like New 100 Machines to Pick From SOUTH TACOMA SEWING MACHINE COMPANY

5444 S. Tacoma Way HI 7154

REOPENED Svinth Service

\* Welding \* Auto Parts \* Gas and Oil \* 24 Hour Wrecker and Road Service \* Auto Repair \* Mechanic on Duty

Open 7 Days a Week 8:00 A.M. to 8:00 P.M.

Svinth Service

Mt. Hiway - Mile South of Johnson's Corner Graham 7-7344

PARK 'N SHOP SUPER MARKET 98TH PACIFIC. WE WELCOME THE 44TH DIVISION. Santa Claus will be at Park 'N Shop Friday 3-10; Sat. Noon-10; Sun. Noon-10; Mon. 6-10; Tues., 6-10. FREE ORCHIDS TO ALL WOMEN. Items: My-T-Good SHRIMP 35c, TOM. SOUP 10c, Chocolate Chips 2/35c, Hunt's Fruit Cocktail 5/\$100, Pork Roast 29, PORK STEAK lb. 39c, PORK SAUSAGE lb. 39c, SMOKED PICNICS lb. 39c, SMOKED HAMs lb. 59c, Walnuts 3/\$100, Fresh Roasted Peanuts 3/\$100, Non Such MINCE MEAT 24 Oz. Jar 39c, Sunshine Hi Ho 28c, ORANGES 29c, Libby's Frozen Peas 2 pkg 29c, Libby's Pumpkin 2/21c, Boiler ONIONS 10 lb. bag 43c, Swansdown Yellow CAKE MIX \$1.00, Auburn Cottage Cheese lb. 22c, Best Foods Mayo qt. 57c, Red Shield BUTTER lb. 69c. Prices Effective Thurs., Fri., Sat., Sun., Mon., Tue., Wed., Thurs., December 18 thru 24th. MAKE PARK 'N SHOP YOUR ONE-STOP SHOPPING CENTER.



# The TIMES - JOURNAL

DEC. 18, 1952 (VOL. 8, NO. 14) PUBLISHED AT PARKLAND, WASHINGTON 5c PER COPY • \$2.00 PER YEAR

**James Sales Grange Yule Party Dec. 18**  
The annual James Sales Grange Christmas party will be Dec. 18 at 8 p.m. in the hall. Lecturer Etta Rau has planned a fine program with numbers from children of Grange families and from the local Boy Scouts. A cordial invitation is extended to families and members of Boy Scout troop No. 30, which Sales sponsors, to be the guests of the Grange for the evening. There will be an exchange of gifts among the small fry, with boys bringing for boys and girls for girls. The adults will bring a gift per family for children at Remann hall. The gifts may be clothing or toys in the age range from 5 to 14. Santa will pay a visit with a treat. Cocoa, coffee and cake will be served during the social hour. The first meeting of 1953 will be Friday, Jan. 2, due to the first Thursday falling on Jan. 1, New Year's day.

**NOTICE**  
The Roy rural fire district will meet Monday, Dec. 22, at 8 p.m., in the Roy Grange hall to nominate commissioners for the district, the names to be presented to the county commissioners at the hearing being held Dec. 29. All residents of the area are urged to attend. Any questions concerning the district will be answered at this time.

**TROVANI'S JUNIOR BOOTERY**  
Specializing in Children's Shoes  
706 ST. HELENS AVE. - MA 6318  
LAKEWOOD CENTER LA 4161

**Bendix - Whirlpool R.C.A.**  
Appliances - TV Radio  
Sales and Service  
**Frye's Furniture & Appliances**  
Parkland Centre Bldg. GR. 3691

### Midland Junior Hi Nominates Officers

On Monday, Dec. 8, the Midland junior high school pupils met in the gymnasium of the school with Perry Keithley, principal, for the purpose of nominating candidates for major student body offices. Students nominated by petition and from the floor were:  
President: Mary Ann Townsend, Phoebe Whitney, Don Arneberg, Dick Goings, Beverly Paulik.  
Vice-president: Sue Sullivan, David Speidel, Warren Hanson, Nancy Hall, Richard Gorenson, Janice Petrich, Alene Norfleet, Jimmie Miller.

**FLETT DAIRY**  
FARM FRESH  
HOMOGENIZED AND PASTEURIZED MILK AND CREAM  
ICE CREAM  
Phone GA 3301

Secretary: Beverly Paulik, Patty Adler, Karen Oakes, Delores Robinson, Evalou McArtor, Geraldine Palmcr.  
Treasurer: Warren Hansen, Pat Lawler, Marlene Corrigan, Larry Jensen, Eldon Davis, Delores Bullock, Donald Kimber, Eleanor Kresse.  
Sgt.-at-Arms: Dick Goings, Jerry Fordice, Paul Stavig, Larry Carlson, John Barber.  
Publicity Chairman: Leilani Angermeir, Nina Ayers, Carol Christilaw, Jeannette Barber, Carolyn Dawson, Lee Robertson.

Results of the election will be published in an early issue of the Times-Journal.


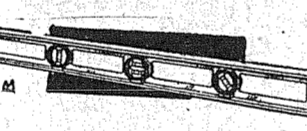
CUB SCOUT pack No. 133 will meet in the basement at Trinity Lutheran church at 7:30 Friday evening for a Christmas party. Children are asked to bring gifts for the exchange.

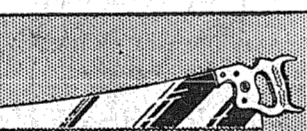
**CUSTOM MEAT**  
Fresh Eggs - Locker Rentals  
Mountain View Food Lockers  
Airport & Spruce GR 5332  
2 1/2 Miles East of Pacific Avenue

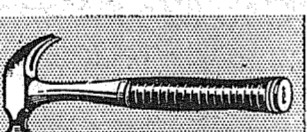



## Make the Men of your House Merry This Xmas-Give Tools-the Ideal Gift

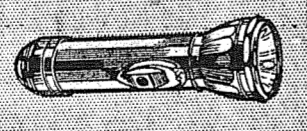
- |  |   |
|--|---|
|  | 6" Skilsaw . . . . \$39.50                  |
|  | HOME UTILITY Electric Drill . . . . \$22.95 |
|  | PORTABLE Hand Sander . . . . \$39.95        |
|  | ALL PURPOSE Electric Paint Sprayer \$10.95  |

- |               |                                    |   |
|---------------|------------------------------------|---|
| <b>Planes</b> | 9" Stanley . . . . \$7.80          |  |
|               | 14" Defiance . . . \$4.98          |   |
|               | 5 1/2" Stanley . . \$1.85          |   |
| <b>Levels</b> | Cherry Wood 18" Stanley . . \$3.00 |  |
|               | Mays 24" Alum Level . \$5.59       |   |
|               | Torpedo Levels . . . . .68c        |   |

- |             |                                 |   |
|-------------|---------------------------------|---|
| <b>Saws</b> | Coping Saws . . .35c            |  |
|             | 10-Pt. Sea Hawk . . . \$3.49    |   |
|             | Yorktown All-Purpose . . \$1.85 |   |
|             | Disston 8-Pr. . . \$6.39        |   |

- |                |                                      |   |
|----------------|--------------------------------------|---|
| <b>Hammers</b> | Defiance . . . . \$1.20              |  |
|                | Plumb Leader . . \$2.50              |   |
|                | (Unbreakable) Estwing . . . . \$3.85 |   |

- |             |                                    |   |
|-------------|------------------------------------|---|
| <b>Axes</b> | Old Faithful Boys Axe . . . \$3.99 |  |
|             | Plumb Single Bitted . . \$4.75     |   |
|             | Plumb Double Bitted . \$5.35       |   |
|             | Plumb Hatchets . . . \$3.15        |   |

- |              |  |   |
|--------------|--|---|
| <b>Misc.</b> | Handy Sanders . . . .89c                   |  |
|              | Stanley Mitre Box . . \$12.45              |   |
|              | Cabinet Vise . . \$5.95                    |   |
|              | Eveready Masterlite Flashlights . . \$1.89 |   |

**MEN! Give Her A Real Gift** . . . . .  
**FOWLER ELECTRIC DRYER . . . . only \$256.00**  
SINGLE DIAL CONTROL - SAFETY DOOR  
FULLY GUARANTEED

## Brookdale Lumber Co.

136th & Pacific Ave. Granite 8669

**WELL DRILLING**  
Berkeley Water Systems  
Capable, Experienced Drillers  
Nothing Down—3 Years to Pay  
**Cascade Pump & Drilling Co.**  
Phone GR. 3141 or GR. 5874

**KANTON'S MEATS**  
GR 3049  
Custom Killing - We Pick Up  
Locker Cutting & Wrapping  
We Feature Baby Beef Selling  
For Locker Meat.

**American Art Co.**  
Custom Picture Framing  
BR 4327  
2046 6th Ave.



**Prescriptions**  
Prepared & Carefully  
Fresh Insulin at Down Town Prices. Pay Phone Bills Here  
**Tincher's Pharmacy**  
8239 Park Ave. HI. 3344  
Across street from Fern Hill P. O.

Nationally Accepted Bookkeeping and Tax Service for Independent Business  
All Tax Forms Prepared - One Low Fee.  
Clear Monthly Statements.  
Complete - Efficient - Modern  
"For Information Call"  
**MAIL - ME - MONDAY**  
of Tacoma  
1110 6th Ave. BRoadway 4814

**Dress Up Your Home During the Yuletide**  
Large Selection of Christmas Trees  
Special Prices for Church Groups, Lodges, Boy Scout organizations  
All Sizes NOW  
**Rainier Tree Lots**  
2 Lots To Serve You  
38th & TACOMA AVENUE  
84th & SOUTH TACOMA WAY  
(Near Richfield Tower)

**For A Christmas Dinner The Whole Family Will Enjoy**  
visit the ABA DABA Cafe

Lunches - Dinner - Full Menu  
OPEN 24 HOURS - 7 DAYS A WEEK  
**ABA DABA CAFE**  
HOME OF THE 5c CUP OF COFFEE  
HIWAY 99 - PONDERS CORNER LAKewood 9603

**BULLDOZING**  
Ken BROWN and Bruce GAMBILL  
1750 9th St. S. W. Puyallup  
Basements - Backfills - Driveways  
Clearing - Leveling - Etc.  
Fill Dirt - Gravel - Top Soil  
Dozers - Large and Small  
PH. PUYALLUP 5-2452 or 5-5487 ESTIMATES Cheerfully Given



**MODEL 21K4W**  
Value-packed, feature-packed TV—priced at an all-time low! Beautiful walnut finish console. 21 inch cylindrical tube for razor-sharp stand-out pictures. Also available in mahogany finish or lined oak at slight extra cost.

**329.95**

**EASY TERMS**  
To Suit Your Pocketbook

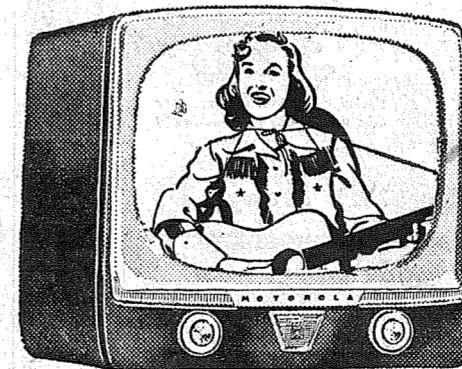
Take advantage of our  
**Motorola TV**  
Christmas Budget plan



Don't wait and be disappointed! Come in today... choose your beautiful Motorola TV with the thrilling Standout Picture while selections are complete. Pay only a little down now, the balance in easy weekly payments... and have a very merry Motorola TV Christmas.

SO EVERYONE MAY ENJOY A LARGE SCREEN T.V. FOR CHRISTMAS WE ARE ALLOWING  
**\$75 & up**  
TRADE-IN ALLOWANCE  
FOR ANY SMALL SCREEN T.V.

This Offer Confined To Model 21K4M & W Only



**MODEL 21T4** — A standout buy! Striking mahogany plastic table model with king-size 21 inch tube. Price includes Federal Excise Tax; 1 year warranty on tubes, parts and picture tube.

**\$259.95**  
Easy Terms

# Siler's

11230 PACIFIC AVENUE Granite 5555





For Christmas Values


SHOP THE

# STREET DISTRICT

NG....TOP QUALITY MERCHANDISE....COURTEOUS SERVICE



Fill Your Cupboard for CHRISTMAS FEASTING ALITY MEATS and GROCERIES  
**Willey's Market**  
Pacific GA. 7316

 **HOLIDAY BEER TO GO AT FAMILY PRICES**  
VISIT THE **BLUE MOON TAVERN**  
8402 PACIFIC AVENUE

Evening in Paris Coty's Gift Sets  
SHEAFFER AND PARKER FOUNTAIN PEN SETS  
PHOTO FLASH CAMERA KITS  
RONSON LIGHTERS  
GIFTS FOR THE WHOLE FAMILY  
**JACOBS PACIFIC DRUGS**  
8248 Pacific Ave. GA. 6445

*Gift Jewelry*  
  
Select Yours Now from the Finest  
**SMITH JEWELRY**  
8238 PACIFIC AVE. HA. 2351

Wash the Laundromat Way During the Christmas Rush  
**Fern Hill Laundromat**  
8420 Pacific Avenue

The Finest!  
WELL SHAPED! DIRECT FROM TREE FARM!  
PETITIVE PRICES!  
9 Years at This Corner  
**ES** 8023 Pacific Ave.

For the Holiday Season  
CRAB MEAT... OYSTERS  
PRAWNS... SHRIMP MEAT  
THE FINEST IMPORTED LUTEFISK  
**MARVIK'S FISH MARKET**  
8018 Pacific Ave. HI. 9211

FOR HIM OR HER FINE SPORTS GIFTS  
Barrett's for a Sporty Christmas  
Everything for the Sportsman  
"PLAY-AS-YOU-PAY"  
Use Your Credit - No Down Payment until 1953  
**BARRETT'S SPORTING GOODS**  
8232 Pacific Avenue HA. 2725  
OPEN MONDAY thru SATURDAY until 9 p. m.  
**USED GUNS** We will give you a liberal trade-in allowance for them on Christmas items.

A Growing Christmas Present  
SHRUBS  
ROSE BUSHES  
FRUIT TREES  
•  
Ten Acres of Nursery Stock  
•  
**PUGET SOUND NURSERY**  
and Gift Shop  
9201 Pacific Ave. HA. 2151  
OPEN SUNDAYS 11 A. M. to 5 P. M.

as....  
ew Year  
**LLER**  
DUSE  
AND TV  
HI. 4131

Better -- Tastier Dining  
Delicious Meals  
Hamburgers  
Fried Chicken  
Sea Foods  
OPEN FOR BREAKFAST  
**Richards SNACK BAR**  
8021 PACIFIC AVENUE  
Phone Orders... HI. 2063

**VAUGHAN'S VALUES**  
SLEDS, a bargain at . . . . \$1.94  
Electric Heaters . . \$7.90 to \$39.50  
(For that quick heat Christmas morn)  
\* \* \*  
 **THOR Power Tools**  
FOR THOSE "DO IT YOURSELF" JOBS  
6 1/2 in. Heavy Duty Saw  
without case \$65.00  
with case . . \$69.95  
7 1/4-in. Heavy Duty Saw . . . \$125.00  
With Case  
 1/4-in Heavy Duty Drill . . . . \$45.00  
3/8-in. Heavy Duty Drill . . . . \$64.50  
Mirrors - - Mirrors - - Mirrors  
16x24 SEAMED CRYSTAL \$2.25  
16x22 SEAMED CRYSTAL \$2.15  
14x22 SEAMED CRYSTAL \$2.00  
**VAUGHAN'S PACIFIC AVENUE LUMBER CO.**  
84th and Pacific Ave. HI. 9515

**Frigidaire "Thrifty-30" Electric Range**  
  
GIANT OVEN GOES CLEAR ACROSS!  
Only 30 inches wide but the oven is large enough to bake 6 pies at once, or roast a 35-lb. turkey.  
• Lifetime Porcelain finish—inside and out  
• Cook-Master Oven Clock Control  
• 4 Radiantube 5-Speed Units  
• Stainless Porcelain Top  
• Full-width Storage Drawer  
BUY IT FOR ONLY \$23<sup>94</sup> DOWN  
Cash Price \$219.75  
Model RO-30, less Cook-Master Drawer \$185.75  
COME IN! SEE A DEMONSTRATION NOW!  
8044 Pacific Avenue HA. 4123  
**Sigler's HARDWARE**

LOOK YOUR BEST FOR THE HOLIDAYS  
Personalized Hair Cutting  
84th St. Barber Shop  
8402 Pacific Avenue  
**ICE CREAM**  
It's Delicious the Year Round  
WE MAKE IT  
Qt. 51¢ Gal. 1.65  
SOFT FREEZE  
Qt. 39¢ Gal. 1.26  
**ROUSH'S Ice Creamery**  
8038 Pacific Ave.

We Have Everything You Need To Complete Your Christmas Shopping List  
  
**SPROUSE-REITZ**  
8218 Pacific Ave.  
HOURS - 10 A. M. to 9 P. M. DAILY

ne Welding  
Cable Splicing  
ating  
hop  
Tanks  
**RAH**  
RVICE  
VENUE  
Family Dad  
d Over  
IO  
ice  
HI. 5942

Headquarters for your CHILDREN'S SHOES... Edwards... RED WING... PAUL'S

State Farm Mutual Insurance FORREST LEONARD Agency GR. 7222

COMMERCIAL MOVING & STORAGE CO. Warehouse Storage

Sewing Machines Lowest Prices in Tacoma

Your Dramex Dealer South End Plumbing

Free Pickup and Delivery GR 5361 College Cleaners

BUILDING SUPPLIES SPANAWAY LUMBER CO.

Tic-Toc JEWELRY 10331 Pacific Ave.

RADIO - TV Repairing and Installation

Perry Radio Co. 12904 Pacific Highway

SPANAWAY NEWS Mrs. Oliver Omat: GR 6466

New Year's Dance There will be a dance New Year's Eve

A-1 Auto Wrecking Used Auto Parts

YOUR NEXT For The BEST WILLOWS BARBER SHOP

YOU SAVE AT DANIELS HARDWARE

FENCING Designers and Builders

dinner sponsored by the Spanaway Volunteer Firemen's Auxiliary

Yule Party for Blue Bird Group The Campfire Blue Bird group

Yule Party for Blue Bird Group (continued)

Democratic Club Friday The Democratic club of Parkland

Extra Egg Profits WITH TRIANGLE X-TRA EGG PRODUCER

Stewart Hay & Grain SPANAWAY

JUMBO OCEAN CRABS Are now in season - fresh cooked daily

JOHNSTON FISH CO. 8290 So. Tacoma Way

TURN TO PAGE 5 FOR HERMANS XMAS SPECIALS

Pierce County Refuse Co. Weekly GARBAGE Collections

Town & Country Septic Tank Pumping

HARVARD COVENANT CHURCH East 84th St. and Portland Avenue

CHRISTMAS PROGRAM SUNDAY, DECEMBER 21, 11:00 A.M.

CALVARY PENTECOSTAL CHURCH Corner of Airport & Bingham Roads

for our savings we chose... Pacific First Federal Savings

SINUS SUFFERERS AMAZING NEW DISCOVERY - FREE TRIAL

See and Hear JIM CALVERT And His Orchestra Every Saturday

A SLEIGHFULL OF Christmas DINNER DELIGHTS AT PRICES THAT WILL HELP YOU CELEBRATE

TURKEYS - DUCKS - GEESE Carsten's Ready to Eat. Whole or Shank Half HAMS

Fletcher's MARKET 122nd and Pacific Avenue Phone Granite 8550

Slippers For every BOY & GIRL on your Christmas List

Saine's Parkland Shoe Store 411 Garfield Street