

BOXHOLDER OR OCCUPANT
RURAL ROUTE

The PARKLAND TIMES

JULY 13, 1950 (VOL. 5, NO. 44)

15,000 READERS EVERY THURSDAY

4

BOX 885, PARKLAND—PHONE GR 7100

GRanite 7100

is our number. We are interested in NEWS, primarily, but we will be happy to print so-called "publicity" notices. You, the readers, make your newspaper "interesting."



By Clarence LaCrosse

Well, it's all over now for another year, but a lot of us will be looking forward to having another vacation next year, even though it is only a week. Some of our Parkland people are returning from their vacations while still others are getting ready to take theirs.

I had the fun of getting four days over the fourth which turned out like a million bucks. In spite of the assertions to the contrary that there were no fish in Lake Crescent, one of the fish that hadn't yet been informed managed to decide to use my bait for his downfall. As a result I caught one of the three fish I have ever caught in my life.

We see Walt Young is back, with a bit more tan. It seems that he must have a liking for flowers, as the last time I saw him was about 11:30 in the evening with a garden hose doing a bit of watering about his place.

Houshunting

We have been following with some bit of interest and a bit of amusement the house-hunting antics of our printer, Joe. It seems that he is not content with merely owning half of the vacant lots on Park Avenue but rather would like a new home. We agree with the gentleman, it would be nice—but after watching him look at several dozen for the past two months and get the reports of the imperfections which are prevalent in most of them, we wonder if our old one built back twelve years ago isn't the better house after all.

It seems that constructors of the new homes have but one thought in mind—that of getting it completed and ready to move into as soon as possible. The result begins to show after you move in with the result that the plaster cracks, the walls change shape, the paint falls off in huge sheets. The plumbing, too, seems to have a good share of its problems with the result that it too is inadequate and in some cases very improperly installed. Haste, you understand, and also the fact that Parkland is growing and some sucker will want to have a house and right away.

We highly recommend that you, too, like Joe, thoroughly investigate every phase of your new home before you buy it. After all, you are not paying the cheapest price for a cheap house.

The Slip of a Lip . . .
It has been vividly brought to our attention lately by the use of the highly excited news-hungry press and radio that there is a war going on. The results have been that every headline, every available bit of space has been filled with rumors, speculation and in most cases very few facts about what is going to happen and what is worse in our minds, what is happening in the way of troop movements, drafting, aerial strength, plane maneuvers and other information which to our way of thinking is not in keeping with the security of our nation.

Of course there is no censorship of news and we would be the last to concede that there should be. However, it is the strong opinion of this paper and this person that newspapers and radios, commentators, etc., should of their own volition and good sense decide for themselves what should be released as war news. It is hardly good judgment to tell our enemies we are sending a division of men at a certain time.

Continued on Page Four

NOW BUILDING

Dryer Mortuary
220 So. 134

Have been framing the roof—up on top of wobbly ladders, leaning around a corner of the sky, nailing 2 x skantlin' together. Lots of fun!

—TRAV DRYER

Clean Clothes Wear Longer . . . Clean Clothes Wear Longer

Parkland Cleaners

We Pick Up and Deliver

GRanite 3221

Airport & Pacific

Clean Clothes Wear Longer . . . Clean Clothes Wear Longer

KIWANIS CLUB SETS PARTY FOR FIRST BIRTHDAY

Dinner, a program and dancing will be in store for Parkland area Kiwanians, their ladies and guests at The First tomorrow evening, when the local club celebrates its first anniversary.

According to Jack Quill, immediate past president and general chairman for the celebration, district officers and other Kiwanis clubbers from five other organizations in the immediate area will attend.

Dinner will be at 7 p.m., with the program following at 8 o'clock. Dancing from 9 to 12 will wind up the anniversary party. At the time of this writing, program particulars were not available.

It was July 14, 1949, that the local Kiwanis club was granted its charter, although it actually came into existence on May 19 that same year.

NEXT TUESDAY'S MEETING SCHEDULED ON VASHON IS.

The Kiwanis club of the Parkland area will cruise up the Sound to Vashon island for an inter-club meeting on Tuesday, July 18, it was learned this week.

Two cruisers will carry the local delegation to the "Strawberry Island." Transportation is being arranged by Rufus Parker, owner of one of the cruisers.

Spanaway Firemen To Buy Grappling Hooks

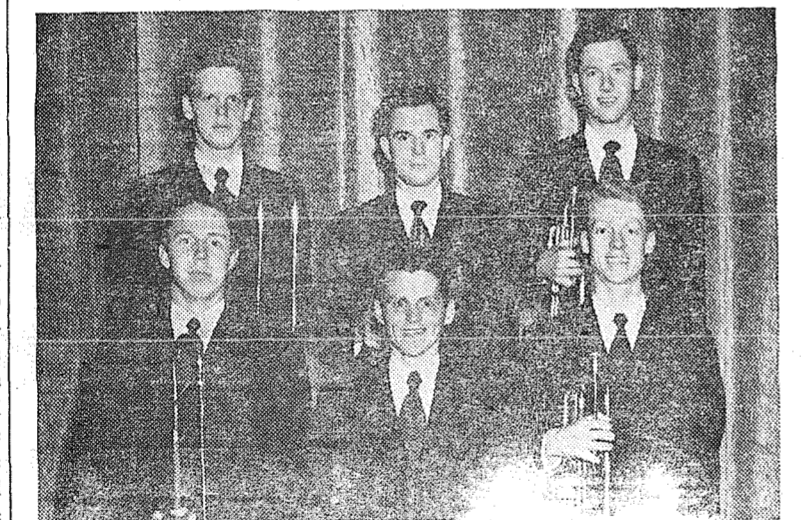
Following their unsuccessful attempt to revive a drowned soldier at Spanaway Lake two weeks ago, Spanaway firemen are now undertaking the purchase of grappling hooks to help with future rescue operations.

The recovery of Pfc. Elmer Milks from 20 feet of water was hampered by lack of grappling hooks. Nevertheless, after his body had been brought up, the Spanaway firemen worked for three hours with their rescuators trying to revive the McChord Field soldier.

PHOTO STUDIO IN HOME

Greeting new patrons at his home photography studio at 10666 South Croft, one block off Pacific Ave., is Don Quigley. He has been in the photography business for several years and moved to Parkland last February.

Ensemble Will Perform at Harvard Church



Appearing at Harvard Covenant Church, 84th and Portland Avenue, next Thursday will be the Bob Jones University brass ensemble. Its membership includes (back row) Frank Garlock, New Jersey; Frank Bradshaw, Ohio; Dale Crowley, Washington, D. C.; (back row) Julian Bandy, New York; Warren Mack, Pennsylvania; Bill Jackson, Wisconsin.

Next Thursday evening at Harvard Covenant Church promises to be unusual in many ways. On that occasion the Bob Jones University brass ensemble will conduct a special service.

This group from "The World's Most Unusual University" presents a program which is unusual, yet appealing and inspirational. Many of the varied and interesting arrangements of the old hymns and other sacred works have been made especially for the Brass Ensemble.

Composed of young people from five different states, and the District of Columbia, the B.J.U. brass ensemble is typical of the institution whose student body is drawn from practically every state in the Union and more than a score of foreign

countries.

The individual members of this group are young people of unusual talent. Frank Bradshaw, the director, holds the Master of Arts degree in sacred music from Bob Jones University and plays solo trumpet in the university orchestra. Julian Bandy plays solo trombone in the university band; Bill Jackson plays solo trumpet in the orchestra. Dale Crowley is an outstanding instrumental performer; and Warren Mack won honors in the 1950 university piano contest.

This Saturday morning at 11, the junior boys of Harvard Covenant will gather at the church to leave for Covenant Beach, where they will attend a week-long Bible Camp.

All Midland To Picnic This Sunday At Dawson

All roads will lead to Dawson field this Sunday as the Midland Improvement club sponsors the first annual Midland community picnic.

People will start converging at the park in mid-morning, with cars slated for 12 noon. Coffee and cream will be furnished, and there will be ice cream and pop for the kids accompanied by their parents. Clyde Spangler will dish out the ice cream and Mr. and Mrs. George Turner will pour the coffee.

Cash prizes will be awarded to the winners of the races and games. In charge will be Clarence Skog and Jim Hartley.

Real Estate Booms Near Castle Site

The real estate boom has already started in the vicinity of the newly-chosen site for the Bethel high school. An ad in the city paper last Saturday announced:

"8 and 10-acre tracts, unimproved, fronting on hard surface road, east of Bethel school district location just approved for new high school. (Between Mountain Highway and Graham.) \$50 down and \$20 per mo. will handle your selection of tract. Price \$1,000 . . ."

STILL NO TRACE OF BRESEMANN

Despite all rumors to the contrary, Eugene Bresemann of Spanaway has NOT been found, Detective Capt. Clarence Otto told the Times this week. The \$250 reward posted by his parents remains unclaimed as the search for the 40-year-old bus driver continues.

Capt. Otto also discounted all rumors that there is any connection between Bresemann's disappearance and the unsolved Noreen McNicholas murder case. He said that investigation had cleared Bresemann of all suspicion.

The detective stated that he is almost sure that the missing man is not in Pierce county. All settled areas of the county as well as all wooded areas that are accessible to a car have been combed by the sheriff's deputies with no trace of Bresemann being found.

This belief is further substantiated by the fact that the hundreds of berry pickers who have been scouring the county during recent weeks have reported no sign of either the missing man or car.

State Park Proposal Delayed By Price

As was predicted in the June 15 issue of the Parkland Times, the state's proposed acquisition of Spanaway Park is being delayed by the fact that the Tacoma Metropolitan Park officials have been suggesting too high a price for the tract.

When the representatives of the state parks and recreation commission visited with the local park board a month ago, several members of the board indicated that they wouldn't think of charging less than \$100,000 for the 408-acre tract.

This week the board received a letter from the director of the state parks and recreation commission explaining the state's position. The director stated that his department would be forced to wait for action from the next session of the state legislature "as it would be impossible at this time to consider the \$100,000 which has been mentioned."

Many local people who are anxious for Spanaway to become a state park point out that the city got the land free in 1905 and since spent only \$5,000 on improvements in the park. Therefore they feel that it is unjustified for the city to jack the price so high as to delay the transfer of the park to state control.

When and if the state takes over the park, it will probably spend several thousand dollars to erect new buildings and make other permanent improvements.

Hamanaka to Edit; Arlton to Study

Joseph Hamanaka, graduate of the University of Washington school of journalism and business manager of the Parkland Times since June 5, will also assume the duties of editor, Publisher Clarence LaCrosse announced today.

Paul Arlton, editor during the past year, plans to resume his collegiate studies and enroll next week for the second term of summer school at P.L.C. He and Hamanaka co-edited this week's paper.

AUCTION
Back of Gas-O-Lene Alley
On 100th and Pacific Avenue
SALES SATURDAY—1 P.M.
TUESDAY—7 P.M.

The PEOPLE'S MARKET PLACE

Buyer Seller or Trader the open door to opportunities awaits you. Tell your CLASSIFIED message to 15,000 readers at ONLY 3 CENTS A WORD

The Parkland Times



Manager Arthur Swindland



Ass't Mgr. Robert Snowden

Pair Celebrates 62nd Wedding Anniversary

Last Thursday, several friends and relatives called upon Mr. and Mrs. August C. Krause of Spanaway to help them celebrate their 62nd wedding anniversary. He is now 93 years old, and she, 83 years old.

After their marriage, they lived in South Dakota until 1906, when they moved west, settling down in Pierce county. Seven of their ten children are still living.

The Krauses raise a nice little garden and have their flowers and a few chickens. Mrs. Krause attends the Church of God in Tacoma each Sabbath.

Their five daughters and two sons are Mrs. Gertrude Black, Spanaway; Mrs. Margaret Pillard, Yakima; Mrs. Minnie Jones, Fox Island; August F. Krause, Sumner; Edward Krause, Tacoma; Mrs. Ruth Studebaker, Port Orchard; and Mrs. Agnes Thomas, Hobson, Mont.

Calling on the couple on their anniversary were Mrs. Jones, Mrs. Conley, August and Edna Krause, Mrs. Roy Morley, Mrs. Black, Mrs. Calla Joelson and Mrs. George E. Clark. Several grandchildren and great-grandchildren called the following day.

Collins Cubs, Scouts Plan Picnic Sunday

Cubs of Collins Pack 92 are inviting their families and the Collins Boy Scouts and their families to their annual picnic this Sunday at Spanaway park.

The festivities will get underway at 11 a.m., with the cats set for 12:30 p.m. The Cubs will furnish ice cream, pop and coffee. The afternoon will be highlighted by games and races.

All Scouts who plan to attend should make reservations with Mrs. G. H. Baker at GR 8462. Each family is asked to bring its own table service.

TRAIL WILL PREACH AT METHODIST CHURCH SUNDAY

F. W. Traill, lay preacher and charge lay leader, will fill the pulpit next Sunday at the Parkland Methodist Church. His sermon, addressed to men of the church, particularly fathers, will be on "Christianity, A Man's Religion."

The Woman's Society of Christian Service will meet in the Parkland Methodist Church, Wednesday at 12:30. Covered dish dinner; social, business and devotional program.

COMMISSIONERS NAME MRS. HANSLER TO LIBRARY BOARD

Mrs. Mike Hansler of Midland was appointed this week to the Pierce county library board. The nomination was made by Commissioner Doug Morris. Mrs. Hansler, long active in civic affairs, replaces Mrs. Byron Moye of 84th and Waller Road, who resigned.

Parkland Bank To Mark First Birthday

From \$0 to \$2,500,000 in just one year! That's the story of the Parkland branch of the National Bank of Washington, which will celebrate its first anniversary next Tuesday.

When the branch opened last July, bank officials predicted that its deposits would reach two million dollars in three years. But the business volume of the new office exceeded all expectation, exceeding its "goal" in less than one-third the time.

This is just one indication of the institution's phenomenal growth in its first year, as outlined for the Times this week by Arthur G. Swindland, genial manager of the branch.

When it opened last July, the branch had a staff of four. Today it employs 22 persons. Over 5,000 accounts have been opened in the 12-month period.

Already the Parkland branch's volume has passed two other branches in the NBW chain, the Winlock-Toledo and the Castle Rock offices. The Parkland office now ranks in eighth place among the ten branches of the head office, which is located in Tacoma.

Residents of the suburban South End were quick to recognize the many advantages offered by the new bank. They soon found out that it had every facility of a hundred-million dollar bank with the friendly atmosphere of a neighborhood institution.

The Parkland branch, newest of the ten operated by the bank throughout southwest Washington, boasts one of the most modern banking offices in the Northwest. Everyone agrees that it represents a tremendous contribution to the thriving Parkland district.

Manager Swindland has lived in Parkland for over 30 years and has taken an active part in community affairs. His wide acquaintanceship and knowledge of local conditions have proved of much value to customers of the new branch. He has been employed by the National Bank of Washington since 1921 and is experienced in all phases of banking.

When the local office opened last July, Swindland was assisted by three persons—Assistant Manager Robert H. Snowden, Teller Bob Young and Secretary Mary Rembowski.

This original nucleus is now ably abetted by Jack Whisler, assistant cashier; Ed Stevens, Cliff Becklund, Louis Brand, Eva Thompson and Eleanor Vetter, tellers; Mary Jo Rigney, Donna Basley, Ken Adcock, Robert Anderson, Joan Backman, Burr Battig, Lauren Bloom, Delores Jensen, Claire Neal, Paul Palmer and Mike Plancich, clerks and bookkeepers; and Hugh Evans, janitor.

Clover Creek Legion Post, Auxiliary Elect

Newly-elected commander of American Legion Post 118 is Warren Stinson. He was chosen at the post's last session and will take office this fall along with eight other new officers.

Senior vice-commander is Tom Bailey; junior vice-commander, Carl Swanson; adjutant, Roy Johnson; chaplain, John Lee; sergeant-at-arms, Harry Martin; historian, Frank McCabe; color bearers, Horace Thorpe and Henry Dean.

The ladies of the Auxiliary Unit 118 chose Mrs. Mabel Hart to pilot them through another year. Her 1950-51 cabinet will include Blanche Rediske, first vice-commander; Lillian Hanson, second vice-commander; Irma Long, secretary; Bertha Bailey, treasurer; Amy Wormald, chaplain; Ruth Drake, historian; and Anne Gunns, sergeant-at-arms.

This Friday at 8 p.m., the unit will convene to consider the sending of Mrs. Hart and Mrs. Rediske to the state convention at Bellingham in August. The post will also meet tomorrow night.

A coffee hour will be enjoyed by both the post and unit at the home of Mrs. Amy Wormald following their respective business sessions.

CANDY SALES SATURDAY

The Spanaway intermediate 4-H girls will hold candy sales this Saturday at Herman's Food Store and Anderson Chevron Service. Leader of the group is Mrs. Robert McGinnis, assisted by Donna Smith.

Keep In Tune With The TIMES

Piper FUNERAL HOME
HILLSIDE 8479 - 5436 SO. PUGET SOUND AVE.

PARKLAND CLUB SETS SPEAKERS ON CREDIT PROB.

Small business credit policies, practices and procedures will be discussed by representatives from the Credit Bureau of Tacoma at the 7 p.m. meeting of the Parkland Business Club next Wednesday in the parlors of the Trinity Lutheran church.

The two featured speakers for the evening are John Schlarb Jr., manager of the Bureau, and G. H. Weddle, manager of the adjustment department of the Bureau.

According to President Don Eastwood, the credit authorities will advise local businessmen on their particular credit problems and discuss the subject of poor business risks. Trinity's Mary-Martha society members will serve dinner.

P. B. RIFLE CLUB PLANS OUTING

On July 23, the Paul Bunyan Rifle and Sportsmen's Club will hold its annual picnic at Benbow lake, Leroy D. Wright, club chairman, announced this week.

A complete day of games, swimming and eating is planned under the direction of Chuck Witsner, treasurer and entertainment chairman.

While most of the ames will be for the children, there will be entertainment for adults. Two baseball games are planned, one a five-inning opener featuring women ball players, and the other, an all-men affair for five more innings.

Annex Large Area To S-W-C Fire District

Annexed to the Summit-Woodland-Collins Fire District last week was the South Summit area of about four square miles with a population of about 450 people.

A large number of the people in the area have wanted to be included in the S-W-C fire protection district since it was established and recently circulated a petition to join the district. Since 100 per cent of the residents of the area signed the petition, the county commissioners felt it unnecessary to hold an election and immediately adopted a resolution to annex the territory.

The area extends south from Maple Avenue to Old Military Road and is bounded by Waller Road on the west and Hemlock Road on the east.

The S-W-C department has previously answered alarms from this otherwise unprotected area. The acquisition of the new territory will mean an increased amount of millage for the upkeep of the fire department.

PROFESSIONAL DIRECTORY

ATTORNEYS
EASTVOLD & HICKS
National Bank of Washington
Parkland Branch
GR 8693

INSURANCE
CLAY ROLEY AGENCY
98th and Portland Avenue
GR 8501

OPTOMETRISTS
DR. L. RICHARD MCGIRK
Modern Eye Care
4802 1/2 So. Yakima HA 2113

DRS. D. M. CLISE, M. A. TWEIT
Visual Training
5434 1/2 South Tacoma Way
Garland 5424

REAL ESTATE
PACIFIC BROKERS CO.
Everything in Real Estate
508 Garfield GR 6323

The PARKLAND TIMES

(Formerly the PRAIRIE POINTER)

Distributed by direct mail every Thursday to 6,000 homes in PARKLAND, SPANAWAY, MIDLAND, Clover Creek, Elk Plain, Harvard, Brookdale, Summit, Roy, McKenna, Graham, and Eatonville.

Office: Park Avenue and Wheeler Street
Post Office Box 885, Parkland — Telephone GRanite 7100

PAUL ARLTON.....Editor
JOSEPH HAMANAKA.....Advertising Manager
CLARENCE LA CROSSE.....Publisher

ADVERTISING RATES
Local and National.....Column Inch \$.85
Contract (local).....Column Inch \$.75

Plenty of
2 x 4
(8 Foot)
— AND —
1 x 4
FIR FLOORING
COME AND GET 'EM!
BASKETT Lumber Company
96th and Our New Phone
Portland Ave. GR 5844

Theatre Guild Calls For One-act Plays

The Tacoma Theatre Guild announced this week their sponsorship of a one-act playwriting contest for original, unpublished and unproduced plays.

Samuel A. Perkins cash awards are as follows: First prize, \$50; second, \$25; third, \$15; and fourth, \$10. Manuscripts will be received until September 30, 1950.

The Theatre Guild will produce the winning scripts on the stage of the South Tacoma Community Center.

There is no restriction as to material selection and no entry fee. A writer may enter as many scripts as he likes.

For further information and entry blanks, contact Mary Dolan, 2918 North 15th, Tacoma 6, Washington.



PUNCH FOR THE CROWD

HAVING a party? Outdoors or indoors, parties are occasions for a punch bowl. It's an easy way to serve a beverage for a number of guests, at any time. People never hesitate to help themselves when a punch bowl is featured on the refreshment table, and the hostess doesn't have to worry about refills.

Besides, it's such a pretty, cool-looking thing—a sparkling bowl filled with a delicious, peppy punch and glistening ice, fresh fruit floating on the surface for decoration. To be sure, of a fine, zesty flavor and a refreshing, bubbly appearance, use pale dry ginger ale as a mixer for your punch.

Here is a simple and mighty good-tasting punch.

Fruit Sparkle Punch
1 cup hulled strawberries
1 cup shredded pineapple
Juice, 2 lemons
1 cup sugar
1 large bottle pale dry ginger ale

Place berries and pineapple in bowl; add lemon juice and sugar and crush slightly. Let stand half an hour. Pour over ice in punch bowl and add pale dry ginger ale. Stir gently to mix well. Garnish with whole strawberries and lemon slices. Yield: 16 servings.

Adaptable
to any decorating requirement

- ARMSTRONG'S LINOLEUM
- ARMSTRONG'S ASPHALT TILE

SUNSET FURNITURE CO.

Parkland Centre For Estimates GR 5972

CHEVRON Motoring Musts

PULL UP CHECK UP

BEFORE STARTING that weekend trip, a full tank of gas and a quick look at vital car check points are a MUST!

DRIVE UP NOW, and let us check your oil, radiator, battery and tires. When you leave our station you can be Chevron Sure of pleasant weekend motoring.

Parkland Fuel Oil & Service Station

GR 8112
120TH AND PACIFIC PARKLAND

CLASSIFIED ADS

WORD RATE: 3 cents (50-cent minimum); LINE RATE: 15 cents; DISPLAY LINES: Ads with display lines (14 point) will be charged on basis of 85 cents for the column inch.

Note: Hereafter new classified ads will be PAYABLE IN ADVANCE —25 cents extra for charged ads.

SERVICES

WE HAVE building blocks, stepping stones, chimney blocks and build garages, foundations, patios. LA. 9220. Eves. GA. 7309. k45

Kitchen Cabinets

MILLWORK — SASHWORK
GR 6907

RECOVERING & REBUILDING

Davenport and chair in tapestries, low as \$125; freeze mohair, low as \$140. Rebuild cushions, \$4.00. Samples shown day or even. in your home. GR 4071 for appointment. r

SEPTIC TANKS CLEANED

contents hauled away. Don Redford, GA. 7334. r

ACE SEPTIC TANK SERVICE

Lyman Redford, owner. Septic tanks cleaned, contents hauled away. GA. 3446 or GA. 9794. r

NURSERY SERVICE

Capable mother offers her home days and evenings for the care of children—no age limit. Home at 910 S. 110th. Large fenced-in yard. Daytime, 35c per hour (15c for each additional child in a family). Accommodations for 8 children. GR 5364. r

RAY GOGAN

LANDSCAPE CONSTRUCTION
Nothing down, 3 years to pay. New lawns, topsoil, shrubbery, rockeries. GR 8842. r

Photo Finishing

Individualized and professional attention to your valued summer snaps. Bring your rolls to

Wesley's Studio

413 Garfield, Parkland GR 3155

59% of the reported rural accidents in March occurred on the week-end days of Friday (21%), Saturday (19%), and Sunday (19%).

FOR RENT

FOR RENT — 2-room cabins, furnished, private shower, oil heat, \$30 month. Inquire Joe's Cafe, GR 6527. k44

FOR SALE

DINING ROOM table, walnut, gate leg, extension. GR 6928. 120th & Yakima. k44

BEAUTIFUL WHITE COLLIE pups. GR 8445. 12501 A St., Parkland. k44

KEEP FOOD COOL—Here is an excellent refrigerator-type cooler. White enamel inside and out. Well worth \$30. GR 6608, 816 Airport. r

GRAVEL, bank run, good for driveway, 4 yards, \$6. Crushed rock and drainfield gravel. GR. 8259, GR. 8573. r

MISCELLANEOUS

FOUND—Black setter dog Write or call Mrs. George Becker, Selah, Wn. Owner please pay this ad. k44

FOR LEASE — Southeast corner of Airport Road and Park Ave. Will build to suit tenants. Mail inquiries to 316 West 73rd., Seattle 7, Wash. k44

UPHOLSTERY SPECIAL—Recover and rebuild davenport as low as \$85. Swing rocker as low as \$25. Free estimate. Parkland Upholstery, 140th & Pacific. GR 3201. r

WANTED — PARKLAND HOMES; have several cash buyers for 2 and 3 bedroom homes in Parkland who will pay up to \$15,000. Call Mr. Harper, GR 8760, representing Washington Realty Co., 772 So. 38th St. Member Tacoma Real Estate Board. r

STEEL clothesline poles installed in concrete. Heavy 3-inch posts. Call us; we do all the work. \$17. Market 0823. r

Want Ads do not Cost—They PAY

Spanawayite Attends Rock Hound Meet

Miss Alice Moorten of Spanaway returned this week from the Rock Hound Pow-wowers' get-together held last week in Vantage, Wash., near Ellensburg.

The Agate or Rock Hounds mean the Tacoma Agate Club and all other rock clubs in America, Miss Moorten explained.

Said she: "It was a wonderful trip and so instructive. Everyone had a grand time and came home with lots of new rocks. . . I was one of the 404 members of the clubs. . ."

Unmarried widows of veterans who died as the result of service in World War II are now eligible for G.I. home, farm and business loans, under terms of the recently-enacted Housing Act of 1950, the V.A. announced this week.

For the convenience of working veterans in the area, the Tacoma V.A. office announced this week that they will be open from 9 a.m. to 5:30 p.m., Monday through Friday.

Parkland AGRICULTURAL SERVICE

LANDSCAPING

Bulldozing — Leveling
Back-Filling

TWO-CYLINDER
JOHN-DEERE CAT.
6-FT. BLADE

Loam Soil — Fill Dirt
Gravel — Fertilizer

See Us First For a Good Job!

D. R. DOTSON

LA. 2434 751 So. 110th St.
PARKLAND

Brown & Robinson

NEW AND NEAT—3-bedroom home, on about 5 acres of good land, has full basement with fireplace and rumpus room. Very best oil furnace with 600-gallon tank, hardwood floors, living room, dining room with fireplace. Light, neat kitchen with nook. One bedroom down, rough-in plumbing for 2 large bedrooms up. It will go G.I. The price is \$12,500.

SO. 96TH STREET—½ acre, furnished 2-bedroom home, cement foundation. Older type home, but good. Chicken house, wood shed, rabbit hutches, the very best of peat soil, fruit and berries. Close to bus. Priced at \$5,500.

BUILDING LOTS—Airport Road, 50x150. Terms, \$900.

SO. AINSWORTH—Fine garden soil, 3-bedroom house, 9 lots, wired for 220. New strawberry patch and assorted fruit trees. Dandy well water. Garage, chicken house and feed room, \$4,500.

PARKLAND 4-BEDROOM HOME on 5 level lots. Nice shrubbery and fruit trees, close to schools and bus. \$5,500.

25 ACRES in 5-acre tracts, fruit land, gardens. \$100 per acre. Easy terms.

PARKLAND INCOME — 5 rental units with room for more. Now grossing \$172.50. Can be had on good terms. \$13,500.

Brown & Robinson REALTORS

11220 Pacific Avenue GR 3341
Home phones: YU 9221, SK 1361, and LA 3066

Two Years Ago This Week

- A post office station in the Midland Food Center opened this week for the 1,500 residents of that community. John Bussanich is operating the substitution.
- Spanaway Progressive Community Club has now reached over one-third the sum needed to pay for the Emerson resuscitation which its members purchased recently. Delbert Bressmann has offered to match the highest individual donation. So far Chet Modahl is the top donor with \$25.
- The Rev. William Clyde Rhea, pastor of the Clover Creek Church, was chosen to serve as councilman for the organization of Northwest Baptist churches.
- The Midland Community Club voted this week to have their executive board meet with a similar committee from Harvard to discuss the proposed consolidation of the two clubs and lay the way for the union.
- Mrs. Thelma Pratt, formerly of Cleveland, Ohio, opened a pie shop in the Parkland Centre this week.
- Mrs. J. F. Graham conducted a demonstration on the construction and arrangements of shadow boxes at the Violet Prairie Garden Club.
- Miss Anga Dale opened her home for a Norwegian "Kaffe Time." The affair was sponsored by members of Circle No. 5 of the Parkland Trinity Lutheran church.
- Lorraine Baskett, Helen Robinson, Ethel Ayers and Ruth Eshpeter were nominated for president of the H. M. and L Fire department's auxiliary.

C. O. Lynn Co. MORTUARY

717 TACOMA AVE. Phone MAIN 7745

Martens Garage

Self-Service REPAIR

Work on your own car!
Come use our tools and our "know-how"

Sales Road (108th)

P-TA WORKSHOP DRAWS OVER 100 TO PARKLAND

Over one hundred parents and teachers from Pierce and neighboring counties are conferring this week at PLC in their annual workshop. The week-long meeting concludes tomorrow.

PARKLAND WELL-BABY CLINIC SLATED FOR JULY 20 MORNING

Parkland well-baby clinic for preschool youngsters will be July 20 from 9 to 10:30 a.m. The clinic will be held in the basement of the Methodist church, across from the Parkland school.

The clinic will continue throughout the summer, it was announced. For further information call GR 5357.

Couples Club of Parkland Methodist church will hold a potluck picnic this Sunday at the cabin of Mr. and Mrs. George Rolstad. The picnickers will meet at 1:30 p.m. in McKenna and then proceed to the Rolstad cabin on the Deschutes river.

For further information call Mrs. Don Waddell, GR 5336.

The annual meeting of the Tacoma-Pierce County Red Cross will be held at 8 p.m. next Thursday, July 20, at the chapter house, 306 South 7th St., in Tacoma, it was announced this week.

Tune-up Special!

BRAND NEW '41-'49 CHEVROLET CARBURETORS \$10

Martens Auto Service GR 6047

M'CLURE WINS EXPERT RIFLE SHOOTING MEDAL

Eldon Ray McClure, 16, of Spanaway, won the expert rifleman's medal, the National Rifle Association of America announced this week.

The Association is the governing body for competitive rifle and pistol shooting in the United States.

McClure climbed through the 13 lower rankings and now needs only one more to reach the top drawer of the junior shooters, the distinguished rifleman's medal. The youth first took up the target sport three years ago.

A 12th year student at Clover Park senior high school, McClure is a member of the school rifle club. He is the son of Mr. Clarence Nathan McClure.

Vacationland NOTES

Taking the wife and kids on a vacation trip in the family auto takes more than a road map, a good spare tire, and a bottle of citronella for insect-ridden nights. It takes a stout heart and plenty of planning.

Happy Vacation

So, before you hit the open road, follow the advice of the experts and:

1. Fill a thermos bottle with cool, refreshing water. Provide each member of the family with paper cups marked with his (or her) name, to avoid hourly stops at roadside stands.
2. Put in a handy supply of crackers, popcorn, and chewing gum as an insurance against junior's continual hunger pangs and an occasional complaint of car sickness.
3. Fasten a shoe bag to the inside of the car door, to provide a convenient storage space for the small cars, boats, airplanes and other toys the kids are always losing.
4. Make it clear to junior that a vacation isn't a tooth-brushing and hand-washing holiday, but a period of normal relaxation and enjoyment for the entire family.

On the Way:

1. Avoid meals of salad and other dubious concoctions, such as hamburger and custard pie, when dining at roadside stands.
2. Remember that pasteurized milk in a bottle or paper container is always a safer bet than even the freshest milk obtainable at the most picturesque farmhouse.
3. Keep the daily mileage down so that your passengers won't become tired and irritable by dinner time. (After all, it's a vacation trip, not a cross-country handicap!)
4. Avoid fatiguing sight-seeing tours to monuments and museums. (Somehow, kids on a vacation just don't go in for too much culture.)
5. By-pass stopovers that afford only adult entertainment and no sandboxes for little sister or sandlots for junior. (Remember, there's nothing at an outdoor dance pavilion to captivate the heart of a four-year-old.

Anderson Chevron Service Station and Garage

ATLAS TIRES AND BATTERIES

Mt. Hiway at Henry Berger Road, Spanaway GR. 6465

FARMERS' UNION AUTOMOBILE & CASUALTY INSURANCE

ANNUAL MID-SUMMER CLEARANCE

MEN'S SHOES Formerly \$8.95 and \$9.95 NOW \$7.95

SPECIAL RACK of broken sizes

Girls' Shoes	\$1.99
Women's Shoes	\$2.99
Men's Shoes	\$3.99

Clearance on Canvas Play Shoes

Children	Women	Men
Were Now	Were Now	Were Now
2.95 1.99	2.98 1.99	5.95 4.95
3.95 2.95	3.95 2.95	5.45 3.95

GIRLS' SHOES

White, red and green Sandals NOW \$2.98
Sizes 5 to 8, 8½ to 12, 12½ to 3
Formerly \$3.98 and \$3.50

White Poll Parrott Shoes NOW \$3.95
Sizes 8½ to 3, formerly \$5.95

Come in and see our other Specials in women's shoes too numerous to mention

ALL SALES FINAL

Parkland Shoe Store

Parkland Shopping Centre GRanite 6012

NOW ENRICHED WITH VITAMIN "D"

Medosweet KREAMILK

BETTER MILK FOR BETTER HEALTH

Keep in tune with the TIMES

Historical IQ

ACROSS

- 1—Country prominent in ancient history (poss.)
- 6—Ancient city famous for its warriors
- 11—Instrument formerly used with the sun to tell time
- 12—Eleventh-century Castilian champion of Christianity
- 14—To suppose
- 15—Famed Norwegian dramatist
- 17—American organization for wounded veterans (abbrev.)
- 18—Threadlike outgrowth of an animal
- 20—City that once ruled the world
- 21—Name of a line of French kings
- 22—Came close to
- 24—To degrade
- 26—Royal Kings (abbrev.)
- 27—Biblical first lady
- 29—South Latitude (abbrev.)
- 30—Personal pronoun
- 31—Exist
- 33—Spanish affirmative
- 35—Greek letter

DOWN

- 1—Famous American inventor
- 2—Familiar name for a kind of veil worn by Mohammedan women
- 3—Supplication
- 4—Southern state (abbrev.)
- 6—Scientist Doctor (abbrev.)
- 7—Biblical first man
- 8—American patriot who made a famous ride (poss.)
- 9—Chemical symbol for tellurium
- 10—An ancient race of woman warriors
- 13—Pronoun
- 16—River famous in ancient history
- 17—Quantity of medicine
- 19—Was carried on a horse
- 20—To be conveyed
- 23—Before
- 25—Peak once surmounted by Hannibal
- 28—The front of an army
- 30—Famed German composer
- 31—Exclamation of satisfaction
- 32—To lament
- 33—Skin abrasion
- 34—Roman numeral
- 36—One of Homer's masterpieces (poss.)
- 37—Famous English diarist
- 38—Senior
- 39—Modern name for Persia (poss.)
- 40—Reddish-yellow color
- 42—College degree
- 46—Roman numeral
- 48—Mythological Greek goddess of dawn
- 50—Time past

The Wisconsin club will hold its regular monthly pot luck supper at 6 p.m. this Sunday in the basement of the Odd Fellows temple, Sixth and Fawcett, Mrs. Charles H. Nichols, club secretary, announced.

EXCAVATING

Especially equipped to excavate under buildings. Also do block and cement work.

Free Estimates GR 8771

FLATT DAIRY

G. FUCHS, Proprietor

HOMOGENIZED AND PASTEURIZED MILK AND CREAM

ICE CREAM

P. O. Box 207, So. Tacoma
Tacoma 9 Phone GA. 3301

Keep in tune with the TIMES

Anderson Chevron Service Station and Garage

ATLAS TIRES AND BATTERIES

Mt. Hiway at Henry Berger Road, Spanaway GR. 6465

FARMERS' UNION AUTOMOBILE & CASUALTY INSURANCE

ANNUAL MID-SUMMER CLEARANCE

MEN'S SHOES Formerly \$8.95 and \$9.95 NOW \$7.95

SPECIAL RACK of broken sizes

Girls' Shoes	\$1.99
Women's Shoes	\$2.99
Men's Shoes	\$3.99

Clearance on Canvas Play Shoes

Children	Women	Men
Were Now	Were Now	Were Now
2.95 1.99	2.98 1.99	5.95 4.95
3.95 2.95	3.95 2.95	5.45 3.95

GIRLS' SHOES

White, red and green Sandals NOW \$2.98
Sizes 5 to 8, 8½ to 12, 12½ to 3
Formerly \$3.98 and \$3.50

White Poll Parrott Shoes NOW \$3.95
Sizes 8½ to 3, formerly \$5.95

Come in and see our other Specials in women's shoes too numerous to mention

ALL SALES FINAL

Parkland Shoe Store

Parkland Shopping Centre GRanite 6012

CROSSWORD ~ ~ ~ By A. C. Gordon

1	2	3	4	5	6	7	8	9	10
11				12	13		14		
15			16			17			
		18		19		20			
			21						
22	23			24				25	
		26		27	28			29	
30			31	32			33	34	35
			37		38	39		40	
41	42		43		44		45	46	
47			48		49		50		
		51					53		
54									

SOLUTION ON PAGE FOUR

Anthracite Institute reports that grains, tobacco, feed and seed crops bring bigger profits to farmers if dried artificially.

PARKLAND LOCKERS

Wholesale Meat for Storage
1000 LOCKERS

- CUSTOM CUTTING
 - ALUMINUM FOIL WRAP
 - QUICK FREEZE
 - CURING AND SMOKING
- Slaughtering by Appointment
A. J. (Slim) Stern, operator
11012 Pacific GR 7111

Square Dance Friday

The next summer square dance will be held July 14, in Collins Grange hall. Dancing will start at 8:30 and continue until 12.

Mr. Whisler will be the caller and will use all the latest singing calls. This type of calling is becoming very popular. There will be couple dances and mixers to fill in and make the evening a very full one.

Stella's
Everything in *Flowers*
● WE DELIVER
Parkland Center
GR 7863

Veterans Reminded On GI Insurance

Many Pacific Northwest veterans will find their G.I. term insurance policies expiring during the last half of this year, the Veterans Administration announced this week. These are policies issued in 1942 which are now completing their eight-year term.


At the time of expiration, a veteran has the choice of three courses he may follow: (1) His term policy may be renewed for another five years at an increased premium; (2) he may convert his policy to any of the six permanent plans of G.I. insurance; or (3) he may drop the insurance altogether.

Veterans may convert their temporary term insurance to any of the following permanent plans, or a combination of these plans: Ordinary Life, 30-pay Life, 20-pay Life, 20-year Endowment, Endowment at age 60 and Endowment at age 65. He may also carry part of his insurance as term and the remainder under a permanent plan, if it better fits his needs.

The VA will attempt to notify all veterans well in advance of the expiration date of their policies in order to allow sufficient time for renewal or conversion. Once a term policy has expired, a veteran has no recourse except to apply for new insurance and pass the required physical examination.

The GI loan program has another seven years to go, ending for the majority of veterans on July 25, 1957.

Plain Careful
SEWING & ALTERATIONS
Reasonable Prices
1022 South 115th St.
Mrs. Doll Moonitz GR 7231

MILLWORK and FRAMES
TILEBOARDS

Parkland Lumber & Hardware
127th & Pacific Ave. GR 5544

BROWN SEEKS SHERIFF'S POST ON DEMO TICKET

C. G. (Doc) Brown announced this week his candidacy for the position of Pierce county sheriff on the Democratic ticket.

"A group of farmers and Tacoma people have asked me to run for the position of sheriff," Brown said. "If



C. G. (Doc) Brown

I will institute the policy of placing a man in each district of the county to become better acquainted with the people and juvenile members of the community and district. A field man will keep in touch with these men, thus keeping tab on what is going on in the county," he said.

Brown released for publication a letter from the Congress of the United States which follows:

"To whom it may concern: This letter will introduce the bearer, Charles G. Brown . . . Mr. Brown has been following police work for a number of years and is, in my judgment, well qualified, dependable and will give good service to anyone desiring such services. I have known him here in the District for some time. Sincerely yours, signed Homer D. Angell, MC."

"I don't have much money to campaign with . . ." Brown said, (but) "I am honest and defy anyone to prove otherwise. I am now, and will continue to be, against the underworld and the racketeers. Some are prepared to put thousands of dollars, into this campaign with the result that they will be obligated, if elected. If I am elected, I will not be obligated to anyone," Brown declared.

REPORTS GOOD RESULTS FROM AD IN TIMES

Roy Larson, manager of the Parkland branch of the State-Wide Driving School, said he is very satisfied with the results from Parkland Times advertising.

Originally he had planned to branch immediately into the Lake-wood district also, but he got so many students from the Parkland area that he has had to concentrate all his efforts in serving this area. Opening of the local branch was advertised exclusively in the Times.

PARKLAND PHARMACY
The
Rexall
DRUG STORE
Pacific Ave. at New Bank Corner
GR. 8519
Open Week Days—9 a.m.—10 p.m.
Sundays and Holidays—
10 a.m. to 2 p.m.—4 p.m. to 9 p.m.
ALWAYS A REGISTERED
PHARMACIST ON DUTY

TRIANGLE

X-TRA
EGG PRODUCER
MANUFACTURED BY
TRIANGLE MILLING CO.
PORTLAND, OREGON
100 LBS. NET
X-TRA
EGG PRODUCER MASH

Keep 'em laying with this properly balanced feed for maximum egg production; in mash or pellet form.

TRIANGLE MILLING CO.
—See—
STEWART HAY & GRAIN CO.

V.A., F.H.A. Fight G.I. Building 'Fees'

Veterans Administration and the Federal Housing Administration have taken joint action to eliminate excessive fees and charges in connection with the construction of housing financed with the aid of government guarantees or insurance under the G. I. Bill and the National Housing Act, it was announced this week.

The new regulations apply both to construction loans and the permanent financing of new homes with credit aids provided by G. I. loans guaranteed by VA, or FH-insured loans. A certificate will be required from the builder or the lender, and in some cases from both, that no fees in excess of the maximums have been paid or imposed.

The new regulations will apply only to applications for VA's reasonable value or for FHA commitments received in VA or FHA offices on or after July 17, 1950.

The maximum interest rate on construction money advanced to builders under the schedule is set at 5 percent. In addition, the lender making the construction loan will be permitted to charge up to 2½ percent of the amount of the funds advanced as a service charge to cover costs of supervision, making periodic advances, clearance of liens, and other overhead.

Where the lender financing the construction also finances the mortgage loan of the purchaser, no additional service charge in connection with the latter loan is permitted. Where the permanent loan is made by a lender other than the institution advancing the construction loan, a flat fee previously authorized, which may not exceed 1 per cent, will continue to be allowed.

In addition to the permissible service charge, the builder also may be required to pay certain other miscellaneous expenses, such as recording fees and those paid for appraisals and inspections.

Enterprising Student Starts Excavating




Charles Fleming of 10012 Pacific Avenue this week announced the start of his excavating business. A student at PLC, Fleming has had four years' experience in that business in Pennsylvania.

The enterprise is especially equipped to excavate under buildings, Fleming said. His firm will also do block and cement work.

Keep In Tune With The TIMES

72nd St. Cleaners
Drive In Under Awning . . .
Where Everybody Stops
Open 7:00 a.m. to 6:00 p.m.
Daily except Sunday
Telephone GA. 5495 for Pick-up

Inland Marine
Nation-wide Service
Surety Bonds
Unexcelled Service
Robbery and Burglary
Automobile
Neon Signs
Casualty
Extended Coverage
Clay Reley Agency
98th and Portland Ave.


ILLUSTRATIONS

LAYOUTS

COPY

FOR YOUR
Printing Needs
CALL
LaCrosse
Printing Company
GRanite 7100

Death Claims Russell, Son-in-Law of Leverage

Funeral services for Frank E. Russell Jr., 20, of 1719 So. 20th St., were held Tuesday at the Cassidy and Allen chapel. Burial was in the New Tacoma cemetery.

Russell died last Thursday in a Portland veterans hospital. Survivors are his wife, Joyce L., 19, of Parkland; his mother, Mrs. Frank E. Russell; a grandmother, and two sisters.

Mrs. Joyce Russell's father, Del Leverage, owns the Parkland Lumber and Hardware company.

All Wisconsinites were welcomed this week to the Wisconsin picnic which will be held Sunday, July 23, on the main picnic grounds at Point Defiance park.

WANTED
HOMES AND FARMS IN ANY LOCATION
Brown & Robinson
REALTORS
11220 Pacific Ave. GR 3341
Member Tacoma Real Estate Board

Keep COOL ICE CREAM
Drop in for
● Fountain Service Daily from 11:00 to 11:00
McCay's Ice Creamery
330 GARFIELD



TRY LAWN MAKING THE EASY
Scott's WAY
It's a breeze—do the job yourself in a jiffy with a SCOTTS SPREADER. Feed with Lawn Food. Then sow Scott's Lawn Seed. You don't need as much because there are 3,000,000 seeds in each pound.
1 lb.—\$1.45 5 lbs.—\$6.95
Scott's LAWN FOOD—Clean meal-type lawn food. Economical, a little keeps grass looking its best. Box feeds 2500 sq ft—\$1.95; Economy bag, 11,000 sq ft—\$7.50.

Puget Sound Nursery & Garden Shop
9201 PACIFIC AVENUE GA 2151

Step Right Up, Folks, and Hear About

Greater
SOUTH TACOMA DAYS
JULY 27, 28, 29
FUN
for the whole family
● KIDDIES PARADE
● BEAUTY CONTEST
● SQUARE DANCE CONTEST
● GRAND PARADE WITH BANDS, CLOWNS, MILITARY UNITS
● CARNIVAL
Sponsored by South Tacoma Business and Kiwanis Clubs

The PUNCH THAT COUNTS
What advertiser hasn't envied the dramatic illustration, the dynamic layout, the informative copy used by bigger advertisers? The PUNCH THAT COUNTS is available to you in THE PARKLAND TIMES.
Equipped with the Metro newspaper service, a commercial photographic service and a layout and copy service, our staff is able to put the "agency touch" into your ads.
You pay only for your ad's space and photography (at cost). The Metro and the layout and copy services are available at no extra cost. Ask our salesman for these services!

The Parkland Times
GRanite 7100
PARK AVENUE & WHEELER ON THE PLC CAMPUS

ANNUAL MID-SUMMER

CLEARANCE

Polka Dot Dresses Formerly \$9.95 NOW **\$4.00**

Pique Dresses Formerly \$10.95 NOW **\$5.00**

Strutter, Striped Suit Formerly \$11.95 NOW **\$7.95**

Blouses, ass't size, colors Formerly \$8.95 NOW **\$5.00**

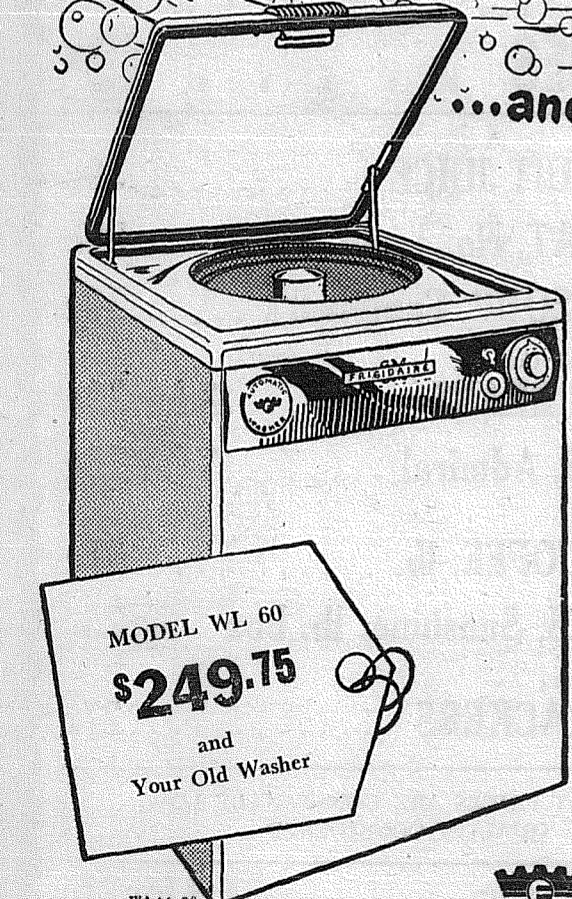
Cameo Nylon Hosiery Formerly \$1.35 NOW **79¢**

SUN SUITS — 20% OFF

Myrtle Mockel
Apparel of Distinction
GR 5317 Parkland Centre

SKIRTS - LINGERIES
JACKETS
20% OFF

Washes and Rinses Clothes Really Clean and Bright
LIVE-WATER ACTION
...and only FRIGIDAIRE has it!



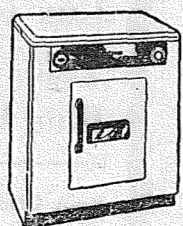
Frigidaire's exclusive Live-Water Action produces rolling, penetrating currents of hot, sudsy water that wash clothes through and through with no pulling or yanking. Clothes are in water all the time—not half-in, half-out. And the same Live-Water Action that washes clothes cleaner, rinses them twice in fresh, clean water. See a demonstration of Live-Water Action. There's nothing else like it!

Only FRIGIDAIRE has all these features!

- All-Porcelain inside and out
- Loads from the top
- Put it anywhere, no bolting down
- Clog-Proof Water Pump
- Underwater Suds Distributor
- Flow-Temp Water Valve
- Direct-Drive Unimatic Mechanism

FRIGIDAIRE AUTOMATIC ELECTRIC CLOTHES DRYER

No more clothes lines or weather worries! Dries clothes as fast as you wash them. In 15-25 minutes clothes come out sweet-smelling, soft, fluff-dried, ready for immediate use or for ironing.



FRIGIDAIRE
THE ALL-PORCELAIN
Automatic Washer

NOTHING DOWN — 24 MONTHS TO PAY

POCHEL DISTRIBUTING COMPANY

YOUR FUEL OIL AND APPLIANCE DEALER

MIDLAND BASEBALL CLUB SLATES HOME GAMES TONIGHT AND FRIDAY

Now boasting a 14-win, 10-loss record in the 1950 baseball campaign, Midland's entry in the Sunset league will play two more games this week at Dawson Field.

At 6:30 this Thursday, the Midland willow-wielders will face the "Fire

Chiefs," and at the same time tomorrow, they will entertain the Five A.C. Everyone is urged to come out and see some good baseball.

The team, sponsored by Midland businessmen, is managed by Frank Turner with Bob Hansler as business manager.

Members of the squad are Morry Taylor, Ocky Larson, Bob Fredericks, Harry Stone, Leo Bierman, Glenn Couture, John Hansler, George Lemagie, Ray Wing, Bill Beshaler, Dale Rokey, Bob Witsler, Jimmy Young, Ben Minschall and Dwayne Peterson.

Sponsors are Baskett Lumber, Midland Food Center, Vaughan's Pacific Ave. Lumber, Angles Ice Creamery, Novotney Bros., Jim Walker, Christensen's Service, Lindstrom's, Frank Gural Shoe Repair, Midland Gas & Fuel, Ella & Roy's Cafe, Mac's Super Service, Fuel Oil & Service, Bower's Tavern, Parkland Cleaners, 6801 Produce and Midland Improvement Club.

On Friday, July 28, Midland Hall will be the scene of a benefit dance, lasting from 9 p.m. to 1 a.m. The "Country Boys" will provide the music. Tickets are being sold by members of the team.

DAY CAMPING FOR GIRLS 7-18 NOW UNDER WAY

All girls ages seven to eighteen are welcomed at either of two Girl Scout day camps which opened Tuesday and continue for three weeks. The camp sites are at Point Defiance and Wapato parks. A girl need not be a member of the Girl Scouts to attend.

Sponsored by the Girl Scouts of America, a Red Feather agency, the camps are staffed entirely by volunteer workers under the coordination of Mrs. Harry McCormack of the Girl Scouts headquarters.

The exact days for the campings are July 11, 12, 13, 18, 19, 20, 25, 26 and 27. The time is from 10 a.m. to 3:30 p.m. each day.

There was a \$1 registration fee for those who enrolled the first day and who will attend regularly. For others the charge is 15 cents per day. This buys milk at noon and insurance for each girl. It was announced further that each bring her own "nosebag" lunch.

There will be swimming at Wapato park only, with Mrs. Julia Crossetto, Red Cross water safety director, in attendance. Mrs. Harvey Johnson will direct camp activities at Wapato park.

Day campers will live with girls of their own age, cook over open fire, play games, sing songs, put on plays and make exploration trips near the camp site. There will also be storytelling and experts to instruct in wood-carving, nature lore, archery, tincture and other hobbies.

PLUMBING
Plumbing Supplies — Schorn Paints
South End Plumbing
GR 8357 SPANAWAY Graham 194

Martin Musicale Now Half Hour Show

New sponsors of "Songs by Charles Martin," weekly KMO radio program, are Pochel Distributing Co. and Home Gas Co.

The show, featuring the popular PLC tenor, has been increased to one-half hour every Sunday, from 12:30 to 1 p.m. Former sponsor of the program was Brookdale Lumber.

Martin, who graduated from PLC last month, was a soloist with the college choir of the West and gained a wide reputation for his outstanding voice. On his radio series, his accompanist is Wendell Kenny of the KMO staff. Guest star on this Sunday's program will be Jean Hesla, also a PLC grad.

Bill Guiel, 25, and Bill Stout, 24, both of Parkland and both members of the American Legion Post 228, were "recalled" from their reserve ranks last Sunday and are now with the Air Force at McChord field, it was learned this week.

Keep in tune with the TIMES

Panorama for Painters



Out of the misty, purple depths of Grand Canyon of the Colorado in Arizona rise varicolored mountains more than a mile high. This panorama from the north rim shows the view summer vacationists receive of the age-old efforts of erosion which is a challenge to an artist's skill. On the very edge of the north rim comfortable accommodations at reasonable cost are provided in cabins and Grand Canyon Lodge.

—Union Pacific Railroad Photo

LaCrosse: ALONG THE STREET

Continued from Page One
tain time on a certain ship, via a certain route, as is now being done by the headline seeking newspapers. You say they know anyway. How do we know they know. If they must know, why should we be the source. Maneuvers, preventative measures and defensive plans should be secret, not broadcast to the world.

One thing is certain, we don't know what our enemy is doing until he does it. Our fighting men don't like all this loose talk—it endangers their lives.

Political Shenanigans?

A lot of people out this way are asking and doing a bit of wondering—especially about the newest attempt of Pat Steele of the prosecuting attorney's office to railroad the trial and conviction of Robert Goebel for the "alleged rape" and murder of Noreen McNicholas, November, 1948.

Perhaps it is not proper to wonder about the doings of the super-slutth of the county but some people don't recognize titles, especially since they add two and two together and get election time coming up about right now. A conviction would certainly add to the vote-getting appeal so badly needed.

Since this paper way back in '48 took the view that Robert Goebel wasn't guilty till proven so, it has been accumulating quite a bit of information regarding the case. We are entirely in sympathy with the Sheriff's

office, which does not have access to sufficient funds to devote a full investigation to such cases. We wonder, as do others, about the available funds of the Prosecuting Attorney for such cases, this one in particular, since it is the one under discussion. We have been unable to verify a report to this office that the private investigator employed was a brother-in-law of the attorney. If such were true, however, it would not be hard to figure out just why it has taken the prosecuting attorney some 16 months to suddenly get evidence which the Sheriff's office has possessed for the past sixteen months.

We wonder, as do others, why Goebel was held some 47 days in the county jail without charges, then released. Then we wonder a lot more about why, just last week, Steele again issued a warrant for the arrest of Goebel, placing him in a jail in Shelton which is a long way from Tacoma. Why, we ask. Don't we have a room in Tacoma? Goebel doesn't know, either; nor do his friends. But they are wondering. In fact, they are wondering to the extent that they have hired the best attorney they can get to fight the case and finally place Goebel on a par with the mighty sluth of the county who wants a conviction regardless of who did it.

4-H County Camp Offers "Lots of Fun"

By Max Starkel

Hey, fellows and girls of the 4-H—county camp is coming! A whole week, July 31 to August 4, at Benbow lake, 17 miles southeast of Tacoma.

Just think of all the fun you can have swimming, playing volleyball, softball, tether ball, horseshoes, tennis and boating. Also there will be a number of classes, such as radio and voice recording, swimming, folk and square dancing, first aid.

The boys had better come prepared to sleep in tents, because that is all there is to sleep in for the boys. The girls will sleep in cabins.

For the members' protection everyone will be insured for health and accident. Also there will be a lifeguard and a registered nurse present at all times.

For each member the cost will be \$8 or less. All in all, the county camp promises to be a lot of fun for all who attend.

No Fires, So Firemen Play Softball, Plan Big Annual Picnic

Parkland spent a very safe and sane Fourth of July, according to this week's report by Fire Chief John Curtis. Since June 26, there hasn't been a fire worth mentioning. In contrast, Lakewood's firemen reportedly answered 11 alarms on the Fourth alone.

There were two minor grass fires on July 5, but neither caused any damage. The most recent fire of any consequence happened a couple of weeks ago when boys playing in a woodshed at the Prairie Mission, 109th and Yakima, started a fire that caused \$400 damage.

But in spite of the paucity of fires, the local firemen have been keeping busy. The softball team has been attempting to climb back on the victory bandwagon after dropping three straight contests in the county firemen's circuit. Last night the Parklanders battled University Place on the PLC diamond.

At one of their recent meetings, the firemen viewed two movies on fire prevention, depicting how fires start.

The smoke-eaters and their wives and families are now looking forward to their annual picnic to be staged Sunday, July 30, at the Spanaway Creek place of Oz Ellingson. The auxiliary is planning the cats, games and other activities.

New members accepted into the department during the past couple months include Joe Anderson, Delbert Gooch, Herbert Rowan, Don Gerbich, Tom Parrish, R. R. Simpson, Jim Turner and Rhys Woods.

Elk Plain Building Committee Convenes

By AMY BROWN

Members of the Elk Plain Community Church who are interested in the building of a permanent church met Monday evening at the home of the E. W. Castles, along with members of the building committee.

The joint meeting of the Sunday School workers' conference and the training for service class will be held tomorrow evening at the home of Mr. and Mrs. Castle Sr.

Mrs. Frances Dorfner spent last week visiting her sister in Yakima.

July 21 is the date of the card party sponsored by the Firemen's auxiliary to be held in the activity room of the school. Both pinocchio and 500 will be played. Prizes are in the form of bags of sugar.

Co-hostesses for the Gleaners' meeting on Tuesday evening were Mrs. Dorothy Ockfen and Mrs. Hannah Ockfen.

An important meeting of the Elk Plain Grange will take place tonight.

Last Friday was a very successful teen-age dance at the Grange hall. About 100 teen-agers were present and danced to the music of the juke-box. Chiaperones were Mesdames Opal Reardon, Bea Gilstrap, Rena Johnson, Ruby Loveland and Gertrude Smalley.

During intermission, several numbers were sung by Mr. Gallagher and Laura Korner of Tacoma. The next in this series of dances will be July 21.

The Don McLellans have returned from a 15-day 2,900-mile jaunt that took them as far as Wyoming. On their itinerary were Oregon, Idaho, Yellowstone Park, Glacier Park, Grand Coulee Dam and Soap Lake. They visited relatives in Montana.

Rev. A. W. Ramstad will conduct the service at Trinity Lutheran church this Sunday.

Solution to Crossword Puzzle

E	G	Y	P	T	S	S	P	A	R	T	A
D	I	A	L	C	I	D	D	E	E	M	
I	B	S	E	N	T	D	A	V	A		
S	H	A	I	R	R	O	M	E	Z		
N	E	A	R	E	D	D	E	M	E	A	N
R	K	E	V	E	S	L					
H	E	A	M	A	S	I	P	I			
A	P	H	O	E	N	I	C	I	A	L	
N	E	E	A	L	R	A	M	I			
D	E	P	E	N	D	A	R	A	B	I	A
E	Y	O	E	R	N	G	E	D			
L	E	S	S	E	R	S	P	O	R	T	S

FORTUNE TELLER
ORIENT
2 3 4 5 6 7

YOU can have fun figuring out your message from the Orient by use of this pleasant little letter puzzle. If the number of letters in your first name is 5 or less, subtract from 7. If more than 5 letters in your first name, subtract from 13. Now take this result and find your key letter in the word ORIENT at the top of this puzzle. Then, starting at the upper left corner, check each one of your large key letters as it appears from left to right. Below the key letters is a code message for you.

E	R	O	O	N	I	R	T	O	R	I	E	N	
D	R	e	h	k	g	s	a	r	e	o	e		
N	I	R	E	O	N	T	O	R	I	N	E	N	
w	e	e	f	s	b	h	o	a	d	u	i		
T	R	O	N	I	E	T	O	R	E	N	I	O	
a	t	n	i	y	t	r	i	d	a	n	b	o	
T	O	E	I	N	R	E	O	T	A	N	I	R	E
p	n	i	u	e	i	e	m	s	t	s	y		
O	E	R	I	N	T	E	I	R	O	M	N	O	V
p	e	c	a	s	e	d	i	o	m	i	w		
I	N	E	T	I	R	O	R	I	N	E	T		
m	e	t	o	s	v	e	r	e	h	a	u	r	
R	I	N	I	T	O	R	I	E	E	N	R	R	
r	i	n	i	g	y	s	i	h	r	e	s	e	

SPANAWAY MEAT MARKET
NEXT DOOR TO HERMAN'S GR. 8215
CORNED PORK, sugar cured...lb. 45c
CORNED BEEFlb. 35c
SLICED BACONlb. 43c
Country Style Pork Sausage 39c lb.
WE FEATURE **Country Style** **SELECT BEEF**
SLICED Bacon Ends 22c lb.

Herman's Food Store

AT END OF SPANAWAY BUS LINE AND SAME BLOCK AS POST OFFICE
NEW STORE HOURS: 8:00 A.M. to 7:00 P.M.

FRIDAY AND SATURDAY, JULY 14 AND 15

MIRACLE WHIP quart . . . 53c
WHEATIES, 2 8-oz. pkgs. . . 25c
FIG BARS fresh shipment, 2-lb. pkg. 49c

VAN CAMP'S, YELLOW TAIL
TUNA . . . 23c
- - Produce - -
Fresh Peas 2 lbs. 13c
Lemon . . . lb. 9c
Cabbage . . lb. 5c
RUBY GEM
Tomatoes carton 19c
Old Style, case of 24, plus deposit
BEER \$2.39
WESSON OIL, pint. . . 32c
Anchors Aweigh lb. tin
PINK SALMON 35c
Frosted
DESSERT MIX . . 2 for 25c
Farm Fresh
FLETT'S MILK, qt. . . 17c

Hay -- Grain -- Feed

PARKLAND BASEBALL CLUB PLAYS RHODES HERE TOMORROW EVENING

JUNIOR LEGION STANDINGS (Not including Wednesday results)

	W	L
PARKLAND	7	1
Rhodes Post	6	2
Shelton	6	3
Puyallup	5	4
Post 138	3	5
Olympia	2	6
Orting	0	8

Mondays' Results

Post 138 7, Shelton 1.
PARKLAND 2, Olympia 1.
Rhodes 11, Puyallup 2.

Games Wednesday

Olympia at Post 138.
Puyallup at Shelton.
Orting at PARKLAND.

Games Tomorrow

Orting at Olympia.
Puyallup at Post 138.
Rhodes at PARKLAND.

Tuesday, July 18
PARKLAND at Shelton.

Friday, July 21
PARKLAND at Puyallup.

Remembering their 6 to 0 shellacking at the hands of Rhodes in the

first round—Parkland's only loss at the time of this writing—the local Junior Legion clubbers will go to bat with vengeance tomorrow evening in a return engagement that may decide the championship.

The Rhodes contest is the last time local fans will be able to see the club in action at home.

Ron May, the ace of the Parkland squad, is slated to toil on the rubber, while Rhodes probably will shoot Everett Gust against the locals again. The tussle figures to be a ding-dong pitching battle. A Parkland win will give them the "inside" track for the loop title.

Said Coach W. H. May: "This is THE game of the season. Rhodes has a very good ball club. . . We dropped the 6 to 0 game on errors. . ."

Monday evening at the PLC field Parkland's apple-knockers eked out a thrilling 2 to 1 win over Olympia. A double by Ronnie Dihel with two men on in the ninth canto scored Joe Jones, who had led off with a single, with what proved to be the winning tally.

However, it took a beautiful job of clutch pitching by relief hurler Ron May to clinch the victory, as starter Gary Kuhn loaded the sacks in Olympia's half of the ninth. Ron May went to Kuhn's rescue and retired the side with a whiff and an easy roller to second.

Delbert Brown got two bingles in there trips to the plate for Parkland, while Ronnie Dihel's two-bagger was the only extra base blow of the game. Kuhn chucked good ball for eight innings, striking out eight.

R H E
Olympia010 000 000 1 3 2
Parkland000 001 001 2 7 3
Warren and Elliott; Kuhn, R. May (9) and Chilton.

Vernon Blair of the Blaim Construction company, Coach May's employer, has spent close to \$400 for uniforms, bats and balls.

Arthur Pietz of the Mountain Highway is home after three weeks in Tacoma General Hospital, where he underwent a spinal operation.

Mr. and Mrs. Emerson Tarpenning enjoyed a junket to Canada, including several days on the scenic Caribou Trail.

ALVSTAD'S MARKET
231 Garfield St. GR 8560
PARKLAND SHOPPING CENTER
FRIDAY AND SATURDAY, JULY 14 AND 15
WESCO, NO. 2 CAN
GRAPEFRUIT SECTIONS 2 for 23c
WESCO, NO. 1 CAN, WHOLE KERNEL
CORN 2 for 21c
DUCHESS, NO. 2 1/2 CAN
TOMATOES 19c
WESCO, 46-OZ.
GRAPEFRUIT JUICE 39c
CRAB MEAT, No. 1/2 can 59c
TOMATO SOUP, Campbell's 10c
Van Camp's, No. 2 Can
PORK and BEANS 2 for 33c
SARDINES, Admiral 3 for 25c
In Paper Bags
WOOD'S COFFEE, lb. 67c
CRACKERS, Sunshine, lb. box . . . 25c
Sunshine, 1-lb. Box
HI-HO CRACKERS 27c
OUR MEAT PRICES ARE CONSTANTLY LOW—
QUALITY CONSIDERED
Waldorf Tissue 4 for 27c
Lux Flakes, 5-oz. 2 for 21c
Tide each 25c
Blue White 4 for 29c
Ruby Gem
Tomatoes, cello-pac, tube 25c
Cabbage, lb. 4c
WE RESERVE THE RIGHT TO LIMIT QUANTITIES
Live in Parkland — Shop in Parkland