

*55th
Annual
Sangerfest*

**PACIFIC COAST
NORWEGIAN
SINGERS
ASSOCIATION**



SHERATON MOTOR INN • PORTLAND, OREGON • AUGUST 20, 21, 22, 1964

PACIFIC COAST NORWEGIAN SINGERS ASSOCIATION

SANGERFEST PROGRAM

SHERATON MOTOR INN

THURSDAY, AUGUST 20, 1964

10:00 a.m. Registration

THURSDAY, AUGUST 20, 1964

10:00 a.m. Registration

Sheraton Motor Inn – Main Lobby

5:30 p.m. Opening Ceremonies

Sheraton Motor Inn – Main Entrance

8:00 p.m. Sangerfest Reception

Norse Hall, 111 N.E. 11

9:30 p.m. Smorgasbord and Dance

Norse Hall, 111 N.E. 11

FRIDAY, AUGUST 21, 1964

10:00 a.m. Grand Chorus Rehearsal

Norse Hall

12:00 noon Singers Luncheon

Norse Hall

1:00 p.m. Ladies Luncheon

Cosmopolitan Hotel “Top of the Cosmo”

2:00 p.m. Grand Chorus Rehearsal

Benson Auditorium

8:00 p.m. 55th Annual Grand Concert

Benson Auditorium

10:30 p.m. Refreshments and Dance

Norse Hall

SATURDAY, AUGUST 22, 1964

10:00 a.m. Sangerfest Business Meeting

Sheraton Motor Inn – West Ball Room

6:00 p.m. Sangerfest Banquet

Grand Ball Room

9:30 p.m. Closing Ceremonies

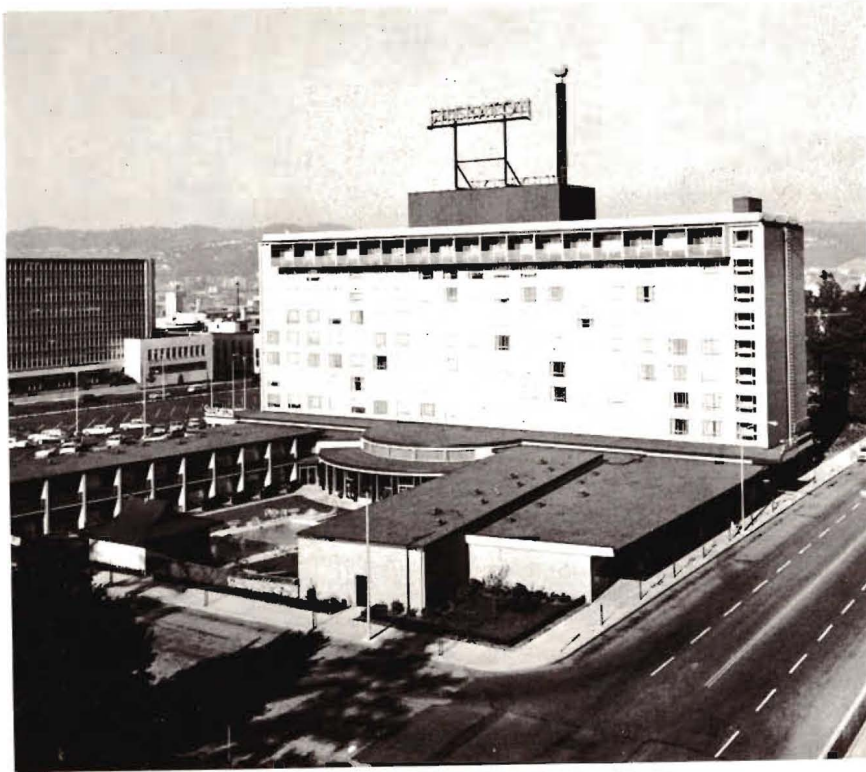
Entrance

10:00 p.m. Sangerfest Grand Ball

Grand Ball Room

CONGRATULATIONS AND BEST WISHES
— from our Staff and Management

Headquarters for your
55TH ANNUAL SANGERFEST



THE SHERATON MOTOR INN

RIGHT IN LLOYD CENTER

- ★ KON-TIKI RESTAURANT
- ★ PROMENADE DINING ROOM
- ★ GOLLIWOG LOUNGE
- ★ POOLSIDE CAFE

*ALL for a more
pleasant stay!*

2 SQUARE BLOCKS OF
PARKING!

AT 8-6111

**Portland
Oregon**



**OSLO HARBOR – NORWAY'S CAPITOL
AND BUSIEST SEAPORT**

**"VELKOMMEN TIL SANGERFEST"
LORENTZ BRUUN, Norwegian Consul**



CITY OF PORTLAND
OREGON



To the Members of the Pacific Coast
Norwegian Singers Association


Greetings!

It is my pleasure to extend to you a warm welcome to Portland, the "City of Roses", on the occasion of your Sangerfest on August 20, 21, and 22, 1964.

Your fine music continues to enrich our lives, engendering joy and happiness, and a feeling of love and tenderness toward our fellow men.

May your Sangerfest be so successful, and your stay in our city so pleasant, that you will remember us happily, and return again and again.

Yours truly,


MAYOR

Land of Saga and Song

The people of Norway have always been a music loving people. A study of the Norwegian sagas and literature give proof that the early Norwegians were lovers of music and that it played an important part in all of their feasts. This love of song and music have been cultivated down through the centuries till modern times.

Singing, and in particular male chorus singing, has a very broad place in the musical life of the country. Virtually every community has its singing societies which are organized into large associations, and great sangerfests are held and sometimes participated in by thousands of singers. This musical culture has contributed much towards keeping the high standard of patriotism and love.

This is the rich musical heritage that inspired such great musicians as GRIEG, BULL, OLE OLSEN, BORG, REISSIGER, AND OTHERS, to create some of the finest male chorus compositions ever produced, compositions that are international classics.

Male chorus singing has been an integral part of Norwegian activities on the West Coast for three-fourths of a century, and it continues an important influence in presenting and infusing a part of our cultural heritage into the life of our Western World. In the year of 1902, through the initiative of Frederick A. Tomte, Portland, the various male choruses of the Coast organized the Pacific Coast Norwegian Singers Association and, with few exceptions, there have been successive sangerfests sponsored in the various Coast cities every year since. This is the 55th Sangerfest by the Pacific Coast Norwegian Singers Association, and the 7th held in the City of Portland.

THE PRESIDENT'S GREETING

The Norwegian Glee Club of Portland again has the pleasure to be host to the Pacific Coast Norwegian Singers Association and on behalf of our great Association it is my pleasure to welcome you to the "Rose City" to the 55th Sangerfest.

As we again assemble in a mighty chorus may our voices blend in true harmony so that our performance may be recorded as another worthy chapter in the glorious history of our Association.

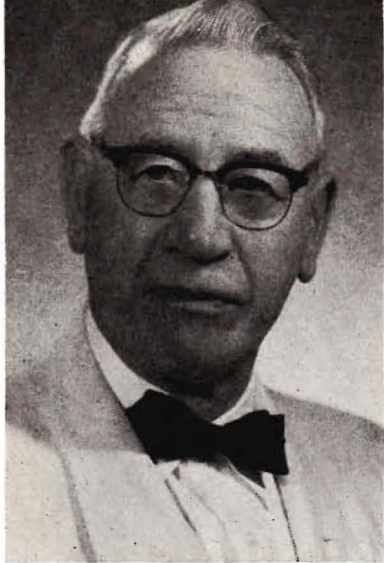
It is my hope that this Sangerfest will be one in the best traditions also socially and that the arrangements which we have made will please you. And when you return home may you be filled with pleasant memories and a renewed dedication for our noble cause.

The Norwegian Glee Club and our Ladies Auxiliary extend to all the singers and friends of our Association a hearty welcome and may your stay here be most enjoyable.

David B. Westby, President

Pacific Coast Norwegian
Singers Association.





OLAF BOEN
Treasurer



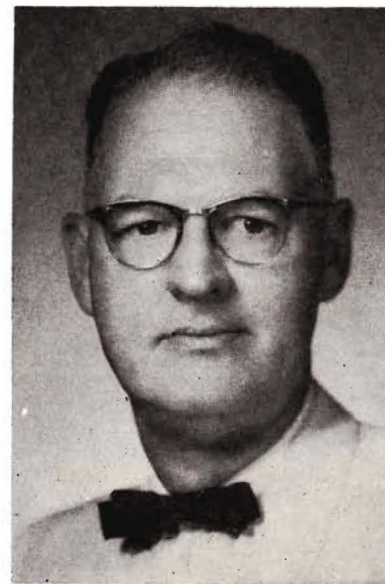
JOHN SHANKY
First Vice-President



OSCAR OYEN
Secretary



KARL C. DAHL
Recording Secretary



HARVEY MATHIESEN
Grand Marshal

OFFICERS – PACIFIC COAST NORWEGIAN SINGERS ASSOCIATION



WILLARD DERGAN
Second Vice-President



M. A. STRAND
Fifth Vice-President



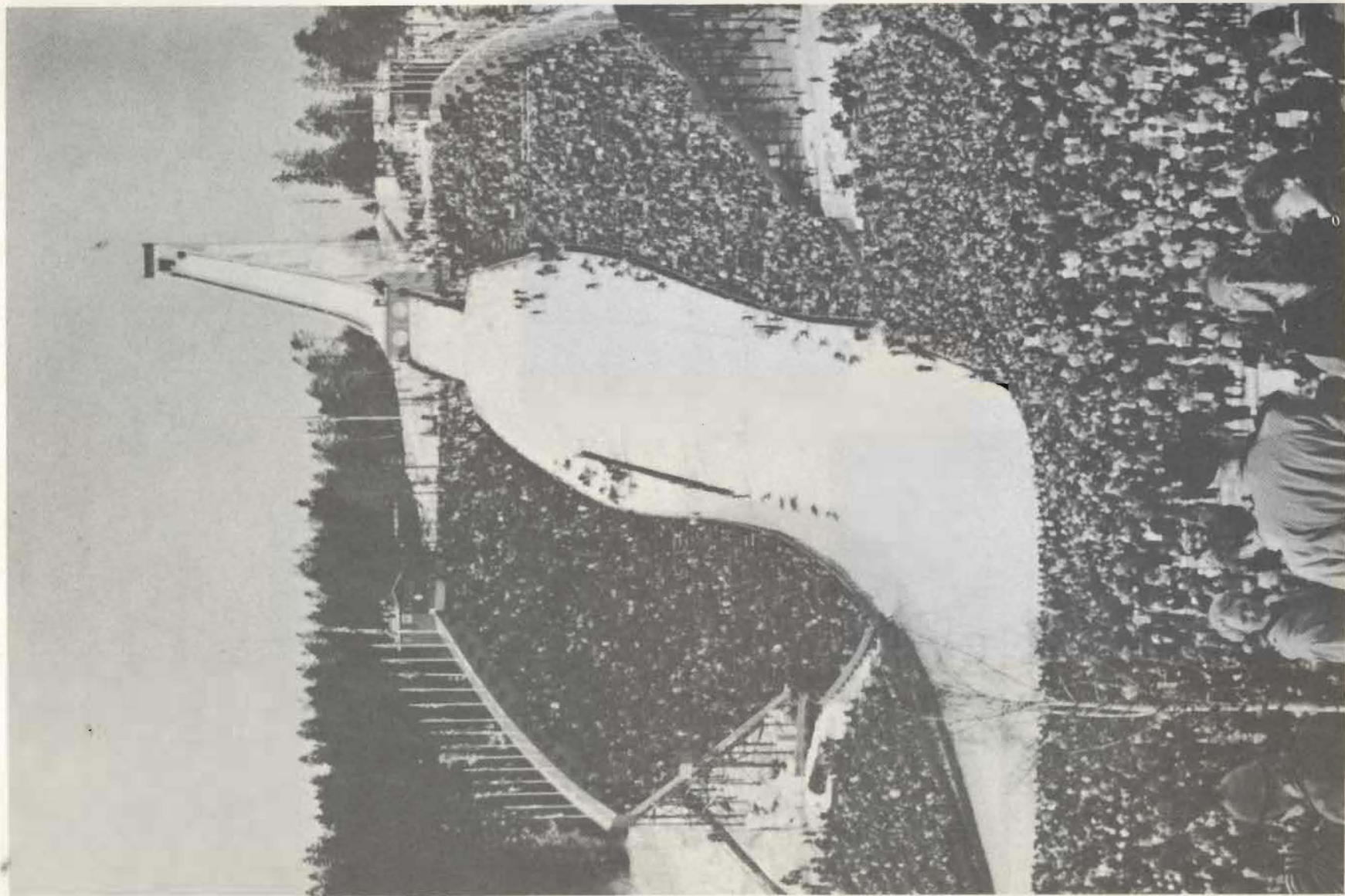
AL NELSON
Sixth Vice-President



G. W. TOLLEFSEN
Third Vice-President



HAROLD LEE
Fourth Vice-President



HOLMENKOLLEN HILL - FAMOUS FOR
THE ANNUAL SKI-JUMPING CONTEST

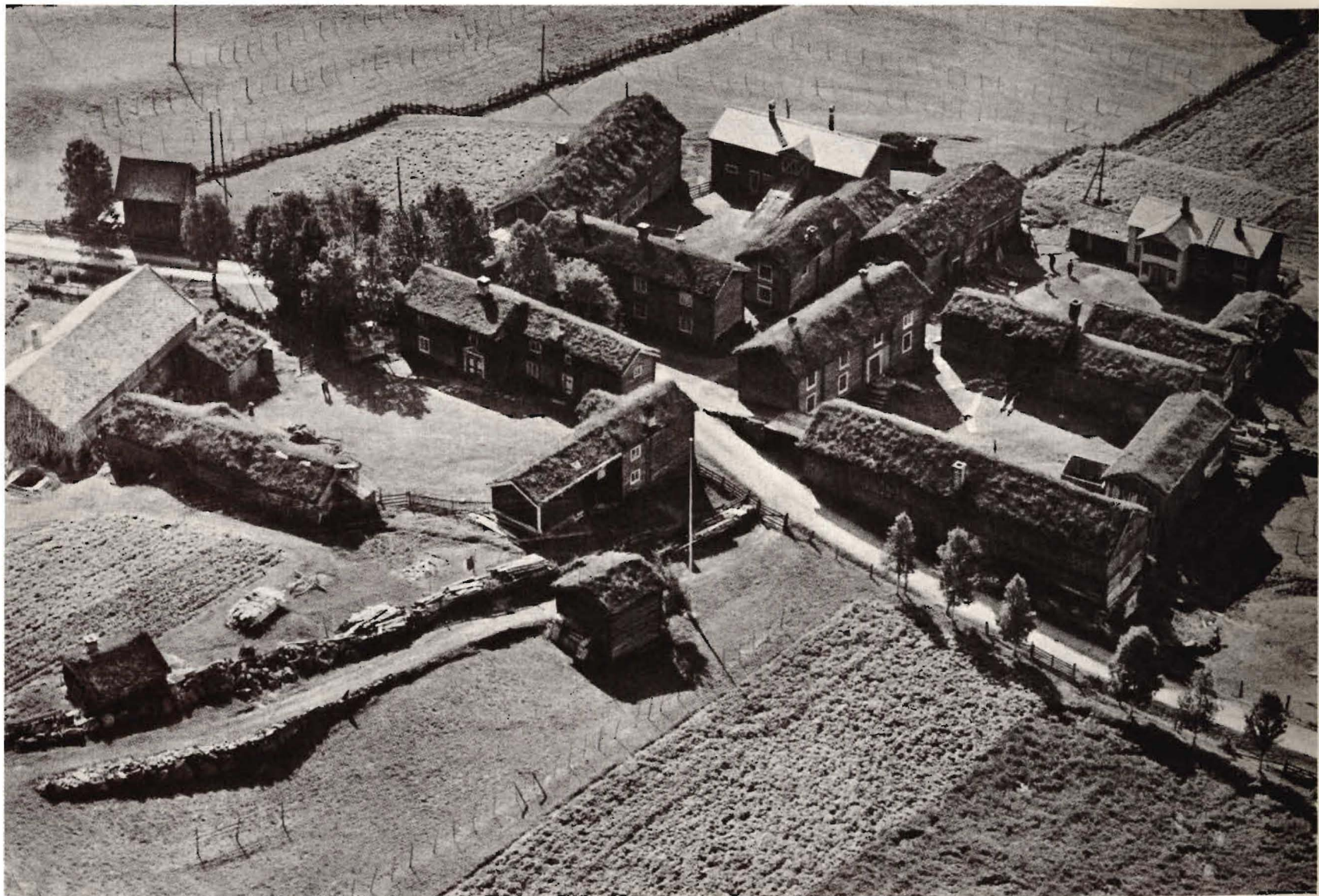
"VELKOMMEN TIL BLOMSTERBYEN"
GRIEG LODGE #15, Sons of Norway



DAVID WESTBY, President

NORWEGIAN GLEE CLUB
OF PORTLAND

BJORN HEGLIE, Director



AN OLD NORWEGIAN FARM: *"Compliments on your 55th Sangerfest"*

Columbia Lodge #58
Vancouver, Washington

Haugen Auto Service
2203 N. E. Union

J. H. Clifton & Sons
5125 N.E. 42nd Avenue



LADIES AUXILIARY OF PORTLAND

VOLBOR G WESTBY, Presiden

ELLEN WESTBY, Secretary

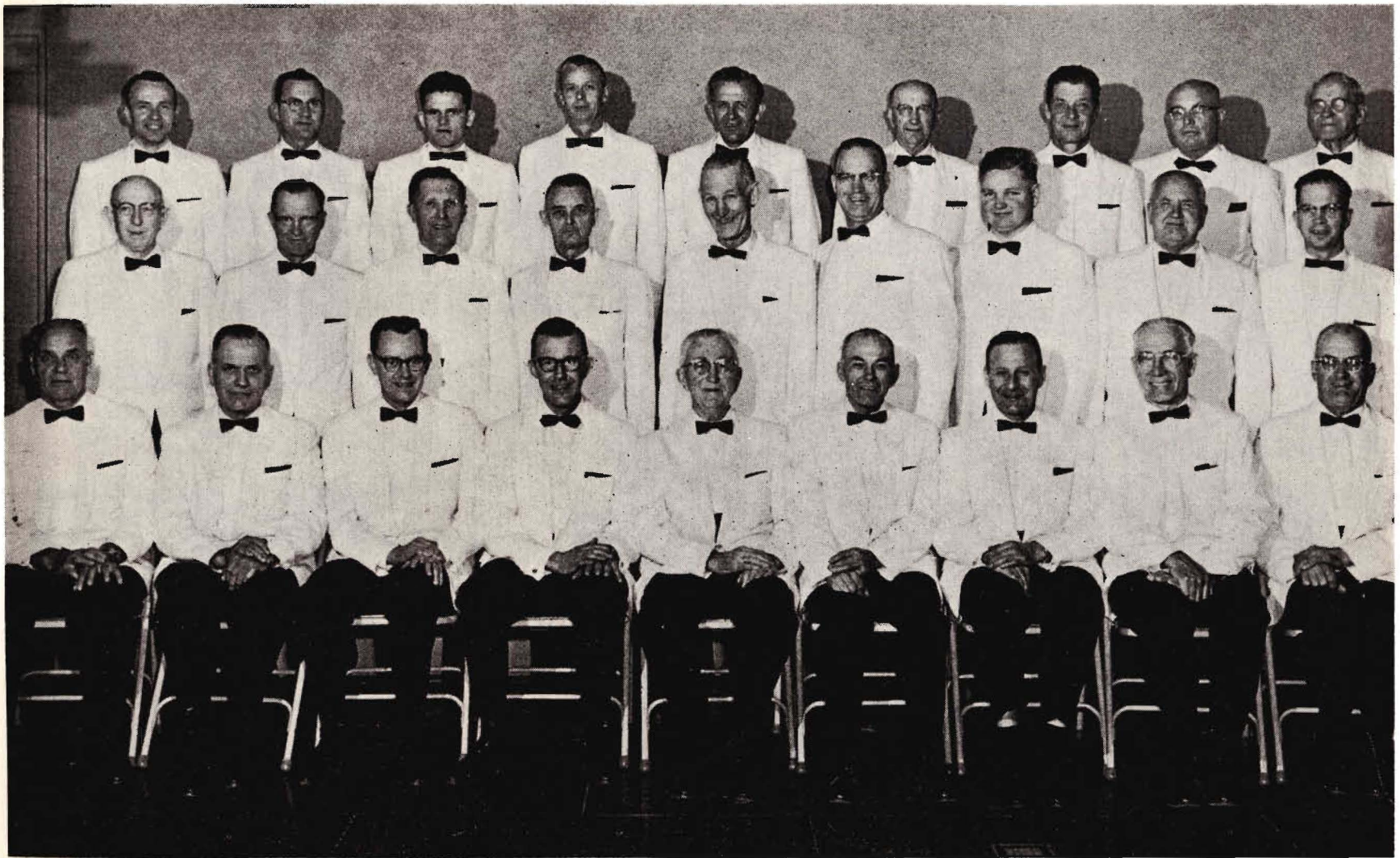


NORWEGIAN FARM CHILDREN: "Congratulations and Best Wishes"

Sonja Lodge #38
Eugene, Oregon

Designs of Scandinavia
Mel Iverson 640 N.E. Broadway

Knute Rockne Lodge #12
Seattle, Washington



TOM KAARNUS, Director

Eugene Norsemen of Eugene, Oregon

JENS THORSEN, President



*Congratulations and Best Wishes
for a Successful Convention*

PORTLAND SWEDISH MALE CHORUS
OSCAR NASTROM, Chairman

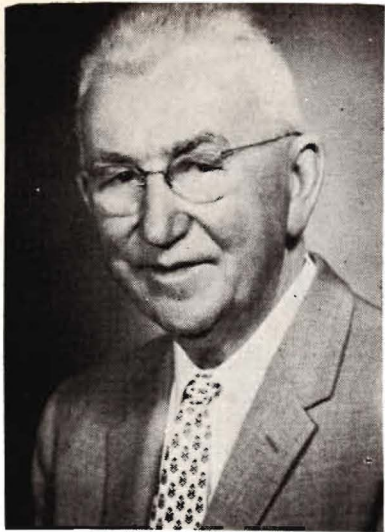
*WELCOME SINGERS – to the
“City of Roses”*

KARWINDOW SERVICE CO.
2892 S. E. Powell Blvd.
Bob and Paul Anderson

W. G. SAHLIN GROCERY

Scandinavian Foods

816 N. E. Grand Ave.



TOM KAARHUS
Director
Eugene Norsemen



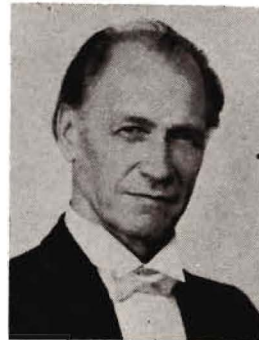
BJORN HEGLIE
Director
Norwegian Glee Club of Portland



GUNNAR MALMIN
Tacoma Chorus Director



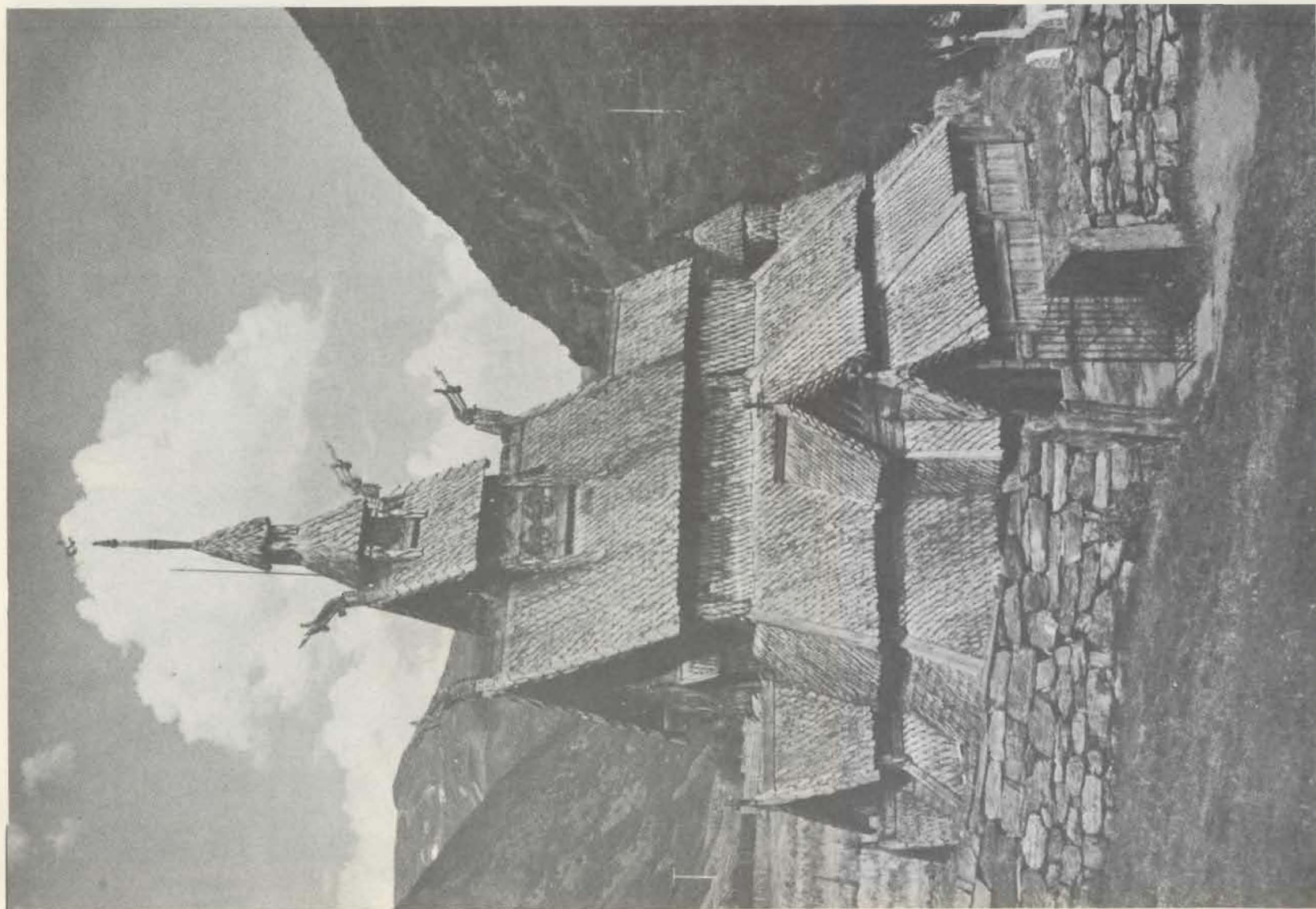
Olaf H. Vogeler, Director
Voice of Norway
Salt Lake



T. GORBACHEFF
Director
Oakland Glee Club



ELIAS BREIDFJORD
Director
Bellingham Male Chorus



A STAVE CHURCH
Built by Early Christians of Norway

"Dignified Service for 53 Years"
Pearson Mortuary
N. E. Knott at Union



136
168
7

OLAF H. VOGELER
Director
Voice of Norway Chorus, Salt Lake

VOICE OF NORWAY CHORUS
Salt Lake City, Utah

Solveig Larsen, Accompanist



A FOUNTAIN IN FROGNER PARK – Designer, Gustave Vigeland

Tordenskjold Lodge #5
Spokane, Washington

American Bank Barber Shop
Carl Saltveit

“And Best Wishes for a most Successful Sangerfest”



Everett Male Chorus — Everett, Washington

HENRY RINGMAN, Director

HAROLD LUND, President



AUGUST WERNER
Director in Chief



HENRY W. RINGMAN
Assistant Director in Chief

(17)



ARNOLD LUNNUM



BERNARD HJORTH



JENS HANSEN



MARIE ROGND AHL

I

- Men Jeg Venter** **Edvard Grieg**
Wild geese in white flocks. The duckling struts in yellow socks and fine clothes. We shall dance in the light of June! Wait until Midsummer; then our wedding night will be celebrated. All the girls will dance. Everyone takes his partner and I'll take mine.
- Synnove's Sang** **Edvard Grieg**
Thankful I am for the happy hours we two passed together from childhood. We played together in the leafy bowers never dreaming of darkness and gloom. I thought our gladness would never end, but now I sit and wait. The hills darken and you never return.
- Med en Vandlilje** **Edvard Grieg**
I bring a white winged flower. I pray thee wear it. On the quiet surface of the stream it floats, heavy with dreams. But take care of the fierce currents below.
- Mot Kveld** **Agathe Backer Grondah**
All the blossoms have sent the sun their "Good nights". Lanterns of glow worms dance on the green and shine in the thickets. The butterfly rests in the cup of the blue bell and dreams of scent of the violet.
- En Drom** **Edvard Grieg**
I had a wondrous lovely dream. I was wooed beneath the greenwood shade in a sunny April. The buds thronged and the brooklets gushed and we stood entranced in bliss sublime. But fairer far than my dream was the bliss one waking hour gave me. I held you fast and long, for fate will part us never more. Here my dream became reality.

II

- Villanelle** **Eva Dell'Acqua**
I have often watched the swallow fly through the clear morning air on her way to her mysterious homeland of sunshine and jasmine.
- A Summer Idyll** **Michael Head**
- Midsummer** **Amy Worth**
- When I Bring to you Colored Toys** **John Alden Carpenter**
- Ombre legere** **Meyerbeer**

"The Shadow Song" from the opera, Dinorah
Dinorah, believing herself to be deserted by her lover, loses her senses and is seen wandering in the woods in her bridal robes looking for her pet goat. She sees her own shadow in the moonlight and thinks it is a friend and sings and dances to it.

Bernard Hjorth, Baritone
Jens Hansen, Tenor
Arnold Lunnum, Baritone

FESTIVAL PROGRAM
GRAND CONCERT

Marie Rogndahl
Guest Artist

Benson Auditorium
Friday, August 21, 1964. 8 P.M.

Sylvia Killman, Accompanist
Teddy Moore, Flutist

Henry Ringman
Assistant Director

Glenn Shelly, Organist
Robert Dick, Pianist

August Werner
Director in Chief

Let There Be Music ----- Williams
On Wings Of Song ----- Mendelssohn
Suomis Song ----- Pacius
Norge Mit Norge ----- Pausenl
Solo - Jens Hansen
Naar Fjordene Blaaner ----- Paulsen

Vikingarne ----- Frieberg
Solo - Bernard Hjorth
On The Sea ----- Buck
Brudfaerden I Hardanger ----- Kjerulf
Baadnt-Laet ----- Grieg

Olav Trygvasson ----- Reissiger
Den Store Hvite Flok ----- Grieg
Solo - Marie Rogndahl
The Lost Chord ----- Sullivan
Landkjending ----- Grieg
Solo - Bernard Hjorth

GRAND CHORUS

August Werner, Director

GRAND CHORUS

Henry Ringman, Director

GRAND CHORUS

August Werner, Director

Aftenroster ----- Borg
Solo - Arnold Lunnum
Bjorn Heglie, Director

Men Jeg Venter ----- Edvard Grieg
Synnove's Sang ----- Edvard Grieg
Med en Vandlilje ----- Edvard Grieg
Mot Kveld ----- Backer-Grondahl
En Drom ----- Edvard Grieg

Villanelle ----- Eva Dell'Acqua
A Summer Idyll ----- Michael Head
Midsummer ----- Amy Worth
When I Bring to You ----- Carpenter
Ombre legere ----- Meyerbeer
Marie Rogndahl

Marie Rogndahl

Sylvia Killman
Accompanist

Teddy Moore
Flutist

14



PORTLAND'S ROSE FESTIVAL PARADE
A Rose Float Entry

"WELCOME TO THE CITY OF ROSES"
Norden Lodge #2 Top O'Cosmo
Tacoma, Washington Cosmopolitan Hotel



Normanna Male Chorus — Tacoma, Washington

GUNNAR MALMIN, Director

OLAV ENGEN, President

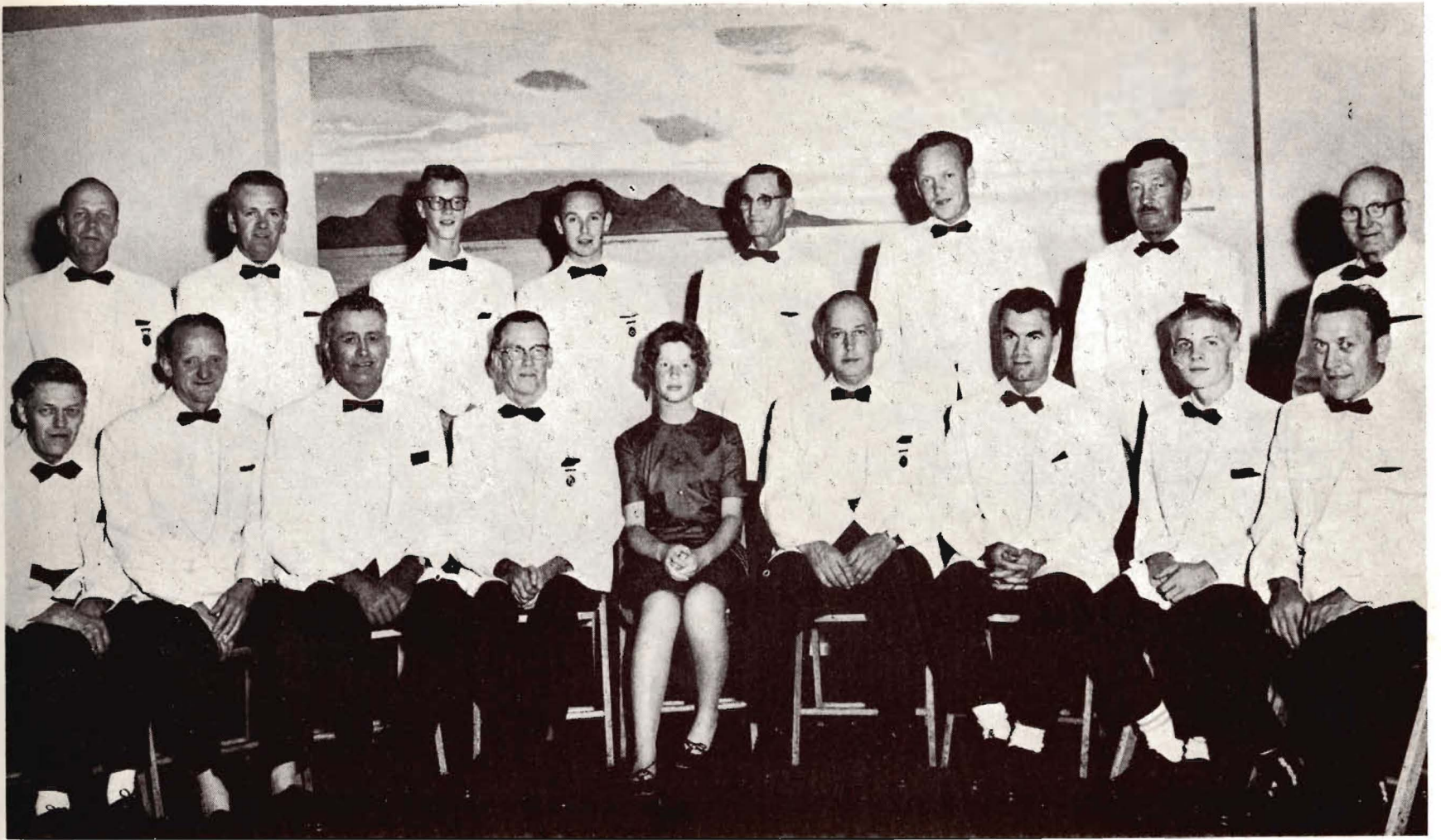
15



**FIRST
NATIONAL
BANK** OF OREGON

PORTLAND'S ROSE FESTIVAL PARADE
A Rose Float Entry

"WELCOME TO THE CITY OF ROSES"



Bellingham Male Chorus — Bellingham Washington

HELMER HELLAND, President

ELIAS BREIDFORD, Director



THE ROYAL COURT OF ROSARIA FOR 1964

Portland Secretarial School
317 S. W. Alder St.
Edna Steen McCall, President



The Norwegian Male Chorus of Seattle, Washington

JOHN ENGAN, President

AUGUST WERNER, Director



**THE PORTLAND LLOYD CENTER –
WORLD'S LARGEST SHOPPING CENTER**

Our Congratulations for a Successful Sangerfest
Leif Erickson Lodge #1 Warden's Shell Service
Seattle, Washington N.E. 7th & Weidler



ODDMUND SATHERDAHL, President

NORWEGIAN MALE CHORUS
Los Angeles, California

GORDON HAF SO, Director



*THE LANDSCAPED MALLS OF THE LLOYD CENTER
THE EAST MALL AND FLORAL BEAUTY*

Kon Tiki Room

Finlandia House, Inc.

Pancake Corner
Jerry Jensen

7-Up Bottling Co.



**THE HUB OF THE LLOYD CENTER –
THE OPEN-AIR ICE PAVILLION**

VAN DUYN CHOCOLATES
"The Gift of Good Taste"

Kandel's Sweaters

Van's Texaco Service

Mario's Men's Shop

PACIFIC COAST NORWEGIAN SINGERS ASSOCIATION

Record of Sangerfests

Roster of Choruses

SAN FRANCISCO, CALIF.	<i>Norwegian Singing Society</i>
VANCOUVER, B. C.	<i>Norwegian Male Chorus</i>
LOS ANGELES, CALIF.	<i>Norwegian Male Chorus</i>
SPOKANE, WASH.	<i>Tordenskjold Male Chorus</i>
OAKLAND, CALIF.	<i>Normanna Glee Club</i>
EVERETT, WASH.	<i>Norwegian Male Chorus</i>
PORTLAND, ORE.	<i>Norwegian Glee Club</i>
SEATTLE, WASH.	<i>Norwegian Male Chorus</i>
TACOMA, WASH.	<i>Norwegian Male Chorus</i>
BELLINGHAM, WASH.	<i>The Bellingham Male Chorus</i>
EUGENE, ORE.	<i>The Eugene Norsemen</i>

Directors-in-Chief

CARLO A. SPERATI	1902-1916
RUDOLPH MOLLER	1916-1935
GEORGE S. JOHNSON	1935-1937
MONRAD MALMIN	1937-1939
GEORGE S. JOHNSON	1939-1940
AUGUST WERNER	1940-1946
HENRY RINGMAN	1946-1950
GUNNAR J. MALMIN	1950-1952
HENRY RINGMAN	1952-1953
GUNNAR J. MALMIN	1953-1955
MONRAD MALMIN	1955-1957
HENRY RINGMAN	1958-1959
AUGUST WERNER	1959-

1. Everett	1903	29. Seattle	1936
2. Seattle	1904	30. Portland	1937
3. Portland	1905	31. San Francisco	1939
4. Tacoma	1906	32. Tacoma	1940
5. Astoria	1907	33. Grays Harbor	1941
6. Seattle	1909	34. Everett	1942
7. Eureka	1910	35. Seattle	1944
8. Everett	1912	36. Tacoma	1945
9. Spokane	1913	37. Portland	1946
10. San Francisco	1915	38. Vancouver, B.C.	1947
11. Bellingham	1916	39. Los Angeles	1948
12. Seattle	1917	40. Everett	1949
13. Portland	1918	41. Oakland	1950
14. Tacoma	1919	42. Seattle	1951
15. Grays Harbor	1920	43. Spokane	1952
16. Astoria	1921	44. Tacoma	1953
17. Everett	1922	45. Portland	1954
18. Edison-Bellingham	1923	46. Bellingham	1955
19. Seattle	1924	47. Los Angeles	1956
20. Portland	1925	48. Vancouver, B.C.	1957
21. Tacoma	1926	49. Everett	1958
22. Vancouver	1927	50. Eugene	1959
23. San Francisco	1928	51. Seattle	1960
24. Astoria	1929	52. San Francisco	1961
25. Grays Harbor	1931	53. Salt Lake City	1962
26. Everett	1933	54. Tacoma	1963
27. Vancouver	1934	55. Portland	1964
28. Bellingham	1935		



NORWEGIAN GLEE CLUB OF OAKLAND

THEO. GORBACHEFF, Director

KAARE KLYKKEN, President



*TIMBERLINE LODGE – MT. HOOD
PORTLAND'S WINTER HOLIDAY*

Captain's Corner
S. W. 4th & Madison

Dude Johnson's LaPaloma
2539 S. E. Grand Ave.

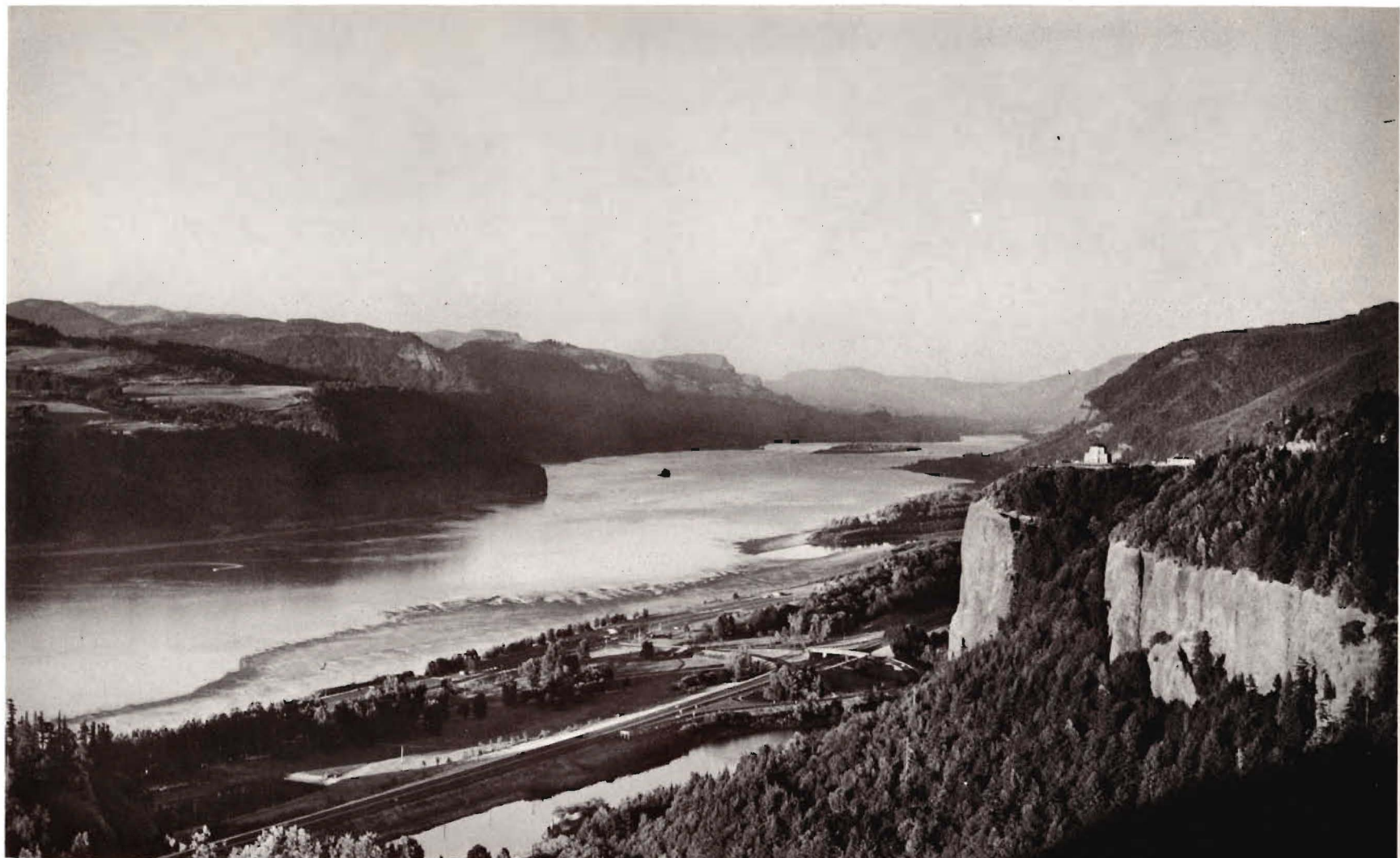
Air Mac, Inc., of Oregon
2727 S. E. Union



NORWEGIAN GLEE CLUB OF SAN FRANCISCO

THEO. GORBACHEFF, Director

AL NELSON, President



**THE COLUMBIA GORGE
ON OREGON'S SCENIC COLUMBIA RIVER HIGHWAY**

**Jacobsen's Meot & Delicatessen
11933 N. E. Halsey St.**

**4th Ave. Smoke Shop
"We Sell the Western Viking"**

**Larsen's West Coast Fruit Co.
1015 S. E. Stark**

THE NORWEGIAN GLEE CLUB OF PORTLAND

Harald Hansen
Herbert Field
Aagard Johannesen
Olaf Thune
Rasmus Cleveland
Sverre Mikkelsen
John Small
Peter Dyrhaug
Carl Johnson
Oscar Oyen
Hy Erickson
Harold Jensen
Fredrick Loken
Don Whetsell
John Shanky
Norman Clifton
Lars Kaarhus
Harald Lee
Herbert Salmon
Cyrus Walhood
John Walhood
David Westby
Ole Haugen
Herman Westby
Adolf Pettersen
Oscar Morud
Gerald Scott
Ernest Harold
Bjorn Heglie

THE LADIES AUXILIARY

Bina Hansen
Helen Field
Signe Johannesen
Adina Thune
Lillian Cleveland

Peggy Small
Agnes Dyrhaug

Agnes Oyen

Aleva Jensen

Gayle Whetsell
June Shanky
Delores Clifton

Myrtle Lee
Ethel Salmon
Clenora Walhood
Mildred Walhood
Volborg Westby
Angie Haugen
Ellen Westby

Alyce Scott
Esther Harold
Mary Heglie
Agnes Chensvold
Solveig Danielsen
Marian Morch
Sylvia Nyberg
Lois Powers
Hilda Sverklie
Caroline Thorsen

21

OUR SINCERE THANKS TO THESE FRIENDS FOR MAKING THIS PROGRAM POSSIBLE

Van Duyn Chocolate Shops
Kelly Westrom, Pres.
739 N. E. Broadway

Jacobsen's Delicatessen
Home Made Rullepolse
11933 N. E. Halsey

Dude Johnson's La Paloma
2539 S. E. Grand Ave.
Where Norwegians Meet

Larsen's West Coast Food Co.
1015 S. E. Stark St.
"Best Wishes to the Sangerfest"

Designs of Scandinavia
Mel Iverson
640 N. E. Broadway

Captains Corner
Barney Giansante
S.W. 4th & Madison

Haugen Automotive Service
New & Used Car Sales
2203 N. E. Union

American Bank Bldg. Barber Shop
Call for Appointment
Carl Saltveit - CA 8-3438

J. J. Warden's Shell Service
"Service is Our Business"
N. E. 7th & Weidler

4th Ave. Smoke Shop
Ollie Rosenlund
We Sell The Western Viking

J. H. Clifton & Sons
5125 N. E. 42nd
Painting Specialists

W. G. Sahlin Grocery
Scandinavian Foods
816 N. E. Grand Ave.

Telephone
BELmont 4-0511

**AIR MAC** INC. OF OREGON

2727 S. E. UNION — P. O. BOX 2191 — PORTLAND 14, OREGON

OFFICES IN SEATTLE • YAKIMA • SPOKANE • PORTLAND • EUGENE • MEDFORD

PORTLAND SECRETARIAL

Loyalty Building, Portland, Oregon

For years past, PORTLAND SECRETARIAL SCHOOL has enjoyed the distinction of pre-eminence in its field. Its diploma is a valuable asset. It is a certificate that the holder is competent and qualified to fill a position in the business or professional world to the satisfaction of the employer. The intensive training, personal instruction, individual advancement, and the discipline instilled into the students have obtained for it the highest standard of efficiency. That same high standard is now—and always will be—maintained with EDNA STEEN McCALL, LL.B., as President, obly assisted by a corps of efficient and experienced teachers. Earnest students of quality, willing to diligently devote their time, energy, and ability in acquiring a thorough business training are solicited.

Write, Phone, or Call for Brochures and Catalogs

NIGHT AND DAY CLASSES—ENROLL ANY TIME—ALL COURSES
NOMINAL TUITION RATES; BUDGET TERMS, IF DESIRED.

PORTLAND SECRETARIAL SCHOOL

317 S.W. Alder Street — CA 3-1772

Heartiest congratulations to the

PACIFIC COAST NORWEGIAN SINGERS ASSOCIATION

SUPREME LODGE
SONS OF NORWAY

1455 West Lake Street Minneapolis 8, Minnesota

DISTRICT LODGE #2
Albert Anderson, President
Violet Moss Brucker, Secretary

Our sincere thanks for the gratifying harmony and cooperation we have enjoyed with your Association in furthering our common aims for the preservation of Norwegian cultural values.

We invite you to join the LARGEST NORWEGIAN SOCIETY on the North American Continent. Fraternal, social and cultural benefits for the entire family. Unequaled Life and Hospital Insurance Benefits.

For information contact

Tormod Rekdal, Assoc. FIC, Regional Mgr.
528 West Pender St., Vancouver, B.C.

J. Henry Carlson, Representative
2305 Rucker Ave., Everett, Wash.

Andy Martinsen, Representative
7500 - 24th N.W.
Seattle, Washington

Nels Bryhni, Assoc. FIC, Representative
4716 Alameda Blvd.
Spokane, Washington

Torolv Myrbo, Representative
2122 Pine Street
Prince George, B.C.

Carl Saltveit, Representative
2944 N. E. 18th Ave. 284-1358
Portland, Oregon

