

UFF DA  
DUES ARE DUE

# Acanthus Vine

VOL. 17 NO. 5

NOVEMBER 1992

## NOVEMBER 15TH - GENERAL MEETING LOCATION

1:00 PM . . . SOCIAL HOUR  
1:45 PM . . . PROGRAM  
*MEETING TO FOLLOW*

SONS OF NORWAY  
1018 18TH AVENUE  
BREMERTON, WASHINGTON

**DIRECTIONS: From the North:** (Poulsbo, Lofall, etc.) follow Hwy. 3 south; take the Bremerton exit. Turn left on Kitsap Way; follow to Warren Ave. (about 6 traffic lights). Turn left on Warren Ave., proceed north to 16th St., left on 16th around block of Roosevelt Field. Hall is on 18th street across from the NE corner of the field.

**From the South:** (Tacoma, Shelton, etc.) Follow 4-lane hwy. into W. Bremerton. Turn right on Burwell Street (2nd traffic light after entering city limits). Follow Burwell to Warren Ave. and continue as directed above.

**NOTE:** Ferry from Seattle to Bremerton leaves at 11:45 AM and plan to take the 5:00 PM ferry returning from Bremerton to Seattle. If you have any questions on Ferry schedules, call Wash. Ferry Info. 464-6990.

**PROGRAM -** *Students from the Eldrid Arntzen workshops are urged to bring painted samples and items, (painted at the meeting or since) showing what was learned. We are all enlightened through sharing!*

**HOSTESSES:** Bremerton, Aberdeen, Port Orchard, Poulsbo, Port Angeles and Anacortes

### IT'S TIME TO RENEW YOUR MEMBERSHIP

**PLEASE** be prompt in sending in your 1993 membership dues to Betty Yanak. Work on the new 1993 WRA Directory will begin after January 1st. You may use the form in this issue or renew at the November meeting.

## President's Message

I am writing this as I tend the WRA booth at the Toleliner's convention. Many people have shown an interest in WRA and asked about membership. So, we will be seeing some new faces I'm sure.

We've had a busy fall -- with the four Eldrid Arntzen workshops (didn't we all learn a lot?) and the two sales this weekend, as well as the Juried Show. Thank you to everyone who helped -- even those with medical problems! I wondered if we would have a sales staff at all in Bellevue -- what with broken shoulders, car accidents, etc.

Thank you to Gurine for arranging the workshops - they were all near I hear. And thanks to the hostesses who opened their homes to Norman and Eldrid Arntzen. *You were all so generous.*

The nominating committee has a good slate of officers for next year-- it will report at the November meeting in Bremerton. Thanks to the committee for encouraging people to serve as officers.

We need volunteers for other important jobs too: the telephone committee chairperson, help with the library, etc. So please make your talents available. It's a good way for new members to know more people. **You are** welcome!

I hope we will see Valdres painting at the November meeting. Doing scenery and those "parrot tulips were new to me. Have you all been working on them?

Any unsold woodenware from Bellevue will be for sale at our meetings. So, bring your spending money! tines, mangletrees, stools, boxes ornaments!

*See you in November!*

Marilyn Hansen

OUR SYMPATHY is extended to the family of Vanessa Strand who died October 21st. She served on the Juried Show committee and attended WRA workshops. She was a member of our organization several years and will be missed.

\* \* \* \* \*

THANK YOU! to Kathy Anderson for supplying some Christmas designs for this issue for your painting pleasure.

\* \* \*

We wish a speedy recovery to the ailing: Jack Ganfield, Char Kelly, and Anita Boren.

\* \* \*

A WORD FROM THE EDITOR: Thank you to everyone sending in reports and news items for the "Vine". We want to have a well rounded newsletter to stimulate interest in rosemailing not only for our members, but those who might be considering taking up the art.

I invite you to send me painting tips, designs (large and small incl. borders), reports of cultural trips involving rosemailing, Norwegian sayings, etc. etc. I have been thinking it might be a good idea to develop a list of suppliers - esp. in western Washington and Oregon. If it's hard for some of us to find supplies, it can be a real problem for new painters. Let me know if this would be helpful and/or send me information.

I had the pleasure of helping at the WRA booth at the Toleliners Convention and at Scandinavian Days. Both events were very well attended. It was stimulating to talk to people interested in rosemailing or wanting to find teachers/classes. Unusual items were found at the convention like a wipe-out tool with rubber on both ends just the right shape for removing painting mistakes; square pieces of birch I hope to use to make some photograph albums with for my family; large wooden pieces; and our own unique wooden articles for sale. Don't miss shopping at our next meeting. Some of these items are not readily available when we want them.

- Barbara Laskowski

ARNTZEN BREMERTON WORKSHOP STUDENTS: Did anyone pick up a packet of Christmas cards and forget the pay for them? Please pay Marilyn Hansen \$5.41. Thanks.

27TH NATIONAL ROSEMAILING EXHIBITION top winners at Vesterheim, Decorah, Iowa were Ethel Kvalheim, Stoughton, WI: Best of Show for a bowl; JoSonja Jansen, Eureka, CA: Blue Ribbon for an ale bowl.

BJORG KLEIVE book is now available. If you are interested in a copy, you may contact Gurine Nordby.

RAFFLE SUMMUARY REPORT - 1990 TO 1992  
By Gurine Nordby

ITEM	INCOME	COST	PROFIT
Bjorg's Bowl (raffled 7-91)	265.00	75.00	190.00
Bjorg's Compote (raffled 11-91)	141.00	67.00	74.00
Kari's Wedding stein thru 8-92	251.00	104.00	
Eldrid's plate thru 9-92	2.00	100.00	
	-----	-----	-----
	659.00	346.00	

Profit from raffles so far is \$313.00

WRA ACQUISITIONS: Kari plate \$175.00; Bjorg's bowl \$124.00; 3-92 B.W. box \$95.00; 9-92 E.A. plate-bowl \$100.00 for a total cost of \$494.00

We will have more income from raffle sales at Tolelimer Convention, Yule Boutique, and the Yule Fest. By the end of '92, we will have more than paid for the pieces we have raffled, but ALSO the study pieces we have purchased so far. This was the goal of the raffles. I feel we have succeeded.

# Exhibit and Juried Show

The Exhibit and Juried Show is now ready for viewing. The judges are at work and the ribbon winners will be announced at the November meeting in Bremerton.

We have a number of very interesting items in the show: a lovely large 3' table painted Rococo style, a slipper rocker painted in "Old Rogaland" style, tines, a yarn bowl, many beautiful bowls, ale bowls, mini carpenter's carrier, 3 legged table, 3 legged chair, lense board, variety of small and large trunks, poridger, folding desk arm chair, clocks, lovely mirror painted in the Rococo style, large cradle, door chime, a large 26" plate painted by Gayle Oram, a small trunk and covered box painted by Barbara Wolters. Other teacher pieces are by Gunnar Bo, Celia Hendrix, Jean Alfsen, Bjorg Klevi, Kathy Anderson Kari Signe Brathen.

Our participants in the show are from Wisconsin, Bremerton, Portland, Snohomish, Ballard and of course Tillamook, Oregon, Telemark and Romsdal, Norway. The past presidents were from Gig Harbor and Marysville.

Members participating in the show are:

Anita Boren	Shirley Peterich
Mickey Buchanan	Naomi Price
Selma Case	Wilda Snider
Lois Clauson	Kelly Sooter
Bernice Coleman	Connie Sullivan
Betty Edwards	Judith Tenggren
Marie Ganfield	Arlene Christianson
Marilyn Hansen	Pickard
Charlotte Kelly	

We have entries in all categories except the Beginner. Our "PEOPLE'S CHOICE" box is ready for your choices and our brochures are on the table waiting for visitors. What we need from all of you is participation - volunteering to take visitors through the exhibit each Saturday and Sunday from Noon to 4:00 P.M. Please see Betty Edwards, Marie Ganfield or Connie Sullivan for the dates that are open.

## TREASURES FROM THE GREAT LAND

*Native Alaskan artifacts from the National Museum of Finland*

From October 15, 1992 to January 10, 1993, the Nordic Heritage Museum, in cooperation with the National Museum of Finland-Helsinki, is presenting an exhibit of approximately 400 rare Native Alaskan artifacts. After having been in the collections of the National Museum of Finland for over 100 years, these beautiful objects are returning to North America for an exclusive tour of only five sites in the western United States and Alaska. This is a once in a lifetime opportunity to view these very rare artifacts which have never before been exhibited outside of Finland.

Most of the items in the exhibit were gathered before Natives began producing objects for sale or trade. In pristine conditions, the articles of Aleut and Athapaskan clothing are particularly significant, since collections in Alaska sown museums contain few, if any examples of these elaborate garments.

The artifacts themselves illustrate how the native peoples of the North successfully utilized their abundant natural resources, expressing their

religious beliefs, myths and legends through their handiwork.

<b>Museum</b>	<b>Monday</b>	<b>Closed</b>
<b>Hours:</b>	Tuesday	10:00 - 4:00 PM
	Wednesday	10:00 - 4:00 PM
	Thursday	10:00 - 9:00 PM
	Friday	10:00 - 4:00 PM
	Saturday	10:00 - 4:00 PM
	Sunday	12 Noon - 4:00 PM

<b>Admission:</b>	Adult	\$5.00
	Senior Citizen	3.00
	College Student	3.00
	K - 12 Students	2.00
	Under 6	(Free with adult)
	Museum Members	Free

This is a show for all age groups. Clothing, hunting and fishing equipment, utensils and ceremonial objects made by artists from eight Alaskan Native Cultures.

*Take in both events! WRA Exhibit and Treasures from the Great Land!*

General Meeting,  
 Western Rosemalers  
 Nordic Heritage Museum  
 September 20, 1992

The meeting was called to order by President Marilyn Hansen at 2:55 pm. She thanked Eldrid Arntzen for presenting the program on the techniques of transparent Telemark rosemaling and for serving as a judge for the juried show. Marilyn also thanked the Seattle members for the delicious refreshments.

Eva Clark reported she and Juanita Wellington, assisted by Mickey Buchanan, had worked on the selection of designs for notecards and the pattern packets. Artists selected are Mickey Buchanan, Anita Boren, Lois Clausen, Marilyn Hansen, Vessla Harris and Kathy Anderson. Packet designs were chosen to be used with woodenware which will be on sale at the Toleliners Convention in October. Five patterns double-sided will be sold for \$4 per packet. 200 sets of patterns were printed at cost of \$137. Six notecards per packet will be sold at \$4 per packet. Betty Cooper and Kathy Anderson painted the envelope designs, and Marilyn will have them printed at cost of 35¢ each. If this is done again, hopefully more designs will be submitted.

Judith Tenggren's treasurer's report reflected a July balance of \$3,188.90 and August balance of \$3,527.12. Revenue is expected from the sale of woodenware, packets and patterns.

Marilyn asked members to start thinking about the Astoria juried show since Kathy Anderson may not be available to chair that show. Signup sheets were passed for the upcoming sales, and people are needed for the Toleliners Convention in October.

Mary Ellerman reported on the Toleliners Convention October 9-12 in Bellevue. It is expected to draw exhibitors from around the country and will include classes and consumer show. WR will be participating.

Betty Edwards thanked those who had sent in advance sheets for the juried show. Numerous entries have been received. Barbara Laskowski put together the printed program. A sign-up sheet was passed for weekend hostesses throughout the show. They will visit with guests, demonstrate and sell their own painted items if they wish.

It was announced that a business membership is necessary for selling items at the general meetings.

Therese MacDonald reported that the library continues to grow and books are more expensive. She proposed the purchase of plastic boxes and a dolly to bring books to meetings. Gurrine Nordby made a motion, seconded by Eva Clark, to purchase plastic boxes and a dolly; motion passed unanimously. Gurine made a motion, seconded by Anita Boren, to increase the library budget for books to \$150 per year; motion passed unanimously.

Kelly Sooter reported there had been a great turnout for Gayle Oram's summer workshop. Betty Edwards will teach the first fall workshop on November 14th on the flowers of Telemark. Next year's workshops: Vessla Harris - Primitive Scene; Kathy Anderson - American Rogalund using traditional colors; Gurine Nordby - 2-day workshop on Crackle finish and painting on the crackle; Gudrun Berg - Grannie Berg's poor box; and a Hallingdahl class. She will ask Kathy Anderson about a possible Bremerton workshop. A motion was made by Anita Boren, seconded by Marie Ganfield, to raise the mini-workshop fee to \$15; motion passed unanimously. Mary Ellerman suggested looking at the individual workshops and tailor fees to costs involved.

Marilyn asked that any information/news items about WR which are being put in a paper, be cleared through Betty Edwards to be sure the facts are correct and accurate.

Marilyn expressed thanks to Barbara Laskowski for the nice job she does on the Acanthus Vine.

Marie Ganfield urged members to let the committee know if they are willing to serve as an officer next year. Nominees will be announced at the next meeting. She had met Loretta Chiltan from Portland, OR at Trollhaugen. Loretta is a costume maker and offered to hold a workshop on making bunads.

Marilyn noted correspondence from the 17th of May Committee planning their annual affair. They would like a representative from WR on the committee. She also received information from the City of Auburn regarding their "Year of the American Craft" program Jan.-Dec. of 1993, if anyone is interested.

Things to think about: 1) A revolving library of the painted items the organization owns which could be checked out. 2) A picture album which would be available at the sales to show larger items which could be ordered from members. Each artist would have one page. 3) Consider giving full tuition to the chair person when a major workshop is held in more than one area.

Marilyn thanked Gurine for all her work organizing the Trollhaugen workshop. Over 60 attended, compared to 24 in previous years. Gurine will help set up Scandinavian Days Thurs Oct. 8th.

Sunshine chair Barbara Hazen reported on cards sent during the summer.

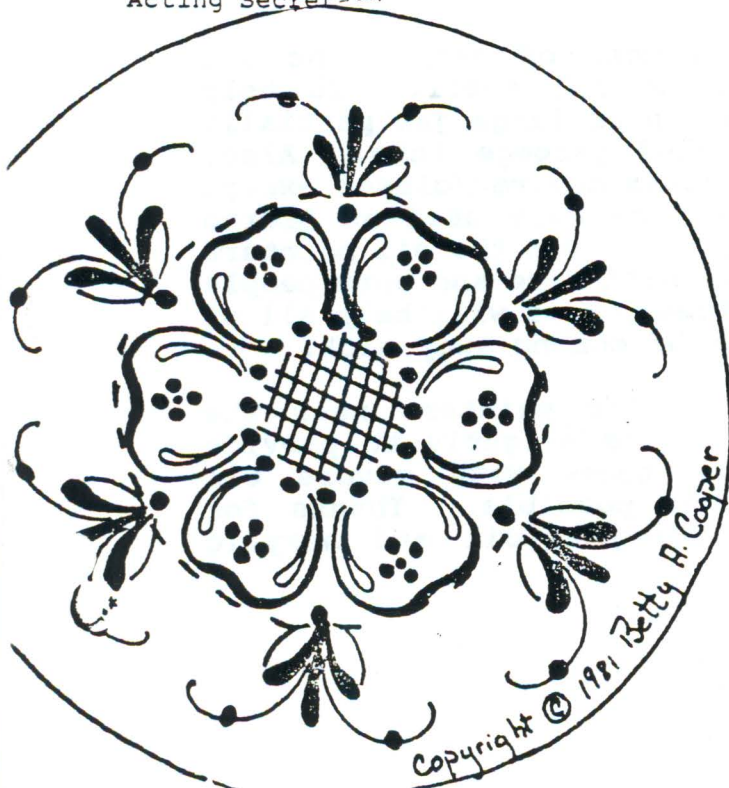
Marilyn expressed thanks to LeRoy Clausen for completing all the woodenware for the October Toeliner's sale.

Door prize donated by Florence Buck was won by Naomi Price.

Forty attended the meeting, including guests Martha Branson from Burien, Carol Ramey from Kent, and Kay Haddox from Renton.

Meeting adjourned 4:20 p.m.

Bernice Coleman  
Acting Secretary



# Workshop Update

Our first workshop is almost here. I hope you are all ready to start painting after this beautiful Summer and Fall.

There are a few spots left in this November workshop -- so please let me know if you want to attend. Even if you find at the last minute that you can attend, please call as there is usually enough room.

The workshops are designed for the beginner to intermediate painter. Advanced painters are very welcome to attend and we are glad they do!

The cost of the workshops is \$15 payable to WRA. Non-members are \$25 to cover the cost of their membership. We are the last known Rosemaling association in the country to up our workshop fees to at least \$15. The increase is to pay for beverages, travel expenses for out-of-town teachers, phone, and postage. The previous \$10 fee only covered the room rent (\$35) and the teacher fee (\$75). This increase will get us out of the red for 1991-1992 and put us in the black sometime in 1993.

Send your name and money to:

Kelly Sooter  
1823 Hollow Dale Pl.  
Everett, WA 98204

or call if you have questions:

(206) 347-0515	Everett
(206) 743-2636	Seattle

OIL PAINTERS: There are increasing number of people who are allergic to or have severe reactions to oil smell. To help alleviate this problem, please bring a can or large jar partially filled with water to put your oil-soaked garbage into. Also, please keep your linseed oil and turpentine covered/closed except when using them. Both of these techniques were used at Eldred Arntzen's workshop and proved very helpful. Even the oil painters found the air to be much more pleasant. With more and more people having adverse reactions to oil based fumes, this will help all of us to attend workshops without the fear of coming away sick.

There will be seats designated for acrylic painters near the windows. We will have some of them cracked slightly to provide better ventilation. This will allow those with severe oil allergies to paint with the least fumes possible. Thanks for helping us with this experiment in bringing oil and acrylic painters together at the same workshop.

SATURDAY, NOVEMBER 14:

**THE FLOWERS OF TELEMAR:**

Location: Nordic Heritage Museum, Seattle  
Teacher: Betty Edwards  
Time: 9:30 - 3:00 or so  
Lunch: Bring a bag lunch as we will take only a 1/2 hour

In the morning we will be painting flowers--with an emphasis on how to approach a flower you may see on a pattern, and what colors look good together on a flower/group of flowers. In the afternoon we will work on scrolls and placement of flowers on a scroll.

What to bring: Bring your oil or acrylic paints and whatever supplies you normally need to paint with. Please bring 2-3 pieces of painted cardboard (off white or med. blue) to practice on. If you would like, Betty will be working from a pattern that would fit a 10" plate backgrounded in one of the colors mentioned above.

SATURDAY, JANUARY 23rd:

**PAINTING A PRIMITIVE SCENE:**

Location: Nordic Heritage Museum, Seattle  
Teacher: Vesla Harris  
Time: 9:30 - 3:00 or so  
Lunch: Bring a bag lunch as we will take only a 1/2 hour

Vesla, who studied rosemaling in Norway, will teach us how to paint a primitive scene. She will help us learn how to paint a scene much like the early rosemalers did in Norway -- not highly stylized as we see so often here in America.

She will have us freehand some buildings, etc. and then we will embellish them with some flowers and scrolls. Even if you don't draw well -- this class is for you!! Many of the primitive scenes in museums were terribly out of proportion.

What to bring: Bring your oil or acrylic paints and whatever supplies you normally need to paint with. If you want to paint on cardboard, bring 2-3 pieces of painted cardboard (off white, med. blue, or whatever you like) to paint on. You may want to paint on a plate or other object after practicing so bring something that's approximately 10" in diameter backgrounded in the color of your choice.

*My First Experience at Trollhaugen Painting Workshop*

by Luella C. Hilby

Anne Freeman, my painting teacher in Port Angeles, had been extolling the delights of Trollhaugen ever since I met her. Sunday morning, September 13th, I drove the 132 miles, plus ferry, from Sequim to see for myself. The brilliant fall-foliage along the way was worth the drive in itself. The lodge that would house us sat nestled up among the green trees.

We unloaded groceries for a week, threw our bedding in on our bunks and helped Gurine set up the painting station for a week with Eldrid Arntzen, Gold Medalist Teacher from Connecticut.

Class started promptly at 9:00 a.m. on Monday. Demonstration, then practice what we learned with individual help. It reminded me of my teaching swimming, i.e. how important to perfect the basic strokes that you need whether painting Hallingdal, Valdres, Telemark, and etc. I struggled to make my brushes follow the rules: load your brush to the ferrule but remember a little paint is better than too much. Look at the place you'll end your stroke, but watch what your brush is doing. Place your hand in the finish position, but reach out to the beginning point. Make every stroke start from the ROOT, but don't touch your brush down until it's at the point you want to start. White is not white but white.



My head says, "slow down!", while my fingers speed up, as my mind hurries to repeat the steps -- before my memory forgets.

Each day we had a delicious lunch and dinner prepared by the "crew of the day". Fellowship was grand and any number of tension-relievers occurred during the evening. Walking the grounds, card games, ping pong, horseshoes, or just petting Troll and Haugen into a PRrrrr (the lodge cats). We even experienced a true-log-house being built nearby. The construction crew was housed at the lodge.

The flowers of Rogaland and Valdres, scene of Chinoissrie, and scrolls of Telemark, I paint were not perfect but, as Eldrid pointed out, "Keep them, don't throw them out." and she quoted, "It's humbling to look at one's beginnings."

*I loved it. I can hardly wait until next year!*

Our Week's Retreat of Painting  
with Eldrid Arntzen

Trollhaugen, Trollhaugen, a lodge so near  
The Son's of Norway, place of retreat.  
Nestled among the trees of green  
Beautiful scenery and air so clean.

When power lines are down and out (just 2 hours)  
Managers BOB and JEORA call out,  
"Don't flush the toilets or open the frig",  
"Or pressure goes down and pump goes 'fiz"

As MARY painted with her brushes  
Creating flowers with C's and S's  
Using fiberts, chisels and liners  
MARIE could see strokes getting finer.

In the middle of the night  
ANNE's feet shuffled towards the light  
There, painting, sat ELDRID: Oh, I say!  
Creating a work of art on tray.

A trip to Lester was started, and then  
Winding roads got NORMAN'S full attention.  
While on patio under starts so bright  
Hot Tub soaking was BARB's delight.

LUELLA and LES plied ELDRID with questions  
And struggled with curves along with the best  
ones.

Rogaland, Valdres, and Chinoissrie  
"I'll get it yet", said LORETTA, "You'll see!"

GURINE's projector showed slides, supreme  
It took 6 adults to dismantle the screen.  
JULIE and BARBARA worked quietly  
Painting their lesson, smiling with glee.

DELPHINE, she traveled over 2000 miles  
To paint and play cribbage with her lovely  
smiles.

ANITA's cards were beautiful to see  
Not like the pinochle she "doubled" on me.

Monday through Thursday we slaved 9:00 to 5:00  
But Friday, the half day, we came back alive  
Wanting to go on for another week  
The teaching, so great, made painting a treat.

*Wish Everyone could experience it!*  
Luella C. Hilby September 1992



TOLELINERS CONVENTION - BELLEVUE

Injuries and sickness struck our members. Char Kelly, the chairperson, had surgery on her shoulder the first day of the sale; but not before she and her husband drove down from Stanwood to deliver the woodenware, then she checked in at 11 AM in Arlington for surgery! That is dedication!

Anita Boren helped using her walker, because she had been in a car accident the week before.

Marie Ganfield was unable to come because of Jack's medical problems, but Barbara Laskowski, Betty Edwards, Kelly Sooter, Barbara Hazen and Wilda Snider who helped me out on the four days were much appreciated.

We sold \$608 -- answered numerous questions about rosemaling and many seemed interest in WRA. So, we become more widely known because we had a booth.

- Marilyn Hansen

Need Some Woodenware!



Ethnic woodenware for sale at our meeting! (leftover items from the convention): 10" round tines with or without "legs", oval tines, mangletres, heart stools, covered boxes and ornaments. Remember the person with the most woodenware wins! You can never have too much wood. . . right?

Trollhaugen Chicken Waikiki

Thanks to Luella Hilby for her delicious "Trollhaugen Chicken Waikiki". Luella's variation is below & followed by the original recipe.

1. Wash chicken; pat dry. Pressure-cook in micro/wave for 26 minutes; then remove skin, fat & bones. OR conventional oven - for time per pound your cookbook states.

2. Cut into chunks. Set aside broth.

3. Make sauce: Drain pineapple, pouring syrup into 2-cup measure. Add chicken broth to make 2 cups. In medium sauce pan, combine sugar, 3 Tbsp. cornstarch, pineapple syrup, vinegar, soy sauce, ginger and bouillon cube; boil 2 minutes.

Pour over cooked rice after adding chicken cubes. (I cooled my chicken broth and removed the fat before adding.)

NHM DISPLAY CABINET

Have you seen the lovely items currently being displayed at Nordic Heritage Museum.

At the present time, the following items are on display:

- Tine Domed trunk Sconce
Bowls Plates Egg cup/holder
Bread Boards Candlebra Octagon planter

The artists who participated are: Kathy Anderson, Marilyn Hansen, Bjorg Klevi, Mickey Buchanan, Barbara Hazen, Barbara Wolters and Betty Edwards.

Stop by and look at these items. If you have an item for sale, please bring it to the November meeting, so that we can place it in the display cabinet. We would like to change the pieces during our Exhibit & Juried Show.

Display Cabinet Committee: Betty Edwards
Barbara Hazen
Marie Ganfield

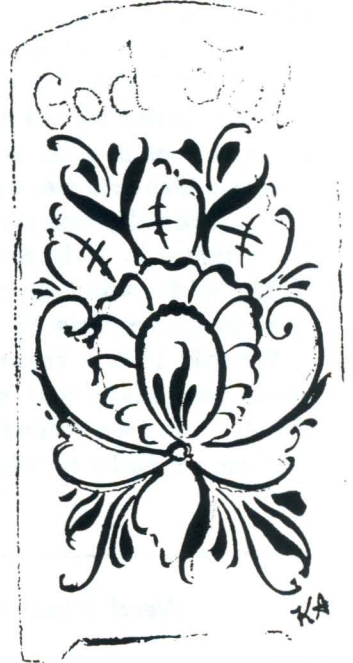
CHICKEN WAIKIKI BEACH

Ideal for outdoor or indoor entertaining, this tempting sweet-and-pungent recipe comes from our newest state—Hawaii. If desired, garnish the platter with fresh lemon leaves, available at florists' shops, and serve with a tossed green salad and your favorite dressing.

- 2 whole chicken legs and 2 whole chicken breasts
1/2 cup flour
1/3 cup salad oil or shortening
1 teaspoon salt
1/4 teaspoon pepper
SAUCE
1 can (1 lb, 4 oz) sliced pineapple
1 cup sugar
2 tablespoons cornstarch
3/4 cup cider vinegar
1 tablespoon soy sauce
1/4 teaspoon ginger
1 chicken-bouillon cube
1 large green pepper, cut crosswise in 1/4 inch circles

- 1. Wash chicken; pat dry with paper towels. Coat chicken with flour.
2. Heat oil in large skillet. Add chicken, a few pieces at a time, and brown on all sides. Remove as browned to shallow roasting pan, arranging pieces skin side up. Sprinkle with salt and pepper.
3. Meanwhile, preheat oven to 350F.
4. Make sauce: Drain pineapple, pouring syrup into 2-cup measure. Add water to make 1 1/4 cups.
5. In medium saucepan, combine sugar, cornstarch, pineapple syrup, vinegar, soy sauce, ginger and bouillon cube; bring to boiling, stirring constantly. Boil 2 minutes. Pour over chicken.
6. Bake, uncovered, 30 minutes. Add pineapple slices and green pepper; bake 30 minutes longer, or until chicken is tender. Serve with fluffy white rice.
Makes 4 servings.

Kathy Anderson 1992



**BALLARD'S YULEFEST  
A NORDIC CHRISTMAS TRADITION**

NHM will celebrate its 15th annual YULEFEST - a Christmas festival featuring the handcrafts, music, dance and food of Scandinavia - on November 21st and 22nd, the weekend before Thanksgiving. This year the event will be held at BALLARD COMMUNITY CENTER: 6020 28th N.W. An old fashioned trolley will run between the Museum, the Community Center, Downtown Ballard and Monroe School (1810 NW 65th) where additional free parking is available. The trolley will operate on Saturday from 11 AM - 5 PM and on Sunday from Noon - 6 PM. YULEFEST hours are from 10 AM to 6 PM on Saturday November 21st and Noon to 6 PM on Sunday November 22nd. Admission to a \$1.00 donation at the door.

YULEFEST has become a tremendously popular way to start off the holiday season in Seattle. For the early Christmas shopper looking for gift bargains there is a wide variety of quality merchandise. For families YULEFEST is an escape into Christmas fantasy for children of all ages. And for adults who just want to get into the holiday spirit while experiencing a touch of Nordic tradition at the same time, YULEFEST has both

the atmosphere and ambiance to make their visit memorable experience.

With 55 vendors, the variety of unique gift items will be many. Entertainers, music, and dancing will delight audience of all ages. Traditional Scandinavian foods will be available to temp visitors at the *Nordic Cafe*.

Admission to YULEFEST entitles patrons to a \$1 discount off admission on the same day to the Museum's major international exhibit TREASURES FROM THE GREAT LAND - *Native Alaskan Artifacts from the National Museum of Finland*.

**If you have rosemaling to enter in the upcoming sales on the weekend of November 21-22, you may bring your items to the November meeting or contact the chairpersons of the event.**



**1993 WRA MEMBERSHIP APPLICATION/RENEWAL**

Name \_\_\_\_\_ Phone \_\_\_\_\_  
(Print)

Address \_\_\_\_\_ City \_\_\_\_\_ Zip \_\_\_\_\_

Renewal       New       **General Membership \$10.00 (U.S.A.)**

Make checks payable to:  Membership \$12.00 (Canada, outside USA)  
Western Rosemalers Association

Business Membership \$15.00

Mail check & form to:

BETTY YANAK, 2407 140TH ST S, SEATTLE, WA 98168

*Dues are due by January 1st. Please renew membership promptly so the new membership list can be prepared promptly.*

**PUBLISHER:**

**WESTERN ROSEMALERS ASSOCIATION**

Editor: Barbara Laskowski  
18228 Rockwood Ct.  
Yelm, WA 98597

Mailing: Gurine Nordby

Membership: Betty Yanak  
2407 So. 140th  
Seattle, WA 98168

Membership in WRA includes your subscription to the Acanthus Vine which is published 5 times a year and is mailed two weeks prior to WRA general meetings in January, March, May, September, and November. Membership yearly dues are \$10.00 (U.S.A.) and \$12.00 (outside U.S.A.)

***NEXT ACANTHUS VINE DEADLINE -  
DECEMBER 15, 1992***

WESTERN ROSEMALERS ASSOCIATION  
6234 SOUTH 119  
SEATTLE WA 98178

FORWARDING AND RETURN  
POSTAGE GUARANTEED

**UFF DA  
DUES ARE DUE**

President: Marilyn Hansen  
7255 Navajo Trail NE  
Bremerton, WA 98310

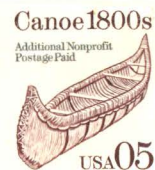
**ADVERTISING RATES**

\$16.25 - Full Page  
4.25 - Quarter Page  
8.25 - Half Page  
2.00 - Block 3" x 2 "

You must send camera ready copy with remittance to the editor.

The Acanthus Vine is the sole possession of the Western Rosemalers Association. All rights are reserved. Written permission from the editor must be obtained to reprint from the newsletter by mechanical or other means.

NON-PROFIT



BARBARA LASKOWSKI  
18228 ROOKWOOD CT  
YELM WA 98597