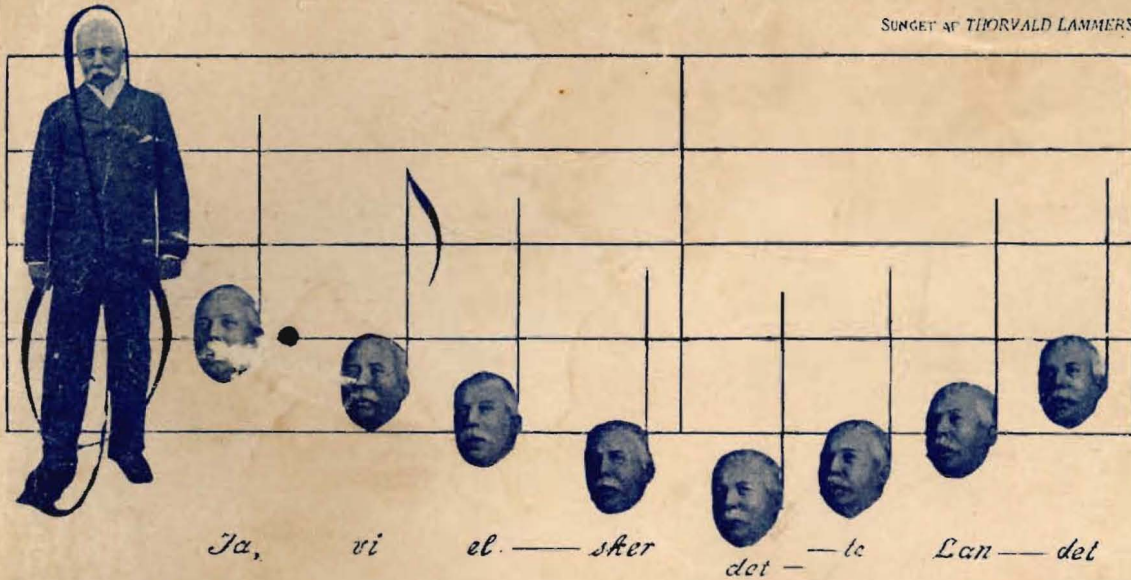


SUNGET af THORVALD LAMMERS



Ja, vi el. — sker det — le Lan — det

Souvenir Program

NORWEGIAN SANGERFEST

JULY 30-31-August 1, 1904

SEATTLE

❁ ❁
120 ROOMS

RATES: 50, \$1.00 AND
\$1.50 PER DAY

❁ ❁



❁ ❁
FIRST CLASS RESTAUR-
ANT IN CONNECTION
FREE BUS

❁ ❁

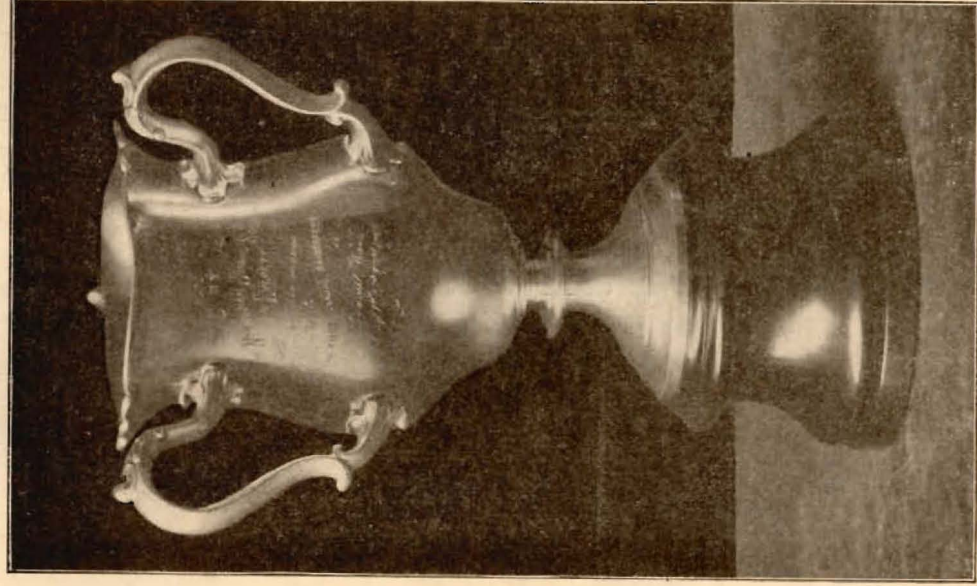
THE HOTEL DILLER

W. G. POTTS, Manager

OPPOSITE U. S. POST OFFICE

COR. FIRST AVE. AND UNIVERSITY ST.

BATTLE



The Eberett Cup

SOUVENIR PROGRAM

ECOND ANNUAL SANGERFEST

of

the

✦ Norwegian Singers' Association ✦
of the Pacific Coast

SEATTLE

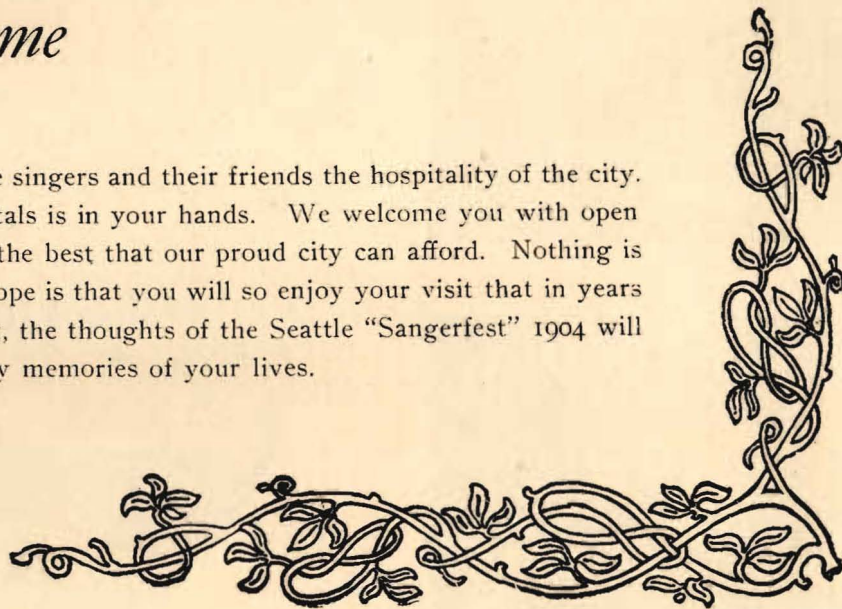
July 30, 31 and August 1, 1904

COMPILED BY HOWARD A. HANSON



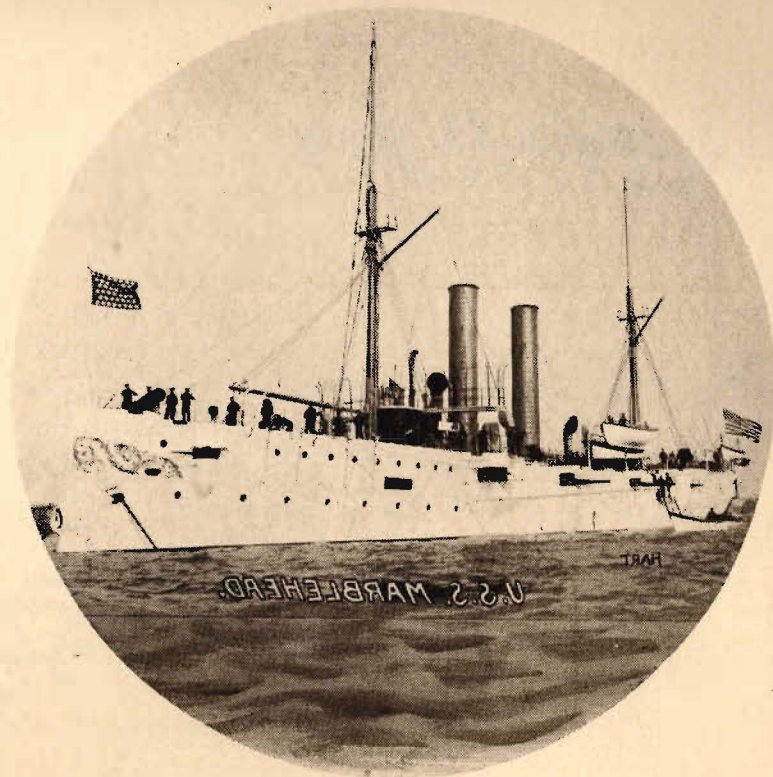
Seattle's Welcome

Seattle extends to the singers and their friends the hospitality of the city. The key to the city's portals is in your hands. We welcome you with open arms, and extend to you the best that our proud city can afford. Nothing is too good for you. Our hope is that you will so enjoy your visit that in years to come, as you look back, the thoughts of the Seattle "Sangerfest" 1904 will be among the most happy memories of your lives.





SEATTLE STREET SCENES



AT THE NAVY YARD

Capital Paid Up.....\$300,000.00 Surplus 150,000.00

The Scandinavian American Bank, Seattle, Wash.

A. Chilberg, President; A. H. Soelberg, Vice-Pres.; J. F. Lane,
Cashier; Geo. R. Fisher, Asst. Cashier;
Wm. Thaanum, Asst. Cashier.

WE HAVE AN OFFICE AT BALLARD.

COMPARATIVE STATEMENT OF DEPOSITS.

May 31, 1892.....	\$ 19,256.08	May 31, 1899.....	557,694.44
May 31, 1893.....	93,079.67	May 31, 1900.....	966,989.74
May 31, 1894.....	73,539.28	May 31, 1901.....	1,509,315.92
May 31, 1895.....	117,216.58	May 31, 1902.....	1,757,863.03
May 31, 1896.....	152,241.16	May 31, 1903.....	2,346,329.96
May 31, 1897.....	170,594.08	May 31, 1904.....	2,621,235.82
May 31, 1898.....	421,815.96	June 9, 1904.....	\$2,640,469.62

DIRECTORS.

A. Chilberg, President, Vice-Consul of Sweden and Norway.
R. A. Ballinger, Mayor of the City of Seattle.
N. B. Nelson, of Frederick & Nelson, Merchants.
W. H. Metson, of Campbell, Metson & Campbell, Attorneys at

Law, San Francisco, Cal.
J. E. Chilberg, Insurance and Transportation.
A. H. Soelberg, Vice-Pres.
J. F. Lane, Cashier.

Officers of the Association

President	DR. A. O. LOE.....	Seattle
First Vice-President.....	LOUIS LANGLOW.....	Tacoma
Second Vice-President.....	ALBERT WINGE.....	Seattle
Corresponding Secretary.....	JULIUS SUNDE.....	Seattle
Financial Secretary.....	C. I. CORNELIUS.....	Portland
Treasurer	OLAUS KJELLAND	Ballard
Musical Director.....	REV. CARLO A. SPERATI.....	Tacoma
Marshal	NELS CHRISTOF.....	Seattle



A. E. JOHNSON CO.

Steamship Agents



Tickets To and From all Points in
SWEDEN, NORWAY, DENMARK and FINLAND



For Sale AT ALL TIMES at the

CHARLES J. NILSON, Manager

====Lowest Prices at General Office====

620 FIRST AVENUE

SEATTLE, WASH.

COMMITTEES

EXECUTIVE.

Dr. A. O. Loe, chairman; Louis Langlow, Albert Winge, Julius Sunde, C. Cornelius, Olaus Kjelland, Rev. Carlo A. Sperati, Nels A. Christof.

RECEPTION.

Elling Ellingson, chairman; all active singers of Seattle Singing Society.

HEADQUARTERS.

August Berg, Chairman; P. Lilleaas, Chris Hansen, Olaf Rod, J. Johnson, C. Guldbrandsen, M. Fjortoft, Magnus Pedersen, Alfred Larsen, G. Quale, Regnor Dahl, G. B. Helgesen, Emil Larsen, T. Lillevik,, Christ Miller, J. Meling, A. E. Hanson, Jno. A. Castberg.

HOTEL.

Olaf Boen, Chairman; Christ. Juel, James Wilson, S. Rothe, Elling Elingsen.

TRANSPORTATION.

Olav Toft, Chairman; A. Olsen, B. C. Hals, J. Jorgensen, L. Teigen, L. Boen, A. Vestad, Capt. H. Blekum, Louis Sandstrom, Albert Winge.

MUSIC.

H. P. Sather, Chairman; Elling Ellingson, Oscar Larsen.

DECORATION.

Oscar Larson, Chairman; John Bach, M. Redding, A. Odegaard, E. Ottesen, A. Sather, C. C. Berg, Carl Sunde, J. C. Levold, K. Erland, L. Boen, C. Malmoe, O. A. Gabrielson, Theo. Pederson, Olaf Larson, H. Haldorson.

BANQUET.

Dr. A. O. Loe, Chairman; Albert Winge, Olaus Kjelland, Julius Sunde, N. Christof, M. J. Lund, A. H. Soelberg, O. A. Sandheim.

PRESS AND ADVERTISEMENT.

Howard A. Hanson, Chairman; Julius Sunde, Theo. Christy.

H. P. Rude, Pres.

Axel H. Soelberg, Secy. Treasurer.

Washington-Posten

Established 1889.

The Only Norwegian-Danish
Weekly on the Pacific Coast

AN EXCELLENT ADVERTISING MEDIUM TO REACH THE NORWEGIAN AND DANISH PEOPLE.

ONE DOLLAR PER YEAR

SEND FOR SAMPLE COPY.

SEATTLE, WASHINGTON.

GENERAL FESTIVAL PROGRAM

Saturday, July 30, 1904.

10:00 A. M. Reception to Singers. N. S. S. Hall, Old University Grounds.

12:00 M. Luncheon for Singers. N. S. S. Hall.

2:00 P. M. Rehearsal. United Singers. Grand Opera House.

2:00 P. M. General Reception for visitors in parlors of Hotel Diller. After reception visitors and singers will leave hotel for an excursion to West Seattle.

7:00 P. M. Final rehearsal. Grand Opera House.

Sunday, July 31, 1904.

2:30 P. M. Grand Concert. Grand Opera House.

7:30 P. M. Special car leaves city for Ballard. Singers will be entertained by "Norden," the Ballard Singing Society.

Monday, August 1, 1904.

10:00 A. M. Business session of the Pacific Coast Association. N. S. S. Hall.

12:00 M. Luncheon served for Singers in the N. S. S. Hall.

2:00 P. M. Excursion to Puget Sound Navy Yard, Bremerton.

8:30 P. M. Banquet to Singers and friends. The Washington.

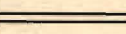
Note. Refreshments will be served at all hours throughout the entire time of the Sangerfest at the N. S. S. Hall, Old University Grounds.

CITY MILLS

LEHMANN BROS., PROPS.

Manufacturers and Dealers in



FLOUR
FEED
and 
GRAIN

RYE AND GRAHAM FLOUR, OAT MEAL, CORN MEAL, ETC.

Western Avenue

Cor. Seneca St.

Newspapers and Periodicals, Curios and Souvenirs
Fine Stationery and Supplies

A. J. THULAND

STATIONERY AND BOOK STORE

Parker Fountain Pens, Wrist Bags and Purses
Imported Swedish Eskilstuna Razors and Snuff Boxes

A large assortment of

Scandinavian Books and Newspapers

Orders by Mail promptly attended to Tel. Main 5694

1333 THIRD AVE., SEATTLE.

Gus Callson

C. J. Ahnquist

Phone Red 1567

CALLSON & AHNQUIST

Merchant Tailors

1017 Pacific Avenue,

TACOMA, WASH.

GENERAL SKETCH OF THE ASSOCIATION

The second annual Sangerfest of the Norwegian Singers' Association of the Pacific Coast takes place in Seattle, July 30, 31 and August 1, 1904.

The Pacific Coast Association was first organized in Seattle, August 26, 1902, at a concert and banquet given by the Seattle Singing Society. It was decided at that time that the first Sangerfest should be given in Everett. John Norman, of Everett, was elected the first president. A. J. Thuland, of Seattle was elected secretary. Dr. A. O. Loe, of Seattle, was elected treasurer. Rev. Carlo A. Sperati, of Tacoma, was elected leader of the united chorus. Later in the year the secretary, A. J. Thuland, resigned and Julius Sunde, of Seattle was chosen to fill the vacancy.

The first Sangerfest was given in Everett, August 1, 2, 3, 1903. The affair was a great success in every particular, and reflects credit on the people of Everett who carried the Sangerfest to such a successful issue.

The citizens of Everett presented the Association with a beautiful silver cup, The Everett Cup, which was won at that time by the Everett Society.

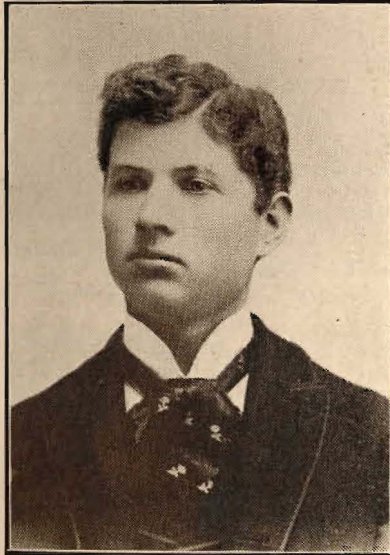
At the business session of the first Sangerfest, Seattle was chosen as the meeting place for the second festival. Otto Ottesen, of Seattle, was elected president, Louis Langlow, of Tacoma, first vice-president; Albert Winge of Seattle, second vice-president; Julius Sunde, of Seattle, corresponding secretary; C. J. Cornelius, of Portland, financial secretary; Olaus Kjelland, of Ballard, treasurer; Rev. Carlo A. Sperati, of Tacoma, musical director; and Nels Christof, of Seattle, marshal. On the resignation of Mr. Ottesen, Dr. A. O. Loe, of Seattle was unanimously chosen president of the Association.

The Association includes at the present time societies from California, Oregon and Washington. It is the purpose of the organization to extend the number of societies in these states, and to include others from Idaho and British Columbia as rapidly as arrangements to that effect can be made.

These annual meetings of the Norsemen on this coast will do more than anything else to unite our people and to develop a proper appreciation for the beautiful songs and music of the Northland.

FRANK HAMILTON

C. F. JOHNSON



Why not patronize

**JOHNSON
&
HAMILTON
CO.**

Scandinavian

UNDERTAKERS

C. F. JOHNSON.

EMBALMERS AND FUNERAL DIRECTORS.

Phones: John 4406; Ind. A1021

2127 First Avenue,

SEATTLE, WASH.

GEO. B. HELGESEN

GRO CER

WHOLESALE and RETAIL

ALASKA OUTFITTERS

Importers of Norway and Swedish Specialties, viz:

EEL, MEATBALLS, DRIED MUTTON, "RYPER," FISHBALLS,
ANCHOVIES, SARDINES, GOATCHEESE,
NOGELOST, ETC.

1929 First Ave., Cor. Virginia St.

Telephones: Ind. 1384; Sunset Main 3428.

LIST OF SOCIETIES

Everett Singing Society, C. A. Clausen, president.

Portland Singing Society, Fred'k A. Tomte, president.

Ballard Singing Society, H. P. Gerring, president.

Seattle Singing Society, N. A. Christof, president.

Tacoma Singing Society, Dr. J. L. Rynning, president.

Parkland Singing Society, Geo. S. Johnson, president.

San Francisco Singing Society.

Note. The San Francisco Singing Society is a member of the Norwegian Singers Association of the Pacific Coast, but owing to unforeseen circumstances will not be present at the Sangerfest this year.

JAS EGGAN
CARL ERICSON

'Phone Independent
R 1131

Eggan
AND *Ericson*
SEATTLE.

FINE PHOTOS

1516 FIRST AVENUE, SEATTLE.
Second Floor.

Remember we move to our new studio, in the Eitel Bldg., 2nd
& Pike about November 1st, 1904.

C. N. Sandahl, Pres.

E. N. Sandahl, Secy.

Puget Sound Nursery and Seed Co.

SANDAHL & SON.

STORE: 1109 Second Ave. Phone, Brown 1531; Ind. A 1531.

Greenhouses: Taylor Ave. & Ward St. Phone, Red 6915.
Take Cedar or Virginia Car.

Main Nursery at Renton.

If you want seeds, trees, plants or cut flowers call at

SANDAHL & SON, 1107 SECOND AVE.

PUGET SOUND NURSERY AND SEED CO.

Norwegian Hotels and Boarding Houses



Hotel Ronning, Weller St. bet. 6th and 7th.

European Hotel, 625 Weller St.

Lane Street House, Cor. South 7th and Lane St.



Rooms 25c to 75c.

OLAF RONNING

Seattle

Regnor Dahl

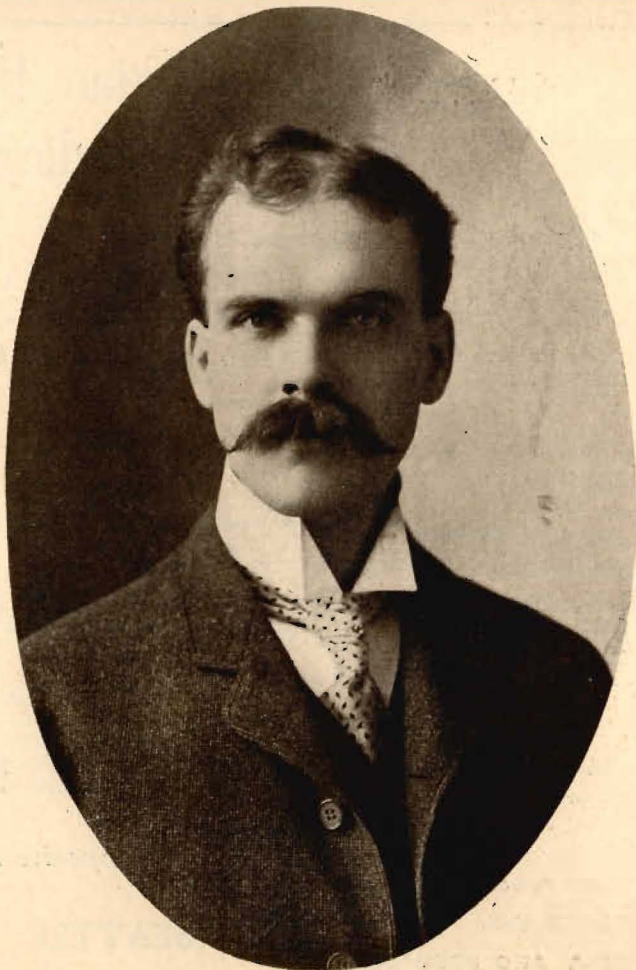
WHOLESALE AND RETAIL

GENERAL MERCHANDISE

Opposite Ferry Landing

WEST SEATTLE

WASH.



DR. A. O. LOE, President

T. J. King, Res. Ind. 7425. A. Winge, Res. Ind. X1920.
Office Phones. Sunset Main 649; Independent 649.

YARD PHONE, A 445.

KING & WINGE

SHIP AND BARGE BUILDERS, AND CONTRACTORS
AND SHIP BROKERS.

Two Marine Ways, and Yards at West Seattle.

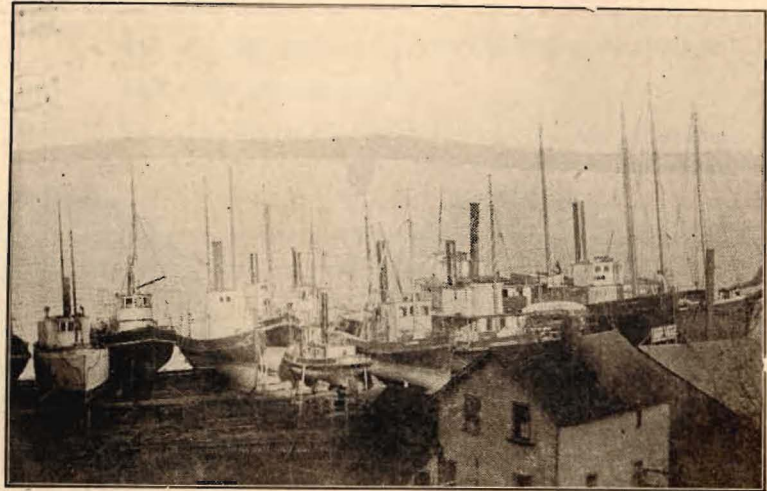
We also build on short notice all kinds of fishing
boats, seine boats and dories.

Special arrangements made with cannery companies
for hauling out, side-tracking and caring for tugs during
the winter season.

OFFICE, ROOM 4, COLEMAN DOCK SEATTLE, WASH.

P. S.—Caulkers and Carpenters furnished in Seattle.
All kinds of ship repairing done.

Puget Sound Agents for **HERCULES GAS ENGINES**



KING & WINGE'S YARD AT WEST SEATTLE.

Myhra's Millinery

Fourth Ave.,
Bet. Pike and Union

If you are looking
for Stylish Millinery
remember we can
sell cheaper than
any other house in
Seattle. Our goods
are the latest.

A call at our store
will convince you.



Telephone 943

SNOQUALMIE HOTEL



Superior Accommodations for Families at Very Moderate Terms.

JOHN A. HILYER, Proprietor.

COR. THIRD AVE. AND PIKE ST.,

SEATTLE



LOUIS LANGLOW
First Vice-President



ALBERT WINGE
Second Vice-President



JULIUS SUNDE
Corresponding Secretary

Photo by Eggan & Ericson.

Ask
Your
Dealer
for
Our
Make of
Shoes



Catalog
Sent
on
Request
from
You

George Could Always Sing Better when Wearing this
Brand of Shoes. The Same Applies to You.

The Washington Shoe Mfg. Co

SEATTLE, WASHINGTON

Men from all the walks in life come here for Clothes.

What's the Reason for it?

Any man who buys clothing here has the satisfaction of knowing that he's getting the very best clothing his money can buy.

We make it our business to see and to know that the men who buy clothes here, get the best. They must have it. They shall have it. We stick to this policy with steadfast devotion. This is the story in a nut shell. The chapter is ended.

Our Suits range in price, from \$10 to \$25.

JOHN LINDH CO.,

1132 Second Ave., near Pike Street.

For.....

PIANOS ORGANS

and all kinds of

Small Musical Instruments

Go to

D. S. JOHNSTON CO.

903 Second Ave.



C. J. CORNELIUS
Financial Secretary



OLAUS KJELLAND
Treasurer



N. A. CHRISTOF
Marshall

Photo by Eggan & Ericson.

P. F. Nordby

(INC.)

MARINE SUPPLIES, FISHER-
MEN'S OUTFITS, SHIP
CHANDLERS

Cordage of all kinds.

Oldest established house of its kind on the Coast.

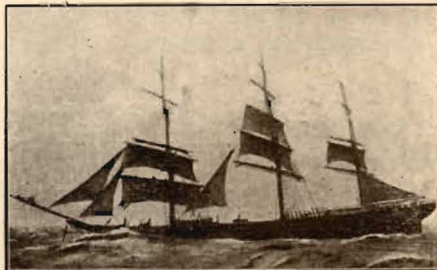
Correspondence solicited.

Branch house, 263-265 Ballard Avenue, Ballard, Washington.

SEATTLE HOUSE, FOOT OF UNIVERSITY ST.

Either Phone 992.

Telephones: Sunset Main 1201; Independent 1201.



SUNDE & ERLAND CO.

SHIP CHANDLERS AND
SAILMARERS

Jobbers of

Cordage, Cotton Duck, Marine Hardware, Tents, Awnings, Camp
Outfits, Etc.

Colman Dock

SEATTLE



REV. CARLO A. SPERATI, Musical Director

Phone Main 783

Independent 783

My motto:—"Good goods, reasonable prices, prompt delivery."

Gilbert Qvale

GROCERIES



Fresh and Smoked Meats
Fruits and Vegetables ❁

801 Pike Street

Seattle

We Have It!

If we haven't everything, our commercial connection with Norway, Sweden and Denmark enables us to get any Book, Magazine or Music, etc., printed in the Scandinavian language, on short notice.

VISELL & EKBERG

1308 PACIFIC AVENUE - TACOMA

Pioneer Book and Stationery Dealers.

Also Agents for all leading transatlantic steamship lines.

UNION MEAT CO.

Wholesale Butchers
and Packers ❁ ❁

Telephone Main 238

SUPPLYING SHIPS A SPECIALTY

1340 Pacific Avenue,

TACOMA, WASH.

Grand Concert Program

Grand Opera House, Sunday, July 31, 2:30 P. M.



Part One

1. Overture—"Jubilee"Bach
Wagner's Orchestra.
2. Song—"Naar Fjordene Blaaner"Paulsen
United Singers.
3. Vocal Solo—The Torreador Song from Carmen.Bizet
Wagner's Orchestra.
Herr Karl Schwerdtfeger.
4. "Landkjending"Grieg
Bass Solo by Harry T. Hanlin.
United Singers and Wagner's Orchestra.
5. Violin Solo—
a) NiagaraKuzdo
b) SerenadeDrdla
Edwin Cahn.
6. Vocal Solo—"Lullaby" from Jocelyn.....Godard
(Violin Obligato Edwin Cahn.)
Miss Emma Loe.
7. Song—"Fanevagt"Olsen
United Singers.
8. Vocal Solo—
a) Morning in the Village Dwells.....Korbay
b) In Mohac Field*.....Korbay
Harry T. Hanlin.

9. Song—Sigurd JorsalfarGrieg
a) Norrónakvad
b) Kongekvad
(Solos by Herr Karl Schwerdtfeger)
United Singers and Wagner's Orchestra.

INTERMISSION



Part Two

10. Medley—Norwegian Folk Music.....
Wagner's Orchestra.
Contest for Everett Prize Cup.
11. Song—"Brudéfården"Kjerulf
Everett Singing Society.
12. Song—"Brus høit"
Portland Singing Society.
13. Song—"Naturen og Folkets Vaar".....Udbye
Ballard Singing Society.
14. Song—"Ossian"Beschnitt
Seattle Singing Society.
15. Song—"Anne Knutsdotter"Reissiger
Tacoma Singing Society.
16. Song—"Valdrisvisen"Behrens
Parkland Singing Society.
17. Song—"Den store hvide Flok".....Grieg
(Soprano Obligato Miss Emma Loe)
United Singers.
18. Postlude—"Star Spangled Banner".....
Wagner's Orchestra.

*Note.—The defeat of the Hungarian army of 25,000 men by 200,000 Turks at Mohac on the 29th day of August, 1526, was one of the greatest disasters in the history of the nation. The proverb—refrain in this song—is still in constant use among the people.

THE WASHINGTON, SEATTLE'S LEADING HOTEL

The Singers Banquet
will be given at
The Washington



Monday Evening,
August First, 1904.

For Banquets or Dinner Parties, the Washington is now recognized by the people of Seattle to be the best on
the Coast.



HARRY T. HANLIN
Bass Soloist



MISS EMMA LOE
Soprano Soloist



EDWIN CAHN
Violin Soloist

Albert Hansen

**Goldsmith
Silversmith
and
Jeweler**

706 First Avenue,

SEATTLE

Office Flyer Dock

H. Blekum, Res. Phone, Brown 1861

Telephone Main 724

W. H. Stevenson, Res. Phone, Lake 1211

STEVENSON, BLEKUM TUG CO.

**Towing and Jobbing
Of All Kinds**

Scows for rent, ballast furnished and watering ships a specialty.

TUGS

"MYSTIC," "HARRY S.," "DOCTOR," "OSCAR B."



A. A. Anderson

Norsk Advokat

ANDERSON & COMBS

Thirty years' practice in
all courts, land office and
patent cases.

Notary Public

321-323 Arcade Bldg.,

SEATTLE

The Parkland Lutheran Children's Home

Located at
Parkland, Washington, cares for and educates homeless and destitute children.

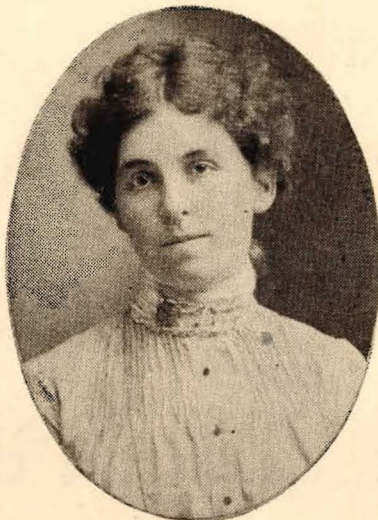
For particulars apply to

E. P. VILAND,

Parkland, Wash.



HERR KARL SCHWERDTFEGER
Tenor Solist



MRS. DOUGLAS ROSS
Accompanist

FINEST GRADE OF WORK IN
THE CITY

REASONABLE PRICES

Braas

Photographer

Special Rates to Societies
and Clubs

614 First Ave.

Seattle

UNION BAKERY AND

CAFE

The best of every thing in the Bakery line.
Fine meals served.

1413 SECOND AVENUE, Bon Marche Block.

Telephone Main 880.

Independent 880.

J. H. Holland, Pres.

Jos. B. Aslakson, Sec. and Treas.

R. L. P. Wallace, Vice-Pres.

J. H. HOLLAND & CO.

Merchant Tailors

ESTABLISHED 1890

1207 First Avenue,

SEATTLE



EVERETT SINGING SOCIETY

... L. P. Opsvig ...



INSURANCE, REAL ESTATE, TIMBER LANDS.

Office, American Nat'l Bank Bldg.,

Everett = - Washington

HOTEL NORDAL

Owned and Managed by
O. K. NORDAL,

Opposite G. N. Depot.

3007 Kromer Ave.,

EVERETT, WASH.

..... JOHN NORMAN

**CLOTHING, MERCHANT
TAILORING AND UN-
CALLED FOR SUITS ✦**



EVERETT

WASH.



TACOMA SINGING SOCIETY

DAVIS, HORTON & CO. LINDBERG-YOUNGLOVE

Complete Housefurnishers

Wholesale and Retail

Cor. Pacific Ave. and 19th St., TACOMA, WASH.

J. J. Bergoust, Pres. L. Streeter, Sec'y and Treas.
F. R. Davidson, Vice-Pres. and Mgr.

Star Diamond Candy Factory

Wholesale Manufacturers of

UP-TO-DATE CONFECTIONS

FINE PACKAGE GOODS A SPECIALTY

1724-26 Pacific Ave., TACOMA, WASH.

GROCERY CO.

WHOLESALE GROCERS

and Importers of

SCANDINAVIAN SPECIALTIES

TACOMA, WASH.

LINDSTROM & BERG,

CABINET MAKERS

Office, Store, Bank and Bar Fixtures, Wood Carving

Hard Wood House Finish and Stairs

Telephone Main 469

Cor. 21st and Commerce Sts., TACOMA, WASH.



BALLARD SINGING SOCIETY "NORDEN"

H. P. Gerring, Ballard Phone Black 764.

A. Barth, Seattle Phone Black 1911.

GERRING & BARTH, GENERAL CONTRACTORS

Estimates Given on All Kinds of Concrete, Paving, Sewer and
Construction Work.

BALLARD, WASH.

Our most effective advertising is the value we give at each
prices. You who have bought here know it. You who have not
bought here ought to know it.

BOSTON CLOTHING HOUSE

BALLARD, WASH.

THOS. HEGDAHL & CO.

CARPETS
FURNITURE
STOVES

THE LEADING HOUSE FURNISHERS OF BALLARD

John 131

Cor. Second and Burke

JOHN JOHNSON

BALLARD, WASH.

Pioneer Grocer

Oldest and Largest Grocery House in the City.

Send me your produce and your mail orders.

I can and will please you.

Tel Main 5.

274-276 BALLARD AVE., BALLARD, WASH.



PARKLAND SINGING SOCIETY

The Pacific Lutheran Academy and Business College



The only Lutheran High School on the Pacific Coast. Thorough preparation for College, for Business, for Teaching and for Christian Citizenship. For Catalogue, Address

N. J. HONG, Principal

Parkland, Wash.

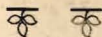


PORTLAND SINGING SOCIETY

DR. A. O. LOE

Physician and Surgeon.

Office: 213 Pike Street.



'Phones: Green 156. Ind. L 273

SEATTLE, WASH.

Harry E. Wilson. O. B. Thorgrimson

Wilson & Thorgimson

Lawyers

Sunset 'Phone Main 1791.

403-404 Marion Block, Seattle.

Res.: Ind. 1754. Office: James 1391
Ind. A 926

N. A. SWANBERG, D. M. D.

Dentist

Pythian Building, Cor. First Ave & Pike.

SEATTLE, WASH.

'Phone: Main 148

M. J. LUND

Norsk Advokat

Notary Public. Practice before all courts.

330 Arcade Bldg., SEATTLE.

John H. Perry Howard A. Hanson

Perry & Hanson

Attorneys

Phone Main 5803

604 Bailey Bldg., .. SEATTLE, WASH.

Practice in all courts. 'Phone Oak 1551.

WILLIAM C. BERG

Lawyer

Fourth Floor, 402-3 Pioneer Building.

Seattle, Wash.

Res. 'Phones: North 154. Ind. R 7285.

DR. LOUIS S. SCHREUDER

Physician and Surgeon.

Office, Snoqualmie Hotel, Pike near 2d.

Phone James 3981.

Office hours: 10 to 12, 2 to 4, 7 to 8.
SEATTLE, WASH.

Office Telephone: Main 1024.

DRS. JANSON & JANSON

Office Cor. 2nd and Pike.

Hours: 10 to 12, 2 to 4, 7 to 8.

Sundays, 11 to 12.

SEATTLE.

Samuel S. Langland

Attorney at Law.

505 New York Block

SEATTLE,

WASH.



J. W. OYEN
Leader of Everett Society



CARLO A. SPERATI
Leader Tacoma Society



H. S. HELGASON, Jr.
Leader Ballard Society

DR. E. A. TROMMALD

Skandinavisk Læge

Office: 1108 Pacific Ave., Bernice Bldg.

TACOMA, WASHINGTON

DR. J. L. RYNNING

French Blk, TACOMA

J. W. OYEN

Lawyer

(Norsk Advokat)

Rooms 319-320 Greenberg Blk, Corner
Hewitt and Wetmore

EVERETT, WASH.

'Phone John 2836

DR. JOHN R. BROWN

Office and residence

1318½ Pacific Ave., TACOMA, WASH.

DR. A. J. GUSTAVESON

Dentist

CROWN AND BRIDGE WORK

Berlin Bldg., Cor. Pacific Ave. and 11th St.

TACOMA, WASH.

DR. P. L. OPSVIG

1909 Hewitt Ave.

EVERETT, WASH.

Office: 1101½ So. Tacoma Ave.

DR. C. QUEULI

TACOMA, WASHINGTON

JOHN BLAAUW

Newspaper Writer

Publisher of "Tacoma Tidende," which
is read by 60,000 Scandinavians in West-
ern Washington. Sent free on trial.

TACOMA, WASH.

Phone Ind. L 1840; Res. Red 9007

307 1st Ave. West

Hjalmar O. Anderson

Teacher of

MANDOLIN AND GUITAR

Director of Mandolin Orchestra

SEATTLE
52-53 Holyoke Blk.

TACOMA
Chickering Hall



GEO. S. JOHNSON
Leader Parkland Society



J. O. BERG
Leader Portland Society



H. P. SATHER
Leader Seattle Society
Photo by Eggen & Ericson.

Telephone Main 4773

Tanning and High-Grade Rug Making

C. C. BERG

Manufacturers of Fine Furs

Sealskin Garments a Specialty
Taxidermy in All Its Branches

When at the St. Louis Exposition don't fail
to see the Taxidermy Exhibit in the Forestry,
Fish and Game Building,

C. C. BERG, Exhibitor.

Home Office

1425 FIRST AVE.,

SEATTLE

Lawson & Tweet

Gowns

405-7 ARCADE BUILDING, SEATTLE

Phone Lake 1981

Ole B. Lien

Harry B. Selvig.

LIEN'S PHARMACY

Drugs, Chemicals, Toilet Articles

Prescriptions a Specialty

1102 Tacoma Ave., TACOMA, WASH.

Telephone James 141

INTERBAY PHARMACY

J. H. Castberg, Prop.

Graduate of Royal University, Christiania

TAKE BALLARD CAR ON WESTERN
AVENUE AND STOP AT INTERBAY.

Siver T. Larsen

Jacob Meland

Trommald's Pharmacy

Telephone James 2316

Drugs, Chemicals and Toilet Articles
Prescriptions a Specialty

1555 TACOMA AVE., TACOMA, WASH.

Corner Seventeenth Street

*Robert Dahl, Investments
Mining*

428 NEW YORK BLOCK SEATTLE

FRENCH & NELSON

The Reliable Dealers

In Clothing, Hats, Furnishings and Shoes,

Dry Goods, Notions and Ladies' Suits.

221-223 Ballard Ave.,

BALLARD, WASH.

H. O. Larsen

H. A. Selle

Artistic Signs, Pictorial Painting

Painting, Graining, Staining, Kalsom-
ning, Paper Hanging

Seattle Sign Co.

Phone Independent 1825.

1215 FIRST AVENUE, P. O. BLOCK.

MILLER BROS.

Wholesale

Butter, Eggs, Cheese, Oysters

1538 Commerce St., TACOMA, WASH.



SEATTLE SINGING SOCIETY



Going on a Trip to the Old Country?

IF YOU DO—

You do want to travel on a new, fast, up-to-date, Express Royal Mail Steamship!

You do not want to go on a slow, poor, cheap, freight boat!

You want to go in good congenial company, all the way!

You want a through Sleeping Car berth!

You do not want to be bothered with your baggage and custom-house inspection!

You do not want to fall into hands of hotel runners and hackmen!

WHAT YOU DO WANT IS—

A CONTINUAL ROUND OF PLEASURE AND TO BE RELIEVED OF ALL TROUBLE.

You can derive the benefit of all these conditions by joining our



Next Excursion From Seattle, Sept.

17th 1904

Personally Conducted by



Hon. John P. Jacobsen

Royal Danish Vice-Consul, Seattle, who is going to Scandinavia on this Excursion, and who has kindly consented to look after the welfare of our passengers.

Call on us for testimonials and lowest rates.

A. CHILBERG

Pres. Scand. Am. Bank.

Agent all lines.

SEATTLE, WASH.

JOACHIM ARNESEN, Manager.

Company of Norman Anna Male Cross - Tacoma



PIANOS AND ORGANS

ALLEN & GILBERT RAMAKER CO. The oldest and largest Piano and Organ House in the Pacific Northwest.

Portland, Oregon, Corner Sixth & Morrison

Everett, Wash., 1803 Hewitt Ave.,

Seattle, Wash., 1406 Second Avenue