

54th SANGERFEST

AUGUST 22 - 23 - 24, 1963

TACOMA, WASHINGTON



*Pacific Coast Norwegian
Singers Association*

HEARTIEST CONGRATULATIONS
PACIFIC COAST SINGERS' ASSOCIATION

And best wishes for a most successful sangerfest

Our sincere thanks for the gratifying harmony and cooperation we have enjoyed with your Association in furthering our common aims for the preservation of Norwegian cultural values.



We invite you to join the LARGEST NORWEGIAN SOCIETY on the North American Continent. Fraternal, social and cultural benefits for the entire family. Unequaled Life and Hospital Insurance Benefits.

FOR INFORMATION CONTACT

Tormod Rekdal, Assoc. FIC, Regional Mgr.
528 West Pender St., Vancouver, B.C.

J. Henry Carlson, Division Manager
2305 Rucker Ave., Everett, Wash.

Erling Langli, Division Manager
12227 Dayton Ave. No., Seattle, Wash.

Nels Bryhni, Assoc. FIC. Div. Mgr.
4716 Alameda Blvd., Spokane, Wash.

SONS OF NORWAY

1455 West Lake Street

Minneapolis 8, Minnesota

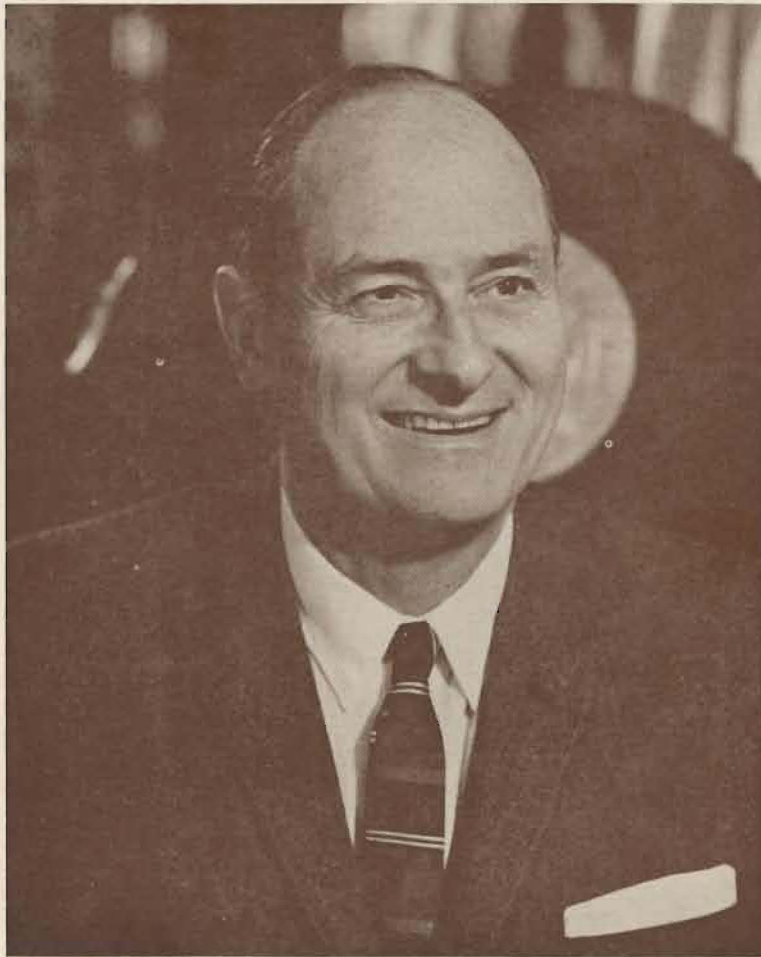


**NORWEGIAN MALE CHORUS
OF SEATTLE**

DONOR:

AUGUST WERNER
SEATTLE, WASHINGTON

1966



GREETINGS:

Years ago, as a student, I read a statement by Thomas Carlyle, the great British writer, that has always remained with me. It went something like this: "All deep things are song. Song seems somehow the very central essence of us; as if all the rest were but wrappings and hull."

I am happy that your abilities with this "central essence" will be exhibited this year in our state of Washington. Too many years have passed since your last visit. During your stay I hope you also will find time to visit widely in our state to sample the rich and varied attractions we have to offer. I can assure you that no matter where you go, you will receive a warm and wholesome welcome from Washingtonians. Best wishes for a successful and melodeous 54th Songfest.

Sincerely,

ALBERT D. ROSELLINI
Governor



AUGUST WERNER
Director in Chief



HENRY W. RINGMAN
Assistant Director in Chief



Greetings and Welcome!

It is always a pleasure for Tacomans to hear the fine music of the Pacific Coast Norwegian Singers Association.

We are constantly thrilled with the harmony of our own Normana Male Choir and look forward to the blending of their voices with those excellent voices of our neighbors. I know Tacoma will be happy to experience once again the melody of your beautiful songs.

Thus, as the Mayor of Tacoma, I extend to you greetings and a most cordial welcome.

I hope you have an enjoyable time, and that you take away pleasant memories when you depart.

Please remember that the office of the Mayor is open to serve you.

Yours very truly,

H. M. TOLLEFSON
Mayor



ROALD REITAN

Guest Soloist



TOM KAARHUS
Director
Eugene Norsemen



ELIAS BREIDFJORD
Director
Bellingham Male Chorus



ALLAN CLARKE
Director
Normanna Male Chorus



PRESIDENT'S MESSAGE

My personal welcome to all my fellow singers, their wives, families and friends. We intend your visit here with us to be a joyous occasion to remember.

No experience in life is more rewarding than that of good fellows singing together, and, no friendship more lasting than the fellowship formed in a singing society. We look forward each year with great expectation to the gathering of the Sangerforbund and the renewing of acquaintances.

Let us hope we can meet for many, many years yet to come, to bring the joy of our music into the hearts of others, and to carry forward the tradition of our forefathers.

Willard Dergan

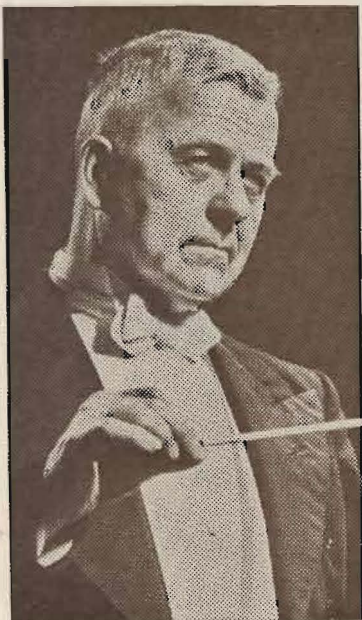
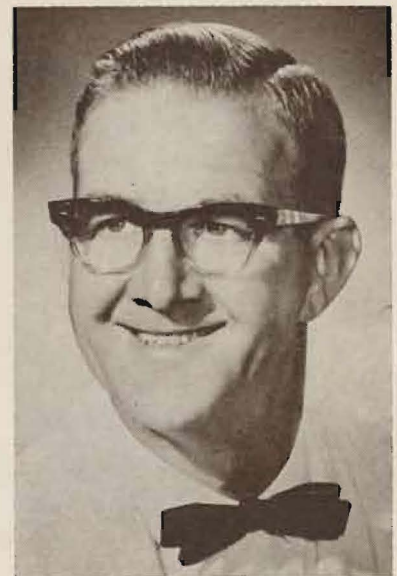
Once again, after 10 years, it is the pleasure and privilege of the Normanna Male Chorus to welcome to the Pacific Coast Norwegian Singers to Tacoma.

Personally, I welcome the opportunity to stand shoulder to shoulder once more with my Brother Singers, and sing the songs of Norway, the land of my forefathers, and of America, the land of my birth.

So again, on behalf of the Tacoma Singers, a hearty welcome, and my your stay with us be a pleasant one.

Cordially,

HOWARD KNUTSON
Pres., Normanna Male Chorus

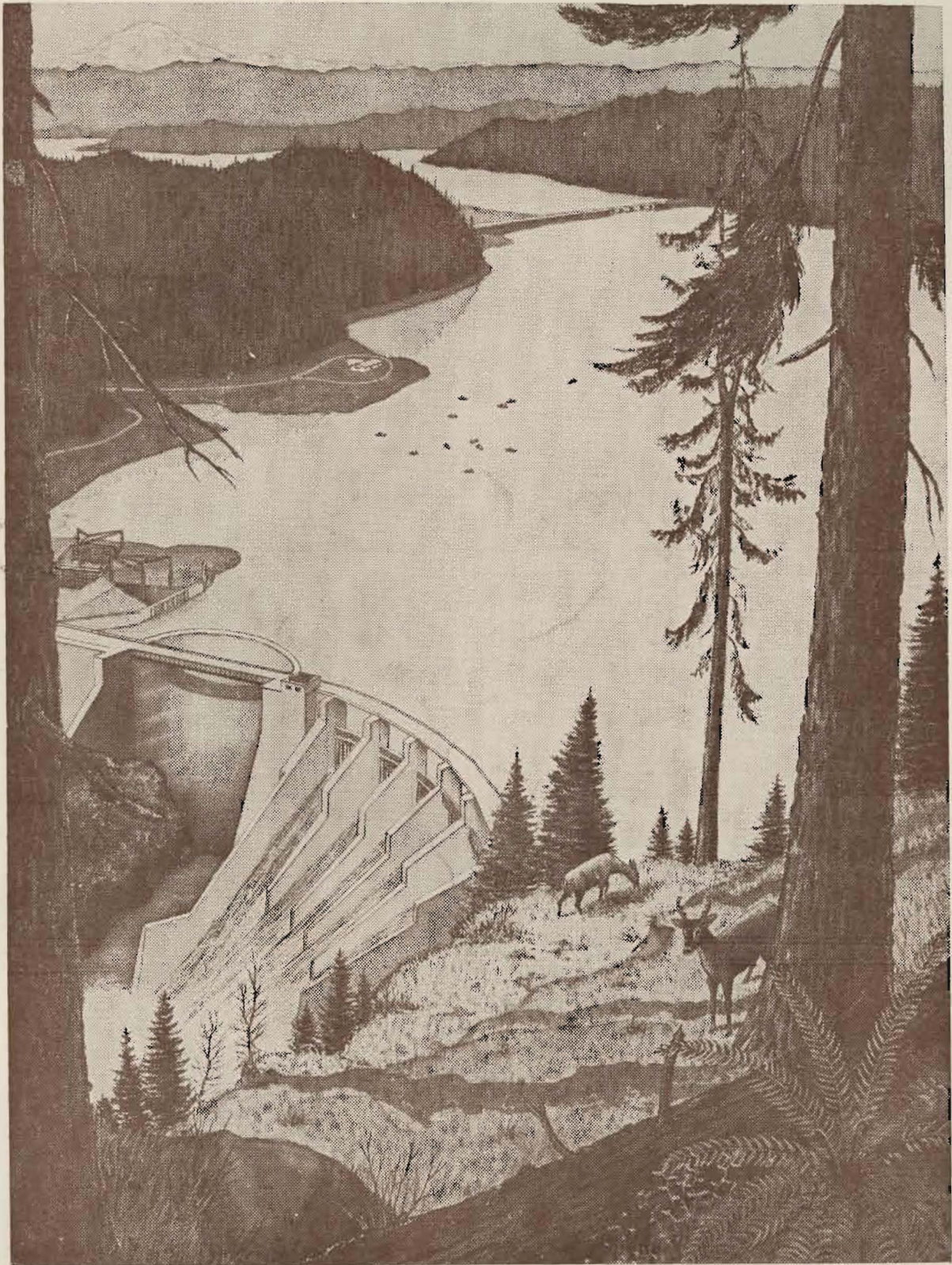


Cordial greetings to our friends in the Sangerforbund!

Gunnar and Dorothy Malmin

Professor Malmin was the leader of the Normanna Male Chorus for 16 years and also for the West Coast Norwegian Singers Ass'n and recently returned from an extended European tour with the Pacific Lutheran College "Choir of the West".

P.S.—Also, greetings from "The Old Country."



MAYFIELD LAKE . . . Tacoma City Light's newest "scenic storehouse of power" Beautiful Mayfield Lake, located in the heart of neighboring Lewis County, has 33 miles of scenic shoreline and is destined to become one of the primary tourist attractions in Southwest Washington. Mayfield Lake and Dam—another milestone in Tacoma City Light's continuing program of power and recreation working together.

TACOMA CITY LIGHT

Fine Service and low rates since 1893

Land of Saga and Song

NORWAY, where its storm-browed and rampired coastlands breast the perpetual onslaught of her Northern ocean, belongs to the primordial data of Earth. The land itself has an ageless and legendary complexion, a racial heritage forever rich in prodigies of the human mind and men's adventuring.

Norway entered upon the arena of history with the advent of the Viking Age about the 7th century, A.D., its people possessing and advanced and original culture, with a long tradition of favored poets and a wealth of poetic expression.

The great Mythology of the Norse had a firm and abiding influence on men's thoughts, way of life, and ambitions. Its numerous and restless pagentry of Divine Beings represented in their various aspects a spiritual affinity to the powers of nature and the complex forces of human life.

The introduction of Christianity in the 10th Century did not deter but rather heightened the almost explosive drive of the Viking Age, until its decline in the 12th Century. All through this great era of the North, Norway played her important role, which saw her ships widen the world's borders by discovery and settlement of new lands, and the opening of sea-roads toward the West which dramatically affected the future of Europe and the rest of the world.

Even today, in our modern age, her people seem still to possess some of the racial genius of the past, together with the inherent qualities of their natural environments. They still know the challenge and the irresistible lure of ships and Earth-embracing seas. About them is a trace reminiscent of steadfast mountains, the forests and moors, the valleys and highland fells, and skerries and islands,

and Northlands adrift on the bosom of time through summer and sun.

Again Norway has resumed her place in the top rank among the nations. She has once more mothered a host of eminent persons, including Statesmen, Explorers, scientists, scholars, and artists, together with great poets, novelists and dramatists; also immortal music from the hands of her composers.

This creative exuberance affected the dreams and aspirations of people in every walk of life. The lyrics of the poets and the music of her mighty tune-smiths needed the voices of singers to be heard and appreciated. Soon every hamlet and town in the land were filled with song, and group singing became a social and cultural asset to every community.

Wherever a Norwegian would fare in the world the song of Norway was dear to his heart. From the East Coast of America, and onward to the Middle-West, and finally to the Pacific Coast this heritage of music and song swept with each succeeding wave of immigration.

Male Chorus singing has been an integral part of Norwegian affairs in all the Coast cities for almost three-fourths of a century, and continues as an important factor in presenting and infusing a part of our cultural heritage into the life of our Western world.

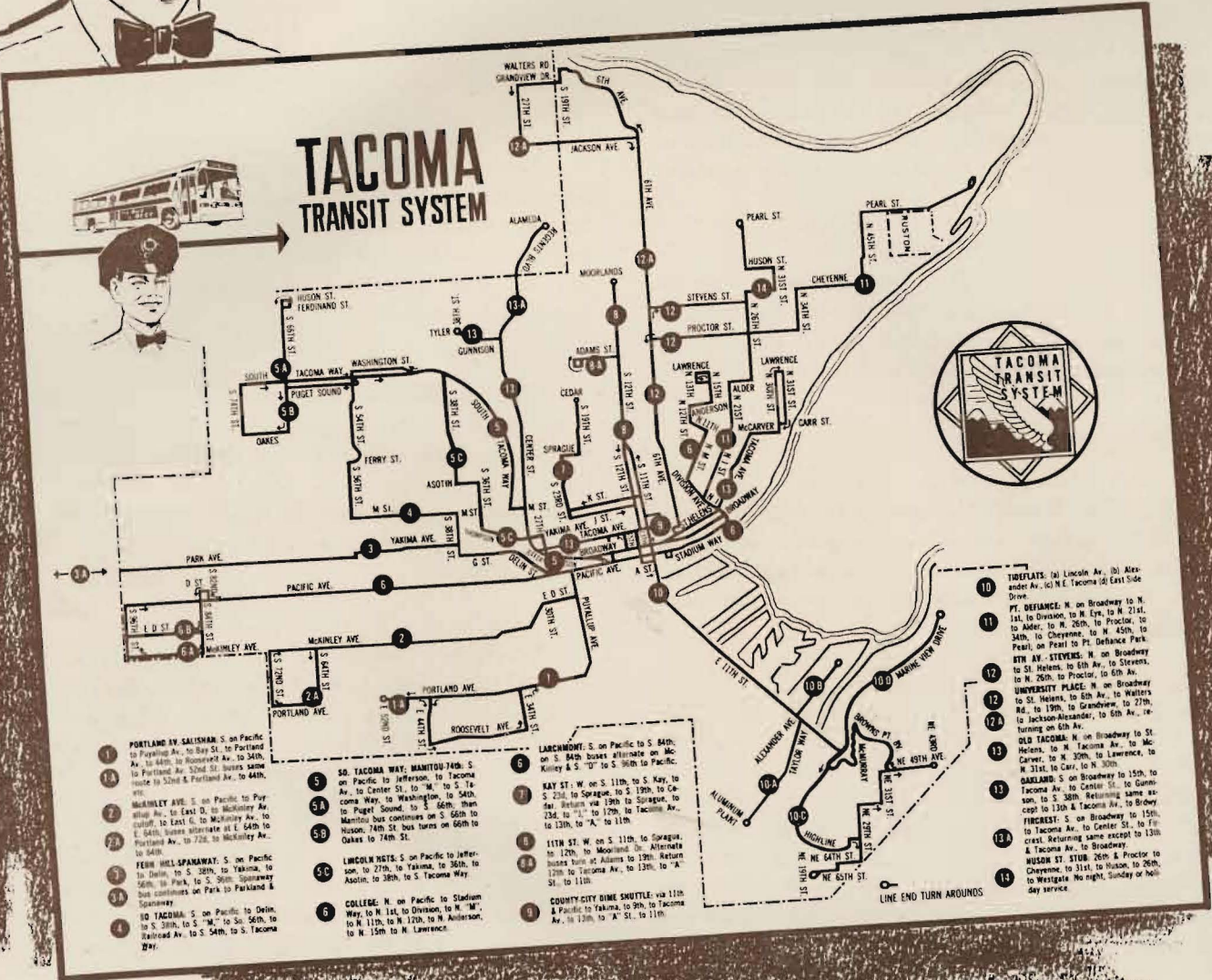
Since the year of 1902, when the different singing organizations of the Coast organized the Pacific Coast Norwegian Singers Ass'n, there have been successive Sangerfests sponsored every year, with few exceptions, in the various Coast cities, culminating this year in Tacoma, as the Fifty-Fourth Sangerfest.



Welcome to Tacoma

TACOMA TRANSIT...

at your service



Mayor Harold Tollefson and the entire City Council bids you a warm welcome to our city. An easy and economical way to visit our parks, beaches and other scenic historical points of interest is by our municipally-owned Tacoma Transit System. We hope you will find the above route map useful in your visit to our All-American City.

CHARTER SERVICE AVAILABLE

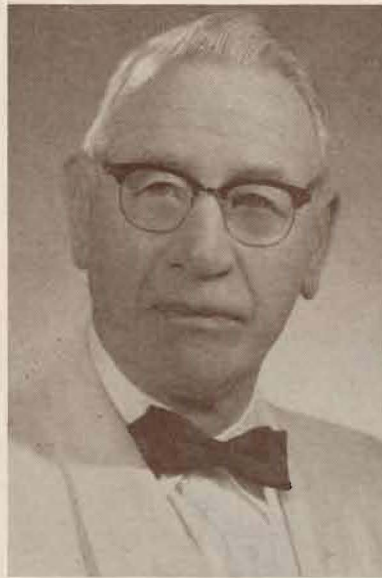


TACOMA TRANSIT System

MUNICIPALLY OWNED



BYRON R. HOLMGREN
Corresponding Secretary



OLAF BOEN
Treasurer



HARVEY MATHIESEN
Grand Marshal



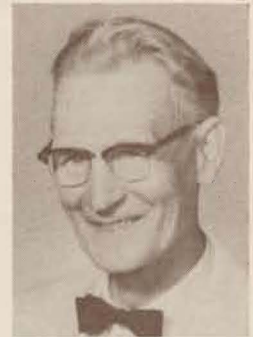
ROBERT TJORSTAD
First Vice-President



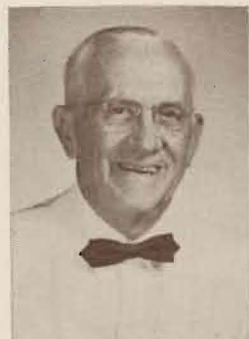
M. A. STRAND
Second Vice-President



G. W. TOLLEFSEN
Third Vice-President



OSCAR MELBY
Fourth Vice-President



WILLIAM MORCH
Fifth Vice-President



FRED S. HESS
Sixth Vice-President



KARL C. DAHL
Recording Secretary

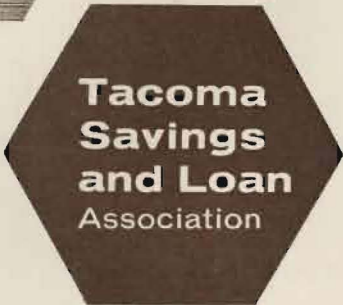


T. GORBACHEFF
Director
Oakland Glee Club



Sixty-four years of *Strength*
Stability
Service

Tacoma's Oldest
... Since 1889



Home Loans Designed . . .
with tomorrow in mind

TACOMA SAVINGS & LOAN ASSOCIATION

Home Office 9th and A Streets

Branches . . . Lakewood — Parkland

COMPLIMENTS OF



The Diamond Store of Tacoma

1132 Broadway



Diamonds — Watches — China

Crystal — Gift Items

Selden's

Furniture



Carpets

Draperies



Linoleum

Downtown Tacoma

Lakewood Center

Moses Lake

Olympia

Home Furnishings Specialists

Greetings to the Singers

RICHARD'S CAFE



SMORGASBORD STEAKS

SEAFOOD

—

BANQUET ROOMS



GR 4-2063

8201 Pacific Ave.

Schedule of Langerfest Dates

Headquarters – Winthrop Hotel

AUGUST 22, 1963 THURSDAY,

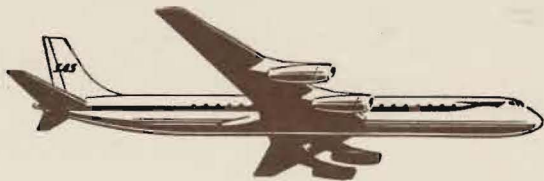
- 10 a.m. to 8:00 p.m. Registration Winthrop Hotel Lobby
8:00 p.m. Reception Crystal Ballroom
9:15 p.m. Smorgasbord T.A.C., 733 Commerce St.
10:30 p.m. Dance Crystal Ballroom

FRIDAY, AUGUST 23, 1963

- 10:00 p.m. Rehearsal Normanna Hall, 15th & K St.
12:00 a.m. Singers Luncheon Normanna Hall
Courtesy of Sons & Daughters of Norway
12:30 p.m. Ladies Luncheon Lakewood Terrace, York Room
Busses leave Commerce St. entrance of Winthrop Hotel at 11:30 a.m.
2:00 p.m. Final Rehearsal Mt. Tahoma High School Auditorium
66th and Manitou Way
8:00 p.m. Grand Concert Mt. Tahoma High School Auditorium
66th and Manitou Way
10:50 p.m. Refreshments & Dance Crystall Ballroom

SATURDAY, AUGUST 24, 1963

- 10:00 a.m. Business Meeting Crystal Ballroom
6:00 p.m. Banquet Crystal Ballroom
9:30 p.m. Grand Ball Roof Garden



Greetings Singers!

Always fly SAS to Scandinavia and enjoy traditional Scandinavian Hospitality on board spacious modern jet planes.

Maybe you are planning a concert tour to the "Old Country"
If so, ask us about our our inexpensive group rates.

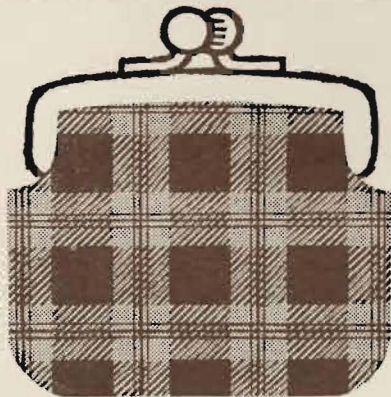


SCANDINAVIAN AIRLINES SYSTEM

414 University Street, Seattle, Wash. 98101

MUtual 2-5911

Home loans cost less at Pacific First!



A MUTUAL SAVINGS INSTITUTION

**Pacific First Federal
Savings and Loan Association**

BELLINGHAM • SEATTLE • TACOMA* • LONGVIEW • PORTLAND • EUGENE • SPRINGFIELD

*HOME OFFICE • ESTABLISHED 1907



UNDER THE BIG
REVOLVING CLOCK
11th and Pacific
Phone FULTON 3-2511
Lakewood at Villa Plaza
Phone JUNiper 8-6681



C.O. LYNN CO. *Mortuary*

Providing Fine Funeral Services Since 1905

717-719 Tac. Ave. So. TACOMA, WASHINGTON Phone MA 7-7745

AUGUST WERNER
Director in Chief
HENRY RINGMAN
Assistant Director in Chief

ROALD REITAN
Lyric Baritone
Guest Artist

VIVIAN VENABLES
BEVERLY LOGAN
Accompanists

FESTIVAL PROGRAM

GRAND CONCERT

FRIDAY, AUGUST 23, 1963
8:00 P.M., MT. TAHOMA HIGH SCHOOL

Now Let Every Tongue Adore Thee *Bach*
Let There Be Music *Williams*
Joagersang *Arr. A. Werner*
I Believe *Ades*
The Lost Chord *Sullivan*

GRAND CHORUS

1 *Allerseelen* *Strauss*
2 *En Drom* *Grieg*
3 *Tonerna* *Sjoberg*
4 *Svarta Rosor* *Sibelius*
5 *Nemico Della Patria, aria from "Andrea Cheiner"* *Giardano*

ROALD REITAN—Soloist — Accompanist Beverly Logan

Dear Land of Home *Sibelius*
Hostandagt *Reissiger*
Lassie O' Mine *Walt*
Sanger-Polka *Moller*
Badn Lat *Grieg*

ROALD REITAN and GRAND CHORUS

1 *A Hundred Little Loves* *Klemm*
2 *Now Sleeps The Crimson Petal* *Quilter*
3 *Drinking Song* *Paulenc*
4 *Vienna City of Dreams* *Sieczynski*

ROALD REITAN—Soloist — Accompanist Beverly Logan

I Skumringen *Lindoe*
Klara Stjarna *Wetterling*
Sigurd Jorsalfar (a) Norona Kvad (b) Konge Kvad *Grieg*
Landkjending *Grieg*

ROALD REITAN and GRAND CHORUS

DISTRICT LODGE NO. 2
Sons of Norway

*Sends their Greetings and Best Wishes
for a Successful Sangerfest*

J. HENRY CARLSON, President

VIOLET MOSSBRUCKER, Secretary

Compliments

Christian A. Stang

CONSUL OF NORWAY

Seattle, Wash.



Stang Travel Service

434 White-Henry Building

MA 3-3957

Seattle, Wash.

Wishing You 365 Days of Clear Sailing

TACOMA
MARINE SUPPLY, INC.



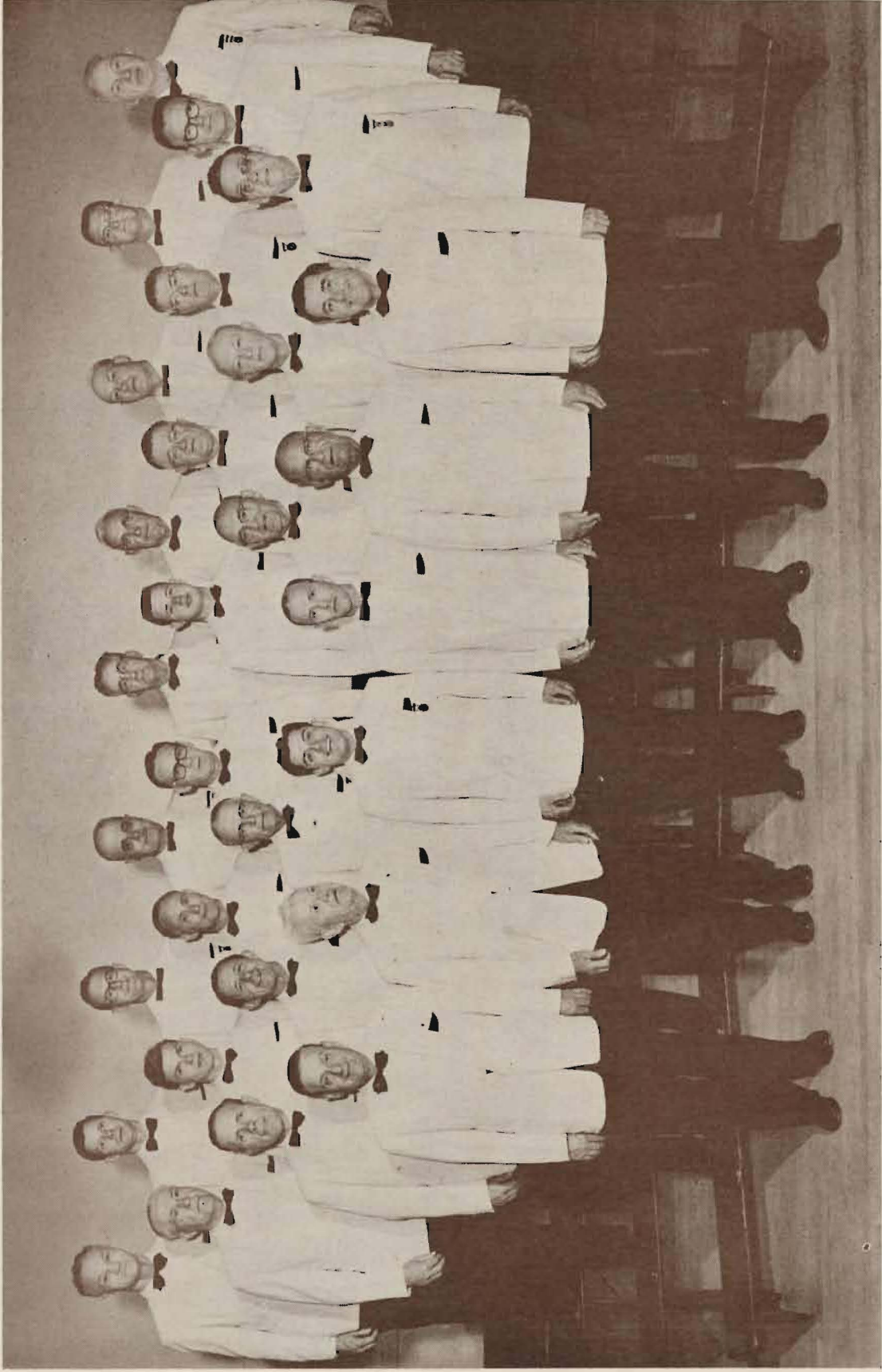
Boat & Marine Supplies

Marine Hardware



759 Port of Tacoma Road

BR 2-3223



Normanna Male Chorus — Tacoma, Washington

FIVE MUTUAL FUNDS

Investors
DIVERSIFIED
SERVICES, INC.
FOUNDED 1894

Pension and profit
sharing services
available

CALL
YOUR *Investors man*

He represents INVESTORS Diversified Services, exclusive national distributors for five mutual funds.

For a prospectus-booklet on one of these investment funds, call the number below or clip this complete advertisement and mail it today to your INVESTORS man.

HARLOW B. STORDOCK

DIVISIONAL SALES MANAGER

2000 Fifth Ave.

Seattle

It's great to

get cookin' with

Nalley's

FINE FOODS

Norselander

VIEW DINING

DELICIOUS
SEAFOOD
CHICKEN
OR STEAK
LUNCHEON OR DINNER



Dancing Monday thru Saturday

Free Parking

300 - 3rd Ave. West, Seattle AT 4-8240

Mayflower
MOVING • STORAGE



FU 3-3591

For your next trip to Norway

CALL **SU 4-2760**

Your friendly Norwegian travel agent in Ballard



1736 N. W. Market St.

SU 4-2760

Seattle, Wash. 98107

Norskebutikken i Ballard

Fra Norge har vi ost og kjeks og alskens gode saker, og her vi lager fiskemat, pølser og pålegg som riktig smaker. Så har vi fra kaffekjeler, vaffeljern til norske ukeblader som Hjemmet, Allers, Illustrert og Alle Kvinner; samt mange, mange ting du ingen andre steder finner.

**BALLARD DAIRY &
DELICATESSEN**

EINAR PER JOHNSEN

2248 N.W. Market St., Seattle 7, Wash. SU 3-8288

VESTKYSTENS STØRSTE NORSKE SPESIALFORRETNING
Past ordress besorges



Normanna Ladies Auxiliary — Tacoma, Washington

Officers: President, Mrs. George Jacobsen; Vice President, Mrs. Milt Andreasen; Secretary, Mrs. Nels Nirberg; Treasurer, Mrs. Ole Mathisen.

Front Row: Mrs. Martin Heglund, Mrs. Paul Riebe, Mrs. Lena Mykland, Mrs. Andrew Wold, Mrs. Nels Norberg, Mrs. George Jacobsen, Mrs. Bjørn S. G. B. Arnason, Mrs. Alvin Sather, Mrs. Thor Standal, Mrs. Howard Knutson, Mrs. Trygve Lindoe, Mrs. Thor Tollefson.

Members not pictured: Mrs. Milt Andreasen, Mrs. Carl Caspersen, Mrs. Ole Landseth and Mrs. Willard Dugan.

Greetings to the Singers



TACOMA BOAT BUILDING



ARNE STROM

ARNOLD STROM

NO MONEY DOWN

ON ANY CAR ON OUR LOT

BUY ON THE GRASSI-TORELLI PLAN

1. No interest or carrying charges on any balance we finance.
2. No Security required.
3. We don't want your furniture.
4. Your signature only!
5. We finance servicemen!
6. Drive the car one month before you make a payment!
7. Very low monthly payments!
8. We approve our own credit!

G. M. AUTO SALES

2132 Jefferson Avenue

FU 3-4755

BR 2-9484

**American Plumbing
& Steam Supply Co.**



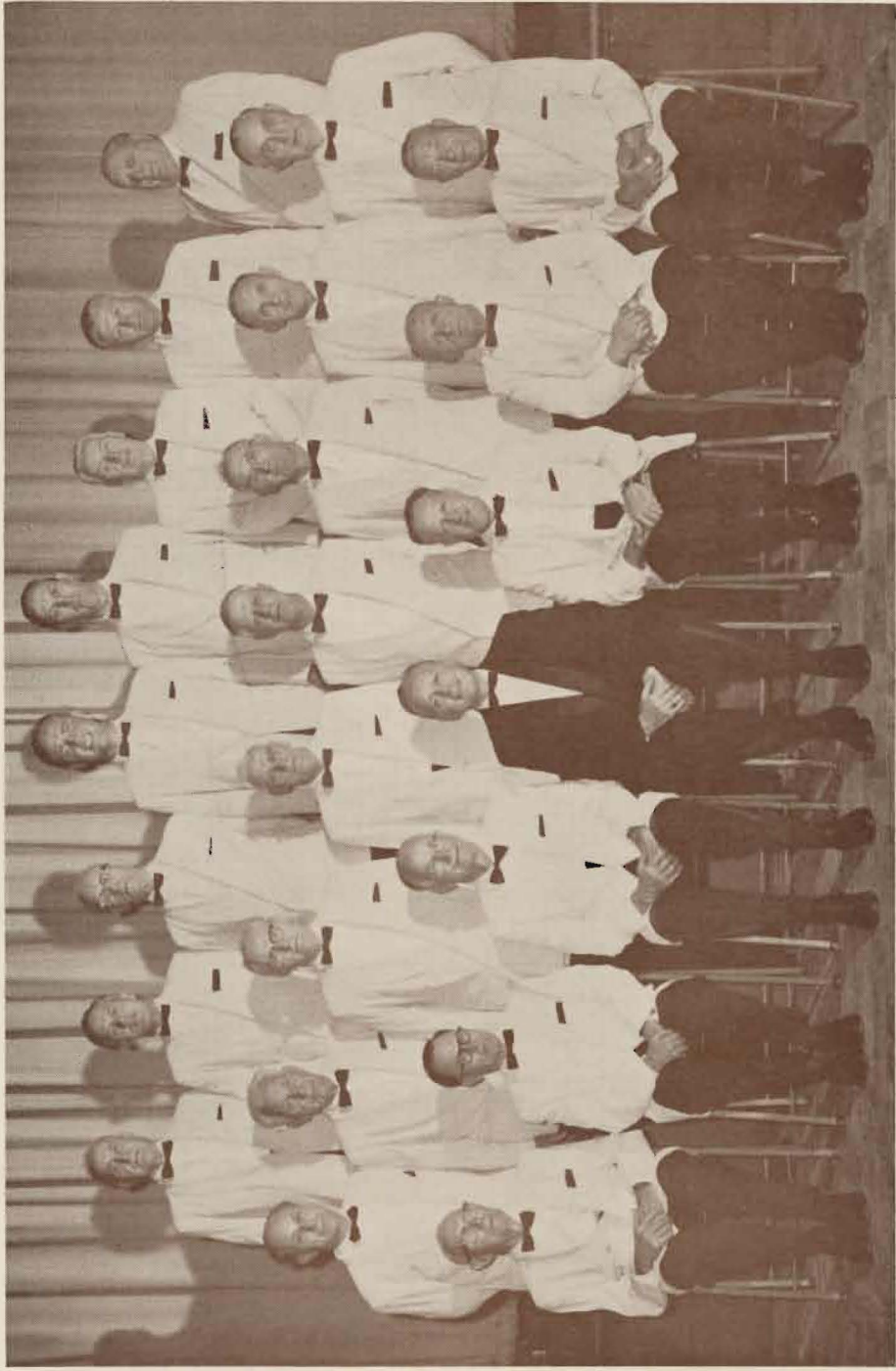
Steam, Industrial & Marine Supplies
Wholesale Plumbing and Heating



1908-16 Pacific Ave. — Tacoma

FU 3-3661

Seattle — VE 9-1833



Norwegian Male Chorus of Los Angeles, California

wh

Winthrop Hotel

Convention Headquarters

Welcomes Norwegian Singers

If we may make your stay more pleasant in any manner,
please call on us.

WILLIAM A. HAMMAN & STAFF

Now!

The Sabre Room

Live Entertainment — Cocktails

Served by "The Greek"

Now!

The Three Keys

for the Ultimate in Dining

(Lobby Level)

Welcome!

Pacific Coast NORWEGIAN SINGERS



Peoples Store

DOWNTOWN ● LAKEWOOD

ALFRED'S RESTAURANT



Visit the Bubble Room
for your favorite cocktail

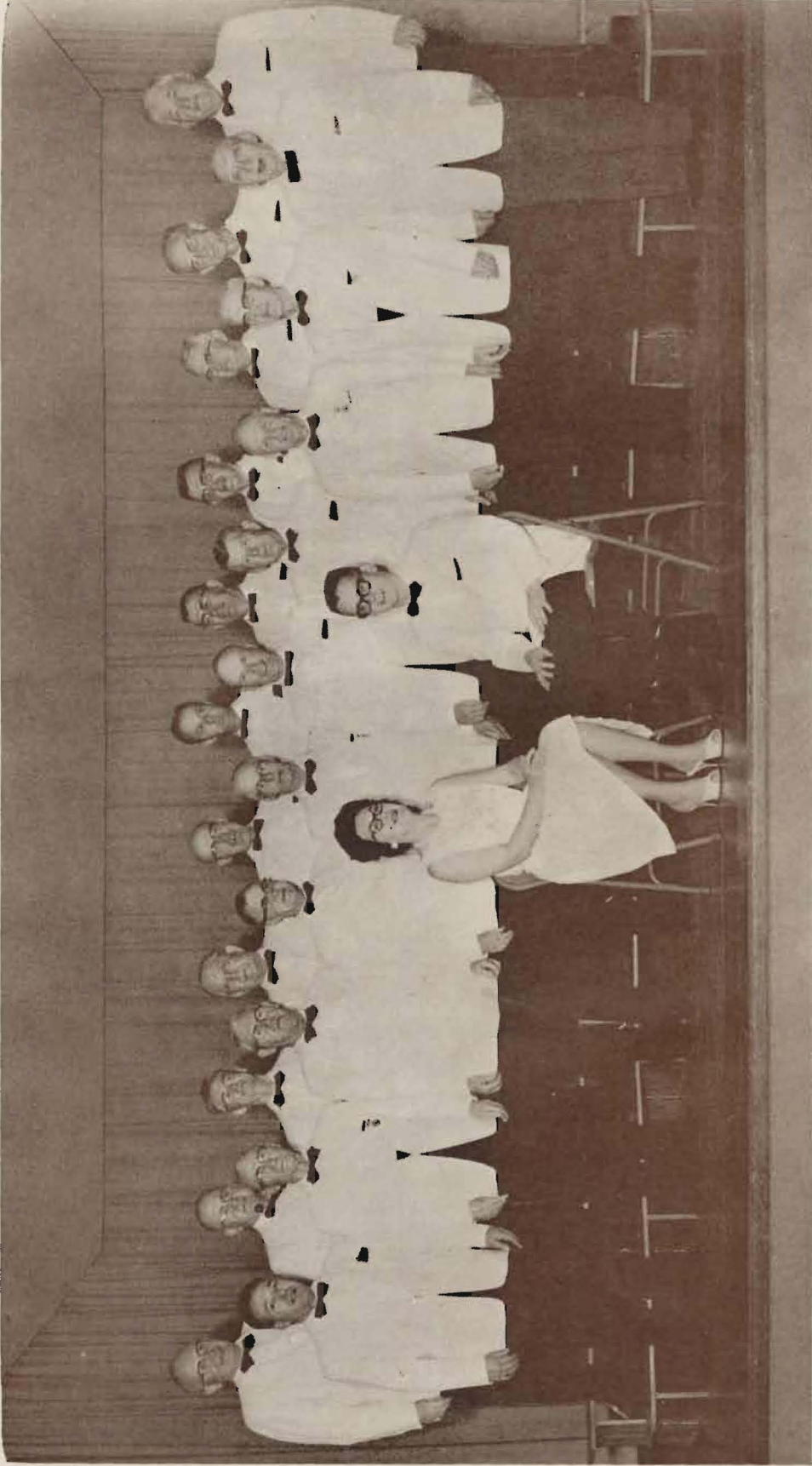
Famous Steak House



402 PUYALLUP AVENUE

MA 7-5491

Lee Rundlett & Bill Cooley



Norwegian Glee Club of Portland, Oregon

CONGRATULATIONS TO
HOWARD KNUTSON

PRESIDENT

Normanna Male Chorus



709 Pacific Avenue

Market 7-0196

Greetings to the Singers

**HUNTER FUEL
& APPLIANCE CO.**

6202 McKinley Avenue

GR 2-4453



Tacoma's Color Headquarters

Black and White TV



FREE HOME DEMONSTRATION

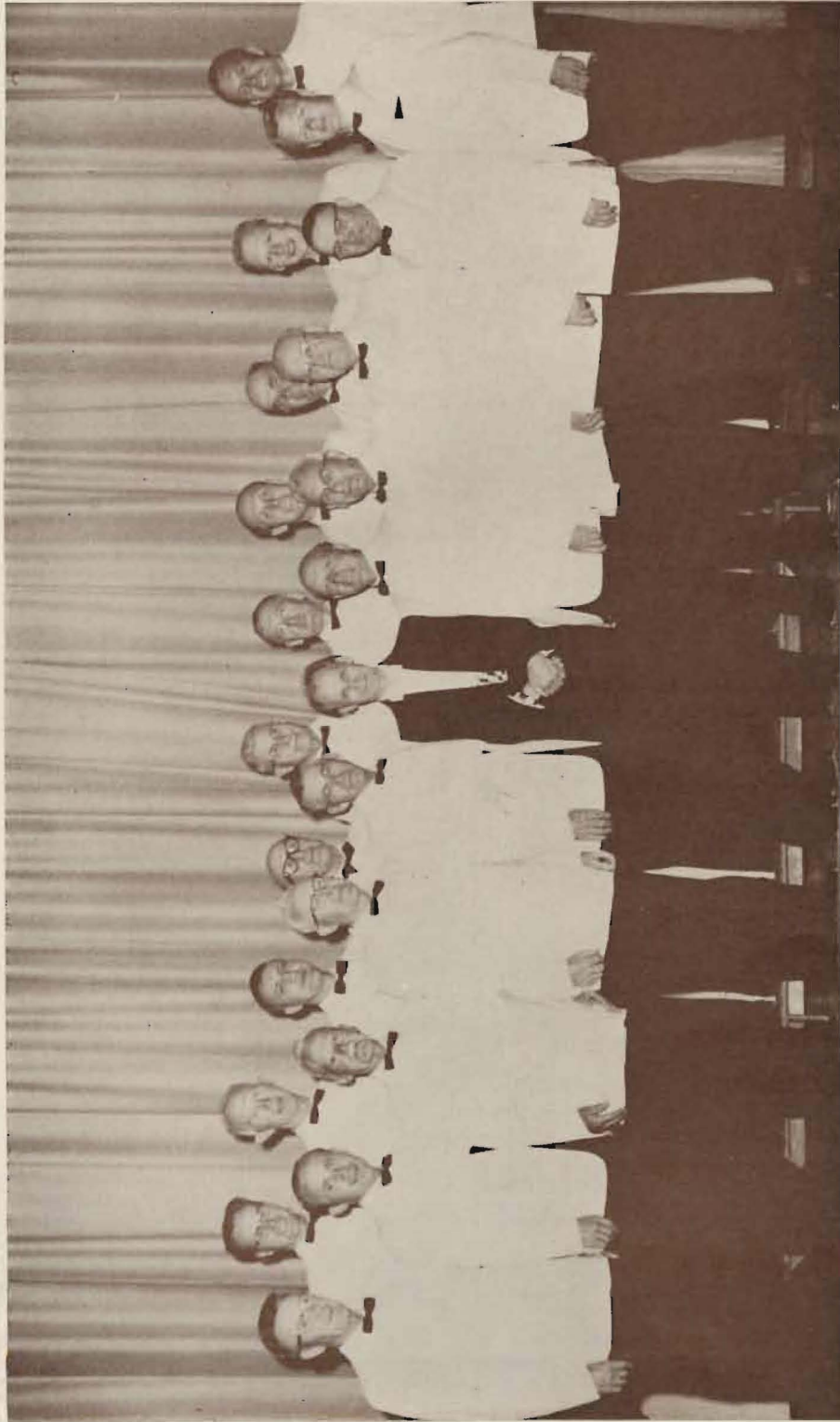
BIG TRADES

Art and Signe
Welcome you to
Sangerfest



Compliments

"THE BALHOLM"



Normanna Glee Club of Oakland, California

Velkommen
Sangere



G. Kirkebo & Son, Inc.

GENERAL CONTRACTORS



7202 - 35th West - Tacoma

SK 2-3531

Pacific Coast Norwegian Singers Association

SINCERE GREETING

And best wishes for a most successful convention

And enjoyable stay in our city

from

Norden Lodge No. 2

Sons of Norway

South 15th & K Streets

Tacoma, Wash.

GLADYS EIDE, President

H. O. STROMSNES, Secretary

CAVANAUGH LUMBER CO.



LUMBER AND MILLWORK



1423 Puyallup Avenue

BR 2-4135

Greetings

FROM

Puget Sound Plywood, Inc.

230 East F Street

CASCADE CYCLE SALES

TRIUMPH HONDA NORTON DUCATI
SCHWINN BICYCLES - PARTS & SERVICE

1424 Puyallup Ave.

MA 7-2188

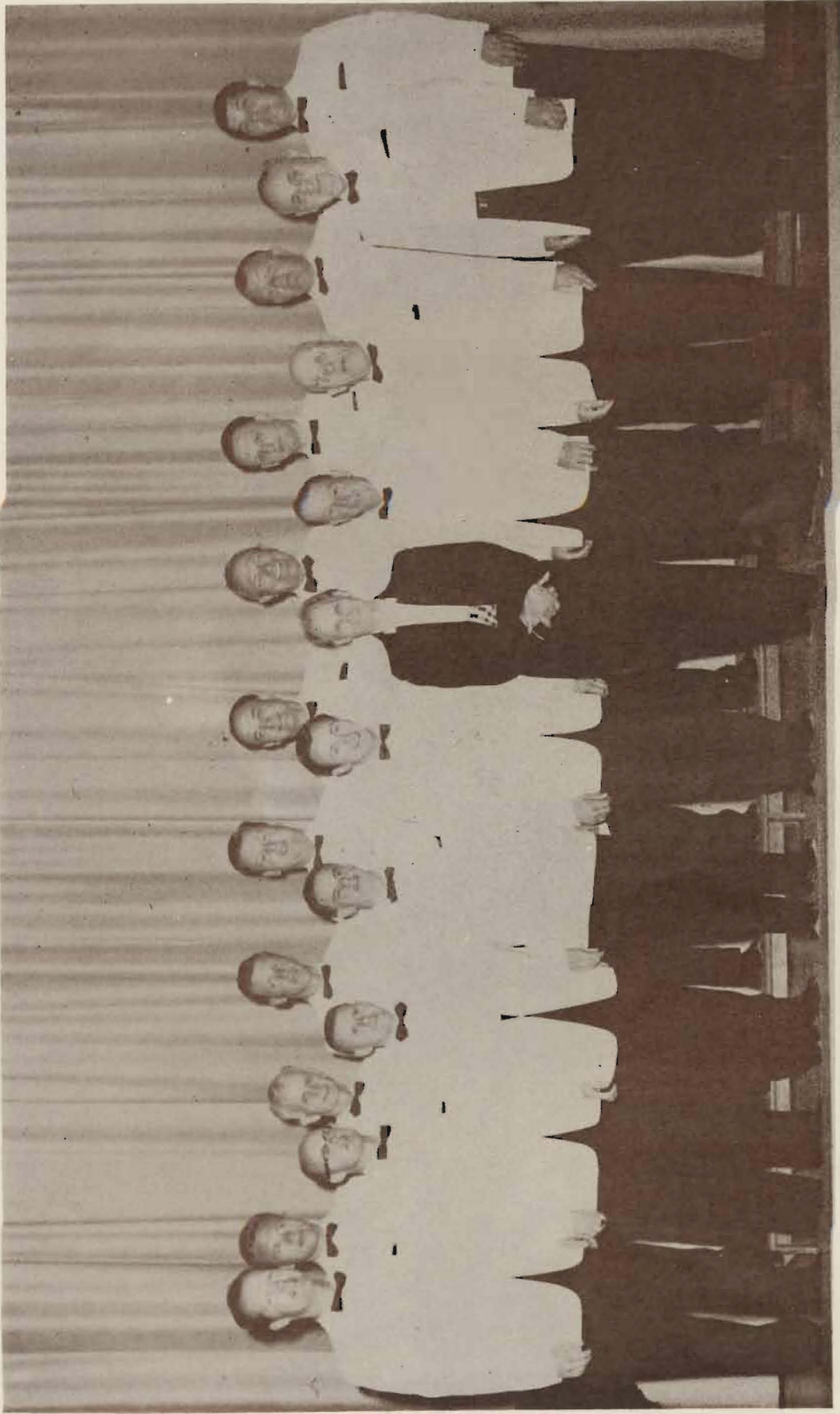
ERLING O. BERGERSON

GUNDERSON

Original Jewelry

764 Broadway, Tacoma - BR 2-4295

527 Pine, Seattle - MA 4-1531



Norwegian Singing Society of San Francisco, California

**OAKWOOD
DAIRY**



Milk from our own herd

Pasteurized and Homogenized
Grade "A" Milk and Cream



6021 Valley Avenue East

WA 2-5335

COMPLIMENTS OF

**CONCRETE
TECHNOLOGY
CORPORATION**



MANUFACTURERS OF
PRESTRESSED CONCRETE



ARTHUR R. ANDERSON

THOMAS W. ANDERSON

COMPLIMENTS OF

GILCHRIST BUICK

YOUR BUICK DEALER

5629 South Tacoma Way



Sales Service Used Cars

**THOMAS
FINER FOODS**



**3902 South 12th Street
SKyline 9-9283
Tacoma, Wash.**

Greetings to the Singers

FROM

Strom's Construction

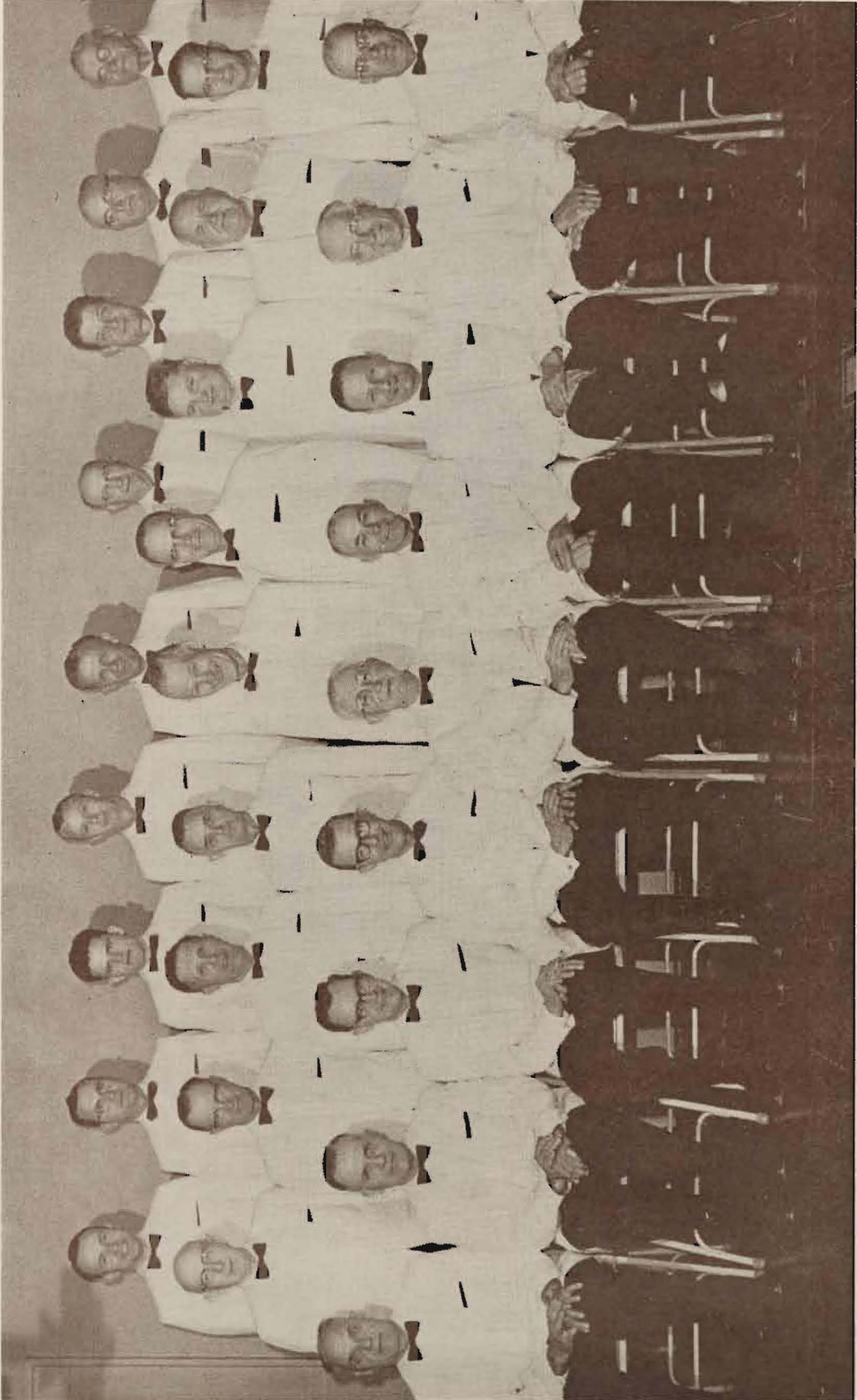


NORMAN STROM

Greetings to the Singers

FROM

Puget Sound Plywood



Eugene Norsemen of Eugene, Oregon

BOND'S AVES BLUEBERRY FARMS



GROWERS AND SHIPPERS
FRESH & FROZEN
QUALITY BLUEBERRYS

Can ship anywhere in the United States
by the pound or ton



Location of Farm 1501 - 13th St. S. E.
TH 5-8373 Puyallup, Wash.

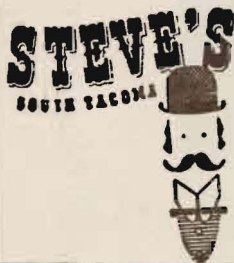
CHARLES E. BOND

*Greetings to the
Pacific Coast
Norwegian Singers*



COMPLIMENTS OF

Foss Launch & Tug Co.



Smorgasbord 12 to 9 p. m. Daily

ENTERTAINMENT NIGHTLY

Cafe Open 24 hours

54th & So. Tacoma Way
GR 2-4471

Greetings to the Singers

FROM

North Light Club

Tacoma, Wash.

SIG JOHNSON, Pres.

CLARA TANGVAD, Sec.

GREETINGS!
**Washington
Travel Bureau, Inc.**

Your Scandinavian Travel Agents

SIGNE KAIJA
MARTA LIND

BR 2-4211

Greetings!

ORDER OF RUNEBERG

TACOMA LODGE 106

*Greetings and Best Wishes
to the Singers*

Daughters of Norway

EMBLA NO. 2

MARIE BERGLUND, Pres.

HELEN TENSVOID, Sec.

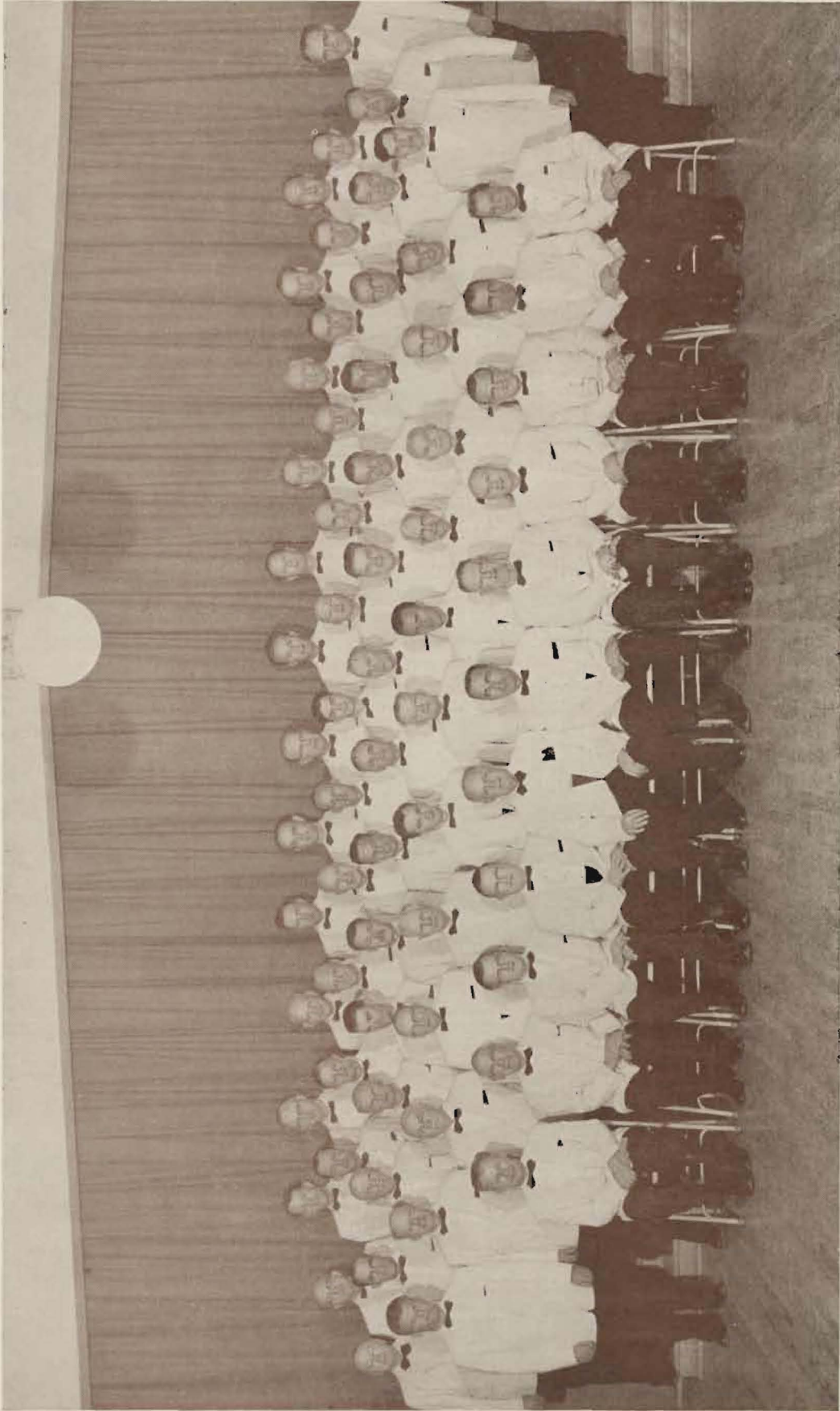
Greetings to the Singers

FARLEY'S FLORISTS

FLOWERS THAT EXPRESS YOUR SENTIMENT

1620 Sixth Ave.

MA 7-7116



The Norwegian Male Chorus of Seattle, Washington

QUALITY
SALES
AND SERVICE
FOR OVER 40 YEARS



**SOUTH TACOMA
CHEVROLET**

56th and South Tacoma Way

GR 2-3311

All three

Pacific Coast
states are served
by America's only
tri-state bank . . .



**THE BANK OF
CALIFORNIA**

NATIONAL ASSOCIATION

Offices in California, Oregon, Washington

MEMBER FEDERAL DEPOSIT INSURANCE CORPORATION

**1011 Pacific Avenue
Tacoma, Washington**

FOR WORLD WIDE TRAVEL

Make Steamship, Air, Bus and Rail Reservations

With

Tacoma Travel Bureau

Winthrop Hotel MA 7-4846

Frasers JU 8-0311

**Pacific Mutual Fuels
Inc.**

401 East 11th St.

MA 7-1137

Tacoma, Wash.



FRANK SCHNIDER

B. R. CHRISTIAN

AFTER YOUR MEETING
Let's all go to Johnny's Dock for

GOOD FOOD



JOHNNY'S DOCK

PIER 3

MA 7-3186

**PARKER PAINT
MFG. CO., INC.**

*"The Best in the West -
On Land or Sea"*

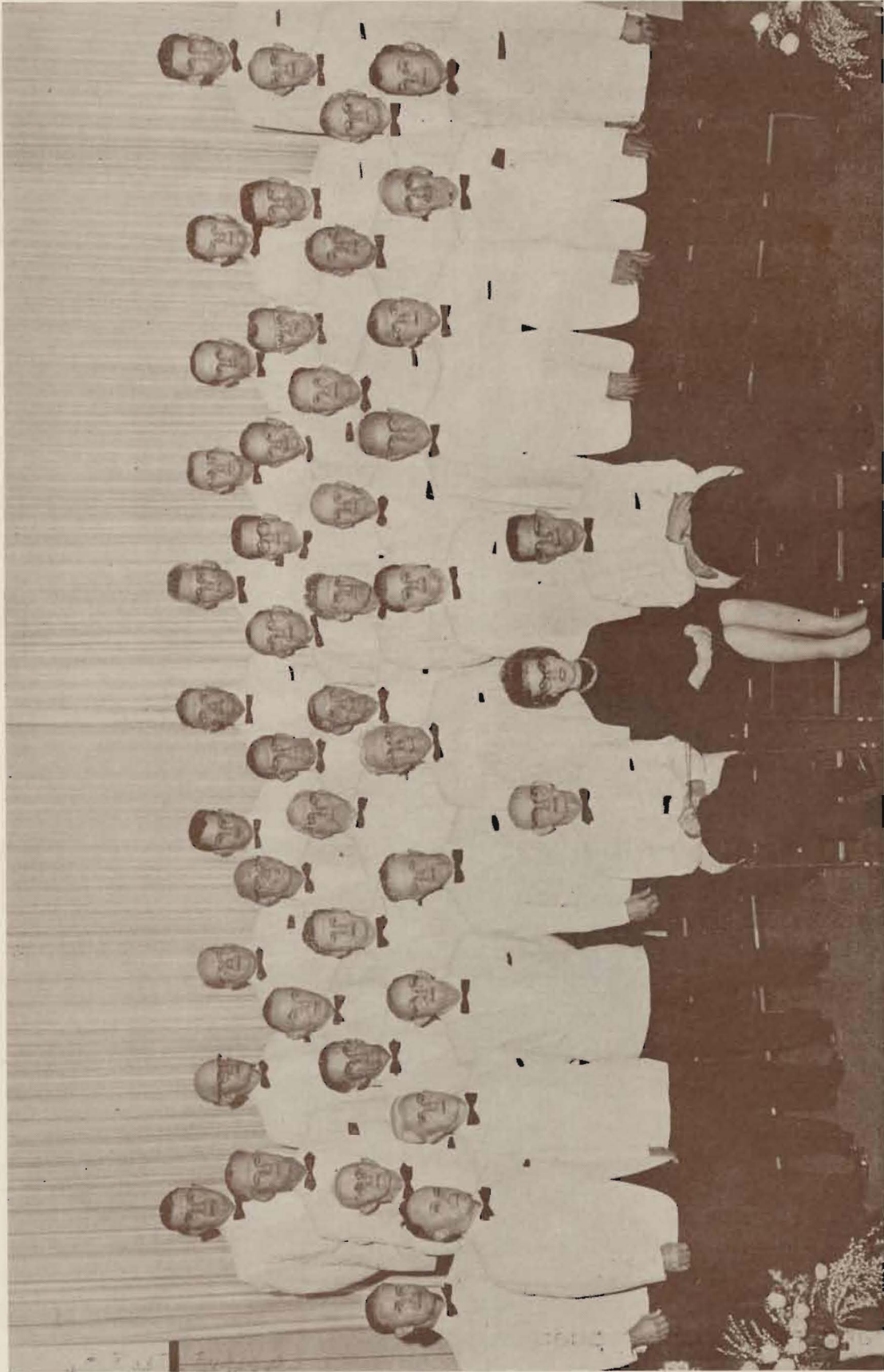


3302 So. Junett



GR 4-0741

Tacoma, Wash.



Everett Male Chorus - Everett, Washington

Greetings to the Singers
**Peerless Laundry and
Dry Cleaners**

2912 So. 12th

MA 7-1177

Greetings to the Singers

FROM

HARRY SPRINKER

COUNTY COMMISSIONER

HOLROYD CO., INC.

BUILDING MATERIAL — READY MIXED CONCRETE

5047 So. Washington

GR 4-8481

Keep Singing!

Mildred & Carl Svedberg

MURPHY'S CAFE

OPEN 24 HOURS

GOOD FOOD

COCKTAILS

938 Pacific Ave.

BR 2-1619

RICHARD'S STUDIO

Official Sangerfest Photographers

A Complete Glass Service

B & B GLASS CO.

748 Market — FU 3-1638

111th Gravelly Lake Dr. — JU 8-0221

Greetings to the Singers

Reyier & Wick

BUILDING CONTRACTORS

FISTER CONSTRUCTION

HOME BUILDERS

106 Del Monte

SK 9-0523

PIONEER MARKET

MEAT

FISH

POULTRY

1302 So. 23rd

MA 7-5392

Ostlund's Shoe Store

1 Grace Walker Shoes

Red Goose Shoes

1110 SO. KAY

PHIL OSTLUND

Fowler's 12th Street Drug Co.

So. 12th & Pine

FU 3-3523

14 MINUTE DRY CLEANING

Custer Coin-op Laundry & Dry Cleaning

Featuring Dupont Valclene (Oderless)

711 Custer Road — Near Meadow Park Golf Course

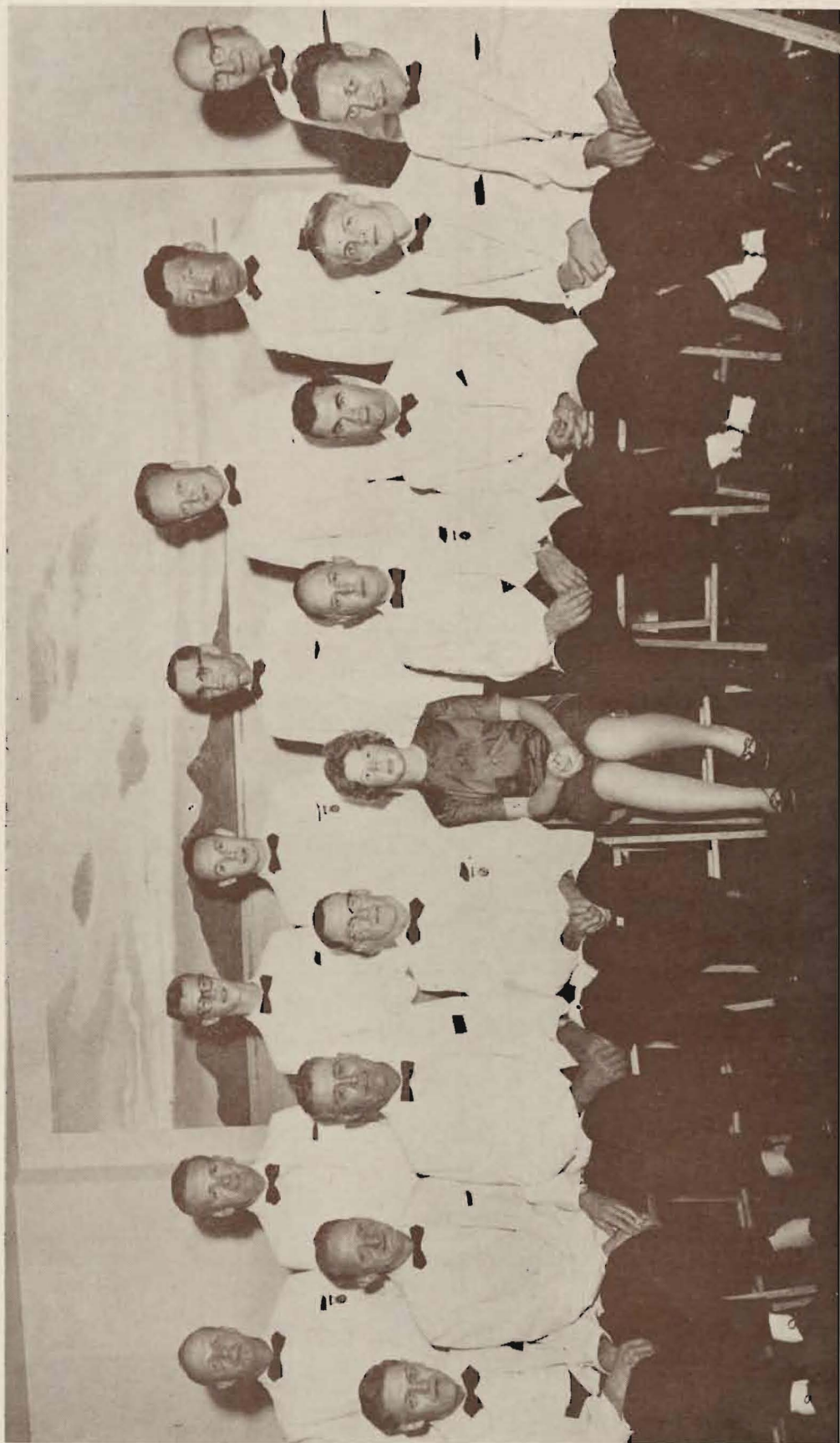
Greetings from

Swedish Order of Valhalla



1105 Broadway

MA 7-2446



Bellingham Male Chorus — Bellingham Washington

*Greetings to the
Pacific Coast
Norwegian Singers
Association*



**DORIC
MOTOR HOTEL**

242 St. Helens

FU 3-2711

TACOMA'S FINEST

TAILORED TO MEASURE
CLOTHES



STETSON HATS
VAN HEUSON SHIRTS



GIL GUNDERSON

749 Broadway

MA 7-6803

3 DAY SERVICE

WE CALL FOR AND DELIVER

PARKLAND CLEANERS

11004 Pacific Ave.

LE 7-3221

MRS. L. A. KRAMER

Greetings and Best Regards

Western Millwork & Builders Supply

509 Puyallup Ave.

FU 3-4423

Tacoma, Wash.

The Best in Seafoods



Marvik's Fish Market

WHOLESALE & RETAIL

8018 Pacific Ave.

GR 4-9211

Greetings to the Singers



ANNA STROM

SATHER OIL SERVICE

5447 South M Street

3526 McKinley Ave.

GR 2-4486

Greetings to the Singers



WESTERN FURNACES, INC.

Greetings
Pacific Coast Norwegian Singers Association
Syng Dig Sammen Sangerskare

Myrtle and Howard Knutsen

Esthyre and Ole Mathisen

Olav Simon Engen

Teckla and Trygve Lindoe

Gudrun and John Johnson

Ida and Andrew Apelseth

Amanda and Ward Arneson

Emily and Nels Norberg

Astrid and Elmer Mobroten

Clara and Milton Andresen

Elsie and Clarence Person

Hanna and Martin Heglund

Virginia and George Jacobsen

Marian and Thor H. Tollefsen

Margaret and James Paulsen

Sina and Bjarne Sagen

Henry Hansen

Ann and Willard Dergan

Suzanne and Alvin Sather

Una Mae and Byron Holmgren

Doretha and Harold Olsen

Doris and Thor Standal

Turid and Ole Rasmussen

Frid and Robert Tjorstad

Greetings Pacific Coast Singers Association

J. P. MYERS FUEL

SHELL STOVE & DIESEL OIL

MA 7-7197

OSKAR HOKOLD, INC.

GENERAL CONTRACTORS

HOME BUILDERS

2420 So. Tacoma Way

GR 4-0633

Greetings to the Singers

FARLEY'S FLORIST

1620 Sixth Ave.

MA 7-7161

Best Wishes for a
 Successful Convention



Thor Tollefson

Greetings to the Singers



PUGET SOUND NURSERY

GR 2-2151

9201 Pacific Ave.

*Greetings to the
Pacific Coast Singers*



**SAXTON'S
INCORPORATED**

6030 South Tacoma Way

GR 2-4455

*Greetings to the
Norwegian Singers
Association*



**SILVER SPRINGS
BREWERY**

GEORGE WILLIAMS, President

105 East 26th

BR 2-1872

Tacoma, Wash.

Volvo
FAMOUS SWEDISH CAR

FAST — FRISKY — FUN

Complete Sales — Service — Parts

AT

"Topping Motors"

925 Market

FU 3-5714

Tacoma, Wash.

**GEORGE SCOFIELD
CO., INC.**

Ttu-Mix Concrete Sand Gravel

Quality Building Materials



1543 Dock Street

Fulton 3-5372

Greetings to the Singers

FROM

Munson-Smith Motors, Inc.

DODGE

DODGE POWER GIANT TRUCKS

CHRYSLER — IMPERIAL

Sales and Service

4101 So. Tacoma Way

GR 2-3307

On Highway 99 — Tacoma, Wash.

Wolford & Brazeau

6th and Sprague

Texaco Service



U SERVE

U SAVE

Committees

CONCERT COMMITTEE

Chairman: Byron Holmgren, BR 2-5891
Willard Dergan, James Paulsen, Harold Olsen,
Robert Tjorstad, Elmer Mobroten

SOUVENIR PROGRAM COMMITTEE

Chairman: Martin Heglund, SK 9-7581
Paul Riebe, Robert Tjorstad, Trygve Lindoe, Olaf Engen,
Arvid Berg

HOTEL AND BANQUET COMMITTEE

Chairman: Nels Norberg, GR 2-6496
Thor Tollefson, Bjarne Sagen, Andy Apelseh

REGISTRATION COMMITTEE

Chairman: George Jacobsen, GR 4-2515
Milton Andresen, Arvid Rostad, Trygve Lindoe,
Clarence Person, Robert Tjorstad, Thor Standal,
Alvin Sather

RECEPTION COMMITTEE

Chairman: Willard Dergan, BR 2-7178
Nels Norberg, Harold Olsen, James Paulson,
Ole Mathieson, Byron Holmgren, Bill Dergan

TICKET SALES AND PUBLICITY COMMITTEE

Chairman: Elmer Mobroten, GR 4-5755
Thor Tollefson, Bjarne Sagen, Ole Rasmussen,
John Johnson, John Lovall, Ward Arneson

WAYS AND MEANS COMMITTEE

Willard Dergan, BR 2-7178; Martin Heglund, SK 9-7581
Co-Chairmen:
James Paulsen, George Jacobsen, Milton Andresen,
Byron Holmgren, Arne Engen, Lawrence Knutson,
Henry Hansen

MUSIC COMMITTEE

Trygve Lindoe, Chairman
Martin Heglund, George Jacobsen, James Paulsen
Byron Holmgren, Robert Tjorstad

G. W. PAULSON
FLOOR DECORATORS

CARPET LINOLEUM TILES

13th & K Streets MA 7-0101

COMPLIMENTS OF

ANDERSON FUEL CO.

1549 So. Dock St. BR 2-8311

GREETINGS

Pacific Coast Norwegian Singers Association



L. R. JOHNSON

PIERCE COUNTY TREASURER

LARSON ELECTRIC

Wiring and Electric Heat

GR 2-0024

CENTRAL BANK

Sixth Avenue at Pine

12th and K Streets

**AMERICAN FEDERAL SAVINGS
& LOAN ASSOCIATION**

1115 A Street
Tacoma, Washington

WILLIAM BRASIER

AUTOMOTIVE

INDUSTRIAL

PARTS ★ SUPPLIES

"House of a Million Parts"

Motor Parts & Equipment Co.

1745 Jefferson Ave. BR 2-3137

Greetings to the Singers

STROM'S MARKET

19th and K Streets

VERN'S CHAR BROILER

AND CATERING SERVICE

BREAKFAST ★ LUNCH ★ DINNER

POPULAR PRICES

9th & Pacific

BR 2-9471

Matthews City Lumber Co.

LUMBER & BUILDING MATERIALS

2310 East D Street

FU 3-1614

Tacoma, Wash.

Harold Meyer Rexall Drugs

OPEN 365 DAYS A YEAR

TWO LOCATIONS

48th & So. Tacoma Way

11th & South K Street

VIKING RESTAURANT

Featuring Real Scandinavian Smorgasbord

Steak, Chicken or Sea Food

Open Week days 5 to 10p.m.

Sunday 1 to 9 p.m.

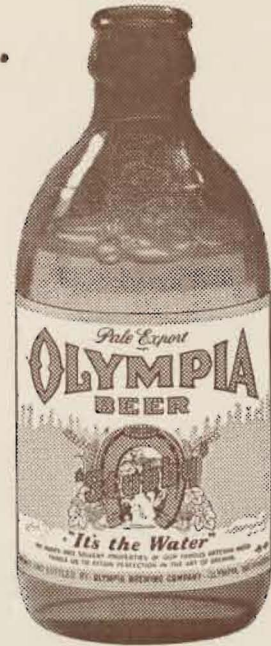
Closed Mondays

For Reservations Call JU 8-8785

The one priceless ingredient...

The quality and consistency of brewing water makes the difference in a beer's taste and character. Olympia's rare artesian water never changes and is naturally perfect for brewing just as it flows from the earth. This remarkable water is the most priceless of all the choice ingredients used in creating a beer of distinctive good taste. It's the reason we say . . .

** "It's the Water"*



*Visitors are always welcome to the Olympia Brewing Co., Olympia, Wash. *Oly *® G-36*

We wish to express our appreciation for the good will and support of friends, societies and business firms in making this program possible. This cooperation is necessary for a successful Sangerfest, and we are grateful for their assistance. Kindly help us show our appreciation by patronizing the firms which have given their support.

