

Elect



Dr. A. de Pierre HALL For Coroner

(Paid Advertisement)

A. W. (WALT) OLSON OUT TO BE COUNTY CLERK

With a background of experience which he declares qualifies him for the office of county clerk, A. W. (Walt) Olson seeks nomination to that office on the Democratic ticket.

Olson has been on business for many years in the K street district. He is a former chief clerk for Standard Oil company, a resident of Pierce county for thirty-seven years, an honor graduate of the public schools, owns his own home.

"The budget for the clerk's office in 1938 was \$26,982.50, and the budget asked for 1939 is \$34,603.55," Olson explains. "An increase of \$7,621.05. Why? I ask.

"Mr. Craig, present county clerk, says he has a record of economy and efficiency. Does this verify it?"

"He also says he has paid to the treasurer's office, in 4 years, \$32,201 net profit. There is no such thing as net profit in his or any other county office. The clerk's office receives money from the prosecutor, sheriff and Superior Court receipts. He, in turn, gives this money to the treasurer. Therefore, the total receipts for his office in four years will only equal his one year salary budget. The salary budget. The salary budgets are made up from the general fund, which receives its money from taxes and other sources.

"Don't be fooled. Prove my figures if you wish, for Mr. Craig will not refute them in public debate."

SELDEN AFTER VOTES FOR PROSECUTOR

J. W. Selden, who seeks nomination on the Republican ticket for the office of prosecuting attorney, was born in Nebraska, in 1872. He is a graduate of the University of Nebraska law school. He practiced law in Omaha about four years, and came to Tacoma in 1904, where he has been engaged in the practice of law ever since.

In 1914 he became a deputy in the prosecuting attorney's office under Judge Fred G. Remann, who was then prosecutor, and then served as a deputy prosecutor two years under Judge William D. Askren. In 1920 he was elected prosecuting attorney and served two terms as such, leaving that office in 1926, since which time he has been actively engaged in the private practice of the law.



John C. Bjorklund

Sheriff John C. Bjorklund, who seeks re-election as sheriff of Pierce county in the primaries, Tuesday, points to a record of accomplishment during the past four years, coupled with a background of 38 years in public life as his qualifications to be considered when voters choose the chief law enforcement officer of Pierce county.

During the years in which Sheriff Bjorklund has held many responsible positions, he has made friends in all walks of life and held the respect and confidence of all with whom he came in contact.

As sheriff, Bjorklund has made beneficial changes in the department, added new equipment, established a criminal identification bureau, installed two-way radio in a criminal car, and by his ability has instilled new life in the sheriff's office and brought the department up to a par with any law enforcement agency in the Pacific Northwest.

In his campaign for re-election Sheriff Bjorklund has not indulge in personalities, but prefers to place confidence in the discriminating voters, who have observed through the years a steady, reliable and reasonable direction of the sheriff's office. Sheriff Bjorklund has conducted the sheriff's office in a business-like manner. He has made remarkable strides in providing equipment to cope with criminal activity. He asks the support of the citizens to assist him in obtaining new and modern equipment with which to carry on an eternal vigilance to safeguard persons and property in Pierce county.

BLANCHE FUNK MILLER UP FOR RE-ELECTION



Blanche Funk Miller, who has been a Tacoma precinct justice of the peace for many years, announces her candidacy for re-election to that office.

Judge Miller contends that one of the three justices to be elected should be a woman, as more than 90 per cent of the cases heard in the minor court affect women and children.

"I have sought to bring to the court the humanitarian point of view and to treat each individual case with a sympathetic understanding and judicial wisdom," Judge Miller said.

Her forward-looking and liberal interpretation of the law is attested by her many friends. She is a member of the Pierce county and Washington state bar associations, has a bachelor and master of arts degree, and received her degree in law at the University of Washington.

DR. HALL CANDIDATE FOR COUNTY CORONER

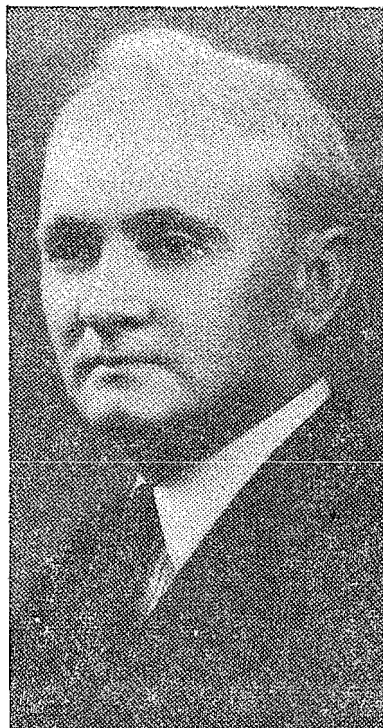
Dr. A. de Pierre Hall, candidate for county coroner on the Democratic ticket, bases his qualification for the post on his record, as follows:

Received bachelor of medicine degree from University of Copenhagen in 1897. Received doctor of medicine degree and graduate of pharmacy from University of Virginia, 1900. Rated G. U. expert U. S. Army during World War, major medical corps, former medical director to federal bureau of analysis, Philadelphia. Former medical director Milwaukee clinic of urology. Resident industrial physician and surgeon, Pierce county, 1922 to 1936. For the past 18 months, staff assistant on state department social security recently resigned as such and established the old age assistance clinic, now being operated with offices at 1103 1/2 Broadway.

Dr. Hall has always been identified with progressive legislation, served in the state legislature in 1933 and was twice elected Pierce County Democratic chairman.

Dr. Hall also attended the University of Upsala (Sweden) and University of (the then) Christiania, as an academic student. His sister was the former Countess Spouneek of Denmark. He has always interested himself in Scandinavian activities, and is an honorary life member of the Scandinavian-American Democratic federation.

FRED A. SMITH IS 'MODERNIZING' ASSESSOR



"In asking re-election," Fred A. Smith, Pierce county assessor, says, "it is appropriate to compare previous conditions with those we now have.

"Four years ago this was one of the most backward offices in the state. The assessor's crew immersed in depressing detail; duties to the people and county neglected in the laborious process of writing books by hand.

"A few legal strings have been severed, some machine equipment installed, and now more than half the crew of the assessor's office are out in the field in an effort to achieve the first principle of taxation, that equality between taxpayers, which the law presumes.

"The success of this effort was manifest when the last session of the Board of Equalization found only fifteen complaints where there were two to three hundred in previous years. The tax commission also has recognized our effort and our state ratio, on which properties valued by the commission are based, is raised to 47 (the highest in the state is 48). The increase nets Pierce county about \$60,000 per year.

"A little personal attention to the legislature and the profitless household furniture tax was wiped out. Another session of the legislature and the automobile tax has been cut in half and simplified, with increased total

Elect Hans Lavik to the Legislature



HANS LAVIK, CANDIDATE FOR REPRESENTATIVE

(Paid Advertisement)

Progressive - Qualified Taxpayer - Home Owner ENDORSED BY LABOR

IN FAVOR OF:

Federal Old Age Pension. Elimination of Waste. Sound Progressive Legislation.

DEMOCRAT

27th District

RE-ELECT



L. W. CRAIG PIERCE COUNTY CLERK

(Paid Advertisement)

Elect

Robert W. THURSTON



Candidate for State Senator 29th District

(Paid Advertisement)

ELECT! SAMUEL L. CRIPPEN Democratic PROSECUTOR



Return to a Common-Sense Administration

I will reverse the present procedure in the prosecutor's office and devote my time to the major civil and criminal work and leave the petty larceny cases to my deputies. I will recommend "corrective measures" rather than "punishment" as the principle of procedure in juvenile cases involving boys or girls.

(Paid Advertisement)

Elect Chas. L. Westcott FOR



FOR

Justice of Peace NON-PARTISAN TICKET

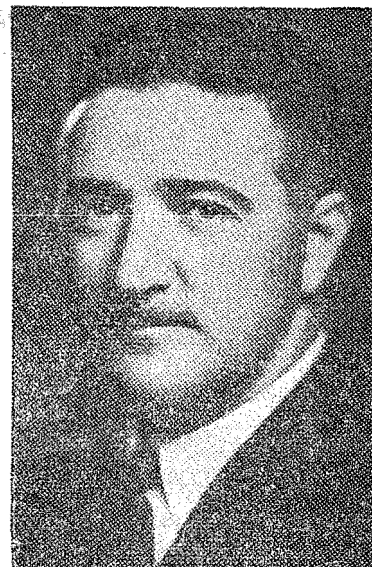
collections and less cost to the individual.

"We are on the road to where ability to pay will be the measure of the tax. When that is accomplished, old age security and home exemptions will be made possible. It is necessary to look facts in the face and be willing to acknowledge that a great economic change is taking place, a change so great that many things that have been regarded as wealth, can now be seen as liabilities.

"The rising necessity for more equal distribution of economic wealth gives us an opportunity equal to, if not of greater importance than, that which our forefathers had when they laid the foundation of the religious and political freedom we now enjoy."

Michigan or en mexicansk by hvor folk var misfornojet med elektrisiteten. De klaget, men blev avvist. Sa stormet de radhuset og pryfte embedsmennene. - Militset rykket ut. Under sammenstotet blev 8 drept og 15 saeret.

ELECT - D. L. "Doug" BARLOW Commissioner THIRD DISTRICT



YOU

Can Help Elect D.L. "Doug" BARLOW, Commissioner. He is the ONLY candidate with:

★ THE CONSTRUCTIVE ABILITY and a PROGRESSIVE PROGRAM that will really help everyone in the County.

Let's put the County on the map by electing a capable leader.

HONEST - SINCERE

ELECT - D. L. "Doug" BARLOW Commissioner

QUICK RELIEF FROM EYE STRAIN

due to dust, sun, light-glare, driving, movies, reading, etc.

Do your eyes burn—feel tired, uncomfortable? Try Murine. It contains 7 helpful ingredients which cleanse and clear eyes reddened from fatigue—make your eyes feel clean, fresh, alive! Much more effective than boric acid. Send for trial bottle. Mail 10c (stamps or coin) with your name and address to The Murine Co., Dept. HS, Chicago, Ill.



DON'T NEGLECT A COLD

Chest colds that may become distressing usually ease up quickly when soothing, warming Musterole is applied. Musterole is NOT just a salve. It's a "counterirritant," helpful in drawing out pain. Used by millions for 25 years. Three strengths. Recommended by many doctors and nurses. All druggists.





Efficient — Courteous
Elect
A. W. (Walt) Olson
 Candidate for
County Clerk
 Democratic Primaries
 Sept. 13, 1938
 (Paid Advertisement)

**G. H. WALLACE ASPIRES
 TO ASSESSORSHIP, REP.**

In announcing his candidacy for the Republican nomination as assessor of Pierce county, G. H. Wallace states that he is of the opinion that the assessor's office is the key position in county government because it is the foundation of our local government's financial structure. Its primary function is not the procurement or collection of revenue but to offer equal protection to taxpayer and government alike by the imposition of fair, honest and equalized valuation. Such a service to the county government and its taxpayers demands and requires more judgment and greater competence than the operation of any other county office in the state. Fundamentally, the equalization of property values is the most important obligation and duty of the assessor. Modern valuation work requires a wealth of experience and a background of scientific and practical study. The laws of the state of Washington clearly define the duties of the assessor, and it is mandatory that the assessor conduct his office in strict compliance with these laws.

Mr. Wallace believes it is not by what a candidate promises but by his record that he must be judged. He has been a resident of Pierce county for the past 32 years and is well versed in municipal affairs, having served as a school director and as the mayor of the town of Orting. For a period of eight years Mr. Wallace was employed by the United States government as a field deputy for the internal revenue department at Tacoma. He superintended and completed the construction of the Northern Pacific tunnel under the Point Defiance park.

Mr. Wallace resides at 3015 North 21st street, Tacoma, is married, and the father of two children.

**WESCOTT ASKS
 JUSTICE PLACE**

Chas. L. Westcott, who has his law offices on the third floor of the Puget Sound Bank building, is a candidate for justice of the peace, which now is on the non-partisan judiciary ticket.

He lives with his family at 811 South Stevens, and has been a resident of Tacoma since 1900. He was elected justice of peace in 1912, and served one term at a time when it was a political office; now it is non-partisan.

At the last election he again sought the office, and in those sections of the city where the voters knew him, Sixth avenue (West End), and in the heart of the city (Third Ward), received a large vote. A more extensive campaign will be waged by him this time.

His friends claim he is the best fitted candidate in the field; that he is temperamentally fitted for the position, and that he has a proper sense of justice, equity and fair play to all.

Five have already filed for the three positions. After the election, one of the three will be designated by the mayor to act as city police judge. He will hear cases involving breach of city ordinances. The other two will handle minor criminal cases brought by the state. More cases are filed in these justice courts than in the higher courts, and for their proper disposition, one learned in the law should be selected.

Westcott is the only candidate, other than the two present incumbents, who has had experience in hearing civil cases as a justice. His fellow attorneys and the local judges will vouch for his ability. He has been engaged in private law practice longer than all the other candidates combined.

**CANDIDATE FOR
 JUSTICE**

Clarence E. Layton, a well known Tacoma attorney, has opened his active campaign for election to one of the three positions of Justice of the Peace in the city of Tacoma.

In asking for the vote and support of the people of Tacoma, he points to his training and experience in the active practice of the law, and to his record while on the bench as acting justice of the police court.

Mr. Layton was acting police judge in Tacoma during the recent illness of Judge Magill, serving as acting justice for nine months in 1937-1938. He was assistant district counsel for the southwestern district of Washington for the Home Owner's Loan Corporation during the year 1935. For the past six years he has been secretary-treasurer for the Tacoma Bar association. He has been engaged in the active practice of the law in Tacoma for the past eight years.

Mr. Layton graduated from Stadium high school, the University of Washington, and the University of Washington School of Law. He has been a resident of Tacoma for the past twenty-five years, is married, and has a young family. He is active in many fraternal and charitable organizations of the city. His father, Dr. E. A. Layton, was for many years director of health for the Tacoma Public Schools.

**COFFEE IN CAMPAIGN
 FOR RE-ELECTION**

Congressman John M. Coffee, representative in the United States Congress from this district, points to his legislative record, as follows, as reasons why he should be returned to that important office:

1. Author and sponsor of the Federal Arts Bill (to encourage creative artistry and enable all to enjoy such endeavor).
2. Author and sponsor of the Narcotic Survey Bill (to fight the drug traffic).
3. Author and sponsor of the Hot Oil Repeal Bill (to strike a blow at monopolistic high prices for fuel oil and gasoline products).
4. Author and sponsor of Constitutional Amendment abolishing federal tax-exempt securities.
5. Author and sponsor of a permanent Public Works bill (designed to relieve unemployment by giving federal aid to self-liquidating public improvements).
6. Author and sponsor of a strict pure food and drug bill (to protect all consumers from harmful foods, quack medicines and dangerous cosmetics).

He has supported and will continue to fight for the General Welfare Act, H. R. 4199.

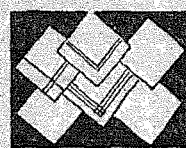
Opposed laws curbing freedom of speech.

Was a leader in Wage-Hour Bill fight.

Took active part in neutrality and anti-war debates.

Was a member of the liberal bloc.

He has actively worked for such projects as the Narrows bridge and McChord field, the new northwest army air base.



**Buy handkerchiefs
 with what it saves**

It isn't necessary to pay 50¢ or more to get quality in a dentifrice. Listerine Tooth Paste, made by the makers of Listerine, comes to you in a large tube at 25¢. Note how it cleans, beautifies and protects your teeth. Moreover it saves you approximately \$3 a year over 50¢ dentifrices. Buy things you need with that saving—handkerchiefs are merely a suggestion. Lambert Pharmaceutical Co.

**LISTERINE
 TOOTH PASTE
 25¢**

OLIVER HARSTAD



**DEMOCRATIC
 CANDIDATE FOR**

**COUNTY
 COMMISSIONER**

**EQUAL SERVICE TO ALL
 SECTIONS OF THE DISTRICT**

HARSTAD for an ACTIVE ADMINISTRATION

(Paid Advertisement)

**Elect
 PAUL
 SANDEGREN**



**Candidate for
 Representative**

Democrat

27th District

(Paid Advertisement)

**THOR C.
 Tollefson**



**For
 Prosecutor**

**Dr. T. H.
 LONG
 Coroner**



**Candidate for
 RE-ELECTION
 Democrat**

(Paid Advertisement)

**Elect
 ART NELSON**



World War Veteran

**Democrat ic Candidate for
 Constable**

Conscientious - Reliable - Courteous

(Paid Adv.)

**RE-ELECT
 Ralph
 Metcalf**



**State
 Senator
 26 District**
 (Paid Advertisement)

**Vote for
 CLARENCE E.**

Layton



**JUSTICE OF THE
 PEACE**

(Paid Advertisement)



Elect
G. H. WALLACE
 REPUBLICAN
 ASSESSOR
 Headquarters:
 416 Washington Bldg. - MAin 1096
 (Paid Adv.)

**RE-ELECT
 Congressman
 John M.
 COFFEE**



**Congress
 Sixth District**
 (Paid Advertisement)

KEEP YOUR EYES Clean and Clear
 Murine soothes and refreshes tired, irritated eyes. Use it daily.
MURINE FOR YOUR EYES
 FREE BOOK ON REQUEST "A World of Comfort for Your Eyes"
 MURINE CO., DEPT. H.S., CHICAGO, U.S.A.

**BIGGEST RAZOR BLADE
 VALUE EVER OFFERED**
**4 PROBAK JUNIOR
 BLADES 10¢**
 You'll get better shaves for your money if you ask for Probak Jr. Why take chances when you can have the known quality of these world-famous blades at this amazingly low price? Only 10¢ for 4 double-edge blades—buy a package from your dealer today.
**PROBAK JUNIOR
 BLADES**

RE-ELECT JOHN C. BJORKKLUND SHERIFF

ON HIS RECORD

REASONS WHY WE SHOULD RETAIN BJORKKLUND AS SHERIFF

SHERIFF John C. BJORKKLUND has for 38 years engaged in public service and held many responsible positions.

Always a forceful leader among men, Bjorklund working in Tacoma industry as a youth of 21 in 1900, sought to improve working conditions and raise wages for workers. He worked as a shingle weaver here at Elma and later worked as a longshoreman.

Sheriff Bjorklund energetically represented the workers as business agent of the longshoremen's organization. He was elected for seven consecutive terms as secretary-treasurer of the Pacific Coast district and was vice-president of the International Longshoremen's association.

His relations with labor have been most admirable; he is recognized as one of the ablest leaders in the country in behalf of all workers. He has held the respect and confidence of all with whom he has associated, employer and employee alike.

His honesty is unquestioned and his ability has been proven. His long business experience coupled with knowledge and needs of the people has served him well. He is dependable, sincere and capable. He is qualified for the office of sheriff by long experience.

Sheriff Bjorklund has enforced the law in a sensible, dignified manner. He has not been vindictive in administration of the sheriff's office and has not infringed on the rights of those with whom he came in contact.

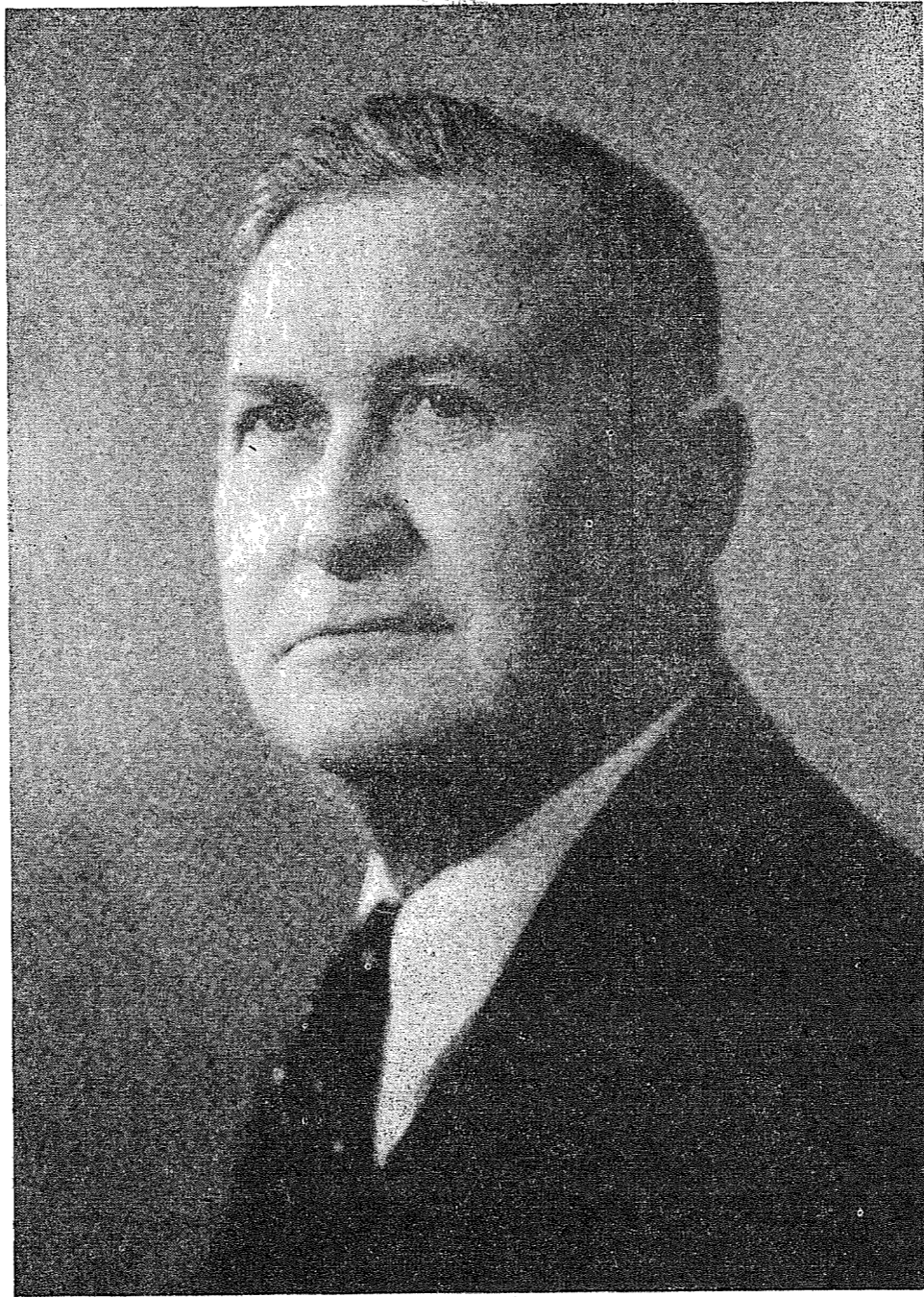
Inauguration of a complete identification bureau

Installation of 2-way radio communication in a criminal car

Encouraged all officers to complete courses in first aid work.

Officers also passed training courses in police work.

Co-operation with agencies to eliminate juvenile delinquency.



REASONS WHY WE SHOULD RETAIN BJORKKLUND AS SHERIFF

Sheriff Bjorklund was appointed by President Wilson during the World War in 1917 to direct the U. S. Marine Employment Bureau.

He was superintendent of the U. S. City Employment Bureau in 1926 and 1927. He succeeded in raising the wages and bettering conditions for those for whom he secured employment.

The workers themselves considering Bjorklund's years of faithful service urged him to seek the office of sheriff of Pierce County in 1934. He was supported by thousands of loyal friends and had a wide margin of votes, attesting to the confidence his friends placed in him.

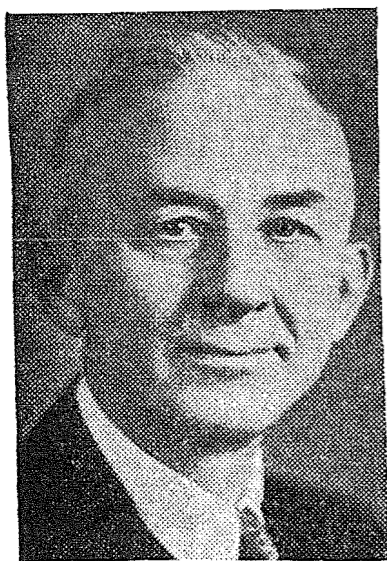
Sheriff Bjorklund has made beneficial changes in the department. He inaugurated a complete bureau of criminal identification, obtained new equipment, installed two-way radio in one criminal car and urged the staff to complete courses in police work and first aid, which has been done.

His executive ability and keen judgment have been factors in bringing the department up to a par with any law enforcement agency in the Pacific Northwest. He seeks to obtain new and more modern equipment in order to cope with criminal activity.

Sheriff Bjorklund will continue to direct the department in a business-like, dependable manner with a humanitarian treatment of unfortunates; a firm disposition of those criminally inclined and a judicial, sympathetic understanding of the juvenile and first offenders in criminal activity.

He stands on his record of past accomplishments, and will continue to maintain the sheriff's office for the benefit and protection of all persons and property in Pierce County.

(Paid Advertisement)



Dr. T. H. Long

som søker gjenvalg som Coroner har praktisert som doktor i Tacoma for 15 år, og har sitt eget hjem med kontorer på 23de og K st. I de fire år han har tjenestegjort som coroner har han forsøkt å tilfredsstille de partier som er utsatt for ulykke. Han har forsøkt å være økonomisk å spare komunen penger ved å forebygge saksanlegg. Blant skandinaverne er han vel likt, og har mange venner innen denne koloni.

DAVIS SEEKS RE-ELECTION FOR POSITION OF AUDITOR

Supporters of S. Clifford Davis, candidate for re-election to the office of county auditor, make this last statement to the voters in behalf of his candidacy.

No issues have developed in the campaign for this office, nor have any of Mr. Davis' opponents been able to offer one bit of criticism in the operation of his office. Patrons of the office are unanimous in their praise of the service rendered. Mr. Davis, during his first term, has always considered the public first and has instituted many conveniences and reforms for the betterment of the people, one of the many being the establishment of agencies throughout the county for the issuance of auto licenses.

Mr. Davis, when he first assumed the duties of county auditor, found the office in a deplorable condition, the work being far behind and the morale of the office force at a low ebb. By the careful selection of capable and conscientious employees, Mr. Da-

vis has raised the standard of his office to a very high degree of efficiency, a fact which has been brought to the attention of the public by the reports of the state examiners in their annual audits. At the present time, Mr. Davis is operating his office with a smaller staff than any of his predecessors, and this in spite of the fact that the work has increased greatly. Taxpayers must bear in mind the fact that from 1920 to 1933 inclusive, the operation of the office cost the taxpayers \$104,358.66 over and above the revenues collected, while during the three completed years under Mr. Davis' direction, 1935 to 1937 inclusive, the office has been self-sustaining, without any cost to the taxpayers, and has turned back to the current expense fund \$37,915.58 over and above all operating expense.

This record is one rarely equaled by men in political life and is a reflection of Mr. Davis' long record as a business man, an executive and accountant.

Experimenting by electing men to office who are inexperienced and inefficient is costly. This can be avoided by re-electing S. Clifford Davis as your county auditor.

ART NELSON CANDIDATE FOR CONSTABLE, DEMO.

Art Nelson, 4717 South Puget Sound, has filed for constable on the Democratic ticket.

He has been a resident of this state for many years. Was married in Tacoma, and enlisted in the army during the World War, at Tacoma. He is a veteran, and member of the American Legion. Also a member of Pierce County Democratic club, American-Scandinavian Democratic club, and the 266th District Democratic club.

He pledges cooperation with superior offices, and a conscientious, reliable, courteous and fearless administration.

Nelson was born in Montana, of Norwegian parents.

D. L. "Doug" Barlow

D. L. "Doug" Barlow carries on the family tradition of being of service to Pierce county and the state of Washington by filing for the office of County Commissioner from the 3rd district, subject to the Republican primaries on September 13.

He is young, progressive, and a successful business man—born in Pierce county of a pioneer family that has long been identified with building and construction and the progressive development of Pierce county and the state of Washington. His creed is, and always has been, "I believe in listening to individual and group problems and in doing my best to solve them." Well thought of in the building field, he is a constructive man for a constructive job, a man big enough to work with his two fellow commissioners, regardless of personal feelings.

"Doug" Barlow is alive to the tourist possibilities of Pierce



D. L. "Doug" Barlow

county. Through proper coordination and development with state and local groups, he is eager to develop the sportsman's and the tourist possibilities of the county. Because of his knowledge of, and association with, major construction projects throughout the state, he is able to get for Pierce county the recognition it is entitled to.

Call On

BURNETT BROS.

Jewelry and Watches
and fine Silverware
Tacoma's Leading Jewelers
924 Broadway

Re-Elect

Blanche Funk Miller
for
Justice of the Peace
Three JUSTICES of the PEACE to
be Elected—
One Should Be a Woman
(Paid Advertisement)



The ability to pay should be the measure of the individual's tax burden for government, education and relief.

To that end the efforts of an Assessor should be devoted, in the field of actual assessment to achieve equality; and in the wider sphere of public education, toward the enactment of corrective legislation.

FRED A. SMITH
Pierce County Assessor

(Paid Advertisement)