

57<sup>th</sup> annual



PACIFIC  
COAST

*NORWEGIAN*

SINGERS ASSOCIATION



ANGERFEST

BELLINGHAM, WASHINGTON 1966

**HONORS:**

*Oliver G. & Carl M. Magee  
Seattle, Washington*



**SCHEDULE OF EVENTS**

**THURSDAY**

*August 18*

Registration begins 10:00 a.m.  
Mezzanine—Hotel Leopold  
Reception 8:00 p.m.  
Crystal Ballroom, Hotel Leopold  
Supper and dancing

**FRIDAY**

*August 19*

Rehearsal 10:00 a.m.  
Bellingham High School  
2020 Cornwall Avenue  
Ladies—assemble at Cornwall entrance to  
Hotel to board buses for tour and lunch-  
eon 11:30 a.m.  
Luncheon 12:00  
Norway Hall, 1419 Forest Street

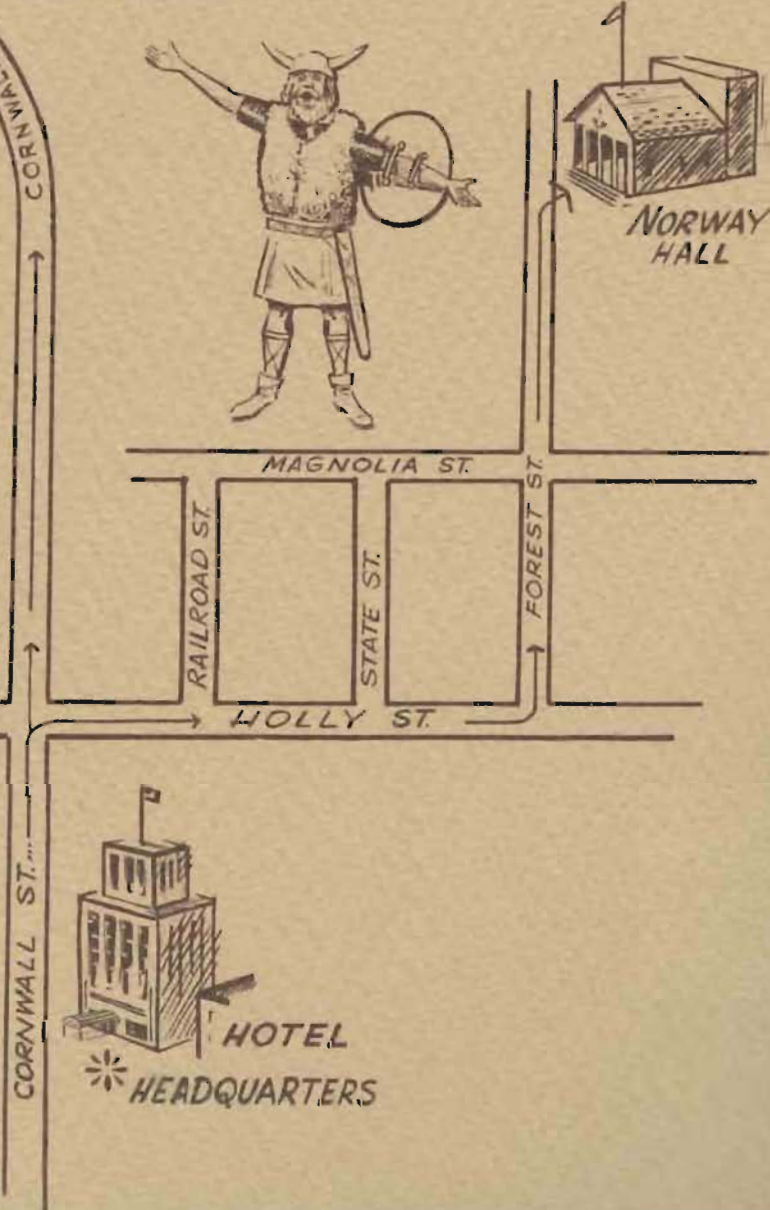
*Registration Closes at Noon*

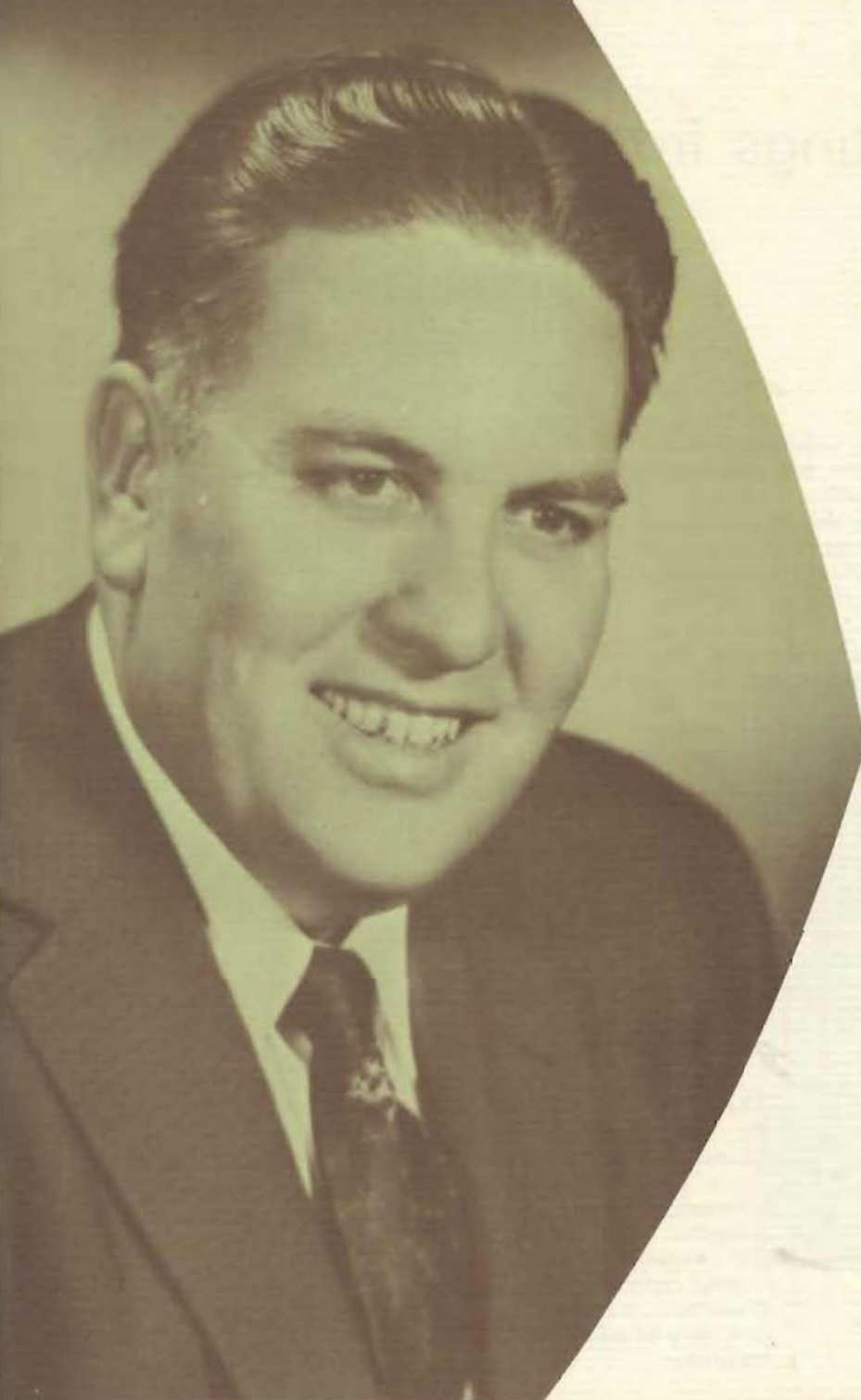
Rehearsal 1:30—3:00 p.m.  
Bellingham High School  
Concert 8:00 p.m.  
Bellingham High School  
Dancing 10:30 p.m.  
Crystal Ballroom, Hotel Leopold

**SATURDAY**

*August 20*

Business Meeting 10:00 a.m.  
Hotel Leopold  
Banquet 6:30 p.m.  
Crystal Ballroom  
Grand Ball





## WELCOME!

On behalf of the citizens and city officials of the City of Bellingham, I extend a hearty welcome to you and your ladies on the occasion of this 57th annual "Sangerfest" of the Pacific Coast Norwegian Singers Association being held in our city, August 18, 19 and 20, 1966.

Letters of welcome are easy to write and for some reason they all seem to have the same terminology. I assure you that while the terminology of this letter of greeting may be fairly standard, you will find the actual welcome extended to you by our city to be far above and beyond that normally encountered in convention cities.

We are proud and pleased to play host and hostess to the members of the Pacific Coast Norwegian Singers Association. We promise to do our utmost to make your stay in Bellingham a pleasant one and hope that you will enjoy it so much that you will desire to return and visit us again.

With this thought in mind, we hope that you came to Bellingham prepared to enjoy yourselves and we wish you a most successful Sangerfest.

Respectfully yours,

**JOHN E. WESTFORD**

Mayor

# Greetings from Your Host Chorus

*On behalf of the Pacific Coast Norwegian Singers Association, we welcome you once again to Bellingham, the red carpet city.*

*There have been many ups and downs as the year has progressed but we hope the downs are in the past and that we will ride the crest in harmony through this 57th Sangerfest celebration.*

*We, of the Bellingham Male Chorus, are especially happy to have the Association with us to help celebrate this our 50th anniversary year, having been first organized as a Norwegian Male Chorus in 1916.*

*As we again thrill to the joining of many voices in song may we create true harmony of spirit and fellowship to inspire us through the year to come.*

*The Ladies Auxiliary of the Bellingham Male Chorus extends greetings to the Pacific Coast Norwegian Singers Association. We hope that this Sangerfest lives up to your expectations and contributes pleasant memories to add to past traditions.*

*Helmer J. Melland*  
PRESIDENT  
BELLINGHAM MALE CHORUS



*Mrs. Dorothy Melland*  
PRESIDENT, LADIES AUXILIARY  
BELLINGHAM MALE CHORUS



and Auxiliary . . .



*Emil Olsen*  
CORRESPONDING SECRETARY



*Pete Norman*  
TREASURER



*Elfie Peterson*  
FIRST VICE-PRESIDENT

*Helmer J. Melland*  
PRESIDENT, P.C.N.S.A.



and from the Officers of



*Don Whetsell*  
4TH VICE-PRESIDENT



*Gus Tollefson*  
3RD VICE-PRESIDENT

# P.C.N.S.A. for 1965-1966

*Harvey Mathiesen*  
GRAND MARSHAL



*Karl C. Dahl*  
RECORDING SECRETARY



*Olav Boen*  
TREASURER

DIGNITY

LUXURY

PRESTIGE

The New SONS OF NORWAY Business and Cultural Center



*Symbol of SONS OF NORWAY PROGRESS*

*We invite you to visit our new building, Home Office and Cultural Center  
the next time you are in Minneapolis*

- \* Life and Hospital Insurance
- \* Fraternity, Fellowship and Recreation
- \* International Membership Advantages

On behalf of our officers, directors and members everywhere we extend our heartiest thanks for the many years of cordial cooperation in furthering the preservation of the best in our Norwegian heritage and best wishes for an outstanding and successful Sangerfest.

## SONS OF NORWAY

1455 West Lake Street

Tel. 827-3611

Minneapolis, Minnesota 55408



# One by one, the years go by . . .

<i>Place</i>	<i>Year</i>	<i>Singers</i>
1. Everett	1903	
2. Seattle	1904	
3. Portland	1905	
4. Tacoma	1906	
5. Astoria	1907	
Not held	1908	
6. Seattle	1909	
7. Eureka	1910	
Not held	1911	
8. Everett	1912	
9. Spokane	1913	
Not held	1914	
10. San Francisco	1915	
11. Bellingham	1916	
12. Seattle	1917	
13. Portland	1918	
14. Tacoma	1919	
15. Grays Harbor	1920	
16. Astoria	1921	
17. Everett	1922	
18. Edison-Bellingham	1923	
19. Seattle	1924	256
20. Portland	1925	
21. Tacoma	1926	
22. Vancouver	1927	100
23. San Francisco	1928	132
24. Astoria	1929	
Not held	1930	
25. Grays Harbor	1931	
Not held	1932	
26. Everett	1933	
27. Vancouver	1934	185

<i>Place</i>	<i>Year</i>	<i>Singers</i>
28. Bellingham	1935	
29. Seattle	1936	
30. Portland	1937	139
Not held	1938	
31. San Francisco	1939	195
32. Tacoma	1940	
33. Grays Harbor	1941	
34. Everett	1942	150
Not held	1943	
35. Seattle	1944	139
36. Tacoma	1945	141
37. Portland	1946	155
38. Vancouver, B.C.	1947	153
39. Los Angeles	1948	139
40. Everett	1949	167
41. Oakland	1950	154
42. Seattle	1951	257
43. Spokane	1952	159
44. Tacoma	1953	174
45. Portland	1954	147
46. Bellingham	1955	187
47. Los Angeles	1956	125
48. Vancouver, B.C.	1957	146
49. Everett	1958	178
50. Eugene	1959	197
51. Seattle	1960	173
52. San Francisco	1961	199
53. Salt Lake City	1962	182
54. Tacoma	1963	196
55. Portland	1964	214
56. Oakland	1965	174
57. Bellingham	1966	

Norwegian Glee Club of Portland

# Our Director-In-Chief, Assistants, and



*August Werner*  
DIRECTOR-IN-CHIEF

*Henry Ringman*  
ASSISTANT DIRECTOR



# Guest Soloist



*Elias Breiford*  
DIRECTOR  
BELLINGHAM MALE CHORUS



*Eloise Tweit Rall*  
GUEST SOLOIST



*Shirley Spurrell*  
ACCOMPANIST

# Norwegian Male Chorus

*Gordon Hafso*



## THE NORWEGIAN MALE CHORUS of LOS ANGELES

Several choruses were organized in the Los Angeles and Long Beach areas between 1900 and 1920.

Our present group was reorganized on January 1, 1920 called the "Normennenes Sangforening"; later the "Norwegian Male Chorus of Los Angeles."

The first great event sponsored by the Chorus was a "Songfest" in which Norwegian, Swedish, and Danish Choruses in Los Angeles and San Francisco participated under the direction of Axel Philstrom of San Francisco. The concert was held in Trinity Auditorium and more than 2,000 people attended.

The chorus joined the Pacific Coast Norwegian

singers Association in 1927.

The chorus sponsored its first Sangerfest in 1948 with Bernhard Manger as the President of P.C.N.S.A. The second Sangerfest was in 1956 with Aimar E. Moller as president.

In 1962, when SAS opened the L.A.—Polar route, the three Scandinavian Princesses were our guests at a concert and reception in their honor at the

Pasadena Civic Auditorium. All three choruses sang together under the direction of Gordon Hafso.

With few exceptions, the Norwegian Male Chorus has appeared at every 17th of May program, in the Los Angeles area.

At the present time we have twenty-four active members.

# of Los Angeles



Seated, from left to right: Henry Larsen, Ole Johnson, Magne Engen, Gordon Hafso *Director*, Peder Ness, Albert Andersen, Oddmund Saterdahl. 2nd Row: Thomas Hanson, Joe Omdahl, Birger Hopen, John Kvanmen, Otto Thompson, Edwin Lindgren, Aimar Moller. 3rd Row: Linman Bjerken, Ralph Dahl, Lars Dahl, Ole Hanson, Gordon Moe, Kenneth Kvanmen *President*, Michael Kvanmen, Norman Koch. *Not pictured*— Haakon Munkvold.

## Normanna Glee Club

*Theodore Gorbacheff*



NORMANNA GLEE CLUB of Oakland, was organized June 12, 1923 with fifteen charter members.

Arne H. Arneson, one of the organizers, became the first director. He held the position for 19 years. Other directors have been: Phillip Hillstrom, Karl Ingebritsen, Elmar Bacher, Edgar Thorpe, and Theodore Gorbacheff, now serving.

The average membership has been twenty-five. It has not at any time been a big chorus but it has been, and is, a very active one.

Oakland has hosted two Sangerfests, one in 1950 with Gerhard A. Aastad as President, and in 1965 with Jacob A. Jacobsen as president.

Yearly concerts and entertainment have been held. Some of these with the other Scandinavian choruses in the Bay area.

The Normanna is fortunate in having a Ladies

Auxiliary that gives wonderful support and encouragement to the singers.

The present chairman of Normanna is Gordon D. Rye.

## Tordenskjold Lodge No. 5

Spokane

# of Oakland



*Front Row, from left to right:* Erhart Malmin, Ole Lovtang, Kaare Klyleken, Karl Stohle, Rune Janred, Theodor Gorbacheff, *Director,* Erhard Astal, H. K. K. Hansen, John Fuiiren, Antton Jorgensen, Karl Eikeberg. *Back row:* Morris Johnson, Ralph Johnson, Reidar Lih, Martin Wallace, Einar Waksdal, Ed Overson, Hans Nerheim, Olaf Laxo, John Hansen, Gordon Rye, Elmer Holm, Olav Lovtangen, Jake Jakobsen, Harald Lovtangen.

*Theodore Gorbacheff*



## Norwegian Singers

THE NORWEGIAN SINGING SOCIETY of San Francisco was organized September 30, 1903, with 20 singers. We joined the Pacific Coast group May 6, 1904. The first president was Klaus Olsen.

San Francisco was host to the Pacific Coast Sangerfest in 1915, 1928, 1939 and 1961. The last three years we had the Sangerfest Caspar Hexberg was the president.

Our chorus meets each Tuesday night at Dovre Hall 3543 18th St., San Francisco. Director is Theodore Gorbacheff. President is Al Nelson. We have 38 active singers.

Wergeland Lodge No. 21

Bellingham

Royal Cafe

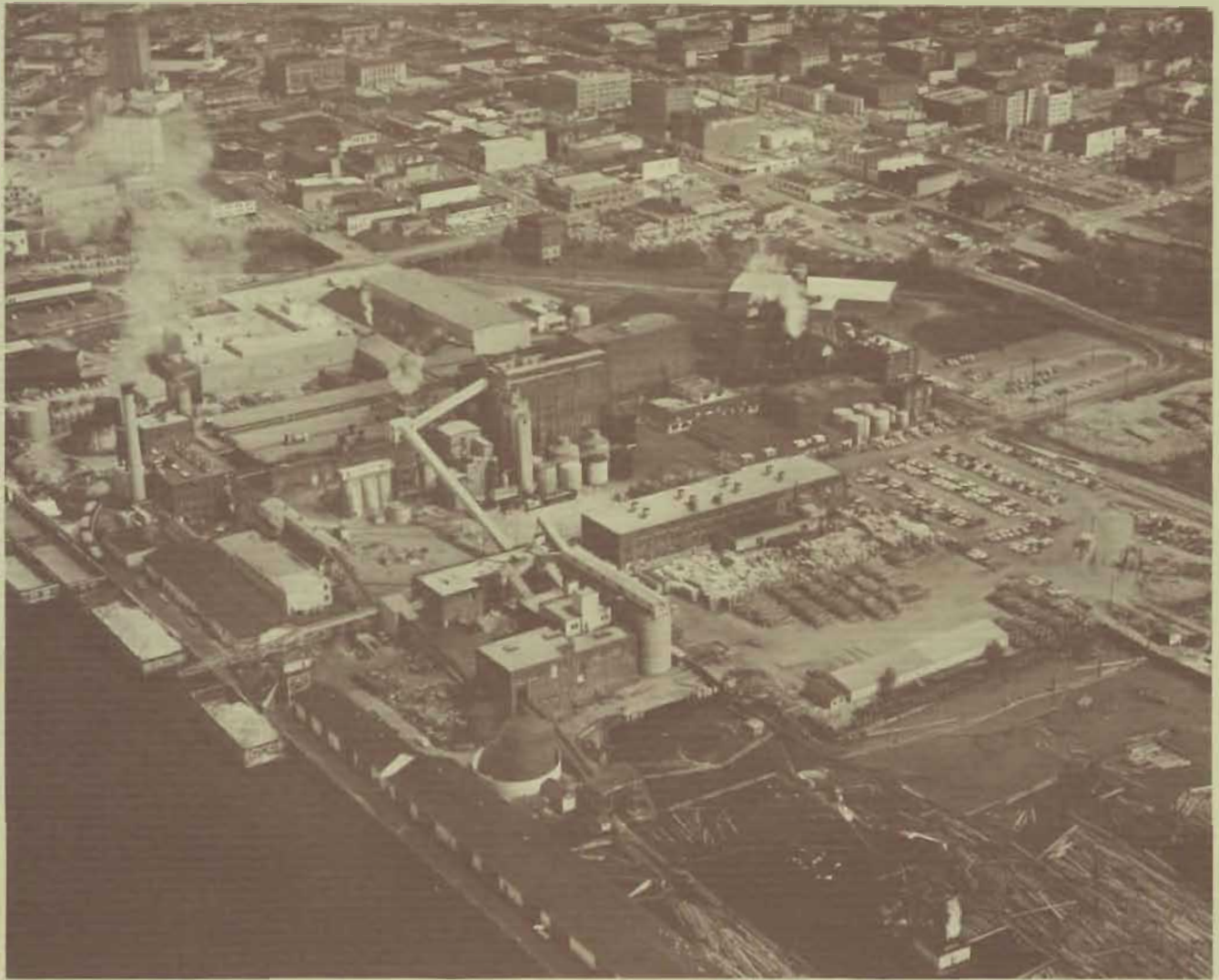
Bellingham



## of San Francisco



*First Row, left to right:* Olav Tjensvold, Kaare Valvik, Leif Storsether, Theodor Gorbacheff, *Director*; Olav Boe, Bjarne Pors, Fred Fredericksen; *Second Row:* Thor Berg, Einar Engdahl, Harold Nyman, Al Nelson *President*, Rubin Anderson, Peder Eriksen, Clyde Forseman, Walter Mattson, Hans Christensen, Eric Lockner, Joe Soanes, Hal Oustad, Phil Malkerson, Per Herskedal, Evald Swanson, Eskil Hoberg, Leif Herskedal, Norm Ronneberg, Capt. H. Hansen, Bob Thiele, Burt Ericson, Larry Selmer. *Not pictured—* Gustav Andre, Erling Andreasen, Leroy Elwing, Bruce Fest, Eric Lockner, John Michelson, Olaf Olsen, Ed Overson, Ed Peterson, Carl Svenson, Nils Wik.



GEORGIA-PACIFIC CORP.  
PUGET SOUND DIVISION

## ... A bit of nostalgia

By invitation of the Seattle Chorus, the following met in Seattle in 1902 to organize the Pacific Coast Singers. Portland was represented by J. O. Berg, C. Tackle, F. A. Tomte, C. Olsen, J. D. Hansen, C. J. Cornelius and J. A. Wick; Everett by O. A. Sandheim and John Norman; Seattle by Dr. O. A. Loe, Ed Ellingsen, N. A. Christoff, and J. A. Thuland. All business was conducted in Norwegian. The name of Pacific Coast Singers Association was adopted at this meeting and included choruses from Washington, Oregon, California, Idaho, Montana, and after a lively debate British Columbia was also included. The officers elected were John Norman of Everett, President, F. A. Tomte of Portland, Vice-President, J. A. Thuland of Seattle, Corresponding Secretary, C. J. Cornelius of Portland, Recording Secretary and Dr. O. A. Loe of Seattle, Treasurer. The first Sangerfest was to be held in Everett in August 1903 which turned out to be a huge success. Eleven copies of the by-laws and the constitution were printed by 1905 and then revised and approved in 1929.

In 1909 the combined group had their convention in Seattle to celebrate the Alaska-Yukon Exposition. They voted to appear in tuxedos and were directed by Carlos Sperati.

At the convention in Eureka, California, 1910, Mr. T. Hamman, who was the editor of the Sanger-Hilsen magazine discussed the idea of uniting the East and West singers and thereby the Norwegian Singers Association of America was established.

In 1926, at Tacoma, the uniform was finally voted upon—this was dark blue coat, white trousers, white shirt, black bow tie, and white shoes. This was amended to read blue four in hand tie. This was the official uniform until it was changed in 1953 to the new uniform as we wear it today—white double or single breasted tuxedo coats, plain dark blue trousers or tuxedo trousers, white shirt with attached turned down collar, maroon bow tie, maroon kerchief, black socks and black shoes.

In June of 1962 the first coast to coast Norwegian Singers Association held a concert, which was very impressive, in the Mormon Tabernacle, Salt Lake City, Utah.

## About the songs . . .

**I MIDNATTSOLEN.** This is a sight that one must see to realize the beauty—the sun at midnight, at the northern tip of Norway and Sweden and all northern countries.

**KLARA STJARNA.** Twinkling Star in heaven's deep blue, do not hide your eye to me. To the realms where you shine my soul is longing.

**I GUD'S FRI NATUR.** (In God's Free Nature). It would be the same as we here in Washington say—this is truly God's Country. This song is an expressed pleasure of being out in the free air, beautiful scenery, good weather, and you feel happy and it's good to be alive.

**BARA BLA.** Billow Blue, it rises to the cliff, under the cliff it dies. Billow Blue, the thundering sea sucks you into itself, in the bosom of the sea and dies.

Billow Blue, your sighing echoes in my spirit, Billow Blue. All your living hours are your dying hours. At the cliff is your death.

**HAV (The Sea).** By the beloved composer, Oscar Borg. The boisterous yet sentimental soul of the sailor yearns to follow the sea gull's graceful flight over the boundless blue.

**EN SANGER'S BON.** A singer's prayer, thanking God for the gift of song, and looking forward to joining the throng before God's throne.

**VIKINGARNE.** This is a song that expresses the feeling of the Vikings, who were the explorers of old. The Vikings originated from the Nordic race, who roamed the sea for adventure and new land.

**OLAV TRYGVASON.** Poem by Bjornson, music by Reissiger. It is perhaps the favorite of all the Norwegian male chorus songs, and hardly a concert is given without its appearance on the program. The epic background of the song is the Naval Battle fought at the peninsula of Svold, off the

German-Baltic coast in the year 1000, where the famous Norwegian Hero—King Olav Trygvason fell against his combined Norwegian, Danish and Swedish foes. His Dragon ship, the "Long Serpent", the most famous of all Viking ships, was taken—and Olav Trygvason, wounded, jumped overboard and disappeared. But the song itself with King Olav's Earl, Erling Skjalgson and his men, who with 6 lighter warships had outsailed the 11 heavier Dragon Ships of the King, and unaware of the sad fate of their beloved Hero, were laying in wait for him—in vain. And then from the depth of the ocean, like a sigh, came the message carried by sobbing waves to the waiting men: "Taken is the Long Serpent! Fallen is Olav Trygvason."

**DEN STORE HVIDE FLOK,** "The Great White Host". Behold a host arrayed in white, like thousand snow-clad mountains bright. Their voices they in worship raise, before the throne of God, "mid Angels" song of praise! This religious poem is from the prolific pen of the Bishop H. A. Brorson (1694-1722). The music, a Norwegian folk song arranged by Grieg, is one of the finest examples of Norwegian sacred music.

**LANDKJENDING (Land-Sighting).** The poem is by Norway's great writer Brorson and the music by the immortal Grieg. It is one of the most popular male chorus songs in the world, depicting the young Hero-King Olav Trygvason's return to his native Norway and the first impression of land he and his followers got from the gleaming mountain peaks and thundering waterfalls as they sailed in through the deep blue fjords in the shimmering sunlit air. In the solo the King gives profound expression for his belief, that here was home and here he would raise the Cross which should lift his spirit high and strong like the mighty mountains! His men intone the prayer, carrying the song to a grand soul stirring finish.

# in this order

AUGUST WERNER  
*Director-In-Chief*

HENRY RINGMAN  
*Assistant Director*

ELIAS BREIDFORD  
*Bellingham Director*

## BELLINGHAM HIGH SCHOOL AUDITORIUM

Friday Evening, August 19, 1966

at 8:00 o'clock

ELOIS TWEIT RALL  
*Soprano*

ERNST OBERG  
*Accompanist and Organist*

SHIRLEY SPURRELL  
*Chorus Accompanist*

Let There Be Music ..... *Williams*  
I Midnattsolen ..... *Wold*  
I Gud's Fri Natur ..... *Reissiger*  
Klara Stjarna ..... *Wetterling*  
The Green Cathedral ..... *Hahn*

Grand Chorus—August Werner, *Directing*

Let All My Life Be Music ..... *Spross*  
Love Went Ariding ..... *Bridge*  
Vissi D'Arte (La Tosca) ..... *Puccini*

Eloise Tweit Rall, *Soprano*

Bara Bla (*Icelandic Folk Song*) ..... *arr. by Werner*

Grand Chorus—Elias Breidford, *Directing*

Hav ..... *Borg*  
Marching On ..... *arr. by Wick*  
En Sanger's Bon ..... *Reissiger*  
Vikingane (Solo—Carl Benson) ..... *Frieberg*  
Grand Chorus—Henry Ringman, *Directing*

Black Roses ..... *Sibelius*  
The Night Has A Thousand Eyes ..... *Hageman*  
En Svane ..... *Grieg*  
Takk For Dit Raad ..... *Grieg*

Eloise Tweit Rall, *Soprano*

Olav Trygvason ..... *Reissiger*  
Den Store Hvide Flok (Solo—Gunnar Hellberg)  
..... *Grieg*  
The Lost Chord ..... *Sullivan*  
Landkjending (Solo—Carl Benson) ..... *Grieg*

Grand Chorus—August Werner, *Directing*

### DIRECTORS - PAST AND PRESENT

CARLO A. SPERATI . . . . . 1902-1916  
RUDOLPH MOLLER . . . . . 1916-1935  
GEORGE S. JOHNSON . . . . . 1935-1937  
MONRAD MALMIN . . . . . 1937-1939  
GEORGE S. JOHNSON . . . . . 1939-1940  
AUGUST WERNER . . . . . 1940-1946

HENRY RINGMAN . . . . . 1946-1950  
GUNNAR J. MALMIN . . . . . 1950-1952  
HENRY RINGMAN . . . . . 1952-1953  
GUNNAR J. MALMIN . . . . . 1953-1955  
MONRAD M. MALMIN . . . . . 1955-1957  
HENRY RINGMAN . . . . . 1958-1959  
AUGUST WERNER . . . . . 1959-1966

## . . . they receive through service

IN JUNE OF 1915 at San Francisco, the medals were suggested but it wasn't until a business meeting in December 1915 that they came to decision on them. 5 Sangerfests attended would be represented by the bronze medal, 10 by silver, 15 by gold. These medals would be inscribed with P.N.S. 500 of each of the medals were ordered. The first medals were not awarded until 1917 at the convention in Seattle.

An interesting motion was made and passed at the business meeting in Everett in 1942 to the effect that men in service be allowed credit towards their medals, who through no fault of their own could not attend Sangerfest. This was similar to a decision in 1918.

The first 40-year medal was presented to Mr. Joe Libak of Portland at the Sangerfest of 1951 in Seattle. However, we have Olav Boen, our treasurer from Seattle, who received his 45-year medal in 1959 and is still an active singer.

### AWARDED 1965

#### 5 YEARS

Redalf Gjersrud, Seattle  
Rudolf Christensen, Seattle  
Ken Kvanmen, Los Angeles  
Howard Loseth, Eugene  
Mathienus Strand, Salt Lake City  
Alwyn Nelson, San Francisco  
Egil Hansen, San Francisco  
Leif Herskedal, San Francisco  
Laurin Foster, San Francisco

#### 10 YEARS

Herbert Field, Portland  
Hans K. Hansen, Oakland  
Karl Ingebretsen, Oakland  
John Kaspersen, Seattle  
Sverre Thorstensen, Seattle  
Otto Thompson, Los Angeles

#### 15 YEARS

Ole Haugen, Portland

#### 25 YEARS

George Jacobsen, Tacoma  
Thor Standahl, Tacoma

#### 30 YEARS

Anton Breivik, Seattle  
Roy Kvangnes, Everett

### ELIGIBLE IF IN ATTENDANCE 1966

#### 5 YEARS

John Fuioren, Oakland  
Laurin Foster, Everett  
Matthew Gustafson, Eugene  
Bjarne Harestad, Seattle  
Robert Johnson, Eugene  
Elfie Peterson, Bellingham  
Guttorm Laaback, Everett  
Austin Skeisvold, Seattle  
Rudolf Christensen, Seattle

#### 10 YEARS

Kaare Berg, Seattle  
Lars Dahl, Los Angeles  
Karl Eikeberg, Oakland  
Hi Erickson, Portland  
Howard Knutson, Tacoma  
Thoralf Storvick, Everett  
Olav Tjensvold, San Francisco

#### 15 YEARS

Karl Dahl, Bellingham  
Emil Elverum, Seattle  
Roy Haugen, Everett  
Elmer S. Holm, Oakland  
Ole Johnson, Los Angeles  
Kenneth L. Knutson, Seattle  
Gunnar Malmin, Tacoma

#### 25 YEARS

Idan Gilbertson, Everett  
Carl Moe, Seattle  
Gustaf Solheim, Seattle

#### 30 YEARS

Ward Arneson, Tacoma  
A. W. Holthe, Everett  
Jerome Sandvig, Seattle

#### 35 YEARS

Emil Olsen, Bellingham  
Herman Westby, Portland

#### 40 YEARS

Martin Heglund, Tacoma

#### 44 YEARS

Emil Enger, Everett  
(Recognition, no medal)

#### 52 YEARS

Olav Boen, Seattle  
(Recognition, no medal)

GREETINGS TO  
THE PACIFIC COAST NORWEGIAN SINGERS

*Eat More Fish . . . For Better Health!*

DAHL FISH CO.

Bellingham

# The Norsemen

*John M. Gustafson*



THE NORSEMEN was organized in Eugene, Oregon, in the fall of 1951. However, like most singing groups, its real activity did not gain momentum until the fall of 1954. By then we had a chorus of 17 men that met regularly.

The Chorus sang under the direction of Mr. Tom Kaarhus from the time it was organized until the fall of 1963 when illness caused him to retire. He passed away in November 1964 and it was a great loss to the members of a true friend and a leader that lived his music.

In the fall of 1963 it was our good fortune to get Mr. John Gustafson from the music department

of the University of Oregon as Director and also Mr. Robert Dick who is connected with the Music department of the Public School System as accompanist.

We became members of the Pacific Coast Nor-

wegian Singers' Association in 1958, and in the summer of 1959 it was our pleasure to host the Singers on their 50th Sangerfest. The name "Norsemen" was adopted in 1958 and many of the members have been active since the Chorus began their weekly rehearsals in 1951

Mjollner Lodge No. 34

Silvana



## of Eugene



*Front row, left to right:* Marvin Hanson, Mike Bagaasen, Ray Hanson, Bill Mattson, John M. Gustafson, Robert L. Dick, Clarence Gunderson, Howard Herbranson, Jon Pederson. *Second Row:* Gilbert Sando, Fritz Larsen, Les Churchill, Oscar Melby, Bob Johnson, Magnus Manseth, Iral Nelson, M. S. Christianson, Rudy Breistrand. *Third Row:* George Belsey, Henry Losoth, John-Erik Nilsson, Pete Larsen, Obert Andrews, Matthew Gustafson, Ernest Estvold, Aron Stevenson, Jens Thorsen.



*Bjorn Heglie*

## Norwegian Glee Club

THE NORWEGIAN GLEE CLUB of Portland marks its 80th Anniversary this year. No other group of its kind can equal this length of service to a community.

Many noted musical personalities have been directly or indirectly connected with the endeavor. We are pleased with our Director, Bjorn Hegbe, a young Norwegian-born American. He received his early training in Norway and delights in entertaining others with his almost unlimited collection of old Norwegian folk songs.

Something new was added in 1965 and we believe it is a great addition to the Norwegian music possibilities in the City of Roses. The Nordic Choraliers organized only a few months ago. The ladies have assisted in several major programs under the direction of Robert McCoy. They have come a long way in a short time.

Leif Erickson Lodge No. 1

Seattle

Fairhaven Pharmacy

South Bellingham

## of Portland



*Front Row, left to right:* Pete Dyrhaug, Harold Jensen, Herb Field, Olav Thune, Rasmus Cleveland (*deceased*), Alice Peterson, David Westby, Bjorn Heglie, Ole Haugen, Norman Clifton, John Walhood, Oscar Oyen, Don Whetsell, Cyrus Walhood, Herman Westby. *Second row:* John Small, Carl Johnson, Fred Loken, Hi Erickson, Harold Hansen, Lars Larsen, Ernest Harold, Lars Kaarhus, Harold Tec, Ted Rosenfold, Oscar Morude, Herb Salmon. *New members not pictured:* Ralph Hovis, Iver Farasted, Robert Nosen.



*Gunnar J. Malmin*

## Normanna Male Chorus

THE NORMANNA MALE CHORUS of Tacoma had its origin when eight Norwegians from Parkland, Washington, got together in October of 1888 and formed what was then known as "Den Norske Sangforening".

Later, as the group grew in membership and moved to Normanna Hall in Tacoma, the name was changed to "Normanna Male Chorus of Tacoma", and was incorporated under that name in 1922.

The Tacoma chorus has had many directors over the years and has been honored three times by having its director chosen as Director-in-Chief of the P.C.N.S.A. These three directors were Carlo A. Sperati, George S. Johnson, both now deceased, and the present Tacoma director, Gunnar J. Malmin. Gunnar has been with the Tacoma chorus for the last twenty years.

Travelodge

Bellingham

George and Ingrid

# of Tacoma



*Front row, left to right: Thor Tollefsen, Ivan Dessen, Willard Dergan, Paul Riebe, Ben Dentinger, Prof. Gunnar Malmin, Director, John Johnson, Bob Tjorstad, Al Sather, Bjarne Sagen, Andy Ferroy. Second row: Ole Rasmussen, Clarence Person, Einar Engen, Arvid Rostad, Ove Helligstad, Gary Ferguson, Arvid Berg, Jim Paulson, Andy Apalseth, Arvid Isaksen. Third row: Ward Arneson, Anton Hellesland, Rev. O. K. Blomelie, Martin Hegland, Howard Knutson, Elmer Mobroton, Thor Larsen, Ole Mathisen, Mike Skuja, Thor Standal. Fourth row: Henry Hansen, Harold Olson, George Jacobsen, Norman Berg, Carl Bulre, Milton Andreasen, Anton Ness.*

*Jens Hansen*



Director in Chief of the Pacific Coast Norwegian Singers Association for many years, and appeared on many Sangerfest concert programs as a featured concert soloist. Both were honored by Norway with the Royal Order of St. Olav for their contributions to Norwegian Music and male chorus singing in America.

The chorus has throughout the years taken part in all Norwegian celebrations in Seattle, giving regular concerts and participating in patriotic celebrations. They assisted in entertaining the Norwegian Royal Family in 1939, 1942 and 1964. Of particular note was the participation in the program and un-

## Norwegian Male

THE NORWEGIAN MALE CHORUS of Seattle was originally organized December 6, 1889, six months after the founding of the City of Seattle and three weeks after the State of Washington was admitted to the Union. It is the oldest acappella male chorus in Seattle.

Chorus directors have been John Melling, Gulbrandsen, Halfdan Rode, Hjalmar Anderson, Alfred Lubin, Karl Von Godin, Knut Sortheim, Alberg Winge, H. P. Sather, Rudolph H. Moller, August Werner, Al Brevik, and Jens K. Hansen. Like his predecessor, well-known composer-director Rudolph H. Moler, Director August Werner, Professor Emeritus of the University of Washington, has served as

veiling of the Leif Erickson Statue created by August Werner in 1962.

The Seattle chorus is a member of the Pacific Coast Norwegian Singers Association and has attended fifty-six Sangerfests in all since the first one held in Everett in 1903. Seattle has hosted the Forbund eight times from 1904 to 1960. At the present time there are seventy-five active members and numerous associate members.

Since 1909 the chorus had the very active support of a ladies auxiliary, the Helpmates, who have greatly assisted in the endeavors of the chorus.

# Chorus of Seattle



*Front row, left to right:* Harry Solheim, Jerome Sandvig, Olav Boen, Jens Hansen, *Acting Director*, John Engan, August Werner, *Director*, Olive Svendsen, *Accompanist*, Harvey Mathjesen, Carl M. Moe, Edwin B. Lindgren, Clarence Svendsen. *Second row:* Rudolf Christensen, Hans J. Klaboe, Thor Bjornstad, Erling Berg, Aage Edland, Svein Nyhammer, Gunder Nielsen, Trygve Bjornstad, Bernt Satre, Arild Ottesen, Alf Knudsen, Gustaf Solheim, Emil Elverum, Karl Vik. *Third row:* Frederick Jorgensen, Roy Berg, Harold Hansen, Irving Rodley, Henry Gundersen, Ralph Snider, Einar Sivertsen, Tore Driflot, Sverre Jules, John Kaspersen, Anton Brevik *Deceased*, Paul Wasbrette. *Fourth row:* Clifford Field, Rolf Berg, Kaare Berg, Jarle Berg, Walter Gronvold, Ronald Olsen, Harold Wetten, Ray Sperline, Thomas Stang, Kristian Fallmyr, Raymond Severa, John Akslen, Moritz Flister, Harold Eastvold *Deceased*. *Fifth row:* Sverre Thorstensen, Finn Rasmussen, Art Hansel, Christian Hanson, Kristian Berg, Ragnvald Svino, Emil Engelsen, Arthur Lie, Austin Skeisvold, Bjarne Harestad, Laurits Danielsen, Wilbur Jensen, Gert Torget, Andrew Pederson. *Not pictured:* Fred Bodtker, Harold Champeness, Haakon Dalsbo, Hedalf Gjersrud, Seve Hansel, Kenneth Knutson, Ole Lie, Per Sorum, Hans Sorvik, Birger Tellevik, Harold Waale, Walter Welke, Reidar Tynes, John Sjog, John L. Jensen, Robert Svendsen, Einar Nordanger, John Fallmyr, Arne Berg, Chris Berg, Donald Vadset, Stanley Bjorklund, Knut Tveit.

Henry Ringman



it was decided to invite the other choruses on the Coast for the first Sangerfest. The first rehearsal was held on Wednesday night, August 6th, 1902. The name of the Everett chorus was to be "The Norwegian Singing Society of Everett". There were five choruses on the Coast at that time, Portland being the oldest. The Norwegian Glee Club of Portland, Norwegian Male Chorus of Tacoma, Norwegian Male Chorus of Seattle, Norden Male Chorus of Ballard and the Everett Norwegian Male Chorus. The first Sangerfest was a great success and the Everett Chorus has been host to the Pacific Coast

## Everett Norwegian

THE EVERETT NORWEGIAN MALE CHORUS was organized August 5th, 1902 in Quam and Clausen's Store on Rockefeller Ave. in Everett, Washington. The following nine members were present and formed the original chorus: Dr. L. P. Opsvig, J. W. Oyen, Sigurd Holman, John Norman, P. L. Opsvig, Anton Foss, M. H. Clausen, Ole Sandheim and Louis Helland.

The first officers were Dr. L. P. Opsvig, president; John Norman, secretary; M. H. Clausen, treasurer; and J. W. Oyen, director.

A constitution was adopted at this meeting and

Singers seven times.

The Everett chorus never takes a vacation as they usually give two Christmas concerts and two spring concerts each year besides preparing for the Sangerfests. The chorus also sings at many other functions during the year.

Directors of the Everett chorus, past and present, are: J. W. Oyen, Rev. Carl Norgaard, Dan Wold, Phillip Hillstrom, Rudolph Moller and H. W. Ringman. Assistant directors are Emil Enger, John Rognan, Erling Espedal and Arnold Lunnun. Shirley Spurrell is our very capable accompanist.



# Male Chorus



*Front row, left to right:* John Johnson, Carl Langland, Toney Knutsen, Olav Hytno, Erling Espedal, *Assistant Director*, Shirley Spurrell, *Accompanist*, Henry Ringman *Director*, Anders Saatvedt, Robert Laaback, Olaf Strand, Emil Enger. *Second row:* Fred Ness, Magnus Ostbo, Alvin Odlaug, Gus Stenberg, Thoralf Storwick, Erling Stolesen, Roy Kvangnes, Henry Carlsson, Harold Klett, Olav Alstad. *Third row:* Art Anderson, L. E. Olson, Albert Hilmo, Ansel Olin, Bert Melhus, Peter Dybfest, Jacob Nesthy, John Breun, Robert Leese, A. W. Holthe, Guttorm Laaback, Edwin Maynard. *Fourth row:* Gus Tollefsen, Carl M. Gunderson, Idan Gilbertson, C. J. Gunderson, Bjorn Hilmo, Harold Lund, Ben Tiset, Leroy Johnson, Roland Halverson, Oscar Halverson, Roy Haugen, Nathan Moss, Arnold Lunnun *Assistant Director*. *Not Pictured:* Brede Berg, Bert Curtis Laurin Foster, Pahner Lund, Peder Petterson, Otto Wold, Bjorn Swendsen.



*Elias Breidford*

## Bellingham

THE BELLINGHAM MALE CHORUS was organized in the spring of 1916 as the Norronna Singing Society, with Selim Lindborg as the first director.

It was decided to extend an invitation to the Pacific Coast Norwegian Singers Association to hold the 11th Annual Sangerfest in Bellingham, and it was accepted. The Sangerfest was held here on September 1, 2, 3 and 4, 1916. Since then, other Sangerfests have been held in Bellingham in 1923, 1935, 1955 and now again in 1966.

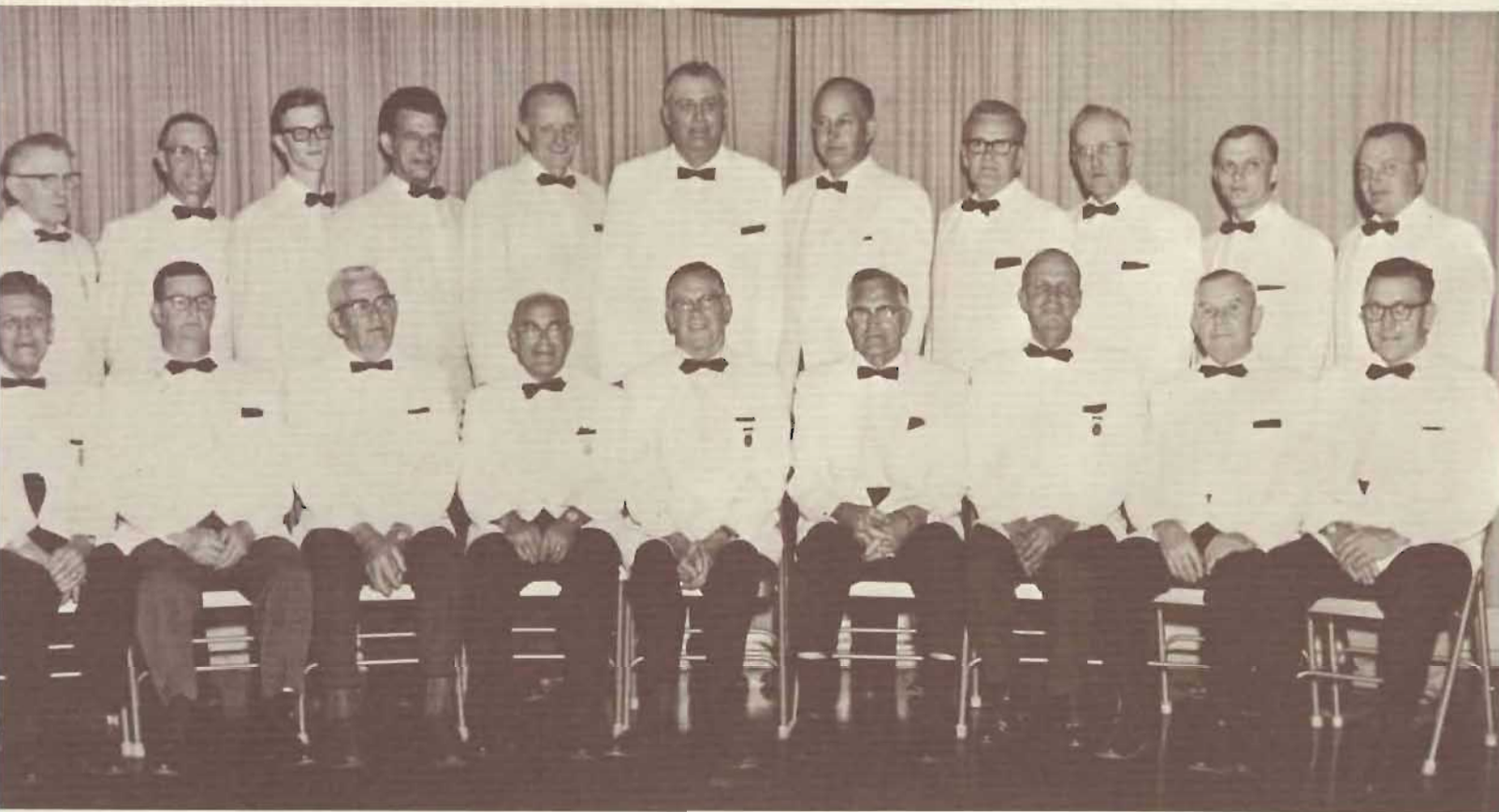
Of the original charter members Emil Olsen is still active.

The Bellingham Male Chorus extends greetings to all members of the Pacific Norwegian Singers Association, their wives and friends, and sincerely hope you will have a wonderful time at this 57th Annual Sangerfest.

Leopold Hotel

Norwegian Male Chorus of Seattle

# Male Chorus



*First row, left to right:* Matt Nordgaard, Carl Benson, Mel Hanson, Dr. Gunnar Hellberg, Elias Breidford, *Director*, Hjalmar Brannstrom, Helmer Melland, Oscar Anderson, Karl Dahl. *Back row:* Adolf E. Olsen, Vancouver, B.C., Emil Olsen, Jack Benson, Ted Ingemorsen, Vancouver B.C., Pete Norman, Elfie Peterson, Meivin Oberg, Martin Kalhovde, Gilbert Flockoi, Rolf Flockoi, Arnie Olsen, Vancouver, B.C. (*Not pictured:* Jeff Fox, accompanist, James Florence)

## Our Friends . . . They helped!

Morse Hardware Co.

Kjell Dahl

John and Borghild Engan

Bellingham Builders Supply Co.

Ted E. Clark

Mills Electric Co.

Fritjof Lodge No. 17, Sons of Norway

Blythe Plumbing and Heating Co.

Wilder Construction Co.

Nelson Construction Co., Ferndale

Iverson Supply

Pastime Cafe

Western Woodworking Co.

Shuksan Electric Co.

Uniflite Boatbuilders

Horseshoe Restaurant

Gilbert Construction Co.

First Federal Savings and Loan

Erickson Construction

Centaur Studio

Bellingham Sash and Door Co.

Georgia-Pacific Corp.,

## 'Twas the past . . .

**1903** First director was Rev. Carlos Sperati for the concert at the Sangerfest in Everett.

**1910** King Haakon of Norway sent a telegram to the Sangerfest in Eureka.

**1924** There were two concerts—256 singers with 1814 people in the audience at the first concert on Saturday and 1900 Sunday afternoon in the Meany Hall in Seattle.

**1935** The Treasurer and Secretary were late to the business meeting in Bellingham, due to the fact that there was a Labor Day parade and therefore created a delay in crossing the street.

After the concert at this convention, Mr. Syliaasen, the Grand Marshal expressed some of his views, to the effect that there was room for improvement, both in behavior and appearance, but on the whole the singers did pretty well.

**1939** *The concert was held in the Opera House in San Francisco and among the soloists was Clara Pladsen, known to us now as Mrs. Jerome Sandvig of Seattle.*

**1944** Emil Olsen of Bellingham presented Sangerforbund with a beautiful hand carved solid ivory gavel, sent by Mr. Strand of Nome, Alaska, as a token of continual "Sanger Spirit".

The soloist in Seattle, Mr. Waldemar Johnson of Norway, said he felt he had never sung with such a grand and spirited male chorus.

**1945** August Werner, Director-in-Chief, congratulated the singers for whole hearted support and attention of 99½% of the entire chorus.

**1949** Everett Sangerfest City—at the business meeting President Enger called on Sergeant

Guttormsen to come forward to handle a parking ticket. The Sergeant came and graciously ate the ticket thus destroying all evidence of criminal violence.

**1951** 257 Singers were registered for the concert given on Green Lake in the amphitheater in Seattle. This was the largest group registered since 1924 when 263 attended. The soloist was Lauritz Melchior who was presented with an Honorary Life Membership to P.C.N.S.A.

**1954** Sigurd Storm of Spokane donated a marshal's badge to the Forbund. This badge is big and resembles a policeman's badge.

**1956** Los Angeles papers noted the reference to our Assistant Director, the head of our three-ring circus, as Mr. Ringmaster.

Who could forget the cab strike in Los Angeles, so private cars and street cars were the mode of transportation if you were not in the mood to walk.

**1958** Eugene, Oregon applied for application to join the Forbund after which they more or less were convinced to take the next Sangerfest.

Assistant Director M. Malmin of Vancouver, B.C., went to the bar at the Normanna Hall in Everett and asked for coffee. To his surprise he got it.

Clarence Svendsen was commuting between the hospital in Seattle and Everett because his wife presented him with a daughter on the night of the concert.

Karl Dahl was presented with a ball and chain since his wife could not attend the Sangerfest.

**1961** Assistant Director in Chief Henry Ringman thanked everyone for their support in

*Continued to next page*

## *'Twas the past, continued*

making a concert which he was sure pleased the public. He was on the spot—but he had suspenders this time to hold up his trousers.

Just before Sangerfest time, Director in Chief August Werner was hospitalized. Prior to his illness he had been supervising the making of a statue of Leif Ericson which he designed and which was dedicated in Seattle during the Fair.

**1962** Arne Olson of Vancouver, B.C. reported that their chorus was 100% in attendance in Salt Lake City. He and his dad, the only 2 active members, rehearse and sing with the Bellingham Chorus. He paid dues for Vancouver to retain their membership.

August Werner, Director in Chief, was very pleased with P.C.N.S.A. members and he believed a lesson was taught the Norwegian Singers Association. He thought their choice of songs and

the way they were presented missed the healthy male chorus singing and lacked spunk.

**1963** The many problems that happened in the final stages of Sangerfest at Tacoma, such as the burning of the theater and the burning of the Norway Hall at 15th and K streets where the reception was to be held.

Dr. Stubb was made an Honorary member of P.C.N.S.A.

The recording secretary exchanged his dilapidated, patched satchel for a genuine leather attache case presented by the Grand Marshal.

**1964** A motion was made and carried to purchase a banner with the insignia for the P.C.N.S.A. to be displayed at Sangerfests. This banner was displayed for the first time at the Oakland, California Sangerfest, in 1965.

*CONGRATULATIONS, SINGERS!*

District Lodge No. 2, Sons of Norway

Norsemen of Eugene, Oregon

*Cover Design by:*  
BOB WILLIAMS  
Mount Vernon, Washington

*Layout and Printing by:*



