



Property of Normanna Male Chorus, Tacoma.

Souvenir Program
of
The Eighth Sangerfest
of
Pacifikkystens Norske Sangerforbund
at
Everett, Washington
August 3, 4, 5, 6, 1912

Brief Historical Sketch of Pacifkkystens Norske Sangerforbund

(The Pacific Coast Norwegian Singers' Association)

Norway is the home of song, at least of the Northern Climes. Travelers declare that no place on earth so abounds in song birds, and every man, woman and child everywhere eagerly join in to swell the ever increasing crescendo. Hallelujah! Hurrah! Whoever once was spellbound by this entrancing, harmonious, mighty chorus always again long to hear it and join it. For it makes them strong and happy.

In every city and hamlet, every broad country district or narrow valley in Norway are found singing societies—male, female or mixed—sometimes democratically constituted, sometimes according to class.

Even in America, where most people are too busy in other pursuits of life, particularly in chasing the "Almighty Dollar," the Norwegians have found time to remain true to these serene voices of childhood and fatherland—at least, of late years. Singing societies are now formed wherever the Norwegians are any considerable part of the population, from the Atlantic to the Pacific, from torrid Texas to icebound Canada. Male choruses were the pioneers, but lately the women have been just as eager to form societies and forbunds as the sterner sex.

Two large associations of male choruses have been formed in this country, one east of the Rocky Mountains, the other on the Pacific slope. The one of the East has flourished for nearly 25 years, and is just now returning from an immensely numerous and successful sangerfest in Fargo, N. D., where about 1,000 voices joined in the Grand Chorus. Pacifkkystens Norske Sangerforbund is just this month rounding out its first decade.

It was originated by F. A. Tomte of Portland in 1902, and has since found many who willingly and gladly have stood its sponsors. Particular praise is due to Professor Carlo A. Sperati, formerly of Tacoma, but now for several years of Luther College, Decorah, Ia., who has been its moving spirit and director in chief ever since it started. Other men who deserve honorable mention as faithful and

untiring workers in the cause are: John Norman of Everett, who has twice been honored or burdened with the presidency of the forbund; J. O. Berg, who for nearly 30 years has directed the Portland society; J. W. Oyen, director of the Everett society, also for years directing the Stanwood and Silvana societies; Geo. Johnson, director of the Tacoma society, formerly also of Parkland; Rudolph Moller, for several years director of the Ballard and Seattle societies; and Rev. C. Aug. Peterson, who never failed in constant love and work for the song child, though as a Methodist minister he could not remain constant to any one place or society.

Owing to the roving disposition of the people of the west, no society has been able to retain the same identical singers from one year or sangerfest to another. And it is sad to contemplate that comparatively only very few singers will be in our ranks this time who sang on the stage in the Everett Theater at the first sangerfest held here in 1903.

The different sangerfests have been celebrated at the following times and places: First in Everett, 1903; second in Seattle, 1904; third in Portland during the Lewis & Clark Exposition, 1905; fourth in Tacoma, 1906; fifth in Astoria, 1907; sixth in Seattle during the Alaska-Yukon-Pacific Exposition, 1909; seventh in Eureka, Calif., 1910; eighth in Everett, 1912.

Wherever the sangerfests have been held they have met with much favor and even enthusiasm from the people, and have always been a great success musically and socially if not financially.

The silver loving cup which at the first sangerfest was presented to the forbund by the citizens of Everett to be competed for by the different societies, was the first time awarded to the Everett society for "Valdrisvisen"; at the second sangerfest to Seattle for "Ossian"; at the third sangerfest to Portland for Reissiger's "Olaf Trygvason," and at the fourth sangerfest held in Tacoma, again to the Everett society for Sigurd Lie's "Per Spillemand." Since then the silver cup has not been competed for.



The Home of the Everett Lodge of Elks, which will be the headquarters of the Singers during the Sangerfest.

General Festival Program

Singers' Headquarters, Elks' Home, Rucker and California Aves.

SATURDAY, AUGUST THIRD.

Reception at Headquarters.

Presiding Chairman, John Norman.

Luncheon	12:00
Rehearsal	2:30
Lunch	5:00
Parade	7:00
Concert	8:15

SUNDAY, AUGUST FOURTH.

Luncheon	12:30
Concert	2:30
Photographing	5:00
Luncheon	6:00

Social gathering at Headquarters during evening.

MONDAY, AUGUST FIFTH.

Leave Headquarters for a trip to Stanwood over G. N. Railroad at 9 A. M., returning to Headquarters about 9 P. M. for a social gathering during evening.

TUESDAY, AUGUST SIXTH.

Business Meeting	9:00 A. M.
Luncheon	2:00 P. M.
Automobile Trips	3:00 P. M.
Banquet	8:00 P. M.



PROF. CARLO A. SPERATI, of Decorah, Iowa,
Director in Chief.

Festival Committees

EXECUTIVE COMMITTEE:

John Norman, President
Conrad Lien, 1st Vice-Pres.
A. A. Satrum, 2nd Vice-Pres.
E. K. Erlandson, Secretary.
P. M. Gavelstad, Treasurer.
C. H. Jesdahl P. D. Kraby
Herman Johnson Knute Thorsvig
John Ramstad E. A. Kittlesen
A. A. Halden K. K. Aalbu
Peter Nesje J. W. Oyen

FINANCE COMMITTEE:

P. M. Gavelstad, Chairman.
C. H. Jesdahl Knute Thorsvig
E. A. Kittlesen John Ramstad

PROGRAM AND MUSIC:

J. W. Oyen, Chairman.
E. K. Erlandsen John Norman

DECORATION COMMITTEE:

Peter Nesje, Chairman.
Peter Vikdal Sigurd Holmen
Oscar Ramstad Lars Hatlen
A. A. Halden

REFRESHMENTS COMMITTEE:

K. Thorsvig, Chairman.
H. Enger A. Flatseth
E. A. Kittlesen J. Ramstad
C. H. Jesdahl S. Holmen

COMMITTEE ON PARADE:

H. Johnson, Chairman.
A. A. Halden P. Nesje
O. Ramstad G. Olson

PUBLICITY COMMITTEE:

E. K. Erlandson, Chairman.
John Norman

COMMITTEE ON ENTERTAINMENT

J. Ramstad, Chairman.
C. H. Jesdahl P. M. Gavelstad
J. W. Oyen

TRANSPORTATION COMMITTEE:

P. D. Kraby, Chairman.
K. Thorsvig K. K. Aalbu

HOTEL COMMITTEE:

K. K. Aalbu, Chairman.
A. Flatseth H. Johnson

RECEPTION COMMITTEE:

E. A. Kittlesen, Chairman.
All singers active and social
members.

BANQUET COMMITTEE:

C. H. Jesdahl, Chairman.
M. Clausen K. Thorsvig

STANWOOD COMMITTEE:

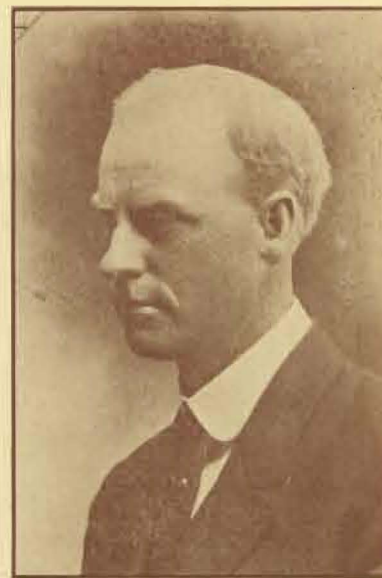
Conrad Lien
Andrew Anderson
Magnus Thomle



ALBERT A. SATRUM, 2d Vice Pres.,
Norman, Wash.



JOHN NORMAN, President,
Everett, Wash.



CONRAD LIEN, 1st Vice Pres.,
Stanwood, Wash.



E. K. ERLANDSON, Recording Sec'y,
Everett, Wash.



J. W. OYEN, Corresponding Sec'y,
Everett, Wash.



C. H. JESDAHL, Treasurer,
Everett, Wash.



EXECUTIVE COMMITTEE.

Ladies' Committee

LADIES' COMMITTEE

Mrs. J. W. Oyen, President

Mrs. Peter Kraby, Vice Pres.

Mrs. S. Holman, Secretary

Mrs. Flatseth

Mrs. Jesdahl

Mrs. O. Ramstad

Mrs. John Ramstad

Mrs. H. Enger

Mrs. A. Halden

Mrs. I. Erlandson

Mrs. E. A. Kittleson

Mrs. A. Hanson

Mrs. John Norman

Mrs. Peter Vikdal

Mrs. M. Clauson

Mrs. C. Christianson

Mrs. J. Johnson

Mrs. O. T. Thoreson

STANWOOD COMMITTEE

Mrs. M. A. Christenson

Mrs. C. J. Gunderson

Mrs. Conrad Lien

Mrs. John Ellingson

Miss Kristine Thomle

REFRESHMENT COMMITTEE

Miss Helen Kraby, President

Mrs. John Norman, Vice Pres.

Miss Minda Kobbervig

Miss Karen Vikdal

Miss Minerva Oyen

Miss Palma Thorsrud

Miss Sophie Fuhr

Miss Marie Fuhr

Miss Berghild Fuhr

Miss Ethel Norman

Miss Hulda Ellenson

Miss Inga Enger

Mrs. E. Buehrer

Miss Helen Benson

Miss Ella Peterson

Miss Clara Larson

Miss Mathilde Olson

Miss Gelena Olson



THE EVERETT LADIES' COMMITTEE

Concert Program

CARLO A. SPERATI, Director In Chief

Saturday, 8:15 p. m.

PART I

1. Tobani.....Grand American Fantasia
Orchestra—Max Elster, Director.
2. Ole Olsen.....Hæv dig Sang
Grand Chorus and Orchestra—Solo, Gustaf Holmquist.
3. Becker Sangermarsch
Nordlyset, Spokane
4. Sjomannen
Grand Chorus.
5. Bizet Toreador Song
Gustaf Holmquist.
6. Hauser.....Hungarian Rhapsodie
Max Elster.
7. (a) Reissiger.....Se hist ved Oestresaltets Vove
(b) Rudolph Moller.....Kjærringa me' Staven
Grand Chorus.
8. (a) Grieg Udfarten
(b) Grieg.....Jeg vil ha' mig en Hjertenskjær
Maja Gloersen-Huitfeldt.
9. Oscar Borg..... Hav
Viking Mandskor, Aberdeen.
10. WagnerPilgrims' Chorus
Grand Chorus and Orchestra.

PART II

11. WallaceMaritana Selections
Orchestra—Max Elster, Director.
12. Oscar Borg..... Leif Eriksson
(a) Paa Havet. (b) Land.
Grand Chorus.
13. (a) Selmer.....Hoit over Vrmlen og Stimlen
(b) Geibel.....When the Swallows Homeward Fly
Nordmændenes Sangforening, Silvana.
14. (a) Korling Kamrat
(b) Reissiger En Sangers Bon
(c) Lindblad Sotargossen
Gustaf Holmquist.
15. Bohm—arr. by Schehlmann..... Silent as Night
Grand Chorus.
16. (a) Musin.....Mazurka de Concert
(b) Ole Bull.....Sæterjentens Sondag
Max Elster.
17. (a) Selmer Ulabrand
(b)Canada, Oh Canada
Nordmændenes Sangforening, Vancouver, B. C.
18. (a) Grieg Mote
(b) Grieg Killingdans
Maja Gloersen-Huitfeldt.
19. (a) Wendelborg.....Den Norske Lods
(b) Parks.....Sweet Sabbath Eve
Norden, Ballard.
20. Grieg Landkjending
Grand Chorus and Orchestra—Solo, Gustaf Holmquist.

Doors closed during each number.

Concert Program

CARLO A. SPERATI, Director In Chief

Sunday, 2:30 p. m.

PART I

1. Keler—Bela Hungarien Lustspiel
Orchestra—Max Elster, Director.
2. Oscar Borg Fædrelandssong
Grand Chorus.
3. (a) Rudolph Moller..... Vikingesonner
(b) Arr. by Parks..... Larboard Watch
Nordmændenes Sangforening, Seattle.
4. Beschrift Ossian
Grand Chorus.
5. Leoncavallo Prologue
Gustaf Holmquist.
6. Carl Behm..... Legende
Max Elster.
7. Arr. by Behrens..... Valdrisvisen
Grand Chorus.
8. (a) Grieg Fra Monte Pincio
(b) Grieg Ragnhild
Maja Gloersen-Huitfeldt.
9. (a) Arr. by Rudolph Moller.... Kan du glemme Gamle Norge?
(b) Fr. Slicher..... Now Farewell, Thou Village By-way
Nordmændenes Sangforening, Tacoma.
10. Wagner Pilgrims' Chorus
Grand Chorus and Orchestra.

PART II

11. Golden Hayden Selections
Orchestra—Max Elster, Director.
12. Oscar Borg..... Lelf Eriksson
(a) Paa Havet. (b) Land.
Grand Chorus.
13. (a) Catharinus Elling..... Solfest
(b) Heidelberg
Nordmændenes Sangforening, Portland.
14. (a) Niels Gade..... Ballade—Knud Larvard
(b) Kjerulf En Sommerdag
(c) Heinrich Martin Mor
Gustaf Holmquist.
15. Dudley Buck..... The Signal Resounds from Afar
Grand Chorus.
16. Keler—Bela..... The Son of the Purzta
Max Elster.
17. Oscar Borg Tonernes Flugt
Norden, Eureka.
18. (a) Alnaes Sidste Reis
(b) Hildach Spring
Maja Gloersen-Huitfeldt.
19. (a) Russ Halvor Kletten
(b) Geibel Killarney
Nordmændenes Sangforening, Everett.
20. Grieg Landkjending
Grand Chorus and Orchestra—Solo, Gustaf Holmquist.

Doors closed during each number.



MME. MAJA GLOERSEN-HUITFELDT, Seattle, Wash.
Soprano



GUSTAF HOLMQUIST, of Chicago
Basso



OSCAR MOLINE, Everett, Wash.
Accompanist



MAX ELSTER, Everett, Wash.
Violinist



RUDOLPH MOLLER,
Director of Seattle and Ballard
Societies.



J. W. OYEN,
Director of Everett and Silvana
Societies.



OTTO LIEN,
Director of Stanwood Society.



J. CLIFTON,
Director Portland Society.



AXEL PIHLSTROM,
Director of San Francisco Society



HANS THOMASSEN,
Director of Eureka, Cal., Society.



T. M. DROTNING,
Director Spokane Society.



GEORGE JOHNSON,
Director Tacoma Society.



PETER FULSETH,
Director Aberdeen Society.



NORDMÆNDENES SANGFORENING, EVERETT, WASH.



NORDMÆNDENES SANGFORENING, STANWOOD, WASH.



NORDMÆNDENES SANGFORENING, SILVANA, WASH.



NORDMÆNDENES SANGFORENING, SEATTLE, WASH.



NORDEN SANGFORENING, BALLARD, WASH.





NORDMÆNDENES SANGFORENING, TACOMA, WASH.



NORDEN SANGFORENING, EUREKA, CAL.



NORDMÆNDENES SANGFORENING, SAN FRANCISCO, CAL.



VIKING MANDSKOR, ABERDEEN, WASH.



NORDLYSET, SPOKANE, WASH.



NORDMÆNDENES SANGFORENING, VANCOUVER, B. C.



C. J. BJORKE
Director of Vancouver Society

Everett--"The City of Smokestacks"

The City of Everett, only 20 years old, has a population, as shown by the 1910 census, of 24,862. Broad streets and avenues are laid out and water works, electric lights, sewers, street railway systems and other city necessities, conveniences and luxuries are provided. Although Everett's population is but little less than twenty-five thousand, it has a tributary population of seventy-five thousand. Everett is situated on the eastern shore of Puget Sound by the way of the Strait of Juan de Fuca and is the most advantageously located of all the seaports of the northern Pacific Coast. Everett covers an area of six square miles, has a bonded indebtedness of \$551,900 and a warrant indebtedness of \$210,000. The assessed valuation of property is \$13,267,437, and it was on a cash basis the first of July, 1912. Everett is widely known as the "City of Smokestacks," from her miles of factories which line her water front for ten miles. It is the largest labor town in the state.

In her lumber and shingle mills alone, Everett gives daily employment to 1,600 men, who, in the course of a year's time, produce upwards of \$3,000,000 of manufactured products. Her woodworking institutions yield annually another \$3,000,000 of manufactured products, making the grand total of \$6,000,000 each year received from the sawing up of the immense forests, which lie to the north, east and west, directly tributary.

The twelve miles of waterfront available at present will be increased by twenty with the completion of the project which the government now has under way for the deepening and improvement of the Snohomish river. This stream is being dredged to a low water depth of sixteen feet, and when the work is finished, twenty miles of river front will be made available for manufacturing sites, fronting on deep water. The appropriation made by the last Congress of \$285,000 for this work has been exhausted, and another immense appropriation becomes available on July 1. A large part

of the one already expended was for strengthening the jetties and deepening the basin just inside.

Everett is the first tide-water point reached by the Great Northern, the Northern Pacific and the Chicago Milwaukee & Puget Sound Railway Company, and this selection of Everett as a salt water terminal was due to its immense manufacturing and resultant enormous tonnage. It was but natural that Everett should be selected as one of the first cities to be reached by the Chicago Milwaukee & Puget Sound Railway and after the completion of the main line into Seattle and Tacoma.

In the way of water transportation, Everett enjoys equally as good advantages as with its railroads. At the Great Northern's Oriental dock steamers now receive part or full cargo, while it is one of the ports of call of the Pacific Coast Steamship Company's line of San Francisco vessels. A splendid mosquito fleet plies back and forth to the adjacent islands of Whidby and Camano and up the Snohomish and Skagit rivers to the towns along their banks.

The city has four banks, one national, two state and one savings. The statements made as a result of the call of April 18 showed deposits of \$4,163,840.64, a gain since the call of February 20, scarcely two months previous, of \$532,771.23.

Everett has thirteen miles of beautifully paved streets, asphalt predominating; fifty-three miles of graded dirt streets; forty-three miles of sewers, and sixty-five miles of cement sidewalks; 243 arc lamps light its streets.

Everett is the county seat and metropolis of Snohomish County—the largest both in area and population north of King.

In addition to Everett's three transcontinental railroads and her magnificent boat service to Seattle and nearby points, she is possessed of two interurban railroads. One of these is between Everett and Snohomish, the other interurban reaches from Everett to Seattle. As a result, there are a total of 100 trains in and out of Everett every twenty-four hours.

Officers of Pacifikkystens Norske Sangerforbund During Period 1910-1912

President.....John Norman, Everett, Wash.	Recording Secretary.....Eyvind K. Erlandson, Everett, Wash.
First Vice-President.....Conrad Lien, Stanwood, Wash.	Marshal.....Andrew A. Halden, Everett, Wash.
Second Vice-President.....Albert A. Satrum, Norman, Wash.	Corresponding Secretary.....J. W. Oyen, Everett, Wash.
Treasurer.....Carl H. Jesdahl, Everett, Wash.	Director in Chief.....Carlo A. Sperati, Decorah, Iowa

Names of the Different Societies, Members of Pacifikkystens Norske Sangerforbund

Nordmændenes Sangforening.....Everett, Wash.	Nordmændenes Sangforening.....San Francisco, Cal.
Nordmændenes Sangforening.....Seattle, Wash.	Lærken.....Astoria, Oregon
Norden.....Ballard, Wash.	Norden.....Eureka, Cal.
Nordmændenes Sangforening.....Portland, Oregon	Nordmændenes Sangforening.....Stanwood, Wash.
Nordmændenes Sangforening.....Tacoma, Wash.	Nordlyset.....Spokane, Wash.
Nordmændenes Sangforening.....Silvana, Wash.	Viking Mand'skor.....Aberdeen, Wash.
	Nordmændenes Sangforening.....Vancouver, B. C.

