



# EMBLA NYHETER

EMBLA LODGE NO. 2, DAUGHTERS OF NORWAY

Tacoma, Washington

July 2012 VOL. 25, NO. 5

Publication Committee:

Sarah Callow Janet Ruud  
Chris Engstrom Marilyn Mahnke

Photo Contributors:

Melody Stepp Carol Kemp  
Marilyn Mahnke Julie Touchette

## “NORWEGIAN-AMERICAN WOMEN OF DISTINCTION”

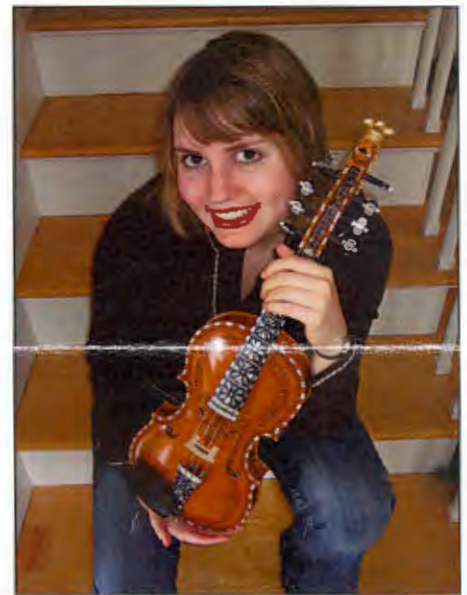
### SUMMER LUNCHEON - AUGUST 4 - SCANDINAVIAN CULTURAL CENTER

Every summer, Embla members rebel and simply refuse to “do all the work.” We have a lovely luncheon, when all the food is prepared by *someone else!* And all the tables are set by *someone else!* And all the dishes are cleaned up by *someone else!* Isn't that a great tradition?! At this luncheon, we honor our senior members (age 75 and up) by treating them to lunch (another great tradition!). We enjoy delicious food, we present wonderful entertainment, and we give prizes (yes – another great tradition).

This year's luncheon will be held at 11:30 a.m. on Saturday, **August 4<sup>th</sup>**, at the beautiful **Scandinavian Cultural Center** at PLU. The Luncheon Committee is planning a great event for you, and everyone is invited to attend (\$20). Children are welcome too (\$9)! You will get all the details in your invitation, which will arrive in your mailbox shortly! Be sure to reply promptly, so we'll know how many to prepare for.

The theme this year is “**Norwegian-American Women of Distinction.**” (By the way, did you know that astronaut Sally Ride is a Norwegian-American?)

Our special entertainer will be **Rachel Nesvig**, a young woman who is indeed a Norwegian-American Woman of Distinction. Rachel recently returned from a year of teaching music in Kenya, and although she now has a new love for



**RACHEL NESVIG** is proud to be Norwegian-American



Summer Luncheon  
Embla Lodge #2

A Norwegian-American (maybe?) woman by the Os Waterfall

Kenyan music, she will always have a strong place in her heart for Norwegian music. She received her BA in Music and Norwegian from St. Olaf College in 2007, and later her Masters in Violin Performance from Central Washington University in 2011, along with her K-12 Teaching Certificate. At St. Olaf College, she was the first student to receive a Distinction in Hardanger Fiddle. (See, I told you she is a woman of distinction!) She spent half her junior year in Norway, studying classical and jazz violin at the Music Conservatory of the University of Stavanger. In 2009, she taught beginning Hardanger Fiddle at the Hardanger Fiddle Association of America's Annual Workshop. Rachel is currently a teacher and a freelance violinist and fiddler.

By Janet Ruud

SIE  
HS  
1923  
D62



**The Syttende Mai Luncheon**

At the Sons of Norway's Leif Erikson Hall (2245 NW 57<sup>th</sup> Street) there is a *Syttende Mai* luncheon and program from noon to 2 pm every year. Eleanor Baker and Evelyn Lundstrom-Weiss represent Daughters of Norway on the 17<sup>th</sup> of May Committee (Embla #2 and Solveig #31 lodges). The flags were presented, and everyone stood to sing *Ja vi elsker* and the Star Spangled Banner, accompanied by pianist George Halvorsen Fiore. The master of ceremonies was Professor Terje Leiren, University of Washington, Scandinavian Studies. Toasts were made to King Harald V of Norway and President Obama. Consul Kim Nesselquist was honored as Knight 1<sup>st</sup> Class of the Royal Order of Merit, and Audun Toven's son, Trygge Toven, accepted an award for his late father. Lunch was catered by Me & You Catering, Inc. and included breaded cod generously donated by Trident Seafoods, mashed potatoes, peas and carrots, cabbage salad, and bread with butter. Dessert was white cake with a cream filling. Water and coffee were available at the tables, and wine was sold. This is always a fun celebration, and everyone is dressed in their bunads and Norwegian sweaters. There were many visitors from Norway too.



Eleanor Baker and Evelyn Lundstrom-Weiss

Article and pictures by Julie Touchette

**HIPP, HIPP HURRA!!!**

Norwegian Constitution Day was celebrated in Ballard by thousands of people. Many activities were planned! The parade Marshals were honored at the luncheon at the Sons of Norway Hall, Leif Erickson Lodge. Julie Touchette attended. There were *Barneleker* (children's games), a Nordic Café, fjord horses, entertainment at Bergen Place, a Café at Leif Erickson Lodge, and of course, finally the Parade!!



Emma and Ashlynn (Sharon's Granddaughters), Sharon Groeneveld, Judy Willison, Marilyn Mahnke, and G.L. President Ellen Hinds

Photo by Marcia Comer



Sharon Groeneveld's Granddaughters Emma and Ashlyn Sharon, Diane Nelson, Jeanette Wiggins, Jeannette's mother Aase Johnson Poulter (born on Lofoten Islands, lives in Idaho Falls), Marilyn Mahnke, Karen Bell, Laurie Rice, Judy Willison and Carol Voigt

Photo by Ross Willison

*Tusen Takk* to our representative Eleanor Baker, who was on the planning committee. How did she get us in the line-up for the parade as #7? This was wonderful, as it gave us a chance to see the rest of the parade, and we enjoyed the wonderful weather. Some of our members belong to other organizations and were marching with them. Driving around Ballard was a great sight, with lots of people out walking and lots of homes flying their Norwegian flags. Looking forward to next year!

By Marilyn Mahnke

# Notes from the May meeting of Embla Lodge



At our May meeting we were treated to a presentation by Joe Follansbee, author of Bet: Stowaway Daughter, a book for young adults about a Norwegian girl who stowed away on a ship. He spoke about the very interesting history of the Seattle-based three-masted schooner "Wawona," which carried lumber and was also a fishing vessel. He has written a book about the ship, Blowing Out The Stink: Life on a Lumber and Cod Schooner, 1897-1947.



May flowers on the serving table

Elene Emerson has announced that she will no longer be our Tubfrim Chair. She's been the Tubfrim Chair since 1999 and has really enjoyed collecting the stamps that raise funds that go to help handicapped children in Norway. Marshals Diane Nelson and Julie Touchette brought Elene to the front, where President Karen Bell thanked her. *TUSEN TAKK, ELENE!*

Our May hostesses did a great job on the food, decorations and the beautiful, delicious *Kransekake*, made to honor the *Syttende Mai* celebration this month. The hostesses were Carol Kemp, Torun Parker, Marilyn Mahnke, Carol Spencer, Esther Van Noy, Vonnie Stone and Mardy Fairchild. Harriet Swieso brought some delicious Hardanger lefse, also.



Carol Kemp and Carol Spencer made the beautiful *kransekake*



May hostesses: Esther Van Noy, Marilyn Mahnke, Mardy Fairchild, Laurie Rice, Carol Kemp, and Torun Parker

Candace Brown has resigned from her position as the scribe for the *Døtre av Norge* paper. We appreciate all the wonderful articles she has written. *MANGE TAKK!*

**We are hoping that someone will step up and fill that position soon.**

By Sharon Groeneveld, Secretary  
Pictures by Carol Kemp and Marilyn Mahnke





# Notes from the June meeting of Embla Lodge

**Sonja Ruud**, who just graduated from PLU, gave a talk about her trip to Norway for our **June** meeting. She participated in PLU's Gateway semester program in the

fall of 2011. While she got to see a lot of Norway, meet family and friends, ski etc., she also was there to study hard in a course called "Challenges of Contemporary Society." We all enjoyed her talk and the wonderful pictures she shared. Sonja's father and mother (Jan Ruud and Linda Faaren), her sister Kirsti Ruud, and her grandmother Grace Faaren were present to hear her talk. (Jan Ruud is Janet Ruud's cousin.)

Two new members, Gerda Hunter and Christina Wilcoxson, were welcomed into Embla membership in the formal initiation ceremony by Judge Judy Willison and President Karen Bell. We sang "The Sister Chain Song," and Cultural Chair Melody Stepp read a poem.

Our Embla Scholarship winner this year is Jacob Peterson, who is Shirley Peterson's grandson. He was present to receive the award along with his dad Mike Peterson, his grandfather Marvin Peterson and of course, Shirley. He is going to attend the University of Washington at Tacoma.

After much discussion, it was decided by the members to have our **Summer Luncheon** at the **Scandinavian Cultural Center at PLU**. Our chosen date of July 28 was later changed to **August 4**. Watch for your invitation!

President Karen Bell said that the convention delegates have met and discussed the Grand Lodge Board's proposed changes to the Daughters of Norway Constitution. The changes have been emailed to everyone. If you would like a hard copy, please notify President Karen (kbellsteilacoom@yahoo.com or 253-302-5110). Carol Kemp brought up Queen Maud Lodge's proposed amendment which recommends changing the "Norwegian descent" requirement to "any Nordic descent" for the office of Grand Lodge President. After discussion, it appears that most Embla members are not in favor of changing the requirement. If you have questions or comments about any of the proposed amendments, please contact Karen Bell.



The bonfire on our serving table wasn't real - like this one - but it was really nice!

Our **2012 Nordic Festival** will be held October 13 at Edgemont Jr. High School in Edgewood from 10 a.m. - 4 p.m. This is a large venue all under one roof. We need a **lot of helpers** in order to have a successful event. Sign-up sheets will be passed around at the next two meetings. You may also contact Mardy Fairchild by phone at 253-472-0444 or email at (mfairch@citysounds.biz) ) to volunteer.

Lisa Ottoson, Ines Ottoson, Karen Kunkle, Harriet Swieso, Tina Riffle, Judy Rogers and Mardy Fairchild were great hostesses for our **Sankt Hans Fest** celebration. There was plenty of good food, and the birch tree decorations were beautiful! We even had a **bonfire in the middle of the serving table!** Karen Bell also made some delicious *rømmegrøt!*

Financial Secretary Joan Anderson reported that all but four members have paid their 2012 dues. Thanks for all your hard work on that, Joan!

Our Norwegian Cooking Class Chair, Judy Willison, reported that our fall classes will be October 9, 18 and 27 in the SCC at PLU. Come and learn some wonderful new recipes, enjoy the friendships, and have a light lunch – all for only \$5!

By Sharon Groeneveld, Secretary



**Kirsti Ruud, Sonja Ruud, Grace Faaren, Linda Faaren, Jan Ruud, and Janet Ruud**

Photo by Melody Stepp

# HÅNDVERKERER

The *håndverker* ladies are busy working on projects for the upcoming convention, and we will have a new item this fall, just in time for our October 13 Nordic Festival. We have agreed to purchase *vimpeler*, flags / pennants which are in the shape of a triangle. This type of flag dates back to the Viking times. It is sometimes called a “homecoming flag,” and was flown at the top of a ship’s mast. As the ship left home port, it would be rolled in. Little by little, the flag would be let out until the ship was back home. By looking at the *vimpel*, the crew members could tell how close they were to home.

Today, a *vimpel* may be flown at a residence to indicate that the family is at home. Whereas a national flag must be lowered at sunset, a *vimpel* can be left up night and day.

These special flags can range in length from about three feet to nine feet! We will sell the three-foot version at our Nordic Festival in October.



By Marilyn Mahnke

## LØP OG KJØP!

This rhyming phrase means “Run and Buy!”  
It’s often used in Norwegian advertising.

Photo taken in 2010 by Daniel Flathagen, Øye, Norway  
(Møre og Romsdal)

## NORWEGIAN LESSON

Vimpels are narrow, usually triangular flags. The use of the flag can have different meanings, for example in connection with shipping, or the Navy. An *orlogsvimpel* is a long, narrow flag used in the military context to show that the ship is under command.

Vimpels looking like the national flag are used more informally than the national flag and can be hoisted 24 hours a day. Such a *vimpel* usually has a design similar to that found on the country's national flag, but there can also be differences between them.

*Vimpel er et smalt, gjerne trekantet flagg. Bruken av vimpel kan ha ulike betydninger, for eksempel i forbindelse med sjøfart. En orlogsvimpel er en lang og smal vimpel som benyttes i militær sammenheng for å vise at skipet er under kommando.*

*Vimpler som tilsvarer nasjonalflagg anvendes mer uformelt enn flagget og kan være heist døgnet rundt. En slik vimpel pleier å ha et motiv som ligner det som finnes på landets nasjonalflagg, men det kan også være forskjeller mellom dem.*

Are you **SERIOUS** about learning Norwegian? Norwegian on the Web (NoW) is an **online course** in Norwegian at entry level (offered by NTNU—Trondheim), where all the teaching aids are integrated on a website, **free of charge**. NTNU stands for *Norges teknisk-naturvitenskapelige universitet* (Norwegian University of Science and Technology). Check it out! [www.ntnu.edu/now](http://www.ntnu.edu/now)

## LEIKARRINGEN

We have an awesome group of ladies who meet twice a month to practice our Norwegian dances at Lutheran Community Services in Tacoma. We are getting many requests to perform at events, and we danced at the Norwegian Heritage Festival in April; on June 7<sup>th</sup> a group of us performed and taught dances to students at Pope Elementary School. We will be dancing again for the Nordic Festival in October. Wouldn't you like to join us? We have an excellent new leader – Carol Voigt – and we get some exercise and have lots of fun and laughter as we dance together!

By Judith Willison

## EMBLA SCHOLARSHIP FUND

Donations have been made to the Embla Scholarship Fund  
in memory of Aggie Thoreson

by John and Ethel M. Allen, Bruce and Christiane Ulness, Margaret E. McCauley from Littleton,  
Colorado, Jeanette Murphy from Spokane, and Elene Emerson.

in memory of Marilyn Mahnke's husband, Martin Romero  
by Harriet Swieso

A lovely *sølje* was donated to Embla by Florence March and Evangeline Billingsly, which was purchased by Sharon Groeneveld, with the money going to our Scholarship Fund.

*Please remember that our Scholarship Fund needs your donations. Keep in mind that that you can make a donation for a number of reasons:*

- *in memory of an Embla sister or other loved one*
- *in honor of someone (birthday, anniversary, new baby, etc.)*
- *in thankfulness for your own milestone birthday, good health, or anniversary, etc.*
- *in acknowledgment of anyone/any occasion that you would like to recognize in this special way.*

By Chris Engstrom

## PAST PRESIDENTS CLUB

The Past Presidents Club meets every other month. In February, we were hosted by Mardy Fairchild; in April by Marilyn Mahnke, and our June meeting and luncheon was held on Monday, June 11<sup>th</sup> at Delphine Johnson's home. We have a wonderful time visiting and enjoying the delicious food. And we have a short business meeting too.

It is always delightful to get together, and this is truly one of the lasting benefits of being president of Embla.

By Judith Willison



At Marilyn's House - Seated: Carol Kemp, Delphine Johnson, Harriet Swieso, Standing: Mardy Fairchild, Janet Ruud, Judith Willison, Esther Van Noy and Marilyn Mahnke

***Embla would like to thank the Past Presidents Club  
for their generous donation to our Summer Luncheon!!***

## SUNSHINE REPORT

### Remembering Dagny

Dagny Vaswig was born on January 28, 1921 in Minnesota. She became a member of Embla on September 4, 1980, together with her sisters Florence March and Evangeline (Vangie) Billingsly. They and their five other sisters were known as the singing group, the Seven Ordahl Sisters. Dagny, Florence, and Vangie later formed the "Nordic Trio," singing at many Norwegian functions. Dagny was a major soloist in the Tacoma/Seattle area, performing in both classical and musical theater. She was part of the Leikarring (singing and dancing), and she served as Embla's Cultural Director for several years, who led us in all of our songs. She was also an avid and talented photographer. Our Embla scrapbooks are filled with photos that Dagny took. Dagny passed away on May 7, 2012. Please keep her sisters and their families in your thoughts and prayers .

### Prayers for healing

- Eleanor Baker, Astrid Dorum, Judy Gullander, Helen Garner, and Norma Borgford have had surgery this summer.
- Karen Lynn's son is going through chemo treatments.

### Congratulations!

Lisa and Jacob Evert have a new baby boy, Jonah, who was born on June 25th, weighing in at 8-1/2 pounds and 20" long. Proud grandparents - Ellen and Terry Campbell!  
By Marilan Mahnke

### EMBLA'S NORWEGIAN COOKING CLASSES

Our spring cooking classes in the Scandinavian Cultural Center at PLU in March were lots of fun and special, thanks to the members who demonstrated and those who always help with set up, cashiering, and cleaning up. Janice Kelly is "retiring" and she is being replaced by Sharon Groeneveld, who will join Ellen Campbell and me on choosing recipes and helping out at the classes. A special **thank you to Janice** for volunteering for the last four years and being such a great demonstrator and so much help in the kitchen with set up and clean up! Our next classes will be in the fall. The dates are: Tuesday, October 9; Thursday, October 18; and Saturday, October 27. If you have a delicious Norwegian recipe you would like to share (and demonstrate?), PLEASE contact me (253-838-4232 or jwillison@comcast.net) and we will put you on the schedule. Suggestions or favorites from our Embla cookbooks are always welcome, too!  
By Judith Willison

### Embla Lodge #2 Daughters of Norway

534 Forrest Park Dr.  
Fircrest, WA 98466

ADDRESS SERVICE REQUESTED



Scandinavian Cultural Collection  
PLU Mortvedt Library  
12180 Park Ave S  
Tacoma WA 98447-0013

9844730013

