



**35<sup>th</sup>**  
**Sangerfest**  
**Seattle**  
**1944**



**Pacific Coast Norwegian Singers Ass'n.**



*Yesterday:* Sight of the striped-sailed dragon ship of the Vikings, most formidable and efficient fighting machine of its day, sent the terror-stricken foe scrambling for safety.

*Today:* Seattle's own B-29 Superfortress, the epitome of engineering achievement and greatest fighting machine of all time, spells doom to the enemies of freedom loving people.

MEMBERS:  
JUNE 15-1976  
KAREN H. + HANS D. SORVIK, SEATTLE, WASHINGTON

# *Pacific Coast Norwegian Singers Association*

WE PROUDLY DEDICATE OUR

## THIRTY-FIFTH SANGERFEST

TO OUR MEMBERS IN THE ARMED FORCES

Nels Aarreberg

G. Abbors

Arthur Andersen

E. Arneson

Olaf Boe

H. Brain

Einar Bugge

John Dahl

Otto Erikson

W. Eriksen

H. Eyford

Raymond Fosse

Barney E. Grevstad

George A. Gundersen

Morton Halvorsen

Norman Hansen

Harry Hansen

Harry M. Hansen

Ray Jacobsen

J. Johanson

Hal Kamp

Erling Larsen

Arnold Lunnum

A. Magnussen

Monrad Malmin

Harvey L. Mathiesen

Carl Moe

P. Moen

E. A. Olsen

Andrew Pedersen

Robert Saxhaug

Martin Severied

Ove Simonsen

Otto Skaug

Ossie Thollefsen

B. Tripp

Sigurd Vistaunet

John Voog

*Seattle, Washington*

*August 26-27, 1944*

GREETINGS

to

The SINGERS

from

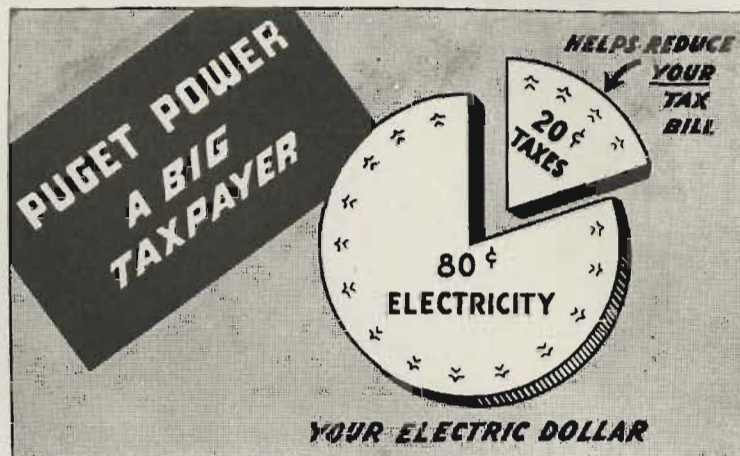
Mr. and Mrs. Jacob Samuelson

Compliments of

R. FLAKSTAD



Associate Member



PUGET POWER is a big taxpayer, while public power is in large measure *tax free*. Your Puget Power electric bill is also a *tax bill!* About **20 cents** out of every dollar of Puget Power's income is paid out in taxes and this year's total will amount to more than \$5,000,000.

*If Puget Power were put out of business this huge tax bill would have to be paid by you in other ways*

★ WAR BONDS FOR VICTORY

**PUGET SOUND POWER  
& LIGHT COMPANY**

FRANK McLAUGHLIN, *President*

OWNED  
AND OPERATED  
THE  
*American  
Way*



## GEORGE S. JOHNSON

### *In Memoriam*

Born—Grove City, Minnesota.....June 26, 1878

Died—Tacoma, Washington.....November 21, 1943

George Johnson spent his early boyhood in Minnesota and moved to Fremont (Seattle) at the age of eleven. It was in Fremont where he was first heard of as the organizer and director of the first boys band on the Pacific Coast.

In a few years, George moved to Parkland where he studied at Parkland College. Later he became director of the Norwegian Singing Society of Parkland and attended the first song festival of the Pacific Coast Singers Association, which was held in Everett in 1903.

In the year 1907, George became director of the Normanna Male Chorus of Tacoma, which position he held almost continuously to the year 1940. He also directed the Shrine Band, the Hugo Schmidt Band and various other bands and orchestras.

George Johnson was Assistant Director of the Pacific Coast Norwegian Singers Association from 1924 to 1934 and was Director in Chief in 1935, 1936, 1937 and 1940.

George Johnson will be remembered as a driving leader, an enthusiast for Norwegian music and particularly for his years of effort in behalf of the Tacoma Chorus and our Singers Association.

# Greetings

to the singers

from

**AUGUST  
BUSCHMANN**

Colman Building,

Seattle



## Greetings--Singers!

expressing my admiration for your  
work and fine accomplishments

### Christen A. Stang

Consul of Norway at Seattle  
for the state of Washington

Also doing business as:

### THOS. H. KOLDERUP & CO.

Insurance Agents  
Established for over 25 years

Writing:

Fire—Automobile—Burglary  
Liability Insurance and Bonds

Analysis of insurance coverage  
and estimates furnished



519 White Bldg.

Telephone MA. 0715

4th and Union — Seattle 1, Wash.

# Pacific Coast Norwegian Singers Association

## ASSOCIATION OFFICERS

K. F. FREDERICK  
President  
Seattle, Washington

ROBERT A. MOEN  
Corresponding Secretary  
Seattle, Washington

JEROME SANDVIG  
Recording Secretary  
Seattle, Washington

RUDOLPH BYE  
Treasurer  
Seattle, Washington

M. O. SYLLIAASEN  
Grand Marshal  
Seattle, Washington

PROF. AUGUST WERNER  
Director-in-Chief  
Seattle, Washington

HENRY RINGMAN  
Assistant Director  
Everett, Washington

JENS K. HANSEN  
First Vice-President  
Seattle, Washington

G. L. HELLBERG  
Second Vice-President  
Bellingham, Washington

BREDE BERG  
Third Vice-President  
Everett, Washington

DAVID WESTBY  
Fourth Vice-President  
Portland, Oregon

ALFRED ABRAHAMSEN  
Fifth Vice-President  
San Francisco, California

C. O. WOLLAN  
Sixth Vice-President  
Tacoma, Washington

## SANGERFEST SCHEDULE

Saturday, August 26

Registration at Norway Hall

10:00 a.m.—Rehearsal at I.O.G.T. Hall

12:00 noon—Luncheon at Norway Hall

2:00 p.m.—Rehearsal at Plymouth Church

8:00 p.m.—Concert at Plymouth Church

10:30 p.m.—Entertainment at Norway Hall for Registered Guests

Sunday, August 27

9:30 a.m.—Norway Chorus Breakfast

2:00 p.m.—Business Meeting at Olympic Hotel

6:00 p.m.—Banquet at Olympic Hotel, Spanish Ball Room

Losje Breidablik, Dötne av Norge

Seattle 4, Wash.

+

Jennie Woog  
President

Gunvor Bjerkeseth  
Sekreter

Compliments of

*Norwegian*  
**Commercial Club**

∞

1944 Officers

Alf Larsen  
President  
Carl Zapffe  
Vice President

Robert A. Moen  
Secretary  
Valdemar Holm  
Treasurer

Compliments of

**LERVOLD & SONS**

Cabinet Works

BEN LERVOLD  
Res. Phone, SUNset 0088

Corner 15th N.W. & Market St.  
SEATTLE 7, WASH.

Compliments of

**ALF LARSEN**

Northern Products Corporation

+

200 Bell Street Dock, Seattle  
Associate Member

Compliments

of

**EINAR BEYER**

+



# Pacific Coast Norwegian Singers Association

Norwegian Male Chorus.....	Vancouver, B. C.
Bellingham Male Chorus.....	Bellingham, Wash.
Norwegian Male Chorus.....	Everett, Wash.
Norwegian Male Chorus.....	Seattle, Wash.
Normanna Male Chorus.....	Tacoma, Wash.
Grieg Male Chorus.....	Grays Harbor, Wash.
Larken Singing Society.....	Astoria, Oregon
Norwegian Glee Club.....	Portland, Oregon
Norwegian Singing Society.....	San Francisco, Calif.
Normanna Glee Club.....	Oakland, Calif.
Norwegian Male Chorus.....	Los Angeles, Calif.



## RECORD OF SANGERFESTS

1—Everett .....	1903	19—Seattle .....	1924
2—Seattle .....	1904	20—Portland .....	1925
3—Portland .....	1905	21—Tacoma .....	1926
4—Tacoma .....	1906	22—Vancouver .....	1927
5—Astoria .....	1907	23—San Francisco .....	1928
6—Seattle .....	1909	24—Astoria .....	1929
7—Eureka .....	1910	25—Grays Harbor .....	1931
8—Everett .....	1912	26—Everett .....	1933
9—Spokane .....	1913	27—Vancouver .....	1934
10—San Francisco .....	1915	28—Bellingham .....	1935
11—Bellingham .....	1916	29—Seattle .....	1936
12—Seattle .....	1917	30—Portland .....	1937
13—Portland .....	1918	31—San Francisco .....	1939
14—Tacoma .....	1919	32—Tacoma .....	1940
15—Grays Harbor .....	1920	33—Grays Harbor .....	1941
16—Astoria .....	1921	34—Everett .....	1942
17—Everett .....	1922	35—Seattle .....	1944
18—Edison Bellingham .....	1923		

## HONOR ROLL

### Decorated for Attendance at Thirty Sangerfests

J. J. Libak, Portland.....	1940
Peter Lilos, Seattle.....	1940
Theodore Christy, Seattle.....	1941

### Decorated for Attendance at Twenty-Five Sangerfests

Olav Boen, Seattle.....	1937
Thomas Tjerandsen, Seattle.....	1939
M. H. Clausen, Everett.....	1940
M. O. Sylliaasen, Seattle.....	1940
H. B. Rasmussen, Astoria.....	1941
A. Rasmussen, Astoria.....	1941
Nicolay Christiansen, Seattle.....	1942
J. H. Clifton, Portland.....	1942



## DIRECTORS-IN-CHIEF

Carlo A. Sperati .....	1902-1916
Rudolph Moller .....	1916-1935
George S. Johnson.....	1935-1937
Monrad Malmin .....	1937-1939
George S. Johnson.....	1939-1940
August Werner .....	1940-1944

*Wrap your  
future in SECURITY!*



Face the post-war future with confidence — open an account with Seattle Federal and add to it regularly as the months go by. Your savings are fully insured up to \$5,000.00 by the Federal Savings and Loan Insurance Corporation. *Savings placed on or before 10th of the month will earn from the 1st.*

+ + +

Buy, or refinance your home with a Seattle Federal home Loan. Terms to fit any budget at low interest rates.

**SEATTLE FEDERAL SAVINGS**

AND LOAN ASSOCIATION

Third and Seneca

Seattle, 1

Welcome to Seattle

For Complete  
Home Furnishings  
visit

**GRUNBAUMS**

6th Ave. Near Pine

SEneca 0600

Greetings

**CITY LUMBER CO.**

Wholesale and Retail Distributors

4365 Leary Way  
Seattle 7, Wash.

Nels C. Olson

SUNset 6000

**Ben's General Service**

*Ballard Home of Federal Tires*

**COMPLETE AUTO REPAIR**

6759 15 N.W.

SU. 9739



## To All Members:

GREETINGS AND WELCOME to this Thirty-fifth Sangerfest of the Pacific Coast Norwegian Singers' Association!

Never in the history of our Association have times been as trying for its members as they are now. Many of them are in their country's service; others have dear ones suffering at the hands of the enemy in occupied territory; and still others mourn those who have paid the supreme sacrifice that the ideals of Liberty, Justice, Truth and Equality may forever be perpetuated.

Yet these adversities have served but as a challenge to you singers to carry on. May your singing cheer and gladden those whose hearts are heavy, and may you find enduring pleasure in the giving of your song.

To our members in the Service this Festival of Song is dedicated with profound appreciation and respect, and with the fervent hope that its concord of sound is but an augury of the harmony of peace which is to come among all men!

KARL F. FREDERICK,  
*President*

Storlosjen Dotre av Norge  
Paa Stillehavskysten

sender sin beste hilsen til  
Vestkystens sangere.



Kaspara Gorud  
President

Gunvor Bjerkeseth  
Sekreter

Leif Erikson Lodge No. 1  
SONS OF NORWAY  
Seattle, Washington

EXTENDS ITS HEARTIEST GREETINGS  
TO THE PACIFIC COAST NORWEGIAN  
SINGERS' ASSOCIATION ON ITS . . .

35th SANGERFEST



## Leif Erikson Foundation

Leif Erikson Foundation was organized in Seattle in 1934 for the purpose of helping to perpetuate the knowledge of the Discovery of America by Leif Erikson and to commemorate the event in some fitting manner October 9th, of each year.

Membership of interested individuals or clubs is cordially invited.


OUR BEST WISHES FOR A  
SUCCESSFUL SANGERFEST



## Valkyrien Lodge No. 1

Daughters of Norway

Seattle, Washington



# SAGA

Today in Norway singing must be in a subdued minor chord. Our beloved "Land of the Midnight Sun" is an invaded country, the tyrant's iron heel and mailed fist resting heavily upon her peace loving people. As they courageously fight the tyranny and oppression of the aggressor, we, in the midst of freedom, dearer to us than ever before, turn our prayers to Norway, our faith holding true that the day will soon return when her people shall sing "Ja, vi elsker dette landet" as free men.

The beauty and grandeur of Norway, with her lofty mountains, deep blue fjords and woodclad valleys, inspired such masters as Grieg, Ole Bull, Sinding, Kjerulf, Nordraak, Reissiger, Borg and many others, to express themselves in song and music. They contributed compositions of lasting beauty that rightfully belong among the finest the world has produced. Singing has been the heritage of the Norwegian people since the days of the Vikings. In towns, villages and farm lands singing societies were formed for young and old and it was in Norway that male chorus a cappella singing was developed to the high level which has been used universally throughout the years.



In America, as in Norway, the characteristic Norwegian love of song and ability to organize has manifested itself in male chorus work which has forged a strong link in the bond between those of Norwegian birth and those of Norwegian ancestry.

To further the culture of group singing on the Pacific Coast, representatives of various choruses met at Seattle in 1902, under the leadership of F. A. Tomte of Portland. His suggestions were met with enthusiasm and resulted in the formation of the Pacific Coast Norwegian Singers Association.

For the outstanding achievements of the Association, a tribute is due the brilliant and able leadership of the former Directors-in-Chief, Carlo A. Sperati, Rudolph Moller and George Johnson, and the present Director-in-Chief, August Werner.

The first Sangerfest was held in the city of Everett in 1903. This is the thirty-fifth Sangerfest and the sixth held in the City of Seattle.

## GREETINGS

With Best Wishes Accorded  
1944 Norwegian Sangerfest

**DR. KRISTIAN FALKENBERG**

Optometrist  
829 Republic Bldg.  
Seattle

ELiot 3445

Across from Bon Marche

**OLAF HOLTE**

Jeweler and Watchmaker

New Location October 1st—312 Stewart St.

Compliments of

**Harold J.**

**GANGMARK**

+

FISHERIES SUPPLY CO.

*Greetings*

*from the*

**SHIP EQUIPMENT  
AND SUPPLY CO..**

235 Fifth Ave. North

Erling Malmo

GArdfield 0074

**OSBORN & ULLAND, Inc.**

*We Specialize in Everything in Sports*

Second & Seneca

MAIn 8464

Compliments of

**Hans Bue  
North End Fuel Co.**

MElrose 2424

Associate Member



## DIRECTOR'S GREETINGS

*Let us all sing in harmony in our country's great chorus. Then our song will be a power among our people—a spiritual power in the life and building of our communities.*

+

AUGUST WERNER  
DIRECTOR - IN - CHIEF  
PACIFIC COAST NORWEGIAN SINGERS  
ASSOCIATION



GREETINGS

TO OUR NORWEGIAN MALE CHORUS

They faithfully carry on in song the  
heritage of the Norwegian people.

+

O. A. WIGGEN & SONS

2014 Market

SUnset 4700

Compliments of

L. SANDSTROM

Pacific Fishing & Trading Co.

*Compliments*

*of*

Halibut Producers

Cooperative



15th Avenue N. W. at Shilshole

Seattle,  
Washington





## WALDEMAR JOHNSEN

Born in Bergen, Norway, the birthplace of Edvard Grieg and Ole Bull, Waldemar Johnsen is Norway's foremost baritone, an artist worthy of his immortal predecessors.

With imprisonment in a Nazi concentration camp as the only alternative for his refusal to sing on German sponsored programs, Mr. Johnsen escaped to Britain on a small fishing boat in 1941, seeking immediately to join the Norwegian armed forces.

The Norwegian Government valued him far greater for the morale-building power of his gifted voice, and since that time he has made hundreds of appearances before the uniformed men of the United States, Norway and Britain.

# Washington Posten

er offisielt organ for  
Pacifickystens Norske Sangerforbund

## Sangerspalten

staar altid til disposisjon for alle  
kor og alle sangere

---

Greetings and Sincere Best Wishes  
to Our Brother-Singers

who are striving so faithfully to keep alive  
beautiful Scandinavian songs and music.

**SVEA MALE CHOIR**

+

of Seattle, Wash.

Beste Hilsener Til  
Pacifickystens Norske Sangerforbund  
Og  
Sangerfesten i Seattle 1944



Vi hilser ogsaa Ved Denne Anledning i Stolt  
Takknemmelighet

Nordmennesenes Sangforening Av Seattle,  
Vaar Fremste Tolker Av Norsk Musikk

Knute Berger



**Berger Engineering  
Works, Inc.**

3236 16th Ave. S.W.

Seattle, Wash.



**ARVILLE BELSTAD**  
Organist



**HENRY RINGMAN**  
Assistant Director



**GERTRUDE WERNER**  
Chorus Accompanist



**JENS HANSEN**  
Soloist

GREETINGS from

**K. GORUD**

*Ladies' Wear*

6315 Roosevelt Way

7218 Greenwood

---

Compliments of

*Carl Zapffe*

Manufacturing Silversmith

ELECTRO PLATING

Associate Member

ELiot 6125

516 Virginia St.

---

Compliments of

**JOHN PETERSEN**

Delicatessen

7216 Greenwood

SUnset 9905

---

Compliments of

**H. E. NELSON**

927 Seaboard Bldg.

GREETINGS TO THE SINGERS

from

**B. H. STORDAHL**

+

407 3rd Ave. W.

ALder 1860

---

GREETINGS TO THE SINGERS

from

**HENRIK VALLE**

+

407 3rd Ave. W.

ALder 1860

AUGUST WERNER  
Director-in-Chief

JENS HANSEN  
Tenor Soloist

GERTRUDE WERNER  
Chorus Accompanist

# FESTIVAL PROGRAM GRAND CONCERT



Saturday Evening, August 26, 1944  
at 8 o'clock

HENRY RINGMAN  
Assistant Director

WALDEMAR JOHNSEN  
Baritone Soloist

ARVILLE BELSTAD  
Organist

Ja, Vi Elsker Dette Landet (Yes, We Love  
with Fond Devotion).....Nordraak  
The Star Spangled Banner.....Stafford-Smith  
Sangerhilsen (Singer's Greeting).....Grieg  
Grand Chorus, Conductor August Werner

\* \* \*

To the Rising Sun.....Torjussen-Belstad  
Fantasie Triomphale .....Haarklou  
Arville Belstad at the Organ

\* \* \*

Beautiful Saviour, Hymn from the 12th  
Century, arr. by.....Wick  
On the Sea.....Buck  
Lassie O'Mine.....Walt  
Up and Away.....Geibel  
Grand Chorus, Conductor Henry Ringman

\* \* \*

Til Norge (To Norway).....Grieg  
Det Förste Möte (The First Meeting).....Grieg  
Vaaren (To Spring).....Grieg  
Og Jeg Vil Ha Mig En Hjertenskjær  
(Oh, That I Had a Sweetheart).....Grieg  
Waldemar Johnsen, Accompanist Arville Belstad

\* \* \*

Bädn-Lät (Nursery Rhyme) Norwegian Folk  
Song arr. by.....Grieg

Incidental Solo—P. Lilos

Rötnams Knut, Norwegian Folk Song arr. by..Grieg

Halling, Norwegian Folk Song arr. by.....Grieg  
Soloist Jens Hansen  
Grand Chorus, Conductor August Werner

\* \* \*

Eit Syn (A Vision).....Greig  
Sne (Snow) .....Lie  
De Hundrede Violiner (The Hundred  
Violins of Heaven).....Alnös  
De Brennte Våre Gårde (They Burnt  
Our Farms) .....Rangström  
Waldemar Johnsen, Accompanist Arville Belstad

\* \* \*

Tenting Tonight, words and music by  
Kittredge arr. by.....Werner  
Stridsbön (Battle Hymn).....Lindblad  
Den Store Hvide Flok (The Great White  
Host) Norwegian Folk Melody arr. by.....Grieg  
Soloist, Waldemar Johnsen  
Grand Chorus, Conductor August Werner

\* \* \*

Triumphal March, from Sigurd Jorsalfar.....Grieg  
Arville Belstad at the Organ

Norröna-Kvad (Norse Song) from  
Sigurd Jorsalfar .....Grieg  
Konge-Kvad (Song to the King)  
from Sigurd Jorsalfar.....Grieg

Soloist Jens Hansen

Landkjending (land-sighting) .....Grieg  
August Werner, Soloist  
Arville Belstad, Organist  
Grand Chorus, August Werner, Director

Welcome! We invite you to visit our display of furs.



SEATTLE—FUR PORT OF ALASKA

Store Phone:  
SUnset 0690

Residence Phone:  
SUnset 3377

**P. TORWICK**  
TAILOR

Suits \$37.50, \$43.00, \$48.00 and \$53.50

5329 Ballard Avenue

Seattle, Wash.

**ROSSOE QUALITY OIL BURNERS**  
**ROSSOE OIL DELIVERY**  
**ROSSOE BURNER SERVICE**

*Insure Complete Heating Satisfaction*

413 Fairview No.  
MAin 5454

**ROSSOE MFG. CO.**

## Nicoline's Apparel

LADIES EXCLUSIVE SHOP

MRS. KORNELIUS JOHNSEN

2029 Market Street

HEmlock 3330

**Fidelity Savings & Loan Association**

of Spokane

Established in 1907

**Insured Savings — Home Loans**

1630 - 4th Avenue

Seattle, Wash.

**GOOD TIMES**  
**ARE YOURS**  
**AFTER "V"-DAY**

The happy trips, vacation joys, and home conveniences are the "Dreams Come True" tucked safely away in each war bond you buy.

**INVEST IN VICTORY—BUY WAR BONDS NOW**



## — Program Notes —

*Sangerhilsen—Singer's Greeting.* Music by Grieg, text by Skavlan. This rousing song was composed especially for the Trondheim singers and sung by them for the first time Sunday, June 17th, 1883, as a greeting to the visiting male choruses from all over Norway at the Sangerfest in Trondheim that year. Since then it has had its place on the repertoire of every Norwegian male chorus at home and abroad.

Let a rousing song of Welcome  
Greet our brothers from afar!  
Lift our Banner, born of Freedom,  
Harmony, our guiding Star.  
Onward march the happy throng  
Greeted by our song.

Sing Ye then! With voices blending  
In a wondrous Harmony,  
Ere our paths go homeward wending,  
Sing a song of Victory!  
Pray then, that our Tonal Fest  
And our song, be ever blest!

*Rotnams Knut.* A sturdy number in Grieg's excellent arrangement for male voices. Rotnams Knut, who really lived, is dancing around the floor, challenging one and sundry to dare to throw him out!

*Halling.* This rollicking Folk Song arranged for solo and chorus is another example of Grieg's superior art. "If you haven't jumped before, then you certainly are doing it now! If you weren't so dizzy you wouldn't be so flighty now! Oh, well,—!

*Stridsbon.* This prayer by Lindblad, one of Sweden's foremost composers in an Invocation to the Almighty for strength and steadfastness in trying times.

*Norrøna-Kvad* and *Konge-Kvad* are both from Bjornson's historical play Sigurd Jorsalfar. (Sigurd the Crusader). The

scenes, which occur in the end of the second and third acts. Sigurd and his brother, Ojstejn, both Kings, and together ruling Norway, are listening to the homage paid them by the court poets and all their sturdy warriors. These are colorful and festive scenes. In Grieg's genial musical settings, the two songs have long since attained their place among the great in Norwegian choral literature.

*Baadn-Laaf.* "Nursery Rhyme." This humorous piece is a little Norwegian Folk Song, a Children's Ditty. The setting is by Grieg in his own inimitable style and shows his mastery in male chorus arrangement. The besome lies in the closet. The cat is drumming and four mice are dancing, so the whole earth is shaking. The cat sits on the roof speaking to its daughters: "How shall we keep our feet dry, our paws are freezing?" We shall travel to Denmark and buy shoes for two bits, and corn and gingersnaps. Meow!

*Den store hvite flok.* "The great white Host." Behold a Host arrayed in white, like thousand snow-clad mountains bright. Their voices they in worship raise, before the throne of God, 'mid Angels' song of praise! This religious poem is from the prolific pen of the Bishop H. A. Brorson (1694-1722.) Several Norwegian Folk Melodies, greatly varying, are to be found to this text, but Grieg selected the one used here and arranged it for baritone solo with male chorus accompaniment. Of the three verses of the song only the first is used in this setting which has long since become a great favorite with all male choruses.

*Landkjending.* "Land-Sighting." The poem is by Norway's great writer Bjornson and the music by the immortal Grieg. It is one of the most popular male chorus songs in the world, depicting the young Hero-King Olav Trygvason's return to his native Norway and the first impression of land he and his followers got from the gleaming mountain peaks and thundering waterfalls as they sailed in through the deep blue fjords in the shimmering sunlit air. In the baritone solo the King gives profound expression for his belief, that here was home, and here he would raise the Cross which should lift his spirit high and strong like the mighty glittering mountains! And his men intone the prayer carrying the song to a grand soul stirring finish.

## For Perfect Coffee

Two Distinctive  
Perfect  
GOLD SHIELD  
COFFEE  
Granulations—  
SILEX and  
NORMALIZED



"Always Good—  
ALL Ways."

Look for the distinctive red brick wall design of

**GOLD SHIELD  
COFFEE**

APPEALING AROMA  
DELIGHTFUL FLAVOR  
EXTRA FULL STRENGTH

*"More Cups per Pound—More Enjoyment per Cup"*

Roasted, Packed and Guaranteed by  
**SCHWABACHER BROS. & CO., INC.**  
Seattle, Wash.

## America's Original Light Table Beer



**OLYMPIA  
BEER**  
*"It's the Water"*

**OLYMPIA BREWING COMPANY**

Olympia, Washington, U. S. A.





Portland Chorus.

Compliments

## HOVELAND'S SHOE REPAIR

+

First Avenue at Virginia Street

*Best Wishes*

## Commercial Automotive Service

∞

9th and Denny

EL. 8800

ELiot 5027

## ARNE SUNDE

Diamonds, Watches and Jewelry

Watch and Jewelry Repairing

+

1406 Fourth Ave.

Seattle, Wash.

# ONE OF THE GREAT TRADE NAMES OF AMERICA

★

SEATTLE BREWING & MALTING CO.

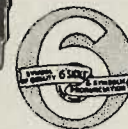
Since 1878 \* E. G. Sick, Pres.

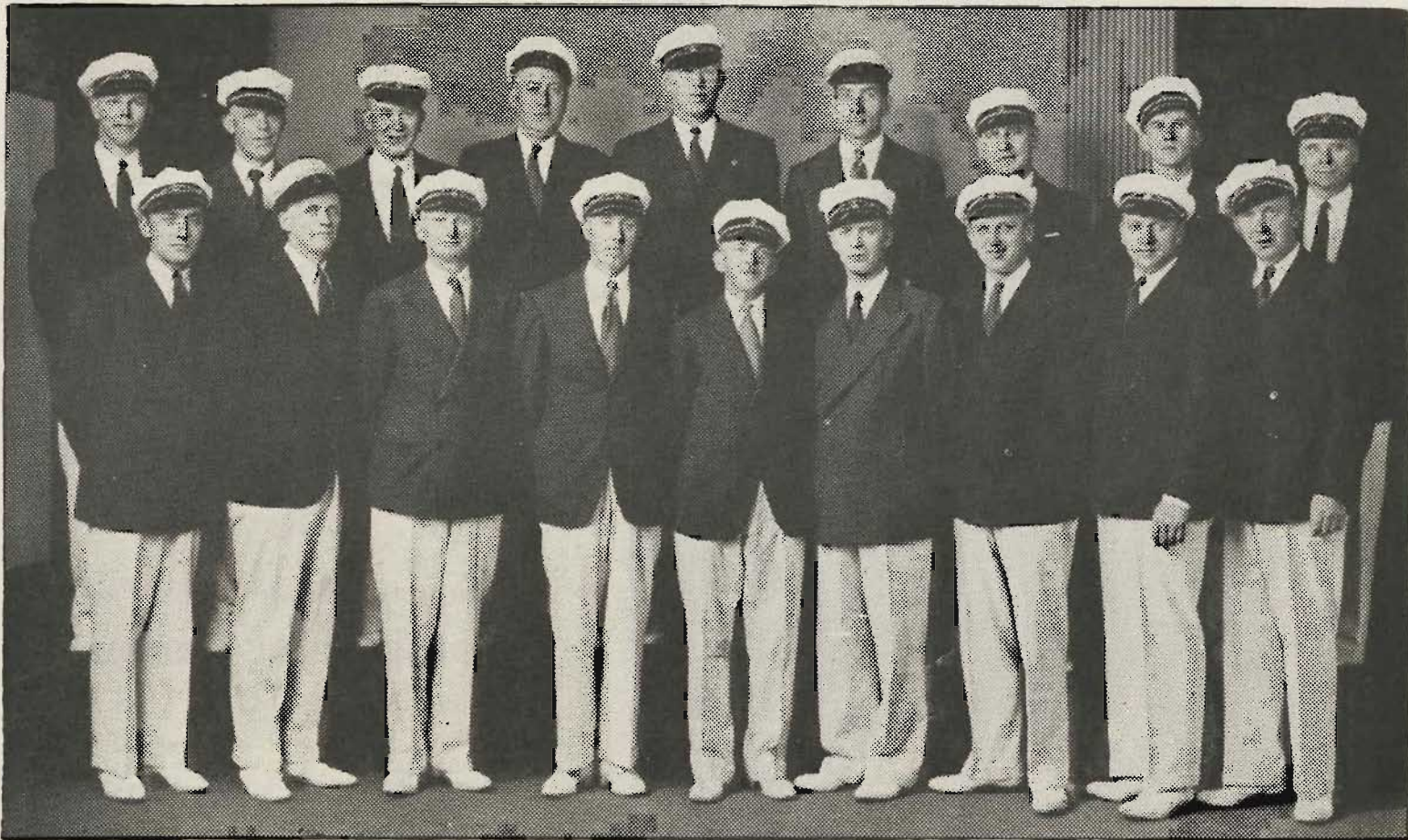
WASHINGTON'S OLDEST INDUSTRIAL INSTITUTION

Sicks'

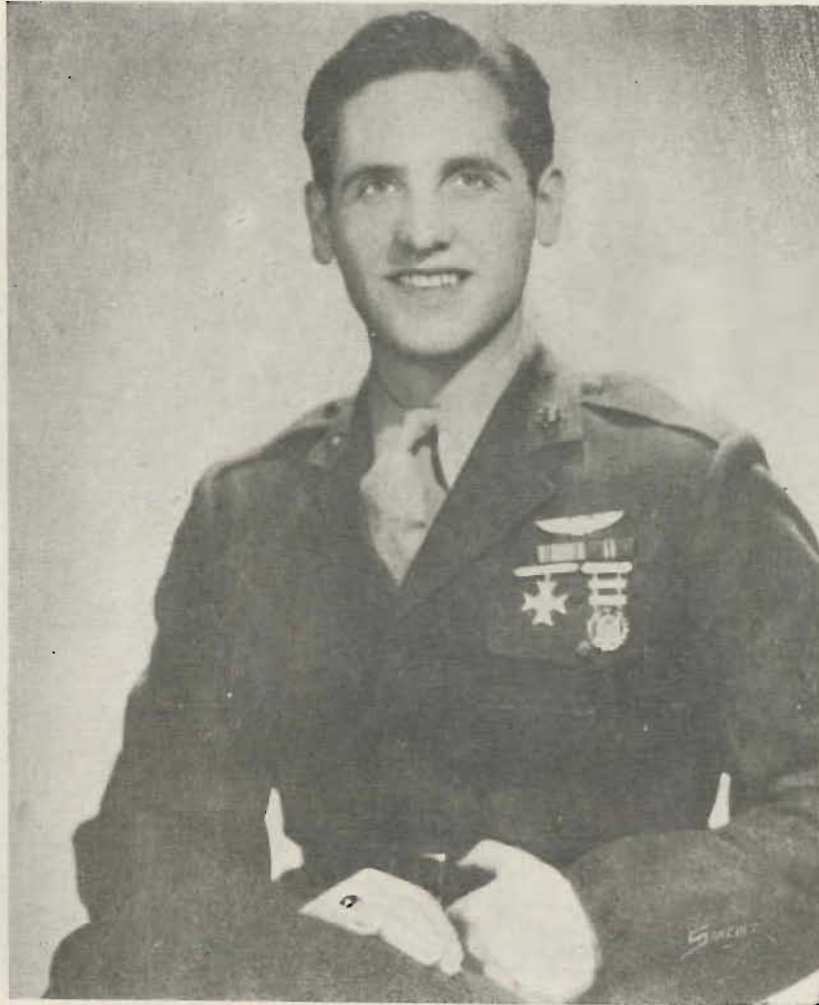


BUY  
WAR  
BONDS





Grays Harbor Chorus



Compliments of Mother

to

STAFF SGT.

**Asbjorn Remmen**

**The Singing Marine**

Civic Opera Assn.

*Soloist*

Seattle Orpheon Club

Normanna Male Chorus, Tacoma, 1938

Pacific Home, Los Angeles, Calif.

Capt. Dobbsie's Goodwill Trip,

Alaska, 1938

*Also serving in the Armed Forces*

**Brother, Ivor Remmen**

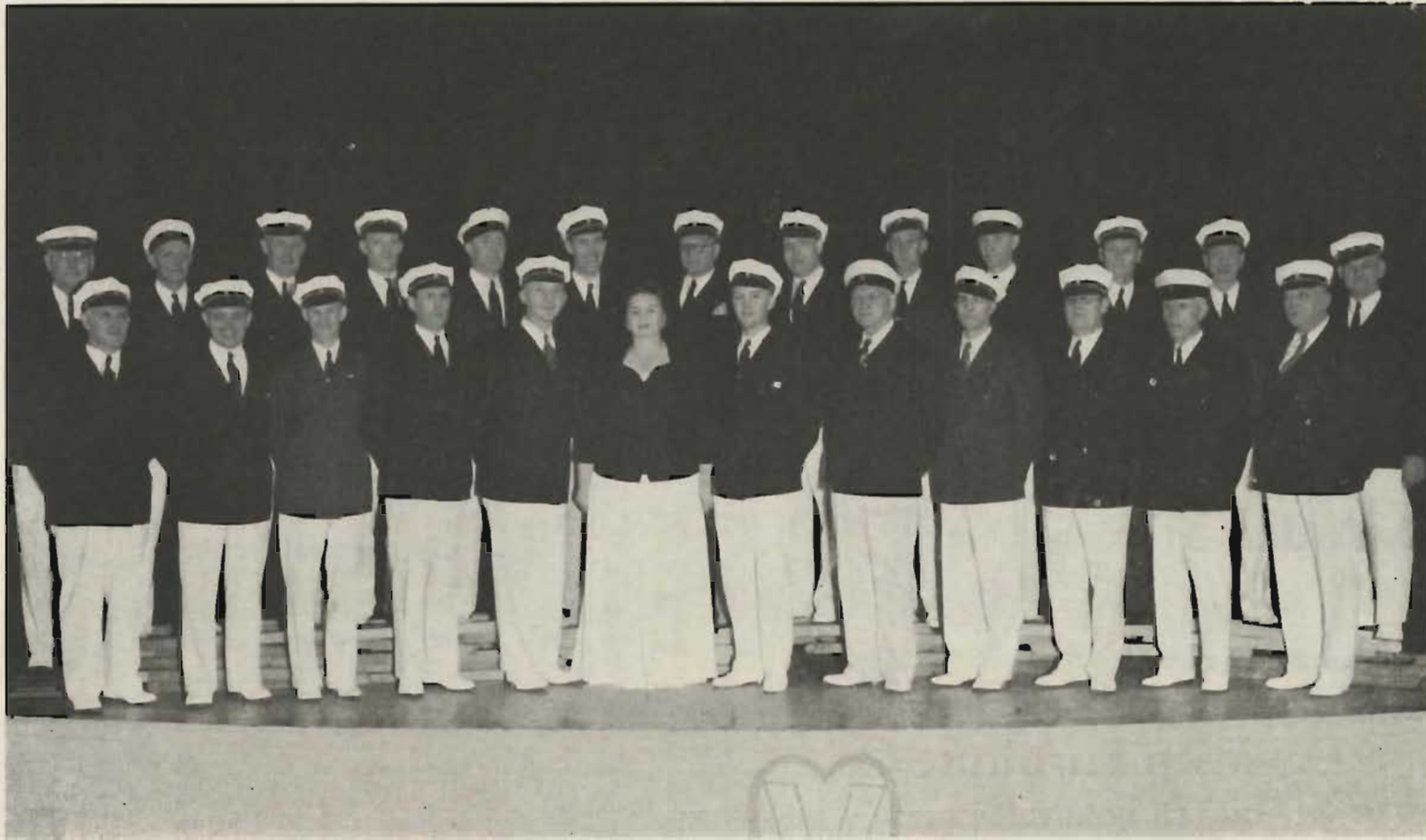
Machinist Mate, 3rd Class, U. S. Navy

**Mrs. Martha Remmen**

Kensington Hotel

1627 Belmont Ave.

Seattle, Washington



Tacoma Chorus

# JOHANSON STUDIO

*Distinctive Portraiture*

1752 Market St.

SUnset 0187

- School
- Starts
- Soon



Your children should drink plenty of milk for extra energy—be sure it is—

## Arden Milk



ARDEN FARMS CO.



## Davidsen Furniture Co.

COMPLETE HOME FURNISHERS

RECOVERING • REPAIRING • REFINISHING

LOWEST PRICES

2316-18 Market St.

SU. 9077

Seattle, Wash.

Compliments of

# Johnson & Sons Mortuary, Inc.

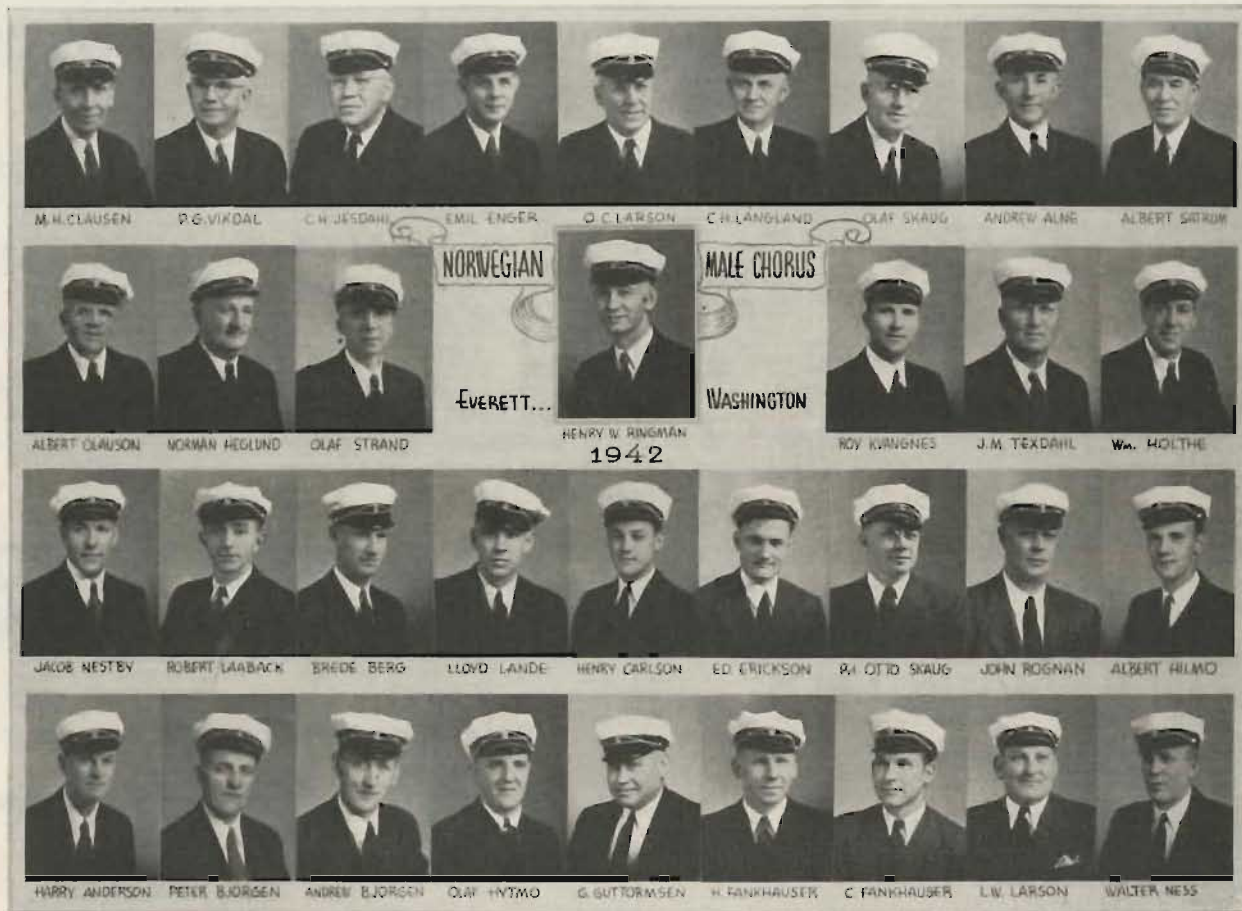
1103 East Madison Street  
Seattle, Washington

- We render a dignified, high type of service at a very moderate cost.

*We Serve Anywhere—Anytime*



Sophia Johnson, C. R. Johnson,  
H. B. Johnson, N. E. Gustafson



Everett Chorus



“FROM A FRIEND”



*A Beautiful Service at  
a Reasonable Cost*

BUTTERWORTH'S

Chapel of Memories

Funeral Directors Since 1883

Melrose and Pine

MAin 0949

Compliments

Perfection Smokery

2408 Elliott Avenue

O. W. AUSTIN

HERBERT AUSTIN

Central Millwork and Lumber, Inc.  
*General Millwork*

Store Fixtures—Kitchen Cabinets—Finish Lumber  
Sash—Doors—Screens

GA. 8100

125 Queen Anne Ave.  
Seattle

Compliments of

**OLSON & WINGE  
SHIPBUILDING CO.**

Oscar O. Olson

Carl B. Winge

*The Chanticleer*

*Ballard's Leading Restaurant*

Seafoods - Steaks - Chicken

SU. 9693

4700 15 N.W.

North End of Ballard Bridge—Seattle





Seattle Chorus

## George A. Johnson Company

Manufacturer

"Johnson's Best" Oiled and Rubber

Waterproof Clothing

SUNset 0406

Seattle

5200-5224 Shilshole Ave.

## Hallbergs, Inc.

"Famous for Fine Foods for Over 50 Years"

511 Pine Street

Seattle

Compliments of

## RODEO TAVERN

+

425 Denny Way

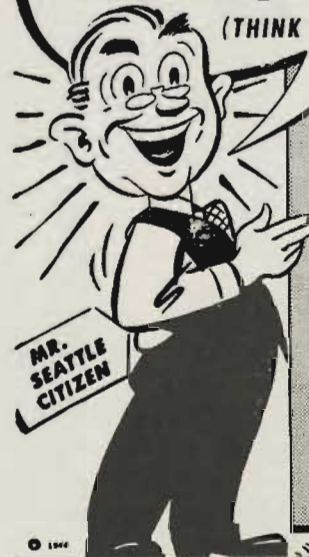
## BALLARD TRANSFER CO.



Seattle, U. S. A.

# GOSH! THAT'S NEWS TO ME!

(THINK OF IT... 353 PRODUCTS!)



## PIONEER is Headquarters for

Sand / Gravel / Tru-Mix Concrete / Agricultural Gypsum / Hydrated Lime / Fire Brick / Insulation / Cleaning Compounds / Roof Coatings / Cork Board / Fireplace Fixtures / Refractory Cement / Ash Doors / Drain Tile / Plasterboard / Fire Clay / Flue Lining / Gypsum Lath / Asphalt Shingles / Hardwall Plaster / Joint Sealing Compound / Sewer Pipe / Sound Deadening / Stucco / Wallboard / Quick-Setting Cement / Lime Putty / Plaster Paris / Roofing Paper / Gypsum Plaster / Building Paper / Paint / Metal Lath / Lime Mortar / Lamp Black / **318 more!**

**PIONEER**  
SAND AND GRAVEL CO.  
901 FAIRVIEW NORTH  
**353**  
PRODUCTS  
MAIN 2900

# NORWEGIAN MALE CHORUS OF SEATTLE

President.....Karl F. Frederick  
 Vice President.....G. W. Tollefsen  
 Corresponding Secretary.....Maurice Burseth  
 Financial Secretary.....Rasmus Langseth  
 Treasurer.....Rudolph Bye  
 Marshal.....Roy Svendsen  
 Librarian.....Thor Boyeson

Emil Abrahamson  
 A. K. Anderson  
 Axel Andersen  
 Olaf J. Aunan  
 Anton Berg  
 Trygve Bjornstad  
 Jonothon Bjornsen  
 Olav Boen  
 Anton Brevik  
 Einar Bugge  
 Carl Caspersen  
 Olaf Christian  
 Nicolay Christiansen  
 Theodore Christy  
 Nels Dahl  
 Ole Dahl  
 Ingulv Eldegard  
 Otto Erickson  
 Raymond Fosse  
 John Furness  
 Barney Grevstad

Martin Grimstad  
 George Gunderson  
 Andrew Halvorsen  
 Morton Halvorsen  
 Christian Hansen  
 Harry Hansen  
 Harry M. Hansen  
 Harold Hansen  
 Jens K. Hansen  
 Norman Hansen  
 Thomas Hermans  
 Sylvan Howick  
 Herman Jacobsen  
 A. S. Jensen  
 K. R. Johansen  
 Julius Johnson  
 Fred Jorgensen  
 George Jorgensen  
 Sverre Jules  
 John Kaspersen  
 Abraham Kvalheim  
 Sigurd Langlie

Erling Larsen  
 Peter Lilos  
 Ole Linstad  
 Knut Litell  
 John Loberg  
 Arnold Lunnum  
 Jack Madsen  
 Harvey Mathiesen  
 Ole Melby  
 Carl M. Moe  
 Gordon Moe  
 John Moe  
 Robert Moen  
 P. B. Nelson  
 Alfred Nyland  
 Peter Oakland  
 Bjarne Olsen  
 Peter Olson  
 Andrew Pedersen  
 Arnold Ranheim  
 Gunnar Reitan

Olav Ruud  
 Jerome Sandvig  
 Robert Saxhaug  
 Ole Simonsen  
 Harry Solheim  
 Gus Solheim  
 Hans Sorvik  
 Walter Stillman  
 Clarence Svendsen  
 M. O. Sylliaasen  
 Henry Teigen  
 Carl Tjerandsen  
 Norman Tjerandsen  
 Thomas Tjerandsen  
 Ben Tollefsen  
 John Voog  
 Carl Vik  
 Norman Vik  
 Sigurd Vistauet  
 Harold Waale  
 Axel Wold

Salmon Bay Sand & Gravel Co., Inc.

SAND GRAVEL CEMENT PLASTER  
BUILDING MATERIAL

5228 Shilshole Avenue

SUnset 1234

SEATTLE

---

Mr. Bartell Extends  
His Best Wishes

+

**BARTELL DRUG CO.**

---

**COAL and WOOD**

25 Years in the Pacific Northwest

**Pacific Coast Coal Co.**

*Pioneers in fuel responsibility*

**AMERICAN  
SHIP SUPPLY CO.**



Capt. B. Qvale

3155 Elliott Avenue

ALder 4920 - 4921

---

Roy and Arnie's

**RECREATION**

Roy C. McCoy—Arnie Mills

*Dancing Every Night*

BEER and WINE

8511 15th Ave. N.W.

Take Bus No. 15 on 1st Ave.

SUnset 9946

# THE SINGERS HELPMATES

## OFFICERS

President.....	Mrs. M. O. Sylliaasen
Vice-President.....	Mrs. Harold Waale
Recording Secretary.....	Mrs. Olaf Christian
Corresponding Secretary.....	Mrs. Trygve Bjornstad
Treasurer.....	Miss Torberg Hansen

### *Honorary Member*

Mrs. L. Andersen

Mrs. Emil Abrahamsen  
 Mrs. A. K. Andersen  
 Mrs. Lewis Boen  
 Mrs. Olav Boen  
 Mrs. Anton Brevik  
 Mrs. M. Burseth  
 Mrs. A. Christiansen  
 Mrs. N. Christiansen  
 Mrs. Nels Dahl  
 Mrs. Karl Frederick  
 Mrs. Martin Grimstad  
 Mrs. Andrew Halvorsen

Mrs. Morton Halvorsen  
 Mrs. Jens K. Hansen  
 Mrs. Thomas Hermans  
 Mrs. Ivar Hollum  
 Mrs. S. J. Hovick  
 Mrs. Herman Jacobsen  
 Mrs. S. O. Jules  
 Mrs. John Kasperson  
 Mrs. A. Kvalheim  
 Mrs. Knut Litell  
 Mrs. John Loberg  
 Mrs. J. O. Madsen

Mrs. Harvey Mathiesen  
 Mrs. O. Melby  
 Mrs. Carl Moe  
 Mrs. Gordon Moe  
 Mrs. Emma Nelson  
 Mrs. Al Nyland  
 Mrs. Peter Oakland  
 Mrs. Peter Olson  
 Mrs. T. A. Olsen  
 Mrs. Randi Ruud  
 Mrs. J. L. Sandvig  
 Mrs. C. W. Sivesind

Mrs. Gus Solheim  
 Mrs. Hans Sorvik  
 Mrs. Walter Stillman  
 Mrs. E. G. Suther  
 Mrs. Roy Svendsen  
 Mrs. Hans Thompsen  
 Mrs. Ben Tollefsen  
 Mrs. G. W. Tollefsen  
 Mrs. August Werner  
 Mrs. John Wick  
 Mrs. Agnes Wika

The Helpmates organized in 1909 to form a women's auxiliary of the Norwegian Male Chorus of Seattle. True to their names, the women of this group have been "helpmates" to the chorus for a period of 35 years. The roster includes a number of charter members who are still actively interested as well as daughters of former beloved members.

Meetings are held in Norway Hall the first Monday evening of each month. A joint social hour with the members of the Chorus is held after their respective meetings, to which a cordial welcome is extended to visiting Singers and their ladies.

The Helpmates invite membership of women interested in the support of this work.

Compliments  
of  
MARITIME  
SHIPBUILDING

---

AS "NORTHWEST"



AS  
RAINIER...that's the Fame of

**Societe** Candies

QUALITY as high as this famous mountain . . . and as typical of the Northwest.

So good that it's mostly "over there" now . . . giving our boys the energy lifts they need.

You may not find Societe always at your candy counter now . . . but someday this Northwest favorite will be available wherever and whenever you want fine confections.

*Societe'* IMPERIAL CANDY CO.—Seattle  
Cecil H. McKinstry, President

Compliments of

HI-GRADE  
DAIRY




---

MAin 1766

820 Yale Ave. N.

---

Compliments Of





## OUR FISHING FLEET

Seattle is "home port" to one of America's mightiest fleets of fishing craft. Early each Spring these sturdy little ships leave their snug harbor and travel hundreds of miles over the vast North Pacific to return at frequent intervals laden with the bountiful harvests of the deep.

They have developed fishing into one of Seattle's major industries. Nearly twenty million pounds of halibut reach the Seattle market each year at a consumers value of some eight million dollars.

Other ships bring some ten million pounds of salmon to our canneries and markets at a value of three million dollars. Nor should we overlook the many other kinds of fish, including the vitamin rich soup fin shark.

This silvery horde always important as a source of food is now of inestimable value in feeding a nation at war. Seattle and the entire nation owes a tribute to these men who continue to do their part in war and in peace.

*Chas. E. Sullivan*

FLORIST

Fourth Avenue at Stewart

Six Main Lines to Answer . . . SE 1300

Greetings and Best Wishes

**BALLARD  
SHIRT SHOP**

2217 Market Street

Seattle, Washington



RENTALS AND LOANS

OLE BJORNSTAD

6501 Phinney

SUnset 1974

For Fine Men's Wear

Every Lundquist-Lilly suit is 100%  
all-wool — always. For clothes you  
like at prices you like to pay go to

**LUNDQUIST-LILLY**

*Men's Wear Center*

Fourth & Pike  
Seattle

Eleventh & Pacific  
Tacoma

COMPLIMENTS

**LARSEN CLOTHING CO.**

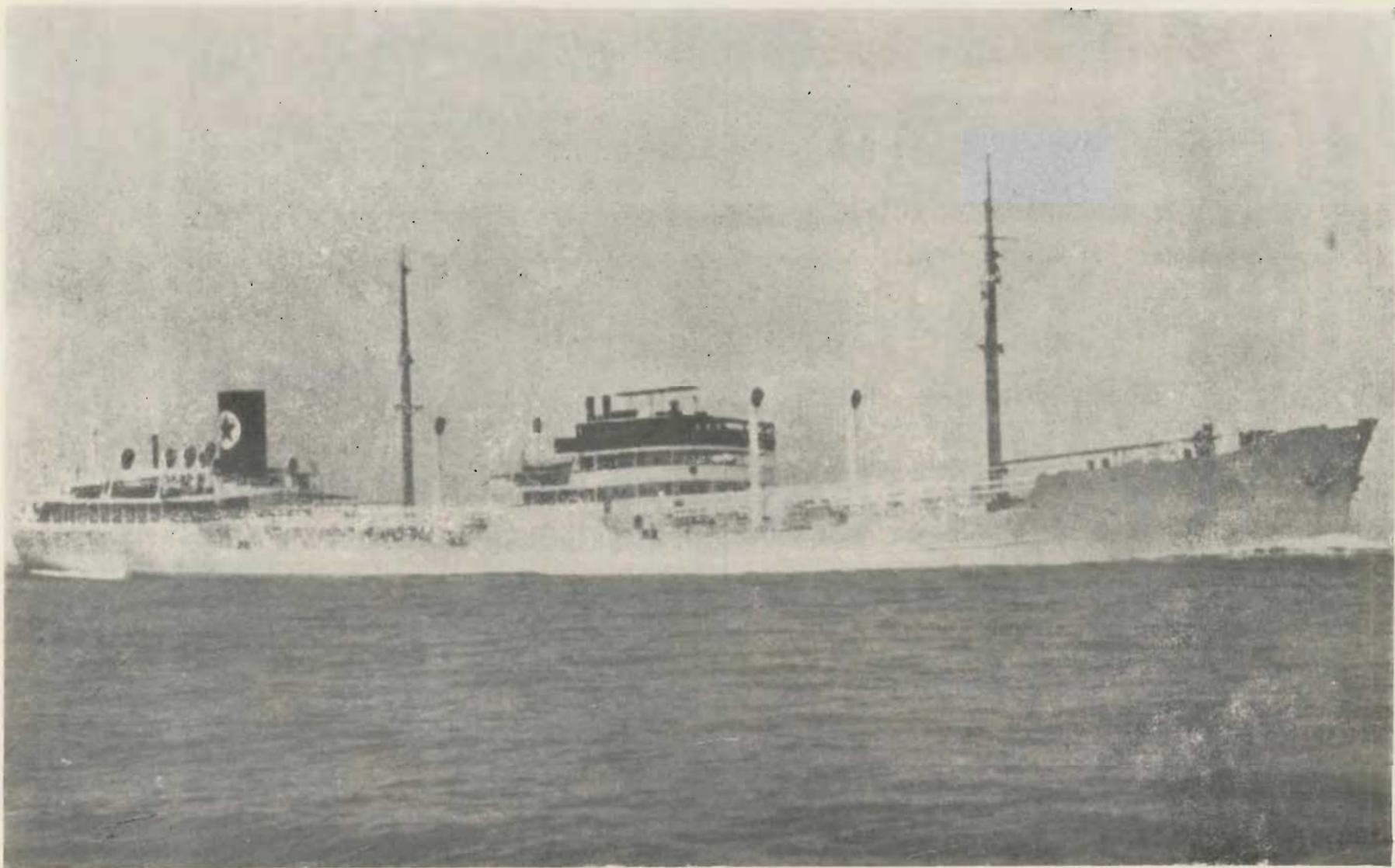
Four Friendly Stores to Serve You  
We Manufacture Wholesale and Sell for Less

For the Best Toast in Town!

**Hansen's OLYMPIC BREAD**

ENRICHED WHITE, RAISIN, CORN MEAL,  
ROMAN MEAL, and GERMAKO





"THE TANKER CHAMPION OF WORLD WAR II." Up to September, 1943, this Norwegian tanker had crossed the Atlantic 45 times since the beginning of the war, carrying 300,000 English tons (105,000,000 gallons) of high octane gasoline.

## KRISTOFERSON'S DAIRY

LOCALLY OWNED AND OPERATED SINCE 1897

+

1300 Rainier

PRospect 8000

## FOSS TUGS

Are Always Ready

Nothing takes the  
place of experience



Tacoma ● Bellingham ● Port Angeles ● Seattle

## China Clipper Inn

CHINESE AND AMERICAN DISHES

BEST QUALITY FOOD

1011 Howell Street

Tel. Main 9430

Seattle, Wash.

COMPLIMENTS

of

### Bakers of Washington, Inc.

THE PAINT THAT'S PREFERRED BY  
PARTICULAR PAINTERS



SHORN PAINT MFG. CO.

Seattle, U. S. A.

# A Dedication

## To The Norwegian Merchant Marine

*WHOSE HEROIC AND UNSELFISH ADHERENCE TO DUTY DURING THIS WAR  
TYPIFIES THE SPIRIT OF THE NATION WHICH IT SERVES*

When war first struck out at the little country of Norway, its merchant marine, compared with those of other nations, stood fourth in size and first in quality.

Its ships were nearly all fast and modern, its fleet of tankers the finest in the world. Rather than capitulate to the aggressor, the entire fleet, vessel owners as well as officers and crews, elected to serve in the cause of liberty loving peoples and to place itself completely at the disposal of the Norwegian Government and the "Allied Nations."

Since that time the sleek beautiful vessels have been speeding thru the dangerous submarine infested waters to bring valuable supplies to our fighting fronts in all corners of the world.

The toll in lives and ships has been enormous, but the important work has continued with no thought of reward except that greatest reward . . . *Freedom.*

We salute these noble men and their noble ships which we hope to see soon again, minus war paint, resting for a brief moment in our own harbors before continuing to many distant ports.

STEAKS AND CHOPS

ELiot 9380

# Nordlys Cafe

1808½ 8th Ave. Bet. Howell and Stewart

Located Half Block From Bus Station

SCANDINAVIAN DISHES AND SHORT ORDERS

BEER AND WINE

AGNES SCHJELLAND, Prop.

BEST WISHES

# MARINA MART

1500 Westlake North

GARfield 6530

Geo. Warren

Compliments of the

# ATLAS LUMBER COMPANY

*Everything to Build With*

522 Dexter Ave.

ELLIott 8383

Compliments of

# SEATTLE SHIPS SUPPLY CO.

*Complete Fisherman's Store*

SALMON BAY TERMINAL

PORT OF SEATTLE

Pedar Hvatum - Alfred Howe

Greetings to Singers

# Pittsburgh Paint Store

Seattle, Wash.

SYLVAN HOWICK, Mgr.

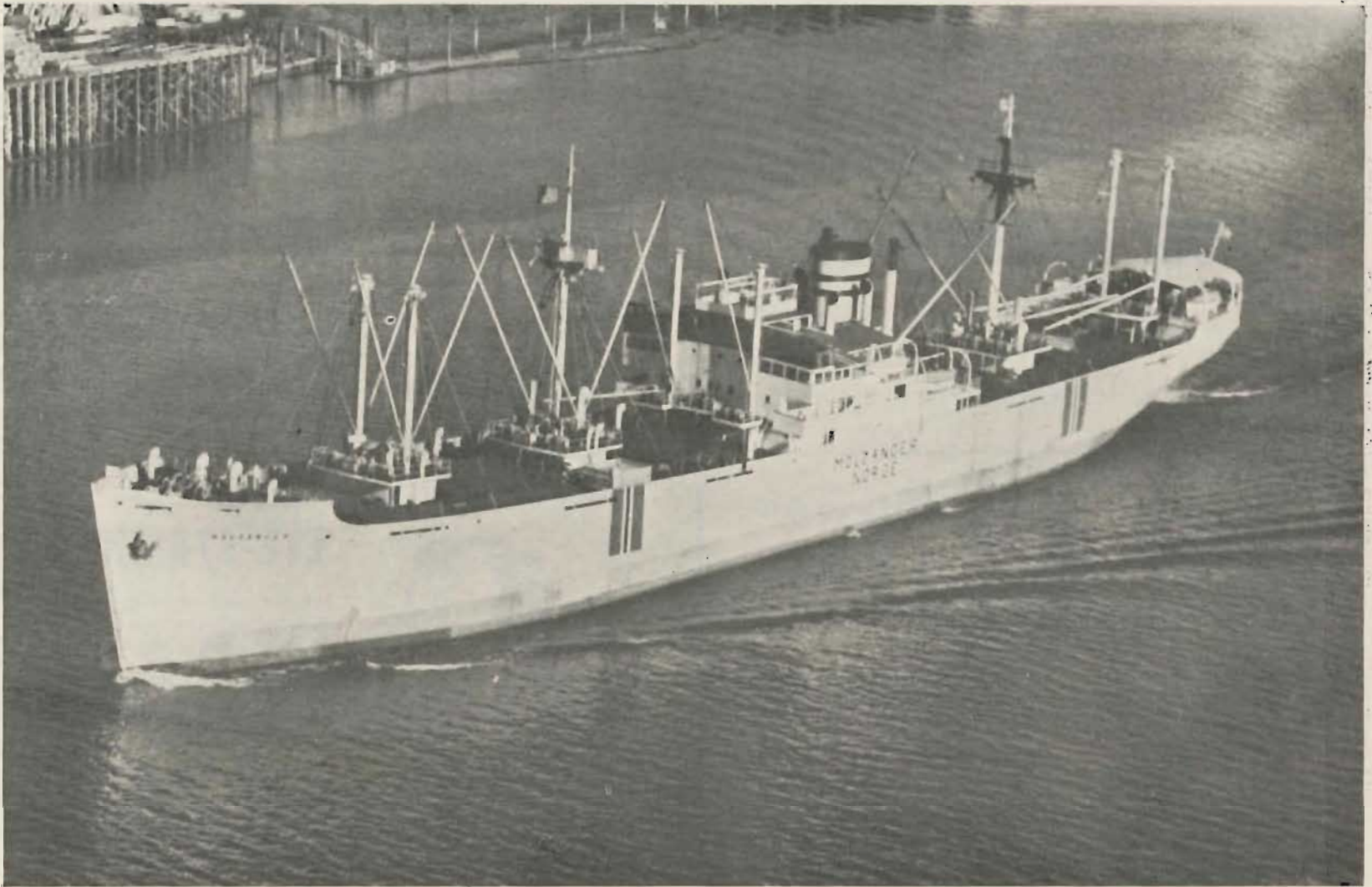
2320 Market St.

SUNset 7774

**ANDERSON**  
FURNITURE COMPANY*Ballard's Pioneer Furniture Store*

A. W. Swanson

5424 Ballard Avenue



Norwegian Sailors on the Seven Seas "Worth Far More Than One Million Men to the United Nations."

—Admiral Land.

Compliments of



## STAR MACHINE CO.

1741 1st Ave. South

ELliott 0760

SEATTLE

Select  
BEER and WINE

Choice STEAKS  
and DINNER at all HOURS

## SHIPS CAFE

Where SEAMEN and LANDLUBBERS MEET

1600 - 15th West, Seattle

GArdfield 9729

C. W. & Ben Willard

COMPLIMENTS

## H. L. OLSEN FURNITURE CO.

*Ballard's Largest Furniture Dealer*

DAVENPORTS, CHAIRS, RUGS,  
STOVES, DINING ROOM SETS

5354 Ballard Ave.

## PAUL HANSON

LAPIDARY

Importer and Cutter of Precious Stones

Manufacturing Jeweler

OFFICIAL BIRTHSTONE LIST

Adopted by National Jeweler's Association

JANUARY	Garnet
FEBRUARY	Amethyst
MARCH	Bloodstone or Aqua Marine
APRIL	Diamond
MAY	Emerald
JUNE	Moonstone or Agate
JULY	Ruby
AUGUST	Sardonyx or Peridot
SEPTEMBER	Sapphire
OCTOBER	Opal or Tourmaline
NOVEMBER	Topaz
DECEMBER	Turquoise or Lapis Lazuli

1309 Fourth Avenue

Seattle, Wash., U.S.A.

Phone ELiot 4659

*Have you these warnings of*

## EYE-STRAIN?



"Six or Sixty"—your eyes are the most important contribution to your happiness and success.

Our business reputation did not spring up over night, but grew slowly and soundly because it was rooted in the solid ground of customer satisfaction. This policy founded by Dr. John Pugh more than 25 years ago still prevails today.

## GLOBE OPTICAL CO.

1514 Westlake

MAin 7002



Compliments

of

**ACME MILL WORK, INC.**

Seattle, Washington

H. W. Hansen

ALder 0411

## WALLPAPER

Complete Line on Display at All Stores—Over 300  
Patterns to choose from—products of the  
best and most exclusive mills

**W. P. FULLER & CO.**

Paints—Wallpaper—Glass—Sash & Doors

5 Stores to Serve You

Fairview N. & Roy—ELliot 5334

1912 Fourth Ave.—SE. 4210

910 E. Pike St.—EAst 2590

1415 Cornwall St., Bellingham

4552 University—MEI. 3266

MAIn 0663

## WOODLAWN FLOWER SHOP

HARRY CROUCH

510 Union Street

Seattle

Compliments of

**CENTRAL CAFE**

FINE FOOD — BEER & WINE

VITO CARNOULE, Proprietor

MAIn 0785

407 1st South

Compliments of

**Hughbanks & Jasperson**

GAS and OIL

Leary Ave. and Market St.

SEATTLE

WASHINGTON

Compliments of

**Scandia Furniture Co., Inc.**

*"The house of good furniture values"*

1901-1903 Market St.

SUNset 2165

Seattle

## HAMMAR OPTICAL CO.

*"Just good glasses  
at reasonable prices"*

T. W. HAMMAR, T. F. GINNATY, Optometrists  
320 STEWART STREET

## *"The Food Is Delicious . . . at Erickson's Excellent Food"*

So plan now to enjoy a dinner or luncheon at Erickson's. The cuisine is planned for the most discerning taste. The personnel is friendly with a genuine willingness so serve. The joy of living permeates the air as you enter upon the reserved, quiet, dignified atmosphere of ERICKSON'S EXCELLENT FOOD.

AT THE MARINA MART

1500 WESTLAKE AVENUE N.

CARfield 0501

Open from 11:00 a.m. to 2:00 a.m.

Closed Wednesdays

Compliments of

## C. C. FILSON CO.

Better Outdoor Clothes

2nd at Madison

Compliments of

## S. E. SAGSTAD

of

## SAGSTAD SHIPYARD

A. Monsen

## FRANK'S BAKERY

*"Pastry of Quality"*

+

2307 Market St.

DEXter 0530





For Norskdommen Tar Sangerne Det Storste Loft

# Viking MARINE COMPANY

CAPTAIN HARALD FRITZNER, Owner  
Colman Building, Seattle, 4, Washington

## PIONEER CLOTHING STORE

MEN'S WEAR

CLOTHING · HATS · FURNISHINGS · SHOES

SUnset 3010

2204 Market St.

Compliments of

# CHET LOG C A B I N

+

5431 Ballard Avenue

Harry N. Pappas

## NITE OWL TAVERN

925 Howell



Sam Caston

Al Alhadeff

Compliments of the

## CASCADE DRUG CO.

20th and MARKET  
Ballard Station

Seattle

Washington

## Halverson's Department Store

*Serving Ballard for over 40 years  
with men's, women's and children's clothing*

5449 BALLARD AVENUE

Greetings to Norwegian Singers

## SUPERIOR FISH CO.

*We Ship Anywhere*

C. MOE

GArfield 0017

487 Elliott West

E. M. BERG  
G. R. BERG

Phone  
SUnset 4443

## BERG FUEL COMPANY

Reliab'e Fuel Service

Furnace and Stove Oil - Coal and Wood  
Heating Equipment

2040 MARKET ST.

SEATTLE, WN.

COMPLIMENTS OF

## OREGON CITY WOOLEN MILLS

A. W. PARKS, Mgr.

Home of Pure Virgin Wool Suits, Overcoats and  
Women's Coats

1218 Second Avenue

Seattle, Wash.

## Meduna Machine Works

- Fuse Bond Metallizing—
- Crankshaft Grinding—
- Main Line Boring

503 Westlake North

SEneca 9978 — MAIn 8551

## J & M CAFE

Restaurant, Cards, Beer Wine

Cigars and Tobacco

201 First Avenue South

Seattle, Wash.

We wish to express our appreciation for the goodwill and support of friends, societies and Seattle business firms in making this program possible. This cooperation is necessary for a successful Sangerfest and we are grateful for the assistance we received.

NORWEGIAN MALE CHORUS  
OF SEATTLE





