



The Acanthus Vine

VOL. 20 - NO. 4 Western Rosemalers' Association

September 1995

President's Notes

Time is approaching for the new 1995 Juried Show and Exhibit to be held at Pacific Lutheran University in the *Scandinavian Cultural Center*, 121st and Park Avenue South in Tacoma. It is also the 20th Anniversary of Western Rosemalers' Association.

All members are encouraged to help fill our Juried Show and Exhibit with entries. A show is not successful if everyone does not do their part to make this project successful.

If you do not paint, but have some pieces in your possession, it would be wonderful to have them exhibited. Anything you can do would be appreciated.

WRA now has 192 members—so we should have an exhibit of 384 pieces which is two items per person. Please help us reach our goal.

The King and Queen of Norway will visit the PLU display on October 26th.

We are thrilled to have all our membership—new members, returning members, and also many of our original organizers of the association. Everyone should be proud of this great club. The club only grows and achieves with everyone's contribution.

Please review the calendar in this newsletter so that you are aware of the deadline dates, etc. for the club activities.

If you have any suggestions for the the associations, please contact me or any other officer.

Mary McDonald

● *Important Issues to be voted on at the September meeting are listed on page two.*

The September 17th meeting will be held at Nordic Heritage Museum, 3014 N.W. 67th Street, in Seattle.

11:30 am	Board Meeting
1:00 pm	Social Hour
1:45 pm	Program
	Meeting to follow

Directions: From I-5 take Exit 85th N.E., go west on 85th N.E. to 32nd Ave. N.W. Turn left on to 32nd Ave. and continue to 67th Street N.W. Turn left on 67th. The museum is an old brick school building unlabeled on the backside. Parking is plentiful on the playground.

Program: Marie Ganfield will have a surprise!

Prizes: There will be two door prizes—one for attendance, and the other for bringing guests, woodenware, refreshments, etc.

Hostesses: Members from Seattle, Kent, Issaquah, Bellevue and Edmonds.

If members are having trouble with transportation, please contact Evelyn Anderson, Edna Echren, and Eva Clark, our telephone committee. Also, if you are a new member and are bashful about coming into a room of new people, call the telephone committee and they will help introduce you to the members.



The **ACANTHUS VINE** is published by and is the sole possession of the Western Rosemaler's Association. All rights are reserved. Written permission from the editor must be obtained to reprint from the newsletter by mechanical or other means.

President: Mary McDonald
15907 82nd Pl NE
Bothell, WA 98011
(206) 488-5270

Editor: Barbara Laskowski
18228 Rockwood Ct
Yelm, WA 98597
(360) 894-2989

Mailing: Kathy Anderson

Membership: Loiselle Dahill
101040 Paulina Highway
Prineville, OR 97754

Membership in WRA includes your subscription to the Acanthus Vine which is published five times a year and is mailed two weeks prior to WRA general meetings in January, March, May, September and November. Membership yearly dues are \$10.00 (USA) and \$12.00 (outside USA)

Advertising Rates

16.25 Full page
8.25 Half Page
4.25 Up to quarter page

Advertisements need to be sent to the Editor, be camera ready, and submitted with check made out to Western Rosemalers Association.

DEADLINE FOR NOV. VINE Sept. 23rd

Due to working schedule and vacation plans.

1996 Membership Due
Send check to Membership Chairman
See form in this issue.

ISSUES TO BE VOTED ON AT THE SEPTEMBER MEETING

- ⇒ **Library** - It must be moved from Laurie Medill's home. She is willing to work as Librarian, but **does not** have the space in her home to house the collection. Some options have been looked at and will be presented at the meeting. Please bring your ideas so a decision can be made to move the collection.
- ⇒ **Sales** - The commission of 20% to Western Rosemalers does not always cover the cost of sales. Please get your ideas together for the meeting so it can be discussed.
- ⇒ **Final details** on the Juried Show



Tips on making a turn table

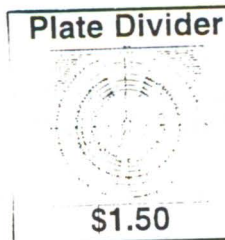
Purchase a lazy susan (approx. \$2.95) from a variety store. Be sure to check smoothness of ball bearings when you turn the table.

Also purchase florist tape (about \$2 and comes on a roll like scotch tape at craft stores) and use this to center your wood on the turn table. The tape will not stick to your wood, but will hold solid when using the turn table.

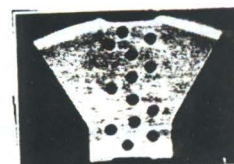
To check to see if your piece is centered, put your wrist on the edge of a table and extend your middle or index finger to the piece of wood and rotate the lazy susan. Your finger should be the same distance all around the piece of wood. Adjust if necessary to center. This finger method is the best method to get an even edge on the wood. Just put paint on finger and rotate wood—and PRESTO—EVEN BAND!

Supplies useful to use for rosemaling.

Plate Divider



Banding tool - can put on edge of wood and rotate on the turn table for any size band.



A-1 Apply a perfect gold band around your plates, cups, or any piece you want, with Rynne's banding tool. Constructed of rust-proof aluminum. 12 circle sizes. Use your china marking pencil to mark the circles.
\$.85 each

Submitted by Mary McDonald

Western Rosemalers' Association
 1995 - 1996 Calendar of Events
20th Year Celebration of WRA

January 1996	February 1996	March 1996
19 Lettering Workshop - Tacoma 20 Creative Background Workshop 21 Meeting - PLU - Tacoma 21 Election of Officers 31 Last day to pay dues for year 1996 and get your name in the 1996 roster.		General Meeting - NHM Museum Installation of Officers World Fest - Northgate Membership Roster
April 1996	May 1996	June 1996
Norwegian Heritage Festival at Pacific Lutheran University in Tacoma	General Meeting at Scandinavian Cultural Center at PLU in Tacoma	Midsommar Fest at Poulsbo Raab Park
July 1996	August 1996	September 1995
Heritage Festival at Marymoore Park in Redmond Tivoli at NHM		7-8-9 Shirley Evanstad. Hallingdal. Ptl'd 11-15 Shirley Evanstad. Hallingdal. at Trollhaugen 17 General Meeting at NHM <i>Bring items to meeting for Show</i> 23 VINE DEADLINE FOR NOV ISSUE 27 Juried Show pieces to be in PLU 8-5pm 28-30 Judging - PLU
October 1995	November 1995	December 1995
1 - Juried Show at Set-up PLU 2- PLU SHOW OPENS - Hours are Sun. 1 - 4 pm. Tue. & Wed 11-3pm 7 - Mini-Workshop. Teacher Betty Edwards. at Our Redeemers Lutheran Church in Seattle. Hallingdal 7-8-9 Scandinavian Days at Puyallup 26 King Harald & Queen visit exhibit	12 General Meeting in Bremerton 12 Nominating Committee Selection for officers 13 PLU Juried Show/Exhibit ends 14 Pick up Juried Show/Exhibit items 18 Yule Boutique at PLU's Olsen Auditorium in Tacoma 18 - 19 Yule Fest at NHM in Seattle 18th 10:00 am to 6:00 pm 19th Noon to 6:00 pm 20 VINE DEADLINE FOR JAN ISSUE	<p style="text-align: center;">HAPPY HOLIDAYS TO ALL WRA MEMBERS</p>

WRA Has Busy Summer!

Scandinavia Heritage Festival PLU April 29th

What a nice festival! The spacious booth was in the hallway; we had four tables and several peg board and lots of rosemaled items. Gross income was \$1491.38. PLU's commission was 20% of the receipts. Eight artist's submitted items.

Lois Clauson demonstrated while Mickey Buchanan, Marie Ganfield, Marilyn Hansen, and Gurine Nordby worked in the booth. Luella Hilby furnished moral support and Jack Ganfield and Howard Wick helped with the take down. Thanks to all for helping make it a great sale.

- Marilyn Hansen, Sales Chairman

Midsommar Fest Poulsbo June 18, 1995

A big thank you to Mickey Buchanan, Gurine Nordby, Howard Wick, and Luella Hilby. The weather forecast was "iffy"—but all went well during the sale. I was asked to help carry in the garland of greens to put on the "Mai Stang"—so I saw more of the planning that goes into the gestival. Flowers were added to the greens before it was wound around the pole. Then trained people and volunteers performed the amazing feat of raising the hug pole with large sticks.

Just as we were closing up, the weather changed and it poured down rain. We took photos of the WRA "drowned rats." But, we got some laughs and had a nice day. The booth cost was \$22.50. The artists' 20% commission to WRA was \$91.50. So you can see that this is one sale where WRA made a "profit". That "profit" covers the cost of sales books, bags, tissue paper, and other incidental expenses. Total income was \$537.80.

- Marilyn Hansen, Sales Chairman

Tivoli Nordic Heritage Museum July 8-9th

Beautiful day on Saturday—very busy at our booths—rainy day Sunday, puddles all around, but our overhead tarp kept us dry. Surprisingly, we had many people visit our booth and take part in the festivities of Tivoli. This year, we had three booths although we asked for two. It really increased our sales as we had a number of large items.

At this sale we trained several new people in cashiering and helping with the many extras that help make a sale successful as well as fun. Our crew was both congenial and fun to work with.

Those who helped at Tivoli were: Howard Wick, Kelly Sooter, Al Edwards (set-up and take down both days). Lois Clauson demonstrated and helped set-up. Judith

Kathy Anderson Class Nordic Heritage Museum

June 1-2-3rd 13 Students

What a wonderful class, good instructor, good fellowship and pleasant surroundings. Our first day we practiced "C" and "S" strokes with pattern suggestions and free hand scrolls.

We discussed detail strokes and how to accomplish thick and thin lines. "Always keep brush straight up—unless doing tear drops. Tear drops: put brush down and push to slide. When cross-hatching—follow course of scroll."

Krilling on the potter's wheel was so much fun enriching different back-grounds on red, blue, grey and white. Some results were subtle, some dramatic.

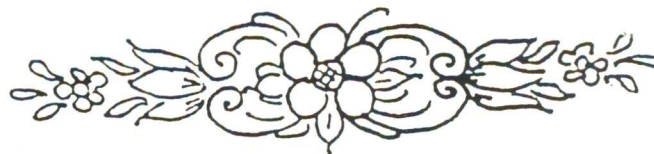
Saturday, we painted Kathy's design which appeared in the January Vine. We worked on blue or red backgrounds and Kathy demonstrated each step and the paint combinations giving step-by-step procedures.

At the end of the third day, we all went home with a beautiful plate and lots of good notes. We took a little time out to see the slides from the 1994 Exhibit and Juried show and discussed the different styles of rosemailing. The slides are available in the WRA library.

During our class, the museum had a wonderful three day sales of books donated from their library and many items from their gift shop. This took place in the room next to our class room, so we had a chance to browse and purchase many items.

For those attending the class—bring your finished plates to our September meeting and share with those who could not attend Kathy's class.

Report made by Betty Edwards



Tenggren cashiered on Saturday with Wilda Snider handling sales. Other workers were Esther Graff, Marilyn Hansen, Ranghild Feroy, Gurine Nordby, Laurie Medill, Barbara Hazen and Betty Edwards.

Betty Edwards, Sales Chairman. Finance & Supplies: Barbara Hazen and Wilda Snider - Setup, Helpers, cashiers, sales people & baggers

The meeting was called to order at 1:30 p.m. by President Mary McDonald. She welcomed new members and guests and thanked Tacoma members for the delicious refreshments.

Minutes were corrected to read: Major workshop student fees will range between \$125 - \$200 for a 5-day workshop.

Treasurer's report: \$4002.64 balance.

Membership: 190 members.

Teachers list: A new list has been compiled to hand out at sales.

Juried show: Committee of Florence Buck, Dorothy Nichols and Lois Tucker will accept items for the show. All members are urged to paint for the show and also to publicize it in their local newspapers and organizations. Dena Iverson and Esther Graff volunteered to work on publicity. Mary McDonald will contact possible judges. A separate mailing regarding the juried show will be sent out June 15.

Recommendations from the Board approved were:

1. Delete last line of Standing Rule No. 35.
2. Requests, including purpose, for "Advance of Funds" must be approved by the Board prior to the check being issued. The President can approve requests up to \$50; the Board up to \$100. Over that amount the general membership must approve it at a general meeting.
3. Bills submitted to WRA must be accompanied by actual receipts or itemization of costs, including date and WRA purpose. Payment of these bills will be made after approval by the Board.

Door Prizes: Won by Gurine Nordby and Solveig Jacobson.

20-Year Anniversary: Betty Edwards called attention to a display of patterns and painting by past presidents Florence Buck and Mary Ellerman. At each meeting this year there will be a new display.

NHM Display Case: Marie Ganfield accepted trays for display until September. In September items by past presidents will be displayed.

The program on Hallingdal painting was presented by Dena Iverson. She explained the characteristics and development of the style and then showed beautiful slides taken on her trip to the Hallingdal of Norway. In conclusion Dena challenged us by saying, "I hope this has inspired you to try to paint some Hallingdal designs. It is my favorite style." Thanks to Dena for a great program.

Respectfully submitted,
Marilyn Hansen
Secretary

UPCOMING MINI-WORKSHOPS

HALLINGDAL

Date: Saturday, October 7th
Teacher: Betty Edwards
Location: Our Redeemer's Lutheran Church
2400 NW 85th, Seattle, 783-7900
Payment Due: September 27th

Description: This class focuses on the classic Hallingdal style. You will learn several of the flowers and have an opportunity to paint a plate (or a painted board if you want). This is a good workshop for beginners to intermediate painters!

Bring your painting supplies. In addition bring a 10" - 12" plate or cardboard (8X10) backgrounded in red or dark blue. Also bring your filbert brushes. See you there!

LETTERING

Date: Friday, January 19th
Teacher: Naomi Price
Location: Tacoma -- those who sign up will be notified of the location
Payment Due: January 5th

Description: This class is the same one offered in Seattle 2 years ago. It is an extensive class covering such things as: how to form correct letters, lettering styles, how to place lettering on a painted piece and how to paint letters on your pieces. This class is perfect for all skill levels.

CREATIVE BACKGROUND FINISHES

Date: Saturday, January 20th
Teacher: Naomi Price
Location: To be announced.
Payment Due: January 5th

Description: This is the same class offered in Tacoma last spring! Naomi will be teaching several new and different techniques (Faux Finishes) to make your rosemaled pieces more interesting! This is really a "hands-on" experience. Several treatments to wood will be taught. Naomi teaches a course on this topic in a local community college. Her training and experience in this is extensive. This class is a good one for all painting skill levels.

MINI - WORKSHOPS

NEW GUIDELINES FOR MINI-WORKSHOPS:

Starting this September, all workshop money must be received by the Mini-Workshop Coordinator at least 2 weeks prior to the workshop. If a minimum of 9 people have not paid 2 weeks in advance, the workshop will be cancelled. The workshop will remain cancelled even if checks are received late (less than 2 weeks before a workshop).

During this past year, 2 workshops had fewer than 4 people paid 2 weeks in advance. A room was not reserved since I anticipated a lack of interest in the workshop subject. Within a week of the workshops, I was flooded with checks and had to secure a room with only a week's notice. Believe me -- it's a stress producing job to locate a facility that can accommodate 12 + painters on short notice.

When you see a workshop you want to attend, send your check in right away. Calling to put your name on the list is ok, but will not keep the workshop from being cancelled if money is not received.

UPCOMING MINI-WORKSHOPS:

We have a great workshop this Fall designed for beginner, novice and intermediate painters. It is a good opportunity to brush-up or learn some basic strokes used in Hallingdal. Additional classes are scheduled for early next year. The number of mini-workshops are limited this Fall because there are several major workshops scheduled.

These workshops are specifically designed for the beginner to intermediate painter. However, rosemalers of all skill levels are welcome to attend!

Someone will call and tell you the specific supplies you will need. In addition to the specific items your teacher requests that you bring, please bring with you:

- * Your paints (oil or acrylic)
- * Garbage bag (for a table cover)
- * Sack lunch
- * Coffee/tea in a thermos (coffee is not provided)
- * A sack for garbage
- * A container with a lid to dispose of oil-based paper towels, etc.

The cost of each workshop is \$14.00 for members and \$24.00 for non-members (\$14.00 for the class and \$10.00 for membership). The cost has risen to cover room rental and teacher stipend. Please send your money to:

Kelly Sooter
1823 Hollow Dale Pl.
Everett, WA 98204
(206) 347-0515 Everett

Celebrating 20 Years of Rosemaling

Plans for celebrating our 20th year as a Norwegian Rosemaling Association have been unfolding as each Vine bring you news from the past.

As you read in the last Vine, Louise Friar, our Historian, is writing articles on the history of the Western Rosemaler's Association taken from our past newsletters. Patterns and sketches of early rosemalers appeared in the last Vine.

Our membership brochure was re-designed for this celebration. Naomi Price graciously offered to redesign the brochure cover and re-write the information of our organizations recognizing our 20 years. A copy of this brochure follows this article.

The President's Book, telling about the first 20 years of the organization, officers, staff and goals will be finished by the end of the year.

Betty Edwards, Louise Friar,
Barbara Hazen, Naomi Price



**design by Jean Alfsen

*Twenty Year Anniversary
1975 - 1995*

Members of the

Western Rosemalers Association

Welcome you to a Demonstration introducing
you to the art of Norwegian Rosemaling

The Western Rosemalers Association enters their 20th Anniversary year with pride and purpose of preserving the Norwegian folk art of rosemaling.

The word rosemaling is probably derived from the name of the flower, even though in some dialects it encompasses a great deal more than merely floral painting. In Norwegian the verb rose can mean to decorate, and rose painting means quite simply decorative painting.

The earliest rural painters were inspired by the Renaissance paintings in the rural churches, works by urban painters that had been commissioned by the diocese. The Renaissance style provided numerous motifs, with acanthus scrolls the dominant recurring theme. Baroque vine-line ornamentation and floral decoration, together with rococo shells and rocailles, were the basis for the development of local styles.

The decorative function was usually the most important, though the pictures could also be symbolic, epic or make a religious statement. Biblical motifs constitute the largest group used by the rose painter. In this manner the rose painter was conforming to ancient folk art traditions.

Members of the Western Rosemalers Association are encouraged to continue the high quality of workmanship set by their predecessors. The membership also exhibits, displays, instructs and demonstrates rosemaling for schools, exhibitions and heritage festivals.



WRA Display Case

SCHEDULE

- Sept 17 Return trays and Tivoli Items
- Sept 17 Receive *Past Presidents' Items* (3 each)
- Nov 12 Return Past Presidents' items
- Nov 19 Select items from sales received.
(Yule Fest & Yule Boutique)
- Jan 21 Items from sales returned
- Jan 21 Juried Show pieces received

The display case draws much interest and favorable comment. Please continue to help keep the case filled.

UPCOMING SALES & DEMONSTRATIONS

Juried Show	PLU	Tacoma	OCTOBER
Scandinavian Days		Puyallup	OCTOBER
Yule Boutique	PLU	Tacoma	NOVEMBER
Yulefest	NHM	Seattle	NOVEMBER

Domo ariaato - Mange Takk- Mahalo Nui - Taksemykit

The shoulder's stitched, and back in place
The spurs have been removed.
Medication, now withdrawn,
My brain is "in the groove!"

I feel it healing more each day,
Look forward to some action.
Walking fingers, squeezing nerf,
and swimming without traction.

The "Get Well!" cards just hit the spot,
I read--- re-read each one.
About the "cow" and "what I said"
Just wait,—I'll have my fun!

Thank You Sons of Norway!
Thank You WRA, TOPS and WISH!
Thank you Kin and Neighbors
Your words are like a dish— of inspiration seasoned
with, just the right amount of cheer-up and good
wishes—the kind that really counts. *Luella Hilby*

To become a WRA member, simply fill out the application below and submit with payment of annual dues to our membership chairman. With your membership card, you will receive five issues of WRA's Acanthus Vine; an informative newsletter announcing classes, shows, activities, people and tools of the trade. You will also receive a membership directory of 200 other persons interested in rosemaking, plus a resource list of more than 150 rosemaking books, photographs, and designs which are for loan to members only. You will have the first opportunity to receive instruction from visiting and local qualified rose painters. Your membership allows you to buy and sell painting supplies at meetings and sell your rosemaking at festivals sponsored by the Association.

MEMBERSHIP APPLICATION

FIRST NAME

LAST NAME

ADDRESS

CITY

STATE

ZIP

PHONE () _____

DATE _____

GENERAL MEMBERSHIP \$10.00

Dues run from January to January

Please make your check payable to:
Western Rosemalers Association

Mail to:

Loiselle Dahill
101040 Paulina Highway
Prineville, OR 97754

Poem read by Betty Edwards at January '95 meeting.

*The purpose of life is to discover your gift.
And the meaning of life is giving it away.*

*When you take responsibilities on your shoulders,
There is not much room for chips.*

*What is more mortifying that to feel that you have
missed the plum for want of courage to shake the
tree?*



1995 Juried Show and
Exhibit
October 2nd to November 13th
Scandinavian Cultural Center at
Pacific Lutheran University in Tacoma

WESTERN ROSEMALERS' ASSOCIATION
8975 SW HOMEWOOD ST
PORTLAND, OR 97225

NON-PROFIT

WRA Editor
18228 Rockwood Ct.
Yelm, WA 98597

