



Welcome

PACIFIC COAST

BERGMAN

• NORWEGIAN SINGERS ASSN •

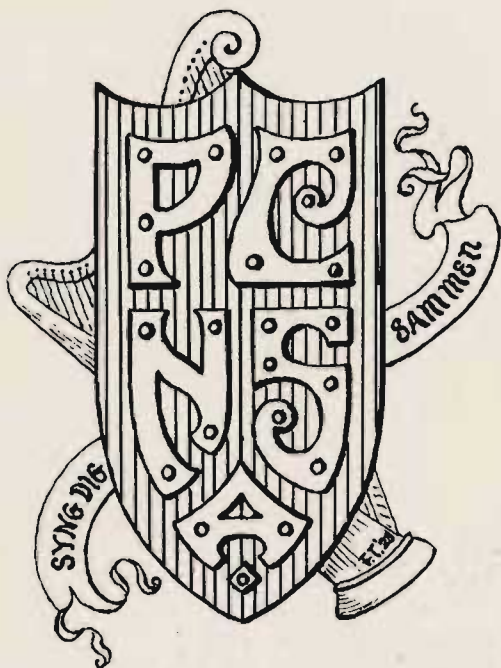
31ST ANNUAL SANGERFEST

AUG. 25-26 - 27-28. 1939



SAN FRANCISCO

NORWEGIAN MALE CHORUS
OF SEATTLE



Brief Historical Sketch of the Pacific Coast Norwegian Singers' Association

SONG AND MUSIC are a birthright which have been entrusted to all nations in a greater or lesser degree.

That such a birthright has been richly entrusted to the Norwegian Nation is a well known fact. As music lovers, composers and performers the Norwegians have always been in the foremost ranks. Singing, and then in particular male chorus singing, has a very broad place in the daily musical life of the country. Virtually every little community has its singing societies which contribute much towards keeping the high standard of patriotism and love. Everybody takes part and the great Sangerfests with massed choruses numbering 5000 to 6000 men are realities.

Immortal composers like Grieg, Sinding, Svendsen, Ole Olsen, Kjerulf and numerous others have given us male chorus compositions of lasting beauty, compositions that rightfully belong among the finest the world has produced in this form of music.

The Norwegian sons and daughters who have emigrated to America have brought with them this great love for song and music, and have contributed honorably to make this country an outstanding musical nation. For over sixty years Norwegian singing societies have existed on the Pacific Coast, and in 1902, chiefly through the efforts of Mr. F. A. Tomte, Portland, Oregon, the Pacific Coast Norwegian Singers' Association was organized in Seattle, Washington. The first officers were John Norman (Everett), President; A. J. Thuland (Seattle), Secretary; Dr. O. A. Loe (Seattle), Treasurer, and Dr. Carlo A. Sperati, Director-in-Chief.

The first Sangerfest was held in Everett, Washington, in August 1903. Since then Sangerfests have been held and celebrated in the principal cities of the Pacific Coast.

The present Sangerfest in San Francisco is the thirty-first in the history of the Pacific Coast Norwegian Singers' Association.

Pacific Coast Norwegian Singers' Association

SANGERFEST SCHEDULE

SAN FRANCISCO

AUGUST 25, 26, 27, 28, 1939

FRIDAY, AUGUST 25:

On arrival, register at Headquarters, Hotel Whitcomb, Market and Eighth Streets.

8 P. M. Reception, given by the San Francisco Ladies' Auxiliary and Singers, Dovre Hall, 3543 Eighteenth Street.

SATURDAY, AUGUST 26:

9:30 A. M. Rehearsal, Dovre Hall.

12 Noon. Luncheon, Dovre Hall, given by the Sons and Daughters of Norway, San Francisco.

2:30 P. M. Rehearsal with music. Stage formation. War Memorial Opera House, Van Ness Avenue and Grove Street.

8 P. M. Grand Concert, War Memorial Opera House.

10 P. M. Grand Ball, California Hall, Polk and Turk Streets.

SUNDAY, AUGUST 27:

9 A. M. Norway Chorus Breakfast, Italian Room, Hotel Whitcomb.

NORWAY DAY CELEBRATION AT THE EXPOSITION, TREASURE ISLAND

11 A. M. Religious Service, Temple of Religion.

1 to 4 P. M. Norway Day Program, Exposition Coliseum. (Singers open and close program)

8 P. M. Sangerfest Banquet and Ball, Gold Room, Palace Hotel, Market and New Montgomery Streets.

MONDAY, AUGUST 28:

9:30 A. M. Business Meeting, Roof Garden, Hotel Whitcomb.

1:30 P. M. Luncheon, given by the Ladies' Auxiliary of the Norwegian Singers, San Francisco, Roof Garden, Hotel Whitcomb.



KLAUS OLSEN
Honorary Member
N. S. S. of San Francisco



AXEL WARENSKJOLD
Honorary Member
N. S. S. of San Francisco



CASPAR HEXBERG
President



ALFRED ABRAHAMSEN
Vice-President



LUDVIG R. DAHLING
Secretary



MONRAD MALMIN
*Director in Chief
Vancouver, B. C.*



PROF. AUGUST WERNER
*Assistant Director and Soloist
Seattle, Wash.*

Pacific Coast Norwegian Singers' Association

CASPAR HEXBERG, *President* San Francisco

ALFRED ABRAHAMSEN, *First Vice-President* San Francisco

LUDVIG R. DAHLING, *Corresponding Secretary* San Francisco

THEO. CHRISTY, *Recording Secretary* Seattle

RUDOLPH BYE, *Treasurer* Seattle

MELVIN O. SYLLIAASEN, *Marshal* Seattle

OLE JOHNSON, *Second Vice-President* Los Angeles

OLAF BIRKELAND, *Third Vice-President* Vancouver, B. C.

OLAF BOEN, *Fourth Vice-President* Seattle

THORVAL THOMPSON, *Fifth Vice-President* Portland

AANON AANONSEN, *Sixth Vice-President* Oakland

EXECUTIVE COMMITTEE

AXEL WARENSKJOLD, *Hon. Chairman*

CASPAR HEXBERG, *President*

ALFRED ABRAHAMSEN, *Vice-President*

OLAV TJENSVOLD, *Treasurer*

LUDVIG R. DAHLING, *Secretary*

HANS OYEN, *Assistant Treasurer*

ERLING ANDRESEN

ARNE MOEN

HELGE UTNE

HALFDAN BERGMARK

ART NILSEN

TORSTEIN WAHLE

ARNE OYEN

LADIES' AUXILIARY

Mrs. A. Moen, *President*

Miss E. Jager, *Vice-President*

Mrs. E. Andresen, *Secretary*

Mrs. H. R. Bergmark, *Treasurer*

Mrs. Charles Andersen

Mrs. Thora Fister

Mrs. O. M. Oyen

Mrs. Christian Andersen

Mrs. E. Gundersen

Mrs. Marie Omdal

Mrs. O. Anderson

Mrs. C. Hexberg

Mrs. A. Paasche

Mrs. R. Botolfsen

Mrs. C. Hove

Miss M. Scarbo

Mrs. H. Bruun

Mrs. P. Midbust

Mrs. O. Tjensvold

Mrs. C. H. Christoffersen

Mrs. A. Nilsen

Mrs. P. Thorsfeldt

Mrs. L. R. Dahling

Mrs. R. Olsen

Mrs. R. Undlin

Mrs. R. Enge

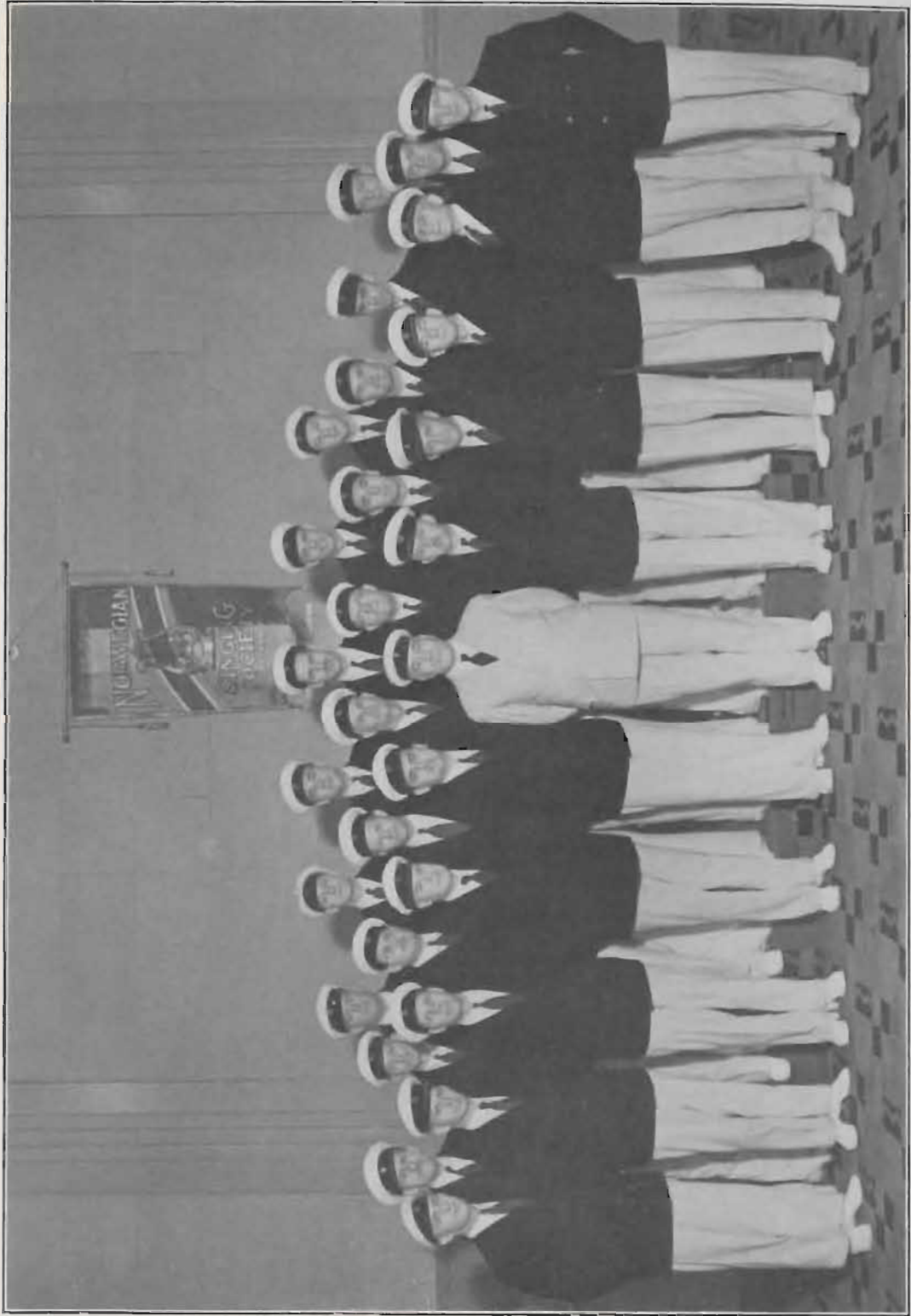
Miss E. Olsen

Mrs. H. Utne

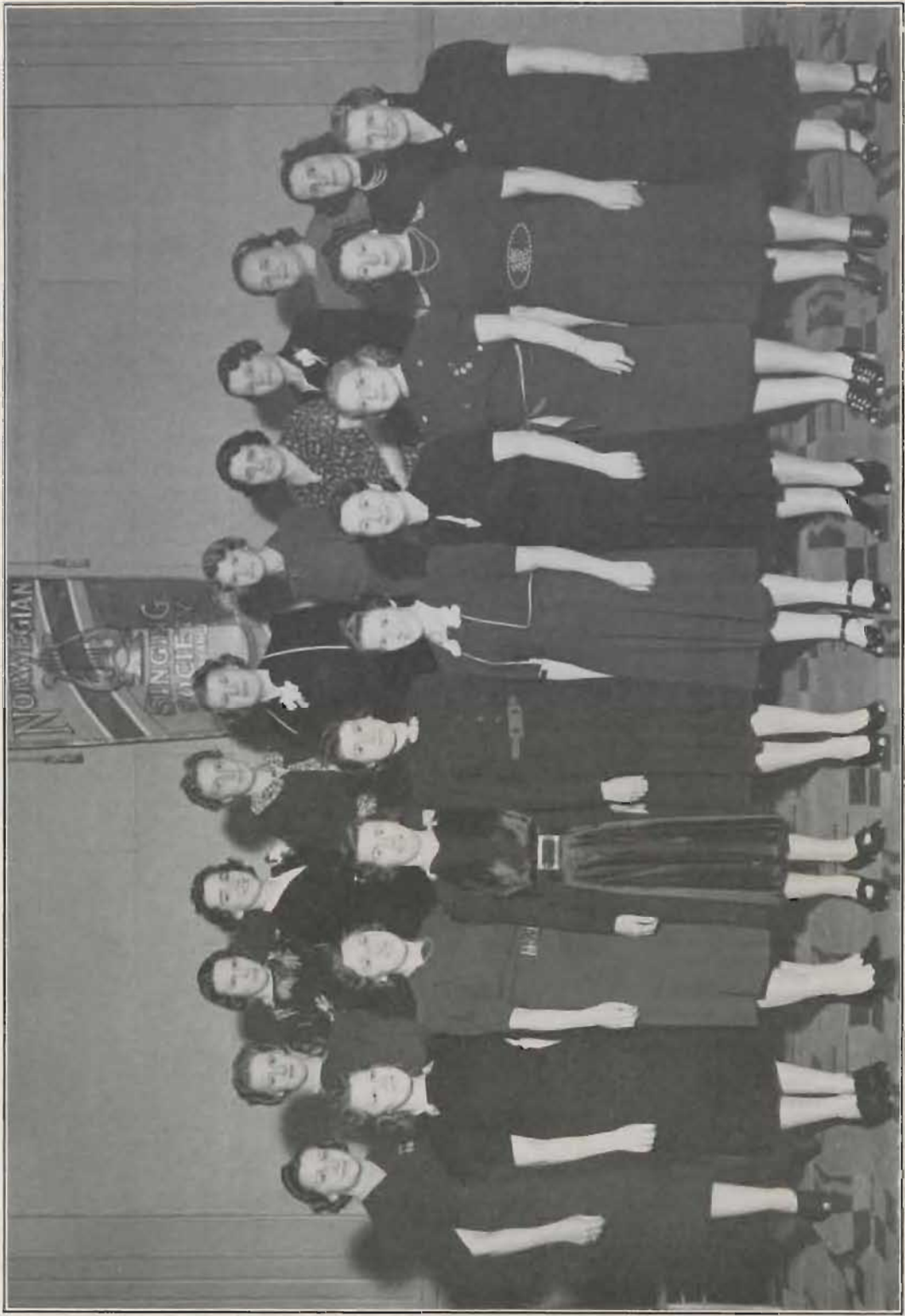
Mrs. F. Ericksen

Mrs. H. Oyen

Mrs. T. Wahle



NORWEGIAN SINGING SOCIETY, SAN FRANCISCO



LADIES' AUXILIARY OF THE NORWEGIAN SINGING SOCIETY, SAN FRANCISCO

SANGERFEST COMMITTEES

SOUVENIR PROGRAM COMMITTEE

A. ABRAHAMSEN
E. ANDRESEN
H. BERGMARK
L. DAHLING
H. OYEN

ADVERTISING AND PUBLICITY COMMITTEE

NORA A. BLICHFELDT
A. OYEN
O. ABELSETH
L. C. HATLEN

TICKET COMMITTEE

H. OYEN
A. NILSEN
A. KLOSTER

REGISTRATION COMMITTEE

L. DAHLING
T. WAHLE
O. ABELSETH
A. CHENSVOLD

RECEPTION COMMITTEE

E. ANDRESEN
A. ABRAHAMSEN
J. ROBERTSEN
R. UNDLIN
E. VISETH
L. PEDERSEN
H. OYEN
A. CHENSVOLD

LUNCHEON COMMITTEE

A. MOEN
H. UTNE
P. VOYE
S. OLAFSSON
W. JENSEN
A. OLSEN

GRAND BALL COMMITTEE

A. MOEN
J. ROBERTSEN
P. VOYE
A. WICKAN
O. L. JOHNSON
L. PEDERSEN
W. LARSEN
R. HOMPLAND
C. HOVE
H. BRUN
P. THORSFELDT
A. OYEN
A. KLOSTER

CONCERT COMMITTEE

H. OYEN
H. UTNE
E. VISETH
H. OUSTAD
A. ABRAHAMSEN

DECORATIONS COMMITTEE

O. ABELSETH
P. THORSFELDT
R. UNDLIN
S. OLAFSSON
B. LARSEN

STAGE COMMITTEE

H. UTNE
E. VISETH
H. OUSTAD
C. HOVE
R. HOMPLAND

BANQUET COMMITTEE

H. BERGMARK
H. OYEN
R. UNDLIN
L. DAHLING

NORWAY CHORUS BREAKFAST

E. ANDRESEN
J. ROBERTSEN

HOTELS COMMITTEE

T. WAHLE
L. DAHLING
E. ANDRESEN

TRANSPORTATION COMMITTEE

P. MIDBUST
R. BOTOLFSEN
O. M. OYEN
J. CHRISTENSEN
A. BERWICK
G. ANSOK
G. STROM
C. L. WOLD
O. A. NELSON
E. GUNDERSEN



WAR MEMORIAL
OPERA HOUSE
*31st Sangerfest
Concert Hall*



GEO. S. JOHNSON
*Honorary Director
Tacoma, Wash.*



CLARA PLADSEN
*Soloist
Los Angeles, Calif.*

■

Compliments

To the Norwegian Singers of the Pacific Coast

Knutsen Line

KNUT KNUTSEN O.A.S.
OWNER

Fast Freight, Refrigerator and Passenger Service
Between Pacific Coast and Europe

■

Interocean Steamship Corporation

PACIFIC COAST GENERAL AGENTS

Seattle

Portland

San Francisco

Los Angeles

■



GJØA

When the famous Norwegian Explorer Roald Amundsen arrived in San Francisco with his ship Gjøa after having made the trip through the Northwest passage, he gave the ship to the City of San Francisco and it is now placed in Golden Gate Park right at the beach.



NORWEGIAN SKI LODGE

At Golden Gate International Exposition, Treasure Island

PACIFIC COAST NORWEGIAN SINGERS' ASSOCIATION

NORWEGIAN MALE CHORUS, Vancouver, B. C.
H. NYSTROM, Secretary
MONRAD MALMIN, Director

BELLINGHAM MALE CHORUS, Bellingham Wash.

NORRONA MALE CHORUS, Stanwood, Wash.

NORWEGIAN MALE CHORUS, Everett, Wash.
 Organized 1902

ROY KVANGNES, President
CLARENCE FREEMAN, Secretary
H. W. RINGMAN, Director

NORWEGIAN MALE CHORUS, Seattle, Wash.
 Organized 1889

MELVIN O. SYLLIAASEN, President
K. F. FREDERICK, Secretary
AUGUST WERNER, Director

NORMANNA MALE CHORUS, Tacoma, Wash.
 Organized 1888

JOHN EDWARDSSEN, Secretary
GEORGE S. JOHNSON, Director

GRIEG MALE CHORUS, Grays Harbor, Wash.

NORWEGIAN GLEE CLUB, Portland, Oregon
 Organized 1886

EMIL P. SLOVARD, President
ALVIN ALVER, Secretary
ERNEST HEROLD, Director

LARKEN SINGING SOCIETY, Astoria, Oregon
 Organized 1904

GUSTAV JOHNSEN, President
EMIL ANDERSON, Secretary
ED WAHL, Director

NORWEGIAN SINGING SOCIETY, San Francisco
 Organized 1903

ERLING ANDRESEN, President
ALF KLOSTER, Secretary
PHILLIP K. HILLSTROM, Director

NORMANNA GLEE CLUB, Oakland, Calif.
ELMER HOLM, President
A. ARNESEN, Director

SCANDINAVIAN SINGING SOCIETY, San Jose
B. DUNDAS, Secretary
H. H. HALLIN, Director

NORWEGIAN MALE CHORUS, Los Angeles, Calif.
 Organized 1919

OLE HANSEN, President
CARL GUNDERSEN, Secretary
LIVERNE SIGMOND, Director

NORSEMEN'S GLEE CLUB, Los Angeles, Calif.
 Organized 1935

HANS P. DEVICK, President
HELMER L. DECKER, Secretary
BEN EDWARDS, Director

RECORD OF SANGERFESTS

| | | |
|----------------------------------|--------------------------------------|-----------------------------------|
| 1. Everett 1903 | 12. Seattle 1917 | 22. Vancouver, B. C. 1927 |
| 2. Seattle 1904 | 13. Portland 1918 | 23. San Francisco 1928 |
| 3. Portland 1905 | 14. Tacoma 1919 | 24. Astoria 1929 |
| 4. Tacoma 1906 | 15. Grays Harbor 1920 | 25. Grays Harbor 1931 |
| 5. Astoria 1907 | 16. Astoria 1921 | 26. Everett 1933 |
| 6. Seattle 1909 | 17. Everett 1922 | 27. Vancouver, B. C. 1934 |
| 7. Eureka 1910 | 18. Edison-Bellingham 1923 | 28. Bellingham 1935 |
| 8. Everett 1912 | 19. Seattle 1924 | 29. Seattle 1936 |
| 9. Spokane 1913 | 20. Portland 1925 | 30. Portland 1937 |
| 10. San Francisco 1915 | 21. Tacoma 1926 | 31. San Francisco 1939 |
| 11. Bellingham 1916 | | |

HONORARY MEMBERS

DR. CARLO A. SPERATI, Decorah, Iowa
 FREDERICK A. TOMTE, Portland, Oregon (Deceased)
 JOHN NORMAN, Everett, Washington (Deceased)
 REV. C. AUGUST PETERSON, Seattle, Washington (Deceased)

HONOR ROLL

Decorated for Attendance at Twenty-five Sangerfests

| | |
|--|--|
| F. A. TOMTE, Portland 1934 | RUDOLPH H. MÖLLER, Seattle 1935 |
| J. J. LIBAK, Portland 1934 | THEO. CHRISTY, Seattle 1935 |
| CARL SUNDE, Seattle 1934 | C. AUGUST PETERSON, Seattle 1936 |
| PETER LILOS, Seattle 1934 | OLAV BOEN, Seattle 1937 |
| GEORGE S. JOHNSON, Tacoma 1937 | |

DIRECTORS-IN-CHIEF

| | |
|---------------------------------------|---------------------------------------|
| CARLO A. SPERATI 1902-1916 | GEORGE S. JOHNSON 1935-1937 |
| RUDOLPH H. MÖLLER 1916-1935 | MONRAD MALMIN 1937 |

The Beer of the Year



The light sparkling
brew you've been thirsty for
-mild yet full of flavor.
Mellow as a harvest moon.
The color of new gold and
the flavor of old Pilsner.
It's the beer of the year.
Ask for Regal Pale *deluxe*.

REGAL AMBEI BREWING CO., SAN FRANCISCO, CALIFORNIA

Program Notes

Varde. "The Beacon." Words by Per Sivle, music by Johannes Haarklou. History relates that the Norwegian King Haakon the Good (919-961) gave order to build great beacons on the highest mountain peaks throughout Norway. They were only to be lit in case of foes entering the country. Thus the ominous message could reach from the southernmost point of Norway all the way to North Cape within seven nights. In rousing words the poem paints a picture of the awakening at night of each man! The Beacon is Burning!! No need of telling them the foe is entering the Fatherland. They rush to the defense of home and country, and the hapless foe shall taste what it means to be the cause of Burning Beacons. Still, though no beacons are burning on the mountain tops they burn in the hearts of Norway's youth. It burns! Burns!—The powerful musical setting has made the song one of the most beloved of Norwegian choral music.

Baadn-Laot. "Nursery Rhyme." This humorous piece is a little Norwegian Folk Song, a Children's Ditty. The setting is by Grieg in his own inimitable style and shows his mastery in male chorus arrangement. The besom lies in the closet. The cat is drumming and four mice are dancing, so the whole earth is shaking. The cat sits on the roof speaking to its daughters: "How shall we keep our feet dry, our paws are freezing?" We shall travel to Denmark and buy shoes for two bits, and corn and gingersnaps. Meow!

Den store hvite flok. "The great White Host." Behold a Host arrayed in white, like thousand snow-clad mountains bright. Their voices they in worship raise, before the throne of God, mid Angels' song of praise! This religious poem is from the prolific pen of the Bishop H. A. Brorson (1694-1722.) Several Norwegian Folk melodies, greatly varying, are to be found to this text, but Grieg selected the one used here and arranged it for baritone solo with male chorus accompaniment. Of the three verses of the song only the first is used in this setting which has long since become a great favorite with all male choruses.

Tord Folesson. Poem by Per Sivle, music by Gomnes. In the year 1030 on Wednesday, July 29th, the Norwegian King, Saint Olav, with army of 3600 men, were overwhelmed by his Norwegian and Danish foes numbering 14,400 men, in the Battle of Stiklastadir. King Canute the Mighty of Denmark and England as well as

the Danish Bishop Sigurd had aroused many of the Norwegian gentry and yeomanry against St. Olav. The song itself describes the battle but is mostly a tribute to St. Olav's standard bearer Tord Folesson. When in the midst of the battle Tord received his death wound he rushed forward through the ranks of the foes and drove the standard pole into the ground where it remained standing, after which he sank dying to the ground. He was followed in death a few moments later by St. Olav. The song ends with these significant words: "Thus must always that man do who carries the standard of Progress for Norway. For this is sublime: The banner stands though the bearer falls!"

Landkjending. "Land-Sighting." The poem is by Norway's great writer Bjornson and the music by the immortal Grieg. It is one of the most popular male chorus songs in the world, depicting the young Hero-King Olav Trygvason's return to his native Norway and the first impression of land he and his followers got from the gleaming mountain peaks and thundering waterfalls as they sailed in through the deep blue fjords in the shimmering sunlit air. In the baritone solo the King gives profound expression for his belief, that here was home, and here he would raise the Cross which should lift his spirit high and strong like the mighty glittering mountains! And his men intone the prayer carrying the song to a grand soul stirring finish.

Olav Trygvason. Poem by Bjornson, music by Reisinger. It is perhaps the favorite of all the Norwegian male chorus songs, and hardly a concert is given without its appearance on the program. The epic background of the song is the Naval Battle fought at the peninsula of Svold, off the German-Baltic coast in the year 1000, where the famous Norwegian Hero—King Olav Trygvason fell against his combined Norwegian, Danish and Swedish foes. His Dragon Ship, the "Long Serpent," the most famous of all Viking ships, was taken—and Olav Trygvason, wounded, jumped overboard and disappeared. But the song itself deals with King Olav's Earl, Erling Skjalgson and his men, who with 56 lighter warships had outsailed the 11 heavier Dragon Ships of the King, and unaware of the sad fate of their beloved Hero were laying waiting for him—in vain. And then from the depth of the ocean, like a sigh, came the message carried by sobbing waves to the waiting men: "Taken is the Long Serpent! Fallen is Olav Trygvason!"

Concert Program

WAR MEMORIAL OPERA HOUSE

SATURDAY, AUGUST 26, 1939

MONRAD MALMIN, *Director-in-Chief*

AUGUST WERNER, *Assistant Director*

1. Overture.

PAUL PADDEN RALSTON, *at the Organ*

2. Star Spangled Banner *Scott-Key*
Ja, vi elsker dette landet *Nordraak*

GRAND CHORUS

MONRAD MALMIN, *Conductor*

3. Ved Rundarne *Grieg*
Eit Syn *Grieg*
Jeg lagde mig saa sildig, *Norwegian Folk Song* *Arr. by Grieg*
Junker Nils sjunger till Lutan *Hallen*

AUGUST WERNER

GERTRUDE WERNER, *at the Piano*

4. Fanevakt *Olsen*
I Midnattsolen *Wold*
Old Black Joe, *arr. by van der Stucken* *Foster*
Naar Fjordene Blaaner *Paulsen*

GRAND CHORUS

AUGUST WERNER, *Conductor*

5. Paa Solen jeg ser *Ole Bull*
Solveigs Sang (*from Ibsen's Peer Gynt*) *Grieg*
Mot Kveld *Backer-Grøndahl*
Mor, min lille Mor *Backer-Grøndahl*

CLARA PLADSEN

6. On The Sea *Buck*
Brudeferden i Hardanger *Kjerulf*
Aftenrøster *Borg*
Thord Folesøn *Gomnes*

GRAND CHORUS

MONRAD MALMIN, *Conductor*

AUGUST WERNER, *Soloist*

GERTRUDE WERNER, *at the Piano*

7. Crudel perche, finora (*Duet from Le Nozze di Figaro*) *Mozart*
La ci darem la mano (*Duet from Don Giovanni*) *Mozart*

CLARA PLADSEN

AUGUST WERNER

8. Varde *Haarklou*
Baadn-Laas, *Norwegian Folk Song* *arr. by Grieg*
Incidental Solo by PETER LILOS

- Hør oss, Svea *Wennerberg*
Den store hvite flok, *Norwegian Folk Song* *arr. by Grieg*
Landkjending *Grieg*

GRAND CHORUS

MONRAD MALMIN, *Conductor*

AUGUST WERNER, *Soloist*

PAUL PADDEN RALSTON, *at the Organ*

GERTRUDE WERNER, *at the Piano*

AUGUST WERNER, *Baritone*

CLARA PLADSEN, *Lyric Soprano*

GERTRUDE WERNER, *Accompanist*

Interocean Line

operated with Westfal-Larsen & Co. A/S tonnage gives the fastest and most frequent service between Pacific Coast ports and Havre, Antwerp, Rotterdam with the new 17 knots superliners "Berganger", "Trondanger", and "Moldanger", together with five other 13 knot mailers, "Brimanger", "Hindanger", "Villanger", "Taranger", "Heranger".

Freight and Passengers.

Agents INTEROCEAN STEAMSHIP CORPORATION

311 CALIFORNIA STREET

Phone DOUGLAS 1136

Westfal-Larsen Company Line

gives the fastest service between Pacific Coast ports and ports on the West and East Coast of South America. Freight and passengers.

Agents GENERAL STEAMSHIP CORPORATION

240 BATTERY STREET

Phone KEARNY 4100

FLEET OF

Westfal-Larsen & Co. A/S

BERGEN, NORWAY

| | | | |
|-----------------------|---------------------|------------------|--------------------|
| M/T "Sandanger" | d.w.abt. 14000 tons | M/V "Brandanger" | d.w.abt. 8550 tons |
| M/V "Langanger" | " " 13655 " | " " "Hoyanger" | " " 8550 " |
| " " "Storanger" | " " 13650 " | " " "Siranger" | " " 8500 " |
| " " "Finanger" | " " 13595 " | " " "Grenanger" | " " 8500 " |
| " " "Hallanger" | " " 13580 " | " " "Brimanger" | " " 8500 " |
| " " "Noranger" | " " 13160 " | " " "Hindanger" | " " 8500 " |
| " " "Varanger" | " " 13160 " | " " "Villanger" | " " 8500 " |
| " " "Orkanger" | " " 10825 " | " " "Taranger" | " " 8500 " |
| S/S "Torvanger" | " " 10750 " | " " "Heranger" | " " 8500 " |
| " " "Davanger" | " " 10475 " | S/S "Porsanger" | " " 7400 " |
| M/V "Spinanger" | " " 10400 " | " " "Samnanger" | " " 7400 " |
| S/S "Malmanger" | " " 10340 " | " " "Leikanger" | " " 7300 " |
| M/V "Berganger" | " " 9825 " | " " "Hardanger" | " " 7300 " |
| " " "Trondanger" | " " 9825 " | " " "Evanger" | " " 7200 " |
| " " "Moldanger" | " " 9825 " | " " "Ravnanger" | " " 5600 " |
| S/S "Labelle Country" | " " 8650 " | " " "Hosanger" | " " 2400 " |
| | | " " "Kaupanger" | " " 2400 " |

and 4 boats under construction

TOTAL d.w. 344,000 tons

Your cargo is SAFE on an "ANGER" ship



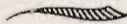
Colt Tower and the Bay

TO

NORWAY ON THE **NORWEGIAN AMERICA LINE** — *the Only Direct Line from New York*



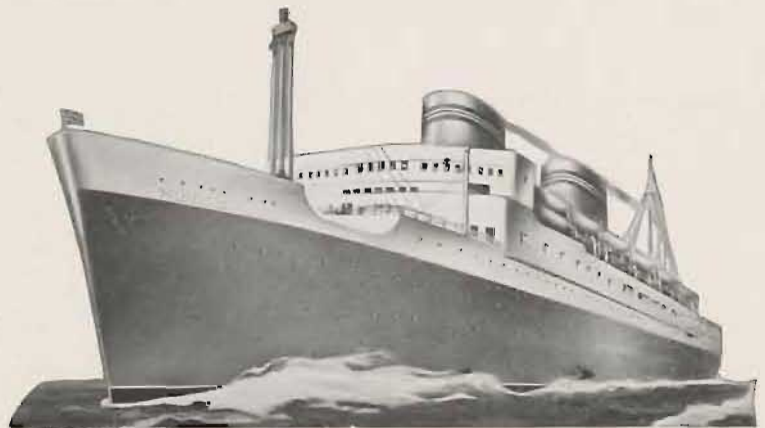
*Frequent Sailings
on the new*
MS "OSLOFJORD"
also
SS "BERGENSFJORD"
and
SS "STAVANGERFJORD"



*Make your plans now to visit the
following attractions in 1940:*

The
INTERNATIONAL EXHIBITION
OF POLAR EXPLORATION IN
BERGEN
and
The OLYMPIC GAMES IN
HELSINGFORS

For Sailings, Rates, Reservations of Space, etc. Please Apply to Your Local Travel Bureau



The 1939 CHRISTMAS EXCURSION
on the
SS. "STAVANGERFJORD" Dec. 9th
conducted by
BREDO MATHISEN
of the San Francisco Office

NORWEGIAN AMERICA LINE

323 GEARY STREET

SAN FRANCISCO

Tel. EXBROOK 8083

Fred Olsen Line

THE ONLY NORWEGIAN DIRECT SERVICE

SCANDINAVIA TO WEST COAST OF NORTH AMERICA, AND VICE VERSA

Ports of call on the Pacific Coast: San Pedro, San Francisco, Portland, Tacoma, Seattle, Victoria, Vancouver, according to cargo secured for or from the ports mentioned. Cargo taken on through bill of lading to all main points in Norway, Sweden and Denmark.

Fleet of Vessels: Diesel Motor Ships—"Knut Nelson", 10,000 tons; "Benjamin Franklin", 10,000 tons; "Abraham Lincoln", "Laurits Swenson", 10,000 tons.

For Further Information Apply to

HEAD OFFICE: OSLO, NORWAY, or FRED OLSEN LINE AGENCY
Financial Center Building, San Francisco, California
Telephone EXBROOK 2261

Get Your Connections to Scandinavia Now!

Serve Your Guests and Friends the Best

Ask Your Dealer For

NORWEGIAN LØITEN'S AQUAVIT
NORWEGIAN LYSHOLM'S AQUAVIT
NORWEGIAN SIMER'S AQUAVIT

After Dinner Serve

POULSEN ARAC PUNCH
LARSEN ARAC PUNCH
ST. HALLVARD'S LIKOR
WHITE CURACAO

If These Liquors Are Not Obtainable at Your Dealers, Apply

SCHOU-GALLIS COMPANY, Ltd.

Wholesale and Retail

34 DAVIS STREET

SAN FRANCISCO

*All "Ski Queen" Brands Norwegian Cheese is Good for Old and Young
When Buying Norwegian Cheese, Ask Your Grocer for*

"SKI QUEEN" BRANDS

Our Gudbrandsdals Gjetost is World Famous

NORWEGIAN DAIRIES' EXPORT CORPORATION
Schou-Gallis Co., Ltd., 34 Davis Street, Pacific Coast Agents

NORWAY DAY

11:00 A. M. CHURCH SERVICE _____ *in the Temple of Religion, Treasure Island*
REV. GUSTAV A. STORAKER

Program

CALIFORNIA COLISEUM, TREASURE ISLAND

SUNDAY, AUGUST 27, 1939, 1:30 P. M.

1. Ja Vi Elsker Dette Landet
AUDIENCE AND ORCHESTRA
2. Address of Welcome P. STRØMSHEIM, *Chairman, Norway Day Committee*
3. Greetings LELAND CUTLER, *President, Golden Gate International Exposition.*
4. Greetings J. HEYERDAHL-HANSEN, *President, Norwegian-American Exposition Committee*
5. Greetings S. STECKMEST, *Consul General of Norway*
6. Naar Fjordene Blaaner *Paulsen*
Baadn-Laar *Grieg*
Olav Trygvason *Reissiger*
PACIFIC COAST NORWEGIAN SINGERS' ASSOCIATION
7. Greetings BETZY KJELSBERG, *Representative, Nordmanns-Forbundet*
8. Bondebryllup (*Ancient Norwegian Peasant Wedding*)
9. Eit Syn *Grieg*
Vaaren *Grieg*
Tak for dit Raad *Grieg*
ELLEN REPP, *Contralto* HENRIK GJERDRUM *at the Piano*
10. Folk Dances PORTLAND GJØA LEIKARRINGEN
11. Address JOHN MOSES, *Governor of North Dakota*
12. Group of Violin Solos.
THORSTEIN JENSEN HENRIK GJERDRUM *at the Piano*
13. Folk Dances SAN FRANCISCO-OAKLAND LEIKARRING
14. Introductions E. B. HAUKE, *Supreme President, Sons of Norway*
MARIE BERGLUND, *Grand President Daughters of Norway, Pacific Coast*
15. En Drøm *Grieg*
Blaaberli *Grieg*
Efteraarstormen *Grieg*
ELLEN REPP, *Contralto* HENRIK GJERDRUM *at the Piano*
16. Drill Team SAN FRANCISCO DAUGHTERS OF NORWAY
17. Ulabrand *Wendelborg*
Brudefærden i Hardanger *Kjerulf*
Varde *Haarklou*
PACIFIC COAST NORWEGIAN SINGERS' ASSOCIATION
18. Star Spangled Banner
AUDIENCE AND ORCHESTRA

8:00 P. M. DANCE _____ *Western States Auditorium, Treasure Island*

ADMISSION 25c

NORWAY DAY COMMITTEE

P. STRØMSHEIM, *Chairman*

NORA BLICHEFELDT, *Vice-Chairman*

OLE ABELSETH, *Secretary*

Klaveness Line

We respectfully invite your inquiries concerning our Express Norwegian Passenger Freight Service to Manila, Hong Kong, Singapore, Java, Celebes, returning via Philippine Islands and Hong Kong to Los Angeles and we operate MSs ROSEVILLE, PLEASANTVILLE, CORNERVILLE and GRANVILLE on monthly schedule, with round trip passages over one hundred days, visiting eight countries, as low as \$400 and other fares in proportion. *Apply to:*

General Agents, Sudden & Christenson

310 SANSOME STREET

Telephone GARFIELD 2846



W. P. FULLER & CO.

Branches and Dealers Throughout the West

Compliments of

JOHN *and* MAX

Corner of Dovre Hall

JOHN GOSH, *Proprietor*



*The Largest
Exclusive Savings
Bank West of
Philadelphia*

PARKER S. MADDUX
President

Comparative
STATEMENT OF CONDITION

| | ASSETS | June 30, 1938 | June 30, 1939 |
|-------------------------------------|------------------|------------------|------------------|
| Cash and due from Banks..... | \$ | 13,656,515.22 | \$ 13,033,715.14 |
| U. S. Government Securities..... | | 61,765,529.01 | 67,055,755.68 |
| State, County and City Bonds..... | | 12,478,387.52 | 9,766,393.40 |
| Other Bonds and Securities..... | | 3,366,056.60 | 3,906,109.36 |
| Loans on Real Estate..... | | 78,421,518.98 | 81,635,681.42 |
| Loans on Bonds and Other Security.. | | 1,093,177.74 | 935,659.55 |
| Other Assets..... | | 77,080.37 | 141,972.25 |
| Bank Premises and Equipment..... | | 1,886,538.93 | 1,847,886.26 |
| Other Real Estate..... | | 844,802.89 | 864,245.63 |
| Total..... | | \$173,589,607.86 | \$179,187,418.69 |
| | LIABILITIES | | |
| Deposits..... | \$158,165,238.41 | | \$163,513,949.28 |
| Other Liabilities..... | 457,623.36 | | 459,808.89 |
| Reserve for Taxes, Etc..... | 194,032.98 | | 212,774.46 |
| Capital Account— | | | |
| Capital Paid Up..... | 4,475,000.00 | | 4,200,000.00 |
| Capital Fund..... | 1,525,000.00 | | 1,800,000.00 |
| Surplus..... | 4,000,000.00 | | 4,000,000.00 |
| Reserves and Undivided Profits..... | 4,772,713.11 | | 5,000,889.06 |
| Total..... | | \$173,589,607.86 | \$179,187,418.69 |

THE SAN FRANCISCO BANK

SAVINGS Inc. Feb. 10, 1868 . Member Federal Deposit Insurance Corp. TRUST

526 CALIFORNIA STREET - SAN FRANCISCO

EVERY BRANCH A COMPLETE BANK

Mission and 21st Sts. West Portal Ave. and Ulloa St. Clement St. and 7th Ave.
Haight and Belvedere Sts. 1528 Fillmore St. 1435 Burlingame Ave., Burlingame

Henrik Ibsen Lodge No. 7

SONS OF NORWAY

3543 EIGHTEENTH STREET

SAN FRANCISCO, CALIFORNIA

EXTENDS GREETINGS

TO MEMBERS AND FRIENDS OF

Pacific Coast Norwegian Singers' Association

*The Order of the SONS OF NORWAY offers Greater Value in Life Insurance, and
HENRIK IBSEN LODGE No. 7 Pays More in Case of Sickness or Accident*

Meets at Dovre Hall Every Friday Evening

Visiting Members Always Welcome

Daughters of Norway

ANNA KOLBJORNSEN LODGE No. 4

Meets in Dovre Hall, 3543 Eighteenth Street

First and Third Friday Evening Every Month

Dovre Hall

The Center of Activities

Modern Facility

*Beautiful Auditorium : Attractive Lodge Rooms
Convenient Social Halls, Suitable for Weddings,
Reception and Private Gatherings.*

Centrally Located

3543 EIGHTEENTH STREET, Near Valencia

Phone Manager ATWATER 4022



Treasure Island

Time Plan Terms

Compliments of
JACKSON'S
FURNITURE

1933 IRVING STREET

MONTROSE 8271

P. M. MIDBUST

C. L. WOLD

Compliments of

CLIFFORD E. ANDERSON

CHAS. E. ANDERSON

RENO F. ANDERSON

C. L. Wold
Construction Co.

Ltd.

GENERAL CONTRACTORS

Office: 4412 FULTON STREET

SKYLINE 4362

Consulate General of Norway

244 CALIFORNIA ST., SAN FRANCISCO, CALIF.

S. STECKMEST, *Consul General*

WILHELM FEJTH, *Vice-Consul*

Office Hours: 10 to 3, Saturday, 10 to 12.

Telephone DOUGLAS 5993

For the States of California, Oregon,
Washington, Idaho, Nevada, Arizona,
Utah, Wyoming, Colorado, New Mex-
ico and the Territory of Alaska.

Phone WEst 0633

John Olsen

The Neze Rosarie

FLORIST and DECORATOR

*Special Attention Paid to Weddings, Parties,
Funerals, etc.*

1702 DIVISADERO STREET San Francisco

Christian Andersen

CONTRACTOR and BUILDER

146 GRANVILLE WAY MONTROSE 2455

NOW!

**SHOESTRING
POTATOES
IN CANS!**



READY TO SERVE!

Serve 'em HOT... serve 'em COLD! For lunch, dinner, picnic or midnight snack! As fresh as the instant they were French fried! Just open the can... and serve! Sensibly priced!

NELSON PACKING CO., San Francisco

*Order a
Supply
Today*

Rates: \$1.25 to \$3.00 per Day

Weekly Rates to Permanent Guests

Hotel Adlon

*All Outside Sunny De Luxe Rooms
with Colored Tile Showers and Baths*

CAPTAIN O. J. OLSEN, *Managing Owner*

438 O'FARRELL STREET San Francisco
Telephone ORdway 4984

Compliments of Capt. Gudmund Olsen

Siegler Springs

"Famous for its Health Giving Springs"

LAKE COUNTY CALIFORNIA

W. P. Holmes
MILL AND CABINET SHOP

Special Patterns Run to Detail

*General Millwork : Turning : Band Sawing : Sanding
Cabinet Work*

We Carry A Complete Stock of ATLAS REDWOOD
TANKS—All Sizes For All Purposes

SIXTH AND CHANNEL STS., SAN FRANCISCO
Telephone MARKET 0824

Phone HEMLOCK 0403 Res. Phone MISSION 8083

A. F. BRINK
AUTO REPAIRING

Overhauling and Reconstruction All Makes of Cars

405 DUBOCE AVE. (NEWMINT GARAGE) *San Francisco*

Telephone DOUGLAS 2838

Nora A. Blichfeldt

ATTORNEY AT LAW

550 MONTGOMERY STREET *San Francisco*

Phone DELAWARE 6320

**A. L. Stockton
Lumber Co.**

GENERAL MILL WORK

Redwood and Pine Lumber

6100 MISSION STREET, DALY CITY, CALIF.

Modern Grease Rack *Body and Fender Repairs*

ADAM J. THOMAS

General Automobile Repairing

Welding and Brazing

1311 SEVENTH AVE., near Irving *SAN FRANCISCO*
Telephone MONTROSE 3134

Compliments

Den Norske Fiske Klub

P. R.

REX SOLE

Phone ATWATER 0681

Compliments of

Andrew Berwick
and Family

CONTRACTOR, BUILDER

and INSURANCE

Residence: 1525 NOE STREET, SAN FRANCISCO

Dannenbaum
Paint Co.

Makers of

GOOD PAINTS

Main Plant: 245 VALLEJO ST. Phone SUTTER 8983
Factory Branch: 2046 Market Street



San Francisco's City Hall

SUTTER 5120

By Appointment

SUTTER 5120

VAL C. HOLMER, M. D.

John Edw. McGuinness, M. D.

Suite 712-716 FLOOD BUILDING

SAN FRANCISCO

Suite 712-716 FLOOD BUILDING

SAN FRANCISCO

General Engineering & Dry Dock Co.

SHIPBUILDERS *and* ENGINEERS

Three Plants

SAN FRANCISCO : OAKLAND : ALAMEDA

Drydocks and Machine Shops

Foot of Fifth Avenue—OAKLAND PLANT

Phone GLENCOURT 3922

Drydock Capacity 12,500 tons, Length 450 Feet

Foot of Schiller Street—ALAMEDA PLANT

Phone ALAMEDA 0533

Two Drydocks, 3,000 tons and 5,000 tons capacity

SAN FRANCISCO PLANT

1100 SANSOME ST., *cor. Green* *Phone SUTTER 0221*

Compliments of

Sven H. Svenson

Sierra Morena Tavern

ON THE SKYLINE BOULEVARD

San Mateo County, Calif.

G. W. ALPERS, *Proprietor* *Phone WOODSIDE 3616*

Ask Your Decorating Contractor to Use

WALL-TEX

Permanently Washable

Plasters Cracks

WALL CANVAS

A. U. Morse & Co.

53 PAGE STREET

Phone HEMLOCK 6446

Lars J. Jacobsen, D.D.S.

Four-Fifty Sutter Street

SAN FRANCISCO

GARFIELD 0635

Maison Paul

GOOD FOOD IS GOOD HEALTH

Specializing in Charcoal

BROILED STEAKS

Lunch 50c : Dinner 65c to \$1.00

1214 MARKET STREET

San Francisco

Across from Whitecomb



Golden Gate Sunset

Rugs Drapes Curtains

FOR FINE DYEING *and* CLEANING

Alfred Abrahamsen

Associated with L. Galtie

*The Largest Independent French Cleaning
and Dyeing Plants in San Francisco*

Phone MARKET 1213 339 EIGHTH STREET

Compliments

INGEMAR E. HOBERG

Telephone GARFIELD 8562

Charles F. Shellgrain FLORIST

Flowers For All Occasions

268 SUTTER STREET Opposite The White House

Compliments of

Roy Box Company

ROY BOTOLESEN, Proprietor

120 KISSING STREET MARKET 5760

Erling Andresen

PAINTING *and* DECORATING

231 FRANKLIN STREET HEMLOCK 4110-4113

Res. 1514 32nd Avenue, OVERLAND 7011

Soderman & Nelson

WATCHMAKERS *and* JEWELERS

Room 700 140 GEARY ST. EXBROOK 7359

*Phone SUTTER 4903 Day or Night
Office Hours: 12-3, and by Appointment*

Joel H. Hanson, M. D.

Physician and Surgeon

1088 FLOOD BLDG. 870 MARKET ST.

Math Pedersen, Proprietor Phone UNDERHILL 1694

Francisco Delicatessen

IMPORTED SCANDINAVIAN
and DOMESTIC DELICACIES

2233 MARKET STREET SAN FRANCISCO

Apartments or Hotel Rooms

EVERY CONVENIENCE

The Westminster, Sacramento and Polk Sts.
The Strathmore, Eddy and Fillmore Sts.
The Byllesby, Fillmore and Golden Gate

O. GUNDERSON, Prop., 2331 Fifteenth Avenue

Compliments of

The Dutch Boy



Compliments from

MR. and MRS. HOLGER BRUUN

When in San Francisco
STOP AT THE WORLD FAMOUS
PALACE HOTEL

Noted for its hospitality and luxurious appointments . . . beautiful dining and cocktail rooms . . . the center of social and business life.

THE **PALACE**
HOTEL

Personal Service by
ABEL CHAPONOT
of
ABLE PRINTING HOUSE
429 MINNA ST.
Phone SUTTER 1706



Interior, Ski House, Treasure Island

Marine Paints

ANYTHING FROM MAST TO KEEL.

American Marine Paint Co.

311 CALIFORNIA ST. SAN FRANCISCO

O. B. OLSEN'S

RESTAURANT *and* TAVERN

Sandwiches of All Kinds : Light Lunches

BEER ON DRAUGHT

98 EMBARCADERO *Corner Mission Street*

Velkommen

til

San Francisco

DEN NORSKE KLUBB

1900 FELL STREET

Phone ATWATER 6677

ATLAS STAIRBUILDING

QUALITY STAIRS

2901 TWENTY-SECOND STREET, *corner Harrison*
Rep. by J. Jacobsen, Res. ATWATER 6677

OTTO ANDERSON, *Phone UNDERHILL 0515*

WM. A. ROWE, *Phone HEMLOCK 5741*

Anderson & Rowe

PLUMBING AND HEATING

CONTRACTORS

84 PAGE STREET

SAN FRANCISCO

RINGNES BOKØL
LØITENS AKVAVIT
LYSHOLM AKVAVIT
POULSENS ARAC PUNCH
AALBORG AKVAVIT
KONG HAAKON KONFEKT $\frac{1}{4}$ & $\frac{1}{2}$ kg box
Freis Lohengrin & Marzipan etc.
Norsk Ost
Flatbrød and Knekkebrød
Fiskeboller
Seikaker
Torskerogn
Appetitsild
Krumkagejern
Munkepander
Ostehøyle
Sukkertang, Sandbakkelseforme
Grynmel
Bringebær saft
MULTER
Tyttebær Gele
Stikkelsbær Gele

og alle Slags importerede skandinaviske Varer

Anderson & Meyer

6 VALENCIA STREET

Corner Market Street

Norwegian Singing Society of San Francisco

MEETS EVERY TUESDAY AT EIGHT P. M.

at DOVRE HALL, 3543 Eighteenth Street, Near Valencia

New Members Welcome

Office Phone: VALENCIA 5285

Res. Phone: BAYVIEW 3867

Hours: 10 to 5; Evenings by Appointment

Dr. Bartlett D. Whelton

DENTIST

202 NEW MISSION BUILDING, 2588 Mission St.
near 22nd—San Francisco

Phone OVERLAND 0698

H. R. BERGMARK

PAINTER *and* DECORATOR

2271 TWENTY-FIFTH AVE.

San Francisco

Flowers for All Occasions Funeral Designs A Specialty

PICETTI BROS.

FLORISTS *and* DECORATORS

2101 MARKET STREET

San Francisco

*Greetings
from*



*Your
Loyal
Friend*

OSCAR E. EYDE

your INSURANCE man

354 PINE ST., SAN FRANCISCO

DOUGLAS 5907



Chinatown, San Francisco

ASK FOR

First Quality



At Your Independent Grocer

O. CASPERSON & SONS

Phone MISSION 3713

Compliments of

William Smith
Lumber Co.

FOURTH AND CHANNEL *Phone MARKET 0103*

COMPLIMENTS
FROM A FRIEND

Phone LOCKHAVEN 1675

O. M. OYEN
CONTRACTOR *and* BUILDER

50 CASTENADA AVENUE

San Francisco

J. W. RIVERS, Manager

The Union Central
Life Insurance Co.

PROTECTING THE AMERICAN FAMILY

Since 1867

635 RUSSELL BUILDING
SAN FRANCISCO

235 MONTGOMERY STREET
Tel. EXBROOK 0082

Compliments

De Luxe Tavern

EIGHTEENTH AND VALENCIA STS. SAN FRANCISCO

Phone HEMLOCK 7973

OLAV HELM

Wholesale Distributor

CIGARS : TOBACCO : CANDY

37 FORD STREET SAN FRANCISCO

Phone HEMLOCK 9301

Auto Sheet Metal Works

*Complete Auto Reconstruction
Manufacturing and Repairing of Fenders, Radiators
and Bodies*

C. H. CHRISTOFFERSEN

711-719 GOLDEN GATE AVE. San Francisco

UNDERHILL 5912 *Free Delivery* Bokelund Bros.

LINDE'S MARKET

MEATS

*Fresh Cured and Smoked Meats, Fresh Dressed Poultry
and Imported Scandinavian Delicatessen*

2200 FIFTEENTH ST., cor. Noe San Francisco



Outdoor Band Stand, Golden Gate Park

GREETINGS TO
THE NORWEGIAN SINGING SOCIETY
from

San Francisco Wine Association

Wines : Liquors : Whiskies

1339 BUCHANAN ST., SAN FRANCISCO WALNUT 4455

CHAS. W. BROWN

CANVASSING : PAPERHANGING

1739 WASHINGTON STREET ORDWAY 8983

Phone FILLMORE 4878

OSCAR GROBERG

Geary Street Furniture Exchange

New and Used
FURNITURE, CARPETS, RUGS,
STOVES, etc.

1749 GEARY STREET San Francisco
Res. 1421 Lake St., Phone BAYVIEW 9660

(Swedish American Hall)

2170 MARKET STREET SAN FRANCISCO

*Still Orch Potatis Sercevas Varje Söndag
Imported Scandinavian Liquors*

CAFE DU NORD

*GUSTAV FAGERLAND J. NICHOLSON
J. NICHOLSON Phone MARKET 9319 CARL E. STROM
GUSTAV FAGERLAND J. NICHOLSON
J. NICHOLSON Phone MARKET 9319 CARL E. STROM*

J. NICHOLSON Phone MARKET 9319 CARL E. STROM

ENJOY SKAL & SMORGASBORD

At

BIT OF SWEDEN

LUNCH—DINNER

560 SUTTER ST., SAN FRANCISCO Phone SUTTER 6332

Sten & Frida Kuylenstierna-Kuylen

NORSK FET SILI.

Gaffelb'tar, Gjetost, Salt Aal Torr Lutfisk, Vita Arter, Bruna Bonor, Lingon, Ostron-Anjovis, Stekholmskt och Finskt Kuäckebröd, Halionsaft, Pinga-Sil, Kuriko, Appetit-Bitter, Nogelost, Flatbröd, Svensk Punsch m. m. hos.

C. H. JOHNSONS

36 SEVENTH STREET

mitt imot Postkontoret



Evening Star, Treasure Island

For a trip to Norway, choose a Liner

*from the largest fleet crossing the Atlantic—
and see Paris or London en route!*



QUEEN MARY—*the world's fastest ship*

MAURETANIA—*the world's newest liner*

QUEEN ELIZABETH—*in service in 1940—will
be the world's largest ship*

The Cunard tradition of fast, luxurious depend-
able service also distinguishes the popular

AQUITANIA

BRITANNIC

GEORGIC

Ask your nearest steamship agent for sailing dates, rates, and booklets describ-
ing Tourist and Third Class. He will be glad to help you plan your trip via
Cunard White Star.

CUNARD WHITE STAR

25 Broadway, New York, N. Y.
32-34 North Michigan Ave., Chicago, Ill.
1243 Washington Blvd., Detroit, Mich.

155 Baker Arcade, Minneapolis, Minn.
606 South Hill St., Los Angeles, Calif.
244 Stockton St., San Francisco, Calif.
208 White Building, Seattle, Wash.

GREETINGS FROM



SU 5328

Phones

DE 5328

Retter Electric Co.

WIRING, FIXTURES, APPLIANCES

423 FLOOD AVENUE

SAN FRANCISCO

UNDERHILL 8508

Walter O'Connell

Von Tagen Plumbing Co.

3376 EIGHTEENTH STREET

SAN FRANCISCO

Appreciation



THE NORWEGIAN SINGING SOCIETY OF SAN FRANCISCO
IS MOST GRATEFUL TO THE LOCAL NORWEGIAN SOCIETIES
AND OTHER FRIENDS AND SUPPORTERS THAT HAVE
HELPED US TO MAKE THIS SANGERFEST POSSIBLE BY
THEIR SPLENDID COOPERATION AND GENEROUS SUPPORT.

Welcome to San Francisco



MR. ABRAHAMSEN, ALFRED
MR. ABELSETH, OLE
MR. AND MRS. ANDERSON, RENO F.
MR. AND MRS. ANDERSON, CHAS. A.
MR. AND MRS. ANDERSON, CLIFFORD E.
MR. AND MRS. ANDRESEN, ERLING
MR. AND MRS. ANSOK, GEO.
MR. AND MRS. BAKER, WM. D.
MR. AND MRS. BLOM, CHRISTIAN
MR. AND MRS. BERWICK, ANDREW
MR. AND MRS. BOTOLFSEN, ROY
MR. AND MRS. CHRISTENSEN, JOHN
MR. AND MRS. DAHLING, LUDVIG R.
MR. AND MRS. DE PUCCI, JOE
MR. AND MRS. ELLERMAN, CHARLES
MR. AND MRS. ENGER, RALPH
MR. AND MRS. GUNDERSEN, EDWARD
MR. AND MRS. HEXBERG, CASPAR
MR. AND MRS. HOLT, O. K.
MR. HOYDE, C. H. R., M. D.
MR. KJOLAAS, ANDREW
MR. AND MRS. KRAG, ERIK
MR. AND MRS. MIDBUST, P. M.
MR. AND MRS. MULLER, HAROLD

MR. AND MRS. MOEN, ARNE
MR. AND MRS. NELSON, O. A.
MR. AND MRS. OYEN, O. M.
MR. AND MRS. OLSEN, ROBERT
MR. PAULSSON, P. R.
CAPT. AND MRS. PETERSEN, E.
MR. AND MRS. QUISTAD, THOS.
MISS SCARBO, MARIE
MR. AND MRS. STROMSHEIM, P.
1644 FUNSTON AVENUE
MR. AND MRS. SVENDSEN, ELVIN A.
MR. STROM, GEO.
MR. AND MRS. THORSEN, ANDREW
MR. AND MRS. TØDSEN, PAUL
MR. WARENSKJOLD, A.
MR. AND MRS. WAHLE, T.
MR. AND MRS. WOLD, C. L.
MR. AND MRS. WOLD, CLARANCE
BOCH RADIO SERVICE, 1439 TARAVAL ST., MO 4731
MARINE BUFFET, P. URSIN, PROP., 81 STEUART ST.
TOULOUSE LAUNDRY, 821 LINCOLN WAY
TELEPHONE EQUIPMENT & REPAIR CO.,
O. M. CHRISTANSEN, PROP., DO 1311
LEN WALSETH, AUTO REPAIR, 65 11TH ST.,
PHONE HE 2485, RES. PHONE DE 2485

