

The Scanthus Vine

Vol. 11 #3

MAY 1986

COMING MEETING: Sunday, May 18th
1:00 Social Hour/Sharing
1:45 Business Meeting
2:30 Break
2:45 Program

LOCATION: Nordic Heritage Museum
3014 Northwest 67th St.
Seattle, Washington

DIRECTIONS: From I-5, take Exit 85th N.E. Go west on 85th N.E. to 32nd Ave. N.W. Turn left on 32nd Ave. to 67th N.W. Turn left again on 67th N.W. The museum is an old brick school building, unlabeled on the backside, but parking is plentiful on the playground.

PROGRAM: Celia Hendrix will discuss and point out the valuable instruction available in rosemaling pattern books. Much of the time it is forgotten, but it can be very helpful in painting instruction, techniques, and in knowing what supplies are needed.

HOSTESSES: for the meeting will be the Seattle members.

SHARING: Those that completed their plates from the Lois Clauson workshop are asked to bring them. There also will be a couple examples of the Florence Buck design in this *Vine* and hopefully many samples of the basic design in this issue. Examples of rosemaling are welcomed at every meeting. Photographs may be taken.

DOORPRIZE will be a lovely small tina.

CALENDAR OF EVENTS

- May 18th GENERAL MEETING in Seattle
- May 17th and 18th NORTH KITSAP ARTS AND CRAFTS SHOW at North Kitsap Middle School during the Viking Fest at Poulsbo, WA. Mickey Buchanan and Marilyn Hansen will co-chair the sale. Hours are 11 AM - 7 PM on Sat. and 11 AM - 6 PM on Sunday. All items should be sent the chairmen before the sale. **Come and visit the festival. gym is full of arts & crafts. Parade through Poulsbo on Saturday.**
- June 7th, 9:00 - 3:30 PM MINI-WORKSHOP - Connie Sullivan in Seattle at the Nordic Heritage Museum. A Telemark design will be painted on a plate. \$5.00 fee.
- June 15th POULSBO MIDSUMMER FEST - Chairmen for the sale are Lois and Leroy Clauson. Signup sheet will be at the meeting. Get your rosemaling to them **before the sale** What is left may be taken to ASTORIA SALE if you wish, but new list must be sent to Dena Iverson.
- June 21st 9:00 - 3:30 PM MINI-WORKSHOP - Tacoma, Teacher Gudrun Berg. A plate will be painted in the Halingdal design. \$5.00 fee. **Date may be changed....contact Frieda Hauge to be sure of date.**
- June 21 - 22 ASTORIA SALE - Chairman Dena Iverson. Contact her for information.
- August 9th (Sat) 10:00 AM BOARD MEETING - at the home of Lois Clauson.
- August 15th Deadline for next **ACANTHUS VINE**.
- September 21st GENERAL MEETING In Tacoma. White Elephant Sale of painting supplies and woodenware is planned. The last one was enthusiastically received....remember this when cleaning out your painting cupboard this summer.
- September 22-26 **HANS WOLD** noted Norwegian painter will be here for a workshop on Telemark. The fee will be \$80 for a five-day workshop. The class will be located in the Federal Way area. The class will be limited to experienced painters and a maximum of 12 in number. The registration fee is \$25 and may be sent to Dena Iverson. A registration form is in this issue.
- October MINI-WORKSHOP in Seattle. Celia Hendrix will teach on painting clocks. More information in September Vine.

SYNOPSIS OF GENERAL MEETING - March 16, 1986

The meeting was called to order by President, Ida Mae Swedberg.

Johnson/Alfsen Dena Iverson informed the members that Jean Alfsen had Memorial passed away after a lengthy illness. Seven WRA members attended her funeral in Gig Harbor. Since Jean Alfsen had been a active members of WRA for a number of years, it was decided that a donation of \$100 would be given to the Johnson/Alfsen Memorial Fund at Pacific Lutheran University (PLU) which was established to bring students from Norway to PLU.

Scandinavian Cultural Club It was moved that WRA would be a sponsor along with many other Scandinavian organizations of the Scandinavian Cultural Club at PLU. Members were encouraged to attend a Nordic night at PLU on April 28th.

Paint-Ins & Mini-Workshops Betty Edwards announced that space was still available for the Lois Clauson class on April 17, 18, and 19th.

Freida Hauge announced a mini-workshop in Tacoma on April 26th by Gudrun Berg which would be followed up by a second one **in June in Tacoma.**

Sales There will be a festival in Poulsbo, WA on May 17th & 18th. Mickey Buchanan and Marilyn Hansen are the chairpersons. They would like someone to demonstrate and help at the sale.

Lois and LeRoy Clauson will co-chair the sale in Poulsbo on June 17th. Sign-up sheets for assistance will be at the May meeting.

Membership Three new members joined at the meeting: Margaret Ferguson, Voneta Baumgardner and Georgia Cassillo.

Naomi Price, membership chairman, reported that there were 140 paid up members as of March 16th. Incidental information about the membership shows that WRA members live in 11 states, 59 cities and WRA has 15 new members for the current year. Naomi Price was commended by the President for the outstanding job she has done with the 1986/87 Directory.

Publicity Ida Mae Swedberg announced that Lila Granaas has agreed to be the Publicity Chairman.

Hostesses Dena Iverson thanked the Tacoma members for hosting the meeting and providing the refreshments.

Program Dena Iverson gave an informative program about the use of color in rosemaling.

Door Prize ...was won by Dorothy Nichols.

Florence Belsvig, Secretary

IN MEMORY OF JEAN MARTHA ALFSEN

Our good friend, fellow rosemaier and past WRA president passed away March 9th after a ten month struggle with lymphoma. She is survived by her sister, Ethel James, of Greenville, Michigan and by eleven nieces and nephews.

She was born November 19, 1915 in Alpena, Michigan, to Johan and August (Behning) Alfson. Since 1975 Jean lived in Gig Harbor, WA. She was an active member of Peninsula Lutheran Church and gave much time as a volunteer with the FISH program. She was a member of the Pacific Lutheran University Heritage Society ,PLU Q Club, and the Sons of Norway.

At the time of the death of her good friend Edith Johnson, a fund was established at Pacific Lutheran University--the Johnson/Afson Scholarship Fund. In her memory, WRA has donated \$100 to this fund.

* * * * *

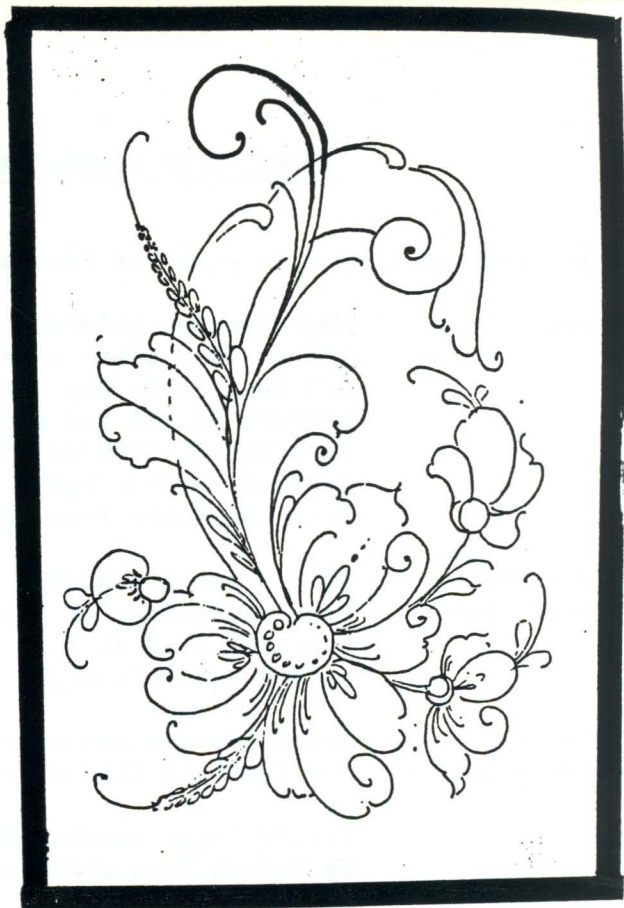
One of Jean's nieces, **Kari Miller** sent the following note to past-president Betty Edward which is as follows:

"Dear WRA members,

Thank you so much for the lovely azalea plant that you sent for Jean. I can't begin to tell you all how thankful we are for your caring and support for Jean over the past months. Your cards, notes and phone calls meant a great deal to Jean. She was very proud of her association with WRA."

SPECIAL SALE OF UNPAINTED WOODENWARE

Many pieces of unpainted woodenware that were Jean Alfson's will be available for sale at the next two WRA meetings. Jean's niece, Linnea, has asked Dena Iverson to take care of this sale for her, as she was leaving soon for Norway, to live for the next 18 months.



Some of the wooden pieces have been base coated, others are unfinished. All proceeds of the sale will be donated to the Alfson/Johnson Memorial Scholarship fund at PLU. Jean's rosemaiering books have been donated to the WRA library in her memory.

**RAFFLE
NILS ELLINGSGARD PANEL**

Remember the beautiful 4' x 6' Telemark panel, that Jean Alfson won in a raffle several years ago?

Now, members of WRA will have another opportunity to become its proud owner. The panel has been given to WRA to be raffled again -- with the proceeds going to the Alfson/Johnson Memorial Scholarship fund at PLU. You may purchase your raffle ticket from Deanna Skelton at \$1.00 each. The drawing will be held at the November meeting. A picture of the panel will be on display at the WRA meetings.

- Dena Iverson

WELCOME TO OUR NEW MEMBERS

We welcome you to our association and also thank you for becoming involved in a traditional art form that would become lost if it weren't for people like you with an interest and desire to know more about Rosemaling.

As the Western Rosemaler's Association expands its membership, it quickly become apparent how little we know of one another. The opportunity to get acquainted is there, but the timing isn't always to our convenience. Therefore, I would like to introduce to the present membership our newest admirers of Rosemaling:

Margaret Ferguson from Seattle writes "I belong to the First Covenant Church of Seattle which has a Swedish background. Through friends with Scandinavian heritage I have been through Scandinavian shops and displays and seen rosemaling. I thought it very beautiful and wanted to learn it. After retiring, I saw in the Ballard Tribune where the Sr. Citizen groups had Rosemaling classes. I found one in the Northwest Sr. Citizen Center taught by Wilda Snider. I am learning and it is a pleasure (after you retire) to know your learning days are not over. You don't know how much that in itself means to me."

Sophie Jacobs who lives in Tacoma, WA said "I have always admired rosemaling so in 1983 I took classes with Florence Buck and later with Karen Dahl at Gloria's Gift Shop in Parkland. Now I am painting with Maureen Lange. The mini-workshops sounded great and I have been to one so far."

From Camano Island, WA, **Edna R. Liljegren** writes to say: "I am of Norwegian parentage and my husband is of Swedish heritage. We have a daughter living in Issaquah, WA and are proud grandparents of three. We are retired, but not necessarily "tired". I did not become familiar with rosemaling until about 7 years ago." "...through Celia Hendrix's exuberant classes in Marysville, I recently joined WRA and thereby attended my first mini-workshop conducted by Mary Ellerman on Hallingdal. We are presently planning a trip to Norway and Sweden the end of June and July, so may not have time to take advantage of any mini-workshops until later."

As membership chairman, may I remind the membership that our Membership Directory is available to all members and has something in it for everyone. You may pick one up at our general meetings or send \$1.00 (shipping charges) to: Naomi Price, 20834 Morningstar Drive, Bend, Oregon 97701.

Please add the following members to your mailing list:

Amble, Shirley	12021 12th Ave. N.W.	Seattle, WA	98177	
Anderson, Kathy	8975 S.W. Homewood St.	Portland, OR	97225	297-6337 (503)
Athow, Marian	4617 N. Vassault	Tacoma, WA	98407	759-7149
Baumgardner, Voneta	4718 E. 161st	Tacoma, WA	98446	535-0235
Cossillo, Georgia	5410 Academy Terrace Ct W	Tacoma, WA	98467	565-9346
Dawson, Elsie	66 SW 17th St.	Chehalis, WA	98532	748-4964
Dunn, Leslie	4120 Lake Wash Blvd NE	Kirkland, WA	98033	828-0158
Egaas, Pat	11330 Madison NE	Bainbridge Is., WA		842-2037
Ferguson, Margaret	864 NW 70th	Seattle, WA	98117	784-3797

- Naomi Price

"THE DREAM OF AMERICA"

Is Coming to Nordic Heritage Museum

The "Dream of America" exhibition, the biggest project the Museum has ever undertaken, is scheduled to open in early June and continue through November 9.

Produced by the National Museum of Denmark and Moesgaard Museum at Aarhus, the major exhibit will spotlight the Nordic immigration to America as seen within the context of the world of the 1840s to the 1920s, with special emphasis on the mass immigration of the 1880s and the turn of the century.

During this period, 52 million people left Europe. Some 30 million people chose to go to America, with 2.5 million of them from Denmark, Finland, Iceland, Norway and Sweden. Why did they leave? What were their living conditions? What were their dreams? How did they make the transition to life in the New World and what were their contributions to this society?

The exhibit tackles these questions in a personal, imaginative way — through the stories of individual immigrants — so we will understand this epic in very universal, human terms.

And what an exhibit it is! Through murals, maps, dioramas, photos, objects, interpretive labels and reconstructions of sites, we will have a chance to get a sense of the sights, sounds and smells of the times — to relive history.

Made up of ten units, the components will be grouped in chronological order to tell the story of the "Dream." First we are introduced to the European condition of both rural and urban dwellers and the "push/pull" factors that nudged along the mass migration. The America letters, from immigrants who were already making a fresh start in the new land to their friends and relatives back home, were a strong magnet for many.

Then there's a look at the ocean crossing and arrival at New York's Ellis Island, including a segment of a ship and a re-constructed cabin, a naval history of the routes to America, and photos and film from the Statue of Liberty. We will also see New York, the first American experience for many immigrants, through the eyes of the Danish immigrant, Jacob Riis, a photographer and writer concerned with social conditions and poverty.

The story of the westward expansion of the United States is also the story of these European immigrants. The exhibit shows us the gold rush, railroads and steamboats, homesteading on the prairie, covered wagons, the Cavalry, the Mormon settlement and the Indian tribes. There's also the story of the secondary migration to the Pacific Northwest for fishing, farming and logging and the building of Seattle, Tacoma and Spokane.

Other sections of the exhibit look at schools, churches, cooperatives and religion, as well as Nordic-Americans who made an impact on American society, such as Gunnar Borglum, who carved Mount Rushmore, and Christian Gullager — "father" of the American eagle.

Besides the exhibit itself, the Museum will be a flurry of activity with films, slide shows, lectures and workshops on such topics as the impact of Scandinavians on the Pacific Northwest. For the kids, there will be such activities as building sodhouses, quilting, baking and cooking the "pioneer way."

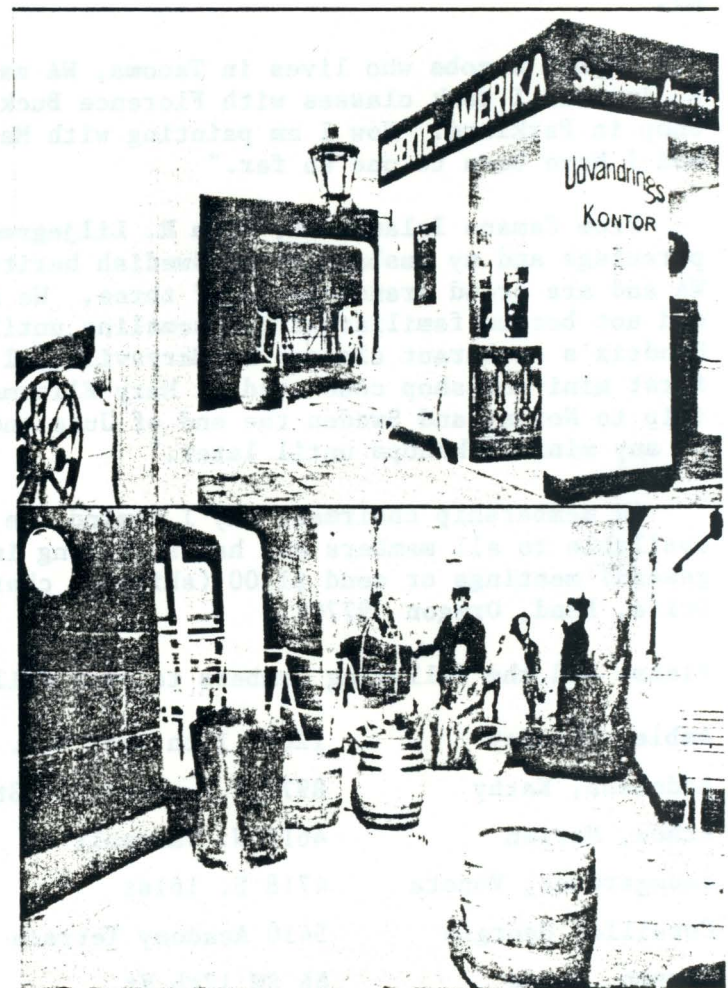
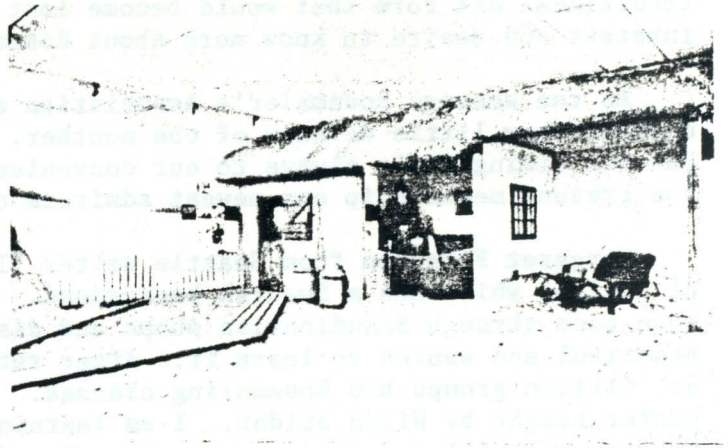
In addition to the exhibit's broad theme and innovative format, "The Dream" fits perfectly into the Museum's long-range goals of building up permanent exhibits that will tell the whole story of Nordics in the Pacific Northwest.

In Denmark, the exhibit covered more than 20,000 square feet, drawing a record number of 210,000 visitors in Copenhagen in five months. At Moesgaard, attendance surpassed 230,000. The NHM's exhibit, which will be a modified American version with added components on the Nordic immigration, will occupy about 8,000 square feet on the Museum's lower floor. That will also mean easy access for the handicapped and elderly. In fact, we hope the exhibit will reach at least 100,000 visitors.

"The Dream" is being arranged and produced by Moesgaard Museum with three team members and several consultants. Through January the exhibit is being altered and reconstructed for the American version. It will be transported in March and constructed and installed at the NHM from April through May.

It's a magnificent exhibit, and in order to make this dream a reality, the Nordic Heritage Museum will need the support and talents of all our members for financial assistance, help in planning, and in labor and construction.

Let's keep our sights on this "Dream."



From "The Dream": 1, The home they left; 2, The emigration office; 3, Going on board.

IT'S A WINTER WONDERLAND

What better way to spend the winter than with an exhibit of skis, skates, mittens and sleds from the Nordic countries? "Nordic Winter Wonderland" shows us the fun of winter and how folks coped with life in the long, dark winter months. You'll see skis, sleds, skates, snowshoes and sleighs, caps, mittens, jackets, and sweaters.

The exhibit continues through March so bundle up and slide on over.

DREAM OF AMERICA

The Nordic Heritage Museum staff have asked the members of WRA to take part in the Danish exhibit "Dream of America", which will be at the museum from June 29 through December.

There will be daily demonstrations on the arts and crafts of the different countries. They want us to demonstrate rosemaling Saturday and possible Sunday once a week from 11-2 p.m. At that time we can bring some of our own rosemaling and sell it-- the museum would take 10%. I have 7 people who are interested, but would like as many of you who feel they could give some time. Probably it would be 2 or 3 times during that time if quite a few of us sign up.

- Betty Edwards

* * * * *

WRA Exhibit Although only 19 members sent items to the exhibit this year, we have many fine pieces on display, so bring your friends to see the very lovely display. Janet, the curator at the museum does a beautiful job of displaying and writing up the history of each item. Even the simplest piece of rosemaling looks beautiful. At our last exhibit, we had over 35 members taking part in the exhibit. I would be very interested in your comments on how to make the exhibit more representative of our whole membership.

- Betty Edwards

WRA Pins Western Rosemaling Association Pins will be available at the May meeting. They are in color, enameled on metal--very nice. Bring \$1.50 and go home with this lovely symbol of our art to wear proudly. If you would like one mailed to you, contact either Asta Oden in Tacoma or Deanna Skelton in Seattle. The price will be \$1.75 when mailed.

NORMA SPLITT NOTECARDS ...are available at meetings for \$2.00 and \$3.00 at sales. Coming soon -- 4 new designs from Norma Split...a sample will be at the May meeting. Very lovely!!

HISTORY OF ROSEMALING cards at 2¢ each will also be available. See Asta or Deanna.

A NOTE FROM THE EDITOR We would like to begin having a "mail bag" column so we can establish a bit a communication with our far flung membership. Let us know what you are doing about rosemaling in your area, rosemaling tips, patterns to share with a bit of information about yourself....anything that might be of interest to other members of our association. You may write to the editor: Barbara Laskowski, 18228 Rockwood Ct, Yelm, WA 98597. The next deadline is August 15th.

NEWS WE HEARD ABOUT

From the **Norse Rosemalers' Assn Newsletter**: Those of you who know Bergljot Lunde, know that she has been quite ill for the past half year. The GOOD news is that she has been given a clean bill of health. She is even painting some now. However, Bergljot will not be teaching over here for a few years. She and Gunnar thank everyone for the many letters and cards of good wishes!!

Florence Belsvig who is our present WRA Secretary is presently hospitalized at Tacoma General Hospital. Our association sent her a plant and card. We wish her a speedy recovery.

In a note just received by the Acanthus Vine editor, Florence wanted to thank everyone for their cards, flowers and telephone calls during her recent illness.

WORKSHOP NEWS

Reports

Nine attended the three day **American Rogaland Workshop** taught by **Lois Clauson** April 17-19 at the Nordic Heritage Museum.

The first two days, Lois took us through background colors, mixing oil paints and explained and demonstrated the techniques used in painting leaves, flowers and scrolls done in the American Rogaland style. On the third day, we painted to completion a plate using the techniques learned. The completed plates will be on display at the May meeting.

The atmosphere of the class was friendly and warm and under Lois's direction, we went home with a wealth of information and skills. **Thank you, Lois** and to all of the class members for their help in making the class a success.

- Report by Betty Edwards, Workshop Chairman

* * *

Mini-Workshop on Hallingdal was held in Tacoma April 16th with teacher **Gudrun Berg** from Olympia, WA with 8 persons in attendance.

Gudrun had a 15" x 12" board with six different Hallingdal flowers painted for us to see. From this she demonstrated painting each flower on another worksheet, following which we would paint the flower on our own sample worksheet. We managed to get through 5 of them. It was helpful to learn the color combinations and which colors to mix up and where they went on the flowers. **Thank you to Gudrun for a fine job of teaching and helping.** We appreciate the time she spent with us.

Gudrun Berg will also be teaching our next mini class. She showed us a 12" plate design (Hallingdal) which we will do. She will have 12" plates available for a cost of \$7.00 at the May meeting or you may pick

them up at my place. There may be a change of date for this class to June 21st so we will have to let you know by May 18th meeting. - Frieda Hauge
Tacoma Mini-Workshop Chairman

* * * *

April 5th in Seattle, Connie Sullivan taught on basic flower of Telemark, Rogaland and Hallingdal on different backgrounds. Eight attended and we were busy until almost 4 p.m.

Connie had many helpful hints and many different flowers from the three areas. We were sorry that more of you could not take advantage of this fine workshop. As Marvel remarked to me ...where could you take a class in rosemaking from 9 to 4 for only \$5.00. It is hoped that more members will set aside these special Saturdays for instruction. It costs WRA \$85 per workshop in Seattle which means it would take 17 students to pay for the class.

COMING WORKSHOPS

Seattle - June 7th - Nordic Heritage Museum 9:00 to 3:30 P.M., Connie Sullivan Teacher. We will work on a Telemark design from beginning to end, using the Telemark flowers we learned in the April class. Woodenware will be available for the class at the May meeting. Connie will be there to tell you more about the class. If you were unable to attend the April class, Connie will give you some help with the flowers. Please sign up at the meeting. If you are not at the meeting - call Marvel Gordon for details.

- Betty Edwards

COMING IN SEPTEMBER FOR A WORKSHOP WILL BE NORWEGIAN PAINTER, HANS WOLD. DATE: SEPTEMBER 22-26. REGISTRATION WILL BE LIMITED TO 12. SEE REGISTRATION SLIP IN THIS ISSUE.

A Rosemaling Experiment

Paint this pattern (on paper), use any colors you like, and add your own details. You may add or subtract anything you like. Remember, you are painting to please yourself!

Here's your chance to experiment with color and detail. Let's see how many different ideas we can come up with!

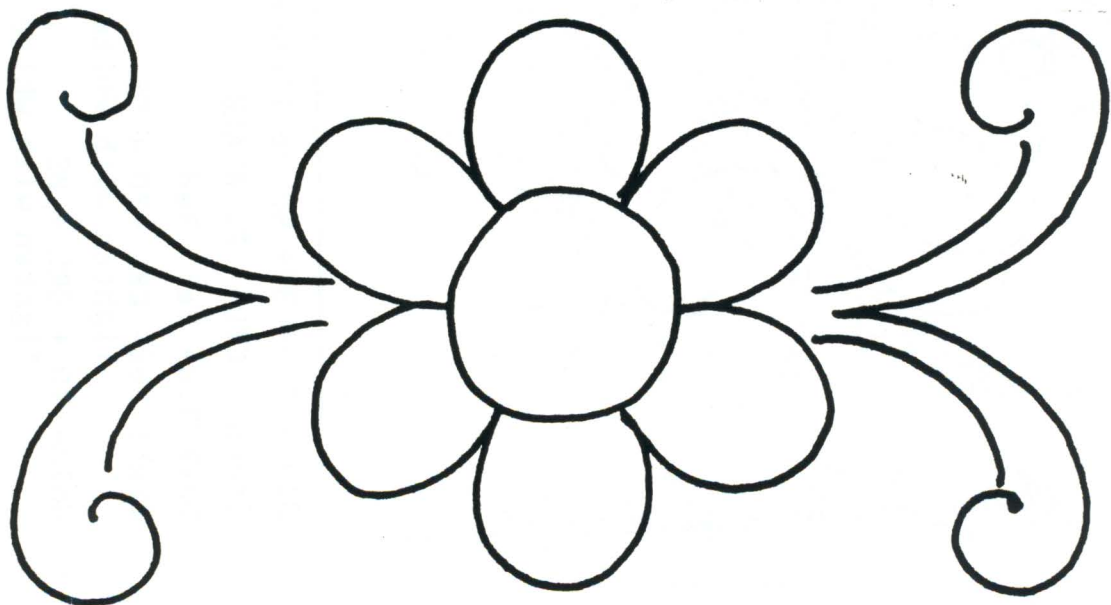
Bring your painted design to the May meeting or send to: Celia Hendrix

4805-88th St. N.E.

Marysville, Wa. 98270

Hopefully, we will see what an individual art Rosemaling really is. Good luck!

Celia



Design by Florence Pugh - Sept. 1955.



Blue- PB + BU+ WH to lighter
Green - CYL+ I. BLACK
Dark Red- Ven. Red
Light Red- CRL +YO + BS
 lighten with white
Gold- YO + CRL + BS
 lighten with white
Light detail- WH + YO + RU
Dark outline-nI. Black

1713 - 2-22

HANS WOLD WORKSHOP

Hans Wold, noted Norwegian painter will be here in September for a workshop in Telemark design. The class will be limited to intermediate-advanced (those having good brush control and knowledge on how to mix up oil paints) students and will be limited to 12 students only. The fee will be \$80 for 5 days, September 22 through 26th, Monday - Friday, 9:00 AM - 3:30 PM, in the Federal Way area. An information sheet on what supplies will be needed and directions on how to get where the class is held will be sent each student prior to the class. Registration Chairman is Dena Iverson. 839-7712

HANS WOLD WORKSHOP - September 22 - 26, 1986

NAME _____

ADDRESS _____

CITY _____ ZIP _____ TELEPHONE _____

Please send this form with a \$25.00 deposit to:

Dena Iverson 1817 S. 262nd Pl., Kent, WA 98031

The balance of \$55 will be required prior to the start of the class on September 22nd.

THANKS TO!!! Celia Hendrix for the unique idea for a pattern design project. It will be interesting to see how creative our members are in developing different ideas for this pattern. Let's all give it a try! Bring it to the next meeting or send to Celia Hendrix. AND ALSO THANKS for a lovely Telemark design from Florence Buck. Florence is the 1st Pres. of WRA & has taught in this area many years.

Publisher: Western Rosealers Association DUES: \$10 per year. Make checks payable
Editor Barbara Laskowski to Western Rosealers Association. Mail to:

Membership in WRA includes your subscription to the ACANTHUS VINE. The ACANTHUS VINE is published 5 times yearly and is mailed two weeks prior to WRA general meetings in January, March, May, September and November.

NAOMI PRICE
20834 Morningstar Dr.
Bend, OR 97701

ADVERTISING RATE LIST:

++++ NEXT EDITORIAL DEADLINE IS

\$16.21 - Full Page \$4.25 - Quarter Page
8.25 - Half Page 2.00 - Block 3" x 2"

Aug. 15th

Please send camera-ready copy with remittance to:

Vine Editor: Barbara Laskowski
18228 Rockwood Ct.
Yelm, WA 98597