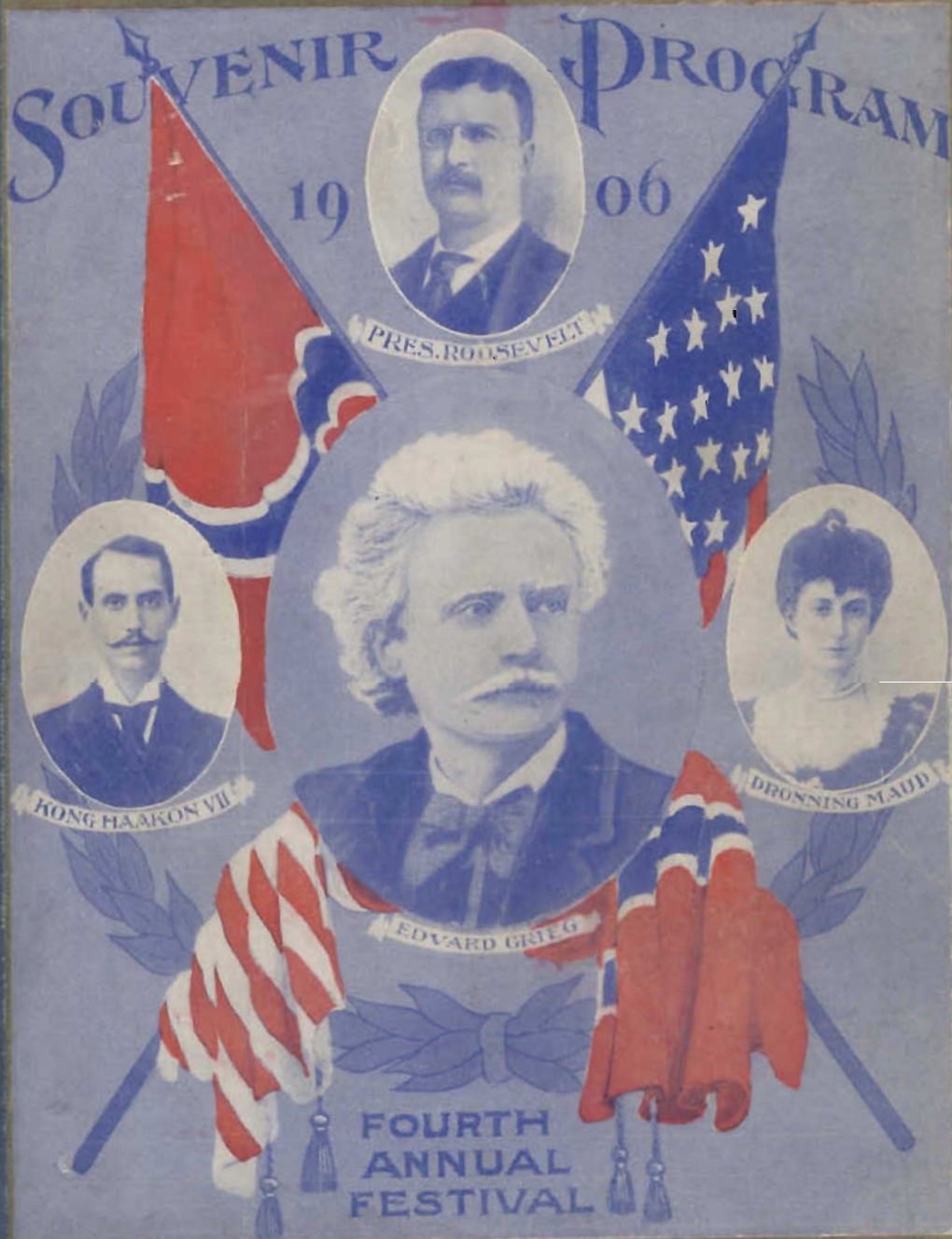


**THE PACIFIC COAST
NORWEGIAN SANGERFORBUND**



780.79-P115



Pacific Lutheran College

LIBRARY

☆

CLASS 780.79 ACCESSION 31900

BOOK P115 COPY _____



THE NORMENDENES
PACIFIC COAST SINGING SOCIETIES

BANQUET

AT THE

TACOMA HOTEL

MONDAY EVENING, AUGUST 27, 1906

8:00 P. M.

P. C.
LIBRARY

Pacific L
L

CLASS 780.7

BOOK P118

TOASTS

DR. RYNING, *Toastmaster, Tacoma*

- LOUIS LANGLOW *President P. N. S. F., Tacoma*
- PROF. CARLO SPERATI *Director, Decorah, Ia.*
- AUGUST PEDERSEN *Astoria*
- GUNARD LUND *Seattle*
- DR. P. L. OPSVIG *Everett*
- DR. C. QUIVLE *Tacoma*
- D. O. J. WESTHIME *Tacoma*
- MR. RUDOLF MOLLER *Ballard*
- PROF. HONG *Parkland*
- MISS ASHBY *Sileana*
- MR. J. O. BERG *Portland*

AND OTHERS.

MENU

TOKE POINT OYSTERS

BOUILLON EN TASSE

BOILED HALIBUT, MOUSSELLAINE SAUCE
Parisienne Potatoes

Olives

Radishes

Gherkins

CHICKEN PATTIES A LA REINE

PINE APPLE SHERBET

PRIME RIBS OF BEEF AU JUS

Pommes Naturel

Cauliflower au Beurre

SAGO CUSTARD PUDDING, CREAM SAUCE

ASSORTED CAKE

FRUITS

CAFÉ NOIR

P. L. C.
LIBRARY

✓780.79

P.H.S

1906



PROF. CARLO A. SPERATI
Musical Director

5

TACOMA'S ↙
→ *WELCOME*

WE, the people of Tacoma, extend to you, one and all, noble sons and daughters of Viking sires, a most cordial welcome. We welcome you as neighbors and friends, but, more than this, we welcome you as bearers and interpreters of the noble music of the North, and we do most earnestly assure you that your beautiful songs, born of a free and sturdy people, and reflecting the wild and tumultuous conflict of northern climate and scenery, and sung, as you sing them, from a full heart, bringing out their weird harmonies, their strong images, their powerful contrasts, and their deep and sublime thought, will thrill our hearts and inspire us to loftier ideals, nobler thoughts, and stronger acts. We would therefore again tender you our heartiest welcome.





Dr. P. L. Orsvig, 2nd Vice-President.



L. LANGLOW, President.



Dr. J. L. RYNNING, 1st Vice-President.

UNION PACKING CO.

TACOMA, WASH.

THIS Company belongs to Norwegian business men in Tacoma, who ask you to see that your grocer keeps their canned Salmon. We put up only the very best and guarantee the most clean Salmon in Alaska. Our brands are

MUIR GLACIER and ALASKA STAR

If you feel like doing us any good demand either of these two brands and we will guarantee satisfaction. We sell our goods to the wholesalers only, and the retailer can get from them at the same market price as equally as good Salmon from other companies. There is, therefore, no good reason why your grocer should not keep our goods, and everyone will do so if you demand it.

Yours truly,

UNION PACKING CO.,

Tacoma, Washington.



JOHN BLAAUW, *Marshal*



NICOLAY CHRISTIANSEN, *Recording Sec'y*



O. J. EKRE, *Treasurer*



J. U. XAVIER, *Cor. Sec'y*

HISTORICAL

The Norwegians are, as a rule, deeply interested in music. And this their love of music is not merely a latent power, lying idle or, at best, only sparingly used. On the contrary, the average Norwegian, reticent as he may be in other respects, is very communicative in this line. Thus we find that every city, town or hamlet in Norway has one or more local singing societies, each social class or group usually having its own musical organization. Thus the students have their singing society, the merchants theirs, the workmen theirs, and so forth. Once a year, or oftener, the cities or larger towns to which a number of singing societies are tributary issue a call for a general meeting for the purpose of friendly competition as well as for the organization of a grand chorus in which all the smaller societies participate. Such a gathering of singers is called a "Sangerfest" (singers festival).

The Norwegians who have immigrated to this country have also brought with them to their new home their deep love of music and song. In the Central States where they are strongly represented, singing societies similar to those of the mother country are very common and have been in existence for a number of years. A great many of these have been welded into larger organizations, or leagues (sangerforbund) whose annual gatherings are musical events anticipated with a great deal of interest, not only by the Norwegians themselves, but by people of other nationalities as well.

In several of the larger cities on the Pacific Coast local Norwegian singing societies have been in existence for a number of years, but prior to 1902 no systematic effort had been made to organize them into a larger union (sangerforbund). Mr. F. A. Tomte, of Portland, Oregon, deserves the honor of taking the initiative in this matter. In the summer of 1902 he broached the matter to the Portland society, of which he was a member. The idea was favorably received, other societies on the coast were interested in the plan, and, on the invitation of the Norwegian Singing Society of Seattle, a general meeting was held in that city on the 26th day of August, 1902. The outcome of this meeting was the organization of the Norwegian Singers' Association of the Pacific Coast. Mr. John Norman was chosen the first president of the new organization; A. J. Thuland and Dr. A. O. Loe, of Seattle, were made respectively, secretary and treasurer. The Rev. Carlo A. Sperati, of Tacoma, was elected as musical director. Mr. Thuland later resigned as secretary and was succeeded by Mr. Sunde, of Seattle.

The first "sangerfest" was held in Everett, on the 1st, 2nd and 3rd of August, 1903, and

was a pronounced success in every respect. The beautiful silver cup presented to the Association by the citizens of Everett, was won by the Everett society.

At the business session following the first sangerfest the following officers were chosen for the ensuing year: Otto Ottoson, of Seattle, president; L. Langlow, of Tacoma, and Albert Winge, of Seattle, first and second vice presidents respectively; Julius Sunde, of Seattle, corresponding secretary; C. J. Cornelius, of Portland, financial secretary; Olaus Kjelland, of Ballard, treasurer; Nils Christhof, of Seattle, marshal. The Rev. Carlo A. Sperati was re-elected musical director. On the resignation of Mr. Ottoson, Dr. A. O. Loe was unanimously chosen president of the association.

The second sangerfest was held in Seattle, in 1904, from the 30th of July to the 1st of August, inclusive. During the year four new societies had joined the Association, thus giving it a numerical strength of 160 singers, who all took an active part in the program of the sangerfest which was generally spoken of by the people and by the press of the city as the greatest musical event that had ever taken place in Seattle, and certainly did a great deal towards developing a proper understand and appreciation of the beautiful songs and other music from the Land of the Midnight Sun. The cup was this year won by the Seattle society.

At the business session of the second sangerfest the following officers were elected: F. A. Tomte, Portland, president; Louis Langlow, of Tacoma, first vice president; John Norman, of Everett, second vice president; C. J. Cornelius, of Portland, recording secretary; S. Byrkeland, of Portland, corresponding secretary; A. Winge, of Seattle, treasurer; Otto Johnsen, of Ballard, marshal, and the Rev. Carlo A. Sperati, musical director.

The third annual "sangerfest" was held in Portland, Oregon, on the 26th, 27th and 28th of August, 1905, during the Lewis and Clark Exposition. The organization had made a substantial increase during the year, having received an accession of five new societies and could now muster a grand chorus of three hundred voices. The Lewis and Clark Exposition had attracted to Portland a large number of people from all parts of the world, and our singers thus had an excellent opportunity of presenting Norse music to the most representative audience ever gathered west of the Rocky mountains. The occasion was a great one, and our singers were equal to it, and certainly left on the vast and varied audiences a strong and favorable impression of Norwegian music that will be carried to the most remote corners of the globe.



Executive Committee

LOUIS LANGLOW, *President*

DR. J. L. RYNNING, *Vice-President*

DR. P. L. OPSVIG, *Second Vice-President*

PROF. J. U. XAVIER, *Corresponding Secretary*

NICOLAY CHRISTIANSEN, *Recording Secretary*

O. J. EKRE, *Treasurer*

JOHN BLAAUW, *Marshal*

REV. OVE J. H. PREUS CHARLES EVANS

J. C. F. JOHNSON JOHN WESTGRUND

A. B. HORN



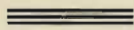
ASK YOUR GROCER FOR

GOLDEN GRAIN GRANULES



GOLDEN GRAIN CO.

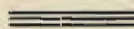
“They all go that Drug Store.”
 Why? Because that Drug Store has the reputation for accuracy and the use of Pure Drugs in its Prescription Department. Only registered pharmacists employed.



LIEN'S PHARMACY

OLE B. LIEN and HARRY B. SELVIG,
 Proprietors.

Telephone James 141



Free Delivery 1102 TACOMA AVENUE

I. M. Larsen

AWNINGS, TENTS, FLAGS,
 BOAT & VESSEL SUPPLIES

Sail Making

TELEPHONE MAIN 141

720 Pacific Avenue TACOMA, WASH.

OFFICE HOURS, 11 to 12 A. M., 3 to 5 and 7 to 8 P. M.
 SUNDAYS, 12 to 1

Dr. Peterson

RESIDENCE TEL. MAIN 877

OFFICE: 913 COMMERCE STREET, NEAR 9TH
 OFFICE TEL. BLACK 7897



Financial Committee

LOUIS FOSS, *President*

AUGUST CULTUM, *Vice-President*

H. E. KNATVOLD, *Treasurer*

GUSTAV BEUTLICH, *Secretary*

E. O. ERICKSON

H. A. FATLAND

CONRAD DAHL

CAPTAIN O. G. OLSEN

DR. C. QUEVLI

JOHN WESTGRUND

DR. E. A. TROMMALD

A. B. HORN

CAPT. O. A. ANDERSON

BEN MELSNES

LOUIS LANGLOW



KRAABEL & ERICKSON

..DEALERS IN..

GENERAL MERCHANDISE



**Groceries, Hardware, Flour, Hay
Grain and Feed**

Dry Goods, Gents' Furnishing Goods and Shoes
PATENT MEDICINES, STATIONERY, ETC.
PARKLAND, WASH.

Thomas Thompson

Geo. Tegland

Thompson & Tegland

Dealers in

Staple and Fancy Groceries

School Supplies of All Kinds

—AND—

FLOUR AND FEED

Parkland, - - - Washington

The Pacific Lutheran Academy

Offers more advantages to young men and women than any similar institution in the Northwest.

It has an ideal location, a modern building, a strong faculty, a large attendance.

It teaches English, German, Latin, Greek, Norwegian, History, Mathematics, Sciences, Book-keeping, Shorthand, Typewriting, Music.



It furnishes tuition, heated and lighted room, good board and books for less money than is usually charged for board and room alone in a large city.

We can't tell you all about it here. Write your name and address on a postal card and mail to us, and we will send you our illustrated catalogue, giving full information about the school. Address

N. Hong, Principal, Parkland, Wash.



Press Committee

DIRK BLAAUW, *Chairman*

JOHN BLAAUW

PAUL GILSTROM

PROF. N. J. HONG

Transportation Committee

JOHN BLAAUW, *Chairman*

JOHN A. PETERSON

CAPT. O. G. OLSEN

CAPT. T. D. BLOOM

Program Committee

REV. O. J. PREUS, *Chairman*

GEORGE JOHNSON

DIRK BLAAUW

PAUL GILSTROM

NICOLAY CHRISTIANSEN

Arrangement Committee

DR. J. L. RYNNING, *Chairman*

ALEXANDER BORDEAUX

J. C. F. JOHNSON

HALVOR FOLKESTAD

EINAR ASKEVOLD


VISELL & EKBERG

**Books, Stationery
Office Supplies**

Cutlery and Notions

1308 PACIFIC AVE. TACOMA, WASH.
PHONE JOHN 2561

Scandinavian Books on all subjects
Tickets to and from Europe

☯ ☯	
K	ONA ☯ ☯
	OFFEE ☯
	OMPANY
☯ ☯ ☯ ☯ ☯ ☯ ☯	<p>Wholesale Roasters and Dealers in COFFEE, TEA and PEANUTS</p> <p>Ask your Grocer for Our Coffee</p> <p>ALWAYS FRESH</p> <p>1538 PACIFIC AVENUE TACOMA, WASH.</p>

JOHN HOLLEQUE

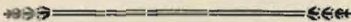
H. E. ANDERSON

Palace Hardware Co.

**BUILDERS' HARDWARE
MECHANICS' TOOLS**

PAINTS, OILS, VARNISHES, Etc.

1508 Jefferson Ave. Tacoma, Wash.
Telephone Main 151



C. EBERT

DISTRIBUTOR OF



HARDESTY EXTRACT

1508 PACIFIC AVENUE
TEL. MAIN 76

Ladies' Committee

MRS. LOUIS LANGLOW, *President*

MRS. A. B. HORN, *Vice-President*

MRS. O. HOLMES, *Secretary*

MRS. H. FOLKESTAD

MRS. ALEX. BORDEAUX

MRS. C. QUEVLI

MRS. O. OLSEN

MRS. J. C. F. JOHNSON

MRS. HANS PETERSON

MRS. CHARLES EVANS

MRS. J. M. ARNTSON

MRS. WM. HANSON

MRS. ELEANOR KERR

MRS. JOHN WESTGRUND

MRS. J. NICHOLSON

Decoration Committee

WILLIAM OLSON, *Chairman*

I. M. LARSEN

INGMAN STORAASLI

T. J. MAGELSEN

CHRIST JOHNSON

CLARENCE HORDNESS

GYNTER STORAASLI

THEODOR HANSEN

SYVER BRAATELIEN

Hotel Committee

DR. J. L. RYNNING, *Chairman*

ED. JOHNSEN

O. OLSEN

O. J. FINTLAND

ALFRED A. NELSON

CHAS. WILLIAMS

A. BERGGREN

Tacoma Clothing Co.

MEN'S *and* BOYS'

CLOTHING

A Fine Line of

Gents' Furnishings

Hats, Caps, Boots, Shoes

1305 Pacific Avenue.

Lindstrom & Berg

CABINET
MAKERS

Office, Store, Bank and Bar

FIXTURES

Interior Housework
in Hard Woods

TELEPHONE MAIN 469

Corner 21st and Commerce Streets
TACOMA, WASH.

To the Public:

PLEASE bear us in mind when something is needed in the line of Graniteware, Tinware, Crockery, Glassware, Yankee Notions or anything in 5 and 10c goods. A complete assortment always on hand at lowest market rates.

Eastern Racket Store,

J. A. Johanson, Prop.,
2318 Pacific Avenue.

J. E. Aubry

Cor. 21st and C Sts.

TACOMA, WASH.

Carriage and Wagon

Manufacturer



REPAIRING and
PAINTING

General Festival Program

SATURDAY, AUGUST 25, 1906.

9:30 a. m., Welcome by Mayor George P. Wright, of Tacoma.

10 a. m. to 12 m., Rehearsal at Tacoma Theatre.

12 to 2 p. m., Lunch at Headquarters.

2 to 5 p. m., Rehearsal at Tacoma Theatre.

6 to 8 p. m., Lunch at Point Defiance Park.

SUNDAY, AUGUST 26, 1906.

12 to 2 p. m., Lunch at Headquarters.

2:30 p. m., Mattinee at Theatre.

5 to 7 p. m., Lunch.

8 p. m., Concert at Tacoma Theatre.

MONDAY, AUGUST 27, 1906.

10 a. m., Business Meeting at Headquarters.

12 to 2 p. m., Lunch.

2:30 to 5 p. m., Sight Seeing.

8 p. m., Banquet at Tacoma Hotel.

*We wish no worse treatment to the representatives
of the*

Haritic Norske Sangerforbund

during their stay in our city, than that the delicacies supplied them by the good people of Tacoma should be flavored by Rogers' Extracts and raised by Rogers' Baking Powder.

Don't you suppose they would want to come again?

The Rogers Co., Tacoma

Acme Mills Company

TACOMA, WASHINGTON

MANUFACTURERS OF

High Quality CEREALS and Flours

OUR LINE COMPRISES ACME AND RALSTON GOODS
TRESPO FOOD, UNIVERSAL PACKAGE OATS
AND OTHERS



MISS EMMA THEOLINE LOE
Soprano Soloist

McCormack Bros.

CORNER 15th STREET AND PACIFIC AVENUE

We ..
Extend a
Hearty
Welcome

and ask you to make
our store your Head-
quarters, and if in
need of anything in
our line you will
find our goods are
right and



OUR PRICES ARE RIGHT

Remember we are always as
Anxious to Please as to Sell

McCormack Bros.

1352-54-56 PACIFIC AVENUE, TACOMA, WASH.



OVE J. H. PREUS
Bass Soloist



P. O. NICHOLSON
Tenor Soloist

F. L. PALLIES

JOBBER

Wholesale and Retail
TOBACCONIST

1126 PACIFIC AVE. PHONE BLACK 4397
TACOMA, WASH.

CIGARS and PIPES FINE TOBACCOS

AGENCY FOR THE FAMOUS

El Mas Noble, Clear Havana Cigar

Amorife, Porta Rica 5c Cigar

John Bright, 5c Cigar

Castle Hall, 5c Cigar

AND OTHER LEADING BRANDS



Awarded Diploma
at St. Paul
1900

Residence Phone
Red 8081

J. F. Lee

TWO PHOTO STUDIOS

1535 COMMERCE ST., Cor. Jefferson Ave.
PHONE RED 7236
905 PACIFIC AVENUE
PHONE JOHN 2326

TACOMA, WASHINGTON

A Serious Study in Coffee.

Do you know that a really serious study of Coffee is the work of a lifetime? There are plenty of cheap brands of Coffee, which seem very delicious on paper. They cost you little, being a very cheap grade, and just as good as an advertisement can make them, but the goodness doesn't go beyond paper. If you want Coffee "as is Coffee" you are sure of getting it at our store. Our Coffees are selected and handled by experts. We mingle flavors as an artist mixes colors. Every blend of Paulson-Barnes Co.'s Coffees is a harmony that delights the palate. Our prices are: 20c, 25c, 30c, 35c, 40c and 50c a pound. Its up to you to have good Coffee.

PAULSON-BARNES CO.

Phone 232

1101-3 C St.

High Grade Plumbing

Steam and Hot Water
Heating

YOU are cordially invited to visit our show rooms, where will be found one of the most complete displays of improved sanitary fixtures ever shown in the city.

Ben Olson Co.

Phone Main 392

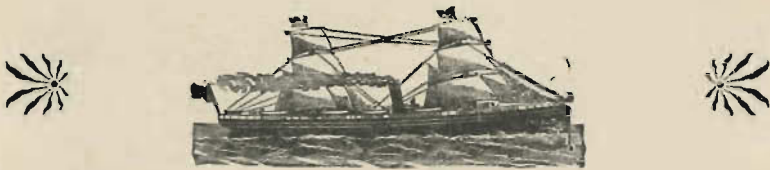
1130 Commerce Street



PROFESSOR OLOF BILL.

WHITE STAR LINE

NEW YORK—QUEENSTOWN—LIVERPOOL
 NEW YORK—AZORES—MEDITERRANEAN
 BOSTON—QUEENSTOWN—LIVERPOOL
 BOSTON TO MEDITERRANEAN PORTS



A. J. THULAND, Passenger Agt.
1333 Third Ave., Seattle, Wash.

E. L. GEONDAHL,
 President.

A. H. SOELBERG,
 Vice-Pres. and Cashier.

JOHN ERIKSON,
 Vice-President.

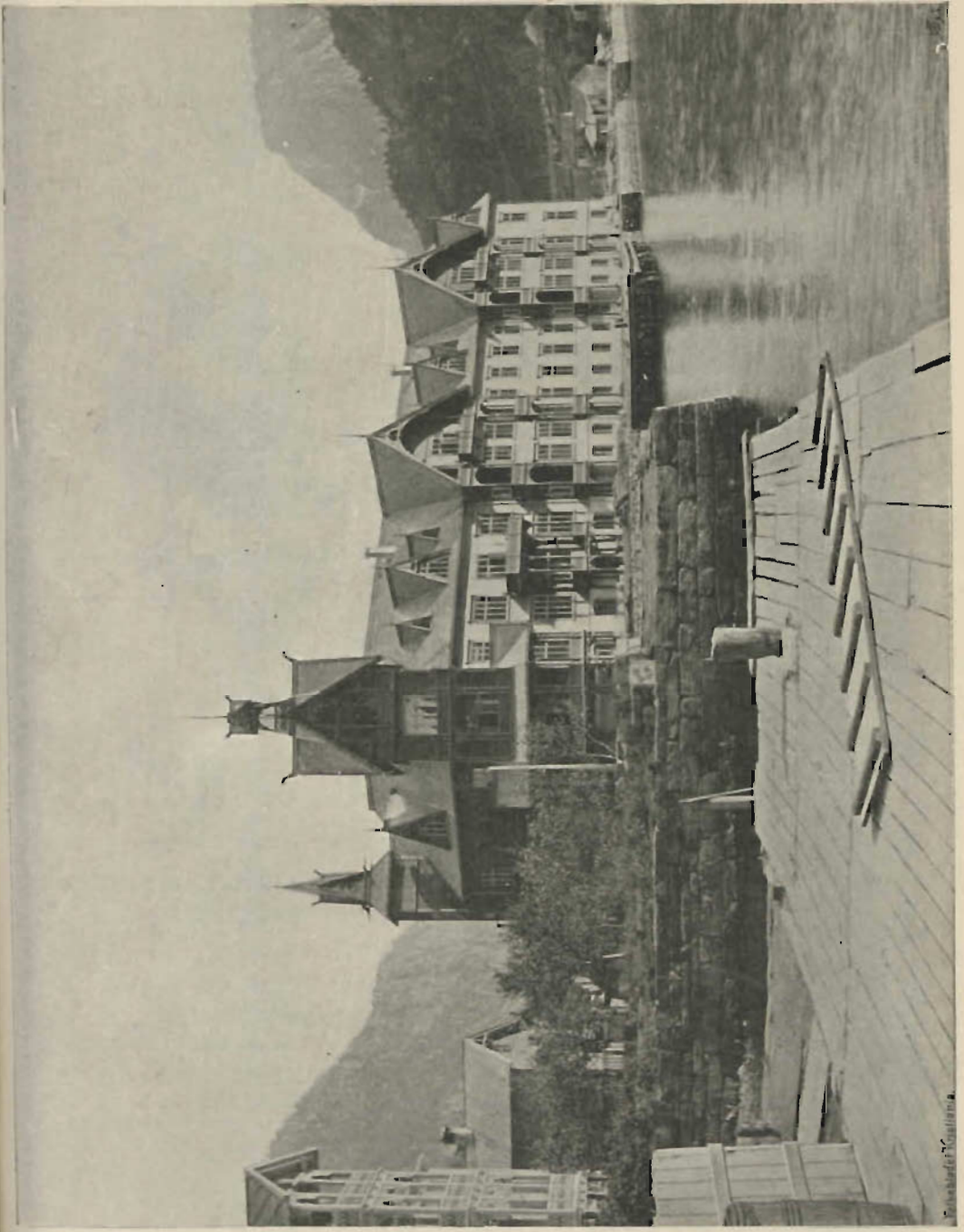
ACCORDING as liberal treatment to its depositors as is consistent with modern banking methods, and being equipped with unexcelled facilities for the prompt and proper transaction of all branches of banking, we solicit the accounts of firms, corporations and individuals.

We pay 4 per cent interest in our Savings Department, compounded twice a year.

The State Bank of Seattle

Cor. First Ave. and Yesler Way

Seattle, Washington



SCENE IN NORWAY.

A. CHILBERG, President
J. E. CHILBERG, Vice-President

J. F. LANE, Cashier
WM. THAANUM, Asst. Cashier
W. L. COLLIER, Asst. Cashier

The Scandinavian-American Bank

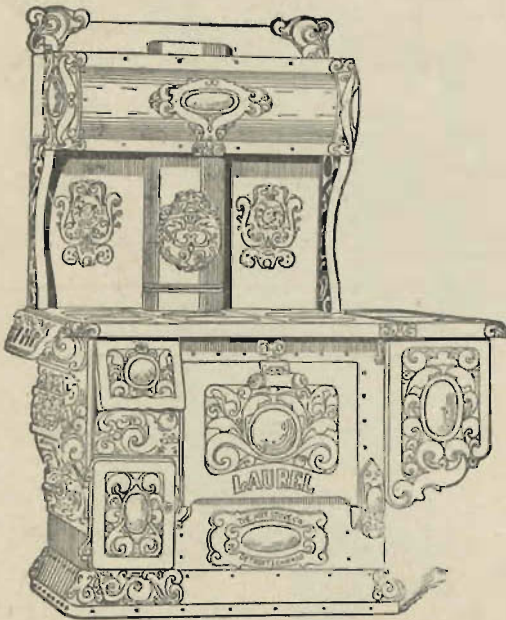
SEATTLE, BALLARD AND TACOMA, WASH.

Capital Paid up	-	\$500,000.00
Surplus	- - -	\$350,000.00
Deposits	- - -	\$7,000,000.00

Interest Paid on Time Deposits.

"Start the Savings Habit Now so that you may do things really worth while later on."

F. P. SEARLE, MANAGER BALLARD OFFICE



For at syngde godt maa en vare glad,
men glad blir De aldrig, for
De faar fat i en

Laurel Range

— SELGES HOS —

THOS. HEYDAHL, & CO., Ballard, Wash.

H. M. SHAVLAIN, Tacoma

H. MEYER, Olympia

PORTLAND HDW. CO., Portland, Ore.

PETERSON FURNITURE CO.,
Everett, Wash.

GREAT NORTHERN FURNITURE
CO., Bellingham, Wash.

Thos. Heydahl

WESTERN SELLING AND DISTRIBUTING AGENT

BALLARD, WASH.



BARLOW SINGING SOCIETY.

STATEMENT OF
The Pacific National Bank of Tacoma, Washington
 AT CLOSE OF BUSINESS, JUNE 18, 1906
THE OLDEST BANK IN TACOMA

CONSOLIDATED WITH LUMBERMENS NATIONAL BANK JUNE 26TH, 1905

RESOURCES	LIABILITIES
Loans and Discounts \$2,541,608.09	Capital Stock \$300,000.00
Stocks and Bonds 254,918.30	Surplus and undivided Profits 78,441.00
U. S. Bonds and Premiums 236,725 58	Circulation 225,000.00
Cash and due from banks 1,020,918.79	Deposits 3,450,729.76
\$4,054,179.76	\$4,054,170.76

Savings Department

3 per cent Interest Credited January 1st or July 1st.

This Bank Represents the Largest Individual Responsibility of any Bank in the Pacific Northwest.

DEPOSITS JUNE 28, 1906, \$1,869,770.61

DEPOSITS JAN. 21, 1906, \$2,603,941.08

DEPOSITS JUNE 18, 1906, \$3,450,729.76

The Arcade

Cor. Pacific Ave. and 14th St.

Tacoma, Wash.

J. F. MURPHY, PROP.

Largest Exclusive Dry Goods Store on the Pacific Coast.

Exclusive Agents for the Ladies
Home Journal Patterns



Having on Hand at All Times Complete Lines of

Silks, Dress Goods, Linings, Trimmings, Laces, Ribbons, Notions, Hosiery and Underwear, Muslin Underwear, Ready-to-Wear Millinery, Suits, Waists, Jackets, Skirts, Children's and Infants' Wear, Wash Goods, Domestic, Draperies, Blankets, Etc. Also carrying

Complete Line of Men's and Boys' Furnishings,
All Sold at Popular Prices.

Tel. Main 317

S. H. McKee, Prop.

Union Market

Wholesale and Retail Dealer in

FRESH, SALT AND
SMOKED

MEATS

**Poultry and Game
in Season**

1104 South K St., Tacoma, Wash.



SEATTLE SINGING SOCIETY.

Oh Me

Oh My

99
COFFEE

Is the kind to buy at 25c. per pound Ask your Grocer

CRESCENT
Egg Phosphate Baking Powder

At 25c. per pound

is better than the high priced Trust Powders at any price

Ask Your Grocer

K. K. TVETE

DEALER IN

CLOTHING, HATS, SHOES,
AND
GENTS' FURNISHING GOODS



108-110 MAIN STREET
Squire-Latimer Block

SEATTLE - - - WASHINGTON

Telephones:
Main 649
Yard, Ind. A415

KING & WINGE

SHIP BUILDERS
CONTRACTORS

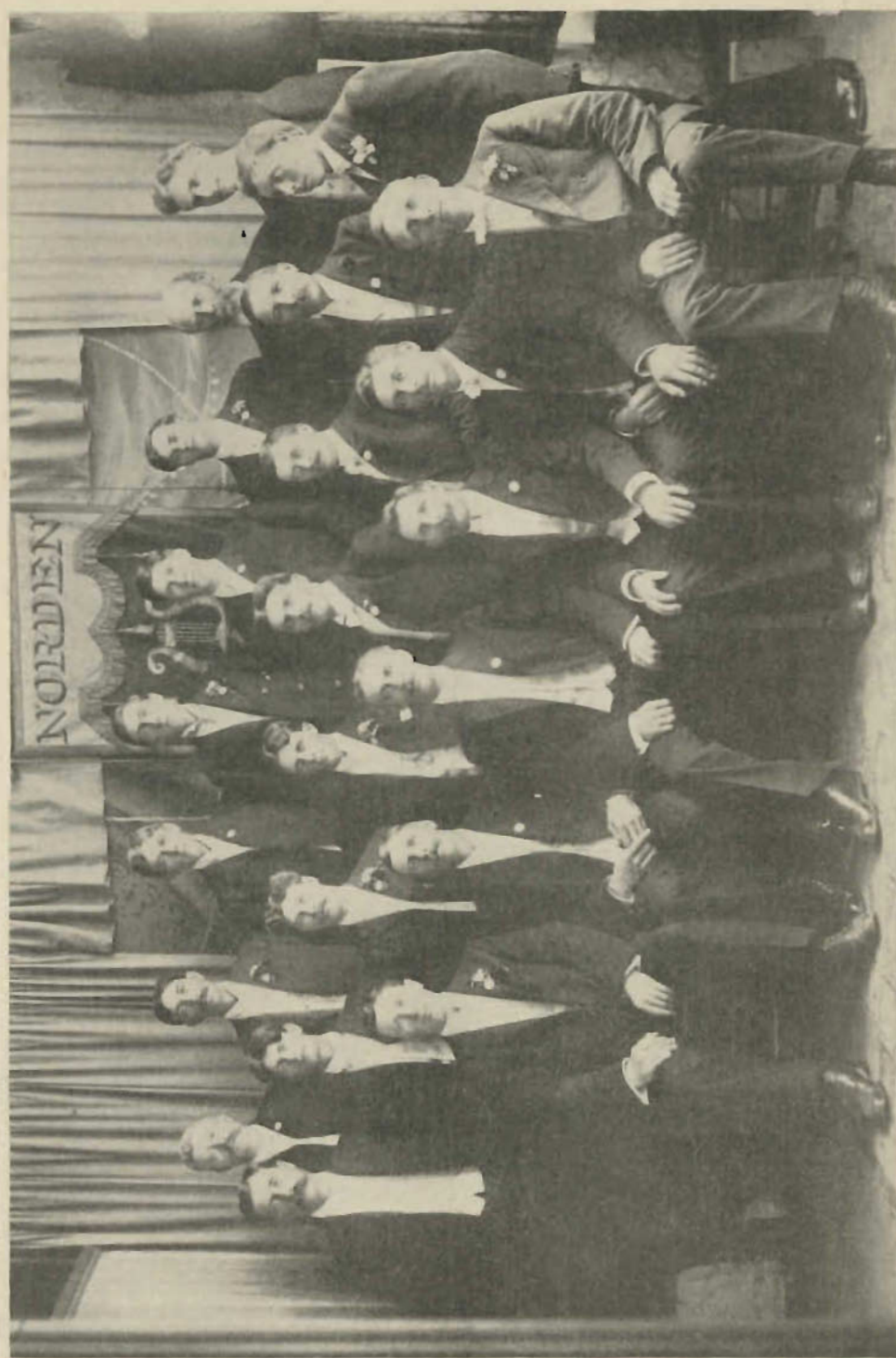
Marine Ways at West Seattle

Importers, Exporters
and Packers of

ALASKA COD FISH

CABLE ADDRESS, KINGWINGE
WESTERN UNION CODE

Room 4, Colman Block SEATTLE, WASH., U. S. A.



BALLARD SINGING SOCIETY.

Howard A. Hanson

PERRY & HANSON.

..Horsk Advokat..

407-9 Washington Building

Main 5803 - - SEATTLE, WASH.

Residence Phone, IND. R. 2634
Office Phone, IND. X. 1859

Samuel S. Langland

ATTORNEY at LAW

534 New York Block

SEATTLE, - - WASHINGTON

Phones: MAIN 6251 and IND. 591

Dr. E. C. Munk

EYE, EAR, NOSE
AND THROAT

Office hours: 10 to 12 a. m.; 1 to 4 p. m.

Eitel Building, - SEATTLE, WASH.

Keep Me! You may Need Me!

Naar Den Skandinaviske Advokat,
Raadgiver of

Notary Public

A. A. ANDERSON

Har examineret of garanteret eders
Abstract of Eignomsrettigheder eller
skrevet eders Dokumenter

Da ved De det er gjort rigtig

"Suggestions to Strangers" render Profit paa
forlangende.

Office Entrance: Room 323 Arcade Bldg.

SEATTLE, - WASHINGTON

Residence Phones: East 412, Ind. 8438
Office Phones: Main 3515, Ind. L. 2902

DR. A. O. LOE

Physician and Surgeon

RESIDENCE, 917 16th AVENUE N

Hours 10-12 a. m., 2-4, 7.30-8.30 p. m.

Office, 201-2-3 Eitel Bldg.

Second and Pike St. SEATTLE, WASH.

Res. Phones, North 154 and Ind. R. 7285
Office Phones, Main 4498 and Ind. 3894

Dr. Louis S. Schreuder

PHYSICIAN
& SURGEON

OFFICE: 219 PIKE STREET, NEAR SECOND

SEATTLE, - WASHINGTON



SILVANA SINGING SOCIETY.

Buy Land! Sing and Be Happy!

WE CAN give you some valuable information regarding 5 and 10 acre tracts between Tacoma and Seattle. Well, we can deliver the goods. We have it and we can sell it to you. If you are interested, if you want a home of your own, a place that will assure you a good living the rest of your life, then call on us. Matters not what your financial circumstances may be, we will show you a way that will put you on the clear. It will some day bring you a fortune. Don't overlook it. Come now.

A. E. JOHNSON CO.

612 First Avenue

Seattle, Wash.

If you have a desire to take a trip to Europe, we are in a position to fix you up with a trip that you will enjoy.

Phone Main 783

Independent 783

Sunset Main 1201

Independent 1201



Gilbert Qvale



GROceries

FRESH AND SMOKED MEATS
FRUITS AND VEGETABLES



714 Pike Street, Seattle, Wash.



Sunde & Erland Co.

SHIP CHANDLERS
AND SAILMAKERS



JOBBERS OF

MARINE HARDWARE
CORDAGE, COTTON DUCK, AWNINGS
TENTS, CAMP OUTFITS, Etc.

Colman Dock

Seattle, Wash.



EVERETT SINGING SOCIETY.

DOCTOR OF OPTICS EYES EXAMINED FREE

ALFRED BUTT

JEWELER AND OPTICIAN
EXPERT WATCH REPAIRER

1188 PACIFIC AVENUE OPP. 12TH STREET

TACOMA, WASH.



DEALER IN
WATCHES, CLOCKS, JEWELRY, DIAMONDS AND SILVERWARE

WE CAN WE DO



Sell Diamonds, Watches and Jewelry cheaper than any Store in Washington — Cash or Easy Payments.



ANDREWS, - 1144 Pacific Ave.



Basement Mutual Life Building

THE OLDEST TICKET AGENCY
IN THE NORTHWEST

ESTABLISHED OVER THIRTY YEARS AGO
By MR. ANDREW CHILBERG

WE SELL TICKETS
TO AND FROM ALL PORTS IN
THE OLD COUNTRY

VERY LOWEST RATES ON ALL BEST LINES

IF YOU ARE GOING HOME OR WANT TO SEND FOR YOUR
FRIENDS—DON'T FAIL TO GET OUR RATES

SATISFACTION GUARANTEED

CALL OR WRITE FOR ANY INFORMATION DESIRED

Telephone John 586

Dr. A. J. Gustavson
DENTIST



CROWN AND BRIDGE WORK

Berlin Building
Cor. Pacific Ave and 11th St. TACOMA, WASH.

Beebe-Smith Co.
TACOMA, WASH.

MERCHANDISE BROKERS
AND
MANUFACTURERS' AGENTS



PORTLAND SINGING SOCIETY.

Ask Your Grocer for



"OLYMPIC BRAND"

COD FISH BRICKS



BLOM COD FISH CO.

TACOMA, WASH.

PHONE RED 1651



TACOMA

**Toast and Hardtack
Company**

DEALERS IN

Toast, Hardtack and Saratoga Chips

WHOLESALE AND RETAIL

1111 South 11th St.

TACOMA, WASH.

Albert Hansen



**Goldsmith
Silversmith
and
Jeweler**



706 FIRST AVENUE

SEATTLE, WASH.



H. Torkelson

Manufacturer of

OIL CLOTHING



Cor. 25th and A Streets

TACOMA, WASH.



HAMARFEST, NORGE.

PETER FURSETH

... Dealer in ...

High-Grade Groceries

AND SCANDINAVIAN SPECIALTIES

WE SOLICIT YOUR TRADE

PHONE BLACK 8906

17th AND J STREETS

TACOMA, - - WASH.

Dr. J. L. Rynning

PHYSICIAN
AND SURGEON

TACOMA, - WASH.

Horn-Holmes Co.

(INCORPORATED)

General Merchandising

TWO OF THE MOST COMPLETE
STORES IN TACOMA

1000-1008 Center St.

TELEPHONE JOHN 211



2322-2324 Pacific Ave.

TELEPHONE MAIN 613

Westgund & Sather

DEALERS IN

Staple and . . . Fancy Groceries



SCANDINAVIAN
GOODS A
SPECIALTY

Phone Main 305

COR. 13TH AND K STREETS



ASTORIA SINGING SOCIETY.

Vestkysten

ISSUED EVERY FRIDAY BY

WEST COAST PUBLISHING CO.

1101½ Tacoma Ave. - - - Tacoma, Wash.

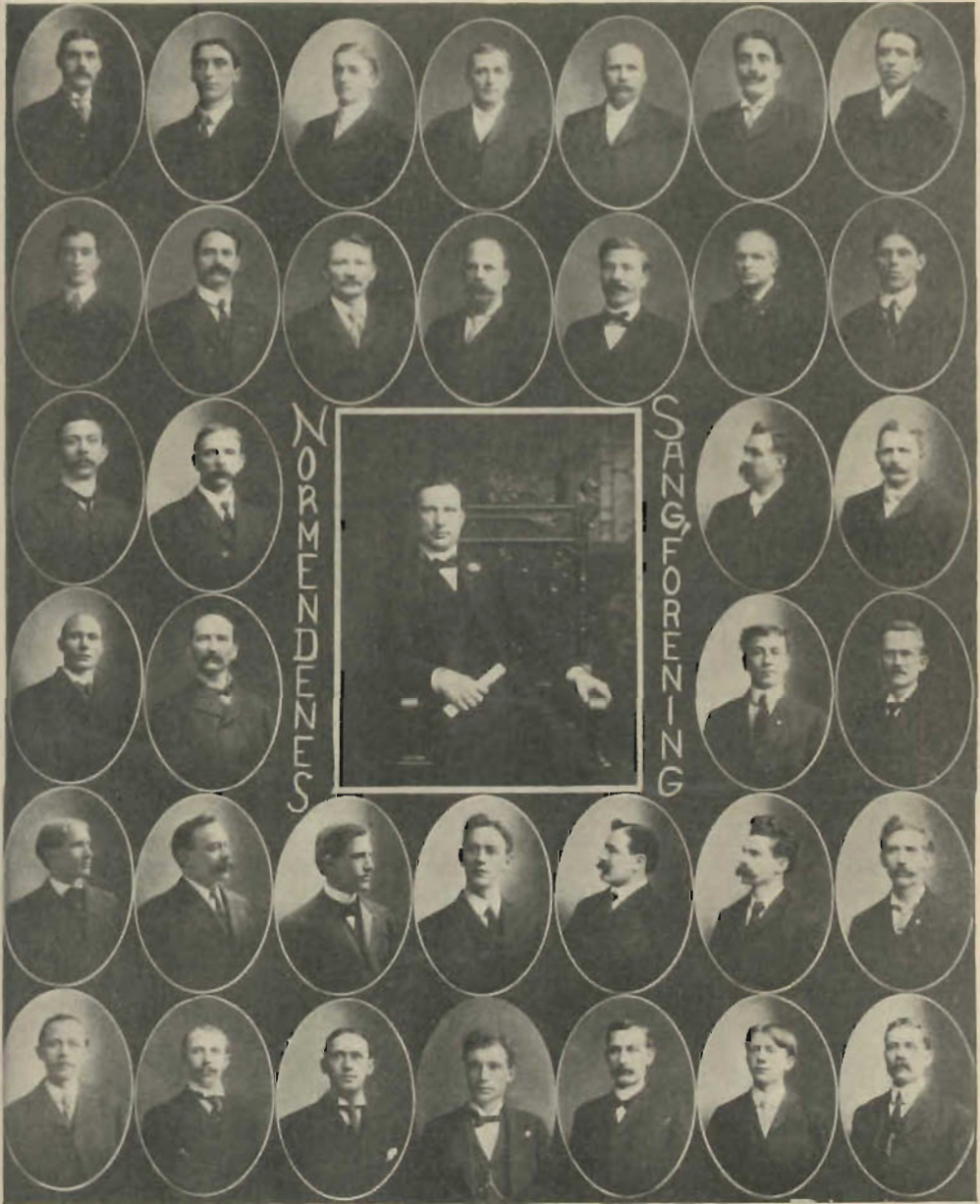


SYVER BRAATELIÉN
Editor



C. A. TANBERG
Business Manager

“Vestkysten” contains more original literature than any other Scandinavian paper on the Pacific Coast. It is read in thousands of homes and is one of the very best mediums of advertising.



TACOMA SINGING SOCIETY.

Union Meat Co.

**Wholesale Butchers
and Packers**

Supplying Ships a Specialty

Telephone Main 238

1340 Pacific Avenue

TACOMA, WASH.



———
PURITY AND
 :: :: **FLAVOR** :: ::
UNEXCELLED



Johnson-Lieber Company

Agents

SIVER T. LARSON

JACOB MELAND

Trommald's Pharmacy

TELEPHONE JAMES 2316

Drugs, Chemicals & Toilet Articles

∴ PRESCRIPTIONS A SPECIALTY ∴

1555 Tacoma Avenue

Cor. Seventeenth Street

TACOMA, WASHINGTON

TEL. RED 7692

ALASKA FUR CO.

C. LOFSTAD, Manufacturer of and Dealer in

FINE FURS

ALASKA SEAL GARMENTS A SPECIALTY. RE-DYEING. SKINS BOUGHT.

907 Commerce St.

Tacoma, Wash.



The Everett Cup

All the Societies, except Tacoma, will compete for this Cup, which prize is now held by the Portland Singing Society.

Davies Bros.

ELECTRIC CO.

Sales Room, 933 C Street
Factory, Corner Ainsworth and Hood Streets

Designers

AND MANUFACTURERS OF

**Electric and
Combination
Fixtures ...**

House Wiring and General Construction Work

933 C STREET TACOMA, WASH.

RHODES BROS. STORE

**Bids You
Welcome**



The splendid achievements of this modern, up-to-date store are the topic of general comment. Test its service, make use of its waiting rooms, its writing tables, post office, parcel desks and make it your store. Invite your friends.

AGAIN WE BID YOU WELCOME

Tacoma Trunk Factory

TRUNKS
BAGS
SUIT CASES
TELESCOPES,
ETC., ETC.

Repairing Done

TELEPHONE RED 2772

931 South C Street

TACOMA, - WASH.

**..The..
Autocrat Shoe**

FOR WOMEN

Believe me, there is no
Shoe like it under the
canopy of Heaven!

Price **\$3.50** a Pair

Sole Distributors

The Stone Fisher Co.

11th and C Sts. TACOMA, WASH.

GRAND CONCERT

TACOMA THEATRE, AUG. 26, 1906

Program—2.30 P. M.

1. Overture Pique Dame *Suppe*
PHILHARMONIC ORCHESTRA
2. Norge, Norge! *argjening bunn - 18. only* *Johan Selmer*
ja, vi elsker.
UNITED SINGERS
3. ~~Sangen har Lyssning~~ *Forsberg*
"LUREN," PARKLAND
4. Bjorneborgarnes Marsch
UNITED SINGERS
5. Serenade *Chr. Brain*
NORMENDENES SINGING SOCIETY OF PORTLAND *15*
(Holders of the Cup)
6. Kirken den er et Gammelt Hus *Lindeman*
OVE J. H. PREUS AND UNITED SINGERS
7. Per Spillemand *Sigurd Lie*
NORMENDENES SINGING SOCIETY OF EVERETT *18*
8. a.—Til Vaaren }
b.—Margretes Vuggeviser. } *Edvard Grieg*
c.—Lille Haakon. }
ELSE MYHR KREFTING *sum*
9. Norsk Somands Sang
NORMENDENES SINGING SOCIETY OF ASTORIA *25*
10. Sigurd Jorsalfar *Edvard Grieg*
P. O. NICHOLSON, UNITED SINGERS AND ORCHESTRA
- 6 1/2* By the Sea
PHILHARMONIC ORCHESTRA
(Strings only)
11. Den Store Hvide Flok (The Great White Host) *Edvard Grieg*
EMMA THEOLINE LOE AND UNITED SINGERS
The great white host of Heaven we see
As thousand mountains full of snow;
With waving sound of paleus around
The throne, who may they be?
"THE STAR SPANGLED BANNER"

Lunch at RYDER'S

BAKERY AND COFFEE HOUSE



... MILLIONAIRES' CLUB ...

916-18 Commerce St., Tacoma

We have added to our Large Stock of

General Hardware

STOVES RANGES, TIN AND GRANITE WARE, SILVER PLATED WARE, NICKEL WARE, ALUMINUM WARE &c.

AGENTS FOR THE

Torrid Zone Steel Furnace

The Range we swear by is the "QUICK MEAL". It is the quickest baker and the most economical steel range made. If you have the cash we will save you money.

Tin Shop on the 3rd Floor in connection with our store.

Washington Hardware Co.

H. E. KNATVOLD, MGR.

928 Pacific Ave. and 927 Commerce St.

TEL. MAIN 171

Great Bargain-fest

AT

CHRISTOFFERSEN & CAMPION'S

STORE, NINTH AND C STREETS

Present quarters too small, going to extend our business—Shall have a new and better store.

Great Extension Sale Now On

Must close out several thousand dollars worth of seasonable merchandise at once to make room for new stocks on the way.

EVERY ARTICLE IN THE STORE
IS MARKED DOWN

Dress Goods, Silks, Linens, Fine Wash Goods, White Goods, Window Nets, Ladies' and Children's Knitwear and Hosiery, Undermuslins, Petticoats, Ribbons, Laces, Umbrellas, Blankets—
ALL REDUCED.

Attend the Sangerfest and the Bargainfest today.

Christoffersen, Campion & Co.

NINTH AND C STREETS



Somebody is getting the worst of this deal, but nobody gets the worst of it when they deal with us

W. N. UDALL & CO.

Men's Outfitters
912 Commerce Street

Program—Continued

8 00 P. M

1. Oberon *Weber*
PHILHARMONIC ORCHESTRA
2. Fannmarsch—(Staa Stark) *Wennerberg*
UNITED SINGERS
3. Ulabrand *Kr. Wendelberg*
"NORDEN," BALLARD SINGING SOCIETY 20
4. a.—Saterjentens Sondag (The Chalet Girls Sunday).... *Ole Bull*
b.—Halling (Norwegian Folksong)..... *Arr. Edvard Grieg*
c.—" EMMA THEOLINE LOE AND UNITED SINGERS
5. Zigeunerweisen *Sarasate*
OLOF BULL *Enon*
MR. WALTER GUERNSEY REYNOLDS, Accompanist
6. Morgensang *Abt*
NORMENDEXES SINGING SOCIETY OF SEATTLE 22
7. The Beleguere! *Rather. from* *Arthur S. Sullivan*
UNITED SINGERS
8. Andante Spianota and Polonaise..... *Chopin*
ELSE MYHR KREFTING *Enon*
9. Varde *Johannes Haarklou*
NORMENDEXES SINGING SOCIETY OF TACOMA 25
10. Landkjending (Landsighting)..... *Edvard Grieg*
OYE J. H. PREUS, UNITED SINGERS AND ORCHESTRA
A poetic picture of King Olav, Trygvason's arrival to Norway after years of absence, describing in lofty words and sublime feeling that overcome the youthful monarch on the first sight of land, and after landing, the prayer offered by him to the Almighty and afterwards taken up by his men. *Prolonged cheering.*
11. Overture Raymond *Thomas*
PHILHARMONIC ORCHESTRA
12. Den Store Hvide Flok (The Great White Host).... *Edvard Grieg*
EMMA THEOLINE LOE AND UNITED SINGERS
The great white host of Heaven we see
As thousand mountains full of snow;
With waving sound of palens around
The throne, who may they be?
"THE STAR SPANGLED BANNER"

List of Members
OF
Normendenes Singing Society
OF TACOMA

FIRST TENORS

J. E. Burkee
Anthon Peterson
W. J. Hansen
J. Martinsen
Hans Frostee
J. O. Viker
J. Honore
John Gundersen
M. L. Johnson
A. L. Yphardt

SECOND TENORS

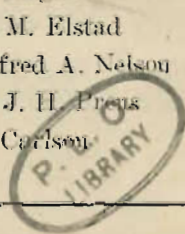
J. C. F. Johnson
F. Furseth
E. Askevold
L. Bredstrand
Ed. Johnson
C. Herman
F. Johnson
H. Gunderson
P. O. Nicholson

FIRST BASS

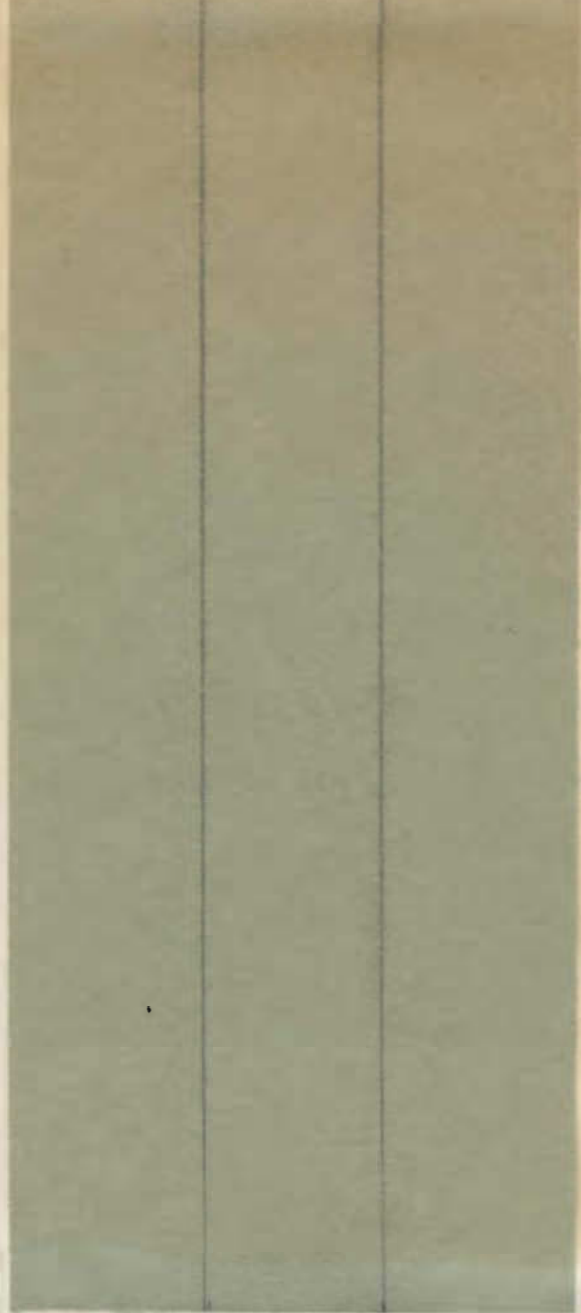
Nicolay Christiansen
E. G. Harvly
O. Olsen
Ingolf Larsen
H. Folkestad

SECOND BASS

J. L. Rynning
John Westgrund
Louis Langlow
O. J. Ekre
A. B. Horn
Charles Evans
C. J. Finmland
Chas. Heggernes
Chris Sather
T. Magelsen
E. M. Elstad
Alfred A. Nelson
O. J. H. Preus
T. Carlson







Faint, illegible markings and a circled number '2' are visible on the light beige background below the green area.

