

Parkland Round-up Queen Contest Now Starting

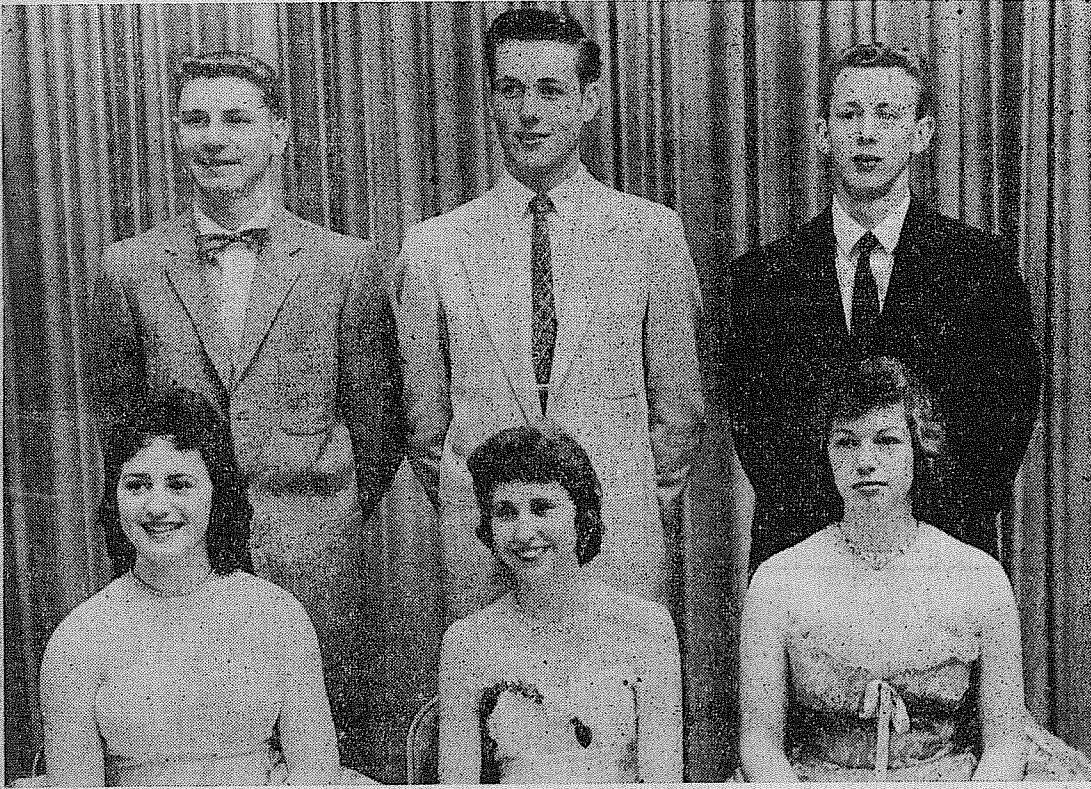
Sec. 34.66 P.L. & R
U.S. Postage Paid
Parkland Branch
Tacoma, Wash.
Permit No 9P
Occupant or Boxholder
Rural Route
Postmaster: If unable
to deliver, return post-
age is guaranteed on
addressed papers.

The TIMES JOURNAL

THURSDAY, APRIL 25, 1957 • Volume 12, No. 33 PUBLISHED AT PARKLAND, WASH. GRanite 0223

New Business Buildings for Parkland Area

Royalty To Reign at Bethel Hi Senior Ball



TOP SECRET—The identity of the King and Queen who will reign over a wonderland of "Pink Fantasy," the theme of this year's senior ball at Bethel high school Friday evening, April 26, will be announced during the intermission, the choice having been made by secret ballot of the class. The spotlight will include the Royal Court of six, then narrow down to the King and Queen. Music will be furnished by the "Queen's Men" orchestra and dancing will begin at 8:30 p. m. All Bethel students, escorts and parents are cordially invited. The Royal Court, shown above, are: Left to right, standing, Kirk Bardwell, Floyd Taylor, Ken Riley; seated, Betty Garrison, Corinne Wedmark, Sonja Langtwaite.

Woodland P-TA Plans Dinner, Carnival May 4

Woodland P-TA will hold a carnival and ham dinner at the school Saturday, May 4. Plans for the affair were completed at a meeting held Tuesday evening, April 16, at the Henry Bassi home; present were Mesdames E. Snider, W. West, W. Williams, L. Siefert, R. Schaefer, B. Ruyle, Mr. and Mrs. Henry Bassi, Art Harbor and Armond LeBlanc.

The Woodland P-TA opened their April meeting at the school Friday evening with the 2nd grade pupils, under the direction of their teachers Mrs. Parker and Mrs. Thompson, presenting a musical, "Sleeping Princes." Joette Nish presented Mary Ferguson, Patty McMahon and Isabel Swanson in tap selections. Markida Hipkins, Ann Doolin, Ann Wolford, Frances Neff, Kathy Gansburg, Rosalie Divilbiss and Del-Sa Nish danced the Can-Can.

Today's Laff

SPRING — The time of the year unmarried gals get "Bride" ideas!
SUMMER SHOES — At Pocket Pleasing Prices!
Also — One-day shoe repair service.
PAUL'S SHOES
167th & Pacific Spanaway
Next to Bargain Basket

Cedar Mill Run Wood up to 25"
PICKUP or TRAILER LOAD
U-Haul
50c
Split Cedar Fence Posts
37c ea. in lots of 300
43c ea. in lots of 100
GR 4080

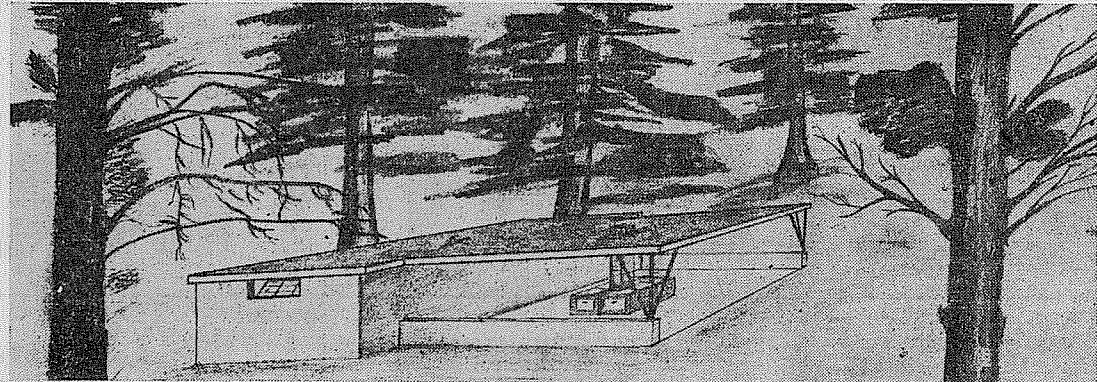
BUY - SELL - TRADE "ANYTHING"
U - B
SAVING MART
12603 Pacific Avenue

Phone **GR 3221** For
FREE Pick-Up And Delivery Service
FAST Courteous And Efficient Service
GENTLE DRY CLEANING
PARKLAND CLEANERS
11004 Pacific Ave. GRanite 3221
North of the Bank Corner
24 HOUR SERVICE AT THE PLANT

Scout Parents To Meet At Midland

The regular parents meeting of the Midland Boy Scout Troop 84 will be held in the Scout hall Wednesday, May 1, at 8:00 p. m. The main topics for discussion are the Scout Exposition and the Camporee.

Spanaway Will Make This Dream Come True



LOOKING TO THE FUTURE—People of the Spanaway area are taking a long look into the future of their children in their support of a recreation area to provide wholesome fun for everyone. Pictured above is the artist's sketch of the kitchen and rest room building planned as the first unit of the proposed Spanaway Recreation Area which people of the community expect to see well started this season. (See Story on Page 17).

Joanne Payne Is Named PLC May Queen

Joanne Payne will be crowned Queen of the May at the 24th annual May Festival to be held in the P. L. C. gymnasium on Wednesday evening, May 1, at 8:00 o'clock.

"Hi Neighbor"

NEW 1957 full size Chevrolet 1/2-ton pick-up, complete with 5 tires, directional signals, heaters, electric wipers. Delivered to your door for only \$425.00 down, balance monthly on our Insured Monthly Payment plan. Write us, wire us, phone us, see us.

Klasey Chevrolet Co., Inc.
At Morton, Wash.
Eastern Lewis County
Phone 2434; Open Every Day
8:00 a. m. to 8:00 p. m.
We Are Never Undersold

Friendly Service Since 1908
Convenient to All Cemeteries—
All Costs on One Plan
PHONE **HAWTHORN 3353** 5436 SOUTH PUGET SOUND AVE
PIPER FUNERAL HOME

Clover Creek Smoker April 26

The annual Clover Creek school smoker, which is sponsored by the P-TA, will be held Friday, April 26, at 7:30 p. m. in the school gym. Donations for this fund raising event are: Adults 50c, children 35c. The P-TA board advises that there is a rate of \$1 per family of three or more coming as a group.

A new and well planned building for Parkland Cycle Shop (Del Cheney) is being put up near the present site of the business by Lawrence Armstrong, owner of the property, at 11011 Pacific Ave. The one-story fireproof concrete block structure will be 30 by 45 feet designed for the addition of a second story at a future time if desired. James Locke is the contractor. The building presently occupied by Parkland Cycle will be removed when the firm is established in the new one.

Now on Garfield street is the fine modern dental clinic at C St., next to the Parkland post-office, on which work was started this week. Carl Hedlund is the contractor but details were not available as to the size or design of the structure. It is reported that office space will be included for Dr. Kenneth L. Pate, well known Parkland dentist, as well as others.

A fourth new addition to community enterprises will be the Texaco service station now building at 136th and Pacific Ave. with Western Construction Co. the contractors. Details are not at this time available.

Stationed In Korea

7th Div. Korea (AHTNC) — PFC James C. Masterson, 23, whose wife, Yvonne, lives on Rt. 1, Spanaway, is a member of the 7th Infantry Division in Korea. Masterson, an assistant squad leader in Company F of the division's 32nd Regiment, entered the Army in January 1956, and arrived overseas last July.

Games Party

There will be a games party in Our Lady Queen of Heaven parish hall, 146th and A streets, Friday evening, April 26, beginning at 8:00 o'clock. Andrew Lorenz is general chairman, Mrs. Adam Friesz chairman of the refreshment committee.

Cookie Sale a Success

The 32 troops in the Southeast District who participated in the Girl Scout Cookie sale wish to express their appreciation to the community for the outstanding cooperation. The total number sold were 6,911. The money goes toward the permanent camp at St. Albans, for day camp support, and to troop treasuries for their individual projects.

Rebekah
Those attending Rebekah Unit 26 at Orting were Mesdames E. Tinius, E. Robinson, Albert Nelson, John LaPore, Carter Larson and H. Drab, the Misses Inez Langtwaite and Thelma Funk.

Community Church
"Resurrection Now" is the theme of the Rev. Paul Nelson's sermon at the 11:00 a. m. service at Covenant Community church Sunday. Sunday school is at 9:45 a. m., the evening service at 7:00 o'clock.
Reporter — Mrs. Kate Nelson, Graham 7-7640.

With the 1957 Parkland Round-up only six weeks away (June 7, 8, 9), interest now centers in the selection of the Queen and her Princesses.

Various clubs and groups in the community will be nominating candidates for this high honor and any young girl who can qualify may enter the contest on her own. Details of the Parkland Round-up Queen contest are contained in the official information and entry blank, as follows:
I. Eligibility
Candidates open to girls sixteen to twenty-one inclusive, unmarried, and having residence in Pierce County. Candidate must be at least 16 and not over 21 on June 1, 1957.
II. Judging
Five impartial, qualified judges will judge the girls on poise, beauty, and horsemanship; and rank girls according to scoring rules set down by the Parkland Round-up.

Scoring will be determined on a maximum point basis of 3000 decided and obtained as follows:
A. A maximum of 1000 points for beauty and poise.
B. A maximum of 1000 points for horsemanship.
C. A maximum of 1000 points for selling a limited number of Parkland Round-up buttons.
Explanation of Part A and B. Sunday afternoon, May 26, the contest for beauty, poise and horsemanship will be held at the Parkland Round-up grounds. Each candidate will be interviewed and then mount and display her ability to handle her horse easily and gracefully, and other points of good horsemanship. Judges will rank and score each candidate.

Explanation of Part C:
Each candidate will be given 100 Round-up buttons at the time of her acceptance as a candidate. She will receive 10 points for each button sold but she may earn only a maximum of 1000 points. Button sales benefit the Parkland Round-up Community Park fund. Judging from the number of buttons sold in previous years, it should be possible for every candidate to earn her 1000 points in this part of the contest. Button sales commence May 1 and end May 20.
Fill out below, detach, and mail as directed:
To: Betty Anderson, treasurer, 9813 Pacific Ave., Parkland, Wn.
I, living at wish to enter the contest for Queen of the 1957 Parkland Round-up and hereby agree to abide by the rules set down by the Parkland Round-up committee.

Date of Birth
Phone Number
Sponsoring Organization, if any

Graham News

An Easter party was held Friday evening at the home of Mrs. H. Drab. New Easter bonnets were presented; those winning were Mrs. E. Robinson, Mrs. N. Funk, Mrs. John LaPore and Mrs. Albert Nelson, after which a delicious lunch was served.

Visiting
Mrs. Sam Jenkins is visiting her daughter, Mrs. Ray Herkes of Renton.

Mr. and Mrs. Albert Nelson were dinner guests of their daughter and family, Mr. and Mrs. D. E. Gooch on Easter Sunday.

Amaranth Lodge In Installation

The Amaranth Lodge of Kapaowin held a public installation of officers Saturday evening. Mr. and Mrs. Fred Erickson were installed as royal matron and royal patron; Mr. and Mrs. Dennis Butler as associate matron and patron; Wayne Milton, trustee for three years; Lloyd Valentine, treasurer; Irene Butler, secretary; Mrs. Orley Andrews, conductress; Mrs. Calla Geer, associate conductress; Mrs. Roy Larson, marshal in the east; Mrs. Wayne Milton, marshal in the west; Mrs. Aldabelle Johnson, standard bearer; Mrs. John Snyder, prelate; Florence Hardtke, Truth; Jean Nichols, Faith; Nina Bernier, Wisdom; Eva Blocker, Charity; Marguerite Hansen, musician; Grace Hardtke, historian; Clyde Nichols, warden; Ivan Reed, sentinel.

Shower
A baby shower was given for Mrs. Mary Strickland Thursday at the home of Mrs. Christianson. Assistant hostesses were Doris Broaten and Shirley Medlock.

Trip South
Mrs. Fred Sprague and her father, Mr. Carrol Brown motor-ed to California to visit relatives. They plan to be gone two weeks.

Reporter — Mavis Zacek, Rt. 1, Box 246-B, Graham.

Drive Safely Save A Life

Round-up Beard Growing Contest Starts May 1; Many Fine Prizes

Beginning May 1, whiskers will be no unusual sight in the Parkland area, with the spirited contest for the many valuable prizes of the annual Parkland Round-up beard growing contest giving a lot of fellows a valid excuse for a long vacation from shaving. The contest is open to any Pierce County resident, who must be clean shaven on May 1.

Sales Preschool Presents Awards To Two Members

The highest honor awarded by the P-TA organization is the Honorary Life Membership and the Acorn pin. The money from the purchase of Life Memberships supports the Washington Congress P-TA scholarship program for teacher training.

James Sales Preschool recently presented the award to Mrs. Russell Semple for her work in formation of a Cub Pack; being a Den Mother in Parkland and formerly in Seattle; work with the UGN and community service projects; service to schools by chairmanships and offices in Sales Preschool and P-TA and Franklin Pierce High Boosters.

The award was also given by the James Sales P-TA to Mrs. George Stephenson in recognition of her work on service projects through various clubs of which she is a member; being a member "behind the scenes" committees; service to her neighbors and P-TA members; outstanding effort in chairmanships and offices in P-TA and Preschool.

Service to the home, community, school, and Church is the foundation of P-TA work. It has been well exemplified by these award winners.
—Photos by McKewen

Professional Directory
Farmers Mutual Ins. Co.
Auto - Fire - Liability
J. J. GUNNS Agency
and BARBER SHOP
303 Ea. 176th St. GR 7757
2 Blocks East of Transformers, Spanaway

-CLIFFORD M. KORSMO
Lutheran Brotherhood
Life Insurance
GRanite 5644

Professional Directory
Farmers Mutual Ins. Co.
Auto - Fire - Liability
J. J. GUNNS Agency
and BARBER SHOP
303 Ea. 176th St. GR 7757
2 Blocks East of Transformers, Spanaway

Free Estimates Up To 3 Years To Pay
80-Rod Roll Barbed Wire 10.89
42" Looped 100-Ft. Roll Wire Fence . 29.95
White Per Gal. Outside Paint 3.59
(Good For Fences)
Shingle Stain . 2.99
(Just Add Water Mix) Sack Concrete Mix . 1.00
8' Econ. Grade Each 2 x 4's 24c

Professional Directory
Farmers Mutual Ins. Co.
Auto - Fire - Liability
J. J. GUNNS Agency
and BARBER SHOP
303 Ea. 176th St. GR 7757
2 Blocks East of Transformers, Spanaway

Professional Directory
Farmers Mutual Ins. Co.
Auto - Fire - Liability
J. J. GUNNS Agency
and BARBER SHOP
303 Ea. 176th St. GR 7757
2 Blocks East of Transformers, Spanaway

Professional Directory
Farmers Mutual Ins. Co.
Auto - Fire - Liability
J. J. GUNNS Agency
and BARBER SHOP
303 Ea. 176th St. GR 7757
2 Blocks East of Transformers, Spanaway

Professional Directory
Farmers Mutual Ins. Co.
Auto - Fire - Liability
J. J. GUNNS Agency
and BARBER SHOP
303 Ea. 176th St. GR 7757
2 Blocks East of Transformers, Spanaway

Professional Directory
Farmers Mutual Ins. Co.
Auto - Fire - Liability
J. J. GUNNS Agency
and BARBER SHOP
303 Ea. 176th St. GR 7757
2 Blocks East of Transformers, Spanaway

Professional Directory
Farmers Mutual Ins. Co.
Auto - Fire - Liability
J. J. GUNNS Agency
and BARBER SHOP
303 Ea. 176th St. GR 7757
2 Blocks East of Transformers, Spanaway

Professional Directory
Farmers Mutual Ins. Co.
Auto - Fire - Liability
J. J. GUNNS Agency
and BARBER SHOP
303 Ea. 176th St. GR 7757
2 Blocks East of Transformers, Spanaway

Round-up Beard Growing Contest Starts May 1; Many Fine Prizes

Beginning May 1, whiskers will be no unusual sight in the Parkland area, with the spirited contest for the many valuable prizes of the annual Parkland Round-up beard growing contest giving a lot of fellows a valid excuse for a long vacation from shaving. The contest is open to any Pierce County resident, who must be clean shaven on May 1.

Sales Preschool Presents Awards To Two Members

The highest honor awarded by the P-TA organization is the Honorary Life Membership and the Acorn pin. The money from the purchase of Life Memberships supports the Washington Congress P-TA scholarship program for teacher training.

James Sales Preschool recently presented the award to Mrs. Russell Semple for her work in formation of a Cub Pack; being a Den Mother in Parkland and formerly in Seattle; work with the UGN and community service projects; service to schools by chairmanships and offices in Sales Preschool and P-TA and Franklin Pierce High Boosters.

The award was also given by the James Sales P-TA to Mrs. George Stephenson in recognition of her work on service projects through various clubs of which she is a member; being a member "behind the scenes" committees; service to her neighbors and P-TA members; outstanding effort in chairmanships and offices in P-TA and Preschool.

Service to the home, community, school, and Church is the foundation of P-TA work. It has been well exemplified by these award winners.
—Photos by McKewen

Professional Directory
Farmers Mutual Ins. Co.
Auto - Fire - Liability
J. J. GUNNS Agency
and BARBER SHOP
303 Ea. 176th St. GR 7757
2 Blocks East of Transformers, Spanaway

Professional Directory
Farmers Mutual Ins. Co.
Auto - Fire - Liability
J. J. GUNNS Agency
and BARBER SHOP
303 Ea. 176th St. GR 7757
2 Blocks East of Transformers, Spanaway

Professional Directory
Farmers Mutual Ins. Co.
Auto - Fire - Liability
J. J. GUNNS Agency
and BARBER SHOP
303 Ea. 176th St. GR 7757
2 Blocks East of Transformers, Spanaway

Professional Directory
Farmers Mutual Ins. Co.
Auto - Fire - Liability
J. J. GUNNS Agency
and BARBER SHOP
303 Ea. 176th St. GR 7757
2 Blocks East of Transformers, Spanaway

Professional Directory
Farmers Mutual Ins. Co.
Auto - Fire - Liability
J. J. GUNNS Agency
and BARBER SHOP
303 Ea. 176th St. GR 7757
2 Blocks East of Transformers, Spanaway

Professional Directory
Farmers Mutual Ins. Co.
Auto - Fire - Liability
J. J. GUNNS Agency
and BARBER SHOP
303 Ea. 176th St. GR 7757
2 Blocks East of Transformers, Spanaway

Professional Directory
Farmers Mutual Ins. Co.
Auto - Fire - Liability
J. J. GUNNS Agency
and BARBER SHOP
303 Ea. 176th St. GR 7757
2 Blocks East of Transformers, Spanaway

Professional Directory
Farmers Mutual Ins. Co.
Auto - Fire - Liability
J. J. GUNNS Agency
and BARBER SHOP
303 Ea. 176th St. GR 7757
2 Blocks East of Transformers, Spanaway

Professional Directory
Farmers Mutual Ins. Co.
Auto - Fire - Liability
J. J. GUNNS Agency
and BARBER SHOP
303 Ea. 176th St. GR 7757
2 Blocks East of Transformers, Spanaway

Professional Directory
Farmers Mutual Ins. Co.
Auto - Fire - Liability
J. J. GUNNS Agency
and BARBER SHOP
303 Ea. 176th St. GR 7757
2 Blocks East of Transformers, Spanaway

Professional Directory
Farmers Mutual Ins. Co.
Auto - Fire - Liability
J. J. GUNNS Agency
and BARBER SHOP
303 Ea. 176th St. GR 7757
2 Blocks East of Transformers, Spanaway

Dryer's MORTUARY
GR 0253
Easy Parking

SHOP & SAVE AT BROOKDALE LUMBER COMPANY

Fencing Per 8' Section
36" Picket Fence . 3.60
42" Rail Fence . . . 2.80
60" Basket Weave 4.40
72" Stake Fence . . 5.20
PRICE INCLUDES 4x4 POSTS, RAILS, PICKETS and GALVANIZED NAILS

Free Estimates Up To 3 Years To Pay

80-Rod Roll Barbed Wire 10.89
42" Looped 100-Ft. Roll Wire Fence . 29.95
White Per Gal. Outside Paint 3.59
(Good For Fences)
Shingle Stain . 2.99
(Just Add Water Mix) Sack Concrete Mix . 1.00
8' Econ. Grade Each 2 x 4's 24c

BROOKDALE LUMBER COMPANY
GR 8669
136th & Pacific

-- SAVE MONEY -- AT DICK'S RICHFIELD SERVICE
72nd & EAST "L" STREET HA 9848
(NOW OPEN FOR BUSINESS)
WHOLESALE PRICES ON
• RHINOFLEX ARMSTRONG TIRES
• EXIDE BATTERIES
GASS FOR LESS
COMPLETE BRAKE SERVICE
LUBE JOBS - OIL - TUNE-UPS



**STRIKE
IT RICH
FOOD SALE**

MINUTE MAID FRESH FROZEN
ORANGE JUICE 12-Oz. Tin Large **29^c**

Minute Maid. Pink or Reg. 6-Oz. **2 for 25^c**
LEMONADE

Pic'sweet 10-Oz. Pkg. **2 for 25^c**
STRAWBERRIES

RHUBARB . . . 1-Lb. Pkg. **5^c**

LARGE AA
EGGS . . . doz. **42^c**

BANNER
OLEO

Pound
5/1.00



SCOTT White or Colored
WALDORF TISSUE 4 Roll Pack **33**



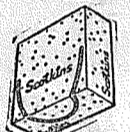
SCOTT NAPKINS
SOFT WEVE 2/25^c



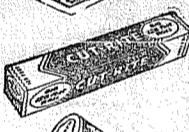
SCOTT - 400 Count
SCOTTIES 2/49^c



SCOTT - White or Colored
SCOT TISSUE 2/25^c



SCOTT
SCOTKINS 2/29^c



SCOTT Wax Paper
CUT - RITE 21^c



SCOTT - White or Colored
SCOT TOWELS 2/37^c

**BETTY CROCKER
CAKE MIXES**
7 Delicious
Flavors
19^c
PKG.

**COFFEE HOUSE
COFFEE**
Drip or Regular Grind
Lb. 85^c

ALL PURPOSE
PILLSBURY FLOUR 25-Lbs. **1.89**

NALLEY'S
MAYONNAISE QUART **49^c**

SUMMIT SPECIAL (Whole Bean)
COFFEE lb. **79^c**

HARDWARE

NU LIFE
Fertilizer

6 - 10 - 4

Sack **\$279**

PEDERSEN'S FRESH PAN READY WASHINGTON GROWN
CUT UP

LOAD YOUR LOCKERS NOW

FRYERS

Not
Less
Than
A
2-Lb.
Pack **89^c**

FRESH GRAIN FED
**PORK
CHOPS** Lb. **49^c**

RITZ CRACKERS 1-Lb. Pkg. 31^c
SUNSHINE SHREDDED WHEAT Pkg. 15^c

**RADISHES or
GREEN ONIONS** 3 bun. **10^c**

Calif. Shafter New
POTATOES 10 lbs. **39^c**

STORE HOURS

8 A.M. TILL 9 P.M. DAILY EXCEPT SUNDAYS

(Large Paved Parking Lot)

**SUMMIT
TRADING COMPANY**

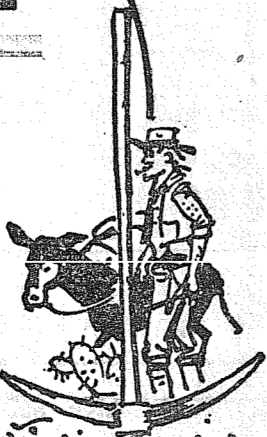
10409 Canyon Road - Tacoma GR 5848

No Sale To Dealers
We Reserve The Right To Limit Quantities

LUXURY MILD
CHEESE

Pound

49^c



EASTERN WASHINGTON

BEEF SALE

TENDER YOUNG STEERS
U. S. GRADED AND INSPECTED

STEAKS
SIRLOIN - RIB
OR ROUND
..... Pound **49^c**

T-Bones Pound **59^c**

PURE FRESH
Ground Round Pound **49^c**

ROUND BONE
Pot Roast ... Pound **39^c**

BLADE CUT
Pot Roast ... Pound **29^c**

JAMES HENRY - LEAN - COUNTRY STYLE SLICED
Bacon Pound **49^c**

SWIFT'S
Weiners **79^c**
2-LB. CELLO PKG.

McDANIELS

Are giving you a **Stokely Week Party**
A jolly event to
Save on **CANNED**
FRUITS and VEGETABLES

-  Stokely's FORDHOOK LIMA BEANS 303 CANS **4 for \$1**
-  Stokely's FINEST SECTIONS GRAPEFRUIT 303 CANS **5 for \$1**
-  Stokely's FINEST Diced BEETS 303 CANS **9 for \$1**
-  Stokely's GRAVENSTEIN APPLESAUCE 2 1/2 CANS **4 for \$1**
-  Stokely's BLUE LAKE CUT GREEN BEANS 303 CANS **6 for \$1**
-  Stokely's GOLDEN CREAM CORN 303 CANS Or Whole Kernel **6 for \$1**
-  Stokely's HONEY POD SWEET PEAS 303 CANS **6 for \$1**
-  Stokely's FINEST TOMATO JUICE 46 OZ. CANS **4 for \$1**
-  TOMATO CATSUP 14 OZ. BOTTLE **6 for \$1**
-  Stokely's Stewed TOMATOES 303 CANS **5 for \$1**
-  Stokely's Halves. Freestone PEACHES 2 1/2 CANS **3 for \$1**
-  PORK & BEANS NO 2 1/2 CANS **5 for \$1**
-  TAMALES WITH SAUCE VAN CAMP'S 300 CANS **7 for \$1**
-  KIDNEY BEANS VAN CAMP'S 303 CANS **4 for \$1**
-  STOKELY'S Sliced GREEN BEANS 303 TINS **4 for \$1**

Stokely's Whole GREEN BEANS 303 Tin **4 for \$1**

Stokely's SALADETTES 300 Tin **4 for \$1**

Van Camp's HOMINY Gold or White 2 1/2 Tins **6 for \$1**

DEL MONTE PINEAPPLE SLICED No. 2 1/2 3 Cans **\$1.00**

DEL MONTE PINEAPPLE CHUNKS No. 2 4 Cans **\$1.00**

DEL MONTE PINEAPPLE CRUSHED No. 2 5 Cans **\$1.00**

DEL MONTE PINEAPPLE JUICE 46-Oz. Tins 4 For **\$1.00**

Free Coffee & Cookies All Day Fri. & Sat.

NALLEY'S "Crisp" 16-Oz. Jar Cucumber Chips **5 for \$1.00**

Sun Valley 5-Lbs. MARGARINE ... **\$1.00**

Swift Brookfield Amer. 2-lb. CHEESE ... loaf **69^c**

Betty Crocker Angel Pkg. CAKE MIX .. 2/ **49^c**

Yuban DeLuxe 2-Lbs. COFFE **\$1.89**

McDaniels Bonnie Good. Lb. COFFE **85^c**

Golden No. 1 Lb. BANANAS **10^c**
Calif. Med. Size Each GRAPEFRUIT .. **5^c**

Borden's MILK TALL TINS. **Surprise!**

AA LARGE EGGS
EGGS
Not ordinary "Grocery Store Eggs",
But Fresh Daily from One Local Farm!
No Cold Storage Eggs at McDaniels!
dozen
42c

EASTERN WASHINGTON
NO. 1 NETTED GEM
Potatoes
10 Lbs. ... 29^c

McDANIELS
AIRPORT & CANYON ROAD
The Home of The Low Price
Store Hours: 9:00 Till 9:00 — Sundays 9:00 Till 7:00
PRICES EFFECTIVE THURS., FRI., SAT. THIS WEEK
Lots Of Free Parking Space



Lewis Meat Market

FORMERLY MALCOM'S

FOR YOUR LOCKER
DRESSED HOGS lb. 34c

SHOULDER
RIB STEAKS lb. 49c

COUNTRY
PORK SAUSAGE 3-lbs. 89c

GROUND ROUND lb. 59c

SIRLOIN STEAK lb. 65c

CARSTEN'S
SLICED BACON lb. 39c

GROUND BEEF, lean 3-lbs. 69c

BY THE PIECE
B O L O G N A lb. 29c

SAVE! — FOR YOUR FREEZER
LOCKER BEEF 25-lbs. \$9.95
By The Half

LOCKER BEEF lb. 35c
All Cuts Included

Open Tuesday through Saturday: 9 a.m. till 6 p.m.
10903 Canyon Road at Summit View
Phone GRanite 8258

Building Permits

Dale L. Gohr, \$200 porch, 907 So. 111th.
Chas. McClelland, \$3500 motel cabin, 12039 Pac. Highway
Geo. Mathewson, \$18,000 frame duplex, 751-53 Tule Lake Rd.
Anton Christiansen, \$2000 frame home, Graham.
Jerrell J. Bushell, \$1100 addition to home, 5605 Vickery Rd. E.
Bill Fueston, \$700 washroom, Rt. No. 1, Box 464, Spanaway.
Fred G. Berto, \$500 cabin, Elbe.
Charles H. Newbury, \$2000 addition to home, Rt. No. 1, Box 198, Spanaway.
John O. Freer, \$1500 addition to home, 13109 Park Ave.

• FIBER SUPPLIES
• FLORAL RENTALS
• GIFTS & NOVELTIES

FREE LESSONS
Tues., Wed., Fri.
7:00 - 9:30

CERAMIC'S
BY VEE
10215 Park GR 7293

New Night Highway Safety Program



Congressman Kenneth A. Roberts, of Alabama, Chairman of the House Subcommittee on Highway Safety, places the first of a new type reflectorized decal on the back of a truck to launch a nation-wide trucking industry night time safety program. Many truck operators will be putting similar safety decals on their trucks in advance of the summer Slow Down and Live Safety Campaign sponsored by the governors of the forty-eight states. The night safety project, headed by Goley D. Sopheimer, (right), director of safety of the American Trucking Associations, is the first of a three-part drive of the ATA in conjunction with the governors' program to cut down highway accidents during the summer months.

Free Prizes

DURING OUR OPEN HOUSE **FRIDAY, SATURDAY, APRIL 26-27**

• FEATURING COMPLETE LINE OF SCHORN PAINTS

Register for two room lots of interior finishes and four gallons of outside white . . . 6 prizes in all . . . not necessary to make a purchase to register

PAINT SPECIAL
OUTSIDE WHITE
Reg. \$3.49 Per Gal.
SALE PRICE
\$2.99
Per Gal.

GLASS SPECIALS
20% Off on Glass Heavy Crystal TABLE TOPS 16x32
Reg. \$3.70
Sale Price **\$2.99**

COFFEE & COOKIES SERVED ALL DAY

Deans Paint & Glass

Open 9:00 to 6:00. (Across Street from Liquor Store)
13021 Pacific Avenue Parkland, Wash.

COMFORT GAUZE DIAPERS

Size: 20x40. Reg. \$3.49 Value

Special During Baby Week Doz. **\$2.29**

TWO COMFORT RECEIVING BLANKETS

Size: 26x36. Reg. \$1.29 Value

Special During Baby Week **98c**

36 x 50 PEPPERELL Baby Blankets

With 3" Hem Binding

5 Colors To Choose From

Regular \$3.49 Value

Special During Baby Week . . . **\$2.98**

where over 57,000 families watch their savings grow

grow

grow

A MUTUAL SAVINGS INSTITUTION
Pacific Federal Savings
and Loan Association
Bellingham • Seattle • Tacoma
Portland • Everett

American Legion News
S. Carta, Reporter

Legionaires, don't forget the potluck dinner this Thursday evening, 25th April, at 6:30 o'clock. Cook up a pot, bundle up the family and have dinner with us. I know you will enjoy a night out. A short meeting will be held after dinner and I also have 36 color slides on Camp Easter Seal which will be shown. See you Thursday for dinner!

Save A Life

LOOK

8 FOOT BEAN POLES . . . 3c Each

FINISHED & COMMON LUMBER All Grades

DOOR JAMBS STEPPING 2x6 DECKING

PAINT - GLASS - HDWR. & ELECTRICAL SUPPLIES

BASKETT LUMBER CO.
MILL & RETAIL YARD
96th and Portland Ave.
GR 5844

PRICED TO SAVE YOU \$\$\$

TV Jamboree!

Clearance on Used TV

1 - 10" TABLE MODEL T.V. **\$22.50**

4 - 17" CONSOLE T.V.s TO **\$90.00**

1 - 20" CONSOLE T.V.

1 - 20" TABLE MODEL T.V. With New Picture Tube

1 - 21" TABLE MODEL T.V.

1 - 21" CONSOLE T.V.

All Reconditioned Satisfaction Guaranteed

Hoffman Near New 27" Console TV **\$249.00**

Hoffman Near New Console TV **\$369.95**
ORIGINALLY \$795.00

90 DAY FREE SERVICE ON ALL NEW SETS

COMPLETE SERVICE DEPT. - FREE TUBE CHECKING
PICK-UP & DELIVERY SERVICE

YOUR FUEL OIL AND APPLIANCE DEALER

POCHEL

 Distributing Company
140th & Pacific Avenue GRanite 8624

Your Friendly Albertson's Food Centers

COFFEE ALBERTSON'S SPECIAL BLEND Lb. 69c	TIDE GIANT SIZE Pkg. . . . 69c	TISSUE ZEE 4-ROLL FAMILY PACK 3 For \$1.00
--	--	--

SAVE --- HERE

PRICES EFFECTIVE THURSDAY THROUGH SATURDAY — NO SALES TO DEALERS

CAKE MIX DUNCAN HINES White, Yel., Choc. 2 For 49c	POTATO CHIPS NALLEY'S 39c SIZE Pkg. . . . 27c	MARGARINE SUNNYDALE 5 Lbs. \$1.00
--	---	---

In Store Bakery!
EVERYTHING Baked in our own bakeries.
BAKED IN SIGHT BY MEN IN WHITE

Cocoanut CREAM PIES Each **59c**

Blueberry MUFFINS **6/29c**

Albertson's food centers
OPEN EVERY EVENING

2 STORES TO SERVE YOU
★ 72nd And Pacific Avenue
★ 6010 Mt. Tac. Drive---Lakewood
OPEN DAILY 9 TO 9 - SUNDAYS 10 TO 7

TOOLS EVERY

House Holder Should Own

To take care of the many jobs that need attention around the house and garage: a hammer with a head that isn't forever flying off; a good all-around saw that can be depended on to cut when it's needed; a pipe wrench; slipjoint pliers; a zig-zag rule; two or three chisels; a brace and assortment of bits; and a screw driver on which you can get a good grip and the handle of which won't turn on the shank.

Mothers Fathers bring the kiddies in for Free Balloons

MIDLAND HARDWARE
8502 Portland Avenue
OPEN SUNDAYS - GRanite 5262

DON'T MISS OUR

SPRING VARIETIES



TASTEWELL **CHUNK TUNA** No. 1/2 Tins **5/\$1.00**

SHORTENING SNOWDRIFT 3 Lb. Tin **85c**

TASTEWELL **PEACHES** Sliced or Halves No. 2 1/2 Tins **29c**

HORMEL'S 12-Oz. Tins **SPAM 43c**

M. D. 4 For **TISSUE 37c**

DINNER BELL 4 For **MARGARINE 89c**

TASTEWELL **GARDEN PEAS** No. 303 Tins 2 For **25c**

TASTEWELL **CREAM CORN** No. 303 Tins 2 For **25c**

TASTEWELL Canned Goods Sale

TASTEWELL NO. 300 TINS **Butter Beans 10c**

TASTEWELL NO. 300 TINS **Kidney Beans 10c**

TASTEWELL NO. 300 TINS **Pork & Beans 10c**

TASTEWELL NO. 300 TINS **Pinto Beans 10c**

TASTEWELL NO. 300 TINS **Chili Beans 10c**

TASTEWELL NO. 300 TINS **Blackeye Beans 10c**

TASTEWELL NO. 300 TINS **White Hominy 10c**

TASTEWELL NO. 300 TINS **Golden Hominy 10c**

Garden-Fresh **VEGETABLES**

WASHINGTON GROWN - NO. 1 **ASPARAGUS 29c**
2 POUNDS
30 Lb. Crate Unclassified \$2.69

WHITE SHAFTER NO. 1 **POTATOES 5c**
1 POUND

ARIZONA **Grapefruit 45c**
8-LB. BAG

WALDORF - COLORED

NEW PACK **TISSUE 39c**
4 Rolls

ROSE DALE - CREAM STYLE **CORN 10c**
Buffet Tins

PARK 'N SHOP DRUG DEPARTMENT
Registered Pharmacist On Duty
16 Hours Per Day
8:00 A.M. TIL MIDNIGHT
Phone Your Prescriptions To Us!
GR 8693

Finest Quality **MEATS**

SLICED BACON
HORMEL'S DAIRY BRAND **63c**
Pound

WEINERS
HORMEL'S - SKINLESS ALL MEAT **45c**
Pound

SHORT RIBS
U. S. GOOD STEER BEEF Bake or Braise **29c**
Pound

We Reserve The Right To Limit Quantities

COMPLETE FOOD SELECTIONS ALWAYS

PRICES EFFECTIVE APRIL 25th - 26th - 27th

PARK-N-SHOP
THRIFTWAY

. . . 98TH AND PACIFIC AVENUE . . .

STORE HOURS
PARK 'N SHOP
8:00 A.M. TIL 12 P.M.
Daily

MIDLAND
8 A.M. TIL 9 P.M.
Sun.: 10 A.M. TIL 7 P.M.

MIDLAND
THRIFTWAY

. . . 98TH AND PORTLAND AVENUE . . .

HOMES LIST WITH LORING FARMS \$6975 - FURNISHED 2 BEDROOM home in Parkland, completely furnished, in excellent location on 115th St. Large lot, garage. Call Bill Black, GR 3501 days, 3272 evs.

Business Service 3

HOUSE MOVING - Leveling, foundations; cement work; free estimates. PR 2653. 3ctf

HILL TOP GRAVEL CO.

Puyallup 5-2198 for Delivery or will load your truck. Pit at end of 23rd Ave. S.E. Puyallup.

Screened Rd. Gravel Crushed Rock - Top Soil - Drain Gravel 6 Days a Week

GRAVEL - All sizes; top soil; leveling; weekend deliveries; GR 7291. 3ctf

DON'T encourage dishonesty; locks keyed, combinations changed; Parkland Cycle & Key; 11009 Pacific Ave. Granite 5772. 3ctf

HEAT BEAUTY SHOP

HA 7628 72nd and Portland Ave.

FAST PHOTO SERVICE - In at 10:00 out at 5:00. QUALITY PHOTO SERVICE, 9818 Pacific Ave., GR 7271. 3ctf

PETE SYLTE WELL DRILLING

JACUZZI PUMPS Sales & Service Service on All Pumps

Rt. 1, Box 475, Spanaway, Wn. Phone GRanite 4748 OWEN TAYLOR, Service Man LA 8043

SNAP ON TOOLS - Johnny Hall, 1012 South 110th, Hubbard 0856. 3ctf

CANYON ROAD GRAVEL & SUPPLY; pick-ups and trailers loaded or we haul; GR 7586. 3ctf

Midland Nursing Home

10816 Portland Ave. GR 5395 LICENSED NURSES ON DUTY 24-HOURS A DAY

PLOWING & DISCING - Farm- all Tractor. 1st hour \$5.00, thereafter \$4.00. GR 7484. 3ctf

Clogged Drains? Toilet Won't Flush?

Just Call Us Sanitary Septic Tank Pumping Service Puy. 5-2873

GEORGE PURDUE-Plumbing, Heating, New work. Remodeling, Repairs. Phone GR 4477. 3ctf

ECONOMY Builders Supply

Airport at Portland Ave. GR 8591 USED BUILDING SUPPLIES And ECONOMY GRADE LUMBER

LAWN MOWERS sharpened and repaired at your home or pick-up service; call Van evenings, GR 3656. 3ctf

R. W. DENTON Jr. M.P. D.

Myopractor - Physical Therapy Mon. - Wed. - Fri. 5:00 p.m. to 9:00 p.m. Other times by appointment Rt. 3, Box 430 Tacoma, Wn.

TOP SOIL - Canyon Road soil; Buck; LA 3189. 3ctf

FOR SALE - Aged chicken fertilizer; delivered by yard or load; Hubbard 0936. 3c36

WE BUILD HOMES-Remodel, level buildings; cabinet work, concrete work. Reasonable, GR 3550. MA 0706. 3ctf

LAWN MOWERS

Serviced and Stored Power Mowers A Specialty Free Pick-up & Delivery

PARKLAND CYCLE & KEY

11009 Pacific Ave. GR 5772 TOP SOIL and fill dirt; crushed rock, Utah coal; GR 3536 or Puyallup 5-2038. 3ctf

Ace Dirt Moving Co.

Bulldozing - Ditching TOP SOIL - GRAVEL SEPTIC TANKS and DRAIN FIELDS Phone Puyallup 5-2452 3ctf

FOUNDATIONS-New additions; free estimates, financing; work guaranteed; GR 2002. 3ctf

SPANAWAY ELECTRIC-Con. tracing and appliances; free engineering service for electric heat; GR 7064. 3ctf

STORKVILLE BABY SHOP

Everything For Baby Including Juvenile Furniture 9618 Pac. Ave. GR 4664

POWER MOWERS sharpened and serviced; pick-up and delivery; Baldwin & Son, 947 Tacoma Ave., MA 8431. 3ctf

FERN HILL BEAUTY SHOP

COMPLETE BEAUTY SERVICE 8237 1/2 Park Ave. HI 3177

New & Used Machinery RAINIER TRACTOR

River Rd. PUYALLUP 5-2105 3ctf

SMITH CABINET SHOP-Remodeling, kitchen cabinets; we sell glass; 16309 S. Park, Spanaway; GR 7949. 3ctf

SEPTIC TANK CLEANING

Prompt Service C. V. Hutson HI 3980 HA 7038

WELL DRILLING Berkeley Pumps

JETS SUBMERSIBLES CENTRIFUGALS TURBINES Call GR 7281

Tacoma Pump & Well Drilling Co.

Rt. 7, Box 316 Tacoma Trades

STAN'S SUPER SOIL SERV. ICE: Top soil, sandy loam, peat fertilizer; HI 2305 or GR 8259. 3ctf

PARKLAND HEATING CO., service for any type heating unit; parts and filters; Williams Oil-O-Matic low pressure furnaces; 755 South 108th; GR 4045. 3ctf

AUTO GLASS, Seat covers; upholstery & convertible tops installed. Open 9:00 a.m. to 1:00 p.m. Saturdays. ART'S GLASS & UPHOLSTERY SHOP, 816 So. Tacoma Ave., MA 2200. 3ctf

ACE SEPTIC TANK SERVICE

Septic Tanks Cleaned O. B. ACKLEY GR 4343 GR 7882

SEPTIC TANKS & WATER LINES INSTALLED. Riley Brothers. Phone GR 4987, or GR 3204. 3ctf

SEPTIC TANK PUMPING - Replace and repair work. 3 years to pay; LA 8734 - HI 5945. 3ctf

South End Auto Wreckers USED PARTS Motors - Transmissions Tires - Batteries We Buy Junk Cars Also Custom Welding by Joe's Welding 1 Mile East Roy Y on Mt. Hy. Spanaway .. GR 6534

TO BUY USE the CLASSIFIED PAGES

FOUNDATIONS, additions, remodeling. Free estimates. Financing, no down payment. Phone HI 7000 anytime. 3ctf

BULLDOZING

Leveling, Back Fill, Clearing Fill Dirt, Top Soil, Ditching Manning & Smith GR 3930

PLOWING, rotovating, leveling, lawns; R. D. Deeler, GR 4940. 3ctf

RAY GOGAN Landscape Construction. Puyallup sandy loam top soil, new lawns; nothing down, 30 months to pay. GR 3127. 3ctf

BULLDOZING

Bank Run Gravel Water Lines Septic Tanks Top Soil at Reduced Prices Frank Reardon GR 5758

ROTOVATING & TRACTOR WORK; Rt. 3, Box 167, Tacoma Chesney-Etter Road. GR 7559. 3ctf

DEPENDABLE T. V. SERVICE

Prompt Service Anytime Work & Parts Guaranteed HA 6692

PRUNING, SPRAYING; lawn mowing service; reasonable rates; Parkland area; HI 1605. 3ctf

ELECTRICAL CONTRACTING - Mile B Service, Airport & Vickery Road; GR 9938. 3ctf

Parkland Septic Tank Service

GR 4426 Pumping - Credit - Cleaning

SEPTIC TANKS CLEANED-Contents hauled away. Don Redford, 8232 So. Fawcett, HA 7334. If no answer call HA 9222. 3ctf

BRICK & BLOCK WORK; fireplaces a specialty; GR 7428 3ctf

BRICK WORK - House leveling and foundations, retaining walls, sidewalk and patios, fireplace and stone work, GR 4291. 3ctf

Bert Brown Realty

11220 Pacific Ave. Office-Days: GR 8695 Evenings-YU 9221, HI 3315

Jennie L. Grodvig Parkland Realty Co.

Insurance of All Kinds Notary Public Est. in Parkland Since 1941 GR 8609 Office 302 Garfield St., Parkland "Deal with the people who give you their personal attention."

TRADE OR SALE - Ideal half block in Spanaway; owner, 14558 Bothell Way, Seattle 55. 9ctf

McMENAMIN'S

SPANAWAY 16 ACRES BEAUTIFUL acreage for motel or trailer court. Approximately 10 acres has been cultivated, the balance nice shade trees and view. For further information call Barney McFadden, Graham 7-7337, or Mick, MA 6355, HI 8408.

BEAUTY SHOP 5502 PACIFIC AVE. A LITTLE gold mine! Owner has to quit-doctor's orders. For further information call Barney McFadden, Graham 7-7337, or Mick, MA 6355 or HI 8408.

120 ACRES BEAUTIFUL new 2-bedroom rambler, tile roof. Also older 4-bedroom home, concrete fn. 40 acres under cultivation, the best of land; balance pasture and approximately 300,000 feet of second growth timber; 10 miles south of Tacoma. For more details call Barney McFadden, Graham 7-7337, or Mick, MA 6355 or HI 8408.

HELP WANTED - Men and women for sales work in an expanding company; good commissions; for information write to P.O. Box 323, Spanaway, Washington. 5c33

Man or Woman OWN YOUR OWN BUSINESS A new item. First time offered. Start in spare time, if satisfied, then work full time. Refilling and collecting money from bulk machines in this area. To qualify you must have a car, references, \$720 cash to secure territory and inventory. Devoting 4 hours a week to business your end on percentages of collections should net approximately \$350 monthly with very good possibility of taking over full time. Income increasing accordingly. If applicant can qualify financial assistance will be given by Co. for expansion to full time position with above average income. Include phone in application. Write Box 2008, Parkland, Wash. 10p33

McMENAMIN'S

3514 Pacific Ave. HI 8408

FOR RENT - Furnished apartment; references required. 126 East Violet Meadow, GR 0569. 10ctf

FOR RENT - Small furnished upper apartment, outside entrance; 401 South 116th; available May 1. 10p33

FOR RENT - Small house, furnished or unfurnished; rent to be paid with farm labor; phone Graham 7-7635. 10c33

FOR RENT - 2 bedroom furnished house \$60 a month; utilities paid; vacant May 1st; GR 7448. 10p33

FOR RENT - 3-room house, furnished or partly furnished; \$50 including utilities except heat; GR 7581. 10p33

FOR RENT - Furnished duplex, 12605 Pacific Ave., Parkland. \$60 plus lights. 10c33

FOR RENT - 1 year old 2 bedroom home on 5 acres, with fireplace; wired for dryer and auto washer; available May 1st. \$55 per month. Phone GR 8450 after 5:00 p.m. 10c34

Repair Service 11

WASHING MACHINE PARTS. Largest stock in town. Repairing that pleases. B.E.'s Washer Service, 3727 So. G. HI 9409. 11ctf

Automotive 12

'57 FORDS & CHEVROLETS; wholesale prices. SMALLY MOTORS, 10410 Pacific Ave., GR 4060 anytime, evenings, Sundays. 12ctf

FOR SALE - 1950 Dodge Coronet gymratom 4-door sedan; GR 7794. 12c33

FOR SALE - Just the car for your boy or girl on graduation. 53 Olds convert. Super 88; Radio, heater, power brakes. REAL SHARP. GR 5520. 12c33

Farm Ads 13

USED TRACTOR SALE Saturday; RAINIER TRACTOR, River Rd., Puyallup; phone 5-2105. 13c36

FOR SALE - Milking machine with pipe, nozzle, gauges and 2 milking units, one with new rubber complete; \$100; W. D. Bromell, Rt. 1, Box 198, Roy, 13c33

FOR SALE - Table model cream separator, 12-gallon tank; in good condition; \$10; GR 6922. 13p33

Work Wanted 14

SEWING, alterations, mending; reasonable; GR 5636. 14c36

CHILD CARE my home, preferably 3 to 5 year old and or small baby. References. GR 5243 14c33

CHILD CARE in my home days, Parkland vicinity; phone GR 8870. 14p33

WOULD LIKE baby sitting job at my home, GR 0351. 14c33

Miscellaneous 15

COMMERCIAL INSTALLATIONS CORNELL Plumbing & Heating GR 7293

LEAVE FILM at Quality Photo Service for developing. In at 10, out at 5. 9818 Pacific Ave. 15ctf

FOR SALE - Electric fence controller; 25-foot house trailer; GR 0585. 15c33

KILN DRIED SHAVINGS \$10 a load; GR 8373. 15ctf

FOR SALE - Pigeons, white king and silver king. Reasonable. 4520 East 100th. GR 6331. 15c33

FOR SALE - Rabbit hutches never used. Reasonable. 4520 East 100th. GR 6331. 15c33

FOR SALE - German radio with tape recorder. Also old fashioned German magic lantern with glass slides; GR 7858. 15p33

FOR SALE - Northwest strawberry plants, \$1.50 per hundred; phone Puyallup 5-2511. 15c33

USED BARGAINS BEDROOM set, vanity with large mirror, slipper chair, 4-drawer chest, bed, \$49.00. Foam rocker, A-1, \$22.50. Clean innerspring mattress \$18.75. Simmons bed chair \$17.50. PARKWAY FURNITURE, 131st & Pacific Ave. Open till 9:00, GR 3941. 15c33

FOR SALE - Painters 32-foot extension ladder; phone Hubbard 1085. 15p33

FOR SALE - Pheasant setting eggs; GR 6959. 15c33

OR SELL THE CLASSIFIED PAGES

Estimates For . . . Home Wiring Remodel, Dryers, Electric Heat, Emergency Service Call WEBB ELECTRIC Days GR 7463 . Eve. GR 4437

SPECIAL ORDERS CAKES-Phone GR 3330, Patty Ann Bakery 15ctf

BABY FURNITURE, new and used, for sale or rent; SMALL FRY EXCHANGE 1109 Market St., BR 9505. 15ctf

FOR SALE - New Puget Beauty Strawberry Plants. WA 7893 evenings. 15ctf

TAP DANCING LESSONS. Beginning and advanced. Call Jim Nylander, GR 0574. 15ctf

MUST SELL three reprocessed ELECTROLUX vacuum cleaners for balance due, some as low as \$10; terms and free home demonstration. UPTON ELECTRIC CO., 1148 Market St., FU 2551. 15c33

PARKLAND FURNITURE - New and used miscellaneous; Airport & Pacific Ave. Residence Phone GR 3748. 15ctf

SAWDUST SHAVINGS UPLAND SLAB G. ANDERSON FUEL CO. BR 8311

TACOMA UPHOLSTERY - Special in reupholstering day. export chair, as low as \$129. Davenos \$49.00; Rocker, \$29. Free estimates; HA 6955, GR 0327. 15ctf

FOR SALE - Siegler heaters at Parkland Fuel Oil Service; GR 0256; 120th & Pacific Ave. 15ctf

PIANO LESSONS - Classical and modern. Reasonable rate. Call GR 4051 or GR 0420. 15ctf

Ace Dirt Moving Co.

BULLDOZING - DITCHING GRAVEL - TOP SOIL - SEPTIC TANKS - DRAIN FIELDS, 1750 9th St. S.W., Puyallup Phone Puyallup 5-2452 15ctf

SPECIAL 8x10 photos \$2.00 each. Billboards \$45.00 dozen. Family Portrait Studio, 8411 South Park. 15ctf

FOR SALE - Tom turkeys, alive or dressed; also fryer rabbits. Goslings and hatching eggs; phone Graham 7-7810. 15c33

SPINET PIANO - Take over low monthly payments on beautiful spinet piano. Can be seen in this vicinity. Will sacrifice rather than remove. For details, write: A. Bachman, 701 Highland Drive, Bellingham, Wash. 15c33

FOR SALE - Bed daveno; semi-automatic wringer type washer; small electric refrigerator; all good condition, very reasonable; 1321 South 102nd, GR 5374. 15c33

TV NOTICE BUY a new Packard Bell TV from UPTON'S on the 25c a day rent plan or 24-month terms; rent or buy. UPTON ELECTRIC CO., 1148 Market St., FU 2551. 15c33

FOR SALE - Bed daveno; semi-automatic wringer type washer; small electric refrigerator; all good condition, very reasonable; 1321 South 102nd, GR 5374. 15c33

HOUSE FOR RENT

ULTRA MODERN two bedroom home. Frigidaire, electric heat, built-in range, refrigerator, drapes furnished. Beautiful surroundings. South end of Spanaway Lake on Loop Road. Ten minutes from McChord Base. \$95.00. Will furnish completely if desired. HI llside 8983

WHEEL BALANCING MOTOR TUNE-UPS HEADLIGHT ADJUSTING

Airport Rocket Service Airport Rd. Next to IGA Shopping Center

FOR SALE - 14'x70" wide beam boats \$275 unpainted; work guaranteed; Bantam Boat Co., 84th & Waller Rd. 15ctf

TAP, ACROBATIC, BALLET classes. All ages. Mildred Keller, GR 7881. 15ctf

COPE BROS., buyers of all kinds of poultry; 102 South 72nd St., HA 4406. 15ctf

Englander THE FINEST NAME IN SLEEP

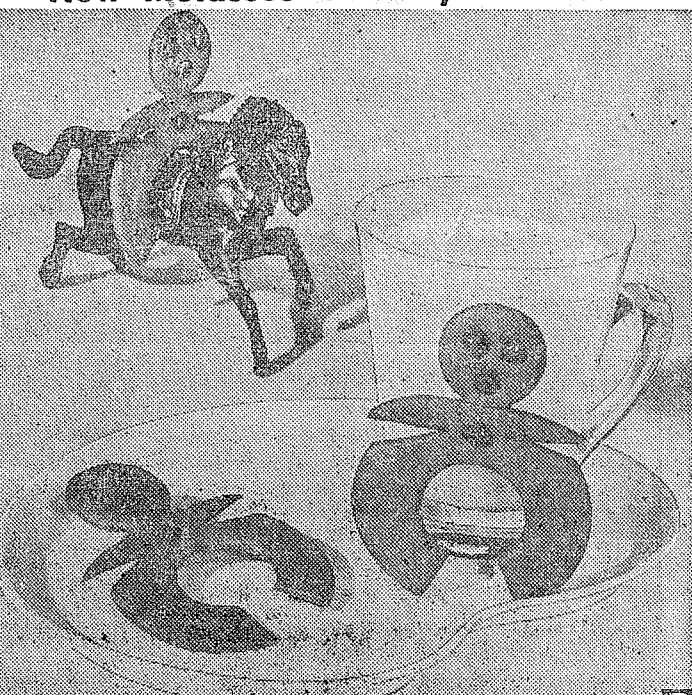
30 Day Free Trial 20 Year Guarantee Goodyear Air Foam Famous Red-Line Foundation Parkway Furniture 141st & Pac. Ave. GR 3941 Open Till 9:00 p.m.

Horses - Equip. 16 PALOMINO MARE, saddle and bridle, \$220; Shetland, saddle and bridle, \$200. Will sell or trade for livestock; 11824 Waller Road. 16ctf

SADDLE HORSES and ponies; also saddles; 11824 Waller Road, GR 6735. 16ctf

Now Open - Suburban Garage

85th and PORTLAND AVENUE ENGINE OVERHAUL SMALL ENGINE REPAIRS ARC & GAS WELDING TUNE - UPS - BRAKES



CIRCLE-O-RANGERS are plump and saucy cookies made with the help of a doughnut cutter! Senior winner of Pillsbury's Eighth Grand National Recipe and Baking Contest, these new Western gingerbread men make delicious nibbling-time treats for young cowboys and cowgirls. Extra incentive—the real New Orleans molasses is a top source of iron.

CIRCLE-O-RANGERS

3 cups sifted all-purpose flour 1 teaspoon soda 1 teaspoon salt 1/2 teaspoon cinnamon 1/2 teaspoon ginger 1/2 teaspoon instant coffee (if desired) 1/2 cup sugar 1/2 cup shortening 1/2 cup real New Orleans molasses 1/4 cup boiling water Cinnamon candies, raisins or currants Sift dry ingredients. Set aside. Cream sugar thoroughly with shortening. Blend in molasses and boiling water.

Add dry ingredients gradually. Chill two hours. Roll out on floured board (1/2 at a time) to 1/8-inch thickness. Cut with doughnut cutter. Place circle and "hole" together on ungreased baking sheet, with "hole" for head. Cut circle opposite head and spread to make bowlegs. Make slanting cuts at sides of circle part way up; spread for arms. Use candies, raisins or currants to mark faces and buttons. Bake in 375-degree oven 7 to 9 minutes. Cool one minute before removing from pan. Makes about 6 dozen cookies.

Legals

NOTICE TO CREDITORS In the Matter of the Consolidated Estate of GEORGE F. ALDRICH and MARIE G. ALDRICH Both Deceased.

Notice is hereby given that the undersigned has been appointed and has qualified as Administrator of the above entitled consolidated estate; that all persons having claims against said deceased are hereby required to serve the same, duly verified, on said GILBERT E. ALDRICH, Administrator, or his attorneys of record at the address below stated, and file the same with the Clerk of said Court, together with proof of such service, within six months after the date of first publication of this notice or the same will be barred.

Date of first publication April 25, 1957. Administrator of said Estate GILBERT E. ALDRICH 3805 1/2 South Yakima Tacoma, Washington Published in the Times-Journal April 25, 1957.

MICHAEL J. STERBICK OF STERBICK & STERBICK Attorneys for Estate 3805 1/2 South Yakima Tacoma, Washington Published in the Times-Journal April 25, 1957.

STERBICK & STERBICK Attorneys 3805 1/2 South Yakima In the Superior Court of the State of Washington, for the County of Pierce. No. 63138

FOR SALE - 14'x70" wide beam boats \$275 unpainted; work guaranteed; Bantam Boat Co., 84th & Waller Rd. 15ctf

FOR SALE - Northwest strawberry plants, \$1.50 per hundred; phone Puyallup 5-2511. 15c33

FOR SALE - German radio with tape recorder. Also old fashioned German magic lantern with glass slides; GR 7858. 15p33

FOR SALE - Painters 32-foot extension ladder; phone Hubbard 1085. 15p33

FOR SALE - Pheasant setting eggs; GR 6959. 15c33

STATION WAGON OWNERS NOW you can buy a Custom built Kar-Rac you can be proud to put on your Station Wagon. Beautifully varnished, gives that "town & country" look. Positive clip and turn-buckle fastening secure your Kar-Rac. Easily handled by one person. Save \$40.00 per Rac. Orchard Hill Duplexes, office, 143rd & Pacific Ave. So., Phone GR 5194. 15p48

FOR SALE - One tan female Chihuahua 1 1/2 years old, not miniature, \$10; Rt. 3, Box 210, Sibley & Adrian Roads, Puyallup. 15c33

ONE NEW HOOVER lark upright vacuum, 1956 model, list \$89.95; attachments, list \$16.95; total \$106.90 value. Complete for \$79.50. HURRY TO THIS ONE! PARKWAY FURNITURE, 141st & Pacific Ave., Open till 9:00; GR 3941. 15c33

Spaghetti Dinner

Bethel 23, International Order of Job's Daughters, will hold a spaghetti dinner Wednesday, May 1, from 5:00 to 7:00 p.m. in the

Fern Hill Masonic hall at 34th and South Park. Planning the affair are Karen Edwards, Pat Jones, Judy Roberts and Susan Stratton; in charge of publicity,

Peggy Jones and Joan Mayberry. Following the dinner there will be a meeting when officers will be elected and the DeMolay Dream Boat picked.

Valid Licenses Required Now For All Military

All military personnel operating vehicles in the state of Washington are now required to have current and valid driver's licenses in their possession, according to an announcement from the Washington State Patrol.

The action follows the recent repealing of the moratorium for driver's licenses of military personnel through state legislative action.

Previously, members of the Armed Forces residing in Washington were permitted to drive with an expired operators license.

Out of state servicemen stationed in Washington must possess currently valid operators licenses from their home states.

The signing of House Bill No. 643, repealing that former law, makes it necessary for all armed forces personnel in Washington to obtain valid licenses immediately.

or procure a Washington driver license.

Thursday, April 25, 1957

Buyers Pass

SIGNED

Discounts On Special Orders 25 to 50% from Retail. Special Items at Our Cost Plus 10%.

CAMERAS - HOUSEWARES - APPLIANCES
FURS - JEWELRY - TOYS - SPORTING
GOODS - LAWN MOWERS - ETC.
ANYTHING WE CAN OBTAIN FOR YOU!

Strickland's

9607 Gravelly Lake Drive LAkewood 2222

Sew-Show Style Show

A Sew-Show style show will be held in the lounge of South Hall at PLC Saturday afternoon, April 27, at 1:30 o'clock. Coffee and dessert will be served. All former and present PLC people are invited to attend and to model.

PLASTER CRACKED? USE DRADEX
COLORS LIKE PAINT
RESURFACES LIKE PLASTER
... ONE EASY COAT
On sale at ...

SO. END PLUMBING AND HARDWARE
Near Roy 'Y', Spanaway GR 4100

Trovani's Junior Bootery

LAKWOOD CENTER LA 4181
Specializing In Children's Shoes
706 ST. HELEN'S AVE. MA 6318

PIERCE COUNTY REFUSE CO
Weekly Garbage Collection
Phone GR 8688

DANCE OHOP GRANGE
Mountain Highway
Saturday, April 27
9:30 - 2:00
Music by "TUNE TEASERS"

TOWN TALK SPONSORED BY THE PARKLAND BUSINESS CLUB

A MAN COULD DIE OF OLD AGE BEFORE ONE OF THESE WAGONS SHOWED UP! IF YOU ASK ME, CHRISTOPHER COLUMBUS MUST'VE PLANNED THE SCHEDULE!

WHATTA WAY TO SPEND A WEEK END! I WISH WE HAD bought our car at LUCKY SALES!

I OUGHTA TOOK MY TRICYCLE!

TOO BAD THEY CAN'T USE THEIR CAR. THEY MORTGAGED THEIR EYE-TEETH TO GET IT!

GET A LOAD OF THE WEARY VAG-ABONDS!! BIRDBRAIN'S NEW JERK-MOBILE EIGHT IS LAID UP 'CAUSE SOME NIFTY-SWIFTY SUPER SERVICE STATION IN THE BIG TOWN GAVE HIM A FOUR SECOND OIL CHANGE BUT FORGOT THE OIL! I'M GONNA STICK WITH CLOVER CR... SERVICE right here in PARKLAND!

SHOP PARKLAND FOR QUALITY AND SAVE...



SHOP BIG BEAR SAVE - SAVE - SAVE!



New Potatoes

Florida grown, U. S. No. 1 Bliss Triumphs! Top quality, size A potatoes. Cream them with peas for a tasty treat.

POUND

4¢

Rhubarb

Home grown, fresh & flavorful. Crimson wine rhubarb. Preserve now!

3 Lbs. For Only

10¢

Sweet Oranges

VALENCIA—A fresh new crop of Sun-kist oranges, loaded with vitamin rich sweet juice. A wonderful buy!

POUND

10¢

● FEATURED ITEMS — Artichokes, Hothouse Cucumbers, Selected Florida Tomatoes, Romaine Lettuce, Fresh Strawberries. All guaranteed fresh at Big Bear!

The bargains are bigger and better at Big Bear! We place primary emphasis on what we term "Real Value"—that is, the combination of finest quality at lowest prices! So shop today at Big Bear and you'll save - save - save!

100% GALVANIZED PAILS

Just one of the many bargains in our housewares department!

EACH ONLY

49

WESTERN MAID MARGARINE

Flavorful and smooth-spreading yellow cubes. A real bargain!

PER POUND

15

BONELESS BEEF ROASTS

Choice boneless beef chuck roasts with all excess fat removed—lean 'n tender!

POUND

65

CHOICE POT ROAST

Blade cuts of tender, lean, graded choice beef!

Per Lb. **35**

CHOICE LAMB ROAST

Shoulder roasts of tender, 1957 Spring lambs!

Per Lb. **49**

SLICED BACON

ARMOUR'S COLUMBIA — It's sugar-cured and well streaked with lean. A Big Bear best value!

POUND

53¢

HUNT'S BARTLETT PEARS 3 No. 2 1/2 Cans For 79

Fancy quarters of luscious ripe pears, packed in a heavy syrup. Serve chilled as a wonderful dessert or with cottage cheese for a delicious salad.



LIBBY FRUIT COCKTAIL 5 No. 303 Cans For 1.00

Sparkling jewel-like cuts of five luscious fruits combined for a perfect flavor harmony. Mix them in gelatine salad for finer flavor and goodness.

PIGTSWEET BRAND FRESH FROZEN VEGETABLES

Your choice! Peas, Corn, Cut Beans, Peas and Carrots, Mixed Vegetables and French Fries!

2 10-Oz. Pkgs. For Only 33

ORANGE JUICE 2 6-oz. Cans For 29¢

PIGTSWEET—The fresh frozen concentrate of juice from extra sweet oranges.

STRAWBERRIES 15¢

PIGTSWEET — Fresh-frozen, sliced strawberries, picked early for finer flavor and freshness. A wonderful buy! 10-oz. Pkg.

BEST FOODS - THE WHOLE EGG MAYONNAISE

Made with freshly broken whole eggs and blended for smoothness and finer flavor. A wonderful buy!

Full Quart For Only

53

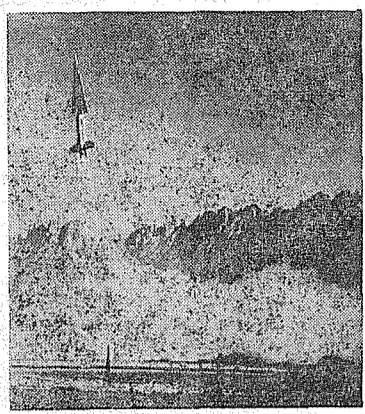
BIG BEAR STORES
WHERE BETTER FOODS COST LESS!
133rd & Pacific, Open 8 a.m. to 11 p.m. daily and Sundays. Prices Wed Noon thru Sat. Limit

Nike-Hercules To Aid NW Army Defenses

Colonel Harrison A. Gerhardt, Commander of the 31st AAA Brigade at McChord AFB, stated that: "NIKE-HERCULES, Aim . . .

to the defenses of the Seattle-Tacoma area as rapidly as production schedules permit. This guided missile, which is capable of carrying a nuclear warhead, is now completing final tests at the Army's White Sands Proving Grounds in New Mexico."

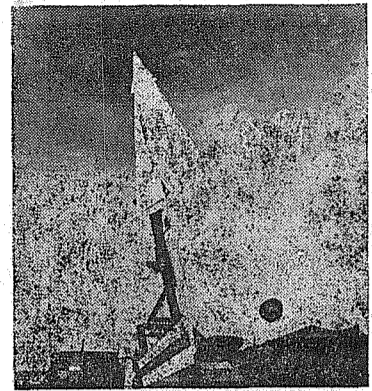
Fire!!



Colonel Gerhardt emphasized: "The HERCULES could be utilized on the present NIKE-AJAX launcher equipment with minor modifications. Once these modifications are made, both models of the NIKE can be fired from the same system. Provisions for accommodating the HERCULES Missile", Colonel Gerhardt added, "were incorporated into the original plans for constructing the existing NIKE-AJAX sites."

The HERCULES, because of its greater velocity, will provide faster interception of the most advanced type of aircraft. Improvements in the HERCULES model gives extreme maneuverability at altitudes far in excess of those which can be reached by the AJAX.

The HERCULES is one of the most effective weapons in America's Air Defense arsenal and will greatly improve the defense capabilities of the Army Anti-aircraft units in the Pacific Northwest.



an improved version of the NIKE-AJAX and the latest member of the U. S. Army's NIKE family of long-range, high anti-aircraft missiles will be incorporated in-

BLUE RIBBON BLOOMS
LILLY'S
RHODODENDRON Fertilizer

Also for...
• SHRUBS • HEATHER
• AZALEAS • CAMELIAS



KREGER'S HARDWARE
Garfield St. & Pacific Ave.
Across from Piggly Wiggly
GRanite 3171

VAUGHAN'S VALUES
FENCES - FENCES
Labor and Material or "Do It Yourself"
Guaranteed Workmanship
Quality Material
Free Estimates and Planning
Ask About Our Monthly Pay Plan



Vaughan's
PACIFIC AVENUE LUMBER COMPANY
84th & Pacific Avenue HI lside 9515

FOR *Mother's Day*



GIVE A PORTRAIT
Your portrait is a gift Mother will cherish for years to come. Only you can give her this gift, the gift that grows in value every year.
Our craftsmen are specializing now in portraits for Mother's Day... call or stop in for your appointment soon.

McKEWEN STUDIO
405 Garfield Street GRanite 3833

A BIG HIT WITH SHOPPERS!

HOME RUN SPECIALS FOR EVERY HOME PLATE!



Open 9 a.m. To 11 p.m. Everyday

PORK & BEANS VAN CAMPS

COFFEE COFFEE HOUSE 1-Lb. Can **83¢**

EGGS LARGE "A" Dozen **37¢** NO. 2 1/2 CAN

19¢

DOG FOOD VETS

MARGARINE BLUE BONNET 1-Lb. Ctn. **29¢**

SALAD OIL JEWEL Quart **59¢** No. 1 Cans

29¢

- RANCHO SOUPS -

TOMATO 22-Oz. For 49¢	VEGETABLE 22-Oz. For 59¢	Chicken Noodle 22-Oz. For 79¢
-------------------------------------	--	---

SWANSON'S

FRYERS 1 3/4 Lb. Pkg. 98¢	Drum Sticks Lb. 79¢	THIGHS Lb. 69¢
---	-----------------------------------	------------------------------

SWANSON'S BEEF - CHICKEN - TURKEY

TV DINNERS

MEAT PIES SWANSON'S Turkey - Beef - Chicken **4/89¢**

FLOUR FISHER'S BLEND 10 Lb. Bag **99¢**

TUNA CHUNK STYLE. Breast of Chicken 1/2 Can **27¢**

59¢ EACH

JOHNSON DRUGS

(WALGREEN AGENCY)

GREETING CARDS - GLASSWARE - STATIONERY
JEWELRY - COSMETICS - LUNCHES - CAMERS

Save Over Half!
cup 'n saucer SALE
both for only... **\$1.00**
NO LIMIT! REGULARLY \$2.30

as advertised in LADIES' HOME JOURNAL

Finest Quality ACCIDENT PROOF MELMAC DINNERWARE



Royale Color-FLYTE DINNERWARE by BRANCHELL



NOW is the time, while this fabulous bargain offer lasts, to start that Melmac dinnerware set you've been wanting! You save \$1.90... \$1.30 on the cup and saucer, 60¢ on the luncheon plate companion special... and there's no limit on how many of these complete luncheon place settings you can buy! Perfect for brunch, luncheons, party snacks. There's a time limit on the offer, though... May 14... so act TODAY! Complete your Melmac dinnerware set at your convenience, from our complete line of matching Open Stock pieces in 8 glowing decorator colors (you can mix 'em or match 'em).

- Companion Special!
- EIGHT-INCH LUNCHEON PLATE \$1.00
- reg. \$1.60
- Buy both, save \$1.00
- COMPLETE LUNCHEON PLACE SETTING
- cup, saucer and plate
- FOR ONLY \$2.00

GUARANTEED not to chip, crack or break! (Guaranteed in writing for one full year)

SETS ALSO AVAILABLE

PRESCRIPTIONS FILLED CAREFULLY - PROMPTLY

U.S. No. 1 White Shafter

NEW POTATOES **4¢**

ASPARAGUS No. 1 Local Washington LB. **14¢**

ORANGES Sunkist 5-Lb. Bag **49¢**

3 BIG DAYS

- Thursday
- Friday
- Saturday

APRIL 25 - 26 - 27
We Reserve Right To Limit - No Sales To Dealers

PIGGLY WIGGLY

PACIFIC AT GARFIELD IN PARKLAND

Warrings BAKERY

Maple Nut Date Rings
Regular 55¢
Spec. 49¢

2 Layer Loaf Cakes 79¢
Devils Food with Nut Fudge Icing. Mocha. Whole Egg with English Toffee Icing. Reg. 83¢ Special

Apple Cups 6/29¢

GIANT PORK SALE

FRESH FRYERS
Pan-Ready Cut-up Washington Grown
Pound **45¢**

PORK ROAST
• CENTER SHOULDER CUT.
SKIN AND FAT REMOVED. . . Lb. **39¢**

PORK STEAK
• LEAN MEATY BLADE CUTS,
TENDER AND TASTY. . . Lb. **43¢**

PORK HOCKS
• DELICIOUS FOR BOILING.
ECONOMICAL TOO. . . Lb. **23¢**

PORK SAUSAGE
• COUNTRY STYLE—LEAN,
MILDLY SEASONED. (Lb. 32c). . 3 Lbs. **89¢**

SLICED BACON
Swift's Sweet Rasher brand
Lb. . . **49¢**

ALL BEEF WIENERS
Swift's Premium
Lb. . . **45¢**

FRESH OYSTERS
Small or Extra Small
Pt. . . **59¢**

Father, Son Partners In New Super-Market

The new Summit View Thriftway super-market at Airport and Canyon roads, which opens this weekend, is truly a family affair. The three man partnership—father and two sons—will provide a fine combination of long experience in merchandising and the energy and enthusiasm of youth.

That factor of youth will be most apparent here, the store manager to be Bob Dietzen, the son. He and his wife Katherine and their four children: Michael, six; Shannon, five; Theresa, three; and Barbara, two, will be living in the immediate vicinity as soon as a suitable home is found.

Bob was raised in the business. He is a World War II veteran (Air Force) and a member of the Knights of Columbus and Elks lodges. Bob's partners are his father, John J. Dietzen, and his brother, John J. Dietzen Jr., both of whom will remain in Eastern Washington where they have stores in Mosses Lake and Yakima.

The Summit View location was selected because the Dietzens believe the area has a fine business potential and that their store will grow with the community and prove of service in the years to come.

Homemakers to County Meeting

The Summit Homemakers club will attend the county-wide Homemakers meeting in the city light building, Tacoma, Wednesday, May 1, at 10:00 o'clock. Members are asked to bring sack lunches as the meeting will continue most of the day.

Topics for the day include "Streamlining Hospitality," "Flower Arrangements," "Table Setting," "Desserts and Snacks," "Electronic Cooking" and "Children's Party Arrangements."

Orthopedic
The Elmer G. Carlson Orthopedic Guild will meet at Luigi's Monday, May 6, for a no-host lunch. They are planning to distribute envelopes for a coin collection, the proceeds to go to the Mary Bridge Children's hospital.

School Election
Due to the school election May 21 the registration books were closed April 20 for new registrations, but are still open for transfer from one rural precinct to another till Monday, May 6. Remember, school elections are very important as the people you elect are the ones who will spend the millage you vote.

Visiting
Mr. and Mrs. E. Beyers from Duluth, Minn., are guests of the Emil Beyers family on 103rd. The men are identical twins and are having a lot of fun fooling the people. They were Sunday guests of Ray Beyers of Seattle, son of Mr. and Mrs. Emil Beyers.

Mr. and Mrs. C. R. McMillan of Canyon road spent the weekend visiting their daughter Marlyon and husband, Mr. and Mrs. George Sparks at Richland, Wash.

New Unit For Graham Church

Ground breaking ceremonies for a new Sunday school building were held on Sunday, April 7, by the Covenant Community church of Graham, Washington. In the above picture, the pastor, the Rev. Paul T. Nelson, is seen conducting the ceremony while



the chairman of the board, Levere Gray, turns the first shovel of dirt. Approximately 150 members of the Sunday school and church who witnessed this ceremony are not visible in this picture. This much needed Sunday school building will be 70 feet long by 30 feet wide and will provide 12 individual classrooms plus a large auditorium and kitchen. George Bennett, a member of the church board, is the construction foreman for this project.

Elk Plain News

The Elk Plain Grange will hold the regular meeting this (Thursday) evening at 8:00 o'clock.

Visiting
Mr. and Mrs. David Rich of Ellensburg visited parents of both, also local friends, over the Easter vacation.

Mrs. Johnson and daughters visited at the home of her daughter, Mrs. Bob Jupiter, last week.

Mr. and Mrs. Cal Sartain are in California and plan to bring their daughter home with them this week.

Bethel Games
The Bethel Braves nine will take on the Eatonville baseball team under the Bethel lights Monday evening, April 30, at 7:30 o'clock.

The Tennis team will meet Fife on the Fife courts tomorrow, April 26, at 2:00 p. m. This match is being watched by all coaches as it promises to be one of the most exciting of the season.

Bethel Hi P-TA
Bethel Hi P-TA will hold its final meeting this evening, April 25, in Room 18 of the high school. The new Booster club will be discussed and Art Hahn, former Booster club president for Belarmino, will talk on the advantages of forming this type of club. The club will be open to all residents of the district regardless of whether they have children enrolled in the 8th grade of the various district schools.

Bethel Hi Lunch Menu
April 29-May 3
Monday — Beef and noodles, canned tomatoes, apple betty with cinnamon sauce, bread and butter, milk.

Tuesday — Creamed chipped beef on biscuits, corn, fruit cup holiday, bread and butter, milk.

Wednesday — Spanish style baked beans, cole slaw, canned Elberta peaches, bread and butter, milk.

Thursday — Hot dogs, potato chips, macaroni salad supreme, chocolate dipped ice cream bars, milk.

Friday — Tomato noodle soup, cheese-relish sandwiches, gingerbread with whipped cream topping, milk.

Reporter — Mrs. Ted Otterstad, G.Ranite 7658.

SPANAWAY ... Recreation Carnival Due

The Spanaway Recreation Committee carnival will be held this Friday, April 26, in the new school gym, starting at 7:00 p. m. Mrs. Clifford Anderson, general chairman, has organized the volunteer help from the many clubs of the district to man the various booths.

Of interest to all will be the Carnival Wheel, Fish Pond, refreshment stand, Garden booth, etc. The Clan Gordon bagpipe band will also entertain.

Admission is free. Refreshments will be served at nominal price.

Baseball Dance
The Spanaway Baseball dance will be Saturday evening, May 4, in the Elk Plain Grange hall. The Rhythm Boys orchestra will furnish the music.

Working hard to make the affair a big success are Bill Fueston, owner of the Prairie Tavern; Dave Harknes, baseball manager, and Jack Rankin, business manager.

Legion
The America Legion Post No. 118 and the Auxiliary will meet Friday, April 26, at 8:00 p. m. at the Spanaway Legion hall.

Better Now
Friends are glad to see Ethan Nelson of the Bargain Basket able to be about again after a long stay in the hospital recovering from injuries suffered in an auto accident a month ago.

Friendly Dozen
Hostess for the Friendly Dozen Birthday club Thursday, May 2, will be Mrs. Margaret Wright.

Best Wishes
Get well wishes for Mrs. John Snowden, wife of the Spanaway Methodist pastor; also for Mr. and Mrs. John Lorenz who have both been in the hospital.

Preschool Installs
The Spanaway Preschool at a recent meeting installed the following new officers: President, Mrs. Donald Palmer; vice president, Mrs. Jack Chadwick; secretary, Mrs. Moval Ackley; treasurer, Mrs. William Iverson. Mrs. Dwane Lamka was the installing officer.

Retiring officers were: President, Mrs. George Woracek; vice president, Mrs. Gordon McNiven; secretary, Mrs. Neil Dorfner; treasurer, Mrs. Moval Ackley.

Grandmothers
The Spanaway Kan Do Grandmothers club celebrated the club's birthday at the Top of the Ocean last Thursday. Members present were Mesdames George Schnelle, Marion Smith, William Walin, Edward Flannery, Emerson Tarpenning, Emily Ball, Beulah Ballard, Matilda Symons.

Men's Club
The Methodist Men's club are having a father-daughter breakfast Sunday morning, April 28, at the Spanaway Methodist church. All men of the community are invited to attend and bring their daughters or a girl aged 8 or older. There will be a guest speaker.

Paper Drive Postponed
The scheduled paper drive has been postponed until Saturday, May 4, at which time Scouts of Troop 34 will canvas the Spanaway area.

Thanks!
The Spanaway Methodist church wishes to thank Troop 34 for cleaning the church grounds.

Reporter — Mrs. Oliver Omat, G.Ranite 6466.

Hasenbolg-Freitas

Martha Nellie Hasenbolg of Tacoma and Robert Eugene Freitas were united in marriage in a single ring ceremony at 2:00 o'clock Friday afternoon, April 19, by the Rev. John E. Besant in the Summit Methodist church.

Parents of the young couple are Mr. and Mrs. Charles A. Hasenbolg of Tacoma and Mr. and Mrs. George Freitas of Puyallup.

The altar of the church was decorated with daffodils and lilies. The bride was gowned in blue taffeta and wore a white orchid corsage. Her matron of honor was Mrs. Charles R. Hasenbolg, whose husband served as best man for Mr. Freitas. Wedding music was played by Mrs. J. B. Besant, wife of the church pastor.

Attending the nuptials were the mothers of the bride and groom, Mr. and Mrs. Charles R. Hasenbolg and Robert D. Crasey of Fallbrook, Calif., cousin of the bride.

Rummage Sale
A rummage sale will be held June 6 and 7 at 15th and Commerce as a benefit for the proposed Summit Youth Center. Those in charge wish to remind people of the community to save all kinds of rummage—clothing, dishes, furniture, jewelry, rags, patterns, etc.—for the sale. Those having articles to be picked up may call GR 8011 or GR 6643.

Reporter — Mrs. M. S. Rau, G.Ranite 8391.

Scottish Pipers Colorful Unit

An unusual feature of the recent Daffodil Festival parade was the Clan Gordon Bagpipe band, Tacoma's first pipe band in 25 years. Much applause and favorable comments were heard as this band marched by playing stirring Scottish marching tunes, resplendent in white tunics, green kilts and flashing sporrans and preceded by the flags of the U. S. A. and Scotland.

The band is under the leadership of its instructor and pipe major, John Montgomery, Scottish born and trained in the National Piping college in the old country.

The Clan Gordon Pipe band has openings for experienced pipers and a few beginners who have the time and the interest to practice. For information call Byron Parker, GR 4841.

The public will have another opportunity to see and hear the Clan Gordon Pipe band and Highland Dancers at the Spanaway Recreation Committee's carnival at the new gym, Spanaway school, this Friday, April 26. Doors open at 7:00 p. m.; admission free.

Lacamas Dinner

The Ladies Auxiliary of the Lacamas Community club will sponsor a buffet dinner Sunday, April 28, 12:30 to 4:00 p. m. in the community hall on the Harts Lake road.

All people of the area are urged to come and bring their families; the donation will be nominal, with a special children's plate. "All you can eat" is the assurance of those in charge. Proceeds will be used for the community projects of the club.

CONGRATULATIONS To SUMMIT VIEW THRIFTWAY On Your Fine New Store: JERRY'S SHELL SERVICE KNAPP & CANYON ROADS

BEST WISHES FOR SUCCESS To SUMMIT VIEW THRIFTWAY The opening of your new store in another step forward in the growth of our community. Summit Feed Knapp & Canyon Roads Next to Summit Trading Co. GR 7136 WE DELIVER

WE WELCOME SUMMIT VIEW THRIFTWAY OUR NEW NEIGHBOR Lloyd's Barber Shop Airport & Canyon Roads

WE WELCOME SUMMIT VIEW THRIFTWAY TO THE SUMMIT AREA HAROLD'S SHOE REPAIR Airport & Canyon Roads

BEST WISHES To Summit View Thriftway Butler's Garage Phone GR 8209 One Block North Airport Road on Canyon Road

WE EXTEND A HEARTY WELCOME TO SUMMIT VIEW THRIFTWAY YOUR FINE NEW STORE IS AN ASSET TO OUR GROWING COMMUNITY SUMMIT VIEW SERVICE AIRPORT & CANYON ROADS G.Ranite 7914

Drive Safely Save A Life Our Congratulations To The New Summit View Thriftway McAuley Summit Drugs Airport & Canyon Roads G.Ranite 0668

WE JOIN SUMMIT VIEW THRIFTWAY in a CO-SALE THURSDAY FRIDAY & SATURDAY AND EXTEND TO THEM OUR SINCERE BEST WISHES FOR SUCCESS IN THEIR NEW MODERN SUPER MARKET

PLANNED FOR YOUR SPRING CLEAN-UP Priced for After-Taxes Pocket Books . . . Super Kem-tone Colony Blue and Parklane lane Green. \$6.39 Value. \$3.25 Close Out Price . . . Gallon REGULAR COLORS - REGULAR PRICE BUILT FOR RUGGED USE Stepladders 5 FOOT Reg. \$4.95 Only \$3.75 Paint Brush Specials \$1.29 2" VARNISH BRUSH 3 1/2" WALL BRUSH Both For Only . . . REGULAR 49c VALUE WHITE SHELLAC 1/2 Pt. 29c REX - REGULAR 35c VALUE WALL SIZE . . . 25c

50 FOOT PLASTIC Garden Hose \$3.45 FULL 7 YEAR GUARANTEE REGULAR \$2.85 VALUE SPECIAL \$2.45 YOUR CHOICE OF GARDEN OR BARN

GARDEN RAKES . . . \$1.95 GARDEN HOES . . . \$1.69 GARDEN CULTIVATORS. \$1.69

HOUSE PAINT \$2.88 OUTSIDE WHITE Per Gal. 15c VALUE 2 FOR VEGETABLE BRUSHES .25c DRAIN CLEANER 29c REGULAR 35c STEEL WOOL 15c 1/2-LB. PACKAGE

1/4" PLYWOOD \$2.98 EACH 4x8 SHEET - INTERIOR & EXTERIOR SHOP GRADE - PRICE AT A LOW-LOW No. 1 Regular \$3.00 Value Special MAIL BOXES . . . \$2.45 25 Gallon. You save \$2.00 Special GARBAGE CANS . \$4.60 CAULKING GUNS \$1.65 Value Special \$1.29 Steel Per Pair CLOTHES POLES \$10.50 Regular \$2.10 Value Special PADLOCKS \$1.25 HOURS: 9:00 A.M. TILL 6:00 P.M. - 6 DAYS A WEEK

SUMMIT LUMBER & HARDWARE COMPANY 5303 EAST 112TH (Airport & Canyon Roads) PHONE G.Ranite 4555

PRICES EFFECTIVE THURS., FRI., SAT., APRIL 25, 26, 27

Here's your Invitation

WIDE SPACIOUS AISLES!
FOR A WORLD OF CARE FREE SHOPPING —
NO CROWDING, NO JOSTLING, NO PUSHING

SELF SERVICE MEATS
IMMACULATE SPOTLESS EQUIPMENT, THE FINEST
of MEATS, PLUS SPECIAL CUTS IF YOU NEED THEM

LOADS OF PARKING SPACE!
PARK QUICKLY, PARK EASILY AND SAVE TIME
AT OUR TRULY ONE-STOP SUPER!

FRESH PRODUCE
ONLY THE FINEST
FOR YOUR SHOP

PREM . . .	SWIFT'S LUNCH MEAT 12-OZ. TINS	3/\$1	MAYONNAISE . . .	BEST FOODS QUART	59¢
COFFEE . . .	SHURFINE DRIP OR REG. POUND TIN	89¢	TOMATOES . . .	SKI SLIDE 2½ TIN FOR JUST	6/\$1
C&H SUGAR . . .	PURE CANE 10-LBS.	89¢	MARGARINE . . .	TASTEWELL ENRICHED POUND	5/\$1
TOMATO SOUP . . .	RICH CAMPBELL'S TIN ONLY	10¢	KETCHUP	HEINZ 14-OZ. BOTTLES	19¢
FLOUR	SHURFINE ENRICHED 10 POUNDS	79¢	TOMATO JUICE . . .	HUNT'S 46-OZ. TINS	4/\$1

CARNATION
EVAPORATED MILK
TALL TINS **69¢**
CARNATION INSTANT
8-QT. SIZE FOR **69¢**

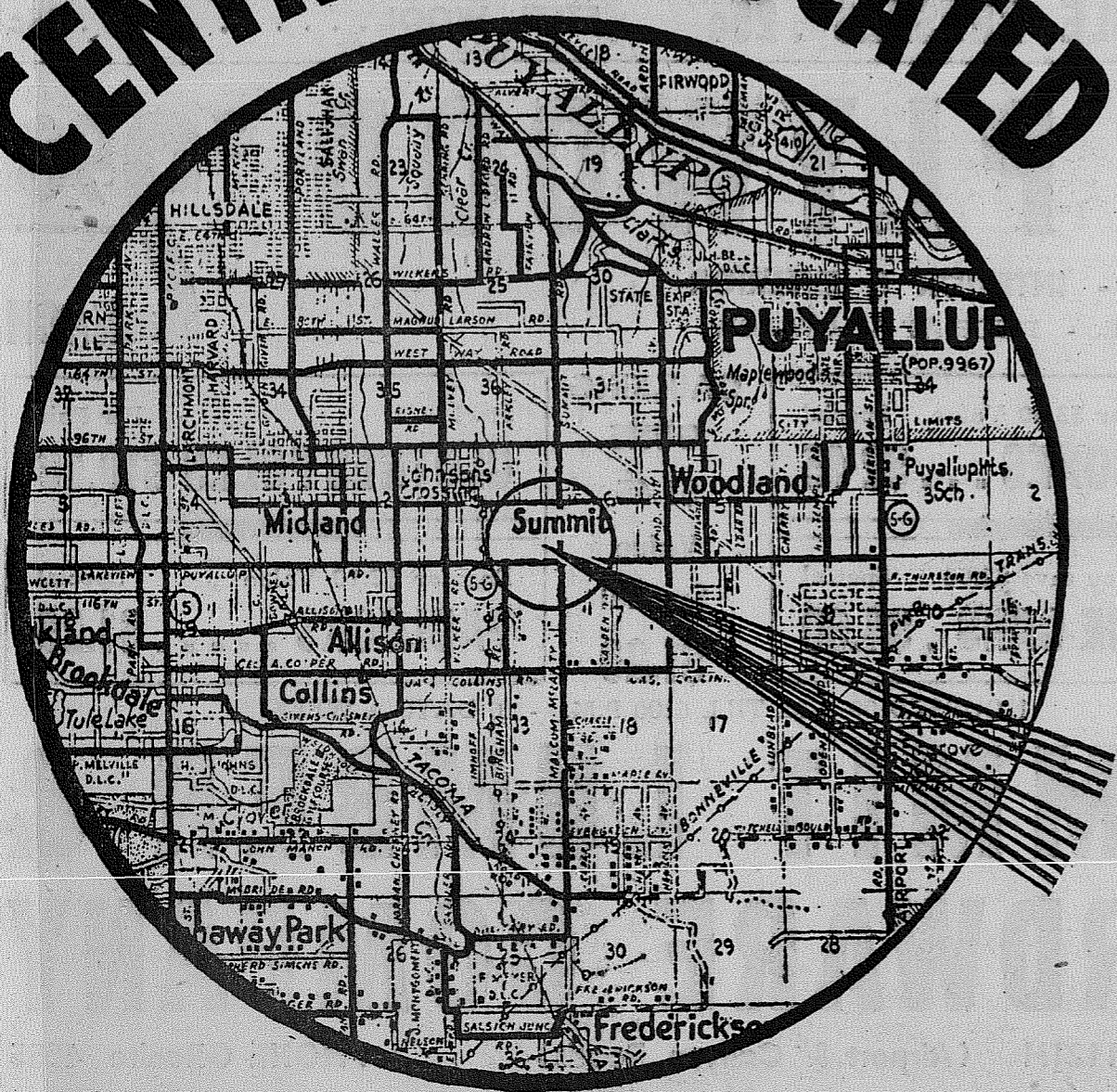
GERBER'S STRAINED **BABY FOOD 10/79¢**
LIBBY'S TASTE TREAT — 12-OUNCE TIN
CORNER BEEF 39¢
ENRICHED COLORED MARGARINE — POUND
ALLSWEET 2/59¢
THE EASY-TO-USE GENTLE BLEACH — 7½-OZ.
SNOWY BLEACH . . . 29¢
CHEF BOY-AR-DEE — 15½-OZ. TIN
MEAT BALLS 39¢

GENTLE AND OH SO SOFT
M.D. TISSUE . . . 4 ROLLS 37¢
DRIP OR REGULAR — POUND TIN
M.J.B. COFFEE 93¢
TASTEWELL — 303 TINS JUST
APPLE SAUCE 6/\$1
VAN CAMP'S — 2½ TIN
PORK and BEANS 4/89¢
IT'S THE MIRACLE FOIL OF THE CENTURY — 25 FT.
REYNOLDS FOIL . . . 25¢

SUNNY JIM
PEANUT BUTTER
20-OZ. JAR **59¢**
ASSORTED FRUIT
JELLIES
Apple, Currant, Grape, Mint, Fruit Berry
5 12-OZ. JARS FOR **\$1**

SHURFRESH — PINT CARTON
COTTAGE CHEESE 25¢

CENTRALLY LOCATED



The
U.S. NO. 2
OREGON



FRESHEST

OF FRUITS
VEGETABLES
RUSHED TO
"DEWY-FRESH"

POTATOES 50 LB. SACK	69¢
BANANAS FANCY GOLDEN RIPE POUND	2/25
GRAPEFRUIT SWEET, FANCY TEXAS PINKS AT ONLY	12 FOR 59¢
LETTUCE SOLID FRESH FULL HEADS SO CRISP	2 FOR 19¢
TOMATOES RED RIPE SLICERS FOR SPRING SALADS	LB. 25¢

to a Grand Opening

PRODUCE! ★ **COURTESY** ★ **SELECTIONS!**
★ **WHAT IS BOUGHT** ★ **YES MA'AM! ALL** ★ **GALORE... FOODS OF ALL**
★ **BRING PLEASURE** ★ **OF THE TIME!** ★ **KINDS TO CHOOSE FROM**

CHEESE KRAFT WONDER MILD BULK CHEDDAR - LB. **39¢**

FOODS FROM NALLEY'S VALLEY
CRISP POTATO CHIPS 7-OZ. PKG. **29¢**
FRESH MAYONNAISE QUART **49¢**
LUMBERJACK SYRUP 24-OZ. **3/1.00**
CUCUMBER CHIPS 16-OZ. JAR **2/45¢**

AA EGGS LYNDEN'S CUSHION CTN. LARGE - DOZ. **41¢**

SHURFINE FINE FOODS
FANCY FRUIT COCKTAIL. . . 303 TIN **5/1.00**
GRAPEFRUIT SECTIONS 303 TINS **5/1.00**
TENDER PEAS 303 TINS **6/1.00**
FANCY APPLE JUICE 24-OZ. BOTTLES **5/1.00**
CREAM STYLE CORN 303 TINS **7/1.00**
CUT GREEN BEANS 303 TINS **6/1.00**

PEPPER SCHILLING'S PURE SPICES 4-OZ. TIN **23¢**

STA-FLO STARCH KRAFT'S NEW DELUXE MARGARINE
10c OFF LABEL - A REG. 29¢ POUND CARTON FOR JUST 29¢
49c SELLER FOR ONLY



THE FINEST
OF MEATS - CUT TO PLEASE THE MOST EXACTING TASTES

U.S. CHOICE BLADE CUT FROM YOUNG STEER BEEF
POT ROAST LB. 33¢

ALL BEEF - FRESH GROUND DAILY FOR YOU
GR. BEEF LB. 4/99¢

BEEF CUBES Choice Boneless For Braising **LB. 49¢**
BEEF ROAST U.S. Choice Round Bone Shoulder Cuts, Steer Beef **LB. 43¢**
SLICED BACON Carsten's Fancy Hygrade **LB. 59¢**
PLUMP WIENERS Carsten's Hygrade Skinless **LB. 43¢**
CHUNK BOLOGNA Top Quality Any Size Piece **LB. 35¢**

NOW OPEN
A GRAND, BRAND NEW
Summitview Thriftway

CONVENIENTLY LOCATED AT THE INTERSECTION OF
AIRPORT & CANYON ROAD
FREE! FREE!

SHURFINE COFFEE
CARSTENS MEATS
NALLEY'S FOODS
THE ABOVE FINE PRODUCTS WILL BE DEMONSTRATED DURING OUR OPENING
PILLSBURY ALL PURPOSE FLOUR . . . 10-LBS. **89¢**

WIN
A
DUMONT
PORTABLE
14" SPORTSMAN
TV
WASHABLE FABRIC COVER
1st FULL POWER Portable! Plugs In Anywhere!

EVERYTHING YOU COULD WANT WILL BE FOUND IN OUR WELL STOCKED CASES . . . AND YOU'LL SAVE MONEY, TOO!

SHUR-FRESH - 10-OZ. PACKAGE **STRAWBERRIES .. 15¢**
SHUR-FRESH - 6-OZ. CANS **ORANGE JUICE 2/25¢**

SHUR-FRESH GREEN PEAS } **PICTSWEEP**
FROZEN 10-OZ. PKGS. 2/25¢ } Your Choice
French Fry Potatoes, Cut Corn, Broccoli Cuts 2/33¢

FRUIT PIES PET RITZ, APPLE, PEACH OR BOYSENBERRY EACH **49¢**
OCOMA CHICKEN DRUMSTICKS BREASTS, THIGHS PKG. **59¢**
SWANSON PIES BEEF, TURKEY OR CHICKEN **3/69¢**

SHUR-SAVE HEALTH & BEAUTY AIDS!
BUFFERIN BOTTLE OF 60 **79¢**
KLEENEX 400 COUNT PACKAGES **2/49¢**
KOLYNOS 2 LARGE TUBES **69¢**

Rexall

SALE

9 SALE DAYS

CHOOSE FROM THESE AND MORE
at 2 for the price of 1 plus a penny!

FRI.
APRIL
26

THRU
SAT.
MAY
4

AS ADVERTISED IN
LIFE, LOOK, POST,
FARM JOURNAL,
PROGRESSIVE FARMER
THIS WEEK, PARADE

Rexall POLYMULSION

Liquid multi-vitamins for children.
PINT REG \$3.59 **2 FOR 3.60**
Reg. \$1.15 4 oz. Bottle 2 for \$1.16



Stock Up Now!

Rexall ASPIRIN

None finer made.

100's
REG. 54¢

2 FOR 55¢



36's Reg. 27¢ 2 for 28¢
12's Reg. 12¢ 2 for 13¢

Finest Quality!

Rexall RUBBING ALCOHOL COMPOUND

Soothing body rub.
Ideal for sickroom needs.

PINT
REG. 79¢

2 FOR 80¢



Rexall
AEROSOL

READY- SHAVE

Push-button lather
for quick,
close shaves.

10 oz.
REG. 98¢

2 FOR 99¢



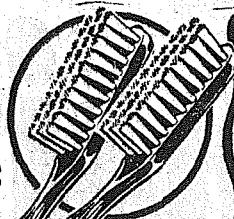
- Reg. 35c Calamine Lotion 2 for 36c
- Reg. 45c Peroxide 2 for 46c
- Reg. 61c—2 for 62c Reg. 41c Zinc Oxide Ointment 2 for 42c
- Reg. 55c Castor Oil 2 for 56c
- Reg. \$1.24 Dicalcium Phosphate 2 for \$1.25
- Vitamins With Minerals Reg. \$4.95
- Panovite 2 for \$4.96
- And Many New Vitamin Specials
- Reg. \$1.00 Mens Pipes 2 for \$1.01

SACCHARIN TABLETS

- ¼ gr., 100's, Reg. 35c 2 for .36
- ½ gr., 100's, Reg. 45c 2 for .46
- 1 gr., 100's, Reg. 55c 2 for .56
- ¼ gr., 1000's, Reg. \$1.19 2 for 1.20
- ½ gr., 1000's, Reg. \$1.30 2 for 1.31
- 1 gr., 1000's, Reg. \$1.59 2 for 1.60

Rexall KLENZO TOOTH BRUSHES

Assorted popular styles. Nylon bristles. EACH REG. 39¢ **2 FOR 40¢**



ADRIENNE HAIR SPRAY

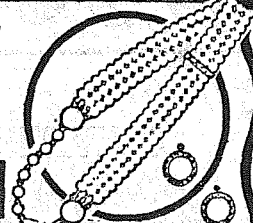
Ideal for pin-ups. Keeps hair neat. Lanolin-enriched. 11 oz. Aerosol REG. \$1.89 **2 FOR 1.90**



Deluxe KING CRAFT White Snow

JEWELRY

Smart chalk white necklaces and earrings. Accented with rhinestones. EACH REG. \$1.00 **2 FOR 1.01**



Rexall Mi 31 ANTISEPTIC Solution

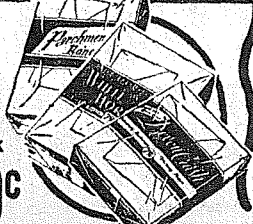
Multi-purpose mouth wash, gargle, breath sweetener. PINT REG. 89¢ **2 FOR 90¢**



Big, Economy

CELLO PACKS

Paper & Envs. • White Vellum • Devon Crash • Parchment Bond • Beauty Check • White Morocco **2 PACKS 80¢**



Generous Boxes BATH POWDERS

• Lily-of-the-Valley • Garden Spice • Adrienne • Lavender **EACH REG. \$1.50 2 FOR 1.51**



- \$1.25 Rexall THEATRICAL COLD or CLEANSING CREAM pound tins 2 for \$1.25
- 43c PRO-CAP WATERPROOF ADHESIVE TAPE ½"x10 yards 2 for 44c
- 35c QUIK-SWABS Rexall, 100's 2 for 36c
- Famous ruby-red mouthwash and gargle.
- 79c Rexall KLENZO ANTISEPTIC pint 2 for 80c
- 49c All-In-One BALL PEN REFILL 2 for 50c
- No. 6 ¼ or No. 10
- 25c COMMERCIAL ENVELOPES 2 packs 26c
- 25c CURLING RIBBON assorted colors 2 for 26c
- 25c GIFT WRAP Every Day, 20"x30" 2 packs 26c
- 35c STORK NURSER 8-oz. feeding unit 2 for 36c
- 2-year guarantee.
- \$3.98 Victoria COMBINATION SYRINGE 2 for \$3.99
- 53c Rexall GLYCERIN SUPPOSITORIES 12's 2 for 54c

6 BONUS BUYS SPECIAL BARGAINS NOT ON 1c SALE PLAN

Save \$1.61! **LETTERMIME WRITING PAPER**
2 sizes. 100 sheets 50 envs. Sugar white gloss paper. **\$3.00 VALUE BOTH FOR 1.39**



Rexall PLASTIC QUIK-BANDS
Flesh-colored, flexible, waterproof. Plain or mercurochrome. 59¢ VALUE **39¢**
47's



ADONIS OR STARLET WRIST WATCHES
Swiss movements. Smartly styled. Non-tarnish cases. **\$8.95 VALUES EACH 6.66**



Rexall FLUORIDE TOOTH PASTE
Fights tooth decay 2-ways with anti-enzyme and fluoride. **\$1.59 VALUE 3 TUBES 99¢**
Rexall pH7 Tooth Paste \$1.47 Value . . . 3 tubes 89¢



Save \$2.02! **Lerie Floral Bouquet BUBBLE BATH**
Delicately scented. Boxes of 20 packets. **\$3.00 VALUE NOW 3 BOXES 98¢**



Save \$1.00! **Defender FOLDING SYRINGE**
Quality red latex. Waterproof case. **\$.259 VALUE NOW 1.59**



Rexall PANOVITE

Diet supplement
multi-vitamin
capsules.

100's REG. \$3.10

2 FOR 311



- Helen Cornell
- 10c **BOBBY PINS** 2 packs 11c
- Helen Cornell
- 10c **HAIR NETS** 2 for 11c
- Rexall
- 47c **MILK OF MAGNESIA** 2 for 48c
- Rexall - Children's
- 35c **ASPIRIN TABLETS** 2 for 36c

- Reg. \$1.49
- COD LIVER OIL** 2 for \$1.50
- Reg. 39c
- 4-Oz. **FOOT POWDER** 2 for 40c
- Reg. 79c
- 8-Oz. **EYEOLO EYE LOTION** 2 for 80c
- Sterile. 2" Width Reg. 27c
- GAUZE BANDAGE** 2 for 28c

- Ease minor pains. 25cs Reg. 33c—2 for 34c.
- 100's, Reg. 79c
- MONACET APC TABLETS** 2 for 80c
- 6-Oz. Reg. \$1.00
- REX-RUB** for relief of muscular soreness 2 for \$1.01
- Pint, Reg. 59c
- ALCO-REX RUBBING ALCOHOL** 2 for 60c
- 1½-Oz. Tube, Reg. 59c
- REX-SALVINE** Antiseptic salve for burns 2 for 60c
- 1½-Oz. Tube, Reg. 79c
- FUNGI-REX** for Athlete's Foot 2 for 80c
- Pint, Reg. \$1.89
- BEEF, WINE & IRON TONIC** 2 for \$1.90
- 45 Sheets, 30 Envelopes, Reg. \$1.50
- TRADITION LINEN WRITING PAPER** 2 for \$1.51
- 36 Sheets, 24 Envelopes, Reg. \$1.00
- WHITE SPLENDOR WRITING PAPER** 2 for \$1.01
- 18 French-fold Notes & Envelopes, Reg. \$1.00.
- "ORCHIDS TO YOU" NOTES 2 for \$1.01
- Note or Letter Size, Ruler or Plain, Reg. 25c.
- ELITE LINEN TABLETS** 2 for 26c
- ELITE LINEN ENVELOPES**, Reg. 25c 2 for 26c

MONEY-SAVERS NOT ON 1c SALE PLAN, BUT SPECIAL BARGAINS

98c Value---**ELKAYS AIR REFRESHER**
5 ounce aerosol 2 for 99¢

57c Value---**REXALLBABY CREAM, LOTION Or OIL** your choice 2 for 58c

49c Value---**REXALL EPSOM SALT**
Pound 2 lbs. 50c

\$1.10 Value---**MONREALE OLIVE OIL**
12 ounces 2 for \$1.55

Rexall MINERAL OIL

Highly refined. Odorless, tasteless. **2 PTS. 86¢**
PINT 85¢ VALUE
Quart, \$1.35 Value
2 QUARTS 1.36



Medford FACIAL TISSUES 2 BOXES
Soft, strong absorbent. White. 300's **39¢**

TURKISH TOWELS

DELUXE WASH CLOTHES

2 for 99¢

2 for 29¢

EVERY ITEM IN THIS SALE IS
REGULAR GUARANTEED MERCHANDISE

PRESCRIPTION SERVICE FREE DELIVERY

PARKLAND PHARMACY

112th And Pacific Avenue

GRanite 8636

SPANAWAY DRUG

165th And Pacific Avenue

GRanite 5993

Formal Opening of 84th St. PSN This Saturday New Home of 84th Street Branch Bank Opens

Formal opening of the new bank building, 84th and Pacific Branch of the Puget Sound National bank, will be held Saturday, April 27, it was announced today by Reno Odlin, president.

The branch opened for business in the new quarters Monday after moving from the temporary building over the weekend.

Open house will be held at the new bank building at 84th and Pacific avenue Saturday from 10 a. m. until 6:00 in the evening. The public is invited to see the new, modern bank building.

The new bank building, in line with advanced modern bank styling, was designed by the architectural firm of Jensen and Mills. The building measures approximately 60 ft. by 73 ft. and contains about 8000 square ft. of floor space. It is constructed of reinforced concrete with red Norman brick veneer facing and trim of a new material of enamel baked on aluminum in an attractive pastel green for the roof edge. Under the large windows the wall consists of a new tempered glass in a pastel green.

On the roof is a Time and Temperature indicator which is in operation 24 hours a day.

Interior layout of the new bank building is designed to give the utmost in customer convenience. There are two convenient customer entrances, the 84th and Pacific avenue corner entrance at the front of the building and another just off 84th from the customer parking lot. The rear entrance has a covered walk extending the length of the building.

The large customer area is beautifully finished in mahogany fixtures; a fiber acoustical tile ceiling; alternate gray and blue walls and a gray tile floor covering.

On the left side of the main entrance are five tellers' windows, and on the right, two note teller windows and a long counter. Also included in the lobby area is a safe deposit vault, coupon booths, officers' desks, large bookkeeping department room and a record vault.

Basement facilities include staff lounges, a kitchen and lunch room, record and supply storage rooms, and air conditioning and heating equipment.

Customer convenience include a 15,750 square foot parking area providing space for 45 cars; a night depository for receiving cash deposits after hours and a round the clock letter drop.

The new bank building was completed 10 months after opening temporary quarters last July. It serves, in addition to the 84th and Pacific avenue area, Parkland, Spanaway, Summit, Portland Avenue, Edgewood, Midland, Brookdale, Wapato, Waller Road, Graham, Woodland, Clover Creek, Collins Road and McKinley Hill.

Ralph Hubbard is manager of the Branch. He joined the staff of the Puget Sound National Bank in 1946 after having served for 3½ years in the U. S.



BIG STEP FORWARD—The handsome new bank building of the 84th and Pacific Branch of the Puget Sound National Bank is holding Open House Saturday, April 27. Manager Ralph Hubbard and staff moved to the new building over last weekend and were open for business Monday. An Open House is being held from 10 a. m. to six in the evening this coming Saturday. The public is cordially invited to attend.

Army. He had six years service in a South Dakota bank. He is a member of the Chamber of Commerce, has served in United Good Neighbor campaigns and with other civic groups. He resides with his wife and three children at 5005 A St.

Other branches are Lincoln, K Street, Lakewood, and a building is under construction at Sixth Avenue and Rochester to house the new West End branch. It will be ready for occupancy in mid-summer.

Phone Company Pays Big Tax in Pierce County

Pierce County's treasury was made richer by \$201,123.71 when Pacific Telephone paid its real and personal property taxes for the first half of 1957.

A check for that amount was delivered by Pacific Telephone District Manager Eric O. Brown to the county treasurer, L. R. Johnson. The second portion of the company's tax bill will be paid in October, bringing the year's total to \$402,196.24, in Pierce County.

The company's tax contribution to the community was pointed up by Brown who noted that of every dollar a customer

pays for his telephone, 26 cents of it goes out as taxes. Pacific Telephone's total tax bill including Federal Excise Taxes in Washington last year was over \$28,300,000. As the largest property taxpayer in the state, the company this year will pay \$3,050,038.13 in real and personal property taxes.

Telephone users make a heavy contribution to tax-supported activity from their telephone bills. In 1956, the average telephone customer of Pacific Telephone in Washington paid taxes amounting to \$47.43 as a part of his telephone bill.

Taxes represented nearly one-fourth of Pacific Telephone's 1956 operating expenses in Washington.

Square Dance Club

A new intermediate square dance club has been organized, combining with the beginners round dance club to form a class at the Masonic Temple, 84th and Park avenue, for weekly lessons on Thursday evenings at 8:00 o'clock. Mr. and Mrs. Ed Townsend are the instructors. All dancers who have completed the beginners classe are invited to join.

SPORTS COVERAGE
GRanite 0223

ELBE . . .

Grange Stamp Project Big Hit

The Elbe Grange received the following report regarding the cancelled commemorative stamps sent in by Grange members and friends: To date over \$2,438.00 worth of these stamps, enough to deliver more than \$48,760.00 worth of surplus foods to needy families and orphanages overseas, have been collected.

They cannot use the common 1c, 2c or 3c stamps, nor the small air mail stamp—only the cancelled commemoratives.

The Elbe Grange wishes to thank all who have been saving and sending stamps to them. It may be interesting to the senders to realize that these stamps that would be worth nothing to them can become such a wonderful help and blessing by your assistance in sending the stamps to the Elbe Grange, in care of our postmaster, Mrs. June Kast, Elbe. Remember that there is no limit of time allotted to collect and send the stamps in and think of the relief and happiness such a little act of kindness is accomplishing.

To have value, the stamp should be cut from the envelope with a margin of about a quarter inch around the stamp. Share this grand cause by saving every commemorative stamp and ask friends to do the same.

Theta Rho

The Theta Rho Girls held their meeting on April 8 with their president, Juanita Lutkens, in the chair. A spaghetti dinner was planned for April 24. Four

Mother: "No, I won't buy a whistle for my little boy. He almost swallowed one."

Salesman: "Well, we have some nice bass fiddles I could show you."

of the Odd Fellows were present to discuss a recreation program. Buy Home

Mr. and Mrs. Frank Lyday Jr. have bought the property owned by Mr. and Mrs. Raymond Fish and have been busy moving into their new home the past week. Mr. and Mrs. Fish are now living in Ketchikan, Alaska.

Rock Hunting
G. Crawford, Floyd Kast, Mrs. Kast, Mr. and Mrs. Joe Kearney and Mrs. Ruby Miller went rock hunting over in the Kosmos area last week. It was cold and the results not much to brag about but they enjoyed the trip. Mrs. June Kast was elected president of the Rock club at the last meeting.

To Seattle
Mrs. Charles Lutkens and her daughter, Gertrude Kruger, were Easter guests of Mr. and Mrs. Clifford Steele in Seattle. Reporter — Pearl E. Engel, Elbe.

**ORCHILS TO...
PUGET SOUND NAT'L BANK**
ANOTHER STEP INTO THE FUTURE
FOR THE GROWING 84TH STREET DISTRICT

**TYLER & NELSON
SERVICE STATION**
8424 PACIFIC AVENUE Hawthorne 9982

**We Extend Our Best Wishes To
PUGET SOUND NAT'L BANK**
AND OUR CONGRATULATIONS
ON THEIR FINE NEW BUILDING

BLUE MOON TAVERN
8407 Pacific Avenue Hawthorne 9746

**We Congratulate
PUGET SOUND NAT'L BANK**
ON THEIR BEAUTIFUL NEW BUILDING
AND WISH THEM THE BEST OF LUCK

PLEASURECRAFT MARINE
JOHNSON OUTBOARD MOTORS - BOATS & SUPPLIES
9001 Pacific Avenue HI lside 2711

**YOUR IMPROVEMENT . . . OUR GAIN!
BEST WISHES TO
PUGET SOUND NAT'L BANK**
ON THE OPENING OF THEIR NEW BUILDING

FERN HILL LAUNDROMAT
8420 PACIFIC AVENUE Hawthorne 9736

**WE EXTEND A
HEARTY "WELL DONE" TO
PUGET SOUND NAT'L BANK**
YOUR NEW BUILDING IS A WELCOME SIGHT
TO OUR GROWING COMMUNITY

84th Street Variety
8242 Pacific Avenue

**CONGRATULATIONS
PUGET SOUND
NATIONAL BANK**

On the Opening Of Your
Beautiful New Bank Building

PAINTING WORK BY

**SAXON
PAINTING CO.**
1110 Court E. BR 3713

**WE EXTEND OUR
BEST WISHES
TO
PUGET SOUND
NATIONAL BANK**

And Congratulate Them
On Their Fine New Building

BRICK WORK BY
**CARL W. NELSON
MASONRY COMPANY**
5807 A. Street HA 6465

DRIVE SAFELY

**Our Congratulations to
PUGET SOUND NAT. BANK**
YOUR NEW BUILDING IS ANOTHER MILESTONE ADDED
TO 84TH STREET'S STEADY MARCH ALONG THE
ROAD TO PROGRESS

TELEVISION SERVICE CENTER
8203 Pacific Avenue Hawthorne 3386

**WE WANT TO JOIN THE MANY FRIENDS IN ADDING OUR
BEST WISHES AND CONGRATULATIONS TO THE
PUGET SOUND NAT. BANK**
THIS FINE BUILDING IS A BIG BOOST TO OUR
RAPIDLY GROWING COMMUNITY

ALTHUSER PLUMBING
8431 Pacific Avenue HI lside 4671

**CONGRATULATIONS...
AND
BEST WISHES
TO
PUGET SOUND
NATIONAL BANK
ON THEIR NEW BUILDING**


CONCRETE PRODUCTS FURNISHED BY
HARRISON BROS. CO.
(Building Materials)
225 Wakefield Dr. MA 0193

**WE EXTEND OUR . . .
HEARTY
CONGRATULATIONS
TO
PUGET SOUND
NATIONAL BANK**

On the opening of their new building.
We are proud to have been selected as
the General Contractor for the construction of this new modern building.

**J. F.
Graham Co., Inc.**
GR 6750
1408 South 141st
Tacoma, Washington

**CONGRATULATIONS! PUGET SOUND NATIONAL BANK
WE WELCOME A WONDERFUL GROUP OF PEOPLE TO THE NEIGHBORHOOD**

YOUR  DEALER → WEIR'S

FREE PARKING . . . OPEN EVERY NITE TILL 9, (SATURDAY TILL 6:00) 8419 PORTLAND AVE. . . . GRanite 5650

**Couple Honored
On Golden Date**

To help celebrate the Othinal Shockleys' golden wedding anniversary, held in the Midland

Improvement club hall Sunday, April 14, scores of friends, neighbors and relatives gathered to felicitate the honored couple with blessings and good wishes, despite the inclement weather.

Lace tablecloths, golden candles and bouquets of daffodils and forsythia covered the tables,

while a centerpiece of yellow chrysanthemums, gold candles and gold foliage was used on the honored guests' table. An elaborate three-tiered wedding cake in the shape of a three leafed clover was decorated in gold and topped with a bridal couple figurine and the number "50" in gold.

The reception was planned by Mesdames Helen Wartenbe, Mildred Hall, Helen Cleary, Florence Brantner, Joan Chase and Myrtle Culver. Granddaughters, Mrs. Joan Royle and Mrs. Shirley Barclay, cut the wedding cake and Miss Nancy Shockley poured. Mrs. Florence Brantner was in charge of the guest book.

Their daughter, Mrs. Elsie Frye of Howe, Indiana, sent the corsages and boutonnières of yellow carnations for the celebration.

The Rev. Marian Flint of the Bethesda Baptist church gave a talk and prayer. Mrs. Helen Cleary and Mrs. Rosetta Reise sang "I Love You Truly." Mr. and Mrs. O. Shockley sang "Silver Threads Among the Gold" with the guests joining in the chorus.

Many congratulatory cards, gifts and flowers were received by the couple. Mr. and Mrs.

Shockley are the first of their families on either side to celebrate their golden wedding anniversary. Mr. Shockley also was honored for his 87th birthday. The couple's five children were unable to attend, most of them living in the East except the eldest son, Richard E., who is in New Mexico but who telephoned to wish them a happy birthday and wedding congratulations.

Mrs. Ollie Brock from Zanesville, Ohio, traveled far to be with her sister on this happy occasion.

Cub Scouts
The Midland Cub Scouts, Pack 84, will have their Pack meeting Friday evening, April 26, at 8:00 in the Midland Improvement club hall. The Cubs are to make homemade Easter hats for their Easter Parade. Their parents are also welcome.

Birthday Club
Mrs. John Both was hostess to the Midland Birthday club Monday evening, April 15. The club members honored Mrs. Allen Zook for her April birthday. Beside the honored guest and hostess, those present were Mesdames Harold Stavig, A. Thompson, Fred Siehl, Clifford Tuller, Joseph Joringdal, Richard McNabb, Harold Walker, Walter Corrigan and Charles Harris and a guest, Mrs. Harris' cousin, Betty.

Wedding Date Set
Mr. and Mrs. Albert E. Jensen recently announced the coming marriage, June 8, in the Trinity Lutheran church in Parkland, of their daughter, Grace Arlene Jensen, to Lou Fisch, son of Mr. and Mrs. Lou Fisch. Both young people are alumni of

Games Night

The 112th Booster club will hold a games night Friday, April 26, at 8:00 o'clock in the South Hill Community hall, Meridian and Pear streets. Refreshments will be served.

Donations are \$1, proceeds going to the fund being raised to build a community hall in the Woodland district.

Fletcher's Take Top In Junior League

Fletcher's Market whipped Parkland Pharmacy for the championship of the Paradise Bowl Junior league last week while Dick Devereaux won high individual honors.

In the Franklin Pierce junior loop Tom Lumsden and Carol Starkel took individual honors for the boys and girls.

Franklin Pierce high school. Reporter — Marlene Corrigan, Granite 8545.

**OUR
- BEST WISHES -**
To
PUGET SOUND NAT'L BANK
IN THEIR NEW BUILDING

ELECTRICAL WORK BY
CONNORS ELECTRIC CO.
2523 JEFFERSON AVENUE Market 1040

**We Extend A Big Welcome To
PUGET SOUND NAT. BANK**
YOUR NEW BUILDING IS A WELCOME IMPROVEMENT
TO OUR FINE COMMUNITY

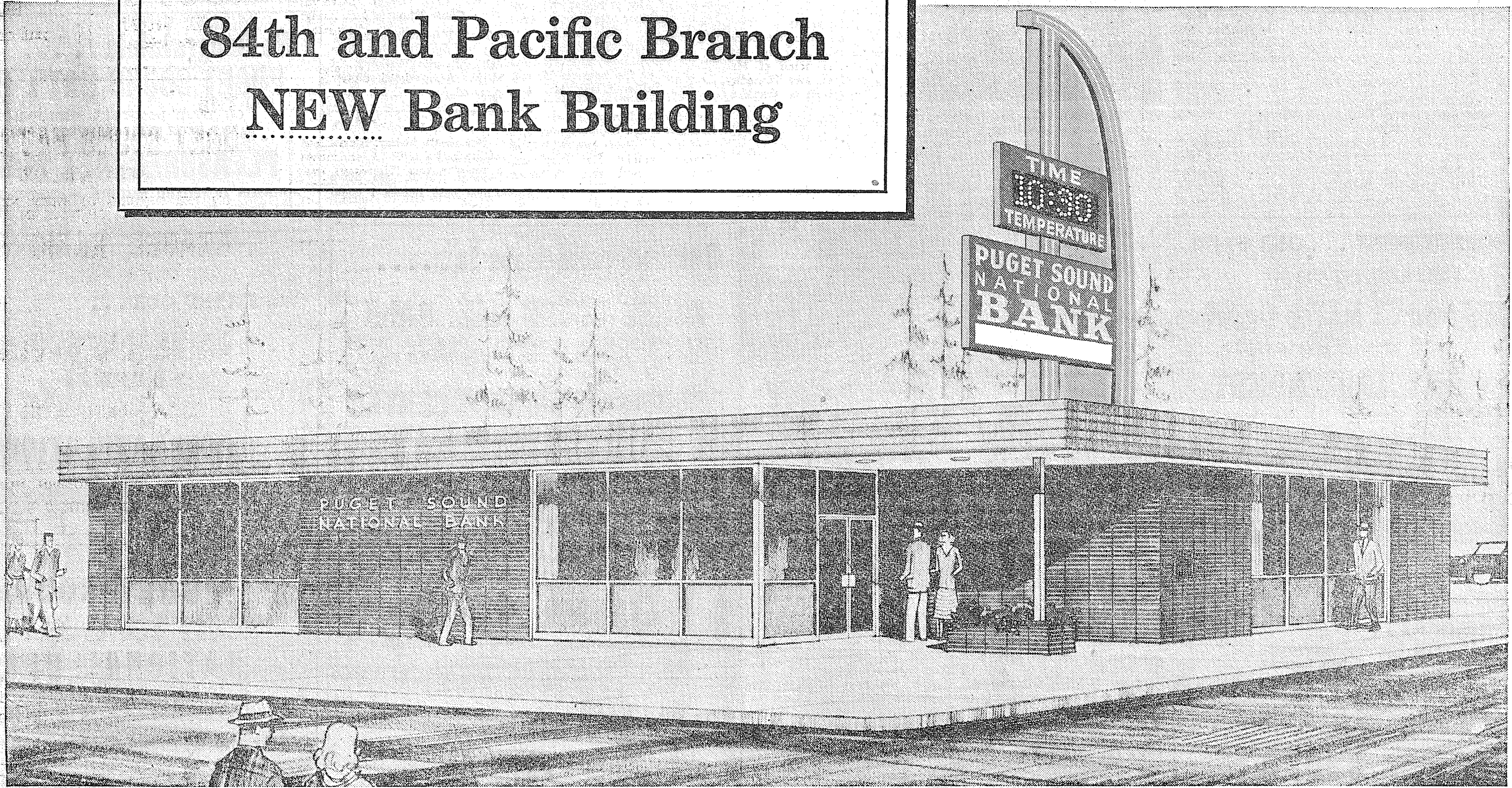
HAWTHORNE 2748
Cooley's
CUSTOM FLOORING
8403 SO. PACIFIC AVE. TACOMA, WASH.

**WE WELCOME THE NEW
PUGET SOUND NAT'L BANK**
84TH STREET BUILDING

A WELCOME ADDITION TO OUR AREA

JACOB'S PACIFIC DRUG
84TH & PACIFIC AVENUE Hawthorne 6445

Formal Opening Saturday
**84th and Pacific Branch
NEW Bank Building**



This is Your Invitation

Manager Ralph Hubbard and his staff invite you to attend the opening of the 84th and Pacific Branch new bank building Saturday... April 27... from 10 a.m. to 6 p.m. The entire staff is looking forward to seeing their many friends from the 84th Street district and the many adjacent areas of Parkland, Spanaway, Summit, Portland Avenue, Edgewood, Midland, Brookdale, Wapato, Waller Road, Bethel, Graham, Woodland, Clover Creek, Collins Road and McKinley Hill.

**ALL THE CONVENIENCES
OF METROPOLITAN BANKING**

- "ACRES" OF FREE PARKING
- NIGHT DEPOSITORY... for making cash deposits after hours.
- SAFE DEPOSIT VAULT... to keep your valuables for a little more than 1c a day.
- 'ROUND THE CLOCK DROP

84th and PACIFIC BRANCH



PUGET SOUND NATIONAL BANK
TACOMA'S FRIENDLY BANK

MAIN OFFICE AND CONVENIENT NEIGHBORHOOD BRANCHES • FREE CUSTOMER PARKING
MEMBER: FEDERAL DEPOSIT INSURANCE CORPORATION

F. P. Band In "Coffee Concert"

The annual "coffee concert" of the Franklin Pierce high school band will be held in the school cafeteria Thursday, April 25, at 8:00 p. m.

Under direction of Harley Christopherson, the 60-piece band will present an attractive program of modern and classical music. Three lovely major-ettes, Marlene Anderson, Marilyn Gaines and Carla Christensen, will add their bit to make the event colorful.

Music will include selections by Sousa, Offenbach, Strauss and two popular selections. Judy Johnson will play a piano solo, "Warsaw Concerta" (Addinsell) with band accompaniment. The band is being assisted by the Franklin Pierce Girls Glee club, singing a group of selections with Mrs. Gunnar Malmin directing.

Eugene Arndt, string instrument instructor in the Franklin Pierce school district, will play two violin solos, accompanied by Mrs. Gunnar Malmin.

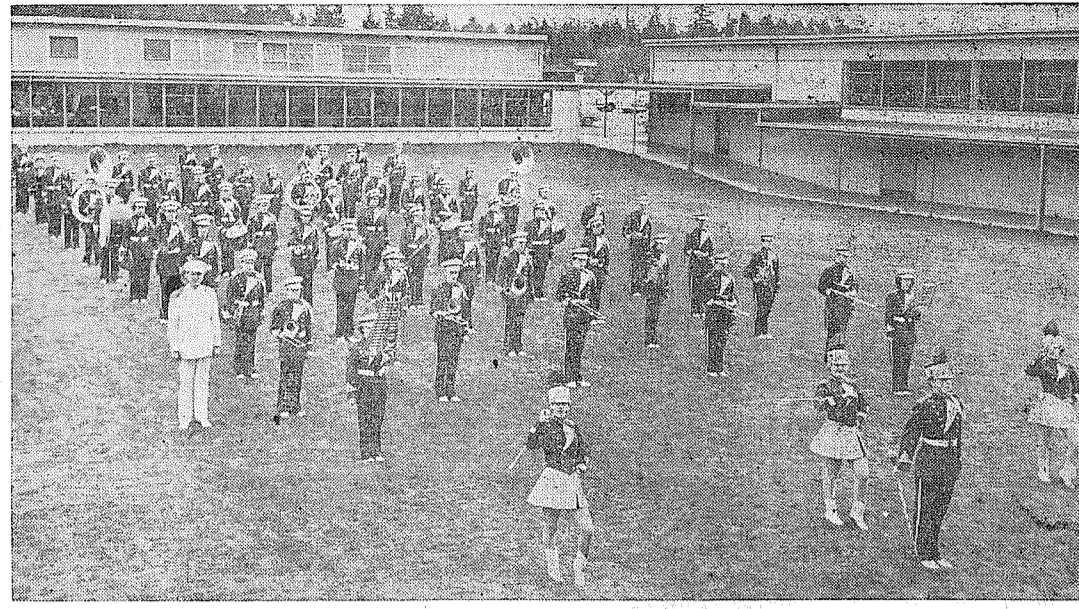
Refreshments will be served by the Band Brother club.

The "coffee concert" is given as a benefit for the band; the donation is 50c. The public is cordially invited.

Other important dates to remember are the music contest to be held at Enumclaw April 27, a banquet for band members and their parents April 29 at 6:30 in the Franklin high school cafeteria; also the District Music Festival at Franklin Pierce high school May 17.

Drive Safely
Save a life . . Yours!

Franklin Pierce Band In Parade Formation



COLORFUL—The handsome crimson uniforms of The Franklin Pierce high school band have made a bright splash of color in many local parades, while the music of three score talented young performers has been enjoyed by thousands. Director Harley Christopherson may well be proud of the group he has directed for the past several years. The public is invited to hear the band and other music makers of the school at the annual "coffee concert" Friday evening, April 26, in the cafeteria. This benefit affair provides for incidental expenses of the band.

Parkland P-TA Meeting, Tea This Afternoon

The Parkland P-TA meeting and tea will be held Thursday, April 25, at 2:15 at the Parkland school.

The invocation will be "The Lord's Prayer" sung by Enid Riley. Mrs. Fink's Campfire group "E-Ha-Wee" will present the Flag. Girls participating are Pam Williams, Priscilla Frieter, Virginia Fink and Carol Herman.

During tea hour the 7th grade girls, under the direction of Mrs. Emil Johnson, will sing two selections: "Lift Thine Eyes" and the "Skater's Waltz." Girls in the chorus are: Kathy Hanson, Janet Ellingson, Susan Peterson, Lois Peterson, Alexis Brick, Ann Malmin, Mary Schnackenberg, Sylvia Luteness, Melody Johnson, Therese Brown, Joan Haakenson and Penny Payne.

Eighth grade mothers will be hosting at the door. In the kitchen the 7th grade mothers hosting are: Mrs. Wheeler, Mrs. R. W. Beckendorf, Mrs. C. W. Manning, Mrs. C. E. Hovey and Mrs. Wilbur Roberts; 7th grade girls helping serve will be Judy McNickle, Martha Hovey, Lorraine Whisler, Therese Brown and Kathy Williams.

There will be a nursery for the little folks headed by Mrs. Jack Morten, Mrs. Wilbur Gamin and Mrs. John Fink, with 8th grade girls, Janet Salzbrun, Nedy Lou Simpson, Ann Bluhm and Diana Perryman, assisting.

Collins News

The Collins Grange will meet in the hall this (Thursday) evening at 8:00 o'clock. An Easter program has been planned by the three Graces, Mrs. Hannah Larson, Mrs. Vera Nowels and Mrs. Jewel Balmer. All Grangers are urged to attend.

Anti-Fluoridation
Anyone interested in joining the Pierce County chapter of the Washington State Anti-Fluoridation League is asked to call the chairman, Dr. Logan McKinsey, WA 6991, or Mrs. Effenberger, GR 6719, planning committee chairman.

Teen-Age
The Collins Teen-Age club will meet again on Saturday, May 4. **New Arrival**
A daughter was born April 11 at St. Joseph's hospital to Mr. and Mrs. Paul Ehnat.

School Issues
Mrs. Morris and Hal Evans spoke on the school bond issue election set for May 21 at the Collins P-TA meeting April 17.

Watch for further news of the proposition.

Improvements
Mrs. Gil Baker announces that Superintendent Morris Ford assures us that plans for landscaping the grounds of the Collins school are under way. We are also looking forward to seeing new floors and decks in the older part of the building in the near future.
Reporter—Mrs. Harold Burgeson, GRanite 7640.

Drive Safely

WE EXTEND OUR
Congratulations

To
PUGET SOUND
NATIONAL BANK

ON THEIR FINE
NEW BUILDING

CERAMIC TILE by

Pacific
Terrazzo, Inc.
MA 8134
1218 CENTER STREET

GOOD LUCK
PUGET SOUND
NATIONAL BANK
IN YOUR NEW BUILDING

CLEAN - RITE
CLEANERS
8234 Pacific HI 5213

FERN HILL BEAUTY SHOP
8237 1/2 PARK AVENUE HI Inside 3177

Takes Pleasure In Extending
Congratulations & Best Wishes

To
PUGET SOUND NAT'L BANK
ON THE OPENING OF THEIR NEW BUILDING

NICE WORK TO
PUGET SOUND NAT'L BANK

ON THE NEW 84TH STREET BUILDING!
AN ATTRACTIVE ADDITION TO OUR DISTRICT!

HAGEN INS. AGENCY

8231 SO. PARK AVENUE HI Inside 6196

WATKINS PRODUCTS

J. H. SLATER, DISTRIBUTOR

8405 Pacific Avenue HAWthorne 3231

CONGRATULATIONS TO
PUGET SOUND NAT'L BANK
ON THEIR SPARKLING NEW BUILDING

WE SALUTE OUR NEW NEIGHBOR!

CONGRATULATIONS ON THE
BEAUTIFUL NEW HOME OF

PUGET SOUND NAT'L BANK

A PLEASING ADDITION!

AUNT SUE'S BAKERY

209 SO. 84TH STREET HI Inside 4072

PROGRESS...

A BENEFIT TO OUR AREA
GOOD LUCK TO THE

PUGET SOUND NAT'L BANK

ON THEIR NEW BUILDING

Hondles' Auto Parts & Garage

Located at 84th & Pacific Avenue Since 1929
HAWthorne 4857

A HEARTY

Welcome
Neighbors

TO ALL THE GANG AT
PUGET SOUND NAT'L BANK

FROM

ALL THE GANG AT

VAUGHAN'S
PACIFIC AVE. LUMBER CO.

84th & Pacific Ave. HI 9515

Clover Creek P-TA Heads Installed

Installation of new officers was the highlight of the business hour Wednesday, April 17, when Clover Creek P-TA met at the school. Mrs. Wallace Bagley, past president, installed the following leaders for the 1957-58 year: President, Mrs. Walt Nordberg; 1st vice president, Mrs. Ed Betts; 2nd vice president, Bruce Grosvenor; secretary, Mrs. Andrew Franich; treasurer, Mrs. Harry Lindbo.

Mrs. Nina Welmer reported on the recent District Council meeting in Puyallup. Mrs. Robert Vorak was appointed chairman for the school picnic.

Final plans were made for the smoker scheduled for Friday, April 26. It was approved to make the donation for adults 50c; children, 35c; family of three or more, \$1. There will be many attractive awards.

Canyon Road News

Last week's luncheon of the Ladies Auxiliary certainly provided that the ladies like to eat out. Every table was filled and the guests greatly enjoyed their interview with the charming Daffodil Festival Queen and her court. Numbers presented by the Conservatory of Music topped off a very enjoyable afternoon for everyone.

Such Timing!
An after climax to Dennis Folk's birthday party reported last week was that he ended the party by going to the hospital for four days with virus pneumonia.

Happy Birthday
Peter Folk celebrated his 77th birthday at the home of his son and daughter-in-law, Mr. and Mrs. John Folk of Canyon road. Sharing the happy occasion with him were also his daughter and son-in-law, Grace and Will Korf from Olympia; his daughters, Frances Olsen and Kathryn Sherman from Tacoma; grandchildren, Mr. and Mrs. Bill Folk, and grandchild, Mark Folk.
Reporter — Mrs. John Folk.

P-TA Board
The Clover Creek P-TA executive board will meet Wednesday, May 1. Those who are in the play are asked to bring their copies with them.
Reporter — Mrs. Wm. Dalby, GRanite 0163.

Orthopedic
The Dr. Lee Rademaker Orthopedic Guild will hold the next meeting at the home of Mrs. Hastung of Spanaway Thursday, May 9. They wish to thank all who contributed to the success of the recent style show, proceeds of which went to the Mary Bridge Children's hospital in Tacoma.

And isn't it the Chinese who say: "If dog lead man, he blind. But, if man lead dog, he married."

DISTINCTION
IS THE WORD FOR THE
PUGET SOUND NAT'L BANK
84TH STREET DISTRICT BUILDING
WE ARE THRILLED WITH THE OPENING
PARK AVE. SHOES
8229 SO. PARK AVENUE HAWthorne 9985

OUR BEST WISHES
TO
PUGET SOUND
NATIONAL BANK
IN THEIR NEW BUILDING
CUT & CURL
BEAUTY SHOP
8236 1/2 Pacific HI 4201

Bethel Boosters Meeting Tonight

Mrs. Jerry Shannon, president of the Bethel Hi P-TA, announces a meeting this (Thursday) evening at 8:00 at the high school for the purpose of formally organizing the Bethel Hi Booster club.

The new group will replace the present Bethel Hi P-TA, those in charge feeling that such a club will have a wider appeal in enlisting the efforts of people of the area in support of the school and its many and varied activities.

All residents of the Bethel school district are urged to interest themselves in the Booster club.

A visitor at an army post came upon two men carrying a third on a stretcher. "Was he hurt?" the visitor asked. "Nope," came the reply, "he just got off KP." "Oh, and you're taking him to the hospital?" "Nope. He's going on guard duty."

WE'RE PROUD...
OF THE NEW 84TH STREET
PUGET SOUND NAT'L BANK
AN ESSENTIAL DISTRICT IMPROVEMENT
A. W. ENBOM
TAX CONSULTANT
8401 PACIFIC AVENUE HI Inside 9481

SPROUSE - REITZ CO.
8218 PACIFIC AVENUE HAWthorne 9762
SENDS BEST WISHES
TO THE ENTIRE STAFF OF THE
PUGET SOUND NAT'L BANK
ON THE OPENING OF THE
BEAUTIFUL 84TH ST. BUILDING

OUR DISTRICT...
SINCERELY WELCOMES THE
PUGET SOUND NAT'L BANK
TO THE NEW 84TH STREET BUILDING
BOYD MOTOR CO.
RAMBLER - HUDSON - METROPOLITAN
8223 PACIFIC AVENUE HI Inside 8431

WE EXTEND OUR
BEST WISHES
TO
PUGET SOUND NAT. BANK
YOUR NEW BUILDING IS A BIG BOOST TO OUR
RAPIDLY GROWING COMMUNITY
RICHARDS
8201 Pacific Avenue HI Inside 2063

A LOOK TO THE FUTURE.....
EVERY COMMUNITY WANTS AND NEEDS IMPROVEMENT.
WE EXTEND OUR BEST WISHES TO
PUGET SOUND NAT. BANK
ROGER'S SERVICE CENTER
8045 Pacific Avenue HI Inside 6293

OUR SINCEREST
CONGRATULATIONS
TO
PUGET SOUND NAT'L BANK
ON THE OPENING OF THEIR BEAUTIFUL NEW
BANK BUILDING
MAY YOU CONTINUE TO PROSPER IN THE FUTURE

LOTS OF LUCK TO
PUGET SOUND NAT'L BANK
IN YOUR NEW BUILDING
BILL'S BARBER SHOP
84th & Pacific Avenue

WE EXTEND OUR
Congratulations to.....
PUGET SOUND NAT'L BANK
YOUR FINE NEW BANK BUILDING IS A STEP IN THE
RIGHT DIRECTION TOWARDS THE GROWTH
OF OUR FINE COMMUNITY
SMITH JEWELRY
8238 Pacific Avenue HAWthorne 2351

B & J
Trading Post
TACOMA'S LARGEST USED FURNITURE STORE
8228 PARK AVENUE HI Inside 7374

To The Many Fine People
Connected With The
PUGET SOUND
NATIONAL BANK
We Extend Our Congratulations
On Your Fine New Building
EXCAVATION WORK BY
FRANK REARDON
GR 5758
129th And A Streets

OUR BEST WISHES AND
CONGRATULATIONS
TO
PUGET SOUND
NATIONAL BANK
On Their Modern New Building
GLASS INSTALLED BY
TACOMA
GLASS COMPANY
1526 Commerce MA 2111

GREETINGS TO
PUGET SOUND NAT'L BANK
From
Palmer Peterson Marie Didenti
Sadie Hughes Libby Curtis
Bill Vout Maxine Stotler
YOUR MODERNISTIC BUILDING IS A BIG ASSET
TO OUR FINE COMMUNITY
FERN REALTY
8234 Pacific Avenue HI 0503

Drive Safely - - Save A Life

100% VINYL PLASTIC PERMA FLEX
59 FOOT LAWN PRO **\$1.98**
GARDEN HOSE
LIGHT WEIGHT & DURABLE - 3 YEAR GUARANTEE

Choice Shrubs & Trees - Fertilizer - Seeds
Garden Supplies at Suburban Prices!

Midland Nursery

& GARDEN SHOP
10603 PORTLAND AVENUE



On The House!

By Mary Lee Conley
The radio was playing the poignantly beautiful Ebb Tide, and I, lulled by its dreamy tempo, was making slow work of breakfast dishes. Suddenly a

noise more reminiscent of Niagara Falls shattered my reverie! The automatic washer never sounded like THAT before! Simultaneously, the phone rang. I dashed to the living room, grabbing the phone just seconds ahead of the Little One. Oh, no! The landlord! Since he'd recently listed the house, I could imagine what he was about to spring!

"How are you?" he inquired. "Fine, and you?" (If you think you're showing the house this A. M., Buster, you're in for

a jolt!) "In the pink, in the pink, and did you enjoy the lovely weekend?" he droned on. "Surely did, and you?" (Egad, get to the point!) I craned my neck for a better view of the kitchen, but so far, so dry! "Fine, fine . . ." he hesitated. I groped for an excuse to bow out on 'but all I could think of was the water flooding the kitchen, and that was out!

As the automatic completed the rinse, and the pump and Niagara played a return engagement, he muttered something about wanting his fiancée to meet us. Specifically, tonight, if our four darling little daughters would be up. He wanted her to see them! Seems he thinks the girls are God's gift, and while we whole-

heartedly agree, THAT, coming from a landlord these days is a sure sign of a serious psychosis! My affirmative answer delighted him. It'd be such a charming glimpse into wedded bliss, didn't I think? Fortunately for him I kept my thoughts to myself. Boy, could our gang ever louse up his little romance for him! Finally hung up and got to the kitchen just seconds ahead of the advancing tide (unpaid adv.). Ran into the laundry and released the stopper, soaking my sleeve to the shoulder. I was still in my nightgown; a little flannel job that the ad promised would make me look as demure as my daughter, but which John firmly maintains is much more reminiscent of his grandfather!

Grabbing a broom, I began gaily sweeping it into the half-bath. Hadn't noticed the milkman hoofing it up the driveway, and talk about your timing, the two kittens dashed in front of him just as I swept water over him. He, broken bottles, and milk

Alder La Grande

Alder potluck this Friday, the 26th, will be a games night starting at 8:00. Small charge for an evening of fun. Bring a white elephant for a prize. Lunch is potluck dessert served later in the evening.

Mrs. Emma Scurlock and Mrs. Mathilda Hedberg were honored recently at the Nisqually Rebeccah meeting. They are the only two active charter members of Alder Lodge No. 233, a membership of 46 years. To fit the occasion the men members put on an old fashioned style show and the guests of honor were presented book-like vases with commemorative inscriptions by Noble Grand Frances Karau.

Mrs. Julia Battles underwent a major operation at the Tacoma General hospital last week; and is reported recovering nicely. Mrs. June Kast was elected president of the Nisqually Canyon Rock club at the last meeting. Floyd Kast will be the new vice president, and Mr. Mierow secretary-treasurer.

Display Chairman Joe Kearney will arrange a display in the hobby room for Community Day at the Eatonville school. Mr. Kearney announced lapidary classes to continue, running from 7:00 to 9:00, followed by the business meeting and lunch. Mrs. Ruby Miller reported on an interesting field trip to Fern Gap on Sunday.

TRUCKS FOR RENT
MA 9039

Save One Half
We Furnish Everything
HARMON'S
Driv-Ur-Self Co.

HARMON'S SERVICE
2112 Jefferson
Jim Harmon, Mgr.

EXPERT LAUNDRY and DRY CLEANING SERVICE
WE CALL FOR AND DELIVER

McKINLEY PARK CLEANERS
3608 McKinley HA 2652

OPEN FOR BUSINESS
Drake's Shoe Repair
8425 PACIFIC

L. W. Gilbert

Teacher: "Junior, what is the first thing your father says on coming to the table?"
Junior: "He says, 'Go slow on the butter, kids! I don't know where the next pound is coming from.'"

Drive Safely

NATIONAL

BONANZA!

FREE GIFTS FOR ALL NEW BABIES



THE FOLLOWING SOUTHERN PIERCE COUNTY GROCERS TAKE GREAT PLEASURE IN BRINGING YOU THIS NATIONAL BABY WEEK

TO THE NEWLY ARRIVED ILLUSTRIOUS INFANTS
1 CASE HEINZ STRAINED
BABY MEATS
From
PARK 'N SHOP
98TH & PACIFIC AVENUE

FOR THE BABY WINNERS
1 CASE OF HEINZ ASSORTED
BABY CEREALS
From
BIG BEAR
134TH & PACIFIC AVENUE

FOR THE LITTLE
1 CASE (4
Gerber's BA
From
I.G.A. FOOD
112TH & PAR

TO FILL THE TUMMIES OF OUR NEW LITTLE RESIDENTS
TWO DOZEN COMPLETE SETS
Even-Flo BABY BOTTLES
From
PIGGLY WIGGLY
PACIFIC AVENUE AT GARFIELD STREET

TO START THE NEW BABIES ON THE ROAD TO HEALTH
1/2 GALLON MEDOSWEET
FRESH MILK
TO EACH NEW BABY, FROM
GIBBONS FOOD CENTER
SPANAWAY

FOR THE LITTLE STRANG
1 CASE (48 Cans) SHUR
CANNEE
From
Summit View
AIRPORT & CAN

Friday Carnival Benefit for New Recreation Area

First big fund raising event of the proposed Spanaway Recreation area will be the carnival to be held Friday, April 26, in the Spanaway elementary school.

With festivities starting at 7:00 p. m., a full evening's entertainment will be provided by a fine program of games, music, movies and other gala activities.

Three valuable special awards will be given away—an electric blanket, electric fry pan and a generous supply of good beef.

There will be the usual carnival booths for the sale of refreshments; also a garden booth to delight the folks with green thumbs.

All proceeds will go to the Spanaway Recreation Area project, the main project of the year in the community. The am-

bitious development will probably be located on Metropolitan Park property near the north gate to Spanaway park and running down to the lake. One of the first features planned will be a baseball field which will be available for the Little League teams of the entire Bethel district. Picnic areas, toilet facilities, and cooking services will center in the attractive rustic building for which plans have been drawn. Tennis courts are also planned, as well as equipment for other sports of interest to youngsters and teen-agers. The lake will be used for a supervised swimming program.

A group of parents and friends around the Spanaway, Clover Creek, Elk Plain, Roy and Kapowsin section have been holding meetings for several months to organize interest in the Spanaway Recreation plan and to lay the ground work for an all-out effort to launch the project this year.

Co-operating in the plans are the Spanaway Volunteer Firemen and Auxiliary, the Lions

County Agent's Corner

By Joseph Buhaly

Thinning young Douglas Fir and Red Alder stands is becoming a more popular practice judging from recent "sign ups" with the Agriculture Stabilization and

club, Kiwanis club, P-TA, Pre-school, Metropolitan Park Board, school board of Bethel District No. 403, Pierce County Commissioners and other civic and service groups. Meetings of the proponents of the plan are held regularly and all local people willing to help are urged to attend. Watch for published dates of the meetings.

FENCING
Designers and Builders
EXPERT WORKMANSHIP
REASONABLE PRICES
Easy Monthly Payments
VAUGHAN'S
84th & Pac. Ave. HI 9515

Conservation Service. Those who plan to take advantage of the 25 per acre federal payment include William G. Lauenberg, Donald A. Belbye, Elmer E. Nice, and Joe Baumgartner of Graham. A. R. Fenton, J. A. Kelley and Douglas M. Babcock of Gig Harbor are planning to do thinning work also. John Kuper of Tacoma has signed up for 50 acres of thinning. Oliver Hansen also of Tacoma, 20 acres, and R. W. Hanseh and G. R. Sell of Eatonville plan thinning improvement work on their timber stands.

Thinnings are necessary if growth is to be concentrated on premium high quality trees and not wasted on poorly formed

and small stems, which cannot survive in the competition for growing space. A couple of days work in a young stand may save the owner hundreds of dollars when harvest age arrives.

By Morrill Delano

An unusual demonstration is being worked up for the coming 4-H demonstration contests to be run off the first part of May. The Backwoods 4-H club of west Puyallup composed of eight boys will enter a two-boy team demonstrating rope making. Rope making is nearly a lost art in this day and age and it would be in this instance if it were not for these boys' leader Vernon Kershner. Mr. Kershner grew

up in the ranching area of Wyoming. When he moved here a few years ago one of the "gadgets" he brought along was this "strand twister" for rope making. He used it as a boy to make all the rope used on his father's ranch.

His club members have now spun enough rope to tie everything up in the neighborhood in practicing for the coming contests. Tommy Austin of east 80th street is president of the Backwoods 4-Hers. His club was newly formed this year.

Rupe Machine Works & Garage
13411 Pac. Ave., P.O. Box 2445 Parkland 44, Wash. GR 7450
COMPLETE MOTOR REBUILDING
Lathe Work, Press Work, Con-Rod-Grinding, Head & Block Grinding, Piston Grinding, Brake Drum Turning, Reborning, Main Line Boring, Pin Fitting, Rod Aligning, Armature Turning, Crank Shaft Service.

FLETT DAIRY
FARM FRESH
HOMOGENIZED AND
PASTEURIZED MILK
AND CREAM
ICE CREAM
Phone HA 3301

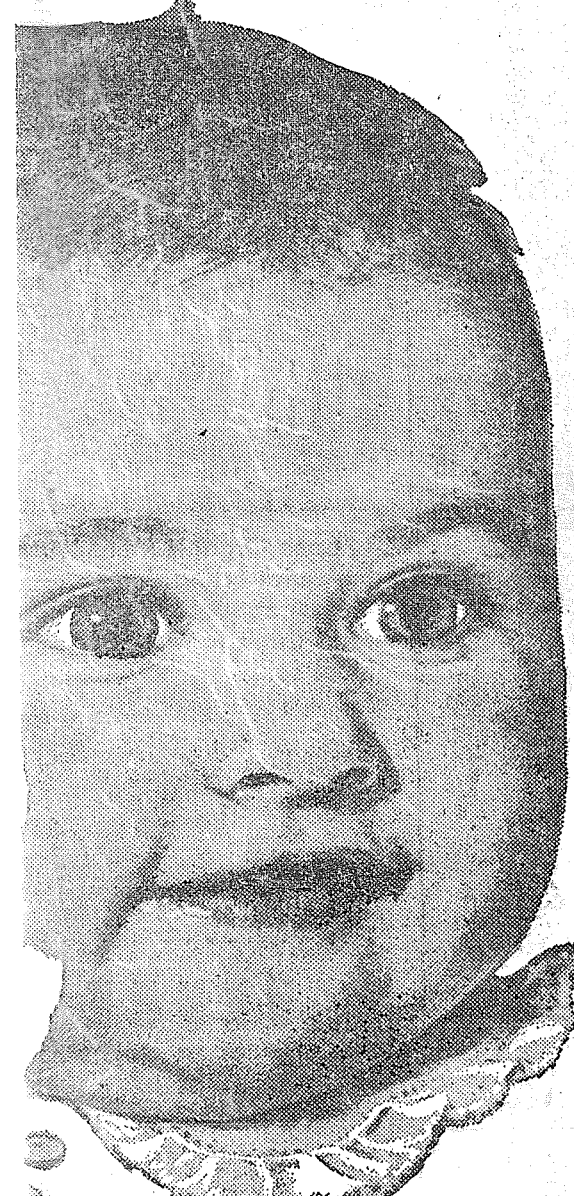
Building Permits
The following building permits have been issued by Keith F. Jones, Pierce County Engineer, Building department:
Howard O. Olson, \$18,000 frame home, Spanaway.
Kirk E. Eaton, \$8000 frame home, 8607 E. Taylor St.
Ceil Webber, \$42000 addition to home, Rt. No. 7, Box 113, Tacoma.

A sailor arrived at the dock just as his ship was pulling out. It had gone about seven or eight feet, so the sailor made a running jump. He landed on the deck but gave his head a terrific bump.
When the sailor came to, the boat was several hundred yards from shore. He sat up, looked back, blinked and then shouted with awe: "Boy, on bay! Can I jump!"

General Sheet Metal Work
Special Attention to Special Equipment
RAU MFG. CO.
GRanite 7372

PRESCRIPTIONS CAREFULLY PREPARED
Fresh Insulin
Downtown Prices
Pay Phone Bills Here
Tincher's Pharmacy
8227 Park Ave. HI 8344
Across from Fern Hill P.O.

BABY WEEK



EVERY BABY BORN A WINNER!

EVERY BABY BORN TO TIMES JOURNAL READER PARENTS DURING NATIONAL BABY WEEK, APRIL 27TH THRU MAY 4TH WILL SHARE EQUALLY IN THIS BONANZA OF BABY NEEDS.

PARENTS! BE SURE TO ENTER THE NAME OF THE NEW ARRIVAL IN YOUR HOME . . . NO ENTRY BLANK TO FILL OUT! NO ESSAY TO WRITE! NO OBLIGATION OF ANY KIND!

RULES AND INSTRUCTIONS FOR YOUR BABY TO BECOME A WINNER:
IF YOU ARE ON THE REGULAR MAILING LIST OF THE TIMES JOURNAL (RECEIVE A TIMES JOURNAL IN YOUR MAIL BOX) AS OF APRIL 25TH, 1957, YOUR BABY IS ELIGIBLE TO WIN. JUST CALL THE TIMES JOURNAL OFFICE, GRANITE 0223 BY 12 NOON MONDAY, MAY 6TH, 1957. GIVE THE PARENT'S NAME, NAME OF BABY, HOSPITAL WHERE BORN, TIME OF BIRTH AND NAME OF ATTENDING PHYSICIAN. UPON VERIFICATION, YOUR BABY'S SHARE OF THIS GIGANTIC BONANZA WILL BE DELIVERED TO YOUR HOME ABSOLUTELY FREE!

BONANZA AND HERewith LIST THEIR DONATIONS

NEWCOMERS
8 CANS)
BABY FOOD
om
DOWNTOWN
K AVENUE

TO INSURE A PROPER DIET FOR OUR NEW CITIZENS
1 CASE MINUTE MAID
Frozen ORANGE JUICE
From
FLETCHER'S MARKET
12208 PACIFIC AVENUE

FOR THE "BABY WEEK" BABIES
1 CASE OF HEINZ STRAINED
Baby Fruits & Vegetables
From
MIDLAND THRIFTWAY
98TH & PORTLAND AVENUE

ERS IN OUR MIDST
FINE No. 1 TALL TINS
MILK
n
THRIFTWAY
BYRON ROADS

FOR THE LUCKY LITTLE TYKES
1 CASE GERBER'S ASSORTED
STRAINED BABY FOOD
1 DOZEN CURITY DIAPERS
From
BARGAIN BASKET
167TH & PACIFIC AVENUE

FOR THE LITTLE CUTIES
1 CASE OF 48 NO. 1 TALL TINS BORDENS
EVAPORATED MILK
From
SUMMIT TRADING CO.
KNAPP & CANYON ROADS

WALLER ROAD Kindergarten Possible Here

Plans are under way to have kindergarten next fall in the

GLASS HOME SERVICE OUR SPECIALTY
Also Commercial Installations
DEAN'S GLASS
13021 Pacific GR 5681

Puyallup Public School system, of which the Waller Road school is a part. So that parents can make plans for their kindergartners and first graders for next fall the administration are at this time announcing the entrance requirements for these pupils entering next September.

If your child is entering kindergarten next fall, he must meet these requirements before he can be enrolled in the Puyallup Public Schools:

1. To be eligible for kindergarten a child must have passed his fifth birthday on or before

October 31, 1957, to be enrolled in Puyallup Public Schools kindergarten.

2. A birth certificate or an equivalent will be required to be presented at the time of registration.

3. Pupils living out of Puyallup School district will not be accepted.

Registration for kindergarten and first graders will be held one full week before the opening of school next fall, in each elementary building. Watch your newspapers for the announcement of the specific days in August.

Visiting Recent weekend guests of Mr.

and Mrs. J. O'Brien were their son-in-law, Mr. and Mrs. Raymond Kulju and children of Richland, Wash. Mrs. Earnestine Savage recently spent a short time at her home on East 72nd street, then returned to Olympia where she has been staying with her daughter-in-law since her son passed away.

In Hospital

Lee Hogan spent the past week in a Tacoma hospital following a heart attack. He is reported doing well but will have to take things easier for some time.

Piano Recital

A spring piano recital was held April 11 at the home of Mr. and Mrs. A. H. DeMeerleer honoring

Dawn DeMeerleer and Glorian Haug, assisted by Janice Knesal and Jimmy Samuelson, pupils of Mrs. G. Haaland.

Many beautiful piano selections were presented by Dawn and Glorian. Other pupils participating in the recital were James and Janice Hart, Marjorie Howard, Sharon Anderson, Elaine and Lawrence Rogness, Karen Samuelson, Linda Rudd, Gregory Mierz, Marjane Floyd, Sarah and Margaret VanAlstyne, Patsy Rowe, Jeanne Hand and Nancy Maxfield. Mrs. DeMeerleer and Mrs. Haug were hostesses to a large group of interested friends and beaming parents attending the reception.

Out of Service
Robert Lasham has completed his four-year enlistment with the U. S. Navy and he, with his wife Shirley and small baby daughter, will make their home in Tacoma after residing in San Diego.

Garden Club
At the May 2 meeting of the Waller Road Garden club all members will answer roll call with a garden problem. Lawrence Savage will talk on pruning spring flowering shrubs and E. D. Costantini will talk on Vegetable gardening.

The flower arrangement of the month will be brought by Mrs. Kenneth Johns, others to bring flower arrangements also. There

Chills, Thrills In Freak Mishap

It was touch and go for a few seconds Thursday afternoon in a freak accident on Pacific avenue at 119th street, immediately in front of the Times Journal Publishing Co. building.

An Oregon trucker, driving along with a large truck and a four-wheel trailer, neither loaded, came rolling down the slight hill at a good clip, traveling south, quite evidently on his way home to Oregon.

Nobody knows just how it happened, certainly not the driver, but suddenly the truck and trailer jack knifed, and both parts of the two units stopped parallel to each other, the truck having whirled completely around, now facing north in the outside lane while the trailer remained in the middle lane facing south, the direction in which it had been traveling. Both south-bound lanes were therefore blocked.

The event was pretty exciting to Times Journal personnel since the careening truck was brought under control less than three feet from the lined up company and employees' cars. If it hadn't stopped when it did several people would have been temporarily on foot.

With kindly understanding another trucker stopped and help-

will be an iris plant exchange and election of officers.

Grange News
Rudolph Geise has been elected delegate to the State Grange Convention in June by members of the Waller Road Grange. Mrs. Geise will accompany him.

Lawrence Howard will replace Lee Hogan as Institutional Representative from the Waller Road Grange, in the Scouting program, due to Mr. Hogan's ill health.

Delba 4-H
The Delba 4-H Girls, with Mrs. Robert Lewis as leader, are sponsoring a car wash as a money making project Saturday, April 27, at Don's Texaco Station at 72nd and Pacific avenue, weather permitting. "No extra charge for white walls," say the girls. Linda Lewis is chairman with Sandy McElroy as co-chairman. Edie Rich is the club reporter.

Reporter — Mrs. Verne Fogle, GRanite 5210.

ed the Oregon man get his rig back on the road and he proceeded on his way—undamaged, unhurt but "all shook up."

Young Couple Will Wed Sunday Evening

Dr. and Mrs. Albert E. Smith announce that their daughter, Gloria Mae, will be married to Ronald E. Peterson, son of Mr. and Mrs. Albert Peterson of Mile B and Collins roads Sunday evening, April 28. The ceremony will be performed at the Country Chapel, 112th and Waller road, at the close of the evening service.

All friends of the families are cordially invited to attend the wedding. The young couple will make their home in the Parkland area.

Mountain View Food Lockers
CUSTOM MEAT CUTTING
Locker Beef 25c Lb. & Up
2519 East 112th GR 5332

NEXT TIME CALL GR 8309

BIXBY T.V. & RADIO
GUARANTEED REPAIRS
12503 Waller Road

Custom Built Cabinets & Store Fixtures
We Install Free Estimates
RHONE'S CABINET SHOP
So. 161st St. GR 3342
Spanaway

GREEN GREEN GRASS
More Fun to Live on!
Choose Organic Morcrop, the quick-acting, long-lasting natural plant food that's tops for our local soils.

PROTECT YOUR PROPERTY WITH CYCLONE FENCE!
DIRECT FACTORY PRICES
NOTHING DOWN EASY TERMS
For free estimates phone Market 4551
911 1/2 Pacific Avenue Tacoma, Washington
ONLY UNITED STATES STEEL CORPORATION MANUFACTURES CYCLONE FENCE

AVENUE FEED
98TH & PACIFIC AVE. GR 4546

T.V. DINNERS

Swanson's Turkey - Beef or Chicken Each **59c**

CAKE MIXES

Betty Crocker White, Yellow 20-Oz. or Devil's Food . . Pkg. **4/\$1**

BLACK PEPPER

Crown Colony 1 1/2 Can **10c**

K-P LUNCH MEAT

12-Oz. Can **29c**

AT SAFEWAY

MAXWELL HOUSE COFFEE
Regular or Drip Grind
2-LB. CAN **\$1.79**

COMBINATION OFFER!
SHERBET DISH 1c
Anchor Hocking Crystal
WITH EACH PURCHASE OF 1/2 GALLON 1/2-Gal.
Snow Star ICE CREAM 79c

Congratulations To The Puget Sound Nat'l. Bank
On The Opening Of Their 84TH STREET BRANCH

SAFEWAY FEATURES ONLY "AGED" CHOICE BEEF

Beef Pot Roast
U. S. CHOICE BLADE CUT SERVE WITH VEGETABLES Pound **37c**

BEEF RIB ROAST, "Choice" lb. 59c
BEEF SIRLOIN STEAK lb. 79c
BEEF ROUND STEAK, Bottom Cut . . . lb. 69c

Bologna Chubs
ARMOUR'S, FOR LUNCHES - 1-LB. 2-OZ. CHUB
Each . . . 3/\$1.00

SLICED BACON
ARMOUR'S BANNER
1-Pound Package . . **49c**

SKINLESS WIENERS
MILWAUKEE Or SOMERSET
1-Pound Package . . **43c**

"BRADLEY'S" CHERRY - APPLE - BOYSENBERRY
FROZEN FRUIT PIES 6/\$1.00 5-Inch Size
MAKES GOLDEN BROWN PIES 3-Lb. Can
FLUFFO SHORTENING 85c
FIRST IN FLAVOR 6-Oz. Pkg.
HERSHEY'S DAINTIES 19c
FOR QUICK AND EASY MEALS 1 1/2-Oz. Can
NEW WHOLE POTATOES 10c
NALLEY'S, MAPLE FLAVORED 24-Oz. Bottle
LUMBERJACK SYRUP 29c

BANANAS

2 LBS. 25c

Florida Oranges EXTRA JUICY Lb. **10c**
Arizona Grapefruit. 8-Lb. Bag **49c**

No. 2 Potatoes

Netted Gems. Ideal For Cooking. Serve Mashed. 50-Lb. Bag **89c**

PRICES EFFECTIVE AT SAFEWAY 82nd & PACIFIC AVENUE ONLY!

Gardening Pleasure at a popular price!

Only **\$169.50** complete

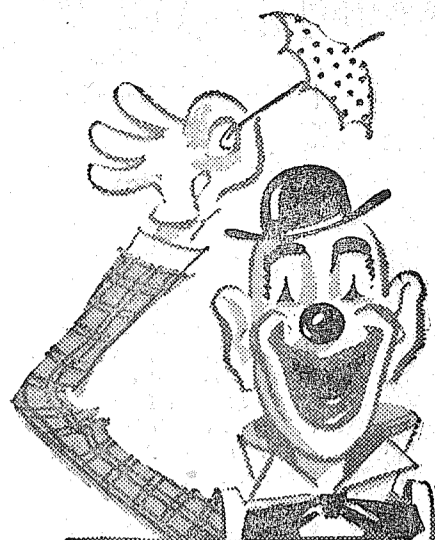
The Quality **Simplicity** Low Cost Rotary Tiller

The perfect mechanical hired man for the large garden or small farm. Ideal for preparing seed beds, mulching, and cultivating. Simple in construction—easy handling with fingertip clutch-control of tines; built tough for long wear. Times GUARANTEED FOR LIFE against breakage. A multiple-use tiller. Time sections can be changed without tools. Equipped with powerful 2 1/4 hp Briggs and Stratton engine with recoil starter. Quiet operation with the Lo-Tone muffler.

Avenue Feed

98th & Pacific Avenue GR 4546

Simplicity Garden Tractors and Attachments from 1/2 HP to 5 HP for every purpose
TILLING • PLOWING • DISCING • MOWING • CULTIVATING



CARNIVAL

NO ADMISSION CHARGE

PRIZES - SURPRISES - CLOWNS - GIVEAWAYS

Bring Your
CAMERAS
Take The Kiddies
Picture
With The Clowns
Prizes will be awarded for the
best photos submitted to Mgr.

FREE

- Ice Cream
- Beechnut Gum
- Balloons
- Pepsi Cola
- Comic Books
- Footballs
- Lifesavers
- Table Lamps
- Comforter
- Dacron Pillow
- Pop Corn
- Baseball Mitt
- Baseball Balls

IN PERSON
THE FAMOUS CLOWNS
BEECHIE
BON BON
ELMER
USELESS
FRIDAY & SATURDAY

BORDENS MILK

TALL CANS

EXTRA SPECIAL

11

U&I SUGAR

10 LB. BAG 89

A WASHINGTON PRODUCT

DOG FOOD

3/25

SKIPPY

ONE POUND CANS

U-I SUGAR

Pkg. 10

POWDERED - BROWN

STRAWBERRY PRESERVES

IGA LARGE 20-OZ. JAR

35

BUTTER PEANUT

SUNNY JIM 20-Oz. JAR

49

KRISPY CRACKERS

SUNSHINE POUND BOX

25

BREAST O' CHICKEN CHUNK TUNA

1/2 SIZE CANS

2/57

NORWEST CREAM STYLE CORN and Garden Peas

303 CAN

10

BLACK & GOLD FREESTONE

PEACHES

LARGE HALVES

2 1/2
SIZE
CAN

25

FAMILY PACK

BEECHNUT GUM AND LIFESAVERS

6 PKGS. 19

OHIO BLUE TIP

BOOK MATCHES

Pkg. of 50

2/29c

SAVE



SERVING FRI. - SAT.

LOOK

5¢ HOT DOGS

NORWEST GREEN CUT BEANS

303 CAN

10

CALIFORNIA WHITE SCHAFTER

Potatoes

6 Lbs. 29

Fresh Peas

2 Lbs. 25

LOCAL

Rhubarb

Lb. 6

FLORIDA PINK

Grapefruit

Lb. 10

Pound

43

Pound

39

GIANT TIDE

69

Whole Drawn

Fresh Fryers

Medium Weight

Spare Ribs

U. S. Choice Bottom

ROUND STEAK

Lb. . . . 65

U.S. Choice Top

ROUND STEAK

Lb. . . . 79

Swift's Prem. Skinless

WEINERS

Lb. . . . 45

Stupendous

STARLAG

12 QT. SIZE

69

Colossal!

Borden's Instant Chocolate MALTED MILK

Lb. Can

49

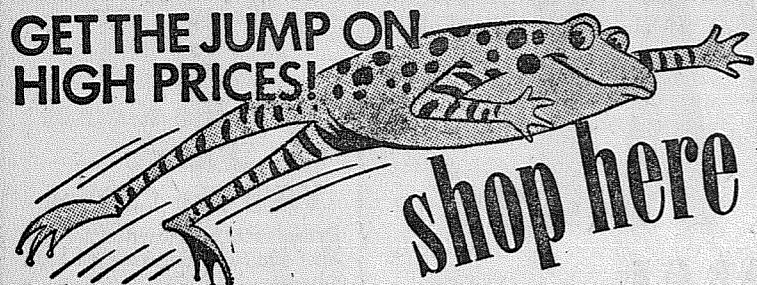
Gigantic

BISQUICK Large 40-Oz. Pkg.

35

FOOD TOWN

GET THE JUMP ON HIGH PRICES!



shop here and

SAVE!

EARLY GARDEN FREESTONE

PEACHES 2 1/2 Tin **4/1⁰⁰**

BANNER

MARGARINE **5 Lb. 1⁰⁰**

FRISKIES
CAT FOOD
Tall Tin
12 for \$1⁰⁰

GIANT
TIDE
69¢

Golden Ripe 2-Lbs. **BANANAS** **25¢**

Fresh Local 3-Bunches **RADISHES** **10¢**

Solid Heads Lb. **LETTUCE** **10¢**

Crisp Spring 2-Bunches **SPINACH** **15¢**

GERBER'S
STRAINED
BABY FOOD
12 for \$1⁰⁰

SNOW MIST
TUNA
6-Oz.
19¢

NALLEY'S

Tang

Quart **35¢**

Cheerios Wheaties

King Size Box **19¢**

PILLSBURY

Cake or Frosting Mix Pkg. 2/55

SAVE QUALITY GUARANTEED SAVE

CARSTEN'S HYGRADE READY - TO - EAT **SMOKED PICNICS**
ARM - ROUND OVEN ROAST
PURE PORK SAUSAGE
LEAN TENDER RUMP ROAST **39¢ Lb.**

LEAN FRESH **GROUND BEEF** **3 Lb. 79¢**

ALL OF THESE SELECT CUTS AT THE LOW PRICE OF
STEAKS - Sirloin - Rib or Swiss
LOIN PORK ROAST - PORK STEAKS
LEAN SPARE RIBS
BONELESS BEEF STEW **49¢ Lb.**

SKINLESS WIENERS 3 lbs. \$1 | SHORT RIBS lb. 10¢

THE QUALITY AND PRICE ON THESE ITEMS CAN'T BE BEAT
SLICED BACON, Carsten's, Pound Layers
STEAKS - Round or T-Bone
SIRLOIN TIP ROLLED ROAST
RIB CUT PORK CHOPS **59¢ Lb.**

YOUR ONLY HOME OWNED SUPER MARKET
12208 Pacific Avenue

Fletcher's

OPEN:
7 Days A Week
9 a.m. to 10 p.m.
Prices Effective
THURS., FRI. & SAT.
THIS WEEK

No Sales To Dealers
Right To Limit Reserved

"COURTESY" OUR MOTTO ALWAYS

PLC Trackmen To Host Ft. Lewis

Althuser, Salter Win Brookdale Best Ball Title

Ernie Althuser and Bernie Salter won championship honors of the Brookdale Club Best Ball Tourney last weekend when they dumped Len Blakely and Spence Broomhead 5 and 4. Consolation went to Rus Gaines and Fred Koch who stopped Walt Trent and Al Stearns 5 and 3.

Medal Tourney
Other action at Brookdale found Bud Williams, entering Friday and also Saturday, winning the first two places in the first division of the medal tourney. His first place score was 66-5-61 and second was 71-5-66. Art Haumann with 71-5-66 tied for second.

In the second division top honors went to Wayne Weaver and Austin Barber, with 80-14-66 and 79-13-66 respectively.

Third division winner was Bill Zumbull with 80-18-62. Third place ties with net 65's were Howard Bond, Dave Edmunds, Clyde Woods and Sam Emerson.

Next week the city-wide Publix Championship begins at Brookdale.

At the College Club, Pete Westby fired a 71-11-60 for first division medal play honors. Second place was tied by Larry Olsen with 79-16-63 and Ron Gratis with 76-13-63.

Second division went to Frank Sheppard with 86-24-62. John Graham took second with 80-17-63 and Ed Hager was third with 83-19-64.

Larry Olsen also won closest to the pin as he hit within 5'10" on number 6.

Next week a Match Against Par is set for the College course.

Clover Creek Smoker Friday

The annual Clover Park Smoker will be held Friday, April 26, at 7:30 at the Clover Creek school gymnasium.

The event, the annual fundraising project of the P-TA, will feature a wrestling match by Bethel high school wrestlers. Also on the schedule is a five-man free-for-all boxing match between five members of the Clover Creek school. Each contestant will have on a left glove and will be blindfolded.

The smoker committee includes Mesdames Nordberg, Weimer, Dalby, Franich, Lindbo, Grosvenor, Rodius, Wolf and Betts.

Baskett, Rognaldson Take Pinette Honors

Evelyn Baskett fired a 213 for high single honors and Elmyra Rognaldson hit 581 for high series to take individual honors in the Paradise Pinette Women's Bowling league last week.

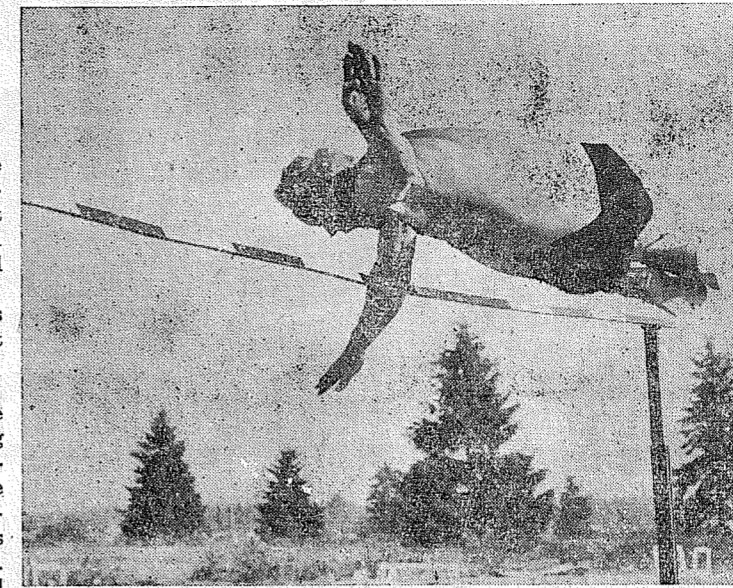
Other high series went to Evelyn Baskett, 575; Aggie Saindon, 553; Blanche Moody, 513; and Eileen Andressen, 504.

Lincoln Fuel continued to hold first place in team standings followed closely by Tacoma Rubber, Wilma's Beauty Salon and Keller Floor Covering.

Splits were picked by Sally Taasevigan, Dorothy Forsyth, Pat Pitsch, Dorothy Kent and Loretta Klingelhoffer.

Jordan's
Round-Up
of fine BAKERY PRODUCTS
Every One a Winner
try the sweet ROLLS

Lute Cinderman



UP AND OVER—Dale Storassli, Pacific Lutheran College trackman, clears the high jump bar in preparation for the dual cinder meet against Fort Lewis Saturday at the Lutes' home field. Storassli scored well for the Lutes last year in the same event. Photo by McKewen.

Diamond Nine Invades Puget Sound Friday

Pacific Lutheran's Gladiators host Fort Lewis Saturday afternoon in a dual cinder meet at the Lute field, while the baseball nine heads for the College of Puget Sound Friday.

The Army track squad invades the Lute campus with hopes to take the annual event, while Pacific Lutheran fans are awaiting the meet which is the first team event since April 13. John Fromm, NAIA javelin champion, is expected to be the big draw for PLC as the husky spear hurler has bettered several personal and school records already this season.

The hardball contest, scheduled for 3 p. m. on the Logger's diamond, is the first of two meetings of the cross-town rivals.

On Tuesday the diamond squad hosts Seattle Pacific College in another baseball tussle. The remaining baseball schedule is May 6 at Western; May 11, U. of Washington here; and May 17, CPS at Western State Hospital.

Other track meets this season are: May 4 at Central Washington; May 11, Western Washington; here; May 18 at Western Washington; May 24-25, Conference meet at Cheney, Washington; June 1, District NAIA at Renton, and June 8-9 NAIA at San Diego, Calif.

Car Washing Hope For Uniform Funds

This Saturday the Franklin Pierce freshman baseball team will again wash cars at three south-end service stations with hopes to raise enough funds for uniforms.

Since the squad is not a school function and will be operating during the summer, no school money can be used for uniforms.

Under the direction of Coach Bud Galusha and assistant Carl Strand, the boys will be washing cars at Tommervik's Parkland Service, Beitz Shell Service and Christiansen Midland Service.

Kids Eye Annual Fish Derby At Wapato Lake Sunday Morning

Young anglers . . . get your fishing poles and tackle ready and head for Wapato Lake.

And by young we mean the physically young fish enthusiasts. Youngsters 13 years of age and under are eligible to enter the ninth annual Kid's Fishing Derby on Wapato Lake Sunday starting at 4 a. m. and ending at 10 a. m.

Heavily Stocked
Stocked with many, many trout, including some big ones, the lake has not yet been opened to anglers and Sunday is the first day as far as Wapato Lake is concerned. It is only for juveniles with no boat fishing permitted.

There will be a grand award for prize winners with those up to nine years of age and the other from 10 to 13. Approximately 40 prizes will be awarded to each group. Last season each boy that caught a fish won a prize.

There will be a grand award for the largest fish regardless of which group it comes from plus another grand prize for the largest amount of fish. The youngest angler entered will also get a special award . . . even if he or she doesn't catch a fish.

Free refreshments, including cocoa and donuts, will be served by the Ladies Auxiliary of the Tacoma Sportsmen's Club.

Warm Up Room
A room will also be available where any of the young hopefuls can warm up. Some tackle will also be available. A Park

District life guard will be on duty to insure safety.

Keeping a record of the fish caught will be simplified this year as a new system will be used. A rack which can hold 300 fish has been built with plastic bags available for each catch following weigh-in which will be at 10 a. m.

Co-Sponsors
Sponsored jointly by the Metropolitan Park District and the Tacoma Sportsmen's Club the event is expected to have more than 1,000 entries. Children may enter regardless if their parents belong to the Sportsmen's Club or not.

Last year several South-end young anglers won valuable and useful awards. Many will again . . . so get your youngsters to Wapato . . . starting time is 4 a. m.!!!

LOW COST
Power Tool RENTAL
SANDERS - EDGERS - POLISHERS - HAND SANDERS - SKIL SAWS - ELECTRIC DRILLS - CEMENT MIXERS - ETC.
ALSO HAND TOOLS FOR RENT

Anderson Lumber
9813 Pacific Avenue GRanite 7311

ANNOUNCING
New Dance Band
THE 3 GALS OF HARMONY
MARGARET - DOT & GLADYS
Dancing . . .
Fridays 9 to 1 - Saturdays 8:30 to 12
the BUNGALOW
Fishermen's Headquarters For Good Food!
OPEN ALL NIGHT
TRY OUR NEW SIZZLING STEAKS

TRIANGLE Chick Starter
A High-Profit Formula For Today's Improved Strains
You have a head start to profit with Triangle's "Famous Formula" Chick Starter. A high content of Vitamins and Antibiotics prevent losses from disease, stunting and other setbacks. A high level of proteins and additional feed values promote faster growth and sturdy development. For greater feed efficiency and better egg profits ask your dealer for Triangle Chick Starter now!

TRIANGLE MILLING COMPANY
SOLD LOCALLY BY
RUDY'S FEED & SEED CO.
14660 Pacific Ave. GRanite 4888