

PACIFIC
P. T. U. Library
Tacoma, Wn. 98407
1967

New Community College Planned

Pierce County Herald and

The TIMES JOURNAL

Vol. 23 No. 47

November 23, 1967

Price Per
Single Copy

10¢



CARMEN YEAGER, age 4, takes a close look at America's traditional holiday bird and is thinking (perhaps) of how he might look gracing the center of her dining table. The bird, sensing his number is almost up, ruffles his feathers in a last ditch

display of defiance. Carmen is the daughter of Mr. and Mrs. Richard Yeager, 212 East 131st and attends Parkland Cooperative Nursery classes where the turkey made an appearance Monday.

A Second Community College To Serve Area Residents

A second community college which will serve residents of Parkland, Franklin Pierce, Bethel, Eatonville, Roy and other Pierce County areas will be built on a part of a site acquired by lease from Western State Hospital land, according to Sen. John T. McCutcheon.

By the cooperation of the Pierce County Commissioners, the Board of Trustees of Community College District Number 11, Pierce County legislators, Bert Cole, director of Department of Institutions, there has been granted over 400 acres of agricultural land formerly belonging to Western State Hospital, to the Community College District No. 11 and to Pierce County.

A park and recreation area will be developed on the second part of the land by

the county.

Added to the existence of our present two great cultural institutions at Pacific Lutheran University and Puget Sound University, McCutcheon said, there will also be added a new four-year University of higher learning within 10 miles of Olympia.

The people of Pierce County will then have unrivaled recreational and educational opportunities from kindergarten to manhood and womanhood, he added. They will not be required to leave home and this will be a vast saving to a great many students and their parents. We will be making our millions reach the multitudes. The establishment of these recreational, cultural and educational institutions in our midst is the fulfillment of a dream which has turned into reality.

Free Month For Parkland Electricity & Water Users

Two thousand eight hundred and sixty homes will see one less bill in the Parkland Light & Water Company realm this month, according to William H. Chambers, president of the company.

Free billings have been given to members of the company every November, except 1964 when rate reductions of up to 20 per cent were made.

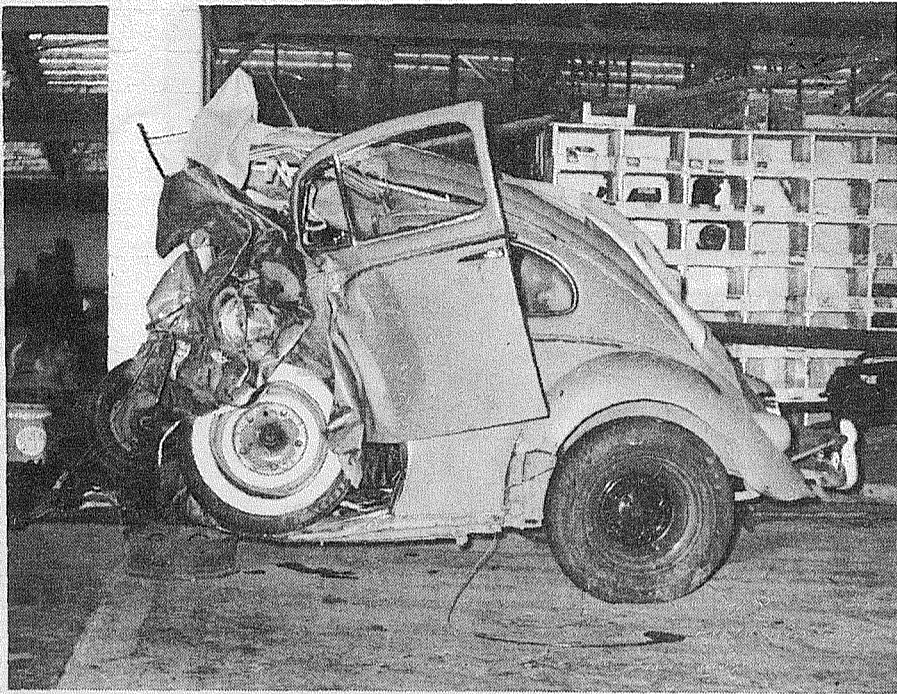
Formed in 1914, the company is governed by five trustees elected by the membership. The trustees are Wm. H. Chambers, president; Jack Quill, vice president; John Curtis, secretary; E. W. (Fritz) Beitz, treasurer; and John V. Austin, trustee.

Success of the company, which employs 18 persons, can be largely traced to the greater use of electricity. Many members

have installed electric heat in existing homes. With one exception, every home and building now under construction in the system area is designed with electric heating.

Through its "Provide Flu Heat Program" the company assists its members financially to install electric heating equipment. Another program recently announced will aid the members to install a new, or replace an old worn out tank. The amount is \$50 for each residential tank.

All members are urged by the company to take advantage of the member benefits. To do so, according to Chambers, will gain financial assistance for the members, but most important the increased electricity sales will virtually assure the continuation of the "Free Monthly bills" and rate reductions.



HEAD-ON CRASH VICTIM. A 20 year old Fort Lewis soldier and a 19 year old Seattle girl were killed instantly when this small, foreign made car was involved in a head-on collision Saturday night on the Mountain Highway. The driver of the other vehicle was taken to Lakewood General Hospital with reported lip lacerations. The car is at LeMay Towing. Arrow indicates skinned-back under carriage.

Sealed Bid Lumber Sale Slated Here

About 2,780,000 board feet of standing timber are available for cutting and removal from a portion of Fort Lewis, the Seattle District, Corps of Engineers, has announced. Included are Douglas Fir and minor amounts of other species. Bids will be opened at 2 p.m., December 14.

The timber will be offered in two simultaneous separate sales. One sale containing 2,180,000 board feet will be reserved for small business concerns.

Interested persons may inspect the timber by calling the Corps of Engineer's representative, Bryan L. Turner, Building T-7985 (North Fort Lewis), telephone Tacoma 967-2004, between 8 a.m. and 3 p.m., Mondays through Fridays, except holidays. Bid forms may be obtained there or from the Real Estate Division, Seattle District, Corps of Engineers, 1519 Alaskan Way South, Seattle 98134.

UGN Drive Over Top

The United Good Neighbor Fund of Pierce County announced it had raised \$1,245,835 in its drive for this year.

The total reported at the final report meeting held Monday at the Top of the Ocean represents 100.9 per cent of the goal set. Awards and recognitions were made by Ned Shera, campaign chairman, and Robert L. DeLong, president of the UGN. Campaign chairmen and workers who achieved their goal were presented with "oscar" (quota buster awards) and firms and organizations who qualified for the "2½ minute club" (reporting 80 per cent or more of their employees pledging 2½ minutes salary per day, or one-half of one per cent of their yearly income) were given plaque awards.

UGN "oscar" were awarded to: Hugh Wagner, Jr., John Gibson of the Midland area, Kenneth Green, C. B. Smith, Robert Mortenson, James Layton, Oral Markward, John Gaston, Robert Pennington, Deryl Emmons, John Balmat, Terry Conner, John Graham, Clifford Duval, and Dewey Webb.

Also, Robert Richardson, John Sharp, Bund Bond, W. Ray Highsmith, Jr., Jack Sorge, Al Scharbaum, John Armstrong, Mrs. Robert Barlow, Captain Elmer Yardley, Walter S. Gordon, Peter Vale, Dimitri Todd, James Ofelt, Al Brenninger, Walter Huber and Ronald Crowe.

Division Chairmen receiving "oscar" were: Robert Henry, David O. Beck, and J. Thomas MacLean.

Tom Turkey Visit Created Interest



PARKLAND PRESCHOOLERS study a tom turkey on display at their Gonyea Playfield Fieldhouse classroom Monday. Children pictured are in the 4-year-old group.

A 39 pound tom turkey paid a visit to Parkland Cooperative Nursery preschoolers Monday and immediately became the center of interest.

The traditional Thanksgiving bird was destined to grace the table of Mr. and Mrs. Terry Summers, 506 South 132nd, who made the gobbler available for class study.

During his visit he became a model for drawings, the star of read-aloud stories, and a frequent distraction to classroom projects. But his ad-libbed "gobble gobble" provided a realistic background effect to the first Thanksgiving stories.

Throughout the discussion about turkeys, the three and four year olds displayed considerable interest in the big fellow's wish bone. Some eyed his massive drumsticks.

All seemed to agree he would be more appealing as a dinner than a pet, possibly because of his somewhat belligerent behavior. Of course, at that point he was only 3 days away from the oven.

Preschool has openings
The Parkland Nursery has a few openings for 4 year olds, Mrs. Richard Kleist told the Journal. Interested parents may contact her at LE 7-8587. Mrs. Leta Kempton, Puyallup, is the teacher.

Estimating Seminar Attended By Two Brookdale Lumber Men

John Baird and William Frost, of Brookdale Lumber, attended an estimating seminar at the Swept Wing Inn, near SeaTac Airport last week. The seminar was sponsored by the Western Builders Association of Seattle.

James Adams of Collinsville, Conn., conducted the classes.

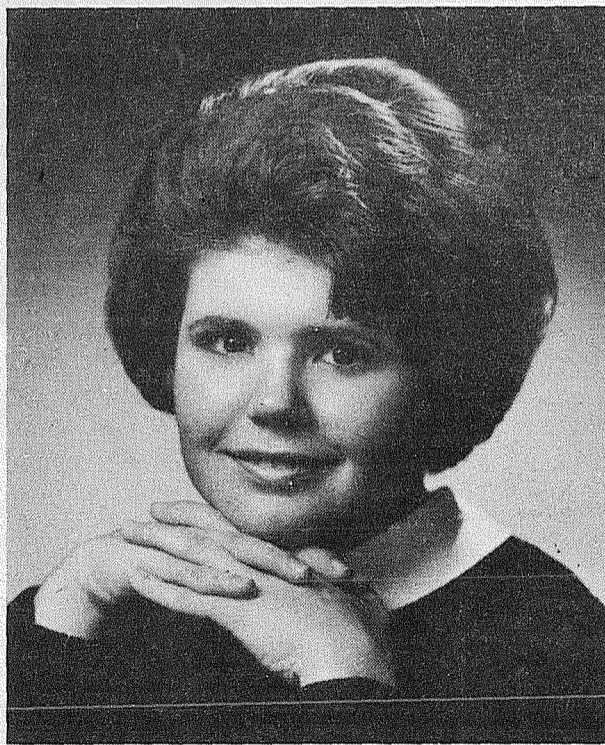
According to Baird, Brookdale Lumber is now prepared to give quick and accurate estimates of remodeling needs.

4-H'ers Make Xmas Plans

Plans will be made for the Merry Mixers 4-H Club Christmas Party and Carolling at the meeting at 7:30 p.m., December 5th at Mrs. Mary Smith's house.

The new officers were installed in a candlelight ceremony at the last meeting. Some of the girls signed up to receive dolls to dress for the Goodwill Dolly Derby.

Recruit



MEDIC—The GI's will become natural hypocondriacs when Sandra D. Carpenter of Graham becomes a medical care and treatment specialist in the Women's Army Corps. Miss Carpenter, 20-year-old daughter of Mr. and Mrs. Roy E. Carpenter of 24810 53rd Avenue E., enlisted in the corps at the Tacoma U.S. Army Recruiting Office and will travel to Fort McClellan, Ala. for basic training. She is a 1966 graduate of Woodrow Wilson High School.

Two Area Women Enlist In Army

Fort McClellan, Ala., is the first step on a new life and career for two area women, according to SFC David R. Cummings of the U.S. Army Recruiting Station in Tacoma.

Jill L. Miller and Cheryl R. White, both of Tacoma, enlisted in the Woman's Army Corps in the last week.

Miss Miller, 18, is the daughter of Mr. and Mrs. James W. Miller of 6006 Portland Avenue. She will attend a course at Fort Gordon, Georgia, after basic orientation, to become a communications center specialist. She graduated from Lincoln High School this year.

Miss White has been a physical therapy specialist and will continue her work in the medical care and treatment field. She is the 20-year-old daughter of Mr. and Mrs. Robert M. White, 9224 Division Lane, S.W. and graduated from Franklin Pierce High School in 1966.

The TIMES JOURNAL

Published weekly at 14620 Pacific Ave., Parkland 98444 and delivered by U.S. Mail and carrier to subscribers. Publishers: Pierce County Publishers, Inc. Managing Editor Em Matson News Editor Sandy Ingram Sports Editor Bob Ingram

Subscriptions \$3.50 per year, \$1.80 six months, or 30c monthly by carrier. News stand price 10c copy.

Qualified as a legal publication under Chapter 213 of the Legislature Acts of the 1941 regular session of the State of Washington

Second Class Postage Paid at Tacoma, Wash.

Vol. 23 No. 47

November 23, 1967

McChord Planes Make Non-Stop Record Flight

MCCHORD AIR FORCE BASE, — Ten F-106 Delta Darts from McChord Air Force Base demonstrated the "global defense capability" of the U.S. Air Force's Air Defense Command Monday.

In the first flight of its kind, the supersonic Darts flew nonstop from Tacoma to Panama City, Fla. in a simulated combat mission which included aerial refueling and aerial firing of air-to-air missiles at "drone"

jet targets.

The six-hour across the United States was made possible by a new modification for in-flight refueling of the aircraft, which is used in the aerospace defense of the Pacific Northwest.

The 318th Fighter Interceptor Squadron aircraft all fired their missiles successfully at the Ryan Firebee drones before setting down at Tyndall Air Force Base, Fla.

Air Defense Command's new global capability will enable air defense fighter aircraft to deploy overseas into crisis areas when directed and upon short notice.

Library Book Exhibition Slated At Bethel District

An exhibit of 615 new library books for children, teen-agers and of special interest to adults, will be on display at the Instructional Materials Center, Bethel School District Administration Building from November 27th to December 1st.

The exhibition will be an opportunity to see the books, both non-fiction and fiction, that will help youth to better comprehend the world we live in today and will tomorrow, according to officials of the district.

The display will be open from 8 a.m. to 5 p.m. Books on display will be supplied by a company which neither solicits nor fills orders. Its free service, now in its seventeenth year, involves all the leading publishers, both large and small, and is universally praised by librarians, teachers and administrators as the preferred way of keeping up with the important new books.

HI HO

PUYALLUP

HI HO

2-GALLON
ARDEN'S
ICE CREAM
2³⁹

GRADE "A" NORBEST FINEST
TENDER-TIME

PLUMP
TENDER
BROAD-BREADED
Turkeys

16- to 24-lb. **37^c**
lb

8- to 14-lb. **TURKEYS 39^c**
lb

ARMOUR'S "AVONDALE"
TURKEYS 29^c
lb

HI HO'S **FRESH GROUND BEEF 43^c**
lb

LEAN SHORT RIBS 29^c
lb

FULL-O' **BOILING BEEF 19^c**
FLAVOR lb

VEAL CUBE STEAKS 98^c
lb

OSCAR **SLICED BOLOGNA 39^c**
MAYER 1/2-lb. pkg.

3- and 5-lb. Tins **BONELESS HAMS 89^c**
DUBUQUE lb

YES, "WE HAVE IT"

LUTEFISK, LEFSE, LONG ISLAND DUCKLINGS, CANNED HAMS, ARMOUR'S SELF-BASTING TURKEYS, MINNESOTA GEESE, CAPONS, CORNISH GAME HENS, TURKEY ROLLS, BONELESS HAMS, SPICED PRAWNS.



OPEN
8 A.M.

CLOSE
11 P.M.

IN PUYALLUP

Long Green **SLICING CUCUMBERS 10^c**
ea.

Quality **PINK GRAPEFRUIT 12¹⁰⁰**

New Crop **UNBLEACHED WALNUTS 3 lbs. 1⁰⁰**
Oregon

JICAMA THE NEW VEGETABLE NOW AVAILABLE

1-lb. Pkg. **CRANBERRIES 25^c**
FRESH pkg.

DELICIOUS, FRESH BAKED
PUMPKIN
MINCE
APPLE **PIE 59^c**
each

ALL DINNER ROLLS 39^c
doz.

Let us give thanks for the many blessings we so seldom appreciate in this, our land of abundance.

PRICES EFFECTIVE NOV. 20th through 25th

HYGRADE
FIESTA BACON
59^c
lb

1-lb. U and I
POWDERED OR BROWN SUGAR 10^c
Pkg.

4 1/2-oz.
ICY WATERS
TINY
SHRIMP 3/1⁰⁰

28-oz.
NALLEYS
MINGEMEAT 43^c

60-COUNT
CHIFFON Dinner Napkins 5/99^c

10-oz.
WEST-PAC FROZEN STRAWBERRIES 5/1⁰⁰

NEW!
REG. 41^c LIBBY'S
PUMPKIN PIE FILLING 29^c
No. 2 1/2 Tin

Pints
Cool Whip 4/1⁰⁰

GIANT 40-OZ.
ADAMS
PEANUT BUTTER 99^c

MANDARIN
PRIZE CROP
ORANGES 1⁰⁰
5 TINS

LARGE 8-OZ.
PHILADELPHIA
CREAM CHEESE 3/1⁰⁰

HI HO

PUYALLUP

HI HO

HI HO

PUYALLUP

HI HO

HI HO

PUYALLUP

HI HO

CLIP AND SAVE

Pay'n Save Extra Value!

Children's Umbrellas

Reg. 69c

39c

WITH THIS COUPON

One coupon per customer. Cash value 1/20 of 1c. Expires Nov. 27, 1967.

Clip this COUPON and Save

Pay'n Save Extra Value!

Welch's Chocolate Covered Cherries

Reg. 87c

59c

WITH THIS COUPON

One coupon per customer. Cash value 1/20 of 1c. Expires Nov. 27, 1967.

Clip this COUPON and Save

Pay'n Save Extra Value!

3 Bees HONEY

5-Lb Can

Reg. \$1.29

89c

WITH THIS COUPON

One coupon per customer. Cash value 1/20th of 1c. Nov. 27, 1967

Clip this COUPON and Save

Pay'n Save Extra Value!

Monopoly Game

\$6.00 Value with coupon

\$3.44

WITH THIS COUPON

One coupon per customer. Cash value 1/20 of 1c. Expires Nov. 27, 1967

Clip this COUPON and Save

Pay'n Save Extra Value!

Carl Richards HAIR SPRAY

13 OZ. SIZE

Reg. 89c

39c

WITH THIS COUPON

One coupon per customer. Cash value 1/20 of 1c. Expires Nov. 27, 1967

Clip this COUPON and Save

Pay'n Save Extra Value!

LAVORIS Mouthwash

1 pt 6 oz.

Reg. \$1.19

59c

with coupon

One coupon per customer. Cash value 1/20 of 1c. Expires Nov. 27, 1967.

Clip this COUPON and Save

PAY'N SAVE

Retail LE 1-6555 9830 Pacific Ave. Pharmacy LE 1-6533

New Minister To Be Installed

The Rev. Roland A. Koch will be installed as the new pastor of Good Shepherd Lutheran Church of Tacoma this Sunday (November 26) at 4:00 P.M. The Rev. R. H. Eckhoff, Circuit Counsellor, will do the installing and Rev. Erwin Gerken will deliver the sermon.

Rev. Koch was born April 3, 1914 at Victor, Iowa. His father was a Lutheran parochial school teacher. He has lived at Victor, Iowa; Detroit, Michigan; Boone, Iowa and Peoria, Illinois. He graduated from Concordia College, St. Paul, Minn., 1934 and Concordia Seminary, St. Louis in 1938. He vicared at Williamsburg, Iowa and supplied at Lutheran Orphan Home, Addison, Illinois and at Yakima, Wash. He was ordained and installed at Grand Coulee-Hartline, Wash. on Feb. 1, 1942.

He married Hilda Wiebel of Wilton, Iowa on January 18, 1942. (She is a sister of Pastor Edwin Wiebel of Beautiful Savior, Seattle). They have three children—Delores, now Mrs. Mark Lieske, teaching school at Zion, St. Louis; Ronald, a senior at Concordia College, Fort Wayne, Indiana, preparing for the Lutheran ministry; and Margene, a senior at Shadle High School, Spokane. Pastor Koch has served as pastor at Grand Coulee-Hartline from 1942 - 1944; at Pocatello and Aberdeen, Idaho, 1944-1957; and at Pilgrim, Spokane, from 1957 to 1967. He has served the church at large for 3 terms as Circuit Counsellor, and 3 terms as member of the District Board of Directors. Also, he has served as Chairman of the District Welfare Committee and of the District Commission on College and University Work. He is presently serving as a member of the Northwest District Board of Directors as a member of the Parish Education Committee.

A reception will be held in the Parish Hall following the Service. Those assisting at the collation table will be the Mesdames Paul Wangsmo, wife of the Outgoing President of the congregation and Thomas Langevin, wife of the incoming President.

County Births

Mr. and Mrs. Robert W. Beller, 607 So. 127th Apt. B, Girl, November 4th.

Mr. and Mrs. J. Morehart, Rt. 1, Box 1848-M, Spanaway, Boy, November 5th.

Mr. and Mrs. L. K. Roberts, 860 So. 110, Boy, November 7th.

Mr. and Mrs. H. Ketler, Rt. 1, Box 112, Roy, Girl, November 11th.

Mr. and Mrs. R. Boone, 715 So. 180th, Girl, November 13th.

Good Samaritan

Mr. and Mrs. William Graham, Rt. 1, Box 380, Graham, Girl, November 10th.

Mr. and Mrs. D. Leonard, 4524 152nd E., Girl, November 13th.

Mr. and Mrs. D. Nelson, 8822 Portland Avenue, Girl, November 15th.

Dryer MORTUARY
(134th & Pacific) PARKLAND

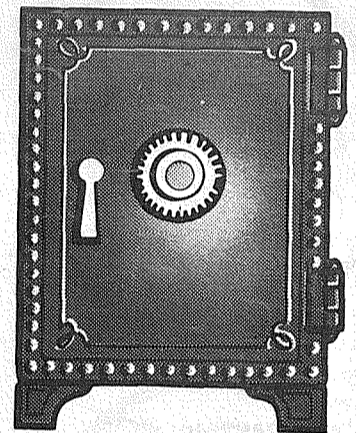
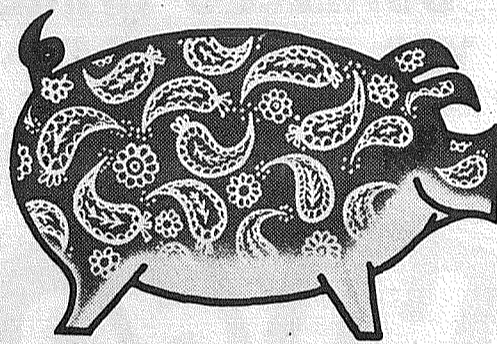
The Country Parson

"Anger is the world's most contagious disease—if you get it, you are sure to contaminate your best friends with it."

Copyright, by Frank A. Clark

Dryer MORTUARY
(134th & Pacific) PARKLAND

A London cleaning firm has responded to the miniskirt with a miniprice. It will clean miniskirts for two cents an inch, meaning that a 15 inch miniskirt can be cleaned for less than 35 cents.



Good... Better...



Best

People save money in all kinds of ways. No matter how you save, putting something away regularly is a **Good** idea... saving safely is a **Better** idea... but, saving where your money earns for you is **Best!** Bank of Washington has the best idea for saving money, two plans that pay the highest interest allowed to commercial banks. Regular Savings accounts earn 4% interest... no minimum deposit... no minimum balance. 90-Day Savings Certificates earn 5% per annum... you only need \$100 to start. And, Bank of Washington will help make saving systematic by transferring money from your checking account every month... just tell us the amount. Save with the bank that has the best idea... Bank of Washington.

BANK OF WASHINGTON

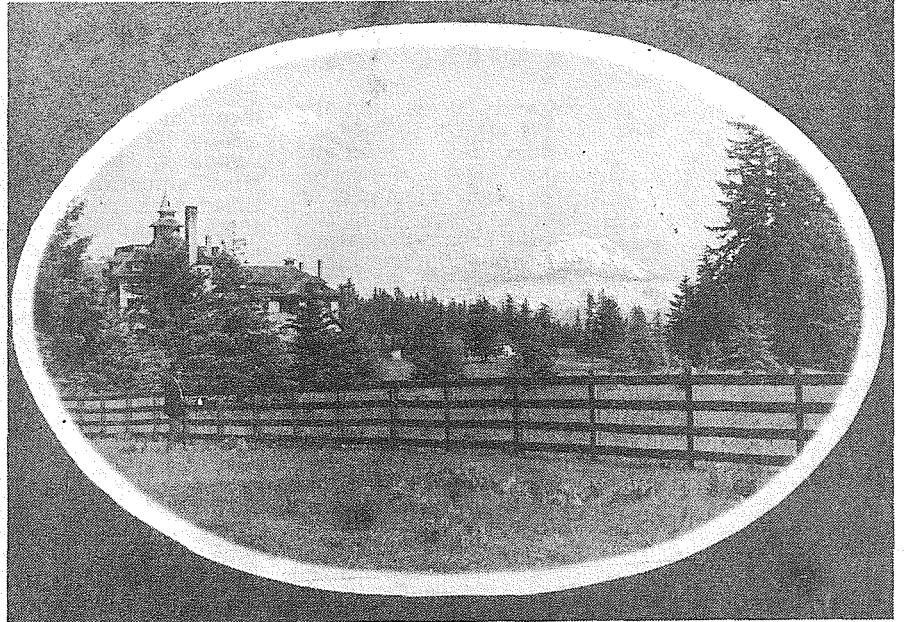
AT YOUR SERVICE: PARKLAND BANKING CENTER
NATIONAL BANK OF WASHINGTON / TACOMA, WASHINGTON / MEMBER FEDERAL DEPOSIT INSURANCE CORPORATION

Parkland Memoirs...

Parkland's Growth Began in 1890



PARKLAND BASEBALL TEAM — No exact date or identification could be obtained for the baseball team except the few players who appear in the Beaus' picture.



POPULATED PARKLAND — "Old Main" stands majestically completed with the apparently memorable fence around the campus in 1895. The grassy area in the front of the picture is now Wheeler Street.

(EDITOR'S NOTE: Following is the first of a series of articles on the history of Parkland, Spanaway, and Eatonville. The photographs are courtesy of Mrs. Carl T. Lindgren and identification courtesy of Mrs. Malla (Sinland) Dahl. If you have some old memories or photographs—the history is not complete, please call.)

By SANDY INGRAM

With a tremendous population of 40 persons in the late 1880's, one of the daughters of William Wilson remarked: "I don't like Parkland anymore; you can't even wade in the creek (Clover) anymore without someone seeing you." Now it is not so easy to see the creek.

When the Wilsons came here in 1882 after buying 200 acres from Peter Smith, who had accumulated 1,000 acres, the nearest neighbors were the James Sales and the Pattisons two miles north, the Smiths a mile west, and the Mahons and Frank Wrights a mile south.

Parkland's real growth came after two significant events in 1890 — the installation of a steam railroad down C Street and the choice of Parkland as the site for Pacific Lutheran University.

Rev. Bjug Harstad, trekking from Iowa for the express purpose of founding a Lutheran institution on the west coast, chose Parkland because of its natural beauty, its newly acquired transportation facilities, and its abundant water supply. In those days the water supply was acquired from Spanaway Lake, Clover Creek and Crystal Springs.

Most of the townsite was plotted by Ward T. Smith, Tacoma real estate dealer who had

lived in Parkland. PLU got hold of a large amount of the land which it sold to Midwesterners at \$100 a lot to help finance the construction of the huge new building, "Old Main".

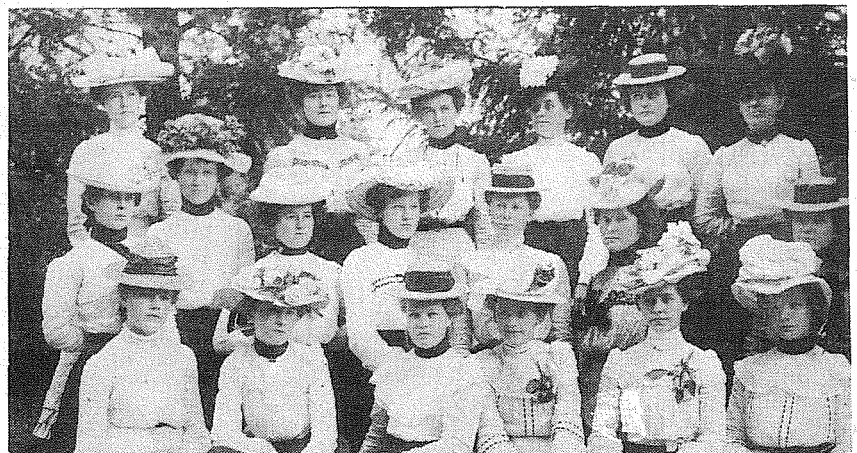
Parkland also boasted a grade school at this time so that the children did not have to walk to Fern Hill to receive their education. Land was donated by William Wilson who homesteaded in Parkland in 1882. The first two rooms of Parkland school were erected in 1887. Two more rooms had to be added during the booming nineties, giving Parkland a T-shaped school which served until the new school was built after the turn of the century.

The first commercial establishment was A. R. Watson's general merchandise store on Garfield Street. Next came Kraabel & Erickson, dealers in groceries, hardware, patent medicines and school books.

Other buildings also took their place along Garfield — Henry Berger's butcher shop across the street from Kraabel & Erickson, the "Old Betsy" railroad depot, a barber shop and Bealeau's candy, cigar and light lunch spot, kitty-corner from the present post office.

Along Pacific Avenue was Brock Johnson's feed and general merchandise store next to Clover Creek, and J. C. Petersen's horse-shoeing and wagon-making shop.

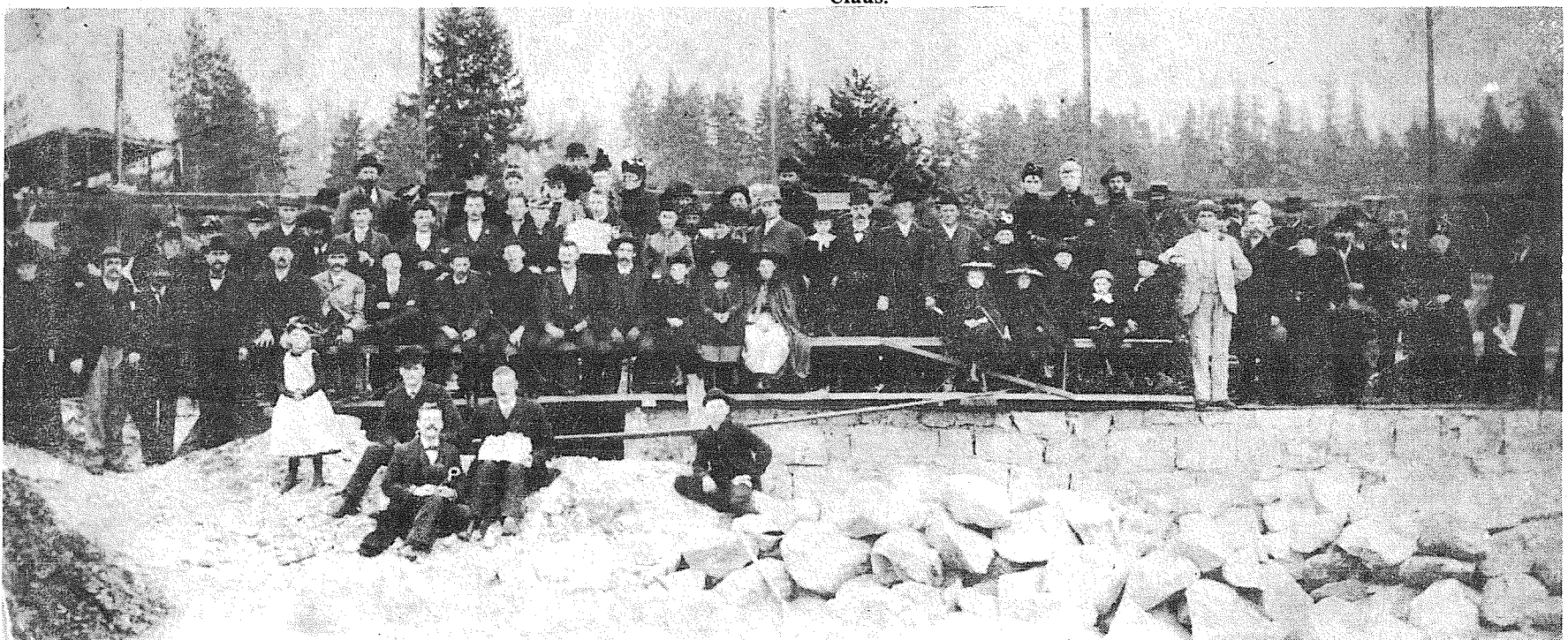
The scene before 1900 is now set and in next week's Times Journal will be the social, academic and church life of the people who made Parkland, along with the story of the tragedy that struck Parkland in 1904 when approximately 20 Parklanites were killed or injured in a streetcar accident.



PARKLAND BELLES, 1902 — The Parkland lovelies pose for a photograph taken by the well-known photographer of Parkland at that time, Bert Barnes, are (as far as can be identified) Front row from left, Malla Sinland, Clara Knutson, no identification, Louise Anderson, and Louise Harstad. Second row: Selma Johnson, Liza Sales, Louell Kraabel, Anna Sinland, Polly Glasso and Louise Brottem. Back row: Nora Trogstad, Emma Merson, Sophie Storeslie, Pauline Glasso and Emily Hong.



PARKLAND BEAUS, 1902 — The young men of the decade are: Front row from left, Leonard Brottem, Emil Glasso, Oscar Brottem, George Johnson, no identification for the last person. Center row, Rawleigh Wilson, Ingvald (Printer) Hanson, John Cavanaugh, Hugh Sales and Burt Rogers. Back row: Ed Cavanaugh, Bert Barnes (the photographer), Ed Hoffman, Williams Sales and — Claus.



CORNERSTONE — Taken at the cornerstone laying of "Old Main" at Pacific Lutheran University, it is estimated that the picture was taken in 1891. The

college is said to have been dedicated in 1894. By the amount of people at the ceremony, it seems the whole population of Parkland turned out for the event.

Pierce County Herald and
The TIMES JOURNAL

WOMEN'S WORLD

Symphony Women Plan Holiday Tour of Homes

Announcement of the Tacoma Symphony Women's annual event of the "Holiday Tour of Homes" was made recently by the president, Mrs. Edwin Schneebeck. The event has been set for the first Saturday in December from 1 until 5 p.m.

Creating interest in the tour will be the architectural divergence and individual appeal of each of the four homes to be opened for public viewing. Four homes will be offered for the tour — two in the North end and the two from our area.

In the Parkland section, the one-story home of Miss Mabel Seamons is a blend of contemporary and traditional design. Spacious rooms are planned for entertaining and displaying a valuable collection of china, silverware and religious books. The kitchen is decorated and designed for the connoisseur cook and Miss Seamons' electronic oven will be demonstrated throughout the afternoon. A lighted fountain adds interest and beauty to the landscaping of this attractive home.

With a commanding view of Mount Rainier and a home as "modern as tomorrow", the residence of the dean of Pacific Lutheran students, Richard D. Moe and his family is pleasingly different. Poised on piers and flanked by a brick wall, this home features an unusual master bedroom, a first-level family room with a fireplace and a kitchen served by a unique mahogany pantry.

The contemporary home of Mr. and Mrs. Richard D. North commands a sweeping view of the Narrows. An Aztec marble

entryway leads into the living area with its spectacular view of land and water. An enclosed swimming pool in connection with the lower level recreation area is a highlight of the home. Water ballet will be presented in the pool during the tour hours by members of the girls swim team of the local High Schools, the YWCA Trim Trouts, and students from UPS.

The architectural imagination of Jere Johnson changed his 50-year-old colonial house on East Road into a home of contemporary charm, fulfilling the needs of the Johnson's six children. Features include the carpeted kitchen, the dining area with modern stained glass windows, and a living room and family room which open onto a deck which commands a spectacular view of the city and Commencement Bay. The master bedroom highlights automatic drapery covering the floor-to-ceiling windows.

Chairman of the Symphony Women's fund raising home tour, MRS. ROBERT STROBEL, who has worked in close association with the four homeowners these past months, has arranged a varied program which will be presented in each home. Programs of music, entertainment and a drawing for works of local artists will be presented throughout the hours of the tour.

All homes will be decorated in the Christmas theme by members of the Petal Pushers Garden Club, Mrs. Robert Sprenger, Chairman, in the North home, Mrs. F.D. Armstrong in the Johnson home, and Mrs. A. Victor Johnson in the Moe home. Miss Sea-

mons will decorate her own home.

Musicians to be presented will be a Harpist, Miss Janice North, Music Ensembles from Curtis High School's Swing Choir, directed by Mr. Robert Northrop, Violinist, Miss Sheri Berntsen and the Tacoma Brass Quintet who will be presenting the Little Concerts in the schools during the spring months. Members of the quintet are members of the UPS Tacoma Symphony Orchestra: Wayne Timmerman, trumpet; William Morrell, trumpet; Steven Rodgers, French horn; Richard Nye, trombone; and David Blake, tuba.

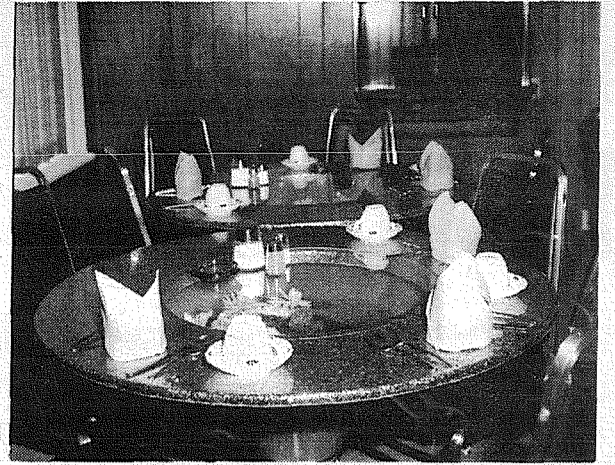
Allen Rau Opens Restaurant

Allen Rau, who operated the Chicken Dinner Inn 1937-1945 in Parkland, has opened his first Chef Rau franchise in Tacoma.

The Tacoma franchise is one of many slated to cover the nation, each featuring the same decor and his special butter-fried chicken recipe. The first franchise is located at 3023-6th Ave.

A special feature of each Chef Rau restaurant will be unique dining tables which the former Parklandite says cost him \$10,000 to develop. The table contains a transparent-covered, lighted water fountain highlighted by colored lights. Rau also has invented a self-service salad bar that will be used in each franchise.

Tacoma was selected for a model Chef Rau showplace restaurant because of the many friends I have in the Parkland-Spanaway area, he said, referring to the old Chicken Dinner Inn. Many of



\$10,000 DINING TABLE, pictured above, features built-in, glass covered fountain. Table is an invention of Allen Rau, who formerly operated Chicken Dinner Inn near Parkland.

my former customers have already dropped by to say hello, the restaurateur stated.

The new restaurant features a family atmosphere and Rau boasts, "I guess we're the only supper house in the world with \$10,000 dining room tables." He pointed out however that after the tables go into mass production the cost will turn out to be far more reasonable.

In addition to Tacoma, Chef Rau's will soon be opening in California and Hawaii, he stated. A steady parade of restaurant operators have been inspecting his model supper house with enthusiasm.

The new restaurant is open only for the evening meal Tuesday through Saturday, and from noon until 8 p.m. on Sundays. "We take Mondays off," he said.



CHEF RAU

Allen Rau is back in Pierce County

with his famous

Butter Fried Chicken

The recipe that won Pierce County diners 29 years ago!

Also featuring

- ★ Butter Fried Prawns
- ★ New York Cut Steaks

Treat The Family

See his notorious \$10,000 Dining Tables

Chef Rau's

3023 6th Ave., Tacoma

Hours

Open 5 p.m. to 9 p.m. Weekdays

Open 12 noon to 8 p.m. Sundays - Closed Mondays

Guild Holds Bazaar



MRS. CHARLES WILBER and Mrs. Alfred Jackson (right) hold a blackboard invitation to a ham dinner and bazaar to be held December 3 at the Graham Grange Hall. Proceeds will go to Mary Bridge Children's Hospital in Tacoma.

A Ham dinner and bazaar will be held by the Gloria Motycka Orthopedic Guild of Graham December 3 to raise funds for Tacoma's Mary Bridge Children's Hospital.

The event, to be held at the Graham Grange Hall, is

chaired by Mrs. Dorothea Long. Helping Mrs. Long will be Messrs Herbert Stark, Harold Bitter, Dorothy Miles, Charles Wilber, Alfred Jackson, R. Curtis, Robert Jervis, Ludwig Mayer, Lawrence Rensing, and Ernest Cope.

DRAPERIES
OUR SPECIALTY

FOR PROFESSIONAL DRY CLEANING
OF YOUR LAUNDRY AND DRAPES

DAVE'S NU-WAY
CLEANERS

phone-GR-5-1144 7209 Pacific Ave.

The STAGE COACH INN has moved into the old Spanaway Cafe Building. I stopped by today, and the place looks great. Best of luck, Mrs. Wilson, with the Inn, but it looks like a success.

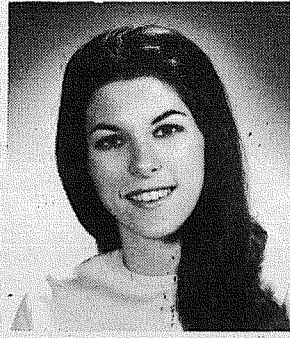
"Barefoot in the Park" turned out to be a great hit, at both ends. Both the Lakewood Players and Pacific Lutheran University performed last weekend. I managed to get to both, and enjoyed them immensely.

The TIMES JOURNAL

ENTERTAINMENT

Around The County

By DONNA DIXON RESTIVO



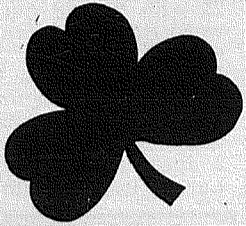
TONITE

JO ANN JORDAN
Trio Plus Two
Winthrop Hotel
Tacoma

sabre ROOM

PRAIRIE TAVERN
CHICKEN & PIZZA
Food! Dancing!
LIVE MUSIC
FRIDAY & SATURDAY
Jean & Chris — Betty Jean & Wade
on The Mountain Highway at Roy "Y"

"KEEP THE SHAMROCK GREEN"
Spend Your Money Here
POOL AND SHUFFLE BOARD
SHAMROCK TAVERN
11108 PACIFIC AVE.



IN THE DARK ABOUT A GOOD PLACE TO EAT? TRY BRAD'S
banquet facilities for 30 to 300
open daily 11:30 to 8 p.m.

9201 Pacific GR 4-1234 26 & Pearl SK-2-5020

With Indian guests of honor, about tables loaded with game and fish, wild fruits from the forest, corn-bread and vegetables from their gardens, the Pilgrim Fathers celebrated their first American harvest festival, in 1621, the first autumn in their new home.

A quaint old account thus describes the occasion: "Our harvest being gotten in, our Governor sent four men on fowling, so that we might, after a more special manner, rejoice together after we had gathered the fruit of our labors. There was plenty of roast turkey, for the fowlers found great store of all type of fine and feathered fowl."

Today we celebrate this peculiarly American holiday a little differently, but the essential spirit and good cheer persist. Many families decide to thank the cook of their family by taking her out for dinner.

BRAD'S, this year, has set out turkey with all the trimmings. They have whipped up a supermeal, with selections from roast ham and beef, also. Fresh cranberries, of course, and a very special Waldorf salad. And at regular Sunday prices.

Brookdale Restaurant plans on being open from 7 a.m. until 8 p.m. Thanksgiving day, serving turkey, ham, and a delicious pumpkin pie.

Both the LITTLE PARK CAFE and RICHARDS will be closed for Thanksgiving.

Gordie's SPANAWAY CAFE has moved down the road to 16003 Pacific into a more spacious restaurant. Gordie Harless, who just has made the move this week, was busy arranging, re-arranging, and generally organizing after the move. The cafe will be open twenty-four hours a day, as before, and serving just about everything imaginable.

Each day will feature a new "dollar dinner" and on Saturday Gordie will have huge sixteen ounce steaks. They must be a foot long, at least! I've bravely accepted the challenge to tackle one.

One thing I was very happy to see was the preparations for real Mexican food, the likes of which I haven't seen since San Diego. Gordie had to order from down south for the ingredients, and should turn out some really down-south dishes. Ol'e!

The multi-talented Jo Ann Jordan has brought her talented group back to the Winthrop this week. Miss Jordan is a perennial favorite of mine, and all along the West Coast. Her performances never fail to bring a bewitching blend of good music and earthy comedy.

This should be a very important weekend for most people. May your plans all turn out well, and have a wonderful time. Happy Thanksgiving, all, and good night. Thanks to you all. Especially you, Charlie, good night.

Bethel Faculty To Meet Clowns

The Bethel High School faculty All-stars will meet the Harlem Clowns in an exhibition basketball contest at 8 p.m. on Monday, November 27, in the high school gymnasium.

The all-star squad will include Babe Buholm, Dave Ratko, Don Ash, Ed Tingstad and Chuck Manuel. Earl Platt, former star athlete at Pacific Lutheran University, will coach the all-star contingent.

Proceeds from the game will be used to promote the Bethel athletic program.



PRETTY EFFICIENT.

The real beauty of the Trimline® phone is in what it can do. The dial is in the handset. So you can call from where you sit. There's a recall button in the handset too, so you can "hang up" and call again without reaching over to the base. There's a longer cord. The handset rests face down on the base, doesn't collect dust. And the entire unit takes up about half as much space as a regular table model phone. Makes beautiful sense.

Pacific Northwest Bell
Part of the Nationwide Bell System

NEW- MORE POWERFUL

the 1968's ARE HERE VOLKSWAGEN
27 MAJOR CHANGES COME IN AND

Tom Carstens AUTOHAUS
7030 So. Tacoma Way GR 4-0666
TACOMA DEALER SINCE 1955

ELK PLAIN TAVERN
Dance To Live Music
Friday Eve 9:30 p.m.-1:30 a.m.
Saturday Afternoon 2 p.m.-4 p.m.
Saturday Evening 9:30 p.m.-1:30 a.m.
Sunday Evening 6:30 p.m.-9:30 p.m.
Open Every Sunday
On The Mountain Highway 2 1/2 Miles Past The Roy Y

LITTLE PARK CAFE
full dinner menu featuring STEAK AND SEAFOOD daily lunch specials
Open 7 Days A Week 6 A.M. to 9 P.M.
171st & Pacific LE 1-1343

Richards RESTAURANT
BUFFET DINING
a dazzling variety of foods — all you can eat — luncheon and dinner.
CHOICE STEAKS • SEAFOODS
SANDWICHES • COCKTAILS
8201 Pacific OPEN SUNDAYS DINING NOON - 10 P.M. GR 4-2063
Cocktail Lounge 2 PM-10 PM

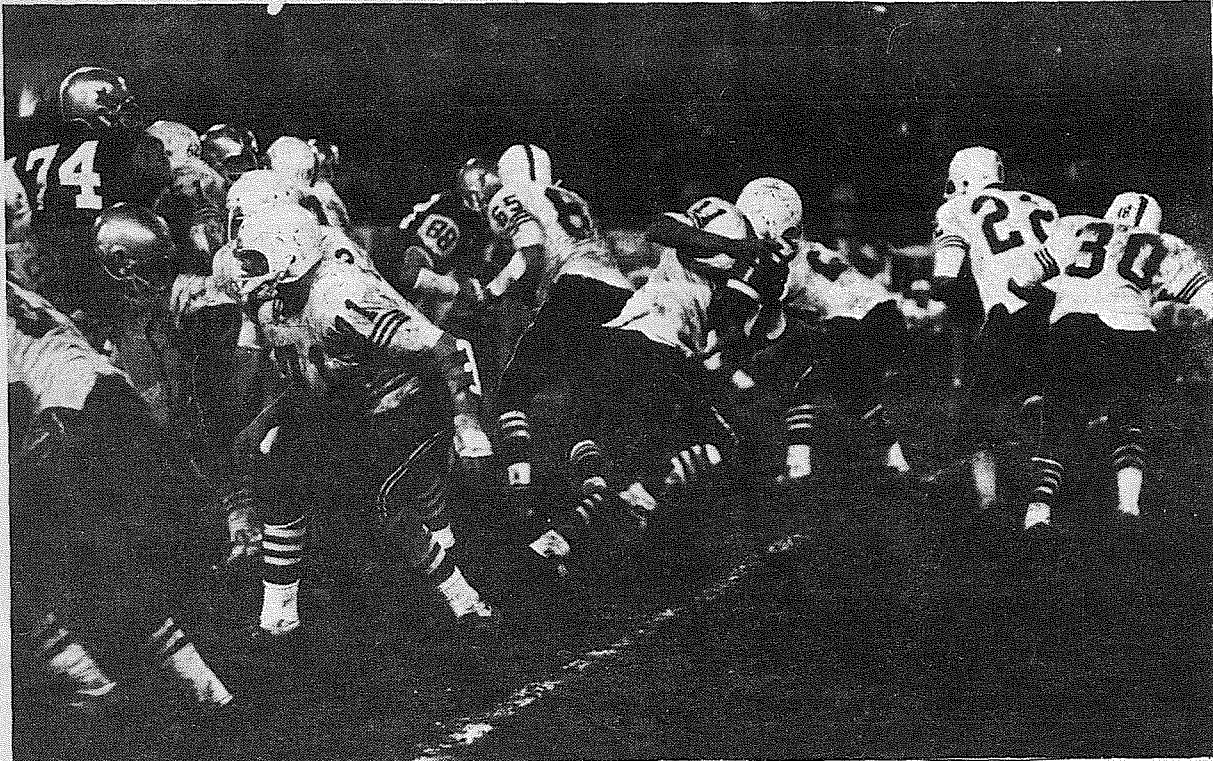
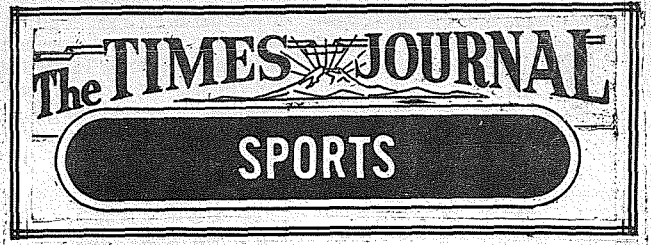
Angelo's PIZZA HOUSE
ORDERS TO GO
Featuring top sirloin and American dishes, spaghetti, rigatoni, meat balls, sausage, ravioli, beer and wine.

Choice of Pizzas
cheese & tomato bacon
anchovie peppers
mushroom olive
Italian sausage hamburgers
pepperoni ham
tuna salami
 onion

LE 7-7233
14102 PACIFIC AVE. PARKLAND
CALL AHEAD, IT'S PIPING HOT ALL THE WAY HOME
PICK UP A BOX, PAIL, BUCKET OR A BARREL



Renton Final PSL Champ



CARDINAL QUARTERBACK Jim Hadland (11) takes off behind a wall of blockers on an end run during the PSL Championship game held at High-

line Memorial Stadium last Friday. Renton came out on top 31-7.

The final chapter of Puget Sound League history came to a close last week as a fired-up Renton football team downed the Franklin Pierce Cardinals 31-7 to capture the championship at Highline Memorial Stadium.

The Cards fought the unbeaten, top-rated Indians all the way, but Renton's fierce aerial and ground attack proved to be the deciding factor.

Renton end Mark Hanis opened the scoring 39 yards to

pay dirt. The play came with 9:01 left in the first quarter.

After Pierce surrendered the ball, Donckers unloaded a 51 yard scoring bomb to Mark Day, giving Renton a second TD in the first quarter. Then the Cards stiffened and held the Indians to two first downs during the second quarter.

As the second half opened, Renton worked its way out of a hole deep in Indian territory, after Jim Furlong's punt backed Renton up to their 8 yard line. Following two run-

ning plays, halfback Joe Nunn cut loose for a 78 yard touchdown romp to make the score 18-0.

Cardinal quarterback Jim Hadland got the Cardinal offense rolling to its score in a 67 yard drive. A 17 yard pass play to end Doug Armstrong, followed by a pass good for eight to Mike Stogsdill, and a 15 yard penalty set up the tally. The TD came on a 13 yard pass to Mike Stogsdill, who was all alone in the end zone.

But before the final gun sounded, the Indians scored twice more.

Due to terrific Cardinal line pressure, the Indians were unable to make a successful conversion until the final quarter of the game.

Franklin Pierce made a final attempt in the closing minutes of the game, penetrating to the Indian 12 yard line. The threat was ended when Hadland was dumped for a 13 yard loss and two passes went astray.

25 Braves Turn Out At Bethel

Brave coach Babe Buholm and the Bethel hoopsters started the task of putting together a winning combination last week in an effort to be ready for the 1967 season opener Dec. 1.

Buholm had two returning lettermen among the 25 who turned out. Forward Ed Warring, a starter last year, and guard Mike LaVine are slated for starting assignments.

They will be teamed up with Mark Bellin, a 6 ft., 2 inch sophomore, and Larry Loete, who saw

some action last year. Junior Mike Stafford and senior John Briehl are scrapping it out for the remaining first team spot.

Others pressing for varsity positions include sophomore Bobby Niehl (6'2"), sophomore Kenny Krumpas (6'1"), guard Tommy Bullion (5'6"), junior Steve Jasmer, and senior Ed Mayo.

Because the 1967 Braves will lack height, Buholm stated team strategy would include plenty of ball control and taking only the best shots. "We're weak on defense at present, but we hope to correct that with work," he told the Journal.

Bethel will play a practice game December 1, with the official league opener December 22 against Fife.

INSURANCE

Military - Home - Business

LE 7-4904

Auto Fire Life Bonds

IRENE CLEMENS

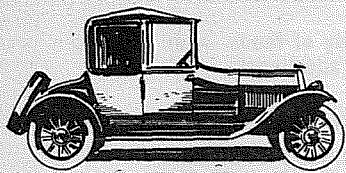
Agency - Parkland
10329 Pacific Ave.

South Tacoma Way
New and Used Dealers'

BEST CAR BUYS

Greatest Selection of New or Used Cars

SHOP SOUTH TACOMA WAY FIRST



BEN-MAC

Motors

Plenty of Local
One Owner
Cars - Guaranteed

JU 4-5411

9612 South Tacoma Way

LIBERTO'S

8021 So. Tacoma Way
100% Financing
No Payment until Jan. 10, 1968

1964 Pontiac Grand Prix	\$1895
1964 Ford XL H.T. loaded	1795
1964 Chev. S.S. New Engine	1795
1965 Mustang	1795
1963 Oldsmobile Starfire	1795
1963 Mercury H.T. like new	1295

FREE WARRANTY FOR 2 YEARS
CALL JU 8-5333

VISTA

150 Select Quality Cars
To Choose From
100% Financing Available
Liberal Trades - EZ Terms
So Visit Vista!

2 Blocks South of Gov Mart
11102 Pacific Hwy. S.W.
Call JU 4-7474

LARRY ATWOOD'S

Auto Wholesale

All cars, new or used, sold
at wholesale prices.

Any type - Any make

or Further information

Call

JU 4-4280 LO 4-9800

Soon Reopening at new location

STARLITE MOTORS

WE SPECIALIZE IN TACOMA'S
FINEST USED CARS IN
THE MEDIUM-PRICE RANGE
HERE ARE SOME EXAMPLES:

'63 FORD GALAXY XL	4-speed	\$1399
hard-top coupe		
'65 PONTIAC BONNEVILLE		\$2199
hard-top coupe		

GR 2-5444

7837 South Tacoma Way

Brookdale Motors

1955 Buick 2-dr htp	\$69.00
1957 Plymouth 4 dr V-8	99.00
1958 Imperial, loaded	399.00
1956 Olds 4 dr., good car	199.00
1961 Mercury S.W. 4 dr	299.00
1957 Plymouth S.W. V-8	299.00
1961 Cadillac Cpe Deville	999.00
1965 Ford 2 dr V-8	1,299.00
1961 Oldsmobile 4 dr htp	499.00
1963 Oldsmobile 4 dr, real sharp	999.00

Boats - Motors - Trailers - Jeeps

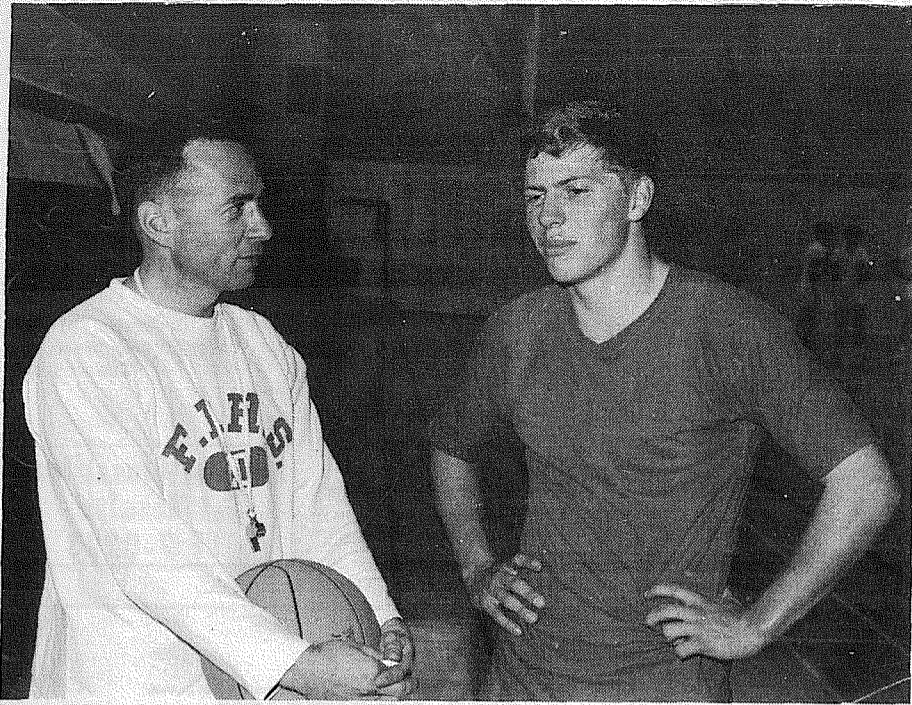
Easy Financing for Military & Civilians
\$10 HOLDS ANY CAR

Auto service specialty - steam clean, detailing.
Auto glass & Repairs. Free pickup & delivery.

JU 4-8868

BROOKDALE MOTOR SALES
8801 South Tacoma Way

F.P. Hoopsters Prepare For Renton



FRANKLIN PIERCE Basketball Coach Del Schafer talks to Forward Jim Hadland during a break in the Cardinal's first full scale basketball turnout last Monday. Hadland is one of two lettermen returning to the Card lineup.

Franklin Pierce held the first full squad basketball practice of the 1967 season November 20, and have a lot of work ahead in order to be ready for their first non conference game with Renton Dec. 1, according to coach Del Schafer.

Out of 62 turning out, the Cards will have only

two returning lettermen in Jim Hadland and Doug Armstrong. Hadland is expected to play forward, while Armstrong will probably play center.

Up from the reserves and competing for the remaining starting spots are seniors Glenn Harkey, Mike Stogsdill, Tim Mann;

juniors Mark Korsmo,

Tom Harvey, Doug Cail, and Jim Furlong. Also in the running are two promising sophomores who might see some action in guard slots. They are Woody Harris and Mark Salsman.

"We lack overall height," Schafer complained stating the Cards will average 6'1" in the forward posi-

Bird Breeders Pheasant Show

PUYALLUP - The Ornamental and Game Bird Breeder Association is holding its first competitive show at 112 Pioneer Way Saturday and Sunday, Dec. 2 and 3.

Show superintendent Ted Baginski of Puyallup said the show will be open to all pheasant breeders with competitors being mainly breeders from the Northwest states. The more common pheasants to be displayed will be the Ringneck family, Golden, Lady Amherst, Silver and Reeves.

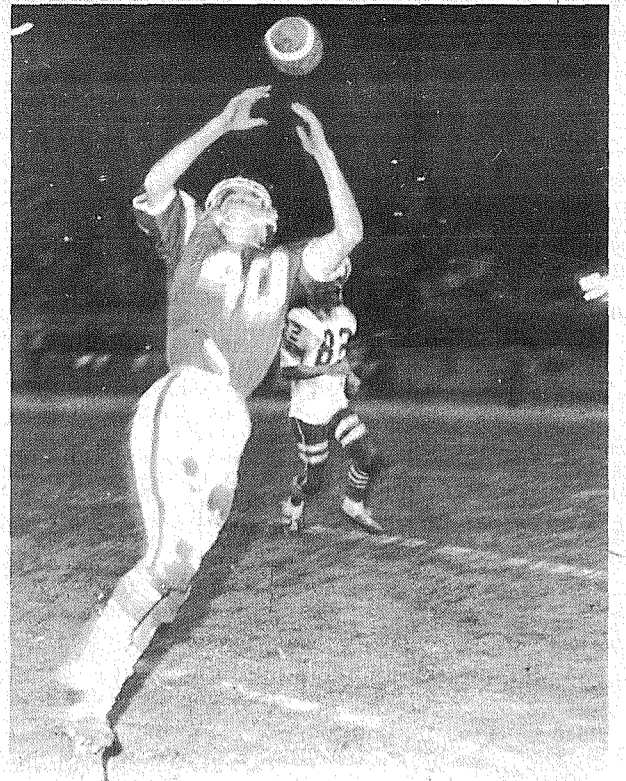
Rarer varieties, he said, will include Impeyan, Swinhoe, Elliot and Edwards.

The 125 members composing the Association are devoted to the raising, preservation and propagation of pheasants and waterfowl which have become endangered in their natural range said Baginski.

Public is invited to view the birds from 2 to 9 p.m. Saturday and 10 a.m. to 5 p.m. Sunday. Admission is free.

tions and 5'9" for guards.

Of the Puget Sound League teams, he picked Puyallup as the squad to beat. However, he quickly pointed out that all the Southern Division teams will be tough and mentioned Federal Way or Clover Park as potential winners. Auburn, he said, could be the division dark horse.



INDIAN WINGBACK Mark Cooper (40) grabs a pass as Cardinal defender Lloyd Smithingell (83) rushes to break up play.

Roy Couple Celebrate 60th Anniversary



MR. AND MRS. CHARLES A. THROSSELL

Mr. and Mrs. Charles A. Throssell, Roy, were honored by 120 guests who attended an open house to celebrate the couple's 60th wedding anniversary last Sunday. The festivities were held at Rebekah Hall in Roy.

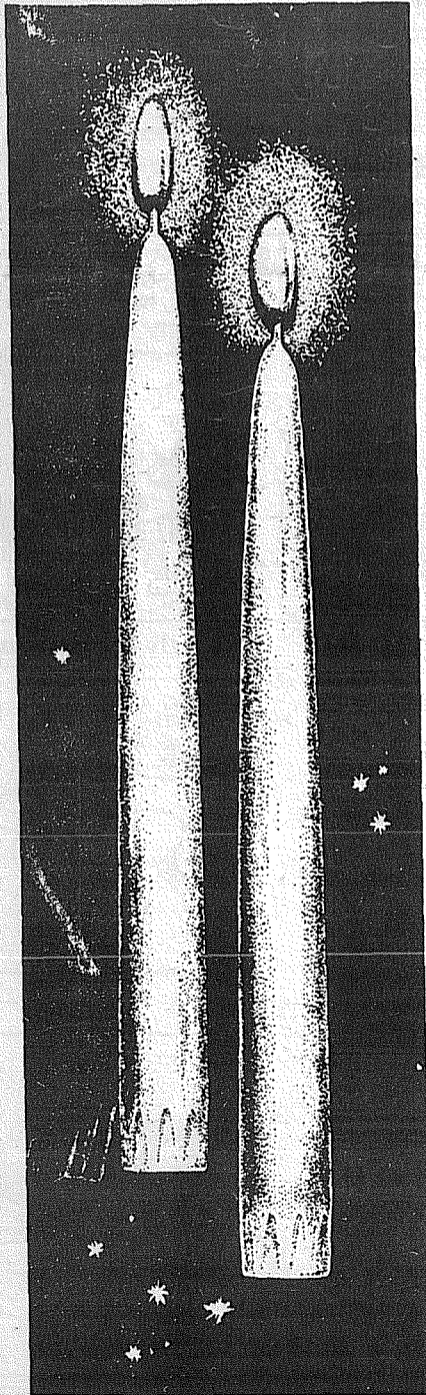
The Throssells attended school in Roy, and started their 6 decades of married life when they eloped November 14, 1907 in Portland, Oregon. They returned to make their first home in Fern Hill, and moved to the Throssell family farm near Roy in 1908.

Making Roy their permanent home, they raised three daughters, a son, and now have 11 grandchildren.

During the open house, friends and relatives arrived from Tacoma, Seattle, Puyallup, Chehalis, Centralia, Yelm, and Roy to share memories with the honored guests and old friends.

Proud hosts for the special day were Throssell children Mr. and Mrs. J.C. Patchell, (Merle) Mr. and Mrs. Henry Harrison (Marie), and Mr. and Mrs. Charles W. Throssell of El Cerito, California.

Mrs. John Martinson sang two solos and later joined Mrs. Mel Grant and Mrs. Bengt Erickson to present several trio numbers. Mrs. James Patchell accompanied on the piano.



FREE TWO RED CANDLES

WHEN YOU OPEN A NEW CHRISTMAS CLUB ACCOUNT

Begin planning now for the money you will need next Christmas. And when you do, we have a free gift of these two beautiful Christmas candles for you.

Choose any Christmas Club plan you want, starting as low as 50 cents each week. You'll be surprised how fast it grows.

And now, you can save automatically for Christmas. No more worries about dropping behind in your payments. We'll transfer your money automatically from your Citizens checking account. Start now.

Citizens STATE BANK



- ★ MAIN OFFICE - PUYALLUP
- ★ EAST SUMNER OFFICE
- ★ SUMMIT VIEW OFFICE
- ★ EDGEWOOD-MILTON OFFICE

MEMBER FEDERAL DEPOSIT INSURANCE CORPORATION

\$\$\$ VAUGHAN'S VALUES \$\$\$

90 lb. green roofing	per roll	\$395
45 lb. black roofing	per roll	\$249
Roof coating - 5 gal.	per can	\$395
15# asphalt felt	per roll	\$249

Cash and Carry Only
No charges, no delivery

CONVENIENT, OFF-STREET PARKING
OPEN ALL DAY SATURDAY

VAUGHAN'S
6402 South Tacoma Way

Building Materials
Inc.
GR 2-4494
&
GR 4-9515

PARADISE BOWL

Express — George Stephenson, 276-200-155, 631; Margie Miller, 226-202-193, 621. Split pick up: Sharon Rose, 6-7.

Little Lutes — Gordon Omdahl, 584, 220; Corrine Deetz, 400; Caren Simdars, 157.

Rolling Bees — Phyllis Huff, 541, 212.

Belles — Ann Bryant, 506; Lois Herbrand, 185. Step ladder: Gloria Gambelin, 106-118-130.

Pinettes — Myrt Camborn, 589, 235; Evie Baskett, 560.

600 Mixed — Steve Pierce, 495; Larry Nestegard, 202; Lavonne Estes, 498, 231.

Parkland Merchants — Don Butts, 589; Frank Armstrong, 213.

Sportsman — Jim Langseth, 551, 210.

Industrial — Leo Rodrequiz, 582, 209.

Friendly Doubles — Nick Pawley, 528, 181; Pauline Simpson, 472, 167. Split pick up: Ted Haikkila, 3-6-7-10; Lee Nelson, 6-7-10.

Premier — Rod Pardey, 642, 236; Art Unkrur, 638; Larry Turner, 622; Dick Devereaux, 604; Chuck Ellis, 603.

Sr. Citizen — Al Kleinsasser, 565, 201; Celia Faddness, 436, 159.

Franklin Pierce Faculty — John Eyres, 531, 219; Vi Barner, 498; Pat Bustruck, 223.

Mixers — Jonas Smeltzer, 521, 199.

Top Rollers — John Boyce, 594, 224; Marian Unkrur, 490, 188.

Graham Mixed — Mike Metcalf, 591; Bill Borton, 246; Mary Ann Metzker, 519; Rose Eveleth, 190.

Eager Beavers — Clara Robbins, 200-203-203, 606; Ann Harris, 215. Step ladder: Gladys Richards, 143-153-163. Split pick up: Mary Lou Jurgens, 6-7; Marilyn Fredricks, 3-7-10.

Birds of Paradise — Ruby Hegedus, 488; Annette Watson, 202.

Hi-Lows — Sue Sweaney, 517; Ruby Crilly, 199. Split pick up: Stella Prall, 2-7-10; Ruby Crilly, 3-7-10.

Parkland Mix — Bert Faulk, 567, 208; Lois Lovelace, 565, 203.

850 Scratch — Frank Burklund, 628, 236.

Classic — Leo Arnestad, 611; Vince Brown, 237.

Evergreen — Ed Bruner, 570, 244.

Bowlerettes — Jerry Garrett, 545, 198. Split pick up: Mary Ellen Sambila, 3-7-10; Nona Kupper, 4-10; Dorothy Ruffcorn, 6-7-10.

Last Niters — Bob Robinson, 565, 209; Ruby Both, 530; Margie Cook, 199.

4x8's — Bud Smith, 495, 207; Shirley Bennett, 477; Ann Pilcher, 192.

Bantams (2 games) — Richard Westgard, 265, 146; Vickie McTaggart, 234, 120.

Juniors — Duane Bjorke, 514, 202; Bill York, 514; Betty Unkrur, 440, 178.

PTA News

Elk Plain PTA will have its annual book fair and gift bazaar at 8 p.m. November 28th at the School.

Paper back and hard back books are available to order in time for Christmas, if desired. Prices start at 25 cents.

There will be students from all grade levels giving presentation. Surprise entertainment will be featured.

Gift items include new and used Christmas decorations, wrapping, etc.

Anyone wishing to donate items for the Gift Bazaar may call VI 7-2466.

Andrew Christensen

Brakeman Bill, a children's television comedian, will

Hammer And Nail

Paint or Enamel

Any standard woodwork finish is easy to use if manufacturer's directions are followed closely. For durability on frequently cleaned surfaces, use washable enamels.

1. After sanding, brush on flat paint, enamel undercoat or resin sealer. Paint may be thinned slightly to improve brushability. Fill surface blemishes with spackle or putty when first coat is dry. Sand lightly and dust clean.

present a show at the Andrew Christensen PTA meet from 6 to 7:30 p.m. December 1st at 10232 Barnes Lane.

The comedian will draw cartoon characters, perform magic, fun, games and contests. Tickets will be on sale at the door. Donations will be 50 cents.

General chairman of the PTA is Mrs. M. H. Ellis, co-chairman in charge of tickets are Mrs. David Wilson and Mrs. John Cooper; concessions, Mrs. Richard Colburn; Patrons, Mrs. John Williams; and publicity, Mrs. Donald Westerbarth.

2. Apply second coat. For a high gloss enamel finish, mix equal parts of flat undercoat and high gloss enamel. Tint undercoat to approximate shade of finish coat. Sand slightly when dry and dust clean.

3. Apply final coat as it comes from the can. A two-step finish, without the second undercoat, also may be used.

Pierce County Bldg. Permits

Lionel C. Taft, \$18,000 res., 920-65th Ave. N.E.
Ellis Ingram, \$18,350 res., 9710-72nd Ct. E.
Robert J. Schultz, \$18,000 res., 10602-120th St. E.
Jerry Devers, \$20,000 res., 8520 Woodland Ave. E.
Al Van Sickle, \$19,000 res.,

8811-107th St. E.
L.F. Barritt, \$18,000 res., 10624-136th St. E.
Ralph E. Yoder, \$24,000 res., 1714-20th Ave. E.
Waterhouse, \$18,500 duplex, 4320-21, 4328 - 26 and 4322-24 - 21st N.E.
Larry Elvins, \$12,000 res., 10920-83rd Ave. E.
Larry Elvins, \$12,000 res., 8213-110th St. E.
Chas. A. Wietser, \$17,500 res., 7215-100th St. E.
Norman Lehman, \$54,000 eight-plex apt., 5303 Parker Rd. E.
Jack E. Anderson, \$14,000 res., 19426, 19418, 19416, and 19425 and 19408 Crescent Dr. East.

Journal Classifieds
Get Results
LE 7-0223

SHELVES CABINETS FURNITURE

your design or ours
made fast, inexpensively, and well

TAYLOR MADE CABINETS, Inc.

10323 Pacific Ave.
LE 7-4193

RENT TV

Color TV

RENTAL MARTS, INC.

GR 5-3755
9440 Pacific

JU 4-4100
10012 Bridgeport

BETHEL HAY

ALFALFA HAY
MUCK-KAPOWSIN RD. ON CEDAR
VI 7-7252

PARKLAND AUTO BODY

Complete Collision Service
108th & PACIFIC LE 7-6303

PARKLAND AUTOMOTIVE

- Automatic Transmissions
- Brake Work
- General Repair
- Tune Ups

PICK UP AND DELIVERY
FREE ESTIMATES

108th & Pacific LE 1-3722

ADVANCE GLASS & UPHOLSTERY

Service while you wait
Residential and Auto Glass

we handle **all** insurance claims
For your car's interior:

Complete water leak service
complete upholstery
repair of torn or worn parts
carpets

10321 Pacific Ave. LE 7-8301

BE PENNY-WISE AT

BROOKDALE LUMBER!

"A Penny a foot"

1¢ ft.

MAHOGANY BASEBOARD DOOR and WINDOW TRIM

(Any size or length in stock)
You Pick & You Haul

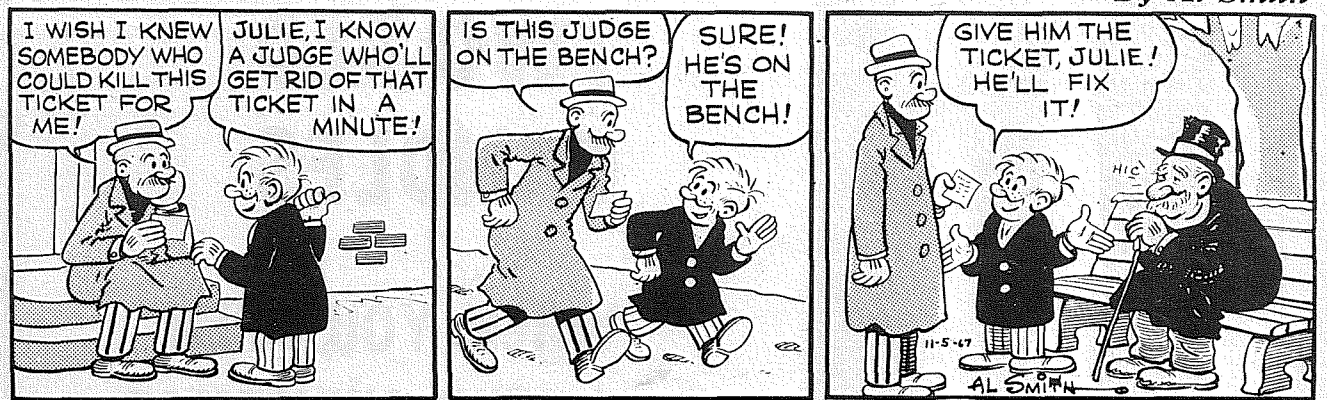
One lot of Marlite
CEILING BLOCKS

Save 30¢ • Reg. 54¢ each
Now **24¢ EACH**

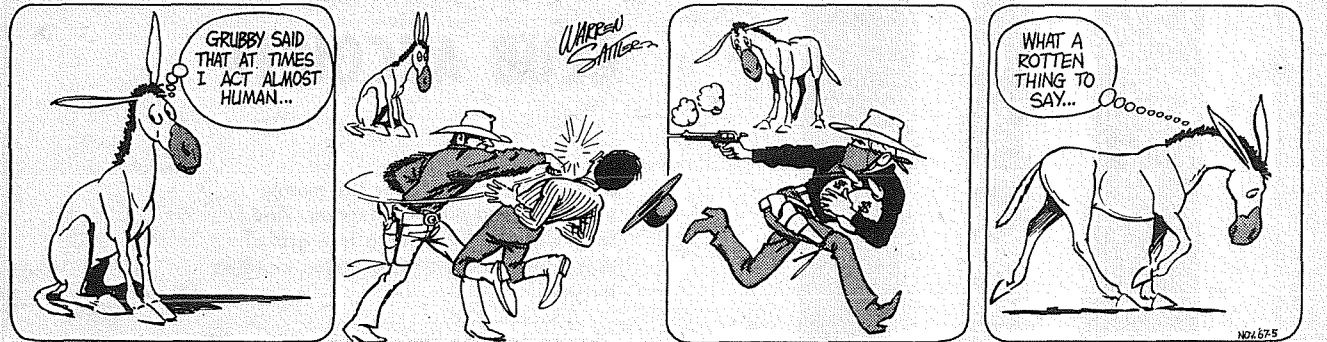
BROOKDALE LUMBER Inc.
13602 PACIFIC AVENUE

OUR WEEKLY COMICS

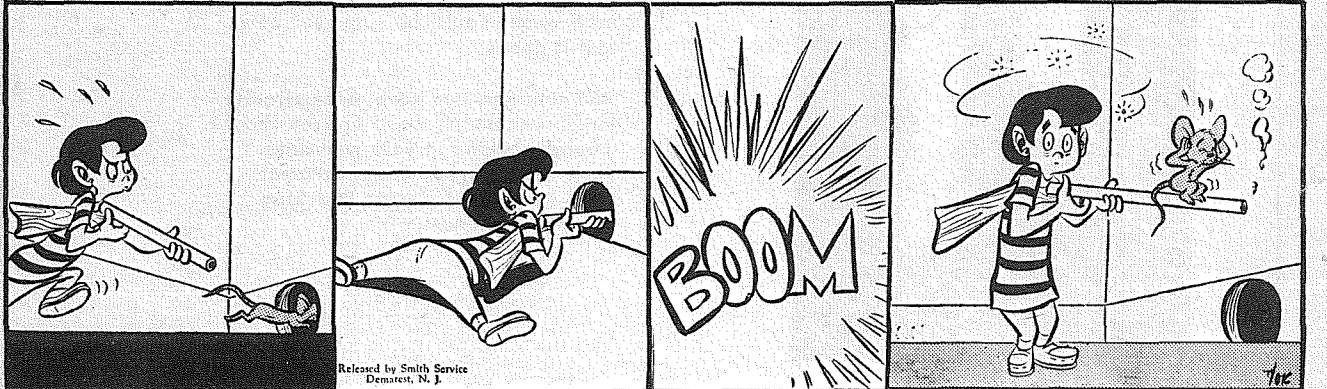
Rural Delivery



Grubby



DEEMS



Grandpa's Boy



CLASSIFIED ADS

Call LE 7-0223 For Want Ads

1 Misc. For Sale

10' FIBREGLASS row boat, \$75. TH 5-8362.

HEAVY METAL Dip tank, approx. 3' x 4' x 20' \$100.00. Bargain Barn, 17501 Pacific Ave. 67-182

GRAVEL - fine screened, 5 yards \$13.50. Washed sand, pea gravel, drain rock, 10 ft. cedar fence rails. Norman LE 7-4088.

TABLE EXERCISER, electric, with sandbag, etc. Original price \$175. Will sell for \$60. LE 1-6467.

OUR CLOTHES Racks are loaded. Girls rights 25c. Warm winter coats for all ages from 69c up. Bedspreads, blankets, drapes. Mens suntan pants 1.89. Field jackets from 98c up. Bargain Barn, 17501 Pacific Ave. 67-182

HAZEL NUTS, Filberts -3# - \$1.00. Howard Smith, 6625 W. Pioneer. TH 5-5362.

BALES OF CLOTHING for large families, garage sales, overseas aid, rummage sales. Bargain Barn, 17501 Pacific Ave. 67-182

Trophy Storm Doors
Heavy Duty Aluminum
Full Piano Hinge
Standard & Special Sizes
Also Storm Windows
Repair Service Available
Manufactured By
PARKLAND DOOR INC.
318 E. 96th GR 4-7011

2 Autos For Sale

'65 BUICK convertible. Original owner. Excellent condition. \$2100. GR 4-3809 evenings.

2 AFB CARBS on Edelbrock manifold for 283 or 327 Chev. \$100. 2 polished alum. Edelbrock valve covers for 327 Chev. \$20. TH 5-5302.

1960 FALCON For sale. LE 7-6603. 67-185

6 Musical Instruments

RENT OR BUY
The beautiful Howard Piano made by Baldwin, \$10 monthly.
LE 7-4221

9 Animals For Sale

PART BOXER Puppies \$10.00 each. LE 7-8423. 67-183

19 For Rent Or Lease

OFFICE SPACE - BOAT & TRAILER SPACE for rent. Office \$50.00 per month. Lights, heat, water and garbage furnished. Covered boat and trailer spaces \$10.00 per month. Phone LE 7-0223 days 10 to 4. 67-164

SHARE - 2 bedroom home completely furnished all utilities furnished. 8441 South Park.

PARKLAND AREA, Clean 1 bedroom duplex \$90.00, garbage and water paid. TH 5-9686 or LE 7-8341 67-184

23 Help Wanted

WOMAN bartender age 21-30, some experience. Don's Tavern, Orting. 893-3572.

Wanted Students To Sell Times Journal Subscriptions
Earn Extra Money
Call LE 7-0223

WOMAN to gather eggs and work in packing room on poultry farm. 8 hours day. 10301-152nd St. E., Puyallup.

22 Misc. Wanted - FREE FILL Gravel wanted at 120 133rd St. So. LE 1-4646. Elmhurst Mutual Light & Power Co. 67-113

28 Building Services

28 Building Services - ROOFING, Remodel, foundation, new additions, Free estimates, LE 1-0567. 67-116

30 Repair Services

TV SERVICE
All makes of Color and black & white.
LE 7-3427

FOR FURNACES, repairs, sheet metal work, call Parkland Fuel Oil, LE 7-0256.

38 Instruction

PIANO studio - 72nd and Canyon Rd. LE 7-5064.

IMPROVE your English LE 7-5274. 67-143

HELEN'S Parkland Ceramics Lessons-Supplies-Firing
1303 S. 117th
LE 1-0823

PRIVATE LESSONS IN YOUR HOME
Piano - Organ - Accordion
FURNISH ACCORDIAN ON Trial Period TH 5-3750

39 Lost

\$50.00 REWARD For white male poodle, large size. Missing for six weeks, vicinity of Military Rd. and Spanaway Loop. LE 1-4019. 67-181

\$25.00 REWARD For large white and yellow cat lost Halloween night. 67-173

36 Personals
LOSE WEIGHT safely with Dex-A-Diet Tablets. ONLY 98c at Johnson Drug.

12 Real Estate For Sale

HOME VACANT
We desperately need good rentals \$80 to \$150 per month
CALL NOW
Let us handle your worries
SUBURBAN REALTY
11302 Pacific Ave.
LE 7-8638 or LE 7-6896

Listings Wanted
Buying or Selling
Real Estate Service
Call
Devereaux Realty
12152 Pacific Ave. LE 7-8658

LIST WITH LION.
Our experienced and qualified personnel will appraise your property at no cost to you.
Call Lion Realty Inc.
LE 1-2242
11457 Pacific Ave.

Need Money?
We have investors who will buy your equity or loan on second mortgage.
Lovelace Realty
12920 Pacific - LE 1-5555

ENCO Heating Oils
Beacon Oil Company
LE 7-6968

Legals

SUPERIOR COURT OF WASHINGTON FOR PIERCE COUNTY
NO. 178784
SUMMONS BY PUBLICATION
C.M. THOMPSON, Plaintiff;
vs.
LAVINA R. THOMPSON, Defendant.

THE STATE OF WASHINGTON, to the said LAVINA R. THOMPSON.
YOU ARE HEREBY SUMMONED to appear within sixty (60) days after the date of first publication of this summons, to-wit: Within sixty days after the 2nd day of November, 1967, and defend the above-entitled action in the above-entitled Court, and answer the Complaint of the above-named Plaintiff and serve a copy of your Answer upon the undersigned Attorney for above-named, C.M. Thompson, Plaintiff at his office below stated; and in case of your failure to do so, judgment will be rendered against you according to the demand of the Plaintiff's complaint which has been filed with the Clerk of said Court.

This is an action for divorce.
George F. Potter,
Attorney for Plaintiff
George F. Potter
Attorney at Law
159 South 112th Street
Parkland, Washington 98444
LEnox 1-2889
Published in the Parkland Times Journal November 2, 9, 16, 23, 30, December 7 and 14, 1967.

Legals

SUPERIOR COURT OF WASHINGTON FOR PIERCE COUNTY
NO. 76339
NOTICE TO CREDITORS
In the Matter of the Guardianship of JOHN J. ZACEK, An Incompetent.
NOTICE IS GIVEN that the undersigned has been appointed and has qualified as Guardian of the Person and of the Estate of JOHN J. ZACEK, a mentally incompetent person. Persons having claims against the incompetent are required to serve the same, duly verified, on the undersigned or the attorney of record at the address below stated and file the same with the Clerk of this Court, together with proof of such service within four months after November 9, 1967, or the same will be forever barred.
/s/ Mavis Zacek
Mavis Zacek, Guardian
159 South 112th Street
Parkland, Washington 98444
George F. Potter
Attorney for Guardian
159 South 112th Street
Parkland, Washington 98444
Published November 9, November 16, and November 23, 1967.

Legals

IN THE SUPERIOR COURT OF THE STATE OF WASHINGTON IN AND FOR PIERCE COUNTY
NO. 76034
NOTICE OF HEARING ON FINAL REPORT AND PETITION FOR DISTRIBUTION.
IN THE MATTER OF THE ESTATE OF CHARLES BOYLE, Deceased.
Notice is hereby given that Mary Lopez, as administratrix of the estate of CHARLES BOYLE, deceased, has filed with the Clerk of this Court her final report and petition for distribution, requesting the Court to settle said report, distribute the property to the persons thereto entitled and to discharge her; and that said report and petition will be heard on the 11 day of Dec., 1967, at 9:30 A.M. in the County Court Room of the Presiding Court, Pierce County, at which time and place any person interested in said estate may appear and file objections thereto and contest the same.
DATED this 17 day of November, 1967.
DON PERRY
HENRY RUTT, Jr.
Clerk of Court
McGAVICK, HEMMEN & BOTTIGER
By: R. TED BOTTIGER
Attorneys for Estate
Published November 24, 1967.

IN THE SUPERIOR COURT OF THE STATE OF WASHINGTON FOR PIERCE COUNTY
NO. 76543
NOTICE TO CREDITORS
In the Matter of the Estate of CHARLES H. JENNINGS, Deceased.
Notice is given that the undersigned has been appointed and has qualified as personal representative of this estate. Persons having claims against the deceased are required to serve the same, duly verified, on the undersigned or the attorney of record at the address stated below and file the same with the Clerk of this court, together with proof of such service within four months after November 9, 1967, or the same will be forever barred.
/s/ Rosco Jennings
159 South 112th Street
Parkland, Washington
GEORGE F. POTTER
Attorney for Estate
159 South 112th Street
Parkland, Washington 98444
Published November 9, November 16, and November 23, 1967.

Legals

A Bird's Nest Salad In Hand
(Makes 6 servings)
1 (3-oz.) package Eagle Brand pasteurized Neufchâtel cheese
Dash tabasco sauce
2 cups (15-1/2 oz. can) French style green beans, well drained
1/4 cup cider vinegar
1/4 cup salad oil
1/2 teaspoon sugar
1 teaspoon Wyler's dehydrated instant minced onions
6 lettuce cups
1 bunch water cress
4 slices (one-half of 6-oz. pkg.) Vera-Sharp brand pasteurized process American cheese, cut into 1/8-inch thick slices
Paprika

In a small mixing bowl, blend cheese and tabasco. Roll a teaspoonful of cheese between palms of hands, forming an egg shape. Repeat with remaining cheese, making 17 additional egg shapes. Chill in refrigerator. In a medium-size mixing bowl, combine beans, vinegar, oil, sugar and onions; mix with a fork until well blended. Cover. Chill in refrigerator for 3 hours. At serving time, make a bed of water cress in each lettuce cup. Drain marinade from beans; gently mix in cheese sticks. Make a nest of beans and cheese over each water cress bed in each cup. Place 3 eggs in each nest. Sprinkle eggs with paprika. Chill thoroughly.

Legals

SUPERIOR COURT OF WASHINGTON FOR PIERCE COUNTY
NO. 76944
NOTICE TO CREDITORS
In the Matter of the Guardianship of HUGH C. HARTLE, An Incompetent.
NOTICE IS GIVEN that the Undersigned has been appointed and is qualified as Guardians of this Guardianship. Persons having claims against the Incompetent are required to serve the same, duly verified, on the undersigned or the attorney of record at the address below stated and file the same with the Clerk of this Court, together with proof of service on said attorney of record or the Undersigned, within four months after November 9, 1967, or the same will be forever barred.
Adeline Maudlin
Dorothy Whalen
Guardians
159 South 112th Street
Parkland, Washington 98444
George F. Potter
Attorney for Guardians
159 South 112th Street
Parkland, Washington 98444
Published November 9, November 16, and November 23, 1967.

Legals

IN THE SUPERIOR COURT OF THE STATE OF WASHINGTON FOR THE COUNTY OF PIERCE
In Probate
No. 76543
NOTICE TO CREDITORS
In the Matter of the Estate of CHARLES H. JENNINGS, Deceased.
Notice is given that the undersigned has been appointed and has qualified as personal representative of this estate. Persons having claims against the deceased are required to serve the same, duly verified, on the undersigned or the attorney of record at the address stated below and file the same with the Clerk of this court, together with proof of such service within four months after November 9, 1967, or the same will be forever barred.
/s/ Rosco Jennings
159 South 112th Street
Parkland, Washington
GEORGE F. POTTER
Attorney for Estate
159 South 112th Street
Parkland, Washington 98444
Published November 9, November 16, and November 23, 1967.

Notices

The Parkland American Legion Auxiliary 228 will meet at Sunshine Hall on November 27th.

Used Car
HEADQUARTERS
MOST FOR THE MONEY
All Makes... All Kinds
ARMSTRONG'S
USED CARS LE 7-5524
11109 Pacific Ave.

PIERCE COUNTY HEADQUARTERS FOR 1968
★ CHRYSLER
★ PLYMOUTH
★ VALIANT
★ BARRACUDA
CALL GR 4-0621
Steven MOTOR CO.
2705 SOUTH TACOMA WAY

Avenue Furniture

• New and used quality furniture
• Appliances
• We buy - sell - trade
• In Spanaway
LE 7-5144
16318 Pacific

SMALLEY MOTORS

before you buy any new '68 automobile, try our
New Car Discount House also
New Security campers and trailers
used automobiles and trucks
LE 1-2291
10325 PACIFIC
OPEN EVENINGS UNTIL 9

BUSINESS DIRECTORY

Fencing
FENCING
Designers and Builders
EXPERT WORKMANSHIP
REASONABLE PRICES
Easy Monthly Payments
VAUGHAN'S
6402 S. Tacoma Wy. GR 4-9515

Top Soil
BALMER & SON EXCAVATING
Bulldozing - Loader
Land Clearing - Dump Trucks
Blasting - Road Construction
Top Soil, Backhoe For Hire
FREE ESTIMATES
LE 7-8165 VI 7-7133

Furnaces
Sheet Metal
• Furnace Repair and Service
• Installations
PARKLAND FUEL OIL
12002 Pacific Ave.
LE 7-0256

Boush Moving & Storage
Agents for U.S. Van Lines
Coast to Coast Service
121 WEST STEWART
TH 5-5436

DOZER & LOADER WORK
Hour or Contract
Hauling State CC Permit
8-10 yd. new truck
NEWBURY'S DOZER SERVICE
LE 7-7455

LOOK
8 ft. **2 x 4's**
25^c ea.
Anderson Lumber
9813 Pacific Ave.

FROM OUR
Correspondents
Waller Road

By Mrs. Verne W. Fogle Le 7-5210

A tour through the Troutco Fish Hatchery was a thrilling experience for more than 40 youngsters of the Waller Road Junior Grange Saturday.

Accompanied by Grange Matron Hazel Walk, assistant matron, Bonnie Shaughnessy and mesdames Anna Van Hulle; Lucile Fogle; Cis Norris and Sybil Corrigan, the young grangers learned the story of the life of various types of fish.

Upon their return they were treated to a weiner roast at the home of their leader.

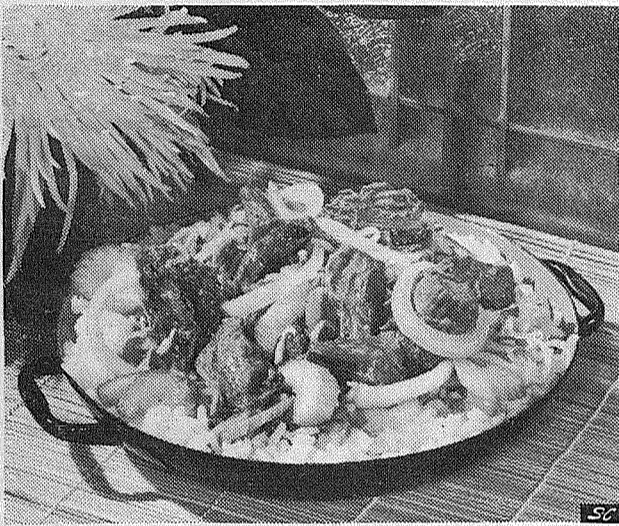
Don't forget to attend the Harvest Luncheon at the Waller Road Grange Hall, Noon, Wednesday, November 29th.

The event will be sponsored by the grange auxiliary, it is open to all. Served Smorgasbord style, it has become a favorite for working folks, as it is a very informal affair.

Mrs. Gae Lovell, extends a special invitation to retired folks to attend. The donation is \$1.25 for adults, it includes luncheon and free games. Children's donation will be 50 cents.

In conjunction there will be a Thrift Shop, with good used clothing and new bazaar items.

Roast Beef Orientale



When it comes to quick cooking you can't beat Chinese style food, especially when it is made with such convenience items as canned roast beef with gravy.

Roast Beef Orientale

- 1 tablespoon shortening
- 1 medium onion, sliced
- 1 can (12 ounces) roast beef with gravy
- 3/4 cup water
- 1/2 teaspoon sugar
- 1 tablespoon cornstarch
- 1 tablespoon soy sauce
- 1 cup thinly sliced celery
- 1 can (1 pound) Chinese vegetables, drained
- Hot fluffy rice or fried noodles

Heat shortening in skillet; add onion and saute until onion is transparent. Add roast beef with gravy, water and cover; simmer about five minutes, or until heated through. Combine sugar and cornstarch; stir in soy sauce until smooth. Add to roast beef mixture and cook, stirring, until sauce is thickened and clear. Add celery and drained Chinese vegetables. Heat to serving temperature. Serve on bed of fluffy rice or fried noodles. Makes 4 servings.

END OF THE MONTH SHOE SALE

Reg. 4.00	Child's snoboot 10 1/2, 11 1/2, 12, 12 1/2	\$2 ⁹⁹
Reg. 16.00	Man's Golf Shoes, 10D	12 ⁹⁹
Reg. 15.99	Man's Golf Shoe, 9 D	12 ⁹⁹
Reg. 4.99	Baby Shoes Narrow Sizes	99 ^c
Reg. 6.00	Girls Tie Shoes 9 1/2, 2 1/2	3 ⁹⁹
Reg. 4.99	Boy's Dress 8 1/2 - 3	3 ⁹⁹
Reg. 6.99	Boy's Boot 1 - 1 1/2	4 ⁹⁹
Reg. 5.99	Boy's Dress Sizes 8 1/2 - 6	2 ⁹⁹ 3 ⁹⁹ 4 ⁹⁹
Reg. 5.99	Princess Dress Girl's Sizes 11 - 3	3 ⁹⁹
Reg. 5.99	Women's Suede Keds, 5 - 10	3 ⁹⁹
Reg. 1.79	Bundle Sox 4 to Pkg.	88 ^c

PAULS SHOES

161 St. & Pacific
LE 7-0552

Open 9 to 9 Daily
Till 6 Sat. & Sunday

9 a.m. - 10 p.m.
7 DAYS
A WEEK

BARGAIN BASKET

16618
Pacific Ave. S. Spanaway
LE 7-3371

No Sales To
Dealers

WE RESERVE THE
RIGHT TO LIMIT
QUANTITIES

We Carry A Complete Line Of Sacked Feeds - Presto Logs

We Are Locally Owned & Operated
HELP YOUR BUDGET
WITH THESE SAVINGS

PRICES
EFFECTIVE

Nov. 24-25
Fri. - Sat.

Sunny Jim
SYRUP
#10
Tin **89^c**

Sunny Jim
Strawberry
Preserves
Two
Pounds **79^c**

Hungry Jack
Pancake
Flour
4
Lbs. **49^c**

Sunshine
Krispy
Crackers
One
Pound **33^c**

School Boy
Peanut Butter
40 Oz.
89^c

Rabbit
Ration
\$1.45
25 Lbs.

Mission
Macaroni
Dinners
3/49^c

Wesson
Buttery-Flavored
Cooking Oil
Qt. **69^c**

Ghirardelli
Choc. Chips
3 49^c
for 6 Oz. Pkg.

PRODUCE

NO. 1
POTATOES
10 # CELLO
39^c

EX. FANCY
DELICIOUS
APPLES
17^c
LB.

RADISHES
GREEN
ONIONS
3 19^c
FOR

MED. SIZE
Dry Onions
9^c
LB.

Everyday Low Meat Prices . . . 25 lb. Locker Boxes \$14.95

PORK
STEAK
59^c
Lb.

GROUND
BEEF
39^c
Lb.

Boneless
Pork Roast
67^c
Lb.

Ham Shanks
39^c
Lb.

CHUNK
BOLOGNA
49^c
Lb.

Boneless
Beef Stew
69^c
Lb.