

DERBY WINNER NAMED FOR PARKLAND

TIMES JOURNAL

Cindra Lee Born At Lakewood

The first Parkland baby for 1962 has arrived. The proud parents are Mr. and Mrs. Lee Hill, of 13703 South J. St., Parkland.

The first baby of 1962 for the area was a girl, named Cindra Lee by the parents. Mr. Hill is a school teacher in the Olympia schools.

Here are the gifts which the parents will receive for the newest addition to the Parkland population.

Quality Photo Service, 9818 Pacific Ave., a surprise gift; Storkville, 9722 Pacific Ave., a baby blanket; Parkland Hardware, the Parkland Firemen's 12169 Pacific Ave., Pyrex Ladies Auxiliary will be formula measuring cup; held tomorrow Jan. 11, at Pierce County Refuse Co., 8 p.m. in the Fire Hall. 135th and Pacific, three This is an important months free garbage ser- ing. Plans for the Fire- vice; Shop Ette Variety and men's Ball in February, Department Store, 133rd nomination of officers and and Pacific in the Lucky discussion of the Ladies Shopping Center, a baby Installation Banquet are on blank; McKewen Studio, the agenda. All members 119th and Pacific, one 8x10 are urged to make a special picture in oil, age 3 to effort to attend. Hostesses 6 months; Spanaway 5 & 10, for the evening are Frances 165th and Pacific, box of Curtis and Laura Elling- chocolates for mother; son.

Parkland Western Auto, The Ladies of the Aux Pacific Avenue near Air- liary wish to thank the port Road, surprise gift; Journal people for their Parkland Pharmacy, 11000 many kindnesses in the past Pacific Ave. in Keller's year and hope that we may Kort, baby bottle steriliz- continue to grow together in good will and under- Pacific Ave., fork and spoon set; Parkland Econo- wash, 12171 Pacific Ave., two weeks free do-it-yourself diaper service; Little Park Cafe, 171st and Pacific Ave., mother's first dinner out.

Tahoma Flying Service, 185th and Pacific, Spana- way Airport, scenic flight; by Postmaster John P. Mc- Ashmore Spanaway Drug, Monagle today about the Tommee Tippee small fry eating set; Paradise Bowl, new rules for handling un- 10707 Pacific Ave., six free lines of bowling; Flett Dairy, GR. 2 - 3301, 12 quarts Grade A milk, Lucky Store, 133rd and Pacific Ave., Gerber's Baby Food, Parkland Fuel Oil Service, 12002 and Pacific Ave., 10 gallons of gas; Bargain Basket, 167th and Pacific Avenue, two dozen Hane's baby shirts; Pochel's, 140 and Pacific, 50 gallons of Mobilheat-stove or diesel oil; Piggly Wiggly, Pacific at Garfield, one case of Gerber's Baby Food; John- son's Drug, Pacific and Garfield, nursery night lamp, and Chuck's Cafe, 133rd and Pacific, lunch for father.

Postmaster Gives New Mail Rules

Mail advertisers and secretaries of social or- ganizations, church groups and PTA's were cautioned by Postmaster John P. Mc- Ashmore today about the effect of the Post Office's new rules for handling un- deliverable second, third and fourth class matter. "Get your mailing lists in good shape before Jan- uary 10," was the Post- master's advice. After that date, the post office will discontinue forwarding circulars and advertise- ments mailed at other than the first class rate.

At present, a lodge notice or an advertisement mailed to any Tacoma ad- dress is forwarded without charge to its correct new location within the local delivery area without charge to either mailer or addressee. After January 10, this extra service will be discontinued. Third class matter, undeliver- able as addressed, will receive no further service unless it bears the endorsement "RETURN RE- QUESTED." With this en- dorsement, it will be returned to the sender at a minimum charge of eight cents.

Further information may be obtained at the Main Post Office or by telephon- ing MA 7-9181 and asking for the Classification Sec- tion.

James Sales PTA

The first meeting of the New Year, for the James Sales P.T.A. will be held January 16, at 7:30 p.m. at the school. "Father, King for a Night" is the theme of the meeting. A special treat is planned and a cordial welcome is extended to all Dads of the James Sales enrollment. Mrs. R. W. Switzer, Pres- ident, will preside.

"Basic Mind Power Development Program"

A Ten Step Program Played on Pre-Recorded Tapes (Tape Recorder Available If Needed)

PRIME BENEFITS ARE, DEFINITE SELF AND FAMILY IMPROVEMENT

- Relaxation
- Physical Well-Being
- Memory Power
- Will Power
- Self Confidence
- Vitality
- Sleep Therapy
- Concentration
- Magnetic Personality
- Financial Success

Phone Tacoma GR 4-1262

OR Mail At Once To

MA 3-2860 Seattle

THEN additional courses available on such as:

- Academic
- Trades
- Professional
- Music
- Smoking
- Alcoholism

RECORDER EDUCATION, Inc. TJ 1/10 500-A Wall St. Seattle 1, Wash.

Please rush additional information on "Basic Mind Power Development Program" and details on how and when I can start.

Name Age Address City Tele. Occupation

Elmhurst Board Tells of Mutual Company Plans

Members of the Board of Directors of Elmhurst Mutual Company, in an effort to clarify some of the questions which have been raised recently about the electric power question, this week consented to an interview.

Harold E. LeMay, president of the board, and Harry Harrigan, secretary-treasurer, spoke for the board, following the Monday night meeting.

Other members of the board are Harold Hillman, Gail Owen, and L. C. McCullough. Office Manager is H. W. Chambers and line manager is C. M. Jolly. The Elmhurst Mutual Co. was formed in 1922 for the purpose of supplying its members with electric power. The company be- longs to the members. A staff of seven people are employed to serve its cus- tomers. Included in the equipment which the com- pany has acquired over the years are a warehouse and garage, office building, 3 trucks, substations and their own lines.

According to the Board members, the company is in good financial condition and is providing good service to its customers.

On the question of City Light power and the Bon- neville Power Administra- tion power which is creat- ing a lot of interest, the board members stated that they have been studying the situation for two years.

The primary purpose of the study was to hold the rates of customers of Elm- hurst stable for as long as

Parkland Firemen Elect

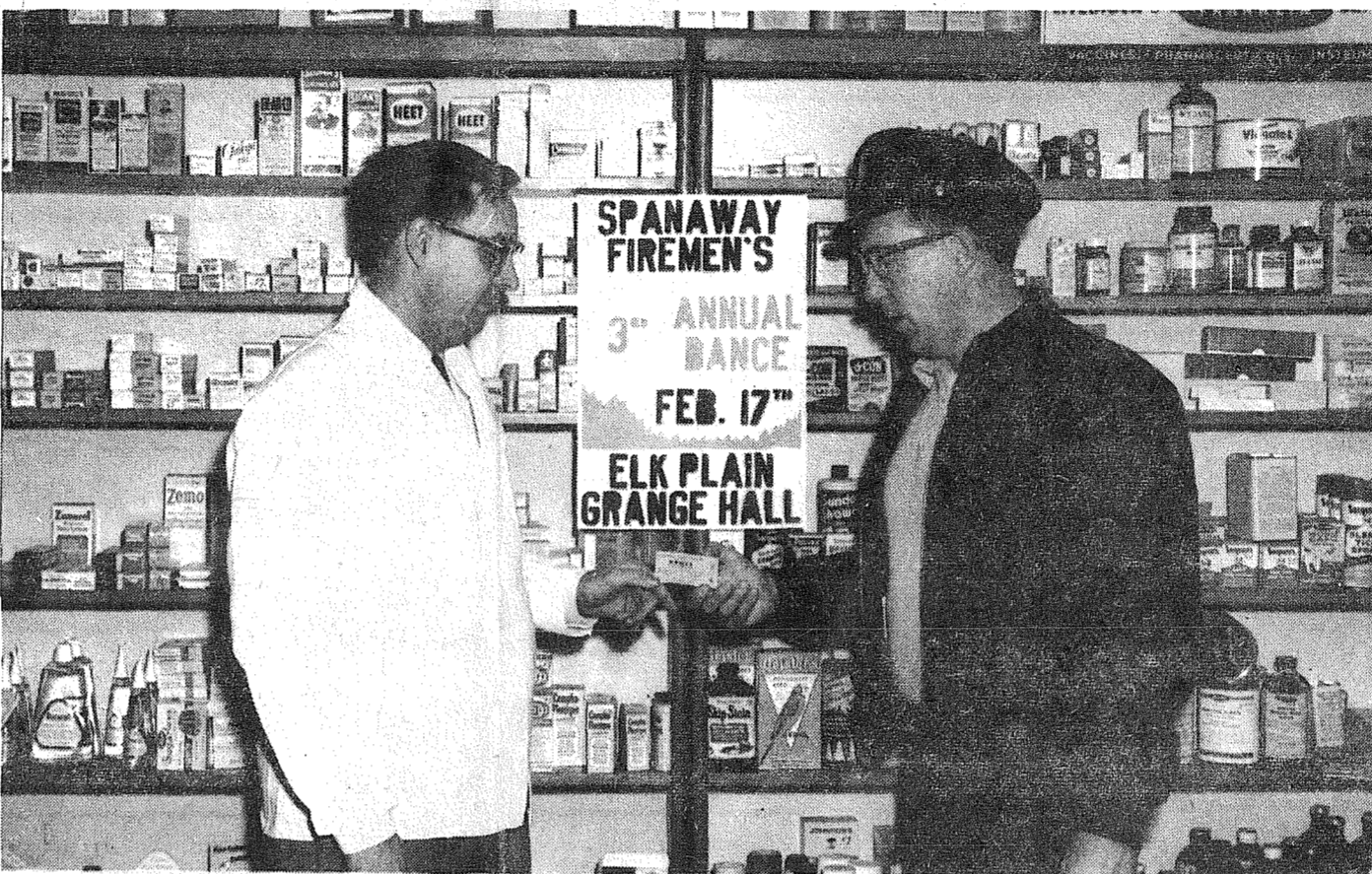
At the regular meeting of the Parkland Volunteer Fire Dept., Greg Vause, Paul Bowen and Ray Hixon were re-elected to their respective offices of Pres- ident, Secretary-treasurer and Historian. Paul Shum- way was elected Vice-Pres- ident, with Chet Kirk being chosen as the Firemen's Relief and Pension repre- sentative.

Chief Larson commend- ed the men on the fine job done in the year of 1961. He reported that the Dept. answered 211 alarms, with 2824 men responding, mak- ing an average of over 13 men per call. This is a record that would make any fire dept. justly proud. It was also noted that there were no fatalities, due to fire, in the district during the year.

Horsemen Install Officers Saturday

The annual installation banquet of the B B Horse- man's Club, Inc., was held at the Firs Saturday even- ing, January 6, with Larry Kirkwood as Master of Ce- remonies.

Mr. Kirkwood also in- stalled the new officers who are: Mrs. Gordon Friesz, President; Gordon Friesz, Vice President; Lloyd Priest, Treasurer; Mrs. Lloyd Priest, corres- ponding secretary, Carol Lagee, recording secre- tary; Leonard Ott, Sgt. at Arms; George Beeson, Mu- riel Larson and Bill Camp- bell as board members.



JOHN TODD, dance chairman for the third annual Spanaway Firemen's Dance, sells ticket Number One to Hobart Ashmore of Ashmore Spanaway Drug. Ticket Numbers Two through ? will go on sale of-

ficially Friday, January 12, as firemen begin their drive by calling on Spanaway residents. The dance will be held at the Elk Plain Grange Hall February 17th beginning at 9:30 p.m.

Adult Evening Classes Planned

An evening school pro- gram for the Franklin Pierce District will be con- ducted during the second semester to meet the ed- ucational desires of adults in this community.

Any person over 18 years of age, or a high school graduate, may enroll in the program. The adult even- ing school will sponsor a class in any area in which as many as eight people desire to work.

Classes for vocational preparation and retraining of people for business and industry, classes for

Bethel District Makes Plans For Spring Vote

Bethel School Directors passed resolutions at their Tuesday, January 2nd meeting, calling for a special election of Tuesday, March 13th. Voters will be asked to vote on a \$140-000 bond issue for con- structing and equipping a High School addition and

two general fund levies: \$15,000 for Kindergarten and \$65,000 for mainten- ance and operation for 1962-63 school years.

The bond issue will qual- ify the district for State Aid in constructing a five teacher station addition to Bethel High School. Special- ized facilities for music, physical education, elec- tronics, auto shop and art- mechanical drawing would be provided. The State will finance 40.8% of construc- tion cost. Lacamas, a non- high school district, placed in the Bethel District ser- vice area by the Pierce County Committee on School District Organiza- tion, must -- by law -- participate in its share of financing cost. Preliminary estimates place the Lacamas share at \$6,173.-00. Total construction cost is estimated at \$190,000.

Clover Creek Legion

Clover Creek Post and Auxiliary of the American Legion will meet at the hall in Spanaway Jan. 12 at 8 p.m. A social hour will follow.

Let Me Tell One:

How Do We Get Schools?

A question has been asked, "How do you get schools in this district if you don't get them from the Federal government?"

I'll raise a question right back. How do you get them from the federal govern- ment?

The answer to the first, is of course, we do it our- selves. Which is not a simple answer, but, I think the best one. We vote the bond issues and special levies into being right down the line to get for our- selves the best possible school system that WE can afford.

Any other way, espe- cially the recourse to the Federal government is coming out of our own pockets anyway, so why not keep the money at home where we can keep an eye on it? School districts in areas which are affected by mil- itary populations are get- ting the federal aid that I think should be given. There might be some argu- ment as to the proper amount for districts close to Fort Lewis and McChord Air Force Base, but that is the extent of any Fed- eral Aid to Education that I want to see.

The answer to the sec- ond question is -- from your own pocket.

The Federal Government has no money machine.



Neil McLean

Everything it gets comes from you and I. And I think that by levying on our- selves within our own dis- tricts will keep a better check on how the money is spent and will give us more in the services that we want than any other way.

The part of this whole process that we tend to for- get has been shown in fig- ures which, while they may not be completely accur- ate, will give an indica- tion of what to expect.

This is generalization, which is open to question, but until someone shows some particular figures I'll go along with them.

When you send a dollar to the federal government, you can expect to get back about 50¢ in benefits. This

fluctuates, of course, as in the case of the Boeing Air- plane Company, which brings back a lot of tax dollars to the Pacific Northwest.

On the state level, the percentage gets a little bet- ter, probably somewhere around 60% coming back in benefits.

On the county level you can see about 80% of your tax dollars being used.

On the municipal level, the percentage gets better, according to studies made.

Add to this the control which the federal govern- ment will expect to exer- cise on the schools which get aid. Now control is a two-edged sword. It can work to the benefit of some school districts, but there are a few in this state that I can think of where feder- al control could be hind- rance.

To sum up, where do you get anything that you have? From your own efforts and anyone who tells you dif- ferent is overlooking the income tax which he will have to pay in the next few months, plus a few other taxes of which we all are not aware.

My future is mortgaged, and my son's future is mortgaged to this country. And I think it is time to do something about paying off the mortgage.

In other Board Business, Mr. Dempsey and Mr. Reese, High School English teachers, and Mr. Platt presented an informative talk on the High School English program.

Mr. Ennitt Rich, Board Chairman, reviewed the State Directors Conven- tion.

The Board renewed the contract of the District Su- perintendent, John Milroy.



MILTON E. LOFLIN, right, president of the Blue Barons Motorcycle Club, is shown presenting a check to Pierce County Sheriff Frank Stojack for the Muscular Dystrophy Drive. Stojack, chairman of the drive, accepted the check which represented the \$218.30 which the club earned at its annual Scramble.

BULK RATE U.S. Postage Paid Permit No. 89 Parkland Branch Tacoma, Wash.

Rural Route Occupant or Boxholder Postmaster: If unable to deliver, return post- age is guaranteed on addressed papers.

Delivered to over 14,000 families

Each dollar spent in your community helps to build it

Thursday, January 11, 1962

Vol. 17, No. 19

Published in Parkland

Le. 7-0223

Flying with Jeanne

Gary Laycock completed his dual cross-country training with a trip to Boeing Field and return with Slim Lawson. Gary then made his first solo cross-country to Boeing and return.

John Baldwin, Hughes Aircraft employee at McCord, took some dual cross-country training with a trip to Ennumclaw, Bellevue, Auburn and return.

Last week Lloyd Smith and Slim Lawson flew to Burns, Oregon in the Ercoupe where Slim picked up a Stinson Voyager for Bob Schermerhorn and returned to Spanaway, Bob bought the plane for his brother and is now learning to fly.

The Twin Cities Flying Club from Kelso-Longview was out in full force last Sunday. Nine fellows and one gal flew in to Spanaway in a Stinson, Cessna 172 and 140 and proceeded to Yakima for lunch and then returned to Kelso.

New Years Day several people were treated to scenic flights of the area. Mr. and Mrs. Cliff Boddington and daughter Claudia from San Jose, California and Susie McDaniels of Puyallup flew up over Paradise Valley where they watched the skiers taking spills and also staying upright. They were all guests of Orv and Jen McGoy from Puyallup.

Walt Stanger took Les Boetner for his first airplane ride. They made a scenic tour of the local area.

The Country Parson



"A fellow's time is like money—it won't do him any good if it's not invested in something."



THAT ANOTHER MIGHT SEE
Have you ever thought of living in a world of darkness or hazy dim? Can you conceive what it would be like not to see the beauty of a rose or an evening sunset? Have you thought of the number of hours spent in reading a good book or the joy derived from such a simple thing as reading the daily paper?

To thousands of people these things are impossible, but a whole new world would be opened to them by the gift of a donor's eyes. Anyone, regardless of age or general health, may donate their eyes that another might see. To give this greatest of all gifts, sight, is a very simple procedure but the wishes of those who desire to donate should be known to their next of kin for the operation of removing the corneas of the eye must be completed within four hours after the donor's demise.

For complete information concerning donating eyes, talk with your family physician or local funeral director. Both will do their best to see that your wishes are carried out.

Of all the ways that man can help his stricken brother, the gift of sight is one of the most noble and truly in accord with the instructions of the master: "Help ye one another."

DRYER'S FUNERAL PLAN CUTS COST

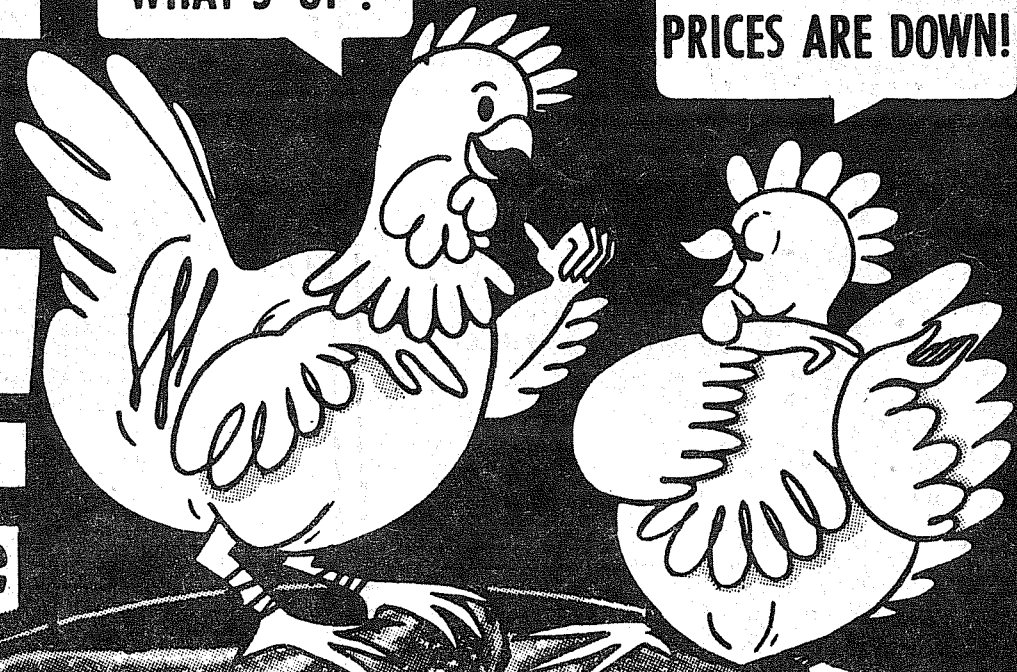


FRESH FRYER PARTS
NECKS AND BACKS **2.25**
WINGS **25**
DRUMSTIX, BREASTS **49**
OR THIGHS. A TERRIFIC BUY!

M-M-M-BOY- WHAT EATING!

WHAT'S UP?

PRICES ARE DOWN!



..... **AT SUMMIT TRADING**

CUT-UP FRESH WASHINGTON GROWN... PANREADY THE VERY FINEST!

FRYERS **29**
CHUCK STEAK **49**
POT-ROAST **59**
FRESH GROUND CHUCK **59**



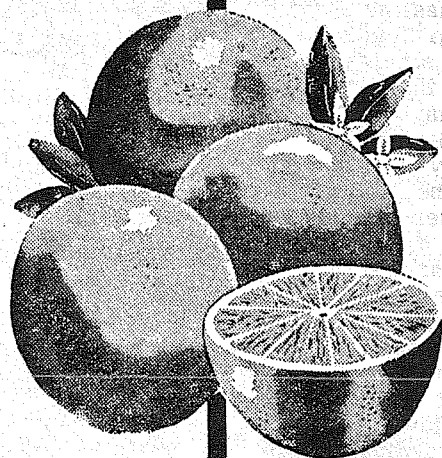
WESSON OIL
45

CLOSED SUNDAY - So our employees may attend Church

C & H SUGAR **10.88** -LB. BAG

WESCO MILK **10** EVAPORATED TOP QUALITY—LOW PRICE! TALL TIN

ZEE NAPKINS **10**
PINEAPPLE **2.49**
CHUNK TUNA **29**
GRAPEFRUIT **5.1**



★ FRESH AS A DAISY PRODUCE ★

ORANGES **10**
CABBAGE **5**
ONIONS **19**
POTATOES **.98**

FOLGERS COFFEE **2.99** LB. 53 TIN

SPRY SHORTENING **79**
MARGARINE **51**
BEEF STEW **39**

STORE HOURS: 9 to 9 Monday thru Saturday

INSTANT COFFEE **79**
6 OZ. JAR **1.29**

CHUN KING SPECIALS
59

10409 Canyon Road



PLEASE NO SALE TO DEALERS

CRACKERS **27**
NABISCO SNOWFLAKE
LB. PKG.

SUMMIT TRADING CENTER

ZEE TISSUE **1**
34-ROLL PKGS.

PRICES EFFECTIVE JAN. 11-12-13... LIMIT RIGHTS RESERVED.

Crime and punishment grow out of one stem. Punishment is a fruit that, unsuspected, ripens within the flower of the pleasure that concealed it.
- Ralph Waldo Emerson

Back To School

The holiday season is over and the Keithley students return again to the books.

As you walk down the halls and check classrooms you find in each case a busy group of students writing, reading, all eagerly participating in order to make the last ditch effort to bring their grades up before the semester comes to a close. All have been reminded that the semester ends on January 19, 1962 and if there is to be any improvement then it must be made here and now. Report cards will be out January 23, 1962.

Throughout the year the Keithley students have had to eat their lunches in the classroom because the Cafetorium facilities were

not completed, and so it was with a deep sigh of relief that both teachers, mothers and students received the announcement that the Keithley lunchroom would be ready within the next few days. This will surely gladden the hearts of the mothers who have had to make up dozens of lunches since the school year began.

Slowly but surely the school is being completed and as each new item is finished students and members of the community should stop to reflect on the monument that symbolizes the very essence of our country. The pursuit of knowledge and education both spiritual and physical are the values upon which our free society is built and can operate.

Psychologist At Brookdale PTA

Dr. Kristen Solberg, Psychology Professor at PLU, will discuss the growth and development pattern of the child between the first and sixth grades, at the January 17 meeting of Brookdale P.T.A. The time is 8 p.m. in the multipurpose room. A comical skit will also be on the program.

Open house will be held for the second grade rooms at 7 p.m. Fourth and Fifth grade mothers will be the hostesses.

Officers Installed

The Senior Inspirational award was given to Jerry Tucker and the Junior award to Kenny Essary. After the ceremonies, dancing was enjoyed by members and guests.

Woodland News

Tonight, Thursday, January 11th at 8 p.m. is Howdy Partners Round Dance night again. Dancing will be at Fruitland Grange with Willis Dodge at the mike. All dancers are welcome. This is a party night with the hosts and hostesses for the evening being the George Patricks, Jack Masseys and Don Anderson.

There is still time to come out to Fruitland Grange on Monday evenings for the new class in square dancing being taught by Willis and Laraine Dodge. Classes will be held each Monday evening from 8 to 10 p.m. so why not plan to come next Monday night and join in the fun and learn to square dance.

The Gordon Davids of Grebe Road had visitors over the New Year from California. Mrs. David's sister and family, Mr. and Mrs. Milfred Ogren and Norman, Dean, Judith, Esther and Sharon of Lancaster, California were here from Dec. 29th to Jan. 2nd. We all enjoyed the visit very much. This is the Ogren's first time to Washington since 1953.

December 29th was the Woodland Lucky Clovers 4-H Club Christmas party. The party was held at the home of Mary and Chuck Temus of Cherry Street and was a 12th night party. A pea and a bean were baked in a cake and the boy and girl with them in their piece of cake are king and queen for the evening. They decide on how the evening is to be spent. King was George Stean and Queen was Susan Stean. A 50 cent gift exchange was part of the evenings program and the club members presented the leader Gordon Davis and Assistant leader Charles Wooley each with a lovely tie clasp. Special guests for the evening were Norman and Dean Ogren of Lancaster, California, cousins of DuWayne and Cheryl David. A wonderful time was enjoyed by all. The Club's January meeting was Jan. 9th at the Stean home on Lundblad Road with the February meeting to be at the Temus home on Cherry Street.

Two comparatively easy victories over Lincoln and Enumclaw have raised new hopes in Cardinalville after a dismal beginning. The 43-32 victory over the Enumclaw Hornets raised the Cardinals from the doldrums of the Puget Sound League cellar. Tom Tommervik and Tim Sherry each contributed 16 points while leading the Cardinals to their first Puget Sound League victory. Tommervik stole the ball on numerous occasions and Sherry pulled down 16 rebounds to help the Redbirds cause. The 55-22 victory over Lincoln was the Cards first real team effort. Tommervik led all scorers with 12.

Cards Face Spartans

Looking for their first victory, the Summer Spartans invade the Franklin Pierce gymnasium Friday night, as the Cards seek their third straight win. Sumner's burly center Tom Thomas, leads the Spartans in scoring, while junior Terry Douka has proven to the playmaker for the winless Spartans.

America's Space Age WORLD'S FAIR APRIL 21-OCTOBER 21, 1962

Telephone Population

The annual report from Pacific Northwest Bell and the American Telephone and Telegraph Company concerning the vital statistics of the "world's telephone population" is in once again.

PNB manager David L. Williams bravely reports that at the end of 1960 there were some 141,700,000 telephones in service in the world. The report, as in the past years, is a year late because of the voluminous amount of statistics that must be compiled. The world's gain in telephone during 1960 amounted to some 8,100,000. Comparing the United States with that of the rest of the world shows U. S. gain at 5.6 per cent and the world at 7.7. The lower rate of growth in this country is attributed to higher development of the telephone here in relation to the rest of the world. The ratio of telephones per 100 people stands at 41 in the U. S. while the rest of the world has only 2.4 phones per 100 people, and the U.S. has about 52 per cent of the world's telephones -- 74,342,000 of them.

Western Hemisphere countries continue to set the pace for telephone usage. Canadians use the phone an average of 538 times a year per person; U.S. citizens 520 times per year per person. Sweden edged out Bermuda during 1960 with 348 calls per person compared to 320, respectively.

An interesting note the Bell System's statisticians point out is that during the past decade seven countries have accounted for

Physical Fitness

A program of physical fitness will be presented by the Dads at the Jan. 17, 8 p.m. meeting of Woodland P.T.A. at Woodland School. Musical selections will be presented by Art Carney on guitar. Refreshments will be served by the 4th grade dads.

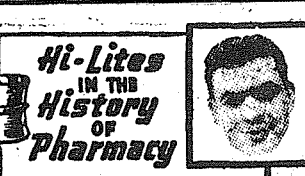
Fear follows crime, and is its punishment.

-- Francois Voltaire

FIRST SEE NATIONALS PARKLAND LE 1-1331

AUTO

127th & PAC. AVE. PARTS



FOR THE GOOD HEALTH OF YOU AND YOUR FAMILY

When we fill a prescription for you, all of the ingredients specified for your health are carefully measured and tested, 100% accuracy is our rigid rule!

Parkland Rexall Pharmacy
11100 Pac. Ave. in Keller's Kort
LE 7-8636

11100 Pac. Ave. in Keller's Kort
LE 7-8636

HILLTOP CONCRETE CO.

READY MIX CONCRETE

- Crushed Rock
- Drain Gravel
- Fill Dirt
- Pit Run
- Gravel
- Sand

TH. 5-9525

Plant: 2223 - 23rd Ave. S.E. P.O. Box 648, Puyallup

INCOME TAX SERVICE

PARKLAND REALTY
CHARLES PETERSON
For Appointment Call LE 7-8609

<h1 style="font-size: 2em;">25¢</h1> <p style="font-size: small;">Saltseas New England Style CLAM CHOWDER 15-Oz. Tin</p>	<h1 style="font-size: 2em;">33¢</h1> <p style="font-size: small;">Morton Frozen Fruit PIES Cherry, Peach, Apricot, Boysenberry</p>	<h1 style="font-size: 2em;">25¢</h1> <p style="font-size: small;">Pillsbury CAKE MIX Reg. 39c</p>
<h1 style="font-size: 2em;">3/39¢</h1> <p style="font-size: small;">CARNATION MILK Tall Tins</p>		
<h1 style="font-size: 2em;">5/89¢</h1> <p style="font-size: small;">Banquet MEAT PIES Chicken, Turkey and Beef</p>		
<h1 style="font-size: 2em;">4/\$1</h1> <p style="font-size: small;">No. 2 1/2 Tin</p>	<h1 style="font-size: 2em;">TOMATOES</h1> <p style="font-size: small;">Cock 'O the Walk Hand Packed</p>	
<h1 style="font-size: 2em;">10/\$1</h1> <p style="font-size: small;">Gerbers Strained BABY FOOD</p>	<h1 style="font-size: 2em;">6/99¢</h1> <p style="font-size: small;">Stockton - Tomato CATSUP 12-Oz. Bottle</p>	
<h1 style="font-size: 2em;">13/\$1</h1> <p style="font-size: small;">16-Oz. Tin</p>		<h1 style="font-size: 2em;">DOG FOOD</h1> <p style="font-size: small;">Vets</p>
<h1 style="font-size: 2em;">2/39¢</h1> <p style="font-size: small;">Zee WAX PAPER 100-Ft. Roll</p>		
<h1 style="font-size: 2em;">10¢</h1> <p style="font-size: small;">Zee LUNCH BAGS 20 Count</p>	<h1 style="font-size: 2em;">10¢</h1> <p style="font-size: small;">Wesco SALT Plain or Iodized</p>	
<h1 style="font-size: 2em;">49¢</h1> <p style="font-size: small;">"AA" Large EGGS Doz.</p>	<h1 style="font-size: 2em;">33¢</h1> <p style="font-size: small;">Mission EGG NOODLES 1-Lb. Pkg.</p>	
<h1 style="font-size: 2em;">69¢</h1> <p style="font-size: small;">Lb.</p>	<h1 style="font-size: 2em;">RIB STEAK</h1> <p style="font-size: small;">Steer Beef</p>	<h1 style="font-size: 2em;">3 Lbs. For 19¢</h1> <p style="font-size: small;">Bulk CARROTS</p>
<h1 style="font-size: 2em;">3 Lbs. For 98¢</h1>	<h1 style="font-size: 2em;">GROUND BEEF</h1> <p style="font-size: small;">Pure</p>	<h1 style="font-size: 2em;">2 Lbs. For 25¢</h1> <p style="font-size: small;">Sunkist ORANGES</p>
<h1 style="font-size: 2em;">45¢</h1> <p style="font-size: small;">Lb.</p>	<h1 style="font-size: 2em;">PORK ROAST</h1> <p style="font-size: small;">Lean Boneless</p>	<h1 style="font-size: 2em;">10¢</h1> <p style="font-size: small;">Each Large Solid LETTUCE</p>
<h1 style="font-size: 2em;">3 Lbs. For 98¢</h1>	<h1 style="font-size: 2em;">PORK SAUSAGE</h1> <p style="font-size: small;">Lean</p>	

WE MAKE LUMBER

LUMBER
GLASS
HARDWARE
SHINGLES
ROOFING
FIR SAWDUST
SHAVINGS

Baskett Lumber
9701 Portland Avenue
LE 7-8663

Now At WEIR'S ...

3,000,000 SALE!

STOP, LOOK AND SAVE! '62 APPLIANCES, TV, STEREO!

THIS RECORD APPLIANCE SHIPMENT MEANS

The QUALITY You Have Always Wanted
At PRICES You Can Afford

Savings-Savings-Savings-For YOU

LOWER MFG. COSTS - LOWER FREIGHT COSTS - MORE QUALITY PER DOLLAR

COME IN and SEE WHAT'S NEW for '62!

New For '62

Daylight blue picture. 19" square corner screen. New high power transformer chassis. Built-in telescoping antenna. FREE roll-around custom stand. Deluxe hardwood handle.

\$168

No Payments Til March

1962 Celebrity PORTABLE



This record shipment is the result of an order for 121 rail-road cars, the largest shipment ever received in the Northwest. This event is being called the \$3,000,000 Sale, the approximate value of the appliances shipped. Mass purchase and saving on freight is being passed directly to our customers... plus Trade-Ins worth more than ever before!

New For '62

Deluxe Filter-Flo WASHNER With Mini-Wash

Big 12-pound capacity. New Mini-Wash for wash basin loads. 5 separate automatic cycles. Automatic bleach dispenser. Water-saver load selector. Filter-Flo system.

\$379.95

\$2.50 per week

New For '62

Americana Eye-Level Oven RANGE

Fits like a built-in. Eye-level, picture window oven. Full size master oven. Automatic rotisserie. 3-in-1 Sensi Temp unit.

THE MOST ON THE MARKET FOR THE LEAST

\$529.95

New For '62

Deluxe Refrigerator

13.6 cubic foot capacity. Full-width chiller tray. Two porcelain crisper drawers. Straight line design. Three door shelves.

\$269.95

Weir's Bargain Box

4-GE ELECTRIC RANGES . . \$137

1-GE ELECTRIC RANGE, deluxe, with clock & timer . \$168

1-GE deluxe DRYER, 2-heat, 2-cycle \$148

1-REFRIGERATOR, auto defrost, full-width zero freezer \$228

1-4 speaker STEREO, all hardwood cabinet . . . \$191

YOU HAUL PRICES

WEIR'S

Your Corner
OPEN TIL 9:00 P.M.
(Saturday TIL 6)
8419 Portland Ave.
LE 7-0231

THERE IS NOTHING "JUST AS GOOD" AS GENERAL ELECTRIC

NEIL McLEAN Publisher
 RUTH THOMPSON Assistant Editor
 JACK BROWN Contributing Editor
 WAYNE JOHNSON Circulation
 CHEY CHAMBERLAIN Accounting
 DARRELL DUGAN Advertising
 DAVE HEBBARD Shop Superintendent
 JUDY REED Assistant
 DICK MARCELLE Composing Room Foreman

Qualified as a Legal Publication under Chapter 213 of the Legislative Acts of the 1941 Regular Session of the State of Washington.

Delivered free by U.S. Mail, or carriers, to all homes in the trade territory. Paid subscriptions elsewhere. In Washington State \$2.50 per year. Outside the state, \$3.00 per year.

**a - Wondering . . .
 and a - Wandering . . .**

I've often heard it said that time changes all things. I think perhaps I can offer up an argument against this theory.

On a cold snowy winter day a young man stood alongside the highway near Missoula Montana, with outstretched thumb, hoping against hope that some kind person would give him a hitch closer to the green pastures he was seeking. Car after car passed him by and in each passing face he could read the unspoken question. Who is that bum and where is he going? Perhaps the word bum was not so far from wrong since this hitchhiker had empty pockets as well as an empty stomach and consequently there was no animosity created between him and those passing over unspoken question.

A couple of weeks ago I was snowbound in Missoula. My plane was out at the airport and with nothing better

ALUMINUM STORM WINDOWS Made To Order
 Awnings - Storm and Screen Doors
 Free Estimates - Installations
PARKLAND HARDWARE
 12169 Pacific Ave. (Across from Piggly Wiggly) LE 7-3171

Prescription Service
 Open 7 Days a Week
 9:30 a.m. - 9:30 p.m.
 Sundays 10 a.m. - 6 p.m.
JACOBS PACIFIC DRUGS
 Wallgreen Agency
 Pay Light & Water Bills Here
 84th & PACIFIC AVE. GRenfield 2-6445

- DIRECTORS**
 JOHN L. ARAM
 GRANT ARMSTRONG
 A. E. BLAIR
 A. H. BROUSE
 GOODWIN CHASE
 ARTHUR S. COFFIN
 HOLLIS DAY
 HENRY O. FOSS
 A. H. HEATH
 L. EVERT LANDON
 W. H. LINDBERG
 GEORGE S. LONG, JR.
 JOE L. LONG, JR.
 L. B. MACDONALD
 R. A. MUELLER
 L. T. MURRAY
 JOSEPH E. NOLAN
 ORVILLE T. OLSEN
 CARL L. PHILLIPS
 MAURICE STANS
 BERT SWEETING
 AUGUST VON BOECKLIN

INSIDE STORY

Our December 31, 1961, statement of condition shows we are growing with Washington. (We're the fourth largest bank in the State, and the largest outside of Seattle.) Our deposits, loans, and capital reserve have all enjoyed a healthy increase during the year.

However, that's only part of the "INSIDE STORY." We have just announced 3½% "instant" interest to savings customers, beginning January 1, 1962. During the past year, two new branches were opened; a new banking office, completed; two more, near completion; and several branches were remodeled. Work will begin on our 30th office in 1962. We've installed newest electronic equipment, and completed plans for preservation of customer assets and records in case of catastrophe.

But the most important part of the "Inside Story" is that we are now serving over 200,000 accounts! It is gratifying, indeed, to note that there has been a tremendous increase in the number of people who have selected NBW as their bank. While a statement of condition must, perforce, list only figures, we, here, consider people our most important asset!

The Directors, Officers and Staff join me in extending best wishes to all for a Happy 1962!

Goodwin Chase
 GOODWIN CHASE
 PRESIDENT

to do I decided to go out and get my radio checked out in the plane. Since time was hanging heavy on my hands I decided that a walk in the brisk air might do me more good than harm so disdaining proffered phone calls for a taxi I headed out of town down the main stem towards the airport.

About an hour and two miles later after battling the snow and blizzard til my cauliflower ears were a delightful shade of purple I decided that my stupidity was showing. Either I got inside of a car or a house soon or I'd end up frozen. With no refuge in sight I stepped off the road at a wide spot and hung out my thumb, little caring if it was legal in Montana or not. After standing there for only a moment I realized that the spot was familiar and memories of standing in the exact selfsame spot some 26 years ago filled my mind.

Watching the face of each passing motorist I suddenly realized that each face portrayed an unspoken thought as they passed. Who is that bum and where is he going? Cold and getting hungry but not quite broke I couldn't help feeling a bit of animosity creeping into mind for those passing me by as I realized that 26 years of hard work trying to better myself hadn't changed things one bit. To the motorist zipping by I was still just a bum trying to mooch a ride.

Who says that time changes all things?

The other day a friend handed me a piece of paper containing an article entitled "An American Creed." I read it over and could but admire and yet wonder about the author. The article was signed anonymous. Had I the foresight and wisdom to write such a piece. I certainly should like the world to know that I created it.

Here truly in my way of thinking is the very thought that should be the creed of all red blooded Americans. Here are words that should give their author fame along with Patrick Henry, Benjamin Franklin, Abraham Lincoln and other great Americans whose words are history. You be the judge if I am not right.

Herewith the article. . . "I do not choose to be a common man. It is my right to be uncommon if I can. I seek opportunity, not security. I do not wish to be a kept citizen, humbled, dulled, by having the state look after me.

I want to take the calculated risk; to dream and to build; to fail or succeed. I refuse to barter incentive for a dole. I prefer the challenge of life to the guaranteed existence; the thrill of fulfillment to the state calm of Utopia.

I will not trade freedom for beneficence, nor my dignity for a handout. I will never cower before any master nor bend to any threat. It is my heritage to stand erect, proud and unafraid; to think and act for myself; to enjoy the benefits of my creation; and to face the world boldly and say: This I have done."

--Anonymous

Grange Sets First Meeting

Riverside Valley Grange for January 18 at the Fir will hold its first meeting wood Grange. The regular social evening at the Riverside Valley Grange Hall is scheduled for January 19.

Roy News

Roy Fire Department held its first 1962 meeting January 2 in the Roy City Hall. New officers are president Harvey Hicks, vice-president Leon Rediske, secretary-treasurer Charles Dodge. Members present when the meeting was called to order by the new president were Harvey Hicks, Mel Moline, Sid Coggins, Charles Dodge, Tony Rotondo, William Marlin, Ben Craddock, Irving Nygren, Leon Rediske, Bert Smith.

Discussion of the proposed radio for the three trucks with a base station in the city hall was the main business. Price of the radio set-up is \$2400 with the fire department's share as \$1200.

Dance date will be set later with a baby beef as a door prize.

Thirty-two runs were made in 1961, mostly grass fires. Three funs were made with the resuscitator.

Fire loss for 1961 was \$50 to an automobile. Chief Tony Rotondo requests that more regular members attend the meetings of the department which will be held the first Tuesday of every month at 7 p.m. at the fire hall.

Capt. and Mrs. Joe Dale who recently moved into a new home south of Roy were surprised Friday night when a group of friends and neighbors gathered at their home for a housewarming.

The Dales were presented many gifts by the unexpected guests.

Present for the evening were Lt. Col. and Mrs. Gary Roush, Mr. and Mrs. John Roush and Cathy, Rev. and Mrs. Irving Nygren with Debbie and Ruth, Mr. and Mrs. Bert White, Mrs. Manning, Miss White, Mr. and Mrs. Paul Farmer, Mr. and Mrs. Ocky Berg-

Theft Of Trees

The U. S. Forest Service already is looking forward to next Christmas but perhaps not in the same way some people are.

Foresters are studying new ways to stop forest-land theft of trees, including Christmas trees.

Trespass by persons cutting trees illegally in the National Forests is a continuing problem, according to Walter H. Lund, timber management chief for the Pacific Northwest Region of the Forest Service.

Lund said representatives from all National Forests in western Oregon and Washington met with Regional Office personnel recently to develop better methods of preventing timber trespass and to outline procedures for investigation and faster action in trespass cases. Arno Reifenberg of the U. S. De-

partment of Agriculture Regional Attorney's Office, Portland, outlined legal action available to the Forest Service where trespass occurs.

In the past five years, total volume of 7,950,000 board feet of trees is known to have been cut from National Forest land by trespassers. This total includes many cases of unauthorized cutting of Christmas trees.

Elk Plain News

Mr. and Mrs. Ernest L. Haskins of Elk Plain are proud grandparents of a baby girl born to Mr. and Mrs. David A. Johnson (Colleen Haskins), their daughter and son-in-law, in Norwich, Conn. on Dec. 17th. She weighed 6 lbs. 8 oz., and has been named Tammy Marie.

The other grandparents welcoming the new baby are Mr. and Mrs. James Hatmaker, of Graham.

The Elk Plain Grange will hold their first meeting of the year with their new officers, Thursday, Jan. 11 at 8 p.m. at the Grange Hall.

Master Ben Kuper will preside. The Grange members are all hoping to see some of the old members' faces present.

Eva Jupiter is back in the Good Samaritan Hospital in Puyallup. Cards and letters would be greatly appreciated. Best wishes, Eva, for a speedy recovery, from your many friends.

Mrs. Mary Ealey had a birthday Jan. 3 and to celebrate her husband Taylor baked her a cake. It was an orange cake with orange filling. He thought it was an excellent cake, but he was the only one that said so. It really was a nice cake, however, as Mr. Ealey is a baker.

Word has been received here that the infant daughter of Mr. and Mrs. Don Beaudry of Haywood, California and formerly of Elk Plain, died Jan. 3rd. The baby, Michele, was four months old. Friends in the community wish to extend their sympathy to the family.

Visitors at the home of the Ray Bukharts over the holidays were Mr. and Mrs. Ron Higgins and son Dale, Miss Donna Higgins and L/Cpl Dale L. Burkhardt of the U.S. Marine Corps. Dale has now returned to his base in Twenty Nine Palms, Calif.

We hear that a new barber shop has been opened in Graham. Hope people in the area will stop by.

Waller Road P.T.A. will meet Tuesday Jan. 16th, at 8 p.m. A special feature on the program will be a talk and the showing of colored slides by Carol Ferch, Puyallup High School Senior, who spent two months in Germany as an exchange student.

The meeting presided over by Mrs. Art Weston will be held in the multipurpose room of the school.

David Van Hulle, newly installed Master of Waller Road Grange, conducted his first meeting Friday, Jan. 5.

The Charter was draped in an impressive ceremony by Chaplain Mary Louise Farrington, in loving memory of Westler Bottoms, who passed away recently.

Waller Road News

Ryan Wolff and Miss Connie Wolff (brother and sister-in-law) from Santa Cruz, California were guests of the Harold C. Olson family for the holidays. A New Year's party was planned for a get-together for them with other relatives from Tacoma.

The Marie Hagen Guild will hold their annual "Birthdays Month" meeting at the Godfrey Berg home Feb. 1. Mrs. J. M Heath will assist as co-hostess.

Ray Kulju of Lawler, Minnesota, son-in-law of Mr. and Mrs. Jonathon O'Brien, spent New Year's Day with the O'Brien's before going to Moses Lake where he will be employed for the next eight months.

Mrs. H. Gustafson of 7809 E. Taylor entertained the Marie Hagen Orthopedic Guild, Thursday, Jan. 4 for a noon smorgasbord. A business meeting followed.

During the program Mrs. Frank Hazen, entertained by relating interesting facts of her native land. She and Mrs. Hazen are from Bogotta, Columbia, South America, where he was employed by a construction firm.

The Hazens are guests of his parents, Mr. and Mrs. George Hazen, while they are in Tacoma. They have been feted at various parties.

Mrs. Leora Nelson is recuperating at the home of her brother and sister-in-law, Mr. and Mrs. Ray Nelson, following surgery.

A reminder to all drivers! The intersection of 64th and Vickery is still a dangerous bit of highway -- the New Year's crash, the injury to the driver and damage to the car will verify this to be accurate.

A baby boy arrived Dec. 27th for Mr. and Mrs. Ronald L. Fogle. He has been named Darryl Alan and joins sisters Kathy and Connie. Grandparents sharing in the excitement are Mr. and Mrs. Elmer Bradley and Mr. and Mrs. Verne Fogle.

Great grandmothers are Mrs. Charlotte Bradley and Mrs. Belle Freed of Tacoma.

Waller Road P.T.A. will meet Tuesday Jan. 16th, at 8 p.m. A special feature on the program will be a talk and the showing of colored slides by Carol Ferch, Puyallup High School Senior, who spent two months in Germany as an exchange student.

The meeting presided over by Mrs. Art Weston will be held in the multipurpose room of the school.

David Van Hulle, newly installed Master of Waller Road Grange, conducted his first meeting Friday, Jan. 5.

The Charter was draped in an impressive ceremony by Chaplain Mary Louise Farrington, in loving memory of Westler Bottoms, who passed away recently.

Clover Creek PTA

The January meeting of the Clover Creek P.T.A. will be Wednesday the 17th in the school gymnasium at 7:30 p.m.

Mr. William Damrau, school principal, will show colored slides of his recent European trip.

After the meeting, the 5th grade pupils will present a special feature, and the 2nd grade students will serve during the social hour.

Fathers and grandparents will be honored at the meeting.

The school reminds those interested that Monday is recreation night at the Clover Creek school and the gym is open from 6:30 to 9:30 p.m.

1962 CAR LICENSE

MIDLAND FOOD CENTER
 East 99th & Portland
 (Pass Cars Only)
 Midland Orthopedic Guild

SAME LOCATION

The Same Friendly Service
**PARKLAND
 ECON-O-WASH**
 12171 Pacific LE 7-9970

Custom Upholstering

• Cars
 • Boats
 • Furniture
**ZENTNER &
 CAMERON**
 GR 4-3076
 Free Pickup & Delivery
 Evenings
 GR 4-2507

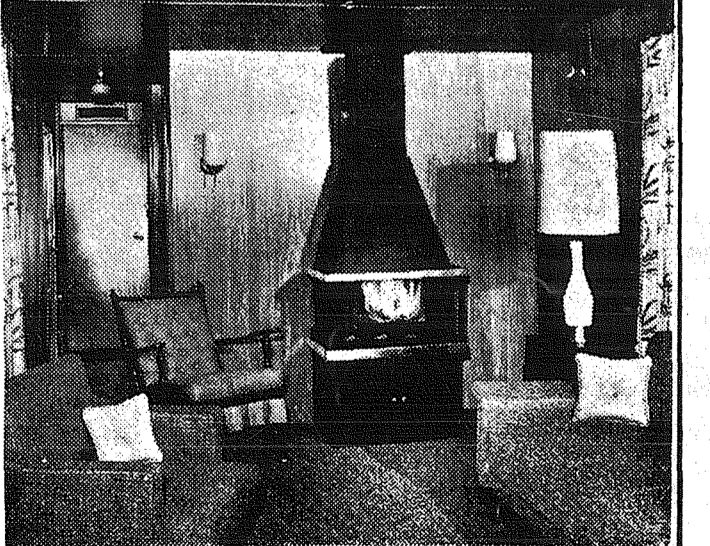
RENTAL TOOLS

BELT HAND SANDERS
 OSCILLATING HAND SANDERS
 SABER SAWS
 PAINT SPRAYERS
 RUG SHAMPOO MACHINE
 FLOOR SANDERS
 EXTENSION LADDER
 POWER MOWER
 SHARPENING & REPAIR
 WINDOW GLASS INSTALLED
 Small Appliance Repair
PARKLAND HARDWARE
 12169 Pacific Ave. LE 7-3171

FOR RENT TRUCKS

& CARS
 MA 7-9039
 Save One Half
 We Furnish Everything
HARMON'S
 Driv - Ur - Self Co.
 HARMON'S SERVICE
 2112 Jefferson
 Jim Harmon, Mgr.

WESTERN FIREPLACE



Easy To Install - - -
 Fits Against Any Wall
 Approved by City of Tacoma Fire Dept.
 Easy Monthly Payments

VAUGHAN'S PACIFIC LUMBER
 85TH and PACIFIC

Growing with Washington

NATIONAL BANK OF WASHINGTON

CONDENSED STATEMENT OF CONDITION

DECEMBER 31, 1961

RESOURCES

Cash and Due from Banks	\$ 32,333,515.26
U. S. Government Securities	39,236,986.62
State, County and Municipal Bonds	12,224,920.66
Other Bonds and Securities	785,966.63

Total Cash and Securities	\$ 84,581,389.17
Loans and Discounts	112,509,192.15
Federal Reserve Bank Stock	339,000.00
Bank Premises, Furniture, Fixtures and Safe	
Deposit Vaults	5,415,099.21
Other Real Estate Owned	37,853.83
Interest Earned--Not Collected	854,412.87
Customers' Liability Under Letters of Credit	
and Acceptances	1,133,930.43
Other Resources	198,017.84

TOTAL RESOURCES

\$205,068,895.50

LIABILITIES

Deposits:	
Demand	\$100,678,546.83
Savings and Time	81,993,523.24

Total Deposits	\$182,672,070.07
Interest Collected--Unearned	2,024,911.73
Letters of Credit and Acceptances	1,133,930.43
Other Liabilities	802,457.98
Reserve for Interest, Taxes, Etc.	1,376,470.36
Reserve for Possible Future Loan Losses	1,749,924.99

Total Liabilities	\$189,759,765.56
Capital	5,600,000.00
Surplus	5,700,000.00
Undivided Profits	4,009,129.94

Total Capital Funds

15,309,129.94

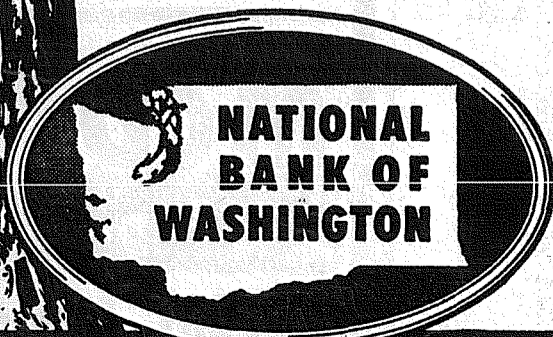
TOTAL LIABILITIES AND CAPITAL

\$205,068,895.50

PARKLAND BRANCH OFFICERS

A. G. Swindland, Vice President & Manager
 E. J. Cook, Assistant Cashier
 Earl H. Dryden, Assistant Cashier
 John H. Hehn, Assistant Cashier

Deposits \$8,883,359.07



Shultz Presents Slides

Dr. A. L. Schultz will present color slides of his canoe trip to Alaska to the Franklin Pierce Hi-Boster Club Tuesday evening at 8 p.m. January 23. The trip was made by a group of eight boys from 12 to 17 years of age and four counselors Dr. Schultz as their guide.

They traveled in five 17-foot fillet canoes equipped only with sails and paddles. They were greeted by Governor Egan of Alaska who commented that they were the only group on record without help to make this trip since the Indians.

Dr. Schultz has proved

Century 21 Speaker At Parents Club

Mrs. Lola Hallowell of the Century 21 Speakers Bureau, will be the guest speaker at the regular meeting of Bethel Junior High School Parents Club, Jan. 15 at 8 p.m. in the multi-purpose room of the school.

Mrs. Hallowell will also show colored slides related to her subject. The public is invited to this meeting, and a question and answer period will follow, according to Frank Petoski, club president. Refreshments will be served following the meeting.

Boat Owners ...

What Is Your Cost Per Hour?

Try Flying It's Economical and Fun Call

Tahoma Flying Service 185th & Pacific VI 7-2266 SPANAWAY AIRPORT

IS THERE A SANTA CLAUS?? Well, Not Here. We Have

- NO Free SEWING MACHINES
- NO Free Cabinets
- NO Repossessed Singers
- NO Repossessed Necchis
- NO Winners

But - We DO Have

EXPERIENCED, guaranteed service in ALL sewing machines (including commercial), and vacuum cleaners at Fair prices. (Ask your neighbor.) COMPLETELY Rebuilt (not just "used") Sewing Machines and Vacuum Cleaners. Word has been getting around that we're sold out again! (Should be more ready by Friday.) BRAND NEW Sewing Machines and Vacuum Cleaners; various models and prices. Budget terms, and we will trade in your old machine — why not give us a call!

PARKLAND SEWING CENTER
12148 Pacific Ave. Parkland Theater Bldg. LE 1-2000

DOES YOUR CAR START HARD?

VALVE GRIND SPECIAL

V8 Olds, Chevs, Fords (OHV) \$55.00

6 cyl. Chevs, Fords (OHV) \$35.95

6 cyl. Plymouth, Dodge, Etc. \$45.95

Foreign and Sports Car Owners - Check here first for our Special Valve Grind Prices!

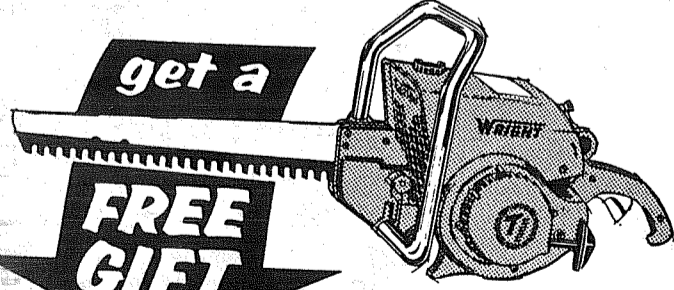
THROUGH

FEBRUARY 15 ONLY

T and J AUTO REPAIR

11101 Pacific Avenue LEnox 1-2200

Ask for a Demonstration



Permanent Hand Sander

WRIGHT POWER BLADE SAW

- most versatile farm saw ... cuts everything from trees to fine-line carpentry.
- reciprocating blade ... 10,000 strokes a minute.

WRIGHT COMPACT POWER BLADE SAW

WRIGHT CHAIN SAW - C70

Wright Power Blade Saws start at \$143.50

Free gift offer valid after March 31, 1962

COME IN TODAY! PARKLAND HARDWARE

12169 Pacific Ave. (Across from Piggly Wiggly) LE 7-3171

Canyon Road Insurance And Retirement Benefits For Employees

The regular meeting of the Canyon Road Ladies Auxiliary was cancelled.

The regular meeting of the Canyon Road Community Club will be held Thursday Jan 11th (tonight) at 8 p.m. in the Community Club, E. 80th and Canyon Road. We are looking forward to the new year under President Robert Runger being as exciting as last year.

We wish to welcome new neighbors to the neighborhood, Mr. and Mrs. Edward Ostrom, who have recently built a new home on Canyon Road and moved in over the holidays. Does the name sound familiar? It should! They are the parents of Mr. Edward Ostrom Jr. who has lived on Canyon Road for 7 years.

Mrs. Phyllis Folk of White Road has been confined to the hospital for several days.

Our deepest sympathy is extended to the family of Mrs. Anna Davidson of Canyon Road who passed away last week. All who knew her will remember how she loved working in her beautiful yard with its flowers, fruit trees, and cute little summer house. In a different category we wish to sympathize with Miss Shannon Walker, daughter of Mr. and Mrs. Don Walker of Canyon Rd, who was riding her horse Nig when he was hit by a truck and killed. Shannon received a bad bump on her head but not seriously.

Mr. and Mrs. Mike Lattuell entertained guests from Wenatchee over the New Year weekend.

The Twilite Twirlers will dance to the calling of Sid Lane Friday the 12th at the Community Hall starting at 8:30. Everyone is welcome.

The Canyon Road Garden Club will meet Jan. 17th at 7:30 p.m. in the Community Hall. The guest speaker will be Mrs. Harriet Kennedy whose topic will be "Know an Organic Gardener." Hostesses for the evening will be the Mesdames Anna Eldred, Stella McElroy and Mabel Nequette. Table decorators the Mesdames Hannah Wuestney, Frances Rice and Pauline Fanning. Arrangements are made by Jerry Patrick, Dee Paulsen, and Irma Wight.

By Mrs. John Folk

Summit News

The Men's Brotherhood of Summit Methodist Church is sponsoring a movie showing January 20 to raise money for chairs to be used in the new church which is now under construction.

The film, "Francis and the Haunted House" will be shown at the Summit Youth Center at 10 a.m. and 2 p.m. Admission will be 25 cents for children, 40 cents for students and 60 cents for adults.

Due to the construction of the new church in the Summit community, the W.S.C.S. will be meeting in different homes. The January meeting will be at the home of Betty Shaban at 8:00 p.m. on Thursday, January 11. All ladies of the area are invited to come. A film strip entitled, "The Church in Action," will be shown.

Pastor Douglas Mitchell, Summit Methodist Church will begin with the class membership of the church on January 31. To be able to attend you must be in the seventh grade or older. The class will continue thru to the middle of March, and cover a study of the Christian church, its history, and the Bible. All are urged to attend.

By Sue Johnson

PROMPT PERSONALIZED PRESCRIPTION SERVICE

TED SWANSON INSULIN - VITAMINS Downtown Prices Pay Phone Bills Here PLENTY OF FREE PARKING TINCER'S PHARMACY 8227 Park Ave. GR 4-3344 Across from Fern Hill P. O.

A. G. Swindland, Vice President and Manager of the Parkland Branch of National Bank of Washington, today announced a new and broad six-part program of insurance and retirement benefits for its employees and their families, effective January 1, 1962.

The insurance program provides for low-cost life insurance, medical and hospital benefits, and major medical insurance for catastrophic illnesses or accidents. The retirement program provides for a two-part pension for the benefit of retired employees, without cost to them during or after employment, and for a continuation in part of the medical and insurance benefits.

In describing the plan, Swindland said: "This new system of employee benefits is comprehensive, based upon best expert advice, and it is designed to protect against hazards of our employees during and after their working lives. Our aim is to relieve our employees of concern over insecurity, and thereby to

Altar Society

The Altar Society of Our Lady Queen of Heaven Church will meet Monday, January 15 at 8 p.m. with Mrs. Steve Canton presiding.

Guest speaker will be Mrs. Frank Pavolka, past president of the Archdiocesan Council of Catholic Women. Mrs. Pavolka, who is currently a representative of the A.C.C.W., will speak on the same topic.

Hostesses for the meeting will be Mrs. J. R. Rogers, Mrs. Ray Perkins and Mrs. Norman Rousch.

SHOP & SAVE at BROOKDALE LUMBER CO.

4'x8' x 3/4" VEENER POPS just \$2.24 ea.

2'x6" No. 4 (Shorts) CAR DECK \$25 Per M

2'x4" ECON. Random Lengths Only 3c Lin. Ft.

SAND & GRAVEL YOU HAUL

5'x9' PING PONG TABLE TOPS Play At Home \$7.65

2x4 8' No. 4 STUDS 24c ea.

1'x4' "E" FLOORING

Good for under linoleum or tile. Or use it in your attic room. just \$8.00 Per 100 Sq. Ft.

1'x8' Kiln Dried "E" SIDING Fin for Outbuildings \$8.00 Per 100 Sq. Ft.

5-Foot STEP LADDER Sturdy \$4.19 Each

4x8x3/16 MAHOG. PANELS Real Nice! \$2.90 ea.

BROOKDALE LUMBER COMPANY

136th & Pacific LE 7-8669

encourage them to help us carry out our policy of unparalleled banking services to the community."

The extensive medical program provides for reimbursement for hospitalization and surgical fees when an operation is necessary. It also covers hospital services, administration of anesthesia and other surgical services, doctors' calls, and diagnostic tests.

The major medical plan is provided to help employees pay the really big bills involved in serious or long-time illnesses. It provides for reimbursement of a major part of the medical expenses not covered by basic plan benefits.

Income Tax Service

At SUBURBAN REALTY, Inc. REAL ESTATE and INSURANCE 11802 Pacific Avenue LEnox 7-8638

ered by basic plan benefits up to a maximum of \$10,000 in benefits for the employee and each of his eligible dependents, in any five-year period. Benefits under this program cover just about all necessary and reasonable expenses prescribed by a doctor, in or out of a hospital.

The group life insurance program for National Bank employees provides each participant with free coverage of \$2,000, and for additional life insurance coverage in long-time illnesses. It provides for reimbursement of a major part of the medical expenses not covered by basic plan benefits.

A retiring employee may continue to participate in

medical coverage benefits. A specified amount of life insurance coverage is continued for the life of the retired employee at no cost to him.

An employee's retirement income benefits are based upon a new and improved pension plan, fully paid by the bank. In addition to any payments under the U. S. Government's Social Security program, each retired employee will receive for each year of his retirement a pension equal to 1 1/4% of his salary for each year of service.

Employees whose salary exceeds \$400 per month also participate in a Supplemental Retirement Fund into which the Bank contributes 9% of regular salary in excess of \$400 per month. The purpose of the Fund is to maintain an equitable relationship of retirement income to salary for all employees of the Bank.

Kids Rain BOOTS
Red, Brown, White
Sizes 5-12, 13-3.
\$197

Kids Rubber Knee Boots
Sizes 4-12
\$297

Insulated RUBBER BOOTS
Full Lace
Steel Shank
Sizes 6-12
\$697

SHOP-ETTE SHOE DEPARTMENT
133rd and Pacific in the Shop-Ette Lucky Shopping Center

SHOP-ETTE

Hours: 10 a.m. Til 9 p.m. Daily
Saturday: 10 a.m. Til 6 p.m. (Closed Sunday)
133rd and Pacific Avenue
In Lucky - Shop-Ette Shopping Center

NOW IN PROGRESS

WHITE SALE

COATS & CLARK RUG YARN
Cotton - Now you can start that crocheted, hooked, woven or shaggy rug or crocheted or knitted accessories.

1/3 OFF ART. C204
FLOUR SACK TOWELS!
4 for 77¢
Reg. 4 for 1.00
Soft, absorbent, lintless cotton for polishing glass-ware, etc. Large 18"x30" size.

SHEET BLANKETS! SAVE 1.44 ea.
Reg. 1.98. Soft, fleecy, warm in pastel plaids. Size 60" by 76" ... overstitched ends for longer wear.

FINGERTIP TOWELS!
4 for 1.00
Colorful cotton terry - lourex. Fringed. Use for table mats, hand or guest towels. Reg. 39c.

WAFFLE DISH CLOTHS
6 for 1.00
Reg. .25 ea. Woven multi-color striped patterns. Long wearing, overlapped edges. Save now!

TERRY DISH TOWELS
3 for 1.00
Colorful screen prints on soft absorbent towels that are ideal for polishing. Lint-free!

NON-SKID THROW RUG
Heavy Pile - Rubber Back
Large 3x5 or 4x6 Size. **2.99**

EVERWEAR SHEETS AND PILLOW CASES

Twin size Size 72"x108" **1.77**

Double bed size 81"x108" **1.99**

Pillow Cases 42"x56".... **.44**

Sturdy all cotton muslin for general use. Smooth textured and durable. Greatly reduced for this great sale.

CANNON BATH TOWELS
solid colors. Absorbent! Hemmed edges, and sturdy. Nationally famous, soft-as-silk towels in assorted selvages. Stock up now at this special low price!

Cannon Wash Cloths 12"x12".... **7 for 1.00**

"SLEEPYTIME" BLANKET
Miracle blend of rayon and orlon, ideal for long wear, lightweight and easy laundering. Soft suede nap... decorator colors. 72"x90" for twin or double beds.

CHENILLE BEDSPREADS
Richly tufted, velvety soft textured in white, pink, yellow, green, aqua, beige. Full bed size! Fringed bottom. Save 1.62!

Reg. 4.95 **3.33**

Ask for a Demonstration

get a **FREE GIFT**

WRIGHT POWER BLADE SAW
most versatile farm saw ... cuts everything from trees to fine-line carpentry.
reciprocating blade ... 10,000 strokes a minute.

WRIGHT COMPACT POWER BLADE SAW
WRIGHT CHAIN SAW - C70

Wright Power Blade Saws start at **\$143.50**

Free gift offer valid after March 31, 1962

COME IN TODAY! PARKLAND HARDWARE

12169 Pacific Ave. (Across from Piggly Wiggly) LE 7-3171

SALE!

CRISP, SPRING COTTONS

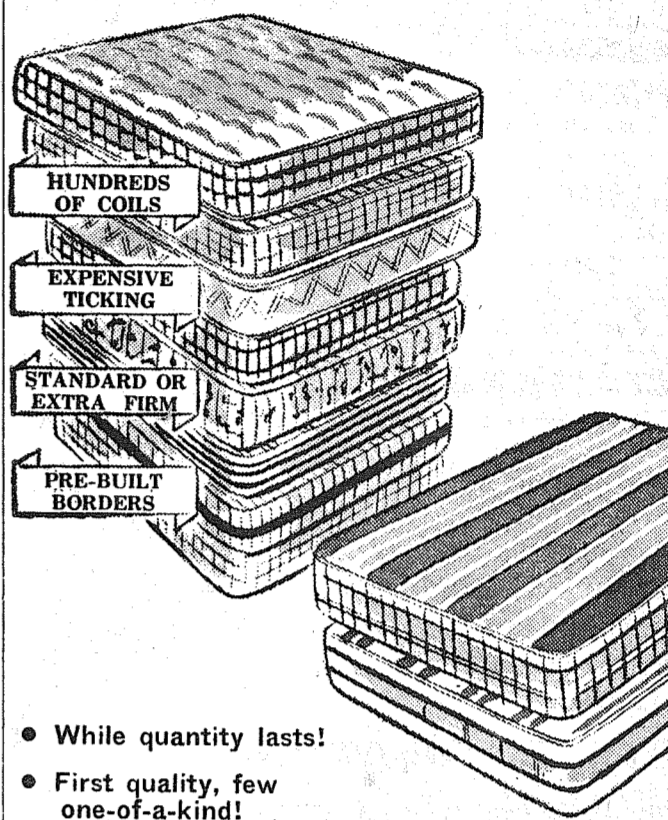
Reg. 59c and 69c Yd. **3 for \$1**

A beautiful assortment of specially selected drip-dry, wash-n-wear, easy-wash and other special finishes. Outstanding colors and patterns. Dress prints, blouse prints, broad-cloths and solids. Very Special!

Mr. and Mrs. Lloyd Larson Sr. held Open House to Tulala, Utah, December 31st to celebrate their 40th wedding anniversary. A beautiful three tiered heart shaped wedding cake was served to the many friends and relatives who wished them many more anniversaries. It was also a farewell to the son and family, Mr. and Mrs. Lloyd Larson Gardner's mother.

MISMATCHED SERTA MATTRESS

SALE! 40% off!



- While quantity lasts!
- First quality, few one-of-a-kind!

values to 49.50 **28⁸⁸** Exch.

MATTRESS or BOX SPRING, FULL or TWIN SIZE
The tickings don't match—but look what you save! Odds and ends from warehouse stock of Serta Manufacturer.

Summit Furniture & Appliance
Airport & Canyon Road LE 7-8676

Midland PTA Will Meet

The Midland P.T.A. will hold its regular meeting on Wednesday evening, January 17th, at 8:00 p.m., at the Midland School. The program will be on the 4-H groups in our community with Mrs. Ivy R. Hammar in charge.

The Midland Orthopedic Guild is selling license tabs for passenger cars at the Midland Food Center, from 9:00 a.m. to 6:00 p.m., Monday through Saturday this entire month. This is an annual money-making project whose proceeds will help with the operation and maintenance costs of Mary Bridge Children's Hospital. The chairman is Mrs. Frank Hushek.

A little daughter, Deborah Jean, was born to SP/4 and Mrs. Douglas Holmes, on Friday, December 29th, in Bussac, France. Grandparents are Mr. and Mrs. Billy E. Casey and Mr. and Mrs. Russell Holmes, all of Midland.

Both Douglas and Donna (Wynn) Holmes are Franklin Pierce graduates, and he is now stationed in France with the United States Army.

Visiting Mr. and Mrs. L. Cleary during the holidays were Mr. and Mrs. Jack Meek and family, Kathy, Debra, John and Steven, from Notus, Idaho.

A visit to KIRO television studio and appearance on the J. P. Patches Show in Seattle, was a recent event for the Silver Shells Blue Bird group. Those making the trip were Gail Allison, Becky Carden "Miss Giggles of 1961", Gayle Roberts, Cheryl Kennedy, Judy Kennedy, Ricky Kennedy, Mrs. Herbert Kennedy, Mrs. E. Kennedy, and Mr. and Mrs. A. J. Roberts. Unable to attend were Kathy Doore, Janet Francis, and Patricia Isacson.

The Silver Shells also held a Christmas party at the home of Mrs. Jack Doore. The girls sang Christmas carols and exchanged gifts. The girls presented their leaders, Mrs. Jack Doore, Mrs. Herbert Kennedy, and Mrs. E. Kennedy, with a surprise gift of "Leader's Pins" and also earrings.

The Midland Beavers 4H Club held its last meeting at the home of Sally Werner, where she gave a demonstration on how to make potato soup. For their community service for the month of January, they will serve refreshments at Pre-School on January 24.

At the January 25th meeting, which will be held at the home of Mrs. Betty Becklund, Kathy McCulloch

will give a demonstration on how to use center peices. They will also have a "twist" contest. On February 1st each girl will bring six bar cookies that they have made from their "Let's Cook" book to the home of their leader, Mrs. Betty Becklund, for a contest to see whose is best. The next meeting will be held at the home of Judith Smith where she will give a demonstration on how to set a table.

The Ki cu wa cota Campfire Girls were hostess to the Yi ma tami Campfire Girls at a council fire held on Friday, January 5th. Following a social period the WOHELO candles were lighted by Marilyn Theno, Corinne Leavitt and Letty Wolfe. Traditional Campfire songs were sung by all. Denise Fleming gave the welcome and was answered by the entire Yi ma tami Group. Honor beads strung from Indian symbols were then presented to each girl by her guardian. The WOHELO candles were extinguished by Connie Kazda, Judy Crawford and Christie Lorraine. Letty Wolfe, Corinne Leavitt, Judy Crawford, Denise Fleming, Connie Kazda, Marilyn Theno, and David Guardian, Mrs. David Lorraine, assisted by Valerie Harrison.

By Mrs. Frank Gural

Preschool To Meet January 11

Brookdale Pre-School Board meeting will be held Thursday, Jan. 11 at 8 p.m. Mrs. R. L. Myking, 620 So. 133rd will be the hostess with Mrs. W. B. Carr the co-hostess.

Returned To Home Station

Army Specialist Four Ellsworth J. Brown, whose wife, Delores, lives at 1738 E. 42nd St., Tacoma, Wn., is a member of the 8th Division's 1st Battle Group, 18th Infantry, which recently returned to its home station in Mannheim, Germany, after some four months of bolstering the Allied garrison in West Berlin.

Specialist Brown and other members of the battle group were ordered to the beleaguered city in August and traveled through Soviet controlled East Germany in U. S. Army vehicles. They have been replaced by the 24th Division's 19th Infantry.

Brown, a rifleman in the infantry's Company E, entered the Army in 1945, was last stationed at Fort Lewis, Wash., and arrived overseas on this tour of duty in January 1961.

Brown is the son of Mr. 119 Federal, Morgan City, La., and is a 1945 graduate of Morgan City High

Symptoms of Distress Arising from **STOMACH ULCERS DUE TO EXCESS ACID QUICK RELIEF OR NO COST**

Ask About 15-Day Trial Offer! Over five million packages of the **WILLARD TREATMENT** have been sold for relief of symptoms of distress arising from Stomach and Duodenal Ulcers due to Excess Acid—Poor Digestion, Sour or Upset Stomach, Gasiness, Heartburn, Sleeplessness, etc., due to Excess Acid. Ask for "Willard's Message" which fully explains this home treatment—free—at

Johnson Drug

Steer Beef **STEAK Lb. 69^c**

STEER BEEF **POT ROAST Lb. 39^c**

PEDERSON CUT-UP **FRYERS Lb. 35^c**

25 POUND BEEF LOCKER BOX \$12⁹⁵

LEAN MEATY **SPARE RIBS Lb. 39^c** RATH **Chunk Bologna Lb. 39^c**

STEER BEEF **T-Bone STEAK Lb. 79^c** STEER BEEF **Rump Roast Lb. 59^c**

STEER BEEF **ROAST Lb. 69^c** 100% PURE **GROUND BEEF 3 Lbs. For 98^c**

OUR OWN MAKE **PORK SAUSAGE 3 Lbs. For \$1**

Folgers **COFFEE Lb. Tin 59^c** 2 Lb. Tins \$1¹⁷ 4 Lb. Tins \$2²⁹

Sunshine **CRACKERS 2-Lb. KRISPY 49^c** GOOD TOGETHER **CAMPBELL'S SOUP Big 26-Oz. 3/\$1**

3 Lb. Jar ADAMS - Plain or Old Fashioned PEANUT BUTTER 99^c

Gold Medal **FLOUR 25 Lb. Bag 1⁸⁹**

CAMPBELL'S **BEANS & FRANKS 16-Oz. Tins 4/\$1**

HUNT'S **FRUIT COCKTAIL 300 Tins 5/\$1** Buddy Boy **POP CORN 2 Lb. Bag 29^c** Minute Instant **SLICED POTATOES Reg. 41c 4 Pkgs. \$1**

LETTUCE Each 5^c
FRESH **RADISHES or GREEN ONIONS Each Bunch**
NO. 1 **CARROTS Lb.**
FRESH **CRISP CABBAGE Lb.**
FINE FOR STUFFING **GREEN PEPPERS Each**

Store Hours **9 a.m. to 10 p.m. DAILY 7 DAYS WEEK**
BARGAIN MARKET 16618 PACIFIC AVE. South SPANAWAY, WASH. LE 7-3371
NO SALE TO DEALERS We Reserve The Right To Limit Quantities
We Carry A Complete Line Of Sacked **FEEDS**

SERVICE UP and go...

Let us put your car in shape to take you there and back smoothly, safely!



Your car is in good hands when you leave it with us for pre-trip servicing. Our mechanics are tops!

MOTOR TUNE UPS

Using The Amazing ANAL-O-SCOPE ONLY

\$5⁵⁰

Average Labor on Most 6-Cyl. Cars.

GASOLINE & OIL



At Competitive Prices

BOB'S PLACE

112th (Airport Rd.) & Jay Street
Serving The Parkland Area For Over 25 Years Continuously

BAG CARROTS . . . 2/17c
 Head **LETTUCE . . . 10c**
 Swift's Skinless 12-Oz. **FRANKS . . . 39c**
 Lean Slab Whole or 1/2 Lb. **BACON . . . 49c**
 6-Lb. Tins **CRISCO . . . \$1.69**
 Campbell's Each **TOM. SOUP . . . 9c**
 Frosty-O Large **CEREAL . . . 25c**
 Sharp Lb. **CHEESE . . . 59c**

Gibbons FOOD CENTER
 SPANAWAY

● **Personals (11)**

RIDE OR CAR POOL — Parkland to Renton Boeing, 7 a.m. shift. LE 1-2764. 1c19

● **Business Service 3**

SHOE & SADDLE REPAIR — Newbury Shoe Repair, 12814 Pacific Avenue. 3c1f

FOUNDATIONS ADDITIONS, REMODELING. Free Estimates. Financing, no down payment. Ph: GR 4-7000 any time. 3c1f

NOW AT SILER'S Complete service on electric ranges. All makes. Fast, dependable, reasonable. LEnox 7-8634. 3c1f

SEPTIC TANK, Drainfields, Sewer Installation. Luke, GR 2-7243. 3c1f

● **Fuel (4)**

FOR SALE — 2-ft. Alder and fir fireplace wood. \$8 cord. 16 inch Alder, \$10 cord, you haul. 2 1/2 miles west of Johnson's Corner on Roy Christie Road. Rt. 1, Box 119, Roy 351. 4c1f

UPLAND FIR firewood and alder fireplace wood. LE 7-4940, 4c1f

● **Help Wanted 5**

BARBER WANTED — Call at Graham Store or phone Graham, VI 7-2241. 5c19

RESERVED
 for **POCHEL'S** Preferred Customers . . .

HELP WANTED — Girl for Mondays and other part time. Will train if interested in photo finishing. 9818 Pacific Avenue. 5c19

WANTED — Applications for carrier boys living in the area between 108th and 80th and Almsworth and Canyon Road. Call LE 7-0223. 5c1f

SALES GIRLS WANTED — Must have recent experience. Apply Monday, January 8th, 10 a.m. to 12 noon. Shop-Ette Variety, 134th & Pacific. 5c18

● **Lost & Found 6**

LOST — German Shepard dog, 6 months. Reward. VI 7-7184. 6c19

● **Want to Buy (8)**

WANTED TO BUY real estate contracts. Write to 810 South 98th. 8p19

● **Real Estate 9**

Fern Realty
 100x100 — Wooded.
 110x116 — Rainier Terrace.
 10x165 — View Sites.
 3/4 ACRE — Cleared.
 3/4 ACRE — Midland.
 3/4 ACRE — With Bldg.
 1 ACRE — Trailer Site.
 1 ACRE — Shelton Waterfront.
 3 ACRES — Canyon Road.
 4 ACRES — Waller Road.
 6 1/2 ACRES — Wooded.
 11298 E. Leonard's Crossing
 LE 7-8651

TWO EXCELLENT 1 Acre Properties with nice homes; low down payment, immediate possession.
AZZ Realty, Inc.
 Parkland Theater Building
 LE 7-0259

M. L. S. MULTIPLE LISTING SERVICE

McKinley Hill Realty
 6311 McKinley Ave. GR 4-9579
 Member of Multiple Listing Service and Tacoma Real Estate Board

M. L. S. MULTIPLE LISTING SERVICE

JENNIE L. GRODVG
Parkland Realty Co.
 Insurance of All Kinds
 Notary Public
 Est. in Parkland Since 1941
 LEnox 7-8609 Office
 302 Garfield St. Parkland
JENNIE GRODVG LE 1-1210
EDNA TAYLOR LE 7-3556
THELMA SCOTT JU 8-3838
 "Deal with the people who give you their personal attention".
 Member of Multiple Listing Service and Tacoma Real Estate Board

MULTIPLE LISTING SERVICE

ASSUME TV PAYMENTS
 This Motorola TV repossessed with only \$39 due. Assume \$10 monthly payments and save. Open Monday and Friday nites till 9:00. Upton Electric, 1148 Market, FU 3-2551. 15c19

FOR SALE — 1960 Universal
 55 Ft. 10 Ft. wide. Lived in 8 months. 3 bedrooms, 1 1/2 bath. Sell equity. TH 5-9673. 15c1f

\$10.00 DOWN rents or buys this RCA TV with option to buy. Full price only \$89. Open Monday and Friday nites till 9:00. Upton Electric, 1148 Market, FU 3-2551. 15c19

RENT invalid and guest equipment. Bunce Rental Inc., 4518 So. Tacoma Way, GR 2-3348. 15c1f

FOR SALE — 10 week old toy poms. 6-10 lbs. Some mixed breed. \$10 to \$35. All without papers. Retta M. Kingery, Smith Prairie Road, Vicinity of Lawrence Lake. 15c19

WANT PFC or better to take over \$10 monthly payments on Zenith TV. Only \$89 due. Will rent with option to buy. Upton Electric, 1148 Market, FU 3-2551. Open Monday and Friday nites till 9 p.m. 15c19

SIGN PAINTING and Truck Lettering. VI 7-7276. Glenn Walker. 15c1f

ATTENTION HOUSEWIVES — POCHEL'S are now the authorized dealers for rSpeed Queen washers, automatic or wringer type, and dryers. Come in and see them at 140th and Pacific Ave. LE 7-8624. 15c1f

PHILCO REFRIGERATOR, \$100; Philco Electric Range, Deluxe, timed oven and meat thermometer, \$200; one ton air conditioner, \$80. All in very nice condition. JU 4-3811. 15c19

● **Rentals 10**

Rental Management
 LIST YOUR RENTAL PROPERTY SATISFACTION IS OUR BY-WORD
 Rental Headquarters for the Suburban Area
Suburban Realty, Inc.
 LE 7-8638 or LE 7-6896

● **Repair Service 11**

WASHING MACHINE PARTS — Largest stock in town. Repairing that pleases. BB'S WASHING SERVICE, 3727 So. G. GR 4-9409. 11c1f

● **Used Autos (12)**

1951 CHEV heavy duty pick-up. Radio, heater, new tires, 12,000 miles since complete overhaul. Truck mirror, cab lights. LE 1-2134. 12p19

● **Farm Ads 13**

HORSES BOARDED \$15.00 per month. 13007 Bingham East. LE 7-6692. 13c1f

● **Situation Want 14**

IRONING OR BABY SITTING in my home. LE 7-8354. 14c19

LICENSED CHILD CARE, day or night, GR 2-9391. 14c1f

BABY SITTING your home or mine. 1312 So. 120th, LE 1-0416. 14c1f

CARPENTER WORK — Remodeling, Kitchen Cabinets, Call Al Smith, LE 1-0192, 16309 So. Park. 14c1f

● **Miscellaneous 15**

DATE OF FIRST PUBLICATION January 4, 11, 18, 1962.

s/Philip S. Tracy
 Administrator of said Estate
 11024 Pacific Avenue

s/Philip S. Tracy
 PETERS & TRACY
 Attorneys for Estate,
 11024 Pacific Avenue,
 Tacoma 44, Washington
 Published in the Times Journal
 January 4, 11, 18, 1962.

FOR SALE — 1960 Universal 55 Ft. 10 Ft. wide. Lived in 8 months. 3 bedrooms, 1 1/2 bath. Sell equity. TH 5-9673. 15c1f

\$10.00 DOWN rents or buys this RCA TV with option to buy. Full price only \$89. Open Monday and Friday nites till 9:00. Upton Electric, 1148 Market, FU 3-2551. 15c19

RENT invalid and guest equipment. Bunce Rental Inc., 4518 So. Tacoma Way, GR 2-3348. 15c1f

FOR SALE — 10 week old toy poms. 6-10 lbs. Some mixed breed. \$10 to \$35. All without papers. Retta M. Kingery, Smith Prairie Road, Vicinity of Lawrence Lake. 15c19

WANT PFC or better to take over \$10 monthly payments on Zenith TV. Only \$89 due. Will rent with option to buy. Upton Electric, 1148 Market, FU 3-2551. Open Monday and Friday nites till 9 p.m. 15c19

SIGN PAINTING and Truck Lettering. VI 7-7276. Glenn Walker. 15c1f

ATTENTION HOUSEWIVES — POCHEL'S are now the authorized dealers for rSpeed Queen washers, automatic or wringer type, and dryers. Come in and see them at 140th and Pacific Ave. LE 7-8624. 15c1f

PHILCO REFRIGERATOR, \$100; Philco Electric Range, Deluxe, timed oven and meat thermometer, \$200; one ton air conditioner, \$80. All in very nice condition. JU 4-3811. 15c19

SPECIAL ORDER CAKES — Phone LE 7-3330, Patty Ann Bakery. 15c1f

DUMPING
 ALL uncalled for vacuum cleaners, Hoovers, Eureka, Kirby, etc., as low as \$8.00. Pay repair bill and get cleaner free. Upton Electric, 1148 Market, FU 3-2551. Open Monday and Friday nites till 9:00 p.m. 15c19

RABBITS — Breeders, Californian, New Zealand Whites with papers. VI 7-7131. 15c19

BEAUTIFUL TOY COCKER: 6 months, female, all shots. AKC. \$40 or trade? TH 5-0192. 15p19

FOR SALE — 10 week old toy poms. 6-10 lbs. Some mixed breed. Nothing over 20 lbs. grown. All without papers. Retta M. Kingery, Smith Prairie Road, Vicinity of Lawrence Lake. 15c20

● **Aviation 17**

FREE—FIRST FLYING LESSON. LEARN TO FLY—\$10 A WEEK New and Used Aircraft Sales, TAHOMA FLYING SERVICE, Spanaway Airport, VI 7-2266. 17c1f

Legals
 In the Superior Court of the State of Washington for the County of Pierce.
IN PROBATE
 No. 68617
NOTICE TO CREDITORS
 In the Matter of the Estate of HERBERT L. CLINK, Deceased.
 Notice is hereby given that the undersigned has been appointed and has qualified as Administrator of the estate of Herbert L. Clink, Deceased; that all persons having claims against said deceased are hereby required to serve the same, duly verified, on said Administrator or his attorneys of record at the address below stated, and file the same with the Clerk of said Court, together with proof of such service within six months after the date of first publication of this notice, or the same will be barred.
 Date of first publication January 4, 11, 18, 1962.
 s/Philip S. Tracy
 Administrator of said Estate
 11024 Pacific Avenue

FOR SALE — 1960 Universal 55 Ft. 10 Ft. wide. Lived in 8 months. 3 bedrooms, 1 1/2 bath. Sell equity. TH 5-9673. 15c1f

\$10.00 DOWN rents or buys this RCA TV with option to buy. Full price only \$89. Open Monday and Friday nites till 9:00. Upton Electric, 1148 Market, FU 3-2551. 15c19

RENT invalid and guest equipment. Bunce Rental Inc., 4518 So. Tacoma Way, GR 2-3348. 15c1f

FOR SALE — 10 week old toy poms. 6-10 lbs. Some mixed breed. \$10 to \$35. All without papers. Retta M. Kingery, Smith Prairie Road, Vicinity of Lawrence Lake. 15c19

WANT PFC or better to take over \$10 monthly payments on Zenith TV. Only \$89 due. Will rent with option to buy. Upton Electric, 1148 Market, FU 3-2551. Open Monday and Friday nites till 9 p.m. 15c19

SIGN PAINTING and Truck Lettering. VI 7-7276. Glenn Walker. 15c1f

ATTENTION HOUSEWIVES — POCHEL'S are now the authorized dealers for rSpeed Queen washers, automatic or wringer type, and dryers. Come in and see them at 140th and Pacific Ave. LE 7-8624. 15c1f

PHILCO REFRIGERATOR, \$100; Philco Electric Range, Deluxe, timed oven and meat thermometer, \$200; one ton air conditioner, \$80. All in very nice condition. JU 4-3811. 15c19

It's The Law!

Rocky took out a \$10,000 National Service Life Insurance Policy while in the Army and named his wife, Fidelity, as beneficiary.

Several years later the two were divorced and their property settlement agreement provided that the life insurance should be the separate property of Rocky.

He never did send the Veterans Administration a written change of beneficiary after the divorce because his wife had agreed that the policy was his own. Later he died and both the administrator of his estate and Fidelity, his former wife, claimed the \$10,000 insurance.

Do you believe the former wife can get the proceeds of this life insurance policy as the beneficiary?

National Service Life Insurance regulations provide that only an insured can change his beneficiary and that must be done by written instrument. Rocky had not changed his beneficiary by any written instrument to the Veterans Administration. This policy, being a contract with the United States, must have its terms construed by federal statutes and regulations, not by state law.

The divorce laws of a state cannot restrict an agreement by the United States to pay and thereby supersede federal law as to the construction of federal contracts.

Rocky unquestionably intended to change his beneficiary after his divorce but intention is not sufficient. It must be followed by positive action such as the written request he failed to make.

Fidelity was still the beneficiary and entitled to the \$10,000 from Rocky's insurance policy.

(This column is written to inform, not advise. Facts may change the application of the law.)

Sale

The Andrew Christensen Elementary School Jan. 17 P.T.A. meeting will be held in the multi-purpose room at 8 p.m. Century 21 Speakers Bureau will furnish the guest speaker.

An all day rummage sale will be in progress Jan. 17 commencing at 9 a.m. in the multi-purpose room.

A film will be shown at 1:45 Jan. 13 at the Parkland Theatre. Ushers for the occasion will be announced at the Jan. 10th executive board meeting.

The certainty of punishment, even more than its severity, is the preventive of crime.

Classes Offered At Evening School

Two-hundred-fifty-six adults have registered for classes in the Puyallup Evening School Program.

This is twenty-four more than last year. Classes will be held in French I, French II, German I, Spanish II, Contemporary World Affairs, Bishop Sewing I, Bishop Sewing II, Tailoring, Interior Decorating I, Interior Decorating II, Upholstery, Bookkeeping, Farm Machinery Repair, Typing, Shorthand I, Office Machines, Water Color II, Cake Decorating, Driver Training, Investing in Stocks and Bonds, Mathematics, and Reading Accelera-tion.

Registrations for winter daytime cooking classes in the homemaker department of the Tacoma Vocational-Technical Institute are now being offered.

The five classes in food preparation for the home which were so popular last winter are again being offered. Morning classes are from 8:45 to 11:45 and afternoon classes are from 12:30 to 3:30. Classes meet once a week for nine weeks.

Half day classes will be offered each morning, beginning January 8 for nine weeks in the following: Family fare, consisting of new recipes and menus for daily meals cooked in the class and taken home for the evening meal; low calorie class which helps the homemaker who needs to prepare low calorie diets which are both appetizing and practical; foreign cookery I with recipes from many nations adapted to American measurements and equipment; foreign cookery II for those who have already had foreign cookery I; and the very popular baking with yeast class consisting of rolls, French bread, tea rings, sweet rolls and white bread, complemented by salads and soups.

In addition to this, on Tuesday and Thursday afternoons a class in general homemaking will be offered designed for the bride-to-be.

For further information call the Institute, Broadway 2-9367, Extension 35, or stop in at the Annex. Fees are nominal.

Tacoma Vocational Offers Five Cooking Classes

Registrations for winter daytime cooking classes in the homemaker department of the Tacoma Vocational-Technical Institute are now being offered.

The five classes in food preparation for the home which were so popular last winter are again being offered. Morning classes are from 8:45 to 11:45 and afternoon classes are from 12:30 to 3:30. Classes meet once a week for nine weeks.

Half day classes will be offered each morning, beginning January 8 for nine weeks in the following: Family fare, consisting of new recipes and menus for daily meals cooked in the class and taken home for the evening meal; low calorie class which helps the homemaker who needs to prepare low calorie diets which are both appetizing and practical; foreign cookery I with recipes from many nations adapted to American measurements and equipment; foreign cookery II for those who have already had foreign cookery I; and the very popular baking with yeast class consisting of rolls, French bread, tea rings, sweet rolls and white bread, complemented by salads and soups.

In addition to this, on Tuesday and Thursday afternoons a class in general homemaking will be offered designed for the bride-to-be.

For further information call the Institute, Broadway 2-9367, Extension 35, or stop in at the Annex. Fees are nominal.

For further information call the Institute, Broadway 2-9367, Extension 35, or stop in at the Annex. Fees are nominal.

For further information call the Institute, Broadway 2-9367, Extension 35, or stop in at the Annex. Fees are nominal.

For further information call the Institute, Broadway 2-9367, Extension 35, or stop in at the Annex. Fees are nominal.

For further information call the Institute, Broadway 2-9367, Extension 35, or stop in at the Annex. Fees are nominal.

For further information call the Institute, Broadway 2-9367, Extension 35, or stop in at the Annex. Fees are nominal.

For further information call the Institute, Broadway 2-9367, Extension 35, or stop in at the Annex. Fees are nominal.

For further information call the Institute, Broadway 2-9367, Extension 35, or stop in at the Annex. Fees are nominal.

For further information call the Institute, Broadway 2-9367, Extension 35, or stop in at the Annex. Fees are nominal.

For further information call the Institute, Broadway 2-9367, Extension 35, or stop in at the Annex. Fees are nominal.

For further information call the Institute, Broadway 2-9367, Extension 35, or stop in at the Annex. Fees are nominal.

For further information call the Institute, Broadway 2-9367, Extension 35, or stop in at the Annex. Fees are nominal.

For further information call the Institute, Broadway 2-9367, Extension 35, or stop in at the Annex. Fees are nominal.

For further information call the Institute, Broadway 2-9367, Extension 35, or stop in at the Annex. Fees are nominal.

For further information call the Institute, Broadway 2-9367, Extension 35, or stop in at the Annex. Fees are nominal.

For further information call the Institute, Broadway 2-9367, Extension 35, or stop in at the Annex. Fees are nominal.

For further information call the Institute, Broadway 2-9367, Extension 35, or stop in at the Annex. Fees are nominal.

For further information call the Institute, Broadway 2-9367, Extension 35, or stop in at the Annex. Fees are nominal.

For further information call the Institute, Broadway 2-9367, Extension 35, or stop in at the Annex. Fees are nominal.

For further information call the Institute, Broadway 2-9367, Extension 35, or stop in at the Annex. Fees are nominal.

For further information call the Institute, Broadway 2-9367, Extension 35, or stop in at the Annex. Fees are nominal.

For further information call the Institute, Broadway 2-9367, Extension 35, or stop in at the Annex. Fees are nominal.

For further information call the Institute, Broadway 2-9367, Extension 35, or stop in at the Annex. Fees are nominal.

For further information call the Institute, Broadway 2-9367, Extension 35, or stop in at the Annex. Fees are nominal.

For further information call the Institute, Broadway 2-9367, Extension 35, or stop in at the Annex. Fees are nominal.

For further information call the Institute, Broadway 2-9367, Extension 35, or stop in at the Annex. Fees are nominal.

For further information call the Institute, Broadway 2-9367, Extension 35, or stop in at the Annex. Fees are nominal.

For further information call the Institute, Broadway 2-9367, Extension 35, or stop in at the Annex. Fees are nominal.

For further information call the Institute, Broadway 2-9367, Extension 35, or stop in at the Annex. Fees are nominal.

For further information call the Institute, Broadway 2-9367, Extension 35, or stop in at the Annex. Fees are nominal.

For further information call the Institute, Broadway 2-9367, Extension 35, or stop in at the Annex. Fees are nominal.

For further information call the Institute, Broadway 2-9367, Extension 35, or stop in at the Annex. Fees are nominal.

For further information call the Institute, Broadway 2-9367, Extension 35, or stop in at the Annex. Fees are nominal.

For further information call the Institute, Broadway 2-9367, Extension 35, or stop in at the Annex. Fees are nominal.

For further information call the Institute, Broadway 2-9367, Extension 35, or stop in at the Annex. Fees are nominal.

For further information call the Institute, Broadway 2-9367, Extension 35, or stop in at the Annex. Fees are nominal.

For further information call the Institute, Broadway 2-9367, Extension 35, or stop in at the Annex. Fees are nominal.

For further information call the Institute, Broadway 2-9367, Extension 35, or stop in at the Annex. Fees are nominal.

For further information call the Institute, Broadway 2-9367, Extension 35, or stop in at the Annex. Fees are nominal.

Bowlers . . .
 Are You Tired of Picking Up Splits?
Try Flying
 Call **Tahoma Flying Service**
 185th & Pacific VI 7-2266
 SPANAWAY AIRPORT

Income Taxes NEW LOCATION

AVYCE BLANCHFIELD
Carl T. Lindgren Realtor
 Phone LE 7-0234
 410 Garfield Street Parkland

PAINTS
 Buy these classified special for money saving bargains for you!

White, semi-enamel . . . \$5.59 Pkg.
 Steel Wool, 12 pads . . . 10c
 Giant (4C) . . . Each
 O-Cello Sponges 69c
 Dura Life Pint
 Self-Polishing Wax 89c

National Paint Co.
 3011 So. Fife Tacoma
 1/2 Block No. of 2500 South Tacoma Way, Back of Daringold Dairy Building.

MOTOR REBUILDING
 Complete Brake Drum Turning, rebor-ing, Pin Fitting, Lathe and Press Work, Head Surfacing, Key Seating, Piston Grinding, Valve Seats Installed, etc.

Maxwell House **COFFEE** 2-Lb. Can **97¢**

Minute Maid - Frozen **ORANGE JUICE** 6-Oz. Can Reg. Price 25c **19¢**

Nalley's **CHILI** No. 300 Cans Reg. Price 35c **4 \$1**

VIM The Miracle Wash Day Tablet Reg. Price 75c **59¢** Giant Size

FARM FRESH LARGE AA **EGGS** Doz. **49¢**

PARKLAND SUPER **SALAD OIL** Qt. No Finer Cooking Oil **49¢**

Borden **BISCUITS** Buttermilk or Regular EACH Reg. Price 2 for 25c **9¢**

No. 2 **POTATOES** 50-Lb. Bag **89¢**

GRAPEFRUIT 8-Lb. Bag **49¢**

LETTUCE Head **10¢**

TOMATOES Lb. **15¢**

Bar-S No. 1 Thick Slice **BACON** Lb. Pkg. **49¢**

MORE GOOD BEEF PRICES

Sirloin Steak	Lb.	79¢
T-Bone Steak	Lb.	83¢
Blade Cut Roast	Lb.	49¢
Round Bone Roast	Lb.	59¢
Boneless Stew	Lb.	69¢
Boiling Beef	Lb.	39¢

PORK STEAKS Lb. **49¢**

SPARE RIBS Lb. **39¢**

RIB STEAK Lb. **59¢**

HAM Shank Half Lb. **49¢**

PARKLAND Super MARKET Formerly Kitchen's 12208 Pacific Avenue **PRICES EFFECTIVE THURSDAY THROUGH SUNDAY EACH WEEK**

Cardinal Voice: Quest For Daffodil Princess Begins

The search for FP's 1962 Daffodil princess will begin Monday when senior and faculty nominate their candidates. On the following day the Daffodil Committee, composed of faculty members and headed by Mrs. Eleanor Ervin, will make the primary selection of candidates when they choose 12 girls from those nominated. This elimination will be done on the basis of the candidates ability to meet the eligibility requirements. Those requirements are that the girls must be seniors, single, and have at least a 3.0 grade point average. These 12 candidates will then be judged on Jan. 29 with reference to their appearance (40 per cent), poise (30 per cent) and speaking ability (30 per cent), when 7 more girls are eliminated. Final selection will be on Tuesday, Feb. 6.

Preparations for the O-Ki-Hi tolo got under way yesterday when the club met to discuss plans for their yearly activity. Committees under the direction of Judy McNickle, general chairman, were set up with previously appointed chairmen selecting their committee members. Those chairmen are Arlene Lofgren, decorations; Jana Bemis, programs; Janet Ripoli, entertainment; Joan Haakenson, refreshments; Cheryl Layton, chaperones; and Betty Lindberg, tables.

Tommervik Talks

While the world's leaders debate the mounting importance of science in today's classroom, there arise daily crises in homes, schools, offices, and factories just because of simple misunderstandings. Scientists seem to have forgotten that to get anywhere in the space race, or for that matter anywhere at all, men must be able to work together and the only way this can be accomplished is through communication. There lies the answer...communication.

Webster, the "Big Daddy" of the dictionary would define it as "the act of imparting knowledge from one to another." How? Is there a set of rules? A code? In a way, yes. To begin with, you must want to sacrifice your time and effort to the cause. You must be willing to give a little, compromise. Don't be stubborn. Give the other guy a chance to air his opinions. Listen to them. For all you know, he might be saying something worthwhile and vital. Give his views some consideration. The by working together, create a plan that satisfies both of you.

Sure, it's hard at first, but with time and patience it will get easier. Through working together, like this, combining thoughts and ideas, people even countries, will slowly learn to communicate with each other. In doing so a bridge of understanding is built between them. And as they cross this bridge they learn tolerance and respect for each other. If teacher and student, parent and child, and countries could get together and do some sensible reasoning, science, as a tool for war will be useless, because there will be no war and much could be done towards accomplishing the peace of which we constantly speak.

Delinquency

The prevention of juvenile delinquency will be discussed by the chief probation officer for Pierce County, Harold Mulholland, at the regular meeting of the Franklin Pierce PTA District Council January 11 at 8 p.m. in the Parkland Elementary School gymnasium. Questions prepared earlier by the members of the Council will also be answered by Mulholland as a part of his presentation. A nominating committee will be selected, according to Council President, Mrs. Hylan Johnsen. Also, Mrs. Dan Seelye and Mrs. J. R. Rogers will present a skit commemorating the founding of the Parent-Teacher Association.

Traffic Deaths

Traffic deaths in Pierce County numbered thirty-eight during 1961. Washington State Patrol Chief Roy A. Betlach said today that was eighteen less than the county's 1960 toll.

The State Patrol Chief praised motorists and traffic enforcement personnel of Pierce County for their achievement. "This record," Betlach said, "proves to us that tragedies on the highways can be reduced when vehicle operators and enforcement people work cooperatively toward that goal."

According to Washington State Safety Council figures, Pierce County recorded three traffic deaths during December of 1961. That compares to five deaths which occurred in the County in December 1960.

Sixty-five traffic deaths occurred on Washington highways during December 1961, an increase of 25 over December 1960. Chief Betlach said 17 pedestrians were included in the 65 fatalities. He said failure to yield the right of way; speed in excess of posted limits; drunken driving; disregard for traffic signals; and pedestrian violations were the principal contributors to the 65 December tragedies.

Jehovah's Witnesses

Edgar C. Kennedy, Pacific Northwest supervisory minister of Jehovah's witnesses, will be convention chairman and chief speaker during the January 12-14 Bible assembly scheduled to be held in the Mount Tacoma High School in So. Tacoma. This announcement was made by Daryl Schinell, presiding minister of the Spanaway congregation of Jehovah's witnesses.

Law Applies To Carrier Boys

Jim, 14-years old, had a newspaper route. He bought newspapers from the Evening News and sold the papers to customers on his route, paying the newspaper company for the papers.

One evening while carrying his papers Jim threw a folded newspaper through the front window of the house of Tom Smith, one of his customers. Mr. Smith picked up his phone and called the Evening News, notifying the newspaper that if it didn't have a new window put in immediately he would sue.

The newspaper company refused to replace the window, saying that it was not responsible for Jim's carelessness in breaking the window because Jim was not an employee of the newspaper but was an independent contractor buying papers from the company and selling to his customers.

Do you think Smith can force the newspaper to pay for his broken window?

The answer is that Smith could sue Jim for the damage to the window, but couldn't make the Evening News pay for the window. The Washington State Supreme Court has held that newspaper delivery boys operating on the "little merchant" plan, buying papers from a newspaper publisher and selling them to the customers on the boy's route, are not employees of the newspaper but are independent dealers. Consequently, a newspaper is not liable for the negligence of a delivery boy carrying papers to his own customers. (This column is written to inform, not advise. Facts may change the application of the law.)

PONY CLUB

The Tiny Hoof 4H Pony Club met Dec. 27 and elected officers for the next six months. They are: Shelia Taylor, President; Kathleen Stillman, Vice President; George Wood, secretary; Chris Larson, treasurer; Jessie Preugschat, reporter; Claudette Kaufman, telephone committee. Mrs. Sidney Wood is the leader.

Spanaway News

The Spanaway Kan Do Grandmother's Club will meet Thursday Jan. 18 at 1 p.m. at the Fire Hall. President Mrs. Laura Smith will conduct the meeting, and Mesdames Oliver Tarpenning and Doris Orat will be the hostesses.

Mr. and Mrs. Donald Funkhouser spent Christmas eve with Mr. and Mrs. Bob Funkhouser of Portland, Oregon.

Mrs. William Walin and grandchildren Connie and Billie Wimbles spent five days including Christmas Day with Mr. and Mrs. Billy Walsh and family at Monmouth, Oregon. Mrs. William Walin and children returned to Spanaway with Mr. and Mrs. Clyde Wimbles of Baldwin Park, Oregon. The Wimbles spent ten days with their son and his family Mr. and Mrs. William Wimbles of Spanaway. Bill Walin spent Christmas Day and the holidays with his sisters and their families at Vancouver and Vader, Washington.

Mr. and Mrs. Ethan Nelson vacationed in San Francisco and attended the East-West football game the Saturday before New Year's.

Mr. and Mrs. Bobby Miller and son Scotty, of Albuquerque, New Mexico, spent three weeks with their parents Mr. and Mrs. Robert Miller. It is the first time in three years they have been home so it was a joyous holiday for the Millers.

Neil McFarland, son of Mr. and Mrs. Marvin McFarland, Spanaway, is

The Times Journal home on emergency leave Walter Flitter, \$11,500 from Long Beach Naval res., 7312 E. 112th; Walter Station, California. Neil Flitter, \$11,500 res., 11202 came home due to the ill-74th Ave. E. Puy.; Joe news of his father, who has Zimmerman, \$12,000 res., 11324 74th Ave. E. Puy.; Mayer & Peterson, \$15,500 res., 7613 48th Ave. E.; Mayer & Peterson, \$14,400 res., 4619 48th Ave. E.; Mayer & Peterson, \$15,000 res., 7614 48th Ave. E.; Samuel R. Morehart, \$7500 res., 11323 Sloat Rd. E.

Building Permits Clarence Otto, \$3000 remodel to res., Rt. #2, Box 216, Puyallup; Western W. Wiggins, \$5000 storage shed, 4402 North Meridian, Puy.; N. A. Balmer, \$700 shed, Rt. #1, Box 1374, Span.; David R. Harlan, \$8000 residence, 10909 So. A St.; Russ Sutherland, \$20,000 residence, 12635 Rebecca Drive; Otto Klaus, \$50 mov. garage to prop., 157 112th St. So.; Ed Kern, \$12,000 res., 7810 126th St. E. Puy.; Everett Sinner, \$10,000 res., 10521 Fruitland Ave. E. Puy. H. Hornbuckle, \$13,500 res., 11704 44th Ave. E.,

Washington State produces more flower bulbs than any other place in the world except The Netherlands.

INSULATION "Insulation that pays for itself" Free Estimates Reasonable Rates B & B INSULATION CO. LE 7-2233

Post-Inventory SHOE SALE Odds & Ends - Broken Sizes - Discontinued Lines - Etc.

Mens Engineer Boots, low heel, 11" top	\$6.95
Boys Extra Heavy Duty 6" Shoes. Vylt Soles, Reg. \$11.00	\$7.95
Baby Shoes, white, 6 to 8, Reg. \$4.00	\$2.99
Childrens Oxfords, Straps, Saddles	\$2.99
Womens Fuzzy Slippers, 10 to 13 - 1 to 6, Reg. \$4	\$1.99
Childrens House Slippers, Reg. \$4.99; 7 to 3	99c
Womens Late Style Dress Heels, Reg. to \$9.00	\$3.99
Womens & Girls Better Grade Saddles, Reg. \$7.00	\$3.99
Mens Loafers, black or brown, Reg. to \$9.00	\$5.95
1000 Pr. Womens Flats, Reg. to \$5.00	\$1.99 - \$2.99 - \$3.99
Womens Bedroom Slippers, Reg. to 6.00	99c

Paul's Shoes & Repair Open Monday thru Saturday 9 to 6 - Fridays Till 9 p.m. 161st & Pacific Ave., Spanaway (Closed Sundays) LE 7-0552

EVERYONE Likes Bargains

Large Selection **Ladies Blouses** Prints, Checks, Solids Sizes 32 To 40 **\$2.99 Value \$1.29**

Ladies **Fur Blend Pullover SWEATERS** Fall Styles. Many Colors to Choose From. Sizes 34 to 40. \$3.99 Value. **Now \$1.99**

Ladies Hooded **CAR COATS** Washable, Quilt Lined Black and Tan Sizes 10 to 12 Only **Now \$2.99**

Men's Long Sleeve **SPORT SHIRTS** Fall Colors. Trim Fits. Ivy League and 1/2 Sleeve Sm.-Med.-Lge.-Ex.Lge. **\$1.99**

Men's **Wool Shirts** Broken sizes, 100% wool, long tails, Checks and Solids, Fall colors. **\$7.99 Value \$4.99**

8-Inch Leather Uppers



Men's Crepe Sole BOOTS Pliable, comfortable leather uppers in popular moccasin toe style! Thick, crepe, wedge soles are rippled for better traction, longer wear! Sizes 6 1/2 to 12. **\$8.98**

6" Leather Uppers Crepe Soles **\$7.98**

Week End Special **Black Suede Lea. Chukka Boot** Sizes 6-12D **Reg. \$7.98**



Now \$3.99

7914 Pacific Avenue One Block North of Park 'N Shop **Open 9 to 9 Week Days 10 to 6 p.m. Sundays** A Small Deposit Holds Any Item on Lay-a-Way **\$1.99**

SEYMOUR'S