

Parkland Fire Station Proposed

Pierce County Herald and

The TIMES JOURNAL

Vol. 23 No. 39

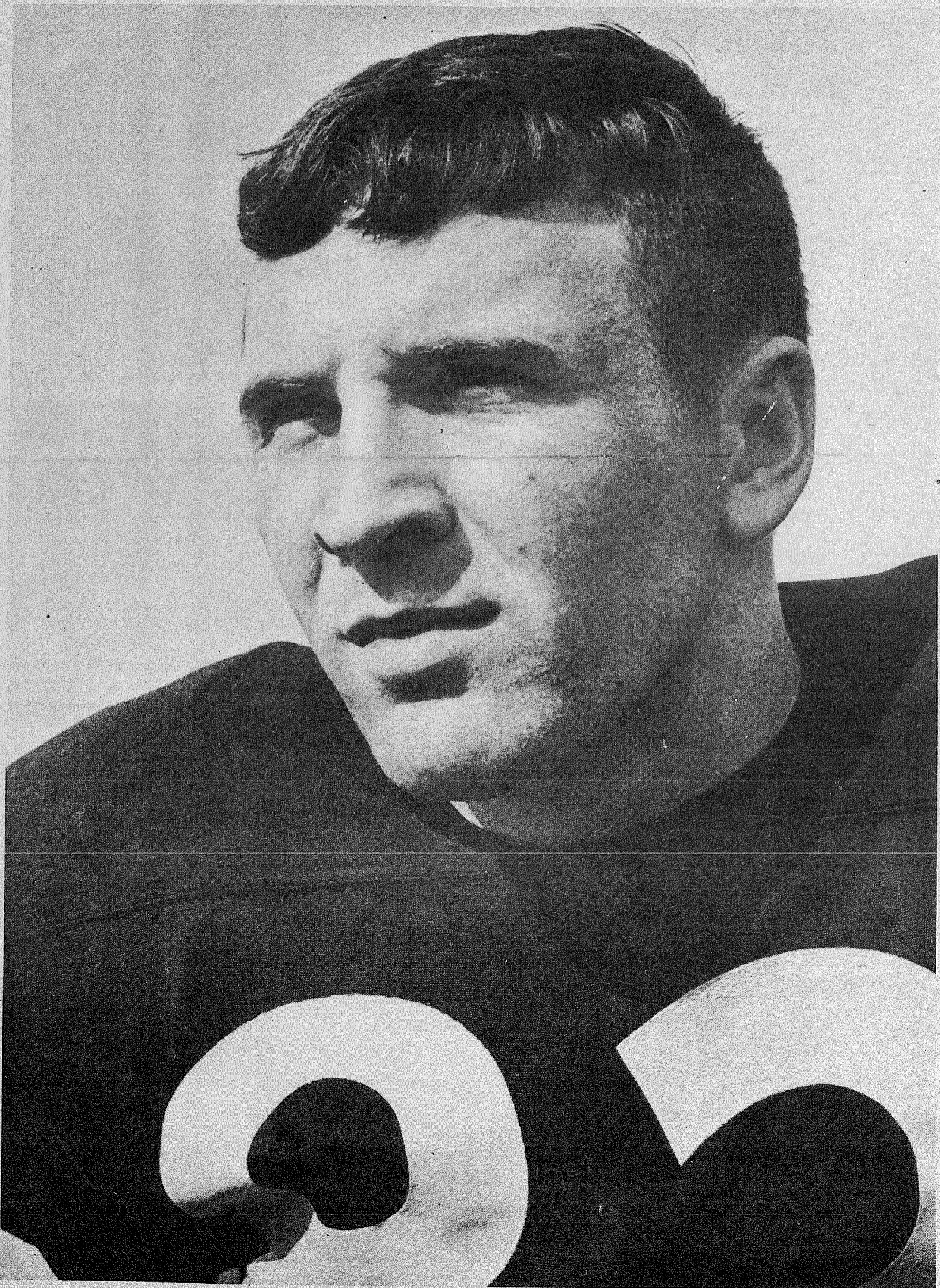
September 28, 1967

See Page Two

Price Per
Single Copy
10¢

PLU Plans Grid Shake Up Says Coach

See Sports Pages 8-9



DAVID ROLLER, Franklin Pierce graduate, is one of many PLU freshmen being considered by Coach Roy Carlson as a possible starter on the varsity eleven. Carlson plans to completely rebuild the Knights over the next two weeks in an effort to

produce a winning ball club after two successive losses. — — — See complete story Page 8.

F.P. Schools Face Building Cuts

New school construction in the Franklin Pierce School District and future classroom building plans might have been blocked by a recent reduction in State matching funds, Dr. E. E. Hill told board members at the final budget hearing held in Keithley Junior High School Tuesday night.

Parkland's new high school, a replacement building for Parkland Elementary School, and other important school building projects might be curtailed or altered by the State's move, board members learned.

The district had been planning on state school construction matching funds of 74.9%. State authorities notified Pierce administrators that district matching funds could drop as low as 47.9%. If this happens, the difference would have to be made up in additional excess levies, should the residents want to continue their school building program.

The statewide reduction in school matching funds resulted from the State Legislature's failure to allocate sufficient funds to cover the

State's school construction needs.

"The new high school will open on schedule," Dr. Hill told the board, "It's just a question of what portion will open."

School officials have requested emergency help from Governor Dan Evans, and he is presently considering using money available to him to be allocated to the Franklin Pierce District for the new high school. Voters approved providing funds to cover 25.1% of the construction at the last school election, and state matching funds were to cover the balance.

"If we get the money as planned to build the high school, then most of the district projects would be constructed as planned," he stated. Cuts in the Parkland High School funds would be reflected in reduction of all projects not currently under construction.

State cuts would not affect the Keithley Junior High Addition, the new administration building, or the James Sales Library.

Dr. Hill said he expected to hear from the State Supt. within the next three weeks if the

governor would make state emergency funds earmarked for school construction available to the district.

Sewers became the topic of discussion when Chairman Herb Gelman asked if the possible dissolution of the South Suburban Sewer District by the voters would force the district to invest more money in a sewerage disposal system than planned. Administrators estimated a treatment plant would cost the taxpayers approximately \$100,000 for the new high school. This money would have to come out of classroom space, the board members learned.

Cost of a septic tank system would be only \$20,000, but it is doubtful if such construction would be allowed without the immediate prospect of sewers being installed, the directors were told.

In other action the directors approved a building fund budget of \$585,759.28, and adopted a bond redemption fund budget in the amount of \$174,106.56.

Voters Urged To Register

Voters registration closes Oct. 7, for those who have not yet registered to vote in the school election Nov. 7, Robert C. Richardson, Franklin Pierce assistant superintendent, said this week.

Richardson pointed out that residents of the area may vote right in their own precincts, or they may register at the clerk's office in the County City Building in Tacoma.

Registration may be made in the following precincts at the listed addresses:

Adams, 821 South 117th St.; Allison, 2318 East 120th St.; Armour, Parkland Western Auto Supply; Brookdale, Parkland Western Auto Supply; Central, 4020 96th St. East; Clover Creek, 182nd Street East, Graham.

Cleveland, 617 South 120th St.; College, 617 South 120th St.; Collins, 128th St. East, Puyallup (Collins Rd.); Cooper, Parkland Western Auto Supply; Dawson, 8419 Portland; Delano, Adm. Bldg., Wash. Experiment Station, Fruitland & Pioneer; Faucett, 821 South 117th St.

Franklin, 9910 Pacific Avenue; Garfield, 617 South 120th St.; Grant, 96th St. East; Harvard, 85th and Golden Given Road; Hill Garden, 9910 Pacific Ave.; Larchmont, 85th and Golden Given Road.

Lincoln, Parkland Western Auto Supply; Mayfair, Parkland Western Auto Supply; Meadow, 821 South 117th Street; McKinley, 9720 Portland Avenue; Meeker, 8419 Portland Avenue; Midland, 9720 Portland Avenue; Monroe, 9720 Portland Avenue; Mulvey, 4020 96th Street East.

Pacific, Parkland Western Auto Supply; Parkland No. 1, Parkland Western Auto Supply; Parkland No. 2, 617 South 120th Street; Parkland No. 3, 617 South 120th Street; Parkland No. 4, 821 South 117th Street; Polk, Parkland Western Auto Supply; Sales, Parkland Western Auto Supply; Summit, 4020 96th Street East; Taylor, 9720 Portland Avenue.

Tule Lake, Parkland Western Auto Supply; Wildwood, 9910 Pacific Avenue; Woodland Heights, 8404 Woodland Avenue; Woodrow, 6122 East Vickery Road.

Burglars Raid Golf Course Shop

Burglars gained entry in the Lake Spanaway Golf Course early Monday and made off with approximately \$2,073.45 in merchandise, according to Pierce County Sheriff's Department.

Taken from the Golf Course's Pro Shop was all kinds of men's and ladies' sweaters, men's pants, shirts, blouses, shells, cardigans, socks, a carry-all and a television set.

The unwanted visitors gained entry to the club house by smashing a 41" x 45", quarter-inch plate glass window in the restaurant and on their way to the clothing goods stole a garbage can and potato boxes, after first emptying the contents into a sink, to help them carry the items.

The golf course itself is secured by an 8-foot fence on all sides with barbed wire on the Pacific Avenue side. All gates were locked. It is believed by the Sheriff's Department that the high fences was the reason none of the heavier, more expensive items were taken.

Fire Station Proposed For Parkland

Voters To Decide In November

Parkland Fire Commissioners are planning to propose a new 10,000 square foot fire station in order to meet the growing demands of the Parkland Fire District, Chief Ray Hixson disclosed Tuesday.

If approved by the voters in November, the new structure would be built on adjacent property east of the present fire hall, he stated.

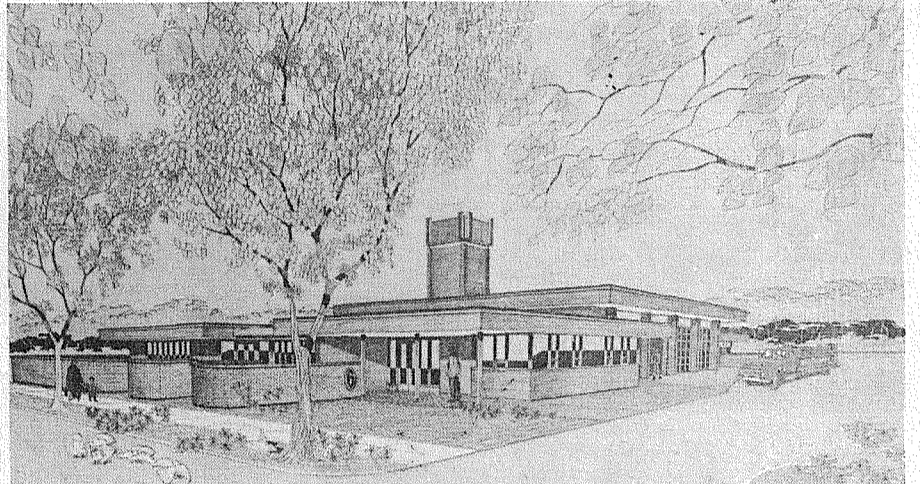
The building would include a four-bay apparatus room with drive-through feature, an alarm center constructed to permit installation of the most advanced telephone and automatic alarm systems, and a dormitory to accommodate 15 firemen.

The present fire station has become outmoded over the years and lacks dormitory space. At times, overnight firemen have been sleeping in supply rooms. Its design will not allow expansion, he said.

A special mudroom will be a feature of the proposed facility. After fighting a fire, firemen need an area to clean turnout gear. The mudroom will permit the firefighters to take a shower while wearing their turnout gear to wash out mud and cinders.

The apparatus room will be large enough to house an aerial ladder truck, and a shop area big enough to accommodate a fire engine is planned, he said.

The proposed structure was designed by Johnson-Austin Architects.



PARKLAND FIRE STATION as proposed in this architects sketch is planned to meet the growing needs of the Parkland Fire District. Voters will decide if station will be built to replace present structure. Building was designed by Johnson-Austin Architects, Parkland.



Fire Calls placed with the Spanaway-Elk Plain Fire Department last week included:

- 9-23-67: A brush fire off 208th and the Mountain Highway. The fire was apparently started by children playing with matches.
- 9-23-67: A grass fire at 1701 So. Park.
- 9-23-67: A short in a television set at 623 So. 174th.

Parkland

Fire Calls placed with the Parkland Fire Department last week included:

- 9-19-67: An electrical fire at 201 So. 110th.
- 9-20-67: A house fire at 11508 So. Eye. Approximately \$5,000 damage was done to the house owned by George Harper.
- 9-20-67: A house fire at 902 So. 96th.
- 9-21-67: An electrical fire at 1701 East 128th.
- 9-21-67: Aresuscitator call at 11821 McKinley.
- 9-24-67: A grass fire at 515 East 121st.
- 9-24-67: A grass fire at 414 East 133rd.

Overseas Yule Mail Season Arrives Early

GRAHAM - Even though Christmas is still three months away, Christmas mailing for servicemen overseas should begin within a few weeks reminded Postmaster E. T. Van Slyke.

He pointed out the following periods which have been designated for mailing Christmas parcels overseas. Surface Transportation: Oct. 16 to Nov. 11; Space Available (SAM): Oct. 21 to Dec. 1 and Airmail: Dec. 1 to 11. Overseas mail, explained the Postmaster, includes Armed Forces members and their families and U.S. civilians employed overseas who receive their mail through an APO, FPO, New York, San Francisco or Seattle address.

School Board Races Develop

A number of contests developed for school board seats in the Bethel, Franklin Pierce, and Eatonville School Districts as filings closed Sept. 22, the County Supt. of Elections reported Monday.

Primary elections will not be held in these school director races, and in some contests the voters will find three candidates vying for their vote in the coming November general election.

In Bethel District 403, long-time board member and president of the board E. W. "Doc" Webster will find Jerry Woods and Darwin Myers campaigning for his District 3 seat. Incumbent William P. Hauser will be challenged by A. E. Dolphin for the District 1 position, and voters will decide between Fred L. Reno and Phillip Zurfluh Jr. for the District 2 seat recently resigned by Bob Westerman. Don E. Goddard and Marvin Antonie filed for the seat now held by Mrs. Phylis Connelly. Mrs. Connelly did not seek re-election.

Mrs. Jo Ann Matson will face Al Rainwater and Truman Dawn for the Franklin Pierce District 4 seat. The incumbent, Emerson Matson, announced earlier he would not be a candidate for re-election. Walter C. Snackenber and Harold Sherry will be unopposed in their bid for terms on the board.

Two contests have developed in Eatonville District 404. Fred Guskie Jr. will be opposed by Leland Bloom for the District 3 opening, and Louis L. Miller will be challenged by David C. Marchetti.

Fall Festival Slated by OES

Ivy Chapter OES will hold their annual Fall Festival dinner at Fern Hill Masonic Temple from 12:30 p.m. to 4:40 p.m. on October 1.

Oven fried chicken and meat loaf will be featured. Tickets are available at \$1.50 for adults and 75 cents for children, under five, free.

The Temple is located at 84th and Park Avenue.

Late News

The commissioners of the South Suburban Sewer District have announced a postponement of the scheduled Oct. 2nd meeting. The meeting will now be at 4 p.m. Monday, October 9th at Room 114 of the Pacific Lutheran University's Administration Building.

25 ft. CHRIS-CRAFT CAVALIER

91.8 Total hours MOSTLY FRESH WATER w/Tandem Trailer

JUST LIKE NEW. MUST SELL

cost 11,500.00 w/inboard trolling motor

\$6950.00 eves til Nine

PARKLAND SPORTS CENTER

1122 PACIFIC AVENUE TACOMA, WASHINGTON PHONE LE-7-5677

HI HO

PUYALLUP

HI HO

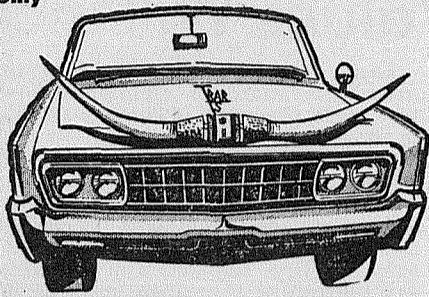
"PRIME" BEEF SALE!

ONLY THE WORLD'S FINEST BEEF CAN BE GRADED "PRIME"

- ROUND STEAK ^{WELL TRIMMED}lb. **89¢**
- SIRLOIN TIP ROASTlb. **1 09**
- RUMP ROASTlb. **79¢**
- SIRLOIN TIP STEAKSlb. **1 19**
- BONELESS TOP ROUNDlb. **1 05**
- SLICED BACON ^{BAR-S OR RATH'S}lb. **79¢**
- ^{BAR-S BONELESS} HOLIDAY HAMSlb. **1 09**
- BAR-S WIENERSlb. **57¢**

FRIDAY and SATURDAY Only

COME IN AND SEE THE FABULOUS \$20,000



"GOLDEN BULL"

The same Co. that made the famous cars featured in "GET SMART" "MAN FROM UNCLE" and "STAR TREK"

THE WORLD'S MOST "WESTERN" CAR

10^{-lb.} bag
U and I SUGAR
SAVE 26¢
88¢

1/2 GAL. HI HO ICE CREAM
SAVE 30¢
59¢

QT. HI HO LIQUID DETERGENT
SAVE 10¢
39¢ QT.

15-oz. MASCOT DOG FOOD
14/1⁰⁰

46-oz. DUCHESS FRUIT DRINK
5/1⁰⁰

4-ROLL PACK WALDORF TOILET TISSUE
3/89¢

GALLON PUREX
47¢

BAKERY

- FRESHLY BAKED DATE-NUT BREAD **49¢** Loaf
- ICED ANGEL FOOD **69¢** Each



in PUYALLUP JUST MINUTES AWAY
PRICES EFFECTIVE SEPT. 25th THROUGH 30th

DRUGS

LOWEST DRUG PRICES FOUND ANYWHERE

- REG. 99¢ **ULTRA BRITE TOOTHPASTE** **59¢**
- REG. 1.39 **COLGATE "100" MOUTHWASH** **69¢**
- REG. 2.00 **NEW DAWN HAIR COLOR** **1 19**
- REG. 1.33 **ANACIN** **89¢**

25 lb. GOLD MEDAL FLOUR
1 99 SAVE 49¢

PRODUCE

- CALIFORNIA SLICING CUCUMBERS **10¢** ea
- FLAME TOKAY GRAPES ... **15¢** lb
- LOCAL DANISH SQUASH .. **10¢** lb
- FRESH FROM HAWAII PINEAPPLE **29¢** ea

HI HO

PUYALLUP

HI HO

HI HO

HI HO

PUYALLUP

PUYALLUP

HI HO

HI HO

County 4-H Dairymen Win Ribbons

Pierce County 4-H dairy members took their share of blue ribbons in the recently concluded State 4 - H Dairy Show at the Western Washington Fair.

Paul Ulrich, Orting, emerged as Champion in Junior Fitting and Showing Ayrshire division; Paula Perryman, Tacoma, was Intermediate Fitting and Showing Champion in Guernseys and Judy Swetz, Graham, Junior Champion in Brown Swiss Fitting and Showing.

Other blue ribbon winners in Fitting and Showing were: Juniors - Steven Nelson, Eatonville; Ronnie Ulrich, Orting; Fritz Felder, Sumner; Billy Wood, Eatonville; Tim Evans, Tacoma; Jill Ford, Orting and Vickie Swetz, Graham. Intermediates: JoEll Kaelin, Puyallup. Seniors: Frank Blessing, Sumner; Mike Giefer, Sumner; Jack Guske, Eatonville; Deanne Doolittle, Orting and Kathy Kaelin, Puyallup.

Frank Blessing, Sumner, exhibited the Senior and Grand Champion Ayrshire cow. Other blue ribbon winners in type



Airman Frank M. Bury, son of Mr. and Mrs. Michael T. Bury of Rt. 1, Graham, Wash., has completed basic training at Lackland AFB, Tex. He is now assigned as an administrative specialist with a unit of the Strategic Air Command at Loring AFB, Maine. Airman Bury, a 1965 graduate of Bethel High School in Spanaway, Wash., received his associate's degree in liberal arts this year from Tacoma (Wash.) Community College.

classes were: Guernsey-Jennifer Tomchick, Graham; Ayrshire - Nick McCown, Tacoma; Paul Ulrich, Orting, and Ronnie Ulrich, Orting. Holstein - Jack Guske, Eatonville; Jill Ford, Orting; Deanne Doolittle, Orting; Jo Ell Kaelin, Puyallup. Brown Swiss - Peter Ames, Puyallup; Eunice Overland, Puyallup; Judy Swetz, Graham.

Chicago Is Home Of Arthur Falveys

A Puyallup girl became the bride of a young man from Chicago, Ill. where the new home will be when Charlotte Marie Iverson was married to Arthur Joseph Falvey, Jr. recently in St. John's Lutheran church in Niles, Ill.

The bride, the daughter of Mr. and Mrs. Norman Iverson of Parkland and Puyallup, was graduated from Franklin Pierce High School and Walther Memorial Hospital School of Nursing. She is on the hospital staff in Chicago.

The bridegroom, the son of Mrs. Parnell Thompson of Niles and Arthur Falvey, Sr. of Chicago, received his education in Chicago and is associated with the M.A.I. Corp. of Chicago.

Rev. Paul Bussert officiated at the ceremony. The bride walked down an aisle marked with bows of white and green and yellow ribbon roses and lily of the valley. At the front pew she was met by her parents who gave their daughter in marriage.

White gladiolus and minia-

ture yellow gladiolus adorned the altar for the marriage service.

The bride wore a four length, A-line, empire styled gown fashioned with Irish linen. The bell shaped detachable chapel-length train and lower part of the skirt were accented with Venice lace. A veiling of bridal illusion was held in place by a headpiece fashioned of Irish linen. She carried a cascade arrangement of white miniature calla lilies and baby's breath.

For sentiment she wore a pearl pendant and earring set belonging to her mother which had been sent by her father from the Orient.

Mrs. Lawrence Van Wansseele flew from Blaine, Wash. to attend her sister. Other bridesmaids were Barbara Olsen and Annelie Moderhack, both classmates of the bride at Walther Memorial.

The attendants were identically attired in maise A-line sleeveless, floor-length gowns of satin-backed linen.

A double bow adorned the shoulders. Each wore headpieces highlighted by four tiers of maise illusion on a pearl comb sprinkled with seed pearls.

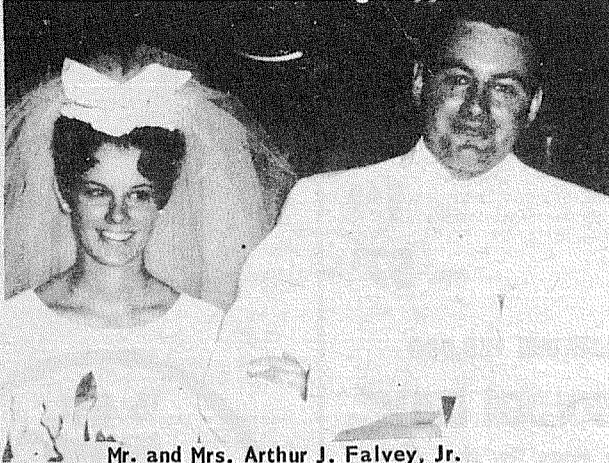
The bride's headpiece and those of her attendants were all fashioned by Miss Olsen's mother.

Kenneth Enderlin of Gary, Indiana was best man for his brother and ushers were James Swanson of Park Ridge, Ill. and Jerome Normantowiz of Chicago.

For her daughter's wedding Mrs. Iverson donned a street

length apricot colored sheath dress with matching re-embroidered lace coat. She completed her ensemble with a Tropicana rosebud corsage.

Mrs. Thompson chose a lemon-colored silk chiffon street length dress featuring long sleeves with jeweled cuffs. She wore a green cymbidium orchid corsage.



Mr. and Mrs. Arthur J. Falvey, Jr.

Land And Property Values Will Increase

Land and property values in the Parkland area will increase significantly in the next few years if sewers become available, according to Clayton B. Peterson, President of South Suburban Sewer District.

This could benefit every land owner and tax payer in the area. Not only would it raise the values of homes and land, it would broaden the tax base. This would be a material help to the schools, fire district and utilities. Now the tax burden of this area must be borne principally by the home owner.

"Every week we get inquiries from investors and developers who want to buy and build in this area," Peterson said. "The Boeing explosion has caused a great housing shortage and Parkland is in the direct line of the expansion. Business development always follows a substantial growth in housing.

"But this expansion is presently stymied because of lack of sewers. These investors are unwilling to commit large sums of money for land unless they can be assured of the possibilities of building. Because septic tank permits are not being approved, they are interested in securing sewer service at the earliest possible moment.

"If we can get sewers next year as is planned, then we will see an unprecedented increase in building of all kinds. It is for this reason that the sewer commissioners are moving ahead in their planning for providing a sewer system in the Parkland area.

"To delay the building of sewers will be a costly mistake," Peterson said. "Building costs are rising and will continue to rise so that a delay of two or three years would add materially to the costs of every landowner in the area. It would also increase taxes since the Franklin Pierce School District would have to spend \$150,000 or more for a sewage disposal plant for its new high school."

Bethel School District Consolidates Buildings

Directors of Bethel School District last week approved consolidation of building plans for a 10 - room elementary school and an 8-room intermediate school into an 18-room building.

The new plan calls for the construction of the 18-room facility on the north 10 acres of a site at 159th St., already owned by the district.

Preliminary plans for that building and for a 3-room addition to the Spanaway Elementary School were approved at last Wednesday's meeting of the School Board.

The two-phase program at Spanaway will make the school into a modern 14-room facility.

The board was apprised of the need for additional funds for the building program and heard the request to ask the voters of the district for approval for the sale of \$325,000 of bonds. In addition to the bonds, a building levy of approximately 13 mills was discussed to supplement the bond issue.

The maintenance and operation levy was discussed with a preliminary estimate of needs at \$305,000. This would be an increase of approximately 7 mills.

The resignation from the school board of Mr. R.T. Westerman was accepted with regrets.

Pay'n Save - Extra Value!

BOXED CHRISTMAS CARDS

REG. 2.95 TO 3.95

1/2 PRICE LIMIT 6 BOXES

With This Coupon

ONE COUPON PER CUSTOMER. EXPIRES OCT. 1, 1967
Cash Value 1/20 of 1c.

Clip this COUPON and Save

Pay'n Save - Extra Value!

PRESTONE ANTI-FREEZE

ONE GALLON CAN

\$1.59

WITH THIS COUPON

LIMIT 4 GALLONS
ONE COUPON PER CUSTOMER. EXPIRES OCT. 1, 1967
Cash Value 1/20 of 1c.

Clip this COUPON and Save

PAY'N SAVE

99th AND PACIFIC ONLY

Retail LE 1-6555 Pharmacy LE 1-6533

Pierce County Herald and

The TIMES JOURNAL

Published weekly at 14620 Pacific Ave., Parkland 98444 and delivered by U.S. Mail and carrier to subscribers. Publishers: Pierce County Publishers, Inc.

Managing Editor Em Matson
News Editor Sandy Ingram
Sports Editor Bob Ingram

Subscriptions \$3.50 per year, \$1.80 six months, or 30c monthly by carrier. News stand price 10c copy.

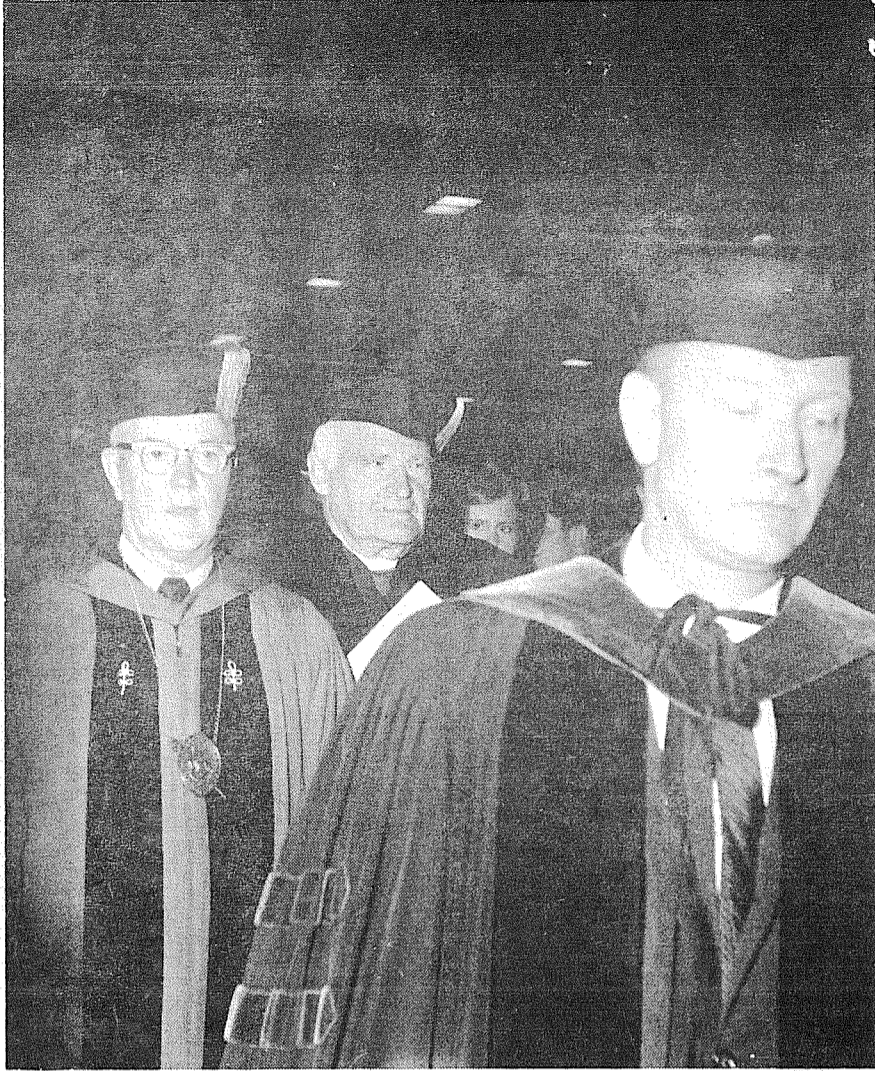
Qualified as a legal publication under Chapter 213 of the Legislature Acts of the 1941 regular session of the State of Washington.

Application to mail at second-class rates is pending at Tacoma, Washington.

Vol. 23 No. 39 September 28, 1967

7,000 Miles To Meet The Primate

By Sandy Ingram



ENTRANCE — Dr. Ramsey, center, follows faculty members down the aisle of Eastvold Chapel with Dr. Mortvedt, left.

Over the great Atlantic Ocean and across the United States to the Pacific Northwest I traveled as a newcomer from England. It seems ironical that after 20 years of residing in my home country as a member of the Church of England, I failed to accomplish what Friday morning at Pacific Lutheran University in Parkland, Wash., did: a meeting with the Most Rev. Dr. A. Michael Ramsey, Archbishop of Canterbury and Head of the Church of England.

The Archbishop, giving his first speech in the Pacific Northwest, was at the University to receive an honorary doctor of divinity degree.

To say I have never been in his presence is not true, but I have never been more than any other of the thousands of parishioners whenever, or wherever he presents a service.

Journalism requires a certain amount of aggressiveness, but that did not stop my butterflies from reproducing throughout the awe striking acceptance speech the primate gave after the presentation.

This meeting was with only five or six members of other news media and time was extremely short for a man with a schedule as tight as his.

Although the meeting was not as I had imagined for the months before his arrival, but what meetings are if the imagination is allowed to run away, it was indeed placed on the top of my list of experiences.

In the walk from the university's Eastvold Chapel, where the presentation was made, to Dr. Robert Mort-

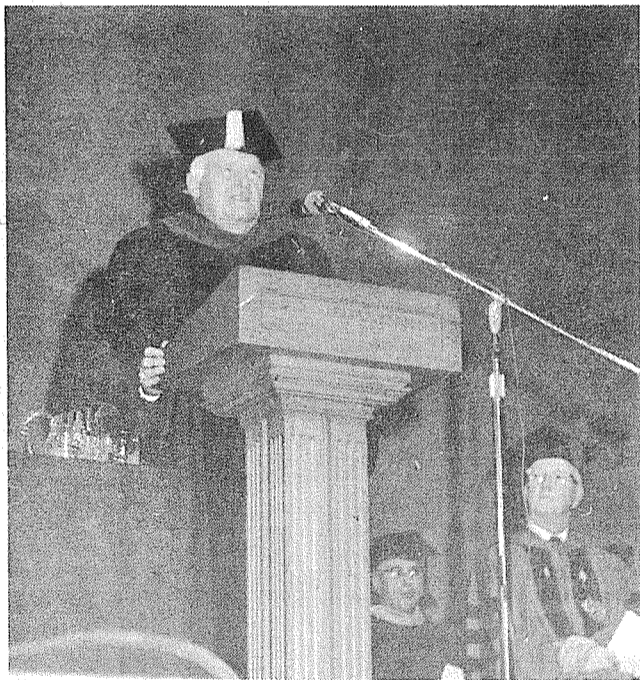
vedt's officer, where the short news conference was held, freshmen and sophomores talked on their way to classes of the philosophies the Archbishop had put forth, on freedom, truth, personality and religion in the American Universities.

A very nervous reporter asked the man who had received a five-minute standing ovation what he thought of the new musical concept creeping into the churches. After giving thought to the question, as he did with every phrase throughout his address, the religious leader said in his precise accent: "I think some of the changes are good for the church...we must keep up with the times, but I think we can do without mere jelly nosed psalmists."

Feeling more like I should have been on my knees rather than sat in an armchair next to him, the conference became shorter with old and new friends alike being introduced and then came the parting for Seattle.

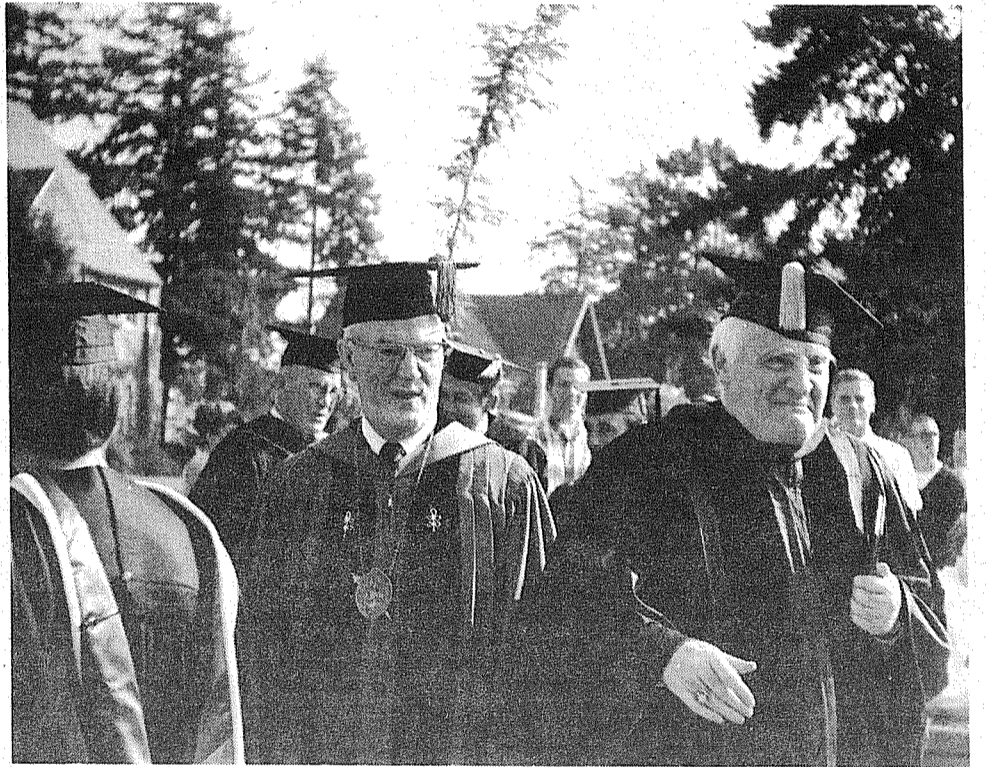
Short as it was, however, the meeting has left an impression on myself and I am sure all those who came in contact with him, that we will never forget.

I might add that before any of you read this I already had numerous copies of the Times Journal going across the United States, from the Pacific Northwest and over the great Atlantic Ocean to relatives and friends still in England, and who have yet to meet the tower of a man that Pacific Lutheran University honored Friday.



SPEECH — Giving his acceptance address, the Archbishop received a standing ovation.

— Times Journal photos by Sandy Ingram.



HAND SHAKING — The Archbishop, right, stands outside the Eastvold Chapel with Dr. Robert Mortvedt, left, following the ceremonies to shake hands with PLU faculty members.

Pre-Rain Special

FREE
Fiberglass Furnace
Filters with our
Cleaning Special

\$1950
Only MOST MODELS

Includes
Ducts, Blower,
Chimney, Smoke
Pipe. Special
Lower Rates on
Stoves & Fireplaces

Free Estimates on
Service or installation
of burners, stoves, fur-
naces.
Free Estimates on Gut-
ter & Downspout Work

Satisfaction Guaranteed
or your soot refunded

HOME FURNACE
GR 2-5591 - 24 hrs.
30 Years Experience

Resident Elected President Of Air Force Assn.

Chief Master Sergeant Virgil Clevinger of Brookdale Road was elected president of the new Puget Sound Chapter of the Air Force Sergeants Association, which begins its first term this week. The organization is an independent representative group and will represent the Air Force and Air Force Reserve people

at McChord Air Force Base and Paine Field, as well as retired person and Air National Guard units in the area. The association is international in scope with representatives in Washington, D.C. Its objectives are to enhance the image and to promote the interests of Air Force non-commissioned

Rummage Sale Slated At Church

The Ladies Fellowship Group of Prairie Mission Sunday School will hold a Rummage Sale from 9 a.m. to 5 p.m., Sept. 28th and 29th in the basement of the church at 108th and J Street.

NEW- MORE POWERFUL

the 1967's
ARE HERE
VOLKSWAGEN
27 MAJOR CHANGES
COME IN AND

Tom Carstens
AUTOHAUS
7030 So. Tacoma Way
GR 4-0666
TACOMA DEALER SINCE 1955

\$\$\$ VAUGHAN'S VALUES \$\$\$

PREPARE FOR WINTER

We have the most complete stock of gutter material in Pierce County. **WOOD, GALVANIZED, ALUMINUM, VINYL.** We will install or do-it-yourself.

SPECIAL- 10 foot galvanized downspout (with gutter purchase) each \$1.39

PLENTY OF FREE PARKING

VAUGHAN'S Building Materials Inc.
6402 South Tacoma Way
GR 2-4494 & GR 4-9515

Dinette Set

- *Walnut Finish
- *Melon or Turquoise Vinyl upholstered chairs.
- *Sturdy Construction
- *Stain resistant top
- *5 pieces

Similar to Illustration

Special \$49.95

Open Mon-Sat 9 a.m. - 9 p.m.
Noon 'til 6 p.m. Sun.

SPROUSE REITZ VARIETY STORES

8218 Pacific Ave.



GROUND BREAKERS - From left are Harvey Roberts; Charles Pfeil; Harry Skinner; Mrs. Robert Colohan, Robert Colohan, Rev. Arthur Campbell, minister; Rev. G. Richard Tuttle, district superintendent; Burton Brewer, Building Committee Chairman; and Robert Brewer, Brewer Construction Co., breaking the ground for the start of the building program.

Ground Breaking At Parkland Church

On Sunday, September 17th, at the Parkland Methodist Church, a Ground Breaking Ceremony was held to signal the beginning of a building program. The Reverend Mr. G. Richard Tuttle, district superintendent of the Tacoma District, was present to declare the project officially begun.

Many shovels wielded by old and young alike symbolized the unity of effort which has been put into planning and which will be necessary for the final completion of the program.

The firm of Thompson-Hansen, Architects A.I.A., has designed the addition, which includes: a fellowship room seating two hundred, a kitchen, a fireplace room, a library and Church Offices.

In addition to this, an enlarged narthex and remodeled sanctuary are included in the program. The Brewer Construction Company of Lakewood has the building contract. The Reverend Mr. Arthur Campbell, minister, and Burton Brewer, Building Committee Chairman, participated in the Ground Breaking Ceremony.

PTA News

ROY PTA will meet 8 p.m. Monday Oct. 2 at the Roy Elementary School. Dr. Fred Gramann, supt. of schools, will outline the district building program covering the next two years of planning. He will also speak on the November millage election.

Spanaway Woman Named Winner

Mrs. J. Snyder of Route 1, Box 1440, Spanaway, has won a Hamilton Beach Electric Knife in a nation wide contest. Mrs. Snyder registered for the contest at South End Hardware, during their Happy Home Values contest.



FRANKLIN PIERCE Adult Education Vocational Counselor Robert Boehlke gives district employees Dee Secher-Jensen (left) and Lynn Little a briefing on new night school data processing course. Data processing classes will open for both college credit and office occupation adult students. (Franklin Pierce Photo)

Pierce Night School 52% Return Lists New Courses Mail Census On Fallout

A housewives driver training course and a class covering techniques in cake decorating have been added to the courses publicized in last week's Journal. Adult Education Supt. Howard Motteler announced Monday.

"The Franklin Pierce Driver Training features home pickup and delivery with behind the wheel practice held late afternoons or week nights," Motteler stated.

Classes covering cake decorating for home makers and bakery employees will be scheduled for 5 weeks on Monday nights from 7-10 p.m. The course will include techniques necessary to decorate a wedding cake, including floral designs and sugar molds, Motteler said.

For information readers are asked to call LE 7-0211 extension 47.

Fall quarter classes opened Monday at Tacoma Community College with a record enrollment on hand.

Initial registration figures showed a total of 2,445 students, Joseph Kosai, records officer, said. Total enrollment for the fall quarter a year ago was 1,846.

The fall quarter continues through Dec. 21. TCC is beginning its third year of operation.

The Bureau of the Census reports that 52% of the Home Fallout Protection Survey questionnaires have been returned from Washington householders living in the areas where the survey is being taken by mail.

This week, about 235,000 reminder letters went in the mail directed to householders who have not returned their questionnaires. Enclosed with each letter was a second questionnaire and post-paid return envelope, in case the originals had been mislaid.

The first questionnaires were mailed several weeks ago to metropolitan Seattle, Spokane, Tacoma, and Vancouver, and the cities of Aberdeen, Auburn, Bellevue, Bellingham, Bremerton, Everett, Hoquiam, Kennick, Longview, Moses Lake, Olympia, Pasco, Port Angeles, Pullman, Puyallup, Renton, Richland, Walla Walla, Wenatchee, and Yakima. In the remainder of the State, the survey was taken by Census Bureau interviewers

who called at homes. This work has been completed.

Residents who have mailed in their questionnaires or who have been visited by inter-

viewers will shortly receive replies from the Census Bureau informing them of the fallout protection their homes offer. Those whose homes have basements will get reports on the amount of protection their basements provide.

All information about the house is confidential between the Census Bureau and the householder. It may not be released to other Government agencies nor to anyone for any purpose whatsoever, not even to State or national Civil Defense.

If yours is one of the missing questionnaires, the Census Bureau and the Washington Department of Civil Defense urge you to fill out and mail it promptly, before next weekend if you possibly can.

PRETTY EFFICIENT.

The real beauty of the Trimline® phone is in what it can do. The dial is in the handset. So you can call from where you sit. There's a recall button in the handset too, so you can "hang up" and call again without reaching over to the base. There's a longer cord. The handset rests face down on the base, doesn't collect dust. And the entire unit takes up about half as much space as a regular table model phone. Makes beautiful sense.

Pacific Northwest Bell
Part of the Nationwide Bell System

LOANS TO \$1000.
YOUR NEAREST HOME OF
"Ready Cash"
Nationwide
FINANCE COMPANY
CALL NOW For Your Back-To-School Needs
912 Pacific, Tacoma
Phone: BR. 2-4122
PROMPT-COURTEOUS-CONFIDENTIAL

Dryer MORTUARY
(134th & Pacific) PARKLAND

The Country Parson

"A fellow who thinks the world is going to the dogs probably also blames the cleaners when his pants are getting too tight."
Copyright, by Frank A. Clark

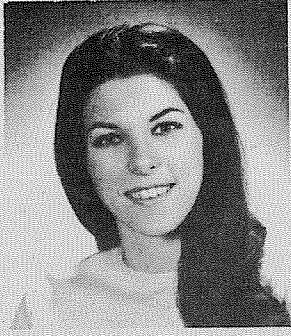
Dryer MORTUARY
(134th & Pacific) PARKLAND

The TIMES JOURNAL

ENTERTAINMENT

Around The County

By DONNA DIXON RESTIVO



The children are back in school, and the nights are growing longer. Fall has come. People around the county are giving up their summer sports and picnics, and turning to evening entertainment in the theaters and restaurants.

One of these restaurants is RICHARD'S. My husband and I stopped by for our first anniversary dinner there last night. Mr. Richards cordially joined us for our midnight supper, and pointed out with pride the changes his restaurant had gone through since its opening twenty years ago.

"At first, we weren't much bigger than a hamburger stand. I worked fourteen hours a day every day we were opened. It wasn't easy, and sometime I would have given the whole place away to anyone who had two bits for it." Here he leaned back and smiled expansively. "But here it stands. We've weathered the storm."

The motif evident in the res-

taurant interested me, and I asked how it was chosen. Mr. Richards had stayed a while in New Orleans, he told us, and found the beautiful wrought iron work fascinating. Also, the spirit and gaiety of the Mardi Gras season appealed to him. So when he headed back for Washington, Mr. Richards used the theme to open his cocktail lounge, and contracted with Mr. Haner, of Parkland, for three woodcarvings of masks, on the Mardi Gras line. These now adorn the restaurant wall. One interesting point I found, however, was that despite the fact that the Mardi Gras idea dominates, Mr. Richards never actually saw the spectacle itself.

While at Richards, we took the proprietor's suggestion, and tried the "Captain's Plate." It turned out to be everything promised, and more. Although I have no gourmet's taste, Charlie has (try cooking for a husband like that!), and

after careful consideration, proclaimed it the best seafood plate he had ever tried. And the dish only runs about two and a half dollars. I plan on going back.

The Lakewood Players Theater, a nice, comfortable size, was almost full for their season premier "Luv."

A little slow in starting, "Luv" picked up speed to pull through with blue ribbon standing. At the play's end the cast appeared, bowing and smiling, and exited stage right. No sooner did they leave than the enthusiastic audience applauded them back for another curtain call. The leading lady, Helen Hoffman, was presented with a big bouquet of red roses by her fellow actors, Ken Krowne and Alan Cummings. And she deserved them.

My only concern about the play is that I can't pick my favorite actor. But then I guess more than one is allowed.

The manager of the Paradise Bowl invited me to stop by and pick up a few pointers last week. After picking out suitable equipment, instructor Jennie Rugers began. She will teach Tuesdays and Thursdays, I understand—a great break for beginners like—guess who.

After a whirlwind of instruction, we felt brave enough to chance a game, and, wonder of wonders, I racked up 87 pins, which is great for me. Last time I bowled 18.

A new construction on Pacific caught my eye, so I stopped by to investigate. The sign says Barlo's, and is a project of Bart Payne's and Loren Sisley's. Loren was in, and showed me around. Barlo's is due to be completed around the middle of October. Looks like it might be a very nice place to eat.

Passed this sign on a church bulletin board late one night: "Love your enemies...that really annoys them."

That's all for now, see you next week. Goodnight, everyone, goodnight, Charlie.

FP Students Will Do Chores

Do you need someone to get your yard and garden into shape for winter? Could you use some help with the last of the house cleaning chores, or that little dab of painting still unfinished? Are you a business-owner looking for some dependable part-time help? If you need part-time help of most any kind, the students at Franklin Pierce High School would like the opportunity to be of service to you. To place your request, please call LE 7-0211, ext. 28, and the high school guidance department will do its best to fulfill your need.

American Legion Thanks Residents

The American Legion, Spanaway Post 118, announced a very successful rummage sale and thanked all merchants and community residents for the support given to the Ladies Auxiliary.

The Legion meets every second and fourth Friday at 8 p.m. in the Hall at So. 160th. All service veterans and their family are invited to join the group, which helps all veterans in need.

Fire Classes Start Oct 3

A nine week course covering fire service fundamentals will be offered prospective firefighters starting October 3 at the Midland Fire Hall.

Classes will be conducted by the Fire Service Training Division of the State Board of Vocational Education, and will end approximately January 23.

Those interested may contact Chief William Shanahan of the Midland Fire Department.

CORRECTION

The Times Journal regrets that Miss Susan Storie's name was spelled incorrectly as published in the Keller Dance Studio advertisement in last week's issue. Our apologies to Miss Storie and Keller Studios.



"The Musical Grants" Rev. and Mrs. D.W. Grant

New Pastor For Country Chapel

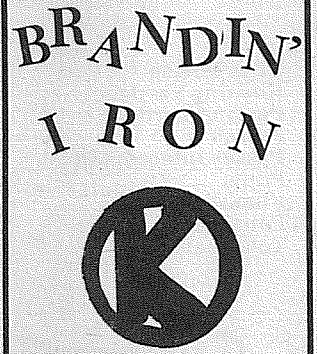
"The Musical Grants," consisting of Rev. and Mrs. David Grant, have recently moved into the Parkland area. Rev. Grant has taken over pastorship of the Country Chapel at 2824 East 112th Street.

The couple has been touring the Western United States conducting evangelical services and providing the music. Rev. Grant plays the saxophone and his wife, Nona, the piano accordion.

He has been pastor of two churches prior to coming to Parkland, the Assembly of God Church in John Day, Oregon, and the Assembly of God Church in Ridgefield, Washington.

They have three children, Steven, 7; Sandra, 4; and Stanley, 1.

Church services will be: Sunday School, 9:40 a.m.; Morning Worship, 11 a.m.; and Evening Service at 7 p.m. Midweek services will include Youth Night at 7:30 p.m. Tuesday and Bible Study at 7:30 p.m. Thursday.



Restaurant

open 7 a.m. - 2 a.m.
Mon.-Fri., 9 a.m. to Sat., 2 a.m.
9 a.m.-10 p.m. Sun.

for char broiled steaks, cocktails, dancing

GR 4-6711
8413 Pacific Ave.

Area Couple's Son AF Academy Cadet

Cadet Steven J. Dawkins, son of Mr. and Mrs. Jesse A. Dawkins Sr. of Eatonville, Wash., is one of more than 900 cadets who have started their sophomore year at the U. S. Air Force Academy.

During the past summer, the cadet and other members of the class of 1970 completed an intensive six-week training program at the academy and armed forces installations across the country.

In the summer program the cadets were trained in survival techniques and base defense tactics in the rugged Rampart Range area near the academy.

This was followed by a combat course in infantry weapons at nearby Ft. Carson, Colo.

The final three weeks of summer training was conducted at several bases where the cadets got a first hand look at operational Air Force units and aircraft.

As he began his second year at the academy, Cadet Dawkins was named to the commandant's list in recognition of his outstanding military performance. He wears a silver wreath designating the honor accorded

him by the academy commandant of cadets.

The cadet will be commissioned a second lieutenant and awarded a B.S. degree upon his graduation from the academy.

Cadet Dawkins is a 1966 graduate of Eatonville High School, where he was salutatorian of his graduating class. He lettered in baseball and was captain of his football team.

He is a member of the cadet choir at the academy

LOOKING AROUND

Every night when Mrs. Joan Lee returned home after walking the dog, she carried a brick. She was only five bricks short of the target 500 needed to build a greenhouse when police stepped in and charged her with stealing them.

Journal Classifieds
Get Results
LE 7-0223

7 Days a Week
Open 6 a.m. - 10 p.m.
171st & Pacific Ave. - LE 1-1343
Little Park Cafe
Each Day Mon. - Sat.
Made Fresh Daily
Wild Blackberry Pie
W!MOM

BROOKDALE RESTAURANT

CHARBROILED STEAKS and CHOPS

OPEN
MONDAY THRU THURSDAY 6 a.m. to 1 a.m.
FRIDAY and SATURDAY ALL NITE • CLOSE SUNDAY 10 p.m.

CALL FOR BANQUET RESERVATIONS

GENE AND SHIRLEY BENNETT - OWNERS

130th & PACIFIC

LE 1-1995

LAKWOOD PLAYERS

present

"LUV"

Sept. 22, 23, 29, 30,
& Oct. 6 & 7

VILLA PLAZA

BOWLING

SATURDAYS UNTIL 7 p.m.

SUNDAYS UNTIL 1 p.m.

BOWLING BALL SPECIAL
- 17.95 -

AMF, BRUNSWICK, COLUMBIA
PRICE INCLUDES TEN FREE
PRACTICE GAMES

PARADISE BOWL

ONLY
35¢

Inc. Tax

108th & Pacific
LE 7-6012

Richards

RESTAURANT

BUFFET DINING

a dazzling variety of foods — all you can eat — luncheon and dinner.

CHOICE STEAKS • SEAFOODS
SANDWICHES

8201 Pacific

GR 4-2063

Angelo's PIZZA HOUSE

ORDERS TO GO

Featuring top sirloin and American dishes, spaghetti, rigatoni, meat balls, sausage, ravioli, beer and wine.

Choice of Pizzas
cheese & tomato
anchovie
mushroom
Italian sausage
pepperoni
tuna

bacon
peppers
olive
hamburgers
ham
salami
onion



LE 7-7233
1402 PACIFIC AVE.
PARKLAND

CALL AHEAD, IT'S
PIPING HOT
ALL THE WAY HOME

PICK UP A BOX, PAIL, BUCKET
OR A BARREL

The TIMES JOURNAL
SPORTS

Mount Si Edges Bethel

by Orlon Tromsness

The Bethel Braves were edged 6-0 by the Mount Si Wildcats Friday night at Bethel by a touchdown that almost wasn't.

Mount Si took over on their own 18 yard line in the closing minutes of the second quarter and drove to the Braves 5 yard line where an off side penalty advanced the ball to the Bethel 2½ yard line. With 15 seconds showing on the clock, Mount Si's fullback Vern Venn plunged to the goal line.

Officials withheld the touchdown signal until all three conferred to decide the tally should go on the scoreboard. The point after touchdown run failed and the 6 point lead held until the final gun.

The Braves missed a golden scoring opportunity in the first quarter when they fought their way to the Wildcat 6 yard line. With a first down and goal to go, Bethel was pushed back to the Mount Si 10 where they lost the ball on downs.

The Brave drive was sparked by the running of sophomore halfback Jody Miller who gained 61 yards on 12 carries during the first half. Miller shows a lot of poise for a sophomore and should give Bethel opponents plenty of trouble.

Bethel's ends Tom Rice, Dave Agnew, and Steve Jasper showed signs of becoming good defensive players, placing a lot of pressure on Mount Si's talented quarterback Dale Burnside.

Brave signal-caller John Zurfluh displayed his ability to uncork the long bomb and a little second effort by Bethel receivers could have changed the outcome of the contest. Several long passes just missed their mark. Zurfluh also runs the option play well.

Mount Si	0	6	0	0	-	6
Bethel	0	0	0	0	-	0

	Mt Si	Bethel
First Downs	9	8
Rushing Yardage	146	93
Passing Yardage	45	23
Passes	4-9	6-22
Passes Intercepted	1	1
Punts	4-29	5-29
Fumbles Lost	0	0
Penalties	4-35	4-30
Total Yardage	191	116

Cruisers Top Warriors

The talented toe of Mark Dawkins gave Eatonville a one point margin victory over Rochester Friday night as the Cruisers downed the Warriors 7-6 in a contest played at Rochester.

A second period pass interception by defensive end Larry Anderson gave the Cruisers a 6-0 lead. Then Dawkins booted the decisive try-for-point.

The Warriors scored in the final period, but an end sweep run failed to provide the tying counter.

Eatonville's outstanding halfback Joe Bennett received a nose injury at the start of the game and was sidelined during the contest. Back Chuck Chappell filled the void carrying the burden of the Cruiser attack. Bennett is expected to be back in the line up Friday night.

The Cruiser defense made the difference, stopping Rochester drives three times inside the Eatonville 15 yard line. One Warrior drive was halted on the three. School officials praised the efforts of the Cruiser defensive line, and mentioned plays by center Neil McDonald and tackle Dick Boness as instrumental in the Cruiser victory.

Eatonville meets Yelm Friday. Yelm was overwhelmed by Orting 33-12 last week.

Eatonville	0	7	0	0	-	7
Rochester	0	0	0	6	-	6

Eatonville - Pass interception by Anderson (Kick-Dawkins)
Rochester - One yard plunge by Swift. (Run failed)

Eastern Humiliates Lutes 47-14

ARI Slates Season Finale

SPANAWAY - Auto Racing Inc. will wrap up one of its most successful racing slates with a Saturday and Sunday season championships at Spanaway Speedway this weekend.

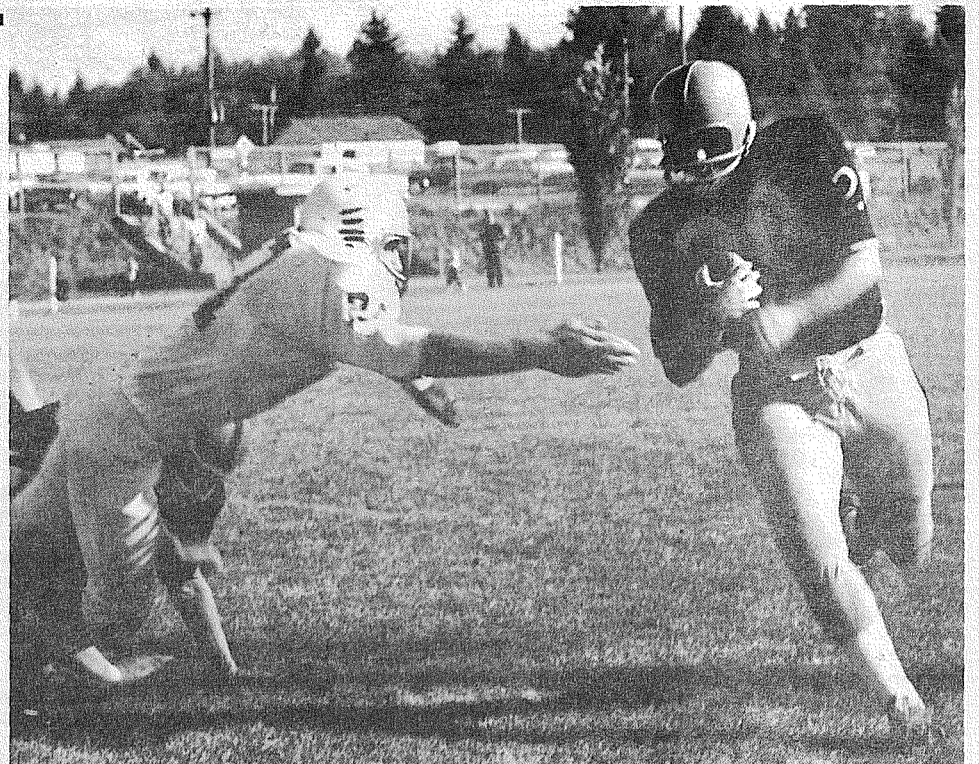
Saturday's evening program will commence at 7:30 when the superstocks will time in. First race of the night is slated for 8:30.

Although they have been slugging it out all year long for top point trophies, both classes are running scared to decide their winners. Don Hall has a fairly comfortable lead over Jackie Kuper in the double "A" standings, but with double points awarded in the upcoming double header, Kuper could come on strong to pick up all the marbles.

A similar situation exists in the "A" class, with durable Steve Kiser trying to hold off the hard changing Ken Longley. Only one thing is sure... there will be an element of

doubt right up until starter Lucky O'Neil gives the checkered flag for the last time Sunday afternoon.

Kuper picked up a little ground last Sunday by taking a 2nd in the dash, 1st in the fast heat and a 3rd in the feature. Longley lost a little ground as Kiser picked up a 1st in the "A" main, a 2nd in the heat and a 3rd in the trophy dash.



END SWEEP - David Halstad (20) of Hillsboro, Ore., attempts an end sweep in Pacific Lutheran University's football battle against Eastern Washington State College. The Savages, in the game played last Saturday, beat PLU 47-14. Blocking is Hans Lindstrom (21) of Puyallup.

Team Shake Up Due

Pacific Lutheran University's head coach Roy Carlson is going to literally start over again this week following two successive defeats.

The Lutes are out of action this weekend so they have two weeks to prepare for their conference opener against Willamette University.

"We are going to take full advantage of our two-week layoff to work on our offense, and to get some scouting done," said Carlson.

Carlson and his two assistants will be in Oregon Saturday to watch Northwest Conference teams in action. During the week they will be trying to mold a winning team.

"We are not that bad a team," said Carlson, "we have just faced two excellent ones." In its season opener, PLU lost to California Lutheran College 20-8, and bowl-minded Eastern Washington State College dumped the Lutes 47-14 last weekend.

"The conference schools are in for a surprise if they think PLU will be a pushover," Carlson said.

By the time the Lutes face Willamette Carlson hopes to have found a quarterback who can throw the ball, as well as run with it. He started the season with Bob Lovell, a 5-8, 150-pound transfer, but lost him to an injury last week. For the Eastern game Carlson started Bob Lovell, a senior letterman who has had little experience in the slot.

Two freshmen could be leading the ball club by the time PLU is ready for action again. Pete Olbertz, a 5-11, 180-pound quarterback from Olympia, Wash., saw some action in the Eastern game, and he looked cool under the attack.

Rick Rogers, a 6-1, 195-pound freshman from Portland, Ore., might also be given a chance for the position, although he has been seeing duty as a defensive corner linebacker.

"We are giving a lot of thought to switching Hans Lindstrom to the slot," said Carlson. "Lindstrom is quick, and he can really run. If he can throw as well, he will probably be our man," he added.

Lindstrom, a freshman from Puyallup, Wash., where he was all-conference and top scorer, has been playing halfback for PLU thus far.

Freshmen are starting to make up a good percentage of PLU's team. Starters last week included Ross Boice, a 6-1, 195-pound tackle from Ferndale, Wash., and Ken Doggett, a 6-0, 170-pound defensive halfback from Mead, Wash.

Other freshmen who saw more time in the game than on the bench included John Bangsund, a 6-5, 208-pound tackle from Seattle; John Safstrom, a 6-0, 195-pound center from Olympia, Wash.; Jack Irion, a 6-2, 180-pound defensive back from Hoquiam; David Roller, a 6-2, 195-pound end from Tacoma; and David Halstad, a 5-9, 180-pound fullback from Hillsboro, Ore.

Two transfer students have received considerable praise from PLU's coaching staff. Fred Moe, a 5-10, 190-pound junior from Washington State University, has been starting as fullback for the Lutes, and last weekend he also started as a defensive linebacker.

Richard Johnson, a 6-4, 250-pound center and tackle from Olympic Junior College, has proven his worth, and will probably be moving into a starting berth on defense.



Action at Spanaway

FP, Evergreen Tie

A 72 yard pass play in the final 44 seconds of the game robbed the Franklin Pierce Cardinals of an apparent victory Friday night in a stubbornly fought defensive struggle that ended in a 7-7 deadlock.

As fans began leaving the Franklin Pierce stadium for the parking lot, Evergreen halfback Jim Stretch fired the long bomb into the waiting hands of quarterback Dan Weiss. Weiss streaked across the Card goal line to register the 6 points, and the point-after-touchdown kick soared through the uprights to tie the ballgame.

Pierce scored earlier in the fourth quarter when Doug Armstrong hauled in one of quarterback Jim Hadland's passes on the Wolverine 40 yard line and scampered to the end zone for 6 points. Shanahan's kick added the extra point.

The Cards had a scare early in the first half when an Evergreen touchdown was nullified by a penalty.

The contest saw brilliant defensive line play by the Pierce defensive squad. Wolverine passers were consistently thrown for losses, and after a trying first quarter Card linemen caught a number of Evergreen backs behind the line of scrimmage.

Evergreen defensemen managed to bottle up the usually powerful Card running attack, although fullback Ross Radcliffe and Hadland kept the Pierce ground game alive with extra-effort attempts. In the passing department, Hadland hit receivers 3 times in 12 attempts.

Next Friday night the Cardinals meet Tacoma's Lincoln Abes at Lincoln Bowl. The Abes squeaked by East Bremerton last week 6-0. Last year Franklin Pierce topped Lincoln 17-13.

Evergreen	0	0	0	7	-	7
Franklin Pierce	0	0	0	7	-	7

F.P.: 57 yard pass play Hadland to Armstrong. (Kick-Shanahan)
Evergreen: 72 yard pass play Stretch to Weiss. (Kick-Berry)

Sept. Anniversary Sale
Rodeo Custom Shop

Complete Saddle
Repair Shop
Western Wear

164th and Pacific Avenue — Spanaway
LE 1-4555

BARGAINS GALORE

HEADQUARTERS for Hunters

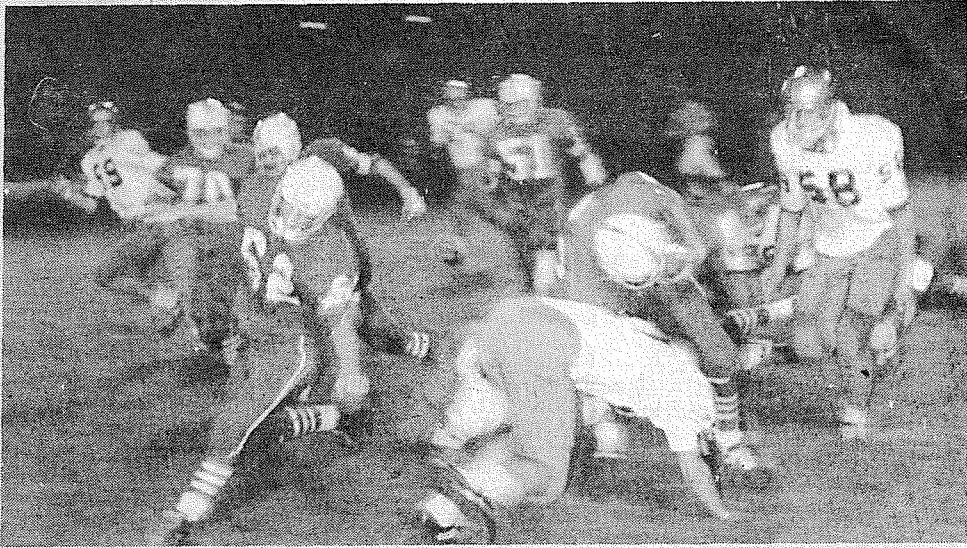
- Guns & Ammo
- Licenses
- Supplies
- Game Tags

South End Hardware

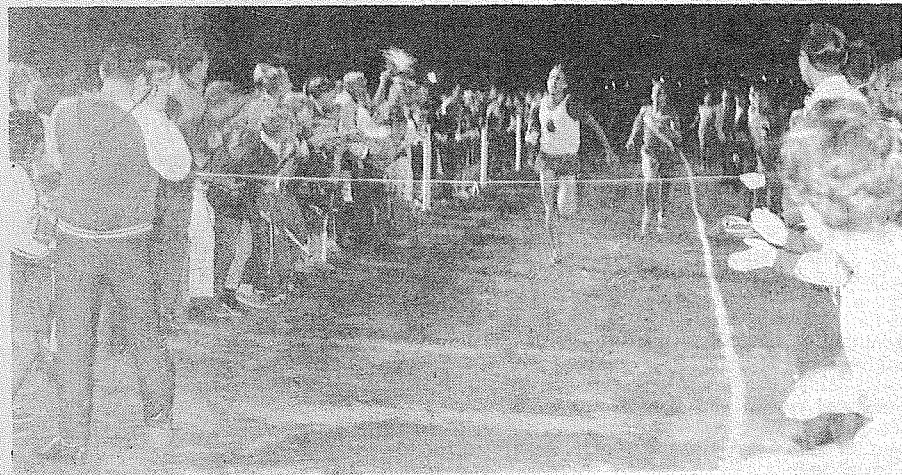
SOUTH 185TH & PACIFIC VI 7-7211 SPANAWAY

LOOK
8 ft. **2 x 4's**
25^c ea.

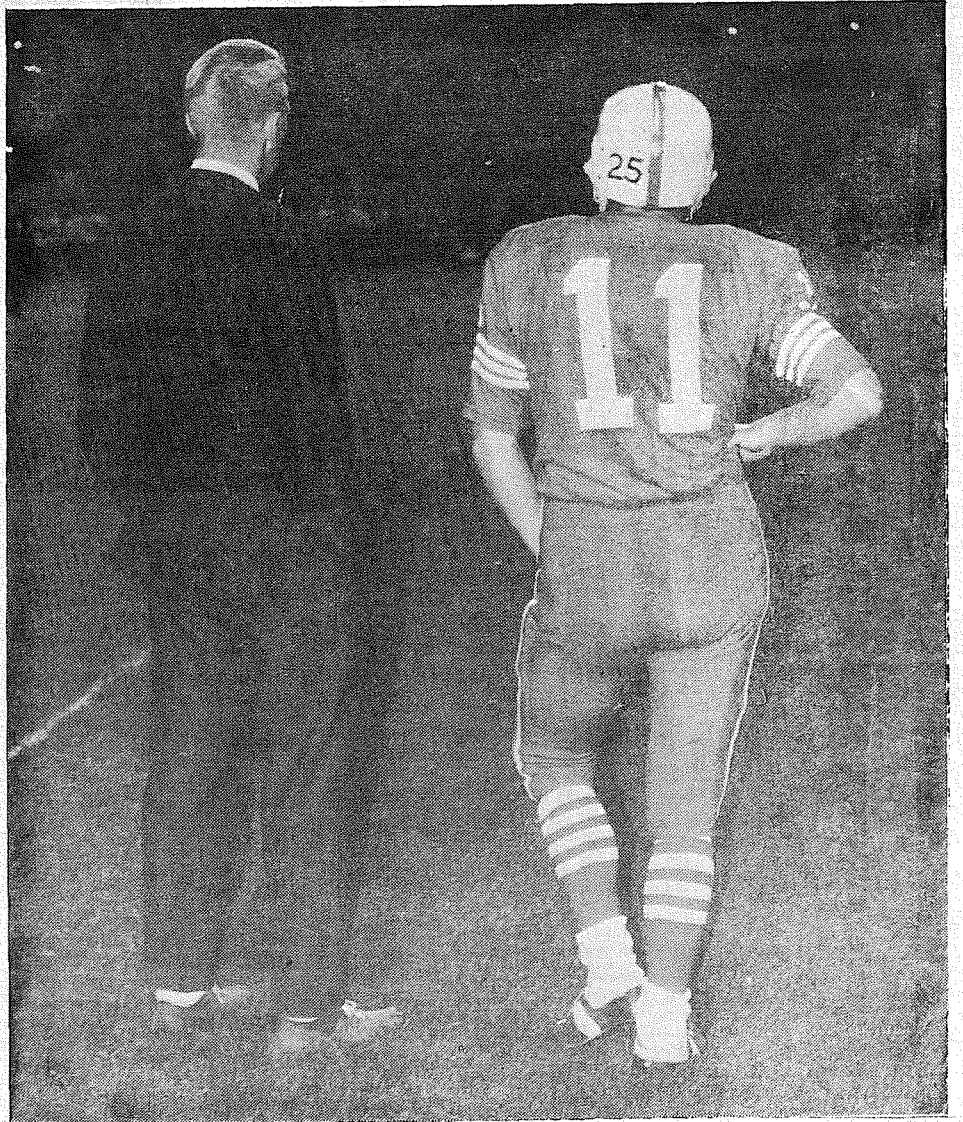
Anderson Lumber
9813 Pacific Ave.



CARDINAL BACK Ross Radcliffe appears to run into a flying tackle by an Evergreen defender, but only after he picked up nearly 10 yards and a first down. The Wolverines held the Cards to a 7-7 tie.



FRANKLIN PIERCE cross country star Gary Shumway is pictured approaching the finishing line to win a 5 school invitational meet in track record time of 5:48.5 for 2000 meters. The event was scheduled during half-time of the Franklin Pierce-Evergreen football game.



COACH ELDON KYLLO discusses strategy with Cardinal QB Jim Hadland during a tense moment in Friday's duel with the Evergreen Wolverines. Pierce attackers found the Evergreen defenders stout and were held to a 7-7 tie.

Eatonville

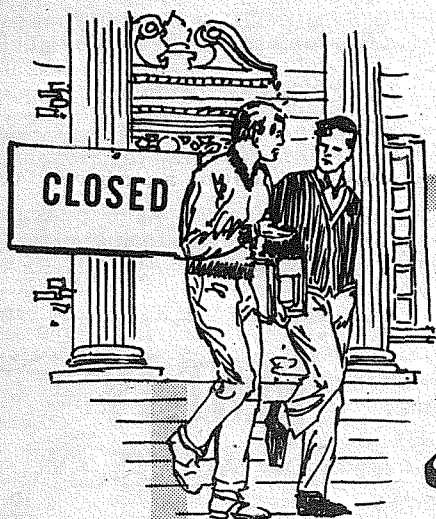
1967 FOOTBALL SCHEDULE

Friday	September 29	Yelm	Away
Friday	October 6	Orting	Home
Friday	October 13	White Pass	Home
Friday	October 20	St. Martins'	Away
Friday	October 27	Winlock	Home
Friday	November 3	Montesano	Away
Friday	November 10	Chas. Wright	Home
			(HOMECOMING)

Eatonville

1967-68 BASKETBALL SCHEDULE

Friday	December 1	Jamboree at Eatonville	
Friday	December 8	Yelm	Home
Saturday	December 9	Laughton	Away
Friday	December 15	Orting	Away
Saturday	December 16	Rochester	Home
Tuesday	December 19	Morton	Away
Friday	December 22	Morton	Home
Wednesday	December 27	Elma	Home
Friday	January 5	Tenino	Away
Saturday	January 6	White Pass	Home
Tuesday	January 9	St. Martins	Home
Friday	January 12	Chas. Wright	Away
Saturday	January 13	Laughton	Home
Friday	January 19	Yelm	Away
Friday	January 26	Orting	Home
Saturday	January 27	Montesano	Away
Saturday	February 3	Rochester	Away
Tuesday	February 6	St. Martins'	Away
Friday	February 9	Tenino	Home
Saturday	February 10	White Pass	Away
Friday	February 16	Chas. Wright	Home



*Will
College Doors
be Closed for
Your Children?*

Each day the costs of a college education spiral upward. In fact, experts predict that within a few short years it will cost nearly \$10,000 to send a student to college for four years study.

That's why so many wise parents began saving years ago for their children's education with a student trust account here at Citizens.

They are not only accumulating money for their children's education, but they know their funds are safe as well. . . . insured up to \$15,000 by the federal government. And earning interest, too.

Will college doors be closed for your children? Don't let them be! Begin saving now for your children's future at your nearest Citizens office.

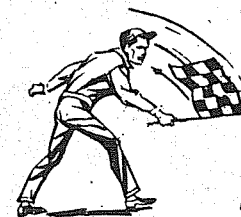
Their education is the greatest investment you can make!

Citizens STATE BANK



- ★ MAIN OFFICE - PUYALLUP
- ★ EAST SUMNER OFFICE
- ★ SUMMIT VIEW OFFICE
- ★ EDGEWOOD-MILTON OFFICE

MEMBER FEDERAL DEPOSIT INSURANCE CORPORATION



SPANAWAY SPEEDWAY

***PRESENTS*
AUTO RACING INC.**

**SEASON
CHAMPIONSHIPS**

2 BIG DAYS!

Saturday Sept. 30-7:30 PM

Sunday, Oct. 1st 1:30 PM

**DOUBLE POINTS
DON'T MISS IT!**

SPANAWAY SPEEDWAY

**2 MILES EAST OF PACIFIC
ON 59TH...TACOMA**

Men In Service



JOURDAN T. SULLIVAN JR. is pictured receiving a congratulatory handshake from Admiral Fred E. Bakutis on his recent promotion to full Lieutenant and being named aide to the admiral.

Jourdan T. Sullivan Jr., son of Mr. and Mrs. J. T. Sullivan 853 South 112th, was promoted to the rank of Lieutenant and named Aide to Admiral Fred E. Bakutis, Commander Alameda Air Fleet. Lt. Sullivan attended Midland Elementary School, and

graduated from the University of Rhode Island before entering the Navy. He was recently awarded the Navy Commendation Medal for action in Viet Nam. His sister, Mrs. Sue Bachmeier, teaches at Central Avenue Elementary School.

— U.S. Navy Photo

Puyallup Over Tye

PUYALLUP - The Vikings will invade Wolverine country Thursday evening to engage in grid-iron combat with Evergreen.

The Norsemen's encounter with the Totems of Tye last Friday bore them a 33 to 19 victory.

Three minutes and ten seconds into the first period, Puyallup's halfback Don Ross lunged through the Tye defense for a 3 yard T.D. effort. Four minutes and twenty seconds later wingback Dorry Clausnitzer hot-footed 9 yards for a second Viking score followed by a successful PAT boot from the toe of Rick Hahn. The quarter closed with Puyallup 13 points over the scoreless Totem team.

Vik tailback Chuck Redwine started the second quarter scoring action by vulldozing 1 yard through Tye for a third touchdown. Hahn's kick was good setting the score at Puyallup 20-Totems 0. Two minutes and twelve seconds remained before halftime when Norse wingback Glen Gergen drove a hard 7 yards for a score. The clock ticked out and at halftime Puyallup led Tye 26 to 0.

The tables turned in the third period as Tye's Gilliland completed a 40 yard ramble for the Totems first touchdown. The PAT kick was no

T-Birds Swamp West Bremerton

The Mount Tahoma Thunderbirds outclassed West Bremerton 27-7 last week to remain one of the top contenders for the City and Capitol league crown.

Quarterback Rod Bolek and company chalked up a total offense of 343 yards to West's 76 yards in registering the victory. T-Bird All City and All State halfback Bob Moore accounted for two touchdowns and an extra point and gained 90 yards in nine carries.

Bolek hit end Al Burki for one touchdown and carried the ball across himself for another. T-Bird reserves, who played most of the second half, held the Wildcats to one TD.

good. The Norsemen returned to action as end Steve Harlow latched onto an aerial from quarterback Steve Alexander for a 15 yard touchdown. Hahn's kick was true and the close of the quarter found the Vikings leading 33 to 7.

Tye came on strong in the last quarter as McHugh received a shot from Blansce good for a 19 yard score. A Wilkening PAT boot was successful and the Totems edged 7 points closer. With four minutes and two seconds left in the game Tye's Blansce plowed forward 4 yards for the final touchdown.

Viking coach Gerry Redmond said, "I was pleased with the offense but we need more work on our defense."

Franklin Pierce Basketball Schedule

- Friday, Dec. 1 Franklin Pierce at Renton
- Friday, Dec. 8 Highline at Franklin Pierce
- Tuesday, Dec. 12 Franklin Pierce at Wilson
- Friday, Dec. 15 Franklin Pierce at Glacier
- Friday, Dec. 22 Mt. Rainier at Franklin Pierce (Homecoming)
- Dec. 26, 27, 28, 29 Holiday Tournament at University of PS Fieldhouse
- Friday, Jan. 5 Clover Park at Franklin Pierce
- Friday, Jan. 12 Franklin Pierce at Puyallup
- Friday, Jan. 19 Lakes at Franklin Pierce
- Tuesday, Jan. 23 Federal Way at Franklin Pierce
- Friday, Jan. 26 Franklin Pierce at Auburn
- Friday, Feb. 2 Franklin Pierce at Clover Park
- Friday, Feb. 9 Puyallup at Franklin Pierce
- Tuesday, Feb. 13 Franklin Pierce at Federal Way
- Friday, Feb. 16 Franklin Pierce at Lakes
- Friday, Feb. 23 Auburn at Franklin Pierce

Bethel Sports Schedule

J.V. FOOTBALL - Game Time 4:00 P.M.

- Oct. 2 - North Thurston at Bethel
- Oct. 9 - Bethel at Enumclaw
- Oct. 16 - Bethel-Bye
- Oct. 23 - Sumner at Bethel
- Oct. 30 - Curtis at Bethel
- Nov. 6 - Bethel at Peninsula

JUNIOR HIGH FOOTBALL Game Time 3:30 P.M.

- Sept. 29 - Bethel at Peninsula
- Oct. 6 - Laughon at Bethel
- Oct. 13 - Bethel at Nisqually
- Oct. 20 - Bethel at Tumwater
- Oct. 27 - Bethel-Bye
- Nov. 3 - Bethel at North Thurston
- Nov. 10 - Curtis at Bethel

VARSITY GOLF - Tee off Time 4:00 P.M.

- Sept. 28 - Enumclaw at Bethel
- Oct. 2 - Bethel at Curtis
- Oct. 5 - Bethel at Sumner
- Oct. 9 - Bethel at North Thurston
- Oct. 12 - Tumwater at Bethel
- Oct. 16 - Bethel at Peninsula
- Oct. 19 - Sumner at Bethel
- Oct. 23 - Seamount League Golf Tournament

CROSS COUNTRY - Starting Time 4:00 P.M.

- Sept. 26 - Peninsula vs. Bethel (Wright Park)
- Sept. 28 - Tahoma at Bethel
- Oct. 3 - Enumclaw at Bethel
- Oct. 5 - Bethel-Bye
- Oct. 10 - Bethel at Tumwater
- Oct. 12 - Bethel at Sumner
- Oct. 17 - Bethel at Curtis
- Oct. 19 - Bethel at North Thurston
- Oct. 24 - Mount Si at Bethel
- Oct. 27 - North Thurston Invitational
- Nov. 2 - League Meet at Curtis
- Nov. 11 - State Meet

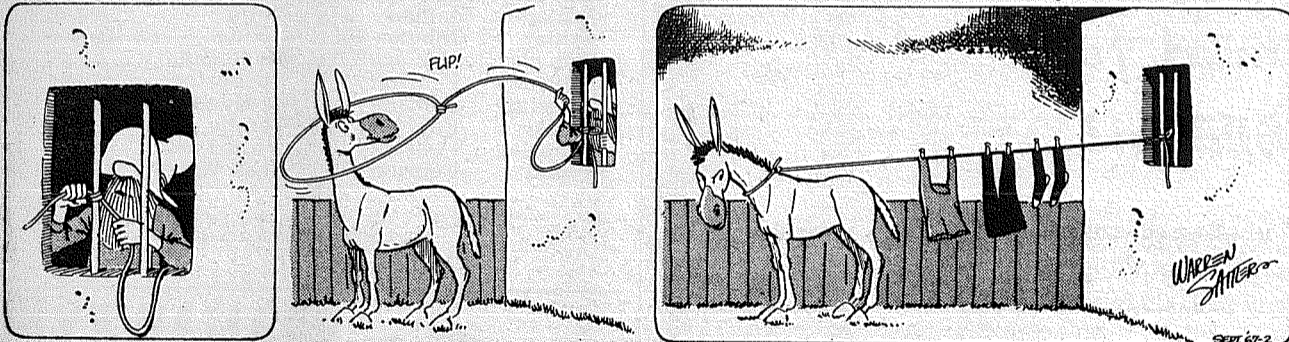
OUR WEEKLY COMICS

Rural Delivery



By Al Smith

Grubby



By Warren Sattler

DEEMS



By TOM OKA

Grandpa's Boy



By Brad Anderson

RENT TV
RENTAL MARTS, INC.
 Portables All Sizes Color TV
 GR 5-3755 9440 Pacific JU 4-4100 10012 Bridgeport

MAGDANZ BUY OF THE WEEK

White Toilet Seats Reg. \$5.00 3⁵⁰	Utility Knife Adjustable Blade Reg. 1.50 1²⁵	Stanley BLOCK PLANE Reg. 4.30 3⁶³
---------------------------------------------------------	----------------------------------------------------------------------	--------------------------------------------------------

MAGDANZ HOMETOWN HARDWARE
 11401 PACIFIC AVE

WE QUIT!
 Only a Few Days Left
 Prices Reduced on Furniture, Groceries, Clothing
SALVAGE MART
 13014 Pacific Ave. Open Til 9 p.m.

INSURANCE
Auto-Fire-Life-Bonds
 A COMPLETE SERVICE FOR HOME OR BUSINESS
IRENE CLEMENS
INSURANCE AGENCY
 10329 PACIFIC AVE. LE 7-4904
 AGENT-BROKER-NOTARY

FROM OUR Correspondents

Waller Road

By Mrs. Verne W. Fogle Le 7-5210

Waller Road Grange, was a fourth place winner in the recent Community Progress Contest, sponsored by the National Grange and Sears & Roebuck Foundation.

Entered in competition with more than 100 granges throughout the state, the accomplishments of the Grangers during the two year period were outstanding in Community service. First of the worthwhile projects was the establishing of the Grange Hall as a Community Center. The permanent buildings constructed in the Park area the past summer were put into use at the Community Fair, which was held in August.

Mrs. Robert Kersey who was president of the Waller Road PTA last year and who is presently serving as Secretary for the Puyallup PTA Council, attended the 1st Governor's Statewide Conference on Libraries.

Held at the Tye Motor Inn, the discussion groups were in various buildings on the Capitol grounds.

Accompanying Mrs. Kersey, were Mrs. Sarah Harvey, council president and Mrs. Ruby Kielen, Council Library Chairman. There also were representatives of the Puyallup Schools.

The groups were conducted on a tour of the capitol grounds and also on a tour of the museum.

Due to the car-bicycle accident last week that sent Suzanne Hickey to the hospital, there is now a 25-mile speed limit posted on 36th Ave. East (Carlson Road).

November Election

Rural Fire Districts To Pick Commissioners

Twenty - two rural fire districts, the agencies responsible for fire protection in Pierce County outside incorporated towns and cities, will elect commissioners November 7.

The League of Women Voters of Tacoma - Pierce County this week issued a brief history and explanation of these districts for the help of voters:

"Most of the cities and towns of Pierce County have fire departments although only Tacoma has all paid personnel.

Fire protection outside city limits, unincorporated areas, is provided by Rural Fire Districts.

Fire District enabling legislation for the County was passed in 1937. The first rural fire district formed was in Sumner in 1940. The size of districts varies. Some are large and some are small and sandwiched in between other fire districts and city lines.

There are 22 rural fire districts in Pierce County. Some have paid personnel while others have token payment volunteers or a combination of both. Rural fire districts are administered by 3 man Boards of Commissioners. In the November 7 election, about 25 officials are to be elected for the rural fire districts of the County.

A network of mutual aid, no - charge assistance contracts has been developed since 1963 between the City of Tacoma and the cities of Fircrest, Ruston, Puyallup, Sumner and Olympia -- the following Rural Fire Districts #12, Buckley, #13 Dash Point - Browns Point, #10 Fife, #5 Gig Harbor, #2 Lakewood, #4 Midland, #6 Parkland, #14 Riverside, #9 Summit and #3 University Place plus McChord

Field Fire Department, Ft. Lewis Fire Department and King County Fire Department #39.

The City of Puyallup has mutual aid, no-charge assistance contracts with Tacoma and Sumner and Rural Fire Districts #6 Parkland, #8 Edgewood, #9 Summit, #10 Fife, #11 North Puyallup and #14 Riverside.

The above mentioned contracts provide that the first concern of each partner is protection of its own territory. A department gives aid to the other only under conditions of adequate self protection.

The fire districts in Pierce County are: 1 - Sumner, formed July 1940, 2 - Lakewood - Suelacoom, formed November 30, 1940, 3 - University Place, formed February 20, 1944, 4 - Midland, formed April 20, 1945, 5 - Gig Harbor - Fox Island, formed January 6, 1945, 6 - Parkland, formed February 16, 1946, 7 - Spanaway, formed April 27, 1946, 8 - Edgewood, formed August 16, 1947, 9 - Summit, formed April 17, 1948, 10 - Fife, formed September 11, 1948, 11 - North Puyallup, formed February 19, 1949, 12 - between Bonney Lake and Buckley, formed December 7, 1949, 13 - Dash Pt. - Brown's Pt., formed January 20, 1950, 14 - Riverside, formed April 26, 1952, 15 - Eatonville area, formed June 21, 1952, 16 - Lake-Bay area, formed November 4, 1952, 17 - McKenna area, formed February 14, 1953, 18 - Orting, formed February 24, 1954, 20 - South Prairie area, formed March 14, 1961, 21 - Graham - Kapowsin - Tanwax, formed November 14, 1961, 22 - Lake Tapps area, formed September 11, 1962, 23 - Ashford - Elbe - Alder, formed April 17, 1967.

9 a.m. - 10 p.m.
7 DAYS
A WEEK



16618
Pacific Ave. S. Spanaway
LE 7-3371

No Sales To
Dealers

WE RESERVE THE
RIGHT TO LIMIT
QUANTITIES

We Carry A Complete Line Of Sacked Feeds - Presto Logs

We Are Locally Owned & Operated
HELP YOUR BUDGET
WITH THESE SAVINGS

PRICES
EFFECTIVE
Sept. 28-29-30
Thurs.-Fri.-Sat.

Hi Country
APPLE JUICE
23¢
QT.

LIBBY
King Size
PITTED OLIVES
No. 1 Tin **39¢**

FAMILY JOY
TOMATOES
303 TIN
6 \$1
for

B&K
LUNCHEON MEAT
3/\$1.00
12 Oz.

Blue Bonnet
Margarine
\$1
4 Lbs.

NALLEY
MEAT BALLS
and
GRAVY
59¢
24 Oz.

OCCIDENT
FLOUR
5 Lb.
39¢

Sunshine
Krispy
Crackers
2-Lb. Box
59¢

Mission
Macaroni
Dinner
3 Pack
49¢

BO PEEP
SUDSY
AMMONIA
QT. **19¢**

PRODUCE

CAULIFLOWER SNOW WHITE HEADS 23¢ ea.	PINK GRAPEFRUIT 3 FOR 29¢	LARGE ORANGES 10¢ LB.	SLICING CUKES 10¢ ea.
---------------------------------------------------	-------------------------------------	---------------------------------	---------------------------------

Everyday Low Meat Prices . . . 25 lb. Locker Boxes \$14.95

Ground
BEEF
39¢
LB.

Cube
Steaks
98¢
LB.

Thrifty
BACON
67¢
LB.

Large
FRANKS
57¢
LB.

Short
RIBS
39¢
LB.

Boiling
BEEF
19¢
LB.

NEED WORK SHOES-BOOTS?

Over 60 Styles
To Choose From!

6" Work Shoes **7⁹⁹** to **15⁹⁹**

8" Boots **10⁰⁰** to **35⁰⁰**

Rubber Boots **3⁹⁹** to **16⁹⁵**

OPEN SUNDAYS

PAULS SHOES

161 st. & Pacific
LE 7-0552

Open 9 to 9 Daily
Till 6 Sat. & Sunday