

Thousands Thrilled By Spectacular CAP Air Show at Thun Field



HUGE SUCCESS—One of the biggest crowds ever seen in the area gathered at Thun Field Sunday for the big air show put on as a benefit for the Tacoma Civil Air Patrol, proceeds to be used to finance its search and rescue program and other activities. The show featured parachute drops by the Rainier Parachute club, fly-bys of antique planes which were also on display, breath taking aerobatics by well known fliers, amusing go-cart races by local TV and radio disk jockeys, the appearance of Brakeman Bill as a treat for the kiddies—all this and scores of minor attractions which added to the pleasure of all. And when the show was over there was still something that few had seen before—streaming away from the field were 7,000 spectators whose cars filled the parking space and lined the surrounding roads for a mile, while the 110 visiting planes took off smoothly from the runways, all without accident or danger. It was really a BIG day! —McKewen Studio Photo

McKenna Loggers Hold Reunion

The annual August picnic-gathering of the old-time McKenna Loggers found 68 assembled at O'Tremba's Cafe near Eatonville. Good food, games and Loggers reminiscences made this a particularly enjoyable occasion for all. Those attending from the greatest distance were: Ed Laramie from Oregon, and George McEachrons' daughter Leone from San Jose, California. A minute of silence was observed for the four members who had passed away during the year: Godfrey Anderson, Earl Ruble, Emil Neimeyer and Archie Thompson. Next year should be bigger and better than ever, at the same place. If you are a former McKenna Logger and your name has been accidentally omitted, please contact Fred O'tremba, for we want you with us next year.

Summer Recreation Program Best Ever

Summer has once more rolled by and the classroom duties call care-free boys and girls back to school. The most successful summer recreation program yet held in the Franklin Pierce and Spanaway areas is now behind them but not forgotten. Through the efforts of the Franklin Pierce School District and the Pierce County Parks and Recreation Department, outstanding leadership has been provided for the well equipped school playgrounds and county areas that have been used as play centers. Playgrounds at Dawson, Parkland Park, James Sales School, Collins School, Central Avenue School, and Spanaway School had a total attendance of 13,000 children throughout the ten week playfield season. James Sales led all playgrounds with an average weekly attendance of over 400 boys and girls. The Learn-to-Swim program inaugurated this summer at the South End Pool was received with tremendous interest. The Franklin Pierce School District provided bus transportation to and from the pool and the two sessions of classes were filled to capacity. Two hundred boys and girls was the maximum that could be accommodated at any one session and that number was reached within hours of the announcement of registration details. This well accepted program is to be continued next season and will be enlarged upon if the demand necessitates such action. Twenty-six baseball teams were in action in the Franklin Pierce area. This "national pastime" found some 400 prospective big leaguers playing in three separate leagues. The adult managers of these squads deserve the plaudits of the community for the interest and time put in without remuneration to provide such wholesome recreational activity for the many boys taking part. Special events were another of the highpoints of the summer play season. The Clover Park School District made possible the use of Thompson Field for the All-County Junior Olympics when Lincoln Bowl in Tacoma was under repair and unable to be obtained. Franklin Pierce area entrants in both the boys and girls divisions were well up in the list of winners. The first playground fair held recently at Spanaway was another of the very successful all-county affairs. All hats are off to the County Commissioners and the Franklin Pierce School District directors whose interest in recreation has made possible further forward progress in the development of the area's recreational program.

F. P. Changes Plans For Kindergarten

Several changes have been made in the registration of kindergarten children in Franklin Pierce Schools by the district administration. Parents and children will meet briefly with kindergarten teachers at 9:00 o'clock Wednesday, Sept. 9, to receive instructions and session assignments. Thursday and Friday, September 10 and 11, kindergarten classes will be in session for one hour only. Parents will be responsible for transporting their own children for these first three days of meeting. Classes for kindergarten children will be in full session and transportation will be furnished to those elementary schools where transportation is provided. All but James Sales and the new Christensen school are furnished with transportation.

F. P. Schools To Open Sept. 9th

Franklin Pierce Schools will open Wednesday, Sept. 9. Administrative Assistant Robert C. Richardson also disclosed that bus runs will be the same as last year except for the Brookdale and Parkland schools, which are as follows:

BROOKDALE
8:20—Leave Brookdale School — Go to 138th and Pacific — West on 138th to Spanaway Loop road — North on Loop road to Tule Lake road — East on Loop road to Yakima Ave — North on Yakima to 124th — West on 124th around College Golf course to Wheeler — West to Alaska — North on Alaska to 117th St. — West to Ash Street — South to Tule Lake Road to Brookdale School.

8:20 — Start picking up Waller & Brookdale road — Pick up along Brookdale road, 131st and Tisch — 133rd and B — 136th and B — 138th and "A" — 138th and "F" — 140th and "F" — Johns Road — 138th and "B" — 143rd and "D" — 143rd

(Continued on Page 2)

Minor 49'ers Set For Fall Football

The Spanaway Recreation Committee is again sponsoring the Minor 49'ers in Little League football. All boys 10, 11 and 12 years old wanting to try for the team are asked to report at the Spanaway ball field Saturday morning at 10 o'clock. For further information, contact Bob Perry, LE 1-0321.

The TIMES JOURNAL

THURSDAY, SEPTEMBER 3, 1959 • VOL. 14, NO. 52 • PUBLISHED AT PARKLAND, WASH. LE 7-0223

U.S. Postage Paid
Sec. 34.66 P.L.&E
Parkland Branch
Tacoma, Wash.
Permit No. 9P

Rural Route
Occupant or Boxholder
Postmaster: If unable
to deliver, return postage
is guaranteed on
addressed papers.

Hunter Safety Grads Celebrate

Byron Parker, president of the Spanaway Progressive Community club, sponsoring the Hunter Safety program, reports a great trip to the McChord Field rifle range with the grads of the course just completed, where the dads and their sons really "shot the bull." Many thanks to Sgts. H. Hessler, F. Mayberry and J. Rodeman.

TODAY'S LAFF

Freedom . . . The ability to do as you please . . . as long as you obey local, county, state, postal, traffic, federal, and family regulations.

OPEN LABOR DAY

PAUL'S SHOES
Spanaway
161st & Pacific Ave.
LEnox 7-0552
Open Friday and Monday
Til 9:00

Parkland P-TA Board

Parkland P-TA Board will meet this Thursday evening at 8:00 in the home of Mrs. Forrest Olson, 303 East 123rd.

Mrs. Don Dovey, new president, urges all board members to attend this first meeting and help plan the events for the coming year.

whose fine co-operation made the outing a big success. Graduates of the hunter safety program at Spanaway now number over 400 boys and girls—350 last year and 70 so far this year. Another group is now starting the course; anyone interested should call John Newell, LE 7-7425, for further information.

Don't forget the Western Washington Fair at Puyallup, Sept. 19 through 27.

Parkland Fire Department Busy

Now that school is about to begin, the Parkland Fire Department wants to extend to all the various groups in our fire district the assurance that the department has men available to help out in putting on a fire prevention program for anyone desiring such a program.

This can be run for any amount of time needed but for one to be effective it should be a minimum of one hour. This has been done in the past and has proved to be very popular where ever it was put on.

One thing we wish to point out at this time is that fire permits are still required, and will be till the 15th of October. These permits are required regardless of weather conditions.

The Department answered 25 fire

Volkswagen Club

By Kreetha B. Alkire

The Volkswagen Club of Tacoma has an active schedule planned for September which includes a business meeting and an auto caravan road tour.

The club's next business meeting will be 8:00 p.m. Thursday, September 10th at Imported Motors, 7030 South Tacoma Way. Business includes planning an October social activity and the making of long range plans for the group's annual birthday party. President Jerry Siler, 10604 A street, will be in charge of the business meeting.

Mrs. Jerry Siler, hostess for September, will serve dessert and coffee during the social hour following the business meeting.

The club's September outing will be a "SEE THE COLORS OF AUTUMN" tour, planned by Road Captain Norman Strand and F. W. Jowett. This tour is open to all foreign cars and will start from Cass's

(Continued on Page 2)

FP Football Soon

The first turn-out for the Franklin Pierce Junior High football squad will be held Wednesday, Sept. 9, at 3:30 p.m. All boys expecting to turn-out should have their physicals for physical education and football before that date and should bring equipment to the turn-out. Coaches will be Ed Stricherz and Frank Berry.

The Country Parson



"It seems easy for others to call church members hypocrites—and kind of easy for members to prove them right."

DRYER'S FUNERAL PLAN CUTS COSTS

Dryer MORTUARY
1214 AND PACIFIC
PARKLAND

Farmers Mutual of Enumclaw
Fire — Auto
ED MAREK
12907 Pacific Ave. LE 7-4000

SPANAWAY HARDWARE

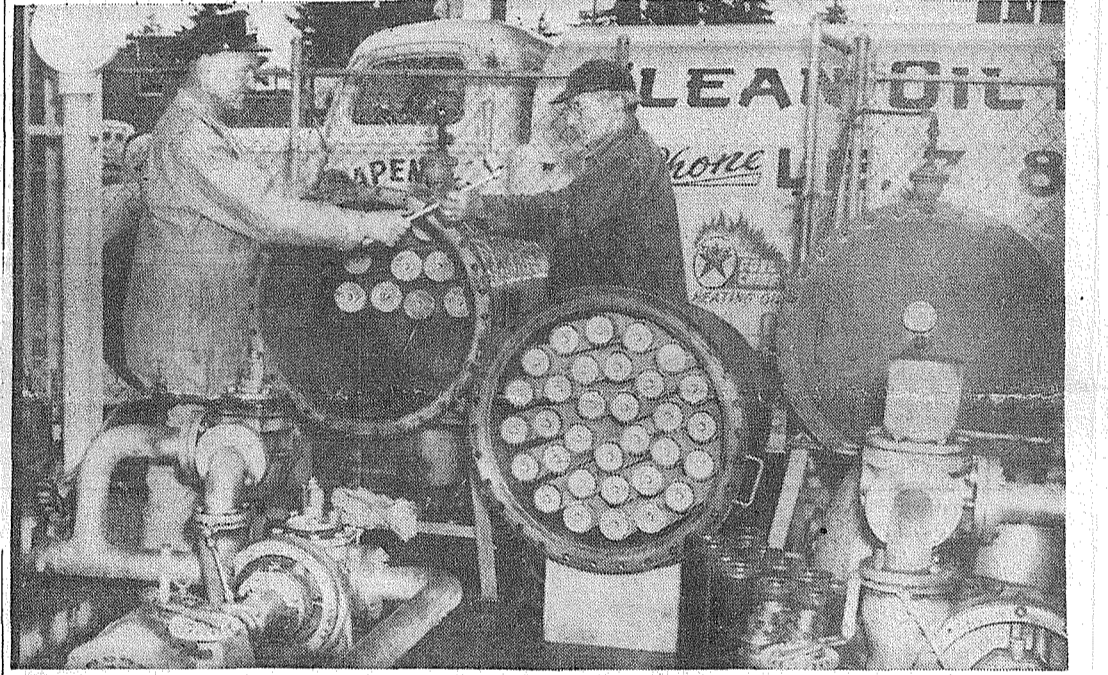
ELECTRICAL AND PLUMBING SUPPLIES
SAND, GRAVEL & CEMENT
PLASTIC PIPE

170th & Pacific
LE 7-8378
Open Sundays 8:30-1:30

PROFESSIONAL DIRECTORY

Farmers Mutual Ins. Co.
Auto — Fire — Liability
J. J. GUNNS Agency
and BARBER SHOP
303 East 176th LE 7-7757
2 Blocks East of Transformers
Spanaway

ANNUAL FILTER CHANGE AT LAPENSKI FUEL



Frank Lapenski (left) and Ed Hamilton are installing the year's new filters and water eliminators at Lapenski Fuel's bulk plant at 9910 Pacific Avenue. The filter removes all impurities and the water eliminator removes all moisture from all oils sold by Lapenski. This is your guarantee of clean, trouble-free heating oil. Established in 1934, moving to the present location in 1944, Lapenski Fuel has kept pace with modern developments by the installation of all equipment necessary to maintain the only bulk plant of its kind in Pierce County. Call Lapenski Fuel, "Home of Clean Heating Oils," for prompt, courteous service. LE 7-8173 — Ad.

SHOP & SAVE at BROOKDALE LUMBER CO.

WALLBOARD

4 x 8 1/2" CELOTEX (Prefinished) . . . Each 2.56
4 x 8 1/2" PRESTWOOD (Prefinished) . . . Each 2.56
Makes Nice Wall Finish for That Spare Room

4 x 8 1/2" VEE GROOVED MAHOGANY . . . Each 5.95
Gives Any Room That Distinctive Look

FREE ESTIMATES ON REMODELING up to 5 years to pay

PLYWOOD

4 x 8 1/2" CEDAR VENEER (Rejects) . . . Ea. 2.95
4 x 8 1/2" FIR VENEER (Shop) . . . Ea. 3.56
4 x 8 1/2" Good One Side (Pops) . . . Ea. 5.44
4 x 8 1/2" OAK and BIRCH (Pops) . . . Ea. 9.50
for Beautiful Cabinets

Interior Doors 2nds

MAHOGANY and BIRCH . . . Ea. 4.95
Make Good Closet Doors

WE CUT WINDOW GLASS

Galvanized Metal Per Gutter . . . Ft. 23c
2" Downspout 10 Ft. . . Ea. 1.95
Thick Butt Composition Shingles . . . Per. Sq. 10.75
Medium Weight Roll Roofing . . . Per 315

USE OUR MONTHLY PAYMENT PLAN

BROOKDALE LUMBER COMPANY
LE 7-8669
136th & Pacific

Open 7 Days A Week Sundays 8 a.m. to 4 p.m.

HUNTING & FISHING LICENSES, SPORTING GOODS, PAINT
SOUTH END PLUMBING AND HARDWARE
185th & Pacific Avenue Phone LEnox 7-4100

FAST — FAIR — FRIENDLY
COMPARE RATES . . . SEE HOW MUCH YOU MAY SAVE — CALL

IRENE CLEMENS
LE 7-4904
10329 Pacific Avenue

FARMERS AUTO INSURANCE

MAMA BEAR Self Service LAUNDROMAT
GENTLE ACTION

Located in the Big Bear Shopping Center
Open 24 Hours Per Day 7 Days A Week
SELF-CLEANING WASHERS

TRUST US WITH ALL YOUR DRY CLEANING!

WE ALWAYS MAKE MINOR REPAIRS AT NO CHARGE

Bachelor maids and men appreciate our special attentions to their garments, as well as the best cleaning job, ever!

PARKLAND CLEANERS
11004 Pacific Avenue
North of the Bank Corner LEnox 7-3221

Back to COLLEGE!

MEN — VARSITY KLONDIKES (Polished Cottons) & CORDS
ALL \$6.95 By Days

LATEST STYLES IN SWEATERS By Van Heusen
Jackets by Buck Skein & H and L Block
Many Wash 'n Wear From \$10.95 to \$19.95

LADIES' BLOUSES By Fritzzi
SWEATERS By Garland
SEPARATES By PETTI

Janet's LADIES' & GENTS' SPORTSWEAR
409 Garfield St. LE 1-0611

WE QUIT FINAL SALE

★ CHILDREN'S WEAR
★ INFANT'S & SHOWER GIFTS
EVERYTHING MUST GO DRASTICALLY REDUCED

ALSO FIXTURES FOR SALE

ESTHER'S NOOK
408 Garfield Street Parkland

REMODEL NOW

NO MONEY DOWN EASY PAYMENTS

- NEW ROOFS
- NEW SIDING
- FOUNDATIONS
- BASEMENTS
- NEW GUTTERS
- GARAGES
- BATH ROOMS
- KITCHENS
- ADDITIONS

Phone Me (Russ the Bldr.) Today
GRAHAM-VINEWOOD, 7-2168
Free Estimates . . .
No Obligations

All Your Favorite Styles Here

Special Evening Hours
Open Friday Night 'Til 9:00

Soines' SHOES

Poll-Parrot SHOES
For Boys and Girls

Melody SHOES FOR TEENS

TEENAGE STYLES 3.95 to 7.95

Wonderful Washable NYLON VELVET
In Red or Black

BLACK FLIP-TOP SHOE FOR LAZY BOYS

CHILDREN'S SCHOOL SHOES 4.95 to 7.95

CUFF STYLE LANCERS

GIRLS' TEENAGE BOOTS

RAND-CRAFT SHOES FOR TEENAGE BOYS

DESERT BOOTS
In Black, White, Rust 12.95
Other Styles From 9.95

411 Garfield
LE 7-3526
Open 10-6

OPEN FRIDAY NIGHT, SEPT. 4 'TIL 9 P.M.

F. P. Schools To Open Sept. 9th

(Continued from Page 1)
and "B" — 143rd and Pacific to Brookdale School.
KINDERGARTEN
11:15 — Leave Brookdale School to Pacific Ave — South on Pacific Ave to 138th — West to Spanaway Loop Road — North on Loop Road to Tule Lake Road — East on Tule Lake Road to Yakima Ave. — North on Yakima to 124th — around College Golf course to Wheeler Street — West on Wheeler to Alaska — North on Alaska to 117th St. — West to Ash St. — South to Tule Lake Road — East on Tule Lake Road to Pacific Ave — 131st St "A" St — 130th Tisch Road — East on Brookdale road to Waller Road — Return to 133rd East "B" — 134th East "B" Johns Road — 138th "A" (Trailer Court) 143rd and "D" — 143rd and "B" to Pacific and Brookdale School.
PARKLAND
8:30 — 112th and Golden Given. Helen's Fruit Stand, 112th and

East "D" — 112th and Pacific — North on Pacific to 99th, East on 99th to "A" Street — South on "A" Street to Airport. North on Pacific to 108th — West on 108th to Park — South on Park and Broadway to Parkland School.
KINDERGARTEN
Leave Parkland School 11:15 A.M. 127th and "F" — 121st — 121st and Golden Given — Golden Given and Airport — Airport to Pacific — North on Pacific to 99th — West on 99th to "A" Street — South on "A" Street to Airport — to Pacific Avenue — North on Pacific to 108th — West on 108th to Park Avenue — South on Broadway and "C" Street to Parkland School.
The new Andrew Christensen school will be a walking school. The only buses in the area will be for junior and senior high school students. State Patrol and county engineers are cooperating with district to make the new school as safe as possible with new cross walks being marked and patrols being organized to help students through congested areas.
Richardson stated that any questions in regards to bus stops should be referred to the building principal for correct answering.

County Agent's Corner

By Florence D. Allen
In forestry language, a "sleeper" is a fire that burns undetected beneath the ground, springing to life hours or days later. Campfires cause many sleeper fires. Don't you be caught napping. Drown your campfires. Stir and drown again. Feel the ashes to make sure that they are "dead out". Keep Washington Green.
Weather conditions are a big factor in forest fire danger periods. High winds, low humidity and long dry spells raise a fire risk appreciably. We cannot control the weather, but we can recognize the danger signals and redouble our care with all fire during these times to help Keep Washington Green.
Open fires are not permitted without a fire permit during the fire season except in designated and approved campgrounds. Fire permits may be issued only to landowners, lease holders, or to persons with written permission from the landowner. Such written permission must be left with a forest warden issuing the permit. Permits are not required for suitable camp stoves and incinerators used in safe places where no fire can spread therefrom. Before building any fire check with local forestry officials. They will tell you how you can make your fire safe and

Volksvagen Club

(Continued from Page 1)
Drive-in, 924 Puyallup Ave., Tacoma, at 12:30 p.m. Sunday, September 20. The group will travel to the Green River Gorge area. All persons attending are requested to bring individual picnic lunches.
Participating in the recent Seattle Seafair Parade aboard U.S. Navy vessels were Lowell R. Smith, hospitalman USN, son of Mr. and Mrs. Lester C. Smith of 1602 South 110th St., and Thomas M. Selland, commissaryman third class, son of A. J. Selland of Rt. 7, Box 470.
Parkland Christian Church
757 So. 138th, Parkland
Sunday School 9:45 a. m.
Morning Worship 11:00 a. m.
Youth Meeting 6:15 p. m.
Evening Service 7:30 p. m.
Bible Study, Thursday 7:30 p. m.
Richard Crane, Pastor

Kapowsin Chest Drive Opens 9th

A fund drive for the Kapowsin Area Community Chest will be carried on Sept. 9 thru 18, advises Foss Caldwell, chairman of the Community Chest in this area. Districts are organized and teams prepared to contact each resident of the area. Each solicitor will have reports of Chest activities and finances for the past year. These reports are available to anyone contacted as a record of the community services supplied by Community Chest Fund contributions.
The past year's activities include assistance to a family who lost their home by fire, medical assistance in several cases of ex-

reme need, shoes for grade school students, Thanksgiving and Christmas baskets for needy families and eye glasses for three grade school students, as well as hot lunches for various periods for several students.
The Community Chest Board wishes to thank all who participate in this program by contributions or by their donations of time and talent. All are urged to contribute generously when contacted in order that these worthy causes may continue to be served.
Kapowsin School area Community Chest Board.

PIERCE COUNTY REFUSE CO.
Weekly Garbage Collections
Phone LE 7-8688

Foliage Fanciers
Foliage Fanciers Garden club will have a noon luncheon Thursday, Sept. 10, at The Top of the Ocean. Members will meet at the

Prescriptions INSULIN
Open 9:30 to 9 Weekdays (Closed Sunday)

ASHMORE'S SPANAWAY DRUG
165th & Pacific LE 7-5993

home of Mrs. Claude Butler at 11 o'clock for a short business session.
The following officers and chairmen will be installed: President, Mrs. Jack Siler; vice president, Mrs. Claude Butler; secretary, Mrs. Robert Tomberg; treasurer, Mrs. Jerry Siler; program, Mrs. A. C. Ayers; sunshine, Mrs. Art Massie; telephone, Mrs. Charles Kent; plant exchange, Mrs. Cline Graves; yearbook, Mrs. Webster Walton; historian, Mrs. Orville Torgeson.
Don't forget the Western Washington Fair at Puyallup, Sept. 19 through 27.

A Real Treat
SPRING CHICKEN
Pan - - - - - Tossed Salad
Fried - - - - - Potatoes
with COUNTRY GRAVY

NETTIE'S CAFE
VISIT OUR DAFFODIL ROOM
PUYALLUP
TH 5-1156 116 SO. MERIDIAN ST.

QUALITY HOMES DESIGN ASSISTANCE
Estimates Without Obligation
Hedlund Const.
920 So. 121st LE 7-4227

Lacamas Rummage Sale
The Ladies Auxiliary of the Lacamas Community club will hold a rummage sale Sept. 11 and 12, 9:00 to 5:00, at 401 Garfield street, Parkland. Proceeds will be used for club expenses.

LUMBER --- ALL GRADES
PAINTS - GLASS - HARDWARE
UPLAND SLAB WOOD
BASKETT LUMBER CO.
9701 Portland Ave LEnox 7-5844

Three day Holiday ahead LABOR DAY SPECIALS

HOODY'S
PEANUT BUTTER 3-Lb. Jar **99¢**

KRAFT SALAD DRESSING
MIRACLE WHIP Qt. **49¢**

CRISCO SHORTENING 3-Lb. Tin **75¢**

Scott White
PAPER NAPKINS
60-Count Pkg. **9¢**

Nalley's POTATO CHIPS
Reg. 39¢ Pkg. **29¢**

WE WILL BE CLOSED
LABOR DAY, MON., SEPT. 7

25-Lb. Bag **1⁹³**

ALL PURPOSE FLOUR
OCCIDENT

COUNTY FAIR
ICE CREAM 1/2 Gal. **75¢**

NALLEY'S CHILI Hot or Mild 15-oz. Tin **4/1⁰⁰**

at **SUMMIT TRADING CO.**

MEATS

Pederson's Cut-Up FRYERS Fresh Packed Daily Lb. **39¢**

Carsten's Fiesta or James Henry HAMS Boneless, and Fully Cooked Lb. **79¢**

U.S. Good — Well Trimmed ROAST Rump Lb. **73¢**

ARMOUR'S ★ BONELESS, COOKED PICNICS 3-Lb. Tin **\$1⁹⁹**

FRESH GROUND HAM LOAF Lb. **43¢**

PRODUCE

CALIFORNIA Cants 3 For **49¢**

WELL-FILLED EARS Corn 6 Ears **29¢**

GREEN Peppers Lb. **10¢**

CONCORD Grapes 5-Lb. Basket **49¢**

ELBERTA CANNING PEACHES BOX **\$1.45**

PICTSWEET QUICK FROZEN — 10-oz. Pkg. Peas or Cut Corn **6/\$1**

LIBBY'S OLIVES Family Size Tall Tin **2/49¢**

HI HO CRACKERS 1-Lb. Pkg. **27¢**

ALL FLAVORS JELLO 4 Pkgs. **29¢**

BLEACH PUREX Gal. **57¢**

WIDE SELECTION SCHOOL SUPPLIES

DARIGOLD BUTTER Pound Prints or Quarters **69¢**

COLGATE TOOTHPASTE Econ. Size **69¢**

KITTY KAT CAT FOOD Tall Tin **2/19¢**

INSTANT FELS NAPTHA Giant Pkg. **79¢**

Large AA White EGGS Dozen **50¢**

STORE HOURS
9 a.m. 'Til 9 p.m. Daily Except Sunday

SUMMIT TRADING COMPANY
10409 Canyon Road, Tacoma LE 7-5848
No Sales To Dealers
We Reserve The Right To Limit Quantities

Special Sale Marks Ownership Changes

With several interesting changes completed at McDaniels Market, a special sale event has been arranged for this weekend by the new owner, Edward G. Haringo, who bought the business from Roy McDaniels recently.

Remodeling of the market and the addition of new fixtures are designed to make shopping easier and more pleasant. There has also been considerable enlargement of the housewares and drug departments.

Mr. Haringo, owner-manager, is personally in charge of the store. He comes from Seattle and has had many years' experience in food merchandising. He is very much pleased with his new location and foresees a fine future for the area.

In Canton, China, more than 500,000 people live in river houseboats.

FENCING
Designers and Builders
EXPERT WORKMANSHIP
REASONABLE PRICES
Easy Monthly Payments
VAUGHAN'S
84th & Pac. Ave. GR 4-9515

BALDWIN \$995.00
MODEL 30

PROSSER PIANO & ORGAN CO.
6425 S. Tacoma Way
GR 4-0605

Summit News

The Woman's Society of Christian Service of Summit Methodist church will hold the first general meeting of the new year Sept. 10 at 10:00 a. m. in the church hall. Last Saturday a group of men from the church did a reroofing job on the church hall so groups meeting there will no longer be bothered by a leaky roof. Our thanks to those who worked hard on that project.

On August 27 the WSCS entertained with a pink and blue shower for the wife of their pastor, Mrs. Floyd Konkite. About 50 guests enjoyed games under the supervision of Florence Gjuka and delicious refreshments served by Ruth Winsley, Muriel Ralph, June Hanson, Helen Scott, Marjorie Simms, Winnie Patrick, Peggy Shulene and Florence Gjuka. The guest of honor received many beautiful and useful gifts.

HOME FROM TRIP
Mr. and Mrs. Byron Carlson returned last week from a trip to California following their wedding August 14. They drove as far south as Monterey, visiting points of interest along the way, and visited Byron's sister Madelyn and her husband, the Roger Millers, in Eugene, Ore. The young couple

Collins News
Mr. and Mrs. R. Saasen have had as their guests, Mr. and Mrs. Dagfin Lindberg from Trondheim, Norway, for the past four weeks. Mr. Lindberg is a cousin of Mr. Saasen. During their stay a dinner for 25 relatives from Seattle, California, Buckley and Tacoma was enjoyed by the guests. They spent time visiting and seeing the sight in and around Tacoma; after a short visit to California they will fly home to Norway.
Reporter—Mrs. John Gorow.

are now at home in an apartment in Parkland.

OVERSEAS
Perry Bartram of 10814 Canyon road recently received word that he was to be sent to Korea for duty with the Army.

FLOCK, STOCK RAISERS
The Summit Flock & Stock Raisers had five members who entered animals in the Beef division, two in the Dairy division and two in the Poultry division at the Pierce County Junior Fair. Results were as follows: Beef division—Bill Irish, blue and red ribbons; Eddie Irish, red and white; Greg Haaland, blue and red; Tryg Haaland, two blues; Grand and Reserve Champion, one red, Dairy—Gary Wilson, two blues one red; Glenna Haaland, two blues one red, Poultry — Susan Kerr, three blues; Eddie Irish, three reds. The last meeting was held at the home of Jim Clowers. Each member gave his demonstration and practice for the Fair. The next meeting will be at the home of the leader, Mrs. George Haaland, Rt. 3, Box 681-A, Collins road. Officers will be elected for the coming year.

residence. All the members are to bring their record books so that they can be completed.

The girls receiving ribbons at the Jr. Fair for 3rd year sewing were Linda Robbins, 1 white and 2 red; Nancy Scalf, 1 white and 2 red; Judy Freestone, 3 red. In the first year sewing were Connie Robbins, 3 blue; Karen Holm, 3 blue, and Donna Freestone, 2 blue and 1 red. In the Baking division were: Angie Holm, 2 blue; Margaret Korsomo, 2 blue; Judy Freestone, 2 blue; Susan Ward, 2 blue; Barbara Tennent, 1 blue and 1 red, and Linda Robbins, 1 blue and 1 white. Judy Freestone also received a red ribbon for judging.

Reporter—Mrs. C. R. McMillan, LE 7-6529.

INTERURBAN AUTO FREIGHT INC.
3 Trips Daily
To Parkland, Spanaway
Summit, Midland
GENERAL FREIGHT
MA 7-4121

BUSY STITCHERS
The Busy Stitchers 4-H club will hold their next meeting on Tuesday, Sept. 15 at 7:30 at the Holm

School Items at SAVINGS!

ONE BALL POINT PEN FREE With \$1.00 School Supplies

CRAYONS AND PAINTS BINDERS AND PAPER

GET ALL YOUR SCHOOL SUPPLIES AT

McAULEY SUMMIT DRUGS
LE 7-0668 — 9 to 9 Weekdays — Airport & Canyon Roads

***He's got a right to be proud ... HE KNOWS HOW TO FLY!**

IT'S QUICK, EASY, INEXPENSIVE!

Start today—solo within a week. Our methods of teaching, modern planes and experienced instructors make it possible for most students to solo after only 8 lessons. Many are licensed to carry family and friends after only 40 hours of flying time.

YOUR DEMONSTRATION LESSON IS FREE

TAHOMA FLYING SERVICE
SPANAWAY AIRPORT
185th and Pacific LE 1-0442

A Message to PARENTS and STUDENTS FACED WITH THE EXPENSE OF A College Education

College Assured Plan

A PROGRAM FOR FINANCING AN EDUCATION

The COLLEGE ASSURED PLAN is a completely new service offered by the Puget Sound National Bank designed to assist young people toward a college education.

Under this plan, the bank advances funds to the college or university of your choice, to cover the student's major expenses for a period up to four years. As long as six years may be taken to repay.

NOW is the time to arrange for next school year's College Assured Plan financing. Call at our 84th & Pacific Branch or phone F'Ulton 3-1441, Ext. 264.

84th & Pacific Office

PUGET SOUND NATIONAL BANK
CONVENIENT NEIGHBORHOOD OFFICES • FREE CUSTOMER PARKING

MAXWELL HOUSE Regular, Drip and Fine Grind
COFFEE 1-LB. TIN **59c**

Sunny Jim Grape Ade, Orangeade and Party Time Punch
46-Oz. Tin **4 For \$1.00**

Old Ranger PEACHES
2 1/2 Tin **4 For \$1.00**
Home Style

FREE COFFEE and COOKIES for MOM and DAD ICE CREAM for the CHILDREN will be served Friday & Saturday

SKIPPY DOG FOOD
No. 1 Tins... **14 For \$1.00**

HUNT'S TOMATO SAUCE 8-Oz. Tin **13/\$1.00**

HUNT'S FRUIT COCKTAIL 300 Tin **5/\$1.00**

FIRCREST CREAM STYLE CORN 303 Tin **8/\$1.00**

HUNT'S NEW WHITE POTATOES 300 Tin **10/\$1.00**

RED DART, Blue Lake — 303 Tin
GREEN BEANS **9/\$1.00**

"AA" MEDIUM EGGS 2 Dozen **69c**
Fresh Daily From One Local Farm

NALLEY'S Hamburger, Sweet and Hot Dog RELISH 11-Oz. Jar **4/\$1.00**

HUNT'S — 300 Tin
TOMATO JUICE **12/\$1.00**

HUNT'S CATSUP 14-Oz. Bottle... **6/\$1.00**

HAPPY HOME or FIRCREST PEAS 303 Tin **9/\$1.00**

ZEE WHITE NAPKINS 80 Ct. Each **10c**

CARNATION INSTANT POWDERED MILK 8-Qt. Size **2/\$1.00**

FRANCO AMERICAN—15 1/2-Oz. Tin
Spaghetti **4 for \$1.00**
With Meat Balls or Ground Beef

S & W — 28-Oz. Tin
BAKED BEANS **4 For \$1.00**

MEATS

HENRY HOUSE — Sugar Cured PICNICS lb. **35c**

HENRY HOUSE — Skinless WIENERS All Meat lb. **45c**

ALL MEAT CHUNK BOLOGNA lb. **39c**

GOLDEN RIPE BANANAS 2 Lbs. **27c**

U.S. NO 1 WHITE ROSE POTATOES 10-Lb. Bag **29c**

TOKAY GRAPES lb. **10c**

SUNKIST JUICE ORANGES lb. **10c**

Save your asphalt driveway!

improve its appearance with **BLACK TOP SEAL**

• Preserves
• Protects
• Doubles Pavement Life

If your black top drive is cracking and breaking down, ... **BLACK TOP SEAL** will save it!

If your drive is new, **BLACK TOP SEAL** will keep it perfect for years.

BLACK TOP SEAL is a tough, flexible coating that resists gasoline and oil, seals out frost, prevents crumbling and swelling ... protects against weather.

Call or Write Today For Free Estimate

Use it on drives ... playgrounds ... tennis courts ... parking lots ... airfields!

FRED L. SCHUTTE Box 189 E GRAHAM, WASH. VI 7-7631

FRICK and FRANZ DOES IT AGAIN!

MAYTAG DRYER SALE

While they last! First Come...First Served

Act now before bad weather hits. Enjoy automatic drying all winter long and SAVE TOO!

Why Settle FOR LESS \$159.95 YOU OWN THE BEST

ALSO FULLY AUTOMATIC WASHER AS LOW AS \$219.95 W.T.

- 2 Stores to Serve You -

SUMMIT FURNITURE AND APPLIANCE
112th & Canyon Road LE 7-8676

FRANZ FURNITURE AND APPLIANCE
8406 South Tacoma Way JU 8-6686

Washington Grown

Whole Fryers Lb. **37c**

Even Though There Are Some New Faces, It's the Same Friendly Service at

McDANIELS

The Home of The Low Price

AIRPORT & CANYON ROAD

Store Hours: 9:00 'Til 9:00 — Sundays 9:00 'Til 7:00

Prices Effective Thurs., Fri. & Sat.

Woodland News

Square Dancers! If you're going to be in town on the Labor Day weekend why not join the Harmony Hoedowners club at the Fruitland Grange hall? Willis and Loraine Dodge will be teaching the new round dance of the month, "Billy Bayou" starting at 8:30 p.m. Bring your lunch and cups. Coffee and tea will be served by the club. Hosts and hostesses will be the Patricks, Preachers, and the Reynolds family. Why not plan to come out and enjoy the fun?

BUSY VACATION

The N. A. Dillmans of North Street had a busy time during their vacation this summer. Mr. and Mrs. Dillman and son Jack spent a week at Lake Chelan boating, fishing and water skiing; then Mr. and Mrs. Dillman spent some time at the ocean and visiting friends in Southern Oregon. Mrs. Dillman spent a week with her son and family, Mr. and Mrs. Jim Dillman and Edith and Jackie, at Coeur d'Alene, Idaho, Lake Chelan and Curlew Lake. The

summer also saw visitors for a weekend at the Dillman home from Richland, Washington, Mr. and Mrs. Bernie Anderson and children Joyce and Tommy.

THOMPSON-DILLMAN

Orchid and white were the colors for the decorations for the wedding of June Thompson of Auburn and Jack R. Dillman of North Street on Saturday afternoon, August 29, at 3:00 o'clock on the lawn of their future home on North Street. The bride wore a navy blue street length dress and her matron of honor a white dress. Matron of honor was the bride's sister Patty Allen of Auburn and the best man was the groom's brother Jim Dillman. The Rev. Donald Leavitt of Stayton, Oregon, long-time friend of Jack, performed the ceremony. Organist was Iris Hennessey and the soloist, Mrs. Forrest Bailey, sang "Oh Promise Me" and "The Lord's Prayer." About 150 guests enjoyed the reception held at the groom's parents' home next door.

The Jack Dillmans will be in their home on North Street by this weekend following a short wedding trip to Portland and Southern Oregon.

PAPER DRIVE

The Boy Scouts of Troop 174, sponsored by the Woodland PTA are interested in all the old papers and magazines that collect around the homes. The money is used by the troop on their building pro-

Labour Nursing Home

All on ground floor, no wards, no steps. Cheerful surroundings, expert care, excellent food. Day No. 116. For information, call 7-7857. State Dept. of Health Lic. 901 Tule Lake Rd. LE 7-7857

ject and other needs of the troop. If you have papers and magazines to be picked up, calls to any of the following numbers will bring someone around to collect them. Newcomer: TH 5-6811; Grass: TH 5-8598, or West, TH 5-8505. Why not help the scouts and yourselves too by calling one of these numbers?

Happy Neighborhood

Happy Neighborhood club held the August meeting on the 21st with Mrs. Gussie Nyquist. It was decided to make hand puppets to distribute to children in hospitals. Delightful refreshments were served the hosts. Members present were Mesdames Kathrine Flom, Effie Taute, Minnie Westman, Cora Hill, Barbara Hill, Lois Miracle, Pat Arnold, Iris Liechty, Mrs. Liechty and the hostess, Gussie Nyquist. Next month's meeting will be Sept. 17.

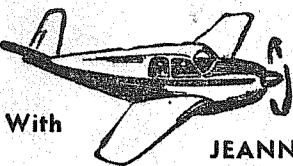
Outing at Westport

August 1 to 16 were enjoyed by the Zearl Tautes and their four children and the George Hopkinses and their five children of East 122nd at Twin Harbors State Park, Westport, where they camped out. The men went surf fishing and the women relaxed on the sand and kept an eye on the children. The Robert Arnolds stopped by for a short visit on the 15th on their vacation trip around the Loop. They also stopped to visit Mr. Arnold's folks at Cosmopolis.

Here On Leave

Sam L. Seaman, U. S. Navy, son of the Norman Seamans of Lundblad road, has returned to San Diego after a 14-day leave visiting his folks. He also visited his grandmother in Salem, Oregon. Navyman Seaman is stationed aboard a submarine tender at San Diego. Reporter—Margaret David, LE 7-6668.

Flying



With JEANNE

Orv and Jen McGoy just returned after 15 days in California. While there they visited friends and relatives. They went as far south as Los Angeles and Torrance. While in southern California they made a side trip out into the desert. They also went out fishing on a charter boat.

The Fly-In at Thun Field Sunday was a huge success with over 5,000 people attending and 119 airplanes.

At Spanaway Airport a first solo flight was made by Erv Gardner in a Tahoma Flying Service Tri-Traveler. Erv is president of Abar, Inc. and can see where flying will help him a great deal in his business.

Dual cross-country training flights were made by Augie Zampardo and Bill Williams this last week.

The Flying Signaleers Club picnic, which is an annual affair, was very well attended with everyone having an enjoyable time. Bob Villont, club Sec. and Treas. won an hour free time in the new Cessna 172 by winning the spot landing contest. Ed Larson won a free hour in the 172 by winning the bomb dropping contest. Tahoma Flying Service personnel would like to express their thanks to the group for the well organized and well run picnic.

The Western Travelers monthly meeting will be Friday night the 4th of Sept. There will probably be lots of pictures shown of the Tieton Fly-In. The club house is located at Thun Field. Every one welcome. Phone your news to Tahoma Flying service, LEnox 1-0442.

Midland News

Mrs. John Both was hostess to the members of the Birthday club Tuesday evening, August 25. Those present enjoyed an evening of home movies shown by Mrs. Fred Siehl of their recent trip to Mundein, Illinois, and also some film taken of neighborhood children several years ago which proved very interesting. Also attending beside the hostess and Mrs. Siehl were Mesdames Larry Cleary, Joseph Joringdal, Allen Zook, Harold Stavig, Alex Thompson, Charles Harris, Walter Corigan, Ernest Loflin, Clifford Tuller, Richard McNabb, and Mrs. Both's sister-in-law, Mrs. Florence Hammar, visiting from Utah.

ALTAR SOCIETY
Altar Society of St. John of the Woods parish will gather for the first meeting of the fall season Thursday noon, September 3, in the parish hall. Members of St. Anne and St. Theresa Circles will be in charge of the luncheon preceding the meeting.

NEW ARRIVALS
New additions are being welcomed into two well-known Midland families. On August 16, the first child, a daughter, Theresa Marie, was born to Mr. and Mrs. Jack Salters Jr. of Collins road.

August 17 was the date of the arrival of the fifth child of Mr. and Mrs. Leslie Armstrong (Gladys Johnson). The new son, David Scott, joins his sister Janet, and three brothers, Doug, Dennis and Gregg. Congratulations to the happy families!

FLETT DAIRY

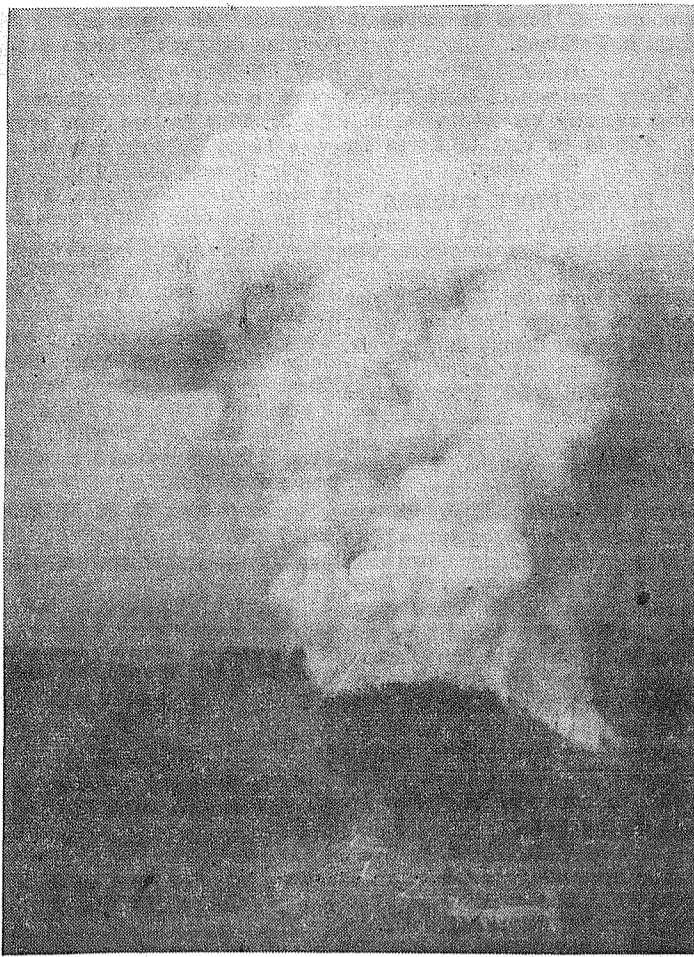
FARM FRESH HOMOGENIZED AND PASTEURIZED MILK AND CREAM
ICE CREAM
Phone GR 2-3301

COMPLETE LINE OF LAWN AND GARDEN SUPPLIES

—RENTALS—
GARDEN TILLER
PAINT SPRAY MACHINE
HAND SANDER
POWER MOWERS
FLOOR WAXERS
POWER SAWS
RUG SHAMPOO MACHINE
For That Professional Job

Parkland Hardware
12169 Pac. Ave. LE 7-3171
Across from Piggly Wiggly

No Atom Bomb; Only A Forest Fire



REALLY HOT—Smoke mushrooming into a sinister looking cloud, this forest fire in the hills near Morton caused some concern on Tuesday, August 25, the spectacular sight being seen for 50 miles in all directions. A crew of well over a hundred trained fire fighters cut fire trails about the blaze and the weekend showers ended the immediate danger.

—Photo by McKewen from Times Journal Photo

In Korea

1ST CAV. DIV., Korea (AHTNC) — Army Sergeant First Class James E. Smith, 41, whose wife Gayle, lives at 7402 East Wilkeson rd., Tacoma, Wash., recently participated with the 1st Division's 7th Cavalry in "Exercise Sea Horse", an amphibious operation in Korea.

During the exercise, a major portion of the 7th Cavalry boarded ships in Inchon and traveled to Pohang-dong where a beach assault was conducted. Sergeant Smith, a squad leader in the cavalry's Company C, entered the Army in 1940 and was stationed at Fort Lewis, Wash., before arriving for duty in the Far East in September 1958.

Graham News

The Benston Assembly of God church and the community welcome the new pastor, the Rev. Gene Neeley, and Mrs. Neeley, who came from Shelley where he was recently the pastor.

VISITING, TRIPS

Private Kenneth Andrus is home

for two weeks leave from the National Guard at Fort Ord; he is visiting his parents, Mr. and Mrs. Carl Meyers and his many relatives and friends.

On his return trip to California from North Dakota, Al Iszler and son Allan brought George Iszler and wife to visit with sister, Mrs. Charles Wilbur, and relatives in Tacoma.

Sunday Mr. and Mrs. Charles Wilbur and son Pat motored to Portland, Oregon, to see Allen compete in the International Championship Quarter Midget racing. George and his wife will return to North Dakota where both will teach at Bathgate.

Mr. and Mrs. Russ Plumb have returned from a two-weeks trip to Helper, Utah, where Mrs. Plumb's relatives had a reunion of 175 members of the family. They also visited in Utah, Oregon, Nevada, Arizona and California.

James Wesley has gone to Edmonton, Alberta, Canada, to attend the funeral of his brother Frank who died suddenly of a heart attack.

REBEKAH

The Past Noble Grands of the Kapowsin Rebekah Lodge No. 241 will meet Sept. 8 at 7:30 p.m. at the home of Mildred DeWitt, president; Mrs. Guy Norman will be in charge of the meeting.

BIRTHDAY PARTY

Wednesday brought a few friends to the home of Mrs. Charles Wilbur to honor her and Mrs. C. Bacon on their birthdays. A potluck luncheon and lovely cake were enjoyed by Mesdames E. Tinius, H. Lautenberg, Irving Cope, B. Watson, C. Bacon and Charles Wilbur. Reporter — Mrs. Marie Tinius, VI 7-7394.

Building Permits

Richard Halverson, \$9,000 frame residence, Rt. 1, Box 372, Span.; Leonard Martin, remodel to residence, \$200, Rt. 3, Box 278, Tac.; Freeman Stearns, \$1,000, mov. res. to prop., Box 535J, Rt. 1, Span.; Wm. F. Kyle, \$300 frame shed, 7225 Portland Ave. Vernon Sherrill \$300 garage, Cor. So. 124th & Jay; David Varner \$1000 garage, 715 E. 99th; Elmer Haakenson, \$1000 carport, 131st & A.; V. R. Selle, \$200 canopy for pumps, Rt. 1, Box 147, Eatonville; Vernon Spangler, \$13,800 frame res. 13219 Golden Given; Arnold Andrew, \$14,600 frame - brick res. Muck Kapowsin Highway.

Card Of Thanks

We wish to thank our many friends for their sympathy at the death of our beloved wife, Mrs. Fred (Anna Mary) Manteufel, and for the beautiful flowers and helpful cards and messages.

Fred Manteufel and family

More U.S. women are marrying at age 18 than at any other age today.

General Sheet Metal Work

Special Attention to Special Equipment

RAU MFG. CO.

LEnox 7-7372
14114 Pacific Avenue

LAF

LE 7-4984 330 Garfield St.

WE HAVE A FEW TYPEWRITERS

LEFT AT A SPECIAL BACK-TO-SCHOOL PRICE

Store Hours 9:00 to 5:00 Daily except We are Closed Wednesday.

PROMPT PERSONALIZED PRESCRIPTION SERVICE

TED SWANSON INSULIN-VITAMINS

Downtown Prices
Pay Phone Bills Here
PLENTY OF FREE PARKING
TINCHER'S PHARMACY
8227 Park Ave. GR 4-3344
Across from Ferd Hill P. O.



LOOK! . . .

BACK TO SCHOOL SALE

JUMBO CRAYOLAS Per Box 15c to 35c

Loose Leaf — Every Kind BINDERS 57c to 3.29 "Pedigree" BALL PENS 8 For 77c

"Pedigree" with Sharpener 12 PENCILS Only 39c Snub Nose SCISSORS 25c

LUNCH KIT WITH VACUUM BOTTLE Reg. 2.98 1.99 Only

SILK HEAD SCARFS Each Only 69c Or 2 For 99c

Also Clothing Specials

200 SHEET FILLER PAPER ONLY 57c

Girls' COTTON SLIPS Each 88c
Girls' RAYON PANTIES 3 for 69c
Girls' ANKLETS 3 for 97c
Boys' ANKLETS 3 for 97c
Boys' COTTON SHIRTS Each 88c
Boys' FLANNEL SHIRTS 2 for \$1.99

BOYS' "MAYO" BRIEFS 69c PR
T-SHIRTS 79c EA.

— Also 100 Other Specials —

USE OUR LAY-AWAY PLAN FOR CHRISTMAS, BIRTHDAYS, ETC.

GARFIELD VARIETY STORE

326 Garfield St. 1/2 Block East of College Open 'Til 8 p.m. Weekdays LE 7-9959

SALVAGE MART

13014 PACIFIC AVENUE—HRS.: 10-6, FRIDAY 'TIL 8 — OPEN SUNDAYS 10 A.M. 'TIL 6 P.M. —

CLOSE OUT \$1.98

CHILDREN'S & LADIES' RAIN SLICKERS

PATCH POCKETS
CORDUROY COLLAR
ASSORTED COLORS
100% WATERPROOF
Reg. \$6.95 to \$8.95
NOW ONLY . . .

LADIES' — Varied Colors & Sizes UMBRELLAS 88c

KIDS SWEAT — Full Zipper Front SHIRTS Reds, Blues, White, Sizes 2-8. \$1.39

KINGSFORD CHARCOAL, 25-lb. 1.59 BRIQUETS 10-Lbs. 69c

BOYS'—Ripple Type Sole, Size 4-6 OXFORDS Black, Non-Suff Upper \$2.98

ALL PURPOSE FLOUR 10 Lbs. 69c

MEN'S DRESS — Wash 'n Wear SLACKS Reg. 9.98 \$6.98 Now Only . . .

DISH — Assorted Colors TOWELS Size 18x32 10c

BOYS' SCHOOL—100% Pre-Shrunk PANTS Cotton, Tans and Blacks \$1.98

50-FT. — 3/8-Inch ROPE 69c

BOYS' SWEAT SHIRTS 99c

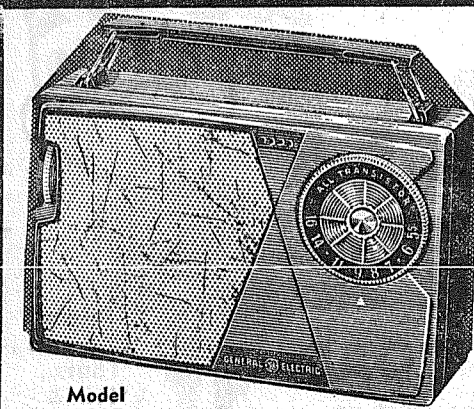
INFANTS CORDUROY CRAWLERS Snap Legs 99c

BOYS' COWBOY BELTS Beaded, Heavy Buckle, Reg. 98c 49c

MEN'S BOOT — Greys, & Whites SOCKS Famous Seneca RED JACKET 12" Tops Pr. 49c

SPIRAL THEME AND NOTEBOOKS Reg. 15c NOW 10c

These are not so called "Advertised Specials", they are EVERYDAY selling prices and are therefore subject to stocks on hand.



NEW! ONLY \$29.88
ALL-TRANSISTOR PORTABLE RADIO
WEIR'S CARRY THE FULL LINE of G.E. RADIOS

29.88
(Less Battery)

WEIR'S

YOUR CORNER (SAT. 'TIL 6)
8419 PORTLAND AVENUE LEnox 7-0231



FOODTOWN



Good or Choice
POT ROAST
45^c Lb.

Yes . . . this will be the last big holiday week-end for summer picnics. And as always you can depend on IGA for all your picnic needs. Complete selection in every department, at the lowest prices in town. Shop IGA today!

SWIFT'S HAMS
SHANK HALF **39^c LB.**

BUTT HALF **45^c LB.**

CENTER SLICES **59^c LB.**

BONELESS FULLY COOKED HAMS
ALL POPULAR BRANDS
83^c Lb.

GOOD OR CHOICE LB.
CHUCK STEAK 49^c

IGA-BAR S
SLICED BACON **53^c LB.**

CARSTEN'S WIENERS **49^c LB.**

GOOD OR CHOICE
TOP ROUND
STEAK 89^c lb.

GOOD OR CHOICE LB.
RIB STEAK 79^c

RATH'S CANNED HAM 3 lbs. **\$2⁸⁹**

ARMOUR'S CANNED PICNICS 3 lbs. **\$1⁹⁸**

GOOD OR CHOICE
BOTTOM ROUND
STEAK 69^c lb.

• French's Prepared, 9-Oz.
MUSTARD Jar **15c**

• Norwest Plain or Kosher
DILLS 48-Oz. Jar **49c**

• Norwest Whole Sweet
PICKLES 22 Oz. **43c**

• Wyandotte Large Ripe, 7-Oz., Or Select Pitted Ripe, 5½-Oz. (Each 23c)
OLIVES 4 For **89c**

• Dennison's Chili Con Carne
15½-OUNCE TIN EACH ONLY 25c 4 For **97c**

• Van Camp Pork & Beans
5 Tins \$1 ★ 4 No. 300 Tins **49c**

LARGE "AA" EGGS
49c Doz.
2^D 95^Z c

U.S. No. 1 BANANAS
14¹ 2^c
POUND

Maxwell House COFFEE
2-Lb. Tin **1.17**
1-Pound Tin, Each **59^c**

JELL-O
10 DIFFERENT FLAVORS!
(Limit: 8 Packages Per Customer)
Regular Package, Ea. **5^c**

LOCAL CELERY
9^c lb.

ASSORTED MELONS
Persian Casaba Honeydew
5^c lb.

• Nalley's Mayonnaise
Fresh, Wholesome!
Full Quart Jar **49c**

• Kraft Miracle Whip
SALAD DRESSING
Full Quart Jar **47c**

• Norton's Cream Pies
CHOCOLATE LEMON BANANA
Frozen, 16-Oz. Pie, Each **49c**

• Sweet Cream Butter
DARIGOLD GRADE "AA"
Cubes Or 1-Pound Print **63c**

• Spaghetti & Meat Balls
CHEF BOY-AR-DEE
No. 1 Tin, Each 21c **5 For 97c**

• Spam Luncheon Meat
HORMEL'S, Tasty
12-Ounce Tin **39c**

FOODTOWN - YOUR BACK TO SCHOOL HEADQUARTERS
AIRPORT (112th) AT PARK AVE. AD DAYS SEPT. 3, 4 & 5



It's **time!**

DRIVE CAREFULLY

Help improve our local safety record! Drive carefully! Many children go to school for the first time! Don't let it be their last! Your caution can save a child's life!

- **HAVE YOUR CAR CHECKED** by an expert! Any car that is not in perfect mechanical condition is a potential murder weapon! The few dollars you spend may save a life!
- **DRIVERS! DON'T HURRY** when you drive! We may as well face it! We cannot reduce traffic casualties unless we slow down! The lives of others are in the hands holding your steering wheel. The minute you may save, isn't worth the life of a schoolchild!
- **PULL OFF THE ROAD** when you're tired, and take a nap! **DON'T DRIVE** at all when you've had a drink! Drowsiness and drinking are responsible for most fatal accidents!
- **BE ON THE ALERT** when you are near a school bus. Of course, they have to obey all traffic rules! But, give schoolbuses a break anyway . . . they carry a priceless cargo!
- **DRIVE EXTRA CAREFULLY** around schools and playgrounds! Be on the lookout for children when they walk to and from school! Your vacation from school children is over now!
- **PARENTS! NEVER STOP TELLING** children about the many traffic dangers! Only then can we hope to help reduce traffic fatalities! One out of seven fatalities involves a schoolchild! One out of ten fatal accidents is caused by a teen-age driver!



**THEIR LIVES ARE
IN YOUR HANDS**

This Advertisement Is Sponsored by the Following Civic-Minded Merchants:

MT. VIEW CLEANERS
11903 Pacific Ave. LE 7-3261

JOHNSON DRUG
Garfield at Pacific LE 7-0221

ECONOMY FURNITURE
10228 Pacific Ave. LE 1-1991

STORKVILLE
9722 Pacific Ave. LE 7-4664

Adolph's Richfield Service
603 South 112th LE 7-0100

ED MAREK INSURANCE
12909 Pacific Ave. LE 7-4000

HAVENS TAVERN
12516 Pacific Ave. LE 7-0667

DRYER MORTUARY
220 South 134th LE 7-0253

Presba's Sporting and Gift Shop
12816 Pacific Ave. LE 1-2131

PARKLAND TRIPLE X
119th and Pacific Ave. LE 7-3211

SMALLEY'S USED CARS
10410 Pacific Ave. LE 7-4060

RAU Manufacturing Co.
14114 Pacific Ave. LE 7-7372



Parkland Fuel Oil Service
120th and Pacific Ave. LE 7-0256

Verne Ashford Insur. Agency
11901 Pacific Ave. LE 7-8647

McKEWEN STUDIO
405 Garfield Street LE 7-3833

FORS FEED MILL INC.
Midland LE 7-8585

SALVAGE MART
13014 Pacific Avenue LE 1-0770

LUCKY SALES and SERVICE
135th and Pacific Avenue LE 7-8688

Summit Furniture and Appliances
112th and Canyon Road LE 7-8676

ARMSTRONG USED CARS
11009 Pacific Ave. LE 7-5524

ERO MOTORS
11001 Pacific Ave. LE 7-5451

Parkland Rexall Pharmacy
11114 Pacific Ave. LE 7-8633

Prettyman Heating Service
14810 Pacific Ave. LE 7-7859

GREEN ACRES EXCHANGE
14810 Pacific Ave. LE 7-4687

SPANAWAY HARDWARE
170th and Pacific Avenue LE 7-8378

LITTLE PARK CAFE
171st and Pacific Ave. LE 7-0321

SPANAWAY 5 & 10
165th and Pacific Ave. LE 7-8322

MODAHL AUTO PARTS
Spanaway LE 7-3772 LE 7-0113

PARKWAY FURNITURE
14103 Pacific Ave. LE 7-3941

ART'S SHOE SHOP
Opposite Parkland P.O. LE 7-8771

Ashmore Spanaway Drug
165th and Pacific Ave. LE 7-5993

BOB'S PLACE
Airport Road and Jay St. LE 7-3395

PARKLAND GRILL
Garfield St. Near PLC LE 7-5135

ANDERSON LUMBER CO.
9813 Pacific Ave. LE 7-7311

COOK MOTORS
9715 Pacific Ave. LE 7-5866

MIDLAND FOOD CENTER
Midland LE 7-8103

PARK 'N SHOP
98th and Pacific Avenue

BROOKDALE LUMBER CO.
136th and Pacific Ave. LE 7-8669

Pochel Distributing Co.
140th and Pacific Ave. LE 7-8624

Television Service Center
8431 Pacific Ave. GR 2-3386

Weir's - Your G.E. Corner
8419 Portland Ave. LE 7-0231

Hondle's Auto Parts & Garage
8412 Pacific Ave. GR 2-4857

Art and Ray's Auto Repair
4708 East Airport Road LE 1-2121

Rudy's Feed and Seed
14806 Pacific Ave. LE 7-4888

RAY'S O.K. TIRE STORE
9639 Pacific LE 7-7355

BASKETT LUMBER CO.
9701 Portland Ave. LE 7-5844

Janet's Ladies' and Gent's Sports Wear
409 Garfield St. LE 1-0611

PARKLAND HARDWARE
12169 Pacific Avenue LE 7-3171

Vaughan's Pacific Avenue Lumber Co.
84th and Pacific GR 4-9515

VIC'S MIDLAND TAVERN
Midland

Times Journal Publishing Co.
119th and Pacific Ave. LE 7-0223

Christensen's Shell Service
Midland LE 7-9987

GENE'S MIDLAND DRUG
9823 Portland Avenue LE 7-3305

NORTHPOLE LOCKERS
1811 East 99th St. LE 7-8181

PARKLAND CLEANERS
11004 Pacific Avenue LE 7-3221

SHAMROCK TAVERN
112th and Pacific Avenue

TAHOMA FLYING SERVICE
185th and Pacific Ave., Sponaway Airport LE 1-0442

SOUTH END PLUMBING
185th and Pacific Ave. LE 7-4100

L & M AUTOMOTIVE
171st and Pacific Ave. LE 7-6772

BARGAIN BASKET
16618 Pacific Avenue LE 7-3371

HERMAN'S FINE FOODS
162nd and Park Ave. LE 7-8213

AVENUE FEED
98th and Pacific Ave. LE 7-4546

QUALITY PHOTO SERVICE
9818 Pacific Ave. LE 7-7271

BIG BEAR STORE
133rd and Pacific Avenue

Fletcher's Texaco Service
9827 Pacific Avenue LE 1-2442

Shopette Variety and Department Store
Big Bear Shopping Center - 133rd and Pacific Ave.

Chuck's Cafe and Drive Inn
134th and Pacific Ave. LE 7-9908

Tomhoff's Furniture and Appliances
128th and Pacific Ave. LE 1-1878

DICK DEVEREAUX REALTOR
110th and Pacific Avenue LE 7-8659

WESTERN AUTO SUPPLY
11108 Pacific Avenue LE 7-3112

PARKLAND ECON-O-WASH
12171 Pacific Avenue LE 7-9970



The Important Question

a-Wondering . . . and a-Wandering . . .
With JACK BROWN

On August 6th I wrote an article on our teenage labor problem. In the August 13th issue I again wrote on the subject since by then I had my dander up due to some of the phone calls I'd received. At any rate I got it all off my chest. This week while reading the Industrial News Review of 8-24-59 I came upon an article along the same lines written by someone whose ideas coincide with mine, which I would like to pass on to you. I quote: "Last July, the Senate Labor Subcommittee voted for an increase of 25 cents an hour—from \$1.00 to \$1.25—in the federal minimum wage. A great many people honestly believe that this was a good and necessary act, and that anything which betters the lot of the lowest paid workers deserves support.

Yet, there is another side to this coin. The publication Economic Intelligence puts the problem in these words: "A worker is hired to make an economic contribution to the enterprise. If he is unable to produce additional service worth at least \$1.25, he simply will not be hired."

In other words, artificial jacking up of the minimum wage produces unemployment among the unskilled workers whose productivity does not justify the higher rate. Then, at the same time, it deprives these workers of opportunities to learn skills that will qualify them for better-paying jobs.

Precisely the same thing will happen if the campaign to extend coverage of the minimum wage law to groups of workers who always have been exempt—such as those in retailing—is successful. The employers affected will have no choice save to pare marginal employment to the limit. All the laws on earth can't change a worker's value to an enterprise. They can simply make it more difficult for him to find a job."

I rest my case and guarantee not to bring the subject up again—at least for a while.

If more women backed up to a mirror instead of walking up to it there'd be less southern exposure on a north bound female and the garment manufactures would be looking for some other pattern to replace those of their short shorts.

This thought is strictly my own and was neither scissored nor swiped from some other source.

Emil Schram, a director of Cities Service Company and formerly chairman of the Reconstruction Finance Corporation and president of the New York Stock Exchange, says this: "The American people have been victimized by the greatest thief in history . . . and the most efficient one. There is no place where their money is safe from this thief . . . in savings banks, in insurance, in pension funds, even in Government bonds. Bury it in the ground or hide it under the mattress . . . and this thief will steal it even faster."

The name of the thief is inflation. It has, in a few years, cut the worth of the dollar by about half. And it will cut it more and more unless you and I, individually and collectively, do something definite about it.

How can inflation be fought? In Mr. Schram's view, we the people, must take an active political interest in the conduct of our national affairs. This means, to be specific, that we must support sound economic policies in government, insist on a balanced budget, stop pressuring Congress for appropriations which are not absolutely necessary, encourage our representatives to resist that kind of pressure from others, demand that states and communities pay their own bills, and refuse invitations to extravagance based on the argument that Washington will pay at least part of the cost. As wage earners, use restraint in making pay and fringe benefit demands. As employers, hold fairly to the principle that increased wages can be justified only by increased productivity. In industry, continue to seek every possible means of offsetting higher costs by greater efficiency of operations, and resort to price increases only when there is no other way to solve the problem.

This is the prescription—and the only one—that can save what is left of the dollar's value.

Canyon Road News

The Canyon Road Community club will convene Thursday, Sept. 10, at 8 p.m. after adjourning for the summer months. After the business session members will enjoy a social hour over coffee and exchange experiences of the summer. See you all there!

Square Dance Lessons
Again it is time for the square dance lessons at the Community hall. Monday, Sept. 14 will be the first lesson and it will also be party night. There will be prizes and refreshments and the first lesson, all for free. Lessons start at 7 to 8:30 for youngsters and 8:30 to 10:30 for adults. After the first meeting lessons will be 25 cents and 50 cents.

Work days
The men of the community gave up their Saturday and Sunday and

enlarged the Community hall, sanded the floors and really made a nice looking hall. Our special thanks to Ed Hoffman who gets home only for the weekend but who worked all day; also to Pat Munsey who celebrated his birthday sanding floors.

BIG FISH
Edward Ostrom of Canyon road is getting congratulations on the big fish he caught—it weighed 36 pounds!

NEWCOMERS
Our community is really building up—we have three new property

Fishing License Hunting License
Super Kem Tone & Kem Glo
PARK AVENUE HARDWARE
Ave., GR 4-0051
Corner 83rd & Park

owners on Canyon road. We hope our mail carrier doesn't get confused because Mr. and Mrs. Jack Lee bought the beautiful new home on 76th and right next door Mr. and Mrs. Lloyd Bee and daughters Janice and Dorise and Mr. and Mrs. John Bee, Lloyd's parents, have moved in their trailers, preparing to build the younger bees a new home. Also new to Canyon Road but not to this vicinity are

Mr. and Mrs. Clarence Baker, who moved into their new home last week. Welcome back!
Reporter—Mrs. John Folk, LE 7-5801.

Rural Garbage Service
Serving Parkland, Lakewood, Midland, Summit, Spanaway and Lakeview
Pierce County Permit
LEnox 7-8688

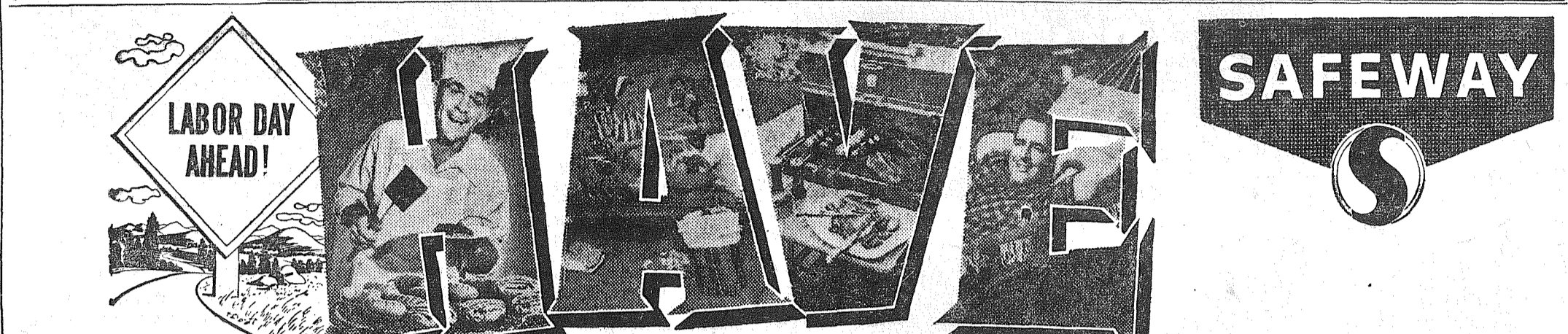
Prescription Service
Open 7 Days a Week
9:30 a.m. - 9:30 p.m.
Sundays 10 a.m. - 6 p.m.
JACOBS PACIFIC DRUGS
Wallgreen Agency
Pay Light & Water Bills Here
84th & PACIFIC AVE.
Greenfield 2-6445

Vaughan's Values

36" RANGE HOOD AND FAN	Reg. 33.50	Sale Price 25.75
16x26 MIRROR MEDICINE CABINET	11.20	8.40
11x18 WALL MEDICINE CABINET	4.60	3.45
31 3/4 x 21 SLIDING DOOR CABINET	32.00	28.00

ASK ABOUT OUR MONTHLY PAY PLAN

Vaughan's
PACIFIC AVENUE LUMBER COMPANY
84th & Pacific Avenue GR 4-9515



Eggs Breakfast Gem Large "A" Dozen . . . **47¢** Breakfast Gem Small "A" Dozen . . . **25¢**

Mayonnaise PIED-MONT Quart Jar **45¢**

Velveeta KRAFT Cheese Food 2-Lb. Loaf **69¢**

Pk. & Beans HIGH-WAY No. 2 1/2 Cans **35¢**

SAFEGWAY

FUN

FRYERS Fresh, Whole, Tender
lb. 33¢

Watermelons
Large Size — Lowest Price of the Season
Every Melon Guaranteed to Please

EACH 49¢

Sweet Corn Your holiday favorite Hydro-cooled for sweetest best flavor. 10 Large Ears **49¢**

TOMATOES Fresh Washington Grown Beefsteak Variety 2 Lbs. 25c	PEACHES Elberta — U.S. No. 1 Washington Grown 26-Lb. Box \$1.49	PRUNES Italian — U.S. No. 1 Washington Grown 30-Lb. Box \$1.59	GRAPES Concord — Jelly Grapes Guaranteed Fresh 5-Lb. Basket 49c
--	---	--	---

CRANBERRY SAUCE Ocean 2 16-Oz. Spray Cans **39c**

Boneless Hams Carsten's Fiesta, Fully Cooked Whole or Half - Small Size **79c**

Smoked Hams Diamond "F" - Whole or Shank Half - 10 to 16-Lbs. **49c**

Skinless Wieners CARSTEN'S 2-Lb. Pkg. **89c** 1-Lb. Pkg. **45c**

Turkeys Small - MANOR HOUSE - Young 1959 Crop - 8 to 12-Lbs. **39c**

Fresh Halibut STEAKS **35c** **LB. 29c**

Fish Sticks Captain's Choice **8-Oz. Pkg. 29c**

Cottage Cheese Lucerne-Qt. **49c** Pint **25c** Half Gal. **89c** Ctn. **25c**

Orange Base MINUTE MAID 4 6-Oz. Cans **\$1.00**

Marshmallows FLUFF-I-EST **LB. 25c**

MONTH OF SUNDAY SPECIAL

Ice Cream SNOW STAR Quarts **39c** Gallon **\$1.35** Half Gal. **69¢**

CRESENT - Chocolate, Butterscotch, Pineapple Topping (With Coupon) 2 7 1/2-Oz. Cans **29c**

Coffee Sale

EDWARDS 2-Lb. **\$1.29** Finest Quality at a Savings 1-lb. Can — 65c

FOLGERS 1-Lb. **65¢** Delicious Fresh Ground Flavor 2-lb. Can — \$1.29

Highway Pears 4 No. 2 1/2 Cans **\$1.00**

Luncheon Meat RATH'S 12-Oz. Can **39c**

Canned Beer PFEIFFERS 6 12-Oz. Cans **89c**

Canned Beer OLYMPIA 6 12-Oz. Cans **\$1.13**

WIN FREE VACATIONS!

Win a trip for two to glamorous Hawaii. You will travel on a swift, luxurious Pan American Clipper to Honolulu. You will stay at famous Waikiki Beach and tour the island of Oahu. Or — win a trip for two to fascinating Alaska, the 49th State and America's last frontier. You will travel aboard spacious Pan Am "Strato" Clippers. Re-live the "gold rush" days. Enjoy the world's most beautiful scenery. Visit your nearest SAFEGWAY store for contest details!

(This contest is exclusively for Washington State Residents. You have an excellent chance to win the trip of a lifetime! Only adults 18 years or older may enter.)

Instant Milk PET 4-Quart Pkg. **37c**

Instant Milk LUCERNE LAC MIX 12-Quart Pkg. **79c**

Cinnamon Rolls CURTSY Pkg. **29c**

Donuts MRS. WRIGHT'S Jumbo Assortment Pkg. of 6 **29c**

Stuffed Olives EMPRESS 21-Oz. Jar **98c**

POWER TOOLS FOR RENT
SANDERS - EDGERS - POLISHERS - HAND SANDERS
SKIL SAWS - ELECTRIC DRILLS - CEMENT MIXERS - ETC.
ALSO HAND TOOLS FOR RENT

Anderson Lumber
9813 Pacific Avenue LEnox 7-7311

SAVE 10¢
When You Buy
2 cans CRESENT TOPPINGS

TO THE DEALER: Do not honor this coupon unless customer purchases 2 cans of Crescent Toppings. Crescent Mfg. Co. will redeem this coupon for 10c plus 2c handling provided the dealer has accepted it on the purchase of 2 cans of Crescent Toppings. Invoices showing the dealer has purchased sufficient stock to cover coupons must be shown on request. Coupon void if taxed, prohibited or restricted by law. Customer pays sales tax.

Cash value 1/20 of a cent

SAFEGWAY

Sale starts 9 a.m. Thursday through Saturday, September 5, at 82nd and Pacific Safeway.

Valve Seats Installed
Complete Motor Rebuilding, Head Surfacing, Piston Grinding, Brake Drum Turning, Reborring, Pin Fitting, Key Seating, Lathe and Press Work, etc.

Rupe Machine Works and Garage
AUTOMOTIVE & INDUSTRIAL WORK
13411 Pac. Ave., P.O. Box 2445, Parkland 44, Wn., LE 7-7450

W. W. Garden Club In Weekend Show
"Gateway to Autumn" is the theme chosen by the Waller Road Garden club for the Flower, Fruit and Vegetable Show to be held at the Waller Road hall Saturday, Sept. 12, 6:00 to 9:00 p.m., and Sunday, Sept. 13, 1:00 to 8:00 p.m. Presiding at the tea table during the show will be Past Presidents Mrs. Walter Daniszewski and Mrs. Nathan Turner and the president of the State Federation of Garden Clubs, Mrs. A. Victor Johnson, who is a member of the Waller Road Garden club and serving the club at the present as an advisor. Entries will be open to the public. Waller Road residents are urged to participate. Premium lists will be mailed to anyone interested. Call Mrs. George Oeh at WA 2-7555, or Mrs. Verne Fogle at LE 7-5210. Entries will be accepted Friday, Sept. 11, 7:00 to 9:00 p.m., or Saturday, Sept. 12, 9:00 a.m. to 12 noon. The Junior Garden Club Dahlia project flowers for 1958 and 1959 are to be entered at this time. The show will be complimentary to the public.

SEYMOUR'S Open Labor Day 9:00 to 9:00

Shop now for back-to-school... save more at Seymour's! Use our lay-away plan!

Back-to-School BARGAINS!

GIRLS SOAP 'N WATER OXFORDS
8 1/2 to 12 **3⁹⁹**
Smart looking, comfortable fitting! Better wearing Biltrite soles. N and M widths, with narrow heels. 12 1/2 to 3, 4 to 10 \$4.99

GIRLS TWO-STRAP School Shoes
8 1/2 to 12 **3⁹⁹**
Sturdy leather uppers. Good-year welt, composition soles! N and M widths with narrow heels. Popular burgundy color. Size 12 1/2 to 3 \$4.99

GIRLS WHITE ELK SADDLES
8 1/2 to 3 **2⁹⁹**
Tops with school girls! Smart, easy-clean white elk with black leather trim. Durable rubber soles for lots of wear!

BOY'S ZIPPERED POPLIN JACKETS
2 to 6x **2²⁹**
8 to 16 **2⁶⁹**
Men's **2⁹⁸**
Lightweight, but warm cotton poplin jackets, with full rayon lining. Choice of grey, tan, red, blue, green. Zipper front opening.

Boys' Cotton Knit T-Shirts
Mercerized cotton, taped seams. Sizes 4 to 12, by Fruit of the Loom... **29c, 4 For \$1⁰⁰**

KNIT BRIEFS, 6 to 12, only 49c

BLACK Suede Pumps
4 to 9 **2⁹⁹**
Popular low, lithe styling, perfect for dress or school. Trim flatties in black suede.

BOY'S NATURAL LEATHER School Shoes
8 1/2 to 3 **2⁹⁹**
Rugged leather uppers, with fancy side stitching. Husky rubber composition soles. Miles of wear for active feet!

BOY'S OIL-TANNED Patrol Shoes
11 to 2 C and D **6⁹⁹**
Full 6" water-proofed uppers, heavyweight Biltrite soles. Brass eyelets, hooks. 2 1/2 to 7 1/2 \$7.49

BOY'S PLATFORM OXFORDS
3 to 6 B, C, D **7⁹⁹**
Thick sponge rubber, black leather uppers, zipper opening. Favorites with young men! Men's 6 1/2 to 11 \$9.99

BOY'S 6 to 16 SCHOOL SHIRTS
Only **1.00**
Warm, washable flannels, colorful rayons, with long or short sleeves. Large selection, many patterns.

BOY'S 6 to 16 CORDUROY SHIRTS
Special! **1.99**
Assorted colors in guaranteed washable corduroy. Pearl-like buttons. Boys' 6 to 16 Corduroy Pants **1.99**

Proportioned for Husky, Slim, Regular!
BOY'S DUB-L-NEE DENIMS
Durable 10-Oz. western-style blue denims, for boys 6 to 12. Fused double knees. Proportioned fit for regular, husky or slim boys. (Sizes 14 & 16, 2.29) **1.99**

Shop Daily 9:00 to 9:00
Sundays 10:00 to 6:00

SEYMOUR'S
FAMILY DEPARTMENT STORE
9714 Pacific Avenue, 1 Block North of Park 'N Shop

Spanaway News

The Spanaway Well Baby Clinic, sponsored by the Preschool, will be held Tuesday, Sept. 8, in the Assembly of God annex with registration from 8:30 to 10:00 a. m. Dr. Robert Klein will be the physician in charge. Polio immunizations will be available. For further information, contact Mrs. Gordon Cooper, LE 7-6536.

FIREMEN, AUXILIARY
The Spanaway Volunteer Firemen and Auxiliary will meet Tuesday, Sept. 8, at 8:00 p. m. at the fire hall. Hostesses will be Mesdames Beulah Ballard, Joe Barsotti, Lorien Buck, Raymond Corbett and Edward Flannery. The rummage sale planned for Oct. 2 will be discussed. The Auxiliary executive board held its first fall meeting Friday, August 8, members present were Mesdames Robert Rhone, Joe Symons, Edward Flannery, George Schnelle and Oliver Omat.

LEGION
Clover Creek American Legion Post No. 118 will meet in the Spanaway Legion hall Friday, Sept. 11, at 8:00 p. m.

SYMPATHY
Deepest sympathy to the family of Mrs. Fred Mantefel, who passed away last week.
Reporter—Mrs. Oliver Omat, LE 7-6466.

Don't forget the Western Washington Fair at Puyallup, Sept. 19 through 27.

Clearance Sale
SAVAGE 19" ROTARY POWER MOWER
Guaranteed Steel Deck
REGULAR \$53.95 NOW **\$42.95**
6 Only — While Supply Lasts

Also Clearance On Used ROTARY, REEL, POWER and HAND MOWERS

PARKLAND CYCLE AND KEY
11021 Pac. Ave. LE 7-5772

ALSO VILLA PLAZA IN LAKEWOOD

REMEMBER—
all savings placed on or before the 10th of the month earn as of the 1st of the month at the Family Savings Center

A MUTUAL SAVINGS INSTITUTION
Pacific Federal Savings and Loan Association
Bellingham • Seattle • Tacoma
Longview • Portland • Eugene

New Shape Of Things To Come



PHONES OF THE FUTURE: Pacific Telephone operator Britt Pedersen displays three new kinds of telephones being considered for future use. She is holding a special Dial-In-Hand set developed at the Bell Telephone Laboratories in collaboration with industrial designer Henry Dreyfuss, and now being field tested. At center is a Push-Button Telephone in which the buttons replace a conventional dial. The set at left, to be known as "The Princess," is a small hand-set designed primarily for use in homes. It also has undergone extensive customer testing, and is expected to be available sometime next year. The new sets represent products of constant research by the Bell System to produce better telephones.

FREE!!
One Paint-Roller Kit
(A \$1.49 Value)
WITH THE PURCHASE OF ONE GALLON OR MORE OF OUR PAINT

Open 7 Days A Week — 7 A.M. 'Til 9 P.M.

BARSOTTI & TIMM
At The Roy Y Union 76 Service Station
LE 7-4221

T.V. JINGLES TELEVISION SERVICE CENTER

NO MATTER HOW YOU LOOK AT IT...
Television Service Center 8431 Pacific Ave., stands for reliable TV repair which is priced to give your budget a pleasant surprise. When your set acts up, Call... GR 2-3386 or JU 8-1000.

TELEVISION SERVICE Center
"YOUR WINEGARD COLOR CEPTOR DEALER"
GR 23386 JU 8-1000 8431 PACIFIC AVE.

CARNATION INSTANT MILK
8-Qt. Pkg. **49c**

Watermelons 16-Lb. Ave. Ea. **39c**
Kraft Cottage Cheese Pint **23c**
AA Large Fresh Daily Ranch Eggs Doz. **49c**

YAKIMA BARTLETT PEARS
Box **\$1.49**

OPEN ALL DAY LABOR DAY
Store Hours: 9 a.m. 'Til 10 p.m.

Steaks
Rib or Sirloin...Lb. **69c**
Well Trimmed Rump Roast...Lb. **59c**
Federal Brand, 4-8-Lb. Average Smoked Picnics...Lb. **59c**

Steaks
T-Bones or Round **79c**

Northwest Skinless — 2-Lb. Bag
Wieners or Franks **89c**
Gr Beef **3 Lbs. 1.00**
Sirloin — All Meat, No Waste
Tip Roast...Lb. **69c**
Nalley's — Reg. or Mex. — 15-Oz.
Chili Con Carne **4/\$1**

Pederson's Washington Grown Cut-Up, Pan-Ready
Red Fryers...Lb. **39c**
Fresh Puget Sound—Whole or Half
Salmon Roast...Lb. **49c**
Salmon Steaks...Lb. **59c**
James Henry — Yankee Brand
Sliced Bacon...Lb. **43c**

School Special
Pencils...Doz. **29c**
Yakima Cants...Lb. **5c**

BARGAIN BASKET
16618 PACIFIC AVE. South SPANAWAY, WASH.

Fresh Corn 6 for **29c**
Tokay Grapes Lb. **10c**

Ten Word INTELLIGRAM

Check the correct word:

- 1—The Pope is also Bishop of (Rome) (the Vatican) (Italy).
- 2—There are about (one billion) (500 million) (250 million) Roman Catholics in the world.
- 3—President Eisenhower recently celebrated his (68th) (72nd) (60th) birthday.
- 4—Appointed to replace Justice Harold H. Burton on the U.S. Supreme Court is (Potter Stewart) (Wilton B. Persons) (Orval Faubus).
- 5—The other name for Formosa is (Atafu) (Taipei) (Taiwan).
- 6—The moon is about (200,000) (one million) (50,000) miles from earth.
- 7—The only member of the present U.S. Supreme Court appointed by President Harry Truman is (John M. Harlan) (William J. Brennan) (Tom C. Clark).
- 8—The International Geophysical Year lasts (12) (18) (30) months.
- 9—Since 1950 the U.S. has expended about (4 billion dollars) (1 billion dollars) (70 million dollars) in military aid to Asia.
- 10—The U.S. rocket which recently soared 75,000 miles into space was named (Pioneer) (Vanguard) (Sidewinder).

Count 10 for each correct choice. A score of 0-20 is poor; 30-60, fair; 70-80, good; 90-100, excellent.

Decoded Intelligram
1—Rome, 2—500 million, 3—68th, 4—Stewart, 5—Taiwan, 6—50,000, 7—Clark, 8—18, 9—4 billion dollars, 10—Pioneer.

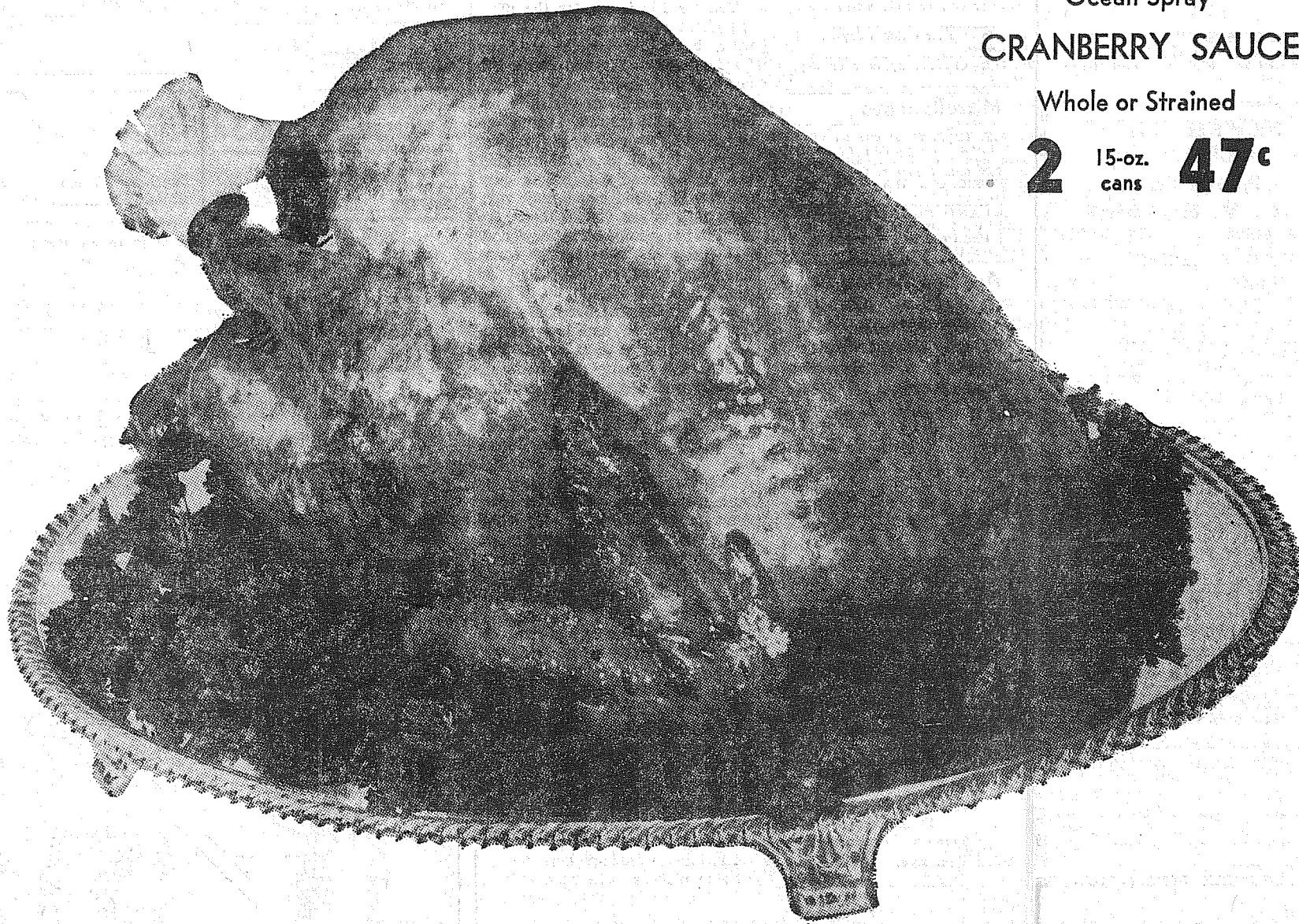
JOBS for CLERK-TYPISTS
— AND —
STENOGRAPHERS

Demand for girls with these skills exceeds supply — classes starting at Knapp Business College

- ENROLL NOW -
KNAPP COLLEGE
10th and Pacific Ave. MA 7-2181



FEATURES the FINEST TURKEYS!



Ocean Spray
CRANBERRY SAUCE
Whole or Strained
2 15-oz. cans 47¢

Canned Hams



Morrell Pride . . . 9 lb. avg., fully cooked with no bones and absolutely no waste!

lb. **69¢**

ROUND STEAK lb. **89¢**
U. S. Graded Choice Beef! Boneless Round Steak, full cut from flavor-aged beef!

GROUND BEEF 3-lbs. **1.00**
Pure and lean! Ground fresh hourly, ideal for patties, barbecues, meat loaf, etc.

HEN TURKEYS lb. **37¢**
Grade A, 1959 Young Hen Turkeys! 10 to 12 lb. avg. Full meated, extra tender.

JILG'S WIENERS 1-lb. Cello **49¢** **SHRIMP MEAT** Per Lb. **89¢**
Famous Smoke-Roasted quality! Ocean caught with real flavor.

1959 CROP, TENDER, YOUNG . . .

12 TO 16-LB. AVG.
Tom Turkeys lb. **33¢**

Broadbreasted, plump, extra juicy turkeys that guarantee you the very finest quality and good eating! Every single bird has been carefully selected for the most tender, succulent flavor.

MIRACLE WHIP per qt. **47¢**

LARGE 'AA' EGGS Per Doz. **49¢**

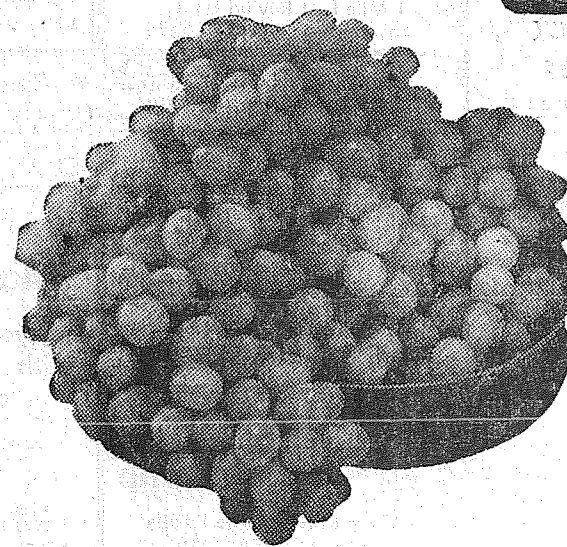
PORK and BEANS VAN CAMP #2 1/2 cans **19¢**

ICE CREAM BIG BEAR BRAND 2 1/2 gallons for only **1.00**

CHUNK TUNA SEA GLORY 5 No. 1/2 Cans **1.00**

COTTAGE CHEESE Medowsweet Creamed per or Country pt. **25¢**

SEEDLESS AND FLAME RED TOKAYS **Grapes** Sugar Sweet Top Quality!



lb. **10¢**

FRESH CELERY each stalk **10¢**
HOME GROWN, SWEET, LARGE STALKS OF PASCAL CELERY

WASHINGTON STATE **PRUNES**
Smooth, frosty-purple Italian Prunes with tart-sweet flesh.
23-LB. BOX **1.49**

WASH. STATE BARTLETT **PEARS**
Extra fancy and fancy. Golden tones, extra firm and juicy.
28-LB. BOX **1.98**

FRESH ELBERTA **PEACHES**
Early Elberta! Firm ripe. Washington State Number One.
26-LB. BOX **1.59**

- Dole Fruit Cocktail . . . 4 No. 303 Cans **89¢**
- Mandarin Oranges Samuri.. 2 11-oz. Cans **49¢**
- Hi-C Orangeade 4 46-oz. Cans **1.00**
- MD Toilet Tissue 4 Roll Pkg. **39¢**
- Libby Green Peas 6 No. 303 Cans **1.00**
- Scott Family Napkins . . . 2 60-ct. White **23¢**
- Whole Apricots Fancy Black and Gold . . 3 No. 2 1/2 Cans **87¢**
- Snider's Catsup 2 14-oz. Btls. **35¢**
- White King Detergent King 11c Off . . Size 1.24
- Pet Milk 6 No. 1 Cans **89¢**
- Moddess 12's Per Pkg. **45¢**

- NBC Ritz Crackers 1-lb. Box **29¢**
- Blue Bell Potato Chips 11 1/4-oz. Pkg. **69¢**
- Zee Waxed Paper 100-ft. Roll **21¢**
- Hot Dog Buns, Langendorf . . . Pkg. of 6 **27¢**

Prices effective Wednesday through Saturday . . . limit rights reserved.

Parkland Big Bear Will Be Closed Labor Day!
OPEN SUNDAY 10 to 7
133rd & PACIFIC AVENUE PARKLAND



M. L. S.
MULTIPLE LISTING SERVICE
\$11,750
Equity Sale—3 bedroom ram-
bler, only 6 years old. Very
nice condition. Midland dist.
Land 80x200. Call Ralph Decker
GR 4-9579. Rc 3030

* ONE ACRE BEAUTY
Summit District. 3 bedroom
rambler. Hardwood floors. All
spacious rooms. Nuff. said.
Better hurry! Only \$9,850. Buy
reasonable equity or F.H.A.
terms. Call Leo Olson, GR
4-0962 or GR 4-9579. Rc 2481

**McKINLEY HILL
REALTY**
6311 McKinley Ave. GR 4-9579
Member of Multiple Listing
Service and Tacoma Real
Estate Board

M. L. S.
MULTIPLE LISTING SERVICE
10 ACRES
In Yelm with 2 bedroom home
wired 220 garage, barn, chicken
house. Good variety of
fruit. Owner now has six cows.
A good buy for \$5,000. Only
\$700 down. Call Edna Taylor,
LE 7-8609 or LE 7-3556.

**PARKLAND
REALTY CO.**
302 Garfield LE 7-8609
or LE 1-1210
Member Multiple Listing Service
and Tacoma Real Estate Board

M. L. S.
MULTIPLE LISTING SERVICE
HOMES
FARMS
ACREAGES
INVESTMENTS
One Call Does It All

**TACOMA
REALTY, INC.**
11004 Park Ave. LE 7-8681
Member Multiple Listing Service
and Tacoma Real Estate Board

Business Service
PAINTING, sheetrock taping and
finishing. LE 7-8564. 3c1f

**CALL
POCHEL
FOR
Expert
T.V. Repair**
Satisfaction Guaranteed
Free Tube Testing
140th & Pacific LE 7-8624

TOP SOIL—You haul or we haul!
LE 7-8536 or TH 9-2038. 1c1f

BULLDOZING
No Job
Too Small
LE 7-7563 LE 1-1974

ECONOMY KITCHENS
Remodeling — Roofing & Siding
Foundations

**LORD'S
CONSTRUCTION CO., INC.**
10428 Pacific Avenue. LE 7-5779

**RADIO
and
SERVICE**
**ABC
ELECTRONICS**
Garfield & C Streets
LE 7-4900

**Giant
Tide** 69c
Sharp
Cheese 55c
**Van Camp's Grated
Tuna** 5 cans \$1.00
16-oz. 40% Post
Bran Flakes 27c
Swift's Hostess
Hams 77c
Swift's BOLOGNA, LIVER-
WORST, SALAMI 43c
Jumbo
Lettuce 2 Heads 19c
Extra Fancy
Peaches 10c
Tokay
Grapes 2 Lbs. 35c

**Gibbons
FOOD CENTER**
SPANAWAY
FOUNDATIONS, additions, remodel-
ing. Free estimates. Financing
no down payment. Phone GR
4-7000 anytime. 3c1f

**COMMERCIAL
INSTALLATIONS
CORNELL
Plumbing & Heating**
LE 7-7293

**NEAT
BEAUTY SHOP**
GR 2-7628
6314 McKinley Avenue

**USED
FURNITURE**
WE BUY, SELL & TRADE
TERMS
TRADING POST
722 So. 112th LE 1-0242

Parkland Heating Co.
All makes of furnaces for sale;
Specializing in Williams Oil
'O' MATICS; Oil, Gas, Hot Wa-
ter Installations. Service; re-
sponsible; 755 South 108th. LEnox
7-4045. 3c1f

**RADIATOR
CLEANING & REPAIRING**
Guaranteed Work
DEL'S RADIATOR
10620 Pacific Avenue
LE 1-1144; Home: LE 1-1288

**SMITH CABINET SHOP—REMOD-
ELING** carpenter work, kitchen
cabinets; we stock and cut glass;
16309 South Park, Spanaway. LE
7-4856. 3c1f

**WASHED SAND
& GRAVEL
CRUSHED ROCK
For Driveways
DRAIN GRAVEL
Pit Run
HILL TOP SAND &
GRAVEL CO.**
Open Saturdays
We Deliver or Load
Trucks & Trailers
2223 23rd Ave. S.E.
PUYALLUP
P.O. Box 648 TH 5-9525

South End Auto Wreckers
USED PARTS—Motors, Trans-
missions, Tires, Batteries. We
buy junk cars. Also Custom
welding by Joe's Welding.
1 Mile East Roy on Mt. Hy.
Spanaway LE 7-6534

SEPTIC TANKS & WATER LINES
INSTALLED. H & J Brothers.
Phone LE 1-0887 or LE 7-2927. 3c1f

PHOTOS \$10, \$15 a dozen, FAMILY
PORTRAIT STUDIO, 8411 South
Park Ave., GR 4-1936. 3c1f

**UPLAND SLAB
WOOD
BASKET LUMBER CO.**
CALL LE 7-5844

PLOWING, garden work, mowing,
rotovating, small dozing work. R.
D. Beeler, LE 7-4940. 3c1f

ART'S SHOE SHOP
Shoes for the Entire Family
EXPERT SHOE REPAIRING
315 Garfield St.
Between 121st and 122nd
Opposite Parkland Postoffice

TOP SOIL—SANDY LOAM. Park-
land area special. Puyallup TH
6-8759. 3c1f

**Home Plumbing
& Heating Co.**
REPAIRING, REMODELING
NEW CONSTRUCTION
1017 So. 112th
Call Day or Night
LE 7-4615

JACK SHANK'S
Refrigeration Service
Parts & Service for All Makes
LE 7-0178

GRAVEL for fills, driveway gravel,
clean sand, top soil. LE 7-6391. 3c1f

**WE HAVE BUYERS
FOR YOUR
HOUSE!**
FARM and
BLDG. SITES

Listings Wanted
**DICK DEVEREAUX
REALTY**
Buying or Selling
Call LE 7-8659
11002 Pacific Avenue

**Residential and Commercial
PAINTING**
Taping and Texturing
Broadwell Painting
LE 7-6893

**SEPTIC TANK
CLEANING**
Prompt Service
C. V. HUTSON
GR 4-3980 GR 2-7038

Fuel
UPLAND SLAB WOOD, 2-cord load
\$14; VI 7-7301, call collect. 4c1f
FOR SALE—Heavy planer cons.
Small and large loads. BUCKLER
FUEL, Puyallup TH 5-2857. 4c1f

Help Wanted
DEALERS NEEDED for fascinating toy
line; car necessary. LE 7-4907.
5c2f

Wanted To Buy
TOP PRICE—Used reparable tires,
all sizes, any quantity; OK TIRE
STORE, 9639 Pacific. LE 7-7355. 3c1f

LIST WITH SUBURBAN
Home and Farm Specialists
in South End Properties. Two
offices open every day and
evening for your convenience.
SUBURBAN REALTY, INC.
113th and Pacific, LE 7-8638
112th and Canyon, LE 7-0229
Member Multiple Listing Service
& Tacoma Real Estate Board. 3c1f

Real Estate
VETERANS approximately \$250
closing costs and \$45 per month buys
this \$6,000. Excellent
condition, new siding and foundation.
90x120' lot. Complete with furnishings
available. Phone Joe Kominski, 9525
3281. 3c1f

FERN REALTY
8234 Pac Ave. GR 4-0503
NOW HEAR THIS, very fine 3
br. home. Extra good shop,
barn and shed. 1 acre finest
valley garden soil. Close to
shopping and schools. Mt.
View. Call Mr. Schuler, GR
2-1618, GR 4-0503.

40 acre farm. Fine large 3 br.
ranch home, large stock barn,
fine deep well. 25 acres clear,
15 wooded, pasture. The price
is right. For particulars call
Mr. Schuler GR 2-1618, GR
4-0503.

FERN REALTY
8234 Pac Ave. GR 4-0503

Rentals
FOR RENT—3 room furnished apartment,
\$80; 4 room unfurnished apartment, \$70.
2 room furnished apartment, \$50. Park-
land Centre Building. LE 1-0446; 7c2f
answer call GR 4-1651. 10c2f

Rental Management
List your rental property
with us. Satisfaction is
our by-word.
Rental Headquarters
for the Suburban Area
SUBURBAN REALTY, INC.
LE 7-8638 or LE 7-6896

**FOR RENT—Clean one bedroom house in
Brookdale area. \$50 a month. LE 7-8818.
10c2f**

Repair Service
WASHING MACHINE PARTS—
Largest stock in town. Repairing
all makes. BR'S Washer Service
3727 So. G. GR 4-9409. 11c1f

VALVE PACING and seating
\$1.00 cylinder; motor reboiling,
\$1.50 cylinder; by exper. 5-
5-193; Hagen's Auto Parts,
15th & River Road, Puyallup.
11c1f

**COMPLETE CAR SERVICE
ROLLINS GAS-LAND
AND
D&W AUTO REPAIR**
166th and Pacific LE 7-5155

LAWN MOWER SERVICING
Bryges & Stratton, Clinton, Power
Products & Lawson. Engine Parts
and Repairs.
PARKLAND CYCLE & KEY
LE 7-5772, 11021 Pacific Ave. 11c1f

12A Foreign Cars
- ALL -
FOREIGN CAR KEYS
107 Varieties
PARKLAND
CYCLE & KEY
11021 Pacific Ave. LE 7-5772

Automotive
1959 FORDS AND CHEVROLETS
Wholesale prices, bank terms.
SMALLEY'S MOTORS, 10410 Pacific
Ave. LE 7-4060 anytime. Open
nights also. 12c1f

**TWO GEORGE Loggers—CC permits,
stumpage available, call Tibbatts
2-4573, after 6 p.m. 12c2f**

**FOR SALE—1955 Dodge V8 1 1/2 ton long
wheelbase Model G. Hard truck; low
mileage, perfect condition. Phone VJ
7-7663 after 5 p.m. 12c1f**

FOR SALE—1940 Ford. Good condition, 210
south 104th. 12c2f
FOR SALE—1939 Chevrolet business coupe;
running order; LE 7-6959. 12c2f

Farm Column
EASTERN WASHINGTON HAY, by
bale, ton or truck load. Also grass,
cut hay and straw. Louis Karson,
LE 7-8408. 11c1f

Work Wanted
BABY SITTING, your home or mine.
1312 South 120th. LE 1-0416. 14c 1f
WANTED—Baby sitting, your home
or mine; 1312 South 120th. LE
1-0416. 14c 1f

Miscellaneous
UNABLE TO PAY \$29 due on CROSLLEY
TV; assume \$10 monthly payments and
cash money on this possession. Open
hill 9:00 p.m., Mondays, Fridays, UPTON
ELECTRIC CO., 1148 Market St., FU
3-2551. 15c2f

Ace Dirt Moving Co.
BULLDOZING - DITCHING
GRAVEL - TOP SOIL - SEPTIC
TANKS DRAIN FIELDS
1750 9th St. S., Puyallup
Phone Puyallup TH 5-2452

COLDSPOT refrigerator, works good, full
price \$40. Call weekly terms; free de-
livery today. Open Fridays and Satur-
day 9:00 p.m. UPTON ELECTRIC CO.,
1148 Market St., FU 3-2551. 15c2f

**FOR SALE—14 ft. house trailer with pre-
pane gas and lights. Also hooked up for
water and electric lights. Good condition,
\$295. 2 1/2 in. interior panel. Fair
condition and good rubber, \$98. See at 429
South 107th before 10 a.m. or after 6
p.m. 15c2f**

**FOR SALE—Gretsch guitar and case. Royal
Standard typewriter. Phone Eatonville,
TE 5-8937. 15c2f**

**FOR SALE—WESTINGHOUSE Laundry
\$50. LE 7-5157. 15c2f**

**FREE to good homes, black and white
puppies, six weeks old. 415 South 122nd,
LE 7-5717. 15c2f**

**BABY FURNITURE—New and used.
For sale or rent. SMALL PRY
EXCHANGE, 1109 Market St., BR
2-950b. 15c 1f**

**STORKVILLE
Baby Shop**
Everything For Baby
Including
Juvenile Furniture
9722 Pac. Ave. LE 7-4664

**WIFE LEFT; he wants out of contract on
SINGER electric portable; will zip-zap
and do fancy stitches. Assume \$22 bal-
ance at \$5 each month and get free home
demonstration. Open hill 9:00 p.m. Mon-
day and Friday. UPTON ELECTRIC CO.,
1148 Market St., FU 3-2551. 15c2f**

**1957 FORD; bedroom suite, coach, chairs,
apartment range, rollaway bed. JU 8-3534.
LE 7-7881. 15c2f**

**TAP, ACROBATIC, BALLET and BATON
classes, all ages. Mildred Keller, LE
7-7881. 15c2f**

**FOR SALE—Davenport and chair; house-
hold odds and ends; one pair new paint
overalls. 36-32; 1415 South 104th, LE
7-5475. 15c2f**

**FOR SALE—Youth high chair, chrome;
LE 1-0828. 15c2f**

**FOR SALE—Oil tank and stand, 10 gal.
LE 7-4889. 15c2f**

**FOR SALE—Floor furnace, automatic,
controlled; with tank and stand. Good
condition. LE 7-4836, 309 Judson. 15c2f**

**FOR SALE—Girls Bicycle, full size. Like
new. Call Mrs. J. H. Schuler, GR
2-1618, GR 4-0503. 15c2f**

**HAIRCUTS—\$1. 11006 So. Yakima. Week
days. 15c3**

**WILL ACCEPT \$50 discount on RCA
\$189.95 to \$139.95. Inquire about
nothing down, 25c-each-day meter
plan. Open Fridays 4:00 to 7:00 p.m.,
9:00 p.m. UPTON ELECTRIC CO., 1148
Market St., FU 3-2551. 15c2f**

**SPECIAL ORDER Cakes—Bakery
LE 7-9330. P. O. Box 5199. 15c1f**

**WANTED—Cameras and photo-
graphic equipment for resale.
QUARTY PHOTO SUPPLY
9818 Pacific, LE 7-7271. 16c1f**

**LEAVE MOVIE & KODACHROME
SLIDES FILM at QUALITY PHOTO
FOR 2-day processing; 9818 Pacific
Ave., LE 7-7271. 16c1f**

**FOR SALE—Young grain fed feeder
beef, by side; LE 7-1110. 15c2f**

**TRANSFERRED—Modern WESTINGHOUSE
SEWING MACHINE, cost \$100 but only
\$40. Open hill 9:00 p.m. Monday, Fri-
day. UPTON ELECTRIC CO., 1148 Mar-
ket St., FU 3-2551. 15c2f**

Horses & Equip
TWO HORSE TRAILER, \$275. LE 7-6692.
Royal 2, \$248. LE 7-6692. 16c2f

Aviation
FIRST-FLYING LESSON
LEARN TO FLY FOR A WEEK
New and Used Aircraft Sales
TACOMA FLYING SERVICE
Spanaway Airport LE 1-0442
11c1f

AVIATORS, subscribe now to the
Northwest Flyer, a new newspaper
devoted to flyers for the Pacific.
Subscriptions taken at your local
airport or write to P. O. Box 2008
Parkland, Wash.—11p1f.

**County
Agent's
Corner**
By Joseph Buhaly
Cone Harvest Ahead

Cone picking season is about to
begin for those who aspire to har-
vesting one of our evergreen crops
—the Fir Cone.
Field representatives for major
cone buyers predicts a fair to good
cone year as contrasted to last
year's poor one. The season is a
little later this year, probably be-
cause of the cool weather, which
slowed ripening of cones. The major
picking this year will probably
start about Labor Day and last till
the middle of October.
Douglas Fir is by far the most
important cone crop in the North-
west, but other species such as
Lowland White Fir and Noble Fir
are also in demand.

Price for the cones varies in ac-
cordance with quality. This is de-
termined by the cutting test. Slicing
the cone length wise and counting
the visible seed determines cone
quality. The seed count may vary
from four to ten visible seeds. An
eight to ten seed count is very good.
No price has been set for cones
this year. However, last year \$2.25
per bushel was paid in Pierce
County for Douglas Fir cones hav-
ing a four seed and over count.
\$1.50 for a three seed count. Two
bushels fills a gunny sack and thus
a gunny sack of good cones brought
\$4.50.
Buying stations are located at
Elbe, Roy, Enumclaw and Eaton-
ville.

The four principal methods of
cone procurement are picking from
standing trees, picking from felled
trees, gathering squirrel-cut cones
beneath trees, and gathering from
squirrel hoards.

Most persons collecting on a
small scale will pick from standing
trees or make use of squirrel cut-
tings. In picking from standing
trees the collector can get more
cones from the young trees with
full crowns. Some cones may be
reached from the ground by pulling
branches into reach with a hook on
the end of a pole. The main harvest
is made by a picker climbing the
trees, fastening himself to the tree
with a safety belt, pulling branches
to him with a hook, and picking the
cones into an apple-picking bag.

Some pickers have been able to
collect cones by making arrange-
ments with a logging operator to
come in immediately after falling
has been completed. Have a definite
understanding with the logger
so there will be no interference
with the logging. For safety reasons
it is best not to pick while
logging and to especially careful
with fire. Logging operators
may be able to withhold the cutting
of heavy-bearing trees until the
cones are ready. One large open-
ing tree may yield up to 12
bushels of cones.

Keep cone picking responsible.
Improvement of our forests will
require increasing amounts of tree
seed. The accessible and suitable
stands will be combed to find them.
Cone pickers can help matters a
great deal by showing a regard for
the rights of landowners. In some
cases damage to forest stands they
have been inflicted by cone pickers.
They should have permission from
the landowner and they should not
remove limbs or fall trees without
permission.

Prospective cone collectors
should always contact the dealer
for particulars before picking. One
dealer states that he gets many in-
quiries from inexperienced persons
who are attracted by reports of high
wages that can be earned. The
good pay, he cautions, is not likely
to be earned by an unskilled col-
lector.

By Ernest H. Hopp
With youngsters scurrying
around to collect ribbons they had
won and animals being loaded for
the homeward journey, the 11th
annual Pierce County Junior Fair
came to a close. The fact that
everyone was tired was far over-
shadowed by a feeling of a job
well done. A long list of successes
could be named. At the top would
have to be the most important part
of the Fair — an opportunity for
4-H and FFA youngsters to ex-
hibit the result of their project
work and let others see what they
did. Youngsters need praise, recog-
nition and evaluation of their work.
Fairs do just that.

Our award ribbon supply was
getting pretty low by the last day
of the Fair. A good portion of the
ribbons were blue, indicating a
top award. Reds and whites were
plentiful too. These recipients will
work harder another year.
It was encouraging to see such
fine crowds in the grandstand each
(See Page 11, Column 1)

LEGALS
BUILDING TO BE MOVED OR
RAZED—FOR SALE AT AUCTION
PARKLAND
10:00 A. M., September 9, 1959
1-Story Frame House and Attached
Garage at 1039 South 109th, Tacoma.
By the State of Washington, De-
partment of Highways, to the high-
est and best bidder.
The above listed parcel, will be
offered for sale at public auction on
10:00 a.m., September 9, 1959, at
10:00 A. M., at the site of the property.
Purchaser is required to MAKE
PAYMENT IN FULL AT TIME OF
SALE and to remove purchased
items and resultant debris from State
highway property by November 9,
1959, complying with all Federal,
State or Local laws and ordinances
that may apply, otherwise the pur-
chaser shall forfeit all rights to such
improvements and all payments
made thereon. Further, the pur-
chaser shall indemnify and save
the State harmless from any and
all claims occasioned by said re-
moval. The State reserves the right
to withdraw any parcel from the
sale and to reject any and all bids.
No. 10845
Published in the Times Journal Aug-
ust 27; Sept. 3, 1959.

Don't forget the Western Wash-
ington Fair at Puyallup, Sept. 19
through 27.
The American black bear is a
"black bear" even when its color
is brown, or even tan.

FOOD BUYS

Holiday
MARGARINE 5 Lbs. \$1
NEW VETS 5-lb. 49c
DOG FOOD 5-lb. Bag
Dairiesweet ICE CREAM 1/2 Gal. 75c
VINEGAR FOR PICKLING Gallon 69c

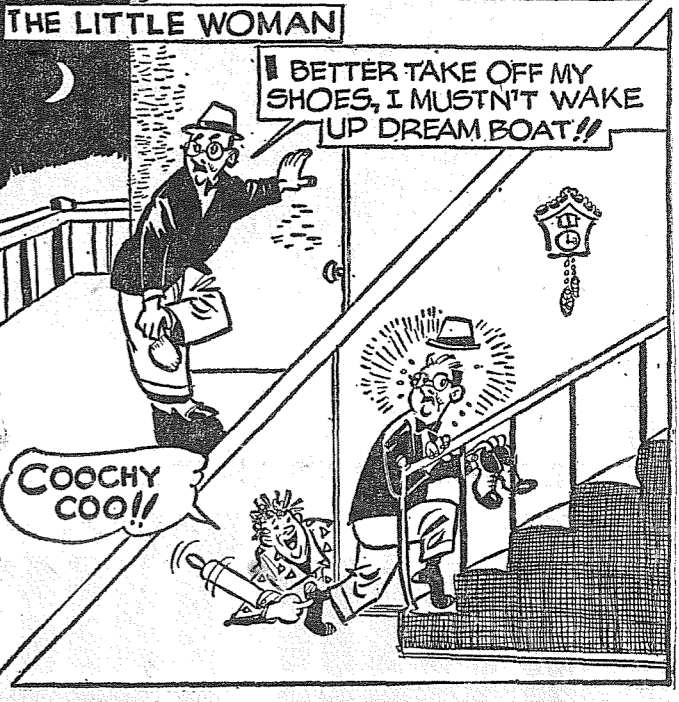
Fresh Ground Beef 3 Lbs. \$1.00
Picnic Style — Pork
Roast 29c
Lean Pork
Steaks 39c
By the Piece
Bacon 33c
Tender Rib
Steaks 69c

Boneless Ham Ready to Eat 73c
Campbell's Chicken
Soups 4 for 65c
Adams Big 8-oz. Jar
PEANUT BUTTER 2 for 89c
GOODEE POTATO
CHIPS—69c Size for. 49c
Sunshine Hi Ho
CRACKERS 1 Lb. 29c

Other Money Saving Food Buys to Be Posted
New Low Price On Canning Peaches

HERMANS FOOD STORE
162nd & Park Ave. Spanaway
(Right to Limit Reserved)

Ticklers By George



New Fall Schedule for Bookmobiles
Starting Sept. 1, the bookmobiles of the Pierce County Public Li-
brary will be operating on new fall schedules. The following schedule
is of interest to residents of Times Journal territory.

A-9 VALLEY-WALLER RD: 2nd & Clear Lake	11:05-11:15
4th Thursdays: Sept. 10, 24; Oct. 8,	11:20-11:30
22; Nov. 12; Dec. 19, 30.	11:45-12:05
Riverside School	9:05-10:30
Clear Lake Rd.	10:40-10:55
Lindford & Montana	11:05-11:20
40th & Waller	11:30-11:45
56th & Vickery	11:50-12:10
Waller Rd. School	12:40-2:00
64th & Waller	2:05-2:20
72nd & Vickery	2:25-2:40
72nd & Canyon	2:45-3:00
80th & Canyon	3:10-3:25
84th & Canyon	3:30-3:50
80th & Vickery	3:55-4:15
See also Route B-7	
A-4 SPANAWAY 1st & 3rd Thurs- days: Sept. 17, Oct. 1, 15; Nov. 5, 19; Dec. 17.	9:10-11:30
Spanaway School	11:30-11:45
A-13th Field at QUALITY PHOTO	12:25-12:40
Military & John Mahon	1:10-1:25
Rds.	1:25-12:40
Rademaker Rd. (Wood's)	1:25-1:40
So. 175th St. (Drake's)	1:05-1:25
So. 172nd & Rademaker	1:30-1:40
Knoble & Nelson	1:45-2:00
(Hagen's)	2:05-2:20
Frederickson (Russell's)	2:25-2:40
Frederickson (Hedlund's)	2:25-2:40
Frederickson	2:55-3:10

County Agent's Corner

(From Page Ten)
 night. These people came out to enjoy themselves and give the youngsters a pat on the back.

We were very happy about the new phases of this year's Fair. The dahlia department added much color. The open class general flower exhibits made an attractive display in the foyer of the new high school multipurpose room. The multipurpose room was made to order for the garden, home economics, forestry, electrical,

photography, science fair and craft exhibits. This area was one of the most widely visited of the Fair. The horses, dairy, livestock, poultry and rabbits seemed to fit in nicely with their new surroundings. There are some problems to be solved for next year's Fair, but a

It's the LAW

During a strike against a telephone company, Jack, Jim and Jon dynamited some communication facilities. They were indicted in a state court for violating a state statute making it a crime to conspire to injure or destroy the property of another. They pleaded guilty and were sentenced to prison.

Later they were indicted in a United States district court, charged with the violation of a federal statute making it a crime to conspire to injure or destroy the property of another. The defendants were found guilty, and the Court of Appeals affirmed the conviction.

The case was then considered by the United States Supreme Court solely on the claim that the Federal prosecutions, based on the same acts as the state prosecutions, placed the defendants in jeopardy twice, contrary to the Fifth Amendment.

The Supreme Court had decided, even before the Civil War, that state and Federal prosecutions for the same offense did not violate the double jeopardy clause of the Federal constitution. In Moore v. Illinois (1852) the court wrote: "Every citizen of the United States is also a citizen of a state or territory. He may be said to

owe allegiance to two sovereigns, and may be liable to punishment for an infraction of the laws of either. The same act may be an offense or transgression of the laws of both . . . that either or both may punish such an offender cannot be doubted. Yet it cannot be truly averred that the offender has been twice punished for the same offense; but only that by one act he has committed two offenses, for each of which he is justly punishable."

Based on the logic of the early decisions, the Supreme court affirmed the convictions of Jack, Jim and Jon.

(This column is written to inform, not advise. Facts may change the application of the law.)

WALLER ROAD NEWS

There will be no Waller Road Community Fair this year. This was decided by the Fair board at a meeting Thursday evening at the home of Mr. and Mrs. Harold Olson. Representatives from all sponsoring organizations were present.



THE COLOR OF LIFE

the Gift that says "I love you" most personally...

a formal portrait by (STUDIO)!
 In living color! For a color portrait truly shows the warmth and friendliness of your eyes . . . the sparkle that whispers your personality secret.
 (STUDIO)'s color lets your loved one see you as he knows you!

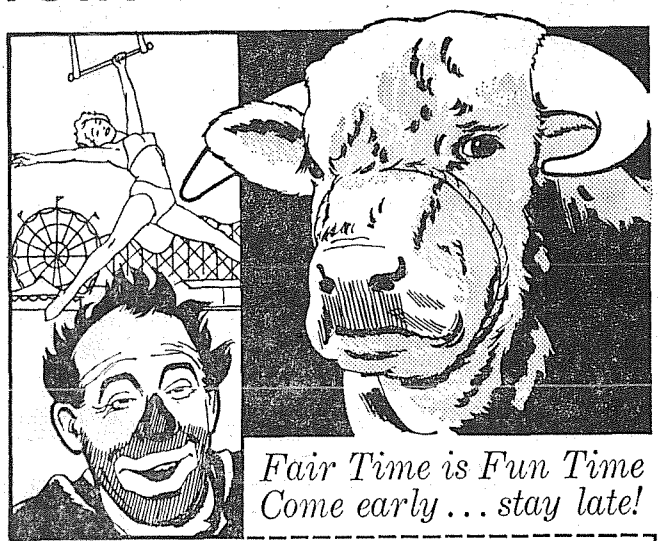
Stop in or phone for an appointment for your color portrait . . . before the last-minute rush!

McKEWEN STUDIO
 405 GARFIELD ST. LE 3833

GIVE COLOR

WESTERN WASHINGTON SINCE 1900

FAIR
 PUYALLUP • SEPT. 19 thru 27



*Fair Time is Fun Time
 Come early . . . stay late!*

RESERVE YOUR GRANDSTAND SEATS NOW FOR THE WONDERFUL, WONDERFUL SHOW . . .
 WESTERN WASHINGTON FAIR ASSOCIATION, Puyallup, Washington
 Reserve . . . tickets at \$1.50 each (including tax)
 for Date . . . (Sept. 19 thru 27) For Afternoon Show . . .
 Name . . . For Evening Show . . .
 Address . . .
 Send check or money order, made out to WESTERN WASHINGTON FAIR ASSOCIATION

due to all those who worked hard.

Bible Comment:

Even Worst Men Have the Latent Capacity for Good

Joseph told his brothers that they should bring their brother Benjamin down to Egypt with them on their next journey to procure grain. The brothers protested that the loss of Benjamin would kill their father, Jacob, who had been dreadfully upset when Joseph had gone from home.

Joseph was insistent and, since the famine was so keen, there was no other way. When they next came—with Benjamin—and had secured their grain for the journey home, Joseph planted a silver cup in Benjamin's sack.

When they had gone a little way, they were overtaken and the silver cup discovered. It was, of course, a very serious situation. Judah, the brother who had originally suggested selling Joseph to the Midianites, thus starting him on his journey to Egypt, came to the front.

Assuring Joseph that the loss of Benjamin would kill Jacob, Judah asked that he be taken as a substitute and punished for the alleged theft and that Benjamin should be allowed to go home. Here is illustrated sharply the latent capacity for goodness and nobility that is in human nature. It is exemplified quite often in men whose lives have been by no means free from serious fault but who rise to the heights of courage and sacrifice in a crisis.

This latent capacity is a hopeful fact for humanity. We find it exemplified in Americans and others, but it is regrettable that it so often requires great crises to bring it out.

Perhaps the greatest task for the Christian church is to so influence men in times of prosperity and peace that what is best in them must be expressed without the stimulus of some extreme situation.

Don't forget the Western Washington Fair at Puyallup, Sept. 19 through 27.

BULL-DOZING
 • Excavating • Grading
 • Gravel
 LE 7-5112

DEPENDABLE PHARMACY SERVICE

Bob Vaughan
 Owner

**Lost Your Prescription No.?
 Doctor Out of Town?**

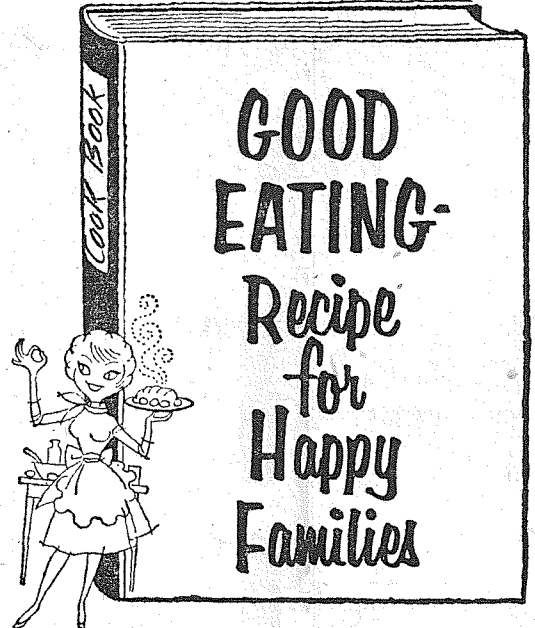
If your prescription was filled at Parkland Pharmacy you have nothing to worry about. We keep a cross file on all prescriptions that we fill, and are able to locate your prescription and number by your name only.

This is but one of the many extra services we offer our customers.

Parkland Rexall Pharmacy

Pacific Avenue & Airport Road
 LENOX 7-8636

INTEGRITY • SERVICE • SAFETY



GOOD EATING-Recipe for Happy Families
 Hormel's BOLOGNA
 By the Piece 39¢
 Lb.

Armour's Star PICNIC HAMS 29¢ LB.
 Lean, Pre-Cooked

Pure, Lean, All Meat
GR. BEEF 39¢
 Fresh Hourly lb.

Hormel's FRANKS 39¢
 12-Oz. Pkg.



INCLUDE THESE SAVINGS ON YOUR SHOPPING LIST
 TASTEWELL — 2½ Size Tin
PEACHES 4 Cans for 1.00
 CARNATION DRY MILK 8-Qt. Size Pkg. 49¢
 SUNNY JIM PEANUT BUTTER 3 Lb. Jar 99¢

FISHERS BISKIT MIX Large 40-Oz. Pkg. 39¢

SUNSHINE KRISPY CRACKERS 1 -Lb. Box 25¢

SHINN'S LARGE "AA" EGGS Fresh from the Nest Doz. 47¢

SHURFINE COFFEE 1 -Lb. Tin 59¢

NALLEY'S CHILI Hot or Reg. 4 15-oz. Cans 1.00

TASTEWELL MARGARINE 1 -Lb. Pkg. 15¢

VET'S — 1-LB. CAN DOG FOOD 12 Cans for 1.00

SWANSON'S — Beef, Turkey, Chicken TV DINNERS Pkg. 49¢

OPEN SUNDAYS
KITCHEN'S
 OPEN LABOR DAY
 Right to Limit
 Open 9 a.m. Til 10 p.m. Daily
 10 a.m. Til 9 p.m. Sundays
 PRICES EFFECTIVE THURS., FRI. & SAT.
 12208 Pacific Ave.

U.S. No. 2 Potatoes 50-Lb. Bag 79¢
 JUST RIGHT FOR CANNING
 Tomatoes 18 Lb. LUG 79¢
 MARBLEHEAD Squash Lb. 5¢
 Delicious Baked

Back - to - School Special
 PEE-CHEE'S 3 for 19¢
 Reg. 10¢
 NOTEBOOK FILLER PAPER 200 Sheets 57¢
 Reg. 69¢
SHOP-ETTE
 VARIETY And DEPARTMENT STORES
 56th and Pacific Ave. Open Daily 10 a.m. to 9 p.m.—Sat. 10 a.m. to 6 p.m.
 Across from Tradewell 133rd and Pacific Ave. Next to "Big Bear"

Piggly Wiggly's Fun Foods

For LABOR DAY!

OPEN LABOR DAY 10 TO 7 P.M.

COFFEE HOUSE

COFFEE . . . 1-LB. CAN **57¢**

STRICTLY FRESH GRADE "A"

EGGS . . . LARGE DOZ. **45¢**

FOR YOUR LABOR DAY OUTING!

SPAM . . . 12-OZ. CAN **39¢**

B & M

BAKED BEANS . . . 4 28-OZ. CANS **\$1.00**

SUNNY JIM GRAPE, PUNCH OR

ORANGE DRINK . . . 4 46-OZ. CANS **\$1.00**

HERE'S A BIG SAVING!

OCCIDENT FLOUR . . . 25-LB. BAG **\$1.99**

SUNNY JIM

PEANUT BUTTER . . . 18-OZ. JAR **43¢**

RAFT

MIRACLE WHIP . . . QUART JAR **47¢**

NALLEY'S POTATO CHIPS
REG. 69¢ BOX
59¢

VERY YOUNG TOP QUALITY S&W PEAS
6 NO. 303 CANS **\$1.00**

ZEE WAX PAPER
100-FT. ROLL **17¢**

Van de Kamp's BAKERIES
Regular 69c **BLUEBERRY PIE** . . . 61¢
Milk Chocolate or Caramel **1-LAYER CAKE** . . . Reg. 79¢ 89c
(Reg. 6 for 33c) Rosette **COFFEE CAKES** 6/29¢
Famous for
QUALITY • VARIETY • FRESHNESS • CONVENIENCE

MD ASSORTED COLORS
NAPKINS 80-COUNT PKG. **10¢**

MD ASSORTED COLORS
TISSUE 4-ROLL PKG. **37¢**

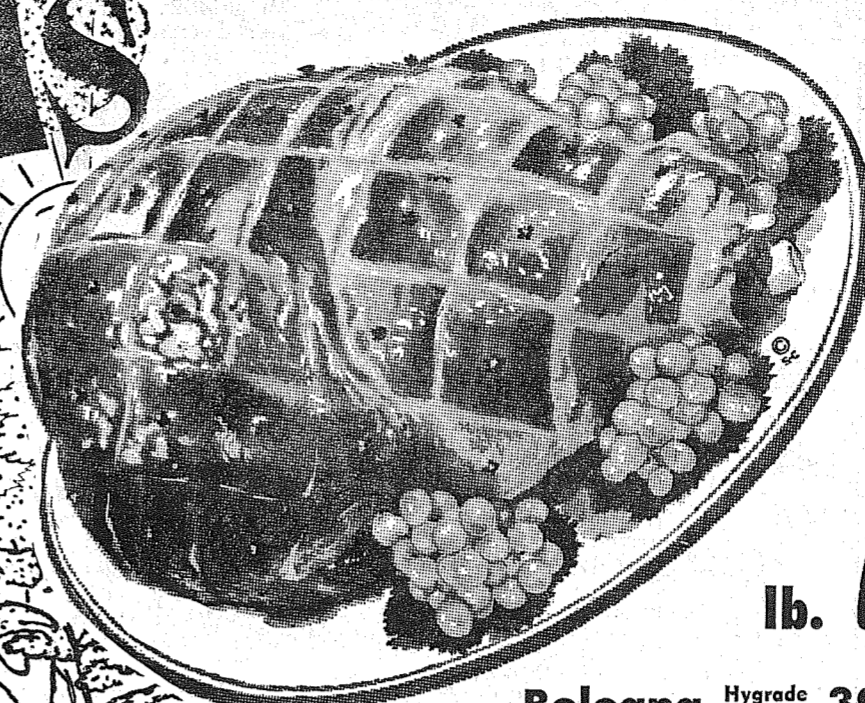
PLYMOUTH, 1-LB. CARTON
MARGARINE lb. **15¢**

TREE SWEET FROZEN ORANGE
JUICE 5 6-OZ. CANS **1.00**

SUN LIQUID . . . Quart Can 63¢ 1/2-Gal. Can \$1.25
WESSON OIL QUART BOTTLE **55¢**

Evaporated Milk **DARIGOLD** 3 Tall Cans **43¢**
Ritz **CRACKERS** . . . 1-lb. Pkg. **33¢**
Reynolds Aluminum **FOIL** . . . 25-ft. Roll **31¢**
Nalley's Banquet **DILLS** or Plain . . . 24-oz. Jar **29¢**
White King **LIQUID** . . . Giant Can **65¢**
Star-Kist Chunk **TUNA** 3e Off. . . No. 1/2 Can **26¢**
Premium Snowflake **CRACKERS** . . . 1-lb. Box **29¢**
Liquid Starch **VANO** . . . Qt. Bottle **29¢**
Dog Food **CALO** . . . 2 No. 1 Cans **29¢**
Bleach **PUREX** . . . Half Gallon **35¢**

FOR THE HOLIDAY OUTING!
ECONOMICAL! EASY-TO-FIX!



HAMS

FEDERAL BRAND, WHOLE OR SHANK HALF, EXTRA LEAN, 12- TO 16-LB. AVERAGE

43¢ lb.

Bologna Hygrade Lb. 39c
CARSTENS HYGRADE WIENERS . . . 1-lb. Cello **47¢**

FRYERS lb. **39¢**
Fresh, Cut-up Washington Grown

U.S. GOOD **SIRLOIN STEAK** . . . lb. **89¢**

U.S. GOOD, AGED **T-BONE STEAK** . . . lb. **98¢**

HYGRADE **SLICED BACON** . . . lb. **49¢**

12-Oz. Jars **FRESH OYSTERS** Mod. Size . . . **45¢**

Federal Brand **HAMS** Butt Portion lb. **47¢**

JUNIOR TURKEYS
ARMOUR'S PEERLESS BRAND
4- TO 8-LB. AVERAGE YOUNG, 1959 CROP
lb. **39¢**

PIGGLY WIGGLY'S OWN, FRESH, LEAN

GROUND BEEF lb. **39¢**

ELBERTA PEACHES
• RUSHED FROM THE YAKIMA VALLEY AT THE PEAK OF FLAVOR!
26-lb. Box **39¢**
TOKAY GRAPES POUND . . . **10¢**
BELL PEPPERS Large Size . . . EACH **5¢**
Green Onions
RADISHES **3 for 10¢**

HARDWARE SPECIALS AT FIFE PIGGLY WIGGLY
THERMOS ICE CHESTS
Reg. 13.95 . . . **10.95** Reg. 19.95 . . . **15.95**
Reg. . . . **12.75** Reg. 22.95 . . . **19.95**
Household Assortment **BRUSHES** 1.49 Value. . . Package of 6 **88¢**
3/8" O.D. **COPPER TUBING** . . . Per Ft. **16¢**
16-oz., With Steel Handle **CLAW HAMMER** Cushion Grip . . . **\$1.89**

M-D (5c OFF DEAL) 400's **FACIAL TISSUE** **23¢**
SUNSHINE — 1-LB. PKG. **MARSHMALLOWS** . . . **33¢**
GIANT PKG. **WHITE KING "D"** . . . **69¢**
SOAP **WHITE KING** . . . GIANT PKG. **69¢**
WHITE KING **CLEANSER** . . . 2 14-OZ. CANS **29¢**

OPEN 9 A.M. - 10 P.M. DAILY
OPEN LABOR DAY 10 A.M. to 7 P.M.

PRICES EFFECTIVE THURS., FRI., SAT., SEPT. 3, 4, 5. WE RESERVE RIGHT TO LIMIT.

Piggly Wiggly

PUYALLUP 1010 EAST MAIN
PARKLAND PACIFIC AT GARFIELD
40th and PORTLAND AVE. TACOMA
SO. TACOMA 5252 SO. WASHINGTON
FIFE FORMERLY ANDRE'S MARKET