

Pierce County Herald and

# The TIMES JOURNAL

Vol. 24 No. 5

February 1, 1968

Price Per  
Single Copy

10¢

## Pam Bartle FP Princess



Pam Bartle, 5'3" and hazel-eyed, was named 1968 Franklin Pierce Daffodil Princess Tuesday night at a special selection program held in the Franklin Pierce Gymnasium.

Theme of the program was "An Impossible Dream." The dream came true for the 18 year old daughter of Mr. and Mrs. R. P. Bartle when 1967 Daffodil Queen Carol Parcheta placed a bouquet of daffodils in Pam's arms to announce the judges' decision.

"I was completely surprised," Princess Pam told the Journal. "But there isn't any school I'd rather represent than Franklin Pierce."

Competing with Pam for the title were Pat Weis, Molly Stuen, Lelia Cornwell, and Gerd-Inger Gregerson. Judges were Dr. Dale Tibbetts, Mrs. Doris Wilder, Jean Lawrence, John Hansler, and Ted Karl. Roger Shaw was master of ceremonies.

During her prepared speech, the new Franklin Pierce Princess likened a woman to an impossible dream. "Who, but a woman," Pam asked, "can talk so fast, say so little, and mean so much."

"Men are the dreamers, if they think they understand the ways of a woman. For them she's impossible," the new princess concluded.

During the question period she was asked, Is it true you enjoy playing football and if so is it just to be with boys? "I enjoy football because a girl can make a touchdown without carrying the ball," she replied.

Approximately 425 braved the threat of a snow storm to attend the program including Princess Pam's parents and sister Judy. Judy, 16, is a Franklin Pierce sophomore. Participating in the program were the Franklin Pierce Band under the direction of Eugene Ahrendt, soloists Phil Shinn, Diane Shaefer, Carole Mason and Cathy Ness duet, and the Franklin Pierce Silvertones

directed by Angelo Manzo.

The new princess, who boasts a 3.88 grade point average, plans a college major in education and hopes to teach elementary school. She has filed an application with Washington State University and Western Washington College in Bellingham. After teaching elementary classes, she eventually hopes to go into school counseling, Pam stated.

Pat Weis, in her prepared speech, saw the complete fulfillment of life as an approach to the "Impossible Dream." She is the daughter of Mr. and Mrs. Fred Weis, 421 East 115th.

Molly Stuen concluded that all dreams are possible and cited the fetes of the Wright Brothers and Lute Jerstad as examples. She is the daughter of Dr. and Mrs. M. R. Stuen.

Gigi Gregerson told the audience, "To reach the unreachable star, this is my quest. Let this star be friendship." Gigi is the daughter of Mr. and Mrs. Guttorm Gregerson, 1201 South Wheeler.

"Some people dream of becoming actors or singers," Lelia Cornwell stated in her prepared speech. "But I dream of repaying my mother, father, and family for their sacrifices." Lelia is the daughter of Mr. and Mrs. David Allen, 12117 Golden Given Road.

Escorting the contestants to the stage were Tom Langseth (Pat Weis), Allan Cail (Pam Bartle), Jim Hadland (Gigi Gregerson), Phil Shinn (Lelia Cornwell) and Karl Korsmo (Molly Stuen).

Each princess candidate wore a daffodil corsage as she was escorted to the stage decorated with daffodils and twigs of pussy willow. In addition to Queen Carol Parcheta, 1966 Franklin Pierce Princess Lori McDowell attended the program.





## School Directors Attend Negotiations Institute

Wilbur (Bob) Roberts, and Tom Stephens from Franklin Pierce School District will be among 200 school directors throughout the State attending a Negotiations Institute February 2 and 3 in Yakima.

The institute is sponsored by the Washington School Directors' Association.

Dr. Myron Lieberman, nationally known author and consultant in the field of negotiations, will be the featured speaker. His major speech will be "Revolving Impasses in Board-Staff Negotiations."

Other speakers will include authorities on school law, labor consultants and experienced administrator.

Participants in the institute will learn procedures and techniques for negotiating with both certificated and non-certificated personnel.

Michael G. Boivin, staff consultant for negotiations, said: "The Negotiations Institute will aid directors to become more knowledgeable in their negotiating. School boards have traditionally been too defensive. They need to impress teachers with the need to bring innovations and flexibility into the schools."

## Librarians Hold First Inservice Training Meet

Community librarians in the Pierce County Library system met Wednesday at the Tacoma headquarters for their first monthly inservice training session.

In the past, branch assistants in the county system have met occasionally, and have depended on visits from headquarters staff for supervision. According to Mrs. Carolyn J. Else, director of Pierce County Library; "The monthly meetings will serve to better acquaint community librarians with processes at headquarters which interact with their specific activities; will provide more effective inservice training in the many areas of library service; and will promote aspects of cooperation and contribution to an extent not possible previously."

Among other community librarians attending the event were Mrs. Beryl Tefter, Midland; Mrs. William O'Malley and Mrs. Jean Johnson, Park-

land; and Mrs. R. E. Barr of Roy.

Wednesday's session was conducted by Miss Barbara Weikert, Pierce County Library's coordinator of extension services, including branch libraries and bookmobiles. The first half of the morning was concerned with brief reports from headquarters staff on current events or materials in the various service departments.

Other participants were Miss Margaret Bixby, coordinator of children's services, announcing the Young Reader's Award ballot system; Carl Holland, supervisor of service to nursing homes, exhibiting material connected with Talking Books for the blind and visually handicapped; Miss Mary Kobetich, reporting on pamphlets available; and Mrs. Margaret Farrell, reference librarian.

A workshop on activities for National Library Week, April 21 to 27, was conducted by Nancy Jane Bare, community relations assistant.

## Parkland Part Of NB of W Growth

The Bank of Washington is now the nation's 157th largest bank, moving up from 164th position last year, according to an announcement made today by American Banker Magazine.

Goodwin Chase, president and board chairman, pointed out that the Bank experienced its greatest year of growth in 1967, increasing its deposit strength by more than \$61 million, or 22.3 per cent. The previous all-time high was established in 1966. Total resources now exceed \$382

## P.C.I.A. States Aims

The Pierce County Improvement Association called for a complete reorganization of the South Suburban Sewer District, and announced a five point program it intends to expedite, Leo G. Wilson, president, disclosed in a press release Monday.

The program will include petitions for election of new sewer commissioners; petition to straighten the existing boundaries of the district; petition to enlarge the area; urge cooperation with Lakewood, other districts, and Pierce County in exercising the county's area-wide comprehensive plan; and sponsor open meetings to disseminate accurate, well-substantiated information to the community.

"It is evident that the commissioners of the South Suburban Sewer District are not acting in the best interests of the people, and installation of a sewer system in the area is getting far too remote," Wilson charged.

Explaining the need to enlarge the area served by the sewer district, Wilson said, "There are several densely populated areas bordered on two and three sides by the sewer lines in the S. S. S. D. plan, yet omitted from the district. In other cases, the district's lines are but a few feet from natural physical boundaries."

He charged that the Pierce County Improvement Association has failed to find any evidence that the sewer district has ever made any attempt to comply with the provisions established by the Housing Urban Development Dept. in May, 1967, and those required by the State Pollution Control Commission in November, 1967.

Wilson summed up the position of his group by saying, "The confidence, trust and willingness of the citizens to work and plan together must be regained. A positive approach, open and clear thinking toward civic improvement, and amity among its people is the only way Parkland will solve its problems."

million.

The bank now has 41 banking centers across the state. Presently under construction are new centers in Spokane and Parkland, with a high-rise headquarters building on the drawing board for Tacoma. A new Central Yakima Banking Center was dedicated on January 20 in the center of downtown Yakima.

## New Officers, New Outfits



COLTS AND FILLIES Drill Team officers donned their new riding outfits for a picture last Saturday. Newly elected officers are (l-r) Jack Wulfkecke sgt.-at-arms; Vicky Bowerman treasurer; Cheryl Wilbor secretary; and Sharon Ackley president. Absent was Lenore Kolapus, vice president. The group is affiliated with the Junior Division of Washington Horsemen Inc., Tacoma Unit No. 1.

## Sheriff's Reports Car Prowlers Hit Area

A rash of car break-ins and larcenies were reported during the past week centering in the Parkland area.

A wing-window was broken to gain entry in a car owned by Bob Larson, a PLU student, Deputy Sheriff Robert J. Crookshank reported. An 8-track stereo and tapes valued at \$180 was stolen.

Crookshank investigated the theft of \$485 worth of auto parts removed from a vehicle parked at Sheridan Motors, 10203 South Sheridan. The thief apparently climbed over a fence to strip the parts from a green 1954 Ford, he stated. Listed as stolen were a 4-barrel carb, a 4-speed floor transmission, and a chrome spoke steering wheel.

Tires, rims, lugs, and hub caps valued at \$120 were removed from trucks belonging to Grant's Glass, 11816 Pacific Avenue, Deputy Sheriff Gary Smith reported.

The front end of the trucks were jacked up to accomplish the theft, Smith stated. They were parked at the firm's warehouse.

Stereo tapes with a listed value of \$75 were removed from the front seat of a car belonging to Ralph Neils, a resident of Tingelstad Hall, Deputy Robert Crookshank reported. A left wing-window was broken to gain entry.

Deputy Sheriff Leon S. Moroy investigated the theft of a radiator, part of a 1955 pickup truck belonging to Richard H. Crane, 311 South 119th. The loss was valued at \$50.

### SPANAWAY

Burglars forced their way into Avenue Furniture, 14803 Pacific Avenue to steal a motorcycle helmet valued at \$20, Deputy Sheriff Gary Smith reported.

After forcing the back door, the burglars were reported to have removed a Harley Motorcycle, but abandoned it 15 feet from the entrance. A helmet, attached to the cycle, was the only thing missing, Smith stated.

### EATONVILLE

Burglars took stamps and a portable radio during a burglary of Eatonville High School, Tony Del Vecchio, Eatonville Police, advised Sheriff's officers last week.

The property was removed from a filing case in the Superintendent's office and was listed as an Arvin 8 transistor portable and \$6 worth of five cent stamps. A mechanical shop was broken into also, where an acetylene cutting outfit was acquired to cut a hole in a fire proof vault.

## Pierce County 4-H'ers To Attend Conference

Mrs. Luis Atlee of Parkland, Mrs. Ernest Taylor of Graham and Mrs. Clarence Johnson of Tacoma are the 4-H leaders from Pierce County who will join with some 100 other volunteer leaders from throughout the state this weekend (February 2 and 3) to explore ideas for 4-H citizenship programs and projects within the county.

Frank Stowe, County Extension Agent, said the leaders will attend the State 4-H Leadership Exploration Conference in Ellensburg. The Conference will be held on the campus of Central Washington State College under the general guidance of Washington State University's Extension 4-H staff.

The program, based on the conference theme, "4-H Citizenship in Action", will focus on four aspects of citizenship: interpersonal, political, economic, and intergroup or

service.

A separate workshop group will be formed around each citizenship aspect and will deal with ideas for implementing emphasis on this particular phase of citizenship at the local level.

Conference speakers and workshop leaders include Dr. Suzanne Lilloy, Assistant Professor of Child and Family Studies at WSU; Stewart Bledsoe, State Representative of Ellensburg; Mrs. Bill Kelso of Sumner, a former WSU Extension Home Management Specialist; and Mrs. Don Howard, 4-H leader from Bettel Ground.

Pierce County delegates will participate in the interpersonal, political, and intergroup workshops.

A grant from the State 4-H Foundation will help defray expenses of conference delegates.

## Evaluation Slated At Franklin Pierce

A team of 41 teachers and administrators are in the process of taking a close look at the Franklin Pierce School District — an evaluation by the education association which is backed by the school board.

Called "Profiles of Excellence," the evaluation involves nine different committees which are investigating all parts of the school system, from the superintendent's office down through each school and including the staff itself.

According to Ruth Rickert, chairman of the overall committee of the Franklin Pierce Education Association, the evaluation is designed to evaluate the school system, but not to measure the quality of teaching.

Begun in October, the evaluation is not expected to be completed until April, after which a final report will be presented to the education association.

Nine committees, each containing three or four teachers and administrators, are evaluating the following areas: the educational program, administrative operation, the board of education, staff personnel policies and procedures, professional compensation, conditions of professional service, the school plant, district organization, finance and

business administration and the local professional organization.

The basis of the evaluation is a guideline established over a number of years by the National Education Association. The guideline cautions the committee members, however, that the evaluation only indicates certain conditions are present or lacking in the school system.

"The mere presence of certain conditions does not necessarily indicate a high quality educational program," the guideline points out. "It may be that conditions are present for a good program, but the program itself is not in operation."

The Franklin Pierce Education Association approached the school board last year with a request to make the evaluation, and the school directors approved the request and told the administration to cooperate fully with the committee. Orin Fjeran, administrative assistant in charge of research, serves as a general resource person for the committee from the administrative level.

Serving on the steering committee with Mrs. Rickert, a high school teacher, are Marv Jacobson, a junior high school teacher, and Douglas Vanderpool, an elementary school principal.

## Lutheran Minister To Address Forums

The Rev. G. S. Thompson, New York church executive, will speak to two adult forums at Trinity Lutheran Church, 12115 S. Park on February 4th. The forums are slated for 9:30 and 11:30 a.m.

Rev. Thompson, Executive Secretary of the Division of Welfare Services for the Lutheran Council in the United States, served parishes in St. Paul and Thief River Falls, Minnesota, and Eau Claire, Wisconsin before going into executive positions. He also taught at Luther Seminary in St. Paul for some time. Serving as a consultant and coordinator, he works with Lutheran welfare agencies and institutions across the nation.

He will be in the Tacoma area to address the Pierce County Lutheran Welfare Association's annual meeting on February 5th.

## Better Club Coverage By Times Journal

Em Matson, managing editor of the Times Journal, has announced the community paper has started an evening shift.

The new shift, on duty until 10:30 p.m., will be run by the news editor, Sandy Ingram.

"This new shift will allow our paper to give the much needed coverage to clubs and lodges in the circulation area," stated Matson.

According to officials at the paper, the decision to start the new hours was made because of the community growth and the need of the general public to be informed of the workers and work being done to improve the area.

All clubs and lodges are asked to notify the Times Journal of the meeting dates and times. The new shift is effective immediately.



EARNs WINGS — Miss Pamela Jean Fauske, daughter of Mr. and Mrs. Einar P. Fauske, 1020 So. 124th, has recently earned her flight hostess wings following completion of the Trans World Airlines' training course at Kansas City. She is currently based in Kansas City assigned to TWA's StarStream jet fleet.



HI HO

PUYALLUP

HI HO

FRESH  
WESTPORT  
**CRABS**  
39<sup>c</sup><sub>lb</sub>

**LIBBY'S** NO. 303 **CANNED GOODS SALE**

GREEN BEANS  
CREAM CORN  
SLICED BEETS  
GREEN PEAS  
WHOLE K. CORN

5/1<sup>00</sup>

RADISHES  
AND  
GREEN  
ONIONS  
2/15<sup>c</sup>

2-lb. PKG.  
ARMOUR'S DINNER  
**FRANKS**  
49<sup>c</sup><sub>lb</sub>

LARGE "AA" PUYALLUP  
**EGGS** 39<sup>c</sup><sub>Doz.</sub>

LOCAL  
EXTRA FANCY  
HOTHOUSE  
**RHUBARB**  
29<sup>c</sup><sub>lb</sub>

FULLY COOKED  
PICNIC  
**HAMS**  
39<sup>c</sup><sub>lb</sub>

10-oz. FROZEN WEST-PAC  
**STRAWBERRIES** 5/1<sup>00</sup>

1/2 GALLON HI HO  
**ICE CREAM** 69<sup>c</sup>

LONG GREEN  
SLICING  
**CUCUMBERS**  
2/25<sup>c</sup>

FULLY COOKED  
SLICED PICNIC  
**HAMS** 47<sup>c</sup><sub>lb</sub>

KING SIZE  
**COLD POWER** 99<sup>c</sup>

MASCOT DOG FOOD 14/1<sup>00</sup>

ALL FLAVORS 1-lb. NESTLE'S QUIK 3/1<sup>00</sup>

SCOTTIES 200 2-PLY FACIAL TISSUE 23<sup>c</sup>

**CAULIFLOWER**  
SNOW WHITE 29<sup>c</sup><sub>head</sub>  
CELLO PACK



PRICES EFFECTIVE JAN. 29th THROUGH FEB. 3rd

DUBUQUE  
**BACON**  
69<sup>c</sup><sub>lb.</sub>

LEMON or JELLY ROLLS ..... ea. 49<sup>c</sup>  
MAPLE BARS ..... 6 for 39<sup>c</sup>

IDAHO  
POTATOES  
59<sup>c</sup><sub>10-lb. Mesh Bag</sub>

CLANCY'S  
15-oz. PKGS.  
BEEF CUBE  
**STEAKS**  
79<sup>c</sup><sub>Pkg.</sub>

**LOWEST DRUG PRICES ANYWHERE**

REG. 1.59 LUSTRE CREME RINSE ..... 69<sup>c</sup>  
REG. 98<sup>c</sup> SUCRETS ..... 59<sup>c</sup>  
REG. 1<sup>00</sup> SUAVE HAIR SPRAY ..... 49<sup>c</sup>

U.S. No. 1  
1-lb. CELLO PKG.  
**Carrots**  
2/39<sup>c</sup>

3-oz.  
SMOKEY  
CANYON SLICED  
**MEATS**  
3<sup>c</sup><sub>PKGS</sub>/1<sup>00</sup>

**CHINESE NEW YEAR**

100 LBS. EBISU RICE ..... 12.79  
KIKKOMAN SOY SAUCE ..... GAL. 2<sup>29</sup>  
LARGE 2 1/2 TINS CHUN KING NOODLES ..... 3/1<sup>00</sup>  
4-OZ. "DYNASTY" WATER CHESTNUTS ..... 5/1<sup>00</sup>  
FORTUNE COOKIES ..... 3/1<sup>00</sup>

JUMBO  
FLORIDA  
**PINK  
GRAPEFRUIT**  
6/1<sup>00</sup>

HI HO

PUYALLUP

HI HO



# Pacific Lutheran University

Late Afternoon and Evening Classes  
Spring Semester, 1968  
Registration: Daily in Registrar's Office  
Classes Begin: Feb. 1, 5-7  
Tuition: \$44.00 per semester hour

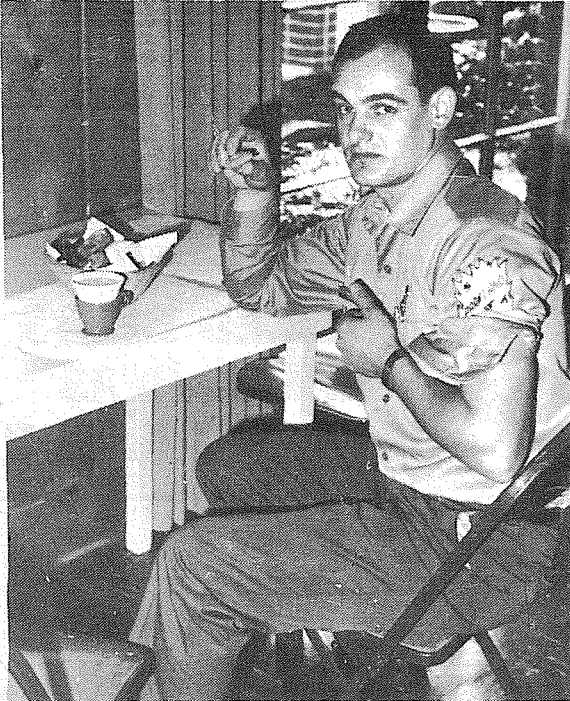
COURSE	HOURS	DAY	TEACHER
210 CREATIVE DESIGN-2 HRS	7:00-8:40	M	MR ELWELL
315 SCULPTURE-2 HRS	3:30-5:20	TR	MR ROSKOS
325A S1 ART IN THE ELEMENTARY SCHOOL-2 HRS	7:00-9:00	M	MR LAUGHLIN
325A S2 ART IN THE ELEMENTARY SCHOOL-2 HRS	7:00-9:00	W	MR LAUGHLIN
400A ART IN THE SECONDARY SCHOOL-2 HRS	7:00-9:00	T	MR LAUGHLIN
ART			
311 ORNITHOLOGY-2 HRS	7:50-12:20	S	MR PATTIE
372 GENERAL ENTOMOLOGY-4 HRS LECTURE LAB	4:30-6:10 4:30-6:10	T WR	MR KNUDSEN MR KNUDSEN
BIOLOGY			
BUSINESS ADMINISTRATION			
212 S3 MANAGERIAL ACCOUNTING-3 HRS	7:00-9:40	W	MR POLLEY
302 INTERMEDIATE ECONOMIC ANALYSIS-3 HRS	3:00-4:15	TR	MR DAVIS
317 S2 DATA PROCESSING SYSTEMS-3 HRS	7:00-9:40	T	MR HILDHOLM
365 REAL ESTATE-3 HRS	7:00-9:40	R	MR HACKMAN
434 GOVERNMENT AND BUSINESS-3 HRS	4:30-5:45	TR	MR DAVIS
440B BUSINESS EDUCATION IN THE SECONDARY SCHOOL-3 HRS	4:30-5:45	TR	MR PETERSON
441 S2 STATISTICAL METHODS-3 HRS	4:30-5:45	MW	MR BEXTON
441 S3 STATISTICAL METHODS-3 HRS	7:00-9:40	M	MR HOLMAN
461 FINANCIAL ANALYSIS-3 HRS	3:00-4:15	TR	MR BANCROFT
473 S1 PURCHASING-3 HRS	5:00-7:30	M	MR KING
473 S2 PURCHASING-3 HRS	7:00-9:40	T	MR STINTZI
477 SALES MANAGEMENT-3 HRS	7:00-9:40	W	MR MCMASTER
512 ACCOUNTING INFORMATION AND CONTROL-3 HRS	7:00-9:40	M	MR WATNE
543 S1 QUANTITATIVE METHODS-3 HRS	7:00-9:40	M	MR PIERSON
543 S2 QUANTITATIVE METHODS-3 HRS	5-5	T	MR PIERSON
550 ORGANIZATIONAL BEHAVIOR-3 HRS	3:00-5:40	M	MR STINTZI
THIS CLASS MEETS IN OLYMPIA			
551 SEMINAR IN INDUSTRIAL MANAGEMENT-2 HRS	7:00-9:40	R	MR STINTZI
552 SEMINAR IN MANAGEMENT-3 HRS	7:00-9:40	T	MR HUTCHEON
553 PUBLIC POLICY AND BUSINESS-3 HRS	7:00-9:40	R	MR HUTCHEON
554 SEMINAR IN BUSINESS FINANCE-3 HRS	7:00-9:40	W	MR BANCROFT
571 SEMINAR IN MARKETING-3 HRS	7:00-9:40	W	MR MCMASTER
590 CASE STUDIES IN BUSINESS-3 HRS	6:00-8:40	T	MR KING
METHODS AND TECHNIQUES OF RESEARCH-2 HRS			
596 RESEARCH IN BUSINESS I-1 OR 2 HRS	7:00-9:40	TR	MR SJODING
597 RESEARCH IN BUSINESS II-1 OR 2 HRS	6:00-8:40	T	MR KING
598 THESIS-1, 2, 3, OR 4 HRS	6:00-8:40	T	MR KING
ECONOMICS			
101 PRINCIPLES OF ECONOMICS-3 HRS	7:00-9:40	W	MR DAVIS
302 INTERMEDIATE ECONOMIC ANALYSIS-3 HRS	3:00-4:15	TR	MR DAVIS
434 GOVERNMENT AND BUSINESS-3 HRS	4:30-5:45	TR	MR DAVIS
441 S2 STATISTICAL METHODS-3 HRS	4:30-5:45	MW	MR BEXTON
441 S3 STATISTICAL METHODS-3 HRS	7:00-9:40	M	MR HOLMAN
490 S1 SEMINAR AMERICAN ECONOMICS-3 HRS	7:00-9:40	M	MR GENDA
490 S2 SEMINAR AMERICAN ECONOMICS-3 HRS	7:00-9:40	R	MR GENDA
543 S1 QUANTITATIVE METHODS-3 HRS	7:00-9:40	M	MR PIERSON
543 S2 QUANTITATIVE METHODS-3 HRS	5-5	T	MR PIERSON
EDUCATION			
201 S3 INTRODUCTION TO EDUCATION-3 HRS	4:30-5:45	TR	MR MOE
315 INSTRUCTIONAL MATERIALS-2 HRS	4:30-6:10	R	MR HAGEN
319 S2 THE TEACHING OF ARITHMETIC-3 HRS	4:30-6:10	TR	MR DEBOWER
413 SCIENCE IN THE ELEMENTARY SCHOOL-2 HRS	4:30-6:10	T	MR STEIN
414 SOCIAL STUDIES IN THE ELEMENTARY SCHOOL-2 HRS	4:30-6:10	M	MR JOHNSTON
416 PARENT TEACHER CONFERENCE-2 HRS	4:30-6:10	R	MRS KEBLBEK
420 PROFESSIONAL SCHOOL LIBRARY MATERIALS-2 HRS	4:30-6:10	R	MRS CHAMBERS
423 LANGUAGE ARTS IN THE ELEMENTARY SCHOOL-2 HRS	4:30-6:10	M	MISS DRVIK
436 WORKSHOP PREPARATION AND UTILIZATION OF INSTRUCTIONAL MATERIALS-3 HRS	4:30-6:10	MW	MR STEIN
THIS CLASS MEETS IN THE GRAPHICS STUDIO OF THE LIBRARY			
439 PRACTICUM IN STUDENT PERSONNEL WORK-2 HRS	7:00-8:40	T	MR LEASURE
440H S1 SOCIAL STUDIES IN THE SECONDARY SCHOOL-2 HRS	7:00-8:40	M	MR GENDA
440H S2 SOCIAL STUDIES IN THE SECONDARY SCHOOL-2 HRS	7:00-8:40	R	MR GENDA
440N METHODS IN TEACHING FOREIGN LANGUAGES-2 HRS	7:00-9:40	W	MR SPANGLER
441 S2 STATISTICAL METHODS-3 HRS	4:30-5:45	MW	MR BEXTON
441 S3 STATISTICAL METHODS-3 HRS	7:00-9:40	M	MR HOLMAN
451 INDIVIDUAL MENTAL TESTING-2 HRS	4:30-5:45	W	MR SEVERTSON
475 EMOTIONAL PROBLEMS OF CHILDREN-2 HRS	4:30-6:10	T	MISS WILLIAMSON
478 MENTAL HEALTH-2 HRS	4:30-6:10	T	MR HOLDEN
501 HISTORY OF EDUCATION-2 HRS	7:00-8:40	T	MR JONES
529 DIAGNOSIS OF READING PROBLEMS-2 HRS	4:30-6:10	T	MISS DRVIK
530 GROUP PROCESSES AND THE INDIVIDUAL-2 HRS	7:00-9:00	MT	MR HOLMBERG
540 COUNSELING THEORY AND PRACTICE-3 HRS	4:30-5:45	MW	MR ADACHI
571 SCHOOL GUIDANCE PROGRAM-2 HRS	4:30-6:10	R	MISS WILLIAMSON
581 PUBLIC SCHOOL ADMINISTRATION-3 HRS	7:00-9:30	T	MR DEBOWER
586 SCHOOL FINANCE-2 HRS	7:00-8:40	R	MR GRAY
595 METHODS AND TECHNIQUES OF RESEARCH-2 HRS	7:00-8:40	MR	MR SJODING
ENGLISH			
322 CHILDRENS LITERATURE-3 HRS	7:00-9:30	R	MISS BLOMQUIST
383 SHAKESPEARE-3 HRS	4:30-5:45	MW	MR RANSON
388 SEVENTEENTH CENTURY ENGLISH LITERATURE-3 HRS	4:30-5:45	TR	MISS KNUDSON
494 TWENTIETH CENTURY AMERICAN LITERATURE-3 HRS	7:00-9:30	M	MR SOLE
FRENCH			
202 S3 INTERMEDIATE FRENCH-3 HRS	4:30-5:20	MTR	MRS HADLEY
404 18TH CENTURY FRENCH LITERATURE-3 HRS	3:30-4:45	MW	MR SPANGLER
440N METHODS IN TEACHING FOREIGN LANGUAGES-2 HRS	7:00-8:40	W	MR SPANGLER
GEOLOGY			
203 MINERALOGY-3 HRS LECTURE LAB	7:00-8:40 7:00-8:40	M T	MR RINGE MR RINGE
GERMAN			
440N METHODS IN TEACHING FOREIGN LANGUAGES-2 HRS	7:00-8:40	W	MR SPANGLER
HEALTH AND PHYSICAL EDUCATION			
214 SKIN DIVING-MEN AND WOMEN-1 HRS	7-30	T	MR ALSETH
283 OFFICIATING-WOMEN-2 HRS	4:30-6:10	M	MISS OFFICER
342 PROBLEMS IN TEACHING RHYTHMICS-2 HRS	7:00-8:40	W	MRS BERG
HISTORY			
360 CIVIL WAR AND RECONSTRUCTION-3 HRS	7:00-9:30	T	MR HALSETH
496 SEMINAR-3 HRS	7:00-9:30	M	MR SCHNACKENBERG
JOURNALISM			
204 JOURNALISM-2 HRS	7:00-8:40	T	MR EYRES
LATIN			
202 INTERMEDIATE LATIN-3 HRS	7:00-8:15	MW	MR HODDUS
440N METHODS IN TEACHING FOREIGN LANGUAGES-2 HRS	7:00-8:40	W	MR SPANGLER
MATHEMATICS			
319 S1 MODERN ELEMENTARY MATHEMATICS-3 HRS	4:30-6:00	TR	MR BARKER
320 GEOMETRY AND ALGEBRA FOR ELEMENTARY TEACHERS-3 HRS	4:30-6:00	TR	MR PETERSON
438 MODERN ALGEBRAIC CONCEPTS FOR THE SECONDARY SCHOOL TEACHER-3 HRS	7:00-10:00	M	MR EGGAN
OPEN TO N.S.F. INSTITUTE PARTICIPANTS ONLY			
MUSIC			
136 UNIVERSITY ORCHESTRA-1 HRS	7:00	M	MR KRACHT
137 CHAMBER ENSEMBLE-1 HRS	7:00	TR	MRS TREMAINE
PHILOSOPHY			
201 S3 INTRODUCTION TO PHILOSOPHY-3 HRS	3:30-4:45	MW	MR MCKAY
221 S2 INTRODUCTION TO ETHICS-3 HRS	7:00-9:30	R	MR HUBER
300 S2 PRINCIPLES OF PHILOSOPHY-3 HRS	7:00-9:30	T	MR ARBAUGH
POLITICAL SCIENCE			
101 S3 INTRODUCTION TO POLITICAL SCIENCE-3 HRS	7:00-9:30	TR	MR MOON
434 GOVERNMENT AND BUSINESS-3 HRS	4:30-5:45	TR	MR DAVIS
441 S2 STATISTICAL METHODS-3 HRS	4:30-5:45	MW	MR BEXTON
441 S3 STATISTICAL METHODS-3 HRS	7:00-9:40	M	MR HOLMAN
458 INTERNSHIP IN PUBLIC ADMINISTRATION-3 HRS	3:00-4:15	MW	MR CULVER
484 SOVIET POLITICAL SYSTEMS-3 HRS	4:30-5:45	MW	MR FARMER
PSYCHOLOGY			
101 S4 GENERAL PSYCHOLOGY-3 HRS	4:30-5:45	MW	MR MINETTI
421 PSYCHOPATHOLOGY-3 HRS	7:00-9:30	M	MR SEVERTSON
441 S2 STATISTICAL METHODS-3 HRS	4:30-5:45	MW	MR BEXTON
441 S3 STATISTICAL METHODS-3 HRS	7:00-9:40	M	MR HOLMAN
451 INDIVIDUAL MENTAL TESTING-2 HRS	4:30-5:45	R	MR SEVERTSON
530 GROUP PROCESSES AND THE INDIVIDUAL-2 HRS	7:00-9:00	MT	MR HOLMBERG
540 COUNSELING THEORY AND PRACTICE-3 HRS	4:30-5:45	MW	MR ADACHI
60 PSYCHOLOGY OF LEARNING-3 HRS	7:00-9:30	T	MR BEXTON
RELIGION			
241 AMERICAN CHURCHES-3 HRS	7:00-9:30	M	MR EKLUND
342 CONTEMPORARY CHRISTIANITY-2 HRS	4:30-9:10	M	MR ANDERSON
SOCIOLOGY			
101 S5 INTRODUCTION TO SOCIOLOGY-3 HRS	3:30-4:45	TR	MR JOBST
332 MODERN MARRIAGE-3 HRS	7:00-8:15	TR	MR KNORR
359 THE COMMUNITY-3 HRS	4:30-5:45	MW	MR JOBST
441 S2 STATISTICAL METHODS-3 HRS	4:30-5:45	MW	MR BEXTON
441 S3 STATISTICAL METHODS-3 HRS	7:00-9:40	M	MR HOLMAN
496 SEMINAR-3 HRS	7:00-9:30	M	MR SCHILLER
SPANISH			
202 INTERMEDIATE SPANISH-3 HRS	3:40-5:00	MR	MR LEMMON
440N METHODS IN TEACHING FOREIGN LANGUAGES-2 HRS	7:00-8:40	W	MR SPANGLER
SPEECH			
107 BUSINESS AND PROFESSIONAL SPEECH-2 HRS	7:15-8:55	M	MR UTZINGER
447 SPEECH FOR THE CLASSROOM TEACHER-2 HRS	7:15-8:55	T	MR UTZINGER

or further information contact Office of the Registrar, PLU, LEnox 7-8611, Ext. 214.

## Color TV Course At Clover Park

A new course on the servicing of color television will begin February 13 at the Clover Park Education Center. The course will be offered two nights a week for twenty-five weeks. Classes will meet Tuesday and Thursday evenings from 7-11 p.m. Objective of the course is to provide all skills and knowledge necessary for full qualification as a color television serviceman. Satisfactory completion of the course will enable graduates to work as a competent serviceman, capable of performing duties required in bench work, home service calls, customer relations and shop methods and procedures.

To be eligible for the course, applicants must be presently employed in radio-television servicing, or have had previous experience in black and white television maintenance.



TIP THIBODEAUX, Parkland Fireman, enjoys a glass of milk after donating a pint of blood to the Tacoma-Pierce County Blood Bank when a mobile unit visited the area Friday.

## Blood Unit Visits Area

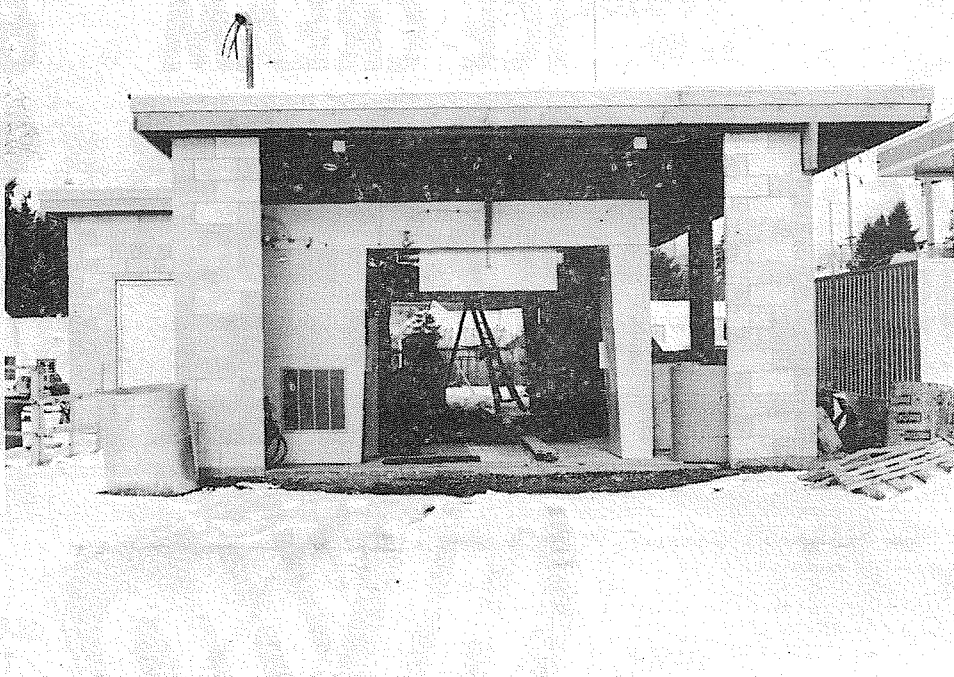
Twenty donors braved cold weather and a light snow fall last Friday to help replenish the dwindling stocks of the Tacoma-Pierce County Blood Bank during a visit by the Bank's mobile unit to Trinity Lutheran Church.

Trinity Lutheran Church furnished the majority of the donors, but also helping were Parkland firemen, PLU faculty, and Kiwanis Club members.

Out of the twenty volunteers, 15 were able to donate, Mrs. Patricia Young, Blood Bank official, stated. She said this was about average for a mobile unit trip.

A number of would-be donors called the Journal office to report they had come down with colds or the flu.

The need is still critical, Mrs. Young stated, as the Bank requires about 25 pints daily to meet the demand. Donors may give blood at the Blood Bank office, 1211 South 12th in Tacoma, she said.



CAR WASH nears completion. An automatic car wash will open in about 2 weeks directly behind Marv Tommervik's Standard-Chevron Station on South 120th just off Pacific Avenue. The new equipment will automatically wash, fully brush and dry.

Newsworthy  
Do you have a newsworthy story? If so, call this newspaper.

## The TIMES JOURNAL

Published weekly at 14620 Pacific Ave., Parkland 98444 and delivered by U.S. Mail and carrier to subscribers. Publishers: Pierce County Publishers, Inc.  
Managing Editor . . . . . Em Matson  
News Editor . . . . . Sandy Ingram  
Sports Editor . . . . . Bob Ingram  
Subscriptions \$3.50 per year, \$1.80 six months, or 30c monthly by carrier. News stand price 10c copy.  
Qualified as a legal publication under Chapter 213 of the Legislature Acts of the 1941 regular session of the State of Washington  
Second Class Postage Paid at Tacoma, Wash.  
Vol. 24 No. 5 February 1, 1968

**TO ADD LIFE TO YOUR GIVING BE A BLOOD PROVIDER**  
CALL FU 3-2553  
**Tacoma-Pierce County BLOOD BANK**  
1211 South 12th

**HERE IS THE MAN**  
To Call For The Best Buy On Your Auto Insurance  
**Al Langseth**  
9920 Pacific Ave.  
LE 1-1800  
STATE FARM Mutual Automobile Insurance Company Home Office: Bloomington, Illinois

**WHY CHAINS? Dunlop Winter Traction Tires**  
See **TINY'S Tire Center**  
108th & Pacific LE 1-4535

**CHURCH DIRECTORY ATTEND OUR WORSHIP SERVICES**

<b>CHRIST THE KING Lutheran Church</b> 8:30 & 11 a.m. Worship Service 9:45 a.m. Sunday School East 85th at Van Buren LE 7-4272	<b>Spanaway Assembly of God</b> 166th & Pacific Ave. Sunday School 9:45 a.m. Morning Worship 11 a.m. Evening Evangelistic 7 p.m. Family Night Wed. 7:30 p.m. LE 1-1412
<b>Spanaway Lutheran Church</b> 8:30 & 11 a.m. Worship Service 9:45 a.m. Sunday School Grades 1 & Up 11 a.m. Sunday School 3, 4 and 5 Year Olds John L. Briehl, Pastor 160th & A St. LE 7-5978	<b>TAKE YOUR FAMILY TO CHURCH THIS SUNDAY</b>

**Where To Buy INSURANCE**

CALL LE 7-8647

**Ashford-McAloon Insurance**  
SAFECO INSURANCE 1901 Pacific Ave.

**INSURANCE**  
**Military - Home - Business**  
**LE 7-4904**  
Auto Fire Life Bonds  
**IRENE CLEMENS**  
Agency - Parkland  
10329 Pacific Ave.



# Food Art Display At Keithley

"Americana" the all-electric cooking school presented to the women of this area by Parkland Light and Water Company, Elmhurst Mutual Power and Light Company and The Times Journal features fashions and food for all on February 19 in the Keithley Jr. High Auditorium at both 1:30 and 7:30 p.m.

For planning a fun tailgate picnic, company food or an appetizing family meal appropriate dishes will be prepared by professional home economist Betty G. Nelson and her associate Helen E. Brady. They will have corresponding costume changes during this two hour cooking show to add to the fun of this entertaining and informative all-electric cooking program.

Dishes prepared will be offered as part of the many prizes that are waiting for those attending this cooking school. Each person will receive a printed booklet containing all the recipes prepared on the program.

Mrs. Betty G. Nelson and Mrs. Helen E. Brady are neighbors in Tacoma where seven years ago they formed their own company, Food Arts. Since that time they have presented many different series — a completely new show each fall and spring. Their shows have been presented in every corner of the state of Washington and many parts of Oregon and Idaho to thousands of enthusiastic club women and homemakers. They believe (and it shows) that a cooking school can be fun as well as instructive and their aim is to provide just such a program.

Mrs. Nelson is a graduate of the University of Washington in home economics and

has a varied background in her profession. Good Housekeeping magazine, consultant work in Sweden, director of Home Economics for Nalley's, Inc., nutritionist for the Washington State Dairy Council and teaching homemaking food classes at the Tacoma Vocational-Technical Institute are a part of her interesting experience. Two teenage daughters and an engineer husband qualify her to title of homemaker. Her home economics training is used every day to make possible the management of home, family and business. Of course, says Mrs. Nelson, having an understanding husband and co-operative daughters is the real secret to being able to manage her many interests.

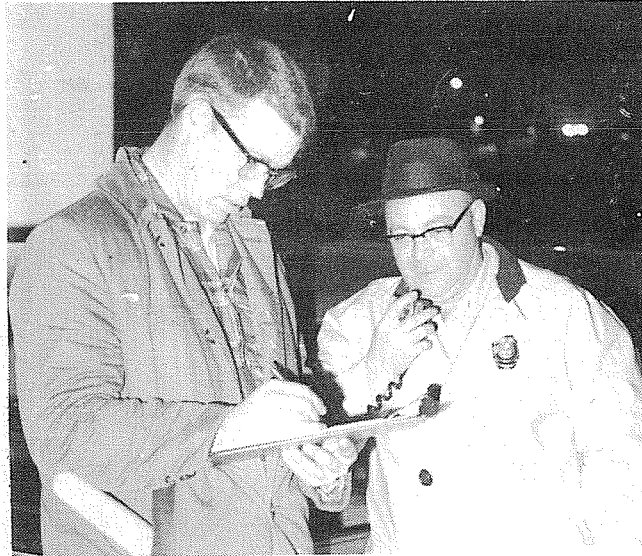
Mrs. Brady's background was in the business world before her marriage and four children took over her full attention. Now that they are all grown she is the office manager of a paper processing plant as well as a partner with Betty in their joint venture — Food Arts.

In their spare time they both enjoy skiing and tennis and try to combine some of their business trips with these sports.

For an evening of fun and good ideas, join your neighbors at the Keithley Junior High School on February 19 at 1:30 or 7:30 p.m.

Admission will be by invitation only. Invitations can be obtained at Elmhurst Mutual Power and Light, Parkland Light and Water or the Times Journal.

# CB Radiomen Train For Fire Duty



WHILE CHUCK YORK takes the microphone Carl Lyden prepares to copy messages during a training session at Parkland Fire Station Monday.

Twenty-five members of the Pierce County Civil Defense Citizen's Band Radio Service are training to assist County Fire Departments at the scene of a fire.

When a fire alert is sounded over a special plectron alarm system, the radiomen grab their turnout gear to help control traffic at the scene of the fire. They are organized to place three or four men at the scene of any fire 24 hours a day.

Need for the assist volunteered by the CB'ers is pointed out by firemen, who are often pulled from firefighting duties to control traffic or hold back spectators.

During a fire call men living closest to the fire are alerted. All members live in the Midland, Parkland, Spanaway, or Lakewood area. After completing training at Parkland Fire Station, they will drill with Fire Departments nearest their home.

The program started about a year ago with five men. Fire training includes resuscitator, hose coupling, and some of the basic duties of a fireman.

Participating last Monday were Carl Lyden, Chuck York, Eldon Bell, Roger Webster, Doug Hutchinson, Wayne Liffik, Dave Pettingell, Harold Stolen, Rich Hieb, Harry Jones, Robert Warter, Jim Hetherington, and Denny Moore.

All have citizen's band radio equipped cars and volunteer their services and equipment.

## Club Calendar

Bethany Lutheran Parish Building will be the scene of the Washington Birthday Dinner celebrations from 5 to 7:30 p.m. February 17th.

The Parish building is situated on the Mountain Highway at Rocky Ridge. Everyone is invited to attend.

**The Merry Mixers 4-H Club**  
The next meeting of the Merry Mixers 4-H Club will be held Monday night at the Elk Plain Grange on February 5, at 7:30 p.m.

The Merry Mixers are going to show and tell the grange members about 4-H. No 4-H meeting is slated for Tuesday night.



C.B. RADIO operators line up for a group picture after training with Parkland Firemen. Eventually, C. B. radiomen trained in fire fighting techniques will work with Midland, Parkland, Spanaway, and Lakewood Fire Departments.

**PIERCE COUNTY HEADQUARTERS FOR 1968**

- ★ CHRYSLER
- ★ PLYMOUTH
- ★ VALIANT
- ★ BARRACUDA

CALL GR 4-0621

**Steven MOTOR CO.**  
2205 SOUTH TACOMA WAY

**Dryer MORTUARY**  
(134th & Pacific) PARKLAND

The Country Parson



"Many problems could be solved quickly if so many of us did not feel they were not in our department."

Copyright, by Frank A. Clark

**Dryer MORTUARY**  
(134th & Pacific) PARKLAND



INSTRUCTORS — Betty G. Nelson, home economist, left, and Helen E. Brady, associate food arts, display their talents at making cooking fun. The two will present their art at Keithley Junior High on January 19.

Journal Classifieds  
Get Results  
LE 7-0223

**NEW- MORE POWERFUL**

**the 1968's ARE HERE VOLKSWAGEN**  
27 MAJOR CHANGES

**Tom Carstens AUTOHAUS**  
7030 So. Tacoma Way  
GR 4-0666  
TACOMA DEALER SINCE 1955

**"CRAZY COY" the Surplus Boy Invites You To Shop at "THE BARN MARCHAY" of Spanaway**

For:

- \* Pre-tested Clothes for Kids, Mom, Dad!
- \* Furniture: Apt. Size Refrig. \$19<sup>95</sup>
- \* Skiers: Skis. . . . . \$2<sup>00</sup> pr.
- \* Printers:
  - White Pants. . . . . .69c
  - White Shirts. . . . . .35c
  - Rags. . . . . .lb.15c
- \* Books. . . . . .10c & up

**TONS OF ARMY SURPLUS BARGAIN BARN**  
17501 Pacific Ave. LE 1-0440  
"We've Got It — From Snoop To Nuts"

**EXTRA SPECIAL See Brookdale Lumber For**

**PREFINISHED PANELING AT BUDGET TRIMMING PRICES**

Here's your chance to buy beautiful wood paneling at money-saving prices.

**LOOK AT THESE BIG VALUES . . .**

BRASILIA . . . . .	7 <sup>95</sup>
Vinyl Shield WALNUT PECAN ANTIQUE WHITE	6 <sup>99</sup>
ECONOPLY MAHOGANY . . . . .	3 <sup>98</sup>
WALNUT . . . . .	9 <sup>95</sup>
BIRCH . . . . .	10 <sup>24</sup>
KNOTTY PINE . . . . .	10 <sup>56</sup>
ELM Mediterranean . . . . .	8 <sup>49</sup>

Many Others At Moderate Prices

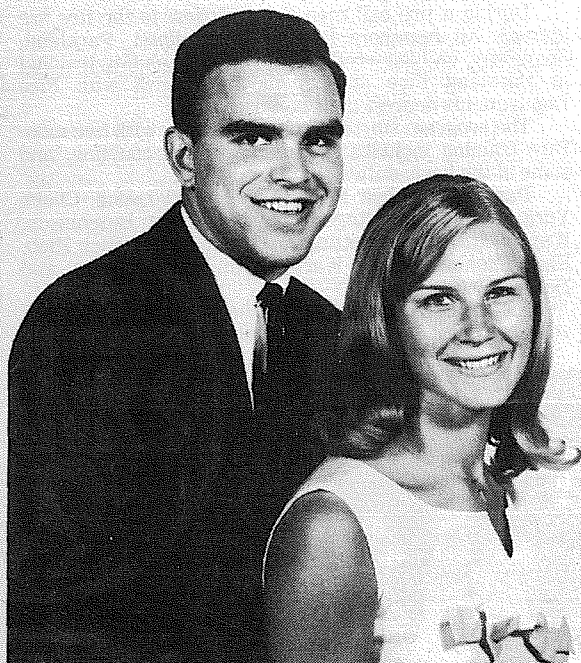
**Brookdale Lumber Inc.**  
13602 Pacific Ave. LE 7-8669



Pierce County Herald and  
**The TIMES JOURNAL**

**WOMEN'S WORLD**

**July Wedding**



Mr. and Mrs. William D. Lobeda, Parkland, recently announced the engagement of their daughter Kathleen Dale to Richard H. Shouse. A July wedding is planned. Both attend Concordia Teacher's College and will graduate in June. The wedding will take place at Our Savior Lutheran Church, East 112th and Bingham Ave. The future benedict is the son of Mr. and Mrs. Howard Shouse.



MR. AND MRS. THOMAS LEO BEMIS

Photo By Bell Studio

**Larson-Bemis  
Wedding  
January 20**

Susan Marie Larson became Mrs. Thomas Leo Bemis January 20 at Our Lady Queen of Heaven Church.

The bride, daughter of Mr. and Mrs. Edgar R. Larson 11520 Golden Given Road, wore a long, white trained velvet gown. Her net veil was fastened to a roll velvet hat. She carried a bouquet of white roses with mums and ferns.

Fr. William Greier officiated, and the bride was given in marriage by her father.

The groom is the son of Mr. and Mrs. Leo H. Bemis, 14801 Terry Lane. The bride is a 1966 graduate of Franklin

Pierce High School and attended Tacoma Community College. The benedict graduated from Bethel High School in 1965 and attends Tacoma Community College.

Maid of honor Charlaire Kay Christiansen was attired in a scarlet floor-length gown of velvet trimmed with a satin ribbon at the empire waistline. Best man was Timothy Rogers.

The couple greeted approximately 200 guests at a reception held in the Church parish hall. Pouring was Miss Jeanie Bemis.

After a 5 day honeymoon, the newlyweds will live at 24826 52nd Ave. East, Graham. The new Mrs. Bemis wore a white rose corsage pinned to her white knit suit as the couple left on the wedding trip.

**Drug Forums  
Indicate Need  
For Education**

"Drugs and Youth for People Who Care" is the theme of two panel discussions slated for February 5th and 7th. Two discussions have already been conducted.

The meetings are the first in the Tacoma area for the purpose of presenting factual information to the public on the problems relating to drug abuse, particularly as it affects the youth of the community.

Mrs. Mardell Buffington of the Tacoma Public Schools, who has been coordinating a city-wide drive for participation in the project by pharmacists and druggists, expressed the appreciation of the project staff for the manner in which civic support has been extended on all fronts.

"The communities have a lot at stake in these seminars and deep concern over drug abuse has been

singularly well expressed," she said.

Emphasis of the panel meetings will be on drug recognition and the community resources available to help those involved in drug abuse.

Dr. James Zylstra, director of education and community services for the Tacoma Narcotics Center of the Opportunity Development Inc., stressed the fact that while the town meetings were particularly aimed at parent participation, all concerned citizens should attend.

"Not only parents, but all persons who have a concern over the alarming escalation of drug abuse should learn the simple ABC's of recognition and be fully apprised of our entire community resources available to help the involved."

A question and answer period will follow the discussion in each of the scheduled meetings, officials announced. The dates and places of the meetings are: Lincoln High School, 7:30 p.m., Feb. 5; and Stadium High School, 7:30 p.m., Feb. 7.

**Telephone Company  
Shows 1967 Increases**

Pacific Northwest Bell has announced a gain of more than 75,000 new telephones in Washington State during 1967. To support this growth a record-breaking \$79 million was spent during the period to provide adequate facilities and equipment.

In the Southern Pierce County area, using Tacoma figures for Parkland, Midland, Summit and Spanaway, there was an increase of 11,381. Graham accounted for 197, Roy, 47; and Tacoma, 11,137.

In a year-end summary of the company's operations in the state, Willis D. Rives, vice president and general manager, observed that meeting telephone needs in 1968 would be even more costly.

"Just over three years ago, our 1964 construction expenditures for growth and modernization amounted to a little more than \$41 million — less than half of what we will spend this year," he said. "Our 1967 telephone gain was double what it was in 1964," he added.

Rives said that construction expenditures for 1968 would exceed \$85 million —

the highest in the company's history.

"The high cost of money and materials to meet this growth and modernization is making it increasingly difficult to give the kind of service that we must provide," Rives stated.

He cited the fact that the company recently sold \$50 million worth of debenture bonds at 6.71 per cent — the highest interest rate paid by any Bell System company since 1921.

"This is extremely expensive 'growth' money and must be supported by good earnings. If we are to attract the outside capital we need in order to grow with the region we serve, it is essential that we improve our earnings level," he added.

**Fun Fair At  
Elmhurst**

Elmhurst P.T.A. will sponsor a carnival Friday, Feb. 2 from 6 to 9 p.m.

The carnival was named "Fun Fair" by Mrs. Auty's morning kindergarten class, and will feature game booths, cake walk, and plenty of good things to eat.

The public is invited to attend.

**REO Slates  
Annual Meet**

Rural Economic Opportunity, Inc., the Office of Economic Opportunity's eyes and arms in rural Pierce County, feel they have a big task cut out for them. While America sends Peace Corps men into South America and Africa, let us not forget our neighbors in rural Pierce.

The problem of the city poor is well in focus, with millions of dollars channeled to help their plight but as U.S. News & World Report, says: "A new study by Government shows rural areas are relatively poorer than cities". This, then is the task of Rural Economic Opportunity, Inc., a small handful of conscientious, dedicated people. In their rural locations they listen to those in trouble or in need; make necessary referrals to existing community facilities, public and private agencies; perform needed services — taking clients to clinics, helping unemployed become employed; organize rural groups such as Senior Citizens and Teen-Agers, etc. to boost morale of individuals, families and communities; and assist communities to locate areas of need and to set up special projects to cope with them.

R.E.O., Inc. is holding their annual meeting, open to the public, with all members of the corporation, board members and members of all committees and neighborhood councils slated to attend, at the James Sales Grange Hall, 612 So. 113th St., just West of Park Avenue, Parkland, at 1:30 P.M., Wednesday, February 7th. Reports will be rendered of activities of the past year and projects for the coming one, to be followed by election of Board members.

The Board of Trustees meeting will immediately follow the Annual Meeting to elect officers and take care of whatever other business comes before it.

**The TIMES JOURNAL**

**ENTERTAINMENT**

TONITE

**The Modernesians**

Winthrop Hotel Tacoma

**sabre FOOT**

**PRAIRIE TAVERN**

**CHICKEN & PIZZA**

**Food! Dancing!**

**LIVE MUSIC**

**FRIDAY & SATURDAY**

Jean & Chris — Betty Jean & Wade  
on The Mountain Highway at Roy "Y"

**Angelo's**

**PIZZA HOUSE**

**ORDERS TO GO**

Featuring top sirloin and American dishes, spaghetti, rigatoni, meat balls, sausage, ravioli, beer and wine.

**Choice of Pizzas**

cheese & tomato	bacon
anchovie	peppers
mushroom	olive
Italian sausage	hamburgers
pepperoni	ham
tuna	salami
	onion

LE 7-7233  
14102 PACIFIC AVE.  
PARKLAND

CALL AHEAD, IT'S PIPING HOT ALL THE WAY HOME

PICK UP A BOX, PAIL, BUCKET OR A BARREL

**Used Car**

HEADQUARTERS

"MOST FOR THE MONEY"  
All Makes...All Kinds

ARMSTRONG'S  
USED CARS LE 7-5524

**WHY CHAINS?**

**Dunlop**

Winter Traction  
**Tires**

See  
**TINY'S** Tire Center

108th & Pacific  
LE 1-4535

**LOOK**

8 ft. **2 x 4's**

**25<sup>c</sup>** ea.

**Anderson Lumber**

9813 Pacific Ave.



# CLASSIFIED ADS

## Call LE 7-0223 For Want Ads

### 1 Misc. For Sale

DINING ROOM table with six chairs, sideboard \$65.00. Call after 5 p.m. LE 7-7798. 68-32

OIL stoves, barrel, stand. Trash burner. TH 5-0356.

ROYAL typewriter, good condition - \$45. Portable sewing machine, \$40 or best offer. TH 5-5470.

GOOD USED BRICK, TH 5-6520.

80¢ A BALE local grass hay. 832 3985. 68-28

RENTAL PURCHASE PLAN at Upton's, 1148 Market Street. FU 3-2551. Open Monday and Friday night till 9:00.

MINN. WOOLEN Co. has work, play and dress clothing for the whole family. Call VI 7-2500 or LE 7-4267. 68-19

2 KEROSENE encubators, 250 egg \$25.00 150 egg \$15.00. LE 7-8229. 68-29

HAY, seeded grass for sale. 75¢ a bale, 458-7687 Jan. Stiebers Farms in Yelm.

MATCHED washer and dryer, maple Jenny Lind double bed, single bed, swag lamp, etc., TH 5-0757 daytime.

JOHN DEERE tractor and equipment. Milk goats. Two ponies, one riding with saddle. Call 893-6162 after 4 or Saturdays.

DRY FIR fireplace wood, 24", \$15 cord. TH 5-6278.

1967 HONDA 305. Like new. Call Jim TH 5-7569.

NIAGRA thermal cyclo pad. Lifetime motor, Perfect condition. \$85. UN 3-9569.

WALL furnace \$20, floor furnace \$20, stove - good \$45, osterizer \$20. TH 5-5909.

BUCO helmet. Nearly new \$12.50. Men's wide 8 Ricker ski boots. \$10. TH 5-0668.

10 GAL. aquarium completely equipped, including stand and 11 tropical fish. \$30. TH 5-0668.

### Original Designs Custom Made Fashions

**Boutique 49**

Specializing in Hard to Fit Sizes  
2314 - 168th St. East  
Spanaway  
LE 7-6440

'56 CHEV stationwagon, 6, \$50. Trashburner, \$50. TH 5-5322.

### TREASURE MART

Buy, sell, trade.  
Fisher Treasure Finder  
508 Garfield

GARAGE SALE - Saturday 1 pm-4 pm and all day Sunday. Appliances, bunk beds, etc. 408-9th Ave. NE.

### Trophy Storm Doors

Heavy Duty Aluminum  
Full Piano Hinge  
Standard & Special Sizes  
Also Storm Windows  
Repair Service Available

Manufactured By  
**PARKLAND DOOR INC.**  
318 E. 96th GR 4-7011

### 8 Garden Supplies

YARDMAN TRACTOR with attachable rotary grass cutter, \$200. LE 7-0195.

### 9 Animals For Sale

PONY-MARE with colt. TH 5-9296.

SHEEP for sale; Ewes with 2 lambs, \$30. Ewes with 1 lamb, \$25. UN 3-1992.

GOOD Buckskin Gelding, \$125. TH 5-1682.

### 10 For Sale Or Trade

GRAVEL, bulldozing, ditching. ADM Co. TH 5-2452.

### 11 For Free

CHICKEN fertilizer. U-haul. TH 5-2653.

### 22 Misc. Wanted

RUMMAGE WANTED, Tacoma Jay Cee'ettes sale Feb. 3 benefit heart test. Call SK 2-1468. 68-26

### 23 Help Wanted

RETIRED MAN - part-time work. Call WA 7-9973 before 9:30 a.m.

EDUCATION aide - youth worker. \$411-mo. Ability to work with low income and minorities a must. Prefer valley area resident. M.O.-R.E., Inc. TH 5-9588.

BOOKKEEPER -SECRETARY for M.D.'s office. Typing, bookkeeping, billing experience essential. TH 5-8106 after 5 pm.

BAR TENDERS. Girls 21-30 willing to work nights and weekends. Don's Tavern, Orting. Some experience necessary. 893-3572.

LOCAL concern in business 20 years same area needs neat, ambitious, honest man. World's fastest growing profession. Earn big money while you learn. Be interviewed by Mr. Bass CH 3-0600 collect.

### Midland and Pacific Ave. Areas

Carriers Wanted  
A few routes open

**Times Journal**  
LE 7-0223

### 30 Repair Services

**TV SERVICE**  
All makes of Color and black & white.  
LE 7-3427

### 36 Personals

LOSE WEIGHT safely with Dex-A-Diet Tablets. Only 98¢ at Johnson's Drug.

HAVE an alcoholic problem? GR 5-1093 or VI 7-7715. Write box 2265 Parkland. 67-194.

RELAXATION through Spiritual therapy, for appointments call evenings LE 1-5572 68-21

HANDWRITING analyzed \$1 P.O. Box 2054 Parkland, Wash. 98444. 68-23

### 27 Misc. Services

TREE topping and removal. Bonded and free estimates. UN 3-1017.

EXPERT alterations, mens & womens fast service and reasonable. LE 1-3506. 67-186

### 19 For Rent Or Lease

#### HOME VACANT

We desperately need good rentals \$80 to \$150 per month

CALL NOW  
Let us handle your worries

**SUBURBAN REALTY**  
11302 Pacific Ave.  
LE 7-8638 or LE 7-6896

FURNISHED 2 bedroom house. No pets. Part utilities paid. Call TH 5-1522 afternoons.

BACHELOR apartment - Fife area. WA 2-6071.

### 19 For Rent Or Lease

SMALL partly furnished house. Adults, nopets. Deposit required. TH 5-4164.

OFFICE SPACE - Boat & Trailer Space for rent. Office \$50.00 per month. Lights, heat, water, and garbage furnished. Covered boat and trailer spaces \$10.00 per month. Phone LE 7-0223 days 10 to 4. 67-164

FURNISHED 1 bedroom apartment. Everything paid. \$55. TH 5-5517.

### 12 Real Estate For Sale

5 ACRES Graham area. Mountain view. \$6500. TH 5-1517.

**Listings Wanted**  
Buying or Selling  
Real Estate Service  
Call  
**Devereaux Realty**  
12152 Pacific Ave. LE 7-8658

BY OWNER 2 bedroom home, good location. LE 1-2194. 68-30

PUYALLUP hillside spectacular valley and city view lot. Sewer and water. VE 9-6755.

MUST SELL - good Puyallup location, 3 bedroom rambler, large rec room, all birch kitchen with eating space, dining room, living room with fireplace, gas heat. Outside utility building and large patio, nicely landscaped yard, paved alley. 12 year old house, excellent condition. Prefer bank terms. Owner VI 7-2477.

**Need Money?**  
We have investors who will buy your equity or loan on second mortgage.

**Lovelace Realty**

12920 Pacific - LE 1-5555

### 1 Misc. For Sale

**HELEN'S**  
Parkland Ceramics  
Lessons-Supplies-Firing  
1303 S. 117th  
LE 1-0823

**Hot Water Tanks**  
Come in and let us show you how to save  
**\$50.00**  
Magdanz Hardware  
11401 Pacific Ave.

### Legals

IN THE SUPERIOR COURT OF THE STATE OF WASHINGTON IN AND FOR PIERCE COUNTY NO. 76250 NOTICE OF HEARING FINAL ACCOUNT

IN THE MATTER OF THE ESTATE OF HUGH LEWIS SMITH, Deceased.

NOTICE is given that the Final Account and Petition for Distribution has been filed with the Clerk of the above Court and the personal representative seeks settlement of the account, distribution of the estate, and discharge, which matters have been set for hearing on February 26th, 1968, at 9:30 o'clock A.M., in the courtroom of this Court. (s) Mavis E. Swift, Administratrix

Published Feb. 1, 1968, in the Pierce County Herald and Times Journal.  
Notice of Hearing Final Account-1

**Best Buys -**  
Are found right here at home with the local merchants. Read this week's ads in this newspaper for best buys.

### Legals

IN THE SUPERIOR COURT OF THE STATE OF WASHINGTON FOR THE COUNTY OF PIERCE IN PROBATE No. 76855 Notice To Creditors

IN THE MATTER OF THE ESTATE OF HERMAN J. FROREICH, SR., Deceased.

Notice is hereby given that the undersigned has been appointed and has qualified as Executor of the estate of the above named deceased; that all persons having claims against said deceased are hereby required to serve the same, duly verified, on said Executor or his/her attorney of record at the address below stated, and file the same with the Clerk of said Court, together with proof of such service within four months after the date of first publication of this notice, or the same will be barred.

Date of first publication February 1, 1968.

Herman J. Froreich, Jr. Executor of said Estate 159 South 112th Street Address: Parkland, Wash. 98444

George F. Potter Attorney for Estate 159 South 112th Street Parkland, Wash. 98444

LEnox 1-2889  
Published in the Pierce County Herald and Times Journal February 1, 8, and 15, 1968.

IN THE SUPERIOR COURT OF THE STATE OF WASHINGTON IN AND FOR PIERCE COUNTY NO. 176214

SUMMONS BY PUBLICATION AMELIA R. ACKLES, Plaintiff, vs. RONALD B. ACKLES, Defendant. THE STATE OF WASHINGTON TO: RONALD B. ACKLES, Defendant: YOU ARE HEREBY SUMMONED to appear within sixty (60) days after the date of the first publication of this Summons upon you, and to answer the Complaint and serve a copy of your Answer upon the undersigned at the place below specified, and defend the above entitled action in the Court aforesaid; and in case of your failure so to do, judgment will be rendered against you, according to the demand of the Complaint which will be filed with the Clerk of the said Court, a copy of which is herewith served upon you. This is an action in which the plaintiff seeks a divorce from the defendant on the grounds of failure to support.

McGAVICK, HEMMEN & BOTTIGER By: R. Ted Bottiger Attorneys for Plaintiff 8849 Pacific Avenue Tacoma, Washington 98444 Phone: GR 5-4800 Published Dec. 28, 1967; Jan. 4, 11, 18, 25, and Feb. 1, 1968.

SUPERIOR COURT OF WASHINGTON FOR KING COUNTY Probate No. 76564 NOTICE TO CREDITORS (RCW 11.40.010)

Estate of MARGARET BETTS SCHROEDEL, Deceased.

The undersigned has been appointed and has qualified as Administratrix of the estate of MARGARET BETTS SCHROEDEL, deceased. Each person having a claim against the above named person or the estate must serve the claim, duly verified by the claimant, on the undersigned or the attorney(s) of record at the address stated below and must file it with the clerk of the court, together with proof of the service, within four months after the date of first publication of this notice or the claim will be barred.

Date of first publication January 18, 1968.

Annabelle R. Shelton Administratrix of said Estate. Address 446 S.W. 316th Federal Way, Wash. 98002

Douglas C. Anderson ANDERSON, STEAD & SAMPSON Attorney(s) for the Estate Address 31220 Pacific Hwy. South Federal Way, Wash. 98002 Telephone: VERNON 2-3131

Published in the Pierce County Herald & Times Journal January 18, 25 and Feb. 1, 1968.

Call For Bids

Sealed proposals will be received by the secretary of Pierce County Fire District No. 7, P.O. Box 511, Spanaway, Washington 98387 until 8:00 P.M. Wednesday, February 21st, 1968, and publicly opened at that time.

For two (2) motorized, triple combination pumping fire engines. Specifications may be secured from the fire chief at station no. 1 162nd and Park Avenue. Bids shall be enclosed in sealed envelopes with the name and address of the bidder, the date and hour of the opening on the face of the envelope.

John Farren Fire Chief Rt. 1 Box 1157 Spanaway, Washington 98387  
Published in the Parkland Times Journal January 18, 25 and February 1, 1968.

### Legals

IN THE SUPERIOR COURT OF THE STATE OF WASHINGTON FOR THE COUNTY OF PIERCE In Probate No. 76833

NOTICE TO CREDITORS In the Matter of the Estate of LELA LAYTON, Deceased.

Notice is given that the undersigned has been appointed and has qualified as personal representative of this estate. Persons having claims against the deceased are required to serve the same, duly verified, on the undersigned or the attorney of record at the address stated below and file the same with the Clerk of this court, together with proof of such service within four months after January 25, 1968, or the same will be forever barred.

s/John Layton 159 South 112th Street Parkland, Washington 98444

s/George F. Potter 159 South 112th Street Parkland, Washington 98444

Published in The Pierce County Herald and Times Journal January 25, February 1 and 8, 1968.

### FLBA Slates Annual Meet

Fred A. Kropf will be the featured speaker during the annual meeting of the Federal Land Bank Association of Puyallup, it was announced today by Dean Easterbrooks association manager.

The meeting is scheduled for Saturday, February 10th and will be held at the Puyallup Valley Elks Club. Registration will begin at 11 a.m.

Items on the agenda will include the election of two directors for the Association. Nominated for one of these positions have been Al Hatt of Puyallup, Paul Tomchick of Graham, and Bill Wood of Eatonville. Nominated for the other position are Harley Brown of Enumclaw, and Harold Eather-ton and Walter Schodde, both of Buckley.

### CLUBS LODGES

Waller Road Jr. Grange Master Cindy Van Hulle, was presented a check by State Grange Deputy John Gorow, at a recent meeting. The check was the first place award in state competition of a picture made with seeds. It also won honorable mention at the National level.

State Deputy David Van Hulle presented 38 members with pins for attending 15 or more meetings in the past year.

Connie Fogle was appointed to the office of Junior Grange Leader. Her certificate carrying the signatures of Hazel Walk, Junior Grange Matron, Carl Schuler, Waller Road Grange Master and State Grange Master A Lars Nelson and State Junior Grange Superintendent Thorax Dick presented an arm badge.

Mike Nelson was presented with a certificate of appreciation for his service as Junior Leader, the past year.

Waller Road Grangers held a pie social following last Friday evening's meeting with proceeds from the sale going to the March of Dimes, \$20.40 was raised.

A reminder to Blood Donors. The Waller Road Grange Community Blood Bank is in need of blood. You could be the next one to need it - so think about contributing. Call Carl Schuler for information. WA 2-7430 or Sybil Corrigan. WA 2-5541.

**RENT TV**  
Color TV  
Portables All Sizes  
**RENTAL MARTS, INC.**  
Parkland GR 5-3755 9440 Pacific Ave.  
Lakewood JU 4-4100 108th & Bridgeport

**BUSINESS DIRECTORY**

### Furnaces

**Sheet Metal**  
• Furnace Repair and Service  
• Installations  
**PARKLAND FUEL OIL**  
12002 Pacific Ave.  
LE 7-0256

### Fencing

**FENCING**  
Designers and Builders  
EXPERT WORKMANSHIP  
REASONABLE PRICES  
Easy Monthly Payments  
**VAUGHAN'S**  
6402 S. Tacoma Wy. GR 4-9515

### Top Soil

**DOZER & LOADER WORK**  
Hour or Contract  
Hauling State CC Permit  
8-10 yd. new truck  
**NEWBURY'S DOZER SERVICE**  
LE 7-7455



# BOWLING

ROLLING BEES  
Phyllis Huff 552 215  
Jennie Rugers 545  
Split Pick Up  
Dorothy Rausch 3-7  
THE BELLES  
Mickey Boutiette 505  
Joan Hoover 217  
PINETTES  
Eileen Andreason 597  
Evie Baskett 562  
Dorothy Kent 594 225  
Ozetta Allen 575  
Ginger Pittman 556  
Phyllis Huff 552  
Wanda Buckland 549  
Lee Leggett 549  
Sue Sweaney 542  
"600" MIXED  
Steve Pierce 220-188-200  
Darlene Besaw 506 191  
PARKLAND MERCHANTS  
Don Butts 575  
Ralph Klopsch 225  
SPORTSMAN  
Bruce Rested 234-188-189  
611 234  
Jim Gray All Spare Game 179  
INDUSTRIAL  
Earl Hardy 571 226  
FRIENDLY DOUBLES  
Scotty Prout 541 216  
Loris Ketter 484 188  
PREMIER  
Vince Brown 187-254-222  
663 254  
Ardeen Iverson 182-193-236  
611  
SR. CITIZEN  
Wendale Gunderson 517  
Ralph McDonald 212  
Beth McLellan 481 197  
Harley Dawson Split 6-7  
FR. PIERCE FACULTY  
Ken Larse 563

Frank Servis 233  
Eleanor Ervin 546  
Lou Shier 224  
MIXERS  
Bob Johnson 554  
Darold Mattoni 210  
Ruth Rickert 507  
Beth Bildt 184  
TOP ROLLERS  
Ken Olson 202-250-205  
657 250  
Geneva Fuller 557 209  
Bill Lauenberg 220-178-214  
612  
Ernie Michaels 506  
Helen Wood 190  
EAGER BEAVERS  
Arabelle Frerichs 569 204  
Step Ladder  
Marie Woracek 86-90-94  
BIRDS OF PARADISE  
Dot Phair 503  
Marie Harrison 503 192  
Split Pick Up  
Helen Nickelson 3-7-10  
HI-LOWS  
Lois Bolen 498  
Shirley Bartle 184  
PARKLAND MIX  
Don Eichler 560  
Jan Iverson 212  
Myrna Lester 551  
Thelma Thornhill 215  
850 SCRATCH  
John Boyce 590 215  
CLASSIC  
Vince Brown 202-233-184  
619  
Bob Leonard 238  
EVERGREEN  
Bob Barr 538  
Wayne Brink 203  
BOWLERETTES  
Jerry Garrett 507  
Marge Gribi 207  
Split Pick Up  
Joyce Prince 4-7-9  
LAST NITERS  
Walt Daniel 203-198-205  
606  
Don Butts 208  
Jean Elston 558 201  
4x8's  
Bob Pilcher 550  
Jim Buchard 211  
Fay Buchard 522 189  
Bob Pilcher  
All Spare Game 178  
Bob Pilcher Split Pick Up 2-10

## PARADISE

Skiers found conditions ideal at Paradise last weekend, and the weather indicates more of the same.  
Powder snow, with a 72" total, was topped by 4" of new snow. Temperature ranged from 5 degrees to 35 degrees during sunny periods.  
The "Yellow Dog" bus leaves Parkland each Sunday for Paradise and tickets are available at Parkland Sports Center, 112th and Pacific. Reservations for bus and ski school should be made by Saturday night.

Pierce County's Only Professional  
**AMBULANCE SERVICE**  
Parkland Ambulance and Lakewood-Pacific  
JU 4-3344 LE 7-3322

**WHY CHAINS?**  
Dunlop Winter Traction Tires  
See TINY'S Tire Center  
108th & Pacific LE 1-4535

**Rubber Boot Sale**  
Reg. \$16.00 U.S. Rubber, leather top - rubber bottom Pacs  
Size 10 - 11 - 12 - 13 Only **\$7.99**  
Sale Price  
Reg. \$10-\$12 50 pair B.F. Goodrich Men's & Boy's 3 Eyelet Rubber Pacs **\$5.99**

20 pair Regular \$17 20 pair Endicott-Johnson Insulated Rubber 11" Boots **\$9.99**  
Sale Price

**NOW!** 3 Complete Departments  
From Calked Boots To Baby Shoes.  
For All The Family  
**SHOES CLOTHING SHOE REPAIR ONE DAY SERVICE**  
**PAULS SHOES**  
161 St. & Pacific LE 7-0552 Open 9 to 9 Daily Till 6 Sat. & Sunday

9 a.m. - 10 p.m.  
7 DAYS A WEEK

# BARGAIN BASKET

16618 Pacific Ave. S. Spanaway LE 7-3371

No Sales To Dealers  
WE RESERVE THE RIGHT TO LIMIT QUANTITIES

We Carry A Complete Line Of Sacked Feeds - Presto Logs

We Are Locally Owned & Operated  
**HELP YOUR BUDGET WITH THESE SAVINGS**

**PRICES EFFECTIVE**  
Feb. 1-2-3  
Thur-Fri-Sat

LIBBY  
**FRUITS**  
For Salads  
**4/\$1.00**  
303 Glass

PARKAY  
**MARGARINE**  
5 Lbs. **\$1.00**

ARMOUR  
**SLOPPY JOES**  
**49c**  
303 Tin

Fleischmann's  
**DRY YEAST**  
**3 For 15c**

Walter Kendall  
**BURGER BITS**  
50 Lb. Bag  
**\$4.69**

Sunshine  
**Vanilla Wafers**  
11 Oz.  
**33c**

Personal Size  
**IVORY**  
Four Bar Pack **25c**

ADAMS  
**Peanut Butter**  
40 Oz. **93c**

Three Bee's  
**HONEY**  
5 Lb. **89c**

## PRODUCE

**LETTUCE**  
SOLID HEADS  
**10c EA.**

**CELERY**  
CRISP STALKS  
**10c LB.**

**DELICIOUS APPLES**  
4 LB. BAG **59c**

MED. SIZE  
**DRY ONIONS**  
**10c LB.**

Everyday Low Meat Prices . . . 25 lb. Locker Boxes \$14.95

**BOILING BEEF**  
**29c Lb.**

**GROUND BEEF**  
**39c Lb.**

**SHORT RIBS**  
**39c Lb.**

**LIVER SAUSAGE**  
**49c Lb.**

**HYGRADE WIENERS**  
**49c Lb.**

**MEAT LOAF**  
**39c Lb.**