

The TIMES JOURNAL

P. O. Box 2008,

Delivered to over 14,000 families

Parkland 44, Wash.

Thursday, November 15, 1962

Vol. 18, No. 11

Le. 7-0223

BULK RATE
U. S. Postage Paid
Parkland Branch
Tacoma, Wash.
Permit No. 9P

Rural Route
Occupant or Boxholder
Postmaster: If unable
to deliver, return post-
age is guaranteed on
addressed papers.

American Education, Youth Appreciation Weeks Noted

Keithley JHS Fall Concert Set Nov. 29th

The bands and chorus at Keithley Junior High School, under the direction of Robert Winters, Anita Jacques and Russell Crockett, will present their annual fall concert Thursday, Nov. 29th at 8 p.m.

Band 11 will perform Onward Christian Soldiers, Rip Van Winkle Overture and Sports Roundup. Band I will play With Flags Unfurled, The Traveler, Valse Caprice and Drummin' Thru the Rye, featuring the drum section.

A trio of trumpeters will render Trumpets Wild, and The Rebel Charge will feature the Rebel Bugle call and yell.

The band and chorus will combine to present Scarlet Ribbons, and the mixed ensemble will sing He and They Call It America.

Numbers performed by the Chorus will include Mr. Touchdown, Aura Lee, Moon River, Bye Bye Blues, and a medley of America, Our Heritage, My Romance and This Is My Country.

Foreign Student

Diana Yu, a foreign exchange student at PLU will be the guest speaker when the Spanaway Pre-School P-TA convenes Tuesday, Nov. 20th at 7:30 p.m. in the new school gym.

A White Elephant Christmas auction will be held.

Christensen P-TA To Meet Wed.

For the month of November only, the Christensen P-TA will meet on the third Tuesday instead of the 3rd Wednesday. The meeting is scheduled for Tuesday, Nov. 20th in the multipurpose room of the school.

"Open House" of the entire building will follow the brief business session. All parents are urged to attend so they can get acquainted with their child's teacher and to see their school work. A bake sale will be conducted in the multipurpose room during the Open House period.

Judge Johnson To Address Booster Club

Judge Bertil Johnson will be the featured speaker at the first annual awards dinner of the Parkland Babe Ruth Booster Club this Friday evening, November 16th.

Judge Johnson's topic will be "What the community can do about juvenile delinquency."

The dinner will be held in the fellowship room of the Parkland Trinity Lutheran Church at 6:30 p.m. Awards will be presented to those boys who participated in the seasons baseball and football programs.

There will be no charge for the dinner, but each family attending is asked to bring a hot dish or salad. Reservations may be secured by calling Darlene Bottiger, LE 1-1269 or Sara Hughes LE 7-3523.

"Cinderella" On PLU Stage 4 More Times

Four performances of the Pacific Lutheran University Children's Theatre production, "Cinderella," are scheduled for this week.

The dramatization of the popular fairy tale will be given at 2:15 p.m. Thursday and Friday in Eastvold Chapel. Final playings of this delightful drama will be given Saturday at 10:00 a.m. and 2:30 p.m.

Eric Nordholm, producer-director of Children's Theatre, states that reservations for these performances may be made by telephoning LE 7-8611, extension 307.

Art Competition Co-Sponsored by Bethel-Thriftway

The Bethel High School Art Department and Parkland Thriftway Store is planning a competition among the art students of Mrs. Dorothy Kappahn's art class at the school.

The three winners will paint windows at the Thriftway Store for prizes to be awarded by the store management.

The painting competition will take place on Friday, Nov. 23rd, starting in the morning.

A panel of judges will decide the winning entries.

New 4-H Club

Wendy Gunderson was elected president of the newly formed Stir and Stitch 4-H Club at its meeting recently.

Use Permits Noted At Board Meet

At the Pierce County Board of Adjustment's, Regular Meeting 2:00 p.m. Tuesday, November 20, 1962, the following conditional use permits were noted:

Case No. CP8-62, Petitioner: Henning and Haverberg; Request: A Conditional Use Permit to operate a pre-stressed concrete products manufacturing company in a G-General Use district. Location: Property lying between the N.P. RR r/w and Pioneer Way approximately one-half mile west of State Highway 5-E in Section 36, Township 20N, Range 4E.

Case No. CP10-62, Petitioner: Carl F. Millar, Jr.; Request: A Conditional Use Permit for a trailer court on a five-acre tract in a RMH Multi-Family Residence zone. Location: Property at the northwest corner of So. 138th and Jay Streets in Parkland.

Case No. CP11-62, Petitioner: Opal M. Lesley; Request: A Conditional Use Permit for a rest home in a RMH Multi-Family Residence zone. Location: Property at the southeast and southwest corners of So. 108th and Alaska Streets in Parkland.

Pop Concert Set for Tuesday

Mr. Richard Curtiss, Bethel Senior High Music Director, announced that a Pop Concert will be held this year instead of the minstrel show that has usually been staged as part of the Turkey Trot.

Featured in the Pop Concert will be the Senior High Band, the School's Dance Band and the Preludes. This will be the first public appearance of the year for the Dance Band and Preludes.

Following the concert, games will be played with prizes being offered and free cake and coffee served. All proceeds from the Pop Concert and Turkey Trot will go to the band fund at the Senior High.

Dance Saturday

Harmony Hoedowners Square Dance Club will dance at the Fruitland Grange Hall on Saturday night, November 17th. There will be a short business meeting for club members at 8:00 o'clock.

Smorgasbord Attracts Summit Ladies

The Summit ladies auxiliary were hostesses on Friday of last week to the Washington Fire Commissioners Auxiliary during their convention in Tacoma.

A smorgasbord at Steves Gay 90's was attended by fifty ladies from different counties in Washington. Local ladies were Mrs. Edna Stramphor, Mrs. Robert Strang, Mrs. Harold Bender, Mrs. Ashley Butler, Mrs. Kenneth Hoff, Mrs. Helen Ramsay, Mrs. Faythe Purdue, and Mrs. Norman Nelson.

Community singing, movies, a skit, and "Fire Chief" favors were enjoyed by the group.

Our next meeting will be this Thursday, November 15th. Thanksgiving Day falls on our regular meeting night. Mrs. Kenneth Hoff will be hostess.

This week in the columns of the Times Journal, Optimist International, through the Southeast Optimist Club of Tacoma, salutes Youth Appreciation Week and American Education Week, through the cooperation of the schools and organizations of the Bethel School District.

Reputation of Young People Boosted

Youth Appreciation Week, the program that has helped redeem the reputation of a generation, is sponsored by Optimist International, a men's service organization with over 2100 clubs in the United States and Canada.

The 1962 program, November 12-18, is the sixth annual international observance of Youth Appreciation Week. The project started in North Carolina, when a group of Optimists originated a plan to take a more positive approach in their attitudes toward teenagers.

They found, that although less than five per cent of the 13-to-19 year-old age group ever comes in contact with the law, careless criticisms and unfounded accusations have turned public opinion against the remaining 95 per cent who are too busy growing up to get into trouble.

This one-club project, called "Youth Appreciation Day," was designed to turn the tide of protest to praise for youth. It attracted so much attention and enthusiasm from newspapers, radio and television stations and city and state officials, that Optimist International decided to sponsor a Youth Appreciation Week on an international basis in 1957.

Youth Appreciation Week has been called "one of North America's most effective deterrents against juvenile delinquency," by letting teenagers know that adults appreciate their achievements, respect them as individuals and understand their problems.

The 1961 Youth Appreciation Week program singled out over four million deserving United States and Canadian teenagers with a pat on the back from over 1900 Optimist clubs. And, over 40 million adults heard the Youth Appreciation Week message by radio, television, newspapers and editorial columns.

How does the Optimist club of your community (Continued on Page 4)

Voters Urged To Report Address Change

The County Election Board wishes to stress to residents the importance of notifying the County Election Office of any change of address, mainly from Rural Routes to street numbers.

Reporting address changes is the responsibility of every voter in Pierce County.

This information should be forwarded to County Election Office, County-City Building, Tacoma, Wash.

Pack 34 Meets In New Gymnasium

Pack 34 will have its first meeting of the year Nov. 16th at 7:30 in the Spanaway School's new gymnasium.

All cub scouts, den mothers and parents are cordially invited to attend. Refreshments will be served.

Bethel District Symbol of Education Growth

The changes and adjustments in the U.S., that followed World War II were most profound with Western Washington being an area of tremendous change. Populations swelled with transfer people and increased birth rates. There was a feeling and desire for making up the lost time of the war years and moving ahead in every way.

These influences were prevalent in what is now the Bethel District in the late 40's as the visionary hope developed to provide the greater educational benefits that one large unified district would give over many small operational benevolent operations.

Special concern was felt for high school students. Of the five consolidating districts that voted to form the Bethel District in 1948, only two - Kapowsin and Roy, had high schools. The problem then was not the 'drop-out', but rather the 'non-entering' boy or girl.

Mrs. Ruth Bethel, Pierce County Superintendent of Schools and former Roy Superintendent, felt great concern for this high school problem. Her inspirational leadership and hard work gave vital help to the consolidation process. Selecting the name of 'Bethel' for the new district was both in honor and appreciation of Mrs. Bethel.

The first big work of consolidation was to erect a centralized high school that would offer a comprehensive education program. The doors of Bethel High School opened in the fall of 1952 with an enrollment of 309 in grades 9 - 12.

'Growth' is the best (Continued on Page 4)

Nursery School Parents Meeting Set For Nov. 15

The Parkland Cooperative Nursery School Parents Meeting to be held Nov. 15 at 8 p.m. in the Gonyea Building will present Mrs. Jack Watson, Director of Educational and Safety Services for the Red Cross. Mr. Watson will speak on first aid emergency procedures, which will include a film "Your Breath Can Save a Life."

Hostesses for the evening will be Mrs. Clifford Nelson and Mrs. Raymond Gribi.

Riverside Elects 1963 Officers

Riverside Valley Grange elected officers for 1963 at their election Nov. 5th.

They are: Master, Robert Braden; Overseer, Lee Biggs; Lecturer, Evelyn Biggs; Steward, Charles Hartman; Assistant Steward, Adam Manweiler; Chaplain, Rev. W. A. Moore; Treasurer, Ardis Pelela; Secretary, Bertha Hickey; Gate Keeper, Edward Davies; Cress, Ellen Manweiler; Pomona, Gergrude Picha; Flora, Dorothy Berg; Lady Assistant, Corrine Wellfelt; Executive Committee Woman, Olive Webb; Home Economics, Myrtle Leach and Pianist, Mary Holquist.



And keep 'em in school!

An Editorial



Switchblade or scholarship; black leather jacket or cap and gown—which symbolizes today's generation of teenagers to you? If you choose the switchblade set, you're wrong because statistics show that over 95 per cent of all teenagers believe in and practice juvenile decency, not delinquency.

Juvenile delinquency is a problem, one which must be faced with skill and courage in the years to come. But why let a few bad apples spoil the reputation of the overwhelming majority of young people, who, too often, get blamed for the misdeeds of a minority?

What's happened to the innocent-until-proven-guilty school of thought? We hand out a lot of censure, a heap of punishment indiscriminately when we classify all of today's teenagers as a "bunch of young hoodlums," unless we take a second look. Optimist International is an advocate of that second look at youth. Optimist clubs across the United States and Canada sponsor an annual Youth Appreciation Week program, reminding communities to take a second look at their town's youngsters.

And where communities have observed Youth Appreciation Week, they've come up with some surprising facts and figures about their own town's young people. Most of all, they've erased an image in their own minds, an image of black leather jackets, switchblade knives and all the other paraphernalia that symbolize juvenile delinquency.

These communities have found that teenagers youngsters are pretty much like adults. There are some bright boys and girls, some athletic ones. Poor scholars, some; Eagle scouts, others. Some get in trouble; most don't.

But, as William James, the great American psychologist-philosopher, said, "the deepest principle in human nature is the craving to be appreciated." Youngsters, whoever they may be, share this craving. They want and need adult recognition, understanding and guidance. Most of all, teenagers want to know that their efforts to do well are being appreciated.

Through the efforts of Optimist clubs across the United States and Canada, much has been done to redeem the reputation of the younger generation during the past five years of the Youth Appreciation Week program. Many adults have been made aware that over 95 per cent of today's youngsters are working toward the goal of a better future.

Give youth a pat on the back during Youth Appreciation Week. Show today's young people that you're worthy of their respect, by giving them yours.

Local Optimists Sponsor Appreciation Week Observance

The Southeast Optimist Club, stressing youth aid in education, recreation and other areas, was chartered November 11, 1959, with Leo Connors, as its first president. The service club, which meets at Richards Cafe each Thursday morning for a 7:30 breakfast, has since provided the sponsorship for more than 1000 youth activities in the area.

Other officers the first year were Alvin Rohmeyer, Dr. Joseph Bowles, and Orris Larsen. Since the beginning of the club, members who held offices include: James Worden, Vern Voss, Glenn Galbreath, Tom Vandenheuvel, Tom Lawing, Ron Walker, Larry Connors, Morton Kimball and the Present Earl Dryden.



SMALLEST BABY is growing up. Petite Miss Meri Rene Nohra, above, who only weighed one pound, 12 ounces at birth when she was born a year ago on Oct. 17th, now tips the scales at 15 pounds and crawls. She is the daughter of Mr. and Mrs. John J. Nohra, Rt. 1, Box 1246. Her dad is principal of Weyerhaeuser School and teaches the 7th and 8th grade class there, and her mother is a teacher of the third grade students at Kapowsin School. Meri Rene has an older sister, Jackie, 4 1/2.

Lady Lutes Meet Cardinal Club Meet

The Lady Lutes of Pacific Lutheran University will meet Tuesday, November 20 at 7:30 p.m. in West Hall.

The guest for the evening will demonstrate how to make Christmas decorations and different and clever ways to wrap packages. Also, the Christmas Family Committee will outline what the Christmas family needs, and the sizes of the children.

The Cardinal Club of Tacoma will hold a social night Saturday, Nov. 17th at 8:30 at the Knights of Columbus Hall, corner of 6th and Steele in Tacoma. Chairman for the evening Gordon Anderson promises an evening of fun and entertainment with refreshments for all.

Cardinal Club members, alumni, associates and friends are invited to attend.



LOOKING OVER PLANS for the Annual Bethel Senior High Turkey Trot are: Jim Harpel, Carol Martinson, Ken G. Nelson and Christine Swenson. The annual event will be held next Tuesday at the Senior High beginning at 7:30 p.m. with a Pop Concert. (Photo by Bert Nelson)



BUSILY REHEARSING for the Fall Concert at Bethel Junior High School this Friday night, Nov. 16th is the trombone section, under the direction of Mr. Hull. Trombonists, from left, are, Dave Berger, Neil Berray, Greg Powell, John Briel, Pat Stratton and Fred Schactler.

Fall Concert At Bethel JHS

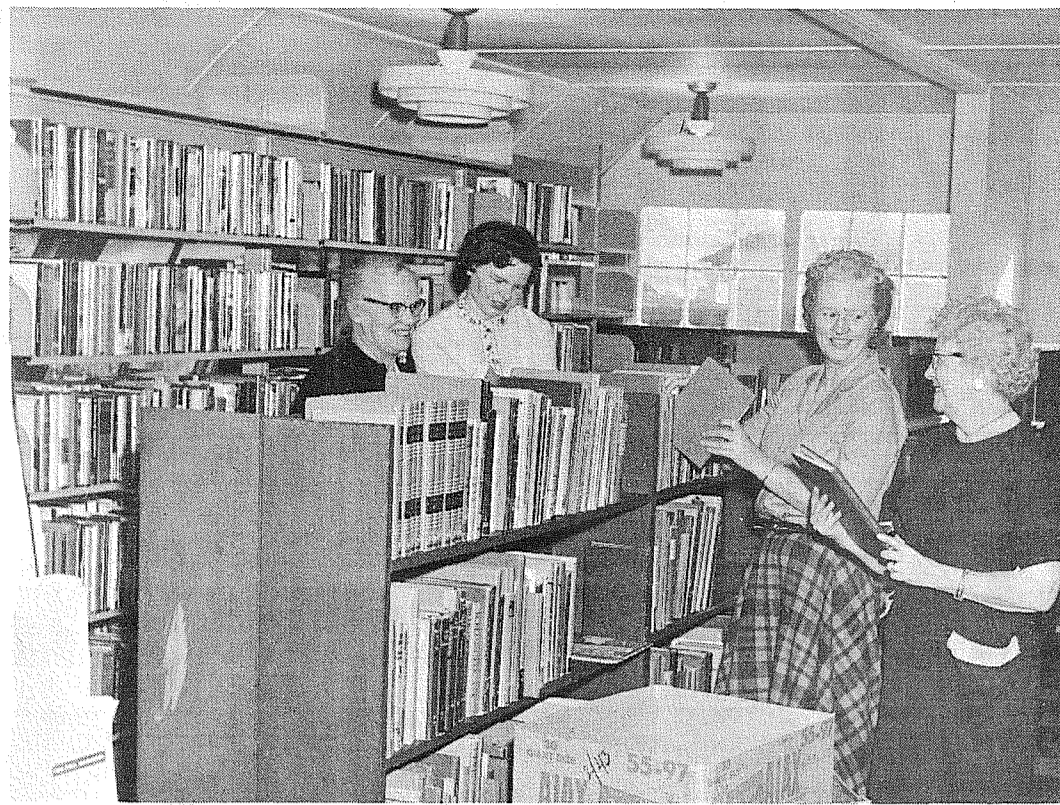
The Fall Concert at Bethel Junior High School will be presented Friday, November 16, beginning at 8 p.m. Two instrumental and two choral groups will participate in the evening's program. The curtain will open with the B-Band group performing two selections, to be followed by the advanced instrumental group with a program of marches, a Latin American arrangement, a classical selection and an assortment of tunes from

a Broadway musical. The final section of the concert will be the two choral groups, the 7th grade chorus and the choir, which will close the concert with two sacred and two secular numbers. The hour-long concert will be under the direction of Mr. Hull, director of the music department, and the community is invited to attend. A small donation will be accepted at the door.

Missionaries Hold Convention

The Spanaway Assembly of God, 166th and Pacific Avenue, has scheduled a missionary convention starting tonight (Thursday) at 7 p.m. and continuing through Friday and Sunday, it was announced by the pastor, Ernest L. Friend. The Rev. and Mrs. Harry Leid, missionaries to Indonesia and the Rev. and Mrs. Lester Kenney, missionaries to the Philippines will present their respective mission fields and the work of the Assemblies of God Mission by word of mouth, film and curios. Mr. and Mrs. Kenney

and their children have spent four years in the Philippines, evangelizing and establishing new churches among the remote mountain tribes. They were under the missionary appointment by the Foreign Missions Department of the Assemblies of God, with headquarters in Springfield, Missouri. Mr. and Mrs. Harry Leid, graduates of the Northwest Bible College, Kirkland, are former pastors of South Bend and Burlington, Washington, and missionaries to the American Indians at Neah Bay.



GOOD READING — Mrs. Marion Cromwell, County Librarian, Miss Barbara Wukert, Supervisor of Branches, Miss Margaret Bixby, Children's Librarian and Mrs. Plummer, Parkland Librarian, seem to be enjoying the contents of some of the

690 books just added to the inventory last week. The Parkland Library rates the second highest in circulation of reading matter in the County, with 2,985 books checked out for the month of October.

Observed Children's National Bookweek

This week marks the national observance of Children's Bookweek, with special displays in schools and libraries and many organizations taking part in the annual celebration. The Parkland Branch of the Pierce County Library is participating in this event, with a display

of new children's books and a recommended reading list for parents to choose from. Participating groups, besides the libraries, include the P-TA, the American Library Association, American Booksellers Association, American Book Publisher's Council, Boy and Girl Scouts.

selections, which may be checked out like library books.

The Parkland Library, with an excellent collection of children and young people's books, had a total of 2,985 books checked out in October. The Branch has grown to have the second highest usage of any of the 23 libraries in the county.

Bookmobiles also are operated by the County Library system, covering all of the rural areas. If you live, work or own property within the unincorporated limits of Pierce County you are entitled to a library card, and all of the benefits it offers.

Although library interest this week is focused on children's books, the libraries also maintain fine record

By Mrs. Oliver Omat. . . **Spanaway News**

Speedy get well wishes from many friends go to Mrs. Alice Webb who underwent a serious operation last week.

Many friends are glad that Lloyd Carey is recovering from a heart attack.

Mr. Joe Barsotti, Mrs. Irwin Timm, Debbie, Linda and Patti spent the weekend with Mrs. and Mr. Donald Madison (Joy Barsotti) at Bellingham.

Monday evening the Spanaway Volunteer Firemen's Auxiliary changed their meeting night to the first Tuesday of the month. The Auxiliary has met on Monday's for about 14 years. The Auxiliary also welcomes Mrs. June Ouhl as a new member.

The Spanaway Grandmothers Club will meet Thursday, Nov. 15th at the Spanaway Fire Hall with Mesdames Emerson Tarpenning and William Walin.

Congratulations to Mr. and Mrs. Felix Brodigan Jr., on the birth of a daughter, Annette Kay, Oct. 31st.

Proud grandparents are Mr. and Mrs. Charles McFadden, Mr. and Mrs. Felix Brodigan Sr. and great grandparents Mrs. Margaret Blow of Eatonville, and Mrs. Anna Fields of Puyallup. Little Annette is welcomed home by brother Michael and sister Bernadette.

Seattle Park Office Closes

Longmire (SPECIAL) Superintendent John A. Rutter of Mount Rainier National Park announced today that the National Park Service office located in the Federal Building at 909 1st Avenue, Seattle, Washington, telephone MU 2-3300, will be closed after November 8. The public, seeking current information regarding the Park, may call the Superintendent's office at Ashford, Washington, telephone LO 9-2211, from 8 a.m. to 5 p.m. daily. It is planned to have this long distance number listed in the Seattle directory under U. S. Department of the Interior for the convenience of the public.

Fruitland Grange To Elect Officers

The Fruitland Grange will elect officers for the coming year at their next regular meeting on Friday evening, November 16th. The Grange Master, Mrs. Oscar Swalander will preside. A social hour will follow the meeting, with refreshments served by the committee.

FREE TRIP TO HAWAII
A Vacation For Two — 7 Days — Plus \$100 Cash — Deluxe Hotel — Luau — A Guided Tour — You'll Fly via Northwest — This Contest Is Limited To Your 40 Western Wash. Shop-Rite's — Your Chances Are Excellent! — Nothing To Buy — No Jingles To Write!

FREE ICE CREAM CONES Served Fri. & Sat.
Giant Size

FREE MONOGRAM GLASS
Truly A Deluxe Product, With Coupon And \$5 Purchase. **39**

FREE Transistor RADIO
RCA Victor Quality Nothing To Buy!

SPECIAL 20¢ COUPON
one glass reg. 59¢ coupon 20¢
With \$5.00 Purchase you pay **only 39¢**

FLOUR SUGAR

GOLD MEDAL 89
10 Lb. Sack

C & H "For Best Baking" 49
5-Lb. Bag

SWANSON'S FROZEN **TV DINNER** EACH **49**

NALLEY'S FRESH **MAYONNAISE** QT. **49**

BIG "G" CEREALS Wheaties, Kix, Cheerios, Etc. Large Box. **4 FOR 1**

NALLEY'S FANCY **MINCE MEAT** 28-OZ. BOTTLE **39**

PUMPKIN PIES Morton Frozen **29** EACH (Mince 3 for \$1)

PRODUCE . . . LETTUCE Fancy Fresh HEAD **12**

YAMS Lb. **9c**

TURKEYS 18 to 24 Lbs. **39** LB.

Hardware Peak **ANTI-FREEZE** \$1.59 Gal.

Oval **ROASTERS** 13 to 19 Lbs. **\$2.19** Special Price

U.S. Grade "A" "Delicious" or "Silver Beauty" or "Perry Farm" 8 to 14-Lb. **43** Lb.

Or STEAK, VNF, U.S. Good & Choice Beef. **89** POUND

RIB ROAST Rib or Loin End, 3-Lb. Size. **49** POUND

SUMMIT SHOP RITE TRADING CENTER
PRICES EFFECTIVE NOV. 15 - 16 - 17, LIMIT RIGHTS

SHOP & SAVE at BROOKDALE LUMBER CO.
Birch & Mahogany Blows 4x8 - 1/4" **\$9.50 each**

48"x30" - 1/4" Veneer **90c each**

Plastic Sprayed Toilet Seats **\$2.95 each**

1x4 No Knot **Fir Flooring** For that spare room, and under linoleum. **only \$8.00** Per 100 Sq. Ft.

Free Estimates on Remodel and Repair Work. **PHONE US!**

Close Out On **Linoleum Wall Tile** 54" Wide for Kitchens, Baths Reg. 13c Sq. Ft. **now 8c** Sq. Ft.

4x8 - 1/4" Economy **Masonite** **\$2.25 each**

10 SHEETS OR MORE **\$1.98 each**

SPECIAL! - 5-Ft. Recess **Bath Tubs** **\$49.95**

American Standard **Toilet** 1st Grade **\$24.95**

BROOKDALE LUMBER COMPANY
136th & Pacific LE 7-8669

ATTENTION BUILDERS
CANYON READY MIX INC.
Is Equipped To Handle Your Big or Small Job - FAST!
(We Are Radio Equipped)
Call LE 7-3943
72nd and CANYON ROAD
ALL DAY SATURDAY DELIVERY

ASHMORE'S Drug Facts
LESS ABSENTEEISM AT THIS PLANT SINCE OUR WORKERS HAVE THEIR PRESCRIPTIONS FILLED AT **ASHMORE DRUG**

ASHMORE'S SPANAWAY Drug
165th & PACIFIC AVE. SPANAWAY

Need A Home Improvement Loan? Check With The Puget Sound

Up to your neck in home repair projects? Has your watered-down income dampened your spirits? Then see a friendly "PS Loan Man" at any branch office of the Puget Sound National Bank. He'll help you arrange for a loan to fix leaky roofs . . . add fresh coats of paint . . . remodel kitchens or bathrooms . . . or a host of other improvements. He'll work out a repayment plan geared to your income.

Stop by one of the Puget Sound offices soon . . . there's one near your home or work.

PUGET SOUND NATIONAL BANK
Parkland Branch • 401 South Gartfield MEL EAGAN, Mgr.

TRY IT FREE FOR 7 FULL DAYS!
The Almost human **GE DISHWASHER** — It Does Everything

INCLUDING —

- Scraping and pre-rinsing
- Does fine crystal
- 3-way washing action
- Sanitizes and dries dishes
- Needs no special plumbing or wiring.

AS LOW AS \$128.95

No Payments Til March

The Versatile Double Oven **GE RANGE** Cooks For 2 or 20!

- Penny-saving small oven
- King-size family oven
- High speed Calrod units
- Fully automatic timing

\$259.95 NOW ONLY W/T

WEIR'S FURNISHES THE TURKEY FOR YOUR HOLIDAY DINNER!

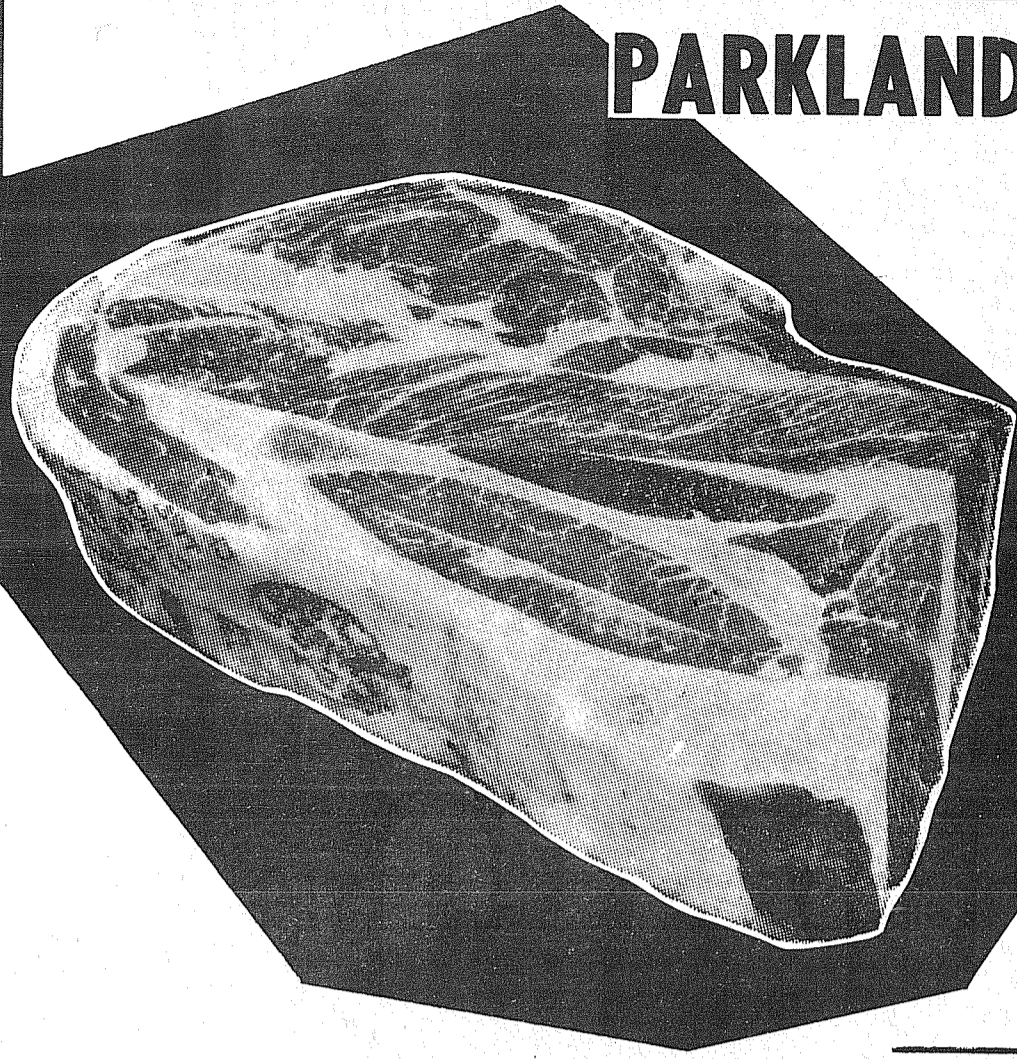
GE's Famous Portable TV WITH FULL POWER TRANSFORMER **\$143**
Year Guarantee On Parts & Labor From

Bring Your Own Records Try Them On The **GE STEREO** **\$138** Best Tone Yet!

WEIR'S Your Corner
OPEN 'TIL 9:00 P.M. (Saturday 'TIL 8)
8419 Portland Ave. LE 7-0231

PARKLAND and SUMMIT VIEW

Thriftway ^{VIP}*



BLADE CUT

POT ROAST

US CHOICE
Or GOOD

Lb.

49¢

WIENERS

HORMEL
12-Oz. Pkg.

43¢

LARD

ARMOUR'S
STAR

Lb.

19¢

CHUCK STEAKS

US CHOICE
Or GOOD

Lb.

59¢

FRESH, LEAN

PORK SAUSAGE

3 LBS.

\$1

C&H SUGAR

POWDERED And BROWN

PKG.

12¢

PET EVAPORATED MILK

Tall
Tins

8 /

\$1

PUMPKIN

SHURFRESH CANNED
2½ Tins

2/25¢

PUMPKIN Or MINCE PIES

SHURFRESH

3/\$1

JELL-O

ASSORTED FLAVORS

Pkg.

5¢

HILLS BROTHERS

COFFEE

It's
Reheatable

2 LBS.

98¢

Sparkle

BEVERAGES

24-OZ.
BOTTLES
NO DEPOSIT

6/\$1

LADY
ELBERTA

PEACHES

2½ TINS

4/\$1

SHURFRESH

CRANBERRY SAUCE

300 Tins

6/\$1

KRAFT

MAYONNAISE

24-Oz. Jar

39¢

SUMMIT VIEW
THRIFTWAY

Canyon &
Airport Road

Prices Effective

Thursday, Friday, Saturday

Nov. 15 - 16 - 17

SWEET - FANCY

POTATOES or YAMS

Lb.

10¢

CRAN- BERRIES

Ocean
Spray

Pkg.

19¢

Emperor

GRAPES

2 Lbs.

25¢

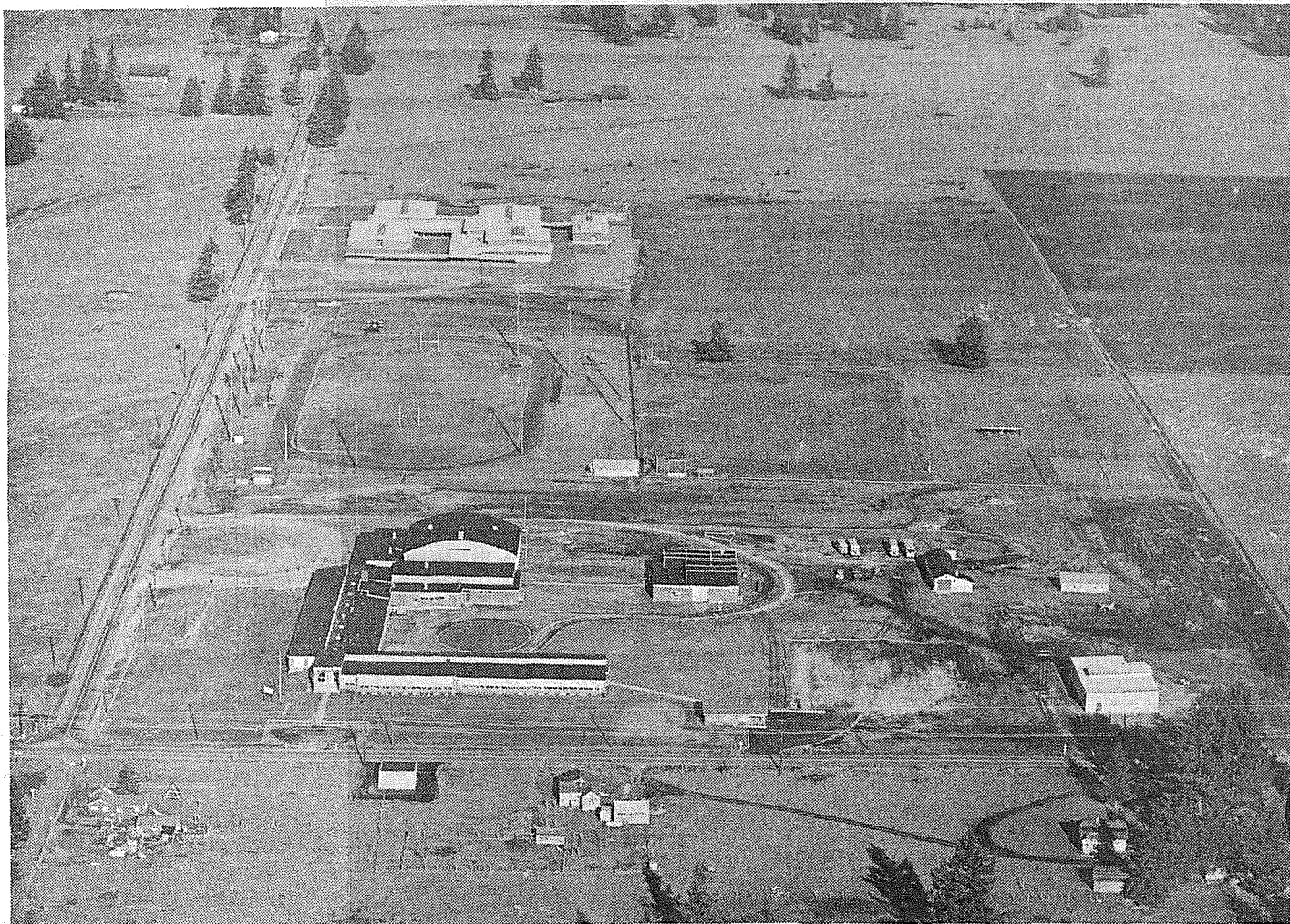
PARKLAND
THRIFTWAY

140th & Pacific
LEnox 7-0281

Prices Effective

Thursday, Friday, Saturday

Nov. 15 - 16 - 17



Bethel Grows

Bethel Grows

(Continued from Page 1)

characterizing word for the Bethel District. It's present 2,815 boys and girls enrolled in 5 elementary, 1 Junior High and 1 Senior High School represent a 75% student increase in a decade. The district increased in every way when Clover Creek district joined the consolidation in 1956. A new Junior High School was erected in 1958. It now enrolls 675. Three elementary additions have been made. Work will start shortly on an addition to the High School.

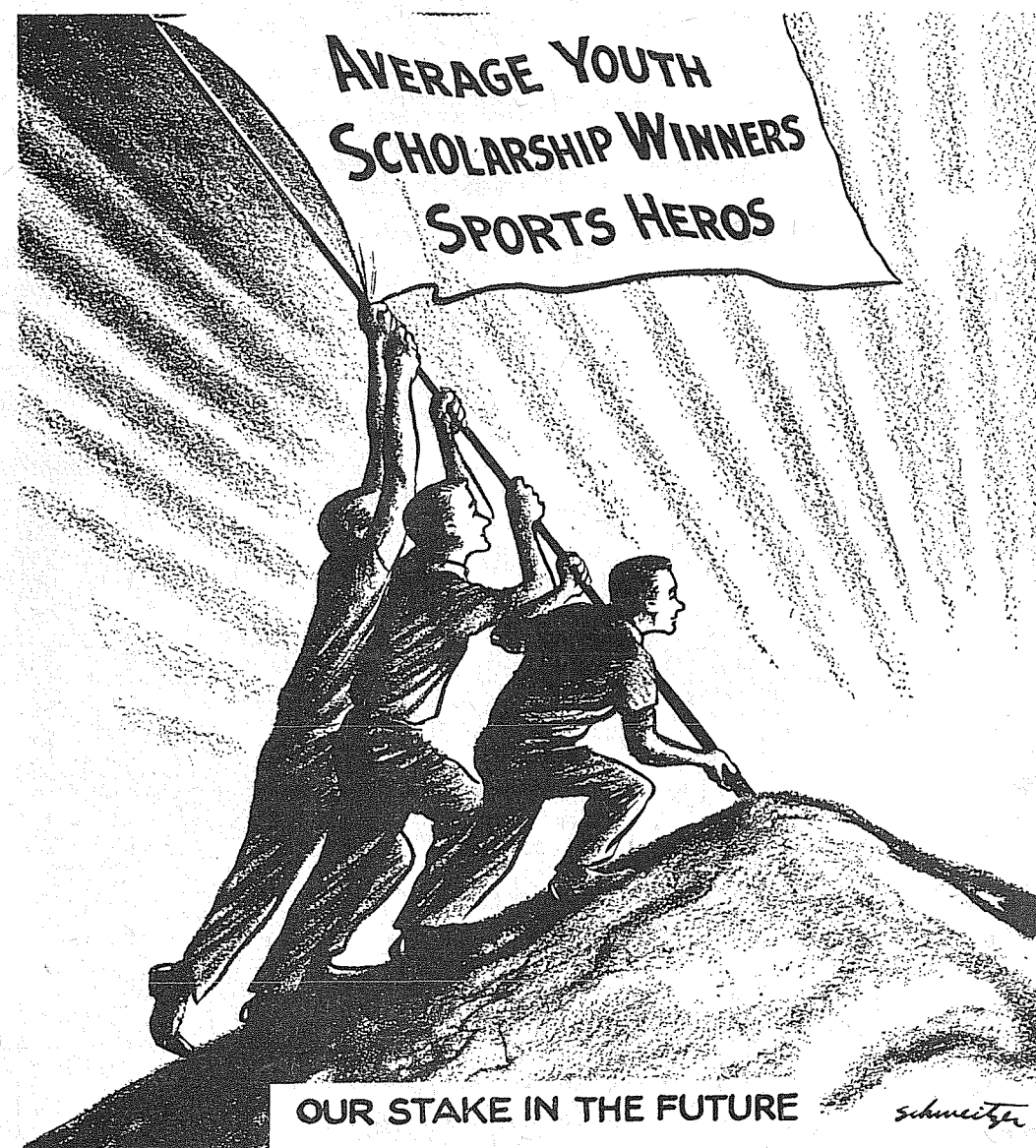
The education program has grown with the enrollment as citizens, school directors and employees have continually worked for improved methods and facilities for their children. A Special Education Program for handicapped children was started in 1960 as an example of the district's effort to provide for the individual needs of pupils.

Junior High Has Service

"Guidance" or "Student Personnel Service" is that term which denotes education itself and is synonymous with the procedures carried on in schools by teachers and administrators to promote education and reach educational objectives.

On the other hand, the term "Student Personnel Service" is being used with more frequency and includes those special services which support these objectives. The special services include those of school counselors, psychologists, social workers, health and attendance people.

Student personnel services are worthwhile only when administrators, teachers, the boards of education, counselors, community leaders, and parents know how they can work together in carrying out a coordinated plan. An effective program depends on the cooperation of the school, community, and the family.



High School Dropouts Discussed

By Earl Platt
Principal, Bethel High School

The causes of dropouts from high school are many and varied. One of the reasons for leaving school is that the student's inability to read adequately in early grades is greatly magnified in high school and leads to a feeling of defeat and frustration. Poor attendance, lack of interest, and failure to cooperate, contribute, in some instances, to the student being educationally retarded about two years. Many times the "dropout" student has not taken part in extracurricular activities and thus failed to become a part of a social group within the school. Another contributing factor is the failure of parents to be impressed with the value of an education and so give little or no encouragement at home. Marriage and enlistment in the services are two other reasons for leaving high school.

To help correct some of these problems and to create a greater holding power, we at Bethel High School have developed a remedial reading program so that the slow readers can realize some success. We are enlarging our selection of vocational subjects to give the student a broader choice. Job experiences have been created in the community for those who can't accomplish academic work. We have set up an evening intramural program in basketball to encourage social participation for potential dropouts.

We have a guidance program to counsel on vocations and the importance of education.

As principal, I interview each sophomore to ascertain any problems and to encourage the students to remain in high school.

Harsh counsels have no effect; they are like hammers which are always repulsed by the anvil. Helvetius

Cred for Counselors

By Doctor Gilbert Wrenn

I will acknowledge that the human being is too complex for me to understand completely. I will strive with best skills available and will improve these skills from year to year as long as I live, but I will only move toward a complete understanding of the individual.

I will always study the individual in his specific environment and will understand that I cannot realistically study man apart from the stresses and demands of that environment.

I will respect the integrity of each individual with whom I deal. I will accord him the same right to self-determination that I will want for myself. I will respect as something sacred the personality right of each person and will not attempt to manipulate him or meddle in his life.

Bethel District Future Aims

Just as 'Growth' has characterized Bethel's past, so it does appear to be the prime influence of the district's future. Enrollments increased 7% this past year. Projects show that 4,000 will be in attendance before 1970. Of course, this means that more facilities will be needed at the present sites and new sites with new schools must be opened. The district is interested in obtaining a 10 acre elementary site in the Spanaway Clover Creek area now.

Enrollment increases also bring a greater number of varied ability students. The 'Individual' shall always be the focal point of American Education. To provide for these differences calls for greater adaptation within regular school programs and increased special school offerings.

Facing a tomorrow of fact changes with automation, technological developments, space science, etc., will necessitate constant growth in the curriculum and methods of schools. The increasing closeness of nations and tremendous changes that are taking place as new nations of the world develop will influence studies in economics, social studies, and languages.

A good school system must always be sound in its fundamentals and balanced in its program. So even in this future of change and growth and their resulting effects, reading, writing, and figuring will still be the fundamental work of the schools.

Providing for the rapid enrollment increase with a program that meets individual difference and prepares students for working and living in the world of the future is a tremendous problem. Bethel people have solved their past problems with the work efforts that come from a dedication to children's education. This same dedication will solve the problems ahead.

Guidance Important To Students

Bethel Senior High School offers guidance and friendly advice through several avenues. Sources of information for students are the class advisors, the guidance counselors, the classroom teachers, the student handbook, the BRAVE TALK, group meetings, the library and office.

The principal and guidance counselors will be glad to discuss specific school, social, personal, or financial problems with any student upon their request.

It is suggested that students not hesitate to ask for assistance. In planning ahead toward college, toward a job, toward the possibility of service in the armed forces; in problems arising in any phase of life while in high school, remember that the guidance counselors, the advisors, and the administration are ready to give whatever assistance is necessary.

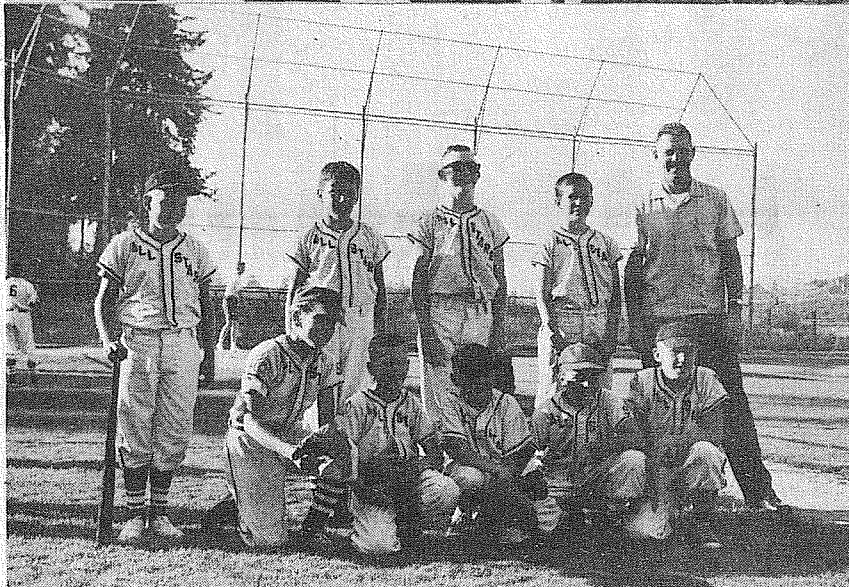
The official guidance program at Bethel Senior High School begins in the sophomore year. The student is given a conference with the principal where they talk over their school programs and other problems the students may want to discuss.

During the sophomore year, the students take a differential aptitude test to determine their strengths. Information from this test helps the guidance office in making decisions about the future primarily in future scheduling and student planning.

When a student becomes a junior at Bethel Senior High, he takes a battery of tests, including Iowa Test of Educational Development and the Kuder Preference Inventory. The top students may also take the National Merit Scholarship Test and some college bound students may take the Preliminary College Entrance exam. All of these tests are given to determine the potential and interest of students to help determine their future plans.

In the senior year, the students are given a series of tests to help in college and job placement. These tests are the Washington Differential Guidance Test, College Board Exams, Vocational Aptitude Tests and Civil Service Commercial Tests.

With the aid of the above tests, the counselor evaluates the students' potential in various fields during the Junior and Senior year. From these evaluations and counseling sessions the student is advised as to broad and specific vocational and professional choices.



Optimist Activities Oratory, Sports, Fund Raising

Youth Appreciation Week Supplement

American Education Week Supplement

is sponsored by these public-spirited organizations:

Roy P-TA

Kimball's Body Shop

Spanaway P-TA

Anderson Lumber Co.

Elk Plain P-TA

The Times Journal

Clover Creek P-TA

Television Service Center

Bethel Booster's Club

Kapowsin P-TA

Bethel Education Association

Reputations Boosted

(Continued from Page 1)

conduct Youth Appreciation Week? Each club has different projects, designed to fit the needs of local youngsters. Many clubs sponsor a teenager of the month program, selecting a youth from one of the local high schools as the town's top teen to be written up in local newspapers. Other clubs sponsor special youth days, such as the day when youngsters take over city or county offices, or the minister's pulpit or the editor's desk. Optimist clubs in some localities sponsor parades and fun-raising drives to bring youngsters to their communities' attention. Scholarships, plaques and similar prizes are popular ways to recognize the achievements of youth.

Youth Appreciation Week's objectives are: To recognize the accomplishments of youth in the home, school, church and community; to promote more active participation by families in family affairs; to encourage groups and organizations to publicly show their respect for youth; to encourage newspapers to devote more space to news of the 95 per cent of youth who are good citizens; to encourage radio and television stations to recognize youth through special as well as regular programs; to encourage national magazines to recognize the accomplishments and contributions of youth; to provide the proper environment, recreation and social activities for youth; to encourage parents to rededicate themselves to the responsibilities of parenthood; to illustrate the great influence religion has on the lives of youth and to encourage their active participation in religious activities; and, to encourage a greater interchange of ideas between adults and youth, leading to a broader understanding of the problems of each.

Won't you give a pat on the back to the youngster in your home and to the youngsters of your community during your local Optimist club's Youth Appreciation Week, November 12-18?

Serves In Korea

7TH INF. DIV., KOREA (AHTNC -- Army Sgt. James E. Laney Jr., 22, whose wife, Penny, lives at 1818 E. 93rd st., Tacoma, recently was assigned as a squad leader in Company A of the 7th Division's 32nd Infantry in Korea.

Sergeant Laney entered the Army in 1958 and arrived overseas on this tour of duty last August.

Optimists Serve As Friends of Youth

"To aid and encourage the development of youth" has been one of Optimist International's objectives almost since the organization's inception. Indeed, it has become almost as much of a trademark of Optimism as the familiar Octagon-shaped emblem or the slogan "Friend of the Boy." Since its adoption in 1923, hundreds of Optimist clubs have spent thousands of hours in service, working toward its achievement.

And, as the organization has increased in size since then, so has its services to youth. These services take many shapes and forms: bike and traffic safety programs; stay-in-school campaigns, the Junior Optimist club movement and many others. But one major project of Optimist International stands out from all the rest by reason of the very scope of its size and influence—Youth Appreciation Week.

In November 1962, Youth Appreciation Week marks only its sixth anniversary of International observance, but already it has become a most potent deterrent to juvenile delinquency. Based on the underlying strength of the organization—optimism, Youth Appreciation Week is designed to turn the tide of protest against youth to praise.

Last year over four million boys and girls in the United States and Canada were singled out for recognition during the 1961 observance. Add this figure to the number of adults who heard the "Pat 'Em On The Back" message over radio, television or in newspapers and you find that over 40,000,000 adults and teenagers were influenced in 1961 by Youth Appreciation Week programs.

The Youth Appreciation Week story begins in 1954, when a group of Optimists in North Carolina originated a plan of taking a more positive approach in their attitudes toward teenagers. A clear-eyed appraisal of the facts turned up the knowledge that less than five per cent of the youngsters in the 13-to-19 age group had ever been in any sort of trouble with the law—a far cry from what people seemed to think about the upcoming generation.

Convinced that the public opinion of protest against teenagers had fostered an attitude of "who cares, anyway" in youngsters, the Charlotte Optimists sent a delegation to the state governor to explain their idea, and his enthusiastic endorsement brought great response and encouragement for a Youth Appreciation Day from newspapers, radio and television stations, civic leaders and community officials.

Encouraged by their success with the first state-wide project, the club presented their program to Optimist International for assistance in promoting Youth Appreciation on a continent-wide basis. A pilot project was scheduled in 1956 to test the reaction of a wider sampling of Optimist clubs in the United States and Canada. It proved equally successful, meeting with enthusiasm and approval from all sides.

Finally, in 1957, the first organization-wide Youth Appreciation Week was held. Over 1,000 clubs participated in the program which was praised by government officials from presidents and prime ministers to local community administrators.

Basically, the idea of Youth Appreciation Week is this: To recognize that the overwhelming majority of teenagers believe in juvenile decency, not delinquency. Youth Appreciation Week, working toward aiding and encouraging the development of youth, lets youngsters know that adults are proud of their achievements and accomplishments with a tangible pat on the back.

DEAR CUSTOMERS:

From now on the Farm Boys will feature the regular week-end specials 7 days a week. We invite you to come in and COMPARE OUR EVERY DAY LOWER SHELF PRICES - You can save money here every day. All kinds of Thanksgiving goodies at low - low prices. Here, for instance, is just a small example:

LIBBY'S
PUMPKIN 2 1/2 Size Tin **15¢**

Shamrock
STUFFING MIX

INCLUDES PACKAGE OF SEASONING
4 12-Oz. Pkgs. \$1

"We Reserve The Right To Limit"

the FARM BOYS

Hours: 9:00 'til 9:00 - Sundays: 9:00 a.m. 'til 7:00 p.m.
E. 112th & CANYON ROAD

FARM BOYS
CLOSED THANKSGIVING



Nov. 15
Beanie Weenie Casserole,
Raisin Bread Sandwich,
Finger Salad, Sliced
Peaches, Milk.
Nov. 16
Whipped Potato, Fish
Sticks/Tartar Sauce,
Pickled Beets, B/B Sand-
wich, Cookie and Milk.
Nov. 19
Basin St. Burger, Pick-
les-Relish Creamed
Corn, Raisin Nibblers,
Milk.
Nov. 20
Sliced Turkey, Mashed
Potato/Gravy, Cran-
berry Sauce, Carrot-
Celery Sticks, Hot Rolls
Butter Dixie Cup, Milk.
Nov. 21
Cook's Choice

**Holiday Craft
Classes Open**

A holiday workshop has been scheduled at the South Park Community Center in preparation for the coming Christmas season. The classes will be taught by members of the Capital District Garden Clubs from 10 until 12 a.m. every Tuesday morning. Schedule of the respective classes is as follows: Nov. 13, Christmas cards, notepaper, and giftwrapping; November 20, Wax candles and grapes; Nov. 27, Cookie and cake decoration; Dec. 4th, Cone corsages and charm strings and Dec. 11, Swags and wreaths. Call GR 2-0443 for further information and list of supplies needed.

GENERAL
House Cleaning
RUGS - UPHOLSTERY
SHAMPOOING
Done on Location, 14-Yrs. Exp.
Call . . . LE 7-7750
For Free Estimate

The first activity will convene Nov. 16th from 7 to 9 p.m. There will be games, dancing, community singing and activities for all with the assistance of the Mt. Tahoma Spades. Refreshments will be arranged by the WARC Auxiliary and will be served by the City Wide Youth Council. Parents must provide transportation, and for those who wish to remain at the center for the program duration, a card room and coffee will be provided.

**Silver Spurs
Halloween Party
Highly Successful**

A delightfully spooky Halloween party was enjoyed by the Silver Spurs 4-H Club Saturday, Oct. 27th with witches, ghosts and goblins. Mr. and Mrs. Trusler, Mr. and Mrs. Kravic, Mrs. Gump and Colonel Haire appropriately costumed, put on a very convincing show. The club's regular meeting will be held Saturday, Nov. 10th at 2 p.m. in Sue Grovesnor's home.

Education isn't play--and it can't be made to look like play. It is hard, hard work. But it can be made interesting work. Thomas A. Edison.

AMARILLO AFB, TEX. mechanics here.
-- Airman Third Class Jimmy A. McKim of Eatonville, Wash., is being reassigned to a permanent duty base following his graduation from the United States Air Force technical training course for jet aircraft

Prairie Riders Name Winners
Muriel Larson won the prize for the best costume for ladies at the Prairie Riders Halloween Party recently, held at the Graham Pioneer Park Hall. Leonard Ott was judged the best costumed man. The affair was planned by the Junior members of the B&B Horseman's Club, Inc., and Edith Justus and Helen Tucker, their advisors.

CLOSING OUT LIMITED STOCK Here's Your Chance To Do Your Xmas Shopping Early **SPECIALS**

24" SLEEPING DOLLS Reg. \$5.95 Now **4.33**

China - Assorted Styles **TEA POTS** Reg. \$1.19 **\$1.00** Imported **CUPS & SAUCERS** **77c**

- COSTUME JEWELRY - Now 1/2 Price -

NOTIONS - 20% OFF Buttons, Bias Tape, Rick Rack

Hardy - Small Size Reg. \$1.29 **Shovel 88c** Check These Sweeping Values!

Anchor Glass - Reg. \$1.98 **Snack Sets \$1.49**

WALL - Reg. 89c **Plaques 39c**

Artificial - Close-Out **Fern & Flowers 5c**

Boys Flannel **Shirts** Close-Out Size 6-16. **88c**

Assorted Colors **Rug Yarn 5/\$1**

Coats & Clark Red Heart 4-Ply **Wool Yarn** 4-Oz. Skein **88c**

Ladies - Pink, White - Sizes 5-6-7 **Rayon Panties 5/\$1**

Mens & Boys **Wrangler Jeans \$2.49** \$3.49

Large Size - Reg. \$2.69 **Enamel Roasters \$1.98**

Aluminum **Fry Pan** Reg. 98c NOW **49c**

Assorted - Reg. \$3.98 **Stuffed Animals \$3.49**

Girls Sleeveless **PRINTED POLISHED Cotton** Reg. \$1.39 NOW **59c**

Hanes Boys **Shorts & T-Shirts 66c**

CERAMIC VASES, CANDLE HOLDERS, PLANTERS Values To 98c Your Choice **33c**

Open 9 to 9 **WALLER ROAD VARIETY** 64th and Waller Rd.

WE'RE ALL MOVED IN!!

- Auto Body Repair
- Auto Front End Alignment
- Truck Front End Alignment
- Wheel Balancing

• Frame Straightening
Unitized Bodies, Too!

- Wheel Straightening
- Hub & Drum Straightening
- Off-Truck Wheel Balancing
- Rear Housing Straightening

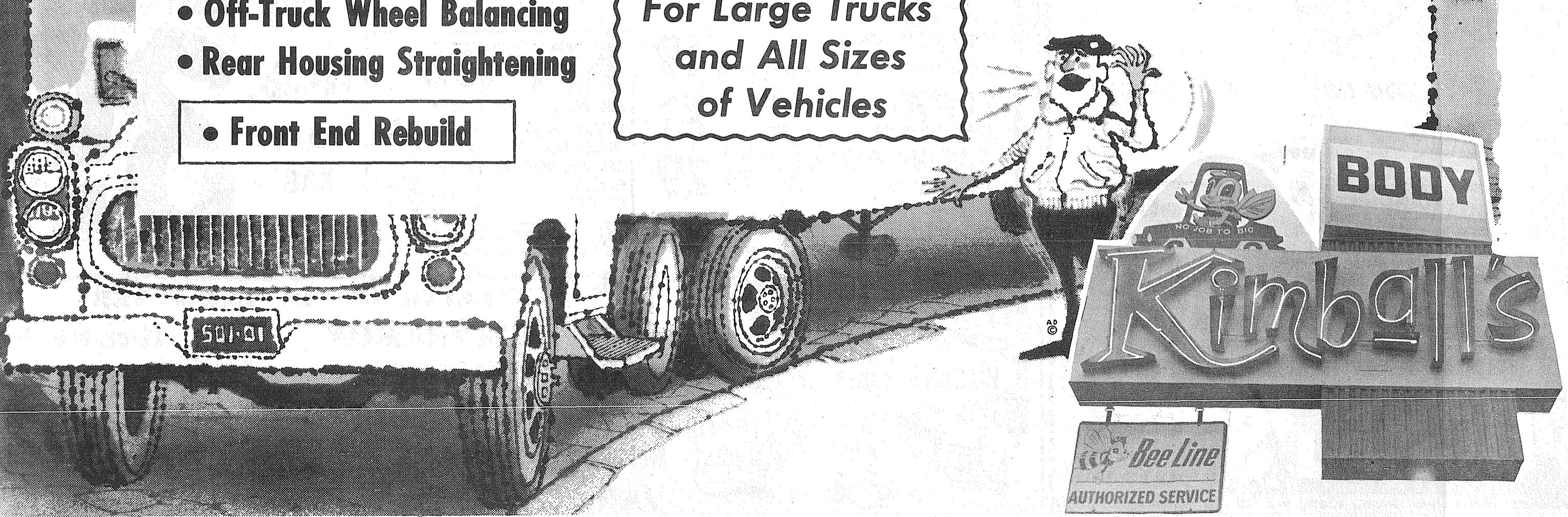
• Front End Rebuild

AT OUR NEW BUILDING
10111 PACIFIC AVE.
LEnox 7-0276

Be Sure To See
The New BeeLine
Wheel Balancer
For Large Trucks
and All Sizes
of Vehicles

Our Crew Is Experienced and Careful - - -

WE WORK ON YOUR CAR AS IF IT WERE OUR OWN!



TIMES JOURNAL

Vol. 18, No. 10

NEIL McLEAN Publisher
RUTH THOMPSON Assistant Editor
JACK BROWN Contributing Editor
WAYNE JOHNSON Circulation
CHET CHAMBERLAIN Accounting
DARRELL DUGAN Advertising
DAVE HIBBARD Shop Superintendent
DICK MARCELLE Composing Room Foreman

Qualified as a Legal Publication under Chapter 213 of the Legislative Acts of the 1941 Regular Session of the State of Washington.

Delivered free by U.S. Mail, or carriers, to all homes in the trade territory. Paid subscriptions elsewhere. In Washington State \$2.50 per year. Outside the state. \$3.00 per year.

**a - Wondering and
a - Wandering ...**

by Jack Brown

As a completely tone deaf monotone I felt as though I was making some progress along the line of music appreciation the other day, only to come face to face with disillusion in a few minutes.

While flying along, a couple of miles up, recently, on a beautiful clear moonlit night, I tuned in the L/F to broadcast band, sat back and soon found myself enthralled with some of the most rapturous music I had ever heard.

Looking out at beautiful night sky and the earth far below, with soothing organ and harp music filling the cabin, I felt that no man could ever get closer to heaven than this and still be inside his hide, when suddenly my reverie was broken by the commercial. All mental thoughts that I had just had as pertain to my music appreciation were dashed to bits as two announcers cut in jolting me awake to the horrible fact that this exotic music was emanating from two different stations, being played on two different musical instruments and was in all probability two entirely different tunes.

At least I can always say that once, if even for a short while, I was an ardent lover of music and nearly carried away by it. Such is the life of a clod.

"Washington Cover Up" is the title of a new book, by Clark Mollenhoff, which has just been published by the reputable firm of Doubleday. Mollenhoff is a capital correspondent of top reputation who has won many awards, the Pulitzer Prize among them. In no sense of the word could he be classed as a political gossip.

In his new book he tells us that unlimited secrecy, at high official levels has been "employed to hide incompetence, laxity, bungling and outright frauds in the Defense Department, in the foreign aid program and in dozens of other areas. And these crimes of omission and commission, he says in effect, have occurred in both Democratic and Republican administrations, so it's not a partisan problem.

Other reputable reporters on the national scene have said the same thing, but as individuals little has been made of their remarks. Now that Mollenhoff has backed up his convictions with courage to bring this stinking mess to the public eye in print perhaps some one of our elected officials with a pinch of honesty and a little guts will look into it.

As I see it, it is particularly smelly when the defense department is involved, for defense accounts for more than half of all Federal spending. We Americans seem to support this enormous burden willingly and unquestionably, just due to its nature, looking upon it as a necessary sacrifice our age demands in the name of survival.

As far as I am concerned secrecy in government can be justified only when a real question of security is at stake, meaning when the release of information would aid our enemies, such as in the time of war, but in all other areas and at all other times it needs to be rooted out.

This is America. We citizens foot the bills and surely are entitled to know what in hell is going on. A completely free press is the only salvation for a free America and a free people.

Summit News

Join your friends and neighbors on Sunday, November 18th at the Summit Youth Center for a breakfast of pancakes, ham and eggs, coffee or milk, being sponsored by the Girl Scout Troop #93. The girls will be serving from 8:00 - 12 noon. Donations are, adults; 75¢, Under 15; 50¢ and family rates are \$3.00. The proceeds will go to the camp fund. Come and have a good time.

SUMMIT YOUTH CENTER REPORT: BILL RAVE - "It was entirely unexpected, but all attendance records were broke last Saturday at the Youth Center Social night. The house was packed. Every available chair and table was in use. The last three guests to arrive sat on up-ended pop crates. And during the intermission the long line of hungry guests headed for the snack bar, emphasizing still further the need for more elbow room. Except for three evenings during the month, barring Sundays -- and Toby Torbet asks, which three?-- lights are a-blast and there is life and action at the Youth Center. Four applications for use of the Hall in November were turned down for lack of open dates. To relieve traffic jam, the SYCA Board last month approved an extensive building program." (From this article, we should feel proud that we have in our area such a place as the Youth Center. No doubt everyone has had or will have some occasion to participate in its activities, support them.)

In reporting the Summit Youth Center officers Henry Olmstead's name was omitted -- our apologies.

You are reminded of the paper boxes that are scattered about the district and are asked to contribute all of your papers and magazines. The paper drive is sponsored by the Girl Scouts.

The Central Avenue P-TA is planning a bazaar and family night on November 30th. Watch the paper for all of the details next week and plan now to attend this Summit activity!

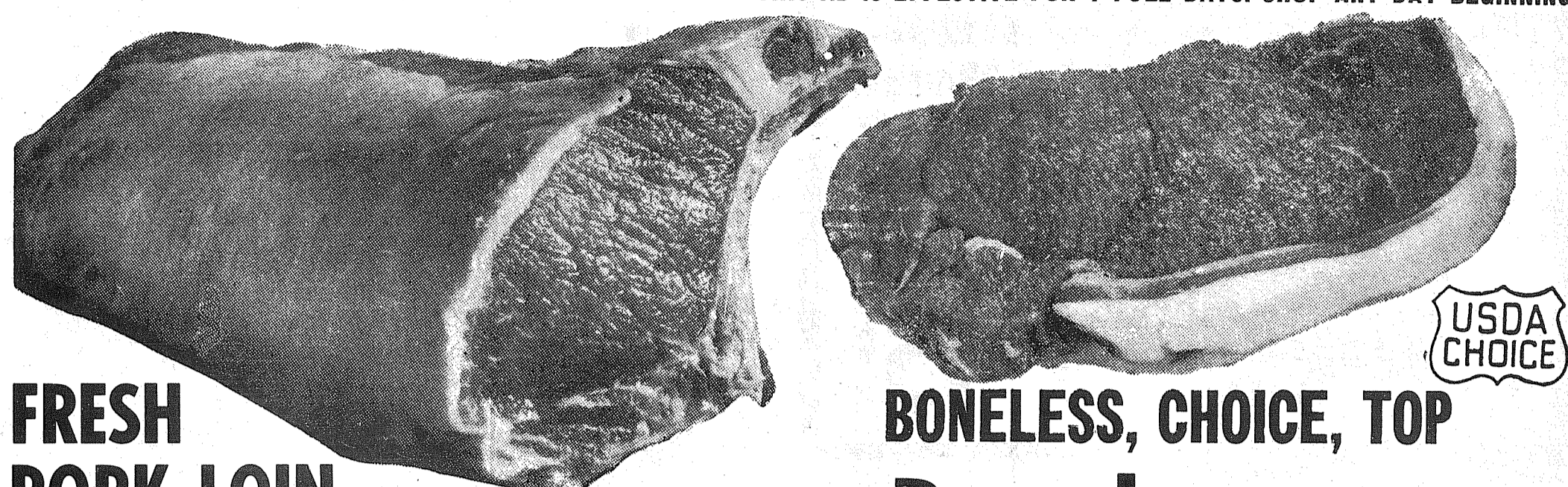
The Wheeling Squares will twirl this Saturday evening at the Summit Youth Center beginning at 8:30 p.m. All interested square dancers are invited. Ed Hendrick will call the squares.

Lucky
7 DAY SPECIALS

FORMERLY LUCKY-BIG BEAR

OUTSTANDING

THIS AD IS EFFECTIVE FOR 7 FULL DAYS. SHOP ANY DAY BEGINNING



FRESH PORK LOIN ROAST

43^c
lb.

BONELESS, CHOICE, TOP Round Steak



CHOICE OF EITHER END
3- TO 4-LB. AVG. EASTERN PORK

PORK CHOPS LEAN CENTER CUT LOIN **69^c**
SPARERIBS COUNTRY STYLE **49^c**
SLICED BACON LUCKY 1-lb. Pkg. **59^c**
JILG'S WIENERS SKINLESS 1-lb. Pkg. **53^c**

CUBE STEAKS USDA CHOICE BEEF **98^c**
RUMP ROAST USDA CHOICE BEEF **87^c**
BONELESS STEAK SIRLOIN TIP U.S. CHOICE **98^c**
GROUND ROUND LEAN, FRESH BEEF **69^c**

WASHINGTON PRIME LYNDEN TURKEYS FANCY GRADE "A"
TOM TURKEYS ... 17 to 22 lbs. **39^c**
HEN TURKEYS ... 10 to 16 lbs. **43^c**

JILG'S BONELESS HAMS FAMOUS PARTY TIME HAMS EASY CARVE WHOLE OR PART **89^c**

FRESH TURKEYS WE HAVE A FULL LINE OF THE FINEST QUALITY FRESH HEN AND TOM TURKEYS FOR YOUR SELECTION IN ALL SIZES. PLUS ... A COMPLETE SELECTION OF DUCKS, GEESE, ROASTING CHICKENS AND STUFFED TURKEYS.

FRESH CRABS DIRECT FROM WESTPORT DAILY TO INSURE FRESHNESS **39^c** lb.

WE BUY ONLY THE FINEST QUALITY PRODUCE AVAILABLE. SHOP LUCKY AND SEE!

Idaho Potatoes SELECTED U.S. No. 1 GRADE RUSSET GEMS

CELERY HEARTS Bunch of 19^c
TENDER, CRISP, SWEET, STRINGLESS 3

BRUSSELS SPROUTS 23^c
FRESH MINIATURE CABBAGE, MILD lb.

BOILING ONIONS 29^c
YELLOW, SWEET, MILD 3-lb. Cello Bag

GOLD RUSH YAMS 23^c
CALIF. U. S. No. 1 MED. SIZE 2 lb.

APPLES RED DELICIOUS OR GOLDEN EXTRA FANCY FINEST FLAVOR 2 lbs. 35^c
RED DELICIOUS OR GOLDEN FANCY GRADE 4 -lb. Cello Bag 59^c

10-lb. CELLO BAG 39^c

FINEST QUALITY CUT FLOWERS OR POT-WRAPPED MUM PLANTS NOW AVAILABLE.

SCHILLING SPICES ARE FINER!

GROUND CINNAMON 1 1/8-oz. can **21^c**
GROUND NUTMEG 1 1/2-oz. can **45^c**
POULTRY SEASONING 7/8-oz. can **17^c**
MINCED ONIONS 1 5/8-oz. pkg. **29^c**
VANILLA 2-oz. bottle **45^c**

Schilling HOLIDAY HOUSE OF FLAVOR

Open Mon., Wed., Fri. 'til 8 p.m.

Pochel's Hates Tears

...lets you pay the easy way!

Our Easy Payment Plan makes it simple for you to pay your heating oil bills--and is kind to your budget, too!

This plan slices large amounts from mid-winter bills ... adds a little to Spring and Fall bills ... and allows you to pay the way you're paid--in regular, equal amounts.

How much extra for this added convenience? Not one penny! In the end, you pay only for the fuel actually delivered.

Another example of Mobilheat Automatic Personal Care--the complete home heating service. Call us today!

Mobil MOBILHEAT

FEATURING A COMPLETE BURNER SERVICE DEPT.

Your Pioneer Fuel Oil, Auto Parts and Appliance Dealer.

POCHEL'S 140th & Pacific LE 7-8624

Open Mon., Wed., Fri. 'til 8 p.m.

PRE-HOLIDAY VALUES!

THURSDAY 9 A. M., NOV. 15th, THRU NEXT WEDNESDAY, NOVEMBER 21st. BIG SALE! SHOP LUCKY!



LUCKY COFFEE

REG. OR DRIP 1-LB. CAN

49¢

7-DAY SPECIALS!

FLOUR OCCIDENT 10-lb. BAG 89¢

EGGS FARM FRESH, LARGE, GRADE AA DOZ. CTN. 45¢

CORN NIBLETS WHOLE KERNEL 12-oz. can 6/99¢

MARGARINE LUCKY 1-lb. pkg. 6/99¢

- | | | |
|--|--|--|
| CATSUP Del Monte... 14-oz. Bottle 2/39¢ | GRAPEFRUIT SECTIONS Duchess. 303 Broken... Can 2/43¢ | TOMATO JUICE Richvale... Large 46-oz. Can 27¢ |
| COCKTAIL SHRIMP Pacific Maid... 4 1/2-oz. Can 43¢ | PITTED DATES Dromedary... 1-lb. Pkg. 47¢ | ASPARAGUS SPEARS Walls Walls All Green Cut... 300 Can 3/1.00 |
| WHOLE MUSHROOMS Tai Wan Button... 8-oz. Can 59¢ | FROZEN PIES Johnston. Large 26-oz. Pumpkin or Mince... Pie 39¢ | GREEN BEANS Jack & The Beanstalk. Sliced... 303 Can 2/45¢ |
| BISCUITS Ballard or Pillsbury... 8-oz. Pkg. 9/99¢ | MINCEMEAT Nalley's... 28-oz. Jar 43¢ | BR'N 'N SERVE ROLLS Langendorf. Reg. 3 Varieties. Pkg. 3/100 |
| CREAM CHEESE Kraft or Philadelphia... 3-oz. Pkg. 2/33¢ | ALUMINUM FOIL Reynold's Heavy Duty... 25-ft. Roll 65¢ | MINCED CLAMS Snow's... 7 1/2-oz. Can 31¢ |
| MIXED NUTS Planters... 6 1/2-oz. Can 55¢ | MARGARINE Saffola... 1-lb. Pkg. 43¢ | COVE OYSTERS Blue Plate... 8-oz. Can 43¢ |
| COCKTAIL PEANUTS Planters... 7-oz. Can 3/1.00 | C&H SUGAR Frosting—New!... 13-oz. Pkg. 29¢ | COCONUT Baker's Angel Flake... 7-oz. Pkg. 33¢ |
| PUMPKIN Libby's... Large 2 1/2 Can 2/35¢ | BANQUET DILL PICKLES Nalley's... 22-oz. Jar 39¢ | PAPER NAPKINS M-D. Asst. or White... Pkg. of .60 2/25¢ |
| CHIP DIPS MRS. J's. Asst. Flavors... 8-oz. Pkg. 39¢ | COCKTAIL SAUCE Snider's... 11 1/2-oz. Bottle 29¢ | STUFFING MIX Langendorf. Seasoned—Ready to Use. Pkg. 33¢ |
| HI HO CRACKERS Sunshine... 10-oz. Pkg. 4/1.00 | CAKE MIX Pillsbury. Devil's Food, Double Dutch or White... 19-oz. Pkg. 29¢ | DEVILED CRAB Mrs. Paul's Miniatures Frozen... 7-oz. Pkg. 49¢ |

FROZEN ORANGE JUICE DONALD DUCK 6-oz. Can 6/99¢

SHOP EARLY!

HUNT'S FRUIT COCKTAIL
No. 300 Can **5/\$1**

SUGARY SAM SWEET POTATOES
No. 303 Can **5/\$1**

ALL STORES WILL BE CLOSED THANKSGIVING DAY, THURS., NOV. 22nd

MEDIUM SHARP CHEDDAR CHEESE Lucky Random Weight Package lb. 59¢	VAN DE KAMP BAKERY SPECIAL! BANANA LOAF Make tempting sandwiches for evening snacks, teas or luncheons. EA. 53¢
--	--

PRICES EFFECTIVE THURSDAY, NOV. 15th THRU WEDNESDAY, NOV. 21st

133rd & PACIFIC PARKLAND

STORE HOURS:
9 a.m. - 11 p.m. Daily
9 a.m. - 9 p.m. Sunday



LIMIT RIGHTS RESERVED

BIRDSEYE FROZEN VEGETABLES

FROZEN LIMAS IN CHEESE SAUCE, LIMA BEANS AND TOMATOES, MIXED VEGETABLES AND ONIONS, OR PEAS WITH MUSHROOMS

35¢

REG. PKG.

BLACK AND GOLD SPICED FRUITS

GRABAPPLES, PEARS, APRICOTS OR PLUMS YOUR CHOICE
LARGE No. 2 1/2 CAN **37¢**

SWANSON'S FROZEN CHICKEN LIVERS

8-OZ. PKG. **49¢**

SUNNY JIM APPLE CIDER DRINK

1/2-GAL. **45¢**

WYANDOTTE RIPE OLIVES

SELECT OR LARGE-WHOLE REG. CAN **29¢**

By Martha Berggren... Roy News

A Natural Resource 4-H Club was organized on a field trip to Tomolla Tree Farm on November 3. Mr. and Mrs. Fred Smith of Lacamas are leaders and officers are Larry Smith president, Rita Dickey vice-president, Ricky James secretary, Linda Dove, reporter. Next meeting of the club will be November 24 at the Smith home.

Mix Master 4-H Club was reorganized on November 3 at the Berggren home. Projects in this club are Dairy with Mrs. Corbin as leader, Meal Preparation with Mrs. J. Dale as leader, Sewing with Mrs. H. Henricksen as tentative leader, Forestry with Mrs. O. Berggren as leader, Baking, Child Care and Beef projects are also being studied by the members. Officers selected at the meeting were Al Berggren president, Hans Chambers vice-president, Judy Corbin secretary, Joe Dale reporter and Cindy Loveland as Sergeant-at-arms. Project meetings will be called by the various leaders with the main club not meeting again until Christmas for a party.

Town of Roy voters overwhelmingly passed a millage measure to give support to the Library and the Fire Department.

At the Roy P-TA meeting members discussed the summer supervision given at the Roy Park and voted to include a substantial sum in their budget to help finance this project next summer.

1963 officers will be elected at the November 15 meeting of Roy Grange.

Building Permits

McCauleys, Inc., \$23,110 mink shed, Rt. #1, Box 125, Graham; Leslie Clark, \$1000 remodel to residence, 8815 Collins Rd.; Ernest C. Dietz, \$75 carport, 2608 Mt. Tacoma Drive; James Zongas, \$19,900 residence, 13224 72nd Ave. E. Puy; J. R. Manning, \$560 remodel to res., 9516 Waller Rd.; Norman Hauge, \$3000 garage, 5006 E. 70th St. Puy; David E. Qunell \$15,000 each (2) residence, 10515 & 10521 5th Ave. E.; Edw. A. Hansen, \$700 carport, 612 Brookdale Rd.; Ralph Brink Town County Realty, \$10,000 each (2) residences, 809 & 815 138th St. South; Geo. Barclay, \$13,500 residence, 14011 Golden Given Rd. and Fred Kistenmacher, \$500 addn. to res. Rt. #7, Box 574, Tac. Joe Sander, \$10,000 res. Alder, Wn.; Hugh Elam, \$10,500 residence, 1633 So. 117th; Gerald E. Strand, \$14,000 res., 10114 98th St. SW; Clinton R. Capps, \$6500 each (2) res., 14115 & 14125 47th Ave. E. Tacoma; Joseph K. Hatcher, \$900 garage, Eatonville; E. M. Mason, \$2700 trailer, Bethel Green Acres, Graham; L. A. Bergstrom, \$15,000 res., 10001 61st Ave. E. Puy; Paul L. De Witt, \$12,000 res., 9601 Fruitland Ave. Puy; Brookdale Lumber, Inc., \$2000 garage, 1821 E. 85th; C. R. Doran, \$12,500 res., 9422 136th St. E. Puy; George K. Haugen, \$12,900 res., 6016 81st Ave. E. Puy; Donald Horton, \$3000 residence, 1510 So. 101st St.

With either a man or a motor, there is something wrong when you hear it knocking.

Clover Creek Grange Elects

Henry Ferguson was elected Master of the Clover Creek Grange at their recent election.

Other offices included; Overseer, Howell Sparks; Lecturer, Christien Lowman; Steward, Robert Fritz; Asst. Steward, Bruce Grosnevor; Chaplain, Helen Ferguson; Treasurer, Bea Gammon; Secretary, Alberta Tennyson; Gate Keeper, Stella Carlson; Ceres, Kathryn Deady; Pomona, Fern Peters; Flora, Ethel Nelson; Lady Asst Steward, Donna Anderson; Ex. Com. One Year, William Mathiesen; Ex. Com. Two Year, Ted Nelson; Ex. Com. three year, Fred Pratt and Home Ex. Chairman, Margaret Hagan.

Your Growing Garden

by Harriet Kennedy

Do you envy gardeners who have a "Green thumb?" Well, don't, for somewhere, in some way, these people learned what to do. They have heard, read, observed others. They watch how their plants react to their own experiences with them. So, take heart, you too can learn. The next few columns will cover easy tips and basic principles that turn failures into success so everyone may have a "green thumb."

Most house plants, there are exceptions, are tropical in nature. They have to be, for the average home temperature is between 65 to 72 degrees. These plants also prefer moist, not wet and soggy, soil. They like filtered light. Improper lighting is one cause of plant failure, yet, a little basic knowledge can forever end that problem.

All plants need sunlight to a more or less, direct or indirect degree, usually about 16 hours a day. Artificial light is an excellent supplement, even substitute - and thank you Mr. Edison.

North windows give the least light. Here one uses "low light" requiring plants such as Grape Ivy, Dieffenbachia, Peperomia, etc. Often these plants are used in even darker areas, they should be regularly moved to a filtered sunlight spot so they can build up a reserve of life producing energy. The more sunloving the plant is that is placed in a north or unlighted area, (Good heavens, is that a pun?).

Monthly School Meets

- 1st Tuesday Collins Pre-School and Tots Club, 8 p.m., school gym.
- Keithley Booster Club, 8 pm Multipurpose room.
- 3rd Tuesday James Sales P-TA, 7:30 p.m. Multipurpose room.
- 4th Tuesday FP High School Booster Club, 8 p.m. Cafeteria.
- 1st Wednesday Ford Jr. High Booster Club, 8 p.m. Multipurpose room.
- 2nd Wednesday Central Ave P-TA, 8 pm School gym.
- 3rd Wednesday Brookdale P-TA, 8 p.m. Multipurpose room.
- Christenson P-TA, 8 pm Multipurpose room.
- Midland P-TA, 8 p.m. school gym.
- 4th Wednesday Midland Pre-School and Tots Club, 8 pm. School gym.
- 3rd Thursday Collins P-TA, 8 p.m. school gym.
- Harvard P-TA, 8 p.m. Multipurpose room.
- 4th Thursday Parkland P-TA, 8 p.m. School gym.

The Country Parson



"A neglected life, like a run-down barn, finally reaches the point where it can't be patched and must be rebuilt."

DRYER'S FUNERAL PLAN CUTS COST
Dryer's MORTUARY
1318 AND PACIFIC PARKLAND

VAUGHAN'S VALUES
Check Your Requirements For Home And Property Improvements

- More LIVING Space
- More SLEEPING Space
- More STORAGE Space
- More KITCHEN Space
- More PLAYING Space
- More DINING Space

Call Us For Free Estimates And Planning
ASK ABOUT OUR MONTHLY PAY PLAN
VAUGHAN'S PACIFIC AVENUE LUMBER
Serving the Tacoma Area Since 1926
64th and Pacific Ave. GR 4-9515

HILLTOP CONCRETE CO.
READY MIX CONCRETE

- Crushed Rock
- Fill Dirt
- Gravel
- Drain Gravel
- Pit Run
- Sand

TH. 5-9525
Plant: 2223 - 23rd Ave. S.E. P.O. Box 648, Puyallup

Read and Use the Want Ads!

Swap (2)

TRADE OR SELL - 8x38 two-bedroom trailer, good shape, for 1961 or 1960 Pickup Chev. LE 7-0645.

Business Serv. (3)

A J ELECTRIC FOR your wiring and electric heating needs, call LE 7-0349, or TH 5-2822. Free estimates. 3ctf

FOR FURNACES, repairs, sheet metal work, call PARKLAND FUEL OIL LE 7-0256. 3ctf

FOUNDATIONS ADDITIONS, REMODELING, Free Estimates, Financing, no down payment. Ph: GR 4-7000 any time. 3ctf

NOW AT SILER'S Complete service on electric ranges, all makes, fast, dependable, reasonable, LENOX 7-8634.

SEPTIC TANK, Drainfields, Sewer Installation. Luke. GR 2-7243. 3ctf

DRESSMAKING and Alterations, Restyling, reasonable, 1515 So. 102nd, LE 1-1376. 3ctf

Help Wanted (5)

BOYS WANTED - 14 and over, evenings for three hours, \$1.00 hour. Call GR 5-2467 or SK 2-0200. 5c11

PART TIME WORK to supplement social security income for lady, 62 to 65 in PLU Library. Should have college experience or equivalent and be willing to work two nights. Call LE 7-8611, Ext. 301 for appointment with Mrs Beckman. 5c11

WOMAN for housework and occasional help with 2 1/2 year old girl. VI 7-7661. 5c11

Want to Rent (7)

WANTED TO RENT - Garage, suitable for storage; Elk Plain, Loveland Dist. Call Elk Plain Barber Shop or VI 7-2172. 7p12

Daisy's BEAUTY SALON Specialists in ALL HAIR CARE OPEN 5 DAYS A WEEK Tuesday Thru Saturday 9 to 5 GR 2-7628 Evenings by Appointment Res: GR 5-2267 6314 MCKINLEY AVENUE

PACIFIC LUTHERAN UNIVERSITY Children's Theatre presents CINDERELLA Thurs., Fri., 2:15 p.m. Sat: 10 a.m., 2:30 p.m. Eastvold Chapel For reservations: LENOX 7-8611, Ext. 307

Want to Buy (8)

WANTED - Coins, Lincoln, Indian pennies, all other old coins. LE 7-5068. 8c1f

Real Estate (9)

FOR SALE OR RENT - 2-bedroom house at 805 121st, Parkland. \$10,500. \$85 rent. Owner, 905 4th NE, Auburn, Wash. Temple 3-1829. 9c12

EASY LIVING 707 So. 116th, Easy to buy. 3-bedroom home with fireplace. Owner in East, says sell at once.

AZZ Realty

13023 Pacific Ave. LE 7-0259 9c11

M. L. S. MULTIPLE LISTING SERVICE

FURNISHED DUPLEX North End location, \$7,950 - \$1000 down, \$75 month. Part basement, furnace. Each apt. has 2 bedrooms, living room, kitchen and 3-pc. bath. Close to bus and stores. Near Division and North K. Call Ralph Decker, GR 4-9575. CA-5714 \$500 DOWN

OR Take over equity, 2 bedrooms, possible 3rd. Separate dining room, half basement, concrete foundation, large garage. Near McKinley Avenue shopping center. Priced for quick sale at \$5,900. Call Ralph Decker, GR 4-9579.

McKinley Hill Realty 6311 McKinley Ave. GR 4-9579 Member of Multiple Listing Service and Tacoma Real Estate Board

Suburban Realty, Inc. Member of Tacoma Board of Realtors - Multiple Listing 11302 Pacific Avenue LENOX 7-8638

M. L. S. MULTIPLE LISTING SERVICE

JENNIE L. GRODVIG Parkland Realty Co. Insurance of All Kinds Notary Public Est. in Parkland Since 1941 LENOX 7-8609 Office 302 Garfield St. Parkland JENNIE GRODVIG LE 1-1210 EDNA TAYLOR LE 7-3556 THELMA SCOTT JU 8-3538 "Deal with the people who give you their personal attention" Member of Multiple Listing Service and Tacoma Real Estate Board

Rentals (10)

FOR RENT - Spanaway area, furnished 3-rooms and bath, part utilities. No pets, \$60.00. VI 7-7179. 10c1f

FOR RENT - New large unfurnished side-by-side duplex. Range, drapes, utility room, garage. Part utilities. 1033 112th St. LE 7-4424. 10c13

FOR RENT - 3-room house, furnished, \$45. Rt. 1, Box 1112, Spanaway. 10c13

FOR RENT - 3-room furnished apartment with tile bath and all utilities: \$80 a month. Call LE 1-1071. 10c1f

Situation Want 14

CHILD CARE in my home, days. GR 4-9010. 14c12

EXPERIENCED mature baby sitter for working mothers, my home; LE 7-0470. 14c13

WANTED - Chain Saw work saving and bucking, Eatonville; TE 2-3986, evenings. 14c13

EXPERIENCED seamstress - Wants dressmaking in her home. LE 1-1431. 14c12

NEAT IRONING - My home, 90c hour. LE 1-1529. 14c11

IRONING - Light house work, \$1.25, GR 4-8506, 7356 So. Alaska. 14c11

EXPERIENCED baby sitting wanted, my home. LE 1-2791. 14c8

CARPENTER WORK - Remodeling, Kitchen Cabinets, Call Al Smith, LE 1-0192, 16309 So. Park. 14c1f

EXPERIENCED MOTHER desires child care. Lots of love and play equipment; my home, 2822 E. 121st; phone LE 1-2593. 14c1f

SITUATION WANTED - Baby sitting, your home or mine. 1312 So. 120th. LE 1-0416. 14c1f

Miscellaneous 15

NORGE Refrigerator, repossessed with only \$59 due. Assume \$5 monthly payments and save. Upton Electric, 1148 Market, PU 3-2551, Open Mon. and Fri. nites till nine. 15c13

PORTA-SHOP COMPLETE Portable Power Work Shop for home or work. For more information call VI 7-7202. 15c11

FRANCISCAN Apple Pottery - Place setting for 8. All serving pieces, \$125.00; TH 5-9240. 15p11

Repair Serv. (11)

REFRIGERATORS, Freezers, Ranges, Washers, Dryers - all makes. LE 7-7825. Enterprise Refrigeration and Appliance Repair, 8505 Waller Road, Midland. 11c1f

WASHING MACHINE PARTS - Largest stock in town. Repairing that pleases. BB'S WASHER SERVICE, 3727 So. G. GR 4-9409. 11c1f

Used Autos (12)

61 FALCON - 4-door, automatic, Deluxe trim, radio & heater, 9247 So. Sheridan, GR 4-8614. 12p11

FFA Project Pigs for Sale - \$12.50; LE 1-1037. 13c12

FOR SALE - 8-week old pigs, LE 1-2622. 13c11

PALOUSE - Weaner Pigs, \$12.50; 3208 Mt. Tacoma Drive, LE 7-3719. 13c11

EASTERN WASHINGTON HAY, C. I. Flowers, Rt. 1, Roy, phone Roy 328. 13c1f

CHICKEN Fertilizer - \$1.00 a pickup load. VI 7-7191, 13c13

WESTINGHOUSE Electric Range

Like new condition. Large oven; best offer; LE 1-2593. 15p1f

BLACK TWIST Party Dress - Worn once, size 11. Paid \$20. sell \$11; LE 7-5245. 15c11

CANDLE MAKING materials of all kinds of decorative holiday candles. Also, colored beeswax and styrofoam. 10720 Waller Rd. LE 1-0896. 15c11

RCA TV repossessed with only \$39 due. Assume \$10 monthly payments and save. Upton Electric, 1148 Market, PU 3-2551. Open Mon. and Fri. nites till nine. 15c13

ATTENTION HOUSEWIVES - POCHEL'S are now the authorized dealers for Speed Queen washers, automatic or wringer type, and dryers. Come in and see them at 140th and Pacific Ave. LE 7-8624. 15c1f

CLASS C RACE BOAT - 40 hp, Mercury Motor, Holslow Trail, er, \$200; LE 1-2665. 15c11

\$10 DOWN rents this Sylvania TV with option to buy. Rental may apply on purchase. Full price only \$79. Upton Electric, 1148 Market, PU 3-2551. Open Mon. and Fri. nites till nine. 15c13

SINGER '61 MODEL

\$29.80 BALANCE due, \$5 per mo. This Singer is equipped to zig-zag, overcast, do decorative designs, etc. No attachments to buy. Dir. Guaranteed. For free home demo, call LE 1-1846 any time. 15c1f

SPECIAL ORDER CAKES - Phone LE 7-3330, Patty Ann Bakery. 15c1f

PIANO TUNING, \$9.00. Churches, \$8.00. Conscientious work. George Messerige Co., JU 8-7092. 15c12

ELECTROLUX Repossessed due to move. Only \$19 due. Assume \$5 monthly payments and save. Upton Electric, 1148 Market, PU 3-2551. Open Mon. and Fri. nites till nine. 15c13

RENT invalid and guest equipment, Dumco Rental Inc., 4516 So. Tacoma Way, GR 2-3348. 15c1f

ALDER FIREPLACE WOOD for Sale. LE 7-3813. 15p1f

SHOE REPAIR, ORTHOPEDIC SHOE CORRECTION, ART'S SHOES, 315 Garfield St., Opposite Parkland P.O. 15c1f

MOST 21" picture tubes installed, \$29.95. \$5 monthly terms. Upton Electric, 1148 Market, PU 3-2551. Open Mon. and Fri. nites till nine. 15c13

JOIN THE FUN - Adult Ballroom Dance Class is now being formed at Keller's Dance Studio. Call LE 7-8686 for further information. 15c13

TEENAGE DANCE CLASS Ballroom Dance Classes are now being formed for teenagers. Thursday nights, \$1.25 per lesson. LE 7-8686. 15c13

The greatest difficulty with the world is not its inability to produce, but its unwillingness to share.

Aviation (17) Grange Master Thanks

FREE-FIRST FLYING LESSON. LEARN TO FLY-\$10 A WEEK. New and Used Aircraft Sales, TAHOMA FLYING SERVICE, Spanaway Airport. VI 7-2266. 11c1f

Legals

In the Superior Court of the State of Washington In and For Pierce County. SUMMONS BY PUBLICATION GEORGE BARNARD, Plaintiff, vs. HILDA T. BARNARD, Defendant.

The State of Washington to the said Hilda T. Barnard: You are hereby summoned to appear within sixty days after the date of the first publication of this summons, to wit, within thirty days after the 1st day of November, 1962, and defend the above entitled action in the above entitled court, and answer the complaint of the plaintiff, and serve a copy of your answer upon the undersigned attorneys for plaintiff, at his office below stated; and in case of your failure so to do, judgment will be rendered against you according to the demand of the complaint, which has been filed with the clerk of said court. This is an action for divorce.

GEORGE F. POTTER Plaintiff's Attorney Parkland Professional Bldg., 159 So. 12th Street Parkland, Pierce County, Washington. Published in the Times Journal Nov. 1, 8, 15, 22, 29; Dec. 6, 1962.

In the Superior Court of the State of Washington for the County of Pierce. IN PROBATE No. 70544 NOTICE TO CREDITORS In the Matter of the Estate of IRENE FRITZ, Deceased.

Notice is hereby given that the undersigned has been appointed and has qualified as administrator of the estate of IRENE FRITZ, Deceased; that all persons having claims against said deceased are hereby required to serve the same, duly verified, on said ROBERT FRITZ or his attorneys of record at the address below stated, and file the same with the Clerk of said Court, together with proof of such service within six months after the date of first publication of this notice, or the same will be barred. Date of first publication November 1, 1962.

/s/Robert Fritz Administrator of said Estate 11024 Pacific Ave., Tacoma 44, Wash.

/s/PHILLIP S. TRACY Peters & Tracy Attorneys for Estate, 11024 Pacific Ave., Tacoma 44, Wash. Published in the Times Journal November 1, 8, 15, 1962.

In the Superior Court of the State of Washington, In and For Pierce County. No. 153100 SUMMONS BY PUBLICATION ROBERTA POSTER SITES, Plaintiff vs. SAMUEL K. SITES, Defendant.

The State of Washington to said Samuel K. Sites: You are hereby summoned to appear within sixty days after the date of first publication of this summons, to wit, within sixty days after the 1st day of

November, 1962, and defend the above entitled action in the above entitled court, and answer the complaint of the plaintiff, and serve a copy of your answer upon the undersigned attorneys for plaintiff, at his office below stated; and in case of your failure so to do, judgment will be rendered against you according to the demand of the complaint, which has been filed with the clerk of said court. This is an action for divorce.

GEORGE F. POTTER Plaintiff's Attorney Parkland, Pierce County, Washington. Published in the Times Journal November 1, 8, 15, 22, 29; and December 6, 1962.

November, 1962, and defend the above entitled action in the above entitled court, and answer the complaint of the plaintiff, and serve a copy of your answer upon the undersigned attorneys for plaintiff, at his office below stated; and in case of your failure so to do, judgment will be rendered against you according to the demand of the complaint, which has been filed with the clerk of said court. This is an action for divorce.

GEORGE F. POTTER Plaintiff's Attorney Parkland, Pierce County, Washington. Published in the Times Journal November 1, 8, 15, 22, 29; and December 6, 1962.

THE PROPOSED constitutional amendment, which would require a two-thirds favorable vote by

the public both sides of this important issue, many of our news media performed a valuable public service and contributed to an enlightened decision on the redistricting problem," Nelson said.

The Grange leader expressed his thanks to newspapers, radio and television stations which presented both pro and con arguments on Initiative 211. "By getting the public both sides of this important issue, many of our news media performed a valuable public service and contributed to an enlightened decision on the redistricting problem," Nelson said.

"This plan is the nearest practical approach to the federal system of representation which gives each state two senators and a minimum of one representative in the lower house of Congress, with the remainder of congressional seats divided according to population," Nelson added. "All we are asking is a minimal representation for counties in the lower house of our Legislature.

Seattle, -- The Washington State Grange and other like minded organizations will urge the 1963 Legislature to amend the constitution on redistricting procedure, A. Lars Nelson, Master of the State Grange, said today.

Nelson, chairman of the Bipartisan Committee for Direct Representation which successfully opposed enactment of Initiative 211, expressed his thanks to "all organizations and individuals who helped" in the anti-211 campaign.

These organizations included the Washington Association of County Commissioners, Washington Cattlemen's Association, Washington Association of Wheat Growers, local Granges "and many others who feared the lop-sided effects of representation by population alone," Nelson said.

Both houses of the Legislature, followed by acceptance by the majority of state voters in the 1964 general election, would provide for both population and area representation in the Legislature. Each of the 39 counties would be given a minimum of one representative in the lower house. The remainder of both houses would be apportioned according to population and the membership of the House would be increased from 99 to 107 "to give adequate representation to areas of growing population," Nelson said.

A rummage sale is now in progress, sponsored by the Altar Society of Our Lady Queen of Heaven parish at 1401 A St. The sale concludes today, Thursday. Hours are 9 to 5 p.m. and 7 to 10 p.m.

FRIENDLY MARKET 162nd and Park Ave. - Spanaway Hours: 8:30 a.m. to 7:00 p.m. - Closed Sunday BIG 6 DAY SALE WITH EVERYTHING FOR THANKSGIVING Order Now For Your Fresh Dressed Turkeys Geese Roasting Hens Phone Orders Taken LE 7-8213

FRIENDLY MARKET 162nd and Park Ave. - Spanaway Hours: 8:30 a.m. to 7:00 p.m. - Closed Sunday BIG 6 DAY SALE WITH EVERYTHING FOR THANKSGIVING Order Now For Your Fresh Dressed Turkeys Geese Roasting Hens Phone Orders Taken LE 7-8213

Skippy DOG FOOD 14/\$1

NALLEY'S P. CHIPS TRIPLE PACK 49c

KRAFT MAYONNAISE 47c 24-Oz.

AA LARGE EGGS DOZEN 49c

CRISP GREEN CELERY 5c

Fresh Extra Small Oysters 12-Oz. 59c

MJB COFFEE 1-LB. 55c 2-LBS. \$1.09 6-OZ. INSTANT 79c

Ocean Spray CRANBERRY SAUCE 303 Tin 19c

AA LARGE EGGS DOZEN 49c

KRAFT OIL QUART 49c

Grade A TURKEYS Hens 43c Toms 39c

LIBBY'S PUMPKIN 2/35c 2 1/2 TIN

Ocean Spray CRANBERRY SAUCE 303 Tin 19c

AA LARGE EGGS DOZEN 49c

KRAFT OIL QUART 49c

Skippy DOG FOOD 14/\$1

NALLEY'S P. CHIPS TRIPLE PACK 49c

KRAFT MAYONNAISE 47c 24-Oz.

AA LARGE EGGS DOZEN 49c

CRISP GREEN CELERY 5c

Fresh Extra Small Oysters 12-Oz. 59c

MJB COFFEE 1-LB. 55c 2-LBS. \$1.09 6-OZ. INSTANT 79c

Ocean Spray CRANBERRY SAUCE 303 Tin 19c

AA LARGE EGGS DOZEN 49c

KRAFT OIL QUART 49c

Grade A TURKEYS Hens 43c Toms 39c

LIBBY'S PUMPKIN 2/35c 2 1/2 TIN

Ocean Spray CRANBERRY SAUCE 303 Tin 19c

AA LARGE EGGS DOZEN 49c

KRAFT OIL QUART 49c

Skippy DOG FOOD 14/\$1

NALLEY'S P. CHIPS TRIPLE PACK 49c

KRAFT MAYONNAISE 47c 24-Oz.

AA LARGE EGGS DOZEN 49c

CRISP GREEN CELERY 5c

Fresh Extra Small Oysters 12-Oz. 59c

MJB COFFEE 1-LB. 55c 2-LBS. \$1.09 6-OZ. INSTANT 79c

Ocean Spray CRANBERRY SAUCE 303 Tin 19c

AA LARGE EGGS DOZEN 49c

KRAFT OIL QUART 49c

Grade A TURKEYS Hens 43c Toms 39c

LIBBY'S PUMPKIN 2/35c 2 1/2 TIN

Ocean Spray CRANBERRY SAUCE 303 Tin 19c

AA LARGE EGGS DOZEN 49c

KRAFT OIL QUART 49c

Skippy DOG FOOD 14/\$1

NALLEY'S P. CHIPS TRIPLE PACK 49c

KRAFT MAYONNAISE 47c 24-Oz.

AA LARGE EGGS DOZEN 49c

CRISP GREEN CELERY 5c

Fresh Extra Small Oysters 12-Oz. 59c

MJB COFFEE 1-LB. 55c 2-LBS. \$1.09 6-OZ. INSTANT 79c

Ocean Spray CRANBERRY SAUCE 303 Tin 19c

AA LARGE EGGS DOZEN 49c

KRAFT OIL QUART 49c

Grade A TURKEYS Hens 43c Toms 39c

LIBBY'S PUMPKIN 2/35c 2 1/2 TIN

Ocean Spray CRANBERRY SAUCE 303 Tin 19c

AA LARGE EGGS DOZEN 49c

KRAFT OIL QUART 49c

Skippy DOG FOOD 14/\$1

NALLEY'S P. CHIPS TRIPLE PACK 49c

KRAFT MAYONNAISE 47c 24-Oz.

AA LARGE EGGS DOZEN 49c

CRISP GREEN CELERY 5c

Fresh Extra Small Oysters 12-Oz. 59c

MJB COFFEE 1-LB. 55c 2-LBS. \$1.09 6-OZ. INSTANT 79c

Ocean Spray CRANBERRY SAUCE 303 Tin 19c

AA LARGE EGGS DOZEN 49c

KRAFT OIL QUART 49c

Grade A TURKEYS Hens 43c Toms 39c

LIBBY'S PUMPKIN 2/35c 2 1/2 TIN

Ocean Spray CRANBERRY SAUCE 303 Tin 19c

AA LARGE EGGS DOZEN 49c

KRAFT OIL QUART 49c

Skippy DOG FOOD 14/\$1

NALLEY'S P. CHIPS TRIPLE PACK 49c

KRAFT MAYONNAISE 47c 24-Oz.

AA LARGE EGGS DOZEN 49c

CRISP GREEN CELERY 5c

Fresh Extra Small Oysters 12-Oz. 59c

MJB COFFEE 1-LB. 55c 2-LBS. \$1.09 6-OZ. INSTANT 79c

By Mrs. John Folk

The Canyon Road Garden Club has set their regular meeting ahead from Nov. 21st to Nov. 28 because of the Thanksgiving holiday.

The Canyon Road Ladies Auxiliary had a very enjoyable afternoon last Thursday. After a potluck luncheon the Pioneer Kitchen Band from Olympia entertained with their humorous numbers. The guest speaker, Mr. Kurt Borgmeyer, Guidance and Special Service of the Puyallup High School related his experiences and progress with handicapped children in the school. The club voted to assist him in his projects. Slides were shown by Mrs. Alma Peake of last year's Christmas project sponsored by their Church of which she with Mrs. Sarah Field and Mrs. Merna Dickison were chairmen. Our nursery was presided over by a very capable sitter and we welcomed the ladies who became new members that day.

We are glad to report Mr. Leonard Merkt of Vickery Road is home after spending a week in the hospital. After receiving blood transfusions it wasn't necessary to undergo surgery.

Miss Valerie Guthrie, daughter of Mr. and Mrs. Otto Guthrie of Canyon Road was taken to Madigan Hospital after an appendicitis attack but it was decided not to operate so we are glad she is back home.

Mr. Gene Russell of East 78th and Mr. DeForest Bullock of Fairview Road arrived at the election booth—Mr. Russell with a badly injured face and Mr. Bullock with his foot in a cast. They assured us it was not a personal

feud. Mr. Russell had tangled again with his cow and Mr. Bullock was a victim of 'do-it-yourself' and dropped a sheet of sheet rock on his foot. (We think that cow should go).

Mrs. Grace Schmaltz of White Road underwent surgery last week at the Northern Pacific Hospital. This was the third operation on her leg which was broken five years ago. We are glad to report she is doing fine.

Mr. and Mrs. Ed Agrelus of Lidford Road are the proud parents of Jason Scott, born Nov. 4th. He checked in at 6 lbs., 4-1/2 oz. and is welcomed by his sister Kathi, his grandmother, Mrs. Marion McLoren and grandfather Henry Godfrey, both of Sherman Oakes, Calif.

A baby shower held the previous week for Lois Agrelus was given by Mrs. Robert Runger of East 72nd. Those attending were Mrs. Paul Burch, Mrs. Ethel Selby, Ann Eldred, Phae Crowell, Mrs. Ann Rector and Lois' mother, Mrs. McLoraman.

Annual Festival

The C. W. A. of Harvard Church will hold their annual festival Friday, Nov. 16th, beginning with a pot luck at 6:30. The program will be presented at 7:30, and will feature Symphony in Sound and Color by Mrs. Jack Larson, one of the members.

A free will offering will be taken, and information on the dinner items may be obtained by calling Mrs. Robinson at LE 1-0370.

Rainbow Girls Plan Annual Tolo In Olympia

Olympia Assembly, International Order of the Rainbow for Girls, will hold its annual winter tolo on Friday, Nov. 23rd from 8:30 to 11:30 p.m. in the Olympia Community Center. The dress is formal and corsages are in order.

Tickets may be purchased in advance or at the door for \$2 per couple. Everyone is welcome to attend.

Mushroom Crop Harmless to Lawn

The fastest growing plants in Pierce county these days are those darn (or worse) mushrooms in lawns. Take heart in that Jack Parsons county agent reports they are not causing damage to lawns. Also no one else is having any better luck than you at controlling them. In fact, there are only a few materials that do any good at all. Considering this and the fact that they do no harm—why fight them?

They are really saprophytic fungi living on dead materials in the soil and their spores are present continually. However they only germinate during the mild, damp weather of fall and spring. Freezing will stop their formation so your problem will soon be solved.

If the mushrooms in your lawn are formed in neat circles 2 feet to 12 feet in diameter then you may have a serious problem and would be good to have someone take a look.

He conquers twice, who upon victory overcomes himself.

Midland School Plans Annual Open House

Midland School will be holding its annual Open House, Wednesday evening, November 28th, at 8:00 p.m. President Mrs. Albert Downs will preside over a brief P-TA business meeting to discuss further plans for the dinner to be held in December. Principal Mr. Albert Reihns extends a warm welcome to all parents to attend. Refreshments will be served by the third grade mothers. Due to the Thanksgiving holidays, Midland P-TA and Preschool will hold their annual Open House and joint meeting Wednesday, November 28th (which is one week LATER than P-TA usually meets).

The Midland Business Club will hold their regular meeting on Wednesday evening, November 21st, at the Midland Fire Hall, at 8:00 p.m. All Midland businessmen are urged to attend.

All Midland residents are urged to attend the regular meeting of the Midland Improvement Club, on Wednesday evening, November 14th, at 8:00 p.m., at the Midland Improvement Club Hall. Zoning will be discussed.

The Midland Fire Department Auxiliary held a Going Away Party in honor of Mr. and Mrs. William Stevens, on Friday evening, November 9th. Hostesses for the event were Mrs. Edward Burness and Mrs. Albert Bombardier. A delicious buffet supper was served at midnight. Guests attending were Messrs. and Mesdames Edward Burness, Fred McPherson, Harold Whipple, Verne Blauvelt, Robert Irving, Cameron Miner, Gene Stokes, David McPherson, Albert Bombardier, Gay Harkey, Walter Olsen, Ted Wiersma, Leslie Roley; and Mesdames William Shanahan and Richard Johnson; and Messrs. Frank Gural, Bill McPherson, and Sam Boone.

Lifetime residents of the Midland area, the Stevens family left Saturday to live in Livingston, Montana, where Mr. Stevens is taking a new position. Bill and Lorraine have been members of the Midland Fire Department and Auxiliary for the past nine years, where Bill served in the capacity of Lieutenant.

An enlightening trip to the Rainier State School at Buckley was made by members and guests of the Mary Circle of the Lutheran Church of Christ the King, on November 6th. Mrs. John Gall, one of the supervisors, conducted the tour. Attending were Mrs. Fred Bates, Mrs. John Bishop, Mrs. Lawrence Briske, Mrs. Leslie Camp, Mrs. Jack Fabry, Mrs. Kenneth Haller, Mrs. Robert Hillstead, Mrs. Joel Larson, Mrs. Fred Mackey, Mrs. V. I. Nygard, Mrs. Charles Robbins and Mrs. Dennis Tuttle. After the trip, the group enjoyed a luncheon at the home of Mrs. Fred Mackey.

This Circle is for the mothers in the church who have preschool children. They meet on the third Thursday of each month at the various homes; and a nursery is provided at the church for the children.

The Midland Cooperative Play School held their annual Hallowe'en Costume Party on Tuesday, October 30th. The children had a pumpkin parade, sang Hallowe'en songs, and popped popcorn. They were served juice, cookies, and ice cream. Attending were Leslie Benoodt, Pat Roley, Steve Whipple, Charles Basket, George Craig, Lester Sleed, Cindy Alexander, Sandra Alexander, Bobby Jacobsen, Jerry Irish, Tony Gordon, Heather Anderson, Lisa Rettke, Lori Rettke, Mary Reding, Billy Lowry, Connie Brooks, Ellen De-

LaVergne, Joyce Almont, Margot Lancaster, Robert Wenzon, Stanley Mansfield, Curtis Mansfield, Jimmy Lancaster, Christopher Anderson, Craig Basket, Tina Marie Lowry, and Allen Lowry.

Hostesses were Mrs. Lawrence Lowry, Mrs. Leslie Roley, Mrs. Jennings Irish, Mrs. Phillip Alexander, and Mrs. Russell Benoodt. Also attending were Mrs. Robert Jacobsen, Mrs. Howard Mansfield, Mrs. J. Lancaster, Mrs. Alistair Anderson, Mrs. Robert Craig, and Mrs. Charles Basket.

Mrs. Leslie Roley represented the Midland Fire Department Auxiliary at the convention of the Washington Fire Commissioners Association, held November 1, 2 and 3, at the Doric Hotel in Tacoma. The Summit Fire Department Auxiliary were hostesses for the luncheon held Saturday at the Doric.

On November 4th, the Wheeling Squares Square Dance Club held a surprise housewarming on Ed and Dottie Hendricks who moved recently from the Midland area to their new home at 7016 - 99th Street, Court East. A potluck supper was served, and the Hendricks were presented with a gift from the group. Attending were Messrs and Mesdames Curt Taylor, Kenneth Leavens, Henry Walters, Al Lenarz, Lowren Johnson, Stanley Moye, Robert Rave, Richard Rave, Earl Torbet, Elmer Willhite, Beve Shields, Al Sater, Frank Davis, Gene Ballard, Wynne Radcliffe, Marion Harkness, Marvin O'Dell, Ken Fuller, Serle Hart and Miss Janice Hart.

Ed Hendricks is the all-er of the Wheeling Squares Club, and they square dance the third Saturday of each month at the Summit Youth Center, starting at 8:30 p.m.

The Clem F. Miller family, former Midland residents, are now back in the Pacific Northwest. Mr. Miller has been transferred back to the Seattle Boeing plant, and they are now living in Seattle. Their two older boys, Skip and David, are both serving in the United States Air Force. Skip is overseas in Germany serving with the Military Police, and David is stationed in California. While on furlough recently, David visited many friends in Midland, and also the Seattle World's Fair.

News items that you would like inserted in the Midland column may be mailed or called in to: Mrs. Frank Gural, 1223 East 85th Street, LE 7-5939.

Husband Attends Warfare School, Local Wife Learns

U. S. FORCES, KOREA (AHTNC) -- Army Sgt. Marvin L. Brown, 25, whose wife, Margaret, lives at 601 S. 126th st., Tacoma, Wash., recently completed the 12-day Guerilla Warfare School conducted by the 7th Infantry Division in Korea.

A squad leader in Company C of the division's 31st Infantry, Sergeant Brown entered the Army in 1955 and was stationed at Fort Lewis, Wash., before arriving overseas last June on this tour of duty.

The sergeant, son of Mr. and Mrs. William D. Brown, 2119 N. 59th st., Seattle, attended Lincoln High School in Seattle.

The principle of a graduated tax was applied as early as 1797, when progressive inheritance tax rates were based on the amount of inheritance received.



PRE-THANKSGIVING SALE!! Thurs., Thru Sat., Nov. 15 - 16 & 17.

TURKEYS

MANOR HOUSE Or LYNDEN 1962 GRADE "A" - The Very Finest!



10-18 # Average Lb. 43¢

18-24# Average Lb. 39¢

Roastrite Turkeys 'B' Grade U.S.D.A. Insp. LB. 33¢

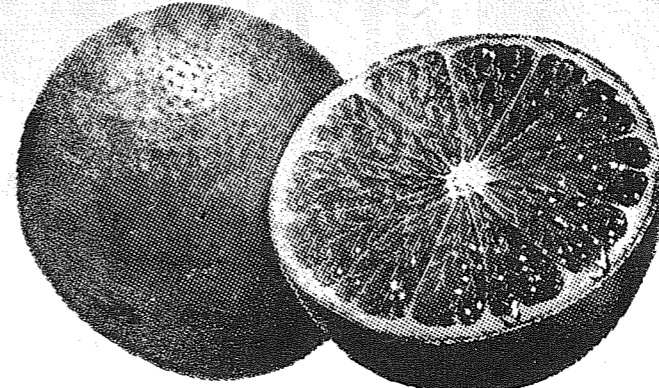
Smoked Hams Bar-S & Hormel Whole or Shank Half LB. 55¢

Beef Pot Roast U.S.D.A. Choice Blade Cut LB. 49¢

Fresh Ground Beef Ground Fresh at Safeway LB. 39¢

PINK GRAPEFRUIT

Famous INDIAN RIVER



14 For \$1

FRESH CRANBERRIES Ocean Spray 2 Lbs. 31¢

FANCY YAMS U.S. No. 1 Or SWEET POTATOES 3 Lbs. 29¢

Ice Cream

SNOW STAR - ASSORTED FLAVORS



Gallon \$1.18 2-Gal. Ctn. \$2.36

HALF GAL. 59¢

Egg Nog



LUCERNE - FRESH Half Gal. Ctn. \$1.15

QUART CARTON 59¢

Libby Pumpkin Large No. 2 1/2 Can 15¢

Cran. Sauce EATMOR BRAND 2 16-Oz. Cans 35¢

Miracle Whip Qt. Jar 49¢

Mince Meat VALAMONT 28-Oz. Jar 35¢

Candi-Cane Sugar 5-Lb. Bags 49¢

Buy Now For Xmas Gifts

THE WORLD WE LIVE IN

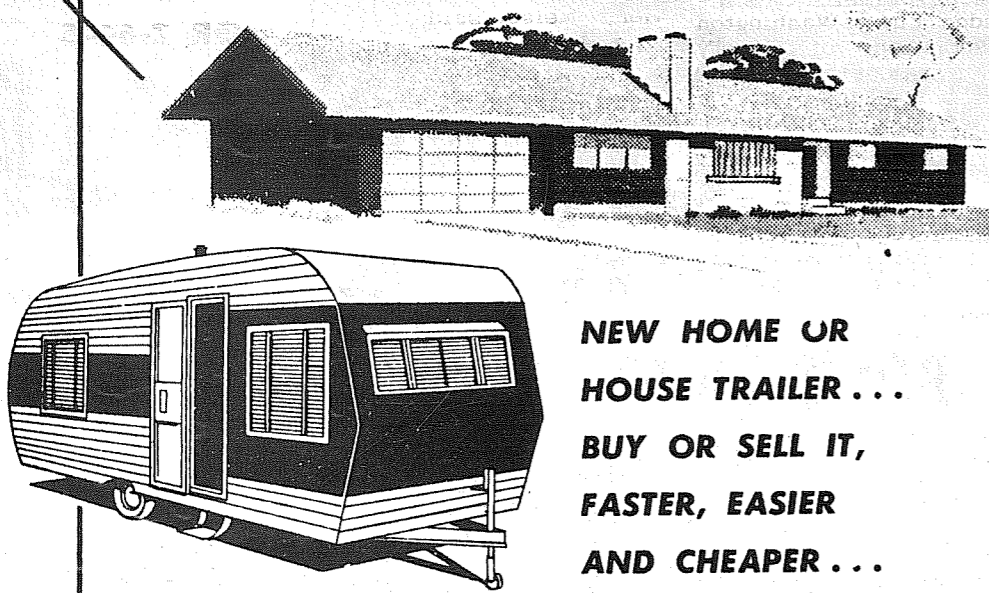
by the Editors of

LIFE

Volumes 1 - 2 & 3 Now On Sale at Safeway

\$1.29 per copy

BUYING and SELLING!



NEW HOME OR HOUSE TRAILER... BUY OR SELL IT, FASTER, EASIER AND CHEAPER...

TIMES JOURNAL CLASSIFIED

WANT ADS BRING FAST RESULTS

Surveys show that 4 out of 5 newspaper readers check the classified ads regularly!

Put these little giants to work for you — buying, selling, hiring, renting — carrying your message to our thousands of readers daily. It's your best advertising buy!

THE FAST WAY TO GET SURE-FIRE RESULTS — PLACE A WANT AD IN:

The TIMES JOURNAL LEnox 7-0223

FROZEN "B" GRADE TURKEYS
Hens Lb. 39¢ **Toms Lb. 35¢**

RUMP Roast
Lb. 59¢

Starkels Farm Fresh Dressed
TURKEYS **Grade A**
HENS Lb. 49¢ **TOMS Lb. 43¢**

Mesta **HAMS** **Lb. 89¢**
Beef Roast **Lb. 69¢**
Beef Steak **Lb. 69¢**
Round or Sirloin

Beef Sirloin Tip Roast **Lb. 69¢**
Med. OYSTERS **12-Oz. Jar 55¢**

RIB Steak
Lb. 69¢

OUR OWN Country Style PORK SAUSAGE **3 LBS 1/2 \$1**

100% PURE GROUND BEEF **3 LBS 1/2 98¢**
1 Bone STEAK **Lb. 79¢**

KRAFT MAYONNAISE **24-OZ. JAR 39¢**

ALCOA 18" Heavy Duty FOIL
25' Roll 59¢

HILL'S BROS. Coffee
1 LB. SIZE 55¢ **2 LB. SIZE 1.09** **10-OZ. INSTANT 99¢**

Fisher's FLOUR **10 LB. BAG 79¢**
Libby's CANNED PUMPKIN **2 1/2 Size Tin 6 Cans \$1**

Sunny Jim CRANBERRY SAUCE **WHOLE Or JELLIED 11-Oz. Jar 3/29¢**

NALLEYS MINCE MEAT **28-Oz. Jar 39¢**
Big Dip ICE CREAM **1/2 Gal. Pkg. 69¢**

Darigold AA SWEET CREAM BUTTER
1-Lb. Pkg. 59¢

Hunt's FRUIT COCKTAIL **300 Size Tin 6/\$1**

Nalleys POTATO CHIPS **TRIPLE-PAK REG. 59¢ 69¢**

Ballard BISCUITS **10 BISCUIT TUBE EACH 10¢**

MORTON FROZEN PIES **PUMPKIN 29¢** **MINCE MEAT 39¢**

California YAMS or SWEET POTATOES **2 Lbs. 15¢**

OCEAN SPRAY CRANBERRIES **1-Lb. Box 19¢**

S & W MIXED NUTS **Lb. 39¢** **Fresh Crisp CELERY** **Large Stalks Ea. 6¢**

9 a.m. to 10 p.m. 7 DAYS WEEK

BARGAIN BASKET
 16618 PACIFIC AVE. South SPANAWAY, WASH.
 LE 7-3371

NO SALE TO DEALERS
 We Reserve the Right To Limit Quantities

We Carry A Complete Line of Sacked Feeds
 • SACKED COAL
 • PRES'-TO-LOGS

THESE PRICES GOOD NOVEMBER 15 THRU NOVEMBER 21

Waller Road News

By Mrs. Vern Fogle . . .
 The Workshop Night held at the Grange Hall Nov. 5th was attended by 21 ladies. It was under the supervision of the Waller Road Grange Auxiliary. Each lady was well on the way to completing a beautiful smocked pillow top at the close of the evening session. Mrs. Lillian Yoder was the instructor.
 Proving to be a popular undertaking, the ladies will meet once a month, taking on new projects. The next workshop night will be Dec. 3rd at 7:30 p.m. Each lady attending will bring one 9 x 12 clear plastic sheet or cover, one coat hanger, two yards of wide satin ribbon of their own color choice, small decorative Christmas balls on stems or colorful cones. A beautiful white wreath will be made.
 Each will also bring a plate of favorite Christmas cookies and the recipe, as well as a notebook.
 This Workshop night, sponsored by the Grange Auxiliary is open to all women of the Community. Come and learn to do things together. No dues to pay.

Grangers attend your meetings, they are interesting, informative, and full of plans for future activities, which include dedication of the Grange Hall, with Dec. 2nd set as the date. (There will be a meeting Friday, Nov. 16th).
 The name of Anna Van Hulle, newly elected to serve as Lady Assistant Steward for 1963 was omitted last week.
 Mrs. A. Fladiger was welcomed as a new member at the last meeting.
 Waller Road Consumers Water Co., held a special meeting at the Grange Hall Nov. 7th presenting information and figures in regards to establishing their own wells.
 Members voted in favor of having the Board of Trustees use reserve finances to proceed with the exploration for water in the immediate Waller Road area.

Another fatal accident at 46th and Waller Road makes drivers conscious of the fact--the curve on the highway at the designated spot is dangerous. With winter months ahead, keep in mind this thought, "Drive carefully, the life you save may be your own."

"Woodchucks" Seat Officers

The first meeting of the coming year for Mr. Carlson's 4-H boys club, "The Woodchucks," was held recently. Officers elected were: Pres: John Munger; Vice Pres: Al Downs; Secretary: Steve Pullin, and Reporter: Richard Jones.
 The boys report a very successful year for their first year of exhibiting in summer fairs. They had eight exhibits entered in the Sumner Jr. Fair, and came home with six blue ribbons and two red ones. At the Puyallup Fair they entered seven exhibits, and received six blue ribbons and one red.
 Two of the members, John Munger and Kenneth Jones, attended Pierce County 4-H camp at Milerylvania State Park this summer. Kenneth was honored by winning the top camp rifleman-ship award and medal. His targets were sent to the National Rifle Association 4-H camp contest. Word has just been received that he placed 5th in the National competition. Out of a possible 300 score, Kenneth's was 267, with the top winner only 17 points ahead with a score of 284.

Dad's Night At James Sales Next Tuesday

A special program will be presented for dads at the Nov. 20th meeting of the James Sales P-TA. Meeting time will be 7:30 p.m. in the schools multi-purpose room.
 The program titled "Lee's Folly" will be a presentation of the poem "The Shooting of Dan McGrew," done in pantomime featuring Canadian girls. Taking part will be Mrs. Don Bowerman, Mrs. Lyman Norton, Miss Elizabeth Orr, Mrs. Don Lefor, Mrs. Dell Miller, Mrs. Martin Pestanna, Mrs. Kenneth Knight, Mrs. Dale Gohr, and Mrs. Franklin Meyers. Also taking part will be scouts of troop 105, Mr. Sonny Cox and Mr. Thomas Edwards.
 Mr. Lyle Catt will preside a demonstration of teaching aid Machines. Following the meeting, open house will be held for Kindergarten, first second and third grades. The first grade mothers will be hostesses for the coffee hour.

Waller Rd. P-TA To Meet Nov. 20

Waller Road P-TA will meet Tuesday, Nov. 20th at 8 p.m. in the Primary Play Court, with Mrs. Richard Frank presiding. Open house will be held directly before the meeting. All parents are urged to come and meet their children's teachers, and see the work they are accomplishing this term.
 "Make It and Take It" will be the main interest of the evening's entertainment for all members attending. Patrons are asked to make a gift and bring it to the meeting, where their gifts will be put up for sale and they buy anything of their choosing in exchange for their contribution.
 The membership chairman reports that membership has dropped this year. All parents, not yet members, are invited to join the P-TA or to send their membership dues to school with their child. P-TA activities are enjoyable as well as a necessary contribution by

parents to their child's education.
 An appeal has been made for donations of plastic or rubber boots in usable condition for use by 5th and 6th graders when on patrol.
 Hostesses for the Tuesday meeting will be Bea Baird, Jean Solheim, Bonnie Wassmuth, Florence Jones and Susie Frank.
 Mrs. Crum's 5th grade Camp Fire girls will lead the flag salute at the meeting.

BUILDERS SUPPLIES
PLYWOOD LUMBER ROOFING HARDWARE PLUMBING ELECTRICAL SUPPLIES
Baskett Lumber
 9701 Portland Avenue
 LE 7-8663

Hunting BOOTS
 We have **REBUILT ARMY BOOTS & OXFORDS**
 Sizes 5 to 14 A width to EEE
2.99
 Most have new soles and heels. Use for hunting - work - school - hiking or any place an inexpensive tough comfortable boot is needed.
3.99
FREE GREASE JOB IF DESIRED WITH EACH PAIR SOLD
Paul's Shoes & Repair
 OPEN MONDAY THRU SATURDAY 9 to 6 - FRIDAYS 'TIL 9 P.M.
 161st & Pacific Ave., Spanaway (CLOSED SUNDAYS) LE 7-0552

SEYMOUR'S Specials!
 SHOP DAILY 9 to 9, SUNDAYS 10 to 6

BOY'S VINYL JACKETS
 Sizes 3 to 6x **5.99** Sizes 7 to 16 **6.99**
 Husky Vinyl in black, charcoal or blue. Looks like expensive leather. Warm quilt lining, knit collar, cuffs, waist and underarm trim. Zipper front.

Girls' Sturdy Vinyl PILE LINED Jackets
 3 to 6x **7.99** 7 to 14 **9.98**
 Real Values! Rich pile lining for warmth. Convertible collar. Sturdy expanded vinyl in red, blue, green or beige. Priced extra low!

LITTLE GIRLS' 3-PIECE Wool Outfits
 SIZES 2-3-4 **8.99**
 Choice of fitted or boxed styles. In red or turquoise wool. Rayon lined coat and hood, flannel lined leggings. Save now!

Plenty of Free Front-Door Parking

GIRLS' RAYON ACETATE PANTIES
 Seymour's Sale Price!
4 For 66¢
 Quality made. Full cut Cellophane packed in set of four. Sizes 4-14

MEN'S HEAVY FLANNEL SHIRTS
 ONLY **2.99**
 Exceptional values! Sturdy 8-Oz. flannel shirts with long tails. Sizes 14 1/2 to 17.

A Department Store Catering To Your Family's Shoe And Clothing Needs!
SEYMOUR'S
 9714 Pacific Avenue 1/2 Block South of 96th and Pacific

Lacamas Dance Sat.
 The Lacamas Community Club will sponsor a dance Nov. 17th from 9:30 to 2 p.m. with the proceeds being used for further improvements on the Hall.