

L.E. Armstrong
11011 Pacific Ave.
Tacoma, Wash.

Pierce County Herald and

The TIMES JOURNAL

Vol. 24 No. 49

December 12, 1968

Price Per
Single Copy

10¢



Members of the Pacific Lutheran University Choir of the West prepare for next weekend's series of Christmas Festival Concerts at PLU. From left, Mark Hougnum, a sophomore from Portland; Joan Norburg, a senior from

Denver; freshman Ed Amundson from Junction City, Ore.; and Roberta Allen, senior from Bellevue, Wash. Performances are at 8:15 p.m. Thursday through Sunday with a matinee Sunday, Dec. 15, at 3:30 p.m. Tickets are complimentary. See story inside.



PARKLAND MAN AND WOMAN OF YEAR. Presenting special plaques to Earl Clemens and Clara Starr, Parkland's man and woman of the year, is Clayton Peterson who m.c.'d the Parkland Business Club annual award banquet held at the Jolly Roger Friday night.



THREE TEENAGERS were killed and two others injured in this spectacular crash at 112th and Waller Road early Sunday morning. The car went out of control at high speed, dipped into the ditch and slammed into a large utility pole according to the Washington State Patrol. Killed were the driver, Shelby Madden, 16, of 902 S. Violet Meadow and two of his passengers Wallace Chamber, 17, of Mineral and Jo Ann Stewart, 16, of 4315 Pacific Avenue. In the hospital with a broken back and injured ankle and leg is another passenger, Guy Gunderson, 16, of Seattle. The fourth passenger, George Salerno, 17, of 5657 S. I Street was treated for a severe head laceration and released from Lakewood General Hospital.



IRENE CLEMENS and Harold Lloyd present County Commissioner Harry Sprinker (center) a check for \$349.25 towards the maintenance of Gonyea Playfield. The money is the proceeds of 1968 Parkland Roundup activities, sponsored by the Parkland Business Club. Lloyd is past president and Mrs. Clemens treasurer.



SCHOOL BOARD OF THE YEAR title and plaque was awarded Franklin Pierce Directors last week in Seattle. Pictured left to right are: Harold Sherry, Dr. Walter Schnackenberg, Bob Roberts, Herb Gelman, and Jo Anne Matson.

Parkland Library Record Selection Increased

Borrowers of phonograph records from Parkland Library now have a larger number of records from which to choose. Recent shipments from Pierce County Library have increased the collection to approximately 100 records, including special Christmas recordings. This is almost double the number on the library shelves in March, 1968.

Several albums of popular music are among the new acquisitions. Don Gibson accompanies himself on the guitar in "All My Love." Al Hirt is featured in "Latin in the Horn." Eddy Arnold sings "Turn the World Around." Popular music for the holidays includes Julie Andrews singing carols in "Christmas Treasure," "John Gary Christmas Album," and "Christmas With Chet Atkins."

Among the new classical recordings are Prokofiev's Symphony No. 6, played by the Philadelphia Orchestra, with Eugene Ormandy conducting; and "Old Timers' Night at the Pops," featuring the Boston orchestra conducted by Arthur Fiedler.

In addition to phonograph records on the library shelves, borrowers may request titles from Pierce County Library holdings. Opera, organ, orchestra, vocal, spoken records, and children's records in popular or classical vein are available. Phonograph records are circulated from the library without charge, just as books.

WHS Holds Concert

Washington High School will hold its first evening musical concert in the Keithley Cafetorium, on Tuesday, December 17, at 7:30 p.m.

Featured on the program will be the band and chorus performing various Christmas and inspirational numbers.

The general public is cordially invited to attend with no admission charged.

Disaster Relief Bake Sale Friday

There will be a Bake Sale, Friday, Dec. 13th at the National Bank of Washington in Parkland, sponsored by the Bethel Women's Disaster Relief Organization.

All proceeds are to be used for the purchase of Emergency Radio Communications between the schools of the Bethel District. These communications are needed as soon as possible.

Contributions of money or bake goods are urgently requested. For further information, call LE 1-1536. LE 7-7749 or JU 8-7071.

era, organ, orchestra, vocal, spoken records, and children's records in popular or classical vein are available. Phonograph records are circulated from the library without charge, just as books.

Silvertones Applauded

The Silvertones singing group of Franklin Pierce High School, under the direction of Mr. Angelo Manzo received a standing ovation for their excellent performance before the 29th District Republican Club.

They were personally congratulated on their excellence by club President R.C. Soukup who also stated that this was an enjoyable and delightful fringe benefit of voting for School Bonds. The occasion was the Christmas meeting and Annual Election of Officers who will serve next year.

The speaker of the evening was W. Y. Walter, former Republican National Committeeman and State Chairman. Mr. Walter gave an analysis of the past election, local and statewide and also laid much stress on party loyalty.

Officers and Directors elected for 1969 were: Harold Peterson, President; Al Larsen, Vice President; Helen Ingham, Secretary; Max Applegate, Treasurer; Vern Brazeau, Sergeant at Arms; Col. R. H. Ziehm, Handel Ingham, W. B. Smith, Dr. James Nockleberg, Dr. Gungdar King, Olive West, Rae Brodin, T. S. McCulloch of Steilacoom, and Dee Baublits of Eatonville, Directors. These Officers and Directors will be installed Wednesday, January 8, 1969 at Brad's Restaurant.

PTA Councils Meet At Brads

A combination meeting-clinic for women who will officiate women's and girls' recreation basketball competition will be held Monday, Dec. 16, at 8 p.m. in the County-City Building, Room 741.

Miss Sandy Molzan, women's athletic supervisor for the Pierce County Park Department, will discuss rules and regulations and explain the program for training women's basketball officials.

All women who are interested in basketball officiating this season are urged to attend this meeting.

Santa Arrives

Santa Claus is coming to the Spanaway-Elk Plain areas on a fire truck again this year according to Chief John Farren of the Spanaway-Elk Plain Fire Department. Chief Farren announced that the Spanaway-Elk Plain firemen have again decided to donate the several hundred work hours necessary on the annual project which sees thousands of candy canes handed to thousands of beaming youngsters.

From a modest operation as a two-day project several years ago the "Santa truck" has exploded to a week-long marathon with its own special problems.

Chief Farren announced the ground rules and set forth the schedule yesterday at a conference in his office. This year Santa's caravan will contain the Spanaway Rescue truck leading the way for Santa's personal fire truck. Both trucks will have their flashers going and there will be much music and Christmas decorations to make them easy to see.

Plans call for fewer stops than in years past, but each stop will be longer. Wherever several children gather down the road the Rescue truck will stop followed shortly by Santa's truck. "If your neighbors have small children and you call ahead when Santa comes to your house, the next group can be forming down the road while Santa greets yours," Farren suggested.

Santa's route, as outlined by Chief Farren includes: Saturday evening, December 14, The Mountain Highway and Elk Plain areas.

Sunday Evening, December 15, South Spanaway.

Monday Evening, December 16, West of Pacific Avenue to Lakeside Drive between 160th Street and 176th Street.

Tuesday Evening, December 17, Spanaway Loop and the area of 138th Street west of Pacific Avenue.

Wednesday Evening, December 18, East of Pacific Avenue from 146th Street to 159th Street as far as 22nd Avenue East.

Thursday Evening, December 19, East of Pacific Avenue from 159th Street to 176th Street.

For those who wish a closer look at Santa, the Parkland J.C.'s will sponsor a personal landing of Santa from a helicopter in a very public event at Parkland Grade School Saturday, December 21st at 1:00.

Santa has scheduled two added visits to the Elk Plain area at Elk Plain Grange Hall at 8:30 December 16th and at the Elk Plain School's Christmas program earlier the same evening at 8:00 at the Elk Plain Elementary School. The Elk Plain School program will include the upper grade band, chorus and reading group.

Pierce Board Honored

The Franklin Pierce School Board was named the outstanding board of school directors in the State of Washington and received a "School Board of the Year" plaque at the Washington State School Directors Association Annual Banquet held December 6 at the Olympic Hotel in Seattle.

The award was based on employee negotiations, creation of special programs in the district, superior communications with staff and community, and the efficiency and qualifications of individual board members. Nomination was submitted by Dr. E.E. Hill, superintendent, and acted upon by the Association who had representatives attend Pierce Board meetings and investigate district programs.

In pointing out the reasons backing the nomination Dr. Hill wrote, "The Franklin Pierce District has the least wealth per pupil of any first-class district in the state; receives only 13 per cent of their budget from special levies compared to a state-wide average of 22 per cent and has one of the highest maintenance and operation rates (because of low valuation). Despite these problems, the board has approved good salary schedules, has provided a high level of support services, and has been willing to invest in equipment and procedures which would promote efficiency."

The District 402 Board is composed of Herb Gelman, Wilbur Roberts, Harold Sherry, Dr. Walter Schnack-

enberg, and JoAnne Matson. The Board had no prior knowledge of their nomination until the four finalists were named at the banquet. Runners up for the honor were Spokane, Clover Park, and Wapato.

Accomplishments of the Board have included a 5-year master school construction plan, "Profiles of Excellence" evaluation, monthly curriculum meetings in schools to institute a 3-way dialogue between parents, teachers, and the Board, and the establishment of model educational programs.

Lions Meet

Mr. L. Terry Conner of the Tacoma-Pierce County Association of Life Underwriters, Inc. will present a program concerning life insurance to the Parkland Lions Club at their 6:30 p.m. meeting at the Brookdale Inn on Tuesday, December 17th.

Mr. Conner will present some interesting facets of the insurance industry, what it means and how it works.

Moose to Hold Enrollment

The December enrollment of the Parkland Moose Lodge 1814 will be held at 8 p.m. December 18 at the Villa Bowl Banquet Room according to Ritual Chairman Dan Evans. Evans also announced the officers of the Lodge will meet Wednesday, December 11, at 8 p.m. at 1220 South 108th.

Pierce County Herald and
The TIMES JOURNAL

Published weekly at 14620 Pacific Ave., Parkland 98444 and delivered by U.S. Mail and carrier to subscribers. Publishers: Pierce County Publishers, Inc.
 Managing Editor Em Matson
 News Editor Sandy Ingram
 Sports Editor Bob Ingram

Subscriptions \$3.50 per year, \$1.80 six months, or 30¢ monthly by carrier. News stand price 10¢ copy.
 Qualified as a legal publication under Chapter 213 of the Legislature Acts of the 1941 regular session of the State of Washington
 Second Class Postage Paid at Tacoma, Wash.

Vol. 24 No. 49 December 5, 1968

HEAD

The Lasting Gift For Christmas

Where Skiers Serve Your Every Skiing Need

Open Evenings 'til 9 P.M.

PARKLAND SPORTS CENTER

1122 PACIFIC AVENUE TACOMA WASHINGTON PHONE LE 7-5677

THE FINEST MEAT AND PRODUCE
OBTAINABLE AT PRICES YOU
LIKE TO PAY!

U.S.D.A. CHOICE
FULL CUT
ROUND STEAKS
79^c_{lb}

U.S.D.A. "CHOICE"
RUMP ROAST
87^c_{lb}

LEAN GROUND ROUND 69^c_{lb.}

SMOKED PICNICS 39^c_{lb}
SLICED SMOKED PICNICS 47^c_{lb.}

Our Own **CORNERED BEEF** 79^c_{lb}

2 1/2-lb. PKG. HONEYSUCKLE
TURKEY ROAST 2⁹⁸

TYSON'S
GAME HENS
59^c_{LB.}



JUMBO WHITE ONIONS
10^c_{lb}

NEW CROP
DATES
1 1/2-LB. BAG 59^c

"THE FIRST IN YEARS"
Not Available Until Wednesday

JAPANESE MANDARIN **ORANGES**
2⁹⁸
Packed in 8-lb. Wooden Crate

CLIP TOP **CARROTS**
TURNIPS
RUTABAGAS } 10^c_{lb}

WE WELCOME YOUR U.S.D.A. FOOD STAMPS HERE
ENJOY THE CLEANLINESS AND FRIENDLINESS OF HI HO

GIANT AJAX
59^c

FOREMOST INSTANT **BREAKFAST** 55^c

HI HO **MAYONNAISE** 39^c_{Qt.}

GIANT 40-oz. DUCHESS **PEANUT BUTTER** 79^c

4-lb. BAG **3-MINUTE POP-CORN** 49^c

4-PACK ASSORTED MD TOILET TISSUE 3/1⁰⁰

LARGE "AA" PUYALLUP
EGGS
43^c_{Doz.}

REG. 1.50
ALMOND ROCA
99^c

HI HO SHOPPING CENTER
OPEN 7 DAYS A WEEK
8 A.M.-11 P.M.
Puyallup Tacoma
RIVER ROAD & MERIDIAN 64th & YAKIMA

25 lb.
GOLD MEDAL FLOUR
2¹⁹

PRICES EFFECTIVE DEC. 9th through 14th



THOMPSON ELEMENTARY students are pictured entering their new school for the first time last Friday for a tour of the new facilities they will occupy following Christmas vacation.



STUDENTS get the feel of a special recessed-floor group discussion area with Principal Will Damrau.



JANET WEBER, 5th Grade Teacher, demonstrates a folding wall for Anita Wright and Mike Meadows. Advanced planning in school design will make Thompson building as contemporary in the year of 2000 as in 1969.



PARKLAND VANDALISM. Vandals attacked Davis Office Supply early this week causing \$100 damage. Rocks were used to break a large plate glass window in the store. Mrs. Davis points to rocks used by the vandals. Sheriff's deputies are investigating.

Pierce County's Only Professional **AMBULANCE SERVICE** Parkland Ambulance and Lakewood-Pacific JU 4-3344 LE 7-3322

Moose to Hold Ritual School

A Ritual school will be held at Nisqually Valley Moose Lodge 1905 in Yelm, Washington on Sunday December 15, for all Moose members of Parkland,

Lakes, Enumclaw, Yelm, Auburn, Tacoma and Olympia Moose Lodges. Orville Ellwein announced last week. Ellwein is District 4 Washington State Moose Association vice-president. The school will feature a \$1.00 donation breakfast served by the Women of the Moose at 9 a.m. until the schooling begins at 11 a.m.

GRAND OPENING
 Fri. Dec. 13 - Sat. Dec. 14 - Sun. Dec. 15
Brookdale Restaurant
 13023 Pacific Ave. LE 1-1995
 visit our remodeled facilities
featuring DOLLAR DINNERS
 Stop by the Stampede Room
 Special treat between 1-5 p.m. Dec. 13 & 14
 Your Hosts - Gene & Dave Bennett

Legion Post Hosts Party

The American Legion post and auxiliary unit No. 228 will hold its annual Christmas party at the Sunshine

Hall in Parkland, December 16, at 8 p.m. This is a social night for the community, and everyone is invited.

A group of children on roller skates from the Chehalis-Centralia area are again our star attractions. Other children will also perform. Of course Santa, and

his bags of candy will be present. Refreshments will be served afterwards. Bring your children and get acquainted with our community.

FEET TREAT

Save steps, find what you are after by reading today's Classified Ads.

idon's WIGS
 Christmas Special
 Lay-A-Way while selection is great!

WIGS
 Hand Tied Front Pre-shaped \$34.95

WIGLETS
 \$3.95 & \$5.95

CASCADES \$7.95

3813 1/2 South Yakima GR 5-5850

We carry a complete line of 100% human hair hairpieces, falls, wigs, wiglets

11214 Pacific Ave. LE 1-2676

Monthly Payment Plan Available

Merry Christmas Shopping! master charge THE INTERBANK CARD

PUGET SOUND NATIONAL BANK/AMERICARD

Looking For An Ideal Gift?

One of the finest things you can give is a paid up service. A simple call to our office can arrange a pre-paid garbage service for 3 months, 6 months, or a full year.

From standard curb pickup to special optional services this will be a most welcomed gift.

For Details Telephone **LE 7-8688** 8 a.m. - 5 p.m. weekdays 9 a.m. - 5 p.m. Saturdays

Upon receiving your order, a special gift letter will be mailed.

Pierce County Refuse 13502 Pacific Ave.

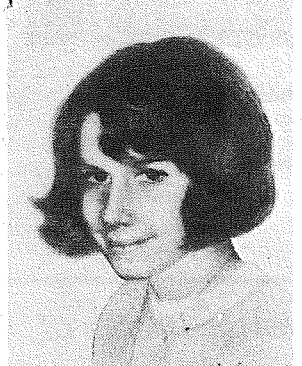
P.S. Maybe one of our special services will appeal to you and make your New Year easier.

LETTERS TO THE EDITOR



Editor Times Journal
Will you, please, help us find our daughter? My wife, Ruth, and I are directing this plea to you and to the ten thousand other newspapers in the cities, towns, and hamlets of this country.

Our daughter, Elizabeth Lurene (Liz) Ernstein, was just two months short of her fifteenth birthday when she vanished without a trace last March 18.



She was last seen walking home from school along a lonely tree-lined street amid the orange groves of suburban Redlands. In her arms, she

carried a blue notebook and a red algebra text book.

Since then, law enforcement agencies, family members, and friends have spent countless hours tracking down hundreds of tentative leads. But to no avail. Not one single, slender clue has brightened all our efforts. Seemingly, Liz has disappeared like a breath of air on a winter's day.

But, surely there is a simple explanation. Was she abducted? Did she run away from home? Is she dead? Or is she alive and, perhaps, in your town?

You can help us. Ruth and I are begging you to help us find an answer to our torment—to help us end the long nightmare of these past eight months—by releasing our story and Liz's picture in your paper.

The Lord willing, some one in your area may have seen her.

With sincere gratitude,
Norm Ernstein
Please, help us
Norman & Ruth Ernstein
776 Crafton Avenue
Redland, Calif 92373

Holly Wreaths
\$1.98
\$2.49
\$2.98

We Pack for Shipping

Bulk Holly
50¢ a Lb.

Branches

Silver-tip fir
Noble fir
Cedar
Berried Juniper

See Our **Gift Chalet** for

Artificial Arrangements

Flocked Branches

Large branches of silver fir flocked, with silver glitter added to make them shine.

Only **98¢** each

Christmas is a Memorial Day, too!

Colorful Cemetery Plaques

You won't believe your eyes when you see them

Only **98¢** each

GIBSON'S Christmas Sale

Tacoma's largest greenhouses are proud to offer the largest selection of Christmas plants ever offered in the city of Tacoma.

25,000 - Twenty-five Thousand Poinsettias in Color
What a Sight - What a Sale!

SPECIAL POINSETTIA CASH and CARRY SALE

1-BLOOM **98¢***
2-BLOOM **1.49***
3-BLOOM **1.98**
4-BLOOM **2.98**
5-BLOOM **3.98**
6-BLOOM **4.98**



THESE LOVELY PLANTS DELIVERED ANYWHERE IN THE CITY LIMITS FOR 75¢ ADDITIONAL (*THESE SIZES NOT DELIVERED)

COME IN EARLY AND SEE THE DISPLAY

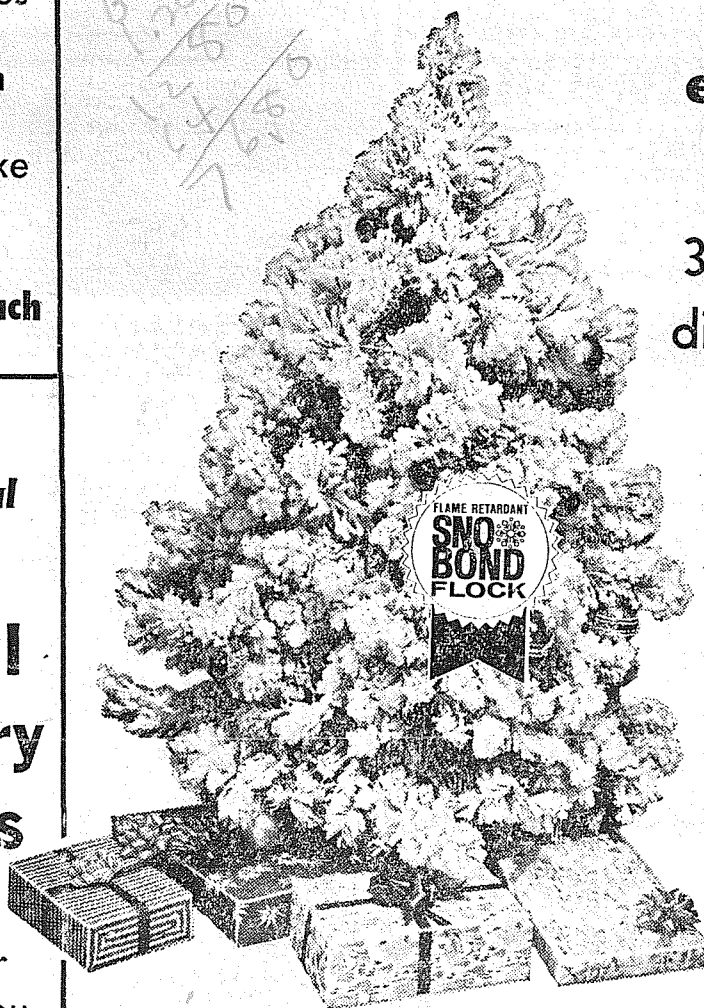
Flocked Trees

Douglas fir--Noble fir--Pine

example value

3-foot tree dip painted, flocked, glitter, and stand

only **4.95**



We have the largest selection of flocked trees in the state—over 8,000 sq. ft. of indoor flocked tree area.

Note—all our trees are painted before flocking. No other system will produce truly white trees — our flock is all flame retardant.

GIBSON'S 50th and Pacific

GR 2-4464

OPEN WEEKDAYS 8 A.M.-6 P.M.

OPEN SUNDAYS 12-5 P.M.

For Your Best New or Used Car Buy
See Your Number One "GOOD GUY"

Dick Seamons USAF Ret.

MUNSON-SMITH MOTORS

GR 2-3307 4107 South Tacoma Way Res. LE 7-7637

An Endowed Care Cemetery



Fir Lane Memorial Park
Dryer Fir Lane Chapel

924 East 176th Street
Spanaway

LE 1-5500

CHURCH DIRECTORY ATTEND OUR

WORSHIP

SERVICES

PARKWAY

Presbyterian Church
Sunday School 9:30 a.m.
Worship Service 10:45 a.m.
Nursery Service Provided

714-138th East LE 1-4234
Rev. Wesley J. Drummond

Spanaway Assembly of God

166th & Pacific Ave.
Sunday School 9:45 a.m.
Morning Worship 11 a.m.
Evening Evangelistic 7 p.m.
Family Night Wed. 7:30 p.m.

LE 1-1412

Spanaway Lutheran Church

8:30 & 11 a.m. Worship Service
9:45 a.m. Sunday School
Grades 1 & Up
11 a.m. Sunday School
3, 4 and 5 Year Olds
John L. Briehl, Pastor
160th & A St. LE 7-5978.

Parkland Lutheran Church & Christian Day School

Worship... 10:30 a.m.
Sunday School-Bible Study 9:15 a.m.
All Ages
H.A. Theiste, pastor
LE 7-5492 LE 1-0777

Trinity Lutheran Church

Worship Services 9 a.m. & 11 a.m.
Sunday School 10 a.m.
Wednesday School 4-5 (through Grade 9)

Erling C. Thompson
Robert Drowes
12115 So. Park LE 7-0201

Spanaway United Methodist Church

Church School 9:30 a.m.
Worship 11:00 a.m.
R. Gordon Harrison, Pastor
163 & Pacific LE 7-5134

FIRST PRIMITIVE BAPTIST CHURCH OF TACOMA

439 S. 96th St. GR 2-6757
Bible Study 9:45 a.m.
Morning Worship 11 a.m.
Youth Fellowship 6 p.m.

CHURCH OF TACOMA

Elder D. R. Autry, pastor, LE 7-8062
Evening Worship 7 p.m.
Wednesday Prayer Meeting 7 p.m.

"Sweet-Tooth" Completed

On Friday, December 6 the student boyd association of Ford Junior High School completed its third annual "Operation Sweet-Tooth." The goal of this project was to provide holiday treats for those residents of Rainier School in Buckley who find it impossible to travel to their own private homes. These treats included cake mixes, frostings, jellos, popcorn, and candy for distribution to the many halls serving approximately 1800 residents.

This project was an extreme success as over one-

half ton was collected by the students.

Ford students working on "Operation Sweet-Tooth" were: Collecting Committee; J. R. Carlton, Chairman; Linda Malyon, Wendy Snowden, Sue McCorkle, Harry Tuttle, Dave Misner, Mike Nowels, Lori Ferlong, Sue Hofner, and Pam Clabough; Publicity Committee: Jim Cail, Chairman; Michelle Heman, Mary Bosenius, Steve Parker, Barb Evans, and Renae Neilsen; Point Committee: J. R. Carlton, Chairman; Bob Hansler, and Phil Edwards.

There will be a follow-up activity for the Ford students this spring as a group will travel to Rainier School for an educational tour of the grounds.



FORD JUNIOR HIGH students recently completed their third annual "Operation Sweet-Tooth" to provide holiday treats for residents of Rainier School in Buckley. Taking time out from truck-loading chores are: (standing left to right), Rick Becker, Linda Malyon, Lori Furlong, Wendy Snowden, Sue Hoffner, David

Misner, Mary Bosenius, Pam Clabough, Michelle Homan, Susan McCorkle, Mike Knowles, Barbara Evans. In the truck is J.R. Carlton, Phil Edwards, and Harry Tuttle. Knelling in front of truck are Steve Parker, Gordy Shadle, and Jim Caille.

Skip Larson Photo

SPECIAL CHRISTMAS PRICES

For Holiday Giving
The place to buy your
mink or other furs.

No Rent - Low Overhead
OPEN SUNDAYS 1:30-5:30 p.m.

Larchmont Furriers

10906 Golden Given Road LE 7-8762

BankAmericards Accepted



Angelo's PIZZA HOUSE

ORDERS TO GO

Featuring top sirloin and American dishes, spaghetti, rigatoni, meat balls, sausage, ravioli, beer and wine.

Choice of Pizzas

- cheese & tomato
- anchovie
- mushroom
- Italian sausage
- pepperoni
- tuna
- bacon
- peppers
- olive
- hamburgers
- ham
- salami
- onion



LE 7-7233

14102 PACIFIC AVE.
PARKLAND

CALL AHEAD, IT'S
PIPING HOT
ALL THE WAY HOME

PICK UP A BOX, PAIL, BUCKET,
OR A BARREL



OPERATION SWEET-TOOTH packers are (left side of counter), Peg Joslin, Yvonne Crask, Pete Willard and Tim Standifler. On right side of counter are Lori Furlong, Linda Malyon, Sue Hoffner, and Sue McCorkle.

Skip Larson Photo

Is your AUTOMOBILE Profile of Protection Complete?

CHECK WITH US
Ashford-McAloon Ins.

12201 Pacific Ave.
(Parkland Square)

LE 7-8647

5436 So. Tacoma Way
GR 4-8431



CHRISTMAS TREES

CUT YOUR OWN
IN SPANAWAY

3 FOOT TO 12 FOOT

BRING THE KIDS AND \$2.00

HAVE FUN SAVE MONEY

SOUTH ON PACIFIC AVENUE TO 176th, TURN EAST TO "B" STREET

12 NOON TILL DARK

ALL DAY SATURDAY & SUNDAY

First Time Anywhere

Jack Gaines will exhibit for sale a large collection of his original oil copies of famous paintings at the Fitch & Quill Gallery.

Originals on Exhibit Now:

Oils by Paul Chalk, Jack Gaines, Gerald Sager, Jerry Becker, and others.

For Christmas giving the gallery also carries a selection of fine work by local ceramists, among them, Wanda Stearns; Raku-ware by Rick Swenson and other hand-crafted items by talented local people. Also available is a selection of fine prints, a framing service, and art supplies including boxed hobby and gift sets.

FITCH & QUILL

11216 Pacific Ave.

LIVE WESTERN MUSIC

EVERY
SATURDAY NIGHT

Nisqually Valley
Moose Lodge 1905

Yelm, Wash.
Highway 510

ARCHIE GORE'S
WESTERN BAND

Wonderful Music
Delicious Food
10 p.m. - 2 a.m.

Moose Members
And Their Guests

Hurry - Just Arrived
Pillows Galore -
and even more . . .

Lovely velvets, silks, corduroy, mink, chinchilla, tiger, pony, bucket rests, patterns, fringe or plain.

From **\$1.98-\$9.98**

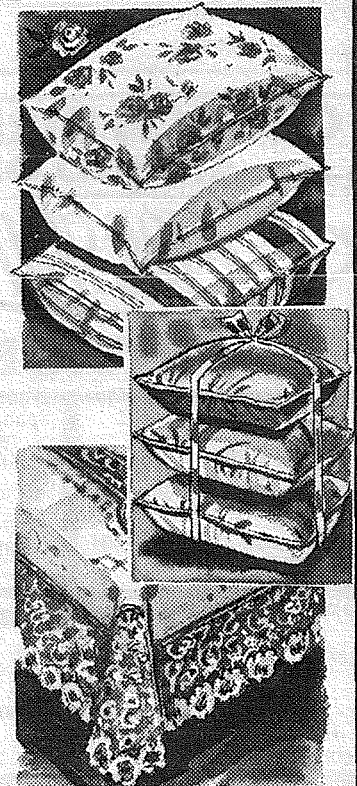
Decorator Bedspreads

Plains and Patterns

From **\$14⁹⁵ to \$46⁹⁵**

In a Hurry?

Ready made drapes -
shorties and long.
Bring window sizes.



We specialize in custom draperies from
our own workroom.

NOW IN OUR NEW LOCATION

Shadle's Decorating Service

(Across From Liberty Theater)

111 West Main Puyallup TH 5-6856

Holiday Specials (through Christmas)

Permanents

Reg. \$18.00 **\$13⁵⁰**

Reg. \$21.00 **\$15⁰⁰**

(Both prices include haircut)

Donna's House of Beauty

16118 So. Park

LE 1-6811



Lucia Bride Selected

The flickering light from dozens of candles illuminated the annual Lucia Bride Festival at Pacific Lutheran University Saturday evening as lovely blue-eyed blond Kathleen Ann Johnsen of Tacoma was crowned Queen of Lights.

A 19-year-old freshman, Kathleen was selected from among three Lucia Bride finalists. A graduate of Wilson High School in Tacoma, the daughter of Mr. and Mrs. Arthur J. Johnson, 1012 Corona Dr. is majoring in both education and music at

PLU. Other finalists were Ellen Bakke, a freshman from Seattle, and Gayle Severson, also a freshman, from Portland.



Kathleen Johnson

Carrying candles and dressed in colorful Scandinavian costumes, members of the Spurs, a sophomore women's honorary, opened the program with the tradi-

tional candlelight procession. Steve Morrison, student body president, crowned the new Lucia Bride.

Folk dances followed, and the event was concluded as the Queen of Lights lit the campus Christmas tree.

Kathleen is one of three PLU coeds selected as Lucia Brides this year. Karen Annette Wik of Portland, a freshman, is the Oregon Lucia Bride, and Theresa Lee Appelo, a sophomore from Seattle, was chosen as the Vasa Swedish Lucia Bride in Seattle. Both festivals were held last weekend.

Karen and Theresa leave this week for Stockholm, where, as two of the five U.S. contestants, in the 1968 worldwide Lucia Celebration. On the evening of Dec. 13, the Stockholm Lucia and her attendants will ride through the streets of the Swedish capital in gaily decorated carriages.

Men In Service

FRANKFURT, Germany — Technical Sergeant Nels R. Roseland recently participated in a North Atlantic Treaty Organization (NATO) exercise.

Sergeant Roseland, a weather observer at Rhein-Main AB, Germany, helped provide up-to-the-minute meteorological information for exercise High Heels-Golden Road 68.

This NATO exercise, involving military units throughout Europe, is a semi-annual testing of NATO forces.

The sergeant attended New Trier High School, Winnetka, Ill., and completed requirements for his diploma after entering service.

His wife, Karen, is the daughter of Mr. and Mrs. Floyd Flowers of Spanaway, Wash.

INSURANCE
Military - Home - Business

LE 7-4904

Auto Fire Life Bonds

IRENE CLEMENS

Agency — Parkland
10329 Pacific Ave.

PARTNERSHIP LIQUIDATION ENTIRE STOCK

1/3 AND MORE OFF

Save for Christmas Buying

Lou Jean Apparel

406 Garfield

LE 7-5317

Wire Flowers Now!



MRS. STELLA JACOBS

Ho! Ho! Ho! — Santa is getting nearer day by day.

Our reminder this week concerns flowers by wire.

It is highly advisable to place orders for flowers by wire EARLY

It becomes increasingly important to avoid the rush periods even where flowers are concerned.

If you place the order a week or more in advance, the order may be sent by letter; — Saving you the charge of a phone call.

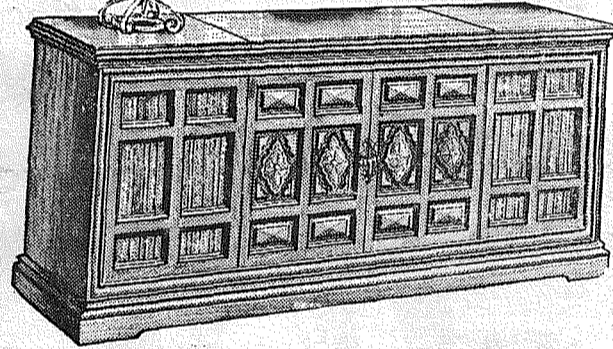
The Poinsettia is the most desired plant for Christmas; — Cut flower arrangements with a holiday flair are a real thrill to receive. Candle arrangements with cones, greens and flowers give a festive air to the whole season.

If you have an established account with us, you may charge, of course. If you have not, come in and arrange to open an account.

We hope you will all have a wonderful holiday season.

Why not let Stella's do your Christmas shopping for you. We deliver.

oid Adv.



for that very special . . .
her or him

this Christmas why not give that special someone on your list a G.E.

STEREO CONSOLE

"The gift that keeps saying Merry Christmas for years to come"

At Weir's you'll find many, many G.E. stereo models to select from . . . and in the smart styling that will complement your own furnishings. PRICES START AS LOW AS \$199.

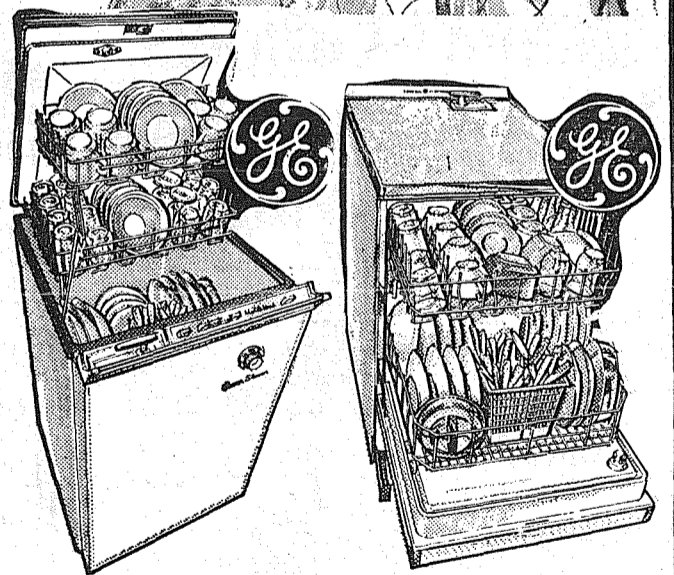
AS LITTLE AS

\$350 per week

Nothing to Pay 'til 1969

NO DOWN PAYMENT - NOTHING TO PAY 'TIL 1969

Your GE Corner is open evenings 'til 9 p.m.



. . . or perhaps that special gal on your list would love to have a new **DISHWASHER**

For as Little as 2¢ A DAY

At Weir's you'll find front-loading or top-loading G.E. dishwashers that will free her from washing dishes forever. Selection? You'll find we feature one of the largest to be found anywhere.

PRICES START AS LOW AS \$139

\$250 per week

"Remember, if it didn't come from Weir's chances are . . . you paid too much"



Weir's

Now 2 Locations to Serve You Better
TACOMA 84th and Portland — LE 7-0231
BREMERTON 279 4th St. — ES 7-0109

Dryer MORTUARY
(134th & Pacific)
PARKLAND

The Country Parson



"The most valuable part of your religion may be the part you can't quite explain."

Copyright, by Frank A. Clark

Dryer MORTUARY
(134th & Pacific)
PARKLAND

SPORTS

Washington Wrestlers Win

The Washington High School wrestlers won the first of many grappling victories with a 27-25 victory over the Lakes J.V. team in a roughly fought contest held December 9, in the Keithley Cafetorium.

Patriot wrestler Bob Andersen got things off to a good start in the 103 pound class with a one-sided 10-1 decision over his opponent Cliff Classen.

After Ken Capron, of Washington, was pinned, Bruce Waddell came back with a decision over Lakes grappler Ken Lafleur. Mark Ballman then helped the Washington cause with a 9-6 decision over Mark Polcyn.

Lakes then came on strong with two pins over Washington wrestlers. The score read, Lakes 15, Washington 9.

The Patriots began their comeback with a forfeit to Tom Harmon and a decision by Kirk Stalo. However, Lakes grappler Jim Scott pinned Len Smithingell handing the Lancers a three-point lead.

Leigh Nelson came through for the Patriots with pin but the Lakes team got it back when Patriot Dennis Ellis was pinned. The score showed Lakes in the lead 25-22 with a single match remaining.

The match pitted Washington's Ray Wainwright against Gabriel. With only 20 seconds left in the match Wainwright pinned his man giving Washington the victory. The crowd went wild in jubilation.

South Sound Swims Again

The Fourth Annual Triton Invitational Swim meet was held at the Puyallup Pool on Dec. 7 & 8. The meet was co-hosted by the Seattle Triton Aquatic Club and the South Sound Swim Club. The meet was won by the David Douglas Swim Club of Portland with the South Sounders finishing 8th out of 12.

Coach Baurichter says that anyone interested in joining the South Sound Club should contact him at the Puyallup pool or John Bustad at the PLU pool. They are particularly interested in the younger swimmers down to 8 and under.

The Sound Sound Swim Club will host a "B" meet at the Puyallup pool on Sunday Dec. 15. This meet is for swimmers that have not broken the AAU time standards for their age group.

The South Sounders finished as follows:

- 10 and under girls
 - 50 breast, 3- Kathy Koehler 40:4.
 - 100 free, 2- Julie Mackay, 1:12.8.
 - 200 Free relay, 5-SSSC 2:18.4.

- 10 and under boys
 - 50 Breast, 2- Paul Carr 40:8.

- 11-12 girls
 - 200 Free Relay, 5-SSSC 2:06.6.

- 11-12 boys
 - 100 Free, 1- Ron Barnard 58.3.
 - 100 Fly, 3- Ron Barnard 1:09.8.
 - 200 Free, 2- Ron Barnard 2:08.4.
 - 200 Free Relay, 4-SSSC 2:00.9.
 - 200 Medley Relay, 5-SSSC 2:19.1.

- 13-14 girls
 - 200 Free Relay, 6-SSSC 2:02.6.
 - 200 Medley Relay, 6-SSSC 2:24.1.

(Continued on Page 9)

Win Streak On Line

Franklin Pierce will host the Federal Way Eagles in a non-league South Sound contest this Friday night, hoping to stop the Eagles in their bid for their fourth consecutive win on the season. Federal Way is showing plenty of early season strength, and can back it up with senior letterman Bob Ferguson, a top scorer and an Eagle football standout. Coach Whalen will count on speed as his major tool in side-tracking the favored Eagles.

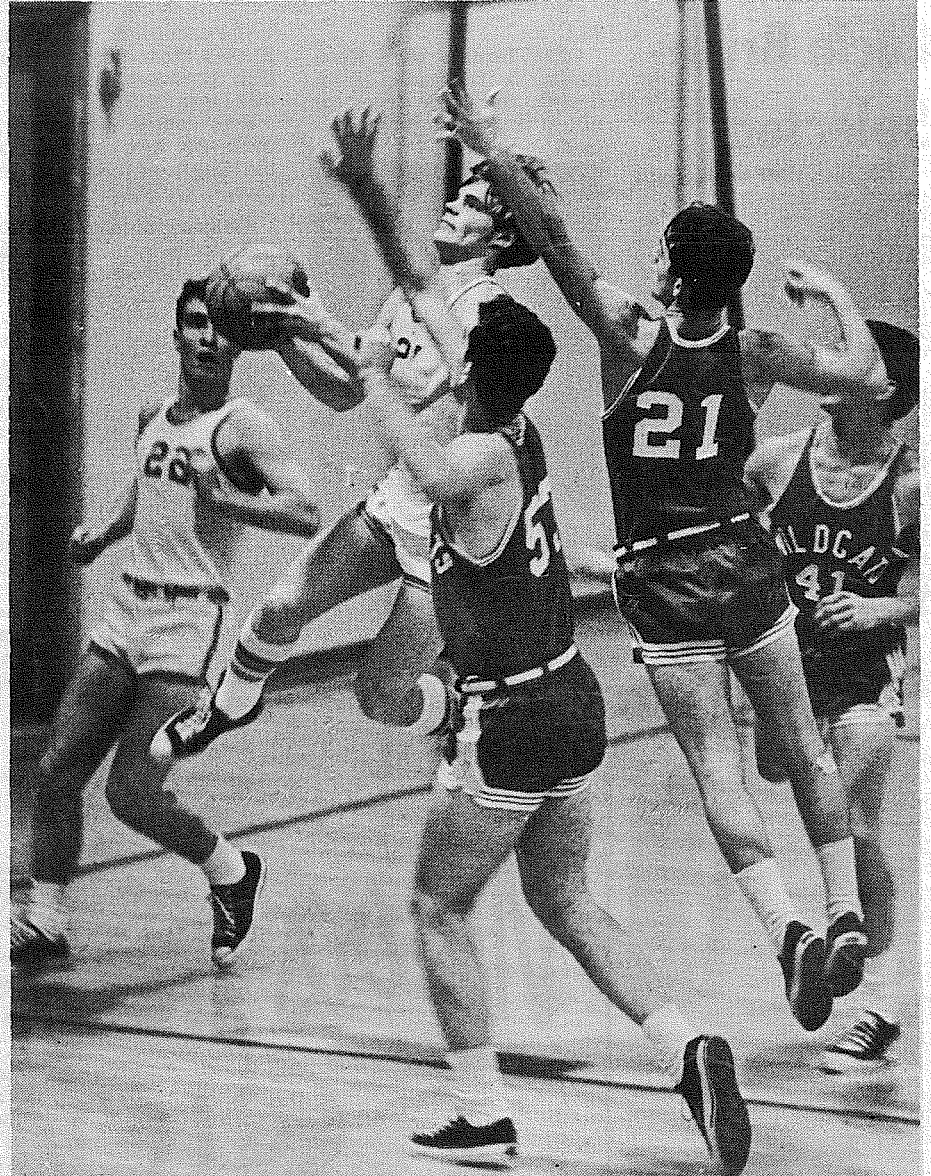
Last second heroics by Lincoln's Jim Johnson provided the margin of victory for the Abes Friday night as they downed the Franklin Pierce Cardinals 53-52 in a non-league basketball contest at Pierce.

Johnson tossed in the winning basket as the final buzzer sounded, grabbing the rebound from Dean Ecklund's off-target 14-footer with only three seconds remaining in the game.

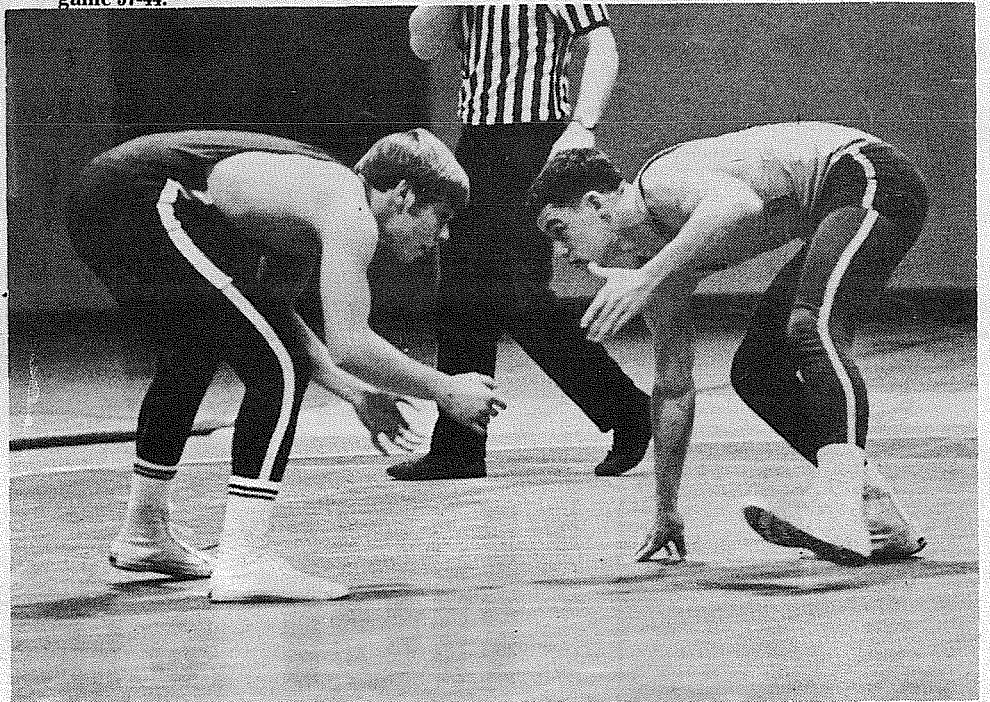
In the final stanza, Whalen placed three juniors into the line-up and the Cardinal squad fought from a ten point deficit to take a one point lead over Lincoln with 45 seconds left to play.

With the score standing at 52-51 in favor of the Cards, Whalen put his ballclub into a stall. A bad pass put the ball into Lincoln's hands at that point, setting the stage for Johnson's winning bucket.

Top scorer in the game was Johnson with 22, followed by Mark Korsmo of Franklin Pierce with 19. Coach Whalen singled out Doug Call for his defensive job on the Abe's Dean Ecklund, holding the first team All-stater to four points in the second half. Rick Trip, a speedy junior, also looked good according to Whalen, playing well on defense in the rebounding department. The Cards out-jumped Lincoln for a 44-39 advantage in rebounds.



BETHEL JV BASKETBALL player Tom Bullion drives for the basket as Mt. Si's Mallory (21) and Delaney (53) attempt to check the move. Bethel JV's won the game 57-44.



BETHEL'S 165-POUND wrestler Jerry Barrow faces Bill Hobis of the Curtis High School Vikings in a contest which saw Barrow pin Hobis. Barrow's lead was not followed by the Bethel team which lost the match 30 to 16.

Hoop Deadlines

Set For Metro Play

Boys and girls recreation basketball teams will have until Dec. 17 to submit entry and insurance fees and rosters for the pre-season Christmas tournaments and jamborees.

Entries in the two Christmas tournaments for boys teams - the Senior High League tourney and the Metropolitan Park District's Christmas boys tournament - will close Dec. 17 at 5 p.m. Tournament play will

open Monday, Dec. 23, and continue through Saturday, Jan. 4.

Buying? Selling? Renting? In a hurry? Use Classified ads.

Smith Built
CAMPERS & CANOPIES

14606 Pacific Ave.
Tacoma, Wash.
Phone LE 7-8022

CUSTOM QUALITY

Christmas Turkey Shoot 3 Games for \$3.00

100% Handicap - Men and Women 1 Prize for every 5 entries

Give A Bowling Gift For Christmas Balls as low as \$15.95 - Bags 5.95 - Shoes 7.95

Special Weekend Bowling Rate - 35c Saturdays until 7 P.M. Sundays until 1 P.M.

PARADISE BOWL

108th & Pacific

LE 7-6012



STANLEY
gifttools
S-P-E-C-I-A-L!

Stanley Gifttools take the guesswork out of giving.

Stanley Job/Master 7" Circular Saw
Model 80 277

Only \$34.95
Regular \$42.50
Offer good to December 31, 1968. Other Stanley Gifttools available.

We also have STANLEY Case-Mate Tools in Gift Case

- 3/8" Reversible Power Drill Kit. \$46.95
- Vibrator Type Sander Kit. . . . \$32.95
- Sabre Saw Kit (Save \$10). . . . \$36.95
- 3/8" Std Drill Kit. \$26.95

Brookdale Lumber Inc.
13602 Pacific Ave. LE 7-8669

STANLEY ALL-N-ONE TOOL
No. 125 \$4.25

- New measuring tool for the handyman and "pro".
- A square, level, protractor, stud marker and 7 other tools in one.

STANLEY WONDER BAR
No. H515 \$2.39

- Pulls • Lifts
- Pries • Scrapes

Extra tough for the hard jobs

STANLEY HANDYMAN
No. H111 1/2 - 16 oz. \$2.89

- Right for farm and home
- Drop forged head, hickory handle

BOWLING

PARADISE BOWL 11/31/68
 EXPRESS - Dick Breon 558, 200; Jean More 474; Lavaun Tatro 170.
 ROLLING BEES - Arabelle Frerichs 539; Helen Olson 204.
 PINETTES - Liz Jowett 175-204-204 - 583; Ozetta Allen 179-211-180 - 570; Gen Barlow 151-222-191 - 564; Evie Baskett 231-163-155 - 549 - 231; Eileen Andreason 189-188-169 - 546.
 SPLITS - Jean Daniel 4-7-10; Mary Segar 6-7.
 THE BELLES - Betty Morrow 188-164-202 - 554 - 202; Rosella Greer 190-197-177 - 564. SPLITS - Darlene Crawford 3-7-10.
 "600" MIXED - Ken Deede 540 - 213; Judy Karns 484; Fran Barry 189.
 SPLITS - John Cooper 4-7-10.
 PARKLAND MERCHANTS - Earl Wilson 200-212-205 - 617.
 SPORTSMAN - Don Finley 174-211-222 - 608; Ray Frerichs 236.
 INDUSTRIAL - Ray Wing 543 - 199; Ed Raden 199.
 FRIENDLY DOUBLES - Aaron Weis 522; Bruce Webster 198; Ann Pilcher 505 - 207.
 PREMIER - Chuck Ellis 180-237-195 - 612 - 237.
 SR. CITIZENS - John Dahl 533; Tarp Tarpenning 203; Beth McLellan 506 - 186.
 FRANKLIN PIERCE FACULTY - Skip Larsen 539; Joe Vermilye 214; Eileen Fay 504 - 178; SPLITS - Mary Strong 4-10; Ruby Danford 3-10 - 3-10; Eileen Fay 2-7.
 MIXERS - John Bastian 570; Hal Crisman 214; Beth Billdt 489; Janceane Key 188.
 TOP ROLLERS - Rus Harford 184-200-231 - 615 - 231; Marian Unkrur 525 - 192.
 GRAHAM MIX - Rosalie Cole 522; Rose Eveleth 208; Bob Sims 554; Bill Lauenborg 234.
 EAGER BEAVERS - Dottie Gentry 514; Dottie Potter 187; SPLITS - Dottie Gentry 2-4-5-7-10; Dottie Potter 2-9; Arabelle Frerichs 2-4-5-10.
 BIRDS OF PARADISE - Merrill Johnson 169-185-190 - 544; Cheryl Lantz 192. SPLITS - Cheryl Lantz 6-7-10.
 HI-LOWS - Sue Sweeney 179-161-223 - 563 - 223. SPLITS - Sharon Stroh 6-7-10; Mabel Robinson 4-7-10.
 PARKLAND MIX - Art Bolstad 236-200-212 - 648 - 236; Kay Fulton 539 - 189.
 850-SCRATCH - Bill Emmert 178-200-222 - 600; Fred Chafe 234. SPLITS - John Resoy 6-7-10 - 3-6-7.
 CLASSIC - Bill Potter 182-202-217 - 601; Gordy Bittner 234.
 EVERGREEN - Bob Barr 596 - 213.
 BOWLERETTES - Elaine Rogers 501; Alice Nolan 192.
 LAST NITERS - Larry Bittner 599; Emel Giroux 245; Lea Caple 510; Donita Williams 191. SPLITS - Noni Cassidy 2-7.
 48's - Marion Howe 533; Del Miller 222; Margie Miller 518 - 183. STEP-LADDER - Jan Eichorn 109-111-113.

PLU Yule Concert

The annual Christmas Festival Concert, a time-honored tradition at Pacific Lutheran University, will be presented in five performances this coming weekend beginning Thursday evening.

Programs will be held each evening at 8:15 p.m., Thursday through Sunday, in Eastvold Auditorium. A Sunday matinee begins at 3:30 p.m.

The Festival productions will present a commentary on the theme, "Behold! The Tabernacle of God is with Men." As in recent Christmas concerts, the theme is based on God's plan of salvation as it unfolds in the beautiful events of the Nativity.

This theme is illuminated throughout the productions by the various arts, including program design, staging and lighting, the spoken Word and combinations of musical ensembles.

Musical compositions enhancing the theme include two major contemporary works, "How Lovely are Thy Tabernacles" - Jean Berger, and "The Christmas Story" by Hugo Distler.

Organizations cooperating in the Festival include the Choir of the West and the Madrigal Singers, directed by Maurice H. Skones, and the University Chorale, directed by David Urness.

(Continued from Page 8)

13-14 boys

100 Fly, 4- Steve Van Wart 1:05.0.
 200 Free Relay, 5-SSSC 1:55.3.
 200 Medley Relay, 5-SSSC 2:10.5.

15-17 girls

100 Free, 4- Sharon Koehler 1:01.8.
 200 Breast, 6- Liz Watts 3:14.2.

Just in time for your Christmas shopping



master charge it.

THE NEW NATION-WIDE CREDIT CARD...

Do you have yours?

Your Master Charge card is free
 You pay nothing for a Master Charge card. There are no annual dues or renewal fees. You can pick up an application from any Citizens State Bank office or from any merchant displaying the Master Charge emblem.

Your Master Charge card is free

You pay nothing for a Master Charge card. There are no annual dues or renewal fees. You can pick up an application from any Citizens State Bank office or from any merchant displaying the Master Charge emblem.

New shopping convenience

With a Master Charge card, you can charge clothing, tires, and parts for your car, lumber, tools, toys, and all kinds of household goods. You can take advantage of sales. And you can charge a wide range of services, from dry cleaning to medical and dental bills.

New travel convenience

With a Master Charge card, you can charge airline, bus and train tickets, hotel and motel rooms, restaurant meals, car rentals, and service at the thousands of gas stations displaying the Master Charge emblem throughout Washington State, and most of the West.

Simple bill paying and bookkeeping

On the Master Charge Plan you receive one monthly statement and the sales slips for all your purchases. You can pay for them all by writing just one check. And you have a complete record of your expenditures.

Extended payments for easier budgeting

If you wish, you can spread your Master Charge payments over several months, for a nominal service charge, in order to budget major purchases or unforeseen emergency needs. Of course, no service

charge is added if you pay your monthly Master Charge balance in full.

Cash when you need it

If you need ready cash, Master Charge will take care of that, too. All you have to do is present your card at any office of Citizens State Bank or any other Master Charge bank. For a nominal fee, you can get cash on the spot.

Why is Master Charge better than other credit cards?

Because Master Charge is the only nationwide program and will be in all 50 states by 1969. In addition, your Master Charge card will be honored nationwide by most other bank credit card outlets. Just look for the Interbank Card symbol.

These Are Your Local Businesses Participating In Master Charge Program

MORE WILL BE ANNOUNCED IN THE COMING WEEKS.....

Anton's Restaurant
 Bacon and Company
 Bride's Auto Mart
 Bunn's Pharmacy, Inc.
 Burke's Office Equipment
 Burr Gregory Company, Inc.
 Buryl Bryan Sporting Goods
 Clemans Furniture
 Coast to Coast Stores
 Coates Hardware
 Cole's Auto Specialists
 Coppin Hardware
 Daffodil Bowl, Inc.
 Dave's Texaco
 Fairway Cleaners
 Gerstmann Brothers, Inc.
 Gino's Sports and Electric

Good Samaritan Hospital
 Gossman Durg Store, Inc.
 Herb's Garage
 Bruce Hunt Western Auto
 Ivan's Restaurant
 Johnson's Jewelers
 Larson's Puyallup Furniture
 L.D.W. Sales, Inc.
 Ludden's Hometown Hardware
 Mahaffie's, Inc.
 Maloney's Floral
 Mason and Burks, Inc.
 Meridian Upholstery
 Miller Office Supply
 Motive Parts Rebuilders, Inc.
 Newell Hunt Furniture, Inc.
 Nicholson's Sumner Pharmacy, Inc.
 O.K. Tire Store

J.H. Pohlman Company
 Puyallup Chiropractic Clinic
 Puyallup Elks BPOE Lodge No. 1450
 Puyallup Laundry
 Raelene's Beauty Shop
 Ray's Camera Shop, Inc.
 Schmitt Pharmacy
 Sperry's Restaurant
 Sumner Floral and Gifts

Tamarak Motel
 Taylor's Auto Class and Upholstery
 Tom and Donna's Motel
 Tubbin Jewelry
 T.V. Hut
 Twin Cedars Florist
 Valley Paint
 Valley Variety
 Wentworth Jewelry

Citizens STATE BANK

MEMBER
 FEDERAL
 DEPOSIT
 INSURANCE
 CORPORATION



★ MAIN OFFICE - PUYALLUP
 ★ SUMNER
 ★ SUMMIT VIEW
 ★ EDGEWOOD - MILTON
 ★ WILLOWS

HORSEMEN'S NEWS

Over The Fence Rail

Fred Stroh had a successful trip to Walla Walla last weekend winning two firsts and a 3rd with Jade Island at the Walla Walla Quarter Horse Show.

Jade placed first in Western Pleasure and English Pleasure, and third in Western Riding.

Other area winners were W.S. Stecker with his Colt Mr. Sports Page, Niel Hoff brought home a second place finish with Beetoe in the Western Riding event, and Carol Stecker rode Phil's Joe Bob for a third place win in the English Pleasure competition.

The show was a large Class A Quarter Horse Show with entries from Montana, California, Oregon, Washington, Idaho, and Arizona.

Harry Twoomey has taken over the Tacoma Unit Stable lease and has started cleaning up the premises for a January opening. The new resident trainer comes from Port Ludlow where he was a trainer and riding instructor.

This is the time of year to advertise stallions for the coming breeding season. Call LE 7-0223 (Plug).

The Pierce County Sheriff's Posse is planning an Appaloosa Show to be held at the Unit One arena in March.

Stabled Horses Need Exercise Agent Warns

Horses are built for action. They are athletes by nature and conformation. If kept confined and inactive over long periods, they are apt to turn to bad habits from sheer frustration and boredom.

Wood chewing and wind sucking are stable vices that closely confined horses are likely to adopt.

Eddie Thomason, county Extension agent, says this reminder comes from Joe B. Johnson, Washington State University Extension livestock specialist.

A 20 to 25-minute daily workout on a longe line or exercise rope is one of the best ways of keeping a stabled horse in good health and good spirits, Johnson says.

Letting the horse run circles around you for about a half-hour daily will help keep his muscles, feet and legs in good condition.

Without the vigorous, daily workout a horse can get fat and flabby and develop weak feet and legs. Pain, frustration, even neurosis can result. And chewing fence posts, gates and the stable door could be his reaction to the triple stress.

Wood chewing is a bad habit that one horse can also catch from another. And wood chewing sometimes leads to wind sucking. A horse clamps his teeth

onto the edge of a board or a crib and sucks in air, audibly. This vice is also called cribbing. Horses addicted to either habit can go off feed because they spend too little time eating.

Once a horse acquires either bad habit, it is difficult to cure, Johnson says.

Most effective treatment is to give the horse a change of quarters, provide a larger exercise area, feed adequate roughage with a balanced ration, and work him hard at the end of a longe line every day.

Watch For Iced

Water Tanks

Pierce County livestock and dairy operators were reminded today to keep an eye on water tanks, troughs and ponds during wintry weather and break up any ice as soon as it forms.

Eddie Thomason, county Extension agent, warned that if ice is allowed to shut off the water supply for prolonged periods, the animals will go off feed.

Dr. Roy Hostetler, Washington State University's Extension veterinarian, advises that without water the digestive system stops and the animal loses its appetite. Weight slips away, and it takes a long time to put it back on again.

The Extension veterinarian stressed that water should be available to livestock at all times, and to young stock as well as to older animals.

The amount of water an animal needs depends on weight, diet and the weather. Cattle and sheep need more water than other livestock because their diet is bulky.

A 600-pound steer probably drinks 7 to 10 gallons of water a day. The amount may be slightly lower on winter days.

In addition to being constantly available, water should be at least 50 degrees in temperature. Colder water causes a temporary paralysis of the digestive tract, and temporary loss of appetite, Dr. Hostetler says.

Too little or too cold water — or no water — can cause a big decrease in milk production, gains of fattening livestock and a slow-down in growth of young animals. Weather changes at this time of year make it important to check the water supply frequently, County Agent Thomason added.



TOP BARREL RACERS. Eight of the top ten WBRA racers for the 1968 season pose with their trophy blankets after winning a share of the \$2,500 in special awards given by various donors and the Barrel Racing Association. Pictured left to right: (front row), Elsa Jensen, Kay Brooks, Janie Curcio, Terry Bussey; (back row), Katherine Anderson, Kay Walker, Janet Stover, and Wynette Russell. Miss Russell lives in the Parkland area, and operates the Bunkhouse.

Pierce Dairyman Elected

Elmer Larson, Roy, has been elected president of the Washington Jersey Cattle Club. Larson and his father, I.L., operate a 120 acre Jersey farm in the Harts Lake area. Milk from their 75 cow herd is marketed through the All-Jersey program.

Larson is not only dedicated to the improvement of

Jersey cattle, but to the entire community and industry affairs. He has served as a director of the County Soil and Water Conservation District, a director of the State Soil and Water Conservation Association, a director for the County Dairy Herd Improvement Association, and held committee membership

in numerous dairy industry groups. He currently serves as president of the Pierce County D.H.I.A. and vice-president of the Washington State D.H.I.A.

SWAP SURPLUS STUFF

For things YOU WANT. Classified ads can do it for you.

Tacoma Livestock Market Report

Thursday, December 5, 1968

554 head of cattle and 47 head of hogs

Cattle prices were steady to strong on all classes of cattle with good demand and acute bidding through the sale. Good Hol. heifers (springing) up to \$415.00 per head. Hol. heifers (1 year to long yearlings) from \$170.00 to \$200.00 per head.

| | |
|--------------------------------------|-------------------------------|
| Choice Veal | 39c to 41c per lb. |
| Heavy Bulls | \$23.00 to \$24.80 cwt |
| Best Hol. Cow | \$18.00 to \$19.70 cwt |
| Med. Hol. and W.F. Cows | \$16.00 to \$18.00 cwt |
| Colored Cows | \$14.00 to \$16.00 cwt |
| Shell Cows | \$14.00 and down cwt |
| Heavy Hol. Steers | \$21.00 to \$22.40 cwt |
| Light Hol. Steers | \$24.00 cwt |
| Hol. Feeder Calf | \$24.00 cwt |
| Good W.F. and Angus Steer Calf | \$26.00 to \$28.50 cwt |
| Good Heifer Calf | up to \$26.00 cwt |
| Good Feeder Steers (750 to 900 lbs.) | \$23.00 to \$26.50 cwt |
| Stock Cows | \$170.00 to \$225.00 per head |
| Block Hogs | \$18.75 to \$19.50 cwt |

We look for a good market at our next sale, Thursday, December 19th. Consign your cattle early. Auctioneers: Ed and Lee Flood, Rt. 2, Box 2330, Spanaway, Washington, phone VI 7-7567.

"Horsemen's Market Place" Classified Directory

Board — Trainers — Breeders
Outfitters — Feed Dealers

Somthin' Old,
Somthin' NEW,
Somthin' For Me,
Somthin' For YOU ...
In Classified Ads —

Outfitters
The Bunkhouse
COMPLETE LINE OF TACK & WESTERN APPAREL
12605 Pacific Ave. Tacoma, Wa. 98445
LE 7-5510

J. W. RANCH
Appaloosa Stud Service
Colts for Sale
Spanaway VI 7-2642

Vet Supplies
Complete supply animal health products.
Franklin - Farnam - Anchor at ASHMORE'S
Spanaway Drugs LE 7-5993

CEDAR LUMBER - FENCING
TACOMA CEDAR PRODUCTS CO.
"At the Waterfall"
14512 Pacific LE 1-2559

A & W SEARS BOARDING STABLES
Box Stalls, Pasture, Riding Trails & Arena
\$45.00 per mo.
Pole Line & Taylor Rd. E. Roy 843-2575

Back In Town BILL MAY
Horseshoeing
TH 5-4902

Automobiles
STATION WAGONS, CARS AND TRUCKS
"Come See Us"
Andy EGAN RANBLER
"Fairness to All"
8223 Pacific GR 4-9404

HORSES BOARDED & RENTED B & B STABLE
on the Mountain Hiway
1 1/2 miles past Roy Y on left.
Open 10 a.m. to 5 p.m.
TUES. - SUN.
VI 7-7162

AVAILABLE NOW... New "Flying L" CHIEF!
The horse trailer with real class. It will grow on you—in about 5 seconds flat. It comes complete with all those desirable "Flying L" luxury features you have always wanted. See the "Big" name this year—Go "Flying L."
STOP IN TODAY.
ART'S AUTO MART
WA. 7-4900
33333 Pacific Hiway So. Federal Way, Wash. 98002

WORN PROUDLY by some 10,000,000 cars coast-to-coast!
Does your car have one? Call:
Bill Ehli
9920 Pacific LE 1-1800
STATE FARM
Mutual Automobile Insurance Co. Home Office: Bloomington, Illinois

SUNNERIZE* AT DUNGENESS MEADOWS RECREATIONAL ACRES UNLIMITED
d. Margo Fisher
Invites you to enjoy Sunny Dungeness Meadows. THIS weekend. Call or write today. Decide on the best time for you to visit Dungeness Meadows at Sequim. Observe for yourself the opportunity that is yours to Sunnerize* away from the rain, the cold, and the miserables. To share in the leisure land living in the sunshine belt simply mail the coupon. A courteous, knowledgeable, real estate consultant will call for you at your door.
*SUNNERIZE: Dungeness Meadows answer to winterize — Sunnerize; meaning: sunshine, warmth, swimming, golfing, relaxing, natural Vitamin C. Also: The area where Sol (the sun) basks in the warm glow of his own reflection. The Sun Shines Almost Every Day at Dungeness Meadows.
Here's Your Tour Map
Recreational Acres Unlimited
2519 6th Avenue, Seattle, Wa. (or phone Sequim 683-5715 or Seattle MA 4-3491 Sat. or Sun.)
Please mail me more information I want to see Dungeness Meadows
Name _____
Address _____
City _____ State _____ Zip _____
Phone _____

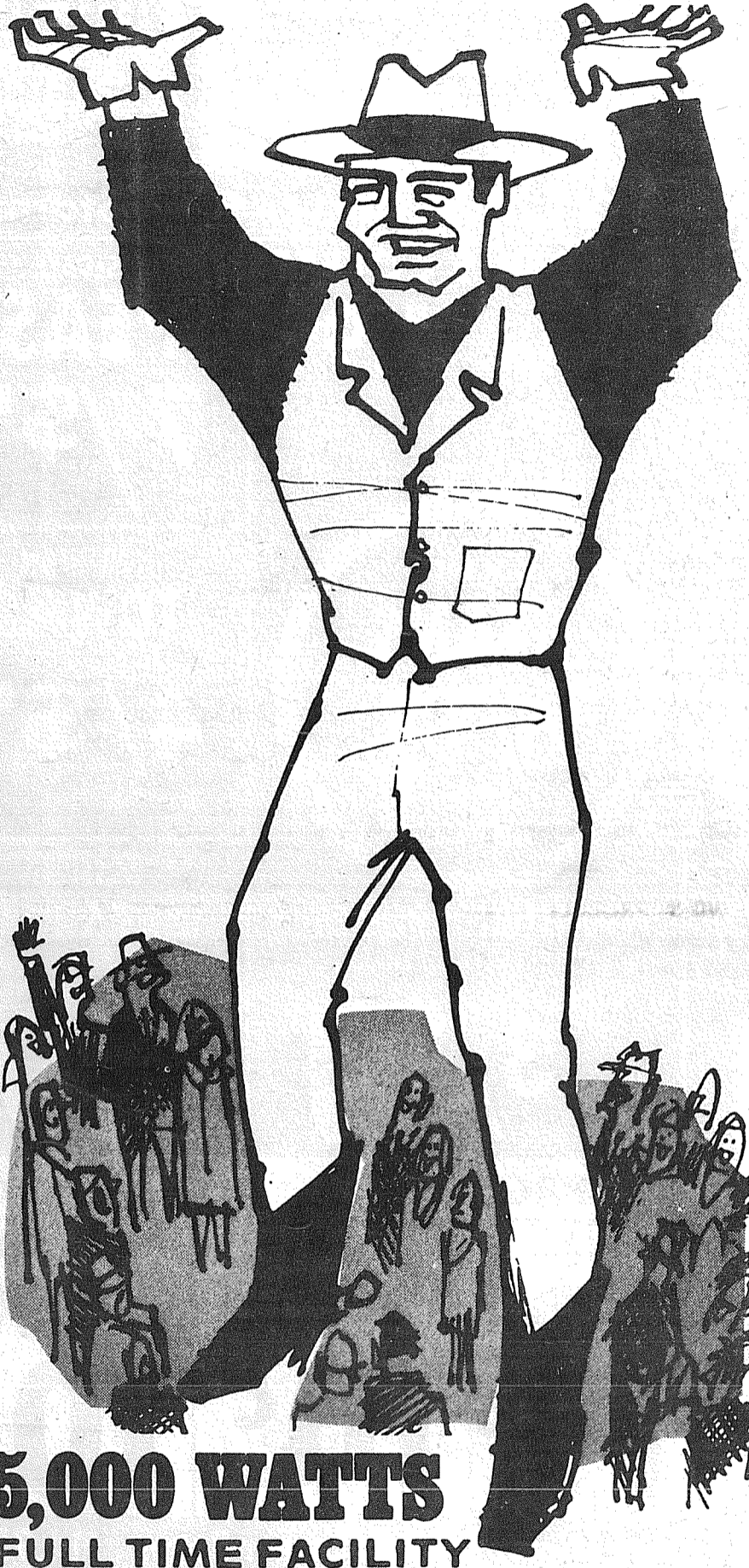
SADDLE SPECIAL
Just in time for Christmas. With your purchase of any new saddle in our stock, receive this 9 piece gift set **FREE!**
Huge selection of saddles

Rodeo Custom Shop
Open Monday thru Friday evenings 'til 9 p.m.
Complete Saddle Repair Shop. Terms Arranged on Saddles or use your Bank Card
164th & Pacific Ave. LE 1-4555 Spanaway

KMO 1360 kc

THE COUNTRY GIANT

TACOMA FT. LEWIS McCHORD SEATTLE



5,000 WATTS

FULL TIME FACILITY

Pierce County's Only

24 HOUR

Country and Western Station

* County News * Tacoma News * High School Sports

- 6 - 10 a.m. Hal Lavers
- 4 - 7 p.m. Ed Dollar
- 7 - 12 Midnight B.J. The D.J.
- 12 Midnight - 6 a.m. Jim Bennett

KMO RADIO 1360 A.M.

READ & USE the WANT ADS for BEST RESULTS

1 Misc. For Sale

GARAGE SALE Sat. Dec. 14, 10:30 to 4:30 p.m. Skis, sled, tire chains, steamer trunk, two workable TVs, gas stove, clothes and misc. 11921 Gravelly Lake Dr., Tac. 68-606

BUNDY CLARINET. 6 years old. \$50. LE 7-3597.

BLOND WIG. Brand new, \$39. Call LE 7-0223 weekdays between 10 a.m. & 4 p.m.

BSA 250 cc 1966 model. Set up for trail & racing. LE 1-4562.

ORCHID PLANT

in bloom
Orchid Culture Book Included
ORCHIDS unLTD
627 So. Pearl, Cor. Bantz
SAT. - SUN. - 1:30 to 5:00
(Bring this ad for this special)

McNESS PRODUCTS, GR 5-2734. 68-303

TOP SOIL, fill dirt, bank run gravel, J.E. Pelland. LE 1-1124.

ARE YOU IN DEBT?

CIVILIAN-MILITARY MA 7-1700

MONEY MANAGERS

232 SECURITY BLDG.
915 1/2 PACIFIC AVE.
TACOMA, WASH. 98402
GET OUT OF DEBT

ONE PAYMENT

AVOID:

1. LETTERS TO EMPLOYERS

2. LETTERS TO C.O.'S

3. LOSS OF PAYCHECK

Eve. appts., Home or office

24-hour svcs.—State approved

Christmas

Letters

MIMEOGRAPHED

Send news along with your Christmas Greetings.

We Stock Special Gifts For Executives

Davis Office Supply

12147 Pacific LE 1-1740

CHEST of drawers, 2 bikes, TV. TH 5-7788.

2 Autos For Sale

PIERCE COUNTY HEADQUARTERS FOR

1969

- ★ CHRYSLER
- ★ PLYMOUTH
- ★ VALIANT
- ★ BARRACUDA

CALL GR 4-0621

Steven MOTOR CO.
2705 SOUTH TACOMA WAY

'58 PONTIAC, Best offer. WA 2-5995.

NEW - MORE POWERFUL

the 1969's

VOLKSWAGEN

27 MAJOR CHANGES COME IN

Tom Carstens AUTOHAUS

7030 So. Tacoma Way
GR 4-0666
TACOMA DEALER SINCE 1955

9 Animals For Sale

MINIATURE poodle puppies \$40. LE 1-5512. 68-604

PUPPIES. 5 wks. old. Part Wire Haired Terrier. VI 7-2557. 68-607

22-WANTED TO BUY

TROMBONE VI 7-2831.

23 Help Wanted

EARN CHRISTMAS expenses early by selling Baum Toys and Gifts party plan. Car necessary. LE 7-5834, GR 2-6008, or GR 5-1215. 68-290

24 Work Wanted

CHILD CARE. Close to P.L.U. LE 7-6736. 68-400

DOZING - Reasonable. Call LE 7-5761 after 4 p.m. 68-557

27 Misc. Services

WATER PUMPS

REPAIRED

All Makes
GRANGE SUPPLY
LE 1-5777

EXPERT alterations, men's and women's. Fast service and reasonable. LE 1-3506.

MIDLAND AUTOMOTIVE

Complete Repair
Foreign & Domestic
Elect. - Alt. - Gen. - Weld. -
Trans. - Overhaul - Valve Grind
LE 1-4331 8-6 Mon.-Sat.

"WHERE TO GET SERVICE"

Parkland Enco-Service
13303 PACIFIC AVE.
LE 7-9954

RENT TV

RENTAL MARTS, INC.

Parkland
GR 5-3755
9440 Pacific Ave.

Color TV

Lakewood
JU 4-4100
108th & Bridgeport

WE'VE MOVED TO 5606 Portland Ave.

Trophy Aluminum Products

(Formerly Parkland Door Inc.)
Call us at GR 4-7011 for
Trophy Storm Doors & Windows

Where Else In The World . . .

CAN YOU DO EVERYTHING AT ONE PLACE EXCEPT IN BEAUTIFUL

BRITISH COLUMBIA

- HUNT Moose - Deer Bear - Caribou
- FISH Catch 18" 20" Rainbows at Door
- SWIM • HYDROCYCLE • SAIL • CRUISE
- GOLF • SKI-DOO • SKI • PLAY TENNIS
- FLY • DANCE • RELAX IN SERENITY

AT **Anglemont Estates**

ON BEAUTIFUL SHUSWAP LAKE
SOME SELECT HOMESITES STILL AVAILABLE

AT \$3,950 20% Down. Bal. on Easy Monthly Pymt. Plan

FREE BUS TRIP & MOTEL

for interested couples. No obligation. No pre-sales talk. No advance money asked, or accepted. Space left for 10 couples only. Leave Tacoma Fri. evening, Jan. 17th. Return Sunday evening, Jan. 19th. Free champagne for those desiring it. Only cost is \$6.00 per person to defray catering cost for 5 meals.

PHONE JACK BROWN, DIRECTOR, FOR FURTHER INFO.
VI 7-7364 evenings

27 Misc. Services

Sheet Metal

- Furnace Repair and Service
- Installations

PARKLAND FUEL OIL

12002 Pacific Ave.
LE 7-0256

NEWBURY'S

Dozer Service

LE 7-7455

Sandy Loam Bank Run
Mixed Soil - Fill Dirt

28 Building Services

REMODELING, leveling, block foundations, cabinets, free estimate. Reasonable. LE 7-3550. 68-48 TFN

REMODELING, repairs, garages, carports. New additions and custom built cabinets. Castle. VI 7-2601. 68-577

36 Personals

LOSE WEIGHT safely with Dex-A-Diet Tablets. Only 98c at Johnson's Drug.

PERSONAL LOANS on diamonds. We buy, sell and trade diamonds. Vince's Loans, 16001 Pacific Ave. LE 1-5100. 68-588

38 Instruction

PIANO LESSONS, beginning to advanced. Children and adults, home or studio. LE 1-3246 or SK 2-7695. 68-179

FOR RENT office space. Two rooms. Light heat and garbage service included. Located in Times Journal Bldg. 146th and Pacific Ave. Ample parking space for customers. \$50 per month lease. Phone LE 7-0223 or stop by.

READ & USE the
WANT ADS
for BEST RESULTS

19 For Rent Or Lease

ONE BEDROOM HOUSE, furnished, Parkland District. LE 7-4904. 68-608

HOME VACANT

We desperately need good rentals \$80 to \$150 per month

CALL NOW

Let us handle your worries

SUBURBAN REALTY

11302 Pacific Ave. LE 7-8638 or LE 7-6896

NEW UNFURN. APT. for rent. Appliances. \$145 plus your elec. LE 7-3333. 68-592

PROTECT YOUR boat & trailer. Covered stalls for rent, \$10 per month. Times Journal Bldg., 146th & Pacific Ave., LE 7-0223.

BILL PROBLEMS

For Immediate Help Call

MA 7-1700

Live Easier Pay One Place MONEY MANAGERS

232 Security Bldg. 915 1/2 Pacific Ave.

12 Real Estate For Sale

Listings Wanted

Buying or Selling Real Estate Service Call

Devereaux Realty

12152 Pacific Ave. LE 7-8658

NEW 3 bedroom home, 72nd and Pacific area. Ready soon. FHA or conventional. TH 5-3173.

Legals

NOTICE OF DISSOLUTION OF PARTNERSHIP
NOTICE is hereby given that the copartnership heretofore existing between OLLIE BAKER and RONALD BAKER under the firm name of BAKER CONSTRUCTION, and doing business in Pierce County, State of Washington, has, as of October 1, 1968, been dissolved by mutual consent; that RONALD BAKER is hereby authorized to collect, receive, and receipt for all moneys due said business, and to discharge all obligations of said copartnership and to perform all of its unexecuted contracts, as of October 1, 1968.

Neither party shall be responsible for any debts incurred by the other party after October 1, 1968.

Ronald Baker
Ollie Baker



JACKSONVILLE, Ark. — Master Sergeant Howard Milligan Jr. (left) receives his second award of the U.S. Air Force Commendation Medal at Little Rock AFB, Ark. Sergeant Milligan was decorated for his meritorious service as an aircrew equipment superintendent at Udorn Royal Thai AFB, Thailand. He was cited for his professional skill in the performance of his duties. The sergeant, who attended Little Rock Central High School, is married to the former Darleen L. Gillilan, daughter of Mr. and Mrs. Shell Gillilan of Eatonville, Wash. Lieutenant Colonel Fred Wright, his commander, makes the presentation. (U.S. AIR FORCE PHOTO)

SHOE CLEARANCE

- Women's US Keds — Reg. to \$7.00 \$3.99!
- Men's rubber bottom, leather top pacs, Reg. \$14.00 \$7.99!
- Children's school and dress shoes, Reg. to \$6.00 \$2.99-\$3.99!
- Baby's sample shoes, Reg. to \$6.00 \$1.99!
- Women's size 8 galoshes, high top 88c!
- Women's boot type flats, Reg. \$4.00 \$1.99!
- Women's duty shoes, Reg. to \$8.00 \$2.99!
- Women's blouses, Reg. to \$6.00 \$3.49!
- Men's and Boys' short sleeve sport shirts \$2.49 & Up!
- 50 pair Men's dress and casual shoes, Reg. to \$11.00 \$4.99!

Use Your Bank Card

PAUL'S

Shoes & Clothing

161st & Pacific

LE 7-0552

Winter Hours
Open 7 Days A Week
Sunday 10 - 9
Weekdays 9 - 9

BARGAIN BASKET

16618
Pacific Ave. S. Spanaway
LE 7-3371

We Carry A Complete Line Of Sacked Feeds - Presto Logs

We Are Locally Owned & Operated

HELP YOUR BUDGET WITH THESE SAVINGS

No Sales To Dealers

WE RESERVE THE RIGHT TO LIMIT QUANTITIES

PRICES EFFECTIVE

Dec. 12-13-14
Thurs.-Fri.-Sat.

PENNANT
FRUIT MIX
43¢
ONE POUND

STOKELY
FRUIT COCKTAIL
4/\$1
303 TIN

MISSION
SPACE NOODLES
4/\$1
12 OZ. PKG.

We Gladly Accept Food Stamps

FOLGER'S COFFEE
3 Lbs. \$1.99
2 Lb. \$1.37
1 Lb.73
10 oz. Instant99

LIBBY CUT GREEN
BEANS
6/\$1
303 TINS

SUNSHINE COOKIES
Choc. Chip, Cherry or Lemon Chip
3/\$1
12 OZ.

ROSEDALE
PEAS
7/\$1
303 TINS

NORTHERN TOWELS
4/\$1
Giant Size

MISSION
MACARONI CHEESE DINNERS
3/49¢

BLOCK ICE

PRODUCE

PARTY ICE

Chiquita
Bananas
10¢
Lb.

Med. Dry
Onions
3/19¢

Green
Peppers
10¢
Ea.

Large Navel
Oranges
10¢
Lb.

Everyday Low Meat Prices. . .25 lb. Locker Boxes \$14.95

PORK ROAST
Fresh Picnic Style
34¢
Lb.

PORK STEAK
Blade Cuts
59¢
Lb.

BEEF LIVER
49¢
Lb.

SLAB BACON
59¢
Lb.

COUNTRY STYLE PORK SAUSAGE
49¢
Lb.

BAR S PICNICS
43¢
Lb.
Sliced & Tied 49c Lb.