

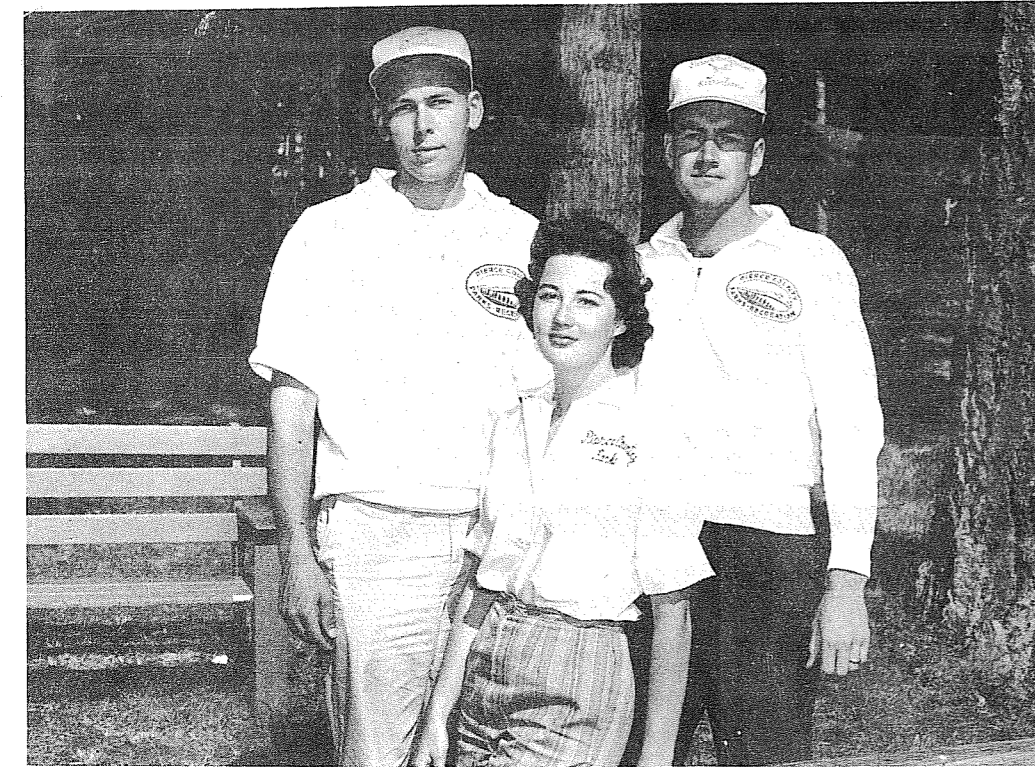
# The TIMES JOURNAL

Thursday, June 29, 1961 Vol. 16, No. 43 Published at Parkland Wn. LE 7-0223

**BULK RATE**  
U.S. Postage Paid  
Permit No. 9P  
Parkland Branch  
Tacoma, Wash.

Rural Route  
Occupant or Boxholder  
Postmaster: If unable  
to deliver, return post-  
age is guaranteed on  
addressed papers.

## Playground Leaders Keep Busy



GONYEA PARK, Dawson Playground, and James Sales Playground have full time Pierce County playground leaders directing a well-rounded group of activities for youngsters of the district. Pictured, from left to right, are: Ben Bassett of James Sales, Charlene Baker of Dawson and Gonyea Park, and Sam Gange of Gonyea Park.

One of the highlights of the Pierce County summer recreation will take place tonight at the Clover Park High School track, starting at 6:00 p.m. This third Annual Lakewood A.A.U. Junior Olympics will draw many track and field enthusiasts, with entries from all over Pierce County, being welcomed until 5:30 p.m. Place winners will receive ribbons and awards do-

nated by the Lakewood Recreation Association. The various Parkland and Midland playgrounds will be bursting with activity with a ping pong tournament, bulletin board poster contest, and a Fourth of July celebration and Noise Parade to be held Friday, June 30th. Remember that all County playgrounds will be closed both July 3rd and July 4th.

### PROFESSIONAL DIRECTORY

Farmers Mutual of Enumelaw  
Fire — Auto  
ED MAREK  
12909 Pacific Ave. LE 7-4000

WMA AUTO CLUB  
FRANKLIN LIFE INS.  
Represented by  
R. O. SANDQUIST  
9702 So. Patterson LE 7-6979

**SHOP & SAVE**  
at  
**BROOKDALE LUMBER CO.**  
Economy  
2x4, 2x6, 2x8  
You load and haul  
Per M **\$39.00**

Outside White  
**FENCE PAINT**  
Gal. **\$2.98**  
4x8, 1/4 and 3/16  
Mahogany Veneer  
Each **\$3.20**  
Fiber Glass Patio  
**ROOF PANELS**  
Only **37c** Sq. Ft.  
SHORT LENGTHS 25c Sq. Ft.

Pre-Hung Aluminum  
**STORM and  
SCREEN DOORS**  
**\$30.95**

Aluminum Screen  
**WINDOWS**  
Made to Order

8' Good Economy Grade  
2x4's  
Each **24c**

8' Fair Economy Grade  
2x4's  
Each **15c**

PATIO SHELTERS  
CAR PORTS  
As Low As  
**\$10** Month

Plumbing and  
Wiring Supplies

**BROOKDALE LUMBER COMPANY**  
136th & PACIFIC  
LE 7-8669

Have a safe, sane Fourth

### Trailer Space

Parkland Trailer Village, now  
leasing space in new adult  
section. Spacious lots, large  
enclosed carports with stor-  
age compartments.

**\$25 Month or lease  
at \$22.50**

Also several vacancies in  
family section. Play ground  
etc.

Modern laundry-drying yard,  
recreation room. No noise  
from airplanes or highway  
here.

Your inspection invited.

**507 East 131st St.  
LE 7-9926  
or  
LE 1-1204**

## WONDERFUL New Way To Paint!

New Du Pont "Lucite" Wall  
Paint is different from any  
paint you ever saw! Creamy-  
thick, it needs no stirring or  
priming. Spreads like magic  
with brush or roller, dries to  
the touch in 30 minutes! Gives  
a lovely washable flat  
finish. After painting, clean  
up with soap and water!



**NEW  
LUCITE  
WALL PAINT**  
19 lovely colors and white  
For matching woodwork —  
"Ducco" Satin Sheen Enamel

**LINDSTROM'S  
Country Maple  
and Carpet Store**  
8021 Portland Avenue  
LE 7-8627

### VW Club Slates Dinner Meeting

The Volkswagen Club of Tacoma's next dinner business meeting will be at Scotty's, 29 North Tacoma Ave., 7 pm Friday, July 14.

President, Jerry Siler, 10804 A St., will be in charge of the business meeting, during which the group will complete a summer activity program. Plans for a Late July auto tour will be completed.

Kreetha B. Alkire is in charge of dinner reservations. All foreign car owners and their families are welcome to attend this

### Meet Your TJ Carrier



Mark Jelsing, 11, of 1003 So. 116th, has been delivering the Times Journal successfully since December 1, 1960.

Mark likes to divide his time between painting, baseball, and building model ships and cars. When he gets older he plans to join the Navy and serve on board a submarine.

Mark delivers the route from 114th to 115th and I Street to Ainsworth.

### Feeder Cattle Sales Planned

Local cattlemen are being urged to submit their consignments to the three feeder cattle sales as soon as possible, according to a report issued this week by J. W. "Bill" Bennett, chairman of the Sale Committee.

Bennett stated that the three sales would be held at the Tri-County Sale Yard located near Grand Mound on August 8, September 26, and October 24.

Sponsors for the sales for the 6th year will be the County Cattlemen's Association of Southwest Washington. "During the past 5 years a total of 5,187 head of cattle have been sold in 10 feeder sales for a total return of \$588,701," Bennett added.

"We are anticipating consignments totaling 1,800 head of cattle at our three sales this year," Bennett stated. He also explained that the sale yard was being expanded to take care of an additional 200 head of cattle at each sale.

Beef cattle owners desiring to consign cattle were reminded of the following rules:

1. All consignors must be producer members of their County Cattlemen's Association.
2. All cattle consigned must be of beef breeding and must be either 1961 calves or 1960 yearlings.
3. Consigned cattle must be delivered to the sale yard on the day before the sale. This is necessary to permit the proper grading and sorting.
4. One owner cattle of uniform quality will be sold as such. All others will be sorted and blended with other cattle to make saleable lots.
5. The consignment fee will be \$1.00 per head. If the cattle are consigned prior to July 1, the consignment fee will be 50 cents per head.

Bennett said that an intensive advertising and promotion program was being conducted again this year. "We have feed lot buyers patronizing our sales from all parts of the Northwest. We want to continue to introduce our local cattle to more and more buyers each year," he concluded.

Representing the Lewis County Association on the Feeder Sale Committee are Alton Colvin of Centralia and Antonio Busek and Hal Hamilton of Chehalis. Consignment forms are available from committee members, officers of the Lewis County Association, and the County Agents office in Chehalis.

### Notice

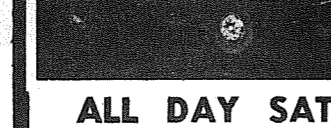
The Parkland branch of the Pierce County Library will be closed July 4th.

### The Country Parson



"Children learn to share like they learn to work—by doing it, not watching their fathers do it."

### DRYER'S FUNERAL PLAN CUTS COST



ALL SIZES DISPOSABLE  
**VACUUM CLEANER BAGS**  
To Fit All Types of Cleaners  
AVAILABLE HERE  
**PARKLAND HARDWARE**  
12169 Pacific Ave. LE 7-3171

### ALL DAY SATURDAY DELIVERY

(All Trucks Radio Dispatched)  
We Give Personalized Service  
To All Our Customers  
**ONE CALL DOES IT ALL**  
72nd AND CANYON ROAD

### CANYON READY-MIX CONCRETE

LE 7-3943

### Going on a trip for the 4th of July Holiday?

Bring your cleaning to us. We guarantee complete satisfaction!  
**PARKLAND CLEANERS**  
11004 Pacific Avenue  
North of the Bank Corner **LE 7-3221**

### Spanaway Man Completes Course

Camp Pendleton (PHTNC) — Marine Pvt. Leo D. Raper, son of Mr. and Mrs. Alvin L. Raper of Route 1, Box 1708, Spanaway, is scheduled to complete a four-week individual combat training course, June 30, with the Second Infantry Training Regiment, Marine Corps Base, Camp Pendleton, Calif.

Each marine receives the instruction upon completion of recruit training to ensure his proficiency in the latest infantry tactics, scouting and patroling, first-aid, map reading, mine warfare and defensive positions.

### Local Man Now Serving in Korea

U.S. Forces, Korea, (AHTNC) — Army Sergeant First Class Robert Porter, 34, whose wife, Trisse, lives at 1120 So. 141st St., recently arrived in Korea and is now a member of the 51st Signal Battalion.

Sergeant Porter, a pole line man in the battalion's Company B, entered the Army in 1944.

### Rodger Lunde

Mrs. Joe McGarr will preside at the 8 p.m. meeting of Rodger Lunde Auxiliary July 6th at the home of Mrs. Robert Surplus.

Delegates will be elected to the National Convention in August.

### Spanaway Man Completes Course

Camp Pendleton (PHTNC) — Marine Pvt. Leo D. Raper, son of Mr. and Mrs. Alvin L. Raper of Route 1, Box 1708, Spanaway, is scheduled to complete a four-week individual combat training course, June 30, with the Second Infantry Training Regiment, Marine Corps Base, Camp Pendleton, Calif.

Each marine receives the instruction upon completion of recruit training to ensure his proficiency in the latest infantry tactics, scouting and patroling, first-aid, map reading, mine warfare and defensive positions.

### Local Man Now Serving in Korea

U.S. Forces, Korea, (AHTNC) — Army Sergeant First Class Robert Porter, 34, whose wife, Trisse, lives at 1120 So. 141st St., recently arrived in Korea and is now a member of the 51st Signal Battalion.

Sergeant Porter, a pole line man in the battalion's Company B, entered the Army in 1944.

### Rodger Lunde

Mrs. Joe McGarr will preside at the 8 p.m. meeting of Rodger Lunde Auxiliary July 6th at the home of Mrs. Robert Surplus.

Delegates will be elected to the National Convention in August.

## Parkland Girls Are Pierce County Junior Fair Princesses



TWO PARKLAND GIRLS, Judy Graves, second from right, and Joan Haakenson, right, will be among six princesses participating in the pre-Fair activities of the Pierce County Junior Fair, set for August 10, 11 and 12.

Queen Martha Hovey of Parkland will hand over her royal duties to the new queen at coronation ceremonies on August 10, opening day of the fair. Left to right, the girls are: Cheryl Hoffman, Christy Paulson, Marcella Lawlor, Sharon Smith, Gayle Kessler, Judy Graves and Joan Haakenson.

Sharon Smith (center), tall, stately brunette from Gig Harbor, a princess last year, was selected as queen by the judges, County Commissioner Emmet Burkes, Mrs. Monty Stromberg of Sumner and Richard Usher, member of the Junior Fair board, at selection ceremonies June 23rd at Fruitland Grange.

Other girls, all of Puyallup

### ALUMINUM WINDOW SCREENS

Awnings - Storm and Screen Doors  
Free Estimates - Installations  
**PARKLAND HARDWARE**  
12169 Pacific Ave. (Across from Piggly Wiggly) LE 7-3171

### Open 7 Days A Week

Summer Hours  
Sun. 8 to 4  
HUNTING & FISHING LICENSES, SPORTING GOODS, PAINT  
**SOUTH END PLUMBING AND HARDWARE**  
185th & Pacific Ave. Open 8 to 7 Week Days V1 7-7211

### HILLTOP Concrete Co.

READY MIX TILL NOON SAT.  
• CRUSHED ROCK • SAND  
• GRAVEL • PIT RUN  
• FILL DIRT  
• DRAIN GRAVEL  
DELIVERED  
OR MACHINE LOADED ON  
YOUR TRAILER OR TRUCK  
WEEK DAYS AND SATURDAY A.M.  
TH. 5-9525  
PLANT: 2223 23rd Ave. S.E., P.O. Box 648, Puyallup

### PIZZA

We make our own  
At  
**JOE'S  
Cafe and Tavern**  
Orders To Go  
**LE 7-9911**  
Cafe Open 5 p.m. to 12 p.m.  
Spanaway

### Today's Laugh: Cowboy Singer: Voval Yotel.

### JULY 4th SHOE SALE

Womens Canvas Flats & Wedgies, Reg. to 4.00.....\$1.99  
Womens Famous Name Canvas Flats, Reg. to 5.00.....\$2.99  
Womens White Leather Flats, 4 to 10, Reg. 4.00.....\$2.99  
Girls Saddle Oxfords, 8 1/2 to 3, Reg. 4.00.....\$2.99  
Womens & Girls Saddles—Black & White, Brown & White, White Burks, Reg. to 7.00. Get 'em for school. Hurry!  
Mens & Boys Canvas Lace or Slip-On, Reg. 4.00.....\$2.99  
Mens "N" Boots, EE Wide, 6 to 12.....\$8.95  
Childrens Canvas Oxfords, 4 to 13 - 1 to 3, Reg. 2.49.....\$1.99  
Mens Rebuilt Army Boots & Oxfords.....\$2.99

### Open Every Sunday Paul's Shoes

Fri. Nite 'til 9 p.m.  
LE 7-0552 CLOSED MONDAY 161 & Pacific

### Week-End Sale

TODDLER'S SUN SUITS  
2 piece & 1 piece checks and prints. Sizes 1 to 4..... **99c**  
CHILDREN'S RAYON & COTTON PANTIES  
Blue - Maise - Pink  
Sizes 2 - 4 - 6..... **4/88c**  
LITTLE GIRL'S COTTON CAPRIES  
Assorted Plaids & Stripes.  
Sizes 3 to 6..... **88c**  
BOY'S SHORT SLEEVE SPORT SHIRTS  
Rayon's and Cotton.  
Sizes 8 to 16..... **88c**  
SHIRT & SHORT SET  
LITTLE BOY'S  
Sizes 3 to 8..... **88c**  
BOY'S FORM FITTING SWIM TRUNKS  
Quick Drying  
Red - Blue - Gold..... 4 to 8 **\$1.29**

### SEYMOUR'S

9714 Pacific Ave. — 1 Block North Park 'N Shop  
SHOP DAILY **9 to 9** EVERY SUNDAY **10 to 6**

### Freezers - Freezers

ALL SIZES FOR ALL NEEDS  
**DISCOUNT PRICES**  
No Payment Til August - Small Monthly Payments

### WEIR'S

**21" T. V.**  
Wider Brighter Picture  
**\$188**

### Freezers - Freezers

ALL SIZES FOR ALL NEEDS  
**DISCOUNT PRICES**  
No Payment Til August - Small Monthly Payments

### WEIR'S

**21" T. V.**  
Wider Brighter Picture  
**\$188**

### Freezers - Freezers

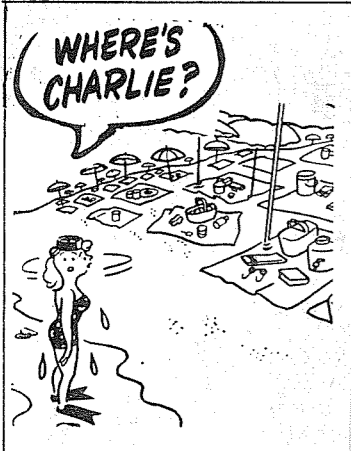
ALL SIZES FOR ALL NEEDS  
**DISCOUNT PRICES**  
No Payment Til August - Small Monthly Payments

### WEIR'S

Your Corner  
OPEN TIL **9:00 P.M.**  
(Saturday 'Til 6)  
**8419 Portland Ave.**  
LE 7-0231

In obedience to the divine nature, man's individuality reflects the divine law and order of being. —Mary Baker Eddy

Order means light and peace, inward liberty and free command over one's self; order is power. —Amiel



**TELEVISION SERVICE CENTER**  
PRESENTS TV CHUCKLES

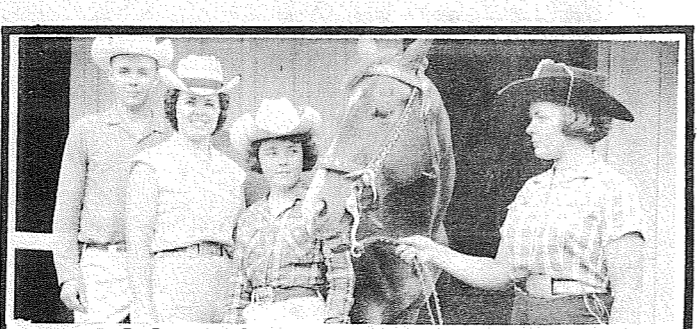
He took the crowd to see the wonderful picture he has on his T.V. since Television Service Center repaired it.

**TELEVISION SERVICE CENTER**  
"YOUR WINEGARD COLOR CEPTOR DEALER"  
GR23386 8431 PACIFIC AVE.

**Thanks From Little League**

The Little League of the Summit area would like to thank Mr. Ken Leavens for taking time, hammer and nails to fix up the bleachers on the field so that spectators could have the case of sitting down to watch the games. Also thank you are extended to McAuley's Ddug Store in Summit for donating and to the Summit Fire Department for their help.

Canada . . . Wonderful  
The last weekend was intended to be spent in honor of Mrs. Mike Cail's birthday by circling the Mountain but found the whole Cail family in Canada. They spent Saturday night in Deception Pass and Sunday they arrived in Vancouver. They visited Stanley Park and The Queen's Park and to their excitement watched, then learned, the English game of Cricket.



**LOOKING FOR A THRILL?**  
Call ROLLING HILL RIDING ACADEMY VI 7-7297

For Reservations Have These Friendly People Plan Your Guided Trail Rides  
Ken - Evie, Corrin, Sharon  
Lessons Available - Horses Boarded - Excellent Care  
Spanaway Rt. 2, Box 2254

**New Daughter To Collins Couple**

Mr. and Mrs. James Stockwell are receiving congratulations on the birth of a daughter, Mary Kay, born June 20. She is welcomed by brothers Danny, Larry, Joey and Johnnie.

**Bike Riders**

The young women who belong to the Bike Riders meet at Collins School each Wednesday at 1:00 o'clock. Any young women who ride a bike is welcome to join them.

**Bad Cuts**

David Boyle suffered a bad cut on his foot recently. Steven Sabalaska also cut a finger that required medical attention. Both boys are recovering nicely.

**Sick**

Mrs. George Shandrow has been on the sick list.

**Attend Graduation**

Mr. and Mrs. A. O. Anderson attended the morning graduation exercises at the University of Washington, June 10, when their son, David, was one of five students to receive the Distinguished Military Special Diploma. Later in the day, he received his BA degree in Political Science. David is a 2nd Lieutenant in the Air Force.

**Improving**

Mrs. Kenneth Hoff, who has been in the hospital is reported improving.

**Guests**

Mr. and Mrs. Mitchell of Wenatchee were recent guests of the Stanley Morris family.

**Home**

Mr. and Mrs. Kenneth Coates and family are home after their vacation to California.

**More Guests**

Mr. and Mrs. Alma Shipley of Mineral were Sunday guests of Mr. and Mrs. L. A. Pulley.

**Reporter—Eva Pearl Morris.**

**County Agents Corner**

By Ernest Hopp  
Charles Pasquier and Clifford Johnson, poultrymen from the Edgewood area, recently were host to poultry producers from Pierce County on a housing tour. Mr. Pasquier showed how he had remodeled a conventional 60 by 40 foot house to utilize forced-air ventilation. He completely closed the house by boarding up the side walls with plywood. Two exhaust fans were installed in one side wall. Air intake openings at plate height were installed along the opposite wall.

Insulation was placed between the rafters. The insulation was a commercial batt type covered with aluminum foil. The house originally was used to house approximately 1100 white Leghorn hens. With the installation of fans and insulation he housed 1600 birds in the same pen. The total cost for equipment and labor for the remodeling job amounted to approximately \$2 per hen for the additional birds housed. As you can see, this compares very favorably with the construction of conventional type housing. In addition to this he received the forced-air ventilation benefits for the entire flock of birds.

Clifford Johnson constructed a new poultry house 35 feet wide and 130 feet long. Cages were installed in this pen. Four exhaust fans were located along one side wall with air intake openings at plate height along

the opposite side wall. This house was totally enclosed except for the small air intake openings and the double doors and the small entrance door along the end.

Mr. Pasquier reported that some of the primary benefits of forced-air ventilation for a conventional floor house is in the management of litter. The litter in his pen remained dry and in good condition. Other benefits he cited were increased housing space for birds and ease of caring for the birds.

He also felt that his production was a little better than it had been in cages which were used under conditions which enabled the birds to produce better. This is primarily true in extremely cold or hot weather.

Both the poultrymen were quick to point out that forced-air ventilation doesn't solve all the problems in managing birds. If an operator is a poor operator, he will likewise have poor results if he uses forced-air ventilation. If he's a good operator, his results, potentially, could be just a little better with the installation of forced-air ventilation. There is much to be learned yet from light control. If it is found desirable to reduce light on growing birds to less than what natural daylight would supply, then forced-air ventilation will be even more important.

The poultrymen also pointed out the fact that when an installation of forced-air ventilation is made, there are many small details that have to be worked out on an individual basis. It seems as if each house is given in a bulletin published by Washington State University. This bulletin is entitled "Ventilating Poultry Houses With Fans." It is available from the County Agents office.

Most of the information discussed on the housing tour was presented recently at a meeting of the Edgemont Poultry Local and, also, the Peninsula Poultry Association. Reed Hansen, poultry scientist from the Western Washington Experiment Station, presented the information at these meetings.

**JULY 4TH SALE-A-BRATION!**

We Will Be Closed Tuesday, The Fourth of July.  
Prices Effective Thurs. Through Monday.

**SWANSON'S T.V. DINNERS**  
Each **49¢**

**DARIGOLD BUTTER**  
Print Pkg. or Quarters **65¢**

**COFFEE HOUSE COFFEE**  
1-Lb. Tin **57¢**

**HI-C ORANGE-ADE**  
46-Oz. Tin **4/\$1.00**

**PRODUCE LOCAL STRAWBERRIES**  
Flat **\$1.98**

Golden Ripe **BANANAS** Lbs. **2/25¢**

Large Calif. **CANTS** **6/\$1.00**

**Large "AA" White EGGS**  
Doz. **45¢**

**Kraft 8-Oz. Pkg. SLICED CHEESE** **29¢**

**Purina 25-Lb. Bag DOG FOOD** **\$2.49**

**Kaiser Pkg. BROILER FOIL** **39¢**

**Nabisco Pkg. SNACK THINS** **3/\$1**

**Cut Rite 125-Ft. Roll WAX PAPER** **2/49¢**

**Nalley's Reg. 69c Pkg. POTATO CHIPS** **59¢**

**HyGrade Fiesta or Henry House Boneless Fully Cooked HAMS** LB. **75¢**

**Miracle Pak Pederson's Country Fresh FRYERS** Pound **39¢**

**Fresh Ground GR BEEF** LB. **39¢**

**U.S. Choice Good for Bar-B-Q CHUCK STEAKS** LB. **49¢**

**DEL MONTE 1/2 Size Tin TUNA** Chunk Style **4/\$1**

**BETTY CROCKER ANGEL FOOD MIX** Reg. 57c **2/89¢**

**WYANDOTTE PITTED OLIVES** **4/\$1**

**B & M 28-Oz. Tin BAKED BEANS** **4/\$1**

**COUNTY FAIR 1/2 Gal. ICE CREAM** **75¢**

**M.D. NAPKINS 80-Ct. Pkg.** **10¢**

**OCEAN SPRAY CRANBERRIES 300 Tin** **22¢**

**NALLEY'S ASST. RELISHES** **4/1.00**

**HIRES ROOT BEER EXTRACT** Bottle **29¢**

**Our Special Value Fully Cooked BAR-B-Q CHICKEN**  
Eat 'Em Hot Eat 'Em Cold  
Lb. **79¢**

**NORTHWEST'S FINEST WIENERS** 2-Lb. Bag **89¢**

**SUMMIT TRADING COMPANY**  
10409 Canyon Road, Tacoma LE 7-5848  
No Sales To Dealers  
We Reserve The Right To Limit Quantities

**OPEN SUNDAYS 10 A.M. TO 7 P.M. FOR YOUR CONVENIENCE**

**WEEKDAY HOURS 9 A.M. TO 9 P.M.**

**New Grandson Born**

Mr. and Mrs. Henry Ferguson have a new grandson born June 10, weighing 10 lbs. 14 oz. He is the son of Mr. and Mrs. Ralph Ferguson of Tacoma.

III  
Sorry to hear Mrs. Ethel Wetherell's daughter-in-law is not well.

**Home**  
The Clover Creek Grange Past Master, Mrs. John Lowman is home from the hospital, June 18, after her operation.

**Grange**  
Clover Creek Grange will not meet until July 21.  
Reporter — Kathryn Deady.

Looking for something? You'll find it in the Times Journal classified ads!

**Rural Garbage Service**  
Pierce County Permit  
Serving Parkland, Midland, Summit and Spanaway  
LEnoz 7-8688

**AIR CHARTER**  
FLIGHT INSTRUCTION  
Approved Flight School  
Wash. MOONEY Distributor  
**TAHOMA FLYING SERVICE**  
Spanaway Airport VI 7-2266

**Hi-Lites in the History of Pharmacy**  
By Bob Vaughan

Your Pharmacist Is the Only Merchant Who MUST Have A College Degree

YOU — YOUR DOCTOR AND OUR SERVICE!  
It takes close teamwork for a pharmacist to be efficient! We fully cooperate with your doctor, double-check each prescription with painstaking care, and give you fast, friendly service. We always maintain a complete stock of pharmaceuticals.

At the PARKLAND REXALL PHARMACY, guarantee complete purity and accuracy in the compounding of your doctor's prescriptions.

**NOW! FREE TUBE TESTING**  
You bring them in, We'll do the testing, and we guarantee a full stock of tubes for all makes.

**Parkland Rexall Pharmacy**  
Pacific Ave. & Airport Road  
LEnoz 7-8636

## a-Wondering . . . and a-Wandering . . .

with JACK BROWN.

Well, here I am in the land of sugar, pineapple, shapeless women and knobby kneed men. I have put off writing this column as long as possible, hoping that inspiration would strike, but no such luck, so will make this article one of those letters from me to you affairs.

I am here in Hawaii to do a story on Hawaiian aviation for the Northwest Flyer. I came over on the "Fly now—Pay later or be sued plan", and since this is supposed to be "The Most", I brought along my ever lovin' frau to soak up some of the sun that is going to waste around here. She sure did, too. Tonight she looks like a Maine lobster with a sun stroke.

So far I have just toured the island picking up a little local gossip and atmosphere to go along with the story I am to write. Tomorrow I get down to work, or rather up to work, as I will be flying around the island chain seeking what makes things tick.

Since I was only here for one day during the war, I have enjoyed myself so far, as it is all new to me. I have come to the conclusion that Hawaii is the melting pot of the world's humanity. I pity the southern segregationist that ever makes a trip down here. Color matters not an iota to the residents of Hawaii. I think one of the most striking examples of that brought to mind so far was on the way in from the airport tonight. I looked down the road and saw four young teenage girls walking along the side of the road. As I caught up with them it was obvious that each was of a different nationality. Locked arm in arm they walked along, each enjoying the friendship of their companions oblivious to the fact that one girl was blonde and fair as any Norse lass, another of the yellow race, another an olive skinned Hawaiian or Tahitian, and the fourth girl was an ebony-colored beauty. On these islands friendship is all that matters, and the children are brought up to believe that. It will take a lot of talking to convince me that they are wrong.

I can't say that I feel like getting on a soap box to ballyhoo the attractions of Hawaii. Like any other tropic isle, the sun and surf is the greatest come-on; and with it go all the usual carnival type things. A large part of the island's income is from tourists, and consequently they have gone to extremes to capture each and every silver dollar they can, and justly so. If you are a sun worshipper and like to lay on the beach, swim a little and bend your elbow to your heart's desire, this is the place. If sunning it and night clubbing it are not for you, then neither is Hawaii. To give you a rough idea, I have been here three days now and I dare say I could act as your guide and show you all the points of interest on this island in an equal length of time. Beyond that . . . sun, eat and drink. I for one am grateful that I have a job to do here and am not faced with

countless hours to while away doing nothing.

To give Hawaii its full due, I must say that the flowers, trees and foliage here surpass any I've seen. Regardless as to whether a person is a nature lover or not, he will be taken in by the beauty of the greenery.

If you ever plan on visiting Hawaii, here are a few tips that wouldn't win me any plaque from the C of C; but as I see it, it's the best way to see the mostest, eat the mostest and pay the leastest. Get your hotel reservations made in advance. If you write to enough places over here you will find accommodations to fit your budget. Once here, rent a Jeep for transportation on the weekly rate of \$9.00 per day and forget about the guided tours. With the Jeep you can see all. Sate your yearning for knowledge of the islands by asking anyone what's foremost in your mind. People here are more than willing to give you any information you ask for. When you're hungry, crank up and get off the "strip". You'll find excellent food in the regular shopping centers at equal or less than you're used to paying at home. If you are going out to some of the well ballyhooed places call first and ask them to give you a run down on the menu. That way you won't have to embarrass your pocket-book.

As a clincher on the above, let me say it can happen to the unwary. Last night Dolores and I went out to dinner with another Parkland couple. We walked into a fancy looking place and sat down. By the time we had gone through the preliminaries and were too well established to leave, we discovered we had hit one of the tourist traps and were about to be relieved of a few more of Uncle's silvers than we had expected. When the waiter handed me the menu I can't say that I was overcome with joy to find that the cheapest item on it was \$6.00 per person. After they had revived me I proceeded to eat a lobster thermidore that I saw duplicated today in another part of the island for \$1.85.

All I can say is that before you hock your soul to visit Hawaii, think it over and don't give too much thought to what others who have been here say. There are more miserable, disappointed, sunburned people per square block here at Waikiki beach tonight than in any other place in the country, yet many of them will spend hours telling others what a wonderful time they have had, once home.

It's true, many people come here and enjoy every minute of it, but after talking to countless visitors these past few days, I feel sure they are in the minority.

By the way, the other Parkland couple originally planned to stay here for two weeks. They have been here three days now; and as soon as I finish this, I am going to take them out to the airport. They're heading for home. Both agree they've had it!

## County Agents Corner

By George Purcell

You might be interested in hearing what are some of the ideas of the Pierce County Rural Suburban Council Youth Study Committee. This group has studied and recommended a youth residential school be established near here where wayward boys might be placed where they would go to school including, perhaps, vocational training) and also taught how to work and do assigned work. Study is continuing on various other subjects before written recommendations are made to the ural-Suburban Council. Some of these subjects include: Should obscene literature be banned with more laws and/or more law enforcement? The "for opinions" — "The reasons should be obvious" and "Some people are only in favor of laws "if the law applies to the other guy." The "vs opinions" — "Why shouldn't a publisher have the right to publish what he wants to publish," "More laws would infringe on people's rights to read what they wish." "How could you define what is and is not obscene?" "The more laws you have, the less liberty you have."

Still other subjects involve education — particularly these random opinions: — "We need youth camps like the old Civilian Conservation Corp. This would give boys jobs, improve their education, expedite conservation practices and would pay its own way to a great extent."

Another opinion heard—"We need to wake American people to the need for more study

of all influences on youth.' "We need, for example, to avoid an all-or nothing-type of thinking. No one is all good or all bad, although many movies and radio and TV programs too often foster this oversimplification. Other examples of all-or nothing-thinking include the popular tendency to think in terms of stereotypes or rigid preconceptions which are applied to all members of certain national, political, occupational, or racial groups, whether they actually hold for only a few members of these groups or for only a few who are then said to be "typical." "If we study and are aware of these various types of pitfalls in our thinking then we can do much to avoid our own traps and thus train ourselves to think clearly and objectively as possible."

Another opinion heard "Lots of people say we have moral decay in our country but I disagree," and "These who feel that way must have their heads in the sand." "Home and consumer economics, sex education, and how to get along with people, needs more emphasis in our schools," one person said.

By Jack Crawford  
How to manage alfalfa for a longer life in western Washington will be the object of a trial set up recently on the Lou Fisch

farm located at Brookdale. The test is being conducted in cooperation by WSU Extension Service and the Experiment Station. Mr. Darrell Turner, specialist in outlying testing, is conducting the trial. The seeding of DuPuits alfalfa was made on May 25. The entire plot was covered with nitrogen, phosphorus, and potash, with per acre rates of 30 lbs. of nitrogen, 60 lbs. of phosphorus, and 60 lbs. of potash. Varied lime applications were made, with no lime on part of the plot, two tons per acre on another area, and four tons per acre on the remainder.

Following the establishment of the alfalfa stand, additional amounts of fertilizer will be applied. These plots will be checked and the production on each different treatment will be cut and weighed to determine the difference in growth. This project is part of the outlying testing program being conducted by the Extension Service and the Experiment Station of Washington State University to take results of research and apply it to the varying conditions met on the farms. This project is set up for a five-year trial.

By George Purcell  
Your opportunities and responsibilities as a United States

Thursday, June 29, 1961  
The Times Journal

Page 3

citizen are:

1. Assume an attitude of individual responsibility.
2. Be a well informed citizen — read one or preferably two newspapers a day with different political leanings. Participate in discussion groups started by yourself among your neighbors. Be able to identify propaganda by finding the source of questionable statements and articles.
3. Be a good party worker in the political party of your choice. Both parties need more workers. The party needs are your opportunity. View politics as an activity and as an avocation. It's too risky and often too costly to plan for a vocation, according to Dr. Daniel Ogden, associate professor of Political Science at Washington State University, recently

in advising 4-H people in a leadership conference at the annual State 4-H Conference at Pullman.

Attending this session were: Dick Eliff of Eatonville, Kris Berg, Larry Bargmeyer, Cheryl Hoffman, Karen Carlson, and Nancy Eidemiller of Puyallup, Trygve and Glenna Haaland of Tacoma, Julie Bergert and Mary Ellen Jerkovich of Gig Harbor, Mrs. Eunice Potrafke of Eatonville, and George Purcell.

Have a safe, sane Fourth

**WAX NO MORE!**  
Liquid - Transparent  
**Pylon Plastic Coating.**  
Yes, never needs waxing,  
polishing or scrubbing.  
**LE 7-3843** or LE 7-4239  
after 5 p.m.

### Prescription Service

Open 7 Days a Week  
9:30 a.m. - 9:30 p.m.  
Sundays 10 a.m. - 6 p.m.

**JACOBS PACIFIC DRUGS**

Wallgreen Agency  
Pay Light & Water Bills Here  
84th & PACIFIC AVE.

Greenfield 2-6445

## County Agents Corner

By Ernest Hopp

Protection and use of available food supplies and food production under emergency conditions will be major jobs in case of enemy attack.

In Pierce county this will be the job local employees of the U.S. Department of Agriculture as part of an interlocking nationwide network.

Specific responsibilities have been assigned to each USDA agency says Ernest Hopp, chairman of the county USDA Emergency Planning Committee.

Mrs. Dorothy Thompson, office manager of the county Agricultural Stabilization and Conservation Committee, will be in charge of food production and food management. This will include reporting the county's production status and potential; working with farmers to reach production goals; assessing dam operations; administering food

orders; administering machinery distribution and helping to round up necessary production manpower and equipment.

The Soil Conservation Service under Lou Gudgel will direct programs of technical guidance on land use and adjustment and availability and use of emergency soil and water. They will also be responsible for radiological monitoring in areas not under the Forest Service or military jurisdiction.

Washington State University's county agricultural extension service activities will be spearheaded by Ernest Hopp. He'll have the job of informing farmers and food industries on their emergency roles and working with local agencies in preventing and cutting damage to farm homes, crops and livestock. He'll also inform local com-

munities of available food supplies, effects of fallout and needed production adjustments.

Harry Locklin, Farmers Home Administration supervisor, will develop stand-by plans for food production loans and carry them out in an emergency.

Forest Service District Representative Harry McCormack will conduct a program of radiological monitoring of all lands within the national forest boundaries and state and local lands under Forest Service protection.

Parker Paint Products  
**BIG PAINT SALE**

Interior • Exterior  
Varnish • Stain

All Being Sold  
AT  
**Wholesale Prices**  
Check Our Prices By Phone  
or Call in Person

**BARSOTTI & TIMM**  
At The Roy Y VI 7-7100  
Open 7 Days a Week 7-9

**PROMPT PERSONALIZED PRESCRIPTION SERVICE**

**TED SWANSON**  
INSULIN - VITAMINS  
Downtown Prices  
Pay Phone Bills Here  
PLENTY OF FREE PARKING  
**TINCHER'S PHARMACY**  
8227 Park Ave. GR 4-3344  
Across from Fern Hill P. O.

**USED TV**

PRICED \$ **59<sup>50</sup>**  
From

Table Models - Consoles - Etc.  
HAVE YOU TRIED OUR TV SERVICE  
Expert Guaranteed Work

YOUR PIONEER FUEL OIL & APPLIANCE DEALER  
**POCHEL DISTRIBUTING COMPANY**  
140th & Pacific Avenue LE 7-8624

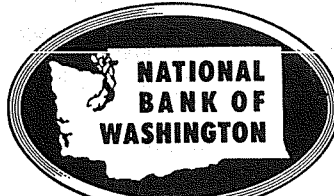
## ARE YOU TAKING ADVANTAGE OF NBW'S DAILY INTEREST ON SAVINGS?

Here's what you get under National Bank of Washington's liberal new method of paying interest on your savings:

Every deposit earns daily interest. Your money begins to earn interest the day you deposit it, and keeps earning right up to the day you withdraw it.

Bank interest now compounded and paid quarterly. Every three months—twice as often as before—interest will be credited to your account, and it, too, will begin earning interest right away.

Highest bank rate the law allows. Your money works harder, earns more than ever before. Start saving today. Stop in at your nearest Branch of National Bank of Washington, and ask for full information.



Parkland Branch

The Bank of Personal Service . . . Where Our Interest Is You — 29 Helpful Offices

MEMBER FEDERAL DEPOSIT INSURANCE CORPORATION . MEMBER FEDERAL RESERVE SYSTEM

**FOR RENT TRUCKS & CARS**  
MA 7-9039  
Save One Half  
We Furnish Everything  
**HARMON'S**  
Driv - Ur - Self Co.  
HARMON'S SERVICE  
2112 Jefferson  
Jim Harmon, Mgr.

**ALL THROUGH YOUR HOME**

**Super-Kem-Tone**

IN EXCITING NEW COLORS . . .  
Even if you have never painted, you can give walls and woodwork a uniform coat of color . . . with this velvet-smooth paint.

We Carry A Complete Stock

**SOUTH END PLUMBING & HARDWARE**  
185th & Pacific VI 7-7211

<b>ROYAL - ALL FLAVORS GELATIN</b> Each <b>5¢</b>	<b>MAXWELL HOUSE COFFEE</b> 1-Lb. Tin Only <b>57¢</b>
<b>MCP Regular or Pink FROZEN LEMON ADE</b> 6-Oz. Tin <b>10¢</b>	<b>NALLEY'S 79c Value POTATO CHIPS</b> <b>59¢</b>
<b>M-D NAPKINS</b> 80 Count <b>10¢</b>	<b>KAISER ALUMINUM FOIL BROILER</b> <b>45¢</b>
	<b>ROYAL CHARCOAL OAK BRIQUETS</b> 10-Lb. Bag <b>85¢</b>
	<b>HUNT'S 300 Tin FRUIT COCKTAIL</b> <b>19¢</b>
Come In And Get Your FREE TICKETS, A Number Of Prizes Will Be Given Away Saturday at 4:00 p.m.	
<b>SKIPPY DOG FOOD</b> No. 1 Tins <b>13</b>	<b>\$1.00</b>
<b>EARLY CALIFORNIA PITTED RIPE Select OLIVES</b> No. 1 Tall Tins <b>4</b>	<b>\$1.00</b>
<b>VAN CAMPS PORK &amp; BEANS</b> No. 2 1/2 Tins <b>5</b>	<b>\$1.00</b>
<b>Pederson Wash. Grown CUT-UP FRYERS</b> LB. <b>35¢</b>	<b>New Shafter POTATOES</b> 10 Lb. Bag <b>33¢</b>
<b>HyGrade Fiesta Ready to Eat BONELESS HAMS</b> LB. <b>79¢</b>	<b>Solid Head, Local LETTUCE</b> Each <b>9¢</b>
<b>Northwest Skinless WIENERS</b> LB. <b>45¢</b>	<b>Jumbo Size CANTALOUPE</b> 6 For <b>\$1.00</b>
<b>Lean GROUND BEEF</b> LB. <b>98¢</b>	<b>Large "AA" EGGS</b> Doz. <b>45¢</b>
<b>Bar-S Thrifty Brand Sliced BACON</b> LB. <b>39¢</b>	
<b>Beef Rib Round Sirloin STEAK</b> LB. <b>69¢</b>	
<b>25-Lb. Beef Locker Box STEAK, Roast, Gr. Beef, Short Ribs</b> New Low Price <b>\$11.95</b>	

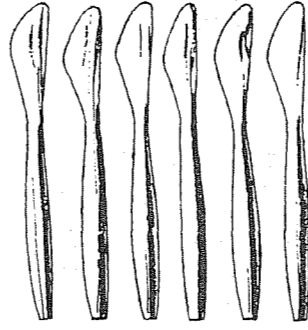
**McDANIELS**  
The Home of The Low Price

**AIRPORT AND CANYON ROAD**  
Store Hours: 9:00 'til 9:00, Sundays 9:00 'til 7:00

PRICES EFFECTIVE THURSDAY FRIDAY SATURDAY

### Fabulous Savings! Fuller piggy-bank premiums

Come in today! Buy 1 gallon or more Fuller Interior Wall Paint...and choose:



6 Stainless Steak Knives. Lifetime sharp. Direct from Holland to you. \$3.50 value...only \$1.00.

Chrome Garden Set. Strong shank. \$3.50 value...only \$2.00.

2 Way Night-Glow Outdoor Sign. Rust-proof aluminum, black finish. \$7 value...only \$3.00, 3 styles.

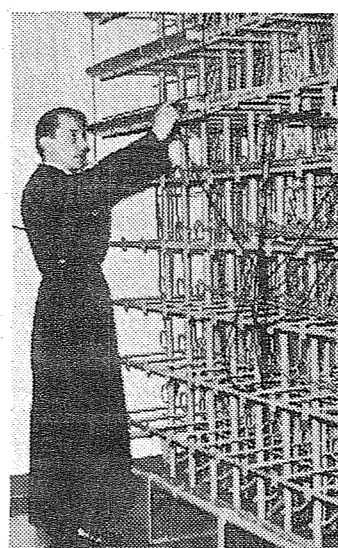
Save on Fuller Quality Wall Paint. Less needed; covers up to 15% more wall space than cheap paint.

Extra years of wear; stays fresh far longer, even when scrubbed. Two finishes: Alkyd Gloss, Latex Satin Flat, \$0.00 gal. Most colors.

BONUS: Get roller and finishing brush with gallon purchase. \$5.50 value...only \$2.99.

FULLER PAINT DEALER

Parkland Hardware 12169 Pacific Avenue LE 7-3171



VATICAN CITY — Brother Gabriel, of the Society of St. Paul, checks the maze of connections in one of the two complex telephone systems at the Vatican. The system has a capacity of 1300 connections and is an external set-up allowing persons in any part of the world to communicate with the Holy See.

Elk Plain... Cub Pack 35 Meets. Cub Pack 35 will meet Thursday, June 29th, at the home of Mrs. Mary Tibbets, den mother. All members should meet at Elk Plain School at 7:15. They will then go to Mrs. Tibbets in a group. Reporter—Mrs. Ray Burkhart

ELECTROLUX Compact KIRBY HOOVER And Most Other Makes BAGS - HOSES - FITTINGS BRUSHES-ATTACHMENTS • Guaranteed Repair • PARKLAND SEWING CENTER LE 1-2000 Parkland Theater Bldg.

Bicycles Lawnmowers Locks & Keys These Are Our Specialties PARKLAND CYCLE & KEY 11021 PACIFIC AVENUE LE 7-5772

### County Agents Flying Corner

By George Purcell. Recent reports of roaming dogs killing sheep should remind dog owners that local laws make these owners liable for damages done. The law plainly states those dogs may be killed if they are either molesting sheep or killing them.

Several nights ago a band of free roaming dogs killed several sheep owned by a 4-H boy in the sheep's regular pasture in the woodland area. Other similar events have happened recently in the Spanaway, Elge-wood, and Sumner areas. If the dog owners suddenly find themselves confronted with a court order to pay \$50 to \$100 in damages, they may decide to keep their dogs closer to home. 4-H'ers like dogs too, but not this kind.

By Jack T. Crawford. Pat Barton of the Buckley 4-H Cattlers copied top honors at the 4-H dairy judging tour held this last Thursday, June 22. Pat's score was 499.2 out of a possible 600 points. Forty-four Pierce County 4-H'ers judged six classes of dairy animals on the tour.

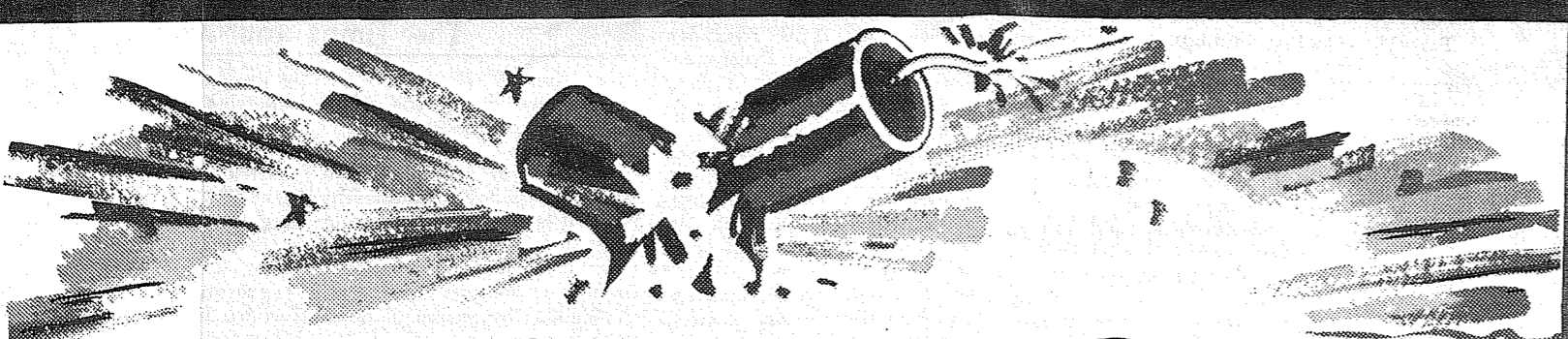
Other 4-H'ers in the top ten were: Mary Temus, Pam Vollerech, Allan Moulden, Judy Graves, Colleen Barton, Dennis Schweikl, Bill Hammar, Terry Dieringer, and Beryl Haugen. Spanaway... California Couple Visits Friends Here. Mr. and Mrs. James Hogan of Santa Barbara, Calif., have spent two weeks with Mrs. Hogan's sister and brother-in-law, Mr. and Mrs. Joe Barsotti.

While here, they went to Victoria, Canada and visited other places. Get Well. Speedy get-well wishes go to Art Pietz who is having eye trouble from injuries received some time ago.

Visitors. Mr. and Mrs. Tom Evans of Yakima came over last week.

We Cover The Earth - T & O Concrete. Color Patios - Floors - Steps Sidewalks - Driveways Foundations Complete Block Work. Free Estimates - Evening Appointments "Oake" VI 7-7338

Recovering. Mrs. William Firestorm has been recovering from recent surgery on her foot. Looking for something? You'll find it in the Times Journal classified ads! 9 TO 9 Weekdays PRESCRIPTIONS FAST SERVICE Veterinary Supplies Photo Equipment Gifts for Everyone From Infants to Grandfather McAULEY SUMMIT DRUG Airport & Canyon LE 7-5658



Pederson's PAN READY FRYERS LB. 35¢

STEER BEEF CHUCK STEAKS LB. 49¢

STEER BEEF STEAKS LB. 69¢

BAR-S THRIFTY BACON LB. 45¢

RATH LARGE BOLOGNA By Piece 39¢

NORTHWEST SKINLESS WIENERS LB. 39¢

STEER BEEF LOCKER BOX 7 1/2-Lbs. Ground Beef 7 1/2-Lbs. Roast 2 1/2-Lbs. Short Ribs 7 1/2-Lbs. Steak \$12.95 RUMP ROAST LB. 59¢

GROUND BEEF 3 LBS. 98¢

LIBBY'S BEEF STEW 24-Oz. 2 / 89¢

LIBBY'S TOMATO JUICE 46-Oz. 3 / 89¢

LIBBY'S PEAS 303 Tin 5 FOR \$

LIBBY'S CORN Cream Style 303 Tin 5 FOR

LIBBY'S CORN Whole Kernel 303 Tin 5 FOR

LIBBY'S CATSUP 14 Oz. 5 FOR

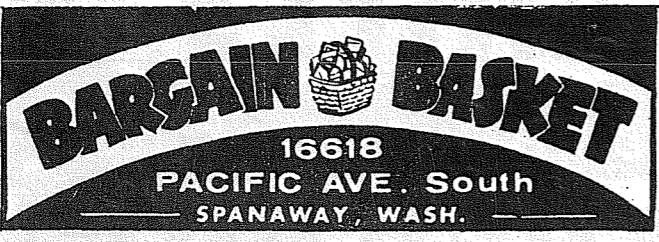
LIBBY'S PEACHES Freestone Halves 5 FOR

LIBBY'S PEARS 303 Tin 4 FOR

LIBBY'S CUT BEETS 303 Tin 7 FOR

LIBBY'S PORK & BEANS 300 Tin 7 FOR

Store Hours: 9 a.m. to 10 p.m. DAILY LE 7-3371



NO SALE TO DEALERS

Olympic CUCUMBER CHIPS 48 Oz. 69¢

SUNSHINE Crackers HI-HO LB. 33¢

Festival 100% PURE STRAWBERRY PRESERVES 2-Lbs. 12-Oz. 89¢

HILLS BROS. COFFEE \$1.25 2-Lbs. HILLS BROS. INSTANT 6 Oz. 89¢

Adams PEANUT BUTTER 3-Lbs. 99¢

WATER MELONS Lb. 4¢

Shafter POTATOES 10 Lbs. 35¢

Large Heads LETTUCE 2 / 15¢

RADISHES & GR. ONIONS 3-Bun. 10¢

## SUMMER CLEARANCE

BOY'S COLORFUL PRINTS Reg. \$1.98 SWIM SUITS 69¢ Sizes 6 to 16

Van Camps - 2 1/2 Size PORK & BEANS 5 / 99¢ Kingsford 10-Lb. Bag CHARCOAL 59¢ 25-Lb. Bag \$1.39

Popular Brand SALAD DRESSING Quart 29¢ SUMMER CAPS Men's 19¢

Ladies White Canvas Pair SHOES Sizes 4 - 9 99¢ Popular Brand Quart MAYONNAISE 39¢

BEACH BAGS Large Size - Rubberized 98¢ BAMBOO SHADES 4 Sizes From 99¢ Up Men's Western STRAWS 39¢

SWIM EQUIPMENT FINS-MASKS SNORKELS Priced Below Wholesale Men's Short Sleeved SPORT SHIRTS \$1.49 All Purpose WHITE PAINT \$1.98 Gal.

# STOCK UP AND GO

**ONIONS & RADISHES** . . . 5c  
**LEMONS** . . . 10/29c

Beef Steak 2-Lbs. 45c  
**TOMATOES** . . . 45c  
 Shurtfresh Triple Pack  
**POT. CHIPS** . . . 59c

**WATERMELON** . . . 5c  
 Pound

Van Camps, 2 1/2's 3 FOR  
**PK. & BEANS** . . . 69c  
 Jiffy, Asst. **CAKE MIX** . . . 5/49c

Jiffy, Asst. **Frosting Mix** 5/49c  
 80 Count **NAPKINS** . . . 10c

**SKIPPY DOG FOOD** . . . 13/\$1.00

Pacific Pearl, Tiny **SHRIMP** . . . 3/\$1.00  
 Sliced, Sweet Rasher **BACON** . . . 45c

Hi-C 46-Oz. **Orange Ade** 2/65c  
 Chunks **BOLOGNA** . . . 39c

**DARISWEET ICE CREAM** . . . 1/2 Gallon 69c

Fresh 3-LBS. **Skinless Weiners**  
**GR. BEEF** . . . 97c  
 Lge. Franks Bag 85c

Lamb Shldr. (Choice) Lb. **FRYERS** . . . 35c  
 Pederson's, Cut-Up Lb.

**HERMANS FOOD STORE**  
 162nd & Park Ave. Spanaway  
 (Right to Limit Reserved)

NOW AT SILER'S  
 Complete service on electric ranges. All makes. Fast dependable, reasonable. LEnox 7-8634. 3ctf

HAY CUTTING - Raking Collins Road Area. LE 1-1029. 3c44

**Help Wanted 5**  
 NEED 50 women to show and demonstrate toys. GR 4-4214. 5p43

**MEN or WOMEN**  
 Parkland - Spanaway - Lakes area. Part time or full time servicing customers with famous Watkins Products. Earn 2 to 3 dollars per hour. No age limit - no investment necessary. Apply 8408 Pacific Avenue.

**Lost & Found 6**  
 LOST - Ladies purple sweater on 112th between Sheridan & Leonard's Crossing. Reward. LE 7-5048. 6c43

**Real Estate 9**  
 WILL SACRIFICE \$6,000 equity for \$3,000. LE 7-3868. 9c43

**M. L. S.**  
 MULTIPLE LISTING SERVICE \$3,250.00  
 LOW DOWN payment, \$40.00 mo. Electric range, refrigerator, oil circulator included. One bedroom, large living rm. 2 lots. 2 blocks to 45th and McKinley Ave. Call Ralph Decker, GR 4-9579. RA-10263 PACIFIC AVE. DIST.

**THURMOND REAL ESTATE**  
 16217 Pacific Avenue  
 Phone LE 1-1808

**BUILDING SITE**  
 5 ACRES located in Bethel School Dist. Many beautiful trees, \$2,500 with \$350 down and \$25 a month. This won't last long. First one there gets it!

**3 BEDROOMS - 5 ACRES** .. NEARLY NEW rambler with lovely landscaped yard; red Cedar fence, wishing well and gold fish pond add to yard's attractiveness. Secluded country living. Located in Bethel School Dist. Many lovely trees. Only \$13,500. Owner will give terms or sell G.I. with nothing down, only closing costs.

**HOME - 1 ACRE**  
 GOOD family home with full basement. Located in East 60th area. Has four bedrooms; close to school. Sell G.I. nothing down. Only closing costs. Priced at \$12,000.

**40 ACRES**  
 \$450 AN ACRE. Fenced on three sides. Enough trees to keep you tax-free down. Owner will give good terms. Located close in, in Bethel School Dist.

CALL LEnox 1-1308  
 DAYS OR EVENINGS  
 OPEN EVERY NIGHT  
 AND SUNDAYS

**Rentals 10**  
 LARGE FURNISHED or unfurnished apts. Three rooms and bath. One two room furnished apt. LE 1-0446, or GR 4-1651. 10ctf

**RENTALS**  
 2 BED, 12802 Park Ave., Unf., \$75.00; 4 Bed, 11707 Pacific Ave., Unf., \$90.00; 2 Bed, 8817 So. I St., R/R, \$65.00; 1 Bed, 6216 Hart Road, Unf., \$45.00.

**Suburban Realty, Inc.**  
 11802 Pacific Avenue  
 LE 7-8683

**2-BEDROOM furnished apartments** in Parkland area. LE 7-0259, hours 9 to 5, after 5-00 p.m. LE 1-0642. 10ctf

**Repair Service 11**  
 WASHING MACHINE PARTS - Largest stock in town. Repairing that pleases. BB's WASH SERVICE, 3727 So. G. GR 4-9409. 11ctf

**APPLIANCE REPAIR**  
 9606 Portland Avenue - LE 1-1155. 11ctf

**Farm Ads 13**  
 BULL SERVICE delivered \$5. Hauling, Tom Grove, Puyallup, TH 5-1890. 13ctf

**FOR SALE - Family Jersey cow**; 11020 A St. LE 7-4127. 13c43

**Situation Want 14**  
 RELIABLE high school girl wishes baby sitting. LE 7-3333 14c43

I'LL FINISH the job your husband started. Remodeling, repairs, and new work. TH 5-4002. 14c44

**WORK WANTED - Cabinet work** wanted, large or small job. Free estimates. LE 1-1021. 14ctf

WILL DO typewriting in my home. LE 1-0890. 14c43

**CHILD CARE** day, night, weekends. My home. 8428 South Yakima. GR 2-9391. 14ctf

**Miscellaneous 15**  
 FOR SALE - Universal range. Three burners, best offer. Call LE 7-0126. 15c43

OLD PAPERS for sale - 15 lbs. for 15c. Times Journal Pub. Co., 14620 Pacific Ave. 15p43

**FOR SALE - Shavings**, call after 4 p.m. TE 2-5238, Eatonville. 15ctf

**FOR SALE - Deming one-third horsepower deep well jet pump and compression tank**, \$65. Route 1, Box 18, Eatonville, TE 2-3683. 15c43

**Support Your Local Merchants**  
 Have a safe, sane Fourth

Thursday, June 29, 1961 Page 5  
 The Times Journal

40" ELECTRIC RANGE, \$25. LE 7-4987. 15c42

BATON & PIANO LESSONS to be given. If interested CALL Marcia Daines at VI 7-2228. 15c43

ELECTROLUX \$9.95. Many other low prices on good used cleaners. Open Mon. & Fri. till 9 p.m. Upton Electric, 1148 Market, FU 3-2551. 15c43

FOR SALE - AKC Registered male cocker spaniel. Black & Tan. 18 months. All shots. Perfect for show or pet. Reasonable. LE 7-7679. 15c43

TRADE Registered black standard poodle, also registered Kerry Blue Terrier, for new or used lumber. LE 1-2262. 15c43

SHIPPED OUT  
 WANT someone to take over payments on Philco TV with only \$59 due. \$10 mo. payments. Buy today, deliver today. Open Mon. & Fri. till 9 p.m. Upton Electric, 1148 Market, FU 3-2551. 15c43

SMALL tractor hydraulic system. Two cylinders, bump and 2 way control with hoses. So. End Auto Wreckers; VI 7-7242. 15c44

ELECTRIC RANGE, \$50, in good working condition; 12102 So. L St. 15c43

AIRWAY Sanitizer Bags. Parts, repairs and hose for all makes of vacuum cleaners and sewing machines. Used cleaners as low as \$5 Open Mon. & Fri. till 9:00 p.m. Upton Electric, 1148 Market St., FU 3-2551. 15c43

FOR SALE - Trailer house, 1958. 1 bedroom. Flamingo Sx36. Excellent condition. Call or write Fleetwood 2-9712. Rt. 3, Box 118, Olympia, Wn. 15c43

ELECTRIC ORGAN - Want responsible party to assume small monthly payments. Also spinet piano. Can be seen in Parkland. Write Tallmans Pianos-Organs, Inc., Salem, Ore. 15c45

TV BARGAIN  
 RCA portable reprocessed with only \$79 due. Assume \$10 mo. payments and get today delivery. Open Mon. & Fri. till 9 p.m. Upton Electric, 1148 Market St., FU 3-2551. 15c43

PUREBRED Black Lab female puppy. \$25. GR 2-7816. 15c43

NEW Screen Doors, all sizes; \$5 to \$6.50. LE 7-4787. 15c44

**CROFT TRAILERS**  
 Local and One-Way Trailer Rentals - NATIONWIDE  
 Hiway 99 GR 4-8437  
 74th & So. Tacoma Way

COCKER PUPS \$5. LE 7-7093. 15c44

FOR SALE - Shavings, call after 4 p.m. TE 2-5238, Eatonville. 15ctf

FOR SALE - Deming one-third horsepower deep well jet pump and compression tank, \$65. Route 1, Box 18, Eatonville, TE 2-3683. 15c43

**Support Your Local Merchants**  
 Have a safe, sane Fourth

# FOOD

**holiday SALE**

BLUE BELL  
**POTATO CHIPS** . . . 49¢  
 Reg. 69c Box

Early California Pitted Ripe **OLIVES**  
 4 Tall Cans \$1.00

We Repeat **DADS ROOT BEER**  
 12 Reg. Btl. 59¢  
 Plus Deposit

**SWIFTNING SHORTENING**  
 3 Lb. Can 59¢

M.D. Asst. **NAPKINS**  
 Pkg. 48 8¢

Parkland Super **SALAD DRESSING**  
 Quart 39¢

Skippy **DOG FOOD**  
 Tall Cans 12 \$1

WHITE STAR CHUNK **TUNA**  
 No. 1/2 Cans 4 \$1

TIP TOP FROZEN 6-Oz. Can **LEMONADE**  
 10¢

SWIFT'S **FRANKS** . . . 43¢ LB.  
 YOUNG STEER BEEF **RIB STEAK** . . . 63¢ LB.

Pork Steak Lb. 43c  
 Veal or Beef Cube Steak 15c  
 Sliced Bacon Lb. 39c

Bologna or Liver Sausage By The Piece 39¢  
 Beef Locker 25 Lbs. \$12.95

**FRYERS** 2 1/4-Lb. & Up . . . EACH 79¢

**WATERMELONS** . . . LB. 4 1/2¢

No. 1 Potatoes 29¢  
 Lettuce 2 Heads 15¢  
 Radishes or Green Onions 5¢ Bun.  
 Carrots 1-Lb. Cello Bag 10¢

OPEN 7 DAYS A WEEK For Your Convenience  
 NEW STORE HOURS: Sun. 9 a.m. - 9 p.m. Week Days: 9:00 a.m. until 10:00 p.m.

**PARKLAND Super MARKET**  
 Formerly Kitchen's  
 12208 Pacific Avenue  
 PRICES EFFECTIVE THURSDAY THROUGH SUNDAYS EACH WEEK

# Classified

Campbell's Chicken-Noodle **SOUP** . . . 35c  
 Franco American SPAGHETTI 2/33c  
 Pacific Maid 8-Oz. Tin **OYSTERS** . . . 27c  
 Book **MATCHES** . 2/25c  
 Swift's Prem **FRANKS** . . . 39c  
 Swift's Boneless Half or Whole **HAM** . . . 77c  
 Stick - Chunk **Salami, Bologna or Liverwurst** . . 35c  
 Each **LETTUCE** . . . 10c  
 Bag **CARROTS** . 2/19c

**Boush Moving & Storage**  
 Agents for U.S. Van Lines  
 Cost to Coast Service  
 11816 Pacific Avenue  
 LE 7-3696  
 Parkland, Wash.

**A-1 SANITARY SEPTIC TANK PUMPING AND SEWER CLEANING SERVICE**  
 PUY. TH 5-2873

**TV REPAIR**  
 Free Pick Up and Delivery  
 All Work Guaranteed  
**McWik's**  
 Call Bill Bean  
 JU 4-3300  
 or  
 LE 7-7933  
 Two Shops to Serve You

TOP SOIL - SANDY LOAM - Parkland area special. Puyallup, TH 5-8759. 3ctf

**SEPTIC TANK CLEANING**  
 Prompt Service  
**C. V. HUTSON**  
 GR 4-3980 GR 2-7038

BULLDOZING, grading, plowing, discing. Work evenings, weekends. Crawler Tractor. LE 7-4051. 3ctf

**ART'S SHOES**  
 Shoes for the Entire Family  
 EXPERT SHOE REPAIRING  
 315 Garfield St.  
 Between 121st and 122nd  
 Opposite Parkland Postoffice

**Personal 1**  
 HUNTERS, FISHERMEN. Watch Channel 13 KTVW TV at 7:30 p.m. on Thursday, July 6 to see one of the most versatile cuttings tools ever invented, Zak's, Skinner and Dresser. Order yours by mailing name, address and \$2, plus sales tax to T. N. Revis, Dept. P 1531 North Prospect, Tacoma 6, Tacoma. If not satisfied, return in good condition within five days for full refund. 1c44

**Business Service 3**  
 HAROLD'S Soil Supply; gravel, top soil and fill. LE 7-3703. 3p45

**CALL POCHEL FOR Expert T.V. Repair**  
 Satisfaction Guaranteed  
 Free Tube Testing  
 140th & Pacific LE 7-8624

SEPTIC TANK, Drainfields, Sewer Installation. Luke, GR 2-7243. 3ctf

ROTOVATING & Tractor Work. Light Blade Work. Reese, LE 7-7559. 3ctf

**WEBB ELECTRIC COMPANY**  
 Commercial-Residential  
 ELECTRIC HEATING  
 WIRING & ELECTRICAL SUPPLIES  
 24 HR. EMERGENCY SERVICE LE 7-4437  
**LE 1-1133**  
 11112 Pacific Avenue

**Lawn Mowers Sharpened**  
 COMPLETE MOTOR SERVICE  
 ROTARY BLADES SHARPENED & BALANCED  
 New Blades For All Makes  
**JOHNSON SHOP**  
 5514 Pacific GR 4-7112

FOUNDATIONS, ADDITIONS, REMODELING. Free Estimates. Financing, no down payment. Ph. GR 4-7000 any time. 3ctf

**PHOTOS** \$x7, \$1 - 8x10, \$2 For Appointment, Phone GR 4-1986 - Open Evenings  
**FAMILY PORTRAIT STUDIO**  
 8411 South Park Ave.

ALTERATIONS and Dressmaking - LE 1-2560. 3c45

**Parkland Heating Co.**  
 All makes of furnaces for sale; Specializing in Williams OIL, O MATICS, OIL, GAS, Hot Water Installations. Electric Heat & Lighting Fixtures; Service; reasonable. 755 South 108th LEnox 7-4045.

**MCKINLEY HILL REALTY**  
 6311 McKinley Ave. GR 4-9579  
 Member of Multiple Listing Service and TACOMA REAL ESTATE BOARD

**M. L. S.**  
 MULTIPLE LISTING SERVICE \$3,250.00

**WANTED - QUICK DEAL**  
 CALL and let me show you this 3 bedroom rambler located on ground 75x100 in the heart of Parkland close to schools, shopping and transportation. Living room, dining room, fireplace attached garage. Reasonably priced at \$9,500. Call Edna Taylor, LE 7-8609 or LE 7-3556. SC10223

**ATTENTION, GI!**  
 CLOSING costs only on this nice 3 bedroom home situated on 1/2 acre of ground among the trees and off the road. Fine place for children; all fenced; garden planted. Call Edna Taylor, LE 7-8609 or LE 7-3556. AA9943

**Jennie L. Grodvis PARKLAND REALTY CO.**  
 Insurance of All Kinds  
 Notary Public  
 Est. in Parkland Since 1941  
 LE 7-8609 Office  
 302 Garfield St., Parkland  
 Jennie Grodvis, LE 1-1210  
 Edna Taylor, LE 7-3556  
 Thelma Scott - Yvonne White.  
 JU 8-8839 LE 7-0440

"Deal with the people who give you their personal attention!"

Member of Multiple Listing Service and Tacoma Real Estate Board

4 1/2% GI loan, corner lot. Three bedroom shake rambler with attached garage. Immediate possession by equity or refinance. 701 S. 90th. Mrs. Girk, GR 2-7734. 9ctf

**Rentals 10**  
 FOR RENT - 3 room house, utility and bath, 16112 C St. Spanaway; GR 2-8568. 10p44

2 BEDROOM side-by-side furnished duplex. 914 So. 119th. Parkland, \$95. SK 9-6001. 10ctf

3 BEDROOM house; stove included. Available July 1st, \$75 per month. 915 So. 99th. 10c43

**REPAIR SERVICE 11**  
 WASHING MACHINE PARTS - Largest stock in town. Repairing that pleases. BB's WASH SERVICE, 3727 So. G. GR 4-9409. 11ctf

**APPLIANCE REPAIR**  
 9606 Portland Avenue - LE 1-1155. 11ctf

**Farm Ads 13**  
 BULL SERVICE delivered \$5. Hauling, Tom Grove, Puyallup, TH 5-1890. 13ctf

**FOR SALE - Family Jersey cow**; 11020 A St. LE 7-4127. 13c43

**Situation Want 14**  
 RELIABLE high school girl wishes baby sitting. LE 7-3333 14c43

I'LL FINISH the job your husband started. Remodeling, repairs, and new work. TH 5-4002. 14c44

**WORK WANTED - Cabinet work** wanted, large or small job. Free estimates. LE 1-1021. 14ctf

WILL DO typewriting in my home. LE 1-0890. 14c43

**CHILD CARE** day, night, weekends. My home. 8428 South Yakima. GR 2-9391. 14ctf

**Miscellaneous 15**  
 FOR SALE - Universal range. Three burners, best offer. Call LE 7-0126. 15c43

OLD PAPERS for sale - 15 lbs. for 15c. Times Journal Pub. Co., 14620 Pacific Ave. 15p43

**FOR SALE - Shavings**, call after 4 p.m. TE 2-5238, Eatonville. 15ctf

**LEAVE Your Kodacolor or Ektachrome Film at QUALITY PHOTO SERVICE**  
 9818 Pacific Avenue  
 In At 10 a.m. - Out at 5 p.m. Same Day

**FOR SALE - 4 milking goats** and 1 3-year old ram. Suffolk. Mrs. J. Schutsky, Box 94, Alder. 15p43

you are invited to...

**Eye & Drive Hawaii**  
 and stay at the new **ebbide HOTELS**

TOUR INCLUDES:

- Round trip Airline transportation.
- Beautiful accommodations at the "Ebbide Hotel" in Waikiki.
- Royal Hawaiian "Double Let Greeting."
- Round trip transfers between the Airport and Ebbide Hotels.
- Room rates based on double occupancy.
- All Studio Apartments air-conditioned.
- "Hawaii Calls Broadcast" Show including lunch; also "Kodak Show."
- Continental Breakfast "At the Pool" daily.
- Mainlander Cavalcade.

3 DEPARTURES WEEKLY

**9 days \$239.95**  
 (11, 13 & 15 DAYS TOURS ALSO AVAILABLE)

PLUS...  
 \* Your own JEEP, for full stay with UNLIMITED MILEAGE. JOLLIES also available at no extra charge.

\*Departure and arrival dates are considered as a day call collect - DAVenport 1-4800 - or write 555 Ramona St., Palo Alto, California

**WORLD ENTERPRISES**

**July 4th Specials**  
 MAKE IT A BANG UP HOLIDAY WITH THE HELP OF THESE ITEMS

**THONGS** . . . All Sizes 49c  
**PICNIC SUPPLIES**  
 Paper Plates, Cups, Etc.  
**BEACH SUPPLIES**  
 Sun Hats, Snorkels, Sun Glasses, Sun Tan Lotion  
**Swimming Pool Sanitizer, Bathing Caps  
 Cameras - Film**

**WE WILL BE CLOSED THE 4TH!**  
**McAULEY SUMMIT DRUG**  
 Airport & Canyon 9 - 9 Week Days LE 7-0668

**4th SPECIALS**

**PICNIC TABLES**  
 6-Ft. Cedar . . . \$13.95  
 3-Ft. Cedar . . . \$5.95

**Trellises 6-Foot . . . 96¢**  
**Gate Arbors . . . 8.95**

**CLAM GUNS . . . 2.95**  
 Tides are Perfect NOW!  
**Extension SCREENS 95¢**  
 9x37

**Fuller's Exterior Paint . . . 5.45 GAL.**  
 California Redwood  
**Stain . . . 2.95 GAL.**

**VAUGHAN'S LUMBER**  
 PACIFIC AVE.  
 84TH AND PACIFIC AVE. GR 4-9515

**HOME IMPROVEMENT COUNCIL**  
 Better Your Living

**PARKLAND Super MARKET**  
 Formerly Kitchen's  
 12208 Pacific Avenue  
 PRICES EFFECTIVE THURSDAY THROUGH SUNDAYS EACH WEEK

### Firemen Attend State Convo

The annual conference of the Washington State Firemen's Association and the Washington State Association of Fire Chiefs was held last week in the Tri-Cities, Richland, Pasco and Kennewick. Attending from Midland were Mr. and Mrs. David McPherson, Mr. and Mrs. Leslie Roley, Mr. and Mrs. William Shanahan, Mr. and Mrs. Richard Johnson, Mr. and Mrs. Ted Wiersma, and Fred McPherson.

The firemen attended fire schools consisting of radio procedure, sprinkler operations, portable pumping, drafting, pumper tanker operations, and hydrant operations. There were 431 firemen taking part in the various drills. Especially interesting was an address given by Louis B. Bruno, Superintendent of Public Instruction in the State of Washington.

Our district is especially honored by having our Fire Chief, David McPherson, elected as Vice President of the Washington State Firemen's Association for the coming year. He has been a board member for several years.

The firemen's wives enjoyed a boat trip down the river to McNary Dam, and also a luncheon and style show.

The hospitality shown the many firemen at the Tri-Cities was very much appreciated by the group.

Visits California  
Mr. and Mrs. Philip Onan have just returned from a three-week motor trip to Southern California, in their new camper. They visited Mr. and Mrs. John Ferguson, of Modesto, California, former Auburn, Washington residents. They spent five days in Turlock State Park, near Fresno, California. They have had a wonderful trip, but they did encounter much rain!

Naval Training  
Ron Snowden, son of Mr. and Mrs. R. Howell Snowden, is now in naval training for the summer. Ron flew down to San Diego with 95 others from the area for a three-month recruit training session. He would enjoy hearing from his many friends at home, and his address is:  
Ronald H. Snowden, Serial No. 525-01-43 SR Co. No. 233, U.S. Naval Training Center San Diego 33, California.

Vacation Church School  
The Lutheran Church of Christ the King has just completed a very successful Vacation Church School, with over 125 children attending. The school was held for the past two weeks, between 12:30 and 3:00 p.m. Those who taught were: Mrs. Martin Kosmo and Mrs. Victor Nygard, superintendents. Primary Deut.: Mrs. Joe Stratton, Mrs. Fred Mackey, Mrs. Robert Hillstead, Mrs. Ted Nylund. Primary: Mrs. Har-

ry Hintz, Mrs. Richard Hansen, Mrs. Ralph Baird, Mrs. Lawrence Koval, Mrs. Lawrence Briske, Miss Geraldine Storlie, Kindergarten: Mrs. John Bishop, Mrs. Ed Hanson, Mrs. James Minion. 7th & 8th Grades: Pastor Robert Hillstead. Other helpers were: Marilyn Culbertson, Elaine Brisks, Janis Majala, and Naomi Dodge.

Weiner Roast  
A lively baseball game started off the events for the Cub Scouts of Midland's Pack No. 84, who held a weiner roast at the Sportsmen' Chateau, Wednesday evening, June 21st.

Those receiving Wolf Badges were: David Lee, Randy Loran, Brad Hillan, Tommy Theno, Dennis Zook, Dean Martineau, John Leavitt, Terry Bartelme, Steven Heblisch, Chas. Knapp, Brian Kazda, Anthony Craig, David Howell, and David Hofner. Receiving a Wolf Gold Arrow were: David Lee, Randy Loran, Dennis Zook, David Both, David Hofner, and Rodney Sylstad. Bear Badges went to Dennis Zook, Wally Hebrich, and Richard Newman. Frank Dentinger and Larry Both received Lion Badges and a Lion Gold Arrow went to Donny Becker.

The next activity of Pack No. 84 will be a potluck picnic at Wapato Park, the 20th of August. Complete plans for this event will be announced just previous to the date.

WCTU Picnic  
The Julia Holden W.C.T.U. met at the home of Mrs. Philip Onan, 309 East 90th, for a potluck picnic, on Tuesday, June 20th. Guests attending were: Mrs. Ella Burleson, Mrs. Mildred Bandy, Mrs. Cable, Mrs. August Elmquist, Mrs. Frank LaCoss, and Mrs. Donna Brown.

Bicycles Stolen  
Midland boys and girls should be particularly alert when parking their bicycles away from home. In the past few weeks, three thefts have taken place. Mark Hollan's bicycle was stolen from the bike rack at the Junior High the last day of school; David Gural's bike was taken when parked in front of

a church; and Gloria Metcalf's bike was taken from the front of a grocery store when she was inside for a very short time. Please be careful with your own bike and immediately report any suspicious actions you see to the closest adult. Let's see if we can't put a quick stop to these thefts.

Breaks Wrist  
Mike Metcalf, son of Mr. and Mrs. F. R. Metcalf, 2319 East Blackwell, fell and broke his wrist on Sunday, June 18th, and will be in a cast for six weeks.

Get Well Wishes  
We are sorry to report that Wendy Snowden has the chicken pox. Wendy is the daughter of Mr. and Mrs. Howie Snowden, 7924 Golden Glen.

Guests  
Now visiting at the home of Mr. and Mrs. John Hollan, and sons, Mark and Brad, is Mr. Hollan's mother, Mrs. Emily Hollan, and his sister and brother-in-law, Mr. and Mrs. Robert Trumble and son Tom from California.

Reporter—Mrs. Frank Gural.

### GOOD GOLF



### Control "Killer" Instinct

BY SAM SWING  
Distance with woods is desirable but walloping the ball with all your might won't achieve it. Distance is translated power which, in turn, is caused by clubhead speed.

A good rule is to hit all golf shots with about three-quarters of your strength. Clubhead speed is generated through the hands by the big muscles of the body—back, thighs, calves.

The hands must decelerate to co-ordinate with the slower, big body muscles. Practice this and the long, straight ball is yours.

Mr. Larry Hoffman, son of the Ed Hoffmans of E. 72nd, left Tuesday for Lee's Summit, Missouri, where he will attend the Youth of Unity conference held at Unity Village there.

Miss Janice Jackson of Bentley Road is visiting her aunt in Helena, Montana.

Mr. and Mrs. Everett Peak entertained Mr. and Mrs. L. A. Brown from South America last week. The Browns have been making a world tour but have agreed that the Pacific Northwest has just about everything. After three days of sightseeing they left for Lake Louise, Vancouver, and then to New Orleans.

Mrs. Grace Rogers, with Nephew Brian Samuelson and granddaughter Vicki Butler, left for Vancouver for a few days of sightseeing.

Mrs. Grace Schmalz of White Road is back home from the hospital after undergoing surgery on her leg which was broken some time ago.

Mr. Lewis Hoffman of Canyon Road suffered a heart attack last Sunday and is in the hospital.

### Blooming Time



Even without a clock, it's a cinch to tell the time. It's TULIP flowers bloom impressively near the famed clock-tower of Big Ben.

### Local Resident Returns From Two Week Vacation Trip

Mrs. Merna Dickson of East 72nd returned from a two week trip to Munsie, Indiana, where she visited her daughter and son-in-law, Mr. and Mrs. Chas. Kizer, and little granddaughter Julie. She traveled there by plane, but returned in a much more exciting way, by helicopter over Chicago and by Jet home with a little engine trouble thrown in for kicks.

Delegates  
Mr. Larry Hoffman, son of the Ed Hoffmans of E. 72nd, left Tuesday for Lee's Summit, Missouri, where he will attend the Youth of Unity conference held at Unity Village there.

Miss Janice Jackson of Bentley Road is visiting her aunt in Helena, Montana.

Mr. and Mrs. Everett Peak entertained Mr. and Mrs. L. A. Brown from South America last week. The Browns have been making a world tour but have agreed that the Pacific Northwest has just about everything. After three days of sightseeing they left for Lake Louise, Vancouver, and then to New Orleans.

Mrs. Grace Rogers, with Nephew Brian Samuelson and granddaughter Vicki Butler, left for Vancouver for a few days of sightseeing.

Mrs. Grace Schmalz of White Road is back home from the hospital after undergoing surgery on her leg which was broken some time ago.

Mr. Lewis Hoffman of Canyon Road suffered a heart attack last Sunday and is in the hospital.

### WEEKLY CROSSWORD PUZZLE

**Songstress**

**Here's the Answer**

**HORIZONTAL**  
16 Depicted singer  
9 She is on the waves  
12 Harangue  
13 Make a mistake  
14 Firmament  
15 Scottish cap  
16 Extensive plain (Sp.)  
18 Observe  
19 Trumpet  
20 Mouth  
21 Essential being  
23 Anatomical tissue  
25 Greek god of war  
28 Froster, as of cakes  
29 Chief god of Memphis  
30 Symbol for sodium  
31 Proceed  
32 Army order (ab.)  
33 Behold!  
34 Low haunts  
37 Encourage  
39 Elder son of Isaac (Bib.)  
40 Go by  
41 Drop of eye fluid  
44 Waste allowance  
46 Capuchin monkey  
48 Harum  
50 British money of account  
53 Philippine peasant  
54 Compass point  
55 Fork prongs  
57 Scottish slyder

**VERTICAL**  
58 Pewter coin of Thailand  
59 Relieves  
1 Cooking utensil  
2 Age  
3 Hazard  
4 Great (ab.)  
5 Shout  
6 Meadow  
7 Sea eagle  
8 God of love  
9 Declare  
10 Eisenhower's nickname  
11 Cereal grass  
17 Lines (ab.)  
20 Organ of hearing  
22 Tree fluid  
23 Philippic  
24 Reverberates  
26 Birds of prey  
27 Discharges, as a weapon  
35 Country  
36 Take court action against  
37 Mimic  
38 Conductors' rods  
42 On the ocean  
43 Pause  
44 Symbol for tantalum  
45 Ceremony  
46 Musical direction  
47 Swiss river  
49 Rot flax by exposure  
51 Scottish sheepfold  
52 Onager  
56 Medical suffix

**For a Richer Fuller Life Year Round Read!**

**AUTOMATIC TRANSMISSIONS Complete**  
Overhaul  
FORDOMATIC 51-55 ..\$100  
MERCOMATIC 55-60 ..\$135  
POWERGLIDE 50-52 ..\$ 65  
53-60 ..\$ 95  
POWER FLIGHT .....\$ 75  
TORQUE FLITE .....\$ 85  
HYDRAMATIC 50-54 ..\$100  
55-60 ..\$140

**Sheridan Motors**  
LE 7-3340  
10203 So. Sheridan

Lucky Nelson, son of Mr. and Mrs. Herman Nelson of E. 84th, who recently graduated from Franklin Pierce, is our latest to join the Navy. A farewell party was held for him by Mr. and Mrs. Tom Swenson.

Happy Birthday  
Mrs. Frances Rice of Fairview Road celebrated her birthday last week at a dinner at the home of her son and daughter-in-law, Mr. and Mrs. Albert Rice of Tacoma. There were no candles on the cake.

**Clover Creek Baptist Church**  
Military and Noble Road  
Three Miles East of Pacific On 159th Street

Sunday School — 9:45 a.m.  
Morning Service — 11:00 a.m.  
Evening Service — 7:00 p.m.  
Young People — 6:00 p.m.

Lyle Bramblet, pastor  
Phone LE 7-6421

**PIERCE COUNTY REUSE CO.**  
Weekly Garbage Collections  
Phone LE 7-3688

**WE MAKE LUMBER**  
LUMBER GLASS HARDWARE SHINGLES ROOFING FIR SAWDUST  
GET OUR PRICE FIRST ON ECONOMY GRADE LUMBER  
**Basket Lumber**  
9701 Portland Avenue LE 7-8663

**LINOLEUM, FORMICA, CARPETS**  
FREE ESTIMATES  
**PACIFIC FLOOR COVERING**  
131st & Pacific LE 7-4545

Radio Batteries & Tubes  
TESTED FREE  
Open Til 9 p.m.  
**Pawn Television**  
8326 So. Park Ave. GR 2-2060

### Son Born To Roy Couple

Mr. and Mrs. Charles F. Larson of Roy are parents of a boy, Andrew James, born June 12 and weighing 6 lbs. 9 1/2 oz. Grandparents of the little boy are Mr. and Mrs. Al Larson of Roy, Great Grandparents are Mr. and Mrs. John Fredrickson of Parkland and Mrs. Anna Berg of Roy.

**Golf Champ**  
Congratulations to Mrs. Henry (Barbara) Hulscher of Lacamas on winning the Tacoma Women's Golf Championship. This is the sixth one for her.

**Now Home**  
Mrs. Charles Mangan is now at home after spending several days in the hospital for treatment of a serious back injury received in an accident at her home last week. She will have to spend some time in a brace but is very happy to be at home again.

**4-H**  
The I. L. and Elmer Larson farm was the scene of a judg-

**General Sheet Metal Work**  
Special Attention to Special Equipment  
**RAU MFG. CO.**  
LEnoX 7-7372  
14114 Pacific Avenue

TV INSTALLATION AND REPAIRS

**A.B.C. ELECTRONICS**  
Garfield & C Street LE 7-4900

Guaranteed WORK LOW RATES

ing practice for Pierce County 4-Hers last Thursday. More than 50 young people turned out to get pointers on judging from Jack Crawford, County Agent, and to judge three classes of jersey cows. This group was joined by a group from Thurston County and were in turn invited to judge Guernseys with the Thurston County group this week.

Many local 4-H members showed at Riverside Fair over the week end.  
Placings will be reported by club reporters next week.  
Reporter, Martha Berggren.

### Have a safe, sane Fourth

**RENTAL TOOLS**  
GARDEN TILLER  
POWER MOWER  
BELT HAND SANDERS  
OSCILLATING HAND SANDERS  
SABER SAWS  
PAINT SPRAYERS  
RUG SHAMPOO MACHINE  
FLOOR SANDERS  
POWER MOWER SHARPENING & REPAIR  
WINDOW GLASS INSTALLED  
Small Appliance Repair  
**PARKLAND HARDWARE**  
12169 Pacific Ave. LE 7-3171

**DRUG FACTS**  
GEE, HE'S GOT A LOT OF WEIGHT, MOM! HE MUST HAVE BOUGHT COD LIVER OIL AND EVERYTHING FROM **ASHMORE DRUG**  
ASHMORE'S SPANAWAY DRUG  
Phone LE 7-5993  
165th & PACIFIC AVE. SPANAWAY, WASH.

**NO MORE AFTER THIS YEAR!**

# FIREWORKS

FOR THE 4th of JULY

**Final Weekend! Shop Early. Items Going Fast. Supplies Limited.**

Zebra top quality name brand items . . . Firecrackers, Aerial Bombs, Sky Rockets, Roman Candles, Floral Star Shells, Buzz Bombs . . . and many other spectacular ground and aerial display items—available for the last time.

**RACKET Box**  
NOISY FIREWORKS ASSORTMENT  
5.95

**YANKEE DOODLE KIT**  
32 different items in this family package assortment  
5.95

**ROY** Stand operated by ROY RODEO ASSOCIATION  
Other Zebra Stands at Milton on Highway 99  
All sales in conformity to state law. Check for local restrictions.

**PIERCE COUNTY REUSE CO.**  
Weekly Garbage Collections  
Phone LE 7-3688

**WE MAKE LUMBER**  
LUMBER GLASS HARDWARE SHINGLES ROOFING FIR SAWDUST  
GET OUR PRICE FIRST ON ECONOMY GRADE LUMBER  
**Basket Lumber**  
9701 Portland Avenue LE 7-8663

**LINOLEUM, FORMICA, CARPETS**  
FREE ESTIMATES  
**PACIFIC FLOOR COVERING**  
131st & Pacific LE 7-4545

Radio Batteries & Tubes  
TESTED FREE  
Open Til 9 p.m.  
**Pawn Television**  
8326 So. Park Ave. GR 2-2060

# FREE ELEPHANT RIDES

At

## SAFeway

84th & Pacific  
SATURDAY JULY 1  
9 AM TO 6 PM

OPEN EVENINGS TIL 9:00 P.M.

# SILER'S

**BRING YOU — THE TV BUY OF THE YEAR**

## MOTOROLA

### 1961 23" CONSOLE TV

- Built-In Swivel Base For Any Angle TV Viewing.
- Two Speakers For Rich Clear Tone.
- Super Golden M Chassis with 20,000 Volts of Picture Power
- Golden Tube Sentry.
- New Custom-Matic Tuner Extends TV Reception Up To 35%.
- Low low down payment.
- As low as \$3.75 per week.
- No payment til September.
- Trade-in allowance on your old set.

23K29

**Plus** THIS GREAT OFFER  
Purchase A 1961 23" Motorola TV At Siler's  
And Take Home A 19" Rotary Lawn Mower

**Briggs & Stratton Powered With Mulch Attachment**

# \$888

FOR ONLY

Siler's trucks radio dispatched for fast efficient service.

# NOW EXCLUSIVE At SILER'S

- ★ 1 Yr. Warranty on Labor Plus
- ★ 1 Yr. Warranty on Parts
- ★ 1 Yr. Warranty on Picture Tube
- ★ 5 Yr. Warranty on Tube Sentry

# SILER'S

11230 PACIFIC AVE. LE 7-8634

OPEN EVENINGS TIL 9:00 P.M.

FACTORY TRAINED SERVICE PERSONNEL