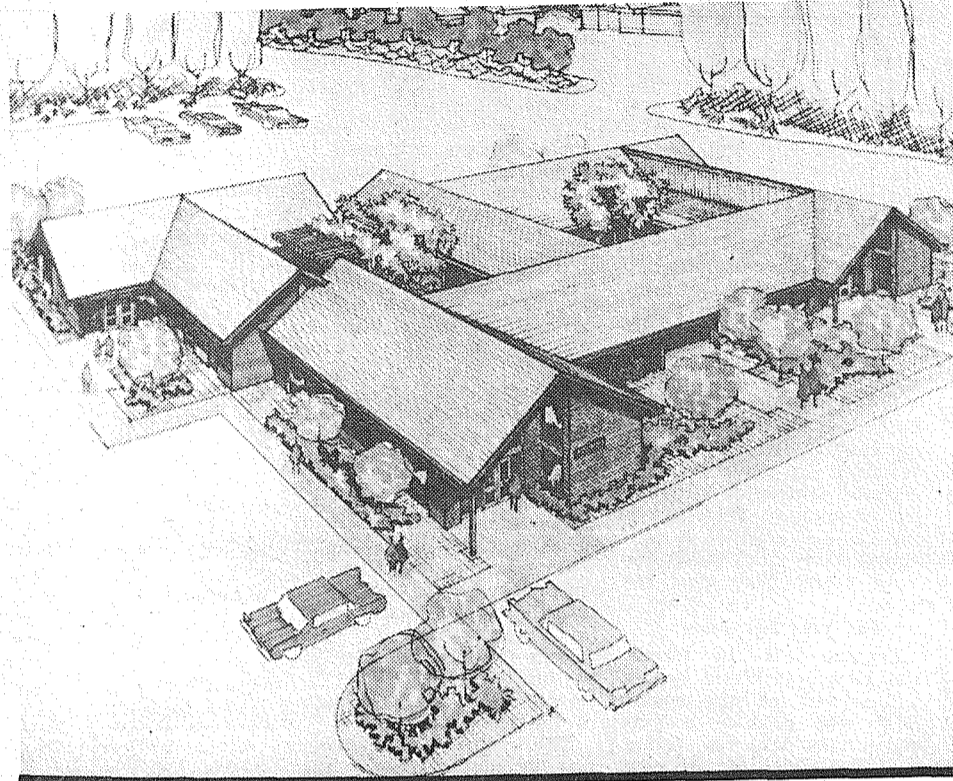


Pierce County Herald and

The TIMES JOURNAL

Vol. 25 No. 29 30

July 24, 1969



Single Copy

15¢

New Office Building Under Construction



A new \$250,000 professional office building is now under construction at 176th and Pacific Avenue, Verge Inc. announced late last week.

The 9,318 square foot structure will offer space for professional type businesses, and house the business enterprises of Ralph Brink. The building is being constructed next to the Puget Sound National Bank Spanaway Branch.

Brink, one of the owners of Verge Inc., said long range planning calls for a second shopping center in Spanaway to be built on property behind the bank and new office building. Development of a shopping center is already underway at Military Road and Pacific Avenue.

Ground was broken for the office building last week.

Editorial

Loveland Members Deserve More Facts

Despite earlier denials that a plan to dissolve Loveland Mutual and sell its assets to the City of Tacoma was in the immediate offering, a Request for Dissolution was received by member-owners through the mail late last week.

When the Times Journal asked manager and secretary Art Crate of the proposed action July 8, he said he knew of "no immediate plan to submit such a proposal to the membership." Yet the accompanying letter to the request submitted over Crate's signature was dated July 7, 1969. The denial was published in the July 10 issue of the paper.

Reaction to the proposal by members ranged from shock to one of hopeful expectation. However, the Times Journal found that many are questioning such a move without being furnished more detailed information.

The request and accompanying letter stated that each membership will receive \$425 and a guarantee that the present rate structure of Loveland would be maintained for a period of 5 years. Although the letter indicated the board of directors had considered alternatives, it did not specify which alternatives had come under their consideration. The letter did not reveal the total amount of money Tacoma would pay; did not outline what the liquidation and sale charges would be; nor did it explain how the amount of \$425 per membership was determined.

The Times Journal learned earlier this week that a general rule of thumb measurement for determining the value of a public utility is to multiply its annual income by five. Using this formula, members can get some idea of what their membership is worth to a prospective purchaser of Loveland Mutual by multiplying their monthly electrical bill by 12, then multiplying that product by 5.

For example, if the member's monthly electrical bill averages \$17 monthly, then to find the annual rate he would multiply by 12. The \$204 he pays annually for service, times 5, would mean his membership is worth \$1,020 to a prospective purchaser of his mutual.

Some members who expressed surprise at the apparent low figure of \$425 per member, were quick to point out that a recent proposal by Loveland for customers of a private power company in their area was based on \$1,000 per meter. This figure was confirmed as a fair estimate by the City of Tacoma.

The Times Journal agrees with those members who feel that member-owners should be given more details on the possible sale, and in a special shareholder's meeting. It is impossible for a shareholder to make a sound decision either for or against dissolution without knowing what outside evaluations have been made to determine if the selling price is good or bad. And how can one vote to sell his company when he has not been advised what the selling price will be?

A mutual power company is solely owned by the members, with each member owning property serviced by the mutual, receiving an equal share. The board of directors and manager are merely elected or hired to carry out the wishes of the membership.

In cases of requests for dissolution, it would appear that members deserve a better explanation of the present position of their company, what alternatives are available to them, and be filled-in with all the facts regarding possible liquidation of their assets. This would include the opinions of outside experts to determine if the sales price is fair and equitable.

Members who sign what amounts to a ballot for dissolution without demanding more information could be doing themselves and their fellow shareholders a financial disservice.

County To Double

OLYMPIA - Population in the central Puget Sound region will nearly double by 1990, and more than twice as many jobs as are available now will be needed by that date, the Puget Sound Governmental Conference forecast in a report issued last week.

Prepared by Donald R. Petrick, the report is part of the conference's five-year work program for planning and the first in a series of technical papers. It covers King, Kitsap, Pierce and Snohomish counties, with data by districts.

Regional population is forecast at 3,102,000 by 1990, up 97 per cent from 1961's 1,572,721. Jobs will increase from 594,000 to 1,202,000 or 102 per cent, the report says.

In Pierce County population will rise from 319,000 to 443,000 in 1975 and 618,000 in 1990, a rise of 94 per cent. Greatest population growth is predicted in the Lake Tapps, and Lakewood areas, and east of Browns Point, with the greatest job growth coming in business and port districts.



STATE TROOPER Carl Heigel takes time from tending the injuries of Mary Dedrick, 32, of 1521 15th Ave. Seattle (lying in the background talking with Trooper Weeks) to investigate the roll over of this 1969 Simca Sunday on the Mountain Highway. The vehicle, driven by Raymond A. Oteru, 23, of 1627 15th Ave., Seattle, was southbound near Johnson's Corner when it swerved to avoid an animal, skidded across the road, plowed up the ditch and came to rest on its side. Mrs. Dedrick was taken to the hospital with back injuries.



NEW BUILDINGS at Spanaway Grade School are proceeding on schedule according to Bethel Assistant Superintendent Virgil Baker. Slated for occupancy next year the new brick building will replace the old brick structure which has been condemned by both the State Fire Marshal and the County Health Department.

Taxpayer Revolt Brews In County

See Page Two



NEWLYWEDS. Mr. and Mrs. Jack Brown are pictured leaving for a short honeymoon following their wedding July 18 at the groom's Shady Acres home. The bride is the former Darlene Sherwood. He is publisher of the Northwest Flyer and a former publisher of The Times Journal.

HYGRADE
SMOKED
**PICNIC
HAMS**
48^c_{lb}

LEAN TRIMMED
**PORK
STEAK**
68^c_{lb}

ARMOUR STAR
**LUNCH
MEATS**
38^c_{PKG.}

U.S.D.A.
INSPECTED
**GAME
HENS**
48^c_{lb}

COUNTRY-STYLE
PORK SAUSAGE
48^c_{lb}

This Week's Low, Low Meat Prices

SLICED PICNIC HAMS.....lb. 55¢	MEXICAN BURRITOS.....lb. 65¢
POLISH or BOLO. RINGS...lb. 89¢	CHOPPED SIRLOIN.....lb. 89¢
LEG O' LAMB.....lb. 95¢	PORK SPARERIBS.....lb. 59¢
GRADE "A" FISH STICKS...lb. 59¢	SMOKED PORK CHOPS...lb. 1.19
IRISH CORNED BEEF.....lb. 89¢	FILLET OF SOLE.....lb. 78¢

BONELESS
CHUCK ROAST
96^c_{lb}

HI HO MARGARINE 6 lbs./1⁰⁰

25 lbs. U AND I
SUGAR 2⁷⁹

HI HO-QUART
SALAD DRESSING 39^c

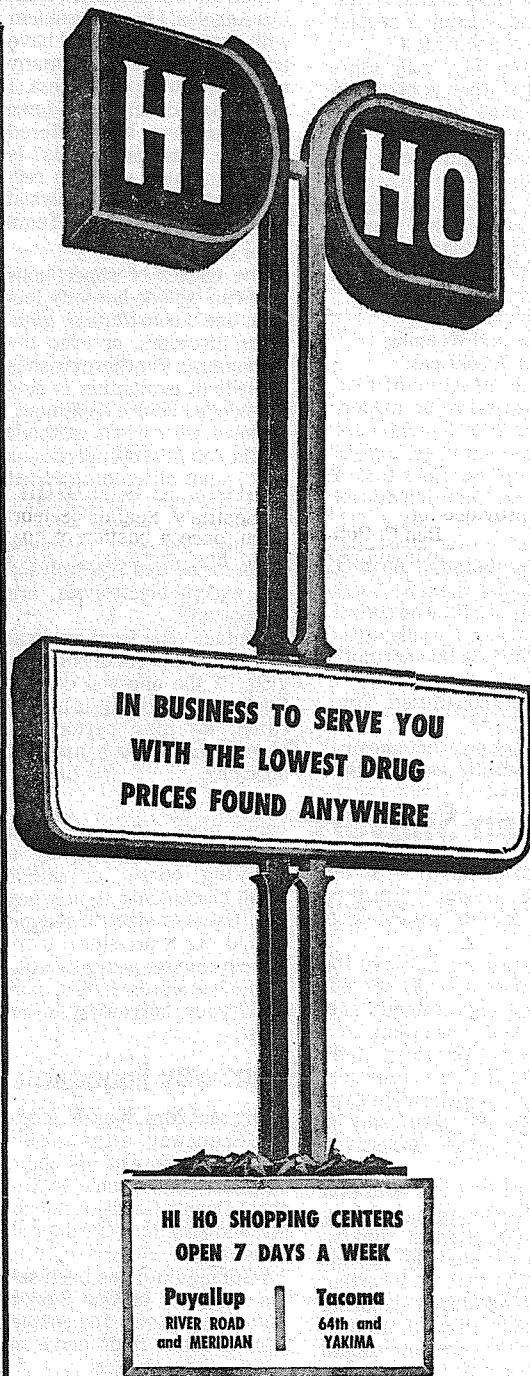
6-oz. FROZEN MINUTE MAID
LEMONADE 10^c_{ea}

38-oz. DUCHESS
PEANUT BUTTER 89^c

22-OZ. HI HO SYRUP... 3/1.00

1/2 GALLON
PUREX 29^c

4-PACK, SCOTT
TOILET TISSUE 3/89^c



LOWEST DRUG PRICES ANYWHERE

REG. 1.49, 100s
BUFFERIN 79^c

REG. 1.19
LISTERINE 59^c

REG. 1.09
BRECK 59^c
CREME RINSE FOR BLONDES

Reg. 1.29
Bag **Bubble Bath** 69^c

Reg. 2.39
21-oz. Can **Lysol Spray**..... 1²⁹

REG. 73¢-2-OZ. SQUEEZE BOTTLE
BACTINE 49^c

REG. 98¢ TERRY CLOTH
HALF APRON 66^c

Prices Effective Now through July 26th

VALLEY GROWN
BLUEBERRIES
29^c_{CUP}

LOCAL
GREEN BEANS
15^c_{lb}

CHIQUITA
BANANAS
10^c_{lb}

VALLEY GROWN
ZUCCHINI SQUASH
10^c_{lb}

WOMEN'S WORLD

When Beauty Aids Go Amiss

By Louise Chase
Washington, D.C. (WNMS) — The search for beauty can send a hypersensitive woman straight to a doctor's office rather than to a triumphant appearance.

A nationwide poll of dermatologists reveals that antibacterial soaps are the most frequent cause of skin-deep irritations, followed by astringents and sprays, nail products, lipsticks and eye shadows. More rarely mentioned are troublesome beauty preparations are medicated make-up preparations, anti-wrinkle creams, eye liners, and mascara.

Dr. Paul Lazar, assistant professor of dermatology at Northwestern University Medical School, who conducted the survey, emphasized that most cosmetics are perfectly safe. But some can cause unexpected reactions among vulnerable women — triggering off an allergy or oversensitizing skin to sunlight.

Some beauty preparations have contained chemicals that irritate skin on contact but most of these have been removed from the market. Dr. Lazar, in a report to a Conference on Evaluation of Safety of Cosmetics, cited chemicals once used in deodorant sticks, nail hardeners, and soaps.

Race Against Fashion
"The problem," said Dr. Lazar, "is that we have to

race to keep up. As new beauty products are developed, new irritants may appear. Skin disorders change as cosmetic fashions change."

Nor is it always easy to trace the source of the trouble. "Your skin can be affected by something you've eaten," Dr. Lazar ruefully pointed out. Proper testing may require repeated visits to the physician and — at the least — applying the suspected cosmetic three times daily on a patch of skin for at least two days. A single application is seldom concentrated enough to provoke a reaction.

Although only a small proportion of women and men break out, the number of cosmetic-users is so vast that thousands of people are affected by one cosmetic or another.

"We spend \$3.5 billion dollars a year on these beauty preparations," said Dr. Lazar. "It is impossible to determine the true incidence of reaction because only patients with severe reactions seek medical advice."

Even Purity Damages

Even the purest substances can prove damaging, the dermatologist pointed out. Baby oil mixed with tincture of iodine, used by teenagers as a suntan lotion, sometimes causes an acne-like reaction. Too energetic rubbing with an oily lotion can irritate hair follicles, particularly among hairy men.

From his own practice, Dr. Lazar also warned against the careless use of aerosol deodorants. Only the most limited area should be sprayed, he said.

the Second Forty

by Margaret Brookfield

A FORUM ABOUT MATURE WOMEN

Fatherless Son

Dear Miss Brookfield:
I am 45, widowed and the mother of two teenagers, one a boy. After the death of my husband over a year ago, my son seems to be changing. His grades have slipped, he has dropped out of group activities, and when I try to talk to him now, he acts as if he has an awful chip on his shoulder. Have you any suggestions?

F.D., Cudahy, Wis.

Dear F.D.:

Since a boy usually models himself on his father, it is difficult for a mother to assume a dual parental role. In doing so, you may not be able to give him the mothering that you are best qualified to give. Your son may need male companionship — an uncle, a family friend, a grandparent, a college student, a group leader, or a school teacher. It is essential that this man be someone whom the child trusts, for he will be undertaking a crucial role in your boy's life.

If, as you say, your son's loss of his father is having a detrimental effect on his school work, you should talk to the school authorities, explaining the family situation. They, too, can be most helpful to your son at this crucial time in his development, further complicated by the loss of a father.

Alone and Weeping

Dear Miss Brookfield:
Isn't the mother-of-the-bride supposed to be moderately happy? My daughter got married a month ago. Admittedly the preparations took a lot out of me, but I find myself either crying or finding excuses to put off the household chores. Sometimes I haven't even prepared dinner for my husband by the time he comes home. I guess I really miss my daughter. Is this normal? Will I get over it?

C.W., Corpus Christi, Tex.
Dear C.W.:
Your reaction is not uncommon. For many women, the

changes in the family — children going off to college or getting married — occur at a time when their body is also undergoing changes: the onset of the menopause. With the children grown and no longer requiring full attention, some women experience a sense of uselessness and emptiness. Get yourself involved in community activities or develop a hobby that once interested you.

Before you do, see your doctor. If your symptoms are caused by the menopause, medication can help. With the onset of the menopause, the body produces less of the hormone, estrogen. This change, in some women, gives rise to a variety of complaints. If so, estrogen replacement therapy can relieve many of the symptoms.

Superfluous Hair

Dear Miss Brookfield:
Like the woman, B.K., from Los Angeles, I have a problem with excess facial hair. I have tried to remove it by many means but without success. I even visited an out-of-town plastic surgeon, but he offered no hope. What causes this? Is there anything you can recommend besides electrolysis?

M.M., Gainesboro, Tenn.

Dear M.M.:

The causes of superfluous hair can include heredity factors, one's constitution, glandular disorders, or even the menopause. For these reasons a medical evaluation is recommended before treatment.

There are various methods for the removal of superfluous hair — not all recommended for facial hair. These include tweezing, cutting, waxing, shaving, abrasion methods, depilatories and electrolysis. All, except electrolysis, are temporary.

Contact your local medical society for a list of dermatologists. If the one you consult thinks that electrolysis is indicated, he may perform it himself or suggest a qualified operator.

Women Shavers

Chicago (WNMS) — If the truth be known, beardless shavers are as American as apple pie.

Among women between the ages of 14 and 44, 98 percent shave their legs or under their arms or both, according to a report by an American Medical Association committee. But there's a generation gap: In the over-45 group, only 70 percent remove "excessive" hair.

Dermatologists note that women frequently use dainty rather than efficient shaving methods — shaving dry or using only water, inserting dull cast-off blades, ignoring bloody nicks. Instead, the doctors suggest, women should

copy male shaving techniques, including the use of shaving cream or lather, fresh blades, and styptic pencils. Users of electric shavers should use a pre-shave lotion to help remove perspiration.

In other words, ladies, don't limit your borrowing to razors!

Spanaway Engagement

Mr. and Mrs. Verne Johnson, Spanaway, announced the engagement of their daughter Cheri Daine to Michael Dennis Gardner, son of Mr. and Mrs. Jack Gardner of Spanaway.

Wedding date has been set for August 9 at Our Savior Lutheran Church. The couple plan to make their home in Lincoln City, Oregon.

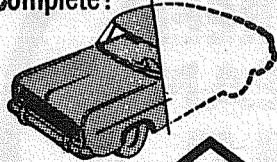
DANCE

Featuring
Ray and Stel
HARRIS
6 Nights Weekly

JOLLY ROGER

3724 E 112th
LE 1-2223

Is the Profile of Protection
ON YOUR AUTOMOBILE
Complete?



You'll Find Out
if You Visit Us



ASHFORD WILSON
INSURANCE
12201 Pacific Ave.
(Parkland Square) LE 7-8647

Hiegels' Given Airport Farewell

Over 20 friends tendered Mr. and Mrs. Robert Hiegel a special farewell Sunday as the couple boarded an airliner at Seattle-Tacoma Airport bound for Honolulu.

Upon arrival, he will take a position with the Federal Government. Robert attended Bethel High School and is a 1969 graduate of the University of Washington.

He is the son of Mr. and Mrs. Herb Hiegel of 8009 South Yakima.

PLU Receives \$5000

Pacific Lutheran University is the recipient of a \$5,000 gift from the Seattle Foundation to be applied toward the construction of the new PLU University Center.

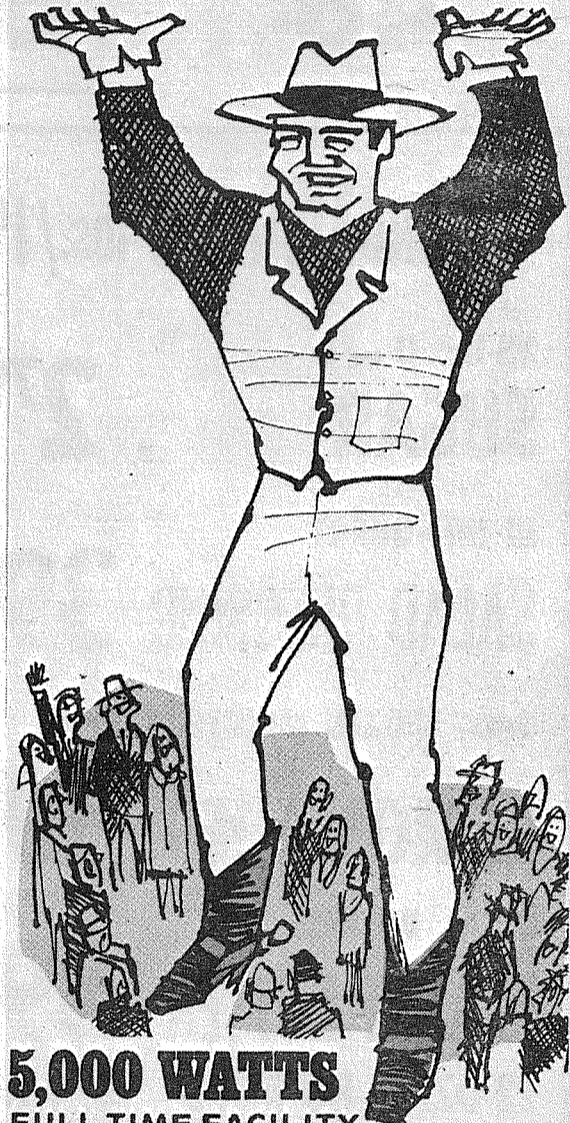
PLU was one of several agencies receiving grants from the foundation, which announced nearly \$60,000 in grants this week.

The University Center is presently under construction at PLU, with completion set for August 1970. The \$3.1 million building will house food services, bookstore, recreation rooms and a variety of multi-purpose rooms.

KMO

1360 kc

THE COUNTRY GIANT
TACOMA FT. LEWIS McCHORD SEATTLE



5,000 WATTS
FULL TIME FACILITY

Pierce County's Only

24 HOUR

Country and Western Station

* County News * Tacoma News * High School Sports

Join
Ed Dollar — the
Country Giant's own
"Jolly Giant" each
afternoon for de-
lightful — entertain-
ing conversation ...
country music at its
best ... interspersed
with the latest in
news — weather and
sports. Designed to
keep you amused
and informed.



Every Sunday Morning
Listen To "REVIVAL TIME"
9-9:30 a.m. KMO - 1360 KC

KMO RADIO 1360 AM

An Endowed Care Cemetery



Fir Lane Memorial Park
Dryer Fir Lane Chapel

924 East 176th Street
Spanaway

LE 1-5500

INSURANCE

Military - Home - Business

LE 7-4904

Auto Fire Life Bonds

IRENE CLEMENS

Agency — Parkland
10329 Pacific Ave.



HARDWARE
&
GLASS

8012 South
Tacoma Way



Weather Protection

4 Mil Only

1^c
Sq. Ft.

Door Mirrors

NOW Only

2⁸⁸

our **CANCELLED** "200"

your new **"200"** account

is ready and it's

FREE!

If you'd like a **FREE CHECKING ACCOUNT...**
and if you'll stop in at our Bank and advise us that you
wish to maintain a balance of \$200 or more...we'll open
a **FREE "200" Checking Account for you NOW!**

Bank of Washington is tickled to oblige! Fact of the matter is, we're an aggressive bank when it comes to bigger and better benefits for our customers. Always have been. If you want a **FREE CHECKING ACCOUNT**, just let us know—now!

Our "200" account is available to any individual who maintains a \$200 balance. If you slip and go below \$200, we'll charge only a \$2 fee that month. If you don't, it's **ALL FREE** every month! Our "200" account is optional; regular or budget accounts are always available to those who want them.

AT YOUR SERVICE: PARKLAND BANKING CENTER

BANK OF WASHINGTON

NATIONAL BANK OF WASHINGTON / TACOMA, WASHINGTON / MEMBER FEDERAL DEPOSIT INSURANCE CORPORATION

Over The Fence Rail



By PEGGY PLUMMER

Events for this week end are as follows:
Deer Island Rodeo, St. Helens, Oregon. July 26th and 27th evening performances only.

Clatsop Cty. (NRA) Gearhart, Ore. July 26th and 27th.

Washington Pony Breeders Show, Horsemen's Sports Arena No. 1, Spanaway, Wash. July 26th.

Columbia River Appaloosa Club's All Breed Game and Performance Show, Twin City Rodeo Grounds, Washougal, Wash. July 27th.

Okanogan Empire Q.H. Show, Cty. Fairgrounds, Okanogan, Wash. July 27th.

King Cty Jr. Rodeo, Enumclaw, Wash. July 27th.

Woodland, Wash. Jr. Rodeo, July 27th.

Millie Peterson, formerly of Spanaway, is now opening a girls ranch the first of August. Millie is now residing at the Munuka Valley Ranch located in Graham, Wn. For more information call Millie at VI 7-2887 or write at Rt. 1, Box 185, Graham, Wash. 98338.

Millie informed me that she plans to have a busy schedule for the girls. Among many of the activities, horseback riding, lessons, horse shows, Junior Rodeos, Trail riding and camping out are all planned for the girls.

Since it is late in the season Millie plans to have a small group of girls and hopes next year she will be able to have her Girls Ranch in full swing.

If you have a young daughter who loves horses and riding sign her up for the Munuka Valley Ranch show as the reservations are limited.

Here is some general information about an upcoming Pony Show for next month. The Welsh Pony Association of Washington is having a show and the entries close August 1 so I thought it best to publish this now. Post entries accepted until one hour before show time at double entry fees.

ALL PONY SHOW August 16, 1969

Tacoma Unit No. 1 Sportsman Arena, Tacoma
Located on 176th Street, one mile east of Pacific Avenue
JUDGE: Mrs. Isabelle Moe, Kirkland, Washington,
Halter and Performance; Mrs. Linda Stover, Game Classes

SHOW MANAGER: Paul Long, 35847 50th Avenue S., Auburn, Washington
SHOW SECRETARY: Mrs. C. G. Stillman, 11408 Gravelly Lake Drive SW, Tacoma, Washington. JU 8-4931.

REGISTERED WELSH HALTER CLASSES
9:00 AM August 16, 1969

Entry Fee — \$1.00 each class

CLASS:

1. STALLIONS, 4 years old and older.
2. STALLIONS, 3 years old
3. STALLIONS, 2 years old
4. STALLIONS, 1 year old
5. STALLIONS, foal of current year
6. STALLIONS, Senior Champion and Reserve. The 1st and 2nd place winners in Classes 1 and 2 are to compete.
7. STALLIONS, Junior Champion and Reserve. The 1st and 2nd place winners in Classes 3, 4, and 5 are to compete.
8. STALLIONS, Grand Champion and Reserve. The 1st and 2nd place winners in Classes 6 and 7 are to compete.
9. MARES, 4 years old and older
10. MARES, 3 years old
11. MARES, 2 years old
12. MARES, 1 year old

13. MARES, foal of current year.
14. MARES, Senior Champion and Reserve. The 1st and 2nd place winners in Classes 9 and 10 are to compete.
15. MARES, Junior Champion and Reserve. The 1st and 2nd place winners in Classes 11, 12 and 13 are to compete.
16. MARES, Grand Champion and Reserve. The 1st and 2nd place winners in Classes 14 and 15 are to compete.
17. GELDINGS, all ages.
18. PRODUCE-OF-DAM (Combined ownership permitted) 2 animals.
19. GET-OF-SIRE (Combined ownership permitted) 3 animals.
20. FITTING AND SHOWING, children 12 years and younger.
21. FITTING AND SHOWING, children 13 through 18 years of age.

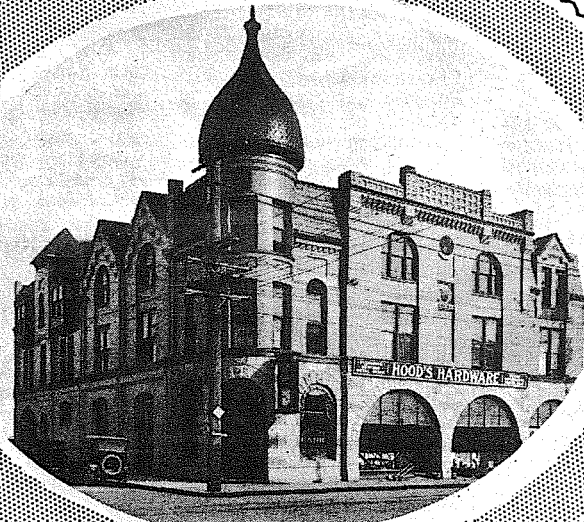
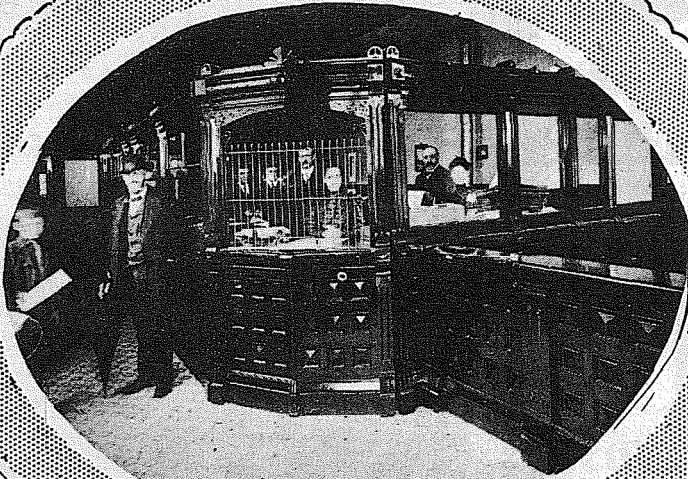
PERFORMANCE SHOW
1:00 PM August 16, 1969

Entry Fee — \$1.50

EVENT:

1. **Costume Class**, Ponies 52 inches and under, riders 17 and under. To be judged on originality, cleverness, attractiveness and manner presented. Pony mounted, led or driven.
2. **Junior Welsh Roadster**, 50" and under, pony 4 years old and under. Reg. req. To be shown to a miniature two-wheeled bike. Driver to wear stable colors. To be shown at a jog trot, road gait, and then at speed. To be judged on breed type, performance, manners, style and speed in form.
3. **Novice Western Equitation**, 52" and under. Rider never to have won a blue ribbon in equitation. Riders 17 and under. No cross entries with Events 4 and 8.
4. **Western Equitation**, 52" and under. Riders 17 and under. No cross entries with Events 3 and 8.
5. **Lead-line Pony**, 52" and under. To be ridden by a child 6 years or under and led by a person capable of handling the pony. To be judged 40 per cent on the child's attire, English or Western, 30 per cent on manners of the pony, and 30 per cent on suitability of pony to rider.
6. **Pole Bending**, 52" and under. Riders 17 and under.

(Continued on Page 7)



ONE PIONEER SALUTES ANOTHER

EZRA
MEEKER

.....

OUR
FIRST
LANDLORD

.....

WE ARE PROUD
TO HAVE SERVED
THE VALLEY
SINCE 1898

Mr. Meeker made a fortune,
Planned a town and named it, too.
Build and bargained,
Rented, ranted,
Dreamed, and made his dream come true.

Mr. Meeker built a kingdom,
Lost it all, but didn't rue it.
Whatever came,
Work or fame,
Mr. Meeker was there to do it.
--Lori Price

Citizens STATE BANK

MEMBER:
FEDERAL
DEPOSIT
INSURANCE
CORPORATION



- ★ MAIN OFFICE - PUYALLUP
- ★ SUMNER
- ★ SUMMIT VIEW
- ★ EDGEWOOD - MILTON
- ★ WILLOWS

Legals

County of Pierce
 NOTICE OF PUBLIC HEARING
 ON PROPOSED CHANGE OF
 ZONE CLASSIFICATION
 Case No. Z30-69 (APPEAL)
 NOTICE IS HEREBY GIVEN that
 a public hearing will be held in
 the Chambers of the Board of
 County Commissioners of Pierce
 County, Washington, in the
 County-City Building at Tacoma,
 Washington, on MONDAY, the
 4TH day of AUGUST, 1969, at the
 hour of 10:00 A.M. on the appeal
 of HELEN JUDD, Case No.
 Z30-69, for an amendment of
 Maps No. Sections 13, 14, 23
 and 24, Township 18 North,
 Range 3 East, and Sections 18,
 19 and 30 of Township 18 North,
 Range 4 East, by changing the
 Zoning Classification from "G-
 GENERAL USE" to "SA-1 ACRE
 SUBURBAN AGRICULTURE" on an
 approximate 4-3/4 square mile
 irregular shaped area bounded
 by Mountain Highway, Lindberg
 Road, Muck Kapowsin Road and
 Benston Kapowsin Road.
 Said HEARING will be held on
 said date and hour, or as soon
 thereafter as the same can be
 heard, when any person, firm or
 corporation may appear before
 the Board and be heard in the
 matter.
 By ORDER of the Board of
 Pierce County Commissioners,
 dated JUNE 16TH, 1969.
 BOARD OF COUNTY COMMISS-
 SIONERS
 Jack W. Sonntag, County Auditor
 and
 Clerk of the Board
 By L. Hamre
 Deputy
 Published in the Pierce County
 Herald and Times-Journal, July
 17, 24, 31, 1969.

IN THE SUPERIOR COURT OF
 THE STATE OF WASHINGTON IN
 AND FOR PIERCE COUNTY
 NO. 188123
 SUMMONS BY PUBLICATION
 ANNIE MARIE BLOWERS,
 Plaintiff,
 vs.
 HERBERT A. BLOWERS,
 Defendant.
 THE STATE OF WASHINGTON to
 the said HERBERT A. BLOWERS,
 Defendant:
 YOU ARE HEREBY SUM-
 MONED to appear within sixty
 days after the date of the first
 publication of this Summons,
 to-wit: within sixty days after
 the 19 day of June, 1969, and
 defend the above-entitled action
 in the above-entitled Court, and
 answer the complaint of the
 plaintiff, and serve a copy of
 your answer upon the under-
 signed, attorneys for plaintiff, at
 their office below stated; and in
 case of your failure so to do,
 judgement will be rendered
 against you according to the
 demand of the complaint, which
 has been filed with the Clerk of
 said Court. This is an action for
 divorce upon the grounds that
 defendant has threatened the life
 of the plaintiff and upon the
 grounds of burdensome home-
 life.
 PETERS & TRACY
 By Philip S. Tracy
 Attorneys for Plaintiff
 Summons by Publication (1)
 Published in the Pierce County
 Herald and Times Journal, June
 19, June 26, July 3, July 10, July
 17, July 24.

Legals

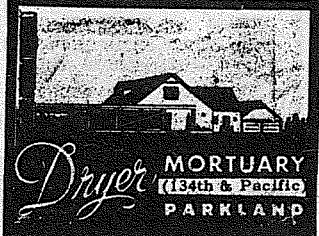
ADVERTISEMENT FOR BIDS
 Sealed bids are invited by
 Franklin Pierce School District
 No. 402 for bakery products and
 dairy products for the 1969-70
 school year.
 Specifications may be ob-
 tained in the District Administra-
 tion Office, 315 South 129th
 Street, Tacoma, Washington
 98444.
 Bids will be received in the
 District Administration Office
 until 2:00 p.m. Monday, August
 4, 1969, at which time they will
 be opened and tabulated. These
 bids will be considered by the
 Board of Directors at their
 regular meeting on August 12,
 1969, at 8:00 p.m. Bids received
 after the time fixed for opening
 will not be considered.
 No bidder may withdraw his
 bid after the time set for the
 opening, therefore, unless the
 award is delayed for a period
 exceeding thirty days.
 The District reserves the right
 to reject any or all bids and to
 waive informalities in bidding.
 Thomas L. Stephens
 Assistant Superintendent
 Business - Operations
 Published in the Pierce County
 Herald and Times Journal July
 24, July 31, 1969.



The Country Parson



"Christianity's weakness is
 that it doesn't force its disci-
 pline on folks—and that's its
 power."
 Copyright by Frank A. Clark



Open 7 Days A Week
 Sundays 9-9
 Weekdays 9-9



16618
 Pacific Ave. S. Spanaway
 LE 7-3371

No Sales To
 Dealers

WE RESERVE THE
 RIGHT TO LIMIT
 QUANTITIES

We Carry A Complete Line Of Sacked Feeds - Presto Logs

**HELP YOUR BUDGET
 WITH THESE SAVINGS**
We Are Locally Owned & Operated

**PRICES
 EFFECTIVE**
 July 24-25-26
 Thur-Fri-Sat

HOLIDAY
MARGARINE
 5 / \$1
 LBS.

FOLGER'S COFFEE
 3 Lb. Tin . . . \$1.99
 2Lb. Tin . . . 1.39 . . . ONE POUND . . . 71c
 10 oz. Instant \$1.29

HAMBURGER
 OR HOT DOG
BUNS
 3 / \$1
 PKGS.

KRAFT
BARBEQUE SAUCE
 3 Varieties 49c Ea

COLD BEVERAGES
 All Varieties
 In Our Cooler

SCOT
TISSUE
 4 / 39c
 ROLLS

S & W
OVEN BAKED BEANS
 28 oz. 39c

**COKE-SPRITE
 or FRESCA**
 26 oz SIZE 6 / \$1

LANGENDORF
COOKIES
 Reg. 29c Size
 4 / \$1
 PKGS.

PRODUCE

Party Ice

LARGE CANTS 3 / \$1	RIPE WATERMELON 4 1/2 Lb. 29c	BEEF STEAK TOMATOES 25c Lb.	LARGE LOCAL LETTUCE 2 HEADS 29c
-------------------------------	-----------------------------------------	---------------------------------------	-------------------------------------------

We Carry a Complete Line of Sacked Feed

LEAN GROUND CHUCK 75c Lb.	CHUCK STEAKS 69c LB	BLADE CUT POT ROAST 59c LB
HYGRADE SLICED BOLOGNA 79c Lb	PORK LINKS 79c Lb.	HYGRADE WEINERS 12 oz. 55c PKG Ea.

CHURCH DIRECTORY
 ATTEND OUR
WORSHIP SERVICES

PARKWAY Presbyterian Church Sunday School 9:30 a.m. Worship Service 10:45 a.m. Nursery Service Provided 714-138th East LE 1-4234 Rev. Wesley J. Drummond	Spanaway Assembly of God 166th & Pacific Ave. Sunday School 9:45 a.m. Morning Worship 11 a.m. Evening Evangelistic 7 p.m. Family Night Wed. 7:30 p.m. LE 1-1412
Spanaway Lutheran Church 8:30 & 11 a.m. Worship Service 9:45 a.m. Sunday School Grades 1 & Up 11 a.m. Sunday School 3, 4 and 5 Year Olds John L. Briehl, Pastor 160th & A St. LE 7-5978.	Parkland Lutheran Church & Christian Day School Worship . . . 10:30 a.m. Sunday School-Bible Study 9:15 a.m. All Ages H.A. Theiste, pastor LE 7-5492 LE 1-0777.
Trinity Lutheran Church Worship Services 9 a.m. & 11 a.m. Sunday School 10 a.m. Wednesday School 4-5 (through Grade 9) Erling C. Thompson Robert Drowes PASTORS 12115 So. Park LE 7-0201	Spanaway United Methodist Summer Schedule Worship . . . 9:30 a.m. Nursery During Service. No Sunday Church School R. Gordon Harrison, Pastor 163 & Pacific LE 7-5134