

P.L.U. Library
Tacoma, Wn. 98117 NOV 3 1967

Special Election Issue

Pierce County Herald and

The TIMES JOURNAL

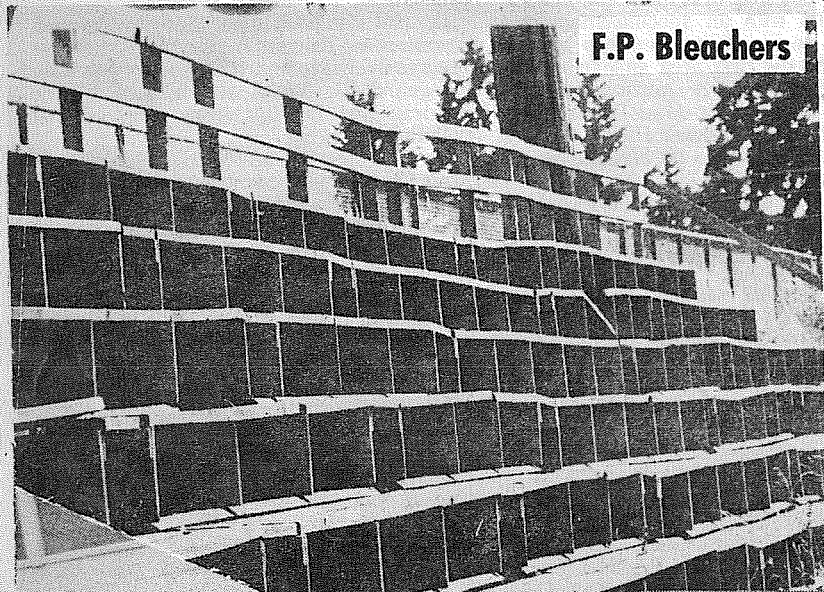
Vol. 23 No. 44

November 2, 1967

Price Per
Single Copy

10¢

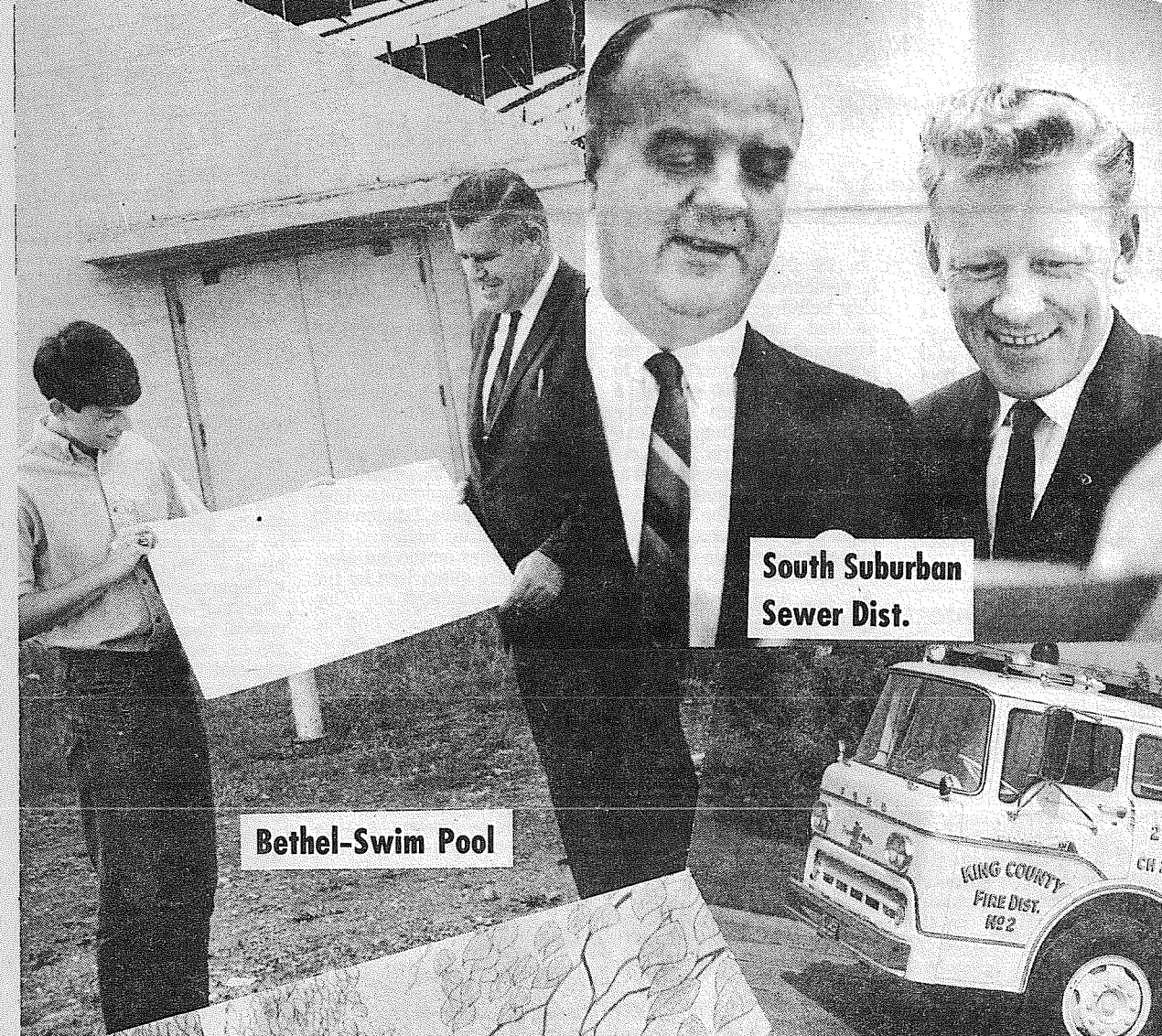
Decisions, Decisions



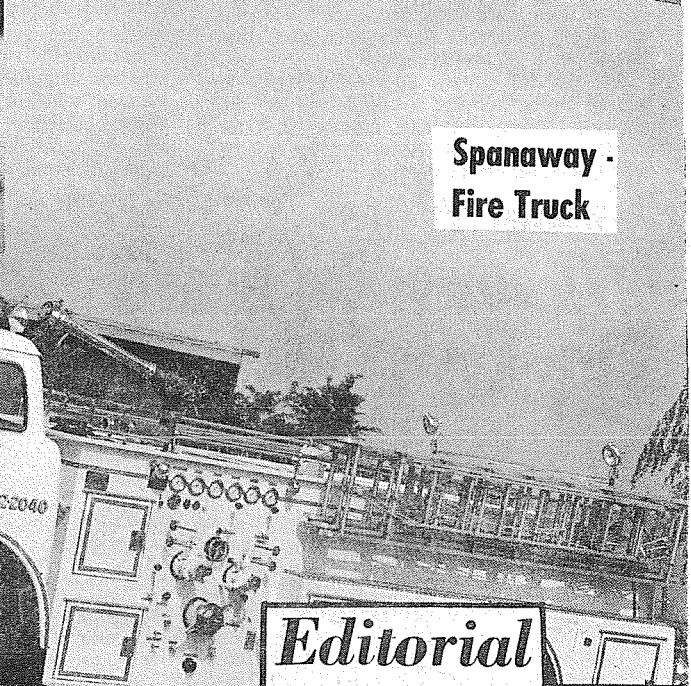
F.P. Bleachers



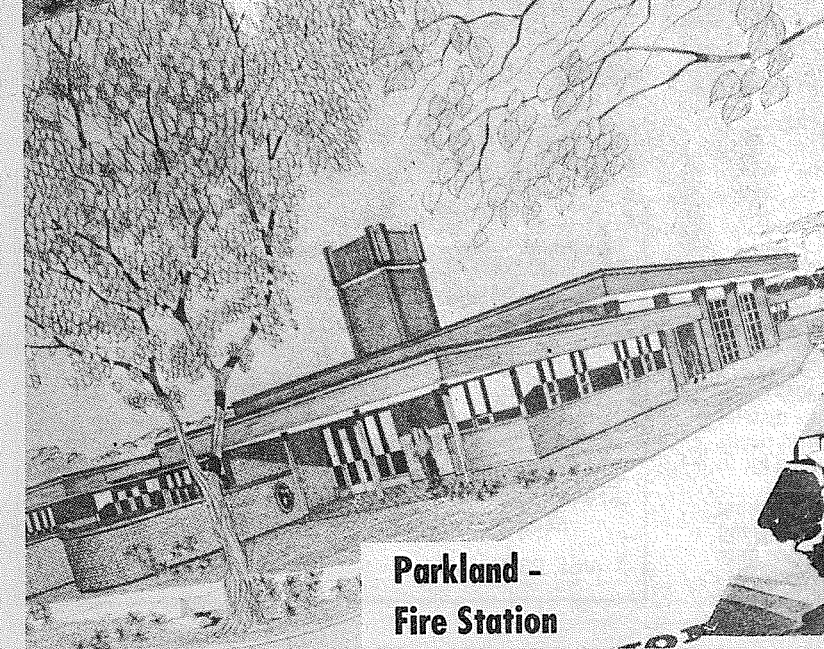
Phase 2
Spanaway
Elementary



South Suburban
Sewer Dist.



Spanaway -
Fire Truck



Bethel-Swim Pool



Remann Hall

Editorial

A combined total of one million, five hundred fifty-one thousand dollars will be awaiting the decisions of the voters Tuesday, November 7 on the coming school elections in the Bethel, Eatonville and Franklin Pierce School Districts.

An additional \$8 million is being asked to provide a new wing for the County-City Building. Pierce County Bond issue Number two requests 4 million more dollars to help solve the overcrowded conditions at Remann Hall.

Our local fire departments are feeling the pinch of the population explosion and need equipment and improved facilities in order to accomplish what is expected of them.

This all adds up to a lot of money, far too much money for voters to stay away from the polls and let someone else make the decision.

Although this paper supports all of the above measures as important to the community, it is not the intent of this editorial to persuade voters to cast their ballots for any one of the issues. However it is the intent to point out the importance of voting "yes" or "no" on each measure on the ballot, as well as for candidates.

They say money "talks". If this is true, doesn't it make good sense to study all the issues, then register a decision on every measure when you go to the polls next Tuesday?

A summary of the measures is outlined in this issue for your convenience.

Parkland -
Fire Station

Voters Needed For Nov. 7 Election "Apply In Person"

More than 2,598 votes are needed in the November 7th election if the two Franklin Pierce School District propositions on the ballot are to be validated, according to Robert C. Richardson, assistant superintendent of the school district.

"One of the biggest problems in an election," said Richardson, "is not whether the people vote yes or no, but whether they vote. The law says we must have at least 40 per cent of the voters in the last general election vote on our issues this time to even make the election legal.

"Then worry whether 60 per cent of the voters pulled the 'yes' button." The Franklin Pierce School District has two propositions on the ballot, one, a \$644,000 excess levy request for operation and maintenance of the schools during the 1968-69 school year and the other a \$23,000 excess levy request for the construction of permanent concrete bleachers for visiting spectators on the east side of the high school football field.

The old wooden bleachers were condemned earlier this year by the board of directors, after the students at Franklin Pierce High School brought to the directors' attention the poor condition of the bleachers. The students have offered to also provide several thousand dollars to help pay for the construction of new bleachers.

The operation and maintenance levy request is a necessary annual request by the school district to maintain the educational program at the present level, Richardson pointed out. He said that already the district receives better than 74 per cent of its funds from the state and federal government, but additional local funds are needed to keep up the regular program.

"Our enrollment has increased at least five per cent annually for several years," said the assistant superintendent. "This means more teachers, more textbooks, more supplies and eventually more classrooms and more custodians."

The district now educates more than 8,100 students in its 9 elementary schools, two junior high schools and one high school, he said. A second high school is scheduled for construction as soon as state matching funds are available. Bonds for the new high school have already been voted by area residents.

Spanaway Firemen Need Trucks

Spanaway-Elk Plain Fire District voters will consider their third special levy request for the district in the 22 years it has been organized in order to meet the fire protection needs of the community.

Spanaway-Elk Plain Fire District commissioners, after appraising the requirements, are asking the electorate for 10 mills in order to purchase two 1000 gallon pumper trucks.

Citing the need for the new trucks, Fire Chief John Farren points out that three of the present trucks are over 20 years old. The district apparatus is made up of a 1942, a 1945, a 1947, two 1956, and one 1964 model truck. In addition, the department has a 1965 rescue van.

The pressure being placed on the equipment is increasing each year, Farren states. Twenty years ago, the department answered 44 calls during the year. Last year the department responded to 176 calls, and for the first 10 2/3 months of 1967 Spanaway-Elk Plain firemen have been called out 234 times. "We are handicapped in that about 75 per cent of our area does not have hydrants," Farren said, explaining the urgent need for additional pumps. The largest truck now owned has a 700 gallon capacity.

The district covers approximately 36 square miles serving a population of 7500 persons. There are 1800 homes, 65 businesses, and 5 schools depending on Spanaway-Elk Plain fire protection, he explained.

Reader Writes . . . Anti-Sewer Petitioners Make False Charges

Dear Sirs: October 27, 1967

Last July a group of men carrying a petition to dissolve the South Suburban Sewer District came into our neighborhood securing names for their petition.

We questioned them at length because we desperately wanted sewers, and at that time they made charges against the Sewer District which we have since found to be completely false.

We own 1 1/2 acres of property; so we anticipated paying a considerable amount of money for sewers. These men told us that we would be paying double what we anticipated through the South Suburban Sewer District, that it probably would be four years before they would get the sewers in operation, and that they could easily lose the government grant which would force us to pay even more. Not only have we found each of these charges completely false, but we have since received the estimated cost of our own property assessments which were one fourth the cost which these petition bearers told us they would be.

Also, the time element for installing the sewers by the South Suburban Sewer District is three years less than the time which the petition bearers charged. It is virtually assured through our state government that the federal government grant will be forthcoming, and even if this grant does not come through, the South Suburban Sewer District would never begin construction of sewers and force us to pay the difference as charged by the petition bearers.

We are very pleased with the assessed amount against our property and feel that to delay the construction of sewers NOW would result in much greater costs in the future.

We intend to vote AGAINST dissolution of the South Suburban Sewer District on November 7th.

Sincerely, 710 East 121st Street
(signed) Jean Fritts Tacoma, Washington 98445

Eatonville School District

The Eatonville School Board and Administration are requesting a \$43,925 special levy, approx 5 mills, to pay the cost of school operations including salaries, instructional supplies and transportation, among other expenses.

According to officials of the district this is an ultra-conservative estimate of funds we need for maintaining the present program into 1968-69.

A need for drastic action in the near is indicated by the impact and trends of cash balances, reserves and special levies, said H. Charbonneau, superintendent of the school district.

"Every effort will be made to economically operate the schools," Charbonneau said. "Realistically, we must realize the effects of inflation, our national economy, the value of a good education for our children, and related factors determining the type of education required now and in the years ahead," he added.

School Name Contest Deadline November 8

November 8 is the deadline for the submission of names for the new high school to be built in the Parkland area.

The Committee to Name the New High School, formed by school board action in July, plans to screen all proposals for a new name and submit its recommendations to the school board at its Nov. 14 meeting.

Suggestions for the name for

Proposed Parkland Fire Truck Not Aerial Rig

The new fire truck proposed in the Parkland Fire District No. 6 \$250,000 bond issue is a 1250 gallon capacity pumper truck, Chief Ray Hixon disclosed last week in response to hearsay charges that the money would be used to buy a hook and ladder rig.

"We have no intention of buying an aerial ladder truck because there aren't enough high buildings in the district to justify such a purchase," he stated. The district needs another pumper and that is the type of truck asked for in the bond measure, Hixon said.

The statement was issued to squelch a rumor being circulated throughout the district that voters were being asked to buy a truck that would be used to service only one building in the area.

Parkland's Need For Sewers Outlined

By SANDY INGRAM

When Parkland area residents go to the polls on Tuesday they will face a pretty loaded ballot sheet with school levies, school board directors to elect, fire district commissioners to elect, fire district levies, county/city bond issue, Remann Hall bond issue and sewer district decisions. The most controversial of which turned out to be whether or not Parkland should have sewers.

The sewer district first made the news in January 1966 with an announcement that landowners were signing petitions so that they may be the first area annexed to the already formed district. Announcement of circulating petitions for Area II was made when County Commissioner Harry Sprinker was the first to sign to be annexed to the district in August 1966.

On October 26 of 1966 an intensive community-wide drive in Parkland was collecting signatures for the annexation of four more areas to the district.

A public meeting was held by the Sewer District at Keithley Junior High School on Nov. 9th, 1966, so that interested persons may have their questions answered. Senator George Kupka, and Dr. Ernest Kredel, director of the Pierce County Health Department attended the meeting and pointed out the need for immediate action and the economic, health and social values of a sewer system to the community. At this meeting Dr. Edward E. Hill, superintendent of the Franklin Pierce School District, called attention to the fact that the Franklin Pierce District had just voted a bond issue for a new

high school by the largest majority of any district in King or Pierce Counties. However, in order to build this high school, a sewer system must be built. Otherwise the School District will have to build a sewage disposal plant similar to the one at Franklin Pierce High School which would cost about \$150,000. This would mean an added tax burden and would not be a permanent solution to the problem.

Dr. Hill also pointed out that as population increases the dangers from pollution become progressively greater. It is necessary that we safeguard the health and welfare of our children and families from diseases that pollution can bring.

Dr. Ernst Kredel said: "Septic tank drainage is like the country cousin who came to town and created nothing but trouble." Seepage from rural septic systems eventually filters into one of the county's natural drainage basins, where it is rapidly becoming a serious problem, he said. Even the most desirable types of soil, will not filter phosphates and nitrates, and they are two of the agents that contribute to pollution of our water facilities.

In July, 67, the Parkland Light and Water Company announced that it planned to chlorinate its entire water supply as a safeguard against contamination. Two wells needed chlorination after it was found that they contained traces of contamination.

No alternative to the South Suburban plan has been offered by any of those who oppose it.

County-City Building Addition Bond Issue Voter Support Urged

In 1959, Pierce County proudly dedicated its new County-City Building. The population at that time was 317,000. Today, eight years later, the population has increased to more than 360,000 causing a critical problem of space within the building, particularly for our courts. And, according to the median estimates of the Washington State Census Board, The County's population is expected to soar to some 468,000 in the next

twelve years, which represents an increase of nearly 100,000 persons.

"We have simply outgrown our building," says Mr. L. Evert Landon, chairman of a county-wide committee formed early last summer to study County-City Building space needs. Even the "boiler room" in the basement, he said, is being used for temporary office space. Landon said his committee reviewed two space studies on the building, which were authorized by the County Commissioners. One was a feasibility study and the other an engineering study. The action of the committee, said the businessman, was a unanimous recommendation that the Commissioners place issue squarely before the voters in the form of an eight million dollar bond proposition.

The major portion of the bond issue, some \$5,000,000, would go for construction of an addition to the court wing to house five Superior Courts, two courts for the Justice of the Peace and one Municipal Court. Veteran Superior Court Judge Bertil Johnson says it is imperative that more courts be provided for the County. He pointed to the fact that during the past six years,

the case loads have increased by more than 2,000 cases annually posing an almost impossible burden on the local courts. Pierce County Juvenile Court, he said, had an increase of 400 cases last year. These increases, he said, have a tremendous impact on the administration of justice in that it takes longer to hear cases. At the present time, there is a delay of up to six months to hear cases in Superior Court, Judge Johnson said. Very soon, there could be delays of one year or more.

Another portion of the bond proposition would go toward construction of a new Tacoma-Pierce County Health Department Building. The space vacated in the building by the Health Department will then be utilized for the expanding needs of other City and County Departments.

Parking, one of the other critical needs of the governmental complex, will see an expenditure of nearly \$890,000 for parking structures to handle an additional 264 automobiles. Other improvements include installation of another elevator in the tower structure and channelization to better circulate traffic around the building.

The cost of financing the \$8,000,000 bond proposition is relatively small, said Mr. Landon, when it is shared equally throughout the County. He says the cost to the average homeowner (\$10,000) would be approximately 27-cents a month. Based on a projected 20-year millage of 1.4, he said, the cost would be about \$3.20 per year.

The TIMES JOURNAL

Published weekly at 14620 Pacific Ave., Parkland 98444 and delivered by U.S. Mail and carrier to subscribers. Publishers: Pierce County Publishers, Inc. Managing Editor Em Matson News Editor Sandy Ingram Sports Editor Bob Ingram

Subscriptions \$3.50 per year, \$1.80 six months, or 30c monthly by carrier. News stand price 10c copy.

Qualified as a legal publication under Chapter 213 of the Legislature Acts of the 1941 regular session of the State of Washington

Second Class Postage Paid at Tacoma, Wash.

Vol. 23 No. 44 November 2, 1967

HI HO

PUYALLUP

HI HO

U.S. No. 1
10-lb. Cello Bag
**OREGON
POTATOES**
29^c

POTATO and ONION SALE

U.S. No. 1
10-lb. Cello Bag
**VALLEY-GROWN
POTATOES**
29^c

50 -lb. Bag **NO. 2 POTATOES 99^c**

**U.S. NO. 1 NORTH DAKOTA
RED POTATOES**
10-LB.
MESH BAG **59^c**

**U.S. No. 1 IDAHO
POTATOES**
10-LB.
MESH BAG **59^c**

**U.S. NO. 1 FINNISH
POTATOES**
10-lb.
Cello Bag **59^c**

20 lbs. No. 2 **POTATOES** BAG **59^c**
WASHINGTON

100-LB. BAG **POTATOES \$2⁸⁹**
U.S. NO. 1

50-lb. BAG
ONIONS
1⁹⁸

**YELLOW
ONIONS**
5^c
lb

**WHITE
ONIONS**
10^c
lb

3-lb. Mesh Bag **BOILING
ONIONS**
19^c BAG

**LEAN
PORK
STEAK**
59^c
lb

NO. 303 TINS **ROSEDALE** CANNED GOODS **SALE**

CREAM STYLE CORN	} 7 / 1⁰⁰
WHOLE KERNEL CORN	
CUT GREEN BEANS	
GARDEN PEAS	
SOLID-PACK TOMATOES	

6-OZ. CYPRESS FROZEN
**ORANGE
JUICE**
9/1.00

**BONED AND ROLLED
PORK ROAST 79^c lb.**
**FULLY COOKED
PICNIC HAMS**
39^c lb.

**ASSORTED
CUP CAKES**
6/35^c

**4-PACK
MD TISSUE**
29^c
**2-LB. JAR DUCHESS
PRESERVES**
59^c

SLICED PICNIC HAMSlb. 47^c
**HYGRADE "FIESTA"
SMOKED PORK CHOPS ...lb. 98^c**
HI HO'S OWN COUNTRY SAUSAGE lb. 39^c
LEAN CUBE STEAKSlb. 1.09

**BUTTERMILK
CRULLERS**
6/35^c

**JUMBO ASSORTED
KLEENEX TOWELS**
27^c
ea

**CHUNK
LIVER
SAUSAGE**
49^c
lb

**OPEN
8 A.M.**



**CLOSE
11 P.M.**

**NO. 2 1/2
ROSEDALE
Peaches**
4/1⁰⁰

JUST MINUTES AWAY

PRICES EFFECTIVE OCT. 30 THROUGH NOV. 4

HI HO

PUYALLUP

HI HO

The TIMES JOURNAL

WOMEN'S WORLD

Customs agents aboard the train from London to Paris thought the passenger looked uncomfortably bulky and he was. Ivor Bloom was trying to smuggle \$28,000 worth of gold bars out of the country, concealed in a specially made vest.



BAZAAR HELPERS — Pat Stahl, left, homemaking counselor, and Judy Pittenger, work director, make preparations for the upcoming Church Bazaar.

Annual Bazaar Slated At Church

The Church of Jesus Christ of Latter Day Saints, 7th Ward, will be holding their Annual Bazaar and Dinner on November 3rd at their 1215 1/2 Pacific Avenue location.

The dinner will be a festive holiday spread with turkey and all the trimmings to be served in the evening from 6 to 8 p.m.

The Bazaar will feature children and infants clothing, quilts of various sizes and patterns, novelties, dolls and crushed glass ornaments. There will also be a large variety of fancy embroidered pillow slips and dish towels as well as hand knit wear and crocheted articles from which to choose.

A special Christmas booth, Lady's Hat Shoppe, Barbor Shop, White Elephant Booth and Fish pond also will be on hand.

The public is invited to attend.

Well Baby Clinic Slated In Area

A "Well Baby" clinic for Christensen, Parkland and Elmhurst areas will be held November 1st at the Parkland Fire Hall, one-half block east of Pacific Avenue on 114th Street.

Dr. Jack Erickson will be the attending physician. The clinic is for children from infancy to five years of age. Military dependents also are welcome. Registration will be from 8:30 to 9:30 a.m.

CLIP AND SAVE

Pay'n Save Extra Value!

9 X 12
PLASTIC TARP
Reg. 29c

5c LIMIT ONE

WITH COUPON
One coupon per customer. Cash value 1/20 of 1c. Expires Nov. 4, 1967.

Clip this COUPON and Save

Pay'n Save Extra Value!

Bonded
ASPIRIN
Bottle of 100
Reg. 23c

5c LIMIT ONE

WITH COUPON
One coupon per customer. Cash value 1/20 of 1c. Expires Nov. 4, 1967.

Clip this COUPON and Save

Pay'n Save Extra Value!

Black and White
FILM
620-120-127
Reg. 3/88c
Right to Limit

5c

WITH COUPON
One coupon per customer. Cash value 1/20 of 1c. Expires Nov. 4, 1967.

Clip this COUPON and Save

Pay'n Save Extra Value!

CELLO TAPE
1500" X 1/2"
Reg. 29c

5c LIMIT ONE

WITH COUPON
One coupon per customer. Cash value 1/20 of 1c. Expires Nov. 4, 1967.

Clip this COUPON and Save

Pay'n Save Extra Value!

Book Matches
Box of 50 Books
Regular 2/25c

5c WITH COUPON

WITH COUPON
One coupon per customer. Cash value 1/20 of 1c. Expires Nov. 4, 1967.

Clip this COUPON and Save

Pay'n Save Extra Value!

Pee Chee Portfolios
Reg. 10c
Limit Two

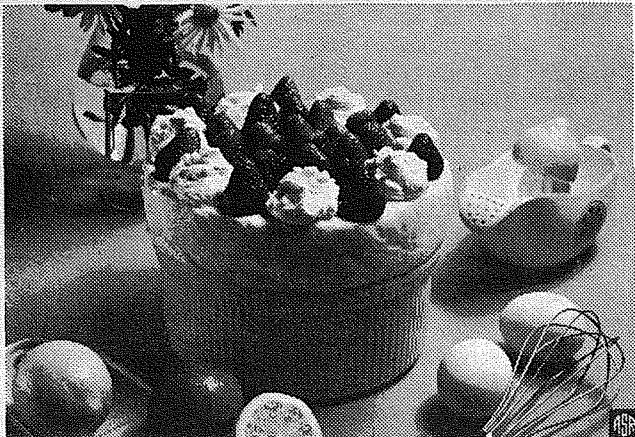
2/5c WITH COUPON

WITH COUPON
One coupon per customer. Cash value 1/20 of 1c. Expires Nov. 4, 1967.

Clip this COUPON and Save

PAY'NSAVE

Retail LE 1-6555 9830 Pacific Ave. Pharmacy LE 1-6533



Chilled Lemon-Lime Soufflé (Calorie-Trimmed)

- | | |
|---|------------------------------|
| 2 envelopes unflavored gelatin | 1/2 teaspoon salt |
| 1/2 cup cold water | 1 teaspoon grated lemon rind |
| 2 cups Sweetness & Light low-calorie granulated sweetener | 1 teaspoon grated lime rind |
| 8 eggs, separated | 1/2 cup lemon juice |
| | 1/2 cup lime juice |
| | 1/2 cup nonfat dry milk |
| | 1/2 cup ice water |

Fasten a 6-inch band of foil around a 1 1/2-quart soufflé dish, allowing 4 inches to stand above top of dish. Soften gelatin in cold water. In top of double boiler, combine Sweetness & Light, well-beaten egg yolks, salt, lemon rind, lime rind, lemon juice and lime juice. Cook over hot water, stirring occasionally until thick. Remove from heat; add softened gelatin, stirring to dissolve. Chill until mixture begins to thicken. Beat egg whites until stiff; fold into gelatin mixture. Combine dry milk and ice water; beat on high speed of mixer until stiff, about 10 minutes; fold into gelatin mixture. Gently spoon into prepared soufflé dish; chill several hours or until set. Remove foil collar before serving. Garnish, if desired, with low-calorie whipped topping and berries.

Makes 10 servings, each 130 CALORIES; 9 grams protein; 4.5 grams fat; 12.5 grams carbohydrate. (With sugar 269 CALORIES.)

Mr. Vern Clark
Announces the Grand opening of his "Gift Box"
At 203 - South 9th, Tacoma

Featuring Unique and Unusual Gift Items From the World Over.

Choose a Gift of Distinction from the "Gift Box"

Hours:
Monday - Saturday
9:30 to 6:00 P.M.

DRAPERIES OUR SPECIALTY

FOR PROFESSIONAL DRY CLEANING OF YOUR LAUNDRY AND DRAPES

DAVE'S NU-WAY CLEANERS
phone-GR-5-1144 7209 Pacific Ave.

TWO floor heat outlets—DOUBLE THE HEAT OVER YOUR FLOORS!

Discover the miracle of GUIDED SUPER FLOOR HEAT!

give your family a new standard of living with a new, patented

SIEGLER OIL HOME HEATER

it pays for itself with the fuel it saves!

Ask your friends or neighbors who own a Siegler Home Heater how they enjoy Siegler's warm floor comfort. They'll tell you, just as they tell us, Siegler gives them more comfort, more heat and more dependable service than they had hoped for. Ask for a demonstration — you'll be convinced.

GRANGE SUPPLY
Of Pierce County
10625 PACIFIC TACOMA
NO MEMBERSHIP REQUIRED

Fire District Candidates State Views

I, E.R. "Bud" Larson, am declaring myself a candidate for the office of Fire Commissioner for Parkland Fire District 6.

Having lived in the Parkland area over 40 years, I feel I know of the problems facing our community and in particular fire department problems. I have been a fireman for nearly 20 years and chief for over 10 years, and feel I am qualified to help administer fire department direction.

During my term as chief of the fire department, I worked out many problems including

cooperation agreements with the surrounding communities including the City of Tacoma.

I directed a committee to solve Pierce County's radio communication problems, and served 18 months on fire station design committee for the Association of Washington Cities.

I led the Parkland Fire District through two insurance rate reductions that resulted in savings to our citizens. I have worked on and promoted annexations to the fire district including the Mayfair area.

I am in favor of the Fire District request for the bonds to build a new fire station and to obtain other needed equipment all of which will make Parkland a safer place to live and at the same time result in still further insurance savings for us all.

If I am chosen to represent you I promise faithful and courteous service for all.

Skwirut Seeks Re-election

I have been a resident of Parkland for 20 years, and a member of the Parkland Volunteer Fire Department for 12 years. I have also been Fire Commissioner for 9 of the 12 years.

My wife Kay; daughter Sally; and son Mark and I reside at 117th and C Street.

I am a member of Trinity Lutheran Church.

During my time as Commissioner, the area has grown and our Fire Department has kept pace with that growth. In fact, better Department ratings have brought reductions in insurance rates. I have served as Superintendent of the Water Department for Parkland Light and Water Company for 14 years. As such, I have been able to help

in a number of ways to coordinate activity between the two Departments. This coordination is very important and is weighed heavily by the Fire Insurance Underwriters when fixing insurance rates. The efficiency of a Fire Department is often dependent upon the water system.

If re-elected, I will continue to work toward giving the best fire service at the lowest possible cost.

4-H Achievement Day Slated In Parkland

4-H members, families and friends will gather 1:30 p.m. Saturday November 4th at the Tacoma Public Utilities auditorium 3628 South 35th, Tacoma. 1967 awards will be presented for outstanding 4-H work at the annual 4-H Achievement Day program.

Mistress of Ceremony Miss Molly Stuen of Parkland will introduce winners of the State 4-H Fair and Western Washington Fair. Medals will be given to applicants of State Awards.

Plaques donated annually by the Puyallup Valley Kiwanis will be presented to the highest individual achiever in 15 projects.

The banks of Pierce County will donate the year pin to 1,243 members and 202 volunteer leaders through their Key Banker's Program.

Calendars will be donated to each member by Mr. Willis Tramm of Avenue Feed Store in Parkland.

Entertainment for the program will be a skit presented by the Heston Riders Club of Alderton and a narration "I am a Citizen" by the members of the Four Hoofs Each 4-H Club of Parkland.

Pops Concert At Eatonville

The Eatonville High School Music Department will present its fall Pops Concert on Saturday, Nov. 4th. The program will be in the High School Auditorium and will begin at 8 p.m.

Three performing groups will present selections. The Choir will perform six selections which will include "Somewhere My Love" by Maurice Jarre, and "Satan's Kingdom's Fallen Down" by Forsblad. The State Band will present several selections including "I'm Gettin' Sentimental Over You" and "True Love."

The High School Band will present Harold Walter's "Civil War Suite," J. Olivadoti's "Hall of Fame."

Your Times Journal Takes Its Place Among The Nations Finest Newspapers



Isn't It Time You Subscribed?

Mail this Coupon to
Subscriptions

**PO Box 2116
Parkland 98444**

Please enter my subscription to The Times Journal as follows:

<input type="checkbox"/> New subscription	<input type="checkbox"/> Renewal
<input type="checkbox"/> \$3.50 Annual	<input type="checkbox"/> \$1.80 Six Month
<input type="checkbox"/> Bill Me	<input type="checkbox"/> Cash Enclosed
<input type="checkbox"/> Newsboy 30c Monthly	

Name _____
Address _____
City _____ State _____
Zip _____

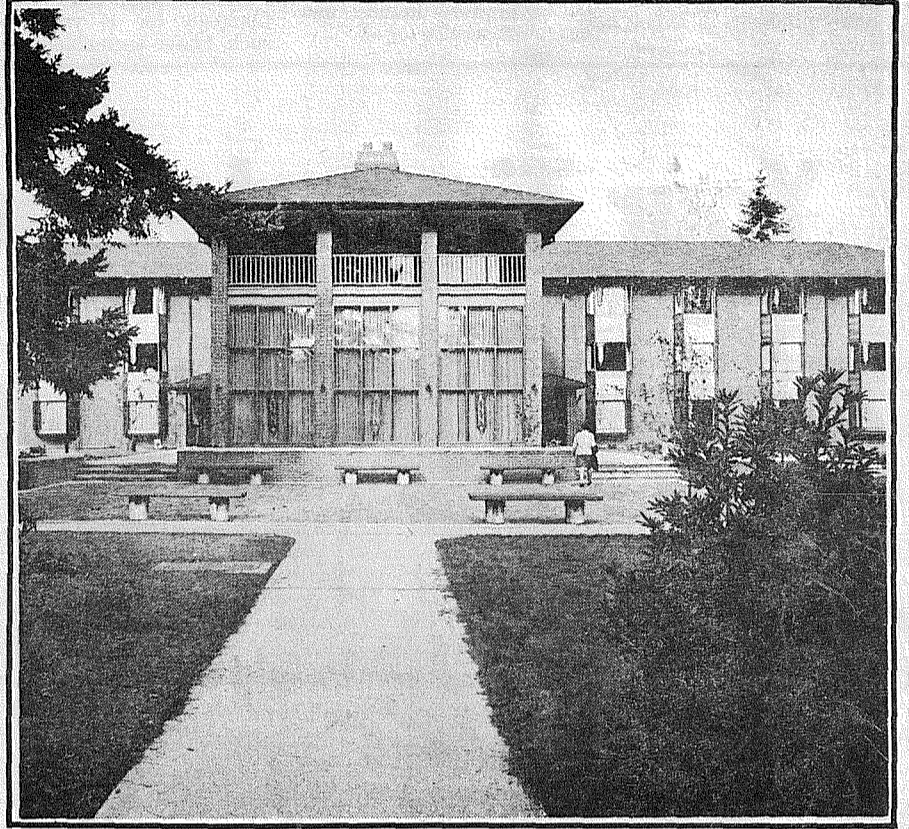
Pacific Lutheran University HOMECOMING FESTIVITIES Nov. 2-3-4-5

Thursday thru Sunday

Dedication and Open House for Two New Residence Halls Sunday, Nov. 5.



Tingelstad Hall, \$2 million resident unit for 396 men.



Ordal Hall, \$1 million residence unit for 185 women.

All Parkland Community Invited

WEEK END SCHEDULE

THURSDAY, NOV. 2:

- 7:00 P.M. — Coronation of Homecoming Queen in Eastvold Chapel.
- 8:15 P.M. — Concert, "The Ray Charles Show—100%," in the Gym. Tickets \$2.00, \$2.50, \$3.00.

FRIDAY, NOV. 3:

- 7:30 P.M. — Songfest, "Under the Big Top," in Eastvold Chapel.
- Afterwards—Serpentine to bonfire and pep rally on lower campus.
- 10:00 P.M. — Alumni Coffee Hour in Stuen Hall.

SATURDAY, NOV. 4:

- 9:30 A.M. — Powder Puff game on football field. Halftime—Crowning of Handsome Harry.
- 10:45 A.M. — Intramural All-Star game, the "Aroma Bowl."
- 2:00 P.M. — Homecoming game—PLU vs. College of Idaho at Franklin Pierce stadium. Admission \$1.25. Students 75c.
- After the game—Reunion coffee hour in Tingelstad, Alpine House, lounge.
- 6:00-8:30 P.M. — Alumni banquet, "A Circus Feast," in Columbia Center.
- 8:30 P.M. — Homecoming dance at the Tacoma Mall, dancing to the music of Milt Kleeb and the orchestra.

SUNDAY, NOV. 5:

- 1:00-3:30 P.M. — Open House — Women.
- 1:30 P.M. — Dedication of Ordal Hall, Main lounge.
- 2:30-5:00 P.M. — Open House — Men.
- 2:30 P.M. — Dedication of Tingelstad Hall, Main lounge.

To Members of the Community:

Homecoming this coming weekend on our campus promises to be an outstanding event and we invite you — our neighbors and fellow residents — to share in the festivities which our students have prepared.

The Ray Charles show Thursday night will be a treat for those of you who enjoy popular music. The Song Fest Friday night will delight those who like variety shows. Saturday's football game with the College of Idaho should provide thrills for those who love sports.

Sunday afternoon we will have open house in our residence halls. We would like especially for you to see our two beautiful new halls which will be dedicated. Erected at a combined cost of about \$3 million these units are the very latest in design and decor.

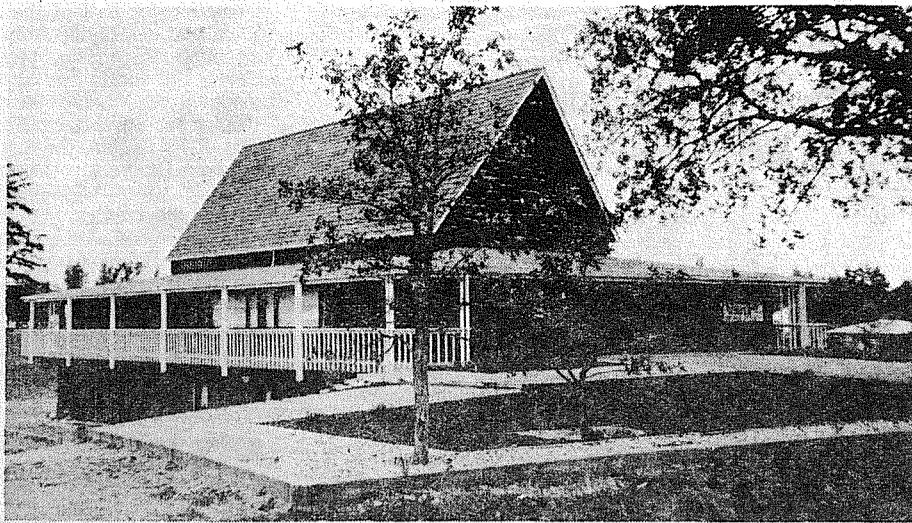
Robert Mortvedt, president
Pacific Lutheran University

Presbyterian Church To Sponsor First Public Dinner

The Parkway Presbyterian Church, 714 East 138th, will host its first public dinner from 5 to 8 p.m. Friday, November 3rd.

Proceeds from the dinner will be used to complete the landscaping program at the church, to put a new sign in front of the church and to buy drapes for the social hall and Sunday School.

The menu will include turkey, with all the trimmings and the dinner will be topped with a piece of pumpkin pie.



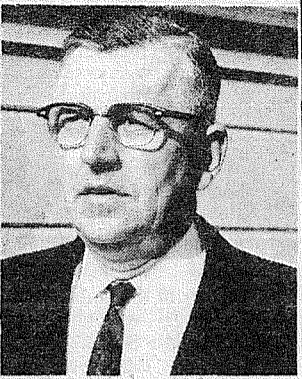
LANDSCAPING is underway at Parkway Presbyterian Church and it is hoped it can be completed with the proceeds of the Church's for public dinner.

LOOKING AROUND

Delvin Sharma, an exchange student from India working at Michigan State, is conducting free sessions in Yoga exercises for former smokers who want to keep away from smoking and excessive eating and gain the advantage of exercising.

When Gainesville discontinued its mule-drawn streetcar line in 1901, the mulepower went to war. The British government paid the Texas town \$65.50 each for the mules and shipped them to Africa to haul gun carriages during the Boer War.

If you work on the job with a person month after month and on into years, you come to know that person as to how he thinks, how he does his job, and what ideals if any the person is dedicated to.



We, the undersigned, work with John Skwirut. We know that he is continually thinking of ways to improve the Community - owned water system of which he is the Superintendent. We know that he successfully converts the thinking into action.

We know him to be very honest and conscientious. We know that he has no use for the person who is untrustworthy on the job or otherwise.

We know that as a Parkland volunteer fireman since 1956, he has given freely of his time, day or night to help a fellow Parklandite who suddenly needed help.

John is a candidate for reelection to the position of Fire Commissioner of the Parkland Fire District #6.

On the basis of our knowledge, we commend John Skwirut to the Voters of Parkland.

VOTE NOVEMBER 7

Les Heineman
O. Swim
R. W. Begallia
George Moe
Alvin L. Raber

Neal Doyhe
Norman G. Peterson
Ruth McManis
John L. Colwell
Paul Russell

Edwin Kropp

This Space Paid for by the above-signed

Three-ring Circus At Pacific Lutheran

The campus of Pacific Lutheran University will become a "three-ring circus" of activity this weekend when the 1967 homecoming celebration unfolds in the form of the "Greatest Show on Earth."

Opening the show Thursday evening will be the crowning of the "Queen of the Midway." Three seniors, Ann Erickson, Kim Morley, and Tarina Kirkeeng are competing for the crown worn by PLU's homecoming queen.

The coronation will be at 7 p.m., in Eastvold Auditorium, and like all the homecoming activities, it is open to the public.

Ray Charles and his orchestra will take the stage next for their 8:15 p.m. show in PLU's Memorial Gymnasium. Tickets may be reserved by calling PLU's corner office, or area ticket outlets.

The curtain will unfold again in Eastvold Chapel when the traditional songfest begins at 7:30 p.m., Friday. Students from the men's and women's residence halls have teamed together for the singing competition, entitled, "Under the Big Top."

Following the songfest a snake dance will take the students to lower campus where a bonfire and pep rally will be held.

Supporters Cite Prop 2 Needs

Crowded, deteriorating, long over-due for repairs and expansion, Remann Hall is at a cross-road today.

The condition of Pierce County's Remann Hall is being told today in appearances before civic and service groups by a volunteer speakers bureau. Heading this task-force of speakers is juvenile court services director Harold J. Mulholland.

Serving with him are Judge Bertil Johnson, Judge William LeVeque, Dr. Harlan P. McNutt and a committee of attorneys from the Pierce County Bar Association.

Usually their story is not a pretty one, acknowledged supporters of Proposition #2 which, if passed, would provide funds for a new juvenile center. These speakers tell their story in hard, cold facts, graphic black and white photographs and tell-tale colored slides explained spokesmen of Citizens' Committee for Bond Proposition #2.

AL RAINWATER

Eminently qualified to serve as a member of the school board



DISTRICT 4

QUALIFIED BY EDUCATIONAL TRAINING AND PRACTICAL BUSINESS EXPERIENCE

Al is a university graduate with a master's degree in Education. His academic training has prepared him for an understanding approach to school problems.

A certified teacher, Al taught math and science in High Schools, and served as a football coach and athletic director. He is familiar with curricular needs and problems.

For the past three years Al

Rainwater has been employed as a divisional manager for a national organization - the Farmers Insurance Group.

He is charged with the responsibilities of budgetary planning, building programs and population forecasting. The school board is entrusted with the same responsibilities. Al's business background will prove particularly valuable in decisions involving the district's \$5 million annual budget.

STATEMENT OF OBJECTIVES

I have become a candidate for the school board because this era of rapid growth demands sound financial planning in the expenditures of school funds.

The taxpayers must anticipate increasing school costs when an area experiences rapid growth. Those who foot the bill for educational programs must be protected

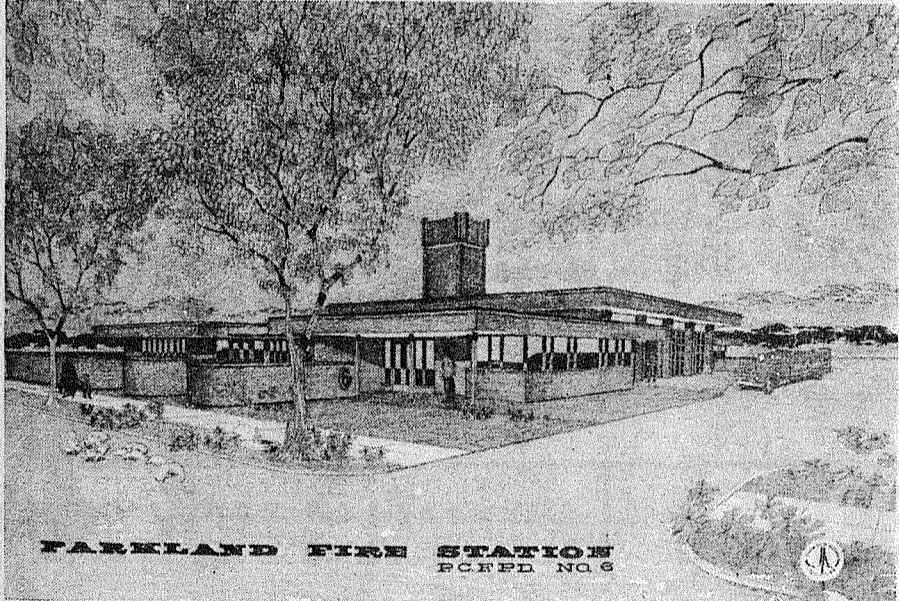
against costly mistakes or unnecessary expenditures. At the same time, our educational program must be protected by the assurance of full value for every dollar allocated.

Budgetary vigilance is imperative if we are to meet today's needs and the pressures of tomorrow's increasing enrollments.

AL RAINWATER: EDUCATOR AND BUSINESSMAN

The ideal combination for service in the best interests of the school system and the tax-paying public.

HELP PARKLAND FIREFIGHTERS KEEP PACE WITH COMMUNITY GROWTH



PARKLAND FIRE STATION
PCFPD NO. 6

A Yes Vote Nov. 7 Will:

- * Authorize construction of a new Fire Station to give Dept. adequate facilities.
- * Provide District with advanced fire alarm System.
- * Add one 1250 Gal. Pumper bringing District up to recommended apparatus level for pop.

"They volunteer their services to safeguard your lives and property. We urge you to support them at the polls next Tuesday."

This Ad Paid for by the Following Firms and Citizens:

TINY'S TIRE CENTER
10805 Pacific Ave.
LE 1-4535

PARADISE BOWL
10707 Pacific Ave.
Tacoma

GRANGE SUPPLY CO. INC.
10625 Pacific Ave.
LE 1-5777

PARKLAND CLEANERS
11004 Pacific Ave.
LE 7-3221

KELLER'S FLOOR COVERING
11002 Pacific Ave.
LE 7-7881

VIS-REY INC.
12702 Pacific Ave.
LE 1-3230

SHOP MART
13322 Pacific Ave.
Tacoma

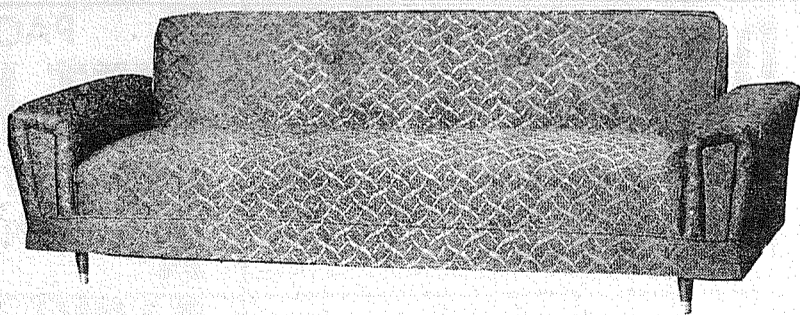
PARAGON PRINTERS INC.
11802 Pacific Ave.
LE 7-7100

TOMHOFF'S FURNITURE
12716 Pacific Ave.
LE 1-1878

TIMES JOURNAL
14620 Pacific Ave.
LE 7-0223

VOTE YES

PARKLAND FIRE DIST. 6
General Obligation Bonds



100% NYLON FABRIC
3 Colors In Stock

DAVENO and CHAIR

Reg. \$149.00
\$99.00 Nothing Down
\$7.50 mo. OAC

SALVAGE MART

Buyers and Sellers of Bankrupt and Damaged Goods
13014 PACIFIC AVE. OPEN 'TIL 9 P.M.

Guest Editorial . . . In Pursuit Of Excellence

By Dr. Edward E. Hill

Superintendent, Franklin Pierce School District

"In Pursuit of Excellence" is the title of a sound-film presentation prepared by the Franklin Pierce Education Council, and presented to seventeen P.T.A. Booster, and other service groups during the past four weeks. More than 3000 parents and interested patrons of the district viewed the presentations. The film outlined in detail why the passage of the November 7th levies were so vital to continue our present quality of education. This editorial will take up where the film left off and describe how we are meeting the population and knowledge explosions in the Franklin Pierce School District.

Since 1949, our schools have grown 400 per cent from 2000 students in four schools to 8200 students in twelve schools today. During the past two years we have grown more than 800 students. Despite our continued growth, the district has no students on double sessions, has reasonably sized classes, and some of the finest teachers and educational programs in the nation.

To keep up with this growth, in the past fourteen months we have completed five building projects, and are planning two more, and have purchased additional sites to build future schools.

Completed in time for school to open last fall, were the addition of a multipurpose complex at Collins School, and classroom and library addition to the Central Avenue School, and four portable classrooms.

Completed in early October this year, was the new wing at Keithley Junior High. This wing houses new science laboratories, special education rooms, a new electronic teaching classroom, and three additional classrooms for the PROJECT PROMISE teacher team. Presently being completed on 129th street, is the first phase of the district administration building.

The second high school is nearing the

preliminary plan stage and construction is expected to start in about six months. The school will open in temporary quarters next fall, and the new high school building for 1000 students is expected to be finished by September of 1969. To keep pace with future growth, the district now owns sites for a third junior high school, a third high school, and two elementary schools.

Our students are not only well housed, but they are well taught. The Franklin Pierce School District has taken the lead in putting into operation new and innovative teaching methods and curriculums, when these procedures were proven to increase either the efficiency or quality of what we teach.

In the past fourteen months, we have initiated some new teaching procedures which are attracting state and national attention.

Perhaps best known is PROJECT PROMISE MATH at Keithley Junior High School. Here, students are taught basic concepts in a large 94 student multi-media electronic classroom. As they are taught, they respond by dialing coded responses with their classroom responder. A small computer analyzes the responses and re-groups and grades the students. On alternate days, students are in small groups where they USE the information taught to them in the large group. This project is a demonstration project for Pierce County and is financed under funds furnished to the Intermediate Office of Education under Title III of the Elementary and Secondary Education Act.

Initiated last year was the ESCP (Earth Science) national curriculum. Our schools were the first to use this new program in the State of Washington.

New this year at Harvard School is the Interest-Specialist program. Under this new

program, students receive basic subject instruction for half of the day and receive specialized instruction from teacher specialists in math, music, physical education, science and specialized academic programs during the other half of the day.

Under sponsorship from the State Department of Education, the district initiated the Parkland Diagnostic Center this year. Students in three elementary schools with learning disabilities are diagnosed in the center, provided with transition training and with the help of a counselor are usually returned to their classroom. Many students who might otherwise have been classified for placement in special education, are now given training they need, and are thereby able to function properly in a regular classroom.

At Ford Junior High School, a new program known as the "pre-dropout" pro-

Loren J. Borneman Completes Training

Marin Private Loren J. Borneman, son of Mr. and Mrs. Floyd E. Borneman of Route 2, Spanaway, Wash., completed two weeks of training under simulated combat conditions in the fundamentals of day and night patrolling, employment of infantry weapons, survival methods and assault tactics at Camp Pendleton, Calif.

This individual combat training is given every Marine after his graduation from recruit training.

While in the field he was taught how to use hand grenades, a compass and the principles of map reading and land navigation. He learned how to detect and disarm mines and booby traps and while being exposed to live machine gun fire he learned to advance safely from one point to another.

From this course, he is scheduled to go on to more advanced training before being assigned to his permanent unit.

gram is identifying students who are at the beginning stages of failure and who demonstrate the potential of becoming future dropouts. Teaching machines, a new curriculum, small classes, and specialized teacher teams are giving these students the skills then need to stay in school.

"Inquiry" is the word at Franklin Pierce High School, with the introduction this year of a new conceptual approach to the teaching of history. History is taught in such a way that students discover the importance of the lessons of history as related to the problems they now face and will face in the future.

With continued voter support, Franklin Pierce Schools will meet the challenges of the population and knowledge explosion, and if the trend of the past continues, will do it at less cost per pupil than any first class school district in Washington.

Collins Residents To Get City Water

Customers of the Imhoff Mutual Water Co., east of Waller Road at 128th St. East, will soon obtain direct service from the Tacoma Water division.

The acquisition was approved by the Tacoma Public Utility Board Wednesday after members of the 22-customer system voted for direct service to improve fire protection and service pressure levels within the area. The firm had been a wholesale customer of Tacoma since 1951.

Tacoma City Water Supt. A. J. Benedetti, said that customers would pay a \$3.50 monthly charge over and above the metered charge for water for a period not to exceed 10 years. This would allow the system to be brought up to Tacoma standards, he said.

Even then, explained Benedetti, they may expect to pay some 30 per cent less than their current monthly bill. At the same time, Tacoma revenue from the area will be boosted about 25 per cent.

Elect
Jo Anne
MATSON
Franklin Pierce School Board
Position 4 Pd. adv.

Local Citizens and Businesses Indorse The South Suburban Sewer District

We, as citizens of the community, interested in the development, health and prosperity of Parkland have taken the time and effort to study all the issues involved, both pro and con, and it is our honest opinion that continuation of the South Suburban Sewer

District is absolutely necessary for future growth. We ask you to take the time November 7th to go to the polls and VOTE against on the dissolution of this vital organization.

<p>JOHN W. SMITH 10116 Pacific Ave. <input checked="" type="checkbox"/> AGAINST DISSOLUTION</p>	<p>LARRY BEISEL 10211 Pacific Ave. <input checked="" type="checkbox"/> AGAINST DISSOLUTION</p>	<p>KIMBALL'S BODY SHOP 10111 Pacific Ave. <input checked="" type="checkbox"/> AGAINST DISSOLUTION</p>
<p>DARI DINER 10018 Pacific Ave. <input checked="" type="checkbox"/> AGAINST DISSOLUTION</p>	<p>PACIFIC AVENUE VET HOSPITAL 10234 Pacific Ave. <input checked="" type="checkbox"/> AGAINST DISSOLUTION</p>	<p>MAGDANZ HARDWARE 11401 Pacific Ave. <input checked="" type="checkbox"/> AGAINST DISSOLUTION</p>
<p>PARKLAND CLINIC 11225 Pacific Ave. <input checked="" type="checkbox"/> AGAINST DISSOLUTION</p>	<p>PARKLAND SPORTS CENTER 11122 Pacific Ave. <input checked="" type="checkbox"/> AGAINST DISSOLUTION</p>	<p>SHAMROCK TAVERN 11108 Pacific Ave. <input checked="" type="checkbox"/> AGAINST DISSOLUTION</p>
<p>SILER'S 11230 Pacific Ave. <input checked="" type="checkbox"/> AGAINST DISSOLUTION</p>	<p>PARKLAND FUEL OIL 12002 Pacific Ave. <input checked="" type="checkbox"/> AGAINST DISSOLUTION</p>	<p>LION REALTY 11457 Pacific Ave. <input checked="" type="checkbox"/> AGAINST DISSOLUTION</p>

Local Citizens and Businesses Indorse The South Suburban Sewer District

We, as citizens of the community, interested in the development, health and prosperity of Parkland have taken the time and effort to study all the issues involved, both pro and con, and it is our honest opinion that continuation of the South Suburban Sewer

District is absolutely necessary for future growth. We ask you to take the time November 7th to go to the polls and VOTE NO on the dissolution of this vital organization.

<p>DAYLE COLLISON COLLISON REALTY <input checked="" type="checkbox"/> AGAINST DISSOLUTION</p>	<p>JAMES HALL 132 E. 121st <input checked="" type="checkbox"/> AGAINST DISSOLUTION</p>	<p>BART PAYNE 12221 Pacific Ave. <input checked="" type="checkbox"/> AGAINST DISSOLUTION</p>
<p>DONALD B. ULLFERS 211 South 117th <input checked="" type="checkbox"/> AGAINST DISSOLUTION</p>	<p>JOHN V. AUSTIN 224 E. 126th <input checked="" type="checkbox"/> AGAINST DISSOLUTION</p>	<p>ERNEST S. HARMON SUBURBAN REALTY <input checked="" type="checkbox"/> AGAINST DISSOLUTION</p>
<p>GENE BENNETT 13023 Pacific Ave. <input checked="" type="checkbox"/> AGAINST DISSOLUTION</p>	<p>AL RABER 1304 So. 116th <input checked="" type="checkbox"/> AGAINST DISSOLUTION</p>	<p>M. VOLKIRCH 204 S. 117th <input checked="" type="checkbox"/> AGAINST DISSOLUTION</p>
<p>STELLA JACOBS Stella's Flowers <input checked="" type="checkbox"/> AGAINST DISSOLUTION</p>	<p>A. G. MCMANIS 754 So. 117th <input checked="" type="checkbox"/> AGAINST DISSOLUTION</p>	<p>Puget Sound National Bank <input checked="" type="checkbox"/> AGAINST DISSOLUTION</p>
<p>JENNIE L. GRODVG Parkland Realty <input checked="" type="checkbox"/> AGAINST DISSOLUTION</p>	<p>B. W. LEE Parkland Shoe Repair <input checked="" type="checkbox"/> AGAINST DISSOLUTION</p>	<p>D. L. FECKLEY Parkland Cycle <input checked="" type="checkbox"/> AGAINST DISSOLUTION</p>
<p>LAWRENCE E. ARMSTRONG Armstrong Used Cars <input checked="" type="checkbox"/> AGAINST DISSOLUTION</p>	<p>CARL MARTENS Marten's Economy Auto Parts Inc. <input checked="" type="checkbox"/> AGAINST DISSOLUTION</p>	<p>MRS. L. A. KRAMER Parkland Cleaners <input checked="" type="checkbox"/> AGAINST DISSOLUTION</p>
<p>M. J. KELLER Keller's Inc. <input checked="" type="checkbox"/> AGAINST DISSOLUTION</p>	<p>ROBIN L. CHRISTENSEN Pacific Autobody <input checked="" type="checkbox"/> AGAINST DISSOLUTION</p>	<p>EUGENE SMALLEY SMALLEY MOTORS <input checked="" type="checkbox"/> AGAINST DISSOLUTION</p>
<p>T.R. DEVEREAUX Devereaux Realty <input checked="" type="checkbox"/> AGAINST DISSOLUTION</p>	<p>BILL LARSON Advance Glass & Upholstry <input checked="" type="checkbox"/> AGAINST DISSOLUTION</p>	<p>Mr. & Mrs. H.T. HUME 10105 Pacific Ave. <input checked="" type="checkbox"/> AGAINST DISSOLUTION</p>
<p>NATIONAL BANK OF WASHINGTON <input checked="" type="checkbox"/> AGAINST DISSOLUTION</p>	<p>TACOMA SAVINGS & LOAN ASSN. <input checked="" type="checkbox"/> AGAINST DISSOLUTION Bob Ketner</p>	

MUFFLE RACKET
when you remodel
with a ceiling of
Armstrong
CUSHIONTONE®

- Provides new comfort of sound conditioning
- Adds new kind of beauty
- Ideal "do-it-yourself" material
- Only \$25 for 10' x 10' area
- Hides ugly cracks forever

190 GEORGIAN
25¢ EACH
BROOKDALE LUMBER INC.
LE 7-8669

Hammer And Nail

The neatest and strongest way to hang a shelf is by making a dado joint or using metal shelf supports. A dado requires power tools and does not permit changing shelf height. Here are inexpensive shelf supports that plug into blind holes 5/8" deep drilled in the plywood sides of the cabinet. Drill additional holes to permit moving shelves when desired. Another device is the use of slotted metal shelf strips into which shelf supports may be plugged at any height. For a better fit, set shelf strips flush in a dado cut, or cut out shelves around shelf strips.



JOHN SKWIRUT, left, water department superintendent for the Parkland Light and Water Co., is proud of his new helper, the Gopher, center, along with Orv Swim, operator, or gopher trainer as other crew members call him.

SHELVES
CABINETRY
FURNITURE
your design or ours
made fast, inexpensively, and well
TAYLOR MADE CABINETS, Inc.
10323 Pacific Ave.
LE 7-4193

Avenue Furniture

- New and used quality furniture
- Appliances
- We buy - sell - trade
- In Spanaway

LE 7-5144
16318 Pacific

Vote Tuesday.
What will the future be like?
Like we plan now. Vote Tuesday.
Pacific Northwest Bell
Part of the Nationwide Bell System

Parkland Lutheran Hosts Pastor

The Rev. Kurt Marquart of Toowomba, Queensland, Australia will speak Sunday afternoon, November 5, 3:00 p.m. at Parkland Lutheran Church, Pacific Avenue at South 123rd.



The Rev. Mr. Marquart is pastor of a parish in Australia and also a member of the "Commission on Theology and Inter-Church Relations" of the Lutheran Church of Australia. He is at present on a lecture tour of the United States and will appear at several Lutheran Seminaries and many churches from St. Louis, Mo. to Tacoma, Wash. His final lecture will be in Parkland. Rev. Marquart's tour is sponsored by The Evangelical Lutheran Synod and State of the Church, Lutheran Church-Missouri Synod.

New Machine Saves Detours

Getting utility lines and pipe under and across streets has long caused expensive problems for the Utility Departments, as well as many detours and bumpy streets for the motorists. For the same length of time, department Heads of Parkland Light and Water Co. have dreamed of some way to overcome these problems. The Pneu-mo-gopher is the latest in the technological advances in the field of underground boring, said John Skwirut, Parkland Light and Water's water department superintendent. It is capable of boring up to 6" holes and under favorable conditions, the Gopher will come out on the other side of the Street in about 30 minutes.

According to Skwirut several street crossings have been made recently with fair success and he is pleased with the performance to date. He explained that the community area is made up of several different soil conditions, some of which his new Gopher may not be able to handle completely, but he has hopes of making a large per cent of the future crossings without tearing up the driving surface of Parkland streets. It is estimated that some 200 crossings per year will be made in carrying out his water operation and the Company's underground power projects.

Parkland Light and Water Company was the first in the Northwest to place an order for the new device, said the superintendent. He added "this action was in line with the long-standing company policy 'to make every reasonable effort to improve the community it serves and quality of service it renders.'"

Reading Program To Be Explained At Open House

ELBE-A. B. Bringle will explain his reading program to parents and friends at the open house of Columbia Crest School in Elbe. The open house is scheduled for Wednesday evening November 8th.

About Winter Horse Care

Horses are athletes and require daily exercise regardless of the season, says Eddie Thomason, County Extension Agent. He points out that daily exercise is a key requirement of good winter care of saddle horses. Other essentials of winter care are a good diet and protection from the weather. Alfalfa hay is recommended as a winter diet as it furnishes adequate levels of Vitamin D and minerals. Other winter care pointers suggested by Thomason are, Trim feet, check for parasites, and clean, inspect and repair stalls and feed boxes. Tack not to be used should be protected in storage with saddle soap or neatsfoot oil. Thomason also reminds horse owners that building plans for fences, barns and trailers are available from the Extension office.

RETAIN THE TEAM
VOTE FOR PORT COMMISSIONERS

ROBERT G. EARLEY
FIRST DISTRICT

A. E. BLAIR
SECOND DISTRICT

RICHARD D. SMITH
THIRD DISTRICT

ALL PIERCE COUNTY VOTES FOR ALL THREE COMMISSIONERS
Paid for by the Committee to retain the incumbent Port Commissioners—Jack Fabulich, chairman

PIERCE COUNTY HEADQUARTERS FOR 1968
★ CHRYSLER
★ PLYMOUTH
★ VALIANT
★ BARRACUDA
CALL GR 4-0621
★ Steven MOTOR CO.
2705 SOUTH TACOMA WAY

Rodeo Custom Shop
Leather Goods For Christmas
We urge you to order now and avoid the Holiday rush on handcarved and personalized belts, wallets, purses, chaps, and other fine leather goods. Truly fine gifts that you can afford. Shop now. No special orders after Dec. 15.
NOV. 4-5
Attend the Quarter horse show at Steckler Stables, 176th and 14th Ave. East, Spanaway. Free Admission. Sponsored by the W.Q.H.A. Hope we see you.
Dean & Dodie
Rodeo Custom Shop
164th & Pacific Ave. — Spanaway
LE 1-4555

STORKREPORT

Good Samaritan
Mr. and Mrs. Leo Jackson,
1114 So. 118th, Boy, October 24th

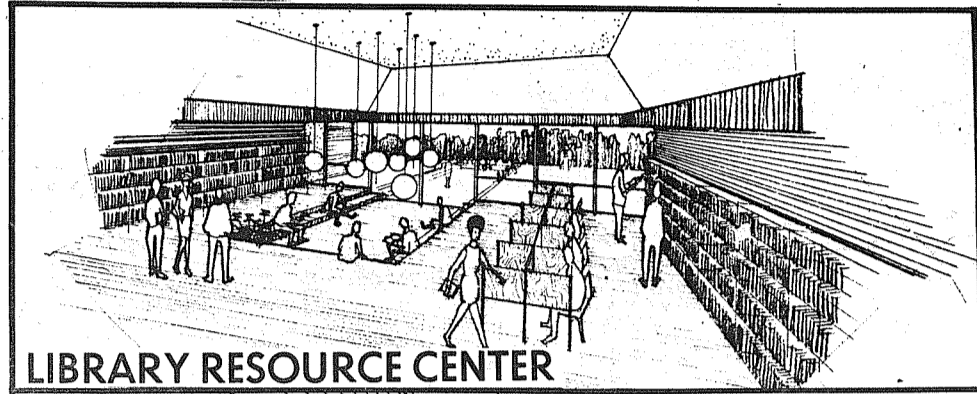
STATE BANK
Citizens
MEMBER FEDERAL DEPOSIT INSURANCE CORPORATION
★ MAIN OFFICE - PUYALLUP
★ EAST SUMMER OFFICE
★ SUMMIT VIEW OFFICE
★ EDGEWOOD-MILTON OFFICE

NEW CAR LOAN at 4 1/2%

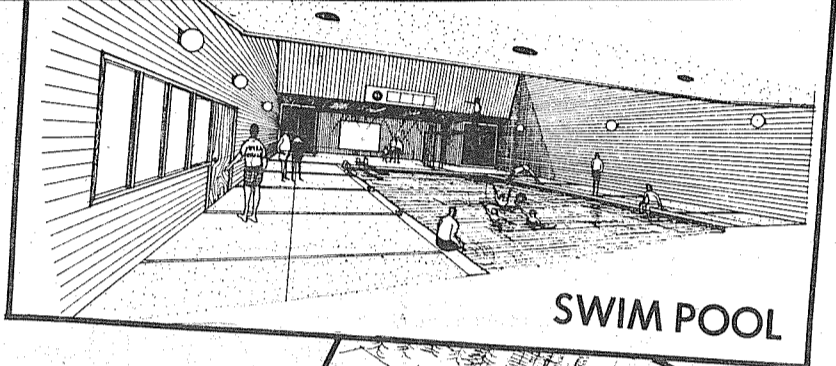
New Cars Cost Less with a

*\$4.50 A Year For Each \$100 Borrowed

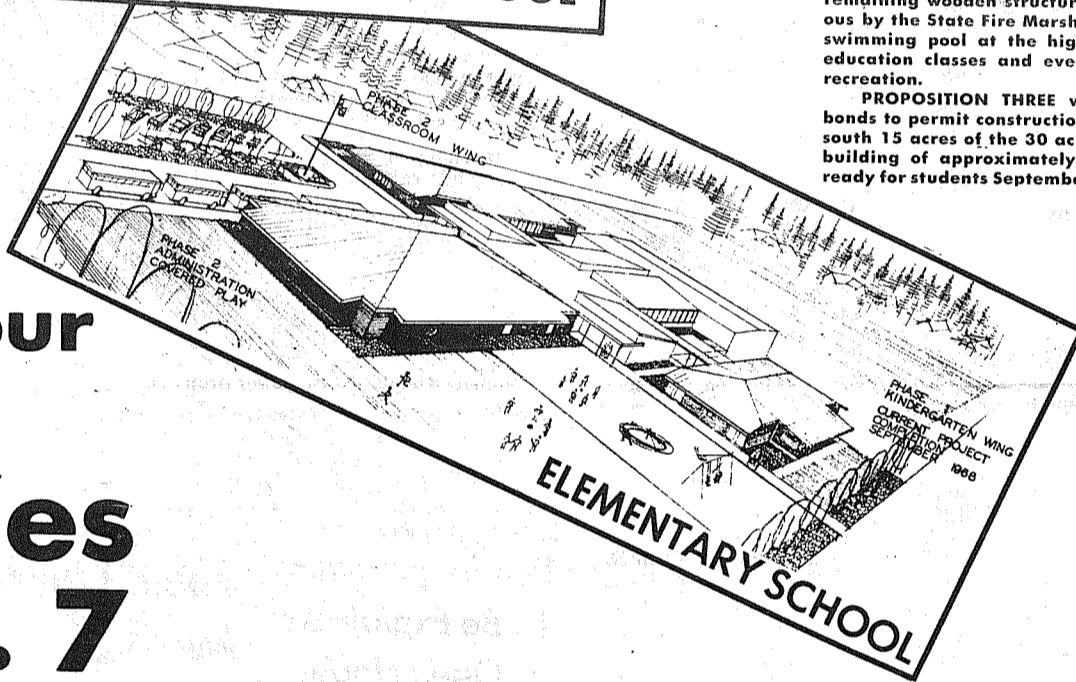
A Plan To Meet The Increasing Needs Of a Growing Community



LIBRARY RESOURCE CENTER



SWIM POOL



ELEMENTARY SCHOOL

Bethel Voters To Decide Nov. 7th

Three important measures will be considered by voters in the Bethel School District next Tuesday. **PROPOSITION ONE** is for a one-year levy needed to operate and maintain Bethel Schools. It will support a program of continuous maintenance, provide additional transportation, provide machine accounting, replace lost Federal monies, and improve employee salaries.

PROPOSITION TWO is a one-year building fund levy of \$196,000 to cover two district projects. Project one will renovate the remainder of Spanaway Elementary School. Three new classrooms will open September 1968 which are already paid for. This project will complete the job by eliminating the old brick building and remaining wooden structures, indicated to be dangerous by the State Fire Marshal. Project Two will build a swimming pool at the high school for both physical education classes and evening and Saturday family recreation.

PROPOSITION THREE will authorize the sale of bonds to permit construction of a middle school on the south 15 acres of the 30 acre site at South 159th. This building of approximately 13-15 classrooms will be ready for students September 1969.

**Support Your
Schools!
Vote Yes
Nov. 7**

The Following Individuals and Firms Have Made This Space Possible

ALL WOMEN HOUSE-CLEANERS LE 1-2981 9620 PACIFIC	PARKLAND LIONS	LAKE SPANAWAY CLUBHOUSE RESTAURANT BANQUETS - LUNCHESES LE 1-3660	PARKLAND CLEANERS "We Call for and deliver" LE 7-3221 11004 PACIFIC AVE.	STANSBIE'S VARIETY Spanaway
ADVANCE GLASS & UPHOLSTERY LE 7-8301	MUNSON REAL ESTATE 11002 PACIFIC AVE. LE 1-6661	CUSTOMIZED BOOKKEEPING LE 1-3656	TOWN & COUNTRY BROKERS, INC. LE 7-8684	CHRISWELL TRAILER SERVICE Mobil Home Furnaces Electric - Gas - Oil LE 1-6114
OLGA DOR MOBIL ESTATES 159 So. 136th LE 7-6994 LE 7-9985	TIMES JOURNAL LE 7-0223	idons Discount Wigs & Falls 11244 PACIFIC LE 1-2248	RODEO CUSTOM SHOP LE 1-4555 164th & Pacific Ave.	Marten's Economy AUTO PARTS 1012 PACIFIC LE 1-1144
La Pergola Dancing to Live Music LE 7-4747	SOUTH END HARDWARE BILL AND DOROTHY RIGHETTI VI 7-7211	BROOKDALE LUMBER LE 7-8669	SPANAWAY HARDWARE Paints - Building Supplies VI 7-7100 Barsotti and Timm	LITTLE PARK CAFE 172nd & Pacific LE 1-1343
TAHOMA FLYING SERVICE PARKLAND & SPANAWAY AIRPORT VI 7-2266	W. W. RITE	ELK PLAIN TAVERN	ASHMORE'S SPANAWAY DRUGS 165th & Pacific LE 7-5993	PARKLAND SEWING CENTER Sewing Machines - Vacuum Cleaners Knitting Machines LE 1-2000 12143 PACIFIC

Your Vote Can Make These Plans A Reality!

PRIVATE LESSONS
IN YOUR HOME
Piano - Organ - Accordion
FURNISH ACCORDIAN ON
Trial Period TH 5-3750

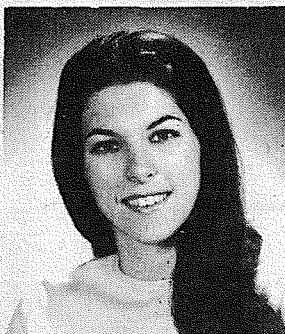
The TIMES JOURNAL

ENTERTAINMENT

Lakewood Players
Present
**"BAREFOOT
IN THE
PARK"**
Oct. 27-28, Nov. 3-4
Nov. 10-11
Villa Plaza
JU 8-2790

Around The County

By DONNA DIXON RESTIVO



Woodbrook Hunt Club held their sixth annual Hunter Trials last weekend. The rains held off and the day turned out wonderfully. To cap it off, there was a buffet supper, cocktails and dancing at the Lakewood Terrace. And what a dazzling party it was! A huntsman scarecrow was propped drunkenly against the wall and each table was centered with a jack o'lantern and autumn leaves. After a marvelous dinner, dance music was supplied by a three-piece band. Quite an assortment of masks was worn by the more than eighty persons in attendance. Dr. Pete Piper and his wife wore surgeon's masks. Lila Hewitt had on a Spanish-looking red and black-lace mask. Hal Dixon wore a horsehead. There were gorillas, clowns, pirates, vamps and many more. I went as a peppermint stick.

Ray Charles will appear tonight with his orchestra at Pacific Lutheran University, opening the 1967 homecoming activities at 8:15 in the Memorial Gymnasium. The Raeletts, a female vocal ensemble, will appear with Ray Charles.

Alan Hovhaness, composer-in-residence with the Seattle Symphony Orchestra, will appear in Tacoma Saturday.

The concert-lecture will be presented at 8:15 p.m. in the University of Puget Sound's Jacobsen Recital Hall.

Hovhaness has composed extensively, including two Armenian Rhapsodies for Strings. He has been influenced by early Ambrosian, Gregorian and Armenian chants. Hovhaness has found what he terms "new ways to utilize archaic materials." He frequently uses model sequences and polymodalism. The program will include a cello and piano suite, a harp sonata, a sung psalm and "Upon Enchanted Ground for Flute, Cello, Giant Tom Tom and Harp."

The Frank Moore Five with Bobby Lewis—opening a two-week engagement at the Sabre Room of the Winthrop Hotel—is more a "musical repertoire" group than musical group. In addition to playing a variety of old and new songs, the Frank Moore Five sings, dances, and performs comedy, satire and impressions.

Frank Moore formed his Five a few years ago and quickly came to the attention of an East Coast disc jockey. Since then, they have appeared on "American Bandstand" and in a number of prominent entertainment spots, such as the Hotel Thunderbird Lounge in Las Vegas and the Mapes Hotel in Reno.

The Elk Plain Tavern had a wild costume party for Halloween. I understand it was really a bang-up affair.

Have a good weekend, everyone. Goodnight. And good-night, Charlie.

Eatonville HS Into Rehearsals

The senior class members of Eatonville High School have started rehearsals for the annual fall play. The production, "Boys and Ghouls Together," is a three-act comedy by David Rogers and will be presented at 8 p.m. Friday, Nov. 17th, in the high school auditorium.

Theme for the play centers around the Dracula family, who are descendants from Dr. Frankenstein. The father and mother attempt to find a husband for their teen-age daughter by turning their ancient castle in the Alps into a youth hostel hoping for a rich American husband.

The Dracula family will be portrayed by Nancy Owings, Sue Peters, Barbara Griggs, Jack Hebert and Bill Millington. Portrayal of the young Americans will be by Jennie Crumley, Sandy Heacock, Linda Thureson, Donna Lyday, Margie Baker, Kathy Koop, Tom Pottin, Mike Baker, and Gerry Garrison. Additional character roles are played by Karen Vormestrand, Dennis Sifford and Dan Lay.

Vietnam Servicemen's Christmas Needs

What does a serviceman in Vietnam really want for Christmas?

According to a USO survey, high on their want list are shaving equipment, foot spray, shampoo in plastic bottles, penlights; insect repellent; small jigsaw puzzles; first aid kits, key chains and keycases; ballpoint pens, writing materials, medicated cleansing cream, small face towels, miniature sewing kits, large work hankchiefs, hard candy tins, and paperback books.

Small three-inch recording tapes, medical scrub brushes, foam insoles for combat boots, heavy work socks, one-inch paint brushes, and small crossword puzzles books also are popular.

Last year, in addition to gifts received by individuals, hundreds of other gifts were received by USO clubs in Vietnam and distributed to servicemen. Monetary contributions to USO made possible Christmas Day programs in Vietnam USO clubs which featured entertainment and dinners. USO staff members hope that this year's observance will be even bigger and better.

Gifts must bear an outside label identifying the contents. Surface mail parcels should be mailed immediately if they are to be received in Vietnam by Christmas.

HINTS FOR THE HOMEMAKER

With the holidays coming on, cooking will probably double at your home. So, if you want to keep your range looking fresh and clean, here's a little holiday magic.

A Q-tip will fit behind the knobs and gadgets on your range. They make cleaning really easy. Just use your regular cleanser, and change when the old tip becomes soiled. For really thorough holiday cleaning, we'll be glad to help you out. Why not give us a call?

**ALL WOMEN
HOUSE CLEANERS**

LE 1-2981 9620 Pacific

Romeo And Juliet Planned At PLU

William Shakespeare's immortal play, "Romeo and Juliet," will be staged Nov. 9 through the 11th in Eastvold Auditorium at Pacific Lutheran University.

Curtain time will be 8:15 p.m., and telephone reservations may be made by calling PLU's box office. All seats will be reserved for the three performances.

Juliet will be played by Constance J. Miller of Seattle, and Romeo will be performed by Robert P. Beath of Mt. Vernon. Both are active drama students.

Director Abe J. Bassett, assistant professor of speech, said the production was written when Shakespeare was about 30-years old. It was first presented in 1595, and has

remained popular since. "It is a play that young people have adored as the ultimate glorification of ideal love," said Bassett.

Although the play's full title is "The Tragedy of Romeo and Juliet," Bassett said Shakespeare has peppered it with comedy. Two of dramatic literature's grandest comics, the Nurse and her man Peter, are integral parts of the play.

"The mood is unusually high-spirited for a tragedy," he added.

But despite the comedy, the play is a story of tragedy of both circumstance and character. Love is sacrificed to the ancient enmity between the houses of Montague and Capulet.

PRAIRIE TAVERN
CHICKEN & PIZZA
Food! Dancing!
LIVE MUSIC
FRIDAY & SATURDAY
Jean & Chris — Betty Jean & Wade
on The Mountain Highway at Roy "Y"

TONITE

Frank Moore Five
With
Bobby Lewis
Winthrop Hotel
Tacoma

sabre
ROOM

Richards
RESTAURANT
BUFFET DINING
a dazzling variety of foods — all you can eat — luncheon and dinner.
CHOICE STEAKS • SEAFOODS
SANDWICHES • COCKTAILS
8201 Pacific GR 4-2063

**IN THE DARK
ABOUT A GOOD
PLACE TO EAT?
TRY BRAD'S**
banquet facilities for 30 to 300
open daily 11:30 to 8 p.m.
9201 Pacific 26 & Pearl
GR 4-1234 SK-2-5020

BROOKDALE RESTAURANT
CHARBROILED STEAKS and CHOPS
OPEN
MONDAY THRU THURSDAY 6 a.m. to 1 a.m.
FRIDAY and SATURDAY ALL NITE • CLOSE SUNDAY 10 p.m.
CALL FOR BANQUET RESERVATIONS
Open Thanksgiving Day 7 a.m. to 8 p.m.
Turkey, Ham and All The Trimmings.
LE 1-1995 GENE AND SHIRLEY BENNETT — OWNERS 130th & PACIFIC

La Pergola Inn
DANCING TO LIVE MUSIC:
**LOWELL THOMAS
AND HIS BAND**
Friday and Saturday
\$7 per couple
14522 PACIFIC AVE. LE 7-4747

IN SPANAWAY
For a Good Place to Eat, Try
**LITTLE PARK
CAFE**
Open 7 Days A Week
6 A.M. to 9 P.M.
172nd & Pacific LE 1-1343

ELK PLAIN TAVERN
Dance To Live Music
Friday Eve 9:30 p.m.-1:30 a.m.
Saturday Afternoon 2 p.m.-4 p.m.
Saturday Evening 9:30 p.m.-1:30 a.m.
Sunday Evening 6:30 p.m.-9:30 p.m.
Open Every Sunday
"On The Mountain Highway 2 1/2 Miles Past The Roy Y"

Angelo's
PIZZA HOUSE
ORDERS TO GO
Featuring top sirloin and American dishes, spaghetti, rigatoni, meat balls, sausage, ravioli, beer and wine.
Choice of Pizzas
cheese & tomato bacon
anchovie peppers
mushroom olive
Italian sausage hamburgers
pepperoni ham
tuna salami
 onion

LE 7-7233
14102 PACIFIC AVE
PARKLAND
CALL AHEAD, IT'S
PIPING HOT
ALL THE WAY HOME
PICK UP A BOX, PAIL, BUCKET
OR A BARREL

The TIMES JOURNAL
SPORTS

Lutes Nearly Upset Linfield

State Elk Season Opens Sat.

Washington's 1967 elk hunts begin Saturday, and this year more nonpermit either-sex elk areas are available to the hunter.

Elk populations are at a high point in elk areas. However, the Washington Game Department cautions hunters not to be highly optimistic about all areas open to general either-sex hunting.

In spots where a building elk herd is in conflict with other aims and an adequate harvest is difficult to obtain, either-sex seasons have been established open to all hunters without special permit. (The areas are all listed in the 1967 Hunting Regulations Pamphlet available free from license dealers.)

In many cases, explains the Department, the elk herd is not compatible with nearby

agricultural crops. Damage problems are developing rapidly and elk numbers must be kept low.

These small elk herds are difficult for the hunter to locate due to relatively low number and brush terrain, but do offer opportunity for the hunter who knows the country.

The Game Department urges all hunters to save themselves disappointment by not looking at the unrestricted either-sex elk areas as prime hunting country.

The bulk of the either-sex areas are open to hunting on the same dates as the general statewide bull elk seasons.

The Department predicts that over 80,000 elk hunters will be out this year and harvest over 12,000 elk.



HALFBACK Mike Stafford pulls in a John Zurfluh pass to gain 11 yards against Curtis last week.
— Photo by Steve Harlow

Hunter's Safety Record Cited

OLYMPIA - With over 300,000 persons licensed to hunt, and the first two weeks of major, statewide hunting seasons behind them, Washington State's hunters have the commendable safety record of no fatal firearm accidents, noted State Game Commission Chairman James Ralls today.

"Some statewide seasons opened in early September, but the biggest turnout of hun-

ters has come since October 14 when deer, ducks and pheasants became legal game statewide, says Ralls.

"From a total state resident hunting population of well over 300,000, we estimate that some 270,000 persons have already gone on at least one hunting trip or more; and we have a safety record of only 11 hunting firearm accidents — all non-fatal.

Bethel Hosts Peninsula

By John Briehl

All the festivities of homecoming week will brighten Art Crate Field as the Bethel Braves host the Peninsula Seahawks in what promises to be a real thriller.

After two straight losses, the Braves will be out to upset the number one rated team from Peninsula. The Seahawks downed North Thurston last week 7-0 enroute to what they hope will be a Seamount Championship.

Last years encounter with Peninsula saw the Braves beaten 27-7 on the Gig Harbor field, but an enthused Bethel team hopes to reverse the score in this homecoming bout.

The Curtis Vikings out-touchdowned the Braves last week at the Curtis field.

Timely fumble recoveries by Doug Lee and Bill Thomas and a pass interception by safety John Zurfluh held the Vikings to a scoreless first half.

The Braves opened the second half with their first and only score. Following two twenty yard pass plays to Mike LaVine, Zurfluh hit end Steve Jasmer on a cross-over for twenty-five yards and the score. The PAT was booted by Ed Mayo.

However, Curtis immediately scored back as Viking fullback Steve Beard raced around end for a forty yard touchdown. Beard added two more touchdowns both on the ground to secure victory for the Vikings.

Cards 37-Eagles 0

PARKLAND - The Franklin Pierce Cardinals will engage their valley rivals, the Puyallup Vikings, in gridiron combat Friday night at Cardinal Field.

Last Friday Franklin Pierce rebounded from a previous 6 to 6 deadlock with Lakes to wallop the Federal Way Eagles 37 to 0. The Cards were first to draw blood when quarterback Jim Hadland drove 3 yards thru the Eagles' line for a touchdown. A Morris Shannahan PAT kick was good for the extra point.

It was Franklin Pierce again in the second period as Hadland plunged 1 yard over goal for his second score. End Mike Qunell nabbed a 41 yard bomb from Hadland for another Cardinal scoring effort.

Shannahan's PAT boot was good. Still in the same period, Hadland rambled 37 yards to score once again. A Shannahan PAT kick was good for the added point. At halftime the Cards led 27 to 0.

Fircrest Takes Rookie League Championship

Fircrest clinched the Rookie League championship and the Economy Angels won the Small Fry League title Sunday by posting victories in their final regular-season games of the Pierce County Park Department's boys football program.

The Pacific Lutheran University Knights were a 22-point underdog against top-ranked Linfield College last Saturday, but the Wildcats were mighty happy to settle for a three-point win.

A field goal in the fourth quarter of play gave the nationally ranked McMinnville team the 24-21 win over PLU.

Head coach Roy Carlson had nothing but praise for his team following the near upset. "Our entire squad played an outstanding game, and if we hadn't fumbled one, the game would have been ours."

At two times in the game PLU led the Northwest Conference power. Freshman Dave Halstead of Hillsboro, Ore., put the Lutes on the board with a 74-yard run. Bob Lovell, a transfer from Everett Junior College, passed to Bill Ranta of Portland for the second PLU touchdown, and Lee Davidson of Colbert legged it 87 yards for the final touchdown.

Davidson, who replaced injured Hans Lindstrom in the offensive backfield, rushed 12 times for 174 yards, and Halstead, the Lutes' work horse, added 103 yards in 13 carries.

Despite the loss, it was the Lutes' best game of the season, said Carlson. The Knights netted 312 yards on the ground. In its previous encounter, Linfield had held opposing teams to an average of 56.2.

The Lutes came out of the game with a few bruises, but no serious injuries. Freshman end Dave Roller, PLU's top receiver, should be back in the lineup this Saturday for the Lutes' homecoming contest against the College of Idaho.

The Coyotes, like the Lutes, have won only one game this season.

"They have a strong defense," said Carlson, "and we are figuring on a tough game Saturday." The fact is supported by scores in the Coyotes' games. Eastern Washington State College defeated College of Idaho 27-0, and Linfield only had a winning margin of two touchdowns. Eastern beat PLU 47-14.

The homecoming contest starts at 2 p.m. at Franklin Pierce stadium.

Bethel Rec Meeting Nov. 9

An organizational meeting to form a new recreation association in the Bethel School District will be held Thursday, Nov. 9, at 7:30 p.m. at Bethel High School.

Ed Niehl, district recreation supervisor, made the announcement of the meeting. The association will undertake the improvement of recreation facilities in the district as well as increasing the number of teams and recreation leagues in the area.

All persons interested in serving on the recreation association are advised to attend the meeting.

New Cars Cost Less with a

*\$4.50 A Year For Each \$100 Borrowed

4 1/2 %

NEW GAIN LOAN 21

Citizens STATE BANK

★ MAIN OFFICE - PUYALLUP
★ EAST SUMNER OFFICE
★ SUMMIT VIEW OFFICE
★ EDGEWOOD-MILTON OFFICE

NEW - MORE POWERFUL

the 1968's ARE HERE VOLKSWAGEN
27 MAJOR CHANGES COME IN AND

Tom Carstens AUTOHAUS

7030 So. Tacoma Way
GR 4-0666
TACOMA DEALER SINCE 1955

PARKLAND AUTO BODY

Complete Collision Service

108th & PACIFIC

LE 7-6303

SMALLEY MOTORS

before you buy any new '68 automobile, try our

New Car Discount House also

New Security campers and trailers used automobiles and trucks

LE 1-2291
10325 PACIFIC
OPEN EVENINGS UNTIL 9

\$\$\$ VAUGHAN'S VALUES \$\$\$

ALUMINUM STORM DOORS each **\$24⁸⁸**
pre-hung

MAHOGANY PANELLING \$ **2⁴⁹**
4 X 8 each

INTERIOR PAINT \$ **2⁸⁹**
latex per gallon

CEILING TILE - White each **12^c**
12 X 12

PLENTY OF FREE PARKING

VAUGHAN'S
6402 South Tacoma Way

Building Materials Inc.
GR 2-4494
&
GR 4-9515

ADVANCE GLASS & UPHOLSTERY

Service while you wait
Residential and Auto Glass

we handle all insurance claims

For your car's interior:

Complete water leak service
complete upholstery
repair of torn or worn parts
carpets

10321 Pacific Ave.

LE 7-8301

PARADISE BOWL

Express — Frank Guesman, 558; Dick Breon, 214; Margie Miller, 454; Betty Breon, 173.
Little Lutes — Jay Young, 583; Mike Stoen, 205; Corrine Deetz, 443, 161.

Rolling Bees — Phyllis Huff, 539; Jennie Rugers, 223; Step Ladder: Lois Yurisich, 169-179-189. Split pick up: Bess Sparling, 3-7-10; Martha Hayes, 2-7-10.

Belles — Willa Woodford, 501, 195. Split pick up: Ann Bryant, 3-7-10.

Pinettes — Ginger Pittman, 555; Evie Baskett, 549; Gertrude Rich, 212; Evie Baskett, 212. Step Ladder: Helen Bergstrom, 158-168-178.

"600" Mixed — Larry Nestgard, 589, 218; Jan Nestgard, 422; Judi Nestgard, 161. Split pick up: Laura Catchpole, 3-7; Alice Edwards, 3-6-7-8.

Parkland Merchants — Fred Armstrong, 545; T. Ketchum, 545; John James, 222.

Sportsman — Joe Arila, 587, 221.

Industrial — Grant Harlow, 614, 245.

Premier — Don Kleiven, 637; Bob Unkrur, 244.

Friendly Doubles — Janice Christensen, 203; Pauline Simpson, 462; James Kenworthy, 541, 208.

Ladies Scratch Trios — Allene Hermanns, 533; Mary Paton, 192. Split pick up: Grace Siler, 3-9-10.

Senior Citizens — Al Kleinsasser, 572; Wendal Gunderson, 224; Janed Scott, 470, 177.

Franklin Pierce Faculty — K. Laase, 556; C. Richardson, 201; Eleanor Ervin, 445, 157. Split pick up: Norma Nartineau, 6-7.

Mixers — Jonas Smeltzer, 568, 429; Shirley McMillian, 539, 200.

Top Rollers — Doug Fogle, 535; Bob Culver, 213; Jerry Varner, 213; Ann Harris, 528, 196.

Graham — John Boyze, 577, 247; Mary Metzka, 476, 169; Ernie Michaels, 169. Split pick up: Marie Chanslor, 3-7-10.

Eager Beavers — Arabelle Frerichs, 483; Ann Runder, 200. Split pick up: Alice Hamilton, 3-7-10; Lois Reeves, 4-10.

Birds of Paradise — Arlene Daugherty, 474; Helen Nickelson, 177.

Hi-Lows — Marian Unkrur, 511, 185. Split pick up: Lois Bolen, 3-7.

Parkland Mixed — Ardeen Iverson, 570; Howard Yurisich, 224; Sally Skorupski, 537; Reta Craig, 187.

850 Scratch — Bud Seeman, 548; Leo Arnestad, 204.

Classic — Grant Harlow, 601; Bob Leonard, 227.

Evergreen — Harold Lagault, 520; Jim Chafe, 203.

Bowlerettes — Rosalie Cole, 510; Lorraine Smith, 210.

Last Niters — Don Butts, 544; Steve Kanton, 209; Eyvonne Larson, 484; Clara Neshiem, 190.

4x8'S — Bob Bjorke, 573, 221; Shirley Bennett, 488; Marlyce Ellis, 183. Split pick ups: Bob Pilcher, 4-7-10. Step Ladder: Ann Pilcher, 129-130-131; Don Divelbiss, 141-148-155.

Pacific Lutheran University Football Statistics (6 Games)

RUSH	tc	yg	yl	net	ga
PLU	278	1269	235	1034	172.3
Opp	325	1352	260	1092	182.0

PASS	pa	pc	phi	nyp	ga
PLU	82	38	10	488	81.3
Opp	147	70	11	1035	172.5

TOTAL	plays	r	p	net	ga
PLU	360	1034	488	1522	253.7
Opp	472	1092	1035	2127	354.5

FIRST DOWNS	r	p	pa	t
PLU	46	22	10	78
Opp	59	44	8	111

PN	no.	yds. lost	ga
PLU	33	292	48.7
Opp	41	447	74.5

FUMBLES	no.	lost
PLU	31	17
Opp	9	4

Individual Statistics

RUSH	tc	yg	yl	net	ave
Harding	31	274	9	265	8.6
Halstead	52	281	12	269	5.2
Davidson	37	260	6	254	6.9
Lindstrom	61	208	60	148	2.4
Moe	40	138	6	132	3.3
Olbertz	13	46	23	23	1.8
Jansen	3	17	3	14	4.7
Doggett	2	6	4	2	1.0
Ferguson	1	1	0	1	1.0
Rue	1	0	-1	-1	---
Ranta	1	0	-11	-11	---
Beller	11	20	43	-23	---
Lovell	25	18	57	-39	---

PASSING	pa	pc	phi	nyp	td
Lovell	45	20	6	236	2
Lindstrom	10	6	0	116	2
Beller	15	8	2	102	0
Olbertz	12	4	2	54	0

PASS RECEIVING	no.	yds	tds	con.
Roller	15	180	0	0
Ranta	8	146	0	0
Carey	4	107	2	0
Halstead	4	13	0	0
Moe	3	35	0	0
Harding	3	16	0	0
Jansen	1	11	0	0

Bantams (2 games) — Steve Hardwick, 280; Mark Miller, 156; Vickie McTaggart, 251, 127.
Juniors — Bob Warter, 480; Duane Bjorke, 200; Laurie Rivstet, 423, 171. Split pick up: Greg Rau, 3-6-7-10.

Calendar of Events

Harvard Grade School PTA will sponsor a carnival in the school's auditorium from 5:30 p.m. Friday, November 3rd.

Theme for the carnival will be "Autumn Days" and a supper, including "sloppy joes," Pronto Pops and trimmings, will be served. Also featured will be booths with prizes.

The American Legion, Post 228, will sponsor a dinner, in celebration of Veteran's Day, on November 13th at the Sunshine Hall, 106th and Yakima.

The Turkey dinner will begin at 7:45 p.m. and the refreshments will be served by the Women's Auxiliary, according to Connie D. Lawson, commander of the Parkland post. Games will follow the dinner.

A Ham Dinner will be served from 2 p.m. November 11th at the Spanaway American Legion Hall, 161st St.

This celebration of Veteran's Day is open to the public. Donations will be \$1 for adults and children under 12; 50 cents.

The Club has a game night every Thursday and cordially invite all to attend.

Harvard Grade School PTA will sponsor a carnival in the school's auditorium from 5:30 p.m. Friday, Nov. 3rd.

Theme for the carnival will be "Autumn Days" and a supper, including "sloppy

joes," Pronto Pops and trimmings, will be served. Also featured will be booths with prizes.

The monthly meeting of Pierce County Library Board of Trustees will be at 1:30 p.m. Wednesday Nov. 8th in the Headquarters building at 201 St. Helens Ave. The meeting is open to the public.

Elk Plain Grange will meet at 8 p.m., November 6th in the Grange Hall.

The Tots Club of Collins district will meet at 8 p.m. November 7th in the multipurpose room of the Collins School. The members will vote on a proposed dance.

Thrifty Maids Homemakers Club will meet on November 9th in the home of Mrs. Erlene Gibson at 12609 28th Avenue East to work on the bazaar items.

Mrs. Clara Johnson, Erlene Gibson, and Kathy Wystrach, all from the Thrifty Maids Club, attended the Homemaker's State Convention in Tumwater.

The newly organized Bethel Recreation Association will hold a very important meeting at 7:30 p.m. November 9th at the High School.

All persons interested Bethel Recreation program are welcome. For further information call Ed Niehl at VI 7-2353.



The Country Parson



"With force you can persuade a man to do your will — but not to approve it."

Copyright, by Frank A. Clark



The newly organized Bethel Recreation Association will hold a very important meeting at 7:30 p.m. November 9th at the High School.

OUR WEEKLY COMICS

RENT TV Color TV
RENTAL MARTS, INC.
 GR 5-3755 9440 Pacific
 JU 4-4100 10012 Bridgeport

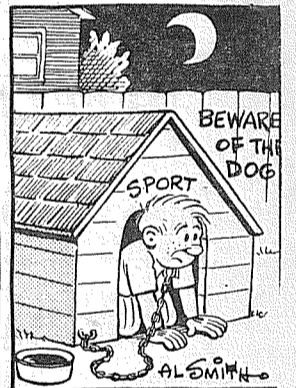
PARKLAND AUTOMOTIVE
 • Automatic Transmissions
 • Brake Work
 • General Repair
 • Tune Ups
PICK UP AND DELIVERY FREE ESTIMATES
 108th & Pacific LE 1-3722

LOOK 8 ft. **2 x 4's**
25^c ea.
Anderson Lumber
 9813 Pacific Ave.

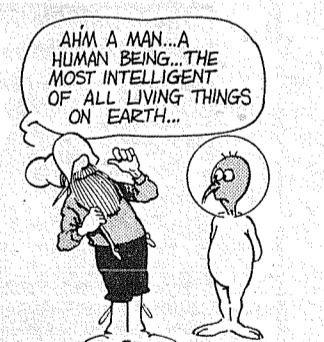
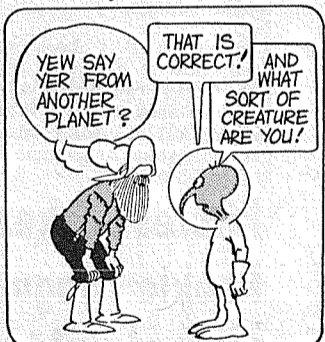
INSURANCE Auto-Fire-Life-Bonds
 A COMPLETE SERVICE FOR HOME OR BUSINESS
IRENE CLEMENS
INSURANCE AGENCY
 10329 PACIFIC AVE. LE 7-4904
 AGENT-BROKER-NOTARY

Vote Tuesday.
 What will the future be like?
 Like we plan now. Vote Tuesday.
Pacific Northwest Bell
 Part of the Nationwide Bell System

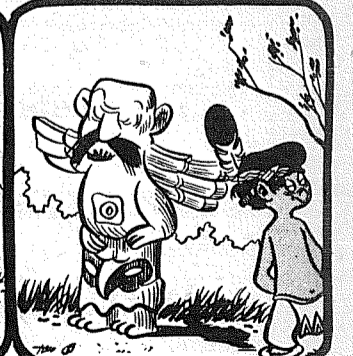
Rural Delivery



Grubby



DEEMS



Grandpa's Boy



By Brad Anderson

CLASSIFIED ADS

Call LE 7-0223 For Want Ads

1 Misc. For Sale

AQUA TANK with reserve, back pack, regulator. \$70.00. LE 1-3001. 67-160

GRAVEL FOR driveways. Coarse or fine screen. 5 1/2 yards, \$14. Coarse washed sand, pea gravel crushed rock, mixes for concrete work. Cedar fence rails and posts. Phone evenings. Norman, LE 7-4088.

AQUARIUM, complete. TH 5-3109.

SONY 500A tape recorder. Ten tapes, two large speakers, two mikes. Inquire at TH 5-7716.

110 lb WEIGHT lifting set. TH 5-9793.

24" RCA blonde console TV. Four 650x13 tires and wheels. Best offer. TH 5-8733.

1967 CAMPER 8', sleeps 4. Good condition. \$850. VI 7-7415.

5-ROOM Spark oil stove. 275 gal tank with stand, \$35. TH 5-0846.

2 Autos For Sale

53 MERCURY, convertible, new tires, good mechanical condition. \$200.00. LE 1-3001. 67-161

OWNER: 1961 Comet wagon. Radio, heater, standard. Good condition. \$575. TH 5-8079.

6 Musical Instruments

BALDWIN SPINET Piano like new. LE 1-3654. 67-158

RENT OR BUY
The beautiful Howard Piano made by Baldwin, \$10 monthly.
LE 7-4221

PIANO - 49" upright, plain case. LE 7-7066.

8 Garden Supplies

EVERGREEN Shrubs to 4 ft. high, you dig from field reasonable prices, Near Bethel Hi School. VI 7-7807. 67-150

FREE FILL gravel wanted at 120 133rd St. So. LE 1-4646 Elmhurst Mutual Light & Power Co. 67-113

9 Animals For Sale

HALF WELSH shetland pinto gelding. Outgrown family pet. \$85. Donita Martin, VI 7-7146.

PUREBRED English setter pups, 3 months old. \$30. VI 7-2325.

BUCK skin mare 4 years old, very gentle, from Reg. quarter horse stud and appendix mare. \$250.00. Susan Martin VI 7-7146. 67-159

SHEEP, 6 yews, 1 ram. UN3-1992.

10 For Sale Or Trade

ACREAGE in 2 1/2 acre lots on Redford Harrison road near Bethel Hi School, or trade land as down payment on house construction. VI 7-7807. 67-151

23 Help Wanted

MEN wanted. Limited number of positions open. Excellent opportunity to grow with small company having large backlog and future. Paid vacation, holidays and medical. Excellent working conditions. Mechanical aptitude desired. Call for interview appointment. VE 8-9800.

PARKLAND Light & Water has opening for meter reader. Position is permanent, \$3.00 to \$3.40 per hr. plus fringe benefits. Applicants should be able to walk long distances and frequently stoop to read water meters. Stop or call at the office. LE 1-5666. 67-162

AGENT for Sumner area. Supplement your income while you learn all phases of casualty insurance. Start part time and work into a full time position. Call Ted Lopat, District Manager, Farmers Insurance Group. SK 9-9494 or SK 2-7070.

24 Work Wanted

IRONING, experienced, references. LE 1-6597.

27 Misc. Services

EXPERT alterations, mens & womens fast service and reasonable LE 1-3506.

28 Building Services

ROOFING, remodel, foundation, new additions. Free estimates LE 1-0567.

36 Personals

GENTLEMAN 58 desires to meet personable lady 45-50, must be free and able to travel. Box 141 B % Times Journal, P.O. Box 2116. 67-156

LOSE WEIGHT safely with Dex-A-Diet Tablets. ONLY 98c at Johnson Drug.

29 Land Services

ROTOVATING, plow, disc, harrow, light blade work. LE 7-6058. 67-149

TOP SOIL and gravel. Loader work. R.D. Beeler. LE 7-4940.

30 Repair Services

T.V. Service - Guaranteed stereo & CB repair call LE 7-3427.

BROKEN bicycles, tricycles and riding toys expertly repaired with economical used parts at the Bicycle Wrecking Yard. LE 1-4741.

38 Instruction

PIANO studio - 72nd and Canyon Rd. LE 7-5064.

IMPROVE your English LE 7-5274. 67-143

HELEN'S
Parkland Ceramics
Lessons-Supplies-Firing
1303 S. 117th
LE 1-0823

19 For Rent Or Lease

HOME VACANT
We desperately need good rentals \$80 to \$150 per month
CALL NOW
Let us handle your worries
SUBURBAN REALTY
11302 Pacific Ave.
LE 7-8638 or LE 7-6896

3 BEDROOM home in country. \$75. TH 5-7190.

TROPHY STORM DOORS
Heavy Duty Aluminum Full Piano Hinge
6 Models to Choose From
Manufacturer - Repair Service
Parkland Door Inc.
318 East 96th GR 4-7011

19 For Rent Or Lease

OFFICE SPACE - BOAT & TRAILER SPACE for rent. Office \$50 per month. Lights, heat, water and garbage furnished. Covered boat and trailer spaces \$10 per month. Phone LE 7-0223 days 10 to 4.

12 Real Estate For Sale

5 BEAUTIFULLY wooded acres, on 660 ft of black top road between Roy and McKenna \$4,950.00. \$200 down, \$45 a month. JU 4-3917. SK 2-3344.

5 ACRES Kapowsin area, \$550 down, \$37.50 monthly. TH 5-1500.

Listings Wanted
Buying or Selling
Real Estate Service
Call
Devereaux Realty
12152 Pacific Ave. LE 7-8658

SMALL FARM. Mile south new high school. 9 1/2 acres. Custom built 3 year old 3 bedroom rambler. Excellent condition. \$32,000 full price. Owner contract. 14711 E. 86th Ave.

SELLING YOUR HOME?
FREE APPRAISAL
GLADLY GIVEN
LOVELACE REALTY
12920 PACIFIC LE 1-5555

M.L.S.
MULTIPLE LISTING SERVICE
McKinley Hill Realty
6311 McKinley Ave. GR 4-9579
Member of Multiple Listing Service and Tacoma Real Estate Board

Used Cars
HEADQUARTERS
"MOST FOR THE MONEY"
All Makes... All Kinds
ARMSTRONG'S USED CARS LE 7-5524
11109 Pacific Ave.

Legals

SUPERIOR COURT OF WASHINGTON FOR PIERCE COUNTY NO. 178119 SUMMONS BY PUBLICATION
HARRY T. CHINN, Plaintiff, vs. PHYLLIS A. CHINN, Defendant.
THE STATE OF WASHINGTON, to the said PHYLLIS A. CHINN, YOU ARE HEREBY SUMMONED to appear within sixty (60) days after the date of first publication of this summons, to-wit: Within sixty days after the 28th day of September, 1967, and defend the above-entitled action in the above-entitled Court, and answer the complaint of the above-named Plaintiff and serve a copy of your Answer upon the undersigned Attorney for above-named, Harry T. Chinn, Plaintiff at his office below stated; and in case of your failure to do so, judgment will be rendered against you according to the demand of the Complaint which has been filed with the Clerk of said Court.
This is an action for Divorce. George F. Potter Attorney for Plaintiff
George F. Potter Attorney at Law 159 South 112th Street Parkland, Washington 98444 LEnox 1-2889
Published Sept. 28, Oct. 5, 12, 19, 26, and Nov. 2, 1967.

Legals

SUPERIOR COURT OF WASHINGTON FOR PIERCE COUNTY NO. 178784 SUMMONS BY PUBLICATION
C.M. THOMPSON, Plaintiff; vs. LAVINA R. THOMPSON, Defendant.
THE STATE OF WASHINGTON, to the said LAVINA R. THOMPSON, YOU ARE HEREBY SUMMONED to appear within sixty (60) days after the date of first publication of this summons, to-wit: Within sixty days after the 2nd day of November, 1967, and defend the above-entitled action in the above-entitled Court, and answer the Complaint of the above-named Plaintiff and serve a copy of your Answer upon the undersigned Attorney for above-named, C.M. Thompson, Plaintiff at his office below stated; and in case of your failure to do so, judgment will be rendered against you according to the demand of the Plaintiff's complaint which has been filed with the Clerk of said Court.
This is an action for divorce. George F. Potter, Attorney for Plaintiff
George F. Potter Attorney at Law 159 South 112th Street Parkland, Washington 98444 LEnox 1-2889
Published in the Parkland Times Journal November 2, 9, 16, 23, 30, December 7 and 14, 1967.

SUPERIOR COURT OF WASHINGTON FOR PIERCE COUNTY NO. 178120 SUMMONS BY PUBLICATION
DONNA L. BOOTHE, Plaintiff, vs. THOMAS W. BOOTHE, Defendant.
THE STATE OF WASHINGTON, to the said THOMAS W. BOOTHE, YOU ARE HEREBY SUMMONED to appear within sixty (60) days after the date of first publication of this summons, to-wit: Within sixty days after the 28th day of September, 1967, and defend the above-entitled action in the above-entitled Court, and answer the complaint of the above-named Plaintiff and serve a copy of your Answer upon the undersigned Attorney for above-named, Donna L. Boothe, Plaintiff at his office below stated; and in case of your failure to do so, judgment will be rendered against you according to the demand of the Complaint which has been filed with the Clerk of said Court.
This is an action for Divorce. George F. Potter Attorney for Plaintiff
George F. Potter Attorney at Law 159 South 112th Street Parkland, Washington 98444 LEnox 1-2889
Published Sept. 28, Oct. 5, 12, 19, 26, and Nov. 2, 1967.

IN THE SUPERIOR COURT OF THE STATE OF WASHINGTON FOR THE COUNTY OF PIERCE
No. 76462
NOTICE TO CREDITORS
In the Matter of the Estate of EMMA H. VAN ARSDALL, Deceased.
Notice is given that the undersigned has been appointed and has qualified as personal representative of this estate. Persons having claims against the deceased are required to serve the same, duly verified, on the undersigned or the attorney of record at the address stated below and file the same with the Clerk of this court, together with proof of such service within four months after October 5, 1967, or the same will be forever barred.
/s/ George A. Van Arsdall
Personal Representative
159 South 112th Street
Parkland, Washington, 98444
GEORGE F. POTTER
Attorney for Estate
159 South 112th Street
Parkland, Washington, 98444

BETHEL HAY
ALFALFA HAY
MUCK-KAPOWSIN RD. ON CEDAR
VI 7-7252

BUSINESS DIRECTORY

Fencing
FENCING
Designers and Builders
EXPERT WORKMANSHIP
REASONABLE PRICES
Easy Monthly Payments
VAUGHAN'S
6402 S. Tacoma Wy. GR 4-9515

Top Soil
BALMER & SON
EXCAVATING
Building - Loader
Land Clearing - Dump Trucks
Blasting - Road Construction
Top Soil, Backhoe For Hire
FREE ESTIMATES
LE 7-3165 VI 7-7133

Furnaces
Sheet Metal
• Furnace Repair and Service
• Installations
PARKLAND FUEL OIL
12002 Pacific Ave.
LE 7-0256

Boush Moving & Storage
Agents for U.S. Van Lines
Coast to Coast Service
121 WEST STEWART
TH 5-5436

DOZER & LOADER WORK
Hour or Contract
Hauling State CC Permit
8-10 yd. new truck
NEWBURY'S
DOZER SERVICE
LE 7-7455

Bethel Grad Wounded



R.R. WESTERMAN
Corporal Robert R. Westerman, United States Marine Corps., son of Mr. and Mrs. R. T. Westerman of 15907 22nd Avenue East and 1966 graduate of Bethel High School, has been wounded in Vietnam. The young marine is at present in Bremerton Naval Hospital where it is estimated he will be for quite some time.

Open House, Dedication Slated At Eatonville

Eatonville schools, in conjunction with American Education Week, will host an open house from 7:30 p.m. Monday, Nov. 6th. Parents and friends will be invited to attend a dedication ceremony of the new science wing. Donald Stewart, Chairman of the school board will officiate and John Van Eaton will comment on the project. The addition will be dedicated to former Superintendent of Schools, Hans C. Olson, and his deceased wife, Salome R. Olson, librarian, in appreciation of their many years of service to the School District. A plaque honoring their contribution to education will be installed in the new wing. Students of the Science Department will demonstrate use of the modern facilities under the direction of Miss Shroyer and Mr.

Clark. The new building consists of a biology unit containing a classroom area with six 5-place lab tables, storage, supply and work rooms. The chemistry, general science and physics unit also has a classroom area with six 5-place lab tables, storage, supply and work rooms. The chemistry, general science and physics unit also has a classroom area with six 5-place tables, storage, demonstration and photographic rooms. The construction cost was \$105,614. Cabinets, furniture and equipment totaled \$30,000. At the conclusion of dedication ceremonies and tour of the science wing, Eastonville Grade School will be open with teachers in their rooms until 9 p.m. We invite all interested to Stop, Look and Listen briefly. Refreshments will be served in the lunchroom by PTA room mothers.

STORK REPORT
Mr. and Mrs. Donald J. Orth, 10206 48th Ave. E., Girl, Oct. 22.
Mr. and Mrs. A.J. Betschart Jr., 14209 Pacific, Boy, Oct. 23.
Mr. and Mrs. Frank A. Ross, 872 So. 84th, Girl, Oct. 24.
Mr. and Mrs. Arnold D. Johnson, 10507 So. Steele, Boy, Oct. 25.

Vote Tuesday.
What will the future be like?
Like we plan now. Vote Tuesday.
Pacific Northwest Bell
Part of the Nationwide Bell System

FROM OUR
Correspondents
Waller Road

By Mrs. Verne W. Fogle Le 7-5210

Waller Road Grange Auxiliary met with Mrs. Roy Looker last Tuesday for a noon luncheon. The business meeting followed with Mrs. H. E. Lovell conducting. Plans were made for the annual fall luncheon. This year's date is set for November 29th. In conjunction, the ladies will hold a Thrift Shop, where new and used attire may be purchased. Bazaar items will be for sale also.

Craft classes will start at 7:30 p.m., November 6th at the Waller Road Grange Hall under auspices of the Grange Auxiliary. The first in the series will be on "Creative embroidery." Each person attending is asked to bring a large darning needle and light weight brown or black yarn. The classes will be held twice a month and as long as interest is shown. Bring a friend or two. For information call Mrs. Verne Fogle LE 7-5210.

Waller Road PTA is sponsoring the sale of identification bracelets and necklaces as a community service. A nominal fee is being charged. Information may be attained by calling Mrs. Chuck Powell, WA 2-8360 or Mrs. Ernest Shaughnessy, WA 2-6460.

Waller Road Garden Club members held a work day last Thursday at the Grange Hall. They planted a variety of bulbs that will offer a show of color in the spring. The Garden Club plants and keeps up the flower beds at the hall as one of their many community projects.

Miss Nani Lovell and Miss Cathy Inell, both graduates of Puyallup High School are enrolled at Central Washington State College at Ellensburg.

Larry Geise is back at Pullman for further studies. Mr. and Mrs. R. Geise went to Pullman the past week to help Larry celebrate his birthday.

Grangers from Pierce County attending the Golden Sheaf and Silver Star Dinner and Program, last Sunday at Waller Road Grange Hall numbered approximately 250. Ninety eight of these were silver star members, 2 were 50 year members. The 50-year members were J. T. Sullivan of James Sales Grange and Oscar Brander of Gig Harbor. The Pomona Grange introduced the two after the dinner, which was served family style under direction of the Waller Road Grange ladies.

The decorations of tables and hall carried a silver theme with the use of candles and streamers. The Pomona Hall Home Economics Committee, headed by Mrs. John Gorow, was in charge. Rev. W. A. Moore, chaplain of the Grange offered the invocation.

Special guests were introduced by Elza Bryant, Peninsula Pomona Master. They were state Grange deputies George Hunter, King County representative of the state Grange; and Mrs. Hunter. Deputies of Pierce County and their wives. They were John Gorow, David Van Hulle and Maurice Rhinehart. Wayne Miller, "State Grange Prince for 867" of Lewis County. He was presented during the program, as a featured speaker on youth and the Grange.

Vocal selections were by the Waller Road Grange quartet, made up of Mesdames K. Aarhaus, L. Larsen, D. Van Hulle and R. Fogle. Dick Taylor of Ohop sang two solos. A skit was presented by Riverside Grangers, Mrs. William Markham presented the reading. The flag presentation was by the Pomona youth group. These young folks also assisted with the serving as did members of the junior grangers of Pierce County.

Edgewood grange made the programs that were given to everyone.

Three 4-H Clubs
Learn Forestry

Three 4-H forestry clubs from the Franklin Pierce and Graham areas met at Bonney Lake on Friday, to learn about forestry. Clubs from the Franklin Pierce area were Mrs. Donna Baskett's "Cavaliers" and "Nature's Friends," and from the Graham area, Mrs. Marie Taylor's "Finny Frills and Fellows."

On hand to teach them was Bob Bradley, new Pierce County Extension Forester. Morning activities began with tree identification. Next came learning to pace and its use in

measuring distances and tree heights, using an improvised cruising stick.

At noon the group had a weenie roast, then learned to use the compass and took pictures in the afternoon.

The appointment of Bradley was announced by Frank C. Jackson, chairman of Pierce County Cooperative Extension service and Harry Sprinker, chairman of the board of county commissioners.

A native of Connecticut, Bradley earned a Bachelor of Science degree from the University of New Hampshire, a Masters' Degree in forest management from Oregon State, and has done additional graduate work in Arizona.

9 a.m. - 10 p.m.
7 DAYS
A WEEK

BARGAIN BASKET

16618
Pacific Ave. S. Spanaway
LE 7-3371

No Sales To
Dealers

WE RESERVE THE
RIGHT TO LIMIT
QUANTITIES

We Carry A Complete Line Of Sacked Feeds - Presto Logs

We Are Locally Owned & Operated
HELP YOUR BUDGET
WITH THESE SAVINGS

PRICES
EFFECTIVE
Nov. 2-3-4
Thur.-Fri.-Sat.

ARMOUR POTTED MEAT 3 OZ TIN 10^c	BOOK MATCHES 50 Count 10^c	ABC CRACKERS 2 Lb. Box 49^c
LIBBY CUT GREEN BEANS # 303 can 6 / \$1.00	LESLIE SHAKER SALT Plain or Iodized 26 oz. 7^c	SILK TOILET TISSUE 4 Roll Pkg. 29^c
NALLEY'S TANG Quart 43^c	DARIGOLD BUTTER One Lb. Cube 75^c	ARMOUR BEEF STEW 24 Oz. TIN 49^c
		FAMILY JOY MUSHROOM PIECES STEMS 4 OZ. TIN 5 / \$1.00

PRODUCE

20 # No. 2 POTATOES 49^c	TOKAY GRAPES 15^c LB.	MED. SIZE DRY ONIONS 2 LBS. 13^c	CABBAGE 7^c LB.
---	---	---	---

Everyday Low Meat Prices . . . 25 lb. Locker Boxes \$14.95

BAR S WIENERS 49^c lb.	BAR S NO # 1 BACON 69^c lb.	BAR S COMBINATION PACK 49^c lb.
BEEF LIVER 39^c lb.	PORK STEAK 59^c lb.	PORK SAUSAGE 43^c lb.

Cowboy Boot Sale

Men's Roughouts \$10⁰⁰
2-tone Dingo's etc. Broken Sizes
Reg. to 19.00

Children's \$4⁹⁹
11 pr. 6 to 3.
Reg. to 8.00

Women's Majorette \$7⁹⁹
Boots - 4, 4 1/2, 5, 5 1/2, 9
Reg. to 11.00

PAULS SHOES

161 St. & Pacific
LE 7-0552
Open 9 to 9 Daily
Till 6 Sat. & Sunday