

Pierce County Herald and

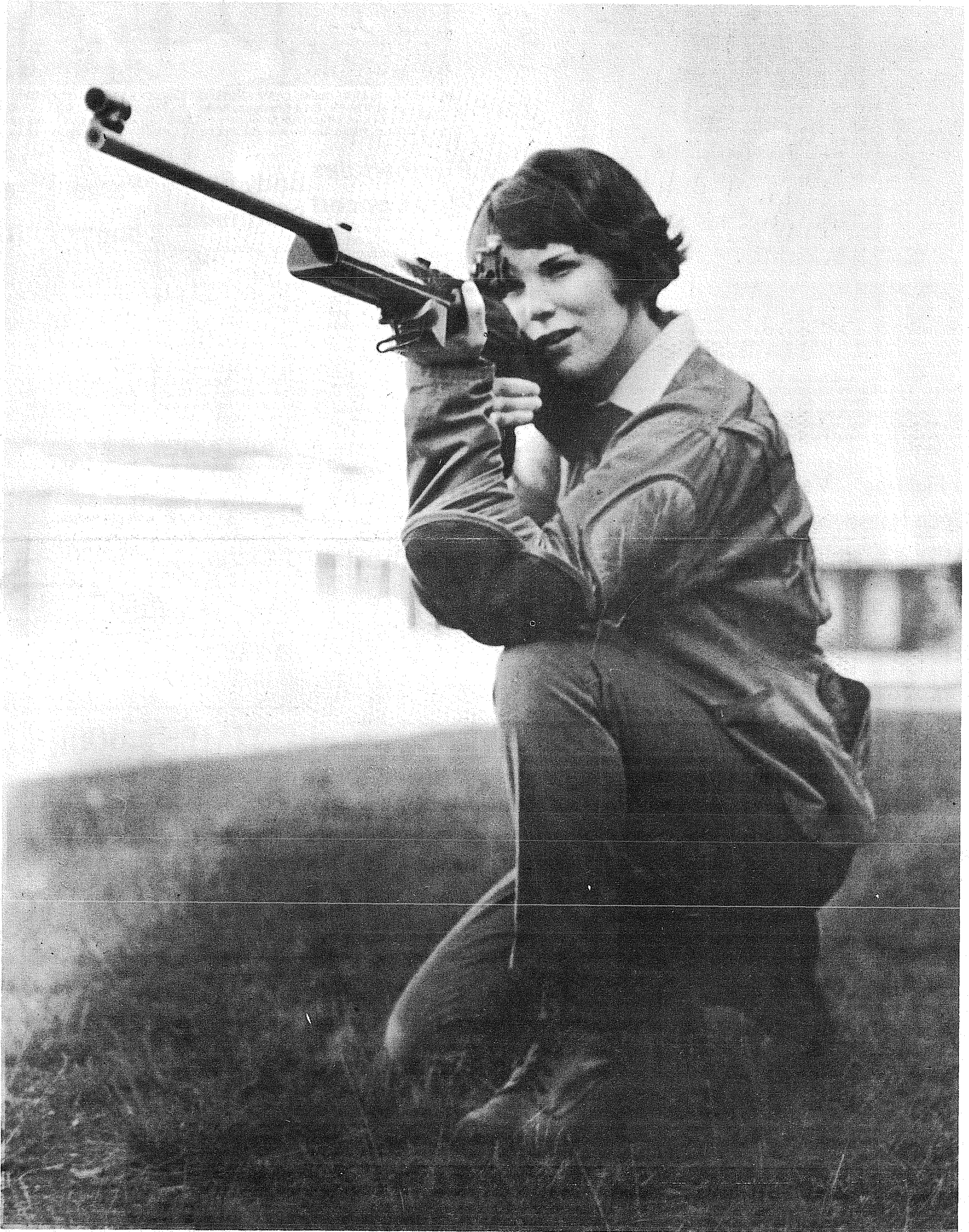
The TIMES JOURNAL

Vol. 25 No. 20 21

Thursday, May 22, 1969

Price Per
Single Copy

10¢



BETHEL ANNIE OAKLY Cecile Frenzel is pictured drawing a bead with the .22 cal. target rifle she used to win the Washington State Junior Gallery Girl Championship Trophy. Cecile, a pretty 17 year old senior, started her marksmanship at Ft. Lawton when she was a 9th grader. More pictures inside.

Editorial

Left Turn Lane To Be Reality

Work has started on Pacific Avenue's long overdue 5th left turn lane, with the first section being constructed between South 96 and approximately 108th.

When completed, it will provide motorists an opportunity to safely wait for the chance to make a left turn out of the traffic lanes. The rear-end collisions that are so numerous on Pacific Avenue should be greatly reduced.

Credit for spearheading the drive for the new lane, and working many hours during and between sessions of the Washington State Legislature to arrange financing, should go to State Representative R. Ted Bottiger. While in Olympia, he was supported in his work for the Pacific Avenue project by Senator John McCutcheon.

Bottiger's attention was drawn to the need for the lane by a Times Journal editorial some years ago. A campaign for the project got under way in 1965 backed by citizens' groups representing both Parkland and Spanaway. Petitions were drawn up, and area representatives attended a Legislative Highway Committee hearing in Puyallup in such numbers that the lawmakers were impressed.

From that point on things began to happen. During the 1967 session funds were allocated and the contracts were awarded in 1969 for the first section. Second and third sections will take the 5th left turn lane to the edge of Spanaway, and then be budgeted over the next two years.

Pacific Lutheran University's coach of coaches was paid a fitting tribute Monday when the school dedicated the new \$2.1 million Physical Education-Auditorium Building in his honor. Clifford O. Olson, who fielded the winningest football and basketball teams in Pacific Lutheran history, is the type of man both athletes and fans will always admire.

The new Olson Auditorium and Fieldhouse complex, a multi-purpose facility designed to serve both the university and community as a center for athletic and public events, will stand as a reminder to future generations of the man whose teams helped put Pacific Lutheran athletics on the map.

Fire Fighters Vets' Poppies' In Open House Sale Begins

John Farren, Chief of the Spanaway — Elk Plain Fire Department announced that the annual open house would be held at the Spanaway Station from 12:00 to 5:00 Sunday May 25.

This will be an opportunity for members of the community to enjoy a guided tour of the fire fighting facility. The tour will be complete with cake and cookies furnished by the Ladies Auxiliary.

Highlight of the tour will be the display of the two new John Bean fire trucks acquired by the district. Also on the display will be demonstrations of the latest in fire suppression and life-saving apparatus available in the district.

The traditional red crepe poppies of the American Legion will appear in button-holes again this spring according to local members of the American Legion Auxiliary. The sale of the poppies, which are hand-made in Disabled American Veterans Hospitals across the country, will be held on the 23rd and 24th of May.

Donations for the poppies are used to help when funds are needed by the veterans to get the extras that make Christmas more enjoyable and when need strikes the veterans at any other time during the year.

Good Samaritan Hospital
May 10, Mr. and Mrs. Warren Stevens; girl, Rt. 1 Box 447, Graham.
May 10, Mr. and Mrs. Perley Rogich; girl, Rt. 1 Box 146-P, Roy.

Rabies Clinics Saturday

Rabies vaccinations for dogs and cats over 3 months old will be offered for \$2.00 at a number of county locations Saturday, May 24 from 2-5 p.m.

The annual clinic is sponsored by the Puget Sound Veterinary Association, and will be held locally at the Parkland Fire Station, 130 South 114.

Cats require vaccine every year to be protected, while dogs should be immunized every two years. Those attending are urged to have their dogs on a leash and confine cats in a suitable carrying case until vaccinated.

Other clinic locations will be: Eatonville High School Athletic area; Lakewood Fire Station; Hi Ho Puget Sound Bank Building, Puyallup; and Baker Junior High School in South Tacoma.

Indians Plan Protest March

Robert Satiacum, Puyallup Indian leader who was forcibly retired from his Puyallup River fishery by State action, is planning a protest march in Olympia June 2.

Since being banned from fishing on the waters used by his forefathers, Satiacum has enrolled as a student at the University of Washington. There he has found new support for him and his fellow Puyallups.

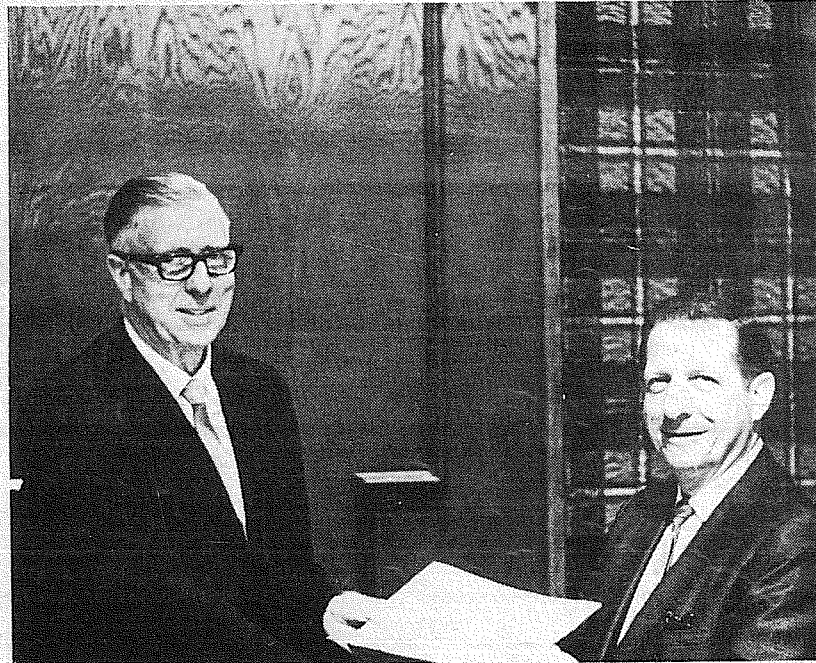
"Indians are linking up in a coalition with other minorities to make a majority," Satiacum told the Journal Monday. "I have been meeting with groups on the campus, and members of the university faculty have promised support by encouraging student participation in the march."

Satiacum selected June 2 for the demonstration because it is the anniversary of the day Indians were made citizens in 1924.

The march will form at the totem pole across from the county courthouse and will hope to meet Governor Evans at the Rotunda, he said. Purpose of the event is to ask greater recognition by Washington State of off reservation Indian fisheries.

Spurred by a recent Oregon Federal District Court decision clarifying the US Supreme Court ruling that gave states the right to regulate off reservation Indian fisherman, Satiacum is hopeful the state will act.

It would be better to work it out than to go to court, he stated. The state has already spent over one million dollars to break our treaty rights and I don't think the people understand their money is being used in this manner.



RETIRING BETHEL ASSISTANT SUPERINTENDENT Francis Olson (left) is congratulated by Dr. Fred Gramann, Bethel Superintendent at the Banquet held by the Bethel Education Association to honor Olson and other retiring staff members. Olson has been in the Bethel District since starting at Roy in 1928.

F.P. Schedules Music Concert

The Franklin Pierce School District will present a district wide music concert May 23 at 7:30 p.m. in the Franklin Pierce High School gymnasium.

The purpose of this concert is to demonstrate the progress of music education from the time a student first begins to play an instrument until he graduates from high school.

Included in the program will be the fourth grade orchestra playing "Off to School" and "Old McDonald." The advanced elementary strings will play "Two Dances" and "Andantino." "Away We Go" and "Big Yellow Bus" will be played by the fifth grade band. The sixth graders will play "Royal March" and "Hail the Conquering Hero."

The combined Junior High bands of Ford and Keithley will play "Citadel" and "Land of the Sun." "Overture to Music for the Royal Fireworks" and "Love is Blue" will be played by the Junior and Senior High orchestra.

The district stage band will play "String of Pearls" and "One Step Above." To end the program, the combined high school bands of Franklin Pierce and Washington will play "Taccata" and "West Side Story."

The program will be under the direction of Sharon Wilmeth, elementary strings, Robert Koehnke, elementary winds, Robert Winters, Keithley Junior High bands, Robert Harper, Washington High School band, Ford Junior High bands and elementary winds, and Gene Ahrendt, district music supervisor, Franklin Pierce High School band, Ford Junior High band III and orchestra.

Spare Rooms Needed

Persons having rooms available during Tacoma's Centennial Celebration Week, June 28 through July 5, have been asked to contact Centennial officials.

The rooms are needed for some of the wives of officers and enlisted men who will be visiting this city aboard Navy ships during the celebration week.

All available hotel and motel rooms in the city have been reserved in advance by tourists and convention delegates during the week preceding Independence Day, according to Centennial officials.

Those who have space available in their homes or other rental units available have been asked to contact Pat Steele, Centennial Hospitality Chairman, at FU 3-3475, or mail information to Centennial Headquarters, 925 Broadway.

Centennial Executive Director Norman Rowley also has issued an appeal for awards to be donated by retailers in the city. The awards will be given to the Centennial queen and her princesses, he said.

Body Bid Planned

Local organizations will be asked to bid "bodies" at a Centennial auction Tuesday, May 20, at 7:30 p.m. in the Tacoma Public Utilities Building auditorium.

Service clubs and other groups will be bidding in a "cast auction" to volunteer a number of their members as actors in a nightly historical pageant, "By These Waters," to be presented in Lincoln Bowl during the Centennial celebration week, June 28 through July 5.

A report will be presented to the audience on what each scene comprises and the number of performers necessary for each. After the report, groups will bid to be responsible for performing each scene, according to Joe Wheeler, spectacle division chairman.

The outdoor spectacular will feature more than 500 local people in colorful and historically authentic costumes and will re-enact highlights of Tacoma's history, combining live action with motion picture and still projection. Performances are slated the nights of June 28 and 29 plus July 1, 2, 3, and 5.

Parade Seeks Buggy Entries

It looks as if there will be more horses than ever in this year's Parkland Roundup Parade.

That prediction was made early this week by Larry Armstrong, and he should know. He's 1969 Parkland Roundup parade chairman.

"Traditionally," Armstrong said, "Most of the finest horses in this part of the country can be seen in our annual western parade. Already entered are the Pierce County Sheriff's Posse, Colts and Fillies, 4-H Pacers Riding Group, Puyallup Riders, Horse and a Half Club, Sunset Riders, Liberty Riders, and Roundup Queen Peggy Plummer and her court. Many others have indicated they will be entering, he stated.

Parade officials are looking for more horse drawn vehicles, like stage coaches, buggies, and wagons, Armstrong said. Old time automobiles are also needed in addition to novelty entries.

For information contact Larry Armstrong LE 7-5524 or Robert Magdanz LE 7-5538.

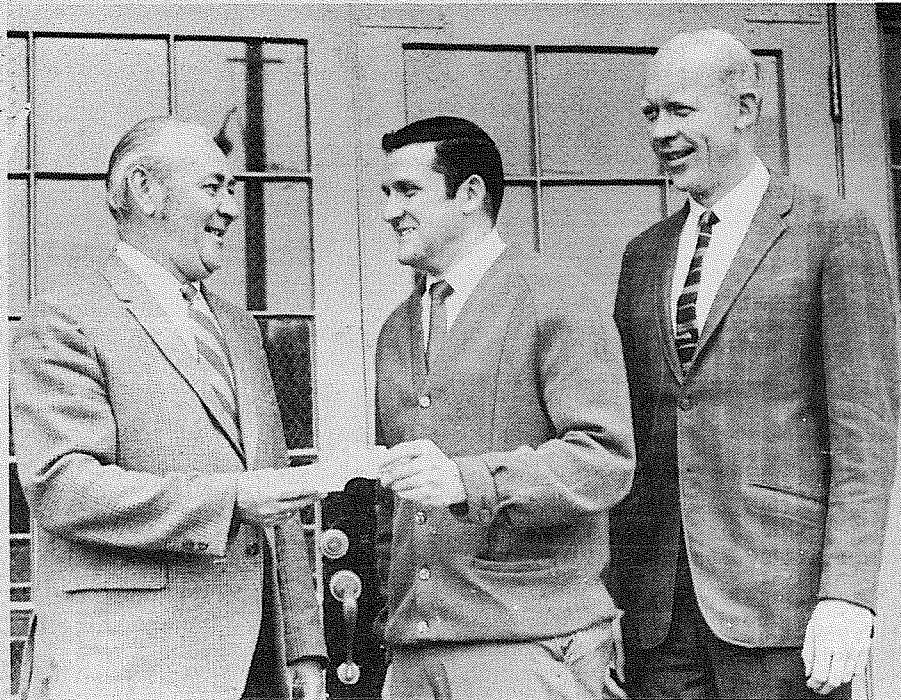
Pierce County Herald and
The TIMES JOURNAL

Published weekly at 14620 Pacific Ave., Parkland 98444 and delivered by U.S. Mail and carrier to subscribers. Publishers: Pierce County Publishers, Inc. LE 7-0223 News and Advertising Deadline: Tuesday Noon Subscriptions \$3.50 per year, \$1.80 six months, or 30c monthly by carrier. News stand price 10c copy. Qualified as a legal publication under Chapter 213 of the Legislature Acts of the 1941 regular session of the State of Washington. **Second Class Postage Paid at Tacoma, Wash.** Vol. 25 No. 20 May 22, 1969

15' STARCRAFT
50 HP MERCURY Elec. Start with Alt.
HOLSCLAW TRAILER

\$2150 COMPLETE No Trade Eves. 'til 9 P.M.

PARKLAND Sports CENTER
11122 PACIFIC AVENUE TACOMA, WASHINGTON PHONE LE 7-5677



SAM HARRIS (left) is pictured turning over a \$200 check on behalf of the Parkland Kiwanis Club to Jim Scaree while Dale Storaasli looks on. The donation will be used to provide scholarships for students in need of help to the Franklin Pierce Summer "Washington My Home" course. Scaree and Storaasli will help teach the course.

RIB-CUT
**PORK
CHOPS**
68^c_{lb}

GRADE "A"
**TURKEY
HINDQUARTERS**
26^c_{ea}

LEAN TRIMMED
**Pork Loin
Roast**
64^c_{lb}

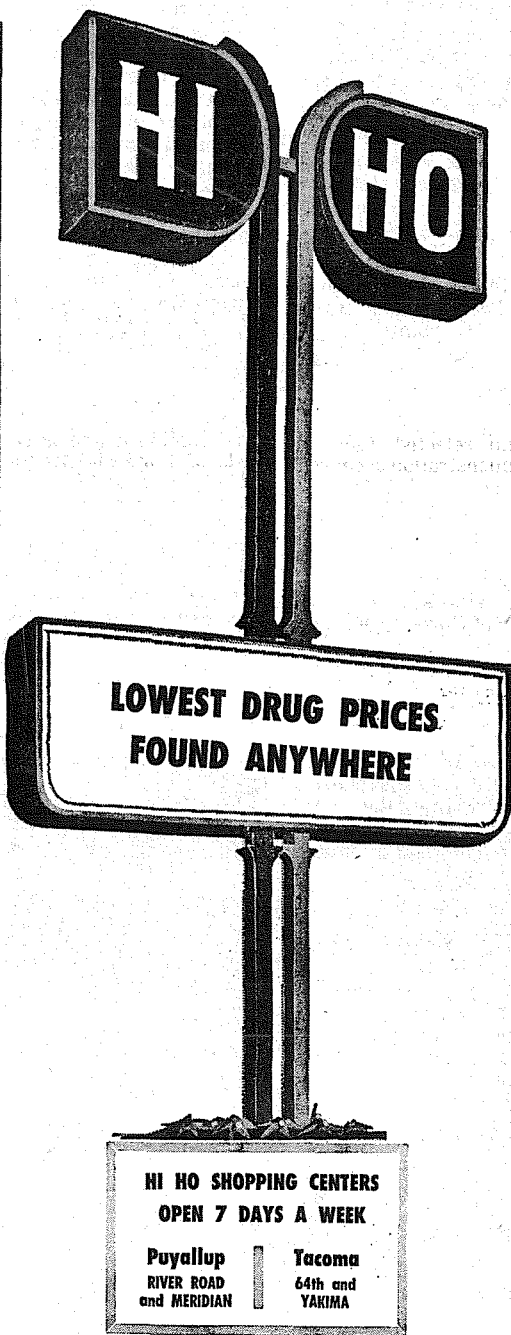
MILWAUKEE
**CHUNK
BOLOGNA**
48^c_{lb}

WASTE-FREE
FISH STICKS
46^c_{lb}

WARM WEATHER DELITES
ARMOUR
5 VARIETIES **LUNCHEON MEATS 3/1⁰⁰**
14-OZ. RESER'S POTATO SALAD 39^c_{Cup}
JILG'S SKINLESS WIENERS 59^c_{lb.}
A NEW ITEM
BY MILWAUKEE **CHICKEN-N-BEEF WIENERS . 58^c_{lb.}**

PERFECTLY SEASONED
PORK SAUSAGE
46^c_{lb}

**10-lb. Kingsford Charcoal
BRIQUETS 69^c**
**NALLEY'S
RELISHES 4/1⁰⁰**
**EVERFRESH FROZEN
STRAWBERRIES 5/1⁰⁰**
LARGE AA EGGS doz. 35^c
12-oz. SPAM 49^c
**4-PACK NORTHERN
TOILET TISSUE 3/1⁰⁰**
26-oz. LESLIE SALT 10^c
**10 1/2-oz. CHEERIOS }
12-oz. WHEATIES } 3/1⁰⁰
8-oz. TOTAL }**



REG. 1.25 COMMAND **TAHITIAN LIME 69^c** SPRAY DEODORANT
REG. 1.49 MOUTHWASH **COLGATE "100" 69^c**
REG. 4.98 **SOMINEX 2⁹⁸**
**13-oz. SUDDEN BEAUTY
HAIR SPRAY 49^c**
REG. 59^c **Q-TIPS 33^c**
REG. 1.05 COLGATE **DENTAL CREAM 67^c**
**FIRST QUALITY
PANTY HOSE
87^c**

PRICES EFFECTIVE NOW through 24th

COACHELLA
RUBY RED
GRAPEFRUIT
15/1⁰⁰

RED RIPE
WATERMELON
8^c_{lb}

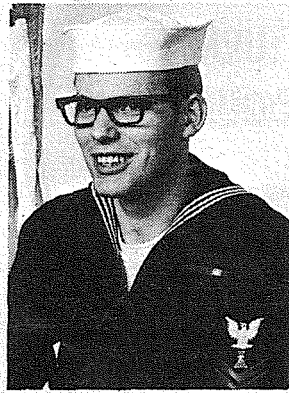
1-LB. CELLO BAG
CARROTS
10^c_{ea}

GREEN
PEPPERS
10^c_{ea}



BETHEL BAND DIRECTOR GLENN HULL peeks from behind posters advertising tonight's concert. In a widely varied program of band music the concert will feature several different groups from jazz combos to a full concert band. The concert will be held at the high school at 8:00 in the gym.

Men In Service



Robert H. Nelson, son of Mrs. Anita A. Nelson of Spanaway, affiliated with the Naval Air Reserve at Sand Point Naval Air Station, Seattle, recently and was assigned to Naval Air Reserve Division (NARDIV) T1.

A 1963 graduate of Bethel High School, he served on active duty for four years at Washington, D.C.

A Petty Officer (Photographer's Mate) Second Class, he is employed by the Bargain Basket grocery store of Spanaway.

As a member of the Selected Naval Air "Ready Reserve" team Nelson will perform one weekend drill a month and serve on two weeks' active duty each year. The "Ready Reserve" team concept allows the Navy to maintain highly skilled personnel at the ready in the event their anti-submarine warfare talents may be required to supplement the active duty Naval forces guarding our coasts.

LIMESTONE, Maine — Frank M. Bury, son of Mr. and Mrs. Michael T. Bury, Rt. 1, Graham, Wash., has been promoted to sergeant in the U.S. Air Force.

Sergeant Bury is an administrative specialist in a unit of the Strategic Air Command at Loring AFB, Maine.

A 1965 graduate of Bethel High School, the sergeant earned his A.A. degree at Tacoma (Wash.) Community College. His wife, Patricia, is the daughter of Mr. and Mrs. Harry L. Price, Speward Road, Anchorage, Alaska.

Mailbox Week Underway

The Post Office Department has officially designated the week of May 19-24 as "Mailbox Improvement Week." This will be the 31st year that rural patrons have been asked to make suburban areas more attractive with painted mail boxes and supports, according to Postmaster Helen G. Young of Spanaway.

Mail boxes of the approved traditional or contemporary design are required. Where box numbers are assigned, the name of the owner and box number must be shown on the side of the box visible to the carrier as he approaches, or on the door where boxes are grouped.

Ruts in the approach to the mail box should be filled. A rural carrier is not required to leave his vehicle to serve a box. The boxes should be maintained for easy and safe accessibility, presenting a neat appearance and affording protection for the mail.

It is believed that where mail boxes are improved the mail service is likewise improved. Every rural patron will find the local post office employees anxious to give the best service at all times. The cooperation of all owners of rural mail boxes is asked in this drive.

Vets Urged To Send Cards

John B. Kirsch, Manager of the Seattle Veterans Administration Regional Office, today urged the 8,140 veterans and servicemen now enrolled in Washington colleges and universities under the Post-Korean G.I. Bill to complete and return the VA certification of attendance cards as soon as possible.

Now sent to college-level G.I. Bill trainees only once during each enrollment period, the certification was formerly required monthly in order for the veteran or serviceman to be paid his monthly VA educational assistance allowance.

The veteran or serviceman is asked to indicate if there has been a change in his enrollment as shown on the card, or if he terminated enrollment, Kirsch said.

To help the VA anticipate his future educational assistance needs, he is also asked to check whether he will enroll in the same program and school for the next period.

On the back of the card is a reminder that if the veteran or serviceman fails to complete and return the card to the VA office indicated on the card, he will receive no further payment from the VA.

Flying TV Star Joins Bible Society

Mary Dorr, noted West Coast television and radio personality, has been named secretary for women's activities in the thirteen-state Western and Pacific Region of the American Bible Society.

Her appointment will be effective on June 1 as announced by Dr. Dorothy E. L. Haas, ABS national director of women's activities and by Dr. Dean S. Collins, Executive Secretary for the Regional Office in Los Angeles. Currently Mrs. Dorr is national president of American Women in Radio and Television, the professional association of women broadcasters in the U.S.A.

Women's work in the Bible Society covers a broad range of activities including scripture distribution and community Bible emphases, encouraged and promoted through 150 women representatives in the region.

LEWIS LLEWELLYN

American Dream Or Nightmare?



Is the "American dream" about to turn into a nightmare?

When the United States constitution was adopted, the purpose of the creation of the federal government was specified in these words: "in order to form a more perfect union, establish justice, insure domestic tranquility . . ."

But how much domestic tranquility do we have now?

Many are afraid to walk on the streets of our cities at night.

Crime breaks out, first in one place, then in another, as if someone behind the scenes were probing for the weak spots in our internal defenses against criminals, arsonists, and killers.

Common people and political leaders alike are alarmed at the trends in our national life.

"Into a Pit" Congressman John B. Anderson (R., Ill.) has expressed a "genuine concern that what we are seeing is a complete rending apart of the fabric of our society—that we are descending into a pit of lawlessness and disorder.

"We have reached the point," he said, "where men are beginning to ask, 'Where will it all end?'"

"It is the moral breakdown in this country that disturbs me more than anything else," the congressman continued.

In our materialistic society, it seems that not many are willing

to recognize that moral and spiritual values must underlie any lasting material progress.

Spiritual Revolution

But Congressman Anderson said, "America desperately needs a spiritual revolution . . . A spiritual revolution would present us with a whole new scale of values. Instead of the present permissiveness which permeates our society, we would recognize the sovereignty of God over our lives."

If this sounds strange coming from the lips of a congressman, let us remember that, in the early days of our nation, it was not uncommon for national leaders to acknowledge the sovereignty of God.

Could it be true that our trouble today is basically that, having relegated God to an inferior position, men are making decisions on a basis which essentially leaves Him out?

Could it be that decisions made on the basis of political expediency rather than on the basis of right and sound principle are at the heart of some of our most pressing problems?

Is it too late to change the course of our country?

Or will we heed the word of the Lord? "Call upon Me in the day of trouble," He invites. "I will deliver thee, and thou shalt glorify Me."

Will you join in prayer for our nation in this crucial time?



Parkland Moose Lodge 1814 Governors Robert Kennedy (left) turning over Gavel to newly elected Governor Axel Bjork who will be leading the Parkland Moose members. Governor Bjork was installed at recent ceremonies at the Lakes Moose Lodge.

Is the Profile of Protection ON YOUR HOME Complete?



You'll Find Out if You Talk to Us.



ASHFORD-McALLOON INSURANCE
12201 Pacific Avenue
(Parkland Square) LE 7-8647
5436 So. Tacoma Way GR 4-8431

DANCE
Featuring
Ray and Stel HARRIS
6 Nights Weekly
JOLLY ROGER
3724 E 112th
LE 1-2223

Angelo's PIZZA HOUSE
ORDERS TO GO
Featuring top sirloin and American dishes, spaghetti, rigatoni, meat balls, sausage, ravioli, beer and wine.

Choice of Pizzas
cheese & tomato
anchovie
mushroom
Italian sausage
pepperoni
tuna

bacon
peppers
olive
hamburgers
ham
salami
onion

LE 7-7233
14102 PACIFIC AVE.
PARKLAND

CALL AHEAD, IT'S PIPING HOT - ALL THE WAY HOME

PICK UP A BOX, PAIL, BUCKET OR A BARREL

LSJ TV

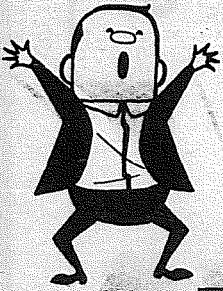
Rental - Sales and Service

Repair All Makes

LE 1-7414

12602 Pacific Ave.

SOMETHING TO SHOUT ABOUT Daily Special



Monday Through Saturday
* Change of menu daily
* Complete Dinner
* Served 11:30 am until 1:30 pm

Only **\$1.25** Tax Included

ORDERS TO GO

VI 7-2179 Call ahead - Save Waiting

Available Anytime

Cheeseburgers
Hamburgers
Chili Dogs
Coney Islands

Onion Rings
Home Made Chili
Fish 'N Chips
Prawns

Fried Chicken
Corn Dogs
Burritos
All types Sandwiches

Fri. Nights Only - 6 pm to 9 pm

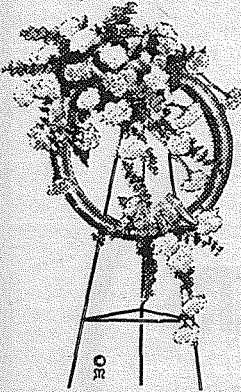
German Dinners - Eat here or To Go

Dutchman Drive Inn

Corner Mountain Highway and Pole Line Road

New Hours
Mon. thru Thur. - 8 am-10 pm
Fri. & Sat. - 8 am-11 pm
Sundays - 11 am-7 pm

Wreaths and Flowers FOR MEMORIAL DAY



Traditional Way to Pay Tribute

On Memorial Day remember your departed loved ones with flowers, the time-honored way of paying tribute. Special thought goes into each of our floral arrangements. Find the one that's appropriate for you to give, here.

Stella's FLOWERS
ARTISTRY IN FLOWERS



12169 Pacific Avenue (at Parkland) • Phone LE 7-0206

Iris Festival

In Japan they stand for patriotism, in France they inspired the "Fleur-de-lis." The Siberian iris symbolizes "messenger" and the ancient Scottish Highlanders made ink out of the roots.

These and other themes will be the subjects of the Artistic Division of the 13th Annual Iris Festival to be held at the Pagoda in Pt. Defiance Park, Tacoma, Washington on May 24, 2 to 8 p.m. and May 25, 10 a.m. to 8 p.m.

The festival, sponsored by the Pierce County Iris Society and the American Iris Society, will be complimentary to the public according to Show Chairman, Mrs. Verna Cook, 6924 Pacific Hwy. E., Tacoma.

Entries may be made in both the Horticulture and Artistic Divisions, said Mrs. Cook. Entries in both Divisions are open to the public.

The Horticultural Division will emphasize a wide variety of both registered and unregistered iris. Classes will in-

clude natives as well as international varieties.

In addition to the two adult divisions, the festival will also include a Junior Section in three age groups: 6 thru 9, 10 thru 13, and 14 thru 18. Junior exhibitors in these age groups will be eligible for awards in the same classes as the adult divisions. Further details and entry forms may be obtained by contacting Mrs. Cook, at WA 2-7988.

Committee Chairman for the Festival are: Mrs. Verna Cook, Chairman; Mrs. David Nadal, Co-Chairman and Hospitality; Mrs. Frank Susan, Schedules and Invitations; Mr. Frank Gropper, Staging; Mr. and Mrs. Bert Vaughan, Entries; Mrs. Henry Peterson and Mrs. Charles Carper, Classifications; Mr. Urban Brewer and Mrs. Louis Haas, Placement; Mrs. Max Maynard, Judges; Miss Mary Penberthy, Publicity; Mrs. Robert Chapman, Awards and Mrs. W. R. Hubbard, Educational.

Bookmobile Schedule For Summer Months

B-2 SPANAWAY — 1st & 3rd Tuesdays:

June 3, 17; July 1, 15; August 5, 19.
 Robert's Rd. (Haire) 9:00-9:30
 159th St. & 7th Ave. E. (Guffey) 9:40-10:10
 171st St. & "C" St. S. (Troupe) 10:15-10:45
 17219 74th Ave. E. (Hedlund) 11:05-11:20
 17915 - 52nd Ave. E. (Zengota) 11:25-11:40
 182nd St. & 38th Ave. E. (Hagen) 11:45-12:15
 Lunch

Orging Prairie Rd. & 38th Ave. E. (Kuper) 12:50-1:20
 208th & Tom Wright (Downey) 1:25-1:55
 Brown Rd. (Klein) 2:00-2:30
 184th St. & E. "B" (Hoover) 2:40-3:10
 168th St. & E. "S" (Drake) 3:30-3:55

B-3 CANYON RD.-MERIDIAN — 1st & 3rd Wednesdays:

June 4, 18; July 2, 16; August 6, 20.
 128th St. & Waller Rd. E. 9:00-9:25
 144th St. & 58th Ave. E. (Baccus) 9:40-10:05
 14327 - 47th Ave. E. (Wolf) 10:15-11:00
 152nd & Bingham (Leonard) 11:05-11:50
 Lunch
 15321 - 66th Ave. E. (Dempsey) 12:25-1:05
 148th St. & 70th Ave. E. (Pirlane Valley) 1:10-1:55
 142nd St. & 94th Ave. E. (Reitz) 2:05-2:45
 144th St. & 107th Ave. Ct. E. 3:00-3:45

B-8 PARKLAND-BROOKDALE — 2nd & 4th Wednesdays:

June 11, 25; July 9, 23; August 13, 27.
 98th St. & Patterson So. 9:00-9:20
 Wheeler & Alaska 9:30-10:05
 Tule Lake Rd. & Yakima So. 10:10-10:25
 138th St. & "J" St. S. 10:40-11:25
 505 E. 138th St. (Phillips) 11:35-12:05
 Lunch
 715 E. Johns 12:40-1:25
 1239 E. 142nd St. 1:30-2:10
 138th St. & Golden Given E. 2:15-2:50
 142nd St. & 25th Ave. Ct. E. (Stanke) 3:05-3:25
 Brookdale & Tisch 3:35-4:05

A-6 UNIVERSITY PLACE — 2nd & 4th Mondays:

June 9, 23; July 14, 28; August 11, 25.
 40th St. & Alameda W. 9:00-9:20
 45th St. Ct. & 60th Ave. W. (Montane) 9:25-9:55
 36th St. & 63rd Ave. W. (Maesner) 10:00-10:20
 Day Island (2 stops) 10:30-11:10
 Beckonridge (Grandview Dr. & Ridge Rd.) 11:30-12:05
 Lunch
 University Estates (42nd St. W. & Elwood) (Granlund) 12:40-1:05
 48th St. W. & Sunset 1:10-1:35
 Greenacres (45th St. & 69th Ave. W.) 1:40-2:00
 Monte Vista II (47th St. Ct. & 67th Ave. W.) 2:05-2:45
 Candlewyck Glen 3:05-3:35
 Chambers Creek 3:40-4:05

A-8 GRAHAM-ELK PLAIN — 2nd & 4th Wednesdays:

June 11, 25; July 9, 23; August 13, 27.
 Muck-Kapowsin Road (Ockfin) 9:05-9:30
 Muck-Kapowsin Road (Chapman) 9:40-10:05
 McDonald Rd. (Rensing) 10:20-10:40
 Thrift Extension Rd. (Mayer, Rt. 1, Box 432) 10:45-11:10
 Carlson-Meridian 11:20-12:25
 Lunch
 Bethel Green Acres 1:15-1:45
 Ambassador (92nd St. & S. Tacoma Way) 2:30-3:55

A-9 VALLEY-WALLER RD. — 2nd & 4th Thursdays:

June 12, 26; July 10, 24; August 14, 28.
 72nd St. & Canyon Rd. E. 9:40-10:05
 80th St. & Canyon Rd. E. 10:20-10:40
 Thomas & Fruitland (Lurkee) 10:50-11:05
 96th St. & 71st Ave. E. 11:15-11:35
 96th St. & 62nd Ave. E. (Winsley) 11:40-12:00
 Lunch
 96th St. & Canyon Rd. E. 12:35-1:05
 80th St. & Vickery Rd. E. 1:10-1:40
 64th St. & Waller Rd. E. (Waller Rd. Water Co.) 1:50-2:20
 53rd St. & 36th Ave. E. 2:25-3:05
 85th St. & Golden Given E. 3:25-4:05

PLU Choir To Perform

The world premiere of a new choral work by contemporary composer Dr. Jean Berger, featuring the PLU Choir of the West, will be performed Saturday evening, May 31.

Berger's composition will highlight the music department's dedication concert, the first cultural event to be held in the new Clifford O. Olson Auditorium.

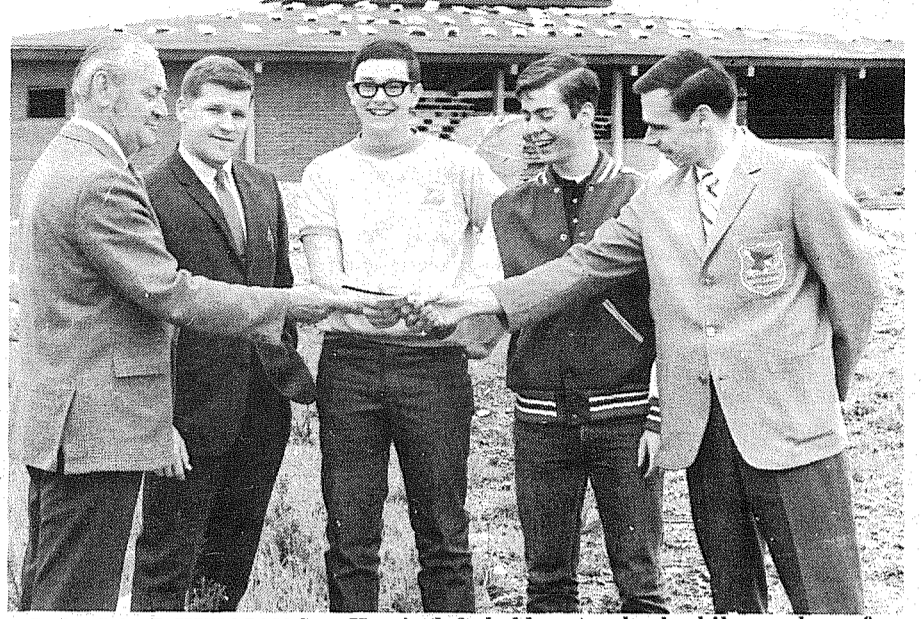
"The Word of God" was written by Dr. Berger especially for this performance. The composition features the entire choir under the direction of Maurice Skones, instrumentalists, vocal solos and speaking parts.

Berger based his work upon the Martin Luther chorale, "These are the Holy Ten Commandments," as well as the Biblical parable of the sower.

The composer will attend the concert and will receive an honorary doctor's degree from PLU during commencement exercises the following day.

Berger is one of the most prolific choral composers in America today. Nearly every choral organization in the country has performed his work and he is in constant demand to work with clinic groups in both the U.S. and Europe.

He conducted a choral literature workshop at PLU last summer.



PARKLAND KIWAIAN Sam Harris (left) holds out a check while members of the Washington High faculty and student body accept the donation. Picture (next to Harris left to right) are Tom Gilmer, Dennis Ellis, Gary McCabe, and Jon Herrington. The money will help provide the school with a Universal Gym.

UPS Prof Author

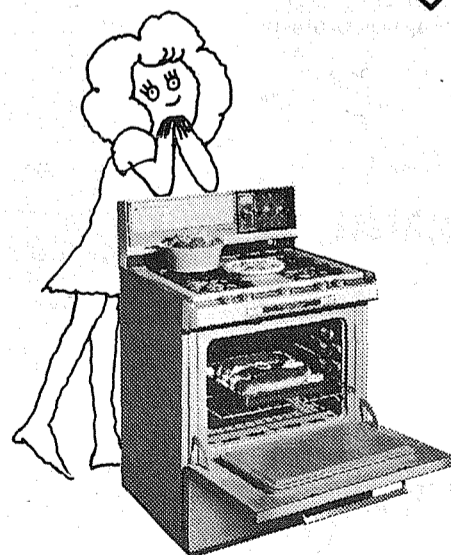
Tacoma's "Man of Jazz," Dr. Leroy Ostransky, who wields a mighty baton and chalkstick as professor of music at the University of Puget Sound, has added another book to his literary credits with last month's release of "The World of Music" by publisher Prentice-Hall, Inc.

The book, a collection of interpretive essays by diverse music authorities, includes a chapter on "Jazz: Some Early Difficulties," from Ostransky's earlier book, "The Anatomy of Jazz." He also writes a weekly column, "News and Notes," in the Sunday Tacoma News Tribune.

LAKEWOOD GENERAL May 16

Mr. and Mrs. Billy G. Williamson, 1520 Military Road East, Tacoma, girl, May 9.
 Mr. and Mrs. Roger Ockfen, 1210 South 129th, Tacoma, May 11.
 Mr. and Mrs. John Postgate, 5602 East 144th, Puyallup, boy, May 14.

TAKE PITY ON YOUR WIFE!



Cleaning the oven just has to be the A-No. 1 dirtiest job going. And that's why Washington Natural Gas is having a work-saving, money-saving "Take Pity on Your Wife" Sale.

Now, through June 15, you can save up to \$100 on a new Natural Gas range with the

marvelous self-cleaning oven. You get a 30-day free home trial, too.

So come on, there, man of the house, take pity on your wife. Call or come in to any office of the Washington Natural Gas Company for full details.

WASHINGTON NATURAL GAS COMPANY
 An equal-opportunity employer

WOMEN'S WORLD

*the
Second
Forty*
by Margaret Brookfield

A FORUM ABOUT MATURE WOMEN

Pimples at 39

Dear Miss Brookfield:

If my problem weren't so upsetting, it would be ridiculous. Would you believe pimples at my age? I am 39, but at the time of my menstrual period my face breaks out. Can you offer any helpful suggestions?

F.P., Madison, Wis.

Dear Mrs. F.P.:

Among some women acne is aggravated during a certain time in the menstrual cycle. While the exact reason for this is not known, medical science believes it is related in some way to the secretion of hormones by the ovaries. If you want to treat this problem, consult your physician. Control can require active local skin treatment, internal treatment with antibiotics and, at times, hormone therapy.

Middle-Age Blues

Dear Miss Brookfield:

I used to say I couldn't wait until the kids (two daughters) married and got out of the house so I could have some time to myself. I must have been crazy. Now with both girls married and living far away I am bored, bored, bored. For a while I was busy with new projects — making drapes, gardening, visiting friends. Now I realize my daughters have their own lives and don't need me, my friends can do without me, and my husband says I am turning into a grouch. Help!

T.D., Arlington, Tex.

Dear Mrs. T.D.:

Yours is a common complaint known as the "middle-age blues." One sure remedy is to go out and help the many people who do need you. Local health, civic, charitable and religious organizations need the assets you can provide: maturity and experience. You say that your daughters no longer need you. But plenty of children need mothering. Why not give it a try? You may feel much better.

Hemline at 40

Dear Miss Brookfield:

I am a husband and the father of a teenage daughter. I would like your opinion on a subject that has been the basis of many family arguments. I maintain that a woman over 40 should not wear mini-dresses. My wife is over 40 and she does. I think she is trying to imitate my daughter — but she's 17. What do you think?

A.R., Atlanta, Ga.

Dear M.R.A.R.:

Take a good look: if your wife looks young enough to pass as your daughter, she can't look all that bad. Fashions change. (Incidentally, have you seen the "new look"

Harlem Women Approve Family Planning

By Louise Chase
Women's Medical
News Service

New York (WMNS) — A survey among obstetrical patients in Harlem Hospital Center indicates that the poor are as interested in planning their families as richer women.

When expectant mothers were interviewed in Harlem, one of the poorest areas in the nation, three out of four said their pregnancy was unwanted and nearly 90 percent approved of preventing or spacing children.

To answer this need, Dr. Donald P. Swartz and his colleagues in the obstetrics department initiated in 1963 a family planning clinic at the Hospital. In a report on five years' operation of the clinic, Dr. Sartz said that registrations increased sharply from 215 the first year to 2,313 five years later. On the other hand, deliveries decreased from 3,684 to 2,777. Admissions for abortions were cut in half.

"Cafeteria Approach"

Women are offered the so-called "cafeteria" approach — a choice of contraceptives. The physician reported that oral contraceptives, the most popular choice, continue to gain popularity. Seventy percent now choose birth control pills, 20 percent pick intrauterine devices, 10 per cent divide among other methods. And the women stick with their contraceptives. When a check-up was made more than a year later, seven out of 10 of the women were still using their particular method of birth control.

Even among the women who had declined hospital contraception services, Dr. Swartz found, 81 percent had changed their minds and were either using a medically acceptable method or were interested in obtaining such a method.

As with patients of private doctors, Patients at Harlem Hospital Center were keenly interested in discussing contraception immediately following delivery, Dr. Swartz said. Harlem women proved their interest with their feet. Return visits for post-delivery check-ups zoomed from 45 percent before the inauguration of family planning services to 75 percent last year.

for men?) Once little girls could hardly wait to grow up and "dress like mommy." They used to play with mommy's clothes and high-heeled shoes — remember? Now the situation has been reversed. Mommy is wearing clothes that resemble her daughter's wardrobe. Today, women live longer and look younger than their grandmothers did. But, if you have strong objections to mini-dresses on your wife, just be patient. Have you seen the new granny fashions coming in, with the hemline around the ankles?

Have you a problem as a mature woman, or with one? For advice and help write to Margaret Brookfield, Information Center on the Mature Woman, 3 West 57th Street, New York, N.Y. 10019.

Dandruff Problem Year Around

By Elizabeth Stewart
LESS DANDRUFF
IN SUMMER?

Chicago, Ill. (WMNS) — Dandruff seems to disappear along with the winter snows and winds but it's all a mirage.

Clinical trials reveal that dandruff is as widespread in the summer as in the winter but shows up less. It's either washed away by swimming and more frequent bathing or falls inconspicuously on light colored shoulders. As the Committee on Cutaneous Health of the American Medical Association notes, there's nothing like a pastel summer dress for hiding dandruff scales.

Ordinary dandruff has afflicted, at one time or another, 94 percent of all adults. But scaling accompanied by any redness, swelling, oozing or scabbing should be examined by a physician.

So far, says the medical committee, the cause of dandruff remains unknown although theories abound. Antidandruff shampoos, treatments and hairdressing vary widely in effectiveness. The newest products contain zinc pyrithione or selenium sulfide.

STRESSFUL CHILDBIRTHS

London, Eng. (WMNS) — Mounting scientific evidence that pregnancy and childbirth sometimes strain a woman's mental health has led the *British Medical Journal* to call for further research on the connection between childbearing and mental illness.

Severe mental illness following childbirth is not at all the same thing as "maternity blues," the *B.M.J.* noted. Maternity blues pass rather quickly while longer-lasting psychic breakdowns are apparently very much the same as other psychiatric disturbances.

So far, the evidence indicates that first pregnancies carry the highest risk. Unplanned pregnancies precipitate more breakdowns than wanted pregnancies. And the amount of stress is apparently crucial. A complicated pregnancy and delivery increases the chance of breakdown.

It does not seem to make any difference whether a woman first begins to crack during her pregnancy or before getting pregnant. But once a woman breaks down as a result of childbearing, she may well collapse again the next time she gets pregnant. One study shows a recurrence in one out of every five stricken women.

QUICK DRY-OUT

Baltimore (WMNS) — Sobering up a chronic alcoholic, which usually takes days, only takes hours when a blood-washing machine is used, Dr. Arnold I. Walder of Baltimore City Hospitals has reported.

Used experimentally, dialysis — the same technique used to save kidney patients — "dried out" acutely intoxicated alcoholics in from four to six hours, and left no hang-overs. Ordinarily, drying-out takes up to seven days in a general hospital.

Dr. Walder, who teaches surgery at Johns Hopkins University School of Medicine, used the machine successfully on men who had drunk the equivalent of one pint of pure alcohol daily for 10 days. Patients in the throes of alcoholic hallucinosis recovered in the midst of the dialysis treatment.

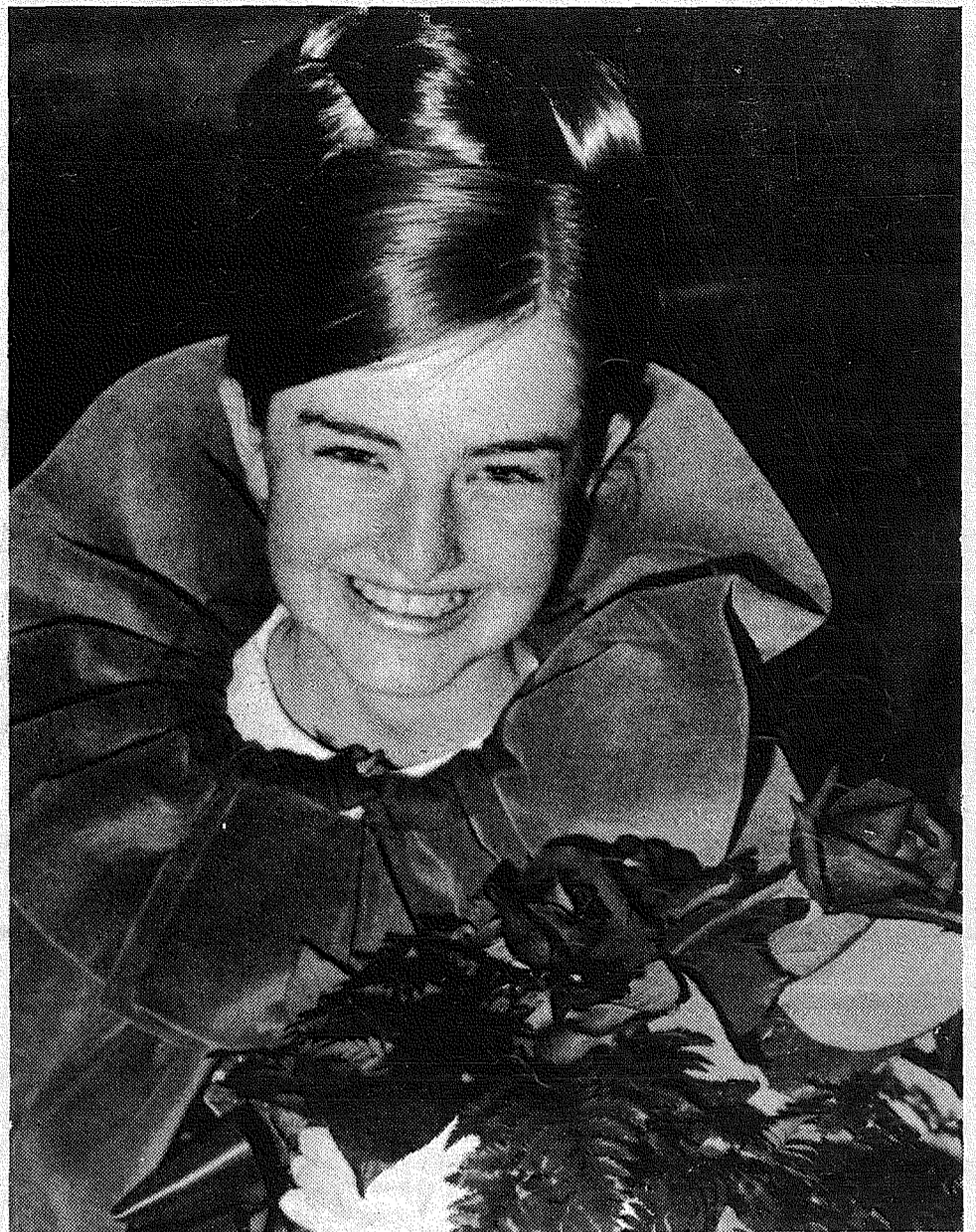
The blood-cleansing technique, the surgeon predicted, "is going to make it much easier, quicker and cheaper to treat alcoholics."

SAILORS, BEWARE

London, Eng. (WMS) — If you're in a boat that capsizes in cold water, it's dangerous to try to swim to shore without a life jacket.

A recent experiment reveals that even top-notch swimmers soon became inca-

County Fair Queen



SUNDAY WAS an exciting day for 16-year-old Jean Turney when she was chosen queen for the 1969 Pierce County Fair. She was crowned and presented a bouquet of red roses from State Senator Reuben Knoblauch before an audience of 4-H families and Fair board members at Wildwood Park in Puyallup. Queen Jean, a junior at Puyallup High School, is the daughter of Rev. and Mrs. Kenneth Turney. She is a six-year member of the Woodland Lucky Clovers 4-H Club where clothing, home improvement and junior leadership projects keep her busy. Members of her royal court include Wanda Eickhoff, Aquinas Academy; Debbie Weaver, Orting High School; Margaret Kiplinger, Franklin Pierce High School and JoAnn Anderson, Franklin Pierce.

Andrea Torgeson New Bride

Mr. and Mrs. Orville H. Torgeson announce the marriage of their daughter, Andrea, to Mr. Gary Tolbert of Hayward, California.

The wedding took place May 17 at the Shepard of the Hills Lutheran Church in Lake Tahoe. Mrs. Vic McLean, the former Kathie Torgeson, was matron of honor.

The parents of the bride and Mrs. Al Svinth (Janet Torgeson), flew to Lake Tahoe to attend the wedding.

Vets Hold Pot Luck

Barracks and auxiliaries of District 5, Veterans of World War I, will meet for a pot luck luncheon noon, May 24, in the Auburn VFW Hall.

Business meeting will open at 1:30 p.m. to elect officers for the coming year. Visiting Department Officers will be Senior Vice Mrs. L. Plotts, Junior Vice Mrs. M. Snow, Treasurer Mrs. Leon Cecil, Secretary Mrs. C. Irwin, and Publicity Mrs. E. Hawks. Those attending are urged to bring table service.

Queried by the *Medical Tribune* on whether contraceptives should be given all who ask, Dr. Williams answered, "The burning problem for me is not whether to advise those who ask for it but how to motivate those who do not."

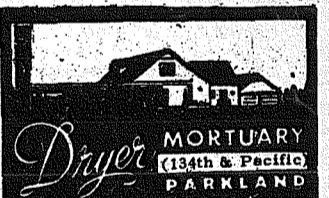
The two other physicians questioned also deplored unwanted pregnancies and criminal abortions. Dr. D'Orsay Bryant of Baton Rouge, La. said: "In prescribing oral contraceptives, you are not only aiding the patient mentally but essentially you are going to cut down on the rate of criminal abortions."

Dr. Jesse M. Galt of Dover, N.H. called the question "ticklish" because it can become involved with morals and morale. However, he added, "I would rather see a woman on the pill than pregnant with an unwanted pregnancy. The psychic trauma is less."

British Wives

The Tacoma British Wives Club, a branch of the Transatlantic Brides & Parents association, will hold their monthly social at St. Johns Lutheran Church Hall in Lakewood at 7:30 p.m. Friday May the 23rd.

Hosstesses for the evening will be Mrs. John Howard Mrs. Warren Clayton and Mrs. George Petre.

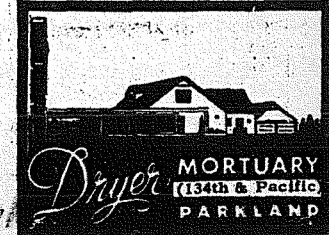


The Country Parson



"In Bible times men feared God — today the reverse must be true."

Copyright, by Frank A. Clark



Pierce County's Only
Professional

**AMBULANCE
SERVICE**

Parkland Ambulance
and
Lakewood-Pacific
JU 4-3344 LE 7-3322

PARKLAND EV. LUTHERAN CHRISTIAN DAY SCHOOL

Grades One through Seven
South 123rd at Pacific Avenue

If you desire a truly Christ-centered education for your child,
call LE 7-5492 for information

H. A. Theiste, Pastor L. Joecks, Principal

DOO W

BEFORE YOU BUY A USED CAR!



- 65 MG, 2 dr, 4 speed, real cute \$595
- 65 Chev 2 dr, 6 cyl, AT, Radio & Heater. Above average \$795
- 64 Olds Jetstar-1, 2 dr, AT, loaded, with air, new tires \$895
- 64 Temp Lemans, 2 dr cpe, V-8, auto, real sharp \$995
- 62 T-Bird, V-8, auto, PS, runs and drives like new \$795
- 59 Chev 1/2 ton with canopy, 6 cyl, 4 speed. Real good cond. \$595

Sale Price Only

ATTWOOD

AUTO WHOLESALE INC.

8228 Pacific Ave. GR 4-9294

A LOT FULL OF BARGAINS BETTER USED CARS

A LOT FULL OF BARGAINS
BETTER

**USED CARS
AT COPE'S AUTO SALES**

- 1965 Jetstar Olds, 2 dr hardtop, 45,000 miles
- 1964 Pontiac Tempest, 6 cyl, 2 dr, stick
- 1963 Chev V-8 Impala 2 dr hardtop, PS
- 1965 Chev V-8, 4 dr, stick
- 1963 Plymouth Fury, 2 dr, hardtop, V-8, PS
- 1963 Chev II Nova, 2 dr, conv, A.T., Red
- 1961 Cad Coup DeVille, A-1
- 1961 Chev 2 dr, 6 cyl, A.T.
- 1960 Dodge V-8 4 dr, Stick
- 1962 Pontiac Tempest Convertible, 4 SP.

You Drive This Car - It Will Work For Itself

COPE'S AUTO SALES

9614 Pacific Ave. LE 1-3060

GIGANTIC USED CAR SALE

1967 Galaxie
4 Door
\$1595⁰⁰

1967 Rambler
4 Door
\$1195⁰⁰

1964 Impala
2 Dr. Hdt. p.
\$1095

1962 Falcon, Auto.
\$595

1963 Buick 2 Dr.
\$795

1964 Corvair
4 Dr. - Auto.
\$795

1961 Chev Nomad
Station Wagon
\$595

1964 Mailbu SS
4 Spd. **\$1295**

1963 Cad. Conv.
\$1095

1955 Stude
Pickup
\$495

1960 Chev
\$295

"Quality Used Cars"

**RAINIER
AUTO SALES**

10002 Pacific Ave.
Tacoma

Ash Motor Co.



**One Stop Service
For New GMC Pickups
and Trucks.**

New Mansfield Campers,
New Chinook Mobilodge,
Chassis Mounts and
Camp Coaches.

PLUS

The largest stock of fine used pickups in the Northwest!
Choose your next car from our stock of "Quality Selected."
Late model autos. Complete financing - We Take Trades.

Ash Motor Co. OPEN 9 to 9

Northwest's Largest Pickup Dealer

9415 Pacific Ave. GR 5-2222



STOP LOOKING START DRIVING!

1968 Galaxie 500
4 dr, 11,000 miles
Air Conditioned

1965 Buick Riviera
Air Conditioned

1966 Mustang
2+2 Fast Back

1967 Chevrolet
Caprice, 4-dr. Vinyl Top
327 Eng. 3 spd. Automatic

1964 Galaxie
4-Dr. Hardtop
49,000 Miles

Reasonable Prices
Many Other Fine
Quality Cars To
Choose From.

PETERSON'S
10203 Pacific Ave.
LE 1-2253

HOLD IT!

DON'T BUY TIL YOU'VE SEEN OUR USED CARS

QUALITY **SONNY'S** CARS

EL CAMINO'S
1969 Blue 4 spd, 350, V-8
1968 Blue V-8, P.S.
1967 Green V-8, Auto, P.S., P.B.
1965 White, V-8, 3 spd.

COMPACTS
1964 Ford Sprint, 66 cyl.
1962 Chev Nova, 6 cyl. auto.
1962 Merc. Meteor, V-8, auto.

COMPACTS
1965 VW 4 spd
1964 VW 4 spd
1965 Corvair, auto.

FULL SIZE
1968 Torino 390 4 spd, PS, PB
1962 Chev 4 dr wgn, auto, V-8
1961 Cad 4 dr hdt, loaded.
1948 Jeep 4 WD, 4 cyl.

Do call Sonny Barrett and check these values.
LE 1-3060 9614 Pacific Avenue Thank You

MORE Used Car for LESS MONEY

At Armstrong Used Cars

- 63 Cadillac 4 dr \$1250
- 65 Ford Squire Wagon \$1175
- 63 Chev Impala SS Hardtop \$ 995
- 64 Chev Bel Air Wagon \$ 895
- 63 Volkswagen \$ 750
- 64 Rambler Classic 770 Wagon \$ 650
- 63 Chev Bel Air Wagon \$ 795
- 62 Ford Galaxie 500 Hardtop \$ 550
- 60 Olds 4 door, Exceptional \$ 250
- 59 Pontiac Bonneville Hardtop, sharp .. \$ 250

Armstrong Used Cars

11009 Pacific Ave. LE 7-5524

CAMP OUT SLEEP IN!

SAVE \$200
KIT
10 1/2' Front
Kitchen Camper.
Reg. \$1795
\$1595

SAVE \$200
SAVE \$200
**ARROYO
8' CAMPER**
Reg. \$1295
\$1095

SAVE \$200
DREAMER
9 1/2' Front Kitchen
CAMPER
Reg. \$1995
\$1795

SAVE \$400.00

18' TEARDROP Semi-Self Contained Beautiful Lacquer Finish on
Natural Ash Hardwood. 4 cu. ft. Gas-Elec. Refrig. Aqua Magic
Toilet - Many, Many Other Extras. Regular Price \$2895.

SALE PRICE **\$2495⁰⁰**

PACIFIC TRAVEL CENTER

10211 Pacific Ave. LE 1-4774

BETTER Used Cars COST LESS HERE!

Economy Transportation
63 Rambler
Station Wagon
Overdrive - 6 Cyl. - Stick
\$277

61 Ford 2 Door
Hdt. p - V-8 - Auto.
One Owner **\$550**

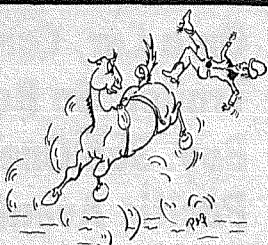
LTV

MOTORS Inc.
13123 Pacific Ave.
LE 7-7722

HORSEMEN'S NEWS

Over The Fence Rail

BY PEGGY PLUMMER



- This week's events are as follows:
- Action Ranch Dispersal, Wapato, Wn. May 23
 - Mt. Solo Saddle Club Horse Show, Longview, Wn. May 23-24-25
 - Saddle & Blankets Riding Club Cross Country Relay, Husum, Wn. May 24
 - Pacific N.W. Shriners All Arabian Horse, Colfax, Wn. May 24-25
 - Yakima Valley College Rodeo, Yakima, Wn. May 24-25
 - Quarter Horse Racing, Waitsburg, Wn. May 24-25
 - Inland Empire Q.H. Assoc. Spokane, Wn. May 24-25
 - Western Wash. Q.H. Show, Enumclaw, Wn. (King County Fairgrounds) May 24-25
 - Skagit Valley Riding Club's 19th Annual Rodeo, (RCA Approved) Mt. Vernon, Wn. May 25

The Tacoma Lariettes are sponsoring a Horse Show the 24th and 25th of May at the Tacoma Unit No. 1 Arena. Saturday is the zone approved game show and Sunday is the equitation classes. Below are listed the rules and events for both days.

Saturday game show general rules:

- The age of all Jr. riders shall be their ages as of 10/1/68.
- All riders will remain at the gate even after that event has been ridden until the ribbons for that event have been handed out. Riders not immediately available for re-run in the event of a tie will be disqualified for the re-run.
- The judge's decision in all cases will be final.
- All entry blanks must be signed. If owner and/or rider is under 18, parent or guardian must also sign.

Classes for Saturday's show:

- Individual Flag Race, Jr.
- Individual Flag Race, Sr.
- Individual Scurry, Jr.
- Individual Scurry, Sr.
- Figure Eight Stake Race, Jr.
- Figure Eight Stake Race, Sr.
- Rescue Race, two riders, one horse
- Individual Pole Bending, Jr.
- Individual Pole Bending, Sr.
- Texas Barrel Race, Jr.
- Texas Barrel Race, Sr.
- Keyhole Race, Jr.
- Keyhole Race, Sr.
- Hangman, two riders, one horse
- Baton Relay, teams of four
- O'Reilly Says, to be run as the judge & announcer may direct.
- Bareback Relay, teams of four
- Wheelbarrow Race, one horse, Man & Lady (or boy and girl)

Designated time for the game show is 10 A.M. There are ribbons to 5 places in each class; High Point Trophies to Jr. Boy, Jr. girl, Sr. man, Sr. woman; Reserve ribbons to those second in line for high points. All classes to be run according to Pacific Northwest Game Rules.

Game Judge is Chet Kelly and timers are Bonnie Parker and Bill Perry.

Sunday show general rules:

- Entry fees - \$2.00 per class, 10c of each entry going to the Puget Sound Zone to assure your zone points.
- Entries will be taken during the day of the show until 15 minutes before each class
- Trophy and ribbons to 7 places in equitation classes. Trophy and ribbons to 5 places in all other classes.



Longacres Race Course operated by the Washington Jockey Club will open its 36th racing season on Friday, May 23rd, with a record 72 days of racing to be enjoyed by the racing fans.

The addition of a new race, the \$7,500 added Joshua Green Handicap at six and a half furlongs for three-year olds and upward will swell the total race awards to a record \$267,500 in 25 stakes and handicaps to be run this summer. The inaugural of the Green Handicap will be run September 7th.

SOME QUESTIONS? Can Steel Blade, horse of the '68 meet and just back from a successful California campaign, repeat this year? We think so. Can Mr. Q.D., winner of the Longacres Derby and best Washington - bred, continue as a Longacres leader? Can Jim Penney (Penney Farms) repeat as the leading trainer in '69? His California racing program this past winter has been successful and he could just be the trainer to beat this coming season. These are just a few of the questions that will be answered by the season's end, September 15th.

A NEW BATTLE for jockey honors could develop. Paul Frey has turned trainer which leaves 1968 winner Kennie Knowles almost alone in the top bracket. He may have to contend with 1968 leading apprentice rider, Richard (Tex) Hollingsworth. Tex has had a good record at Yakima Meadows and with his talent, training and natural ability he could wind up in first place.



DEAD HEAT. It was tie all the way around last weekend at the Washington Horsemen Open Show as Margaret Wallach (left) tied for High Point Rider with Susan Switzler, while Margaret's mount Half Pint Lady shared Horse of the Show honors with Susan's "Two Rivers Teddy." Full results of the show will be published next week.

High point trophy to senior rider - high point trophy to junior rider.

The management reserves the right to cancel any class which does not fill to their satisfaction, or to combine equitation classes that do not fill.

A Junior's age is reconed as of January 1, 1969. The Judge's decision in any class will be final. Classes to be judged according to Washington State horse show rules.

There will be a 5 minute time limit on holding of the gate, unless prior arrangements have been made with the paddock steward.

No cross entries between classes 7, 8, and 13

No cross entries between classes 17 and 18.

Classes for Sunday's show:

Morning Show, beginning at 8:30 A.M.
Afternoon Show, beginning at 1:00 P.M.

- Western Equitation, 10 and under
- Western Equitation, 11 thru 13
- Western Equitation, 14 thru 17
- Hunt Seat Equitation, 10 and under
- Hunt Seat Equitation, 11 thru 13
- Hunt Seat Equitation, 13 thru 17
- Western Pleasure, 13 and under
- Western Pleasure, 14 thru 17
- English Pleasure, Open
- Quarter Horse, Western
- Pairs Class, English or Western
- Color Class, Western
- Western Pleasure, Senior
- Appaloosa, Horse, Western
- Stock Horse, amateur to ride no rope
- Costume Class
- Trail Horse, Junior
- Trail Horse, Senior

Judge for the Sunday performance class is Robert Conn of Bremerton, Wash. Chairmen are Dorene Rieblei and Grace Kirkwood.

In the last issue of this newspaper I was only able to give the names of the winners in the Family Horse Festival Banquet.

Since there were so many nice gifts donated by many people I thought we could give them some type of recognition. Trophies that were donated through the use of entry money by The Tacoma Unit 11 stood 28 inches tall. They were given to the high point junior and senior. High point girl and boy each received custom made chaps from the Rodeo Custom Shop. Saddle blankets were donated to the second place winners by the Tacoma Unit. Third place winners received bags of Trophy feed donated by Ashmore Drugs to the fifth place winners. Simons Western Store gave \$5 gift certificates and the Bunkhouse donated Show Halter gift certificates. Awards were also given to the Fattest person which was won by Martin Berger and the skinniest person which was won by Edna Berger. Ward Bradley received the award for the oldest participant which was a free sauna bath at Mam Mazelles. Most improved rider was Andy Siemans and High Point Pony was Bonnie Case.

I was very happy to write of the weekly results and winners of the Family Horse Festival and hope in the near future to be able to publish more family fun night results. Special thanks to Sharon Milden who always supplied me with the results.

Longacres May Have Split Opener

The Seafair Queen Stakes, traditional opening day feature of the Longacres season, may be run in two divisions this year estimated Racing Secretary Steve O'Donnell. The Renton Thoroughbred race track opens Friday (May 23).

"There are 275 three-year-old fillies either here or will be here when the track opens," Steve said. "About 80 per cent of them are Washington bred... this is a three-year-old Washington-bred filly race."

The 5 1/2 furlong sprint will top the opening day schedule of races. As planned in the track's stakes book, it is a \$7,500-added event this year.

(Continued on Page 9)

"Horsemen's Market Place"

Classified Directory

Board - Trainers - Breeders
Outfitters - Feed Dealers

Back In Town
BILL MAY
Horseshoeing
TH 5-4902

HORSESHOEING
RAY JOHNSON
TH 5-6006

Vet Supplies
Complete supply animal health products.
Franklin - Farnam - Anchor
at
ASHMORE'S
Spanaway Drugs
165th & Pacific Ave. LE 7-5993

Outfitters
The Bunkhouse
COMPLETE LINE OF TACK & WESTERN APPAREL
LE 7-5510
12605 Pacific Ave. Tacoma, Wa.

LE 1-4555
RODEO
CUSTOM SHOP
Dean & Dodie Vosburg
Complete Saddle Repair Shop
Western Wear
English Tack & Togs
164th & Pacific Spanaway, Wash.

HORSEMEN
Don't miss a single issue of the Times Journal.
Coverage by picture and story of Puget Sound area Horse Events of interest to area readers.

\$3.50 Annual \$1.80 ^{Six} Months

Bill Me Check Enclosed

Name _____
Address _____
City _____ Zip _____

Send To Subscriptions
P.O. Box 2116
Parkland 98444

Princesses Wanted!

If you are single, have access to a horse and trailer, are between 16 and 21, and have a desire to represent the 1969 Parkland Roundup celebration, you could be named Parkland Roundup Queen.

To enter, complete the entry form below and send it to Roundup Queen, Times Journal, P.O. Box 2116, Parkland 98444.

Name _____
Address _____
Phone _____ Age _____
Riding Club? _____
Do you own a horse? Yes No

(Continued from Page 8)

More Longacres

up \$2,500 from last year's \$5,000 purse.

High on the list of potential favorites are two chestnuts and a bay. The chestnuts are Ross Hebb and Jay Mill's Countess Serenade and Army and Betty Seijas' Little Red Dot. The bay, Mrs. Wong, is owned by Penney Farms and trained by Jim Penney. Claude Gibson trains Countess Serenade and Wayne Branch handles Little Red Dot.

Bob Meis whose Bonfire Baby won the Seafair Queen last year more than likely will enter Enchanted Wings in this year's renewal.

The barn area horse population has been averaging about 100 head ahead of last year, O'Donnell said. He anticipates 1,000 Thoroughbreds will be on hand when the first race is called Friday.

"Most of the horses are ready to run," Steve added. "The weather has been excellent for training, a great help

in getting the horses ready." Clocker Joe Wittman reports that workout times have been averaging better, again attributed to the fast track conditions.

A large number of horses are coming in from Yakima Meadows and about 160 are being vanned north from the California race tracks. Arden Archer's Pataha Prince is already in from California where this four year old won three races at Santa Anita.

Seafair Queen Karen Brown escorted by King Neptune, Torch Torrence, and Seafair Prime Minister, Jack Nichols, will be the featured guests at the opening of Longacres' 36th season. Queen Karen will be the honorary stewardess for the feature race.

Also on hand for the opening but possibly not running the first day will be Clinton B, the seipor race horse of all Longacres Thoroughbreds. Owned and trained by Bill Howard, Clinton B is now 13. The aged equine with winning

ways among the cheaper distance platers may be running his last season, a statement Trainer Howard has been making for the past four years.

While the equine population is at an all-time high, the people count is down. Mechanical hotwalking machines have taken over hot walking chores once done by retired man and school kids.

Station Cow Tested

Brattleboro, Vt. — A seven-year-old Registered Holstein cow, Nisqually Cavalier Queen 5125680, owned by Western Washington Experiment Station, Puyallup, has completed a lactation of 18,780 lbs. milk, 808 lbs. butterfat and 1,518 lbs. solids-not-fat in 322 days.

The Holstein Association's testing program has provided for determining SNF nutrients since 1962. This is the part of milk that contains protein, lactose, minerals and other elements so important to the nutrition and taste of milk.

Total nutrient testing as sponsored by the Holstein Association is in step with today's consumer demands. It provides the Holstein breeder with information for improving the overall performance of his herd. The homemaker can use it as a measure of milk's food value.

Pierce County 4H's Win Beef Awards

Three Pierce County 4-H girls, Susan Auty, Debbie Glassman and Karen Auty received blue ribbons in the annual Cowbells Beef Demonstration Program. This is a part of the State Program for 4-H's enrolled in a foods or a livestock project. They may choose a topic relating to the selection, utilization or preparing of the economy cuts of beef.

These three girls were some of the 107 who attended the final demonstration day at Sumner High School.

The first place county winner in the senior division, Susan Auty, is eligible to attend the State 4-H Fair this fall and compete with other county winners for the State Award.



Three all-time favorites—cookies, ice cream and the crunchy taste of chocolate-covered English toffee candy bars are combined in this unusual ice cream pie. And though the flavors are simple enough to appeal to youngsters and adults alike, the total effect is sophisticated enough for your most elegant dinner party. Try it and see.

Easy 'N Elegant Toffee Ice Cream Pie

18 brown edge or vanilla wafers
3 pints vanilla ice cream
1 cup chopped Heath chocolate-covered toffee bars.
(4 1/8 oz. bars)

Line sides and bottom of buttered 9-inch pie pan with cookie wafers. Spoon 3 layers of ice cream into cookie shell and sprinkle 1/2 cup of chopped chocolate-covered toffee bars over each layer. Freeze until serving time. Serve plain or with one of the sauces. Yield: 6 to 8 servings.

Toffee Sauce

1 1/2 cups chopped Heath chocolate coated toffee bars (6 1/8 oz. bars)
1/2 cup hot water

Combine candy pieces and water in small saucepan. Place over low heat and cook slowly, stirring constantly, until 2/3 of toffee is melted, 6 to 8 minutes. Cool or serve warm on ice cream. If too thick at serving time, stir cream, as needed, into sauce to thin it to the desired consistency. Yield: About 1 cup sauce.

Men In Service

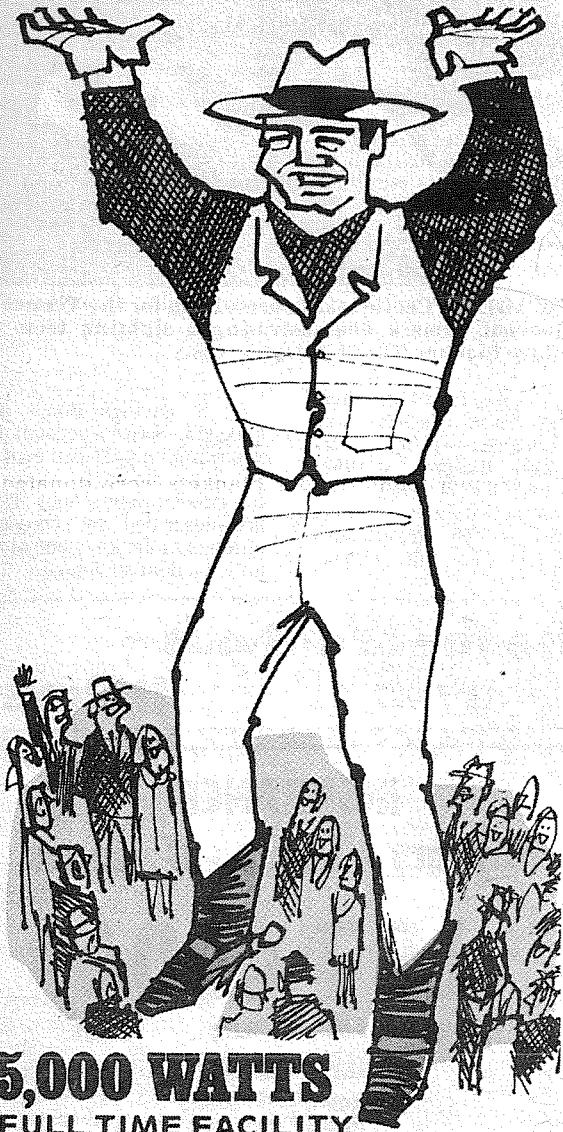
WITH U.S. COMBAT AIR FORCES, Vietnam — Staff Sergeant Robert H. Arends, son of Mr. and Mrs. Henry Arends of Spanaway, Wash., is on duty at Cam Ranh Bay AB, Vietnam.

Sergeant Arends, a supply inventory supervisor, is assigned to a unit of the Pacific Air Forces. Before his arrival in Vietnam, he served at Francis E. Warren AFB, Wyo.

The sergeant attended Bethel High School.

KMO 1360 kc

THE COUNTRY GIANT
TACOMA FT. LEWIS McCHORD SEATTLE



5,000 WATTS
FULL TIME FACILITY

Pierce County's Only

24 HOUR

Country and Western Station

* County News * Tacoma News * High School Sports

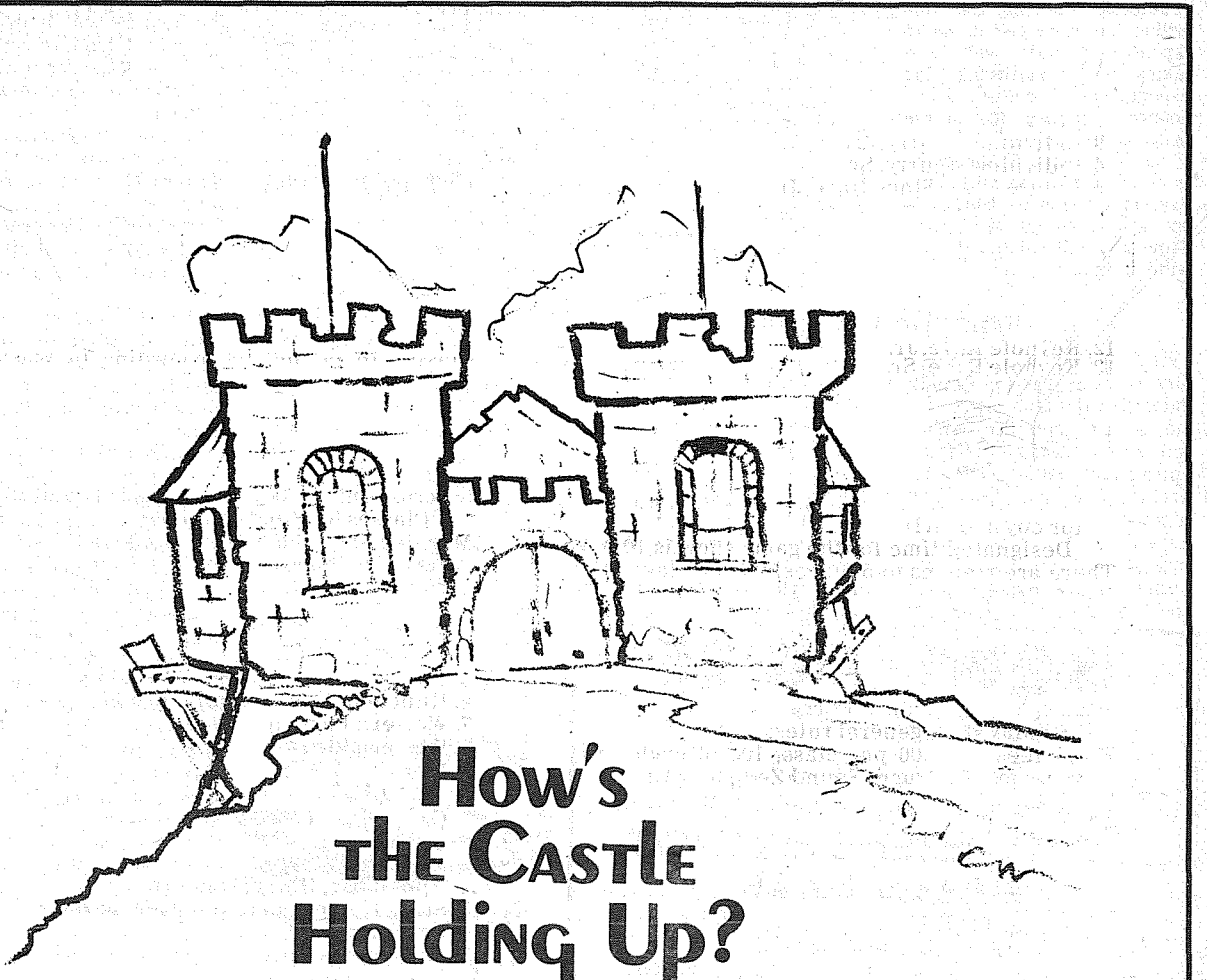
Join

Ed Dollar — the Country Giant's own "Jolly Giant" each afternoon for delightful — entertaining conversation . . . country music at its best . . . interspersed with the latest in news — weather and sports. Designed to keep you amused and informed.



Every Sunday Morning Listen To "REVIVAL TIME" 9-9:30 a.m. KMO - 1360 KC

KMO RADIO 1360 AM



How's THE CASTLE Holding Up?

A man's home is his castle. . . so they say. But even the most royal and loyal of families get dissatisfied with their home when they begin to outgrow it.

So, if your castle needs a new family room or bedroom. Or if the basement needs to be finished, or the attic completed. If the roof needs replacing or the royal vehicle needs a garage. . . then maybe it's time you stopped by Citizens for a low cost home improvement loan.

Did you know that the friendly people at Citizens will loan you up to \$3,500 for your home improvement project? And give you as much as five years to repay it.

Maybe you don't need a new home after all. Let us, here at Citizens, re-do your old castle for you.

It's guaranteed to make loyal subjects of the whole family again.

Citizens STATE BANK

MEMBER FEDERAL DEPOSIT INSURANCE CORPORATION



- ★ MAIN OFFICE - PUYALLUP
- ★ SUMNER
- ★ SUMMIT VIEW
- ★ EDGEWOOD - MILTON
- ★ WILLOWS

Superstocks, Figure 8's Slate Spanaway Action

SPANAWAY - Another double header is on tap for Spanaway Speedway this weekend, with A.R.L. Superstocks sharing their Saturday night spot

Burres Tops Graham TT Opener

GRAHAM - Portland's Sonny Burres, nationally ranked expert, raced his Triumph to victory last Friday at the season's opener for Graham Speedway. Burres had everything going his way before a standing room only crowd, timing in with a low trial of 19:25", then taking the trophy dash, heat and main with comparative ease.

Emil Ahola hit the season opener aboard a Triumph, a new piece of equipment to the popular Tacoma rider after years of racing Matchless and Norton. Once Ahola gets it all together with the right gearing, he will be tough to beat on his home track.

John Bromley, another rider from Portland, captured the amateur main, with Tacoma's Squire Tomasi staging a torrid duel for top spot. Bromley managed a two bike lead at the checkered.

Sumner's two mainstays, Dan and Steve Holton put in a creditable showing, Dan finishing 2nd to Burres in the 15 lap expert main and Steve taking the 1st qualifying 3 lap expert heat. Tacoma's Sandy Saunders placed 3rd in the main behind Holton.

Another 3 star TT program is on tap for Graham this Friday, with Tacoma's Blue Barons again hosting the action. Time trials are slated for 7:30 with racing at 8 p.m.

with the 2nd Powderpuff Derby of the season, and Sunday's afternoon program being shared by the popular Figure 8's and the roaring midgets.

Last week's programs, played before packed grandstands, saw Don Hall and Ken Longley continue their domination of double "A" and "A" competition, both racing to convincing wins in the 50 lap mains.

Jackie Kuper, Don Lorenz and Arlyn Wolanski chased Hall across the finish line, with Ron Eaton, Dennis Scott and Harold LeGault pursuing Longley. For LeGault, it was the first main entered this season that his equipment held together long enough to finish.

In Sunday's Figure 8 action, Jim Toschek received the checkered flag in the 25 lap "A" main and Ken Nikko captured the 15 lap "B" main. A spectacular accident at the world's busiest intersection brought the crowd to its feet during the main, but both drivers walked away uninjured.

Shorty Harrison did his thing again in the superstock action Saturday, breaking a rear axle and flipping during a heat race. Harrison was not injured.

Rainier Climbing Season Extended

Climbers wishing to attempt the 14,410 foot summit of Mount Rainier will get a 14-day head start this year. A review of past weather records shows that few storms of major consequence occur after mid-May. The new extended season will start the third weekend of May and close after the second weekend of September, said John A. Townsley, Superintendent of Mount Rainier National Park.

Junior Golf Program

Registration is now under way at the Pierce County Park Department office for the annual summer junior golf program offered at Lake Spanaway, Meadow Park, North Shore and Golfland courses.

Parents may register their youngsters through June 20 by completing the required form and submitting the \$2 fee to

the County Park Department. Boys and girls between 11 and 18 years of age are eligible to participate.

The program includes free golf at any of the four courses between 7-10 a.m. each Monday from June 23 through Aug. 11, a 20-minute lesson and a season-ending tournament Aug. 18 at Golfland and Meadow Park.

Slow Pitch Schedule

League competition opened this week in the Pierce County Park Department's adult men's slow pitch program.

The County-City Western Washington League and five leagues for county-area teams will play opening league games after the completion of the two-week pre-season tournaments last Sunday.

All slow pitch leagues are now closed to any additional teams and schedules for the remainder of the season are being prepared. All teams will receive copies of the season schedules within the next two weeks.

WESTERN WASHINGTON LEAGUE 2
Wednesday, May 21 - B&I Amusement vs. Purdy Realty, 7:45, Spanaway 6; Mountain Tavern vs. Emry Motors, 7:45, Spanaway 5.

Thursday, May 22 - Heidelberg vs. Durobilt Furniture, 7:45, Spanaway 6; 48th St. Tavern vs. Lake City, 7:45, Spanaway 5.

Monday, May 26 - Purdy Realty vs. Mountain Tavern, 7:45, Spanaway 5; Emry Motors vs. B&I Amusement, 7:45, Spanaway 6.

Wednesday, May 28 - Lake City vs. Heidelberg, 7:45, Spanaway 5; Durobilt Furniture vs. 48th St. Tavern, 7:45, Spanaway 6.

NATIONAL LEAGUE 2
Wednesday, May 21 - AA Auto Parts vs. Fox Engineering, 6:30, Gonyea; Valley Forge vs. Midland Tavern, 7:45, Gonyea.

Tuesday, May 27 - Graham Tavern vs. Mayfair Maulers, 6:30, Western State; Swanson Builders vs. Berg's Tavern, 7:45, Spanaway 6; Midland Tavern vs. AA Auto Parts, 7:45, Western State.

Wednesday, May 28 - Fox Engineering vs. Valley Forge, 6:30, Spanaway 5.

AMERICAN LEAGUE 2
Monday, May 26 - Martin Concrete vs. Len's Haven, 6:30, Spanaway 6.

Tuesday, May 27 - Langseth State Farm vs. B&B Glass, 7:45, Spanaway 5.

Wednesday, May 28 - Absher Construction vs. Island Construction, 6:30, Spanaway 6.

MOUNTAIN LEAGUE 2
Wednesday, May 21 - Orting Pubs vs. Ed Selden Floor, 7:45, Spanaway 4.

Thursday, May 22 - Milton Tavern vs. Eatonville, 7:45, Spanaway 4; Chadwick Painting vs. Pierce County Refuse, 6:30, Western State; 2121 Tavern vs. Brouwer's Tavern, 7:45, Western State.

Monday, May 26 - Ed Selden Floor vs. Milton Tavern, 6:30, Spanaway 4; Eatonville vs. Orting Pubs, 7:45, Spanaway 4.

Tuesday, May 27 - Brouwer's Tavern vs. Chadwick Painting, 6:30, Spanaway 4; Pierce County Refuse vs. 2121 Tavern, 7:45, Spanaway 4.

VALLEY LEAGUE 2
Wednesday, May 21 - Puyallup Eagles vs. Buck & Half Club, 6:30, Spanaway 4; Hull Flooring vs. Precision Machine, 6:30, Spanaway 5; B&I Foam vs. Villa Bowl Bandits, 6:30, Spanaway 6.

Monday, May 26 - Unity Homes vs. Puyallup Eagles, 6:30, Western State; Buck & Half Club vs. Charlie Brown's All-Stars, 7:45, Western State.

Wednesday, May 28 - Villa Bowl Bandits vs. Hull Flooring, 6:30, Spanaway 4; Precision Machine vs. B&I Foam, 7:45, Spanaway 4.

CHURCH LEAGUE 2
Thursday, May 22 - Saints & Sinners vs. Fern Hill Baptist, 6:30, Spanaway 4; Christ the King vs. Bethany Baptist, 6:30, Spanaway 5; Our Savior vs. Christ Lutheran, 6:30, Spanaway 6.

Monday, May 26 - Christ Lutheran vs. Spanaway Assembly of God, 6:30, Spanaway 5.

Tuesday, May 27 - First Baptist vs. Saints & Sinners, 7, Gonyea; Fern Hill Baptist vs. Christ the King, 6:30, Spanaway 5; Bethany Baptist vs. Our Savior, 6:30, Spanaway 6.

Let's Go Boating!

FUNDAMENTAL RULES SIMPLIFY SAFETY

Confused by detailed boating rules that may differ from one part of the country to the next? A little common sense in boating and a knowledge of the fundamental rules of the road can be applied almost everywhere.



CECILE FRENZEL displays some of the trophies she won during rifle matches. The daughter of Mr. and Mrs. William R. Gould, Spanaway, says she will try hunting for the first time this fall.

Slow Pitch Tourney At Spanaway

Heidelberg defeated Emry Motors in the championship contest by a 6-1 margin to take home 1st place in the Pierce County 12" Pre-Season Slow Pitch Tournament at the new Spanaway Recreation complex.

Emry earned their way to the final contest by defeating Durobilt Furniture and then Heidelberg earlier in the day in the double elimination tournament.

In the 14" Tournament, 2121 Tavern defeated the Saints & Sinners by a 5-2 score. The semi-finals saw The Saints & Sinners edge Brouwers Tavern by a narrow 2-1 margin to earn a crack at the undefeated.

This years Pre-Season Tourneys drew a total of forty-four teams and eighty-nine Tournament games were played over the past two weeks.

Tourney Talk: The tournaments longest contest was a 19 inning marathon with Pierce County Refuse outlasting Christ the King for the decision. — In the 14" competition, game winning hits were delivered by Leo Eliason of Spanaway Lutheran, Chuck DeNune of St. Johns, Dick Henning of 2121 Tavern, and Bob Mullen of Swanson's Builders. — Pierce County Refuse has Don May and Fran Cammel, ex-city league standouts on their roster. — Art McLarney of Durobilt Furniture and Bob Young of Heidelberg kept opposing hitters off balance with their repertoire of trick pitches. — There were four home runs hit out of the new Spanaway complex during the 12" tournament and Marco Malich of Heidelberg accounted for two of them. — The lengthening of bases from 60' to 65' in the 14" competition and from 60' to 75' for the 12" games met



DEADEYE. Cecile takes careful aim for the Times Journal camera demonstrating a sighting technique that has filled her trophy case.

with many favorable comments from specators and players alike. — Dick Webster and Art Viafore, ex-Metro League Slow Pitchers umpired many of the tournament games. — 660 players saw action in this years tournament.

U. S. Savings Bonds and Freedom Shares account for approximately 23 per cent of the privately-held portion of the Government's debt. They are described by Treasury officials as the keystone of the national debt structure.

BOWLING 35¢
Saturdays until 7 p.m.
Sunday All Day
Open 10 a.m. Daily — Air Conditioned
Lanes Available Both Day and Night

BALLS \$17.95
Includes Ten FREE Games, Fitting, Drilling
and Engraved Name or Initials

PARADISE BOWL 108th & Pacific
LE 7-6012

**A Full Weekend
Of Action!!
SATURDAY**

SUPERSTOCKS
Trophy Dashes - Heats - Mains
POWDER PUFF DERBY
Time Trials 7 P.M. Racing 8 P.M.

SUNDAY...
The Wild, Zany, Crazy
FIGURE EIGHTS
At the World's Busiest Intersection!
-PLUS-
**RETURN OF THE
ROARING MIDGETS**

**SPANAWAY
SPEEDWAY**

TIME TRIALS
1:30 P.M.
RACING
3:00 P.M.

2 MILES EAST OF PACIFIC
ON 159TH SPANAWAY

**GLASS
&
HARDWARE**

**8012 South
Tacoma Way**

**DOOR
MIRROR
288
EA.**

**4 Mil PLASTIC
IN ROLLS 1¢
SQ. FT.**

**Use the Want-ads —
LE 7-0223
It Pays**

INSURANCE
Military - Home - Business

LE 7-4904

Auto Fire Life Bonds
IRENE CLEMENS
Agency — Parkland
10329 Pacific Ave.

CHURCH DIRECTORY
ATTEND OUR
WORSHIP
SERVICES

**PARKWAY
Presbyterian Church**
Sunday School 9:30 a.m.
Worship Service 10:45 a.m.
Nursery Service Provided

714-138th East LE 1-4234
Rev. Wesley J. Drummond

Spanaway Assembly of God
166th & Pacific Ave.
Sunday School 9:45 a.m.
Morning Worship 11 a.m.
Evening Evangelistic 7 p.m.
Family Night Wed. 7:30 p.m.
LE 1-1412

**Spanaway Lutheran
Church**
8:30 & 11 a.m. Worship Service
9:45 a.m. Sunday School
Grades 1 & Up
11 a.m. Sunday School
3, 4 and 5 Year Olds
John L. Briebl, Pastor
160th & A St. LE 7-5978.

**Parkland Lutheran
Church & Christian
Day School**
Worship... 10:30 a.m.
Sunday School-Bible Study 9:15 a.m.
All Ages
H.A. Theisto, pastor
LE 7-5492 LE 1-0777

Trinity Lutheran Church
Worship Services 9 a.m. & 11 a.m.
Sunday School 10 a.m.
Wednesday School 4-5
(through Grade 9)

Erling C. Thompson
Robert Drowes PASTORS
12115 So. Park LE 7-0201

**Spanaway United
Methodist Church**

Church School 9:30 a.m.
Worship 11:00 a.m.
R. Gordon Harrison, Pastor
163 & Pacific LE 7-5134

CLASSIFIED ADS

Call LE 7-0223 For Want Ads

1 Misc. For Sale

TOP SOIL, gravel, LE 1-1124
69-1

McNESS PRODUCTS. GR 5-2734.
68-303

DANISH WALNUT SPINET PIANO. Must sell to save moving expense. Bargain. Terms or cash. Phone Adjustor, BR 2-5282, Tac. 69-135

Attention Homeowners
Need a garage, fence, carport, patio enclosure?
CALL
KRUGER CONSTRUCTION CO.
LE 7-0178

PENNCREST 16 lb. washer-dryer, new condition \$250, 96 in. Burgundy couch - like new \$100. ¾ bed & dresser \$40, dinette w/6 chairs \$30, foldaway bed \$10, lawnmower \$3, electric edger \$5, 19" portable TV w/stand \$50, misc antique china. LE 1-2913.

JEWELRY, by Sarah Coventry. Private showing, your home or mine. LE 7-6031 or GR 4-4420. 69-124

CUSTOM MADE FASHIONS
BOUTIQUE 49
Specializing in Hard To Fit Sizes
LE 7-6440

EARN a wig - have a wig party. Call Gay LE 1-0186 or GR 2-4647. 69-98

PLYWOOD & PANELING

WE HAVE just purchased a railroad carload lot of pre-finished paneling, 1900 sheets Topaz Elm, Random Groove - 4'x8' sheets. Advertised in Life, Look and American Home at \$9.95 per sheet. Our price... \$6.77 per sheet. No dealer can buy it this cheap! 600 sheets random groove pre-finished birch - 4'x8' and 4'x10' sheets. Regular \$10.88 per sheet. Our price... \$6.79 per sheet. 400 sheets cabinet birch ¾" thickness, AA grade - Regular price - \$21.89. Our price... \$17.29 per sheet. 4'x8' sheets - or save on 4'x6' sheets at \$12.49 per sheet. We also have quantities of ¾" - ½" - ¾" - ¾" plywood, and have ordered ¾" as well as particle board. Come out and see us before you buy. Lumber - Fixtures - Pipe - Florescent Lites - Bricks - Steel - Name it, we've got it at the lowest prices in our trade area.

Open seven days a week, 8 a.m. to 7 p.m.
MURPHY LUMBER & SALVAGE SALES
6401 Waller Road, Tacoma
Phone LE 1-1160

PUMP ORGAN, Pony stallion, Flat bed 4-wheel trailer, 37 Chev coupe, Farmall Cub tractor, attachments, Typewriter. TH 5-9066.

PING PONG TABLE 5x9, complete with legs. Good condition. \$10. 4219-76th East, Tacoma, LE 1-2891.

2 Autos For Sale

GOOD SELECTION USED CARS - TRUCKS
GR 4-9294
LARRY ATTWOOD
8228 Pacific Ave.

NEW- MORE POWERFUL

the 1969's ARE HERE
VOLKSWAGEN
27 MAJOR CHANGES COME IN

Tom Carstens AUTOHAUS
7030 So. Tacoma Way
GR 4-0666
TACOMA DEALER SINCE 1955.

Business Opportunities

PART OR FULL TIME WORK FOR ADDED INCOME WE SECURE LOCATIONS

Reliable man or woman wanted as distributor in this area to service route for NATIONAL ADVERTISED ALKA-SELTZER, ANACIN, BUFFERIN, and BAYER ASPIRIN sold through our latest modern vending machine in handy plastic pill boxes. Dealerships now being established and appointed upon our acceptance. Will not interfere with your present employment, as locations can be serviced evenings or weekends, collect and refill machines.

EARNING POTENTIAL \$450.00 a month, or more depending on size of route. THIS IS A MULTI-MILLION DOLLAR A YEAR BUSINESS.

Cash investment of \$1,900.00 to \$3,410.00 is required, also a good car and 5 to 10 spare hours a week. If you can meet these requirements and cash investment, and are sincerely interested in a fast repeat business of your own then WRITE giving Name, Address, and Telephone Number, for local personal interview with a Company Representative.

HEADACHE-BAR VENDORS CORP.
7578 Olive Boulevard
University City, Missouri 63130

DISTRIBUTOR FOR THIS AREA PART TIME OR FULL TIME WE SECURE LOCATIONS

To restock COMPANY SECURED ACCOUNTS WITH WORLD FAMOUS R.C.A. and SYLVANIA T.V., radio, stereo, and COLOR tubes sold thru our new (1968 Model) FREE self-service tube tester. Will not interfere with your present occupation, as accounts can be serviced evenings or on weekends.

EARNING POTENTIAL \$600. a month, or more depending on size of route.

Investment of \$2,097.00 to \$3,495.00 is required, also a good car and 5 to 10 hours a week. If you can meet these requirements and investment and are sincerely interested in expanding a fast and repeat business of your own then WRITE to us today including your phone number to:

TUBE-O-MATIC ELECTRONICS CORP.
7578 Olive Boulevard
University City, Mo. 63130

9 Animals For Sale

ANIMALS FOR SALE. Reg. Hereford cows, calf at side, bred back \$300.00. Champion stock. 832-6435 evenings. 69-122

1 SHORT HAIR female, 1 Labrador male, country only. JU 8-8736, evenings. 69-143

RARE WHITE purebred German Shepherd pups. 4 wks. \$40. LE 1-1354. 61-141

7 YR. OLD BAY mare. Good game and parade horse. Gentle but spirited. Also yearling filly. LE 1-6139. 69-140

NINE month old male black Lab. GR5-5919, eves. 69-139

YEARLING Apaloosa colt lots of color. Weaning age colt with white blanket. Older brood mare bred-back. VI7-2597.

18 Real Estate Wanted

Listings Wanted
Buying or Selling
Real Estate Service
Call
Devereaux Realty
12152 Pacific Ave. LE 7-8658

22 WANTED TO BUY

IMMEDIATE CASH
For old music boxes, cylinder phonographs or outside horns, toys, muzzle loading guns, coins, china cabinets.
Royal Oak Coin Company
JU 8-0030

24 Work Wanted


SEWING
All Types
LE 7-3961
105 So. 112th
Food King Lot

19 For Rent Or Lease

FURNISHED APT. Ground floor, utilities paid. Washer-dryer. LE 7-8490. 69-142

2-CAR GARAGE, 2 bedroom house, \$90 mo. LE 7-6276. 69-140

Let "SUBUR-MAN" serve YOUR RENTALS



- Selective Placement
- Regular Inspections
- Rental Management

D. GENE BURNS
Rental Mgr.
Residence
LO 4-6598

SUBURBAN REALTY
11302 Pacific Ave.
LE 7-8638

12 Real Estate For Sale

1 ACRE SITES. Water available. \$2,750 and up. LE 7-8774. 69-144

By owner 1 yr. old 3 br., 1½ bath, attached garage, fenced, many extras. In Spanaway. Buy small equity and assume 6% mortgage. LE 1-2913.

Sheet Metal

- Furnace Repair and Service
- Installations

PARKLAND FUEL OIL
12002 Pacific Ave.
LE 7-0256

RENT TV
Color TV

RENTAL MARTS, INC.

Parkland GR 5-3755
9440 Pacific Ave.

Lakewood JU 4-4100
108th & Bridgeport

32 Equipment Rental

RENT DOZERS, backhoes, loaders, T.V.s, Tomhoff's Rent-All. LE 1-1851. 69-80

38 Instruction

PIANO Lessons, beginning to advanced. Children and adults, home or studio. LE 1-3246 or SK 2-7695. 68-179

SAXOPHONE, clarinet, flute, guitar, drums, brass instruments. Private lessons. LE 1-3246.

DRIVER TRAINING. 3 week high school and adult course. LE 1-0505.

RESIN craft hobby classes. Call 848-1881.

27 Misc. Services

EXPERT alterations, men's and women's. Fast service and reasonable. LE 1-3506.

WATER PUMPS REPAIRED
All Makes
GRANGE SUPPLY
LE 1-5777

ROTIVATING, plowing, harrow, disc, blade work. LE 7-6058. 69-95

NEWBURY'S
Dozer Service
LE 7-7455
Sandy Loam Bank Run
Mixed Soil Fill Dirt

Northwest Engine Service
Complete Volkswagen Service and Rebuild
Heli-arcing - Parts
Hours: 8 a.m.-8 p.m.
3117 S. Procter BR 2-4644

SELF SERVICE
Washers - Dryers
105 South 112th
Food King Lot

"WHERE TO GET SERVICE"
Parkland Enco Service
13303 PACIFIC AVE.
LE 7-9954

Legals

Call For Bids
At its regular meeting May 5, 1969, the Commissioners of Pierce County Fire Protection District No. 7 authorized the sale of one 1943 K-7 International Tractor and 2000 gallon tank, complete with Pacific Portable Pump, beacon ray and siren. Sealed bids will be received at Spanaway Fire Station No. 1, 164th & Park Avenue, Spanaway, no later than 9:30 a.m. on Monday, June 9, 1969, and opened the same day at 7:00 p.m. The commissioners reserve the power to reject any or all bids.

Legals

The Board of Directors of the Franklin Pierce School District No. 402, Pierce County, Washington, will hold a Public Hearing and Fixation of the Preliminary Budget for the 1969-70 school year on May 27, 1969 at 8:00 p.m. in the Administration Building, 315 South 129th Street, Tacoma. Copies of the Preliminary Budget are available in the District Administration office.

By order of the Board of Directors
Thomas L. Stephens, Secretary
Board of Directors
Published in the Pierce County Herald and Times Journal May 22, 1969.

By Rose Marie Salter, Secretary
Pierce County Fire Prot. Dist. No. 7
Published in the Pierce County Herald and Times Journal May 22, 29 and June 5, 1969.

ARE YOU IN DEBT?

- Civilian
- Military

Call
MA 7-1700
MONEY MANAGERS

232 Security Bldg.
915½ Pacific Ave.

Get Out of Debt
One Payment
Avoid: Letters to Employers
2. Letters to CO's
3. Loss of Paycheck

AT ARMSTRONG'S

Most cars are sold locally but to date this year two cars per month have been sold to people living 150 miles or more away.

ARMSTRONG'S USED CARS
11009 Pacific Ave. LE 7-5524

BUY SELL TRADE LEASE CLASSIFIED ADS

FOR BEST RESULTS IN:

BUYING

SELLING

RENTING

USE THE WANT ADS

The Times Journal PO BOX 2116 Parkland 98444
LE 7-0223

Ten Words . . . Only \$1⁰⁰
Use This Form For Ad Insert

Name _____
Address _____
City _____ Zip _____
Amount Enclosed _____
Classification _____
Copy _____

Nurse Aide Training

A nine-week course to train nurse aides will begin Monday, June 16, at the Clover Park Vocational Technical Institute. Classes will be held from 8:00 to 4:30 daily at Western State Hospital.

The course includes classroom theory and actual patient care experience in an affiliated hospital or nursing home in this area.

School officials said changing patterns of care in nursing homes and hospitals have resulted in an increased number of employment opportunities for the aides, who work as a member of the health team assisting in the care of patients under the direction of a registered professional nurse.

Men and women who are mature individuals, enjoy working with other people and have good general health are encouraged to apply for this training. Further information is available by contacting Clover Park Vocational Technical School at JU 4-7611.

Altrusa Convention

New officers were elected and committees named for two year terms at the three-day fourteenth annual conference of District Twelve, Altrusa International which ended Sunday, May 18 in Yakima, Wa., attended by representatives from Alaska, Idaho, Oregon, Washington and three Canadian provinces, Alberta, British Columbia and Saskatchewan.

Heading program planning committee are Mrs. Harold Mathews, Seattle, Altrusa Information, assisted by Mrs. Rose Freestone, Ephrata, and Mrs. Pearl Wagoner, Medford; Mrs. Dorothy McLaughlin, Portland, community service, with Mrs. Carrie Jane Gray of Prince George and Mrs. Orbra Greenlee, Pasco, Mrs. Lois Knox, Spokane, international relations, aided by Mrs. Catherine Rew, Walla Walla and Miss Jeanette Pauli, Boise; Mrs. Hamilton, vocational services, with Mrs. Lois Duffy, Roseburg and Mrs. Evelyn Kramer, Parkland. Mrs. Brewster is program coordinator.

"WESCO" HANDMADE BOOTS

Why Not have the BEST?

We Carry a full line of handmade WESCO BOOTS

Men's Work Boots 8" to 12"

Lineman's Boots 14" to 16"

Logger's Caulked Boots 10" to 12"

Use Your Bank Card



From PAUL'S

Shoes & Clothing

161st & Pacific Open 9 to 9 Daily LE 7-0552 Till 6 Sat. & Sunday

Mental Health Foundation Open House

Greater Lakes Mental Health Foundation will hold their second annual open house 3-6 p.m. Friday May 23 at 9511 Bridgeport Way.

The Foundation covers Parkland, Spanaway, Lakewood, and Steilacoom, and all living in this service area are urged to attend. The Center is funded by UGN, State in aid grants, local contributions, and County millage.

Job Mobile Schedule

Dean Fellows of Washington State Employment Office has been assigned to work with Gloria Jacobs on the Rural Employment Office.

The fourth week road schedule is as follows:

May 26, Roy, Lot across from Town Hall.

May 27, McKenna, Gays 76 Station.

May 28, Eatonville, Malcom's Shop-Rite.

May 29, Elbe, Railroad Depot.

Finishing this week, on May 22nd they will be at L & O Second Hand Store at Midland and on May 23rd at the L.T.V. Parking Lot, Summit View, 112th near Canyon Road, next to Thriftway Store.

Open 7 Days A Week
Sunday 10 - 9
Weekdays 9 - 9

BARGAIN BASKET

16618
Pacific Ave. S. Spanaway
LE 7-3371

We Carry A Complete Line Of Sacked Feeds - Presto Logs

No Sales To Dealers

WE RESERVE THE RIGHT TO LIMIT QUANTITIES

HELP YOUR BUDGET WITH THESE SAVINGS
We Are Locally Owned & Operated

PRICES EFFECTIVE
May 22-23-24
Thurs.-Fri.-Sat.

CHEF PAK
PAPER PLATES
100 Count 69¢

ALBERS HEN SCRATCH
25 Lb. BAG \$1.49

BOOK MATCHES
50 CNT 10¢

NALLEY POTATO CHIPS
Reg. 69c Size 49¢ Box

FAMILY JOY MARGARINE
6 One Pound Cubes \$1

THE BUGS ARE COMING
SHELL NO PEST STRIPS
\$1.89

ARMOUR VIENNA SAUSAGE
4 / \$1
5 OZ.

ABC CREME COOKIES
2 Lbs. 59¢

SUNNY JIM PANCAKE SYRUP
20 OZ. 29¢

Block Ice	PRODUCE	Party Ice
BANANAS CHIQUITA 2 25¢ LBS.	LETTUCE 10¢ LB.	FRESH SPINACH 10¢ BUNCH
		MEDIUM SIZE DRY ONIONS 3 19¢ LBS.

Everyday Low Meat Prices . . . 25 Lb. Locker Boxes \$16.95

SLICED BEEF LIVER
39¢
Lb.

HYGRADE SMOKED PICNICS
Whole or Sliced 49¢
Lb.

BAR S WIENERS
65¢
Lb.

POLISH SAUSAGE
Rope Style 89¢
Lb.

HYGRADE SMOKED SLICED HAM - TURKEY BEEF - CORNED BEEF
3 OZ. PKGS. 3 / \$1

HYGRADE CHUNK BOLOGNA
59¢
Lb.

VACATION BIBLE SCHOOL

Dates: Monday June 16 through Friday June 20

Time: 9:00 a.m. 'til 2:00 p.m.

Place: PARKLAND EVANGELICAL LUTHERAN CHURCH
South 123rd at Pacific

Course Theme: "Living God's Way"
Ages: Kindergarten through Junior High (9th Grade)

Phone: Church Office LE 7-5492
Pastor's Residence LE 1-0777

Clip and send to Parkland Lutheran Church
VBS P.O. Box 2006, Tacoma 98444
VACATION BIBLE SCHOOL
Monday June 16 - Fri. June 20
Advance Enrollment Blank

Parent's Name: _____
Address _____ Phone _____
Church Member? _____ Church _____
Interested in Sunday School? _____
Interested in Christian Day School? _____
Children to be Enrolled

Name	Age	Next Grade In School
1. _____	_____	_____
2. _____	_____	_____
3. _____	_____	_____
4. _____	_____	_____
5. _____	_____	_____

Signature of Parent _____