

Bethel Special Levies Outlined See Page 2

Pierce County Herald and

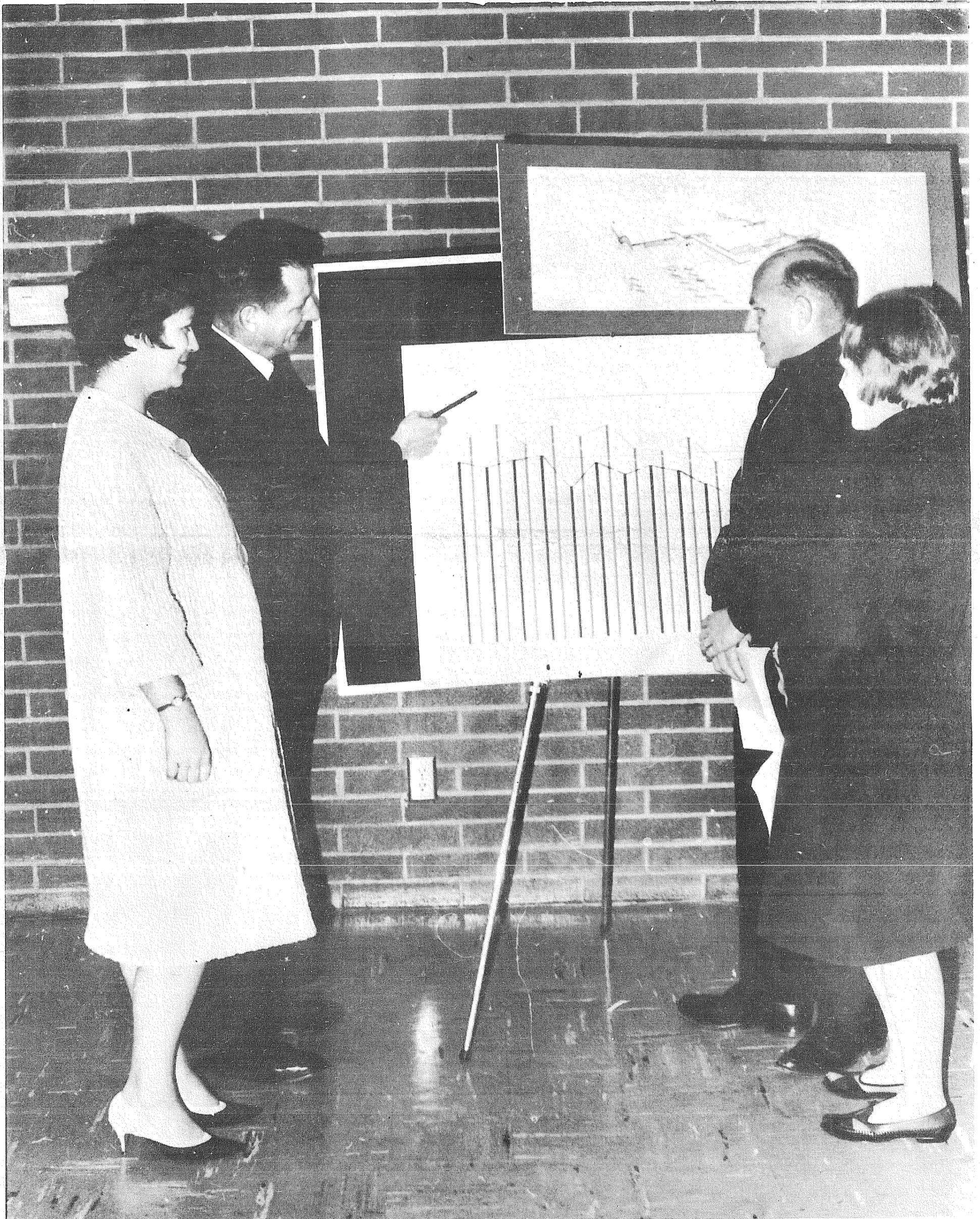
The TIMES JOURNAL

Vol. 24 No. 42

October 17, 1968

Price Per
Single Copy

10¢



BACK-TO-SCHOOL nights for parents are being scheduled throughout the county. Last Monday night, parents of Bethel Junior High students attended classes and conferred with teachers on the progress of their youngsters. Pictured above, Dr. Fred Gramann (second from left) explained enrollment increases to (l-r) Mrs. Bernita Pingle, Gene Kronlund, and Mrs. Joyce Whitfield.

3 Propositions To Face Voters

Three propositions, with no increase in the millage from last year, will face the Bethel School District voters on the November 5th ballot, according to Dr. Fred M. Gramann, superintendent of the district.

Proposition One is the general fund for maintenance and operation of the district. According to Dr. Gramann, "It is unfortunate that the district must have local tax support for this, but until the State grants all school districts a level of support which is enough to give the basic education to all students, it is a necessity."

During 1967-68 school year the district was supported locally by a special levy of \$320,000.00 at a rate of approximately 22.5 mills. Because the assessed valuation per student in the district has dropped, \$390,000.00 or 25 mills is being sought this time.

With the projected increase of students, this additional amount will just keep pace with the present needs. "This is not enough to really do the job — but we feel our property owners are being taxed to the limit," stated Dr. Gramann.

The 1969-70 Building Fund levy will be for 10 mills, a drop of 3 mills from last year. Voter approval on this issue, along with the sale of bonds in Proposition Three will make the district eligible as an "emergency district" which will mean a state matching ratio of approximately 82 per cent, but, said Dr. Gramann, both proposition two and three must be passed to get this much needed assistance.

The basic project for which monies from proposition two will be used is an addition to the high school. Upon completion of the addition the school will house 1,350 students, which is the 1970-71 projection for the

high school enrollment. The new buildings will have to be built in the 1969-70 school year to be ready in time.

It is anticipated, however, that the monies from propositions two and three, along with the State monies, will do more than just the high school addition.

Although it is difficult to predict the costs of this addition, the administrator added, we are planning on using part of the building funds for the preliminary work on other projects. The other projects include: — Equipping the classrooms being built; an addition to the Roy School of probably six classrooms; a four-classroom addition to the Kapowsin School; another elementary school in the Crescent Park Addition area; and acquiring additional sites.

Proposition Three is voter approval to sell \$300,000 worth of bonds during the next building program.

During the past two years, the Bethel District has used the voter approved special levies to:

1) Build and equip the 3-room Spanaway Elementary School addition, which will host open house October 20th from 1 to 4 p.m.

2) Build and equip the Chester H. Thompson Elementary School; the first elementary school to be built in the Bethel School District with all major building and equipment ready to go with initial occupancy — slated for November 15th.

3) Plan for the replacement of the Old brick structure and the wooden building at the Spanaway Elementary School. The money is already set aside for this project, which will start in construction in February, 1969, completion is set for August 1969.

4) Plan for the Middle School at So. 159th and 5th Ave. E. Construction will start in January 1969 with

completion set for September, 1969. The money for this school is already approved.

5) Purchase one 10-acre tract on the Benston-Kapowsin Road for a new elementary school. The district is in the process of acquiring at least one more site for a building to be built by 1970.

6) Make the necessary changes in the district to become a first class school district. This included setting up the accounting system allowing utilization of data processing.

7) Reorganize the central administrators to utilize the special abilities of the personnel. An administrative assistant was added to coordinate the purchasing and maintenance of buildings and have primary control of budgeting. The special services department of the district has also been organized so their efforts are more effective by creating a pupil personnel center.

Elk Plain Sets PTA Meeting

Representative R. Ted Bottiger, 29th District, will be guest speaker at the October meeting of the Elk Plain PTA at 8 p.m. Tuesday, in the school's multipurpose room.

Rep. Bottiger will discuss the possibilities of a State income tax, mobile home tax and also proposed changes in the sales tax.

Prior to the meeting there will be an Open House for 5th and 6th grades. Parents are invited to visit the children's rooms during this time.

A supervised nursery will be provided.

Back To School Set At FP High

The annual "back to school" night of the Franklin Pierce School Hi Booster Club has been set for 7:30 p.m. Tuesday, October 22nd, by president Frank Novotney. Meeting place has been set as the high school cafeteria.

Post cards with each student's schedule are being mailed to the parents. All parents are urged to attend and meet their student's teachers as they go through the abbreviated school day.

Refreshments will be served in the cafeteria when all classes are completed.

Elmhurst PTA Sets Meeting

Elmhurst PTA will meet at 7:30 p.m. Tuesday, October 22nd, in the multipurpose room of the school.

Dr. Edward Hill, Superintendent of Schools, assisted by Clint Richardson, Assistant Superintendent, will narrate films explaining the school levies to be presented on the November 5th ballot.

All parents are urged to attend. There will be an Open House for all grades to enable parents to acquaint themselves with the teaching procedures.

PSNB Slates Opening

Puget Sound National Bank will open its Spanaway branch at 176th & Pacific Avenue on Saturday, October 19, according to A. E. Saunders, bank president.

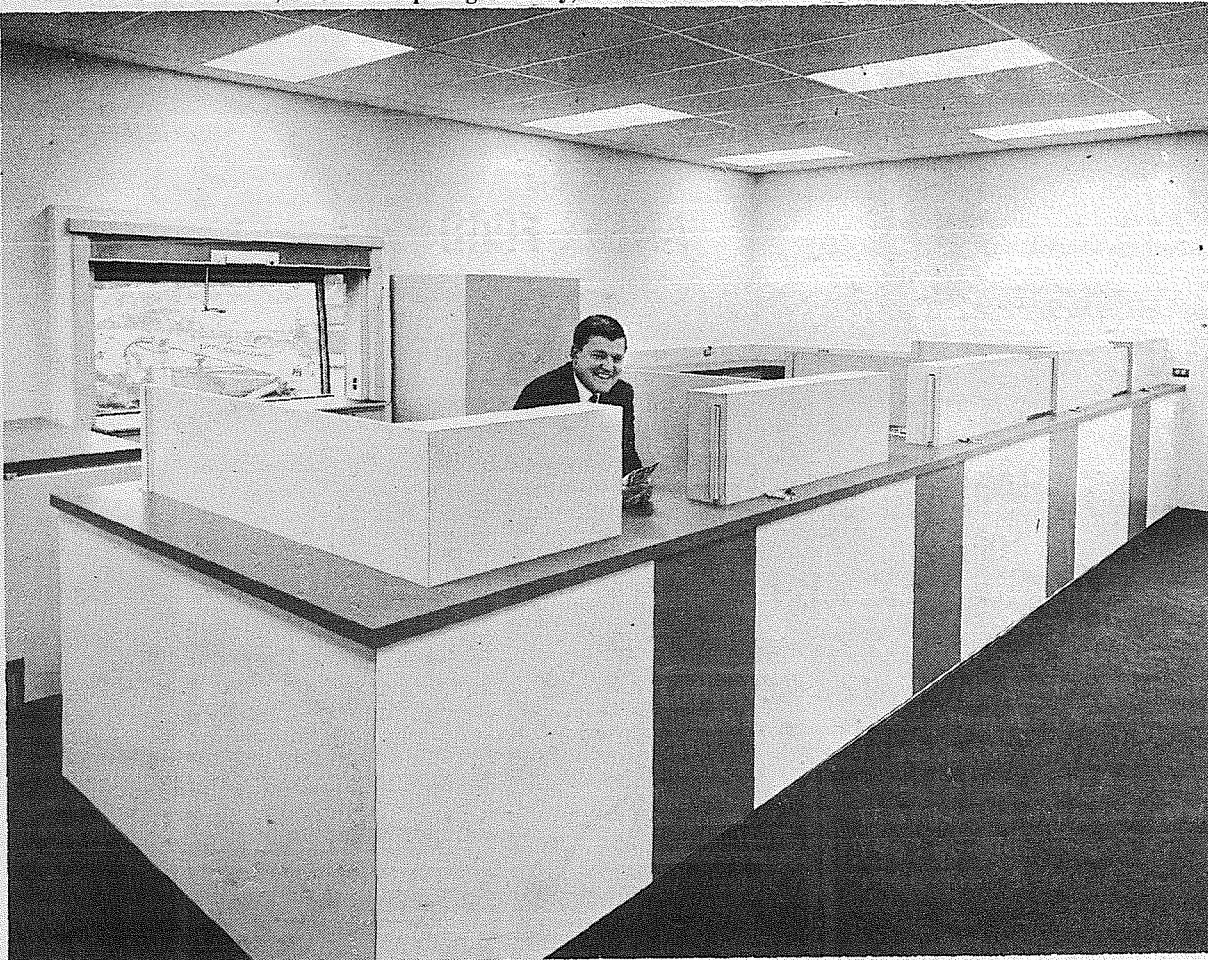
The new branch, managed by Dennis Daugs, is PSNB's 22nd full service bank—with checking and savings accounts, night deposit facilities, safety deposit boxes, loan advice and other regular banking services. It is completely air conditioned, has approximately 2,500 square feet of floor space, four teller windows and a drive-up window for customers to bank conveniently from their cars. The builder is John H. Anderson Construction, Inc.; the architects, Jensen & Stewart.

The Spanaway branch will serve residents and businesses in the Spanaway, McChord and Ft. Lewis areas. "In terms of population, this is an excellent location for a bank, says Daugs. "With the development of new housing projects and the influx of military personnel, a great need for banking facilities has arisen."

Open house will begin at 10 a.m. with official ribbon-cutting ceremonies. Customers are invited to take advantage of a special camera offer, prize drawings, giveaways, and refreshments.



HOW'S THIS FOR SIZE — Dennis Daugs, newly-named manager of Spanaway's Puget Sound National Bank, puts the boss's touch on the vault door. The branch, at 176th and Pacific Avenue, will host its opening Saturday, October 19th.



ONE OF FOUR — Dennis Daugs, PSNB's Spanaway branch manager, familiarizes himself with one of the four teller windows at the newly constructed bank.

Daugs will officially meet the public as manager Saturday when the bank holds its grand opening.

Pierce County Herald and
The TIMES JOURNAL

Published weekly at 14620 Pacific Ave., Parkland 98444 and delivered by U.S. Mail and carrier to subscribers. Publishers: Pierce County Publishers, Inc.

Managing Editor Em Matson
News Editor Sandy Ingram
Sports Editor Bob Ingram

Subscriptions \$3.50 per year, \$1.80 six months, or 30c monthly by carrier. News stand price 10c copy.

Qualified as a legal publication under Chapter 213 of the Legislature Acts of the 1941 regular session of the State of Washington

Second Class Postage Paid at Tacoma, Wash.

October 17, 1968 Vol. 24 No. 42

HEAD VOLKL DYNAMIC

hart

Only We have 'em all

Open 'em 'til 9 p.m.

PARKLAND Sports CENTER

11122 PACIFIC AVENUE TACOMA, WASHINGTON PHONE LE 7-567

NO SALE TO DEALERS

RIB CUT
**PORK
CHOPS**
67¢ LB.

3 LB.
CRISCO
69¢

**PORK
LOIN**
WHOLE OR HALF
69¢ LB.

LARGE "AA"
PUYALLUP
EGGS
43¢ DOZ.



WASHINGTON
50 LB. NO. 2
POTATOES
99¢

AVOCADOES
2/29¢

CENTER CUT
**PORK
CHOPS**
79¢

DANISH SQUASH
10¢ EACH

FRESH "OCEAN SPRAY"
CRANBERRIES
1 LB. BAG **25¢**

REG. 89¢
16 OZ.
**FRESCA
OR SPRITE**
49¢
NO DEPOSIT

LARGE WHITE OR WHEAT
BREAD LIMIT 4 **10¢** LOAF

ALL REG.
BETTY CROCKER
**CAKE
MIXES**
4/1⁰⁰

**PORK
SAUSAGE**
COUNTRY STYLE
43¢

PASTRY SHOP

PASTRY SHOP

HYGRADE
BALL PARK
WIENERS
69¢ LB.

FRESH BAKED
PUMPKIN
PIE
69¢

ICED
ANGEL FOOD
59¢

SWANSONS
**T-V
DINNERS**
49¢

HI-HO SHOPPING CENTER
OPEN
7-DAYS-A-WEEK 8 A.M. - 11 P.M.
Puyallup | *Tacoma*
RIVER ROAD & MERIDIAN | 64th & YAKIMA

5 LB.
BAR-S CANNED
HAMS
3.95 TIN
79¢ LB.

200-2 PLY
CORONET
**FACIAL
TISSUE**
5/1⁰⁰

PRICES EFFECTIVE OCT. 14 THROUGH 19TH

CALL LE 7-8647



Ashford - McAloon
Insurance
SAFECO INSURANCE
11901 Pacific Ave.

Geo. Sheridan
PDA Speaker

"County Government is the finest type of Govern-

ment we have," stated George Sheridan, democratic candidate for County Commissioner at the Parkland Development Association meeting Monday night.

"I don't think that the method of government needs

to be changed, but needs to acquire authority to take care of the local problems," he added. According to Sheridan, who is presently serving as a state representative, the State of Washington has a surplus of

\$140,000,000.00 sitting in the treasury. "Pierce County has one-tenth the population of the state and therefore ten per cent of that surplus, \$14,000,000, belongs in Pierce County," he added. If we could get hold of that mo-

ney we could get better protection and a host of other things we need."

When questioned about sewers, Sheridan said that sewage is a county-wide problem and solving it on a county-wide basis is the only sensible way. "Everybody owes something to those who have tried to get sewer in Parkland and now the county has some authority to work with local areas to find solutions," he analyzed.

He told the group that under the present policy the only way the money will be attained for sewers is with an overall plan and not piece-meal.

Republican candidate, Marv Tommervik, will be guest speaker at the next Parkland Development Association meeting. All are invited to attend.

Sleepy Hollow Names Officers

Diane Stienhoff is the newly elected president of the Sleepy Hollow 4-H Club. Assisting her in the coming year will be Paulette Perryman, vice-president; Patty Evans, secretary; and Vicky Reinke, treasurer. Fay Eickhoff was appointed reporter for the group.

Presiding over the elections were Mrs. Perryman, Mrs. Korsmo and Jami Sales, leaders of the club.

1555 Now Attend Fort Steilacoom Community College

According to J. Paul Steadman, Director of Student Services, the fall enrollment at Fort Steilacoom Community College now stands at 1555.

Of these, 819 are attending classes "on campus" which will continue to be the Clover Park High School until the completion of the college buildings to be constructed on grounds formerly belonging to Western State Hospital.

The remaining 736 are attending the extension classes located in Puyallup, Franklin Pierce, Fife, Madigan Hospital, Fort Lewis, and McChord AFB.

The enrollment represents about 95 per cent of the expected fall total which will be reached with the establishment of a number of special or late starting classes.

BRAIN-WASH '68



Mr. and Mrs. Washington Voter . . . be on your guard!

Whether you realize it or not, you're being made the target of one of the most intensive and potentially dangerous brainwashing campaigns in our state's history.

Sound far fetched?

Not at all!

The timber barons of the Northwest are spending a small fortune to get you to approve Initiative 32. They are trying to brainwash you into believing that: Competition in the market place is undesirable; that a growing and thriving forest products industry is a myth; that a free and vibrant world commerce is bad for our economy.

We all know that these things are plainly NOT true. So, what's the gimmick?

Just this:

Initiative 32 would restrict the export of logs from state-owned lands *only*. It does not prevent the timber barons who own more

than 50% of the timber in Washington from selling their logs in the highly profitable export market.

Beginning to get the picture?

They sell their logs high . . . replace them with low cost public logs . . . low cost because Initiative 32 would virtually eliminate bidding competition from all out-of-state buyers.

Guess who comes out on top of that deal? You're right . . . the big boys win again!

And guess who picks up the tab for the millions of dollars of revenue lost to our schools and counties. You're right again . . . You, the citizen and taxpayer.

Before you vote, study Initiative 32. Be wary of extravagant claims about job losses, log shortages, overcut forest, high housing costs, etc. Don't let the timber barons brainwash you into handing them a multi-million dollar windfall at the expense of your kids—and your own pocketbook.

INITIATIVE **32** **IS BAD FOR YOU**
and EVERYONE ELSE TOO (except timber barons)
VOTE AGAINST

That's What These Highly Respected Organizations Believe

- LEAGUE OF WOMEN VOTERS OF WASHINGTON
- COUNCIL OF THE PACIFIC NORTHWEST LOG EXPORTING INDUSTRIES
- INTERNATIONAL LONGSHOREMEN'S AND WAREHOUSEMEN'S UNION
- LOG TRUCKERS CONFERENCE — WASHINGTON TRUCKING ASSNS., INC.
- WASHINGTON EDUCATION ASSOCIATION
- WASHINGTON STATE SCHOOL DIRECTORS' ASSOCIATION
- WASHINGTON PUBLIC PORTS ASSOCIATION
- WASHINGTON ASSOCIATION OF STEVEDORES
- WASHINGTON FARM FORESTRY ASSOCIATION
- WASHINGTON ASSOCIATION OF WHEAT GROWERS

PAID FOR BY RESOURCE AND TRADE COMMITTEE AGAINST INITIATIVE 32
WM. F. DEVIN AND MRS. JAMES E. PECK, CO-CHAIRMEN, P. O. BOX 303, OLYMPIA

Dryer MORTUARY
(134th & Pacific) PARKLAND

The Country Parson



"Heaven must be filled mostly with folks who have scars on them."

Copyright, by Frank A. Clark

Dryer MORTUARY
(134th & Pacific) PARKLAND



MINOR HEAD injuries were received late Monday night by Dennis W. LaPlante, 21, following an accident in which the car he was driving veered over the center line on East 99th Street and side-swiped a car, above, driven by his mother, Mrs. Donna A. LaPlante, of Tacoma.

PLU Children's Theatre Sets Friday Opening

"Once upon a time many hundreds of children came to Pacific Lutheran University to see a play. Many of them had never seen a live stage production before."

The story is repeated again as the PLU Children's Theatre, organized and directed by drama professor Eric Nordholm, begins its 13th year next weekend with three performances of "Rapunzel" on the Eastvold Auditorium stage.

At 2:30 p.m. Friday and Saturday, Oct. 18-19, and Saturday, Oct. 26, the curtain will open and the youngsters will see Margot and Otto rejoicing at the birth of their first baby.

Margot and Otto are played by Paula Grams, Bremerton, and Peter Christiansen, Seattle. Rapunzel is Walayn Oke of Everett. The witch, (Mortner Gothel), is played by Julie Halvorson from Portland.

Other members of the cast include Bill Lundstrom of Portland as Prince Eric; Barney Peterson of Everett as Tree (the king); Christie Ness as Plant (the queen) and Wayne Svaren, Hardin, Mont., as Stone.

In addition to the three public performances, special performances have been scheduled for Franklin Pierce, Clover Park and Eatonville School District children.

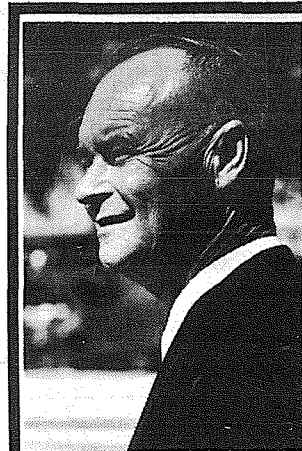
Millage Presentation At Midland PTA Meet

Dr. Edward E. Hill, superintendent of Franklin Pierce School District, and the Franklin Pierce Education Council, will be guests of the Midland PTA meet slated for 8 p.m. Thursday, October 17th, in the cafeteria

of Midland Elementary School.

Dr. Hill and the Education Council will give a slide presentation on the propositions facing the voters on November 5th.

All interested persons are invited to attend.



Marv Tommervik

Will Make a Great

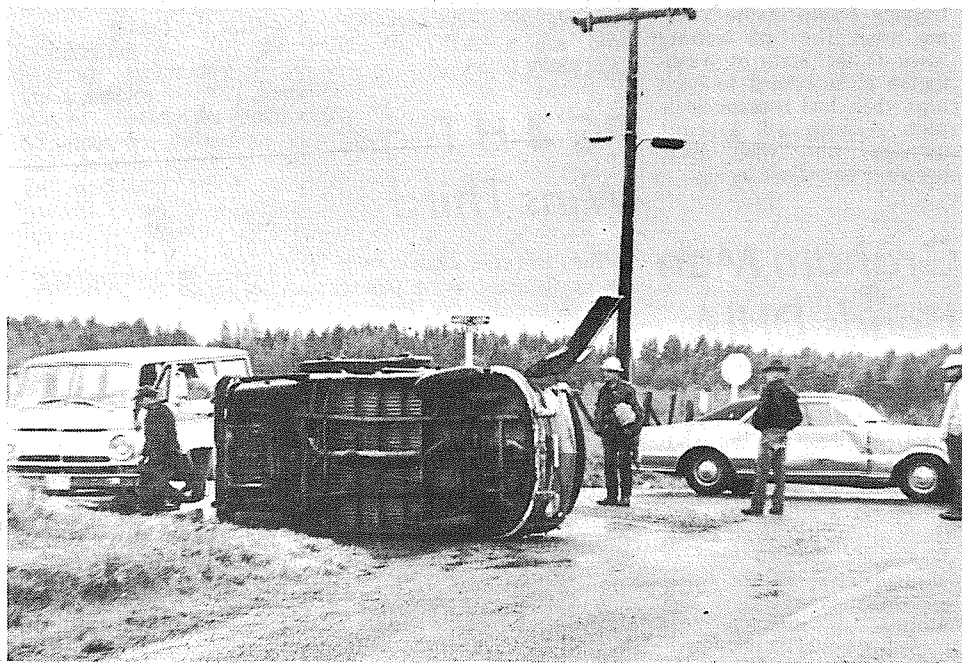
County Commissioner

Every Pierce County Voter CAN and SHOULD Vote For

Tommervik

Commissioner District 2 Rep.

Pd. Pol. Adv.



NO INJURIES were received in a two-car collision at the intersection of the Harts Lake Loop and Roy-Christy Roads Saturday afternoon. The car on its side, driven by Alfay Wolkins, 74, of Shelton, rolled after colliding with a 1967 car driven by Jean M. Hardy, 44, of Tacoma.

"Need to know the area code for Scarsdale, New York?"



Look in the "CALL GUIDE" section—in the front of your TELEPHONE DIRECTORY

This is just a "sampler" of the kind of courteous service you'll receive from our Home Loan Department. Although we offer you a range of the most modern home loans available... we're "old fashioned" enough to believe that a bank should offer you *more* than money.

With every Bank of Washington "Home Sweet Loan" comes special attention to your particular needs. Because your loan matches your appetite for better living, it won't eat you out of house and home.

So, if you're about to buy a new home or build one, get a "Home Sweet Loan" and a sample of the courtesy and enthusiasm that makes home buying easier at Bank of Washington.

Conventional Loans

... financing up to 80%

FHA Insured Loans

... minimum down payment

VA Guaranteed Loans

... no down payment

Terms: to 30 years



BANK OF WASHINGTON

AT YOUR SERVICE: PARKLAND BANKING CENTER

NATIONAL BANK OF WASHINGTON/TACOMA, WASHINGTON
MEMBER FEDERAL DEPOSIT INSURANCE CORPORATION

HORSEMEN'S NEWS

Over The Fence Rail

By Ernie & Paulette Cook

Millie Peterson, owner of Peterson's training stable, has moved her base of operation to Rt. 1, Box 185, Graham, approximately 2 1/2 miles from Johnson's Corner on the Mt. Highway. The new Peterson stable has an indoor arena, as well as an outdoor arena.

Millie is going to open a girls camp this spring which will be called Ma-nu-ka Valley. Meanwhile her four studs, Chief Cherokee Chic, Chic Cherokee Lad, Sir Shannon AMHR 12711, and Sharab L4123 will be standing at stud.

The Tacoma Lariettes are going to hold a Halloween Fun Night at 7:30 p.m. October 26.

The evening will begin with a costume parade, followed by playday events.

Ground rules will be used in all events, or as the judge may direct. There will be ribbons to five places in individual events and three places in team events. High

point trophies will be given for male and females junior and senior.

Classes are as follows; the Grand entry in which all horses and riders will enter the arena for their numbers. Costume class, either horse, rider, or both in costume. Bob for apples, Flag race, senior-individual, flag race junior-individual, Four in hand rope race-teams of four, Pairs class, performance only to count-ladies. Hangman, teams of two. Sack race, on foot—children under 12 no entry fee, Musical sacks, junior, Water race, teams of four men.

The Tacoma Lariette's will do their Fluorescent Drill following the games, and this event alone should draw many spectators.

There will be a 50 cents donation for spectators, and coffee and cookies will be served in the club house.

Cindy Branham won the high point trophy at the funday held at Muffet Acres.

The U.S.E.T. Benefit Games Show is this weekend, at the Tacoma Unit Arena on 176th approximately 1 1/2 miles east of Pacific Ave. The games to be run include Keyhole, Figure 8 stake. Individual Polebend-

ing Junior and Senior, Texas Barrels Junior and Senior, Individual Scurry Jr. and Senior, Rescue Race, Three Barrel Flag, Individual Flag, Baton Race, Canadian Flag, Hangman, Wheelbarrow Race, Bareback Relay, Water Race.

A painting by Margie Jackson will be given away as a door prize, following the Water Race, and just before the high point riders are announced.

Mrs. Jackson will also have several other paintings on display, which may be purchased. Margie has donated a portion of the selling price of each painting to the U.S.E.T.

There will also be a variety of United States Equestrian Team Souvenirs on sale in the concession area.

We hope this show will have the support of all the game riders in the area.

Spanaway Pair Named AHA Members

Kendal and Kimberly Burke, Spanaway, have been named to junior membership in the American Hereford Association, the world's largest purebred registry organization, with headquarters in Kansas City, Mo.

Seventy-seven junior Hereford breeders were placed on the Association's official roster in August. The AHA maintains records for more than 60,000 breeders of registered Herefords over the nation.

The Hereford Association, during the last fiscal year, recorded 469,515 purebred calves. The year's total recordings were the eleventh highest on record in the 86-year history of the breed.

PC 4-H Horse Judges Receive Blue Ribbon

The Pierce County 4-H Horse Judging team placed seventh at the Pacific International (October 5) contest in competition with 36 other teams from Washington, Oregon and Idaho.

Team members were Kathy Clay, Tacoma; Diane Long, Edgewood; and Marne Sagen, Roy. Mrs. William Clay chaperoned the team.

Kathy Clay was the tenth high individual in the entire contest.

BILL PROBLEMS
For Immediate Help
Call
MA 7-1700
Live Easier
Pay One Place
MONEY MANAGERS
232 Security Bldg.
915 1/2 Pacific Ave.

Spanaway Wins Qualifier

The racing Standardbred mare "Spanaway", owned by John S. Seaman formerly of Spanaway, won her qualifying race with ease at Hollywood Park, Seaman reported to the Journal.

Pulling her sulky over the mile well within the track qualifying time of 2 minutes 7 seconds, Spanaway won her race by 1 1/2 lengths. The qualifying race was held for all horses who had not raced in the past 60 days.

Spanaway has been in training at Seaman's Long Beach, Washington ranch. Before coming to the United States, the horse had an impressive winning record on New Zealand tracks. The Hollywood Park season started September 30.

Seaman, who named his famous mare after the Spanaway area, hopes to open a training stable in the Tacoma area. The first trotting track in the State of Washington is scheduled to open next year, and Seaman feels such a stable will attract owners who wish their horses to be trained locally.

Graham Man Heads DHIA

The dairy herd of Frank Swetz, Graham, is the leader in the Pierce County DHIA summary for the month of September, announces County Agent Eddie Thomason. Swetz's herd of 42 registered Brown Swiss and Holstein averaged 1392 pounds of milk and 54 pounds of butterfat per cow.

Honor roll leaders for cows completing lactations in September are: 2 year old — May, a grade Holstein, owned by John Kominski, Roy, with 18,861 pounds of milk and 782 pounds of butterfat; 3 year old — Hart, a grade Holstein also owned by Kominski, with 20,799 pounds of milk and 732 pounds of butterfat; 4 year old — Cookie, a grade Holstein owned by Fred Krapf, Graham with 20,963 pounds of milk and 802 pounds of butterfat; 5 to 10 year old — Captan, a registered Holstein, owned by Bill Wood, Eatonville with 28,776 pounds of milk and 893 pounds of butterfat; and 10 years and over No. 439 a registered Holstein owned by Rainier School, Buckley with 18,586 pounds of milk and 718 pounds of butterfat.

Testing and calculation of records was supervised by Washington State University. Local supervisors are Roy Hartschorn, Orting and Delmar Price, Spanaway.

Meridian Club Names Winners W.W. Holstein Excellent

A large group of Meridian Riding Club members reportedly enjoyed the Puget Sound Zone Banquet which was held at Anton's Restaurant recently.

The Junior Achievement Awards in the 15 and over class were received by three of the club's members. Joe O'Leary received 1st place, Linda Pilcher, 2nd place; and Byron Moye, 3rd place.

Games awards won included: Valerie Merrill — 1st, senior barrels — 2nd, figure eight — 3rd, senior poles.

— Ward Bradley — 1st, senior poles, scurry and baton race — 2nd, keyhole and senior barrels — 4th, figure eight.

— Vincent DeChaux — 1st, baton race and 5th, keyhole.

— John Schill — 2nd, senior poles and 3rd, figure eight.

— Margie Curbow — 1st, baton race, 4th, keyhole and senior poles — 5th, scurry and figure eight.

— Marlene Medley — 1st, baton race, figure eight, keyhole and junior barrels — 2nd, scurry, individual flag and junior poles.

Brattleboro, Vt. — Nisqually Intriger Aletta 5903045, a Registered Holstein cow, owned by Western Washington Experiment Station, Puyallup, Washington, has been officially classified "Excellent" — the highest designation attainable in the type classification program of the Holstein-Friesian Association of America.

This highly select designation is applied only to animals scoring 90 or more of the 100 points representing theoretical perfection in body conformation. Of over 84,000 Registered Holsteins officially classified for type last year, only 1,540 were rated "Excellent".

This animal moved into the "Excellent" bracket at 90 points for the first time during a recent classification of the herd. Classifier was Roy L. Simpson, Mansfield, Pennsylvania, staff member of the national Holstein organization. Animals scored "Excellent" in previous programs are not included in this listing.

The Classification program — in continuous operation since 1929 — provides a universally-recognized method of comparing the conformation of living animals with that of the True-Type Holstein cow or bull. Participation is currently at an all-time high level.

PC 4-H Team Wins Third

The Pierce County 4-H Dairy Judging team placed 3rd at the Pacific International Contest (October 5) in competition with 24 other teams from Washington, Oregon and Idaho.

Team members were Judy Swetz, Graham; Terry Swain, Roy; Patty Evans, Tacoma; and Ronnie Ulrich, Orting, alternate.

Individual honors were claimed by all three team

members. Judy Swetz was high individual in judging Guernseys and was the third high individual in overall placings. Patty Evans was the high judge in Jerseys, for which she received a miniature Jersey jug. Terry Swain was the sixth high individual in the contest.

Eddie Thomason, Pierce County Extension Agent, is the team coach.

Tacoma Livestock Market Report

Tacoma Livestock Market Report for Thursday, Oct. 10th, 731 Head of Cattle, with good buyer support from start to finish. Usual run of Hogs, Sheep and Horses. Market exceptionally steady. Good honest Dairy Cows in strong demand.

Choice Veal	\$40.00-42.00 cwt
Heavy Lean Bulls	24.00-25.50 cwt
Light Bulls	20.00-23.50 cwt
Holstein Cows	17.00-19.00 cwt
Best W.F. & Angus Cows	17.00-18.50 cwt
Good Colored Cows up to	16.50 cwt
Med. Cows & Shells	14.00-16.00 cwt
Heavy Hol. Feeder Steers up to	21.60 cwt
Heavy Black W.F. Steers up to	22.40 cwt
W.F. Feeder Steers (700-800 lbs.)	23.50-25.50 cwt
Light Ho. Steers	24.00 cwt
W.F. Heifers (600-700 lbs.)	20.00-23.00 cwt
W.F. & Angus Steer Calves (400-500 lbs.)	24.00-28.00 cwt
W.F. & Angus Heifer Calves (400-500 lbs.)	22.00-24.00 cwt
Baby Calves by Head	10.00-37.50
Block Hogs	20.00-21.00 cwt
Straight Sows (400-500 lbs.)	15.00-15.20 cwt
Weaner Pigs by Head	14.00-16.00 hd

We look for a comparable market this Thursday.
Ed & Lee Flood — Owners and Auctioneers
VI 7-7567 (Graham)

CAN YOU SMILE?



The Dillows, Hiway House Motel, Albuquerque

if you can smile, you can succeed in **MOTEL MANAGEMENT**

Do as the Dillows and hundreds of Ambassador graduates and learn motel operation with our short, inexpensive course at home followed by two weeks on-the-job training in a motel operated by Ambassador. Men, women and couples needed now. Free nationwide placement assistance upon completion. For personal interview mail coupon today.

Send to:
Management
P.O. Box 2116
Tacoma, Wash. 98444

NAME.....
ADDRESS..... CITY..... STATE.....
PHONE.....

"Horsemen's Market Place" Classified Directory

Board — Trainers — Breeders
Outfitters — Feed Dealers

A & W SEARS
BOARDING STABLES
Box Stalls, Pasture,
Riding Trails & Arena
\$45.00 per mo.
Pole Line & Taylor Rd. E.
Roy 843-2575

Outfitters
The Bunkhouse
COMPLETE LINE OF
TACK & WESTERN APPAREL
12605 Pacific Ave.
Tacoma, Wa. 98445
LE 7-5510

J. W. RANCH
Appaloosa Stud Service
Colts for Sale
Spanaway VI 7-2642

Vet Supplies
Complete supply animal health
products.
Franklin - Farnam - Anchor
at
ASHMORE'S
Spanaway Drugs
165th & Pacific Ave. LE 7-5993

CEDAR LUMBER - FENCING
TACOMA
CEDAR PRODUCTS CO.
"At the Waterfall"
14512 Pacific LE 1-2559

Board-Train-Riding Lessons
English And Western
Jumping And Cutting
Quality Stallions At Stud
Quality Horses For Sale
Champions Made And Shown
To Your Specifications.
Visitors Always Welcome.
VI 7-2881
George Karr
Tacoma Unit #1 Stables
1 Mile East of Pacific on 176th

Everything
In Hardware For
The Horseman
Fencing tool!
South End Hardware
S. 185th & Pacific Spanaway

Automobiles
STATION WAGONS, CARS
AND TRUCKS
"Come See Us"
Andy EGAN
RAMBLER
Fairness to All
8223 Pacific GR 4-9404

HORSES BOARDED & RENTED
B & B STABLE
on the Mountain Hiway
1 1/2 miles past Roy Y on left.
Open 10 a.m. to 5 p.m.
TUES. - SUN.
VI 7-7162

BOARDING-BREAKING-TRAINING-RACE TRACK-ARENA
MARS STABLES
BOB ROUNDY - TRAINER
TH 5-1231 11919 144th E.
Puyallup, Wash.

LE 1-4555
RODEO CUSTOM SHOP
Dean & Dodie Vosburg
Complete Saddle
Repair Shop
Western Wear
English Tack & Togs
164th & Pacific
Spanaway, Wash.

Angelo's
PIZZA HOUSE
ORDERS TO GO
Featuring top sirloin and American dishes, spaghetti, rigatoni, meat balls, sausage, ravioli, beer and wine.

Choice of Pizzas:
cheese & tomato
anchovie
mushroom
Italian sausage
pepperoni
tuna
bacon
peppers
olive
hamburgers
ham
salami
onion

LE 7-7233
14102 PACIFIC AVE.
PARKLAND
CALL AHEAD, IT'S
PIPING HOT
ALL THE WAY HOME
PICK UP A BOX, PAIL, BUCKET,
OR A BARREL

Forestry Tour Set For Thursday

On Thursday afternoon, October 17, there will be a forestry tour on pre-commercial thinning, demonstrating the use and effects of a new chemical called cacodylic acid. Two tree farms in the Puyallup Bonney Lake areas will be visited.

The meeting will begin at 1:15 p.m., at the Paul Bunyan Sportsman Club, on Meridian Road, south of Puyallup. From there we will move on to the Bonney Lake 4-H Forestry Tract. The tour will be over by 3:45 p.m.

Pre-commercial thinning is an important step in intensive forest management, yet it has often been neglected because it has been costly in both time and money. This is no longer true, however, as this new chemical is not only effective and selective in killing unwanted trees but is fast and inexpensive as well. Only the simplest of tools are required for application — a hatchet and a squeeze bottle of chemical.

The two young timber stands you will view are representative of the general area in which they are located. The Paul Bunyan area is an extremely dense, "dog hair", typical low-site situation. The Bonney Lake area exemplifies a more average type stand.

Cacodylic acid is unique in that unlike most other "silvicides", there is no "flash-back", or killing of desirable trees through root grafts.

You as an owner of young dense timber needing thinning — whether one acre or 50,000 — will want to see this method demonstrated and the results of this application. Come and bring your friends.

Post Office Sets Exams

The Post Office Department announced that new postal examinations are being scheduled to provide Eatonville, Spanaway, Tacoma and Yelm Post Offices an adequate list of qualified applicants to consider as vacancies occur.

Residence restrictions have been removed and applicants who qualify on this examination may be considered for employment at any Post Office.

Applications and other information may be obtained from any post office or by contacting the executive secretary, Post Office Establishment Board, P.O. Box F Queen Anne Station, Seattle.

Dr. Laubach To Speak Here

Dr. Frank Laubach, founder of the world wide "Each one teach one" method of literacy training, will speak at a mass literacy rally at First Baptist Church, 9th and Market, October 22 at 7:30 p.m.

Other appearances will be at UPS the same day at 10 a.m., and at PLU on Wednesday, October 23, at 9:45 a.m.

Co-chairmen of the Tuesday night meeting are the Rev. Wm. Mitchell, Miles Memorial Church, and the Rev. Robert Drewes, Trinity Lutheran Church. Introducing Dr. Laubach will be the Rev. Roy Hagen, a missionary friend now living in Parkland.

Dr. Laubach, "Mr. Literacy," as he is often called, has been decorated by a king and a president. Lowell Thomas called him "The foremost teacher of our times." While he was missionary in the Philippines, he taught 20,000 Moros how to read through his system of easily understood charts. Today Laubach Literacy, Inc., promotes the use of this method to teach more thousands to read. It does operate in Pierce County, and at the present time people are being trained to read here by this method.

CP Ed. Center Sets Medical Clerks Course

A twelve-week course to train Medical Ward Clerks will begin Monday, October 21 at Clover Park Vocational Technical Institute, according to school officials. This is the first course of its kind to be established in the State of Washington. According to Mrs. Edna Lyda, R.N., coordinator of Health Education, hospitals and nursing homes need many of these people so that they can more efficiently utilize available nurses.

Republicans Set Candidate Program

A republican "Meet Your Candidates" program has been slated from 3 to 6 p.m. Sunday at the home of Mr. and Mrs. Carl W. Brodin, 1102 Johns Road East (144th Street).

Co-hosting the affair for the Mayfair, Cooper and Pacific precincts will be Mr. and Mrs. Dick Seamons.

Scheduled to attend the event are Mrs. Anita Jones, Bill Smith, Tony Chase, Marv Tommervik and representatives for Jack Metcalf, Richard Nixon and Governor Dan Evans.

All are invited to attend. Refreshments will be served.

HOUSEHOLD APPLIANCE REPAIR LE 1-5631 WE SPECIALIZE IN LAWNMOWER REPAIR AND SERVICE NEW AND USED PARTS

COUPON

\$2.50

off General
Tune-up and
Valve Job
Coupon Good 90 Days

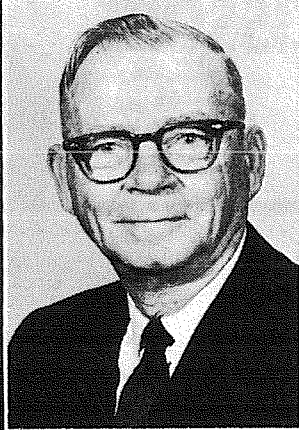
**BLADE
SHARPENING
&
BALANCING**
Pick-up & Delivery
11111 Pacific

New & Used Mowers
**Pulleys
Blades
Accessories
Welding**

You're expected in Spanaway this Saturday.

Pierce County's Only
Professional
**AMBULANCE
SERVICE**
Parkland Ambulance
and
Lakewood-Pacific
JU 4-3344 LE 7-3322

It's W.B. "Bill" Smith
For Active Representation



Let's bring new life to the 29th District by electing active full-time representation.

"This is your district. It deserves full time representation in State Government and as a retired serviceman I can devote the time needed to return representation to the people."

Vote For

W.B. "BILL" SMITH
29th Dist Rep Pos 2 GOP
4828 Military Rd. E.

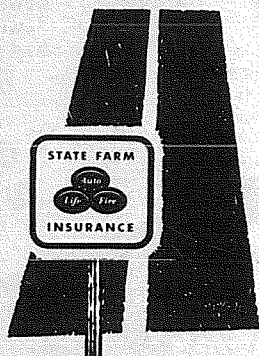
LE 7-8819

The occasion: Open house at our new Spanaway Branch, at 176th and Pacific Avenue, from 10 a.m. to 4 p.m. We'll be giving away up to 150 special prizes. Blankets. Travel cases. Alarm clocks. Corning Ware. And transistor radios. They go to anyone who shows a winning card to our special Mystery Teller. We've probably already mailed you one, but just in case we missed you, please pick up your card at the bank on Saturday. Besides that, we'll give you a \$16.95 Kodak Hawkeye Camera Kit for just \$8.95—if you open or add to your ac-

count with \$50 or more.

We'll also have balloons for the kids, coffee, cake and lots of friendly sociability for everyone.

**Come to our Open House
at the New Spanaway office
Puget Sound National Bank**
176th and Pacific Avenue, Dennis Daugs, Mgr.



symbol of
"hometown
service"
wherever you
drive.

Bill Ehli
9920 Pacific Ave.
LE 1-1800



STATE FARM
Mutual Automobile Insurance Co.
Home Office: Bloomington, Illinois
State Farm is all you need
to know about insurance.

**OPEN
7 DAYS A WEEK
SHOP MART**

DEPARTMENT STORE

13322 Pacific Ave. (Next to Lucky) Tacoma

**SHOP-MART
SALE**

AREA-RUGS

- Size 27-in. x 40 in.
- Gay Bright Colors
- Protect Your Floors and Carpet. Reg. \$2.98

\$1.37

HEY KIDS!

**WATER
COLORS**

- 54 Colors in Metal Box with Brush
- Reg. \$1.29 Value

67c

**ANTIMONY
JEWELRY
BOXES**

- Velvet Lined
- Reg. \$1.00
- 12 Styles

67c

**BATH
POWDER**

- BEAUTIFUL ASST. COLOR PLASTIC BOX ASSTD. SCENTS

47c

**TOOTH
BRUSH**

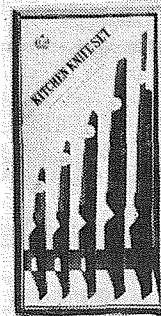
- FIRM BRISTLES ASST. COLORS
- REG. 39c VALUE

10c

**FLIP-TOP
TRASH
CAN**

- Asstd Colors
- Reg. \$3.95

\$1.99

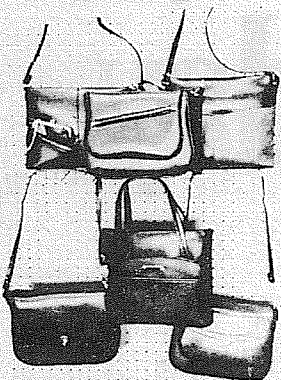


**5-Pc.
KITCHEN
KNIFE
SET**

- Reg. \$3.99

\$1.99

**CHILDREN'S
PURSES**

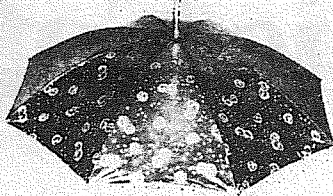


- A Beautiful Assortment of Purses.
- Values to \$1.98

ONLY

67c

**CHILD'S
UMBRELLA**



- Bright, Gay Colors - Patterns

- Reg. \$1.00

ONLY

67c

**9-VOLT
TRANSISTOR
BATTERY**



- Reg. 29c

11c ea.

**8-Inch
MAGNETIC TIP
SCISSORS**



- Reg. \$1.25

68c

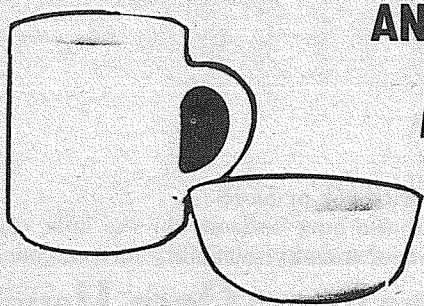


- Sizes
- Cinnamon
- Coffee

ON SALE EVERY YEAR

BEAUTIFUL GOLD TONE COLOR

**CEREAL BOWLS
AND
MUGS**



- Reg. 29c

2 For 25c

UTILITY BAG OR
**DIAPER
BAG**

- Reg. \$1.98 Value

- With Full Zipper
- Shoulder Strap
- Black Only

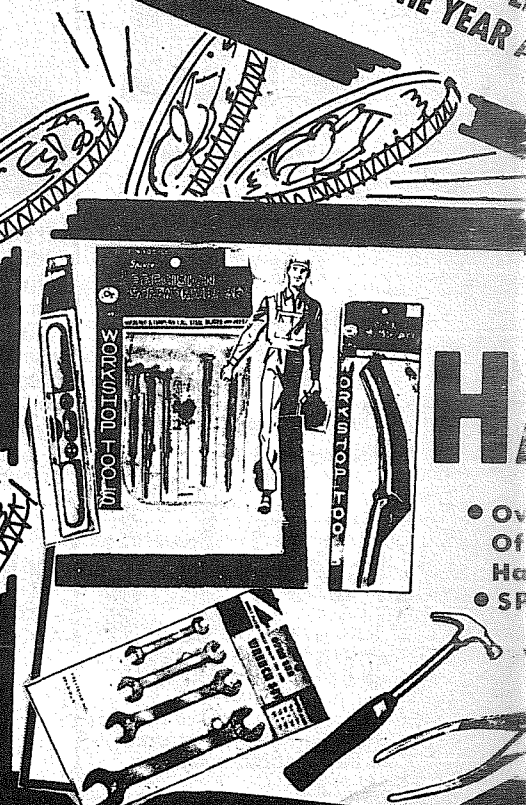
73c

**FIREPLACE
MATCHES**

- 10 In. Long
- 100 In a Box

- Reg. \$1.25

77c



DEPARTMENT STORE

OF SALES

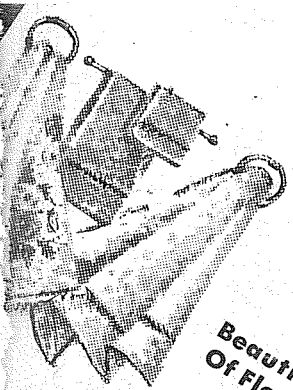
OPEN WEEKDAYS

Monday To Friday
10 A.M. to 9 P.M.

Saturdays 10 A.M. to 6 P.M.

OPEN SUNDAYS

11 A.M. to 5 P.M.



FANTASTIC SELECTION

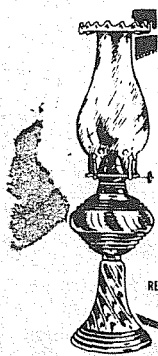
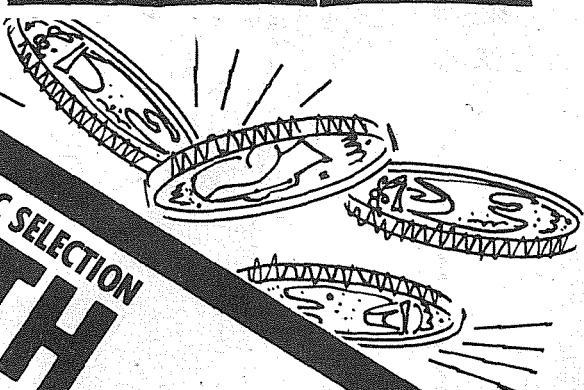
BATH TOWELS

Beautiful Selection
Of Florals - Stripes
And Solid Color
Towels At This
LOW PRICE

Size 20x40

2 \$1

For
79c ea.



QUEEN SIZE

OIL LAMPS

Assorted
Colors

68c

each

WASH CLOTHS

Soft Pastel
Colors

ONLY

Reg. 25c
Value

10c

ea.

POKER CHIPS

Box of
100 Chips

ONLY

47c

8-TRANSISTOR POCKET

RADIO

• Complete With
Carrying Case,
Ear Phones
• A Super Special
AT THIS PRICE

Reg.
\$7.95
Value

\$3 23

DOORMAT

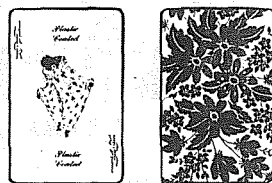
QUALITY
RUBBER
ONLY



Size 15x20

68c

PLAYING CARDS



• Bridge Size and
Pinochle Decks
• 2 Matching Decks
in Plastic Box

ONLY

67c

 A Set
2-Deck

BOXED XMAS CARDS

Reg.
\$1.25

67c

BASKET ASSORTMENT

Imported From Spain
12 Different Styles

Values
to
\$1.49

ONLY

73c

ea.

6-GALLON Apartment Size
Plastic

GARBAGE CAN 87c

AS SEEN ON TELEVISION
OFFICIAL

FOOTSEE

FOOTSEE as long or as fast as you can!
FOOTSEE-Walk! FOOTSEE-Run! FOOTSEE-Race!
FOOTSEE-Hop with Jumping Partners!
EXPERTS - Do the Two-Foot FOOTSEE!

"AMERICA'S SWINGING SENSATION"

73c

TOP-QUALITY HAND-TOOLS

57c

19 Kinds
Special Selected
Tools
SPECIALLY PRICED

Values to \$2.00



WILLIAM A. GILBERT Jr., 21, of McChord AFB received head injuries Saturday night when the car he was driving was involved in a rear-end collision with a car driven by Dale E. McAuley, 26, of Olympia, at 144th and Pacific Avenue.

Beware of Initiative 245

Don't risk losing your credit.

Initiative 245 will seriously damage your opportunity to buy the things you need on credit. It pretends to help you by reducing credit service charges . . . but if it passes you will find it difficult to make necessary purchases on credit . . . like an automobile, appliances, furniture or even the gasoline and oil at your frequent stops at the service station. That's how Initiative 245 threatens you.

The people who need credit most—large families, young families, pensioners, low income families or those who may have missed payments even through no fault of their own—will be least able to secure credit to buy things they need.

Initiative 245 pretends to save you money . . . but it will raise your prices while it puts credit out of reach.

Protect your privilege of buying on credit.

Vote AGAINST Initiative 245

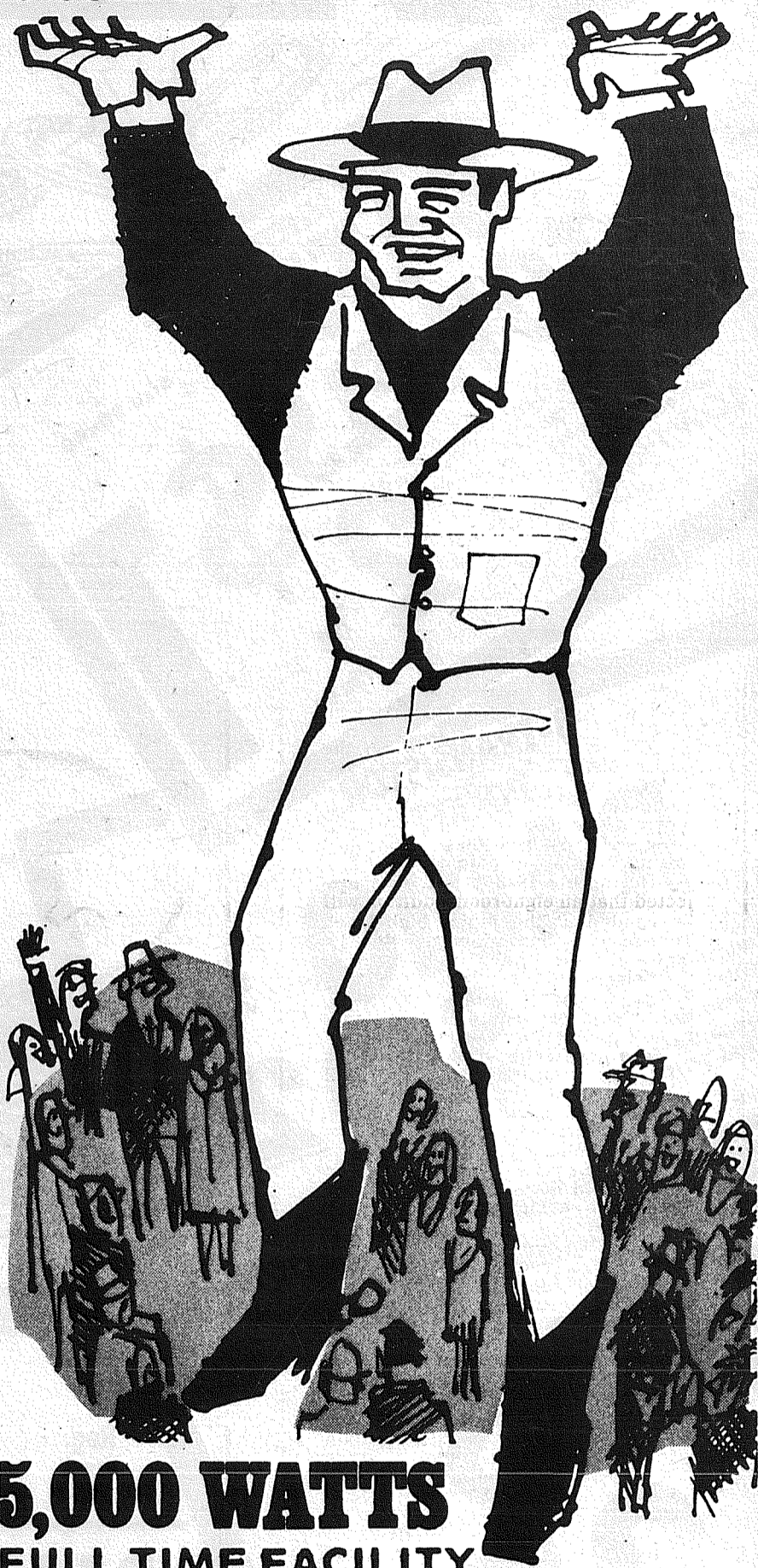
Consumers Committee Against Initiative 245, Dr. Gundar J. King, Chairman.
Room 1805, 1200 Fifth Avenue, Seattle 98101

KMO

1360 kc

THE COUNTRY GIANT

TACOMA FT. LEWIS McCHORD SEATTLE



5,000 WATTS
FULL TIME FACILITY

Pierce County's Only

24 HOUR

Country and Western Station

* County News * Tacoma News * High School Sports

6 - 10 a.m. Hal Lavers

4 - 7 p.m. Ed Dollar

7 - 12 Midnight B.J. The D.J.

12 Midnight - 6 a.m. Jim Bennett

KMO RADIO 1360 A.M.

FP Buildings . . .

Attendance Projections Show Additional Needs

A five-year building program, which will include a 14-room elementary school, a five-room addition to James Sales Elementary, a four-room plus library addition to Christensen Elementary, remodelization at Ford Junior High, was outlined at a recent Franklin Pierce Board meeting by Clint Richardson, assistant superintendent of the district.

It is proposed by the district that a 14-room elementary school be started during the 1969-70 school year, with plans to occupy the building in September, 1971. The new school will probably be constructed on the district-owned site at 128th and Portland Avenue.

The new school would house 390 regular and 60 kindergarten students and will alleviate the crowded conditions that exist at the Elmhurst and Collins Schools, with possible attendance area changes to allow students from Central Avenue and Midland Schools to enroll. According to a population study made by the Pierce County Planning Department, the population in this area will increase 94 per cent by 1985.

The 5-room addition recommended for James Sales would bring the number of available classrooms at that school to 20, allowing enrollment of 600 to 660 students.

When the proposed addition, slated for 1970-71, is completed the attendance area lines between Parkland, Brookdale and James Sales will be changed to equalize the school loads. Two portables will be needed at both Brookdale and James Sales during the 1969-70 school year to house students.

With approximately 60 homes planned under construction at this time the Andrew Christensen area, bringing a projected 100-130 students, the district recommends that a four-room addition plus library be constructed during the 1970-71 school year.

The addition would bring the classrooms at this school to 20 and facilitate an enrollment of 600 to 660 students. According to Richardson it will also be necessary to move portables to Christensen Elementary until the new addition is completed.

During the 1972-73 year it is projected that an eight-room addition will be needed at the junior high level. The district has proposed this be done at Ford Junior High, bringing accommodation up to 1,200.

According to the project resume, the enrollment growth will be more rapid east of Pacific Avenue.

The new facility would include a large group instruction room and small seminar rooms that would be suitable for large-small group instruction. A type of response system should also be considered at the same time, said the administrators. The library at Ford should be enlarged to facilitate the increased number of students, it was added.

When the new school is completed at 128th and Portland Avenue, and when the new additions at James Sales and Christensen Schools are completed, new attendance areas will be considered for all elementary schools in the district to equalize school enrollments, provide better transportation system and to facilitate the possibility of changing the structure of the elementary schools. Richardson emphasized, however, that a study will be conducted and a proposal will be submitted before the plans are finalized.

The new freeway has bisected the Franklin Pierce School District, and has a limited number of overpasses causing a serious transportation problem. In some instances, residents on the south side of the freeway can see the school, yet their children must be transported many blocks to destination.

The recommended building program in the district from 1968 to 1973 will cost approximately \$2,100,625. It is estimated that the program will cost the district \$754,414, which includes \$647,289 for building and \$107,125 for furniture and equipment. The state, on the present matching ratio, will provide the rest.

TABLE I
ATTENDANCE PROJECTIONS
1968-1973

Year	K-6 Elementary	Junior High	Senior High	Ungraded	Total
1968-69	4738	1856	1550	320	8464
1969-70	4866	1883	1669	336	8754
1970-71	4973	1955	1744	353	9025
1971-72	5102	2031	1774	371	9278
1972-73	5227	2105	1805	390	9527
1973-74	5385	2125	1879	410	9799

The above figures are conservative and do not reflect the industrial or residential growth that could result if a sewage system is operative by 1973.

TABLE IX
PROJECTED BUILDING SCHEDULE
1968-1973

Year	Project	Local	Equipment	Total Local	State	Total Cost
1969-70	14 room elementary school, 32,400 sq. ft. @ \$25.00	\$242,369	\$ 40,625	\$282,994	\$ 570,131	\$ 853,125
1970-71	5 room addition to James Sales, 10,500 sq. ft. @ \$26.00	81,436	13,650	95,086	191,564	286,650
1970-71	4 room plus library addition to Andrew Christensen, 10,500 sq. ft. @ \$26.00	81,436	13,650	95,086	191,564	286,650
1970-71	Remodel F. P. High School library - convert to I.M.C.	75,000*		75,000		75,000
1972-73	8 room addition to Ford Junior High - 20,000 sq. ft. @ \$28.00	167,048	39,200	206,248	392,952	599,200
		\$647,289	\$107,125	\$754,414	\$1,346,211	\$2,100,625

* (State matching funds will be requested, however, no matching funds are available at this time.)



Dear Em,

We now have our ambulance situation corrected, and everyone happy that the nearest ambulance will be called. I feel this is certainly the proper way to do it.

I also think it would be fair and proper to inform some of the writers to your paper and the Tribune letter box, that there is two sides to every story. I certainly feel there was a lot of criticism heaped on the Washington State Patrol that they were not entitled to.

I happen to be in a position to be familiar with both sides of this problem, and my conscience would bother me if I did not state my views on this matter.

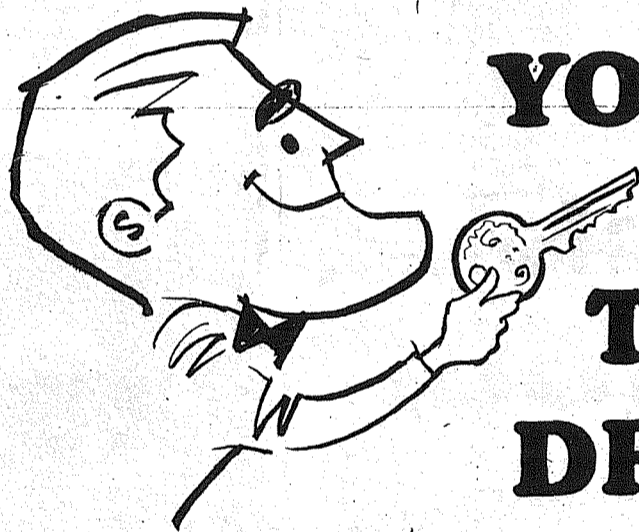
Thanks Em for bringing this situation and others out in the open, and keeping us informed. It does prove that when a tragedy happens on our front porch we do become involved.

John Farren
Chief, Spanaway Fire Dept.

Mrs. Moye Will Open Home

TACOMA - The Root and Bloom Garden Club will meet at 10 a.m. Monday in the home of Mrs. Stanley Moye, 9123-40th Ave. E.

There will be a workshop on Christmas shows.



YOUR KEY TO GOOD DRIVING

The new cars are here. And they've never looked greater. Why not pack up the family this weekend, and drive around to all the Puyallup-area auto dealers and see the tremendous array of beautiful new cars they have to offer?

And, when you get ready to buy . . . remember, the key to real savings on your new car purchase can be the way you decide to finance.

Remember, too, that no one in Pierce County offers a lower new car rate than we do here at Citizens. Only 4½%. That's right. Only \$4.50 per \$100 per year.

A bargain? You bet it is. But don't take our word for it. Shop around yourself. Or, better yet, ask one of the happy people who have already financed with us here at Citizens.

They're our best salesmen and saleswomen.

Citizens STATE BANK

MEMBER
FEDERAL
DEPOSIT
INSURANCE
CORPORATION



- ★ MAIN OFFICE - PUYALLUP
- ★ SUMNER
- ★ SUMMIT VIEW
- ★ EDGEWOOD - MILTON
- ★ WILLOWS

INSURANCE

Military - Home - Business

LE 7-4904

Auto Fire Life Bonds

IRENE CLEMENS

Agency - Parkland
10329 Pacific Ave.

The TIMES JOURNAL

SPORTS

Vikings Edge Braves

By Bill Hallman

"It was one of those games in which we played well enough to win, but didn't," stated Bethel's head football coach Ed Tingstad, after his team's 13-7 loss to Curtis.

Scoring the games first touchdown on a long pass play, just before the half, the Vikings made their 6-0 lead hold through the third quarter and part of the fourth.

It was then Jody Miller broke loose on a 46 yard touchdown run to tie up the game 6-6. Larry Lowte carried the ball over for the extra point and Bethel led 7-6, with a little over 4 minutes left to play.

Curtis received the kickoff and crossed the goal line 12 plays later. The kick was good and the Braves went down in defeat in another close low scoring game.

Coach Tingstad named Jody Miller as one of the outstanding offensive players as Jody played his best game of the season. Bill Thomas, Steve Bury, Doug Bury and Chuck Bullion were his choices for the defensive stalwarts.

Chuck Bullion was high with tackles for the Braves with 14 followed by Bill Thomas with 10 and Steve Jasmer with 9.

Jasmer also hauled in 3 passes for 30 yards. Jody Miller caught 2 for 7 yards as Larry Loete completed 5 of his 11 tosses.

The Vikings outgained the Braves 189 yards to 145 yards on the ground. The Vikings also dominated the passing department completing 3 passes for 65 yards as compared to Bethel's 5 completions for 37 yards.

"One of the brightest things about this year's football season is the continuous support the team has received from our excellent yell staff, and a very helpful student body," stated Tingstad.

After two weeks of away games the Braves play host to the Peninsula Seahawks Friday night at Art Crate Field.

Patriots Stack Cards

WHS Sweeps Meet

Warriors Next

Pierce Downs Tye

The Franklin Pierce Cardinals broke into the win column by plucking Tye 26-14 in a non-conference tilt Friday at Franklin Pierce.

With a victory under their belt, Franklin Pierce will resume South Puget Sound League play with a home game against Clover Park Friday night. The Warriors beat Centralia 19-13 last week to give them a season record of 2-3-0.

Going into the 4th quarter with a 7-7 score, the Cardinals suddenly came to life scoring 19 points to put the game on ice. Pierce quarterback Woody Harris threw an aerial to Steve Bertucci for 36 yards, and a couple of plays later, ran past Tye tacklers for a 20 yard touchdown.

Cardinal Steve Slavens picked off a Tye punt after the next series of downs and scampered 60 yards to pay dirt. Final Pierce score came after a Tye fumble was recovered by the Cards on the Tye 26 yard line.

Seven plays later, Woody Harris scored on a one yard plunge. First Cardinal TD. scored in the opening quarter, was made by Hopkins on a 1-yard plunge.

BUY, SELL, RENT, TRADE quickly by using Classified ads.

Applications For Firemen

Washington High School eleven kept their season record unblemished Thursday night by overpowering the cross-district Franklin Pierce Sophomores 14-0.

Holding the Cards to a total yardage of 57, the Patriots rolled up 180 yards rushing and 72 passing for a total of 252.

First Washington touchdown came with 8:33 left to play in the second quarter after Hans Woldseth intercepted a Franklin Pierce pass on the Washington 27. Following 5 yard advance in two plays, Patriot Wayne Hammer broke loose for 25 yards on a cross buck. Quarterback Woldseth threw to Bob Southwell for 22 yards more and Mark Ballman cracked the middle of the Cardinal line to scamper 22 yards for 6 points. The extra point try failed.

Opening the second half, the Patriots kicked off to the Cardinals. A clipping penalty against Franklin Pierce moved the ball back

to the Cardinal 12. After a 2 yard loss, Patriot Mark Archer caught Card quarterback Novotny behind the goal line for a two point safety.

With 5:02 left to play in the third quarter, the Patriots made their second touchdown. A Woldseth to Archer pass for 21 yards and a pass interference penalty moved the ball to the Franklin Pierce 12. The penalty plagued Cards were caught off side on the next play placing the ball on the 7 yard line. After a 5 yard run by Steve Butts, Woldseth scored on a quarter back sneak.

In the first down department, the Patriots made 12 to the Cardinals' 2. Patriot passers completed 7 out of 16 tries, and Pierce had 1 for 8.

Washington will face a strong defensive Clover Park sophomore team Thursday. The Warriors (1-2-1) have had only 21 points scored against them all season.

Men In Service

(NO264) SAN DIEGO (FHTNC)-Seaman Apprentice Robert R.G. Schisler, USN, 18, son of Mrs. Hannelore H. Mitchell of 614 S. 173rd St., Spanaway, Wash., has been graduated from nine weeks of Navy Basic training at the Naval Training Center here.

In the first weeks of his

naval service he studied military subjects and lived and worked under conditions similar to those he will encounter on his first ship or at his first shore station.

In making the transition from civilian life to Naval service, he received instruction under veteran Navy petty officers. He studied seamanship, as well as survival techniques, military drill and other subjects.

CENTS Make Dollars
when invested in Classified Ads. Place your ad by telephoning now.

Smith Built

CAMPERS & CANOPIES



CUSTOM QUALITY

14606 Pacific Ave.
Tacoma, Wash.

Phone LE 7-8022

If This Is Your House...



You Are A Winner! **\$8**
This Week's Jackpot is

Each week our photographer takes a random picture of a home in the Times Journal coverage area. If you can identify the pictured home as yours, you can claim the jackpot.

Winners receive Times Journal Trade Bucks, redeemable in merchandise or cash at the following businesses.

ARMSTRONG'S USED CARS
11009 Pacific Ave.

PIERCE COUNTY REFUSE
13502 Pacific Ave.

ANDERSON LUMBER
9813 Pacific Ave.

LITTLE PARK CAFE
South 171st and Pacific Ave.

ELMHURST MUTUAL POWER & LIGHT CO.
120 So. 132nd

E & S ELECTRIC
13621 Pacific Ave.

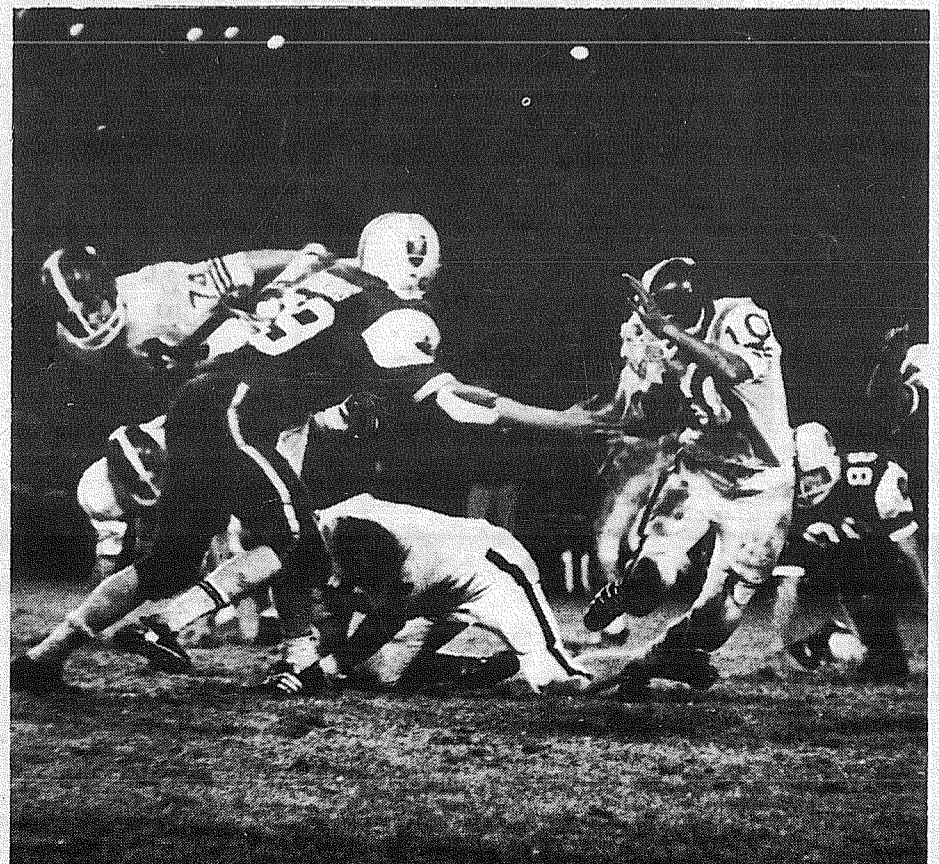
SQUIRE BARBER SHOP
132 162nd So.

SHOP MART DEPT. STORE
133rd and Pacific

Winner Must Claim Jackpot Before 5 p.m. Tuesday following date of publication.



BRAVE QUARTERBACK Larry Loete dodges charging Curtis linemen as he prepares to pass. It was all in vain as Curtis squeaked past Behtel 13-7 in a last minute scoring thriller.



FAILEY ROMPS Dale Failey finds running room through the Curtis line to chalk up a gain for Bethel Friday night. Curtis scored with 1:05 remaining in the game to win 13-7.



AIR AMBULANCE service to all parts of the country is being offered by Tahoma Flying Service, Spanaway Airport, in cooperation with Lakewood-Pacific Ambulance Company. Using a Cessna 177 converted for ambulance duty, Slim Lawson will provide air transportation for patients transferring to distant hospitals or rest homes.



DON GILES, Lakewood-Pacific Ambulance Co., demonstrates the loading of a patient into the Cessna ambulance. For transportation of patients, Lakewood Pacific Ambulance will furnish attendant and special equipment.

Air Ambulance Inaugurated

Tahoma Flying Service, in cooperation with Lakewood-Pacific Ambulance Company, inaugurated an air ambulance service out of Spanaway Airport October 10.

Air ambulance transportation has proven to be easier on the patient and more economical when long trips are involved. The service is ideal for patients wishing to transfer to a hospital or rest home nearer their home town. The air ambulance will also be available for flying patients to specialist clinics such as Mayo.

Citing the need for such a service, Lakewood-Pacific owner Don Giles said that when out-of-state residents are injured or take sick in Pierce County, they often wish to be transported to a hospital nearer their home after receiving emergency treatment locally.

Lakewood-Pacific Ambulance will furnish special equipment including oxygen. In addition, a trained attendant will accompany the patient during the flight.

A Tahoma Flying Service Cessna 177 has been converted for ambulance duty. The craft has a 600 mile range without refueling.

Plane charges will be 60¢ an air mile according to Slim Lawson, Tahoma

Implied Consent Law Vital To Highway Safety

The fate of Initiative 242 in November can have much to do with the safety of our highways for the December and January holidays, Earl F. Campbell, director of the Washington Traffic Safety Commission said today.

Campbell noted that Christmas holiday accidents during a five-day period last year in Great Britain dropped 36 percent after the alcohol breath-testing program was begun there. During the first four months of the tests, highway deaths dropped 22 percent. "Britain's law is a lot tougher on the motorist than the implied consent measure proposed in Initiative 242," Campbell said. "Even so, the success of our own more moderate law will help to build a safer highway environment."

Washington is the only West Coast state without an implied consent law. "Initiative 242 fully meets the standards issued by the National Highway Safety Bureau," Campbell said. The National Highway Safety Bureau operates within the Department of Transportation.

Campbell added that the measure is in complete conformance with the National

Uniform Vehicle Code.

The Washington Traffic Safety Commission recognizes, Campbell said, that passage of Initiative 242 will not bring a traffic safety cure-all. "But when studies in this state and nationwide show that about half of all highway deaths involve drinking drivers, it is time to put added restraint on the few who drink to excess and then drive."

P.C. Fair Nominates Officers

A three-member nominating committee presented a list of candidates for the offices of treasurer and secretary for the Pierce County Fair during the Fair's board of directors meeting Friday.

To be voted on by secret ballot next month for the office of treasurer will be John Foster and George Michael. Named candidates for secretary were Lolita Johnson and Phyllis Wilson. Norbert Grove was named to succeed himself as president. This will be Grove's third term.

The nominating committee included chairman Eddie Thomason, Pat Russell and Gary Roose.



A Legal Publication from the office of A. LUDLOW KRAMER, Secretary of State

To be voted upon November 5, 1968.

SENATE JOINT RESOLUTION 17

Proposed Constitutional Amendment

*Ballot Title as issued by the Attorney General.

PROVIDING FOR STATE BUILDING AUTHORITY

Shall Article VIII of the State Constitution be amended by adding a new section authorizing creation by the legislature of a state building authority to construct buildings and improvements for lease to state agencies or departments for up to seventy-five years, and to finance such construction through issuance of bonds or other evidences of indebtedness to be paid from the authority's revenues which would not be subject to the constitutional debt limitation?

Vote cast by members of the 1967 Legislature on final passage:
SENATE: (49 members) Yeas, 46; Nays, 2; Absent or not voting, 1.
HOUSE: (99 members) Yeas, 92; Nays, 3; Absent or not voting, 4.

Explanatory comment issued by the Attorney General as required by law

The Law as it now exists:

The construction of buildings and other improvements for the various state agencies is from time to time financed through the issuance by the state of general obligation, limited obligation, or revenue bonds. Under the present constitution no law authorizing the state to contract debt in excess of the state constitutional debt limit through the issuance of general obligation bonds can take effect until it shall have been submitted to and approved by the people at a general election. The state supreme court has held this requirement of voter approval to be applicable to bonds which are issued to finance the construction of buildings for lease to state agencies when the rental payments are to be financed from state general fund appropriations.

Effect of Senate Joint Resolution No. 17 if approved into Law:

The proposed amendment would authorize the legislature to create a state agency called the state building authority. If authorized by the legislature, this agency could contract with other state agencies to construct buildings and improvements for their use on a lease basis at a reasonable rental rate for a term not to exceed 75 years. In addition, if authorized by the legislature, the building authority could finance such construction by borrowing funds solely on its own credit through the issuance of bonds or other evidences of indebtedness to be secured by pledges of the authority's income or by mortgages of its leaseholds. In the event the authority utilizes this method of incurring indebtedness, the bonds or other evidences of indebtedness would not be subject to the constitutional debt limitation and could, therefore, be issued without a vote of the people.

Approval of this proposed amendment will validate the provisions of chapter 162, Laws of 1967, which creates a state building authority.



A Legal Publication from the office of A. LUDLOW KRAMER, Secretary of State

To be voted upon November 5, 1968.

SENATE JOINT RESOLUTION 24

Proposed Constitutional Amendment

*Ballot Title as issued by the Attorney General.

VACANCY: LEGISLATIVE, COUNTY ELECTIVE OFFICES

Shall the State Constitution be amended to provide for filling vacancies in legislative or partisan county elective offices as follows:

- (1) The county commissioners of the county affected shall appoint a person from the same legislative, county or county commissioner district and political party as the officer whose office has been vacated;
- (2) On failure of the county commissioners to so appoint within sixty days, the governor shall within thirty days appoint a person similarly qualified?

Explanatory comment issued by the Attorney General as required by law

The Law as it now exists:

The approval of Senate Joint Resolution 24 is required to prevent subversion of the people's wishes and commands in county government and to guarantee full and adequate representation of the people. Under the present constitutional provision the county commissioners, when a vacancy occurs in a partisan elected county office, have complete and unqualified power to appoint, or not to appoint, a new official to the vacated position. For example, if the official vacating the county office is of a different party affiliation from that of the majority of county commissioners, they may subvert the will of the people by (1) filling the vacancy with a person of party affiliation contrary to that of the official vacating the office, or (2) not appointing any new official.

Effect of Senate Joint Resolution No. 24 if approved into Law:

The approval of Senate Joint Resolution 24 will further the will of the people by first placing qualification on the county commissioners' power of appointment. Their power will be restricted to the appointment of a person who is (1) from the same county or county commissioner district as the officer whose office has been vacated; (2) a member of the same political party; and (3) one of the three persons nominated by the county central committee of that party. Second, if the county commissioners fail to act within 60 days time the governor shall make the appointment from the list of three nominees who shall be of the same political affiliation as the person who vacated the office.

The approval of Senate Joint Resolution 24 is required so as to prevent subversion of the people's wishes such as has occurred in Kitsap County in years past. The importance of Senate Joint Resolution 24 was recognized by the Legislature in its vote on the resolution. Unanimous approval was voiced—47 to 0 in the Senate, 96 to 0 in the House of Representatives.



A Legal Publication from the office of A. LUDLOW KRAMER, Secretary of State

To be voted upon November 5, 1968.

SENATE JOINT RESOLUTION 23

Proposed Constitutional Amendment

*Ballot Title as issued by the Attorney General.

TAXING DISTRICTS: EXCESS LEVY ELECTIONS

Shall the State Constitution be amended to permit taxing districts, if authorized by the legislature, to submit propositions for property tax levies exceeding the forty-mill limit to their voters up to 24 months before the levy date, thereby permitting two consecutive annual excess levies to be approved at one election; and authorizing submission of a second proposition in any twelve-month period only if it is substituted for the excess levy previously approved for that year?

Vote cast by members of the 1967 Legislature on final passage:
SENATE: (49 members) Yeas, 48; Nays, 0; Absent or not voting, 1.
HOUSE: (99 members) Yeas, 93; Nays, 0; Absent or not voting, 6.

Explanatory comment issued by the Attorney General as required by law

The Law as it now exists:

Amendment 17 of the state constitution (commonly referred to as the 40 mill limit provision) limits the aggregate of property tax levies by taxing districts to 40 mills on the dollar of assessed valuation, unless the voters of a taxing district, under certain specified conditions, have authorized levies in excess of the 40 mill limit. Except in the case of excess levies to pay principal and interest on general obligation bond issues, no proposition to levy a tax in excess of 40 mills may be submitted to the voters of the district more than 12 months before the proposed levy is to be made. Thus, the voters of a taxing district can only authorize a single one year excess levy for other than bond redemption purposes at any given election.

Effect of Senate Joint Resolution No. 23 if approved into Law:

The proposed amendment would permit taxing districts, if authorized by appropriate act of the legislature, to submit propositions for tax levies exceeding the 40 mill limit to their voters up to 24 months before the levy date, thereby permitting the submission of two consecutive annual excess levies for approval at one election.

No taxing district would be permitted to submit to the voters a proposition to authorize additional levies under the amendment for any year for which the voters have previously authorized an excess levy. However, under certain specified conditions, a taxing district could submit to the voters at any time a new proposition to be substituted for the excess levy authorization which had been previously approved for that year.



A Legal Publication from the office of
A. LUDLOW KRAMER, Secretary of State

To be voted upon November 5, 1968.

HOUSE JOINT RESOLUTION 1

Proposed Constitutional Amendment

*Ballot Title as issued by the Attorney General:

TAXATION BASED ON ACTUAL USE

Shall Article VII of the State Constitution be amended by adding a section authorizing the legislature to provide that farms, agricultural lands, standing timber and timberlands, and other open space lands used for recreation or enjoyment of their scenic or natural beauty, shall be valued for purposes of taxation on the basis of the use to which such property currently is being applied, rather than on the highest and best use?

Vote cast by members of the 1967 Legislature on final passage:
HOUSE: (99 members) Yeas, 84; Nays, 9; Absent or not voting, 6.
SENATE: (49 members) Yeas, 44; Nays, 0; Absent or not voting, 5.

Explanatory comment issued by the Attorney General as required by law

The Law as it now exists:

Under the present state constitution and pertinent legislative enactments, all real property is valued for purposes of taxation on the basis of its true and fair value in money, which is determined by the "highest and best use" to which the property could be applied, without regard to its present actual use. The term "highest and best use" is defined by a Department of Revenue regulation to mean the most profitable, likely use to which a property can be put.

Effect of House Joint Resolution No. 1 if approved into Law:

The proposed constitutional amendment would authorize the legislature to provide by law, subject to such conditions as it may enact, that certain real property shall be valued for taxation purposes in terms of its present actual use rather than its highest and best use. Types of property which would be eligible for such treatment are (a) farms, agricultural lands, standing timber and timber lands, and (b) other open space lands which are used for recreation or for enjoyment of their scenic or natural beauty.



A Legal Publication from the office of
A. LUDLOW KRAMER, Secretary of State

To be voted upon November 5, 1968.

HOUSE JOINT RESOLUTION 13

Proposed Constitutional Amendment

*Ballot Title as issued by the Attorney General.

AUTHORIZING COMPENSATION INCREASE DURING TERM

Shall the State Constitution be amended by adding a new article permitting the compensation of all elected and appointed state, county and municipal officers who do not fix their own compensation (including judges of courts of record and justice courts), to be increased during their terms of office to the end that such officials shall receive compensation for their services as provided by the law in effect at the time the services are being rendered?

Vote cast by members of the 1967 Legislature on final passage:
HOUSE: (99 members) Yeas, 89; Nays, 8; Absent or not voting, 2.
SENATE: (49 members) Yeas, 40; Nays, 6; Absent or not voting, 3.

Explanatory comment issued by the Attorney General as required by law

The Law as it now exists:

Under the constitution the compensation of elective and appointive state, county and municipal officers, including judges of courts of record and justice courts, is fixed by the state legislature or some officer or public body to whom the legislature has delegated such authority.

In the case of such officers who serve for a fixed term (which, depending upon the law governing the particular office, will be from four to as many as nine years in length) there are several provisions in the present constitution which prohibit increases in their compensation during their respective terms of office. These constitutional provisions apply to officers serving for staggered terms on multi-member boards, commissions and tribunals as well as to other officers serving fixed terms.

Effect of House Joint Resolution No. 13 if approved into Law:

The proposed constitutional amendment would add a new Article to the constitution which would provide that the compensation of those officers

named above, who do not fix their own compensation, may be increased during their term of office to the end that such officers shall receive compensation for their services in accordance with the law in effect at the time the services are being rendered.



A Legal Publication from the office of
A. LUDLOW KRAMER, Secretary of State

To be voted upon November 5, 1968.

SENATE JOINT RESOLUTION 5

Proposed Constitutional Amendment

*Ballot Title as issued by the Attorney General.

INVESTMENT OF PUBLIC PENSION FUNDS

Shall the Constitution of the state of Washington be amended by adding a new article and section permitting the moneys of any public pension or retirement fund to be invested in such manner as may be authorized by law?

Vote cast by members of the 1967 Legislature on final passage:
SENATE: (49 members) Yeas, 40; Nays, 8; Absent or not voting, 1.
HOUSE: (99 members) Yeas, 86; Nays, 1; Absent or not voting, 12.

Explanatory comment issued by the Attorney General as required by law

The Law as it now exists:

Under the present constitutional provisions relating to the investment or other use of public funds, there is some uncertainty as to the type of investments which the legislature may authorize the various public employees retirement boards to make when investing pension and retirement funds.

Effect of Senate Joint Resolution No. 5 if approved into Law:

The proposed constitutional amendment would remove this uncertainty by expressly permitting the investment of public pension and retirement funds in such manner as is authorized by appropriate legislative enactment.



A Legal Publication from the office of
A. LUDLOW KRAMER, Secretary of State

To be voted upon November 5, 1968.

SENATE JOINT RESOLUTION 6

Proposed Constitutional Amendment

*Ballot Title as issued by the Attorney General.

AUTHORIZING STATE COURT OF APPEALS

Shall the State Constitution be amended to provide for establishment by the legislature of a state court of appeals with such jurisdiction as may be granted by statute or rules as authorized thereby; providing that the number, manner of election, compensation, term of office, removal and retirement of judges of such court shall be prescribed by statute; and providing that the administration and procedures of the court shall be prescribed by supreme court rules?

Vote cast by members of the 1967 Legislature on final passage:
SENATE: (49 members) Yeas, 47; Nays, 2; Absent or not voting, 0.
HOUSE: (99 members) Yeas, 88; Nays, 4; Absent or not voting, 7.

Explanatory comment issued by the Attorney General as required by law

The Law as it now exists:

Under the present state constitution, the state court system is comprised of a supreme court, together with superior courts in each county, justices of the peace, and such inferior courts as the legislature may provide. The superior courts are primarily trial courts of original jurisdiction, although they also have appellate jurisdiction to the extent provided by appropriate legislative enactment with respect to causes arising in justice courts and other inferior courts in their respective counties. The supreme court has original jurisdiction in certain cases involving state officers and mandatory appellate jurisdiction in all actions or proceedings except in certain cases where the amount in controversy does not exceed \$200. In all of its appellate cases the supreme court is required to enter a written decision.

Effect of Senate Joint Resolution No. 6 if approved into Law:

The proposed amendment provides for establishment by the legislature of a new court of appeals. The new court's jurisdiction and extent of review power over superior courts is to be provided for by statute or by supreme court rule authorized thereby. The number, manner of election, compensation, term of office, removal and retirement of judges of the court of appeals are also to be prescribed by statute, while the administrative procedure of the court is to be prescribed by supreme court rule.

OFFICIAL NOTICE:

THREE PROPOSED STATE BOND ISSUES TO BE SUBMITTED TO THE VOTERS FOR APPROVAL OR REJECTION AT THE STATE GENERAL ELECTION TO BE HELD ON NOVEMBER 5, 1968.

REFERENDUM BILL NUMBER 17

Chapter 106, Laws of 1967

*Ballot Title as issued by the Attorney General.

WATER POLLUTION CONTROL FACILITIES BONDS

AN ACT providing for the issuance and sale of state general obligation bonds in an amount not exceeding \$25,000,000 to finance grants by the pollution control commission to public bodies, in conjunction with federal grants authorized pursuant to the federal water pollution control act, for the purpose of aiding in the construction and improvement of water pollution control facilities; providing for payment of the bonds from unpledged retail sales tax revenue or other means authorized by the legislature; and appropriating \$9,000,000 to the pollution control commission for the above described purposes during the present biennium.

Vote cast by members of the 1967 Legislature on final passage:
SENATE: (49 members) Yeas, 39; Nays, 0; Absent or not voting, 10.
HOUSE: (99 members) Yeas, 93; Nays, 3; Absent or not voting, 3.

Explanatory comment issued by the Attorney General as required by law

The Law as it now exists:

Under present law governmental facilities for controlling water pollution are financed by local public bodies and state agencies with whatever funds are available for that purpose.

At its 1967 session, the legislature enacted legislation providing for the issuance of state general obligation bonds, the proceeds of which would be used to finance construction of water pollution control facilities. Under the state constitution, a law authorizing the state to contract a debt through the issuance of such bonds cannot take effect until it shall, at a general election, have been submitted and approved by the people.

Effect of Referendum Bill No. 17 if approved into Law:

If approved, the law will authorize the sale of state general obligation bonds in an amount up to \$25,000,000. The proceeds from the sale of the bonds shall be administered by the Water Pollution Control Commission, an agency of the state. The commission is authorized to make and administer grants of such funds to municipal or public corporations, to counties and to state agencies, in conjunction with federal grants authorized pursuant to the federal water pollution control act. The act also appropriates \$9,000,000 from the bond proceeds to the commission for the above-described purposes during the current biennium.

The act provides for the payment of the bonds from a portion of the proceeds of the retail sales tax and such other sources as may be authorized by the legislature, and in addition provides that the bonds shall pledge the full faith and credit of the state for payment of the principal and interest thereon when due.

REFERENDUM BILL NUMBER 18

Chapter 126, Laws Extraordinary Session, 1967

*Ballot Title as issued by the Attorney General.

BONDS FOR OUTDOOR RECREATION

AN ACT authorizing the issuance and sale of state general obligation bonds in an amount not exceeding \$40,000,000 to finance the acquisition and development of outdoor recreation areas and facilities. The act directs the Interagency Committee for Outdoor Recreation to allocate half of the money so raised to state agencies for such acquisition and development as the legislature may direct and the other half to local public bodies for acquisition and development of outdoor recreation areas and facilities within their jurisdictions. Payment of the bonds will come from unpledged retail sales tax revenues or other means authorized by the legislature.

Vote cast by members of the 1967 Legislature on final passage:
HOUSE: (99 members) Yeas, 92; Nays, 2; Absent or not voting, 5.
SENATE: (49 members) Yeas, 47; Nays, 1; Absent or not voting, 1.

Explanatory comment issued by the Attorney General as required by law

The Law as it now exists:

Under existing law the acquisition and development of outdoor recreation areas and facilities is financed by various state agencies and local public bodies with whatever funds are made available for that purpose. State and local outdoor recreation budgets are presently supplemented by state funds derived from two measures approved by the voters in 1964: Initiative 215, which provides about one-half million dollars a year from unrefunded motor vehicle fuel taxes paid by purchasers of fuel used in boats, and Referendum 11, which authorized the sale of \$10 million in bonds between 1964 and January 1, 1970. The Interagency Committee for Outdoor Recreation, an agency composed of state officials and members of the public appointed by the Governor, administers these supplemental funds, allocating one-half to state agencies and one-half to counties, cities, and other local public bodies on the basis of an approved statewide outdoor recreation and open space plan.

Under the state constitution, a law authorizing the state to contract debt through the issuance of general obligation bonds cannot take effect until it shall, at a general election, have been submitted to and approved by the people.

Effect of Referendum Bill No. 18 if approved into Law:

If approved, the act will authorize the sale of general obligation bonds in an amount up to \$40 million for the acquisition and development of outdoor recreation areas and facilities in this state. The money will be allocated half to state agencies and half to local public bodies, and will be administered by the Interagency Committee for Outdoor Recreation.

The act provides for payment of the bonds from a portion of the proceeds of the retail sales tax and such other sources as may be authorized by the legislature, and in addition provides that the bonds shall pledge the full faith and credit of the state for payment of the principal and interest thereon when due.

REFERENDUM BILL NUMBER 19

Chapter 148, Laws Extraordinary Session, 1967

*Ballot Title as issued by the Attorney General.

STATE BUILDING PROJECTS: BOND ISSUE

AN ACT authorizing the issuance and sale of state general obligation bonds in an amount not exceeding \$63,059,000; appropriating the proceeds to finance various building projects for the Department of General Administration, the Department of Institutions, and certain state institutions of higher education; and providing for payment of the bonds from unpledged retail sales tax revenues or such other means authorized by the legislature.

Vote cast by members of the 1967 Legislature on final passage:
SENATE: (49 members) Yeas, 41; Nays, 1; Absent or not voting, 7.
HOUSE: (99 members) Yeas, 76; Nays, 12; Absent or not voting, 11.

Explanatory comment issued by the Attorney General as required by law

The Law as it now exists:

The construction and improvement of buildings and other facilities for use by various state agencies is from time to time financed with the issuance by the state of general obligation bonds. The 1967 legislature passed an act authorizing the issuance of such bonds to finance various building projects for the Department of General Administration, the Department of Institutions, and certain state institutions of higher education. However, under the present state constitution, no law authorizing the state to contract debt through the issuance of general obligation bonds can take effect until it shall at a general election have been submitted to and approved by the people.

Effect of Referendum Bill No. 19 if approved into Law:

If approved, the act will authorize the sale of state general obligation bonds in an amount up to \$63,059,000. Proceeds from the sale of these bonds will be used to finance buildings and facilities for the Department of General Administration, the Department of Institutions, the University of Washington, Washington State University, Western Washington State College, Central Washington State College, and the new Evergreen State College. A detailed list of these projects and the specific amounts appropriated for each project appears in the text of the act itself, as set forth on pages 43 and 44 of this pamphlet. The act provides for payment of the bonds from a portion of the proceeds of the retail sales tax and such other sources as may be authorized by the legislature, and in addition provides that the bonds shall pledge the full faith and credit of the state for payment of the principal and interest thereon when due.



A Legal Publication from the office of
A. LUDLOW KRAMER, Secretary of State

CLASSIFIED ADS

Call LE 7-0223 For Want Ads

1 Misc. For Sale

MAKE YOUR own candles. Candle making supplies. Grange Supply Co., 10625 Pacific Ave. LE 1-5777. 68-524

USED LUMBER 4x4 to 8x8 up to 20 feet. WA 2-7858 after 5 p.m. 68-527

POOL TABLES, slate and others. Open 7 days 10 a.m. - 10 p.m. LO 4-9199. 68-535

LONG HUMAN HAIR FALL for sale. Dark brown, has raised crown. Excellent condition. \$39. Call LE 7-0223 between 10 a.m. and 4 p.m.

PARKLAND CERAMICS
fall classes start Sept. 3rd sign up early for day or evening classes
Supplies, firing, instruction
1303 So. 117th - LE 1-0823
Helen & John Krafcik - Parkland

OIL SPACE HEATER. Good condition. Make offer. LE 1-5648. 68-539

CONSOLE Spinnet Piano to be picked up and sold in this area. Assume low mo. pyts. Phone EM 3-5707 or write Kohler & Campbell Pianos, P.O. Box 2125, Salem, Ore. 97308. 68-538

TOP SOIL, fill dirt, bank run gravel, J.E. Pelland. LE 1-1124.

McNESS PRODUCTS, GR 5-2734. 68-303

FENCE rails, large split cedar 10' \$1.25. 5121 East 72nd.

KRAUT cabbage, \$3.50 a crate. 893-3541.

TWO trashburners, \$10 each. UN 3-9387 or UN 3-4125.

ANTIQUE shotgun, ditcher. Heating stove, feather bed, plywood skill saw, large choice blueberry plants, rhubarb roots, thirty ducks. VI 7-2268.

POULTRY equipment. Very reasonable. LE 1-0344.

6-YEAR crib, mattress, \$20. TH 5-8776.

CLARINET. TH 5 - 3839.

2 Autos For Sale

'65 CHEV Impala 327 4-door hardtop. LE 1-1476 after 6 p.m. 68-534

PIERCE COUNTY HEADQUARTERS FOR 1969
★ CHRYSLER
★ PLYMOUTH
★ VALIANT
★ BARRACUDA
CALL GR 4-0621

Steven MOTOR CO.
2705 SOUTH TACOMA WAY

JEEP 4 w.d. pickup. '59 Lincoln, sedan. Best offer. 421 East 138th. 68-402

NEW- MORE POWERFUL
the 1968's ARE HERE VOLKSWAGEN
27 MAJOR CHANGES COME IN
Tom Carstens AUTOHAUS
7030 So. Tacoma Way GR 4-0666
TACOMA DEALER SINCE 1955.

1948 JEEP stationwagon, \$250. 1961 Corvair, 4-door auto., \$275. LE 7-4830.

'59 OLDS Super 88. 1 owner. TH 5-8052.

1966 FORD Supervan. Big engine, 6-ply tires, under 29,000 miles. Lloyd Sherman, Rt. 2, Box 241, Smner (Myers Road - Elhi Hill).

9 Animals For Sale

AKC registered poodles, black or brown, \$50. LE 1-0571.

PUREBRED German Shepherd pups. Mother and father registered. LE 7-8390.

21 Wanted To Rent

HOME VACANT
We desperately need good rentals \$80 to \$150 per month
CALL NOW
Let us handle your worries
SUBURBAN REALTY
11302 Pacific Ave.
LE 7-8638 or LE 7-6896

23 Help Wanted

EARN CHRISTMAS expenses early by selling Baum Toys and Gifts party plan. Car necessary. LE 7-5834, GR 2-6008, or GR 5-1215. 68-290

MALE Help Wanted, labor openings in Explosive Industry. Minimum age 21. Apply at office. Trojan-U.S. Powder, Frederickson, Wa. (approx. 3 1/2 mi. east of Pacific Ave. on 176th St.) Equal Opportunity Employer. 68-537

ATTENTION Boys & Girls. Parkland-Spanaway area - Earn extra money - Start a Times Journal route in your neighborhood. Call LE 7-0223. 68-401

24 Work Wanted

CHILD CARE. Close to P.L.U. LE 7-6736. 68-400

IRONING, experienced, references. GR 5-5663. 68-311

IRONING Experienced, LE 7-5736. 68-282

BABYSITTING my home, Monday through Friday, Spanaway area, LE 1-2002. 68-310

CARPENTER Work. Remodeling repair. New additions. Custom built cabinets. VI 7-2601. 68-525

ARE YOU IN DEBT?
CIVILIAN-MILITARY MA 7-1700
MONEY MANAGERS
232 SECURITY BLDG.
915 1/2 PACIFIC AVE.
TACOMA, WASH. 98402
GET OUT OF DEBT ONE PAYMENT
AVOID:
1. LETTERS TO EMPLOYERS
2. LETTERS TO CO'S
3. LOSS OF PAYCHECK
Eve. appts., Home or office
24-hour srvs.—State approved

Your Friends & Neighbors remember, are the advertisers in these Classified ads.

ARMSTRONG'S USED CARS
11009 Pacific Ave. LE 7-5524

1962 Continental \$1050
1960 Chev Carryall 650
1961 Rambler 4 dr. wagon real sharp 450
1963 Olds Jetfire hdtp 750
1964 Plymouth Savoy 4 dr. 750
1965 Sunbeam 495
1960 Falcon 4 dr. 6 cyl. AD 325
1961 Ford 4 dr. 6 cyl. stick 250
1963 Pontiac wagon 795
1960 Chev 4 dr V-8 P.G. 350

\$5 Discount
To Times Journal subscribers who present this ad with purchase one ad accepted per sale.

27 Misc. Services

AA ELECTRIC, new and re-wiring done. LE 1-4445.

EXPERT alterations, men's and women's. Fast service and reasonable. LE 1-3506.

MIDLAND AUTOMOTIVE
Complete Repair
Foreign & Domestic
Elect. - Alt. - Gen. - Weld. - Trans. - Overhaul - Valve Grind
LE 1-4331 8-6 Mon.-Sat.

DOZING, LE 7-4934, GR 4-5663.

WATER PUMPS REPAIRED
All Makes
GRANGE SUPPLY
LE 1-5777

BABYSITTING days in my home. LE 1-1334. 68-507

NEWBURY'S Dozer Service
LE 7-7455
Sandy Loam Bank Run
Mixed Soil - Fill Dirt

"WHERE TO GET SERVICE"
Parkland Enco-Service
13303 PACIFIC AVE.
LE 7-9954

28 Building Services
REMODELING, leveling, block foundations, cabinets, free estimate. Reasonable. LE 7-3550. 68-48 TFN

29 Land Services
Water - Gas Lines - Footings
DICK'S DIGGING SERVICE
LE 1-5401
601 South 160th St.
Spanaway, Wash.

36 Personals
LOSE WEIGHT safely with Dex-A-Diet Tablets. Only 98c at Johnson's Drug.

35 Announcements
SIGHT IN AT Paul Bunyan covered range Sat. & Sun. only. Details GR 2-0863. 68-536

39 Lost
BOYS 5 speed Schwinn Stinger. Serial No. DD 04179 Lemon Teeler. Reward. LE 1-5240. 68-533

38 Instruction
DRIVER TRAINING. 3 week high school and adult course. LE 1-0505.

Sheet Metal

• Furnace Repair and Service
• Installations

PARKLAND FUEL OIL
12002 Pacific Ave.
LE 7-0256

17 Business Opportunity

GROCERY store. Living quarters plus 1/2 acre. LE 1-0628.

19 For Rent Or Lease

2 BEDROOM house. Kapowsin area. Phone 832-6359.

FURNISHED 3 room cottage, all electric. 825-3rd Avenue N.W. TH 5-6442.

4 BEDROOM house. \$175. TH 5-6671 days.

22-WANTED TO BUY

HUNTERS ATTENTION. We are buying bright open pine cones. McMahon's Orting. 893-3734.

SWAP SURPLUS STUFF

For things YOU WANT. Classified ads can do it for you.

38 Instruction

PRIVATE tutor for English language. LE 7-5274, SH 2-2758. 98-296

PIANO LESSONS, beginning to advanced. Children and adults, home or studio. LE 1-3246 or SK 2-7695. 68-179

DANCE - Married couples 21-80 interested in forming dance club. Ballroom, Fox Trot, Waltz etc. Call LE 1-3018 or GR 2-7602. After 5:30 p.m. 68-530

ARE YOU IN DEBT?
★ Civilian
★ Military
Call
MA 7-1700
MONEY MANAGERS
232 Security Bldg.
915 1/2 Pacific Ave.
Get Out of Debt One Payment
Avoid: Letters to Employers
2. Letters to CO's
3. Loss of Paycheck

RENT TV
Color TV
RENTAL MARTS, INC.
Parkland GR 5-3755
9440 Pacific Ave.
Lakewood JU 4-4100
108th & Bridgeport

USED CARS
TWO YEAR GUARANTEE
1968 Impala SS Custom Cpe \$2995
1967 Camaro Spt. Cpe., 6 cyl. auto . . \$2195
1966 Chevelle Spt. Cpe.,
327, Auto, Pwr Str \$1895
1966 Pontiac Tempest Sta. Wagon
6 Cyl., auto. P.S. \$1795
1964 Ford Gal. 500, Spt. Cpe. V-8 . . \$1395
1965 Impala S.S. Cpe., V-8, Auto. . \$1695
USED TRUCKS
1963 Chev 1/2 Ton 292 \$1395
1960 Chev 1/2 Ton, 6 cyl., 4 spd. . . . \$795
1956 Chev, 6 cyl., 4 speed \$395
Good Transportation
1962 Chev Wagon
4 dr. V-8 auto P.S. \$1095
1962 Plymouth Sport Fury \$695
1963 Renault R-8 New Trans \$495
1961 Ford Hardtop V-8 \$495
1961 Merc Comet Wagon \$495
1961 Falcon 4 dr. \$395
1958 Chev 4 dr. \$395
1960 Chev Wagon 6 cyl. auto. \$295

VAN EATON CHEVROLET
Phone 832-3131 Eatonville

TROPHY ALUMINUM PRODUCTS
• Heavy Duty Storm Doors
• Standard and Special Sizes
• Storm Windows and Screens
• Awning and Patio Covers
• Carports
• FREE ESTIMATES
PARKLAND DOOR INC.
318 East 96th St. GR 4-7011

CHURCH DIRECTORY ATTEND OUR WORSHIP SERVICES

PARKWAY Presbyterian Church
Sunday School 9:00 a.m.
Worship Service 10:00 a.m.
Nursery Service Provided
714-138th East LE 1-4234
Rev. Wesley J. Drummond

Spanaway Assembly of God
166th & Pacific Ave.
Sunday School 9:45 a.m.
Morning Worship 11 a.m.
Evening Evangelistic 7 p.m.
Family Night Wed. 7:30 p.m.
LE 1-1412

Spanaway Lutheran Church
8:30 & 11 a.m. Worship Service
9:45 a.m. Sunday School
Grades 1 & Up
11 a.m. Sunday School
3, 4 and 5 Year Olds
John L. Brieht, Pastor
160th & A St. LE 7-5978.

Parkland Lutheran Church & Christian Day School
Worship . . . 10:30 a.m.
Sunday School-Bible Study 9:15 a.m.
All ages
H.A. Theiste, pastor
LE 7-5492 LE 1-0777

Trinity Lutheran Church
Worship Services 9 a.m & 11 a.m.
Sunday School 10 a.m.
Wednesday School 4-5
(through Grade 9)
Erling C. Thompson
Robert Drowes PASTORS
12115 So. Park LE 7-0201

Spanaway United Methodist Church
Church School 9:30 a.m.
Worship 11:00 a.m.
R. Gordon Harrison, Pastor
163 & Pacific LE 7-5134

READ & USE the WANT ADS for BEST RESULTS

12 Real Estate For Sale

ONE ACRE building sites. Water available. LE 7-3469 or LE 7-8774. 68-526

Listings Wanted
Buying or Selling
Real Estate-Service
Call
Devereaux Realty
12152 Pacific Ave. LE 7-8658

33 Licensed Child Care

ONE CHILD age 3 or 4. Park-land. LE 7-4738. 68-507

7 Furniture, Appliances

TWO brown tweed studio couches. SK 2-4728.
KENMORE auto. washer, \$40. TH 5-4736.

PAVONES CERAMIC STUDIO

6702 106th Cr. E.
Puyallup
TH 5-6529
Fall Class Open
Weekdays & Evenings

ARE YOU IN DEBT? Bills Pressing?

Civilian - Military
GET OUT OF DEBT
ONE PAYMENT AVOID

1. Letters to Employers
2. Letters to C.O.'s
3. Loss of paycheck

Call
MONEY MANAGERS
MA 7-1700
232 Security Bldg.
915 1/2 Pacific Ave.
Tacoma, Wash. 98402
Eve. Appts. Home or Office
24 Hr. Svc. State Approved

7 Furniture, Appliances

BLONDE wood dinette set. Formica top, 4 chairs. Best offer. SK 9-2928 after 6.

ELECTRIC Stove. TH 5-8642.

Legals

In the Superior Court of the State of Washington For the County of Pierce
IN PROBATE
No. 77694
Notice to Creditors

In the matter of the estate of LOUISE E. SLACK, Deceased. Notice is hereby given that the undersigned has been appointed and has qualified as Administrator of the estate of the above named deceased; that all persons having claims against said deceased are hereby required to serve the same, duly verified, on said Administrator or his/her attorney of record at the address below stated, and file the same with the Clerk of said Court, together with proof of such service within four months after the date of first publication of this notice, or the same will be barred.
Date of first publication Oct. 3, 1968.

s/ Quinby R. Buxton
Quinby R. Buxton
Administrator of said Estate
11024 Pacific Avenue
Tacoma, Wash 98444
PETERS & TRACY
s/ Phillip S. Tracy
Phillip S. Tracy
11024 Pacific Avenue
Tacoma, Washington 98444
LE 7-0264
Published in the Times Journal
Oct. 3, 10, 17, 1968.

In the Superior Court of the State of Washington For the County of Pierce

IN PROBATE
No. 77792
Notice To Creditors
IN THE MATTER OF THE ESTATE OF WINIFRED C. LAWRENCE, Deceased.

Notice is hereby given that the undersigned has been appointed and has qualified as Executor of the estate of the above named deceased; that all persons having claims against said deceased are hereby required to serve the same, duly verified, on said Executor or his/her attorney of record at the address below stated, and file the same with the Clerk of said Court, together with proof of such service within four months after the date of first publication of this notice or the same will be barred.
Date of first publication Oct. 17, 1968.

s/ Vance F. Lawrence
Executor of said Estate
11024 Pacific Avenue
Tacoma, Wash. 98444
PETERS & TRACY
By: s/ Phillip S. Tracy
Attorney for Estate
11024 Pacific Avenue
Tacoma, Washington 98444
LE 7-0264
Published Oct. 17, 24, and 31st in the Pierce County Herald and Times Journal.

9 a.m. - 10 p.m.
7 DAYS A WEEK

BARGAIN BASKET

16618
Pacific Ave. S. Spanaway
LE 7-3371

No Sales To Dealers

WE RESERVE THE RIGHT TO LIMIT QUANTITIES

We Carry A Complete Line Of Sacked Feeds - Presto Logs

We Are Locally Owned & Operated
HELP YOUR BUDGET WITH THESE SAVINGS

PRICES EFFECTIVE

Oct. 17-18-19
Thur.-Fri.-Sat.

ARMOUR BEEF TAMALES
15 Oz. **29c**

CARLTON APPLE SAUCE
303 Tins **7/\$1**

VAN CAMP Grated TUNA
1/2 Flat **5/\$1.00**

HEN SCRATCH
25 Lb. Bag **\$1.45**

NALLEY POTATO CHIPS
Reg. 69c Box **49c**

AJAX DETERGENT KING-SIZED
\$1.09

MISSION MACARONI AND CHEESE DINNERS
7 1/4 Oz. **3/49c**

Ghirardelli CHOCOLATE CHIPS
6 FOR **\$1**
6 Oz. Pkgs.

THREE BEE HONEY
5 Lbs. **99c**

BLOCK ICE

20 LB. NO. 2 POTATOES
69c

PRODUCE

SNOW WHITE CAULIFLOWER
29c ea.

SLICING CUKES
10c ea.

PARTY ICE

HUBBARD SQUASH
2c LB.

SAVE OUR LOGS TO PRESERVE JOBS

VOTE INITIATIVE FOR 32

★ THE REASON FOR INITIATIVE #32

- ✓ The price of export logs in Washington State has gone skyhigh because of Japanese demands.
- ✓ Many Washington State mills are being forced out of business because they cannot bid against the Japanese monopolies for high-priced export logs, and at the same time compete with cheap Japanese labor.
- ✓ Initiative #32 WILL limit the export of logs grown on Washington State lands, PROMOTE the export of finished products, and PROVIDE for primary processing by Washington labor, thus PRESERVING our domestic mills and jobs.

CITIZENS' COMMITTEE FOR INITIATIVE #32
Room 804
1425 Fourth Avenue, Joshua Green Building
Seattle, Washington 98101
Ted Goodson, Chairman

★ 32 BENEFITS YOU ★

Everyday Low Meat Prices. .25 lb. Locker Boxes **\$14.95**

T-BONE STEAK
\$1.19 Lb.

SIRLOIN STEAK
\$1.15 Lb.

BONELESS BEEF STEW
69c Lb.

BEEF SHORT RIBS
39c Lb.

BAR S CANNED PICNICS
3 Lb. TIN **\$2.09**

BAR S SLICED BACON
Reg. or Thick **79c** Lb.